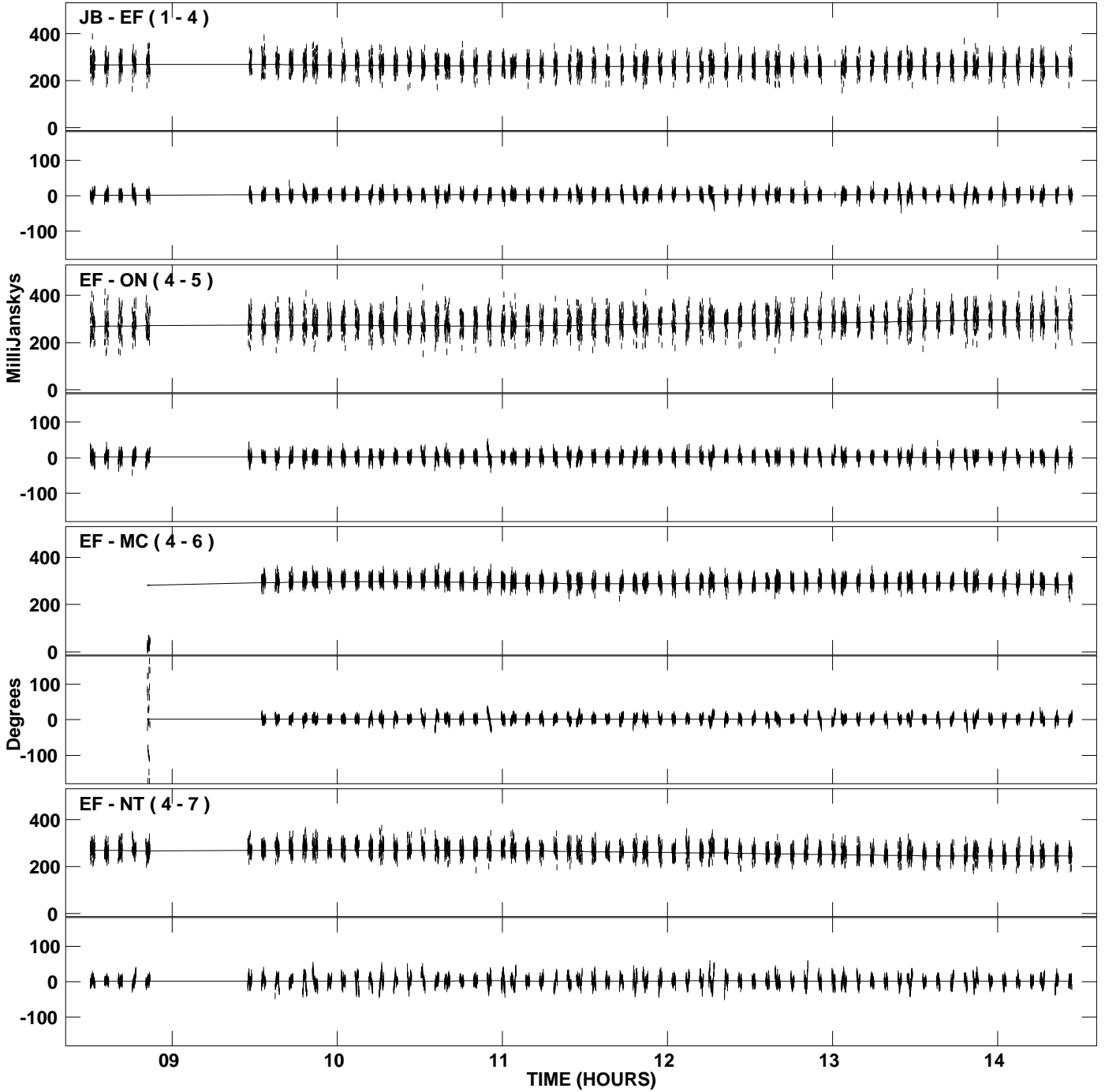
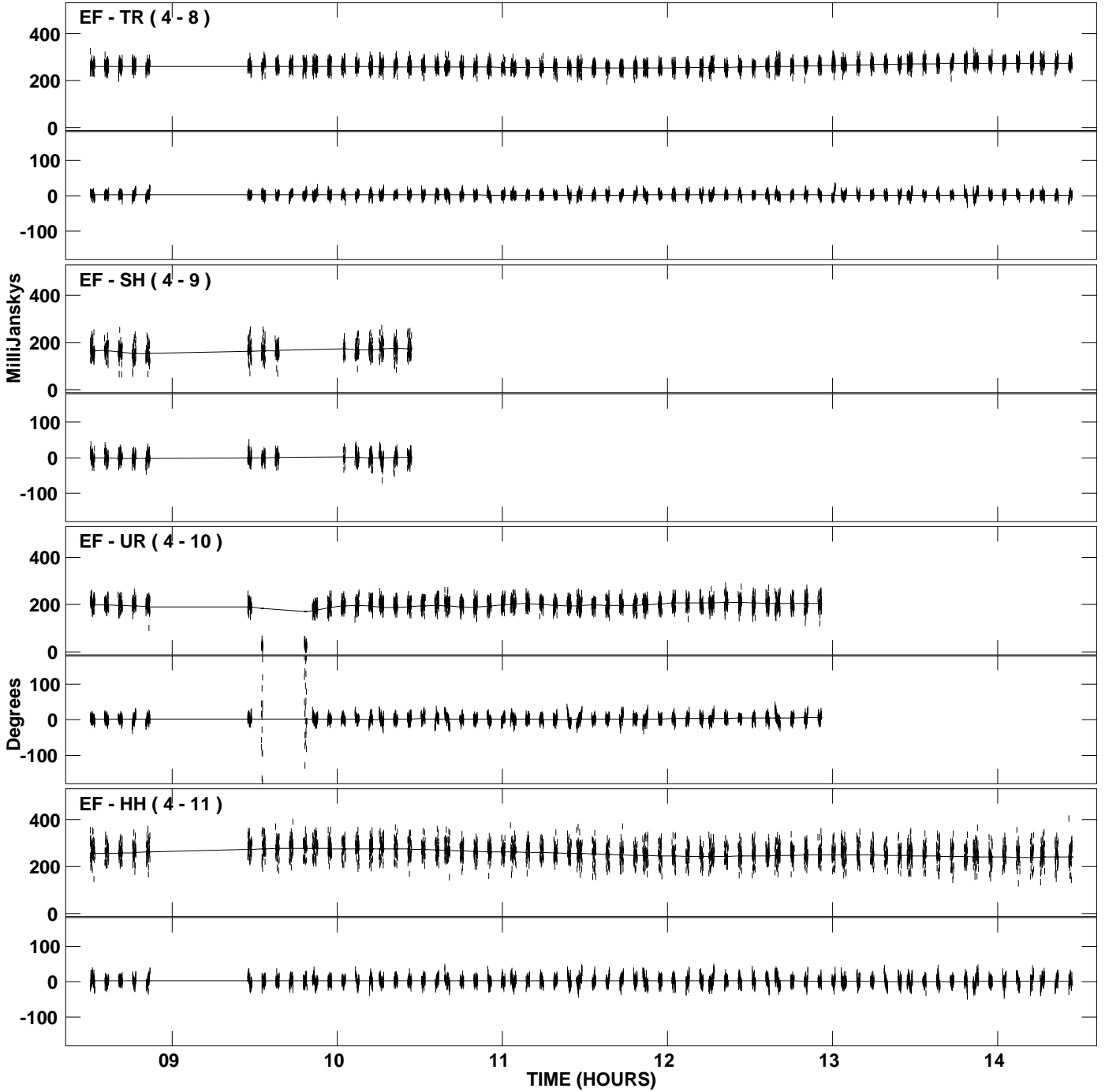


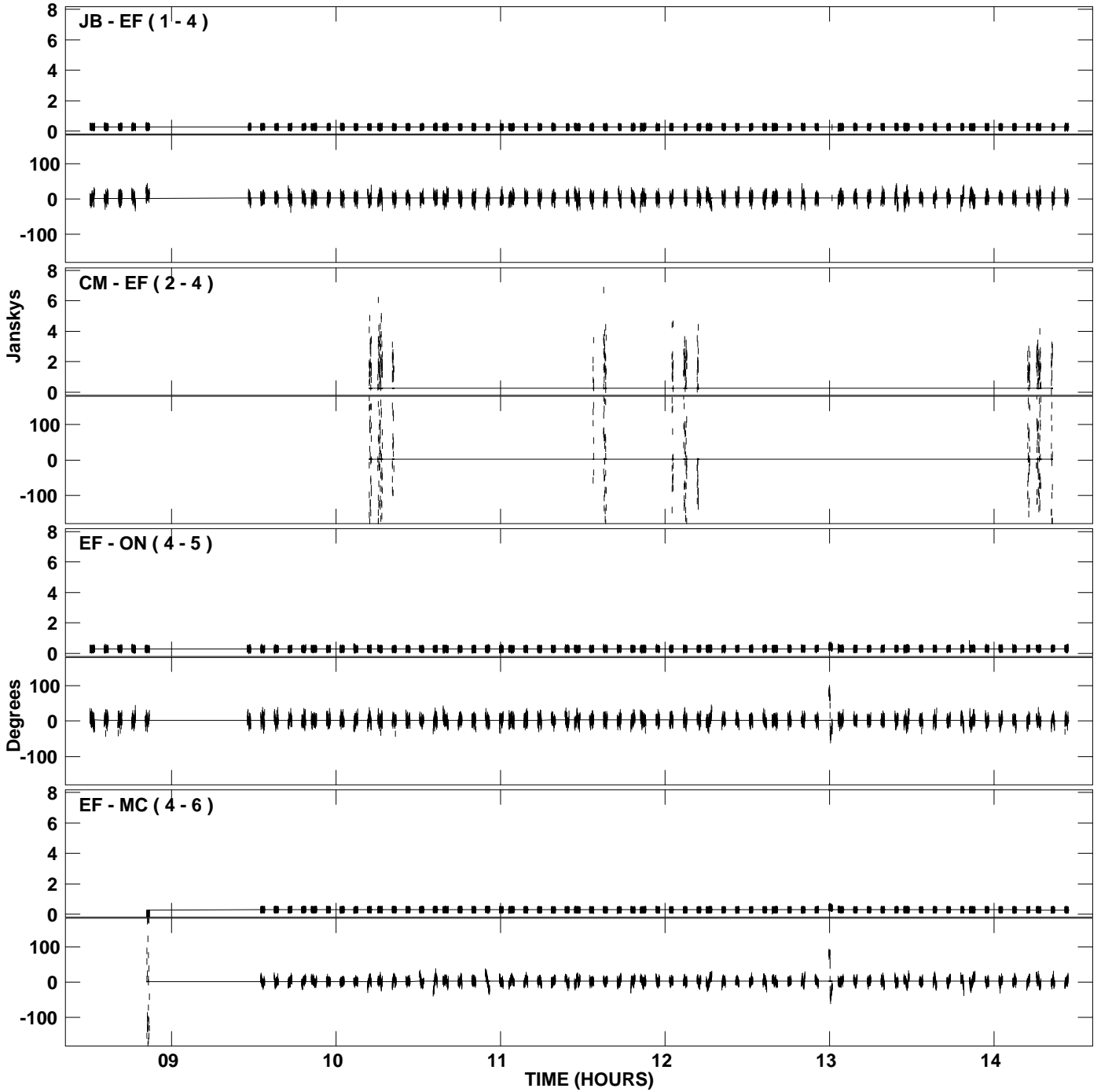
PLot file version 1 created 06-NOV-2007 15:22:02
Amplitude andPhase vs Time for J2310+1055.MULTI.1 CL # 3
IF 1 CHAN 1 STK LL of J2310+1055.ICL001.3



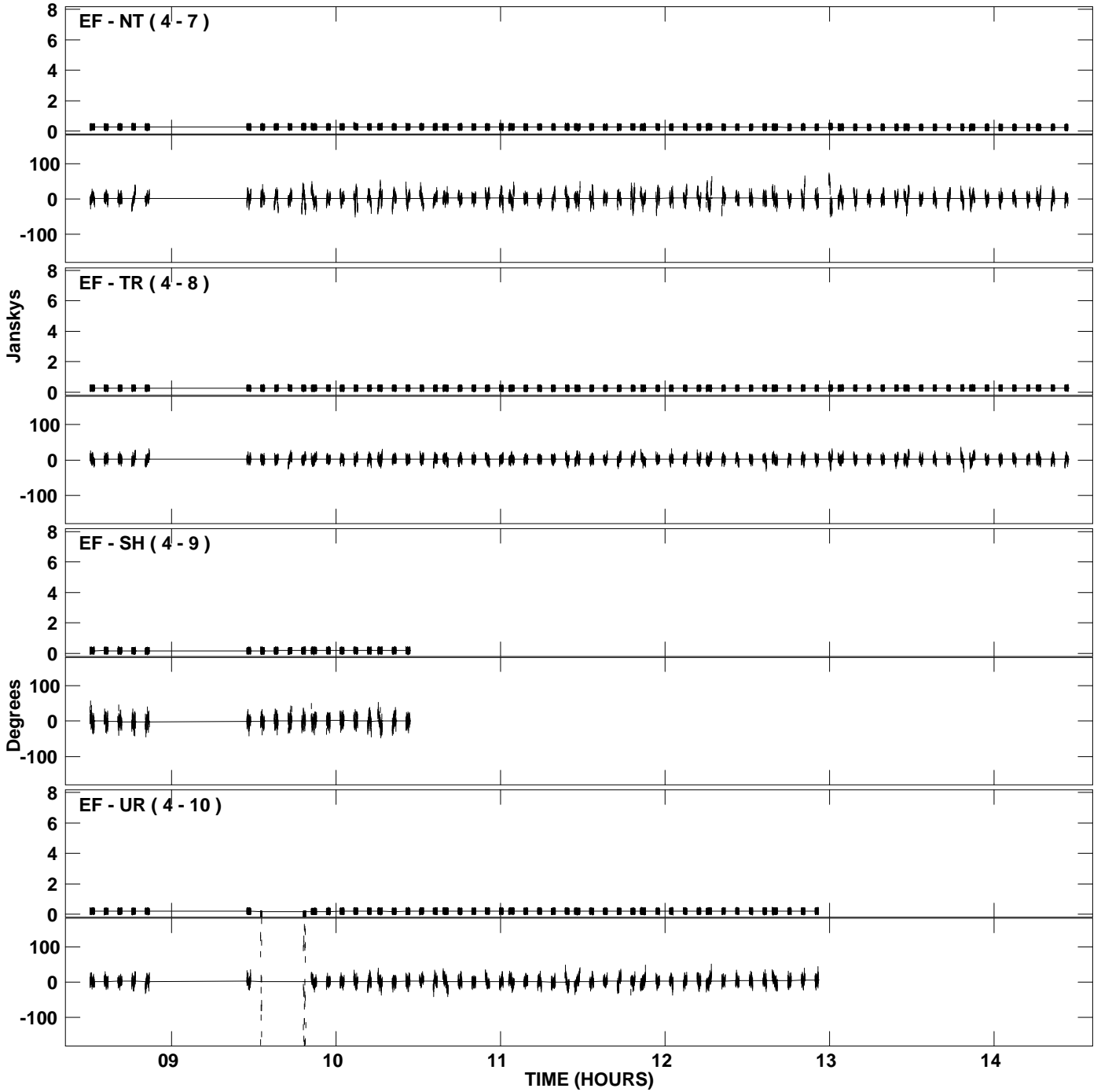
PLot file version 2 created 06-NOV-2007 15:22:02
Amplitude andPhase vs Time for J2310+1055.MULTI.1 CL # 3
IF 1 CHAN 1 STK LL of J2310+1055.ICL001.3



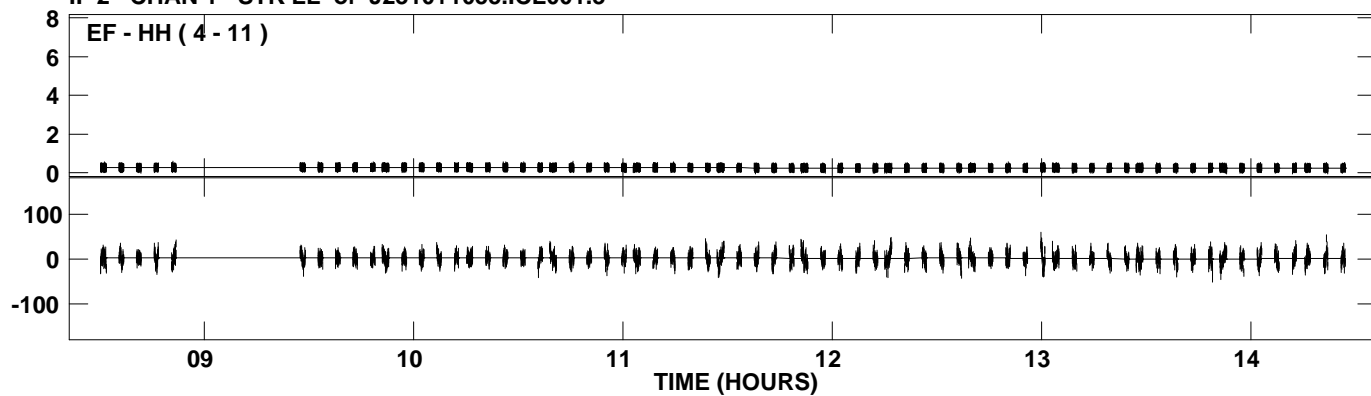
PLot file version 3 created 06-NOV-2007 15:22:17
Amplitude and Phase vs Time for J2310+1055.MULTI.1 CL # 3
IF 2 CHAN 1 STK LL of J2310+1055.ICL001.3



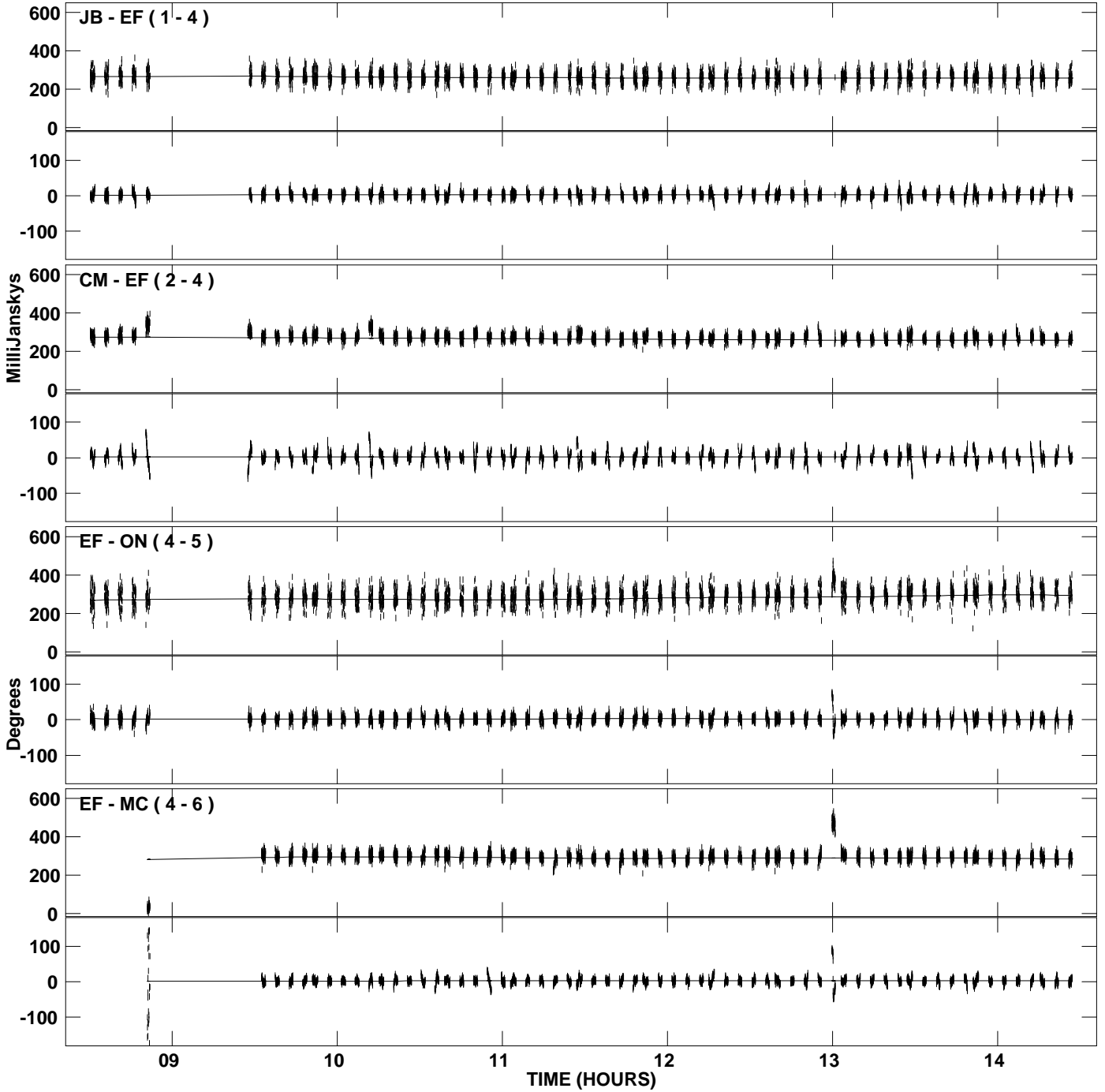
PLot file version 4 created 06-NOV-2007 15:22:17
Amplitude andPhase vs Time for J2310+1055.MULTI.1 CL # 3
IF 2 CHAN 1 STK LL of J2310+1055.ICL001.3



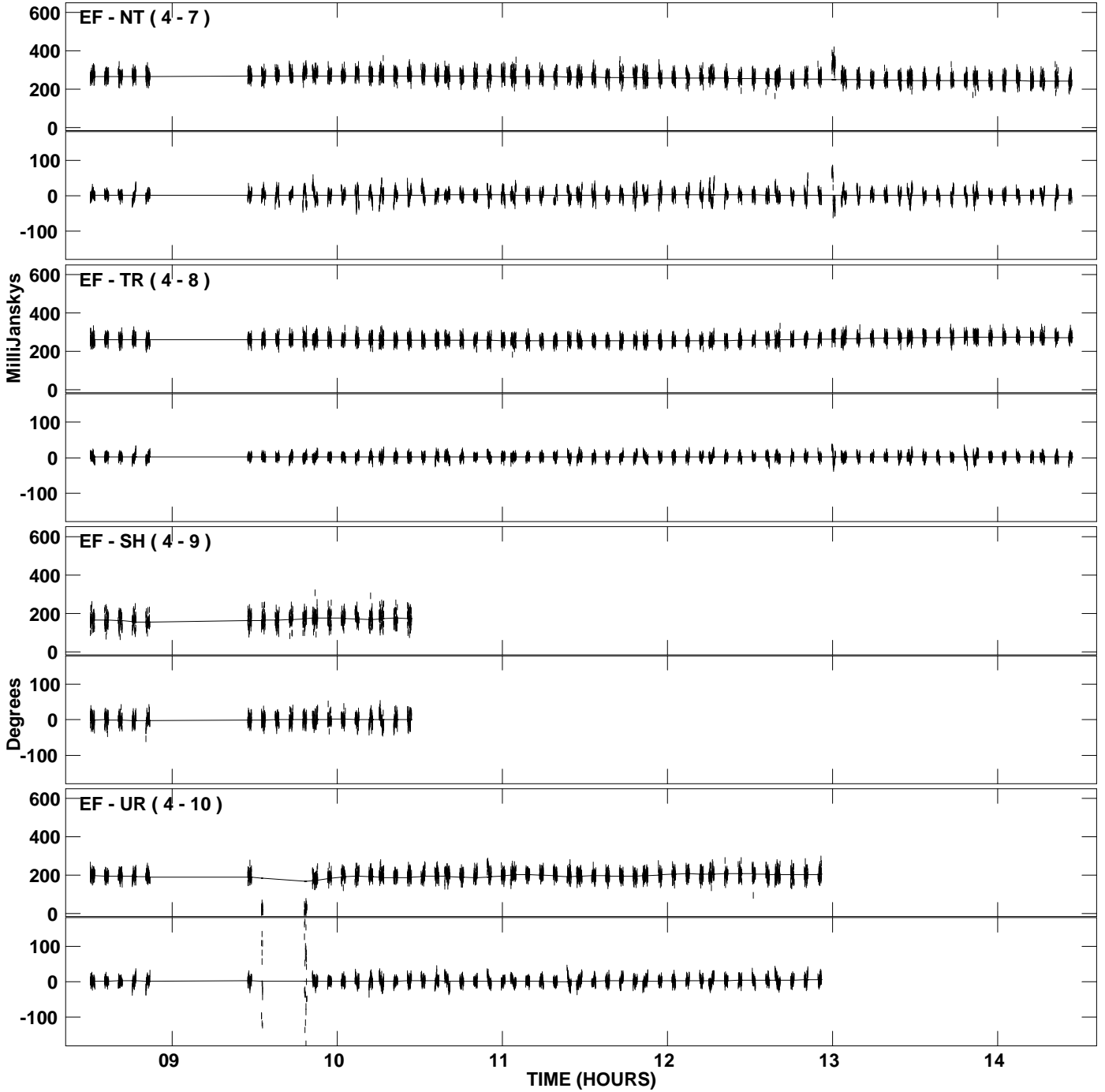
PLot file version 5 created 06-NOV-2007 15:22:17
Amplitude andPhase vs Time for J2310+1055.MULTI.1 CL # 3
IF 2 CHAN 1 STK LL of J2310+1055.ICL001.3



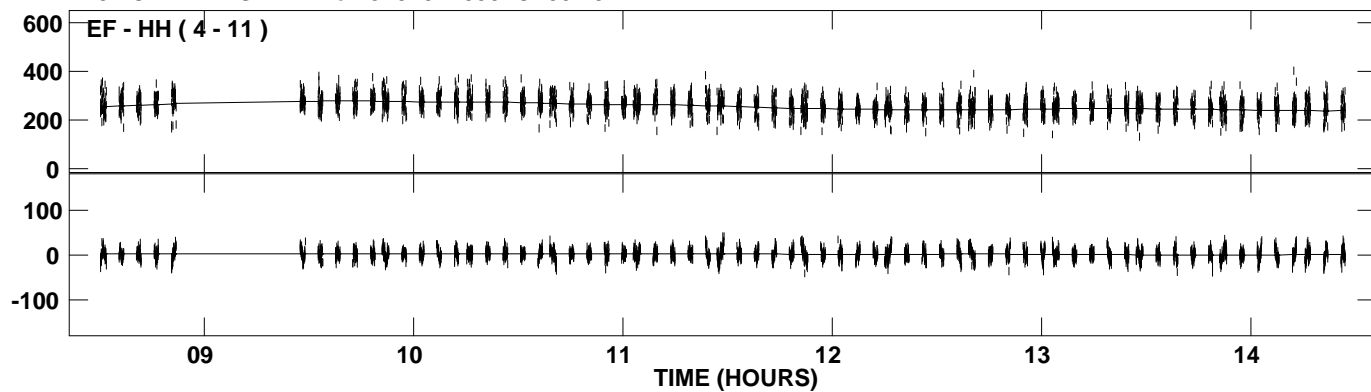
PLot file version 6 created 06-NOV-2007 15:22:37
Amplitude andPhase vs Time for J2310+1055.MULTI.1 CL # 3
IF 3 CHAN 1 STK LL of J2310+1055.ICL001.3



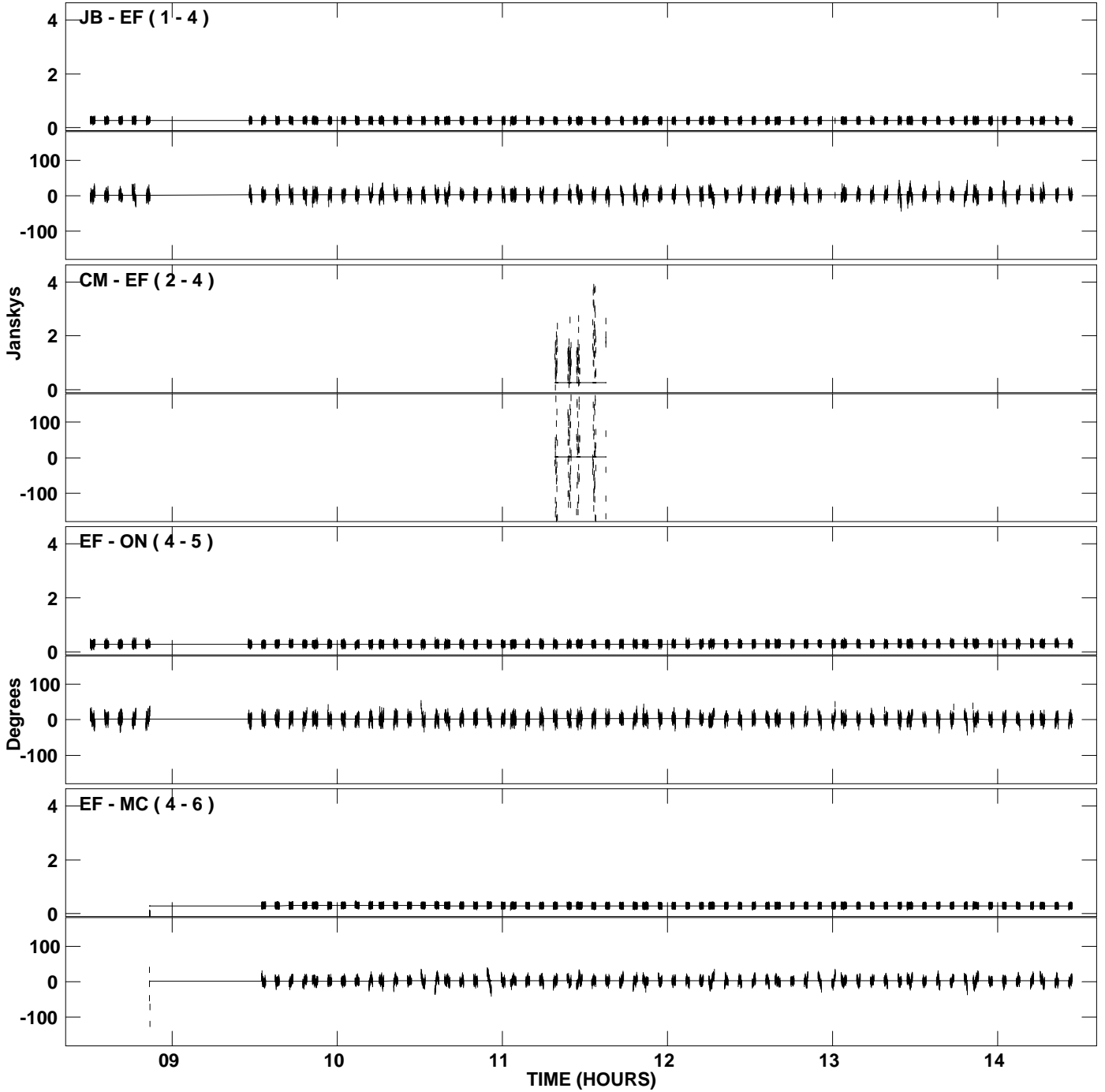
PLot file version 7 created 06-NOV-2007 15:22:37
Amplitude and Phase vs Time for J2310+1055.MULTI.1 CL # 3
IF 3 CHAN 1 STK LL of J2310+1055.ICL001.3



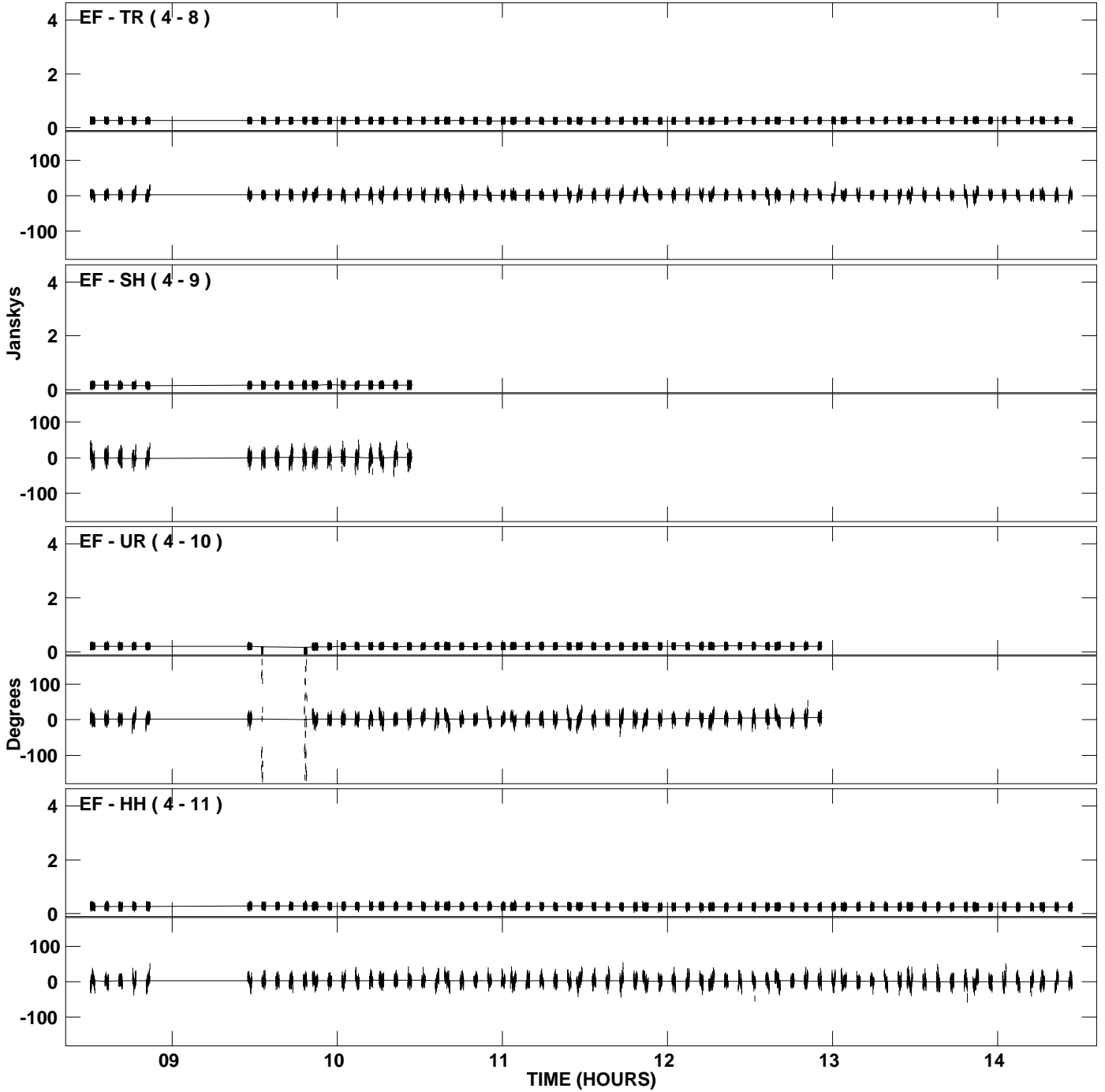
PLot file version 8 created 06-NOV-2007 15:22:37
Amplitude andPhase vs Time for J2310+1055.MULTI.1 CL # 3
IF 3 CHAN 1 STK LL of J2310+1055.ICL001.3



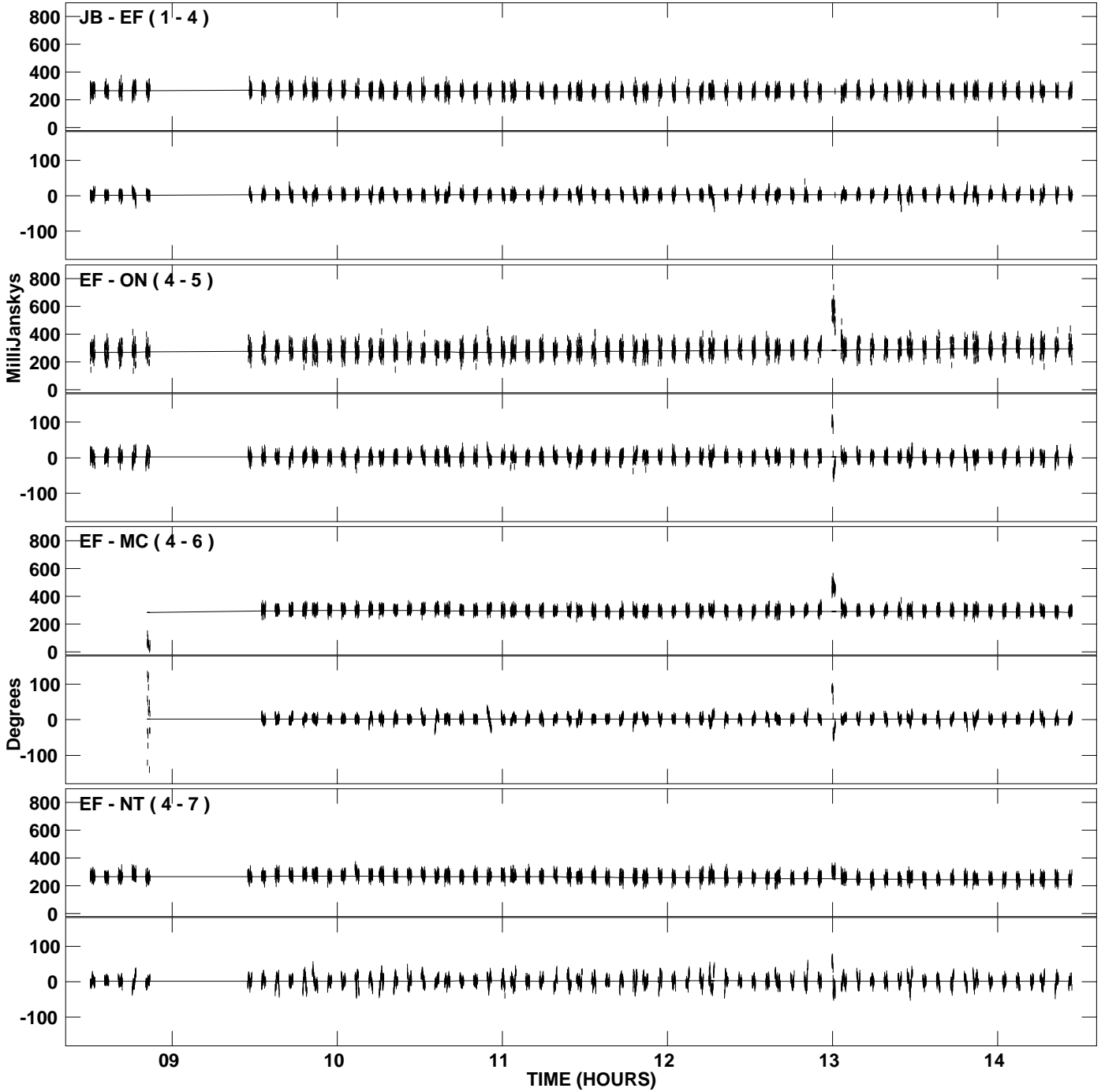
PLot file version 9 created 06-NOV-2007 15:22:58
Amplitude and Phase vs Time for J2310+1055.MULTI.1 CL # 3
IF 4 CHAN 1 STK LL of J2310+1055.ICL001.3



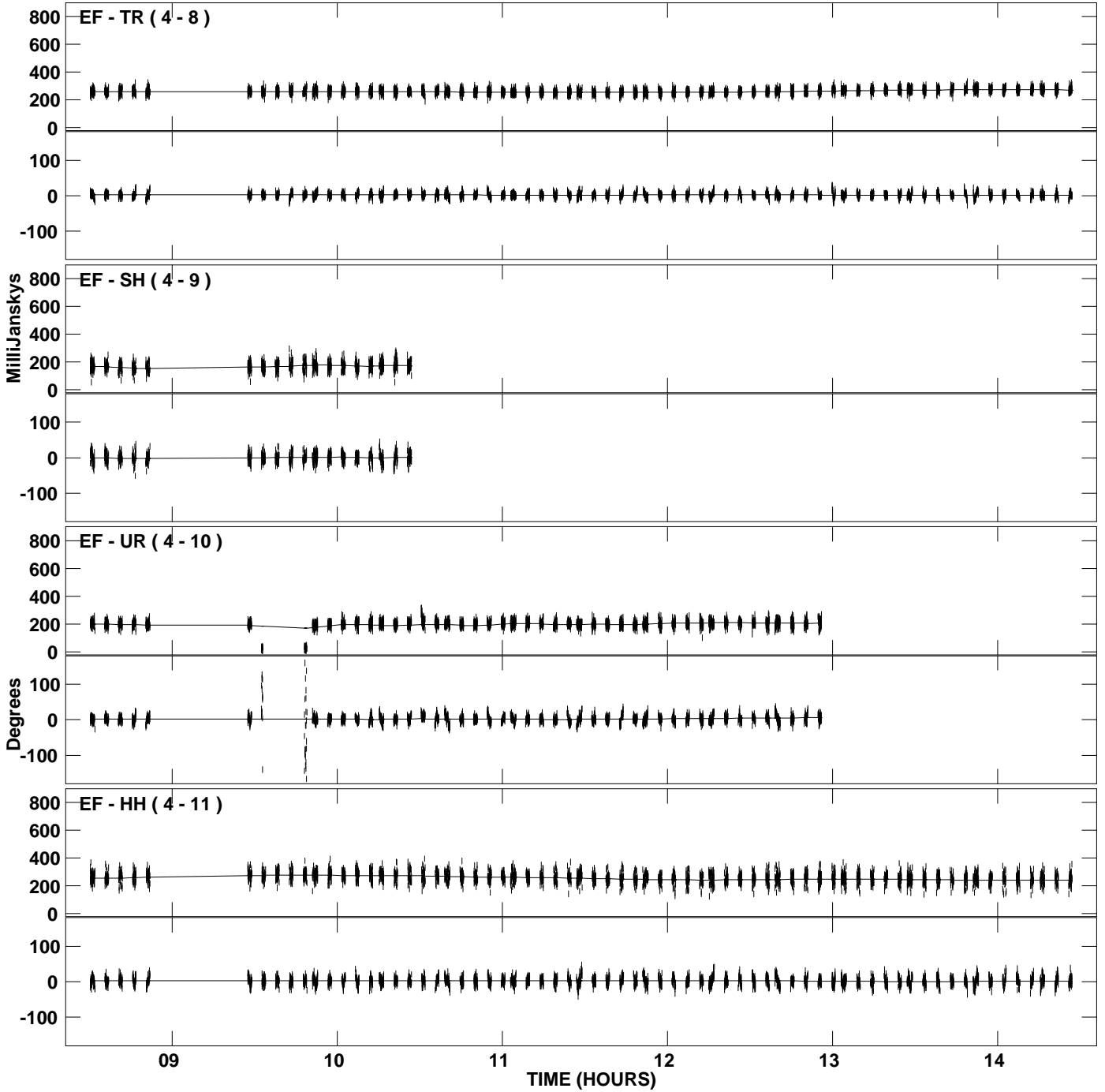
PLot file version 10 created 06-NOV-2007 15:22:58
Amplitude andPhase vs Time for J2310+1055.MULTI.1 CL # 3
IF 4 CHAN 1 STK LL of J2310+1055.ICL001.3



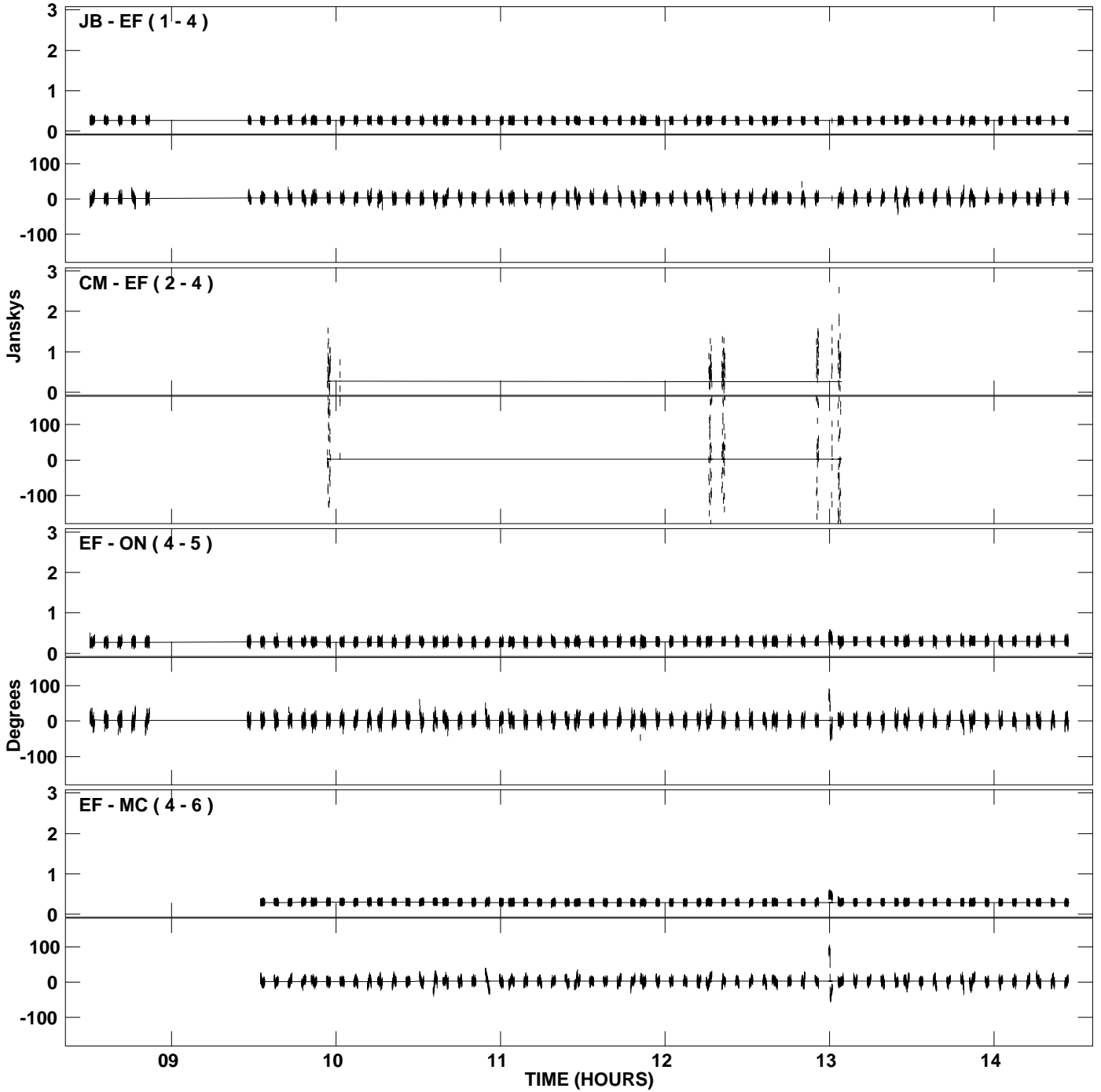
PLot file version 11 created 06-NOV-2007 15:23:20
Amplitude and Phase vs Time for J2310+1055.MULTI.1 CL # 3
IF 1 CHAN 1 STK RR of J2310+1055.ICL001.3



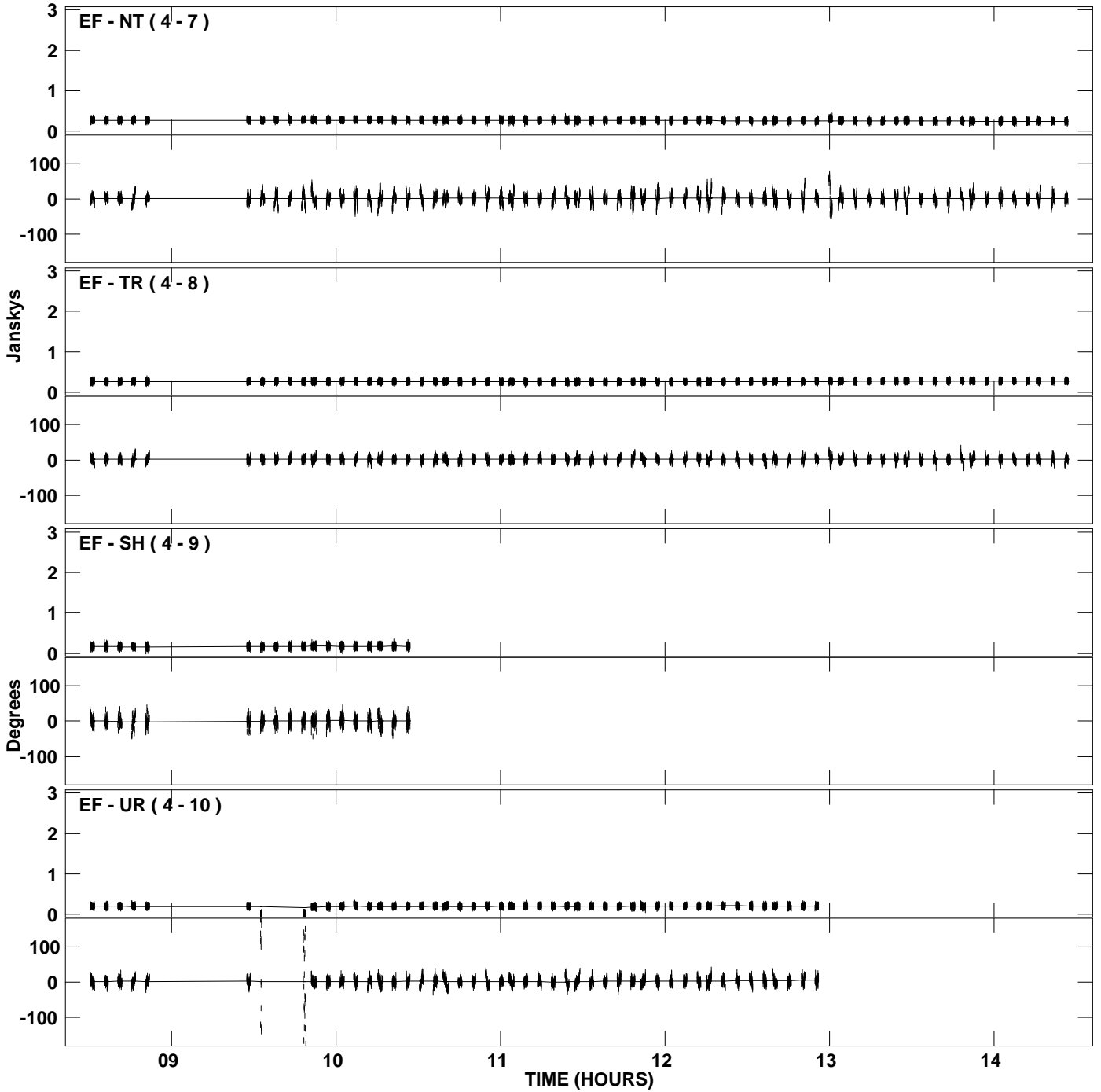
PLot file version 12 created 06-NOV-2007 15:23:20
Amplitude andPhase vs Time for J2310+1055.MULTI.1 CL # 3
IF 1 CHAN 1 STK RR of J2310+1055.ICL001.3



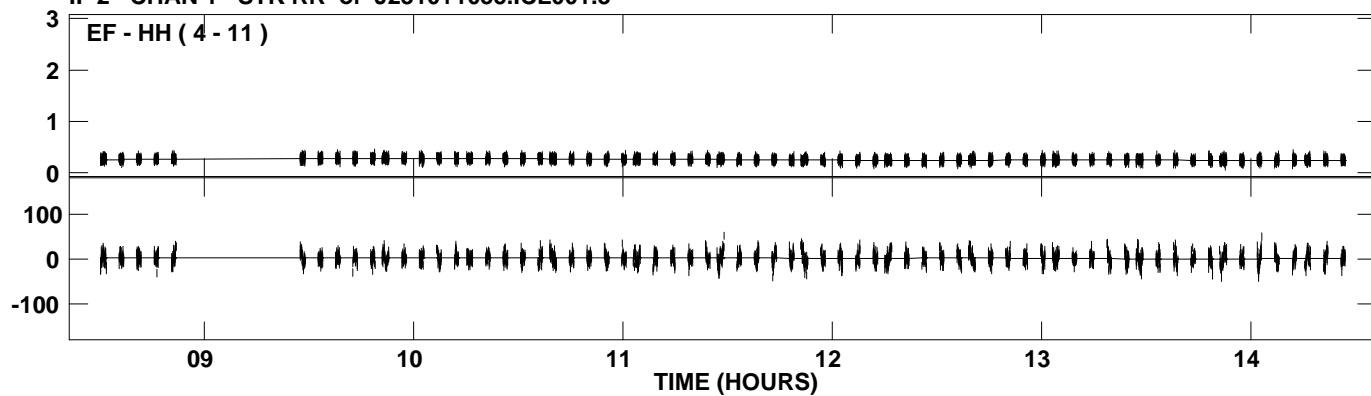
PLot file version 13 created 06-NOV-2007 15:23:34
Amplitude and Phase vs Time for J2310+1055.MULTI.1 CL # 3
IF 2 CHAN 1 STK RR of J2310+1055.ICL001.3



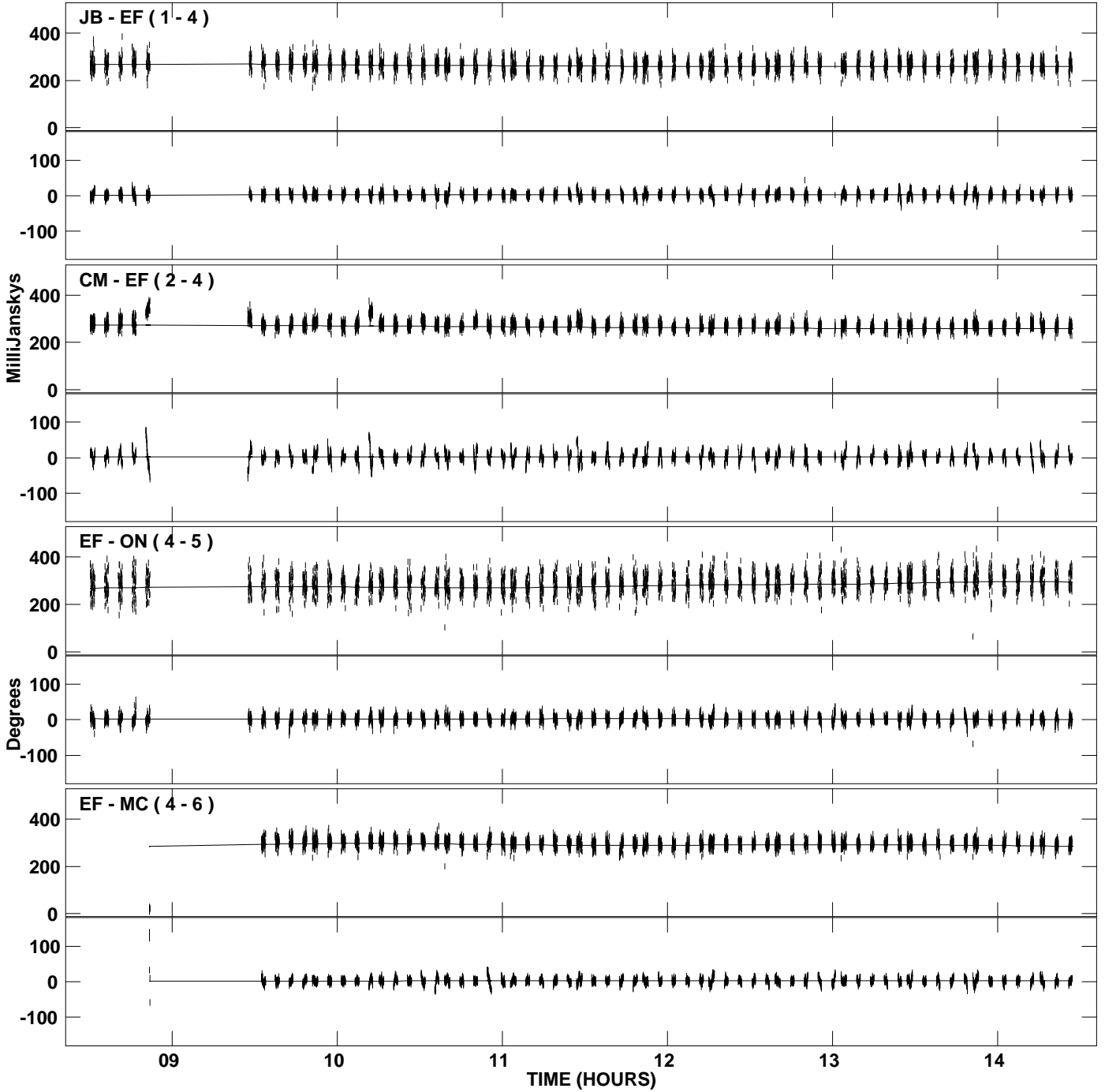
PLot file version 14 created 06-NOV-2007 15:23:35
Amplitude andPhase vs Time for J2310+1055.MULTI.1 CL # 3
IF 2 CHAN 1 STK RR of J2310+1055.ICL001.3



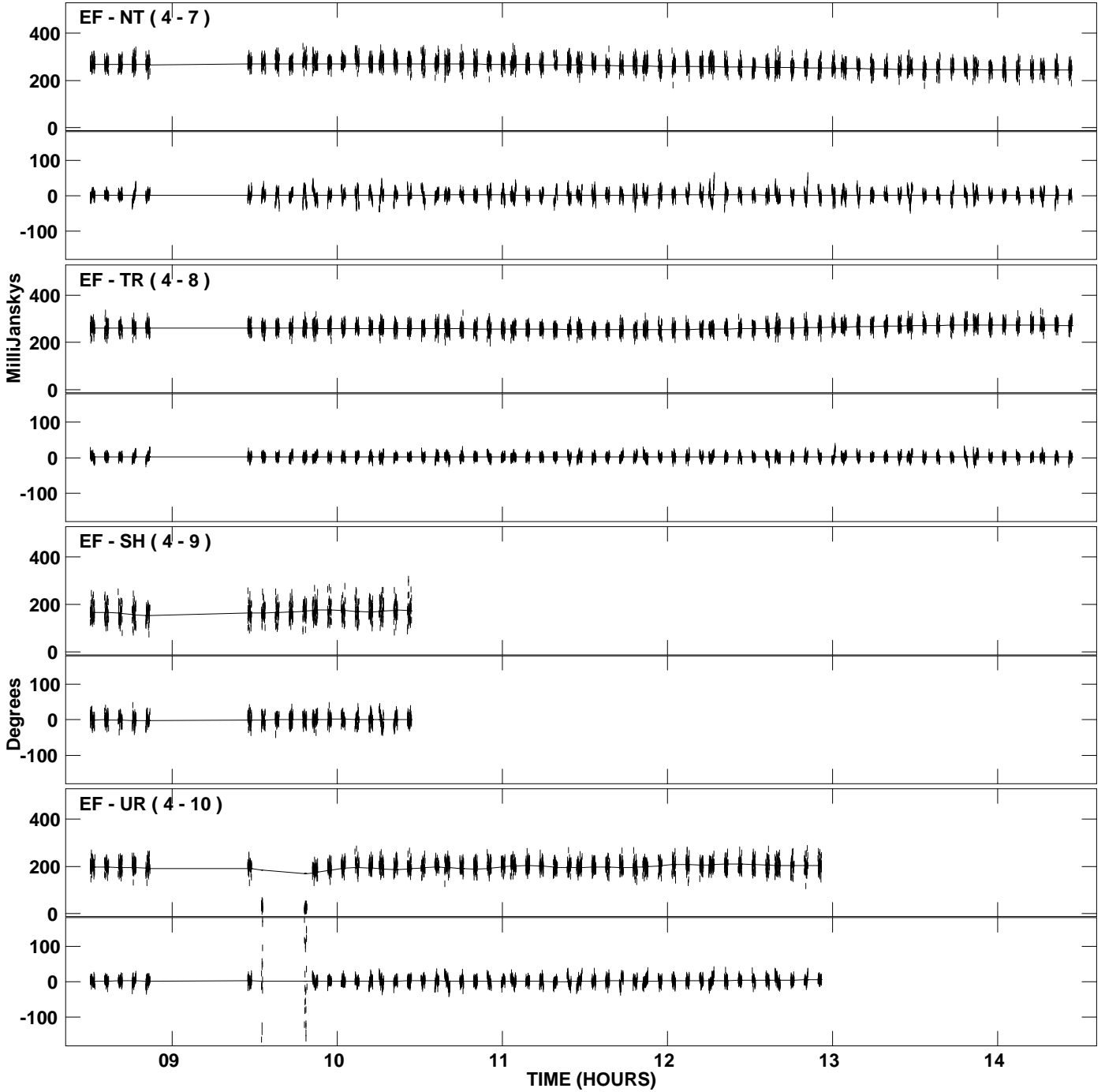
PLot file version 15 created 06-NOV-2007 15:23:35
Amplitude andPhase vs Time for J2310+1055.MULTI.1 CL # 3
IF 2 CHAN 1 STK RR of J2310+1055.ICL001.3



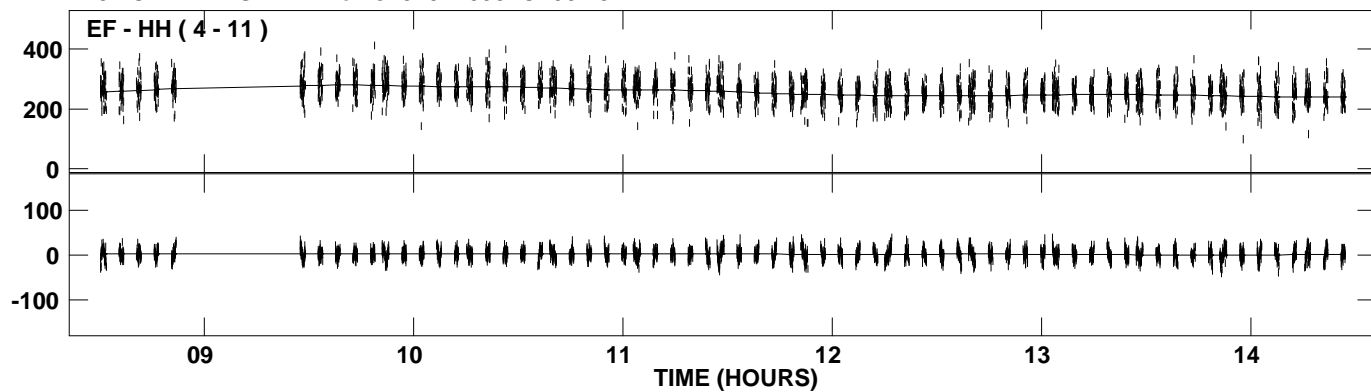
PLot file version 16 created 06-NOV-2007 15:23:49
Amplitude andPhase vs Time for J2310+1055.MULTI.1 CL # 3
IF 3 CHAN 1 STK RR of J2310+1055.ICL001.3



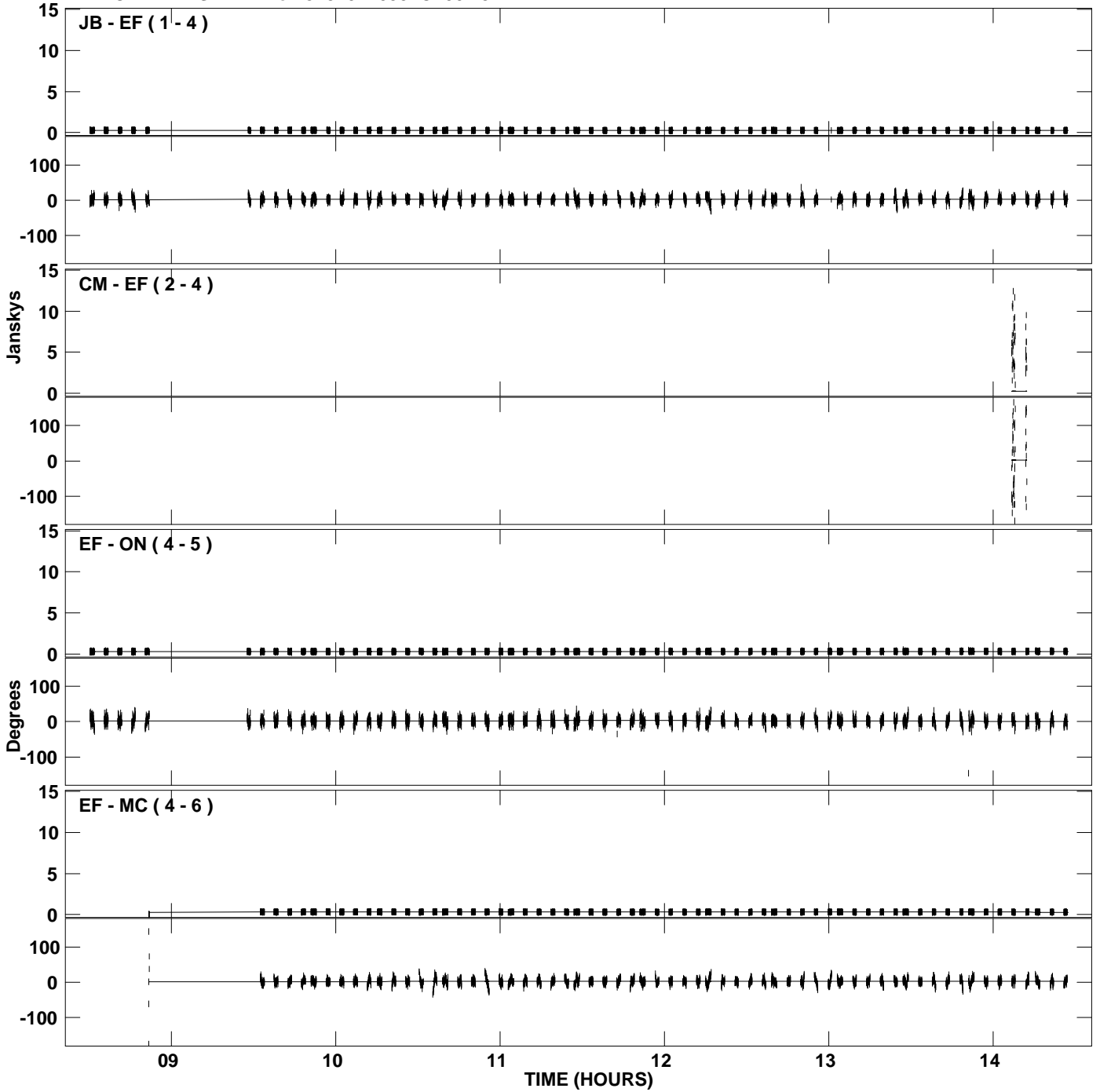
PLot file version 17 created 06-NOV-2007 15:23:49
Amplitude andPhase vs Time for J2310+1055.MULTI.1 CL # 3
IF 3 CHAN 1 STK RR of J2310+1055.ICL001.3



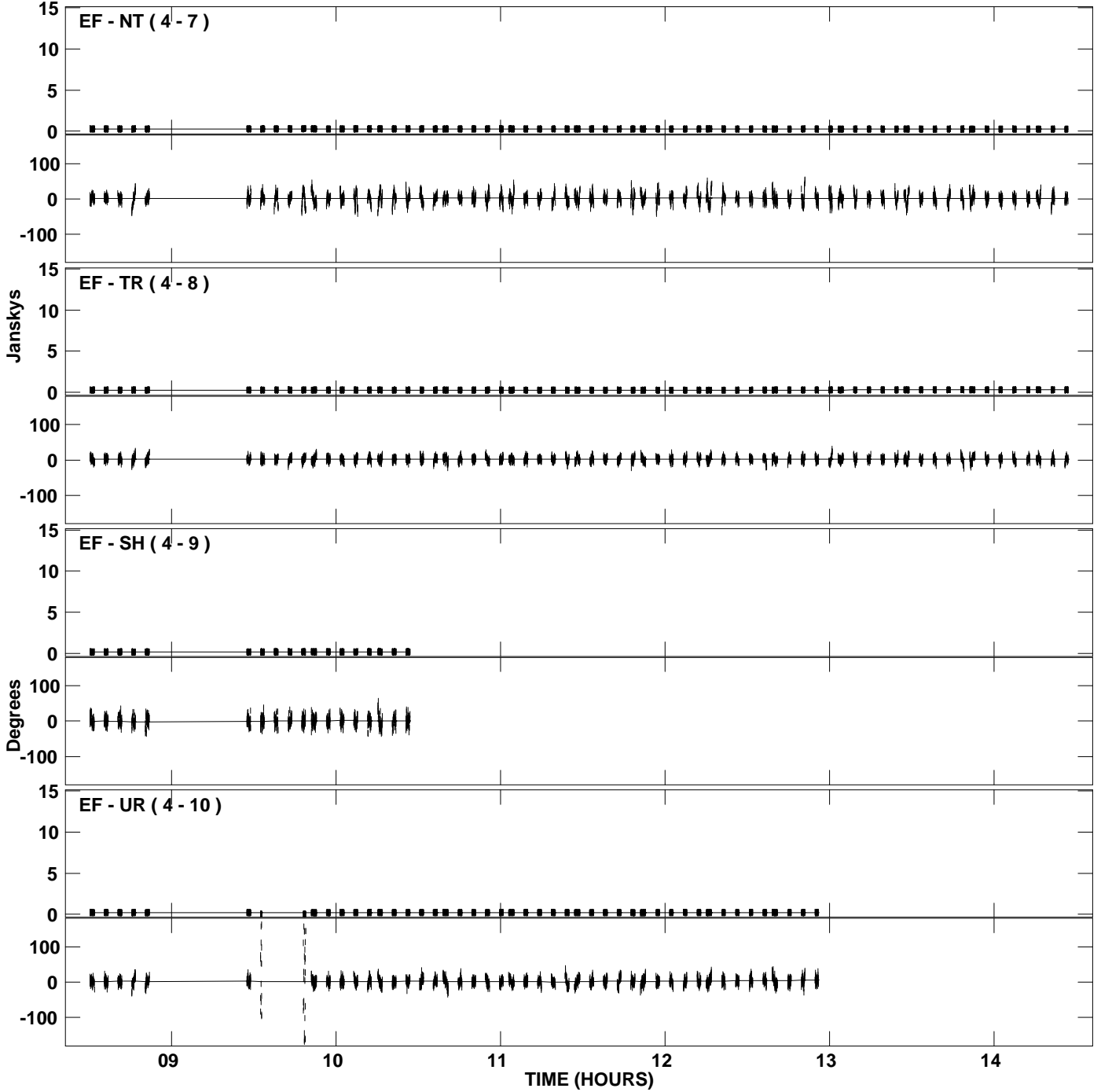
PLot file version 18 created 06-NOV-2007 15:23:49
Amplitude andPhase vs Time for J2310+1055.MULTI.1 CL # 3
IF 3 CHAN 1 STK RR of J2310+1055.ICL001.3



PLot file version 19 created 06-NOV-2007 15:24:07
Amplitude and Phase vs Time for J2310+1055.MULTI.1 CL # 3
IF 4 CHAN 1 STK RR of J2310+1055.ICL001.3



PLot file version 20 created 06-NOV-2007 15:24:07
Amplitude and Phase vs Time for J2310+1055.MULTI.1 CL # 3
IF 4 CHAN 1 STK RR of J2310+1055.ICL001.3



PLot file version 21 created 06-NOV-2007 15:24:07
Amplitude andPhase vs Time for J2310+1055.MULTI.1 CL # 3
IF 4 CHAN 1 STK RR of J2310+1055.ICL001.3

