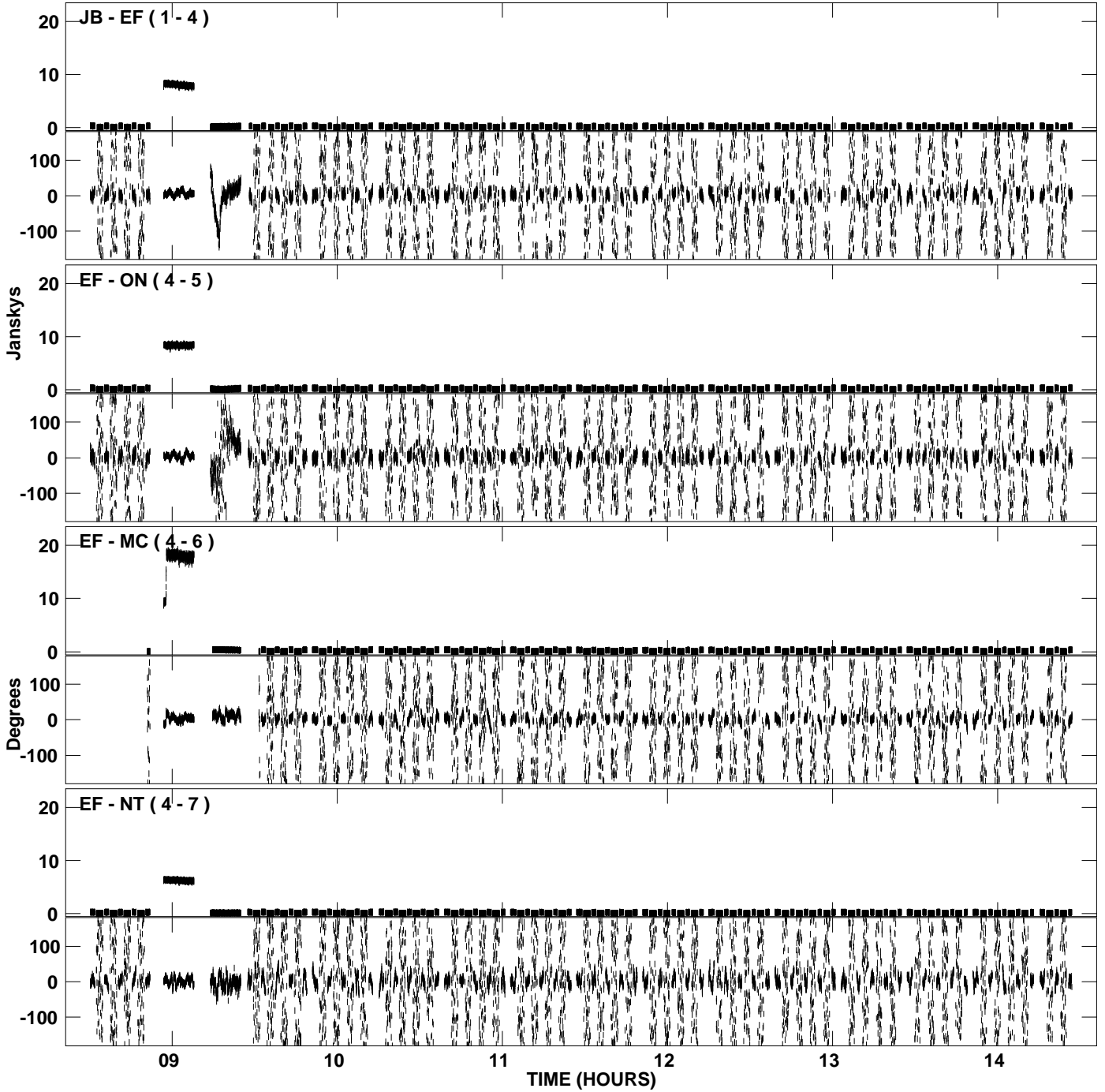
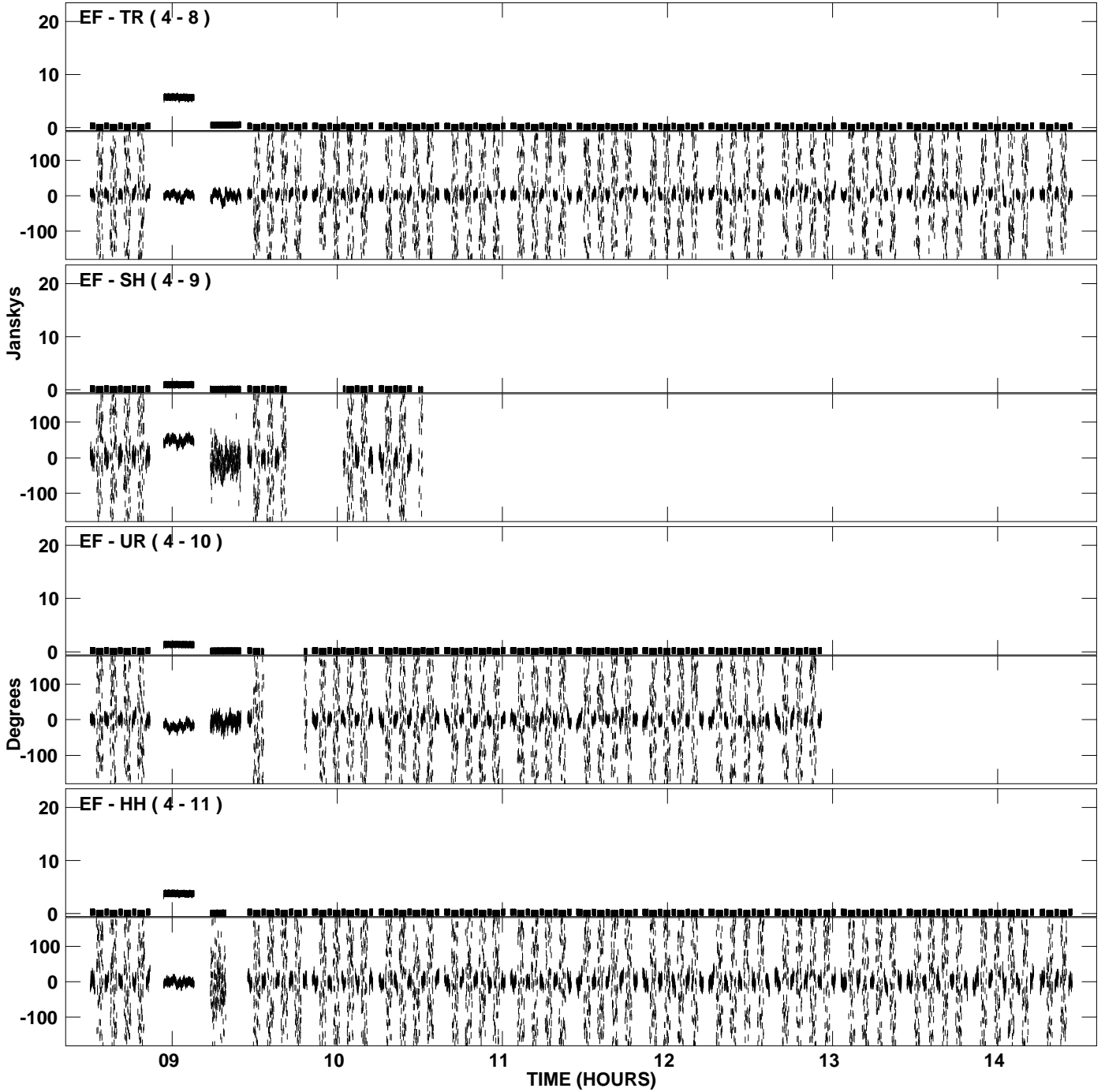


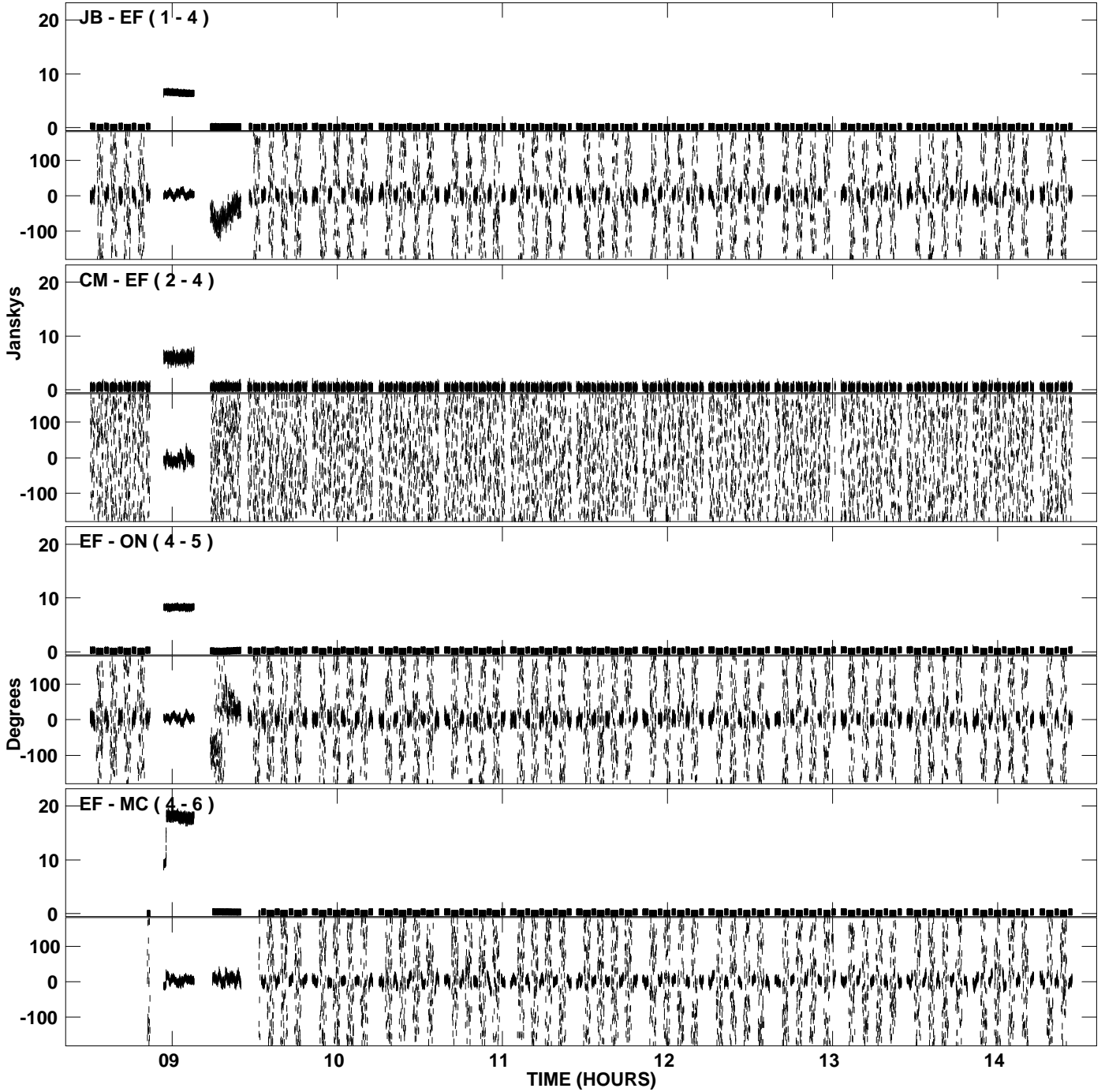
PLot file version 1 created 06-NOV-2007 15:09:14
Amplitude and Phase vs Time for EA037A.UVDATA.1 Vect aver. CL # 3
IF 1 CHAN 1 - 16 STK LL



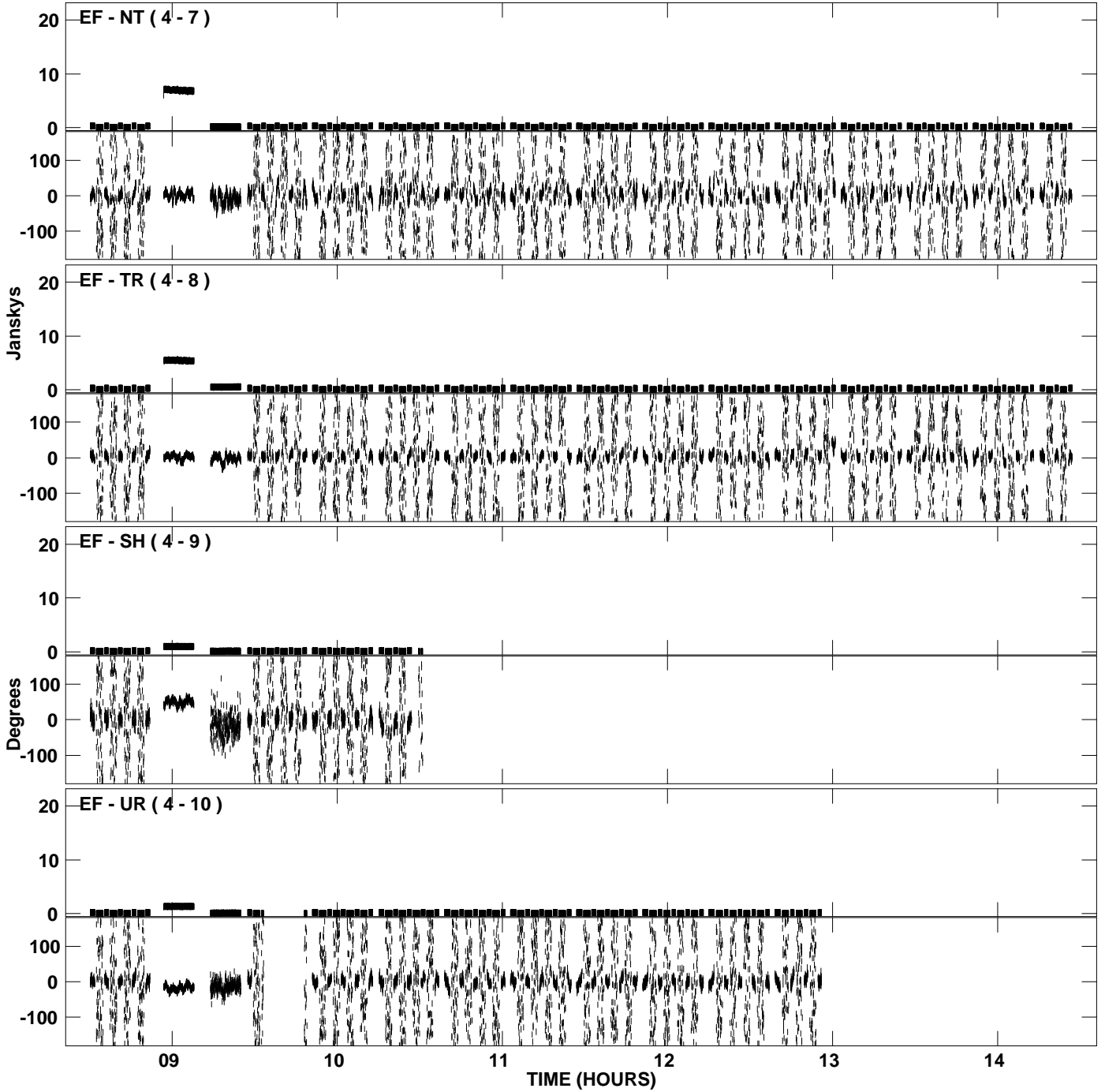
PLot file version 2 created 06-NOV-2007 15:09:14
Amplitude and Phase vs Time for EA037A.UVDATA.1 Vect aver. CL # 3
IF 1 CHAN 1 - 16 STK LL



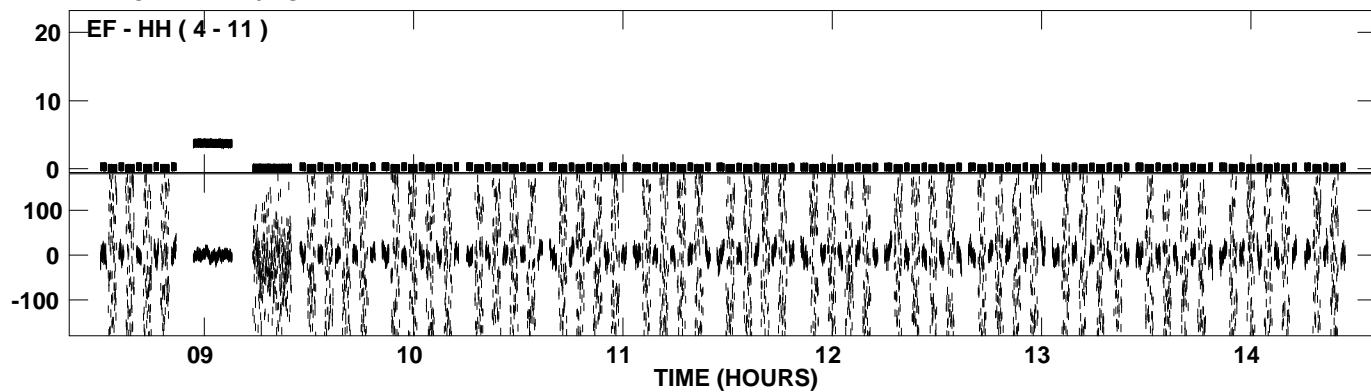
PLot file version 3 created 06-NOV-2007 15:09:42
Amplitude and Phase vs Time for EA037A.UVDATA.1 Vect aver. CL # 3
IF 2 CHAN 1 - 16 STK LL



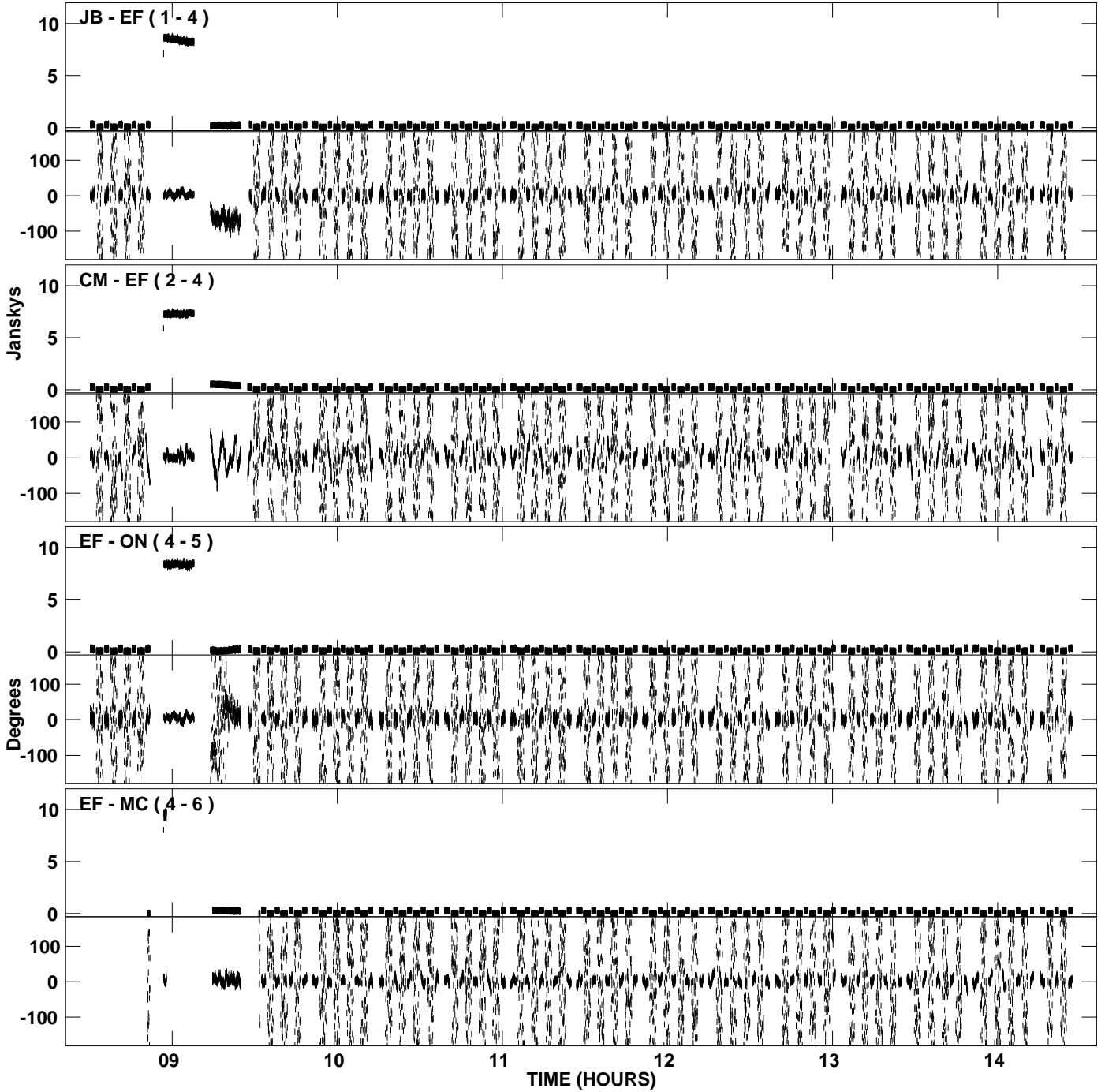
PLot file version 4 created 06-NOV-2007 15:09:43
Amplitude and Phase vs Time for EA037A.UVDATA.1 Vect aver. CL # 3
IF 2 CHAN 1 - 16 STK LL



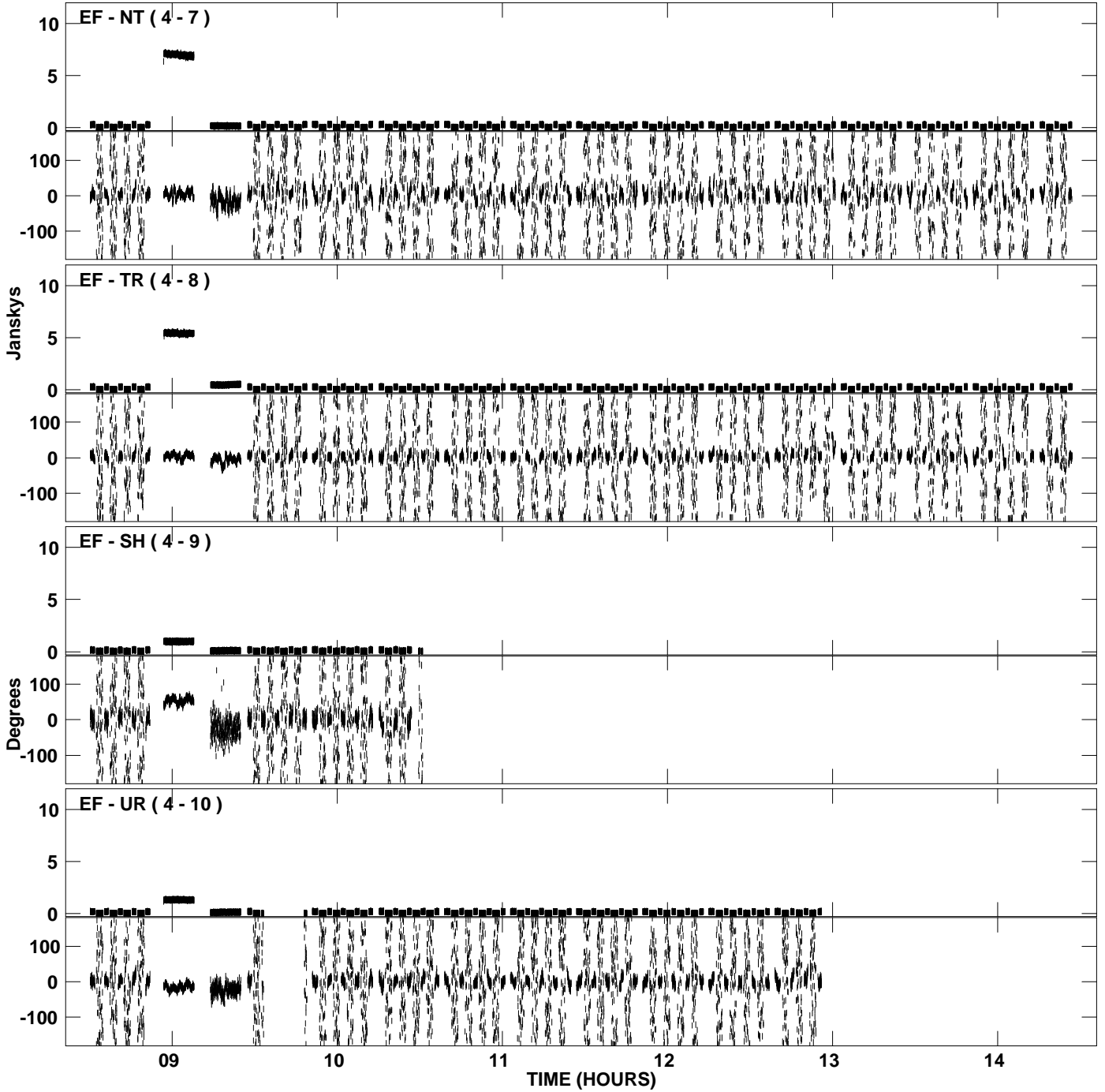
PLot file version 5 created 06-NOV-2007 15:09:43
Amplitude andPhase vs Time for EA037A.UVDATA.1 Vect aver. CL # 3
IF 2 CHAN 1 - 16 STK LL



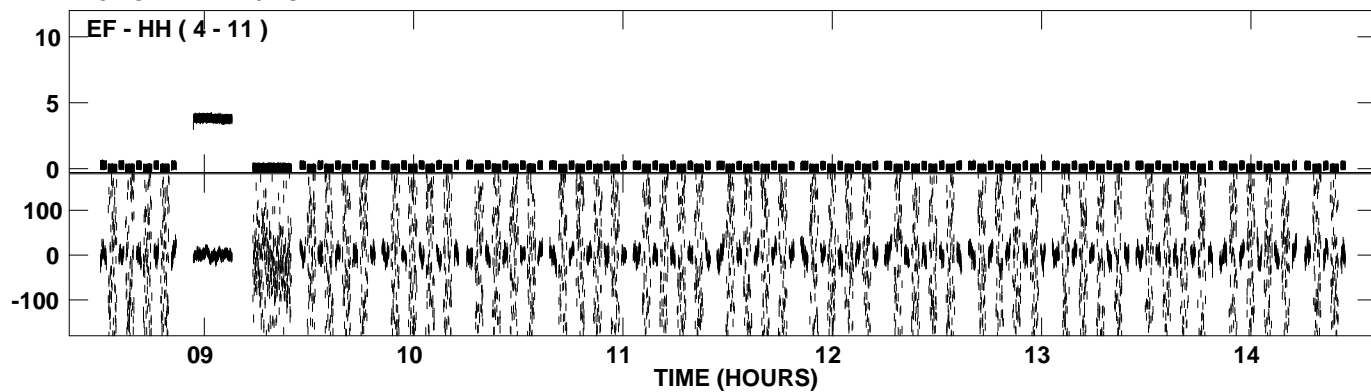
PLot file version 6 created 06-NOV-2007 15:10:10
Amplitude and Phase vs Time for EA037A.UVDATA.1 Vect aver. CL # 3
IF 3 CHAN 1 - 16 STK LL



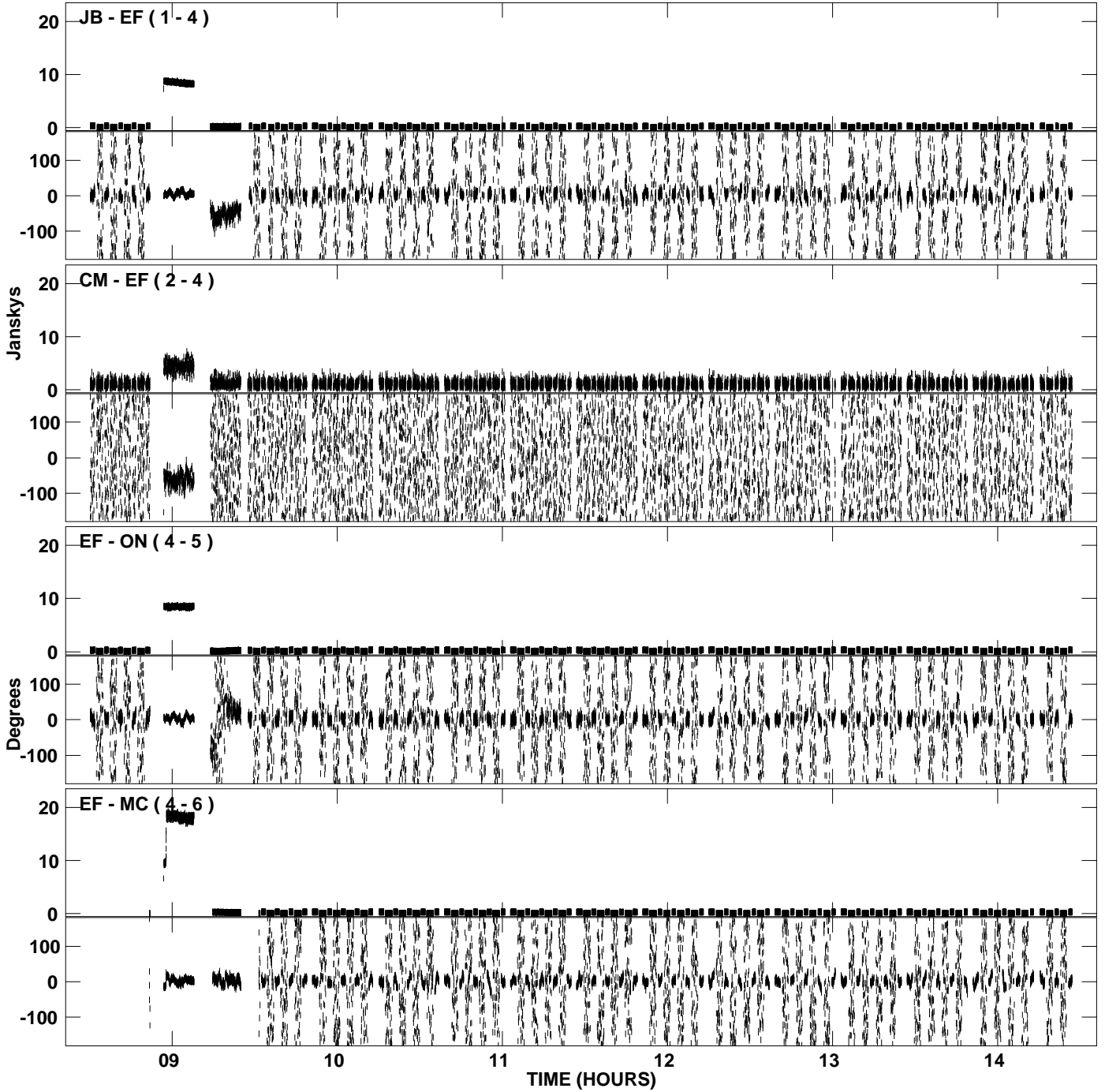
PLot file version 7 created 06-NOV-2007 15:10:10
Amplitude and Phase vs Time for EA037A.UVDATA.1 Vect aver. CL # 3
IF 3 CHAN 1 - 16 STK LL



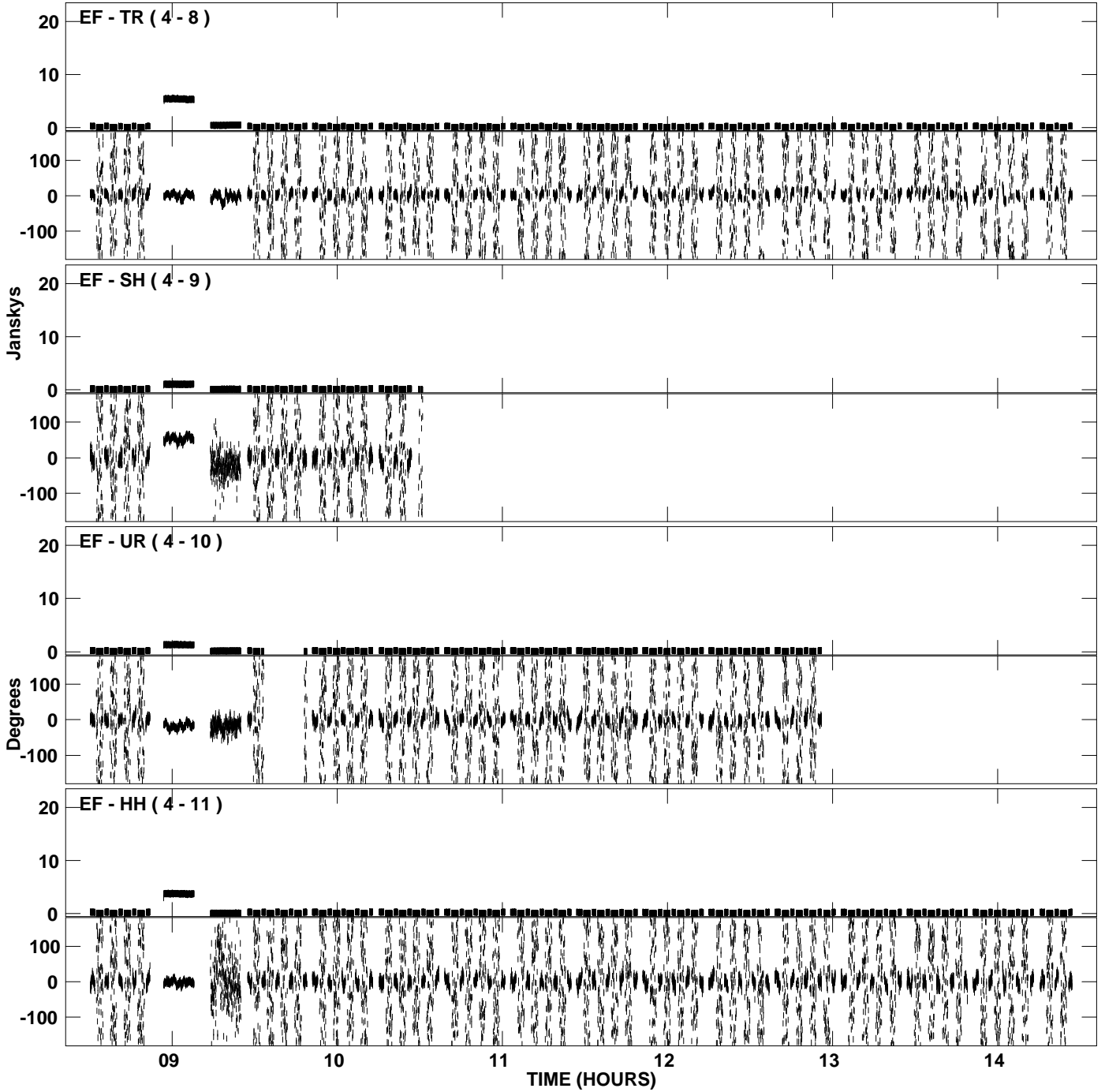
PLot file version 8 created 06-NOV-2007 15:10:11
Amplitude andPhase vs Time for EA037A.UVDATA.1 Vect aver. CL # 3
IF 3 CHAN 1 - 16 STK LL



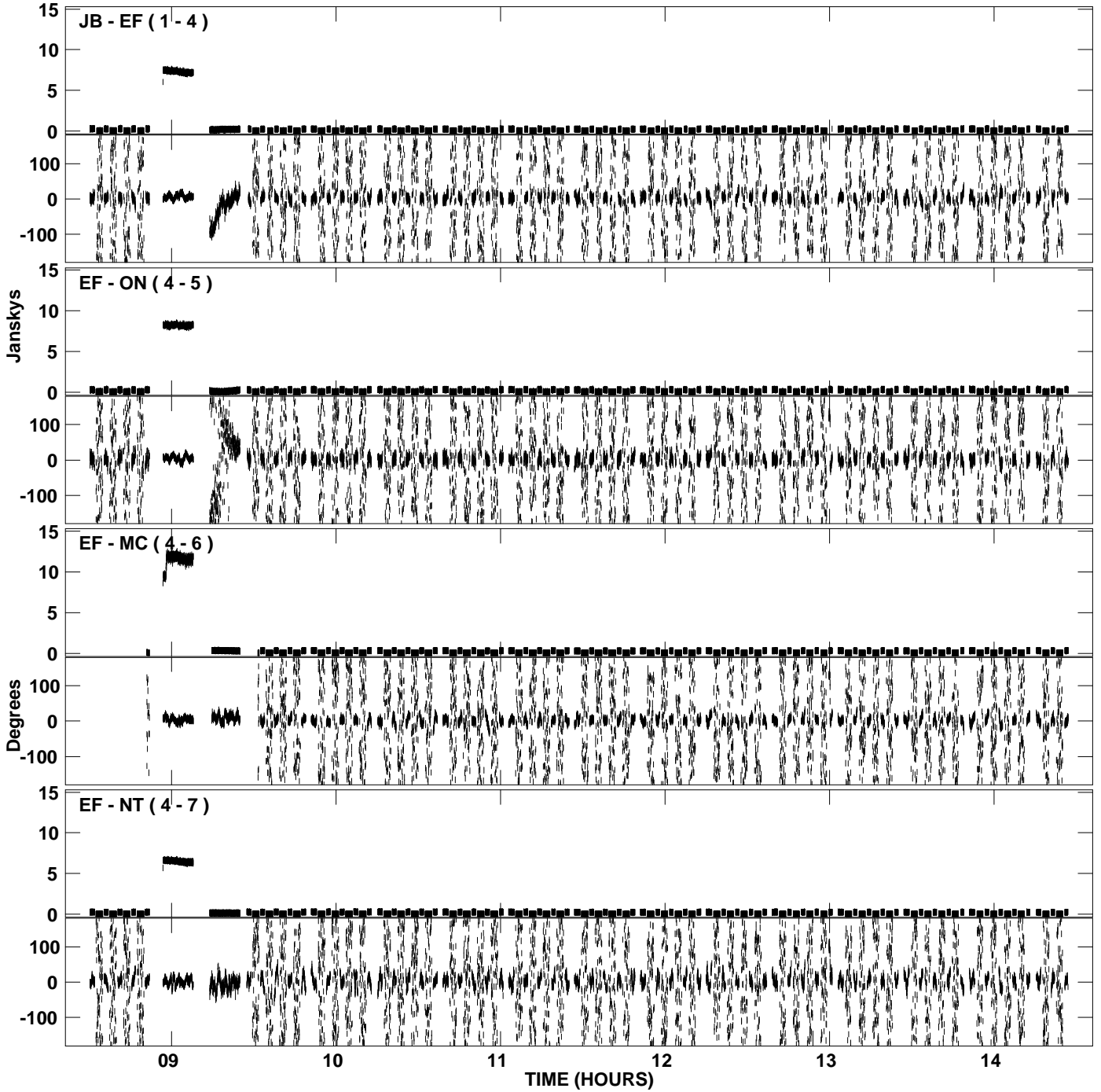
PLot file version 9 created 06-NOV-2007 15:10:40
Amplitude and Phase vs Time for EA037A.UVDATA.1 Vect aver. CL # 3
IF 4 CHAN 1 - 16 STK LL



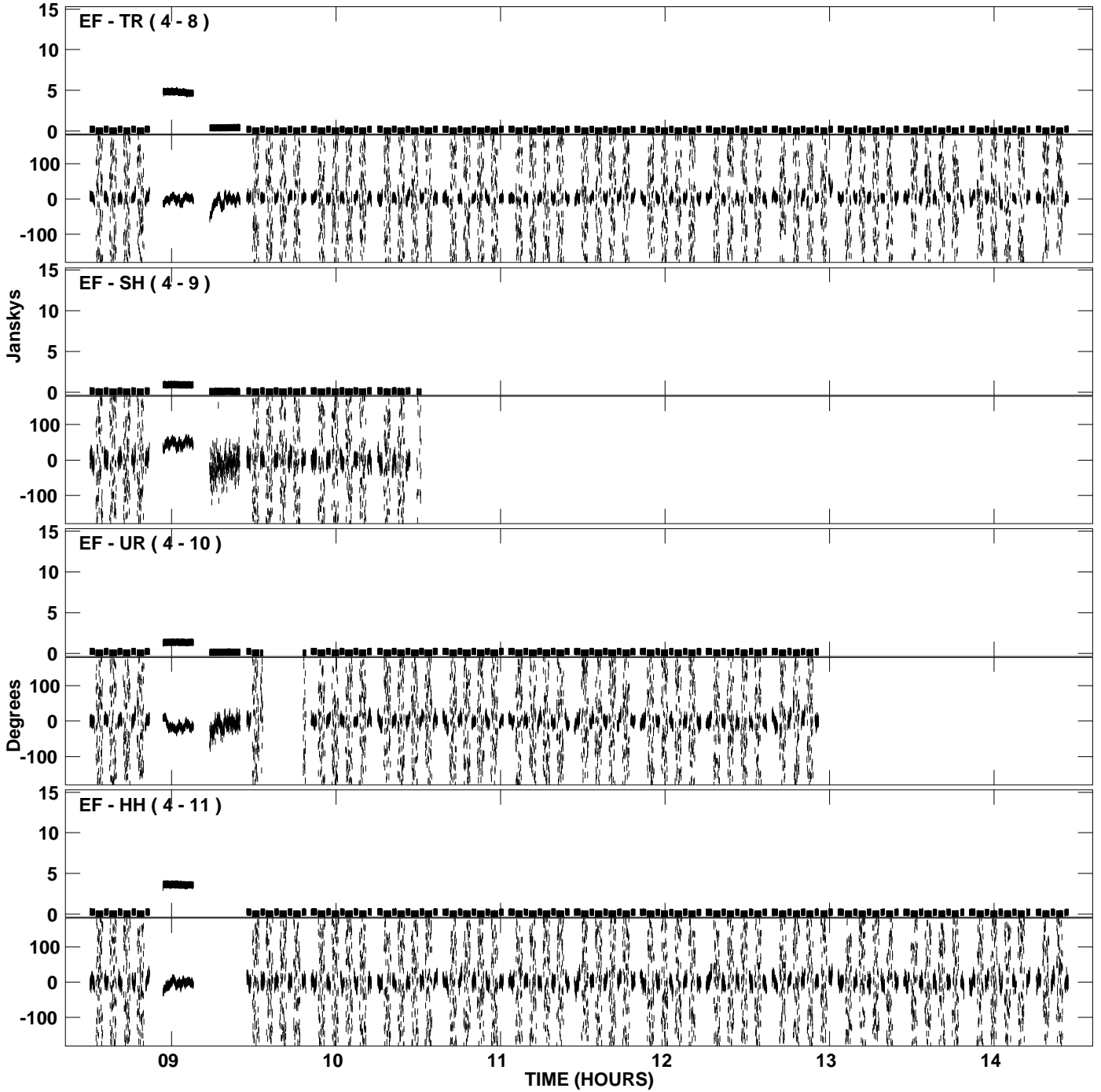
PLot file version 10 created 06-NOV-2007 15:10:40
Amplitude and Phase vs Time for EA037A.UVDATA.1 Vect aver. CL # 3
IF 4 CHAN 1 - 16 STK LL



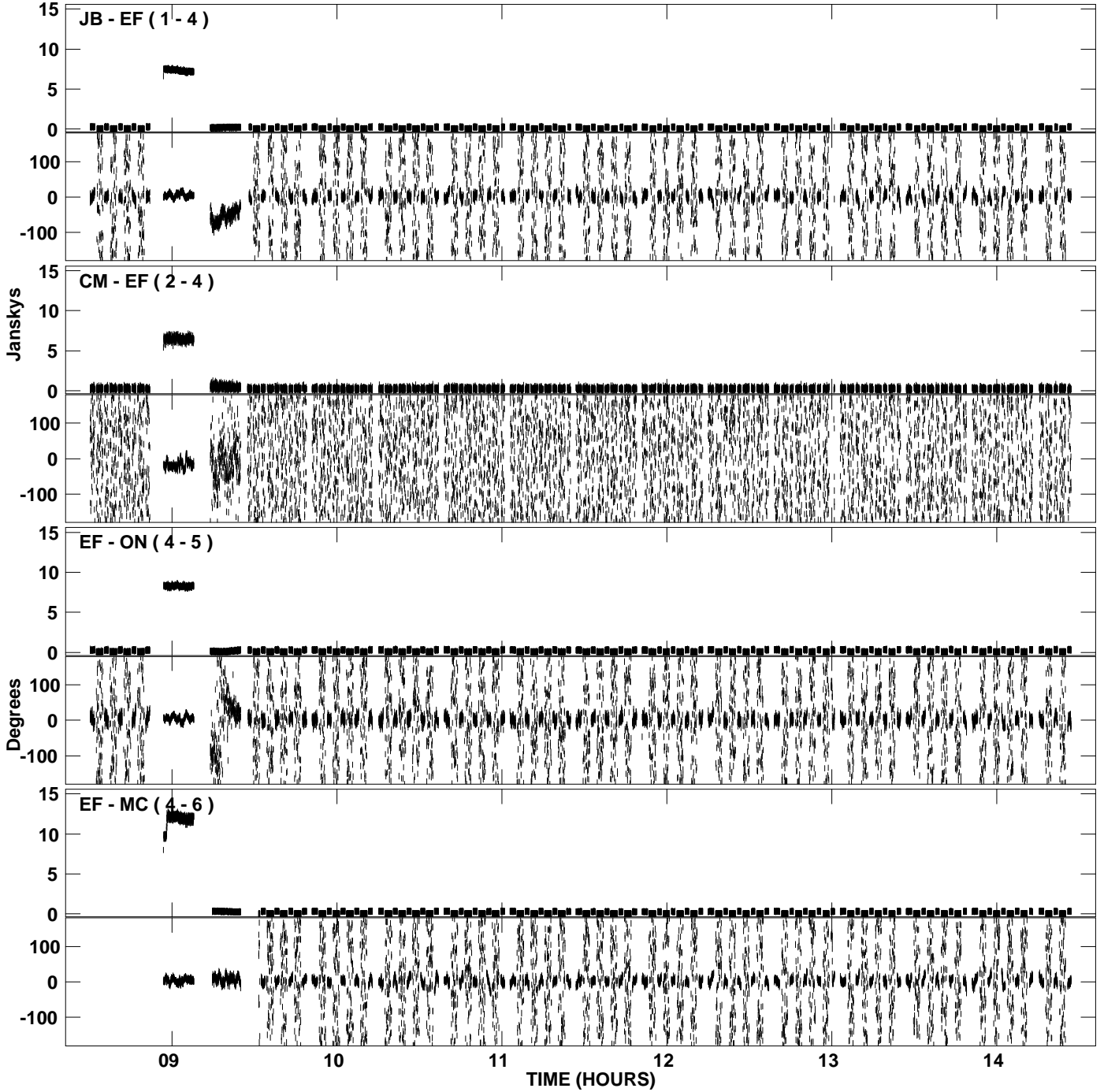
PLot file version 11 created 06-NOV-2007 15:11:05
Amplitude and Phase vs Time for EA037A.UVDATA.1 Vect aver. CL # 3
IF 1 CHAN 1 - 16 STK RR



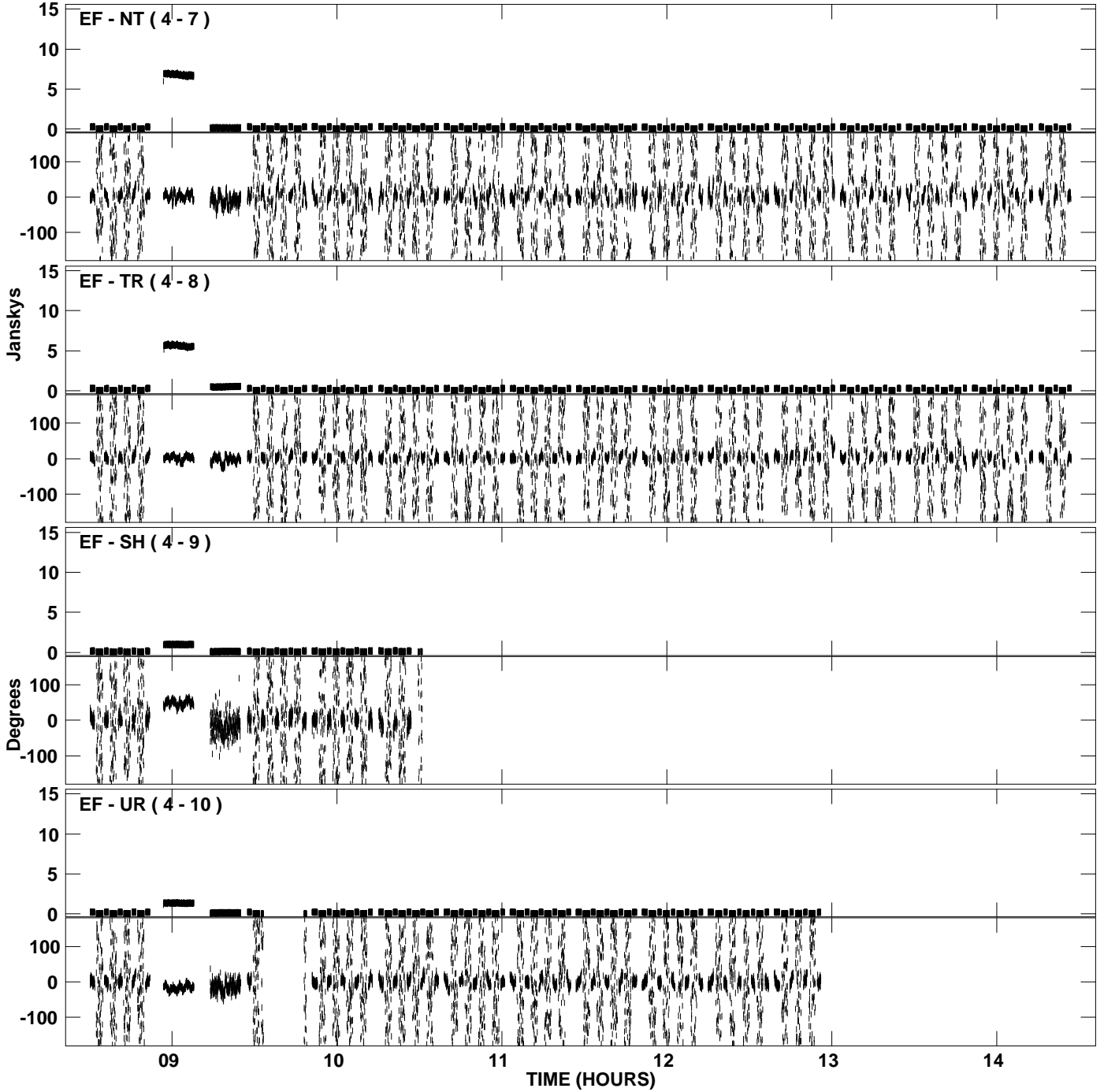
PLot file version 12 created 06-NOV-2007 15:11:05
Amplitude and Phase vs Time for EA037A.UVDATA.1 Vect aver. CL # 3
IF 1 CHAN 1 - 16 STK RR



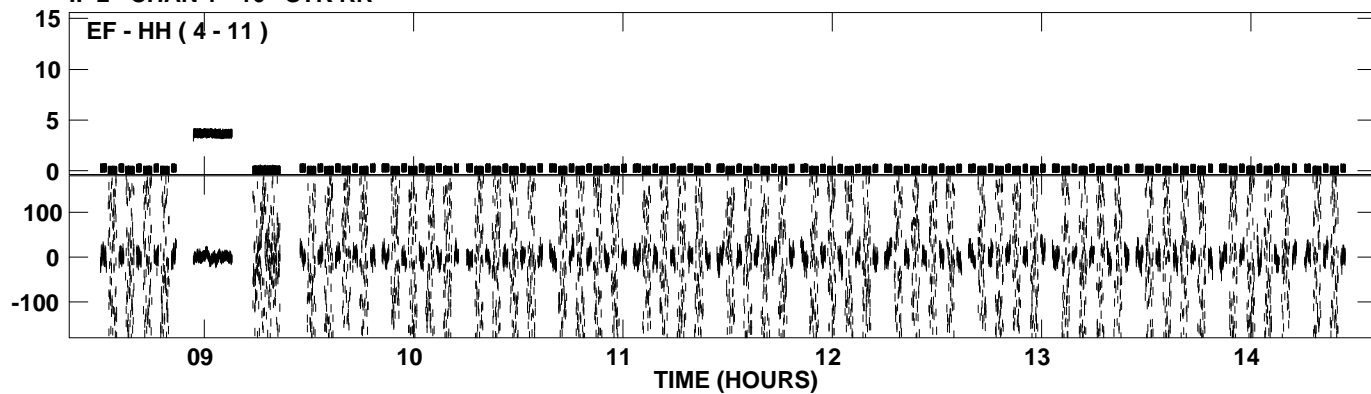
PLot file version 13 created 06-NOV-2007 15:11:31
Amplitude and Phase vs Time for EA037A.UVDATA.1 Vect aver. CL # 3
IF 2 CHAN 1 - 16 STK RR



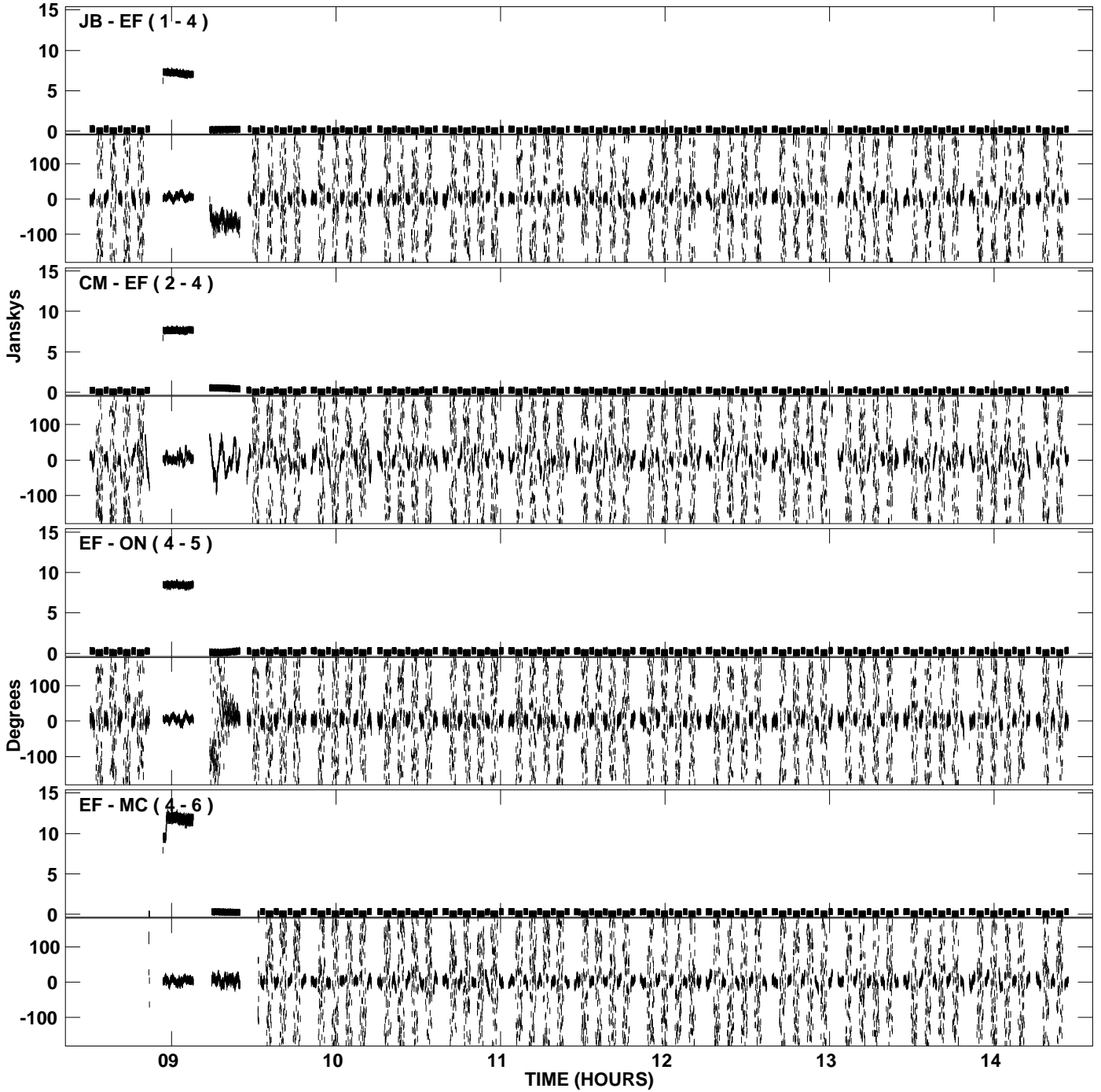
PLot file version 14 created 06-NOV-2007 15:11:31
Amplitude and Phase vs Time for EA037A.UVDATA.1 Vect aver. CL # 3
IF 2 CHAN 1 - 16 STK RR



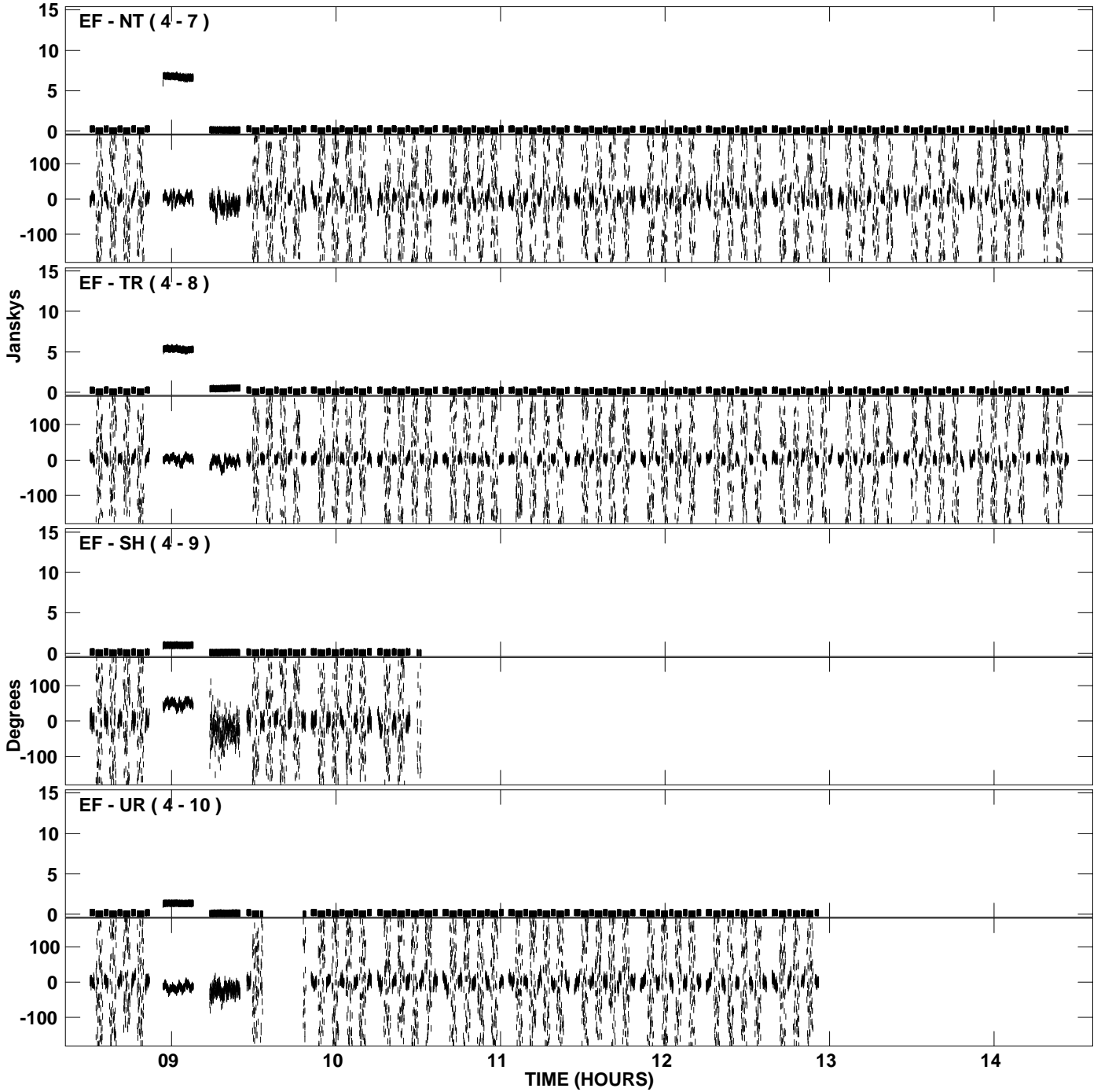
PLot file version 15 created 06-NOV-2007 15:11:31
Amplitude andPhase vs Time for EA037A.UVDATA.1 Vect aver. CL # 3
IF 2 CHAN 1 - 16 STK RR



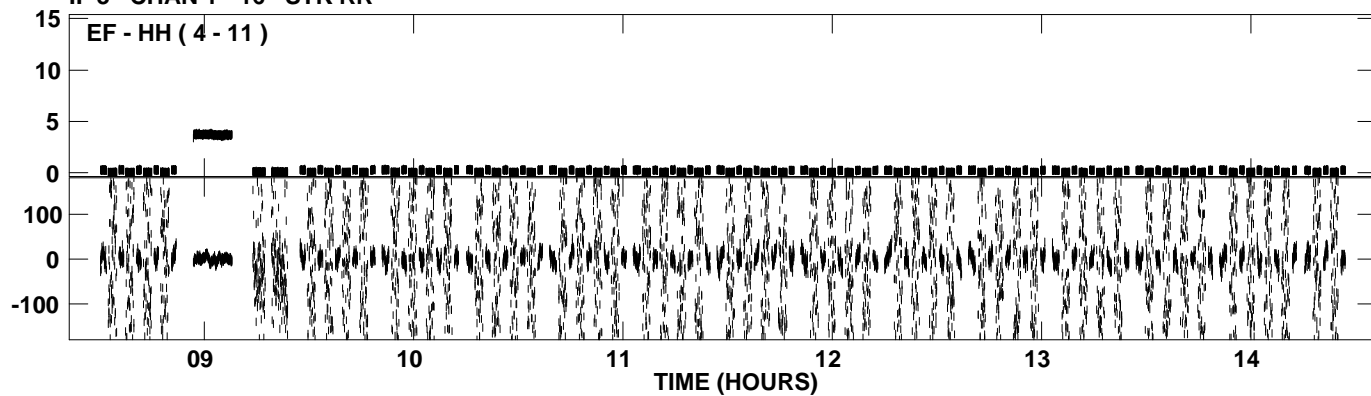
PLot file version 16 created 06-NOV-2007 15:11:56
Amplitude and Phase vs Time for EA037A.UVDATA.1 Vect aver. CL # 3
IF 3 CHAN 1 - 16 STK RR



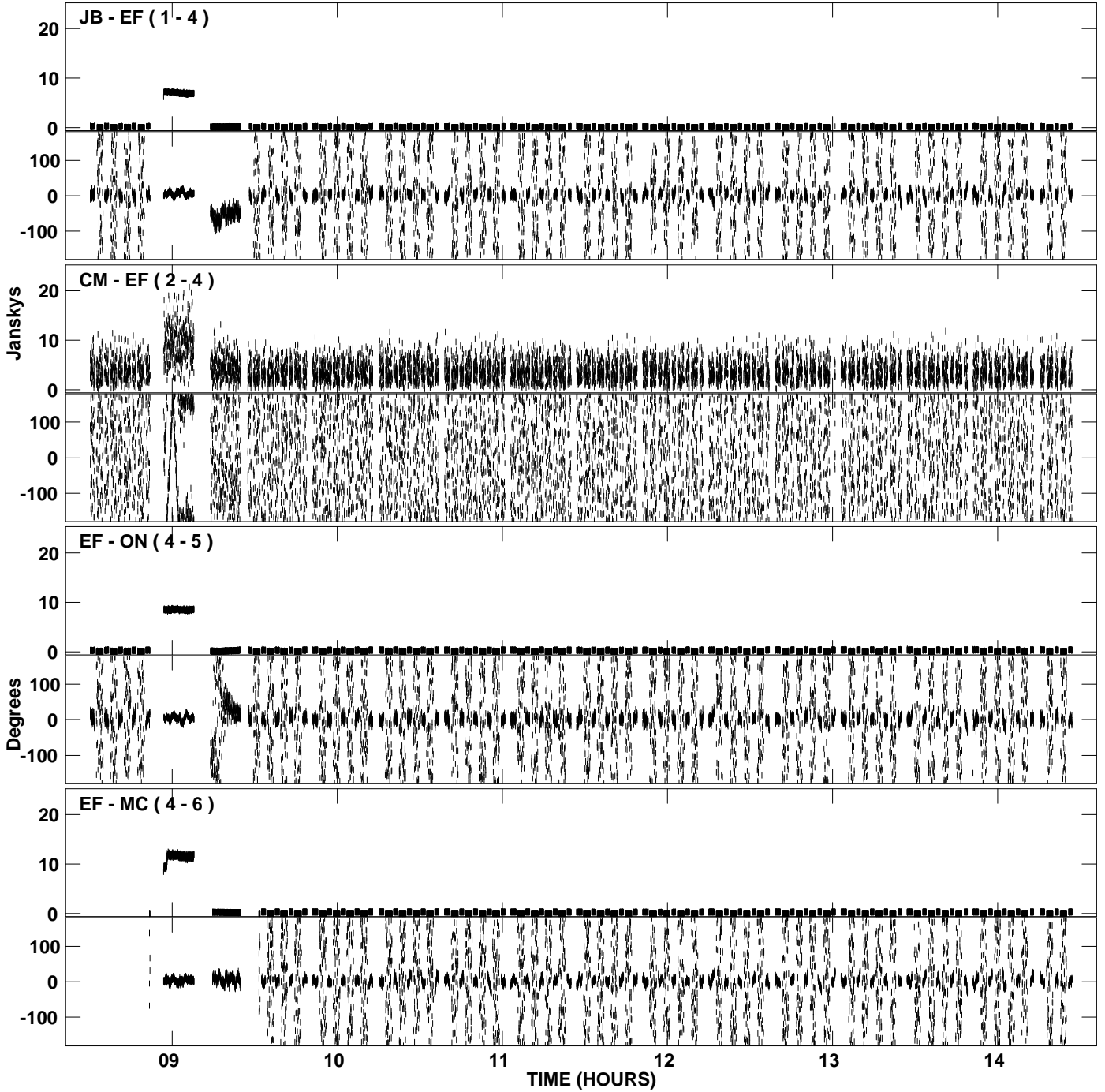
PLot file version 17 created 06-NOV-2007 15:11:56
Amplitude and Phase vs Time for EA037A.UVDATA.1 Vect aver. CL # 3
IF 3 CHAN 1 - 16 STK RR



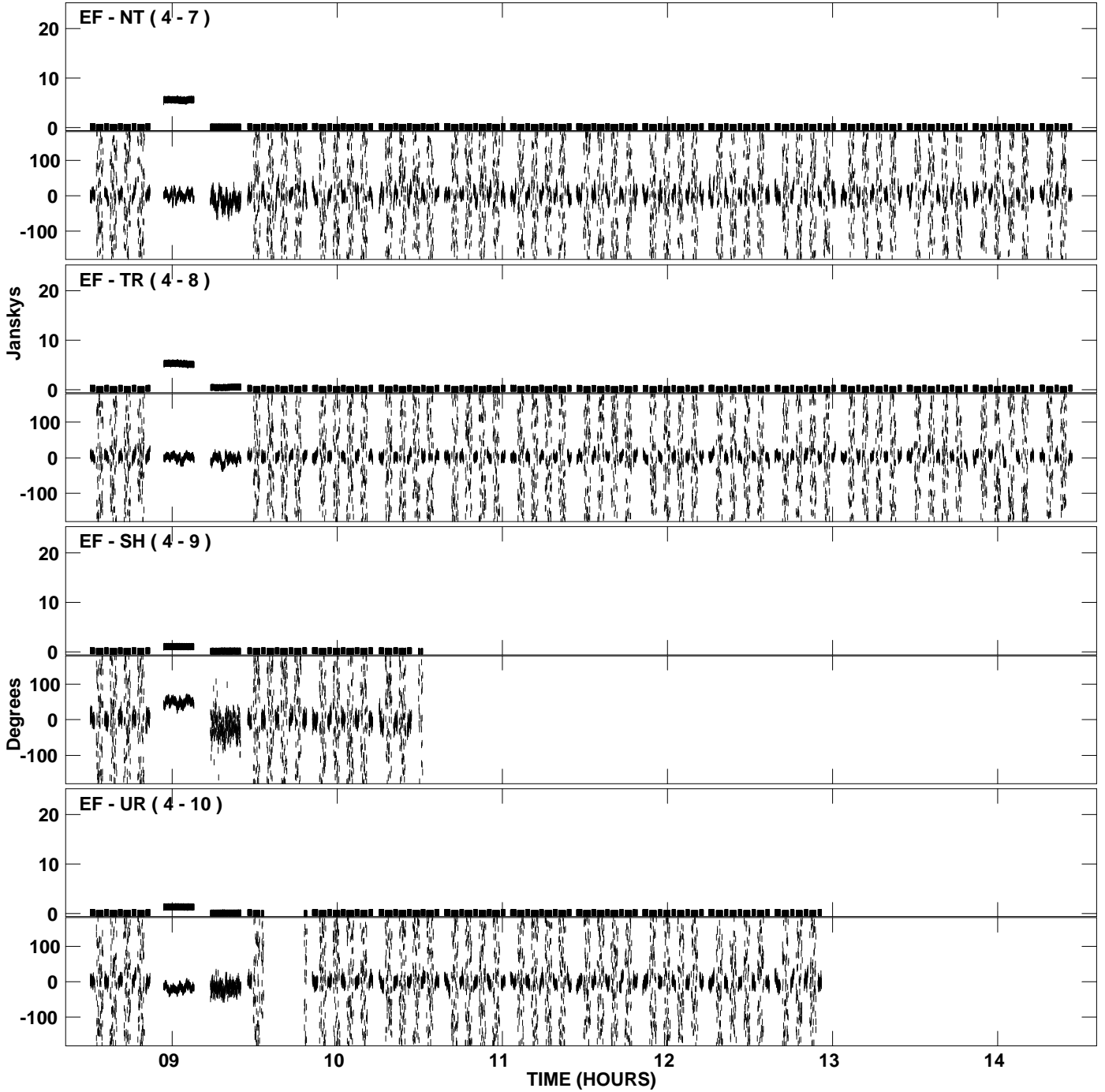
PLot file version 18 created 06-NOV-2007 15:11:56
Amplitude andPhase vs Time for EA037A.UVDATA.1 Vect aver. CL # 3
IF 3 CHAN 1 - 16 STK RR



PLot file version 19 created 06-NOV-2007 15:12:24
Amplitude and Phase vs Time for EA037A.UVDATA.1 Vect aver. CL # 3
IF 4 CHAN 1 - 16 STK RR



PLot file version 20 created 06-NOV-2007 15:12:24
Amplitude and Phase vs Time for EA037A.UVDATA.1 Vect aver. CL # 3
IF 4 CHAN 1 - 16 STK RR



PLot file version 21 created 06-NOV-2007 15:12:24
Amplitude andPhase vs Time for EA037A.UVDATA.1 Vect aver. CL # 3
IF 4 CHAN 1 - 16 STK RR

