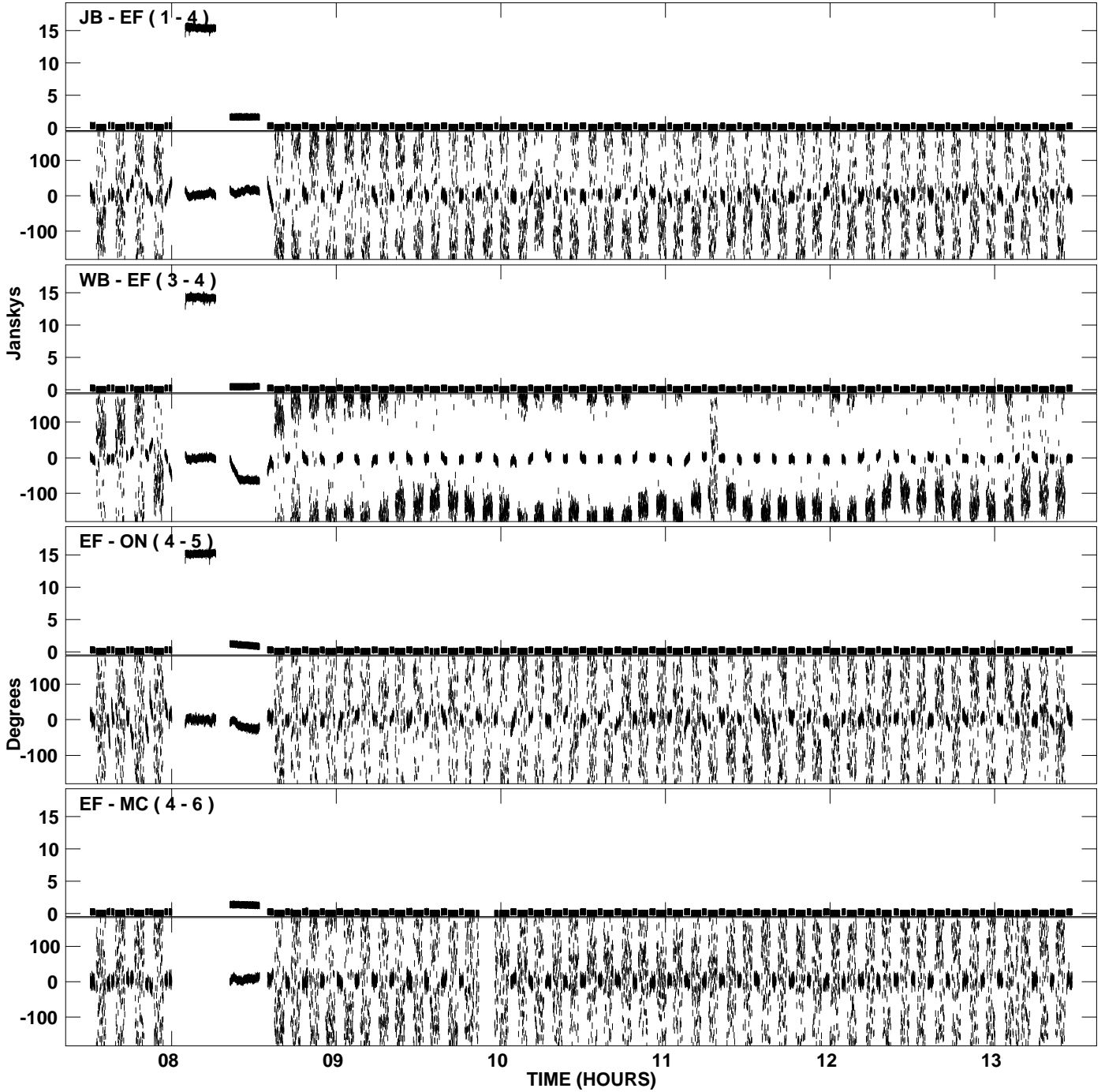
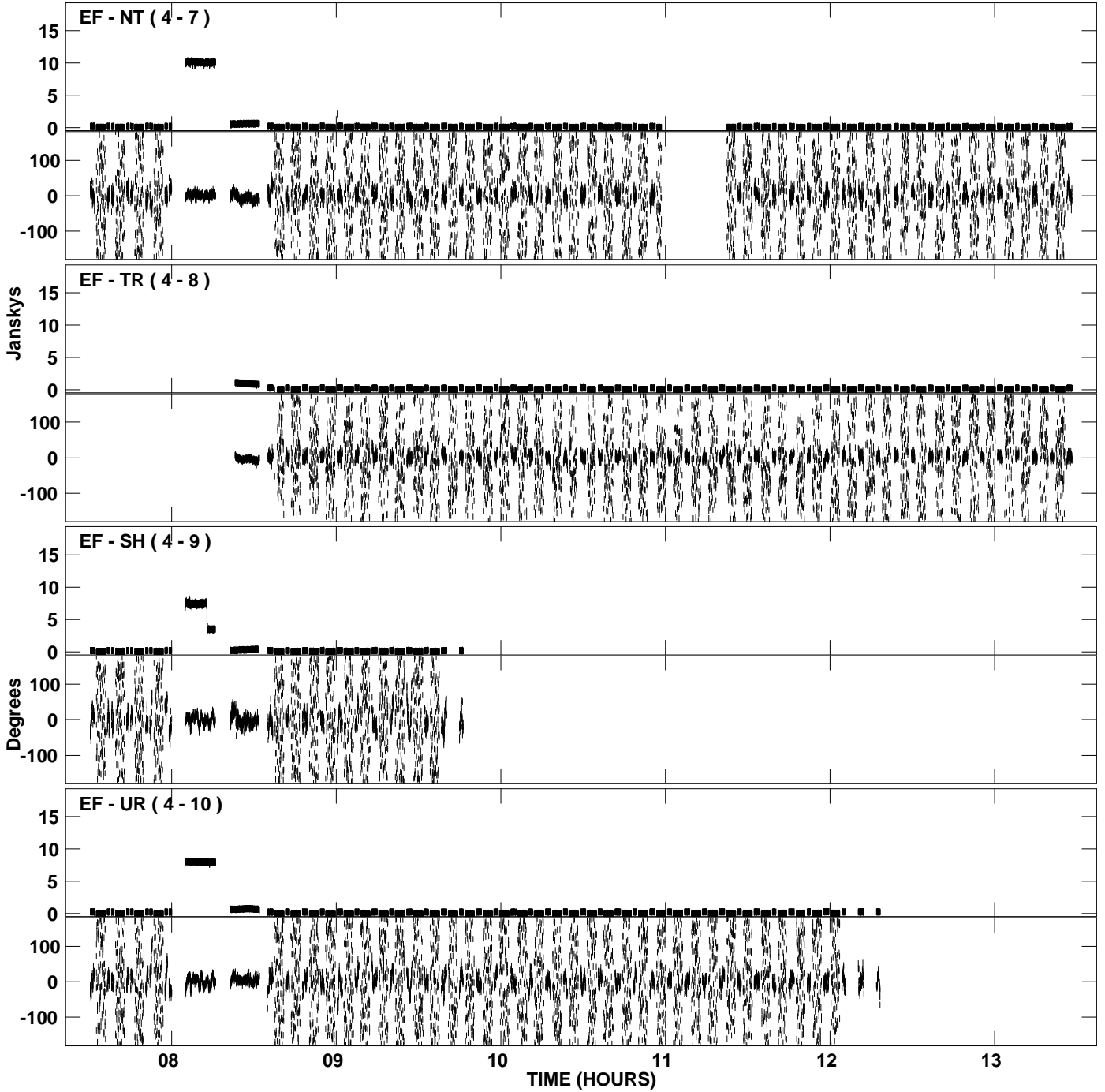


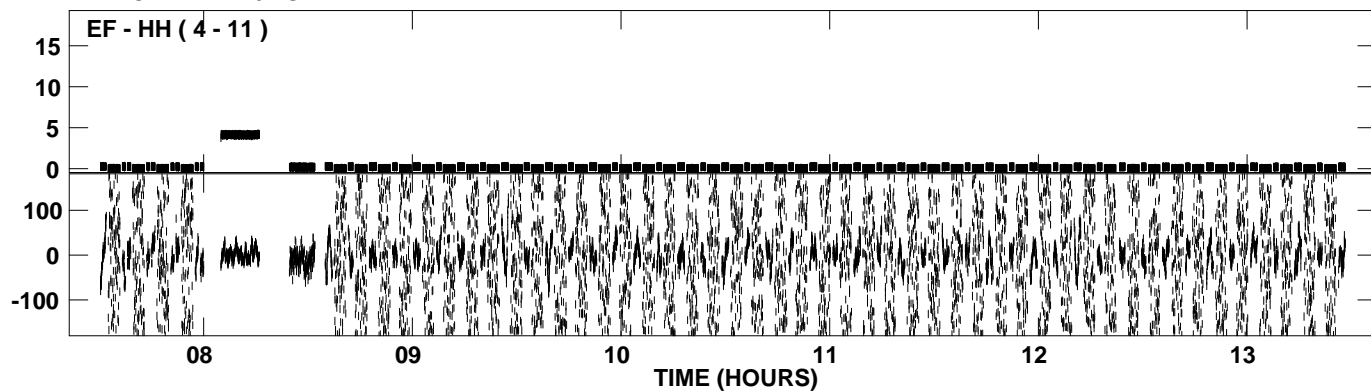
PLot file version 1 created 30-JUL-2007 17:56:35
Amplitude and Phase vs Time for EA037B.UVDATA.1 Vect aver. CL # 3
IF 1 CHAN 1 - 16 STK LL



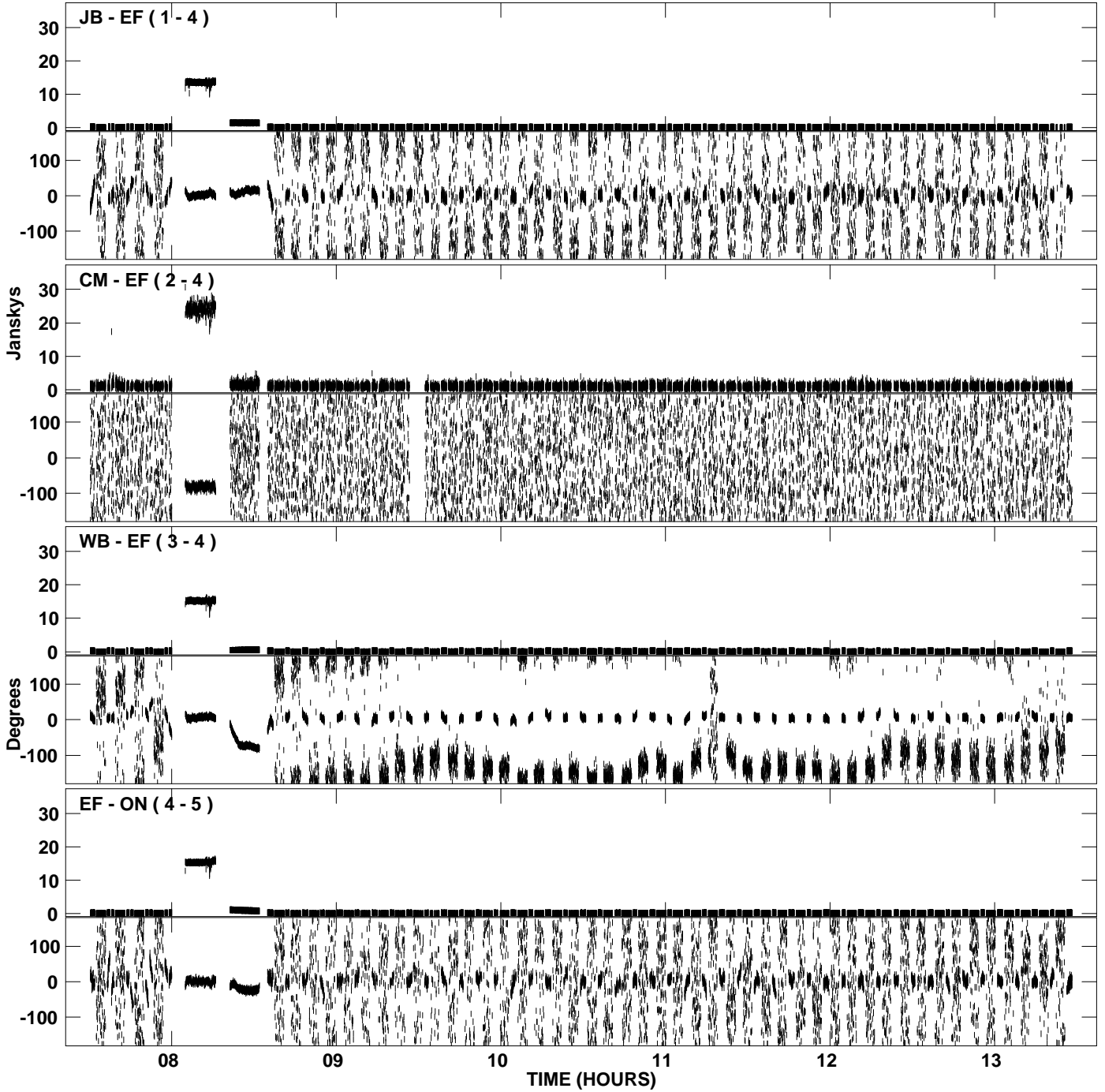
PLot file version 2 created 30-JUL-2007 17:56:35
Amplitude and Phase vs Time for EA037B.UVDATA.1 Vect aver. CL # 3
IF 1 CHAN 1 - 16 STK LL



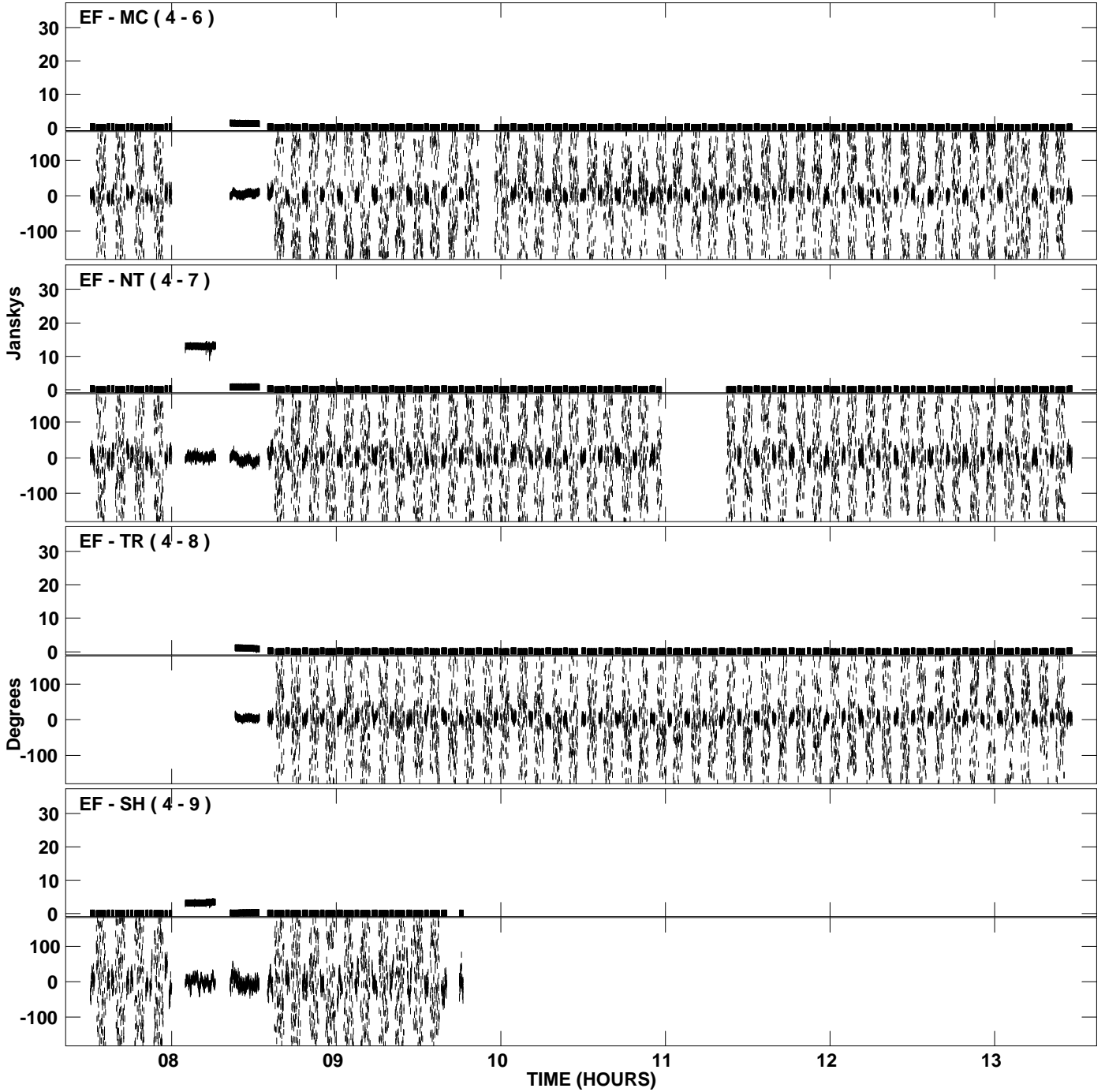
PLot file version 3 created 30-JUL-2007 17:56:35
Amplitude andPhase vs Time for EA037B.UVDATA.1 Vect aver. CL # 3
IF 1 CHAN 1 - 16 STK LL



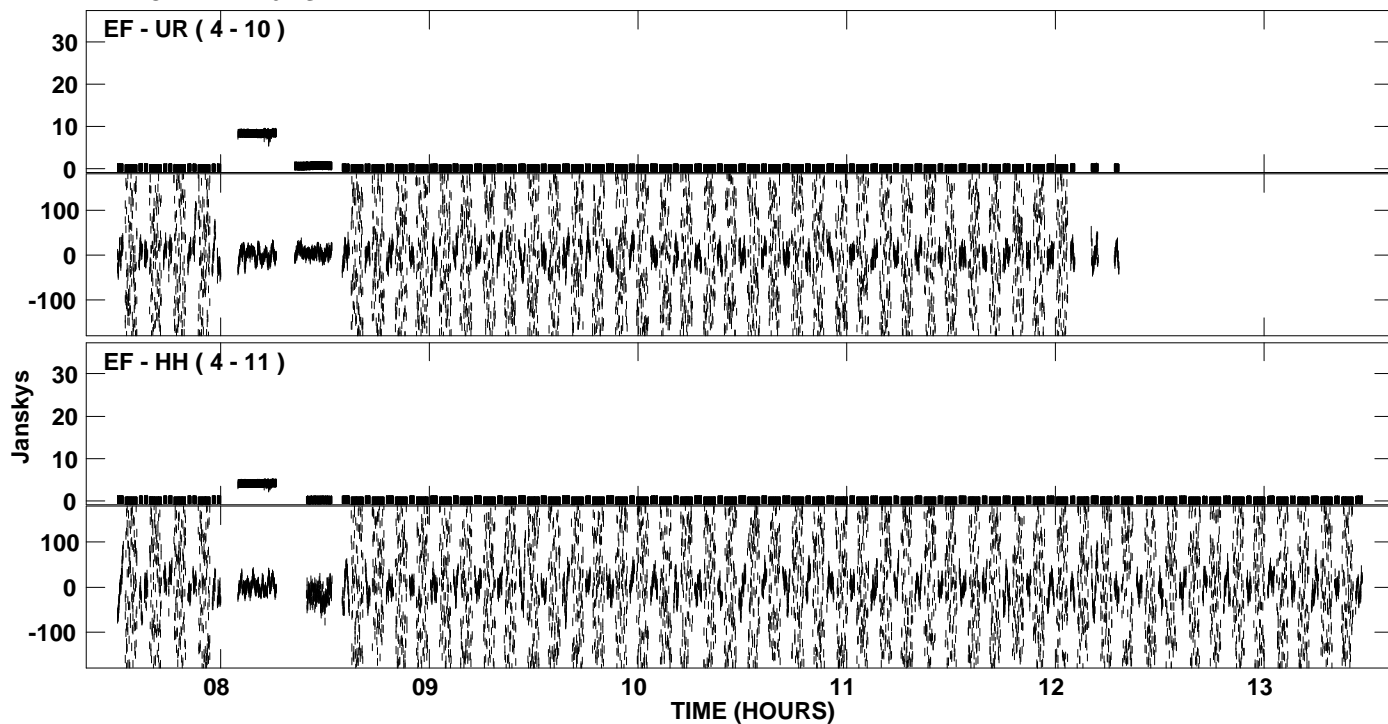
PLot file version 4 created 30-JUL-2007 17:56:56
Amplitude and Phase vs Time for EA037B.UVDATA.1 Vect aver. CL # 3
IF 2 CHAN 1 - 16 STK LL



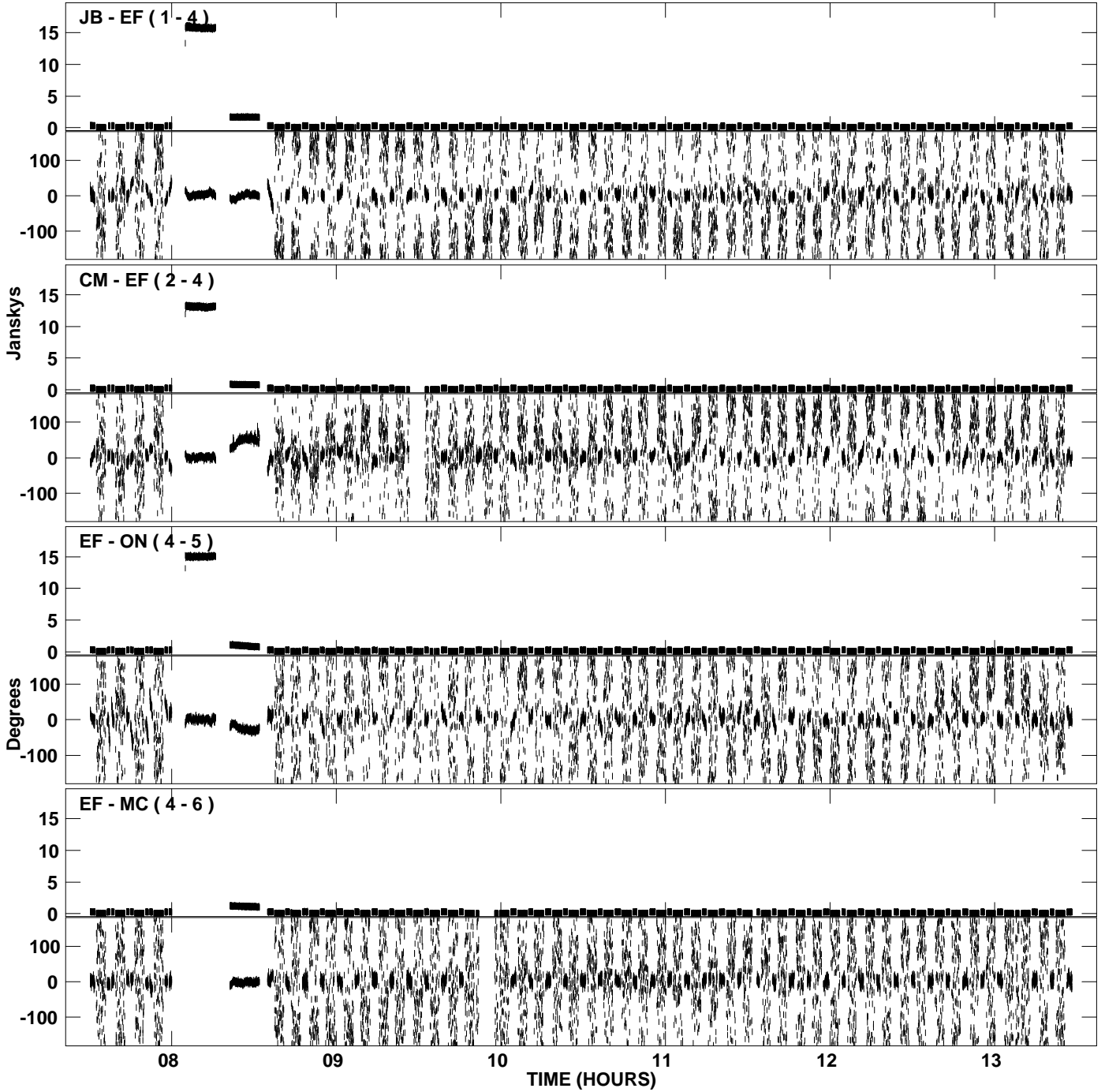
PLot file version 5 created 30-JUL-2007 17:56:56
Amplitude andPhase vs Time for EA037B.UVDATA.1 Vect aver. CL # 3
IF 2 CHAN 1 - 16 STK LL



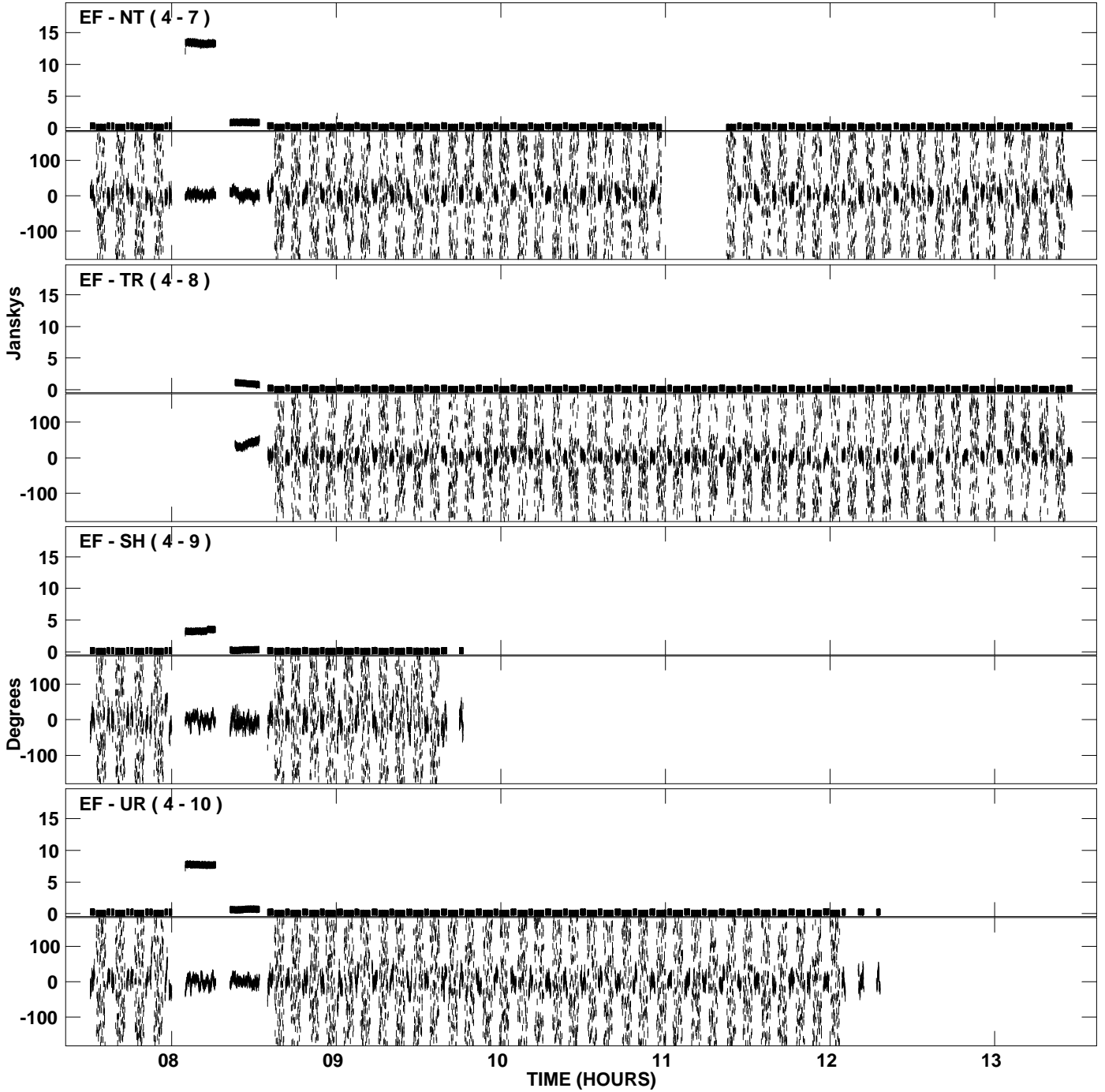
PLot file version 6 created 30-JUL-2007 17:56:56
Amplitude andPhase vs Time for EA037B.UVDATA.1 Vect aver. CL # 3
IF 2 CHAN 1 - 16 STK LL



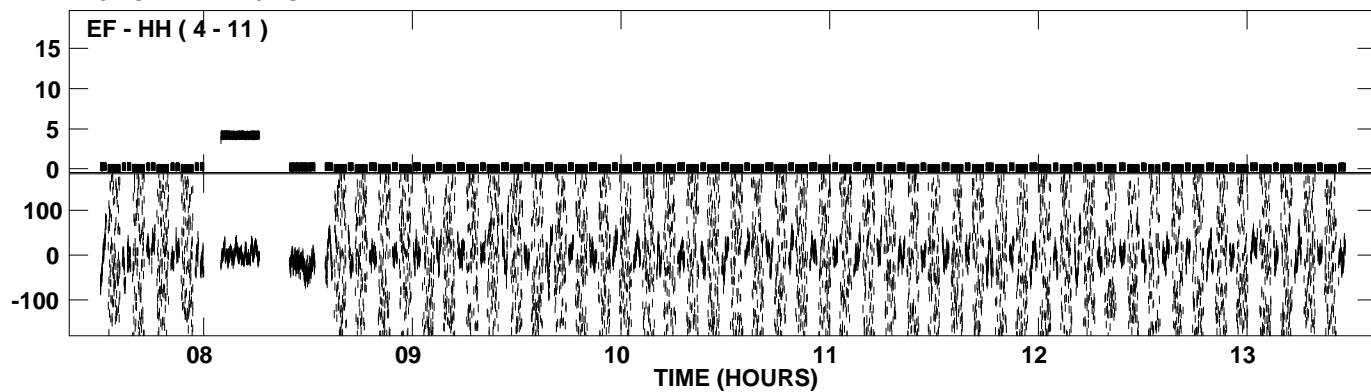
PLot file version 7 created 30-JUL-2007 17:57:14
Amplitude and Phase vs Time for EA037B.UVDATA.1 Vect aver. CL # 3
IF 3 CHAN 1 - 16 STK LL



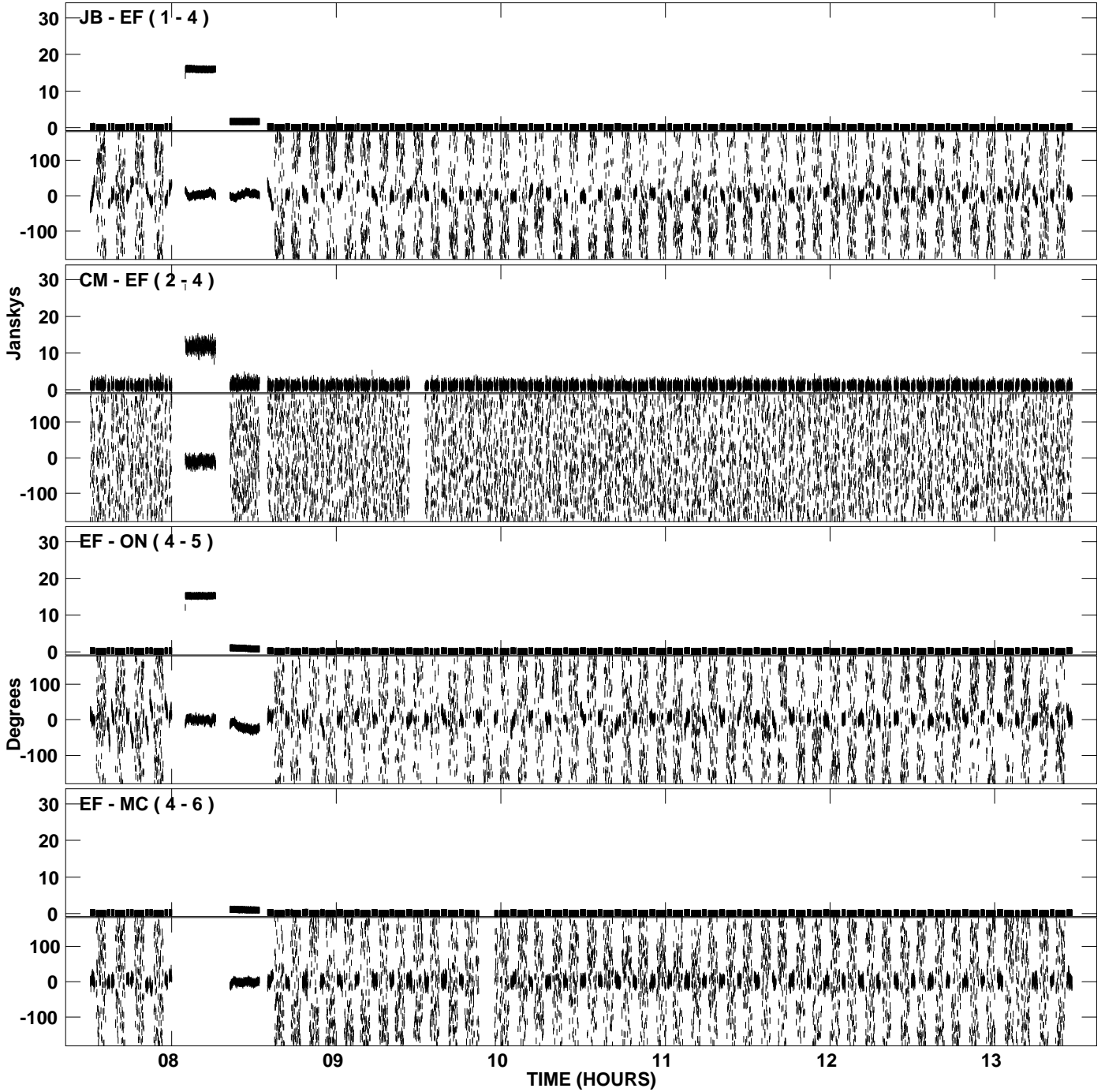
PLot file version 8 created 30-JUL-2007 17:57:14
Amplitude and Phase vs Time for EA037B.UVDATA.1 Vect aver. CL # 3
IF 3 CHAN 1 - 16 STK LL



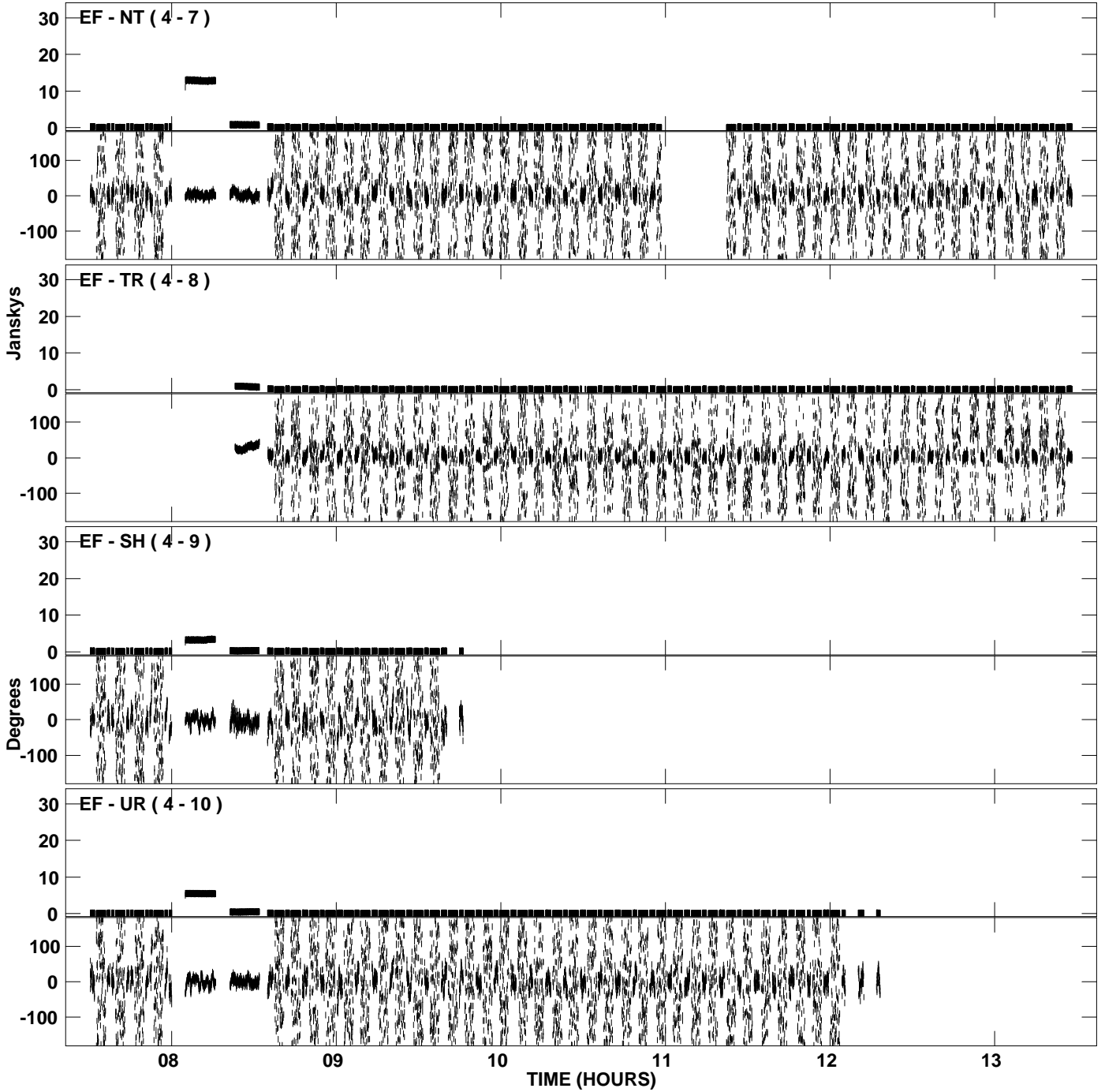
PLOT file version 9 created 30-JUL-2007 17:57:14
Amplitude and Phase vs Time for EA037B.UVDATA.1 Vect aver. CL # 3
IF 3 CHAN 1 - 16 STK LL



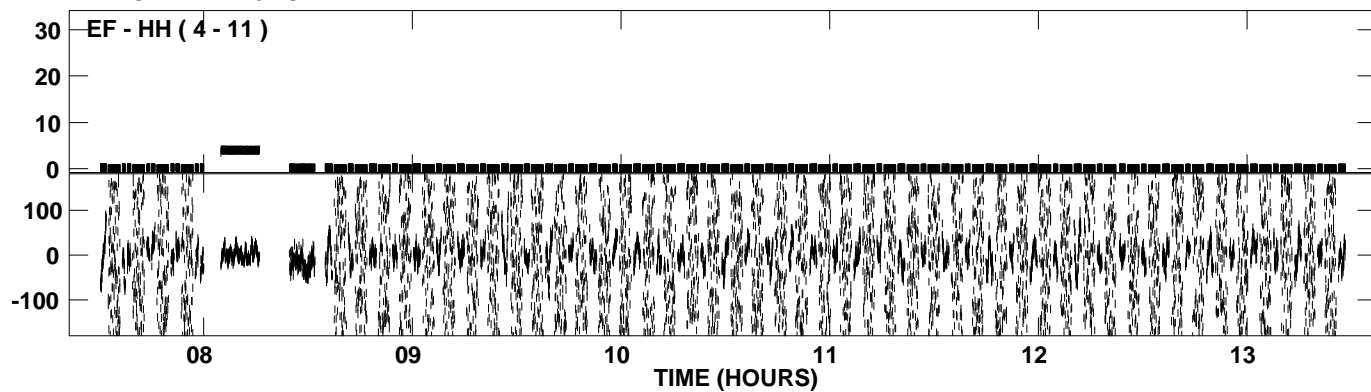
PLot file version 10 created 30-JUL-2007 17:57:35
Amplitude and Phase vs Time for EA037B.UVDATA.1 Vect aver. CL # 3
IF 4 CHAN 1 - 16 STK LL



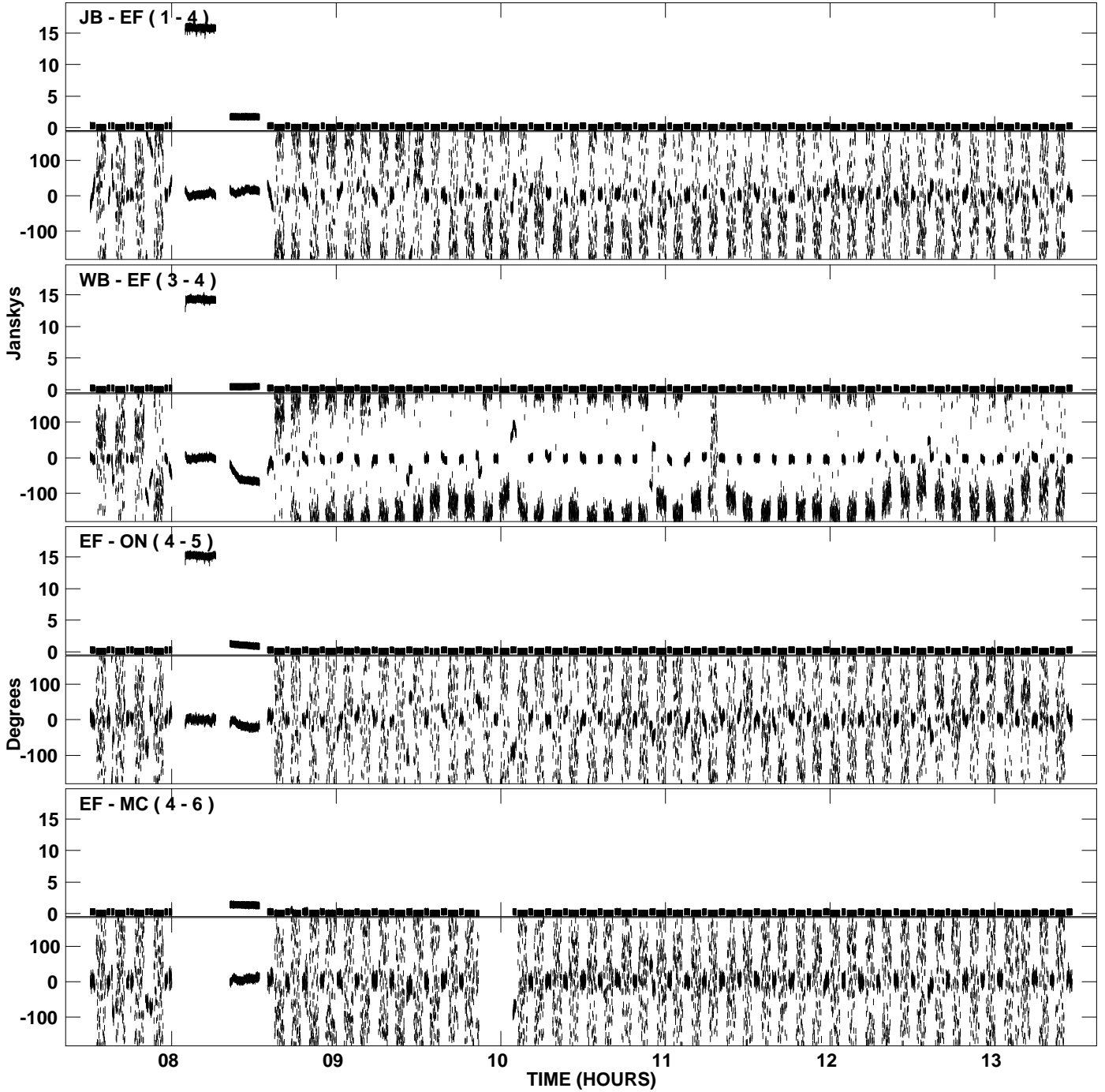
PLot file version 11 created 30-JUL-2007 17:57:35
Amplitude and Phase vs Time for EA037B.UVDATA.1 Vect aver. CL # 3
IF 4 CHAN 1 - 16 STK LL



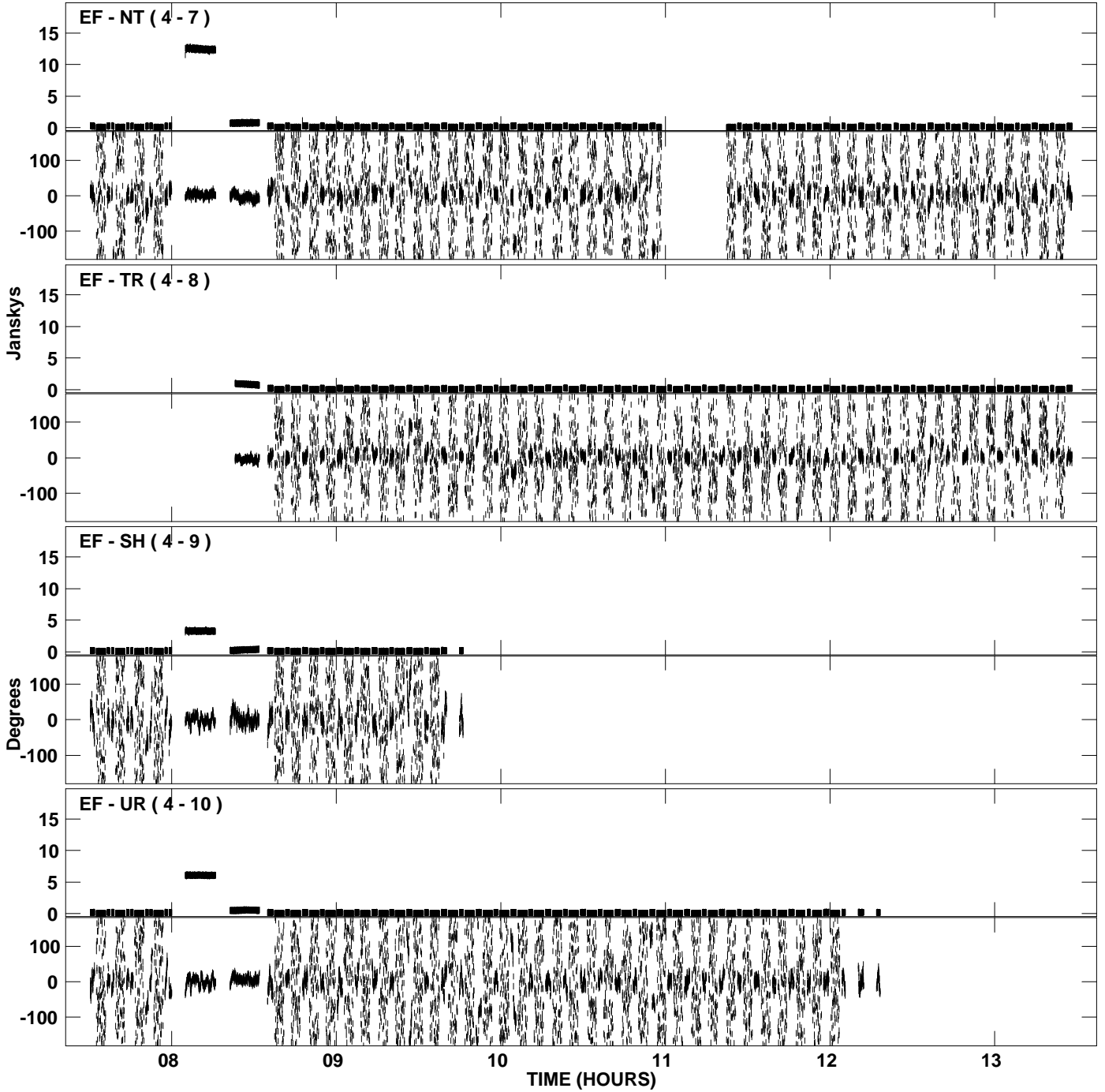
PLOT file version 12 created 30-JUL-2007 17:57:35
Amplitude and Phase vs Time for EA037B.UVDATA.1 Vect aver. CL # 3
IF 4 CHAN 1 - 16 STK LL



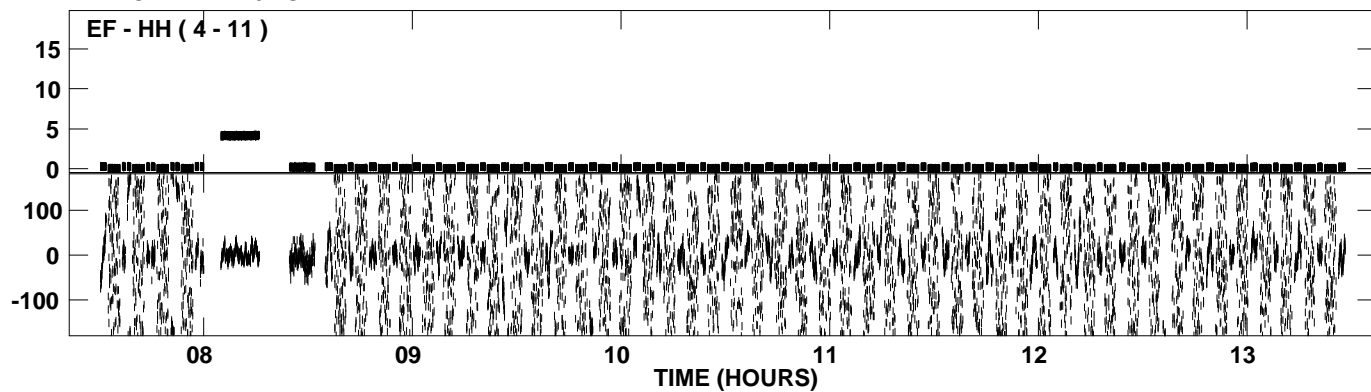
PLot file version 13 created 30-JUL-2007 17:57:49
Amplitude and Phase vs Time for EA037B.UVDATA.1 Vect aver. CL # 3
IF 1 CHAN 1 - 16 STK RR



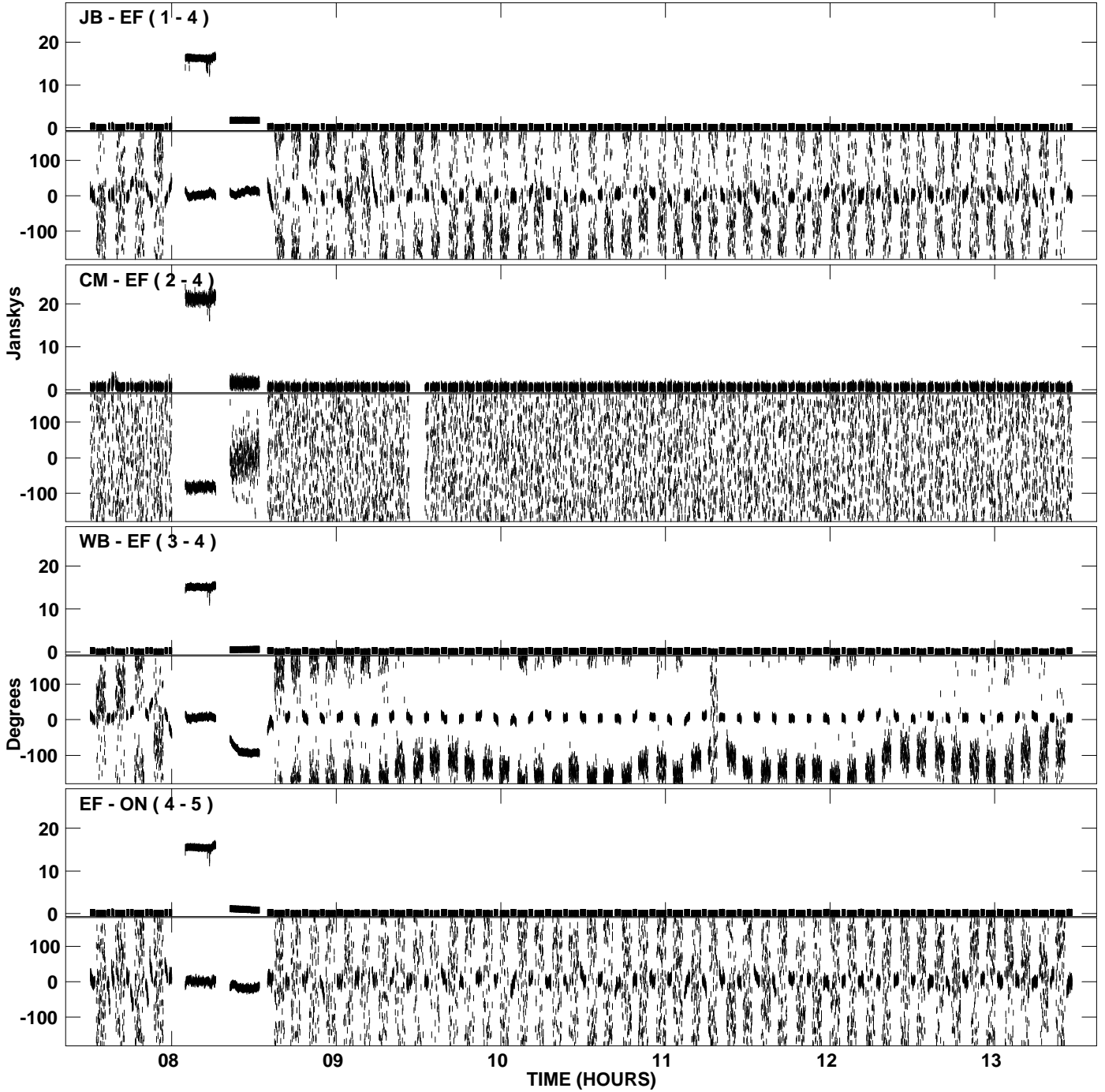
PLot file version 14 created 30-JUL-2007 17:57:49
Amplitude and Phase vs Time for EA037B.UVDATA.1 Vect aver. CL # 3
IF 1 CHAN 1 - 16 STK RR



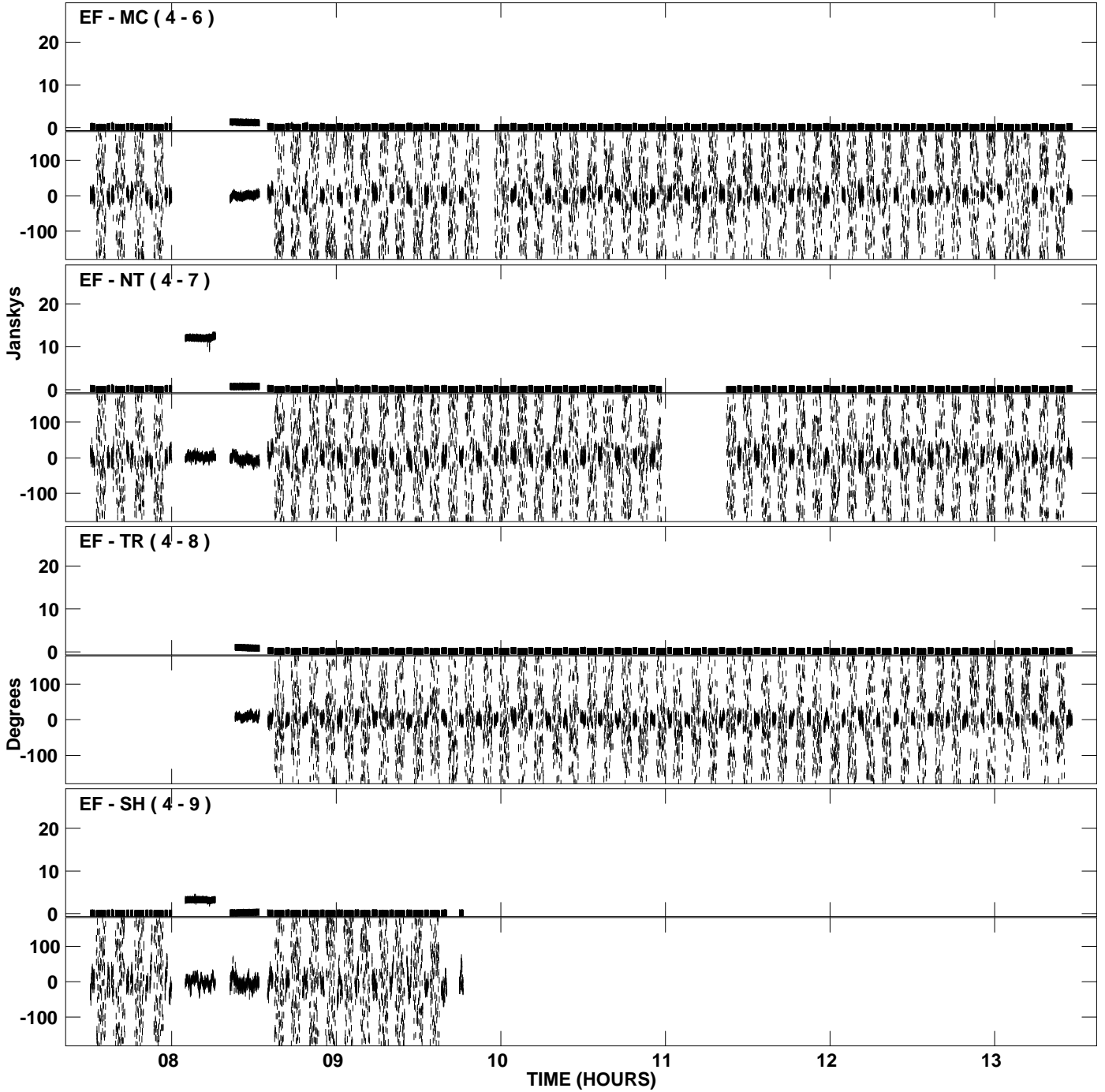
PPlot file version 15 created 30-JUL-2007 17:57:49
Amplitude andPhase vs Time for EA037B.UVDATA.1 Vect aver. CL # 3
IF 1 CHAN 1 - 16 STK RR



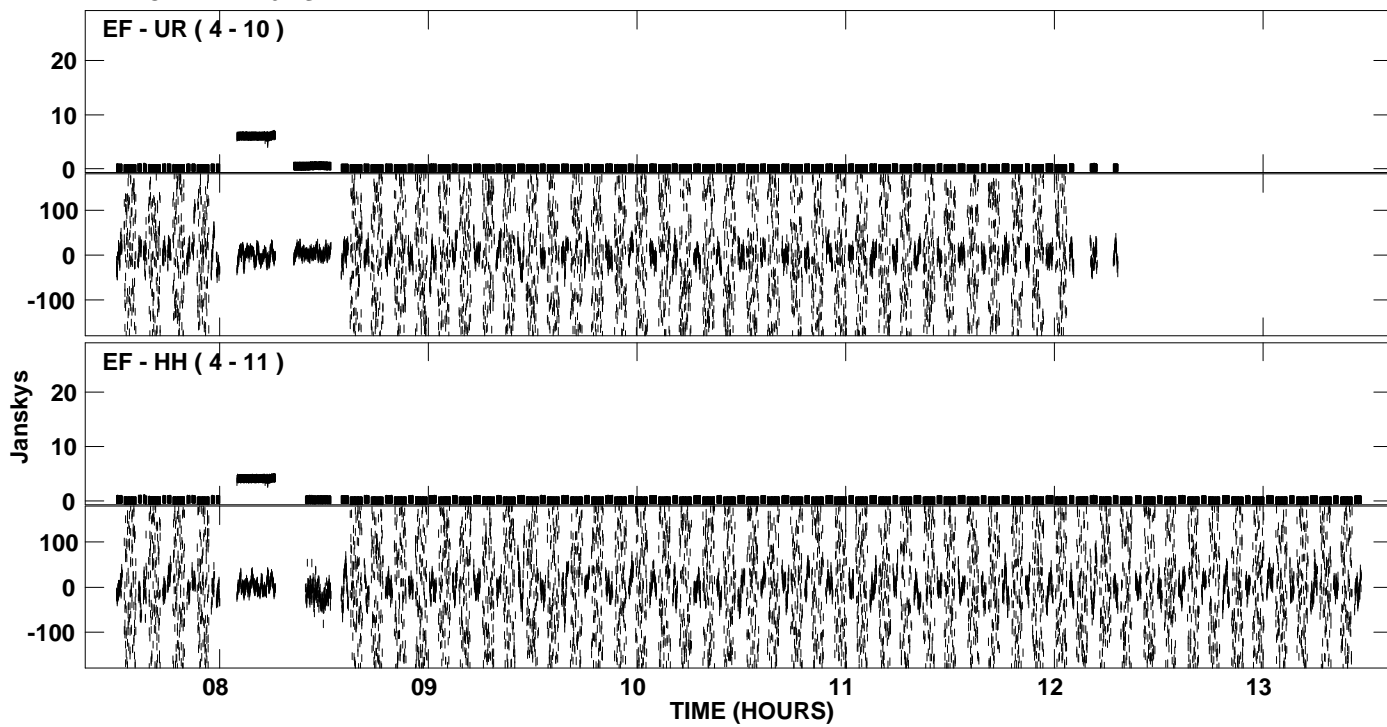
PLot file version 16 created 30-JUL-2007 17:58:05
Amplitude andPhase vs Time for EA037B.UVDATA.1 Vect aver. CL # 3
IF 2 CHAN 1 - 16 STK RR



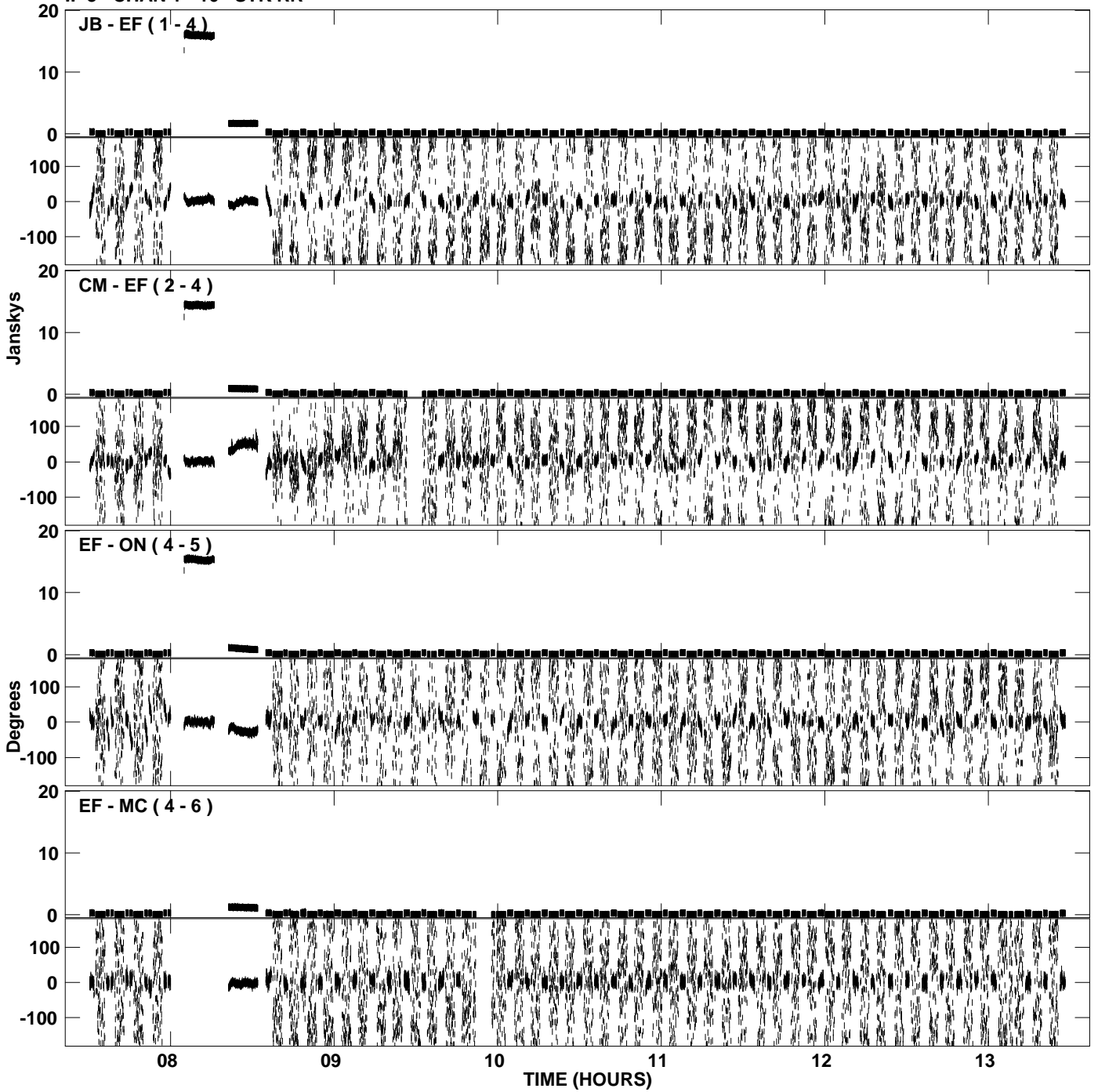
PLot file version 17 created 30-JUL-2007 17:58:05
Amplitude andPhase vs Time for EA037B.UVDATA.1 Vect aver. CL # 3
IF 2 CHAN 1 - 16 STK RR



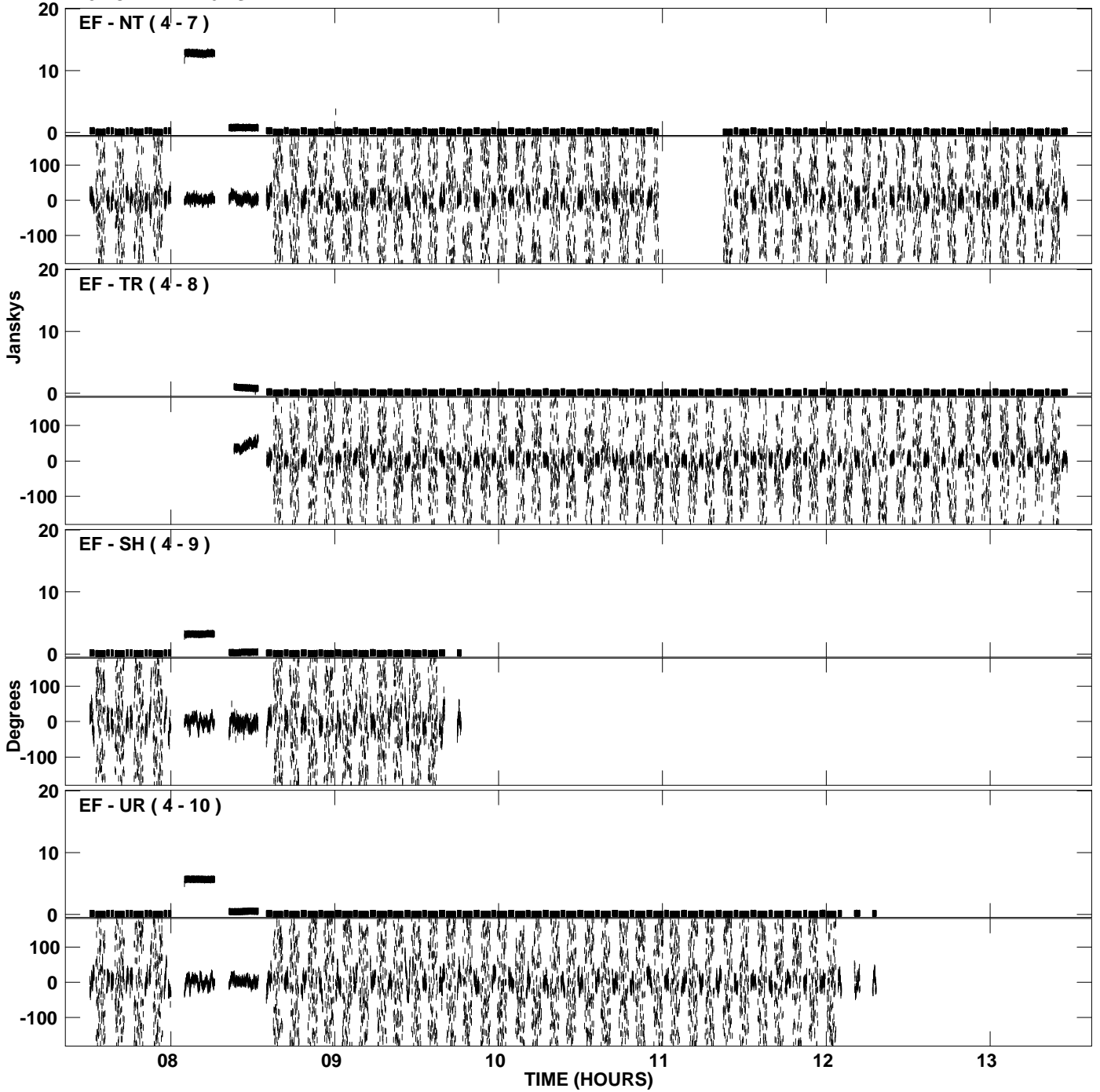
PLot file version 18 created 30-JUL-2007 17:58:05
Amplitude andPhase vs Time for EA037B.UVDATA.1 Vect aver. CL # 3
IF 2 CHAN 1 - 16 STK RR



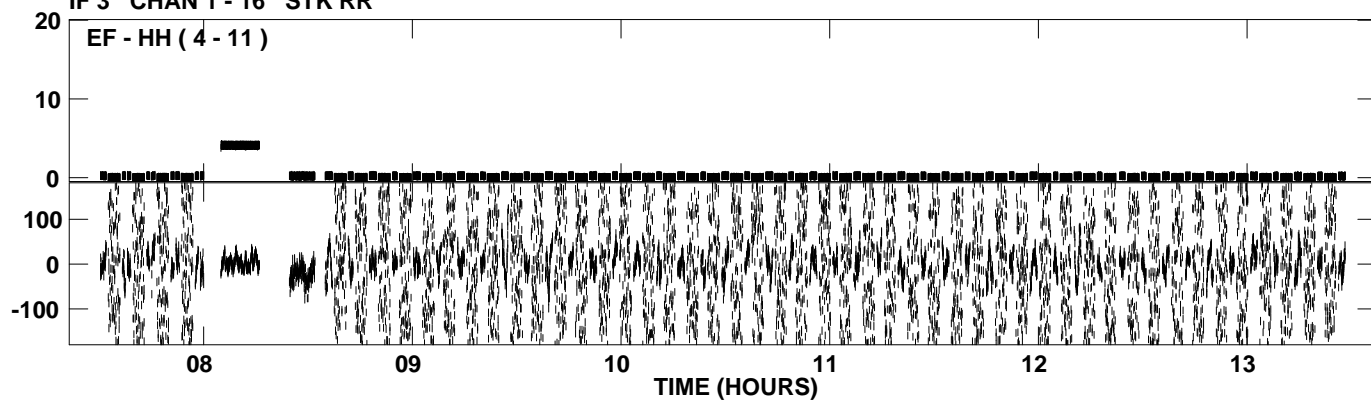
PLot file version 19 created 30-JUL-2007 17:58:26
Amplitude and Phase vs Time for EA037B.UVDATA.1 Vect aver. CL # 3
IF 3 CHAN 1 - 16 STK RR



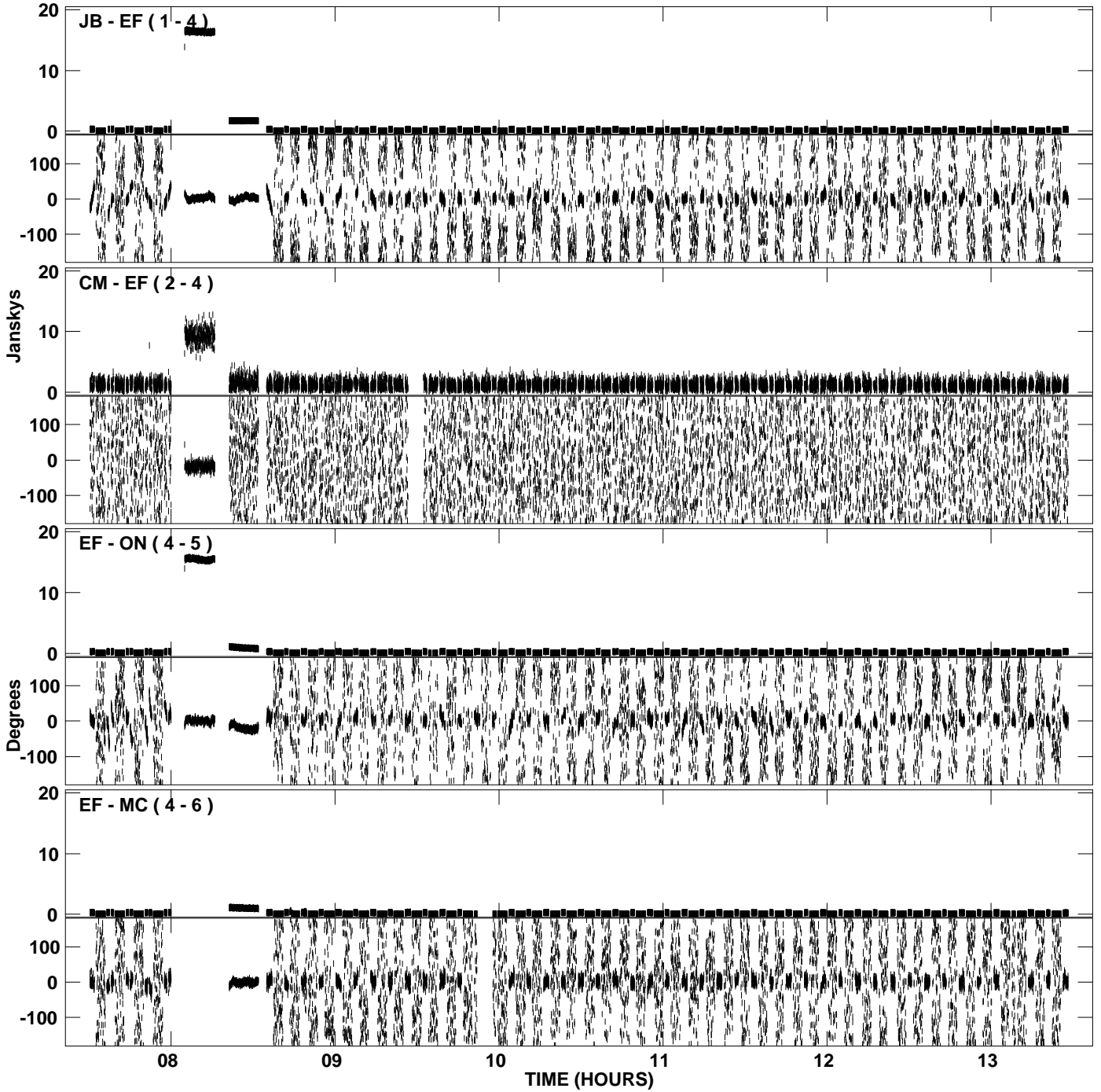
PLot file version 20 created 30-JUL-2007 17:58:26
Amplitude andPhase vs Time for EA037B.UVDATA.1 Vect aver. CL # 3
IF 3 CHAN 1 - 16 STK RR



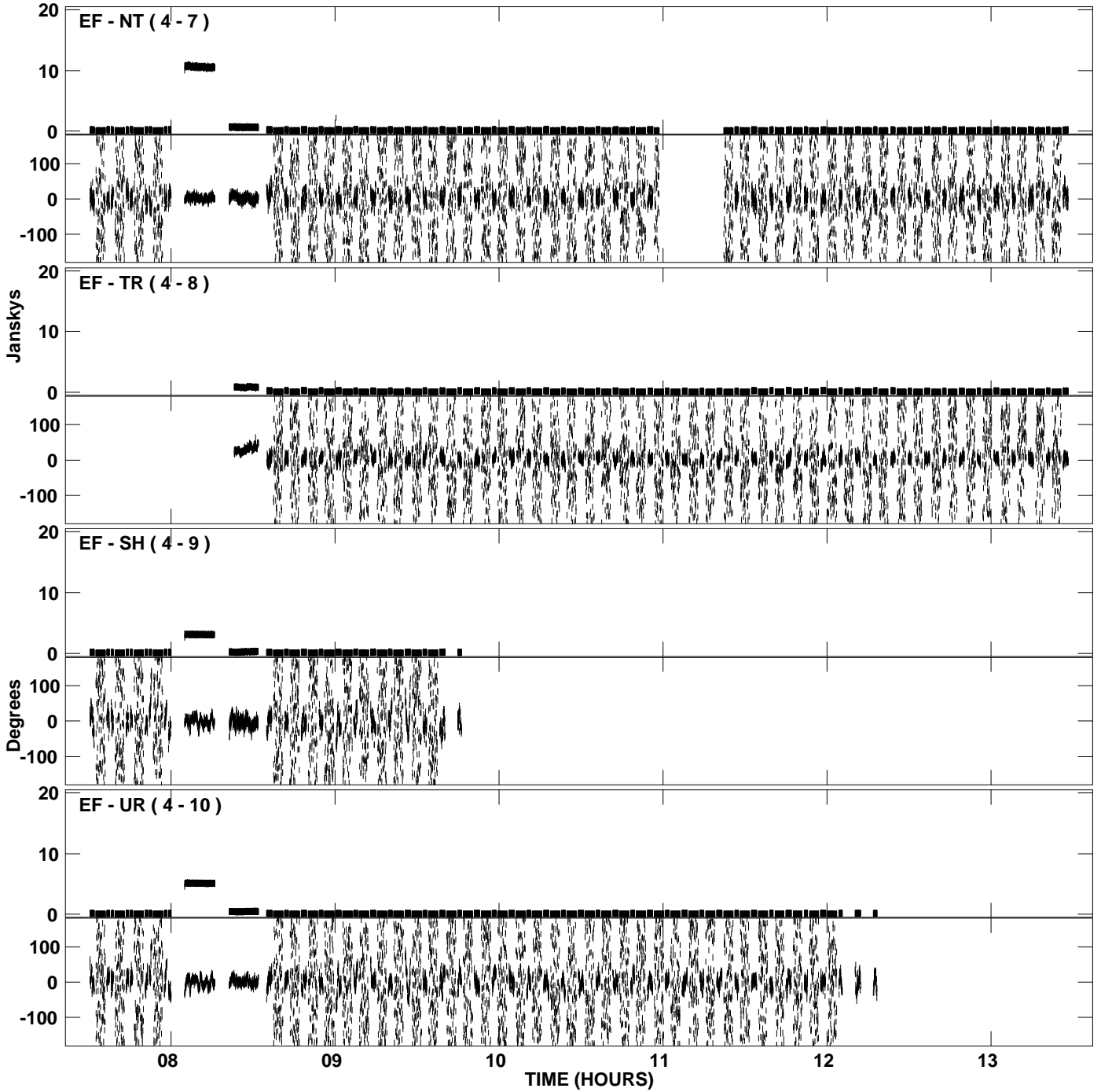
PLot file version 21 created 30-JUL-2007 17:58:26
Amplitude andPhase vs Time for EA037B.UVDATA.1 Vect aver. CL # 3
IF 3 CHAN 1 - 16 STK RR



PLot file version 22 created 30-JUL-2007 17:58:39
Amplitude and Phase vs Time for EA037B.UVDATA.1 Vect aver. CL # 3
IF 4 CHAN 1 - 16 STK RR



PLot file version 23 created 30-JUL-2007 17:58:40
Amplitude andPhase vs Time for EA037B.UVDATA.1 Vect aver. CL # 3
IF 4 CHAN 1 - 16 STK RR



PLot file version 24 created 30-JUL-2007 17:58:40
Amplitude andPhase vs Time for EA037B.UVDATA.1 Vect aver. CL # 3
IF 4 CHAN 1 - 16 STK RR

