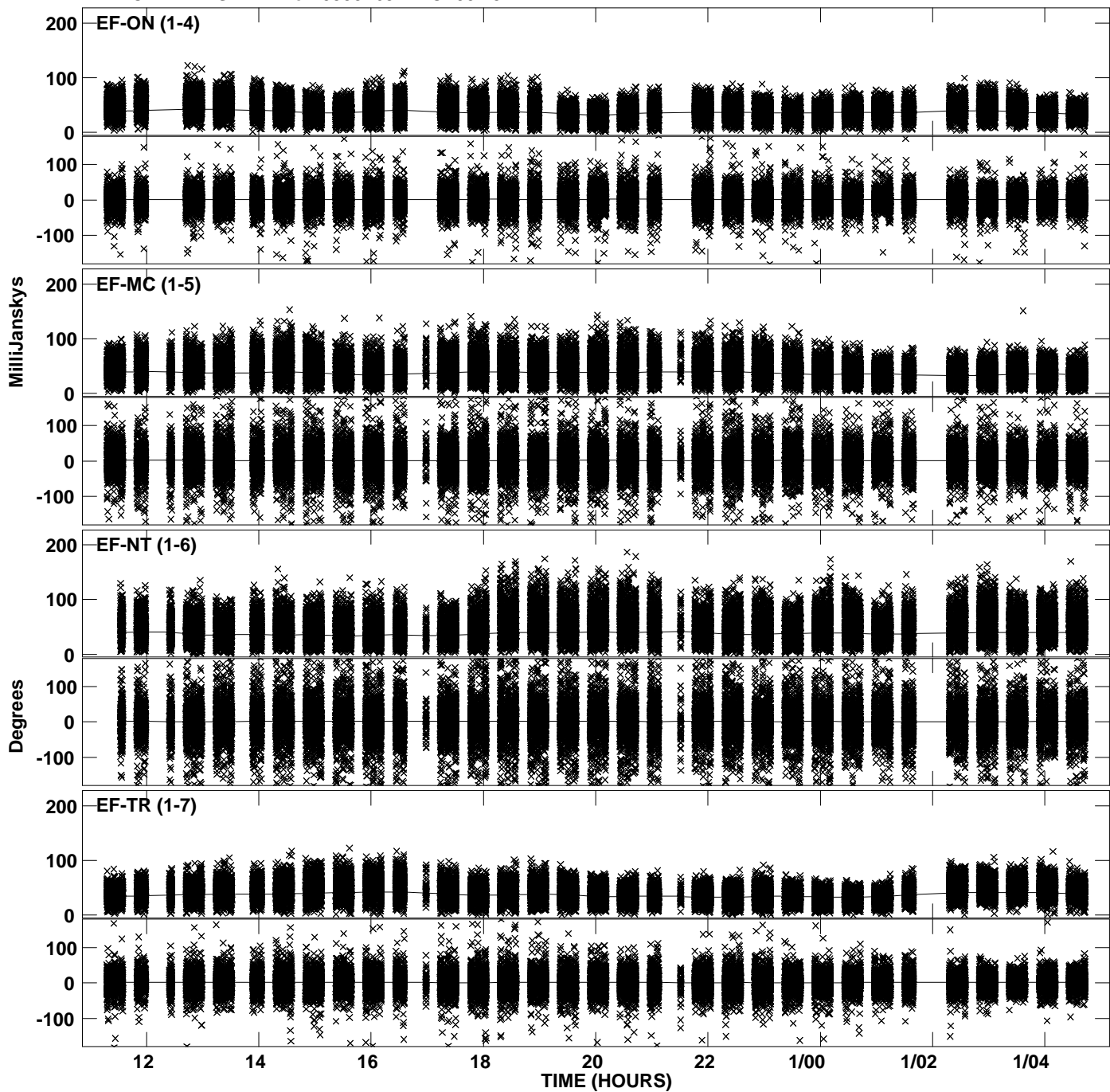
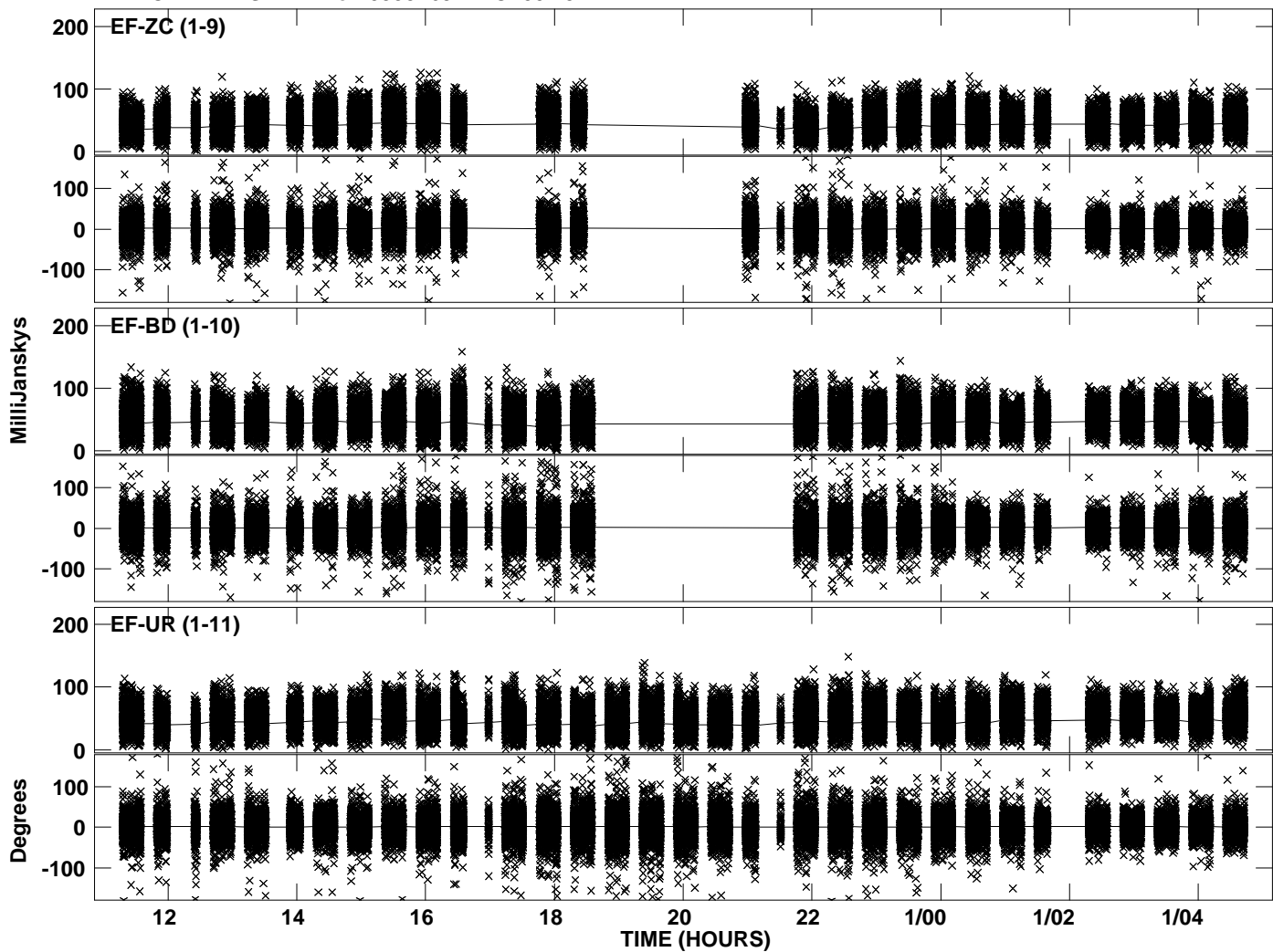


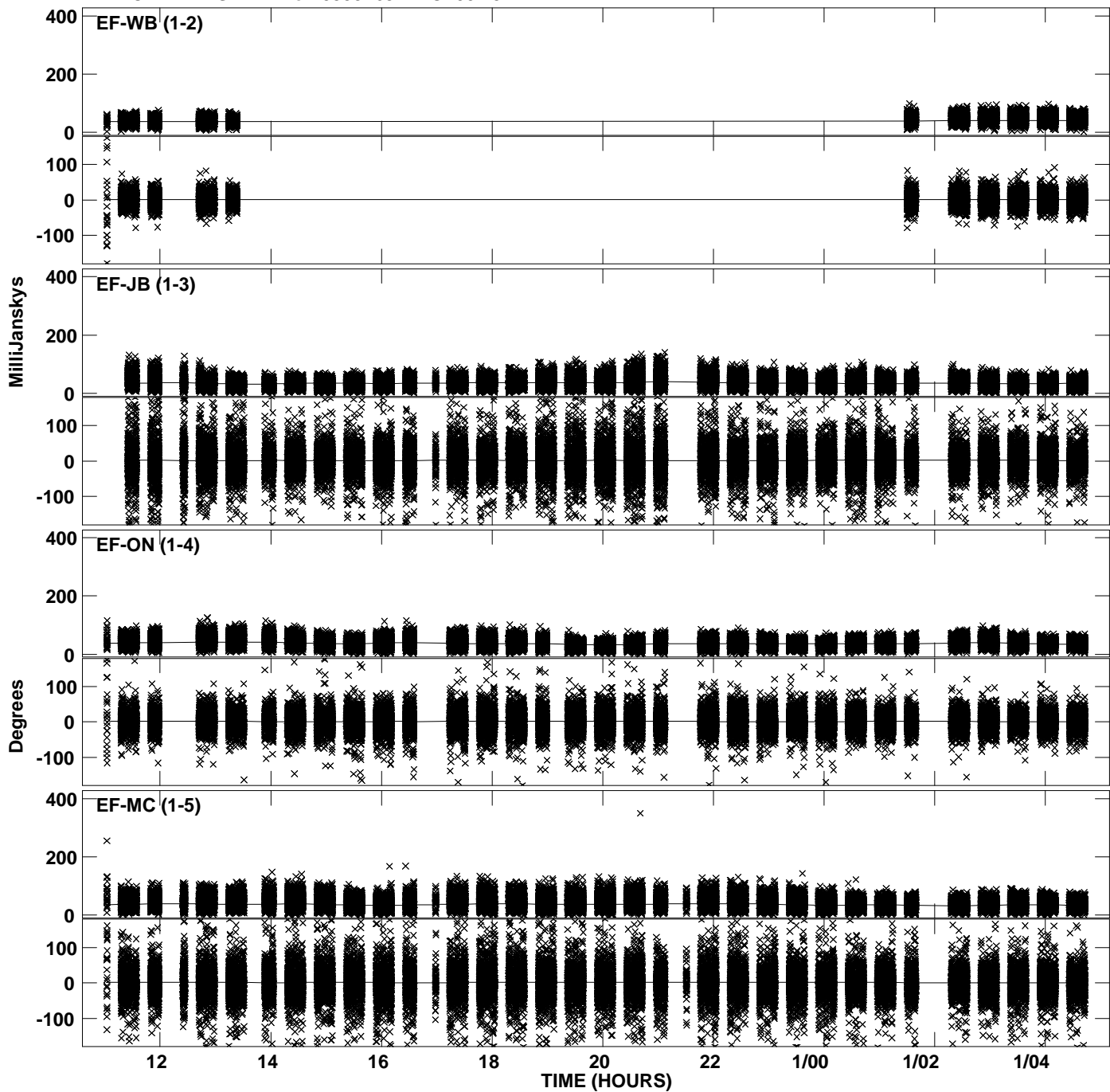
PLot file version 1 created 13-FEB-2013 08:30:51  
Amplitude andPhase vs Time for 0955+697A.MULTI.1 CL # 3  
IF 1 CHAN 1 STK LL of 0955+697A.ICL001.3



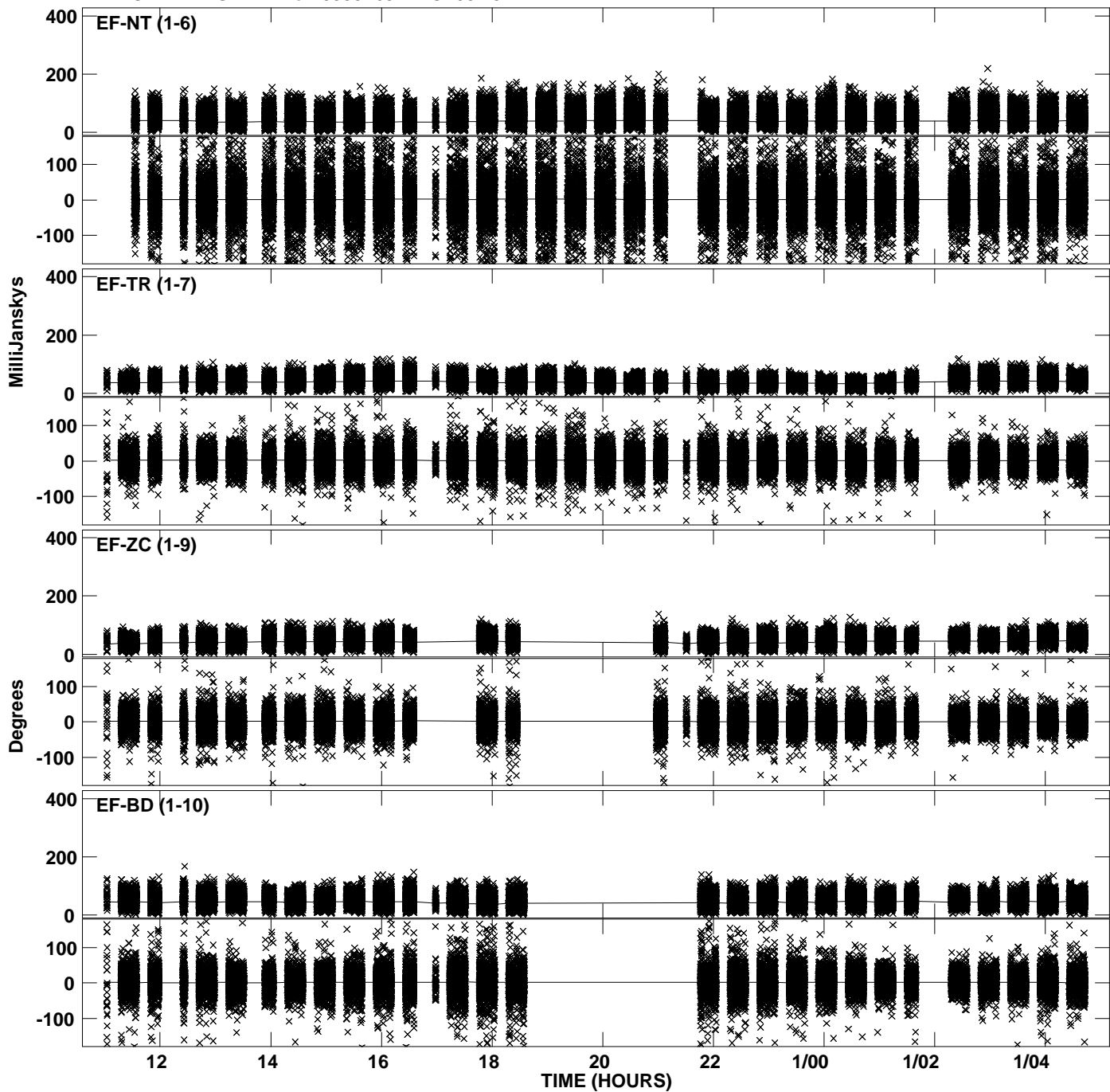
Plot file version 2 created 13-FEB-2013 08:30:51  
Amplitude andPhase vs Time for 0955+697A.MULTI.1 CL # 3  
IF 1 CHAN 1 STK LL of 0955+697A.ICL001.3



Plot file version 3 created 13-FEB-2013 08:30:52  
Amplitude andPhase vs Time for 0955+697A.MULTI.1 CL # 3  
IF 2 CHAN 1 STK LL of 0955+697A.ICL001.3

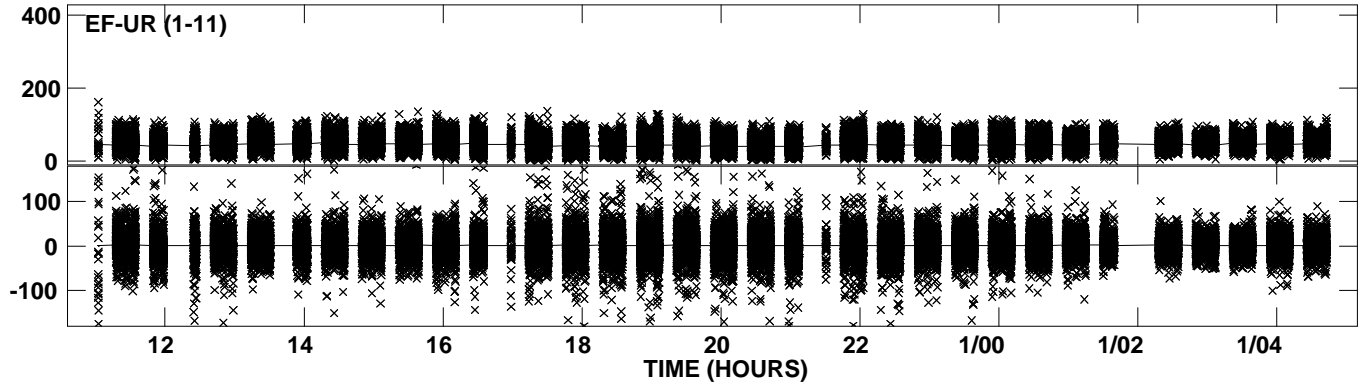


Plot file version 4 created 13-FEB-2013 08:30:52  
Amplitude andPhase vs Time for 0955+697A.MULTI.1 CL # 3  
IF 2 CHAN 1 STK LL of 0955+697A.ICL001.3

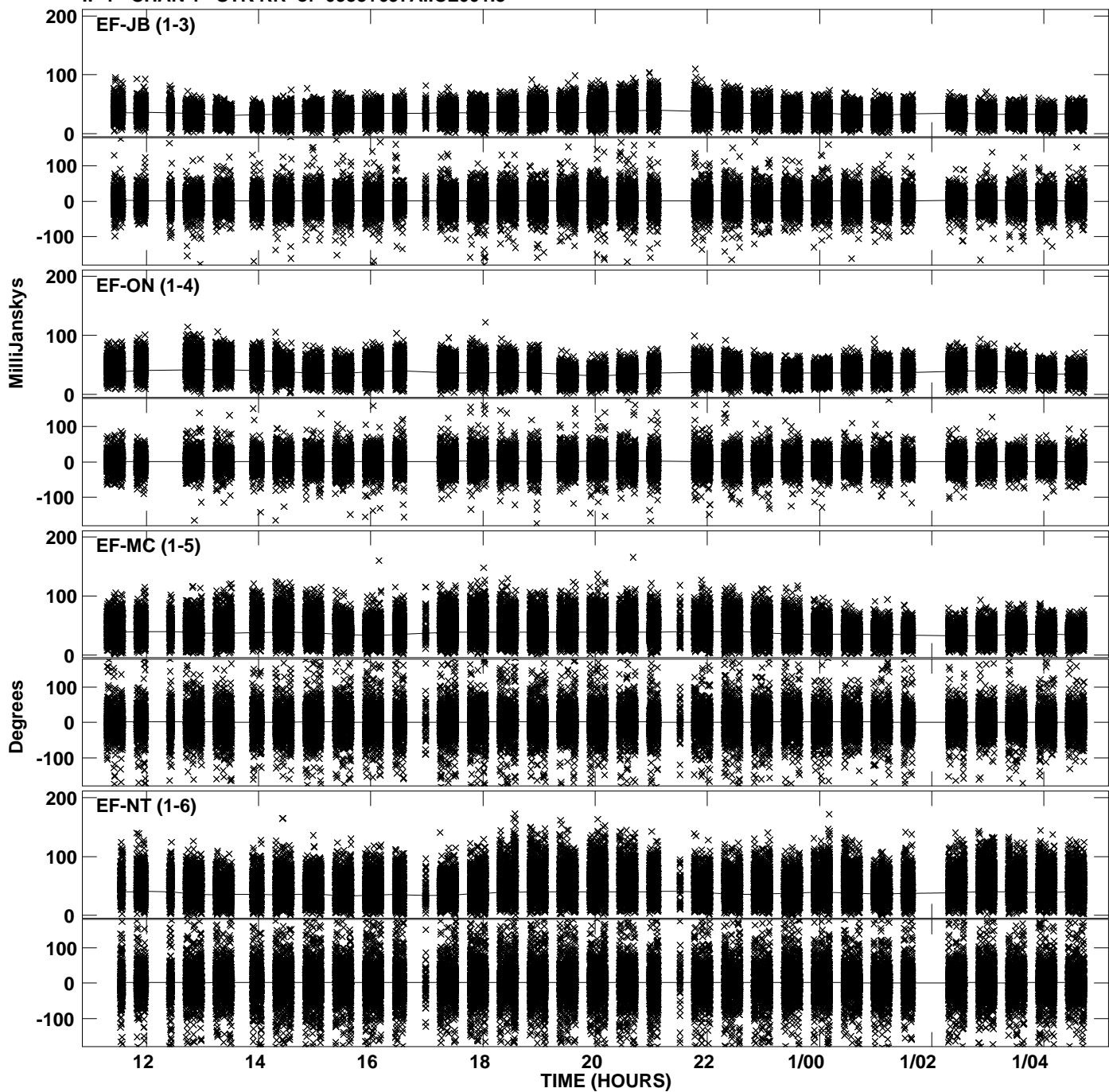




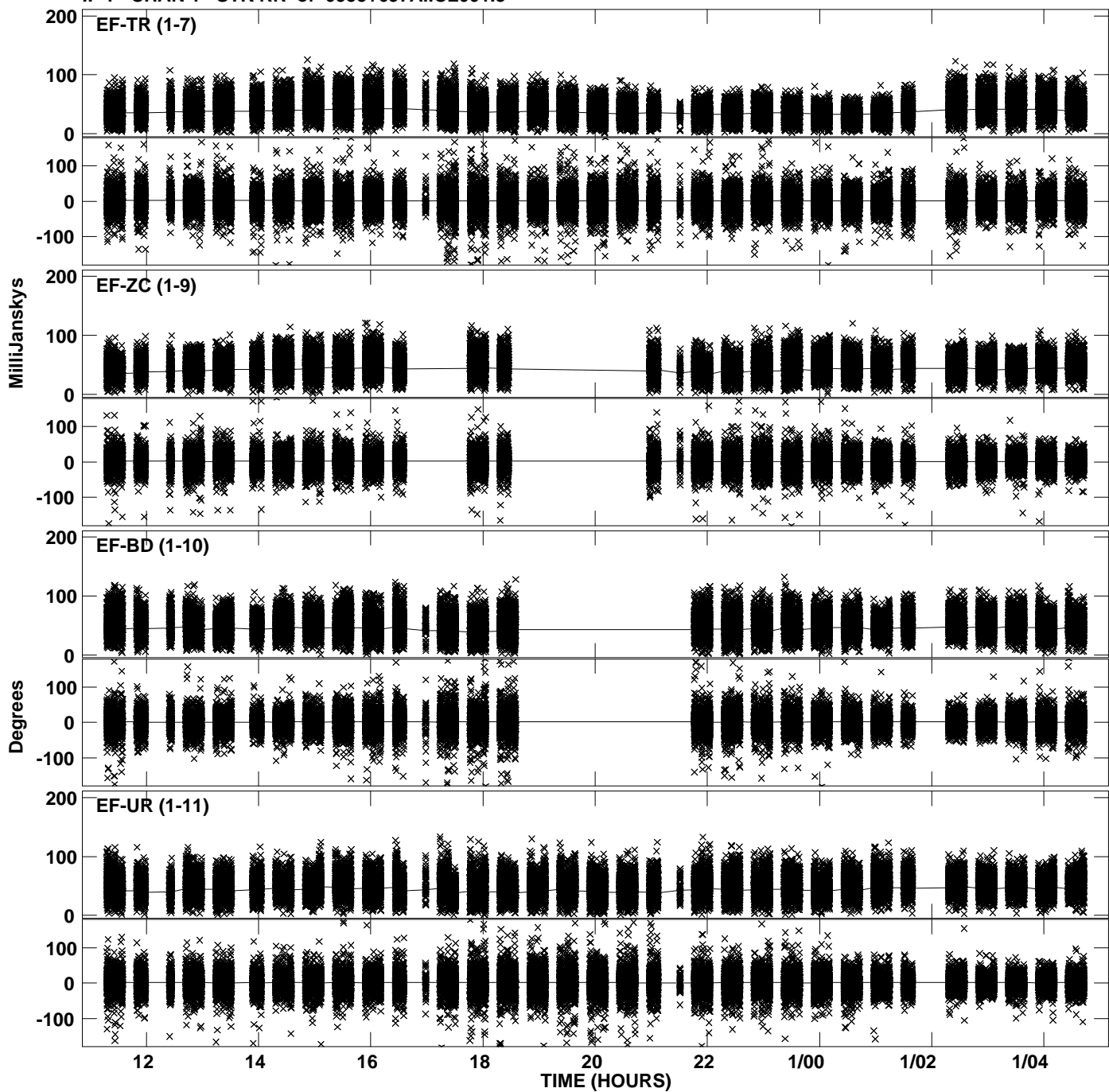
Plot file version 5 created 13-FEB-2013 08:30:52  
Amplitude and Phase vs Time for 0955+697A.MULTI.1 CL # 3  
IF 2 CHAN 1 STK LL of 0955+697A.ICL001.3



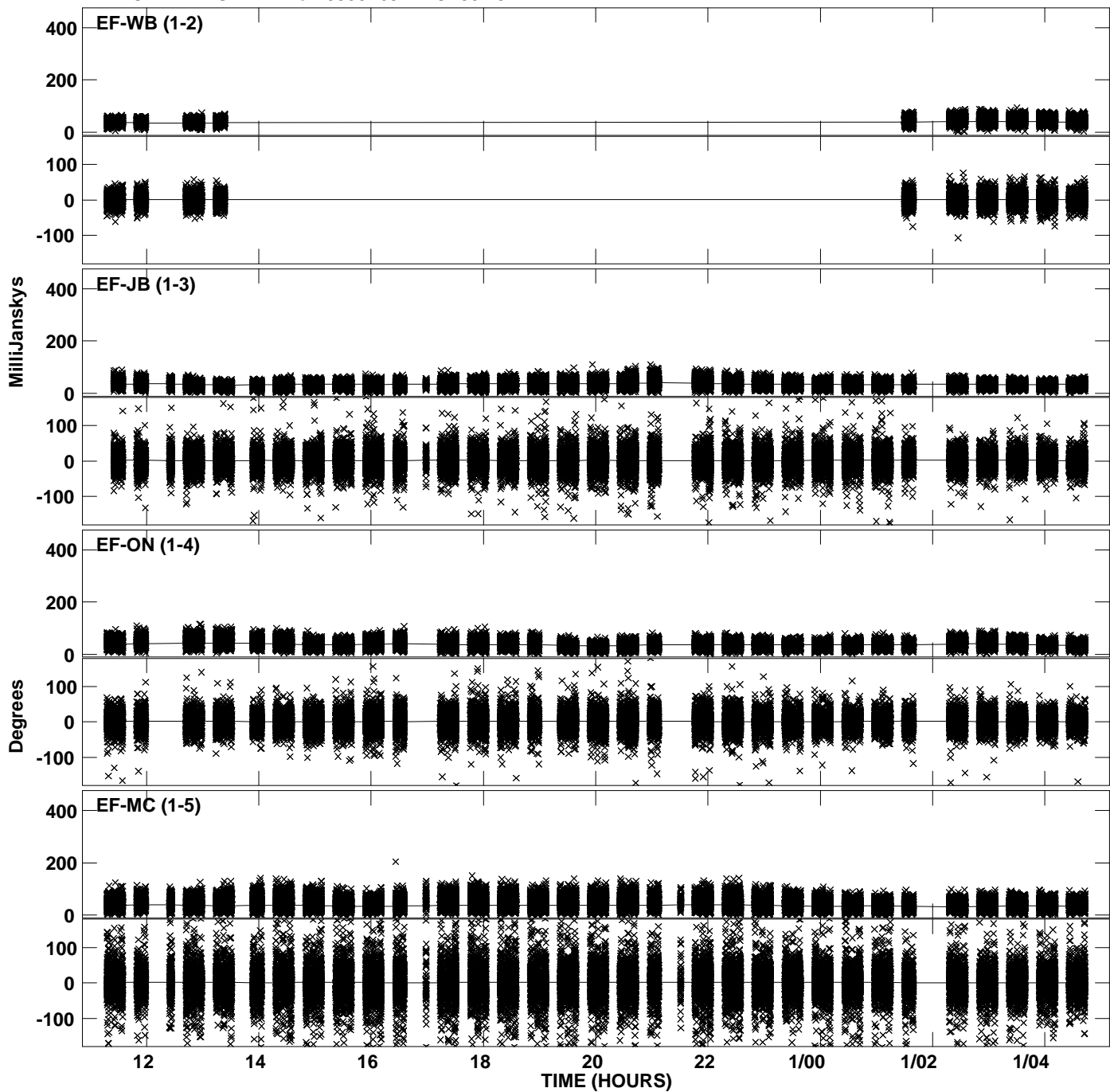
Plot file version 6 created 13-FEB-2013 08:30:53  
Amplitude and Phase vs Time for 0955+697A.MULTI.1 CL # 3  
IF 1 CHAN 1 STK RR of 0955+697A.ICL001.3



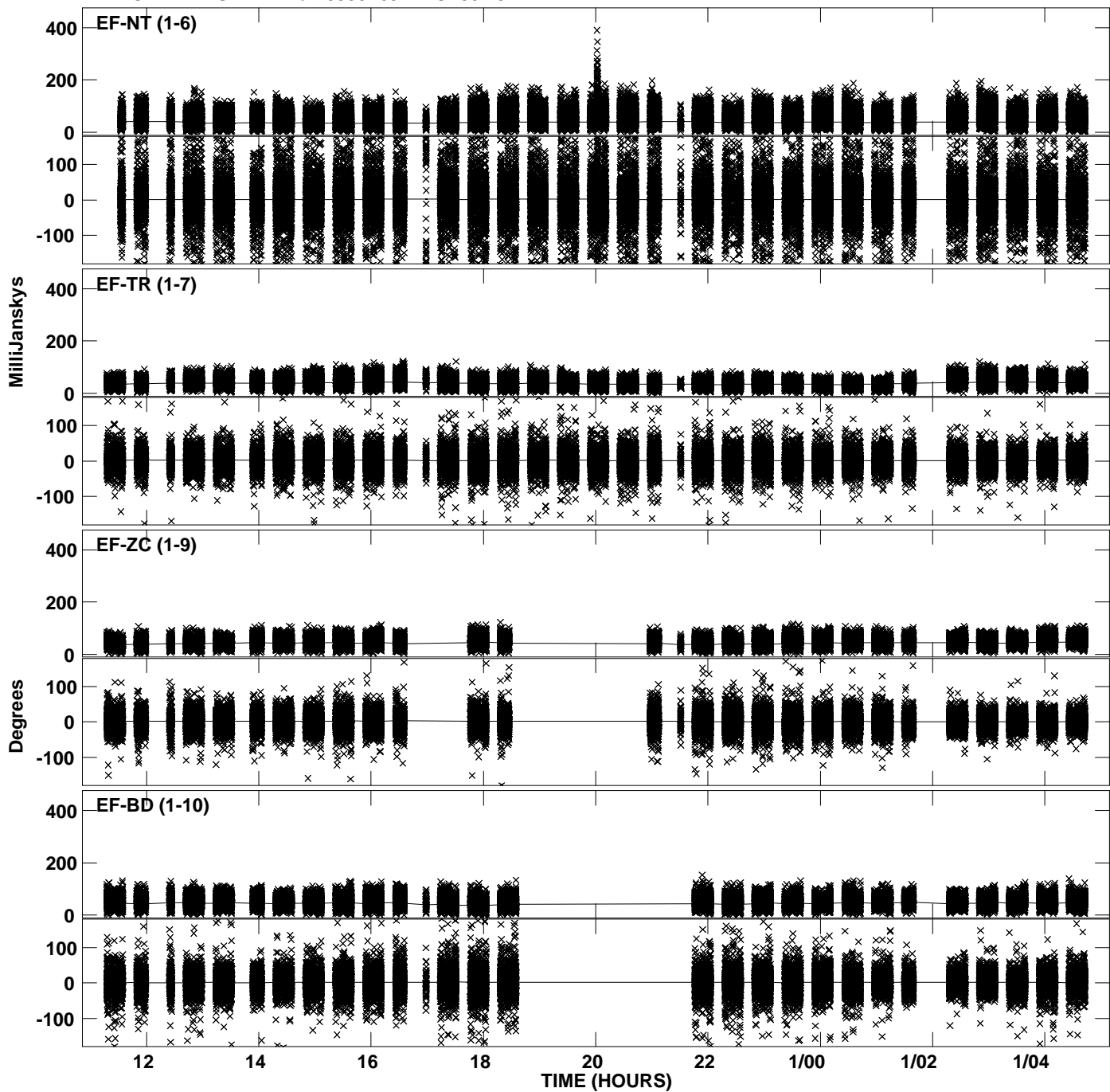
PLot file version 7 created 13-FEB-2013 08:30:53  
Amplitude andPhase vs Time for 0955+697A.MULTI.1 CL # 3  
IF 1 CHAN 1 STK RR of 0955+697A.ICL001.3



Plot file version 8 created 13-FEB-2013 08:30:54  
Amplitude and Phase vs Time for 0955+697A.MULTI.1 CL # 3  
IF 2 CHAN 1 STK RR of 0955+697A.ICL001.3



PLot file version 9 created 13-FEB-2013 08:30:54  
Amplitude andPhase vs Time for 0955+697A.MULTI.1 CL # 3  
IF 2 CHAN 1 STK RR of 0955+697A.ICL001.3



Plot file version 10 created 13-FEB-2013 08:30:54  
Amplitude and Phase vs Time for 0955+697A.MULTI.1 CL # 3  
IF 2 CHAN 1 STK RR of 0955+697A.ICL001.3

