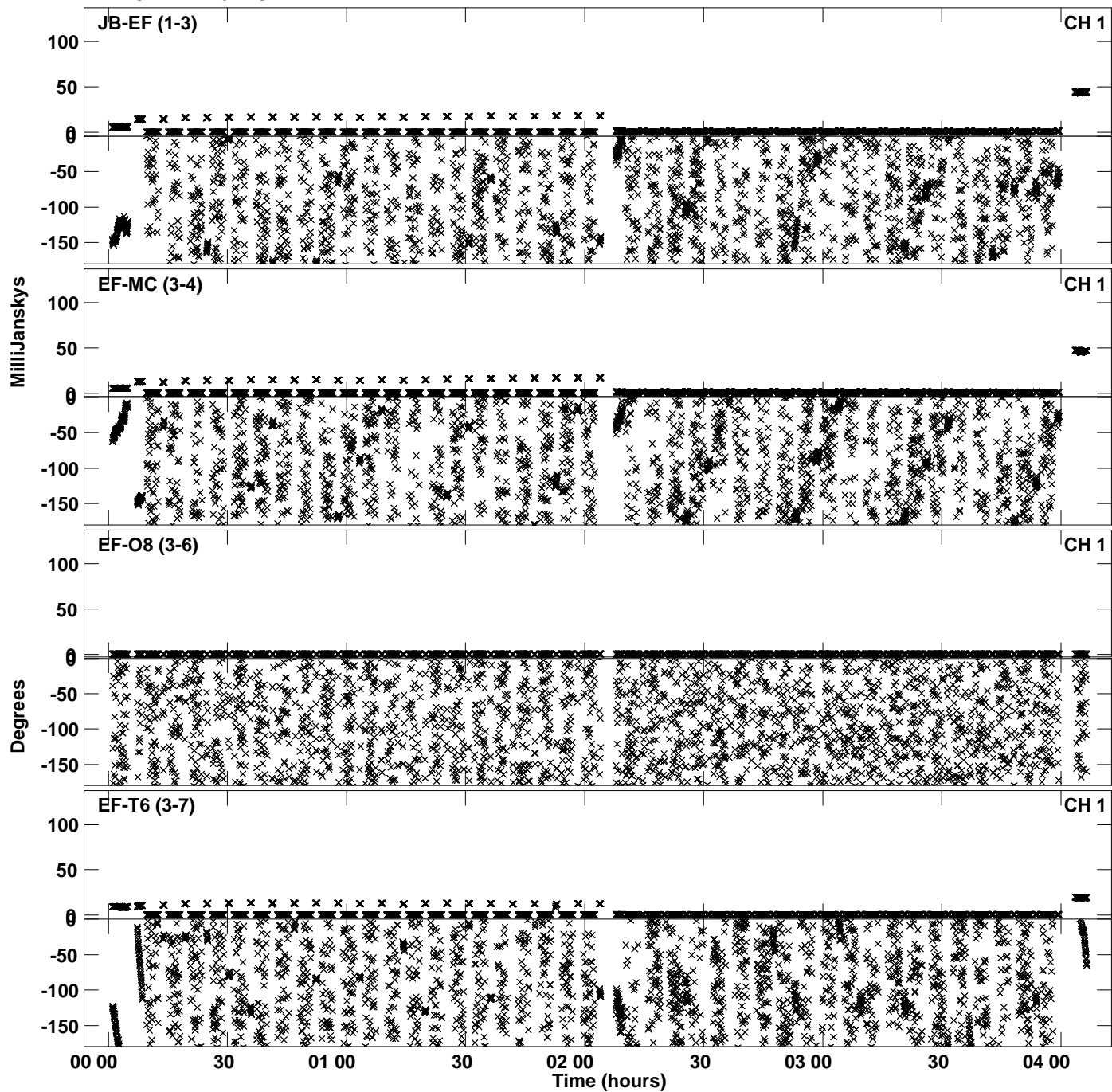
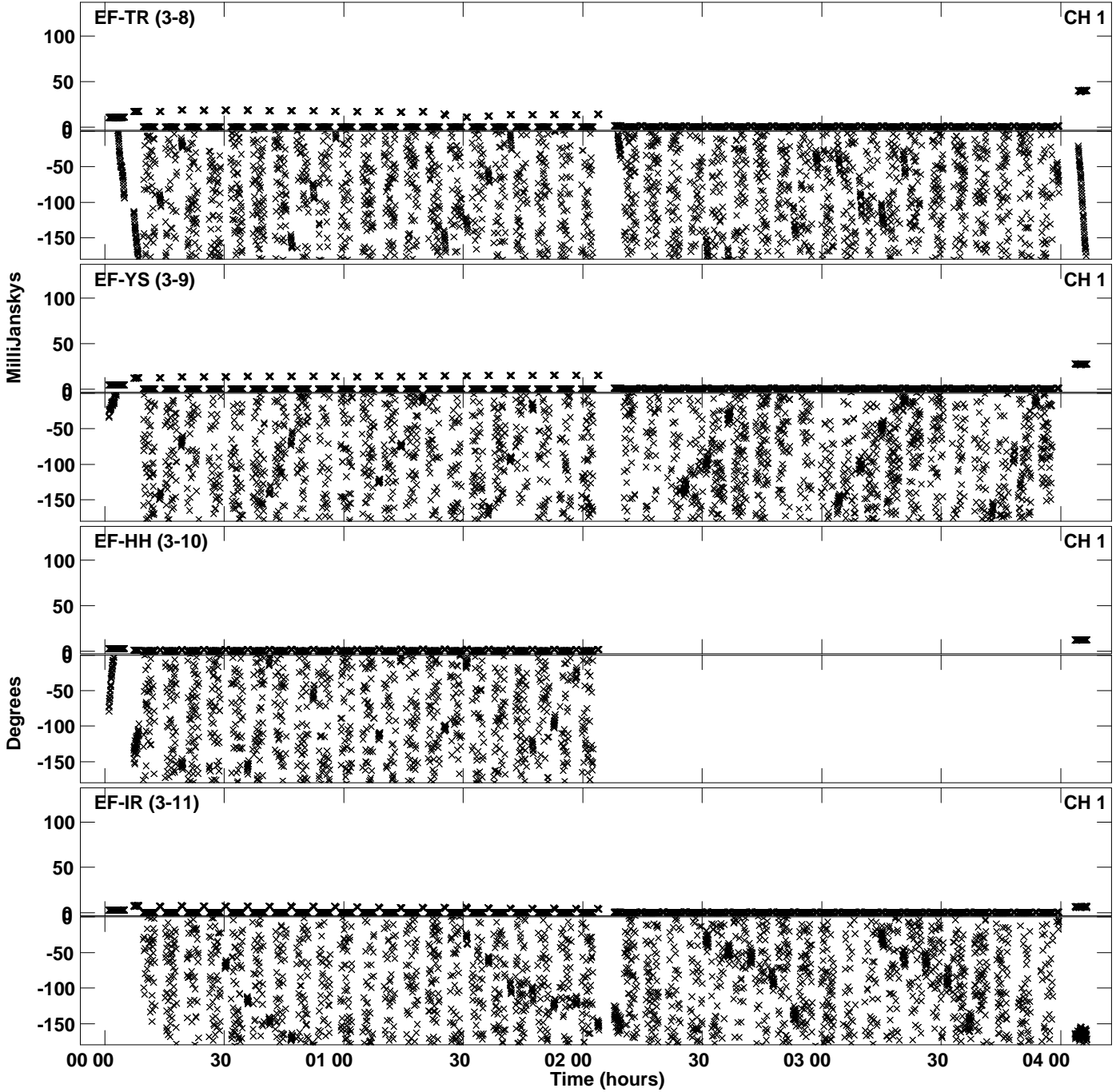


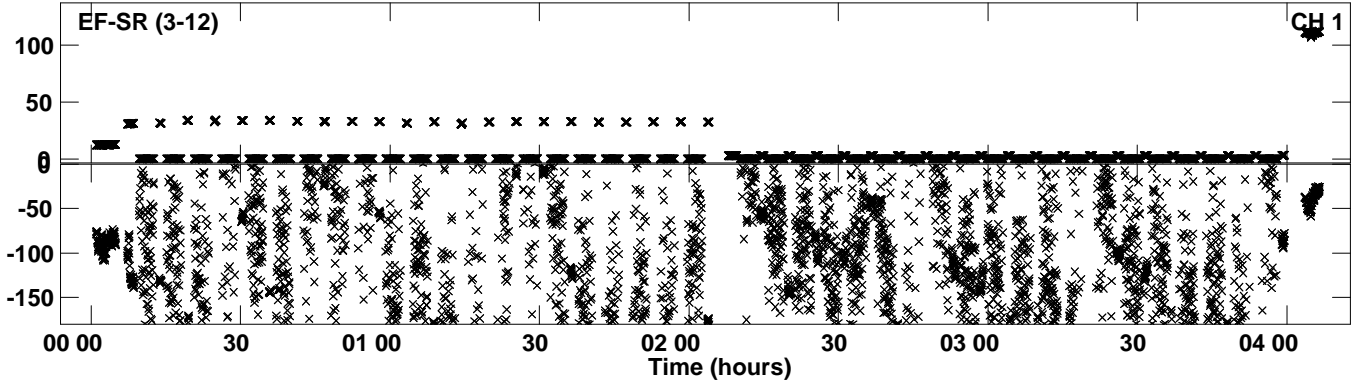
Plot file version 1 created 08-FEB-2024 13:23:17
Amplitude andPhase vs Time for EA071B.UVDATA.1 Vect aver.
IF 1 CHAN 1 - 64 STK LL



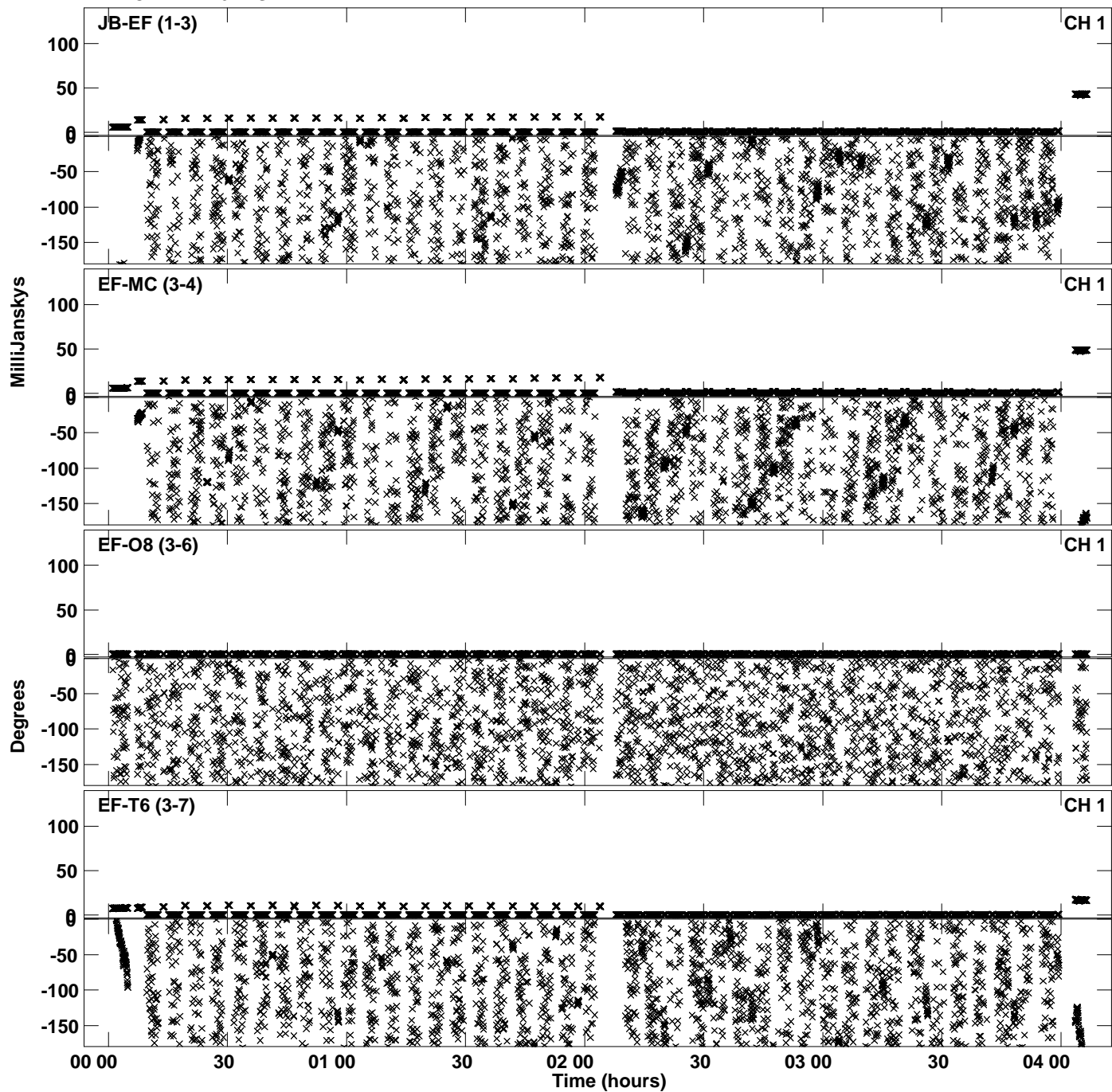
PLot file version 2 created 08-FEB-2024 13:23:17
Amplitude andPhase vs Time for EA071B.UVDATA.1 Vect aver.
IF 1 CHAN 1 - 64 STK LL



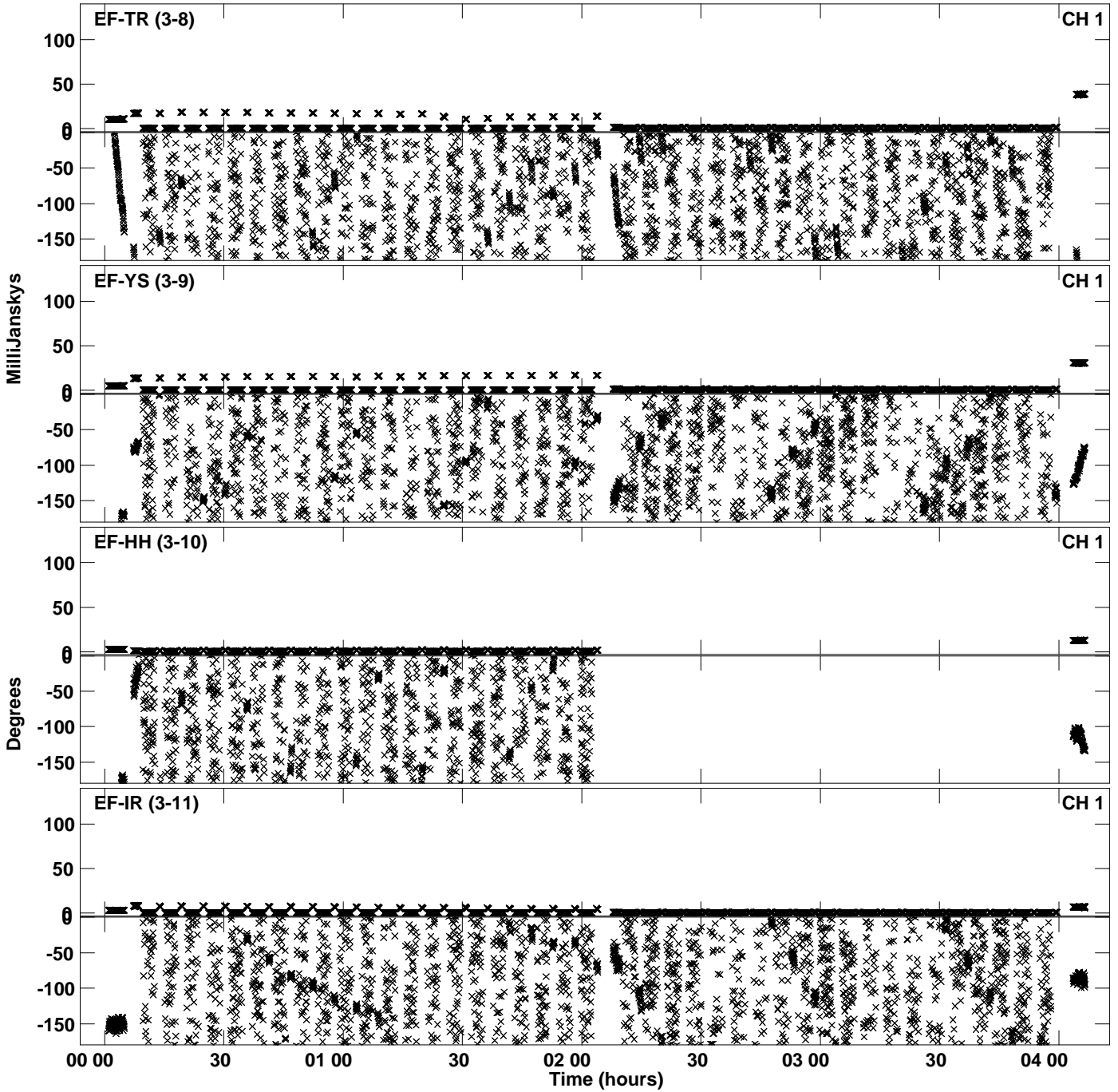
Plot file version 3 created 08-FEB-2024 13:23:17
Amplitude andPhase vs Time for EA071B.UVDATA.1 Vect aver.
IF 1 CHAN 1 - 64 STK LL



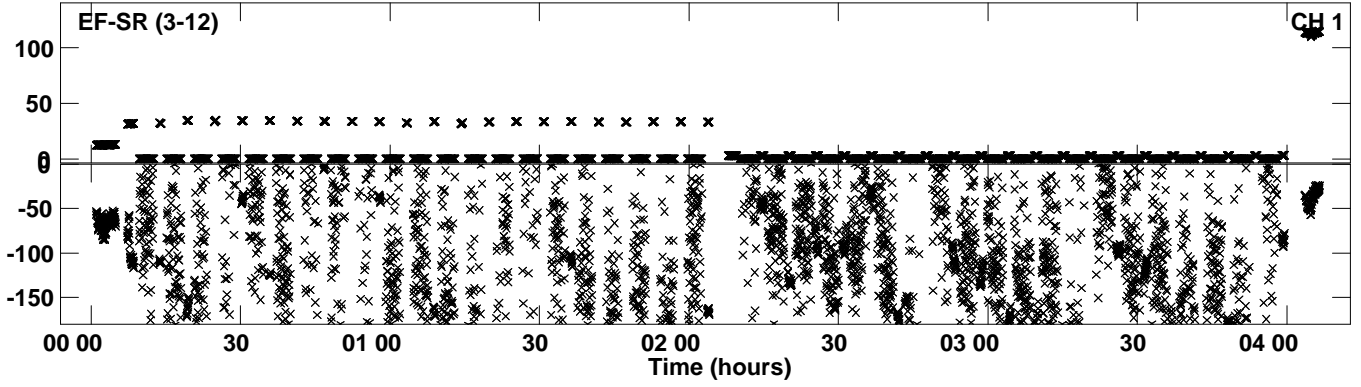
Plot file version 4 created 08-FEB-2024 13:23:23
Amplitude andPhase vs Time for EA071B.UVDATA.1 Vect aver.
IF 2 CHAN 1 - 64 STK LL



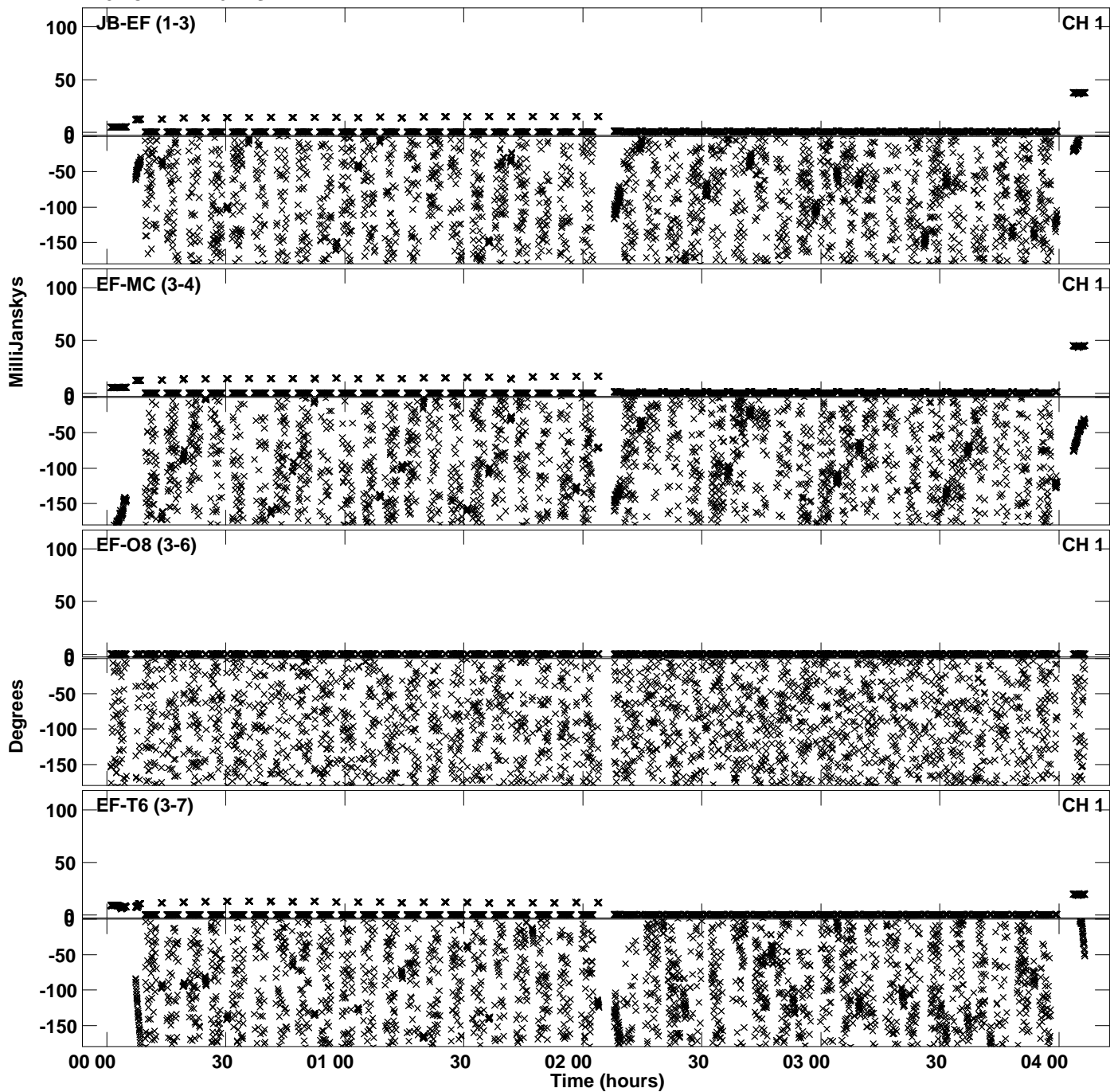
Plot file version 5 created 08-FEB-2024 13:23:23
Amplitude andPhase vs Time for EA071B.UVDATA.1 Vect aver.
IF 2 CHAN 1 - 64 STK LL



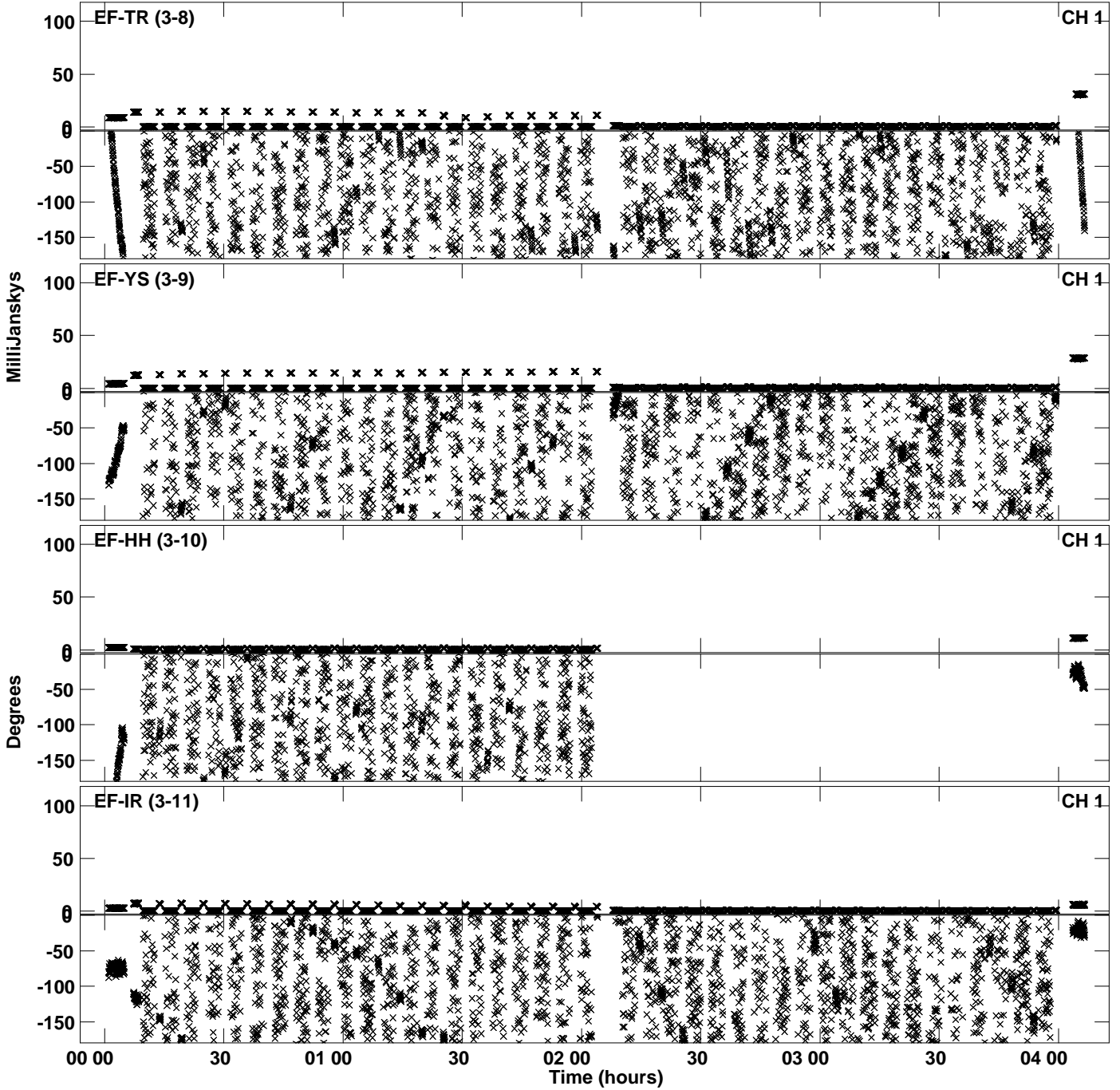
Plot file version 6 created 08-FEB-2024 13:23:23
Amplitude andPhase vs Time for EA071B.UVDATA.1 Vect aver.
IF 2 CHAN 1 - 64 STK LL



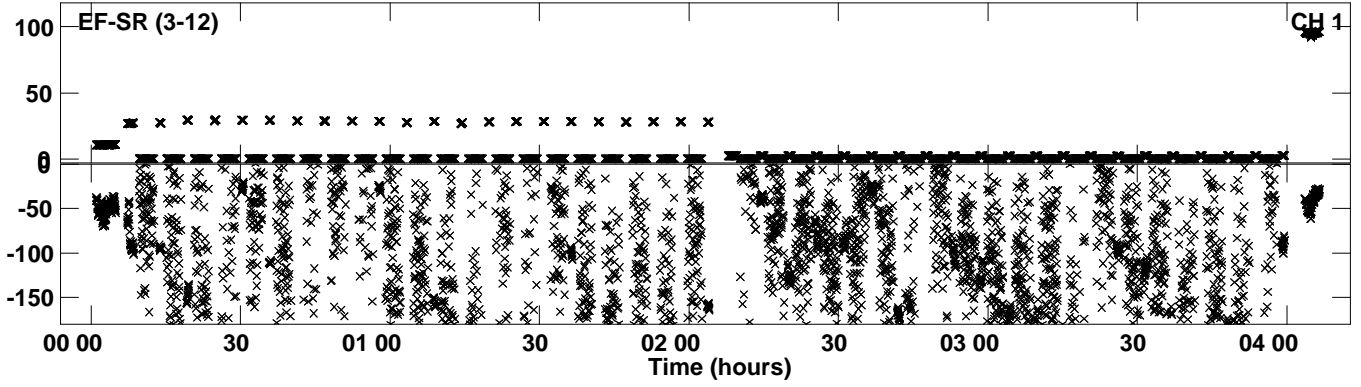
Plot file version 7 created 08-FEB-2024 13:23:29
Amplitude andPhase vs Time for EA071B.UVDATA.1 Vect aver.
IF 3 CHAN 1 - 64 STK LL



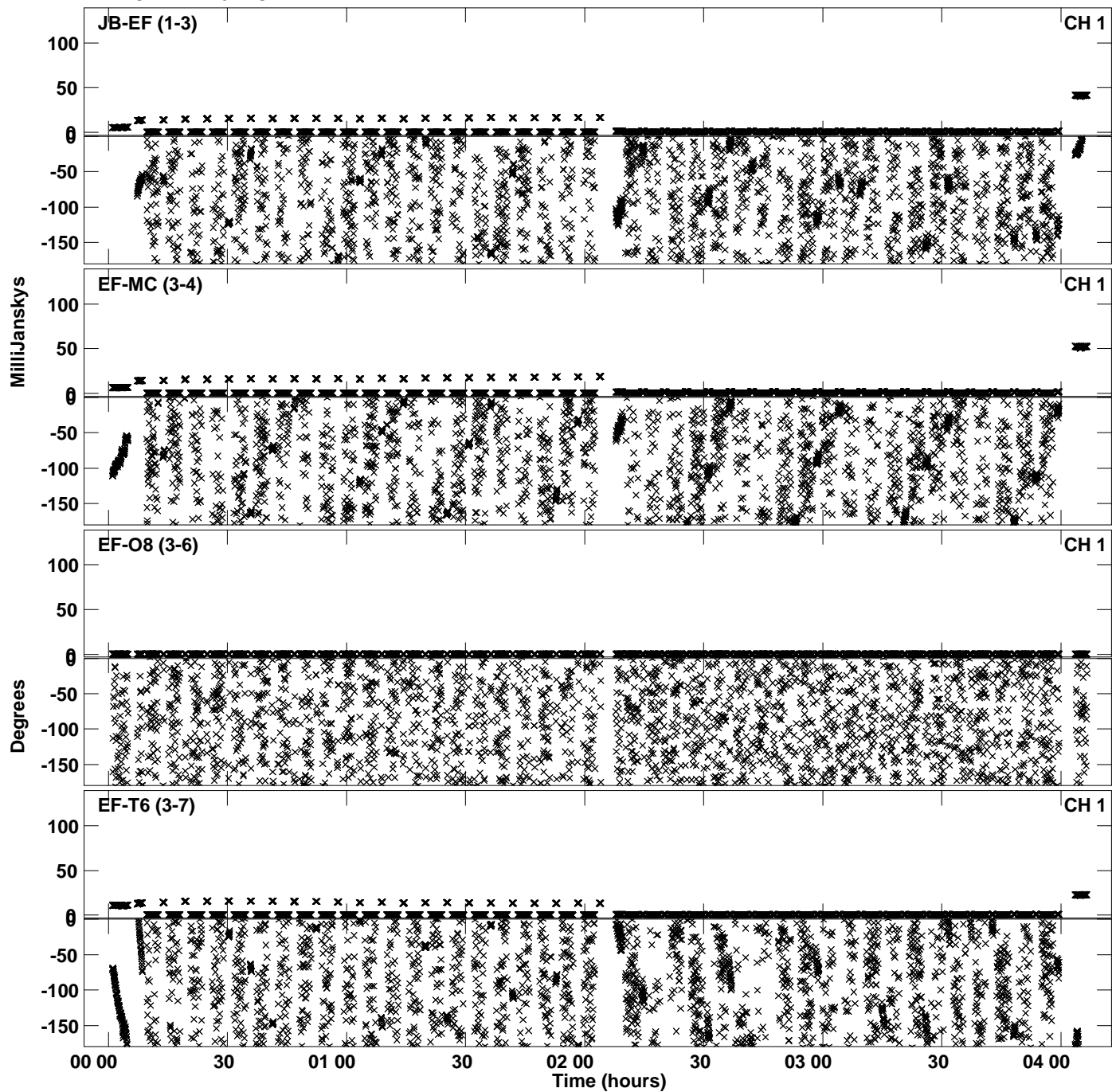
Plot file version 8 created 08-FEB-2024 13:23:29
Amplitude andPhase vs Time for EA071B.UVDATA.1 Vect aver.
IF 3 CHAN 1 - 64 STK LL



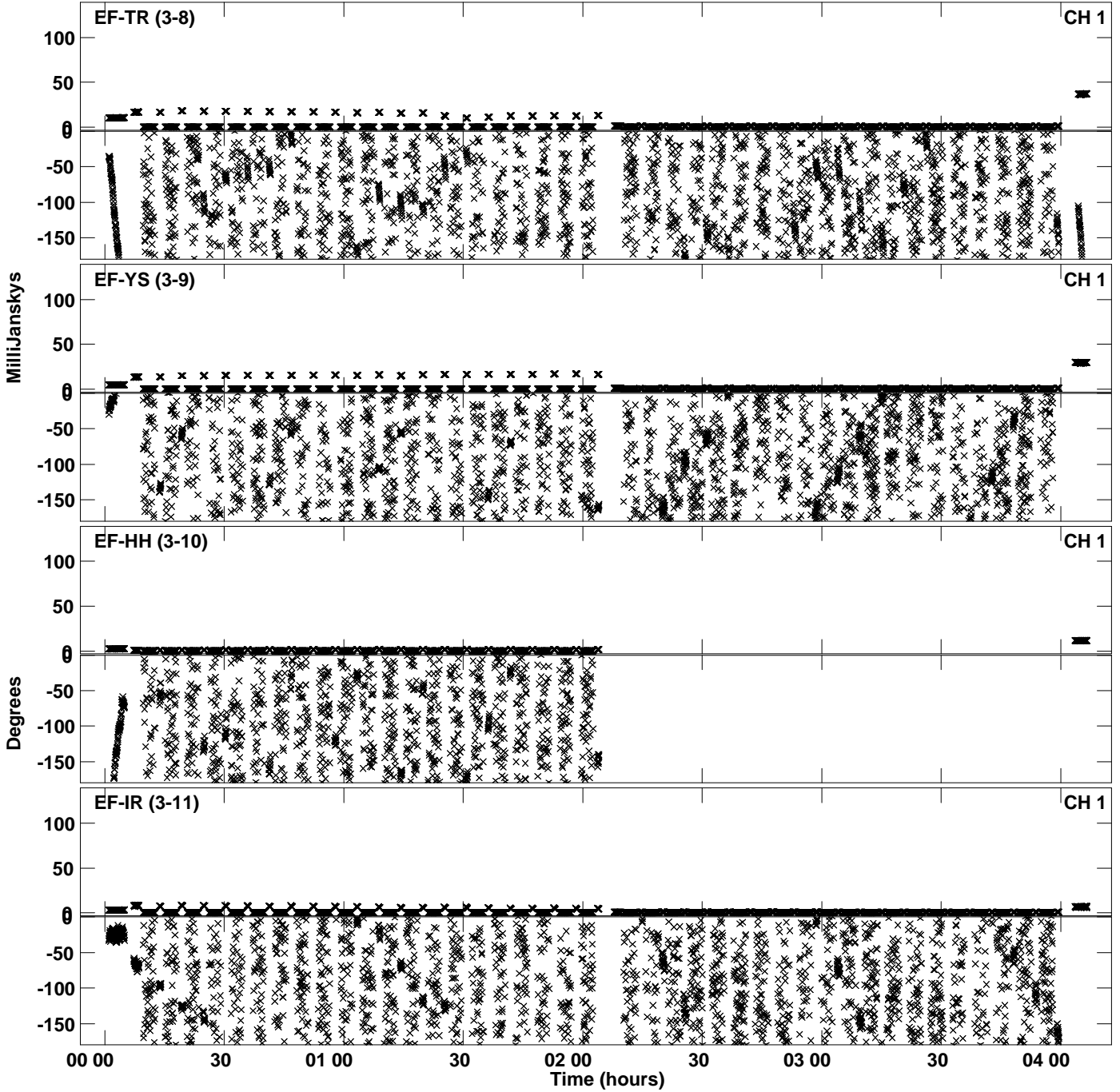
Plot file version 9 created 08-FEB-2024 13:23:29
Amplitude andPhase vs Time for EA071B.UVDATA.1 Vect aver.
IF 3 CHAN 1 - 64 STK LL



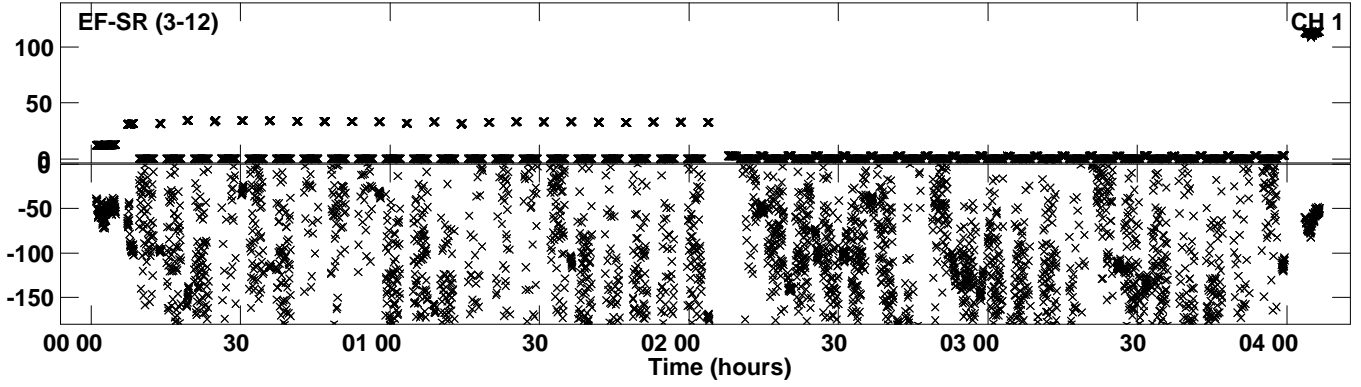
PLot file version 10 created 08-FEB-2024 13:23:34
Amplitude andPhase vs Time for EA071B.UVDATA.1 Vect aver.
IF 4 CHAN 1 - 64 STK LL



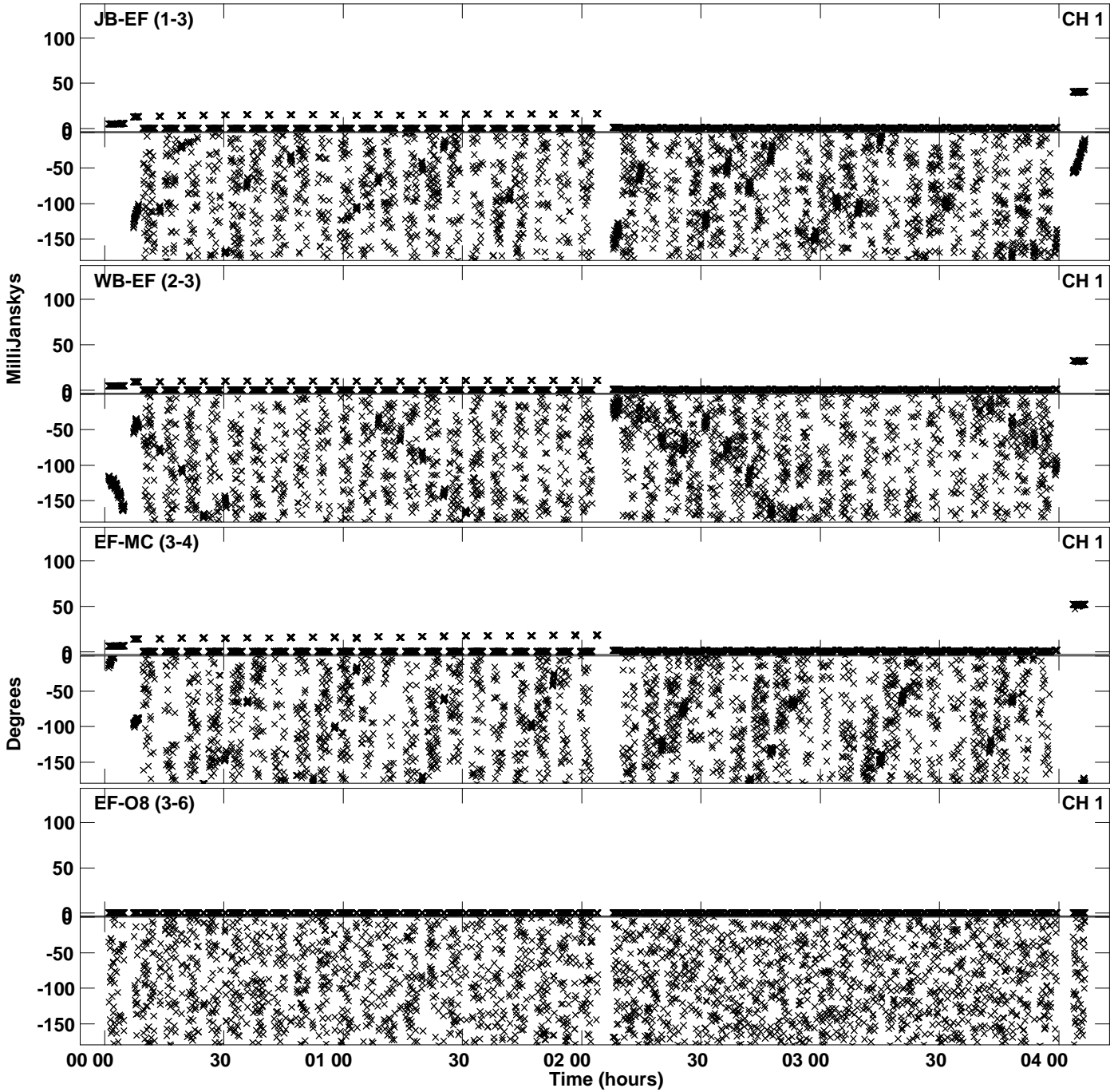
PLot file version 11 created 08-FEB-2024 13:23:34
Amplitude andPhase vs Time for EA071B.UVDATA.1 Vect aver.
IF 4 CHAN 1 - 64 STK LL



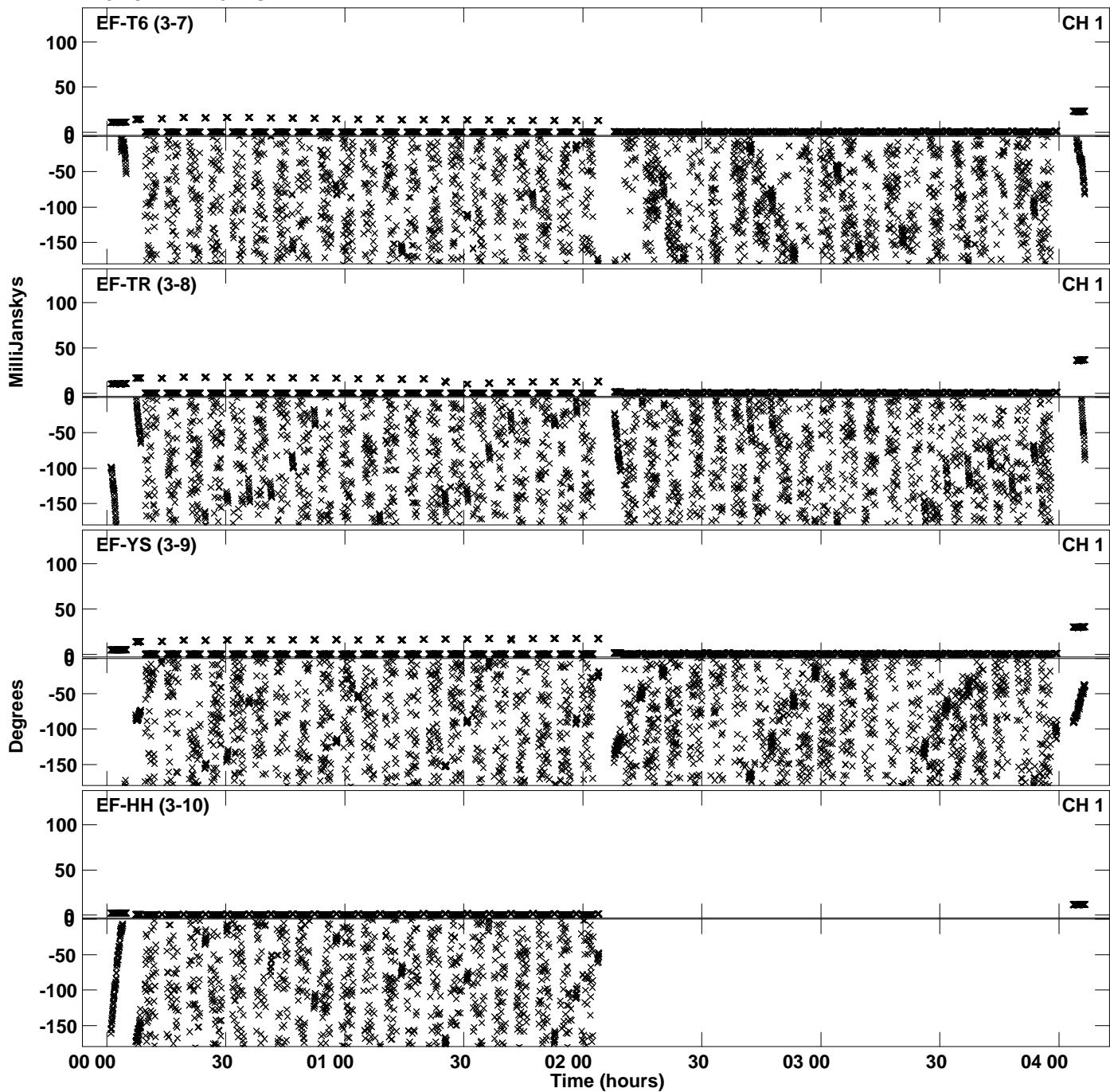
Plot file version 12 created 08-FEB-2024 13:23:34
Amplitude andPhase vs Time for EA071B.UVDATA.1 Vect aver.
IF 4 CHAN 1 - 64 STK LL



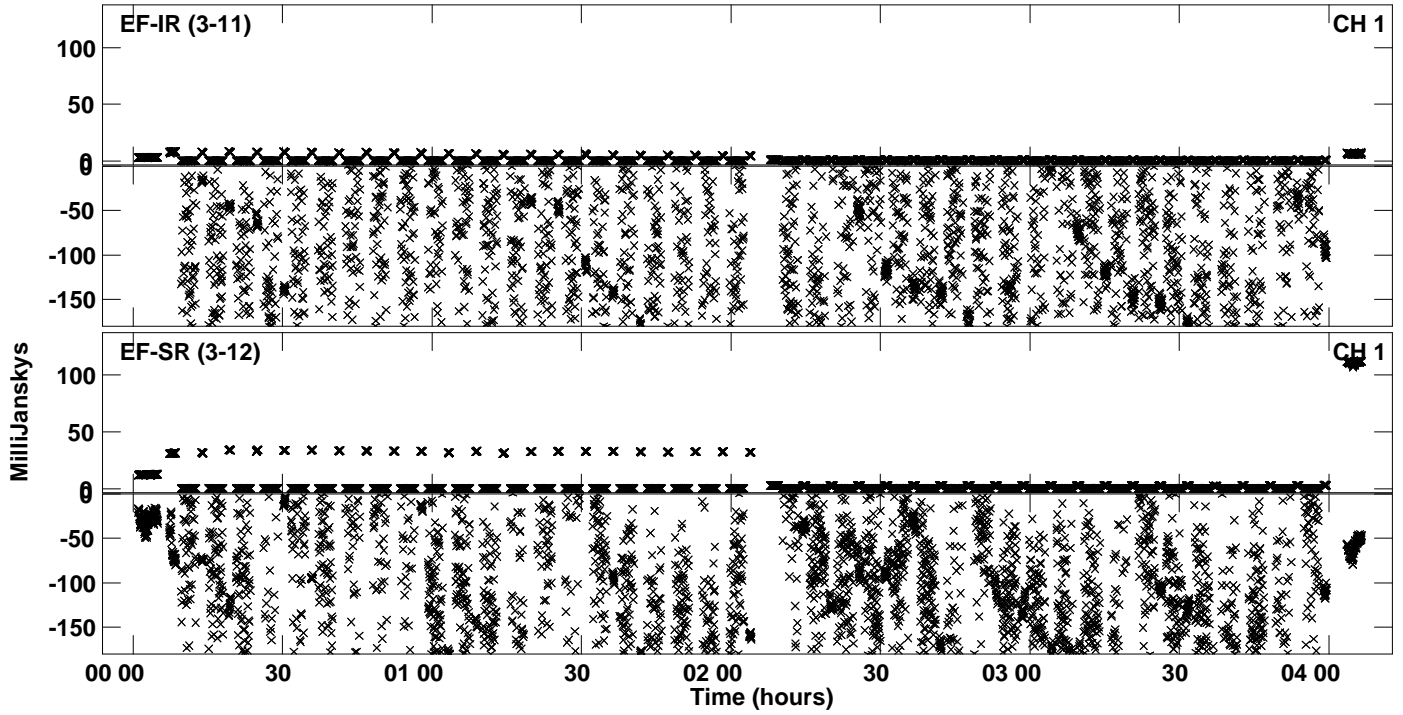
PLot file version 13 created 08-FEB-2024 13:23:40
Amplitude andPhase vs Time for EA071B.UVDATA.1 Vect aver.
IF 5 CHAN 1 - 64 STK LL



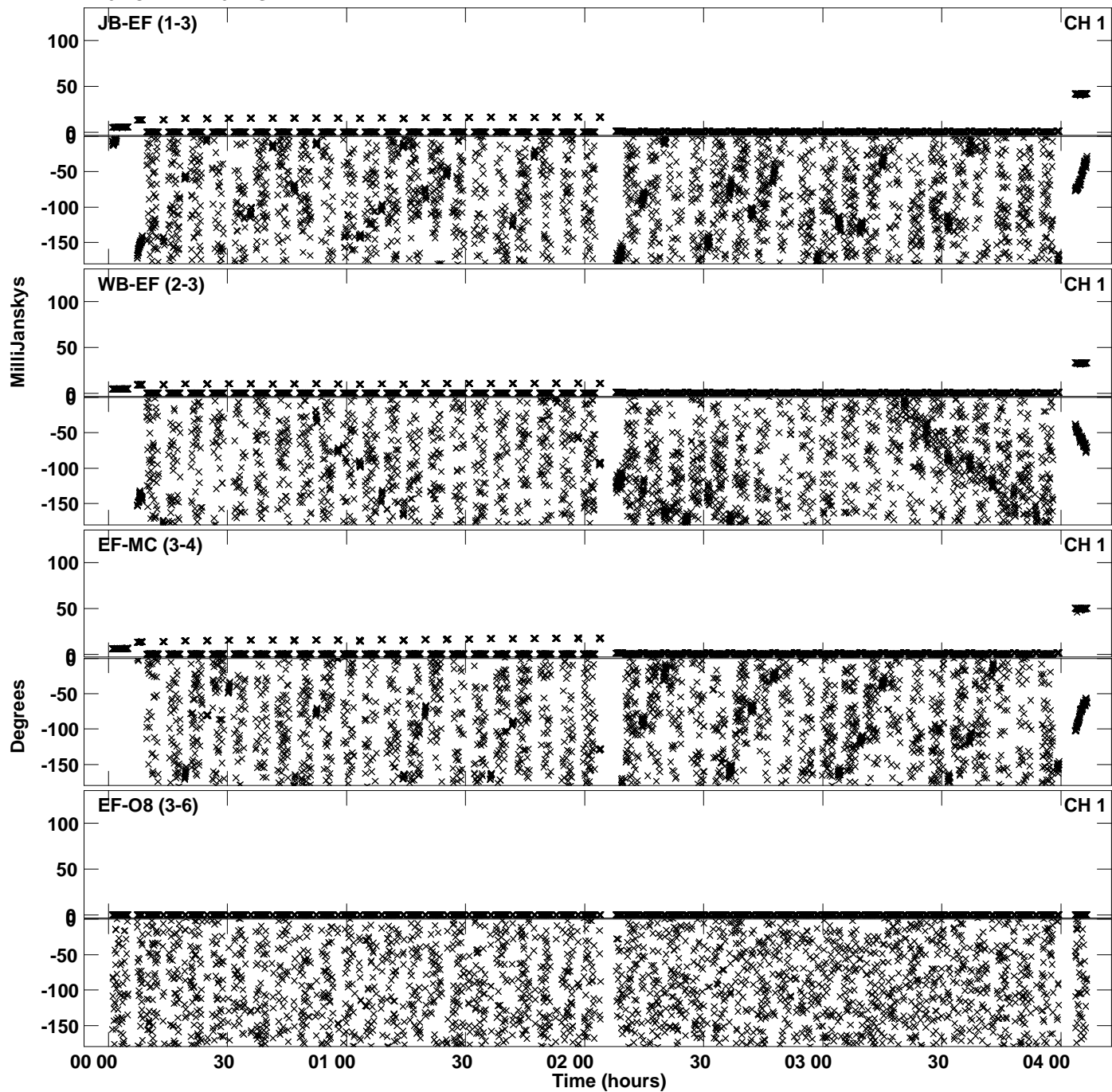
Plot file version 14 created 08-FEB-2024 13:23:40
Amplitude andPhase vs Time for EA071B.UVDATA.1 Vect aver.
IF 5 CHAN 1 - 64 STK LL



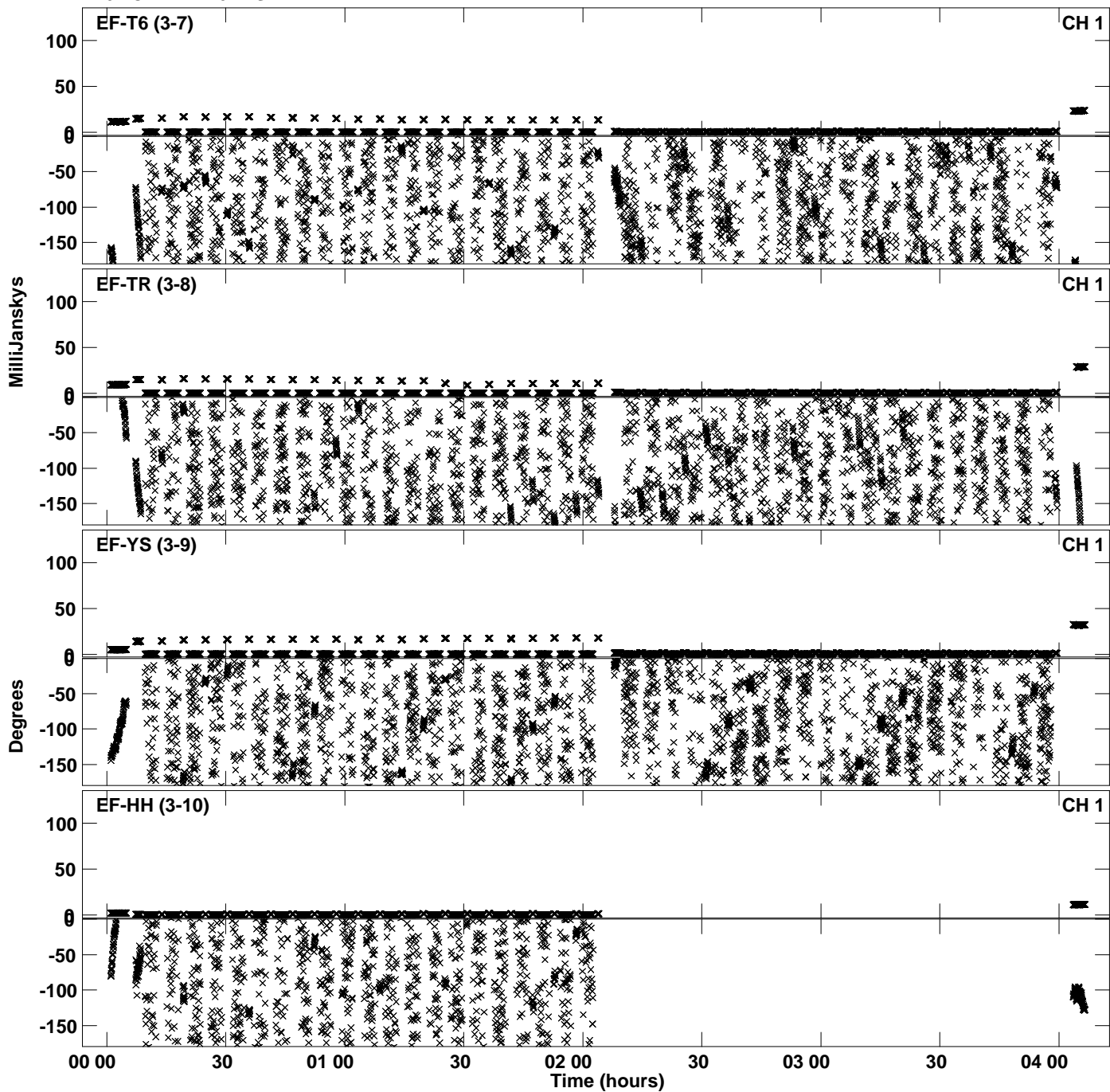
PLot file version 15 created 08-FEB-2024 13:23:40
Amplitude andPhase vs Time for EA071B.UVDATA.1 Vect aver.
IF 5 CHAN 1 - 64 STK LL



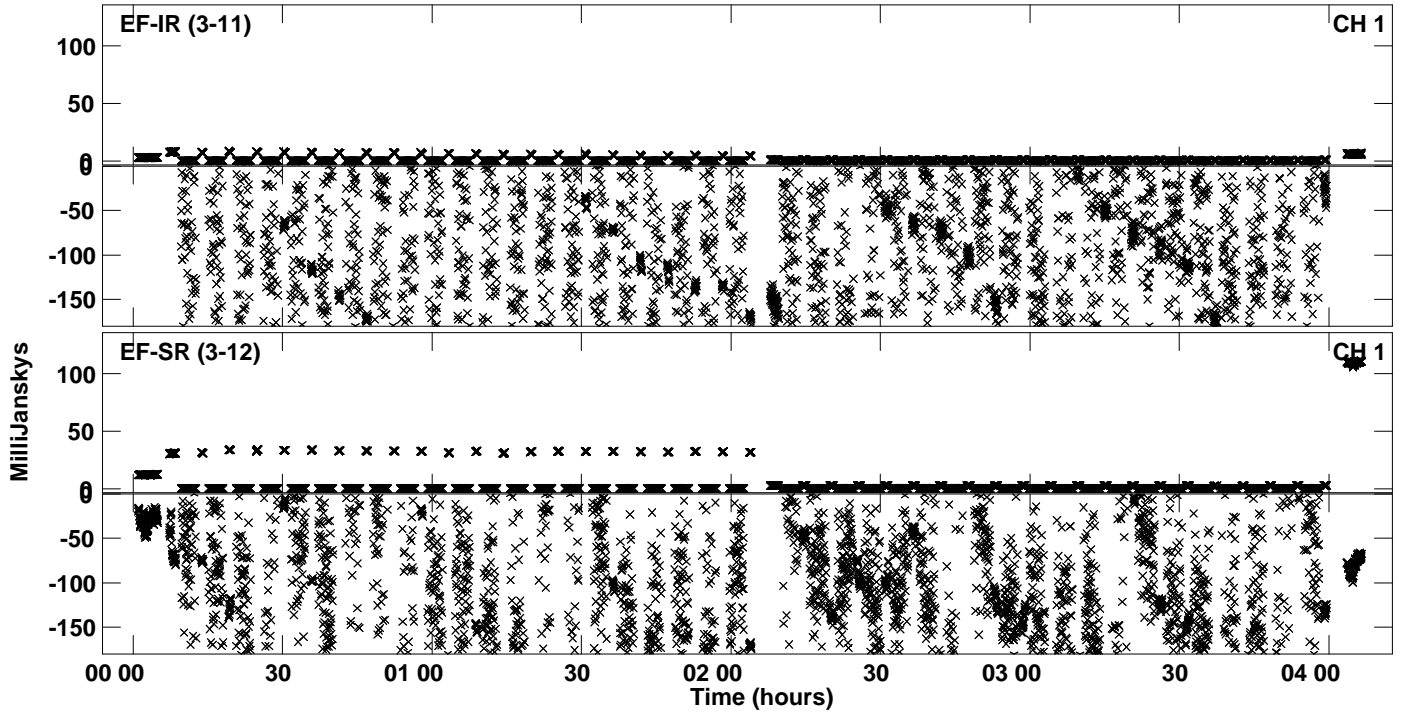
Plot file version 16 created 08-FEB-2024 13:23:45
Amplitude andPhase vs Time for EA071B.UVDATA.1 Vect aver.
IF 6 CHAN 1 - 64 STK LL



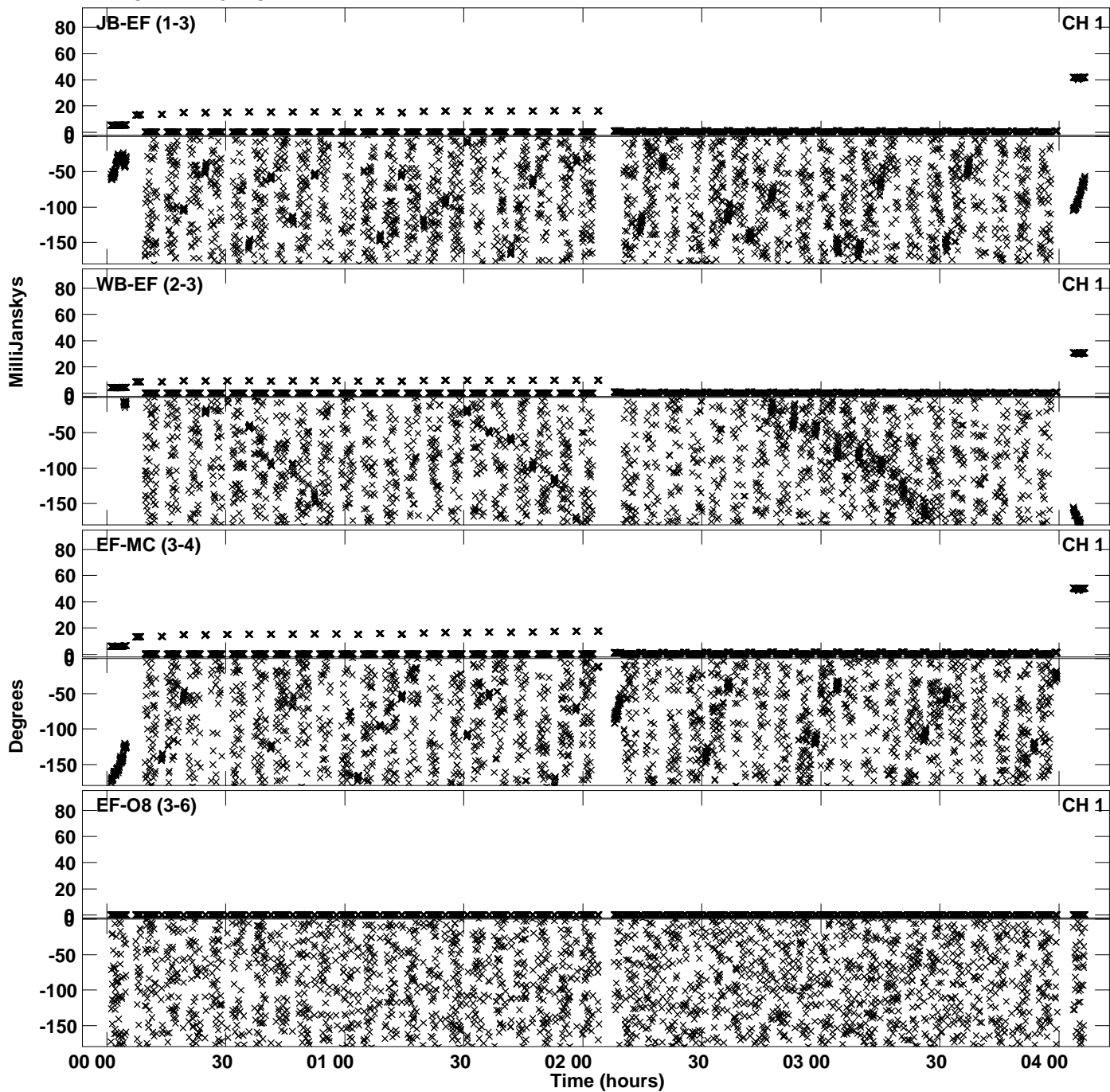
Plot file version 17 created 08-FEB-2024 13:23:45
Amplitude andPhase vs Time for EA071B.UVDATA.1 Vect aver.
IF 6 CHAN 1 - 64 STK LL



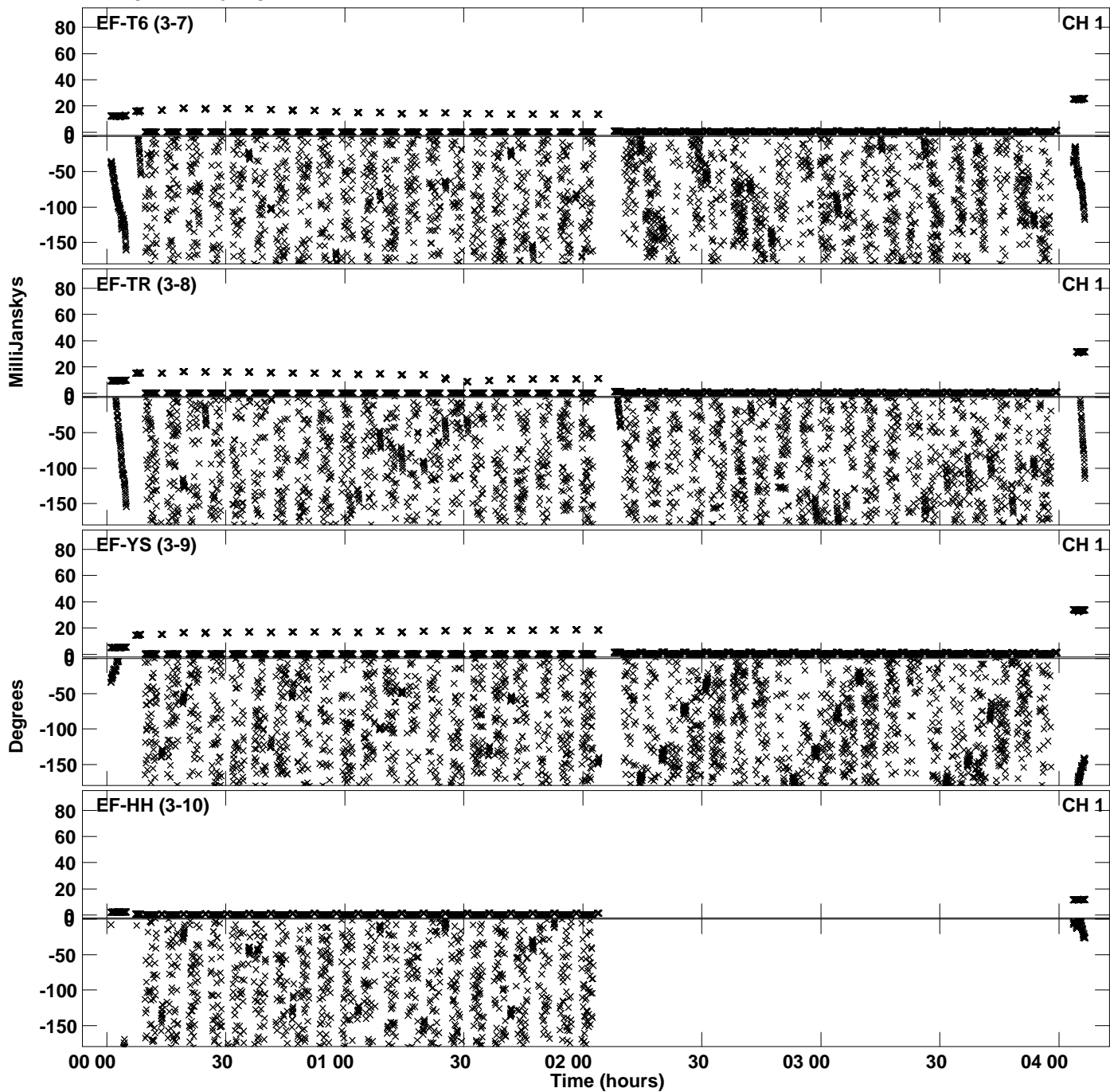
PLot file version 18 created 08-FEB-2024 13:23:45
Amplitude andPhase vs Time for EA071B.UVDATA.1 Vect aver.
IF 6 CHAN 1 - 64 STK LL



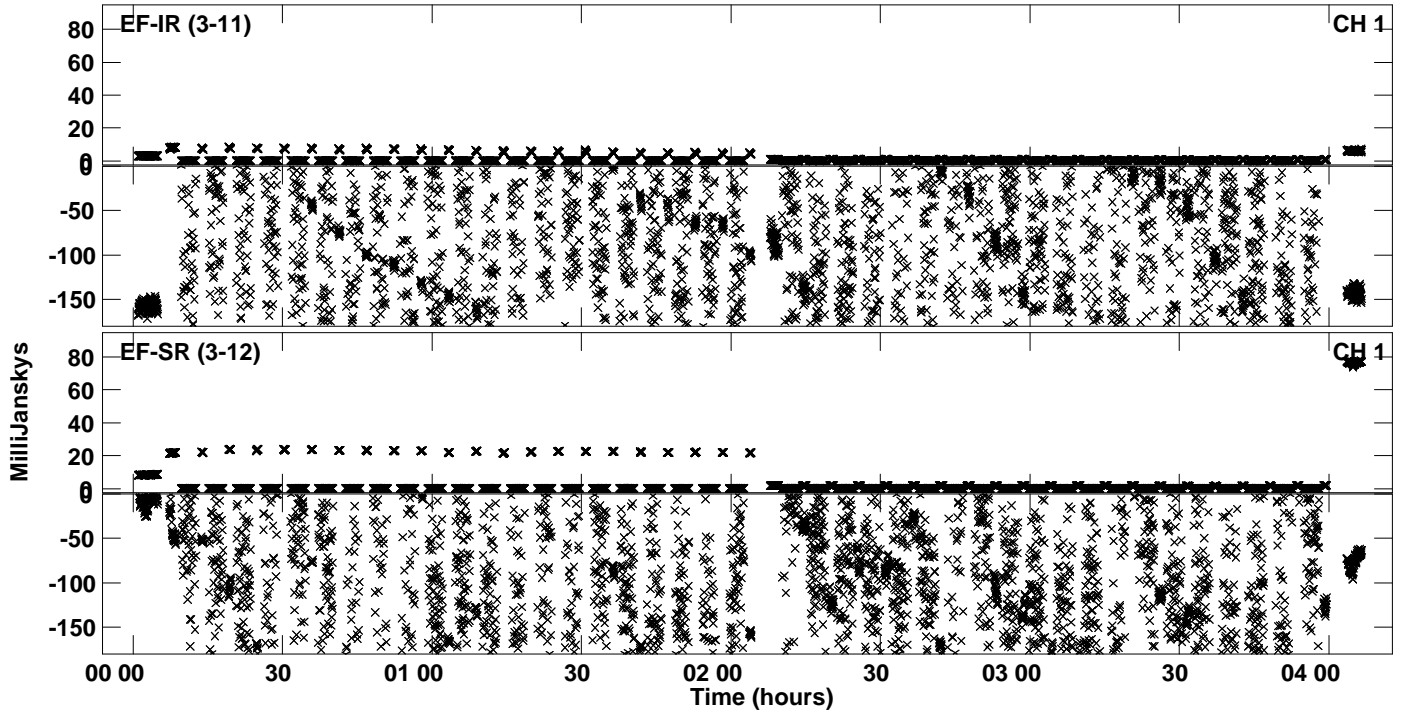
Plot file version 19 created 08-FEB-2024 13:23:50
Amplitude andPhase vs Time for EA071B.UVDATA.1 Vect aver.
IF 7 CHAN 1 - 64 STK LL



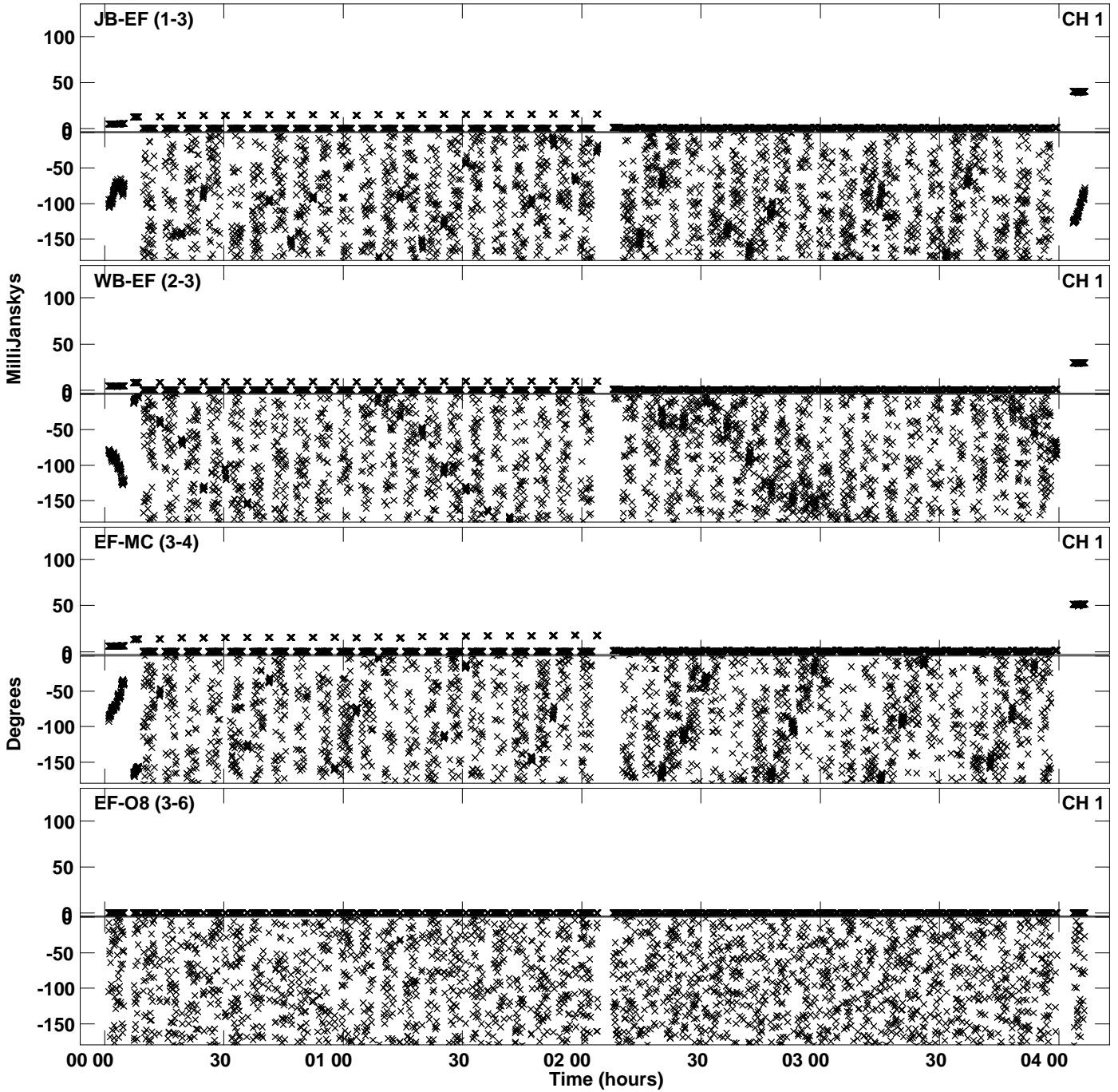
Plot file version 20 created 08-FEB-2024 13:23:50
Amplitude andPhase vs Time for EA071B.UVDATA.1 Vect aver.
IF 7 CHAN 1 - 64 STK LL



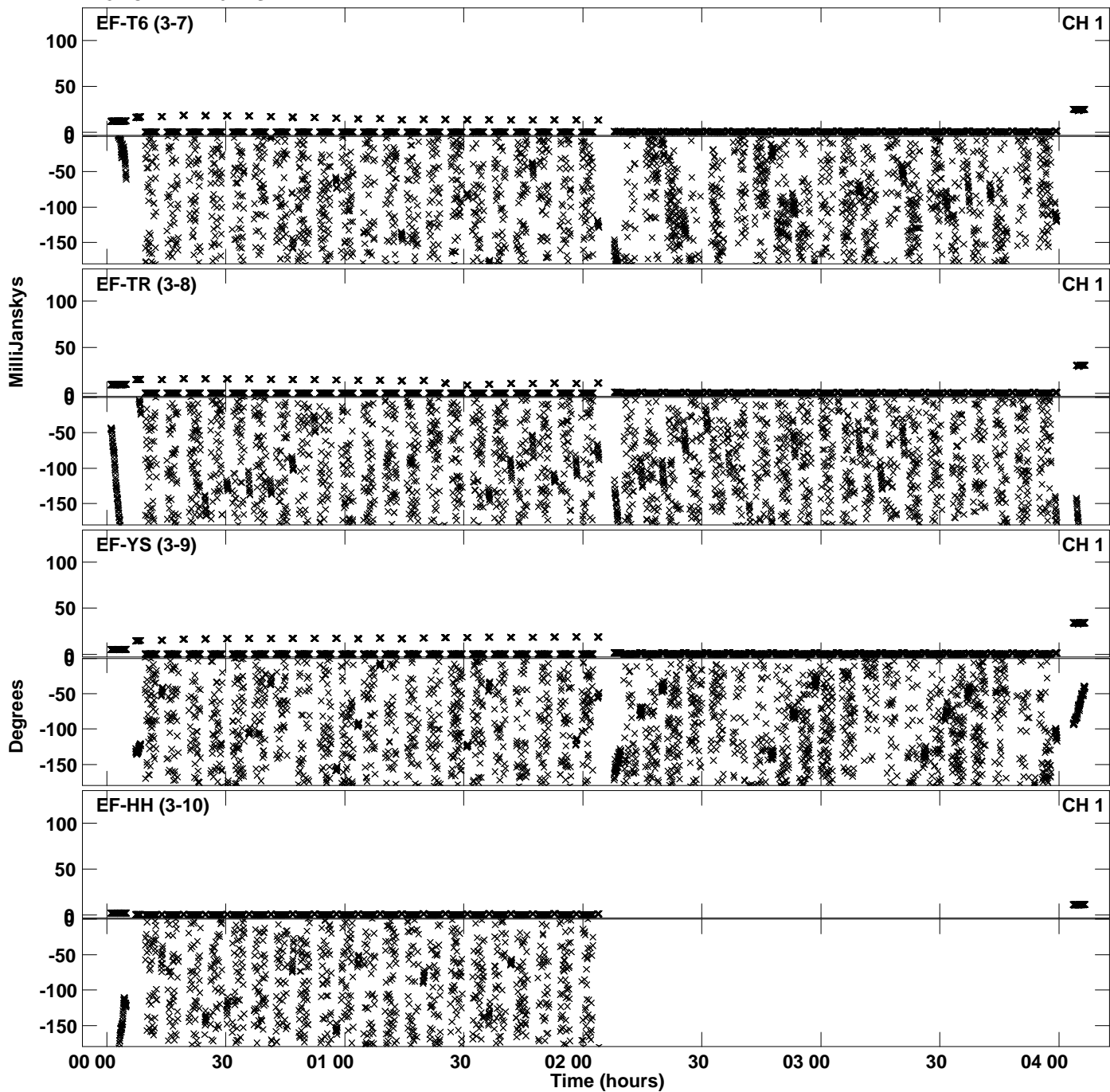
PLot file version 21 created 08-FEB-2024 13:23:50
Amplitude andPhase vs Time for EA071B.UVDATA.1 Vect aver.
IF 7 CHAN 1 - 64 STK LL



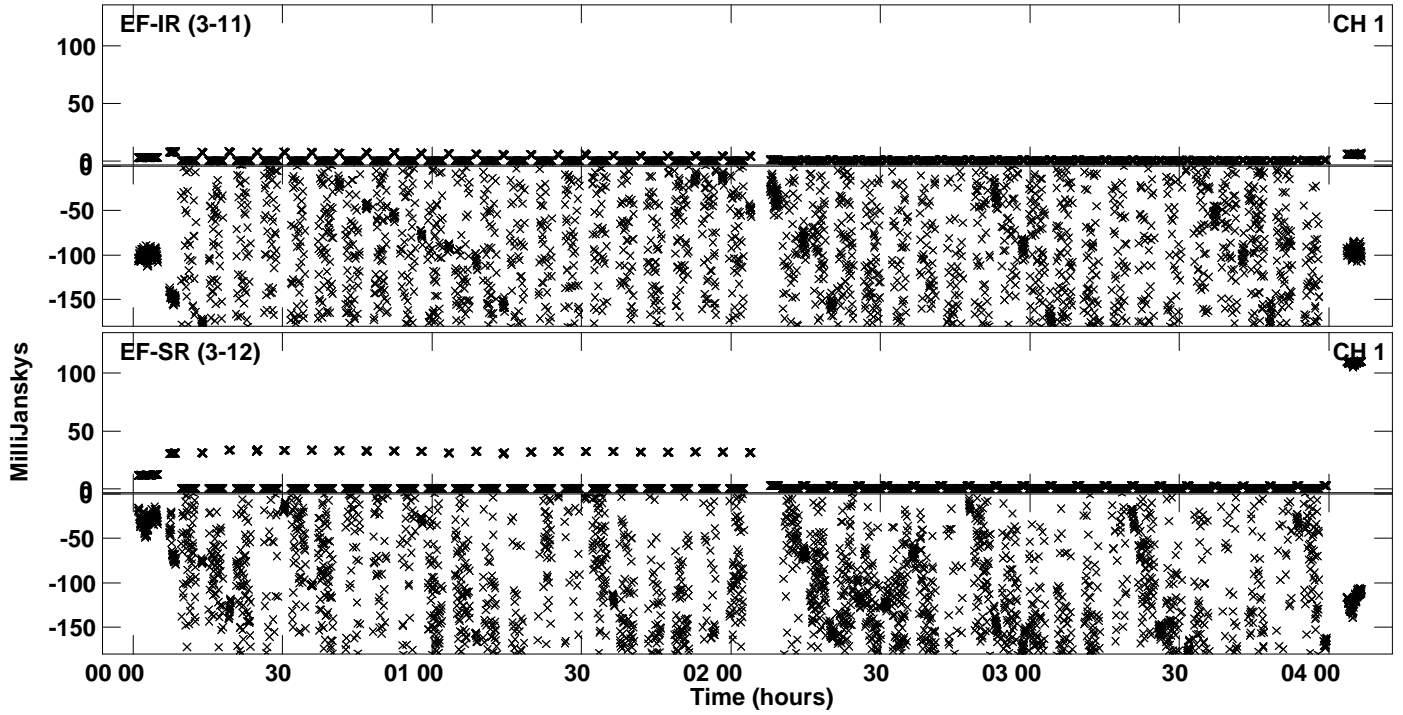
Plot file version 22 created 08-FEB-2024 13:23:56
Amplitude andPhase vs Time for EA071B.UVDATA.1 Vect aver.
IF 8 CHAN 1 - 64 STK LL



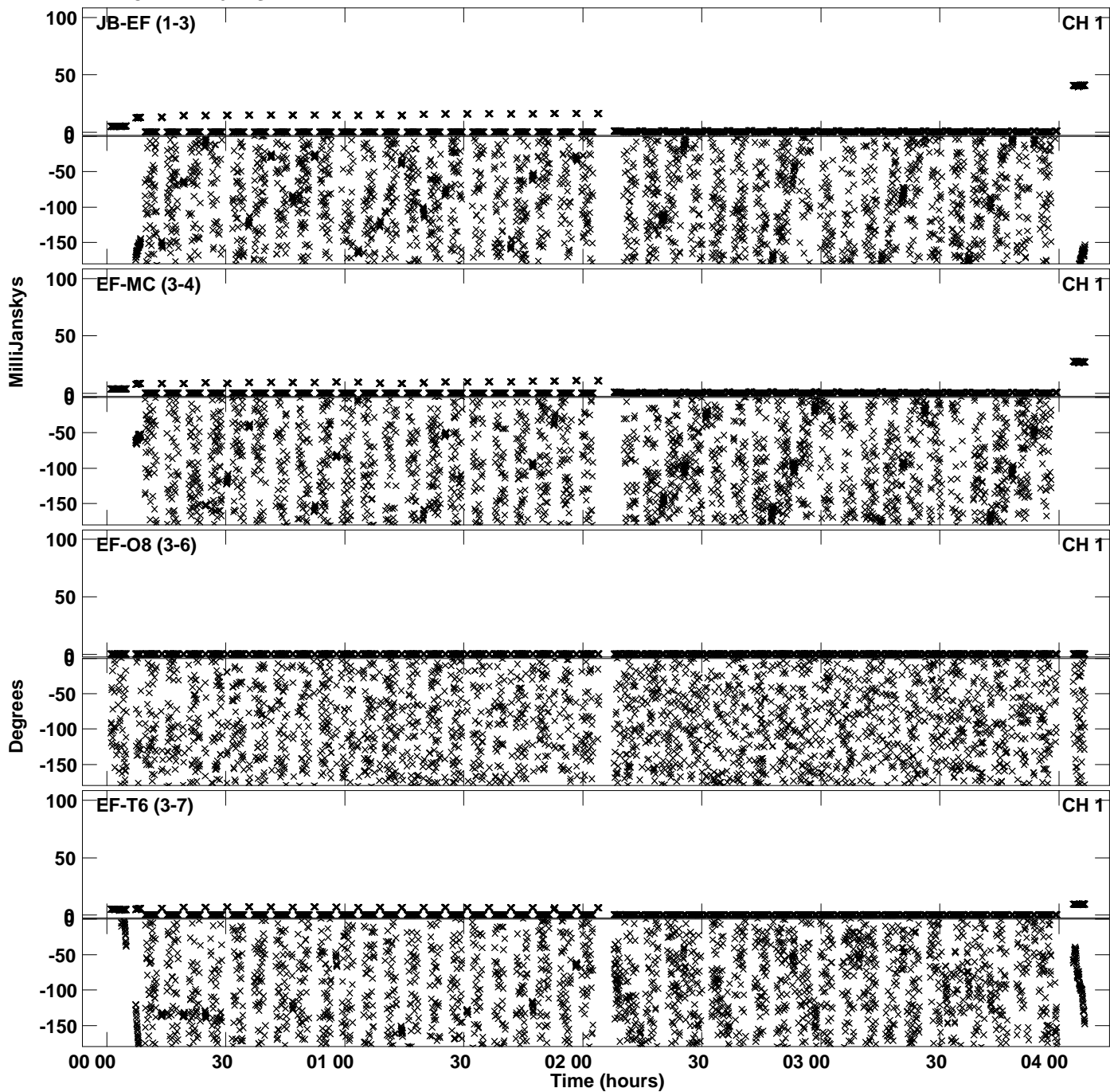
Plot file version 23 created 08-FEB-2024 13:23:56
Amplitude andPhase vs Time for EA071B.UVDATA.1 Vect aver.
IF 8 CHAN 1 - 64 STK LL



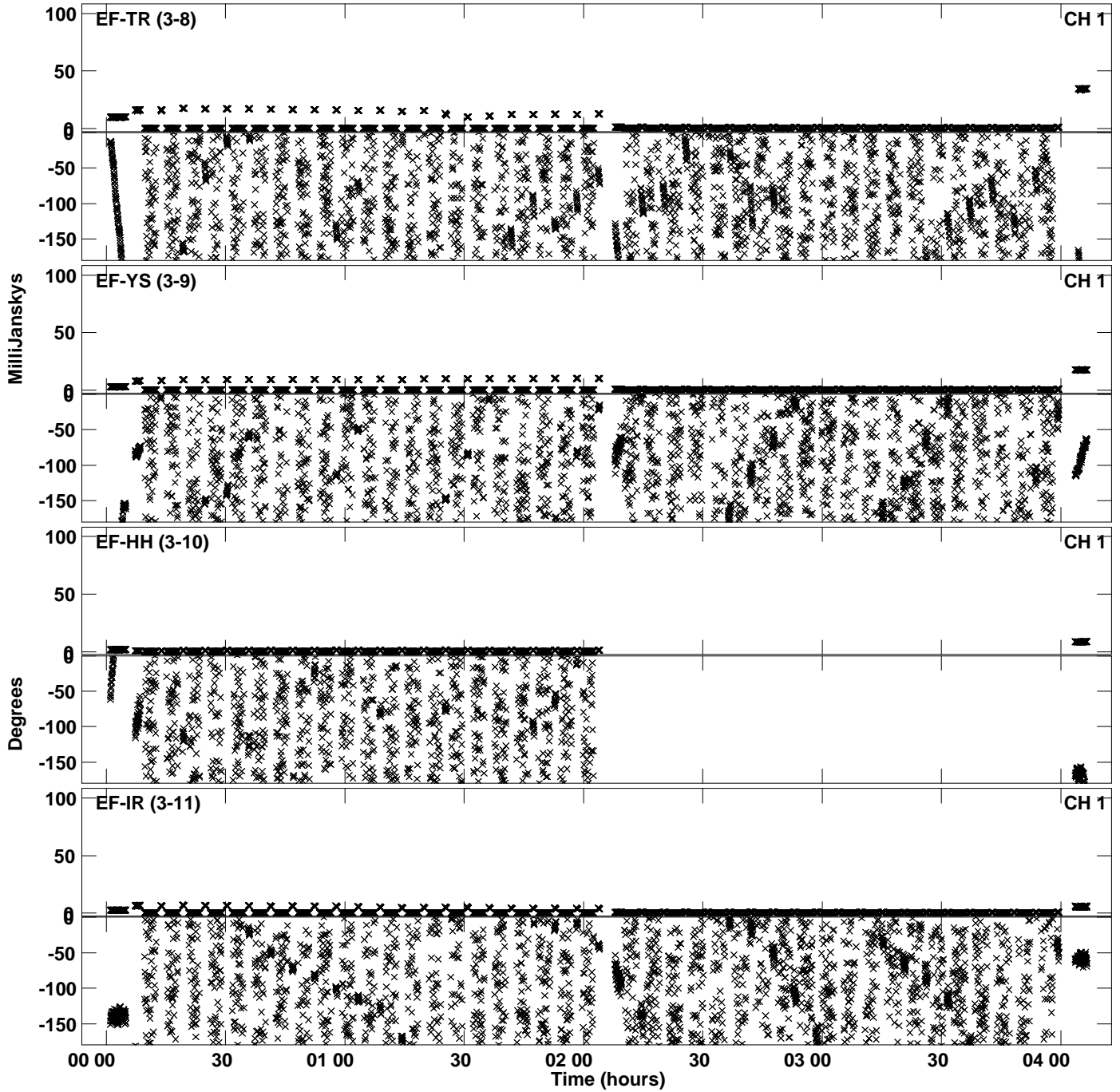
PLot file version 24 created 08-FEB-2024 13:23:56
Amplitude andPhase vs Time for EA071B.UVDATA.1 Vect aver.
IF 8 CHAN 1 - 64 STK LL



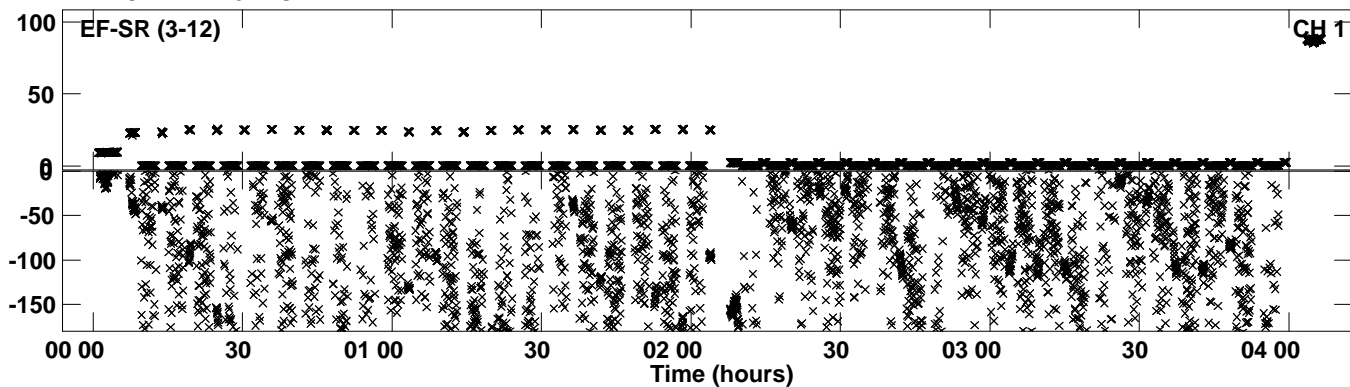
PLot file version 25 created 08-FEB-2024 13:24:01
Amplitude andPhase vs Time for EA071B.UVDATA.1 Vect aver.
IF 1 CHAN 1 - 64 STK RR



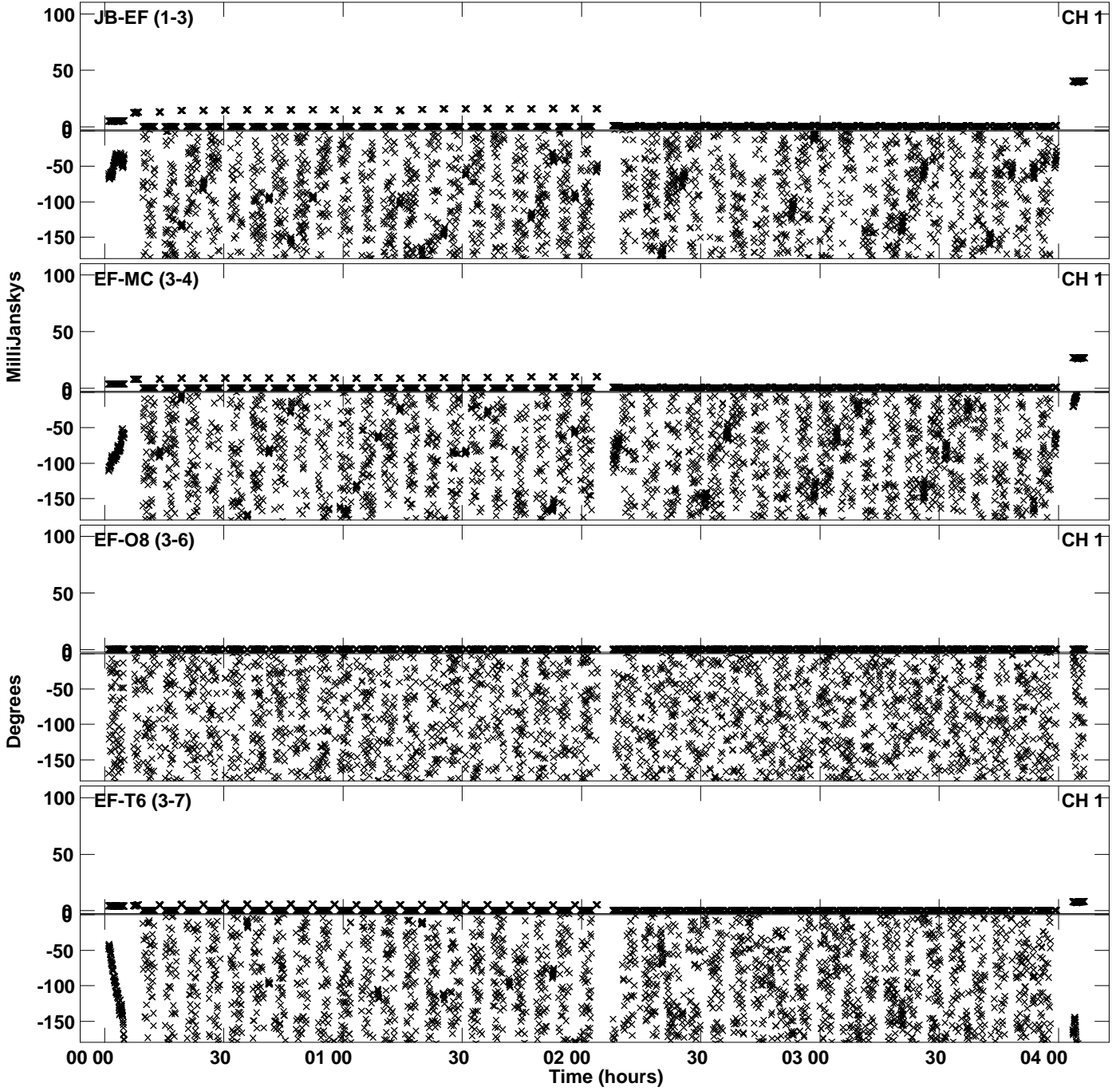
PLot file version 26 created 08-FEB-2024 13:24:01
Amplitude andPhase vs Time for EA071B.UVDATA.1 Vect aver.
IF 1 CHAN 1 - 64 STK RR



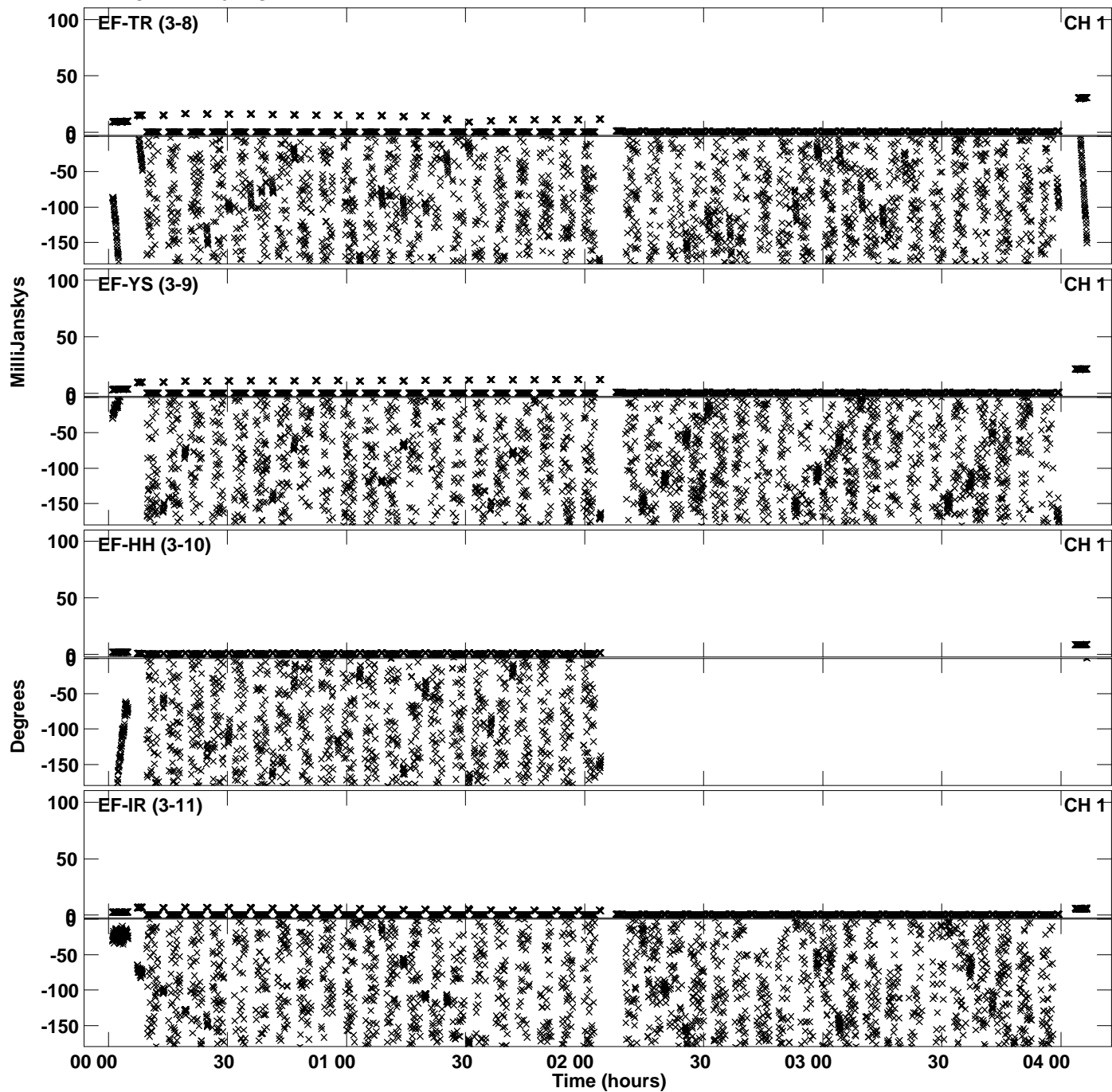
Plot file version 27 created 08-FEB-2024 13:24:01
Amplitude and Phase vs Time for EA071B.UVDATA.1 Vect aver.
IF 1 CHAN 1 - 64 STK RR



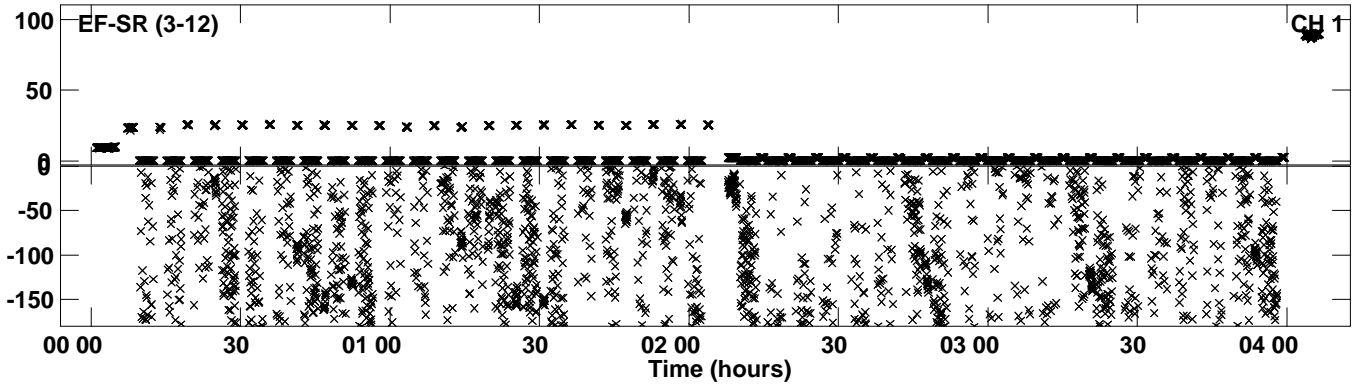
PLot file version 28 created 08-FEB-2024 13:24:06
Amplitude andPhase vs Time for EA071B.UVDATA.1 Vect aver.
IF 2 CHAN 1 - 64 STK RR



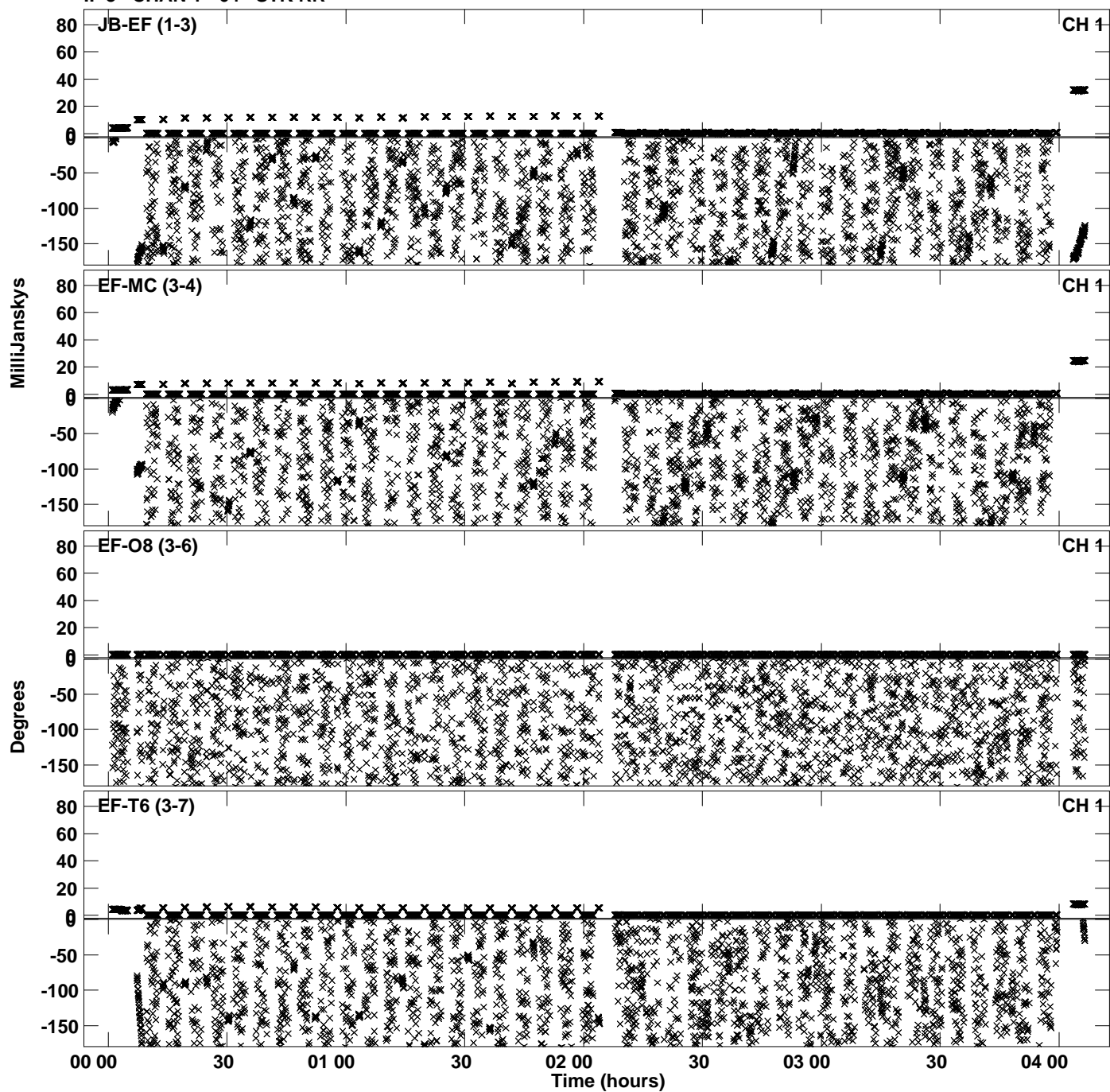
PLot file version 29 created 08-FEB-2024 13:24:06
Amplitude andPhase vs Time for EA071B.UVDATA.1 Vect aver.
IF 2 CHAN 1 - 64 STK RR



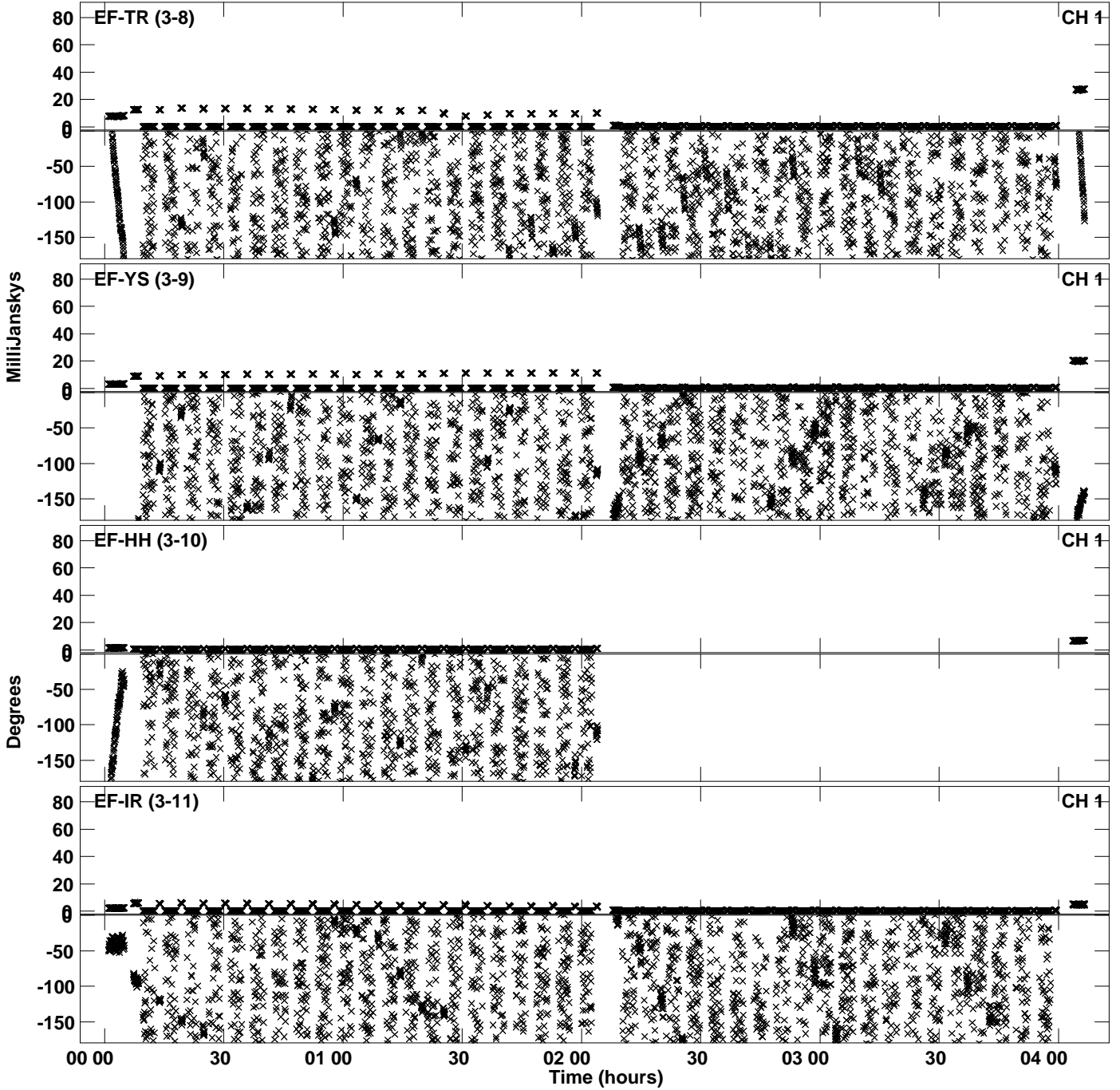
Plot file version 30 created 08-FEB-2024 13:24:06
Amplitude andPhase vs Time for EA071B.UVDATA.1 Vect aver.
IF 2 CHAN 1 - 64 STK RR



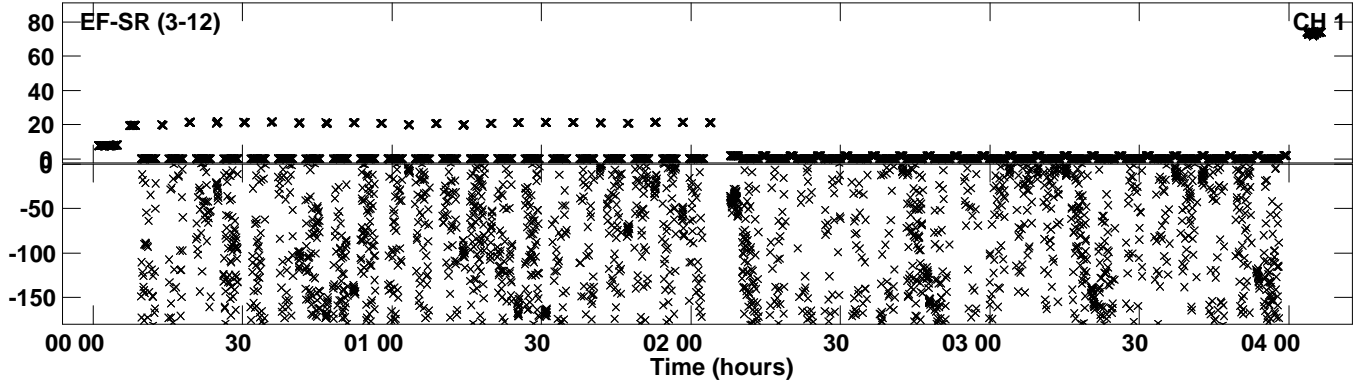
PLot file version 31 created 08-FEB-2024 13:24:11
Amplitude andPhase vs Time for EA071B.UVDATA.1 Vect aver.
IF 3 CHAN 1 - 64 STK RR



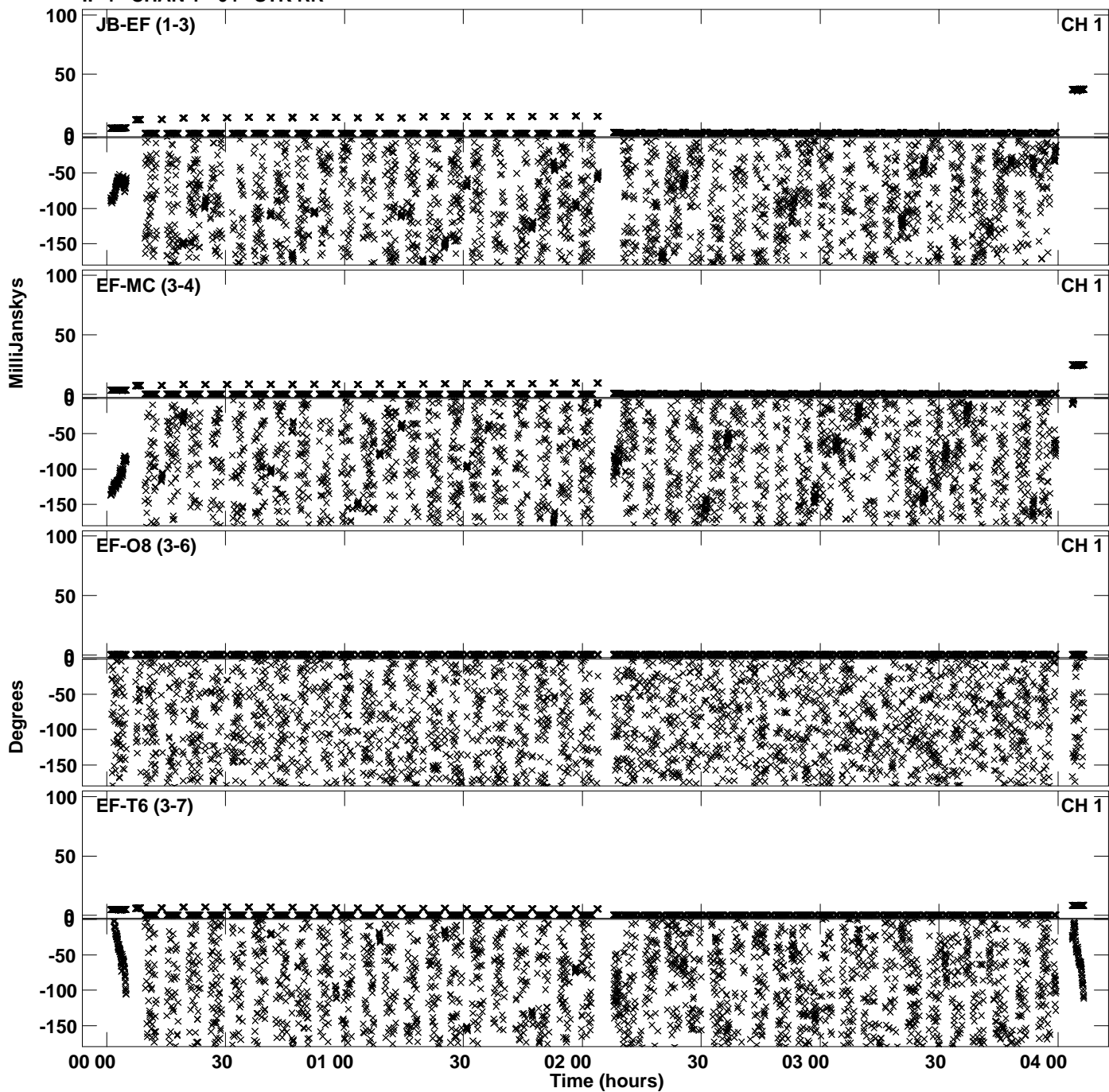
Plot file version 32 created 08-FEB-2024 13:24:11
Amplitude andPhase vs Time for EA071B.UVDATA.1 Vect aver.
IF 3 CHAN 1 - 64 STK RR



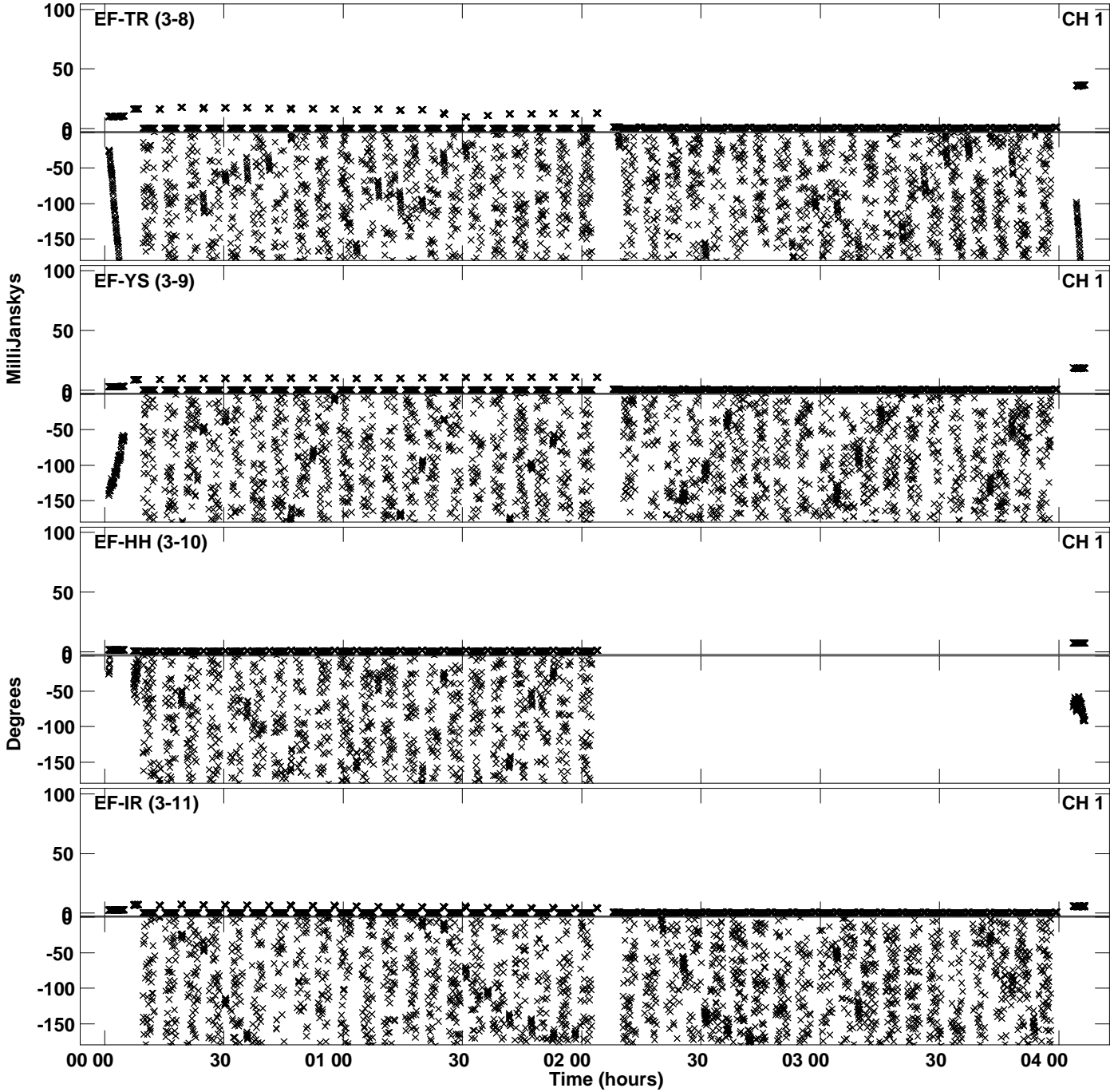
Plot file version 33 created 08-FEB-2024 13:24:11
Amplitude and Phase vs Time for EA071B.UVDATA.1 Vect aver.
IF 3 CHAN 1 - 64 STK RR



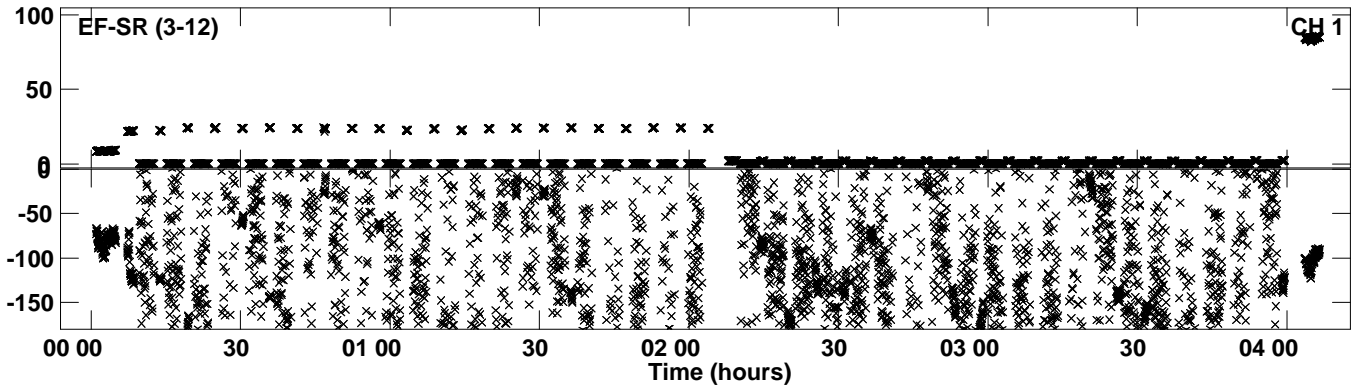
PLot file version 34 created 08-FEB-2024 13:24:16
Amplitude andPhase vs Time for EA071B.UVDATA.1 Vect aver.
IF 4 CHAN 1 - 64 STK RR



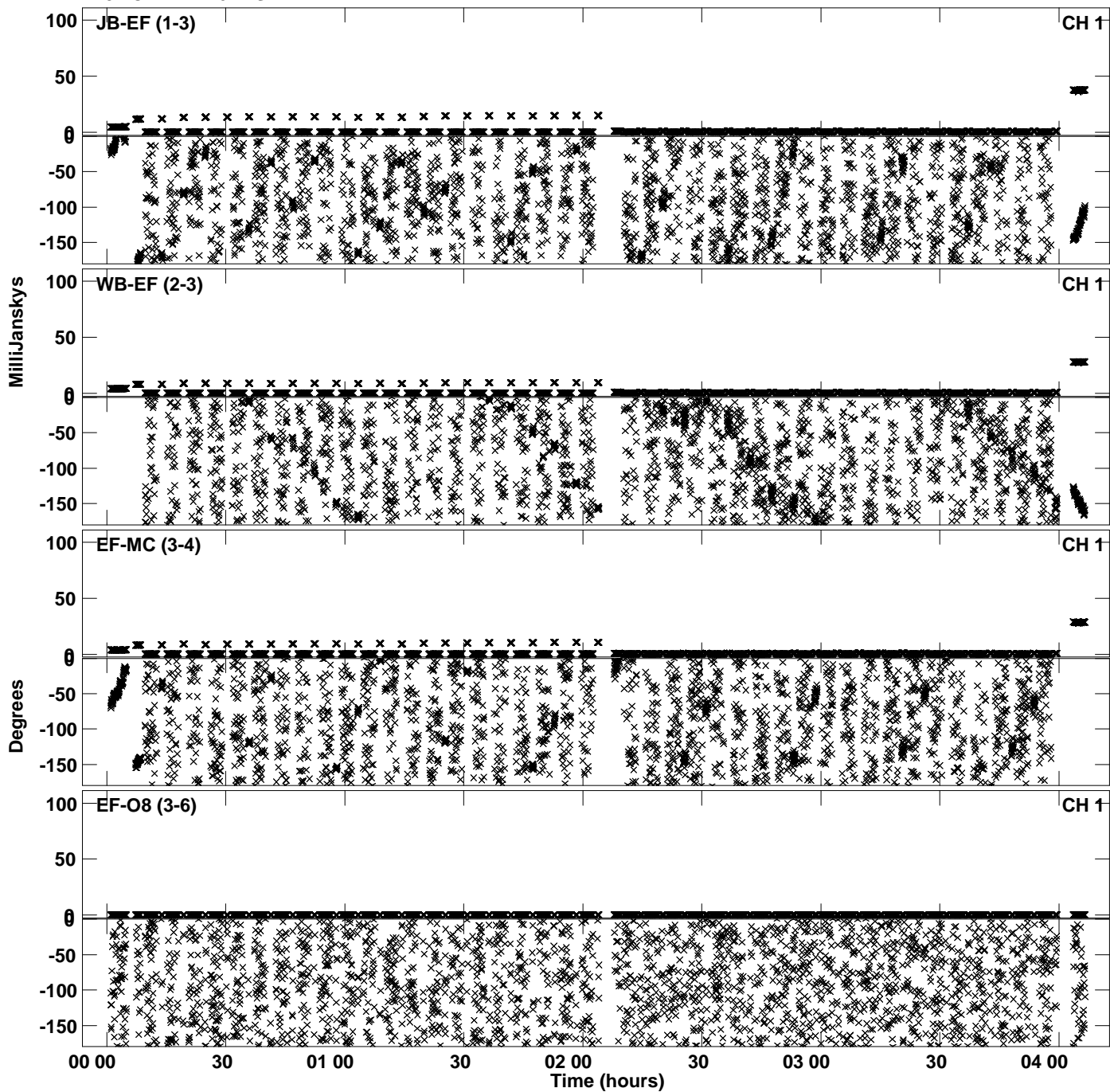
PLot file version 35 created 08-FEB-2024 13:24:16
Amplitude andPhase vs Time for EA071B.UVDATA.1 Vect aver.
IF 4 CHAN 1 - 64 STK RR



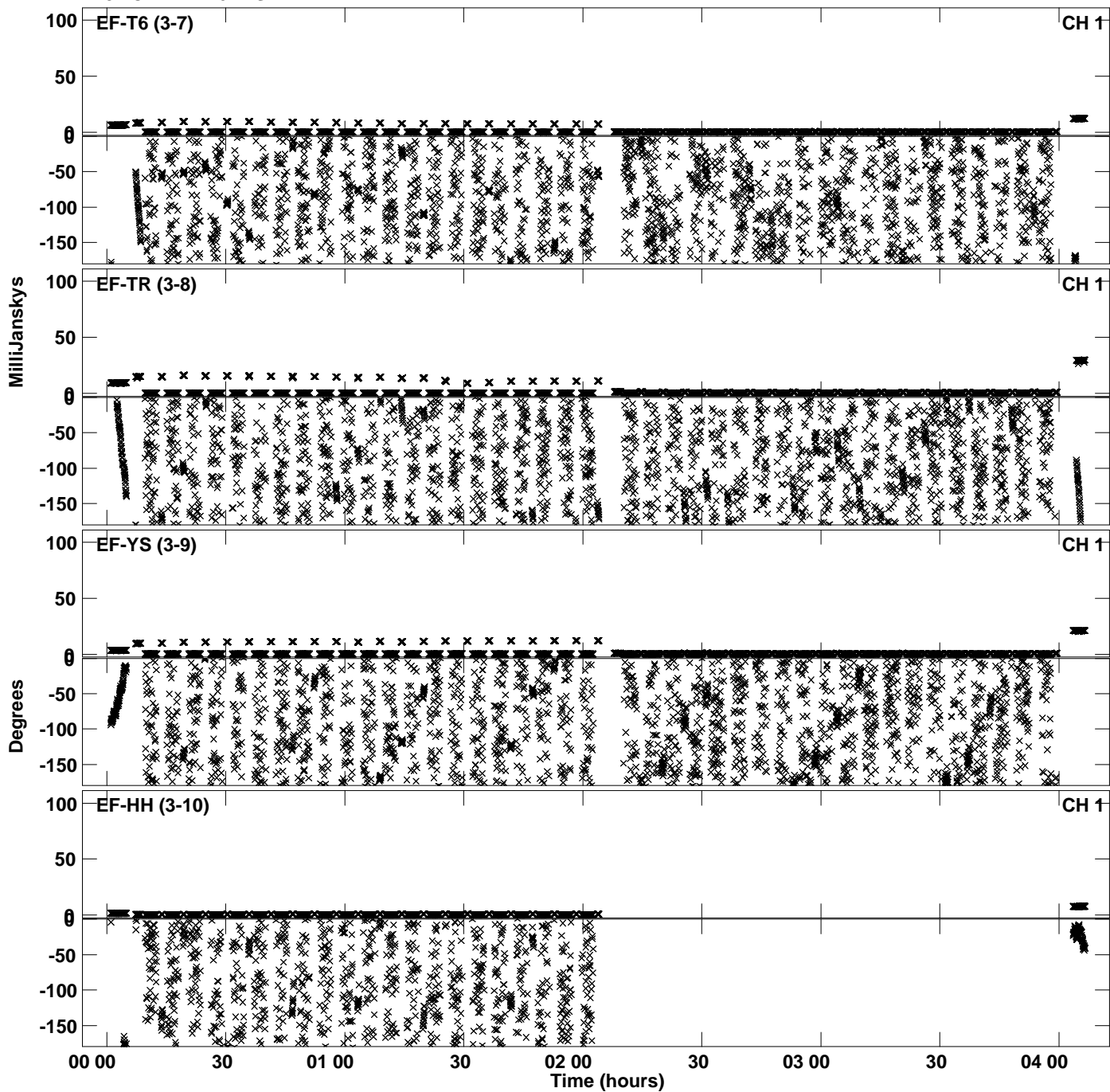
Plot file version 36 created 08-FEB-2024 13:24:16
Amplitude andPhase vs Time for EA071B.UVDATA.1 Vect aver.
IF 4 CHAN 1 - 64 STK RR



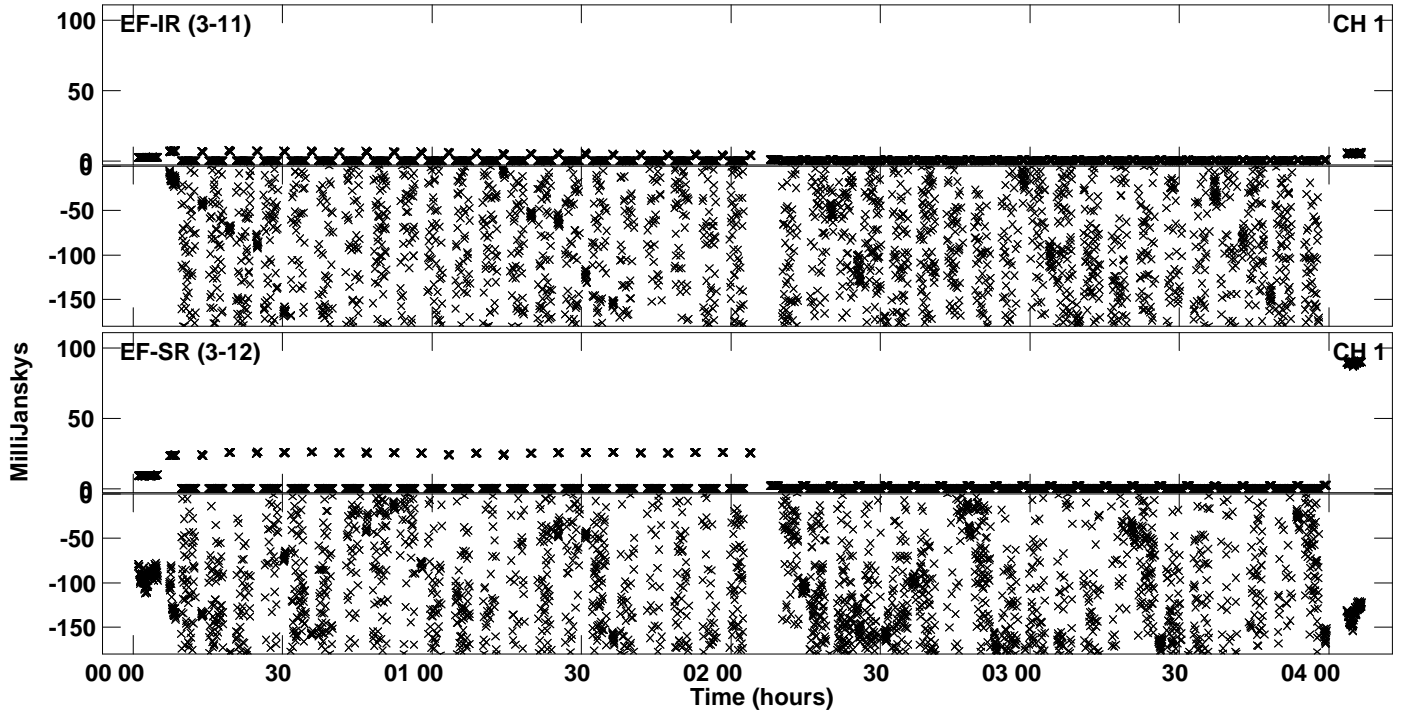
PLot file version 37 created 08-FEB-2024 13:24:22
Amplitude andPhase vs Time for EA071B.UVDATA.1 Vect aver.
IF 5 CHAN 1 - 64 STK RR



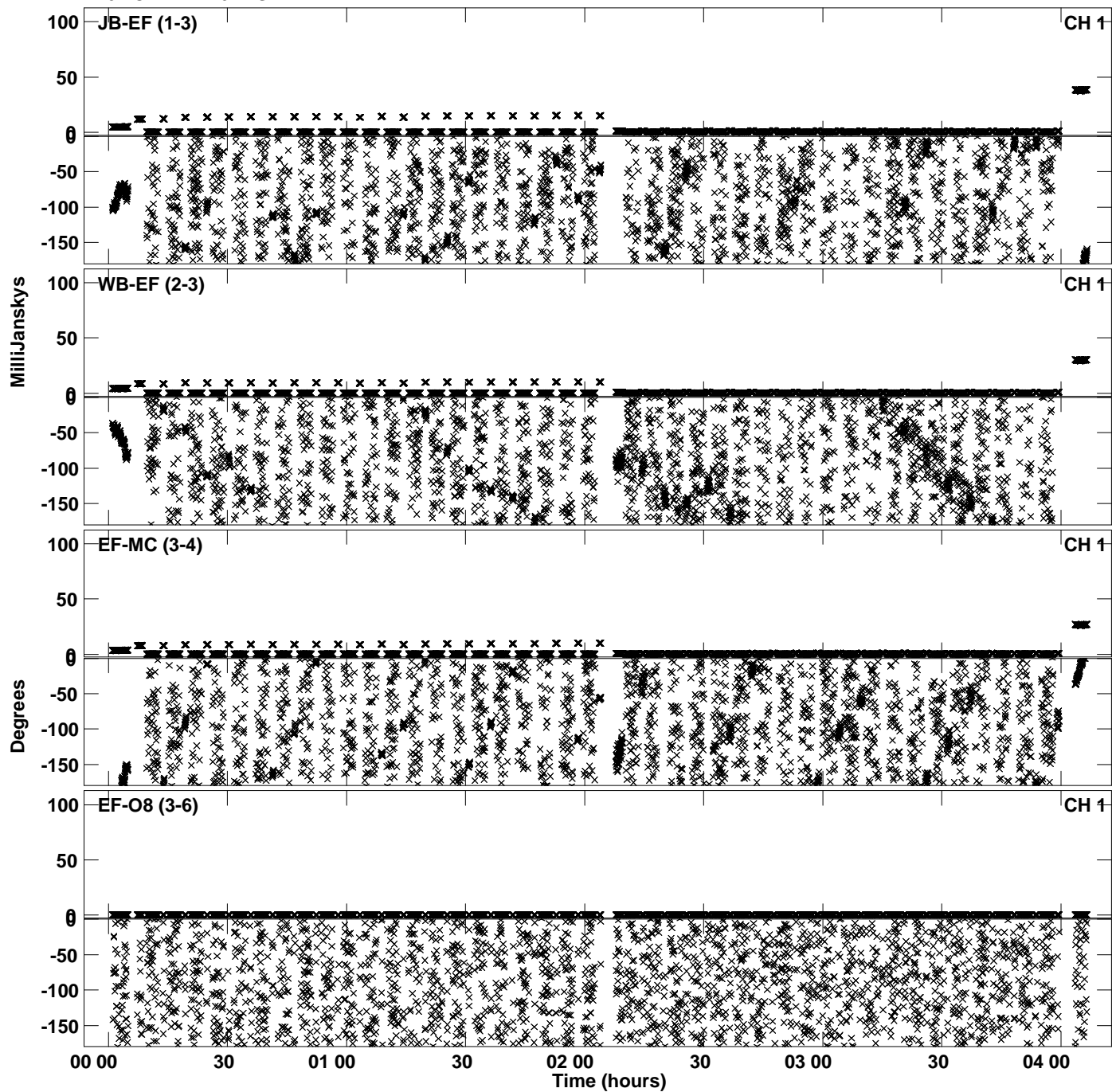
PLot file version 38 created 08-FEB-2024 13:24:22
Amplitude andPhase vs Time for EA071B.UVDATA.1 Vect aver.
IF 5 CHAN 1 - 64 STK RR



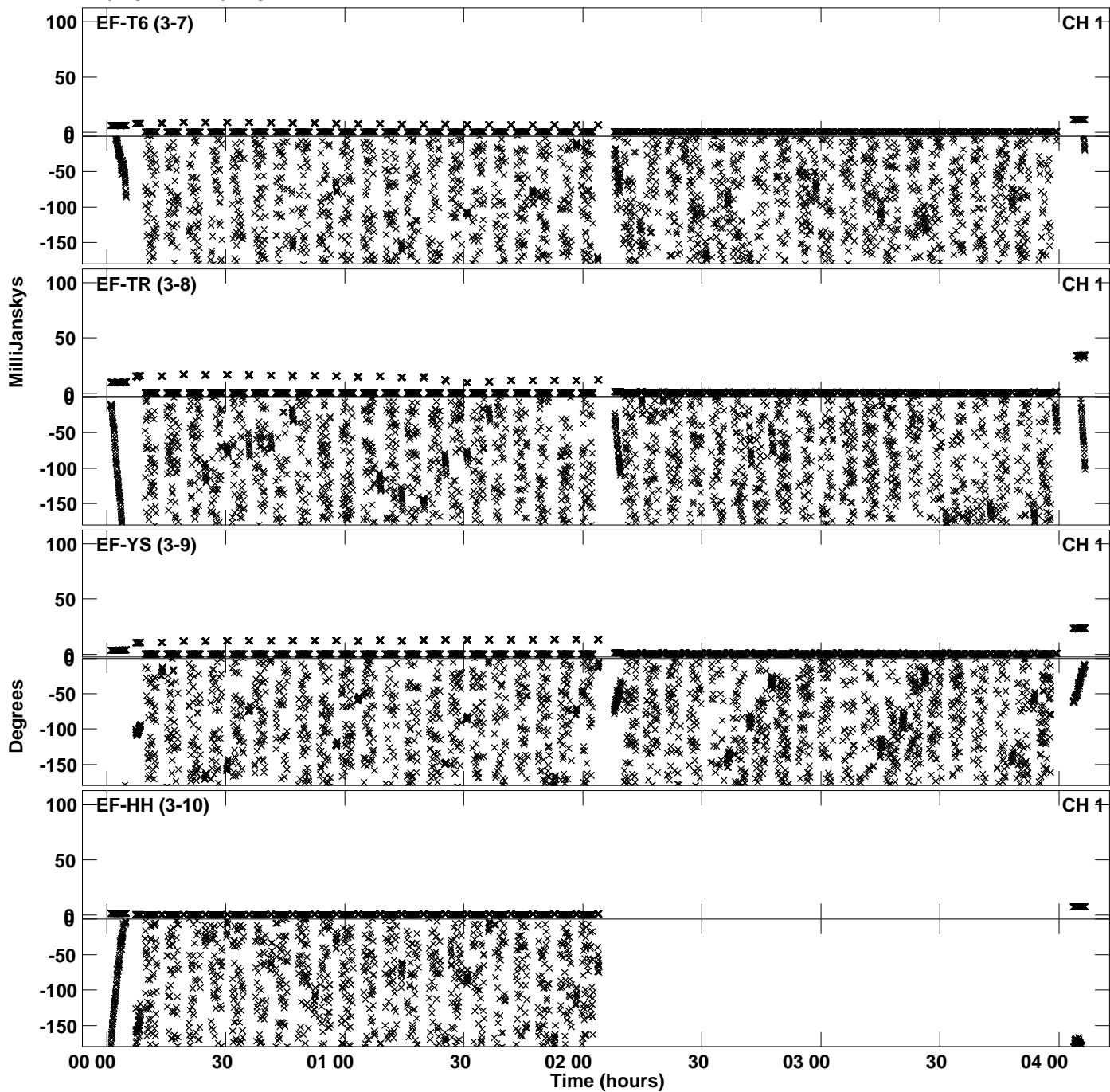
PLot file version 39 created 08-FEB-2024 13:24:22
Amplitude andPhase vs Time for EA071B.UVDATA.1 Vect aver.
IF 5 CHAN 1 - 64 STK RR



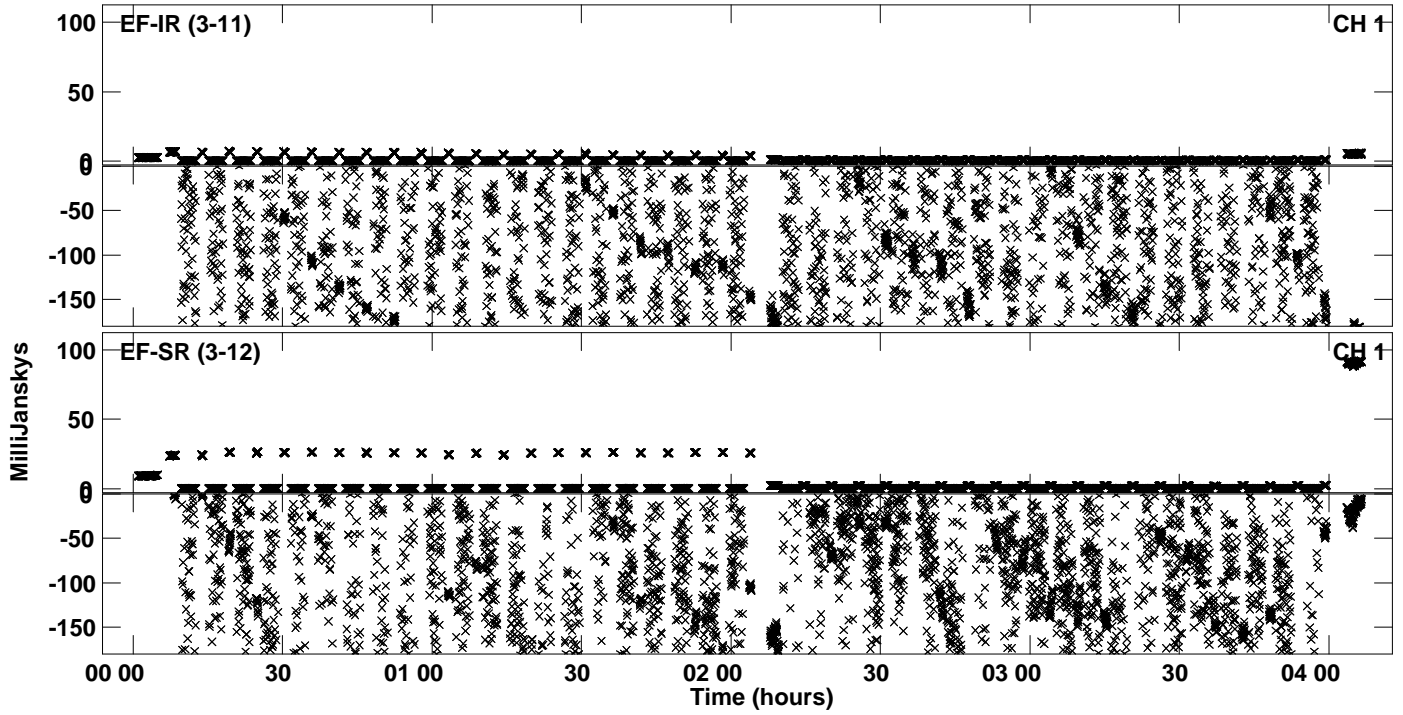
PLot file version 40 created 08-FEB-2024 13:24:28
Amplitude andPhase vs Time for EA071B.UVDATA.1 Vect aver.
IF 6 CHAN 1 - 64 STK RR



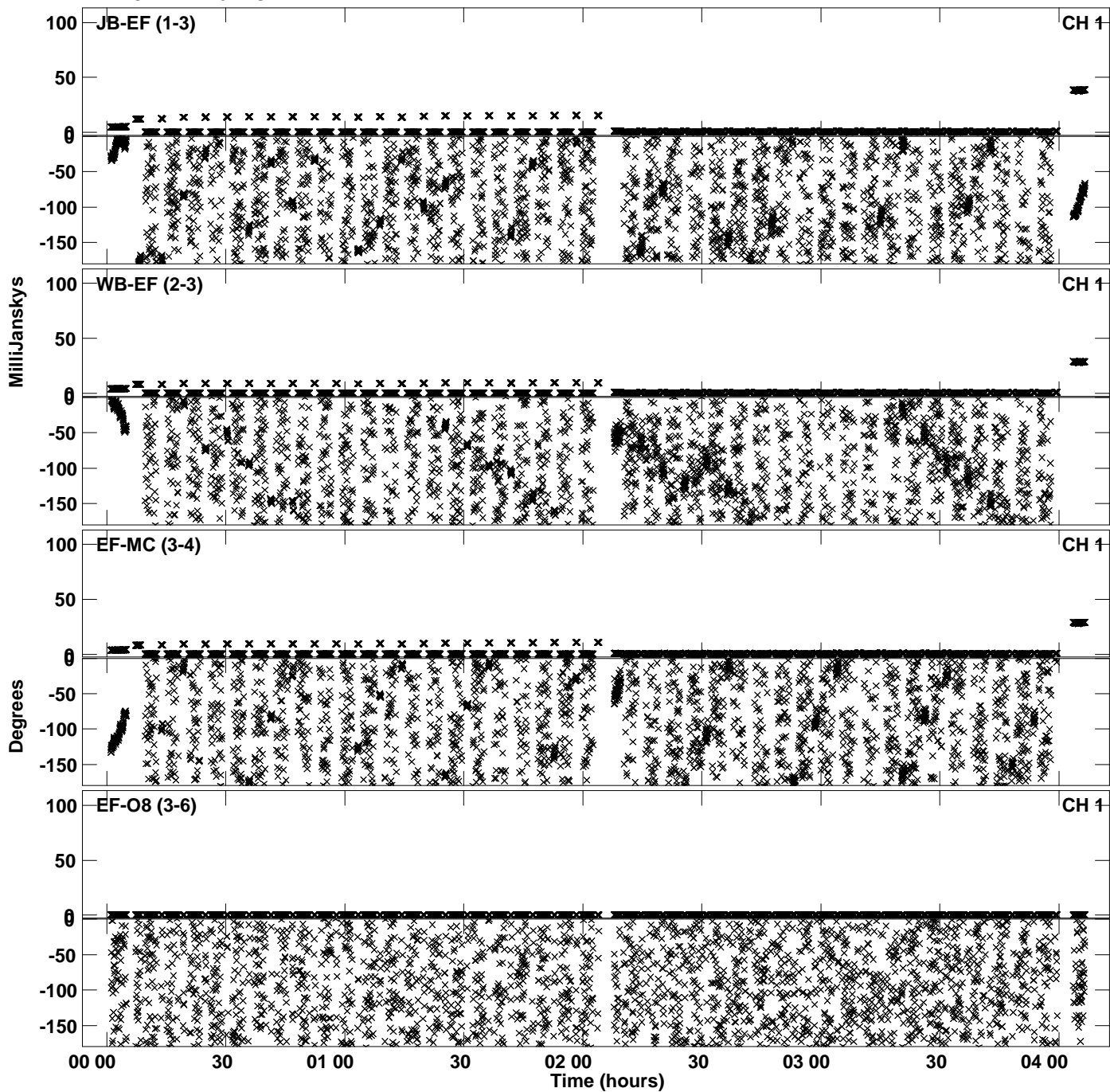
PLot file version 41 created 08-FEB-2024 13:24:28
Amplitude andPhase vs Time for EA071B.UVDATA.1 Vect aver.
IF 6 CHAN 1 - 64 STK RR



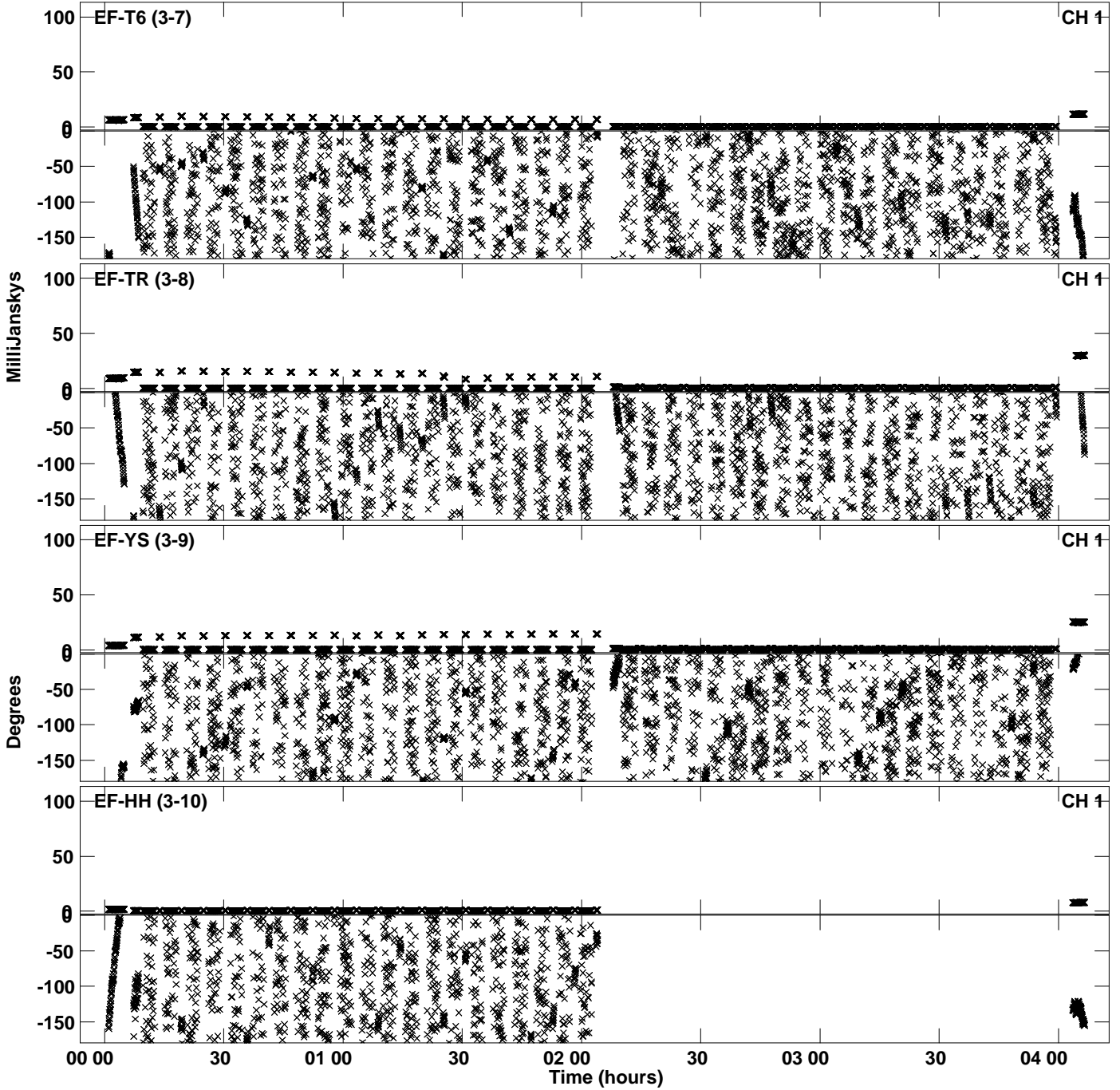
PLot file version 42 created 08-FEB-2024 13:24:28
Amplitude andPhase vs Time for EA071B.UVDATA.1 Vect aver.
IF 6 CHAN 1 - 64 STK RR



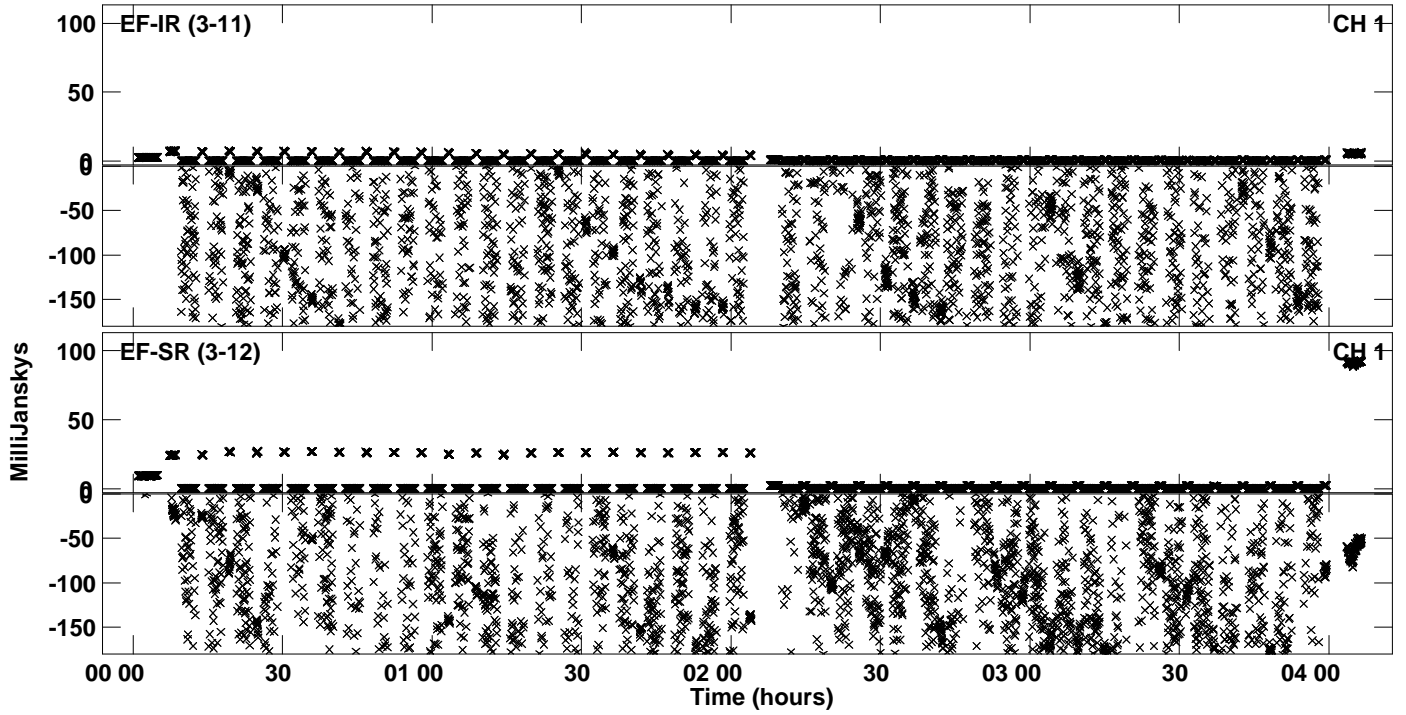
PLot file version 43 created 08-FEB-2024 13:24:33
Amplitude andPhase vs Time for EA071B.UVDATA.1 Vect aver.
IF 7 CHAN 1 - 64 STK RR



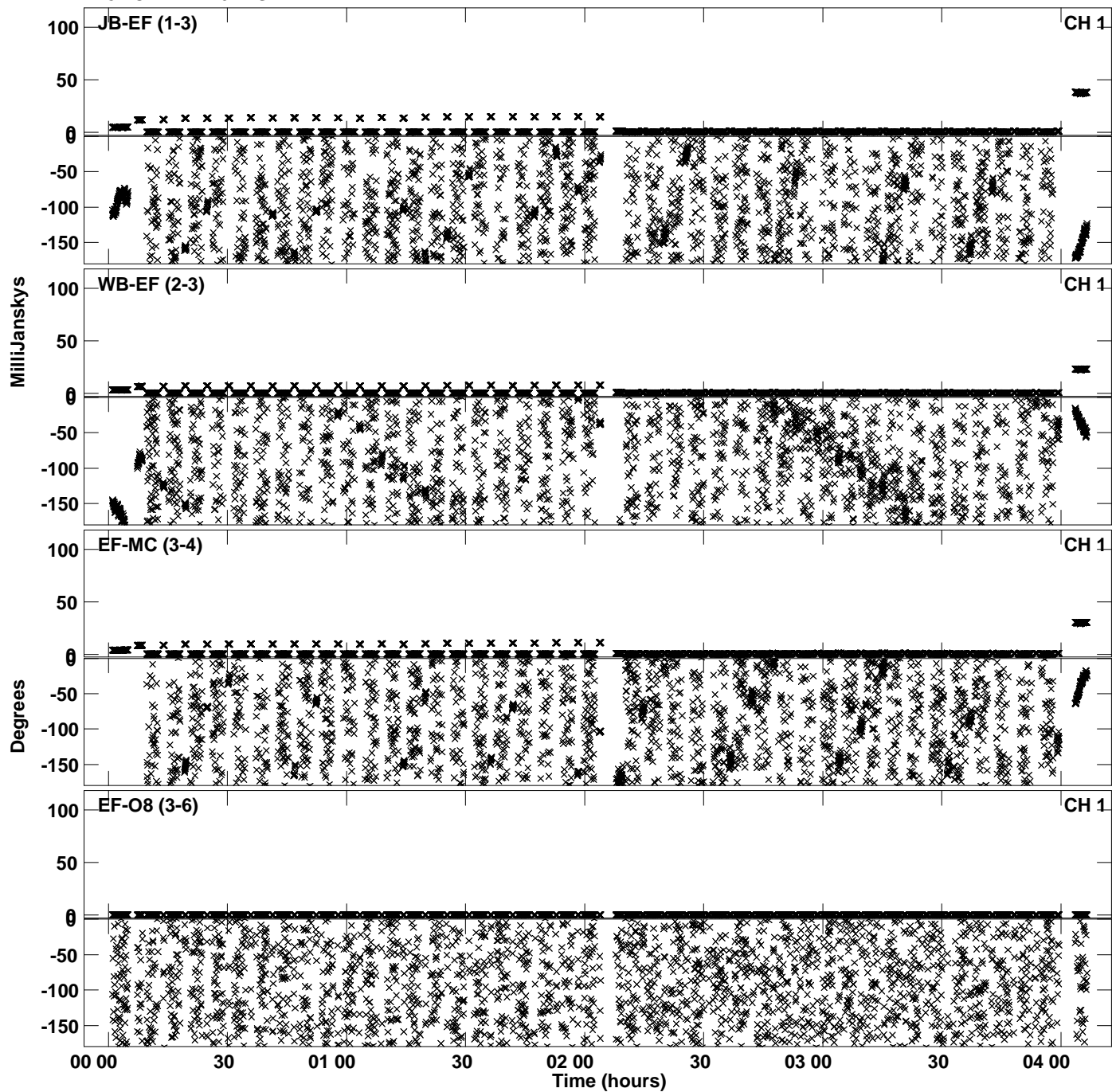
Plot file version 44 created 08-FEB-2024 13:24:33
Amplitude andPhase vs Time for EA071B.UVDATA.1 Vect aver.
IF 7 CHAN 1 - 64 STK RR



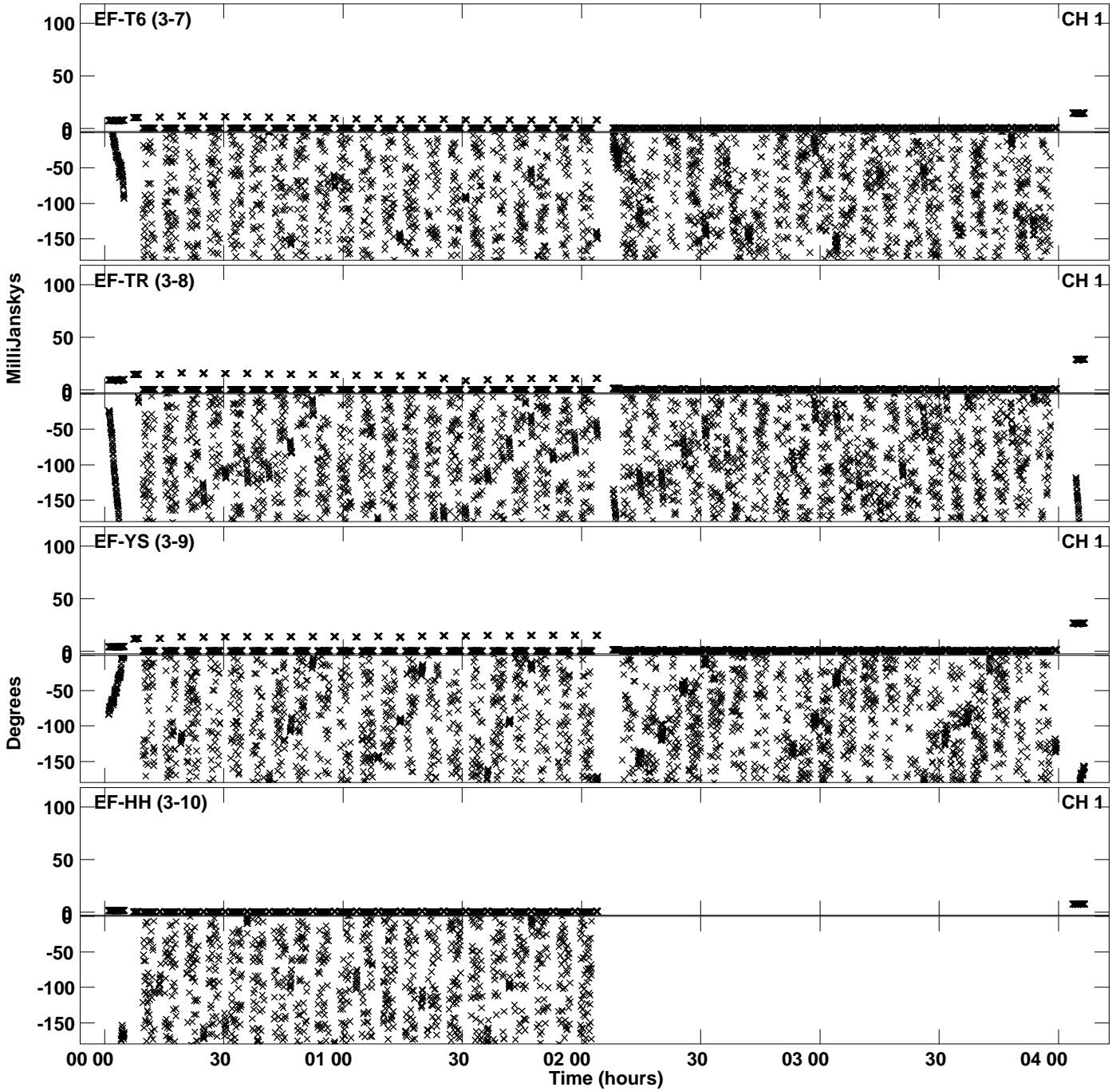
PLot file version 45 created 08-FEB-2024 13:24:33
Amplitude andPhase vs Time for EA071B.UVDATA.1 Vect aver.
IF 7 CHAN 1 - 64 STK RR



PLot file version 46 created 08-FEB-2024 13:24:38
Amplitude andPhase vs Time for EA071B.UVDATA.1 Vect aver.
IF 8 CHAN 1 - 64 STK RR



PLot file version 47 created 08-FEB-2024 13:24:38
Amplitude andPhase vs Time for EA071B.UVDATA.1 Vect aver.
IF 8 CHAN 1 - 64 STK RR



PLot file version 48 created 08-FEB-2024 13:24:38
Amplitude andPhase vs Time for EA071B.UVDATA.1 Vect aver.
IF 8 CHAN 1 - 64 STK RR

