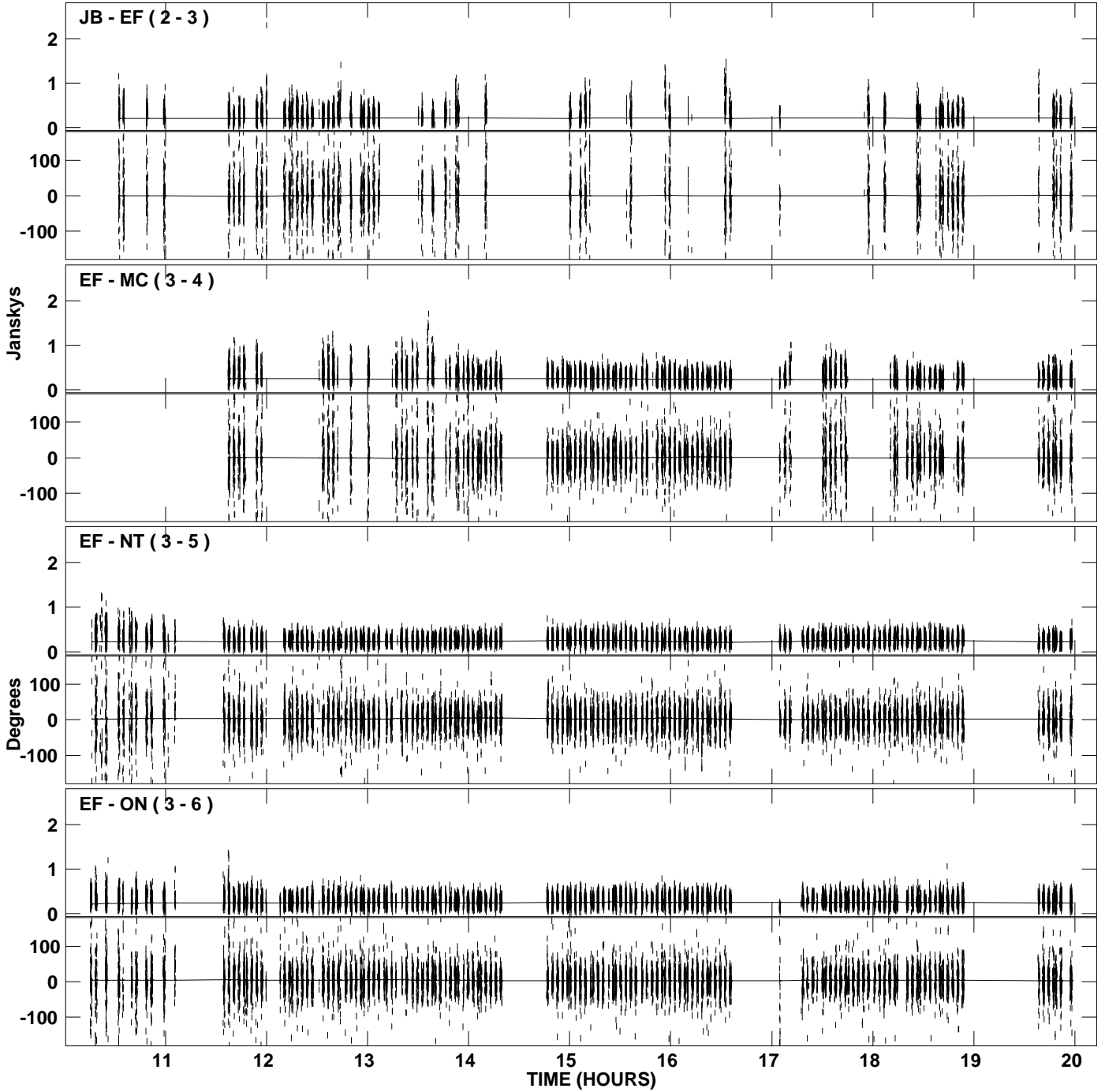
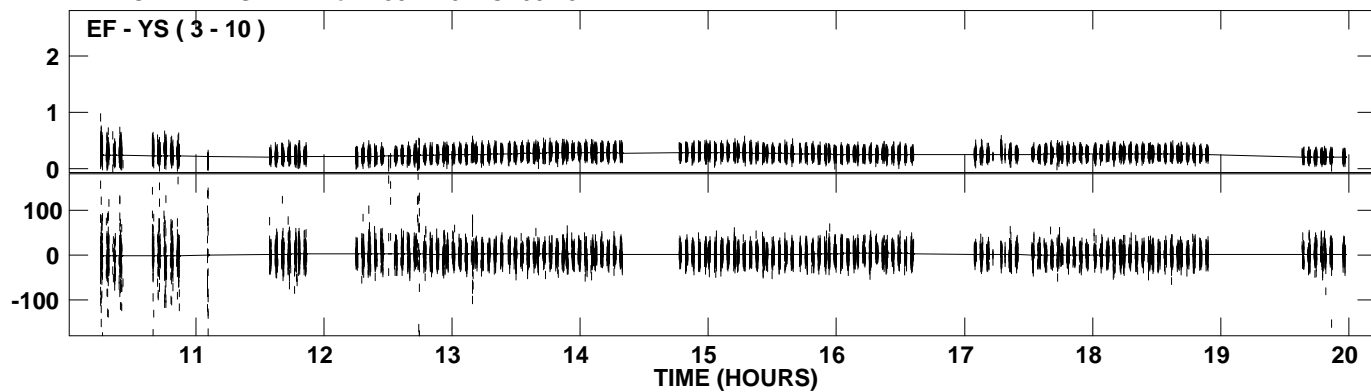


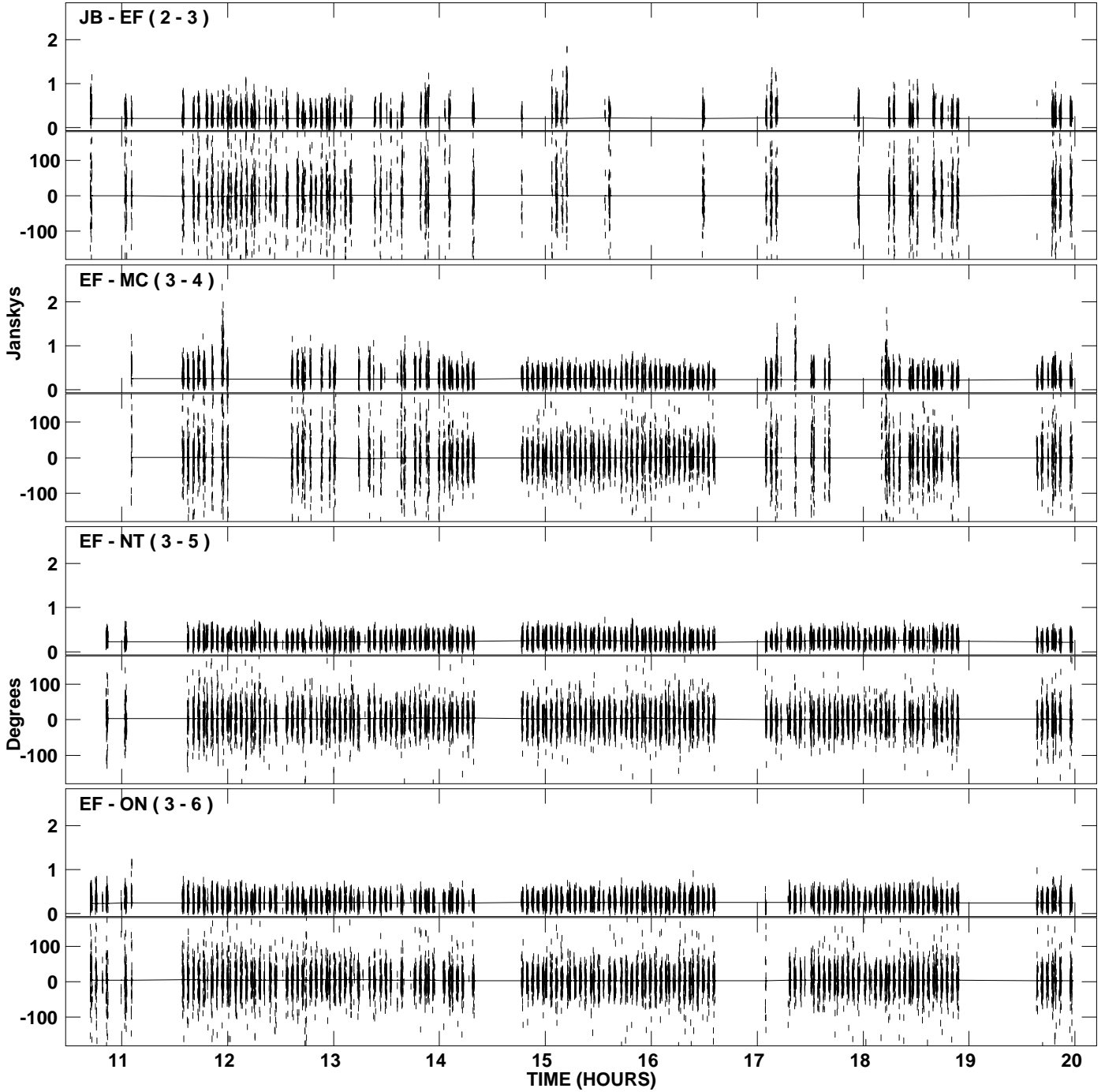
PLot file version 1 created 06-MAR-2009 19:46:51  
Amplitude and Phase vs Time for 1932+204.MULTI.1 CL # 5  
IF 1 CHAN 1 STK LL of 1932+204.ICL001.5



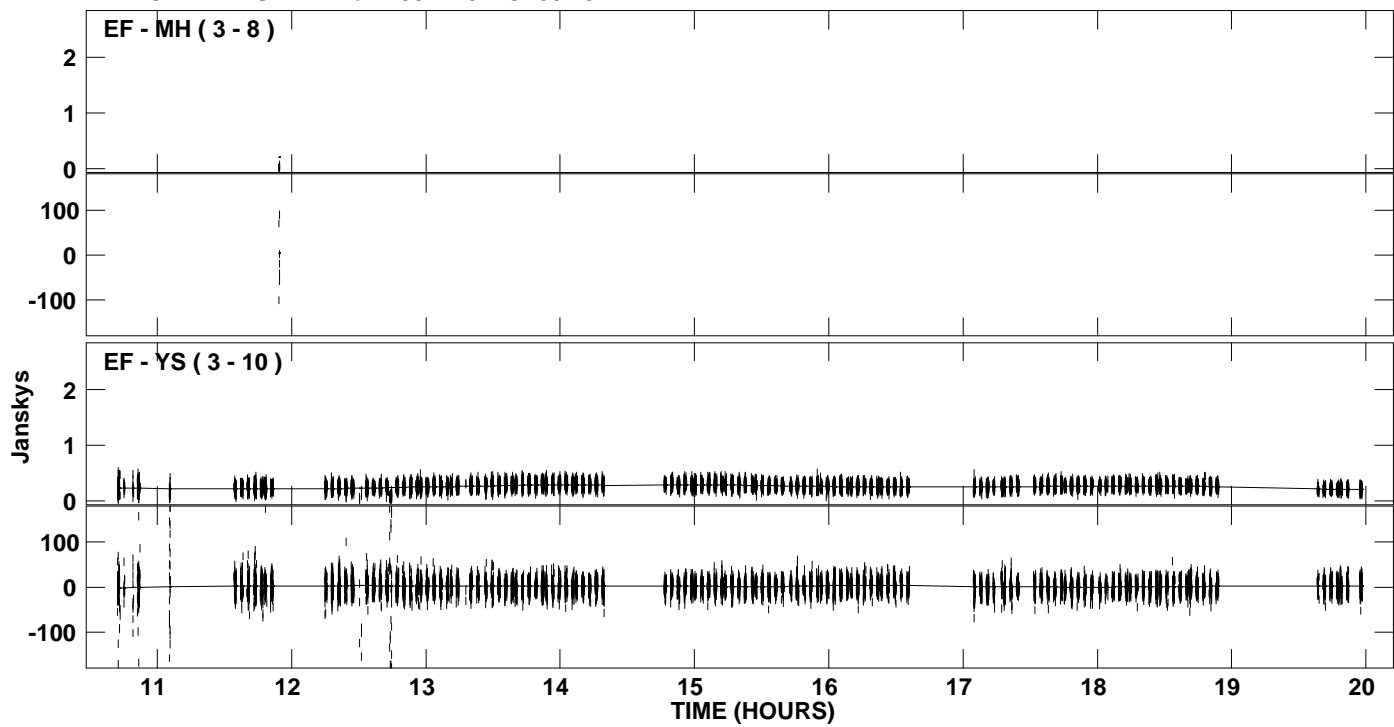
PLot file version 2 created 06-MAR-2009 19:46:51  
Amplitude andPhase vs Time for 1932+204.MULTI.1 CL # 5  
IF 1 CHAN 1 STK LL of 1932+204.ICL001.5



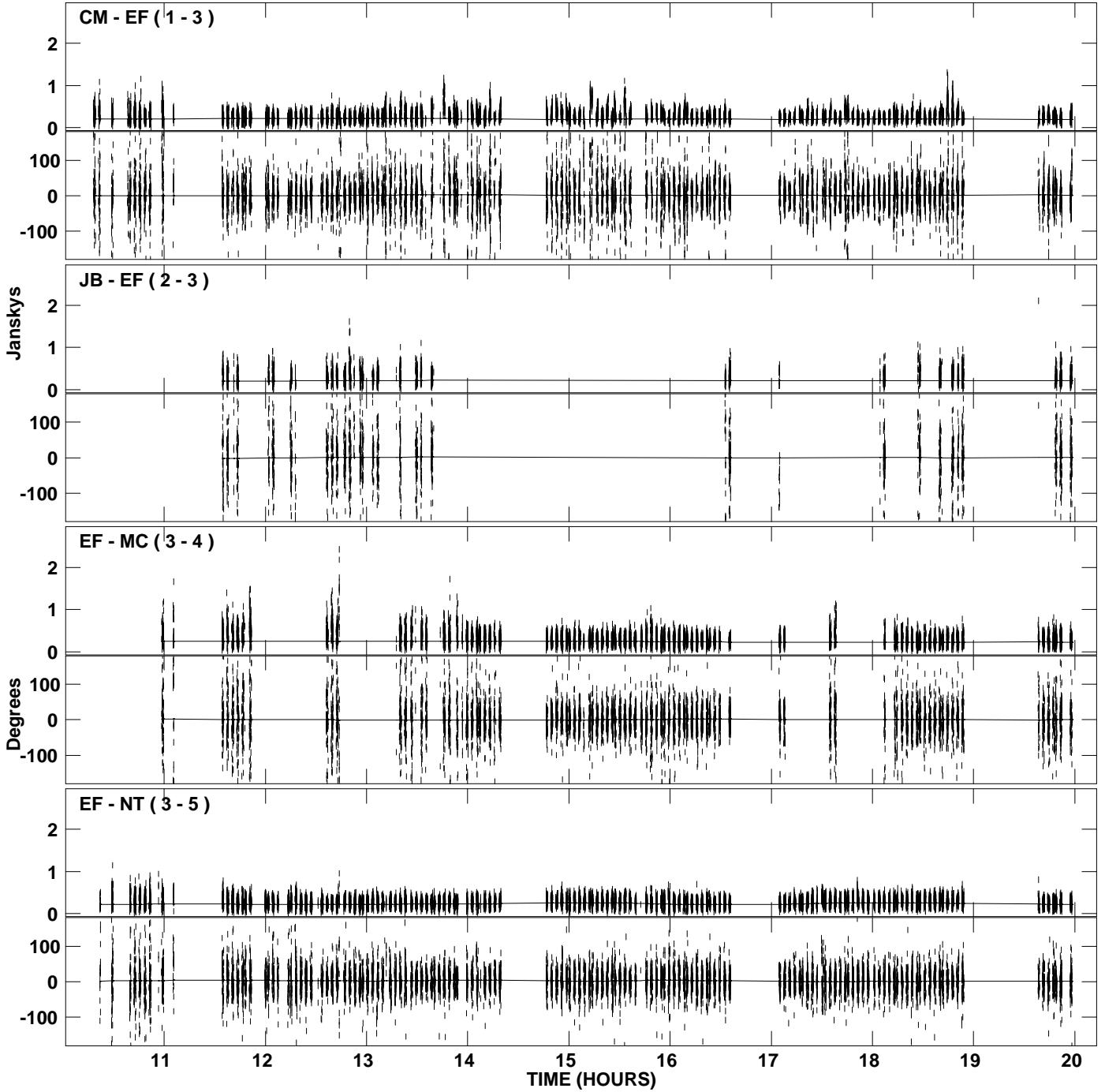
PLot file version 3 created 06-MAR-2009 19:48:18  
Amplitude and Phase vs Time for 1932+204.MULTI.1 CL # 5  
IF 2 CHAN 1 STK LL of 1932+204.ICL001.5



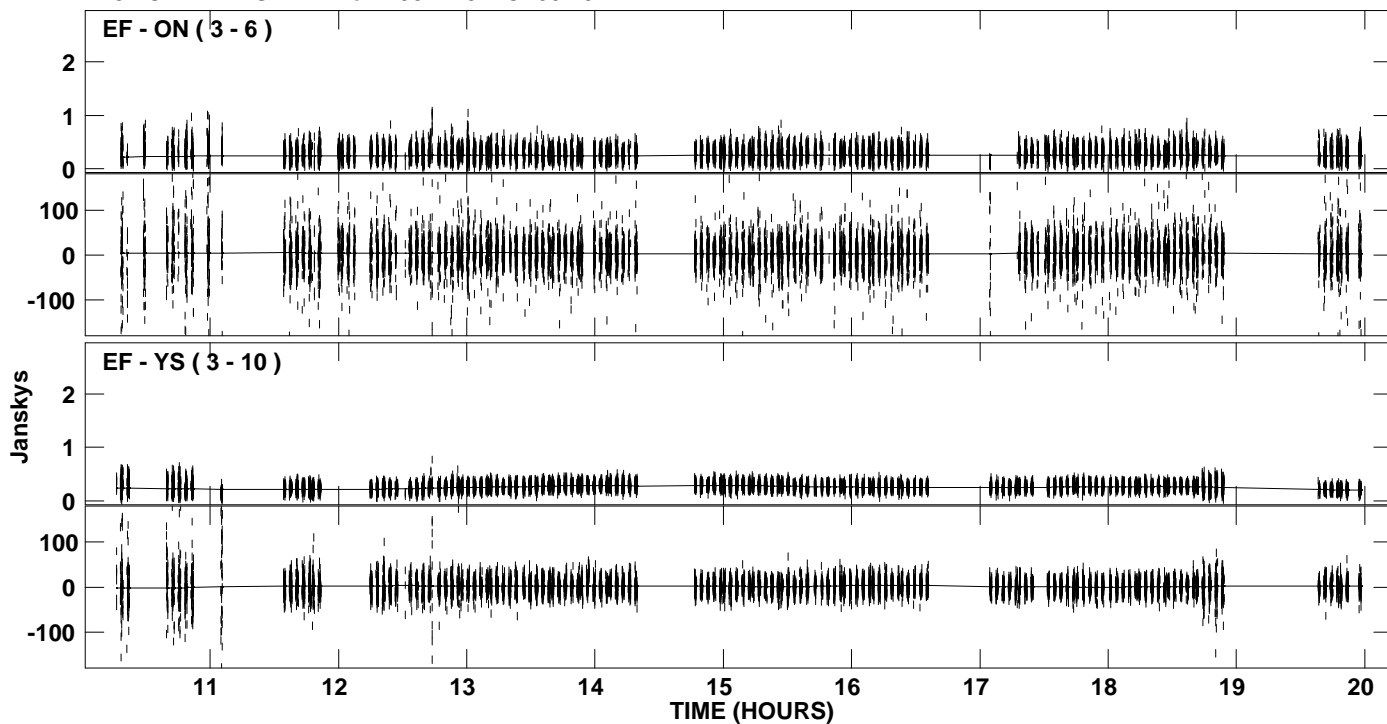
PLot file version 4 created 06-MAR-2009 19:48:18  
Amplitude and Phase vs Time for 1932+204.MULTI.1 CL # 5  
IF 2 CHAN 1 STK LL of 1932+204.ICL001.5



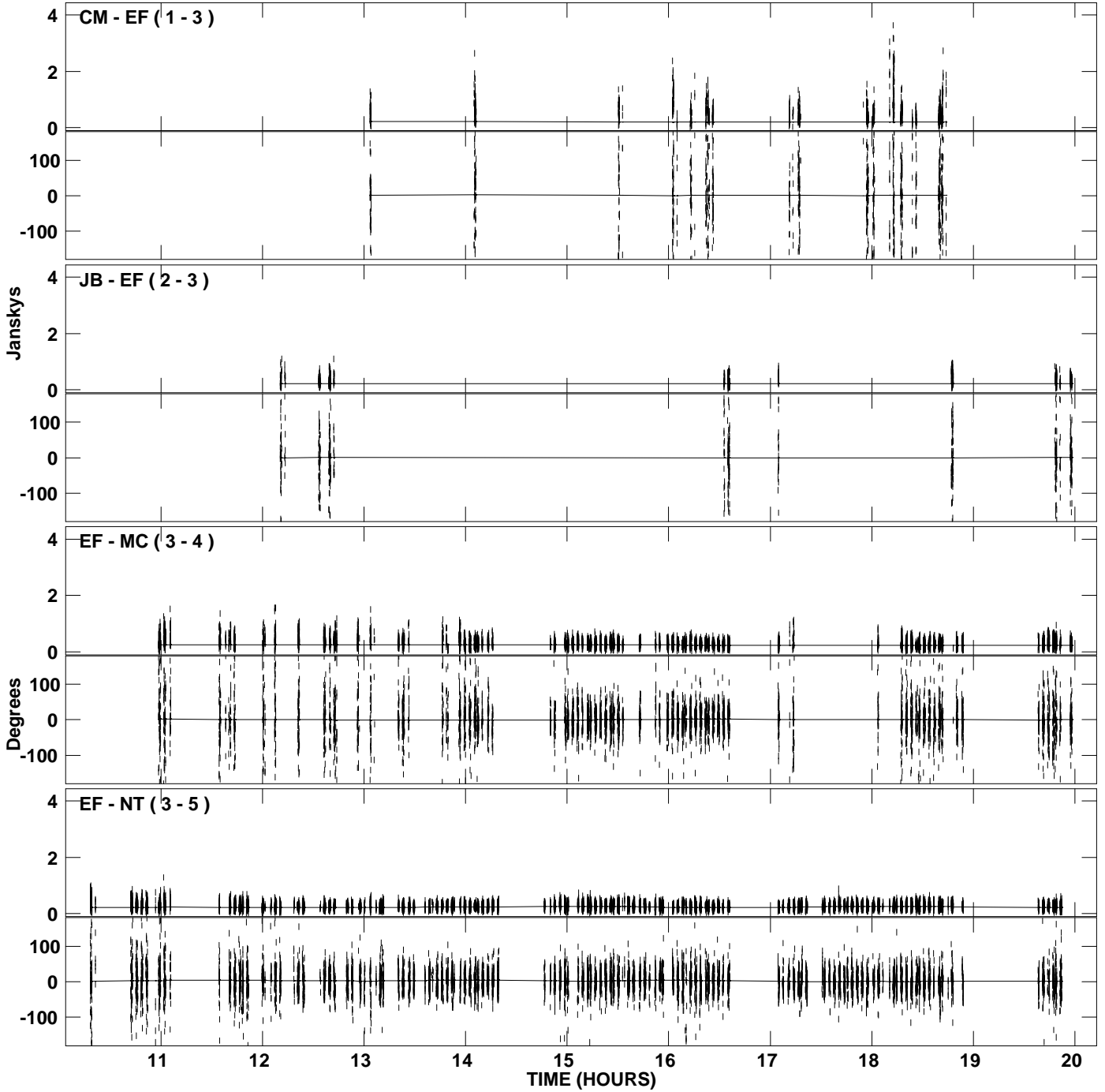
PLot file version 5 created 06-MAR-2009 19:49:14  
Amplitude and Phase vs Time for 1932+204.MULTI.1 CL # 5  
IF 3 CHAN 1 STK LL of 1932+204.ICL001.5



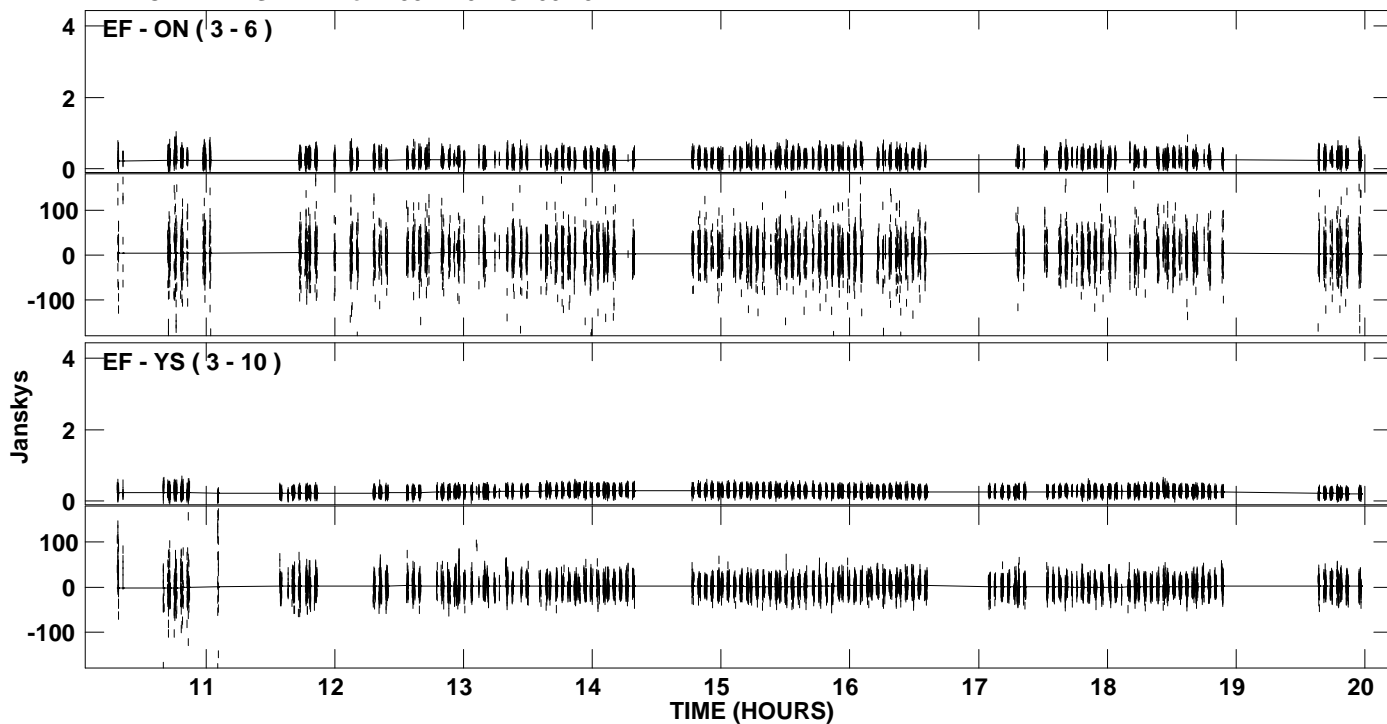
PLot file version 6 created 06-MAR-2009 19:49:14  
Amplitude and Phase vs Time for 1932+204.MULTI.1 CL # 5  
IF 3 CHAN 1 STK LL of 1932+204.ICL001.5



PLot file version 7 created 06-MAR-2009 19:50:26  
Amplitude and Phase vs Time for 1932+204.MULTI.1 CL # 5  
IF 4 CHAN 1 STK LL of 1932+204.ICL001.5

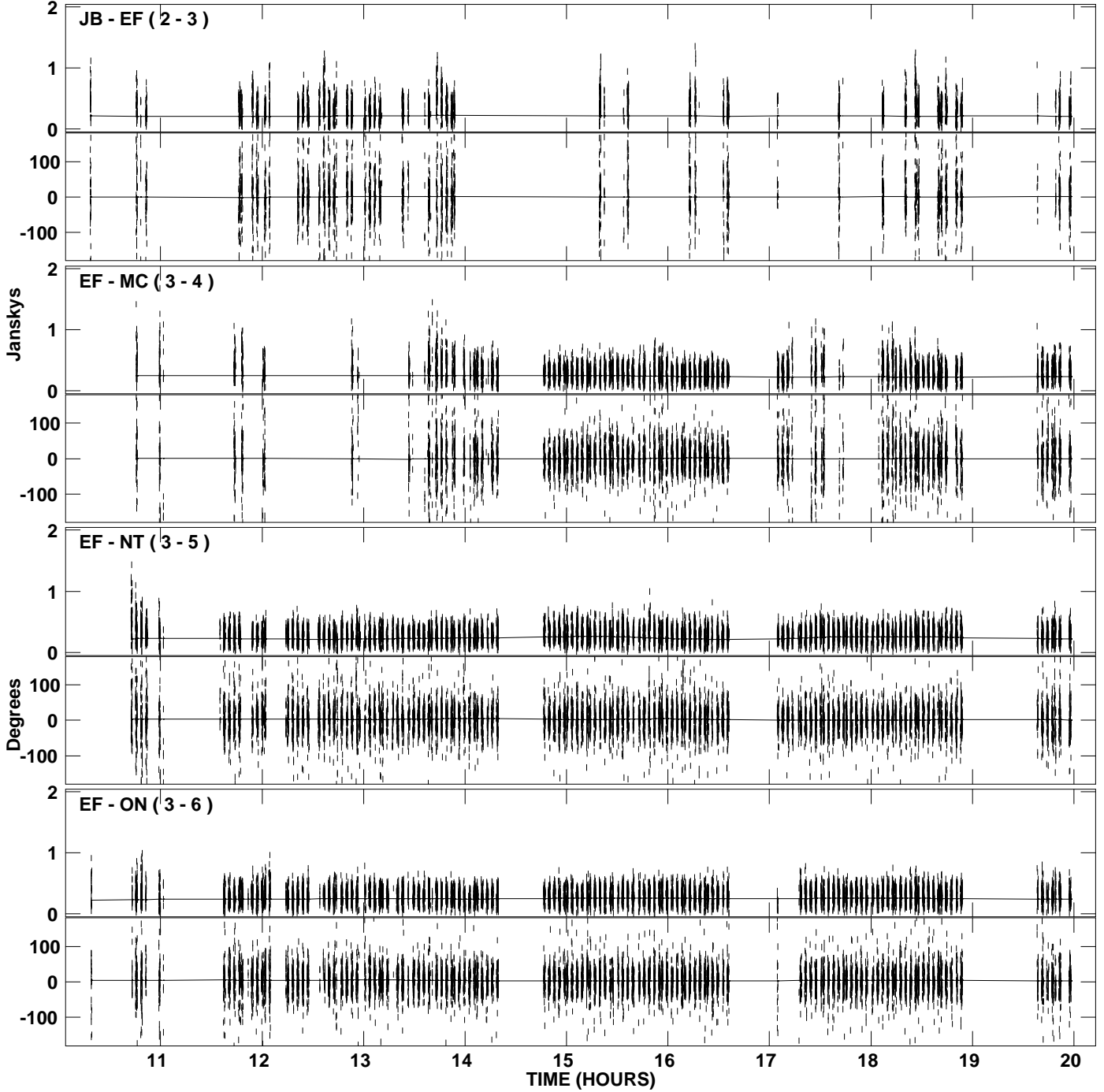


PLot file version 8 created 06-MAR-2009 19:50:26  
Amplitude and Phase vs Time for 1932+204.MULTI.1 CL # 5  
IF 4 CHAN 1 STK LL of 1932+204.ICL001.5

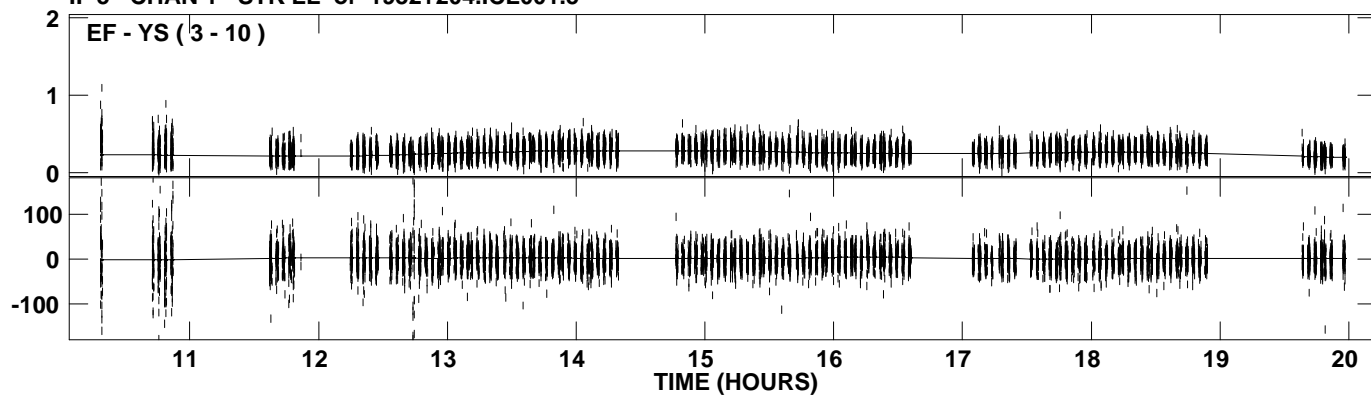




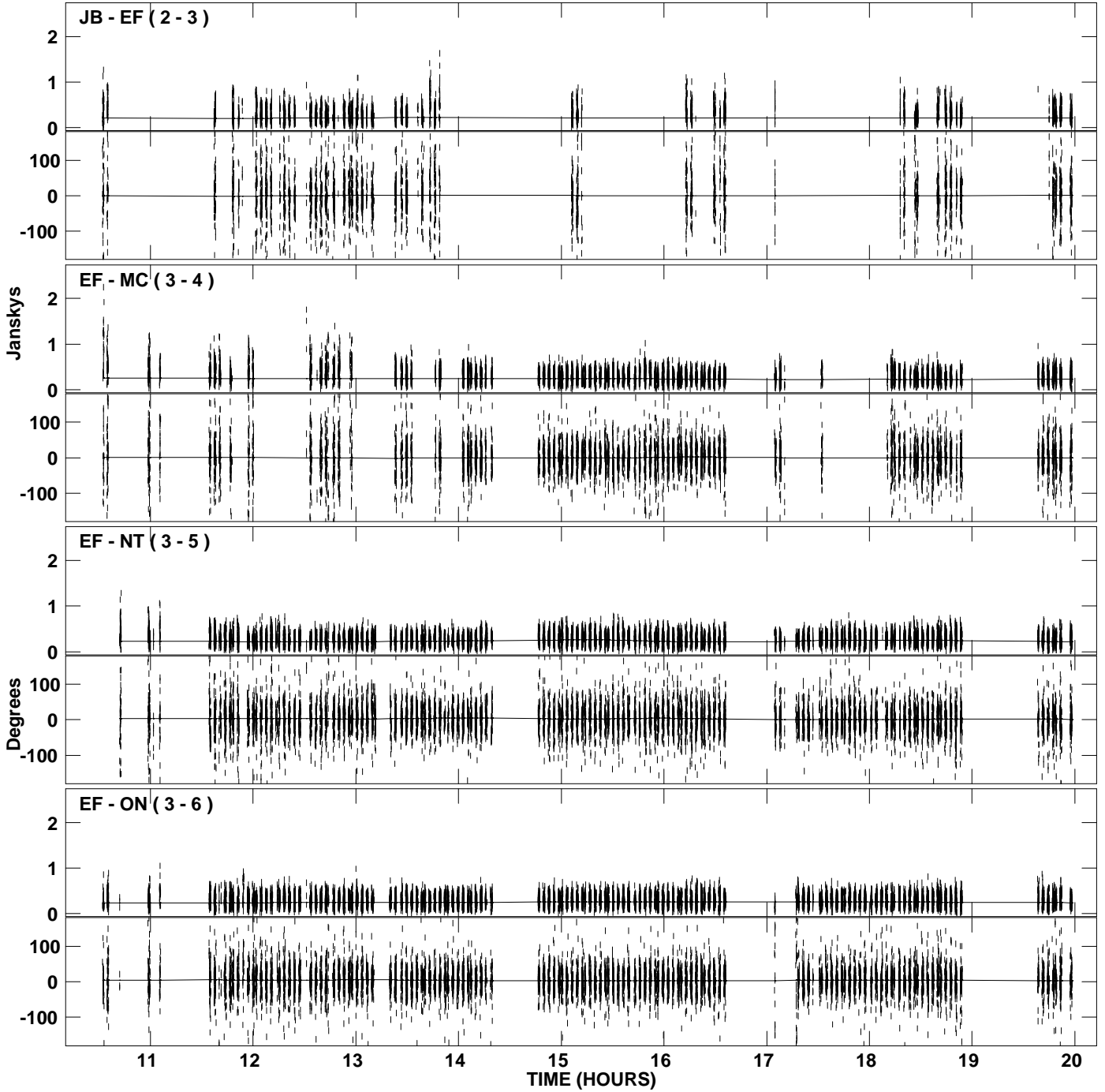
PLot file version 9 created 06-MAR-2009 19:51:23  
Amplitude and Phase vs Time for 1932+204.MULTI.1 CL # 5  
IF 5 CHAN 1 STK LL of 1932+204.ICL001.5



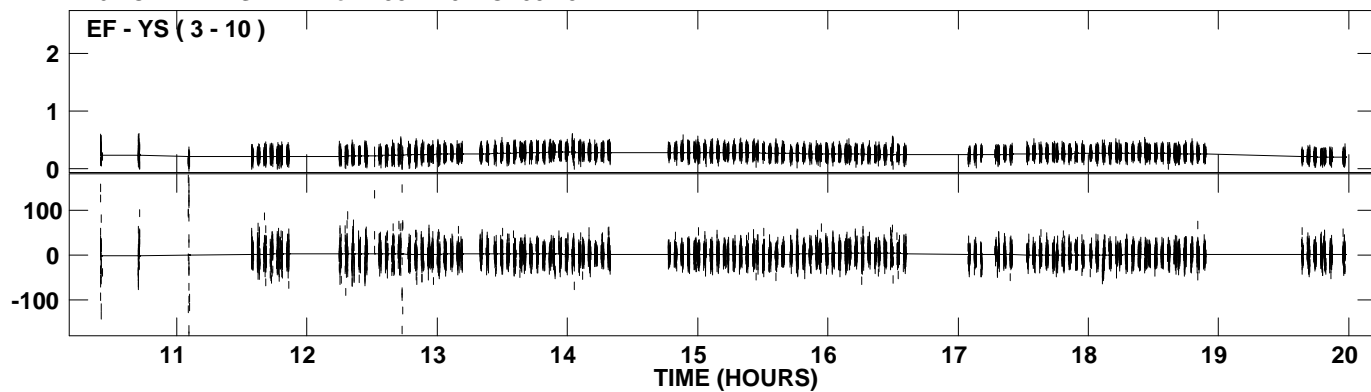
PLot file version 10 created 06-MAR-2009 19:51:23  
Amplitude andPhase vs Time for 1932+204.MULTI.1 CL # 5  
IF 5 CHAN 1 STK LL of 1932+204.ICL001.5



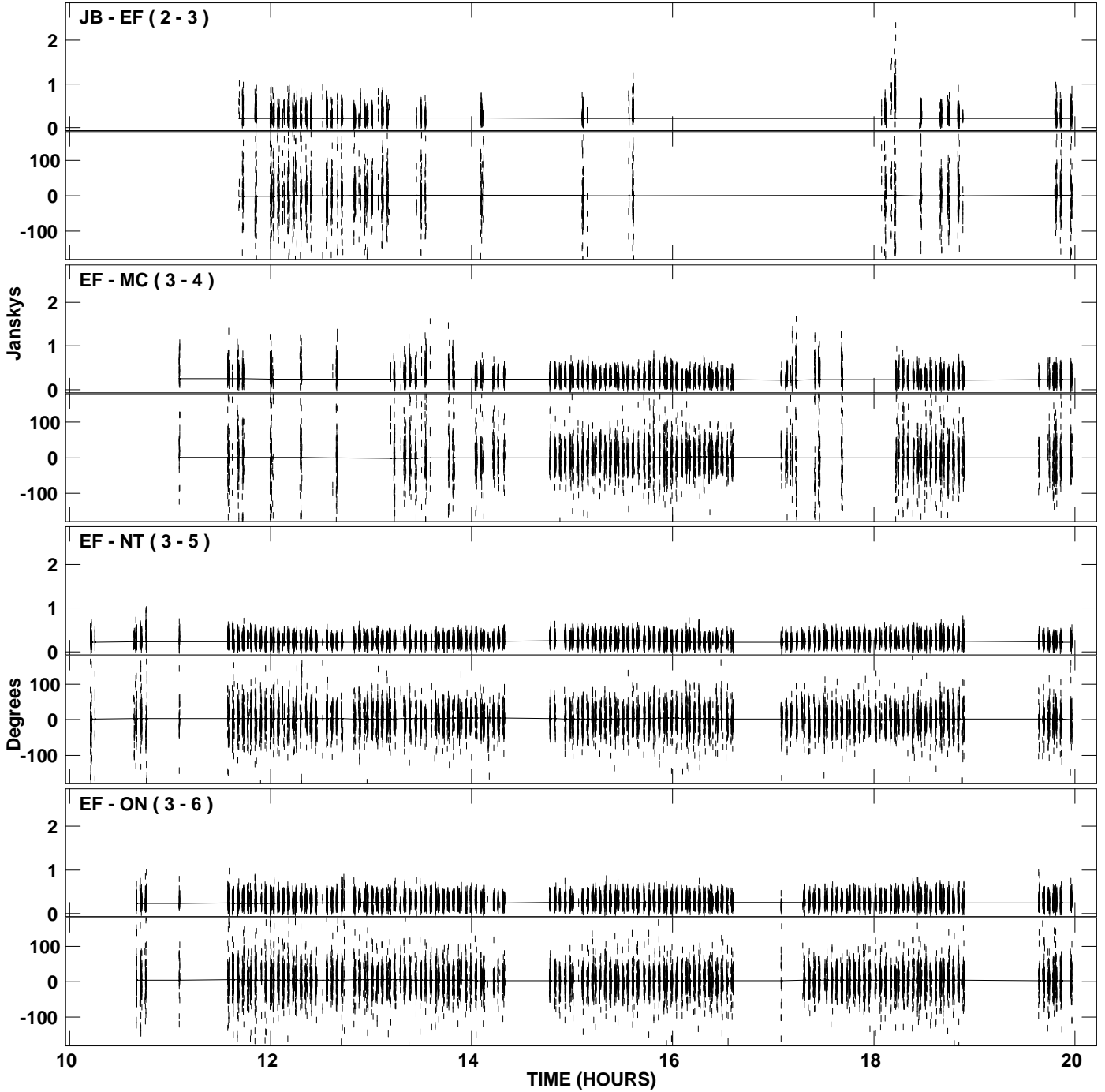
PLot file version 11 created 06-MAR-2009 19:52:19  
Amplitude andPhase vs Time for 1932+204.MULTI.1 CL # 5  
IF 6 CHAN 1 STK LL of 1932+204.ICL001.5



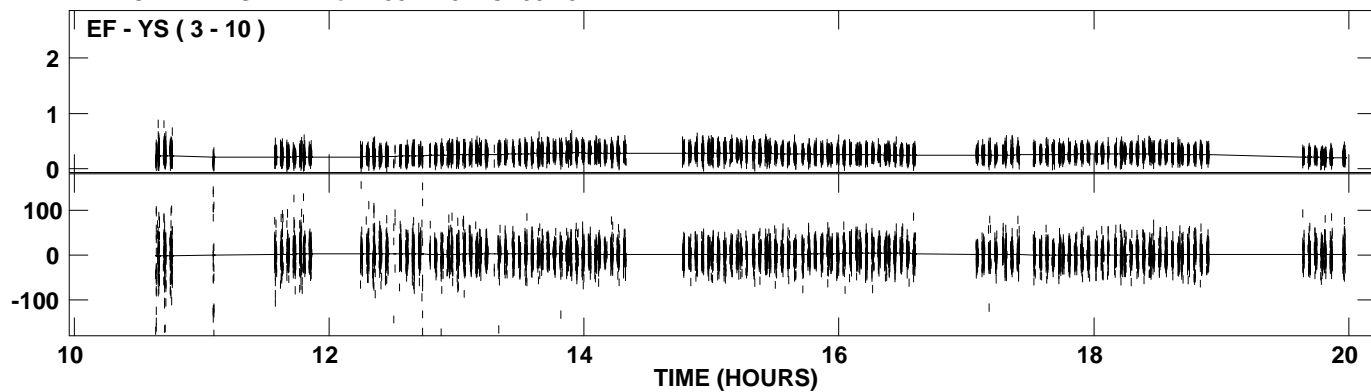
PLot file version 12 created 06-MAR-2009 19:52:19  
Amplitude andPhase vs Time for 1932+204.MULTI.1 CL # 5  
IF 6 CHAN 1 STK LL of 1932+204.ICL001.5



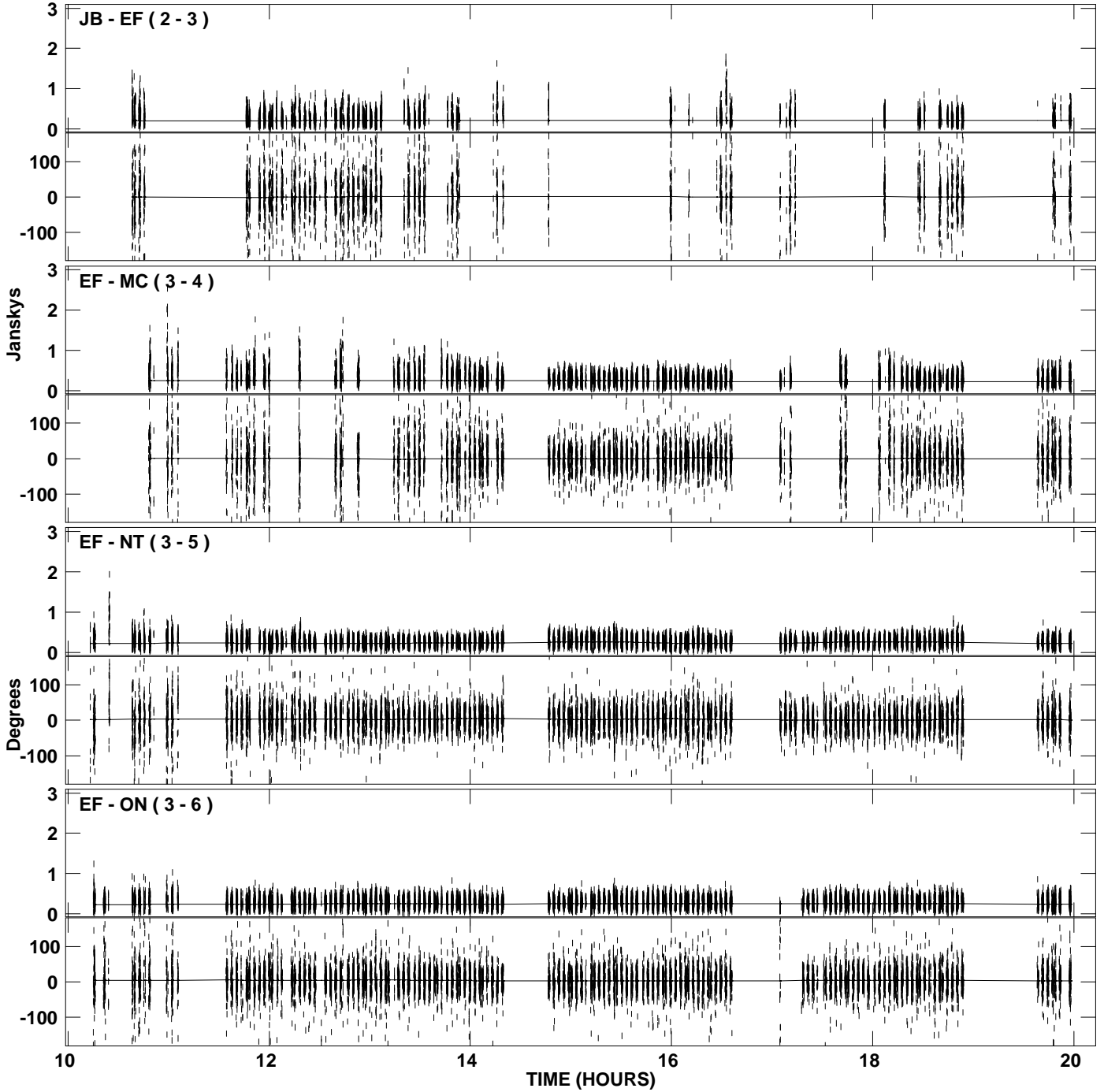
PLot file version 13 created 06-MAR-2009 19:53:29  
Amplitude and Phase vs Time for 1932+204.MULTI.1 CL # 5  
IF 7 CHAN 1 STK LL of 1932+204.ICL001.5



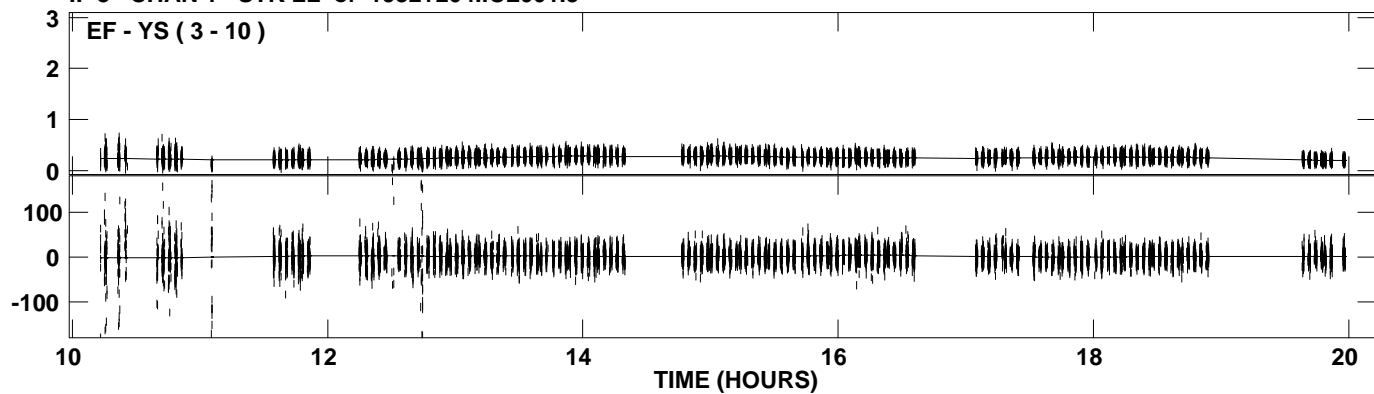
PLot file version 14 created 06-MAR-2009 19:53:30  
Amplitude andPhase vs Time for 1932+204.MULTI.1 CL # 5  
IF 7 CHAN 1 STK LL of 1932+204.ICL001.5



PLot file version 15 created 06-MAR-2009 19:54:39  
Amplitude and Phase vs Time for 1932+204.MULTI.1 CL # 5  
IF 8 CHAN 1 STK LL of 1932+204.ICL001.5

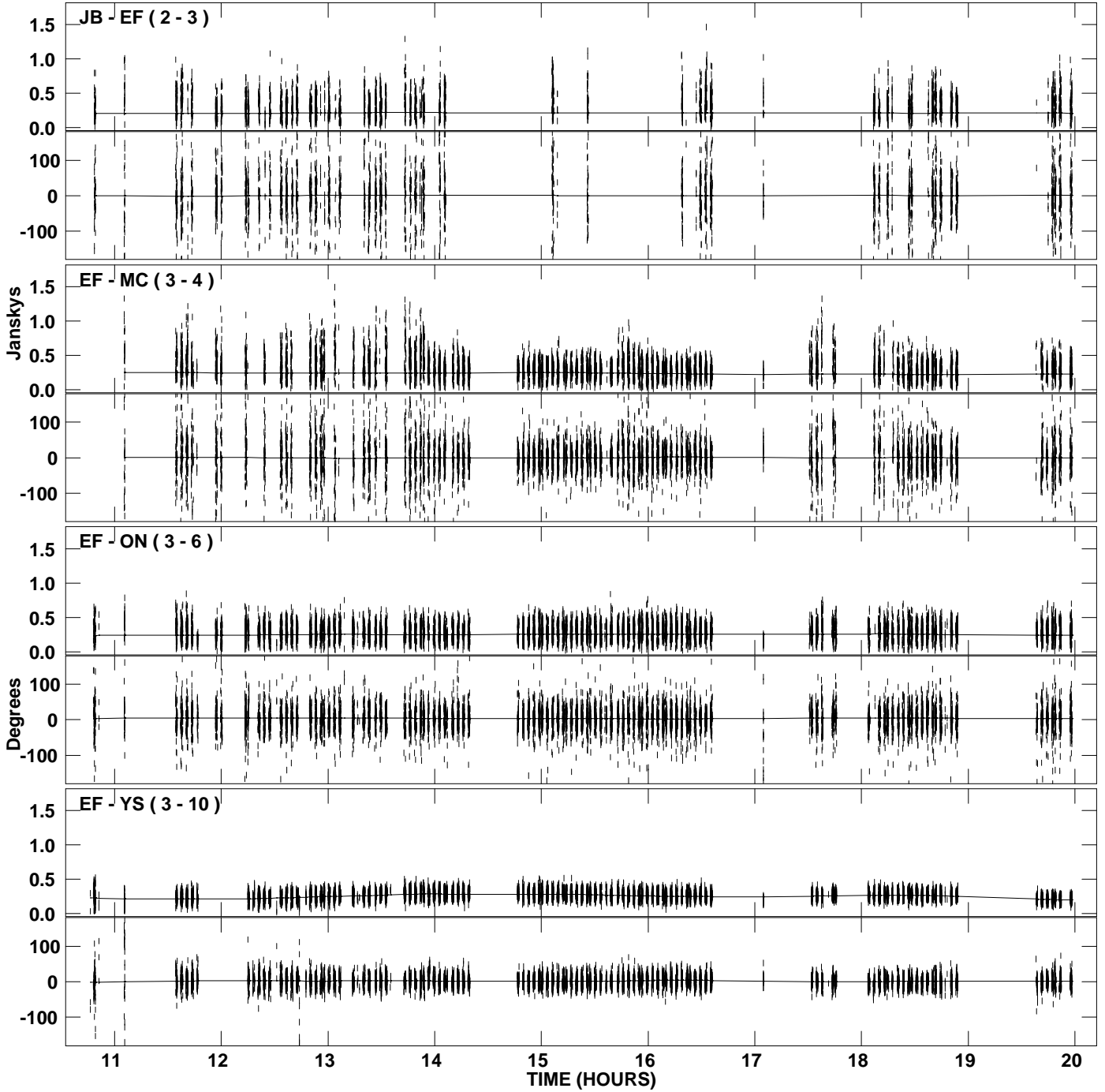


PLot file version 16 created 06-MAR-2009 19:54:39  
Amplitude andPhase vs Time for 1932+204.MULTI.1 CL # 5  
IF 8 CHAN 1 STK LL of 1932+204.ICL001.5

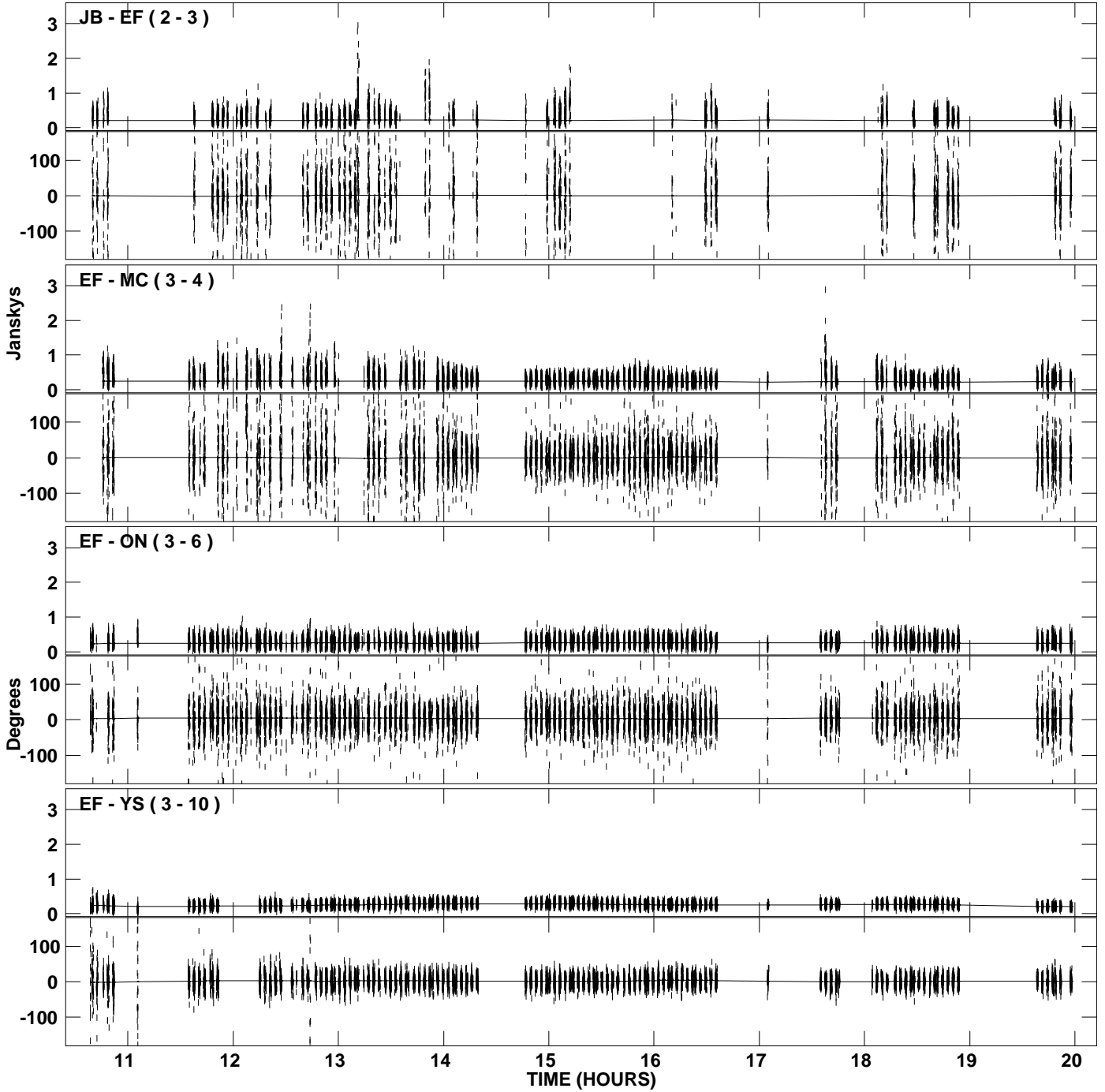




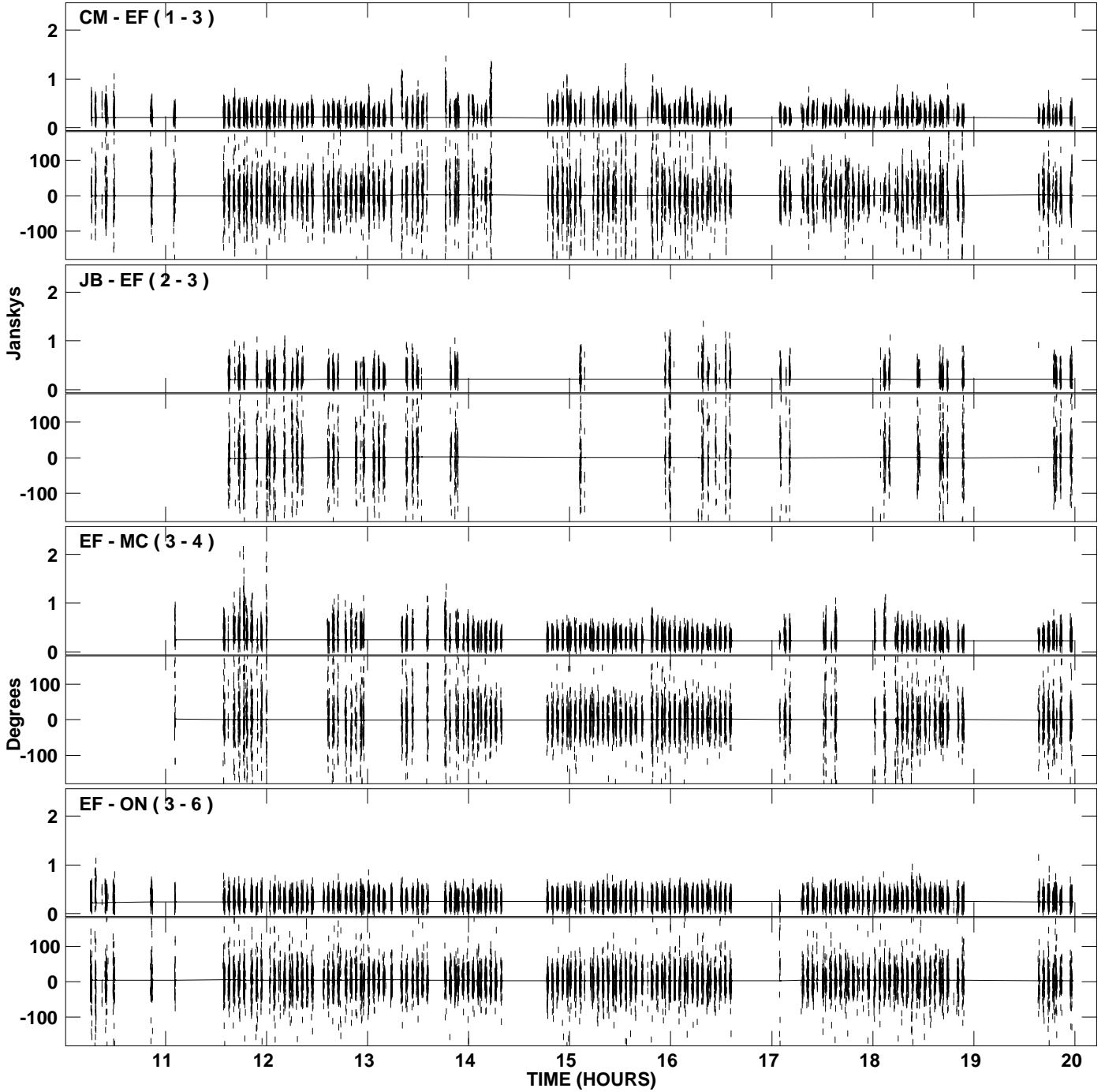
PLot file version 17 created 06-MAR-2009 19:55:36  
Amplitude and Phase vs Time for 1932+204.MULTI.1 CL # 5  
IF 1 CHAN 1 STK RR of 1932+204.ICL001.5



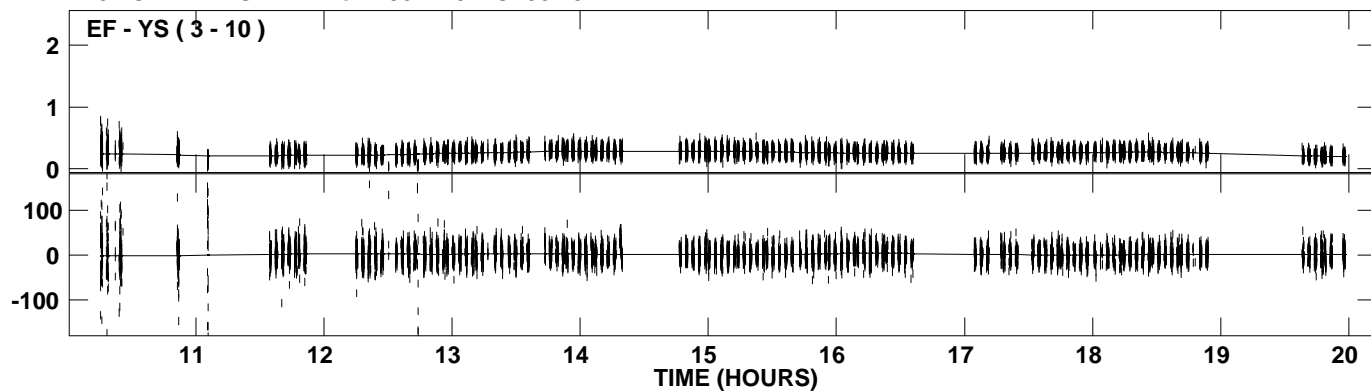
PLot file version 18 created 06-MAR-2009 19:56:34  
Amplitude and Phase vs Time for 1932+204.MULTI.1 CL # 5  
IF 2 CHAN 1 STK RR of 1932+204.ICL001.5



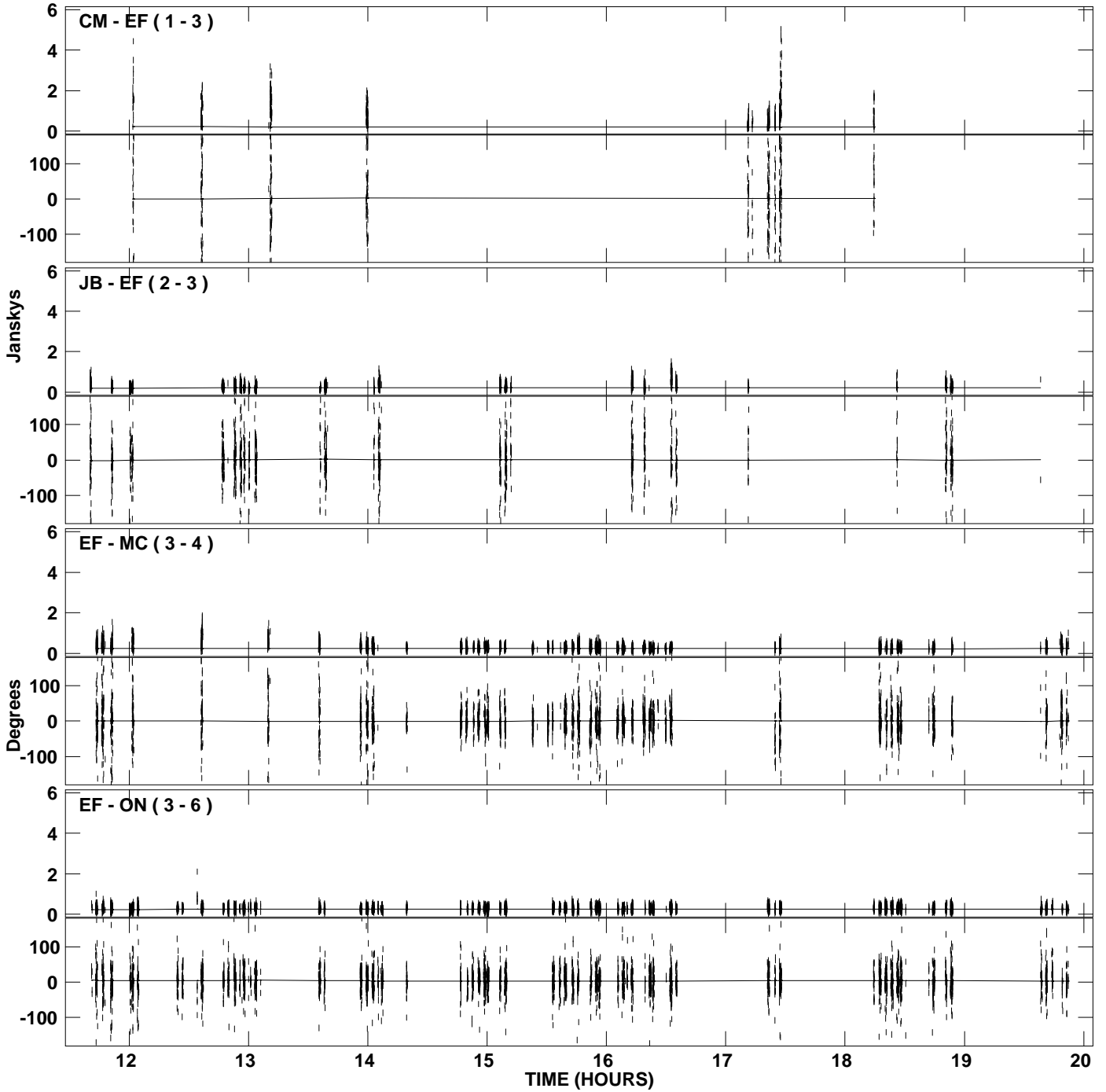
PLot file version 19 created 06-MAR-2009 19:57:36  
Amplitude andPhase vs Time for 1932+204.MULTI.1 CL # 5  
IF 3 CHAN 1 STK RR of 1932+204.ICL001.5



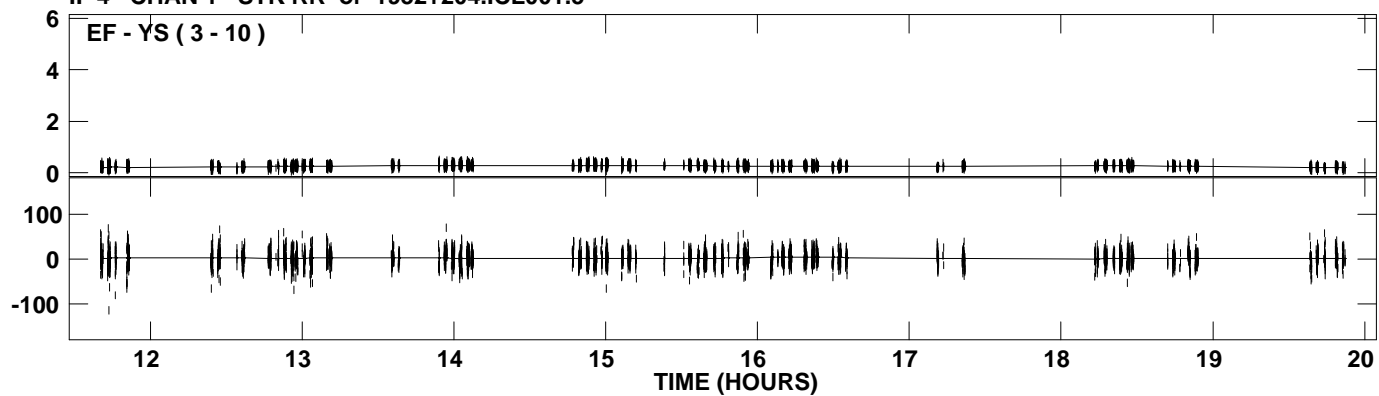
PLot file version 20 created 06-MAR-2009 19:57:36  
Amplitude andPhase vs Time for 1932+204.MULTI.1 CL # 5  
IF 3 CHAN 1 STK RR of 1932+204.ICL001.5



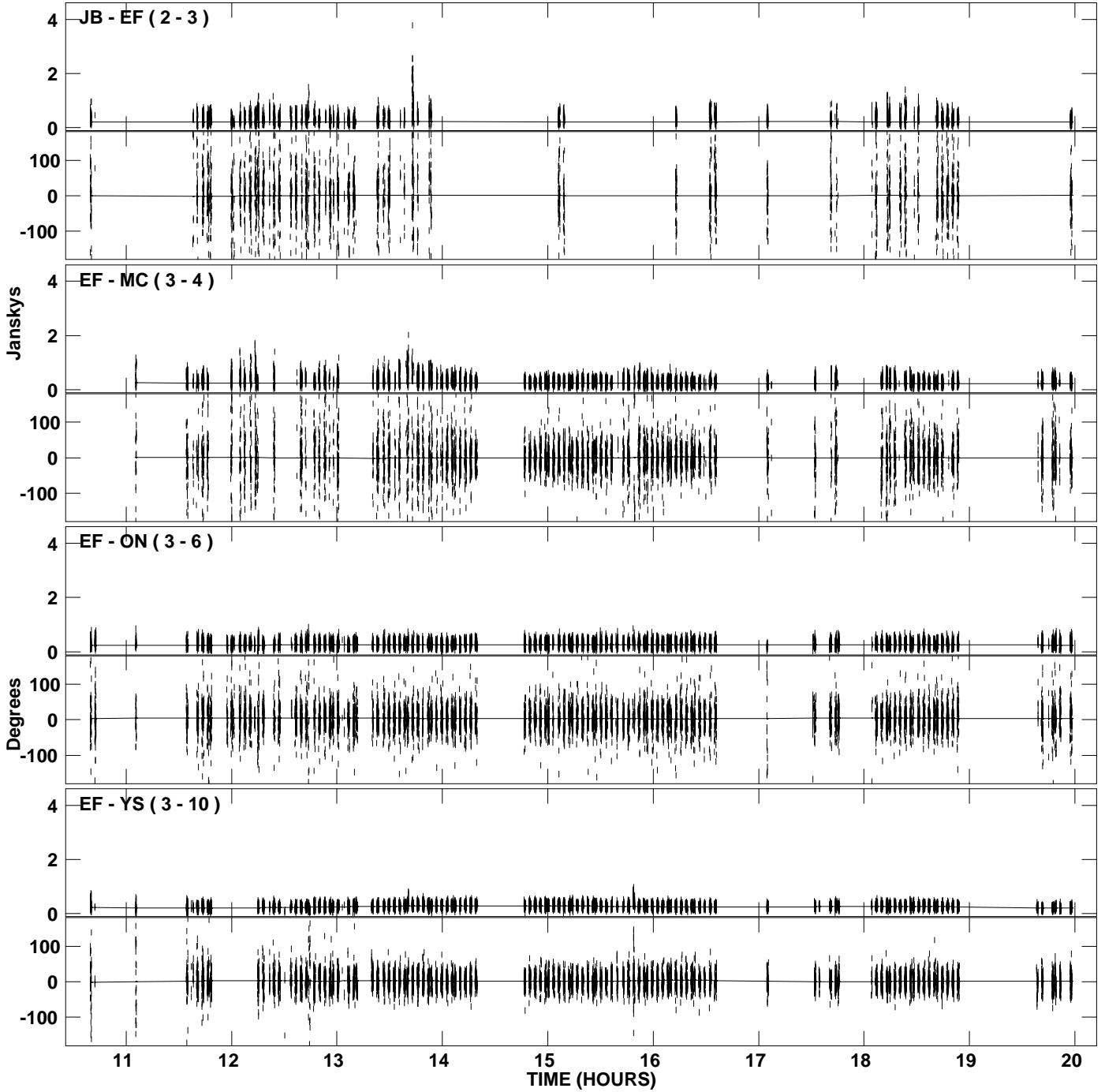
PLot file version 21 created 06-MAR-2009 19:58:37  
Amplitude and Phase vs Time for 1932+204.MULTI.1 CL # 5  
IF 4 CHAN 1 STK RR of 1932+204.ICL001.5



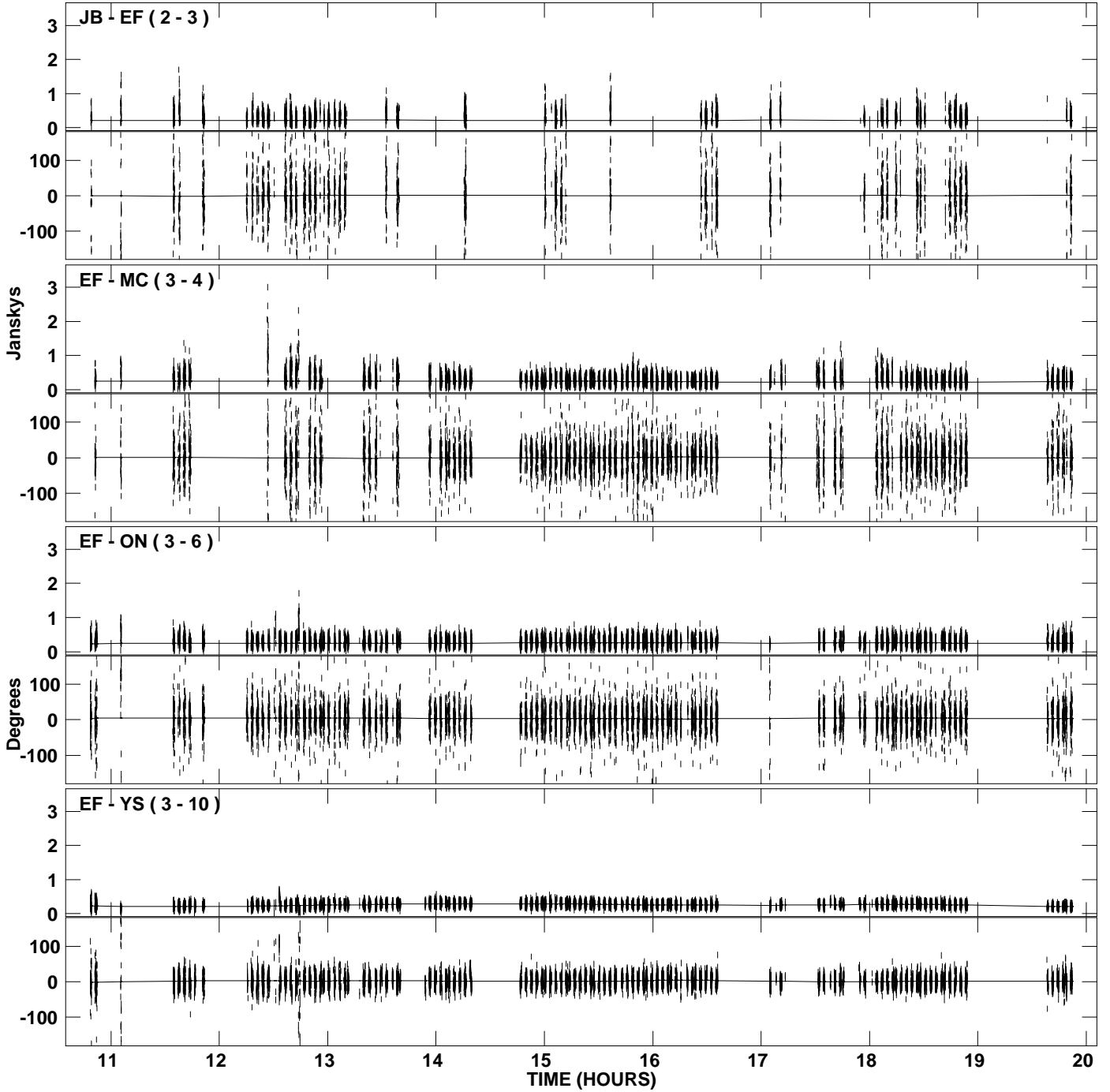
PLot file version 22 created 06-MAR-2009 19:58:37  
Amplitude and Phase vs Time for 1932+204.MULTI.1 CL # 5  
IF 4 CHAN 1 STK RR of 1932+204.ICL001.5



PLot file version 23 created 06-MAR-2009 19:59:34  
Amplitude and Phase vs Time for 1932+204.MULTI.1 CL # 5  
IF 5 CHAN 1 STK RR of 1932+204.ICL001.5

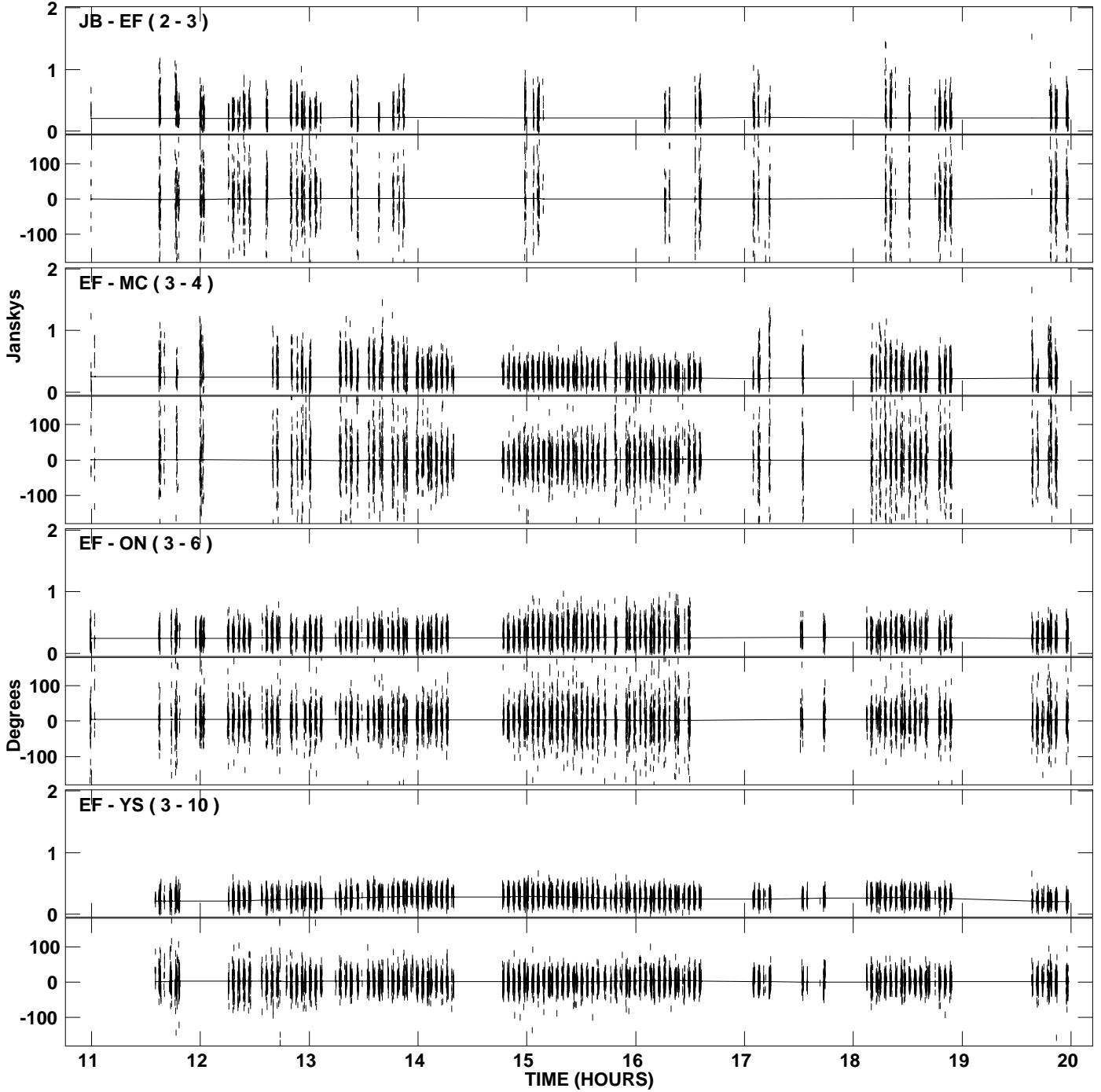


PLot file version 24 created 06-MAR-2009 20:00:37  
Amplitude andPhase vs Time for 1932+204.MULTI.1 CL # 5  
IF 6 CHAN 1 STK RR of 1932+204.ICL001.5





PLot file version 25 created 06-MAR-2009 20:01:46  
Amplitude and Phase vs Time for 1932+204.MULTI.1 CL # 5  
IF 7 CHAN 1 STK RR of 1932+204.ICL001.5



PLot file version 26 created 06-MAR-2009 20:02:42  
Amplitude andPhase vs Time for 1932+204.MULTI.1 CL # 5  
IF 8 CHAN 1 STK RR of 1932+204.ICL001.5

