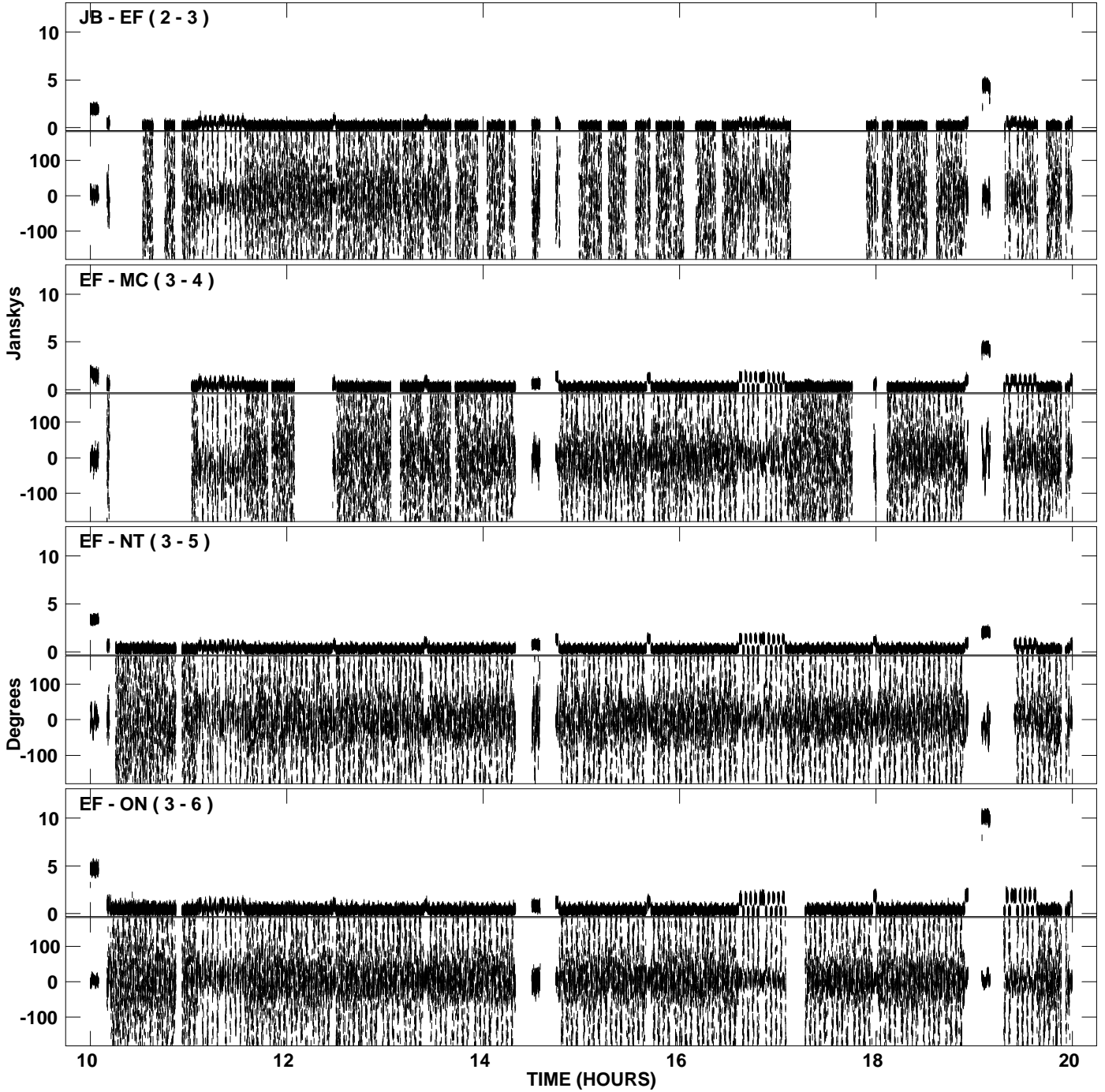
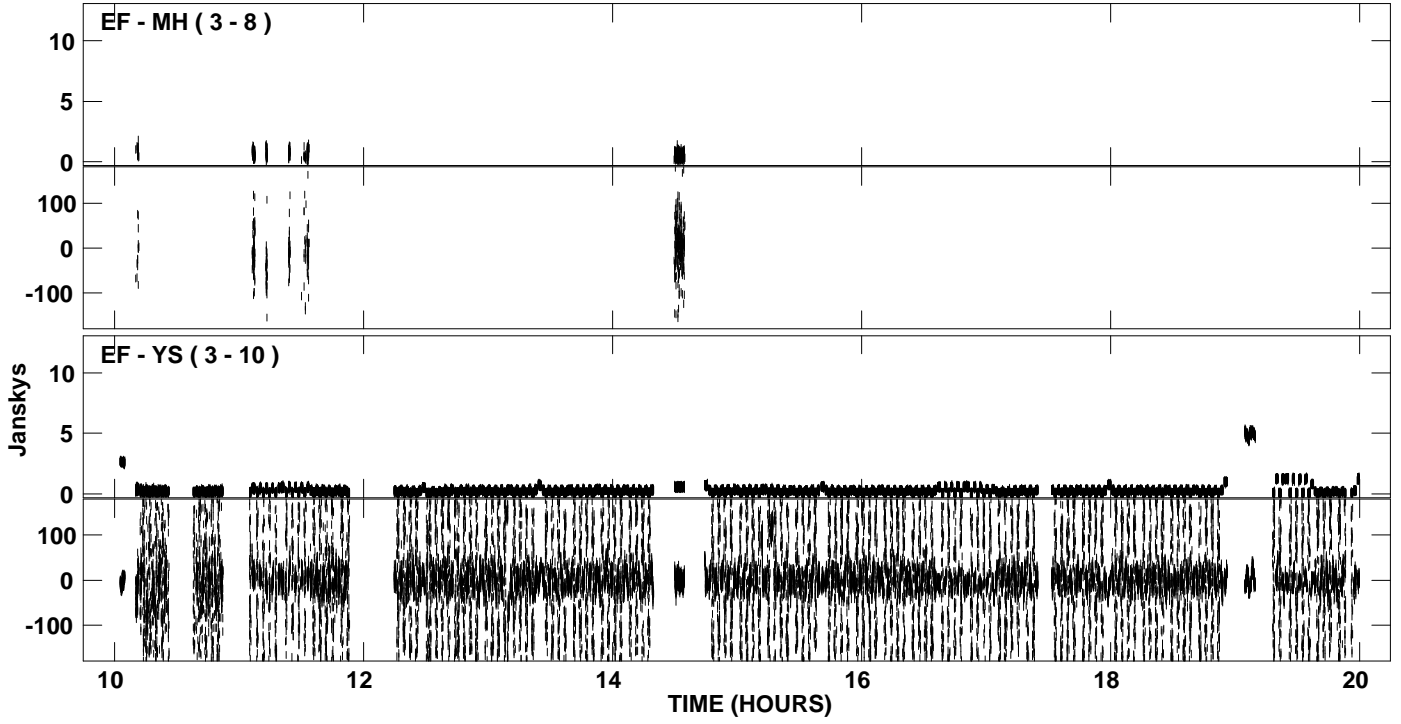


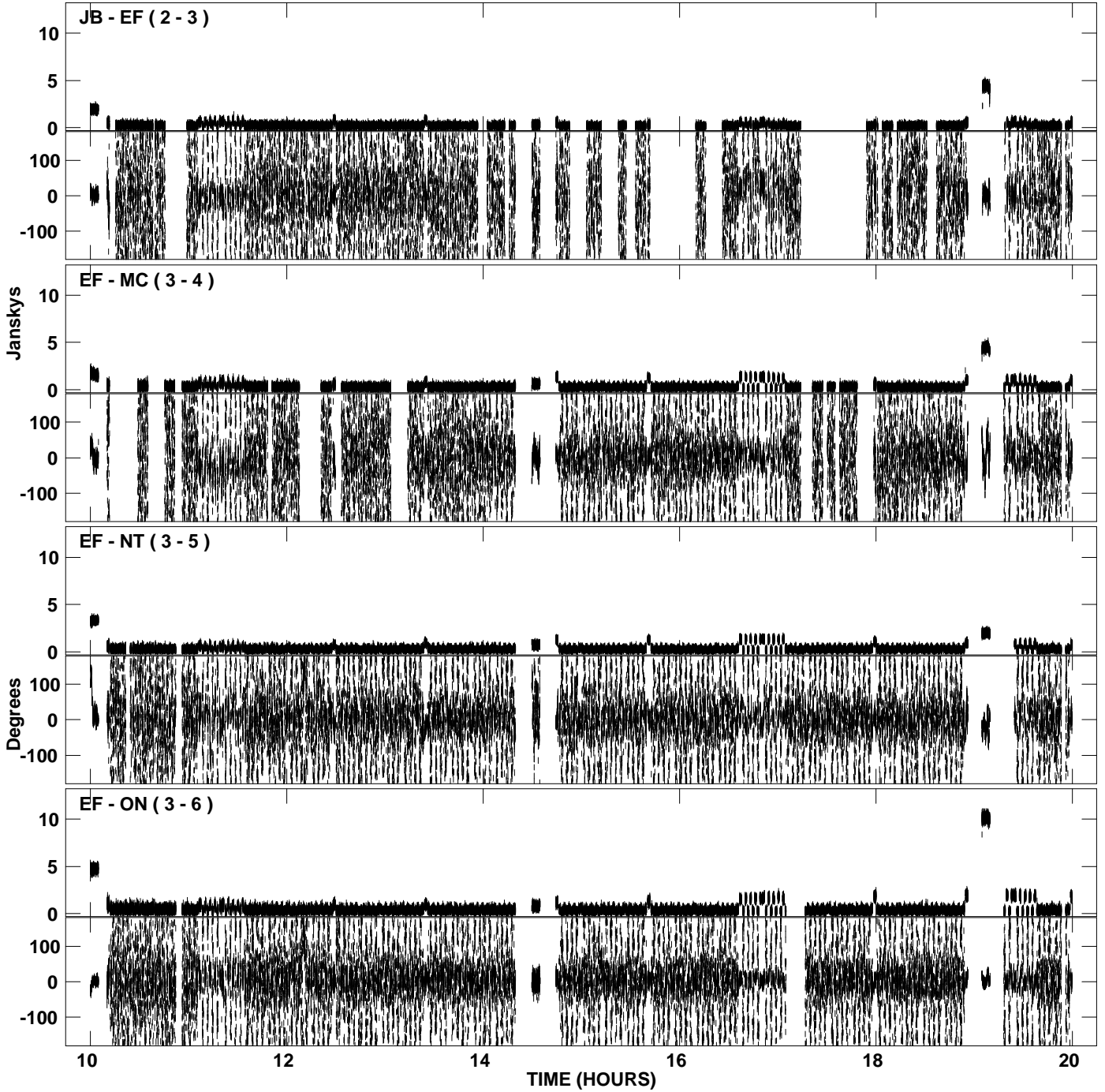
PLot file version 1 created 06-MAR-2009 19:11:53
Amplitude andPhase vs Time for EB037E 1.UVDATA.1 Vect aver. CL # 3
IF 1 CHAN 1 - 16 STK LL



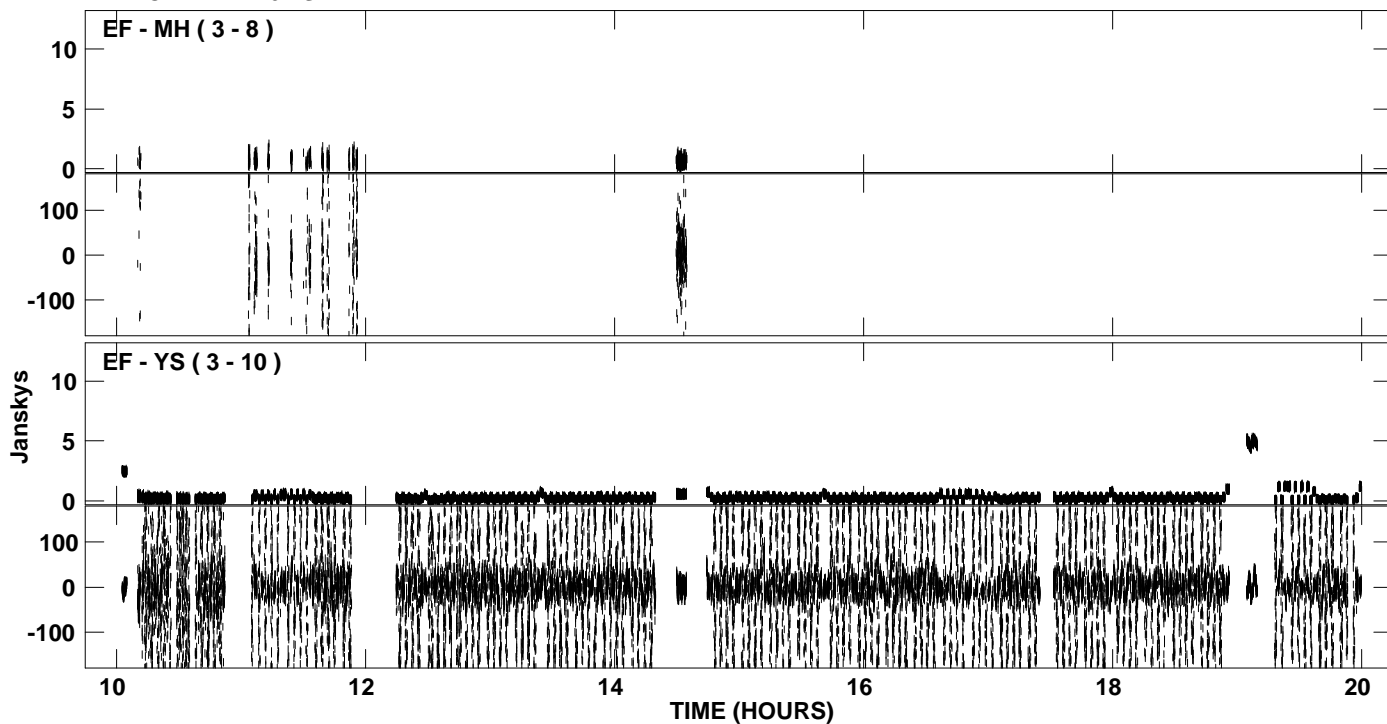
PLot file version 2 created 06-MAR-2009 19:11:53
Amplitude andPhase vs Time for EB037E 1.UVDATA.1 Vect aver. CL # 3
IF 1 CHAN 1 - 16 STK LL



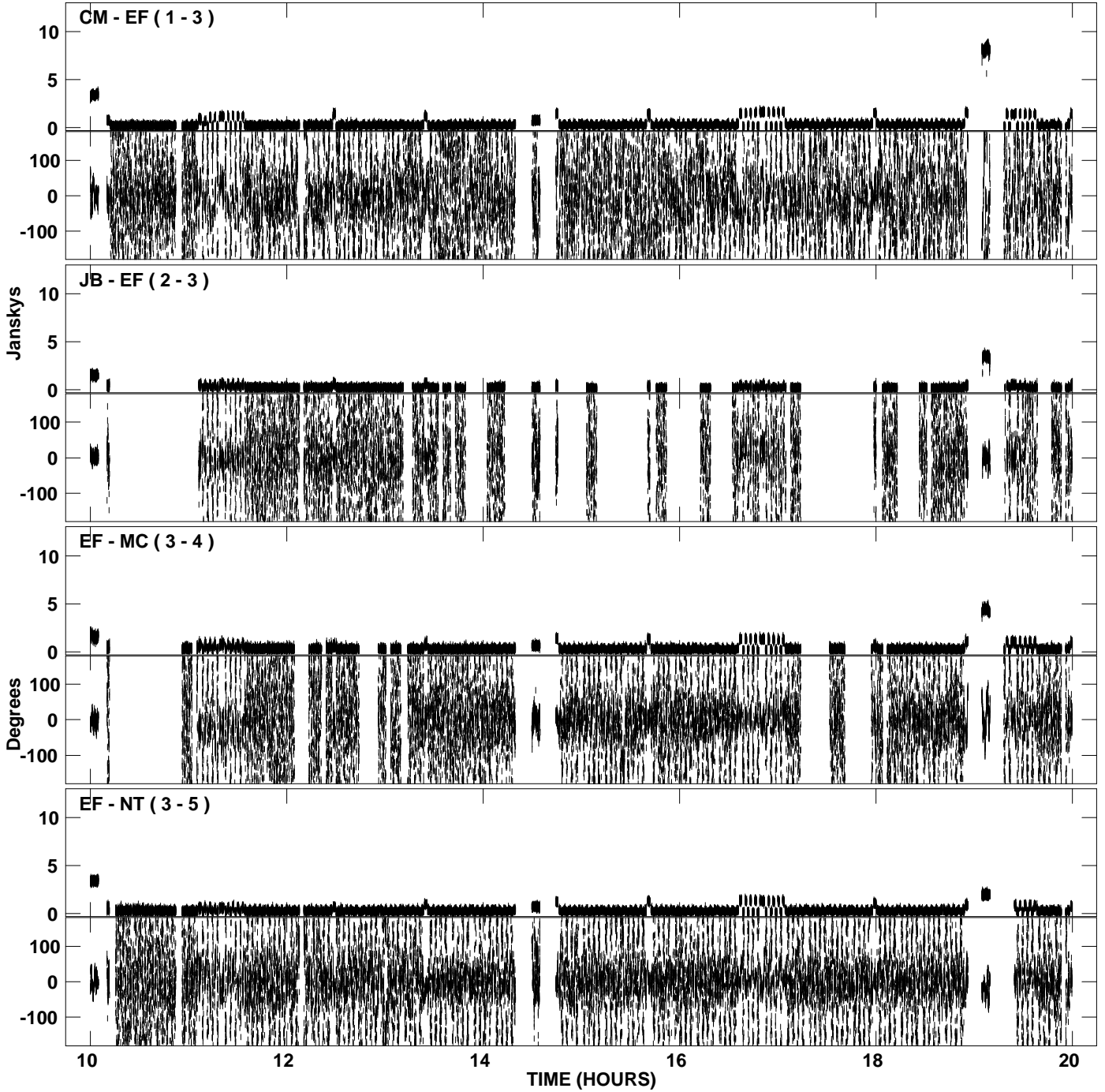
PLot file version 3 created 06-MAR-2009 19:12:10
Amplitude and Phase vs Time for EB037E 1.UVDATA.1 Vect aver. CL # 3
IF 2 CHAN 1 - 16 STK LL



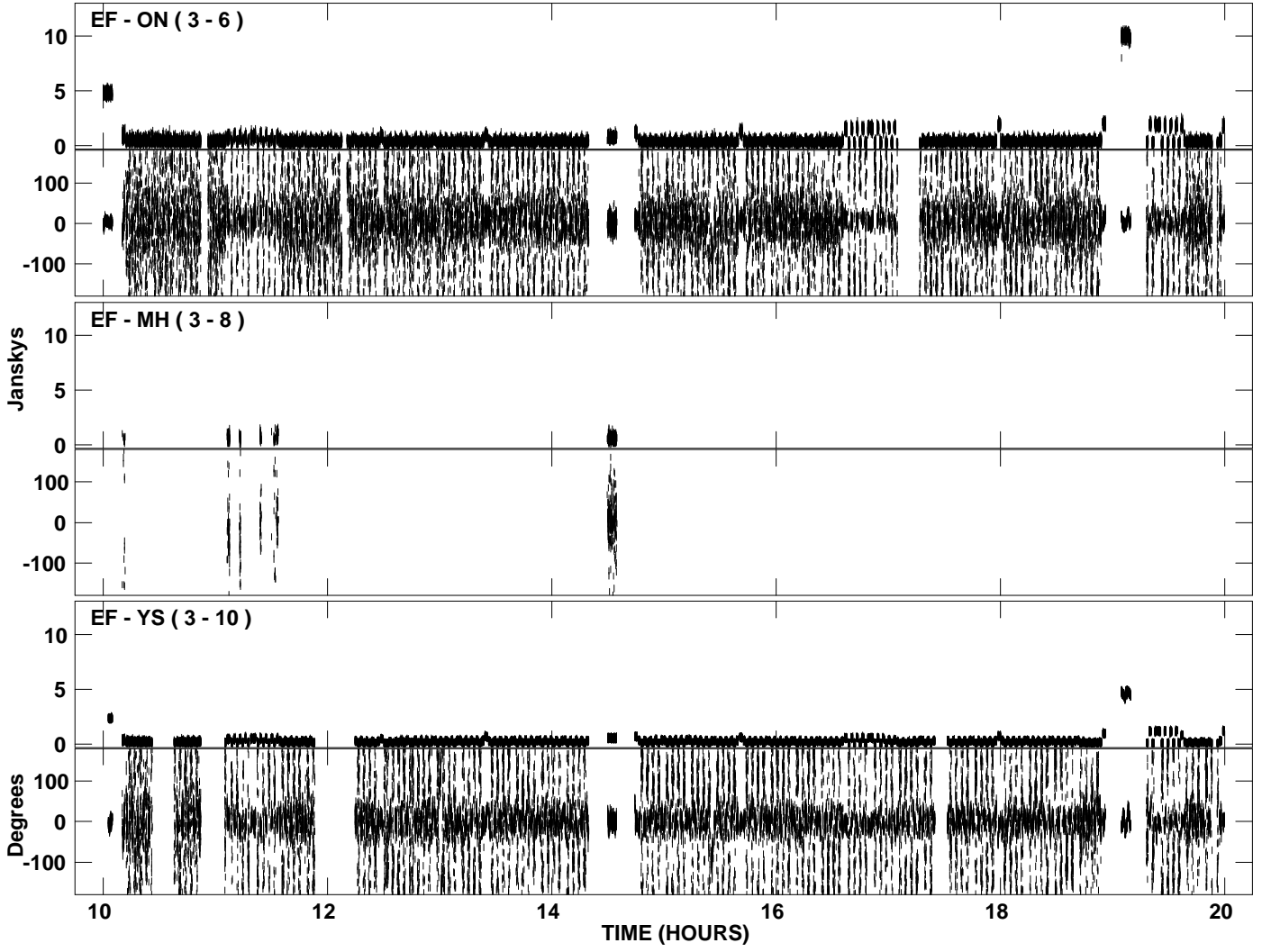
PLot file version 4 created 06-MAR-2009 19:12:10
Amplitude andPhase vs Time for EB037E 1.UVDATA.1 Vect aver. CL # 3
IF 2 CHAN 1 - 16 STK LL



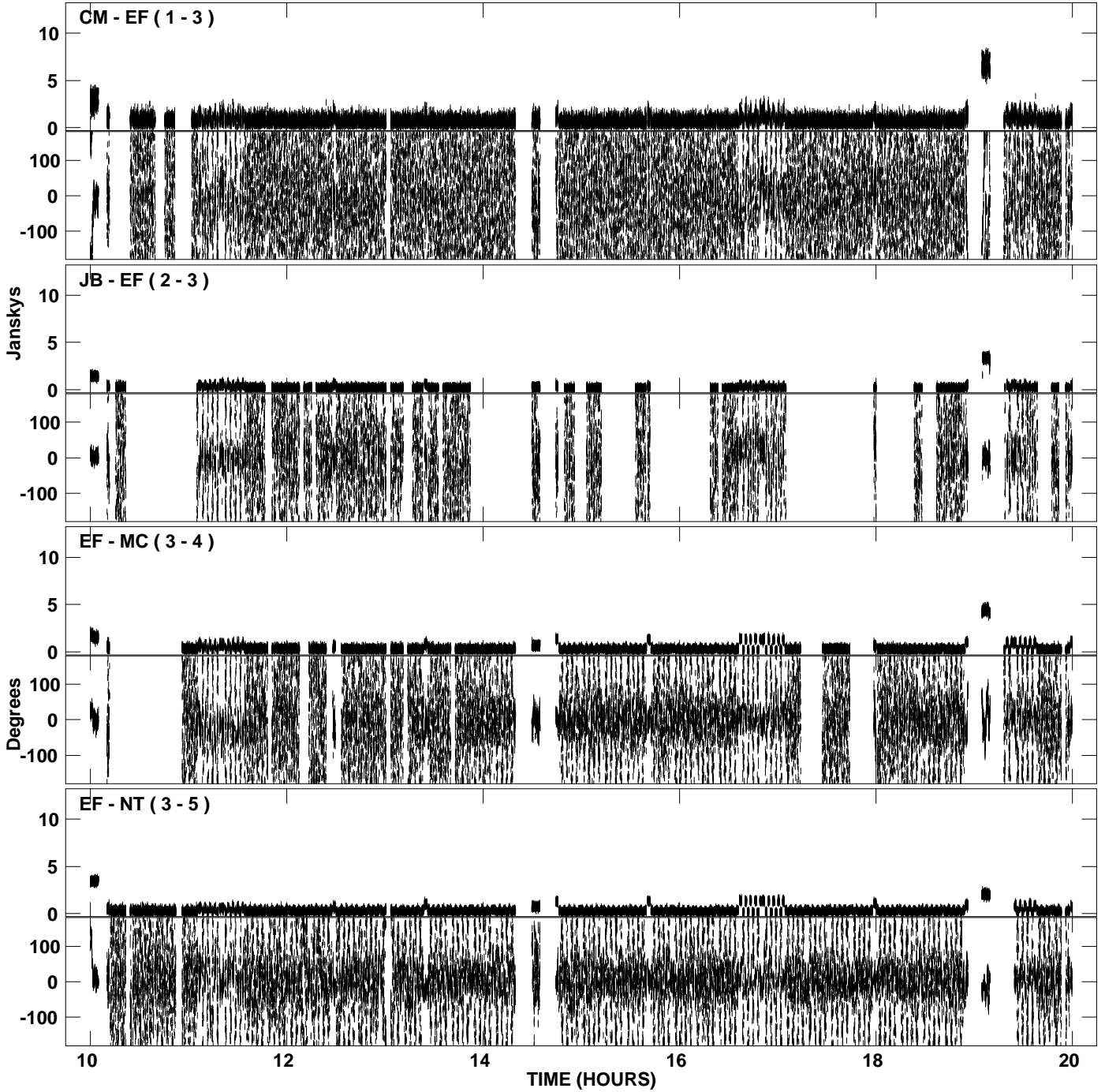
PLot file version 5 created 06-MAR-2009 19:12:22
Amplitude and Phase vs Time for EB037E 1.UVDATA.1 Vect aver. CL # 3
IF 3 CHAN 1 - 16 STK LL



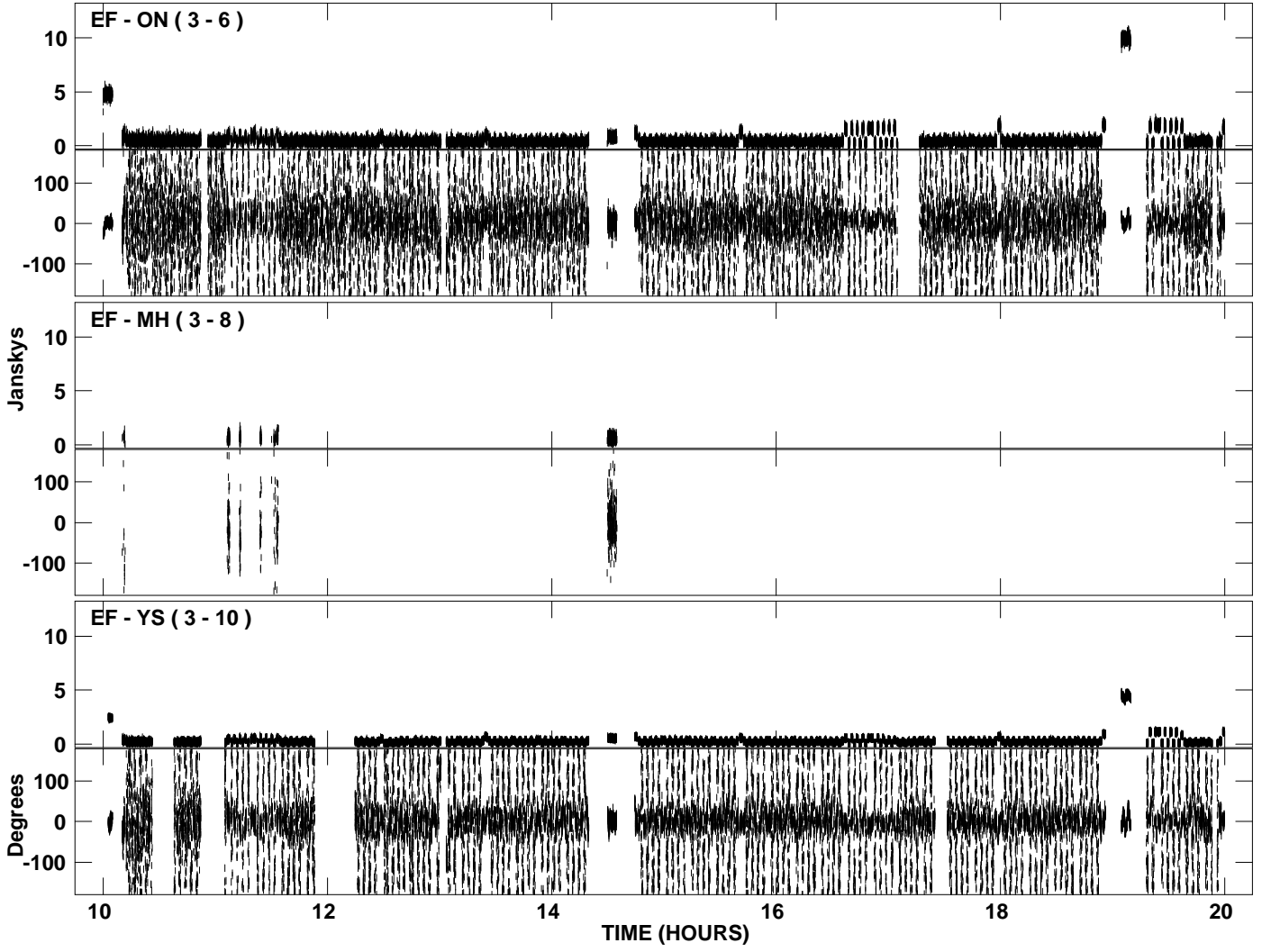
PLot file version 6 created 06-MAR-2009 19:12:22
Amplitude andPhase vs Time for EB037E 1.UVDATA.1 Vect aver. CL # 3
IF 3 CHAN 1 - 16 STK LL



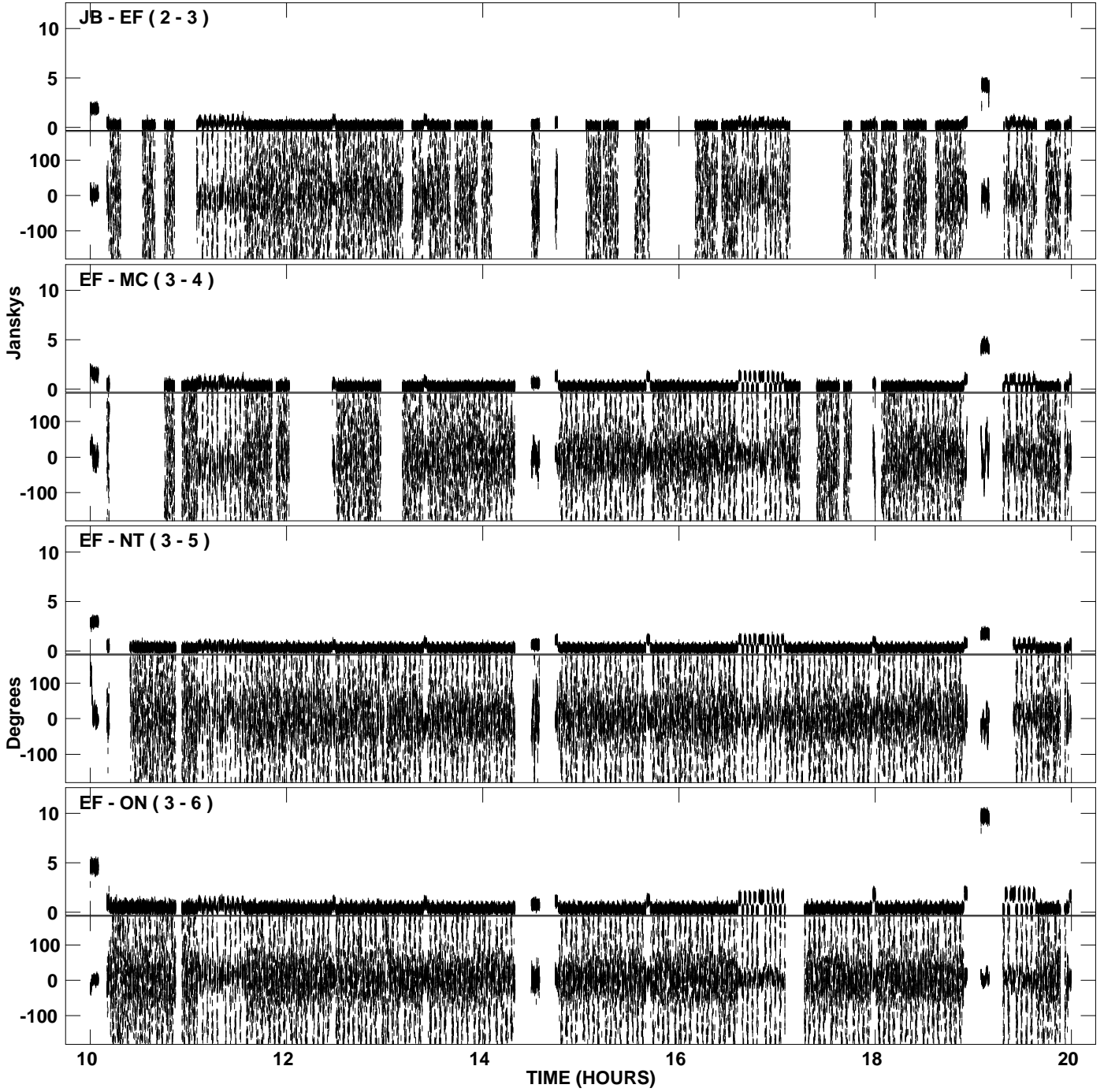
PLot file version 7 created 06-MAR-2009 19:12:34
Amplitude andPhase vs Time for EB037E 1.UVDATA.1 Vect aver. CL # 3
IF 4 CHAN 1 - 16 STK LL



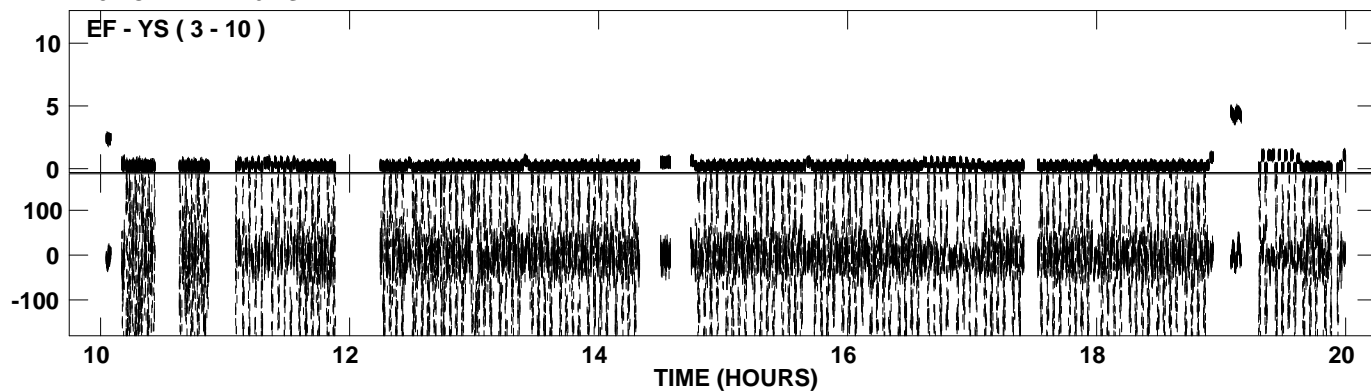
PLot file version 8 created 06-MAR-2009 19:12:34
Amplitude and Phase vs Time for EB037E 1.UVDATA.1 Vect aver. CL # 3
IF 4 CHAN 1 - 16 STK LL



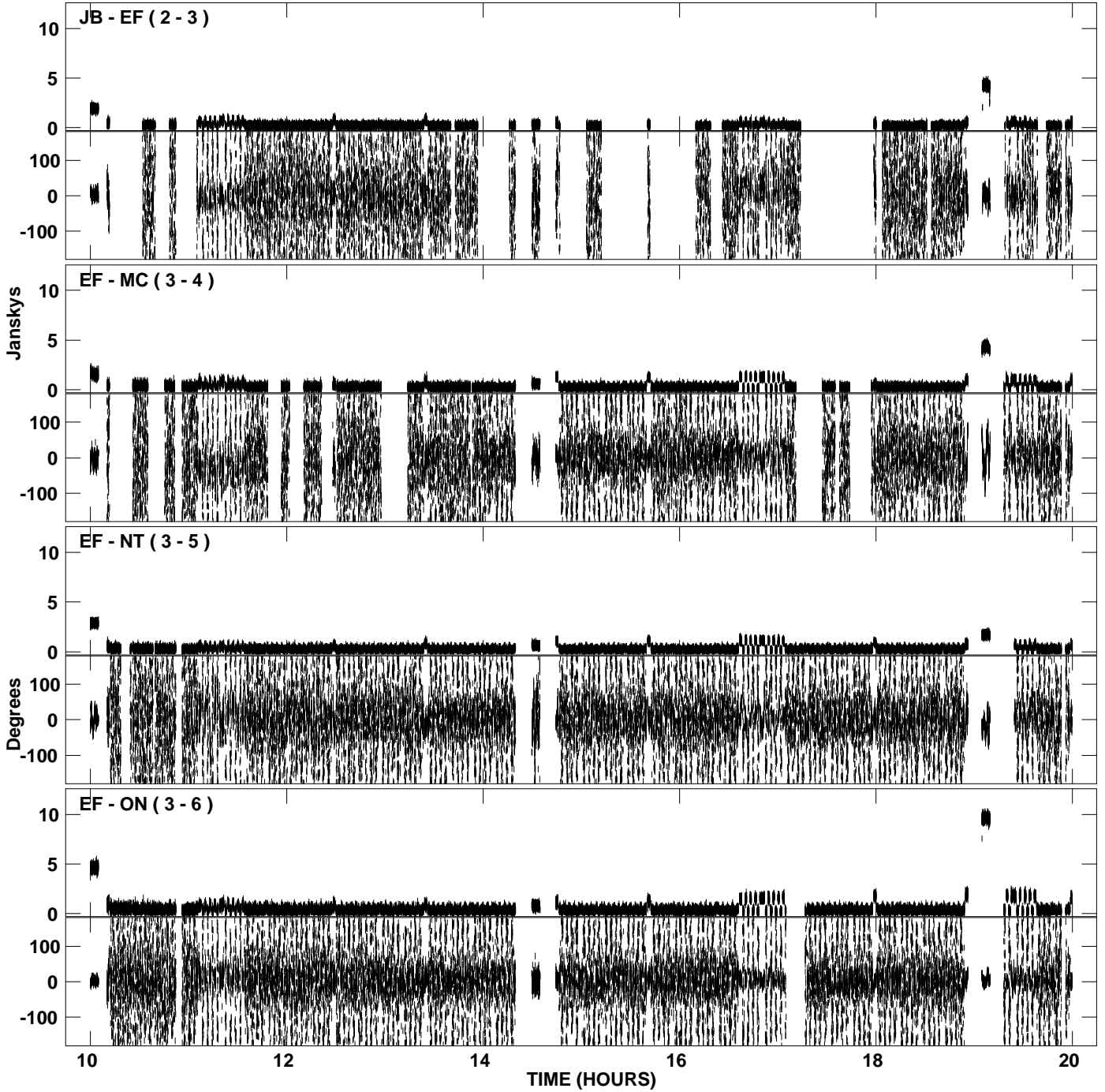
PLot file version 9 created 06-MAR-2009 19:12:45
Amplitude and Phase vs Time for EB037E 1.UVDATA.1 Vect aver. CL # 3
IF 5 CHAN 1 - 16 STK LL



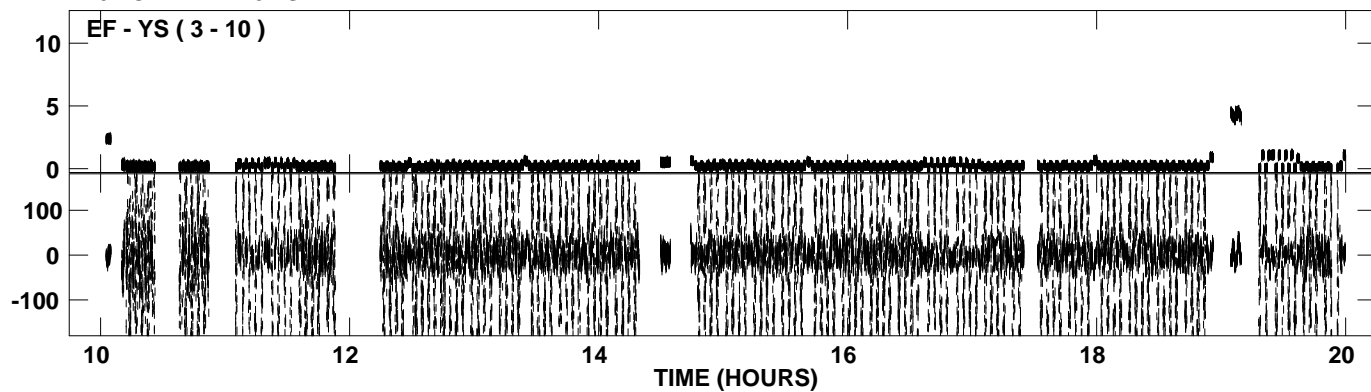
PLot file version 10 created 06-MAR-2009 19:12:45
Amplitude andPhase vs Time for EB037E 1.UVDATA.1 Vect aver. CL # 3
IF 5 CHAN 1 - 16 STK LL



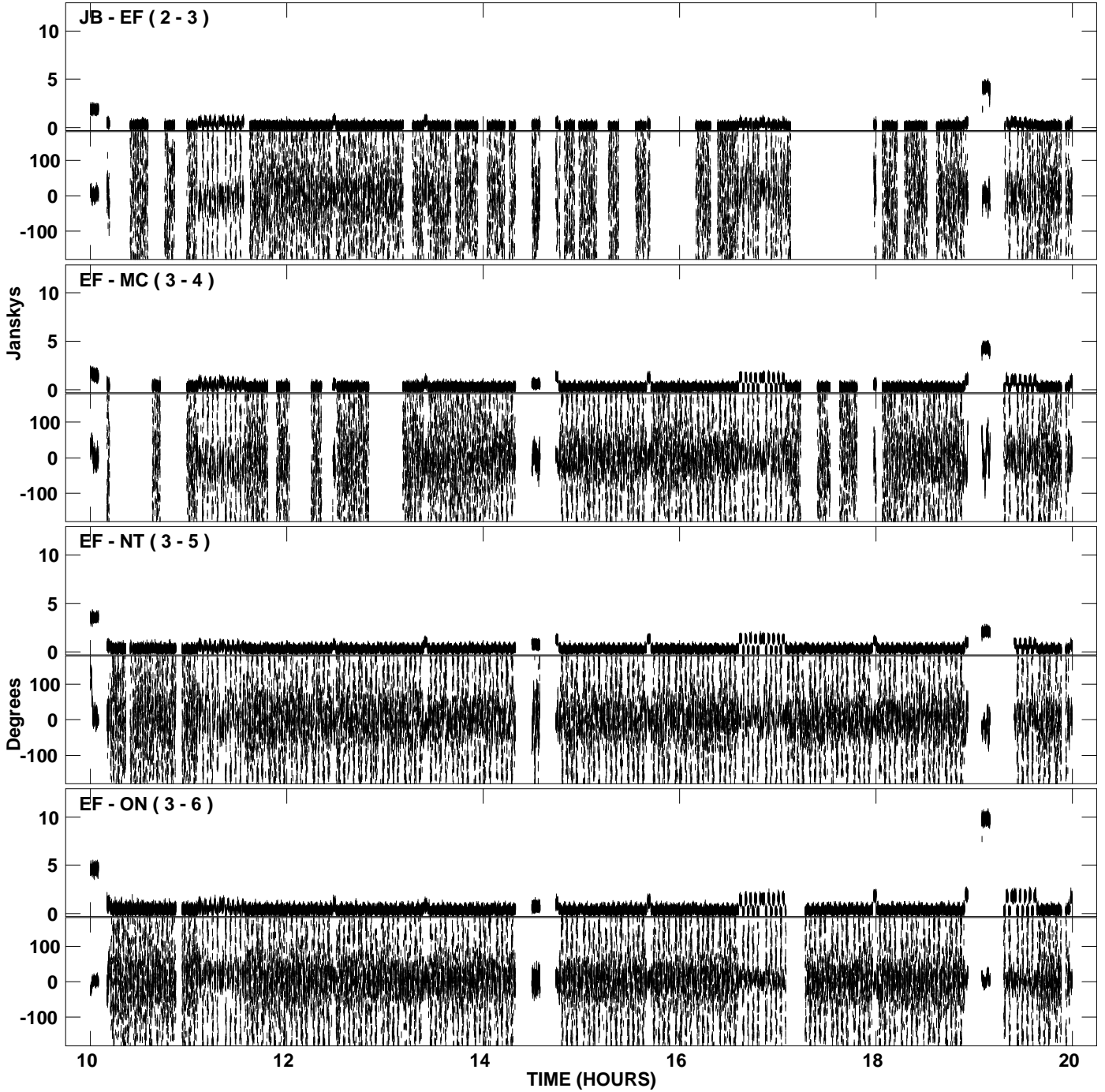
PLot file version 11 created 06-MAR-2009 19:12:57
Amplitude and Phase vs Time for EB037E 1.UVDATA.1 Vect aver. CL # 3
IF 6 CHAN 1 - 16 STK LL



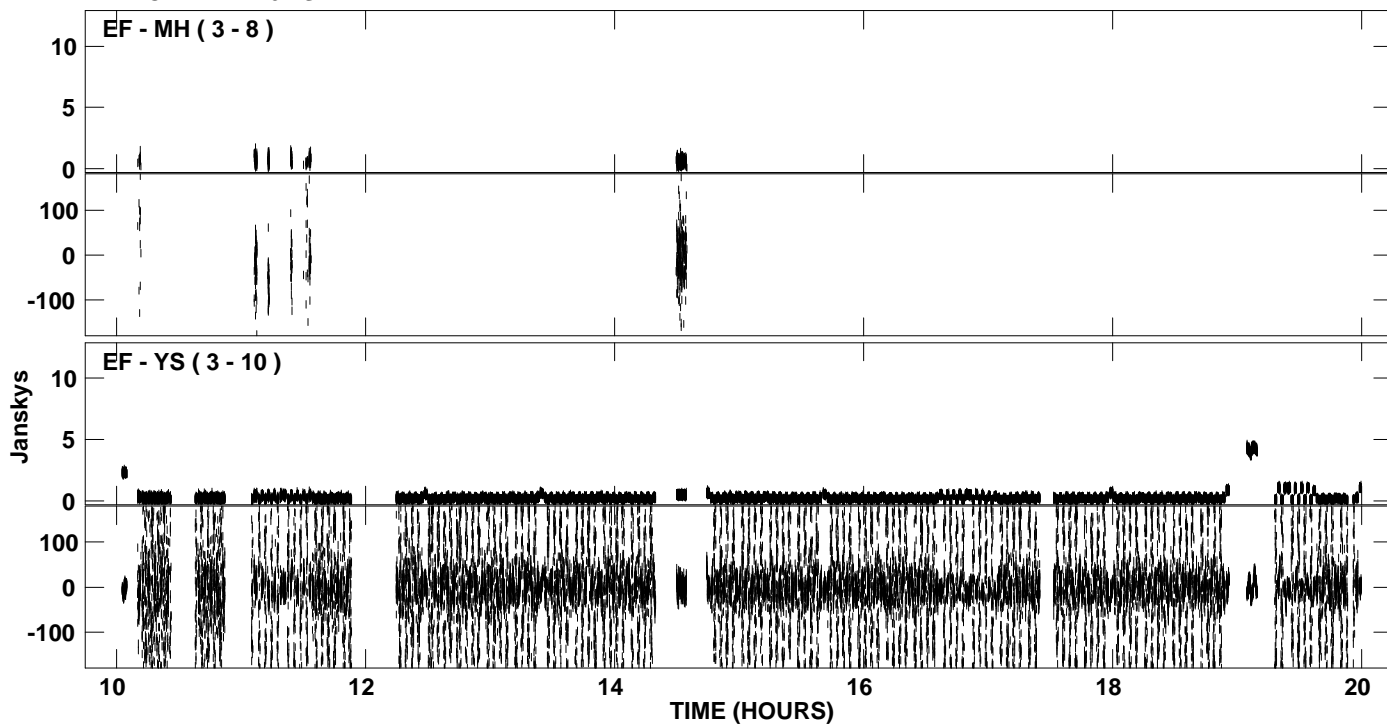
PLot file version 12 created 06-MAR-2009 19:12:57
Amplitude andPhase vs Time for EB037E 1.UVDATA.1 Vect aver. CL # 3
IF 6 CHAN 1 - 16 STK LL



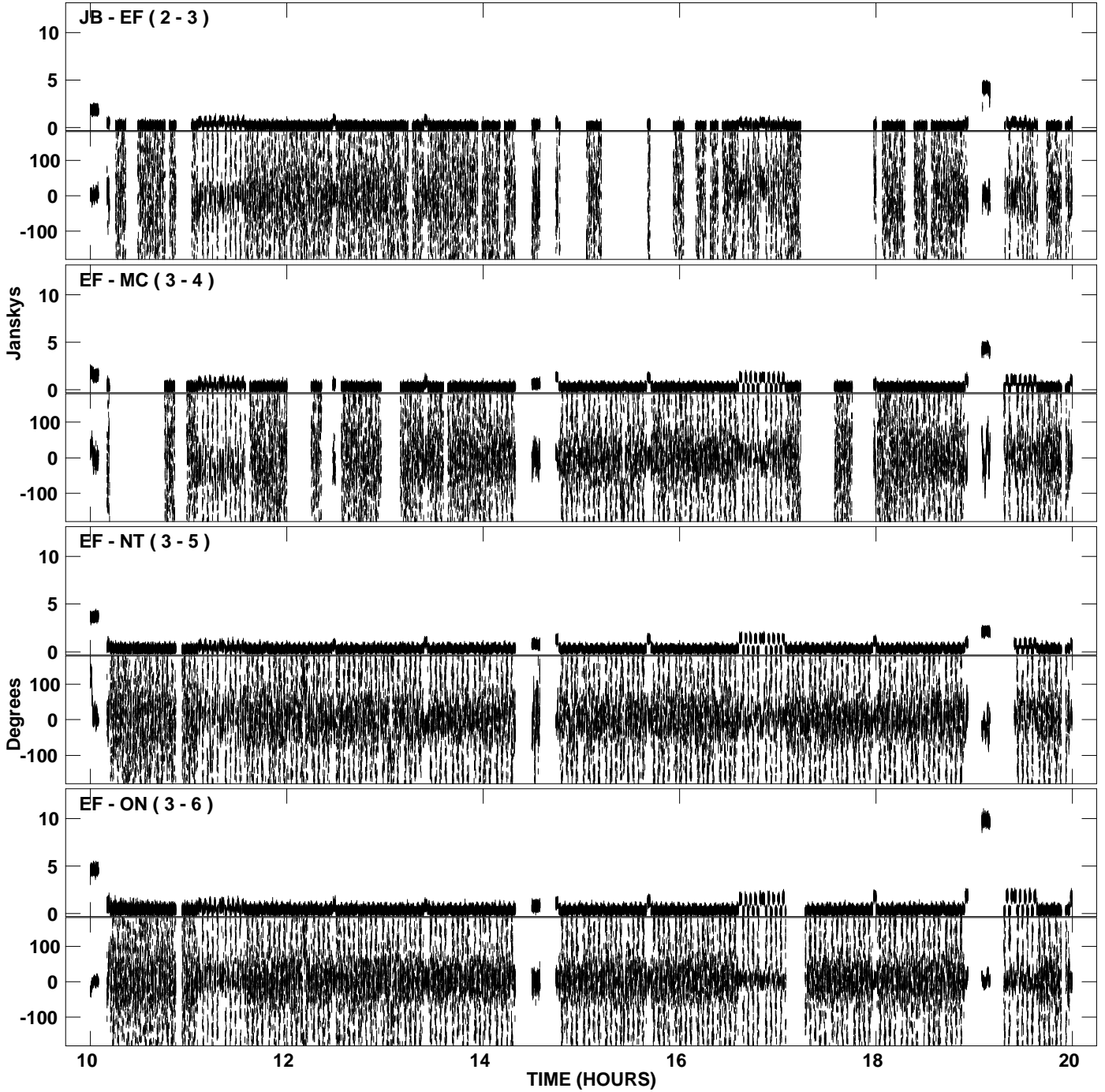
PLot file version 13 created 06-MAR-2009 19:13:08
Amplitude andPhase vs Time for EB037E 1.UVDATA.1 Vect aver. CL # 3
IF 7 CHAN 1 - 16 STK LL



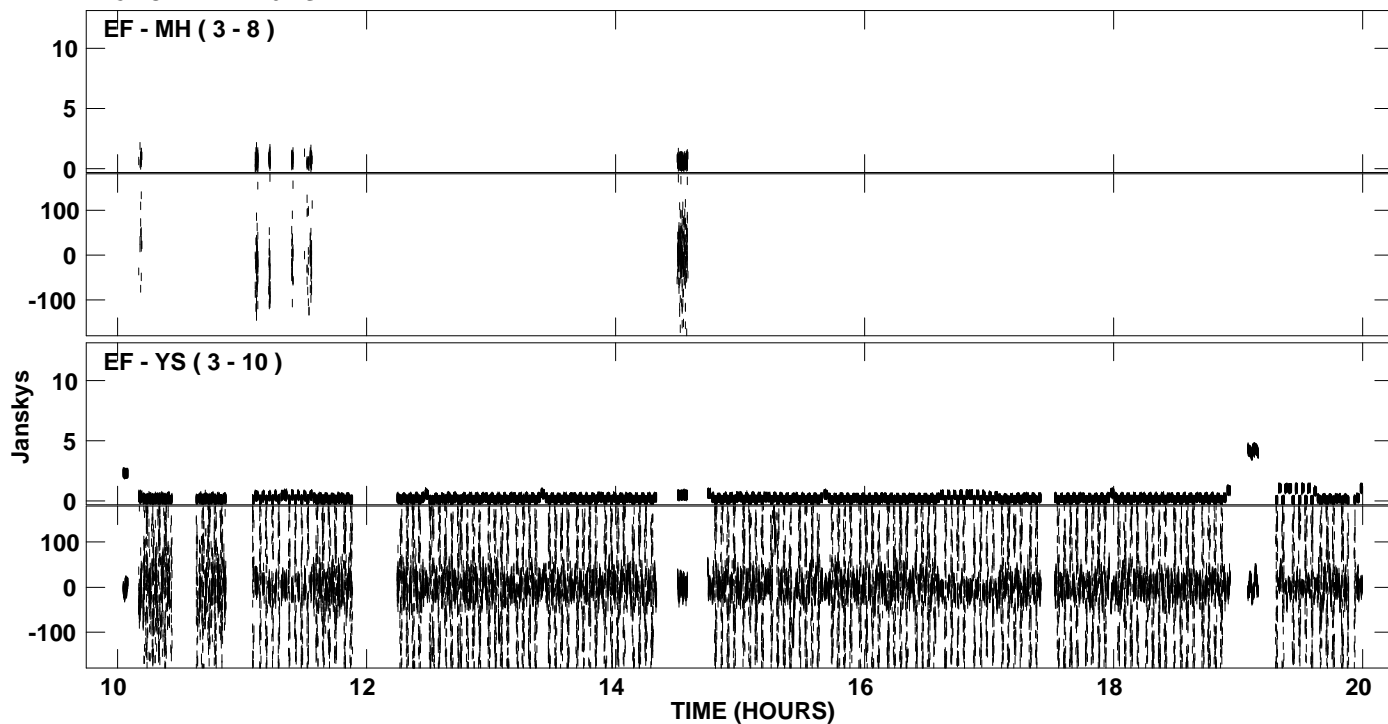
PLot file version 14 created 06-MAR-2009 19:13:08
Amplitude andPhase vs Time for EB037E 1.UVDATA.1 Vect aver. CL # 3
IF 7 CHAN 1 - 16 STK LL



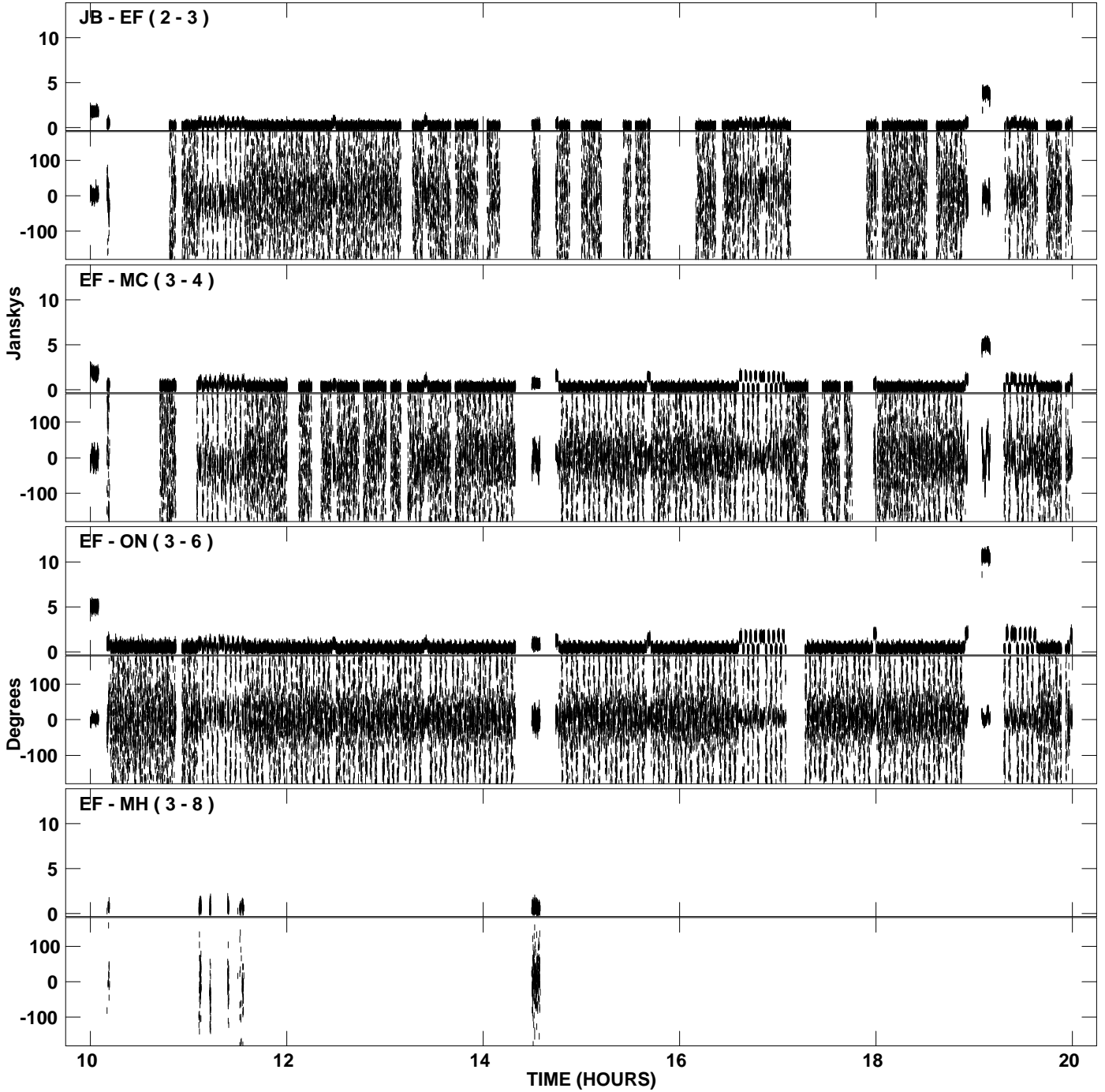
PLot file version 15 created 06-MAR-2009 19:13:19
Amplitude andPhase vs Time for EB037E 1.UVDATA.1 Vect aver. CL # 3
IF 8 CHAN 1 - 16 STK LL



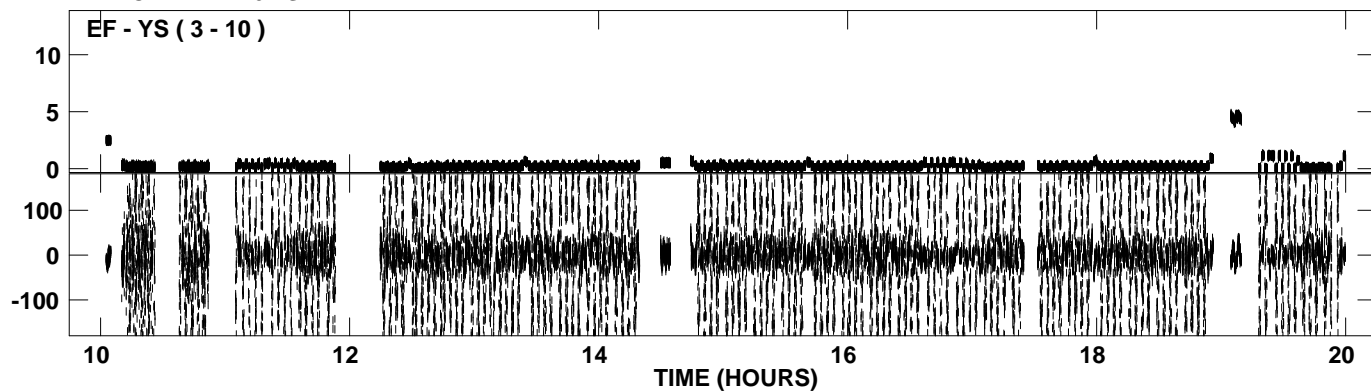
PLot file version 16 created 06-MAR-2009 19:13:19
Amplitude andPhase vs Time for EB037E 1.UVDATA.1 Vect aver. CL # 3
IF 8 CHAN 1 - 16 STK LL



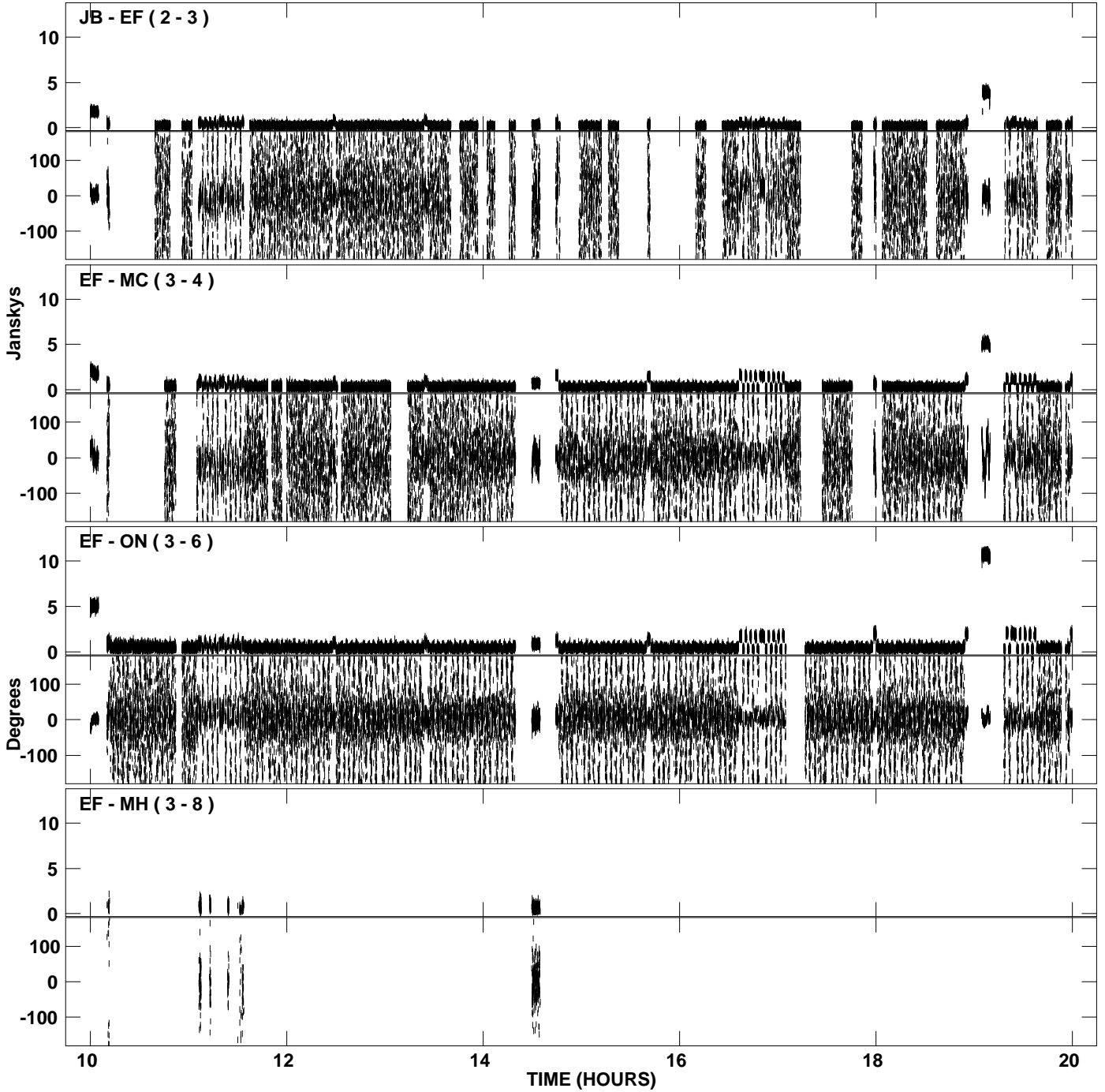
PLot file version 17 created 06-MAR-2009 19:13:29
Amplitude andPhase vs Time for EB037E 1.UVDATA.1 Vect aver. CL # 3
IF 1 CHAN 1 - 16 STK RR



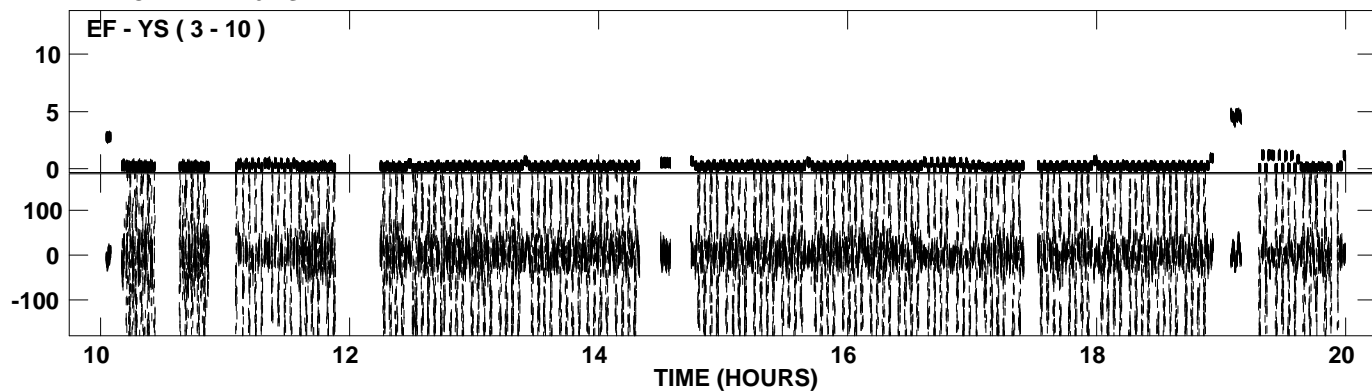
PLot file version 18 created 06-MAR-2009 19:13:29
Amplitude andPhase vs Time for EB037E 1.UVDATA.1 Vect aver. CL # 3
IF 1 CHAN 1 - 16 STK RR



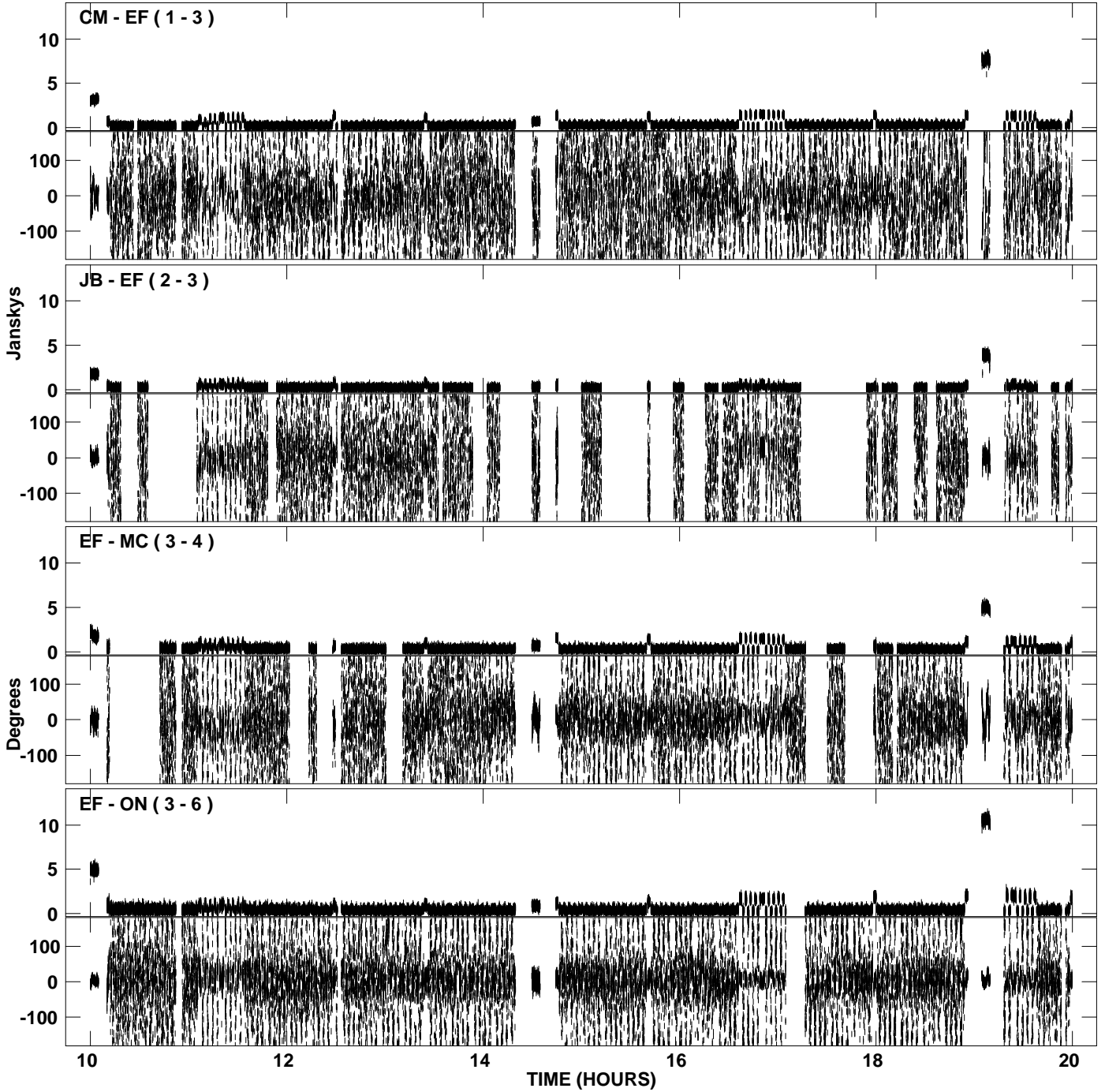
PLot file version 19 created 06-MAR-2009 19:13:38
Amplitude andPhase vs Time for EB037E 1.UVDATA.1 Vect aver. CL # 3
IF 2 CHAN 1 - 16 STK RR



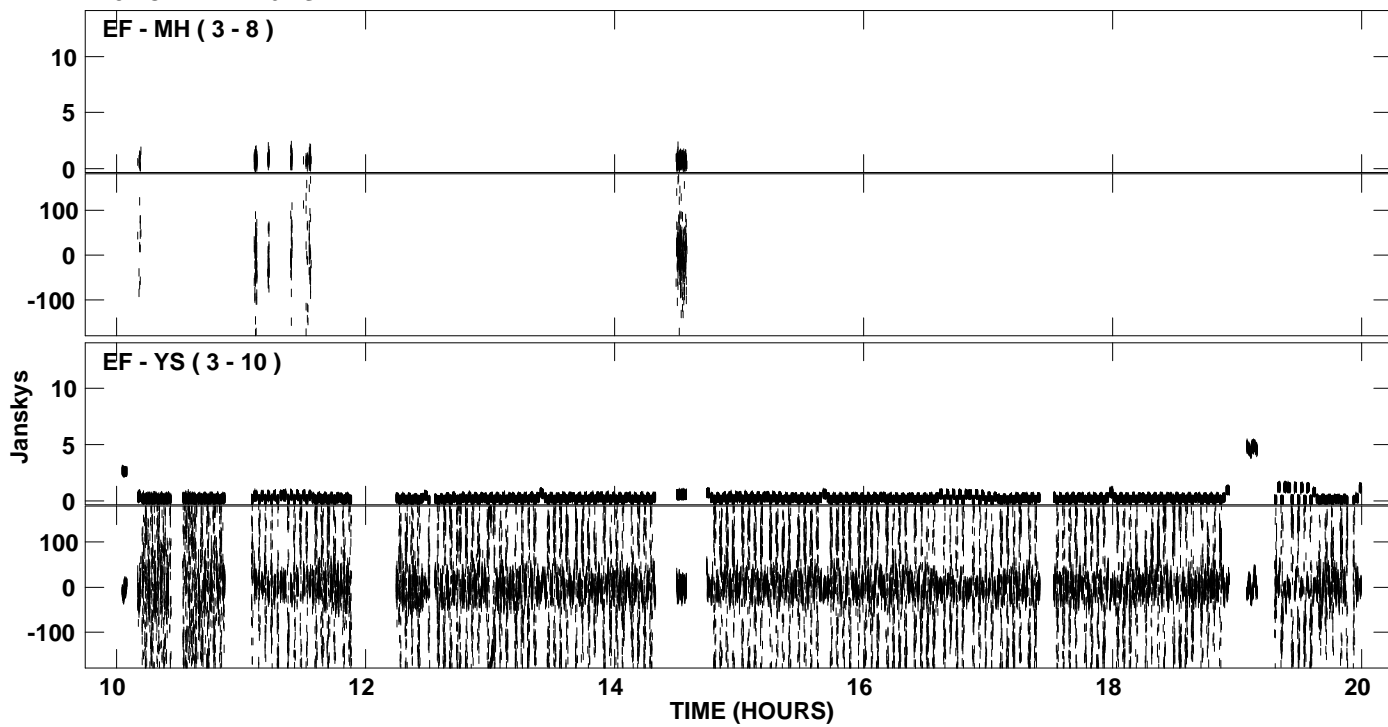
PLot file version 20 created 06-MAR-2009 19:13:38
Amplitude andPhase vs Time for EB037E 1.UVDATA.1 Vect aver. CL # 3
IF 2 CHAN 1 - 16 STK RR



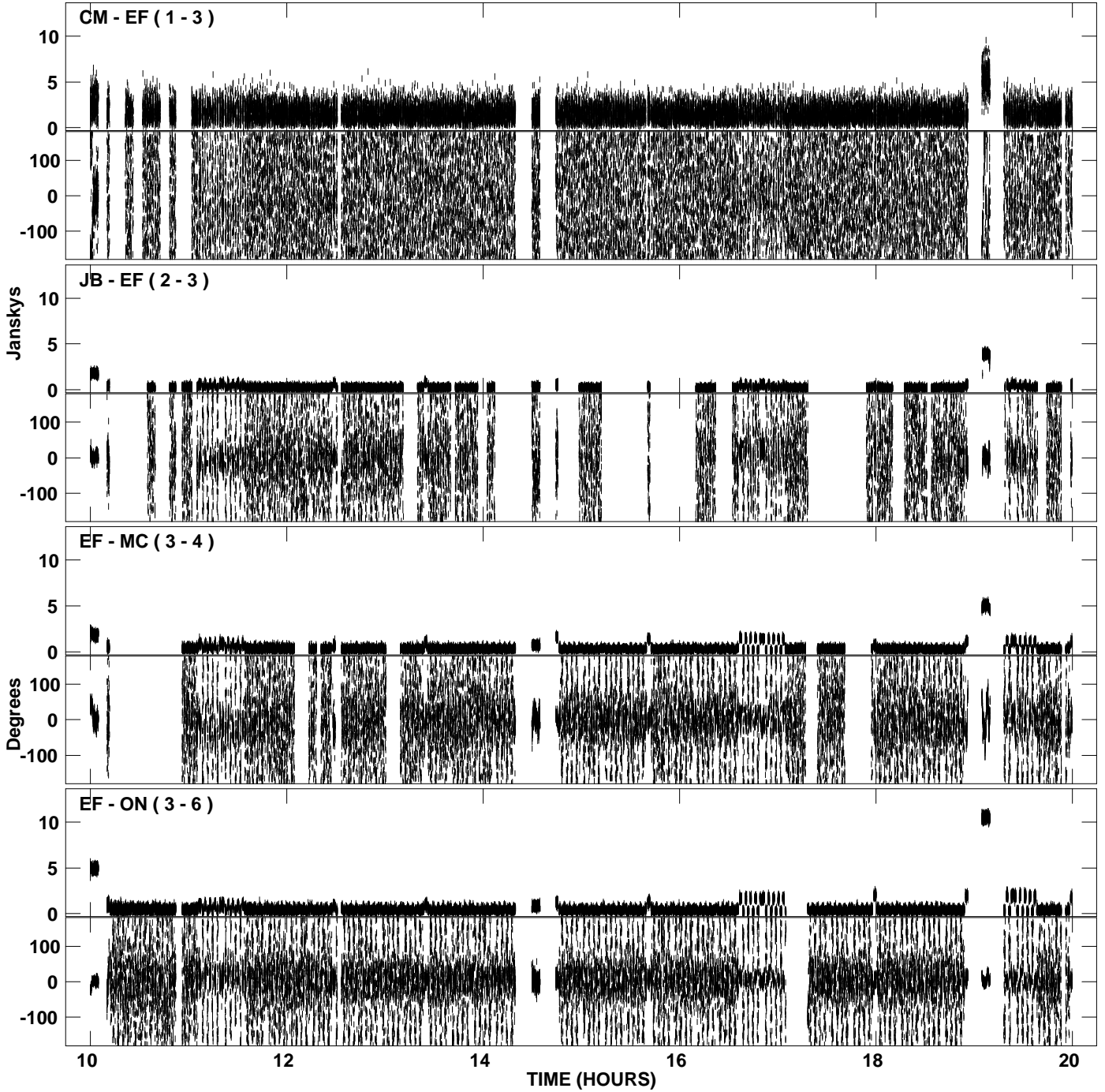
PLot file version 21 created 06-MAR-2009 19:13:48
Amplitude andPhase vs Time for EB037E 1.UVDATA.1 Vect aver. CL # 3
IF 3 CHAN 1 - 16 STK RR



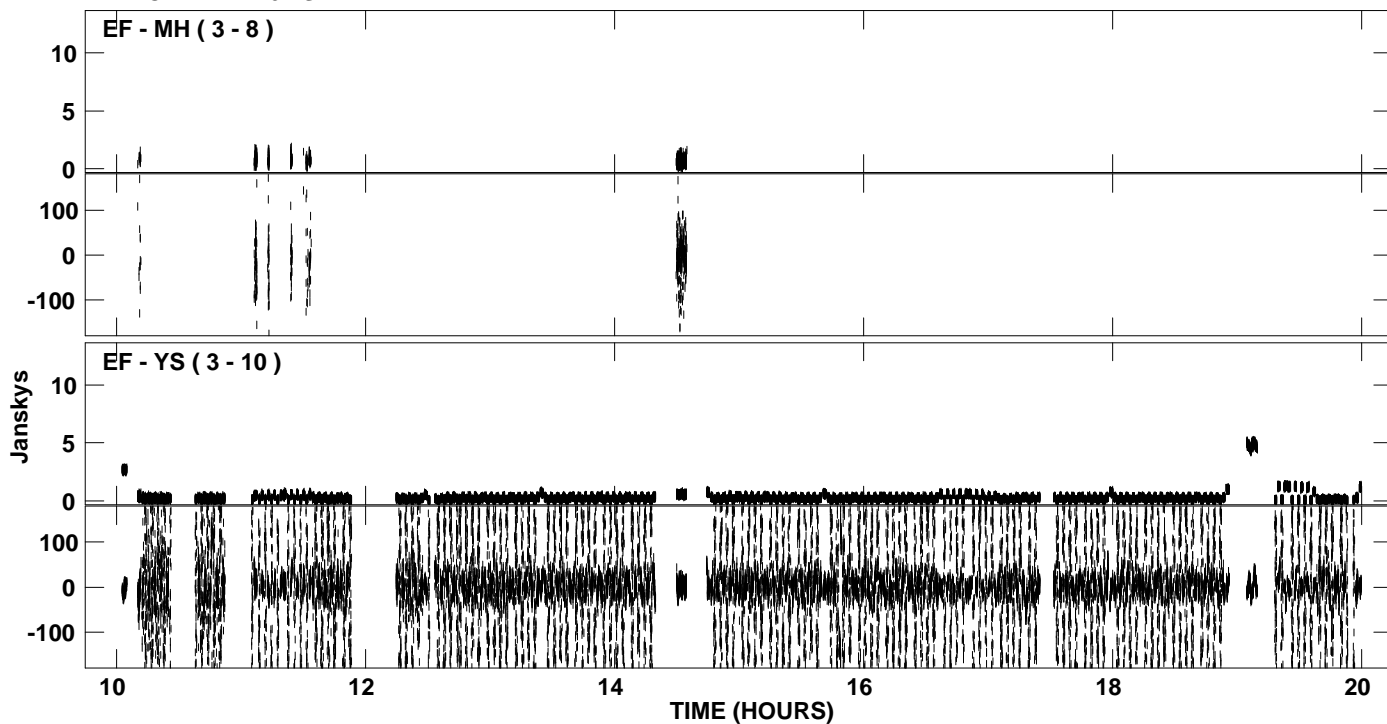
PLot file version 22 created 06-MAR-2009 19:13:48
Amplitude andPhase vs Time for EB037E 1.UVDATA.1 Vect aver. CL # 3
IF 3 CHAN 1 - 16 STK RR



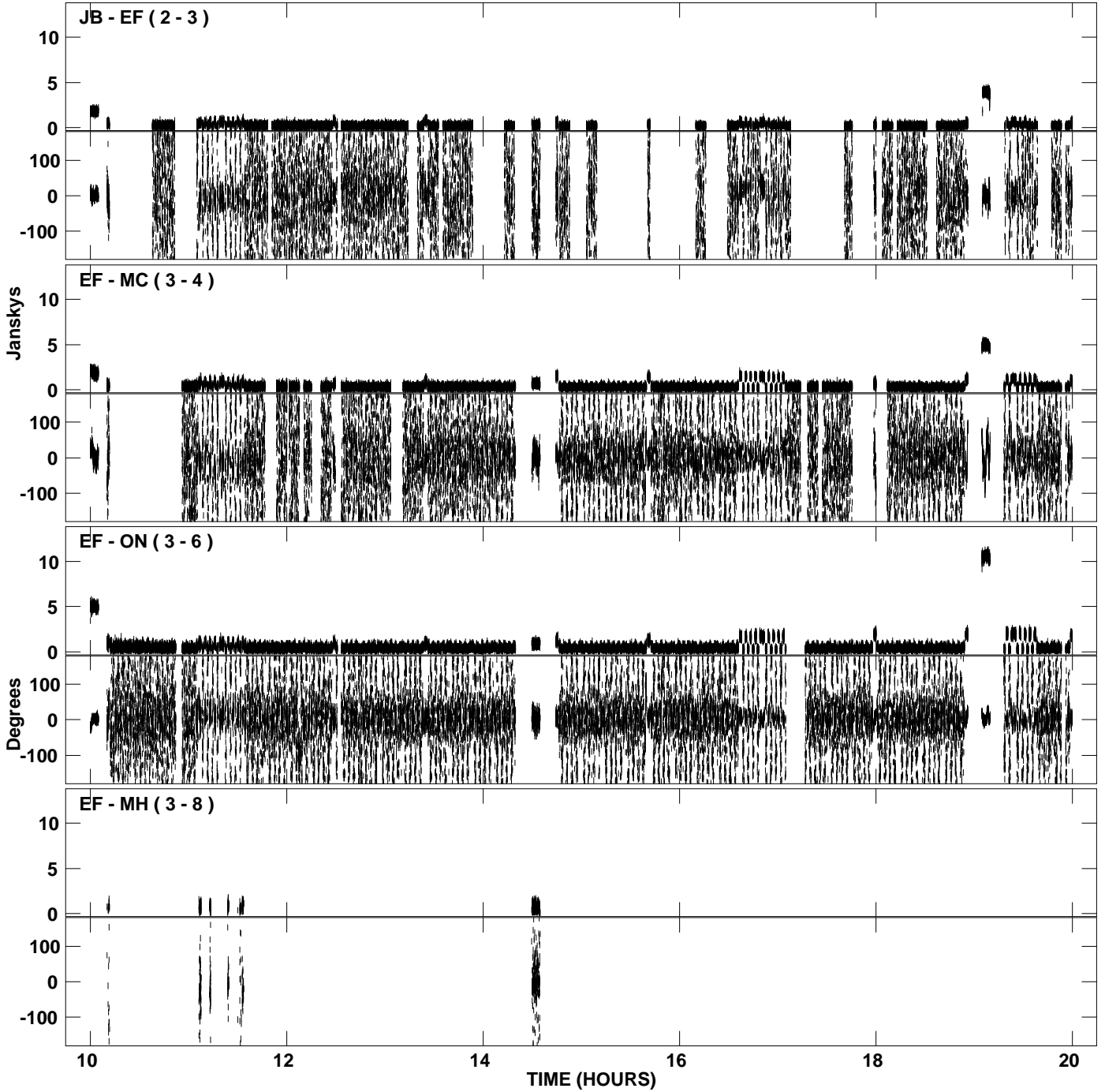
PLot file version 23 created 06-MAR-2009 19:13:58
Amplitude and Phase vs Time for EB037E 1.UVDATA.1 Vect aver. CL # 3
IF 4 CHAN 1 - 16 STK RR



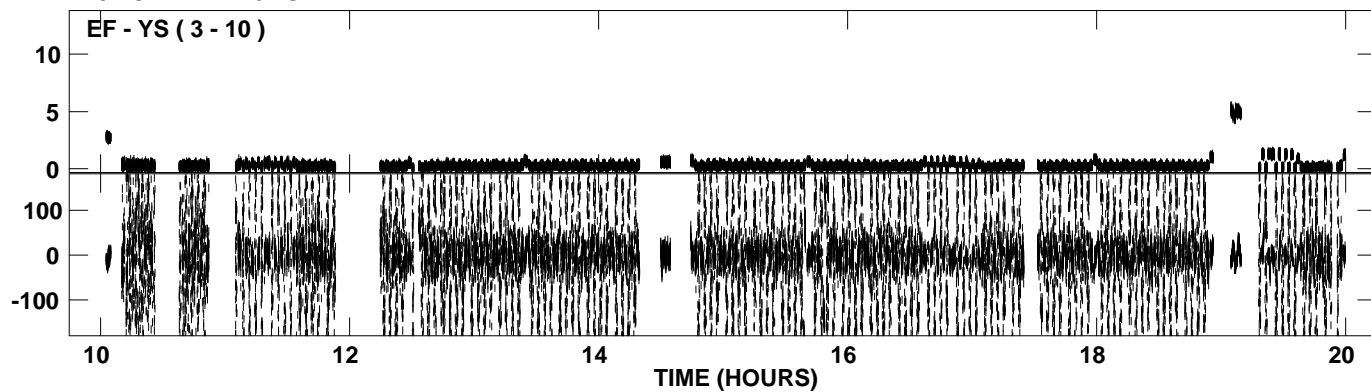
PLot file version 24 created 06-MAR-2009 19:13:58
Amplitude andPhase vs Time for EB037E 1.UVDATA.1 Vect aver. CL # 3
IF 4 CHAN 1 - 16 STK RR



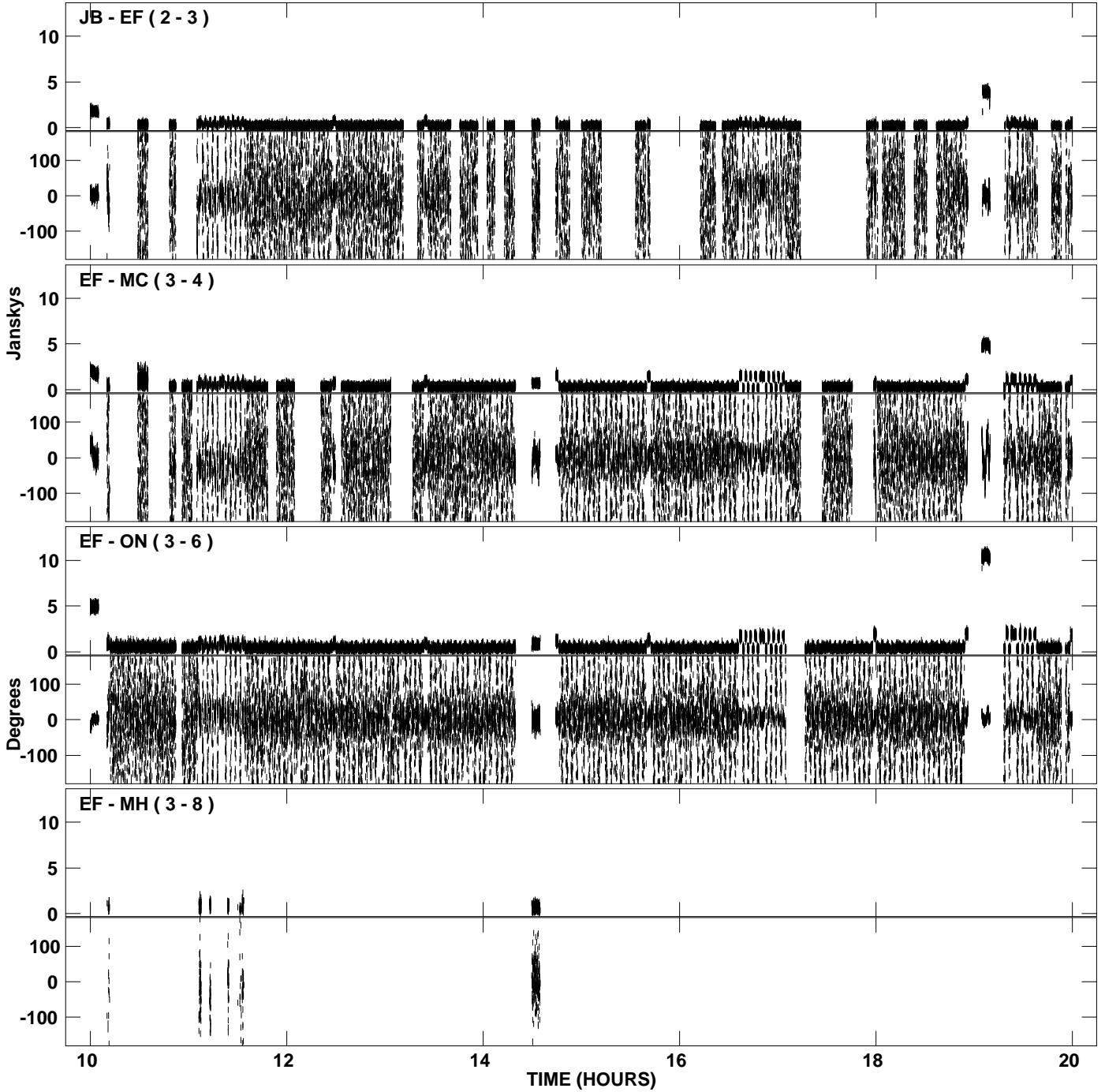
PLot file version 25 created 06-MAR-2009 19:14:08
Amplitude andPhase vs Time for EB037E 1.UVDATA.1 Vect aver. CL # 3
IF 5 CHAN 1 - 16 STK RR



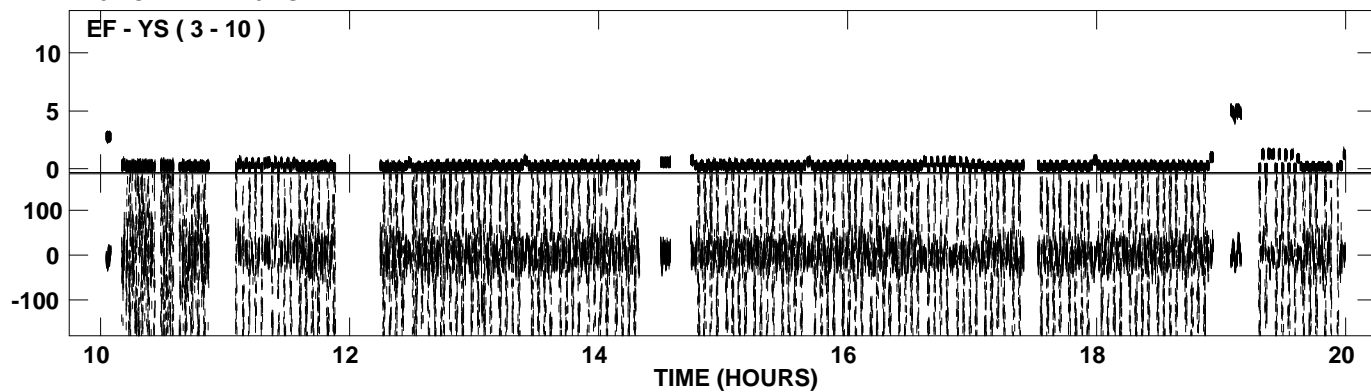
PLot file version 26 created 06-MAR-2009 19:14:08
Amplitude andPhase vs Time for EB037E 1.UVDATA.1 Vect aver. CL # 3
IF 5 CHAN 1 - 16 STK RR



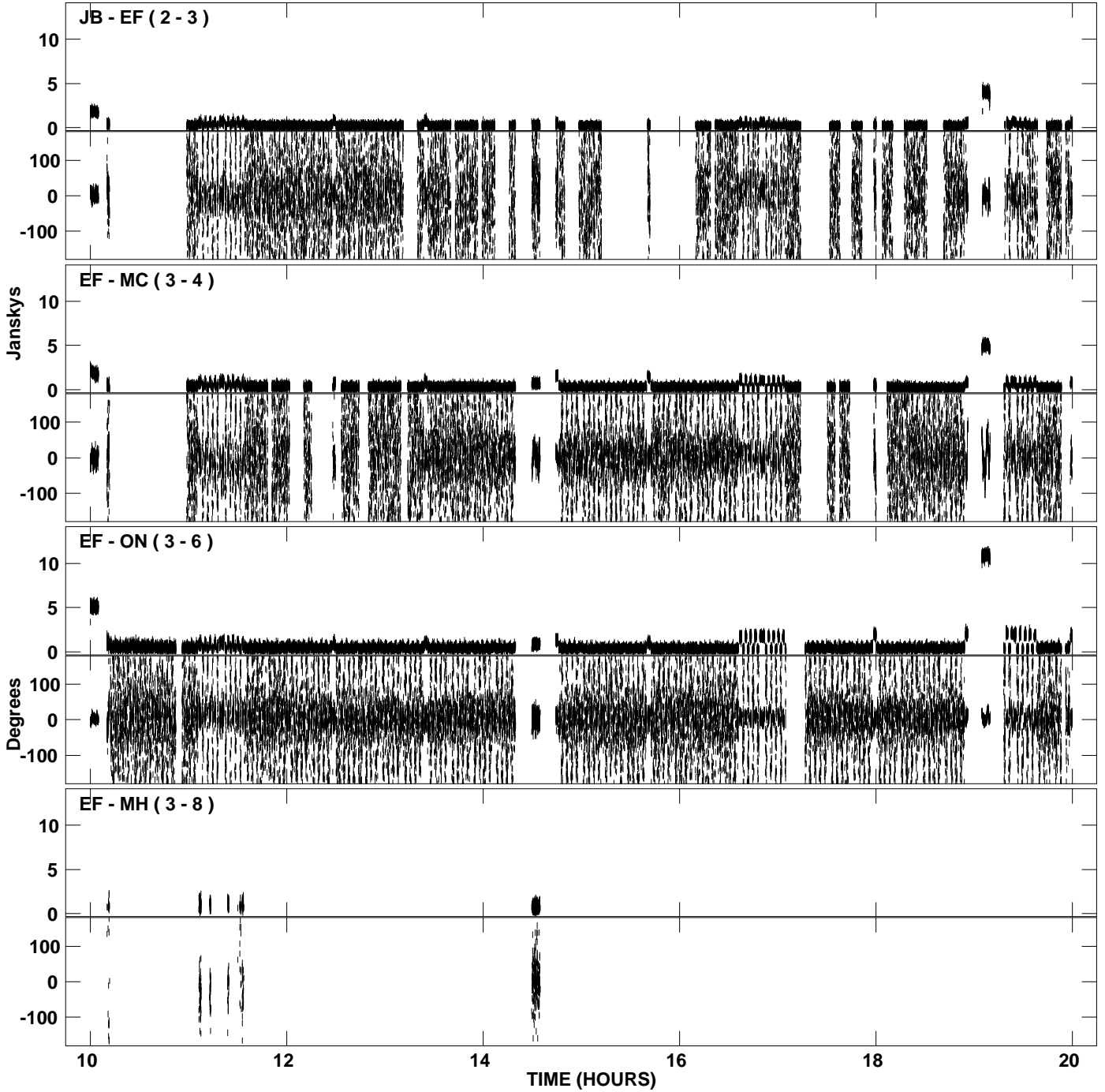
PLot file version 27 created 06-MAR-2009 19:14:18
Amplitude andPhase vs Time for EB037E 1.UVDATA.1 Vect aver. CL # 3
IF 6 CHAN 1 - 16 STK RR



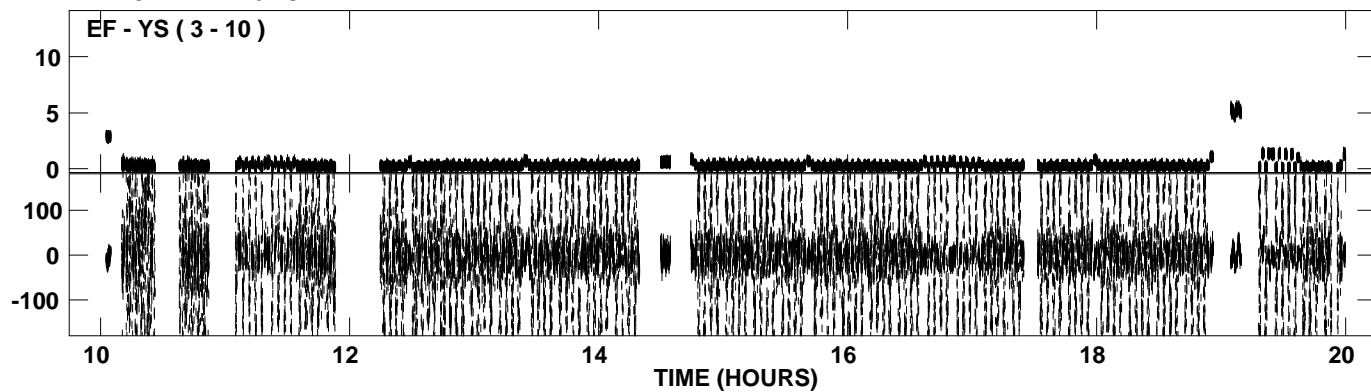
PLot file version 28 created 06-MAR-2009 19:14:18
Amplitude andPhase vs Time for EB037E 1.UVDATA.1 Vect aver. CL # 3
IF 6 CHAN 1 - 16 STK RR



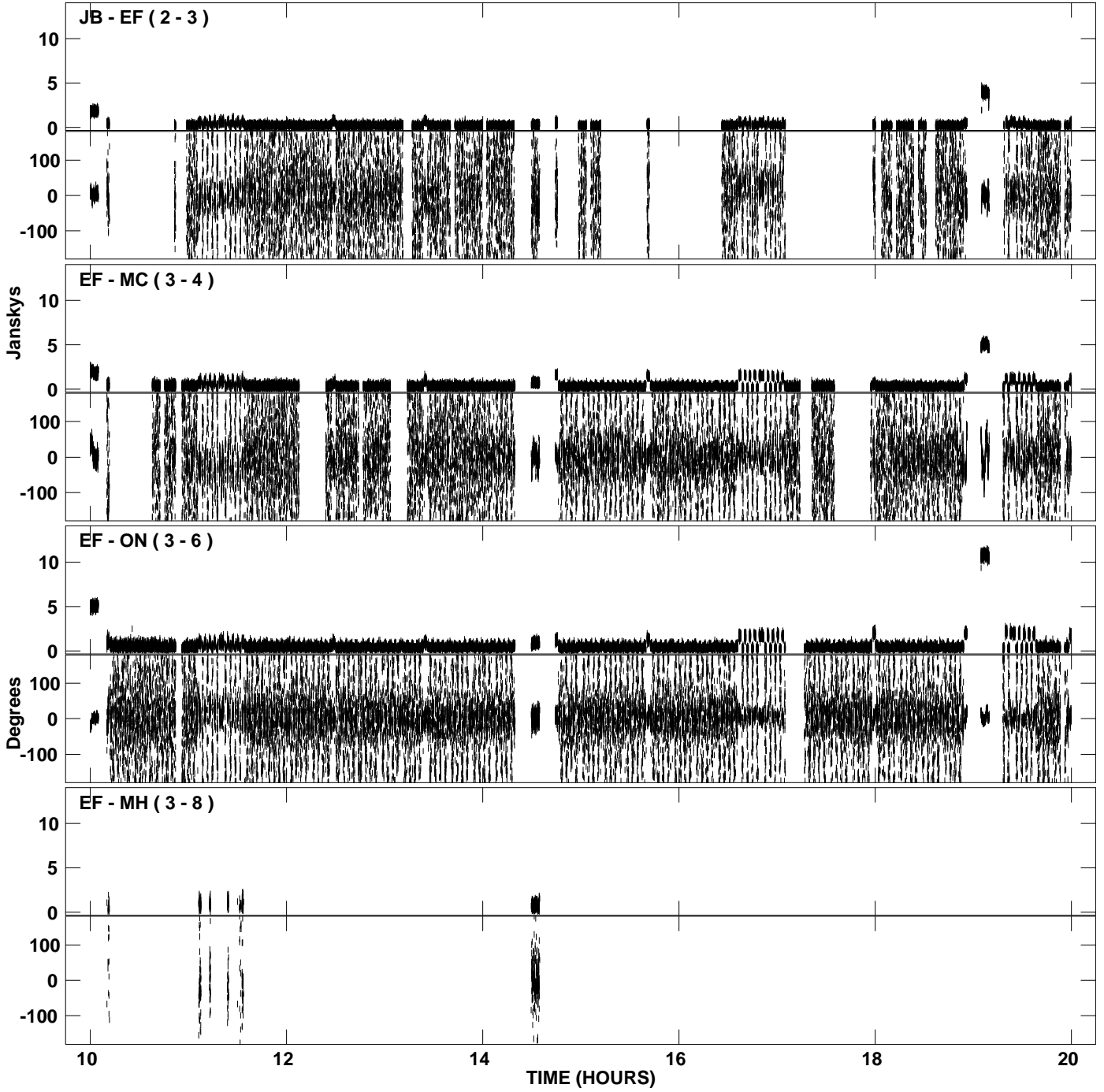
PLot file version 29 created 06-MAR-2009 19:14:27
Amplitude andPhase vs Time for EB037E 1.UVDATA.1 Vect aver. CL # 3
IF 7 CHAN 1 - 16 STK RR



PLot file version 30 created 06-MAR-2009 19:14:27
Amplitude andPhase vs Time for EB037E 1.UVDATA.1 Vect aver. CL # 3
IF 7 CHAN 1 - 16 STK RR



PLot file version 31 created 06-MAR-2009 19:14:37
Amplitude andPhase vs Time for EB037E 1.UVDATA.1 Vect aver. CL # 3
IF 8 CHAN 1 - 16 STK RR



PLot file version 32 created 06-MAR-2009 19:14:37
Amplitude andPhase vs Time for EB037E 1.UVDATA.1 Vect aver. CL # 3
IF 8 CHAN 1 - 16 STK RR

