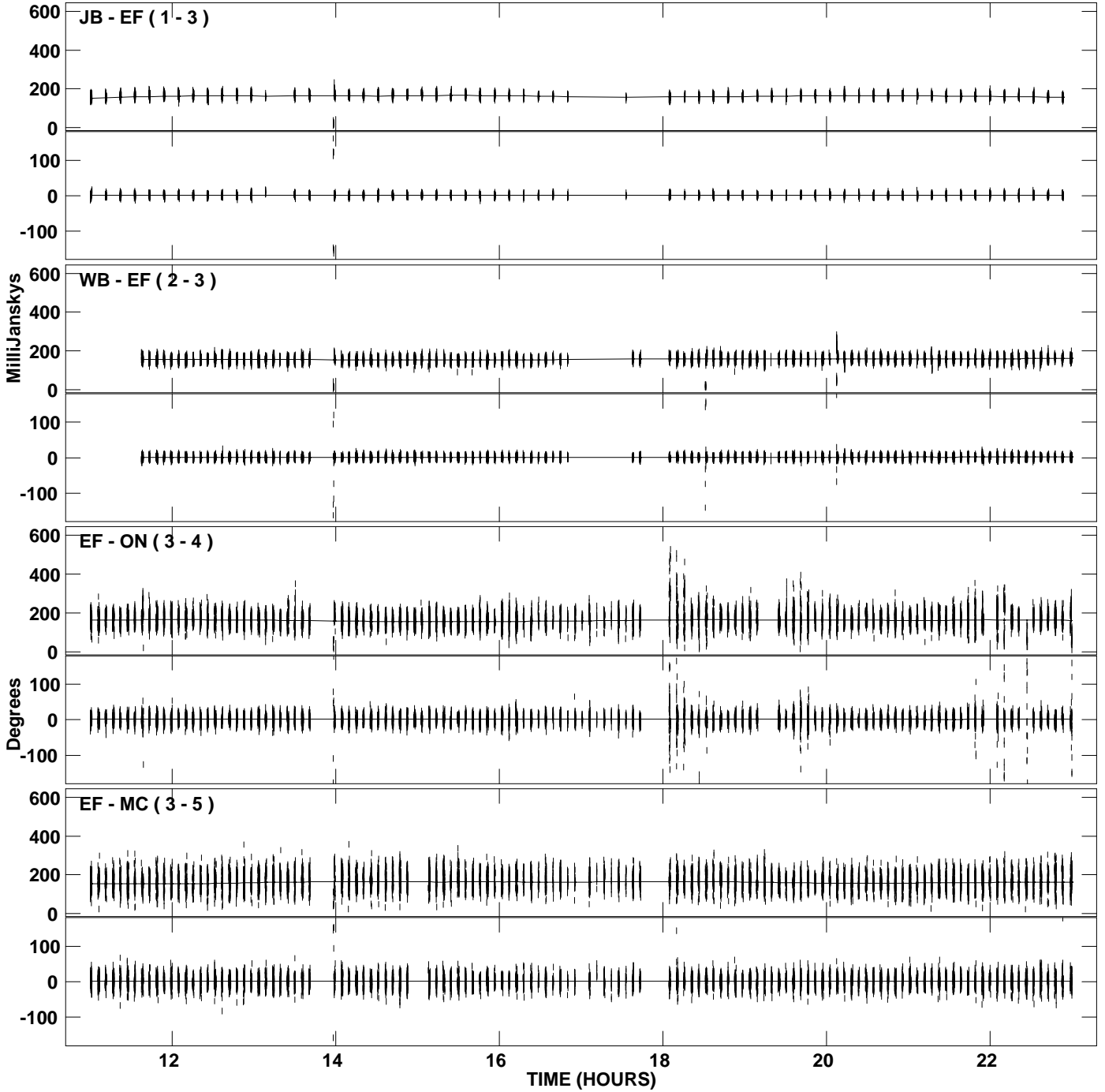
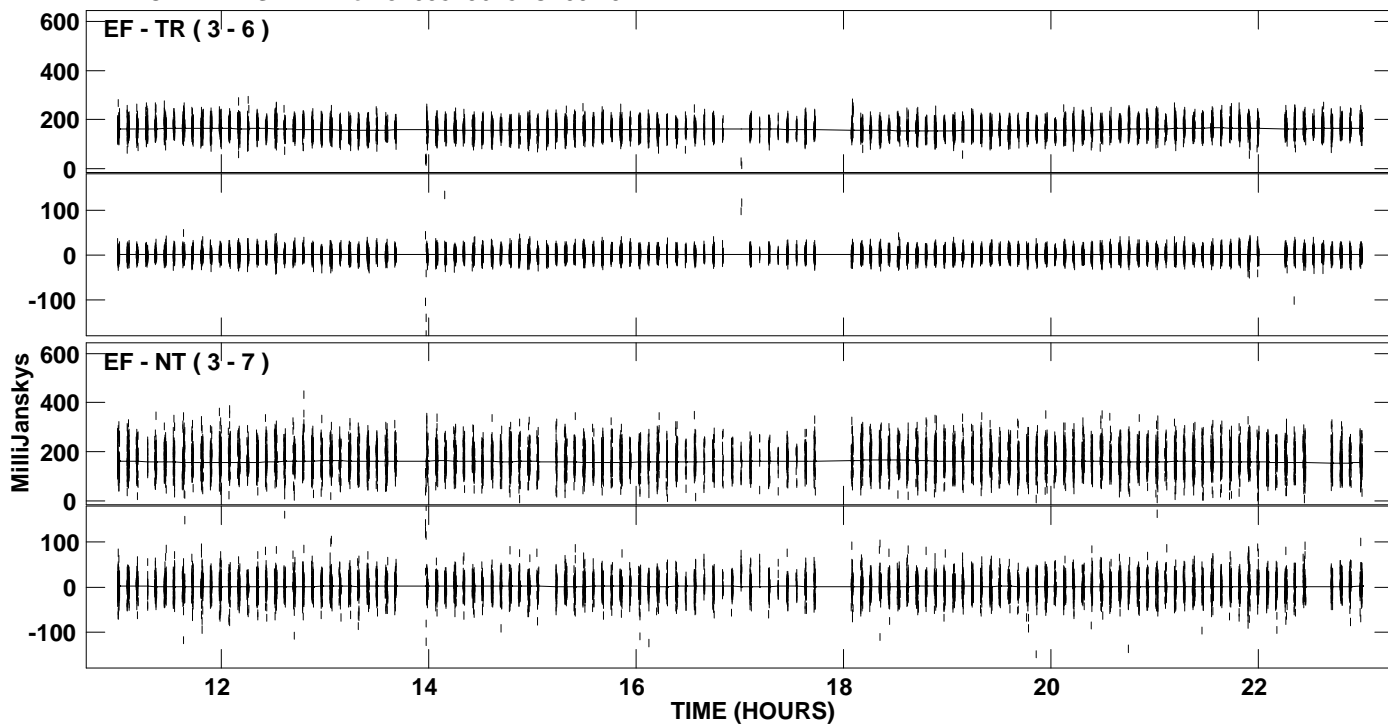


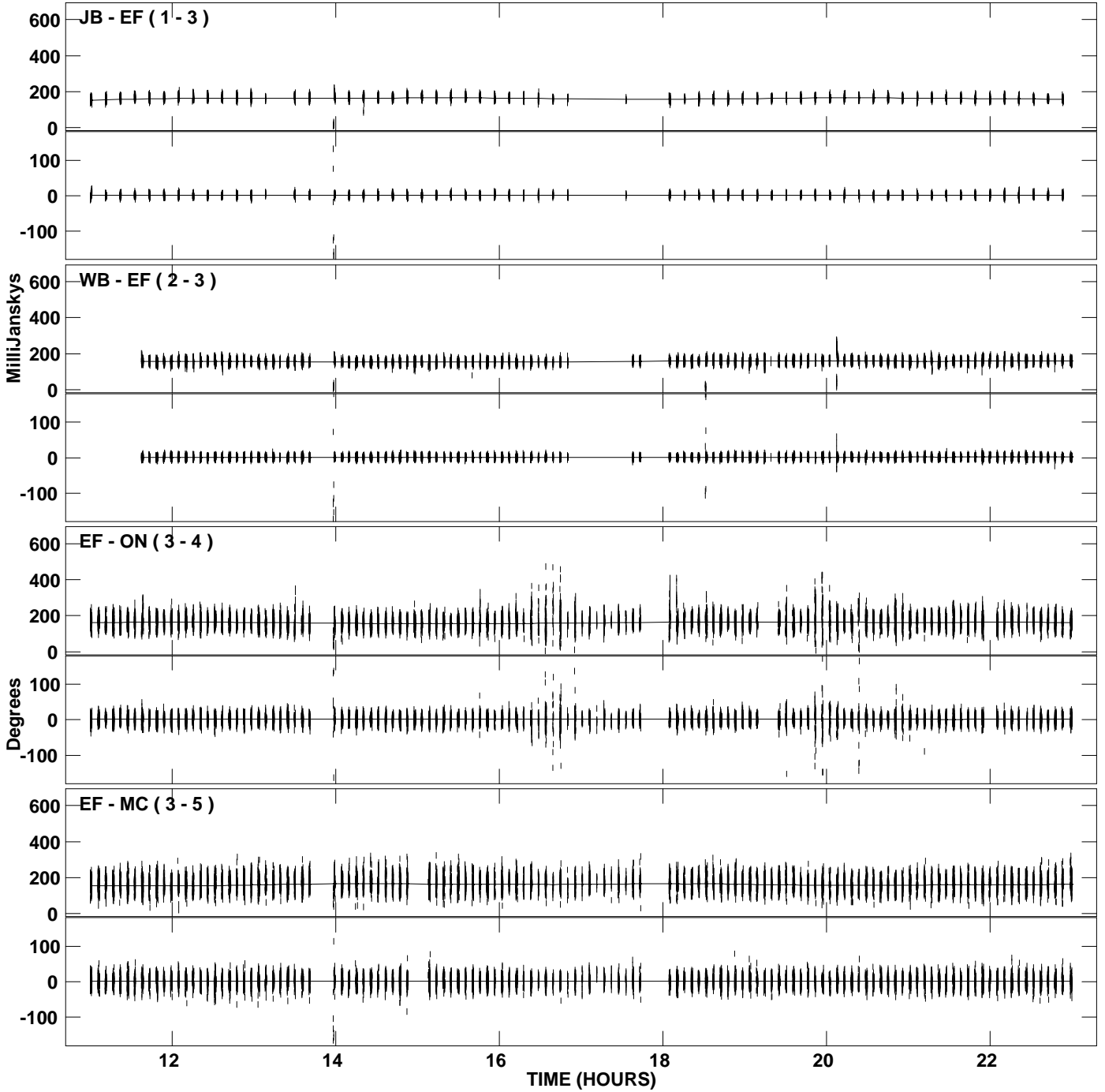
PLot file version 1 created 14-AUG-2008 15:23:31  
Amplitude andPhase vs Time for J1058+5628.MULTI.1 CL # 3  
IF 1 CHAN 1 STK LL of J1058+5628.ICL001.3



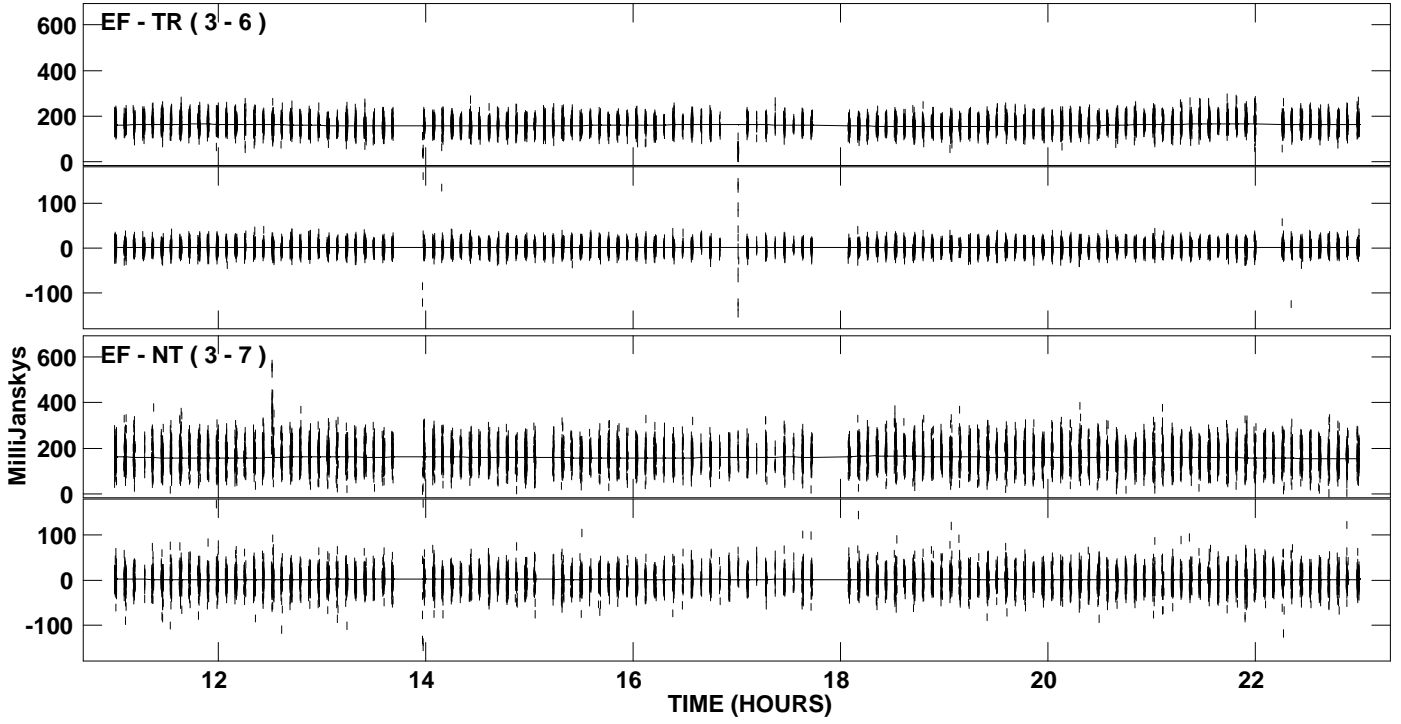
PLot file version 2 created 14-AUG-2008 15:23:31  
Amplitude andPhase vs Time for J1058+5628.MULTI.1 CL # 3  
IF 1 CHAN 1 STK LL of J1058+5628.ICL001.3



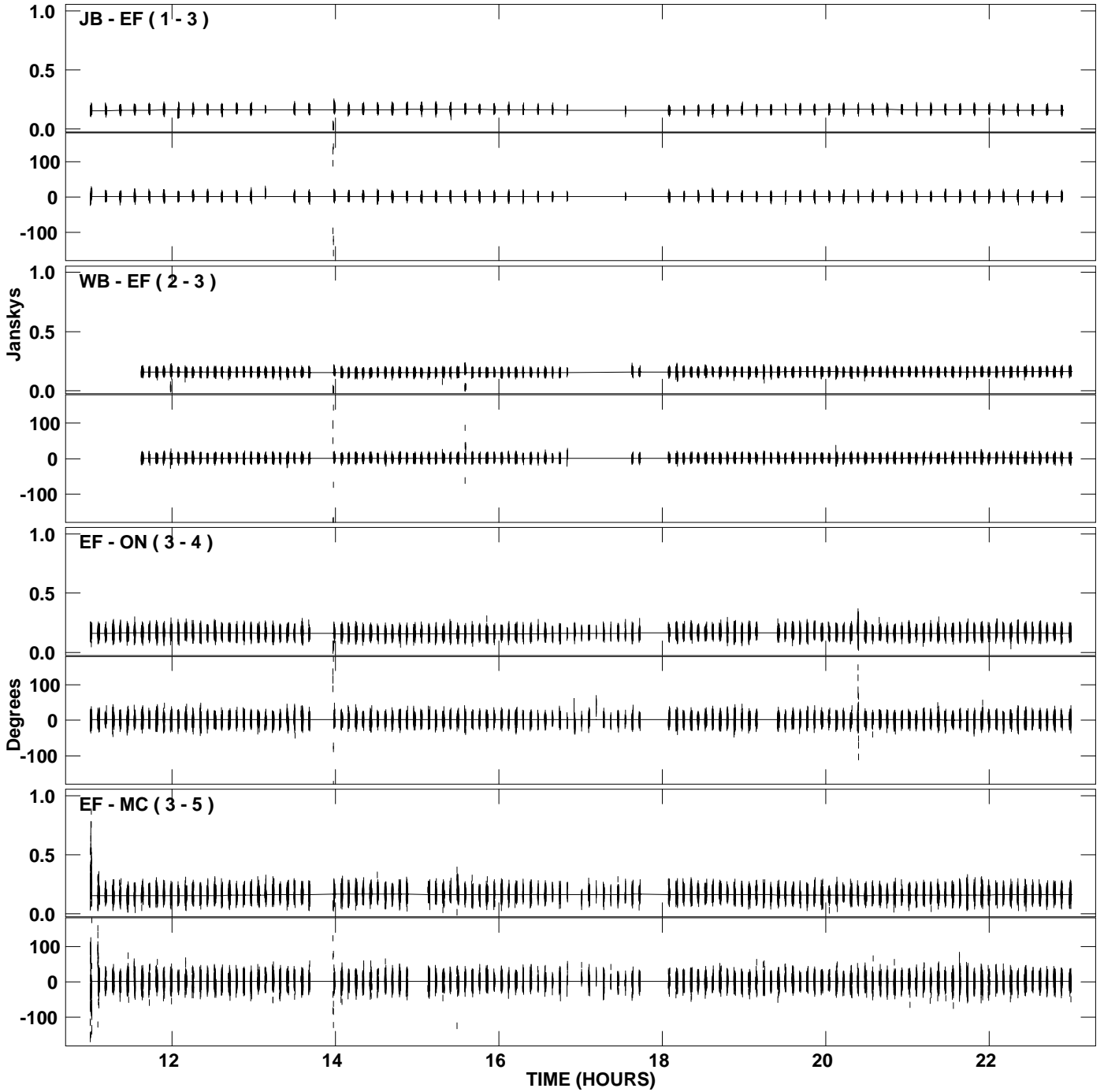
PLot file version 3 created 14-AUG-2008 15:23:32  
Amplitude andPhase vs Time for J1058+5628.MULTI.1 CL # 3  
IF 2 CHAN 1 STK LL of J1058+5628.ICL001.3



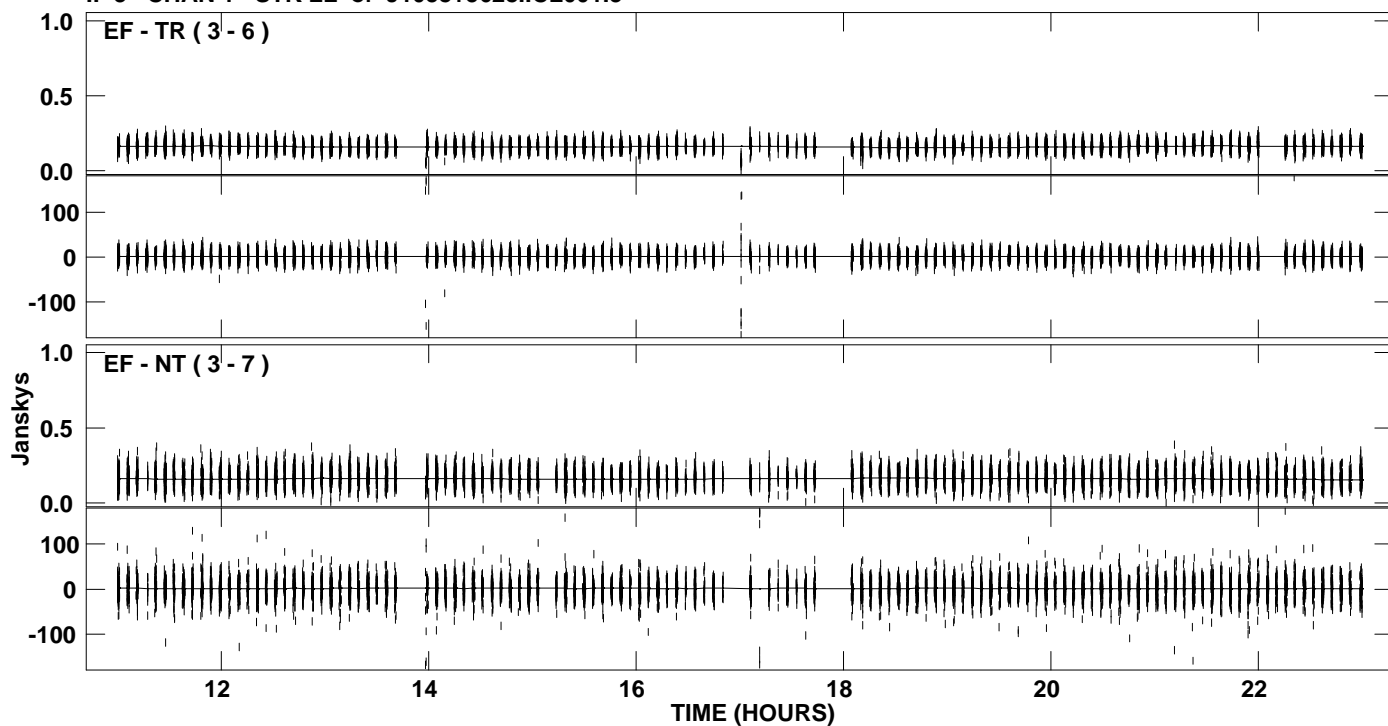
PLot file version 4 created 14-AUG-2008 15:23:33  
Amplitude andPhase vs Time for J1058+5628.MULTI.1 CL # 3  
IF 2 CHAN 1 STK LL of J1058+5628.ICL001.3



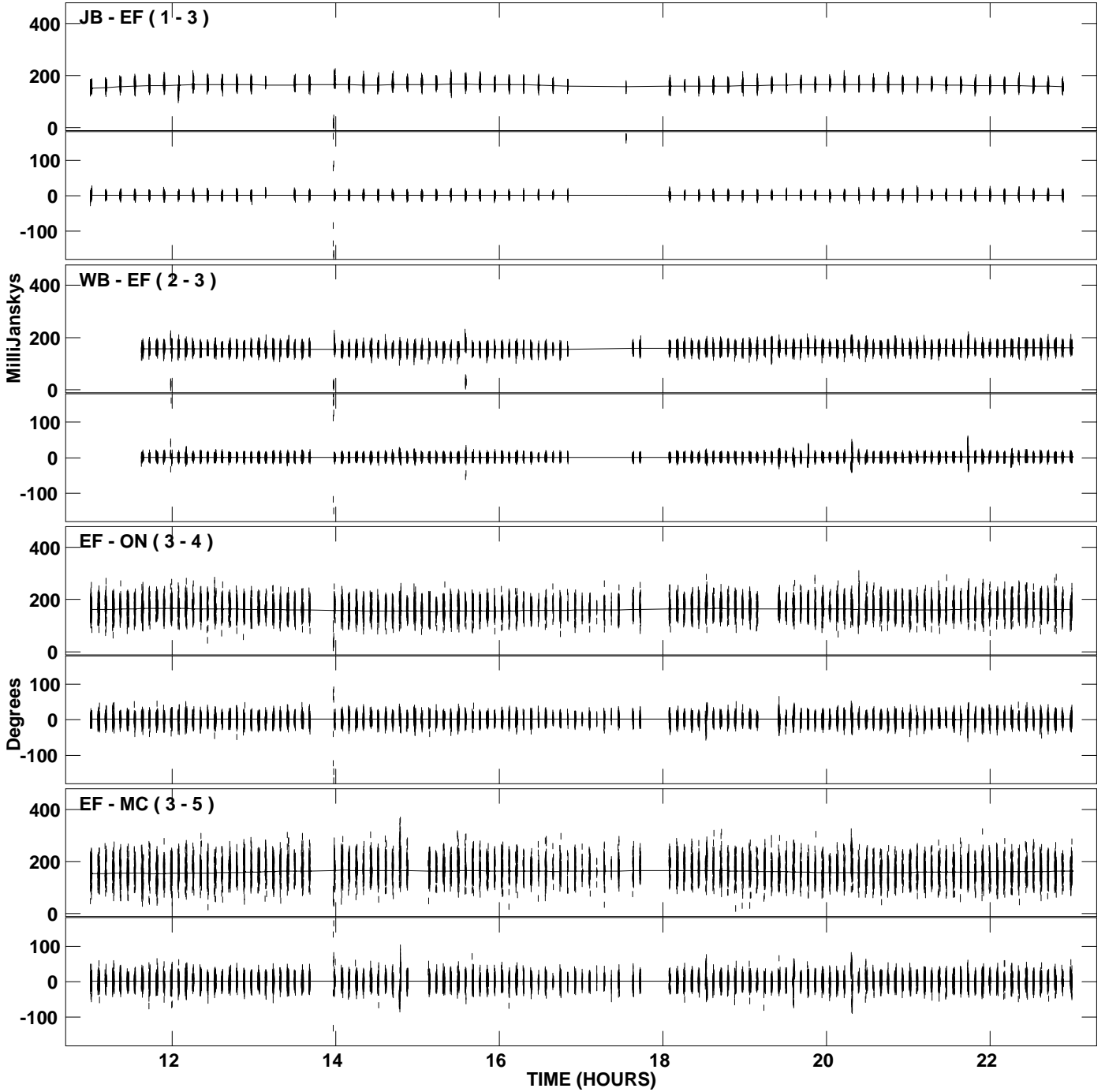
PLot file version 5 created 14-AUG-2008 15:23:33  
Amplitude andPhase vs Time for J1058+5628.MULTI.1 CL # 3  
IF 3 CHAN 1 STK LL of J1058+5628.ICL001.3



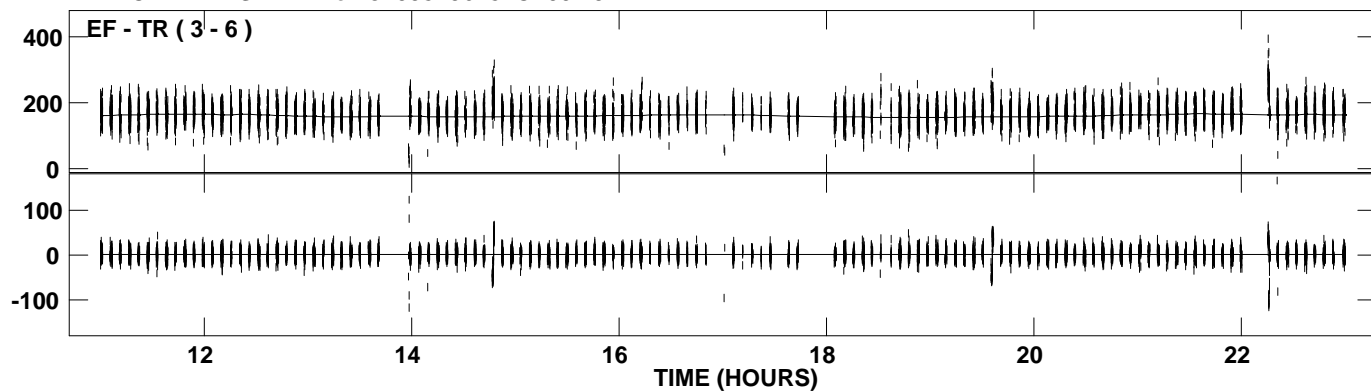
PLot file version 6 created 14-AUG-2008 15:23:34  
Amplitude and Phase vs Time for J1058+5628.MULTI.1 CL # 3  
IF 3 CHAN 1 STK LL of J1058+5628.ICL001.3



PLot file version 7 created 14-AUG-2008 15:23:35  
Amplitude andPhase vs Time for J1058+5628.MULTI.1 CL # 3  
IF 4 CHAN 1 STK LL of J1058+5628.ICL001.3

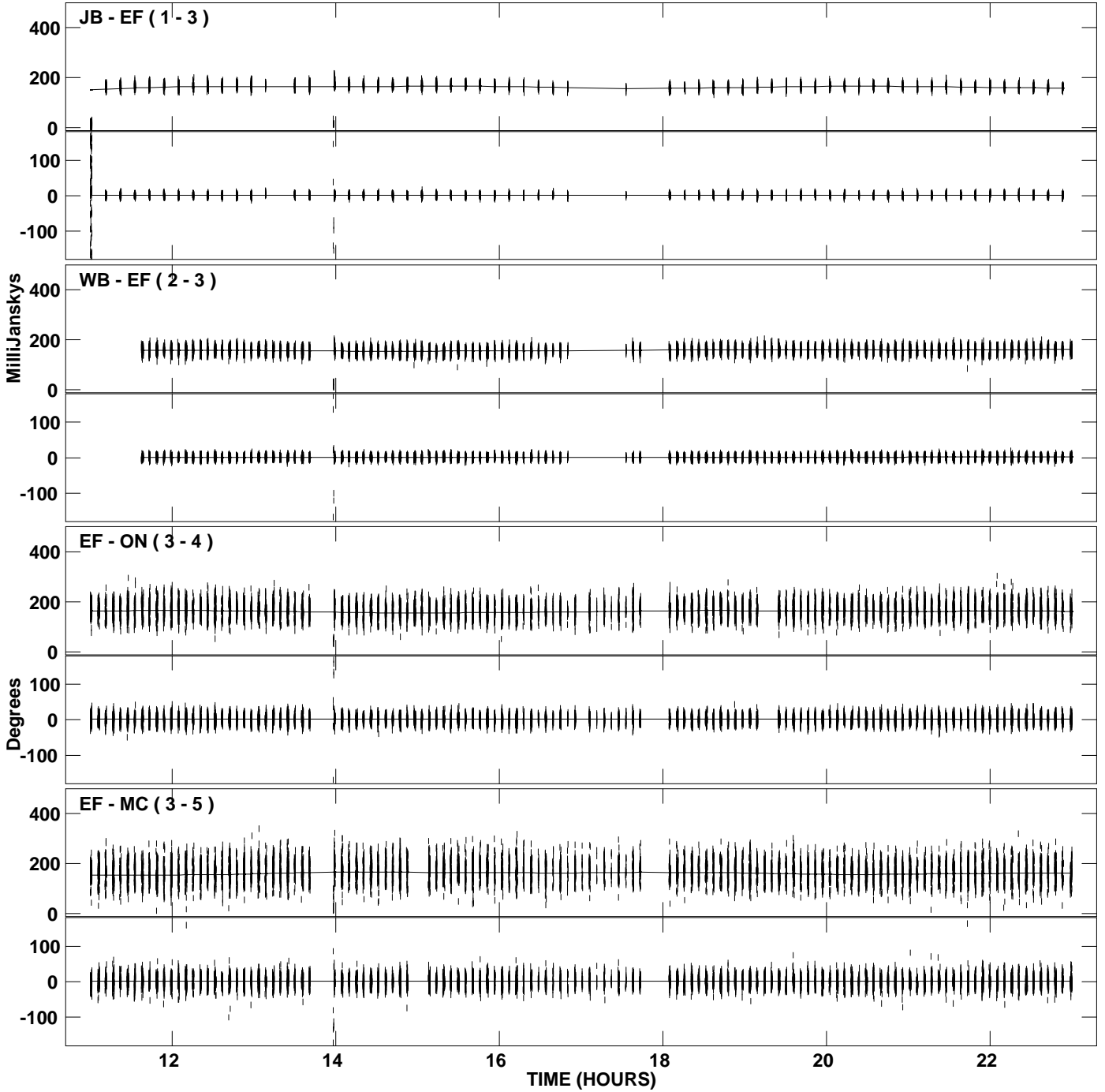


PLot file version 8 created 14-AUG-2008 15:23:35  
Amplitude andPhase vs Time for J1058+5628.MULTI.1 CL # 3  
IF 4 CHAN 1 STK LL of J1058+5628.ICL001.3

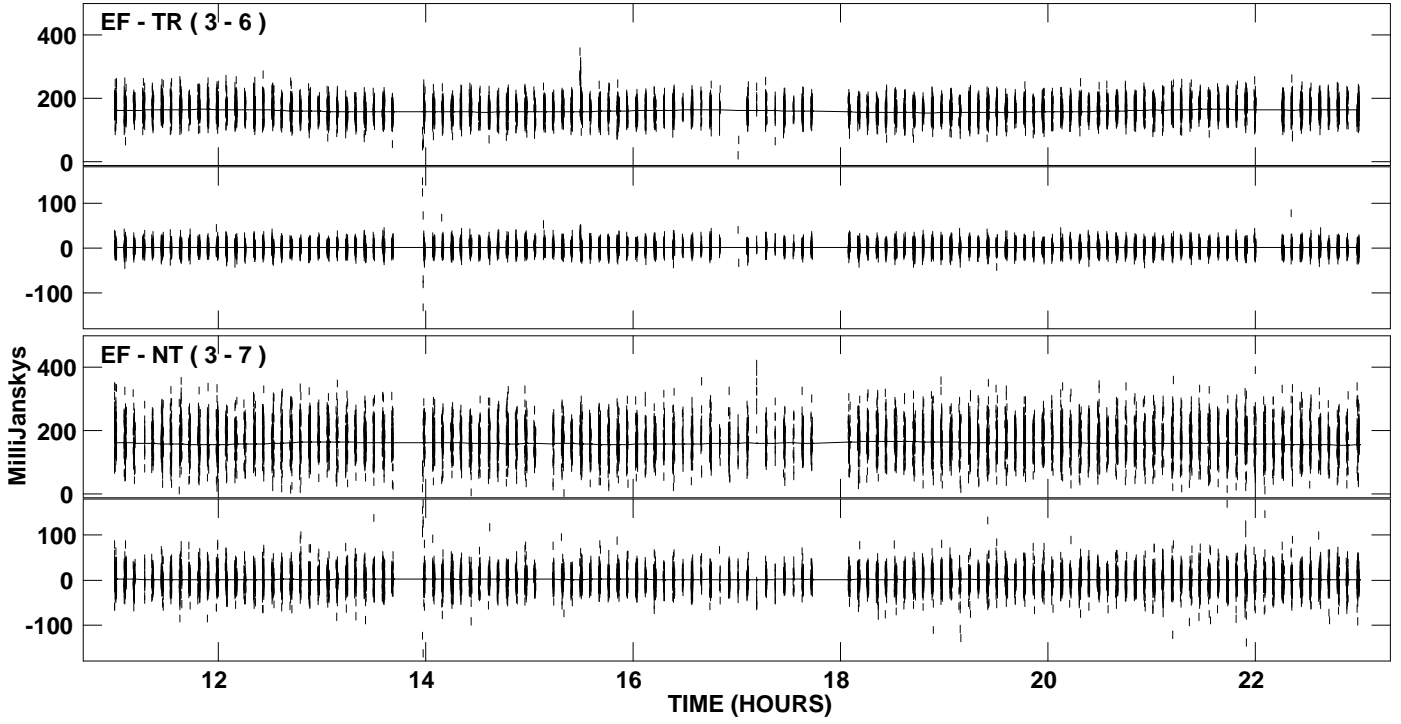




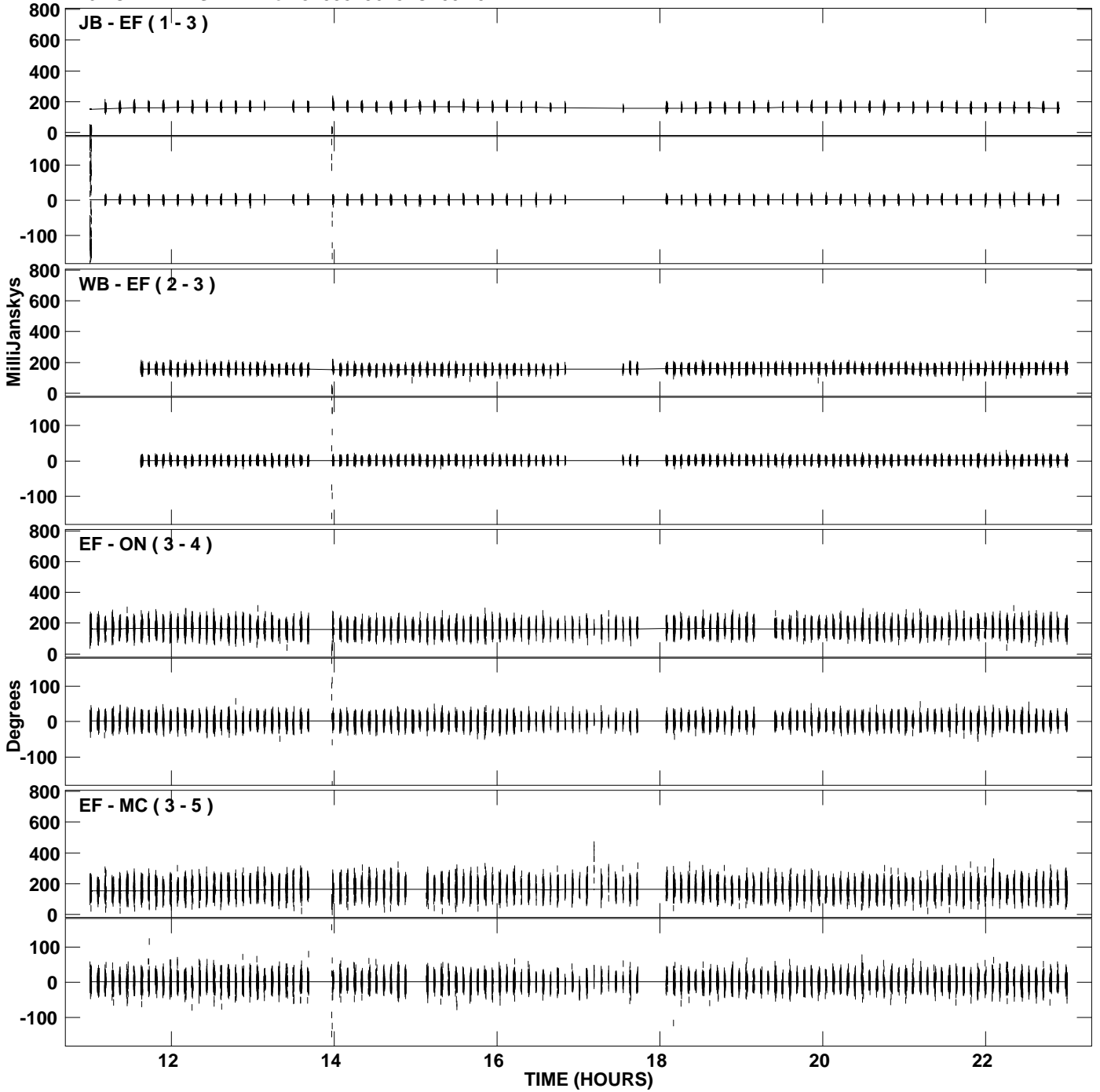
PLot file version 9 created 14-AUG-2008 15:23:36  
Amplitude andPhase vs Time for J1058+5628.MULTI.1 CL # 3  
IF 5 CHAN 1 STK LL of J1058+5628.ICL001.3



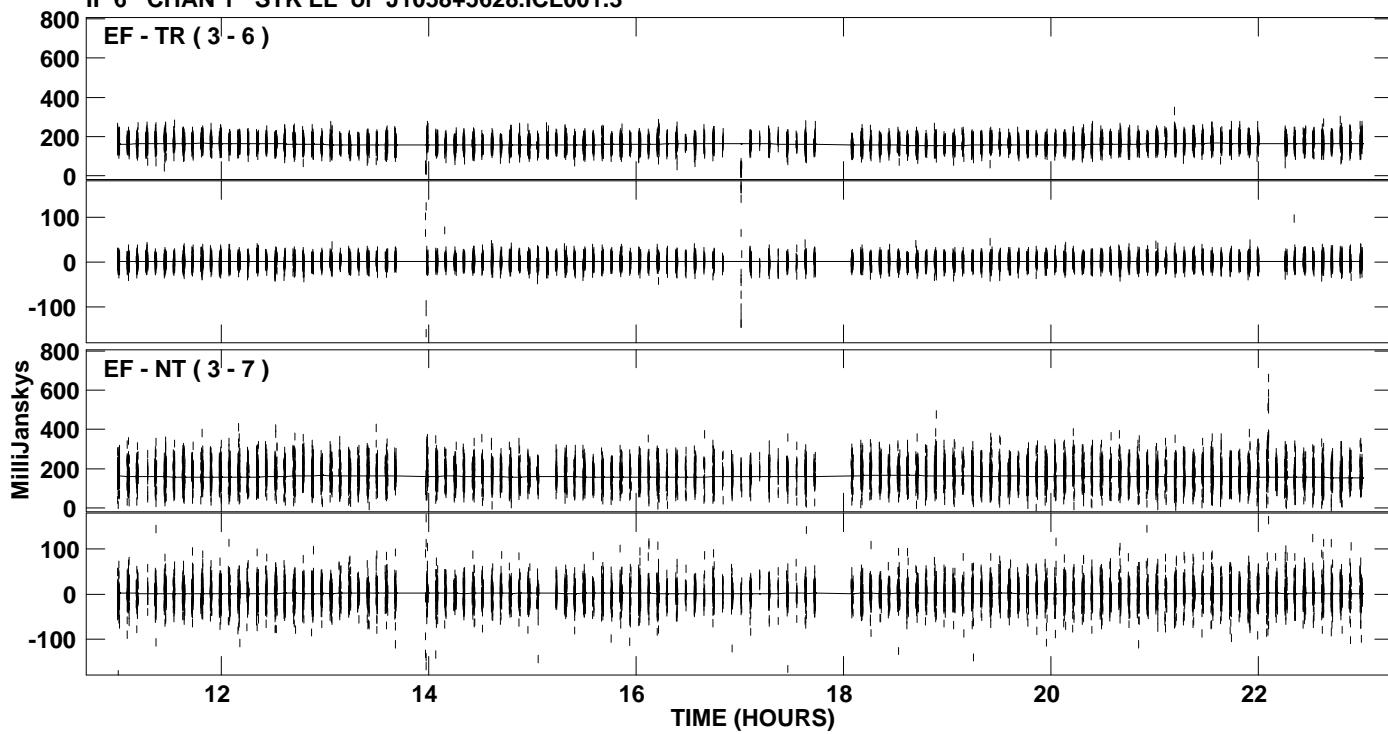
PLot file version 10 created 14-AUG-2008 15:23:36  
Amplitude andPhase vs Time for J1058+5628.MULTI.1 CL # 3  
IF 5 CHAN 1 STK LL of J1058+5628.ICL001.3



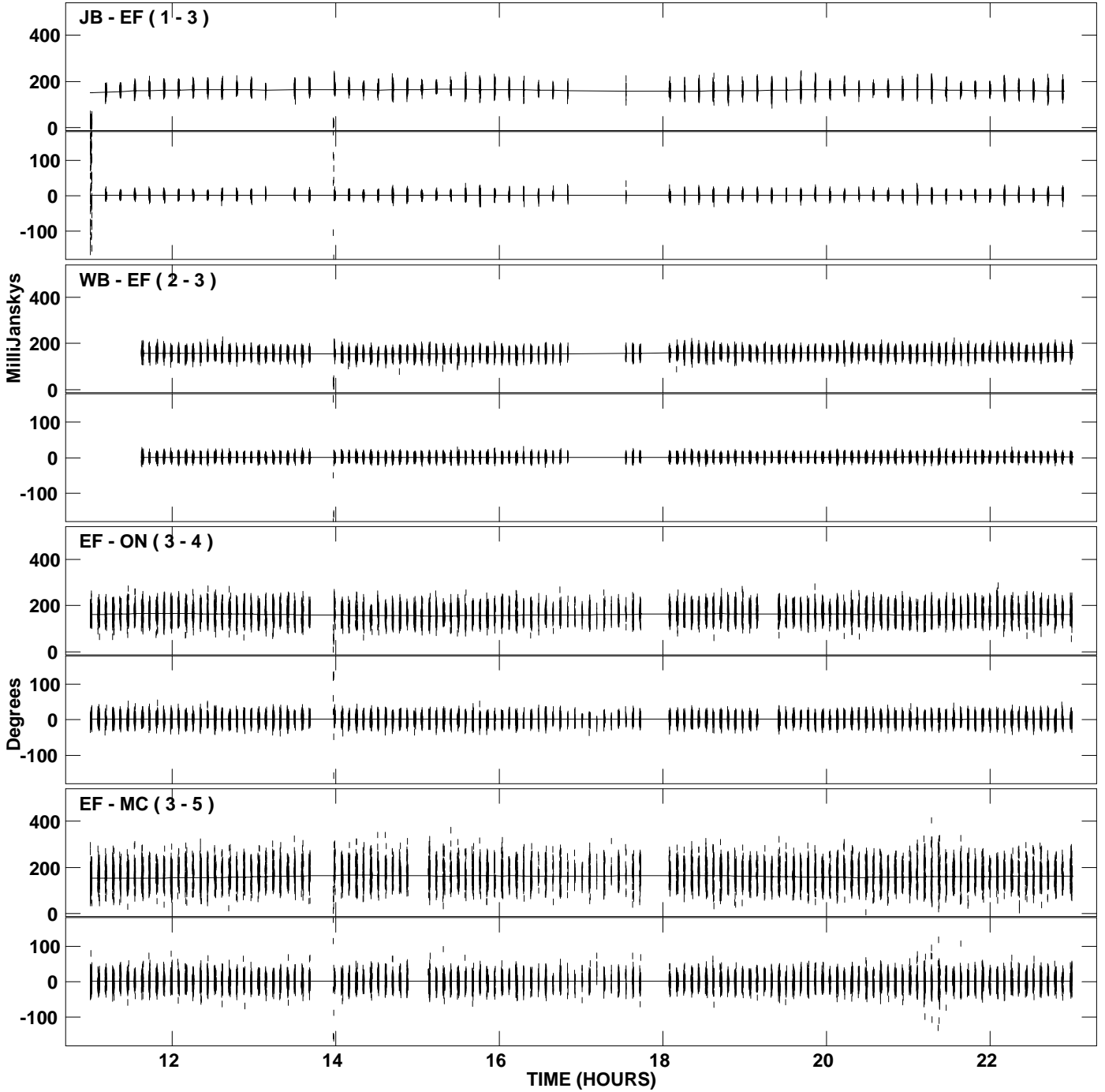
PLot file version 11 created 14-AUG-2008 15:23:37  
Amplitude andPhase vs Time for J1058+5628.MULTI.1 CL # 3  
IF 6 CHAN 1 STK LL of J1058+5628.ICL001.3



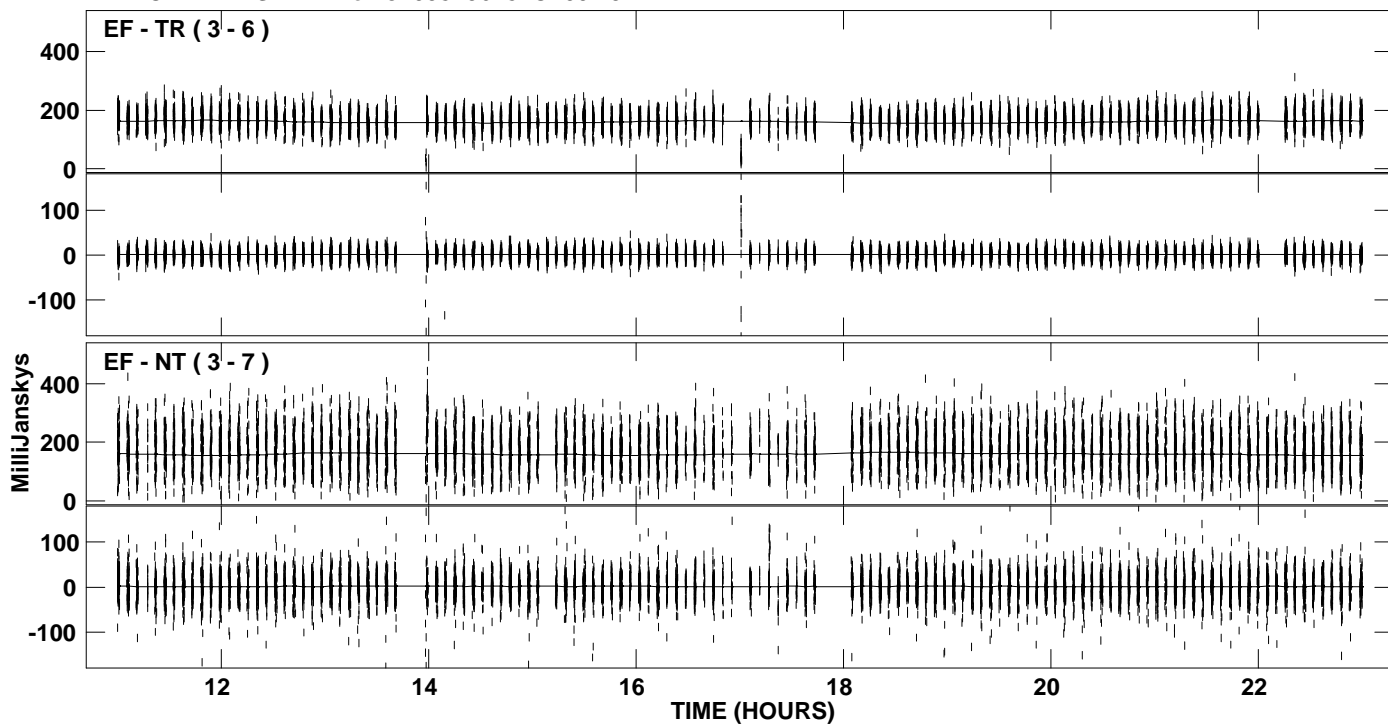
PLot file version 12 created 14-AUG-2008 15:23:37  
Amplitude andPhase vs Time for J1058+5628.MULTI.1 CL # 3  
IF 6 CHAN 1 STK LL of J1058+5628.ICL001.3



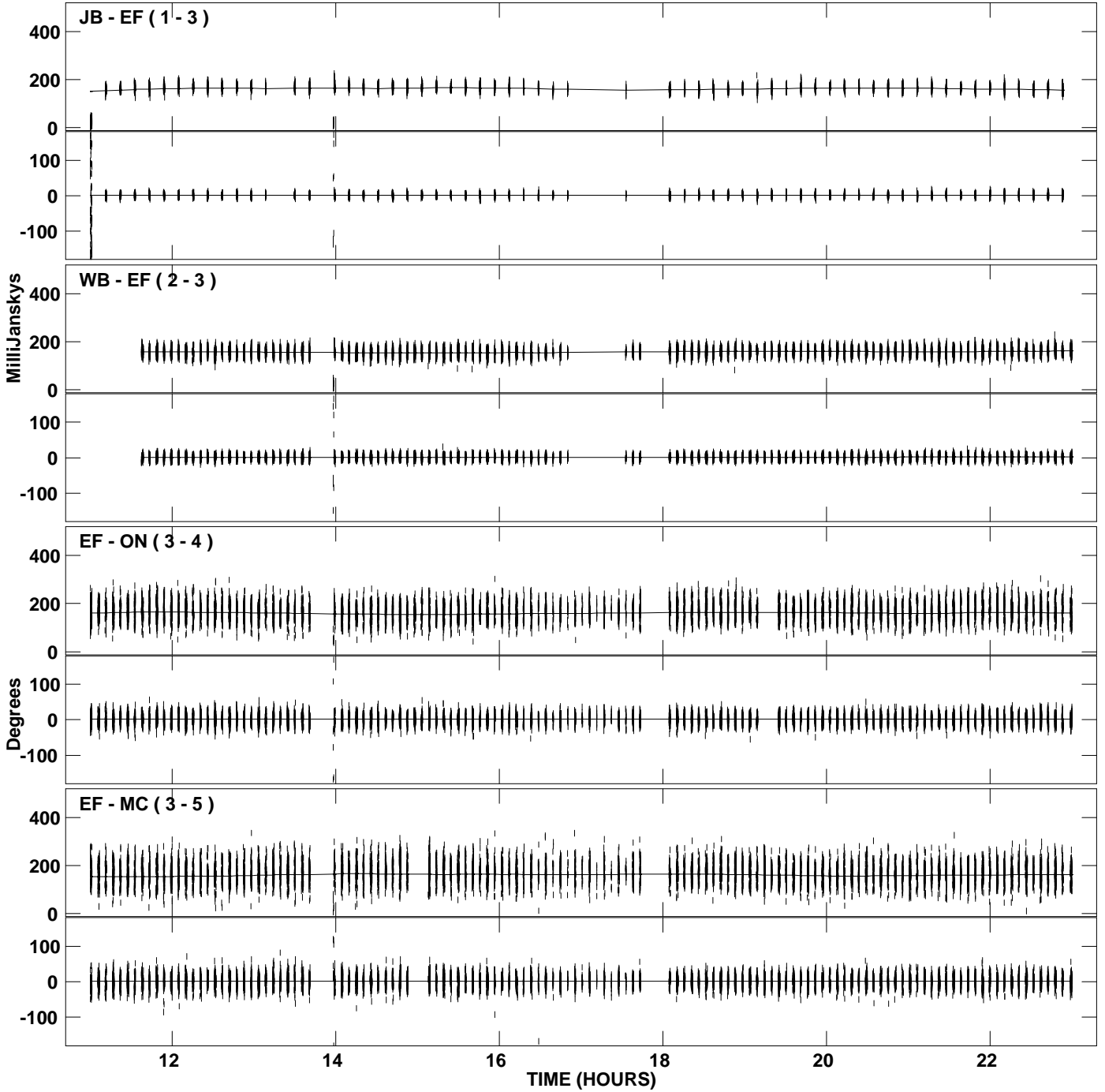
PLot file version 13 created 14-AUG-2008 15:23:38  
Amplitude andPhase vs Time for J1058+5628.MULTI.1 CL # 3  
IF 7 CHAN 1 STK LL of J1058+5628.ICL001.3



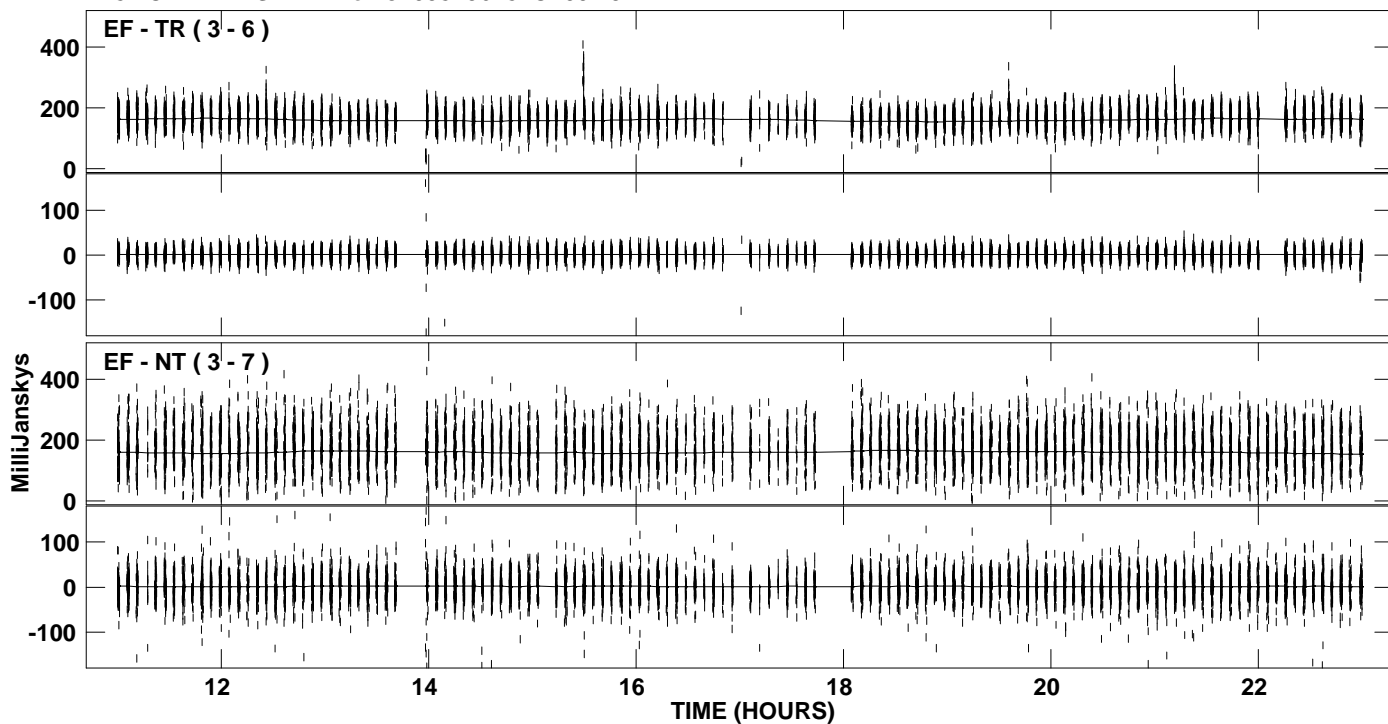
PLot file version 14 created 14-AUG-2008 15:23:38  
Amplitude and Phase vs Time for J1058+5628.MULTI.1 CL # 3  
IF 7 CHAN 1 STK LL of J1058+5628.ICL001.3



PLot file version 15 created 14-AUG-2008 15:23:39  
Amplitude andPhase vs Time for J1058+5628.MULTI.1 CL # 3  
IF 8 CHAN 1 STK LL of J1058+5628.ICL001.3

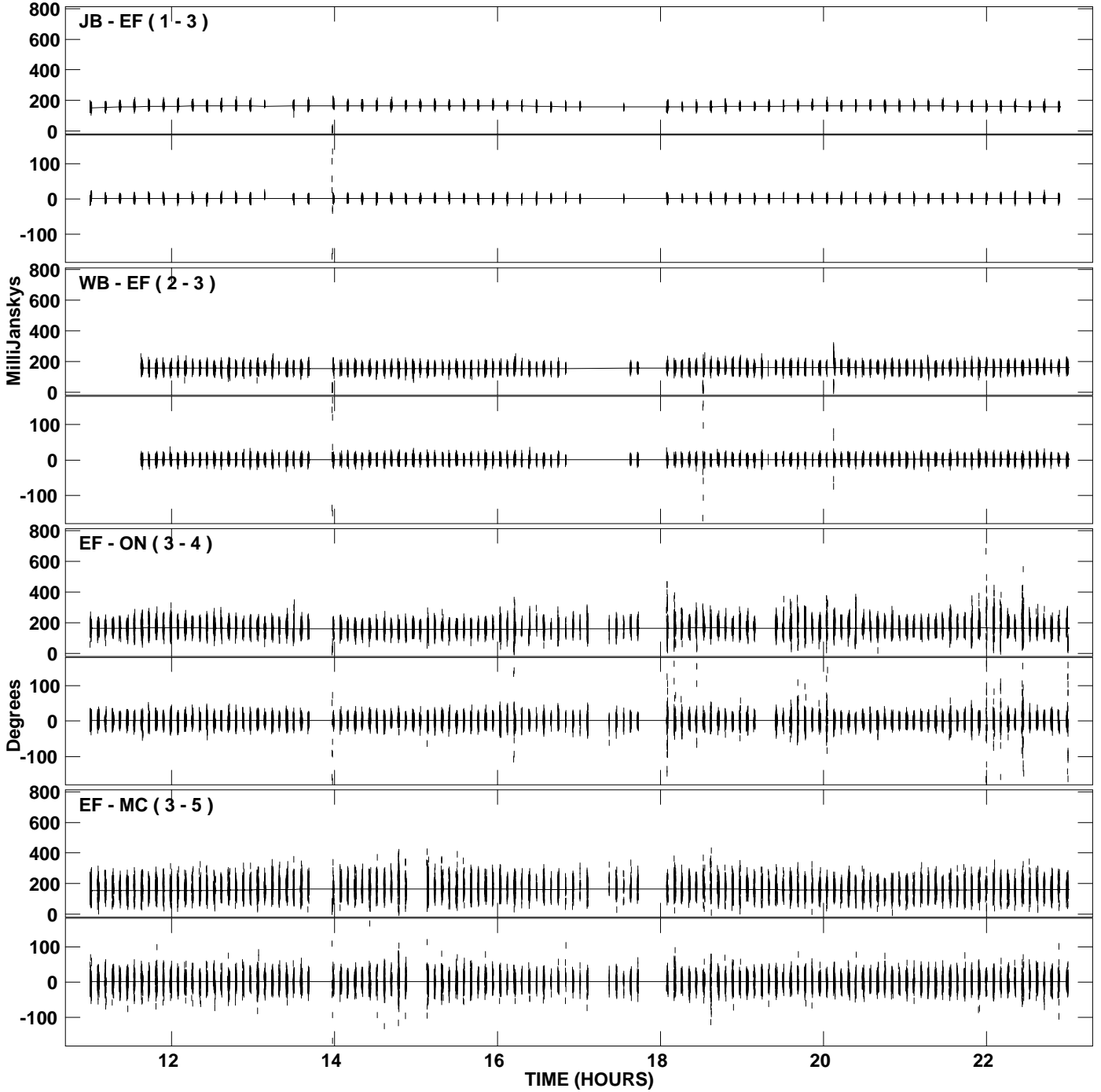


PLot file version 16 created 14-AUG-2008 15:23:39  
Amplitude andPhase vs Time for J1058+5628.MULTI.1 CL # 3  
IF 8 CHAN 1 STK LL of J1058+5628.ICL001.3

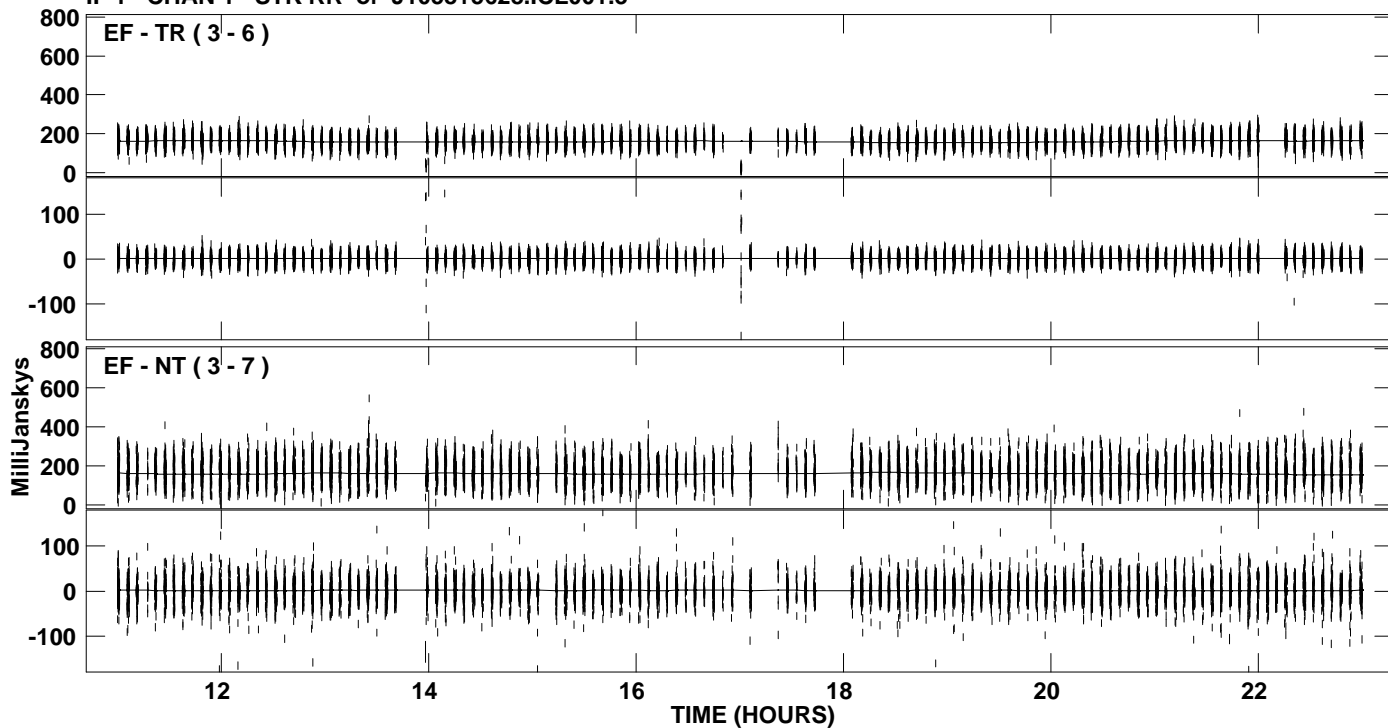




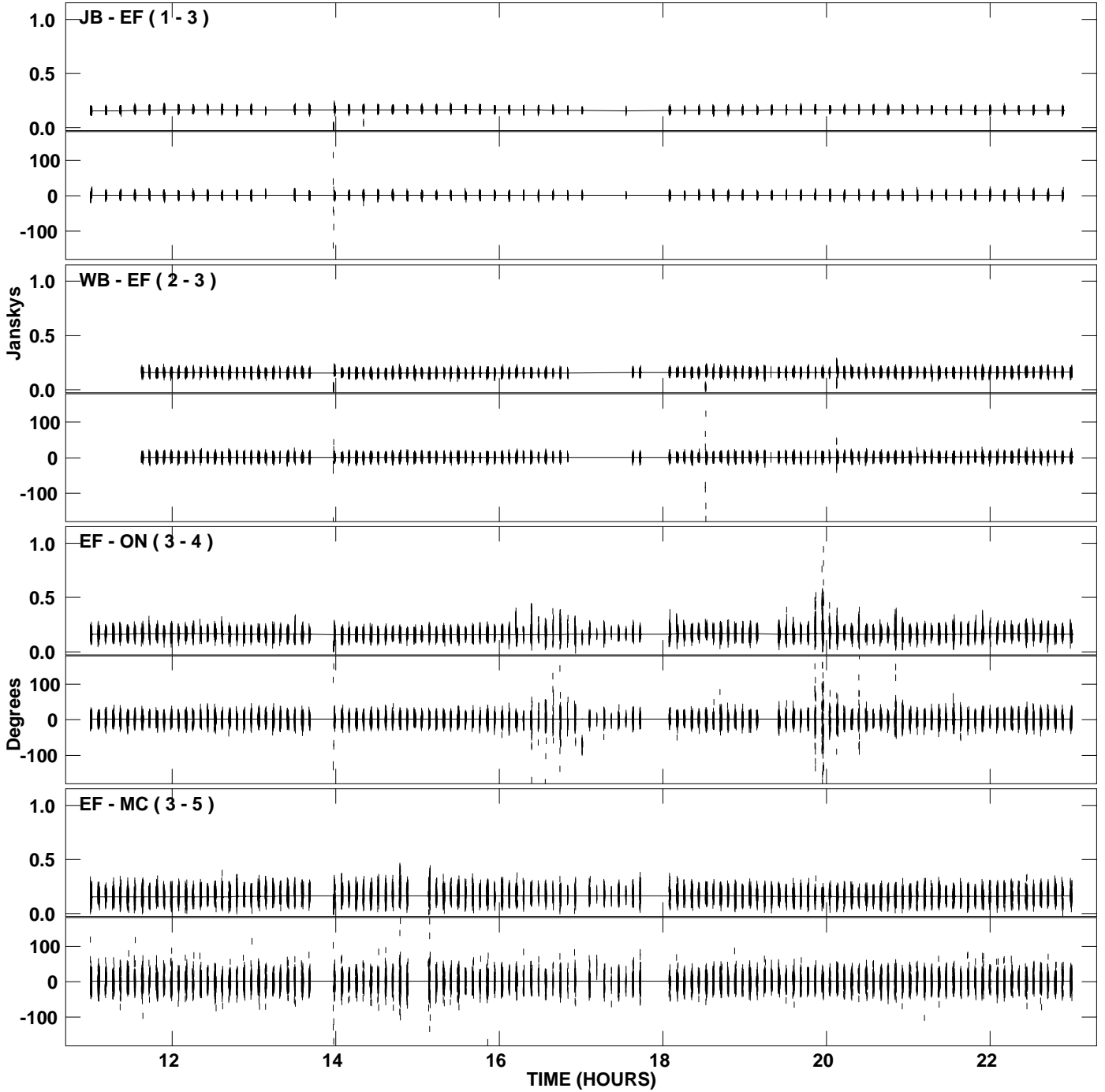
PLot file version 17 created 14-AUG-2008 15:23:40  
Amplitude andPhase vs Time for J1058+5628.MULTI.1 CL # 3  
IF 1 CHAN 1 STK RR of J1058+5628.ICL001.3



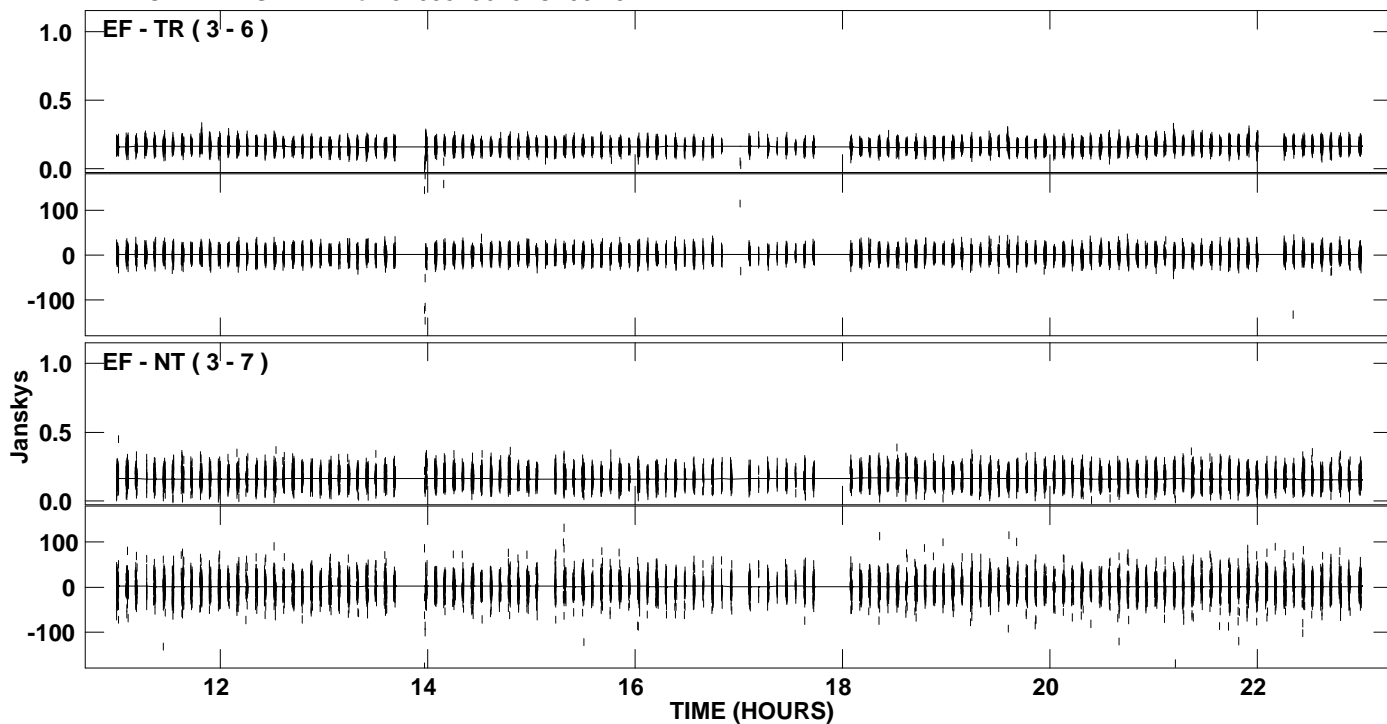
PLot file version 18 created 14-AUG-2008 15:23:40  
Amplitude and Phase vs Time for J1058+5628.MULTI.1 CL # 3  
IF 1 CHAN 1 STK RR of J1058+5628.ICL001.3



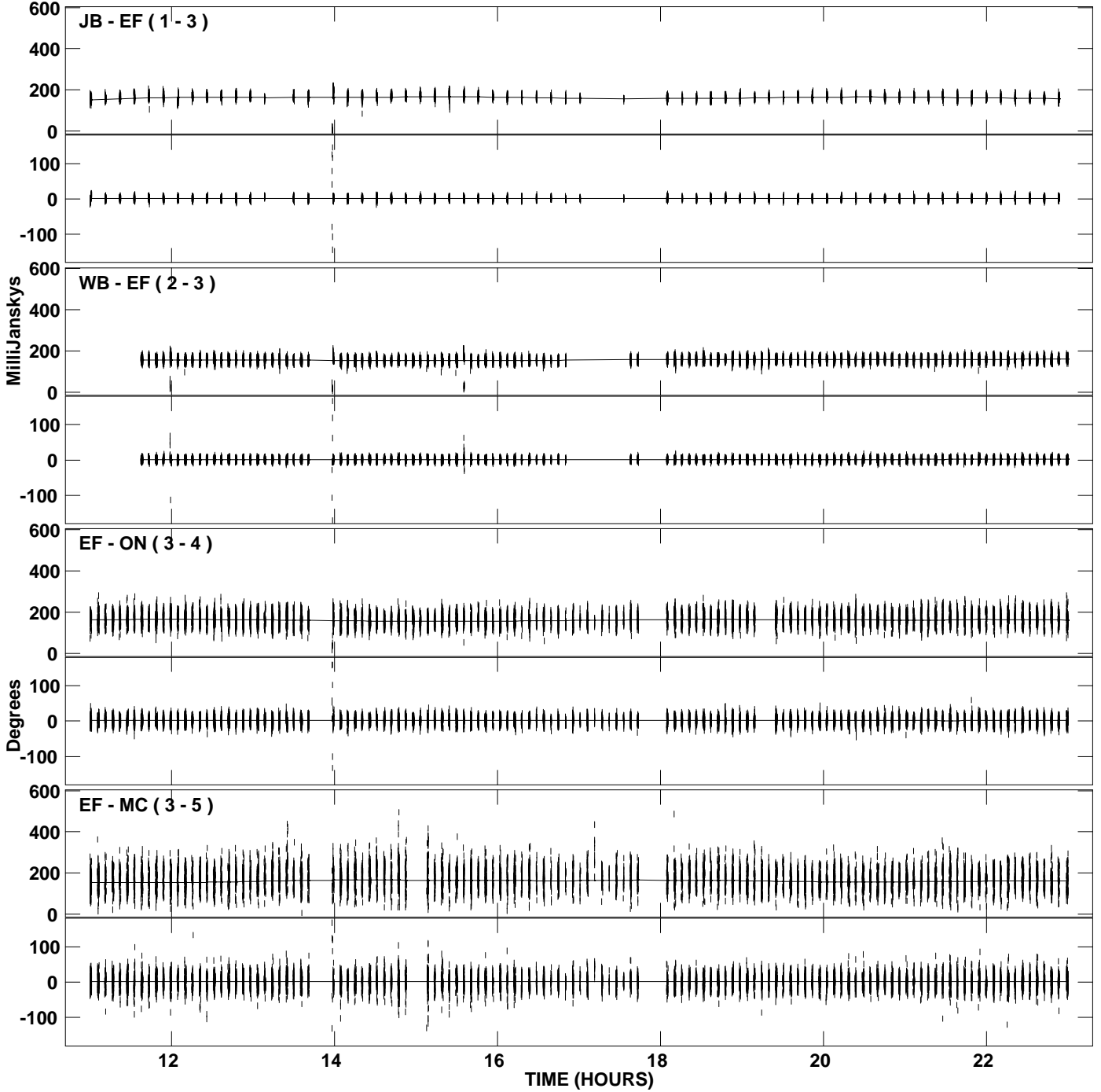
PLot file version 19 created 14-AUG-2008 15:23:41  
Amplitude andPhase vs Time for J1058+5628.MULTI.1 CL # 3  
IF 2 CHAN 1 STK RR of J1058+5628.ICL001.3



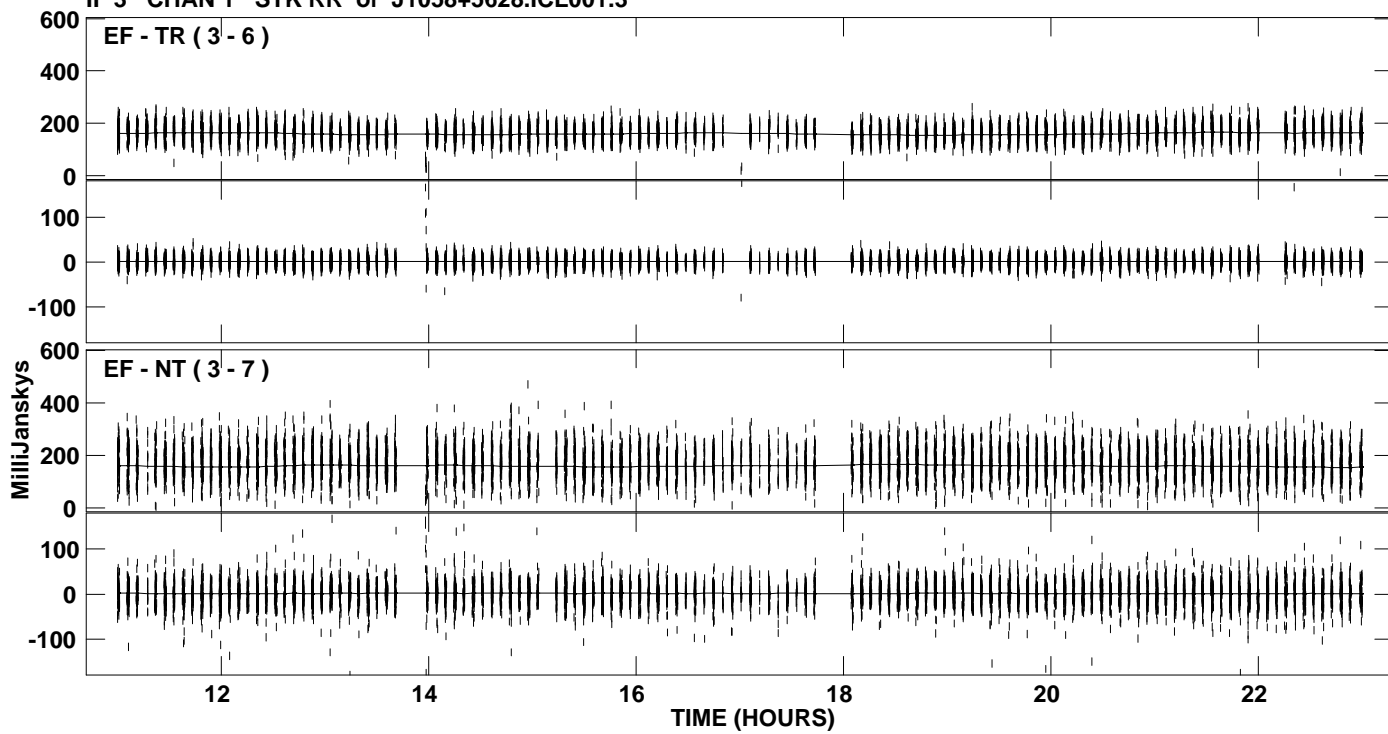
PLot file version 20 created 14-AUG-2008 15:23:41  
Amplitude andPhase vs Time for J1058+5628.MULTI.1 CL # 3  
IF 2 CHAN 1 STK RR of J1058+5628.ICL001.3



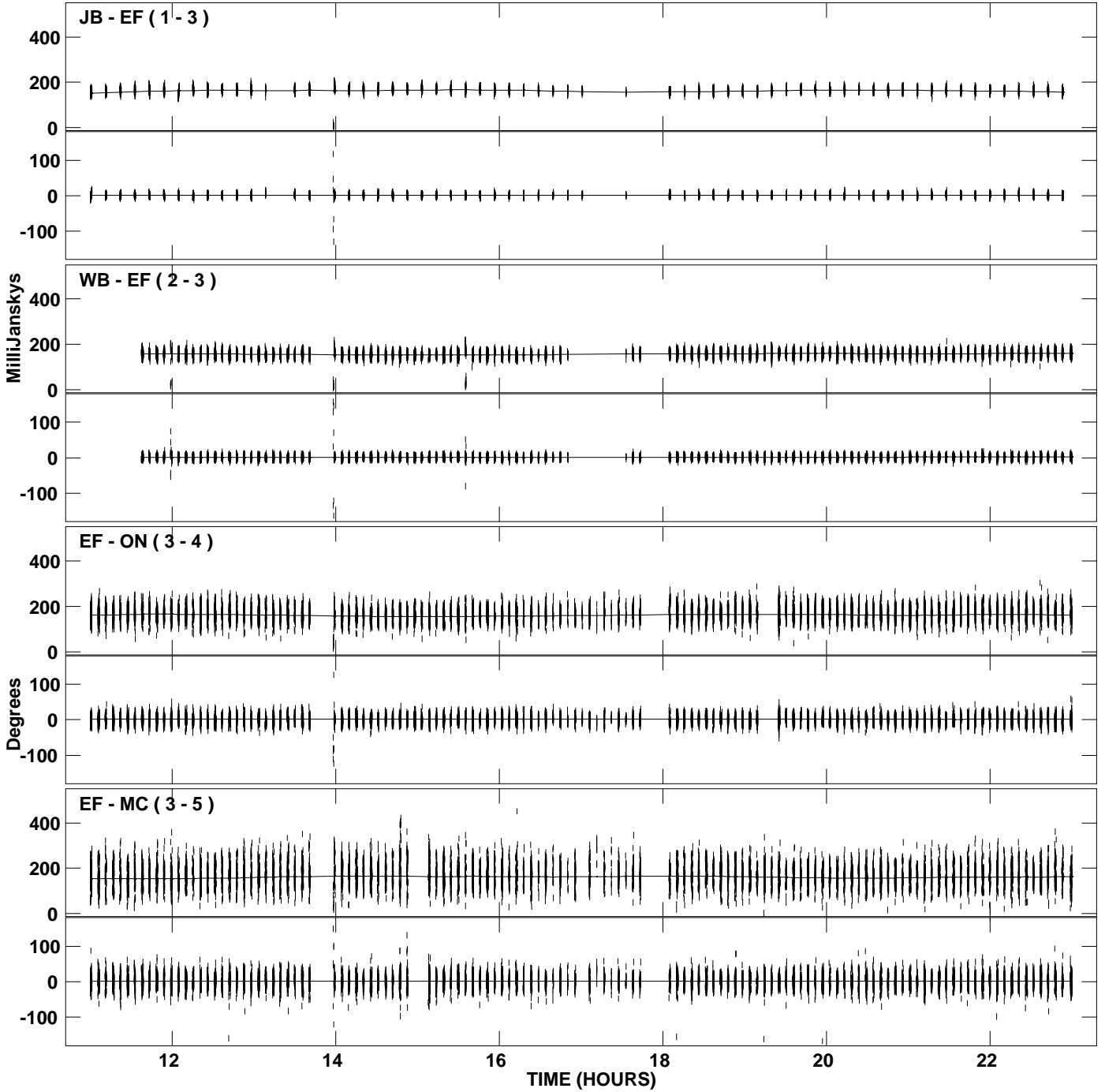
PLot file version 21 created 14-AUG-2008 15:23:42  
Amplitude andPhase vs Time for J1058+5628.MULTI.1 CL # 3  
IF 3 CHAN 1 STK RR of J1058+5628.ICL001.3



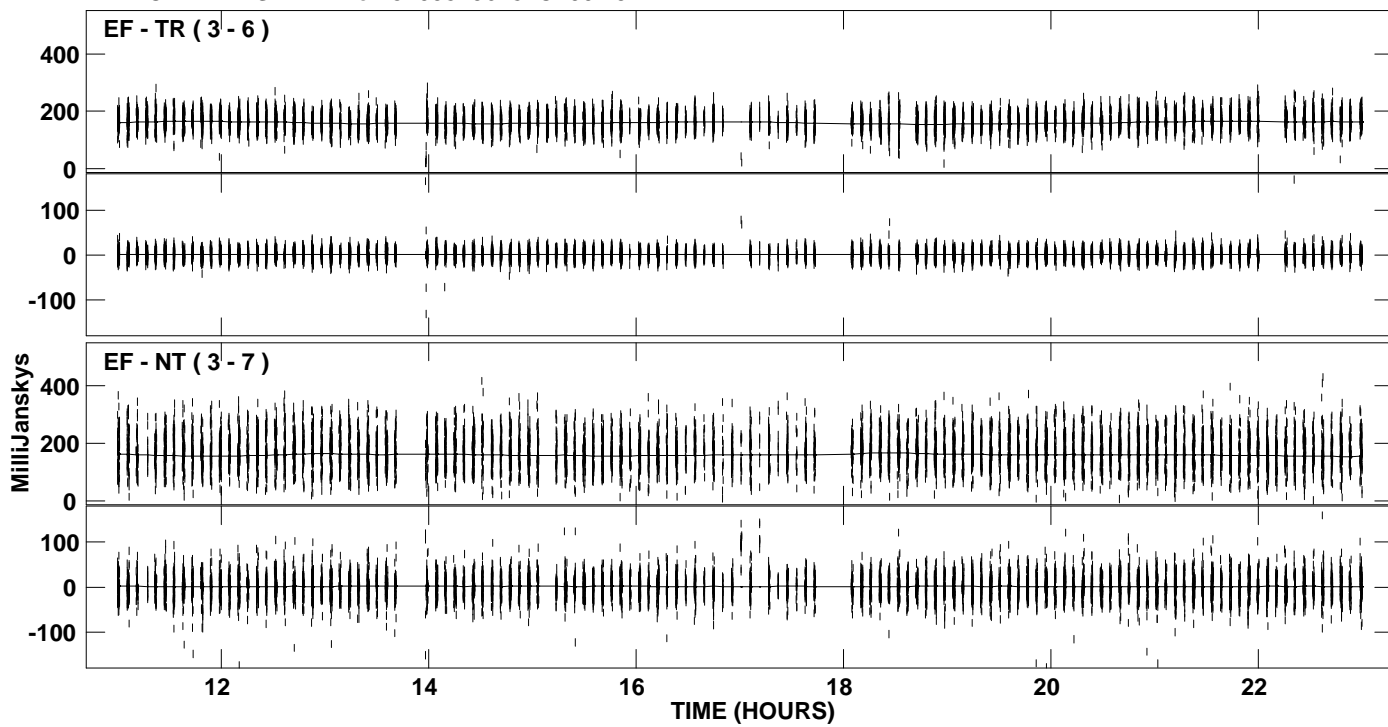
PLot file version 22 created 14-AUG-2008 15:23:42  
Amplitude andPhase vs Time for J1058+5628.MULTI.1 CL # 3  
IF 3 CHAN 1 STK RR of J1058+5628.ICL001.3



PLot file version 23 created 14-AUG-2008 15:23:43  
Amplitude and Phase vs Time for J1058+5628.MULTI.1 CL # 3  
IF 4 CHAN 1 STK RR of J1058+5628.ICL001.3

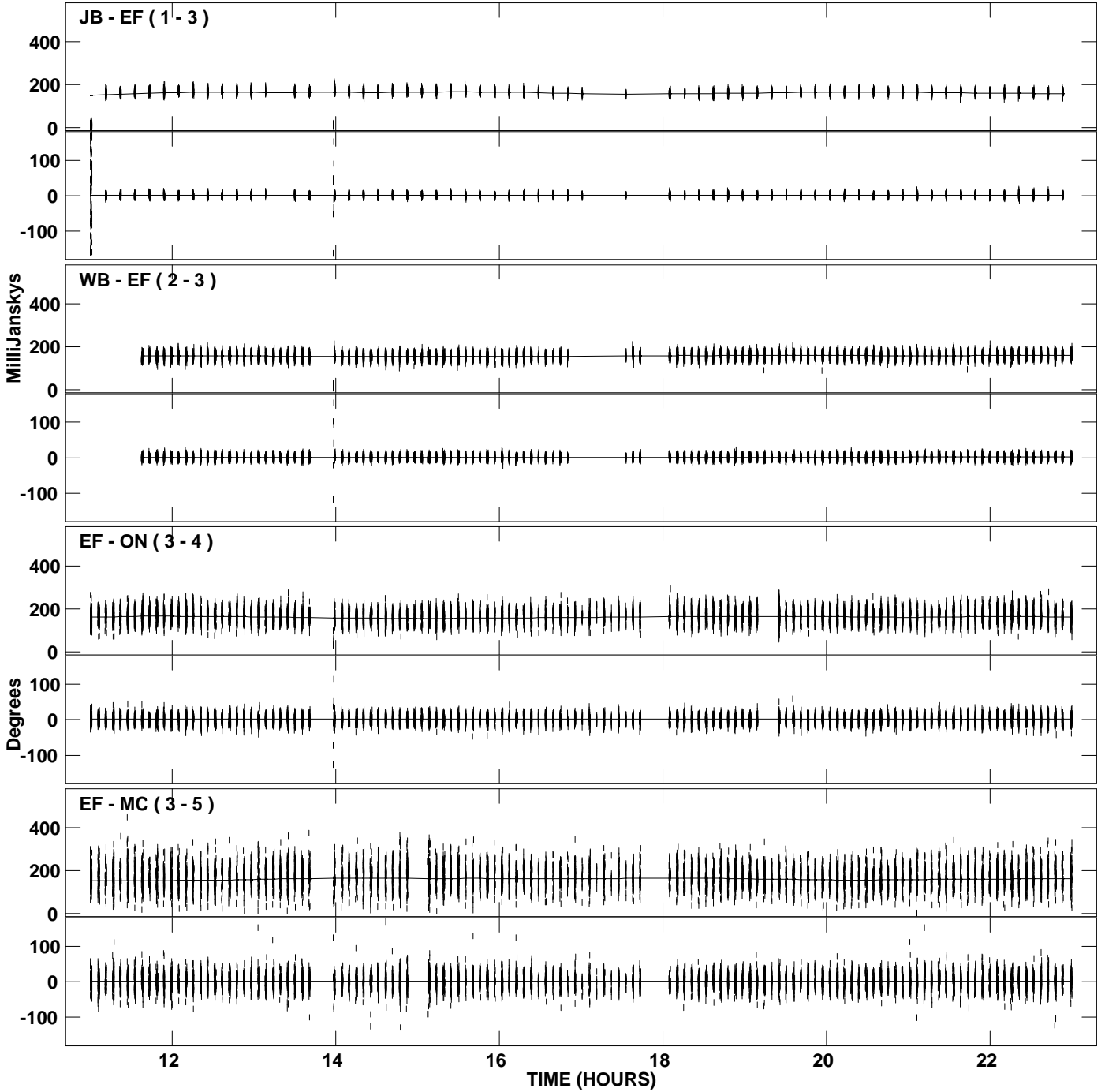


PLot file version 24 created 14-AUG-2008 15:23:43  
Amplitude andPhase vs Time for J1058+5628.MULTI.1 CL # 3  
IF 4 CHAN 1 STK RR of J1058+5628.ICL001.3

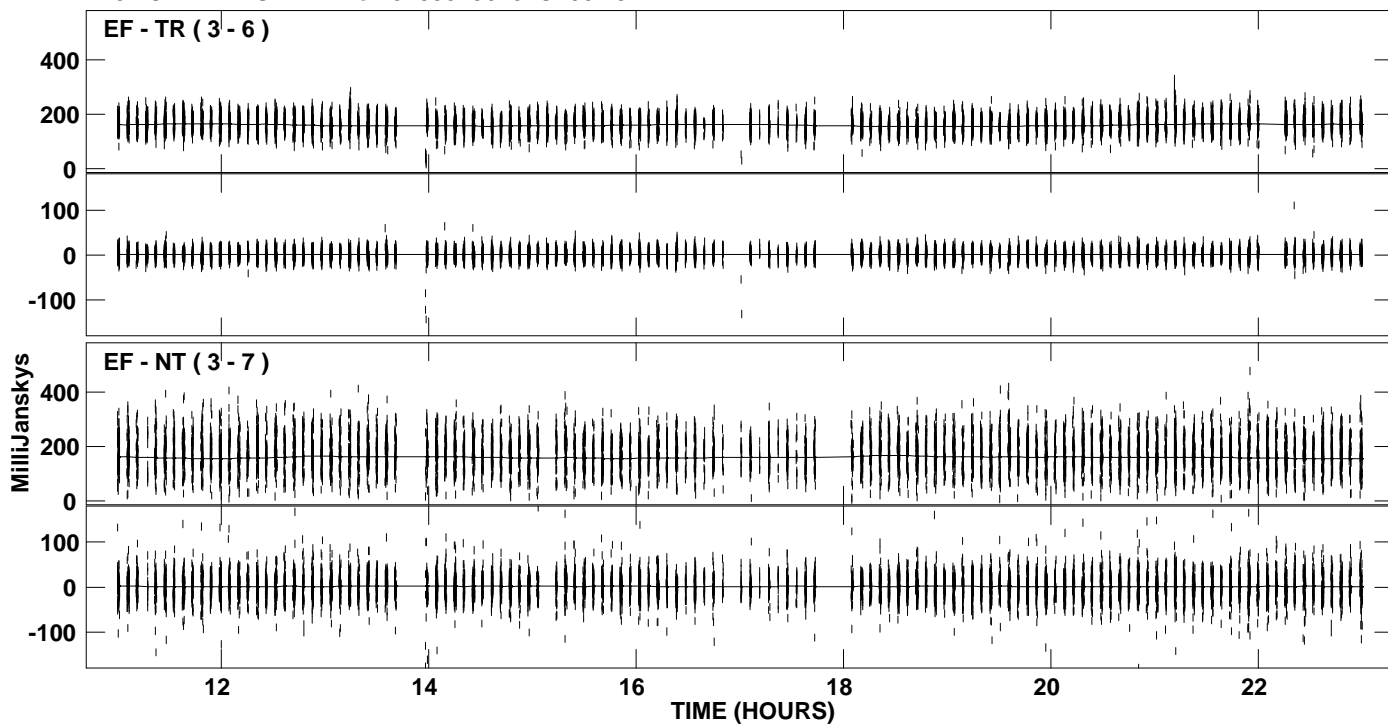




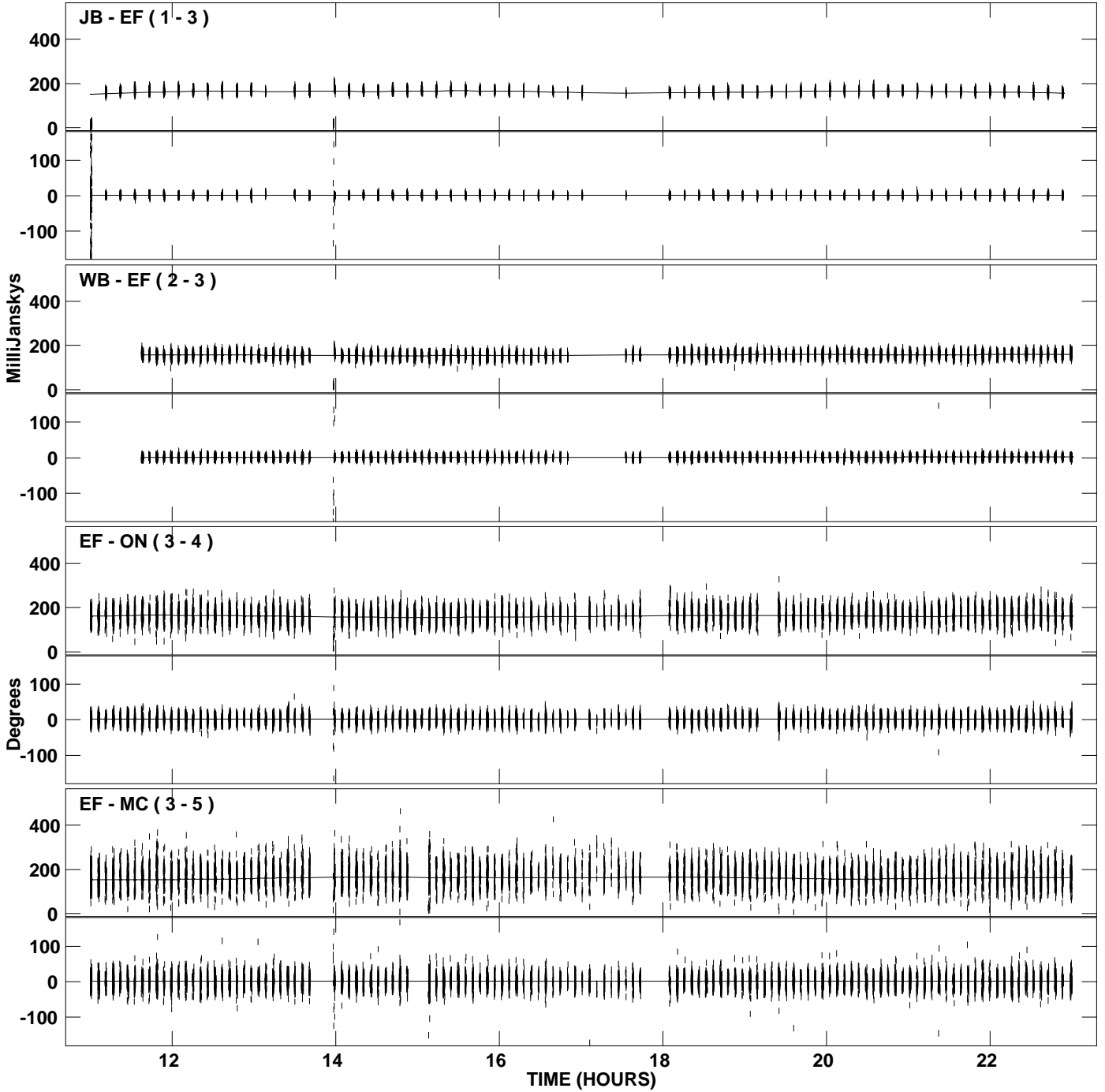
PLot file version 25 created 14-AUG-2008 15:23:44  
Amplitude andPhase vs Time for J1058+5628.MULTI.1 CL # 3  
IF 5 CHAN 1 STK RR of J1058+5628.ICL001.3



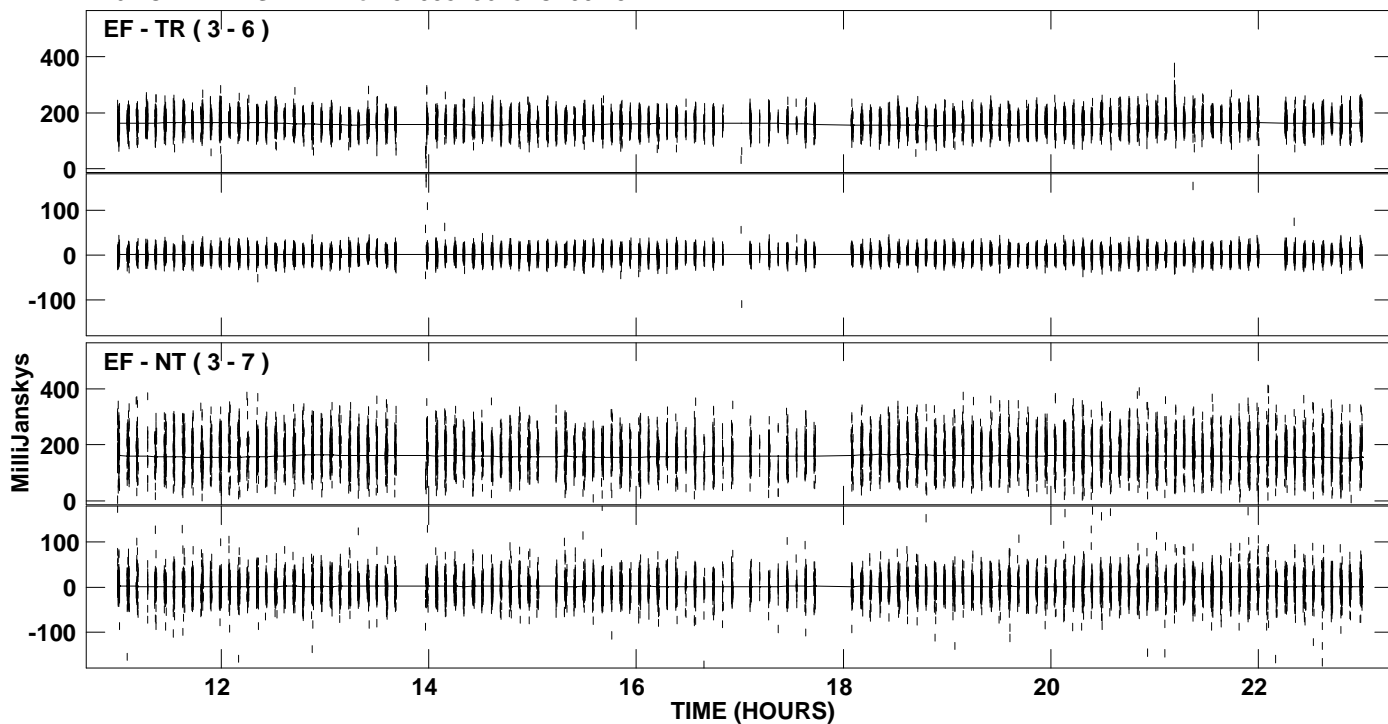
PLot file version 26 created 14-AUG-2008 15:23:44  
Amplitude andPhase vs Time for J1058+5628.MULTI.1 CL # 3  
IF 5 CHAN 1 STK RR of J1058+5628.ICL001.3



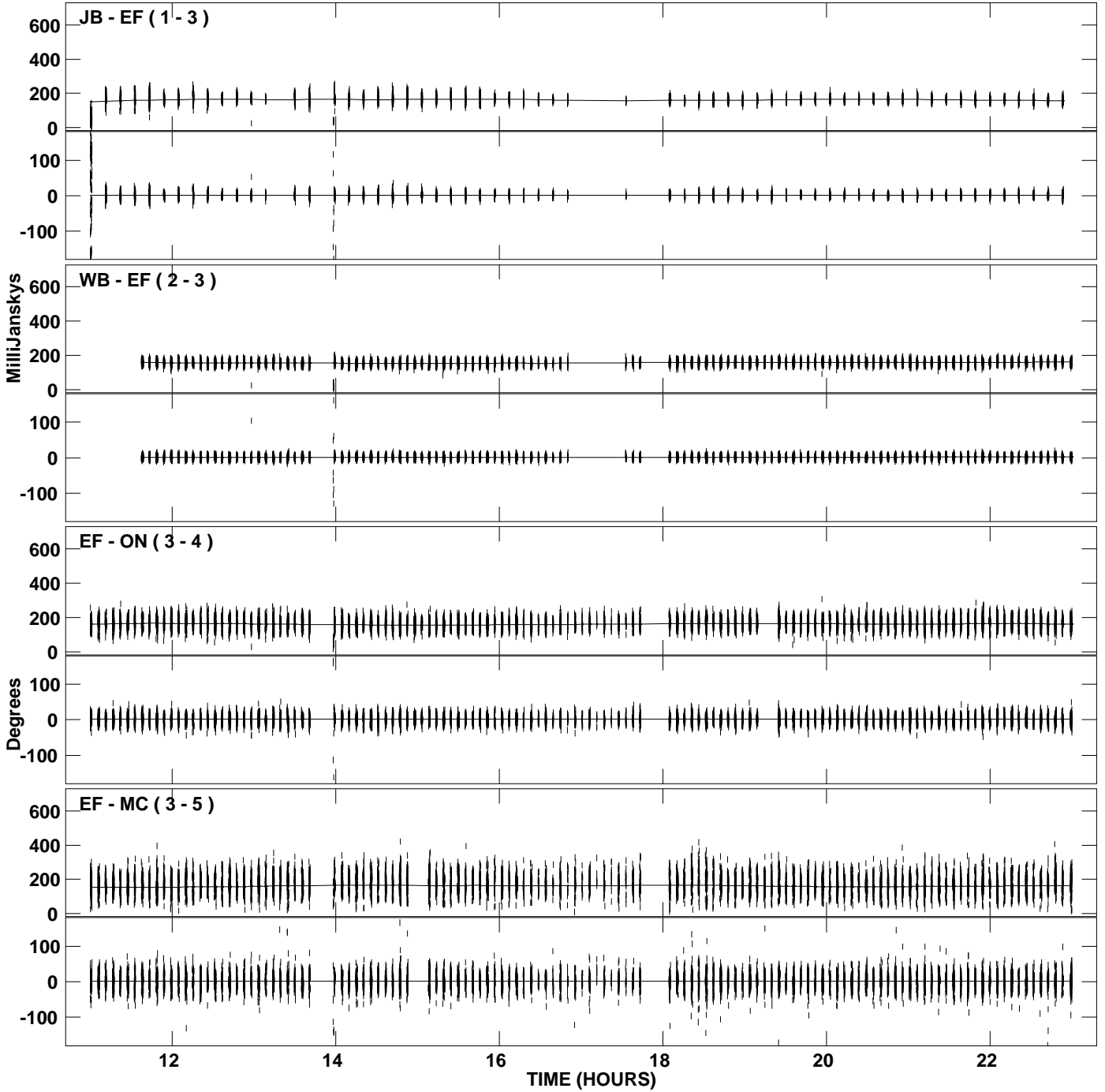
PLot file version 27 created 14-AUG-2008 15:23:45  
Amplitude andPhase vs Time for J1058+5628.MULTI.1 CL # 3  
IF 6 CHAN 1 STK RR of J1058+5628.ICL001.3



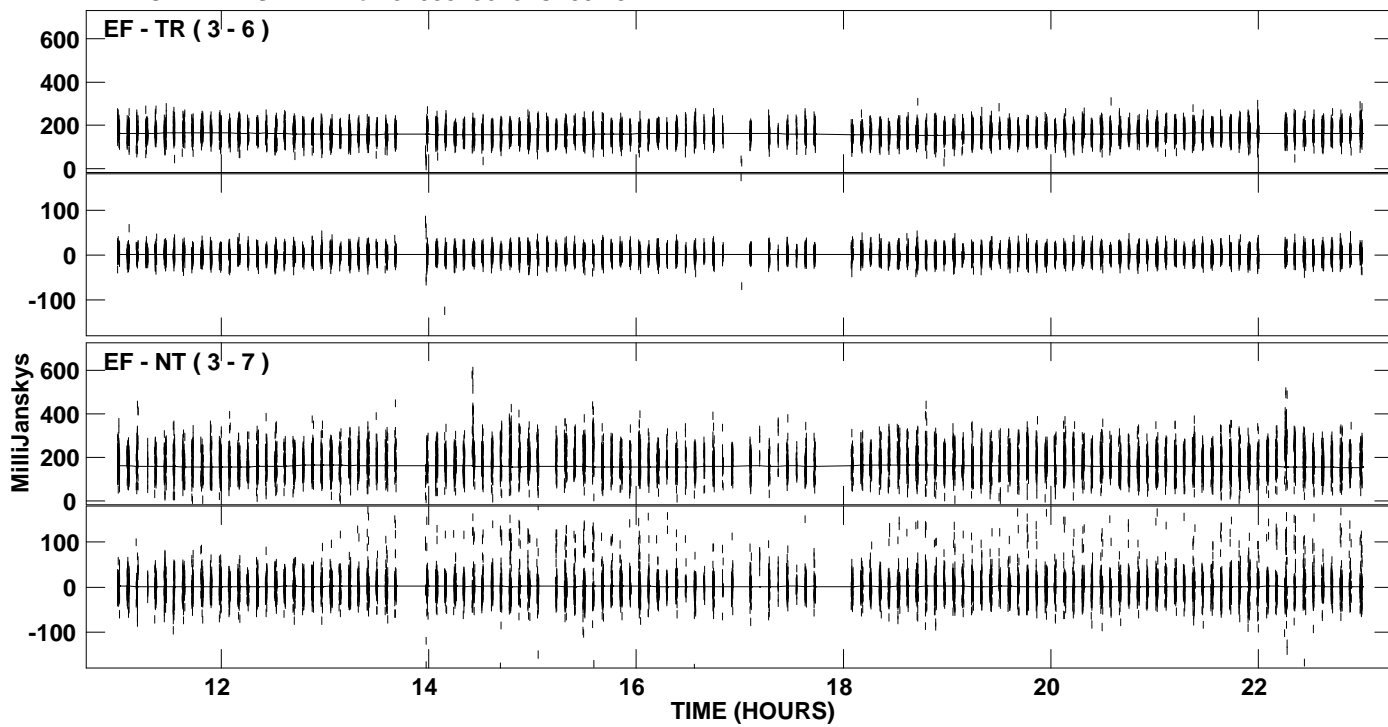
PLot file version 28 created 14-AUG-2008 15:23:45  
Amplitude andPhase vs Time for J1058+5628.MULTI.1 CL # 3  
IF 6 CHAN 1 STK RR of J1058+5628.ICL001.3



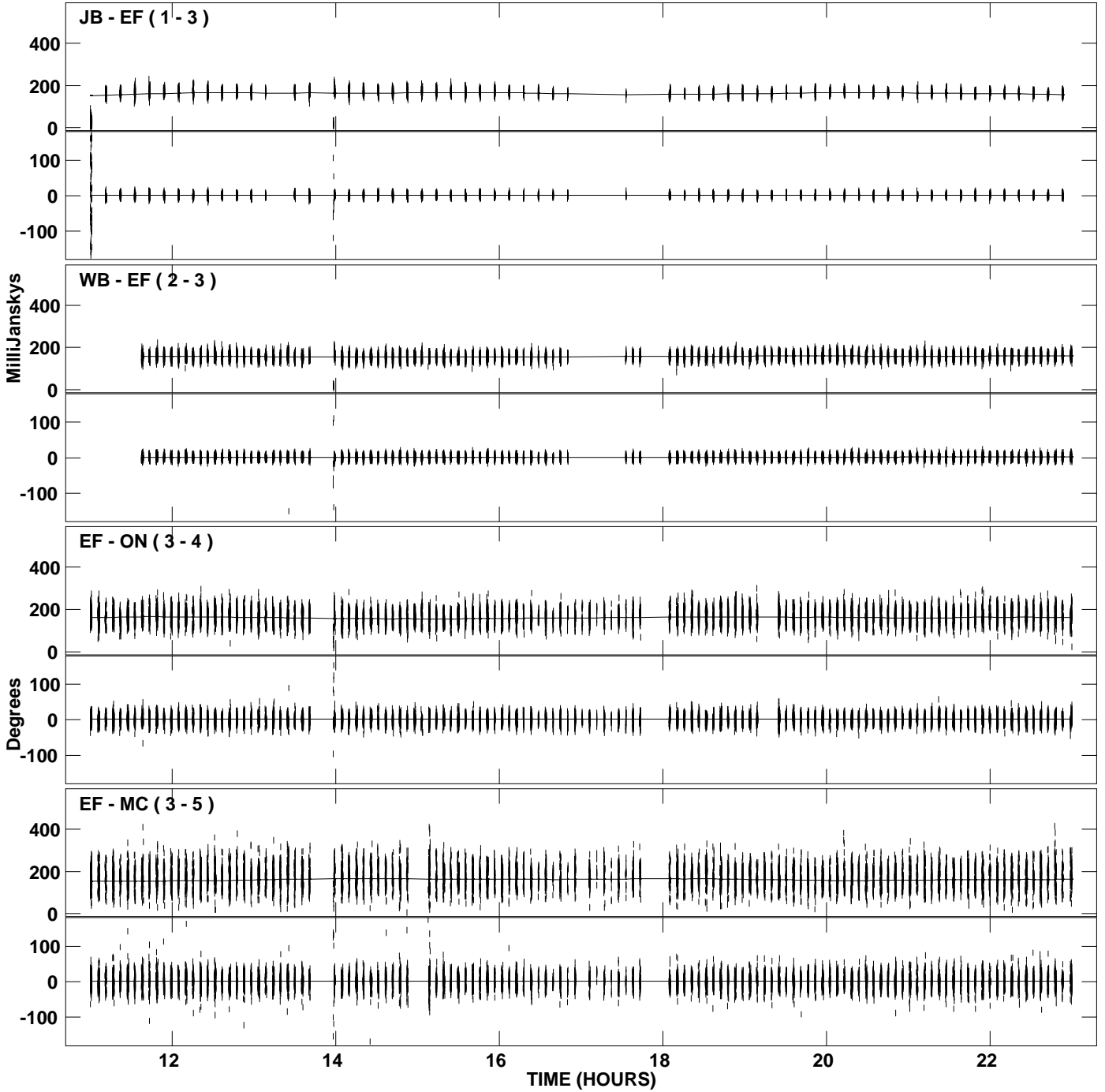
PLot file version 29 created 14-AUG-2008 15:23:46  
Amplitude andPhase vs Time for J1058+5628.MULTI.1 CL # 3  
IF 7 CHAN 1 STK RR of J1058+5628.ICL001.3



PLot file version 30 created 14-AUG-2008 15:23:46  
Amplitude andPhase vs Time for J1058+5628.MULTI.1 CL # 3  
IF 7 CHAN 1 STK RR of J1058+5628.ICL001.3



PLot file version 31 created 14-AUG-2008 15:23:47  
Amplitude andPhase vs Time for J1058+5628.MULTI.1 CL # 3  
IF 8 CHAN 1 STK RR of J1058+5628.ICL001.3



PLot file version 32 created 14-AUG-2008 15:23:47  
Amplitude andPhase vs Time for J1058+5628.MULTI.1 CL # 3  
IF 8 CHAN 1 STK RR of J1058+5628.ICL001.3

