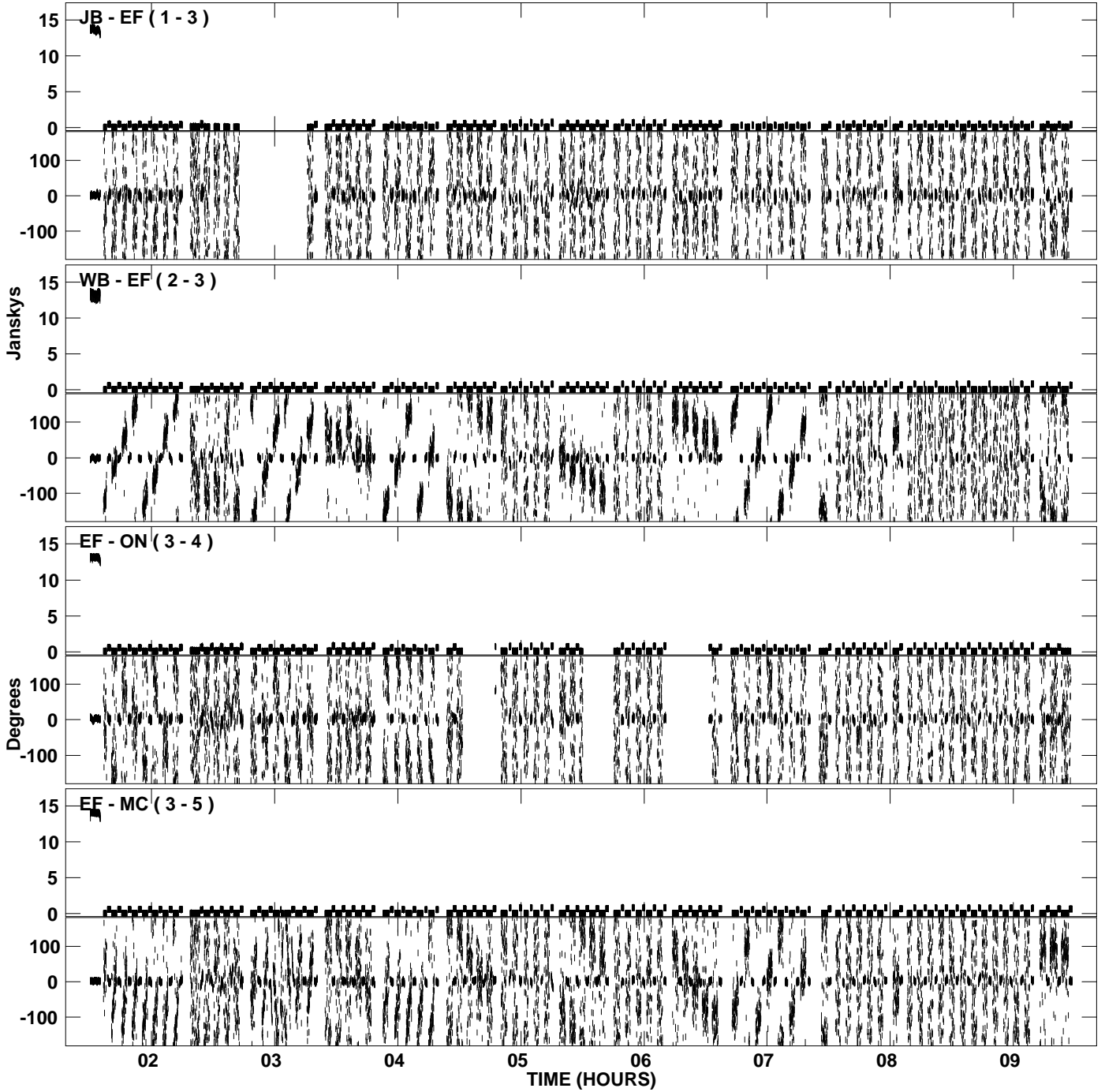
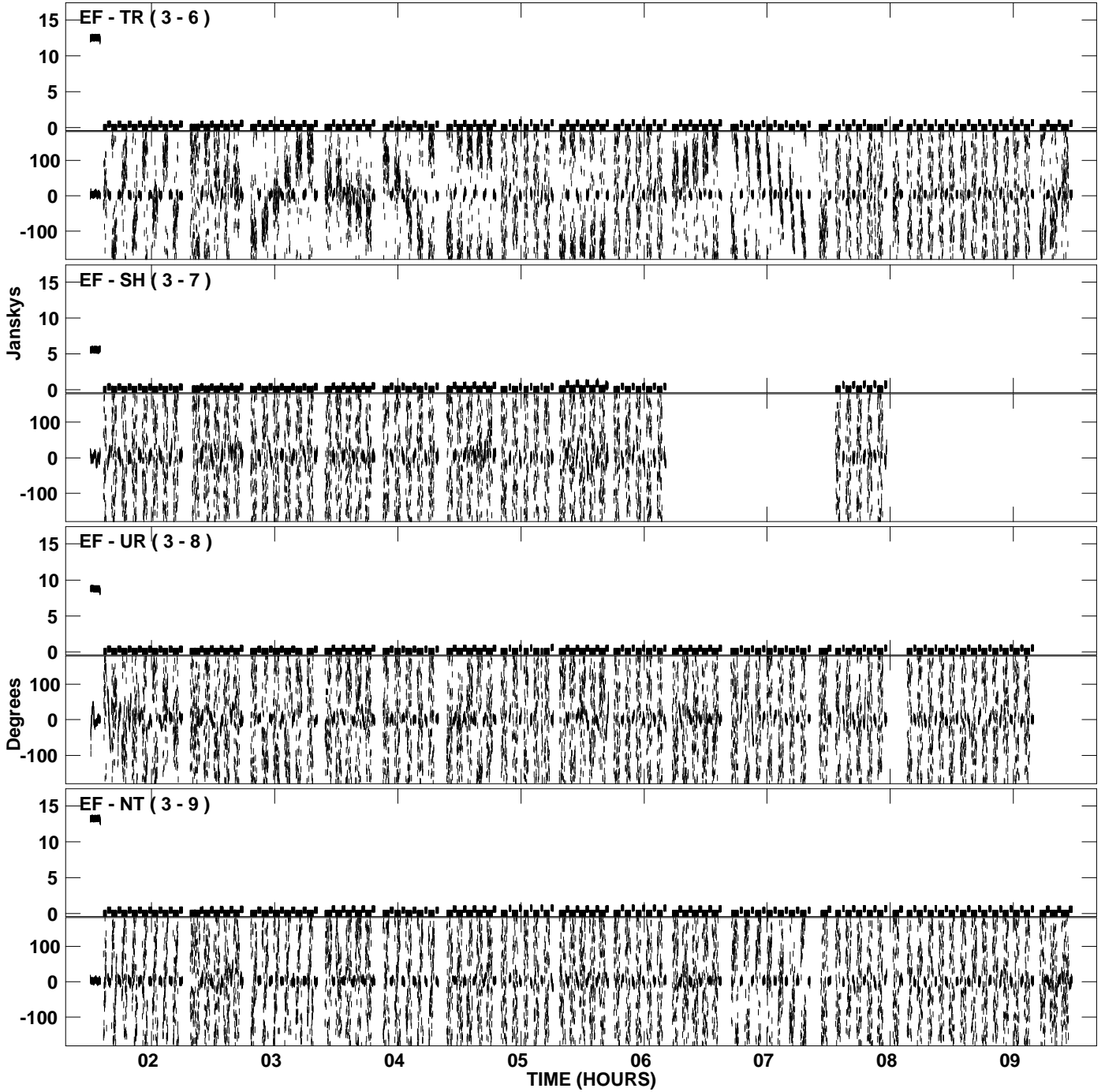


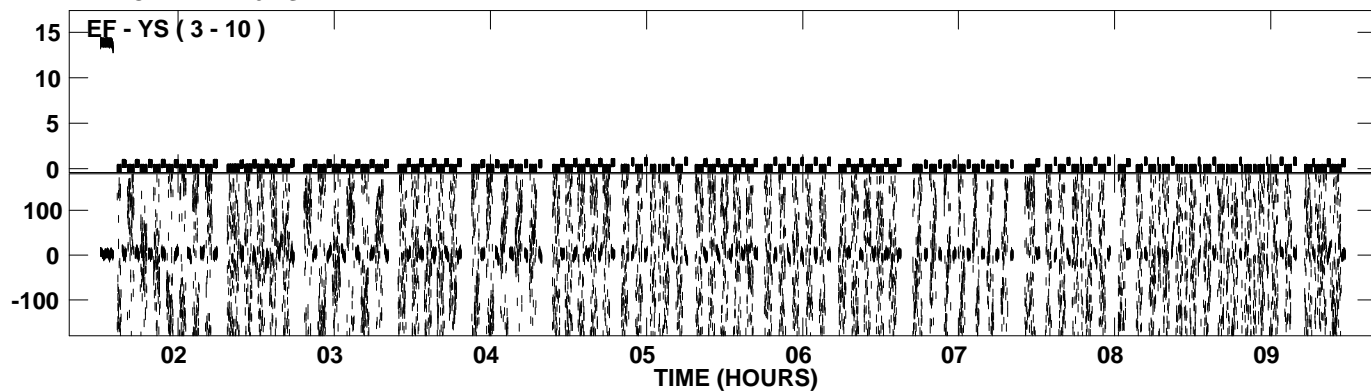
PLot file version 1 created 26-FEB-2010 16:20:48
Amplitude and Phase vs Time for EB044B.UVDATA.1 Vect aver. CL # 3
IF 1 CHAN 1 - 16 STK LL



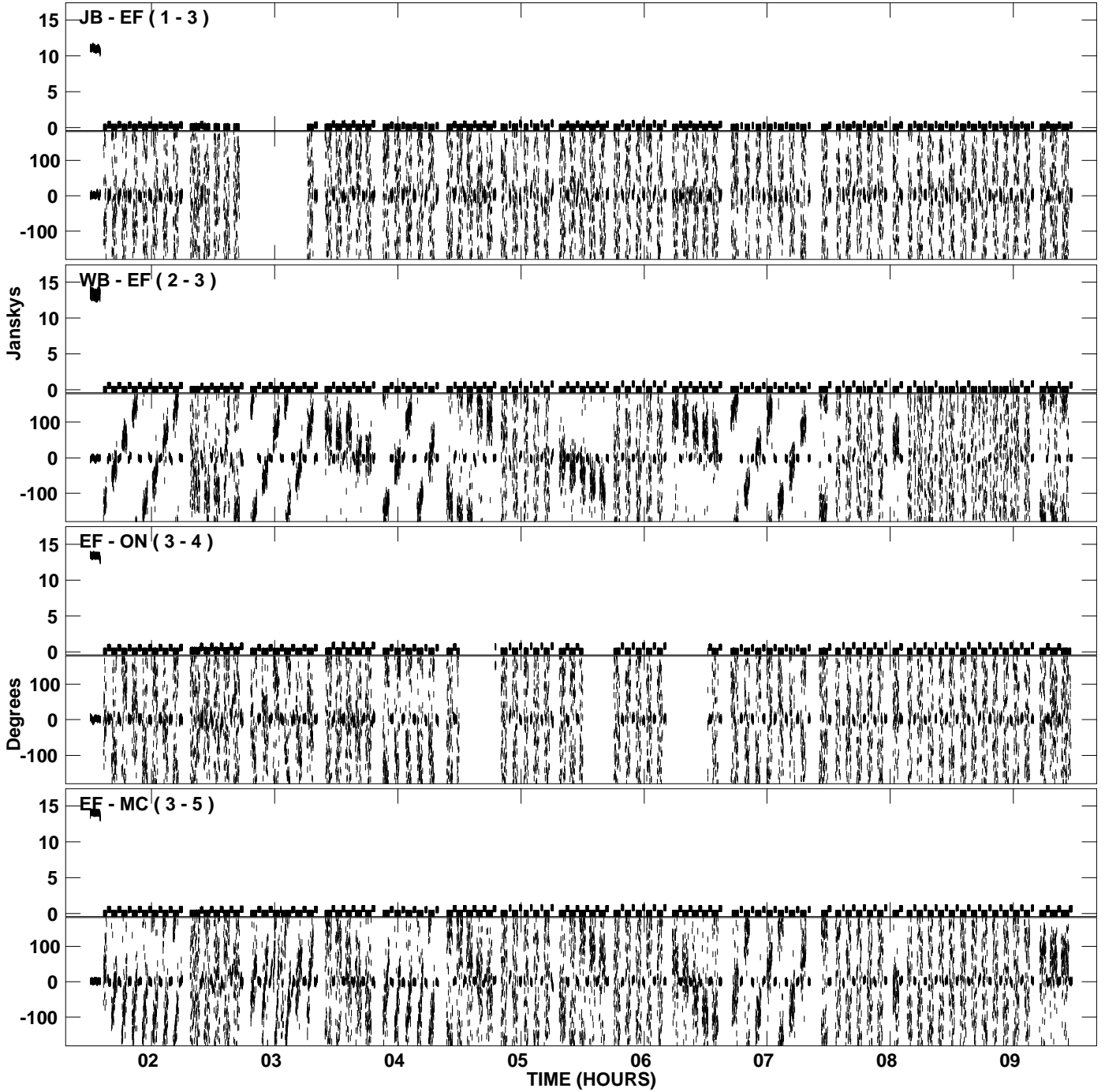
PLot file version 2 created 26-FEB-2010 16:20:48
Amplitude and Phase vs Time for EB044B.UVDATA.1 Vect aver. CL # 3
IF 1 CHAN 1 - 16 STK LL



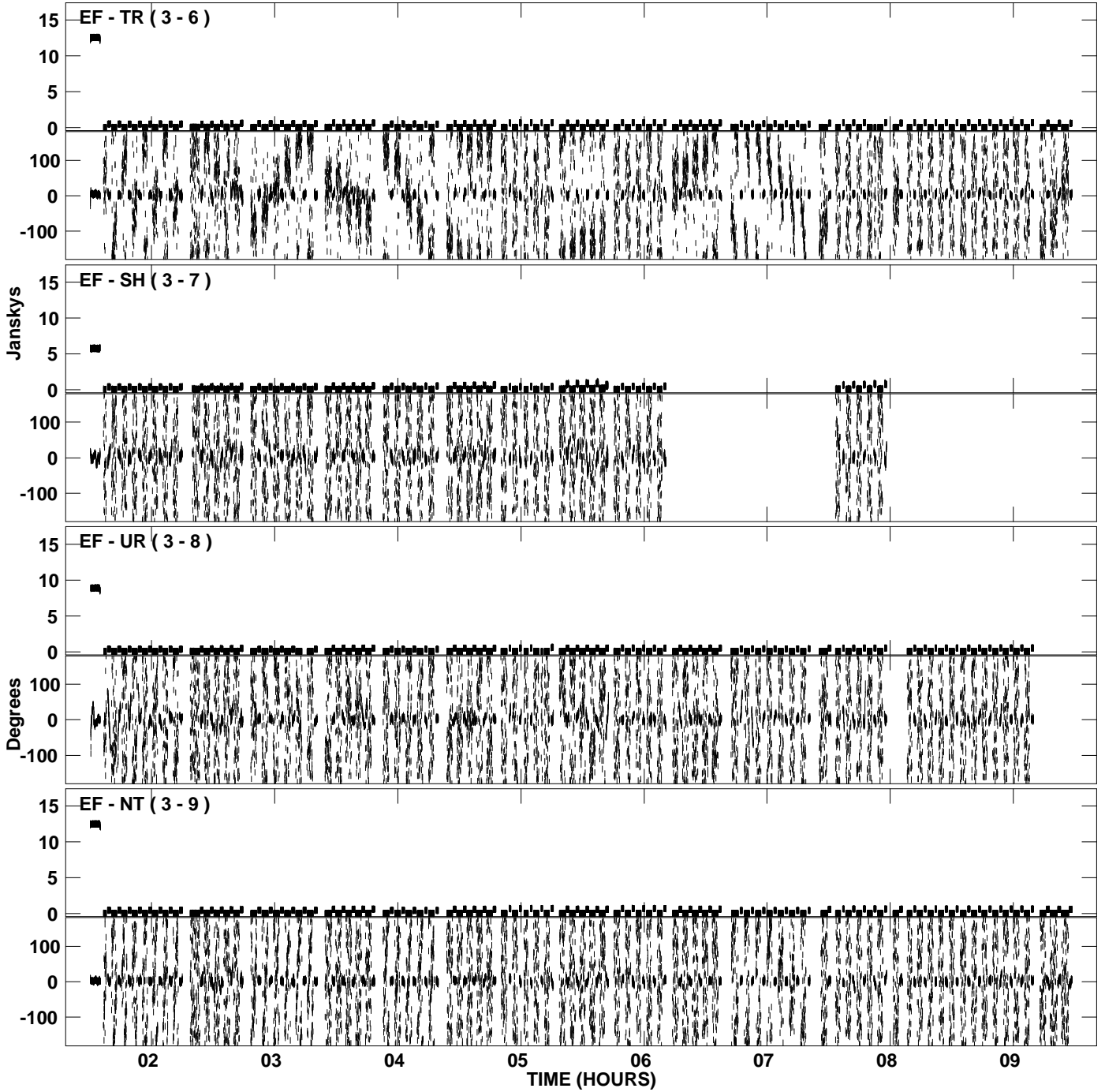
PLot file version 3 created 26-FEB-2010 16:20:49
Amplitude andPhase vs Time for EB044B.UVDATA.1 Vect aver. CL # 3
IF 1 CHAN 1 - 16 STK LL



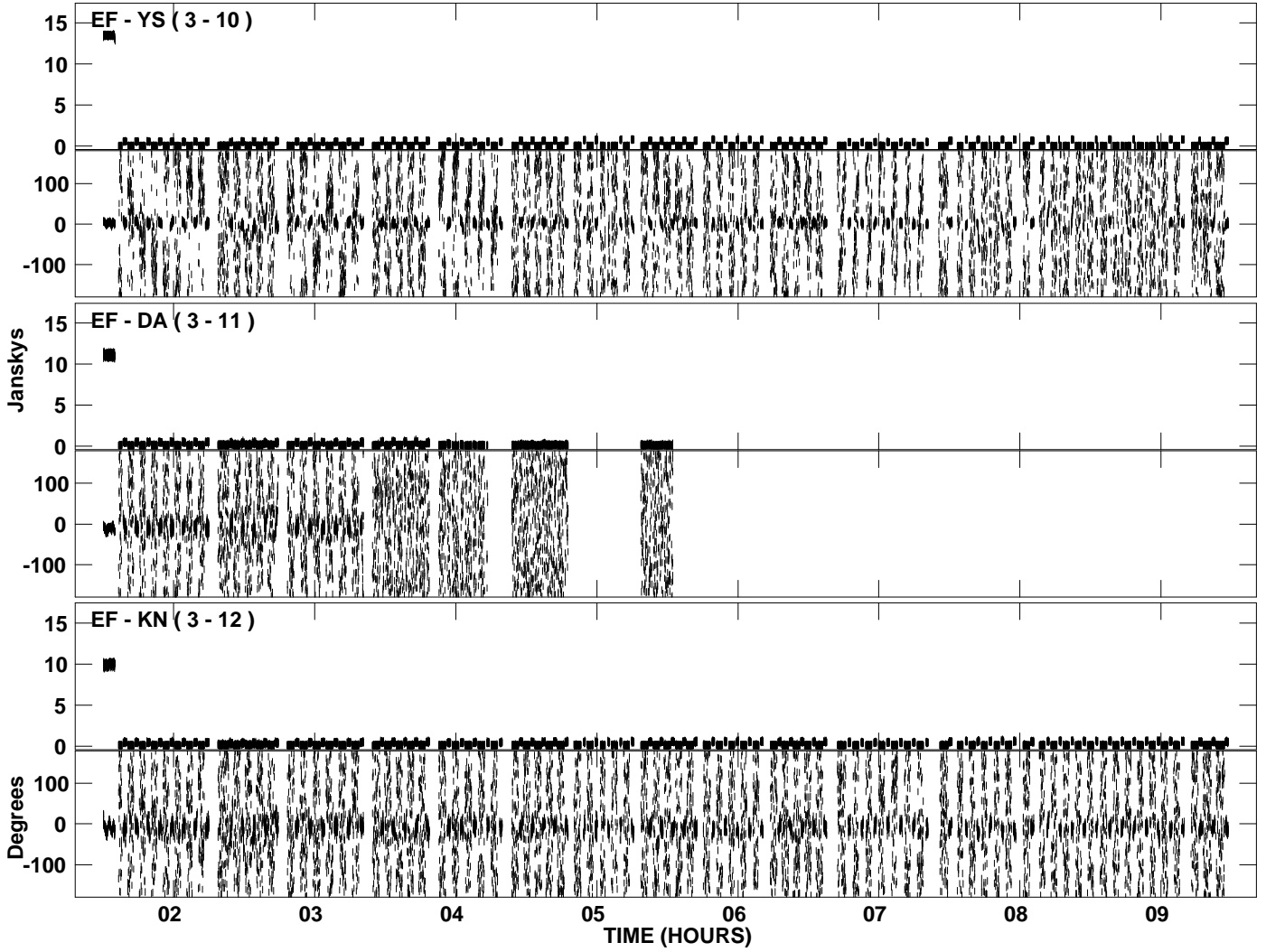
PLot file version 4 created 26-FEB-2010 16:24:23
Amplitude and Phase vs Time for EB044B.UVDATA.1 Vect aver. CL # 3
IF 2 CHAN 1 - 16 STK LL



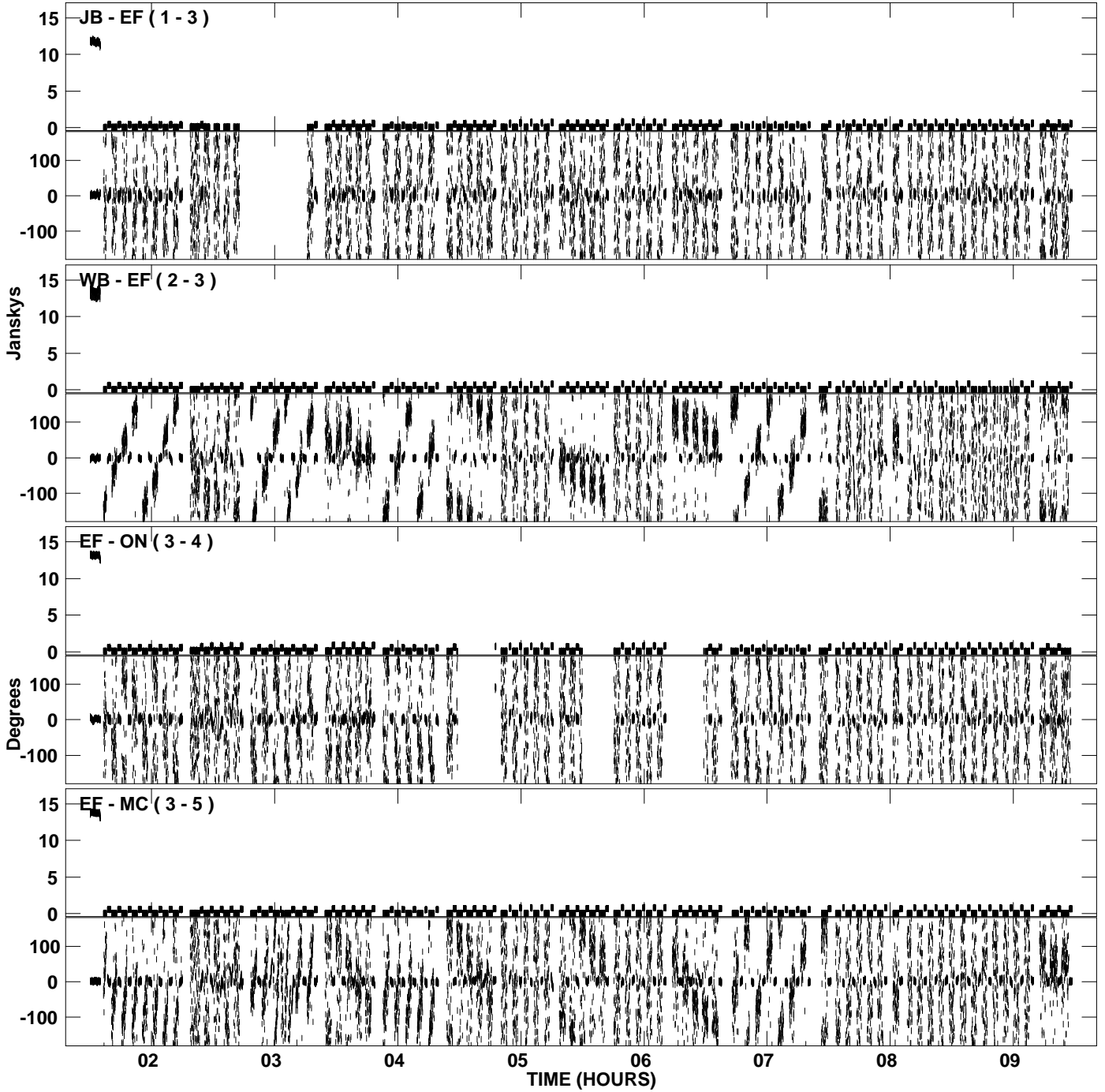
PLot file version 5 created 26-FEB-2010 16:24:25
Amplitude andPhase vs Time for EB044B.UVDATA.1 Vect aver. CL # 3
IF 2 CHAN 1 - 16 STK LL



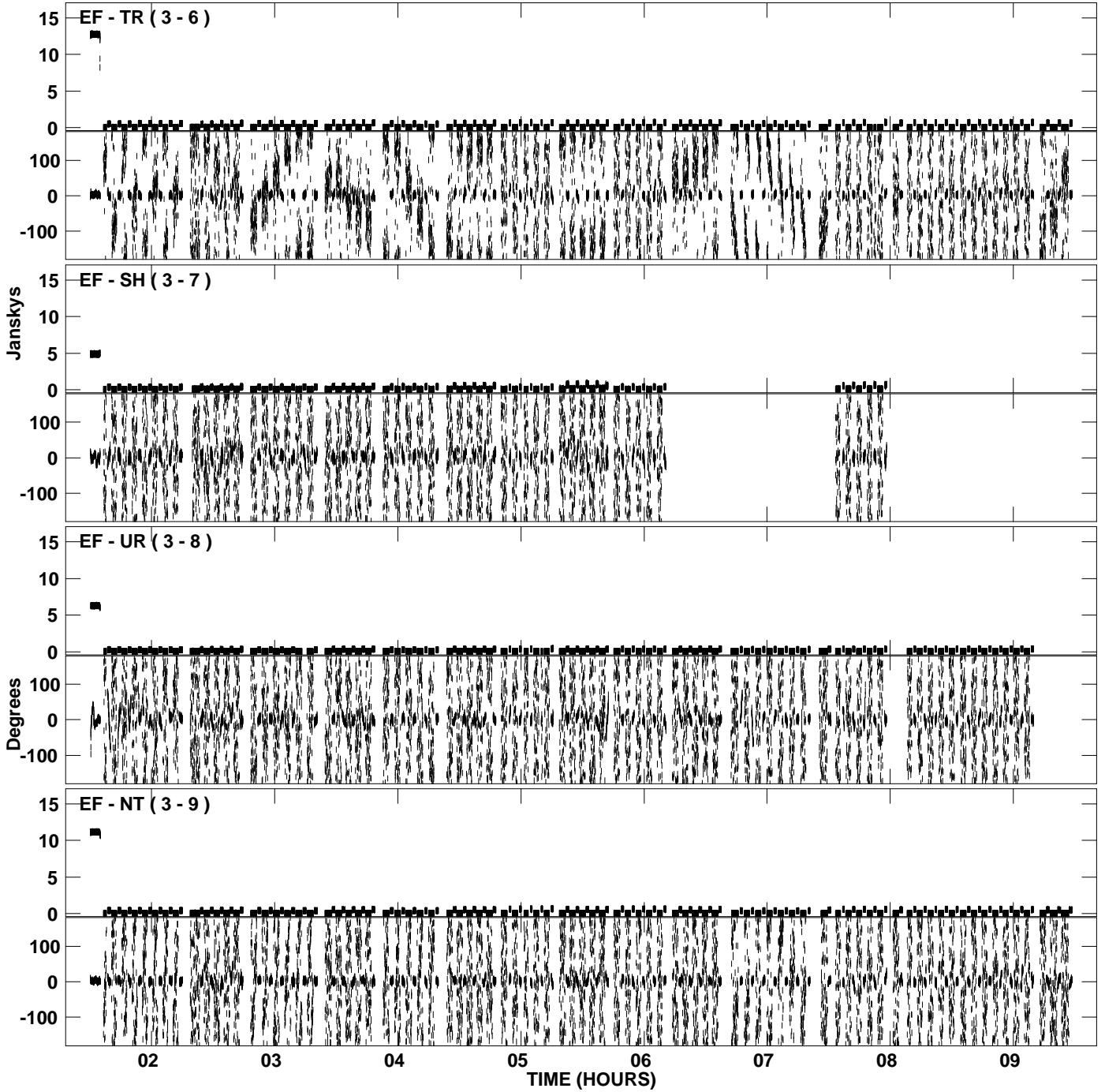
PLot file version 6 created 26-FEB-2010 16:24:27
Amplitude andPhase vs Time for EB044B.UVDATA.1 Vect aver. CL # 3
IF 2 CHAN 1 - 16 STK LL



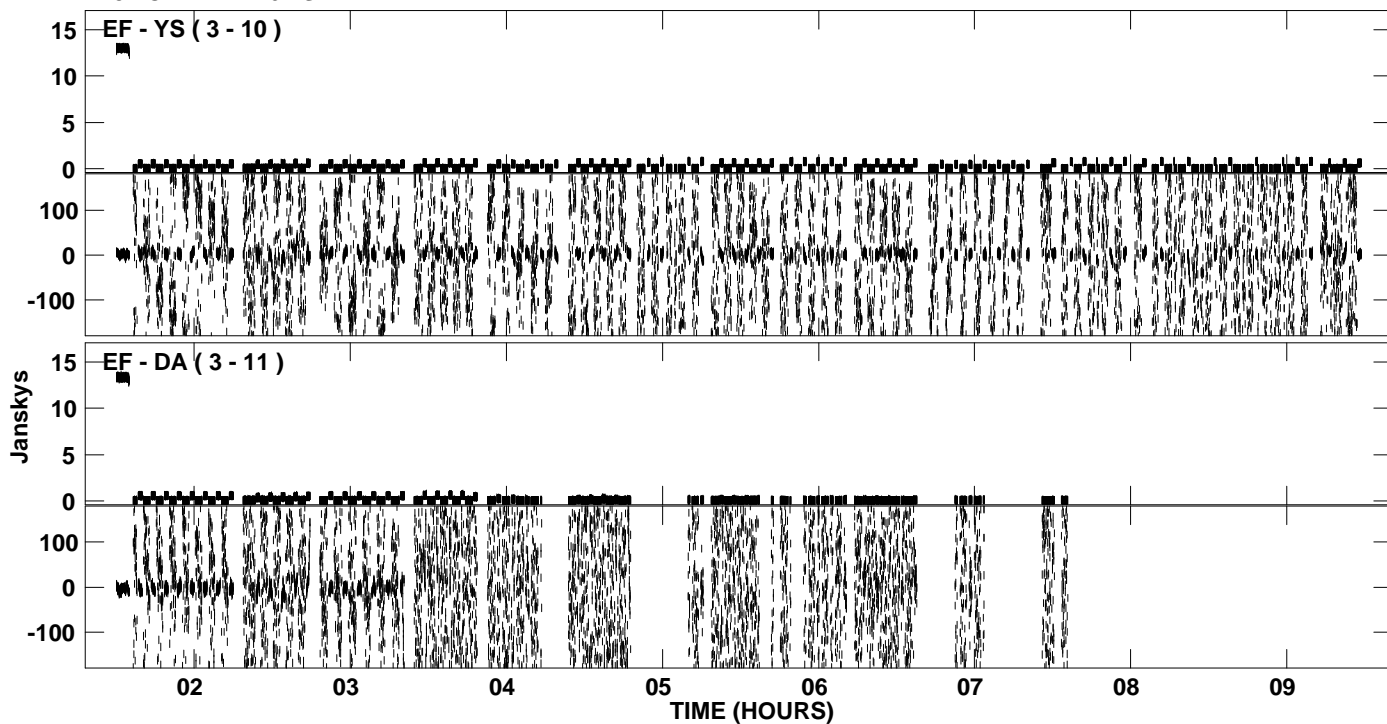
PLot file version 7 created 26-FEB-2010 16:29:02
Amplitude and Phase vs Time for EB044B.UVDATA.1 Vect aver. CL # 3
IF 3 CHAN 1 - 16 STK LL



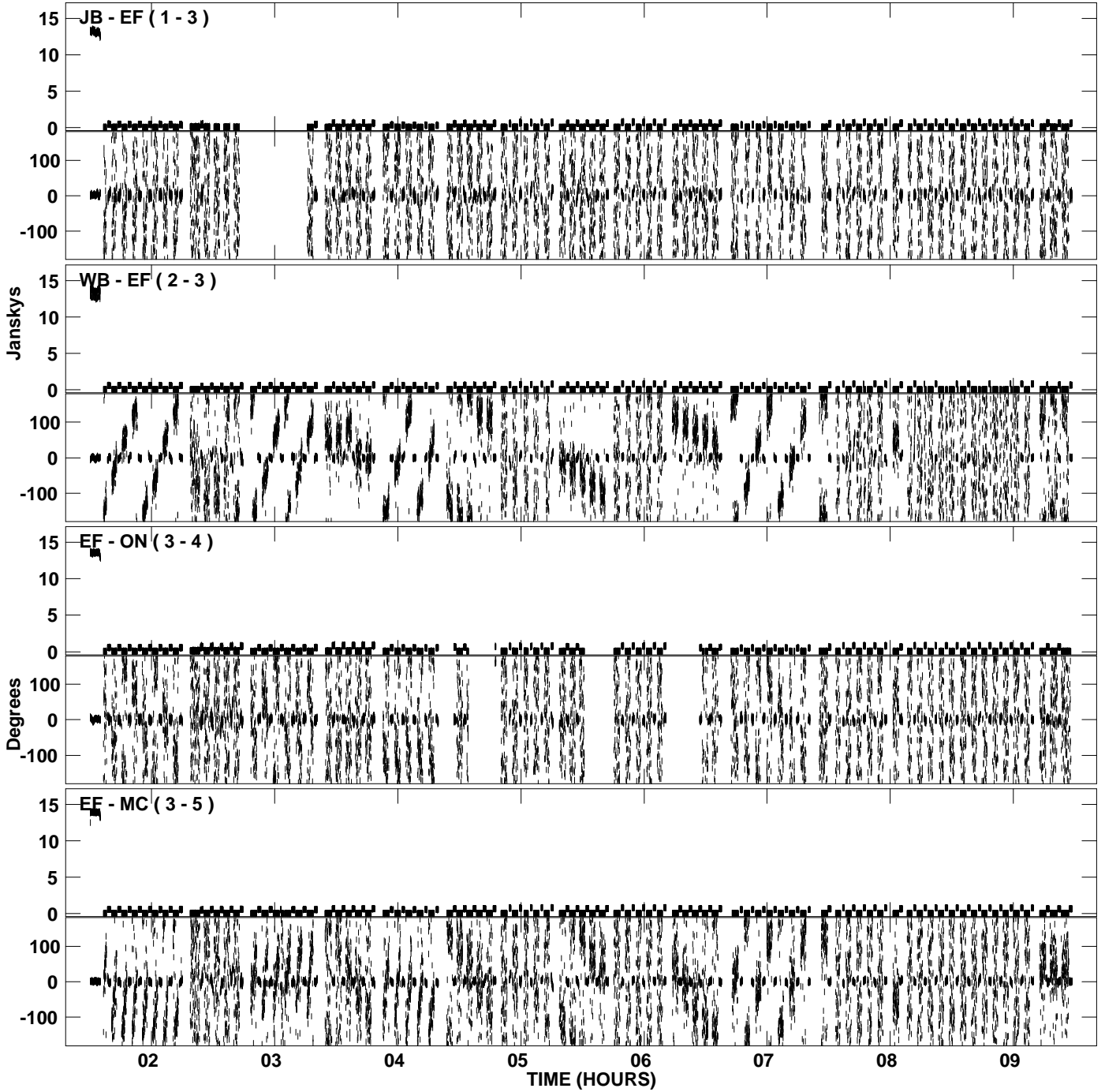
PLot file version 8 created 26-FEB-2010 16:29:05
Amplitude and Phase vs Time for EB044B.UVDATA.1 Vect aver. CL # 3
IF 3 CHAN 1 - 16 STK LL



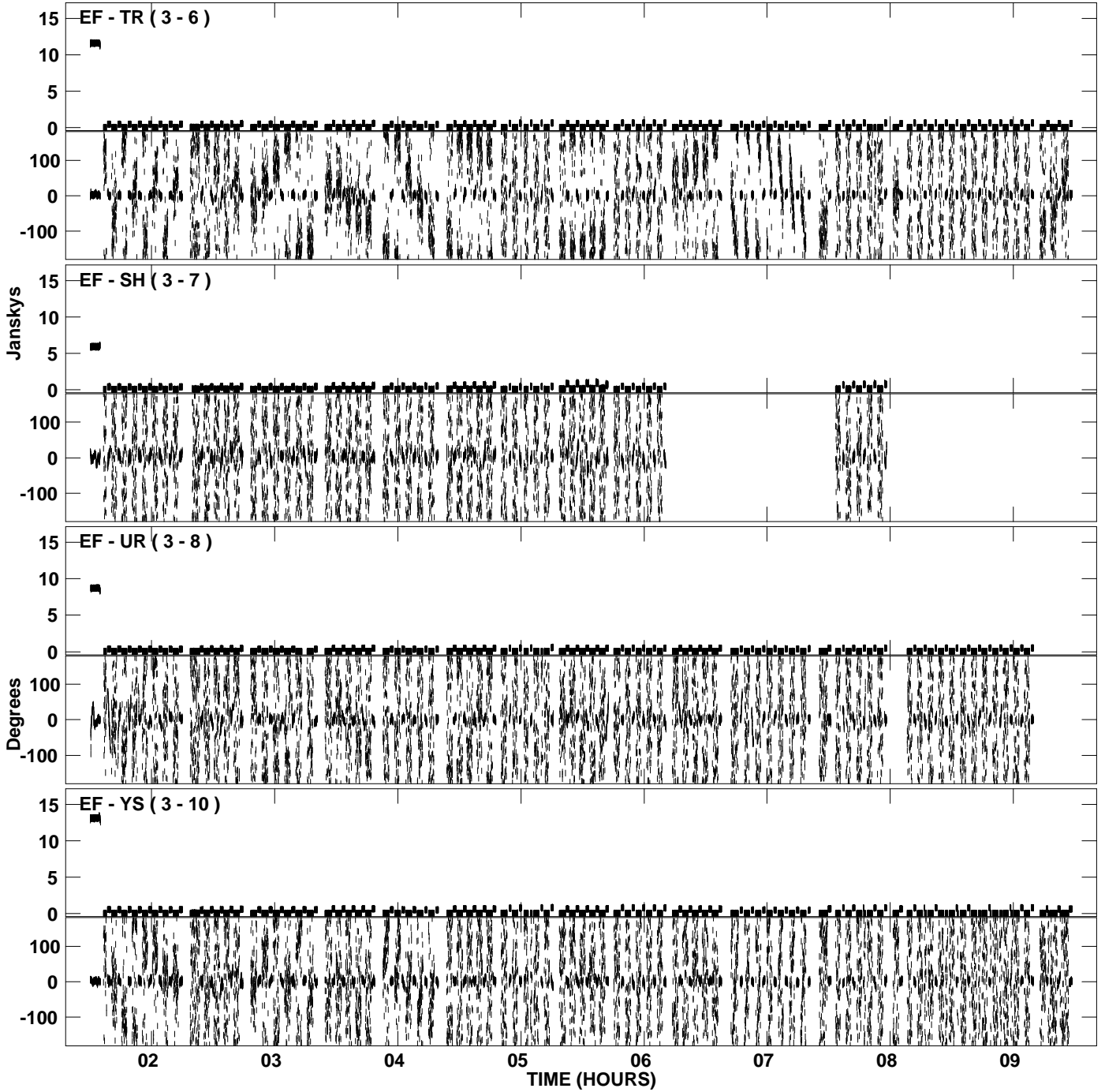
PLot file version 9 created 26-FEB-2010 16:29:07
Amplitude andPhase vs Time for EB044B.UVDATA.1 Vect aver. CL # 3
IF 3 CHAN 1 - 16 STK LL



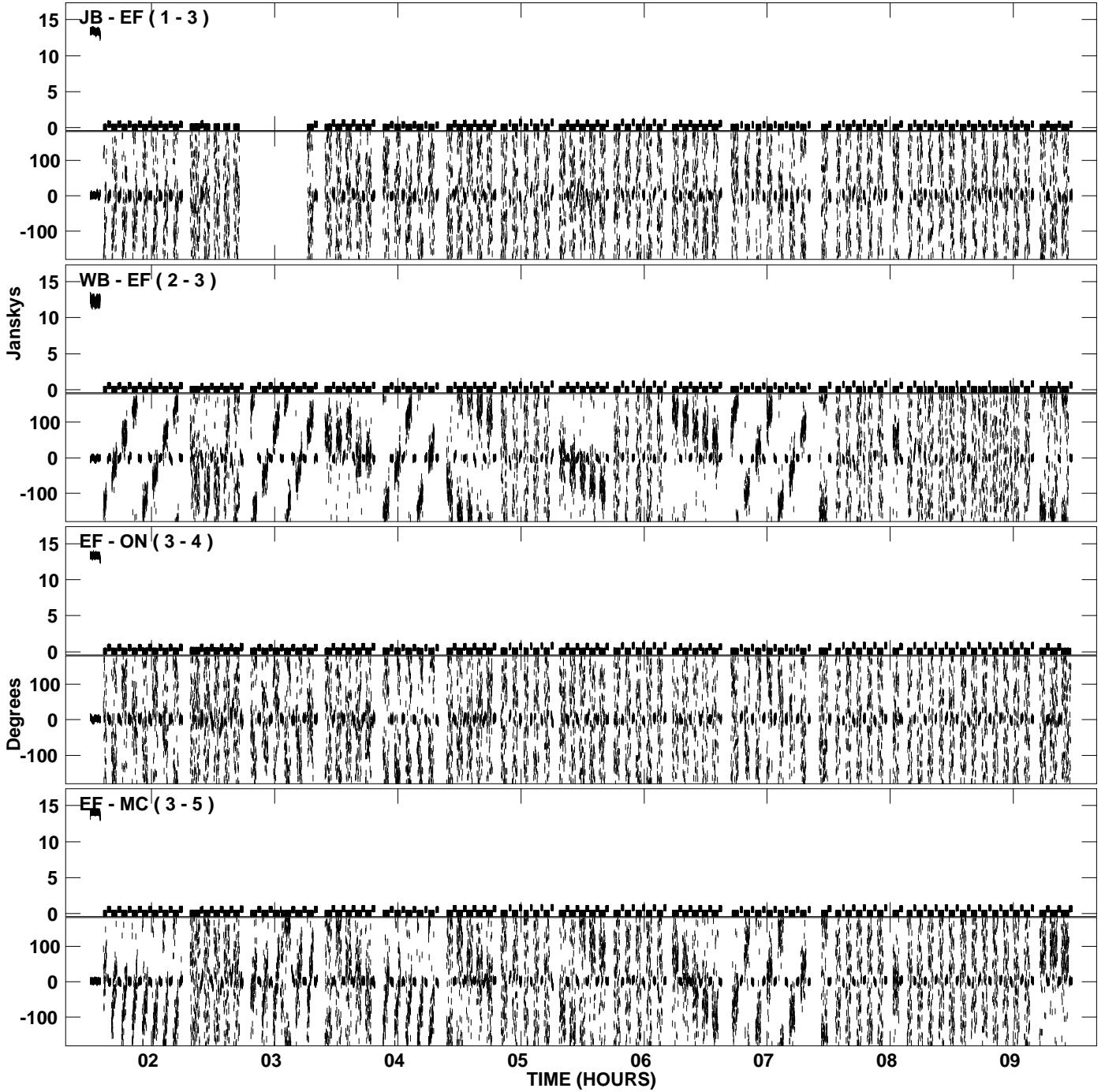
PLot file version 10 created 26-FEB-2010 16:32:51
Amplitude and Phase vs Time for EB044B.UVDATA.1 Vect aver. CL # 3
IF 4 CHAN 1 - 16 STK LL



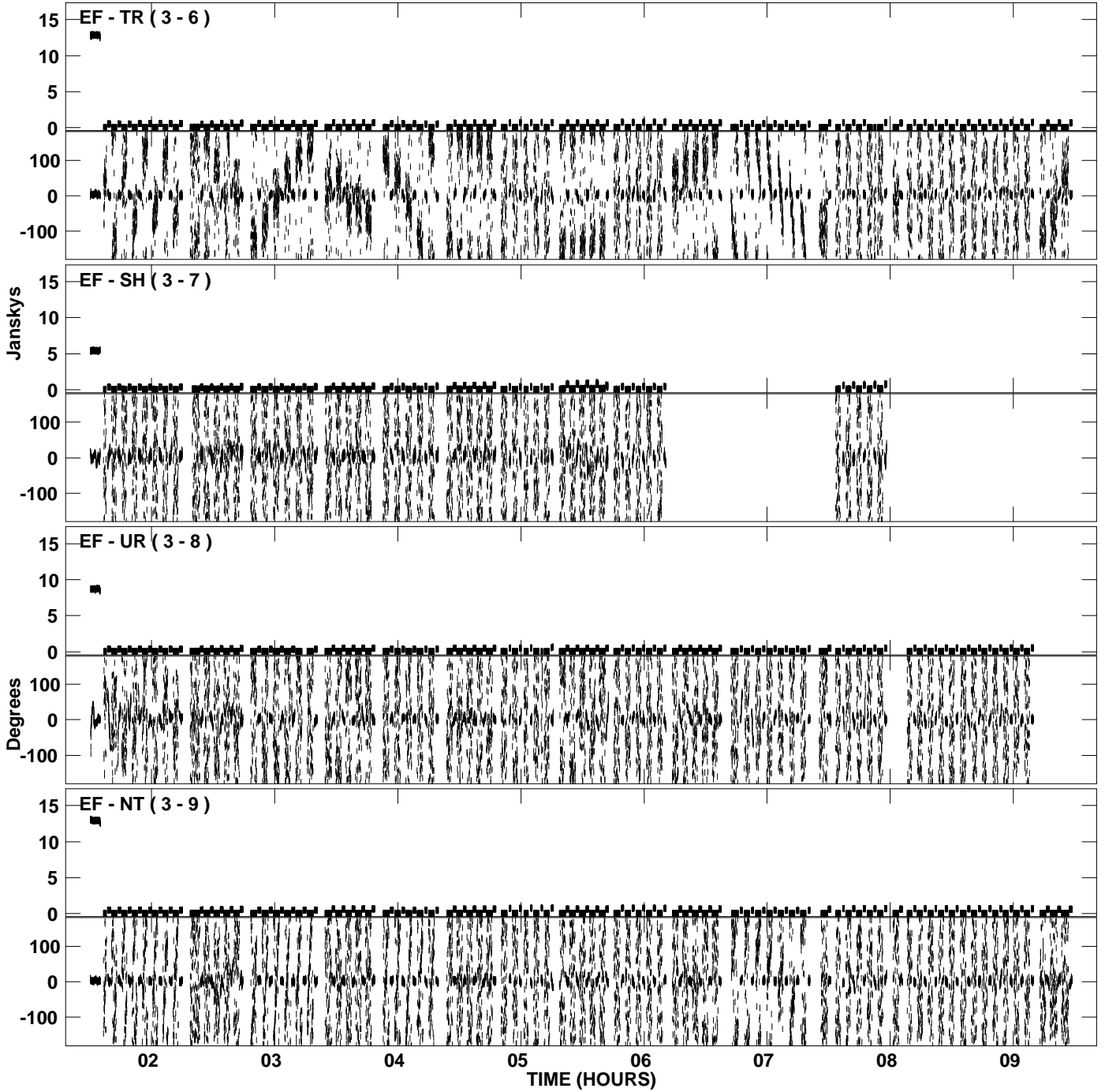
PLot file version 11 created 26-FEB-2010 16:32:53
Amplitude and Phase vs Time for EB044B.UVDATA.1 Vect aver. CL # 3
IF 4 CHAN 1 - 16 STK LL



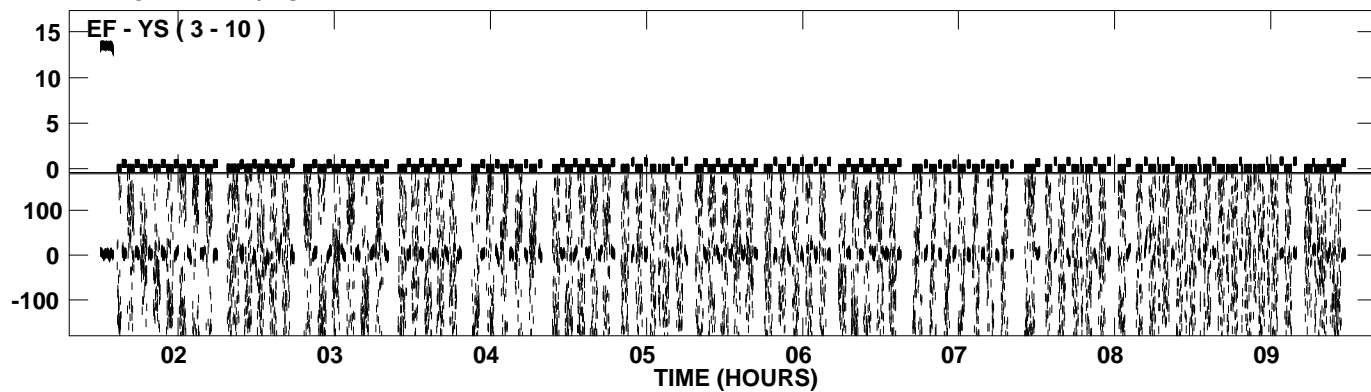
PLot file version 12 created 26-FEB-2010 16:34:31
Amplitude and Phase vs Time for EB044B.UVDATA.1 Vect aver. CL # 3
IF 1 CHAN 1 - 16 STK RR



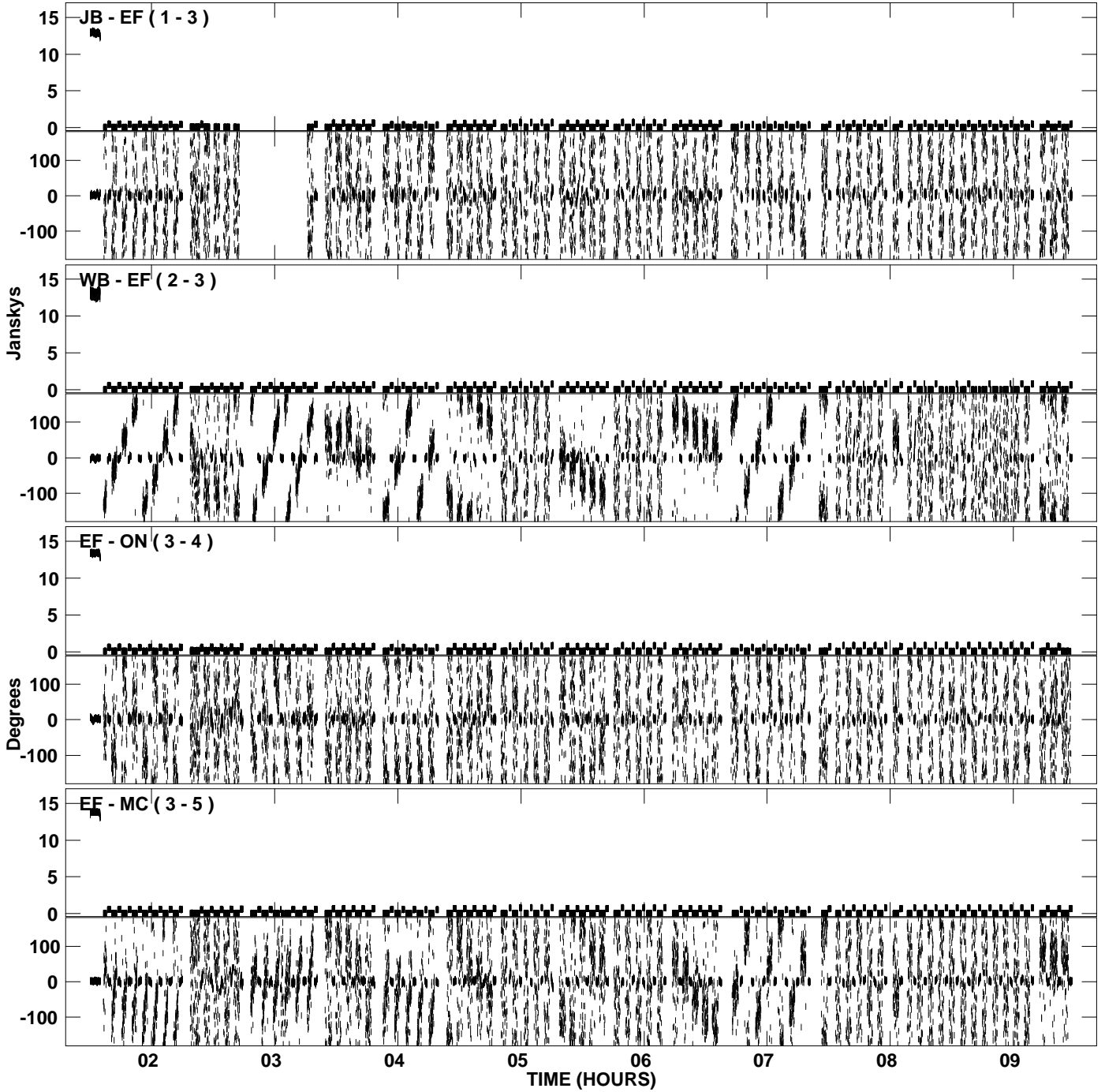
PLot file version 13 created 26-FEB-2010 16:34:32
Amplitude and Phase vs Time for EB044B.UVDATA.1 Vect aver. CL # 3
IF 1 CHAN 1 - 16 STK RR



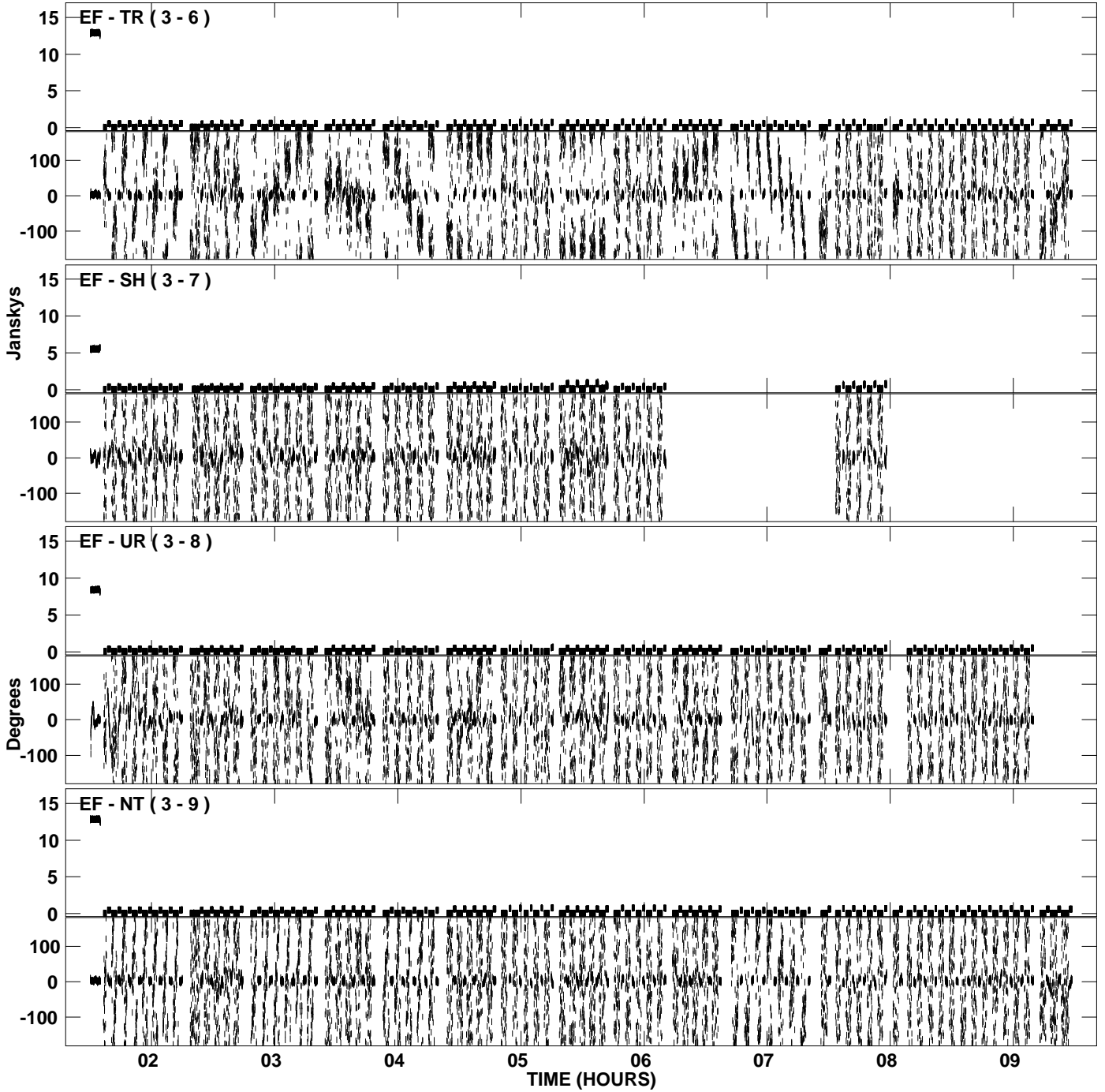
PLot file version 14 created 26-FEB-2010 16:34:33
Amplitude andPhase vs Time for EB044B.UVDATA.1 Vect aver. CL # 3
IF 1 CHAN 1 - 16 STK RR



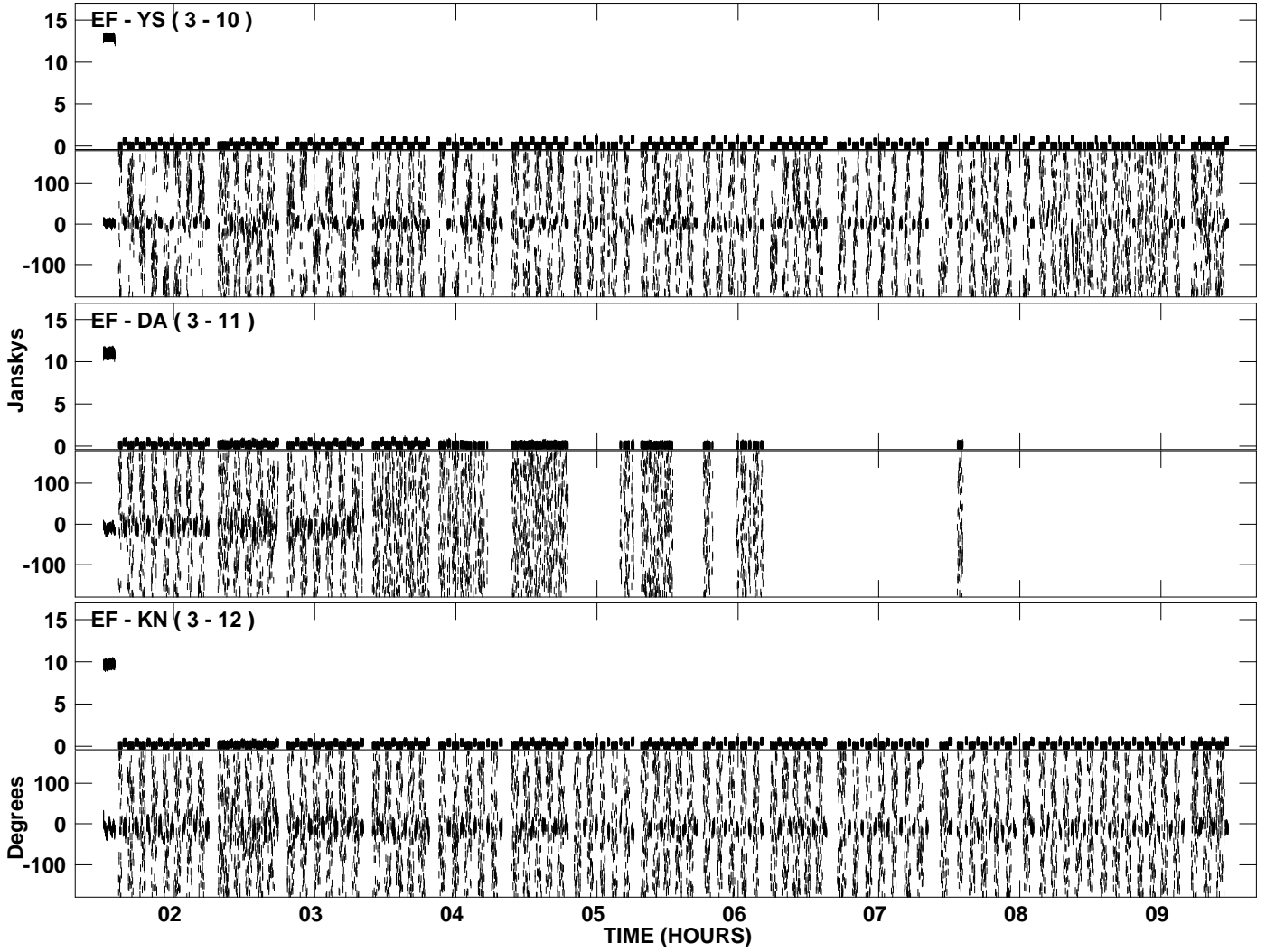
PLot file version 15 created 26-FEB-2010 16:35:01
Amplitude andPhase vs Time for EB044B.UVDATA.1 Vect aver. CL # 3
IF 2 CHAN 1 - 16 STK RR



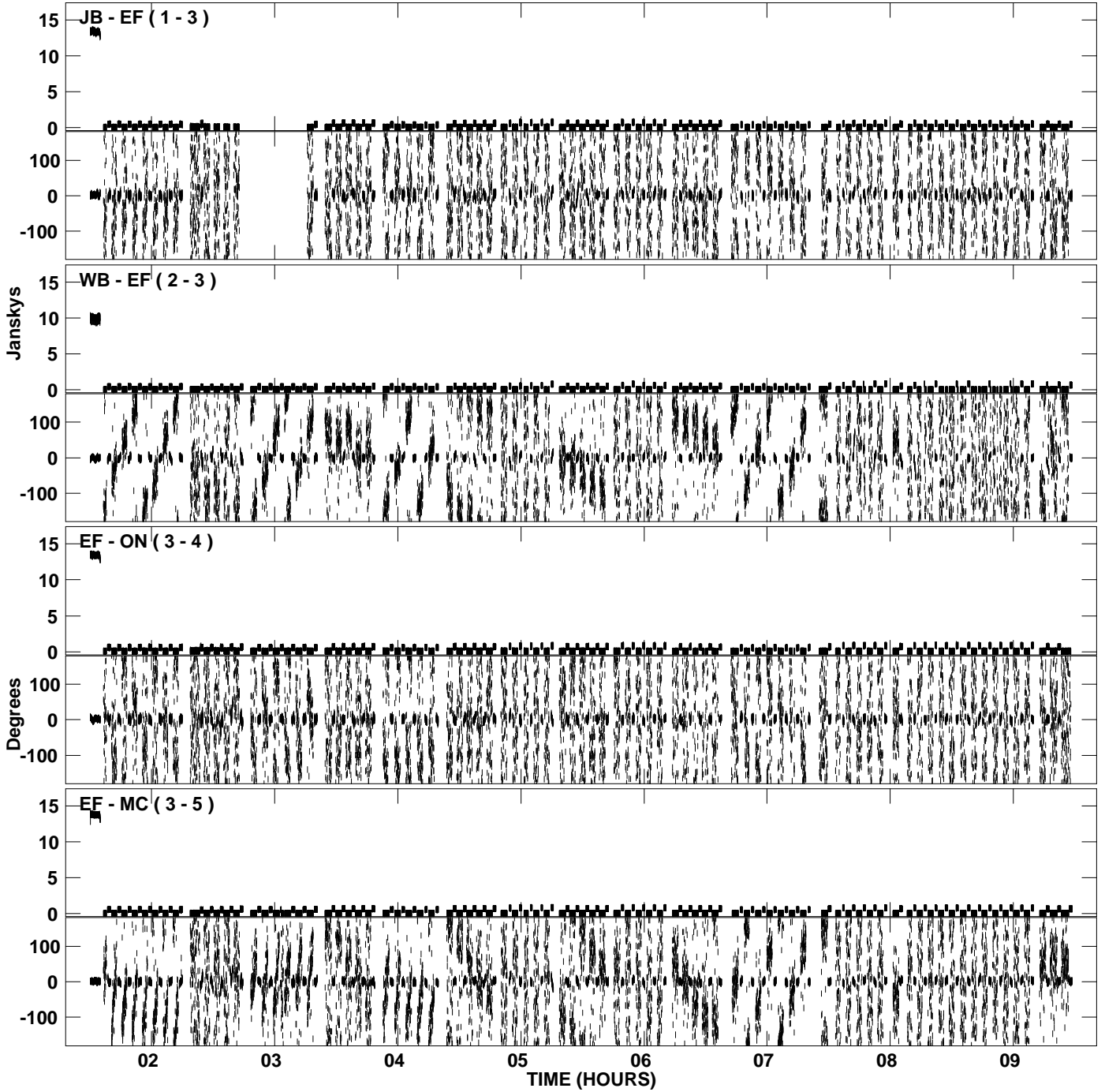
PLot file version 16 created 26-FEB-2010 16:35:02
Amplitude and Phase vs Time for EB044B.UVDATA.1 Vect aver. CL # 3
IF 2 CHAN 1 - 16 STK RR



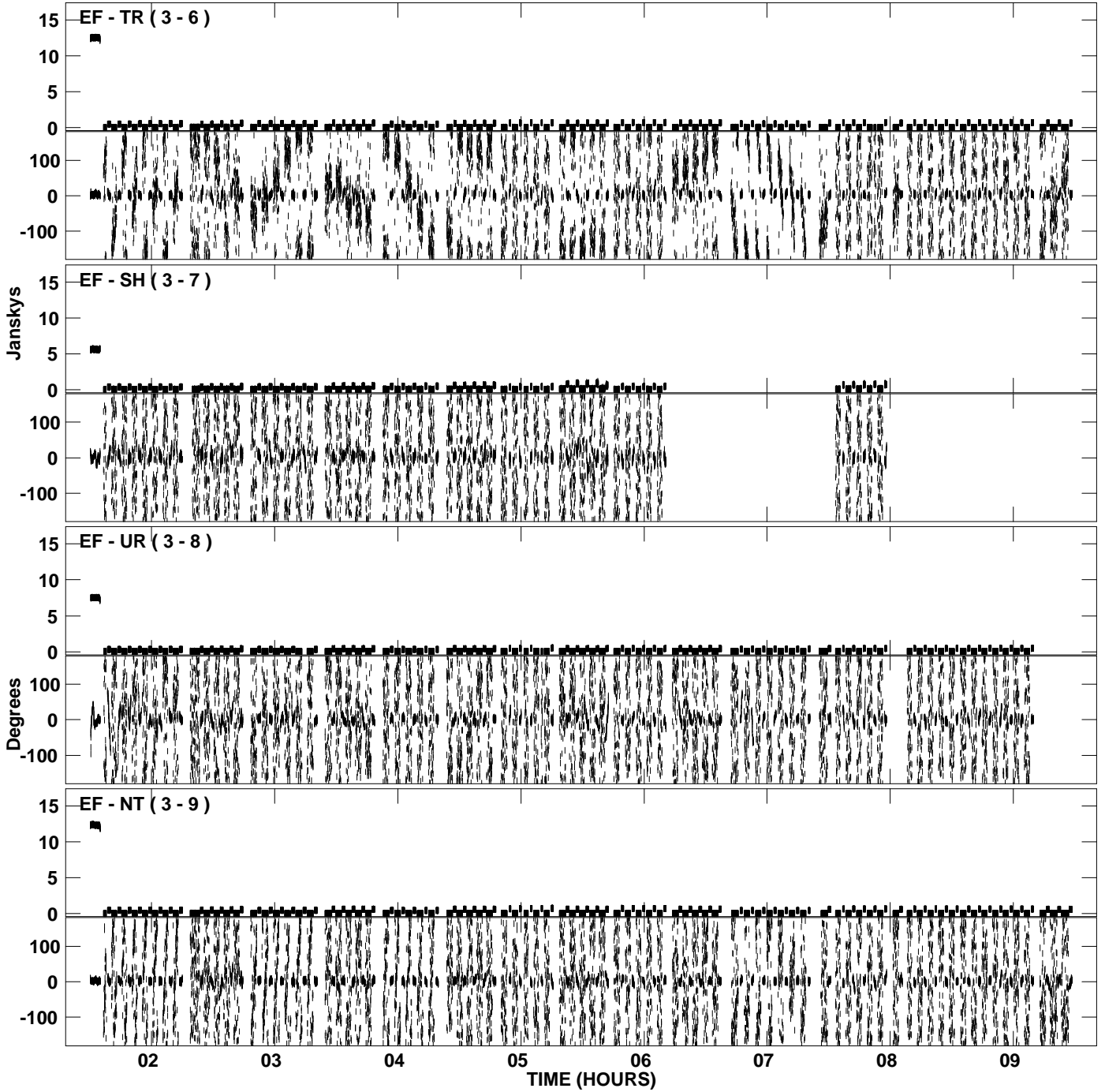
PLot file version 17 created 26-FEB-2010 16:35:04
Amplitude andPhase vs Time for EB044B.UVDATA.1 Vect aver. CL # 3
IF 2 CHAN 1 - 16 STK RR



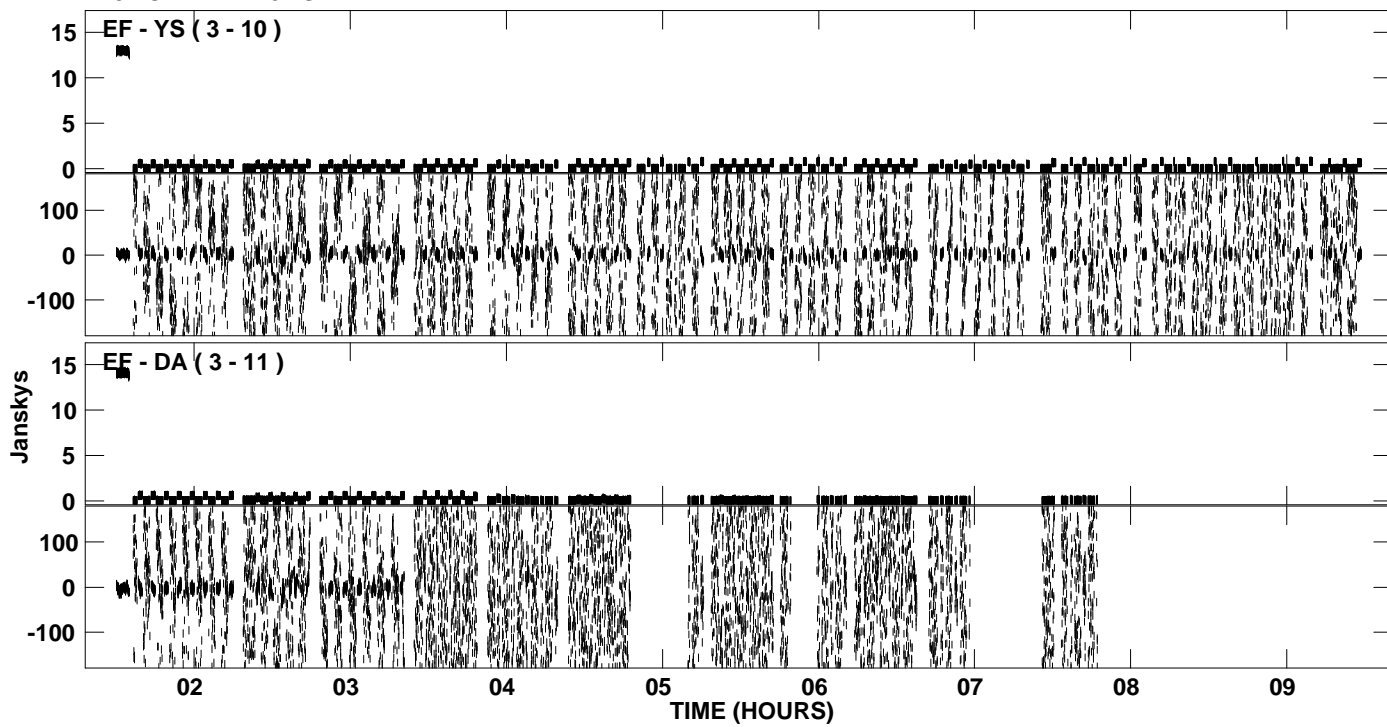
PLot file version 18 created 26-FEB-2010 16:35:27
Amplitude and Phase vs Time for EB044B.UVDATA.1 Vect aver. CL # 3
IF 3 CHAN 1 - 16 STK RR



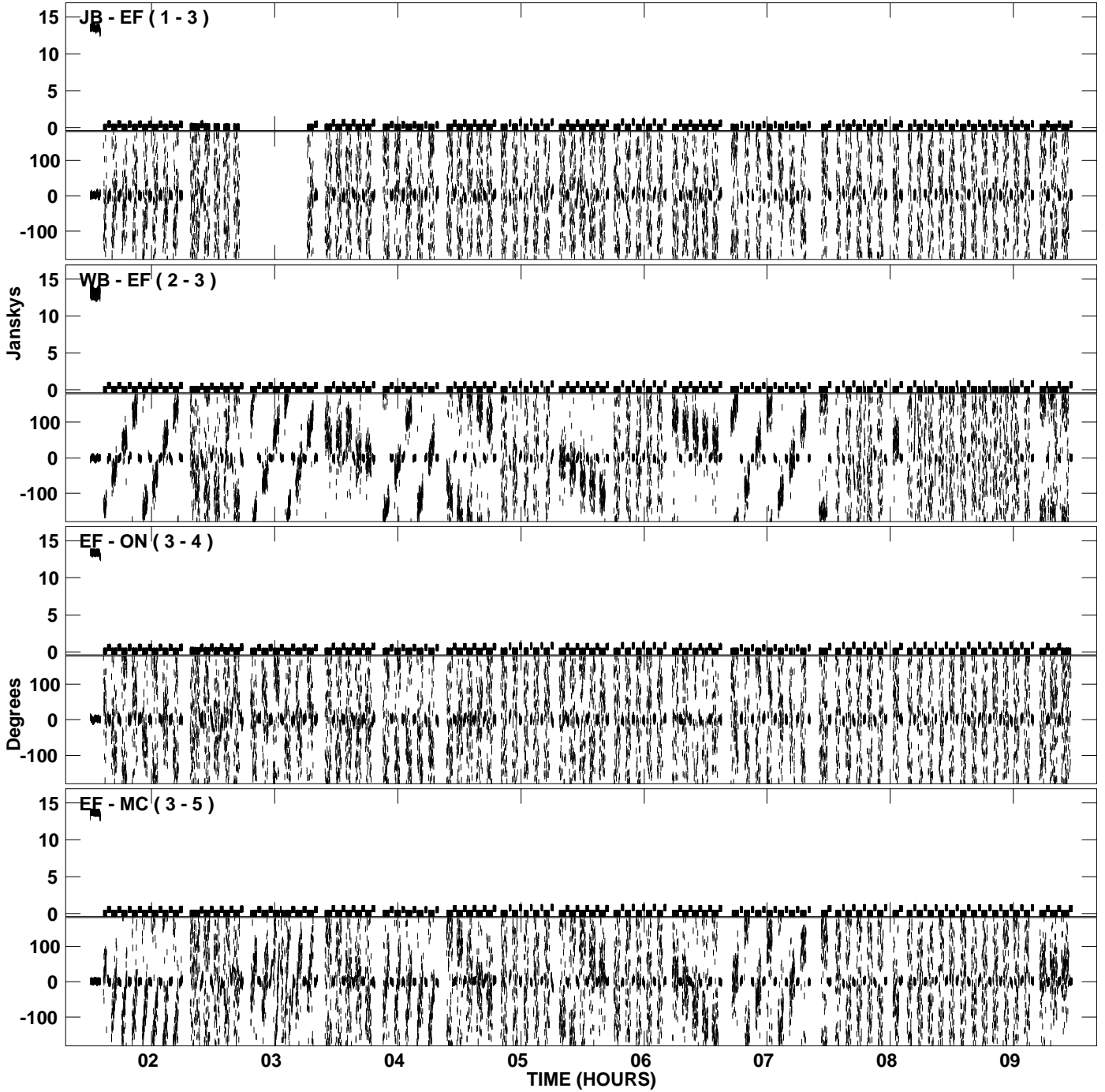
PLot file version 19 created 26-FEB-2010 16:35:28
Amplitude andPhase vs Time for EB044B.UVDATA.1 Vect aver. CL # 3
IF 3 CHAN 1 - 16 STK RR



PLot file version 20 created 26-FEB-2010 16:35:29
Amplitude andPhase vs Time for EB044B.UVDATA.1 Vect aver. CL # 3
IF 3 CHAN 1 - 16 STK RR



PLot file version 21 created 26-FEB-2010 16:35:53
Amplitude and Phase vs Time for EB044B.UVDATA.1 Vect aver. CL # 3
IF 4 CHAN 1 - 16 STK RR



PLot file version 22 created 26-FEB-2010 16:35:54
Amplitude andPhase vs Time for EB044B.UVDATA.1 Vect aver. CL # 3
IF 4 CHAN 1 - 16 STK RR

