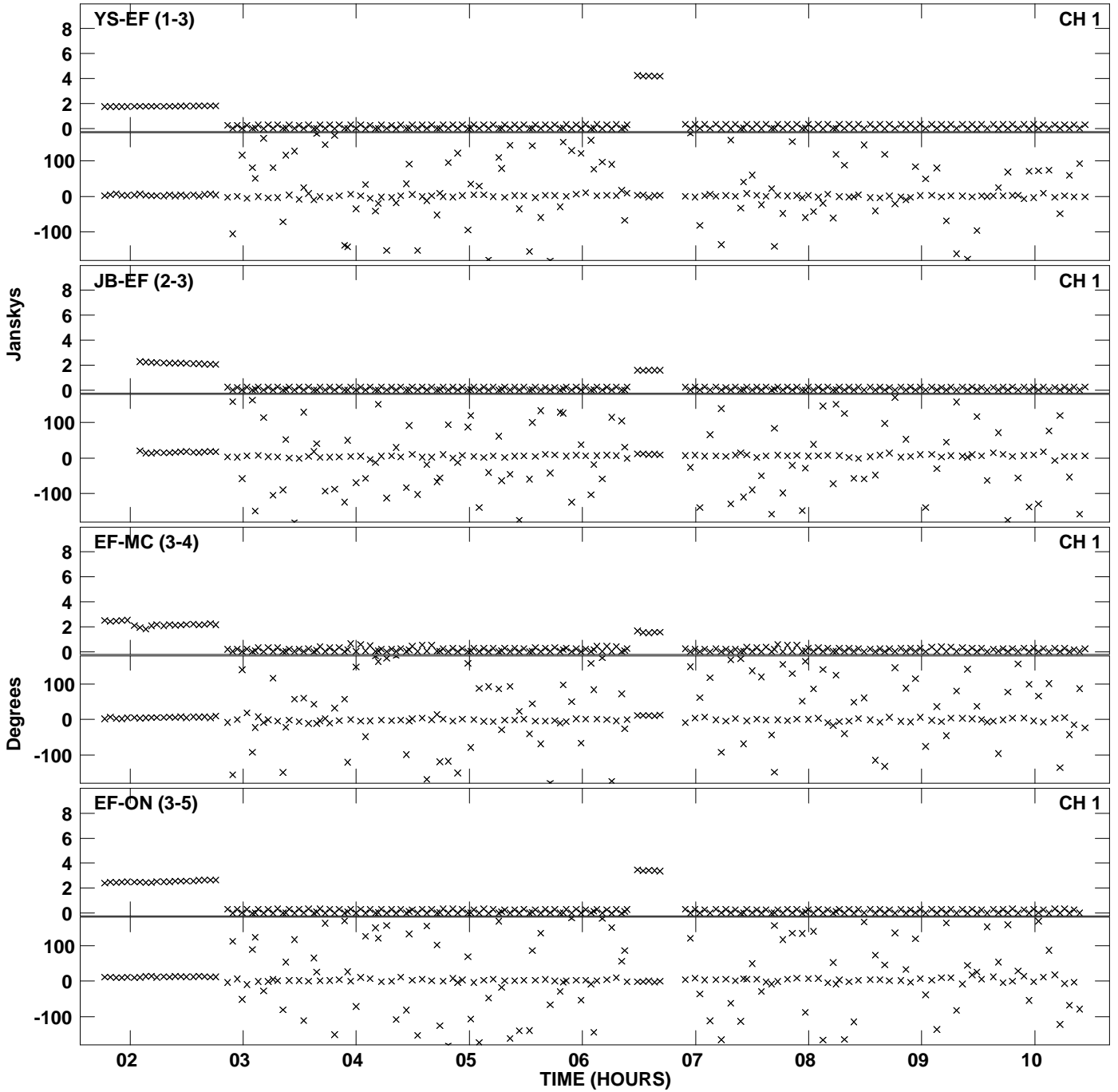
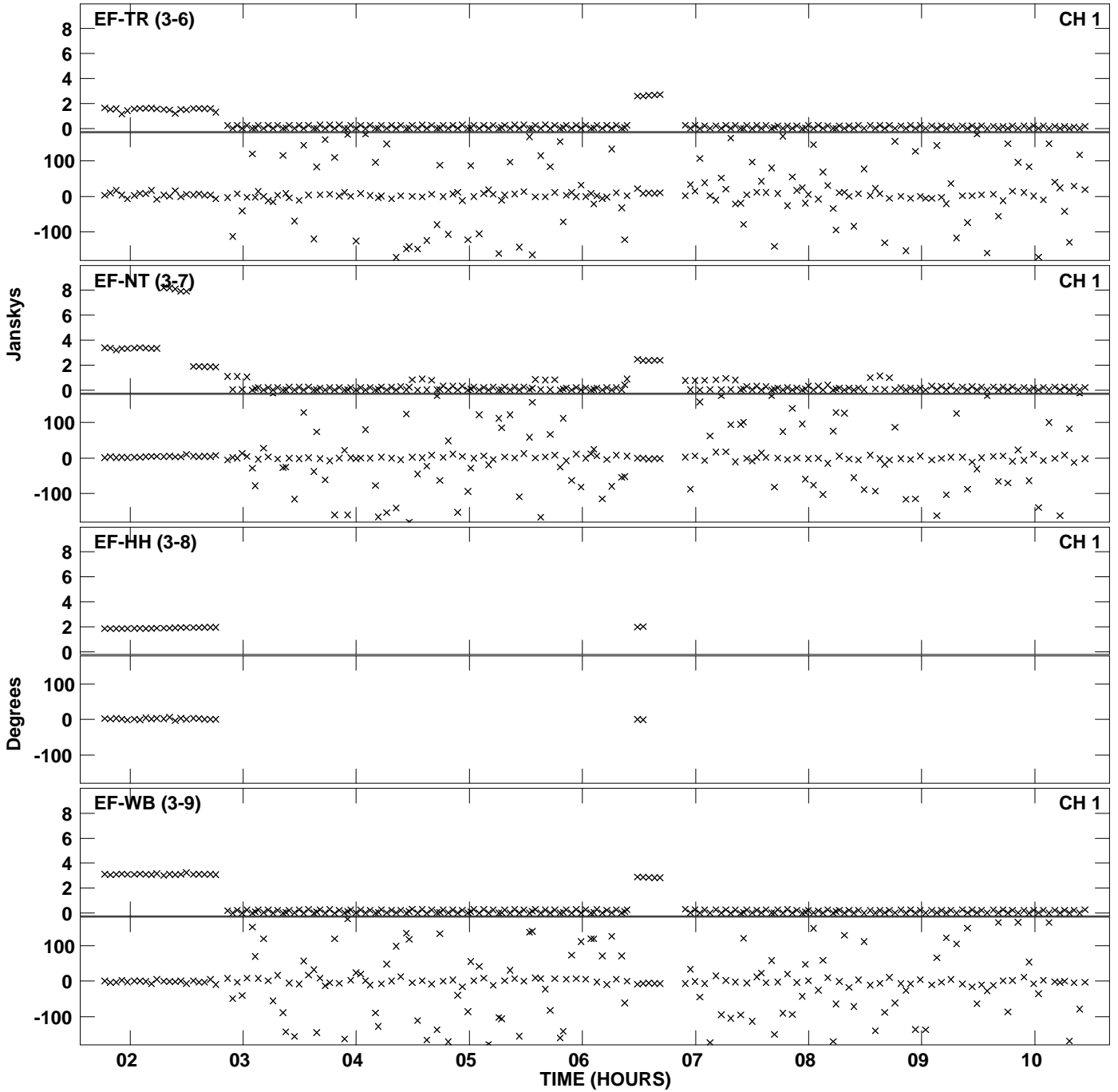


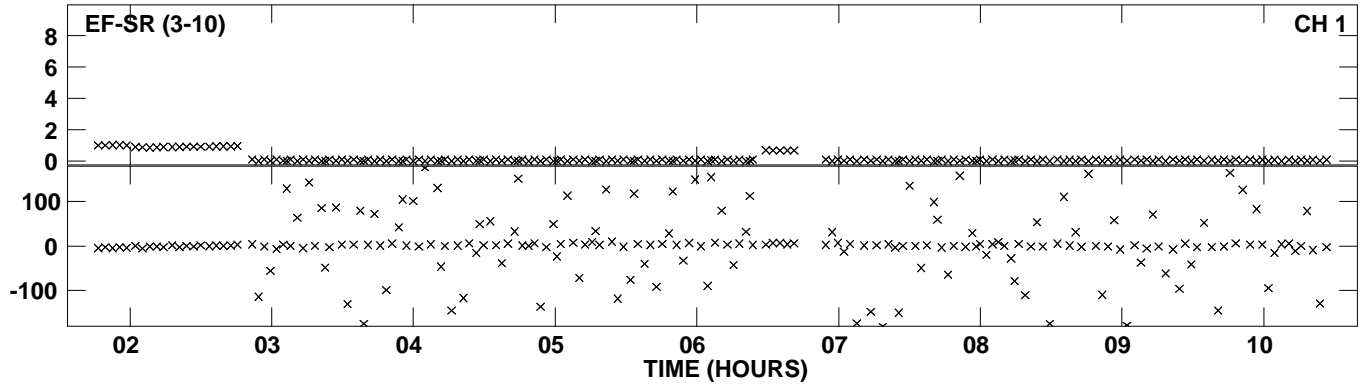
Plot file version 1 created 31-AUG-2015 16:37:47  
Amplitude and Phase vs Time for EB052F 1.UVDATA.1 Vect aver. CL # 3  
IF 1 CHAN 1 - 128 STK LL



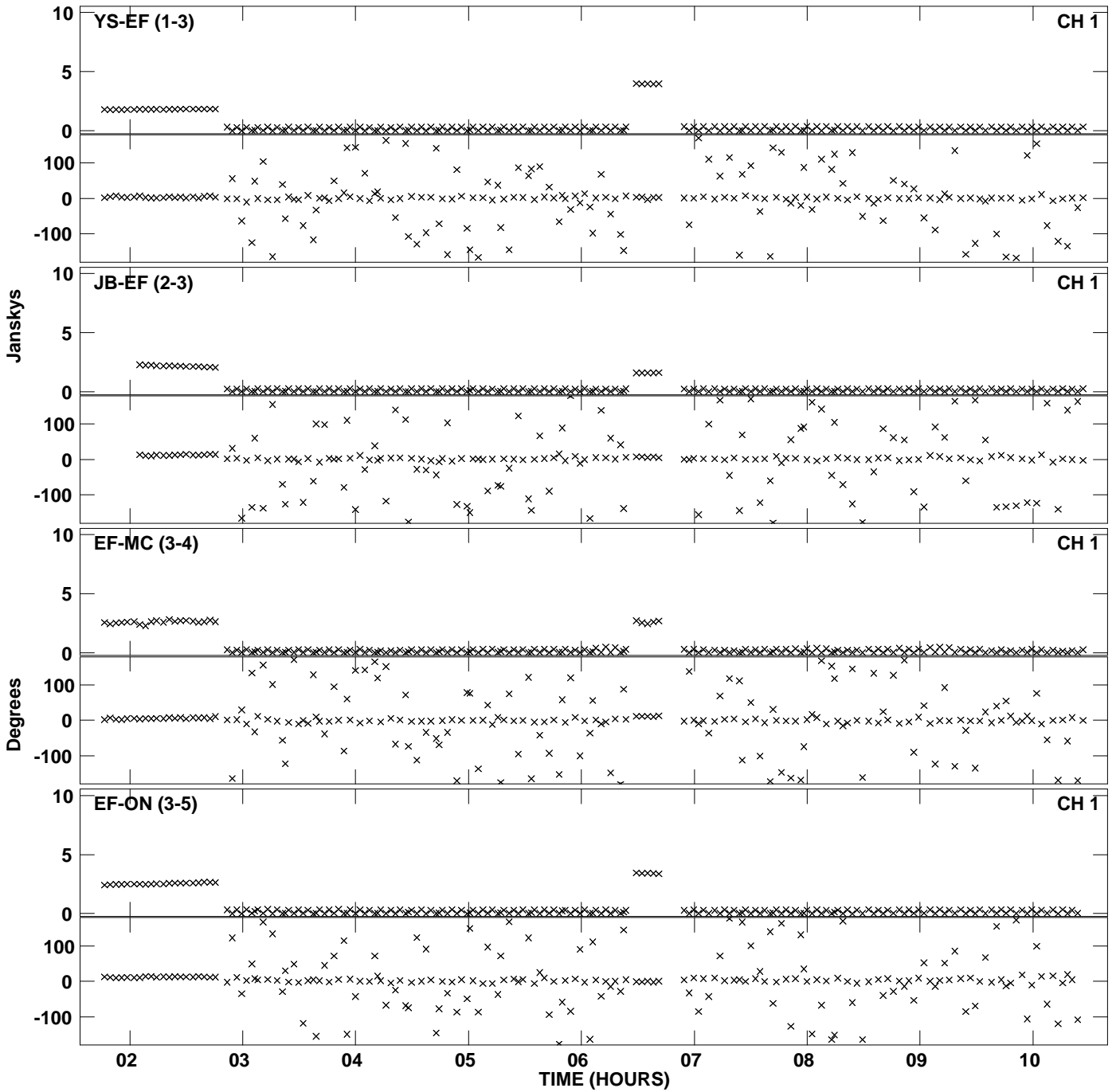
Plot file version 2 created 31-AUG-2015 16:37:47  
Amplitude and Phase vs Time for EB052F 1.UVDATA.1 Vect aver. CL # 3  
IF 1 CHAN 1 - 128 STK LL



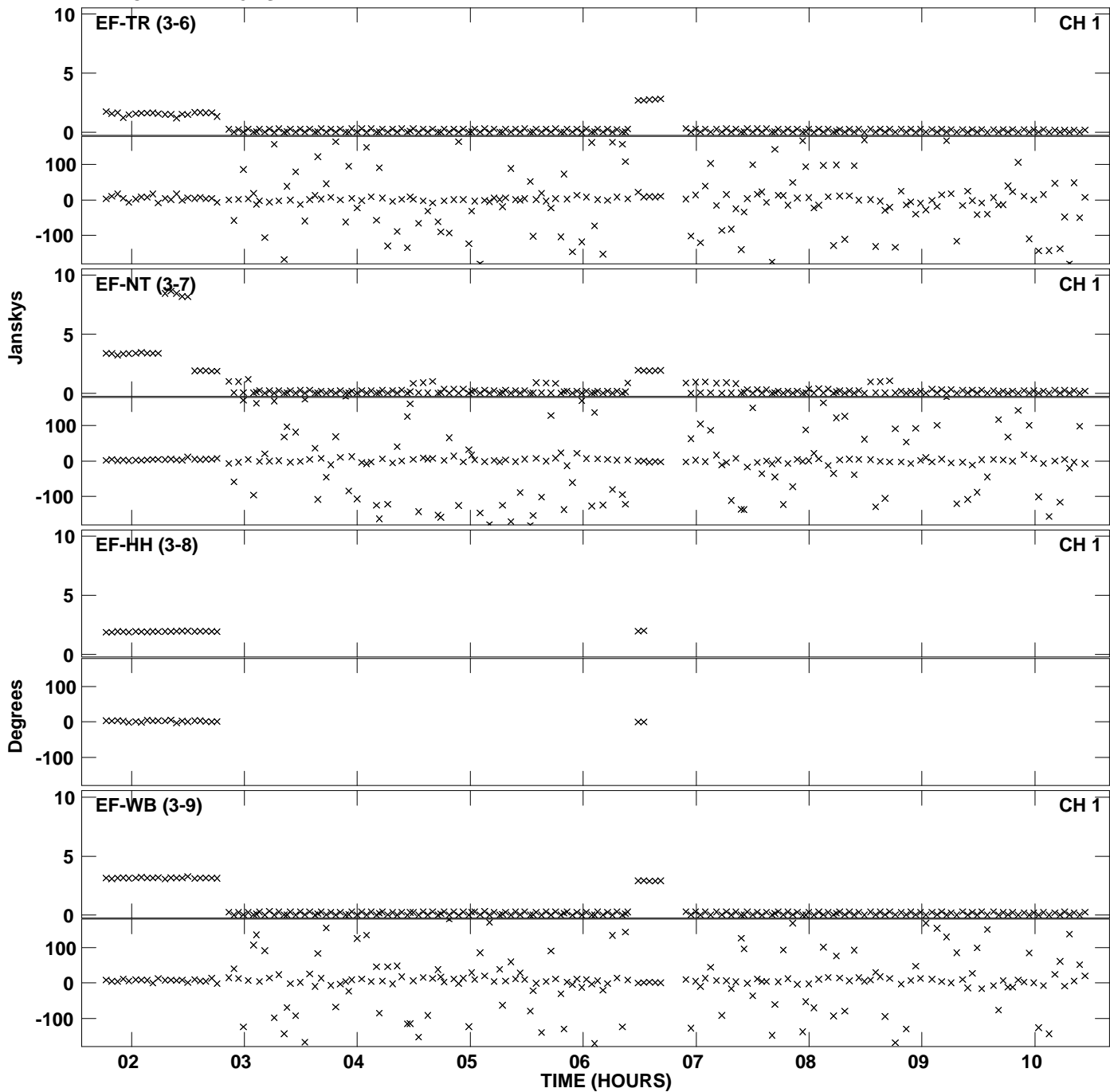
Plot file version 3 created 31-AUG-2015 16:37:47  
Amplitude and Phase vs Time for EB052F 1.UVDATA.1 Vect aver. CL # 3  
IF 1 CHAN 1 - 128 STK LL



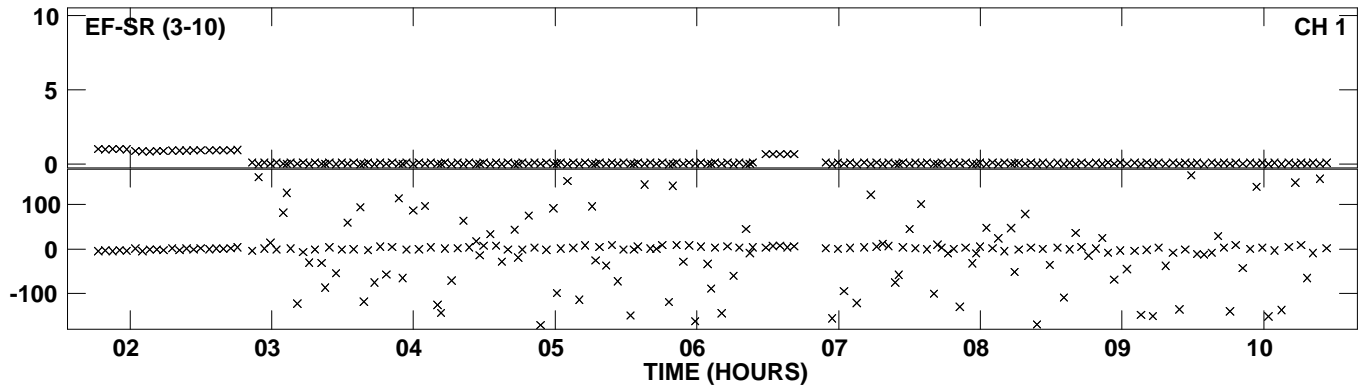
PLot file version 4 created 31-AUG-2015 16:38:06  
Amplitude andPhase vs Time for EB052F 1.UVDATA.1 Vect aver. CL # 3  
IF 2 CHAN 1 - 128 STK LL



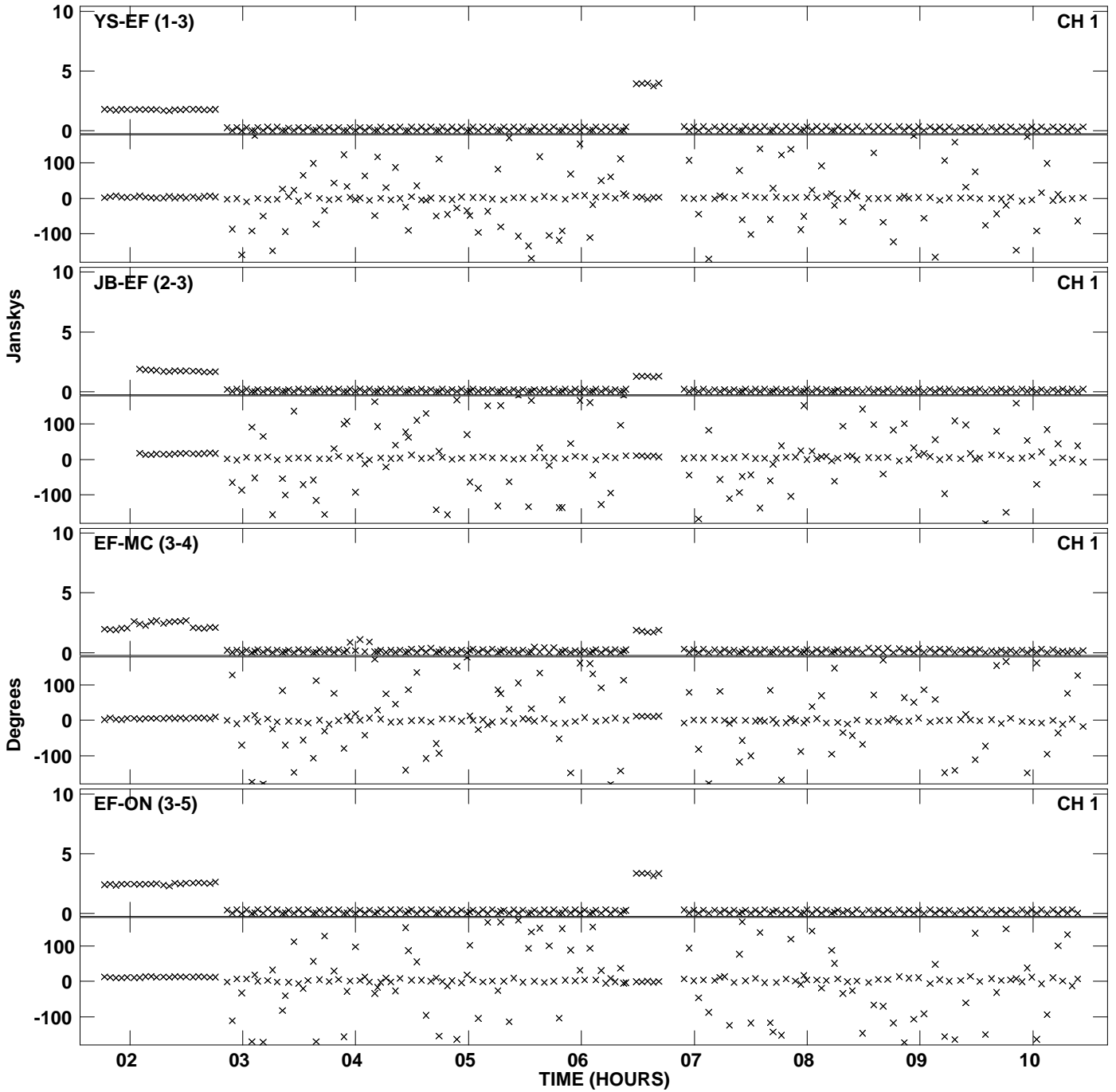
Plot file version 5 created 31-AUG-2015 16:38:06  
Amplitude andPhase vs Time for EB052F 1.UVDATA.1 Vect aver. CL # 3  
IF 2 CHAN 1 - 128 STK LL



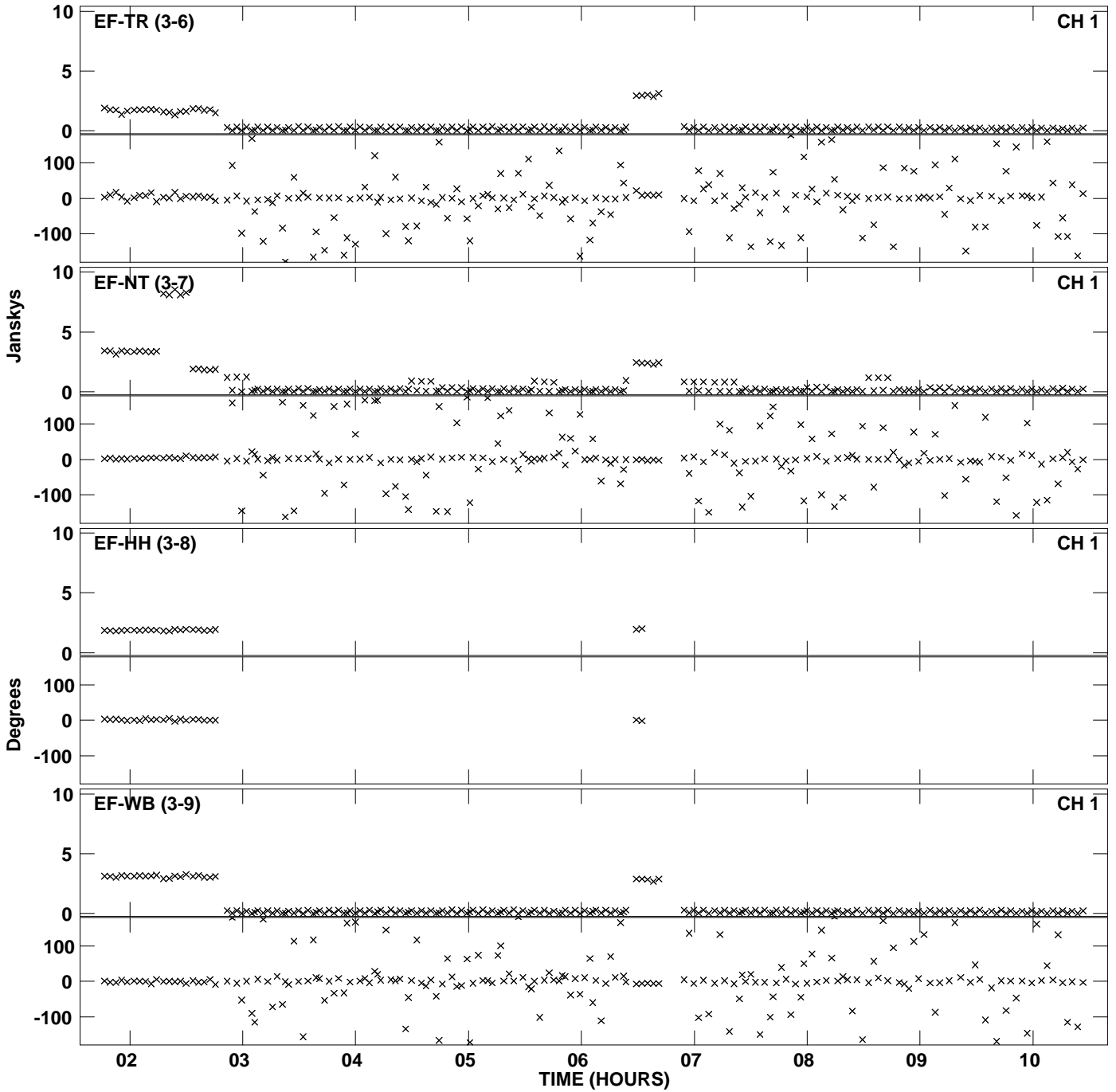
Plot file version 6 created 31-AUG-2015 16:38:06  
Amplitude and Phase vs Time for EB052F 1.UVDATA.1 Vect aver. CL # 3  
IF 2 CHAN 1 - 128 STK LL



Plot file version 7 created 31-AUG-2015 16:38:26  
Amplitude andPhase vs Time for EB052F 1.UVDATA.1 Vect aver. CL # 3  
IF 3 CHAN 1 - 128 STK LL

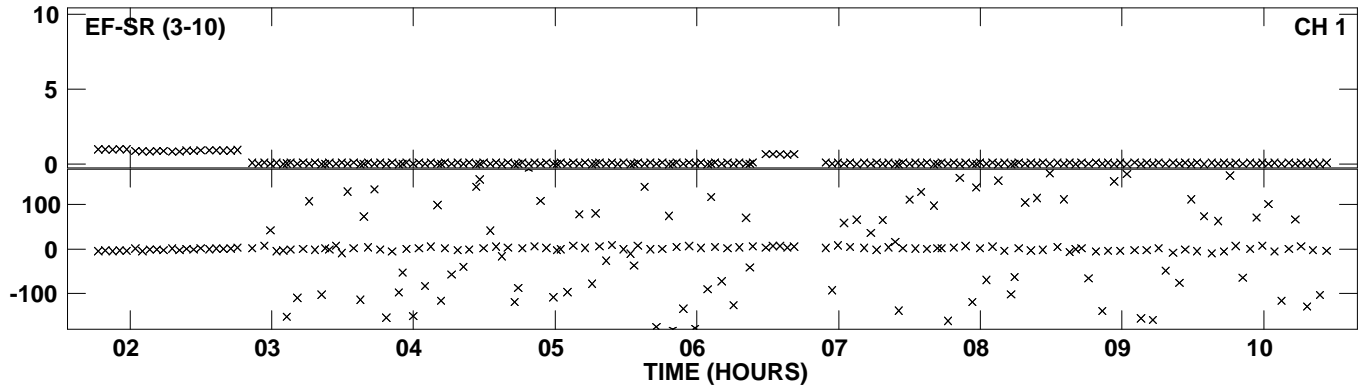


Plot file version 8 created 31-AUG-2015 16:38:26  
Amplitude and Phase vs Time for EB052F 1.UVDATA.1 Vect aver. CL # 3  
IF 3 CHAN 1 - 128 STK LL

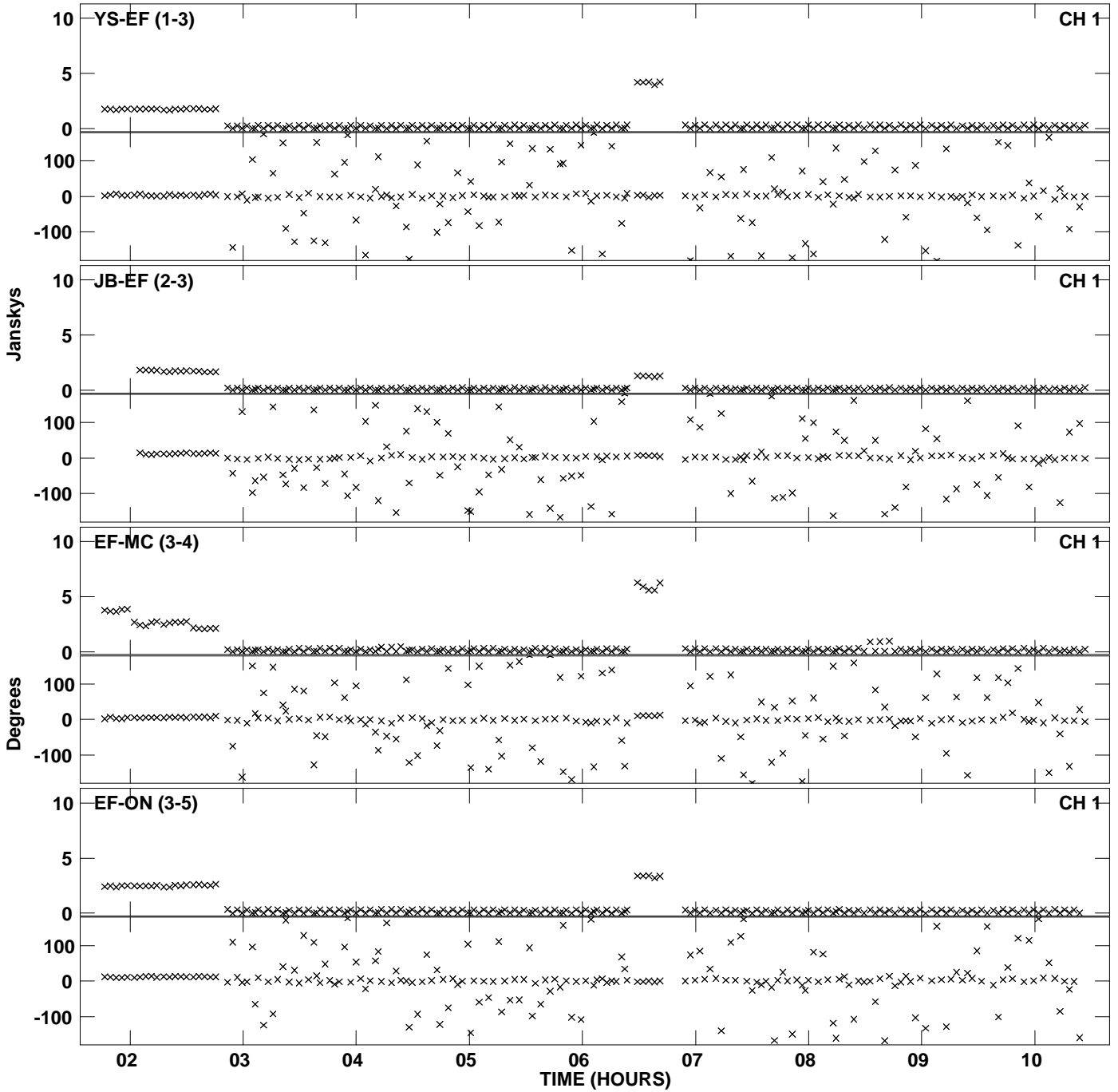




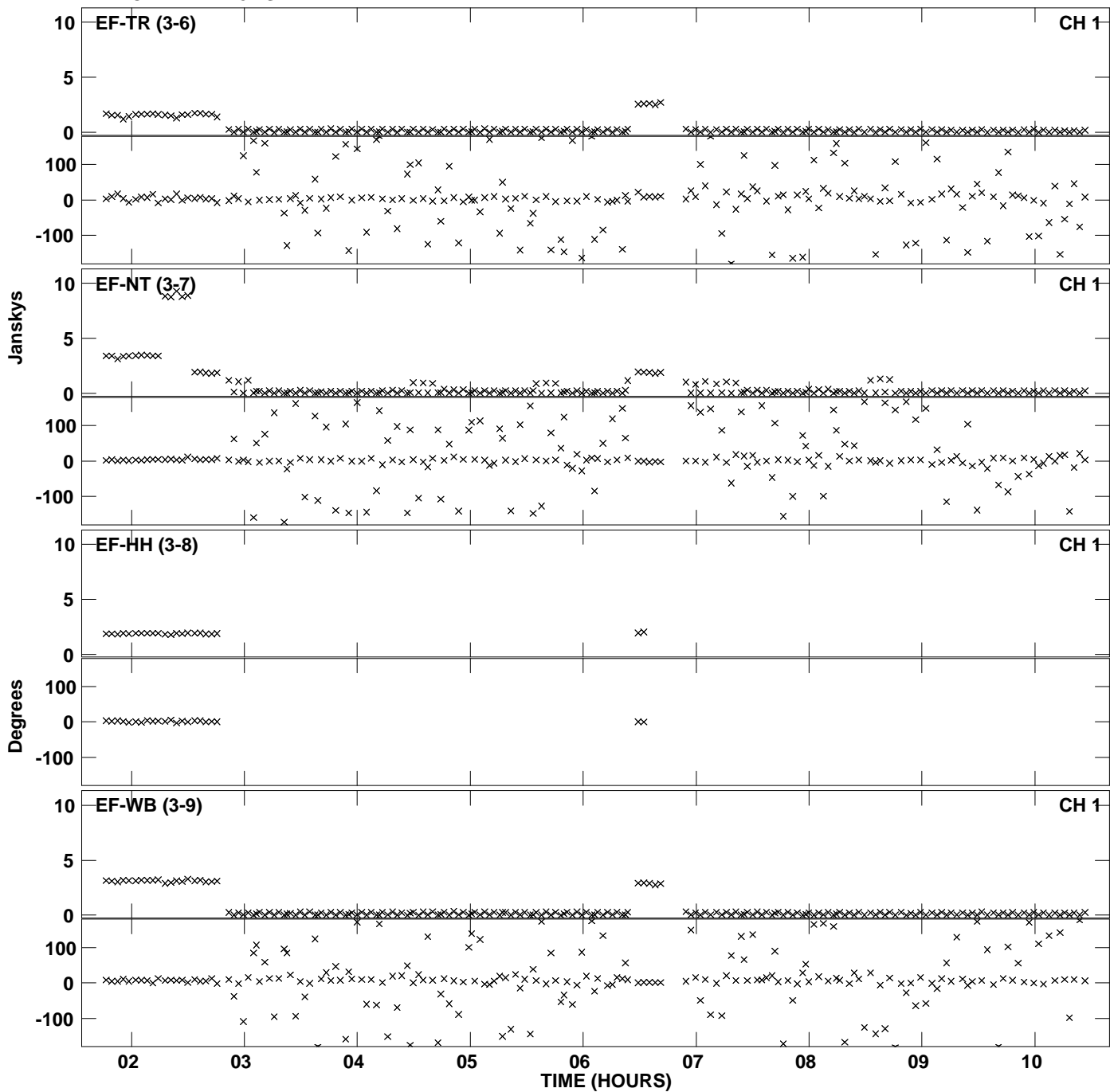
Plot file version 9 created 31-AUG-2015 16:38:26  
Amplitude and Phase vs Time for EB052F 1.UVDATA.1 Vect aver. CL # 3  
IF 3 CHAN 1 - 128 STK LL



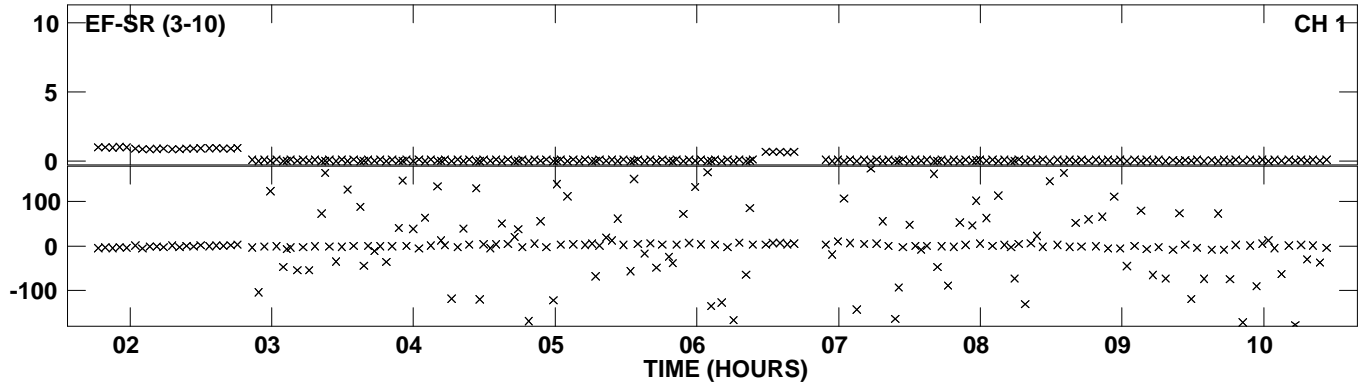
Plot file version 10 created 31-AUG-2015 16:38:46  
Amplitude andPhase vs Time for EB052F 1.UVDATA.1 Vect aver. CL # 3  
IF 4 CHAN 1 - 128 STK LL



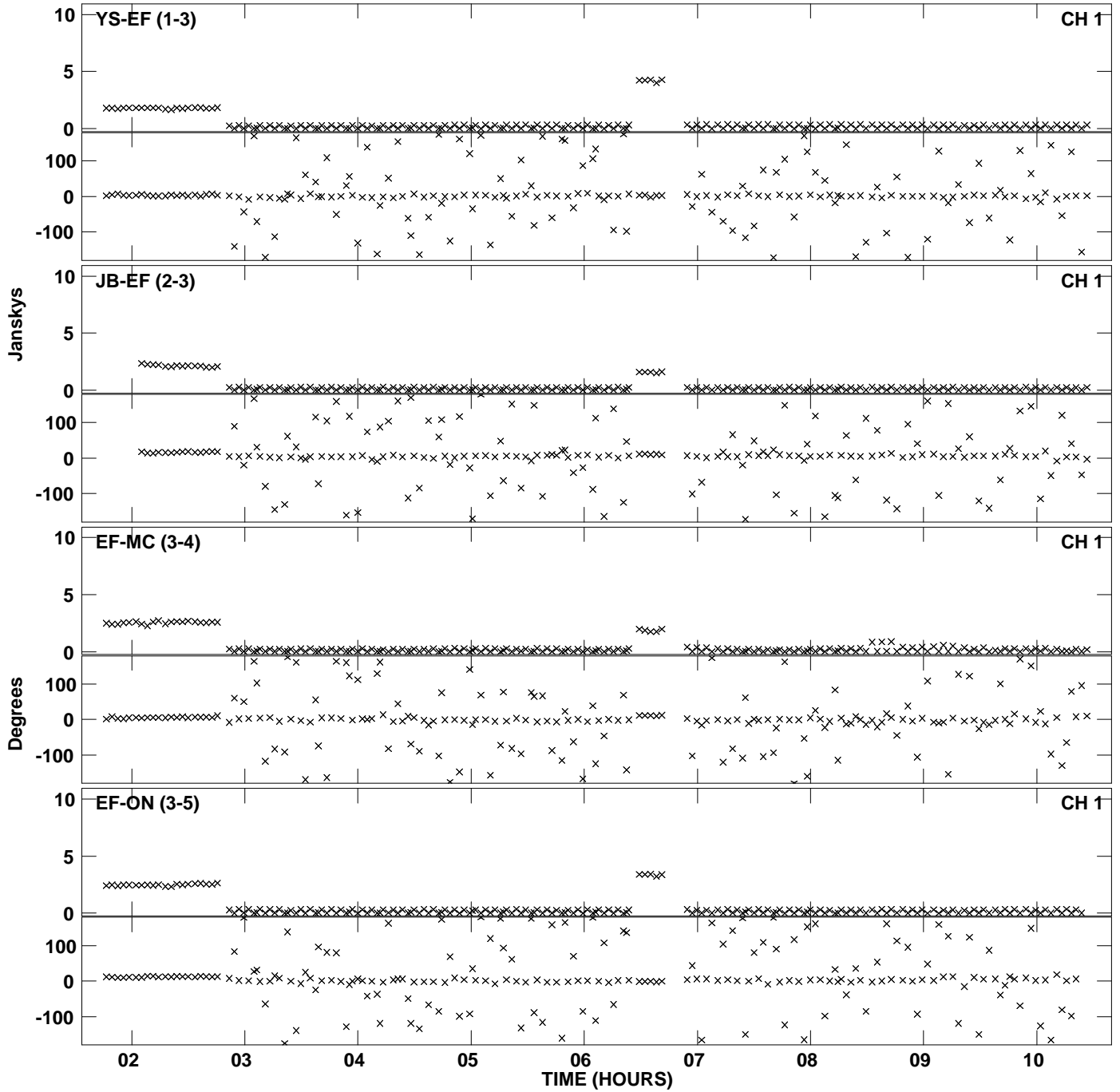
Plot file version 11 created 31-AUG-2015 16:38:46  
Amplitude and Phase vs Time for EB052F 1.UVDATA.1 Vect aver. CL # 3  
IF 4 CHAN 1 - 128 STK LL



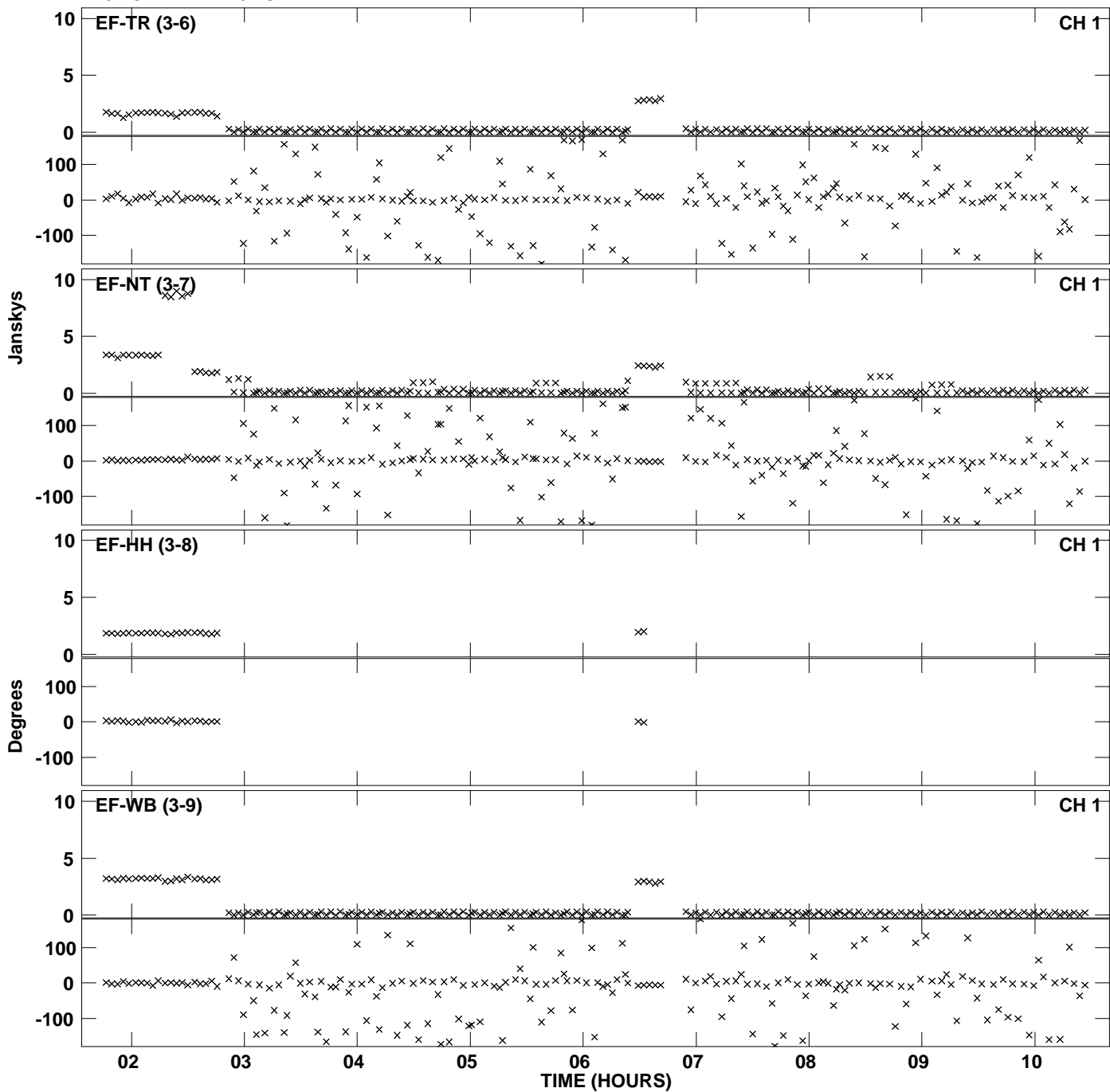
Plot file version 12 created 31-AUG-2015 16:38:46  
Amplitude and Phase vs Time for EB052F 1.UVDATA.1 Vect aver. CL # 3  
IF 4 CHAN 1 - 128 STK LL



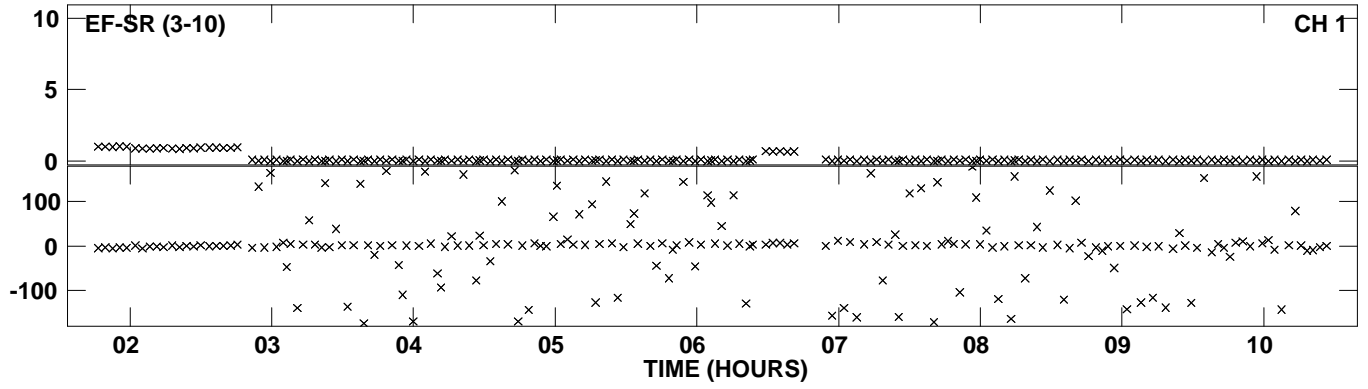
Plot file version 13 created 31-AUG-2015 16:39:06  
Amplitude andPhase vs Time for EB052F 1.UVDATA.1 Vect aver. CL # 3  
IF 5 CHAN 1 - 128 STK LL



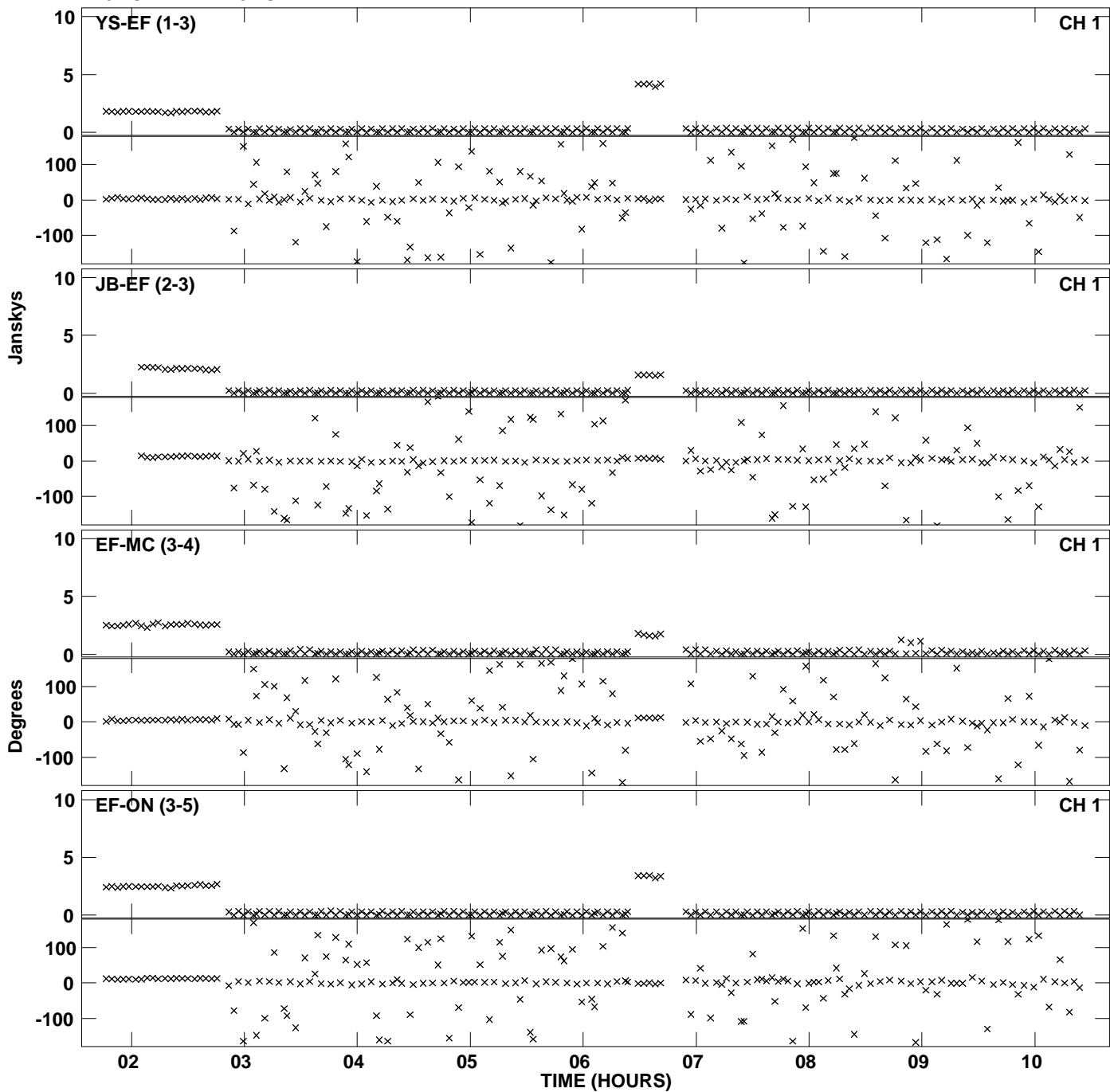
Plot file version 14 created 31-AUG-2015 16:39:06  
Amplitude andPhase vs Time for EB052F 1.UVDATA.1 Vect aver. CL # 3  
IF 5 CHAN 1 - 128 STK LL



Plot file version 15 created 31-AUG-2015 16:39:06  
Amplitude and Phase vs Time for EB052F 1.UVDATA.1 Vect aver. CL # 3  
IF 5 CHAN 1 - 128 STK LL

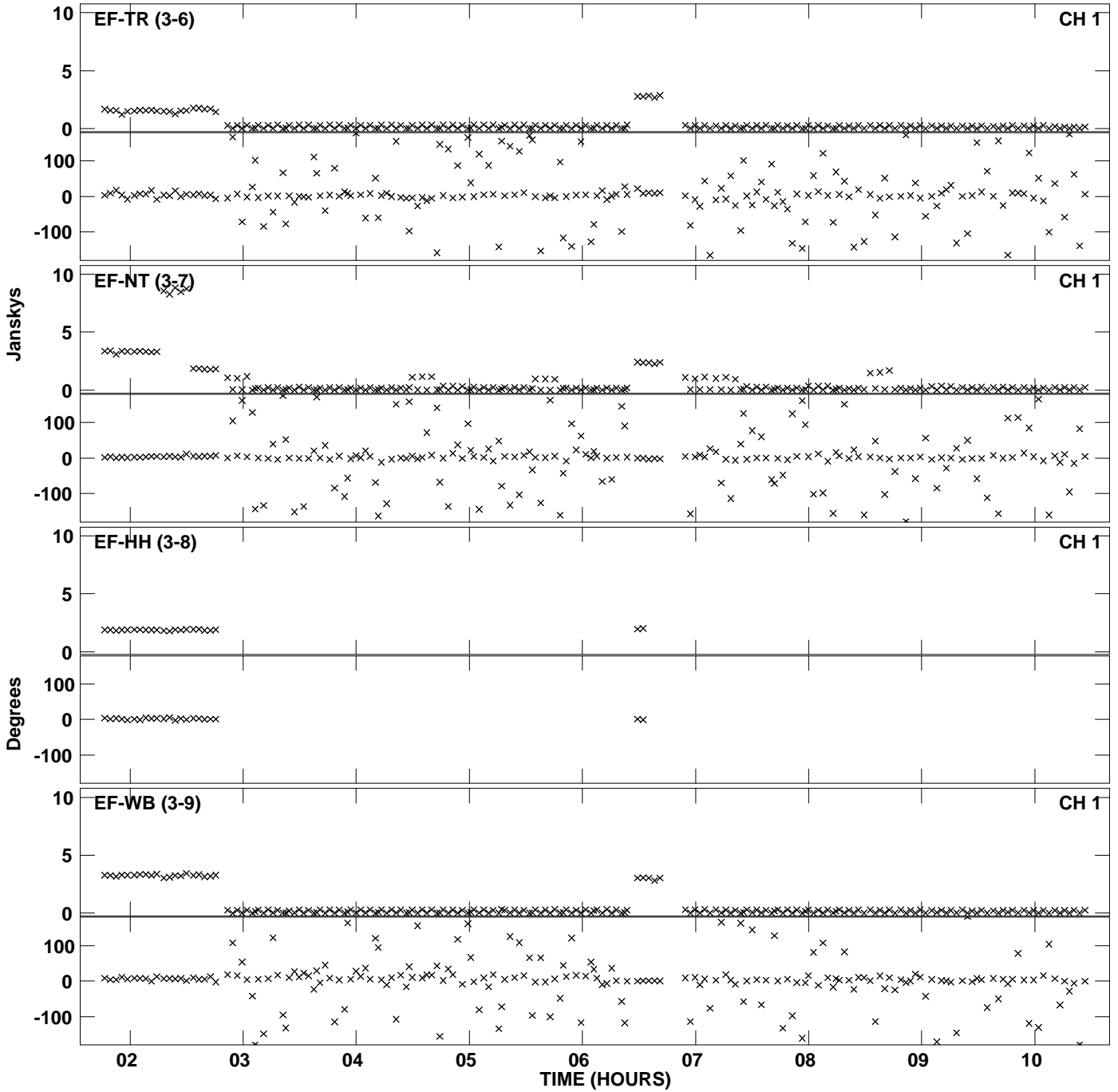


PLot file version 16 created 31-AUG-2015 16:39:25  
Amplitude andPhase vs Time for EB052F 1.UVDATA.1 Vect aver. CL # 3  
IF 6 CHAN 1 - 128 STK LL

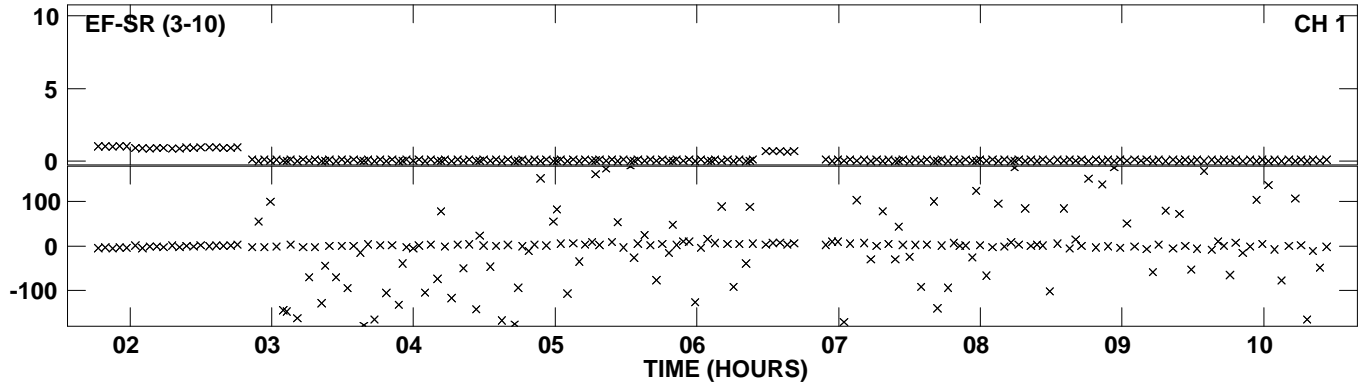




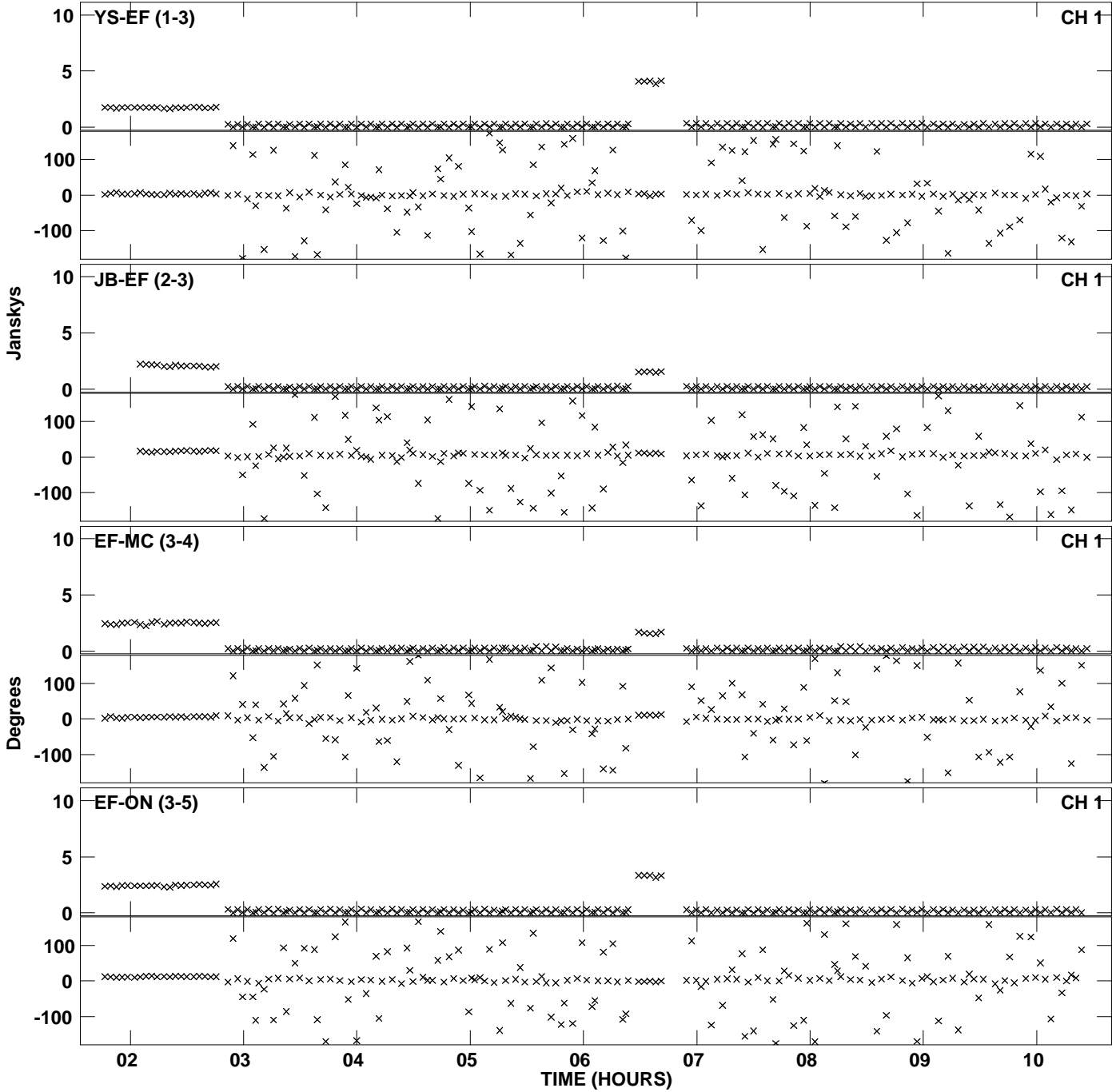
Plot file version 17 created 31-AUG-2015 16:39:25  
Amplitude andPhase vs Time for EB052F 1.UVDATA.1 Vect aver. CL # 3  
IF 6 CHAN 1 - 128 STK LL



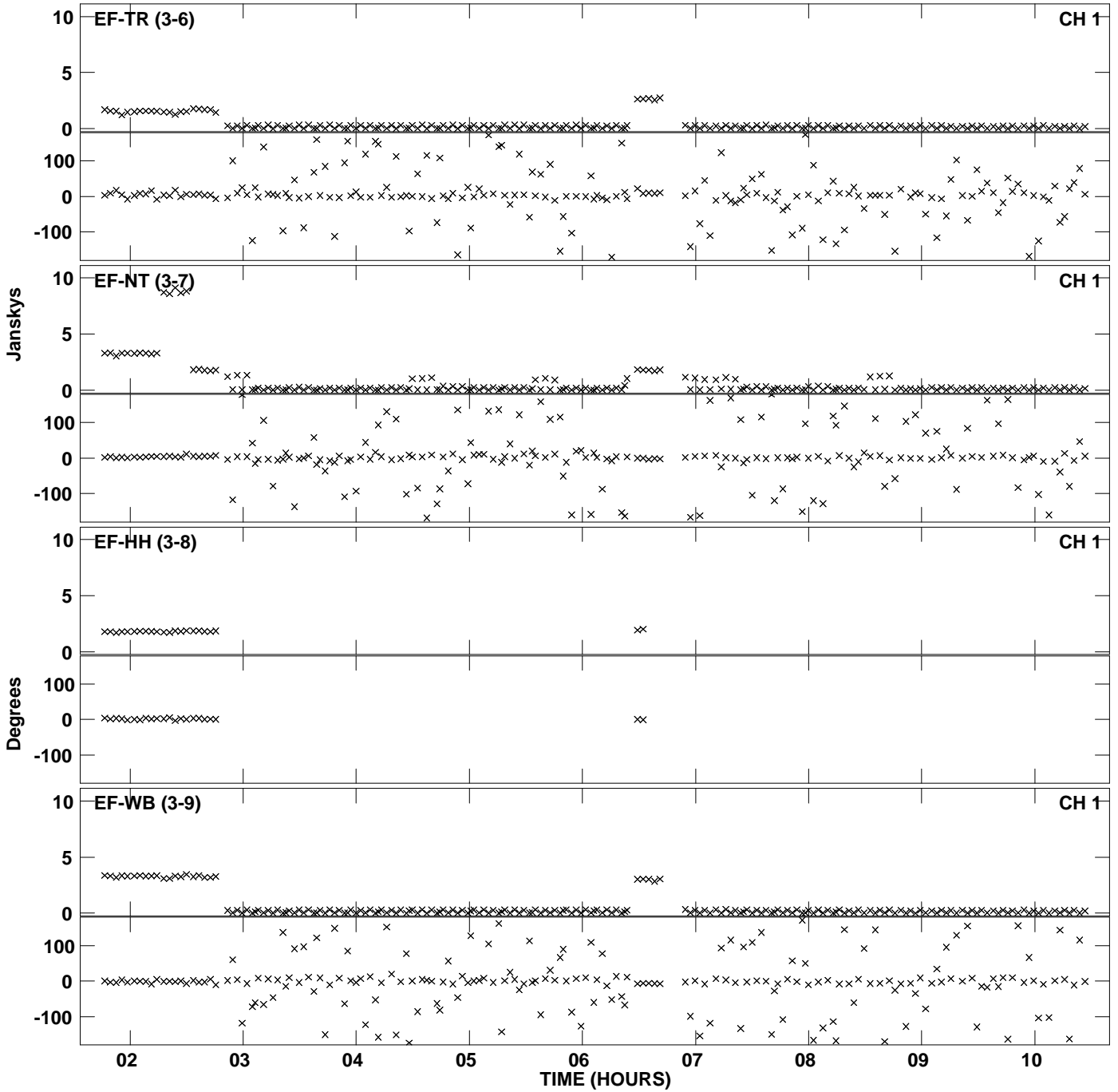
Plot file version 18 created 31-AUG-2015 16:39:25  
Amplitude and Phase vs Time for EB052F 1.UVDATA.1 Vect aver. CL # 3  
IF 6 CHAN 1 - 128 STK LL



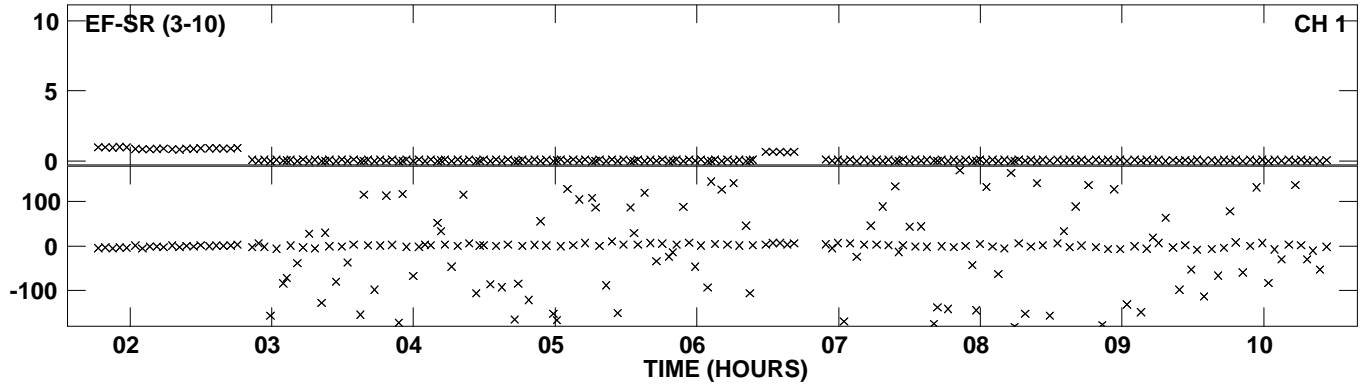
Plot file version 19 created 31-AUG-2015 16:39:45  
Amplitude andPhase vs Time for EB052F 1.UVDATA.1 Vect aver. CL # 3  
IF 7 CHAN 1 - 128 STK LL



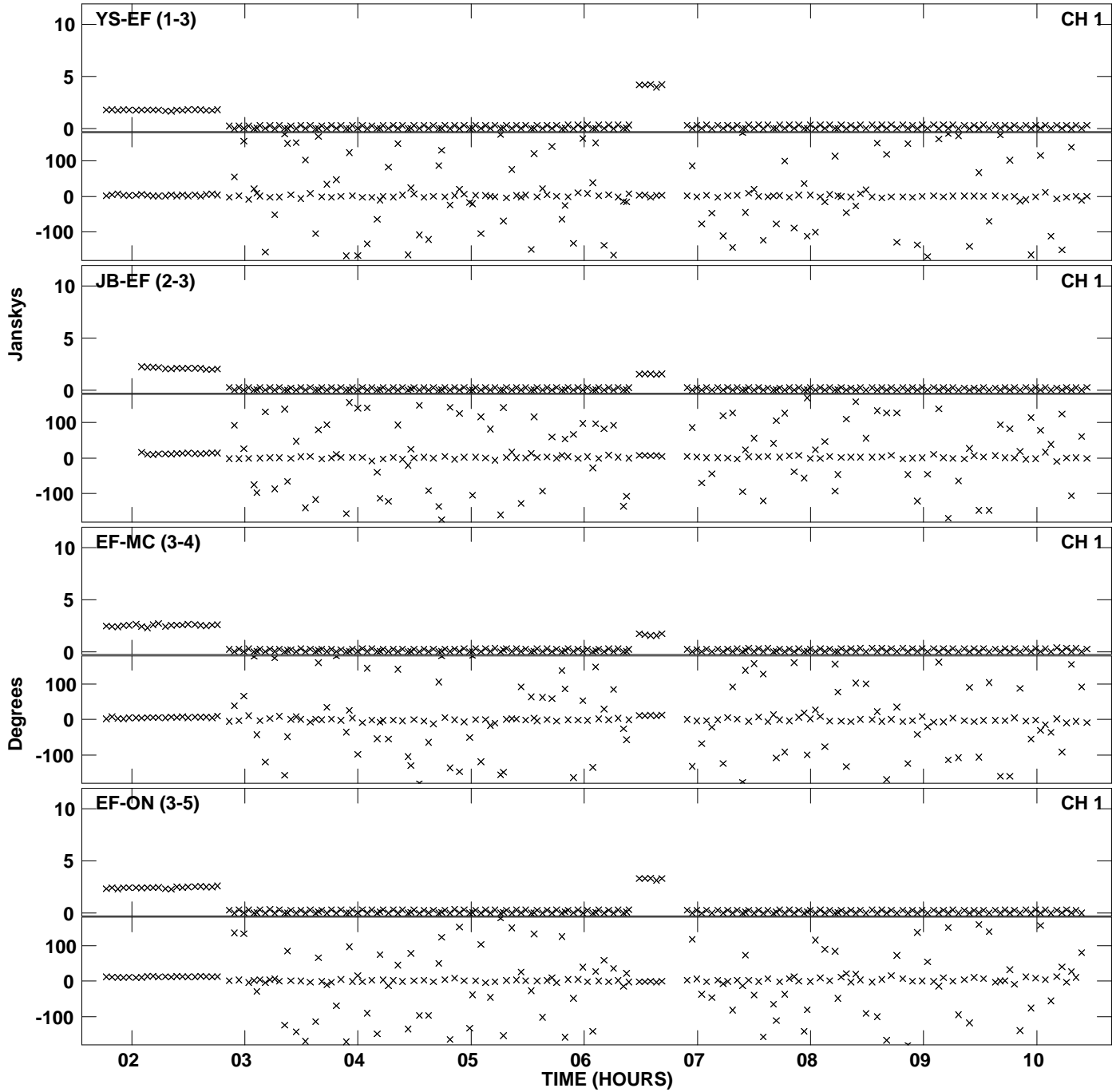
Plot file version 20 created 31-AUG-2015 16:39:45  
Amplitude andPhase vs Time for EB052F 1.UVDATA.1 Vect aver. CL # 3  
IF 7 CHAN 1 - 128 STK LL



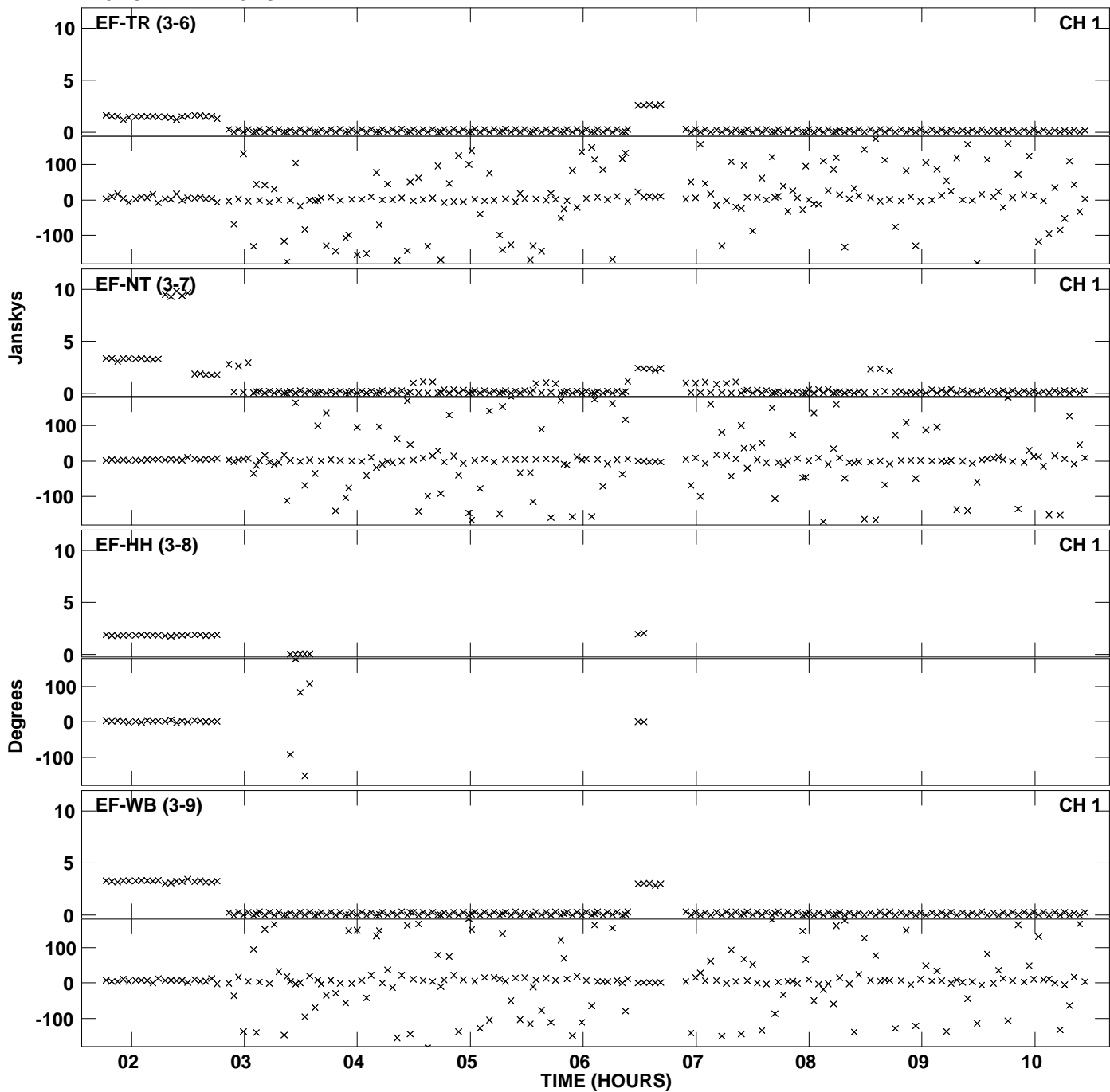
Plot file version 21 created 31-AUG-2015 16:39:45  
Amplitude and Phase vs Time for EB052F 1.UVDATA.1 Vect aver. CL # 3  
IF 7 CHAN 1 - 128 STK LL



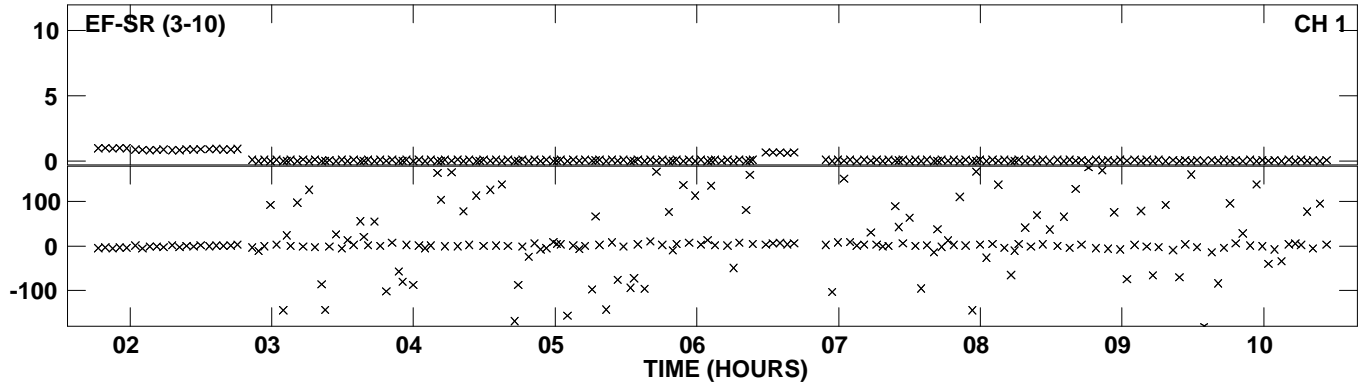
PLot file version 22 created 31-AUG-2015 16:40:04  
Amplitude andPhase vs Time for EB052F 1.UVDATA.1 Vect aver. CL # 3  
IF 8 CHAN 1 - 128 STK LL



Plot file version 23 created 31-AUG-2015 16:40:04  
Amplitude andPhase vs Time for EB052F 1.UVDATA.1 Vect aver. CL # 3  
IF 8 CHAN 1 - 128 STK LL

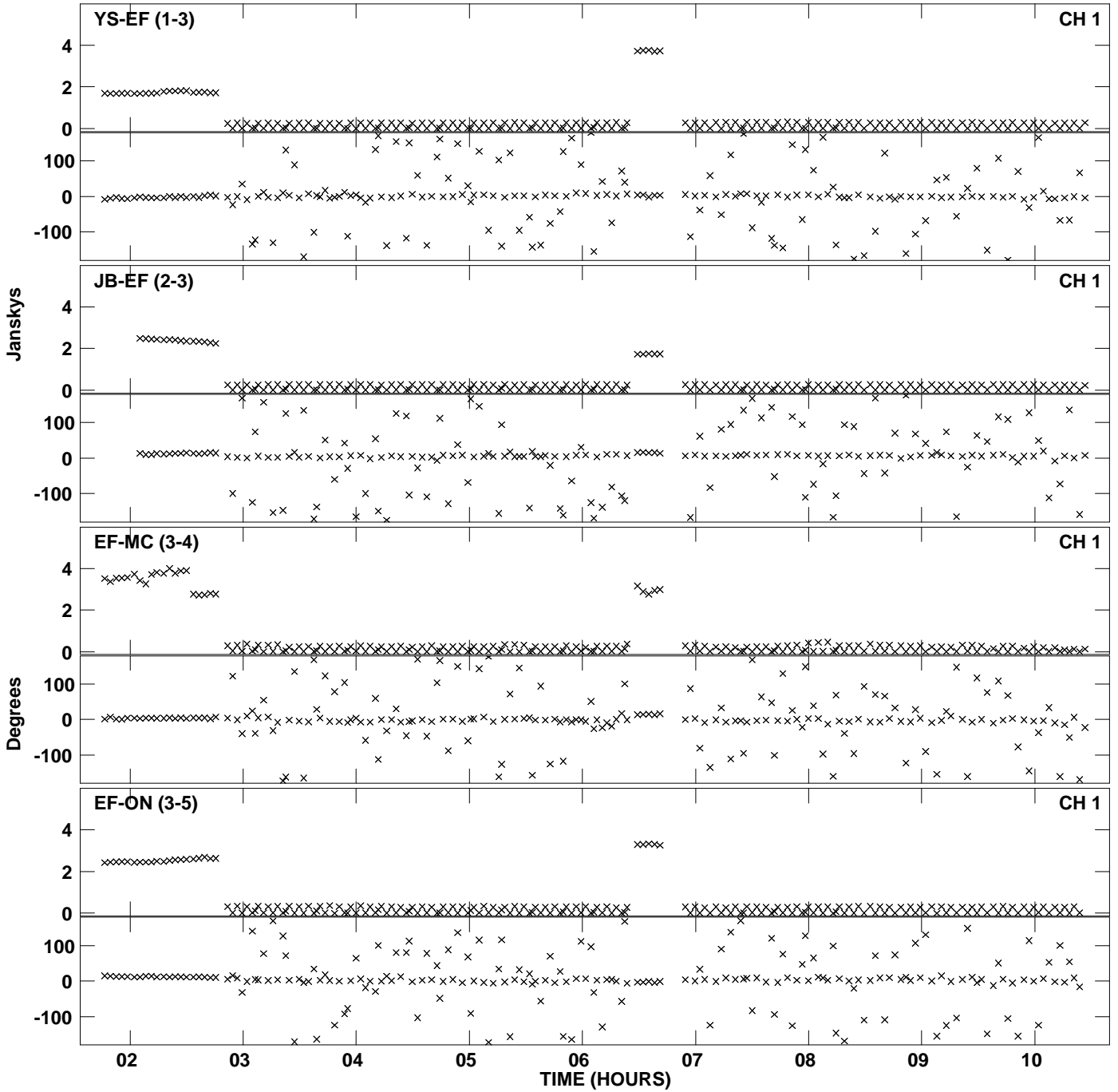


PLot file version 24 created 31-AUG-2015 16:40:04  
Amplitude and Phase vs Time for EB052F 1.UVDATA.1 Vect aver. CL # 3  
IF 8 CHAN 1 - 128 STK LL

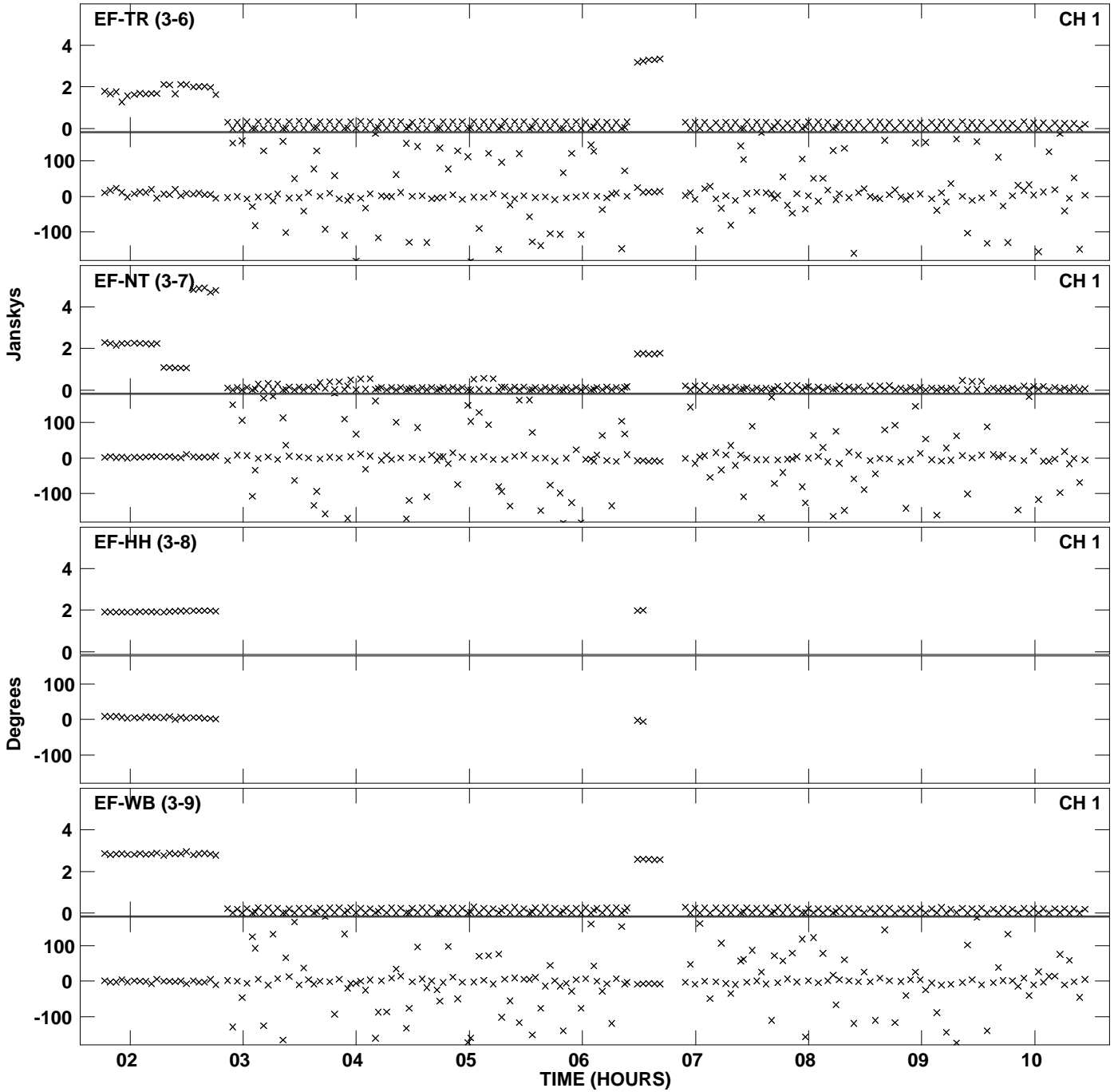




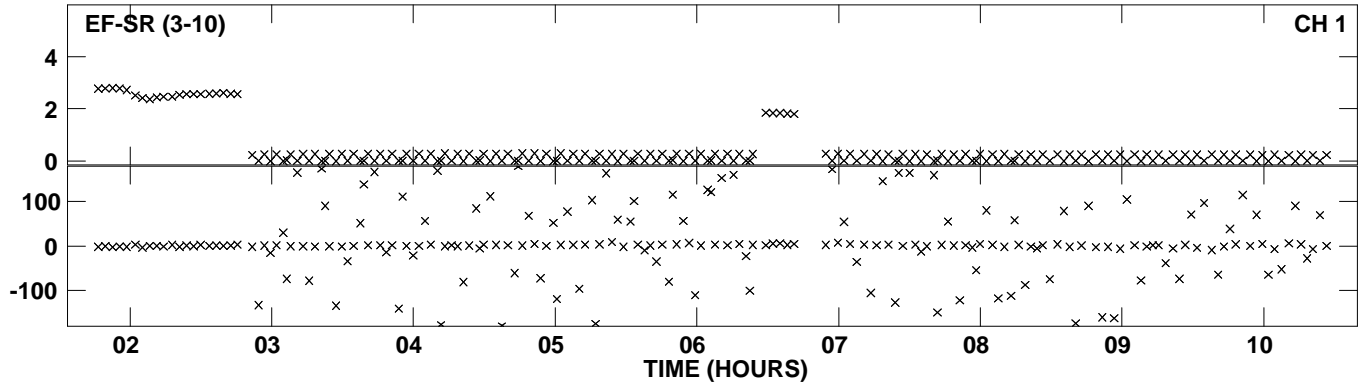
Plot file version 25 created 31-AUG-2015 16:40:22  
Amplitude andPhase vs Time for EB052F 1.UVDATA.1 Vect aver. CL # 3  
IF 1 CHAN 1 - 128 STK RR



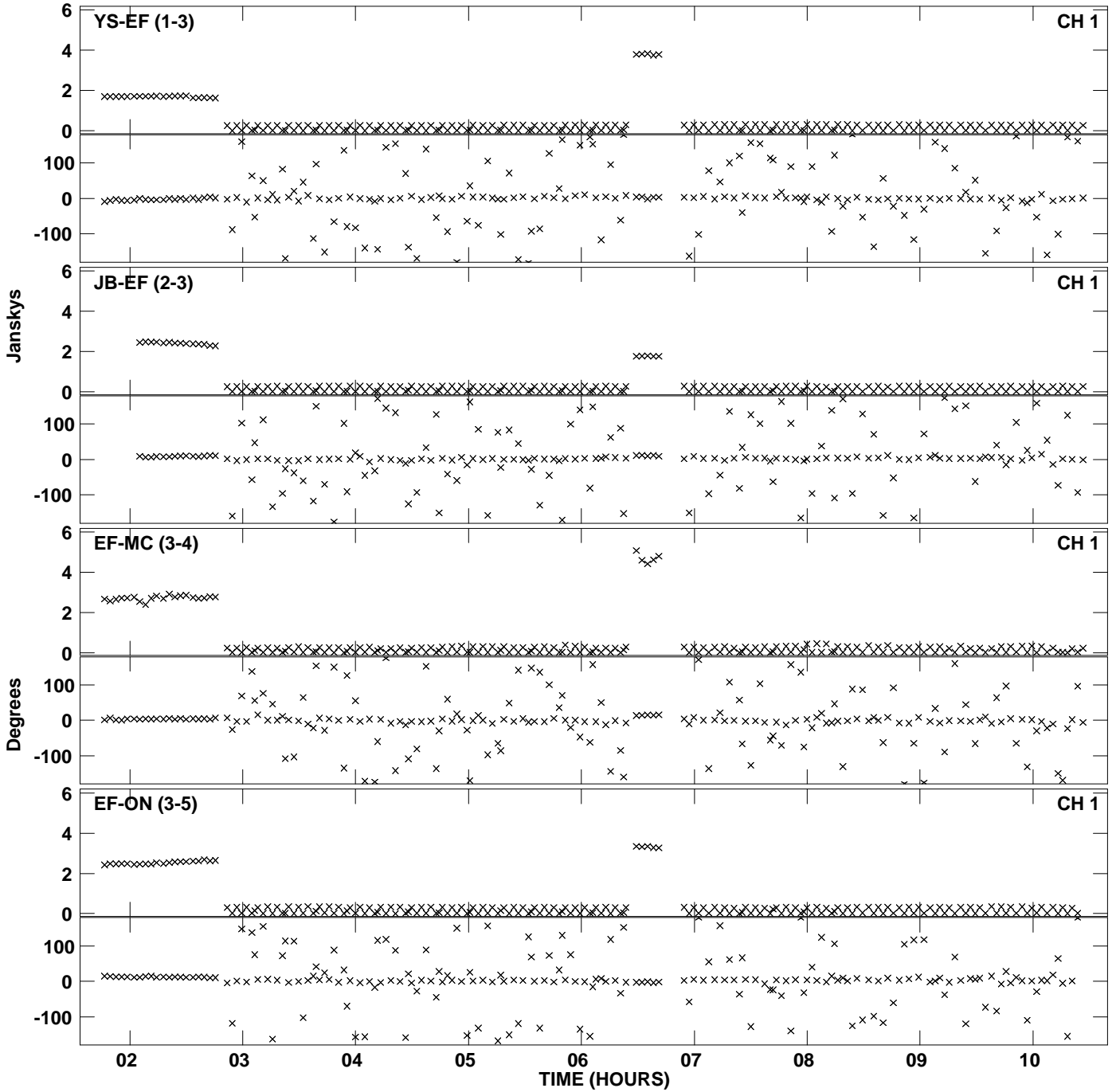
Plot file version 26 created 31-AUG-2015 16:40:22  
Amplitude andPhase vs Time for EB052F 1.UVDATA.1 Vect aver. CL # 3  
IF 1 CHAN 1 - 128 STK RR



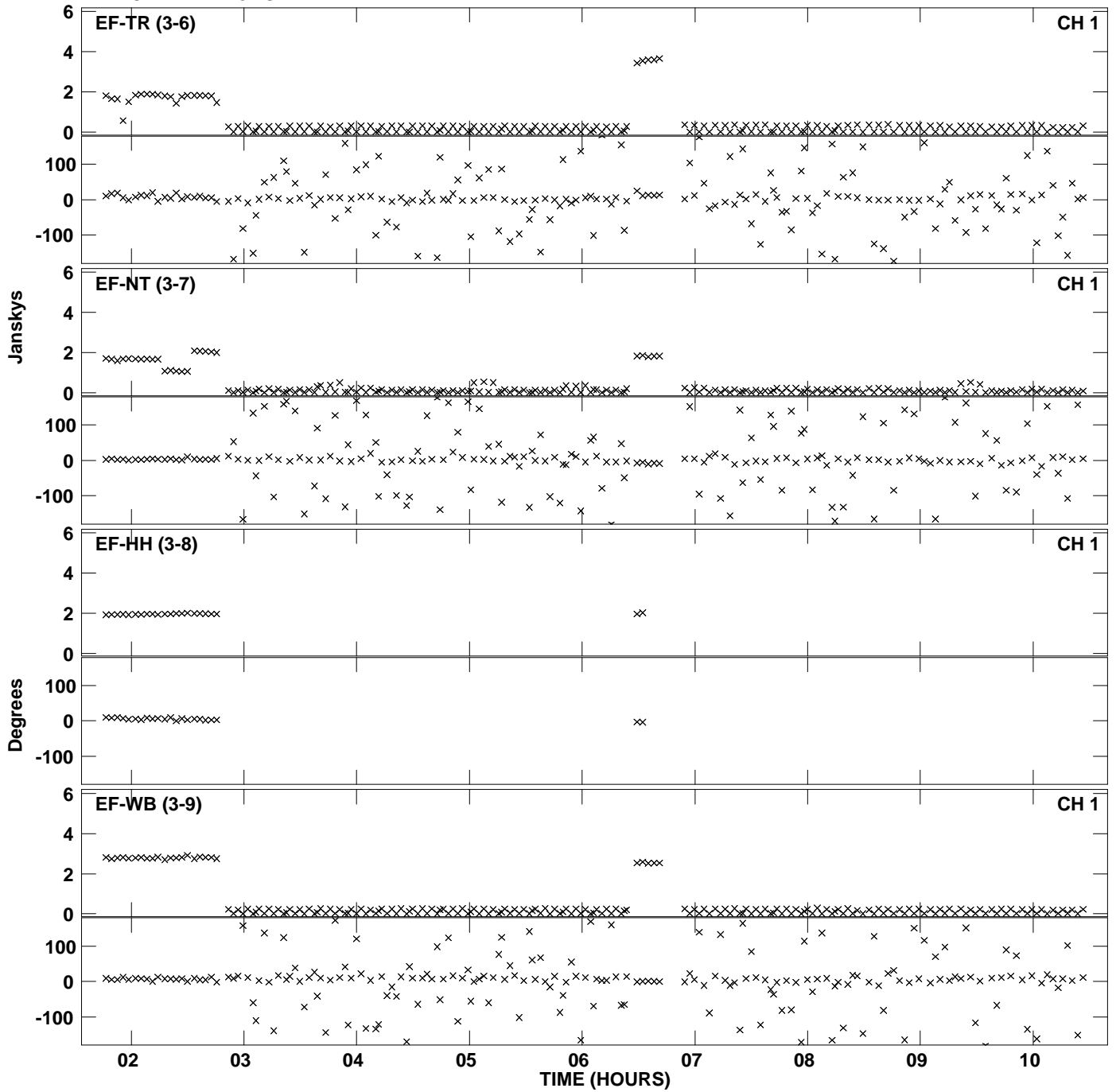
PLot file version 27 created 31-AUG-2015 16:40:22  
Amplitude and Phase vs Time for EB052F 1.UVDATA.1 Vect aver. CL # 3  
IF 1 CHAN 1 - 128 STK RR



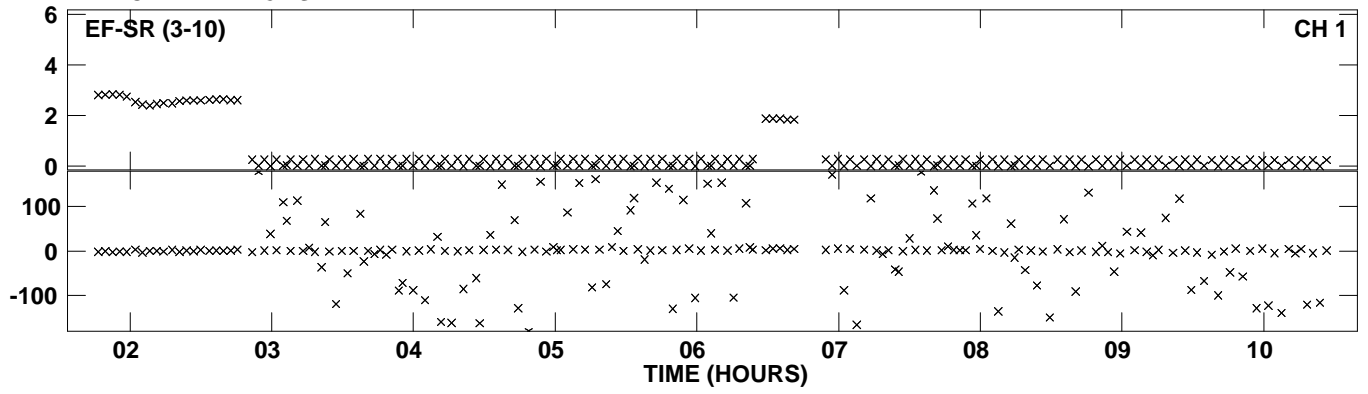
Plot file version 28 created 31-AUG-2015 16:40:40  
Amplitude andPhase vs Time for EB052F 1.UVDATA.1 Vect aver. CL # 3  
IF 2 CHAN 1 - 128 STK RR



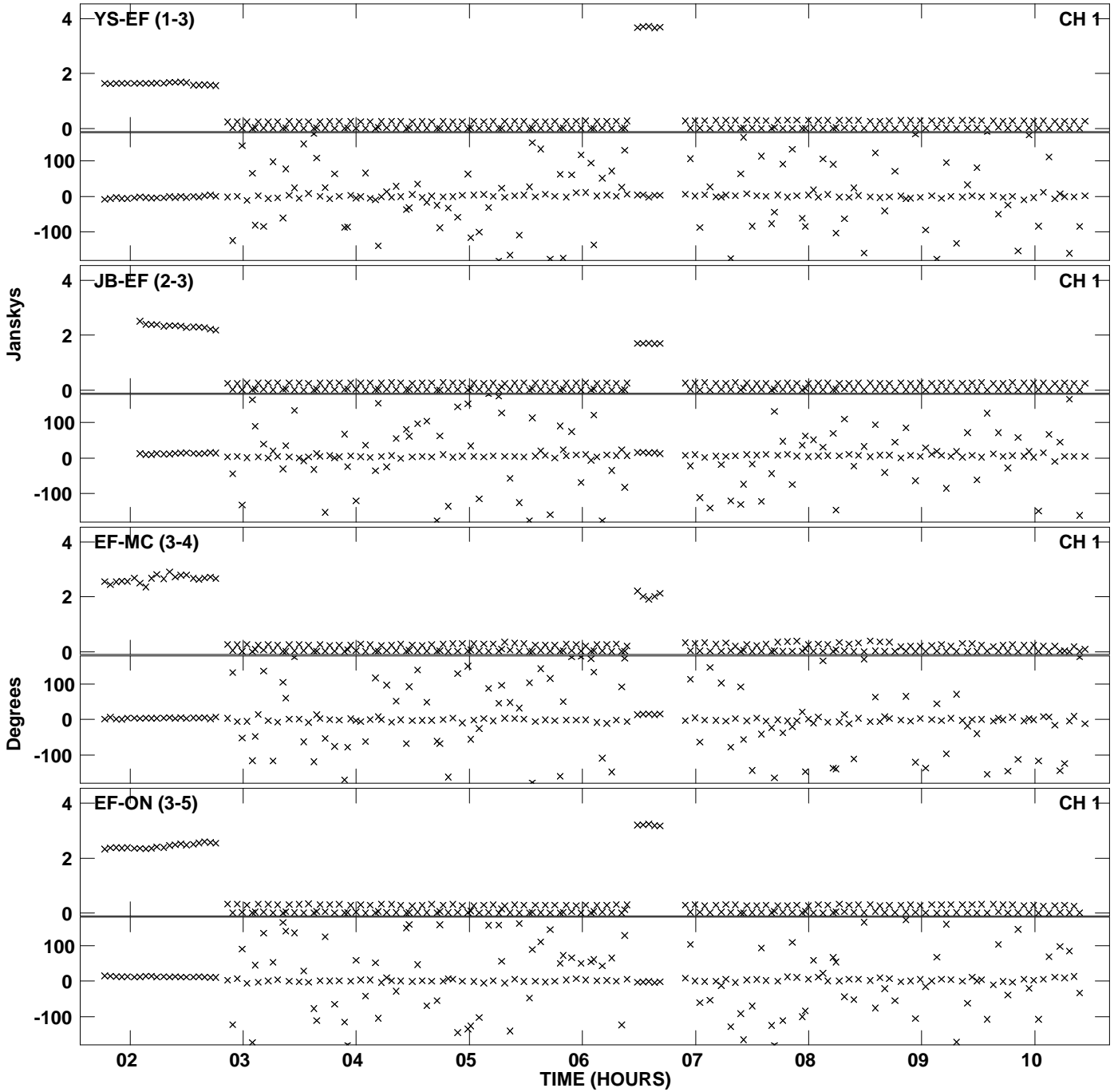
Plot file version 29 created 31-AUG-2015 16:40:40  
Amplitude and Phase vs Time for EB052F 1.UVDATA.1 Vect aver. CL # 3  
IF 2 CHAN 1 - 128 STK RR



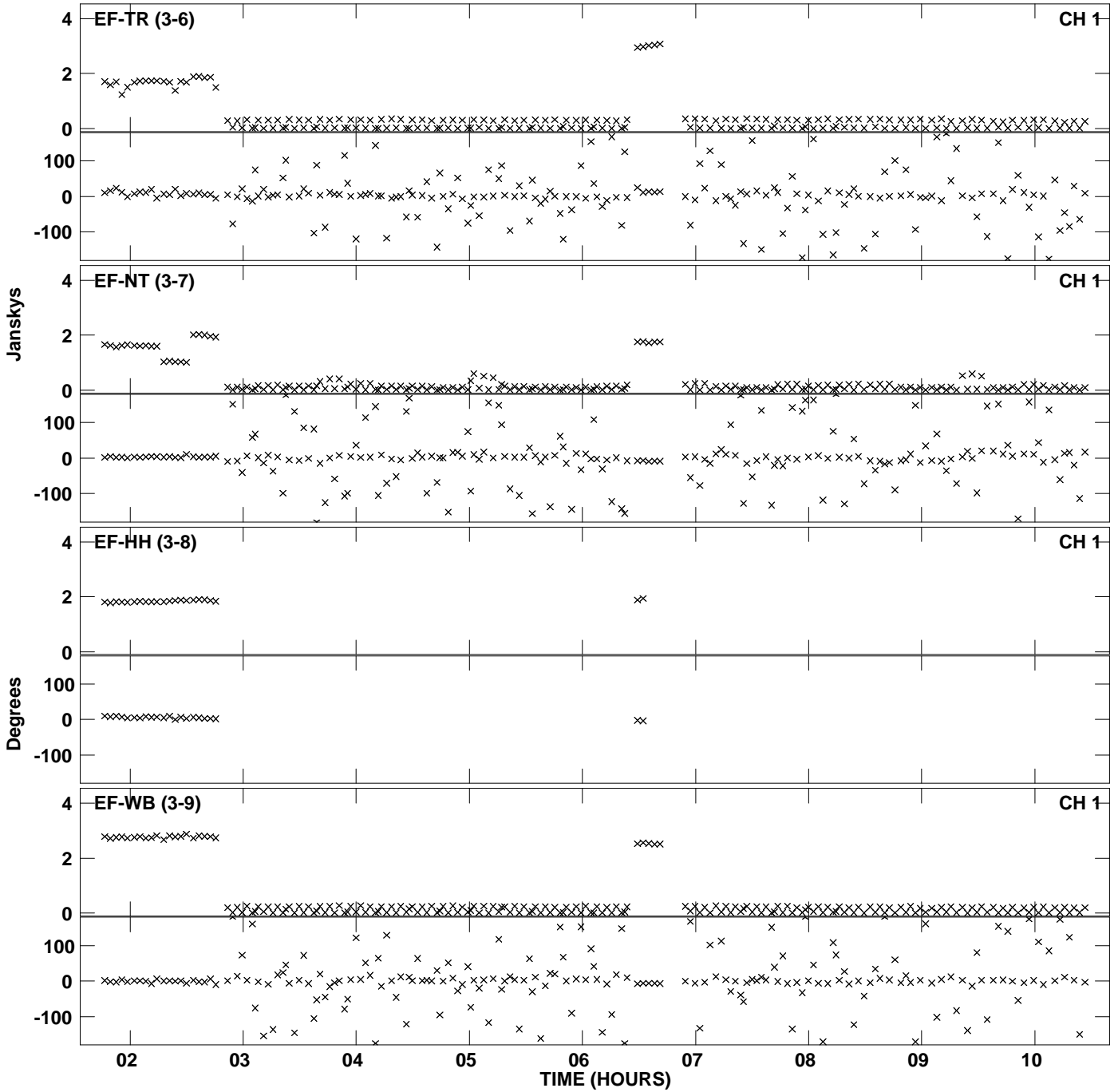
PLot file version 30 created 31-AUG-2015 16:40:40  
Amplitude andPhase vs Time for EB052F 1.UVDATA.1 Vect aver. CL # 3  
IF 2 CHAN 1 - 128 STK RR



PLot file version 31 created 31-AUG-2015 16:40:59  
Amplitude andPhase vs Time for EB052F 1.UVDATA.1 Vect aver. CL # 3  
IF 3 CHAN 1 - 128 STK RR

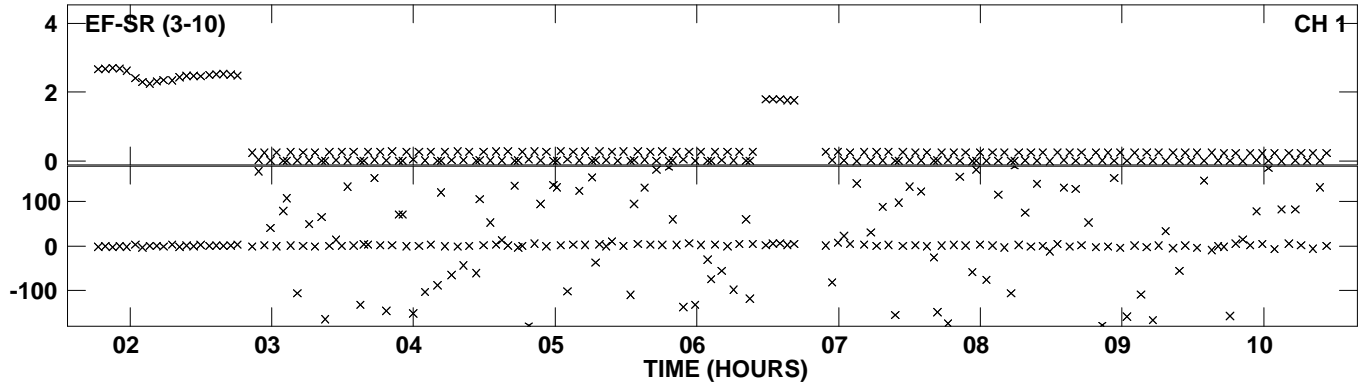


Plot file version 32 created 31-AUG-2015 16:40:59  
Amplitude andPhase vs Time for EB052F 1.UVDATA.1 Vect aver. CL # 3  
IF 3 CHAN 1 - 128 STK RR

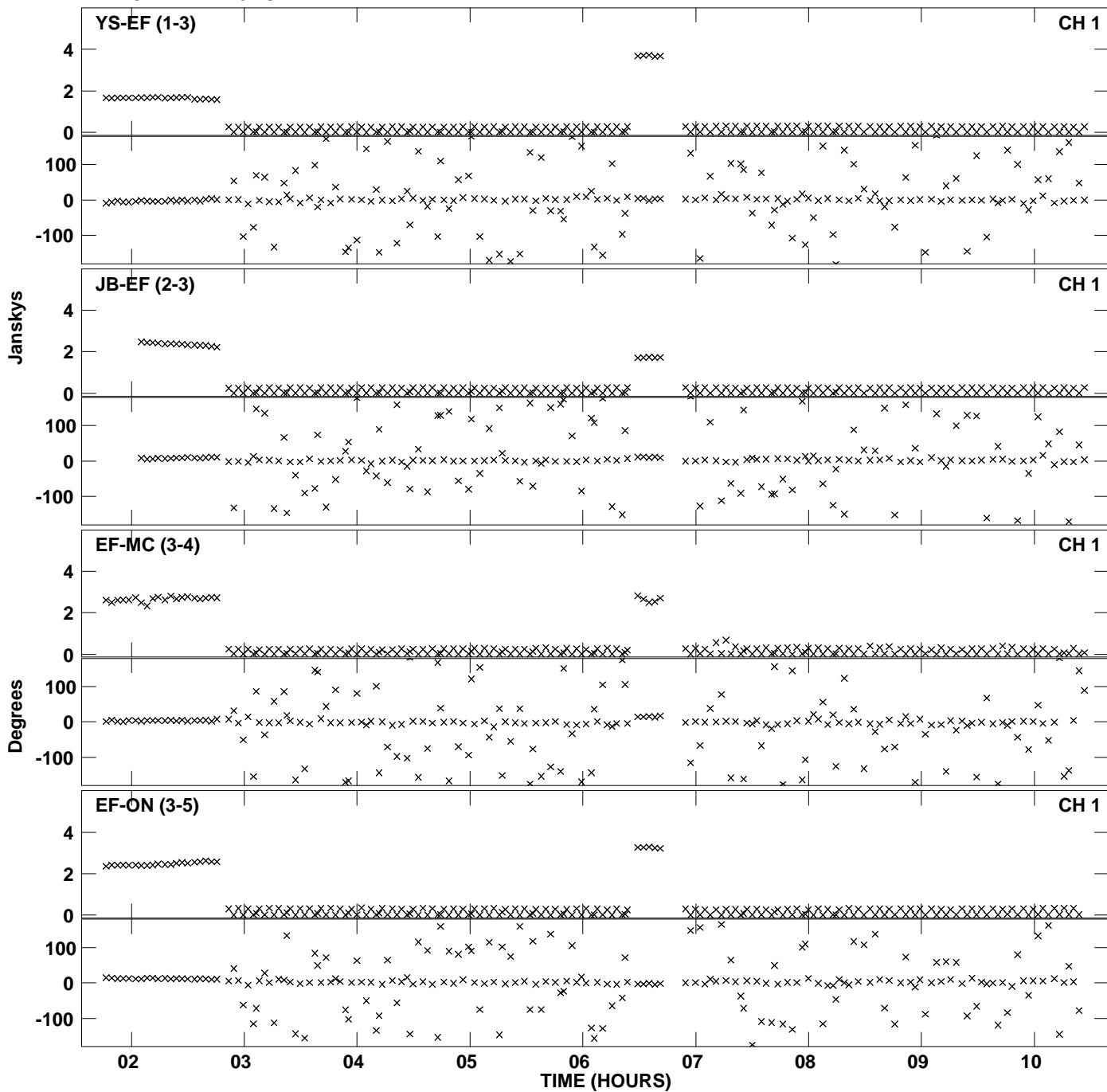




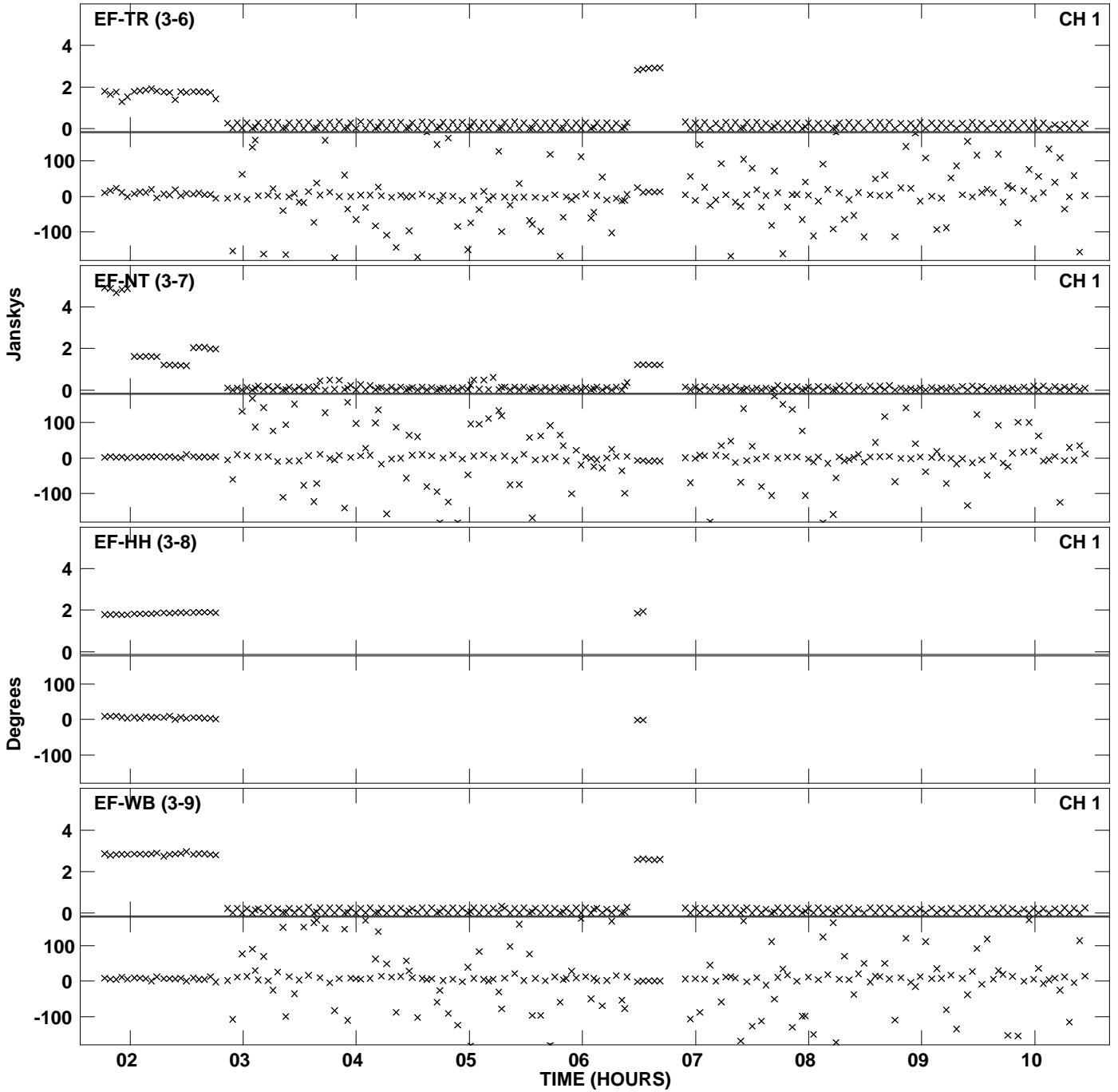
PLot file version 33 created 31-AUG-2015 16:40:59  
Amplitude andPhase vs Time for EB052F 1.UVDATA.1 Vect aver. CL # 3  
IF 3 CHAN 1 - 128 STK RR



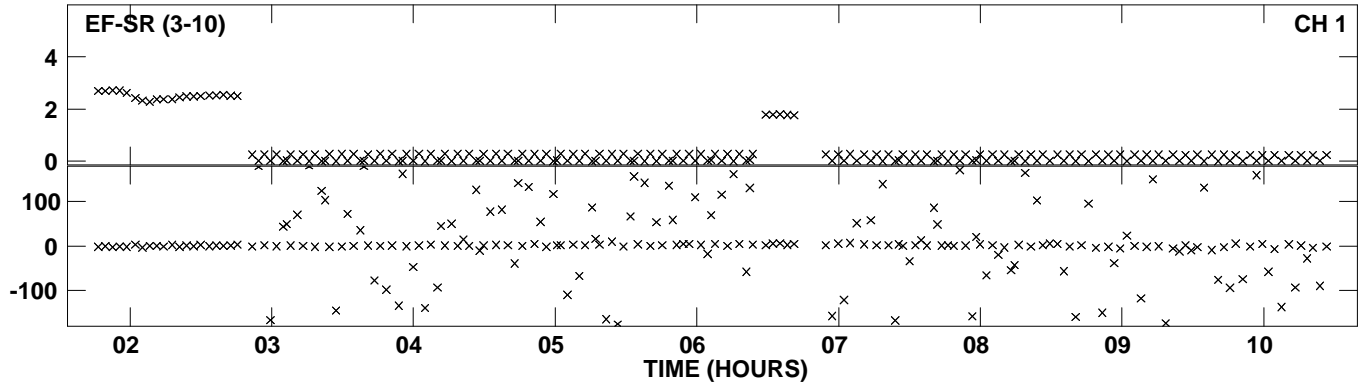
Plot file version 34 created 31-AUG-2015 16:41:17  
Amplitude andPhase vs Time for EB052F 1.UVDATA.1 Vect aver. CL # 3  
IF 4 CHAN 1 - 128 STK RR



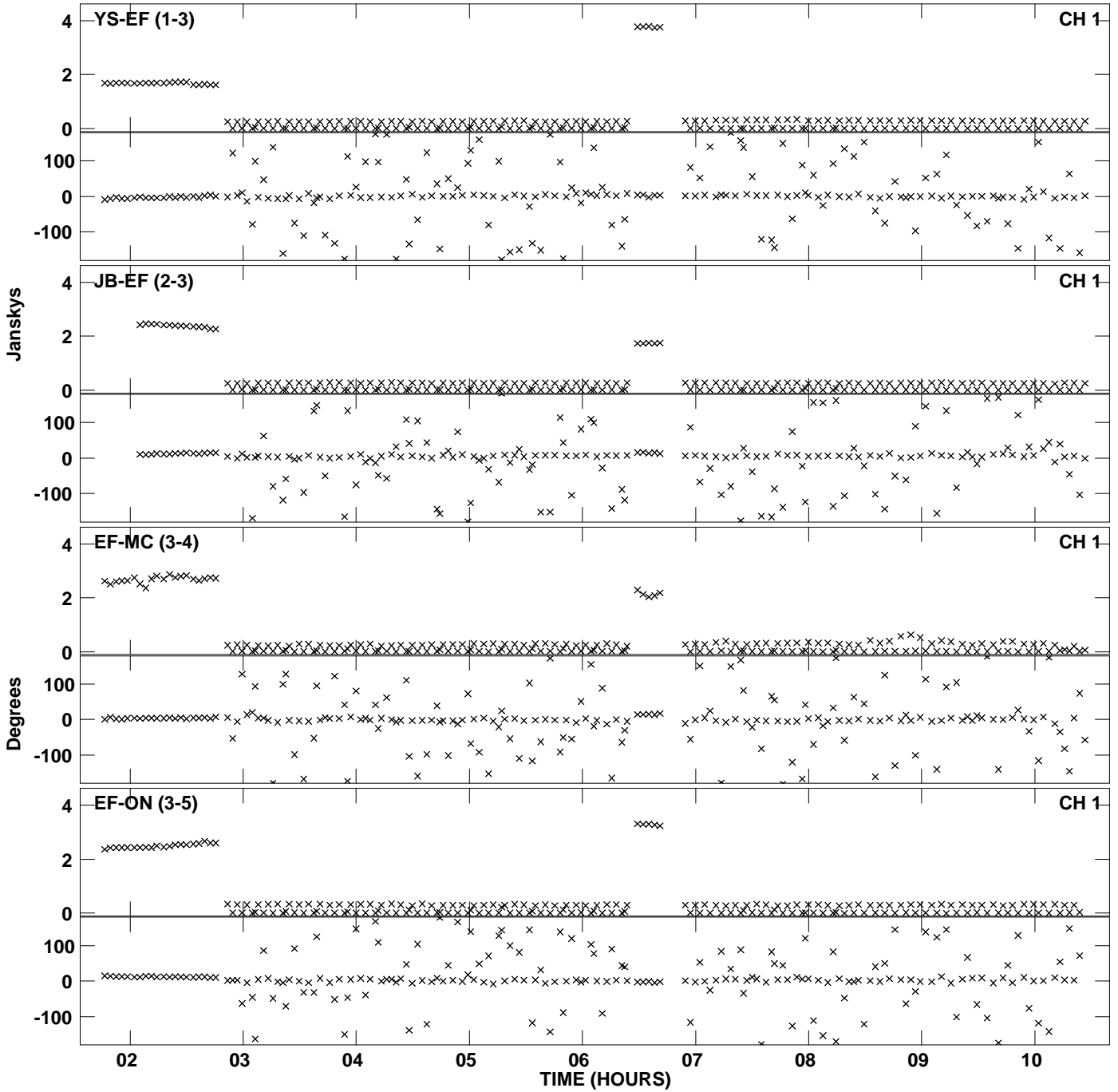
PLot file version 35 created 31-AUG-2015 16:41:17  
Amplitude andPhase vs Time for EB052F 1.UVDATA.1 Vect aver. CL # 3  
IF 4 CHAN 1 - 128 STK RR



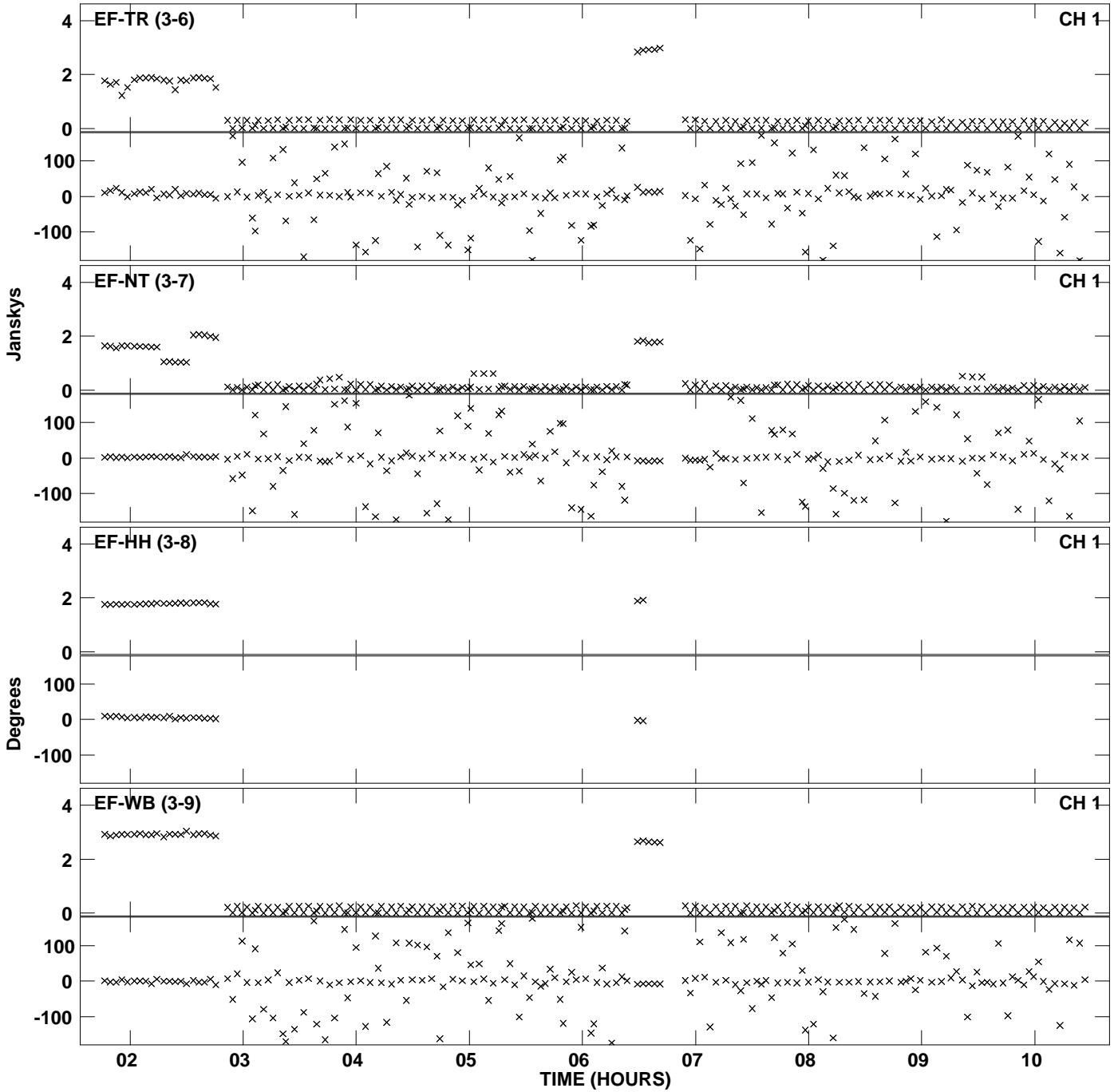
PLot file version 36 created 31-AUG-2015 16:41:17  
Amplitude andPhase vs Time for EB052F 1.UVDATA.1 Vect aver. CL # 3  
IF 4 CHAN 1 - 128 STK RR



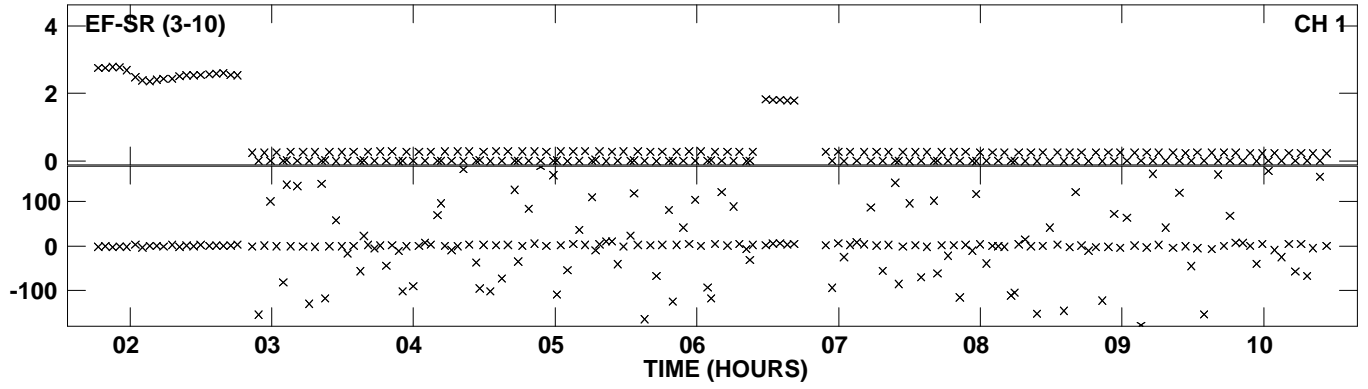
Plot file version 37 created 31-AUG-2015 16:41:35  
Amplitude andPhase vs Time for EB052F 1.UVDATA.1 Vect aver. CL # 3  
IF 5 CHAN 1 - 128 STK RR



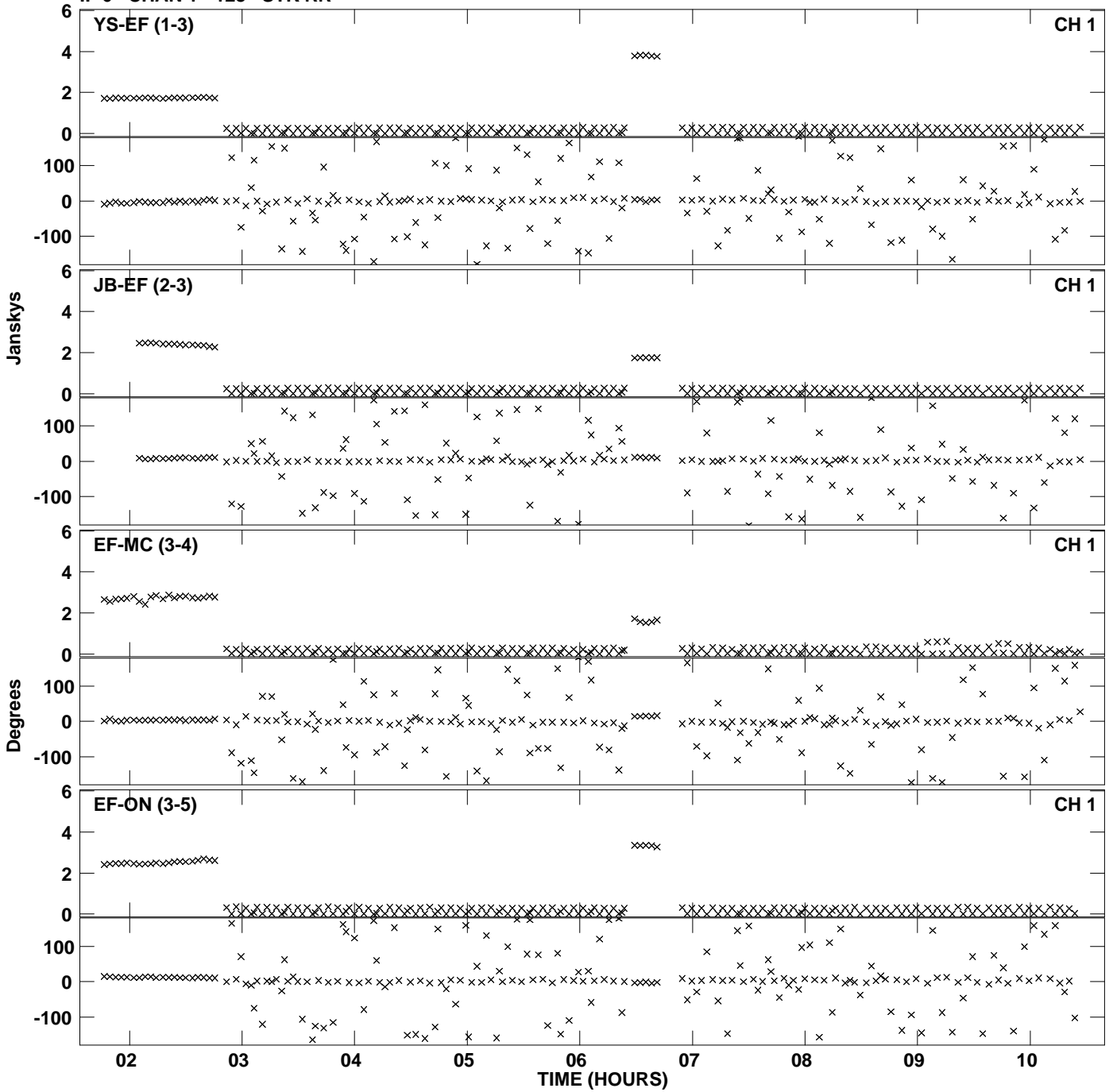
Plot file version 38 created 31-AUG-2015 16:41:35  
Amplitude andPhase vs Time for EB052F 1.UVDATA.1 Vect aver. CL # 3  
IF 5 CHAN 1 - 128 STK RR



PLot file version 39 created 31-AUG-2015 16:41:35  
Amplitude andPhase vs Time for EB052F 1.UVDATA.1 Vect aver. CL # 3  
IF 5 CHAN 1 - 128 STK RR

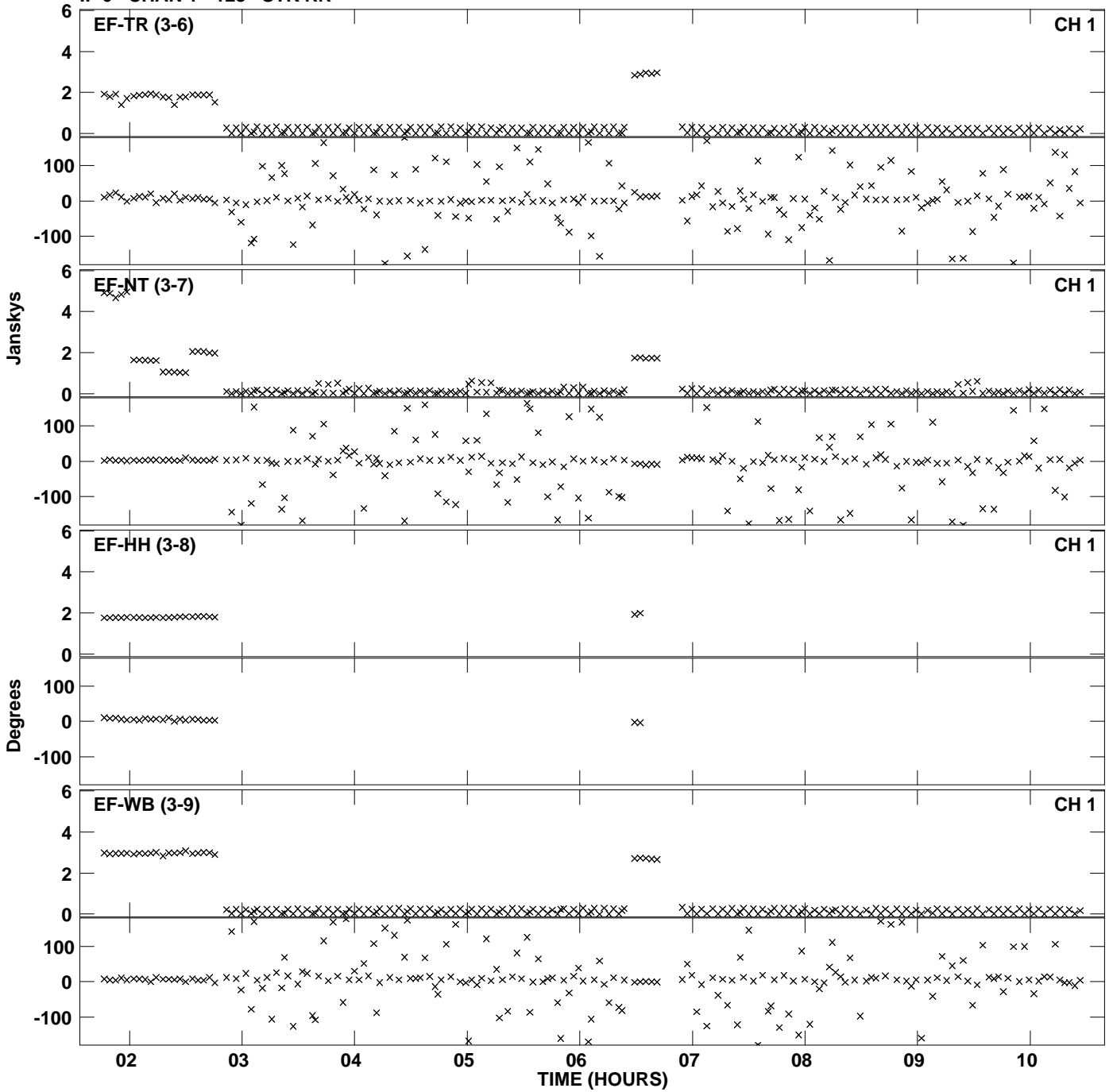


Plot file version 40 created 31-AUG-2015 16:41:53  
Amplitude andPhase vs Time for EB052F 1.UVDATA.1 Vect aver. CL # 3  
IF 6 CHAN 1 - 128 STK RR

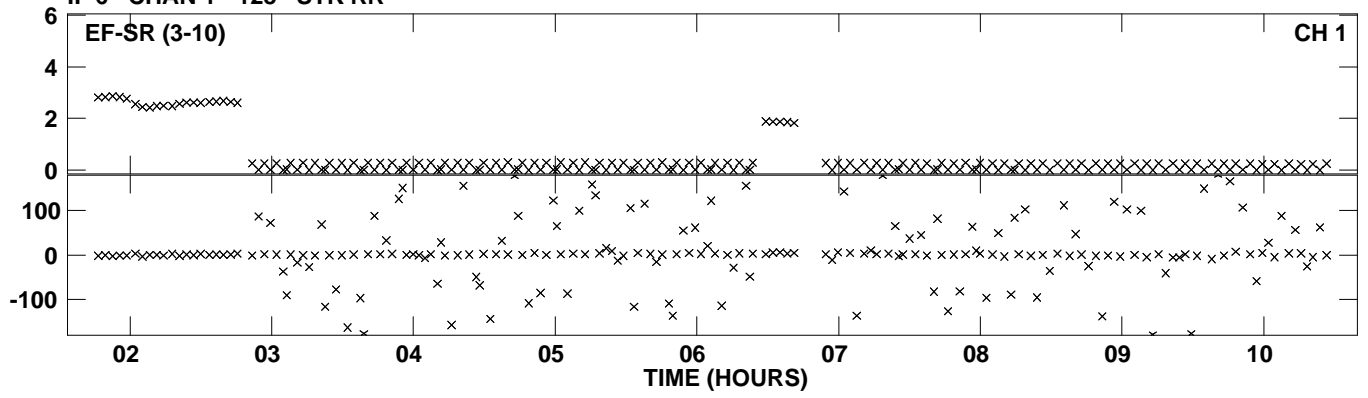




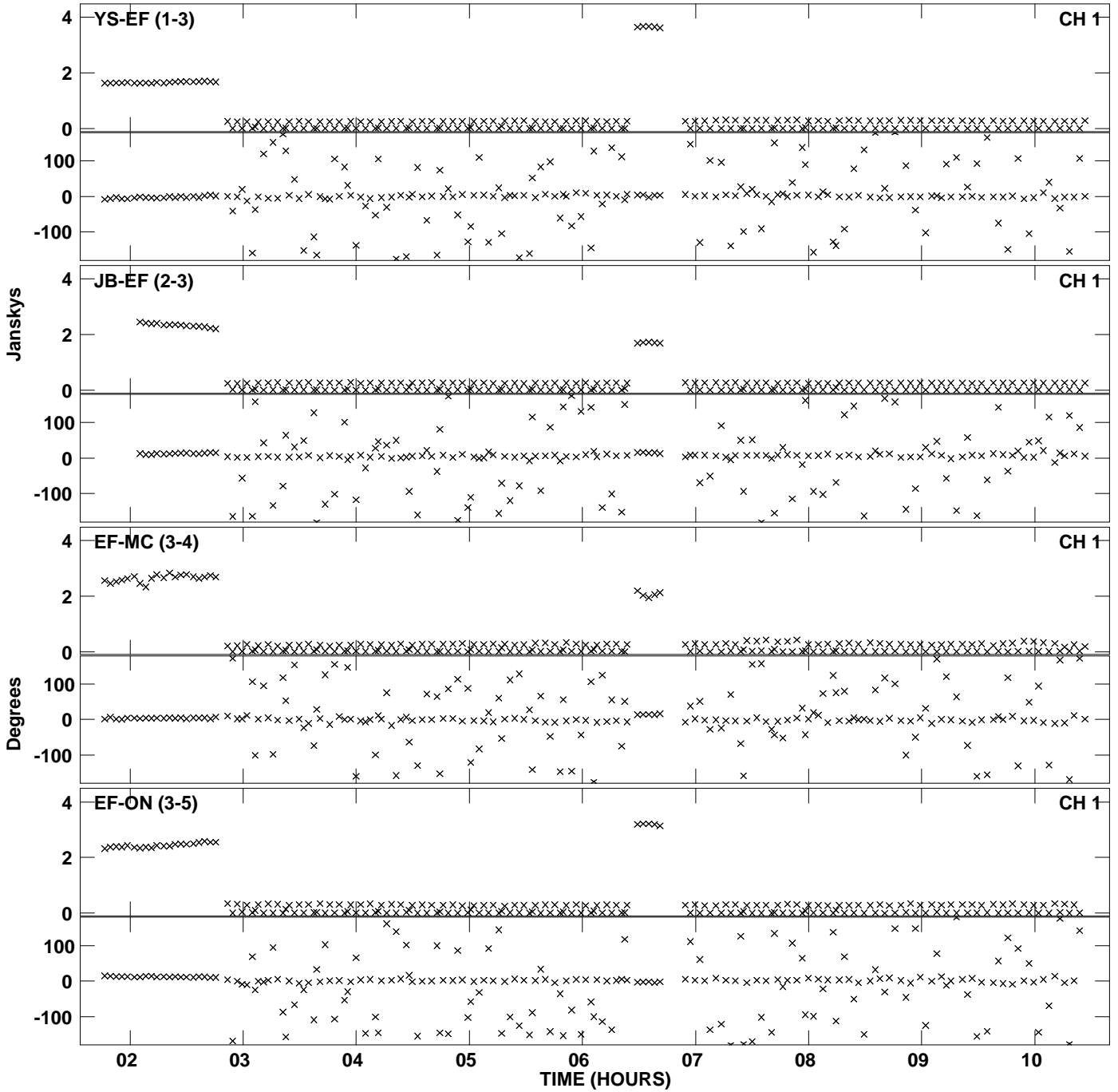
Plot file version 41 created 31-AUG-2015 16:41:53  
Amplitude and Phase vs Time for EB052F 1.UVDATA.1 Vect aver. CL # 3  
IF 6 CHAN 1 - 128 STK RR



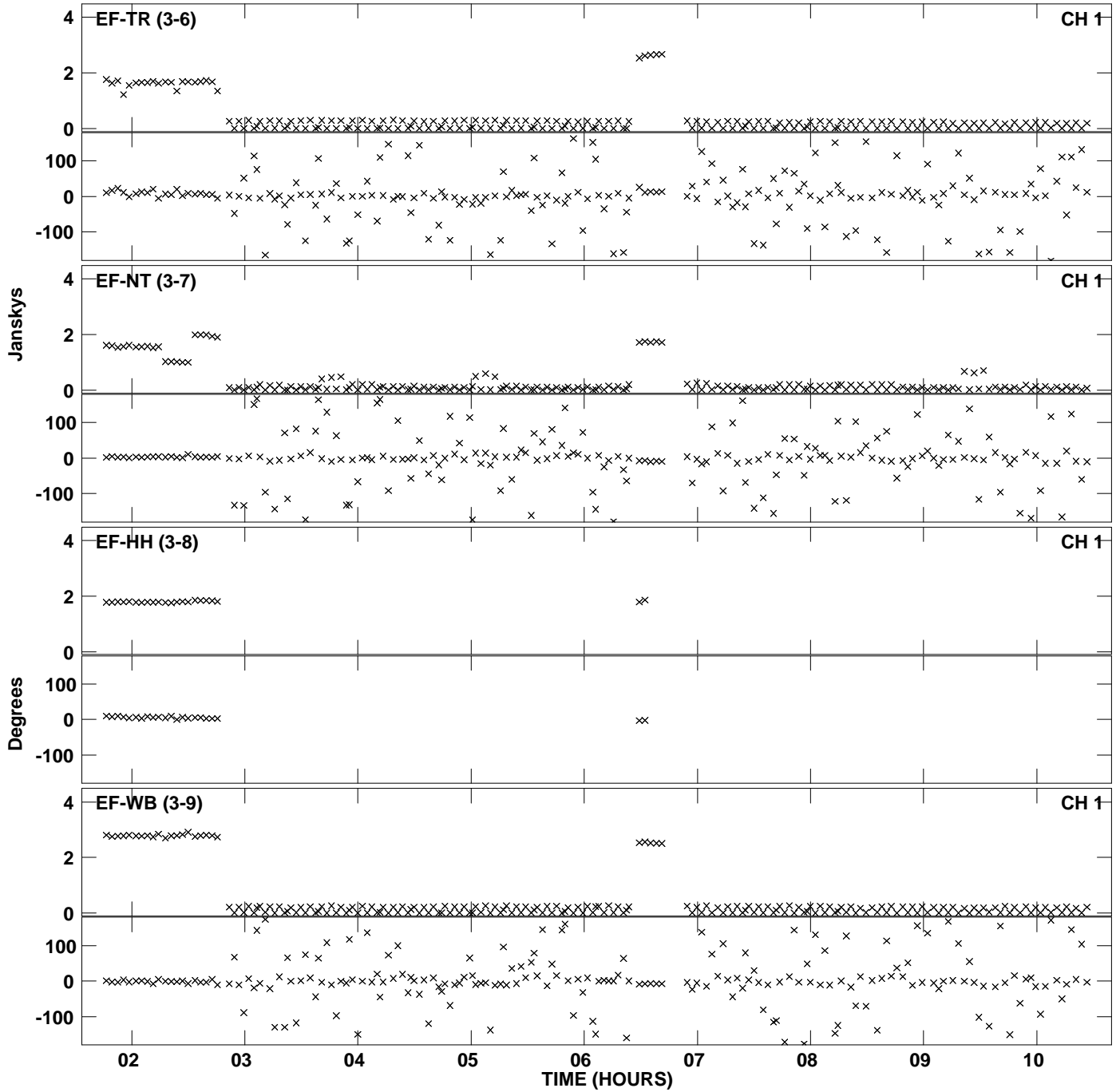
PLot file version 42 created 31-AUG-2015 16:41:53  
Amplitude andPhase vs Time for EB052F 1.UVDATA.1 Vect aver. CL # 3  
IF 6 CHAN 1 - 128 STK RR



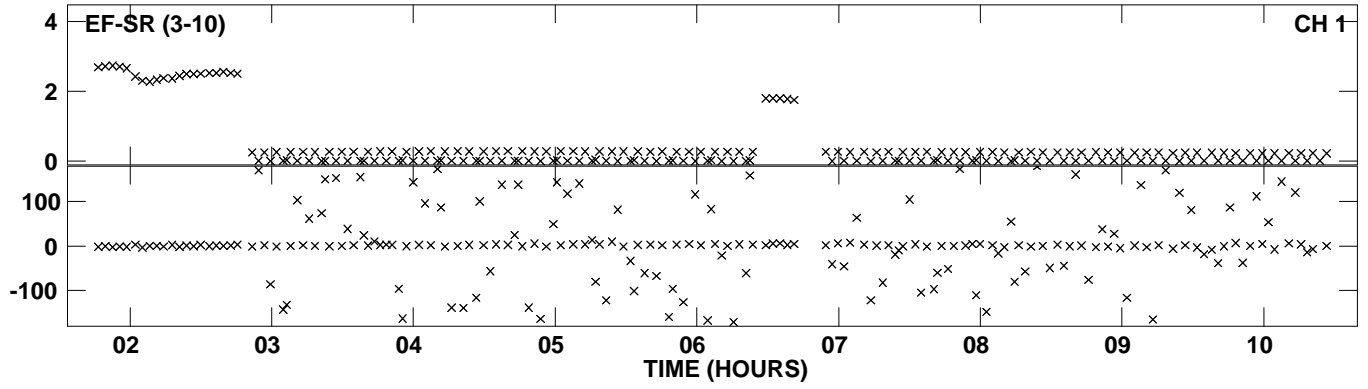
Plot file version 43 created 31-AUG-2015 16:42:11  
Amplitude andPhase vs Time for EB052F 1.UVDATA.1 Vect aver. CL # 3  
IF 7 CHAN 1 - 128 STK RR



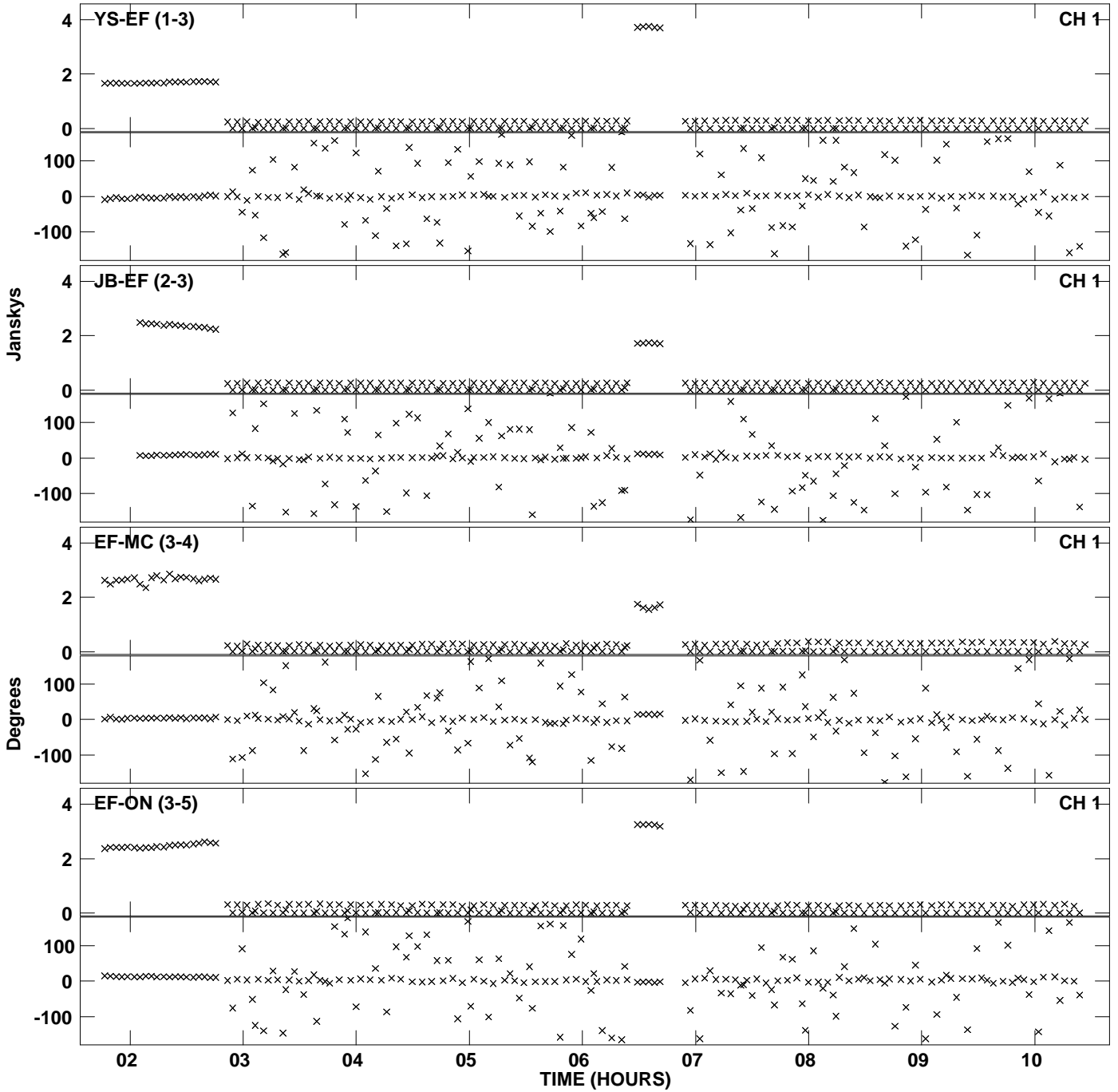
Plot file version 44 created 31-AUG-2015 16:42:11  
Amplitude andPhase vs Time for EB052F 1.UVDATA.1 Vect aver. CL # 3  
IF 7 CHAN 1 - 128 STK RR



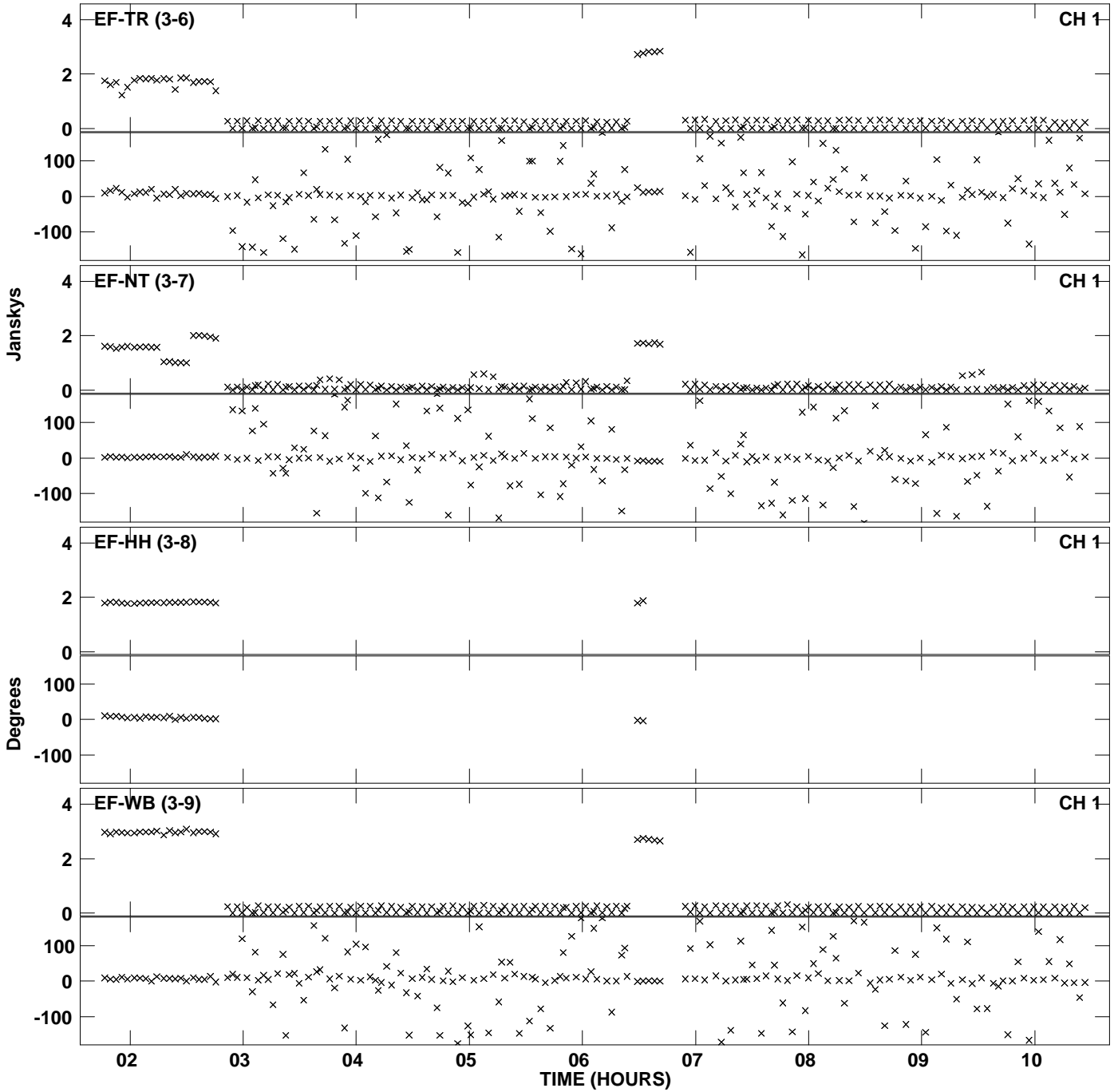
PLot file version 45 created 31-AUG-2015 16:42:11  
Amplitude andPhase vs Time for EB052F 1.UVDATA.1 Vect aver. CL # 3  
IF 7 CHAN 1 - 128 STK RR



Plot file version 46 created 31-AUG-2015 16:42:28  
Amplitude andPhase vs Time for EB052F 1.UVDATA.1 Vect aver. CL # 3  
IF 8 CHAN 1 - 128 STK RR



Plot file version 47 created 31-AUG-2015 16:42:28  
Amplitude andPhase vs Time for EB052F 1.UVDATA.1 Vect aver. CL # 3  
IF 8 CHAN 1 - 128 STK RR



PLot file version 48 created 31-AUG-2015 16:42:28  
Amplitude and Phase vs Time for EB052F 1.UVDATA.1 Vect aver. CL # 3  
IF 8 CHAN 1 - 128 STK RR

