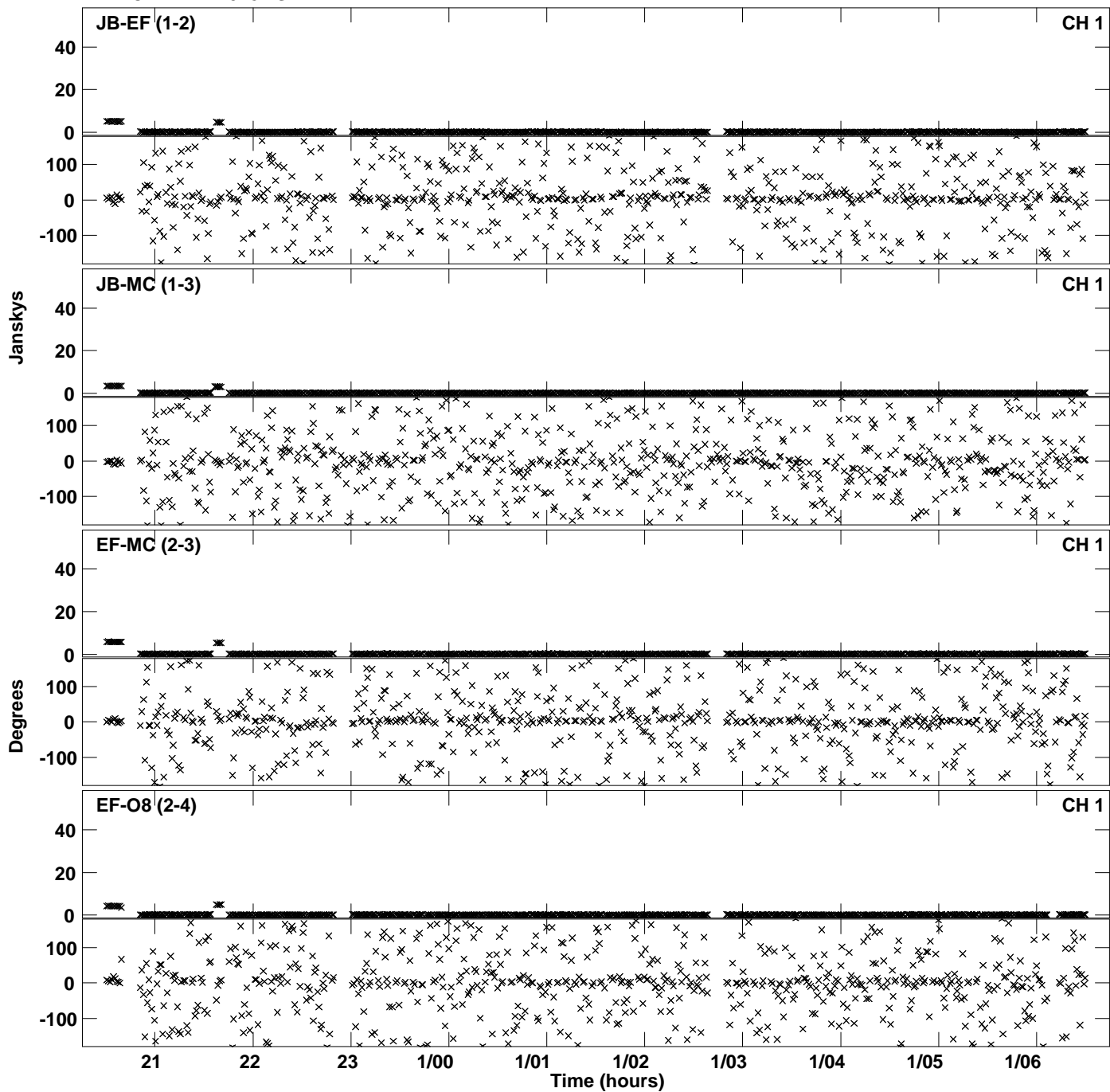
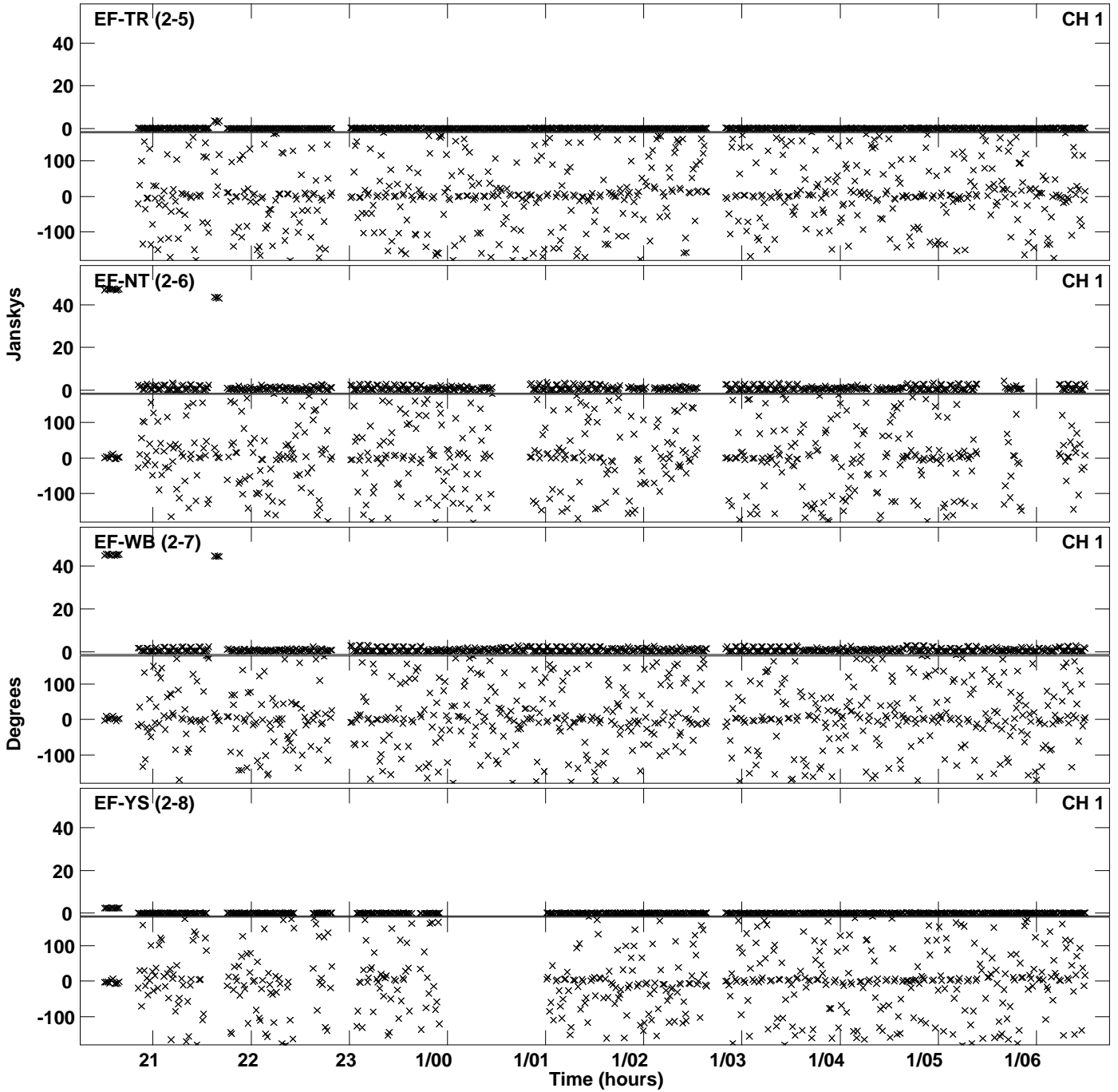


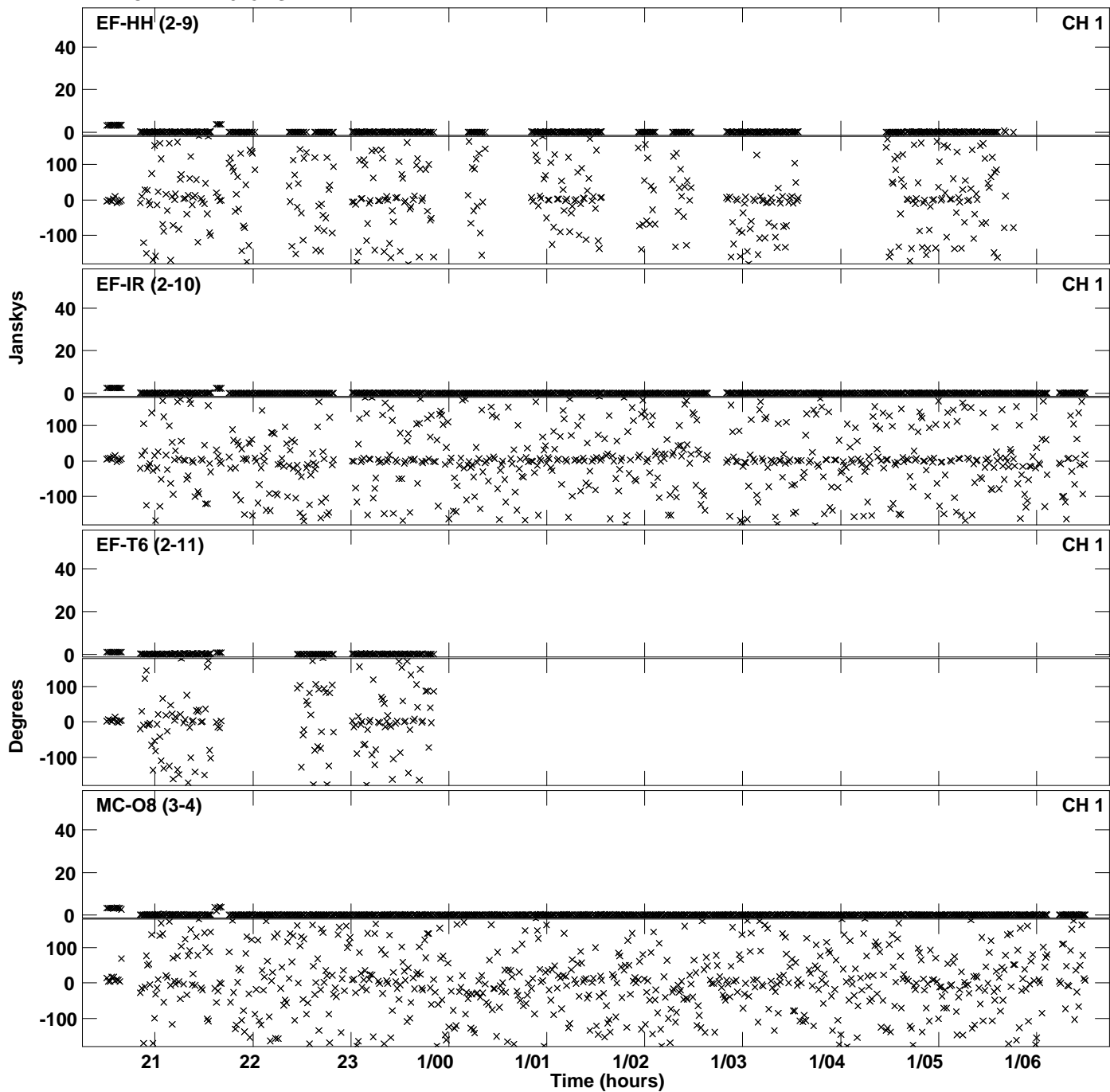
Plot file version 1 created 23-OCT-2019 12:34:02  
Amplitude andPhase vs Time for EB073 3.UVDATA.1 Vect aver. CL # 3  
IF 1 CHAN 1 - 2048 STK LL



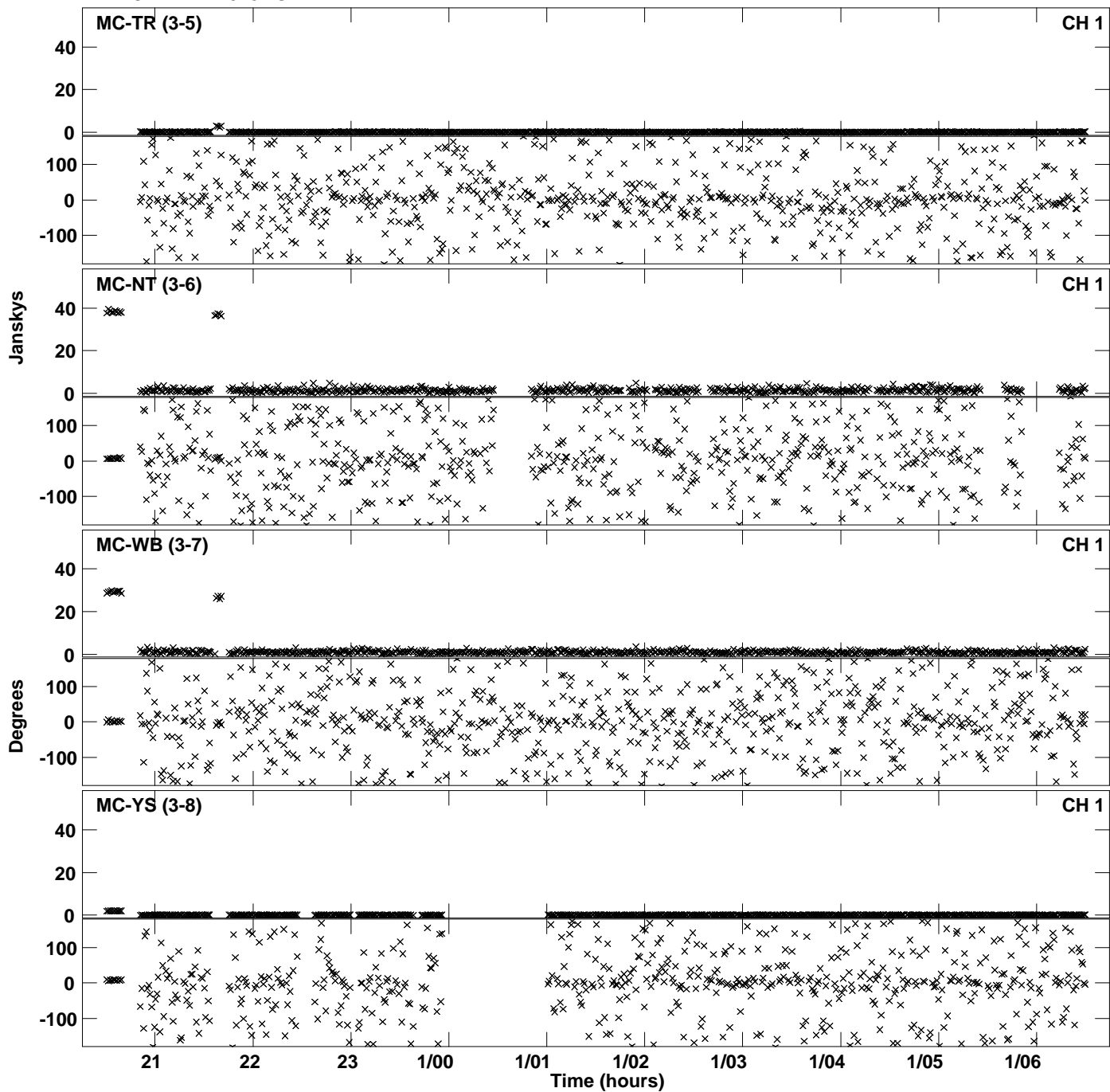
Plot file version 2 created 23-OCT-2019 12:34:02  
Amplitude andPhase vs Time for EB073 3.UVDATA.1 Vect aver. CL # 3  
IF 1 CHAN 1 - 2048 STK LL



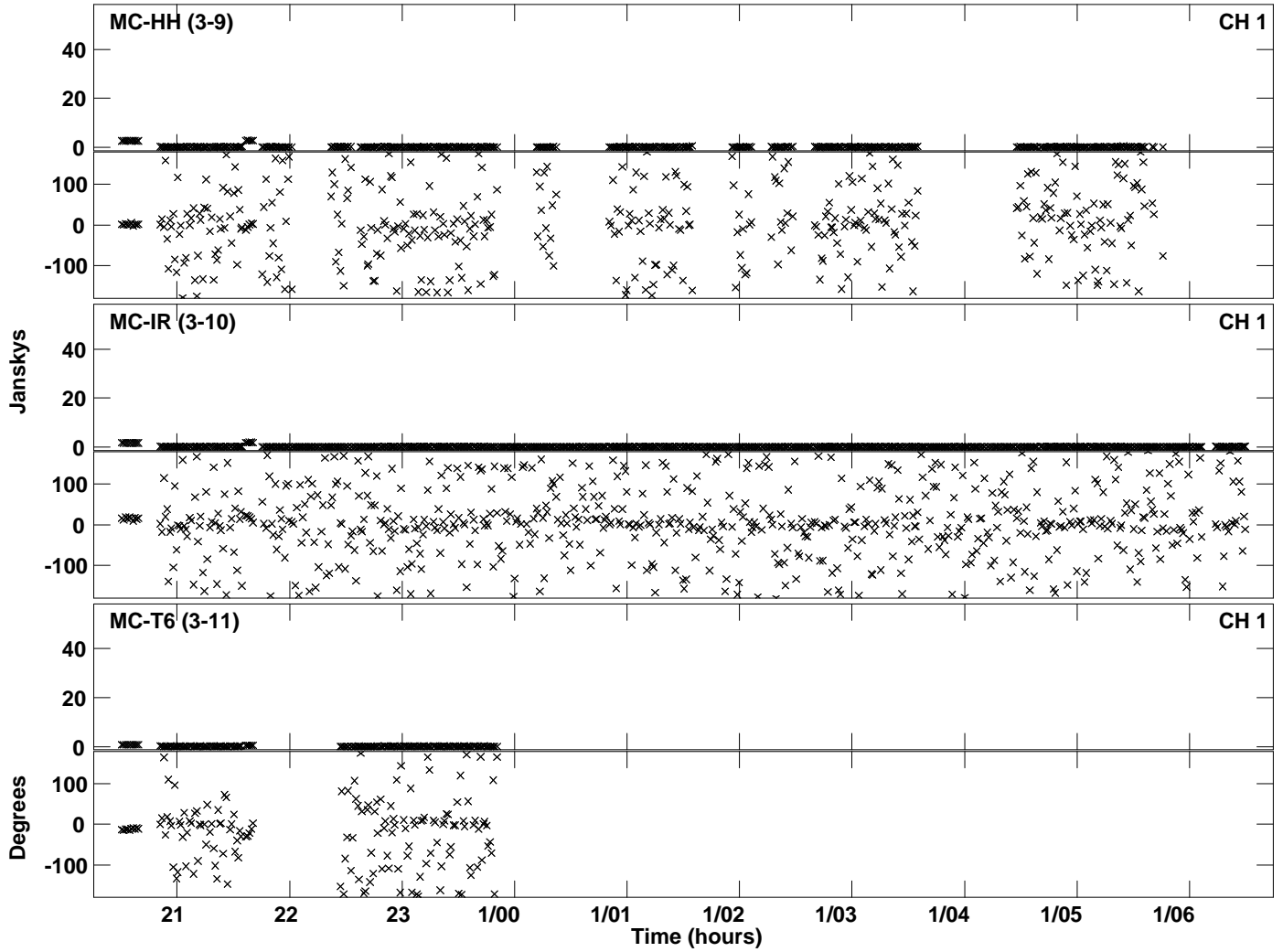
Plot file version 3 created 23-OCT-2019 12:34:02  
Amplitude andPhase vs Time for EB073 3.UVDATA.1 Vect aver. CL # 3  
IF 1 CHAN 1 - 2048 STK LL



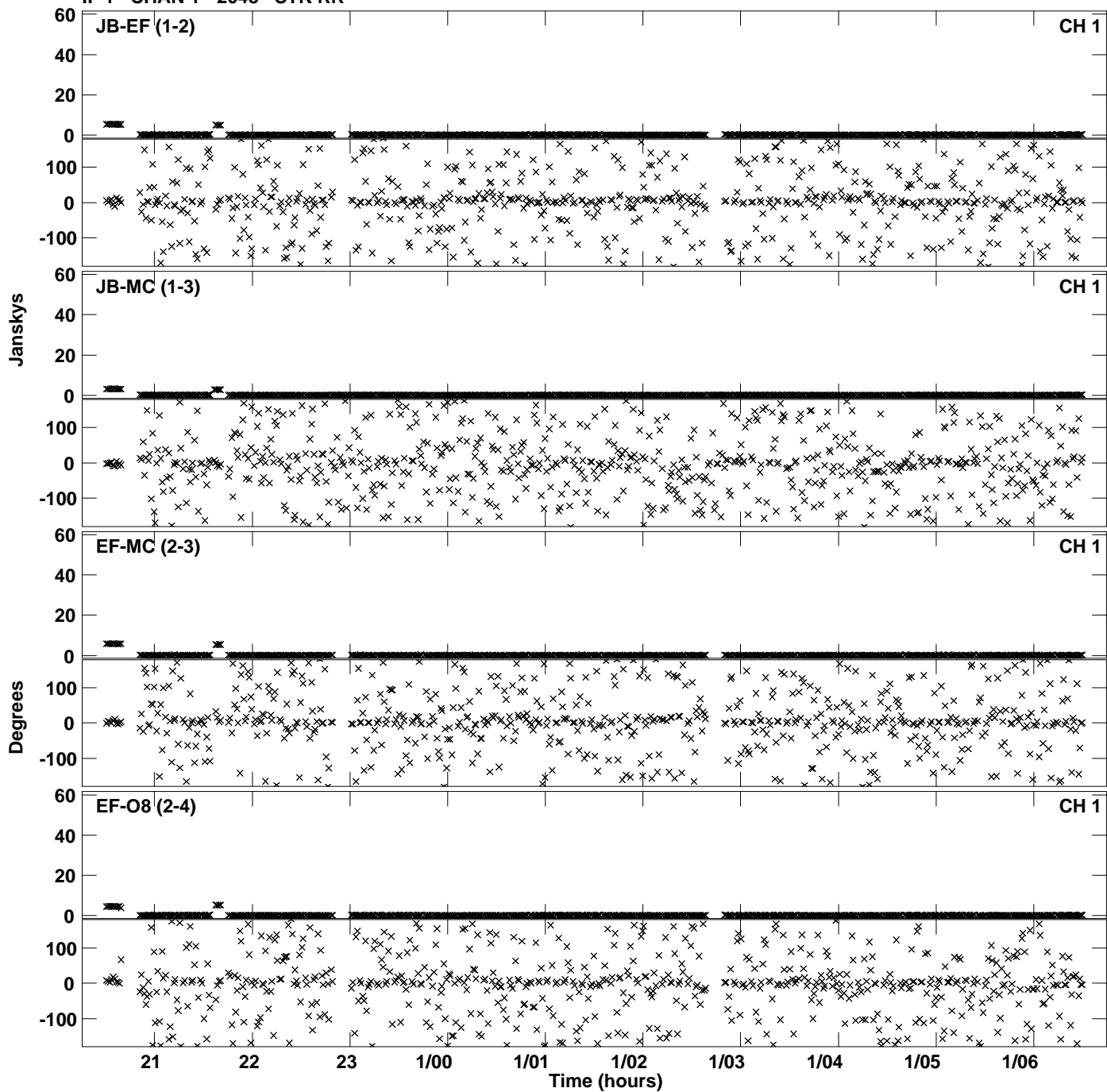
Plot file version 4 created 23-OCT-2019 12:34:02  
Amplitude andPhase vs Time for EB073 3.UVDATA.1 Vect aver. CL # 3  
IF 1 CHAN 1 - 2048 STK LL



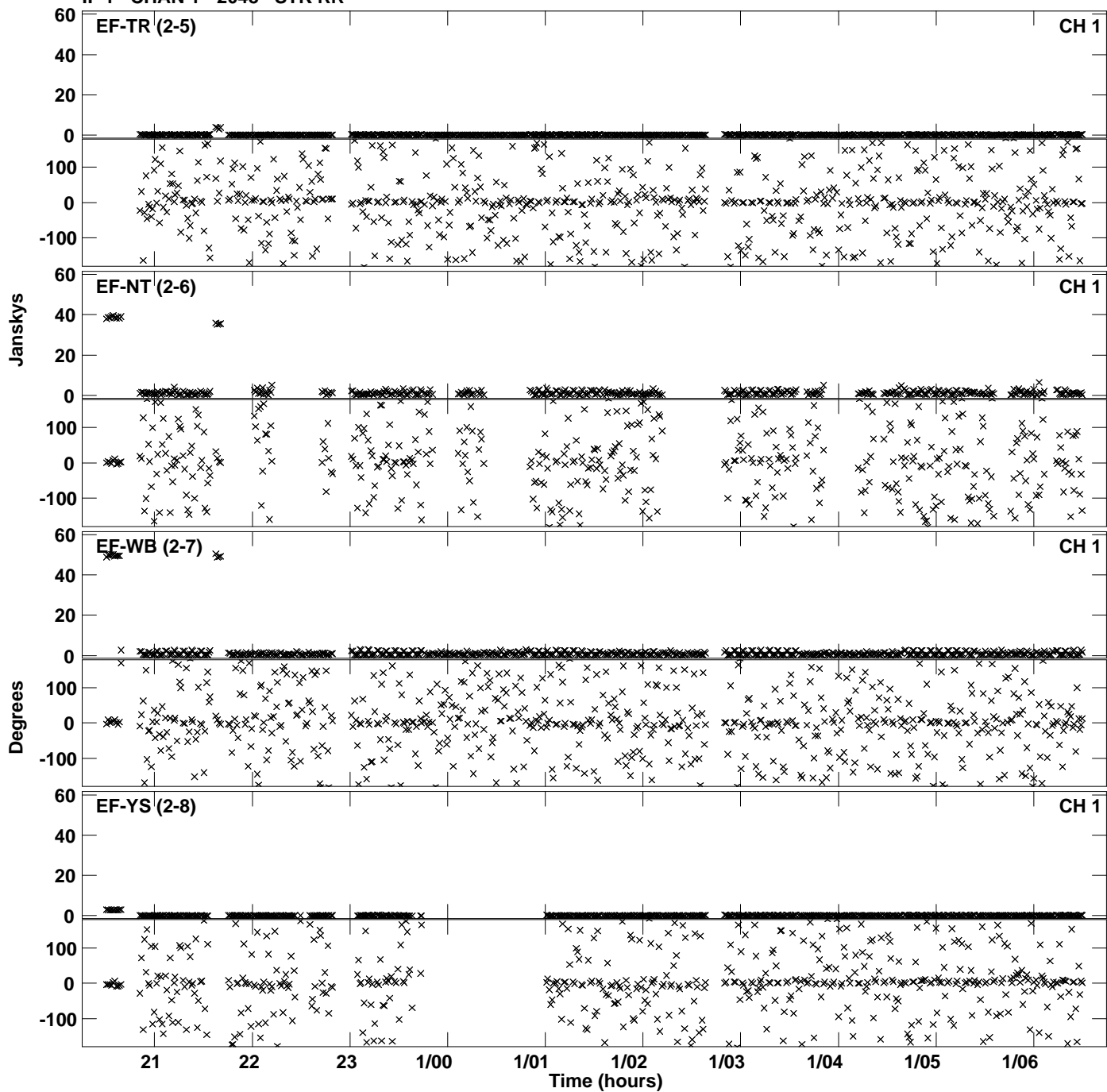
Plot file version 5 created 23-OCT-2019 12:34:02  
Amplitude andPhase vs Time for EB073 3.UVDATA.1 Vect aver. CL # 3  
IF 1 CHAN 1 - 2048 STK LL



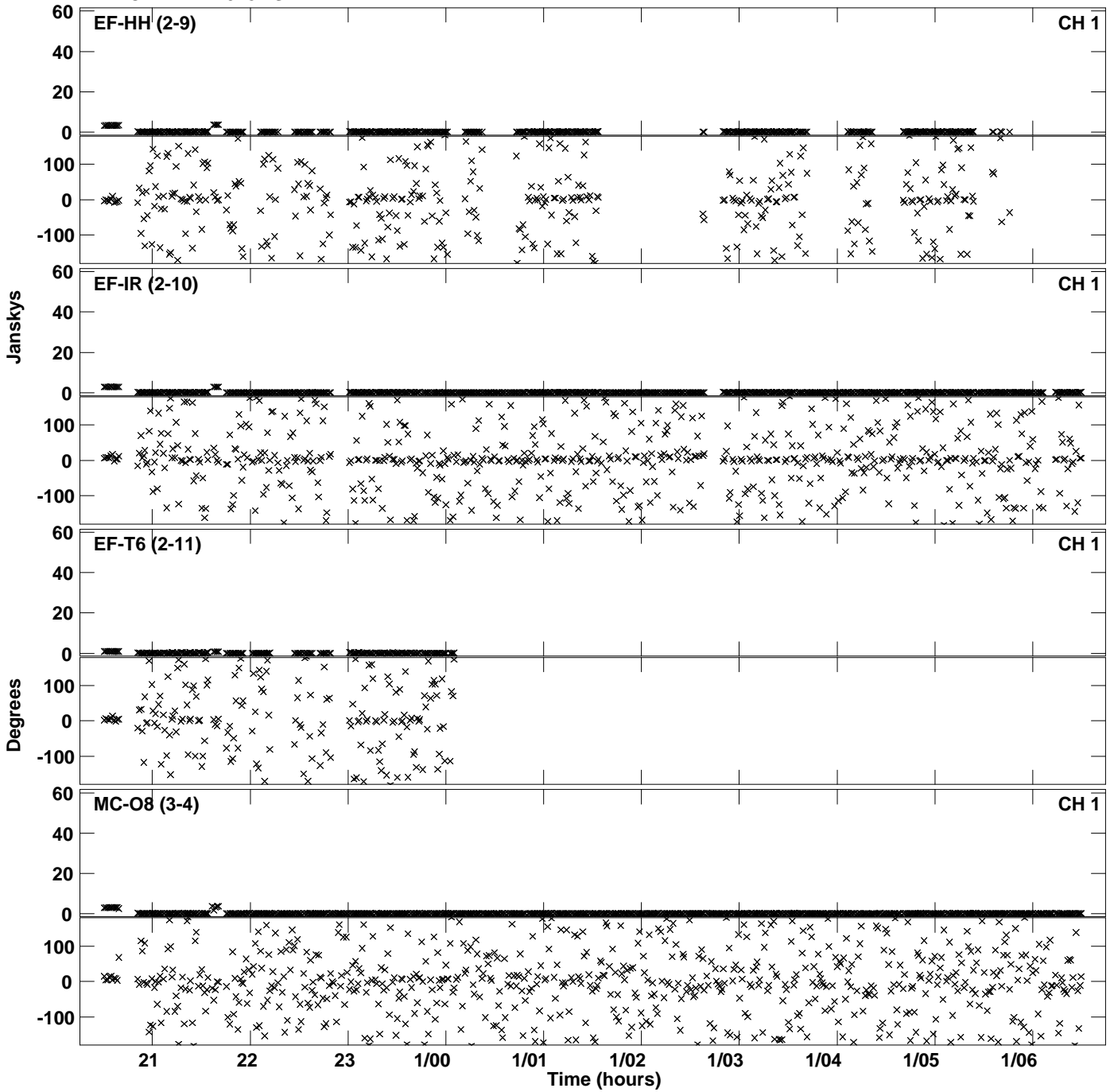
Plot file version 6 created 23-OCT-2019 14:19:50  
Amplitude andPhase vs Time for EB073 3.UVDATA.1 Vect aver. CL # 3  
IF 1 CHAN 1 - 2048 STK RR



Plot file version 7 created 23-OCT-2019 14:19:50  
Amplitude andPhase vs Time for EB073 3.UVDATA.1 Vect aver. CL # 3  
IF 1 CHAN 1 - 2048 STK RR

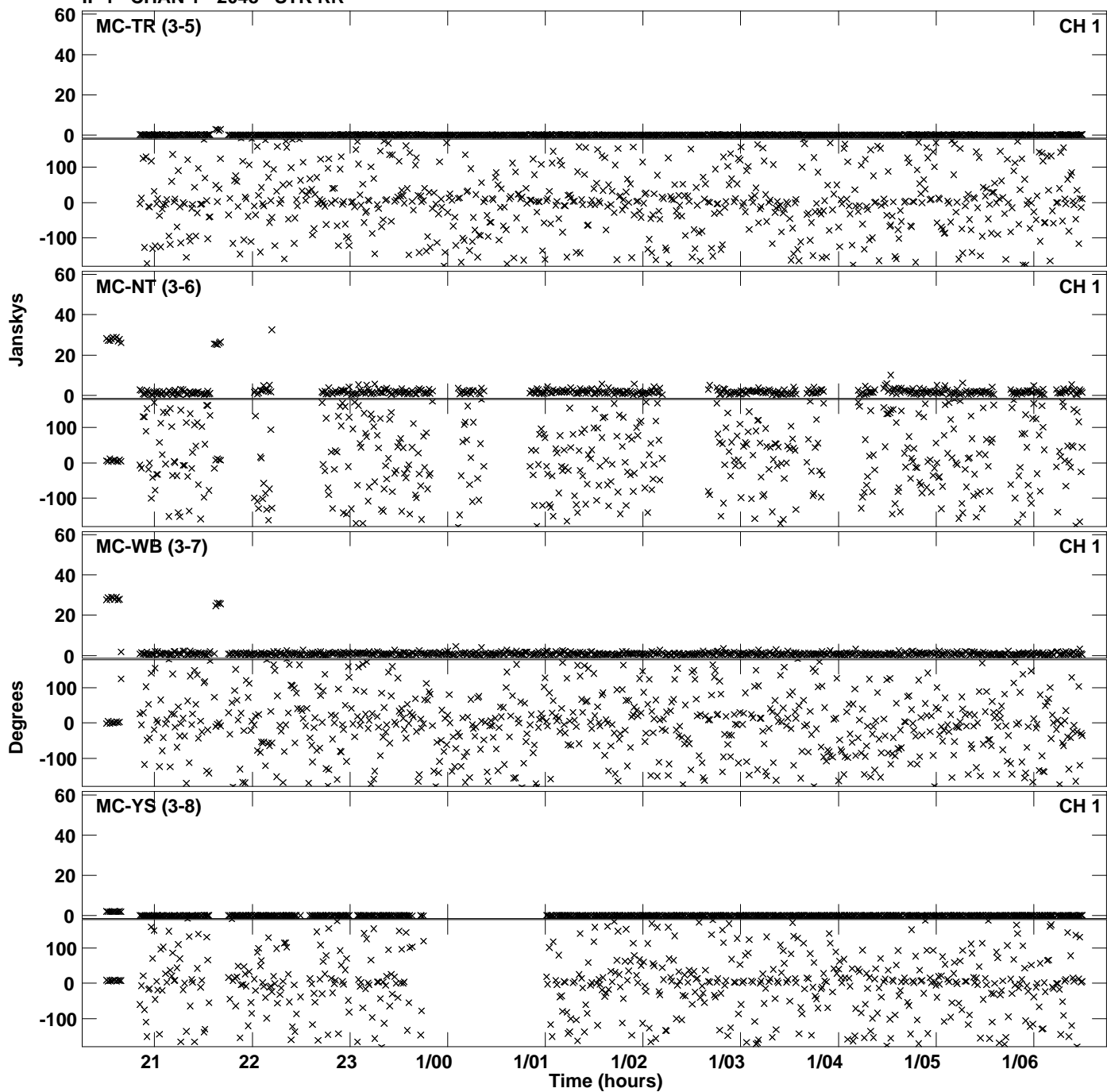


Plot file version 8 created 23-OCT-2019 14:19:50  
Amplitude andPhase vs Time for EB073 3.UVDATA.1 Vect aver. CL # 3  
IF 1 CHAN 1 - 2048 STK RR





Plot file version 9 created 23-OCT-2019 14:19:50  
Amplitude andPhase vs Time for EB073 3.UVDATA.1 Vect aver. CL # 3  
IF 1 CHAN 1 - 2048 STK RR



Plot file version 10 created 23-OCT-2019 14:19:50  
Amplitude andPhase vs Time for EB073 3.UVDATA.1 Vect aver. CL # 3  
IF 1 CHAN 1 - 2048 STK RR

