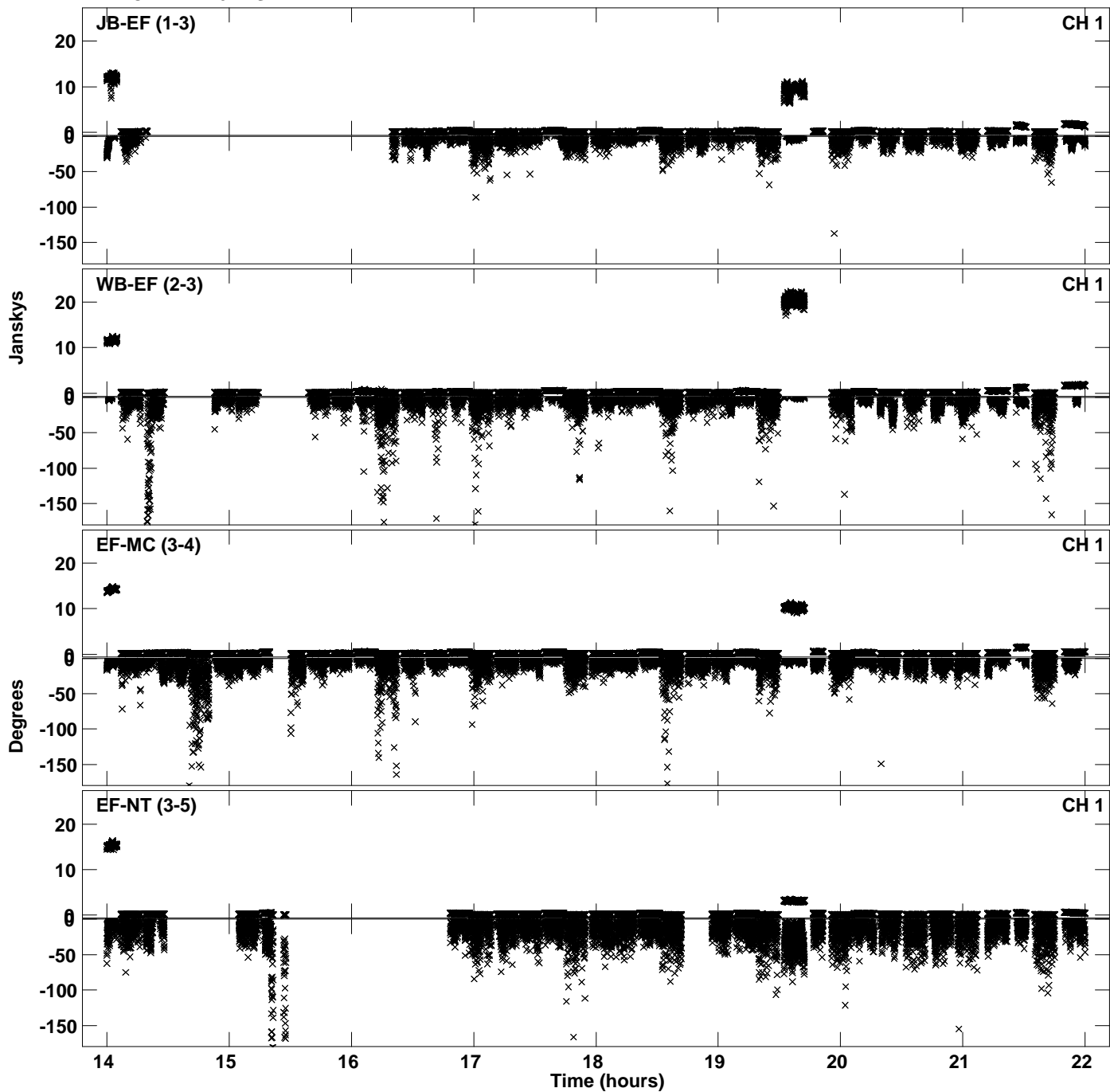
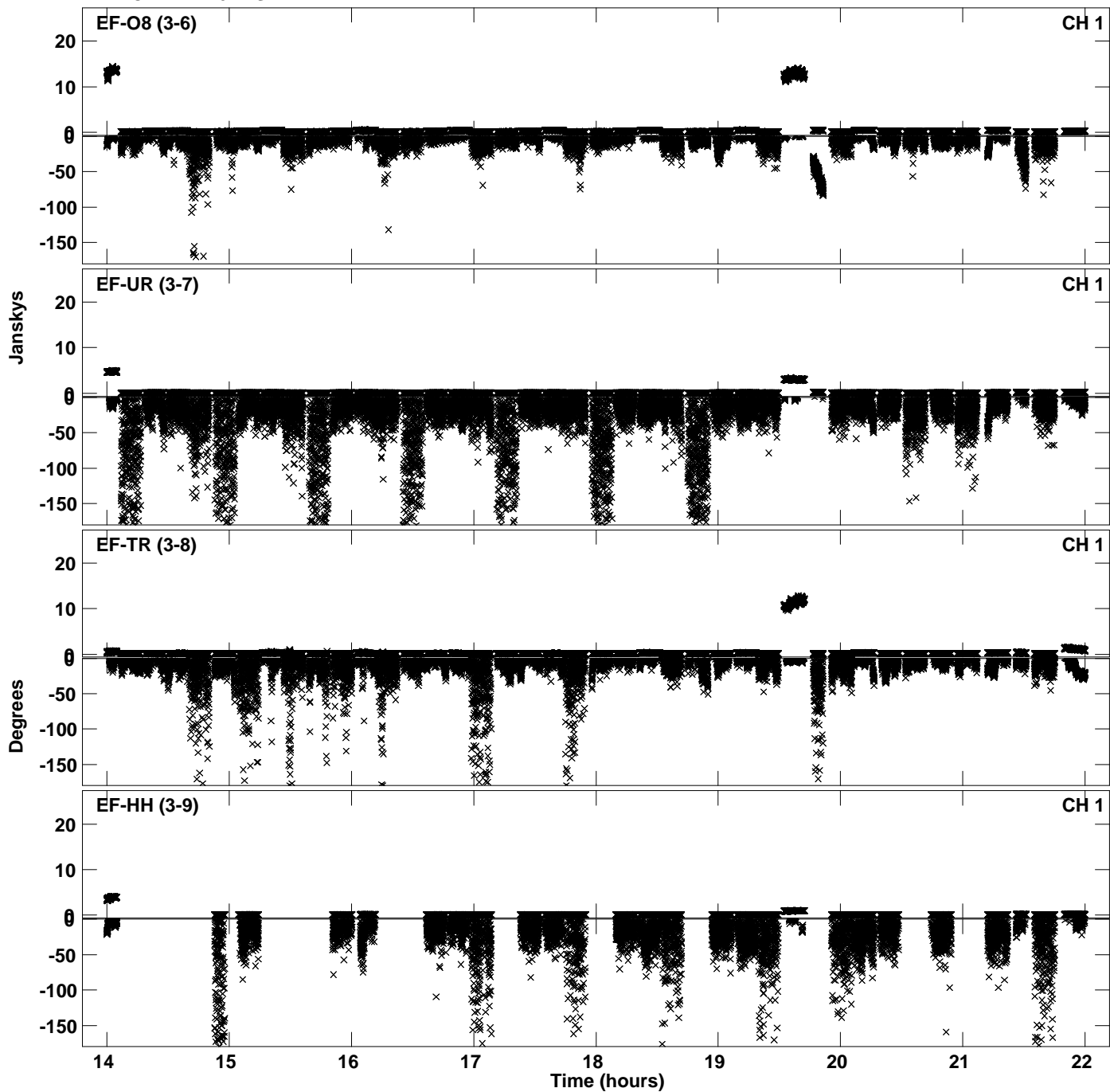


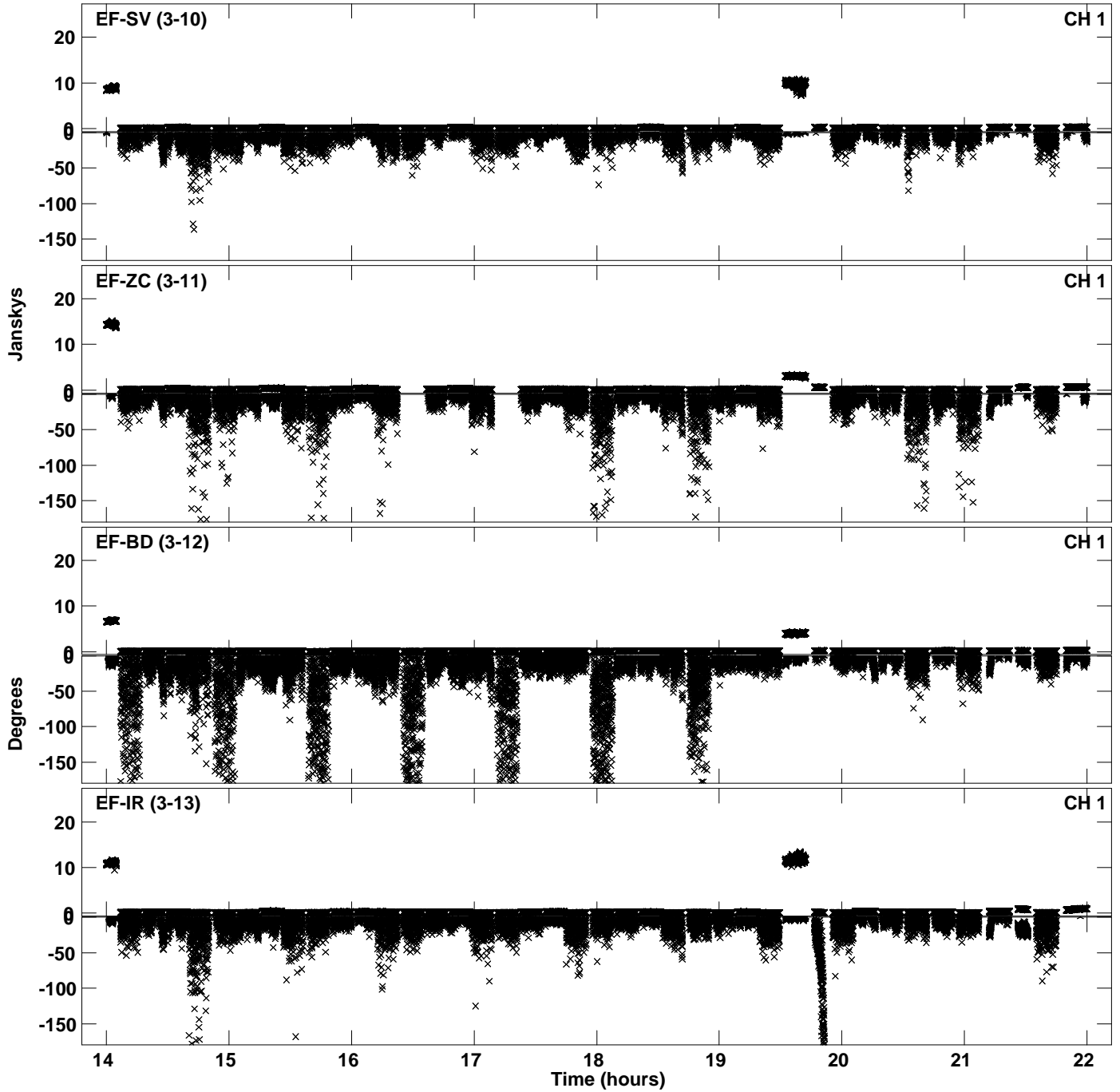
Plot file version 1 created 14-FEB-2022 18:20:47
Amplitude andPhase vs Time for EB090B.UVDATA.1 Vect aver. CL # 4
IF 1 CHAN 1 - 64 STK LL



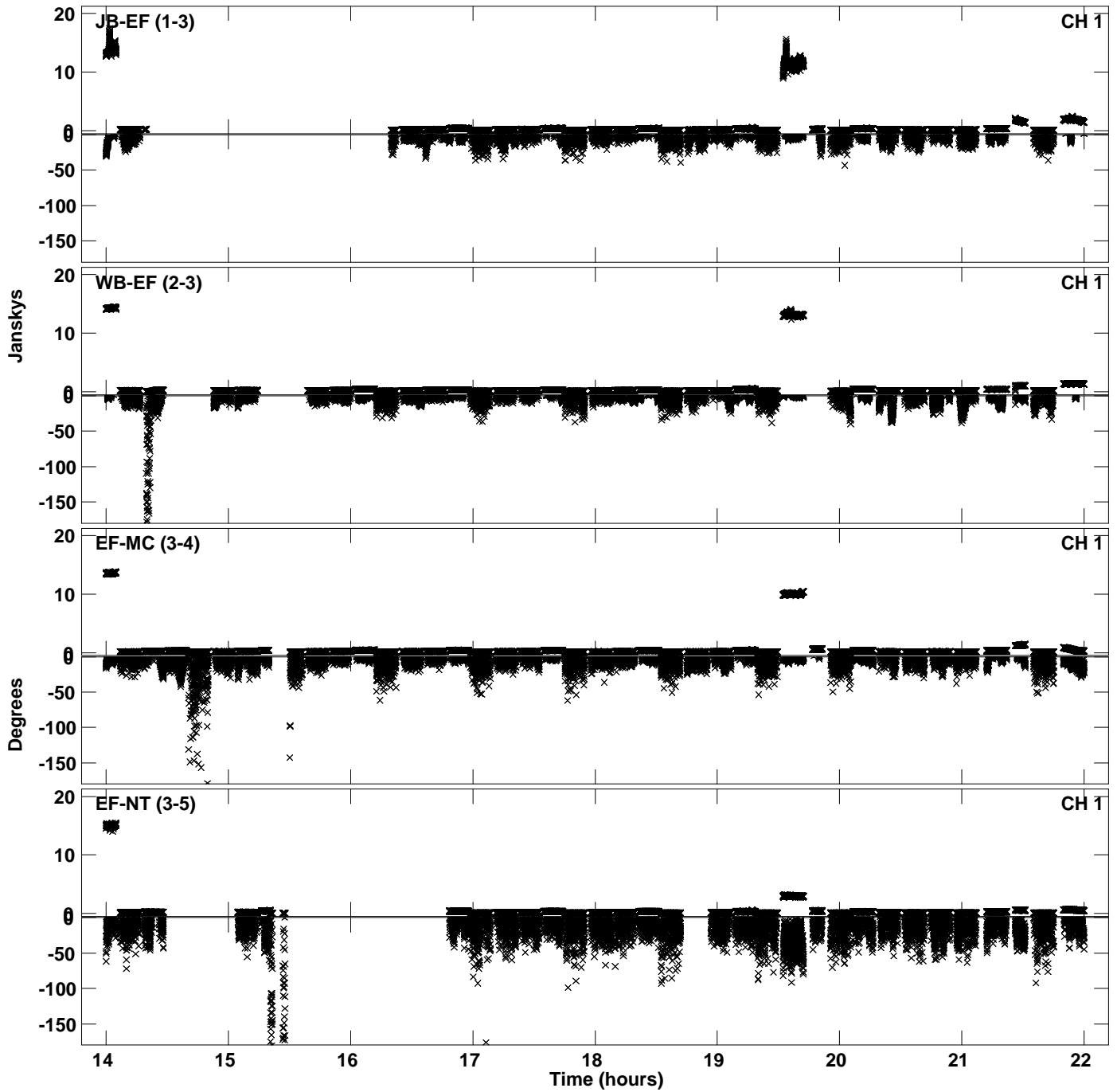
Plot file version 2 created 14-FEB-2022 18:20:47
Amplitude andPhase vs Time for EB090B.UVDATA.1 Vect aver. CL # 4
IF 1 CHAN 1 - 64 STK LL



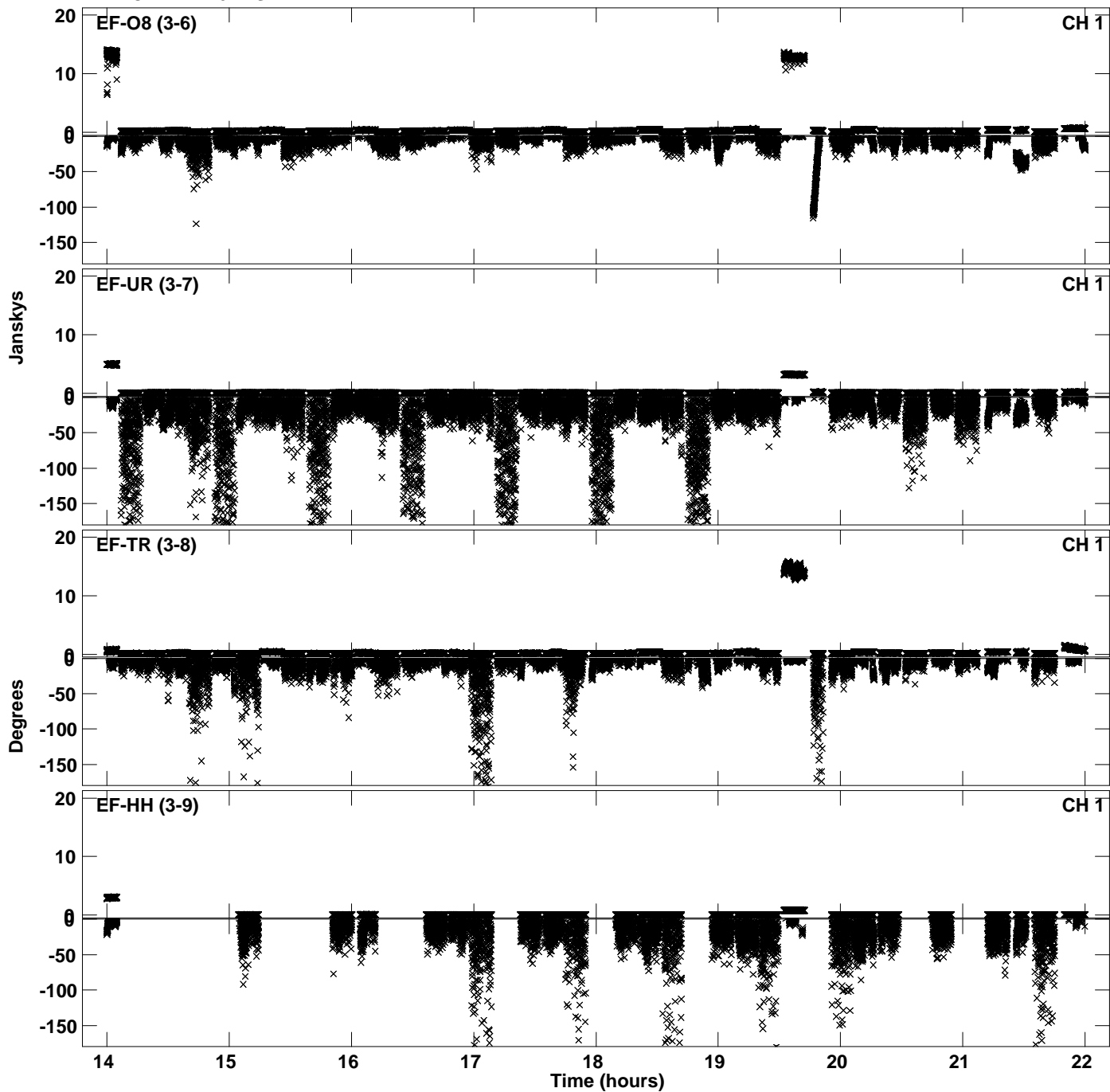
Plot file version 3 created 14-FEB-2022 18:20:47
Amplitude andPhase vs Time for EB090B.UVDATA.1 Vect aver. CL # 4
IF 1 CHAN 1 - 64 STK LL



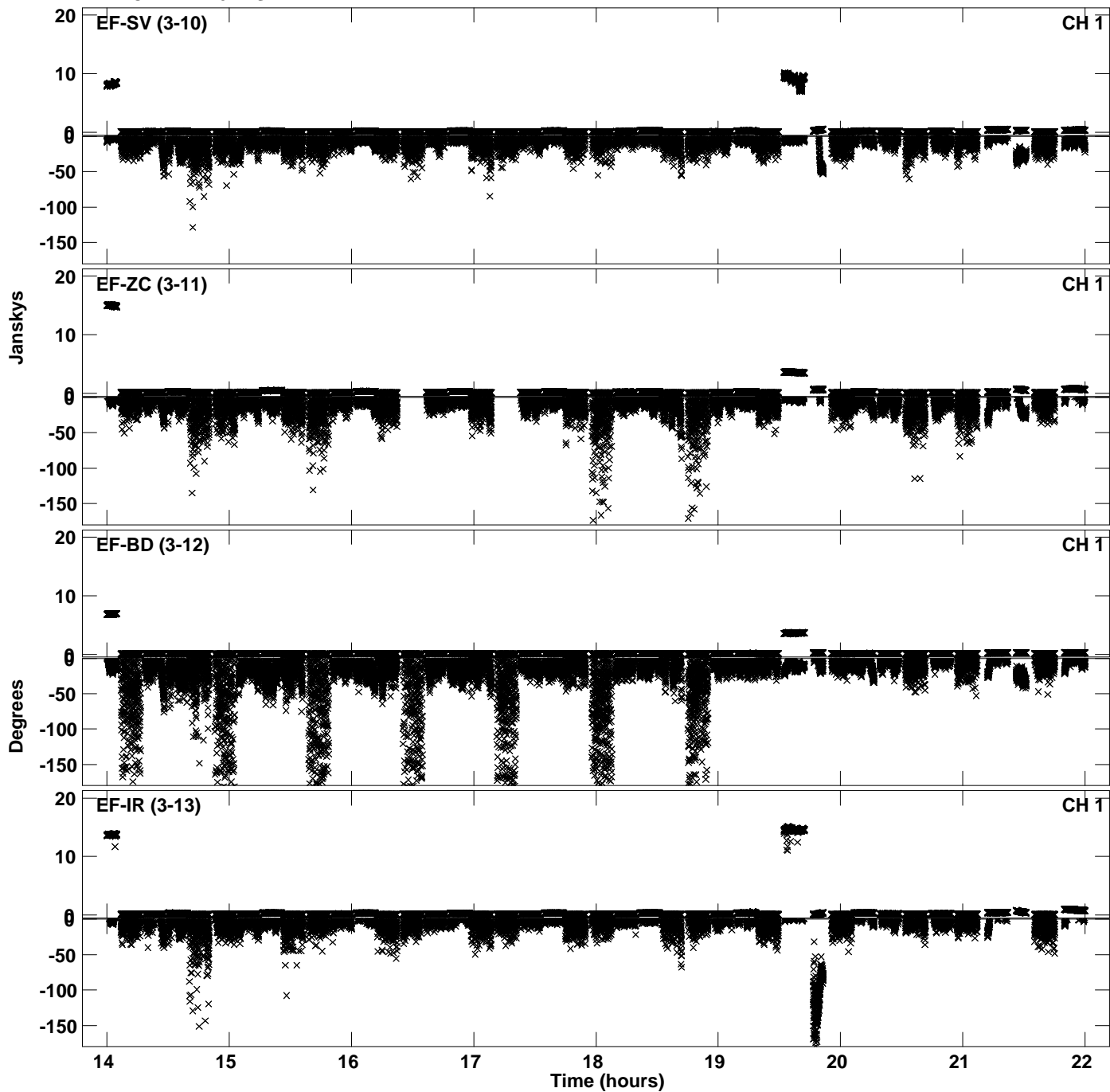
Plot file version 4 created 14-FEB-2022 18:21:57
Amplitude and Phase vs Time for EB090B.UVDATA.1 Vect aver. CL # 4
IF 2 CHAN 1 - 64 STK LL



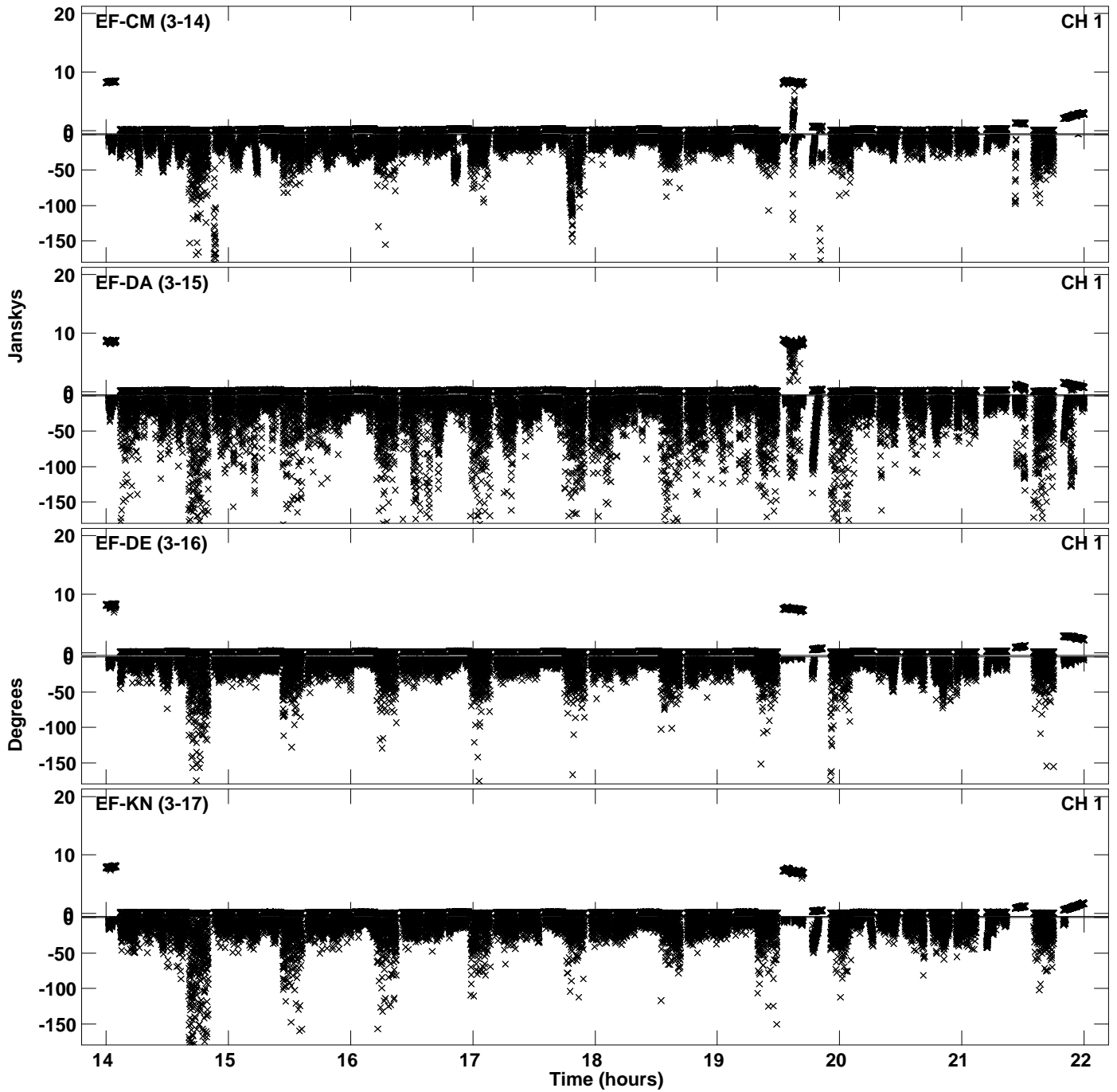
Plot file version 5 created 14-FEB-2022 18:21:57
Amplitude andPhase vs Time for EB090B.UVDATA.1 Vect aver. CL # 4
IF 2 CHAN 1 - 64 STK LL



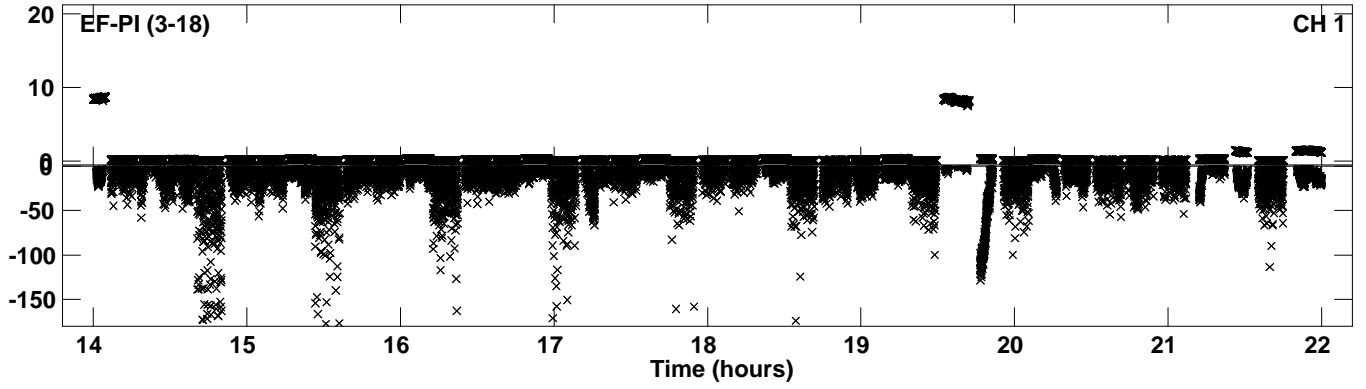
Plot file version 6 created 14-FEB-2022 18:21:57
Amplitude andPhase vs Time for EB090B.UVDATA.1 Vect aver. CL # 4
IF 2 CHAN 1 - 64 STK LL



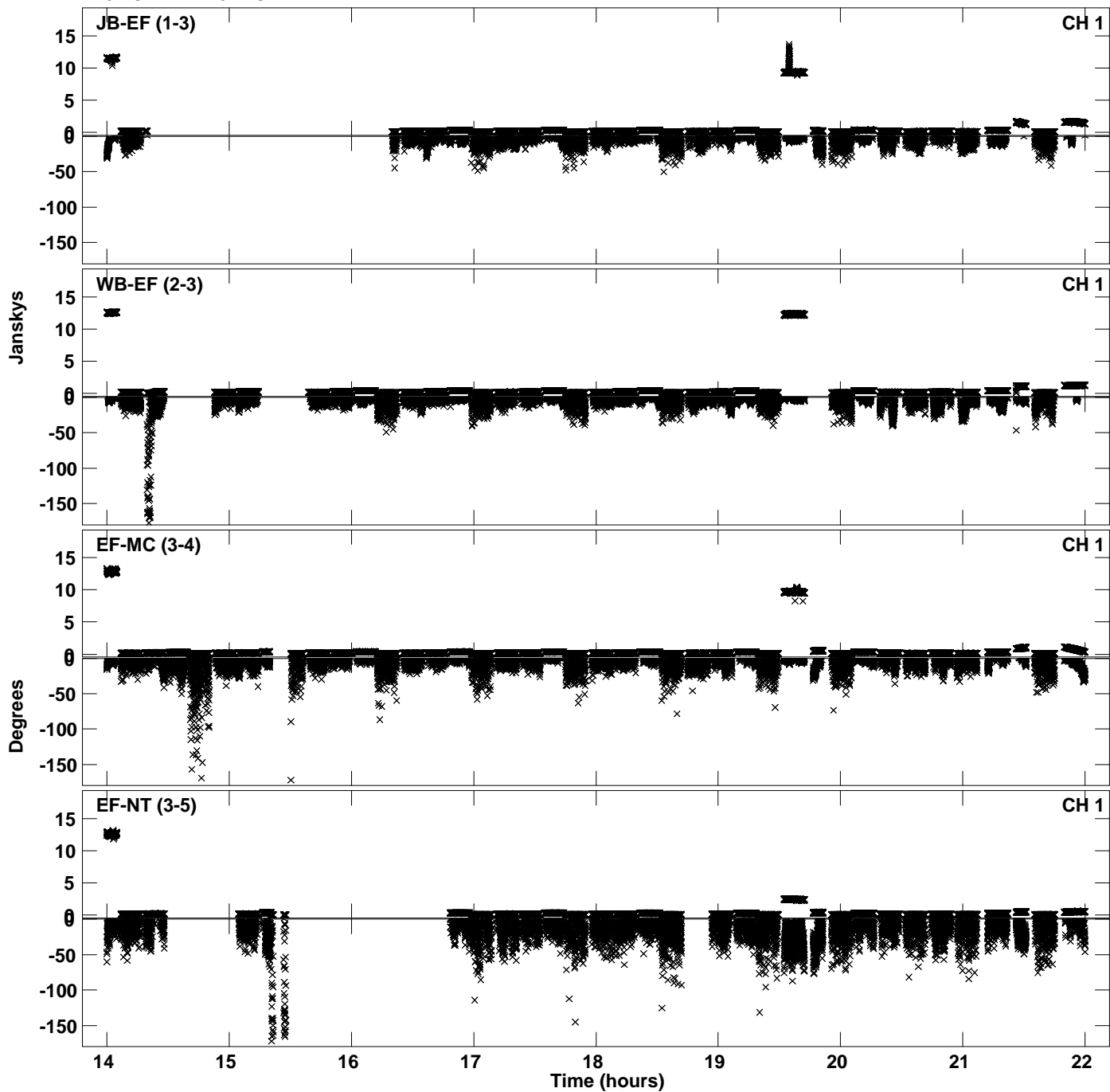
Plot file version 7 created 14-FEB-2022 18:21:57
Amplitude andPhase vs Time for EB090B.UVDATA.1 Vect aver. CL # 4
IF 2 CHAN 1 - 64 STK LL



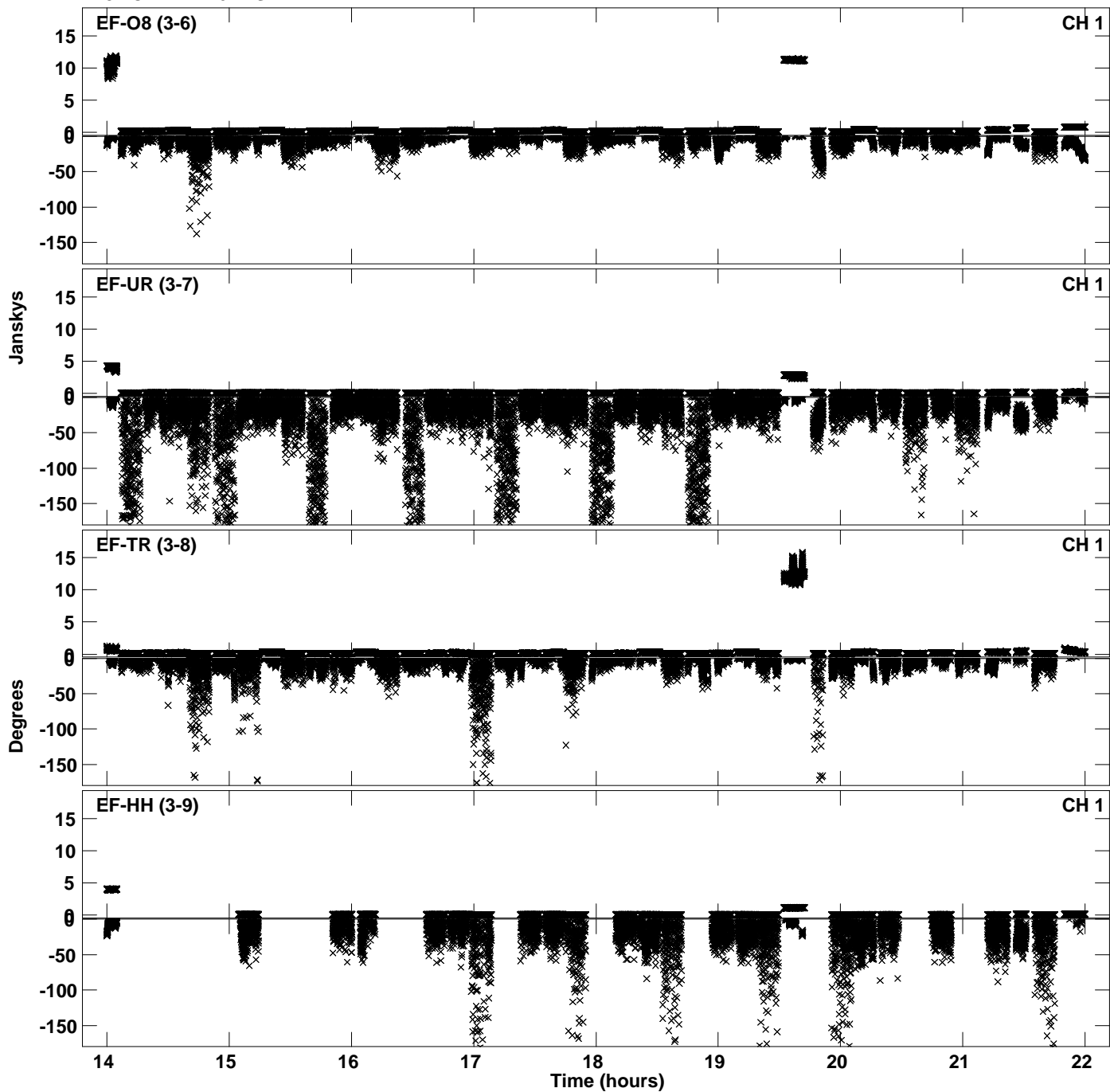
PLot file version 8 created 14-FEB-2022 18:21:57
Amplitude andPhase vs Time for EB090B.UVDATA.1 Vect aver. CL # 4
IF 2 CHAN 1 - 64 STK LL



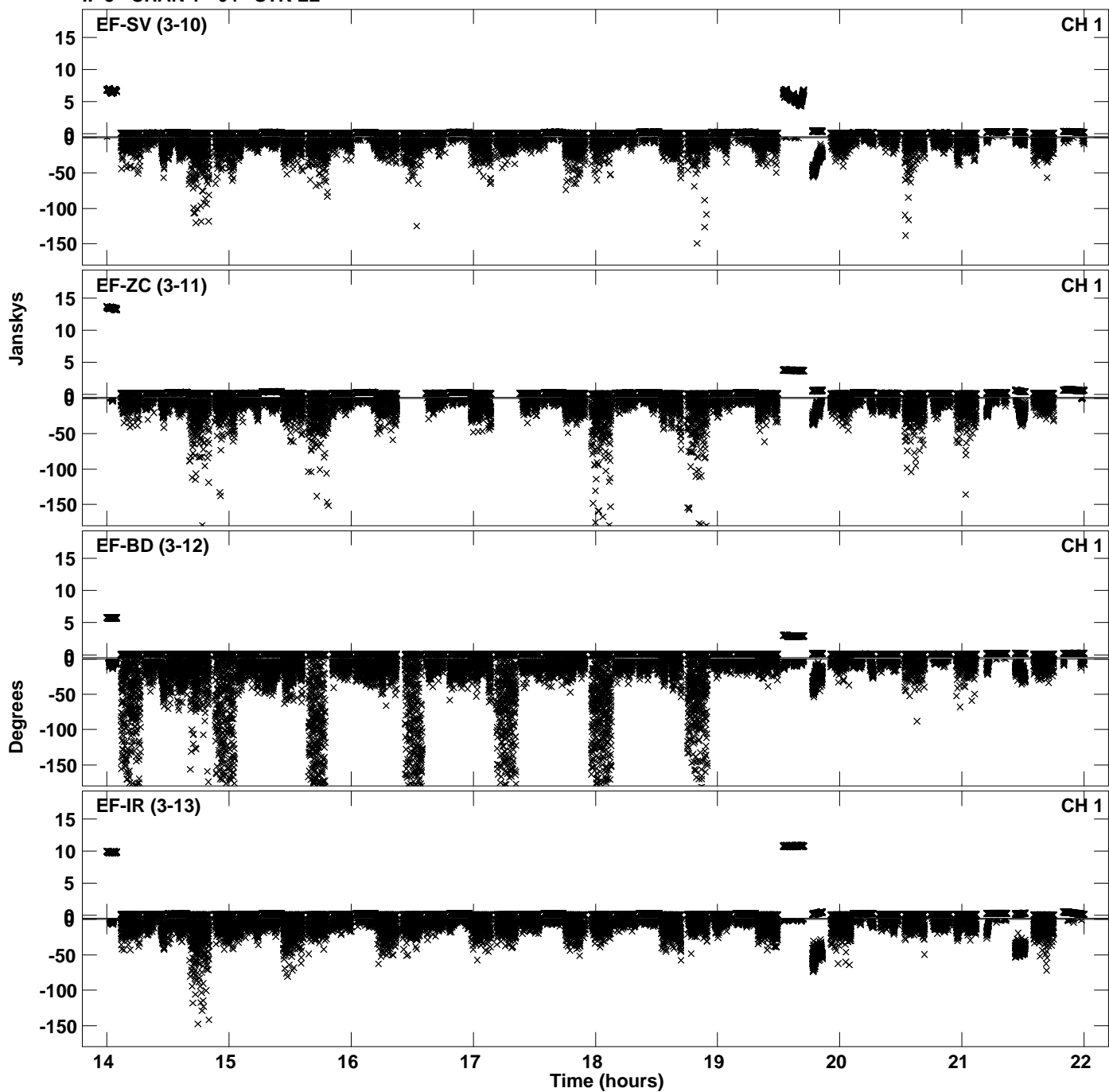
Plot file version 9 created 14-FEB-2022 18:23:13
Amplitude andPhase vs Time for EB090B.UVDATA.1 Vect aver. CL # 4
IF 3 CHAN 1 - 64 STK LL



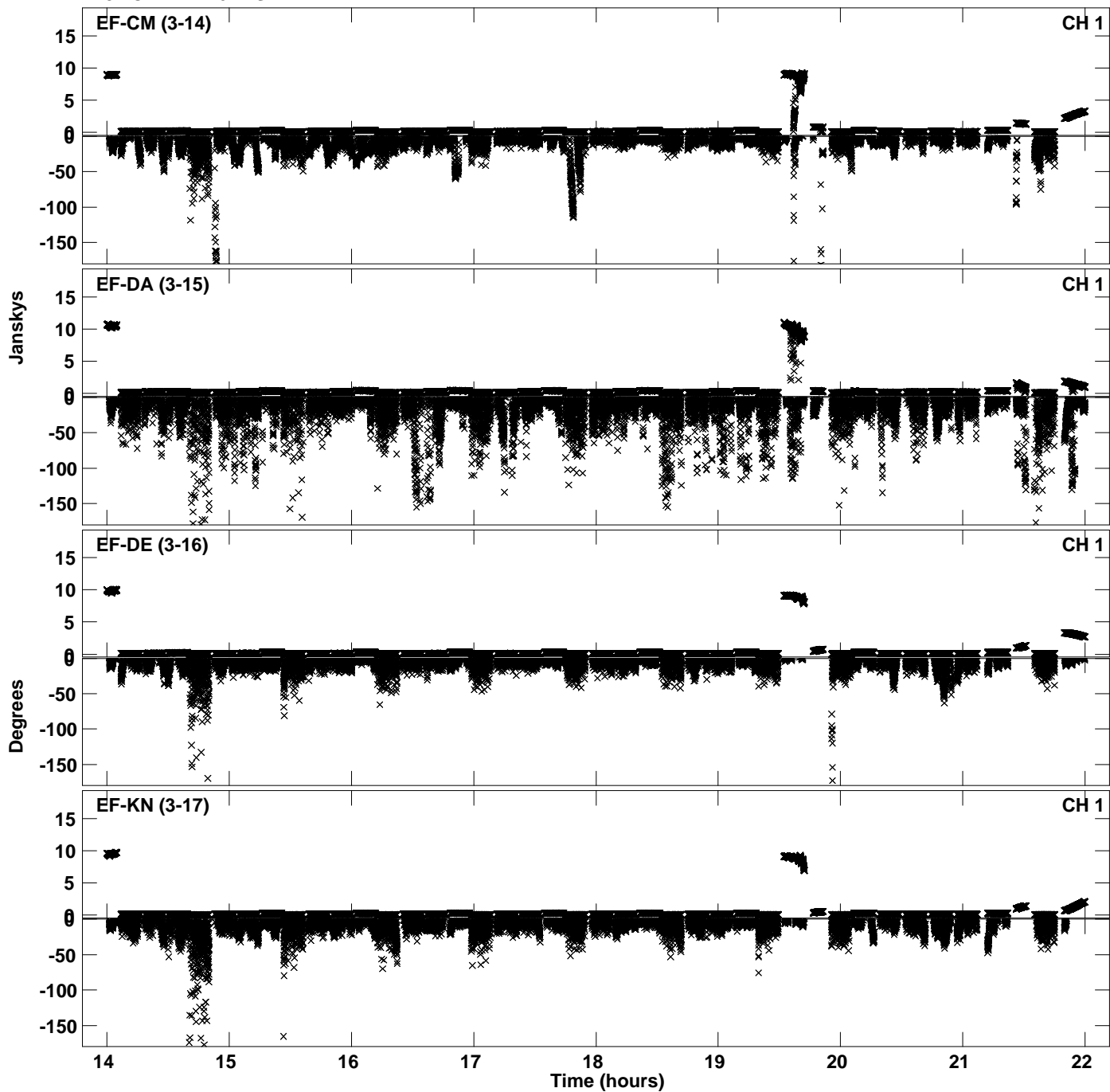
Plot file version 10 created 14-FEB-2022 18:23:13
Amplitude andPhase vs Time for EB090B.UVDATA.1 Vect aver. CL # 4
IF 3 CHAN 1 - 64 STK LL



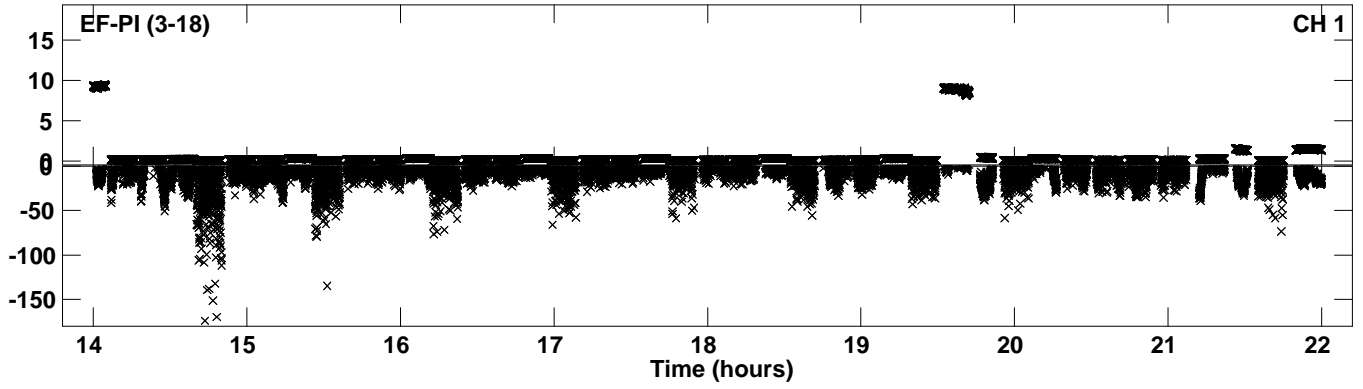
Plot file version 11 created 14-FEB-2022 18:23:13
Amplitude andPhase vs Time for EB090B.UVDATA.1 Vect aver. CL # 4
IF 3 CHAN 1 - 64 STK LL



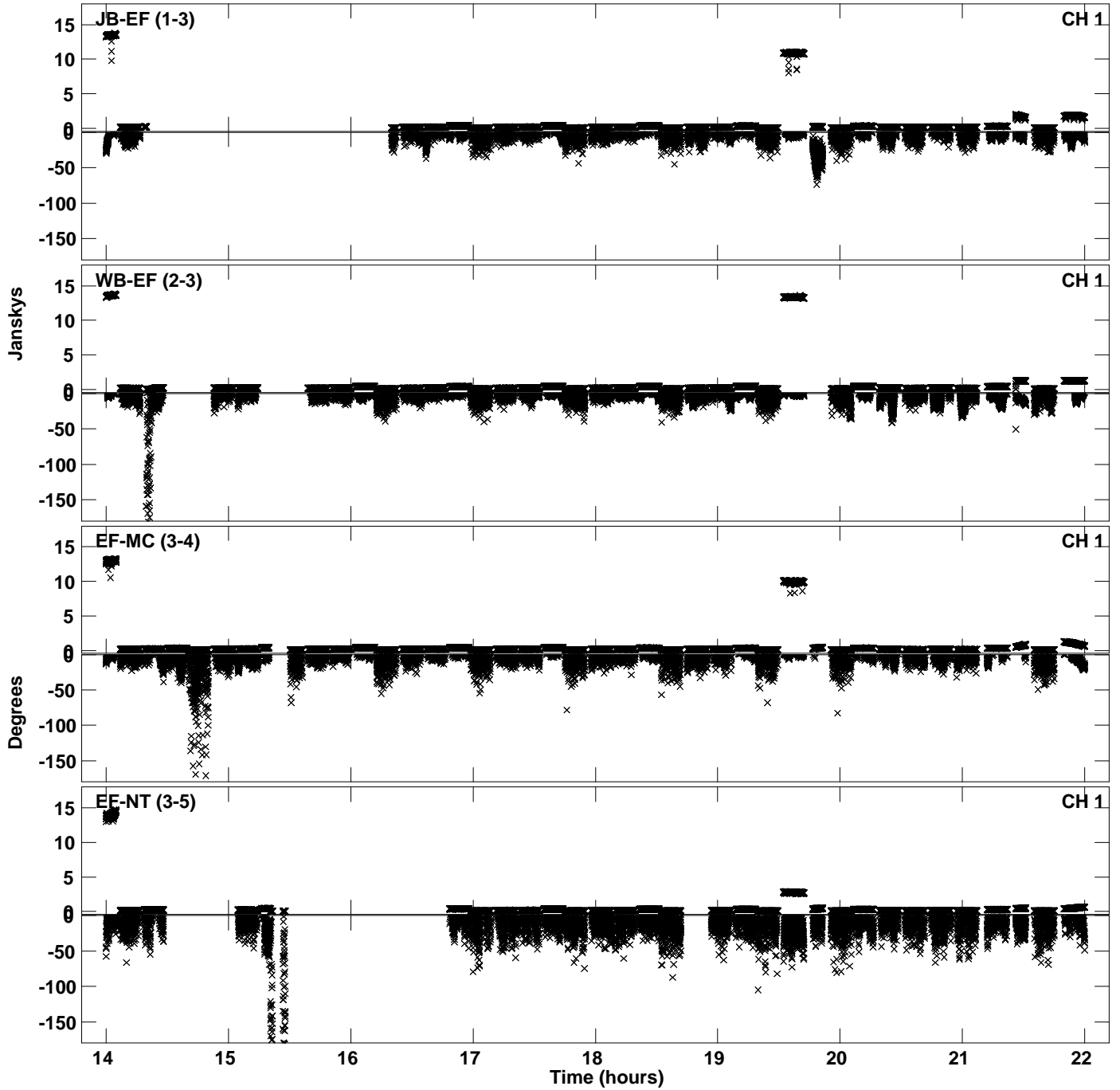
Plot file version 12 created 14-FEB-2022 18:23:13
Amplitude andPhase vs Time for EB090B.UVDATA.1 Vect aver. CL # 4
IF 3 CHAN 1 - 64 STK LL



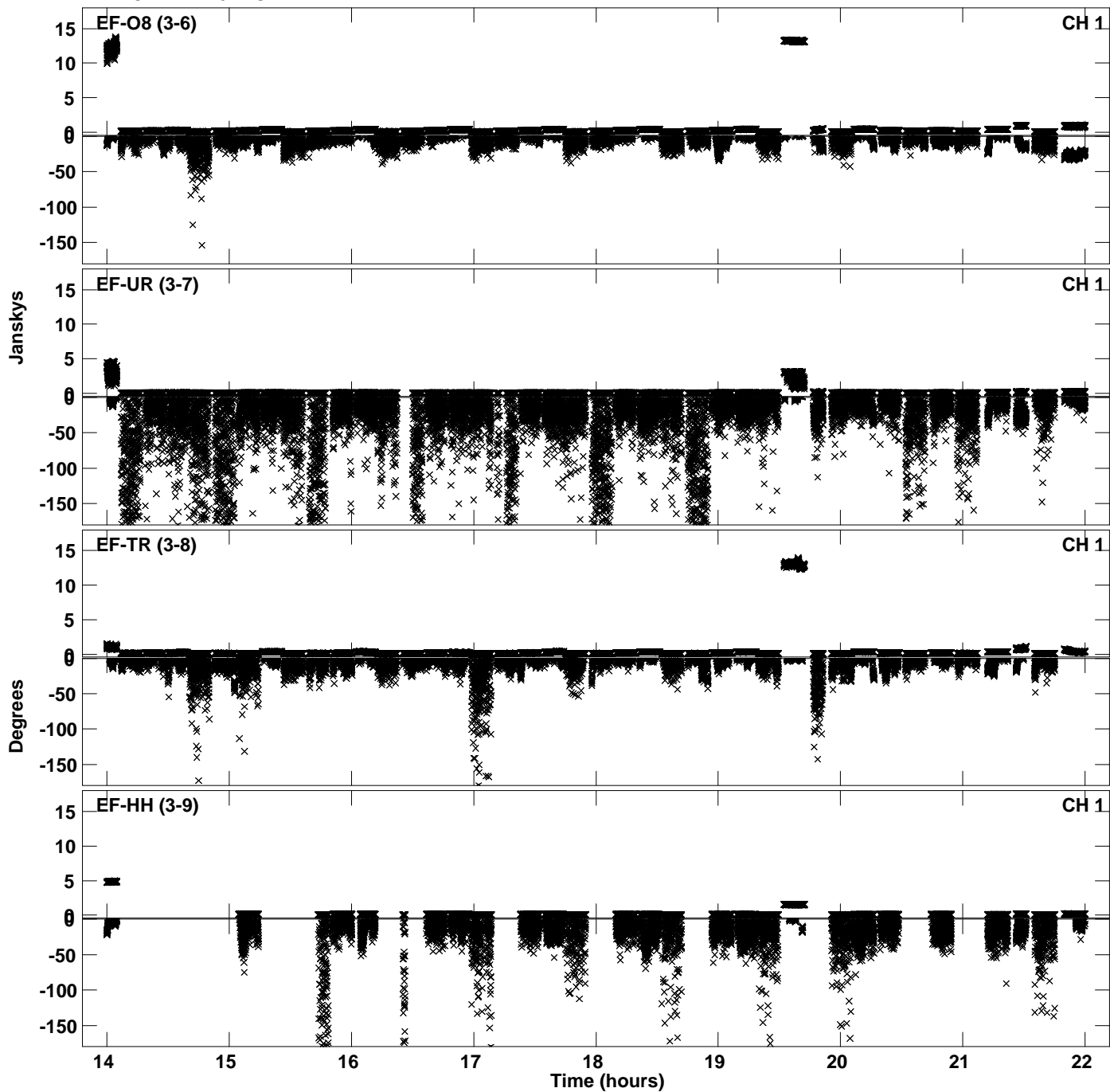
PLot file version 13 created 14-FEB-2022 18:23:13
Amplitude andPhase vs Time for EB090B.UVDATA.1 Vect aver. CL # 4
IF 3 CHAN 1 - 64 STK LL



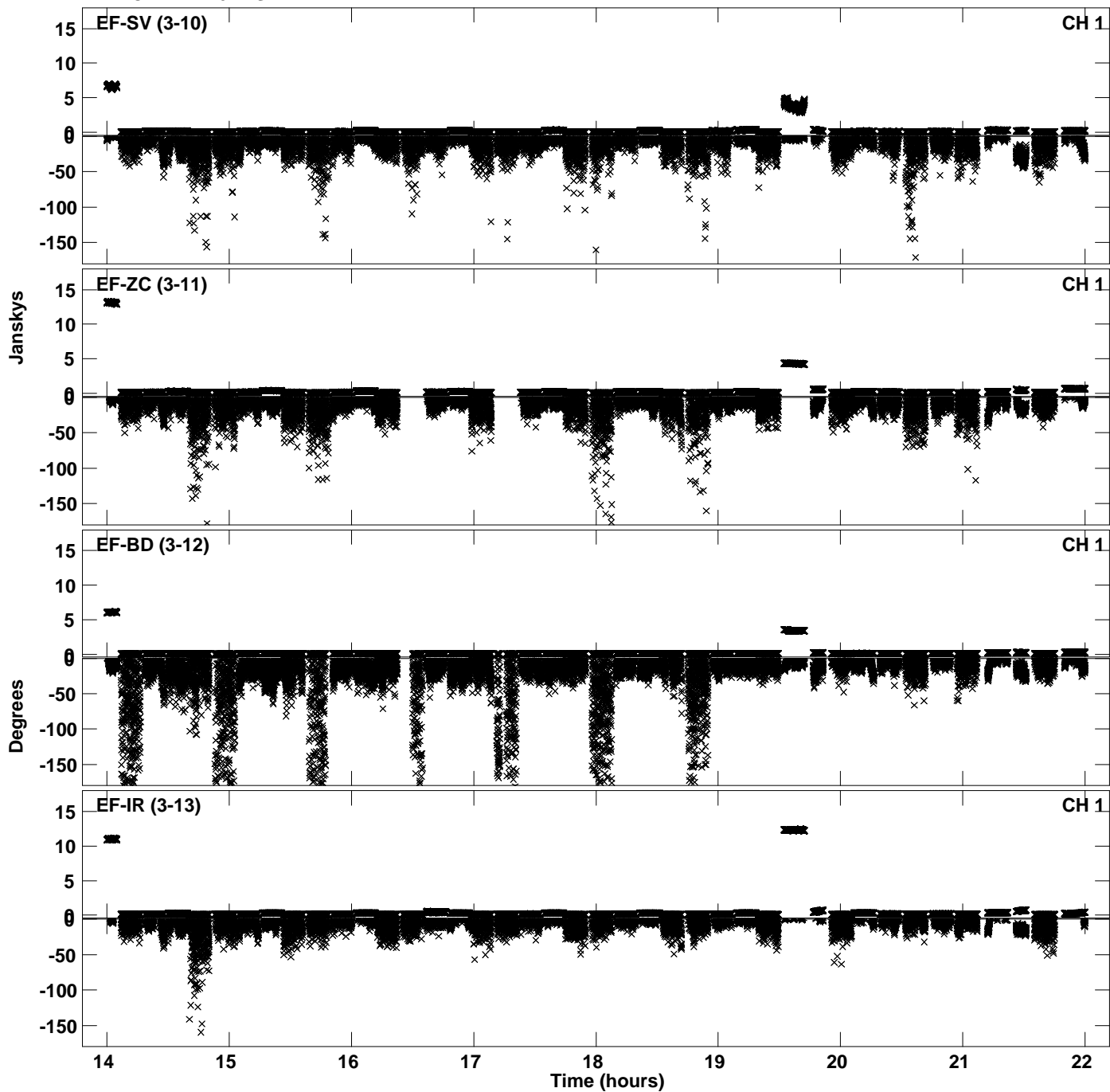
Plot file version 14 created 14-FEB-2022 18:24:06
Amplitude andPhase vs Time for EB090B.UVDATA.1 Vect aver. CL # 4
IF 4 CHAN 1 - 64 STK LL



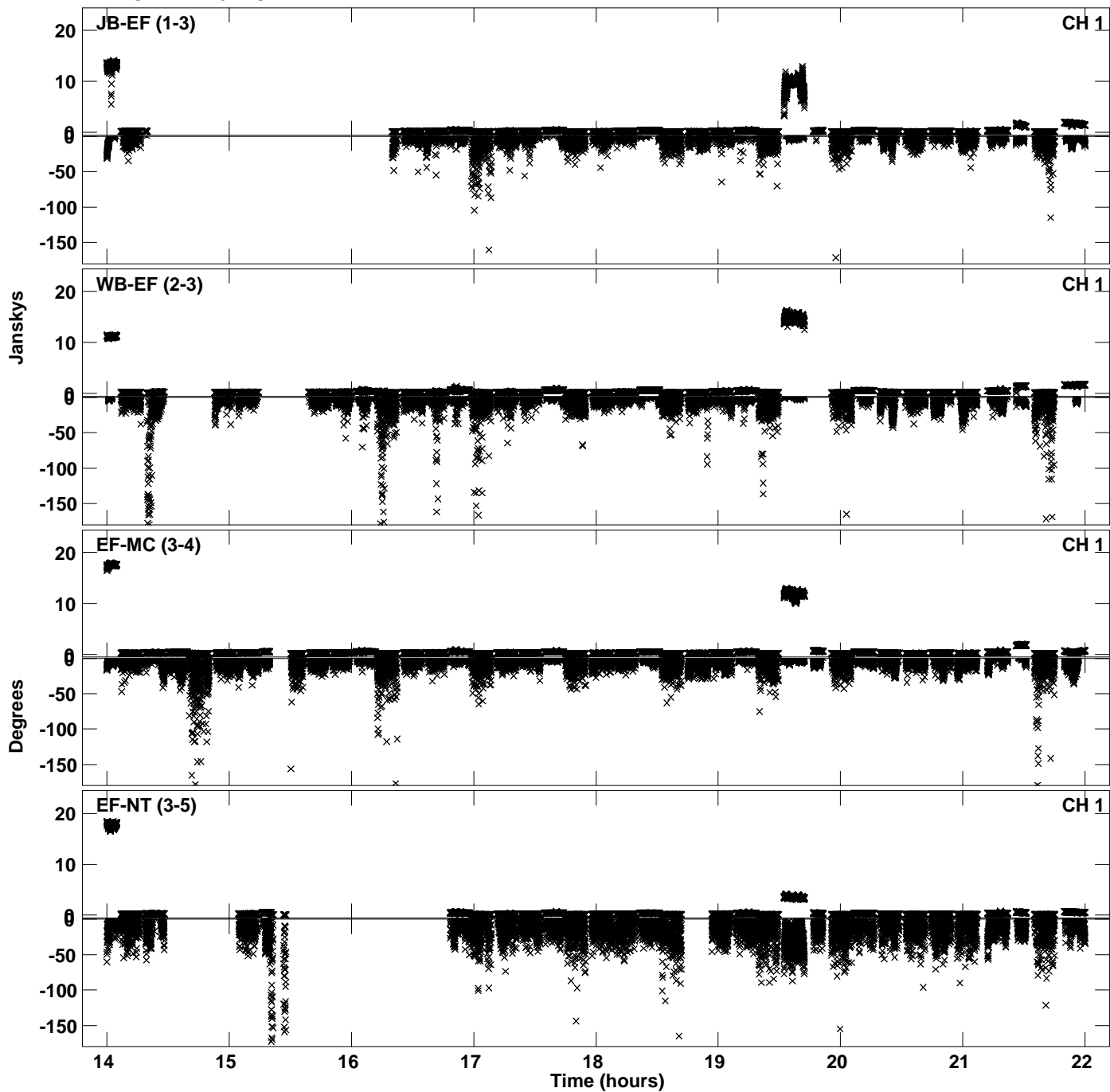
Plot file version 15 created 14-FEB-2022 18:24:06
Amplitude andPhase vs Time for EB090B.UVDATA.1 Vect aver. CL # 4
IF 4 CHAN 1 - 64 STK LL



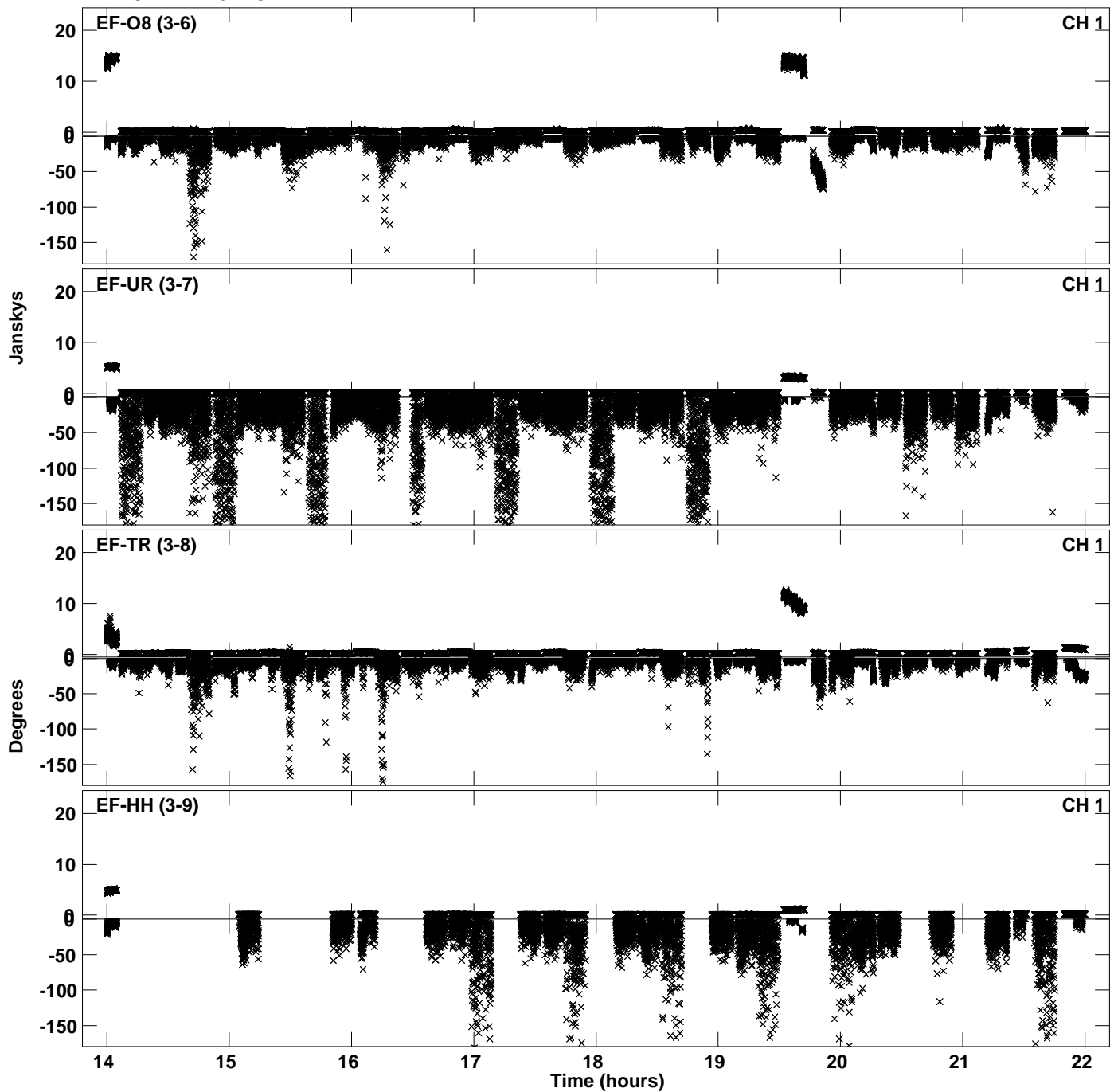
Plot file version 16 created 14-FEB-2022 18:24:06
Amplitude andPhase vs Time for EB090B.UVDATA.1 Vect aver. CL # 4
IF 4 CHAN 1 - 64 STK LL



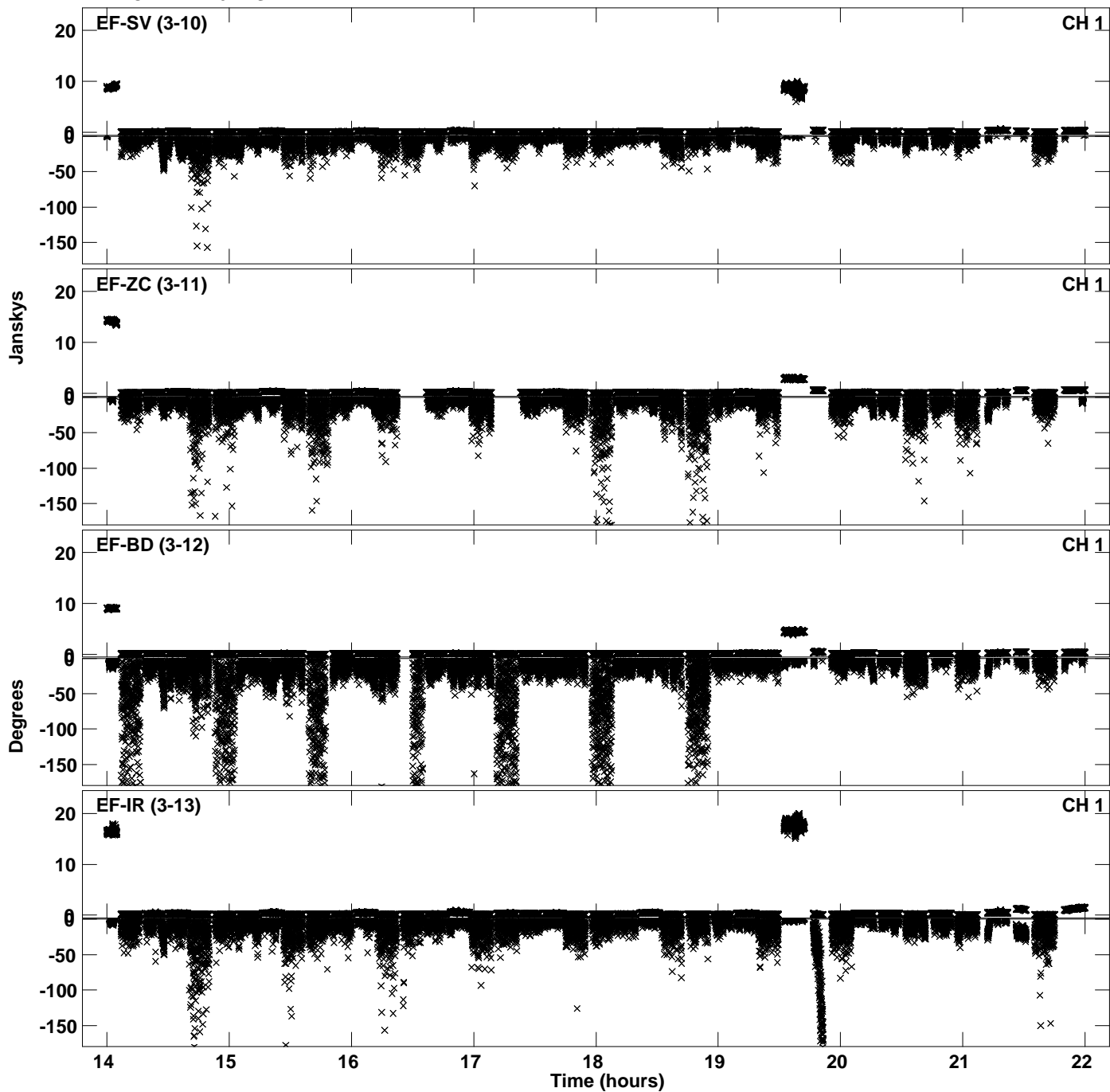
Plot file version 17 created 14-FEB-2022 18:24:55
Amplitude andPhase vs Time for EB090B.UVDATA.1 Vect aver. CL # 4
IF 1 CHAN 1 - 64 STK RR



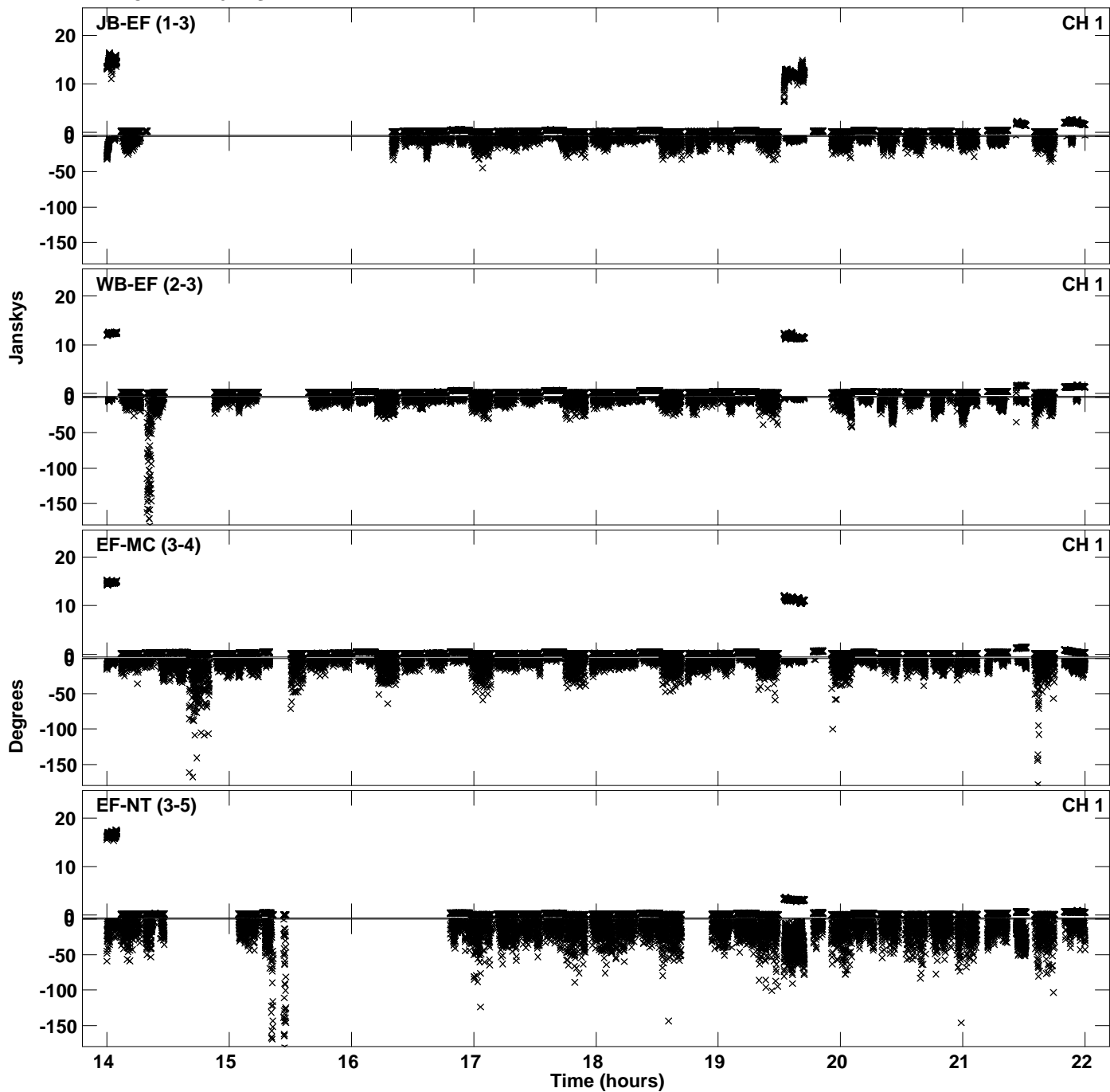
Plot file version 18 created 14-FEB-2022 18:24:55
Amplitude andPhase vs Time for EB090B.UVDATA.1 Vect aver. CL # 4
IF 1 CHAN 1 - 64 STK RR



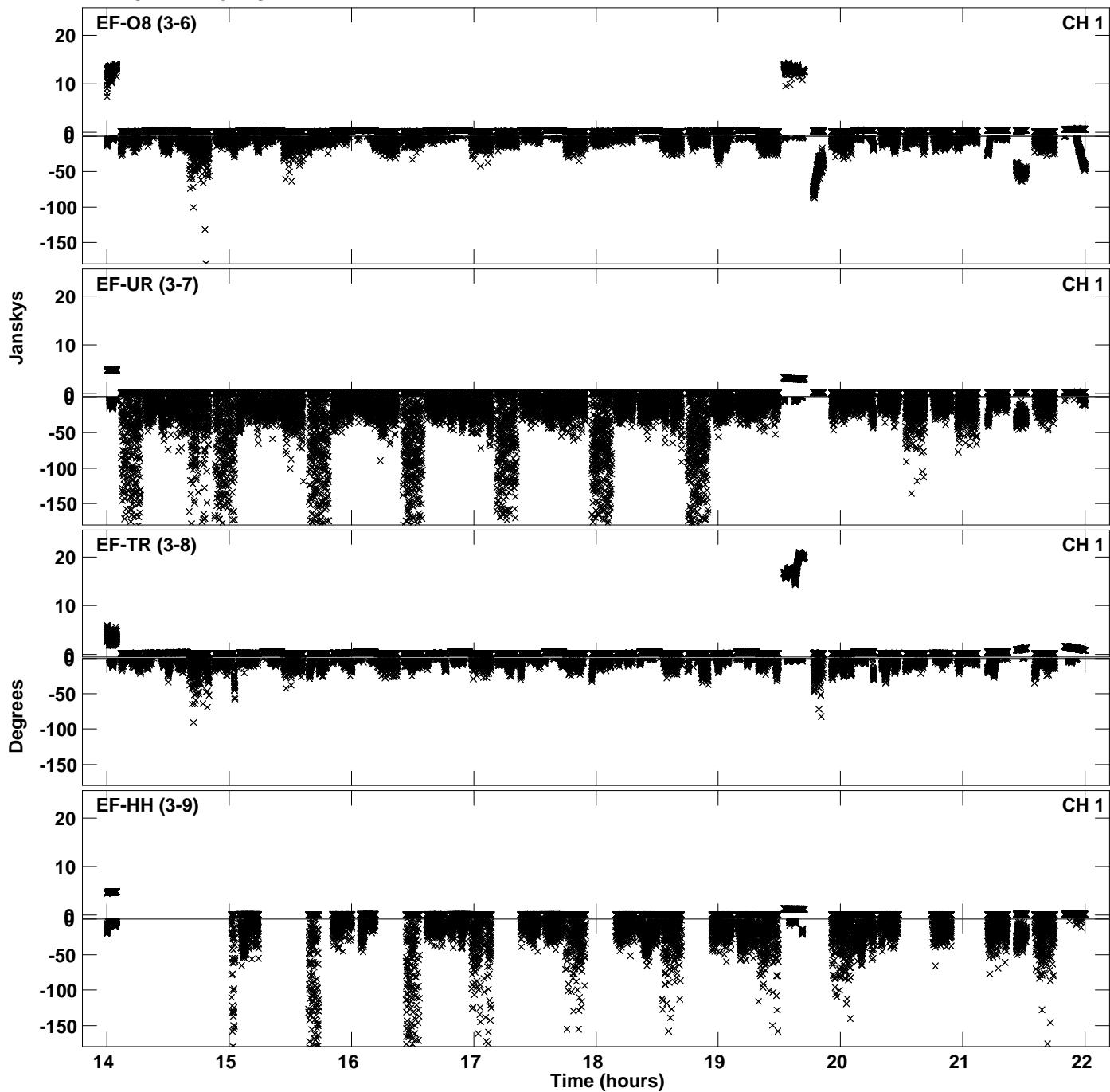
Plot file version 19 created 14-FEB-2022 18:24:55
Amplitude andPhase vs Time for EB090B.UVDATA.1 Vect aver. CL # 4
IF 1 CHAN 1 - 64 STK RR



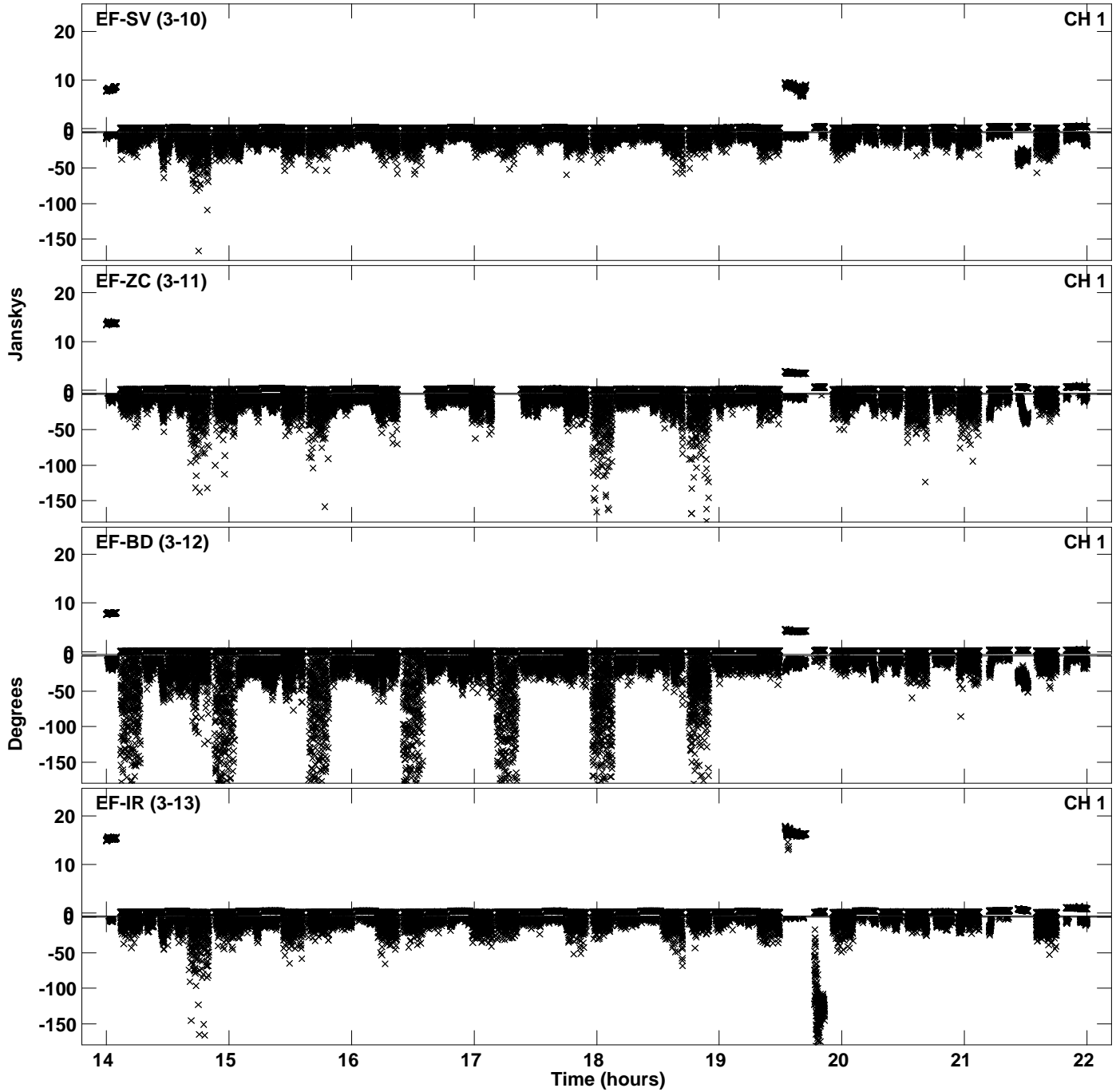
Plot file version 20 created 14-FEB-2022 18:26:03
Amplitude andPhase vs Time for EB090B.UVDATA.1 Vect aver. CL # 4
IF 2 CHAN 1 - 64 STK RR



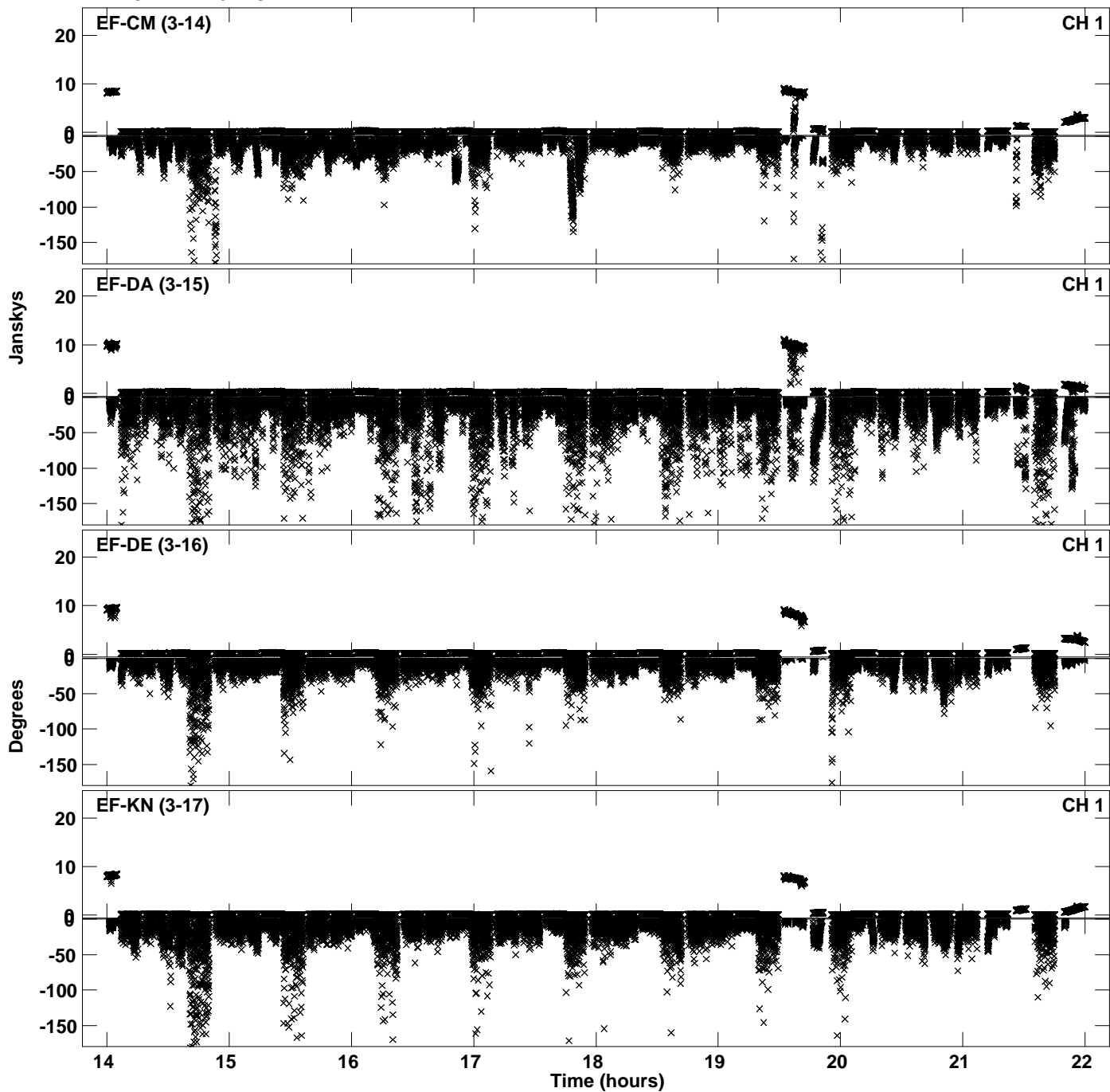
Plot file version 21 created 14-FEB-2022 18:26:03
Amplitude andPhase vs Time for EB090B.UVDATA.1 Vect aver. CL # 4
IF 2 CHAN 1 - 64 STK RR



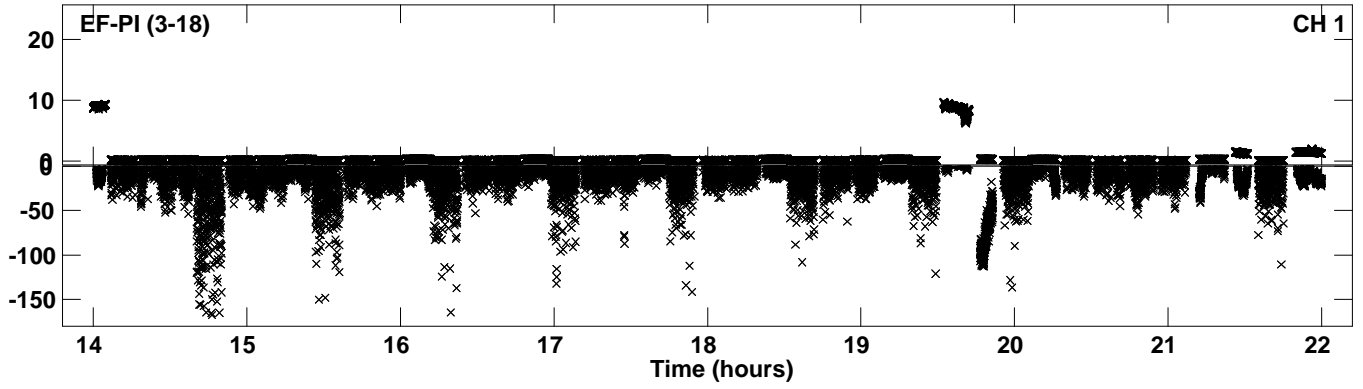
Plot file version 22 created 14-FEB-2022 18:26:03
Amplitude and Phase vs Time for EB090B.UVDATA.1 Vect aver. CL # 4
IF 2 CHAN 1 - 64 STK RR



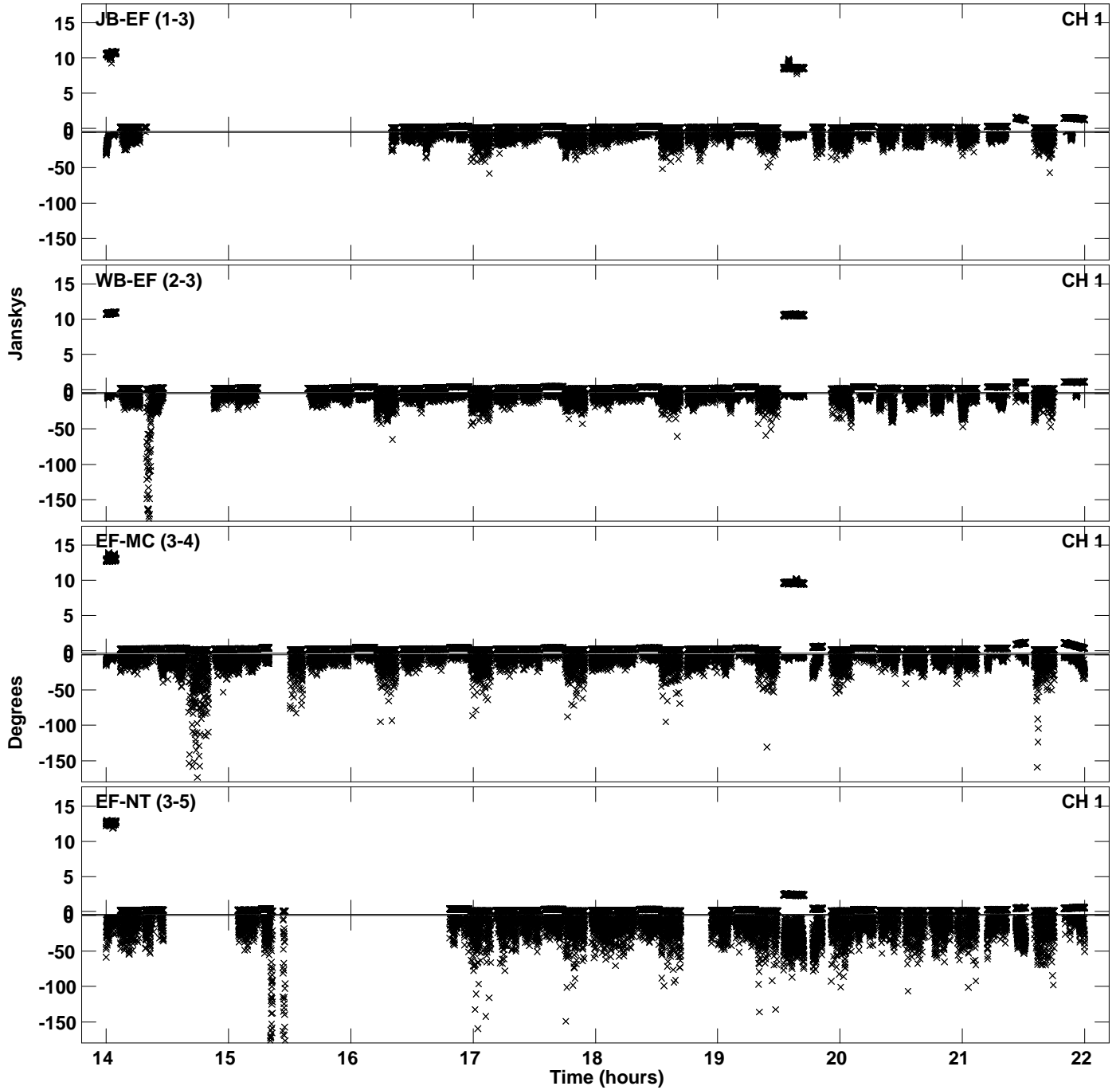
Plot file version 23 created 14-FEB-2022 18:26:03
Amplitude andPhase vs Time for EB090B.UVDATA.1 Vect aver. CL # 4
IF 2 CHAN 1 - 64 STK RR



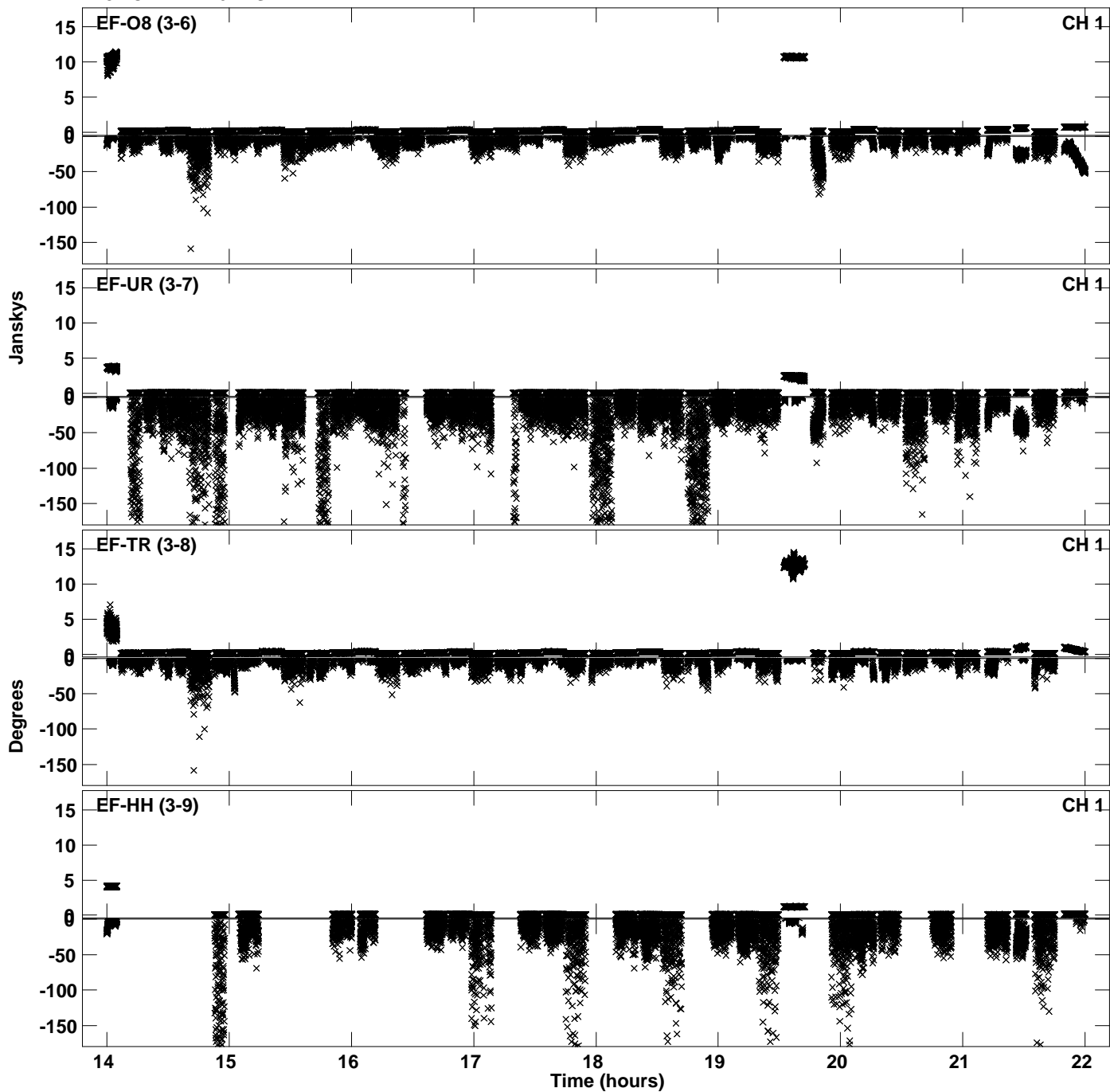
PLot file version 24 created 14-FEB-2022 18:26:03
Amplitude andPhase vs Time for EB090B.UVDATA.1 Vect aver. CL # 4
IF 2 CHAN 1 - 64 STK RR



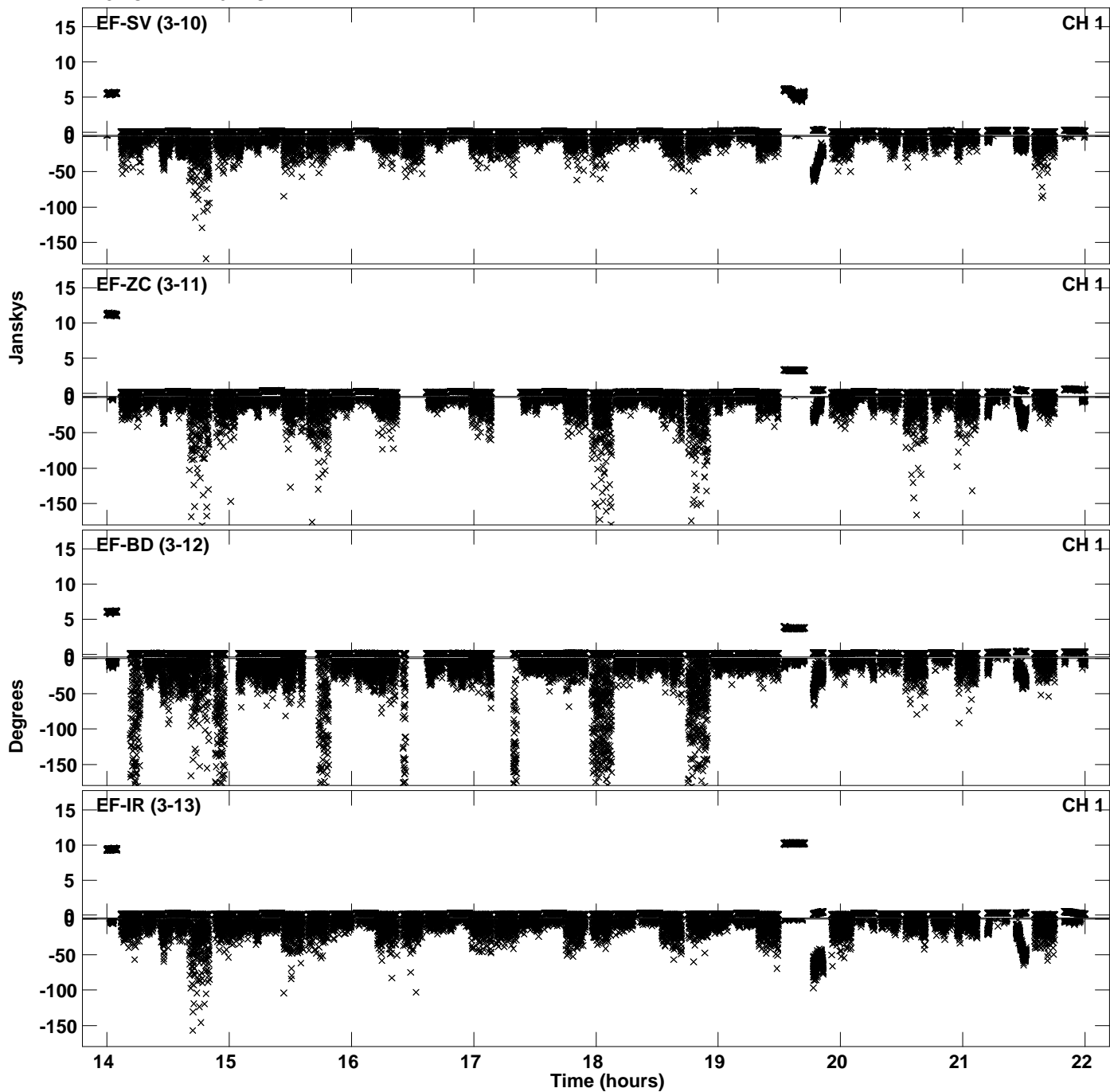
Plot file version 25 created 14-FEB-2022 18:27:05
Amplitude andPhase vs Time for EB090B.UVDATA.1 Vect aver. CL # 4
IF 3 CHAN 1 - 64 STK RR



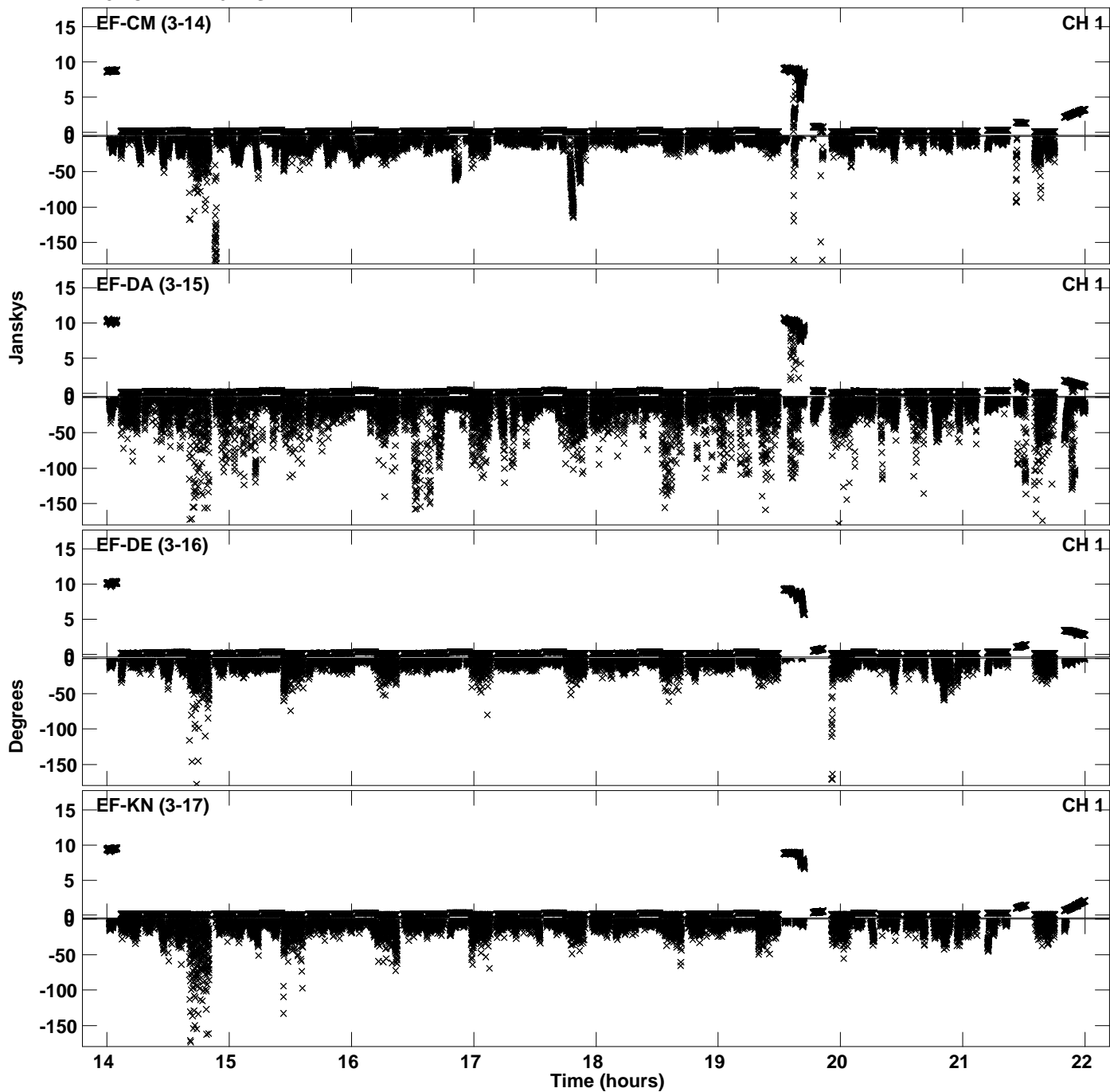
Plot file version 26 created 14-FEB-2022 18:27:05
Amplitude andPhase vs Time for EB090B.UVDATA.1 Vect aver. CL # 4
IF 3 CHAN 1 - 64 STK RR



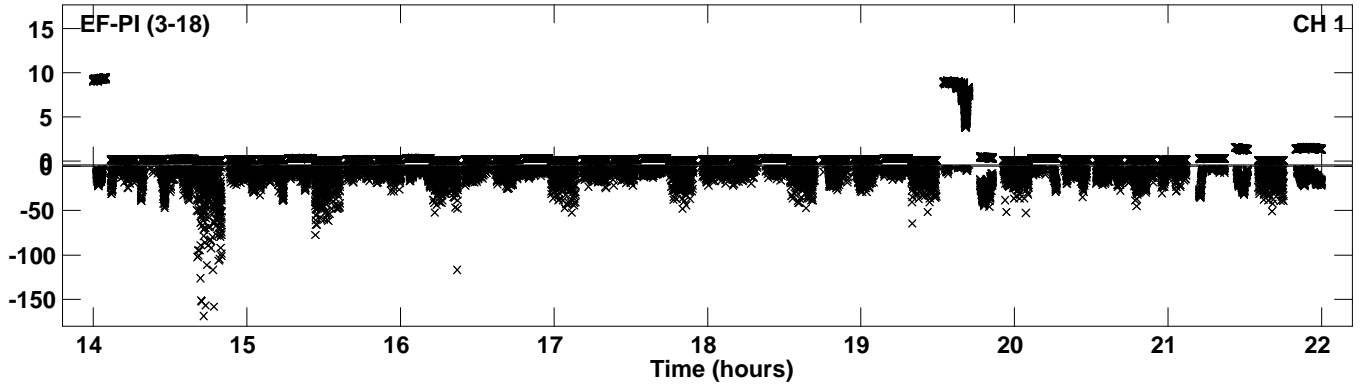
Plot file version 27 created 14-FEB-2022 18:27:05
Amplitude andPhase vs Time for EB090B.UVDATA.1 Vect aver. CL # 4
IF 3 CHAN 1 - 64 STK RR



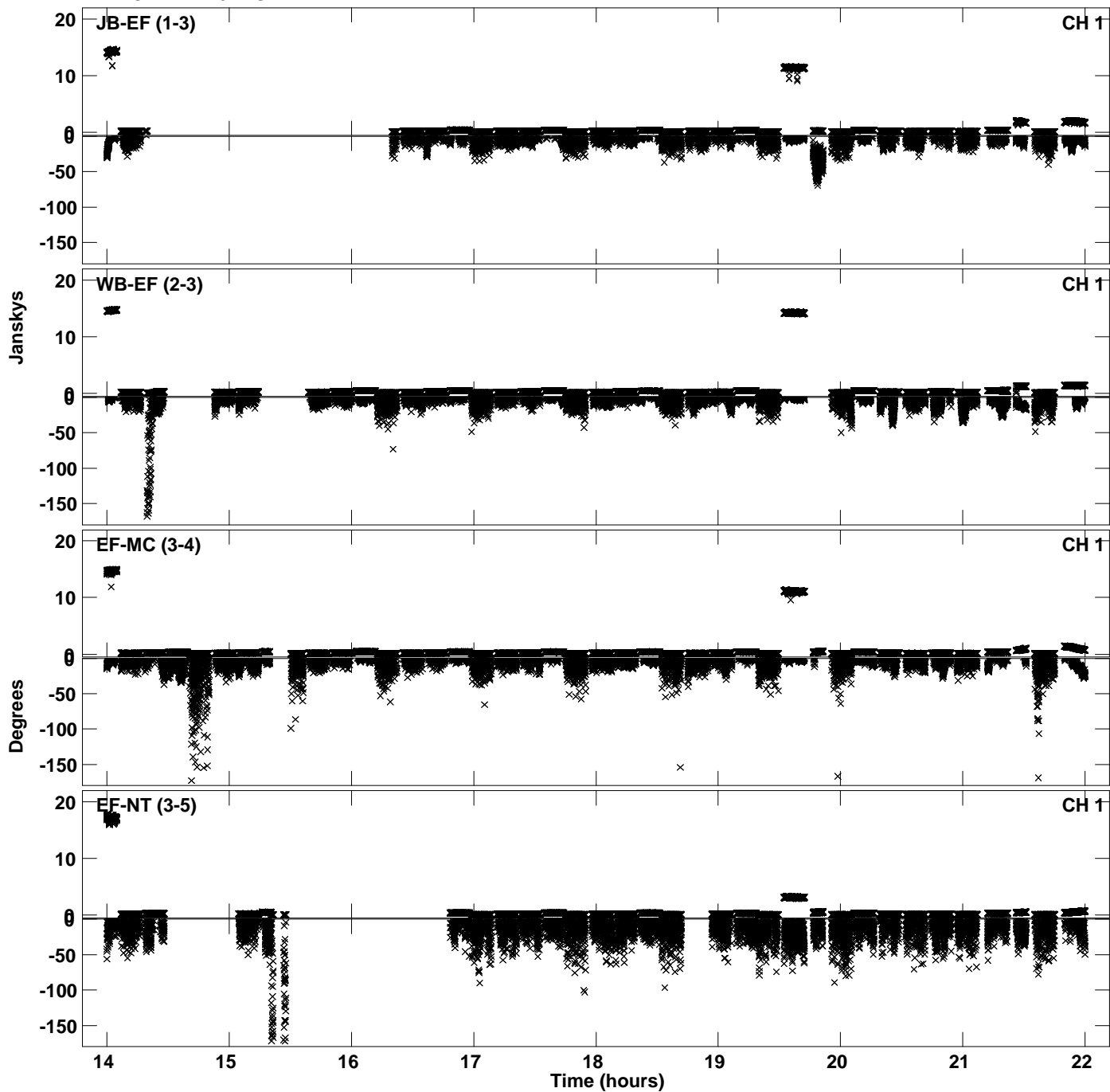
Plot file version 28 created 14-FEB-2022 18:27:05
Amplitude andPhase vs Time for EB090B.UVDATA.1 Vect aver. CL # 4
IF 3 CHAN 1 - 64 STK RR



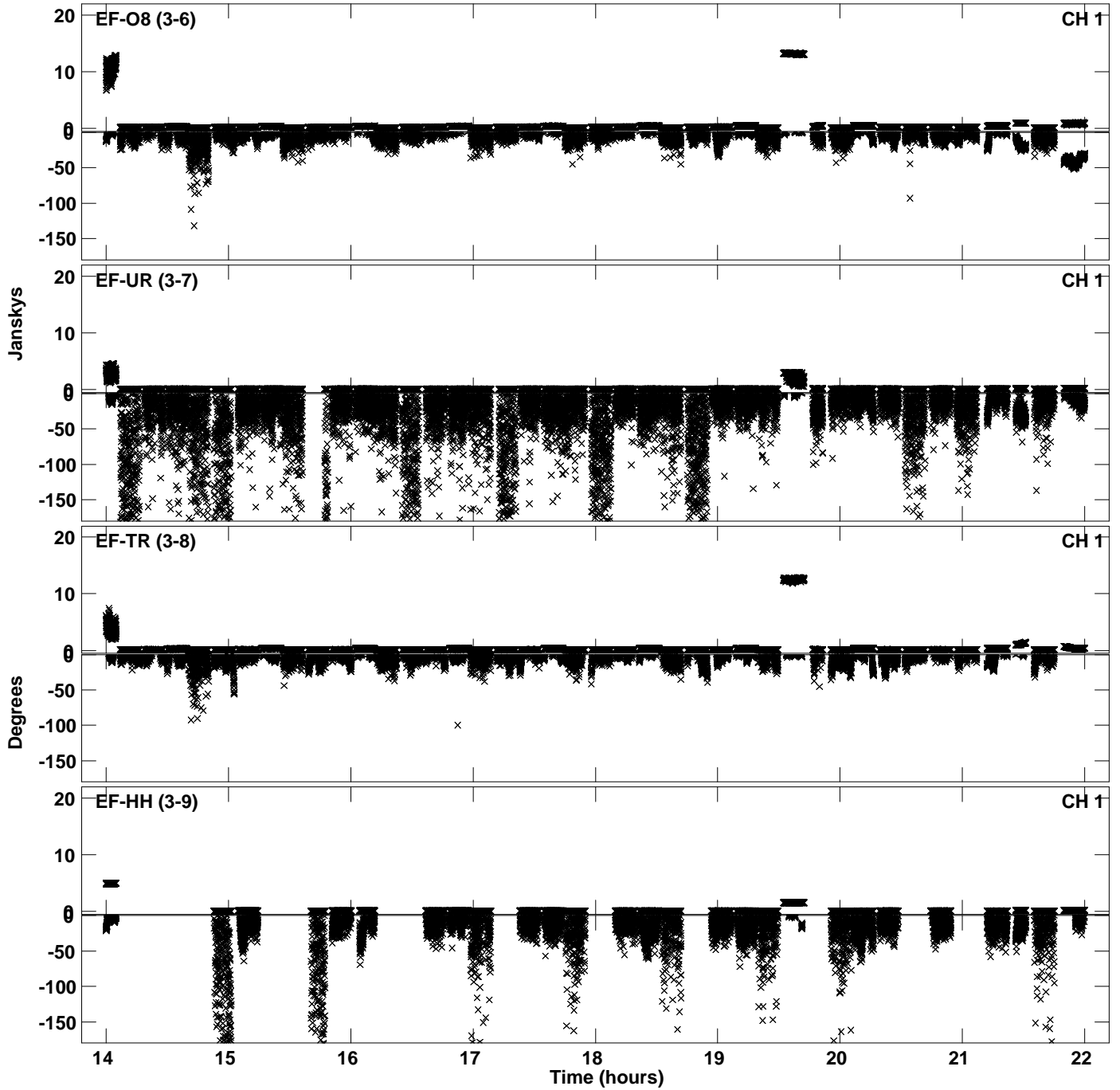
PLot file version 29 created 14-FEB-2022 18:27:05
Amplitude andPhase vs Time for EB090B.UVDATA.1 Vect aver. CL # 4
IF 3 CHAN 1 - 64 STK RR



Plot file version 30 created 14-FEB-2022 18:27:53
Amplitude andPhase vs Time for EB090B.UVDATA.1 Vect aver. CL # 4
IF 4 CHAN 1 - 64 STK RR



Plot file version 31 created 14-FEB-2022 18:27:53
Amplitude andPhase vs Time for EB090B.UVDATA.1 Vect aver. CL # 4
IF 4 CHAN 1 - 64 STK RR



PLot file version 32 created 14-FEB-2022 18:27:53
Amplitude andPhase vs Time for EB090B.UVDATA.1 Vect aver. CL # 4
IF 4 CHAN 1 - 64 STK RR

