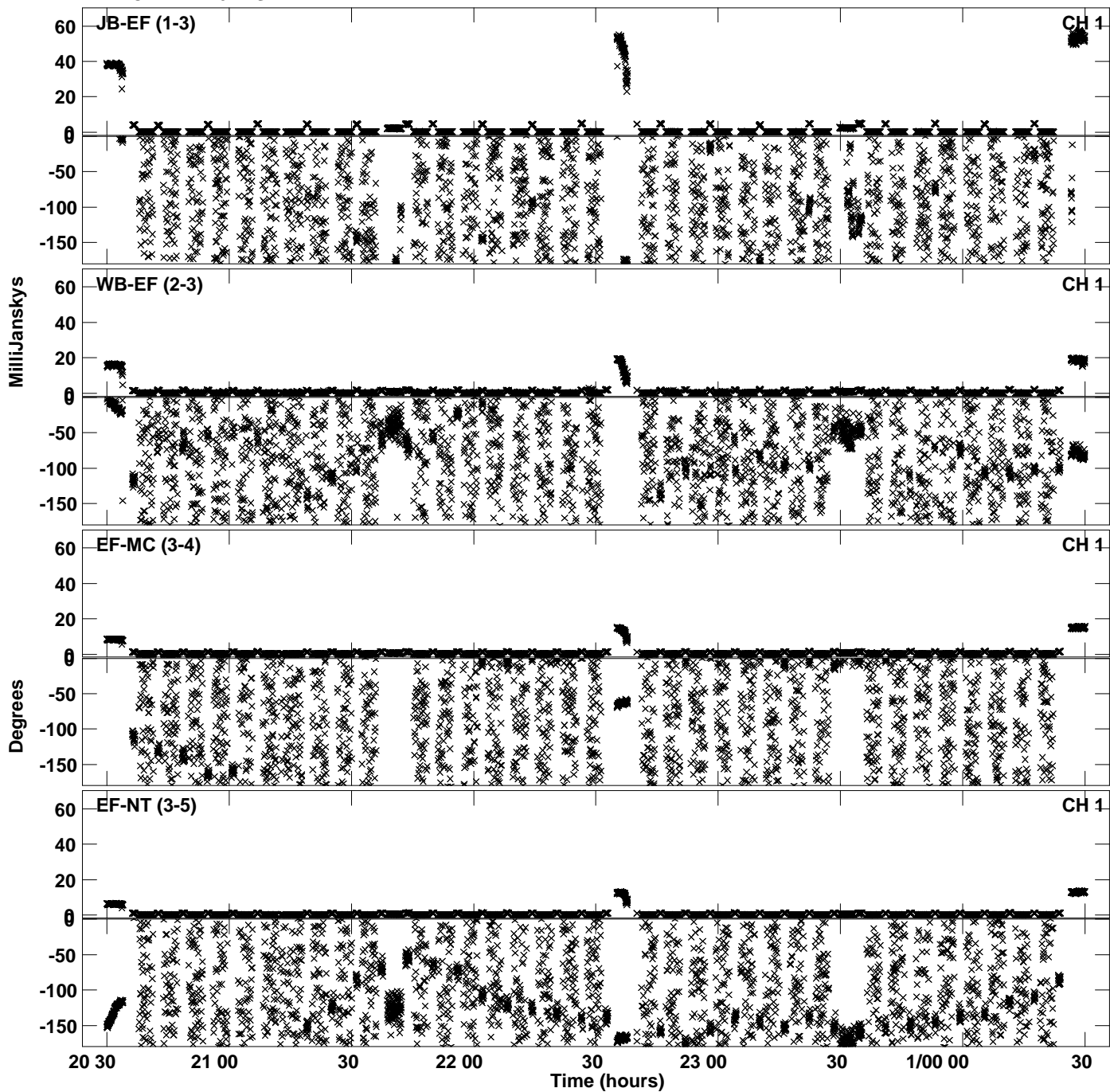
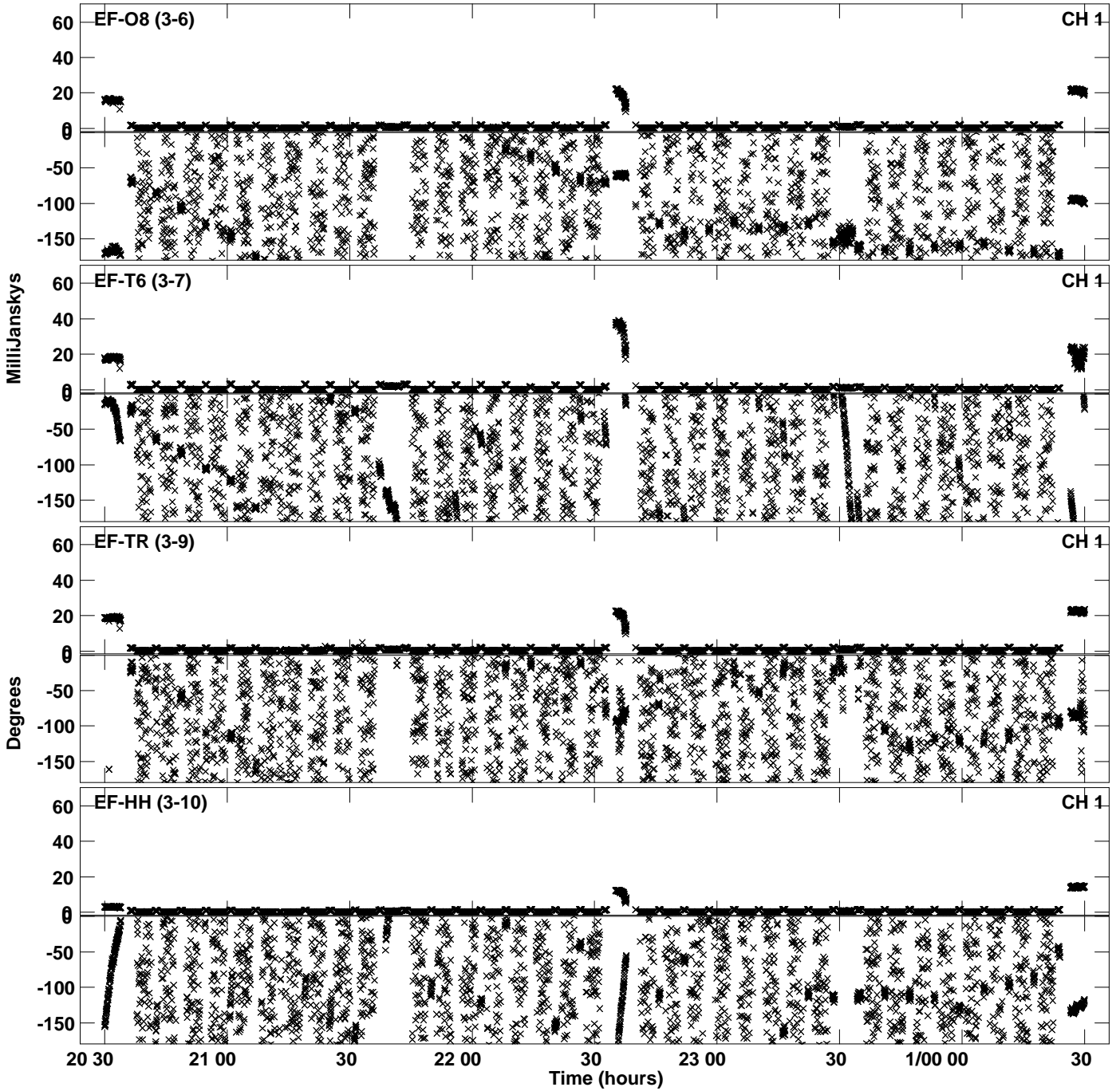


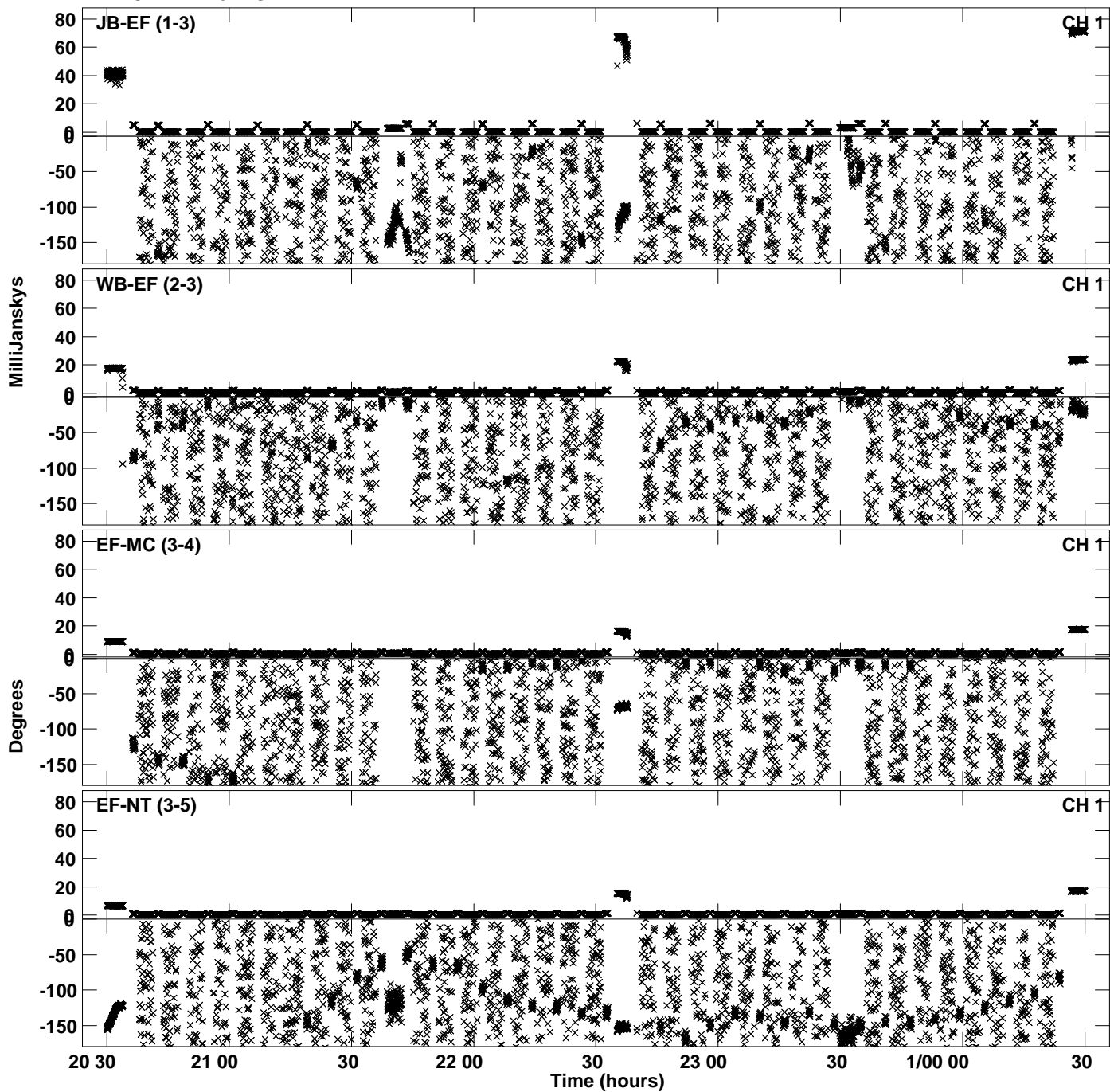
Plot file version 1 created 07-AUG-2023 16:55:50  
Amplitude andPhase vs Time for EB096J.UVDATA.1 Vect aver.  
IF 1 CHAN 1 - 64 STK LL



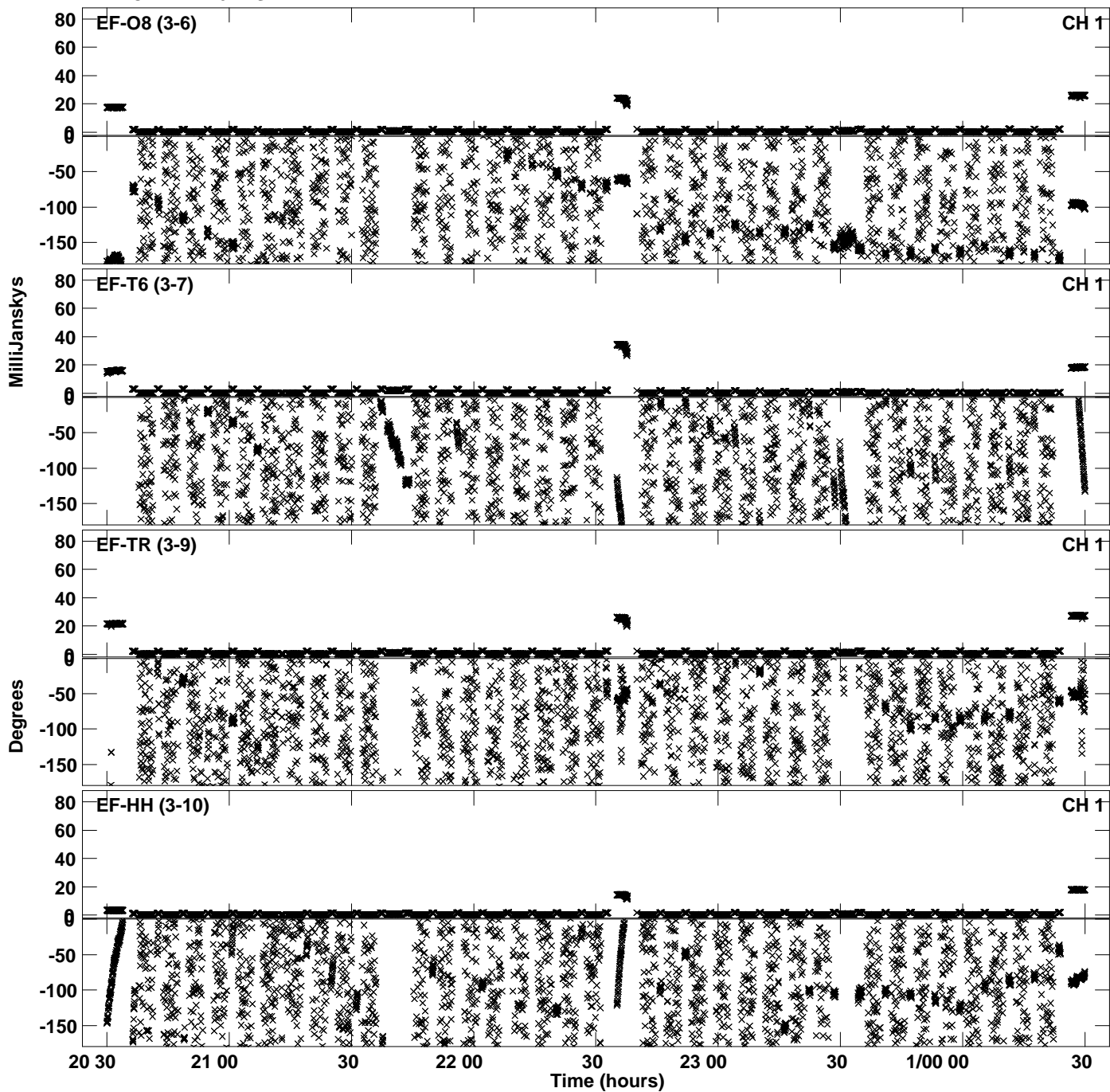
Plot file version 2 created 07-AUG-2023 16:55:50  
Amplitude andPhase vs Time for EB096J.UVDATA.1 Vect aver.  
IF 1 CHAN 1 - 64 STK LL



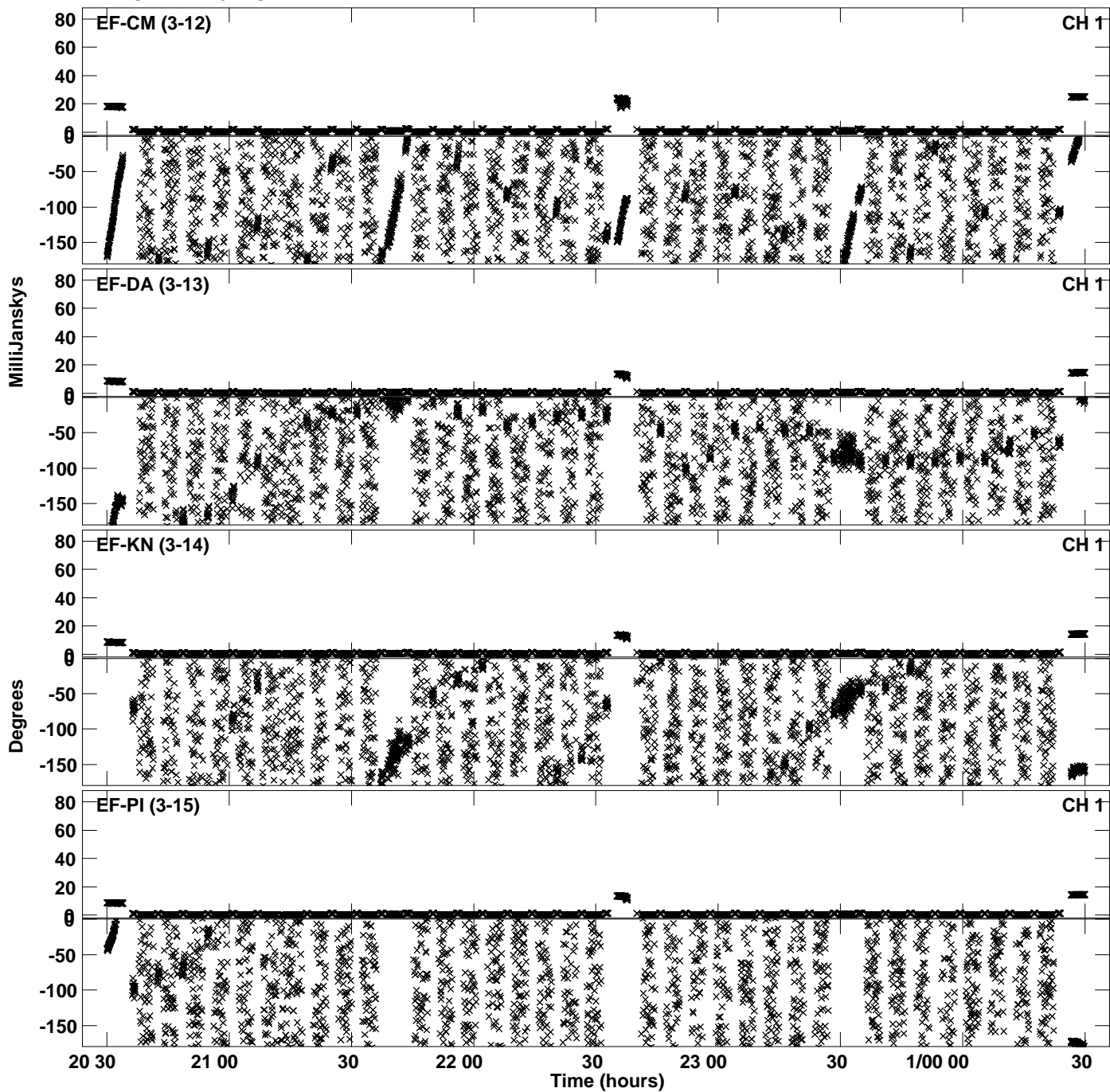
Plot file version 3 created 07-AUG-2023 16:55:58  
Amplitude andPhase vs Time for EB096J.UVDATA.1 Vect aver.  
IF 2 CHAN 1 - 64 STK LL



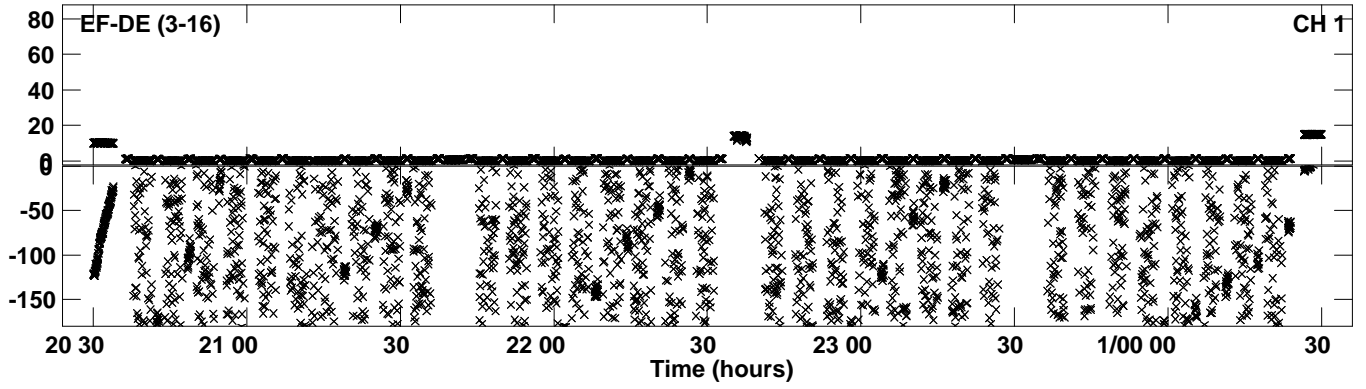
Plot file version 4 created 07-AUG-2023 16:55:58  
Amplitude andPhase vs Time for EB096J.UVDATA.1 Vect aver.  
IF 2 CHAN 1 - 64 STK LL



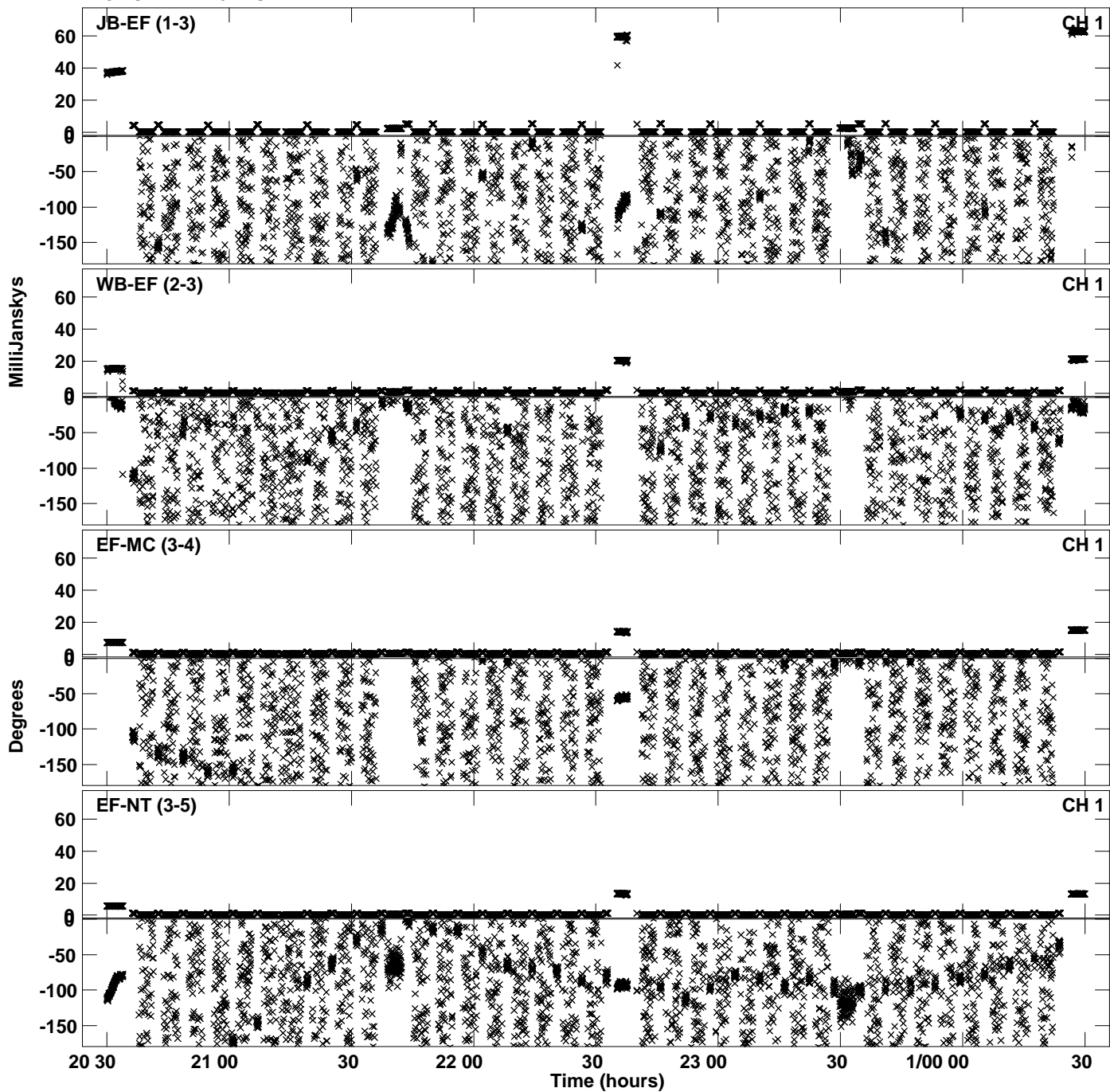
Plot file version 5 created 07-AUG-2023 16:55:58  
Amplitude andPhase vs Time for EB096J.UVDATA.1 Vect aver.  
IF 2 CHAN 1 - 64 STK LL



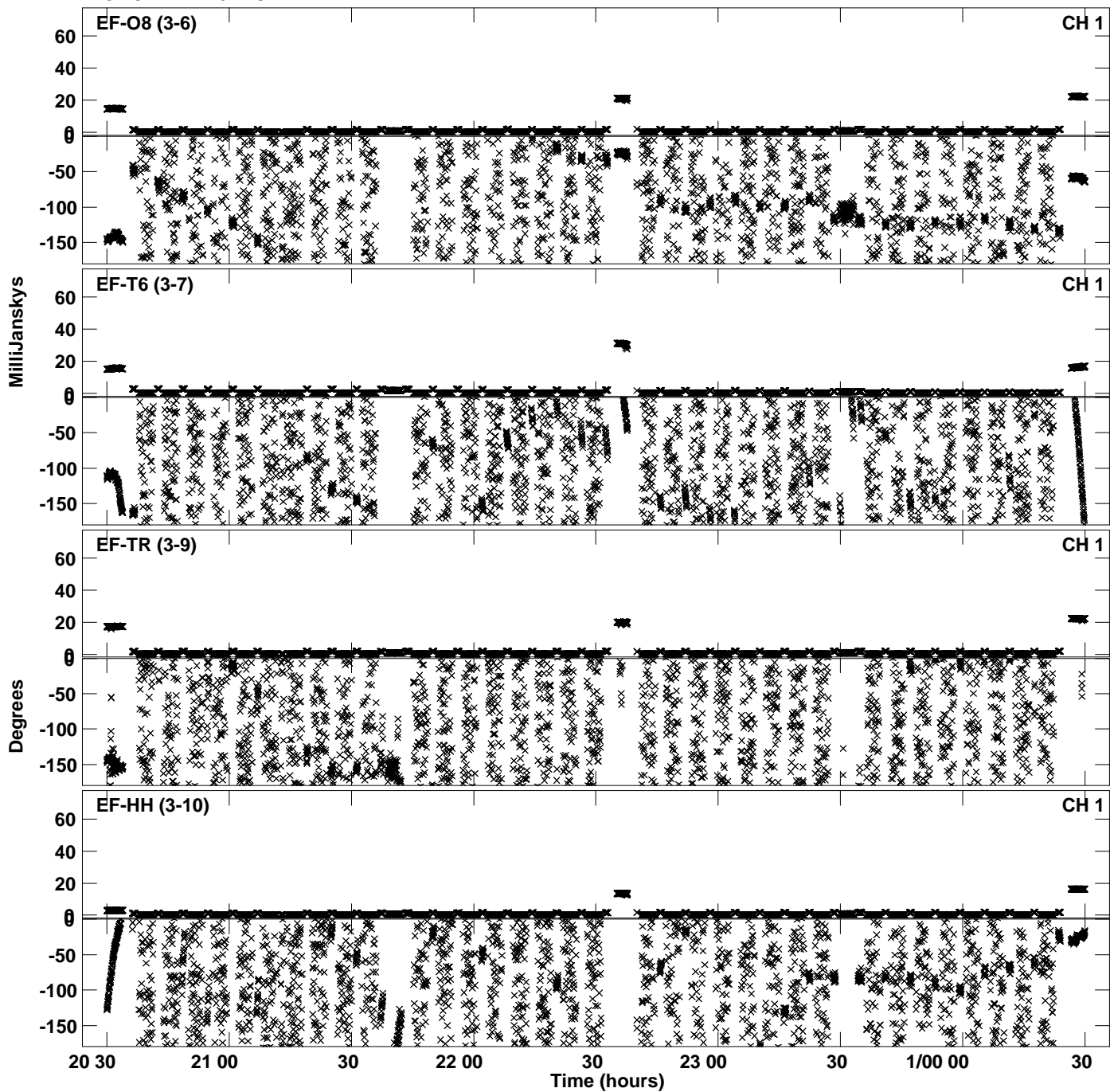
Plot file version 6 created 07-AUG-2023 16:55:58  
Amplitude andPhase vs Time for EB096J.UVDATA.1 Vect aver.  
IF 2 CHAN 1 - 64 STK LL



Plot file version 7 created 07-AUG-2023 16:56:07  
Amplitude andPhase vs Time for EB096J.UVDATA.1 Vect aver.  
IF 3 CHAN 1 - 64 STK LL

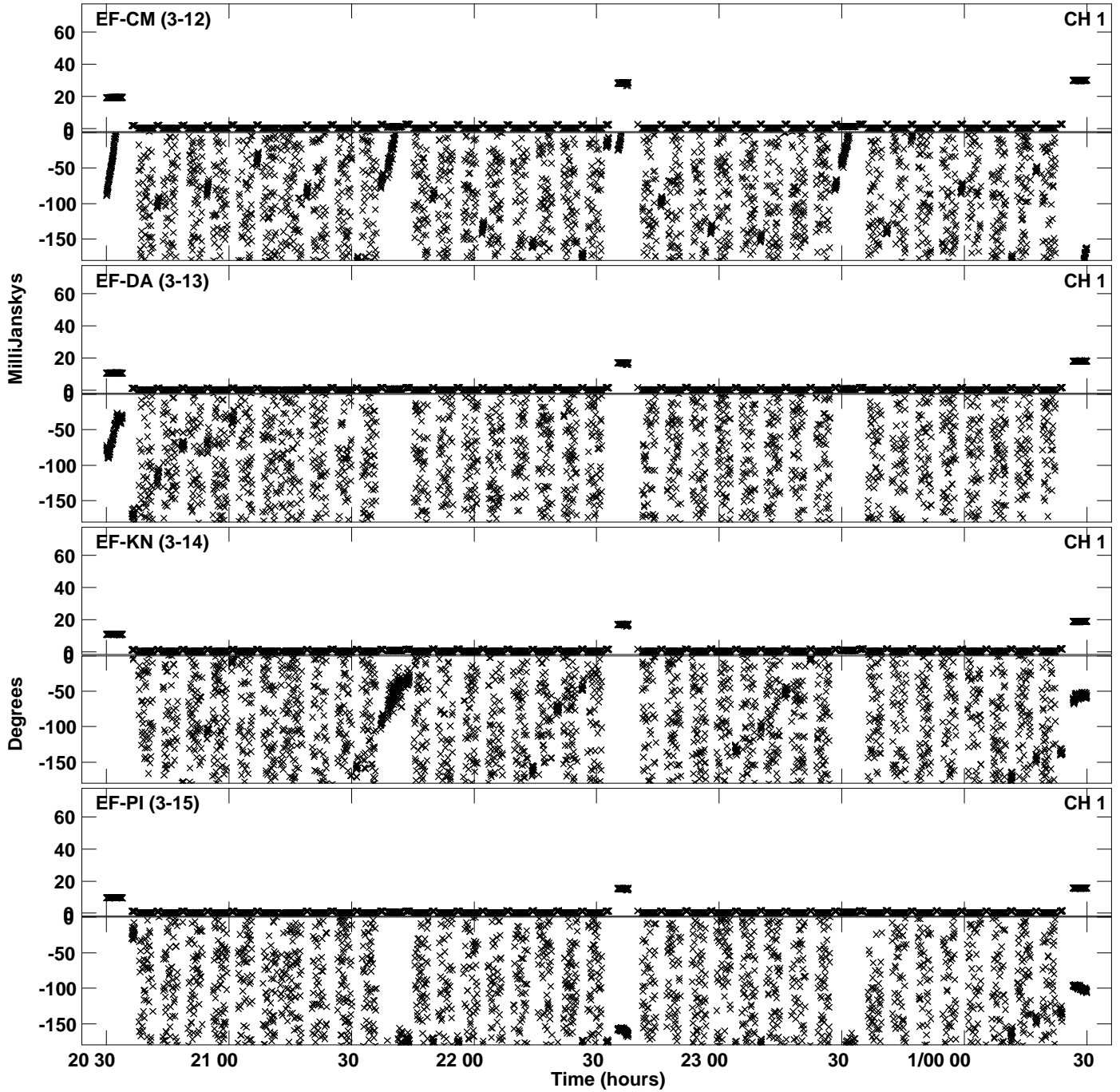


Plot file version 8 created 07-AUG-2023 16:56:07  
Amplitude andPhase vs Time for EB096J.UVDATA.1 Vect aver.  
IF 3 CHAN 1 - 64 STK LL

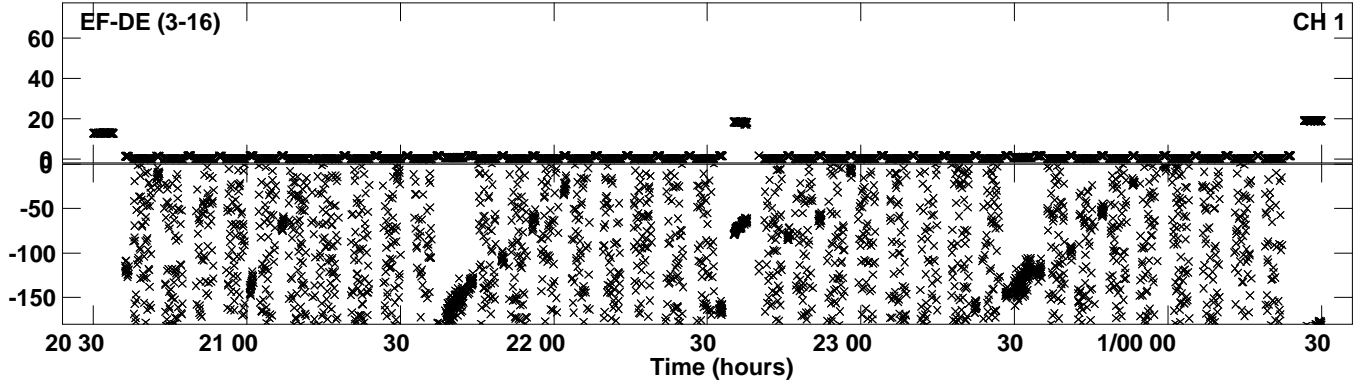




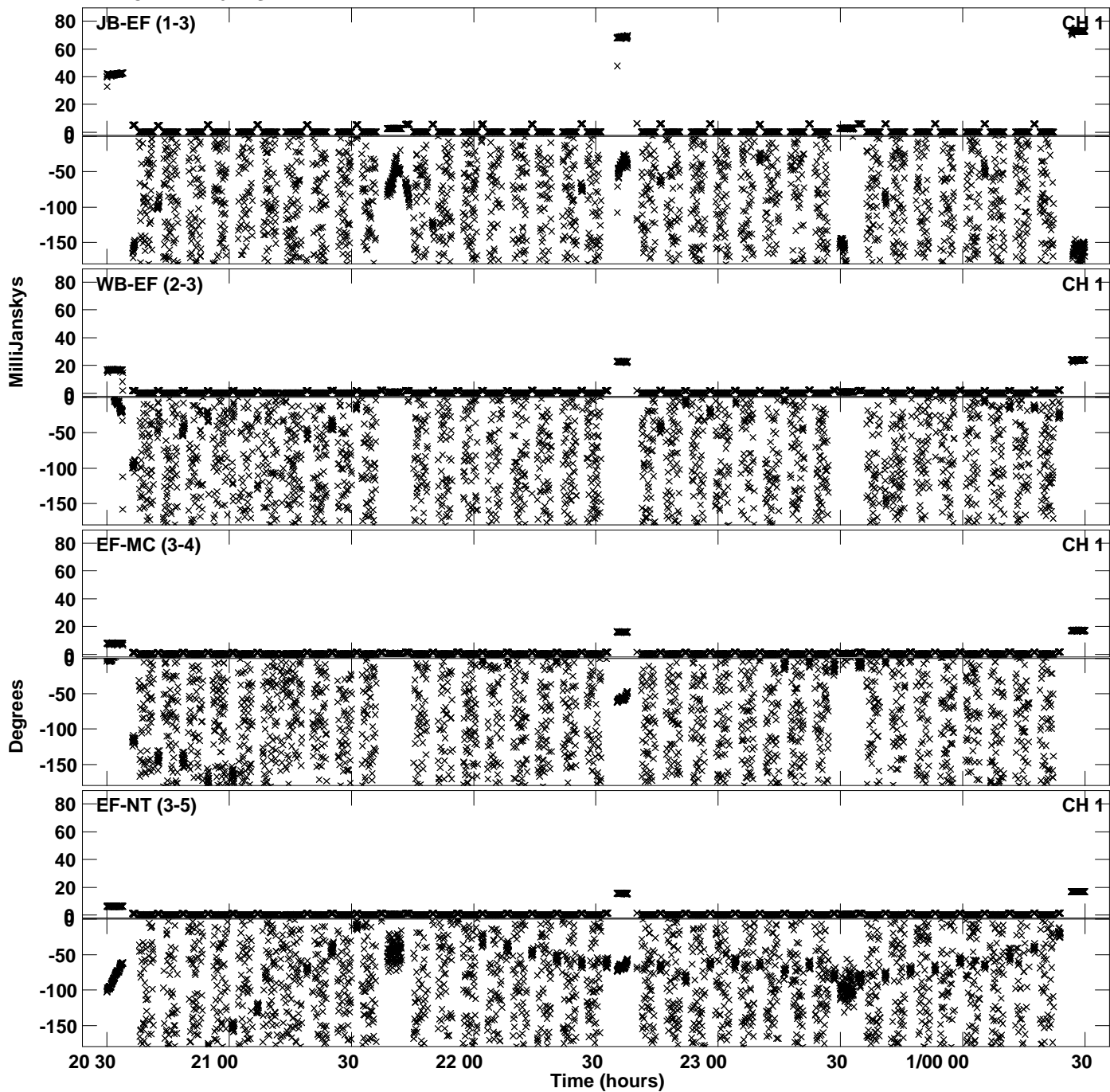
Plot file version 9 created 07-AUG-2023 16:56:07  
Amplitude andPhase vs Time for EB096J.UVDATA.1 Vect aver.  
IF 3 CHAN 1 - 64 STK LL



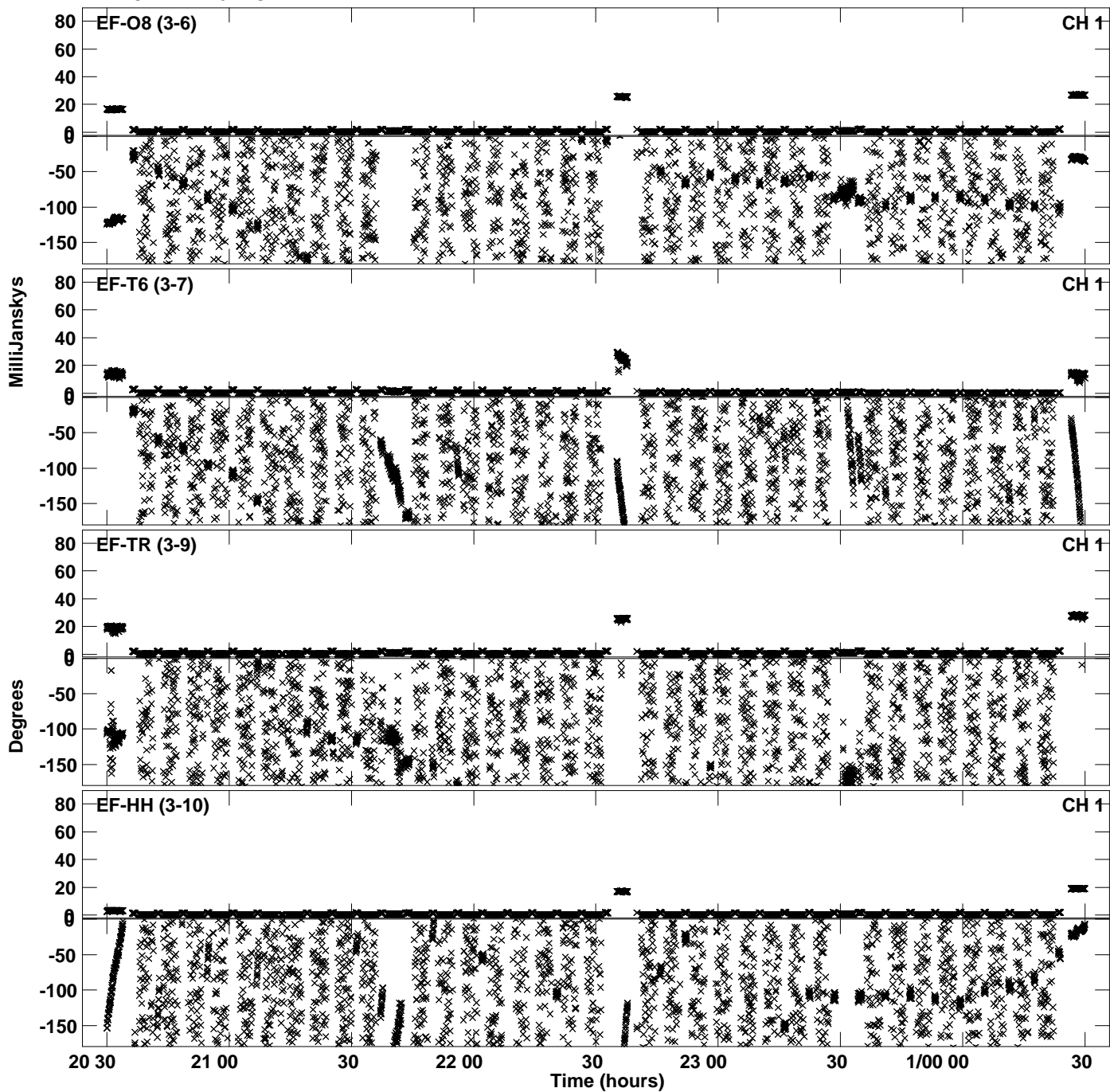
Plot file version 10 created 07-AUG-2023 16:56:07  
Amplitude andPhase vs Time for EB096J.UVDATA.1 Vect aver.  
IF 3 CHAN 1 - 64 STK LL



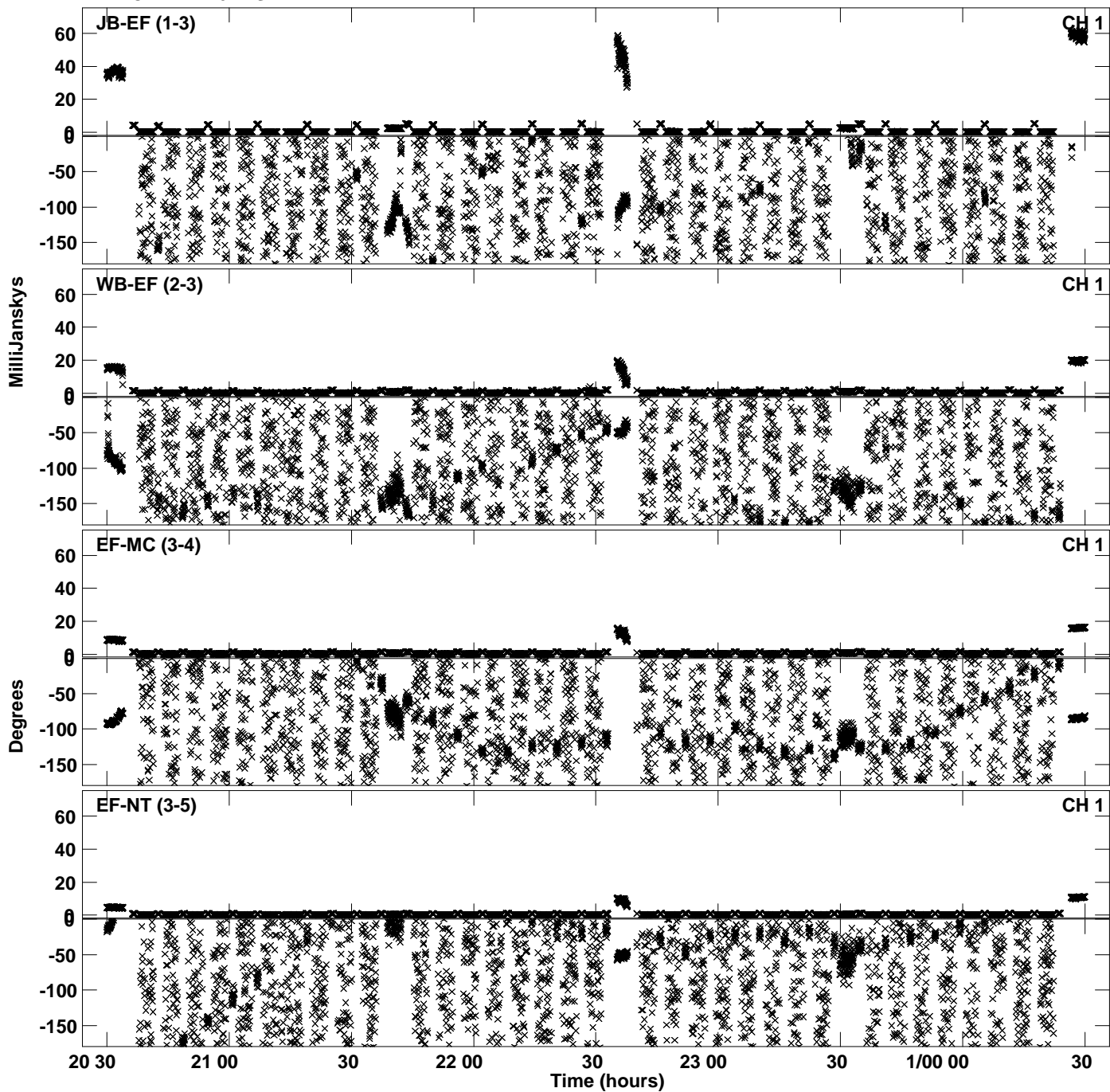
Plot file version 11 created 07-AUG-2023 16:56:14  
Amplitude andPhase vs Time for EB096J.UVDATA.1 Vect aver.  
IF 4 CHAN 1 - 64 STK LL



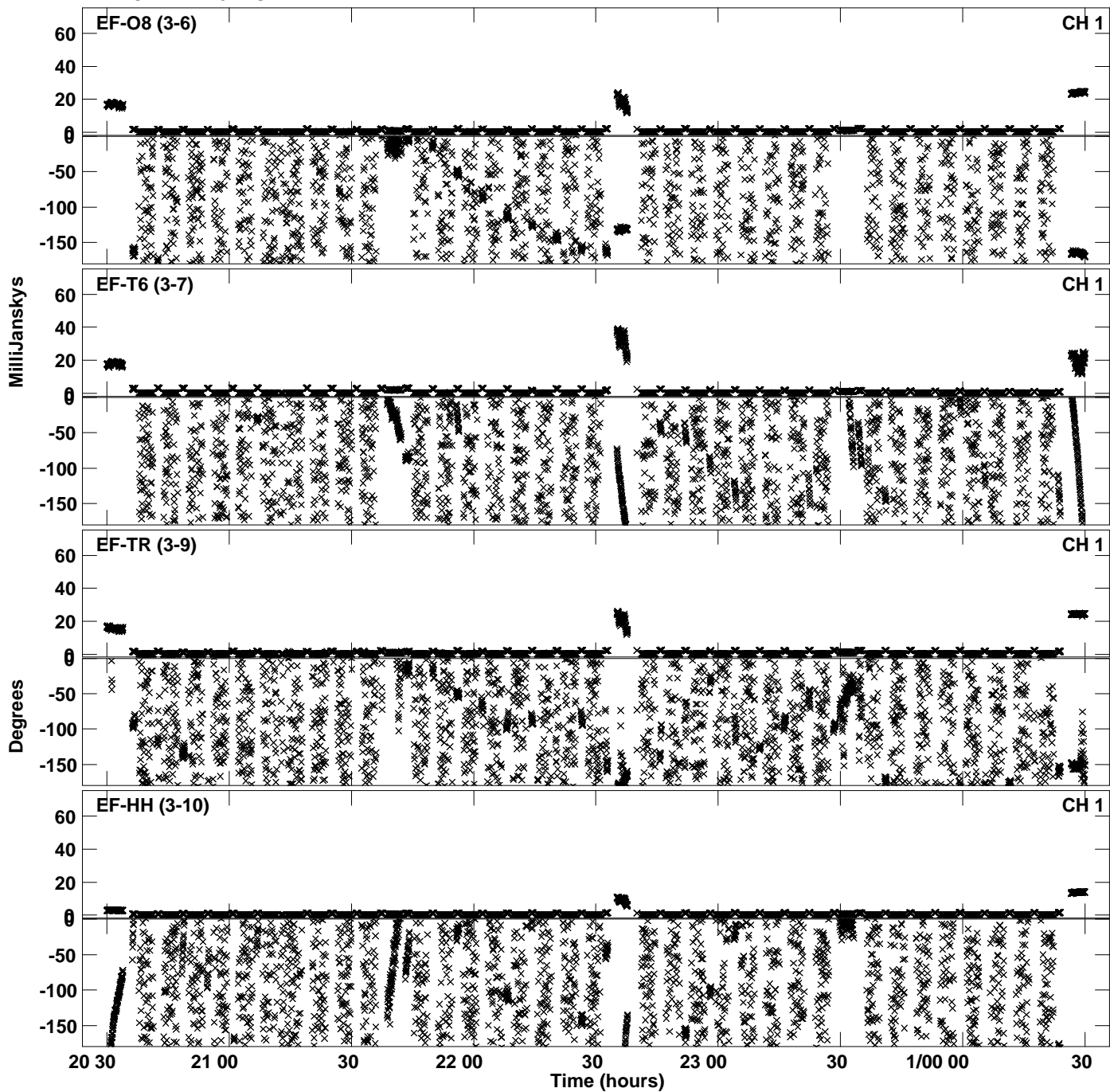
PLot file version 12 created 07-AUG-2023 16:56:14  
Amplitude andPhase vs Time for EB096J.UVDATA.1 Vect aver.  
IF 4 CHAN 1 - 64 STK LL



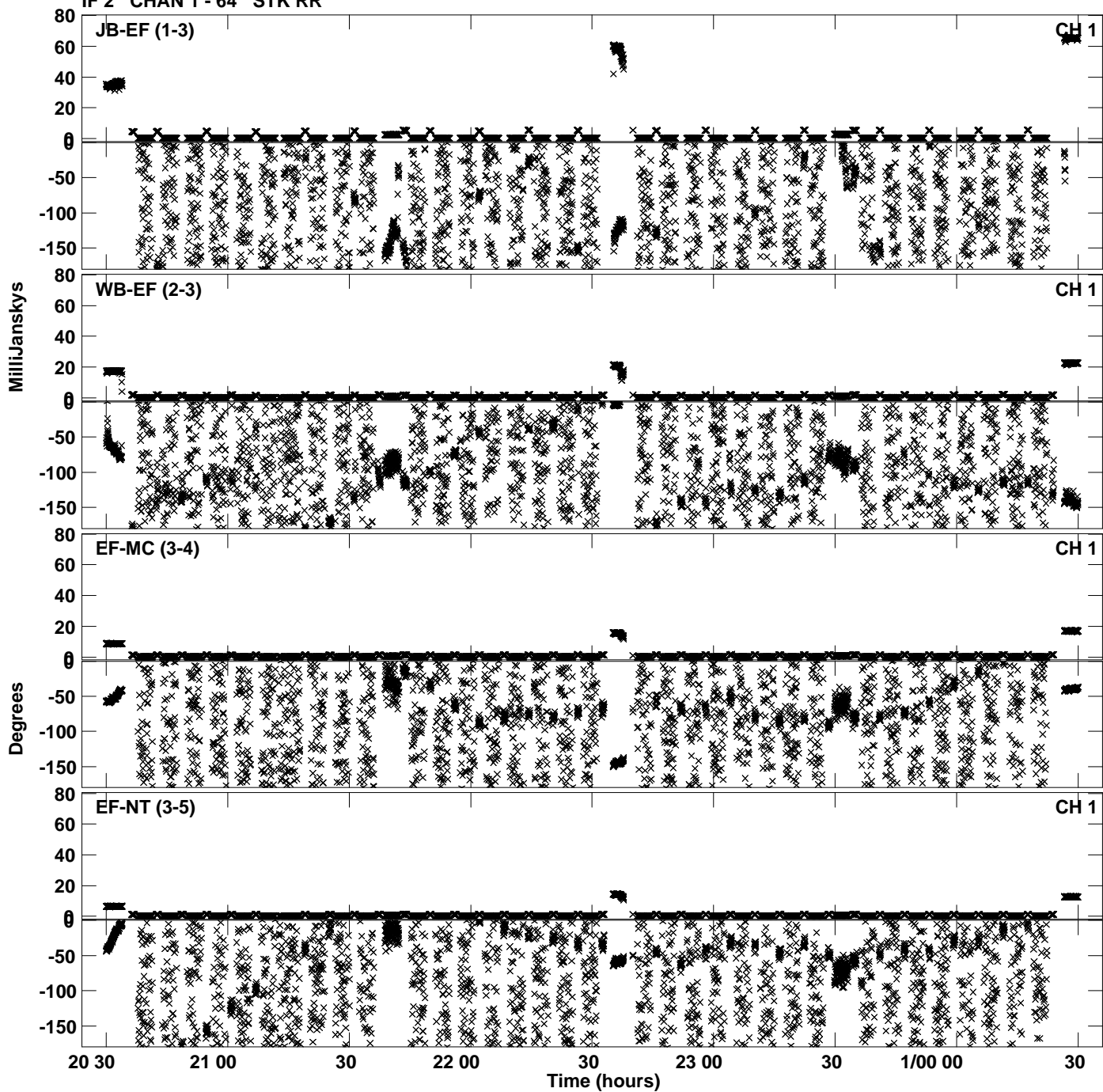
Plot file version 13 created 07-AUG-2023 16:56:22  
Amplitude andPhase vs Time for EB096J.UVDATA.1 Vect aver.  
IF 1 CHAN 1 - 64 STK RR



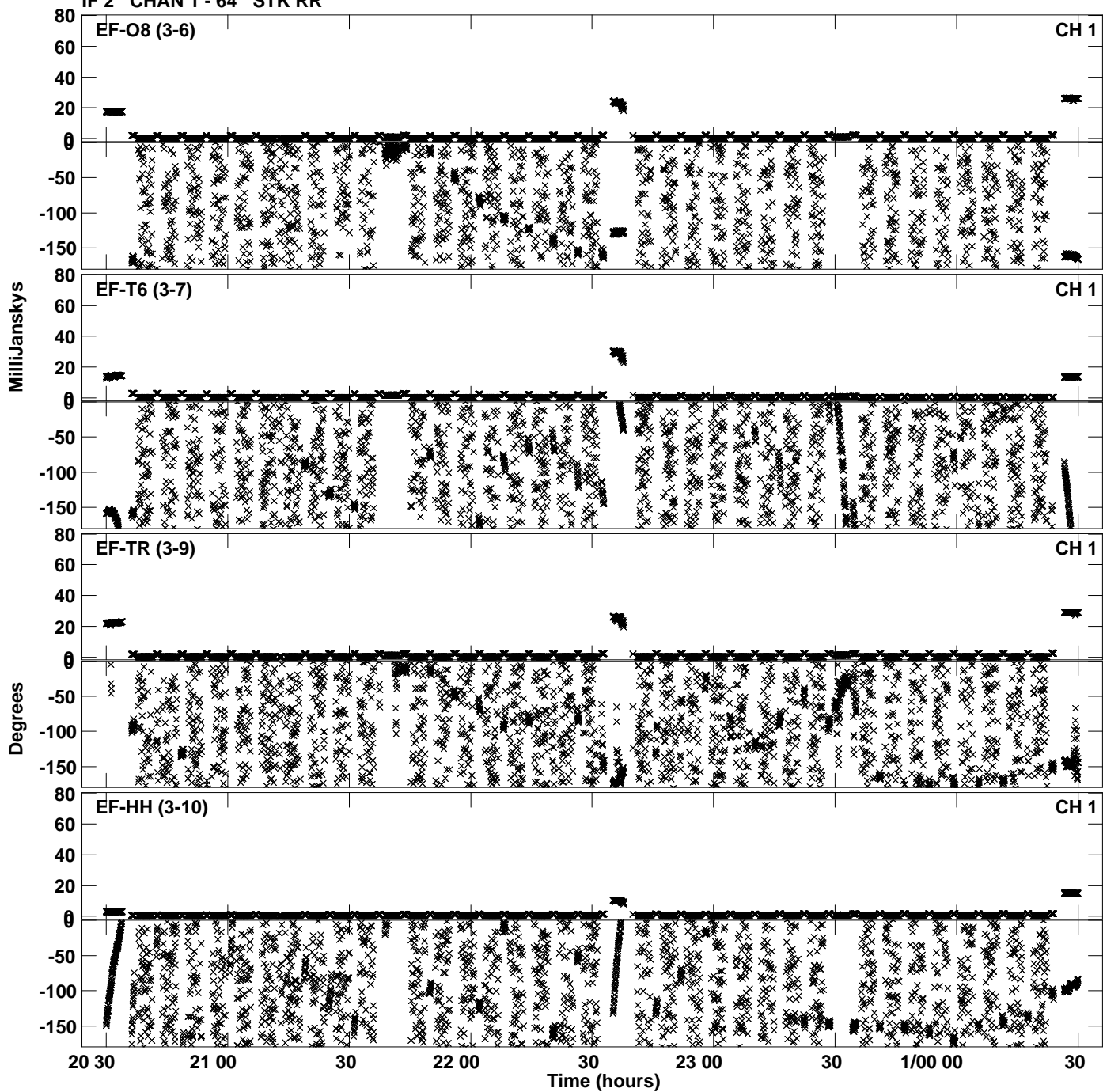
Plot file version 14 created 07-AUG-2023 16:56:22  
Amplitude andPhase vs Time for EB096J.UVDATA.1 Vect aver.  
IF 1 CHAN 1 - 64 STK RR



Plot file version 15 created 07-AUG-2023 16:56:30  
Amplitude andPhase vs Time for EB096J.UVDATA.1 Vect aver.  
IF 2 CHAN 1 - 64 STK RR

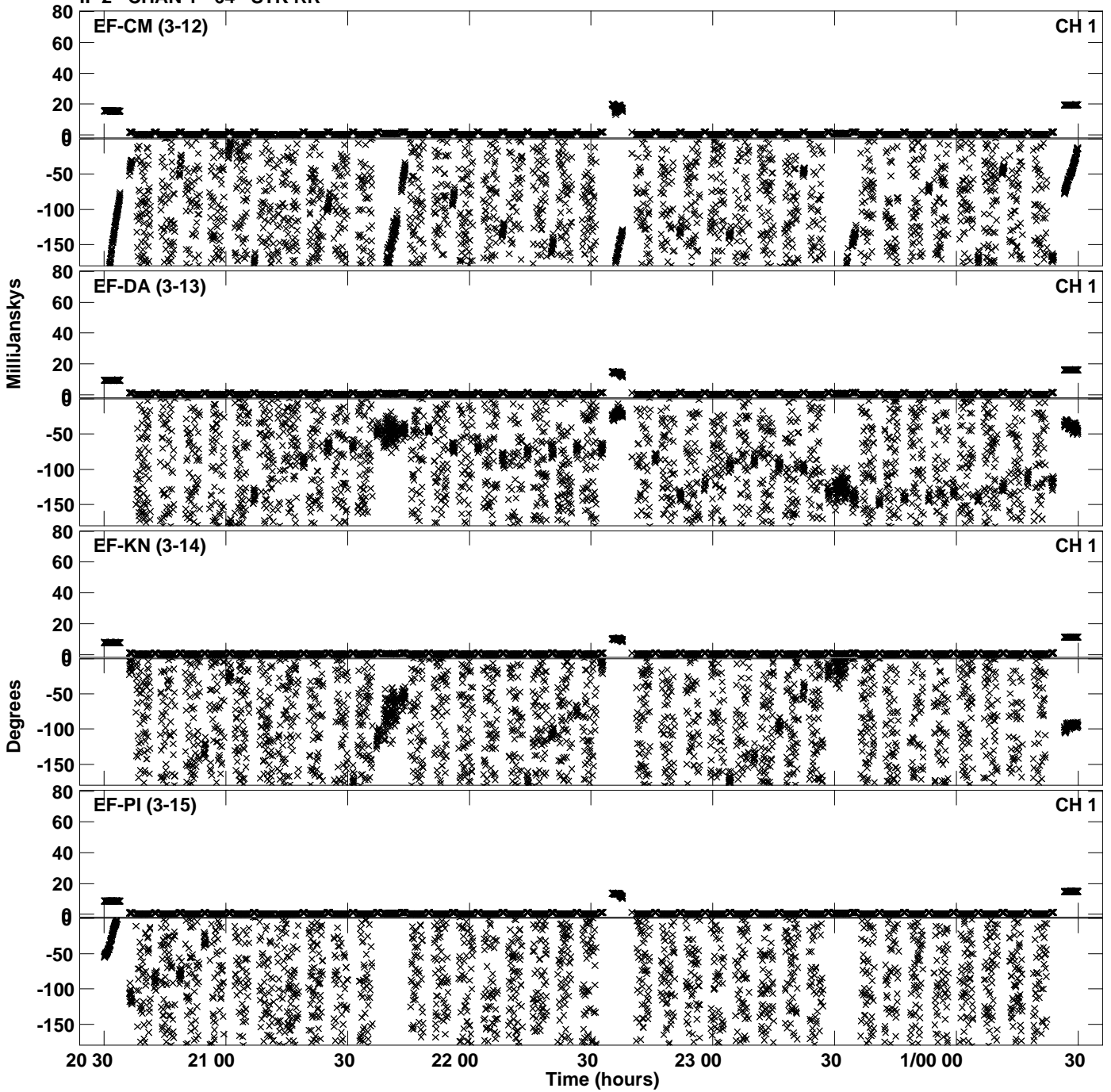


Plot file version 16 created 07-AUG-2023 16:56:30  
Amplitude andPhase vs Time for EB096J.UVDATA.1 Vect aver.  
IF 2 CHAN 1 - 64 STK RR

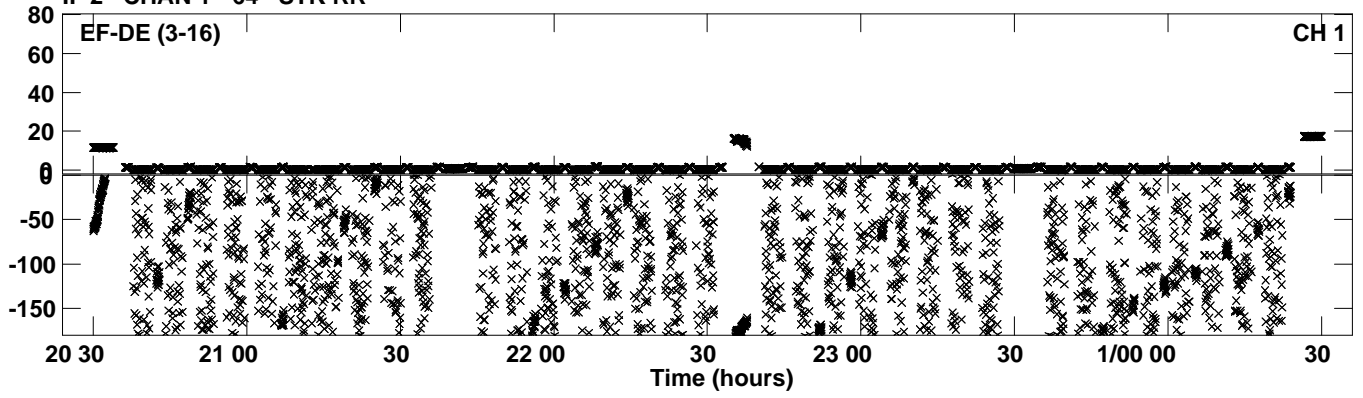




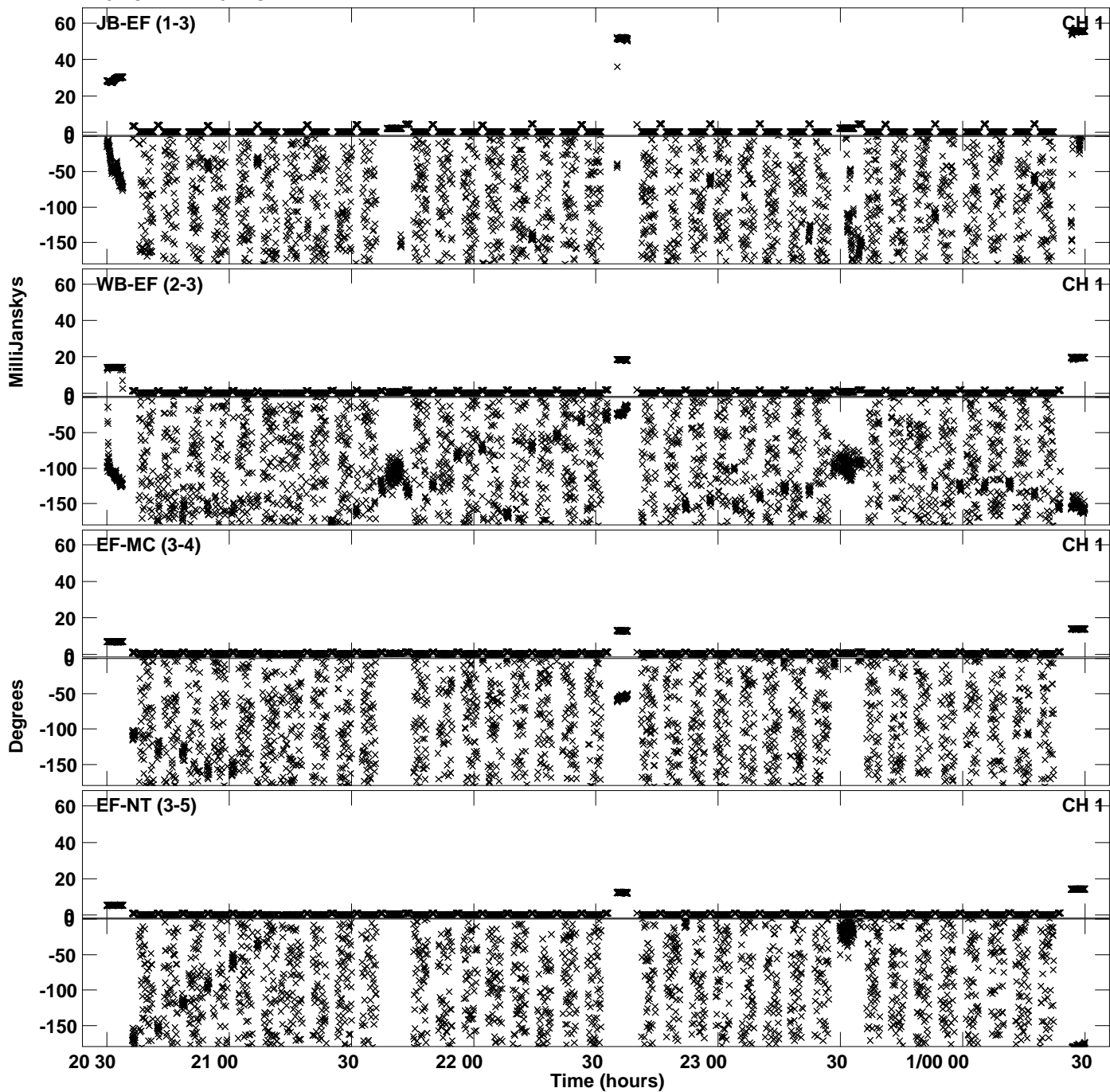
Plot file version 17 created 07-AUG-2023 16:56:30  
Amplitude andPhase vs Time for EB096J.UVDATA.1 Vect aver.  
IF 2 CHAN 1 - 64 STK RR



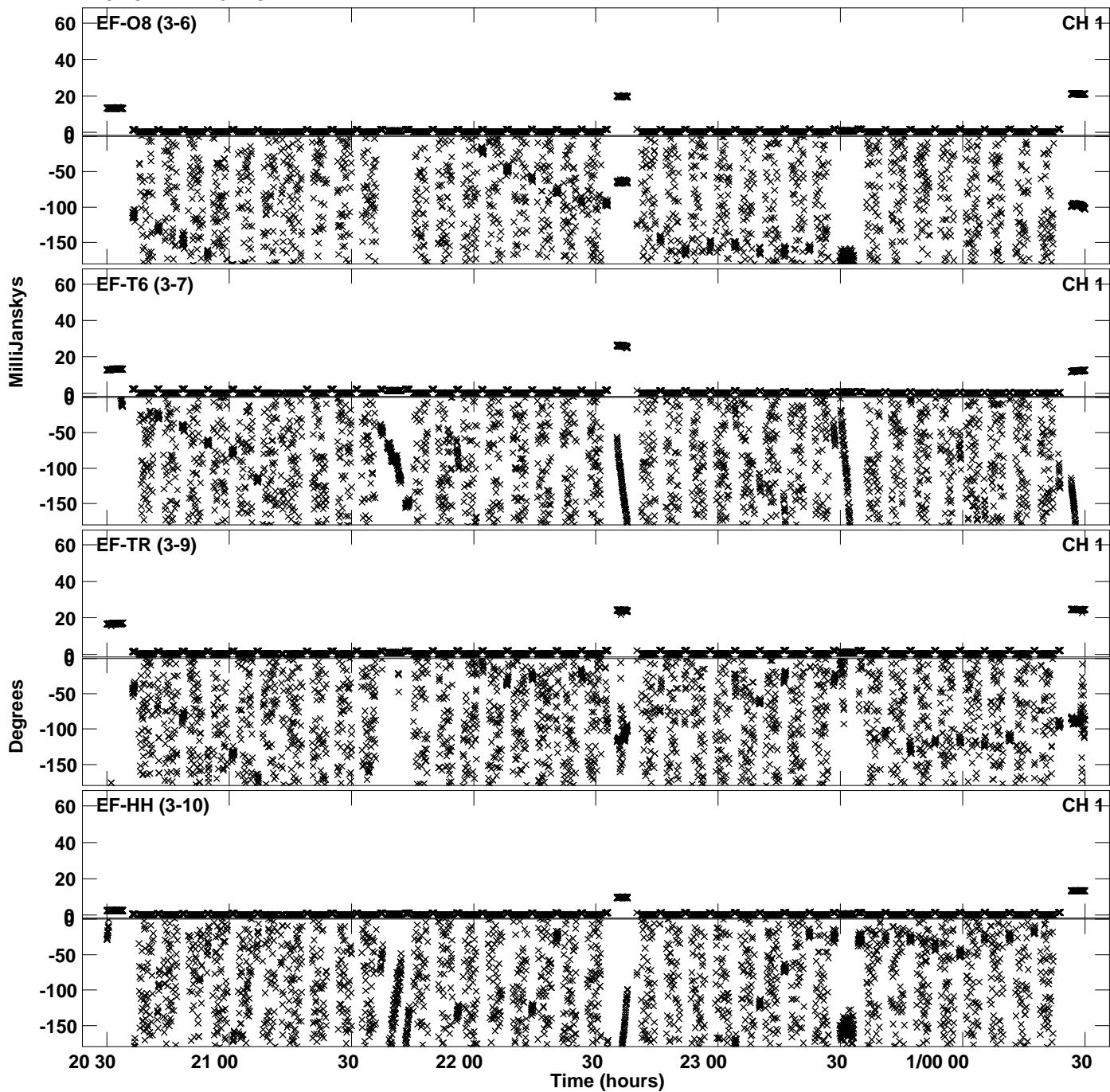
Plot file version 18 created 07-AUG-2023 16:56:30  
Amplitude and Phase vs Time for EB096J.UVDATA.1 Vect aver.  
IF 2 CHAN 1 - 64 STK RR



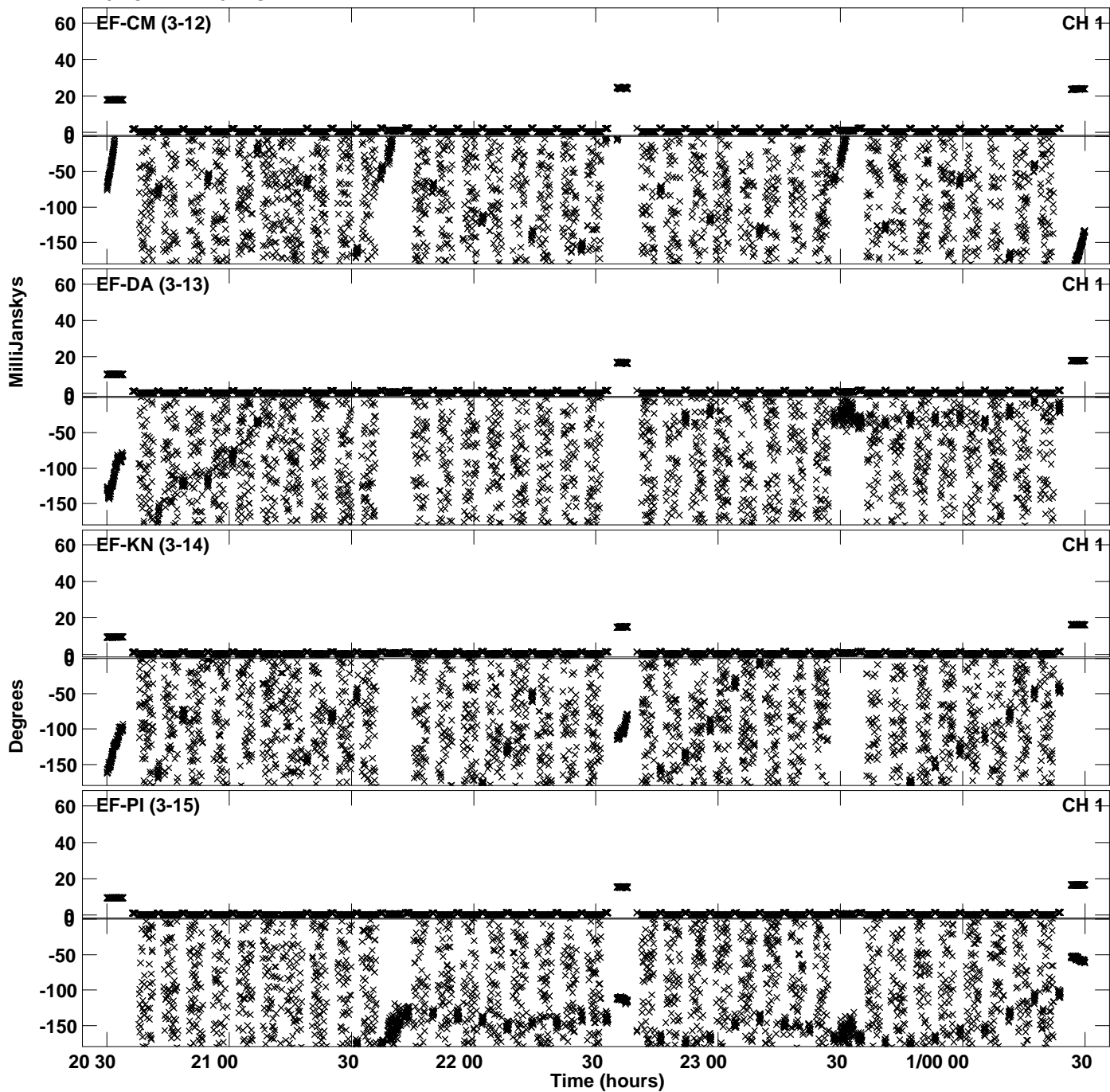
Plot file version 19 created 07-AUG-2023 16:56:38  
Amplitude andPhase vs Time for EB096J.UVDATA.1 Vect aver.  
IF 3 CHAN 1 - 64 STK RR



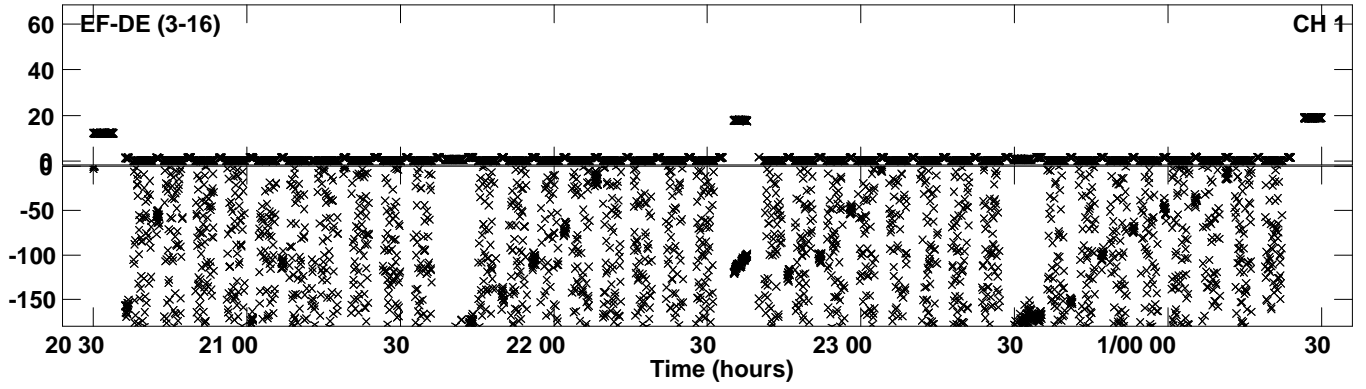
PLot file version 20 created 07-AUG-2023 16:56:38  
Amplitude andPhase vs Time for EB096J.UVDATA.1 Vect aver.  
IF 3 CHAN 1 - 64 STK RR



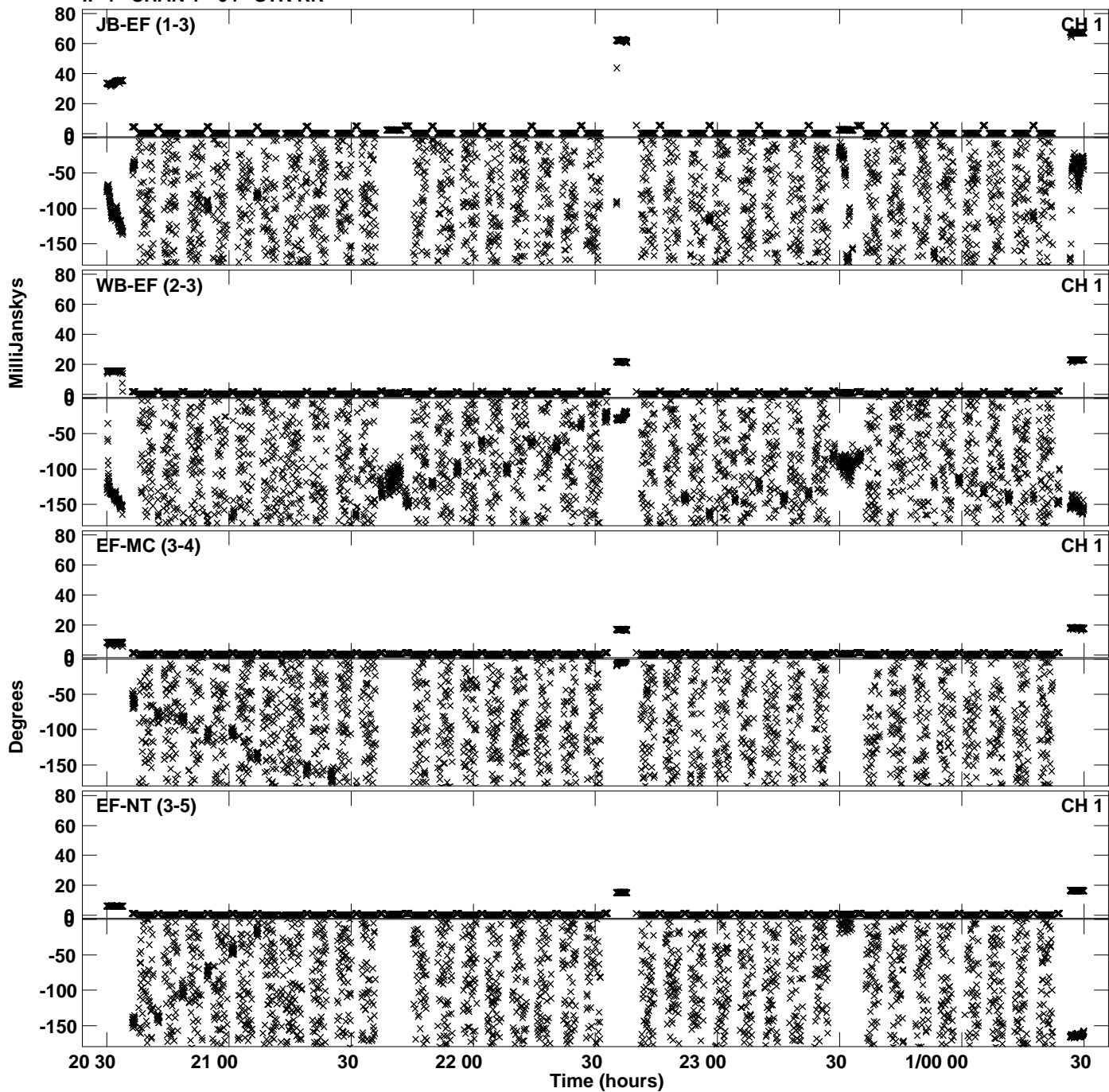
Plot file version 21 created 07-AUG-2023 16:56:38  
Amplitude and Phase vs Time for EB096J.UVDATA.1 Vect aver.  
IF 3 CHAN 1 - 64 STK RR



Plot file version 22 created 07-AUG-2023 16:56:38  
Amplitude andPhase vs Time for EB096J.UVDATA.1 Vect aver.  
IF 3 CHAN 1 - 64 STK RR



Plot file version 23 created 07-AUG-2023 16:56:45  
Amplitude andPhase vs Time for EB096J.UVDATA.1 Vect aver.  
IF 4 CHAN 1 - 64 STK RR



Plot file version 24 created 07-AUG-2023 16:56:45  
Amplitude andPhase vs Time for EB096J.UVDATA.1 Vect aver.  
IF 4 CHAN 1 - 64 STK RR

