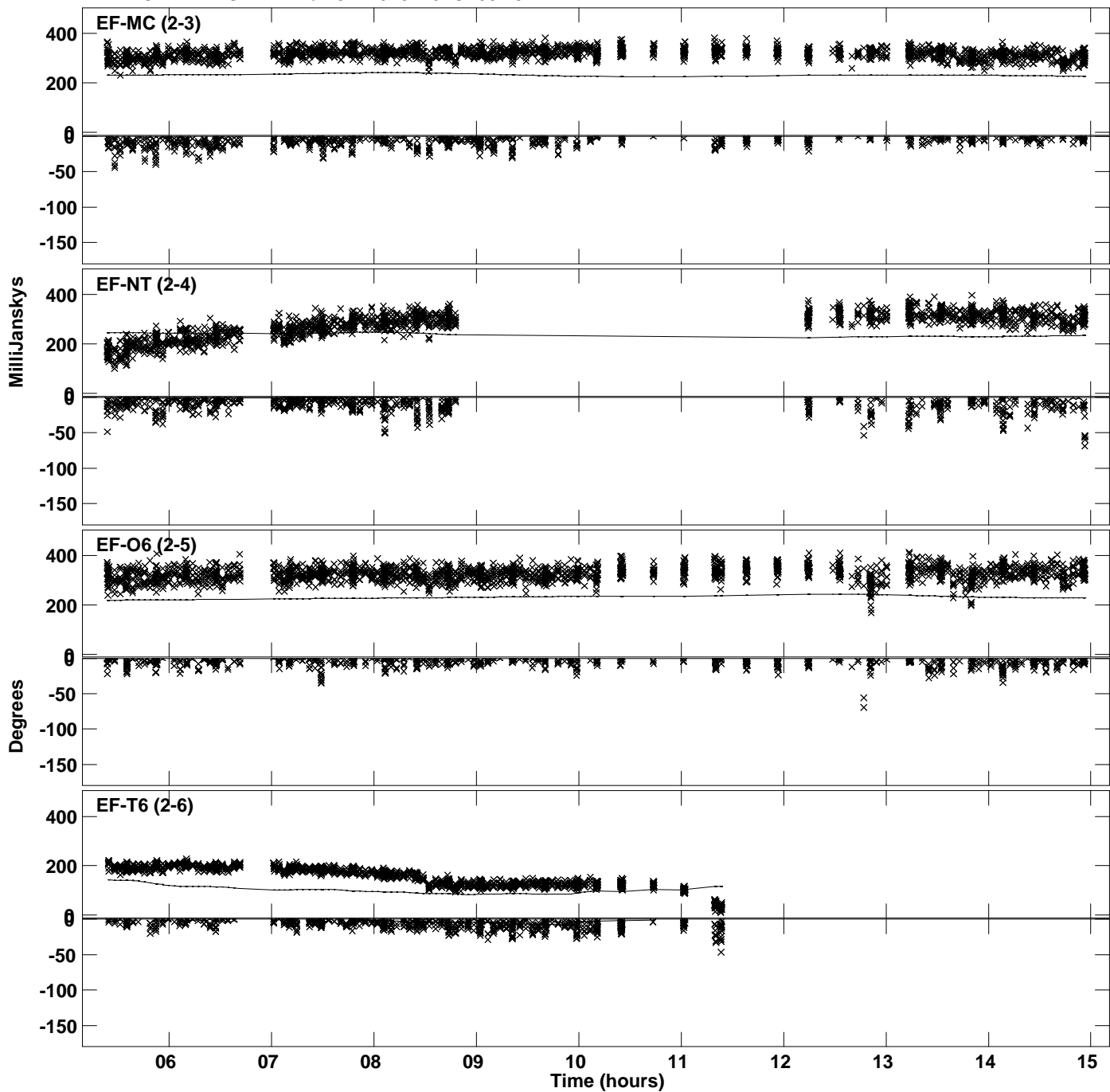
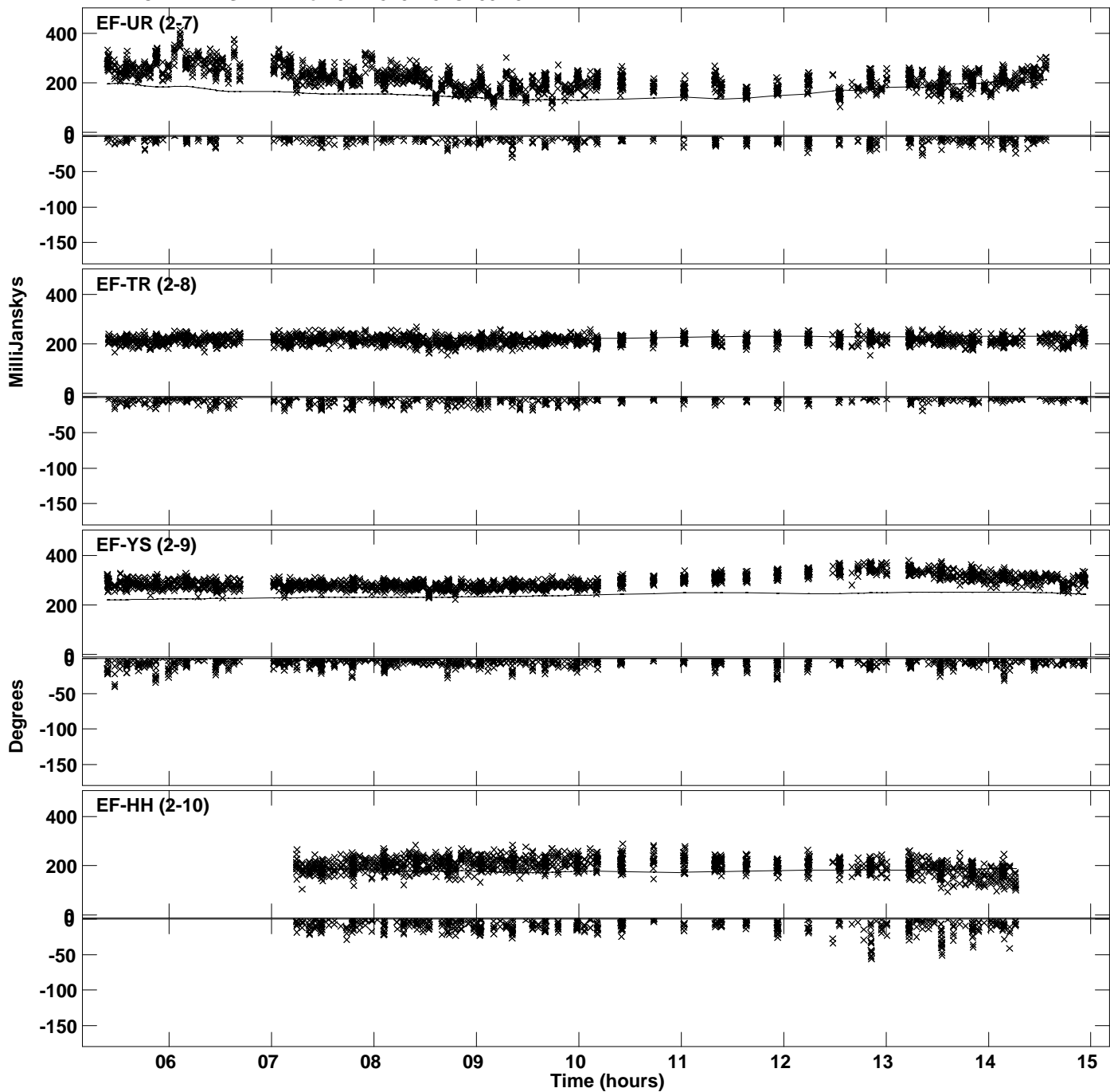


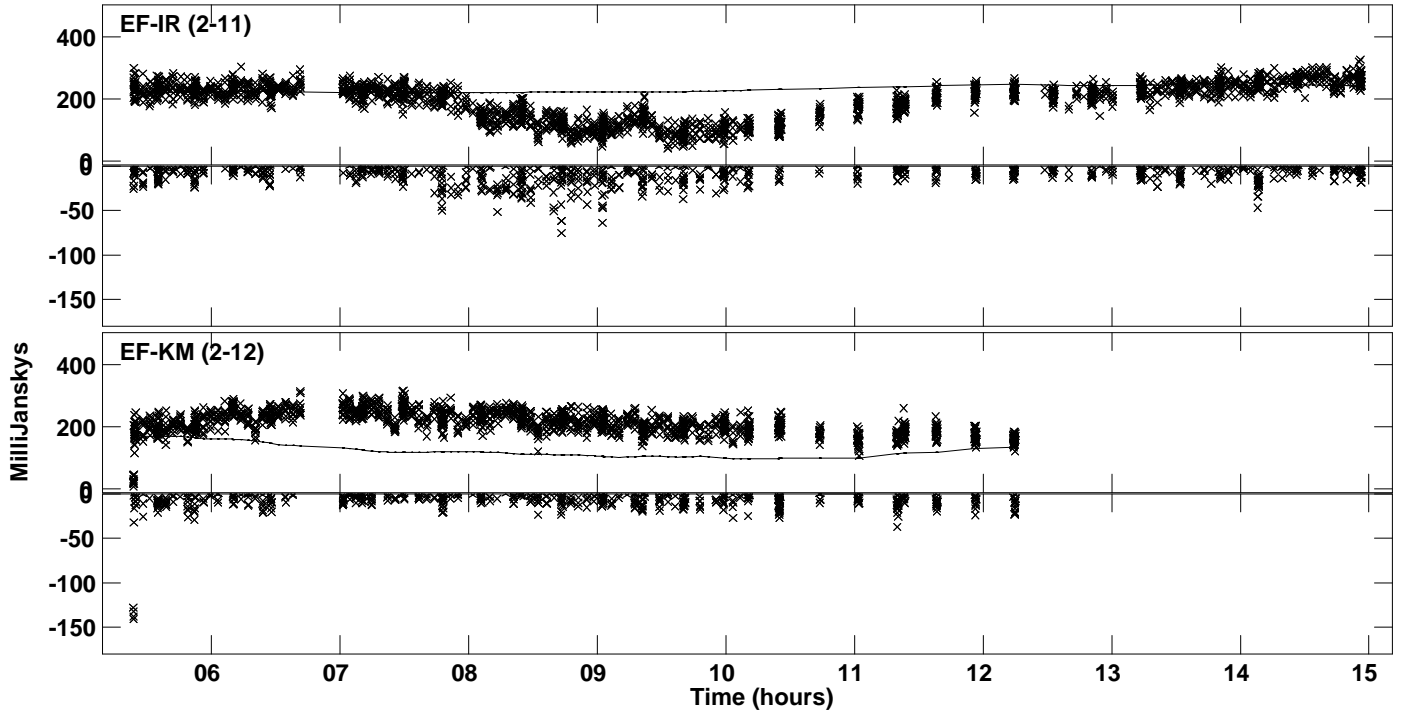
Plot file version 72 created 23-APR-2024 15:37:45
Amplitude andPhase vs Time for J2248+3718.MULTI.1 CL # 2
IF 14 CHAN 1 STK RR of J2248+3718.ICL001.3



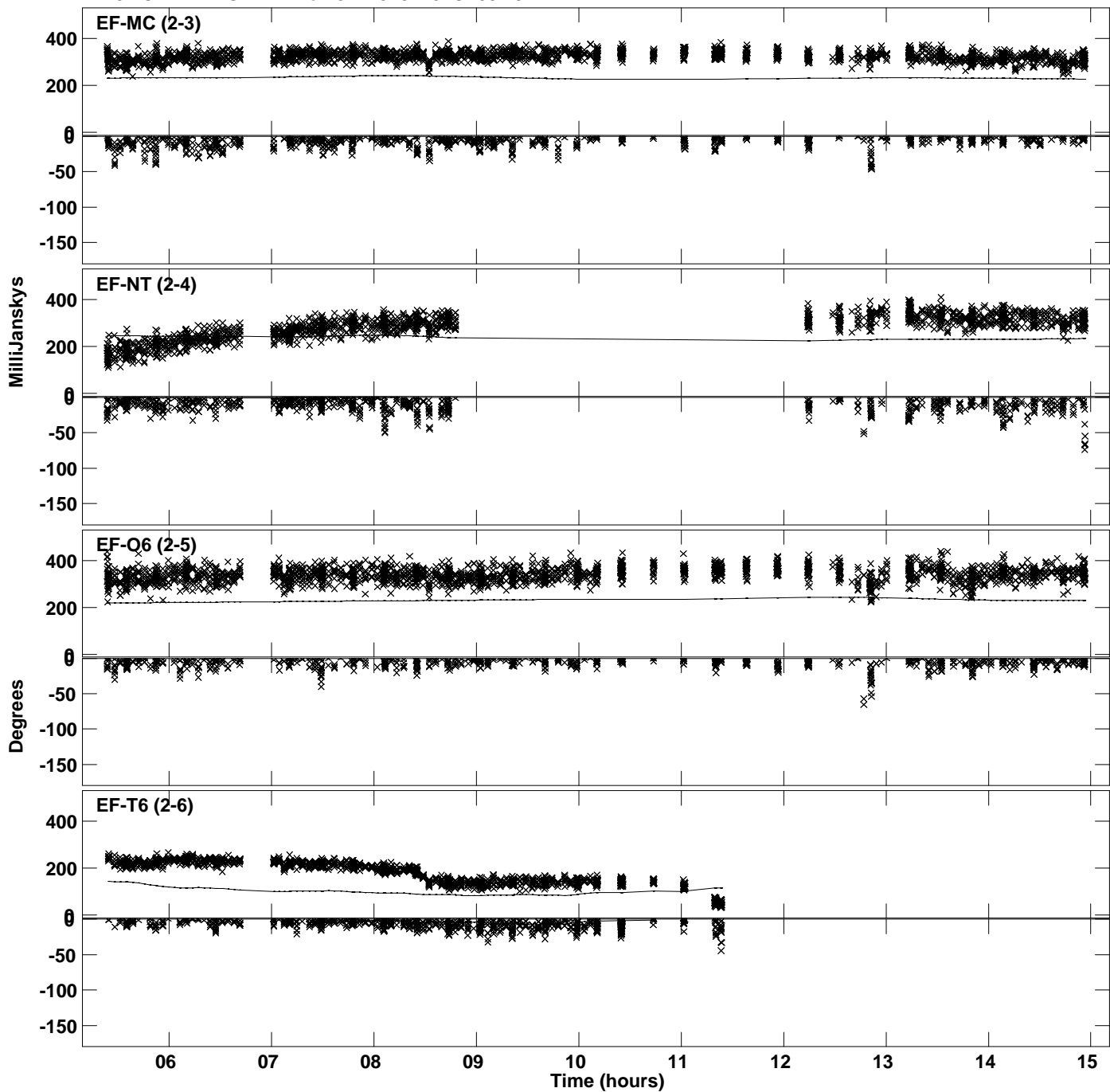
PLot file version 73 created 23-APR-2024 15:37:45
Amplitude andPhase vs Time for J2248+3718.MULTI.1 CL # 2
IF 14 CHAN 1 STK RR of J2248+3718.ICL001.3



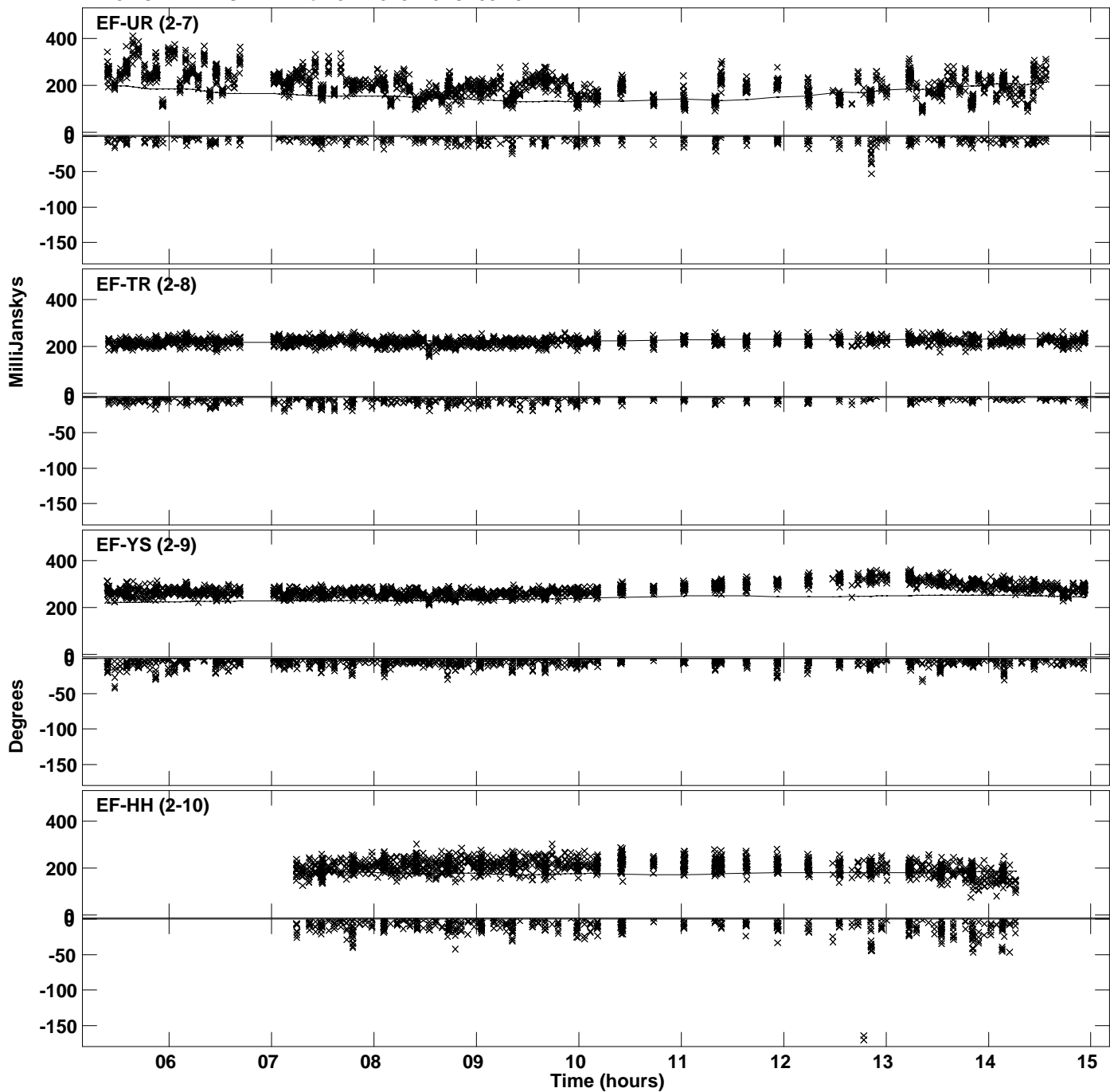
PLot file version 74 created 23-APR-2024 15:37:45
Amplitude andPhase vs Time for J2248+3718.MULTI.1 CL # 2
IF 14 CHAN 1 STK RR of J2248+3718.ICL001.3



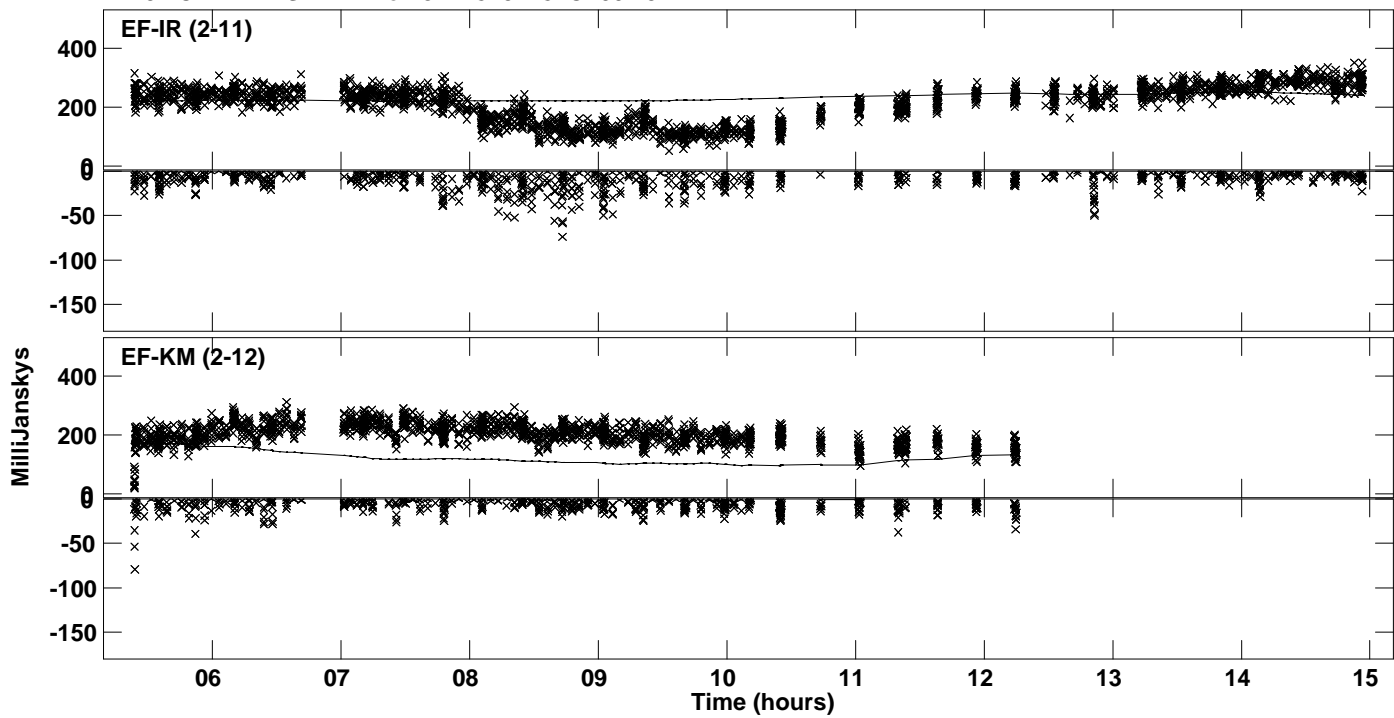
Plot file version 75 created 23-APR-2024 15:37:46
Amplitude and Phase vs Time for J2248+3718.MULTI.1 CL # 2
IF 15 CHAN 1 STK RR of J2248+3718.ICL001.3



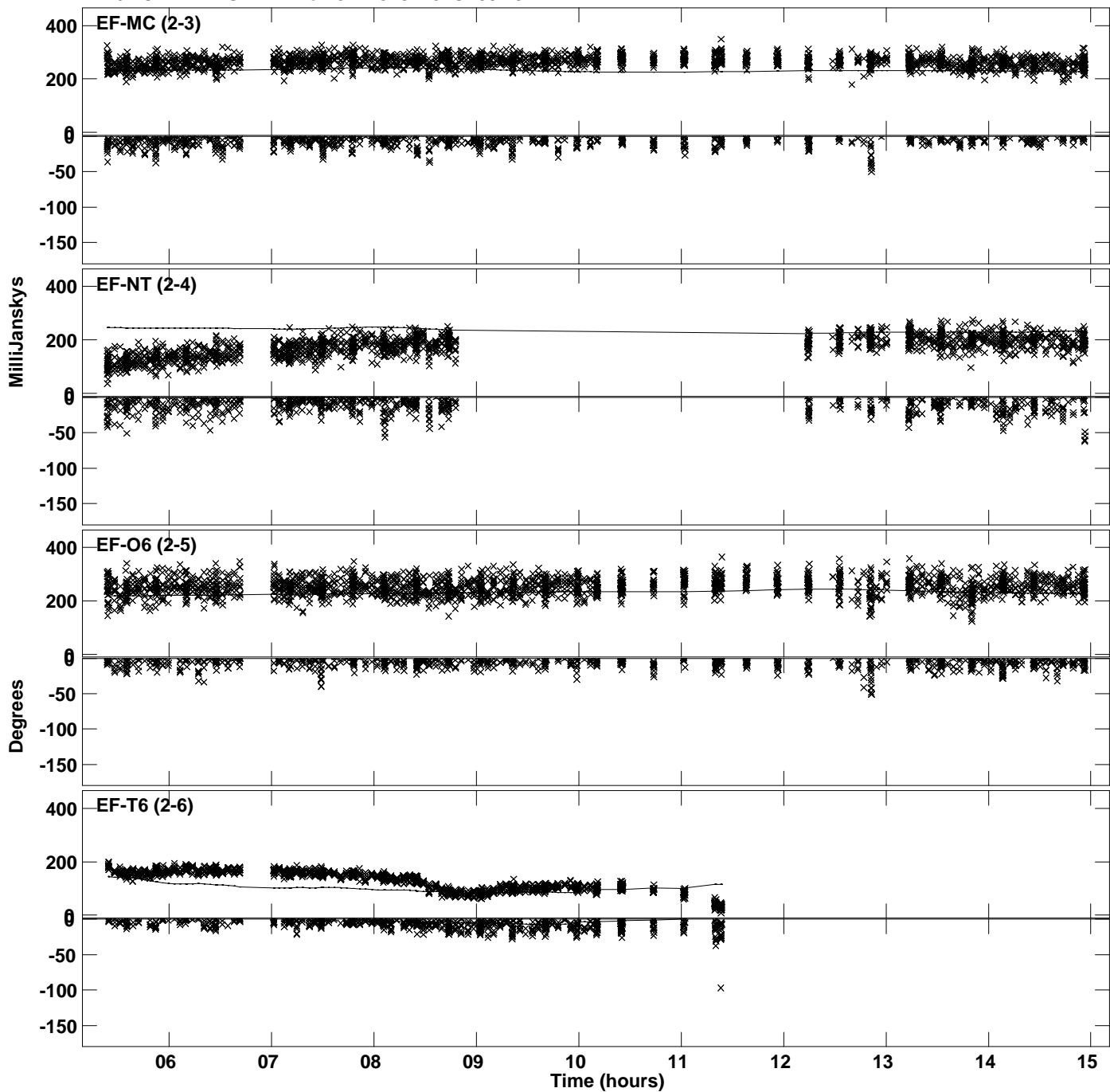
PLot file version 76 created 23-APR-2024 15:37:46
Amplitude andPhase vs Time for J2248+3718.MULTI.1 CL # 2
IF 15 CHAN 1 STK RR of J2248+3718.ICL001.3



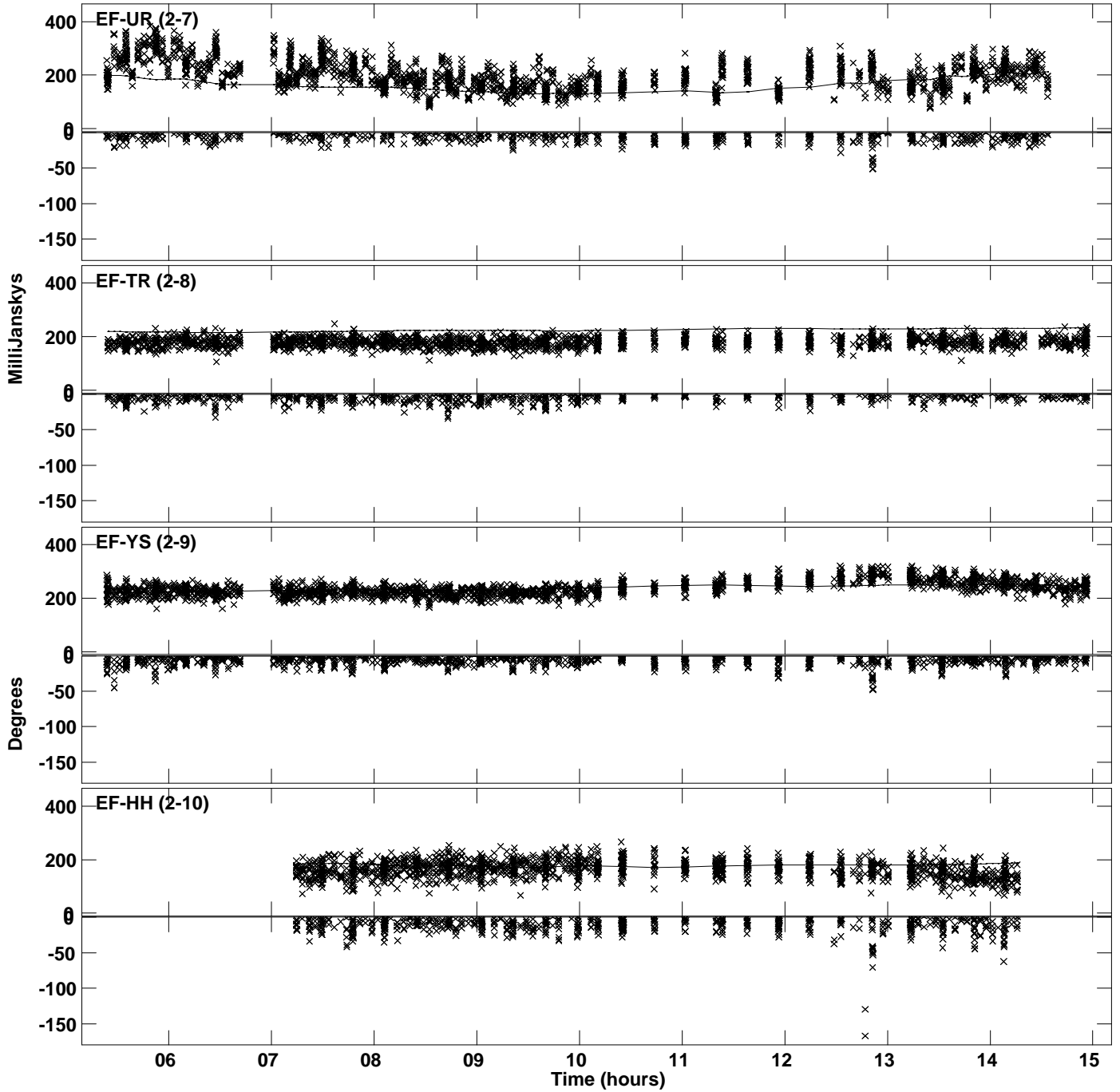
PLot file version 77 created 23-APR-2024 15:37:46
Amplitude andPhase vs Time for J2248+3718.MULTI.1 CL # 2
IF 15 CHAN 1 STK RR of J2248+3718.ICL001.3



Plot file version 78 created 23-APR-2024 15:37:47
Amplitude andPhase vs Time for J2248+3718.MULTI.1 CL # 2
IF 16 CHAN 1 STK RR of J2248+3718.ICL001.3



Plot file version 79 created 23-APR-2024 15:37:47
Amplitude andPhase vs Time for J2248+3718.MULTI.1 CL # 2
IF 16 CHAN 1 STK RR of J2248+3718.ICL001.3



PLot file version 80 created 23-APR-2024 15:37:47
Amplitude andPhase vs Time for J2248+3718.MULTI.1 CL # 2
IF 16 CHAN 1 STK RR of J2248+3718.ICL001.3

