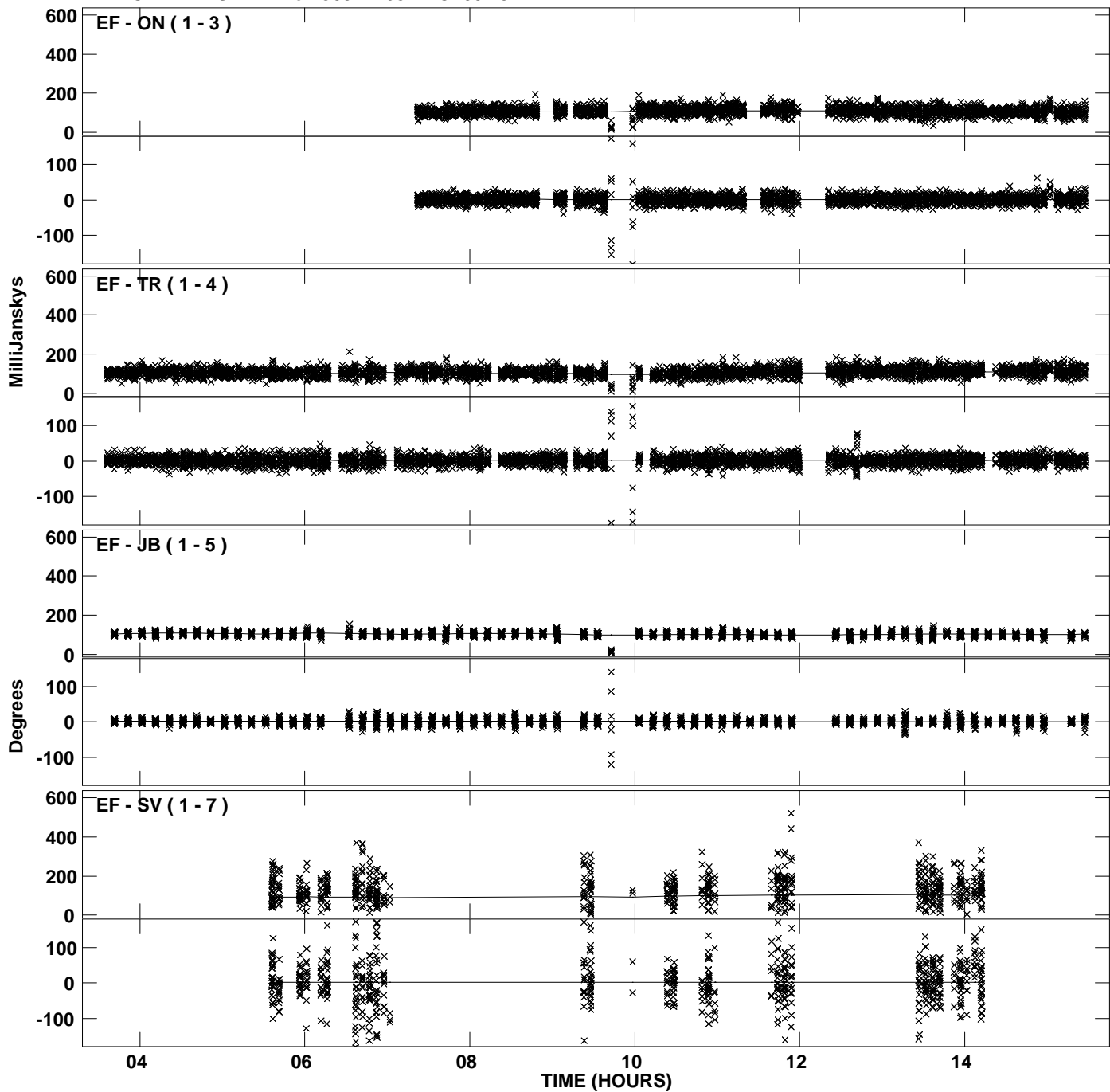
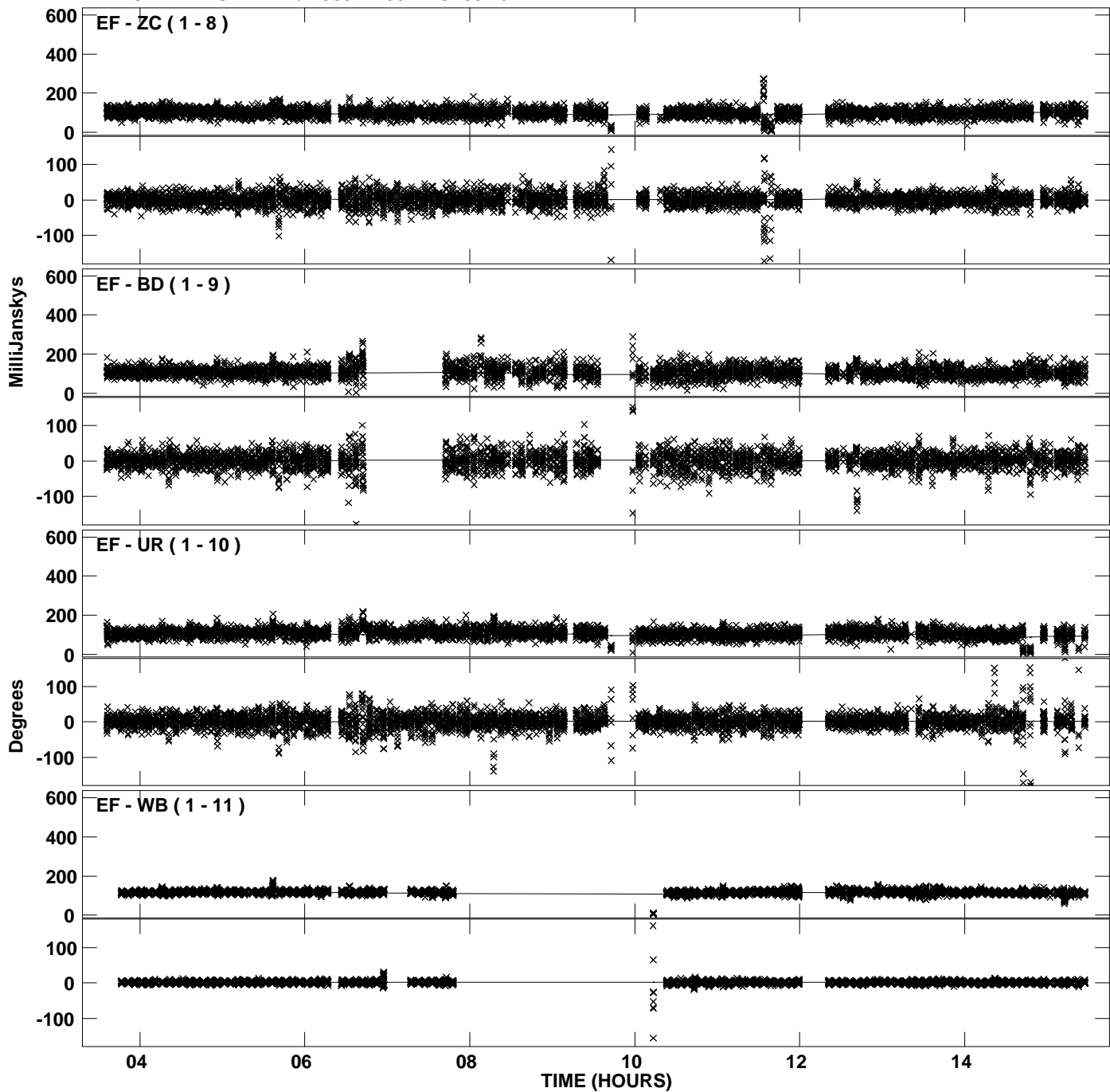


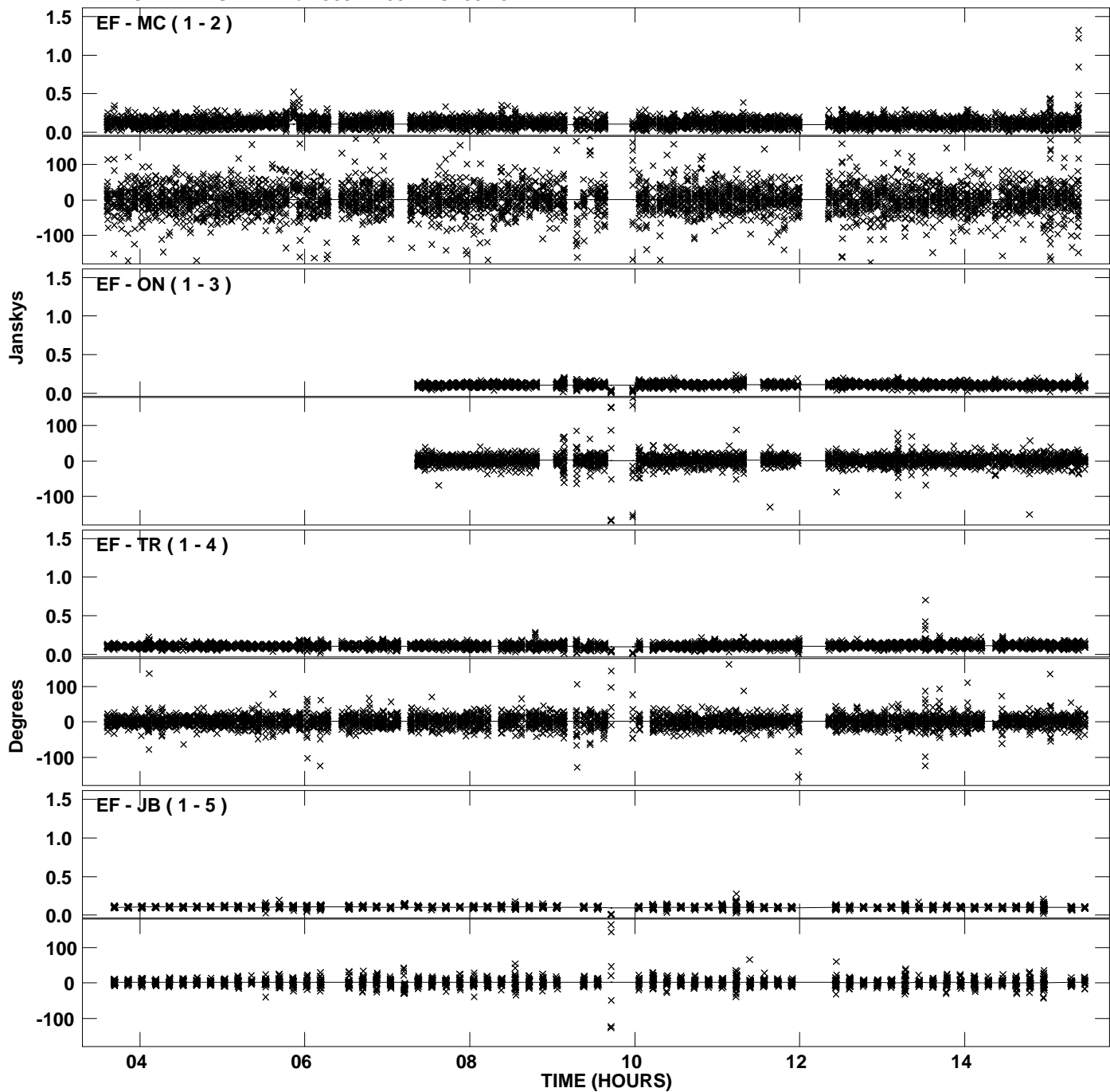
PLot file version 1 created 24-AUG-2011 19:13:12
Amplitude andPhase vs Time for J0344+6827.MULTI.1 CL # 3
IF 1 CHAN 1 STK LL of J0344+6827.ICL001.3



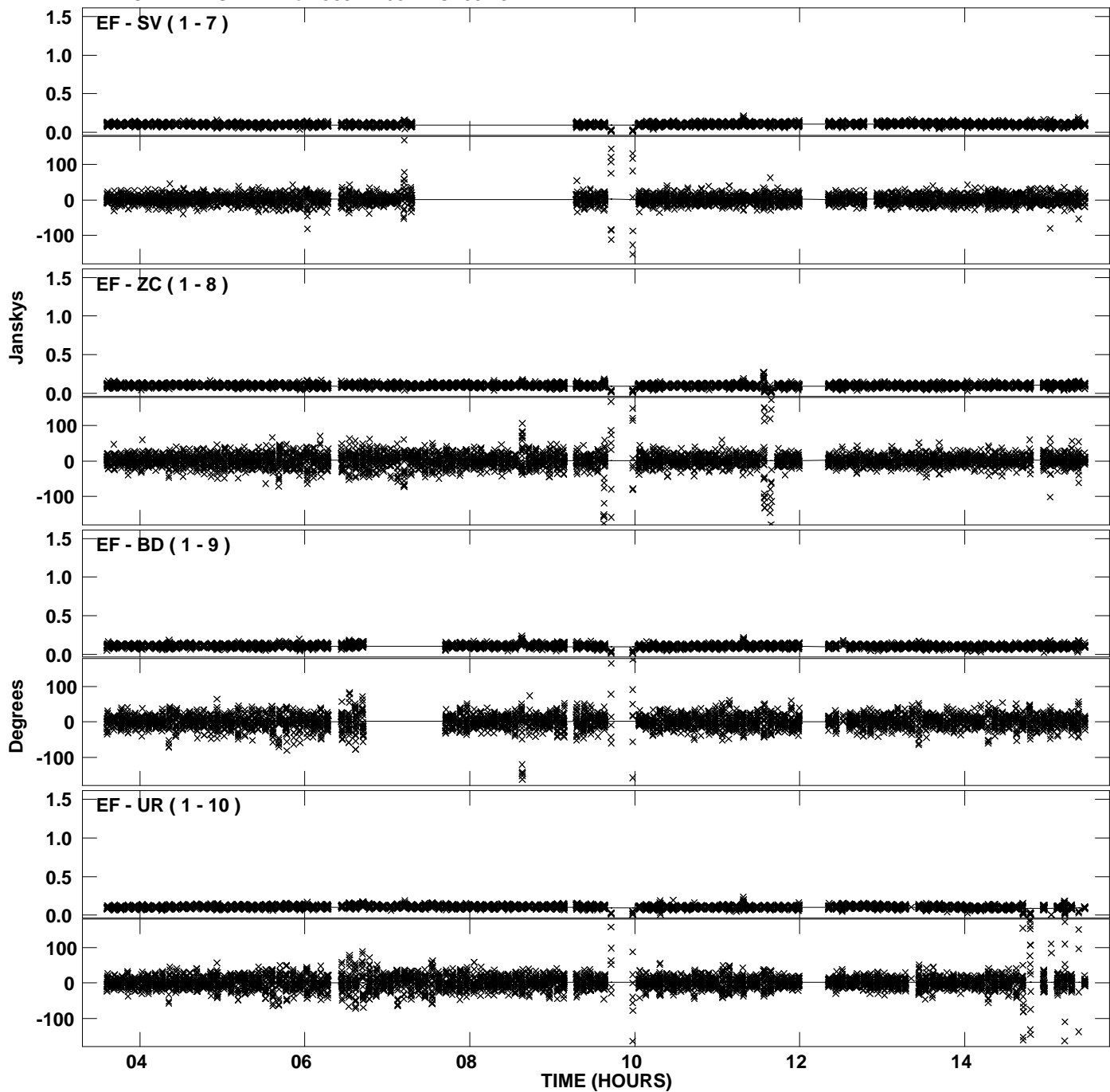
Plot file version 2 created 24-AUG-2011 19:13:14
Amplitude and Phase vs Time for J0344+6827.MULTI.1 CL # 3
IF 1 CHAN 1 STK LL of J0344+6827.ICL001.3



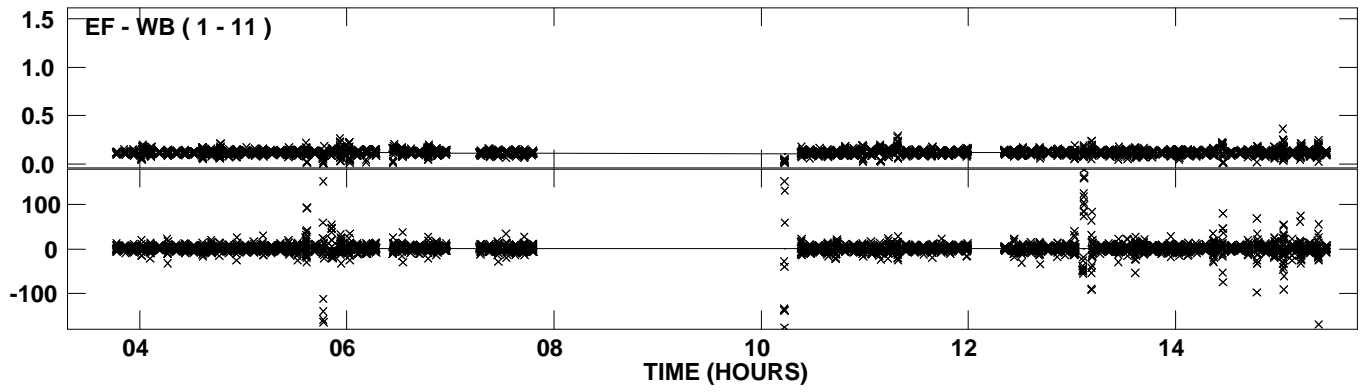
Plot file version 3 created 24-AUG-2011 19:13:27
Amplitude andPhase vs Time for J0344+6827.MULTI.1 CL # 3
IF 2 CHAN 1 STK LL of J0344+6827.ICL001.3



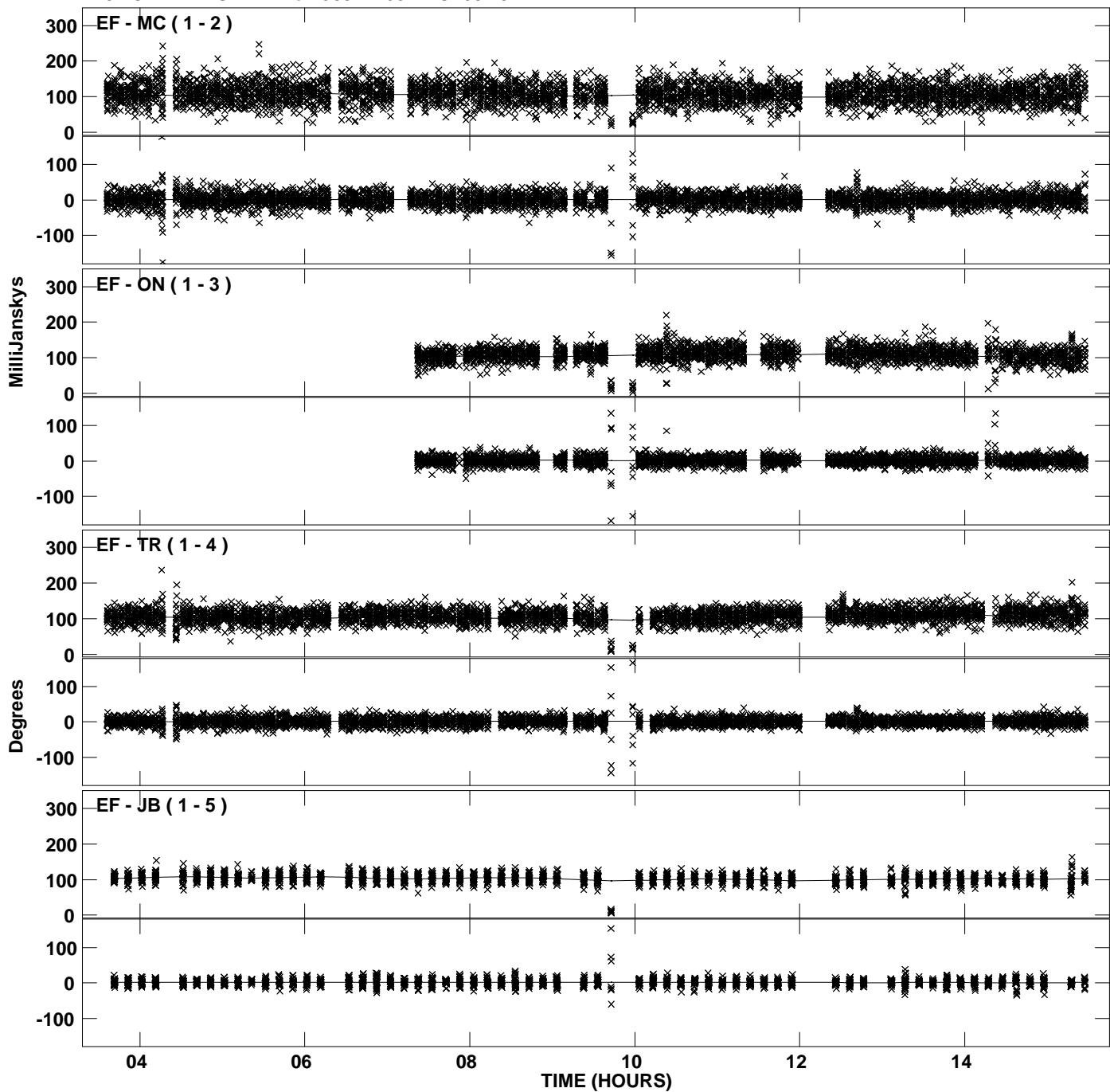
PLot file version 4 created 24-AUG-2011 19:13:27
Amplitude andPhase vs Time for J0344+6827.MULTI.1 CL # 3
IF 2 CHAN 1 STK LL of J0344+6827.ICL001.3



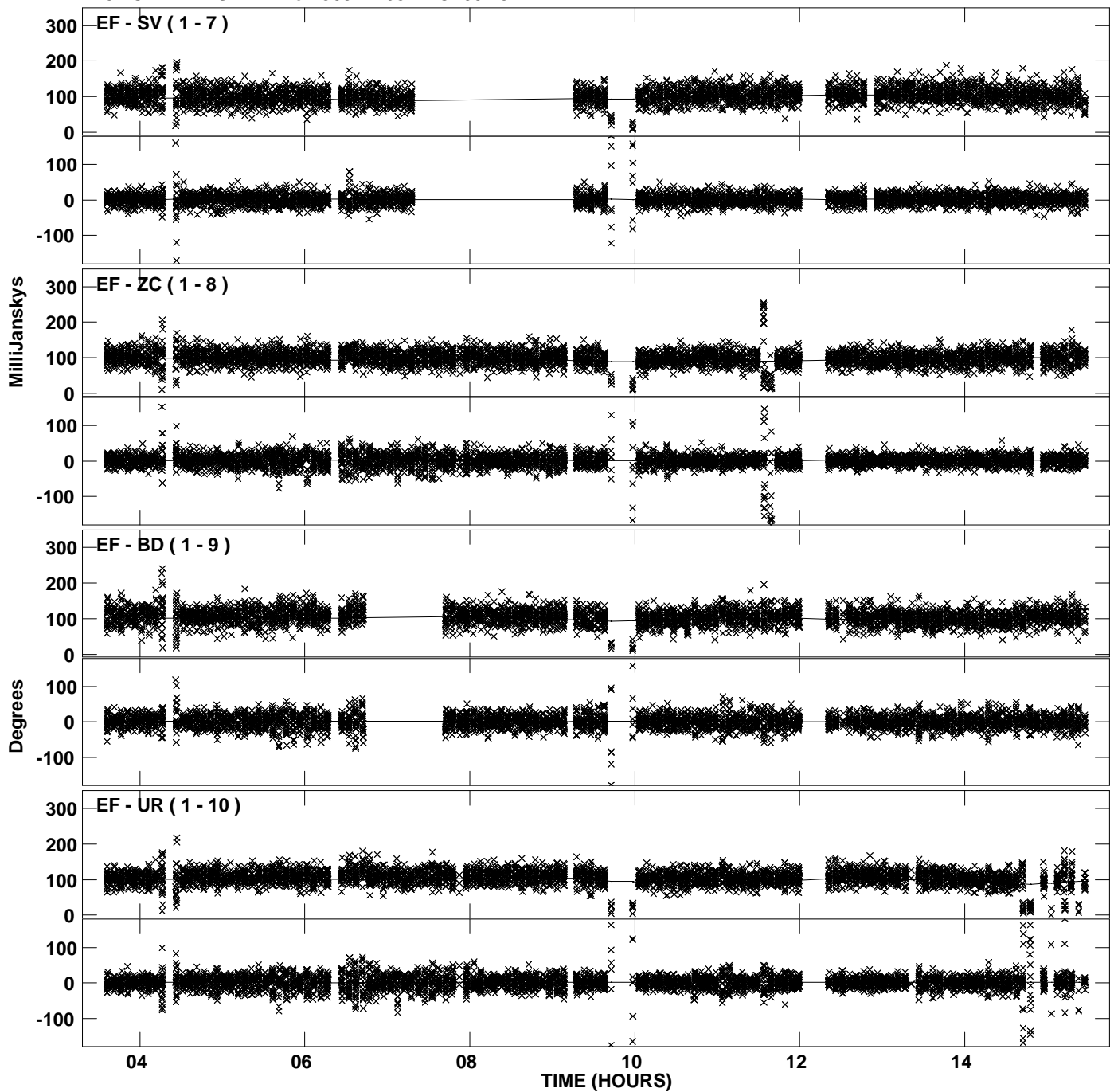
PLot file version 5 created 24-AUG-2011 19:13:28
Amplitude andPhase vs Time for J0344+6827.MULTI.1 CL # 3
IF 2 CHAN 1 STK LL of J0344+6827.ICL001.3



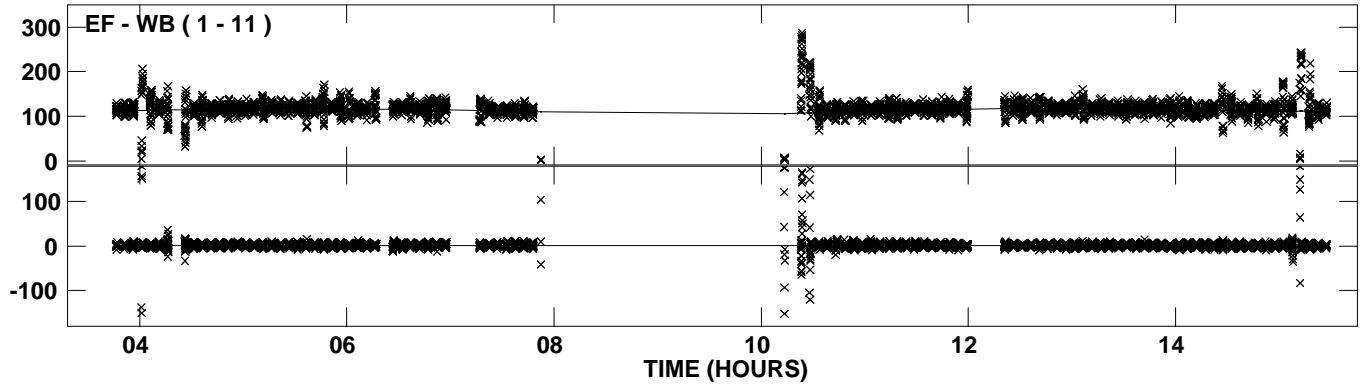
Plot file version 6 created 24-AUG-2011 19:13:56
Amplitude and Phase vs Time for J0344+6827.MULTI.1 CL # 3
IF 3 CHAN 1 STK LL of J0344+6827.ICL001.3



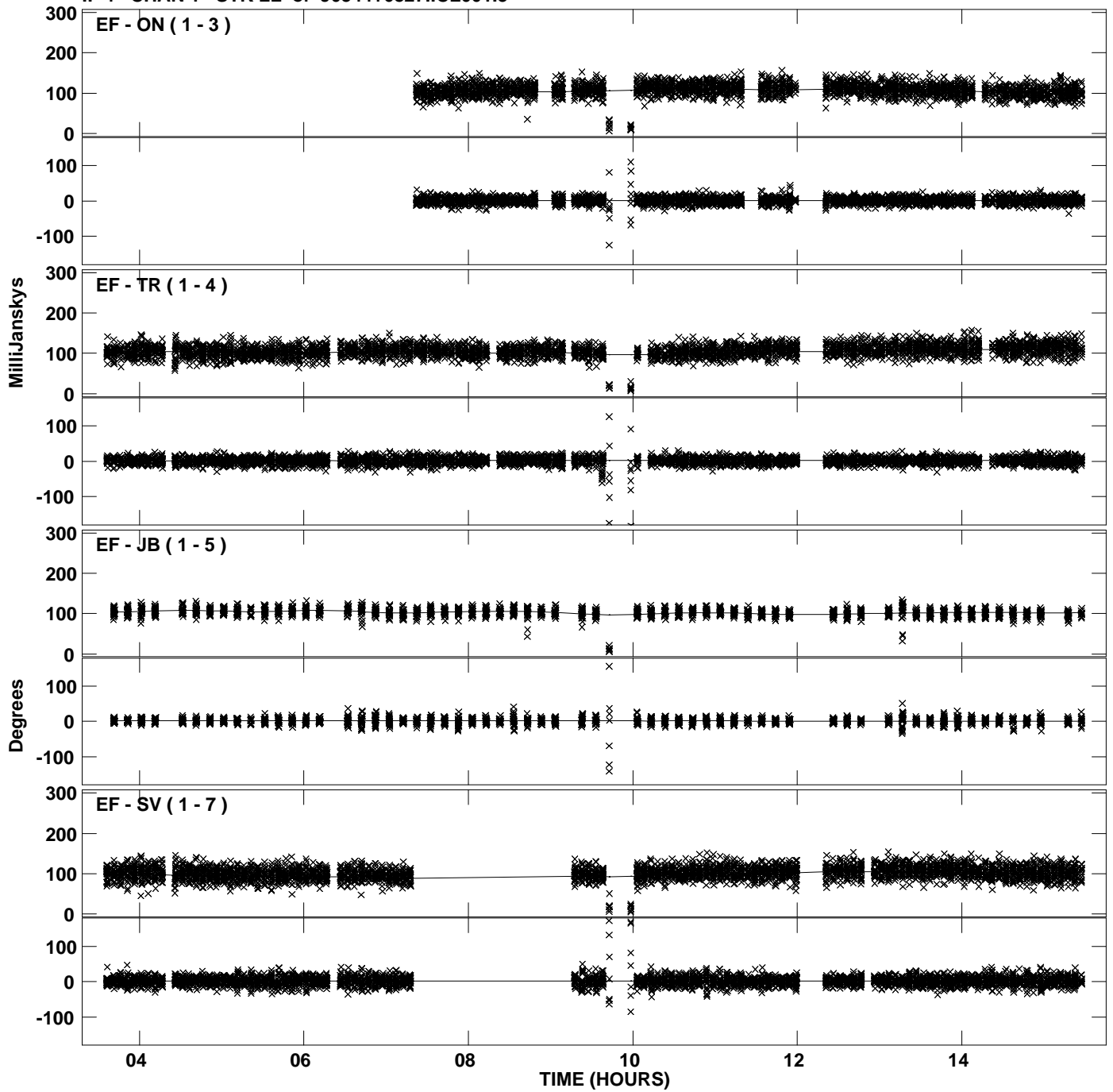
Plot file version 7 created 24-AUG-2011 19:13:57
Amplitude and Phase vs Time for J0344+6827.MULTI.1 CL # 3
IF 3 CHAN 1 STK LL of J0344+6827.ICL001.3



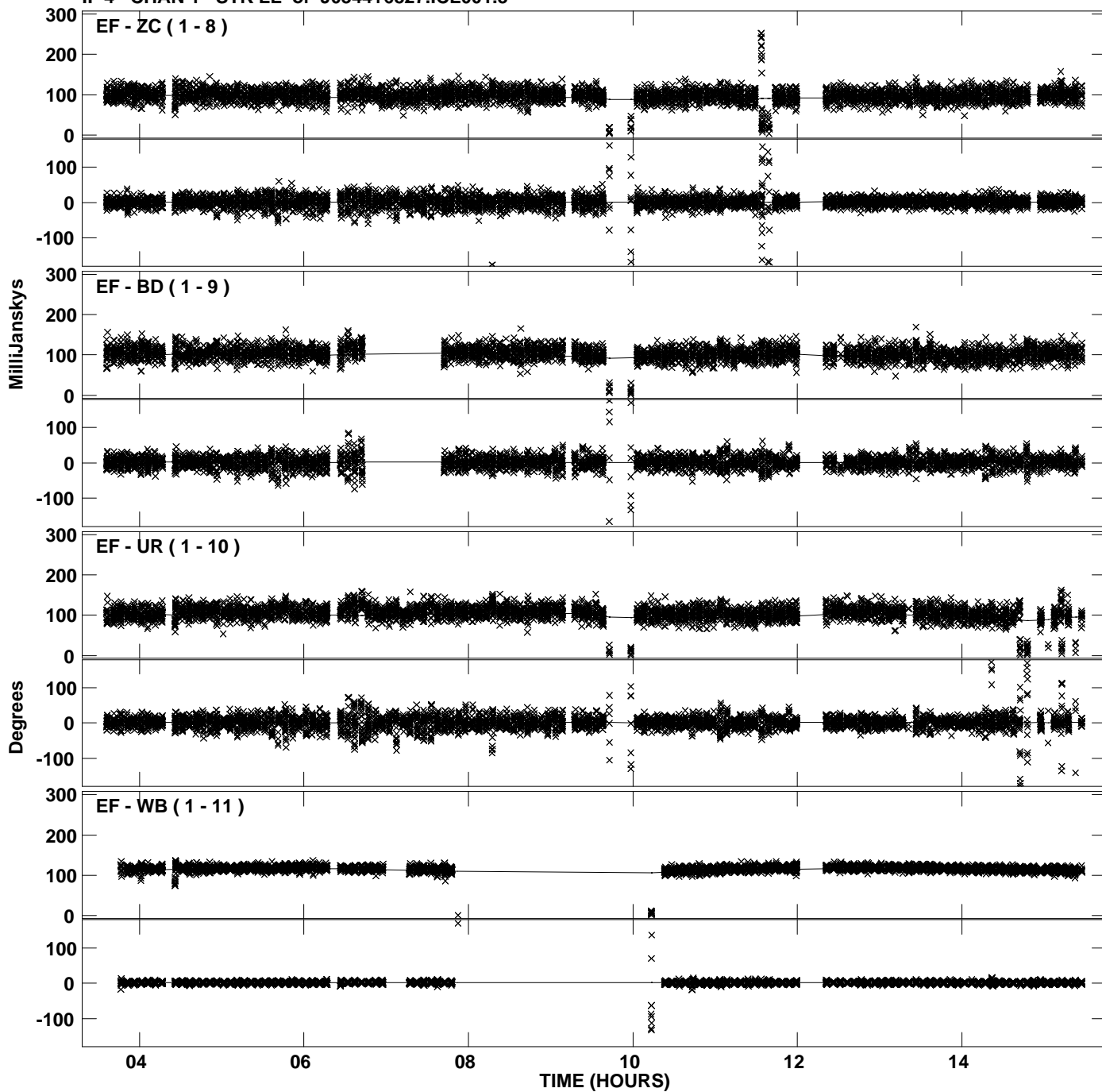
PLot file version 8 created 24-AUG-2011 19:13:58
Amplitude andPhase vs Time for J0344+6827.MULTI.1 CL # 3
IF 3 CHAN 1 STK LL of J0344+6827.ICL001.3



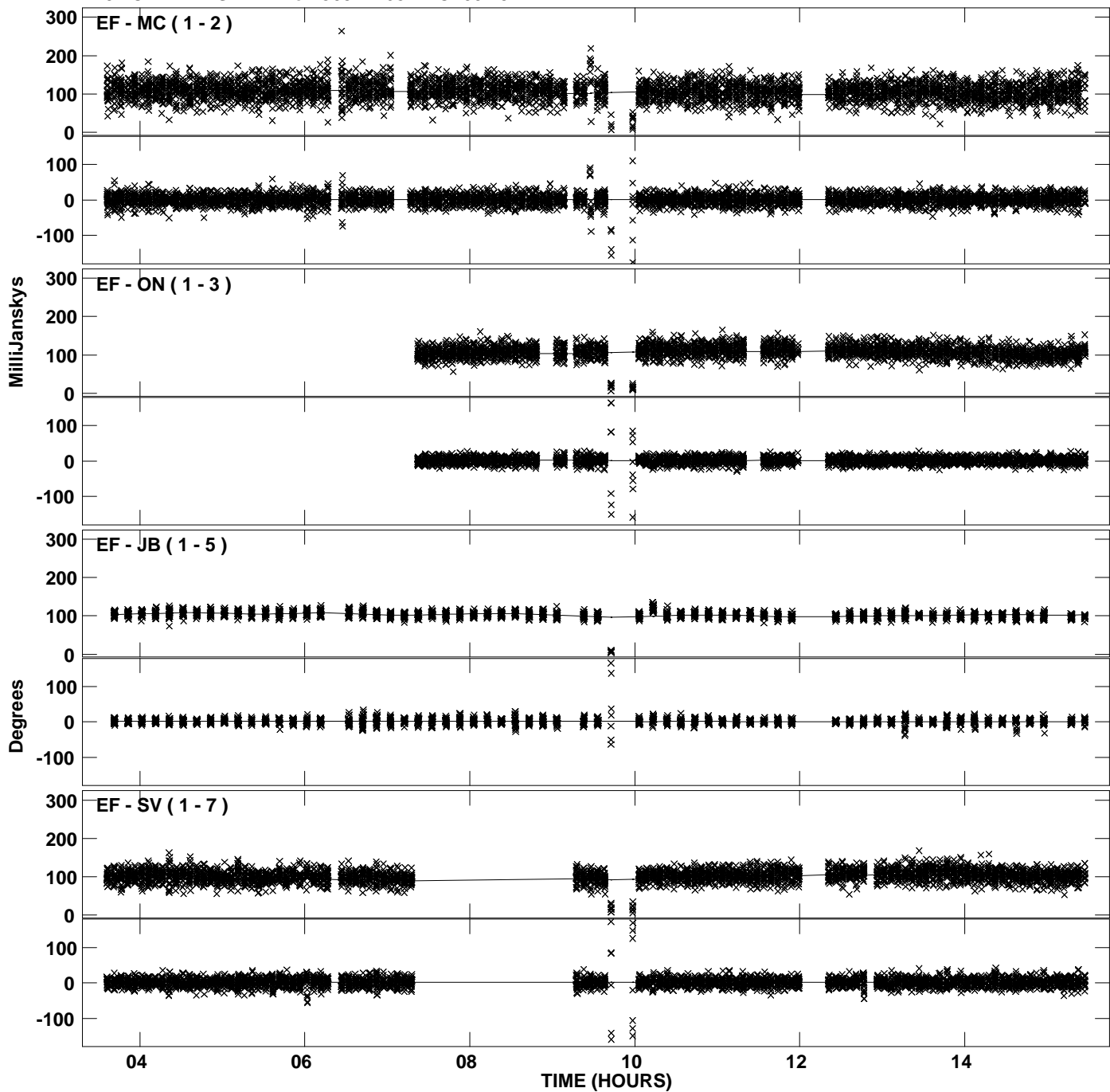
Plot file version 9 created 24-AUG-2011 19:14:22
Amplitude and Phase vs Time for J0344+6827.MULTI.1 CL # 3
IF 4 CHAN 1 STK LL of J0344+6827.ICL001.3



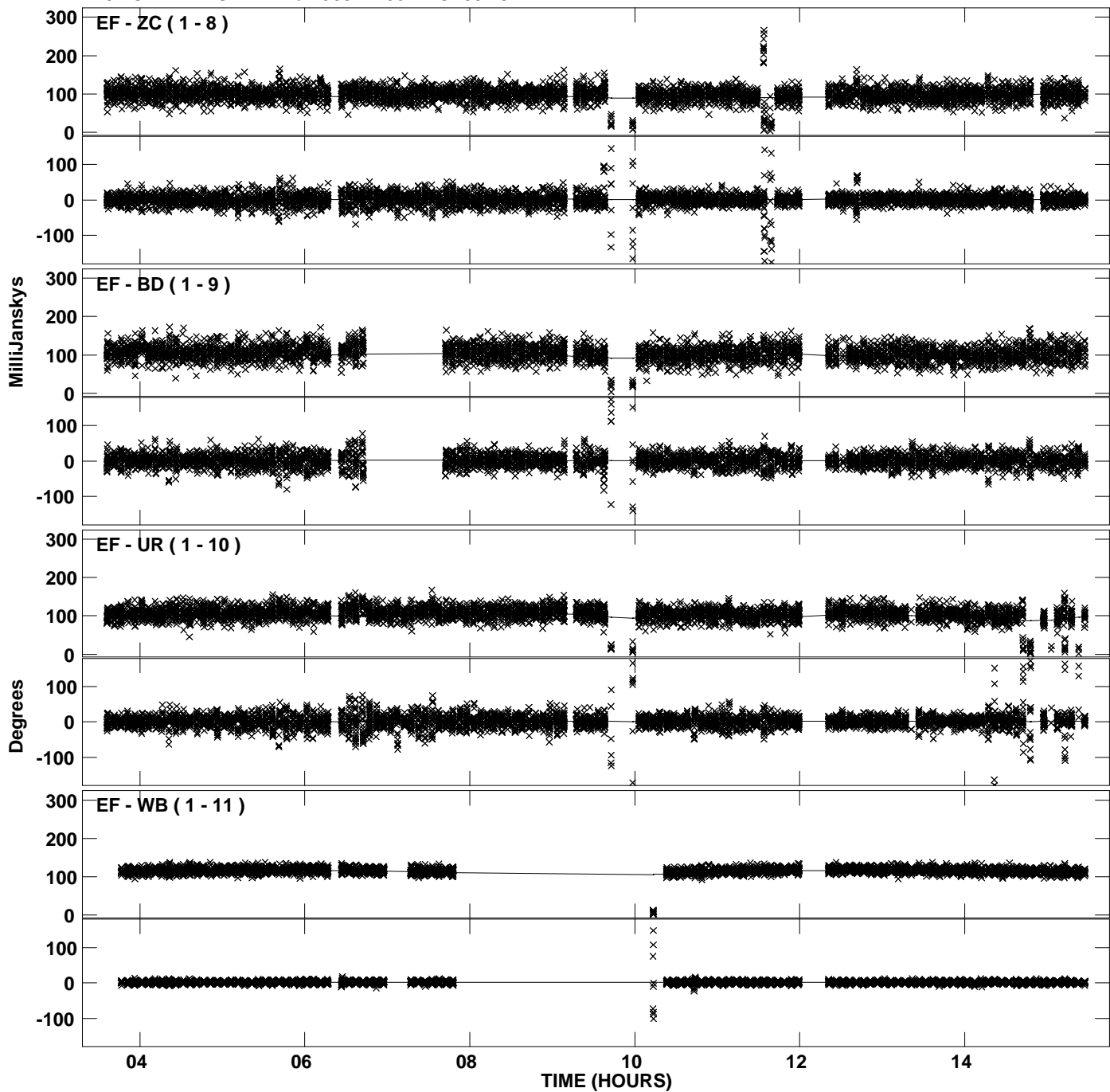
PLot file version 10 created 24-AUG-2011 19:14:24
Amplitude and Phase vs Time for J0344+6827.MULTI.1 CL # 3
IF 4 CHAN 1 STK LL of J0344+6827.ICL001.3



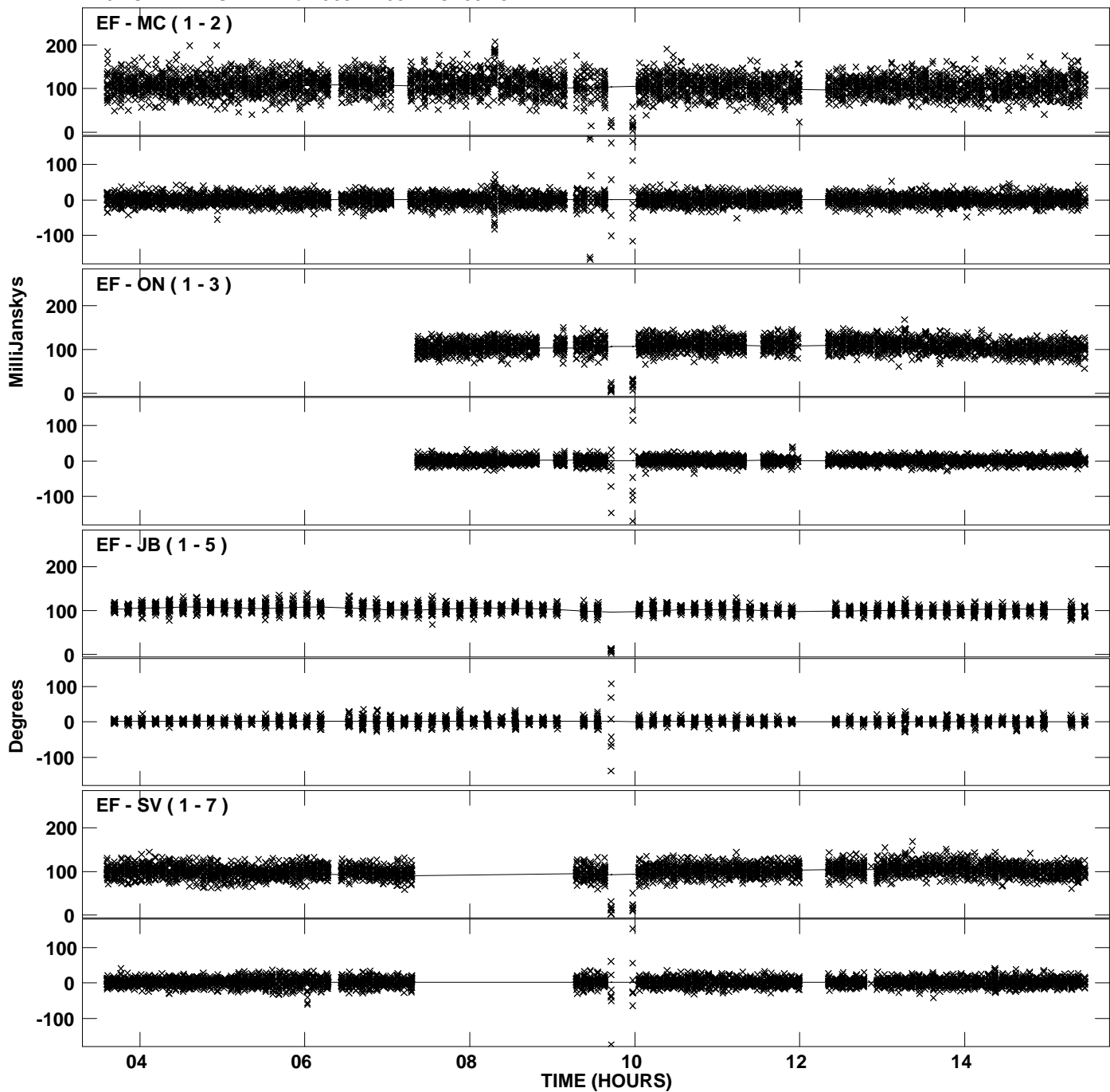
PLot file version 11 created 24-AUG-2011 19:14:50
Amplitude andPhase vs Time for J0344+6827.MULTI.1 CL # 3
IF 5 CHAN 1 STK LL of J0344+6827.ICL001.3



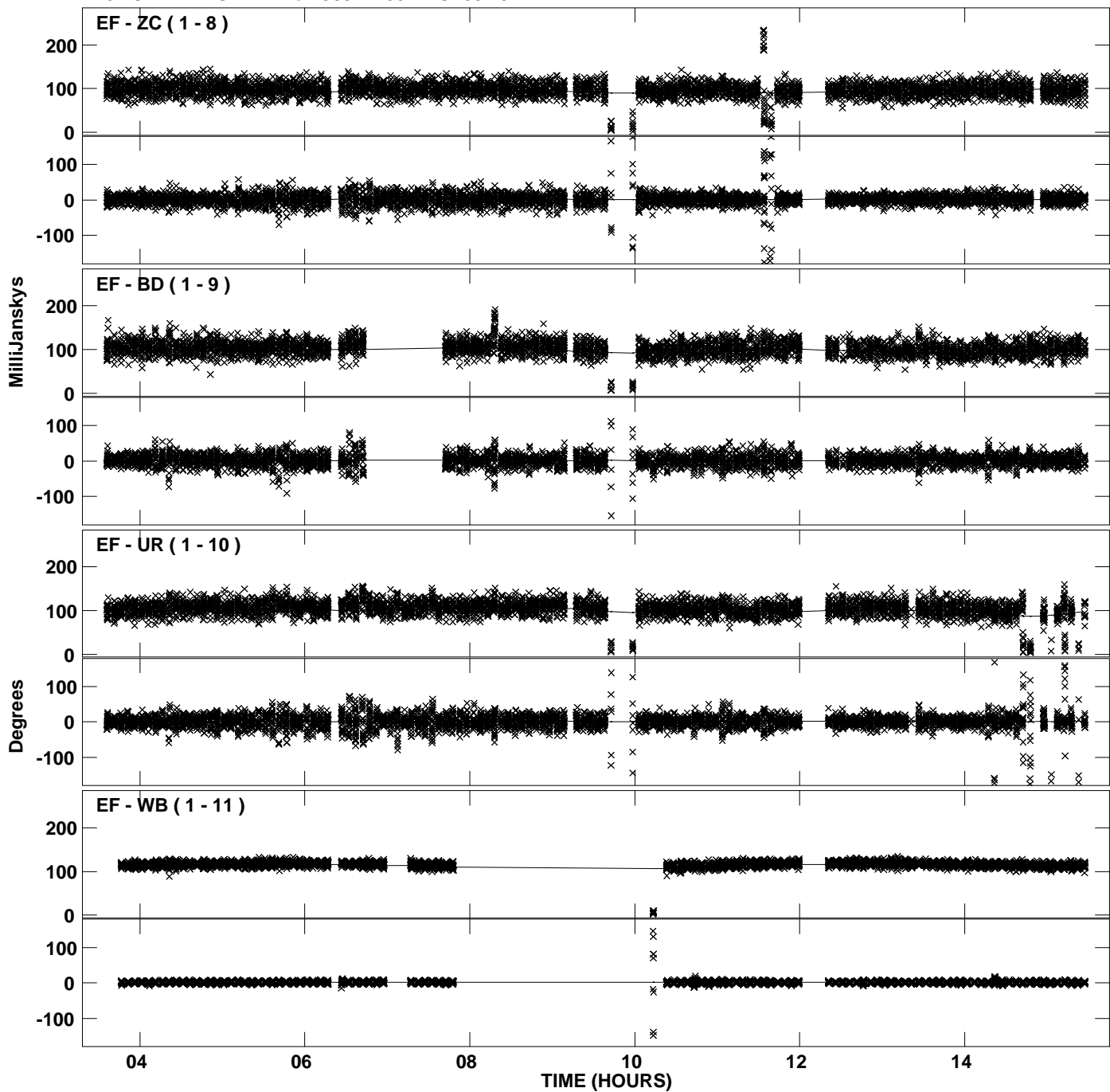
Plot file version 12 created 24-AUG-2011 19:14:52
Amplitude and Phase vs Time for J0344+6827.MULTI.1 CL # 3
IF 5 CHAN 1 STK LL of J0344+6827.ICL001.3



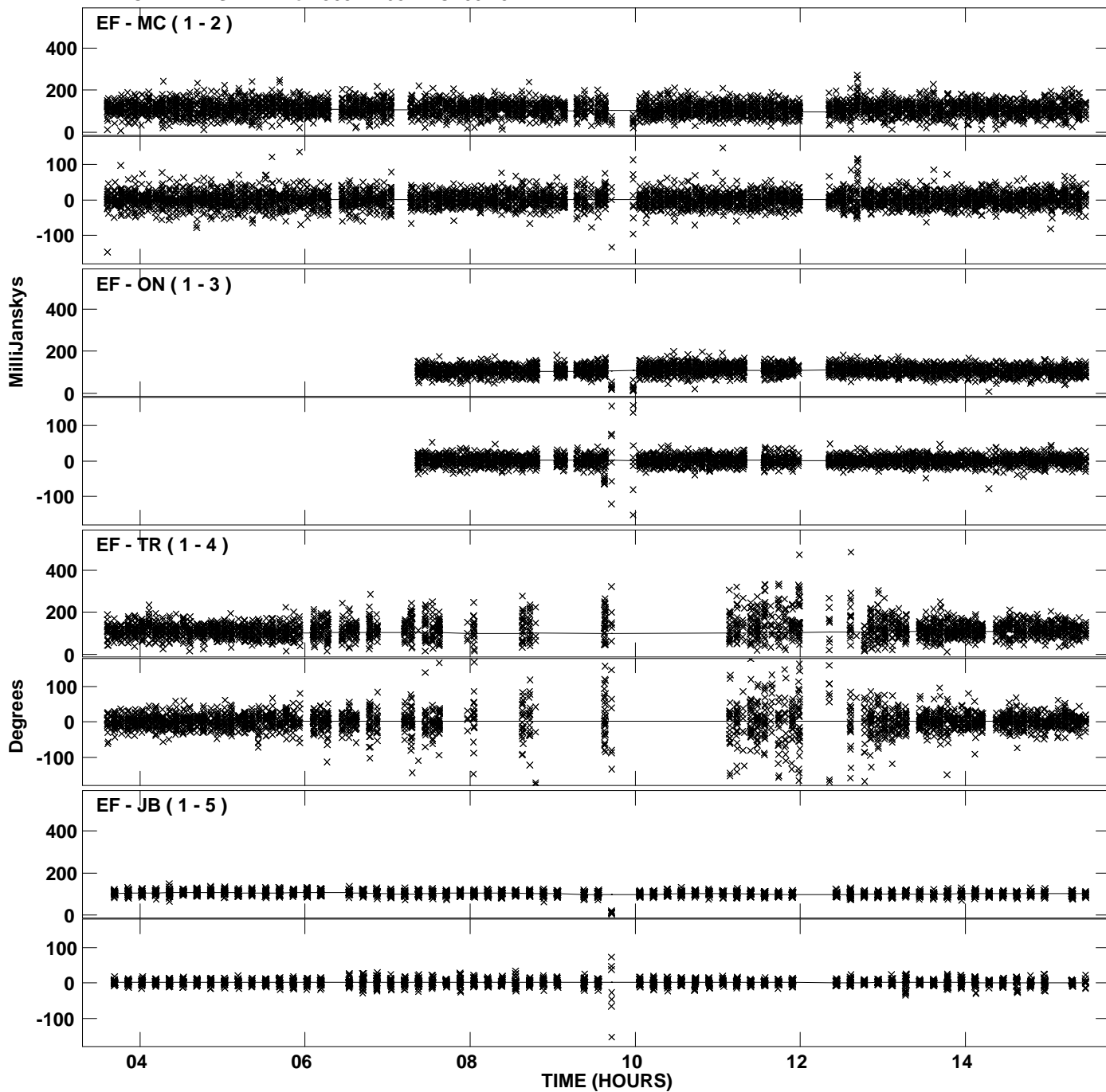
PLot file version 13 created 24-AUG-2011 19:15:03
Amplitude andPhase vs Time for J0344+6827.MULTI.1 CL # 3
IF 6 CHAN 1 STK LL of J0344+6827.ICL001.3



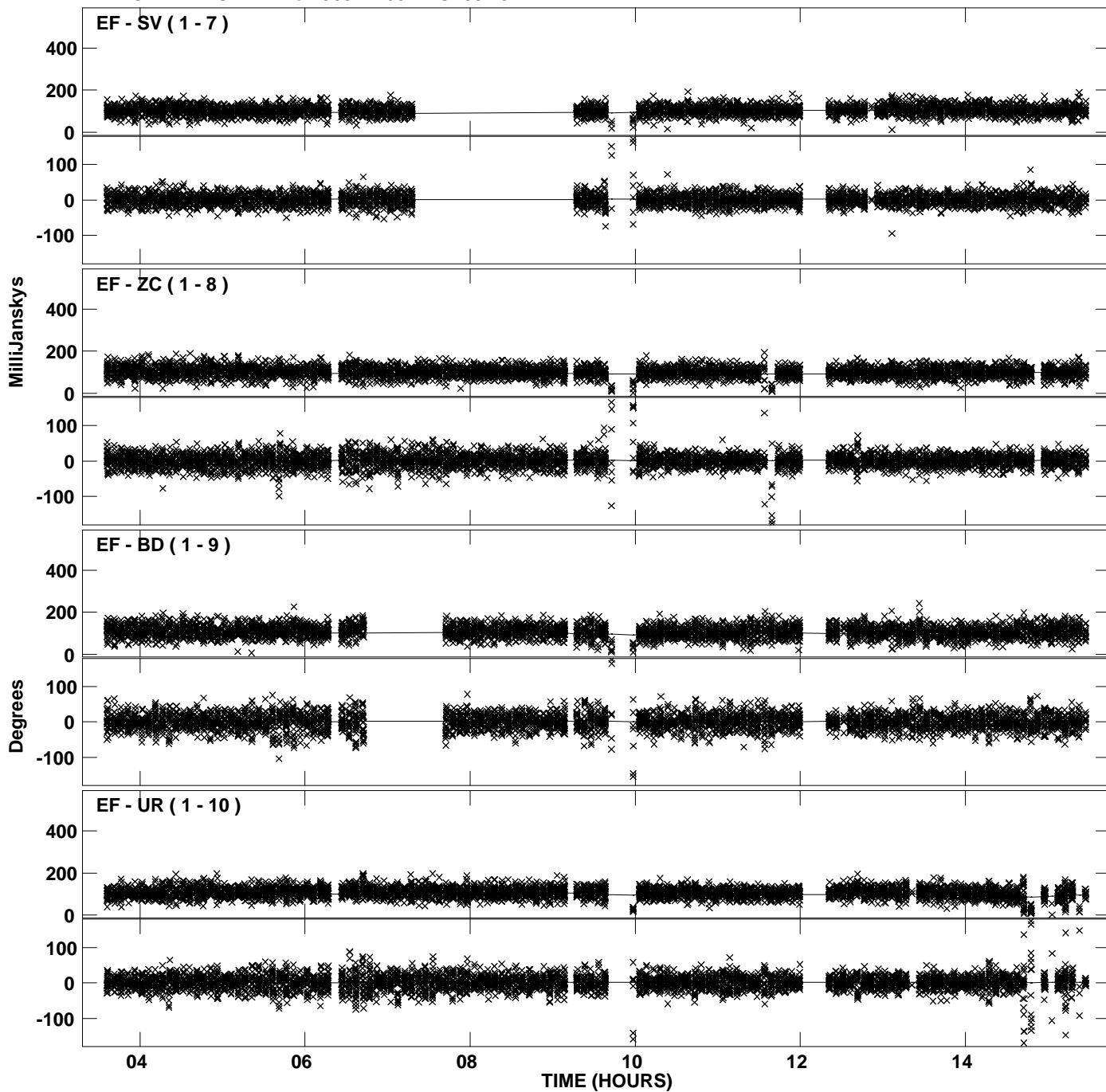
PLot file version 14 created 24-AUG-2011 19:15:03
Amplitude and Phase vs Time for J0344+6827.MULTI.1 CL # 3
IF 6 CHAN 1 STK LL of J0344+6827.ICL001.3



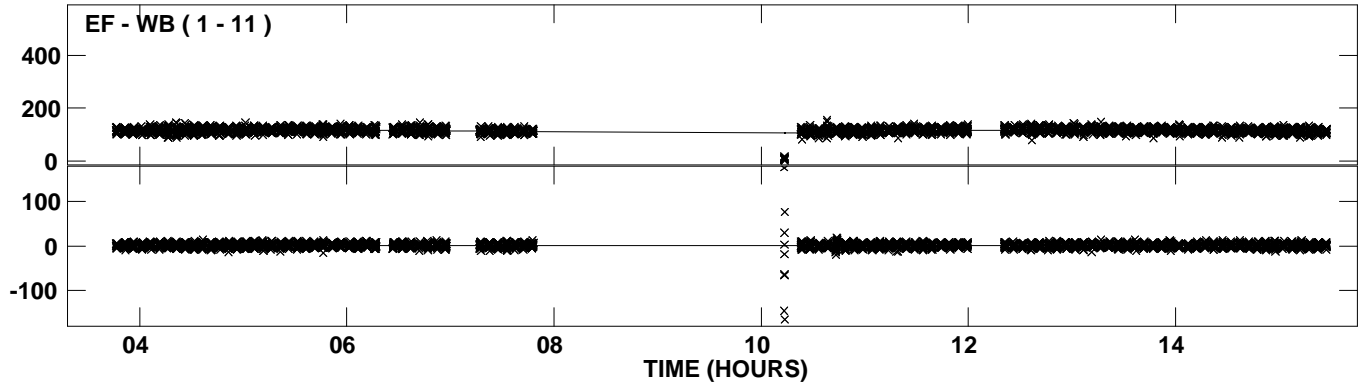
Plot file version 15 created 24-AUG-2011 19:15:04
Amplitude and Phase vs Time for J0344+6827.MULTI.1 CL # 3
IF 7 CHAN 1 STK LL of J0344+6827.ICL001.3



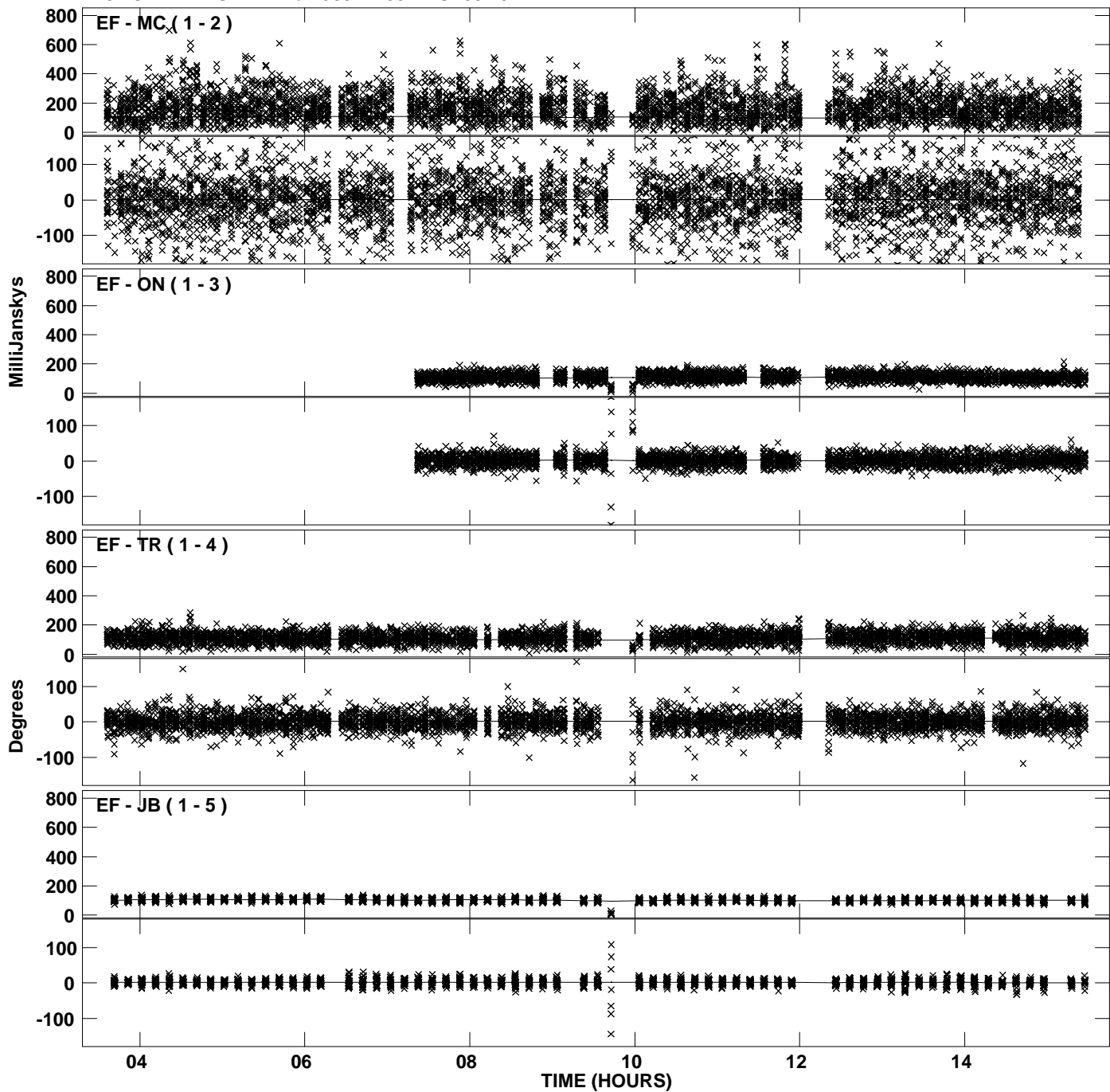
Plot file version 16 created 24-AUG-2011 19:15:04
Amplitude and Phase vs Time for J0344+6827.MULTI.1 CL # 3
IF 7 CHAN 1 STK LL of J0344+6827.ICL001.3



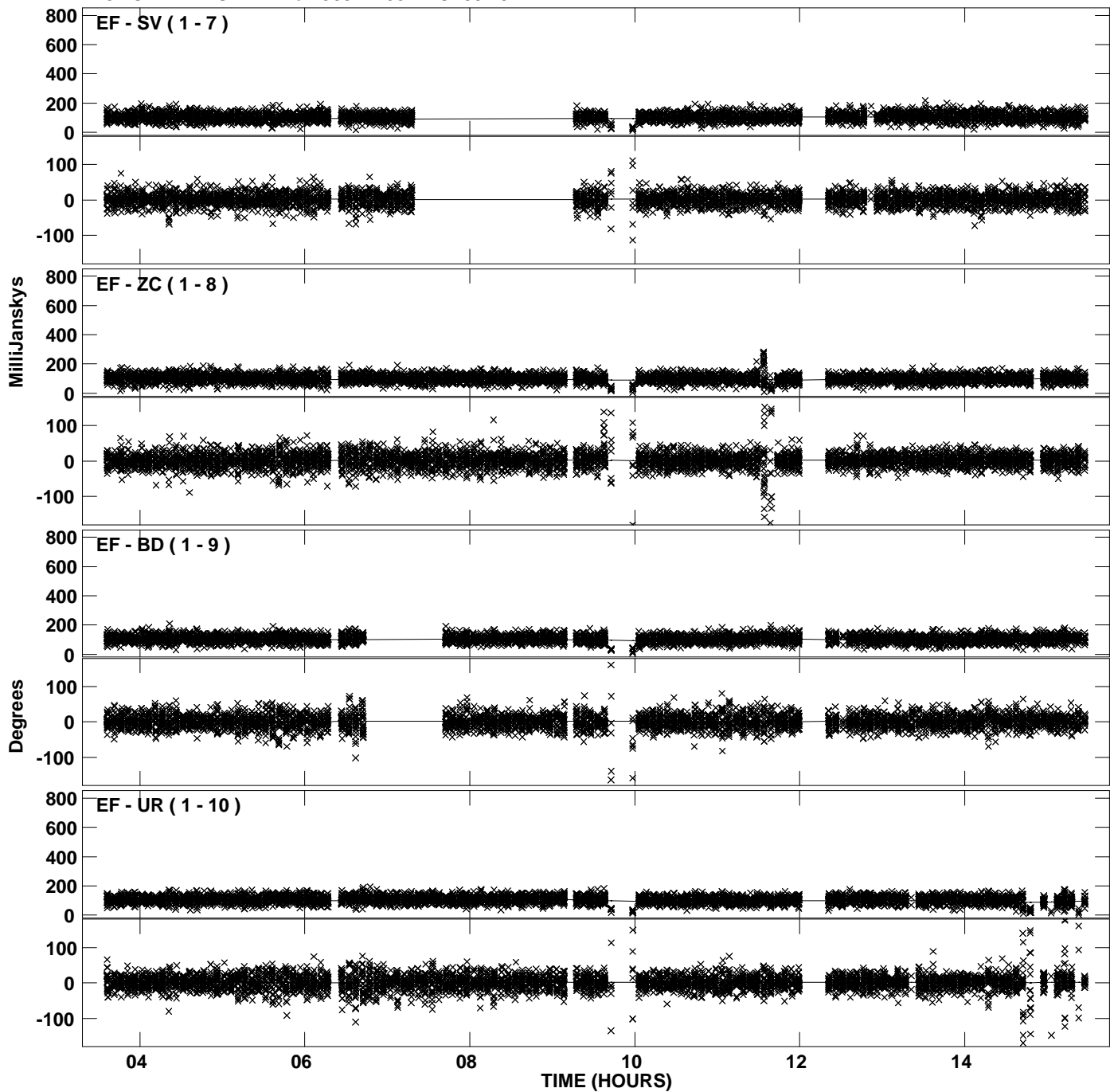
PLot file version 17 created 24-AUG-2011 19:15:04
Amplitude andPhase vs Time for J0344+6827.MULTI.1 CL # 3
IF 7 CHAN 1 STK LL of J0344+6827.ICL001.3



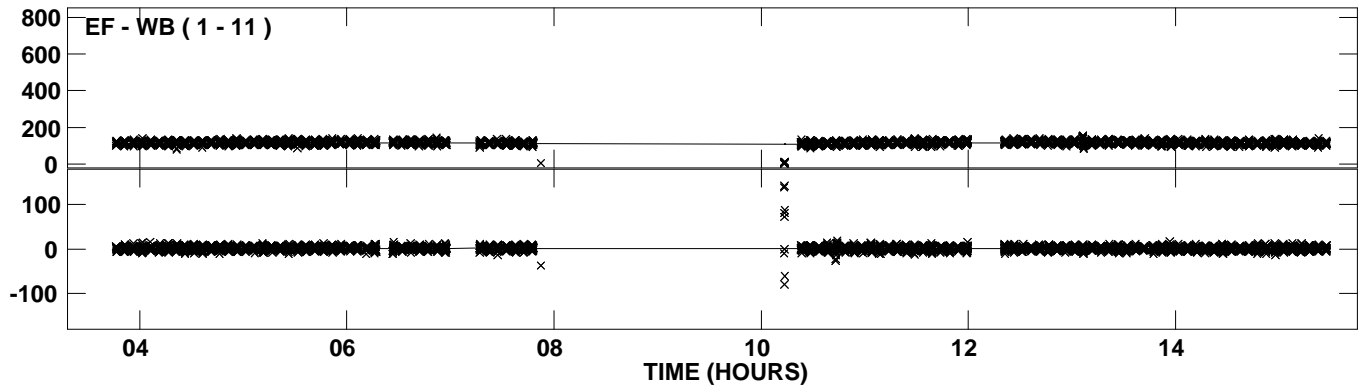
Plot file version 18 created 24-AUG-2011 19:15:05
Amplitude andPhase vs Time for J0344+6827.MULTI.1 CL # 3
IF 8 CHAN 1 STK LL of J0344+6827.ICL001.3



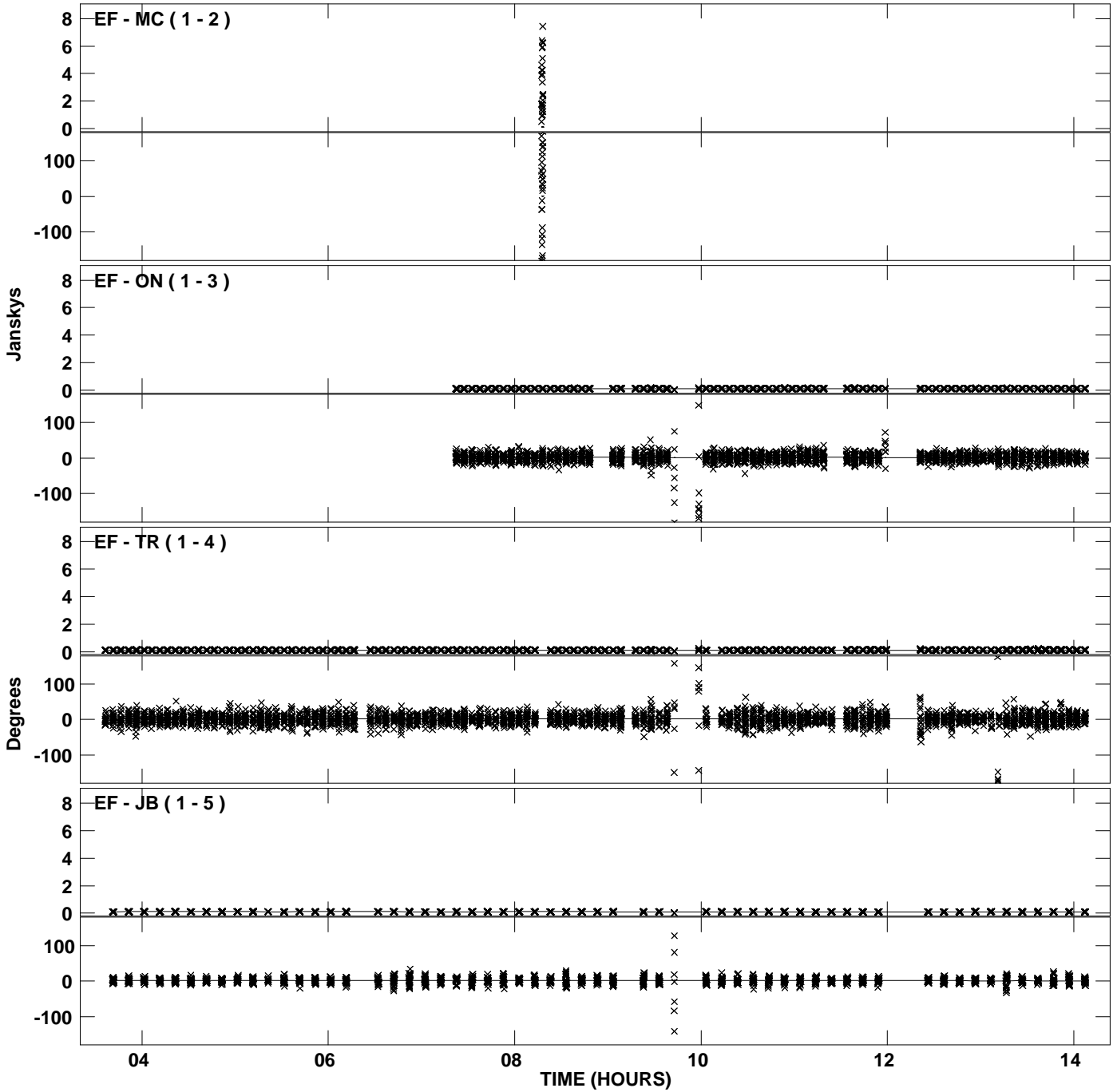
PLot file version 19 created 24-AUG-2011 19:15:05
Amplitude and Phase vs Time for J0344+6827.MULTI.1 CL # 3
IF 8 CHAN 1 STK LL of J0344+6827.ICL001.3



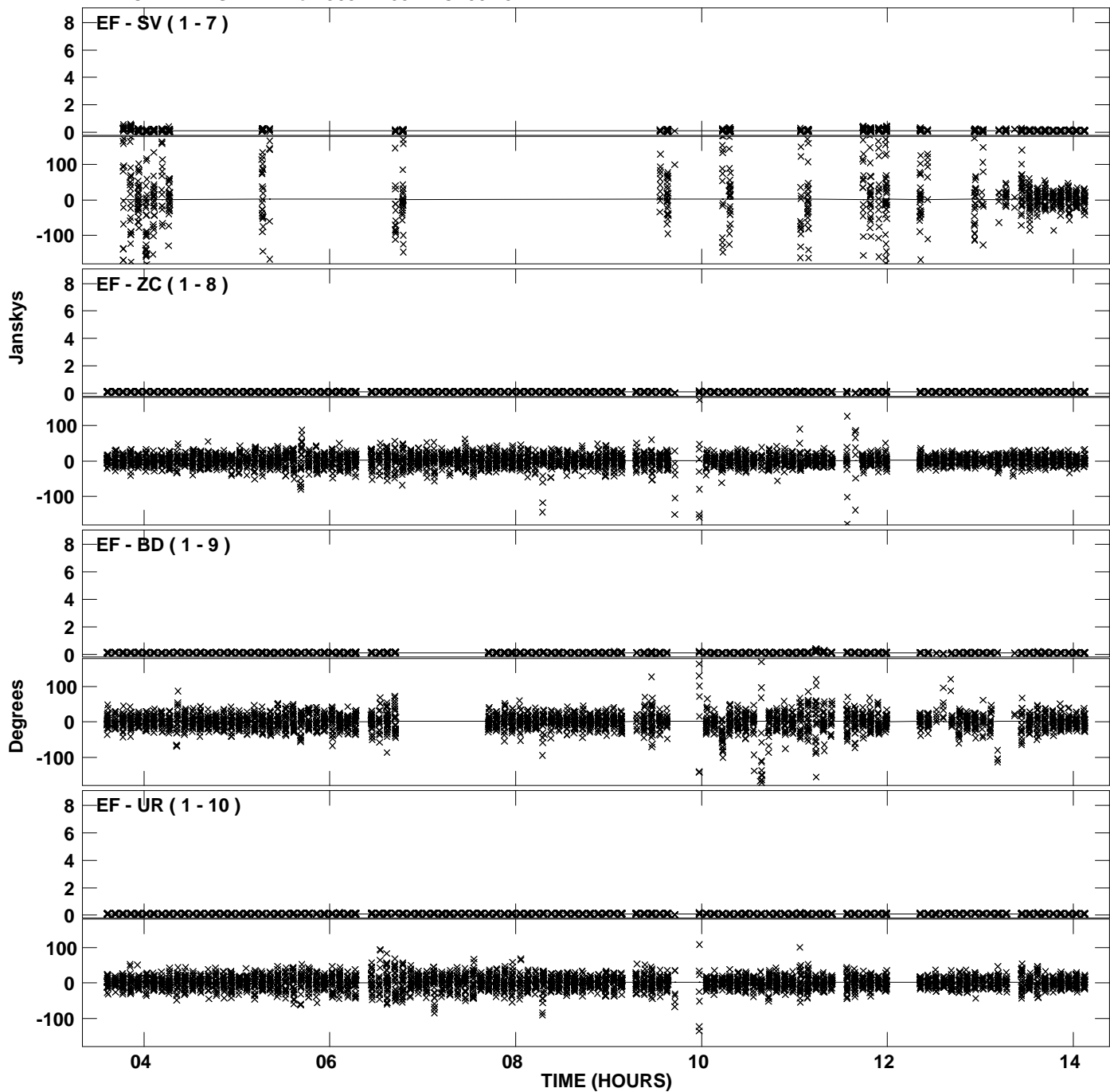
PLot file version 20 created 24-AUG-2011 19:15:05
Amplitude andPhase vs Time for J0344+6827.MULTI.1 CL # 3
IF 8 CHAN 1 STK LL of J0344+6827.ICL001.3



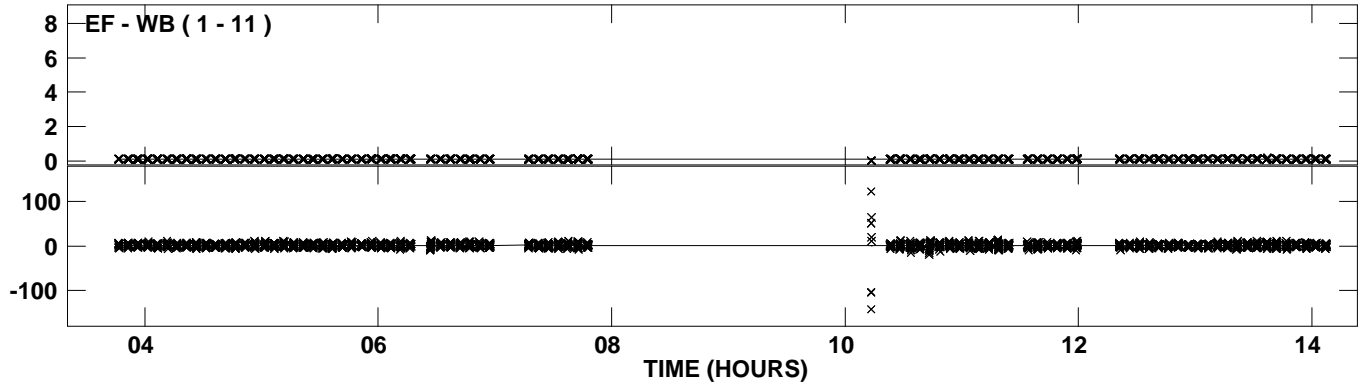
Plot file version 21 created 24-AUG-2011 19:15:05
Amplitude andPhase vs Time for J0344+6827.MULTI.1 CL # 3
IF 1 CHAN 1 STK RR of J0344+6827.ICL001.3



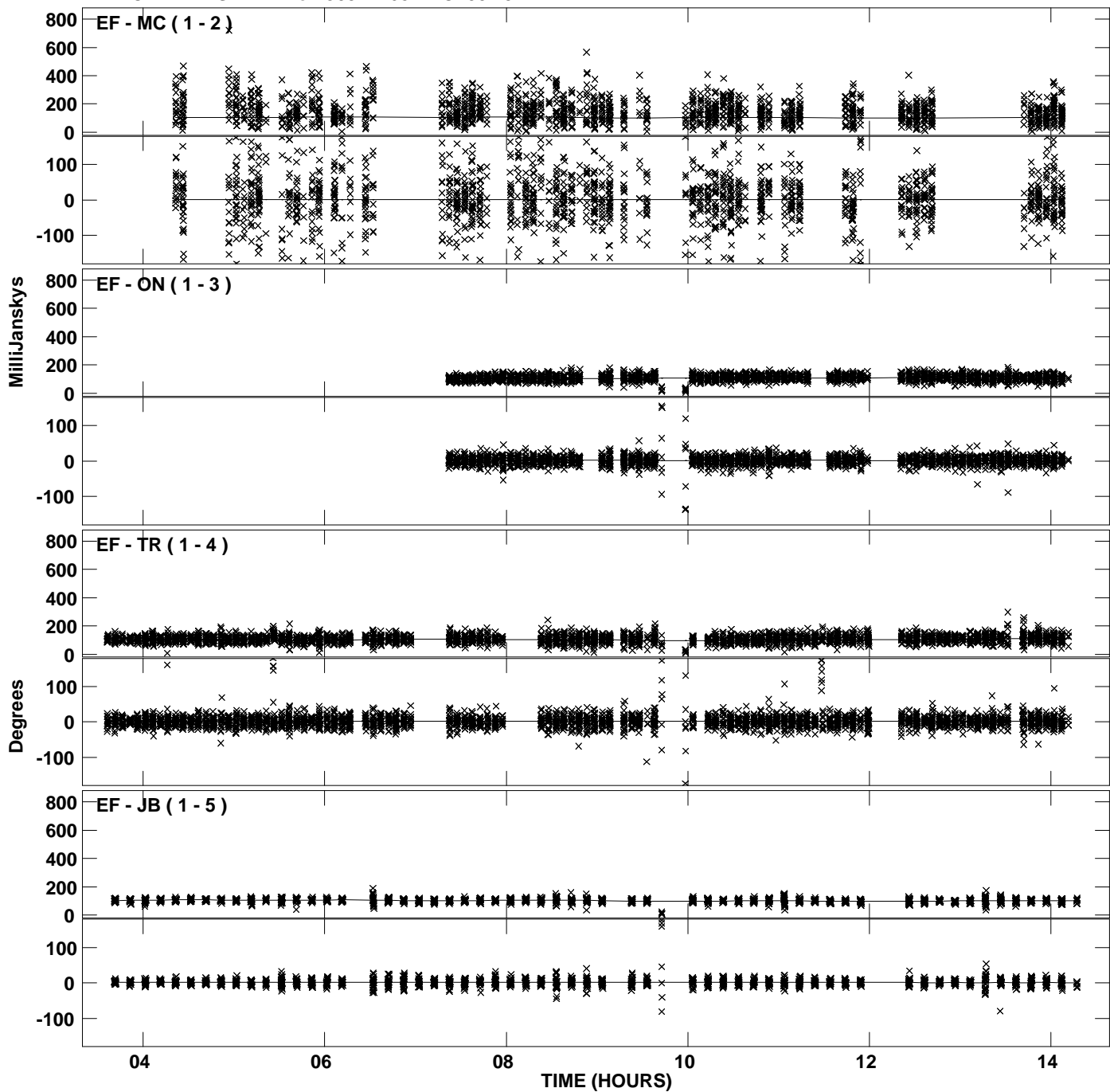
Plot file version 22 created 24-AUG-2011 19:15:05
Amplitude and Phase vs Time for J0344+6827.MULTI.1 CL # 3
IF 1 CHAN 1 STK RR of J0344+6827.ICL001.3



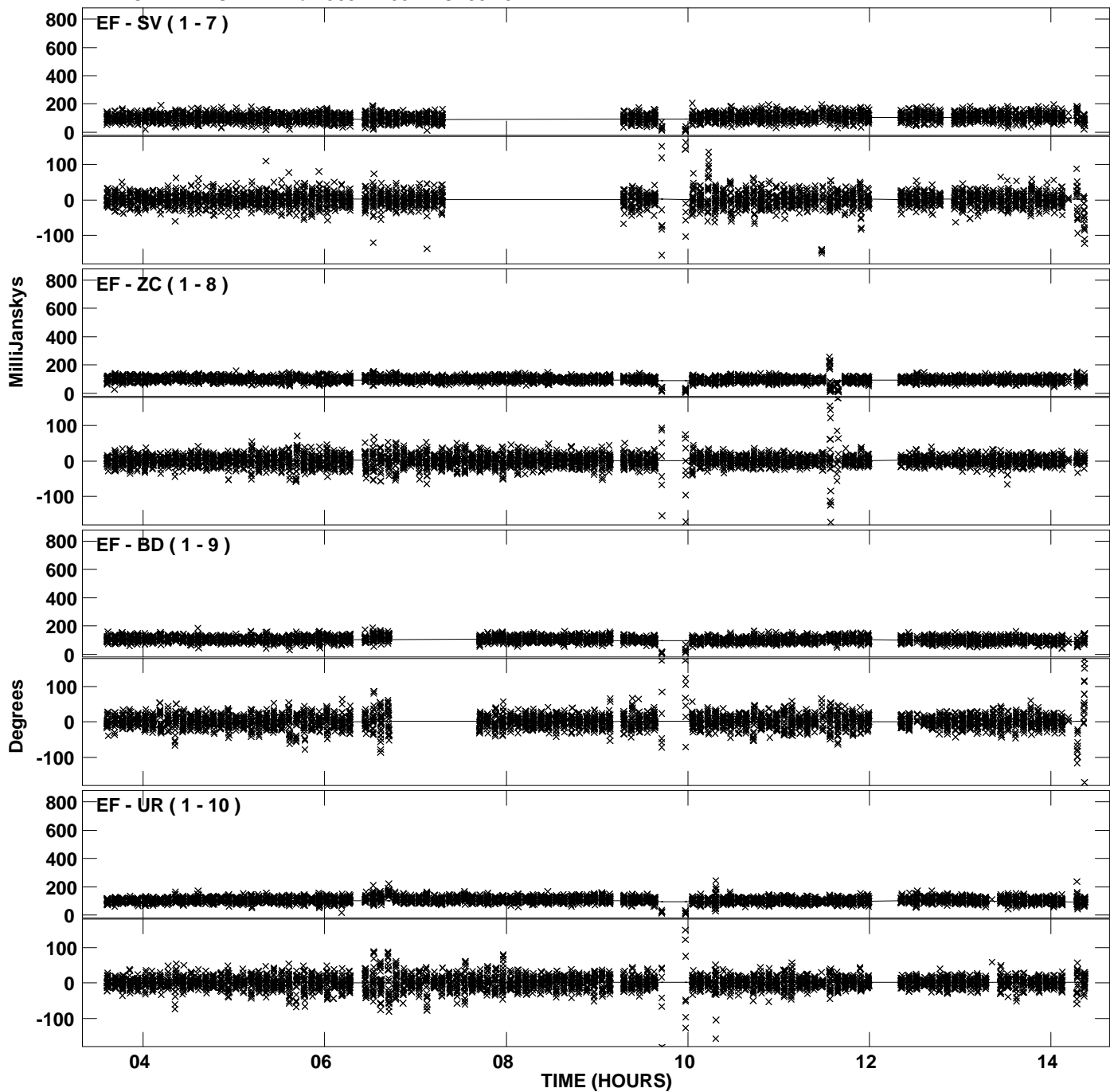
PLot file version 23 created 24-AUG-2011 19:15:05
Amplitude andPhase vs Time for J0344+6827.MULTI.1 CL # 3
IF 1 CHAN 1 STK RR of J0344+6827.ICL001.3



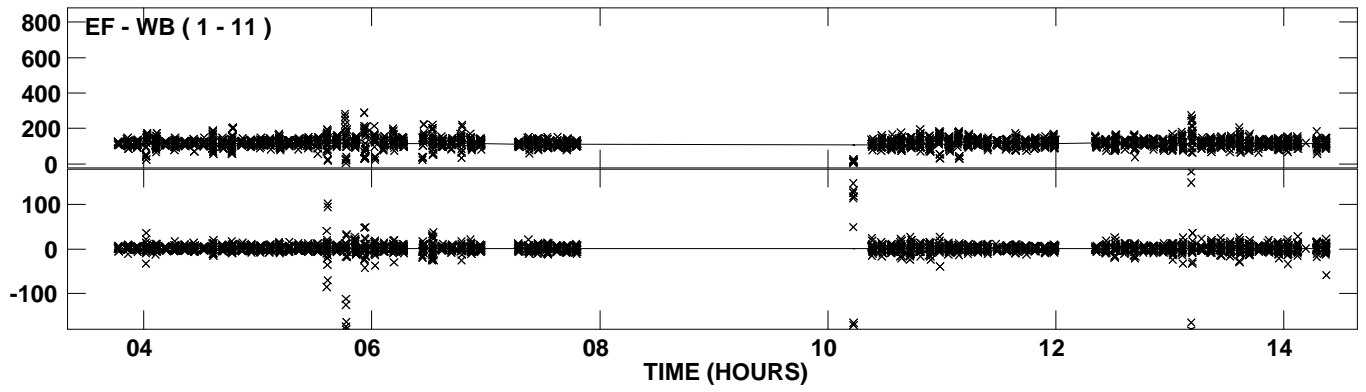
Plot file version 24 created 24-AUG-2011 19:15:06
Amplitude and Phase vs Time for J0344+6827.MULTI.1 CL # 3
IF 2 CHAN 1 STK RR of J0344+6827.ICL001.3



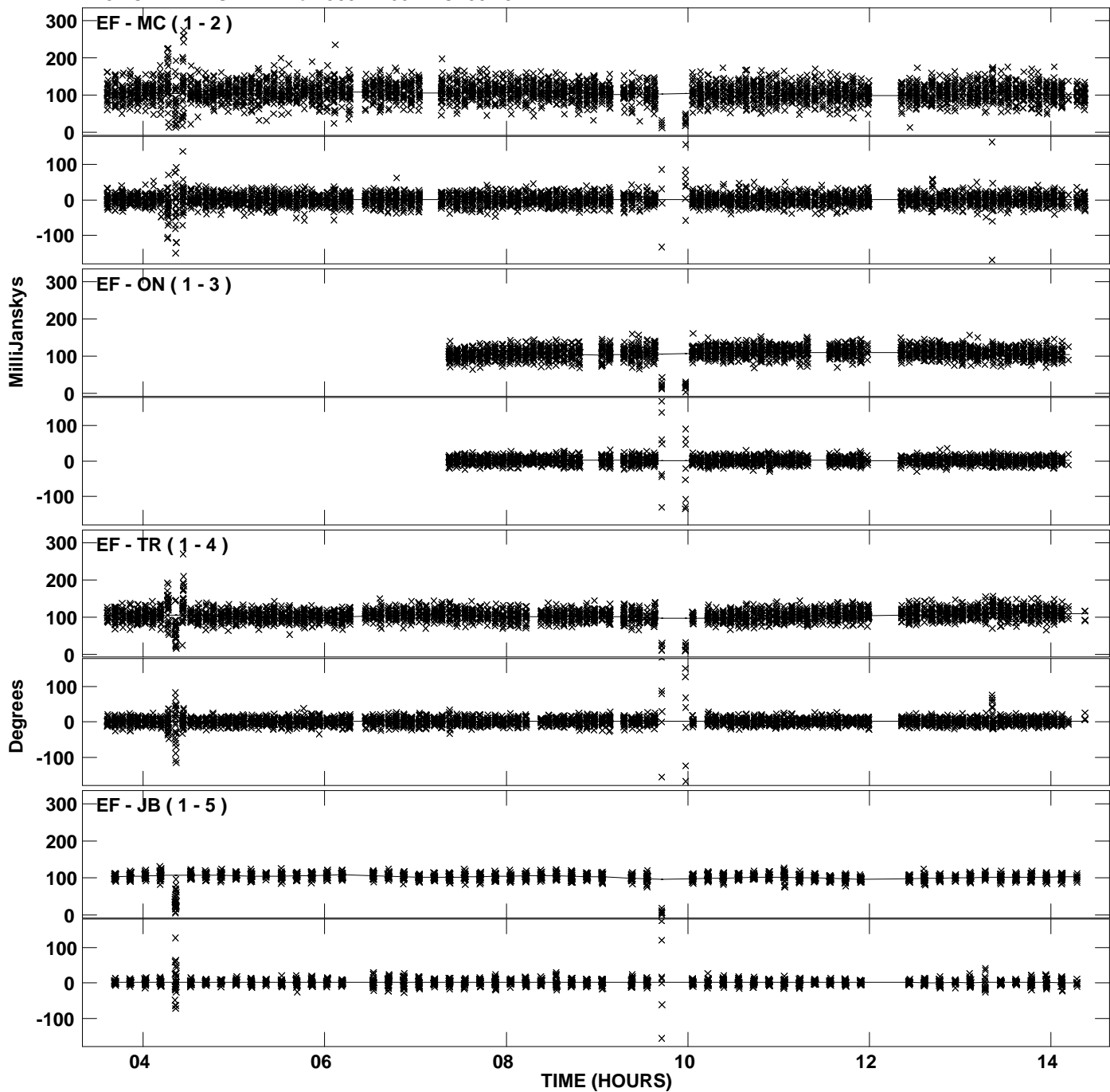
PLot file version 25 created 24-AUG-2011 19:15:06
Amplitude andPhase vs Time for J0344+6827.MULTI.1 CL # 3
IF 2 CHAN 1 STK RR of J0344+6827.ICL001.3



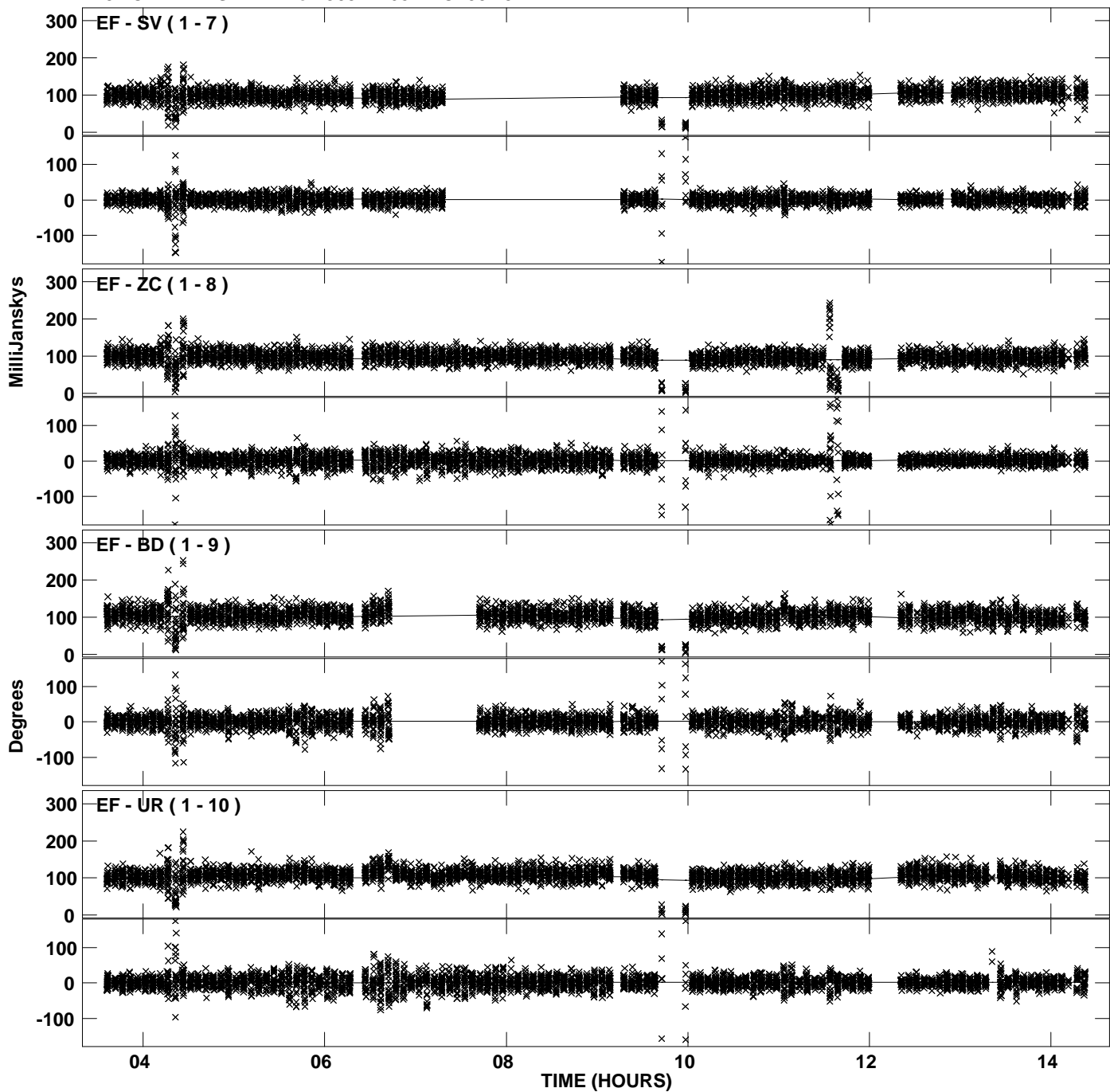
PLot file version 26 created 24-AUG-2011 19:15:07
Amplitude andPhase vs Time for J0344+6827.MULTI.1 CL # 3
IF 2 CHAN 1 STK RR of J0344+6827.ICL001.3



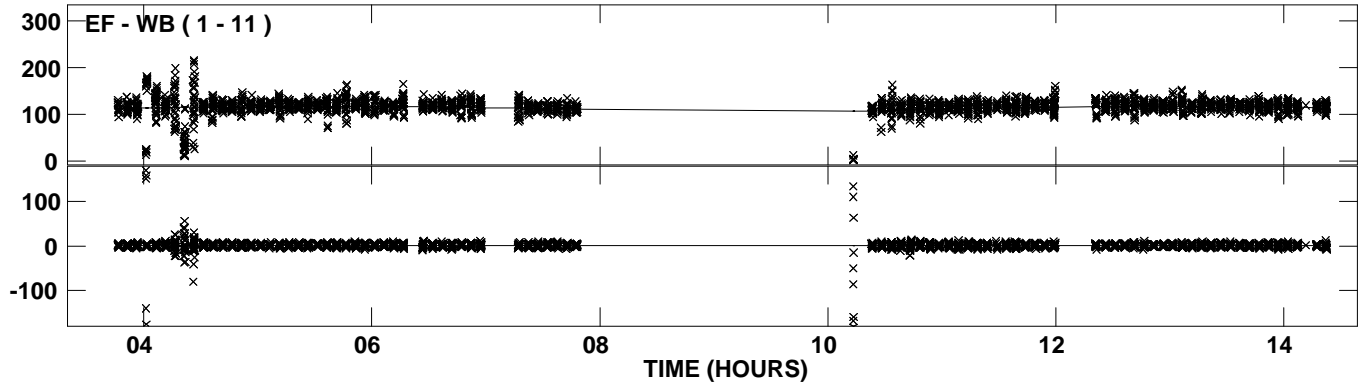
Plot file version 27 created 24-AUG-2011 19:15:07
Amplitude andPhase vs Time for J0344+6827.MULTI.1 CL # 3
IF 3 CHAN 1 STK RR of J0344+6827.ICL001.3



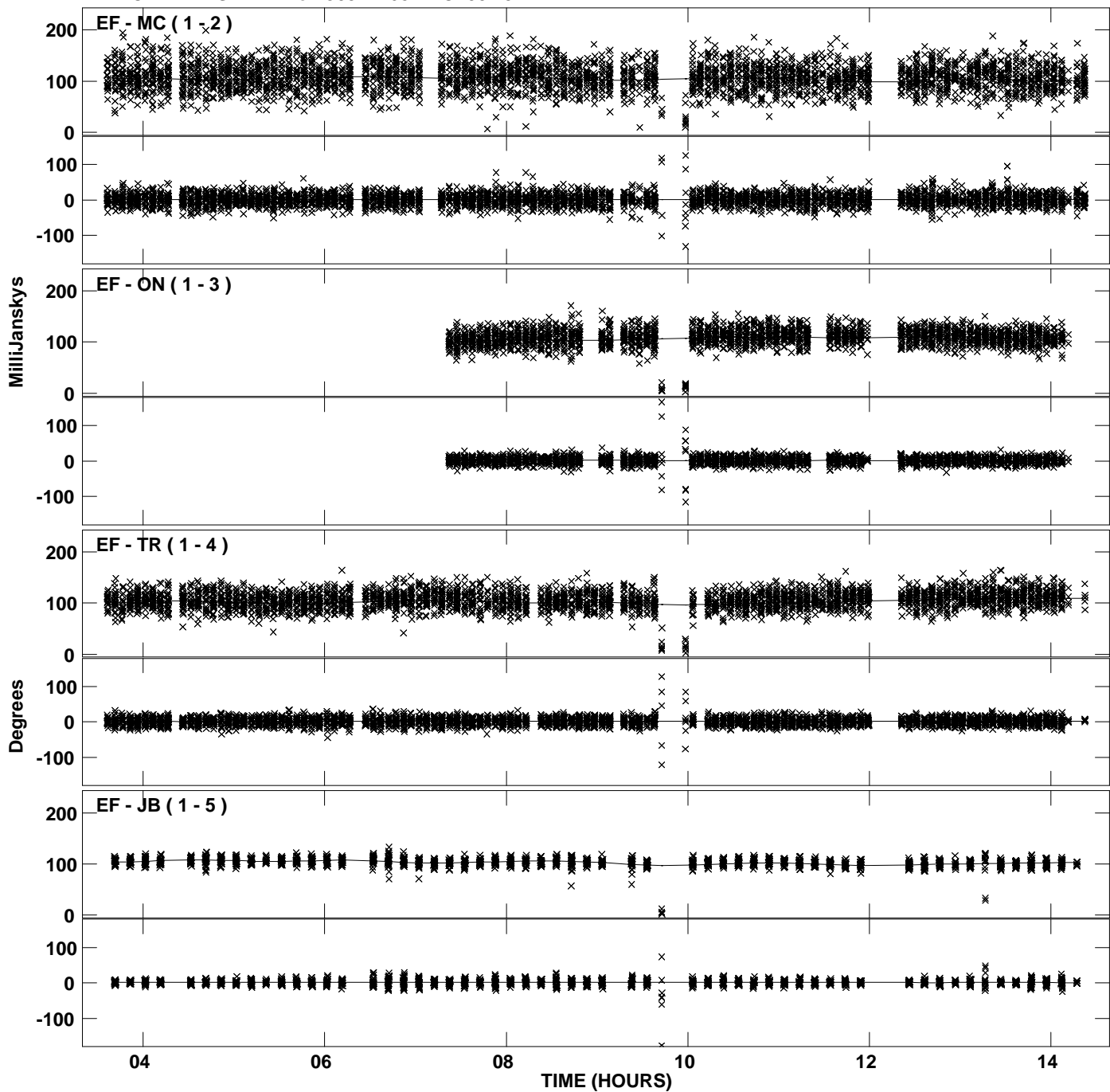
Plot file version 28 created 24-AUG-2011 19:15:07
Amplitude andPhase vs Time for J0344+6827.MULTI.1 CL # 3
IF 3 CHAN 1 STK RR of J0344+6827.ICL001.3



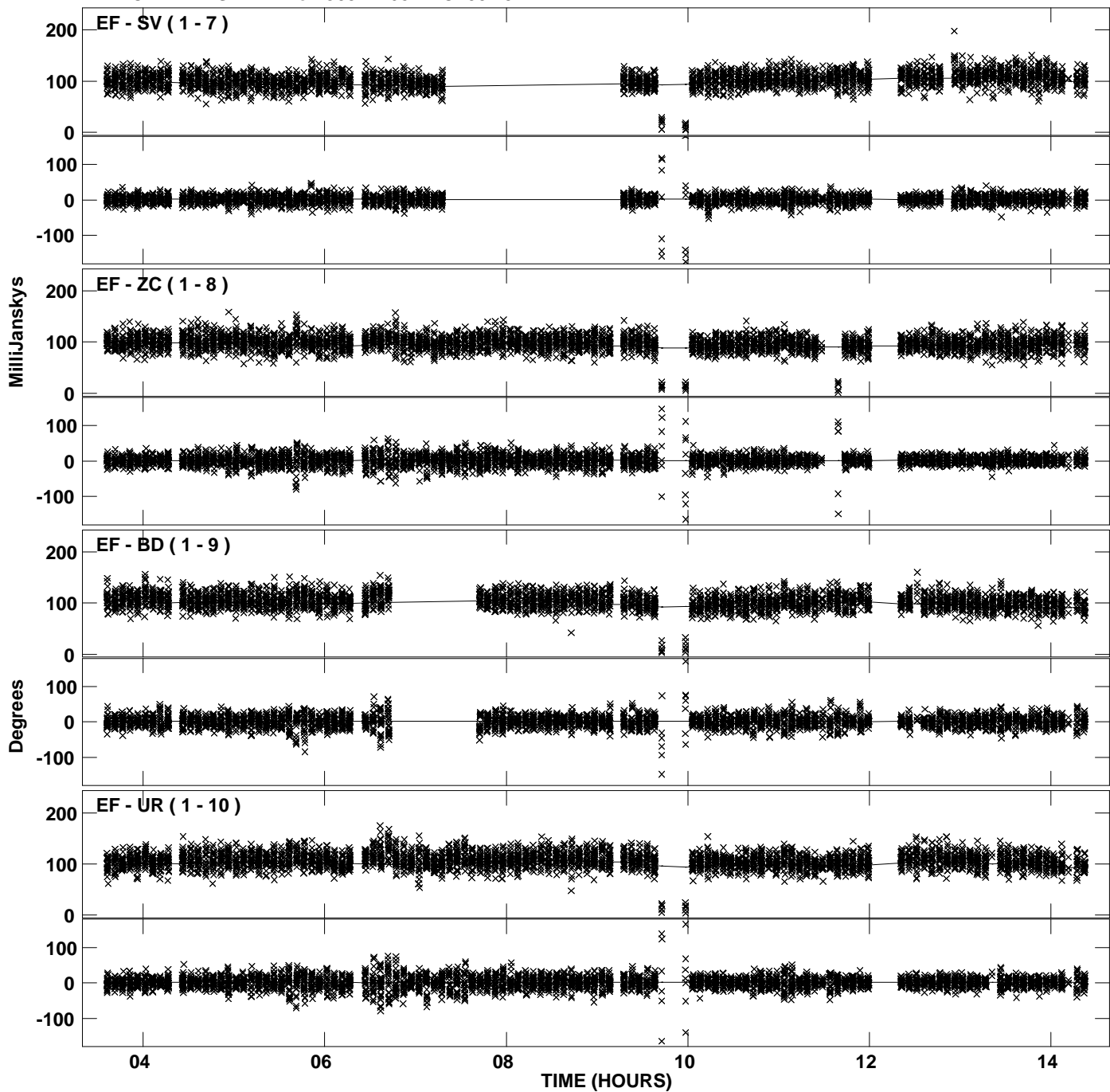
PLot file version 29 created 24-AUG-2011 19:15:07
Amplitude andPhase vs Time for J0344+6827.MULTI.1 CL # 3
IF 3 CHAN 1 STK RR of J0344+6827.ICL001.3



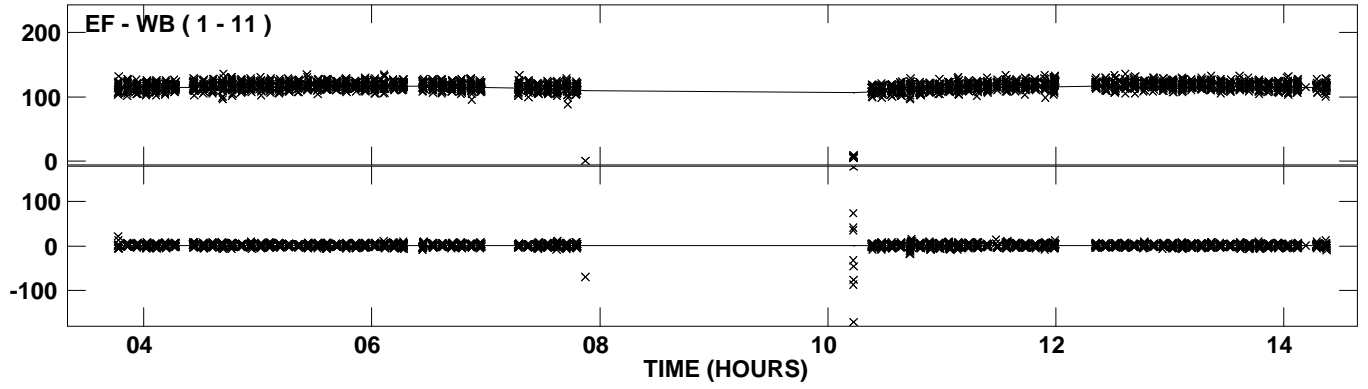
PLot file version 30 created 24-AUG-2011 19:15:08
Amplitude andPhase vs Time for J0344+6827.MULTI.1 CL # 3
IF 4 CHAN 1 STK RR of J0344+6827.ICL001.3



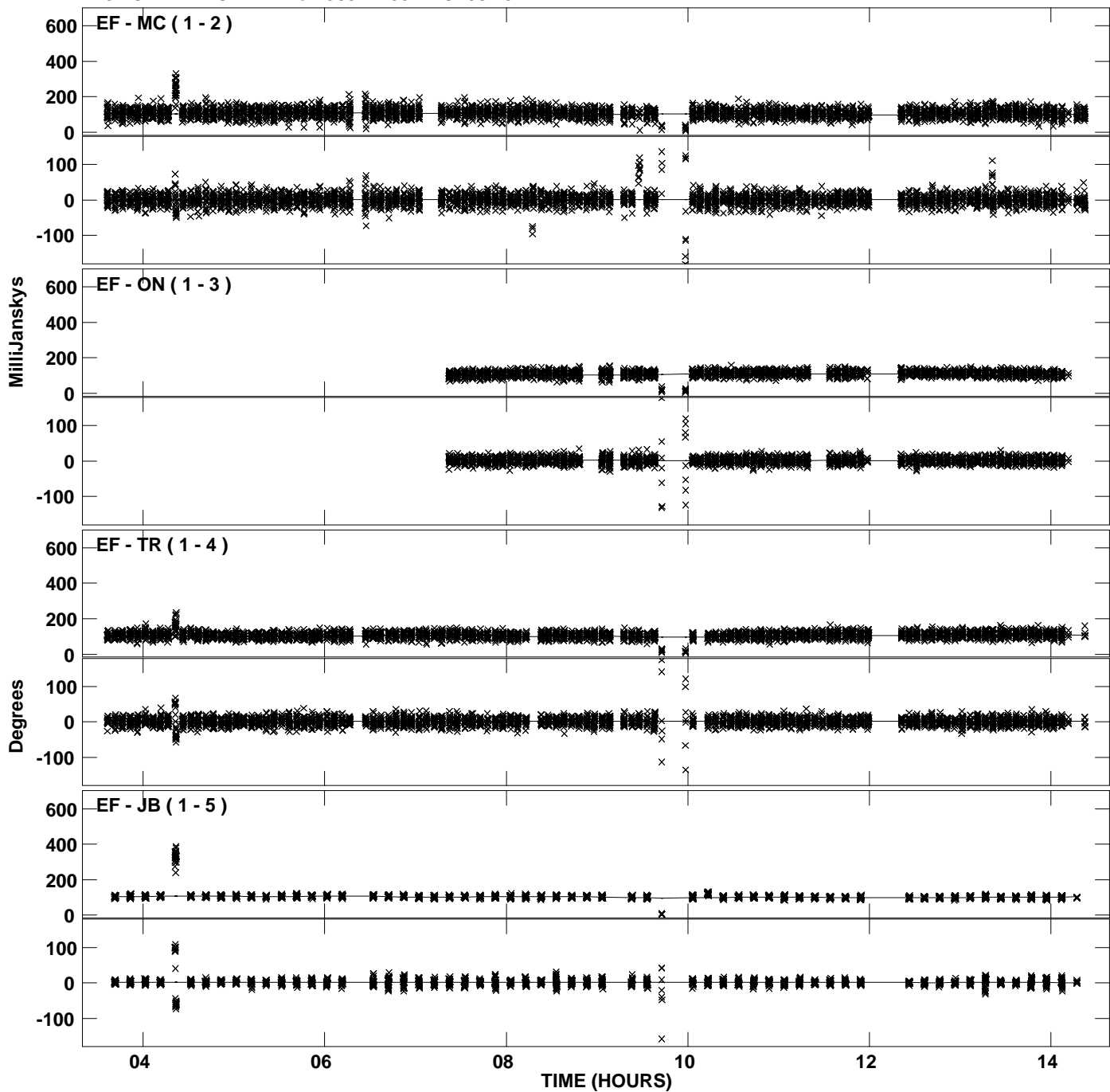
Plot file version 31 created 24-AUG-2011 19:15:08
Amplitude and Phase vs Time for J0344+6827.MULTI.1 CL # 3
IF 4 CHAN 1 STK RR of J0344+6827.ICL001.3



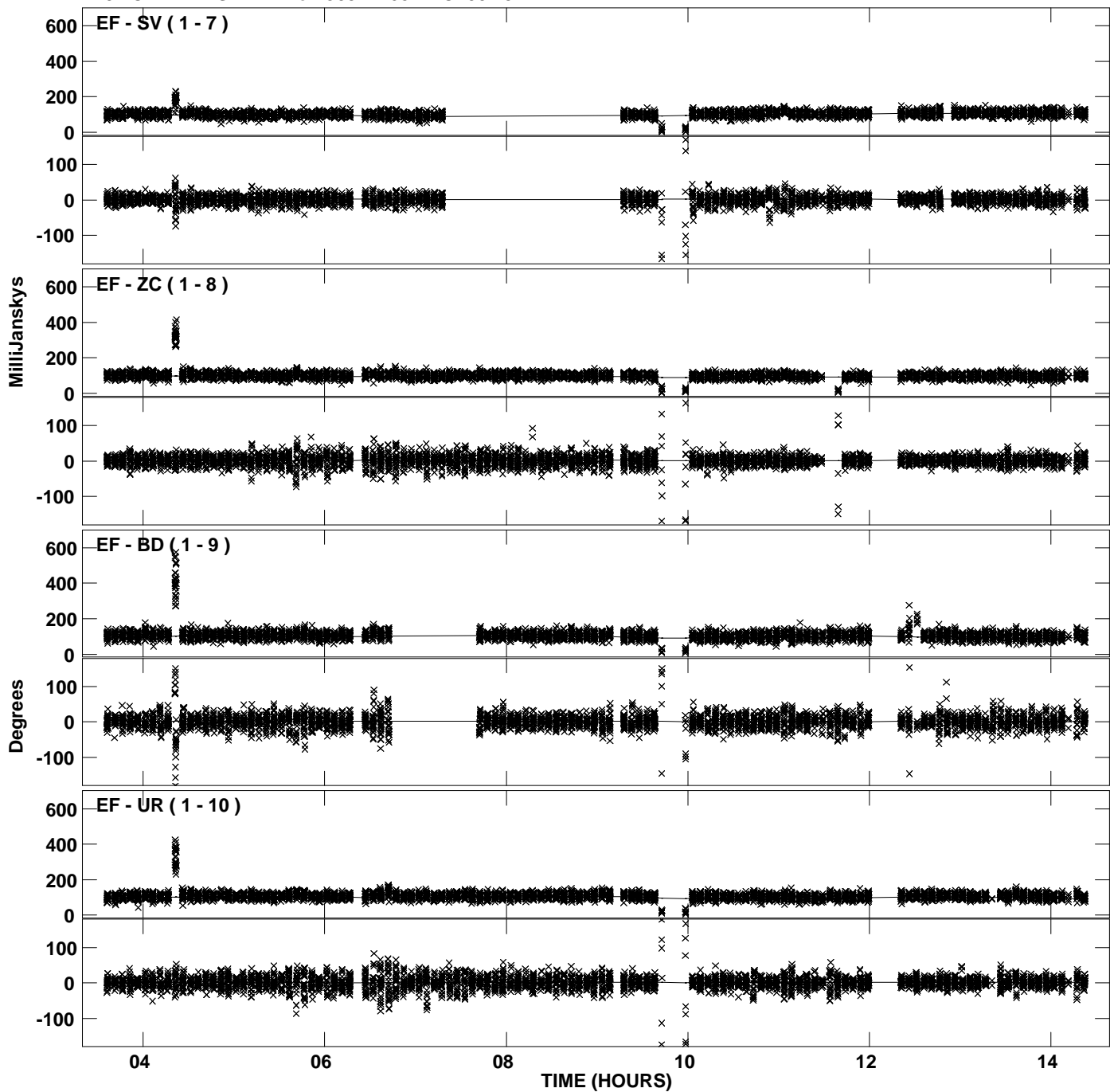
PLot file version 32 created 24-AUG-2011 19:15:08
Amplitude andPhase vs Time for J0344+6827.MULTI.1 CL # 3
IF 4 CHAN 1 STK RR of J0344+6827.ICL001.3



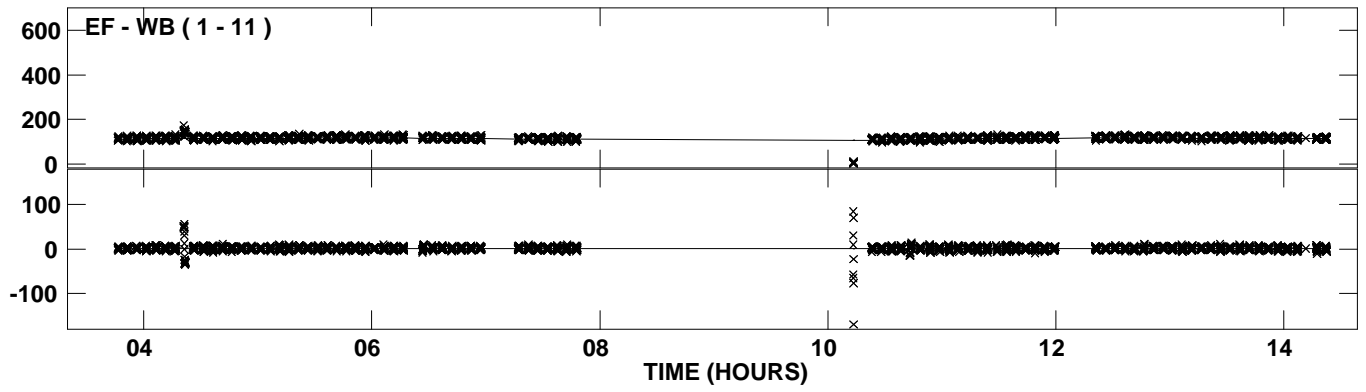
Plot file version 33 created 24-AUG-2011 19:15:09
Amplitude andPhase vs Time for J0344+6827.MULTI.1 CL # 3
IF 5 CHAN 1 STK RR of J0344+6827.ICL001.3



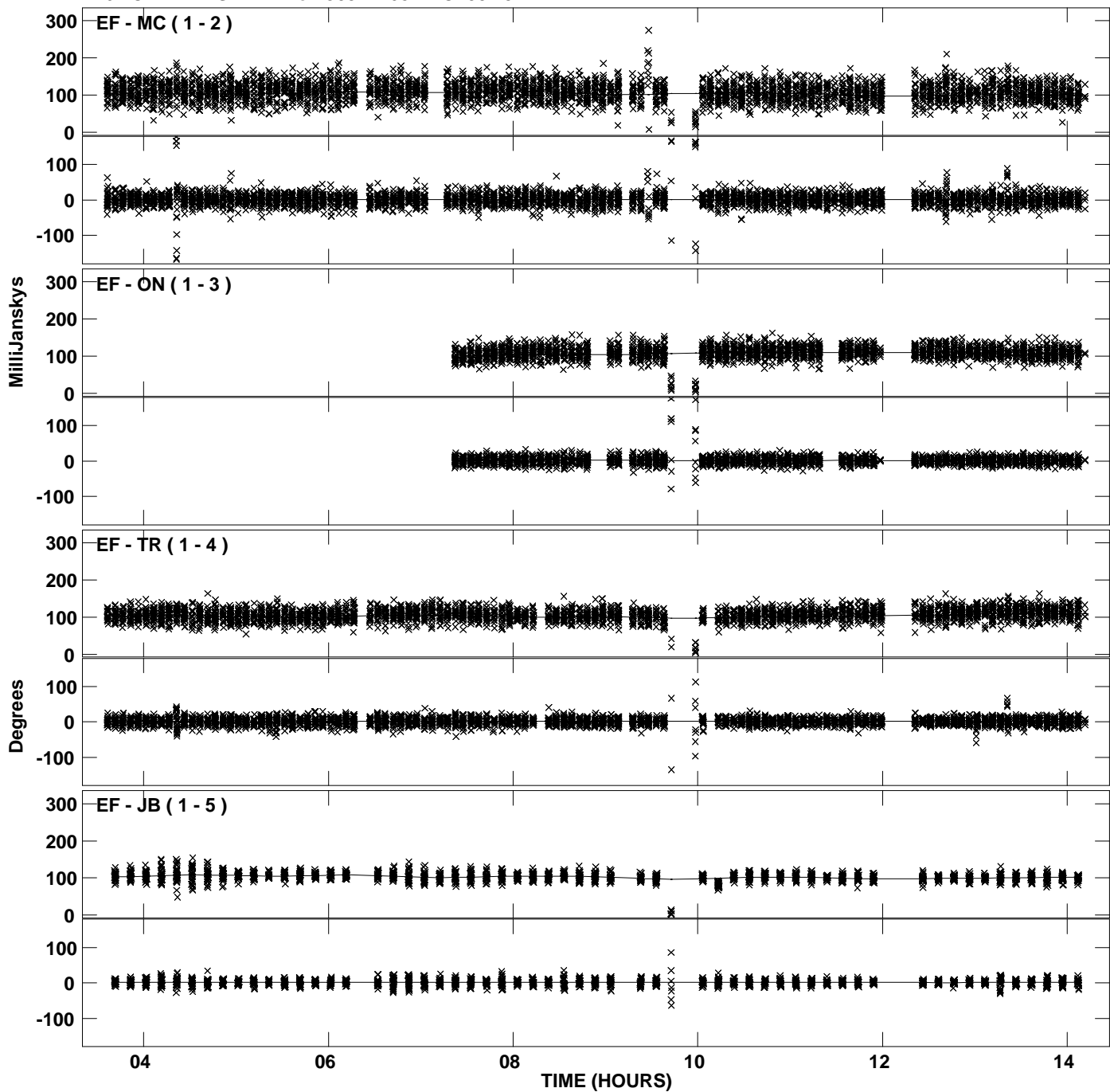
Plot file version 34 created 24-AUG-2011 19:15:09
Amplitude andPhase vs Time for J0344+6827.MULTI.1 CL # 3
IF 5 CHAN 1 STK RR of J0344+6827.ICL001.3



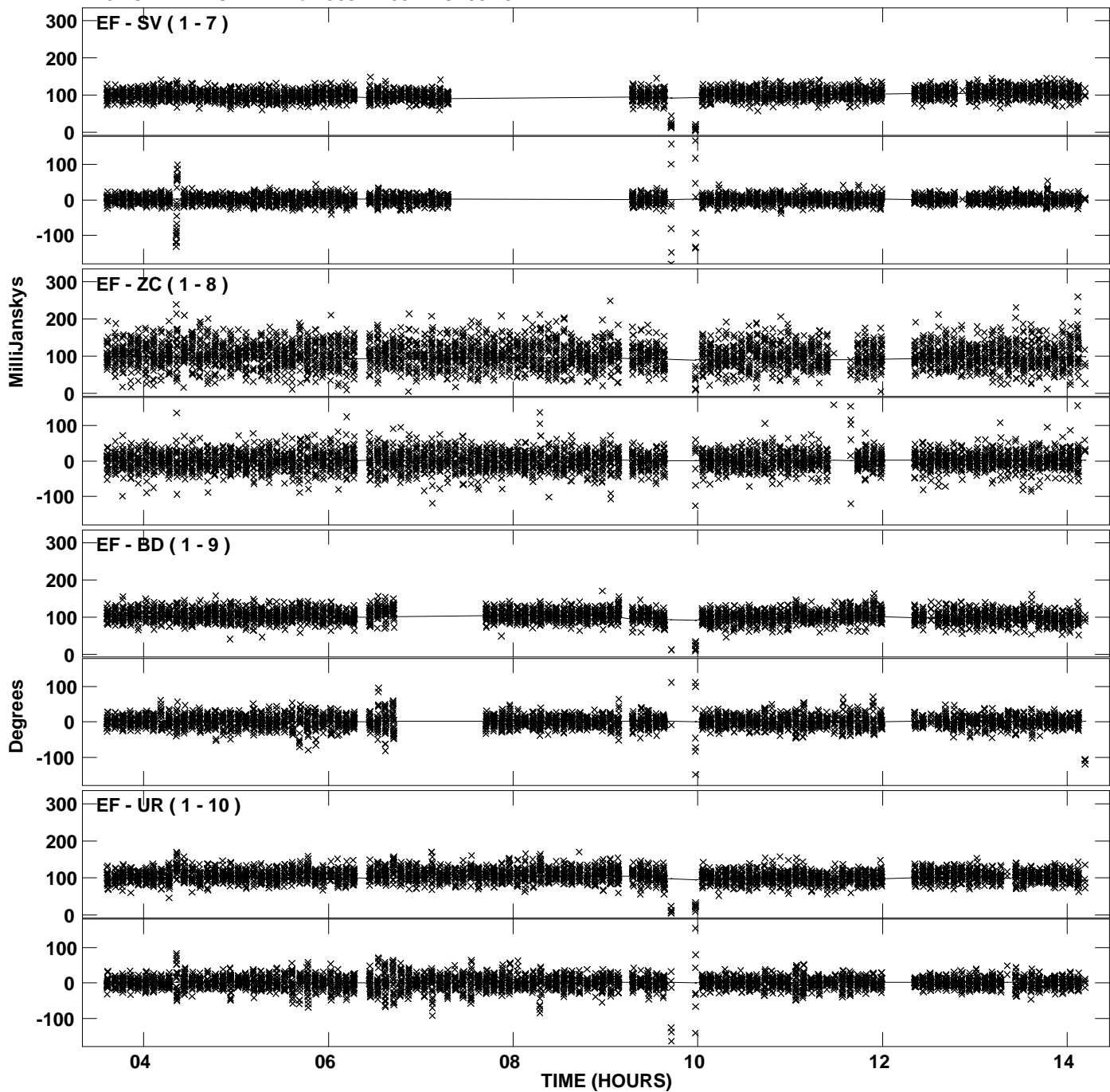
PLot file version 35 created 24-AUG-2011 19:15:09
Amplitude and Phase vs Time for J0344+6827.MULTI.1 CL # 3
IF 5 CHAN 1 STK RR of J0344+6827.ICL001.3



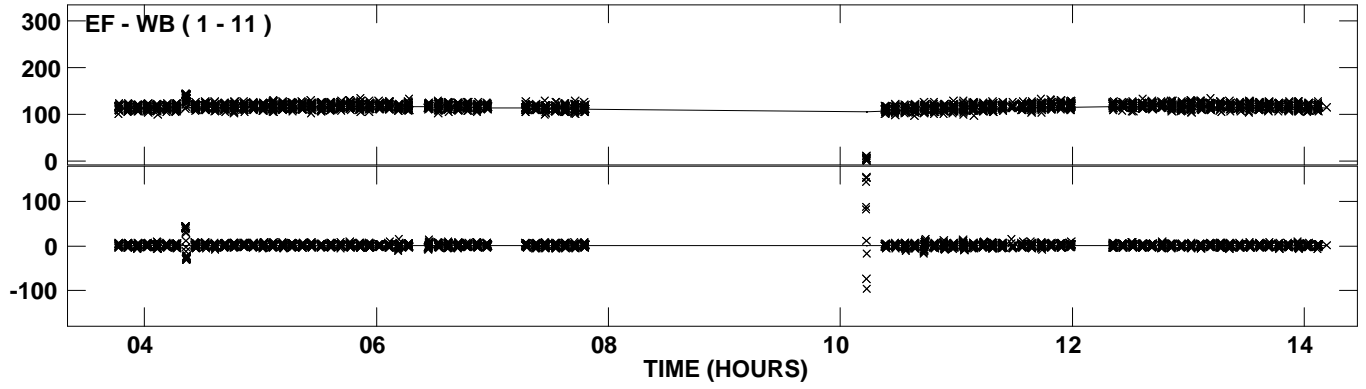
PLot file version 36 created 24-AUG-2011 19:15:10
Amplitude andPhase vs Time for J0344+6827.MULTI.1 CL # 3
IF 6 CHAN 1 STK RR of J0344+6827.ICL001.3



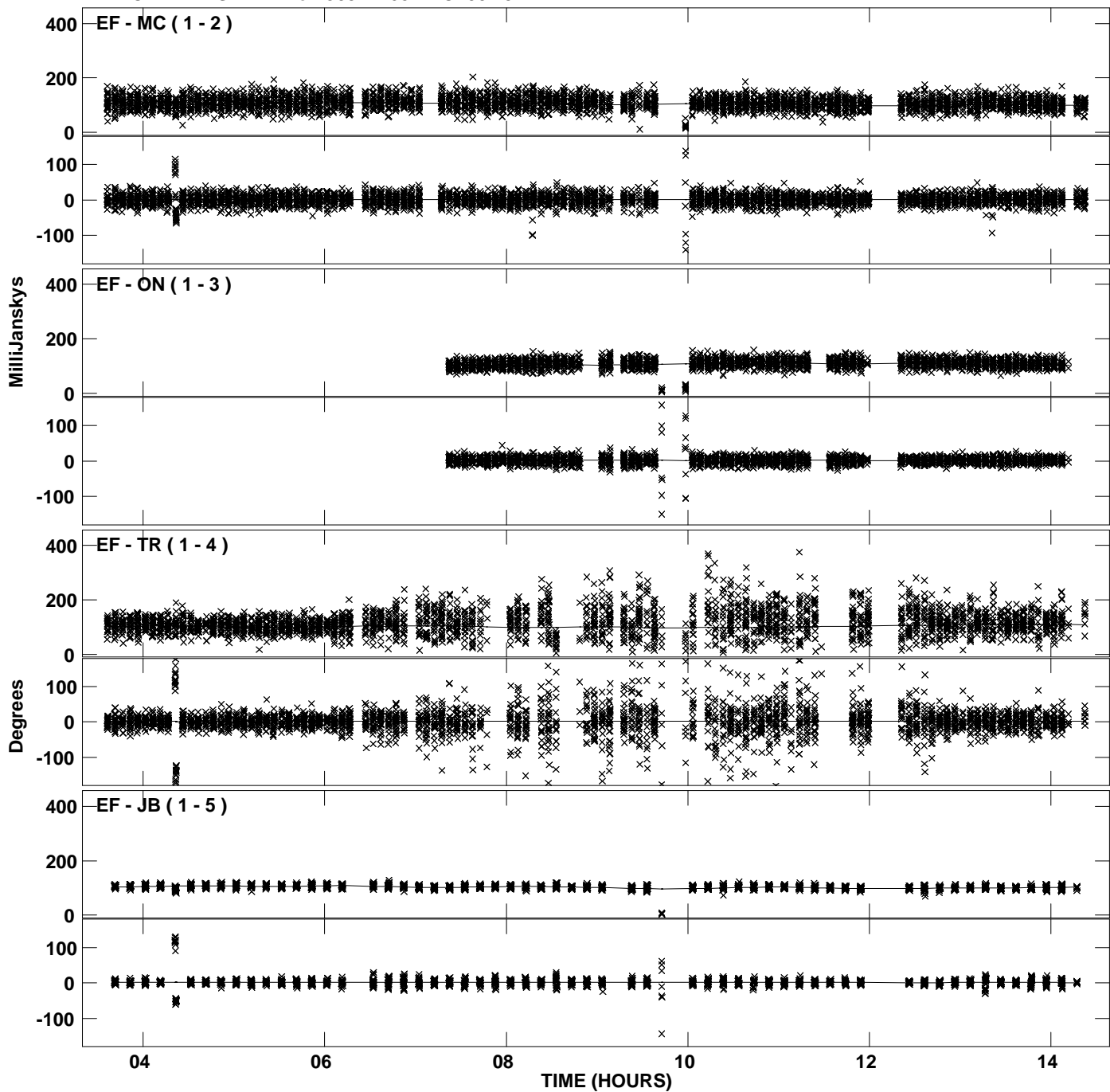
Plot file version 37 created 24-AUG-2011 19:15:10
Amplitude and Phase vs Time for J0344+6827.MULTI.1 CL # 3
IF 6 CHAN 1 STK RR of J0344+6827.ICL001.3



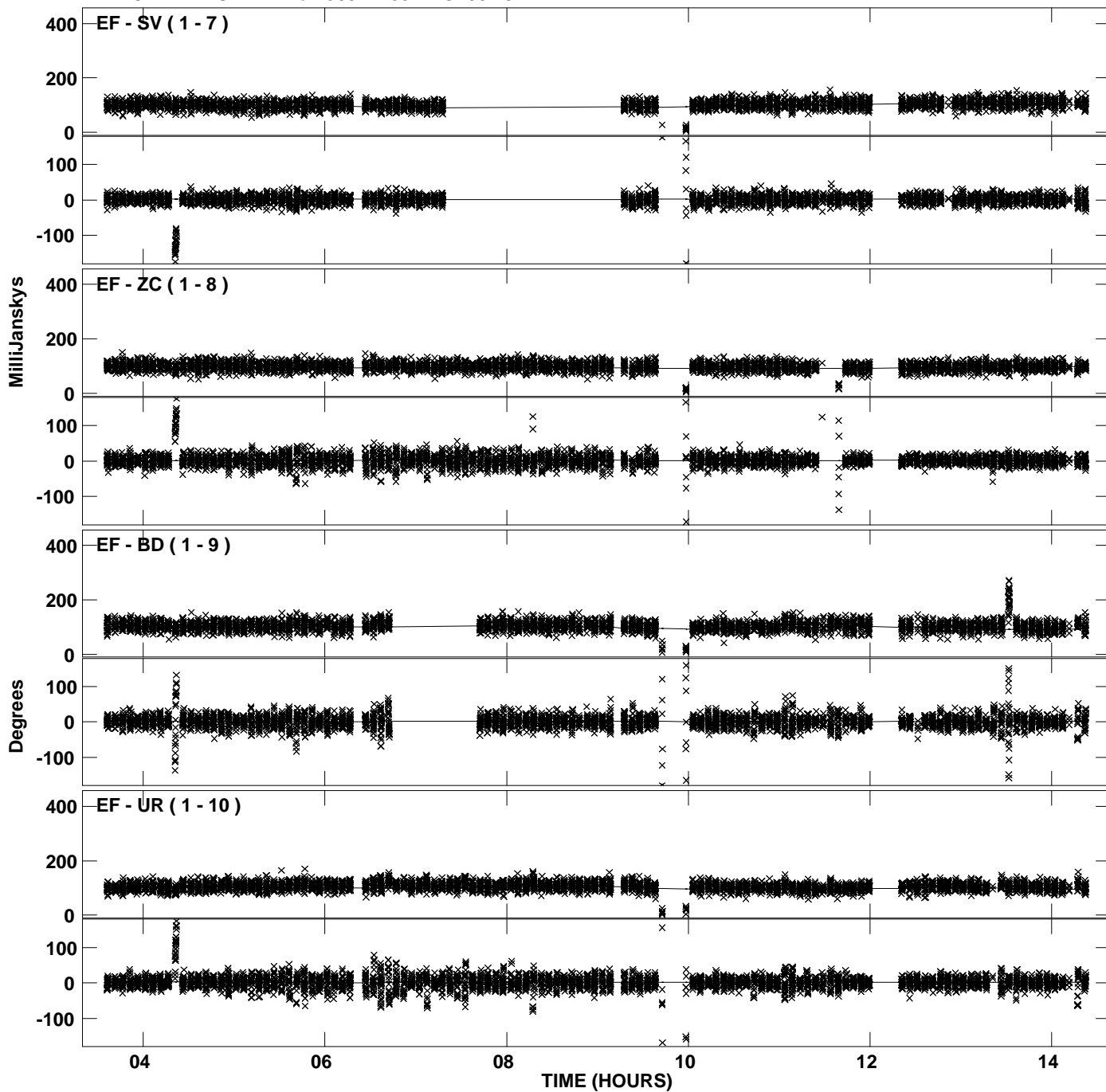
PLot file version 38 created 24-AUG-2011 19:15:10
Amplitude andPhase vs Time for J0344+6827.MULTI.1 CL # 3
IF 6 CHAN 1 STK RR of J0344+6827.ICL001.3



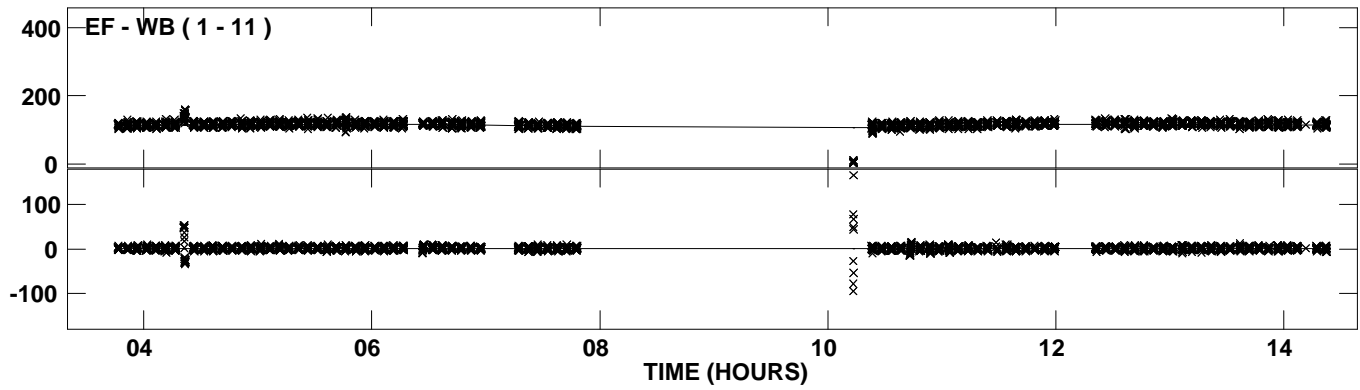
PLot file version 39 created 24-AUG-2011 19:15:11
Amplitude andPhase vs Time for J0344+6827.MULTI.1 CL # 3
IF 7 CHAN 1 STK RR of J0344+6827.ICL001.3



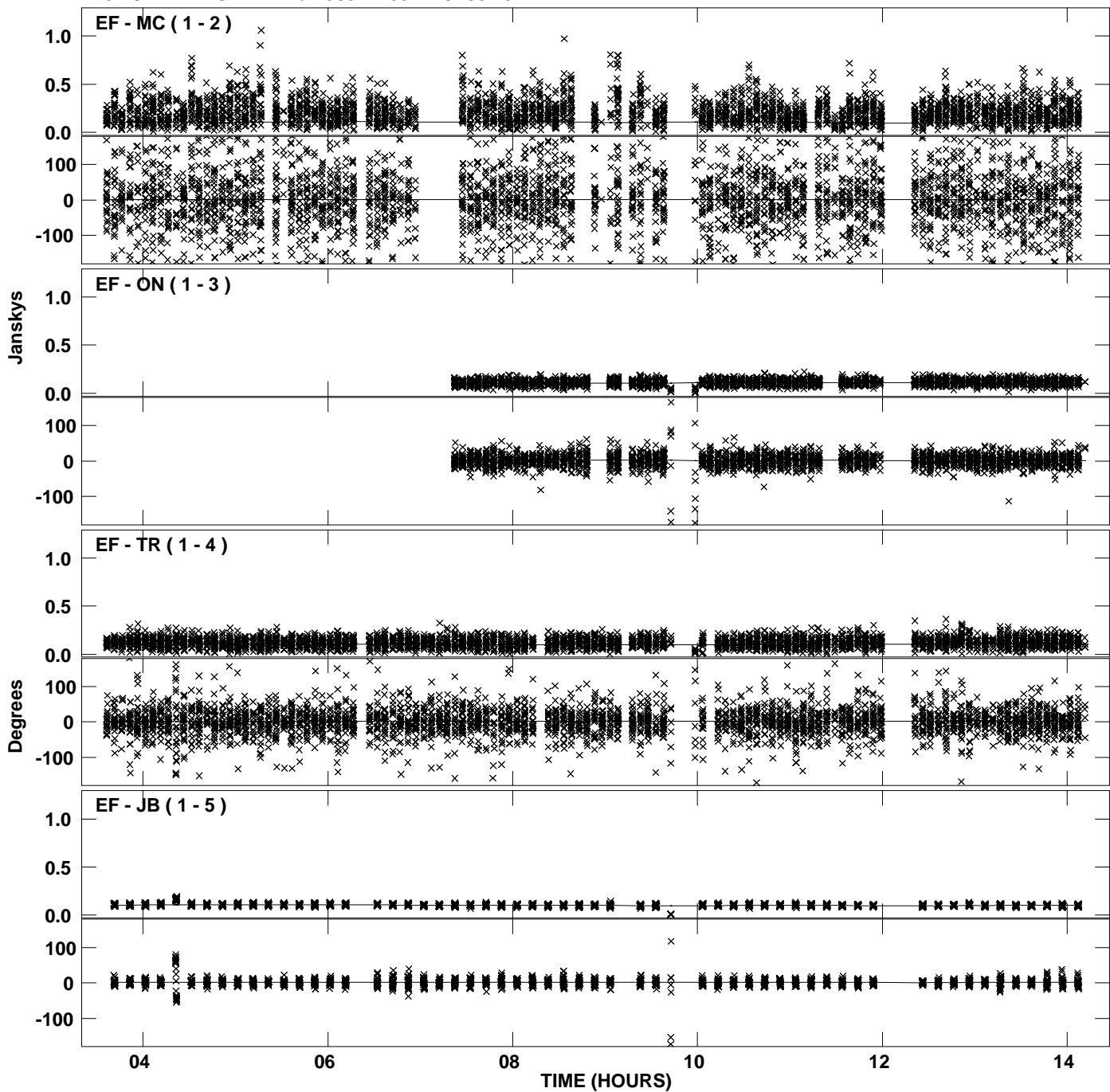
Plot file version 40 created 24-AUG-2011 19:15:11
Amplitude andPhase vs Time for J0344+6827.MULTI.1 CL # 3
IF 7 CHAN 1 STK RR of J0344+6827.ICL001.3



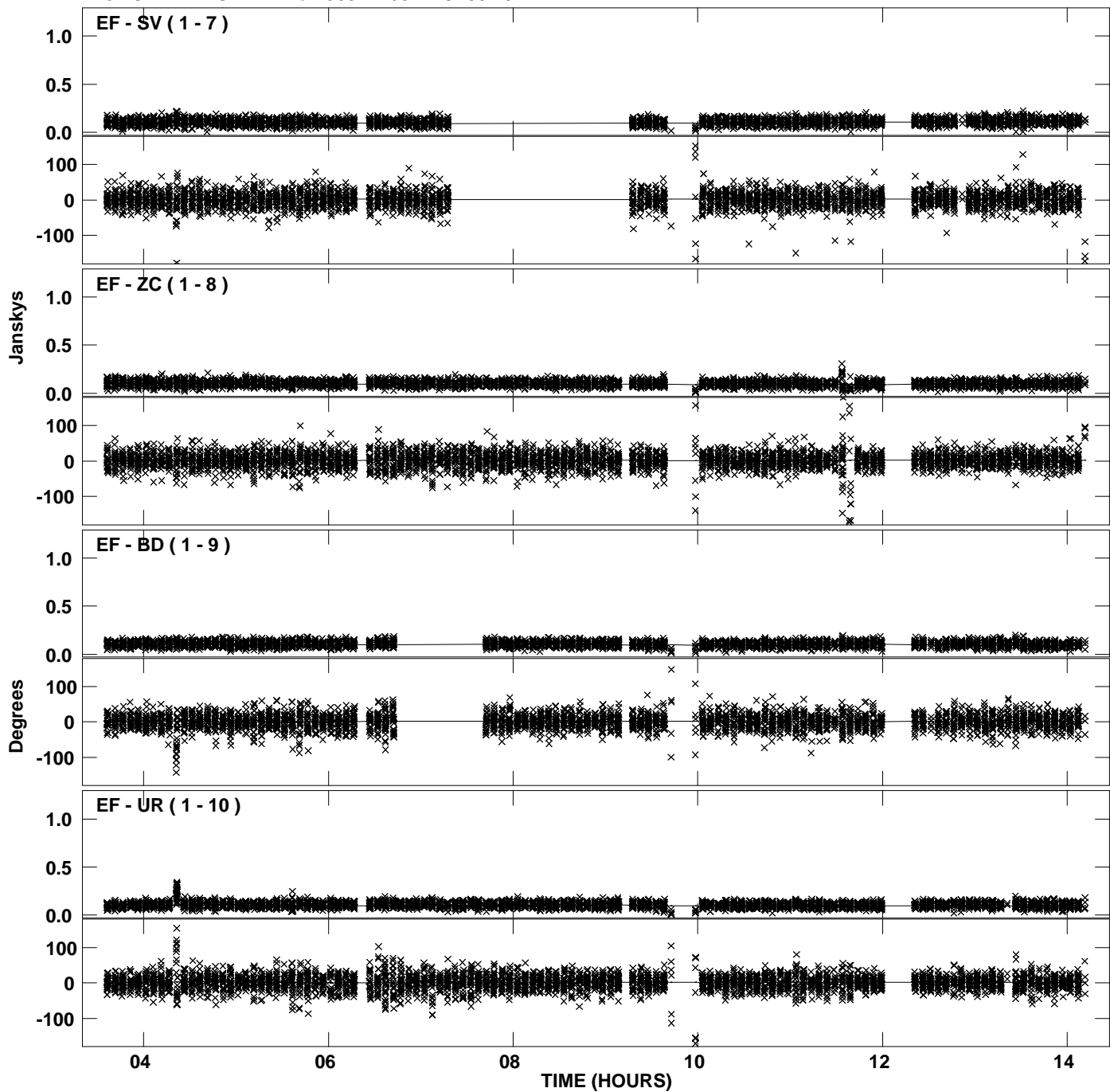
PLot file version 41 created 24-AUG-2011 19:15:11
Amplitude and Phase vs Time for J0344+6827.MULTI.1 CL # 3
IF 7 CHAN 1 STK RR of J0344+6827.ICL001.3



Plot file version 42 created 24-AUG-2011 19:15:12
Amplitude and Phase vs Time for J0344+6827.MULTI.1 CL # 3
IF 8 CHAN 1 STK RR of J0344+6827.ICL001.3



Plot file version 43 created 24-AUG-2011 19:15:12
Amplitude andPhase vs Time for J0344+6827.MULTI.1 CL # 3
IF 8 CHAN 1 STK RR of J0344+6827.ICL001.3



Plot file version 44 created 24-AUG-2011 19:15:12
Amplitude and Phase vs Time for J0344+6827.MULTI.1 CL # 3
IF 8 CHAN 1 STK RR of J0344+6827.ICL001.3

