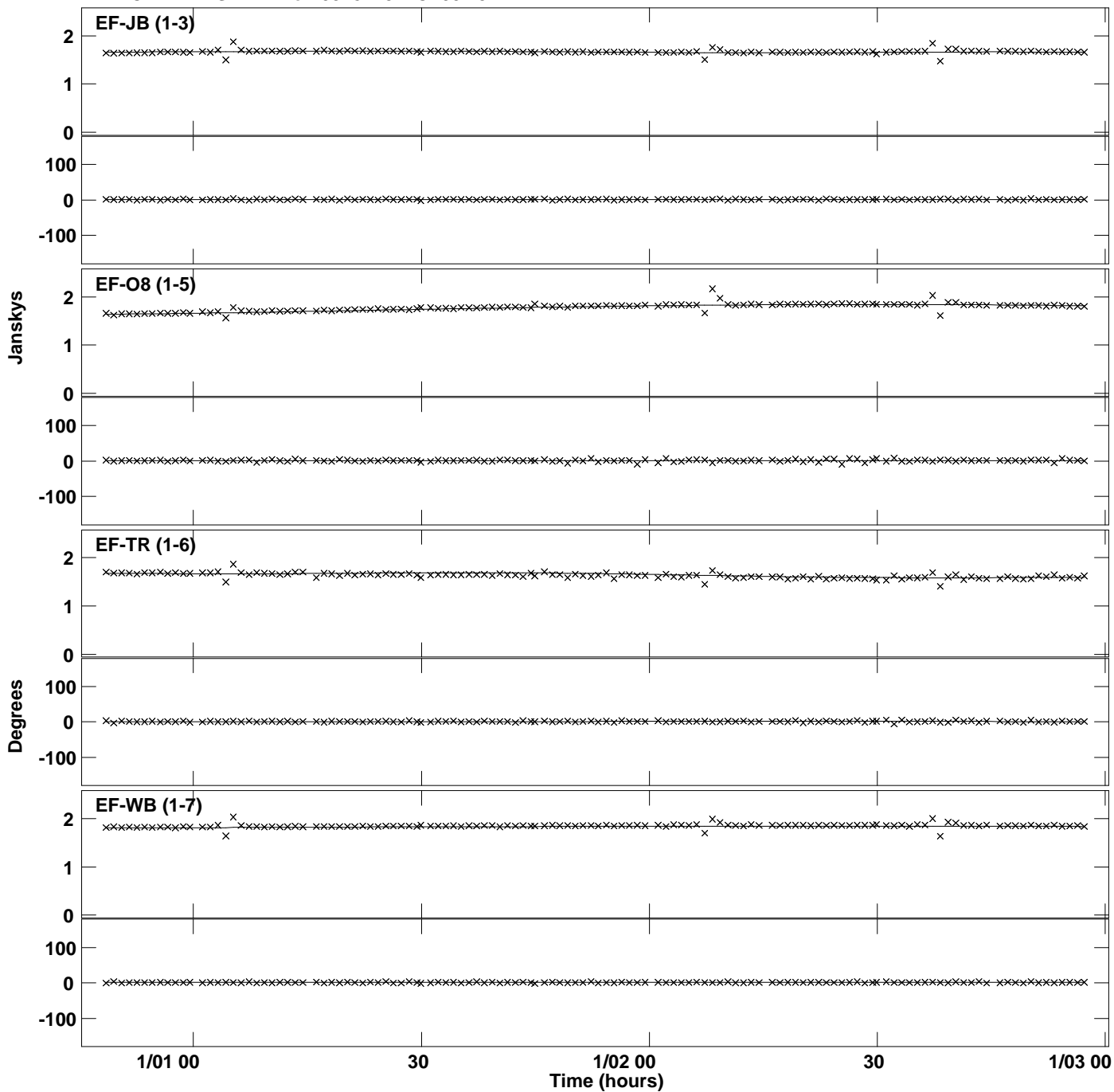
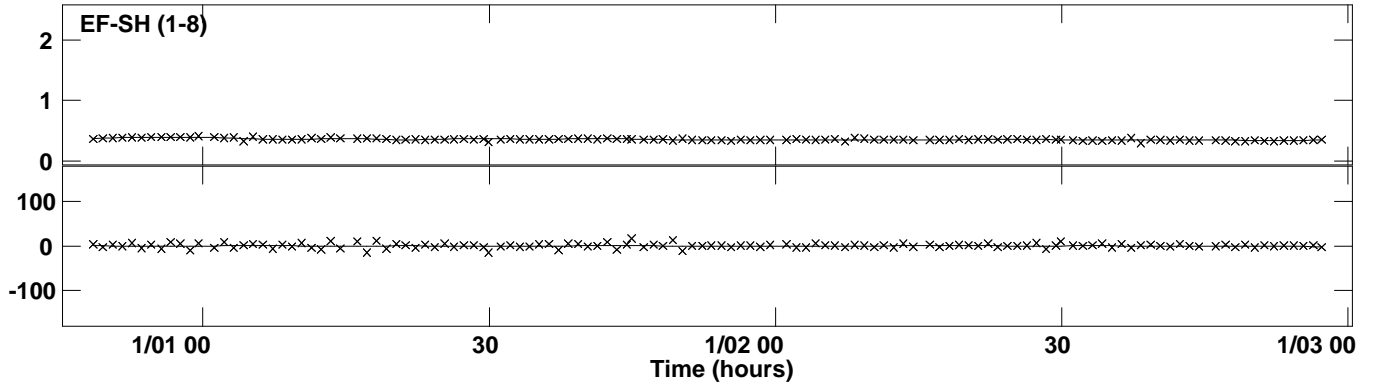


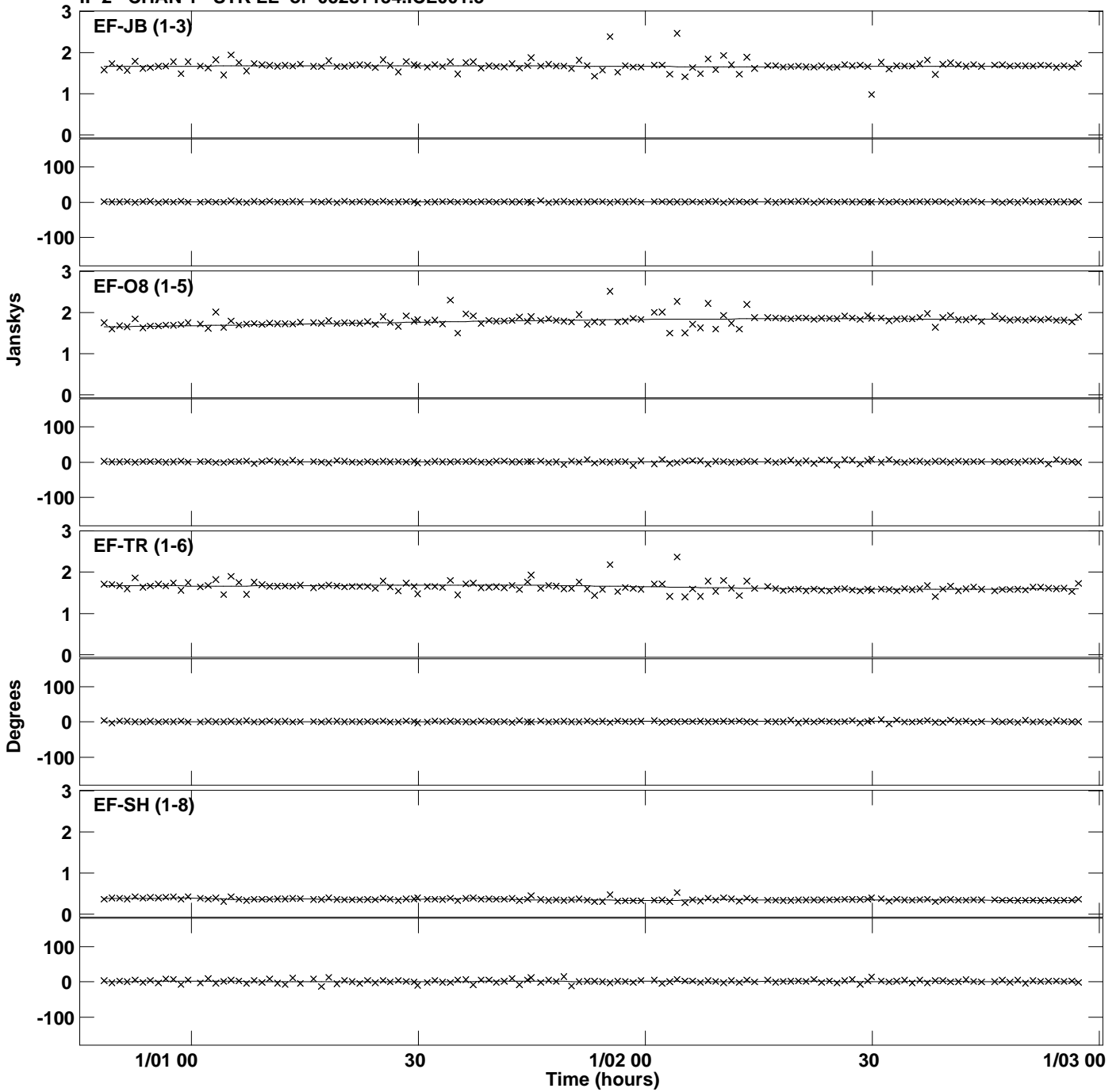
PLot file version 1 created 25-SEP-2015 13:45:12  
Amplitude andPhase vs Time for 0528+134.MULTI.1 Vect aver. CL # 3  
IF 1 CHAN 1 STK LL of 0528+134.ICL001.3



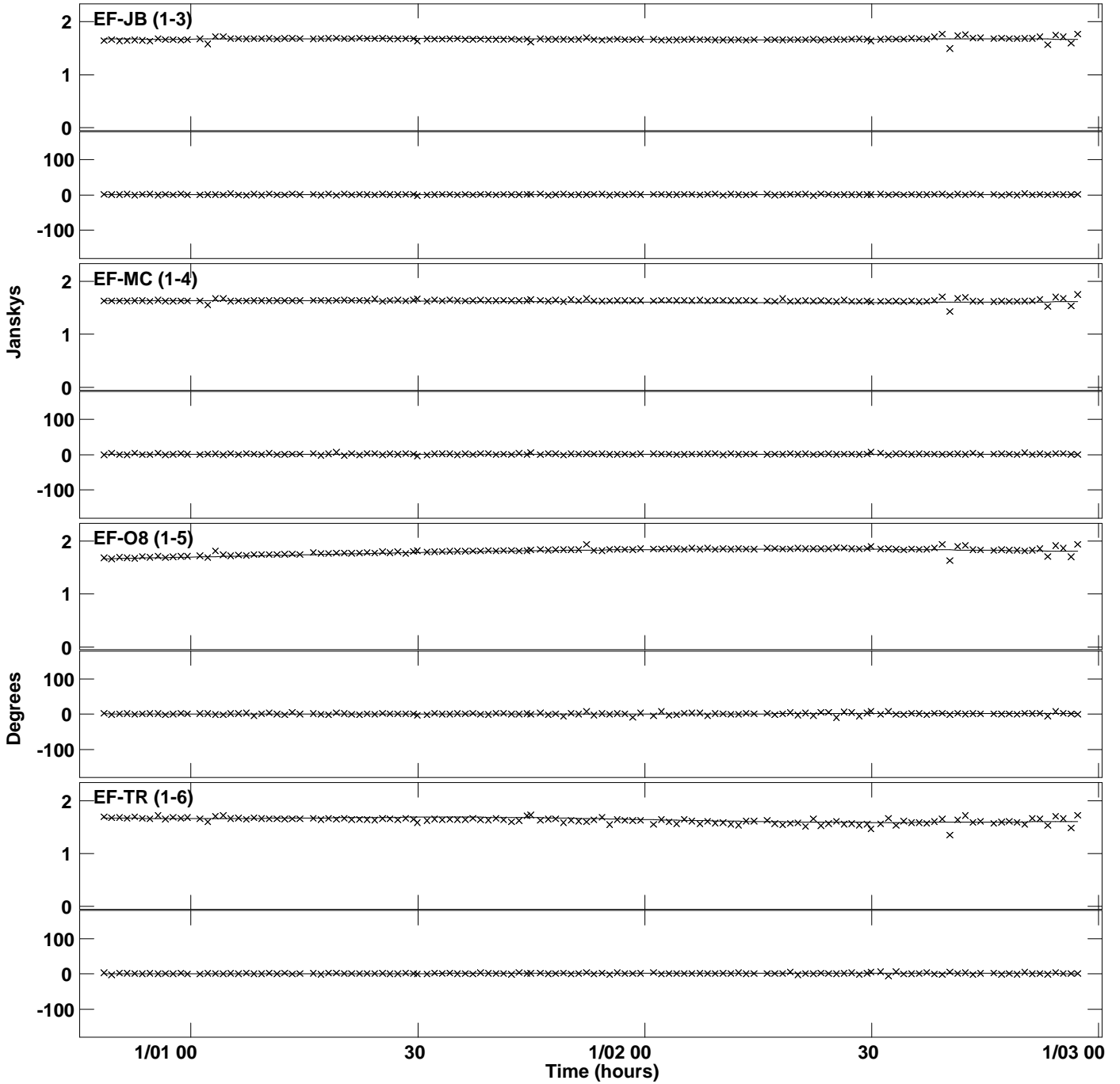
Plot file version 2 created 25-SEP-2015 13:45:12  
Amplitude and Phase vs Time for 0528+134.MULTI.1 Vect aver. CL # 3  
IF 1 CHAN 1 STK LL of 0528+134.ICL001.3



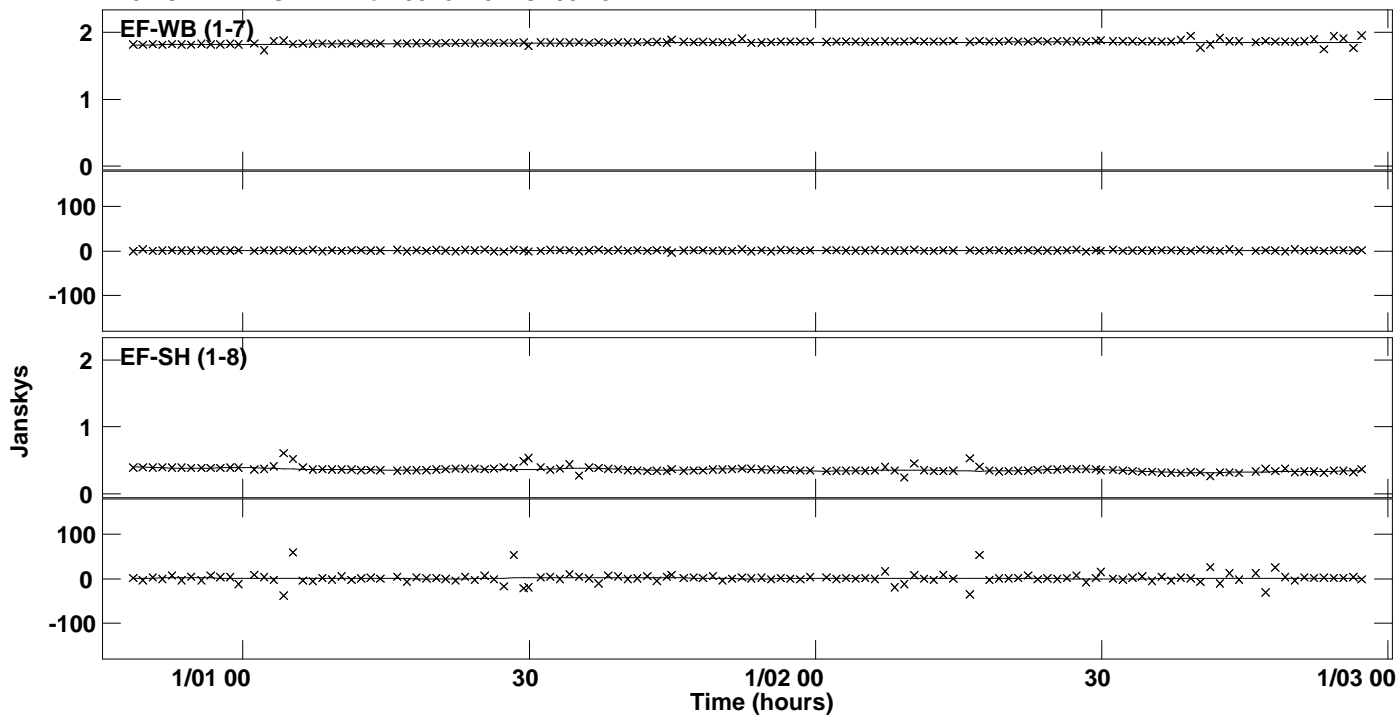
Plot file version 3 created 25-SEP-2015 13:45:14  
Amplitude andPhase vs Time for 0528+134.MULTI.1 Vect aver. CL # 3  
IF 2 CHAN 1 STK LL of 0528+134.ICL001.3



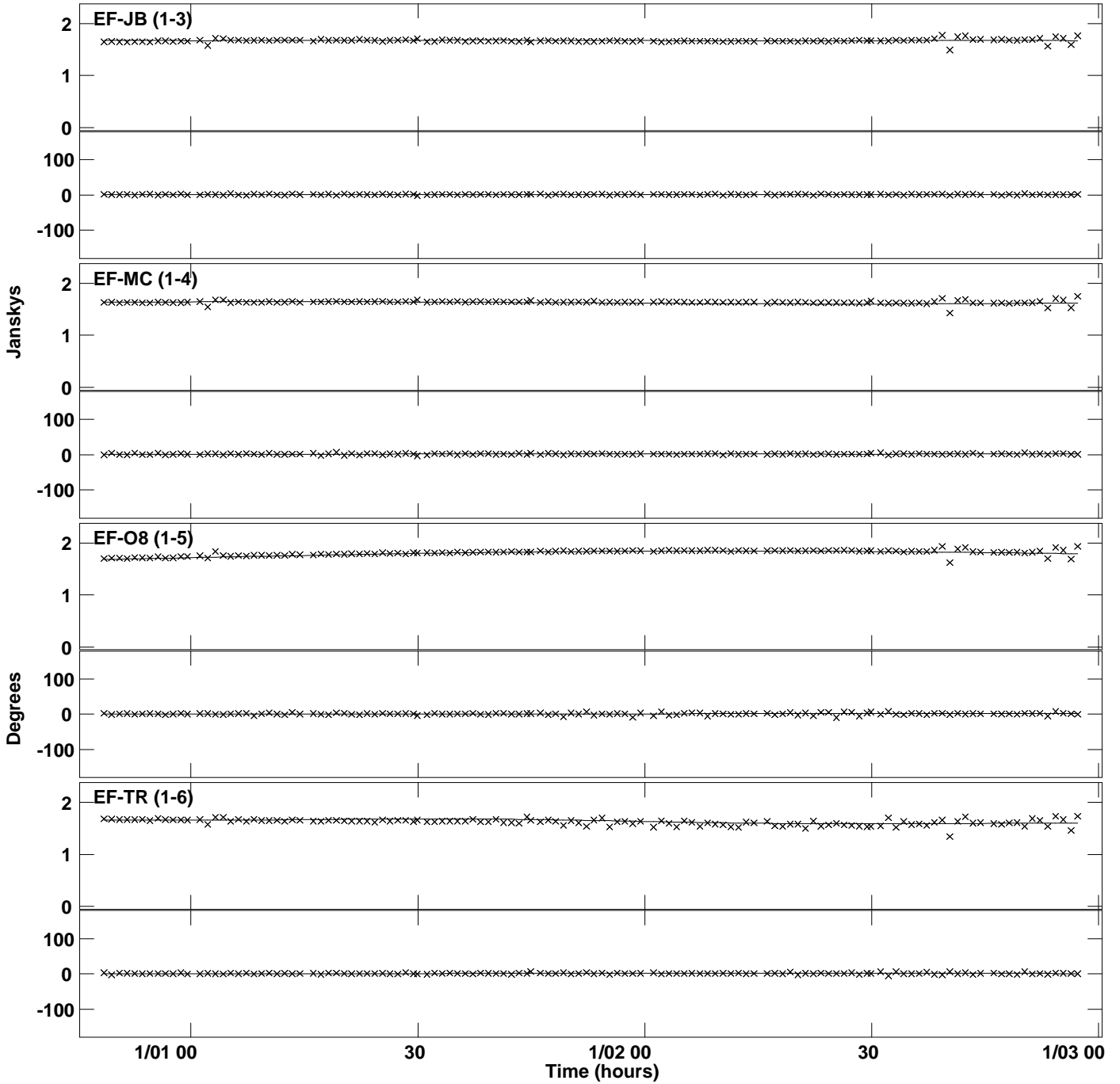
PLot file version 4 created 25-SEP-2015 13:45:15  
Amplitude andPhase vs Time for 0528+134.MULTI.1 Vect aver. CL # 3  
IF 3 CHAN 1 STK LL of 0528+134.ICL001.3



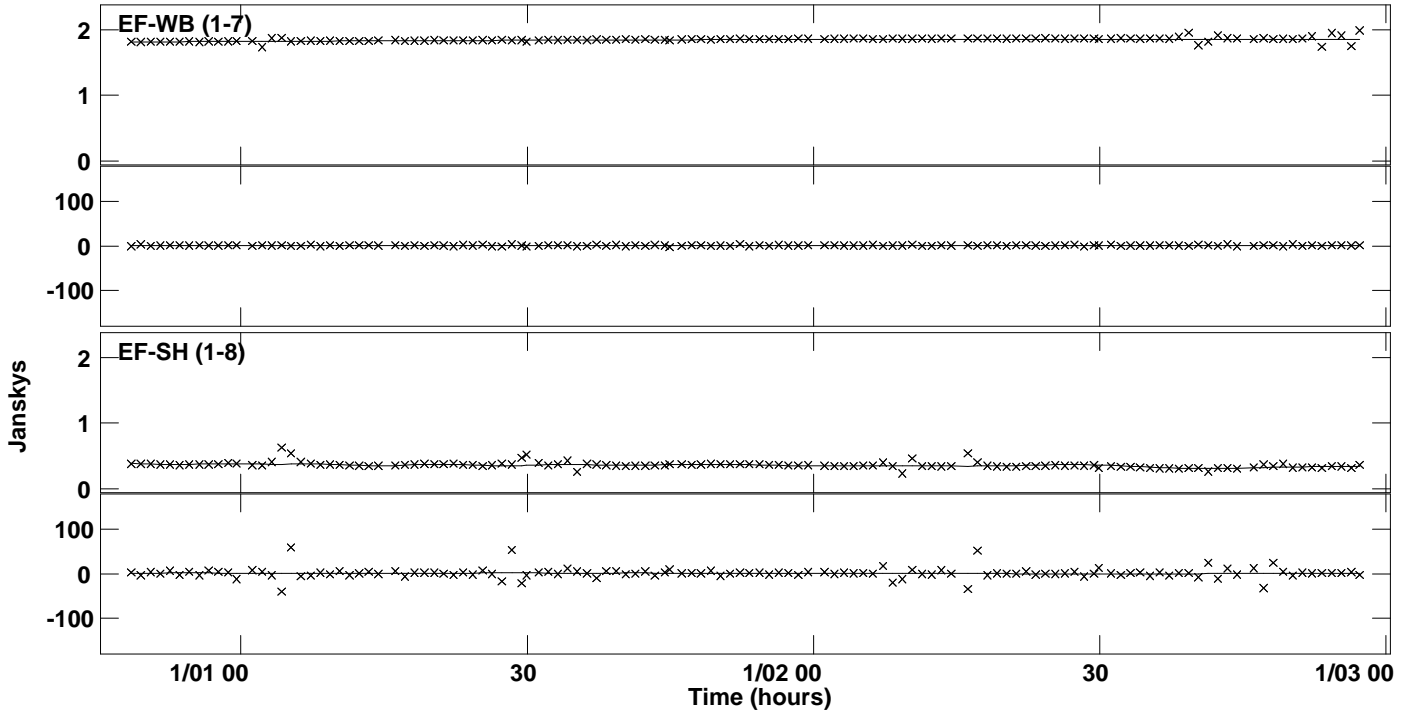
Plot file version 5 created 25-SEP-2015 13:45:15  
Amplitude andPhase vs Time for 0528+134.MULTI.1 Vect aver. CL # 3  
IF 3 CHAN 1 STK LL of 0528+134.ICL001.3



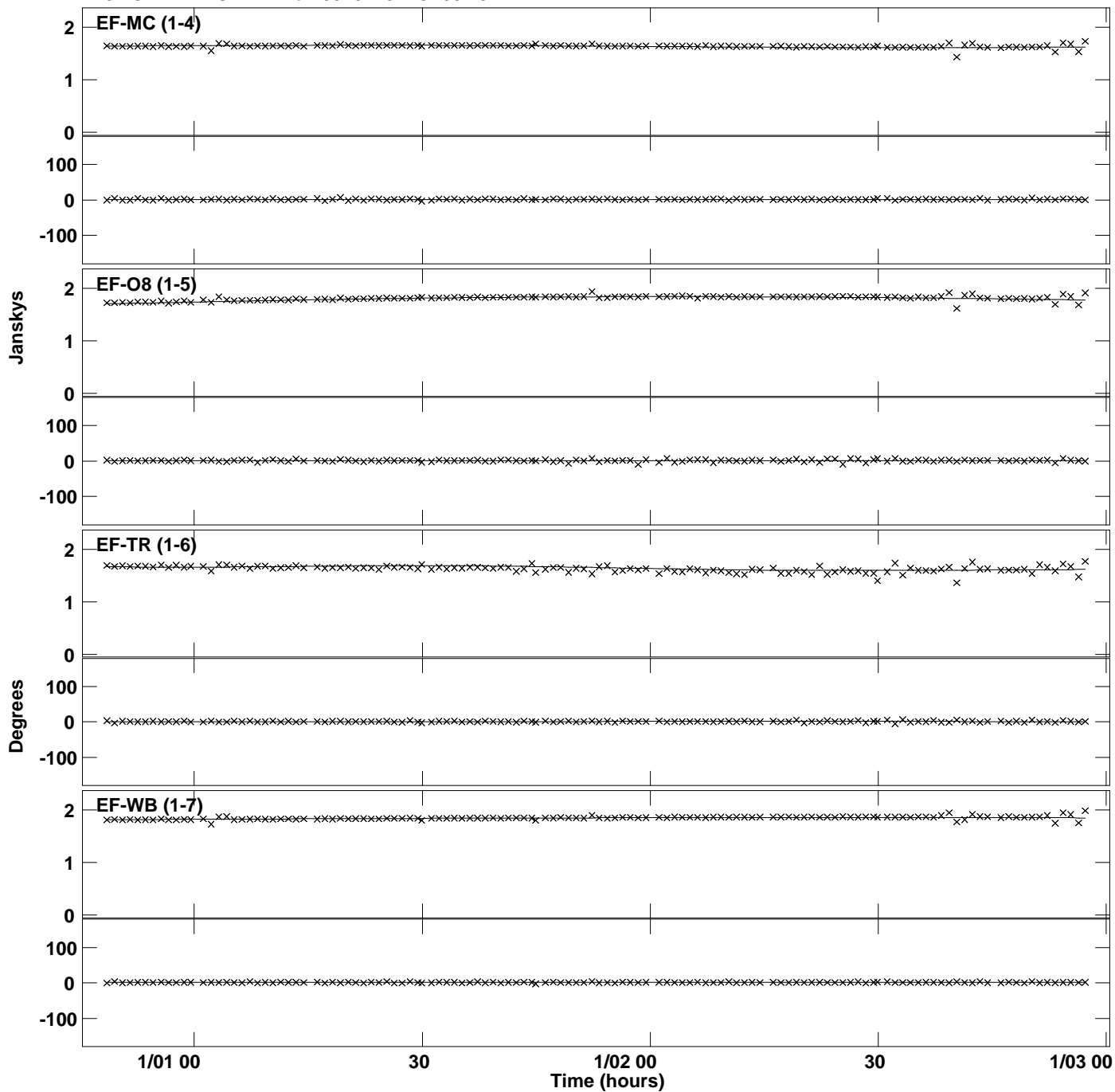
PLot file version 6 created 25-SEP-2015 13:45:16  
Amplitude andPhase vs Time for 0528+134.MULTI.1 Vect aver. CL # 3  
IF 4 CHAN 1 STK LL of 0528+134.ICL001.3



Plot file version 7 created 25-SEP-2015 13:45:16  
Amplitude andPhase vs Time for 0528+134.MULTI.1 Vect aver. CL # 3  
IF 4 CHAN 1 STK LL of 0528+134.ICL001.3

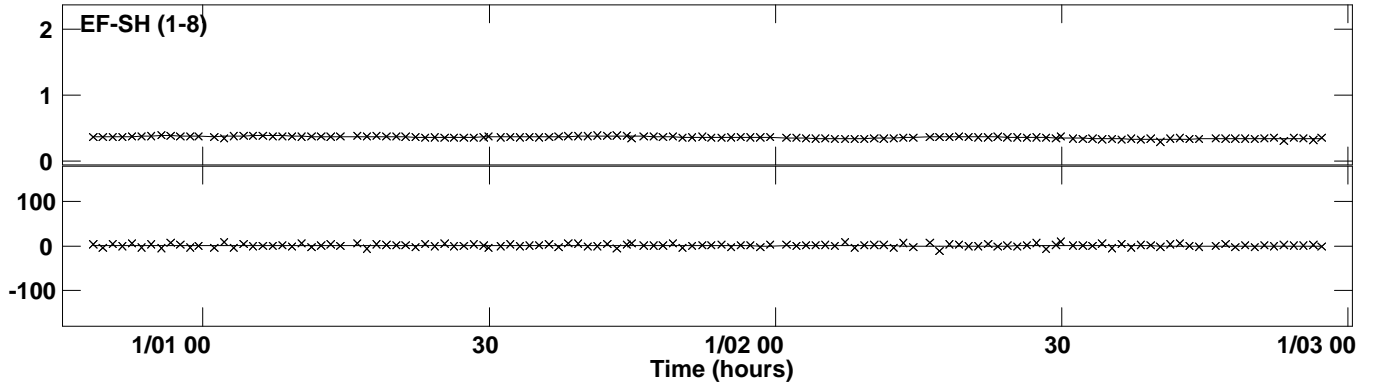


Plot file version 8 created 25-SEP-2015 13:45:18  
Amplitude andPhase vs Time for 0528+134.MULTI.1 Vect aver. CL # 3  
IF 5 CHAN 1 STK LL of 0528+134.ICL001.3

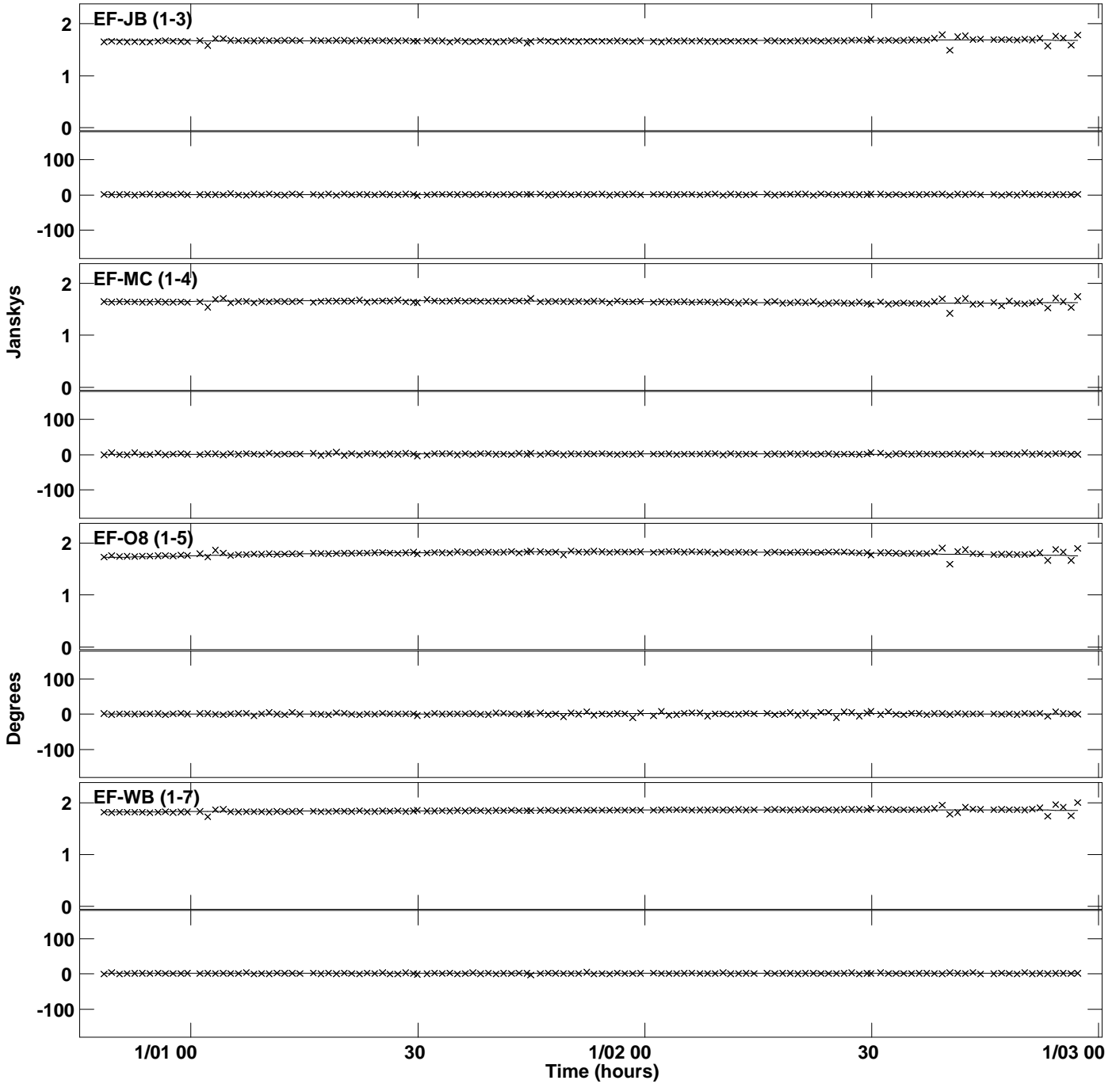




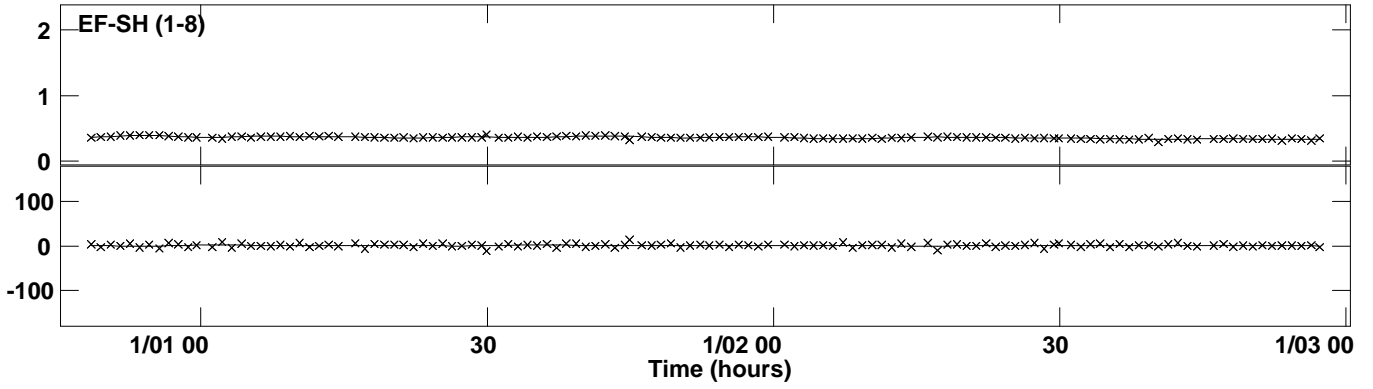
PLot file version 9 created 25-SEP-2015 13:45:18  
Amplitude andPhase vs Time for 0528+134.MULTI.1 Vect aver. CL # 3  
IF 5 CHAN 1 STK LL of 0528+134.ICL001.3



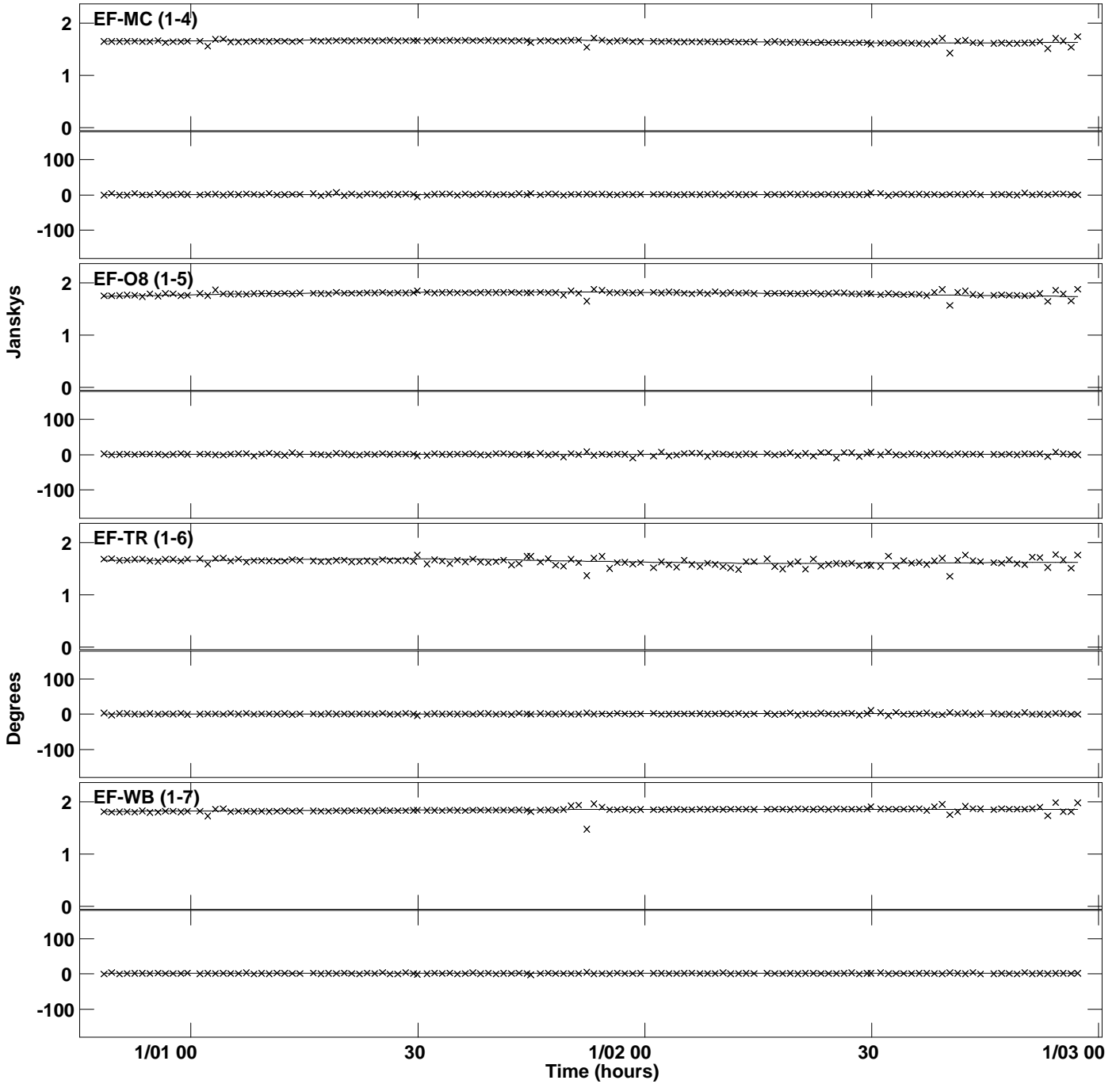
PLot file version 10 created 25-SEP-2015 13:45:19  
Amplitude andPhase vs Time for 0528+134.MULTI.1 Vect aver. CL # 3  
IF 6 CHAN 1 STK LL of 0528+134.ICL001.3



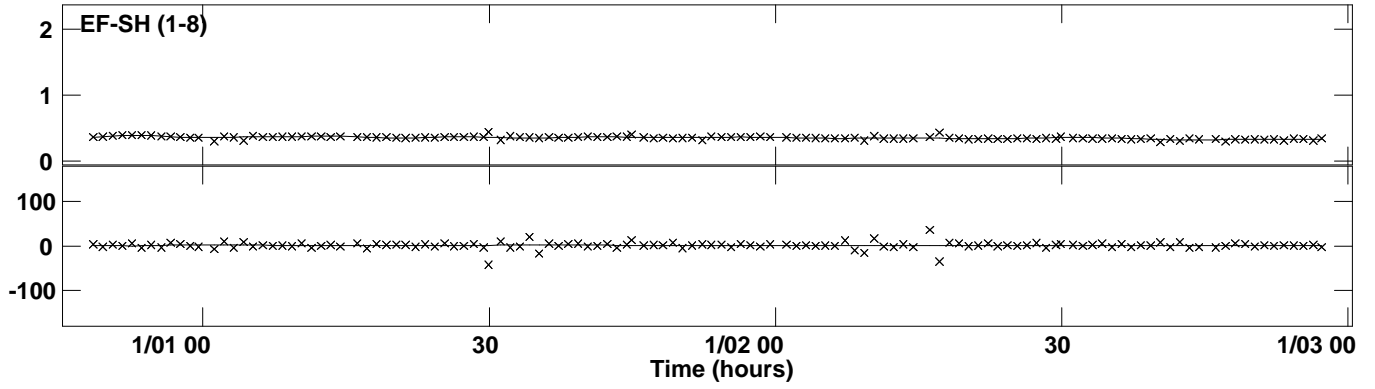
PLot file version 11 created 25-SEP-2015 13:45:19  
Amplitude andPhase vs Time for 0528+134.MULTI.1 Vect aver. CL # 3  
IF 6 CHAN 1 STK LL of 0528+134.ICL001.3



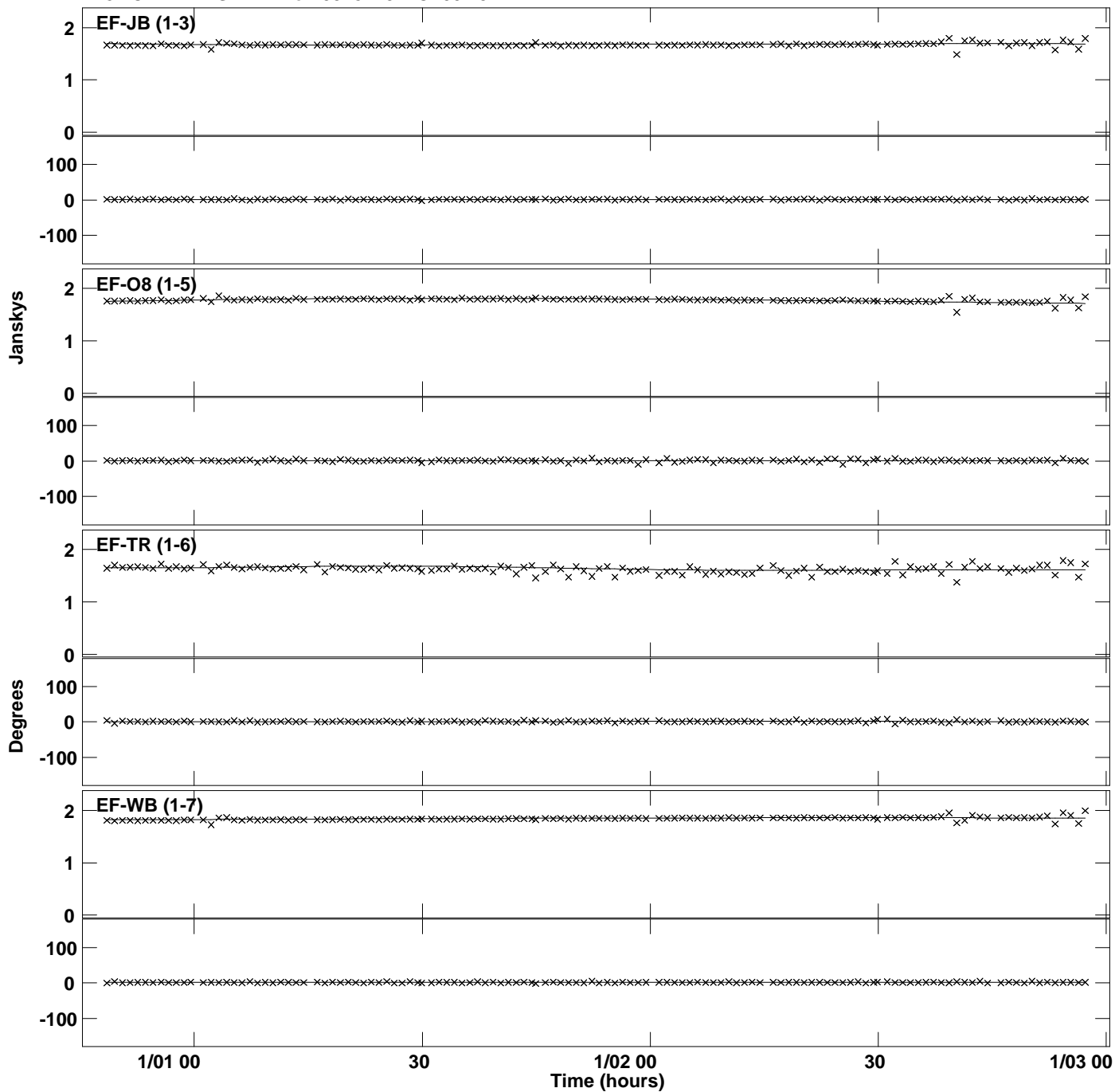
Plot file version 12 created 25-SEP-2015 13:45:20  
Amplitude and Phase vs Time for 0528+134.MULTI.1 Vect aver. CL # 3  
IF 7 CHAN 1 STK LL of 0528+134.ICL001.3



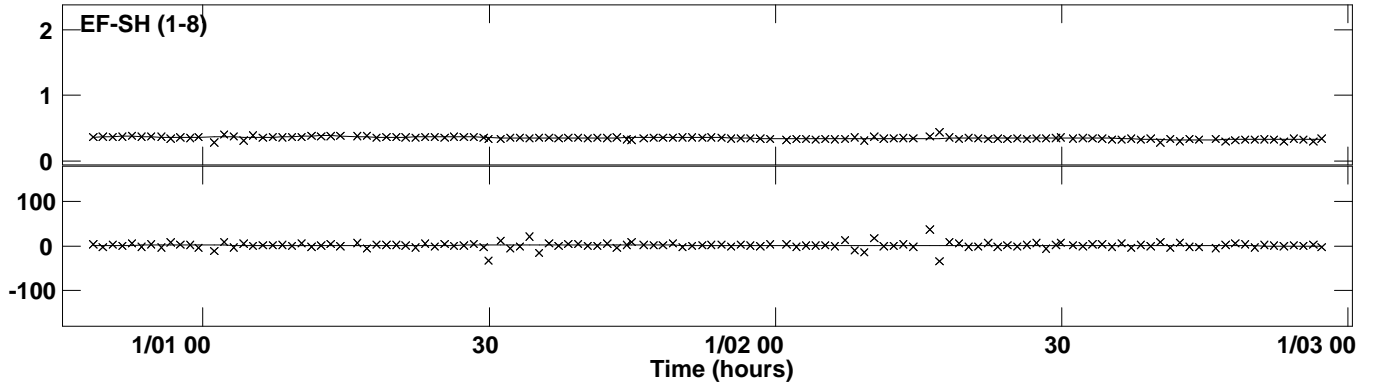
PLot file version 13 created 25-SEP-2015 13:45:20  
Amplitude andPhase vs Time for 0528+134.MULTI.1 Vect aver. CL # 3  
IF 7 CHAN 1 STK LL of 0528+134.ICL001.3



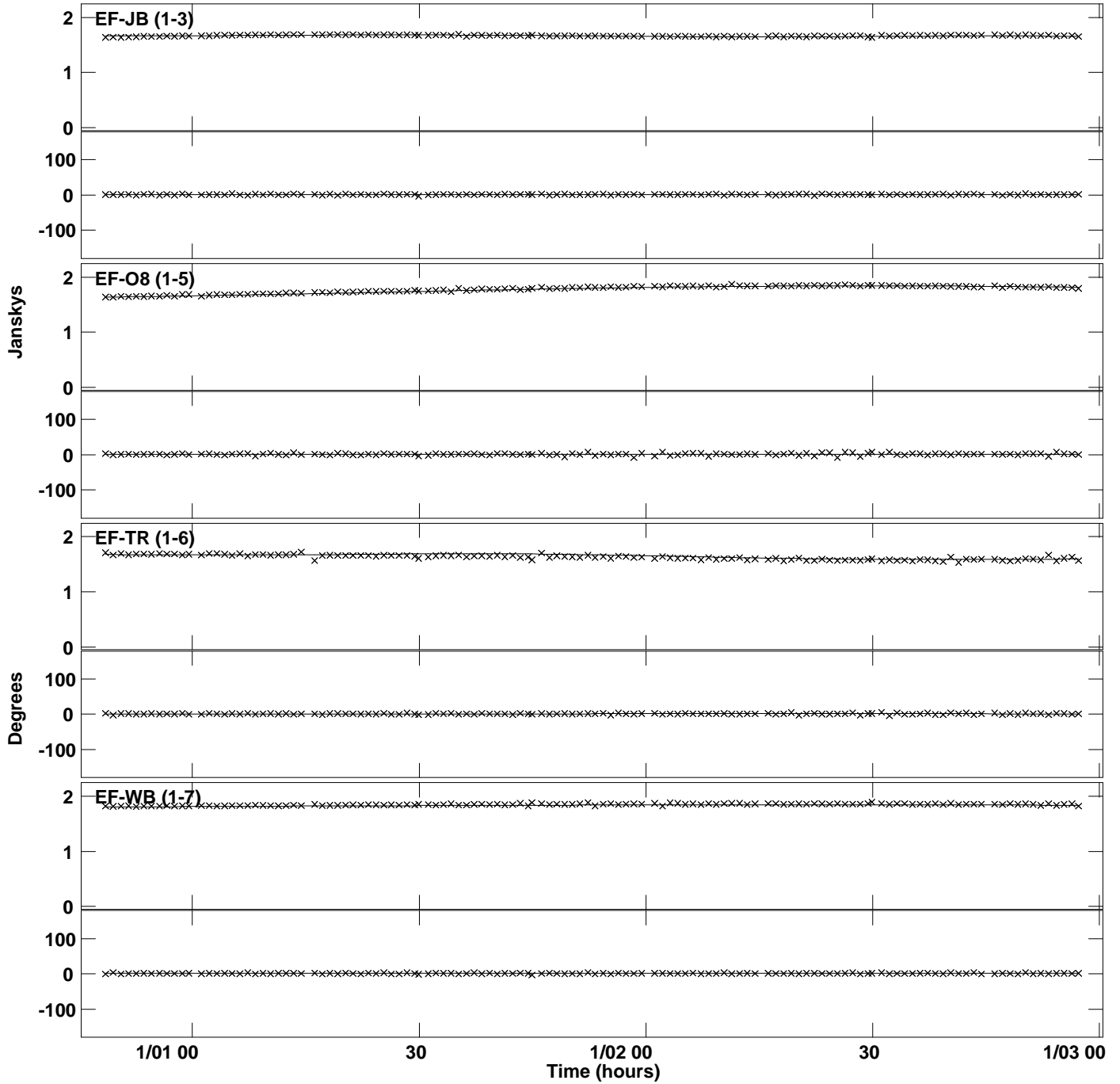
PLot file version 14 created 25-SEP-2015 13:45:22  
Amplitude andPhase vs Time for 0528+134.MULTI.1 Vect aver. CL # 3  
IF 8 CHAN 1 STK LL of 0528+134.ICL001.3



PLot file version 15 created 25-SEP-2015 13:45:22  
Amplitude andPhase vs Time for 0528+134.MULTI.1 Vect aver. CL # 3  
IF 8 CHAN 1 STK LL of 0528+134.ICL001.3

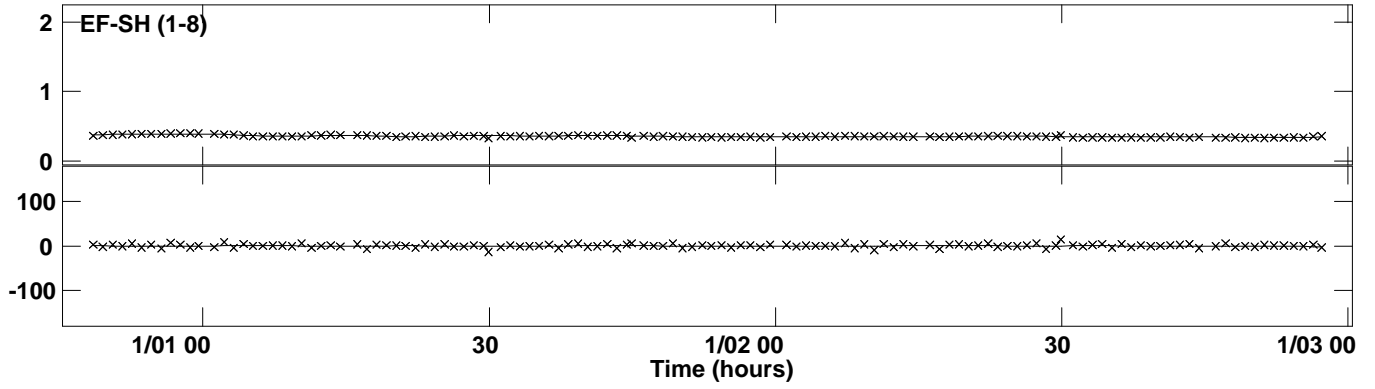


PLot file version 16 created 25-SEP-2015 13:45:23  
Amplitude andPhase vs Time for 0528+134.MULTI.1 Vect aver. CL # 3  
IF 1 CHAN 1 STK RR of 0528+134.ICL001.3

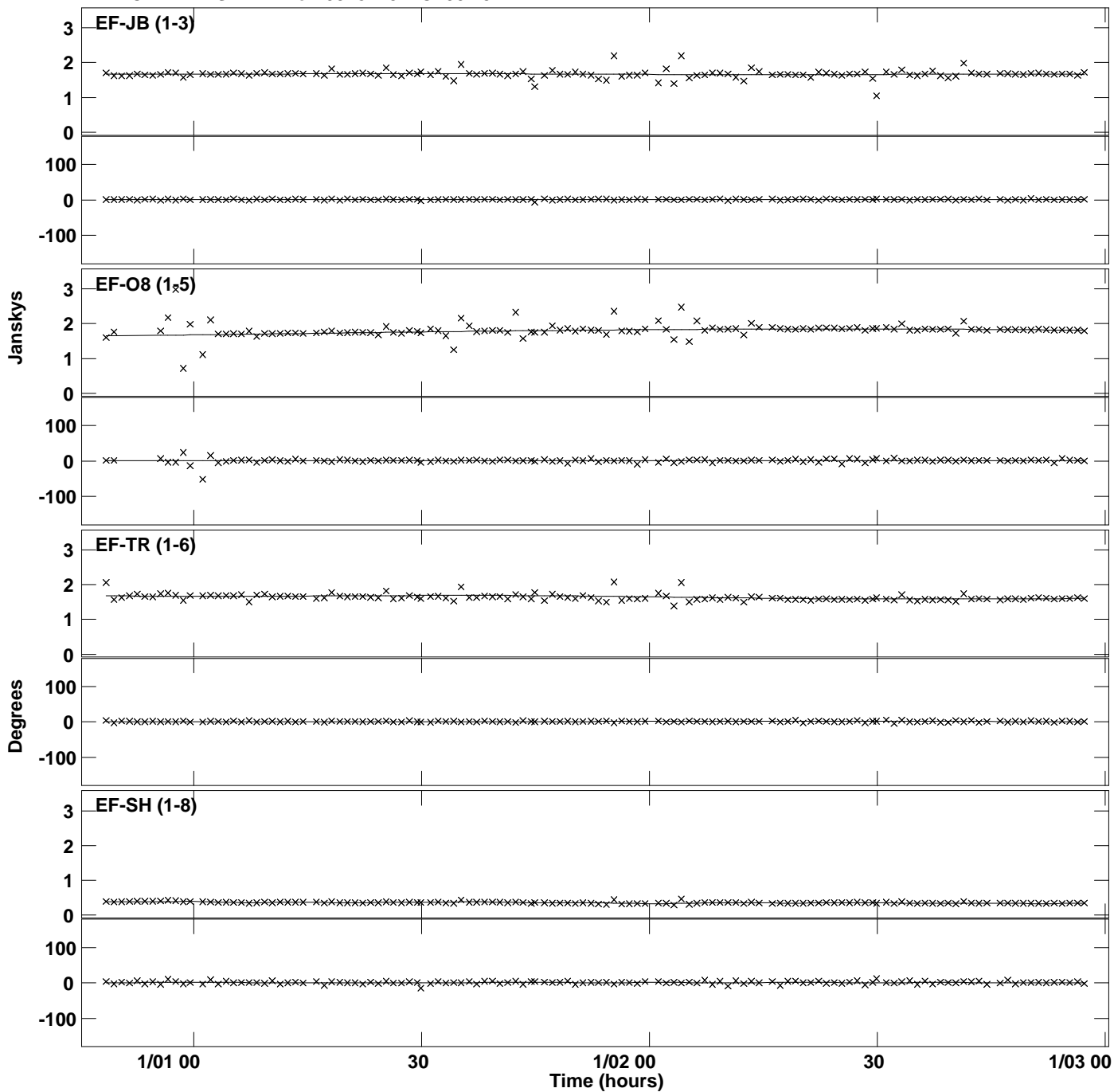




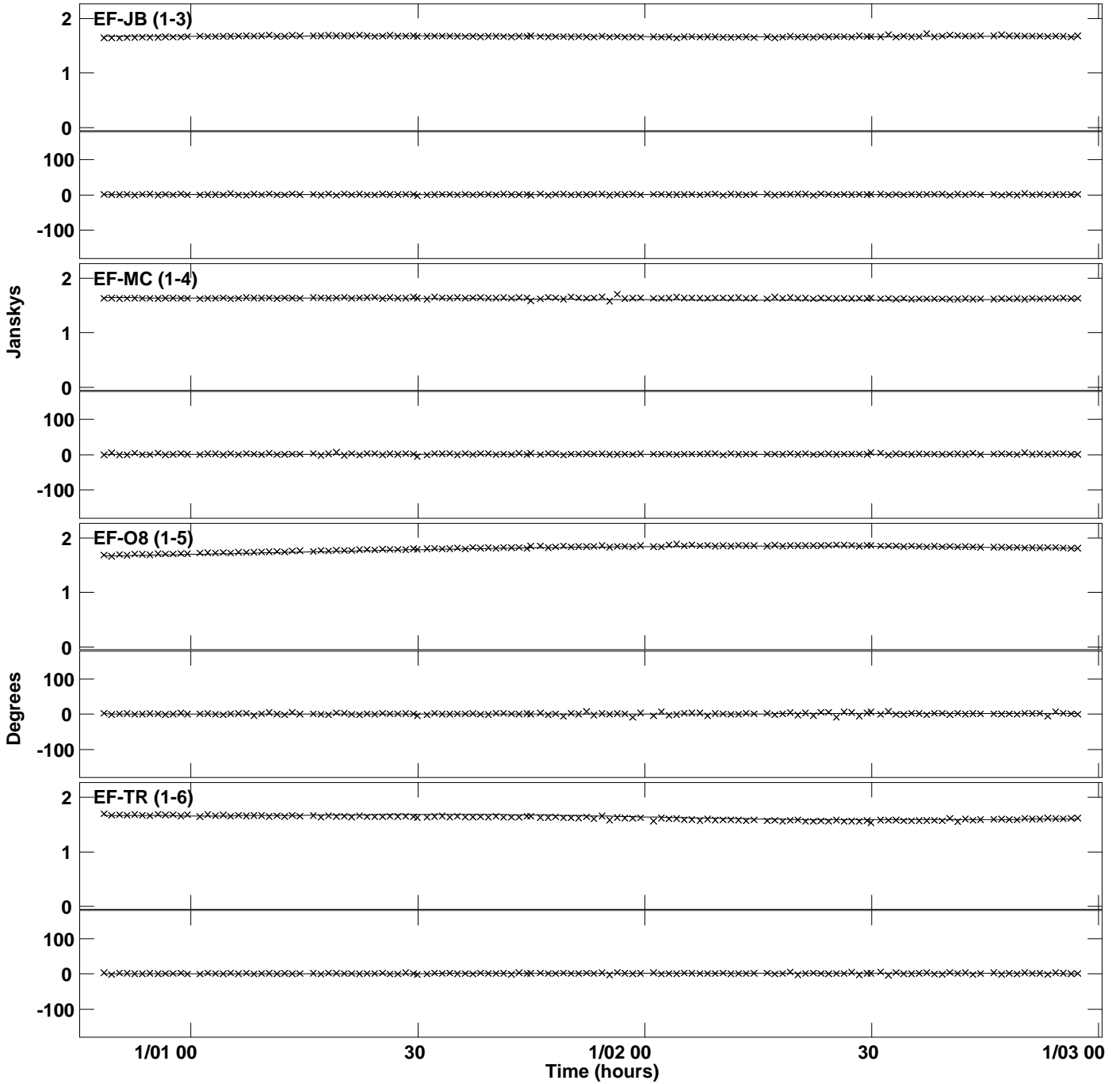
PLot file version 17 created 25-SEP-2015 13:45:23  
Amplitude andPhase vs Time for 0528+134.MULTI.1 Vect aver. CL # 3  
IF 1 CHAN 1 STK RR of 0528+134.ICL001.3



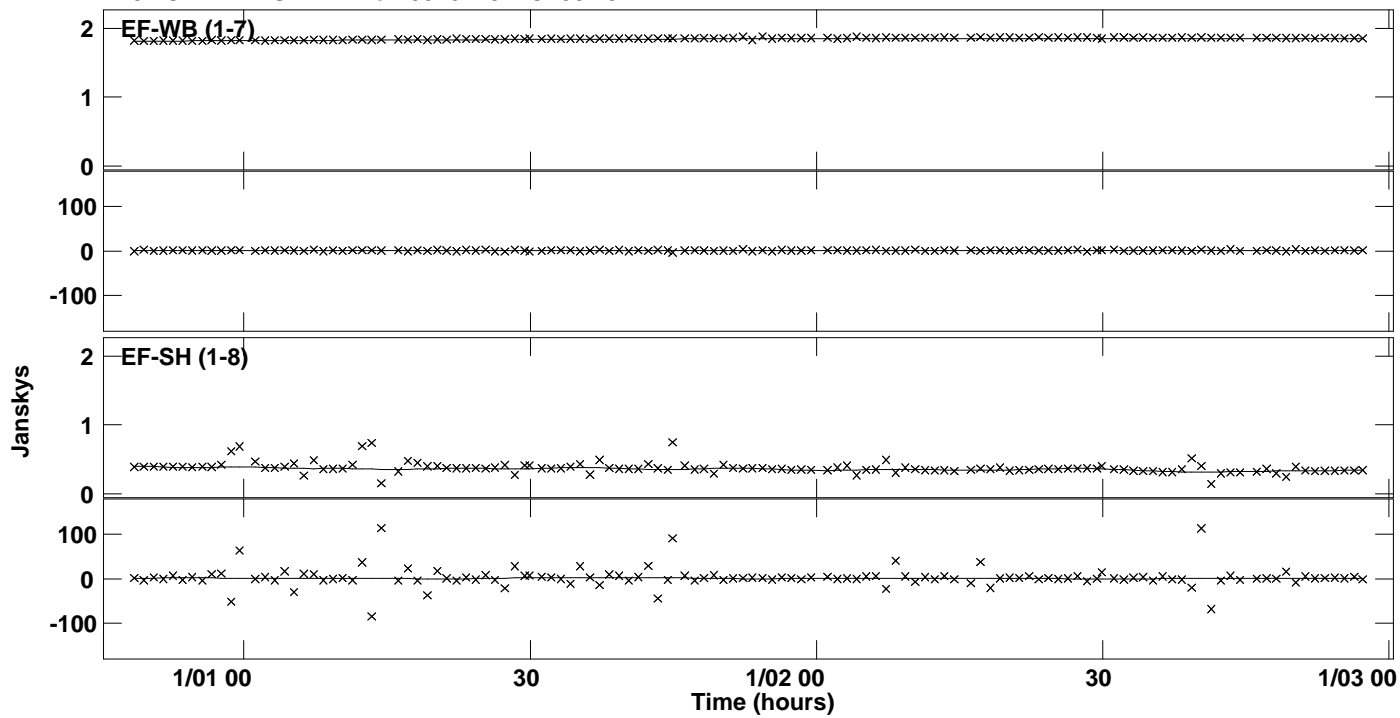
PLot file version 18 created 25-SEP-2015 13:45:25  
Amplitude andPhase vs Time for 0528+134.MULTI.1 Vect aver. CL # 3  
IF 2 CHAN 1 STK RR of 0528+134.ICL001.3



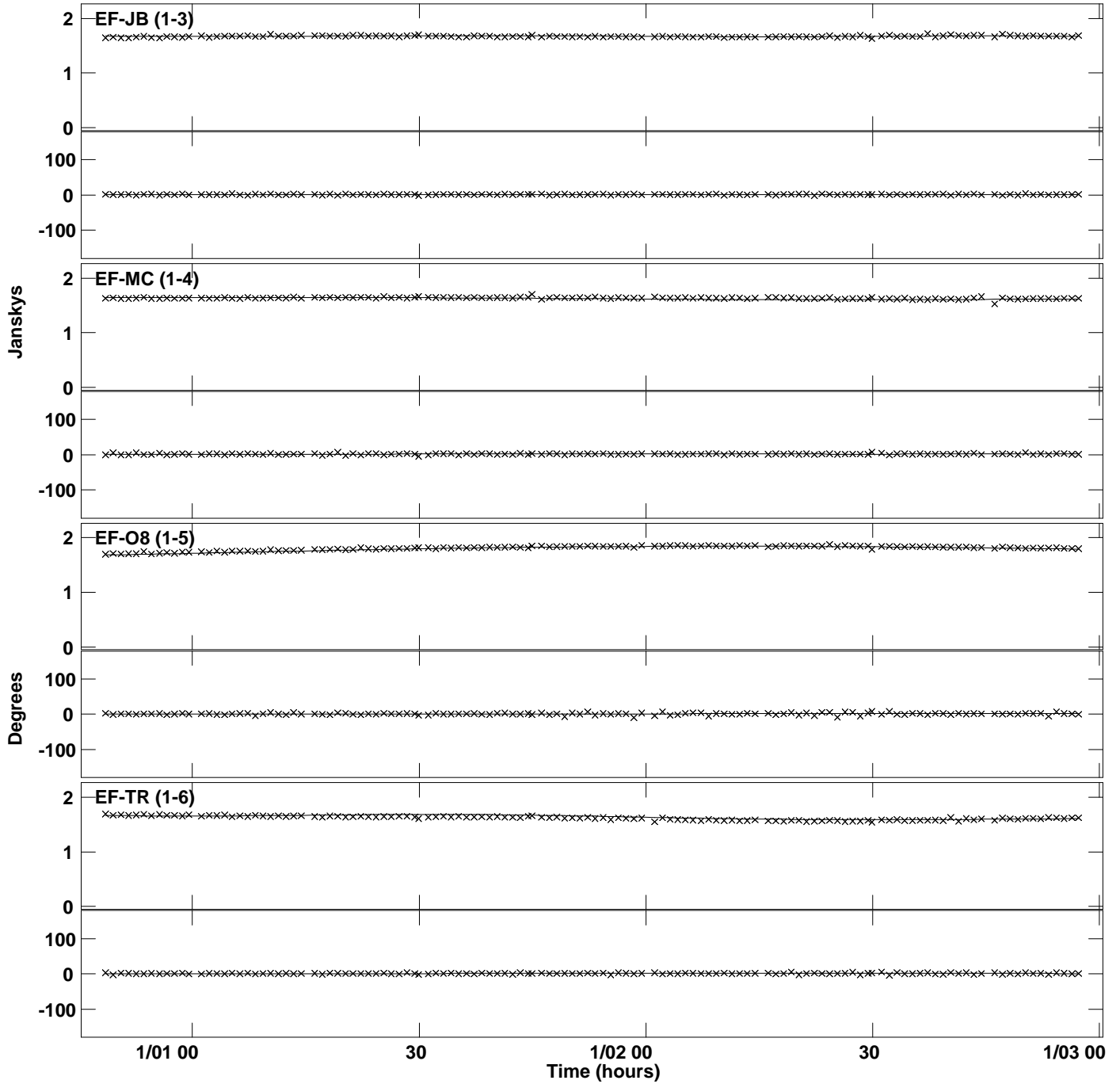
PLot file version 19 created 25-SEP-2015 13:45:26  
Amplitude andPhase vs Time for 0528+134.MULTI.1 Vect aver. CL # 3  
IF 3 CHAN 1 STK RR of 0528+134.ICL001.3



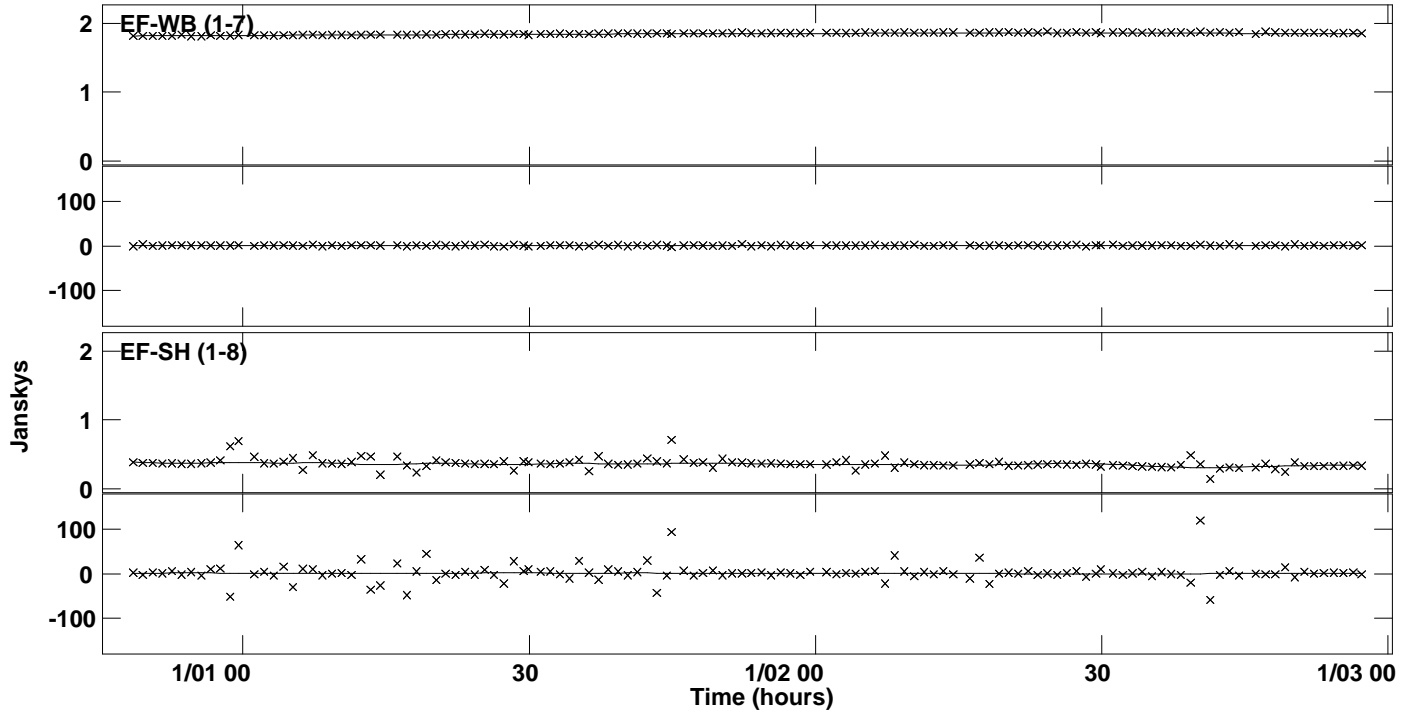
PLot file version 20 created 25-SEP-2015 13:45:26  
Amplitude andPhase vs Time for 0528+134.MULTI.1 Vect aver. CL # 3  
IF 3 CHAN 1 STK RR of 0528+134.ICL001.3



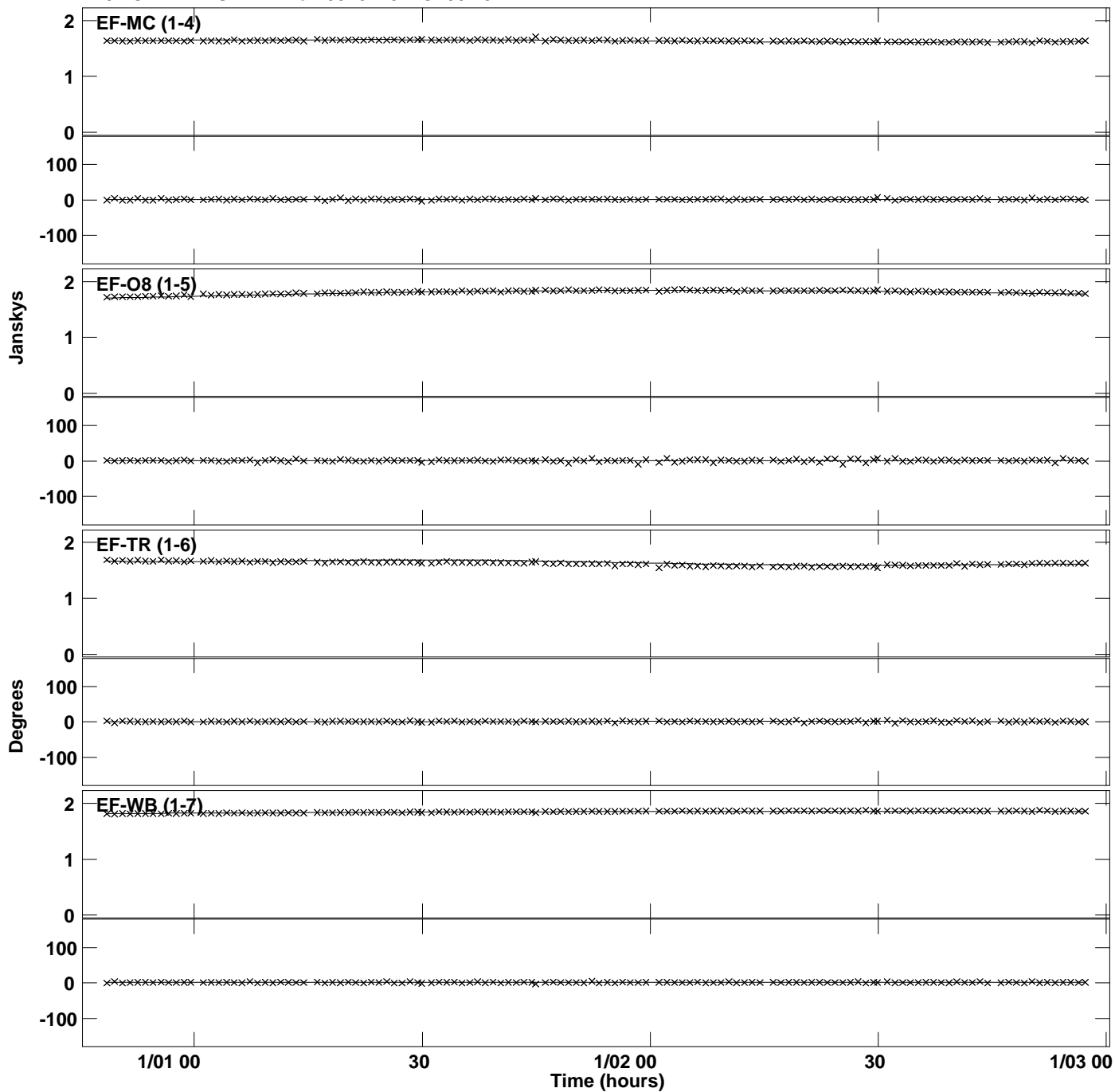
PLot file version 21 created 25-SEP-2015 13:45:27  
Amplitude andPhase vs Time for 0528+134.MULTI.1 Vect aver. CL # 3  
IF 4 CHAN 1 STK RR of 0528+134.ICL001.3



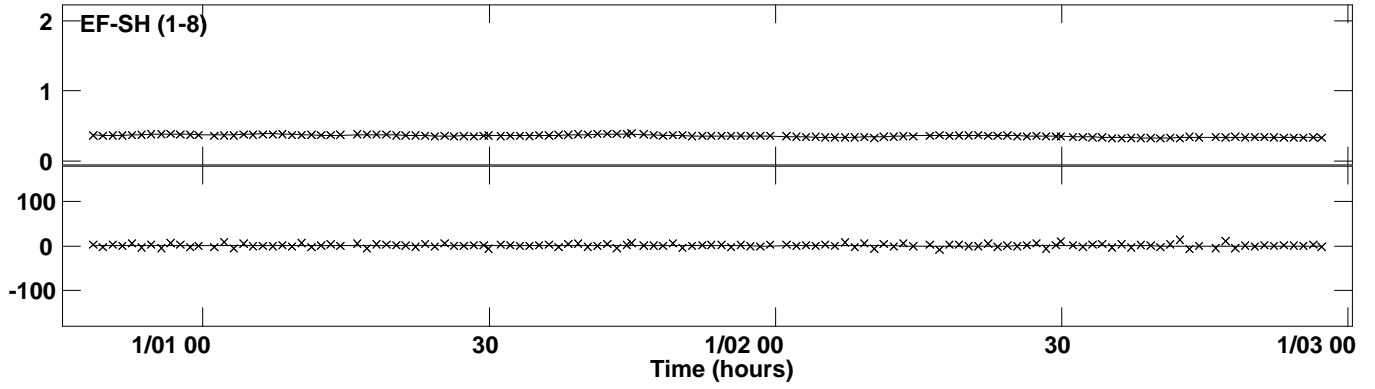
Plot file version 22 created 25-SEP-2015 13:45:27  
Amplitude andPhase vs Time for 0528+134.MULTI.1 Vect aver. CL # 3  
IF 4 CHAN 1 STK RR of 0528+134.ICL001.3



PLot file version 23 created 25-SEP-2015 13:45:29  
Amplitude andPhase vs Time for 0528+134.MULTI.1 Vect aver. CL # 3  
IF 5 CHAN 1 STK RR of 0528+134.ICL001.3

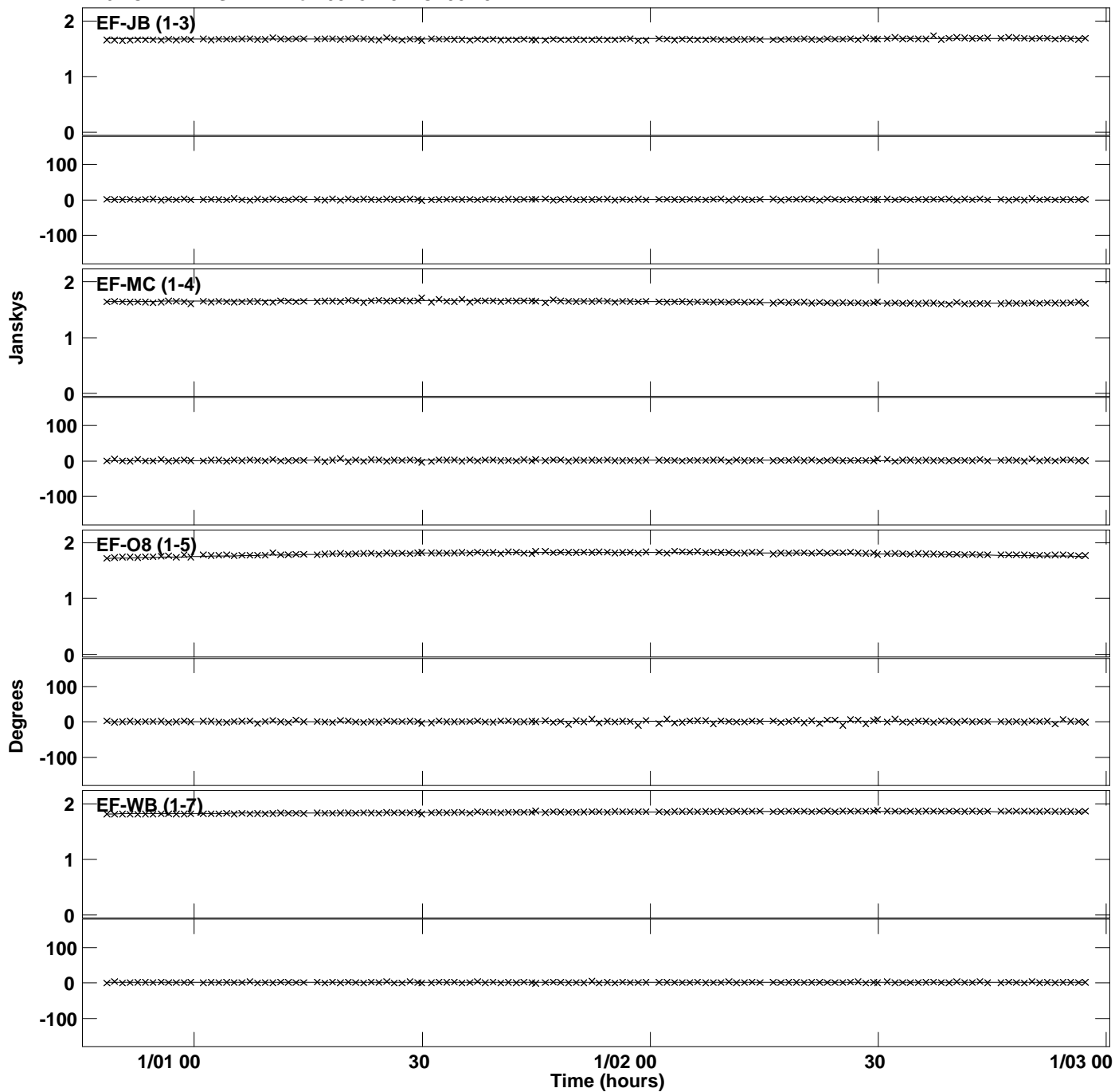


PLot file version 24 created 25-SEP-2015 13:45:29  
Amplitude andPhase vs Time for 0528+134.MULTI.1 Vect aver. CL # 3  
IF 5 CHAN 1 STK RR of 0528+134.ICL001.3

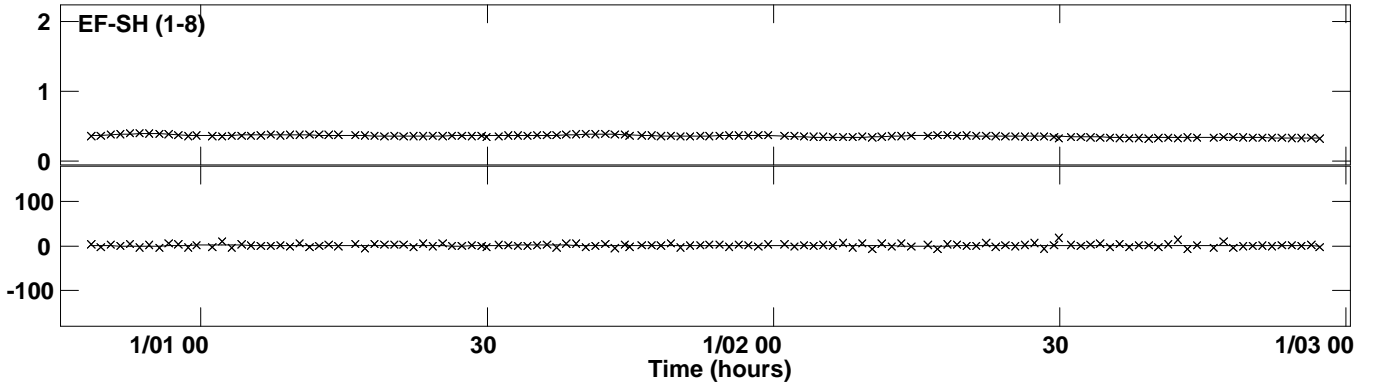




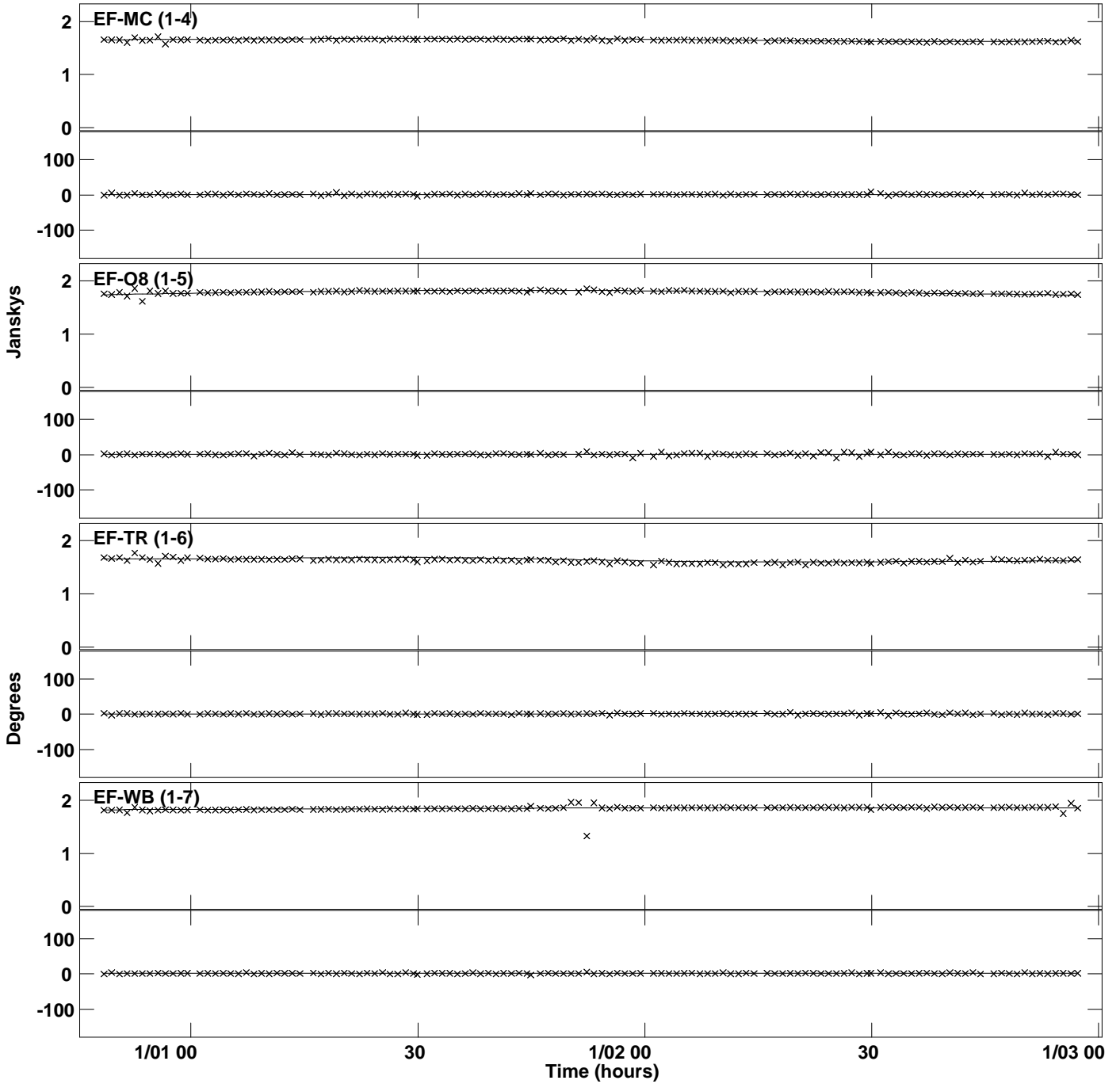
PLot file version 25 created 25-SEP-2015 13:45:30  
Amplitude andPhase vs Time for 0528+134.MULTI.1 Vect aver. CL # 3  
IF 6 CHAN 1 STK RR of 0528+134.ICL001.3



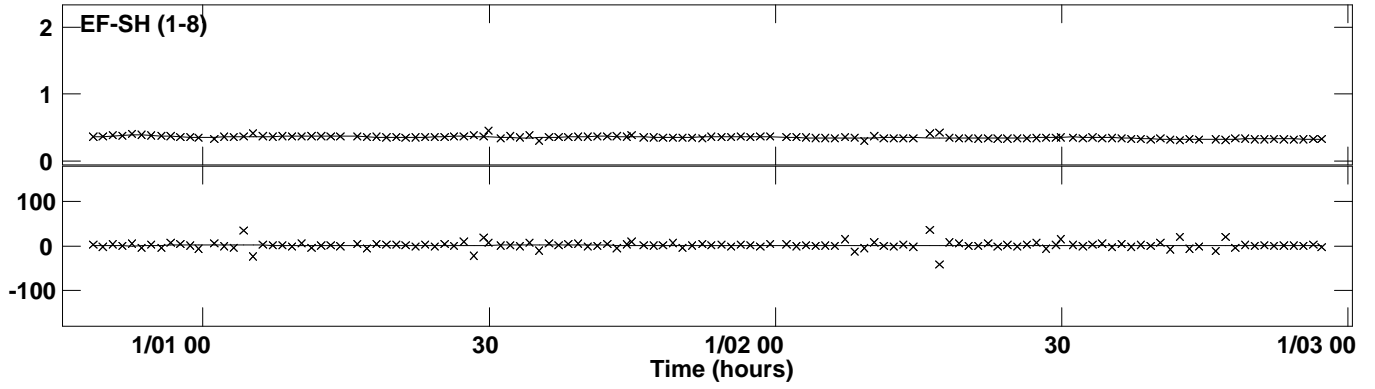
PLot file version 26 created 25-SEP-2015 13:45:30  
Amplitude andPhase vs Time for 0528+134.MULTI.1 Vect aver. CL # 3  
IF 6 CHAN 1 STK RR of 0528+134.ICL001.3



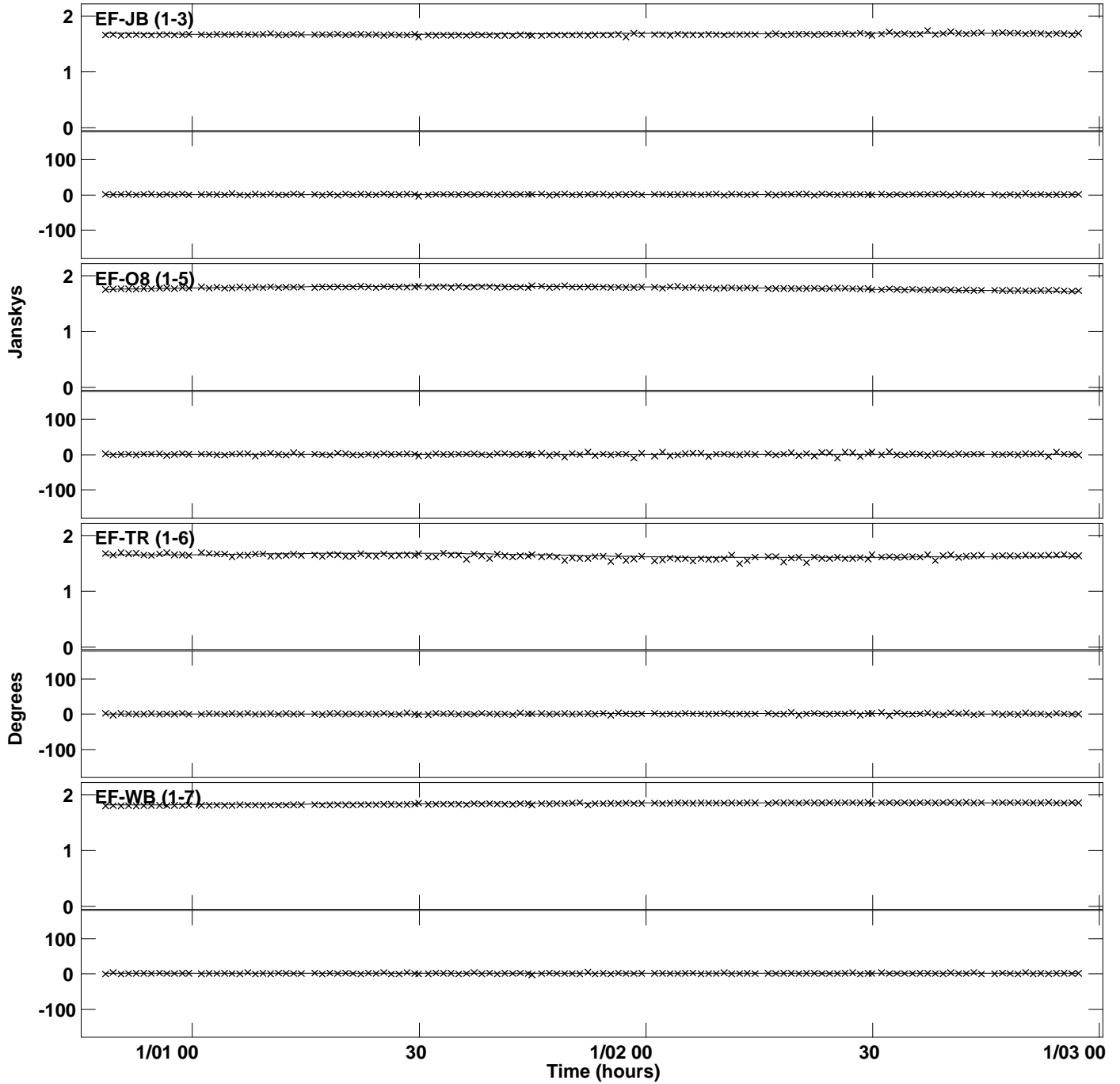
PLot file version 27 created 25-SEP-2015 13:45:41  
Amplitude andPhase vs Time for 0528+134.MULTI.1 Vect aver. CL # 3  
IF 7 CHAN 1 STK RR of 0528+134.ICL001.3



PLot file version 28 created 25-SEP-2015 13:45:41  
Amplitude andPhase vs Time for 0528+134.MULTI.1 Vect aver. CL # 3  
IF 7 CHAN 1 STK RR of 0528+134.ICL001.3



PLot file version 29 created 25-SEP-2015 13:45:42  
Amplitude andPhase vs Time for 0528+134.MULTI.1 Vect aver. CL # 3  
IF 8 CHAN 1 STK RR of 0528+134.ICL001.3



PLot file version 30 created 25-SEP-2015 13:45:42  
Amplitude andPhase vs Time for 0528+134.MULTI.1 Vect aver. CL # 3  
IF 8 CHAN 1 STK RR of 0528+134.ICL001.3

