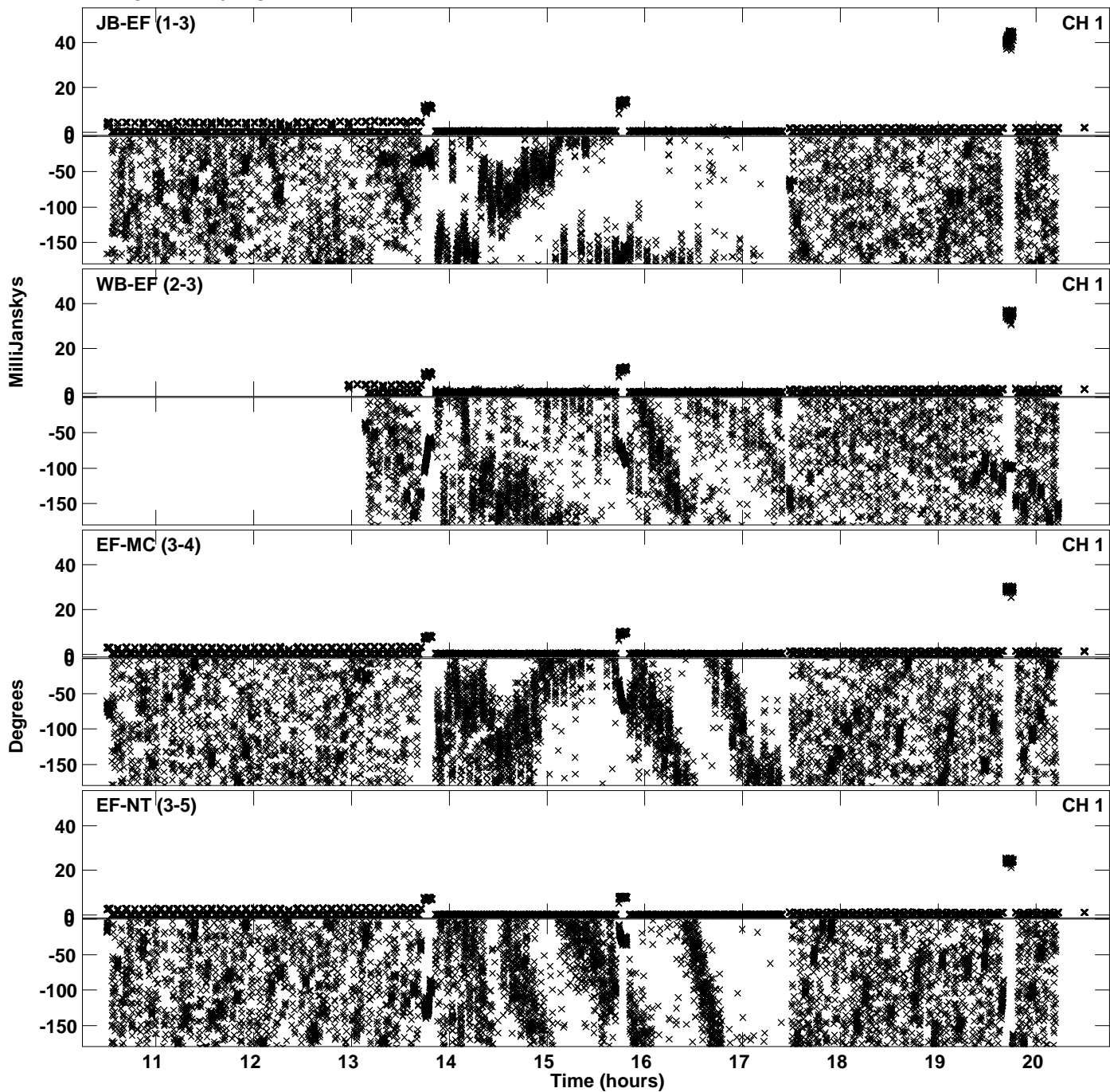
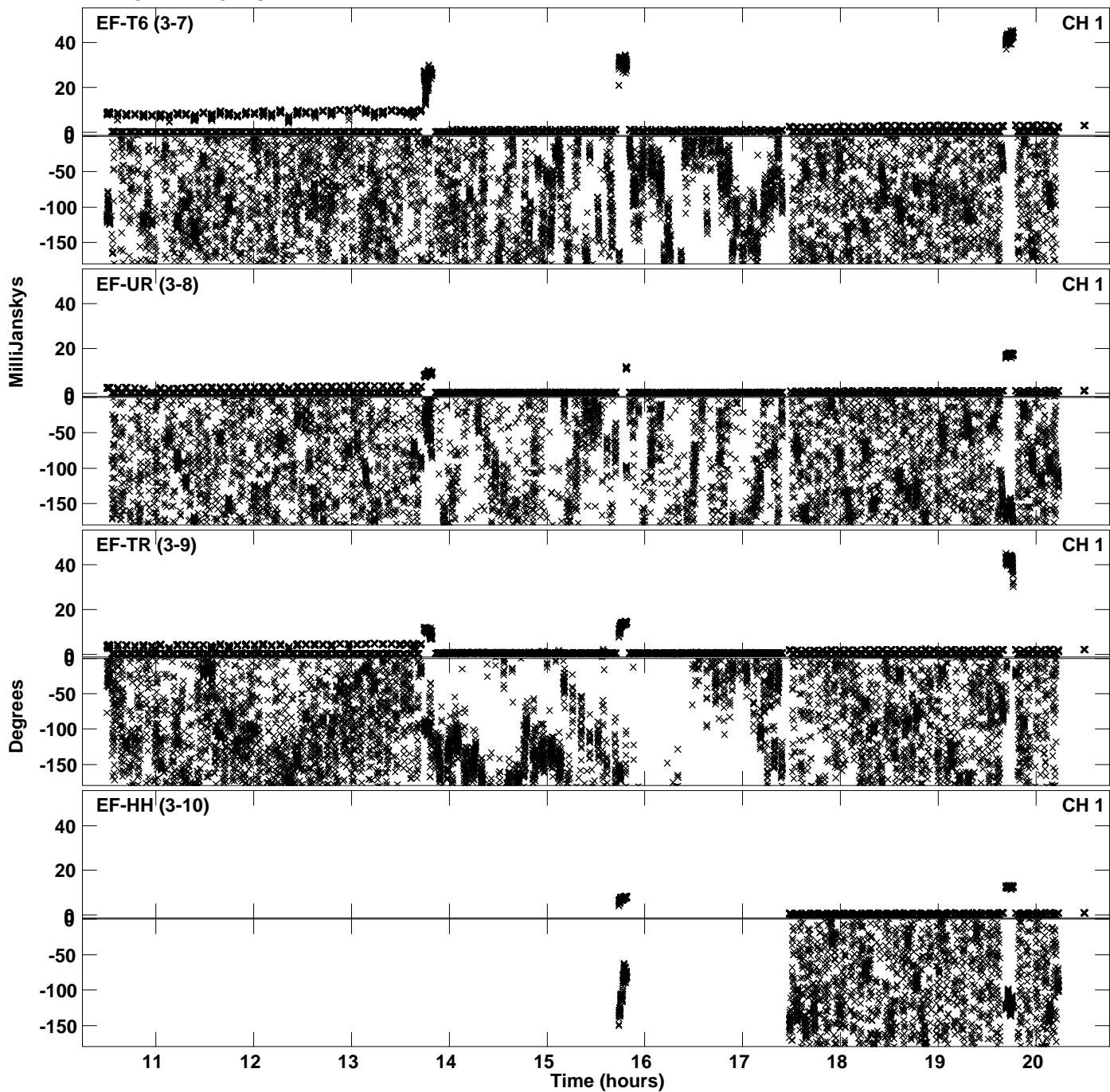


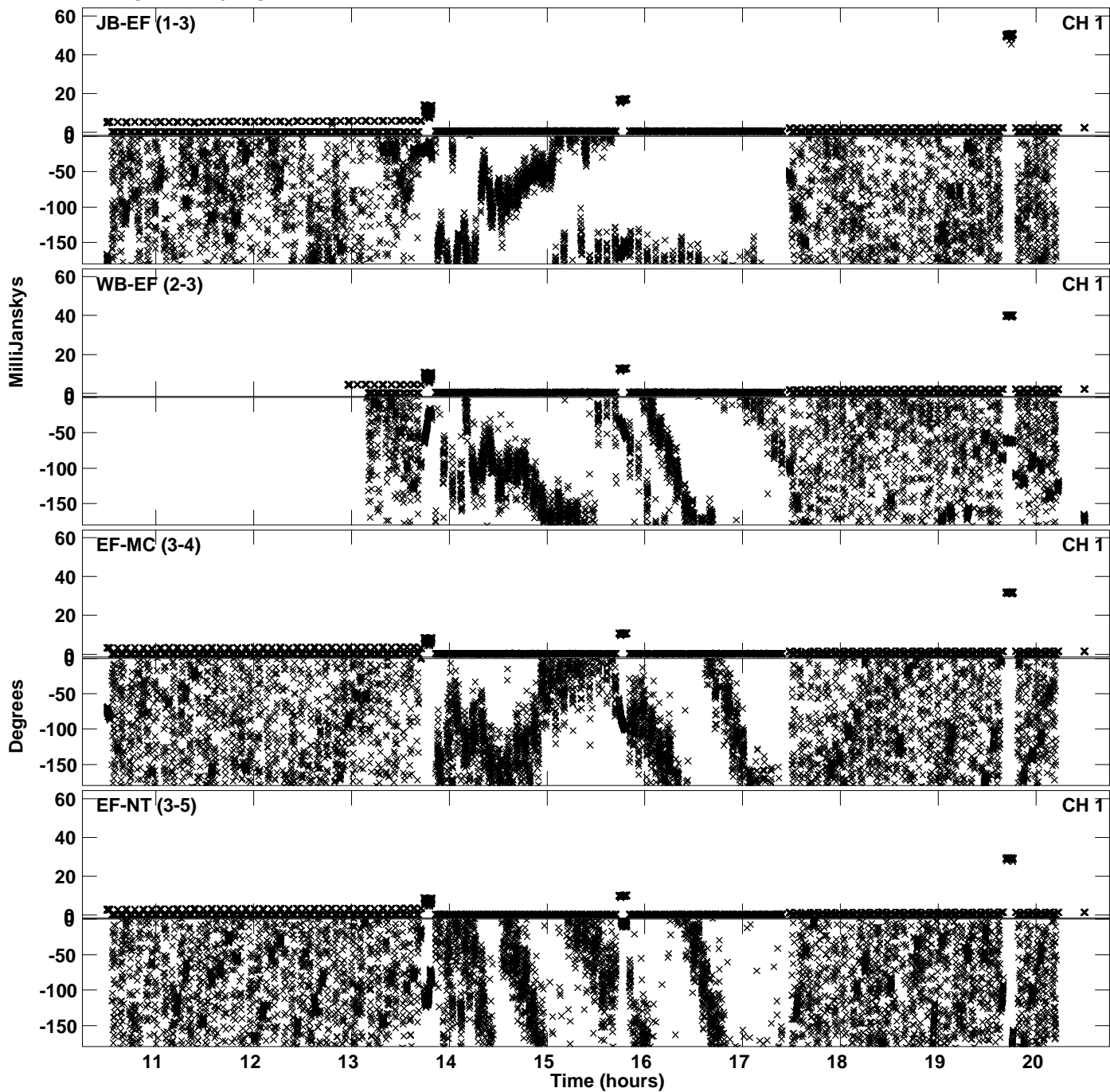
Plot file version 1 created 02-FEB-2023 13:24:49
Amplitude andPhase vs Time for EC073A.UVDATA.1 Vect aver.
IF 1 CHAN 1 - 64 STK LL



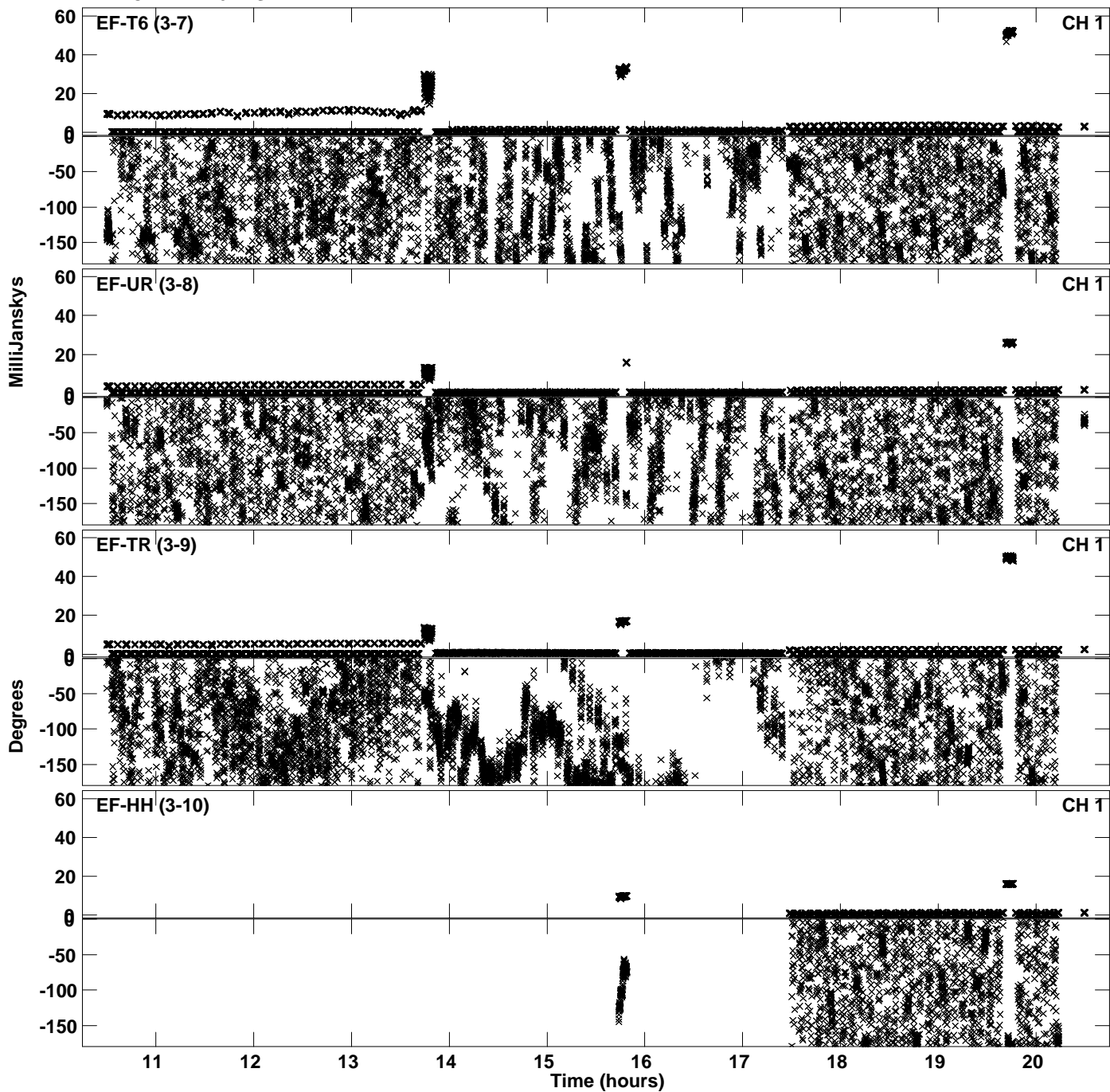
Plot file version 2 created 02-FEB-2023 13:24:49
Amplitude andPhase vs Time for EC073A.UVDATA.1 Vect aver.
IF 1 CHAN 1 - 64 STK LL



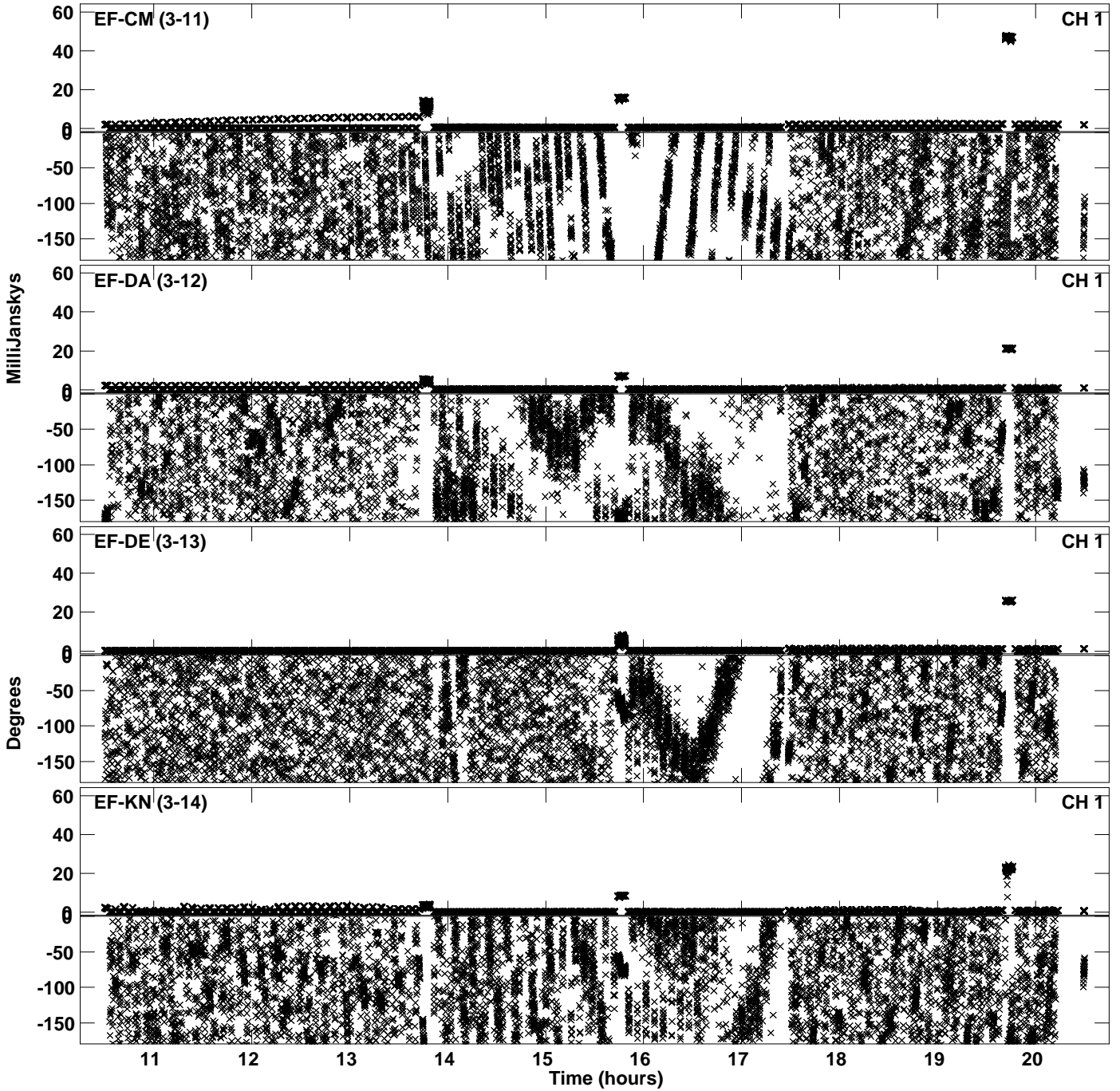
Plot file version 3 created 02-FEB-2023 13:25:08
Amplitude andPhase vs Time for EC073A.UVDATA.1 Vect aver.
IF 2 CHAN 1 - 64 STK LL



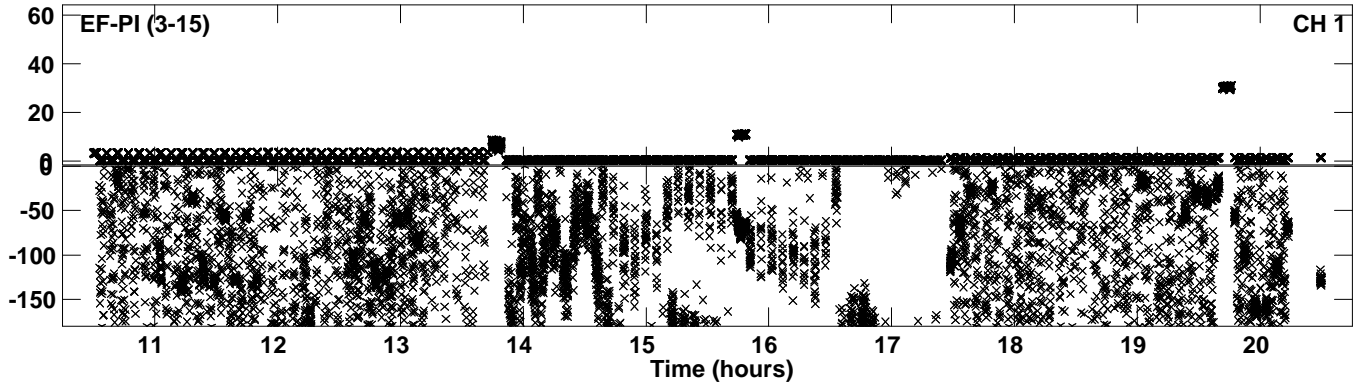
PLot file version 4 created 02-FEB-2023 13:25:08
Amplitude andPhase vs Time for EC073A.UVDATA.1 Vect aver.
IF 2 CHAN 1 - 64 STK LL



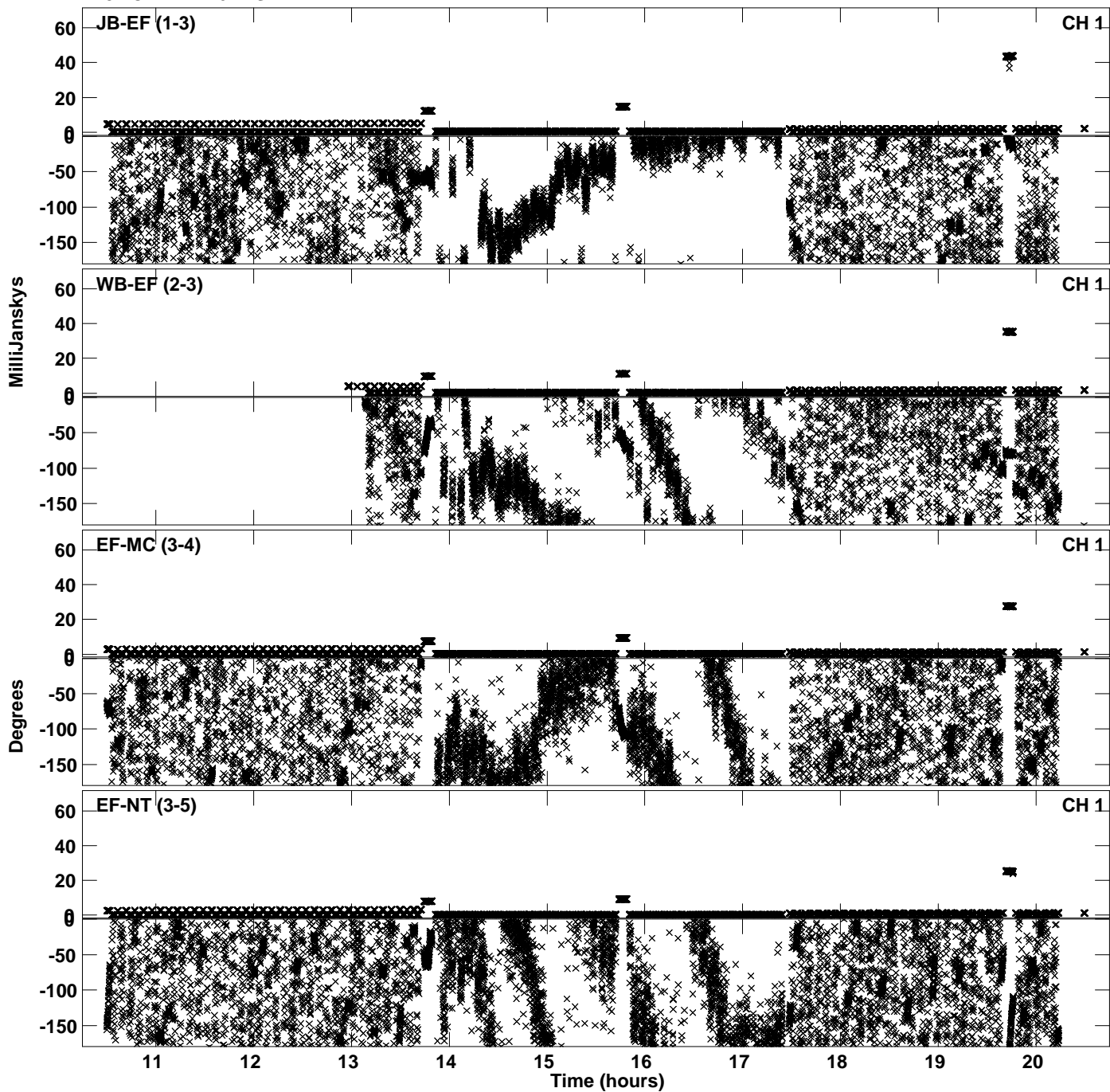
Plot file version 5 created 02-FEB-2023 13:25:08
Amplitude and Phase vs Time for EC073A.UVDATA.1 Vect aver.
IF 2 CHAN 1 - 64 STK LL



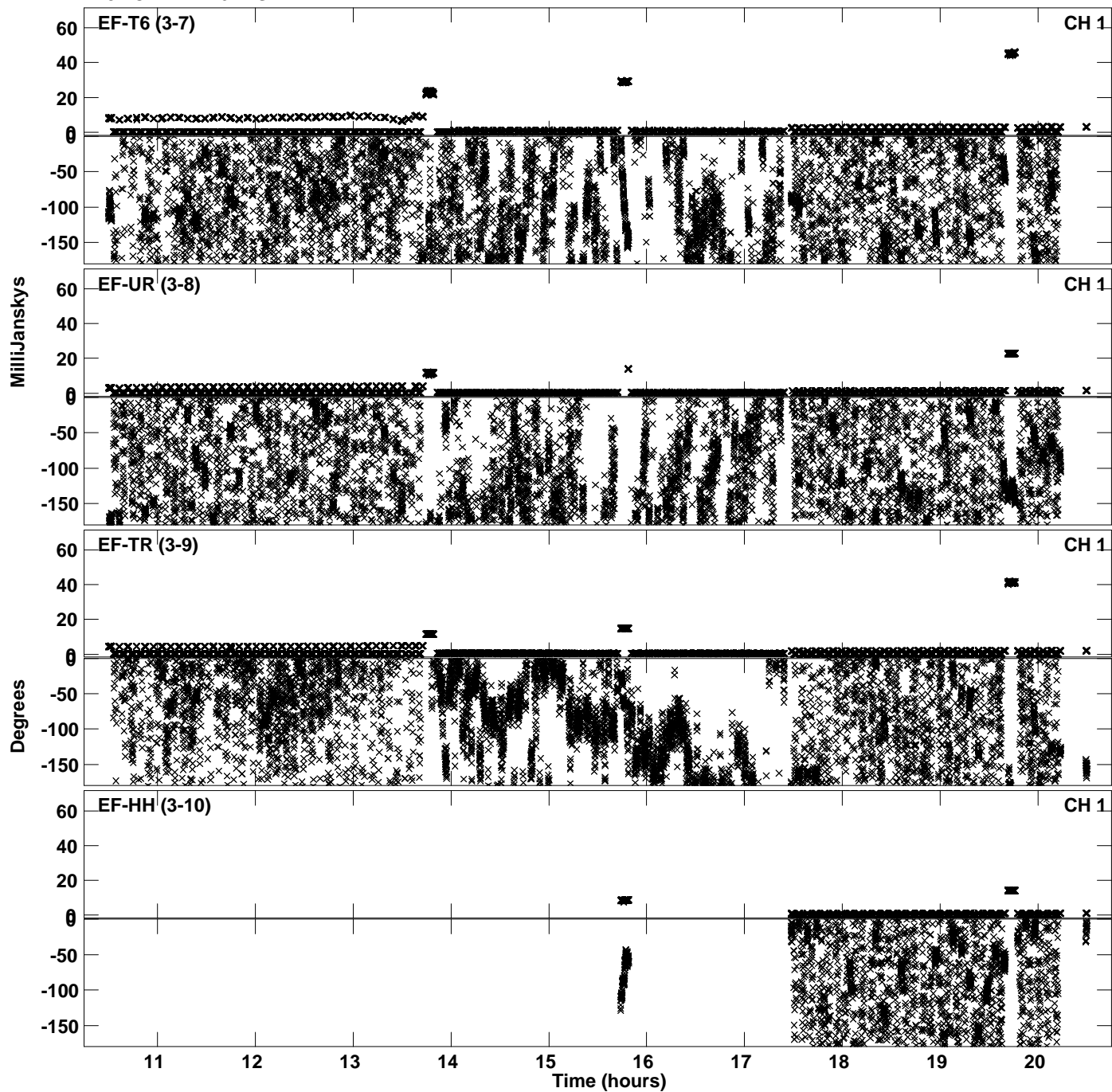
PLot file version 6 created 02-FEB-2023 13:25:08
Amplitude andPhase vs Time for EC073A.UVDATA.1 Vect aver.
IF 2 CHAN 1 - 64 STK LL



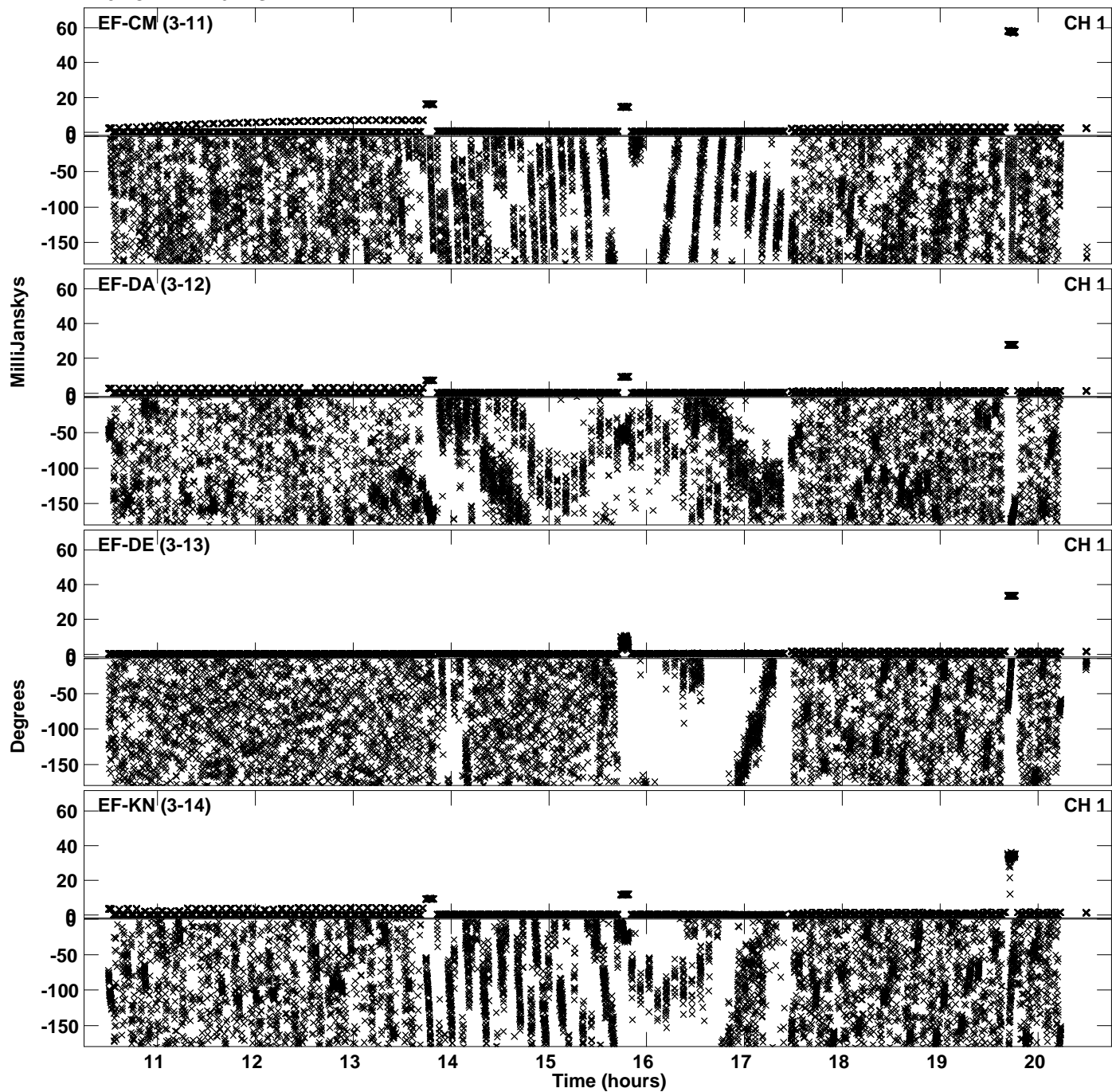
Plot file version 7 created 02-FEB-2023 13:25:26
Amplitude and Phase vs Time for EC073A.UVDATA.1 Vect aver.
IF 3 CHAN 1 - 64 STK LL



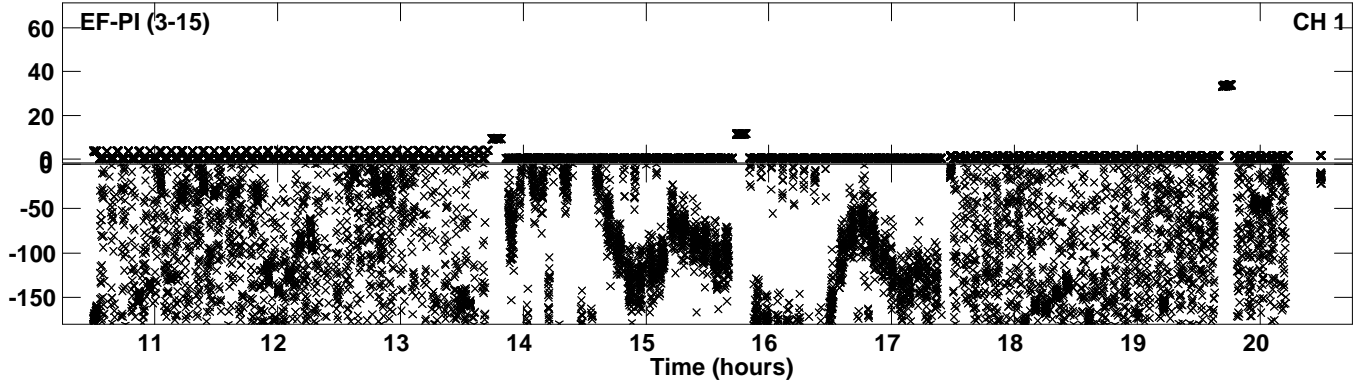
Plot file version 8 created 02-FEB-2023 13:25:26
Amplitude andPhase vs Time for EC073A.UVDATA.1 Vect aver.
IF 3 CHAN 1 - 64 STK LL



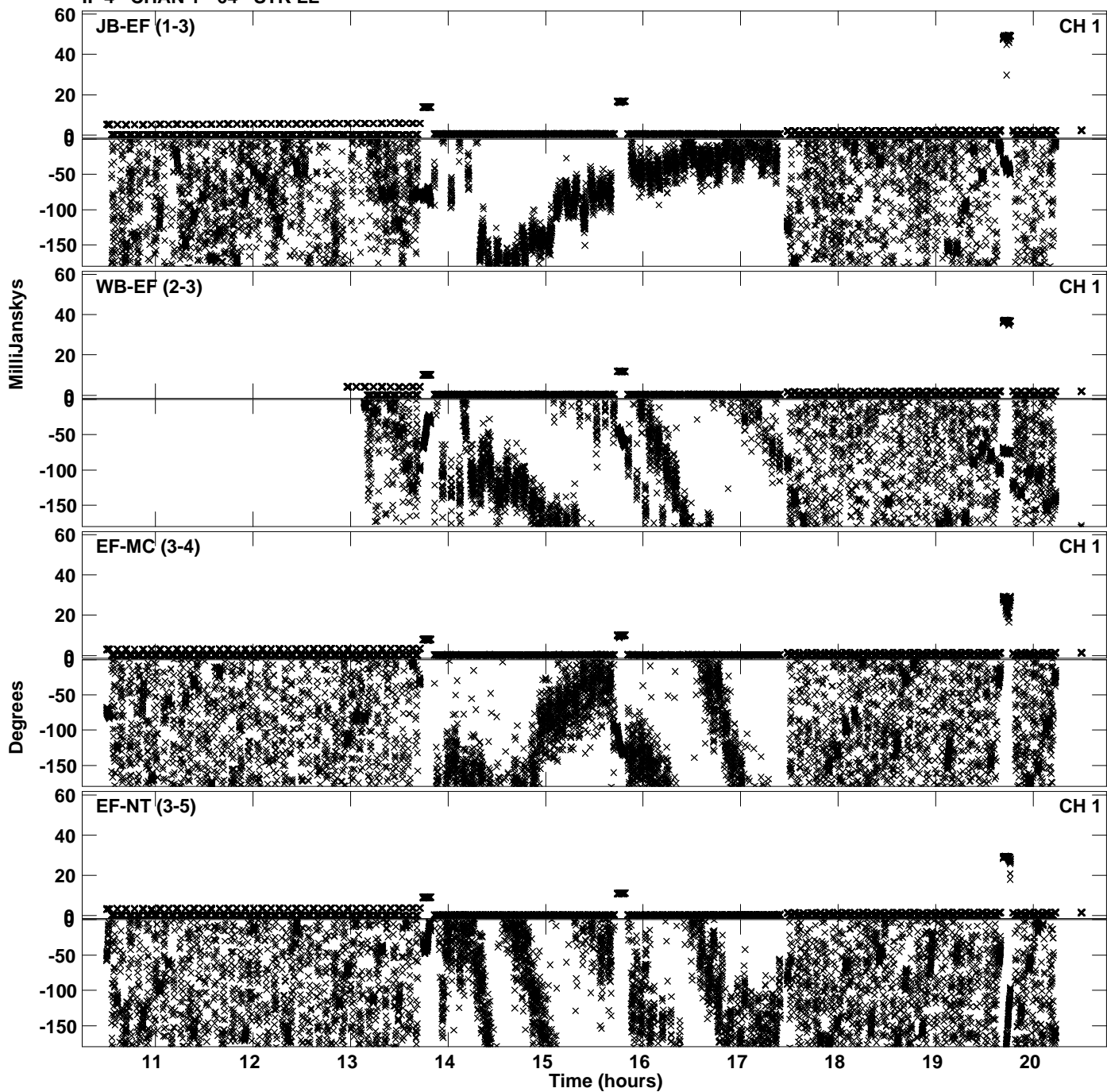
Plot file version 9 created 02-FEB-2023 13:25:26
Amplitude andPhase vs Time for EC073A.UVDATA.1 Vect aver.
IF 3 CHAN 1 - 64 STK LL



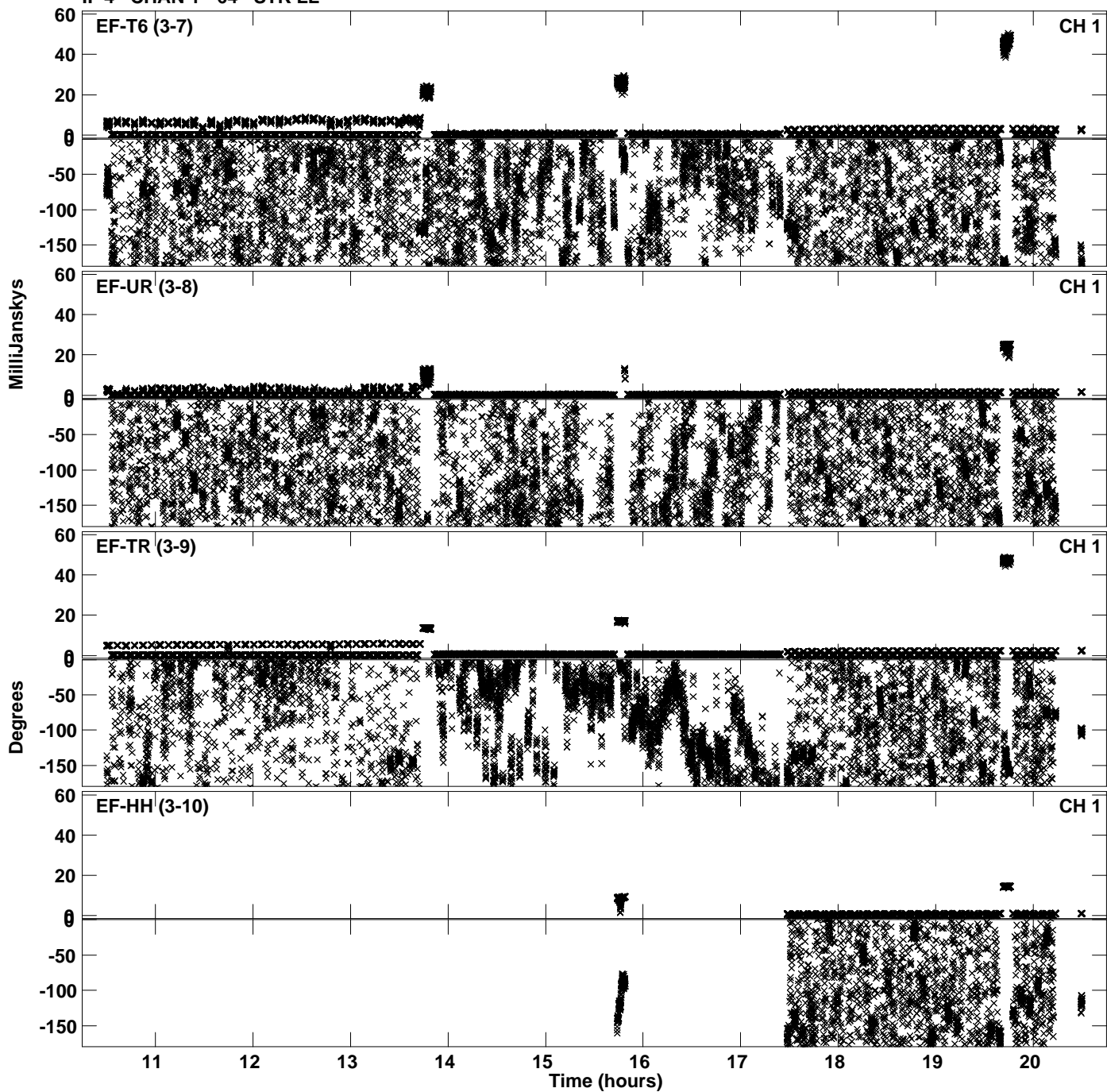
Plot file version 10 created 02-FEB-2023 13:25:26
Amplitude andPhase vs Time for EC073A.UVDATA.1 Vect aver.
IF 3 CHAN 1 - 64 STK LL



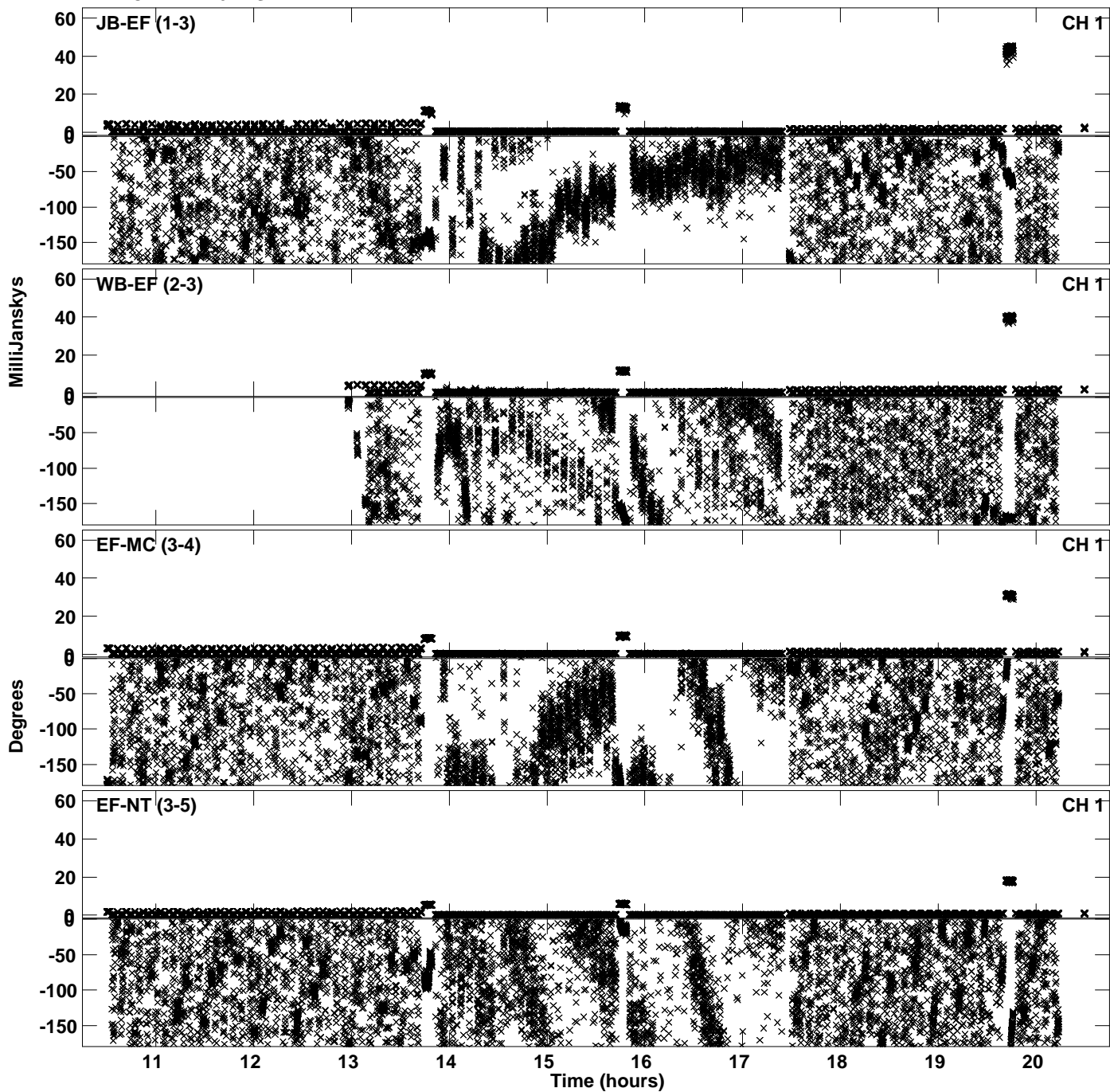
Plot file version 11 created 02-FEB-2023 13:25:42
Amplitude andPhase vs Time for EC073A.UVDATA.1 Vect aver.
IF 4 CHAN 1 - 64 STK LL



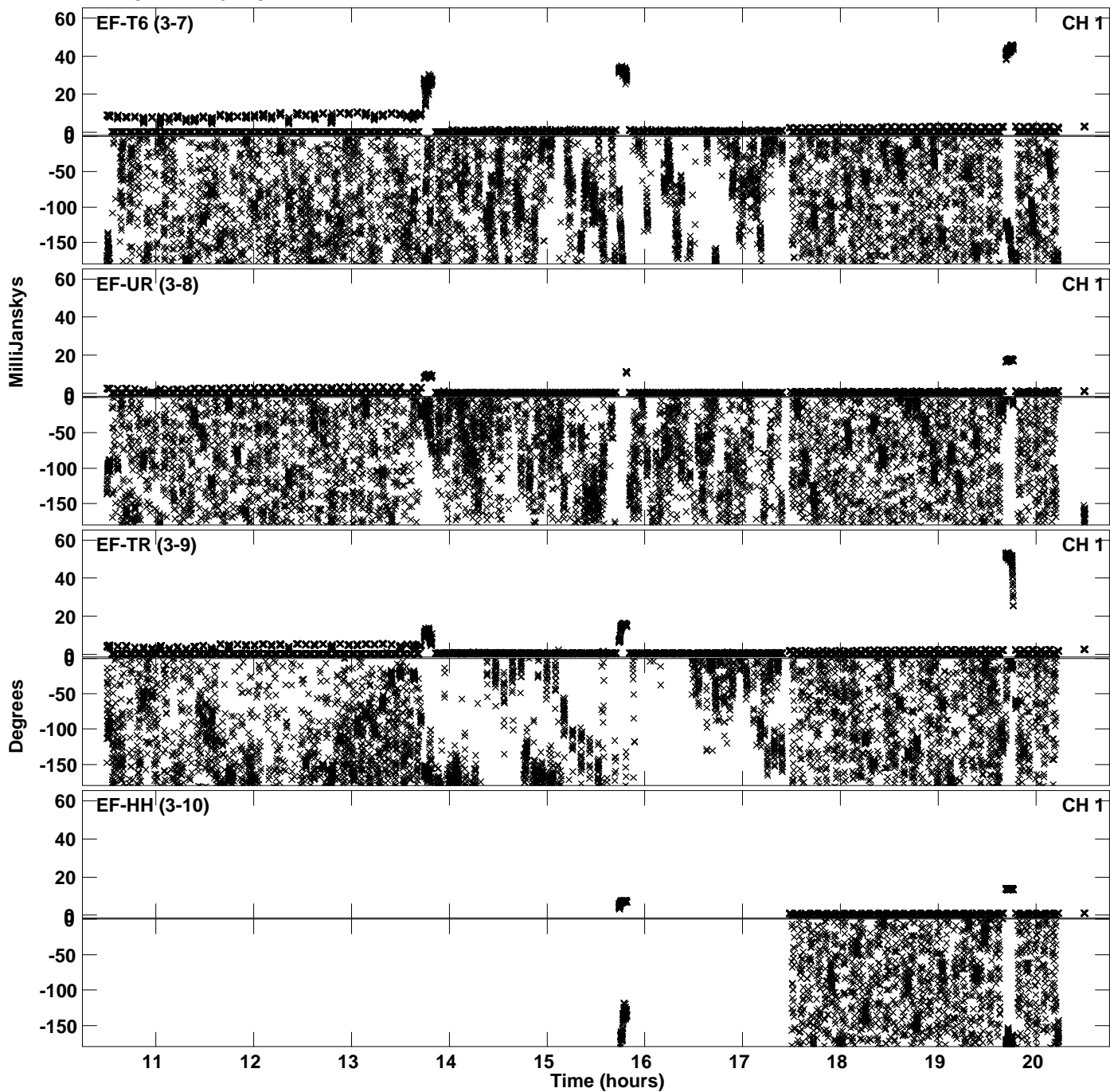
Plot file version 12 created 02-FEB-2023 13:25:42
Amplitude andPhase vs Time for EC073A.UVDATA.1 Vect aver.
IF 4 CHAN 1 - 64 STK LL



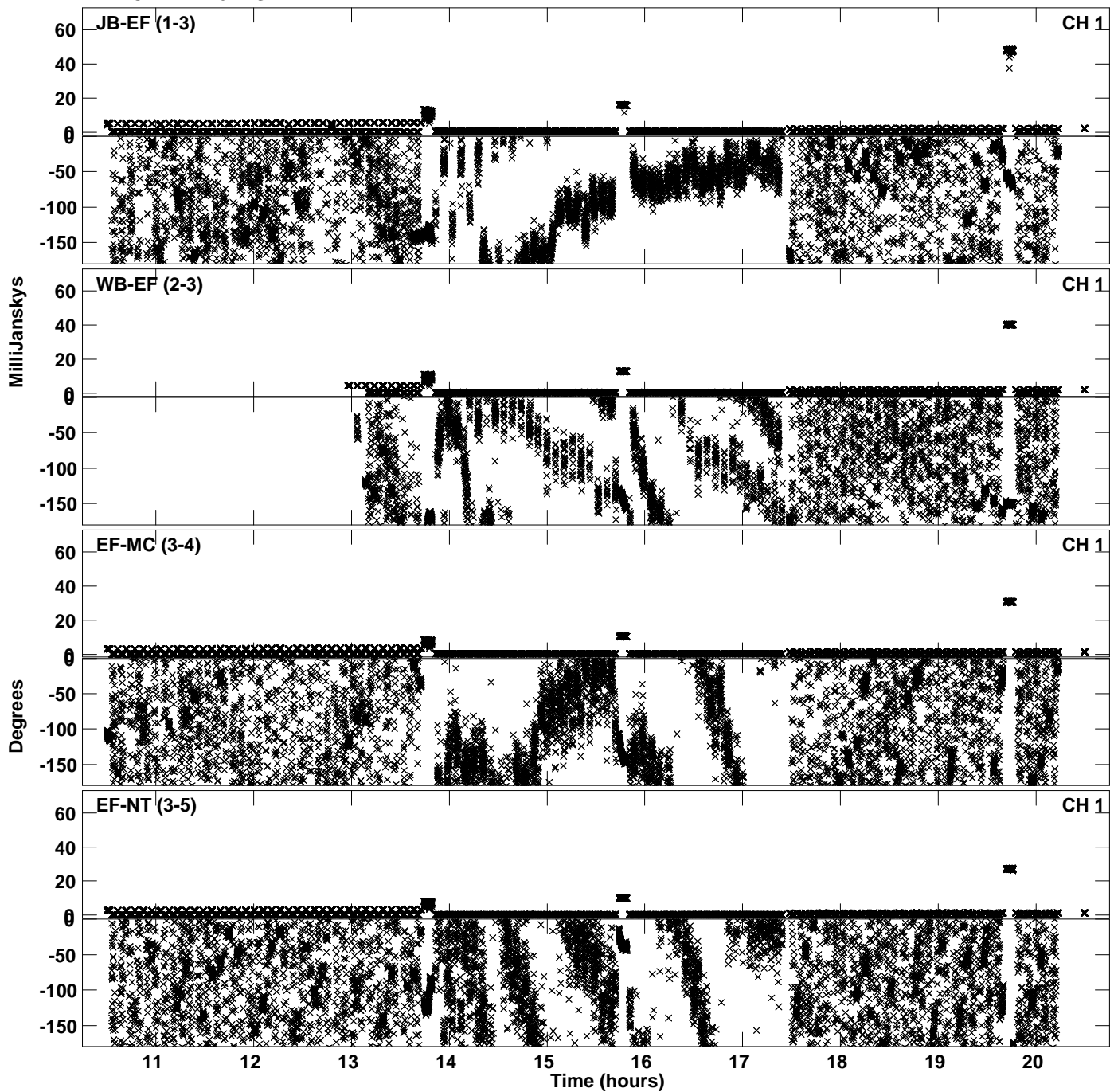
PLot file version 13 created 02-FEB-2023 13:25:57
Amplitude andPhase vs Time for EC073A.UVDATA.1 Vect aver.
IF 1 CHAN 1 - 64 STK RR



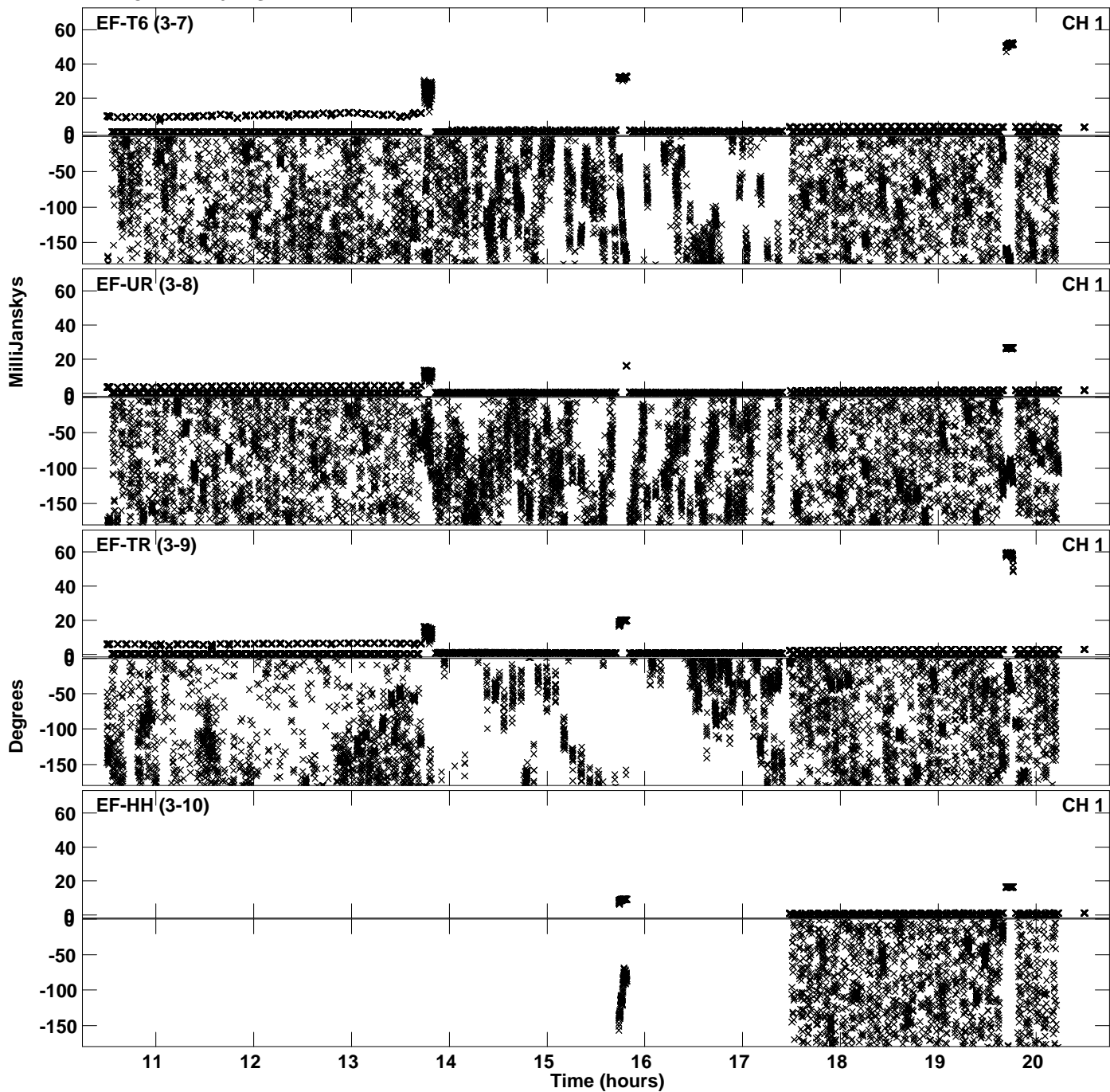
Plot file version 14 created 02-FEB-2023 13:25:57
Amplitude and Phase vs Time for EC073A.UVDATA.1 Vect aver.
IF 1 CHAN 1 - 64 STK RR



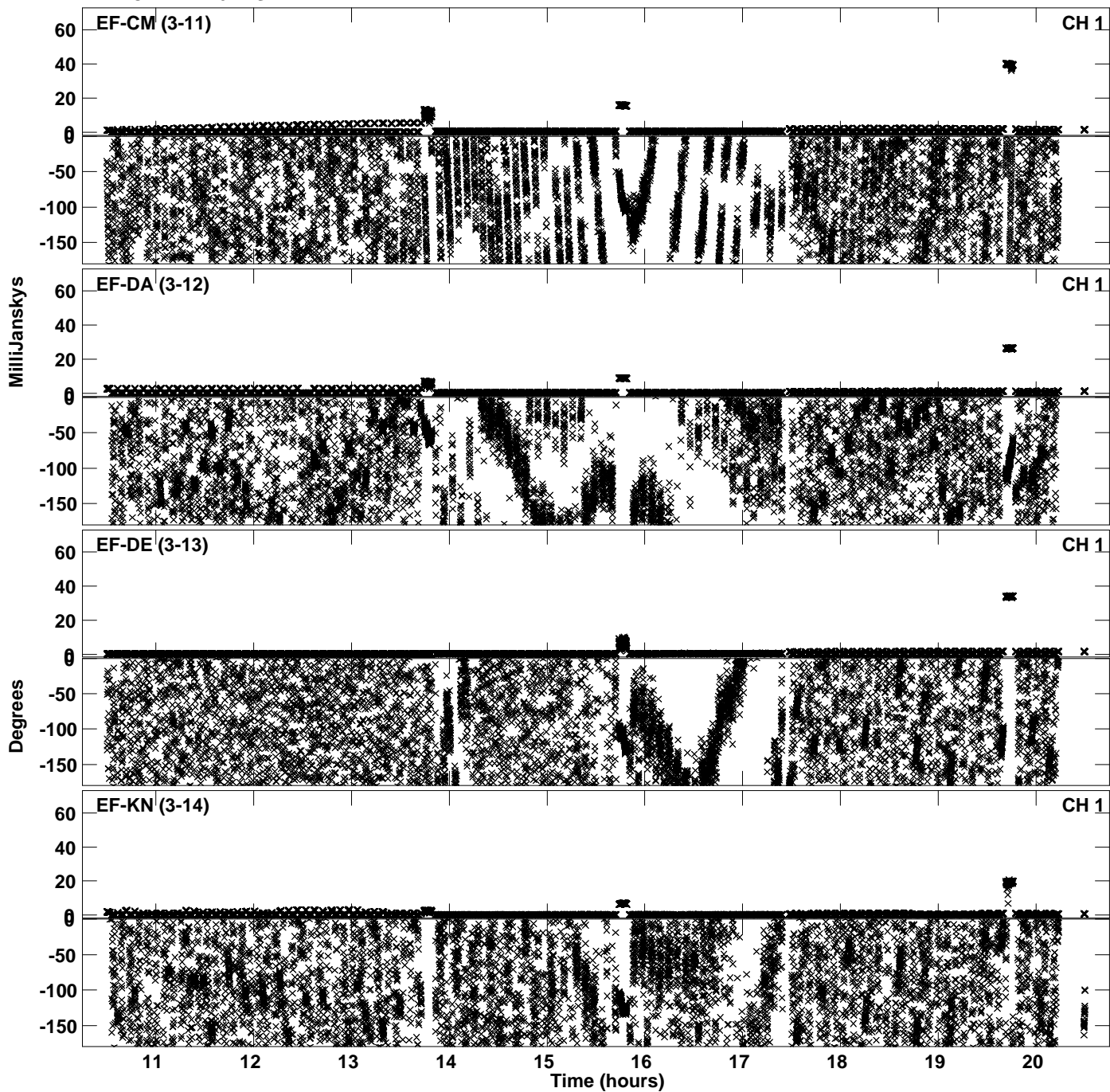
Plot file version 15 created 02-FEB-2023 13:26:15
Amplitude and Phase vs Time for EC073A.UVDATA.1 Vect aver.
IF 2 CHAN 1 - 64 STK RR



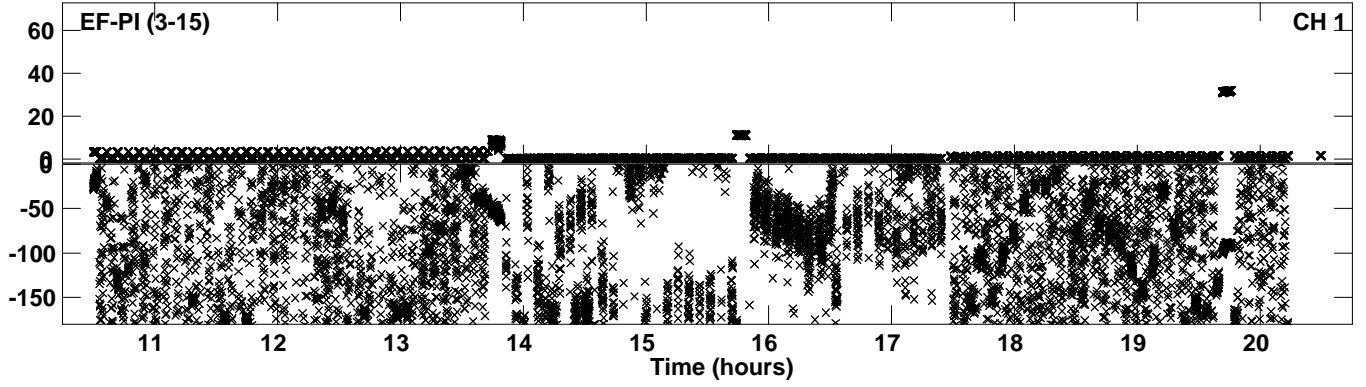
PLot file version 16 created 02-FEB-2023 13:26:15
Amplitude andPhase vs Time for EC073A.UVDATA.1 Vect aver.
IF 2 CHAN 1 - 64 STK RR



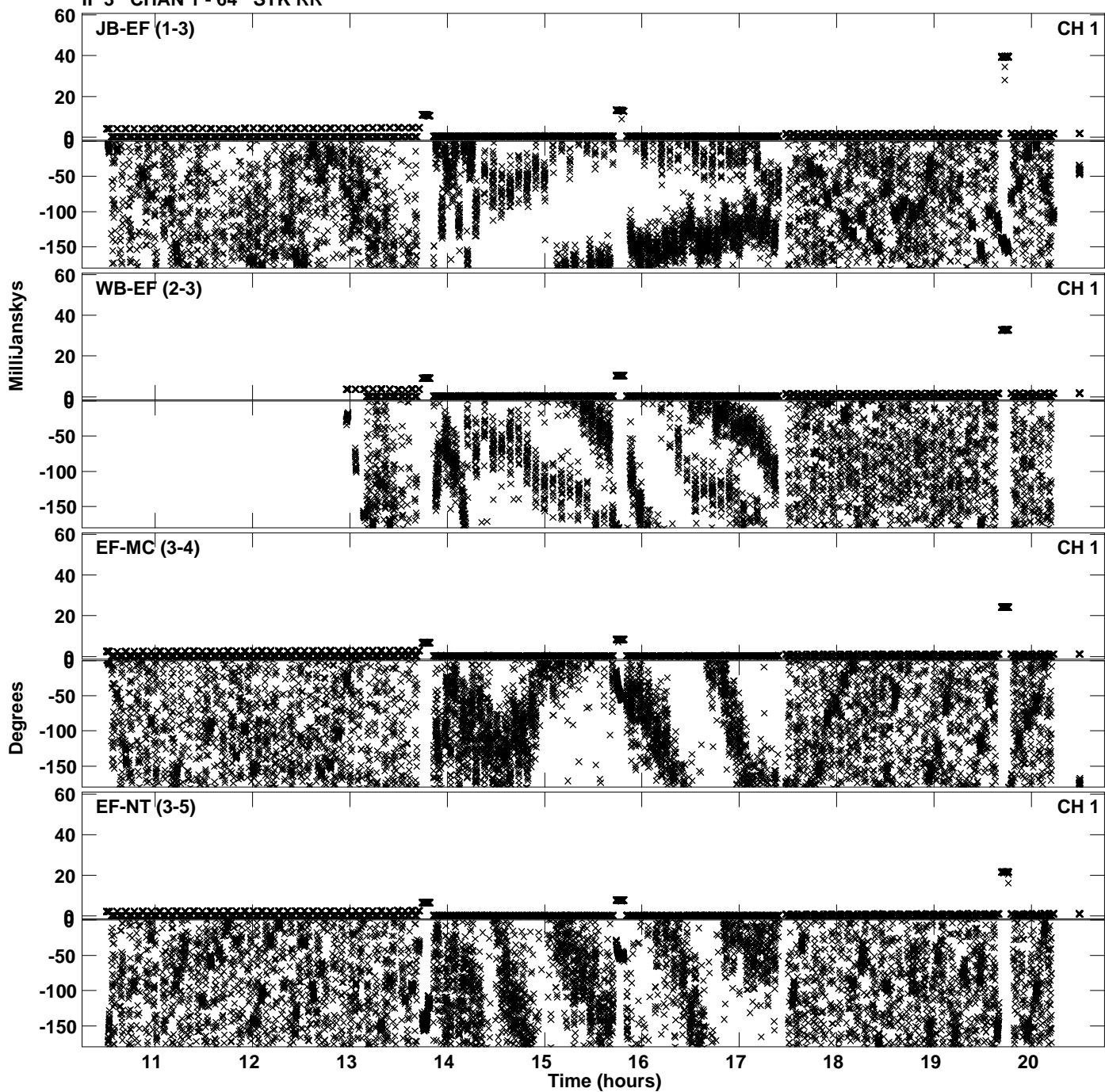
Plot file version 17 created 02-FEB-2023 13:26:15
Amplitude and Phase vs Time for EC073A.UVDATA.1 Vect aver.
IF 2 CHAN 1 - 64 STK RR



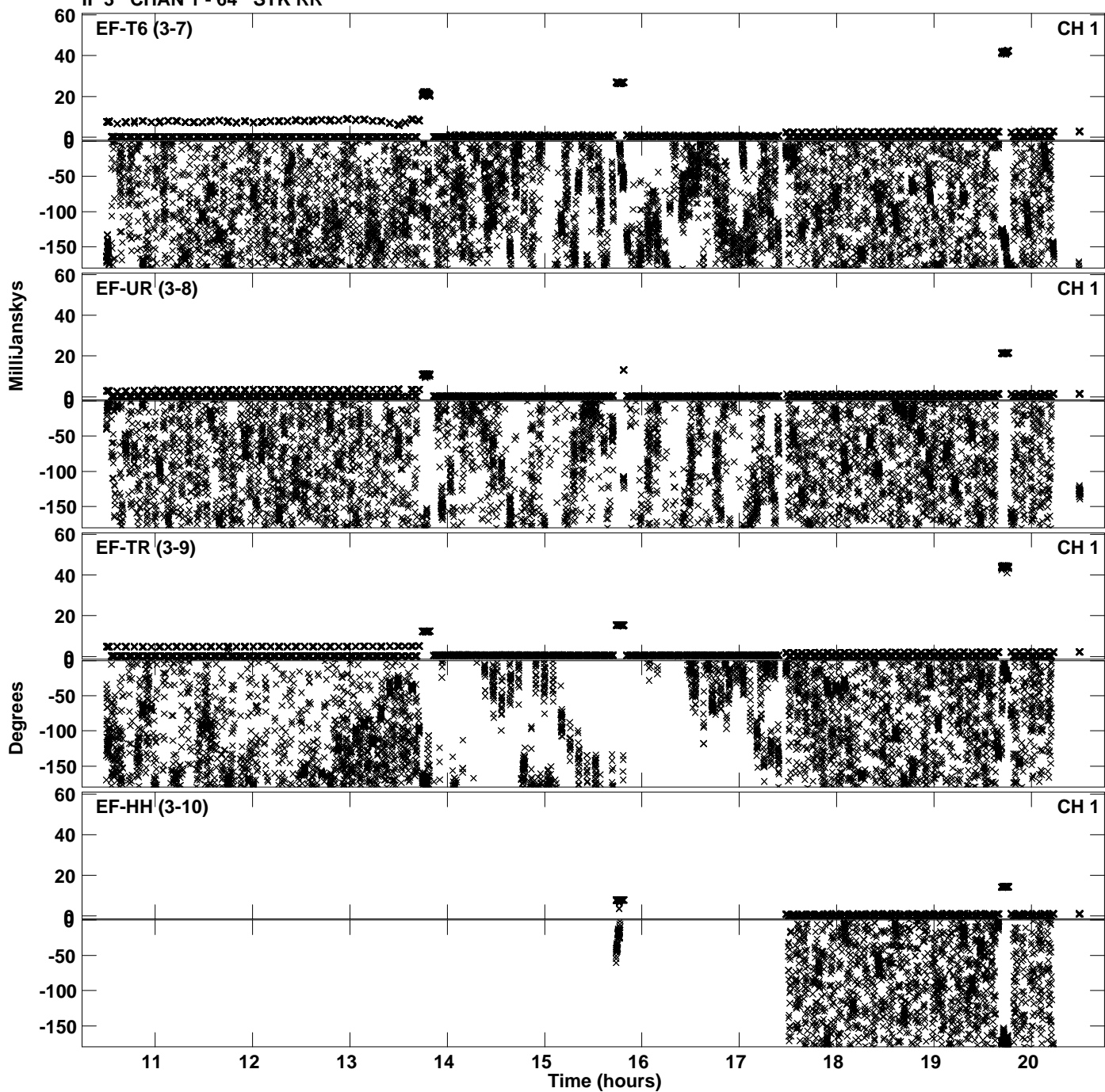
PLot file version 18 created 02-FEB-2023 13:26:15
Amplitude andPhase vs Time for EC073A.UVDATA.1 Vect aver.
IF 2 CHAN 1 - 64 STK RR



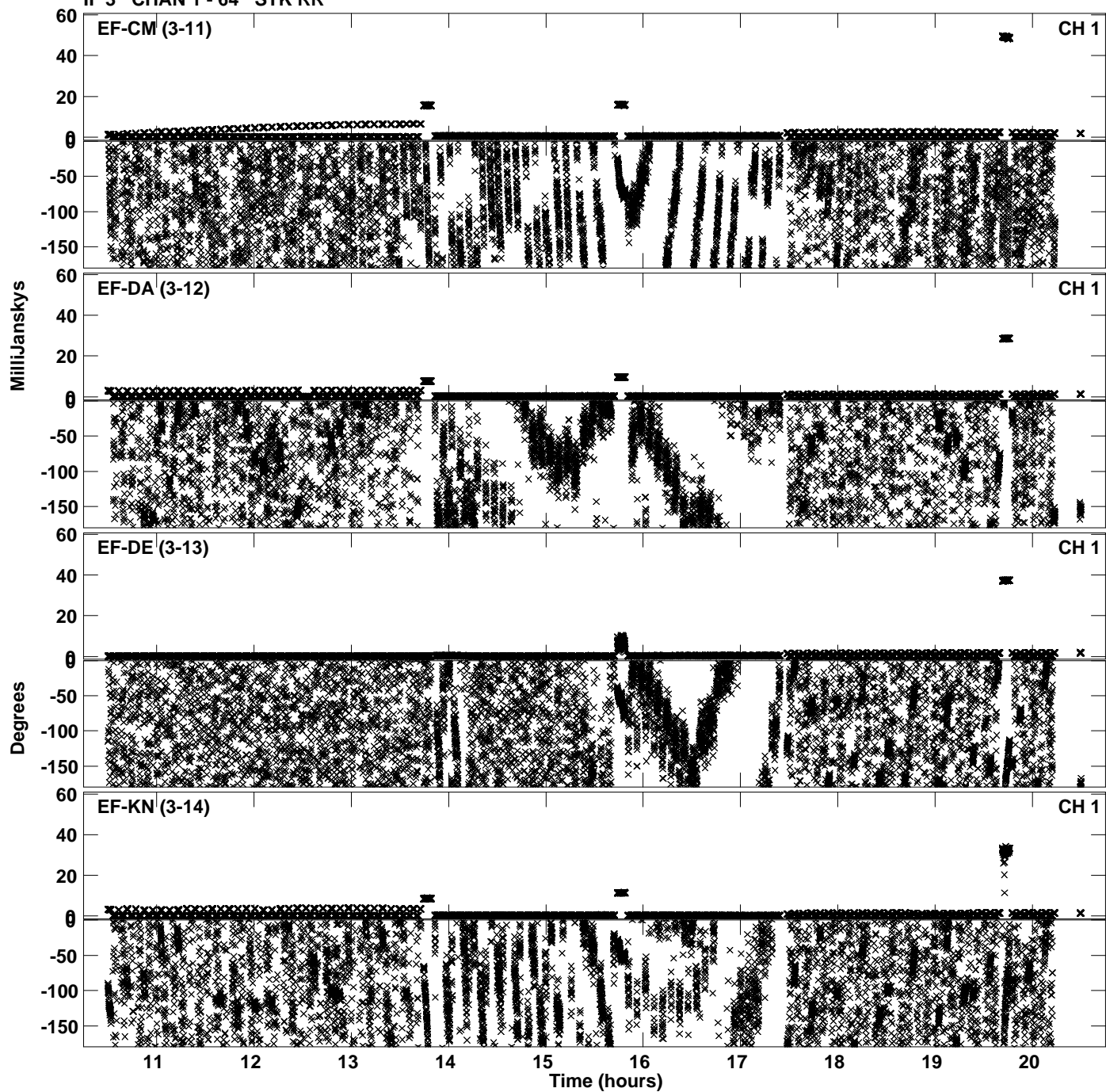
Plot file version 19 created 02-FEB-2023 13:26:33
Amplitude andPhase vs Time for EC073A.UVDATA.1 Vect aver.
IF 3 CHAN 1 - 64 STK RR



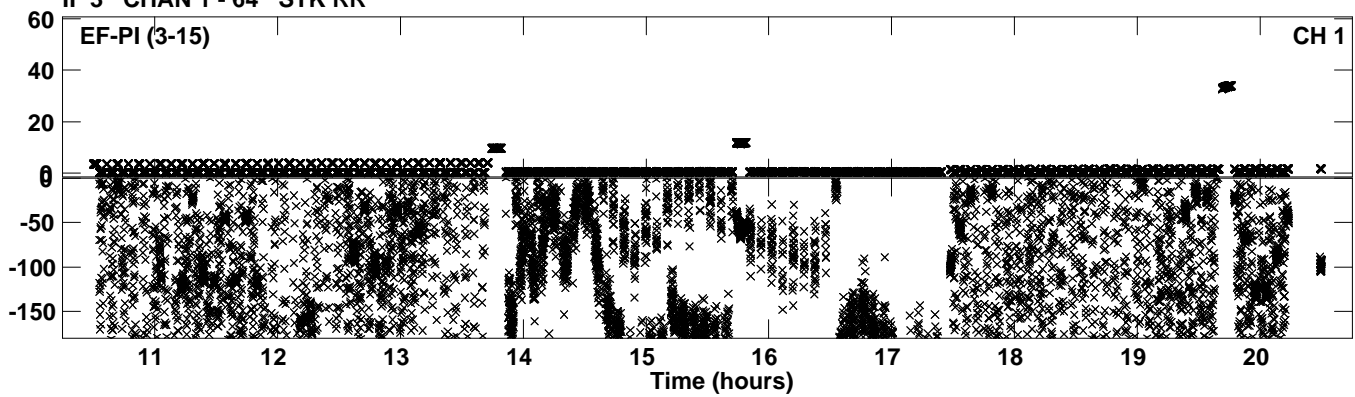
Plot file version 20 created 02-FEB-2023 13:26:33
Amplitude andPhase vs Time for EC073A.UVDATA.1 Vect aver.
IF 3 CHAN 1 - 64 STK RR



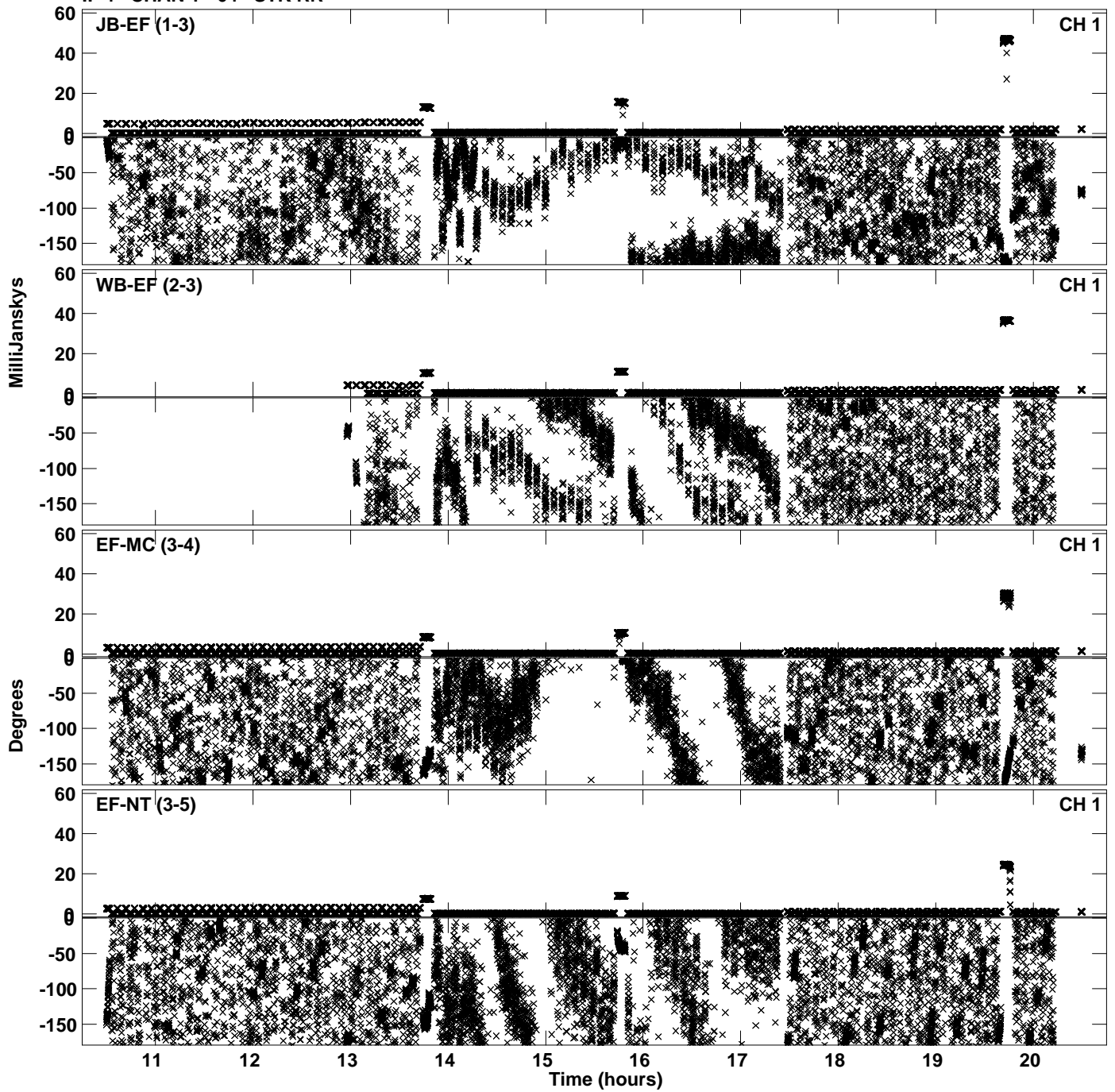
PLot file version 21 created 02-FEB-2023 13:26:34
Amplitude andPhase vs Time for EC073A.UVDATA.1 Vect aver.
IF 3 CHAN 1 - 64 STK RR



Plot file version 22 created 02-FEB-2023 13:26:34
Amplitude and Phase vs Time for EC073A.UVDATA.1 Vect aver.
IF 3 CHAN 1 - 64 STK RR



Plot file version 23 created 02-FEB-2023 13:26:49
Amplitude andPhase vs Time for EC073A.UVDATA.1 Vect aver.
IF 4 CHAN 1 - 64 STK RR



Plot file version 24 created 02-FEB-2023 13:26:49
Amplitude andPhase vs Time for EC073A.UVDATA.1 Vect aver.
IF 4 CHAN 1 - 64 STK RR

