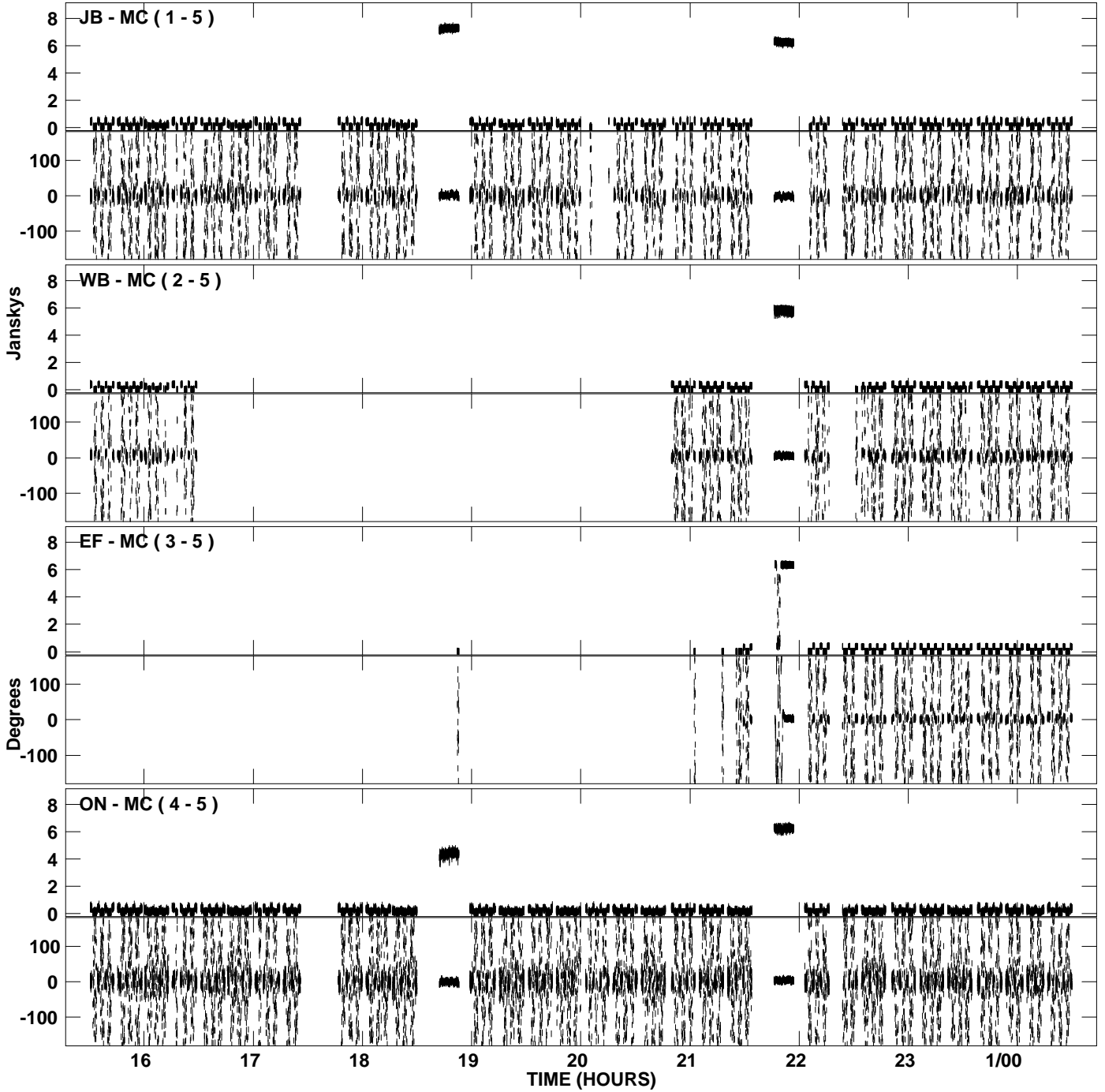
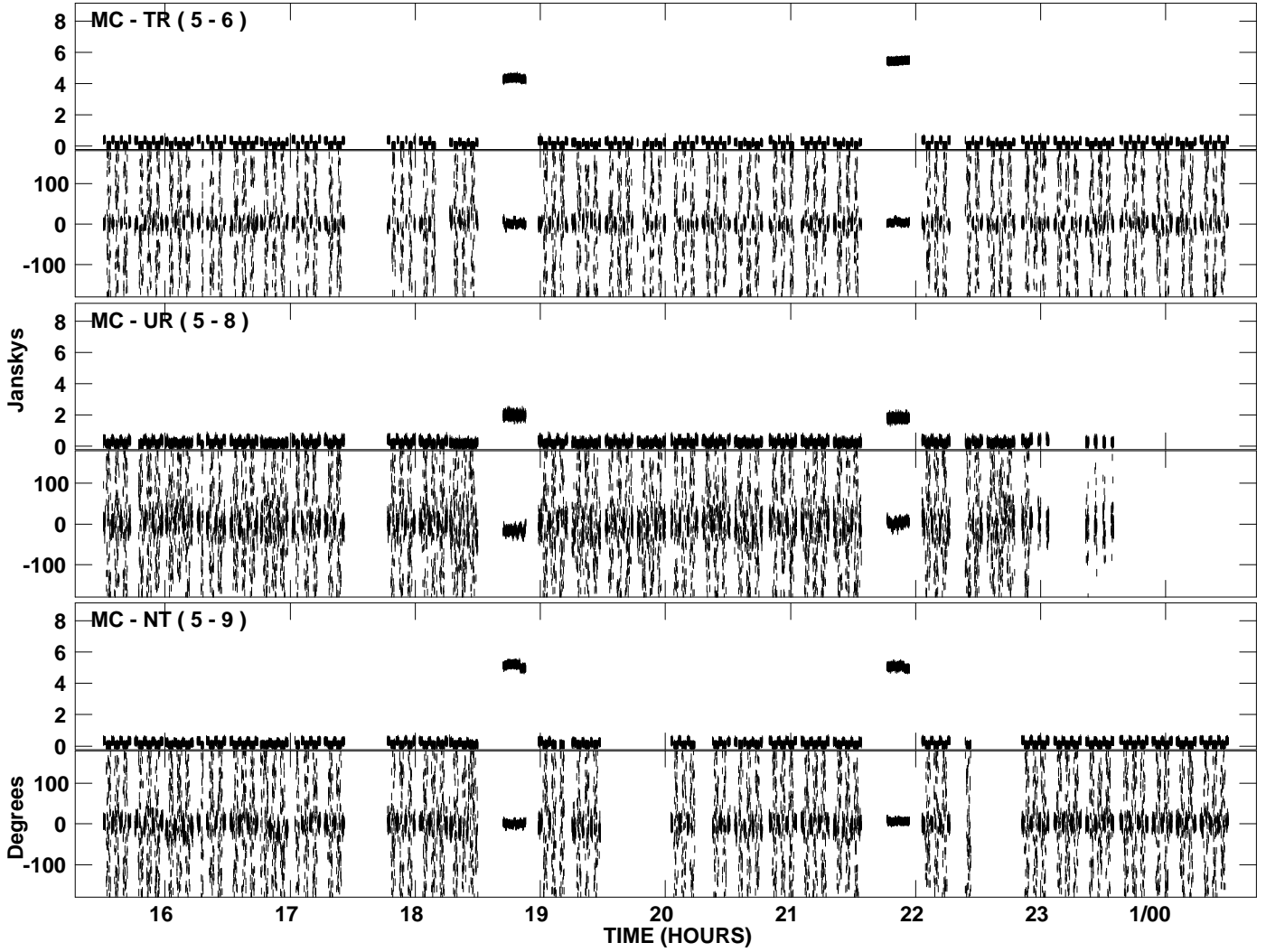


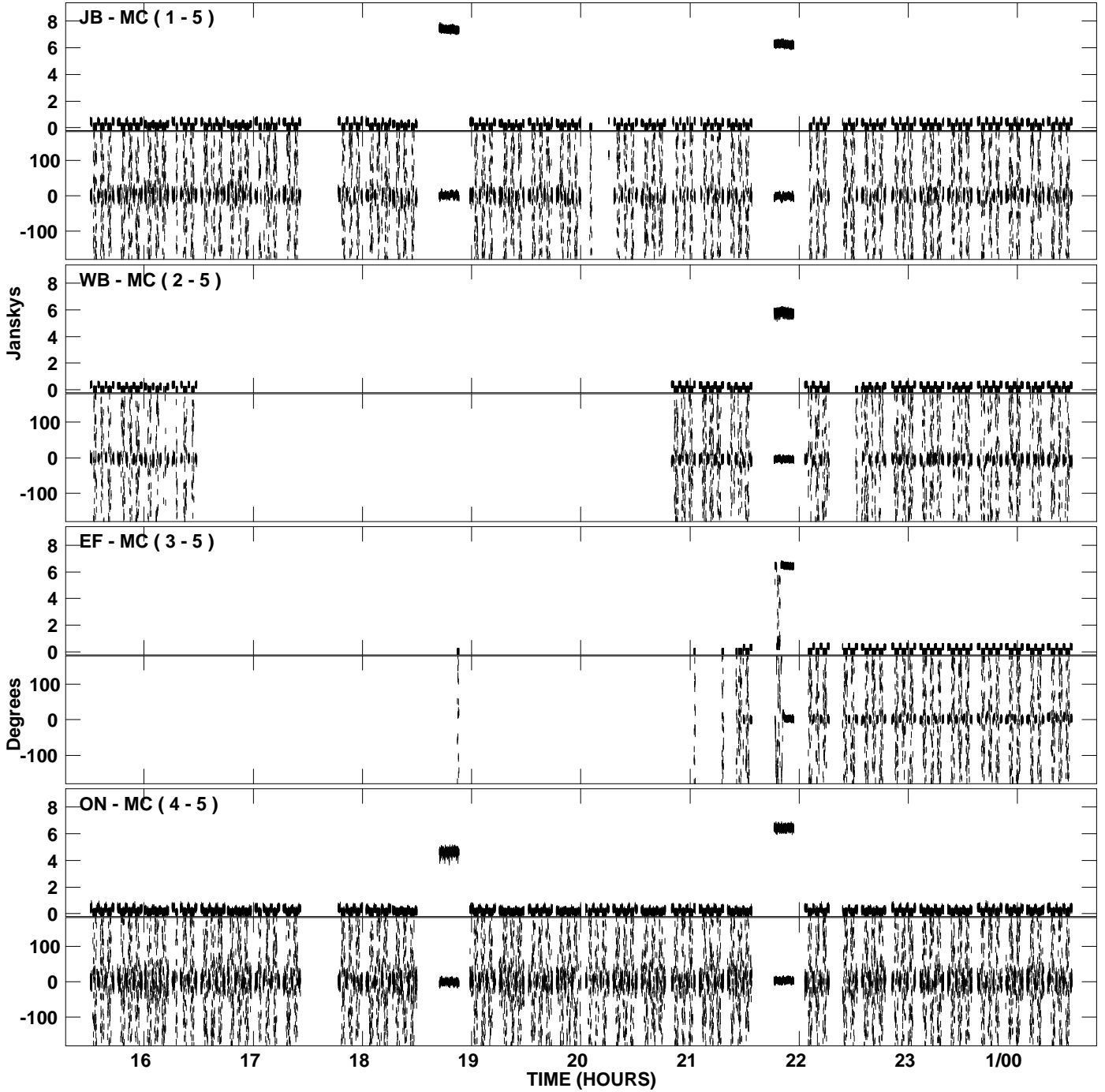
PLot file version 1 created 16-JUL-2007 12:43:13  
Amplitude and Phase vs Time for EG037A.UVDATA.1 Vect aver. CL # 3  
IF 1 CHAN 1 - 16 STK LL



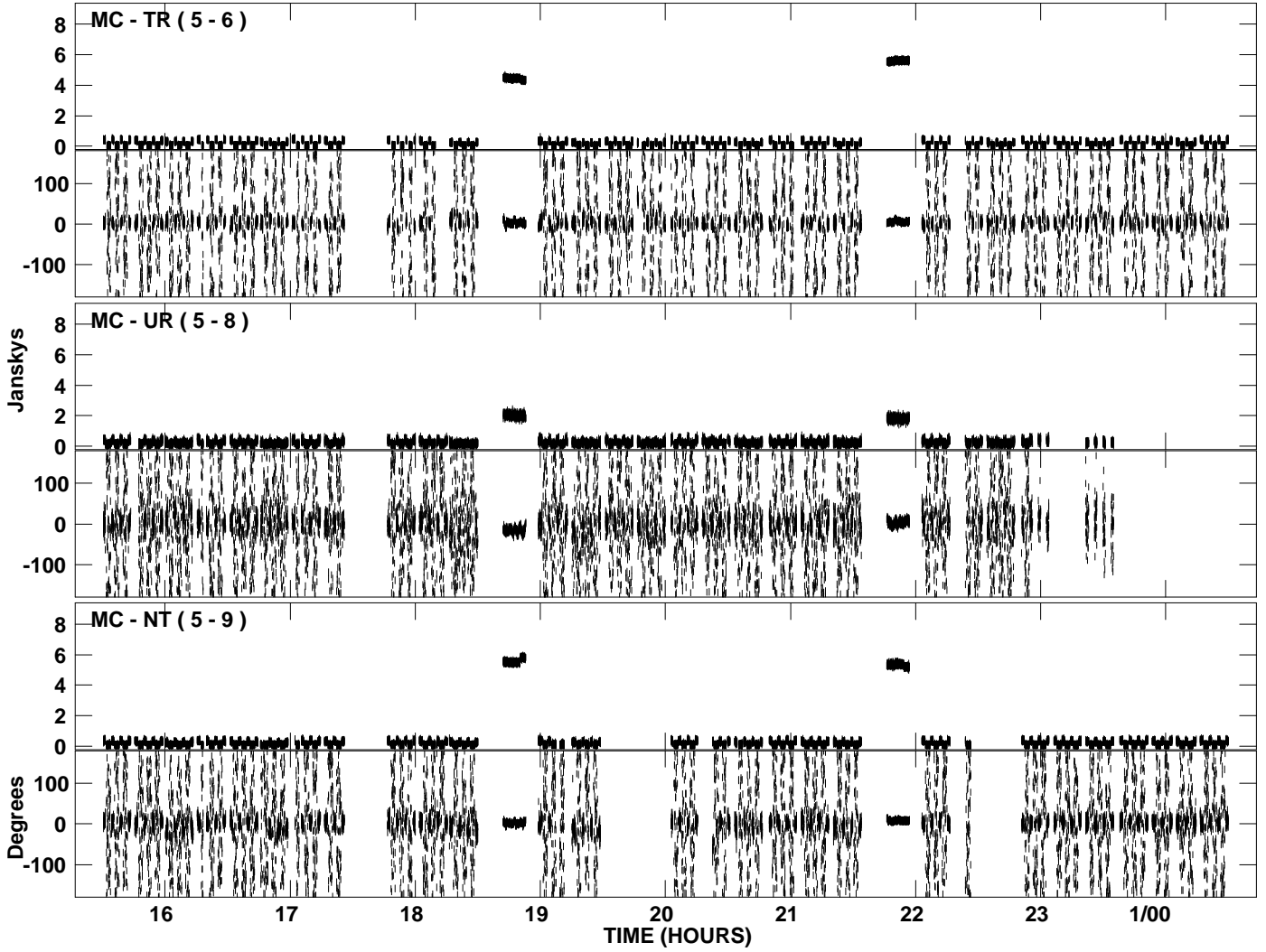
PLot file version 2 created 16-JUL-2007 12:43:13  
Amplitude and Phase vs Time for EG037A.UVDATA.1 Vect aver. CL # 3  
IF 1 CHAN 1 - 16 STK LL



PLot file version 3 created 16-JUL-2007 12:44:49  
Amplitude and Phase vs Time for EG037A.UVDATA.1 Vect aver. CL # 3  
IF 2 CHAN 1 - 16 STK LL

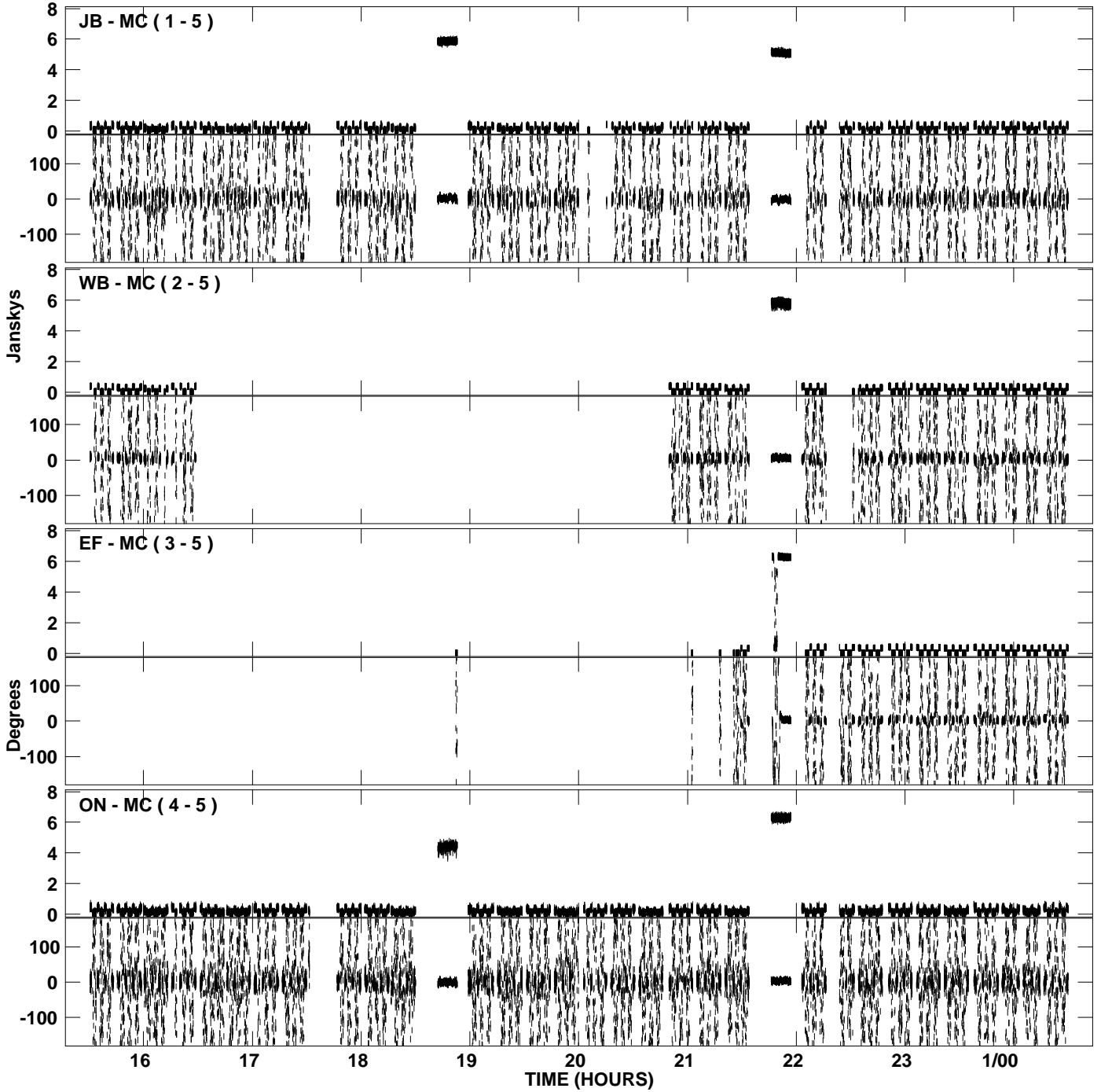


PLot file version 4 created 16-JUL-2007 12:44:49  
Amplitude and Phase vs Time for EG037A.UVDATA.1 Vect aver. CL # 3  
IF 2 CHAN 1 - 16 STK LL

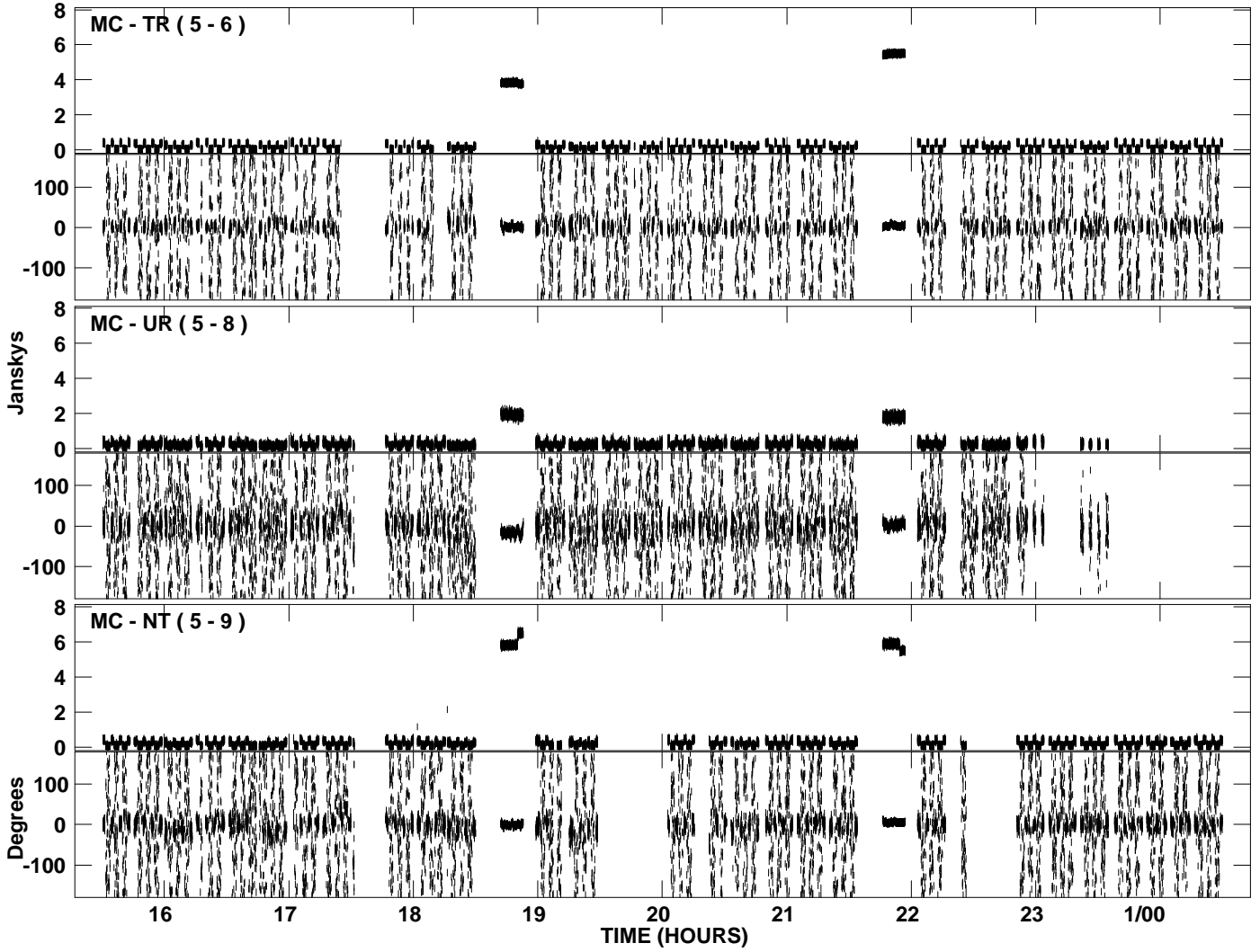




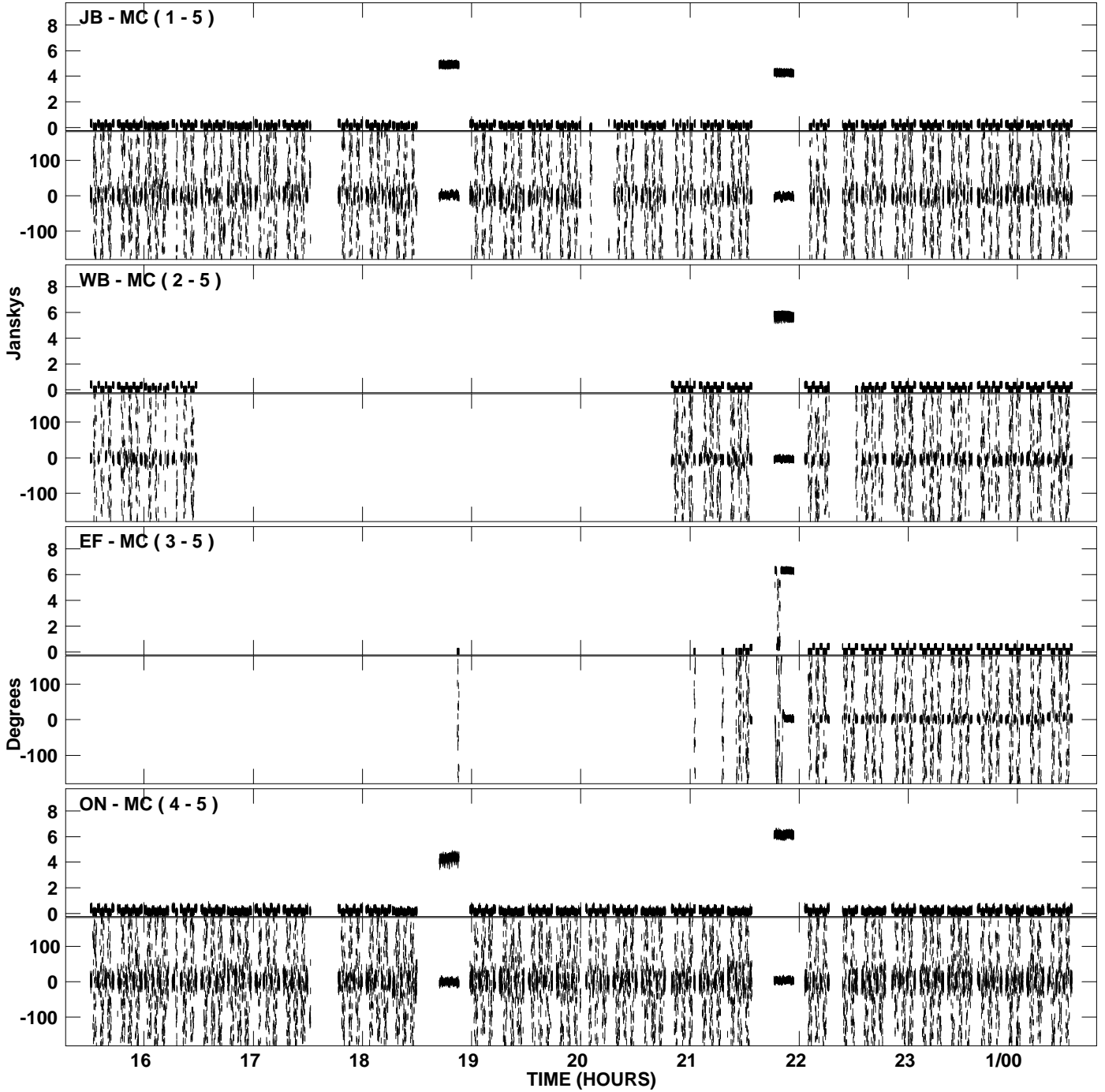
PLot file version 5 created 16-JUL-2007 12:46:26  
Amplitude and Phase vs Time for EG037A.UVDATA.1 Vect aver. CL # 3  
IF 3 CHAN 1 - 16 STK LL



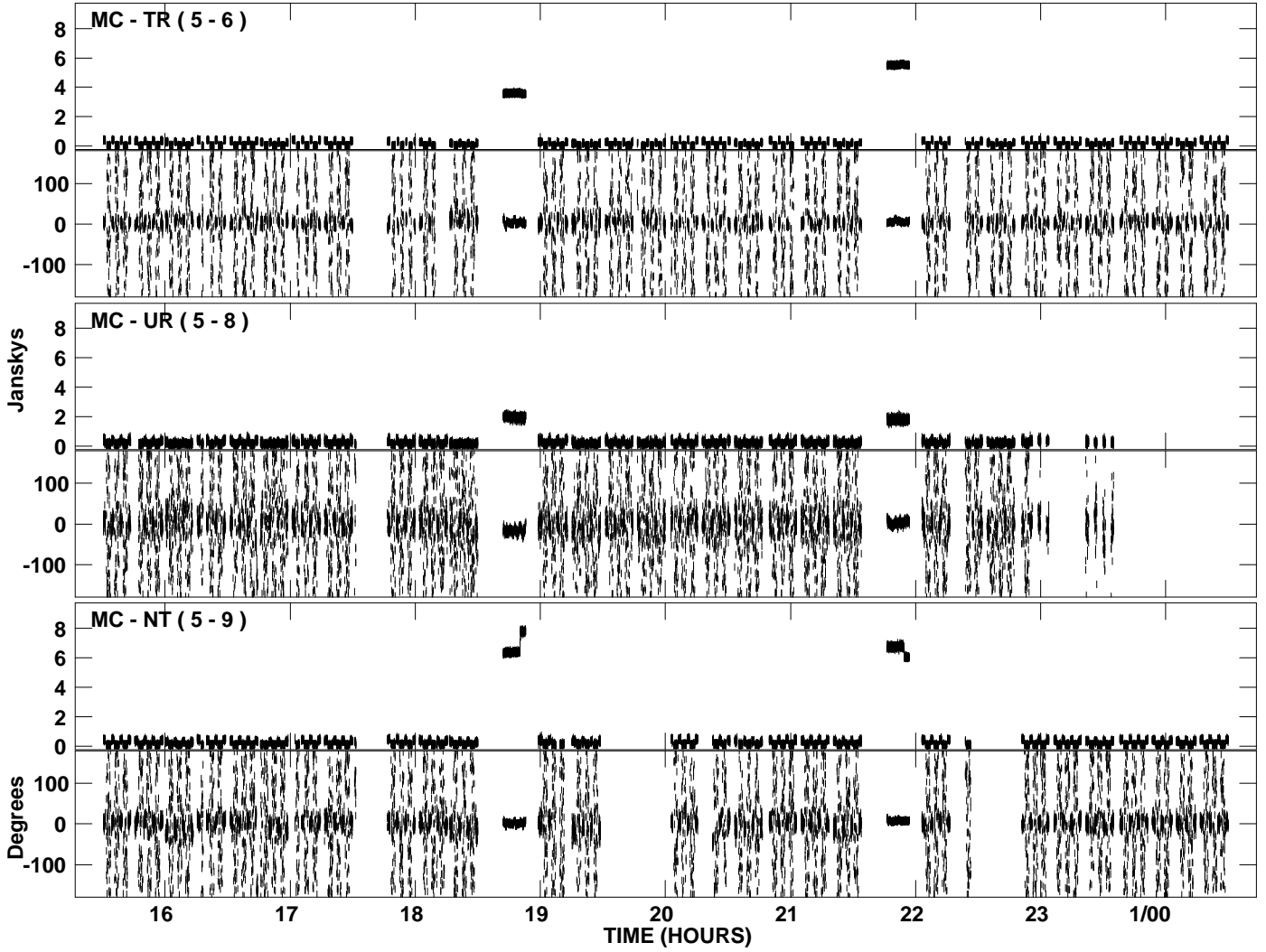
PLot file version 6 created 16-JUL-2007 12:46:26  
Amplitude and Phase vs Time for EG037A.UVDATA.1 Vect aver. CL # 3  
IF 3 CHAN 1 - 16 STK LL



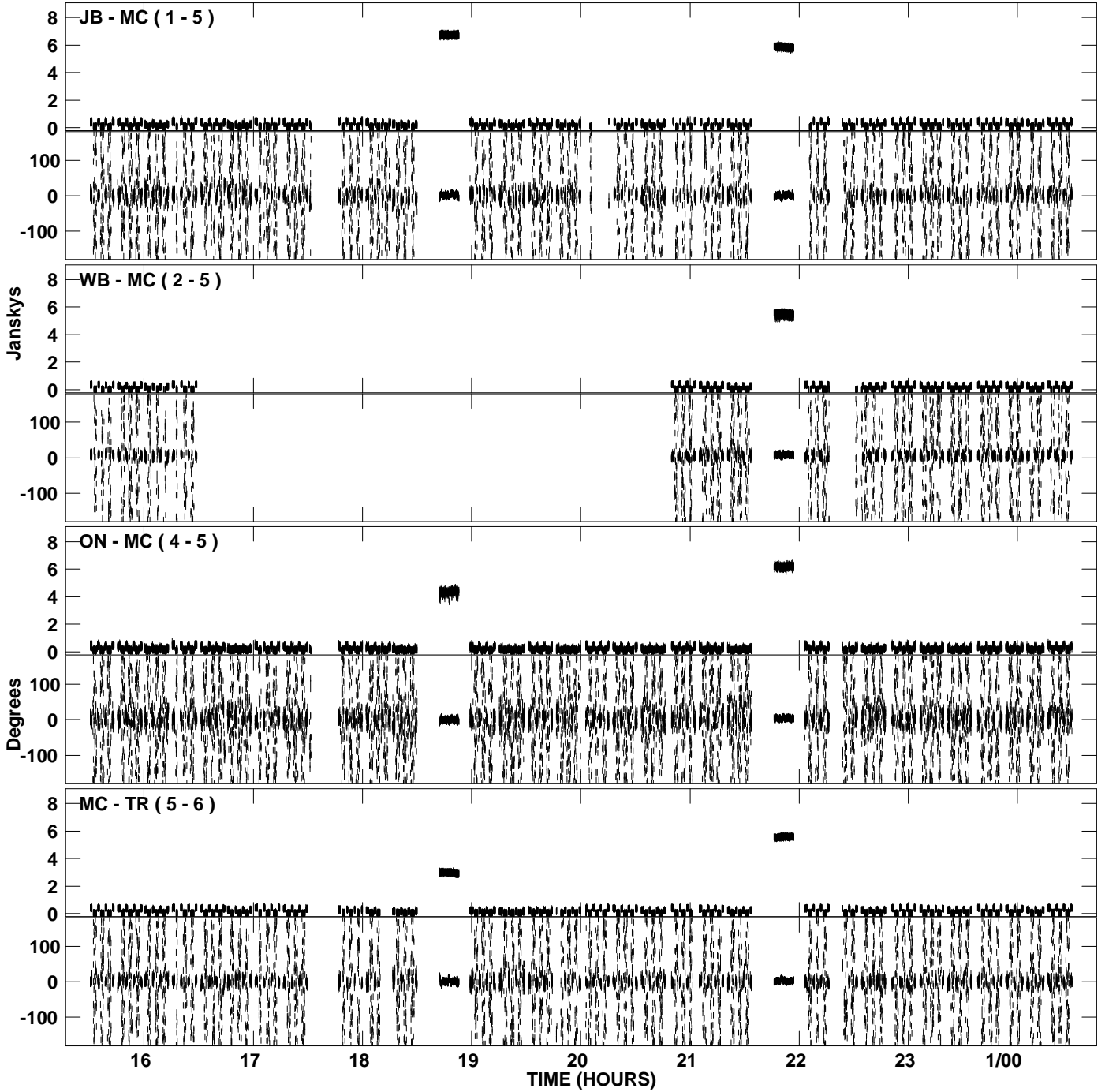
PLot file version 7 created 16-JUL-2007 12:48:04  
Amplitude and Phase vs Time for EG037A.UVDATA.1 Vect aver. CL # 3  
IF 4 CHAN 1 - 16 STK LL



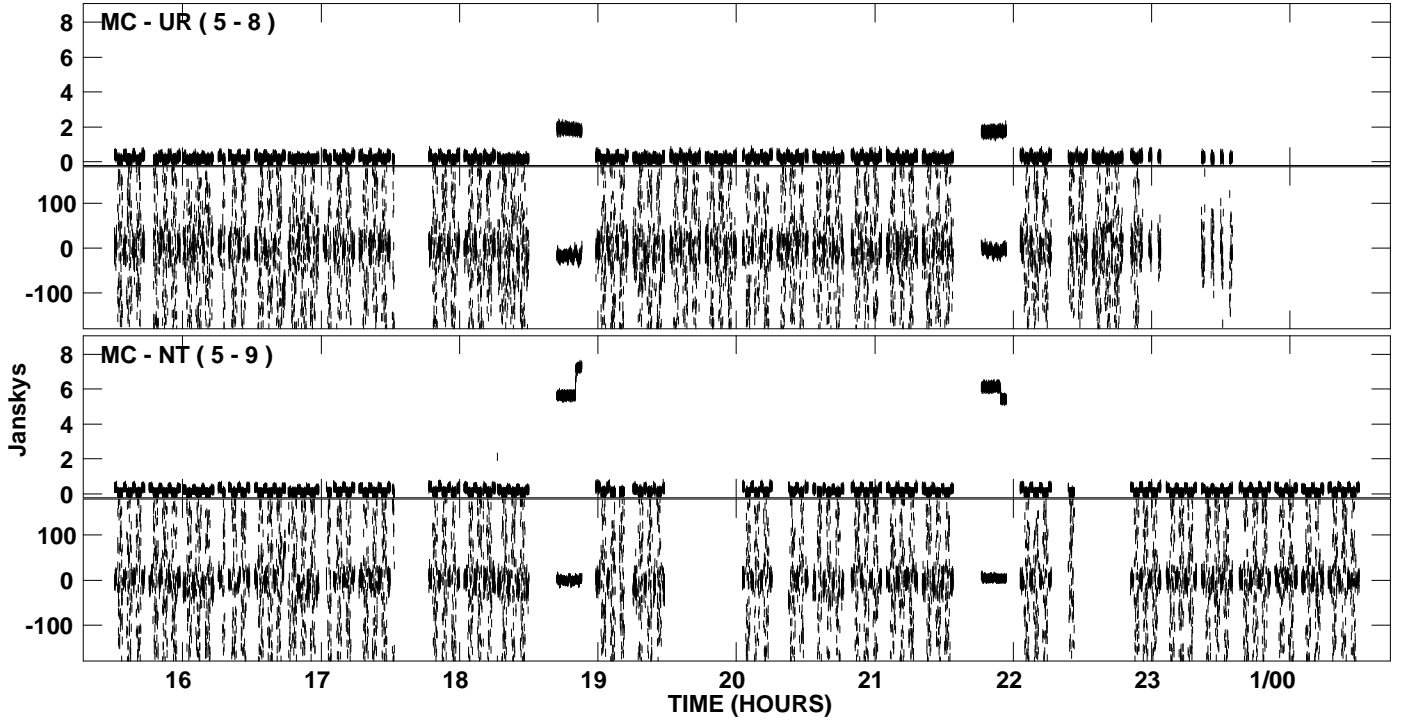
PLot file version 8 created 16-JUL-2007 12:48:04  
Amplitude and Phase vs Time for EG037A.UVDATA.1 Vect aver. CL # 3  
IF 4 CHAN 1 - 16 STK LL



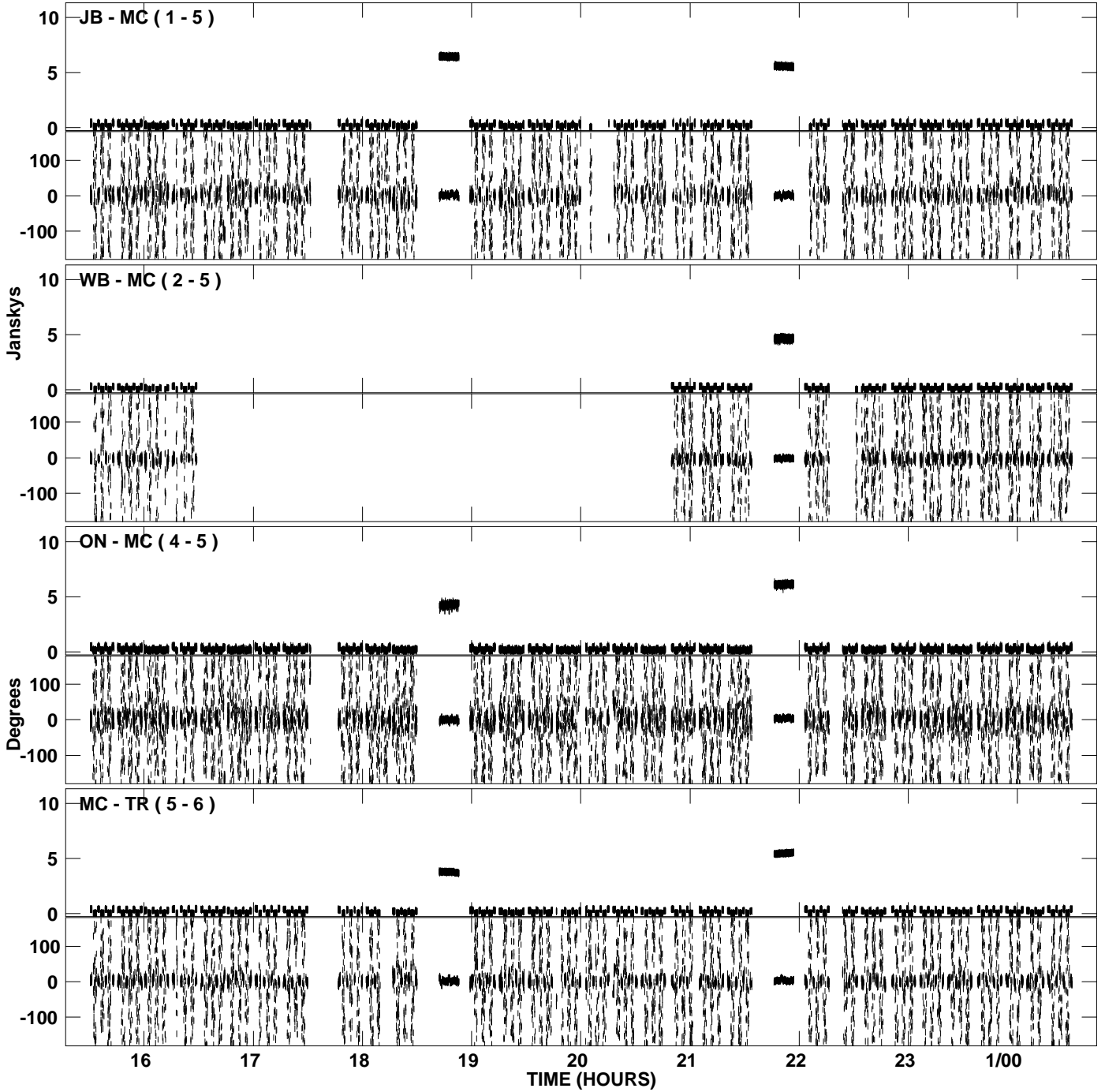
PLot file version 9 created 16-JUL-2007 12:49:42  
Amplitude and Phase vs Time for EG037A.UVDATA.1 Vect aver. CL # 3  
IF 5 CHAN 1 - 16 STK LL



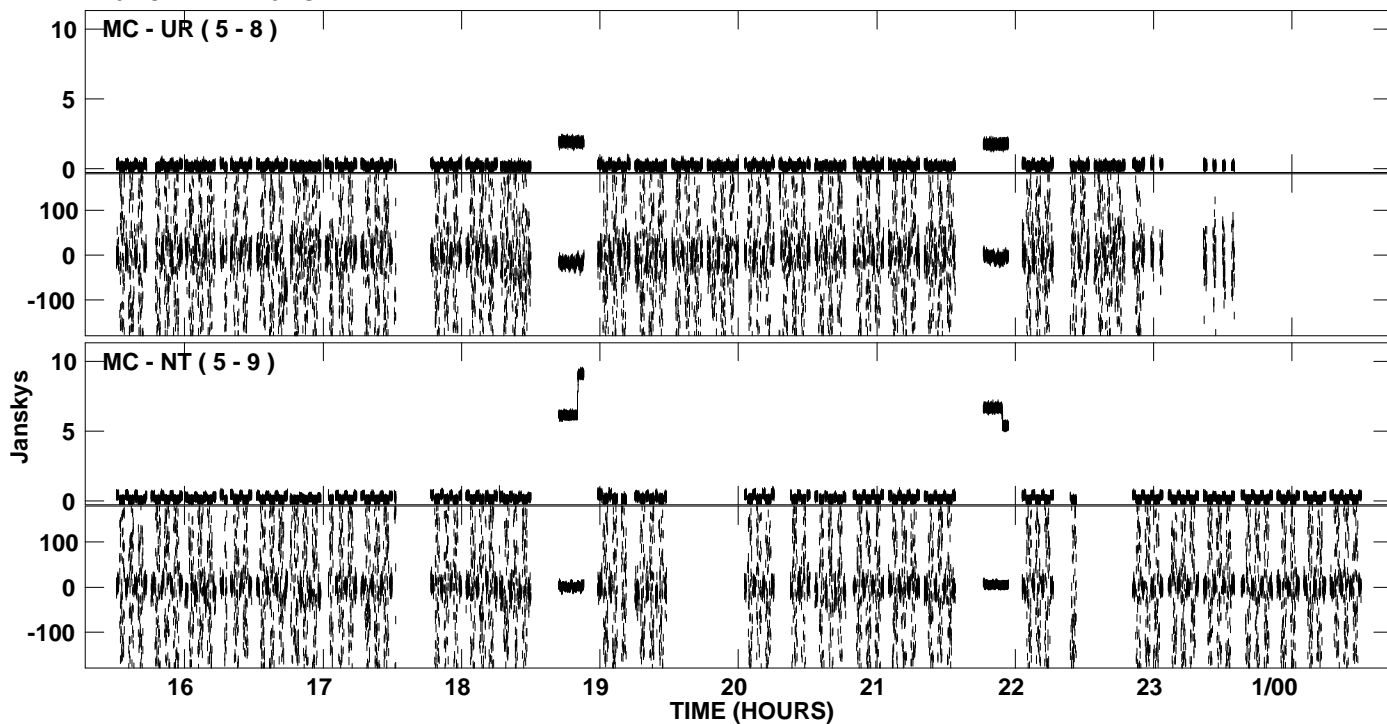
PLot file version 10 created 16-JUL-2007 12:49:42  
Amplitude andPhase vs Time for EG037A.UVDATA.1 Vect aver. CL # 3  
IF 5 CHAN 1 - 16 STK LL



PLot file version 11 created 16-JUL-2007 12:51:21  
Amplitude and Phase vs Time for EG037A.UVDATA.1 Vect aver. CL # 3  
IF 6 CHAN 1 - 16 STK LL

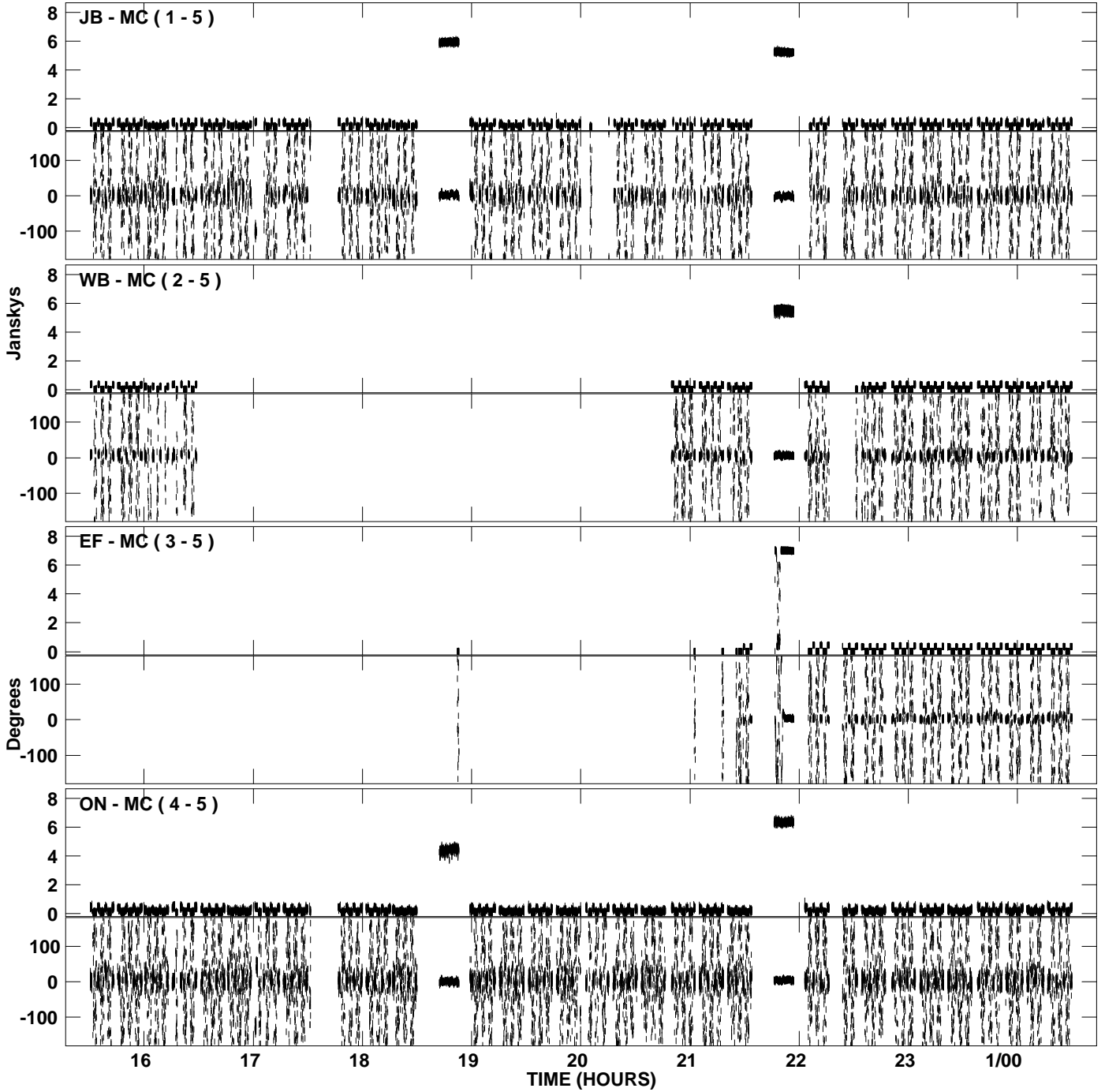


PLot file version 12 created 16-JUL-2007 12:51:21  
Amplitude andPhase vs Time for EG037A.UVDATA.1 Vect aver. CL # 3  
IF 6 CHAN 1 - 16 STK LL

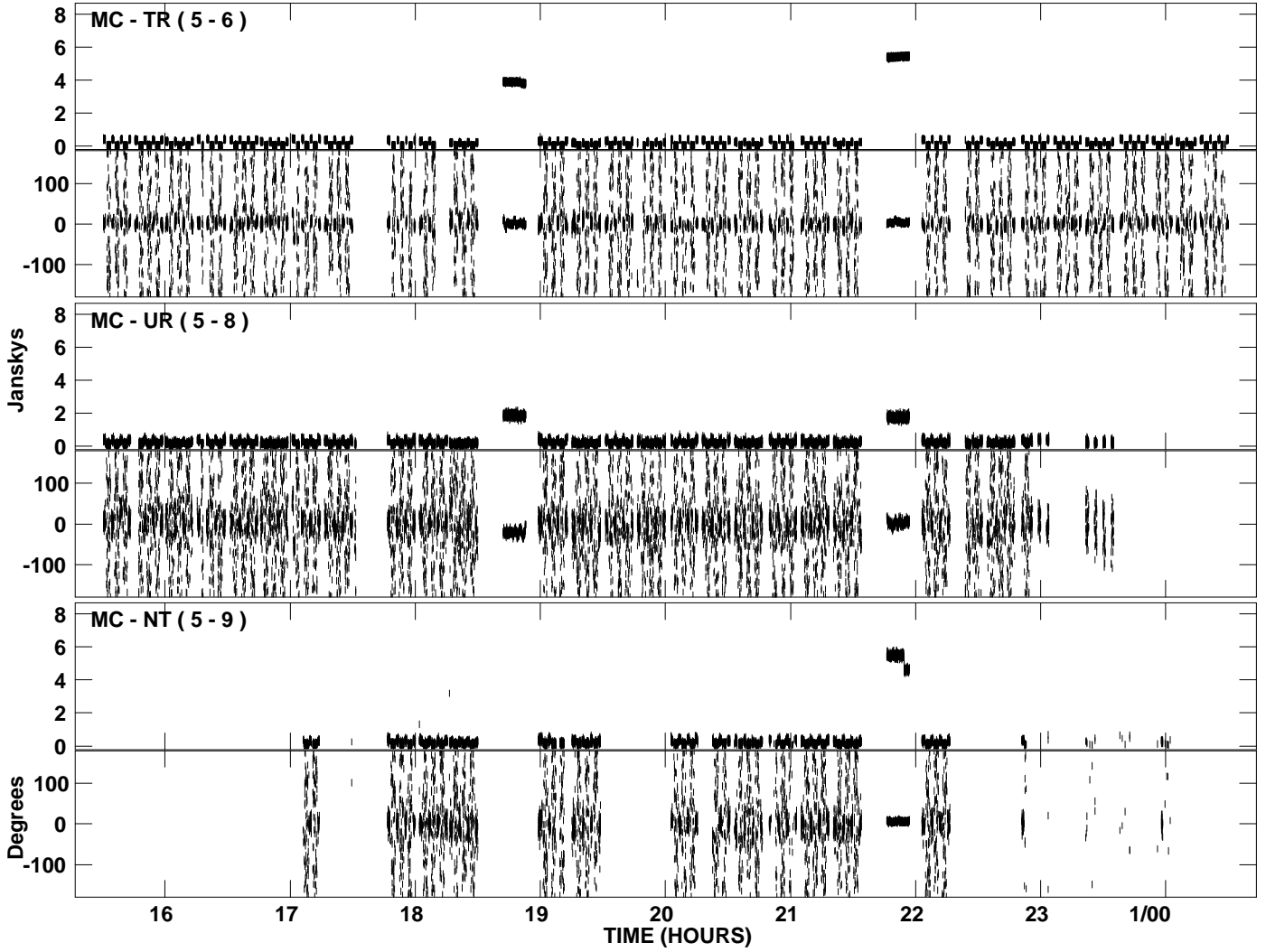




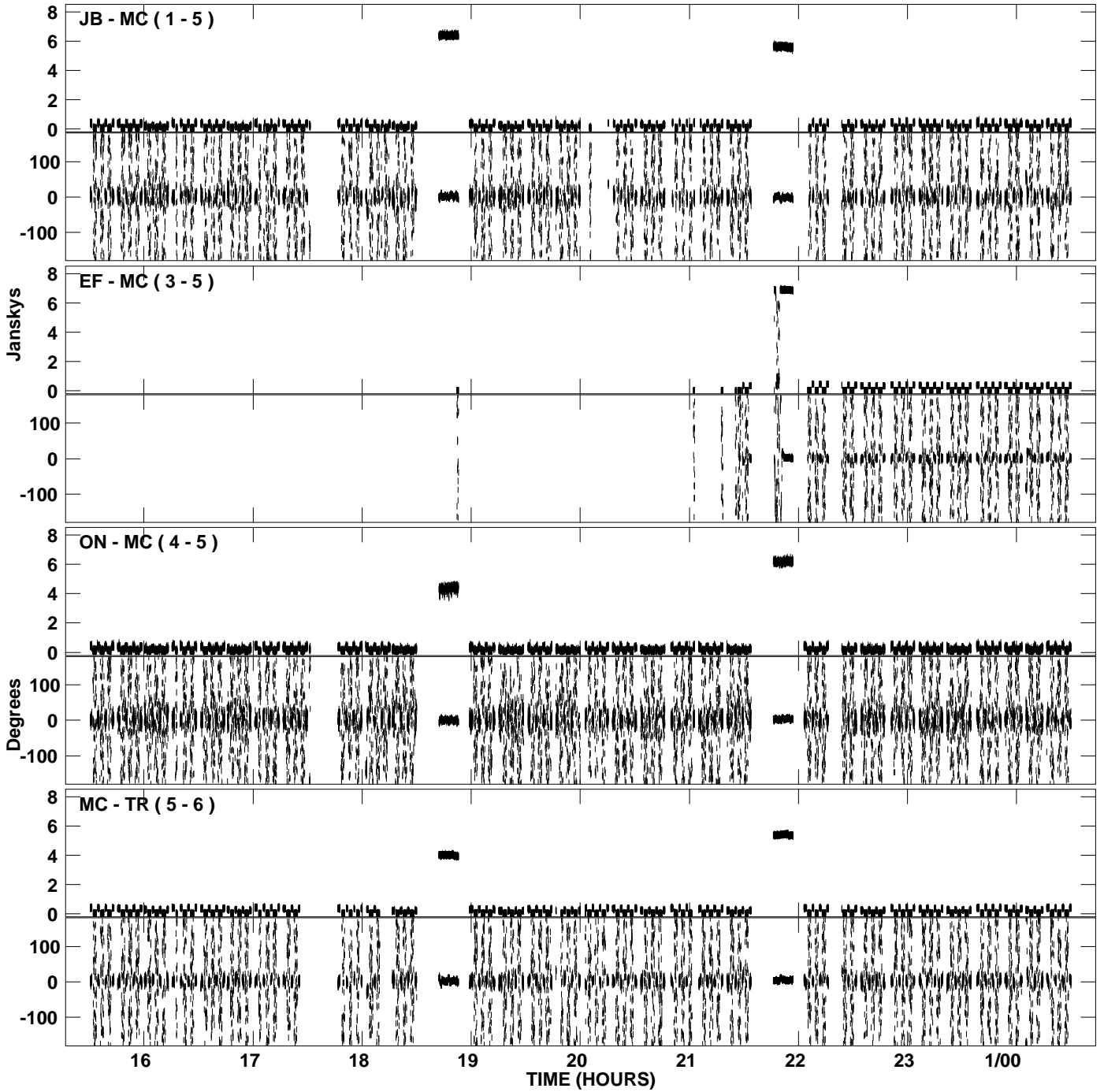
PLot file version 13 created 16-JUL-2007 12:53:00  
Amplitude and Phase vs Time for EG037A.UVDATA.1 Vect aver. CL # 3  
IF 7 CHAN 1 - 16 STK LL



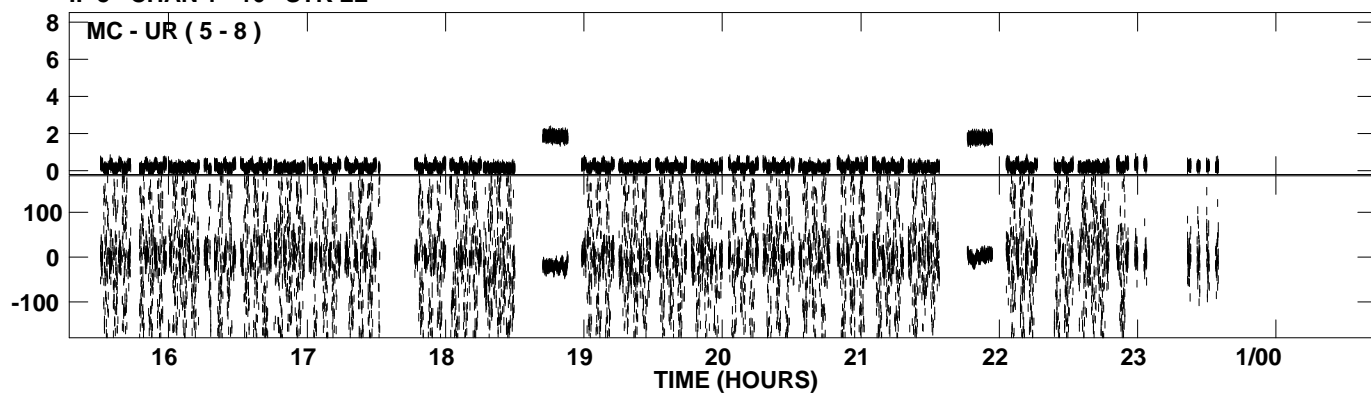
PLot file version 14 created 16-JUL-2007 12:53:00  
Amplitude andPhase vs Time for EG037A.UVDATA.1 Vect aver. CL # 3  
IF 7 CHAN 1 - 16 STK LL



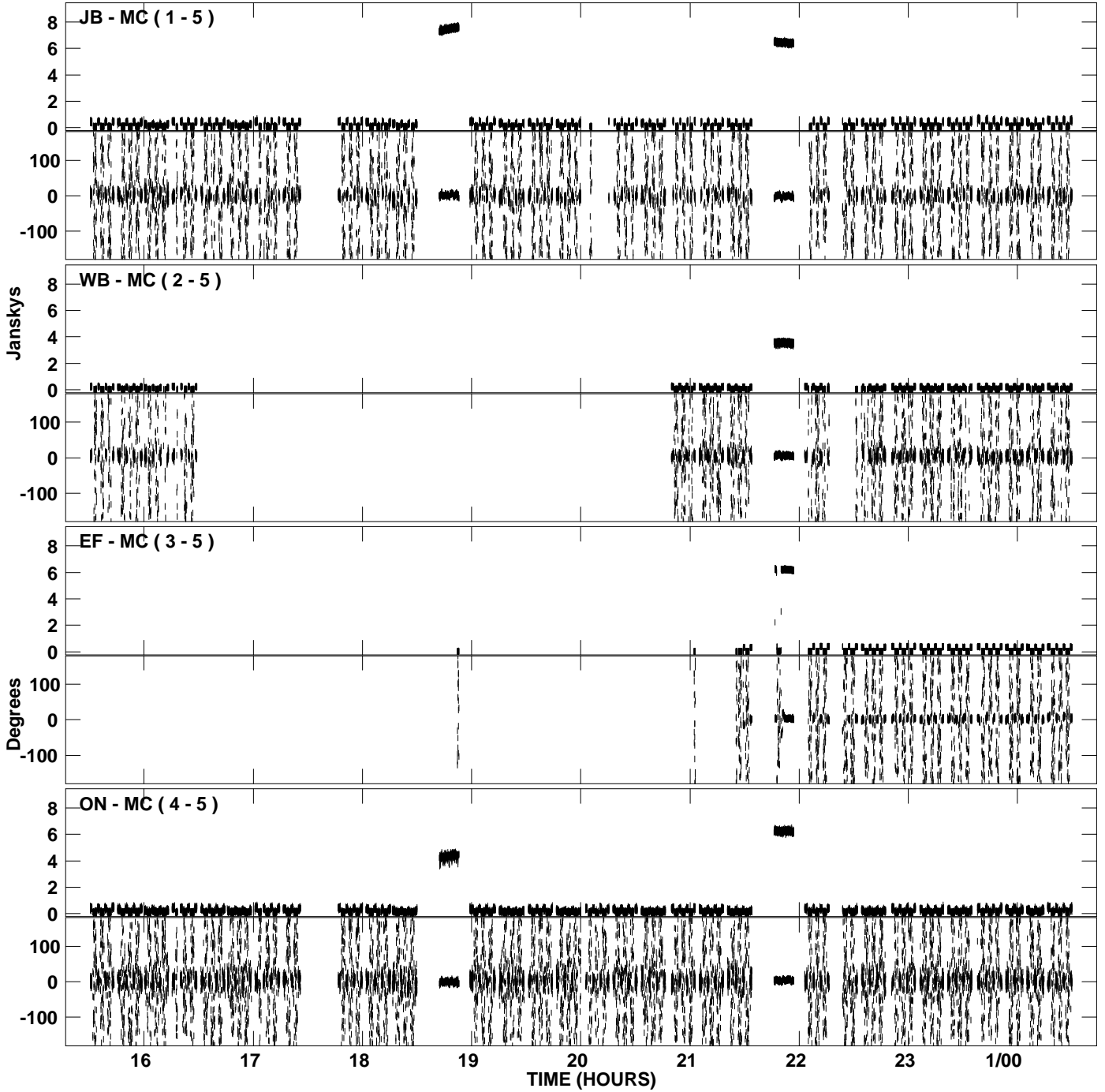
PLot file version 15 created 16-JUL-2007 12:54:38  
Amplitude and Phase vs Time for EG037A.UVDATA.1 Vect aver. CL # 3  
IF 8 CHAN 1 - 16 STK LL



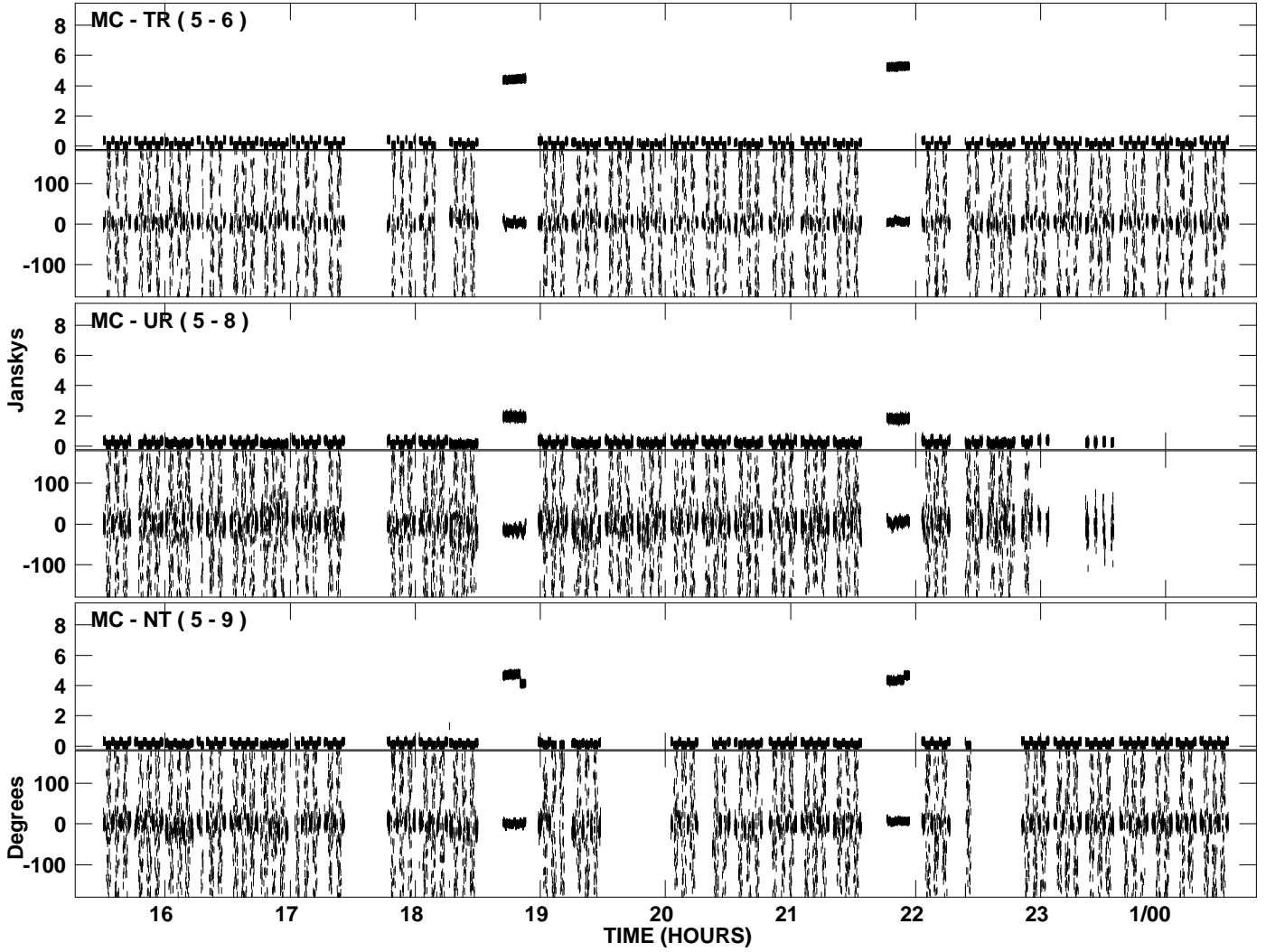
PLot file version 16 created 16-JUL-2007 12:54:38  
Amplitude andPhase vs Time for EG037A.UVDATA.1 Vect aver. CL # 3  
IF 8 CHAN 1 - 16 STK LL



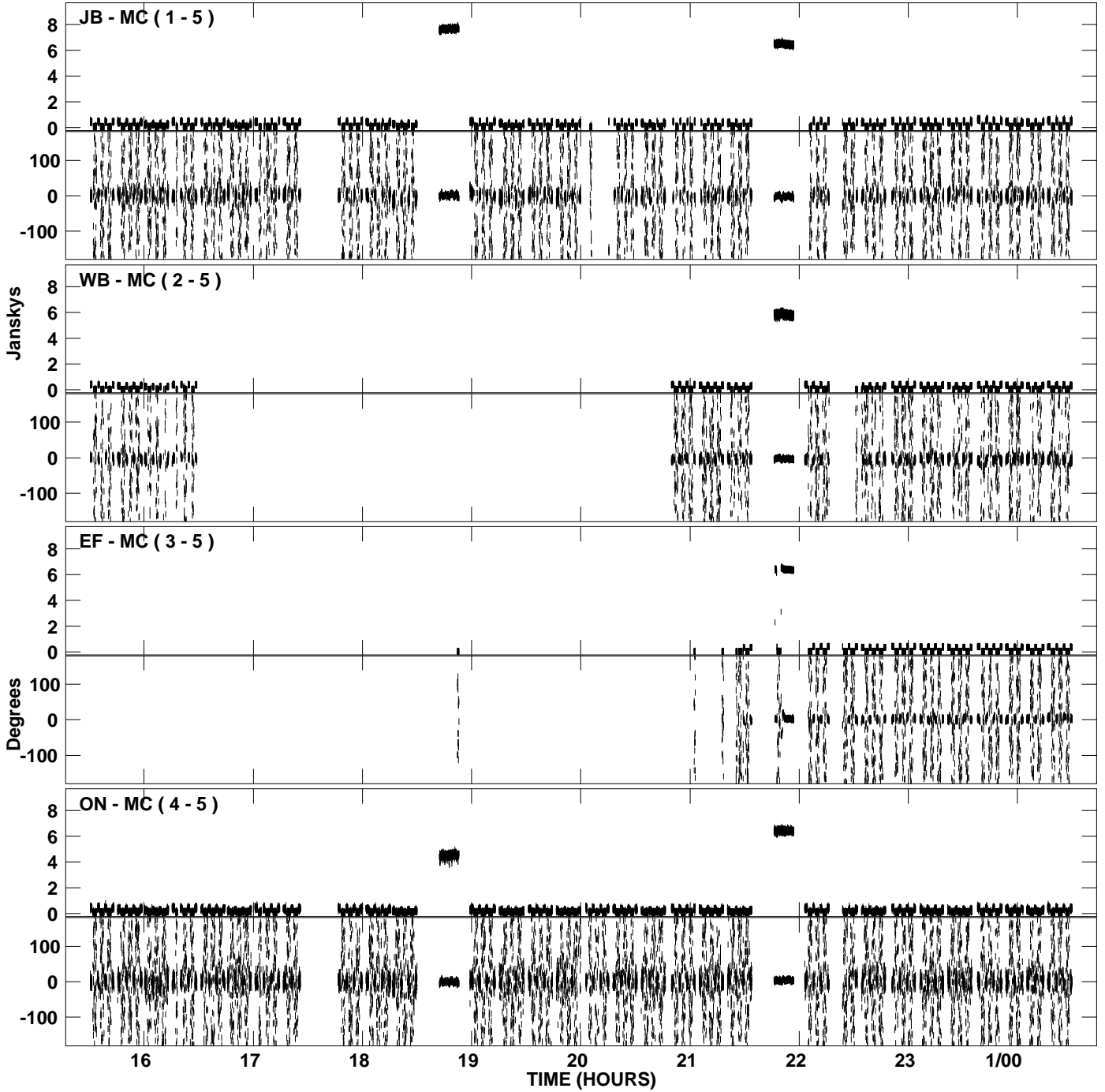
PLot file version 17 created 16-JUL-2007 12:56:13  
Amplitude and Phase vs Time for EG037A.UVDATA.1 Vect aver. CL # 3  
IF 1 CHAN 1 - 16 STK RR



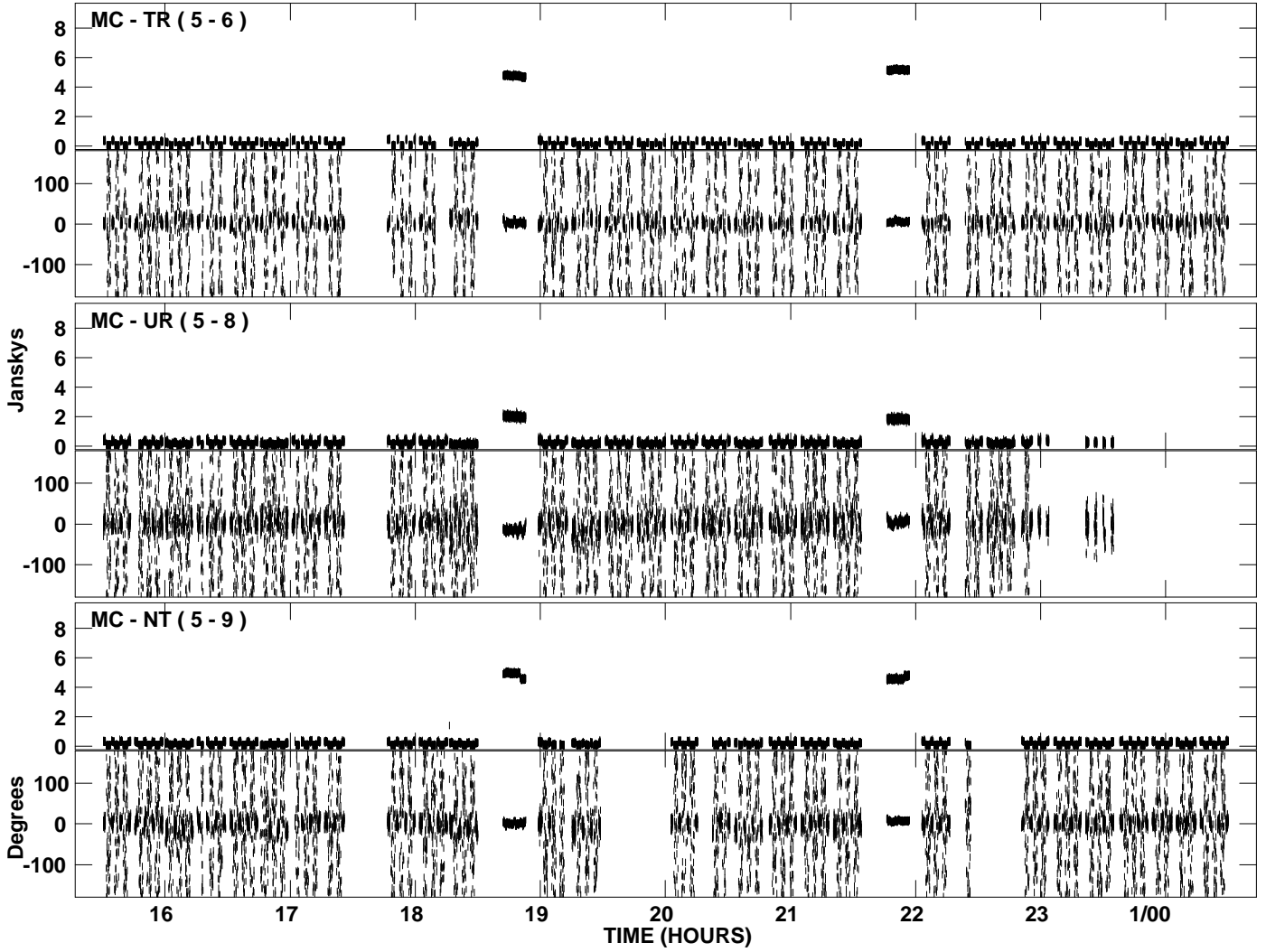
PLot file version 18 created 16-JUL-2007 12:56:13  
Amplitude and Phase vs Time for EG037A.UVDATA.1 Vect aver. CL # 3  
IF 1 CHAN 1 - 16 STK RR



PLot file version 19 created 16-JUL-2007 12:57:47  
Amplitude and Phase vs Time for EG037A.UVDATA.1 Vect aver. CL # 3  
IF 2 CHAN 1 - 16 STK RR

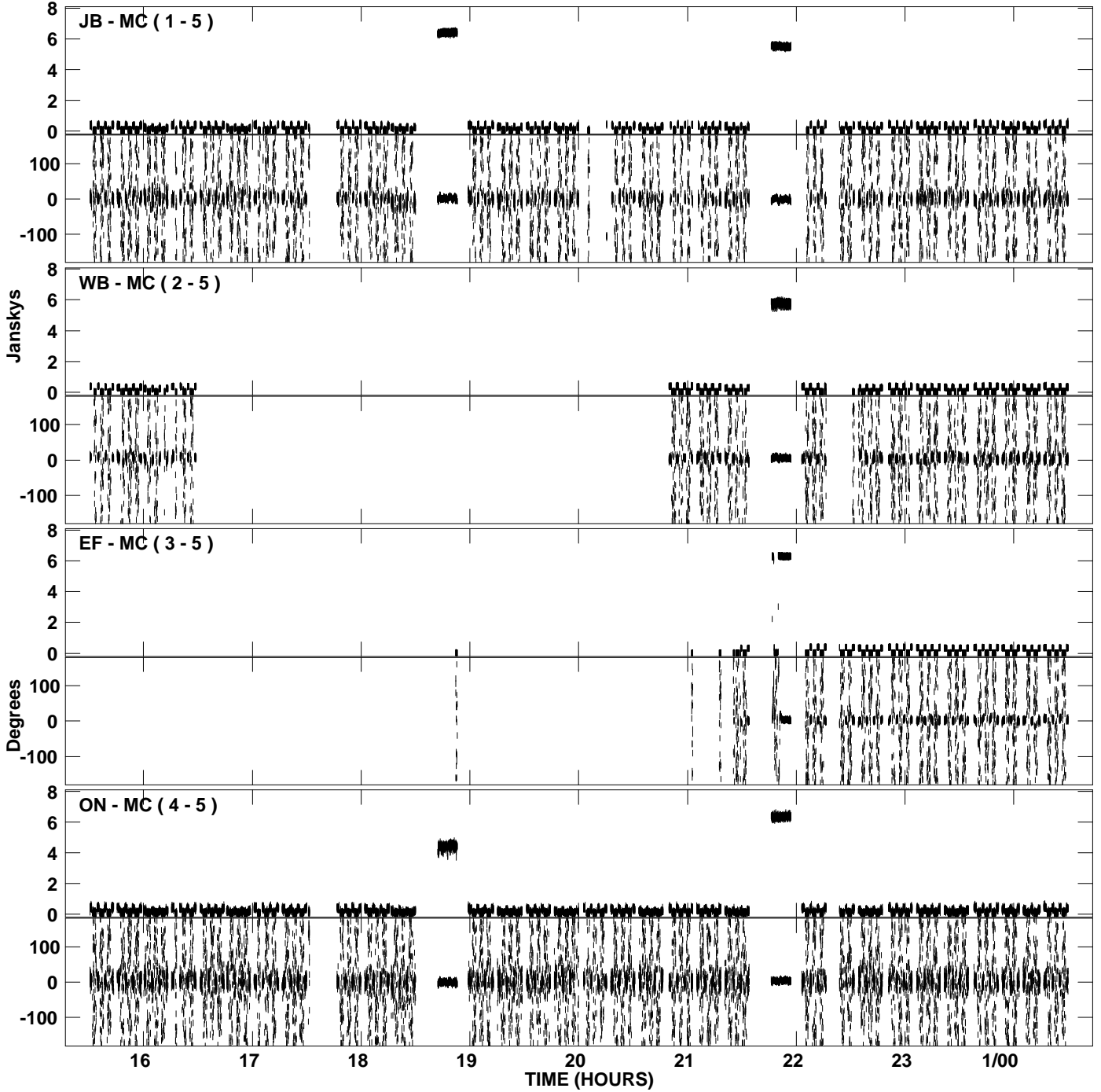


PLot file version 20 created 16-JUL-2007 12:57:47  
Amplitude and Phase vs Time for EG037A.UVDATA.1 Vect aver. CL # 3  
IF 2 CHAN 1 - 16 STK RR

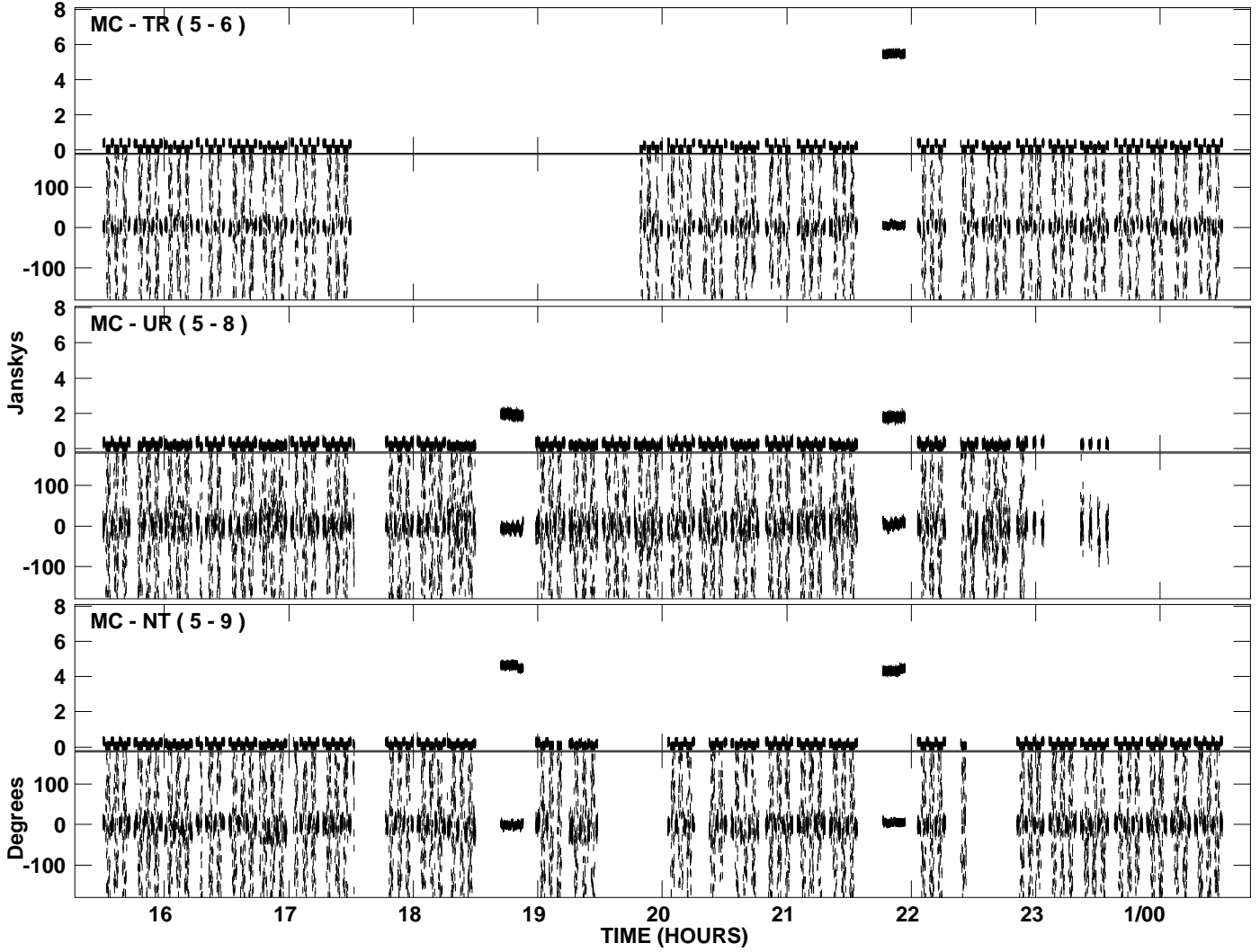




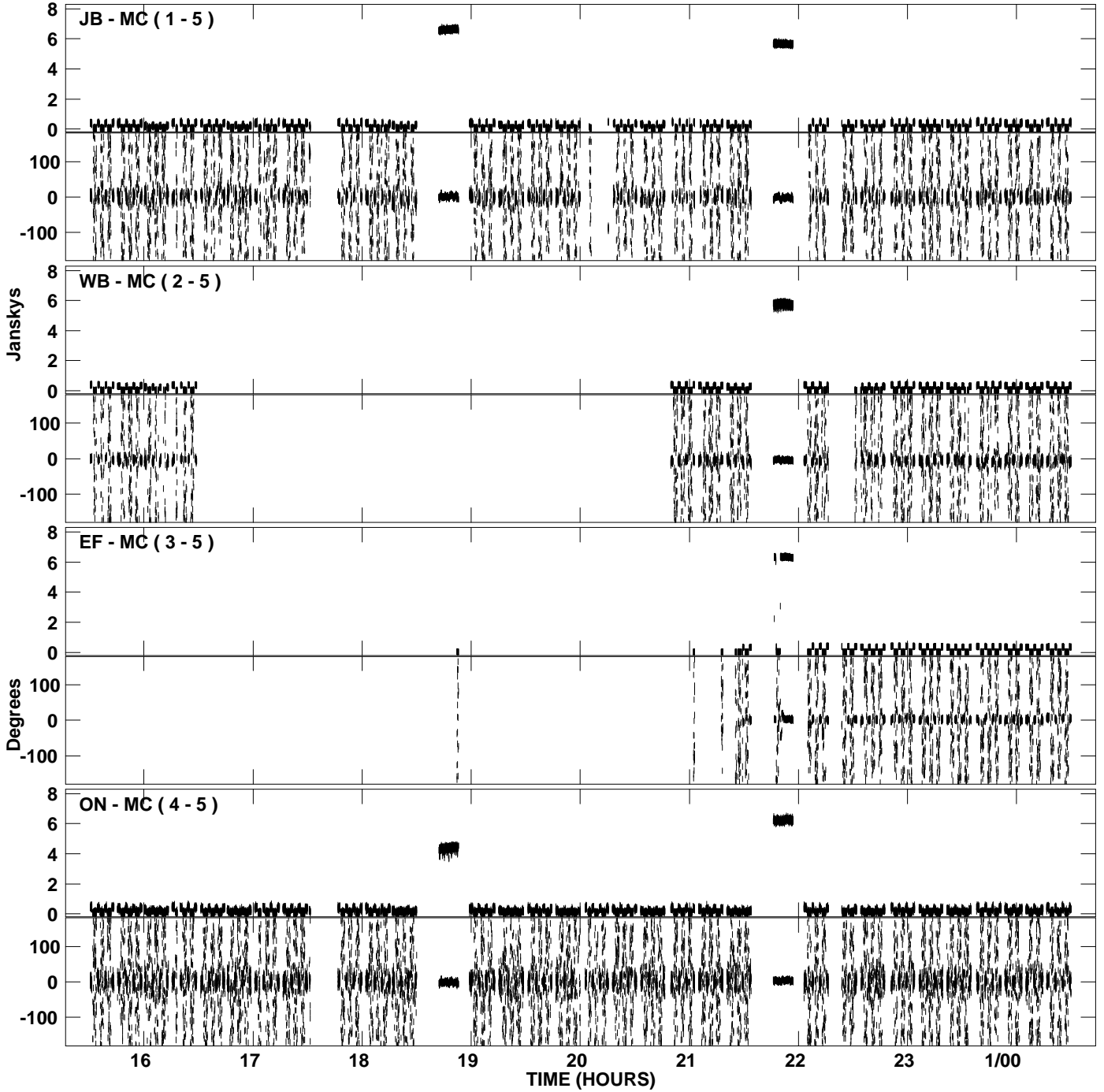
PLot file version 21 created 16-JUL-2007 12:59:23  
Amplitude and Phase vs Time for EG037A.UVDATA.1 Vect aver. CL # 3  
IF 3 CHAN 1 - 16 STK RR



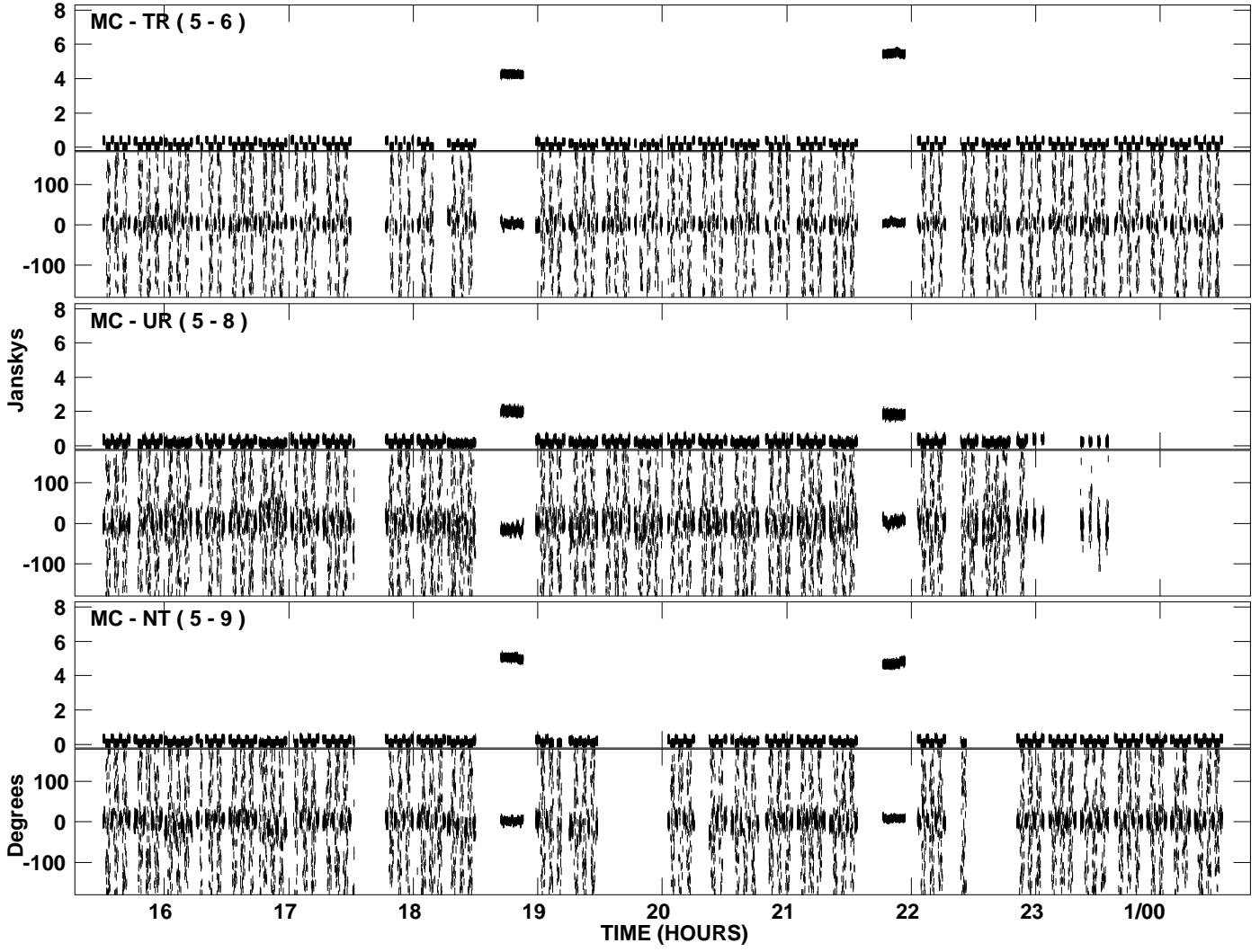
PLot file version 22 created 16-JUL-2007 12:59:23  
Amplitude and Phase vs Time for EG037A.UVDATA.1 Vect aver. CL # 3  
IF 3 CHAN 1 - 16 STK RR



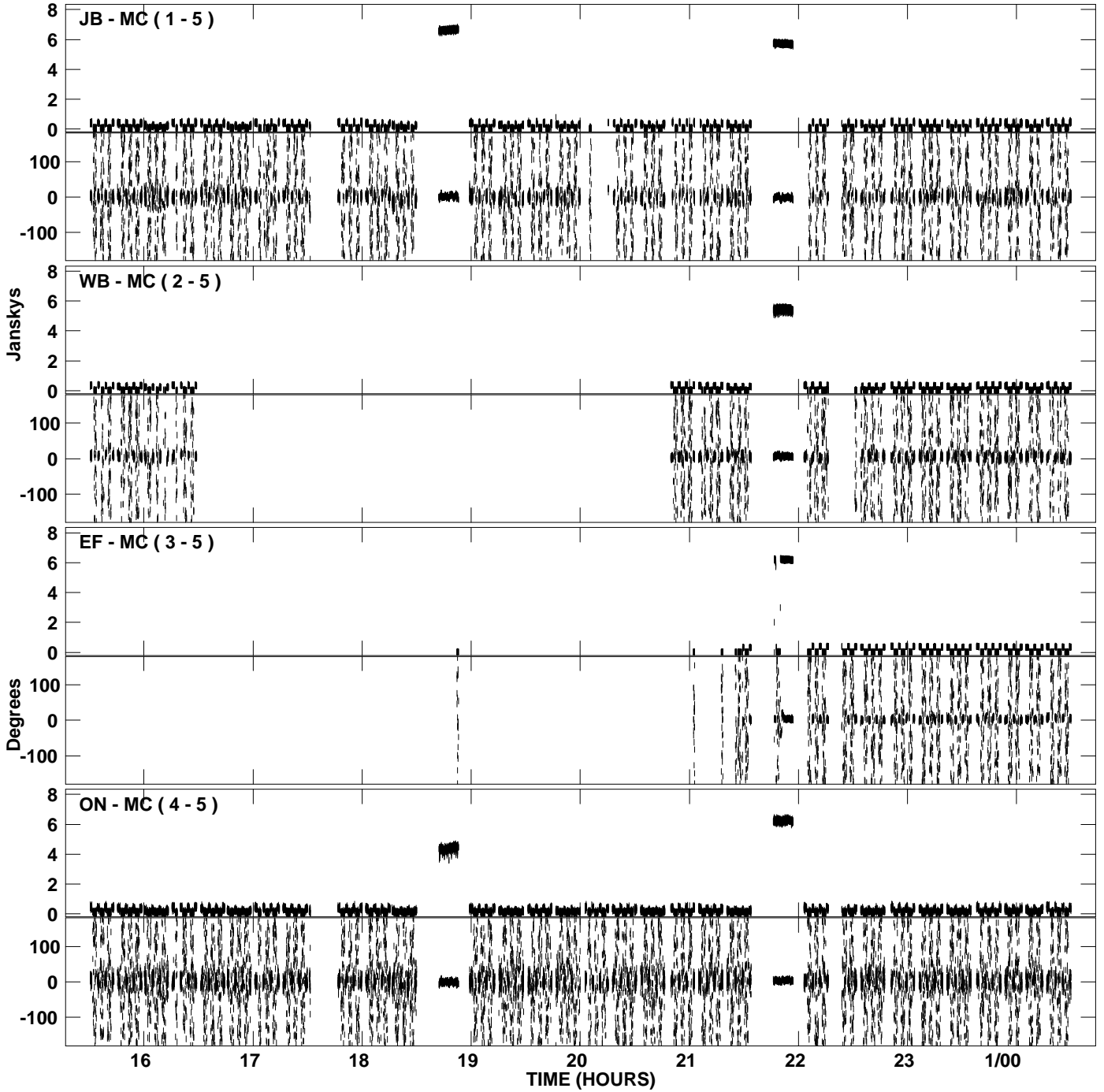
PLot file version 23 created 16-JUL-2007 13:00:59  
Amplitude and Phase vs Time for EG037A.UVDATA.1 Vect aver. CL # 3  
IF 4 CHAN 1 - 16 STK RR



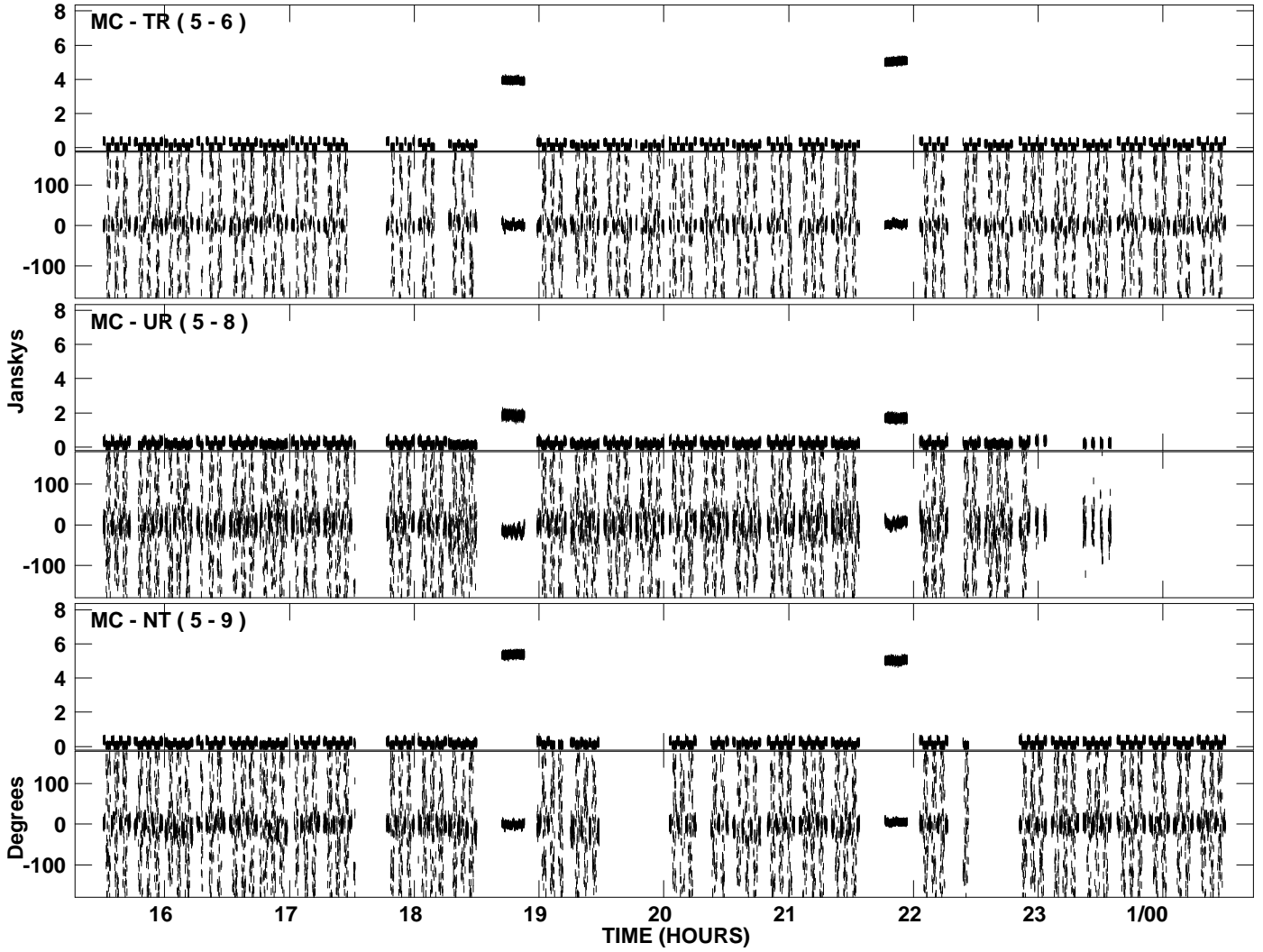
PLot file version 24 created 16-JUL-2007 13:00:59  
Amplitude and Phase vs Time for EG037A.UVDATA.1 Vect aver. CL # 3  
IF 4 CHAN 1 - 16 STK RR



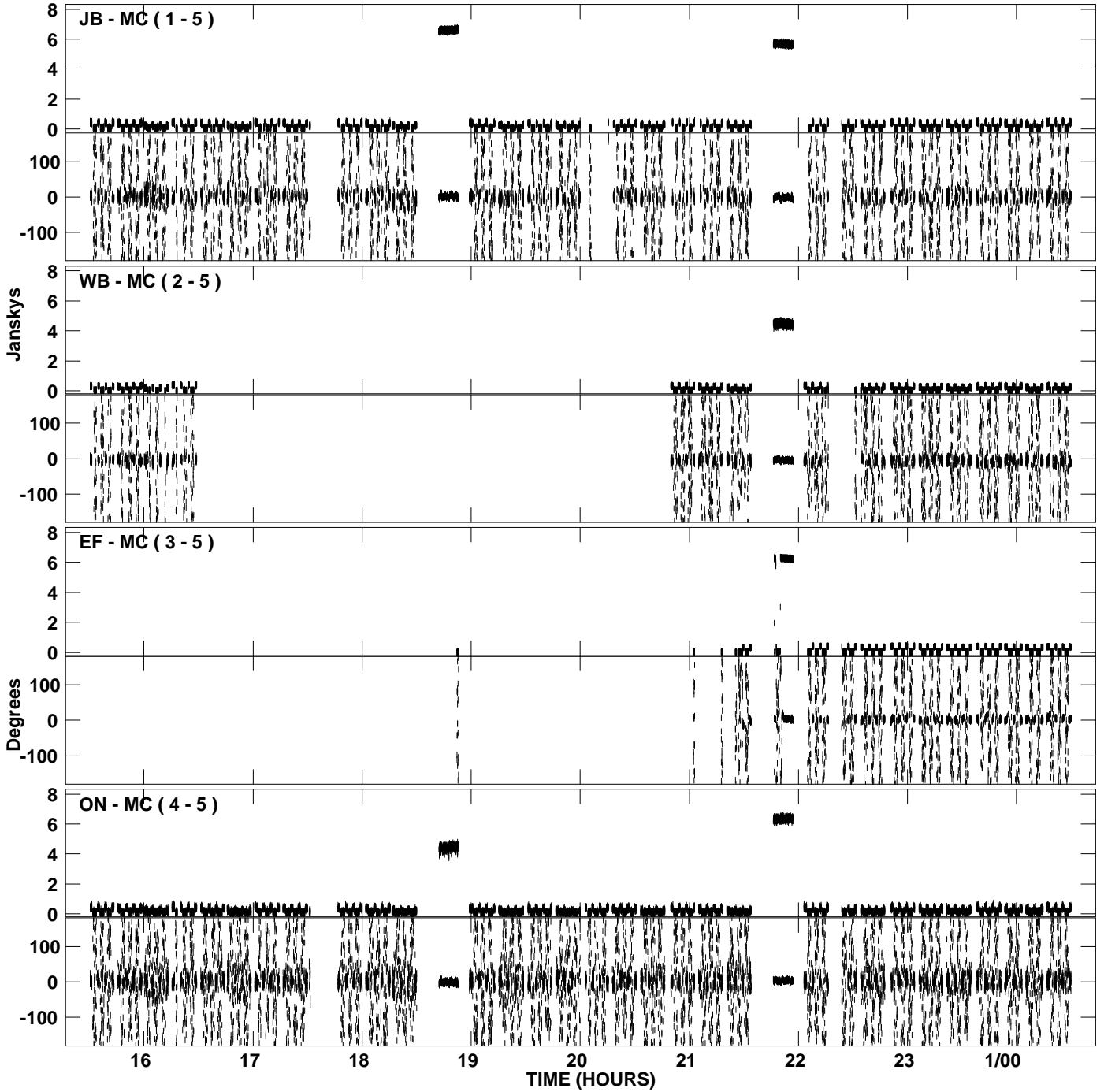
PLot file version 25 created 16-JUL-2007 13:02:36  
Amplitude and Phase vs Time for EG037A.UVDATA.1 Vect aver. CL # 3  
IF 5 CHAN 1 - 16 STK RR



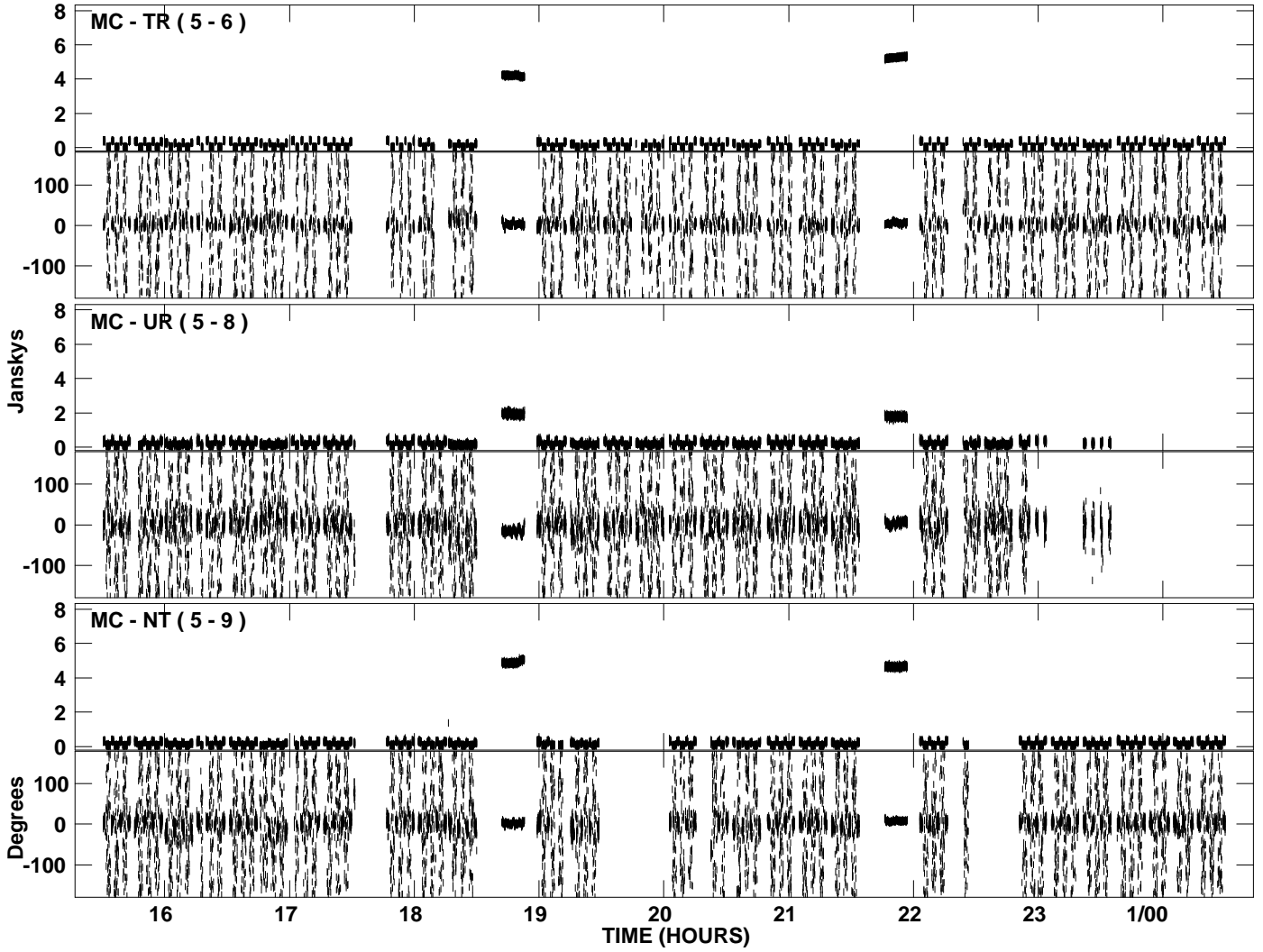
PLot file version 26 created 16-JUL-2007 13:02:36  
Amplitude andPhase vs Time for EG037A.UVDATA.1 Vect aver. CL # 3  
IF 5 CHAN 1 - 16 STK RR



PLot file version 27 created 16-JUL-2007 13:04:12  
Amplitude and Phase vs Time for EG037A.UVDATA.1 Vect aver. CL # 3  
IF 6 CHAN 1 - 16 STK RR

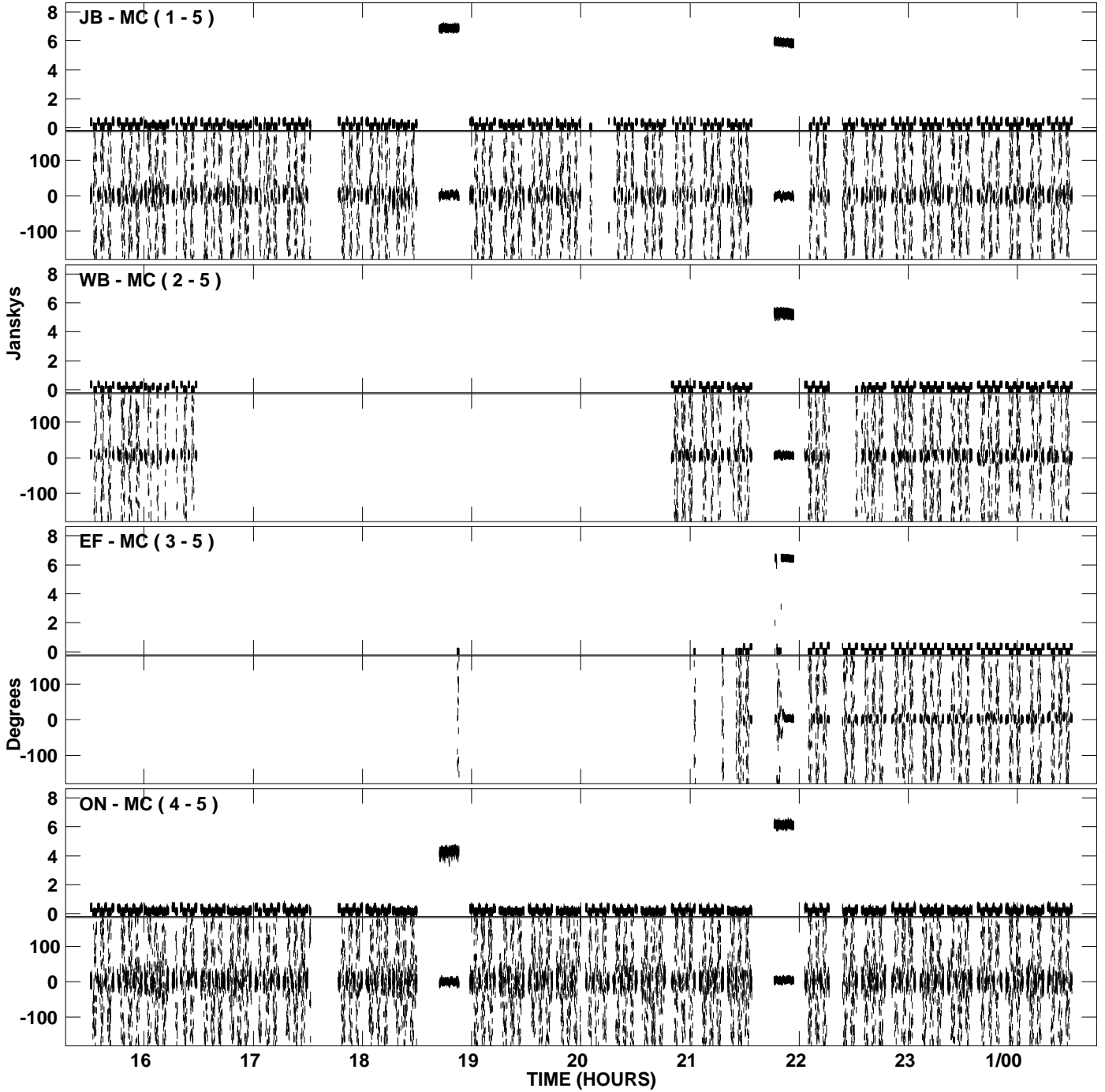


PLot file version 28 created 16-JUL-2007 13:04:12  
Amplitude and Phase vs Time for EG037A.UVDATA.1 Vect aver. CL # 3  
IF 6 CHAN 1 - 16 STK RR

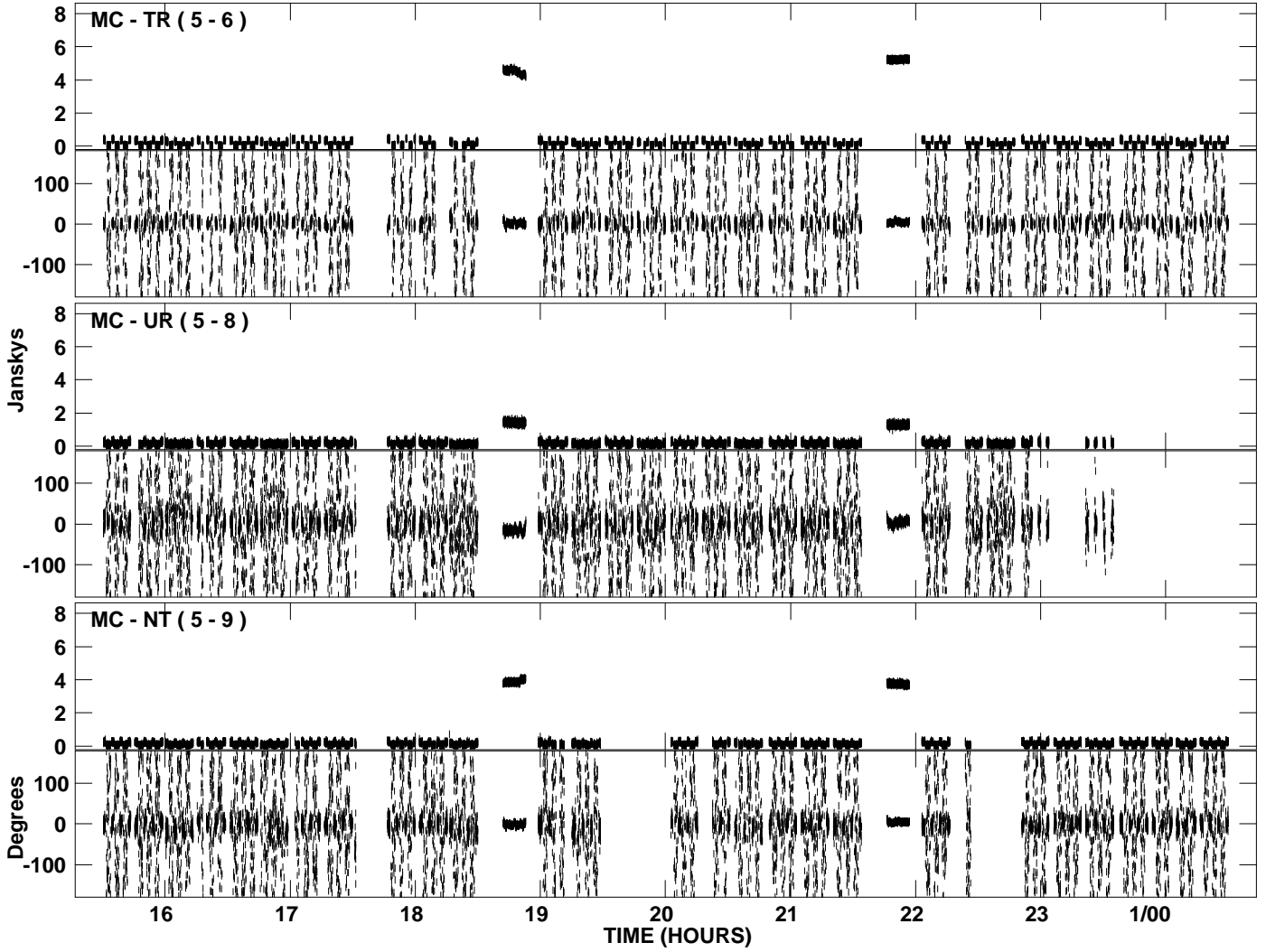




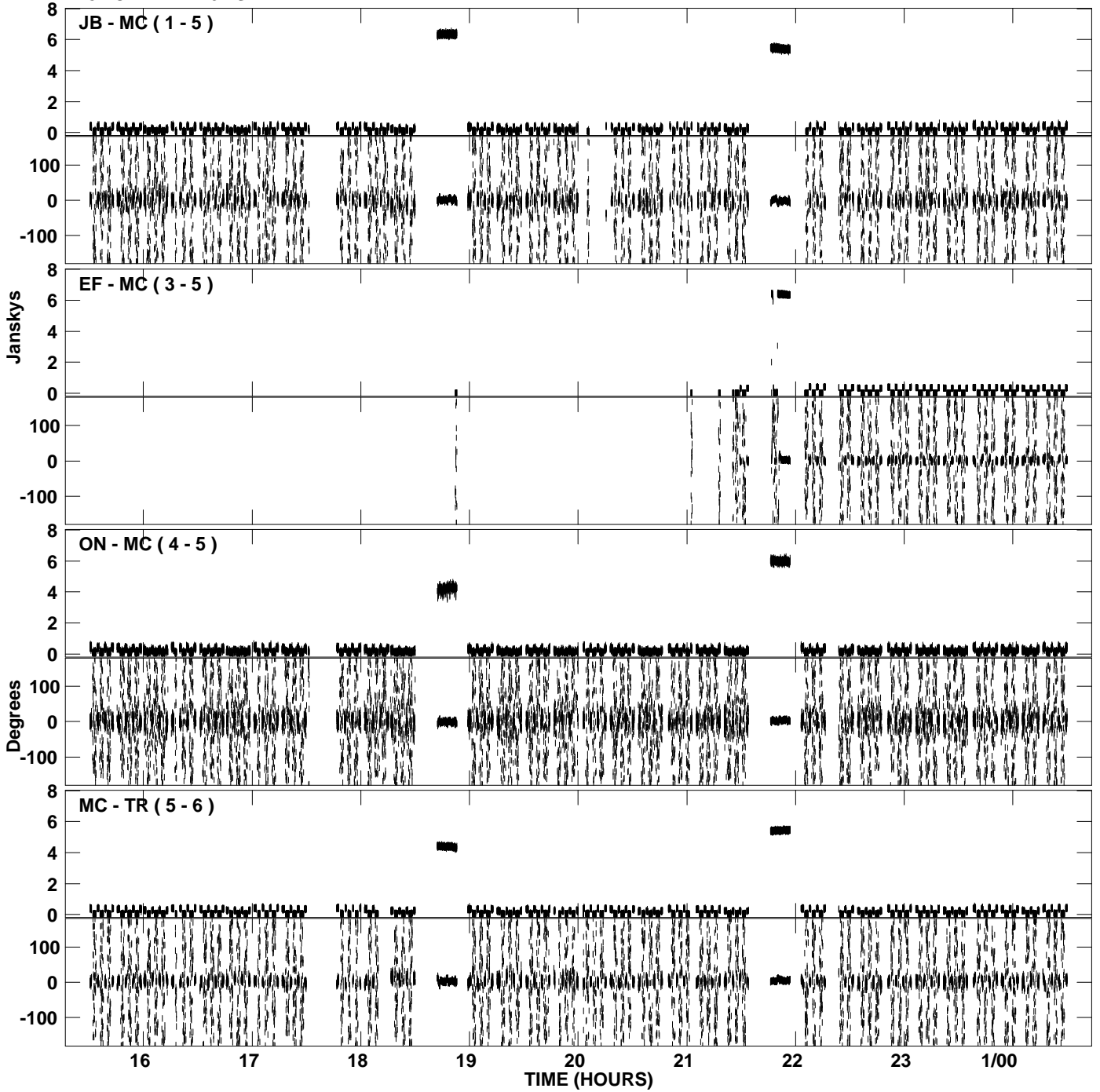
PLot file version 29 created 16-JUL-2007 13:05:48  
Amplitude and Phase vs Time for EG037A.UVDATA.1 Vect aver. CL # 3  
IF 7 CHAN 1 - 16 STK RR



PLot file version 30 created 16-JUL-2007 13:05:49  
Amplitude and Phase vs Time for EG037A.UVDATA.1 Vect aver. CL # 3  
IF 7 CHAN 1 - 16 STK RR



PLot file version 31 created 16-JUL-2007 13:07:24  
Amplitude and Phase vs Time for EG037A.UVDATA.1 Vect aver. CL # 3  
IF 8 CHAN 1 - 16 STK RR



PLot file version 32 created 16-JUL-2007 13:07:24  
Amplitude andPhase vs Time for EG037A.UVDATA.1 Vect aver. CL # 3  
IF 8 CHAN 1 - 16 STK RR

