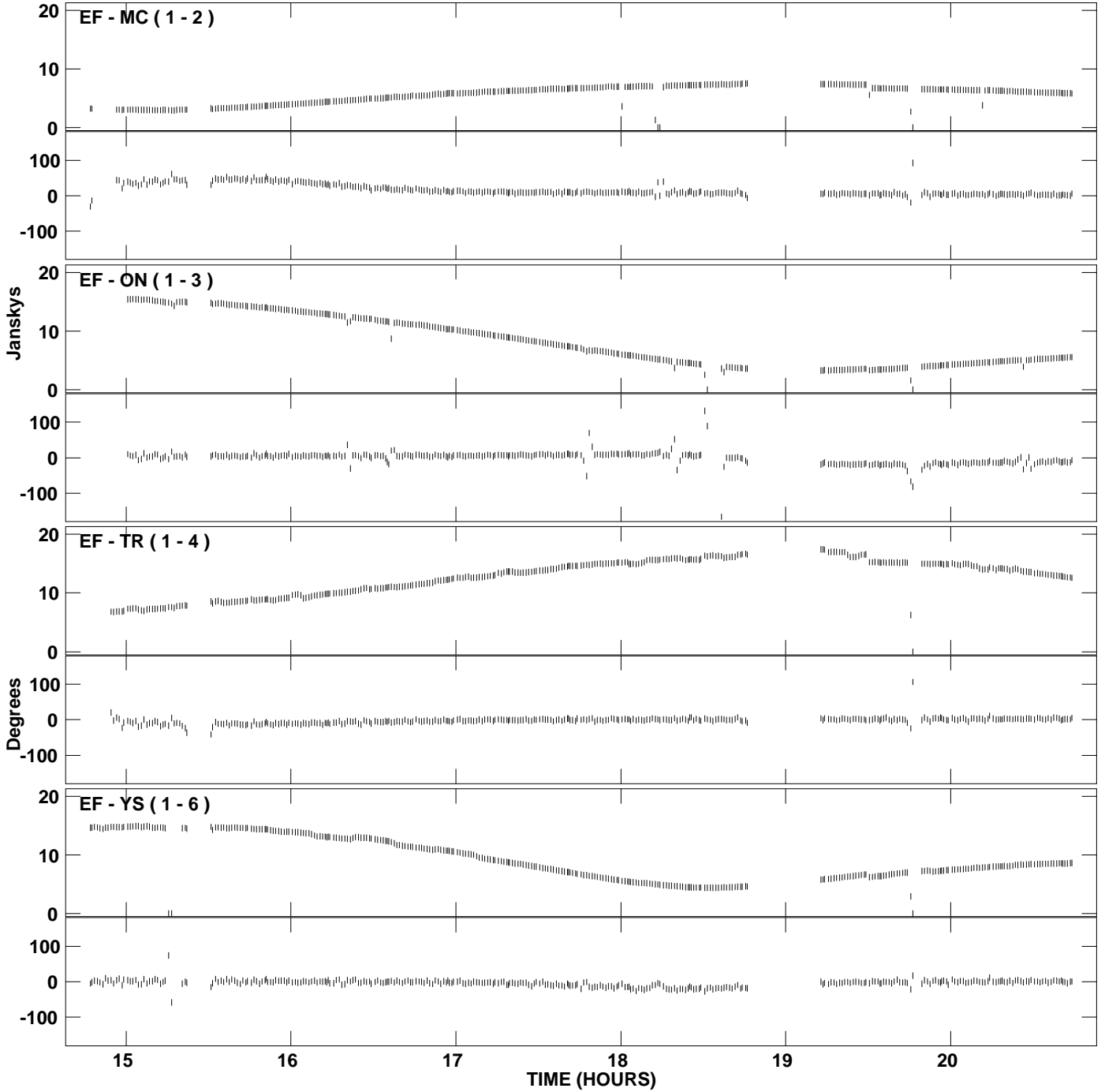
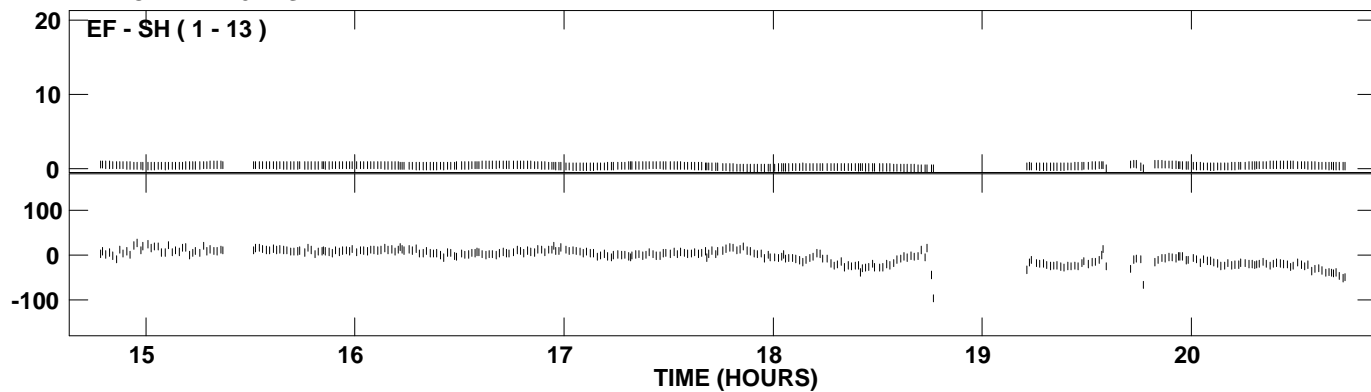


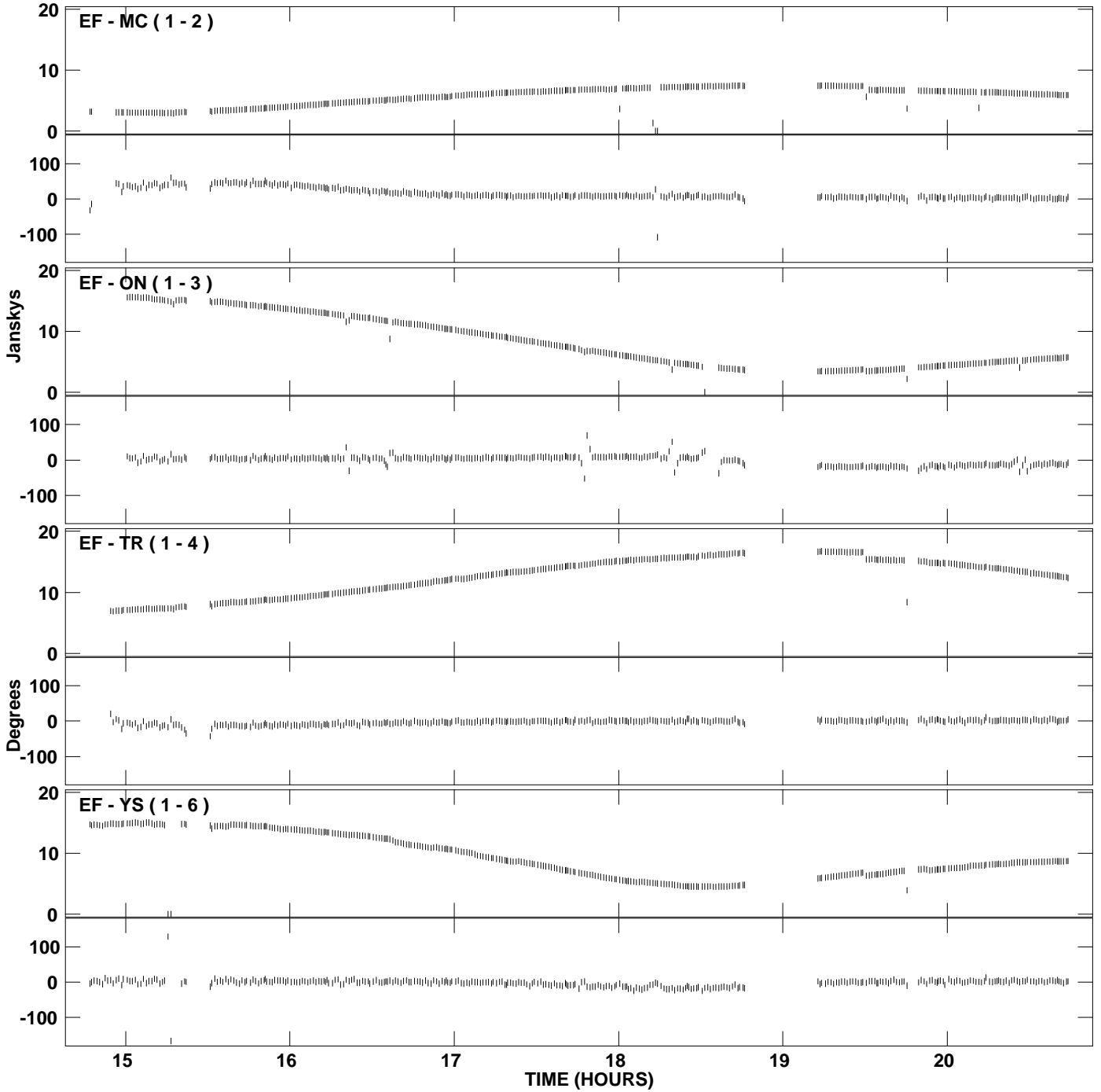
PLot file version 1 created 17-DEC-2009 09:10:26  
Amplitude and Phase vs Time for EG047A.UVDATA.1 Vect aver. CL # 3  
IF 1 CHAN 1 - 32 STK LL



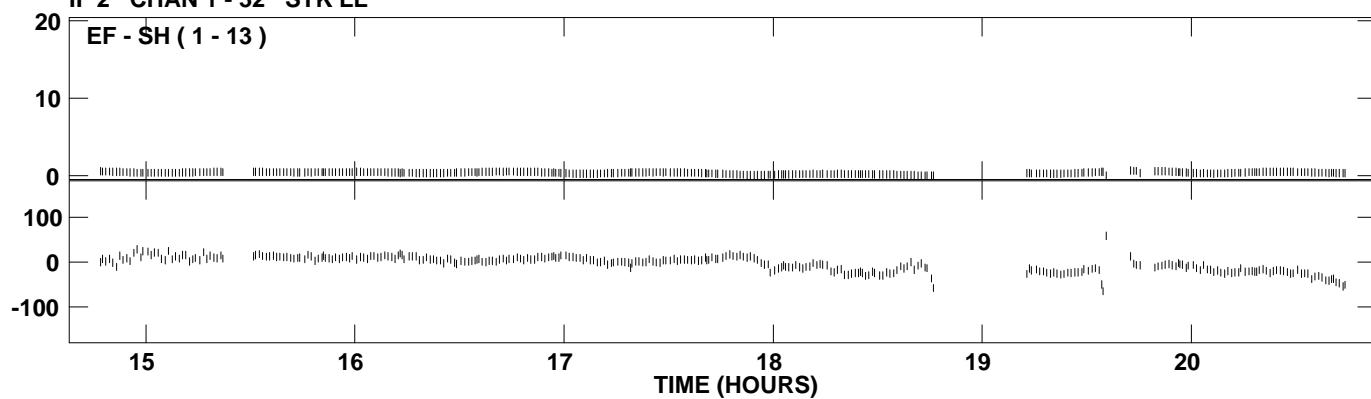
PLot file version 2 created 17-DEC-2009 09:10:26  
Amplitude andPhase vs Time for EG047A.UVDATA.1 Vect aver. CL # 3  
IF 1 CHAN 1 - 32 STK LL



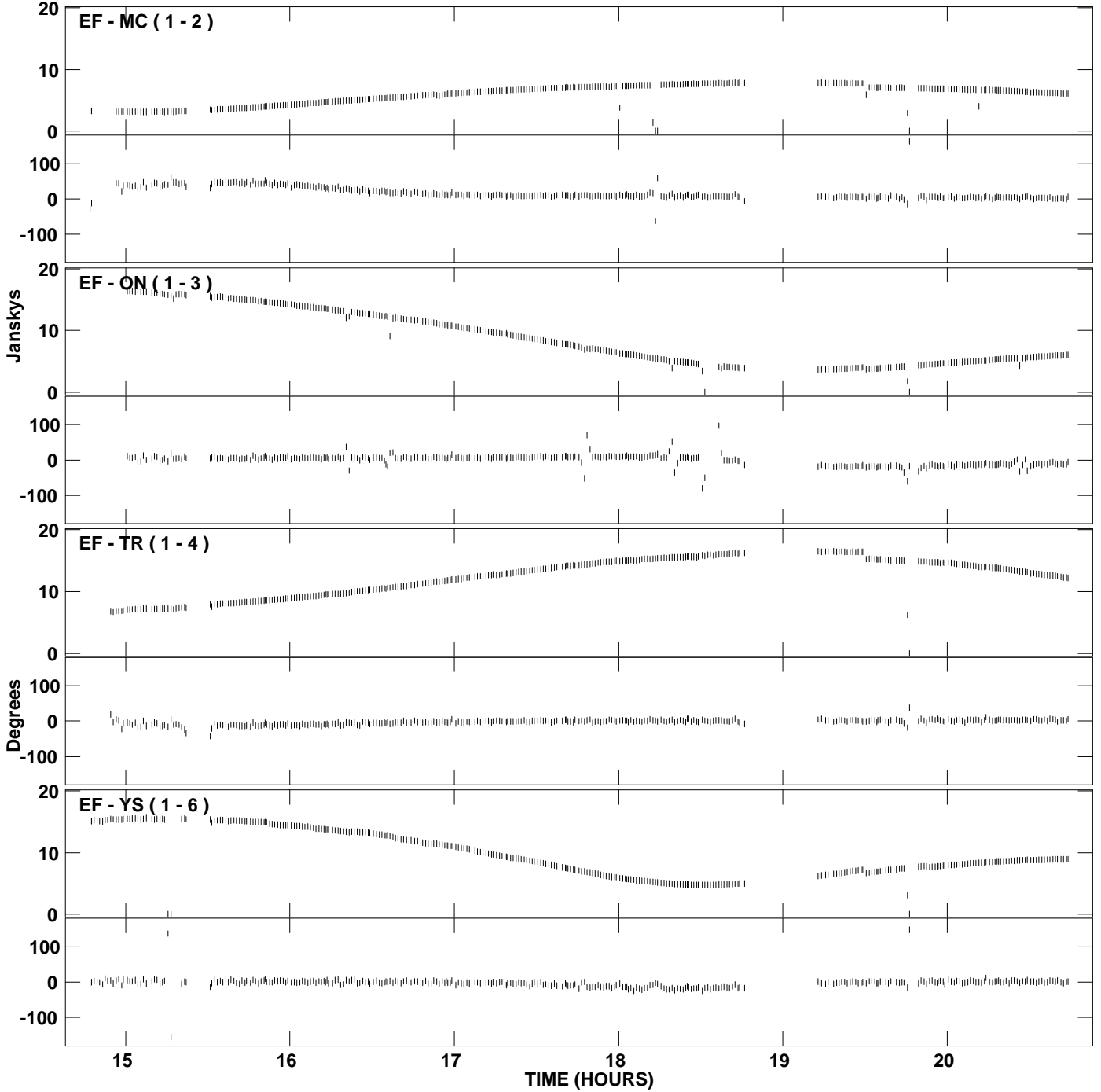
PLot file version 3 created 17-DEC-2009 09:10:41  
Amplitude and Phase vs Time for EG047A.UVDATA.1 Vect aver. CL # 3  
IF 2 CHAN 1 - 32 STK LL



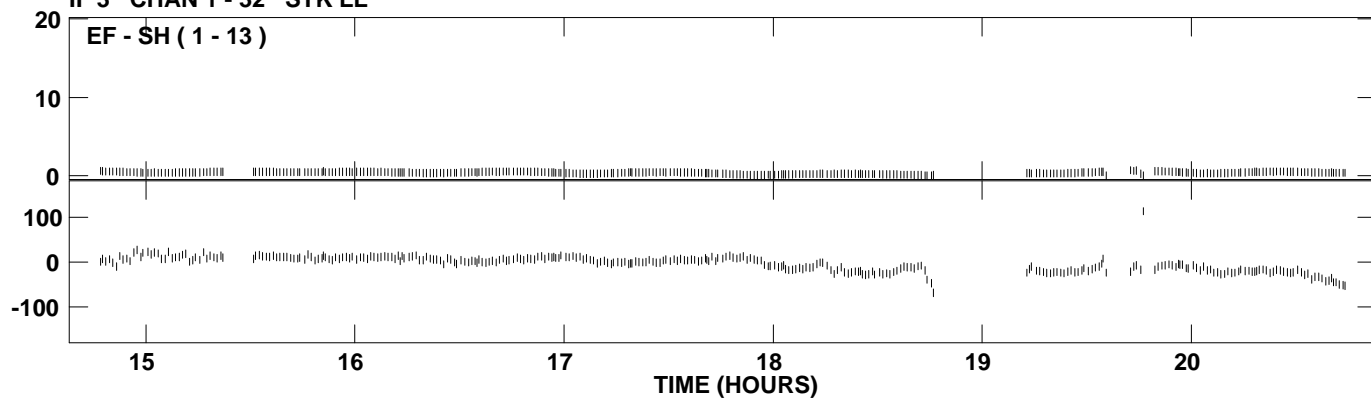
PLot file version 4 created 17-DEC-2009 09:10:41  
Amplitude andPhase vs Time for EG047A.UVDATA.1 Vect aver. CL # 3  
IF 2 CHAN 1 - 32 STK LL



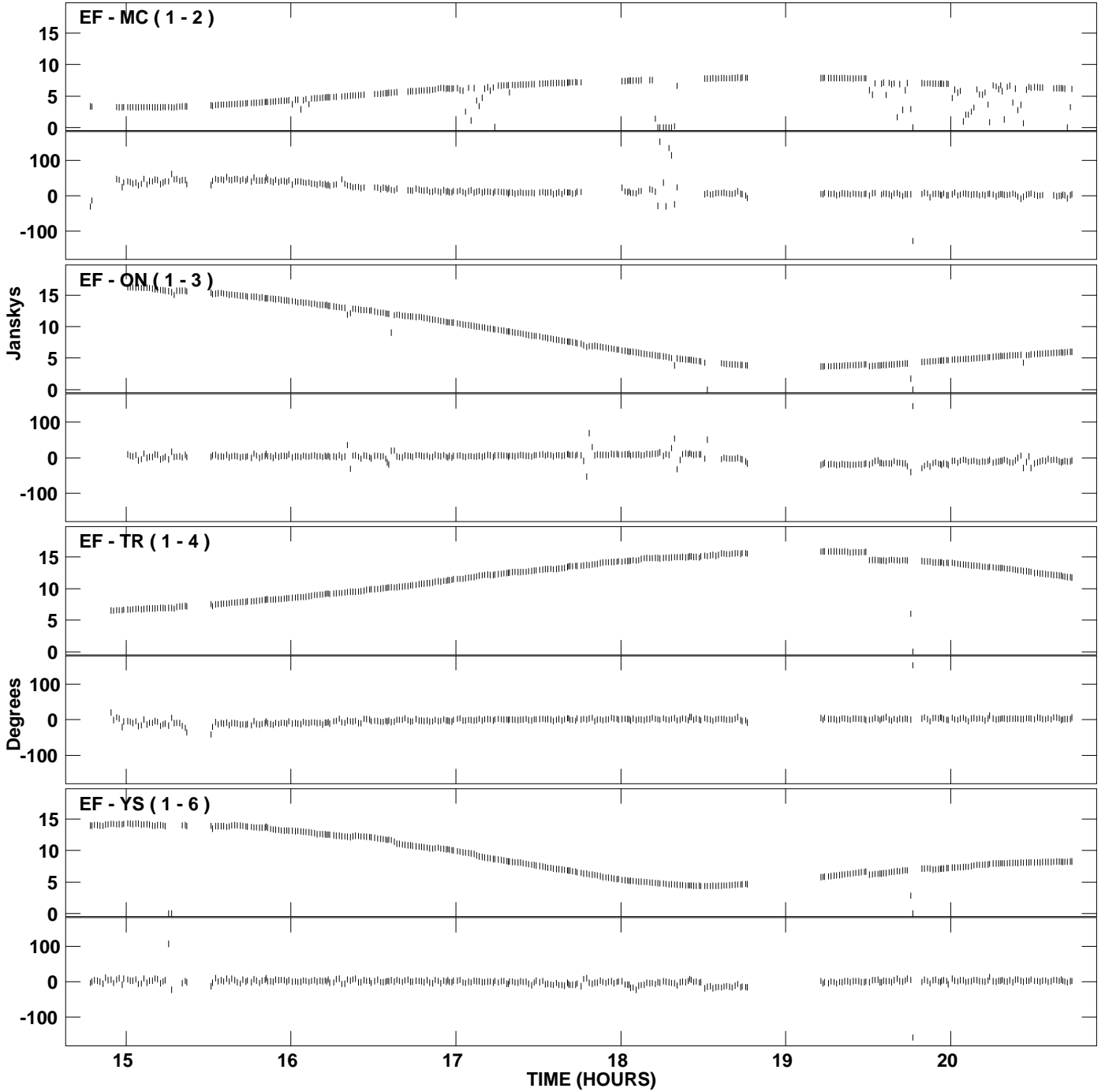
PLot file version 5 created 17-DEC-2009 09:10:55  
Amplitude and Phase vs Time for EG047A.UVDATA.1 Vect aver. CL # 3  
IF 3 CHAN 1 - 32 STK LL



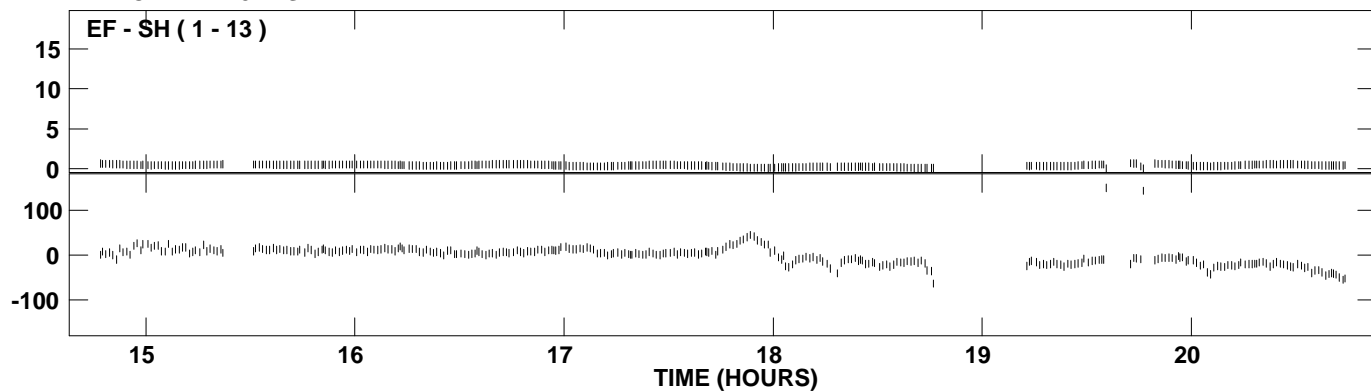
PLot file version 6 created 17-DEC-2009 09:10:55  
Amplitude and Phase vs Time for EG047A.UVDATA.1 Vect aver. CL # 3  
IF 3 CHAN 1 - 32 STK LL



PLot file version 7 created 17-DEC-2009 09:11:10  
Amplitude and Phase vs Time for EG047A.UVDATA.1 Vect aver. CL # 3  
IF 4 CHAN 1 - 32 STK LL

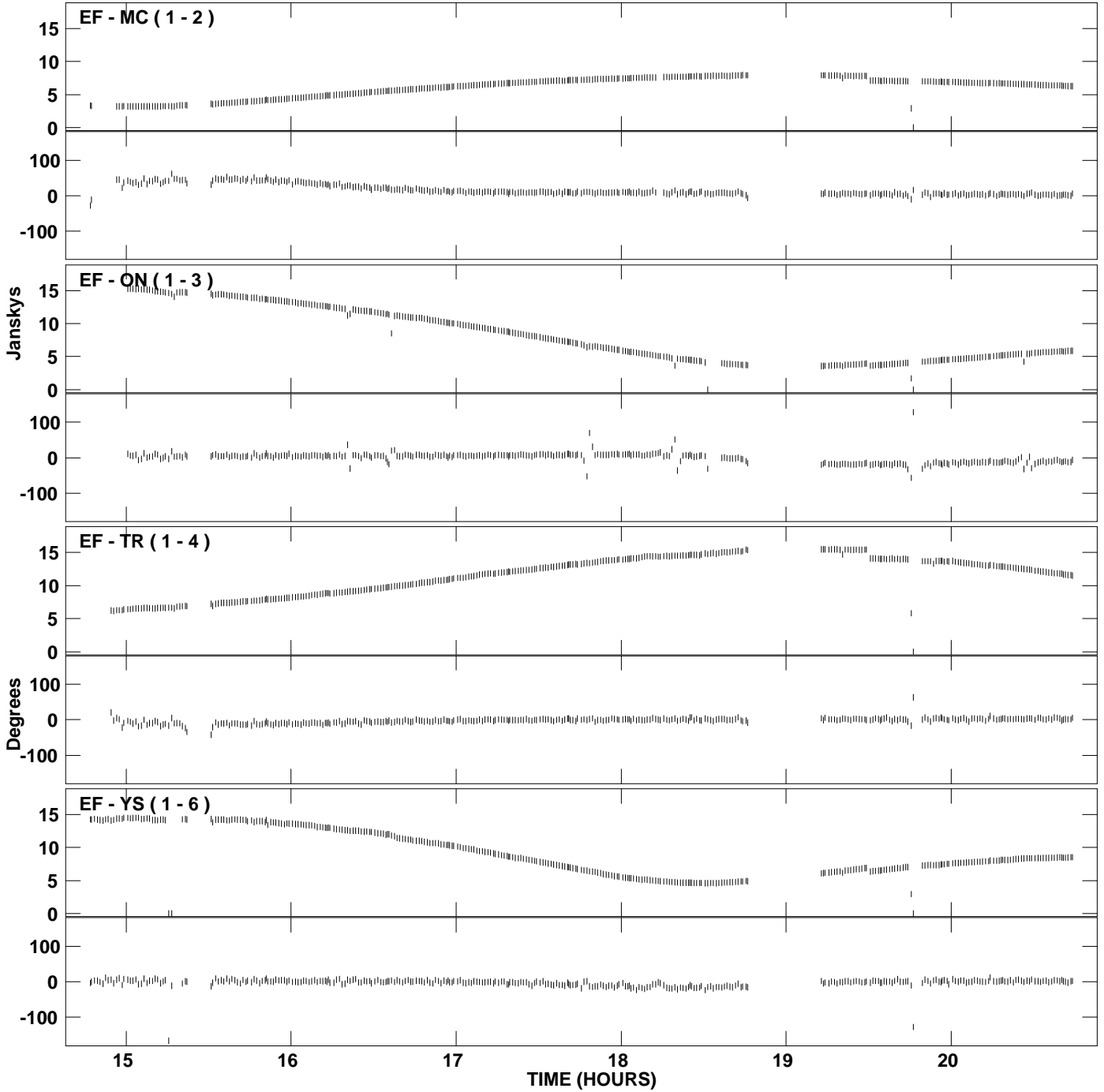


PLot file version 8 created 17-DEC-2009 09:11:10  
Amplitude and Phase vs Time for EG047A.UVDATA.1 Vect aver. CL # 3  
IF 4 CHAN 1 - 32 STK LL

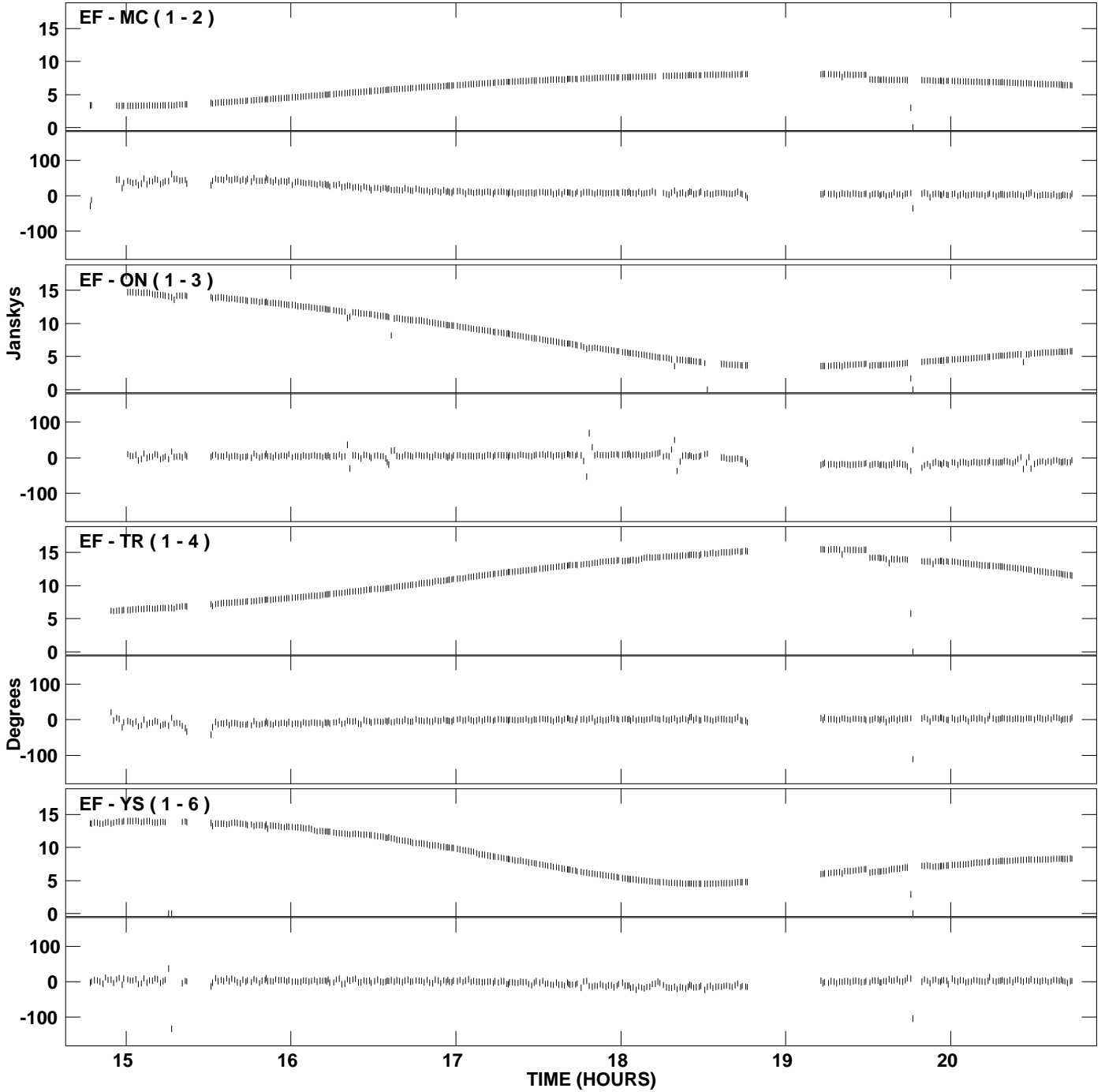




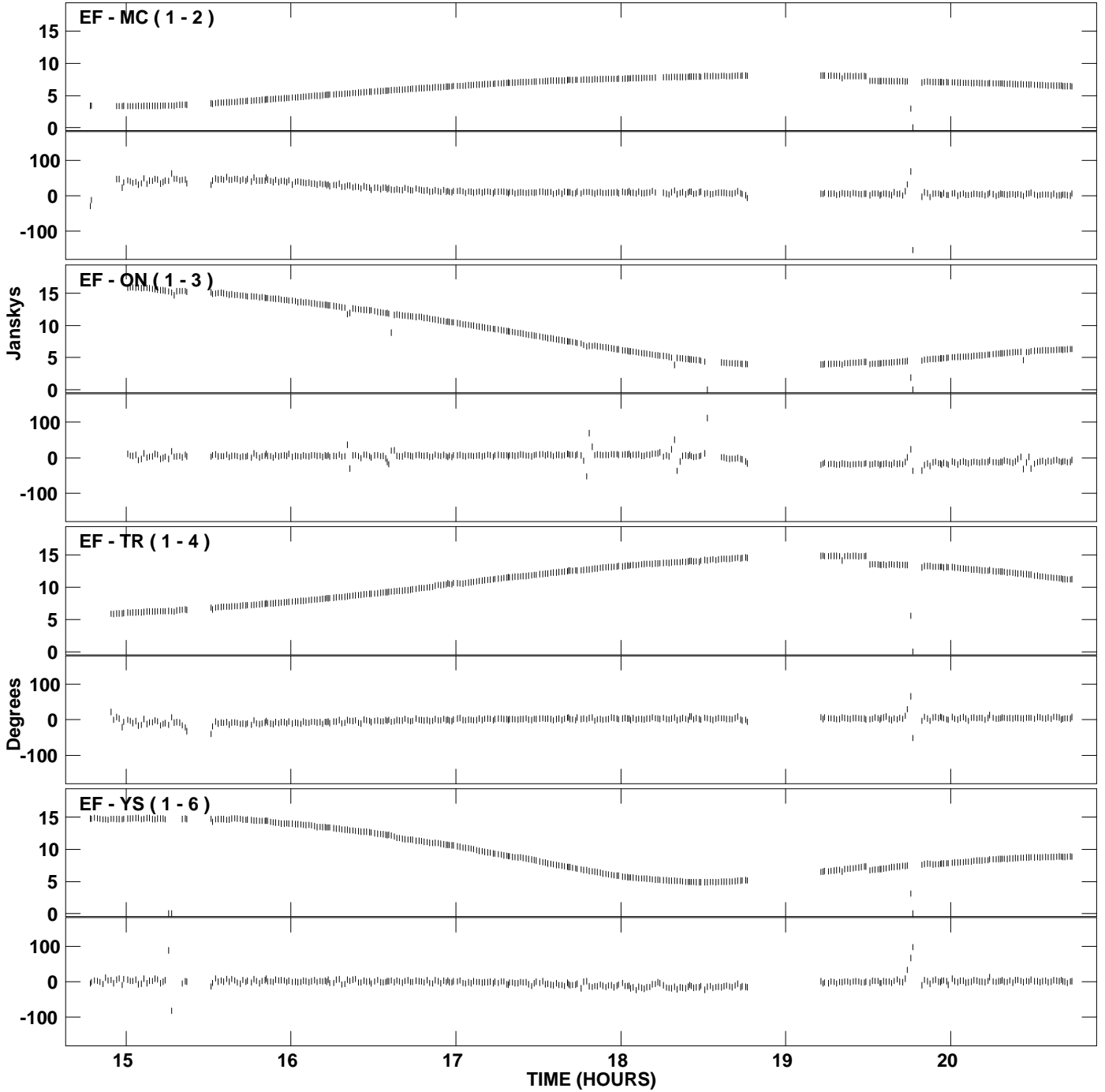
PLot file version 9 created 17-DEC-2009 09:11:23  
Amplitude and Phase vs Time for EG047A.UVDATA.1 Vect aver. CL # 3  
IF 5 CHAN 1 - 32 STK LL



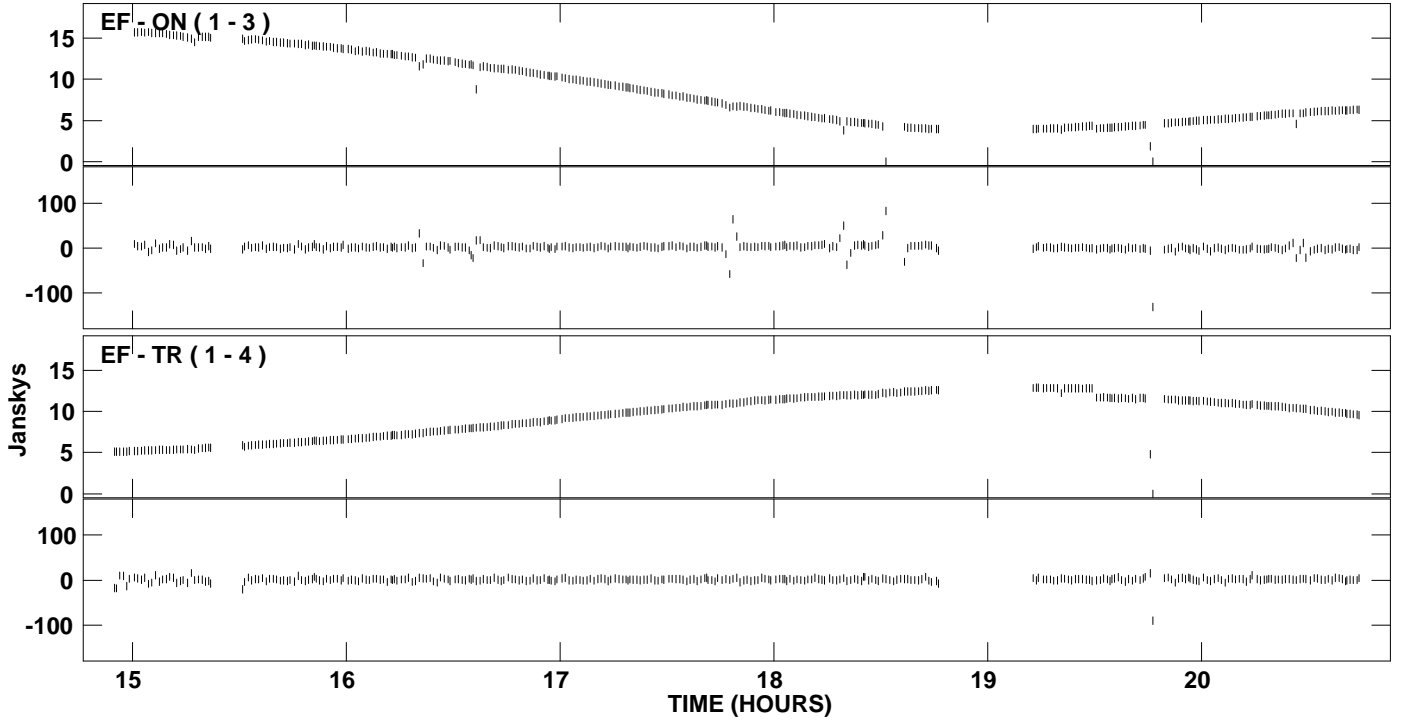
PLot file version 10 created 17-DEC-2009 09:11:36  
Amplitude and Phase vs Time for EG047A.UVDATA.1 Vect aver. CL # 3  
IF 6 CHAN 1 - 32 STK LL



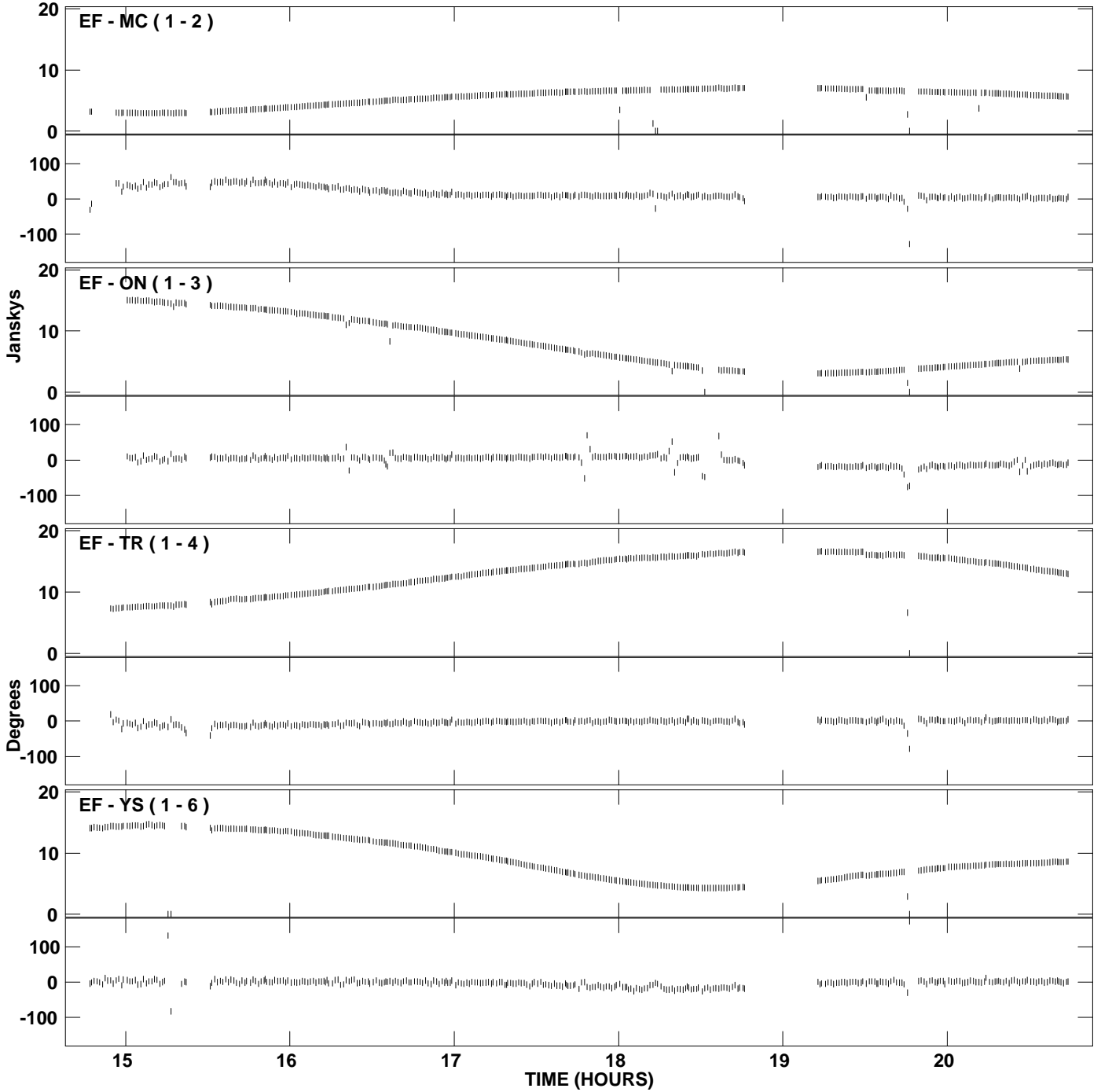
PLot file version 11 created 17-DEC-2009 09:11:50  
Amplitude and Phase vs Time for EG047A.UVDATA.1 Vect aver. CL # 3  
IF 7 CHAN 1 - 32 STK LL



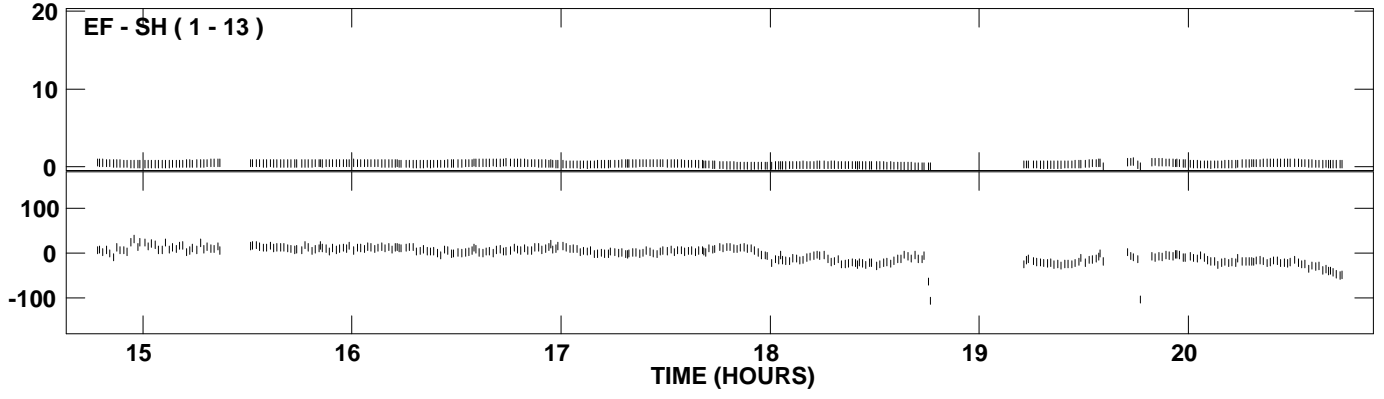
PLot file version 12 created 17-DEC-2009 09:12:01  
Amplitude and Phase vs Time for EG047A.UVDATA.1 Vect aver. CL # 3  
IF 8 CHAN 1 - 32 STK LL



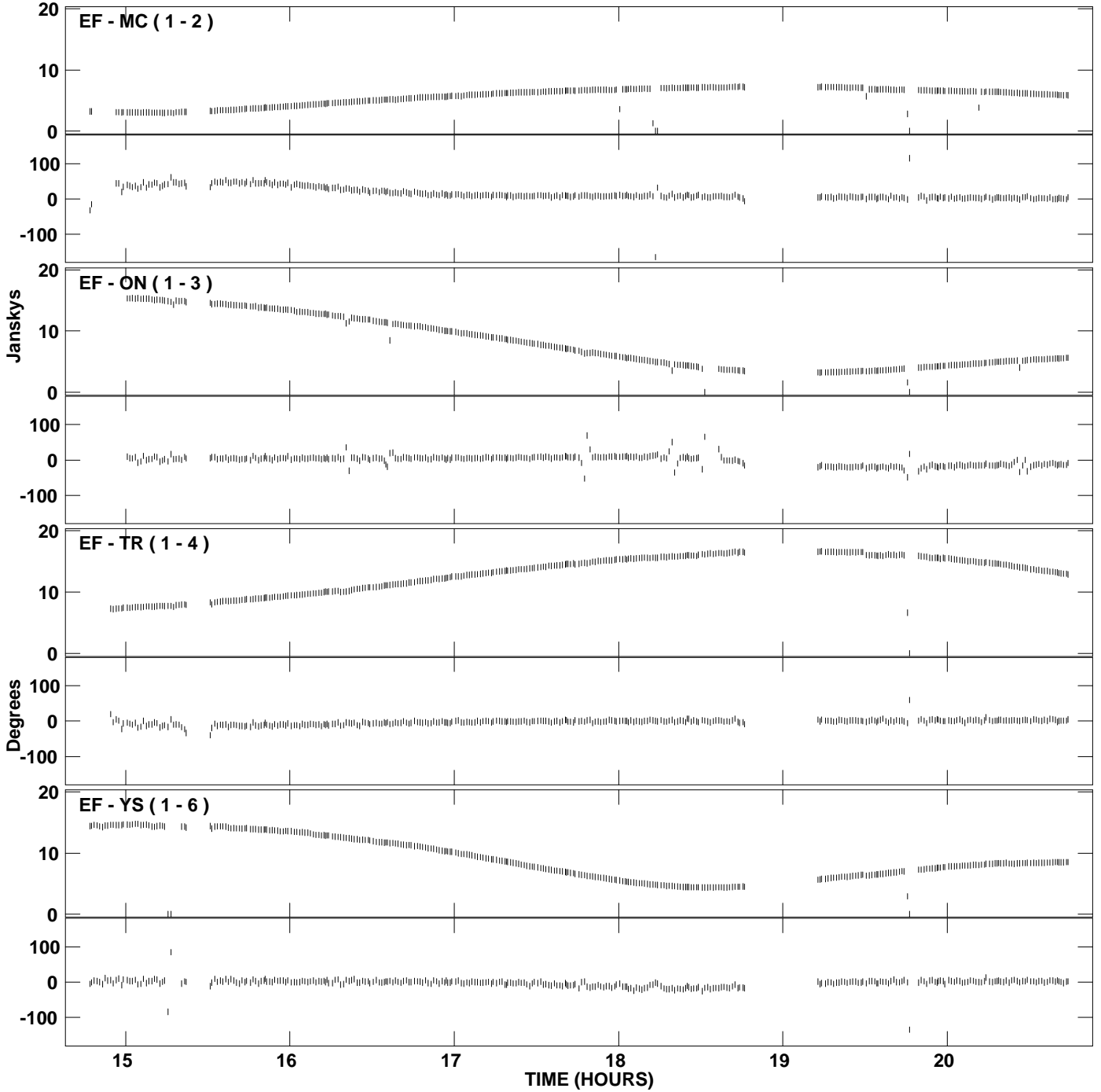
PLot file version 13 created 17-DEC-2009 09:12:14  
Amplitude and Phase vs Time for EG047A.UVDATA.1 Vect aver. CL # 3  
IF 1 CHAN 1 - 32 STK RR



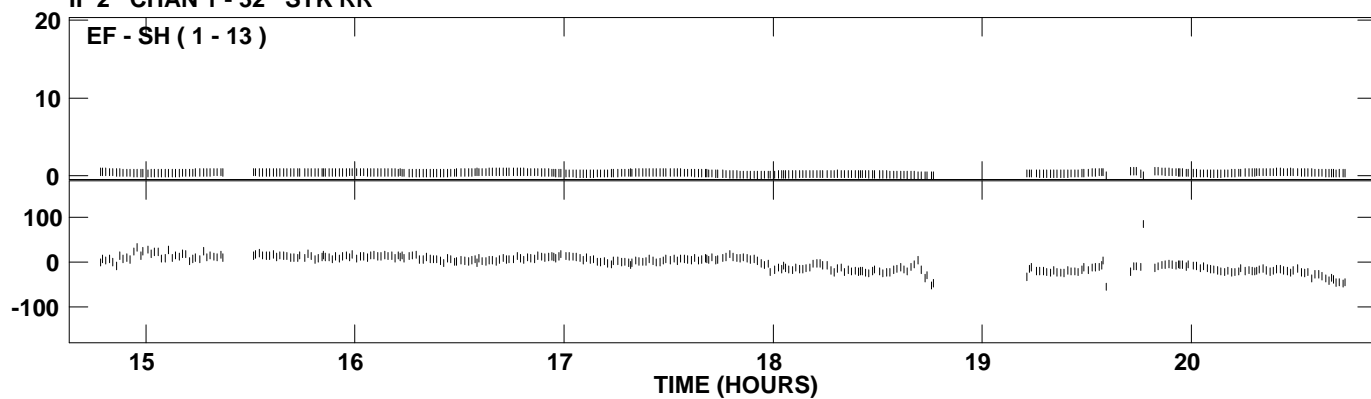
PLot file version 14 created 17-DEC-2009 09:12:14  
Amplitude andPhase vs Time for EG047A.UVDATA.1 Vect aver. CL # 3  
IF 1 CHAN 1 - 32 STK RR



PLot file version 15 created 17-DEC-2009 09:12:27  
Amplitude and Phase vs Time for EG047A.UVDATA.1 Vect aver. CL # 3  
IF 2 CHAN 1 - 32 STK RR

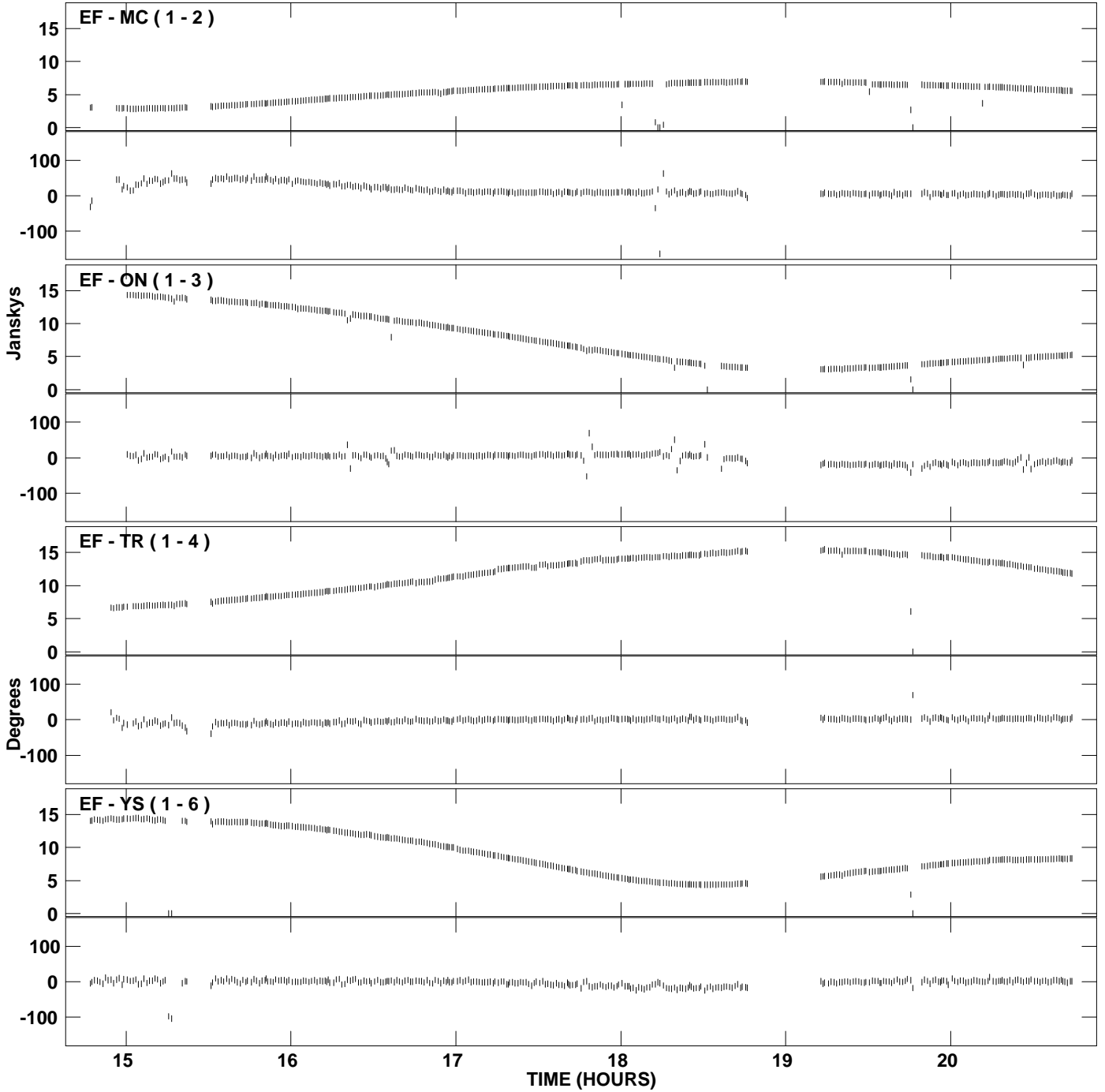


PLot file version 16 created 17-DEC-2009 09:12:27  
Amplitude andPhase vs Time for EG047A.UVDATA.1 Vect aver. CL # 3  
IF 2 CHAN 1 - 32 STK RR

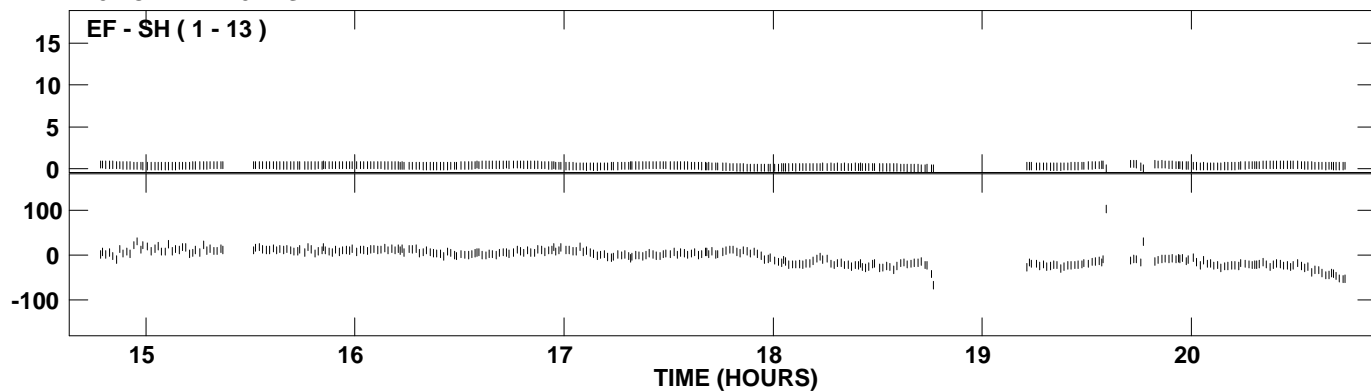




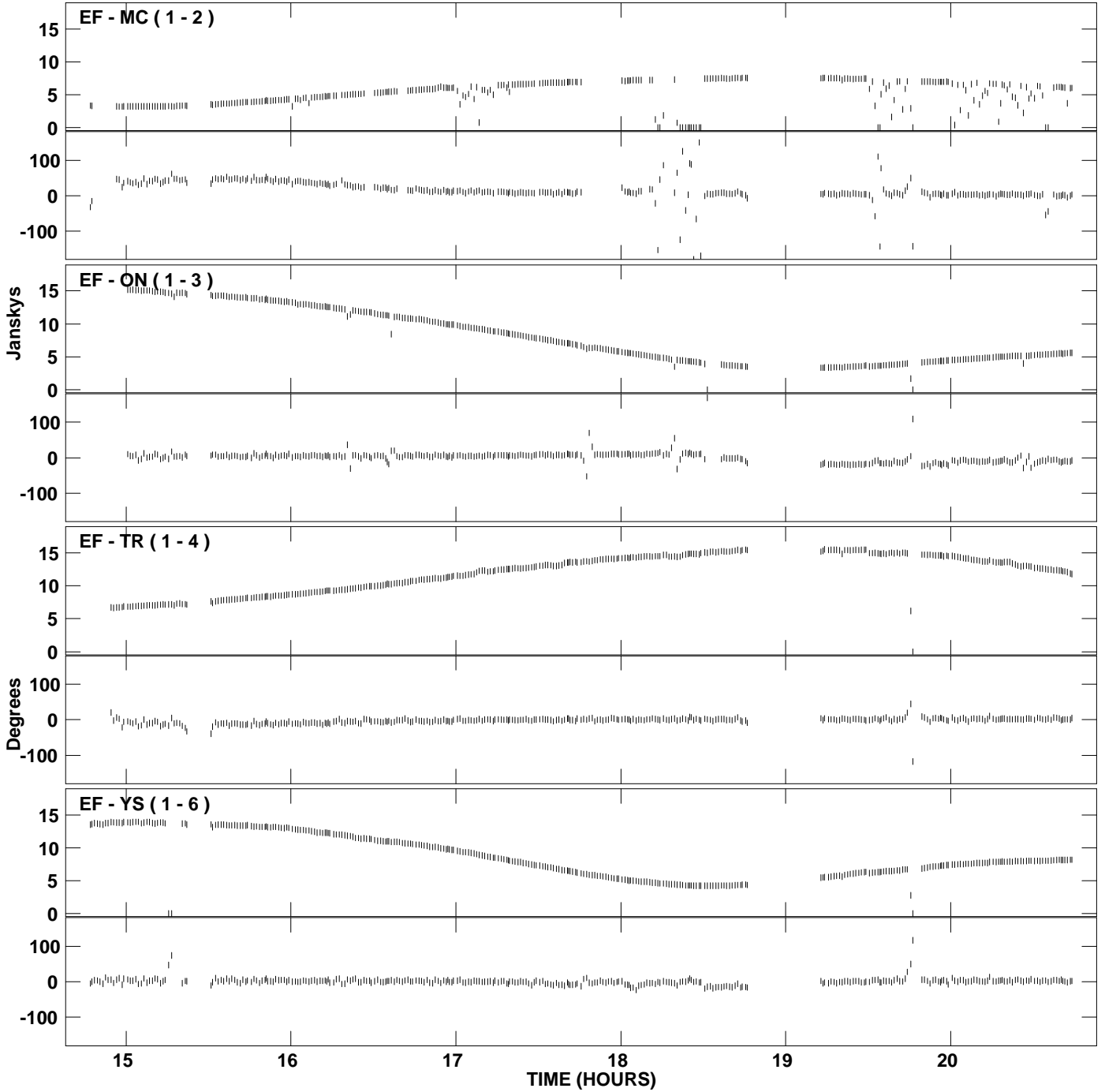
PLot file version 17 created 17-DEC-2009 09:12:40  
Amplitude and Phase vs Time for EG047A.UVDATA.1 Vect aver. CL # 3  
IF 3 CHAN 1 - 32 STK RR



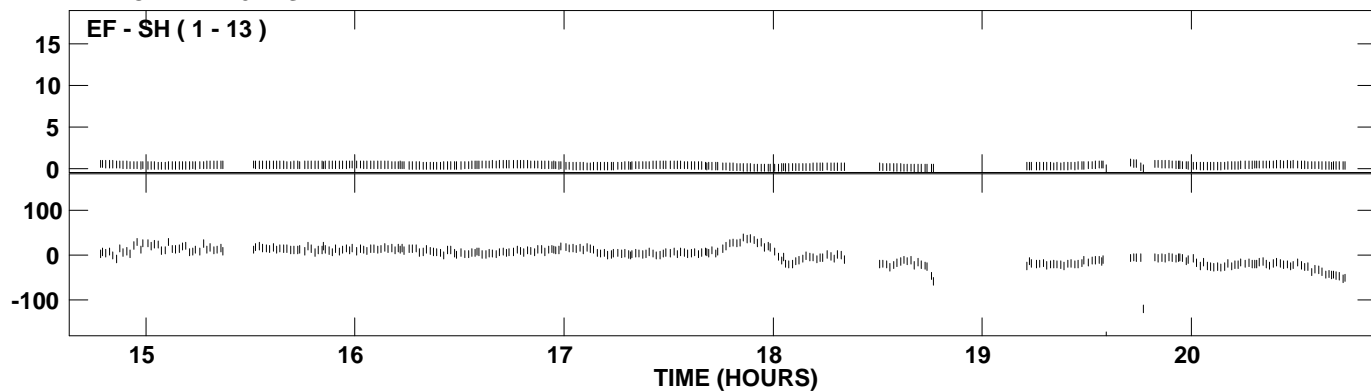
PLot file version 18 created 17-DEC-2009 09:12:40  
Amplitude andPhase vs Time for EG047A.UVDATA.1 Vect aver. CL # 3  
IF 3 CHAN 1 - 32 STK RR



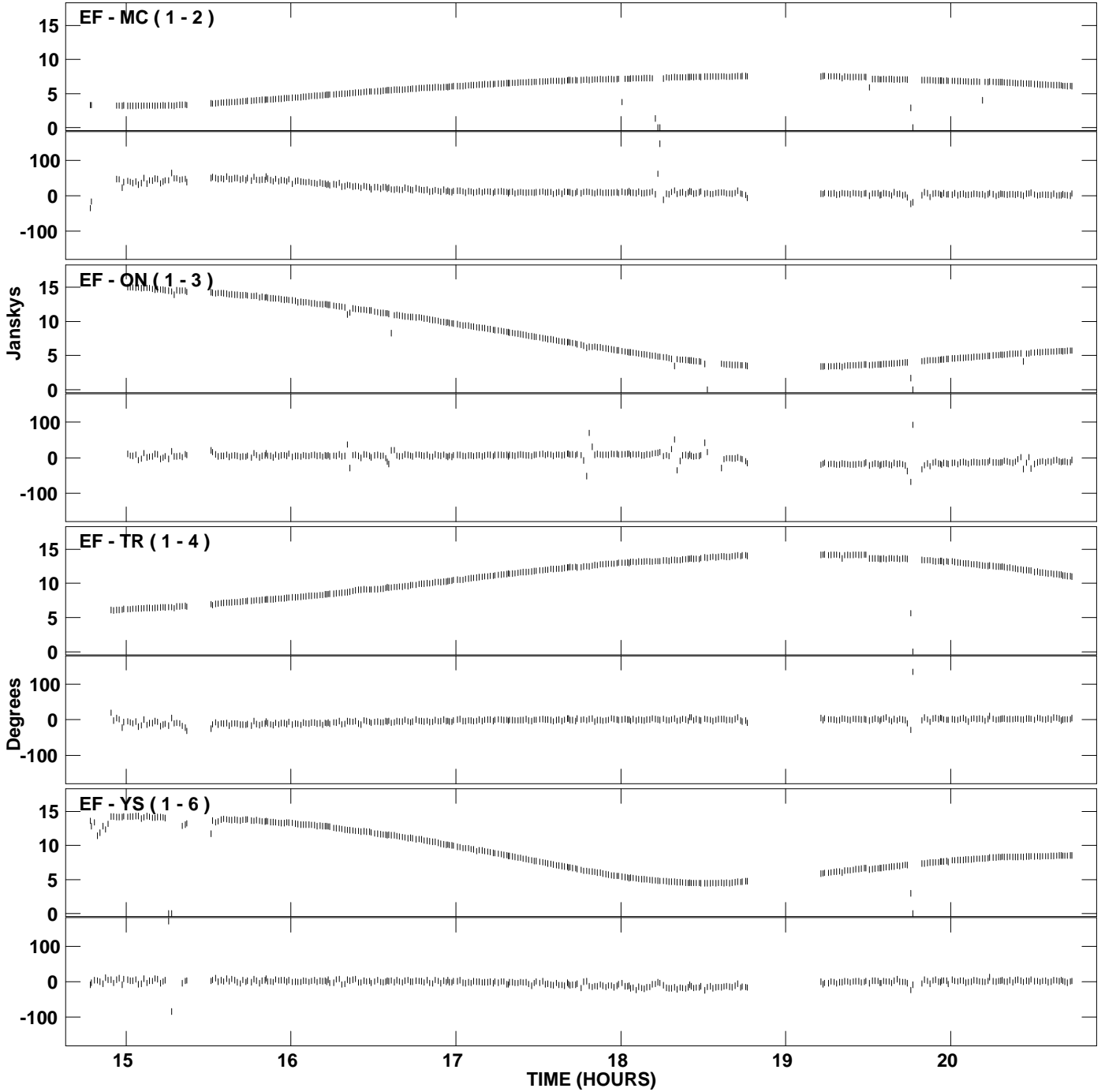
PLot file version 19 created 17-DEC-2009 09:12:53  
Amplitude and Phase vs Time for EG047A.UVDATA.1 Vect aver. CL # 3  
IF 4 CHAN 1 - 32 STK RR



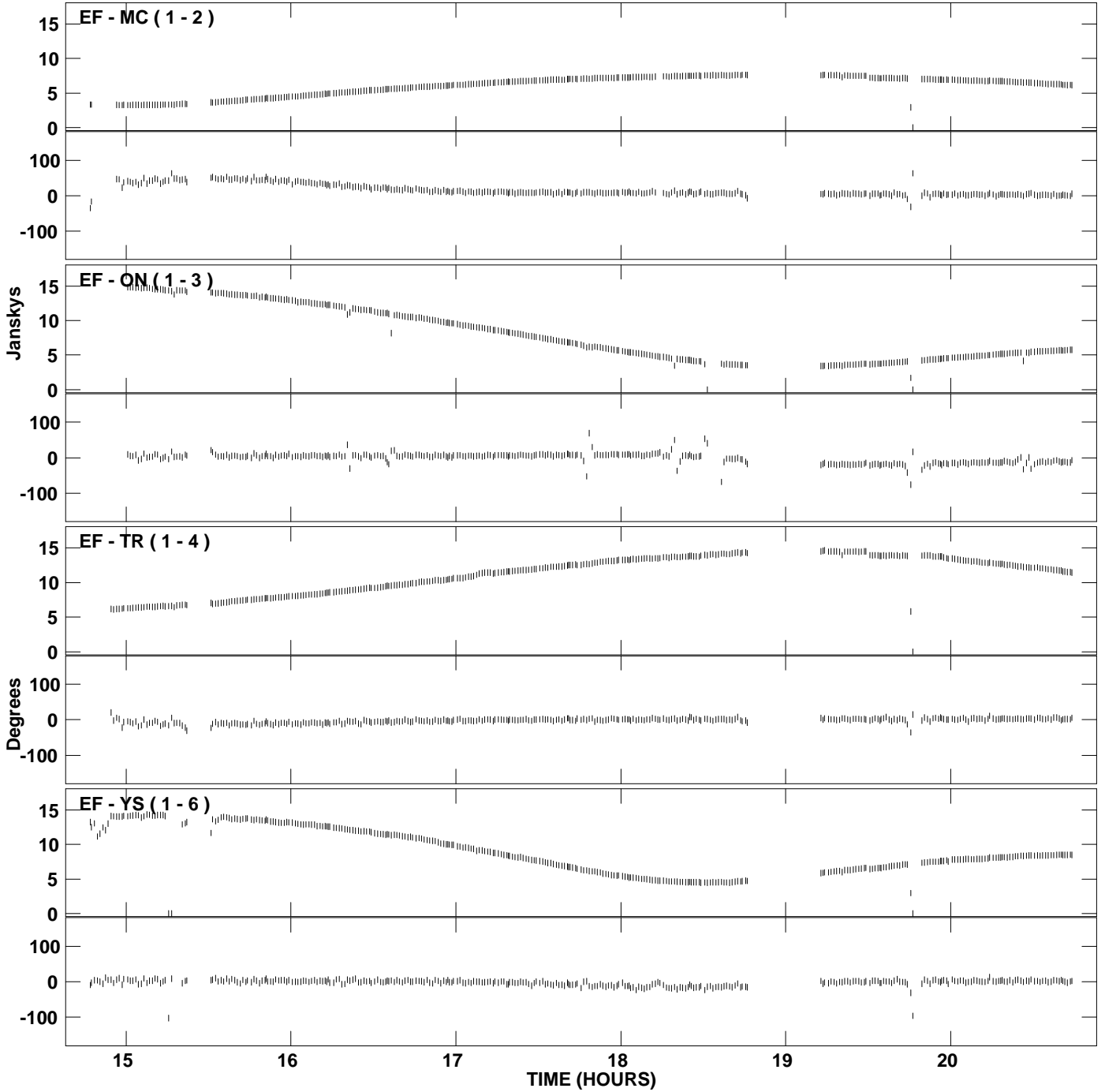
PLot file version 20 created 17-DEC-2009 09:12:53  
Amplitude andPhase vs Time for EG047A.UVDATA.1 Vect aver. CL # 3  
IF 4 CHAN 1 - 32 STK RR



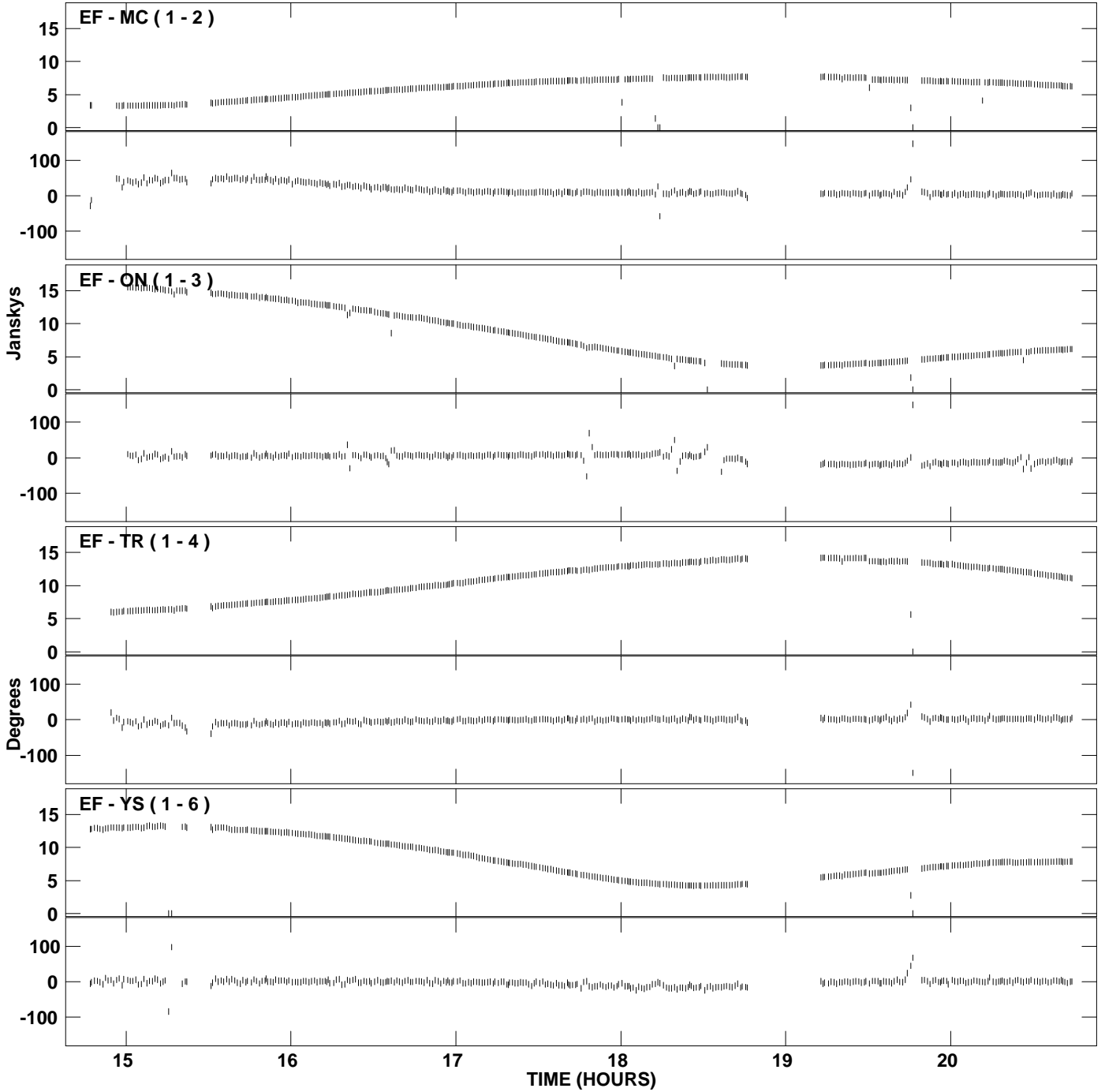
PLot file version 21 created 17-DEC-2009 09:13:04  
Amplitude and Phase vs Time for EG047A.UVDATA.1 Vect aver. CL # 3  
IF 5 CHAN 1 - 32 STK RR



PLot file version 22 created 17-DEC-2009 09:13:16  
Amplitude and Phase vs Time for EG047A.UVDATA.1 Vect aver. CL # 3  
IF 6 CHAN 1 - 32 STK RR



PLot file version 23 created 17-DEC-2009 09:13:28  
Amplitude and Phase vs Time for EG047A.UVDATA.1 Vect aver. CL # 3  
IF 7 CHAN 1 - 32 STK RR



PLot file version 24 created 17-DEC-2009 09:13:39  
Amplitude andPhase vs Time for EG047A.UVDATA.1 Vect aver. CL # 3  
IF 8 CHAN 1 - 32 STK RR

