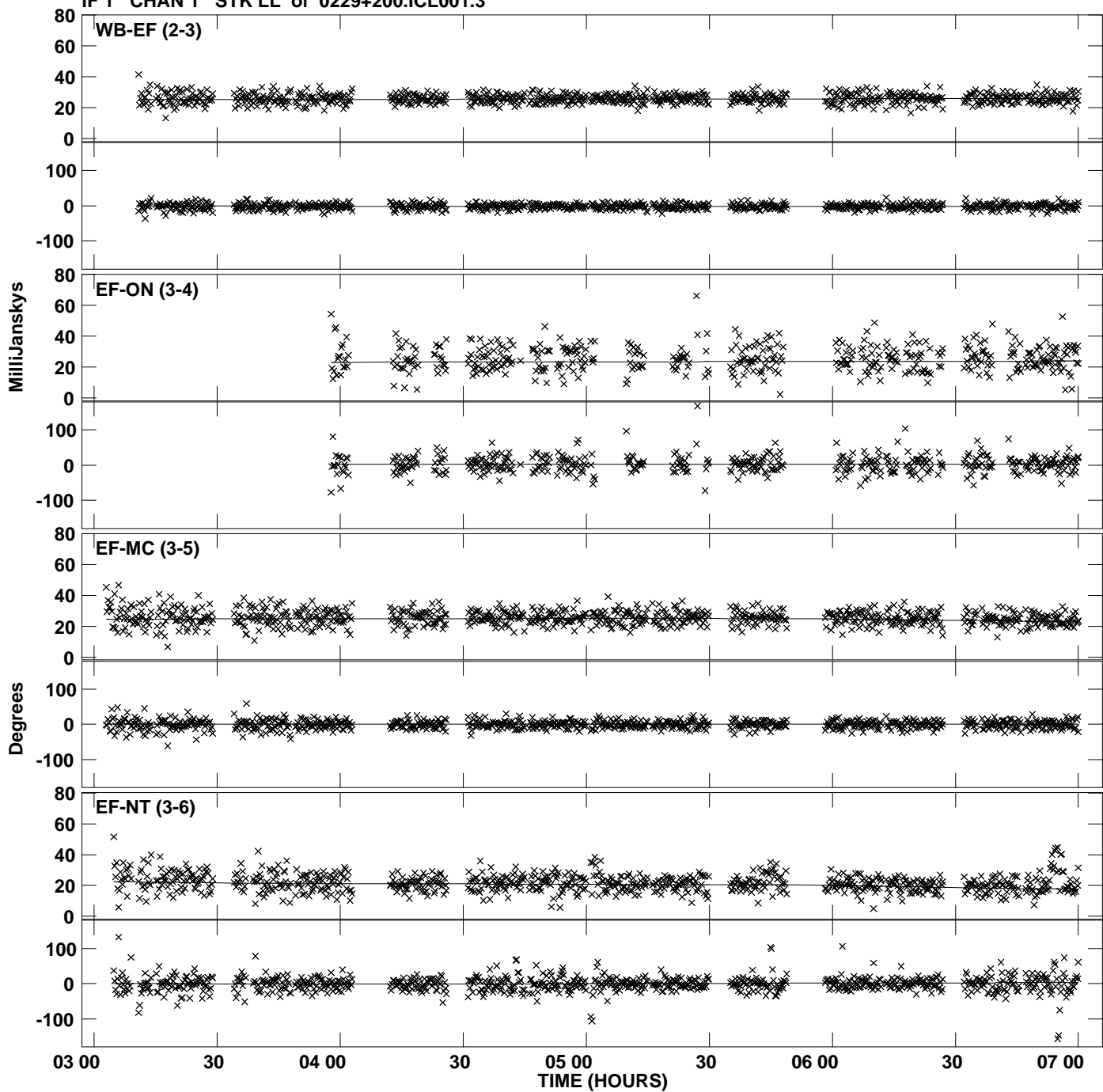
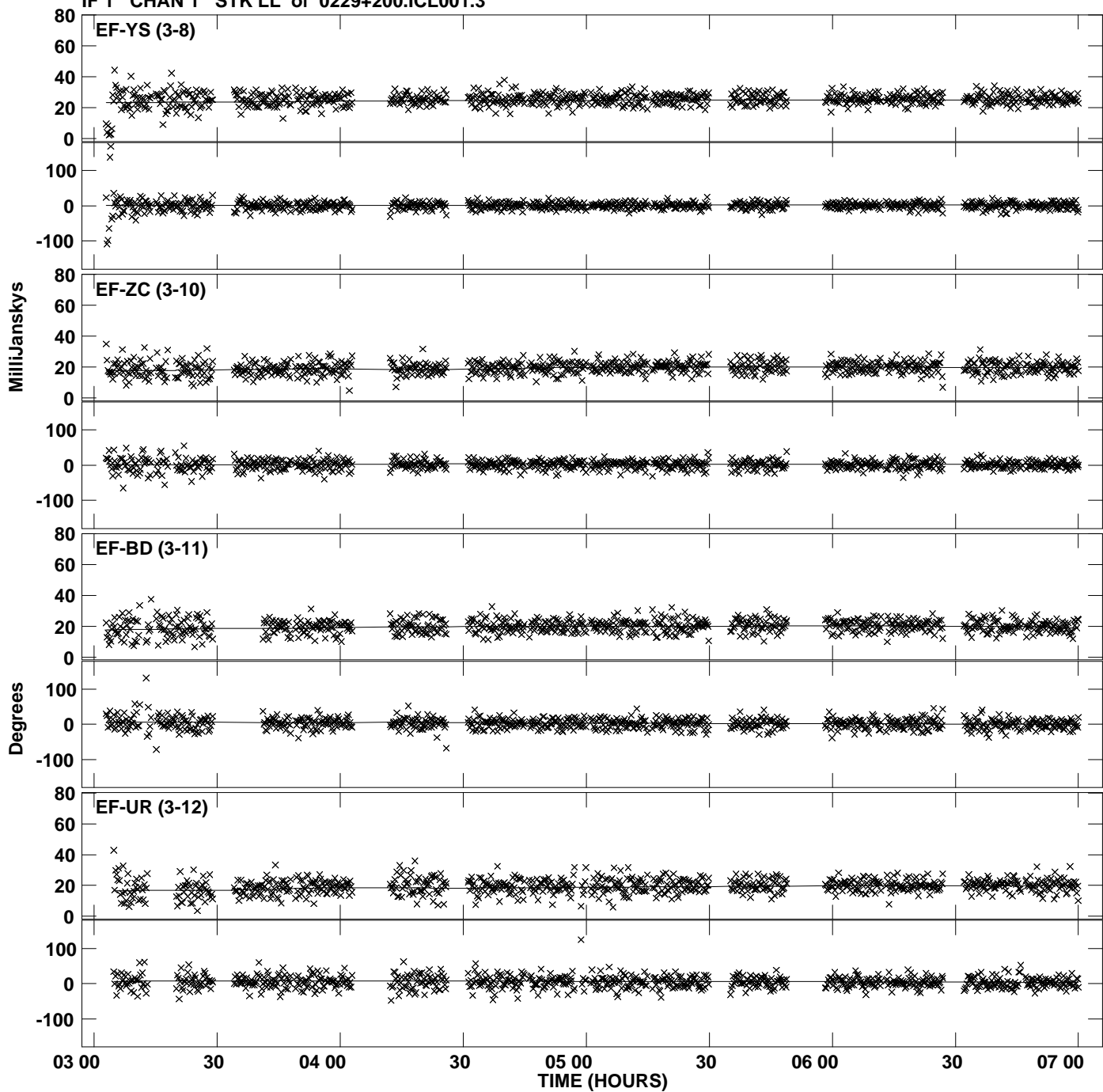


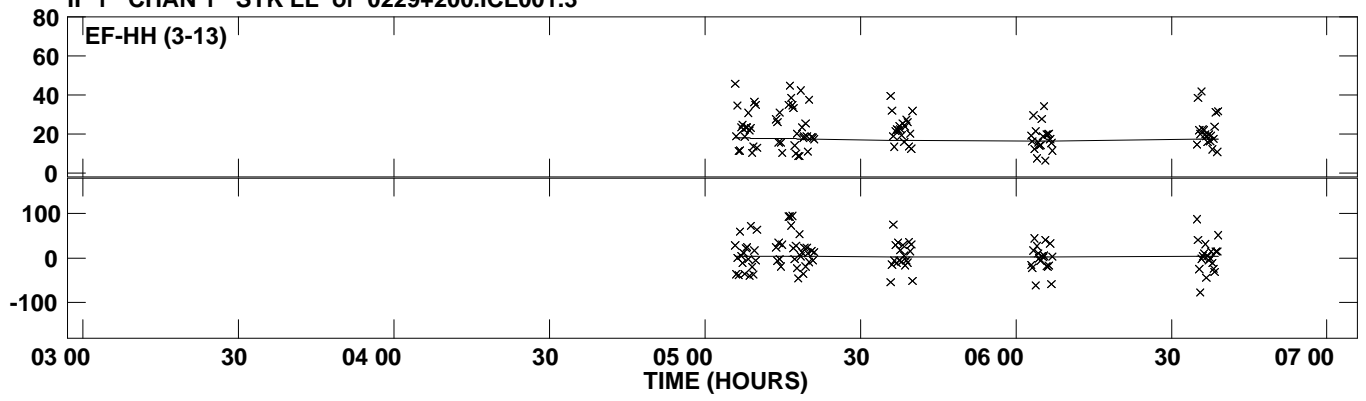
Plot file version 1 created 20-NOV-2012 13:20:06
Amplitude and Phase vs Time for 0229+200.MULTI.1 Vect aver. CL # 3
IF 1 CHAN 1 STK LL of 0229+200.ICL001.3



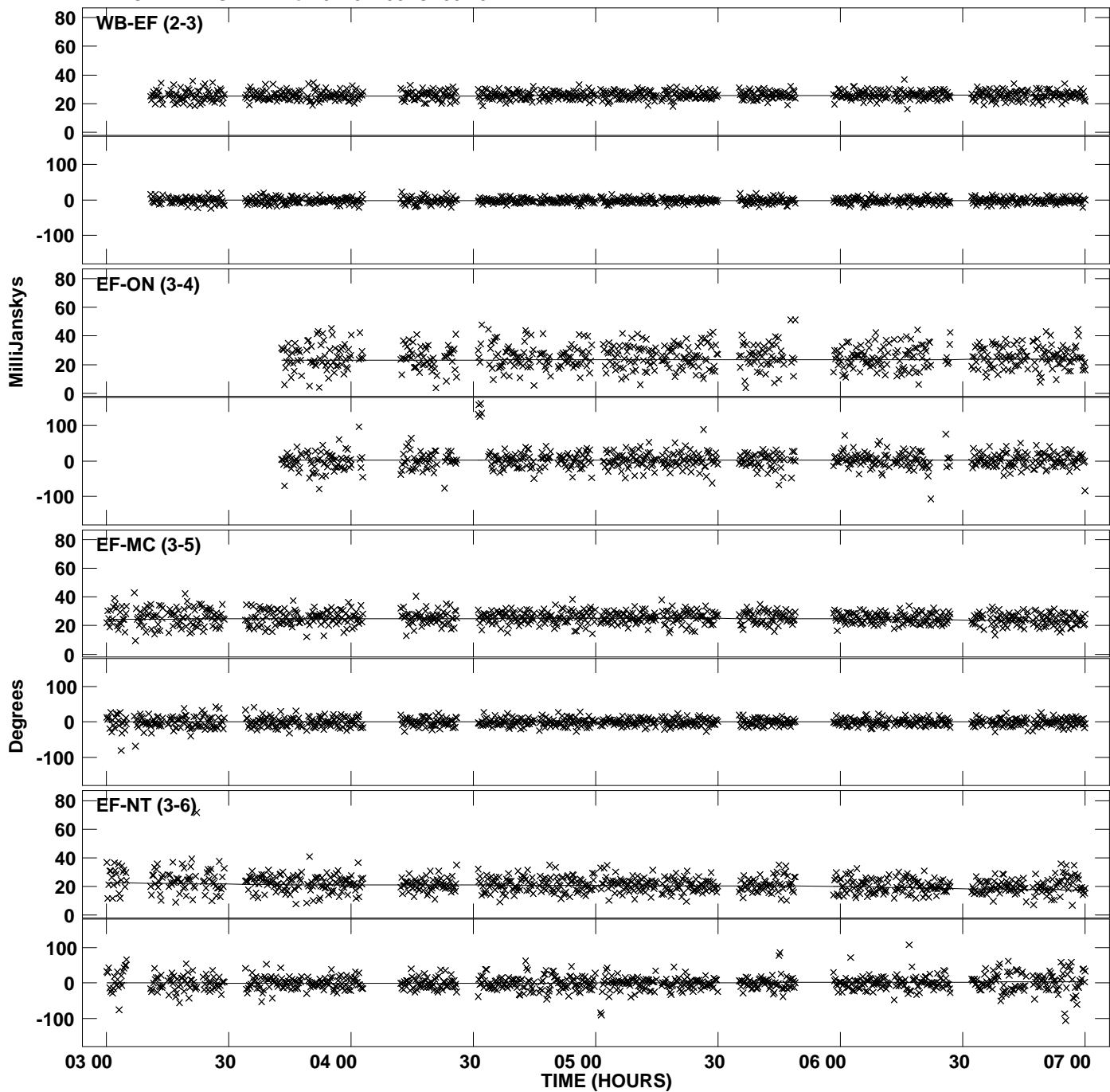
Plot file version 2 created 20-NOV-2012 13:20:06
Amplitude andPhase vs Time for 0229+200.MULTI.1 Vect aver. CL # 3
IF 1 CHAN 1 STK LL of 0229+200.ICL001.3



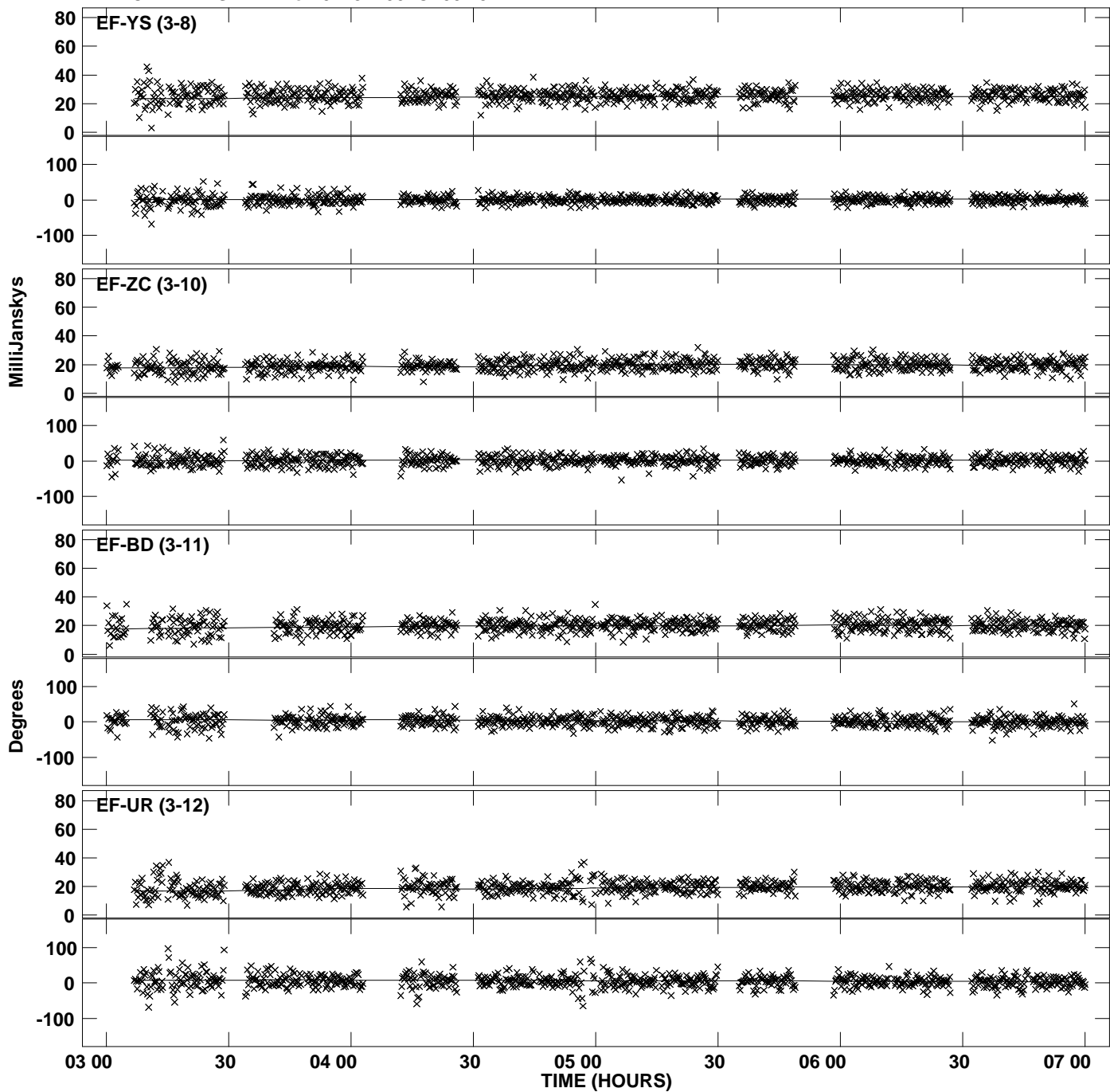
PLot file version 3 created 20-NOV-2012 13:20:06
Amplitude and Phase vs Time for 0229+200.MULTI.1 Vect aver. CL # 3
IF 1 CHAN 1 STK LL of 0229+200.ICL001.3



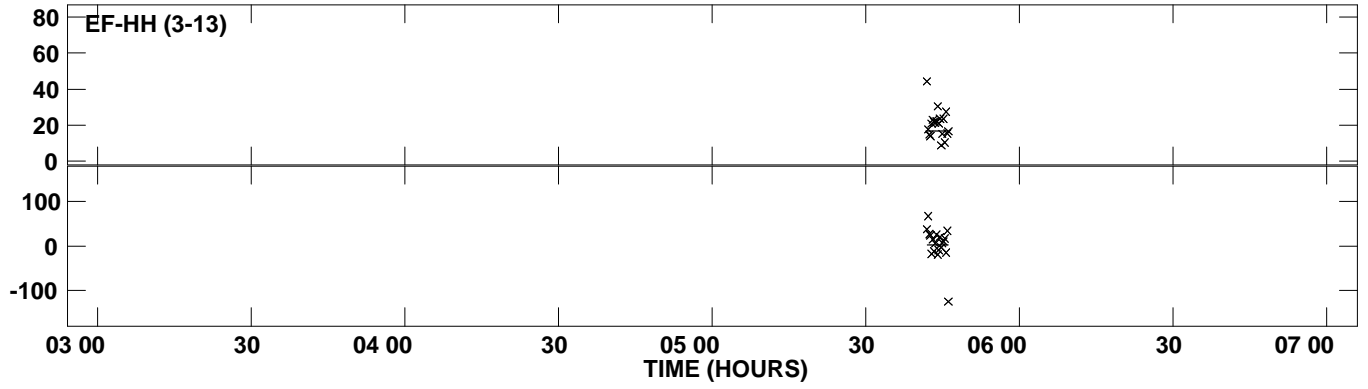
Plot file version 4 created 20-NOV-2012 13:20:07
Amplitude and Phase vs Time for 0229+200.MULTI.1 Vect aver. CL # 3
IF 2 CHAN 1 STK LL of 0229+200.ICL001.3



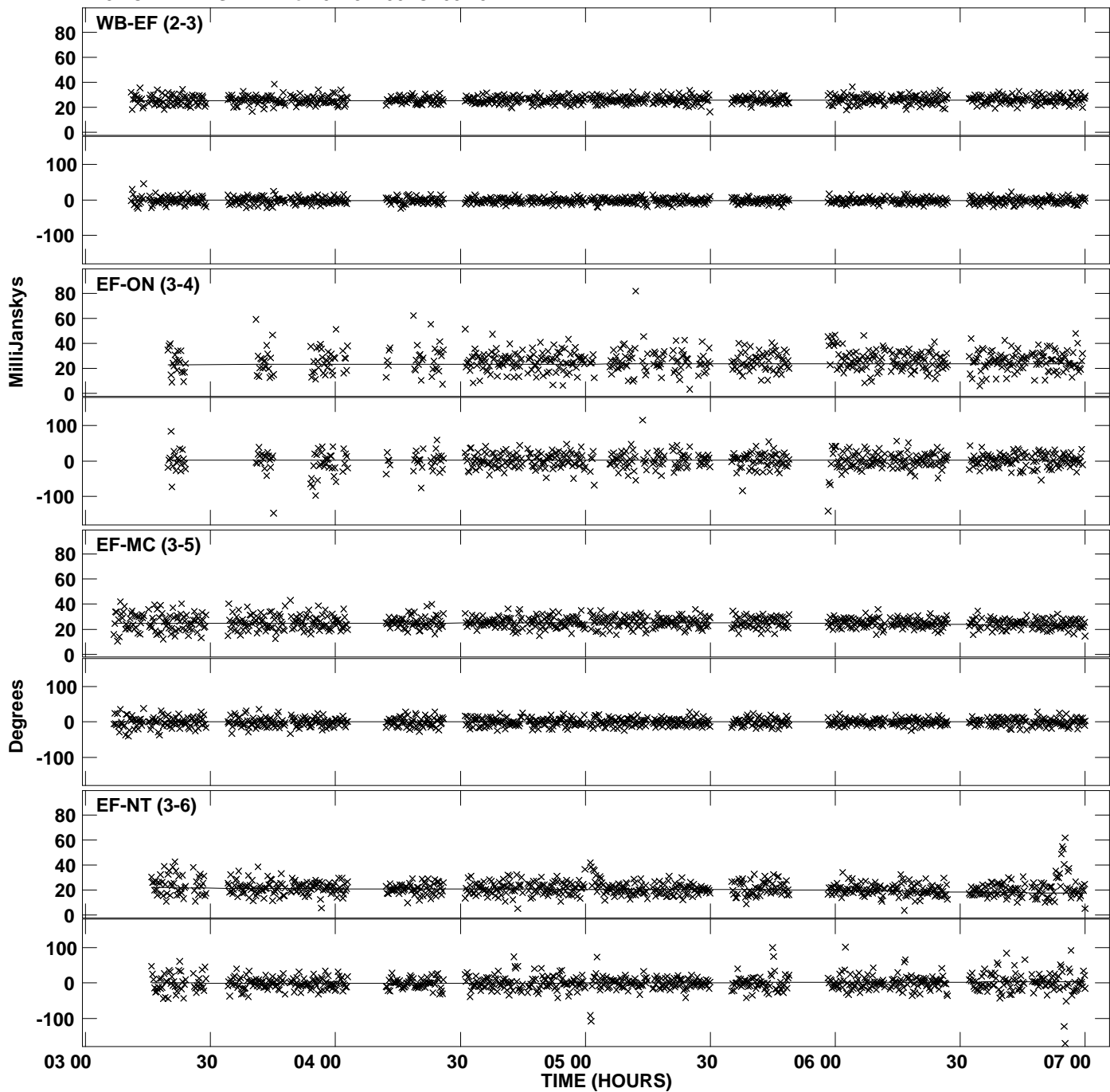
Plot file version 5 created 20-NOV-2012 13:20:07
Amplitude and Phase vs Time for 0229+200.MULTI.1 Vect aver. CL # 3
IF 2 CHAN 1 STK LL of 0229+200.ICL001.3



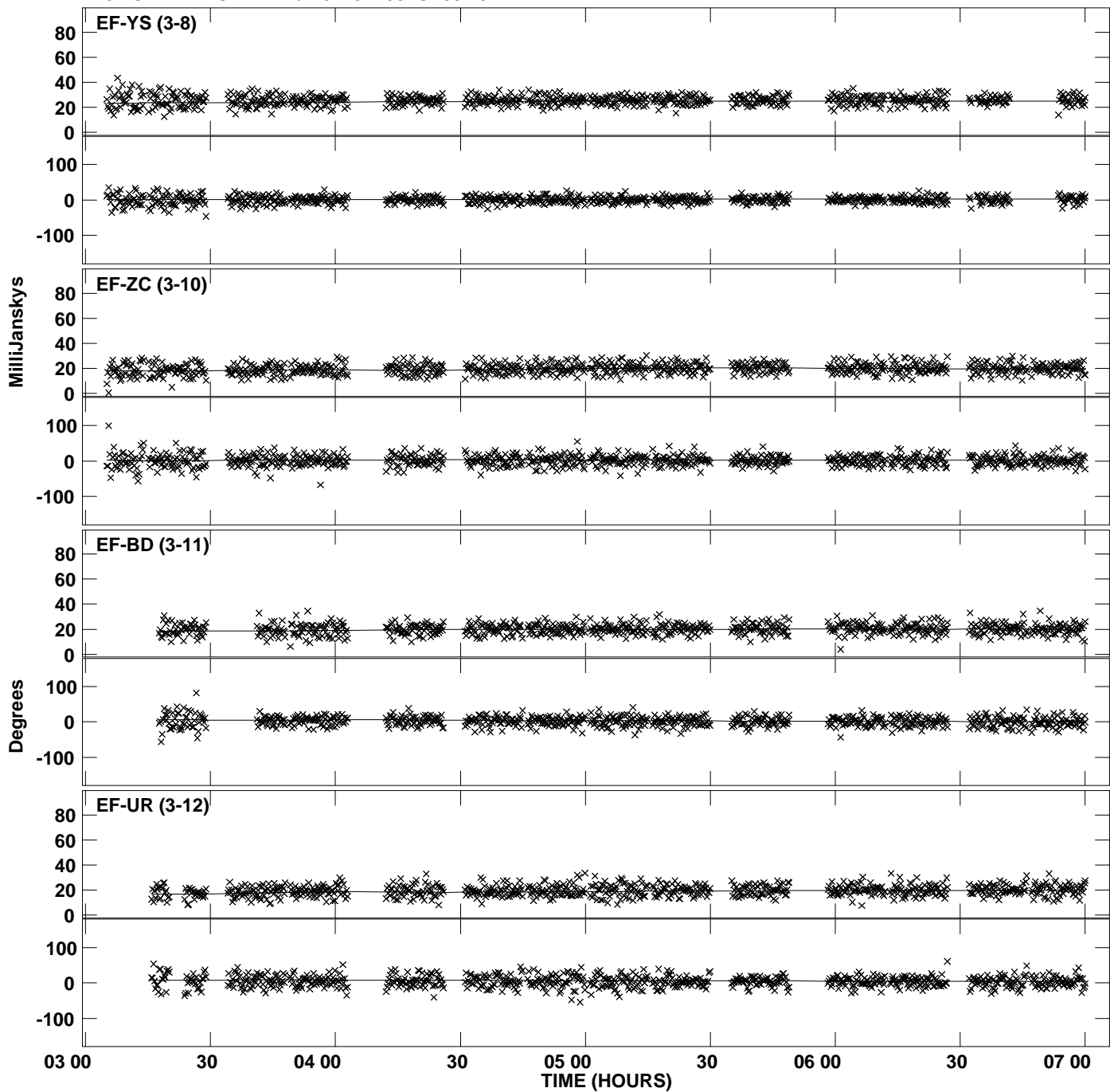
PLot file version 6 created 20-NOV-2012 13:20:07
Amplitude andPhase vs Time for 0229+200.MULTI.1 Vect aver. CL # 3
IF 2 CHAN 1 STK LL of 0229+200.ICL001.3



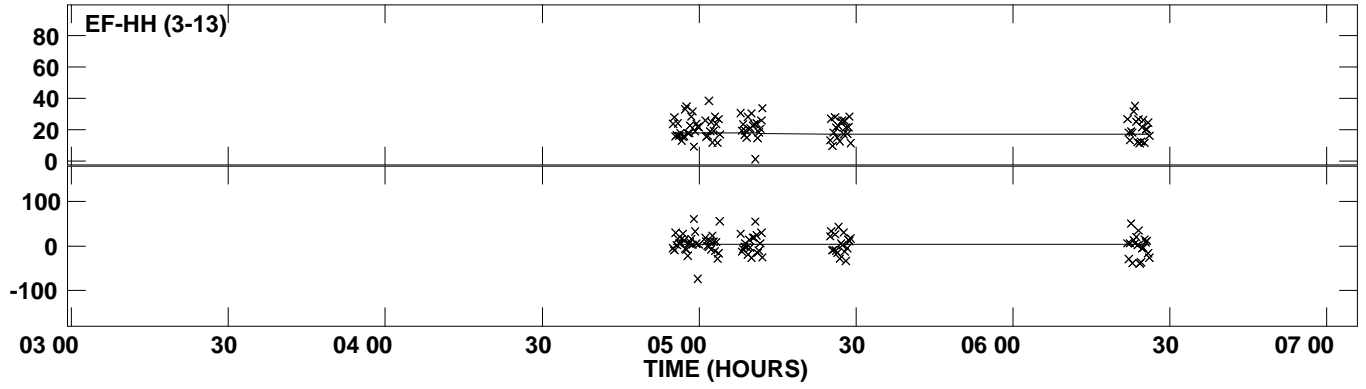
Plot file version 7 created 20-NOV-2012 13:20:07
Amplitude andPhase vs Time for 0229+200.MULTI.1 Vect aver. CL # 3
IF 3 CHAN 1 STK LL of 0229+200.ICL001.3



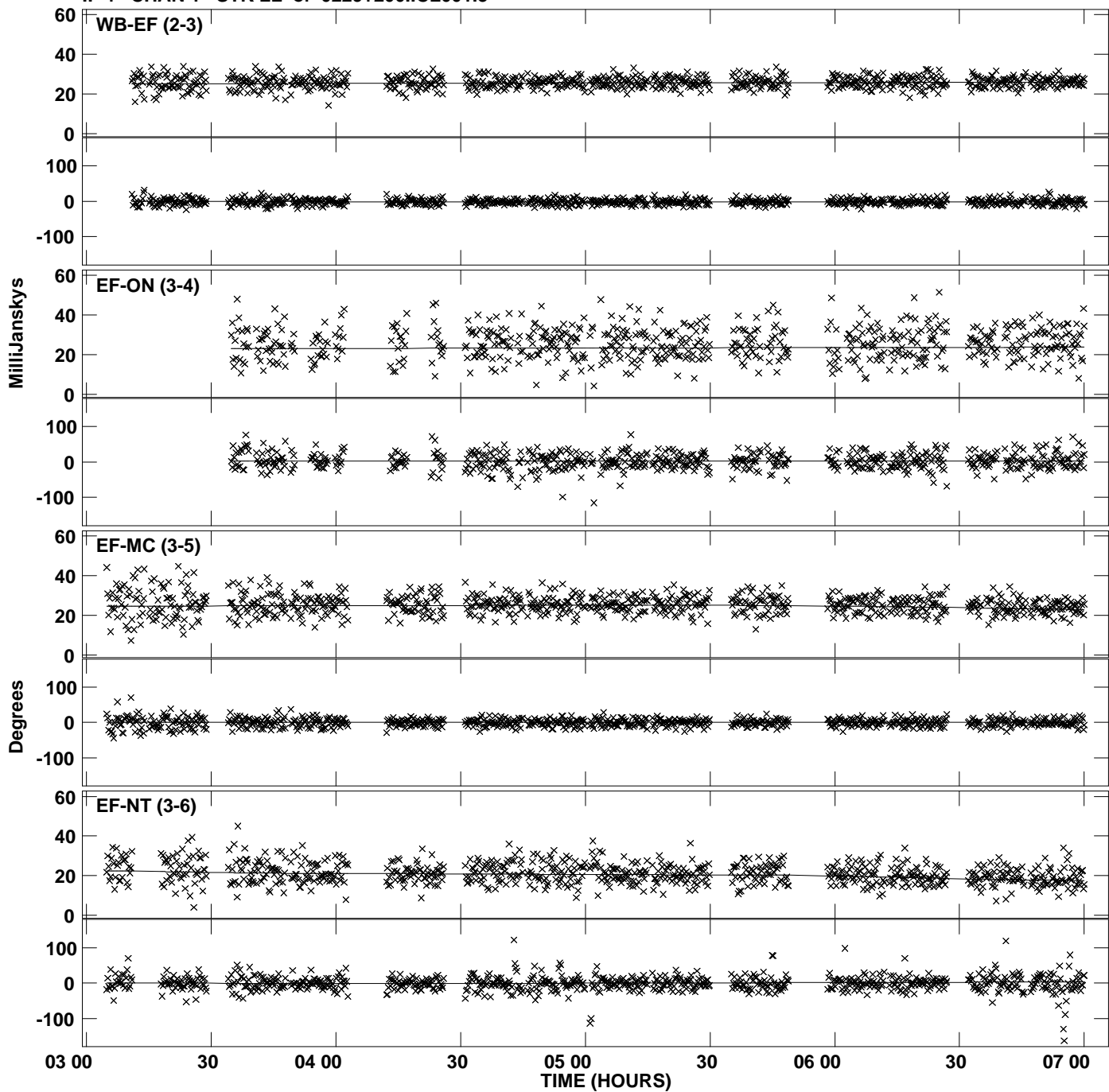
Plot file version 8 created 20-NOV-2012 13:20:07
Amplitude and Phase vs Time for 0229+200.MULTI.1 Vect aver. CL # 3
IF 3 CHAN 1 STK LL of 0229+200.ICL001.3



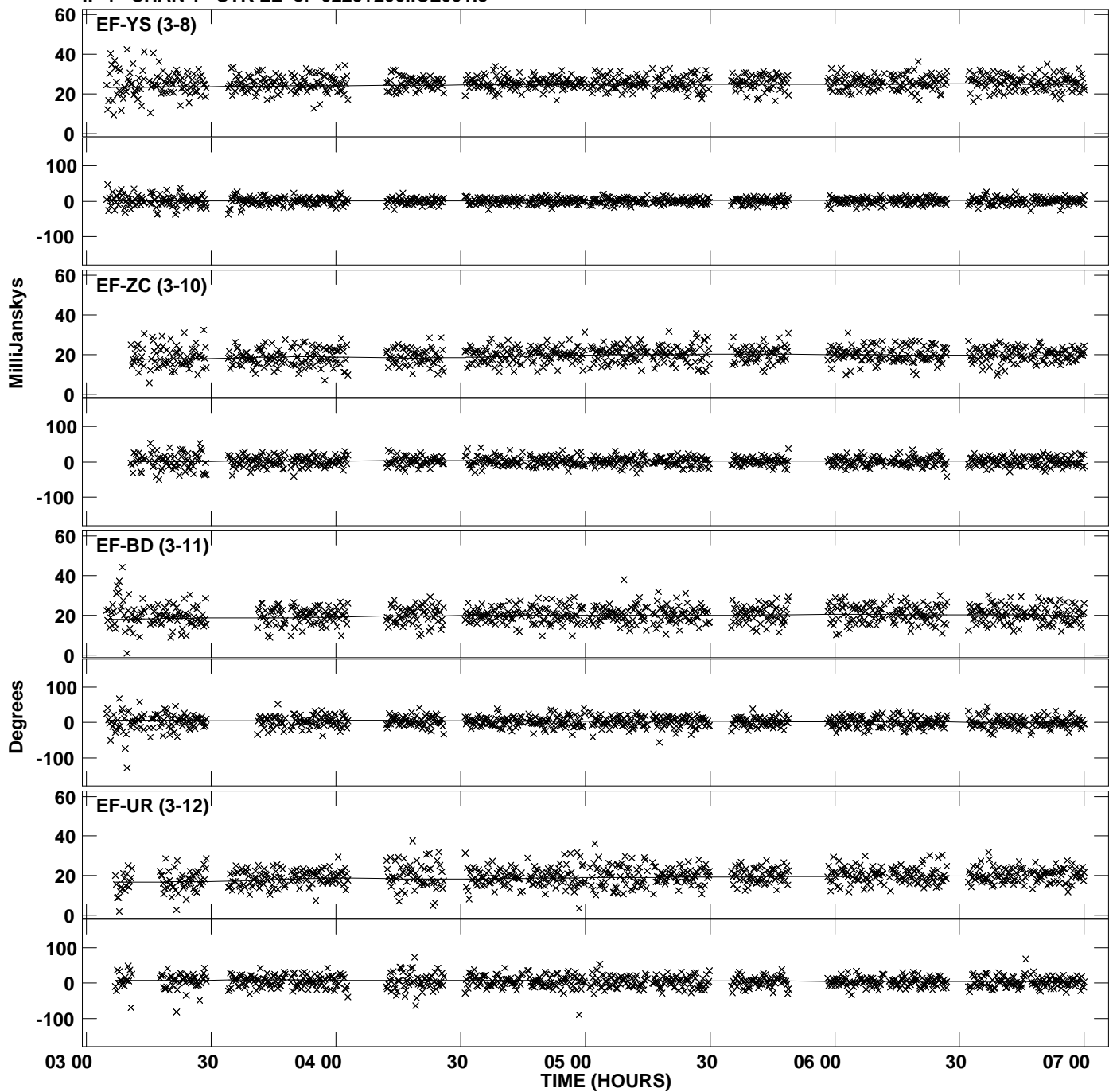
PLot file version 9 created 20-NOV-2012 13:20:07
Amplitude andPhase vs Time for 0229+200.MULTI.1 Vect aver. CL # 3
IF 3 CHAN 1 STK LL of 0229+200.ICL001.3



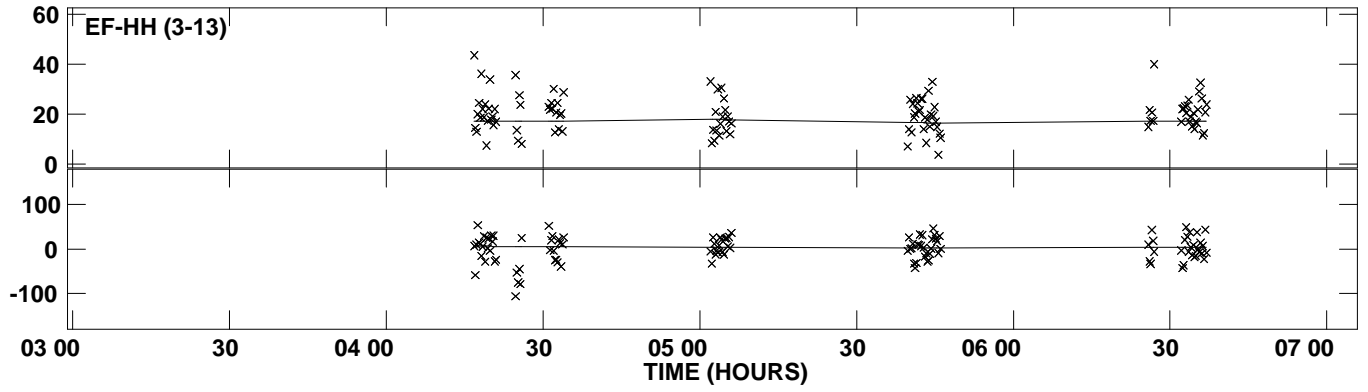
Plot file version 10 created 20-NOV-2012 13:20:07
Amplitude andPhase vs Time for 0229+200.MULTI.1 Vect aver. CL # 3
IF 4 CHAN 1 STK LL of 0229+200.ICL001.3



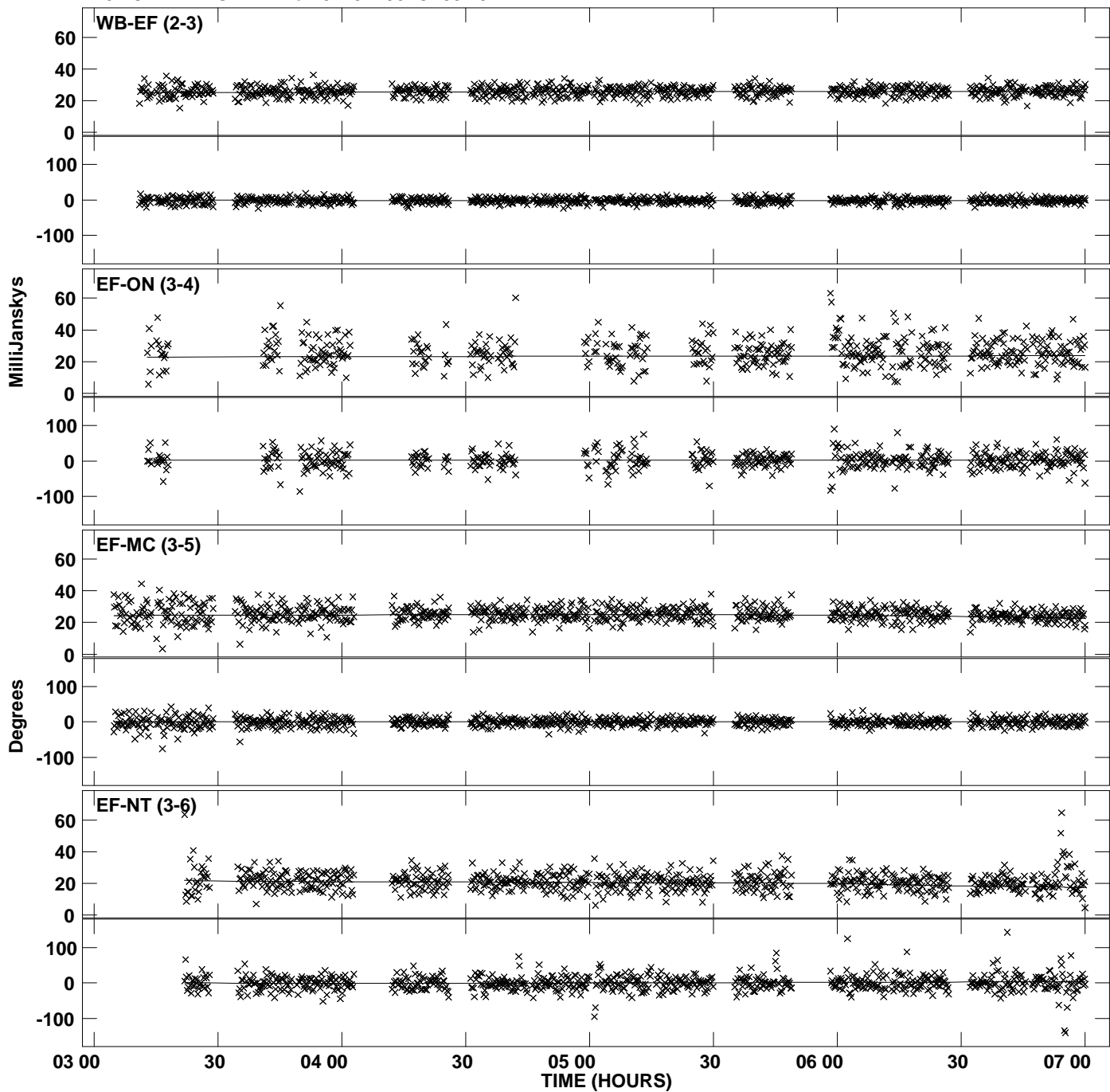
Plot file version 11 created 20-NOV-2012 13:20:07
Amplitude andPhase vs Time for 0229+200.MULTI.1 Vect aver. CL # 3
IF 4 CHAN 1 STK LL of 0229+200.ICL001.3



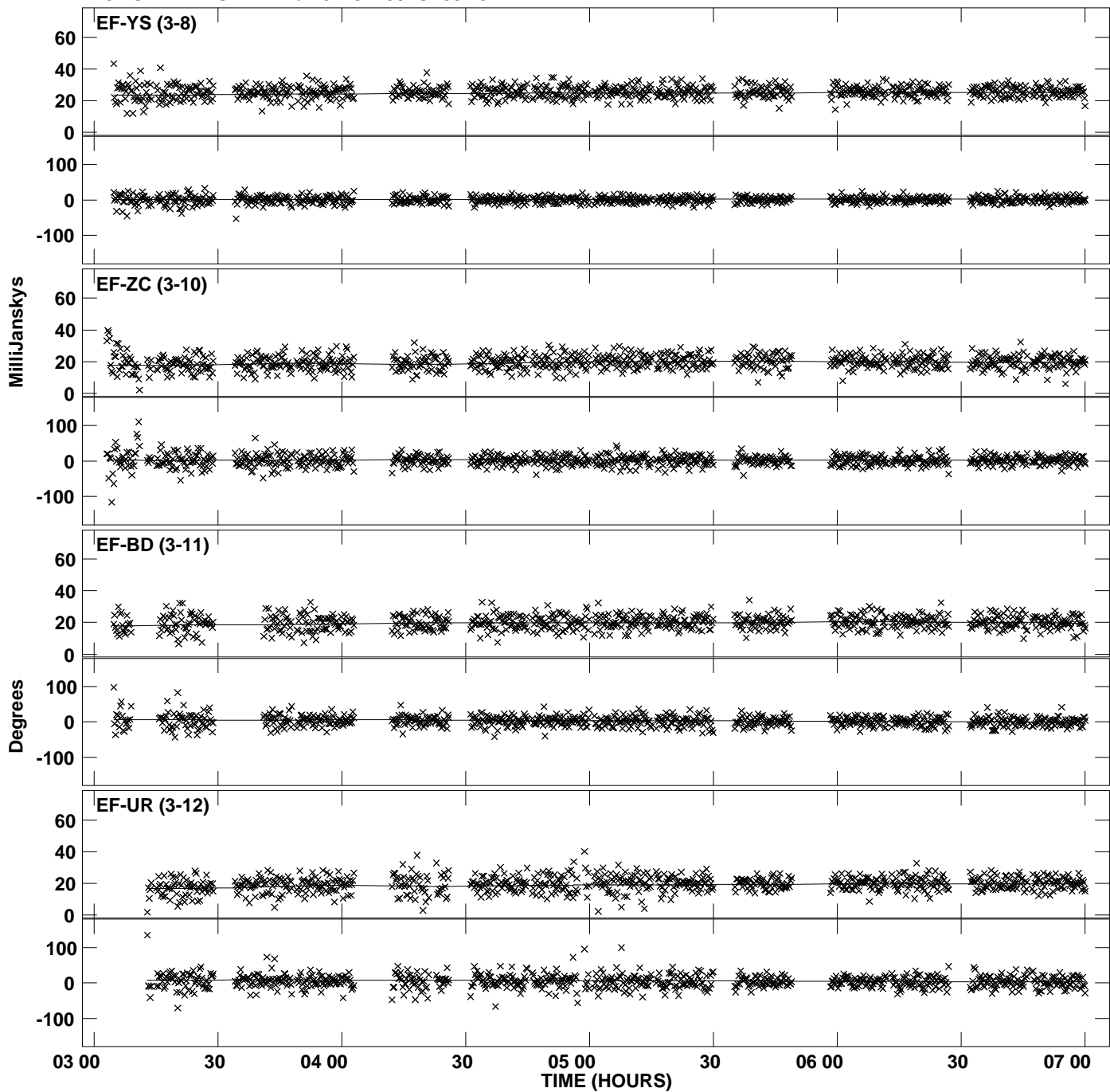
PLot file version 12 created 20-NOV-2012 13:20:07
Amplitude and Phase vs Time for 0229+200.MULTI.1 Vect aver. CL # 3
IF 4 CHAN 1 STK LL of 0229+200.ICL001.3



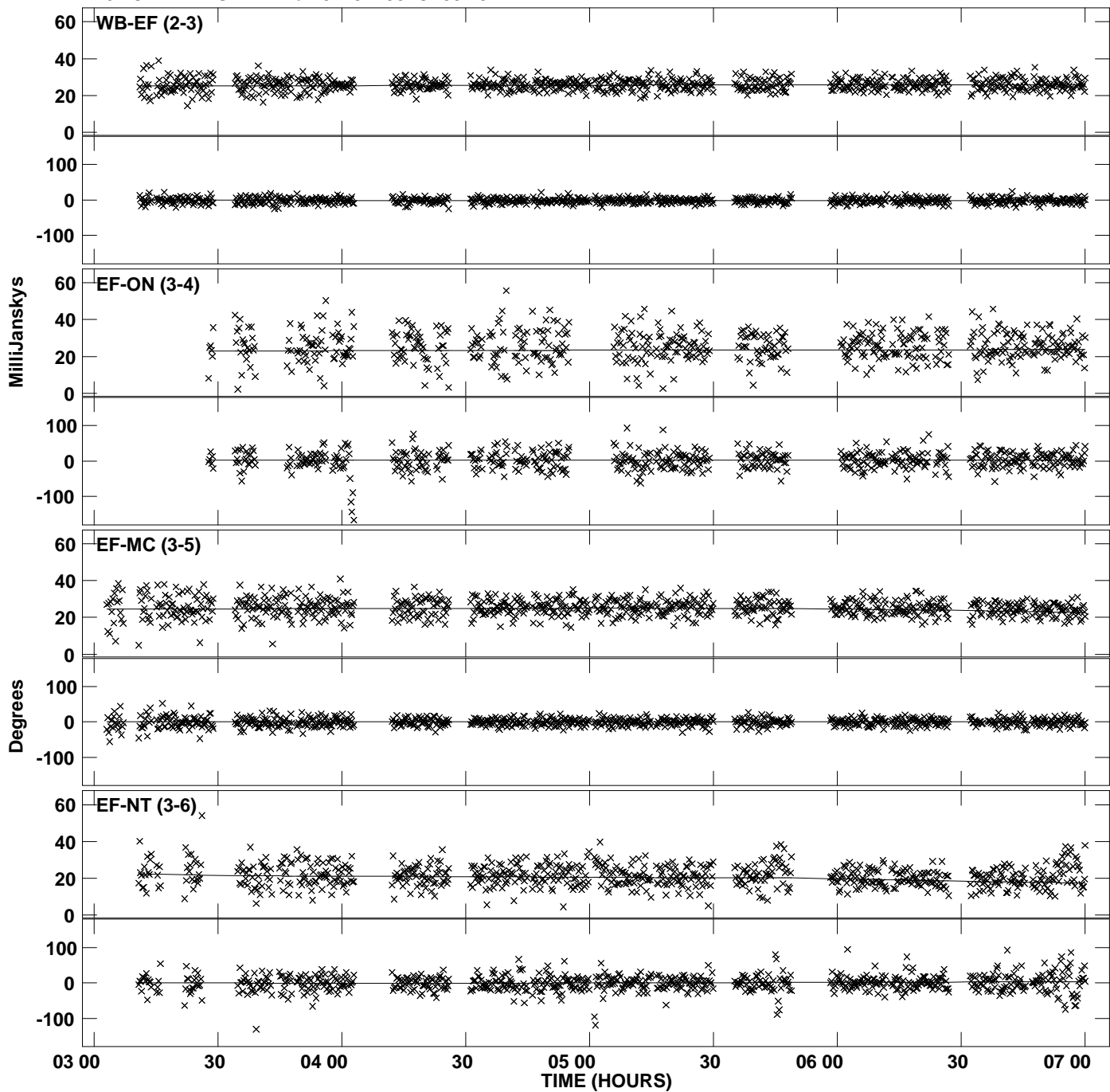
Plot file version 13 created 20-NOV-2012 13:20:08
Amplitude andPhase vs Time for 0229+200.MULTI.1 Vect aver. CL # 3
IF 5 CHAN 1 STK LL of 0229+200.ICL001.3



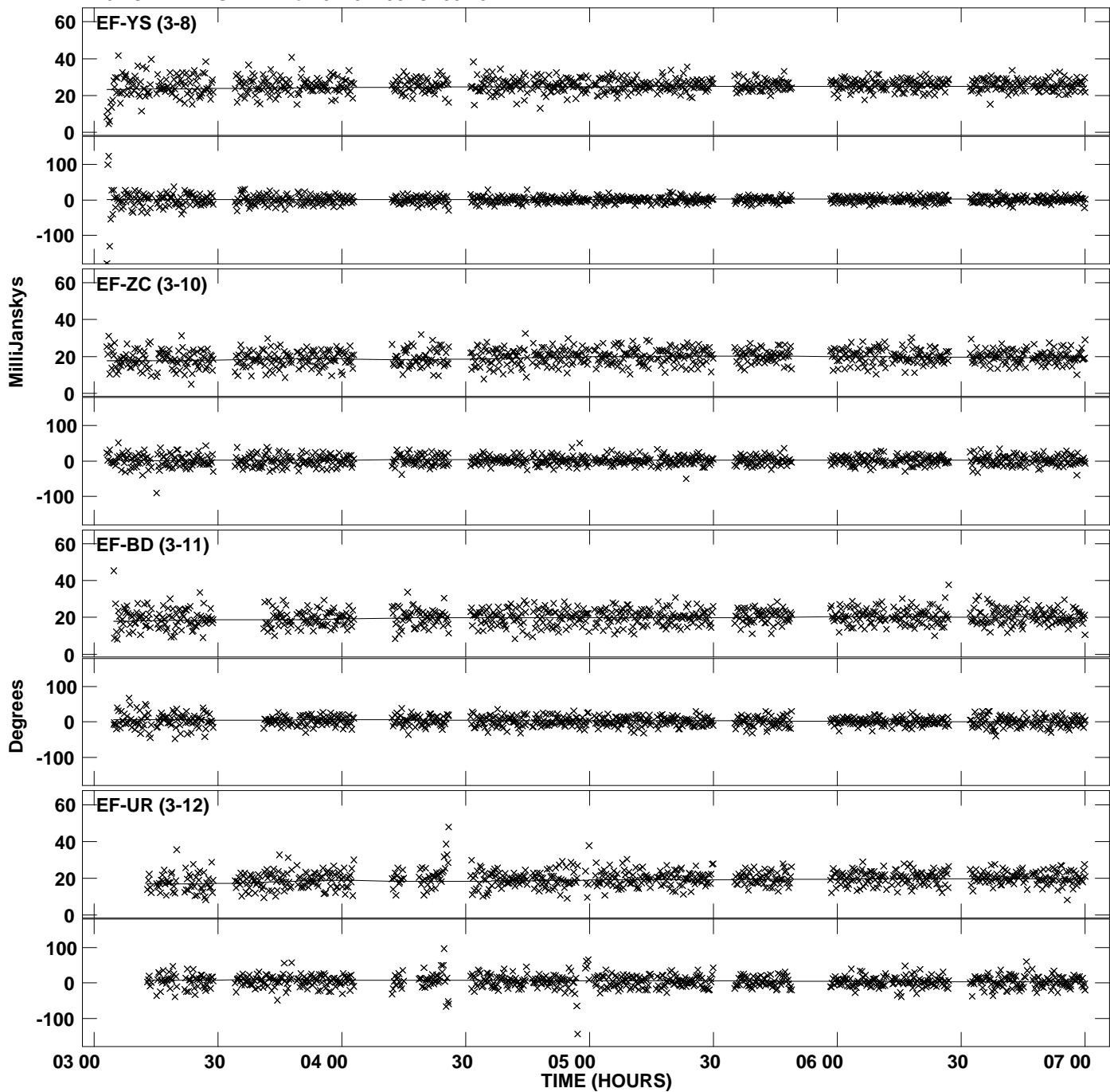
Plot file version 14 created 20-NOV-2012 13:20:08
Amplitude andPhase vs Time for 0229+200.MULTI.1 Vect aver. CL # 3
IF 5 CHAN 1 STK LL of 0229+200.ICL001.3



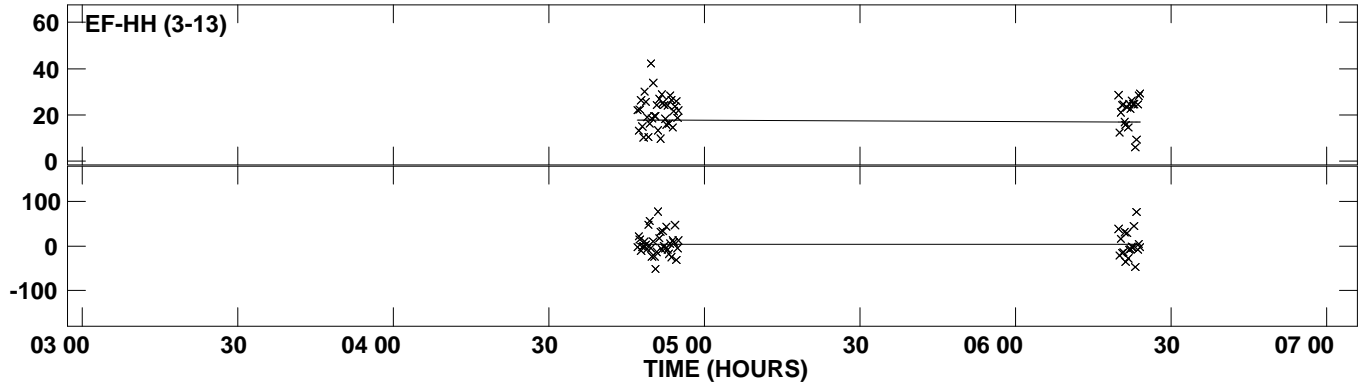
Plot file version 15 created 20-NOV-2012 13:20:08
Amplitude and Phase vs Time for 0229+200.MULTI.1 Vect aver. CL # 3
IF 6 CHAN 1 STK LL of 0229+200.ICL001.3



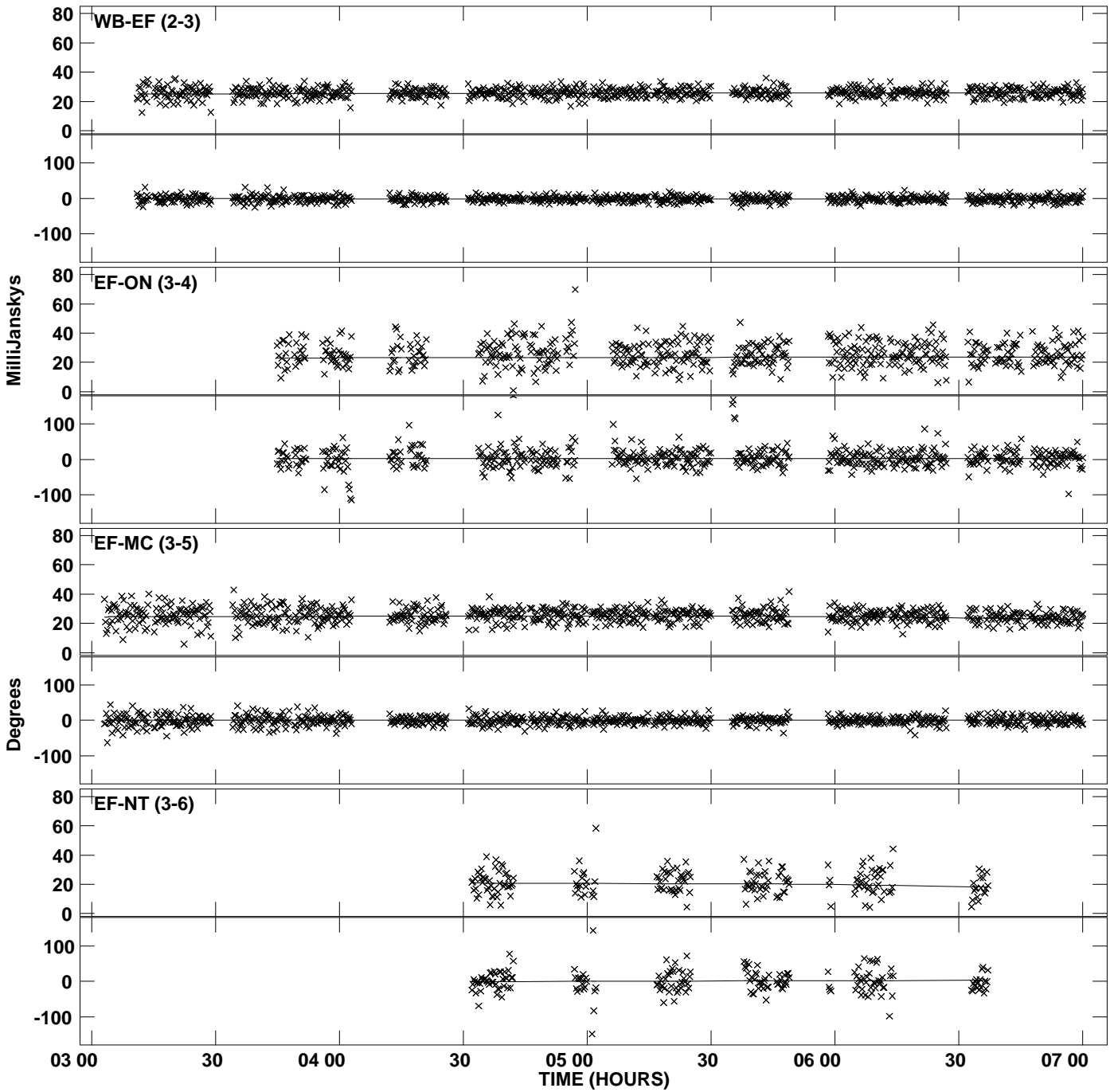
PLot file version 16 created 20-NOV-2012 13:20:08
Amplitude andPhase vs Time for 0229+200.MULTI.1 Vect aver. CL # 3
IF 6 CHAN 1 STK LL of 0229+200.ICL001.3



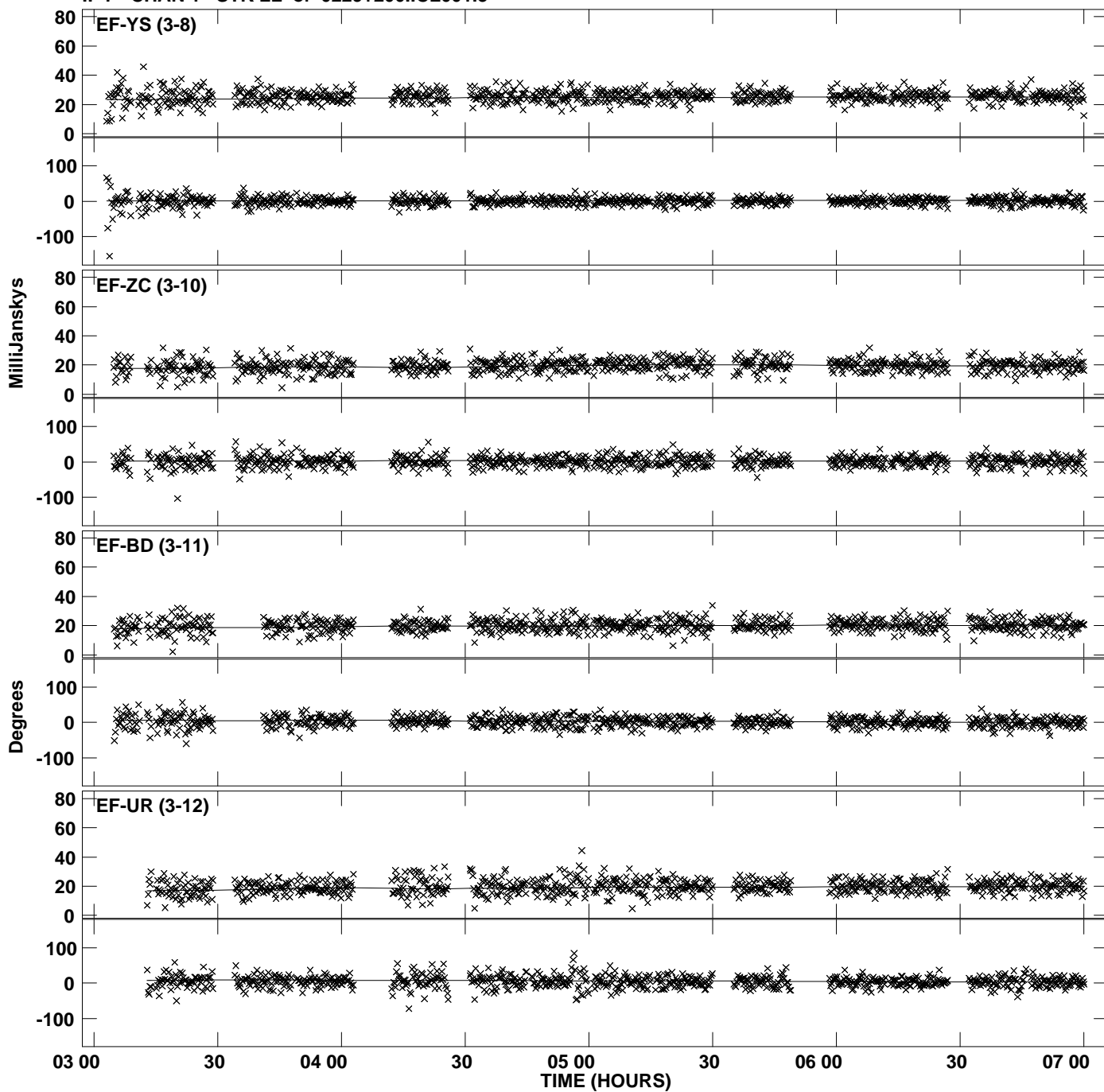
PLot file version 17 created 20-NOV-2012 13:20:08
Amplitude and Phase vs Time for 0229+200.MULTI.1 Vect aver. CL # 3
IF 6 CHAN 1 STK LL of 0229+200.ICL001.3



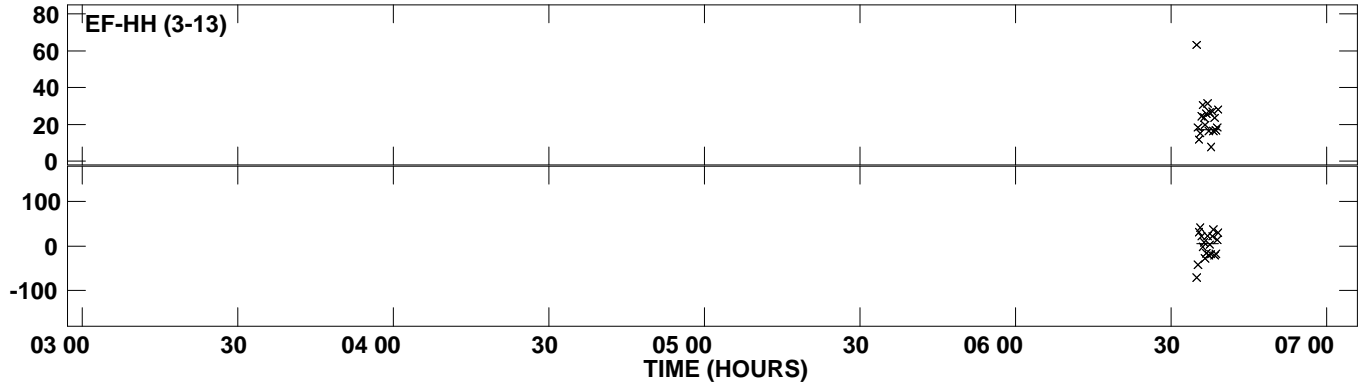
PLot file version 18 created 20-NOV-2012 13:20:08
Amplitude andPhase vs Time for 0229+200.MULTI.1 Vect aver. CL # 3
IF 7 CHAN 1 STK LL of 0229+200.ICL001.3



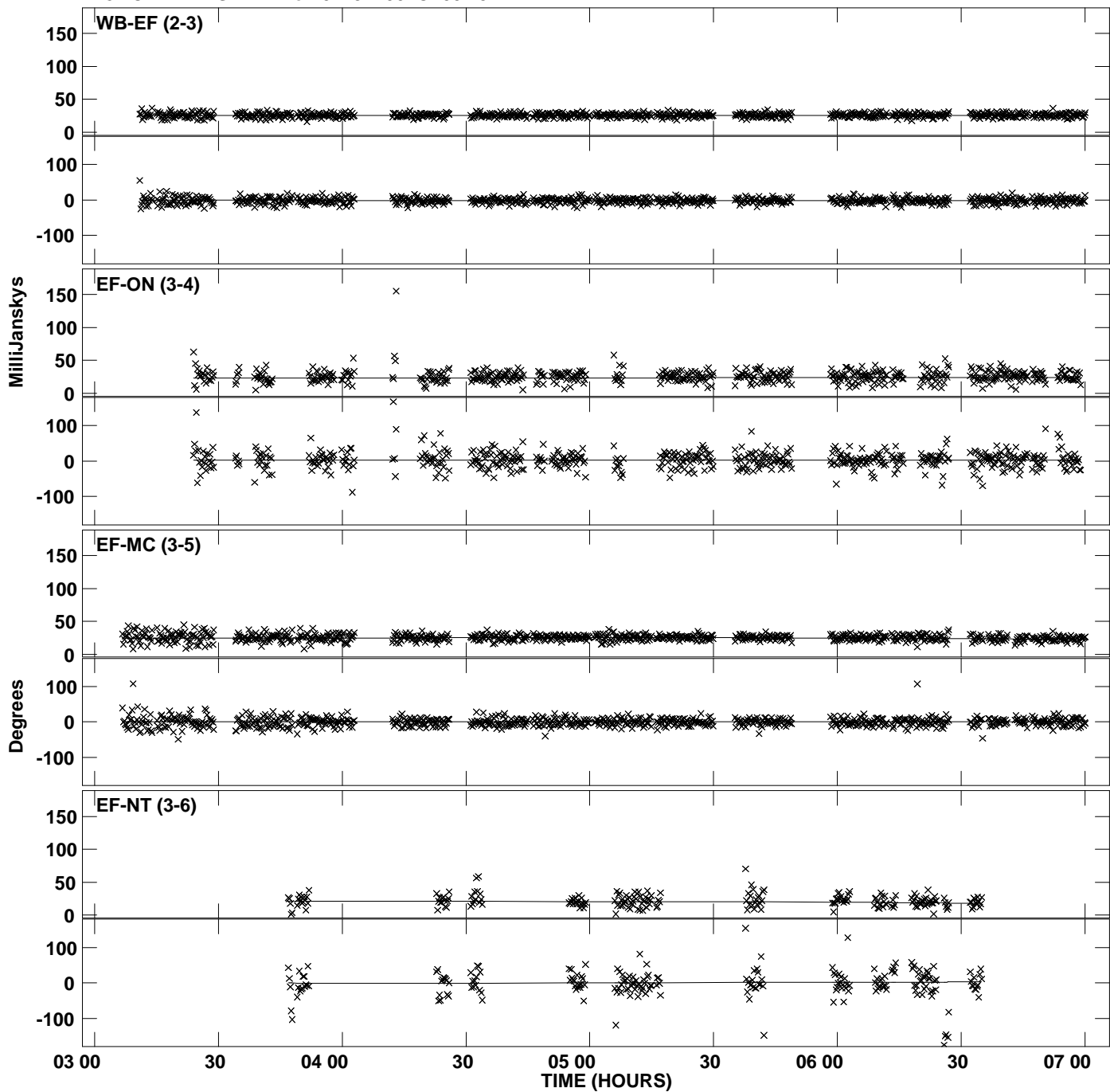
Plot file version 19 created 20-NOV-2012 13:20:08
Amplitude andPhase vs Time for 0229+200.MULTI.1 Vect aver. CL # 3
IF 7 CHAN 1 STK LL of 0229+200.ICL001.3



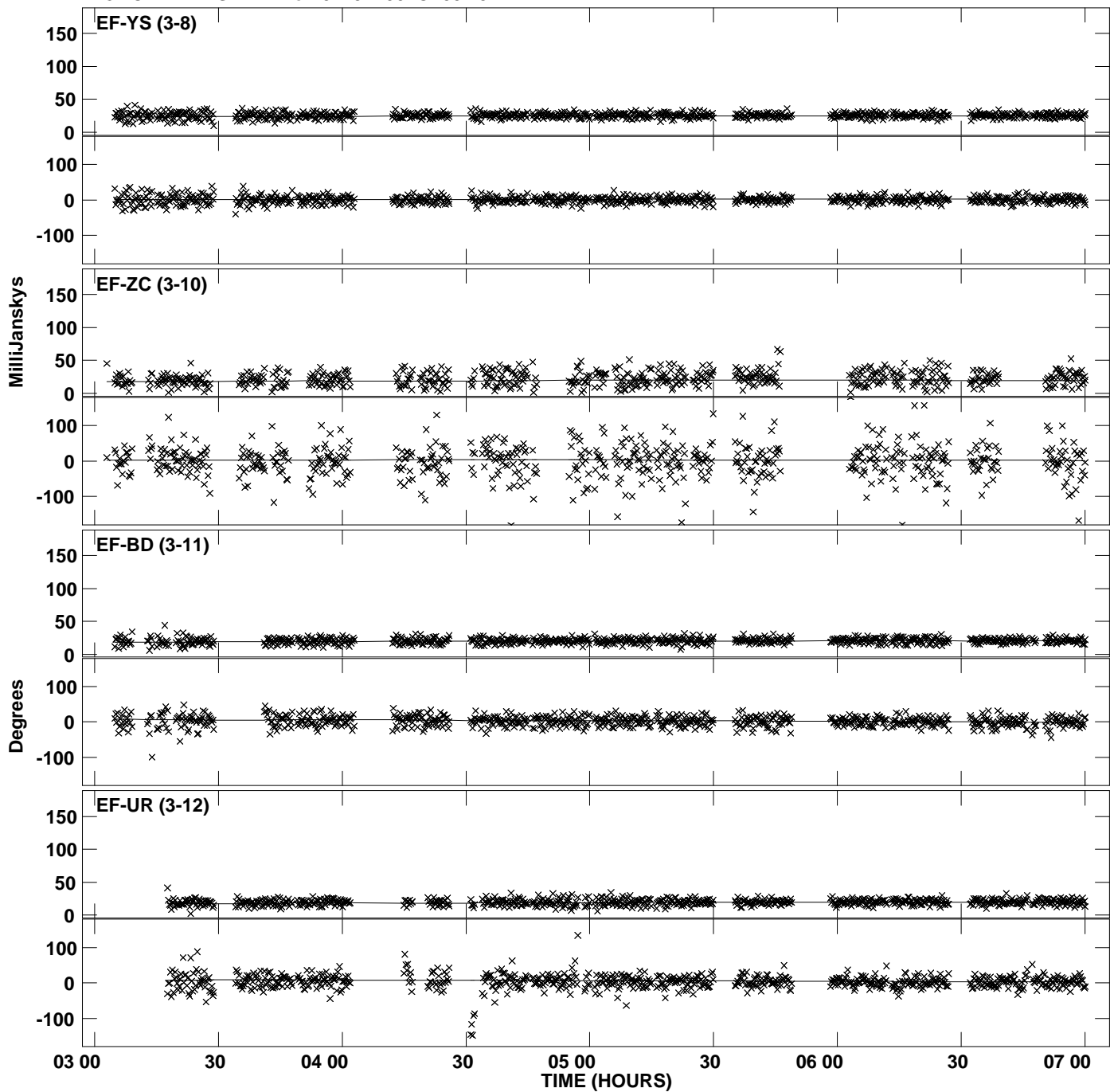
PLot file version 20 created 20-NOV-2012 13:20:08
Amplitude and Phase vs Time for 0229+200.MULTI.1 Vect aver. CL # 3
IF 7 CHAN 1 STK LL of 0229+200.ICL001.3



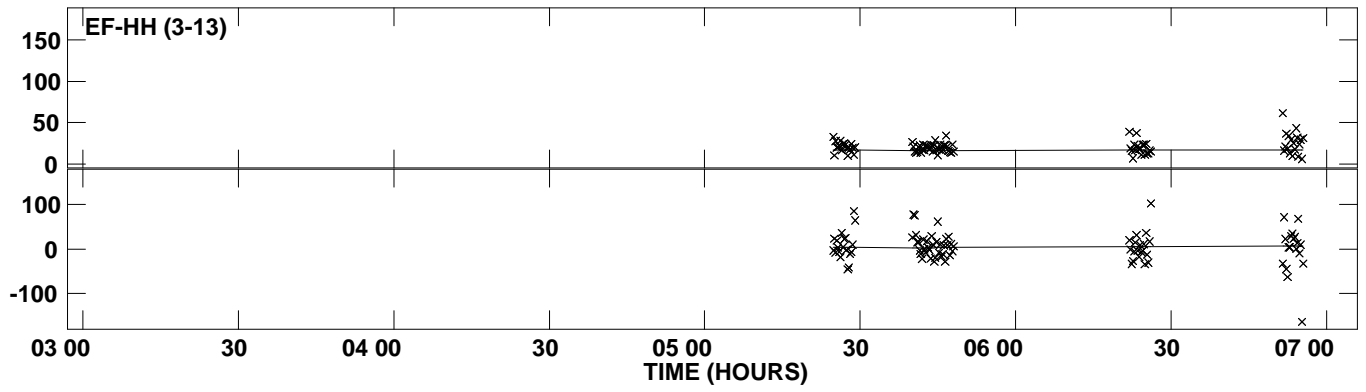
Plot file version 21 created 20-NOV-2012 13:20:09
Amplitude andPhase vs Time for 0229+200.MULTI.1 Vect aver. CL # 3
IF 8 CHAN 1 STK LL of 0229+200.ICL001.3



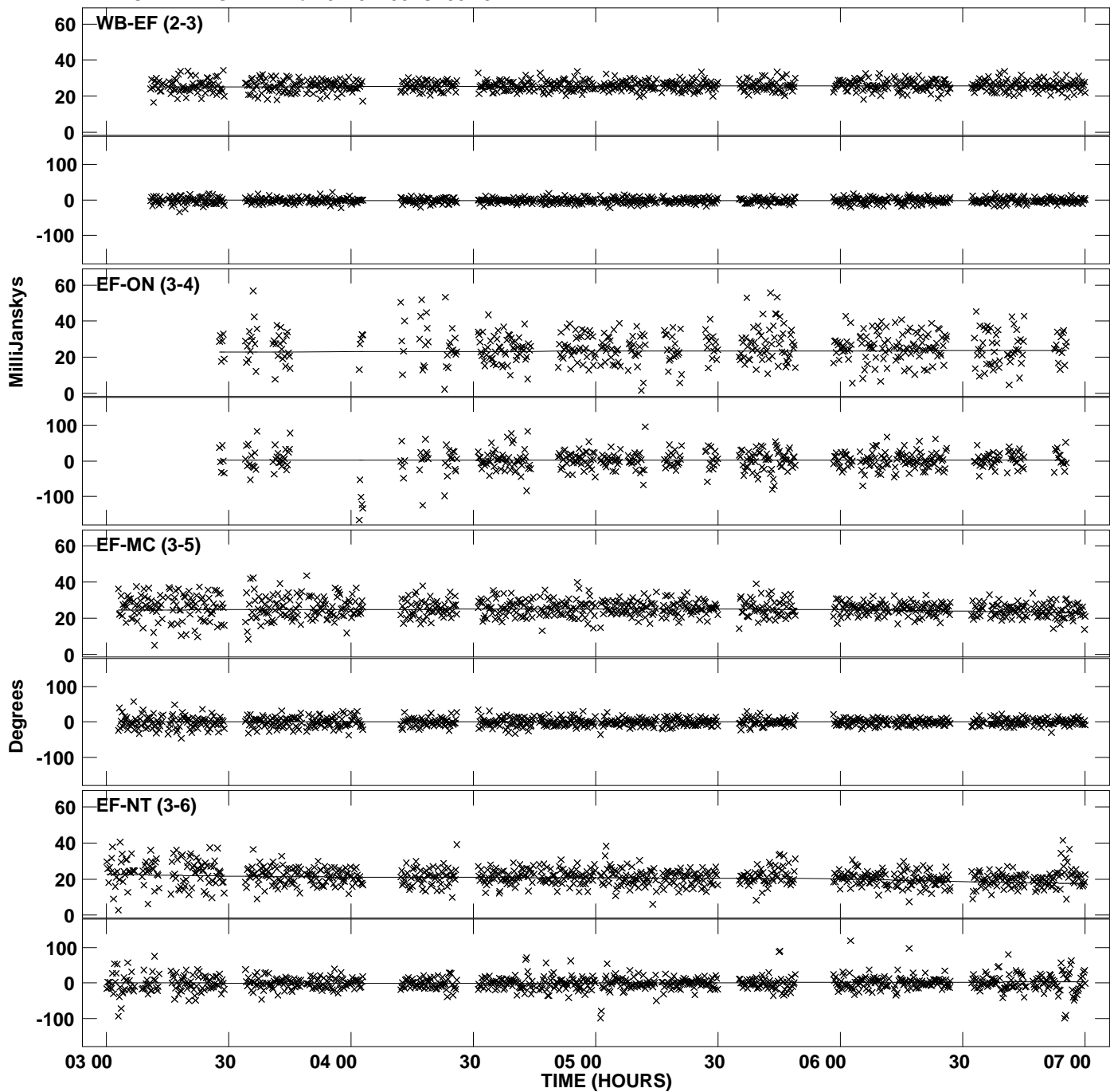
PLot file version 22 created 20-NOV-2012 13:20:09
Amplitude andPhase vs Time for 0229+200.MULTI.1 Vect aver. CL # 3
IF 8 CHAN 1 STK LL of 0229+200.ICL001.3



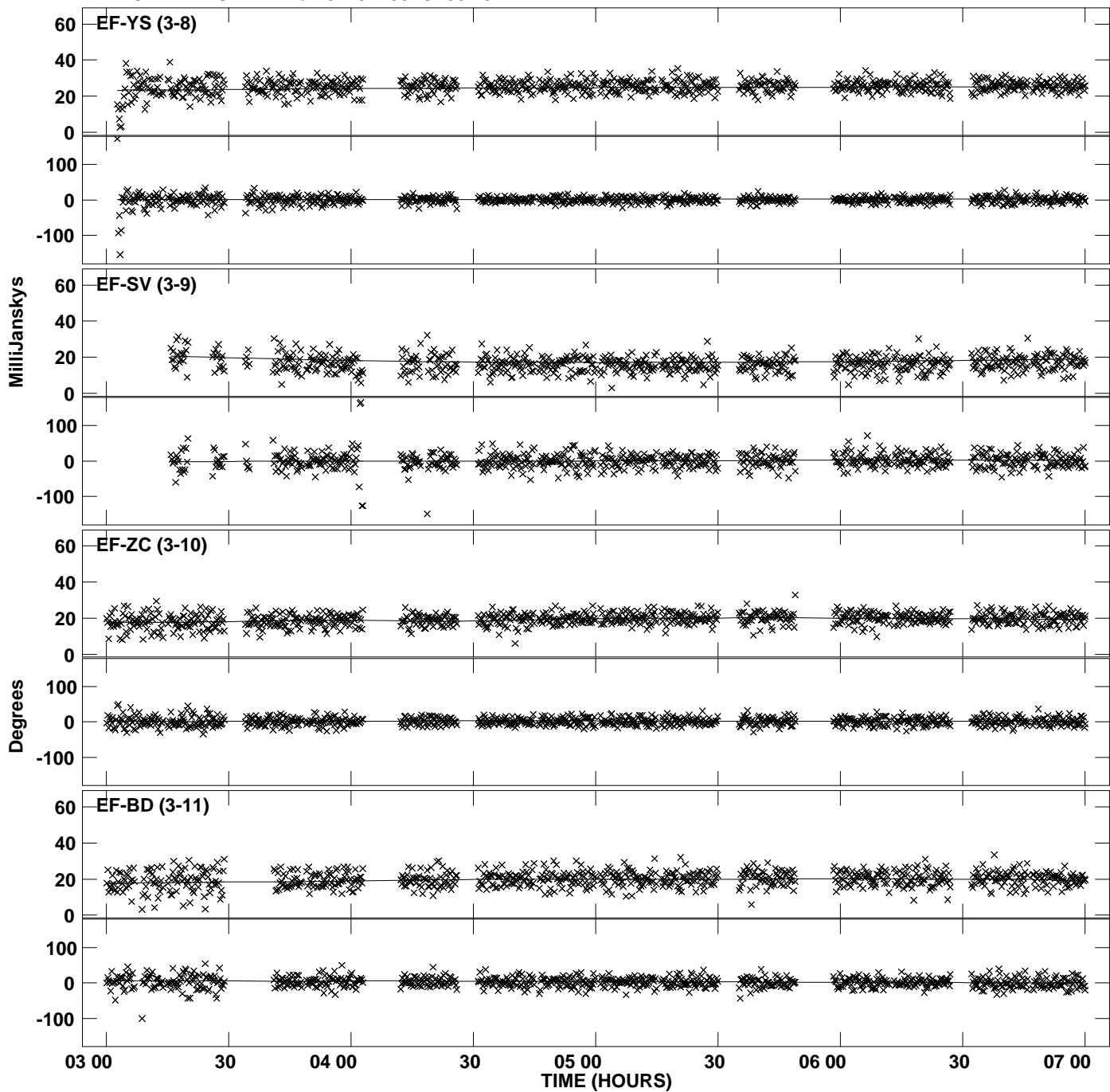
PLot file version 23 created 20-NOV-2012 13:20:09
Amplitude andPhase vs Time for 0229+200.MULTI.1 Vect aver. CL # 3
IF 8 CHAN 1 STK LL of 0229+200.ICL001.3



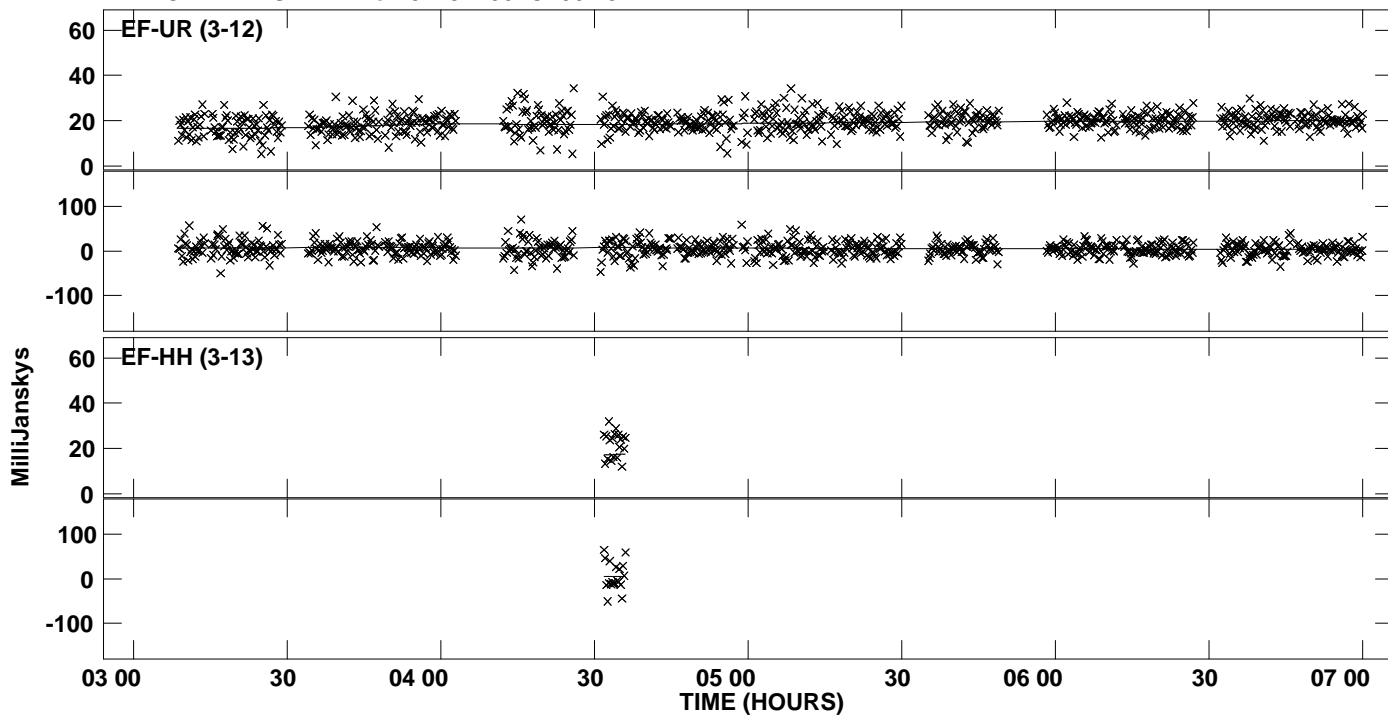
PLot file version 24 created 20-NOV-2012 13:20:09
Amplitude andPhase vs Time for 0229+200.MULTI.1 Vect aver. CL # 3
IF 1 CHAN 1 STK RR of 0229+200.ICL001.3



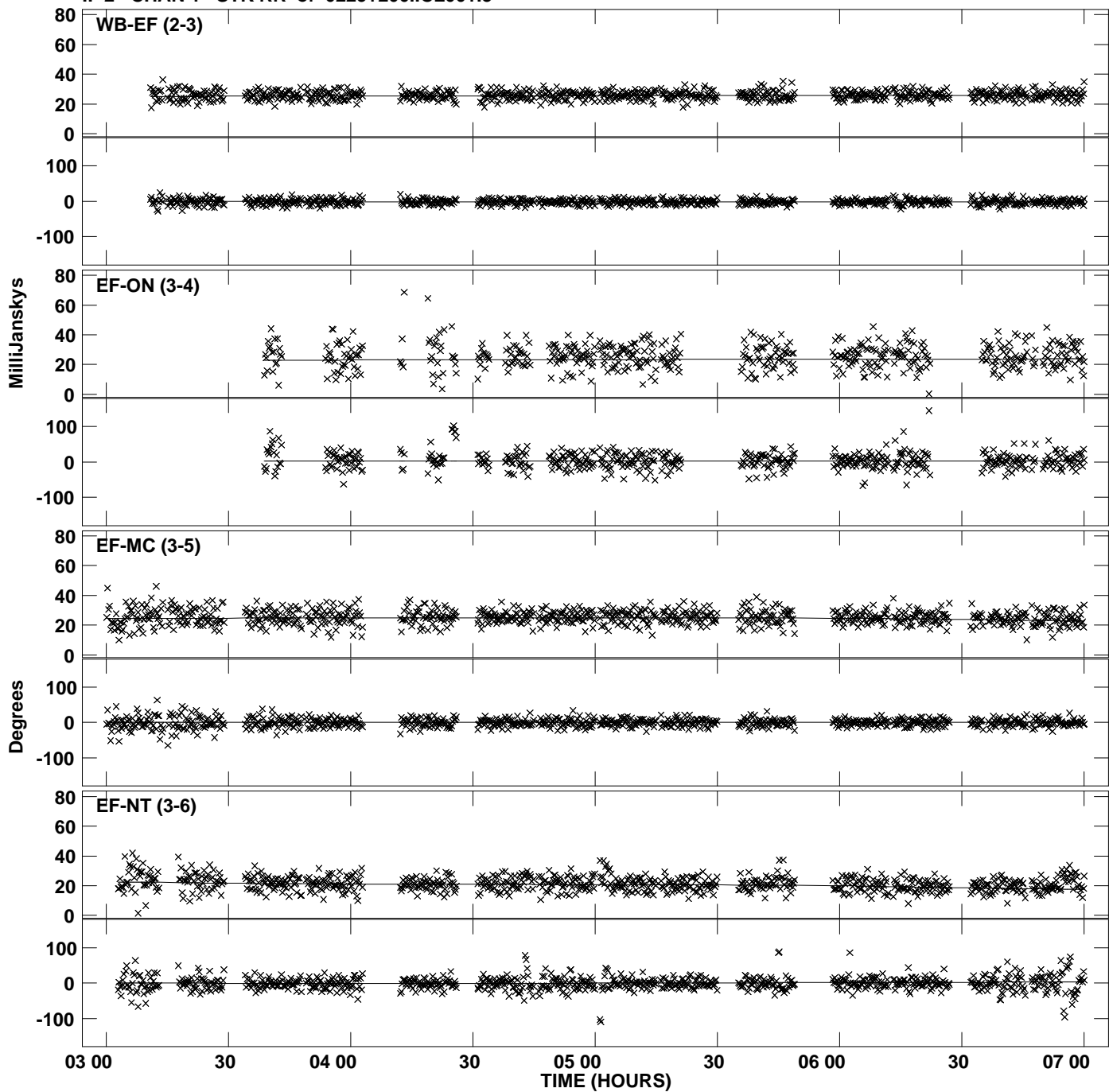
Plot file version 25 created 20-NOV-2012 13:20:09
Amplitude andPhase vs Time for 0229+200.MULTI.1 Vect aver. CL # 3
IF 1 CHAN 1 STK RR of 0229+200.ICL001.3



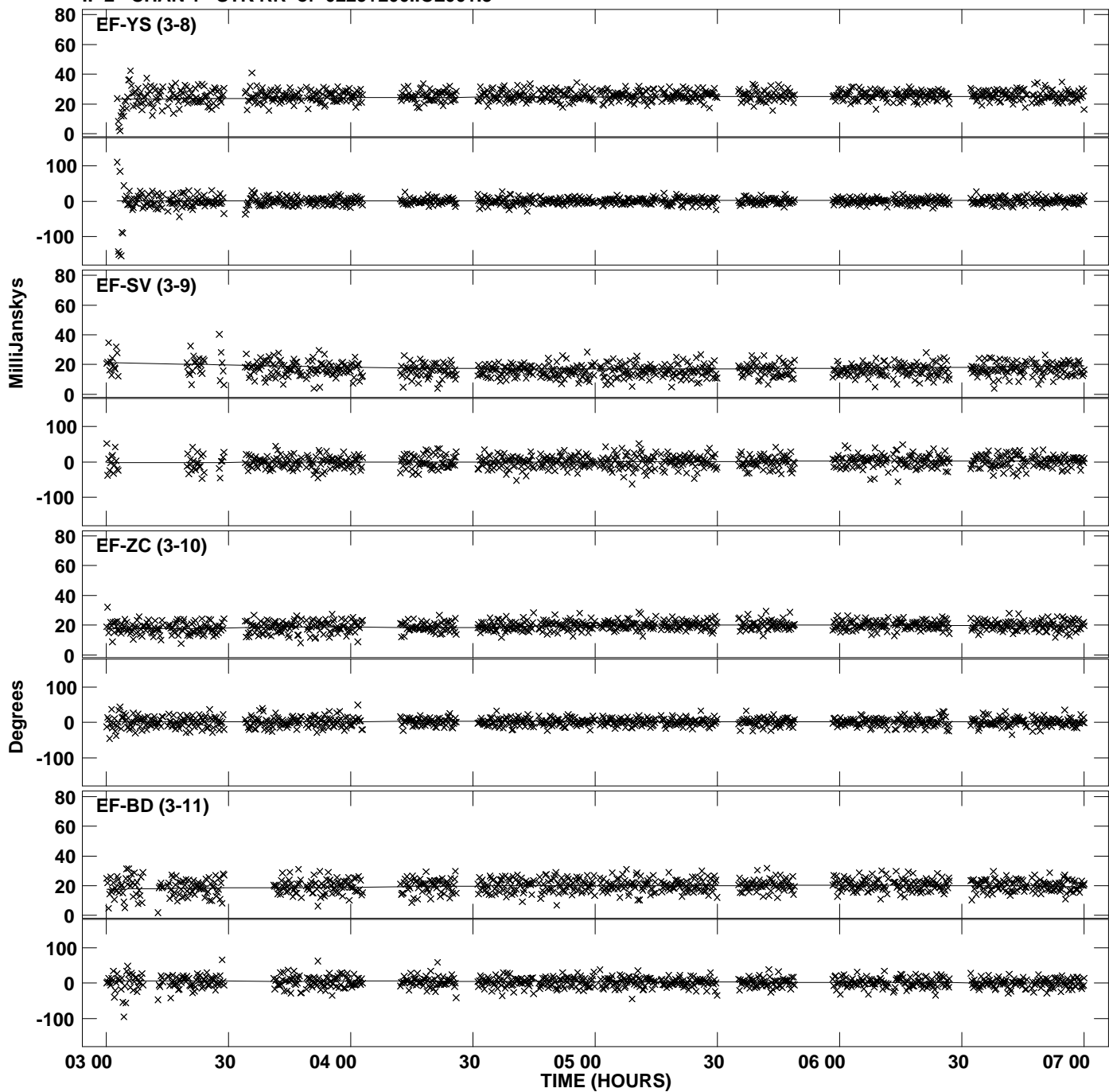
PLot file version 26 created 20-NOV-2012 13:20:09
Amplitude andPhase vs Time for 0229+200.MULTI.1 Vect aver. CL # 3
IF 1 CHAN 1 STK RR of 0229+200.ICL001.3



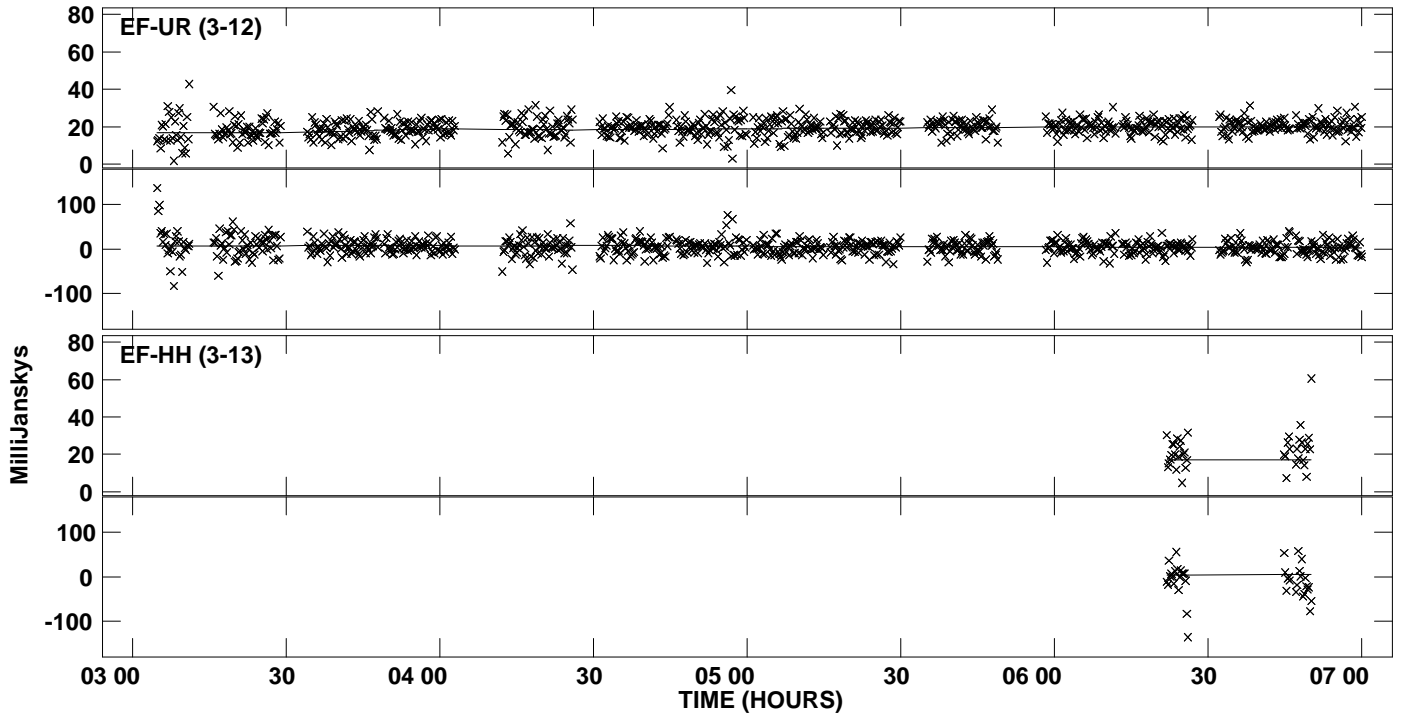
Plot file version 27 created 20-NOV-2012 13:20:09
Amplitude andPhase vs Time for 0229+200.MULTI.1 Vect aver. CL # 3
IF 2 CHAN 1 STK RR of 0229+200.ICL001.3



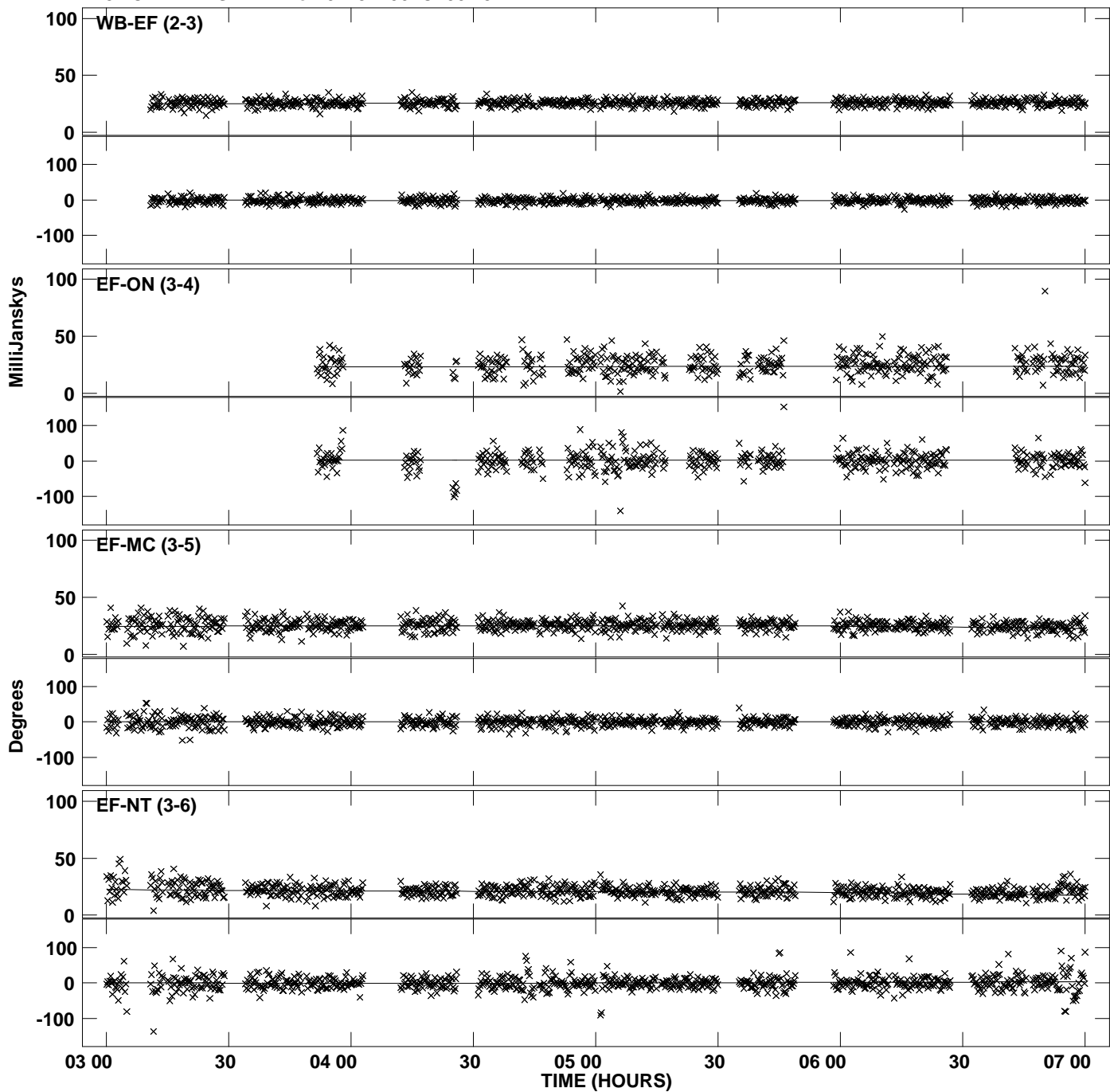
Plot file version 28 created 20-NOV-2012 13:20:09
Amplitude andPhase vs Time for 0229+200.MULTI.1 Vect aver. CL # 3
IF 2 CHAN 1 STK RR of 0229+200.ICL001.3



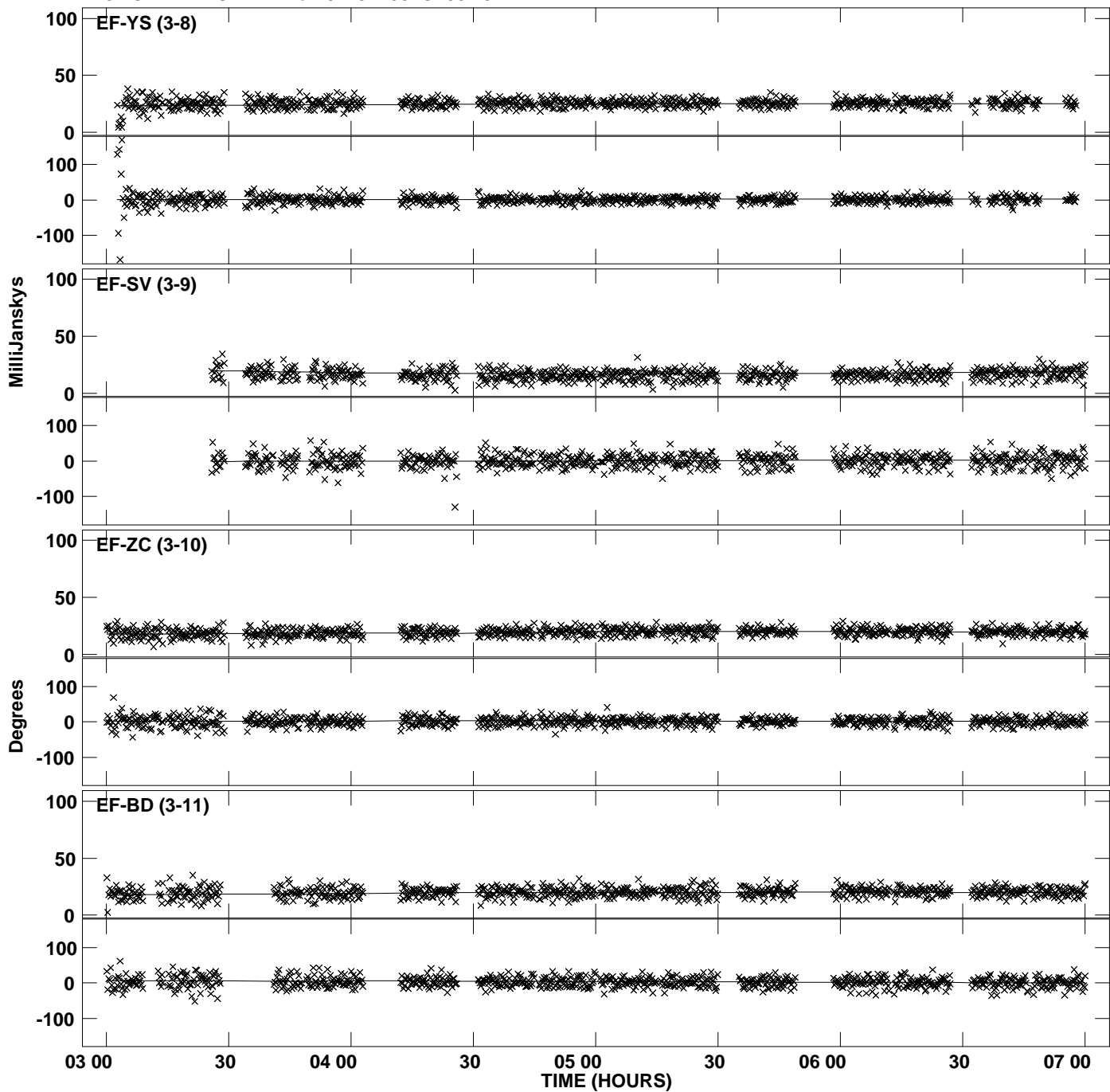
Plot file version 29 created 20-NOV-2012 13:20:09
Amplitude andPhase vs Time for 0229+200.MULTI.1 Vect aver. CL # 3
IF 2 CHAN 1 STK RR of 0229+200.ICL001.3



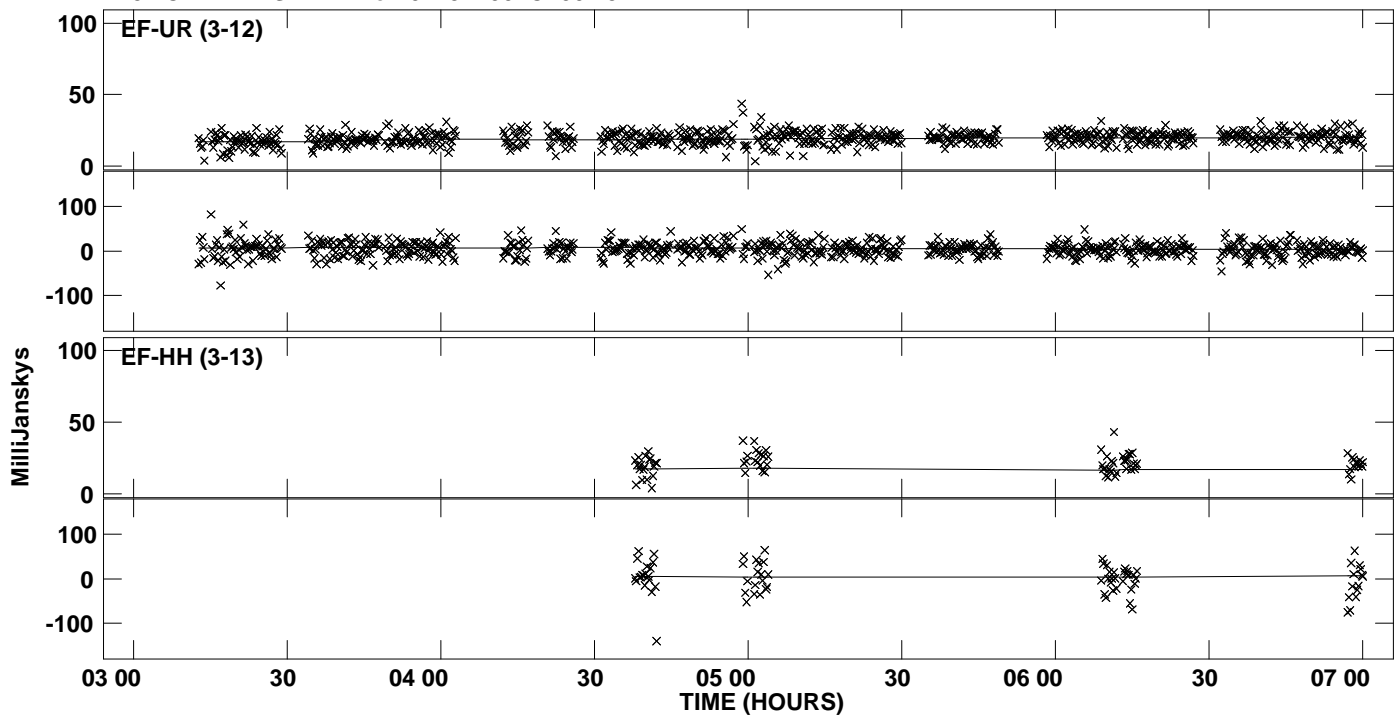
PLot file version 30 created 20-NOV-2012 13:20:09
Amplitude andPhase vs Time for 0229+200.MULTI.1 Vect aver. CL # 3
IF 3 CHAN 1 STK RR of 0229+200.ICL001.3



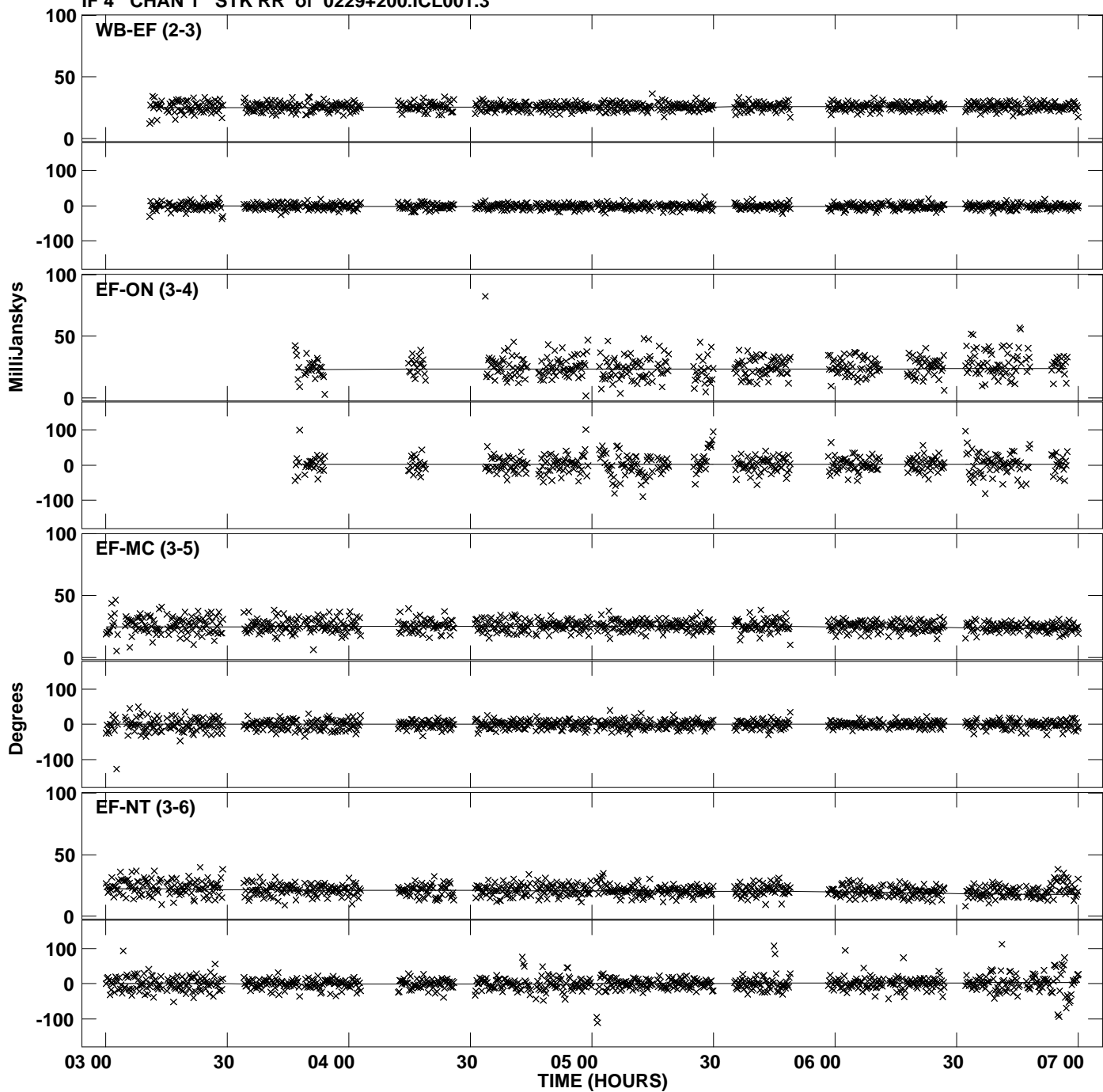
Plot file version 31 created 20-NOV-2012 13:20:09
Amplitude andPhase vs Time for 0229+200.MULTI.1 Vect aver. CL # 3
IF 3 CHAN 1 STK RR of 0229+200.ICL001.3



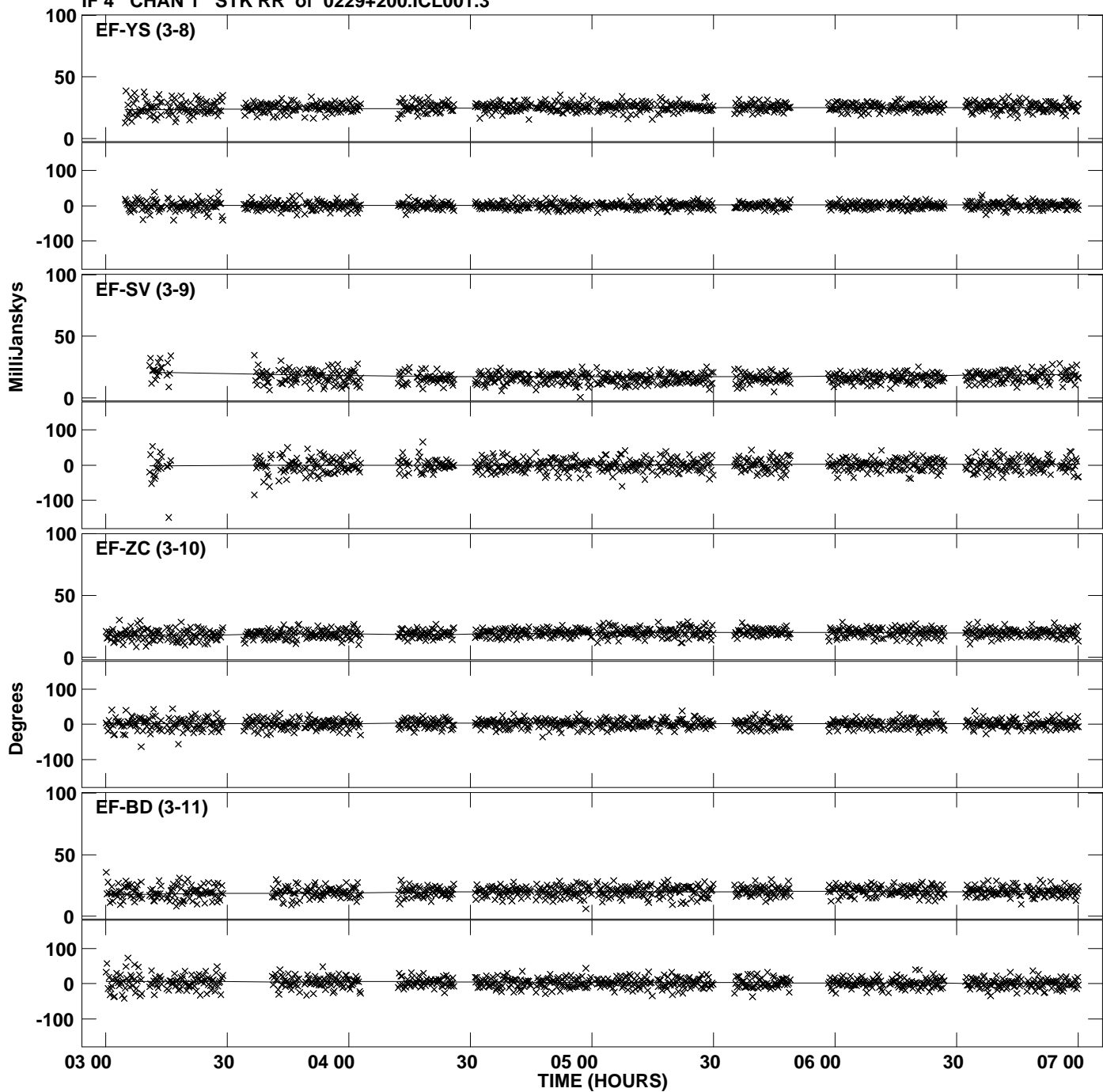
PLot file version 32 created 20-NOV-2012 13:20:09
Amplitude andPhase vs Time for 0229+200.MULTI.1 Vect aver. CL # 3
IF 3 CHAN 1 STK RR of 0229+200.ICL001.3



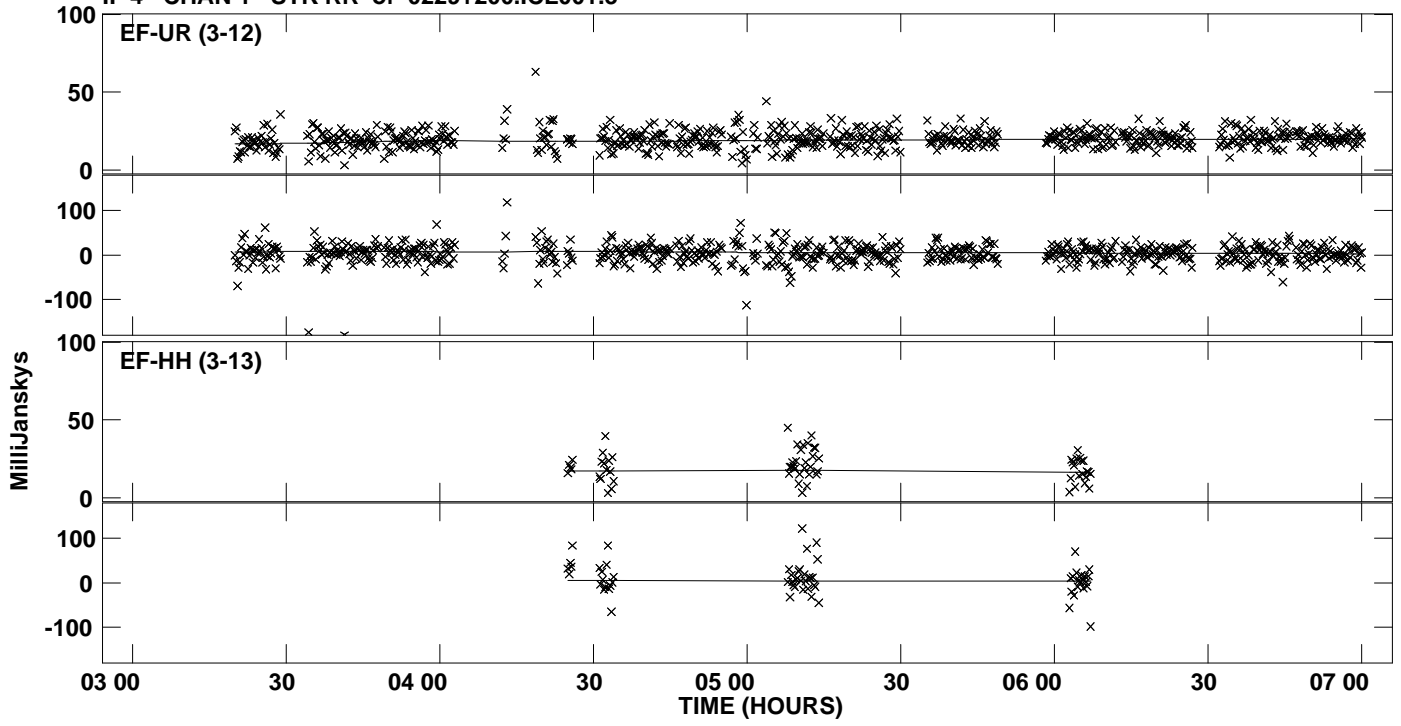
PLot file version 33 created 20-NOV-2012 13:20:10
Amplitude andPhase vs Time for 0229+200.MULTI.1 Vect aver. CL # 3
IF 4 CHAN 1 STK RR of 0229+200.ICL001.3



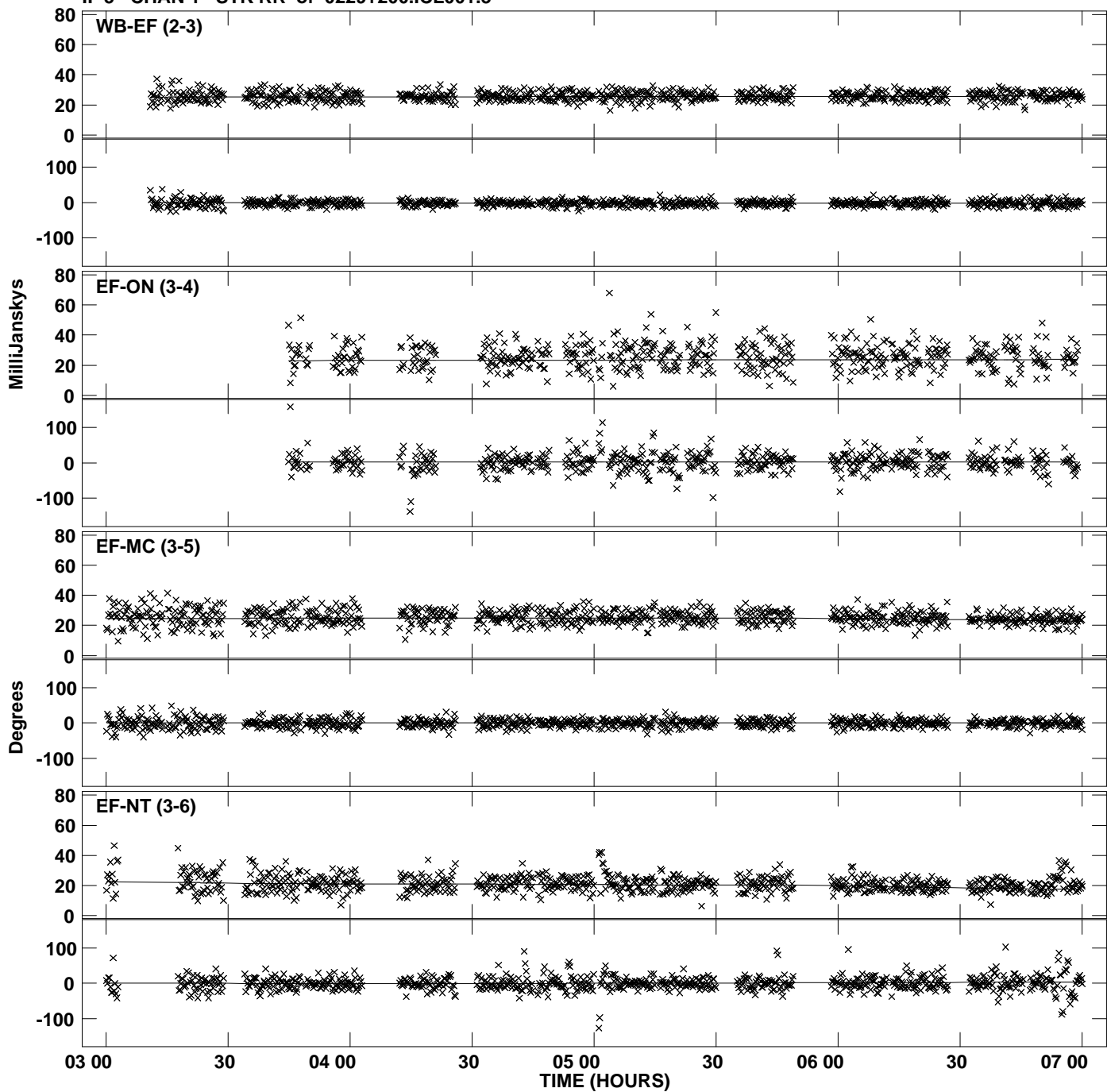
PLot file version 34 created 20-NOV-2012 13:20:10
Amplitude andPhase vs Time for 0229+200.MULTI.1 Vect aver. CL # 3
IF 4 CHAN 1 STK RR of 0229+200.ICL001.3



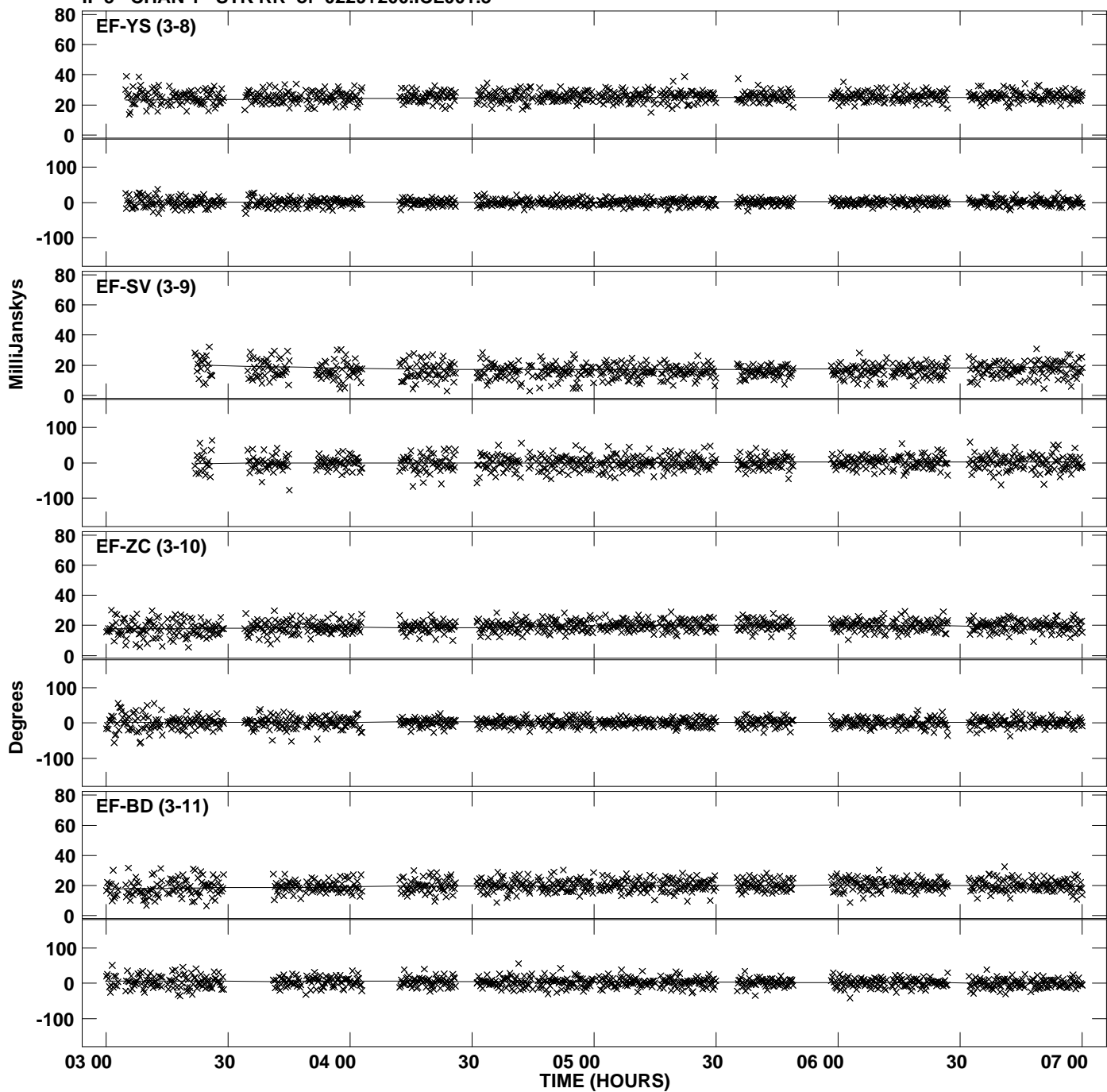
PLot file version 35 created 20-NOV-2012 13:20:10
Amplitude andPhase vs Time for 0229+200.MULTI.1 Vect aver. CL # 3
IF 4 CHAN 1 STK RR of 0229+200.ICL001.3



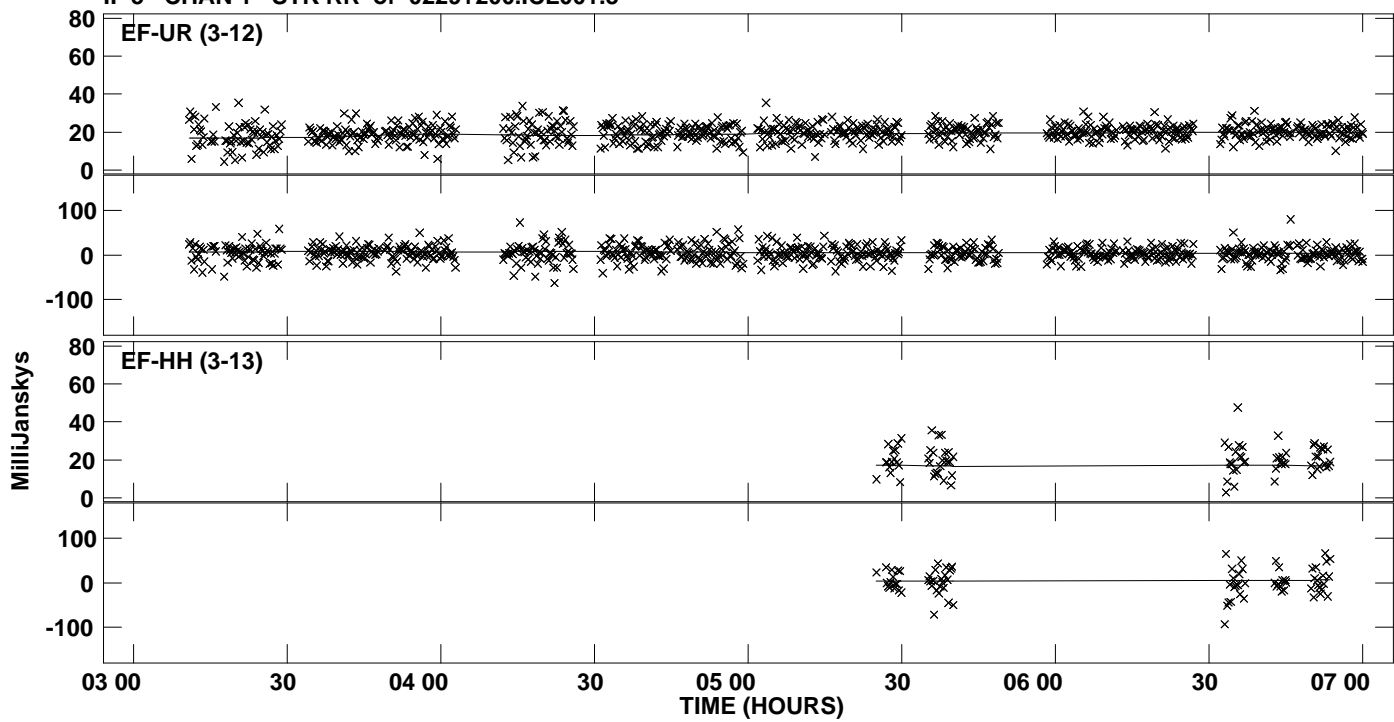
PLot file version 36 created 20-NOV-2012 13:20:10
Amplitude andPhase vs Time for 0229+200.MULTI.1 Vect aver. CL # 3
IF 5 CHAN 1 STK RR of 0229+200.ICL001.3



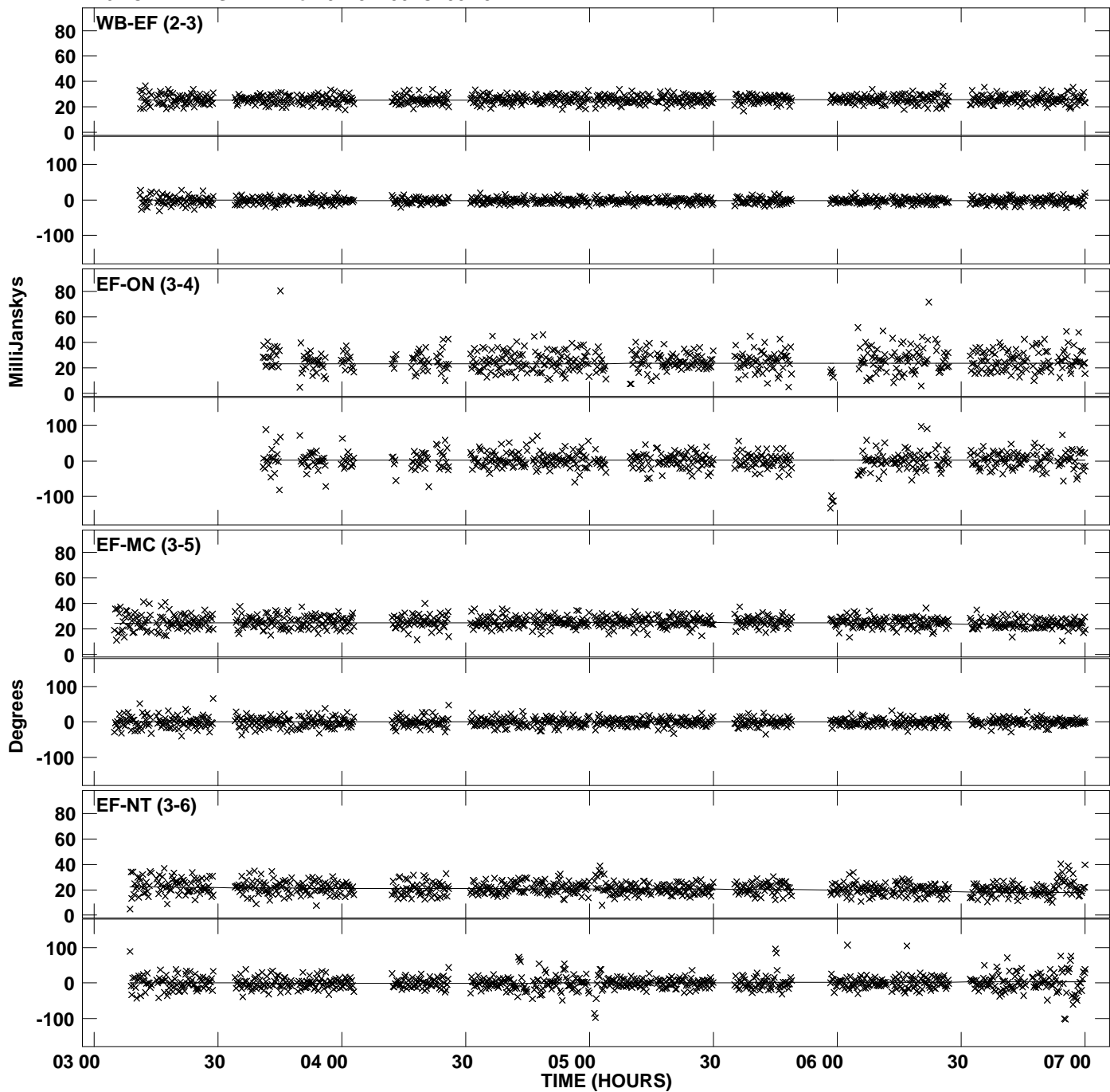
PLot file version 37 created 20-NOV-2012 13:20:10
Amplitude andPhase vs Time for 0229+200.MULTI.1 Vect aver. CL # 3
IF 5 CHAN 1 STK RR of 0229+200.ICL001.3



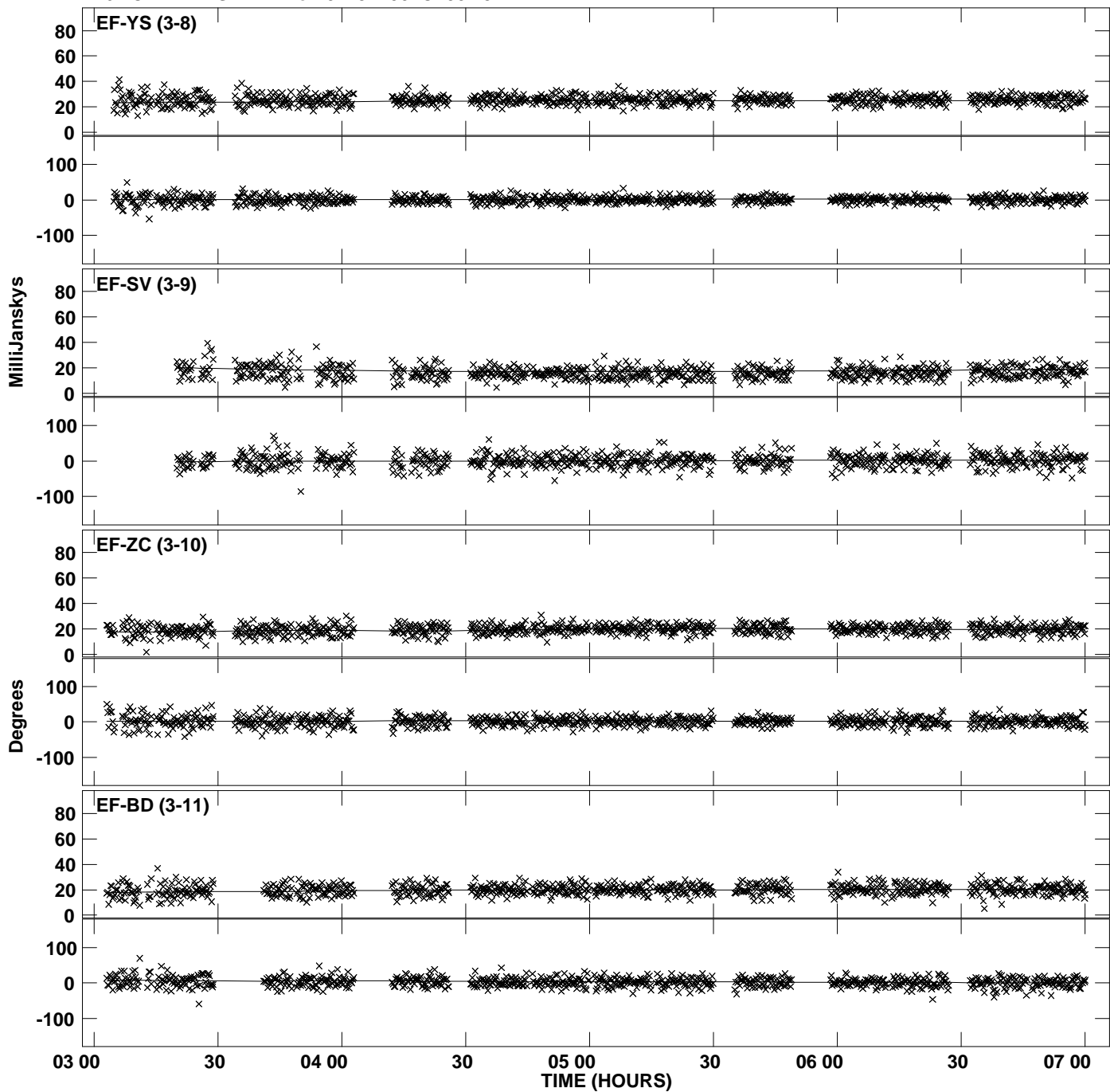
PLot file version 38 created 20-NOV-2012 13:20:10
Amplitude andPhase vs Time for 0229+200.MULTI.1 Vect aver. CL # 3
IF 5 CHAN 1 STK RR of 0229+200.ICL001.3



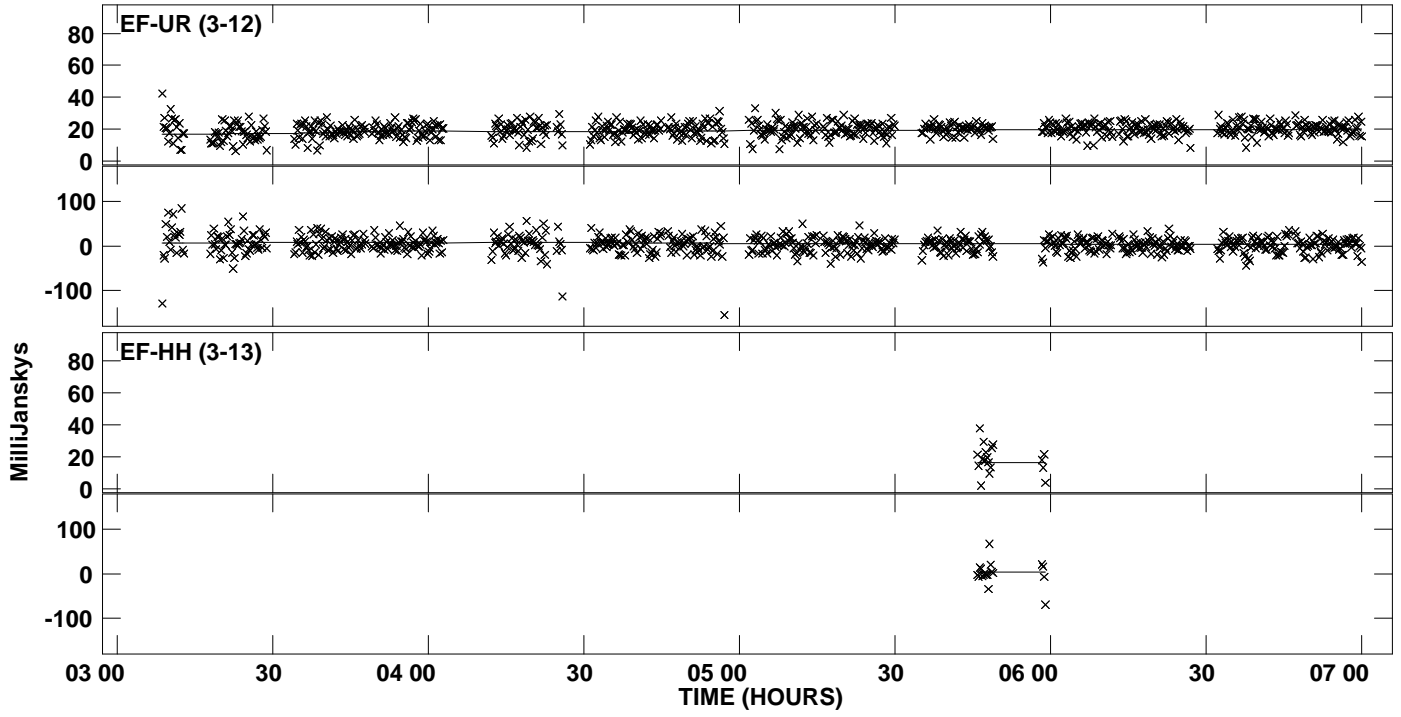
Plot file version 39 created 20-NOV-2012 13:20:10
Amplitude andPhase vs Time for 0229+200.MULTI.1 Vect aver. CL # 3
IF 6 CHAN 1 STK RR of 0229+200.ICL001.3



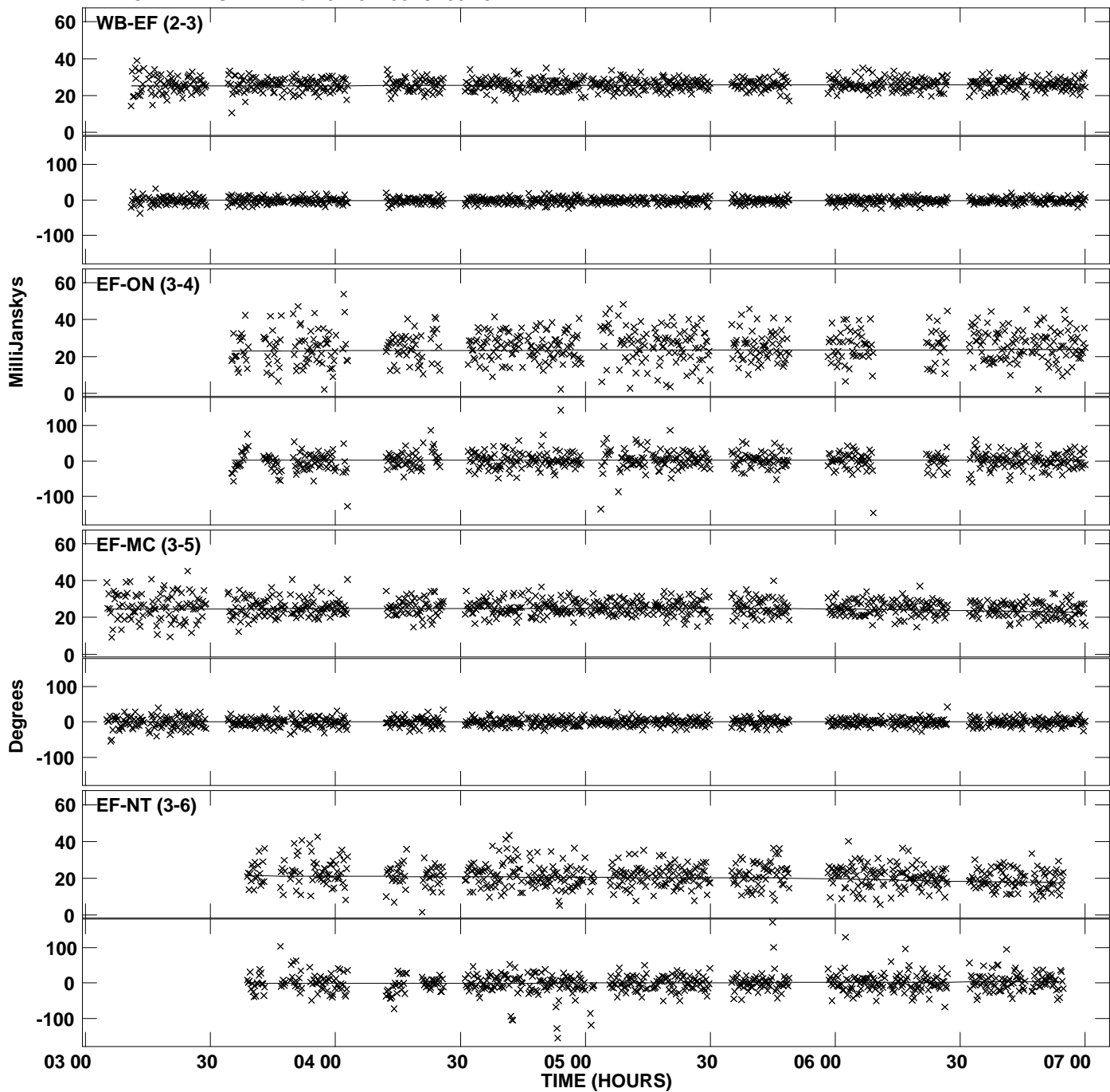
Plot file version 40 created 20-NOV-2012 13:20:10
Amplitude andPhase vs Time for 0229+200.MULTI.1 Vect aver. CL # 3
IF 6 CHAN 1 STK RR of 0229+200.ICL001.3



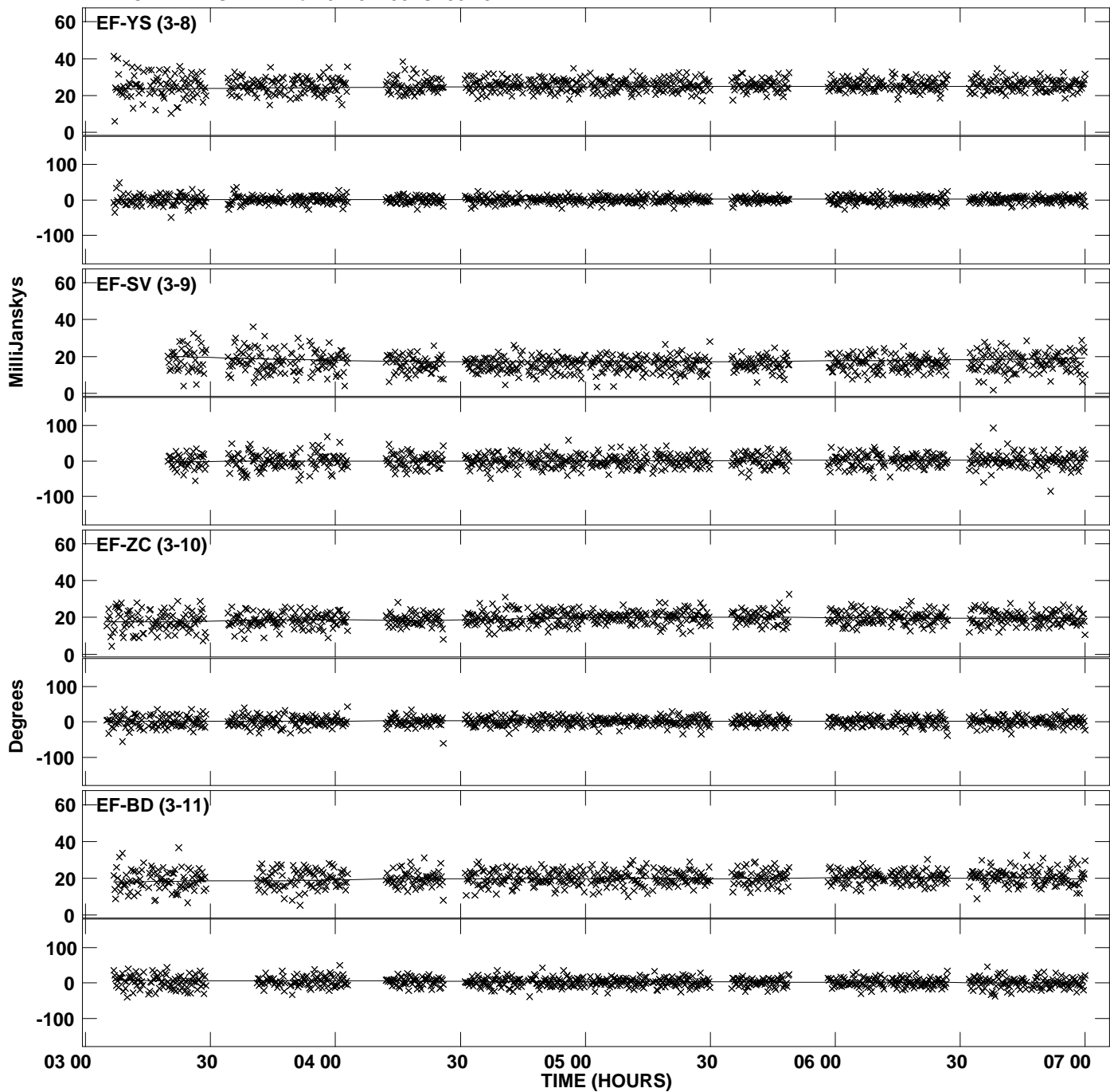
PLot file version 41 created 20-NOV-2012 13:20:10
Amplitude andPhase vs Time for 0229+200.MULTI.1 Vect aver. CL # 3
IF 6 CHAN 1 STK RR of 0229+200.ICL001.3



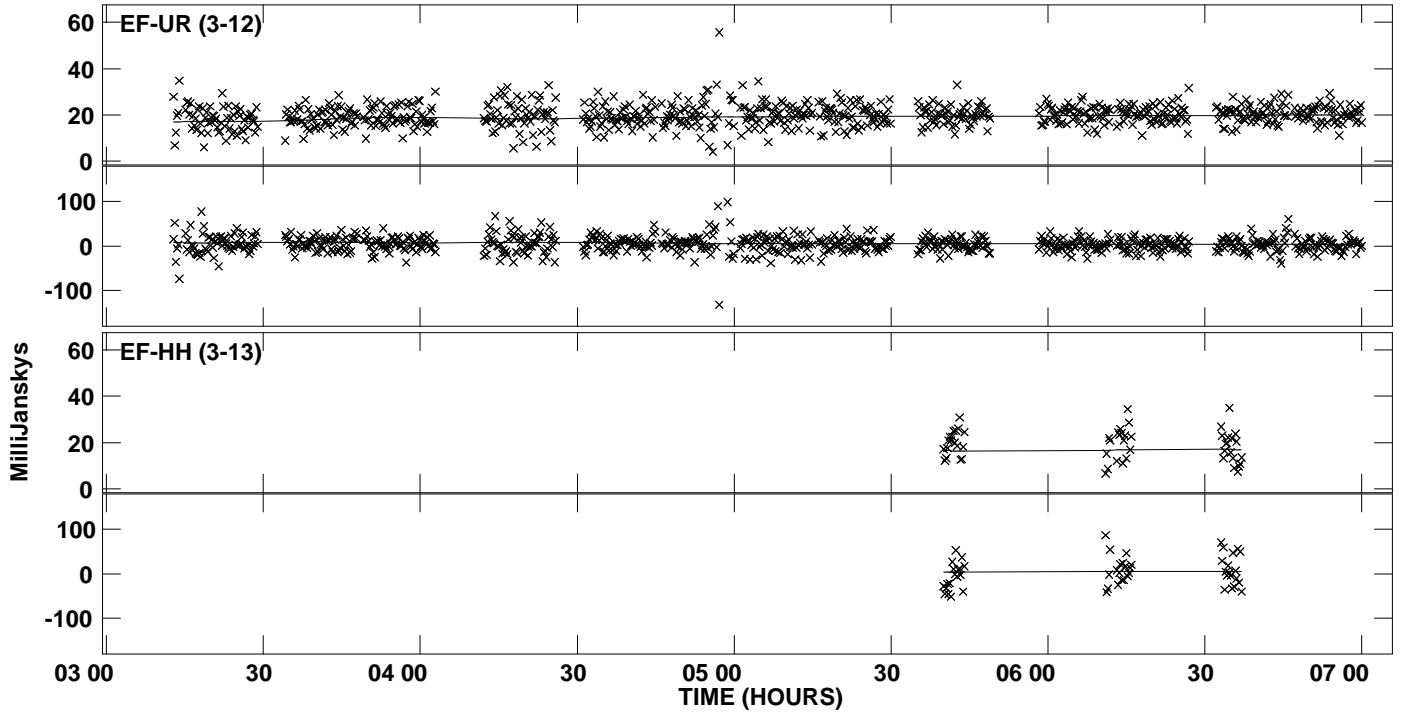
Plot file version 42 created 20-NOV-2012 13:20:10
Amplitude andPhase vs Time for 0229+200.MULTI.1 Vect aver. CL # 3
IF 7 CHAN 1 STK RR of 0229+200.ICL001.3



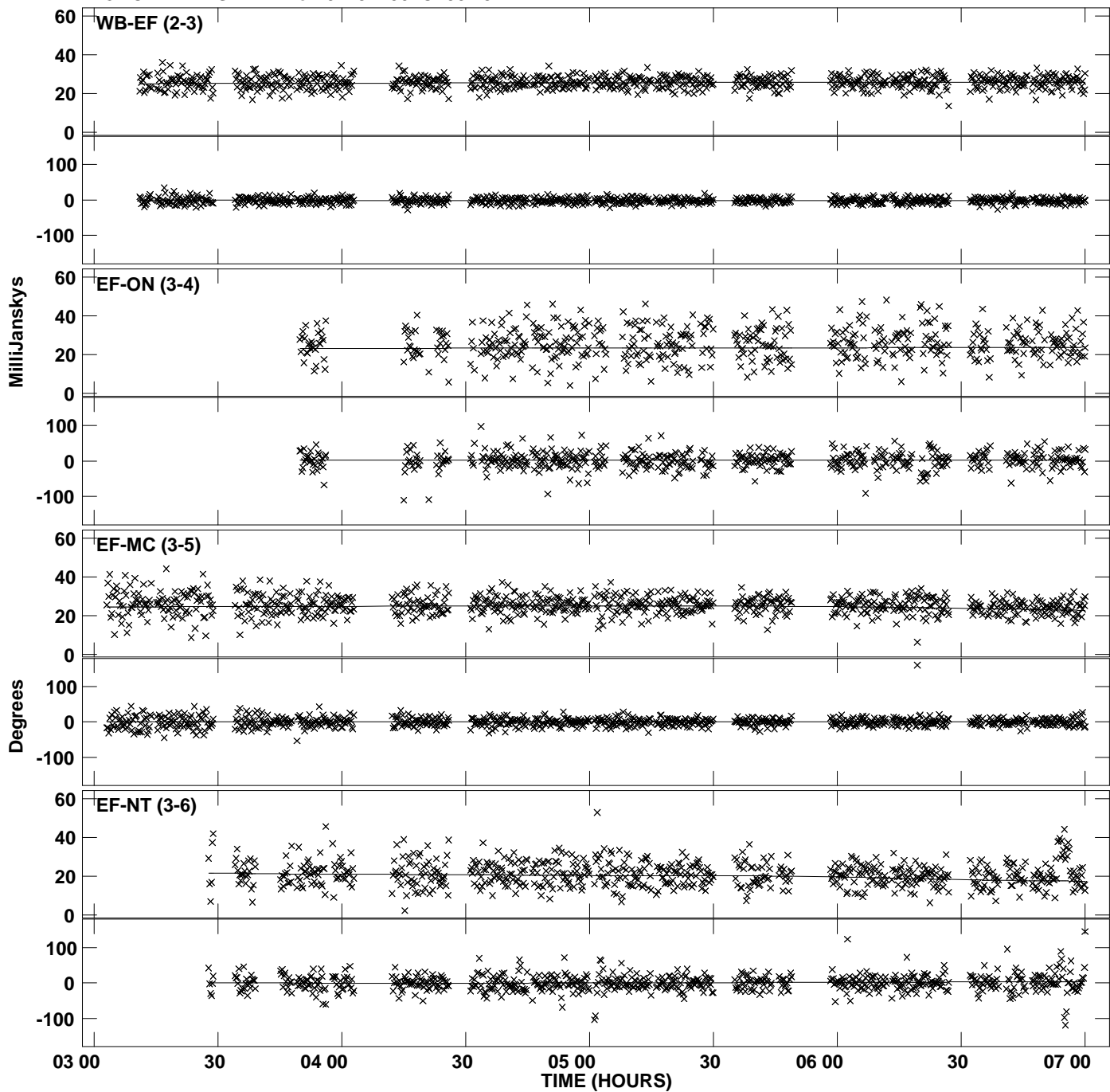
Plot file version 43 created 20-NOV-2012 13:20:10
Amplitude andPhase vs Time for 0229+200.MULTI.1 Vect aver. CL # 3
IF 7 CHAN 1 STK RR of 0229+200.ICL001.3



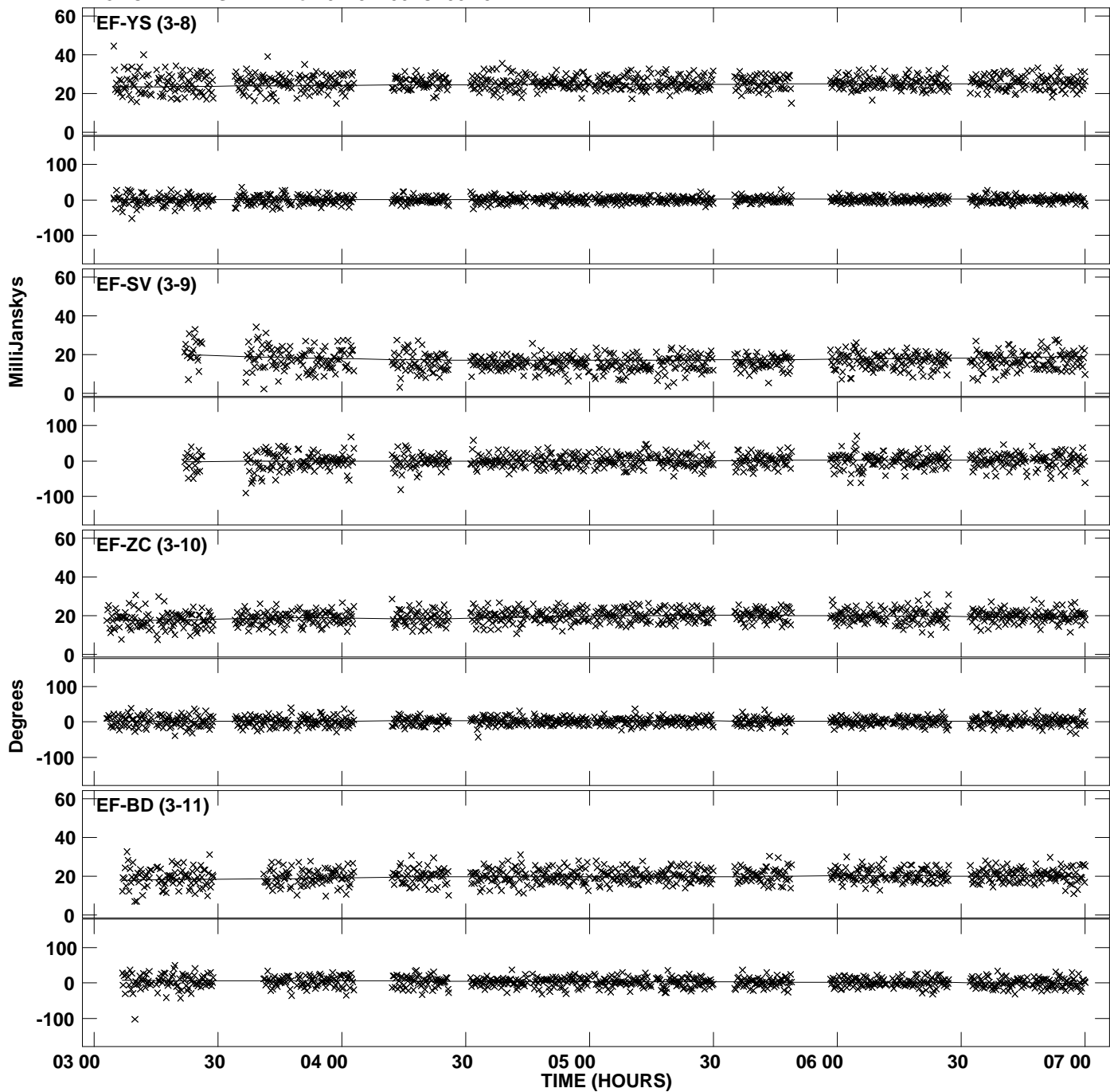
Plot file version 44 created 20-NOV-2012 13:20:10
Amplitude andPhase vs Time for 0229+200.MULTI.1 Vect aver. CL # 3
IF 7 CHAN 1 STK RR of 0229+200.ICL001.3



Plot file version 45 created 20-NOV-2012 13:20:11
Amplitude andPhase vs Time for 0229+200.MULTI.1 Vect aver. CL # 3
IF 8 CHAN 1 STK RR of 0229+200.ICL001.3



Plot file version 46 created 20-NOV-2012 13:20:11
Amplitude andPhase vs Time for 0229+200.MULTI.1 Vect aver. CL # 3
IF 8 CHAN 1 STK RR of 0229+200.ICL001.3



PLot file version 47 created 20-NOV-2012 13:20:11
Amplitude andPhase vs Time for 0229+200.MULTI.1 Vect aver. CL # 3
IF 8 CHAN 1 STK RR of 0229+200.ICL001.3

