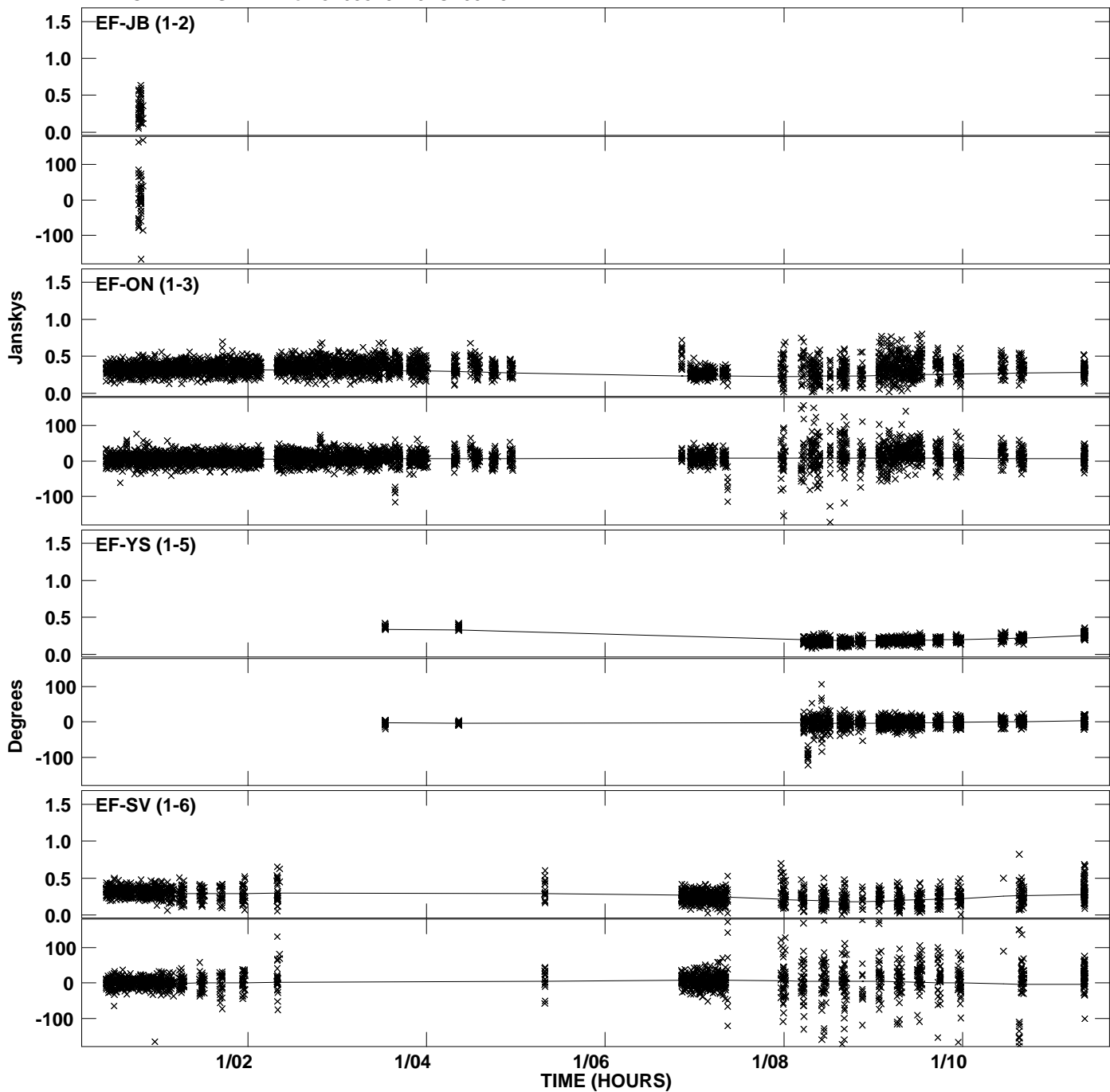
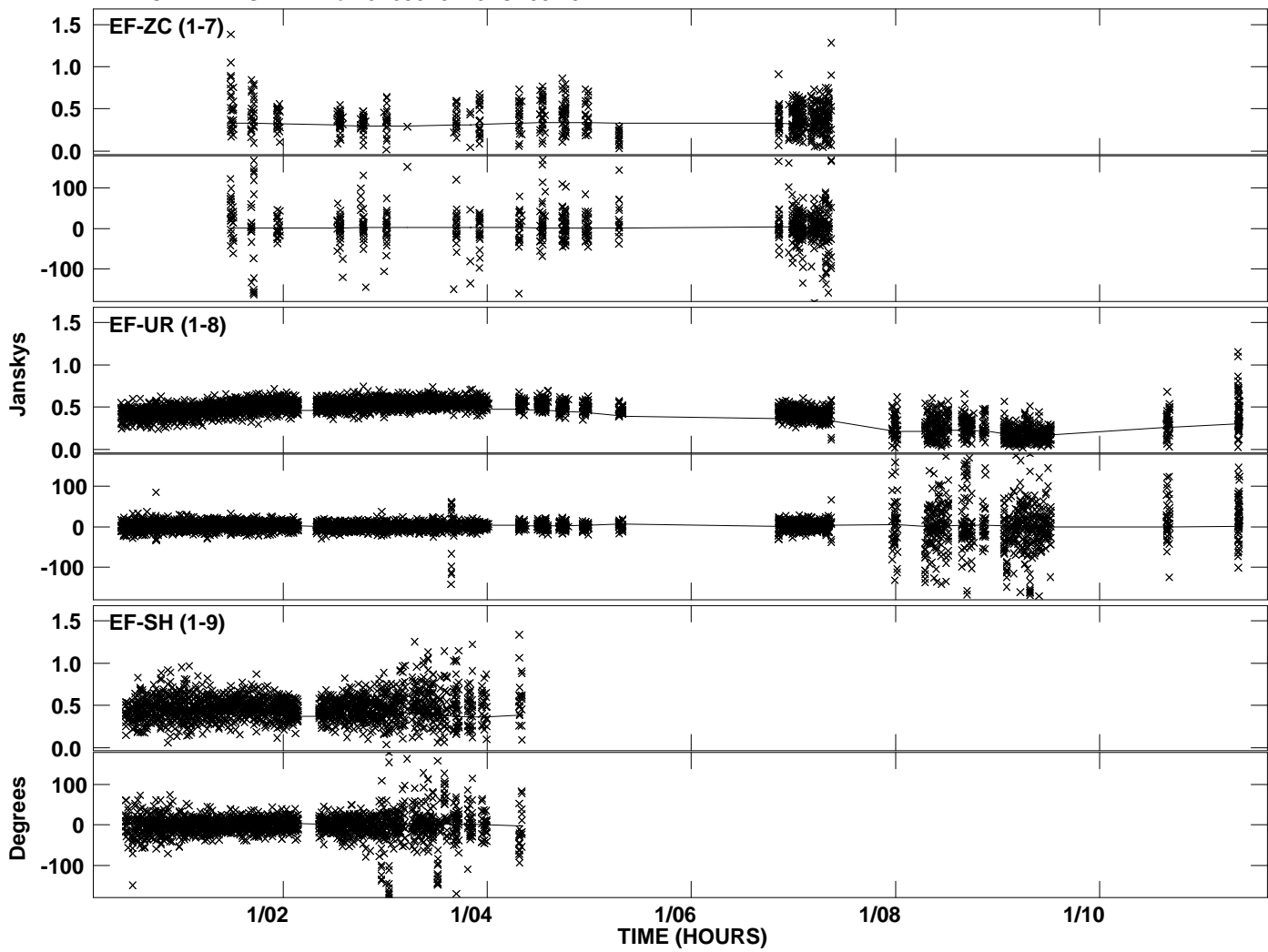


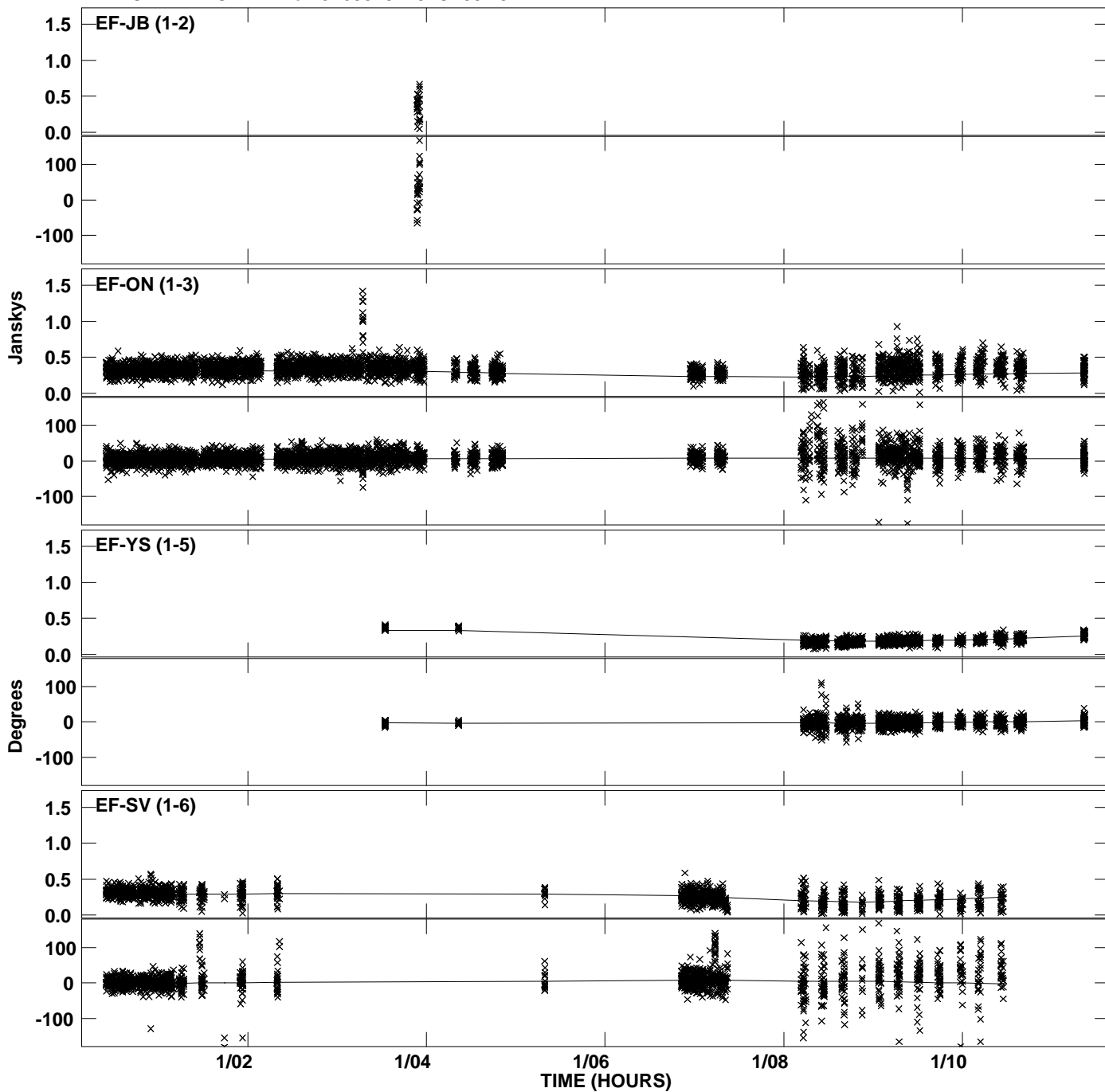
Plot file version 1 created 21-MAY-2012 19:11:25
Amplitude and Phase vs Time for J1638+5720.MULTI.1 CL # 3
IF 1 CHAN 1 STK LL of J1638+5720.ICL001.3



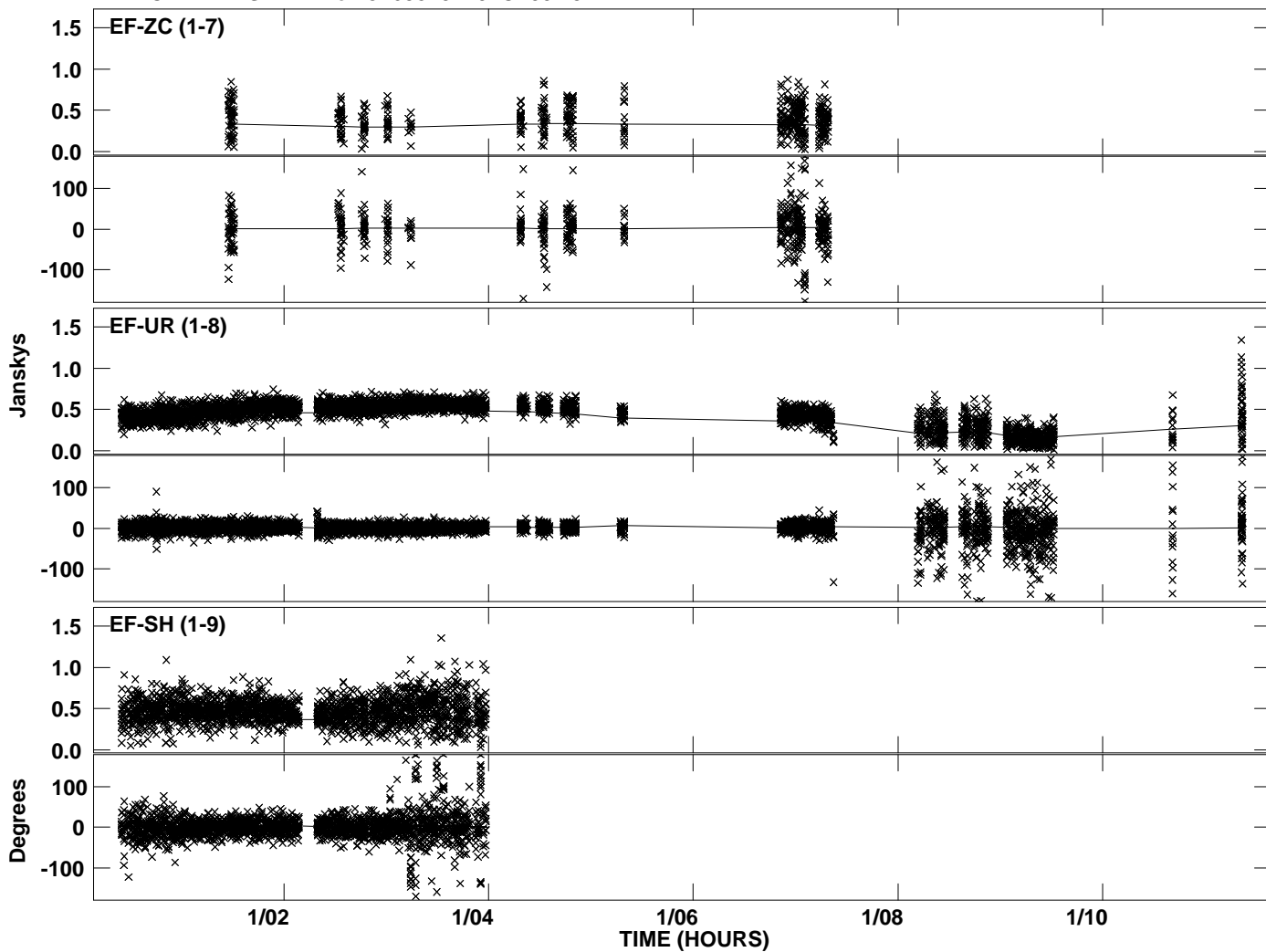
PLot file version 2 created 21-MAY-2012 19:11:25
Amplitude andPhase vs Time for J1638+5720.MULTI.1 CL # 3
IF 1 CHAN 1 STK LL of J1638+5720.ICL001.3



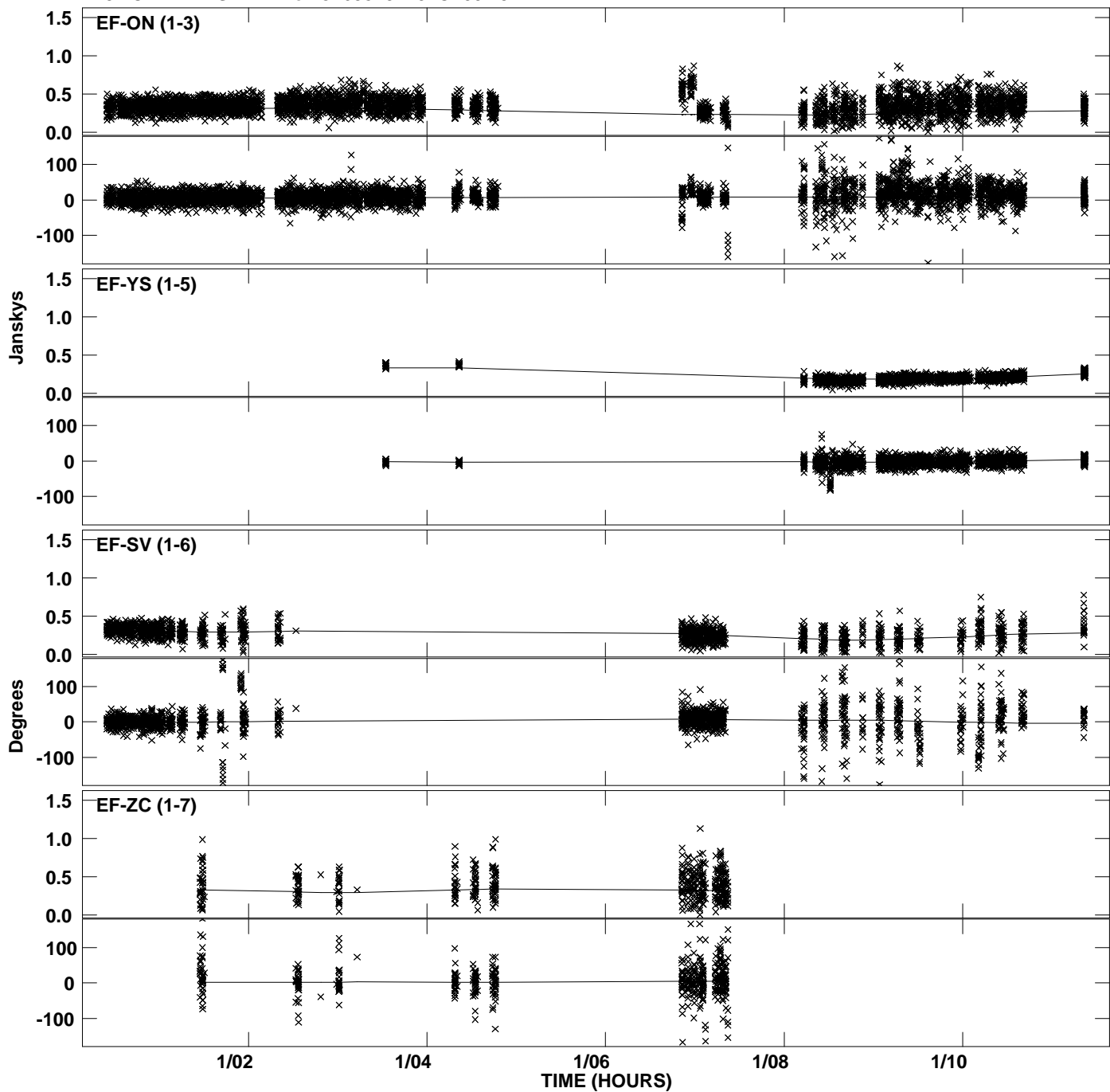
Plot file version 3 created 21-MAY-2012 19:11:46
Amplitude and Phase vs Time for J1638+5720.MULTI.1 CL # 3
IF 2 CHAN 1 STK LL of J1638+5720.ICL001.3



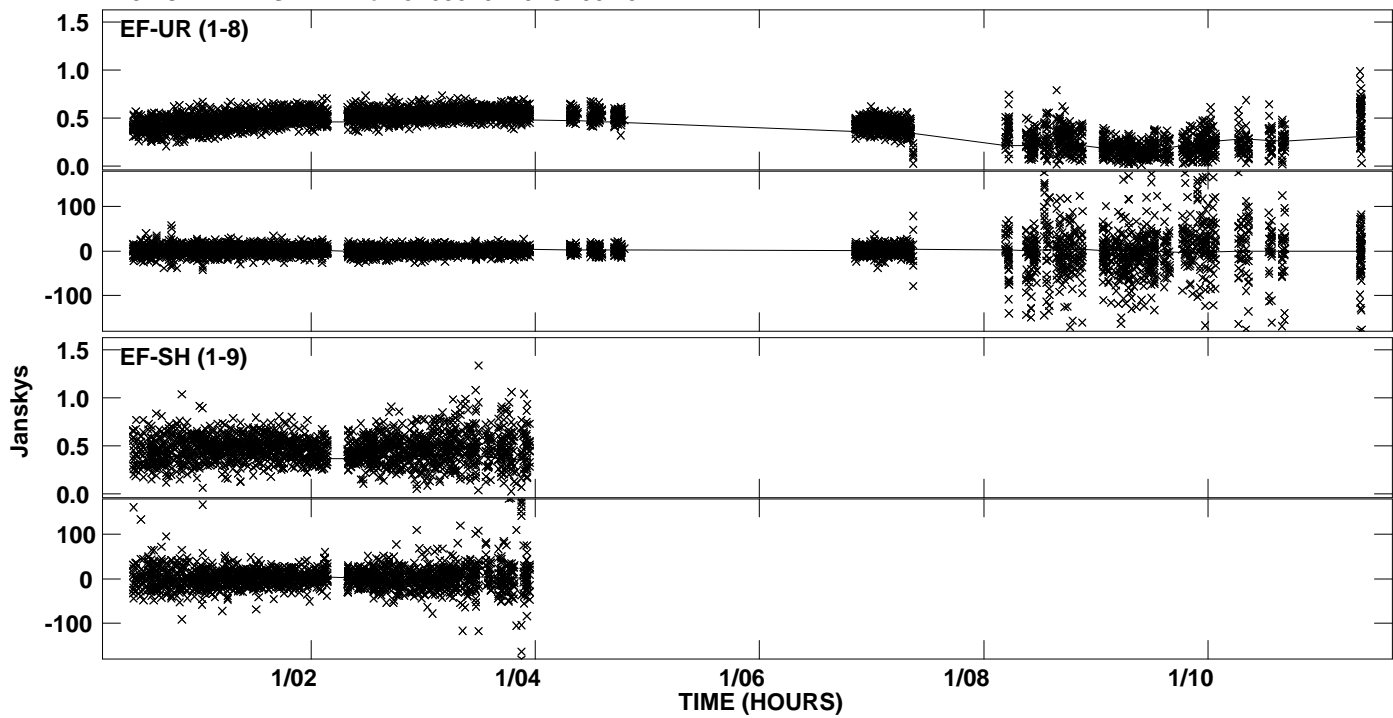
Plot file version 4 created 21-MAY-2012 19:11:46
Amplitude and Phase vs Time for J1638+5720.MULTI.1 CL # 3
IF 2 CHAN 1 STK LL of J1638+5720.ICL001.3



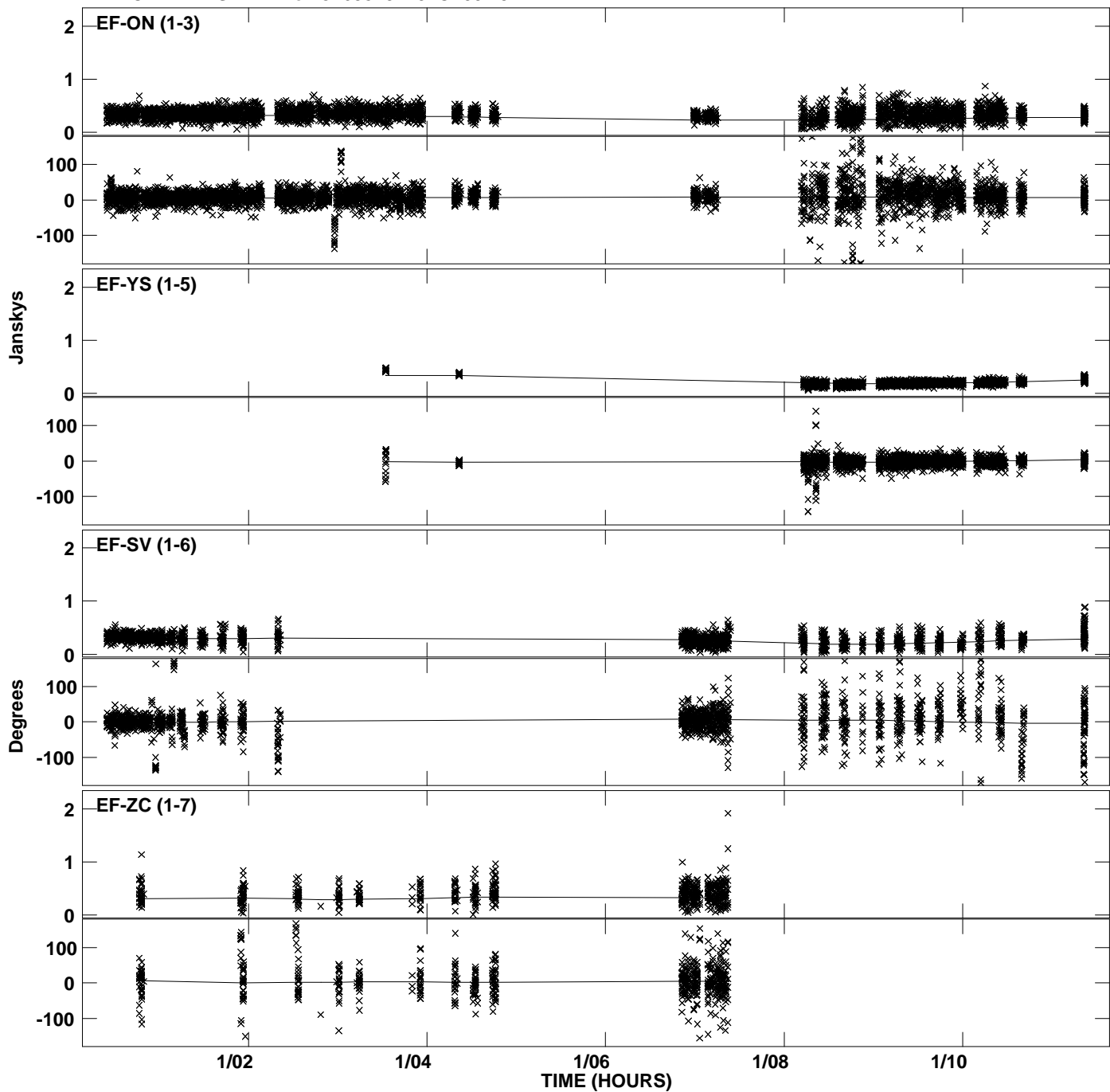
Plot file version 5 created 21-MAY-2012 19:12:09
Amplitude and Phase vs Time for J1638+5720.MULTI.1 CL # 3
IF 3 CHAN 1 STK LL of J1638+5720.ICL001.3



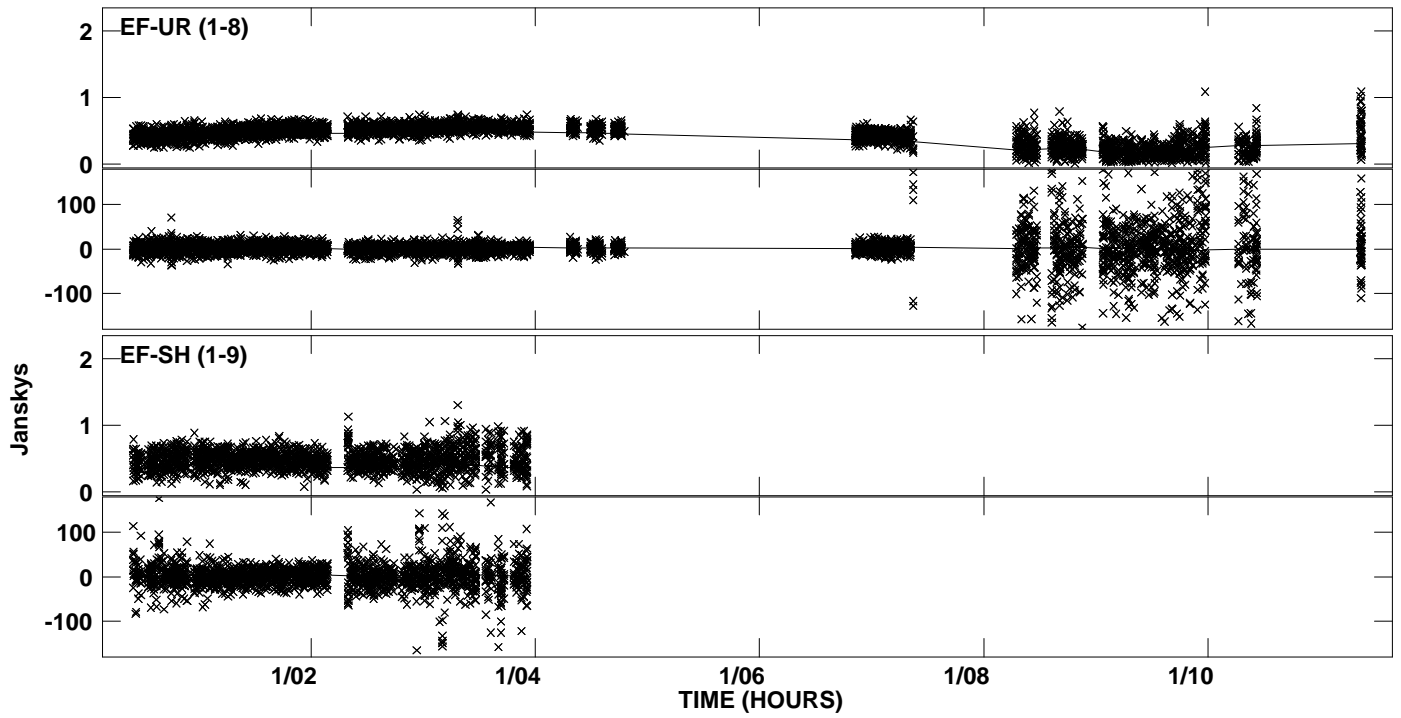
PLot file version 6 created 21-MAY-2012 19:12:09
Amplitude andPhase vs Time for J1638+5720.MULTI.1 CL # 3
IF 3 CHAN 1 STK LL of J1638+5720.ICL001.3



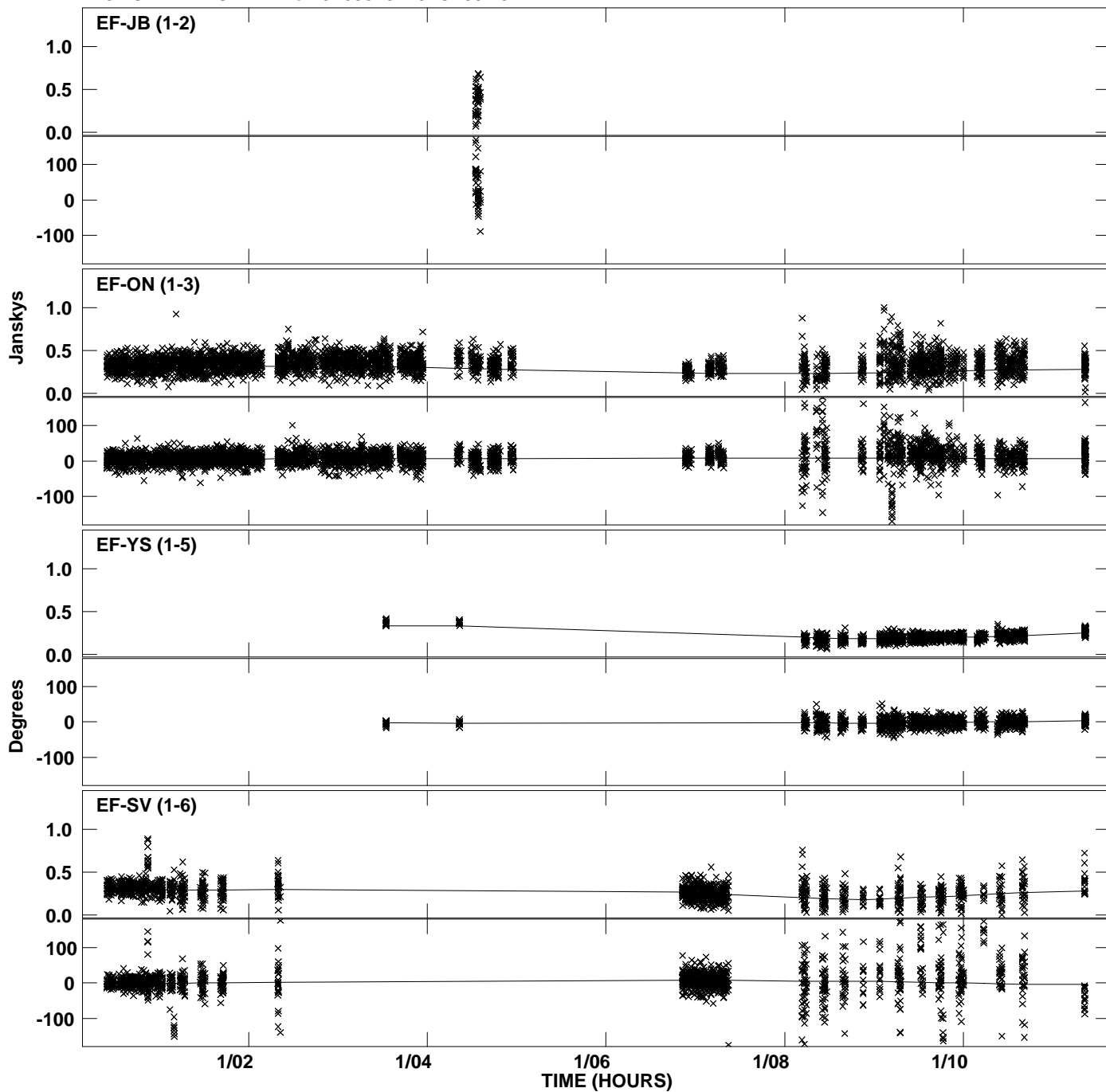
Plot file version 7 created 21-MAY-2012 19:12:32
Amplitude andPhase vs Time for J1638+5720.MULTI.1 CL # 3
IF 4 CHAN 1 STK LL of J1638+5720.ICL001.3



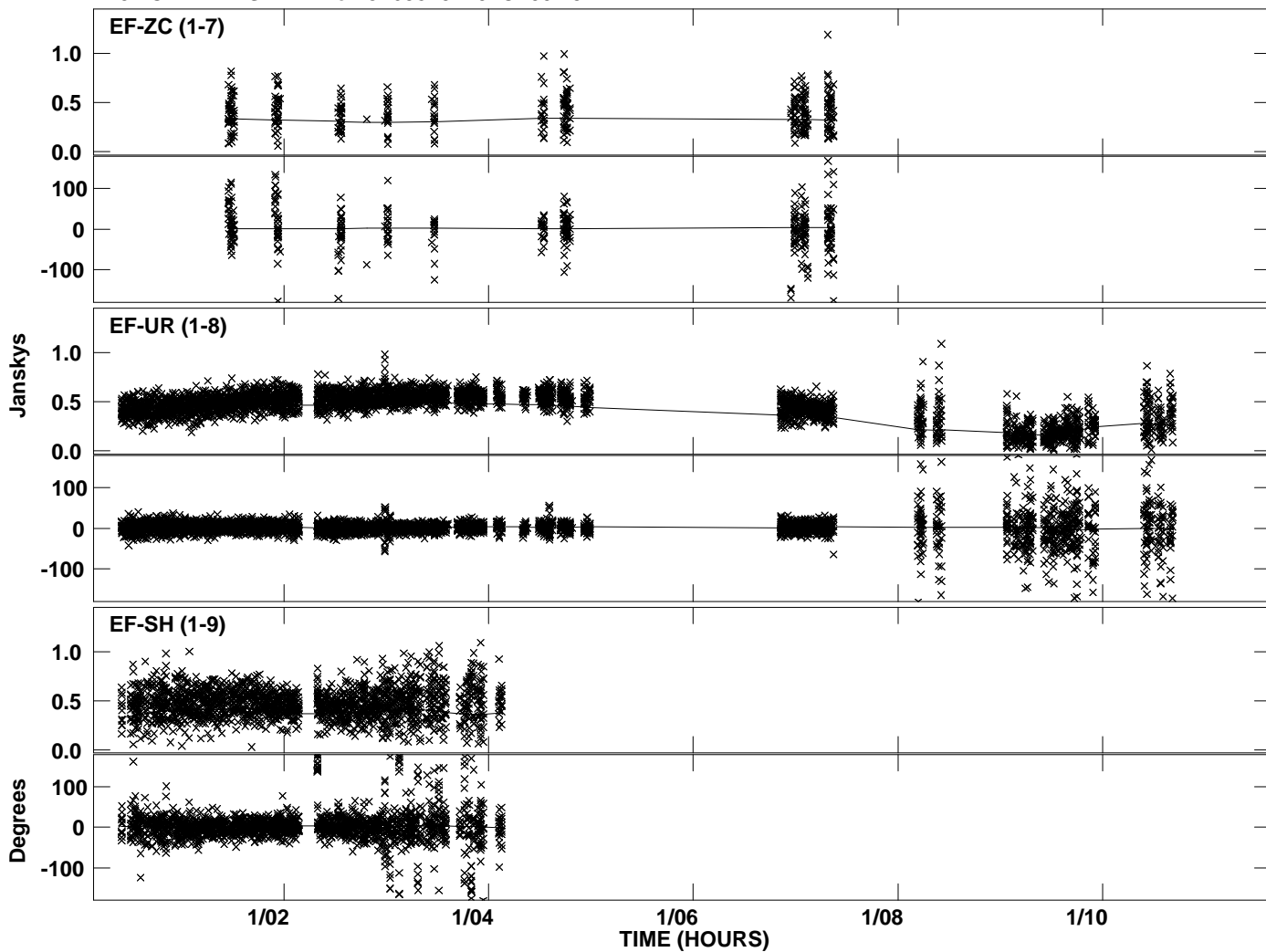
Plot file version 8 created 21-MAY-2012 19:12:32
Amplitude andPhase vs Time for J1638+5720.MULTI.1 CL # 3
IF 4 CHAN 1 STK LL of J1638+5720.ICL001.3



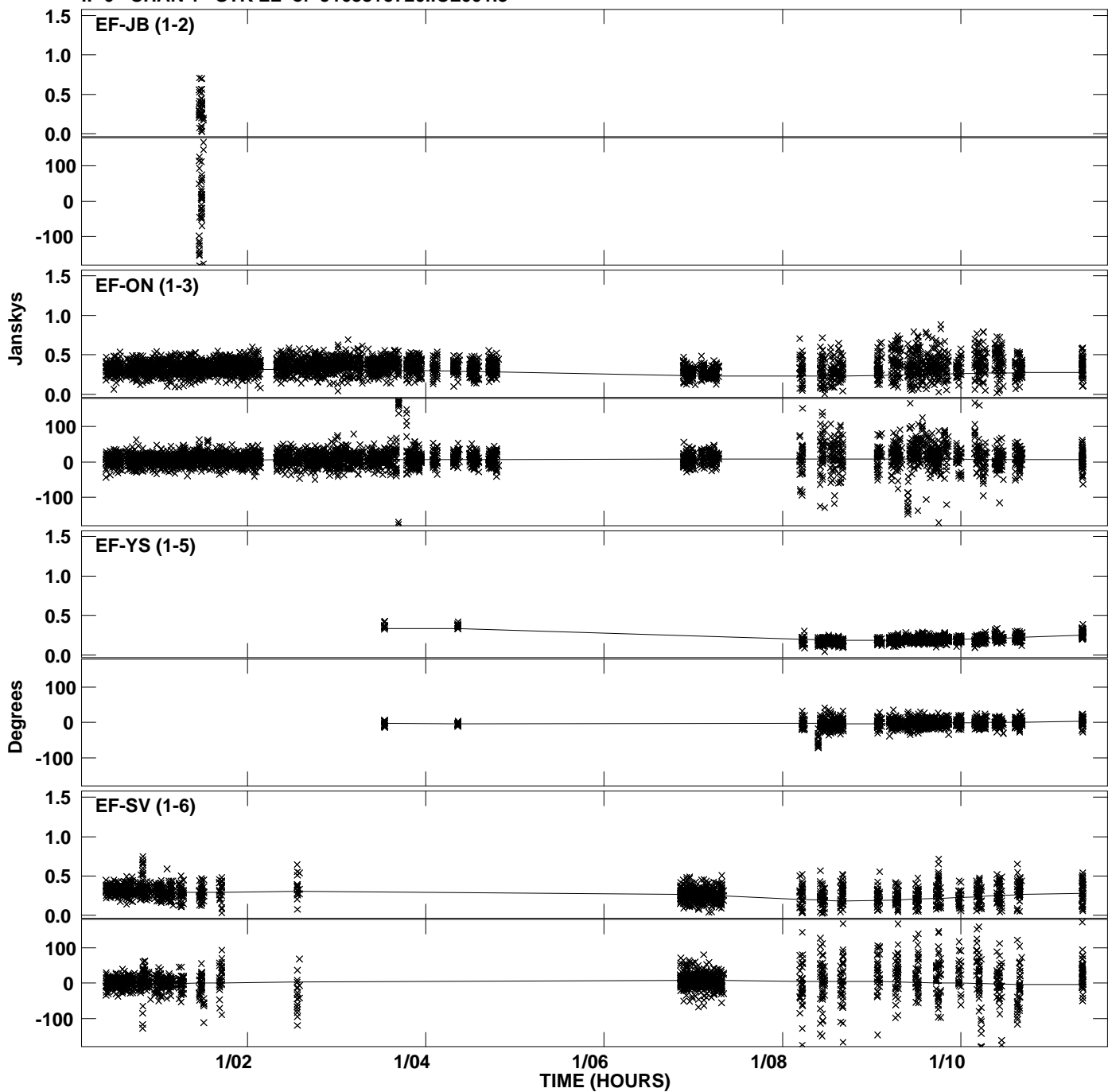
Plot file version 9 created 21-MAY-2012 19:12:55
Amplitude and Phase vs Time for J1638+5720.MULTI.1 CL # 3
IF 5 CHAN 1 STK LL of J1638+5720.ICL001.3



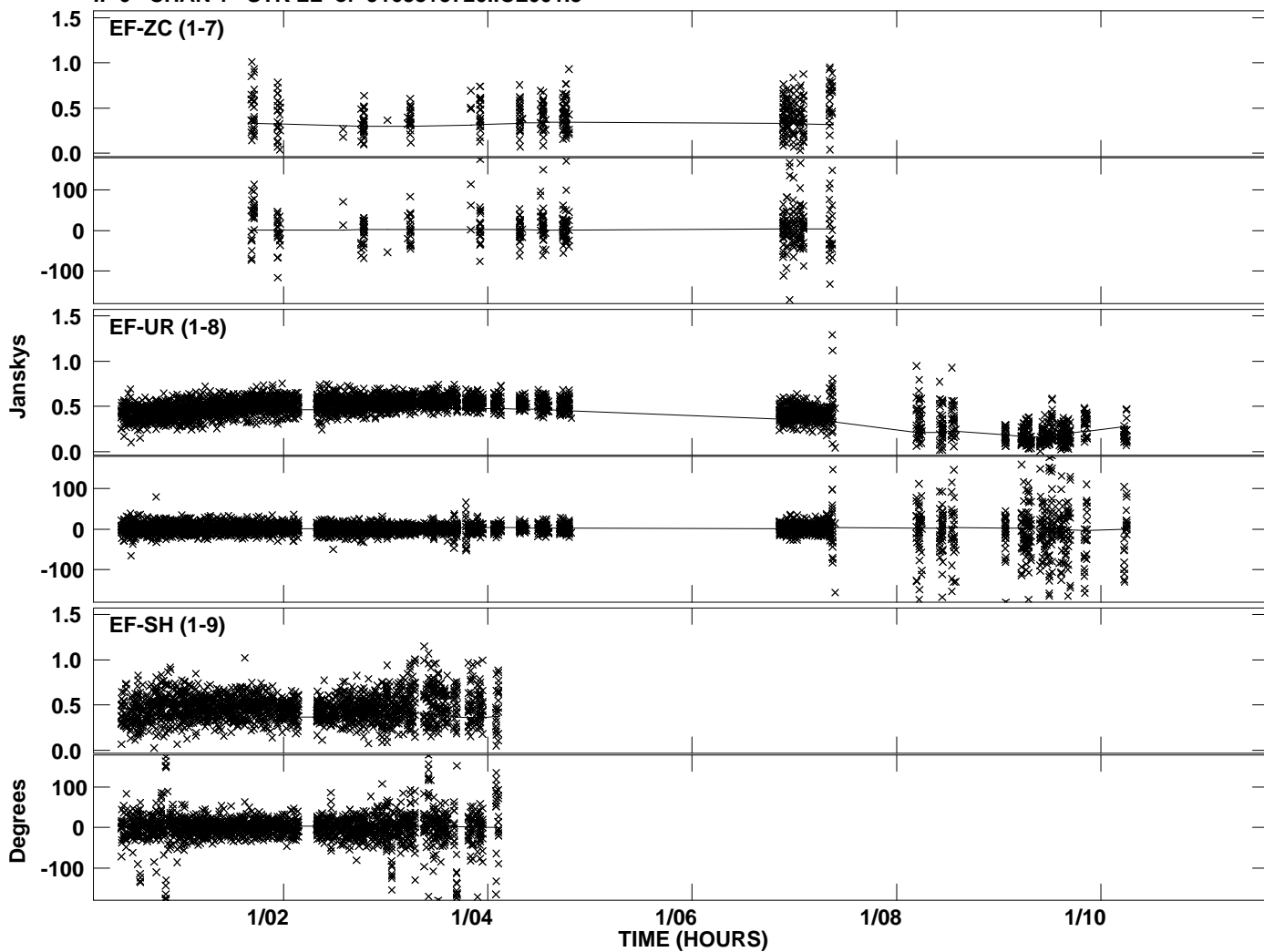
Plot file version 10 created 21-MAY-2012 19:12:55
Amplitude andPhase vs Time for J1638+5720.MULTI.1 CL # 3
IF 5 CHAN 1 STK LL of J1638+5720.ICL001.3



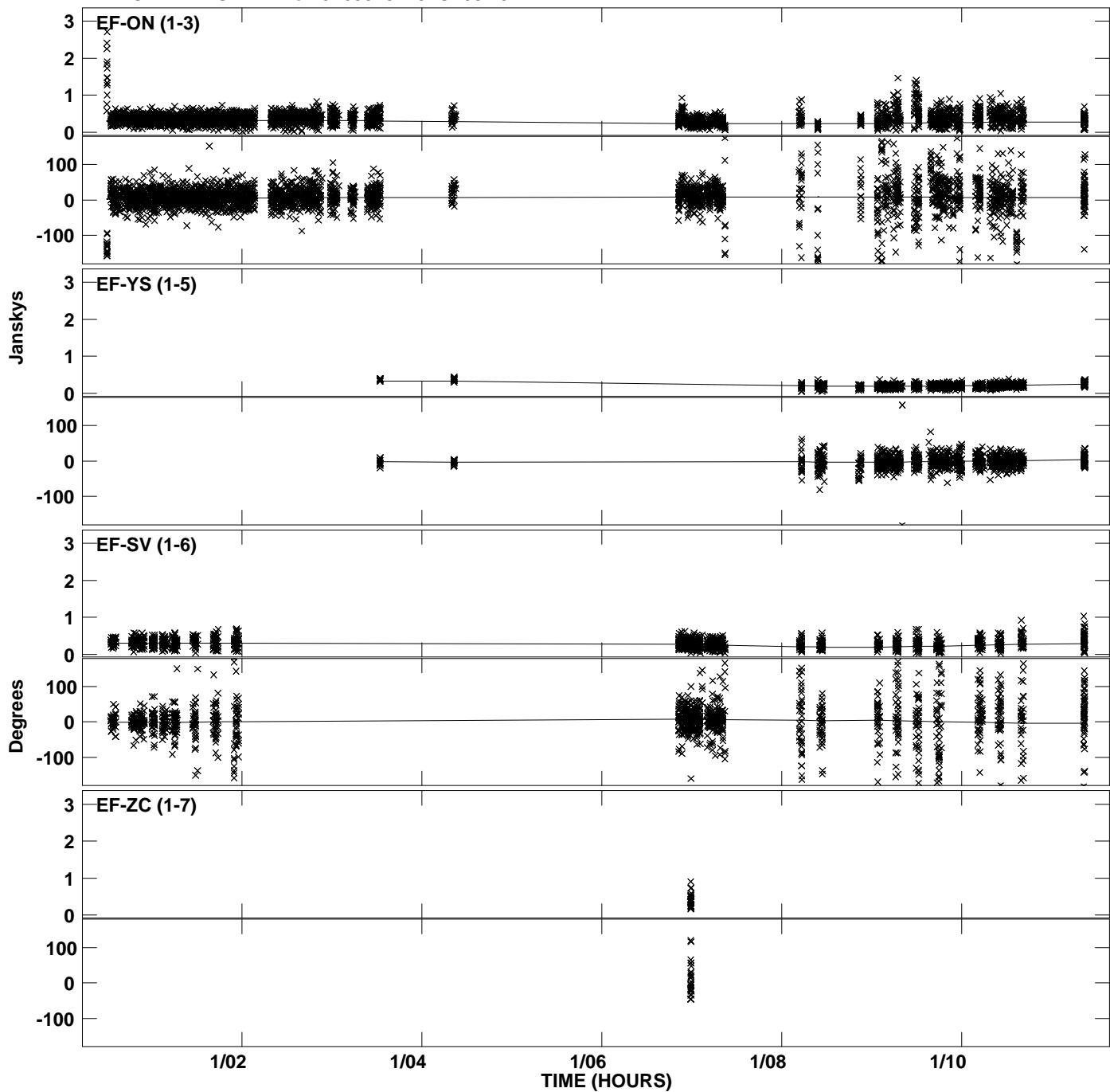
Plot file version 11 created 21-MAY-2012 19:13:17
Amplitude and Phase vs Time for J1638+5720.MULTI.1 CL # 3
IF 6 CHAN 1 STK LL of J1638+5720.ICL001.3



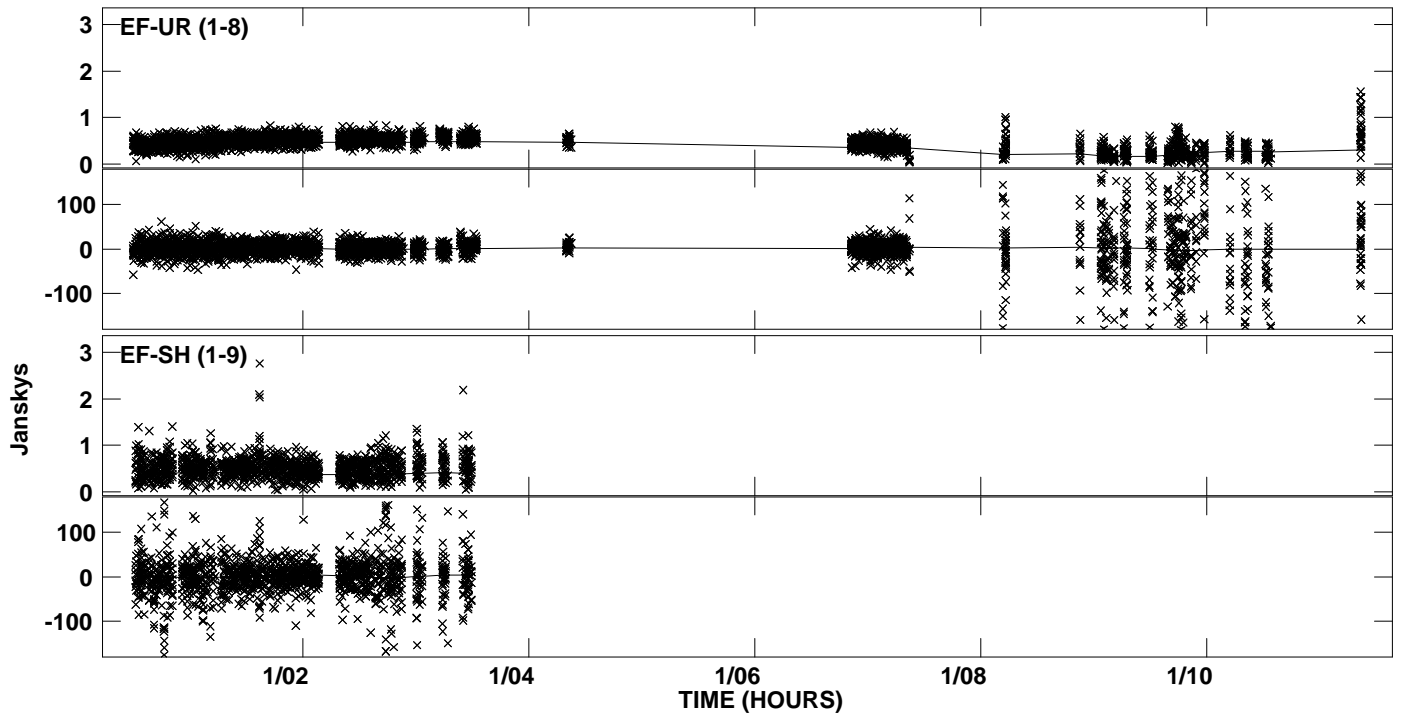
PLot file version 12 created 21-MAY-2012 19:13:17
Amplitude and Phase vs Time for J1638+5720.MULTI.1 CL # 3
IF 6 CHAN 1 STK LL of J1638+5720.ICL001.3



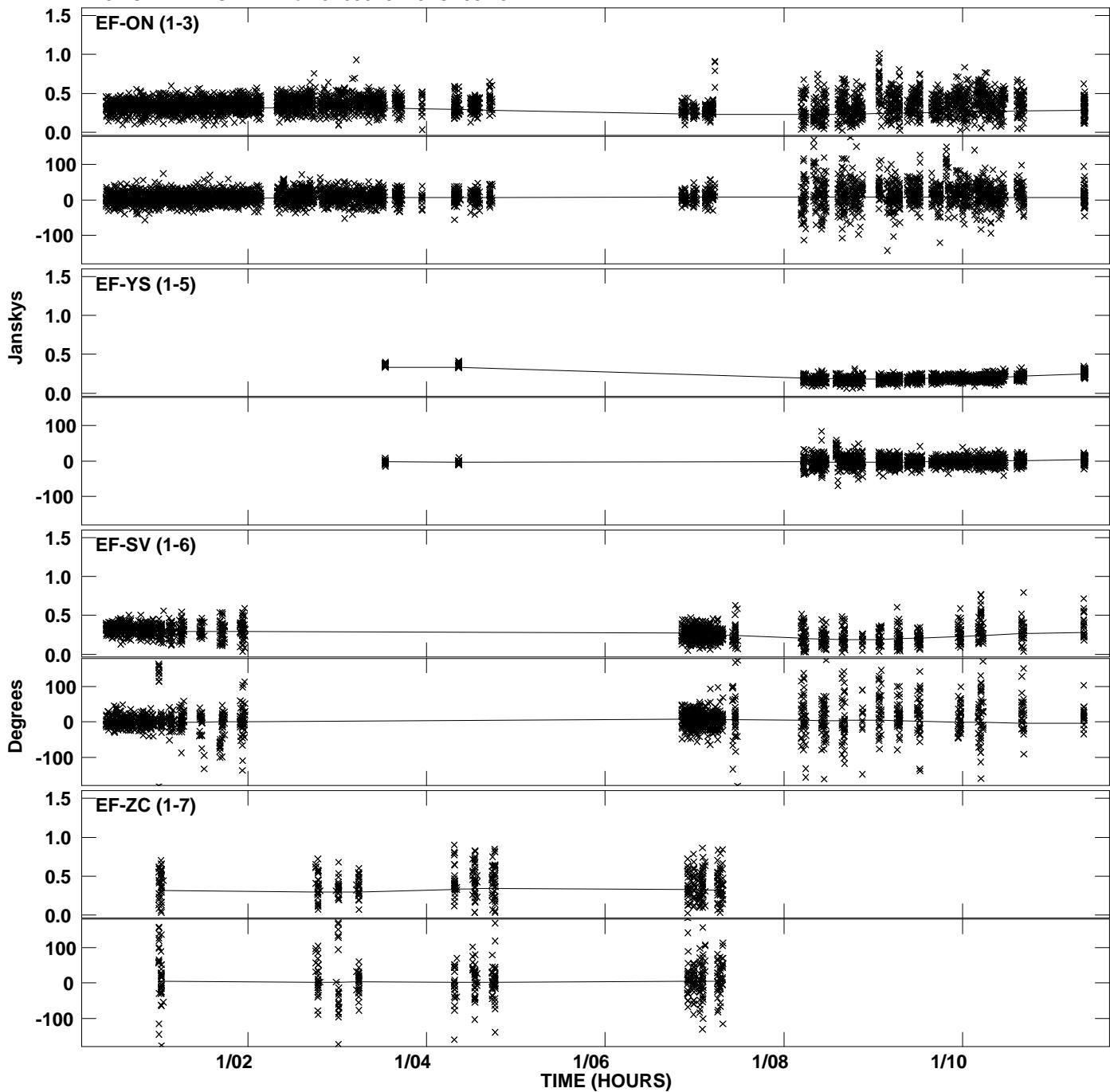
Plot file version 13 created 21-MAY-2012 19:13:39
Amplitude and Phase vs Time for J1638+5720.MULTI.1 CL # 3
IF 7 CHAN 1 STK LL of J1638+5720.ICL001.3



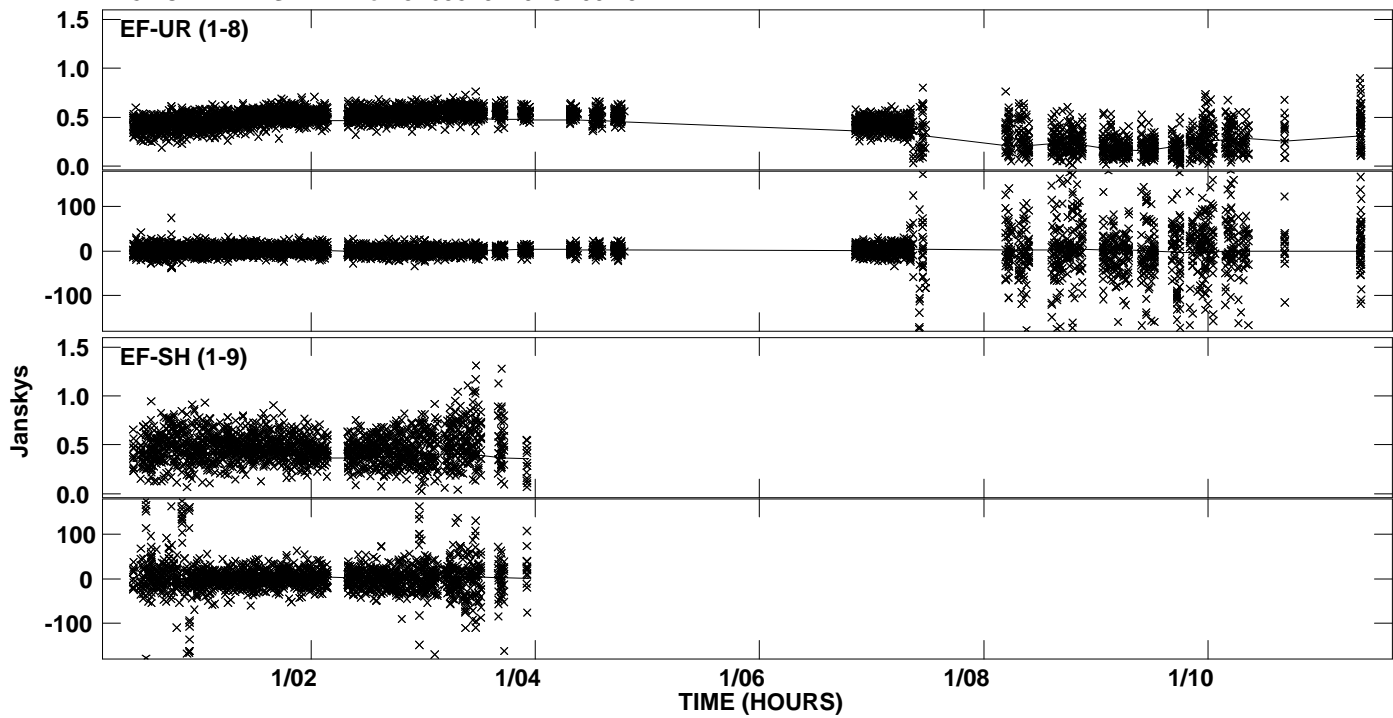
PLot file version 14 created 21-MAY-2012 19:13:39
Amplitude andPhase vs Time for J1638+5720.MULTI.1 CL # 3
IF 7 CHAN 1 STK LL of J1638+5720.ICL001.3



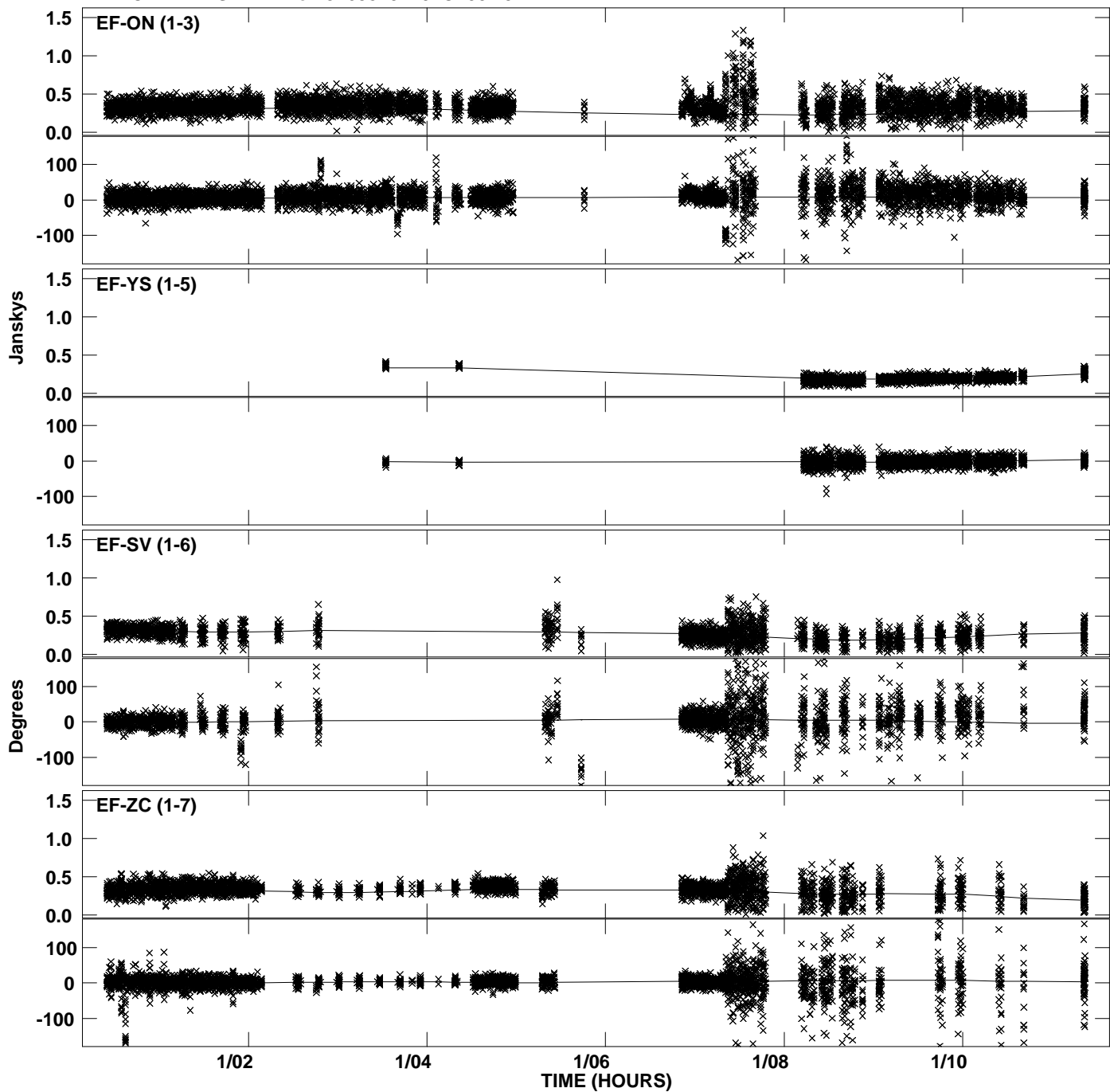
Plot file version 15 created 21-MAY-2012 19:14:01
Amplitude and Phase vs Time for J1638+5720.MULTI.1 CL # 3
IF 8 CHAN 1 STK LL of J1638+5720.ICL001.3



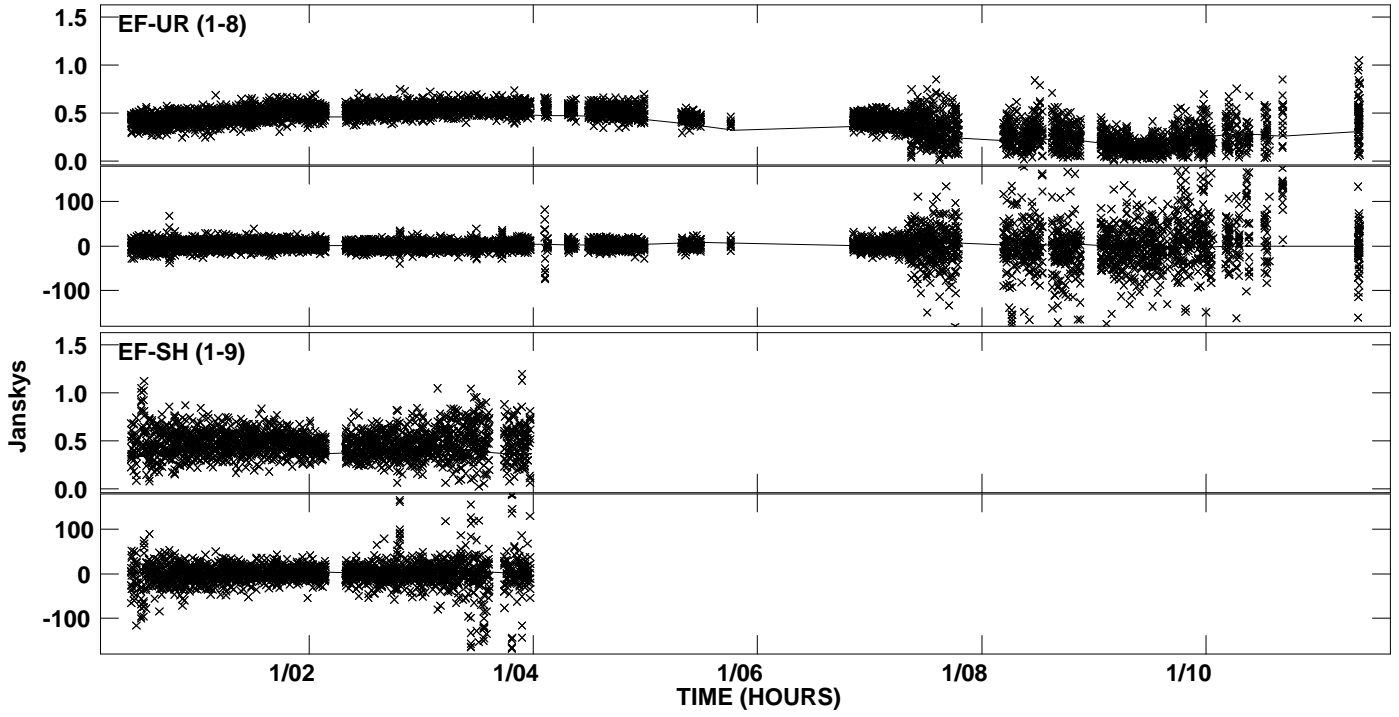
PLot file version 16 created 21-MAY-2012 19:14:01
Amplitude andPhase vs Time for J1638+5720.MULTI.1 CL # 3
IF 8 CHAN 1 STK LL of J1638+5720.ICL001.3



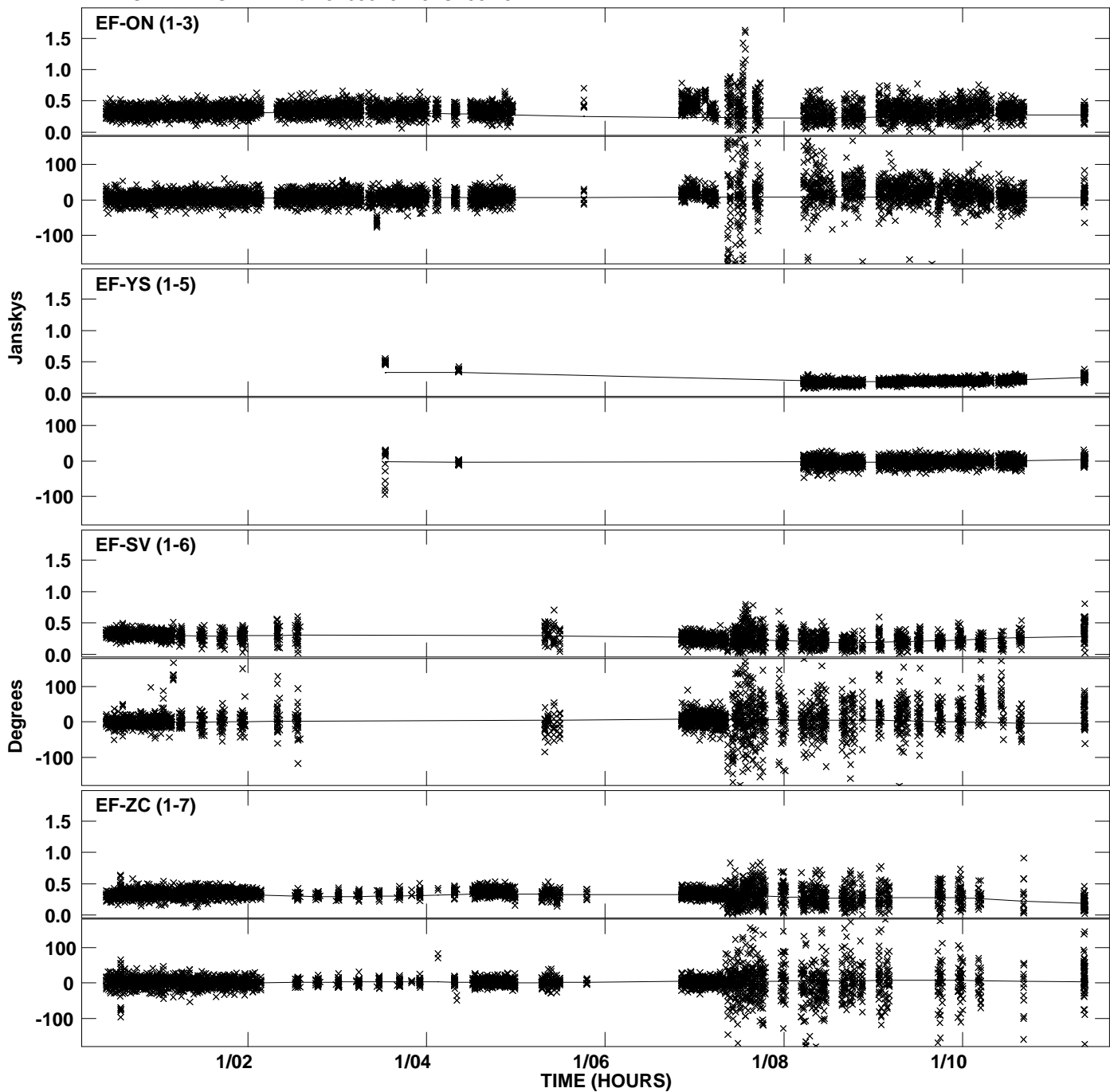
Plot file version 17 created 21-MAY-2012 19:14:24
Amplitude and Phase vs Time for J1638+5720.MULTI.1 CL # 3
IF 1 CHAN 1 STK RR of J1638+5720.ICL001.3



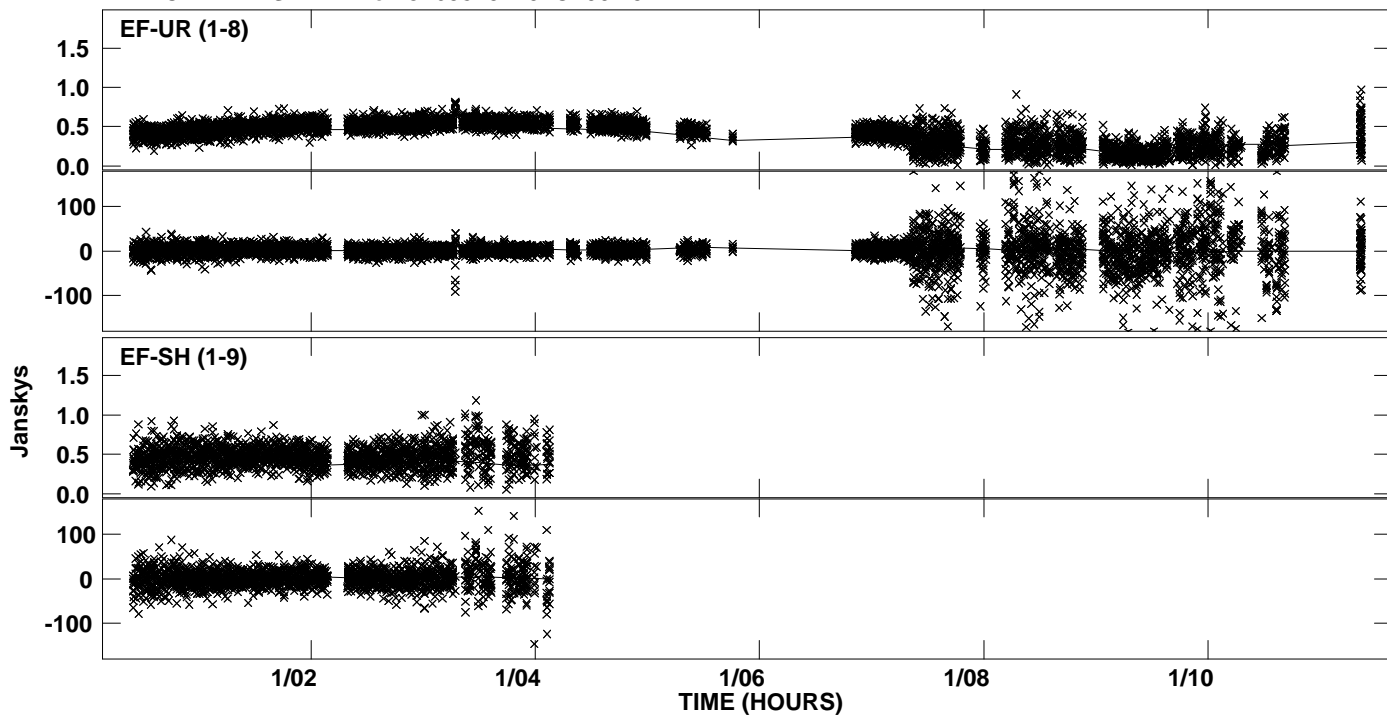
Plot file version 18 created 21-MAY-2012 19:14:26
Amplitude and Phase vs Time for J1638+5720.MULTI.1 CL # 3
IF 1 CHAN 1 STK RR of J1638+5720.ICL001.3



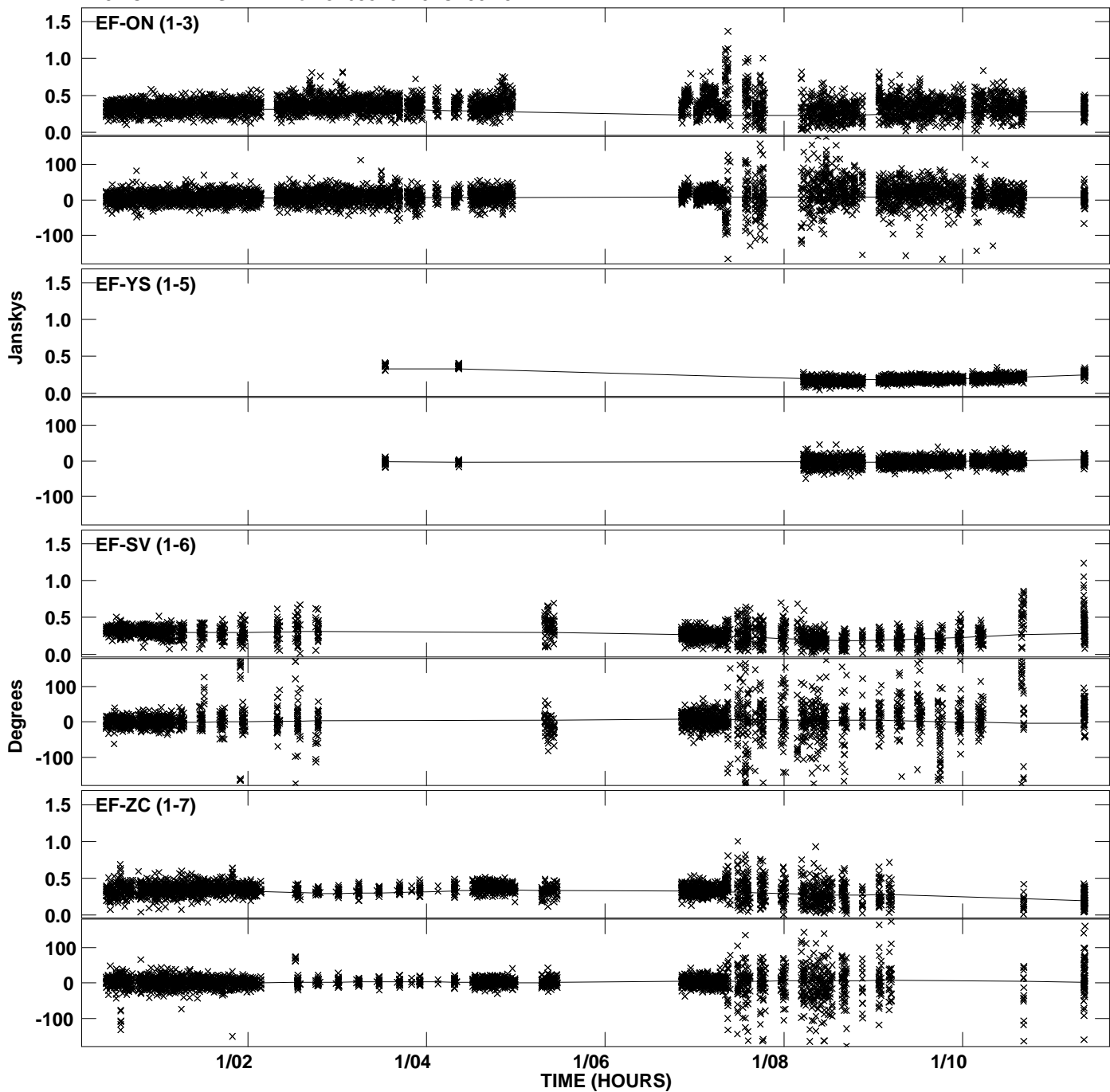
Plot file version 19 created 21-MAY-2012 19:14:50
Amplitude and Phase vs Time for J1638+5720.MULTI.1 CL # 3
IF 2 CHAN 1 STK RR of J1638+5720.ICL001.3



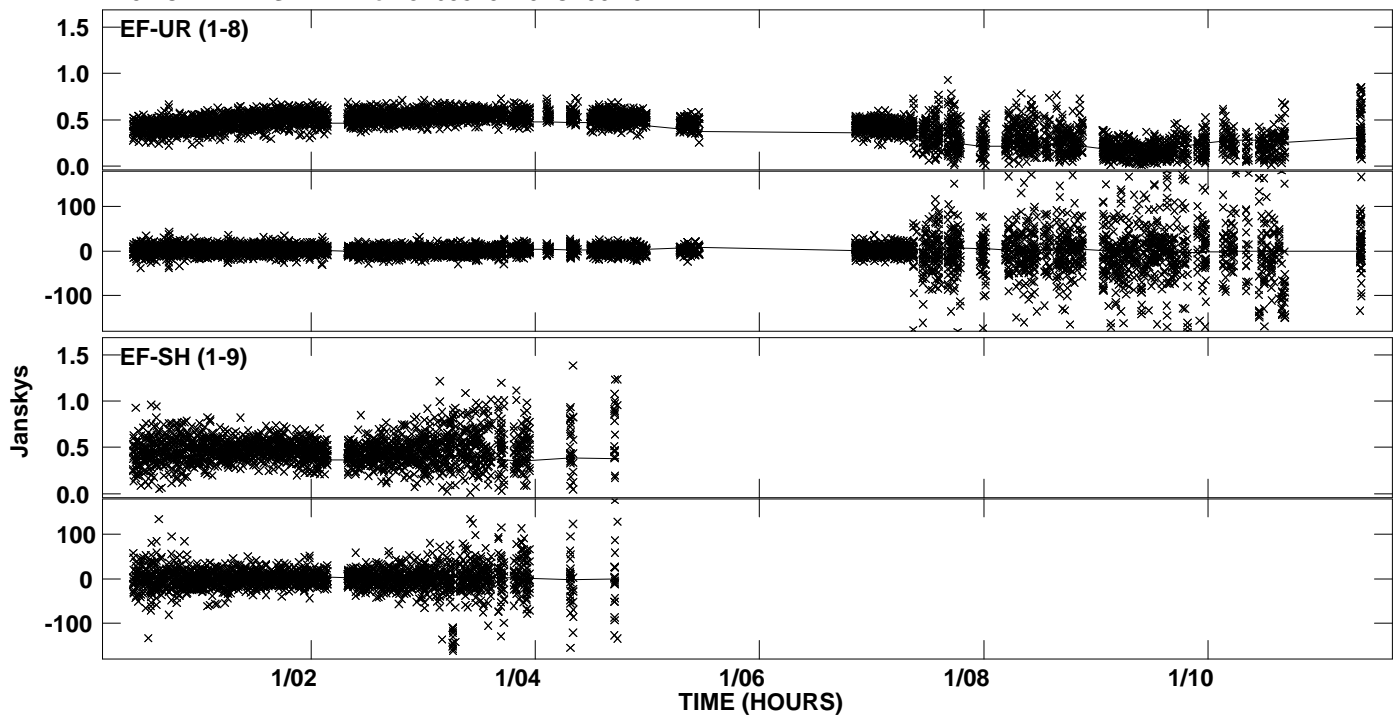
Plot file version 20 created 21-MAY-2012 19:14:50
Amplitude andPhase vs Time for J1638+5720.MULTI.1 CL # 3
IF 2 CHAN 1 STK RR of J1638+5720.ICL001.3



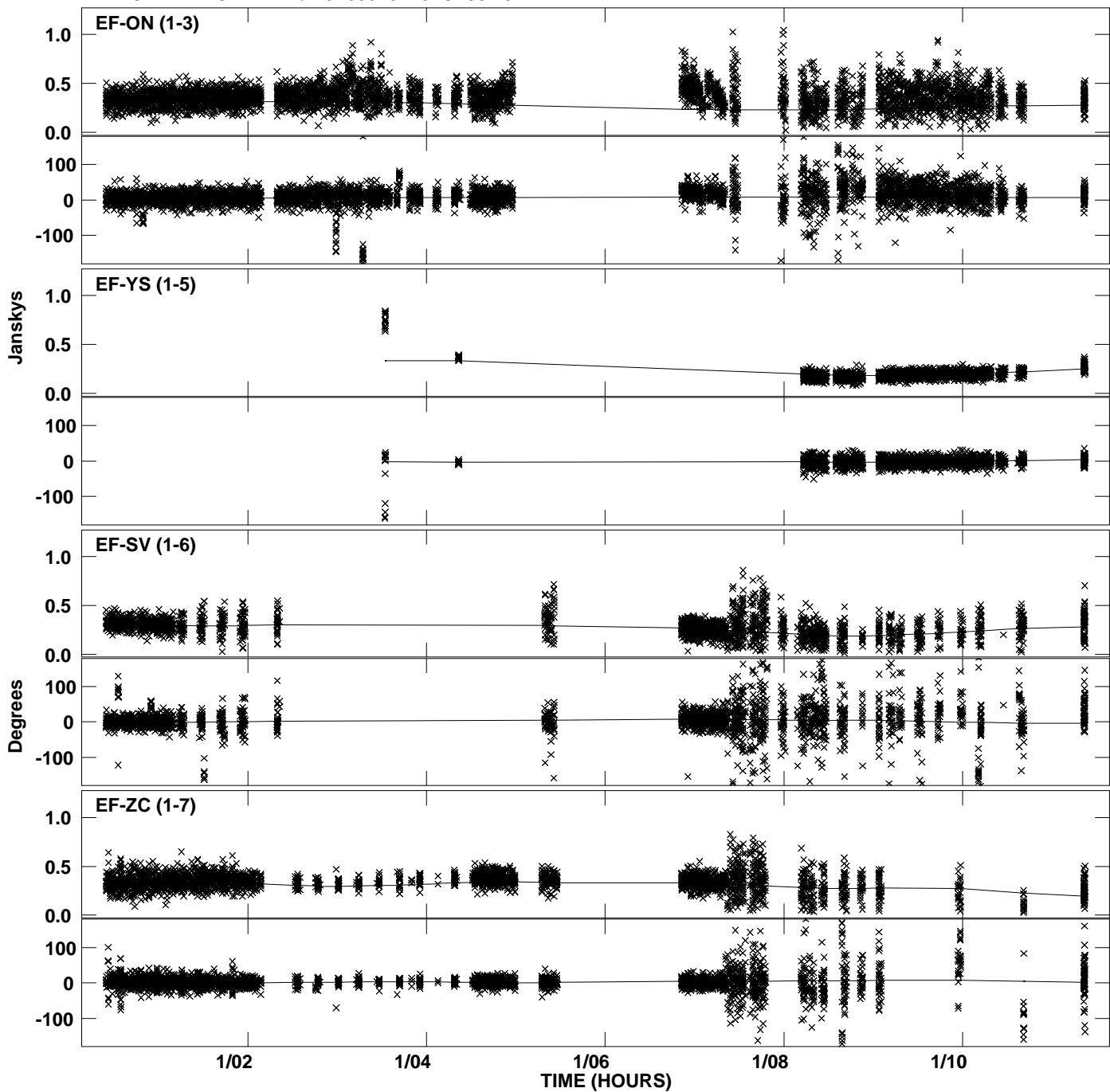
Plot file version 21 created 21-MAY-2012 19:15:12
Amplitude and Phase vs Time for J1638+5720.MULTI.1 CL # 3
IF 3 CHAN 1 STK RR of J1638+5720.ICL001.3



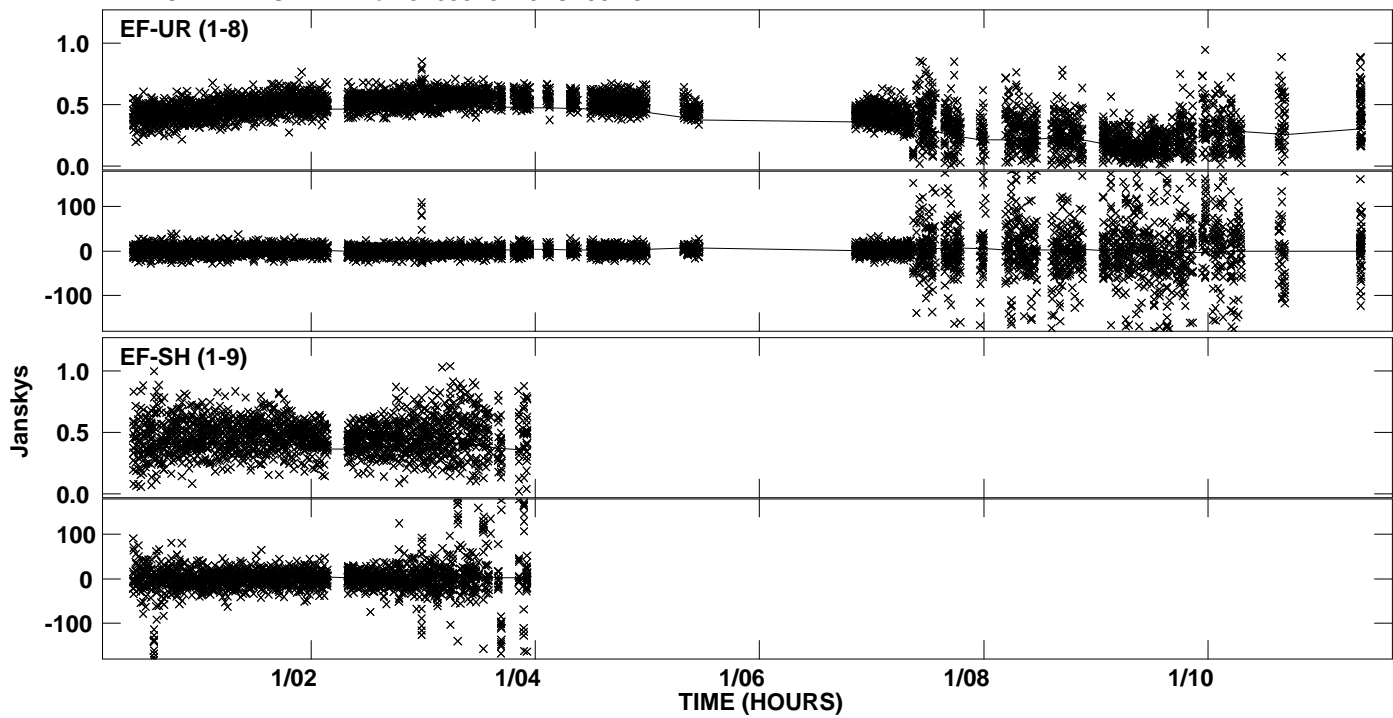
Plot file version 22 created 21-MAY-2012 19:15:12
Amplitude and Phase vs Time for J1638+5720.MULTI.1 CL # 3
IF 3 CHAN 1 STK RR of J1638+5720.ICL001.3



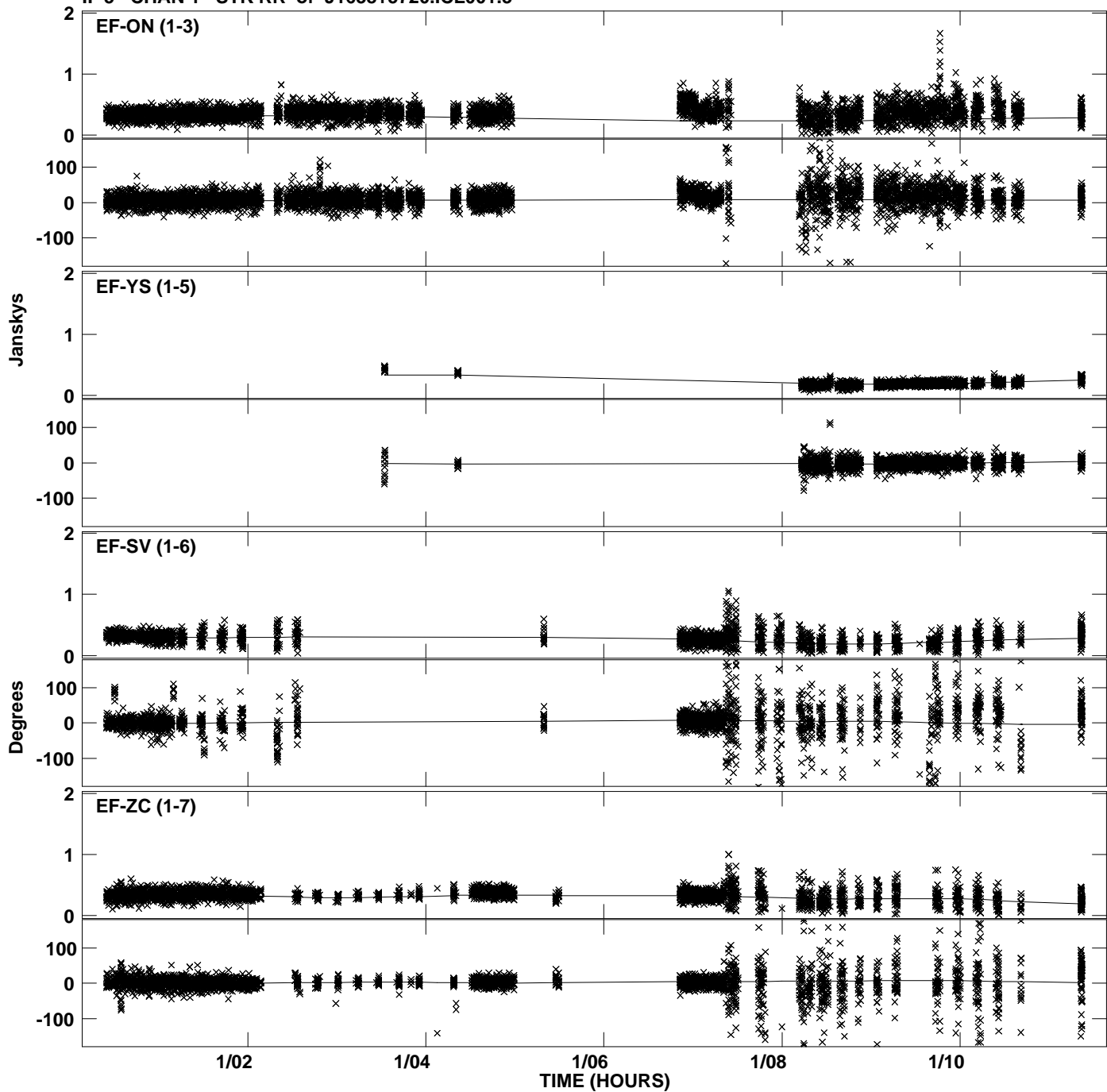
Plot file version 23 created 21-MAY-2012 19:15:36
Amplitude and Phase vs Time for J1638+5720.MULTI.1 CL # 3
IF 4 CHAN 1 STK RR of J1638+5720.ICL001.3



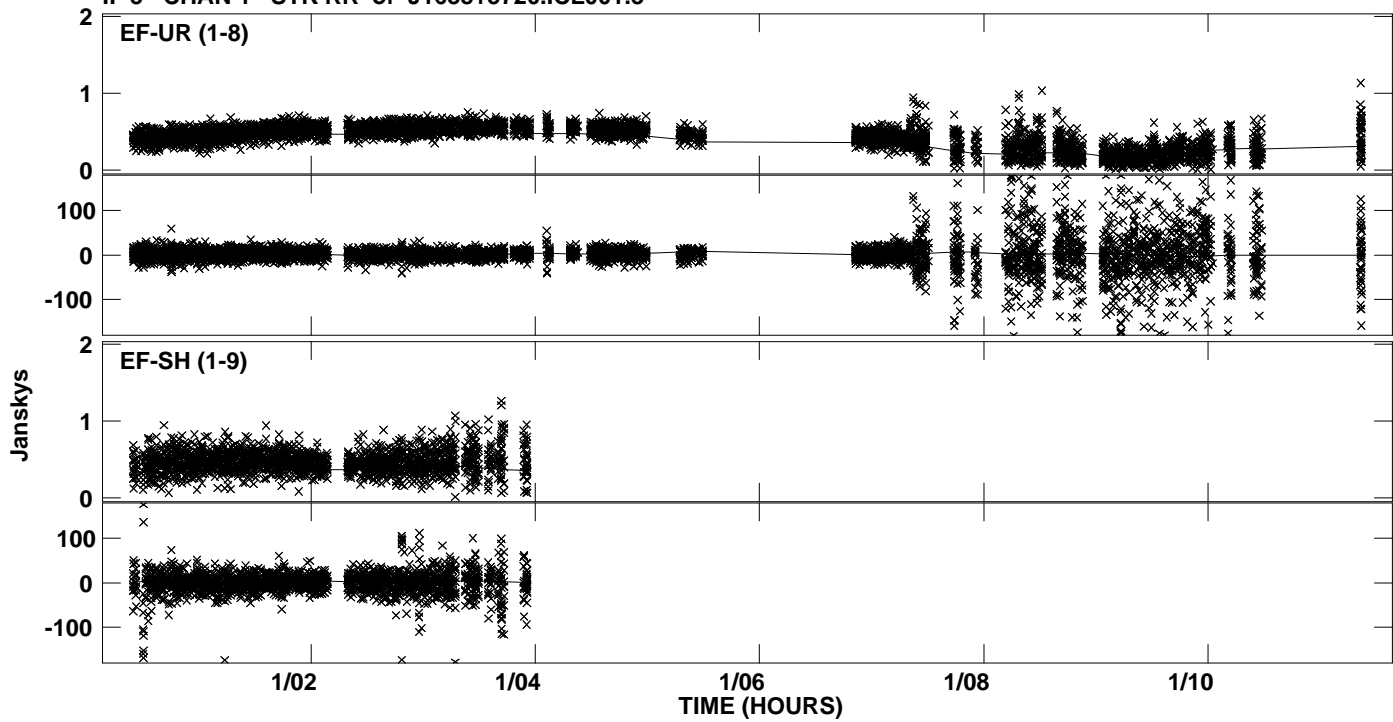
Plot file version 24 created 21-MAY-2012 19:15:36
Amplitude and Phase vs Time for J1638+5720.MULTI.1 CL # 3
IF 4 CHAN 1 STK RR of J1638+5720.ICL001.3



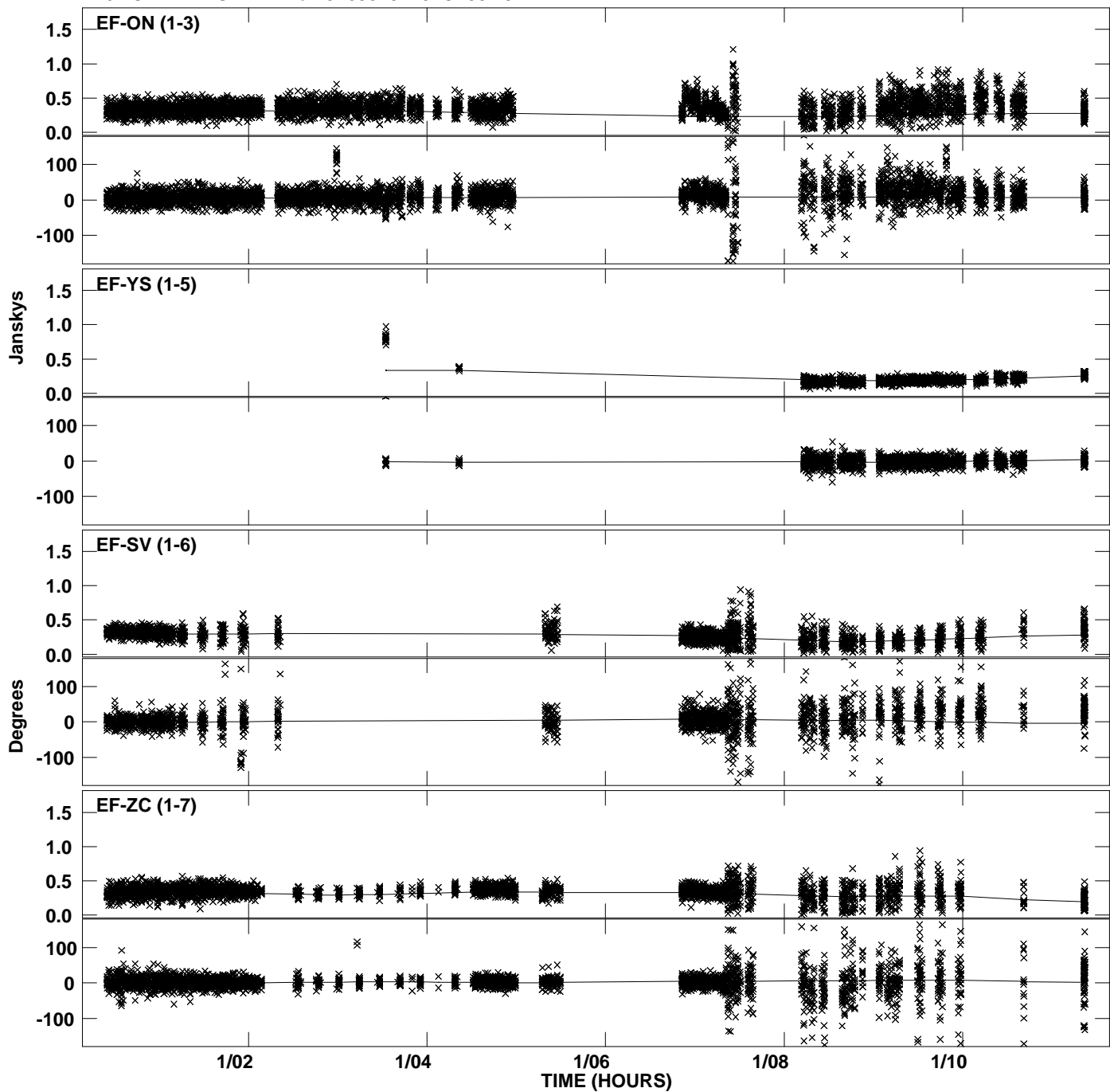
Plot file version 25 created 21-MAY-2012 19:15:55
Amplitude and Phase vs Time for J1638+5720.MULTI.1 CL # 3
IF 5 CHAN 1 STK RR of J1638+5720.ICL001.3



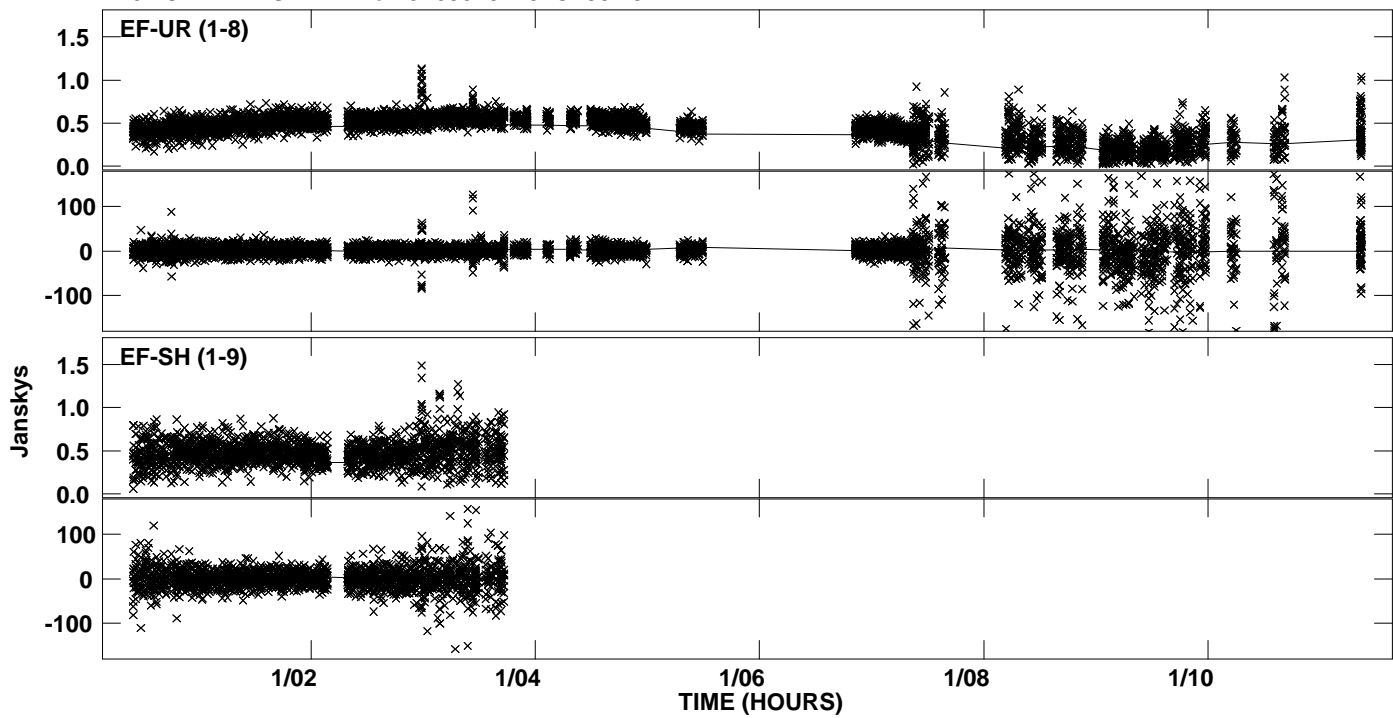
PLot file version 26 created 21-MAY-2012 19:15:56
Amplitude andPhase vs Time for J1638+5720.MULTI.1 CL # 3
IF 5 CHAN 1 STK RR of J1638+5720.ICL001.3



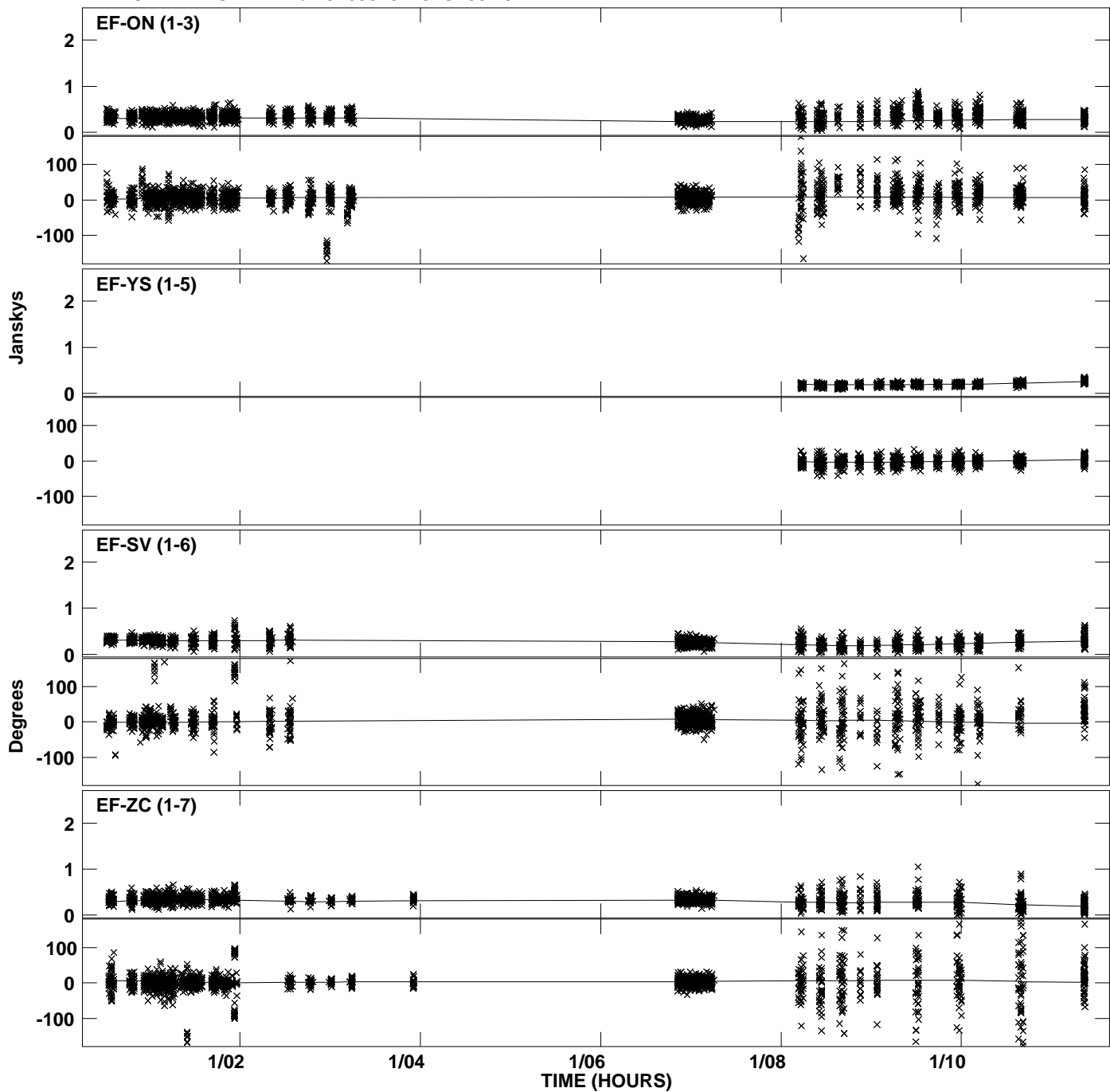
PLot file version 27 created 21-MAY-2012 19:16:22
Amplitude andPhase vs Time for J1638+5720.MULTI.1 CL # 3
IF 6 CHAN 1 STK RR of J1638+5720.ICL001.3



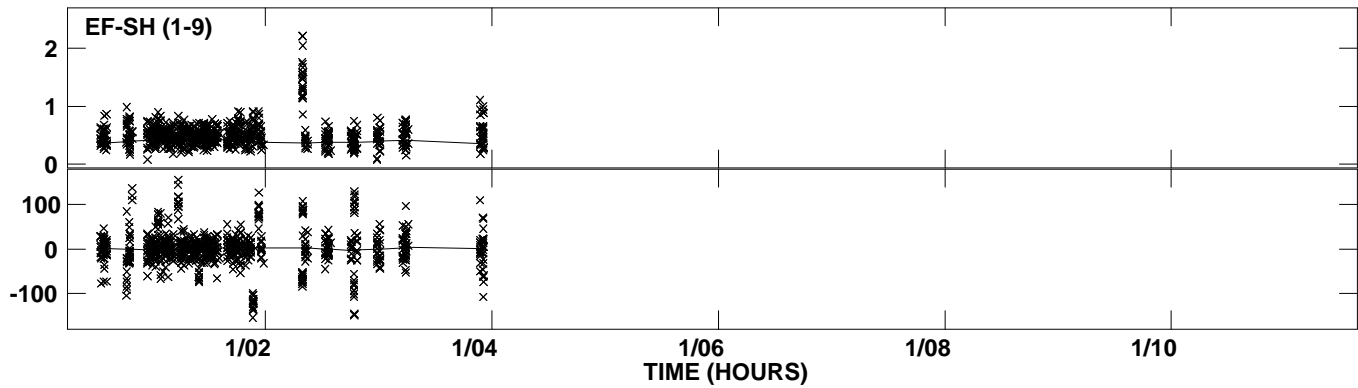
Plot file version 28 created 21-MAY-2012 19:16:22
Amplitude andPhase vs Time for J1638+5720.MULTI.1 CL # 3
IF 6 CHAN 1 STK RR of J1638+5720.ICL001.3



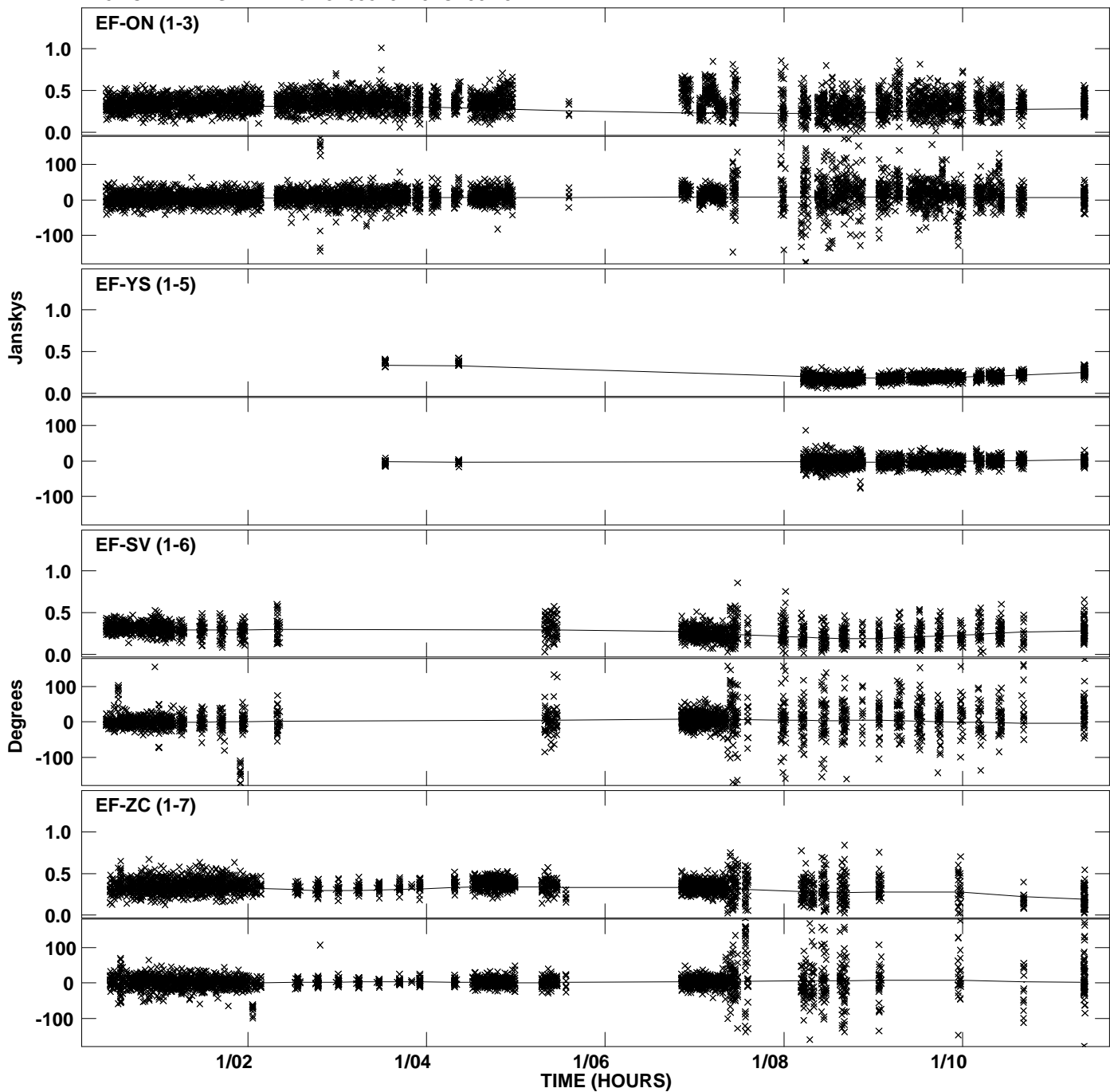
Plot file version 29 created 21-MAY-2012 19:16:45
Amplitude andPhase vs Time for J1638+5720.MULTI.1 CL # 3
IF 7 CHAN 1 STK RR of J1638+5720.ICL001.3



Plot file version 30 created 21-MAY-2012 19:16:45
Amplitude and Phase vs Time for J1638+5720.MULTI.1 CL # 3
IF 7 CHAN 1 STK RR of J1638+5720.ICL001.3



Plot file version 31 created 21-MAY-2012 19:17:07
Amplitude and Phase vs Time for J1638+5720.MULTI.1 CL # 3
IF 8 CHAN 1 STK RR of J1638+5720.ICL001.3



Plot file version 32 created 21-MAY-2012 19:17:08
Amplitude and Phase vs Time for J1638+5720.MULTI.1 CL # 3
IF 8 CHAN 1 STK RR of J1638+5720.ICL001.3

