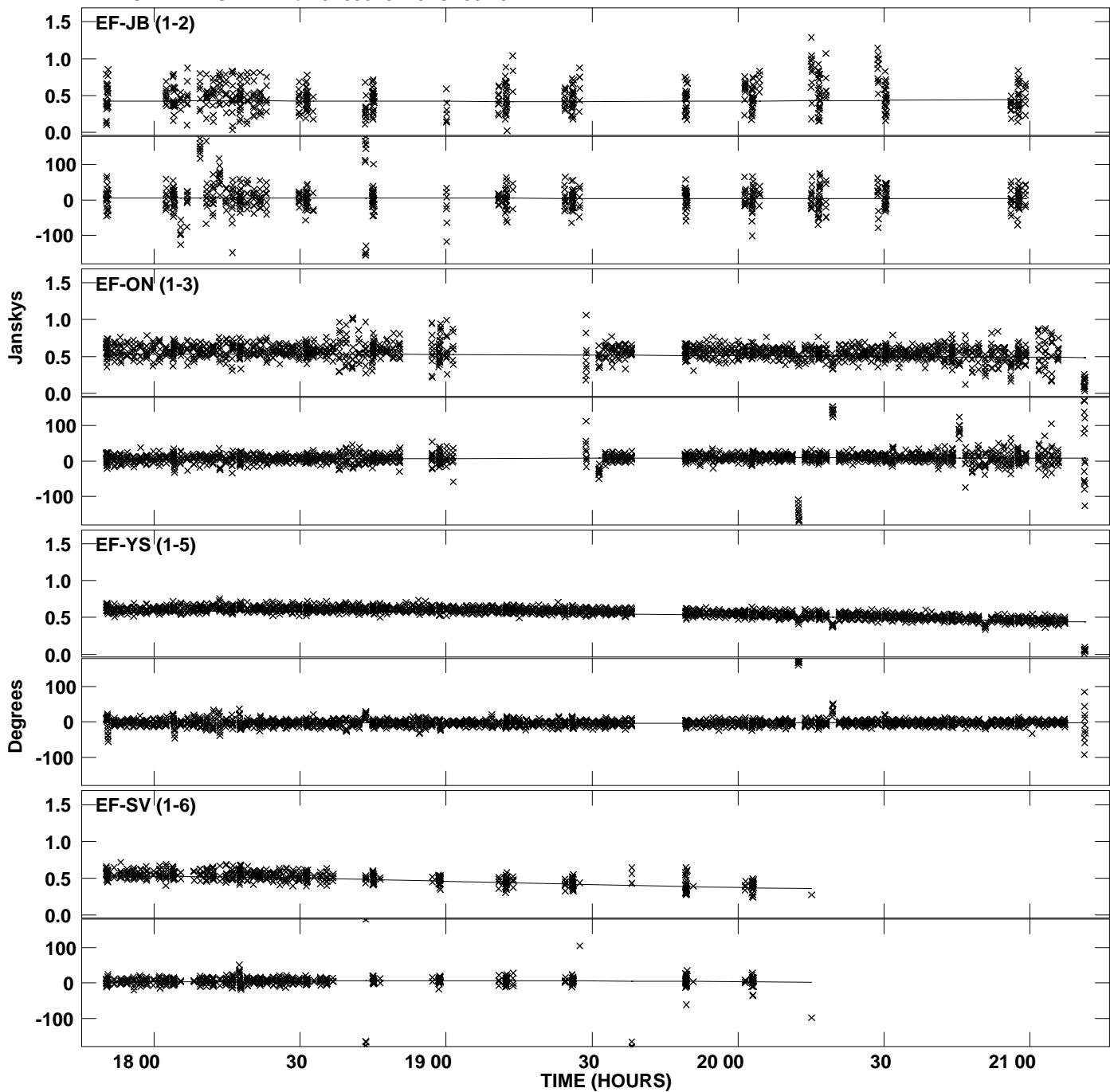
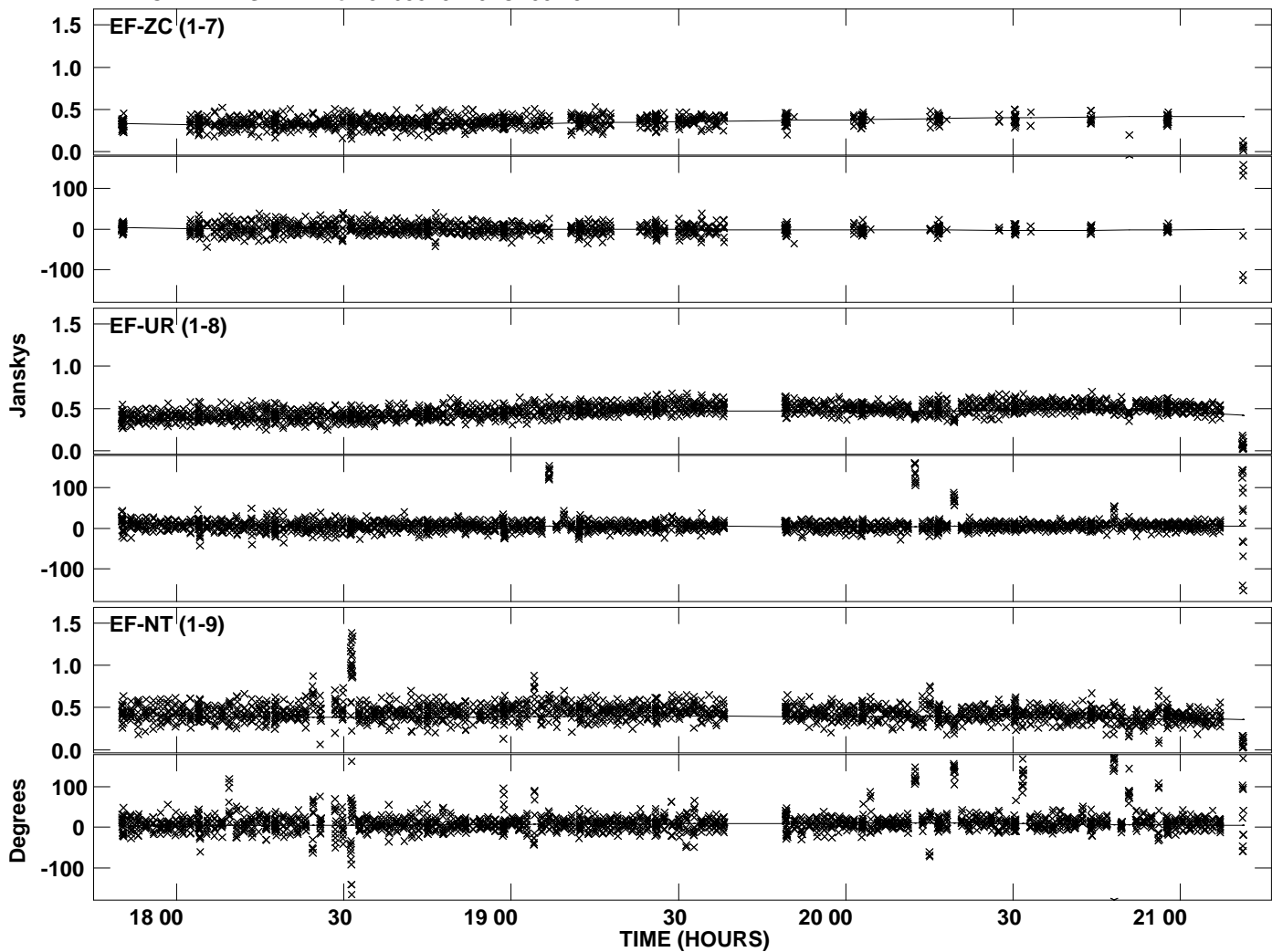


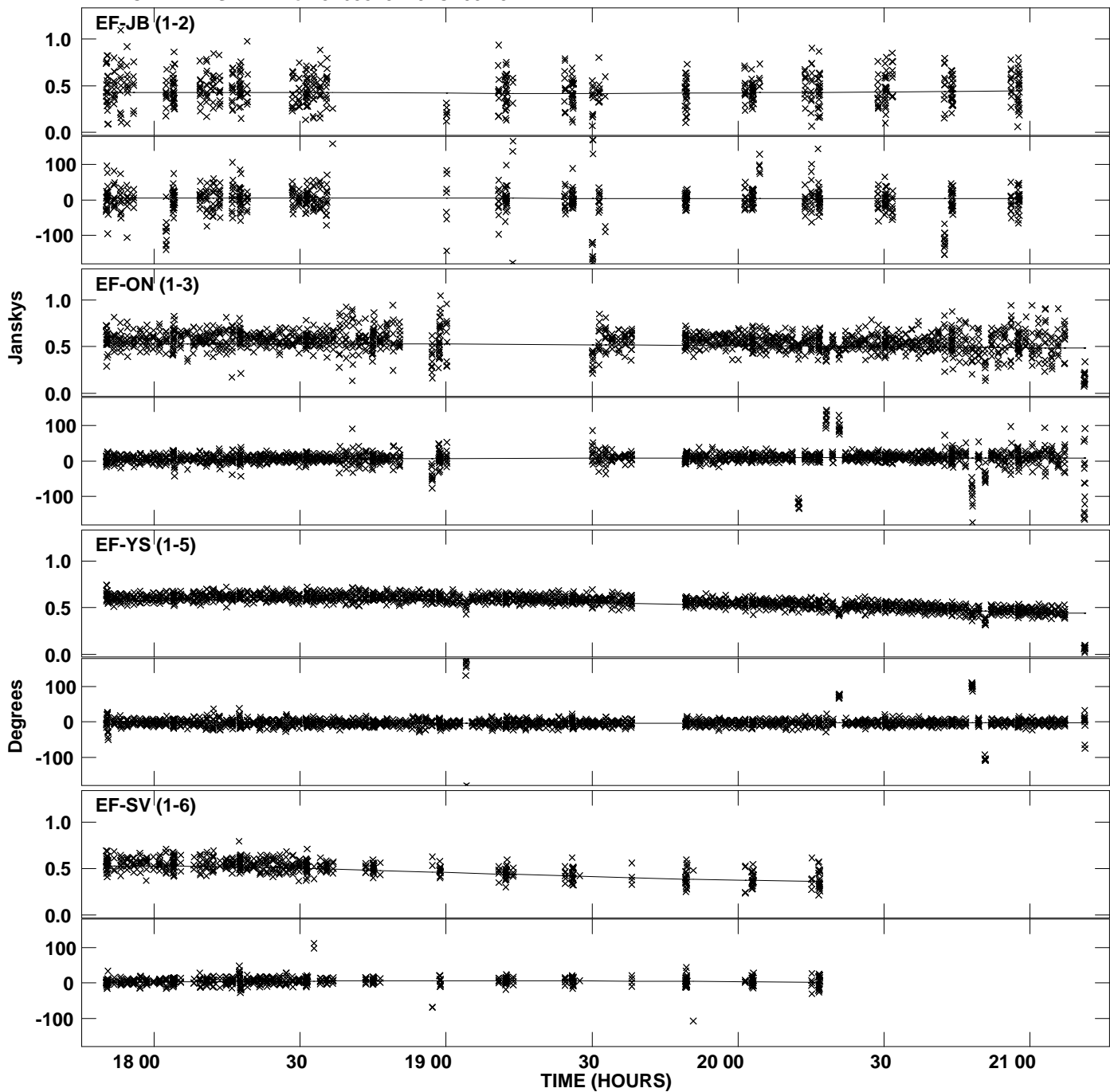
Plot file version 1 created 15-AUG-2012 16:37:28  
Amplitude and Phase vs Time for J1638+5720.MULTI.1 CL # 3  
IF 1 CHAN 1 STK LL of J1638+5720.ICL001.3



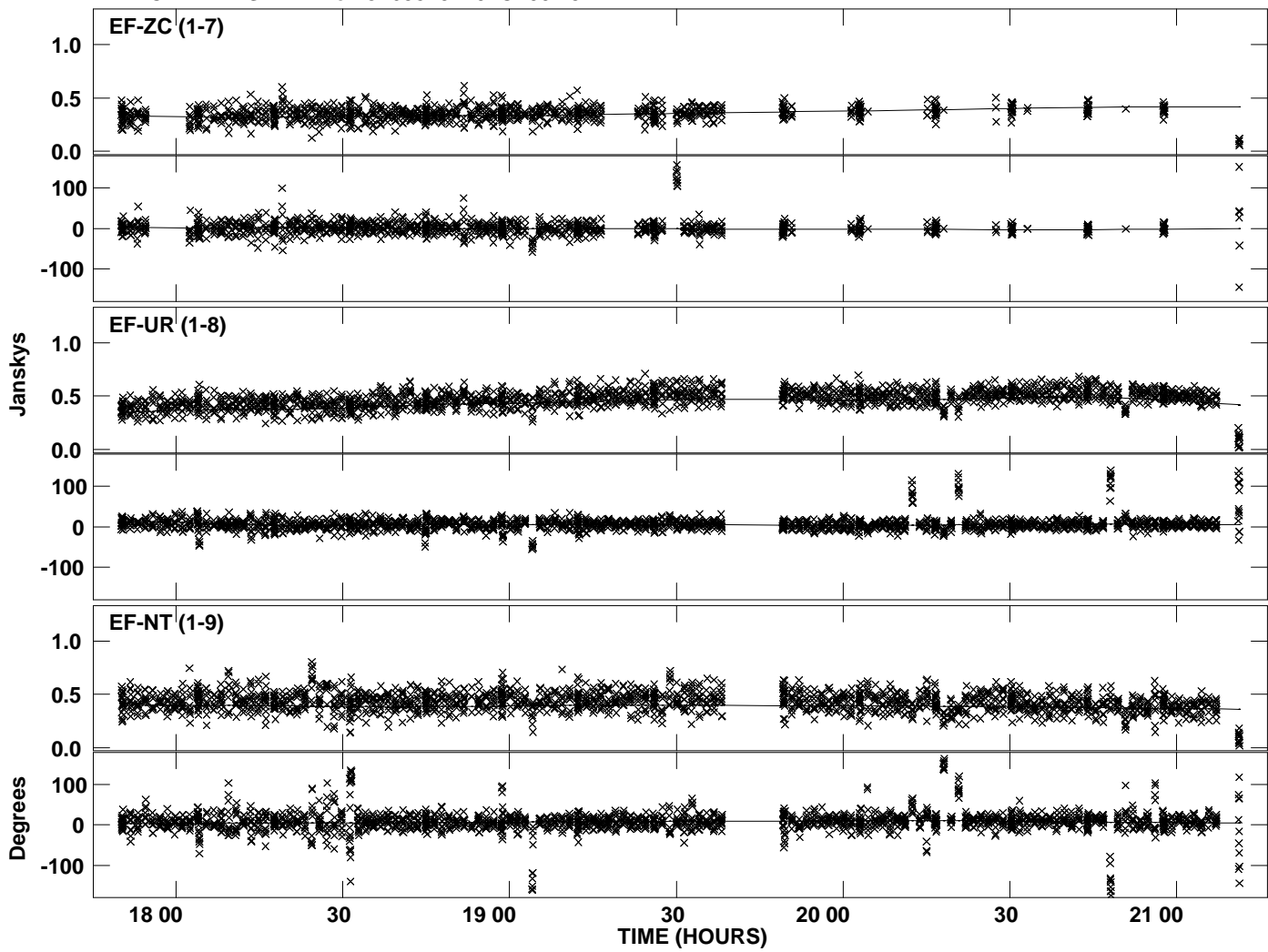
Plot file version 2 created 15-AUG-2012 16:37:28  
Amplitude and Phase vs Time for J1638+5720.MULTI.1 CL # 3  
IF 1 CHAN 1 STK LL of J1638+5720.ICL001.3



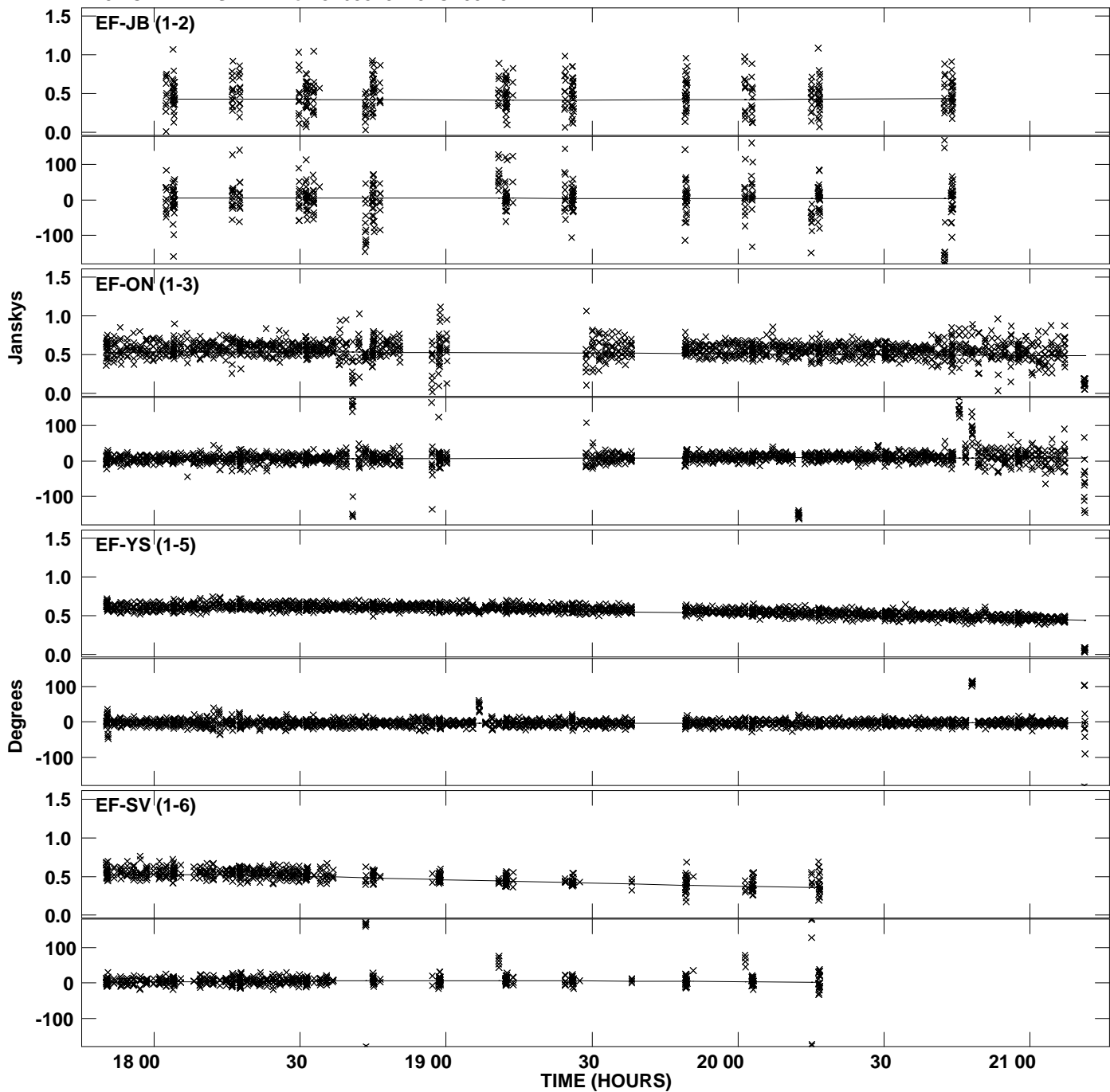
Plot file version 3 created 15-AUG-2012 16:37:34  
Amplitude and Phase vs Time for J1638+5720.MULTI.1 CL # 3  
IF 2 CHAN 1 STK LL of J1638+5720.ICL001.3



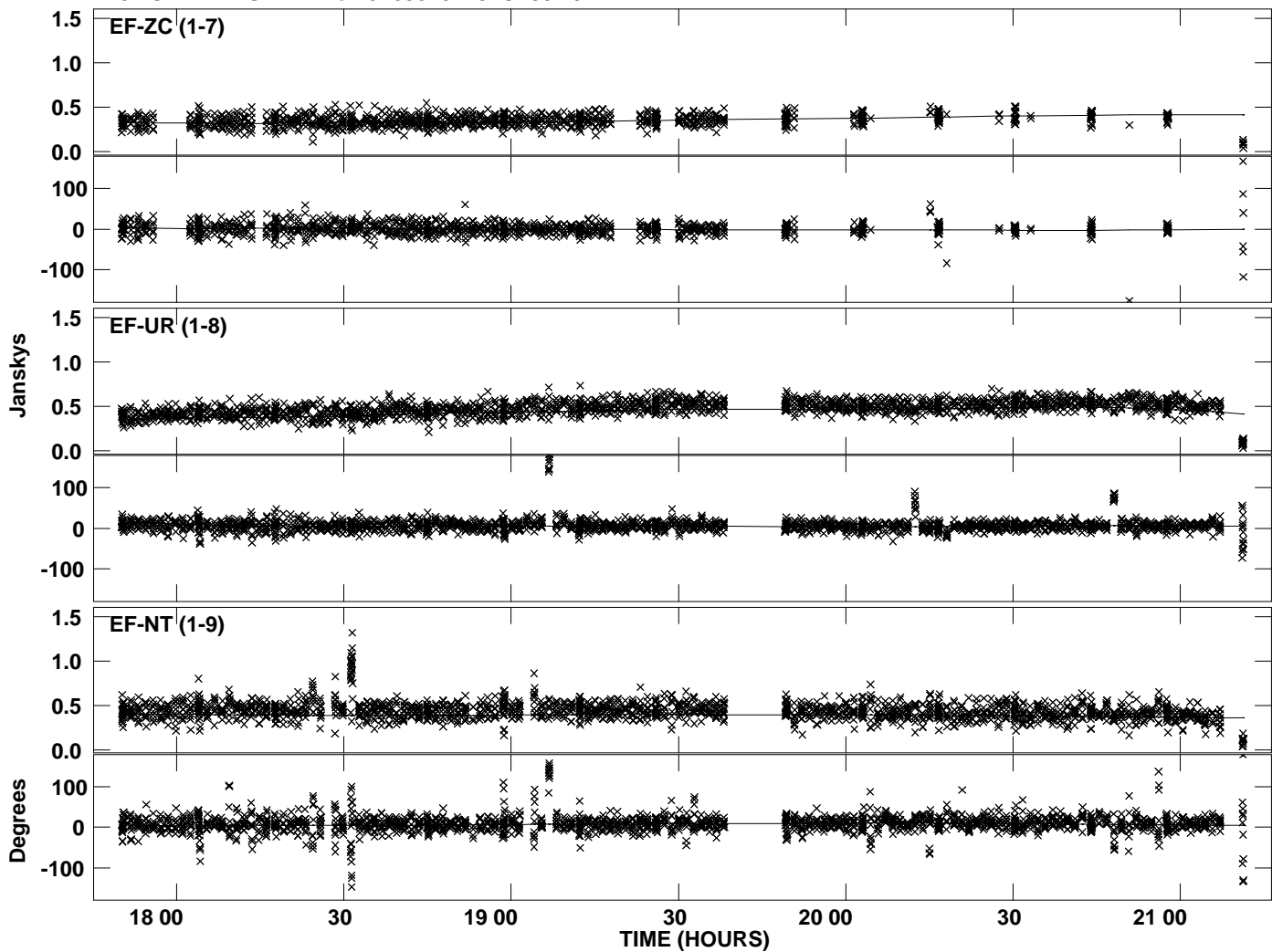
Plot file version 4 created 15-AUG-2012 16:37:34  
Amplitude and Phase vs Time for J1638+5720.MULTI.1 CL # 3  
IF 2 CHAN 1 STK LL of J1638+5720.ICL001.3



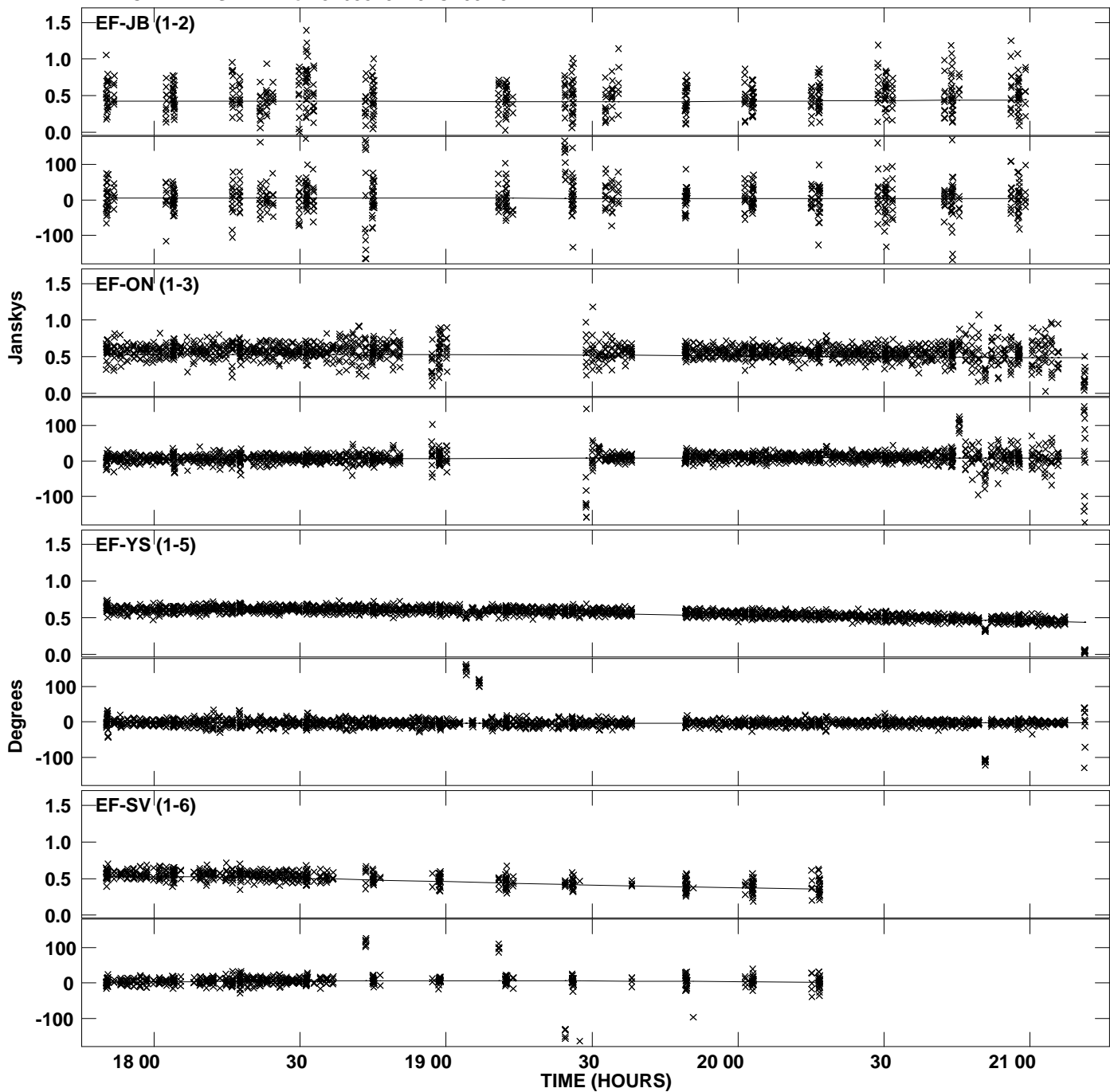
Plot file version 5 created 15-AUG-2012 16:37:40  
Amplitude and Phase vs Time for J1638+5720.MULTI.1 CL # 3  
IF 3 CHAN 1 STK LL of J1638+5720.ICL001.3



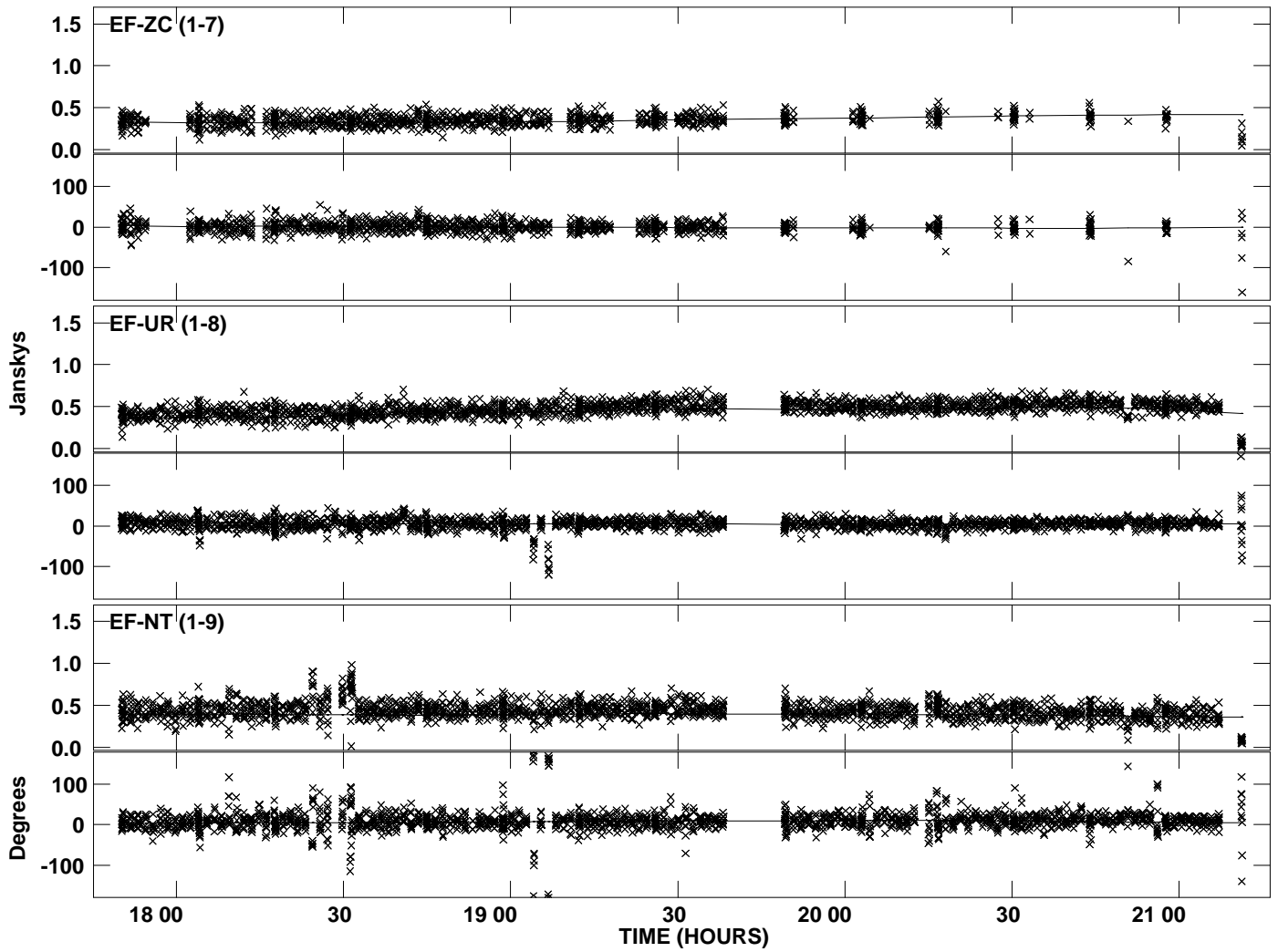
Plot file version 6 created 15-AUG-2012 16:37:40  
Amplitude and Phase vs Time for J1638+5720.MULTI.1 CL # 3  
IF 3 CHAN 1 STK LL of J1638+5720.ICL001.3



Plot file version 7 created 15-AUG-2012 16:37:45  
Amplitude and Phase vs Time for J1638+5720.MULTI.1 CL # 3  
IF 4 CHAN 1 STK LL of J1638+5720.ICL001.3

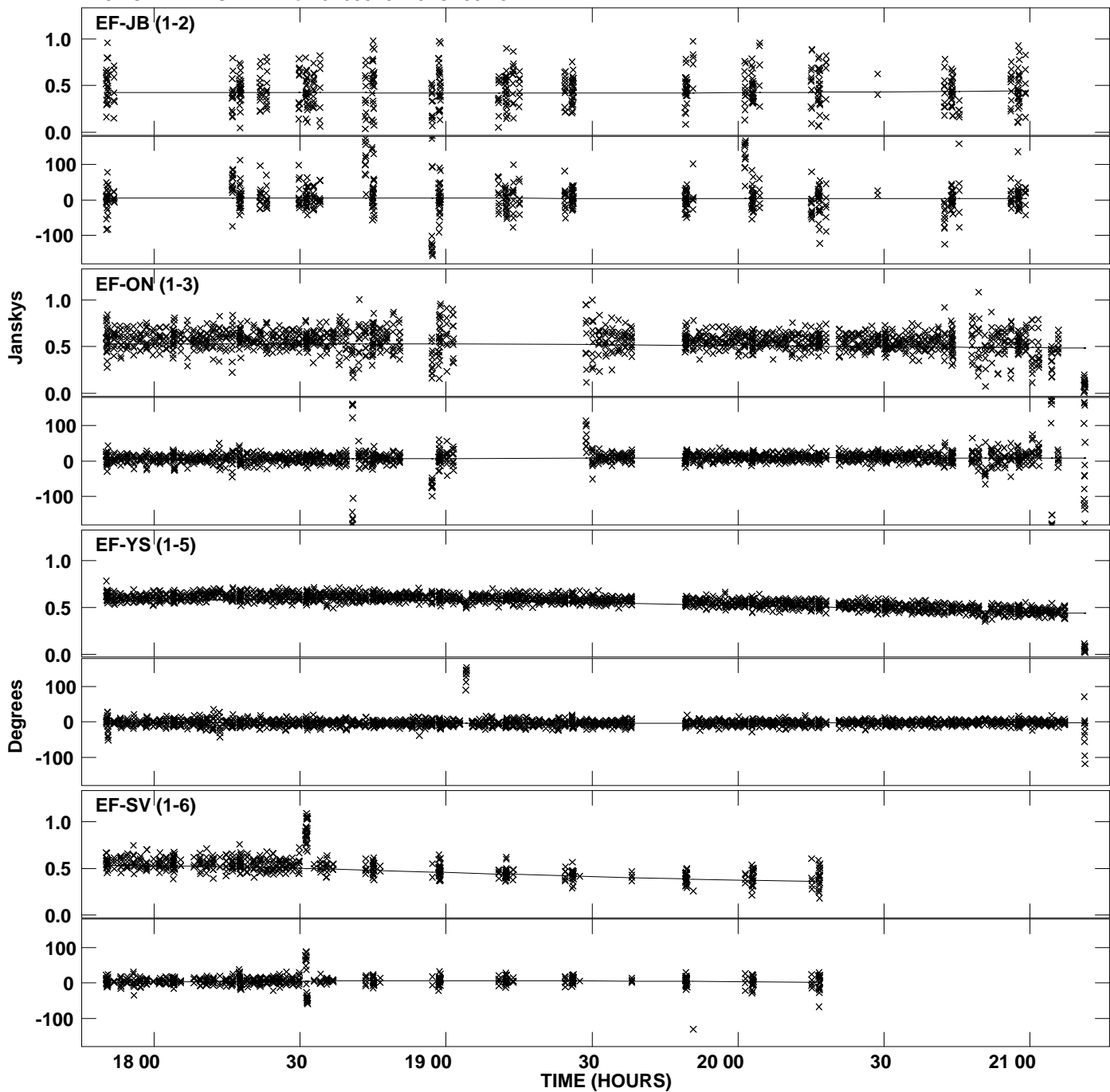


Plot file version 8 created 15-AUG-2012 16:37:45  
Amplitude and Phase vs Time for J1638+5720.MULTI.1 CL # 3  
IF 4 CHAN 1 STK LL of J1638+5720.ICL001.3

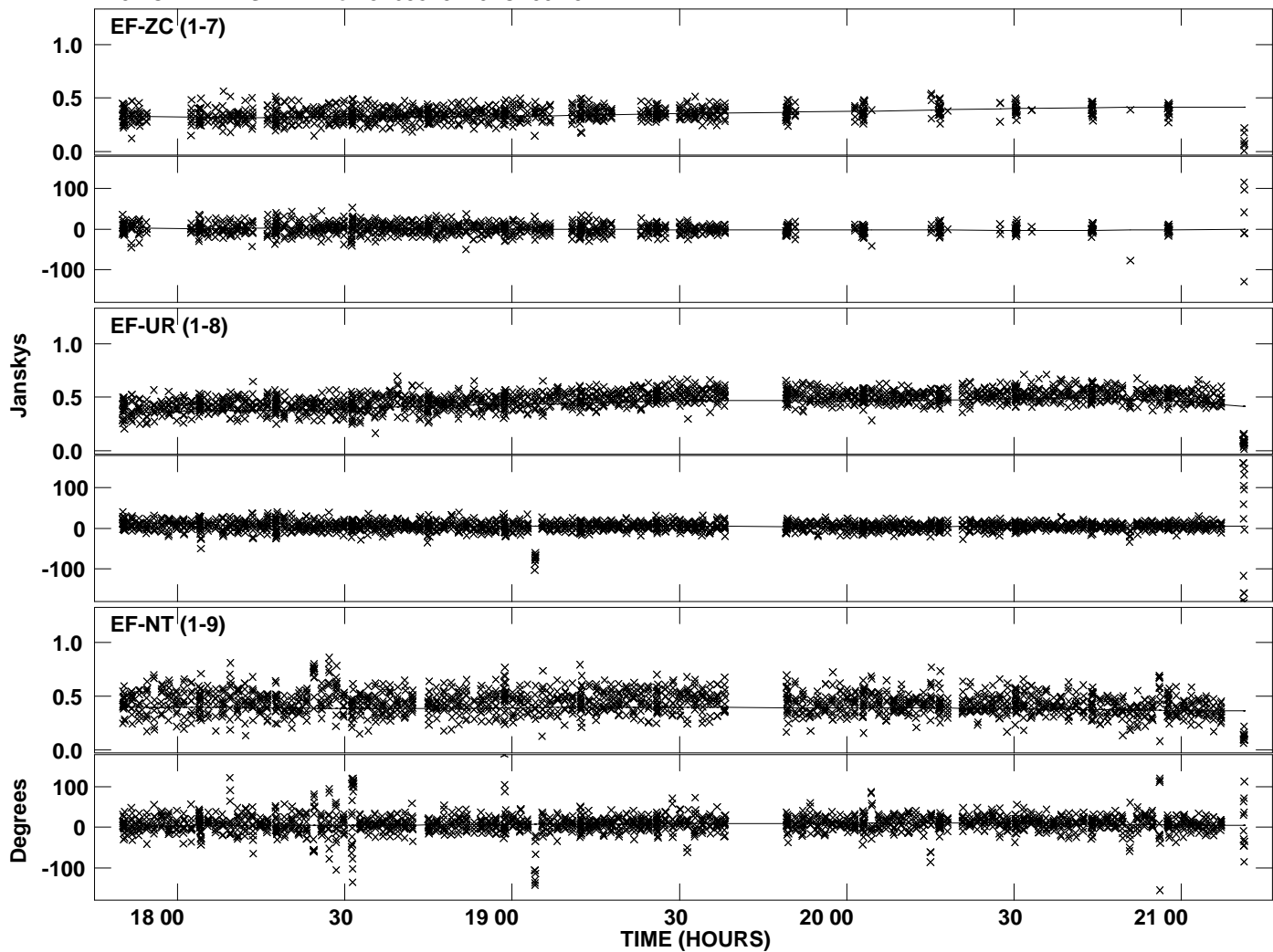




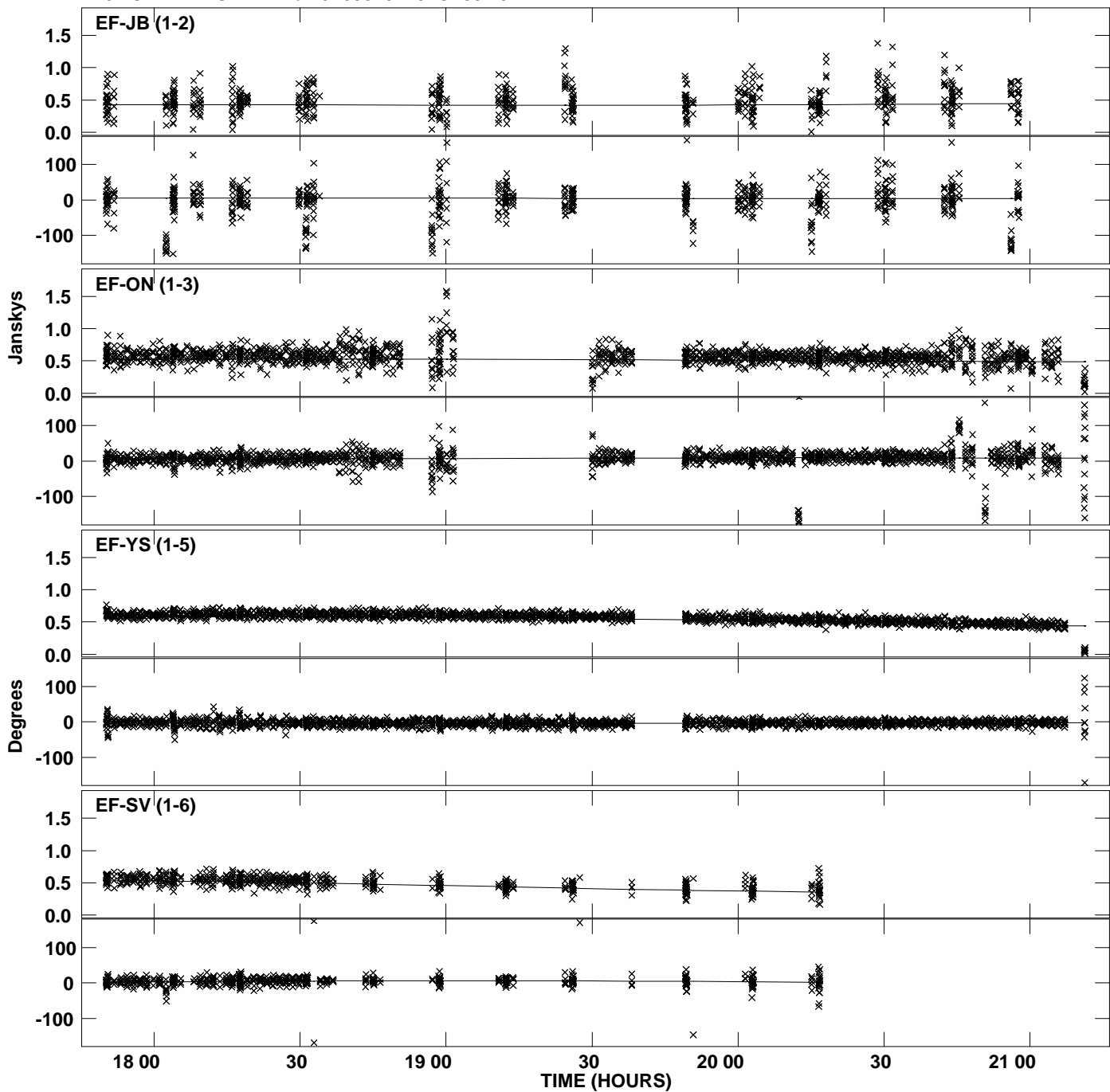
Plot file version 9 created 15-AUG-2012 16:37:51  
Amplitude and Phase vs Time for J1638+5720.MULTI.1 CL # 3  
IF 5 CHAN 1 STK LL of J1638+5720.ICL001.3



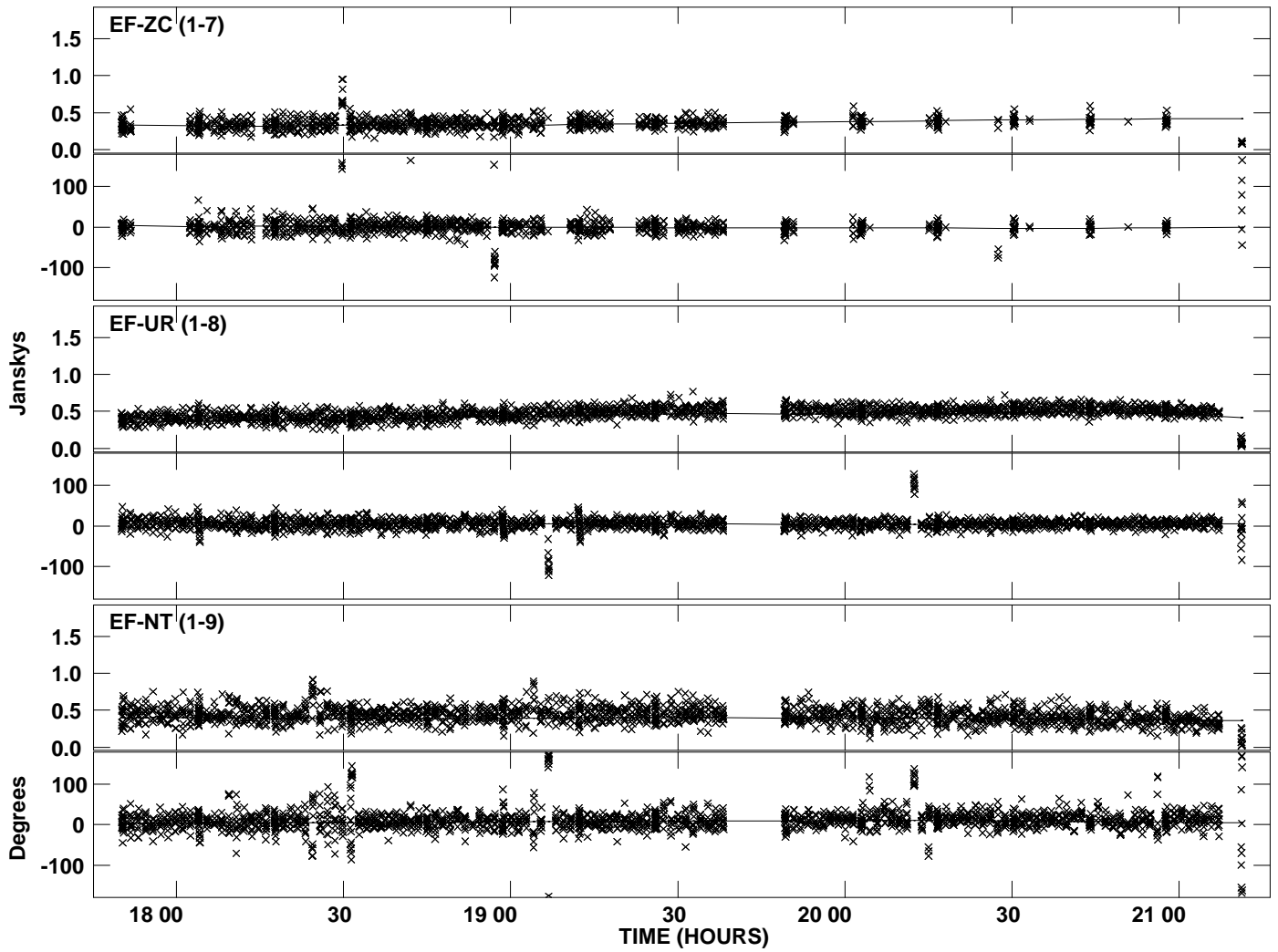
Plot file version 10 created 15-AUG-2012 16:37:51  
Amplitude and Phase vs Time for J1638+5720.MULTI.1 CL # 3  
IF 5 CHAN 1 STK LL of J1638+5720.ICL001.3



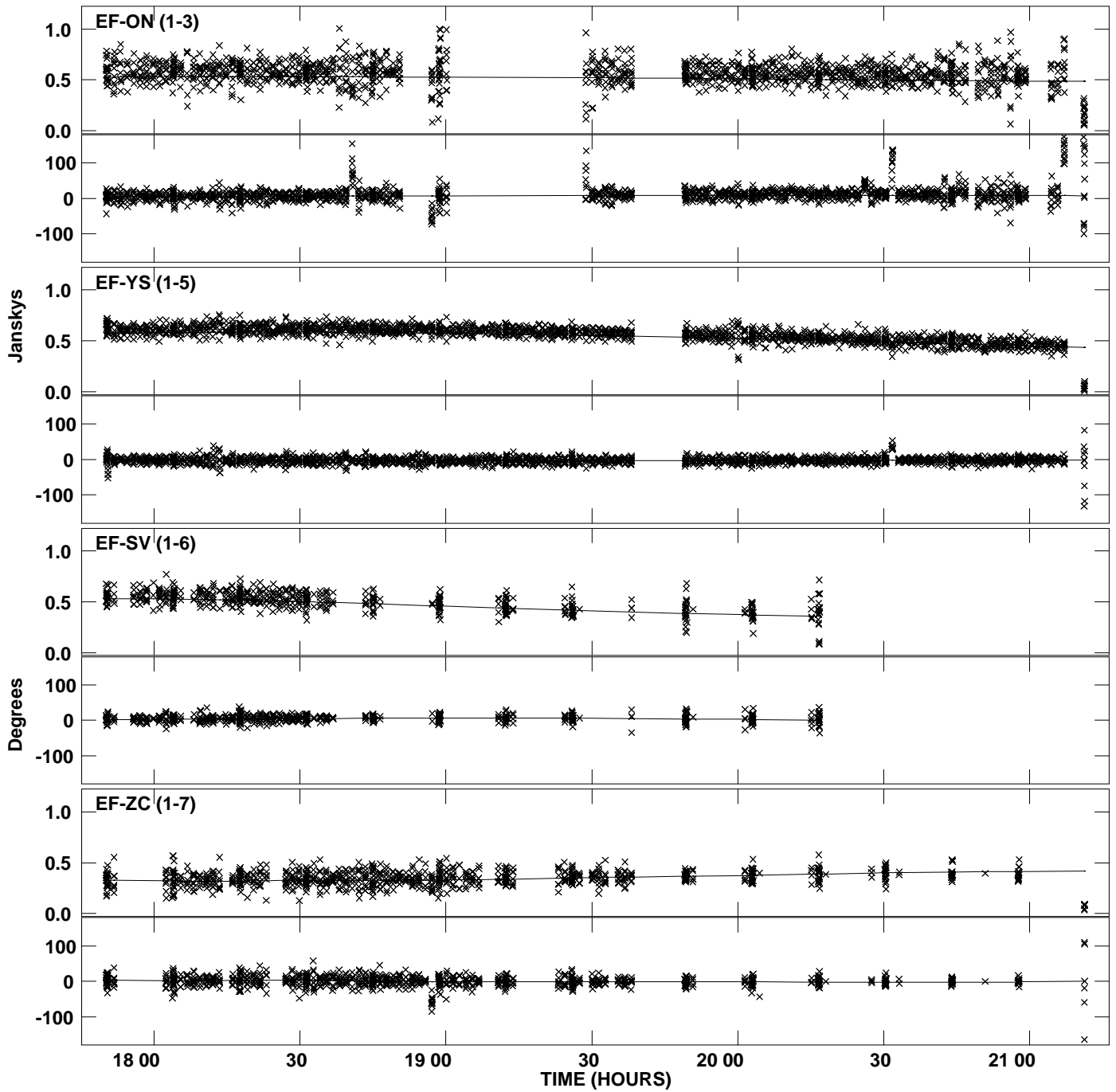
Plot file version 11 created 15-AUG-2012 16:37:56  
Amplitude and Phase vs Time for J1638+5720.MULTI.1 CL # 3  
IF 6 CHAN 1 STK LL of J1638+5720.ICL001.3



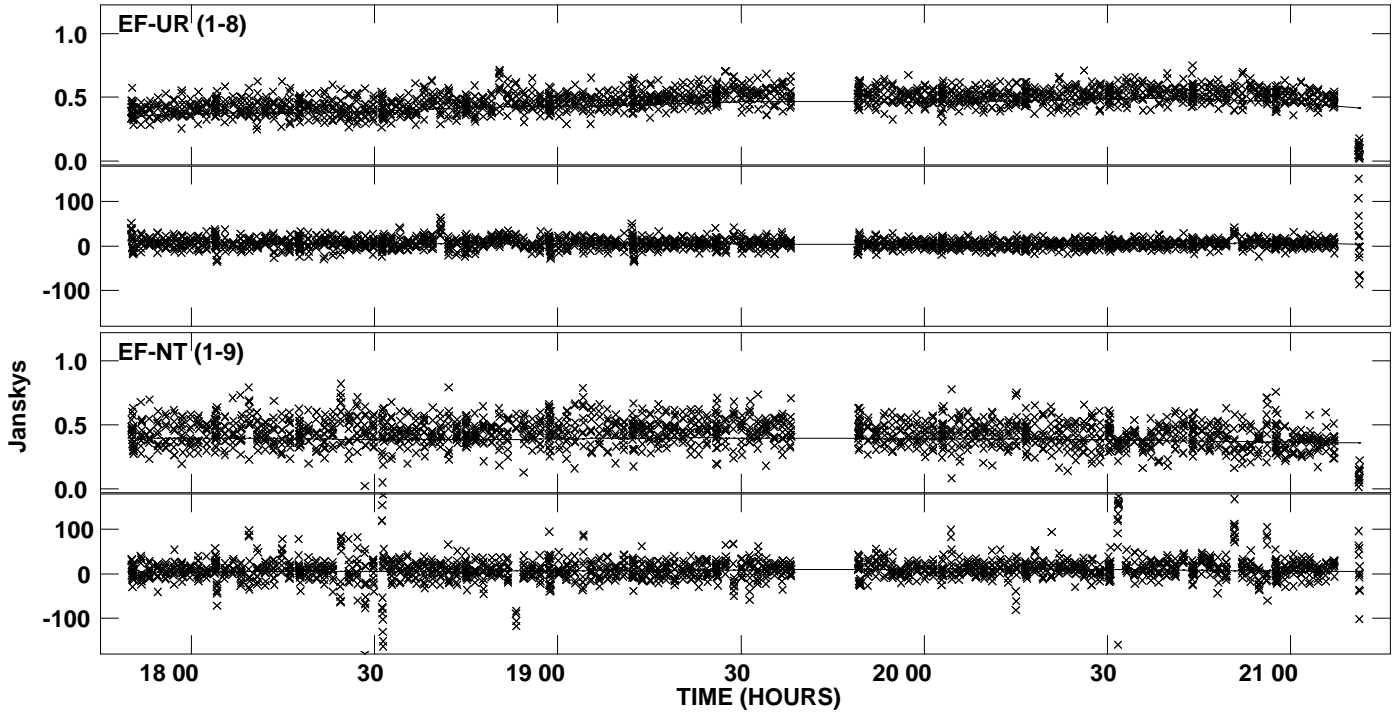
Plot file version 12 created 15-AUG-2012 16:37:56  
Amplitude and Phase vs Time for J1638+5720.MULTI.1 CL # 3  
IF 6 CHAN 1 STK LL of J1638+5720.ICL001.3



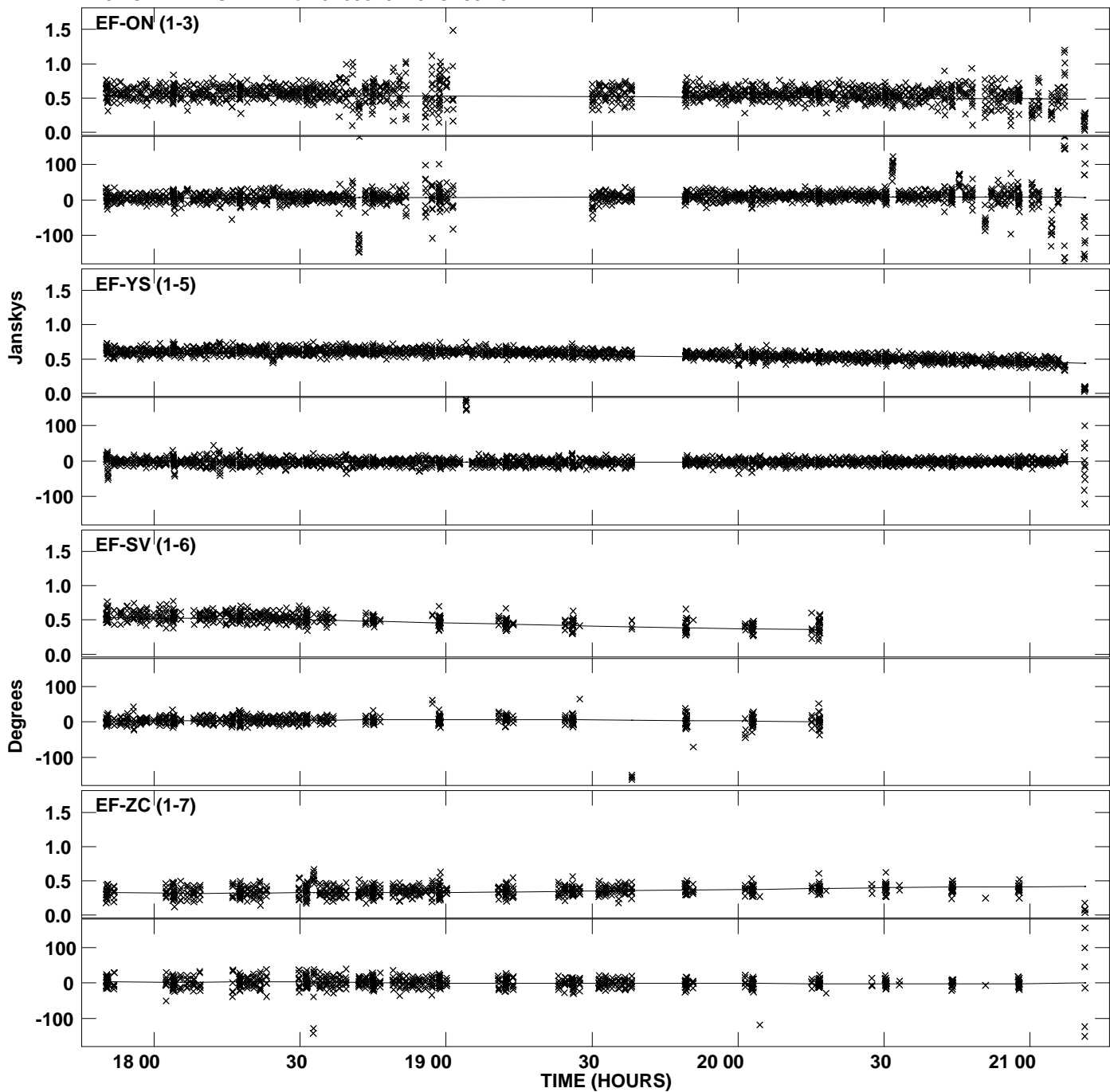
Plot file version 13 created 15-AUG-2012 16:38:02  
Amplitude and Phase vs Time for J1638+5720.MULTI.1 CL # 3  
IF 7 CHAN 1 STK LL of J1638+5720.ICL001.3



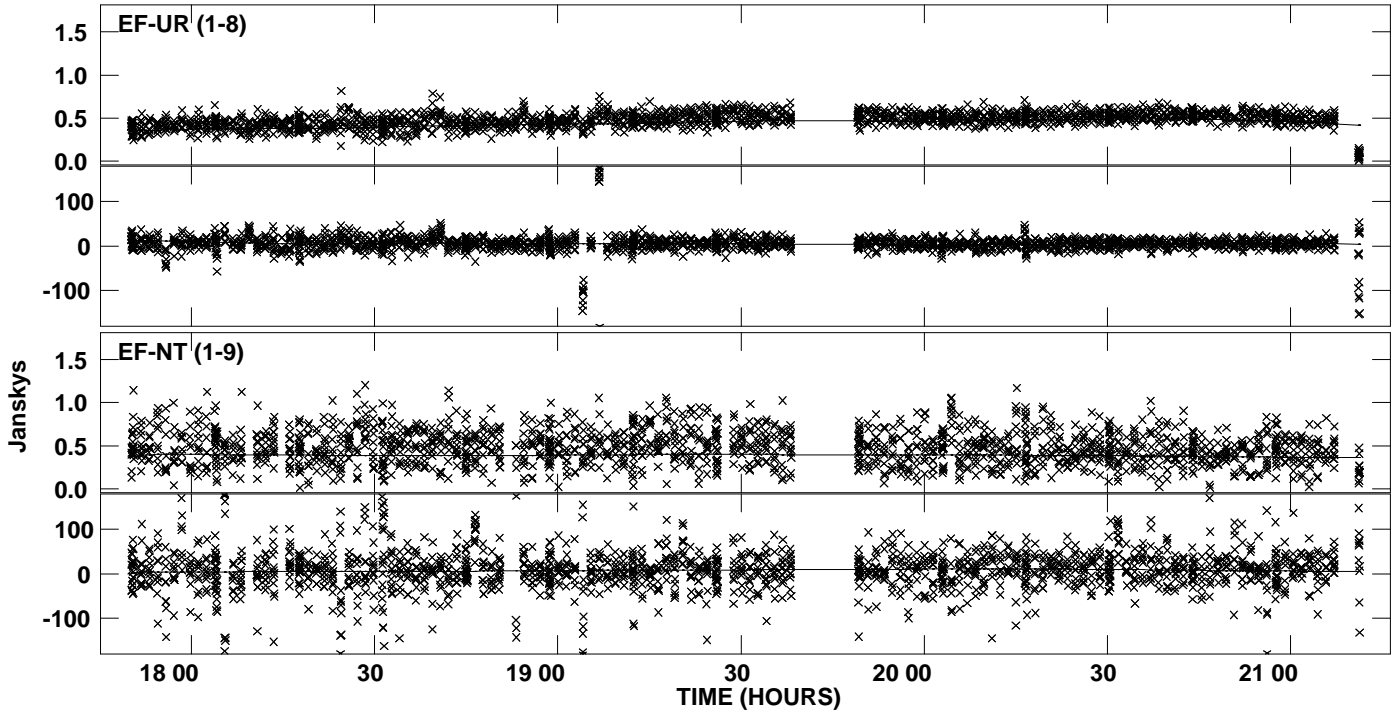
PLot file version 14 created 15-AUG-2012 16:38:02  
Amplitude andPhase vs Time for J1638+5720.MULTI.1 CL # 3  
IF 7 CHAN 1 STK LL of J1638+5720.ICL001.3



PLot file version 15 created 15-AUG-2012 16:38:07  
Amplitude andPhase vs Time for J1638+5720.MULTI.1 CL # 3  
IF 8 CHAN 1 STK LL of J1638+5720.ICL001.3

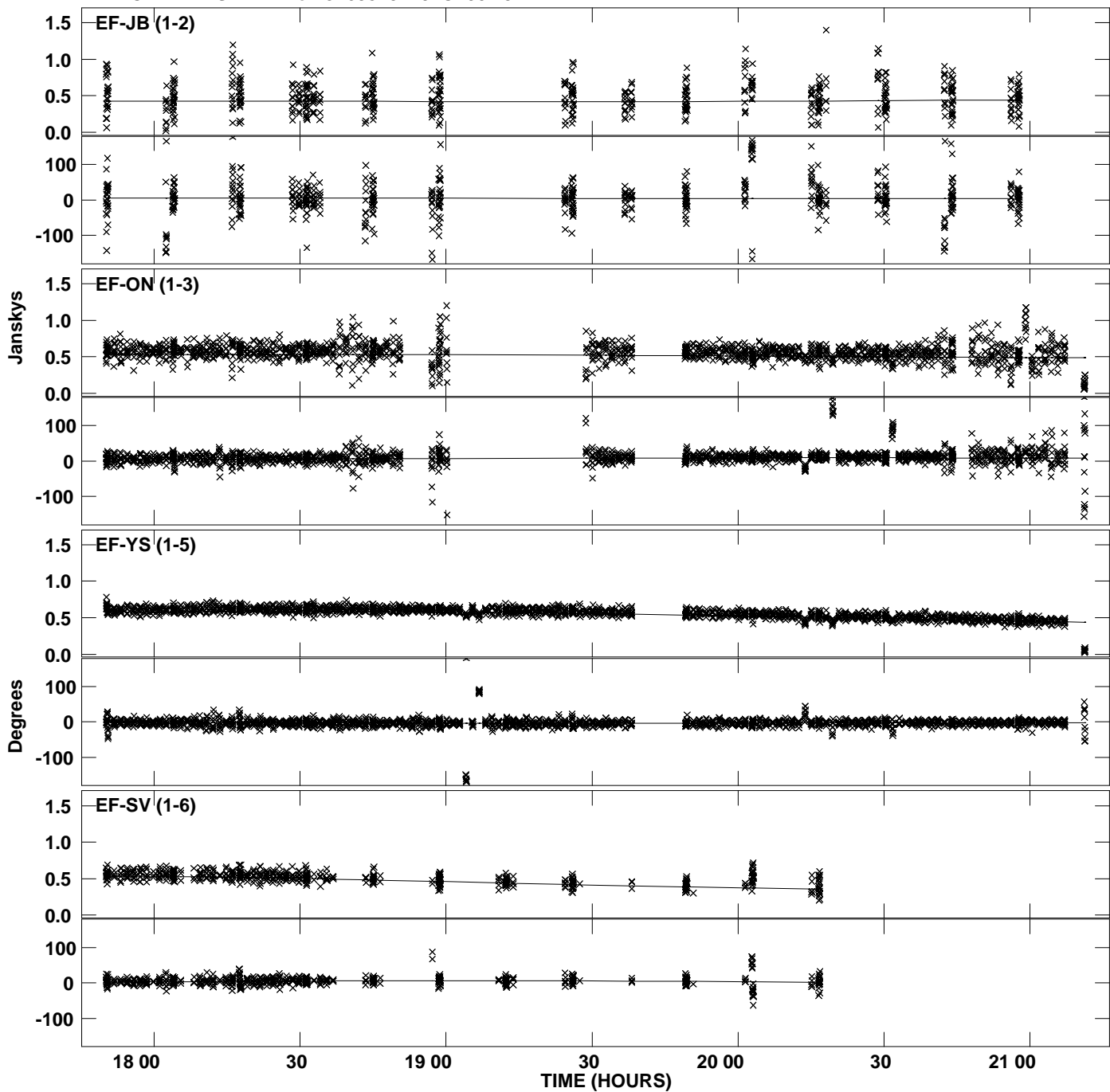


PLot file version 16 created 15-AUG-2012 16:38:07  
Amplitude andPhase vs Time for J1638+5720.MULTI.1 CL # 3  
IF 8 CHAN 1 STK LL of J1638+5720.ICL001.3

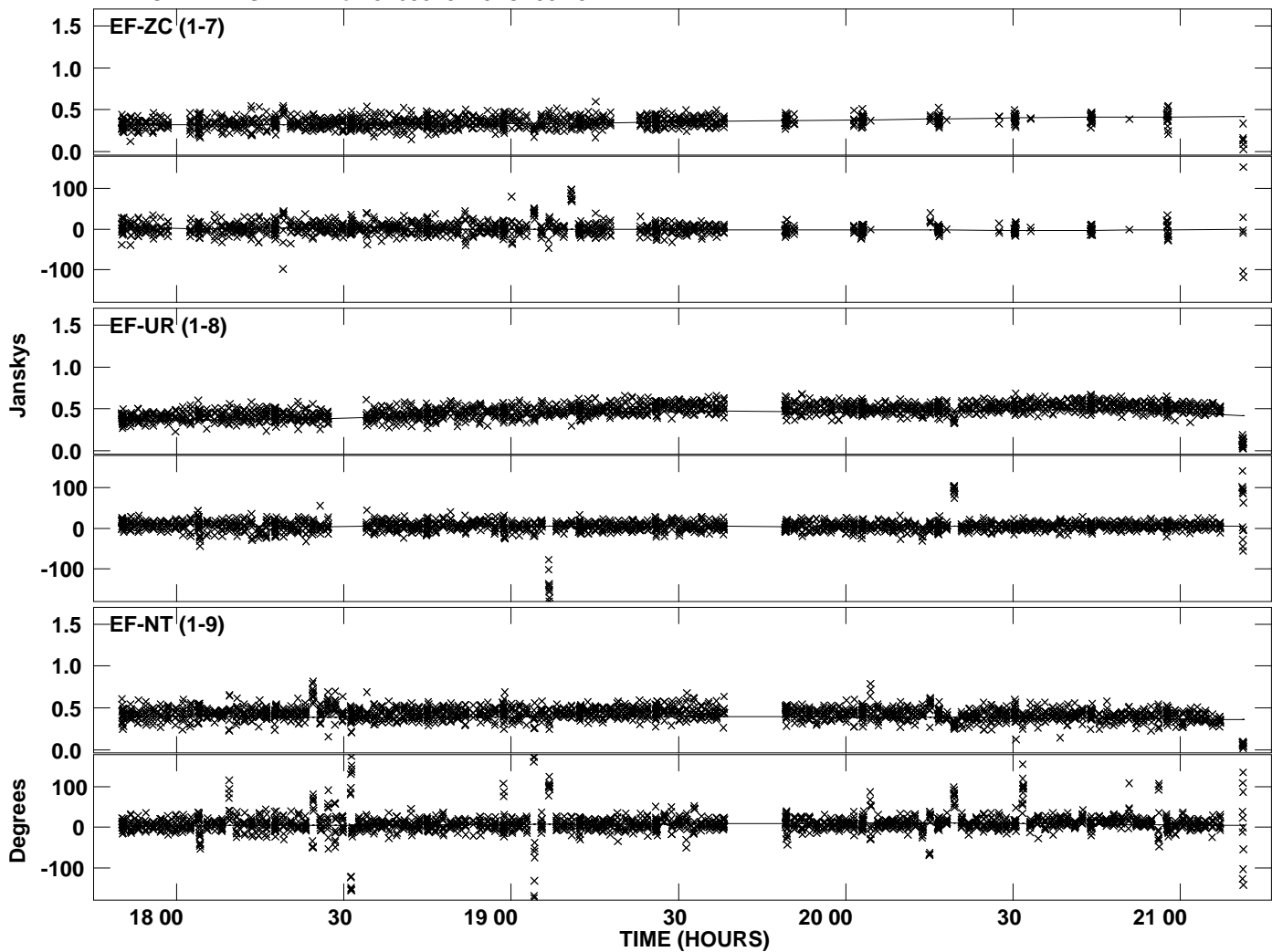




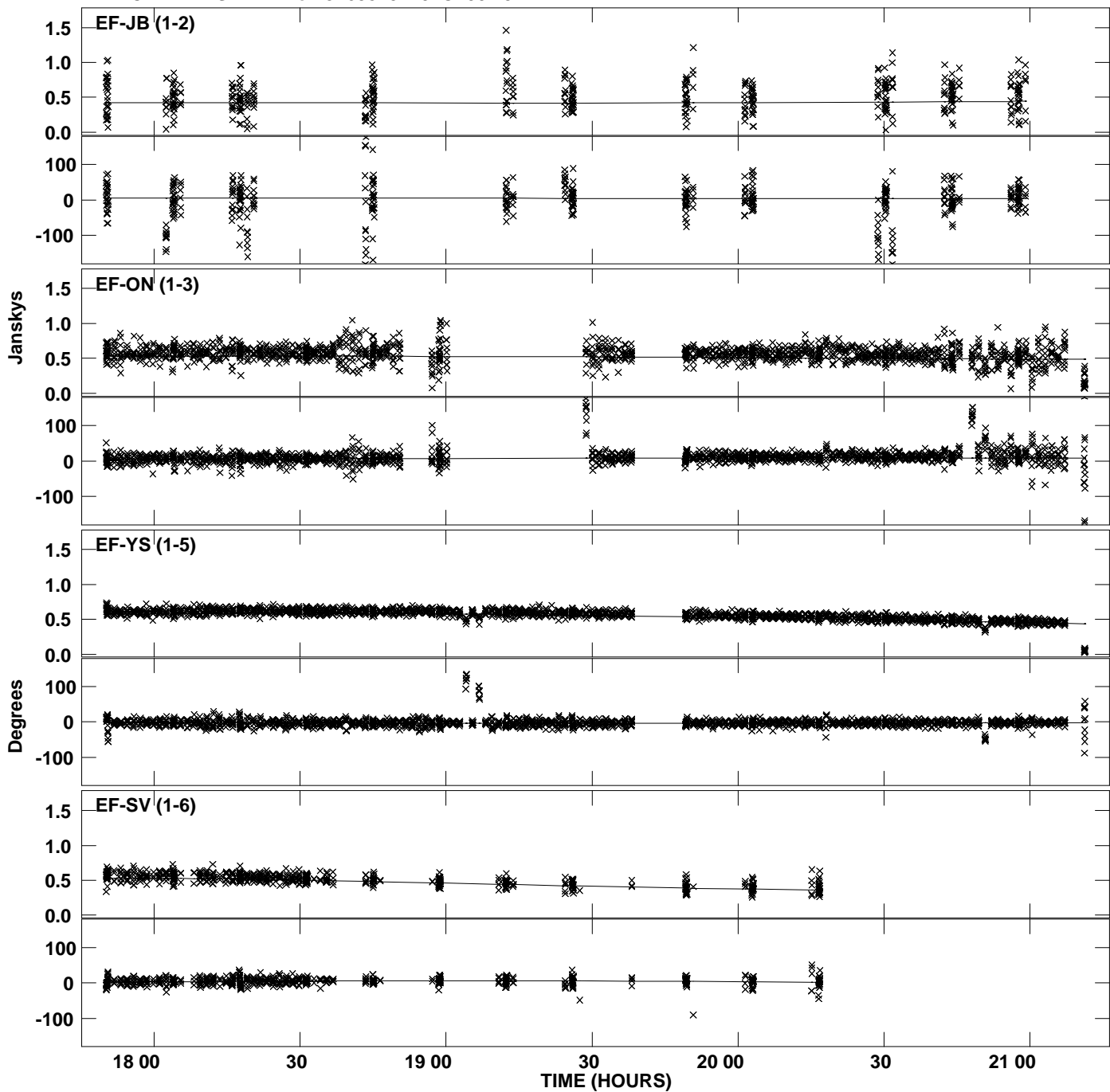
Plot file version 17 created 15-AUG-2012 16:38:12  
Amplitude and Phase vs Time for J1638+5720.MULTI.1 CL # 3  
IF 1 CHAN 1 STK RR of J1638+5720.ICL001.3



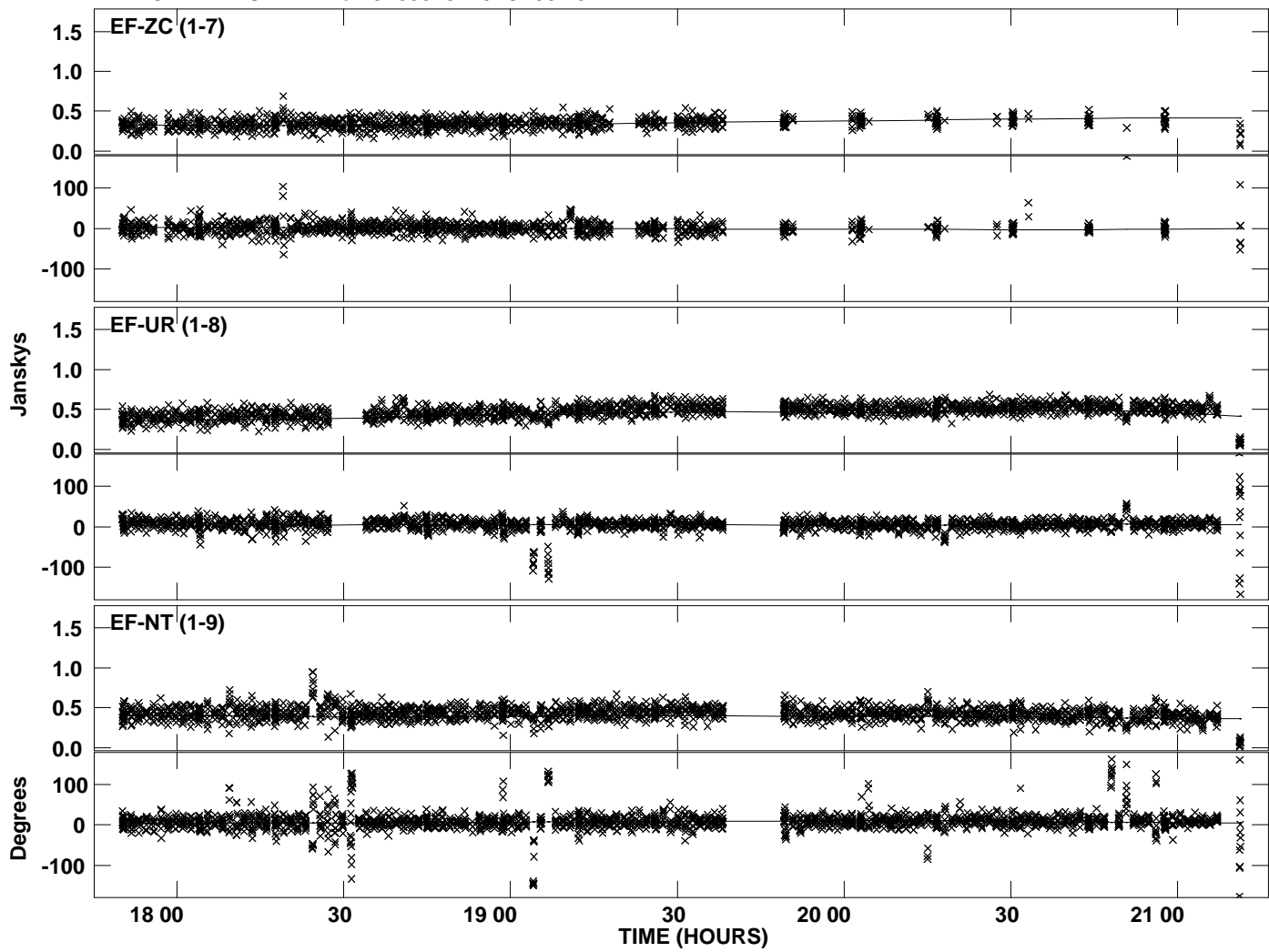
Plot file version 18 created 15-AUG-2012 16:38:12  
Amplitude and Phase vs Time for J1638+5720.MULTI.1 CL # 3  
IF 1 CHAN 1 STK RR of J1638+5720.ICL001.3



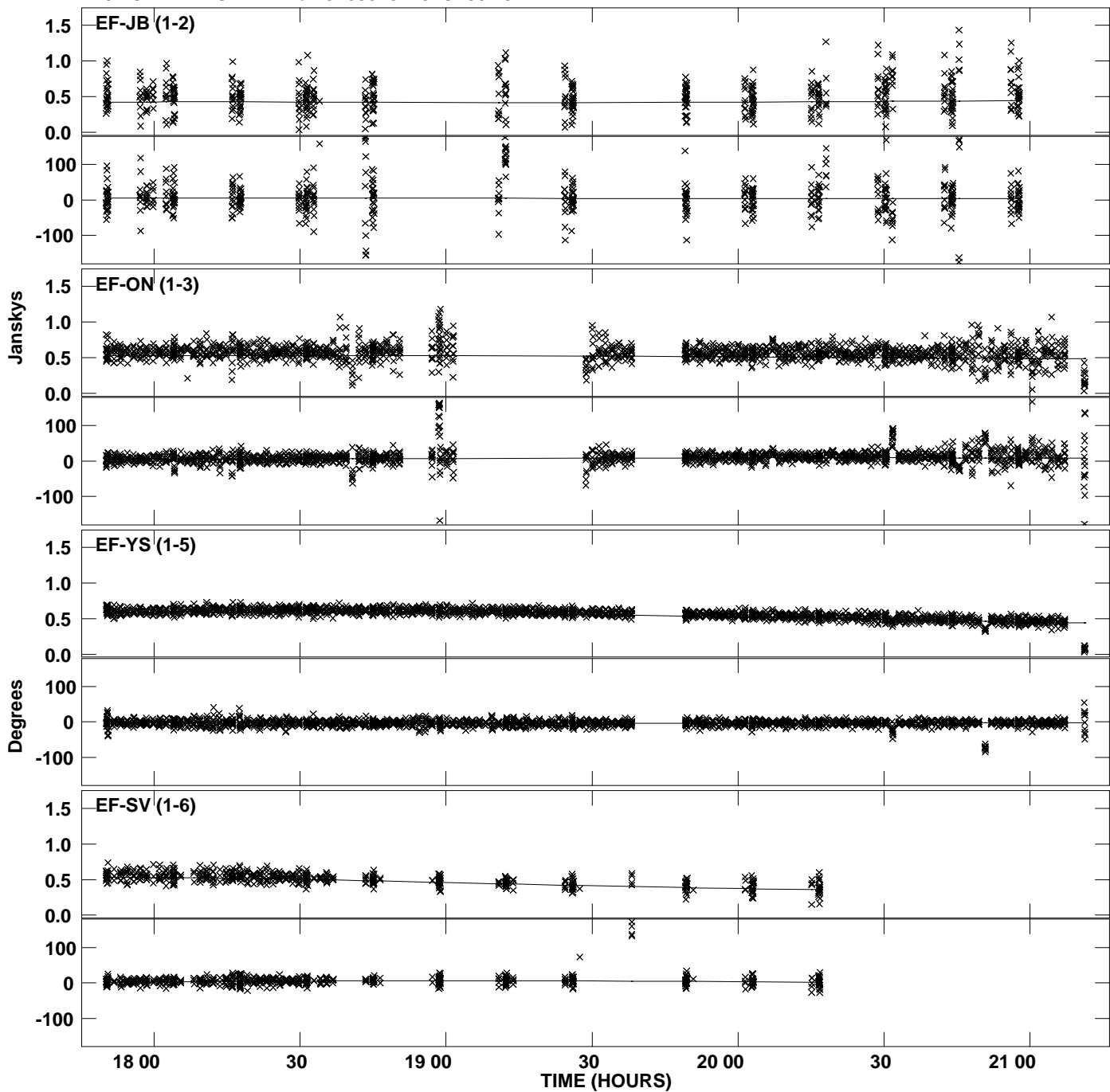
Plot file version 19 created 15-AUG-2012 16:38:18  
Amplitude and Phase vs Time for J1638+5720.MULTI.1 CL # 3  
IF 2 CHAN 1 STK RR of J1638+5720.ICL001.3



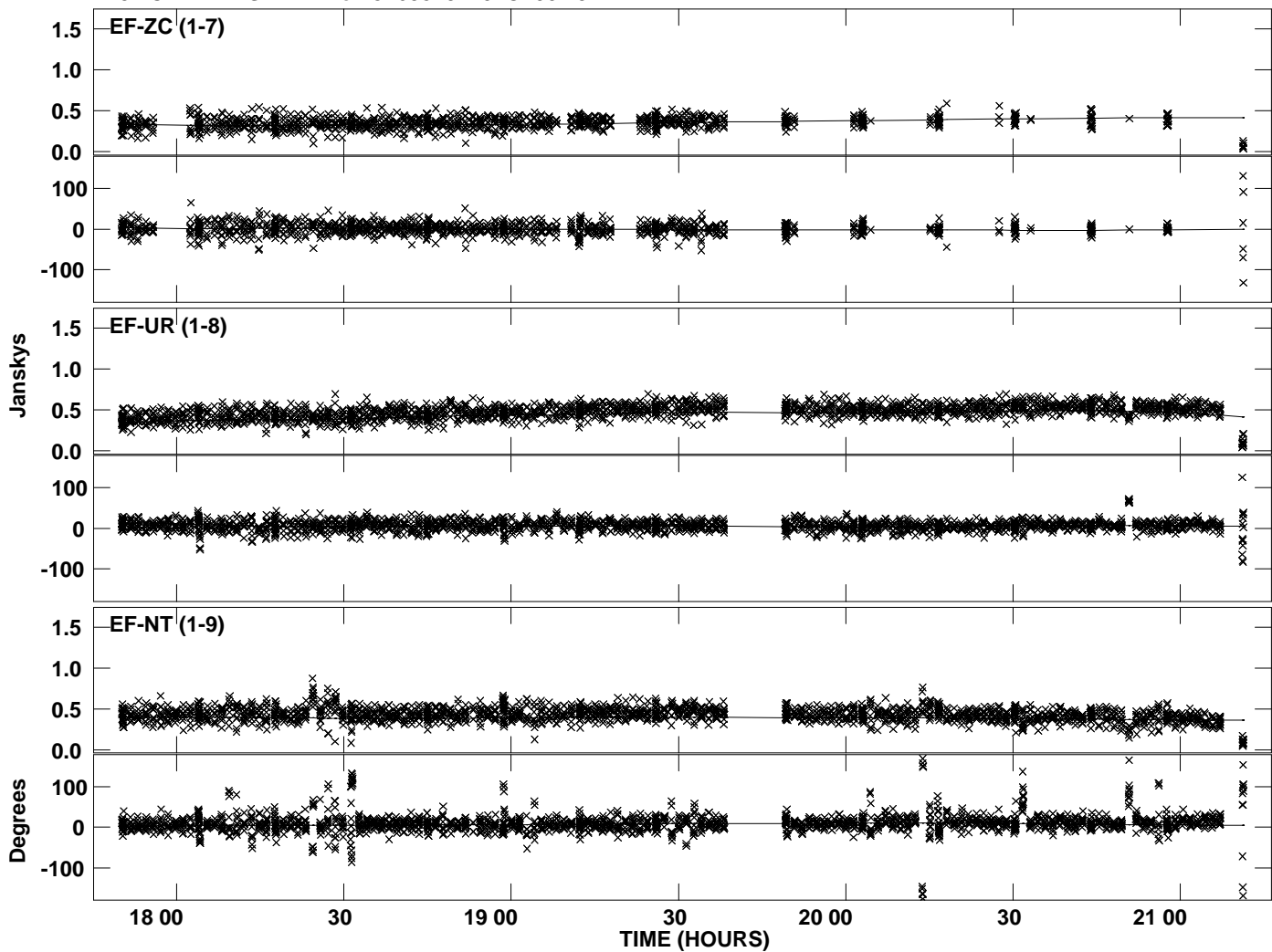
Plot file version 20 created 15-AUG-2012 16:38:18  
Amplitude and Phase vs Time for J1638+5720.MULTI.1 CL # 3  
IF 2 CHAN 1 STK RR of J1638+5720.ICL001.3



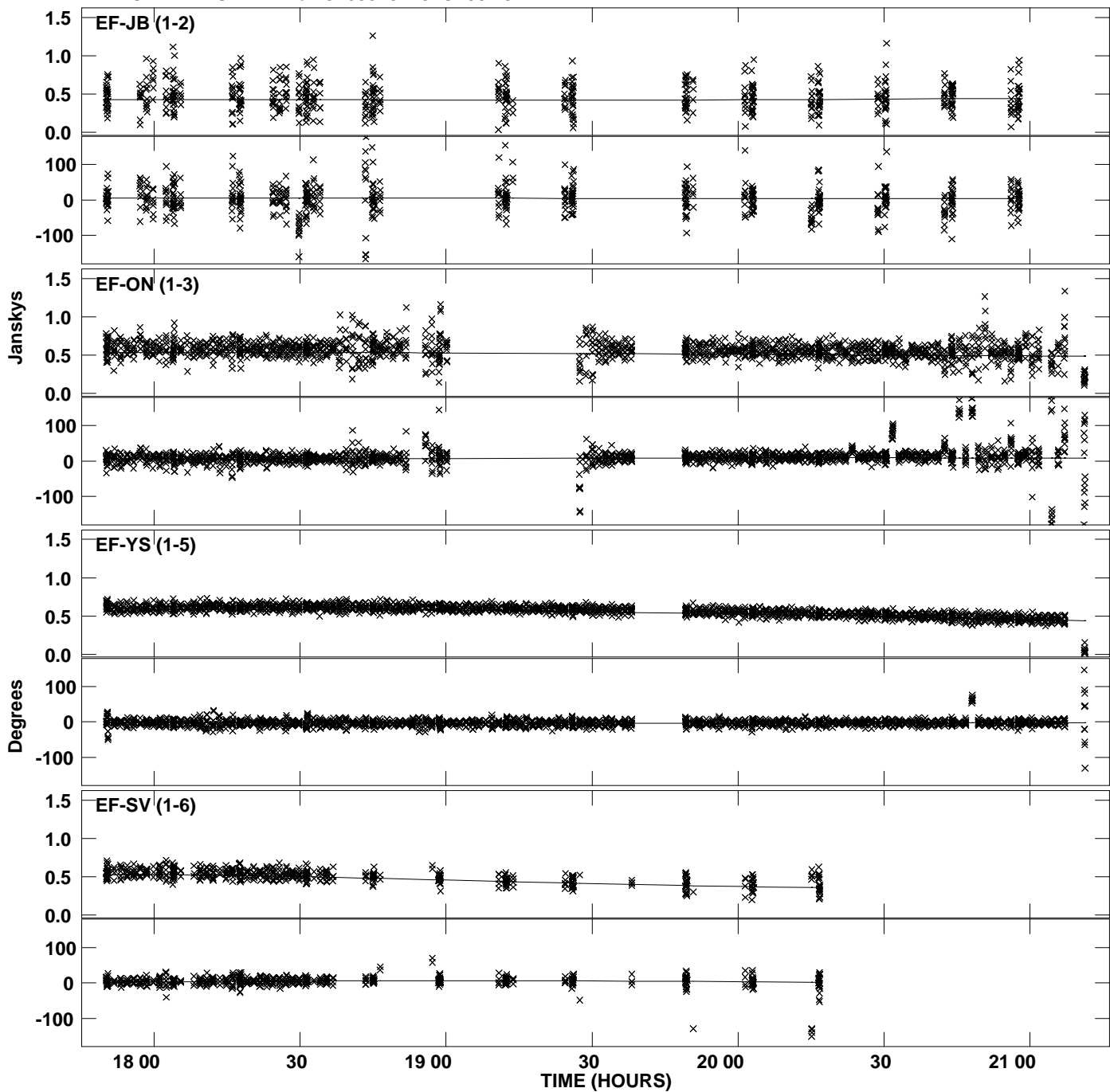
Plot file version 21 created 15-AUG-2012 16:38:23  
Amplitude and Phase vs Time for J1638+5720.MULTI.1 CL # 3  
IF 3 CHAN 1 STK RR of J1638+5720.ICL001.3



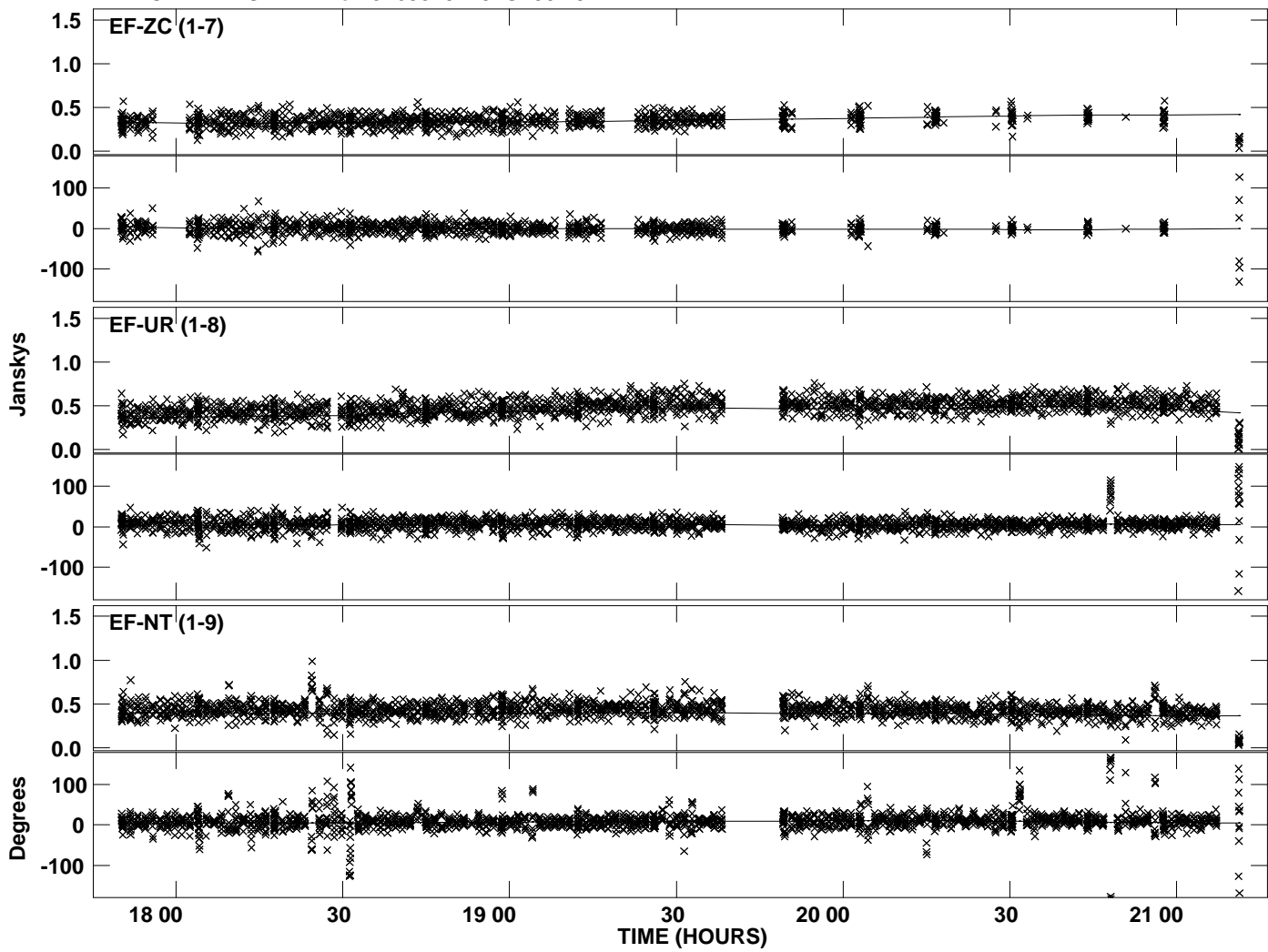
Plot file version 22 created 15-AUG-2012 16:38:23  
Amplitude and Phase vs Time for J1638+5720.MULTI.1 CL # 3  
IF 3 CHAN 1 STK RR of J1638+5720.ICL001.3



Plot file version 23 created 15-AUG-2012 16:38:29  
Amplitude andPhase vs Time for J1638+5720.MULTI.1 CL # 3  
IF 4 CHAN 1 STK RR of J1638+5720.ICL001.3

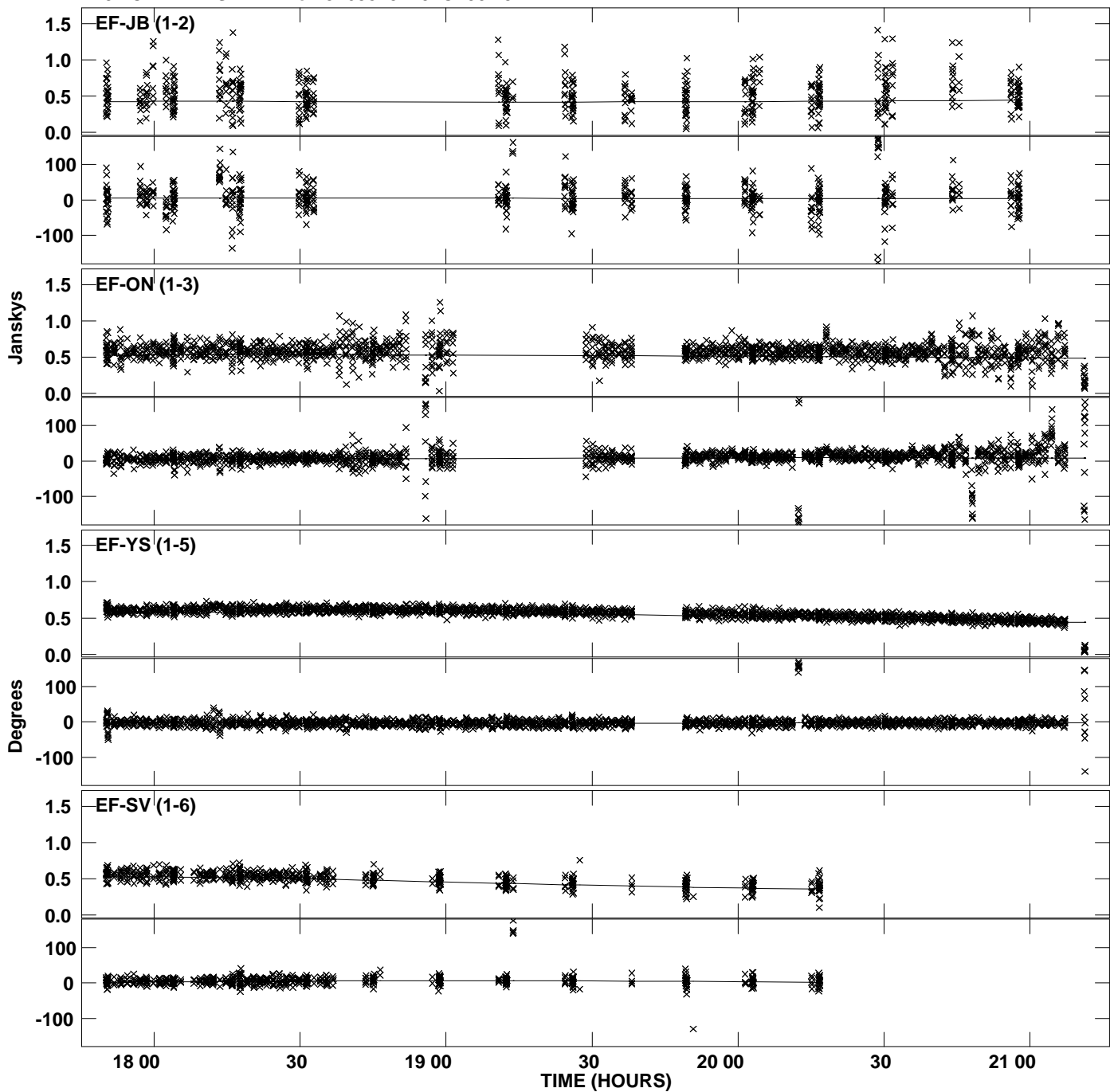


Plot file version 24 created 15-AUG-2012 16:38:29  
Amplitude and Phase vs Time for J1638+5720.MULTI.1 CL # 3  
IF 4 CHAN 1 STK RR of J1638+5720.ICL001.3

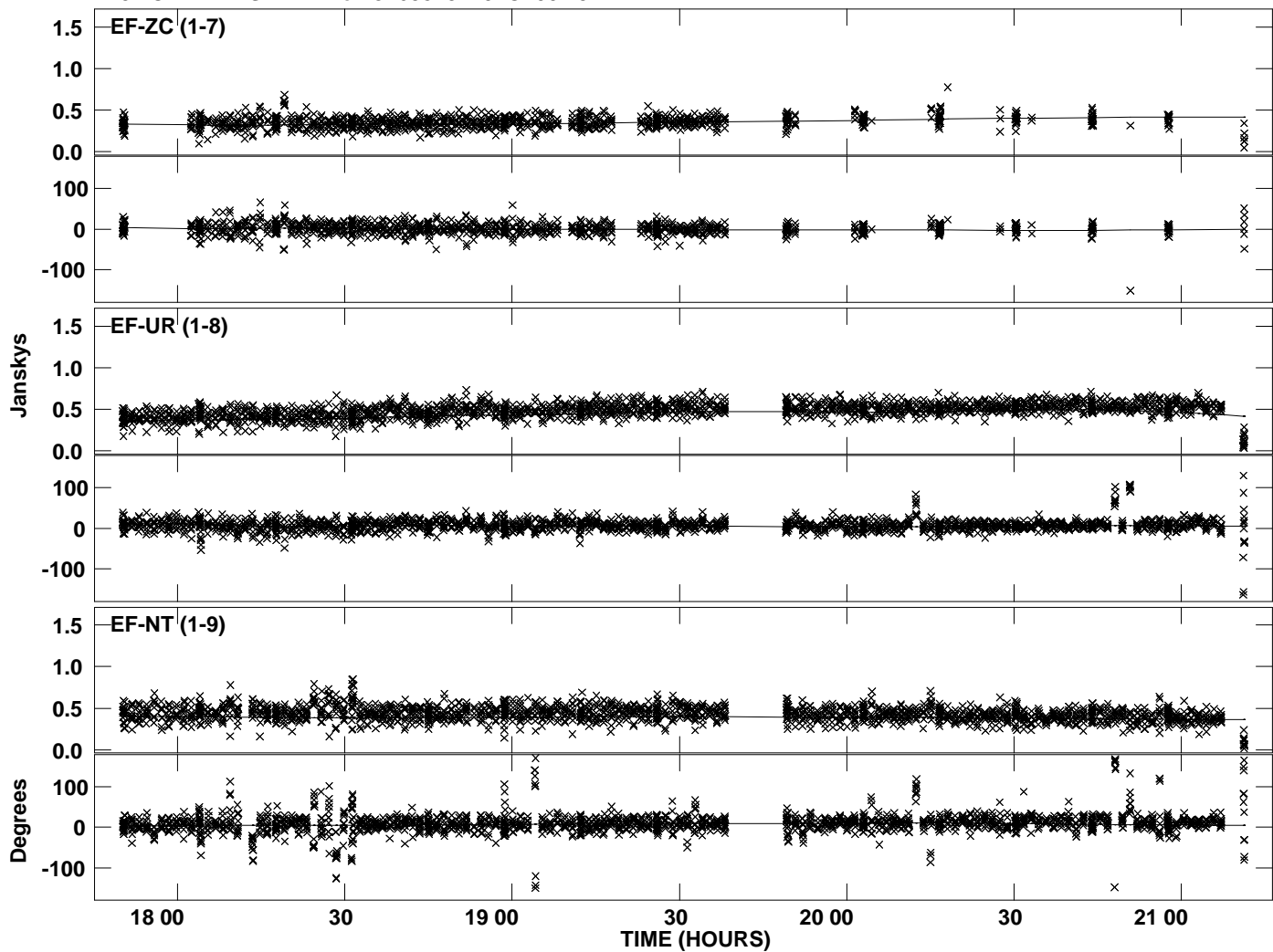




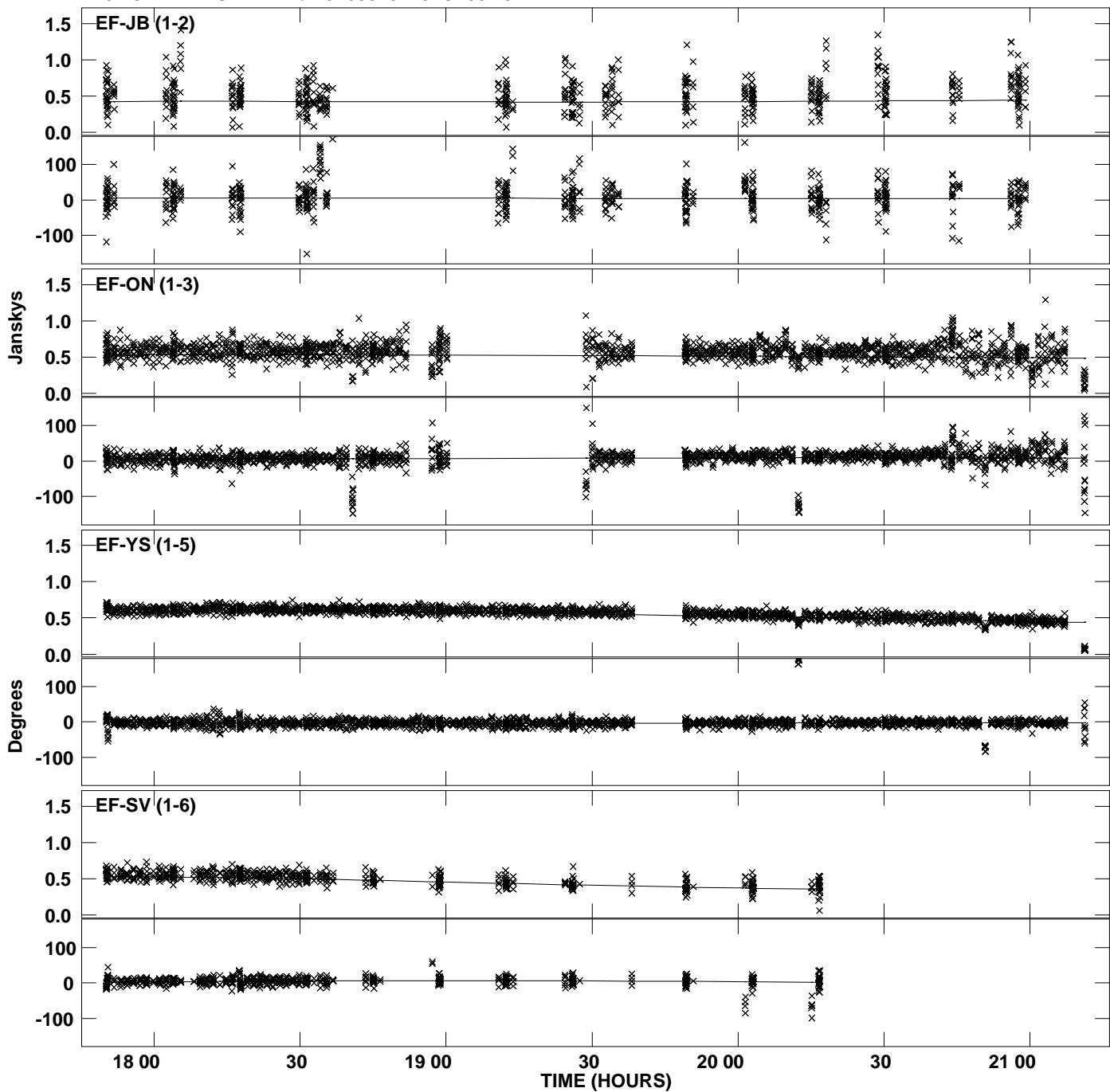
Plot file version 25 created 15-AUG-2012 16:38:34  
Amplitude andPhase vs Time for J1638+5720.MULTI.1 CL # 3  
IF 5 CHAN 1 STK RR of J1638+5720.ICL001.3



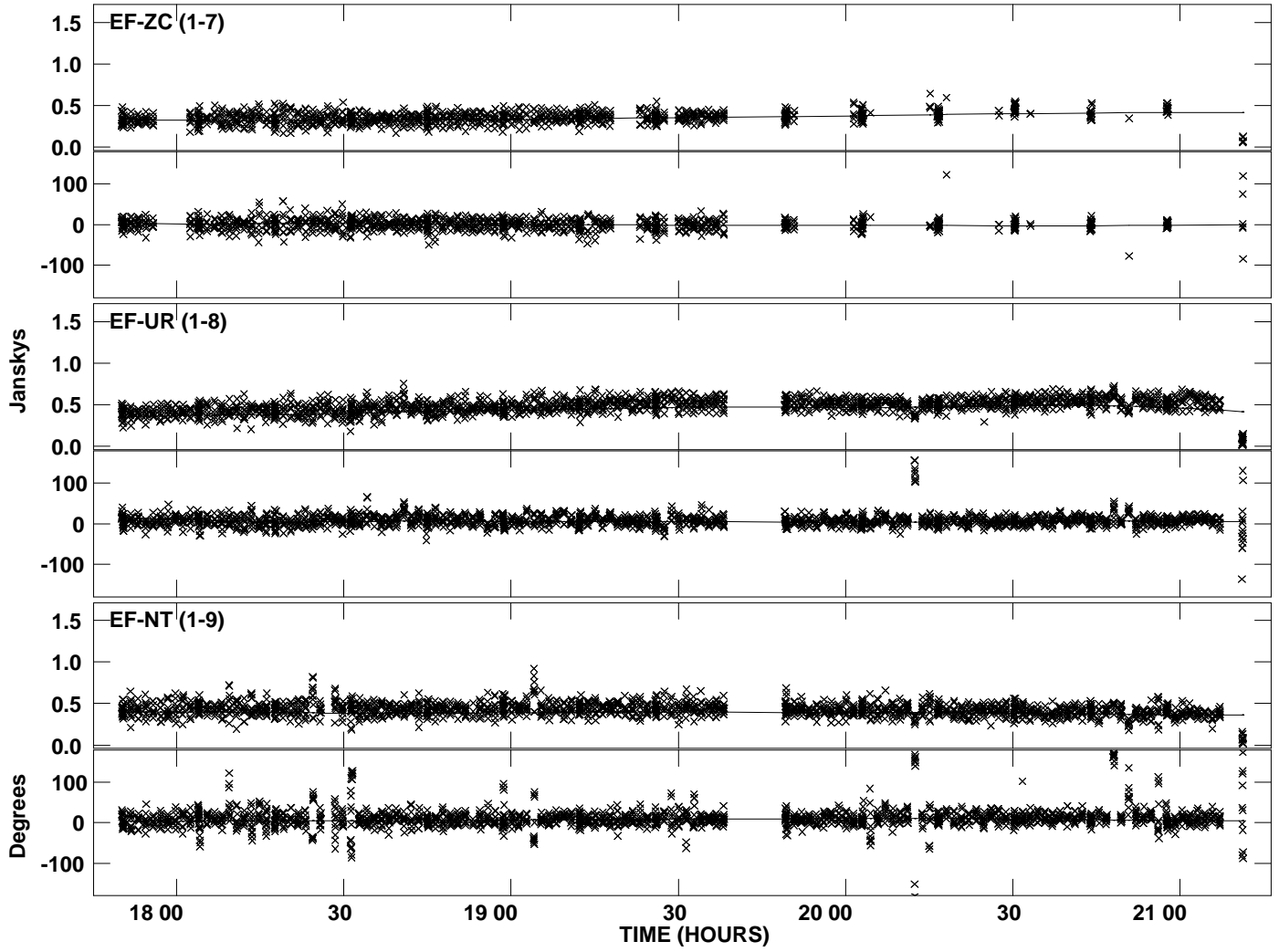
Plot file version 26 created 15-AUG-2012 16:38:34  
Amplitude and Phase vs Time for J1638+5720.MULTI.1 CL # 3  
IF 5 CHAN 1 STK RR of J1638+5720.ICL001.3



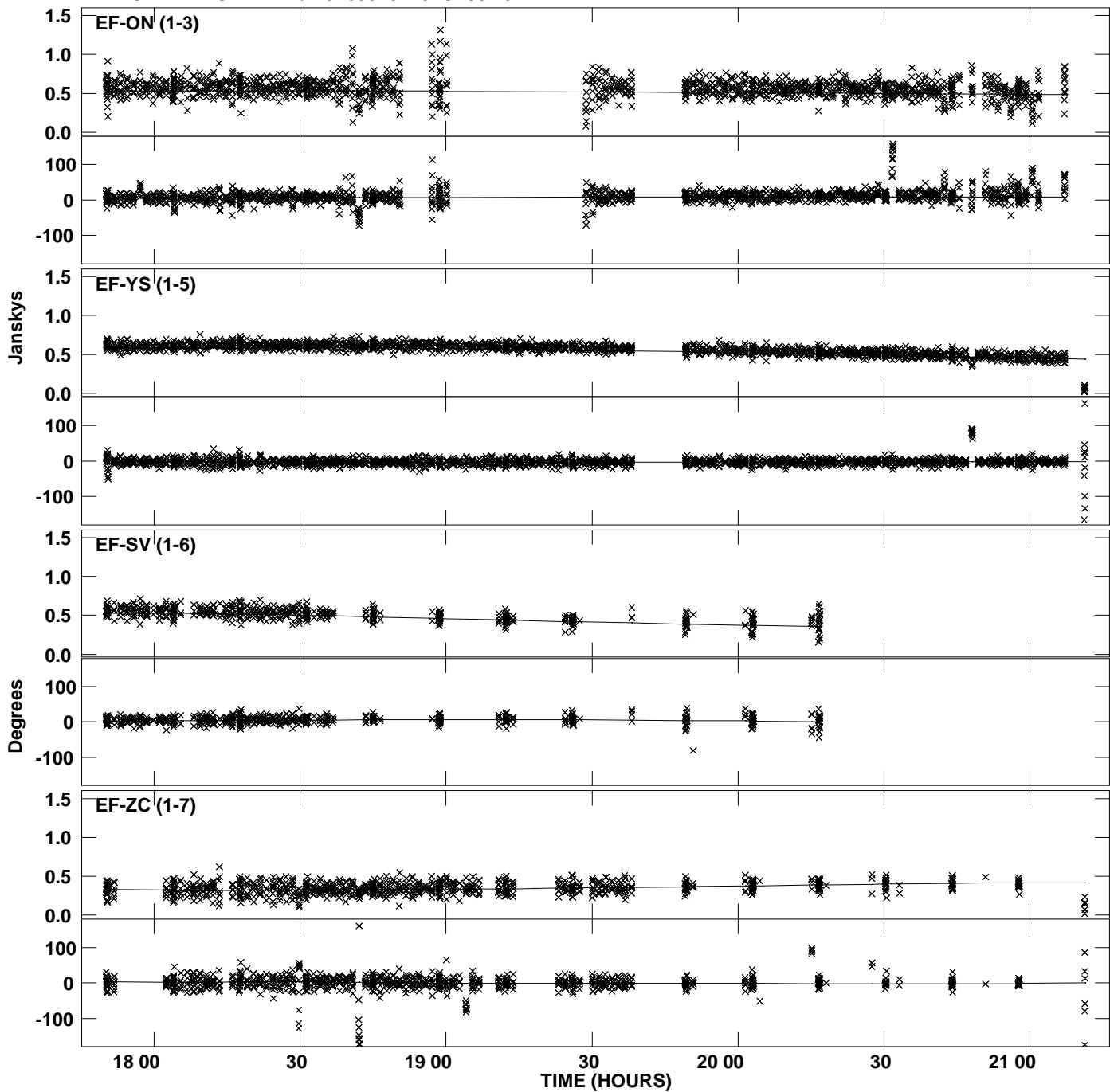
Plot file version 27 created 15-AUG-2012 16:38:40  
Amplitude andPhase vs Time for J1638+5720.MULTI.1 CL # 3  
IF 6 CHAN 1 STK RR of J1638+5720.ICL001.3



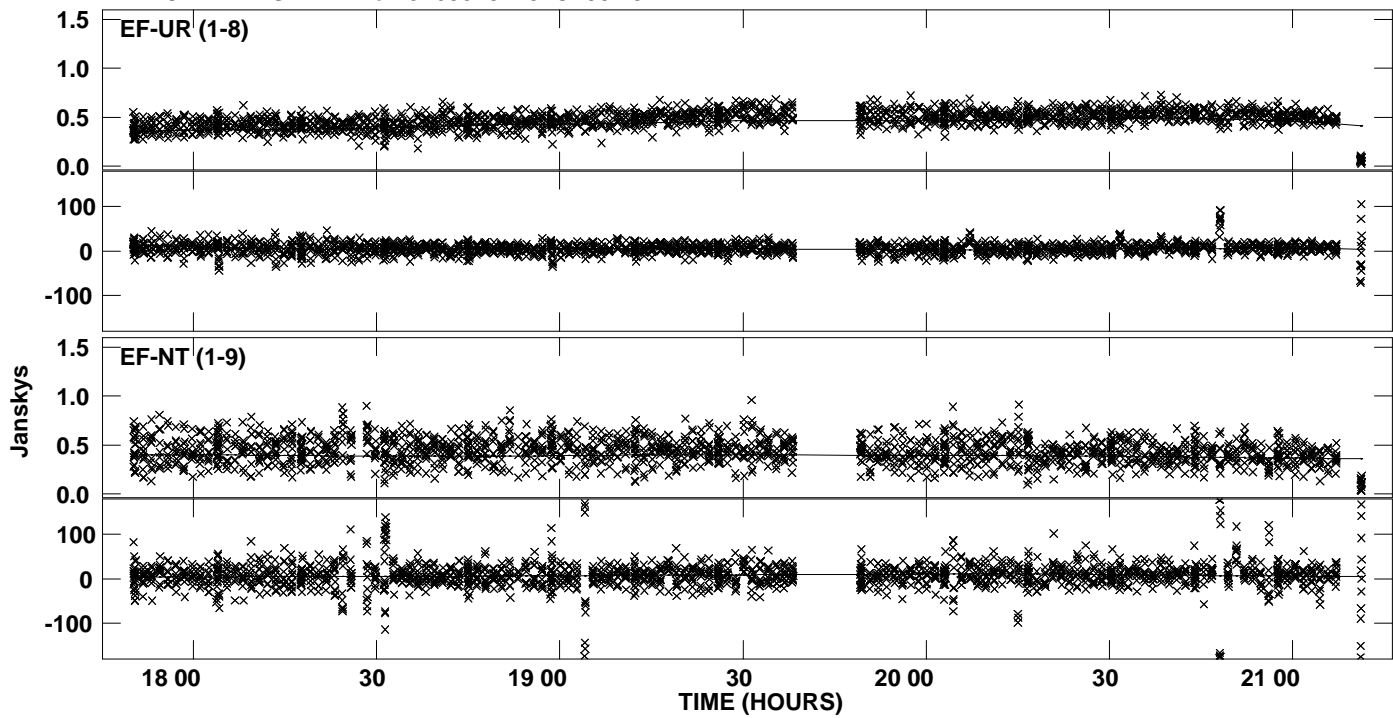
Plot file version 28 created 15-AUG-2012 16:38:40  
Amplitude and Phase vs Time for J1638+5720.MULTI.1 CL # 3  
IF 6 CHAN 1 STK RR of J1638+5720.ICL001.3



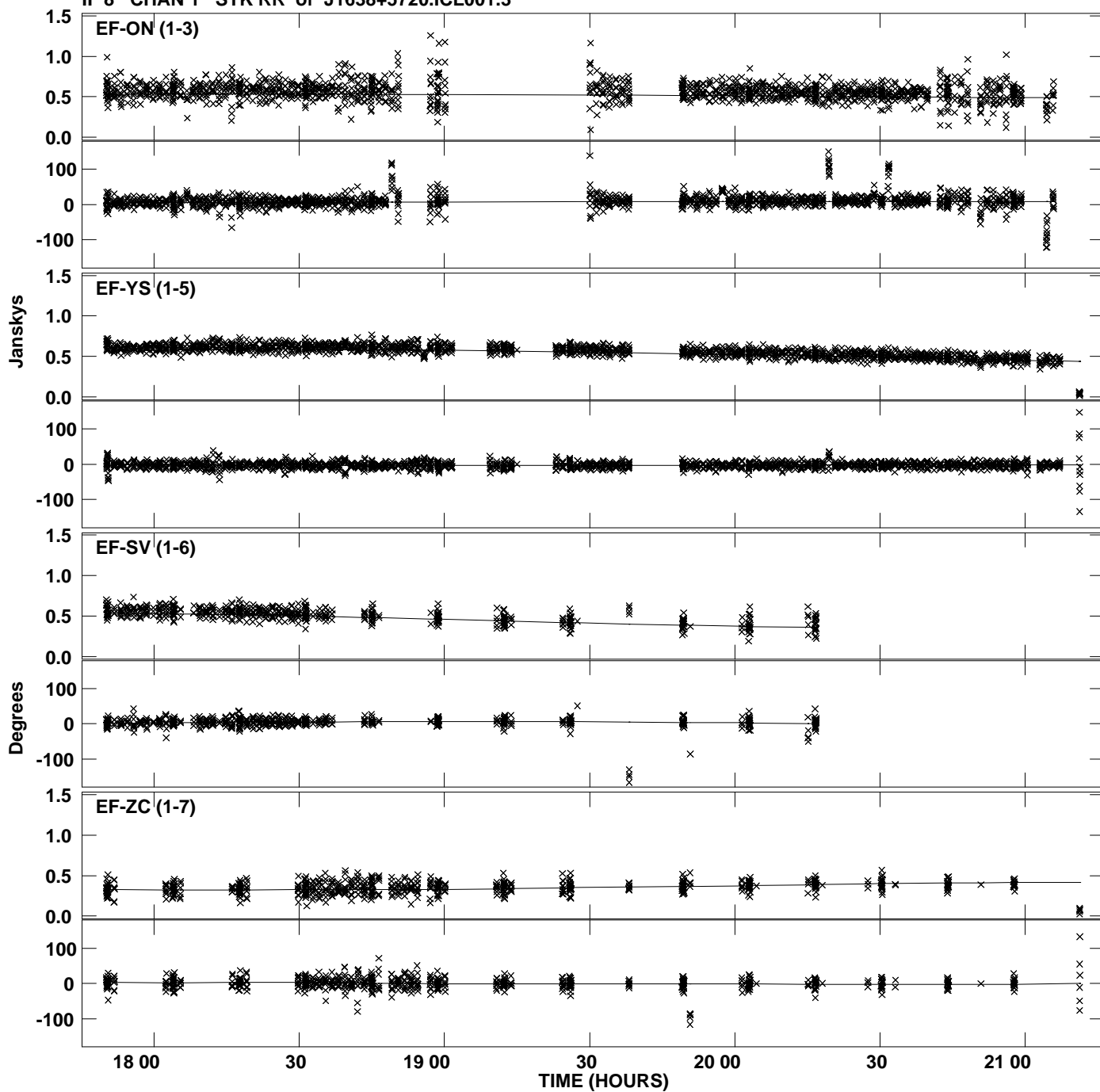
Plot file version 29 created 15-AUG-2012 16:38:45  
Amplitude andPhase vs Time for J1638+5720.MULTI.1 CL # 3  
IF 7 CHAN 1 STK RR of J1638+5720.ICL001.3



PLot file version 30 created 15-AUG-2012 16:38:45  
Amplitude andPhase vs Time for J1638+5720.MULTI.1 CL # 3  
IF 7 CHAN 1 STK RR of J1638+5720.ICL001.3



Plot file version 31 created 15-AUG-2012 16:38:50  
Amplitude andPhase vs Time for J1638+5720.MULTI.1 CL # 3  
IF 8 CHAN 1 STK RR of J1638+5720.ICL001.3



PLot file version 32 created 15-AUG-2012 16:38:50  
Amplitude andPhase vs Time for J1638+5720.MULTI.1 CL # 3  
IF 8 CHAN 1 STK RR of J1638+5720.ICL001.3

