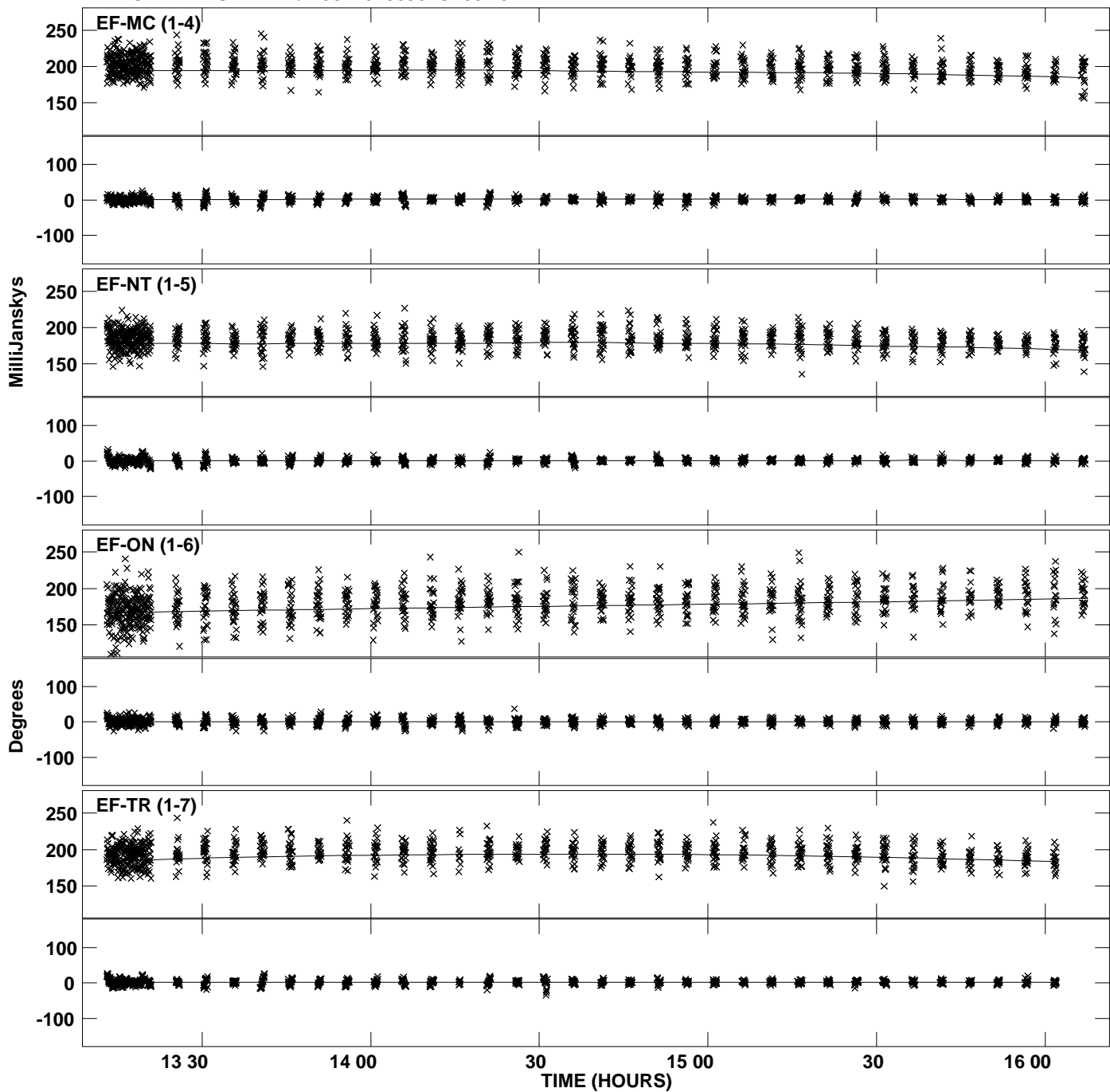
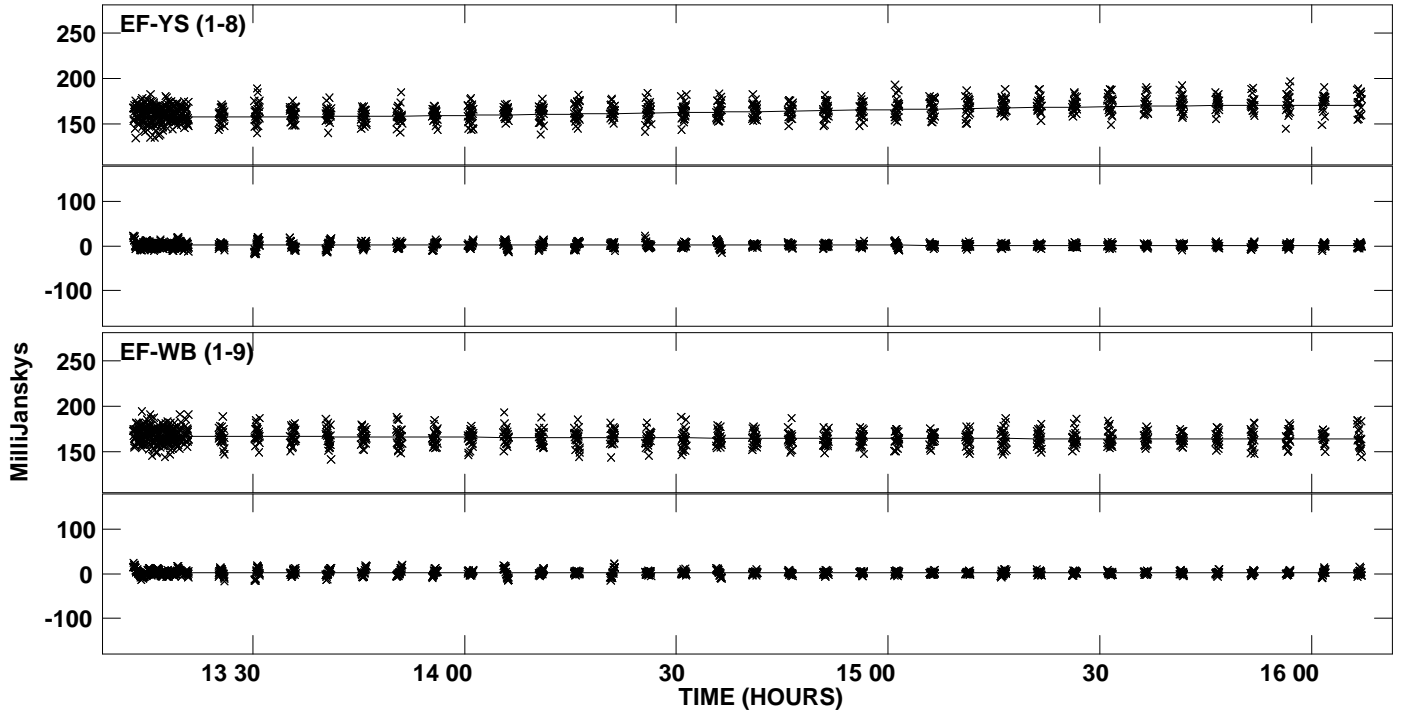


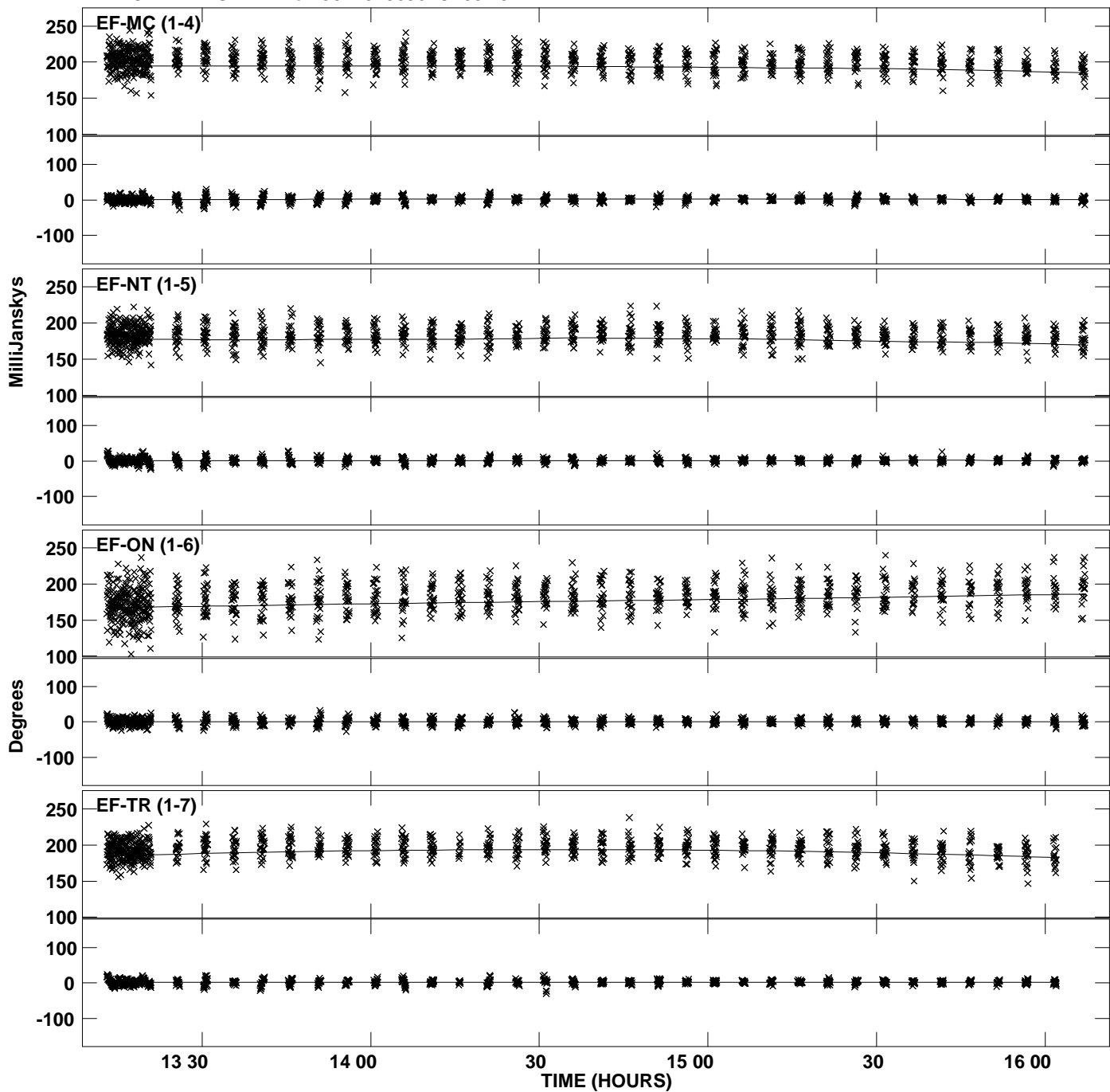
Plot file version 1 created 05-JUN-2013 14:22:34  
Amplitude and Phase vs Time for J0726+0636.MULTI.1 CL # 3  
IF 1 CHAN 1 STK LL of J0726+0636.ICL001.3



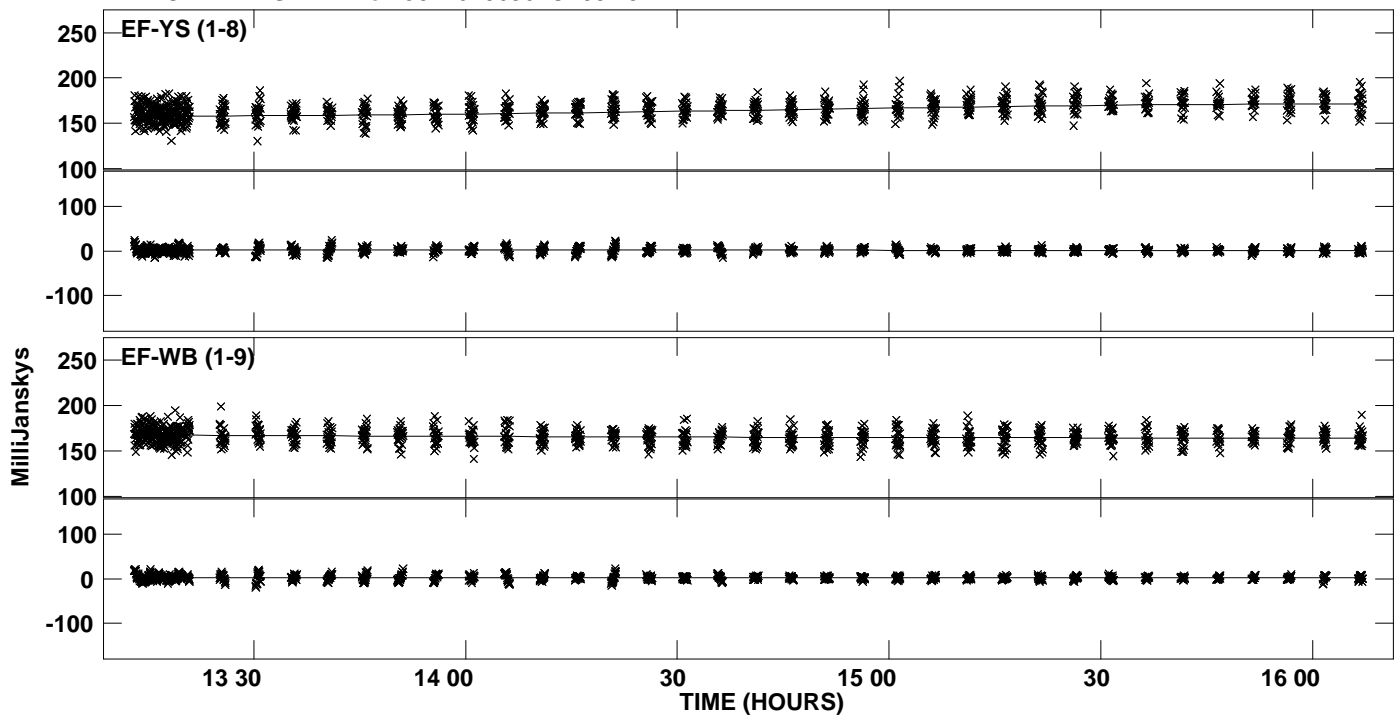
Plot file version 2 created 05-JUN-2013 14:22:34  
Amplitude and Phase vs Time for J0726+0636.MULTI.1 CL # 3  
IF 1 CHAN 1 STK LL of J0726+0636.ICL001.3



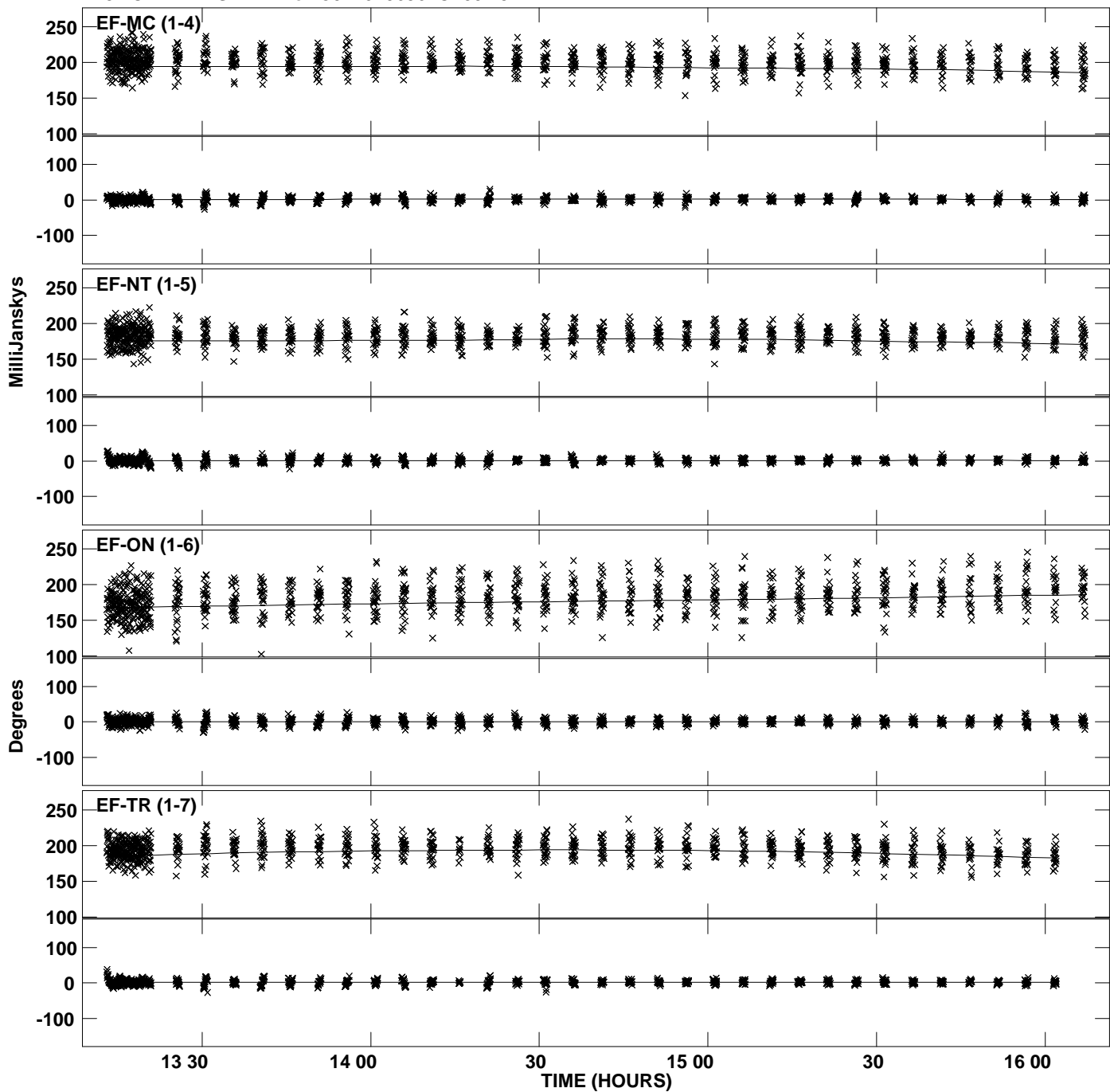
Plot file version 3 created 05-JUN-2013 14:22:34  
Amplitude and Phase vs Time for J0726+0636.MULTI.1 CL # 3  
IF 2 CHAN 1 STK LL of J0726+0636.ICL001.3



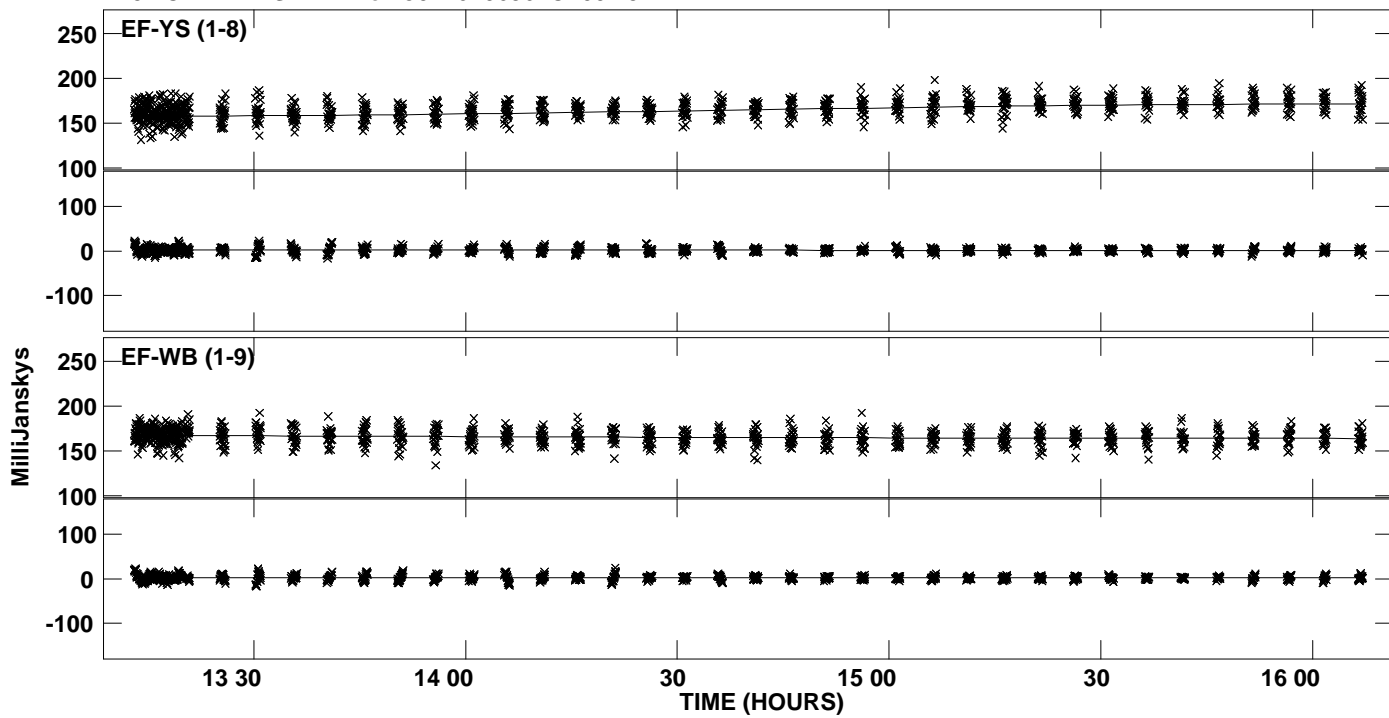
Plot file version 4 created 05-JUN-2013 14:22:34  
Amplitude and Phase vs Time for J0726+0636.MULTI.1 CL # 3  
IF 2 CHAN 1 STK LL of J0726+0636.ICL001.3



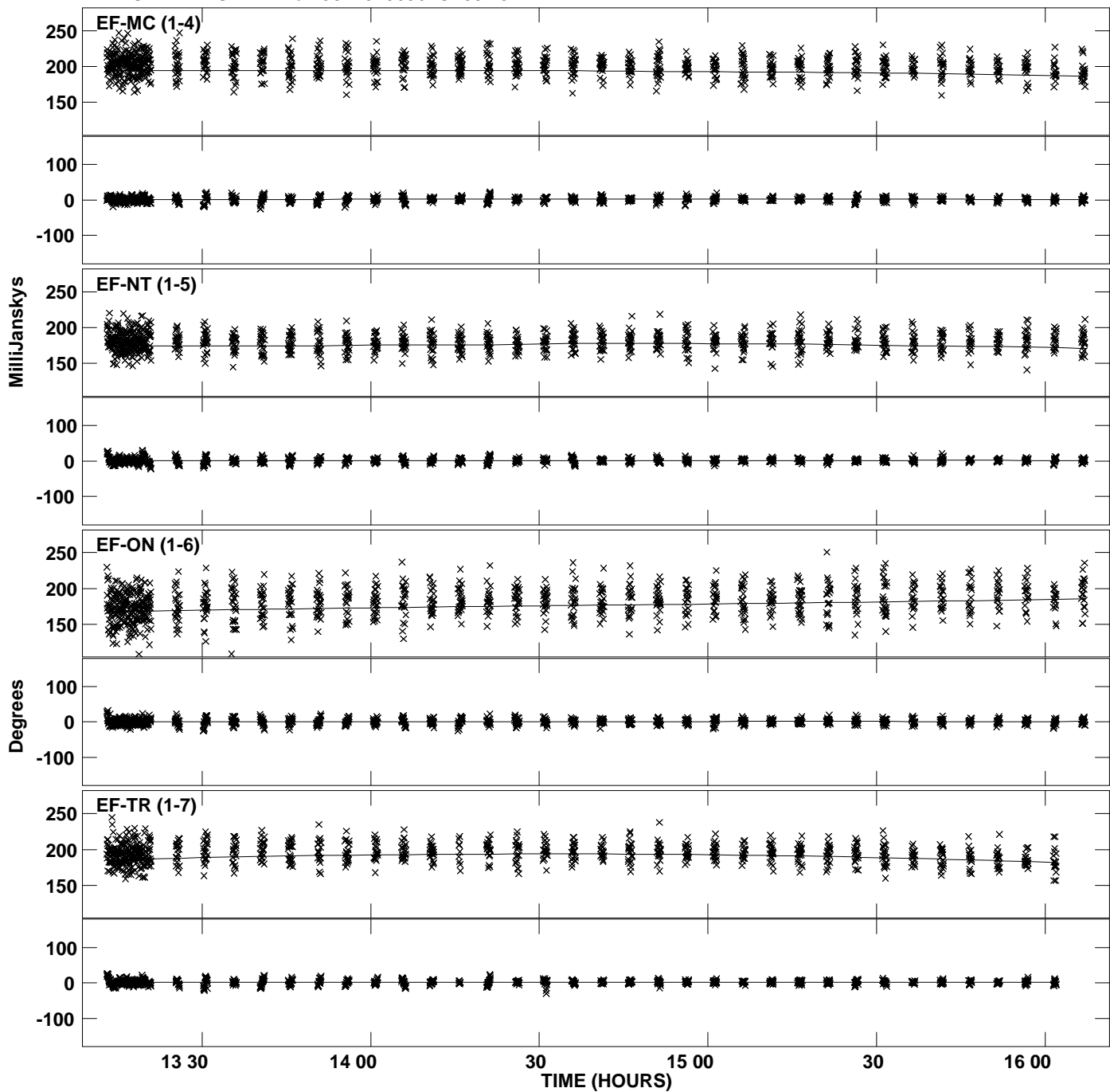
Plot file version 5 created 05-JUN-2013 14:22:34  
Amplitude and Phase vs Time for J0726+0636.MULTI.1 CL # 3  
IF 3 CHAN 1 STK LL of J0726+0636.ICL001.3



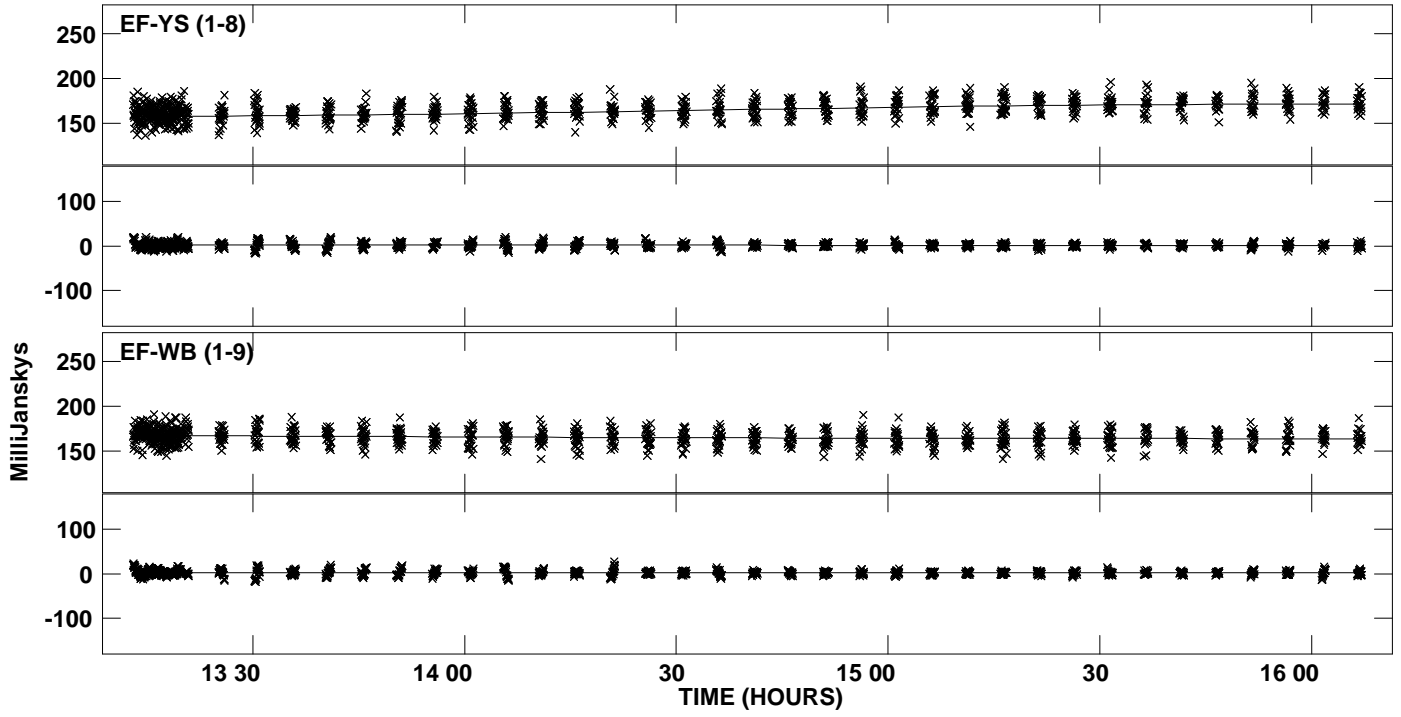
Plot file version 6 created 05-JUN-2013 14:22:34  
Amplitude andPhase vs Time for J0726+0636.MULTI.1 CL # 3  
IF 3 CHAN 1 STK LL of J0726+0636.ICL001.3



PLot file version 7 created 05-JUN-2013 14:22:35  
Amplitude andPhase vs Time for J0726+0636.MULTI.1 CL # 3  
IF 4 CHAN 1 STK LL of J0726+0636.ICL001.3

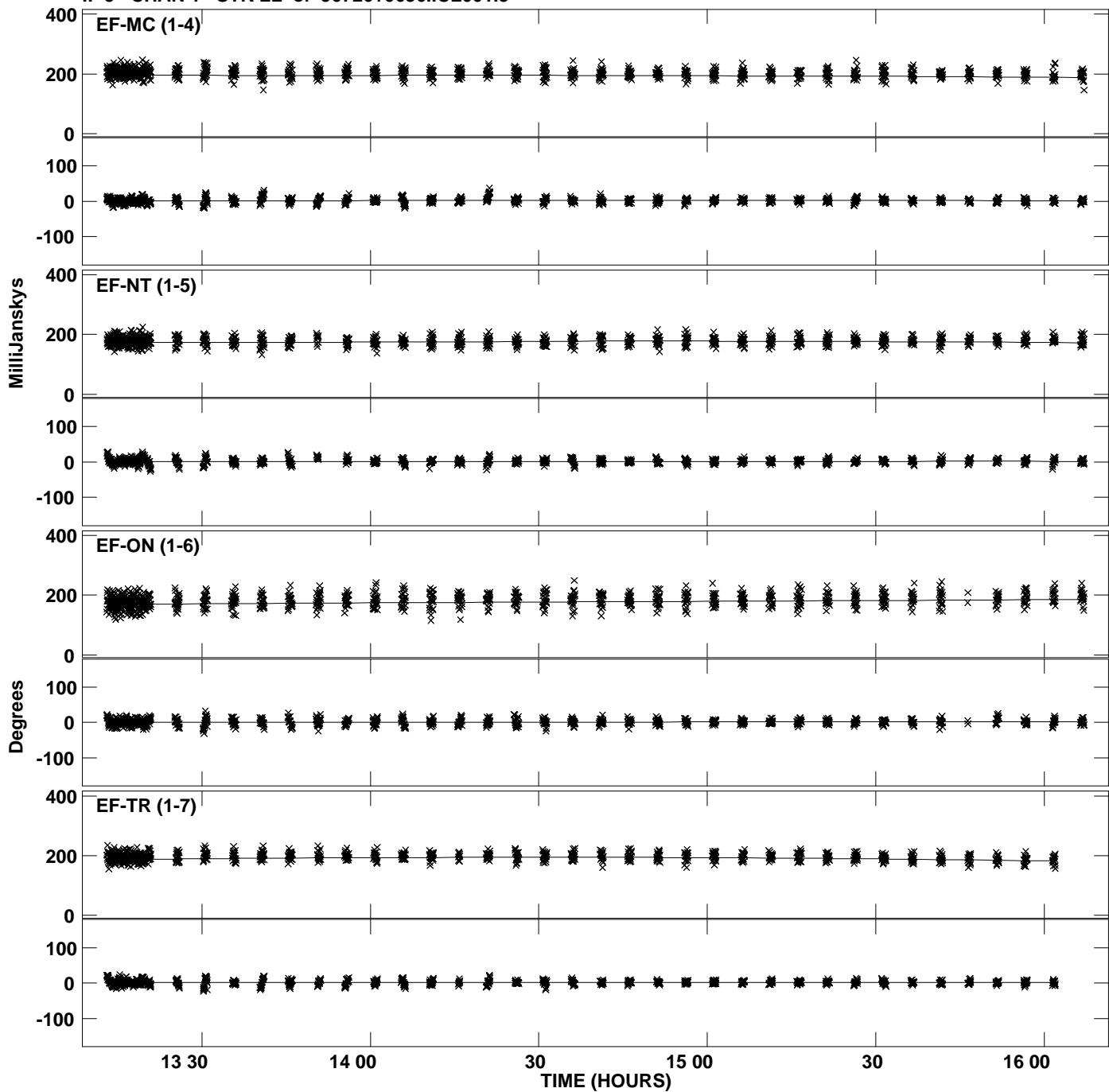


Plot file version 8 created 05-JUN-2013 14:22:35  
Amplitude and Phase vs Time for J0726+0636.MULTI.1 CL # 3  
IF 4 CHAN 1 STK LL of J0726+0636.ICL001.3

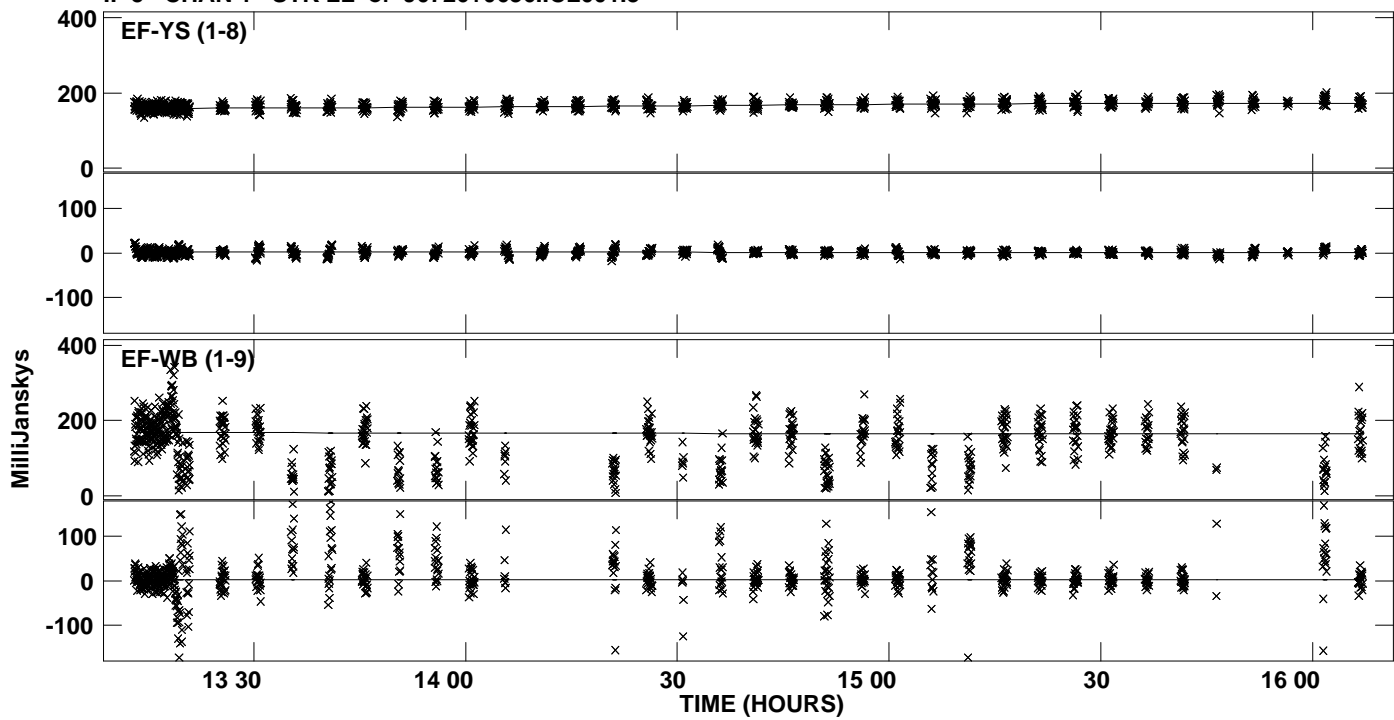




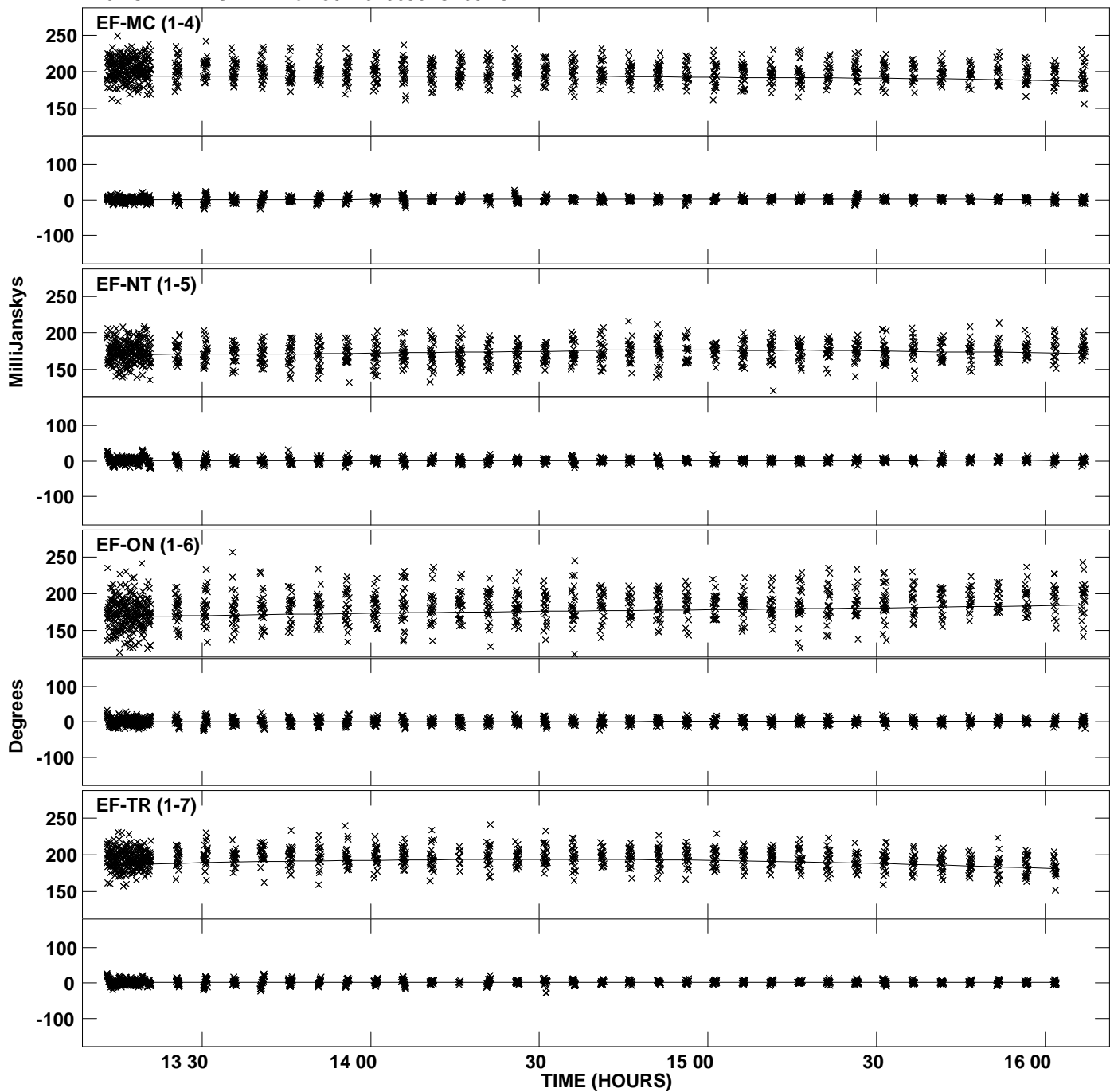
Plot file version 9 created 05-JUN-2013 14:22:35  
Amplitude and Phase vs Time for J0726+0636.MULTI.1 CL # 3  
IF 5 CHAN 1 STK LL of J0726+0636.ICL001.3



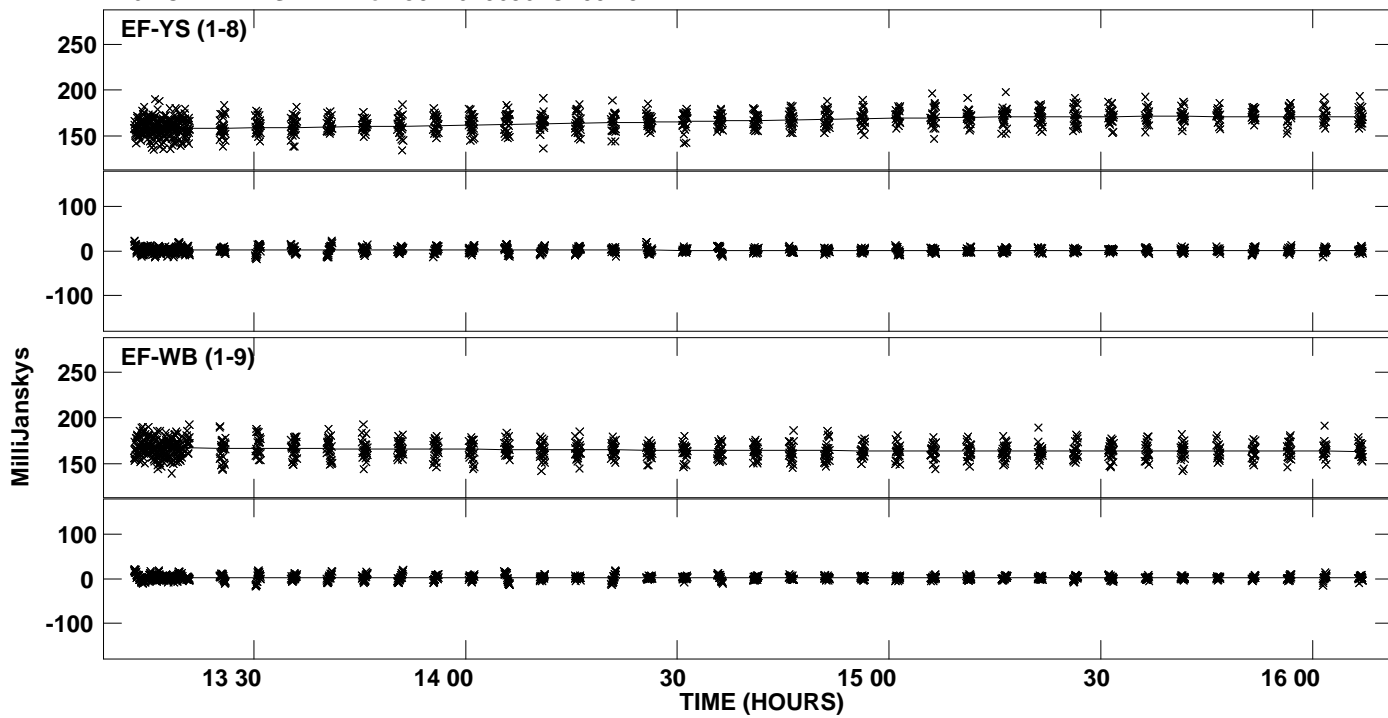
PLot file version 10 created 05-JUN-2013 14:22:35  
Amplitude andPhase vs Time for J0726+0636.MULTI.1 CL # 3  
IF 5 CHAN 1 STK LL of J0726+0636.ICL001.3



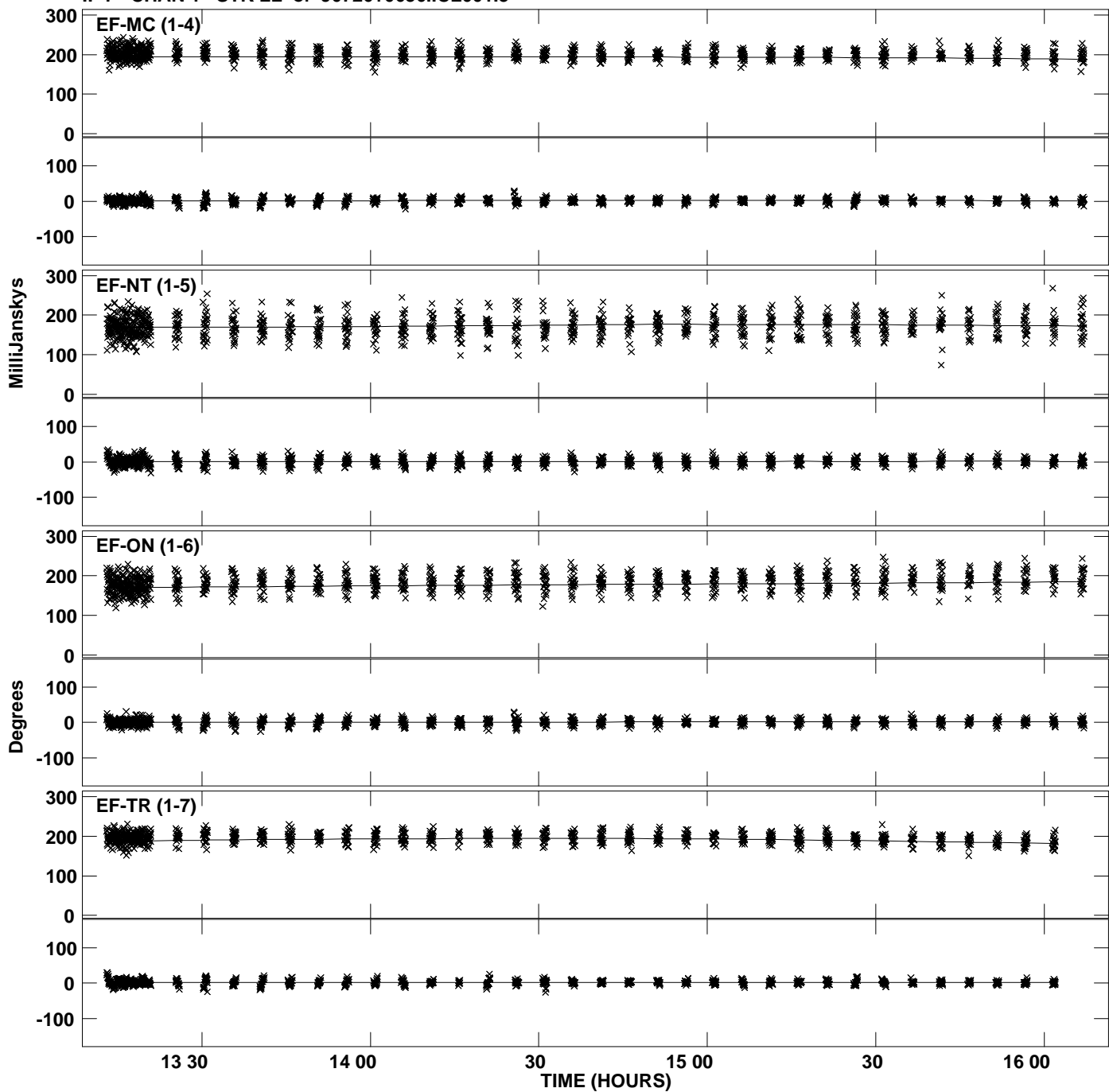
Plot file version 11 created 05-JUN-2013 14:22:35  
Amplitude and Phase vs Time for J0726+0636.MULTI.1 CL # 3  
IF 6 CHAN 1 STK LL of J0726+0636.ICL001.3



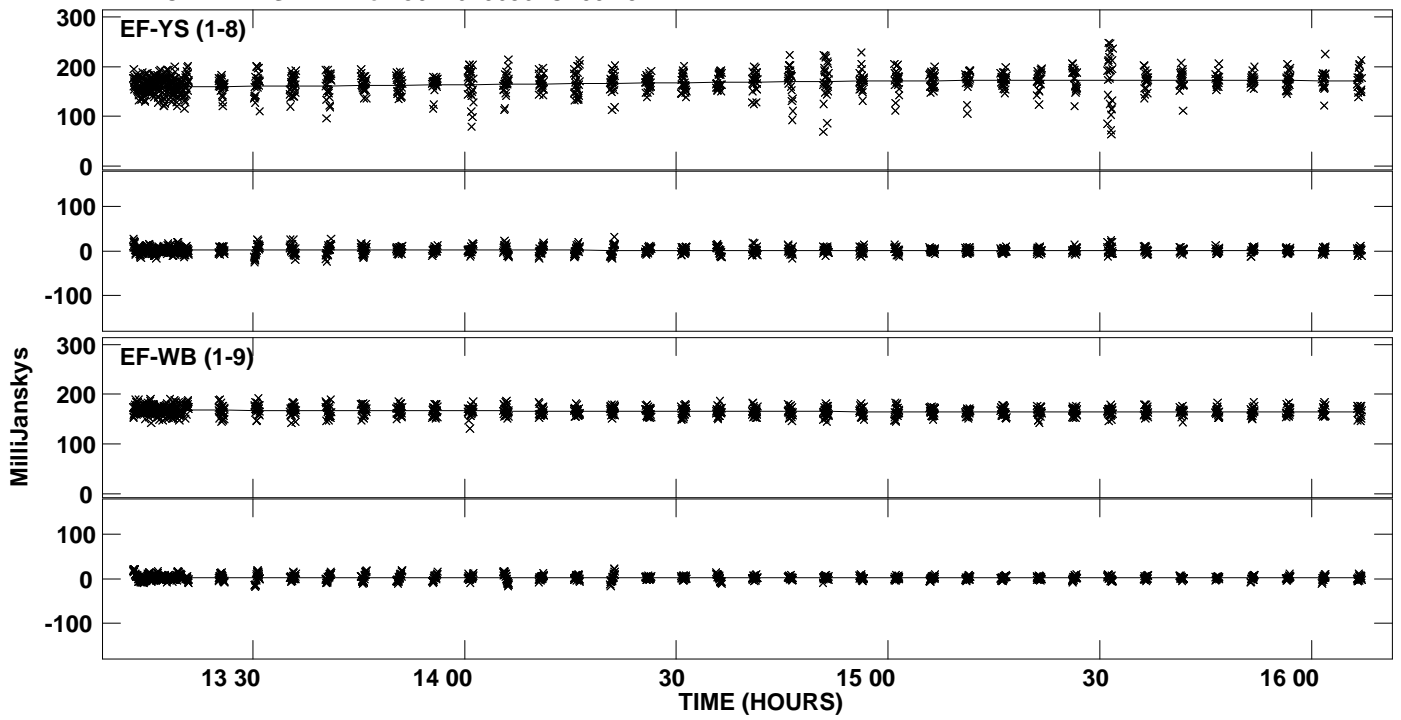
Plot file version 12 created 05-JUN-2013 14:22:35  
Amplitude and Phase vs Time for J0726+0636.MULTI.1 CL # 3  
IF 6 CHAN 1 STK LL of J0726+0636.ICL001.3



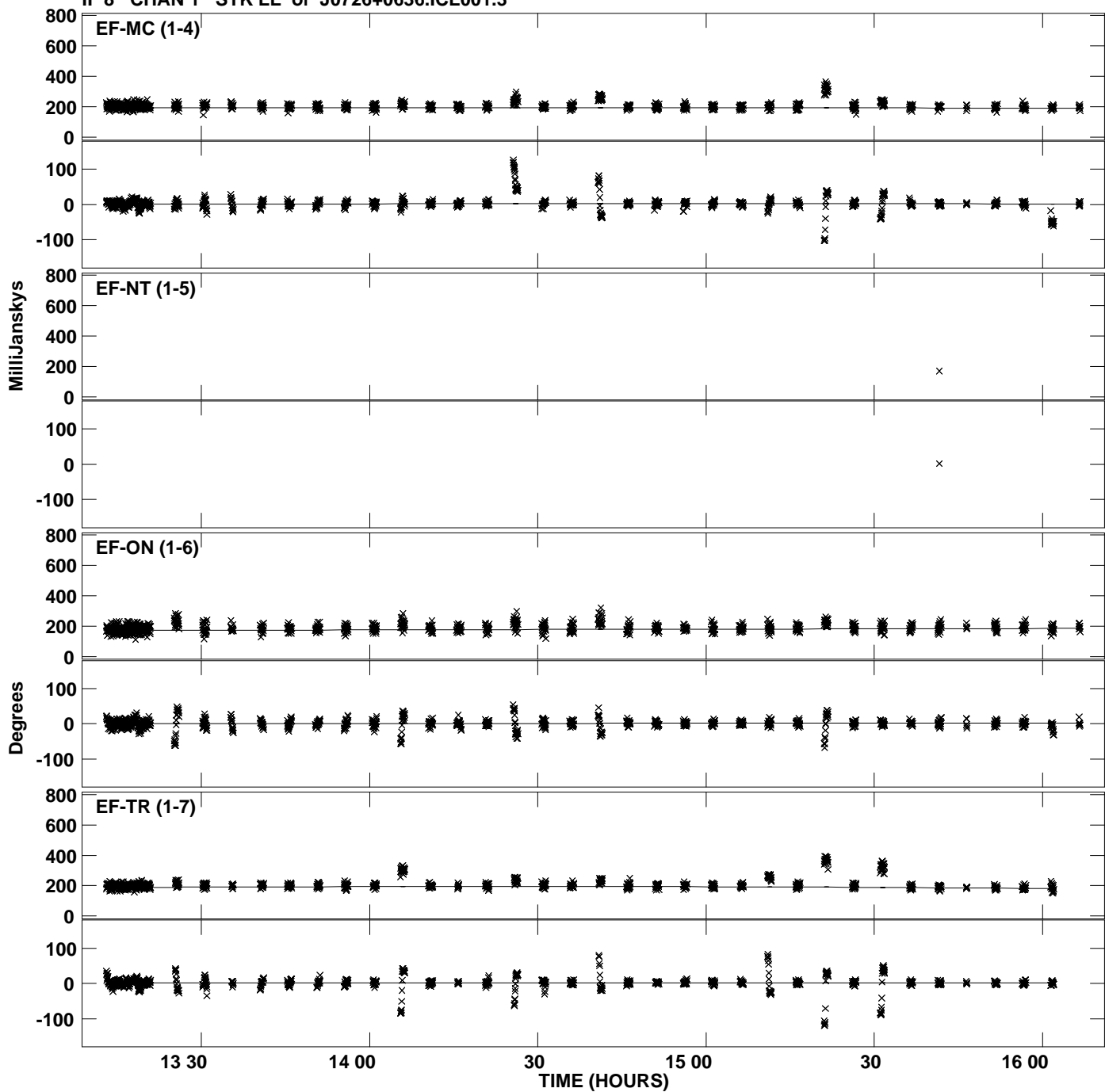
Plot file version 13 created 05-JUN-2013 14:22:35  
Amplitude andPhase vs Time for J0726+0636.MULTI.1 CL # 3  
IF 7 CHAN 1 STK LL of J0726+0636.ICL001.3



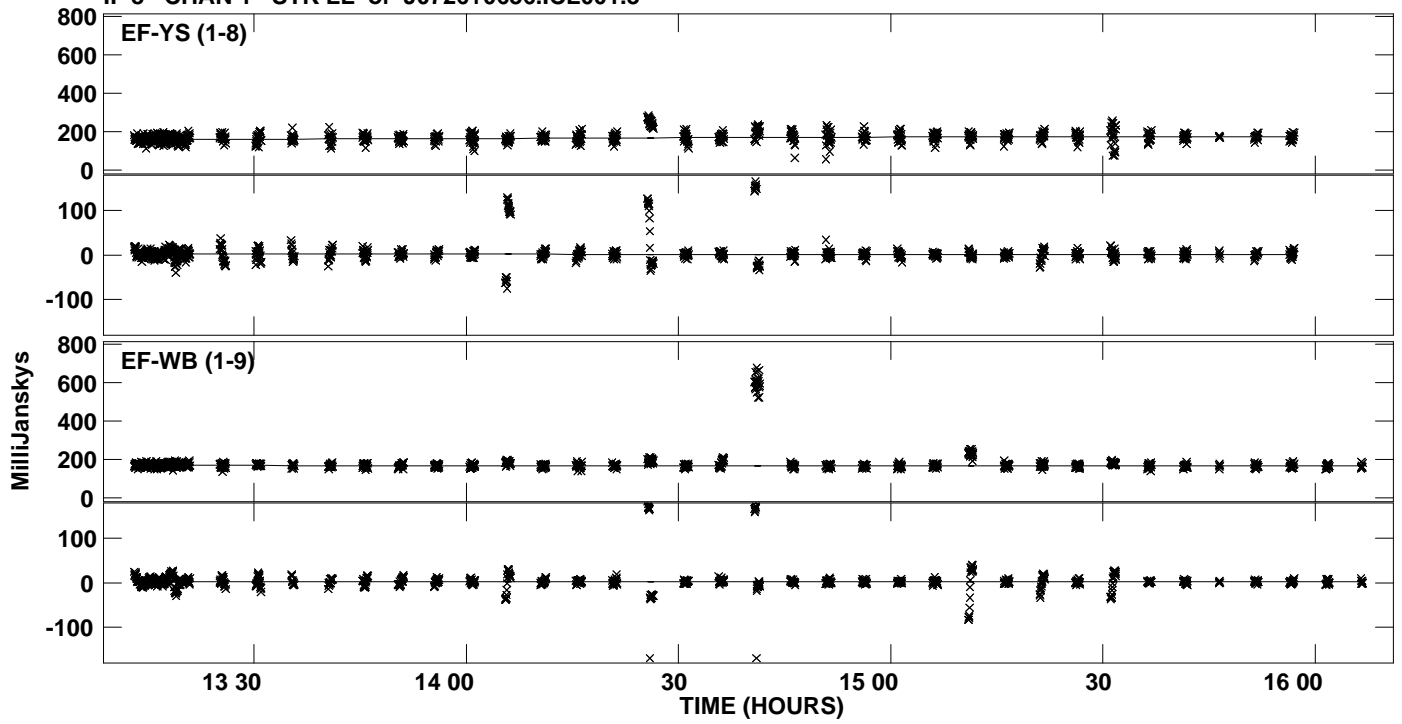
Plot file version 14 created 05-JUN-2013 14:22:35  
Amplitude andPhase vs Time for J0726+0636.MULTI.1 CL # 3  
IF 7 CHAN 1 STK LL of J0726+0636.ICL001.3



Plot file version 15 created 05-JUN-2013 14:22:35  
Amplitude andPhase vs Time for J0726+0636.MULTI.1 CL # 3  
IF 8 CHAN 1 STK LL of J0726+0636.ICL001.3

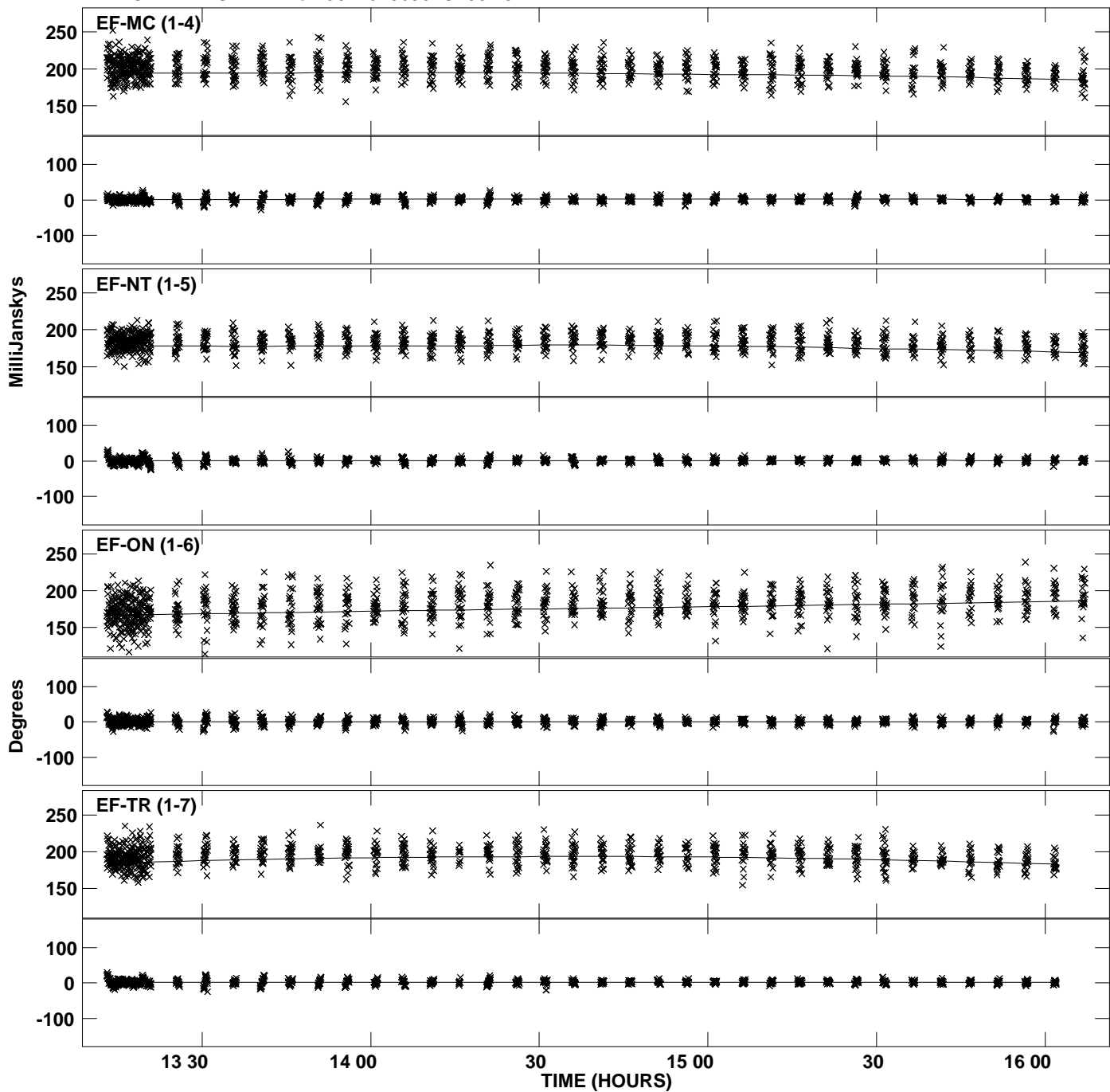


Plot file version 16 created 05-JUN-2013 14:22:35  
Amplitude andPhase vs Time for J0726+0636.MULTI.1 CL # 3  
IF 8 CHAN 1 STK LL of J0726+0636.ICL001.3

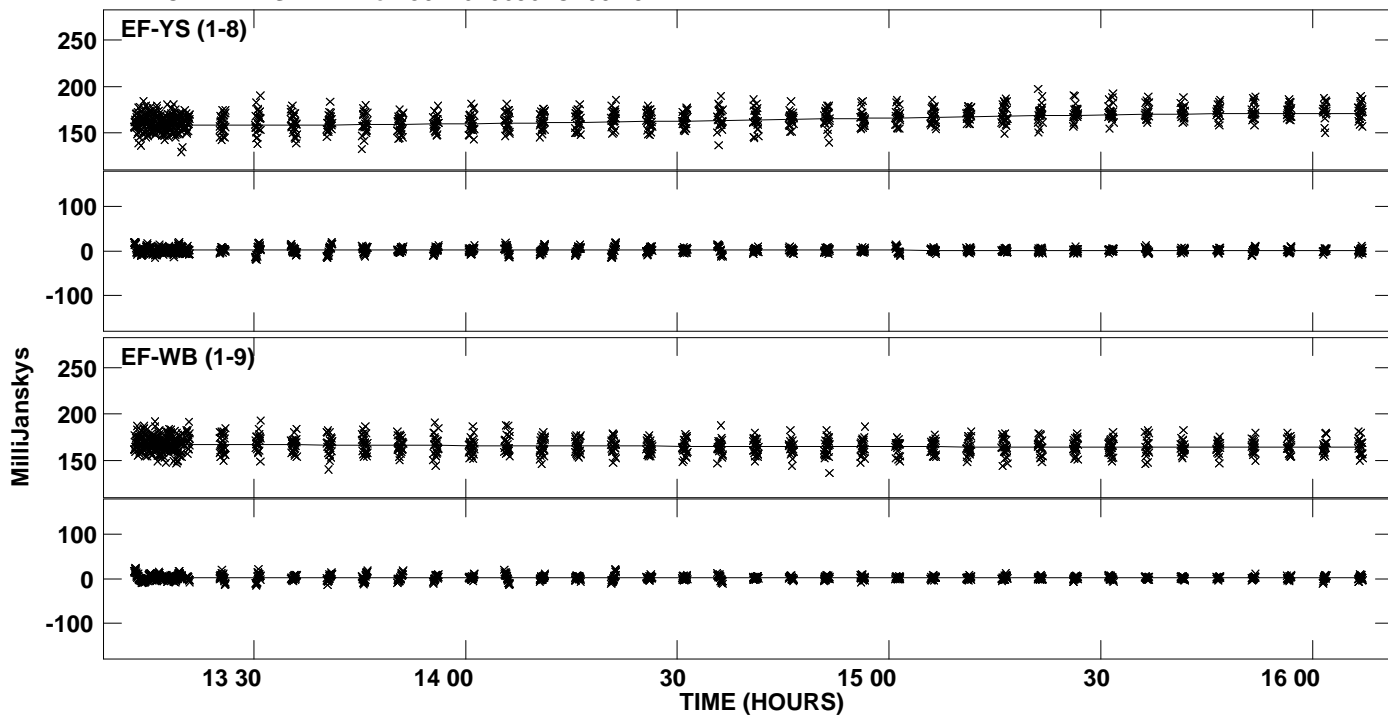




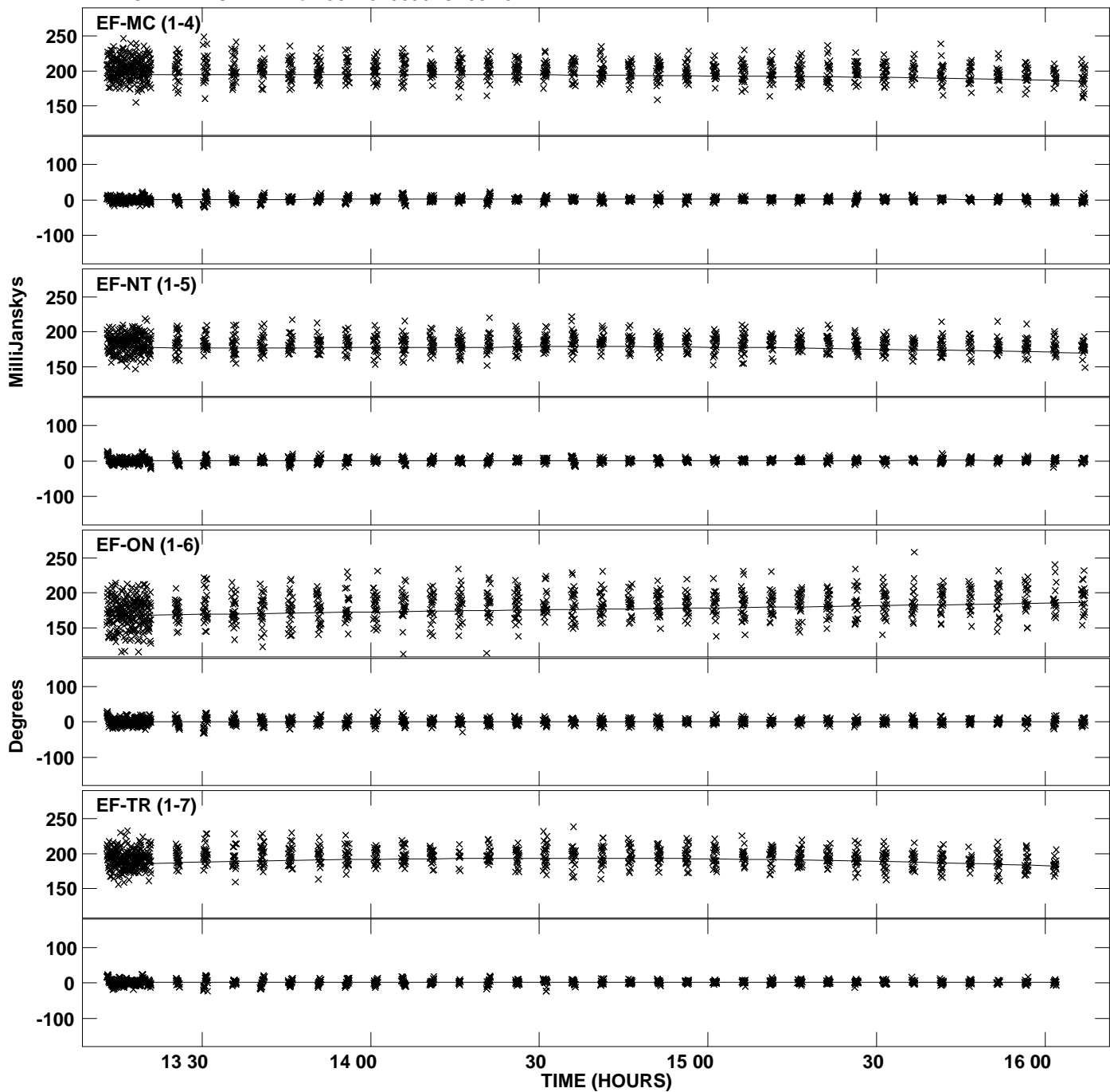
Plot file version 17 created 05-JUN-2013 14:22:35  
Amplitude and Phase vs Time for J0726+0636.MULTI.1 CL # 3  
IF 1 CHAN 1 STK RR of J0726+0636.ICL001.3



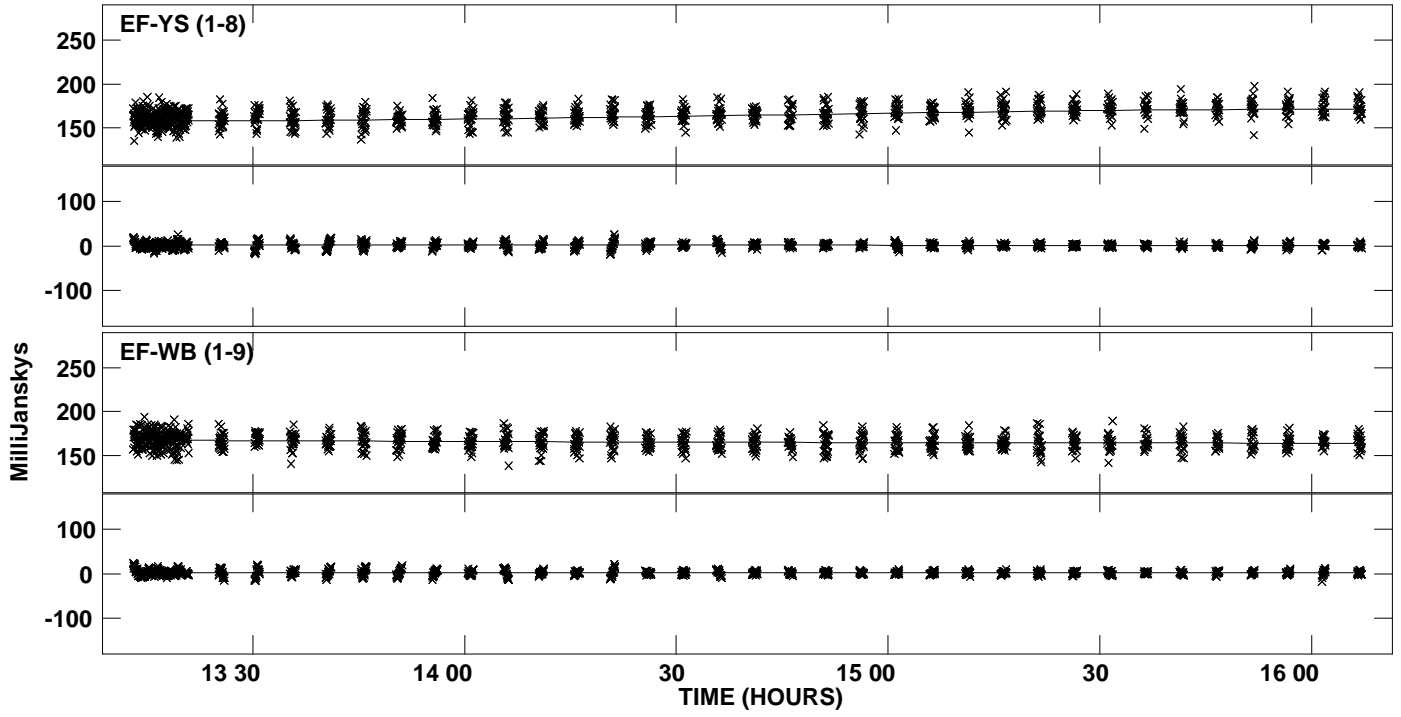
PLot file version 18 created 05-JUN-2013 14:22:35  
Amplitude andPhase vs Time for J0726+0636.MULTI.1 CL # 3  
IF 1 CHAN 1 STK RR of J0726+0636.ICL001.3



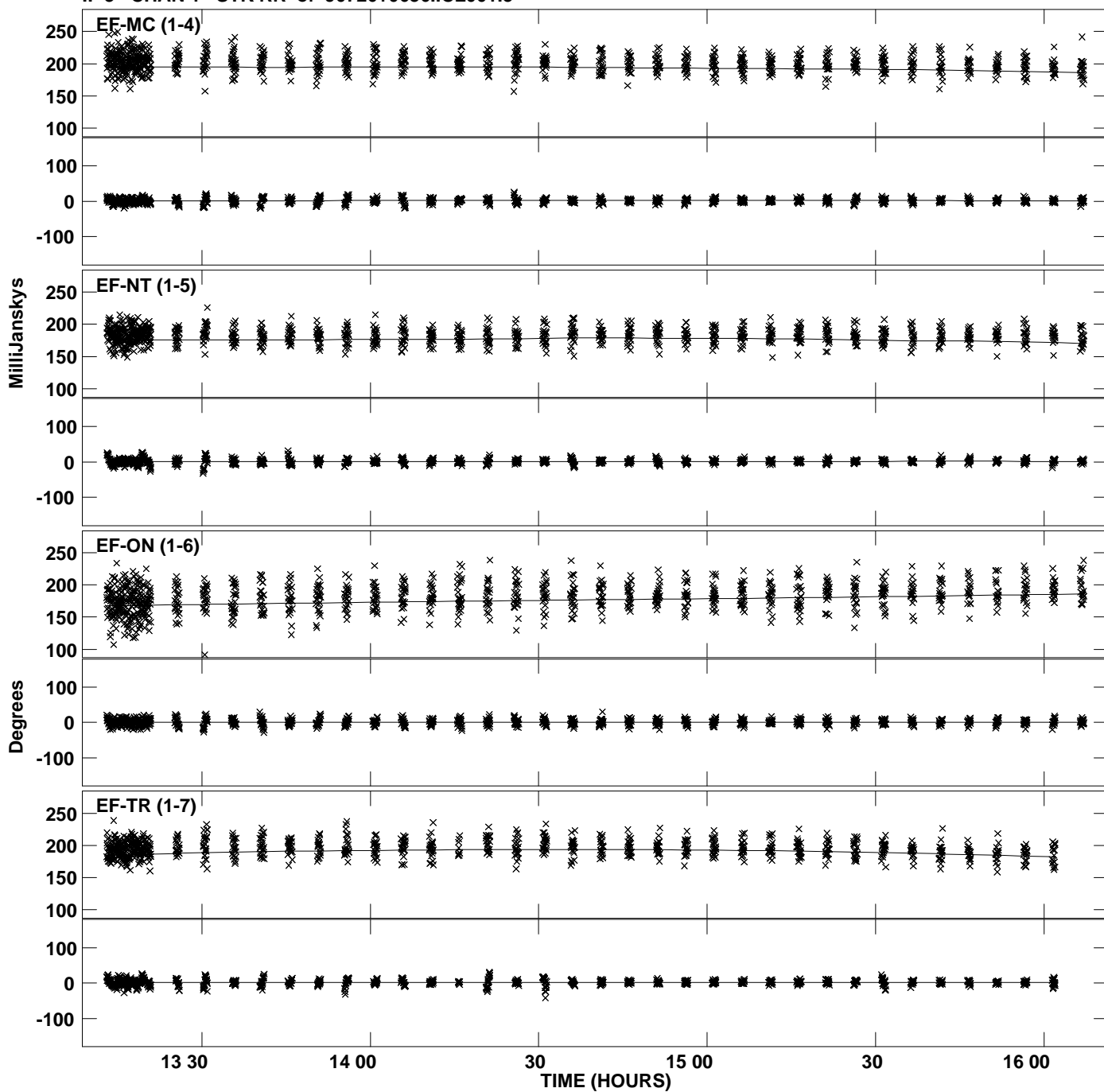
Plot file version 19 created 05-JUN-2013 14:22:35  
Amplitude and Phase vs Time for J0726+0636.MULTI.1 CL # 3  
IF 2 CHAN 1 STK RR of J0726+0636.ICL001.3



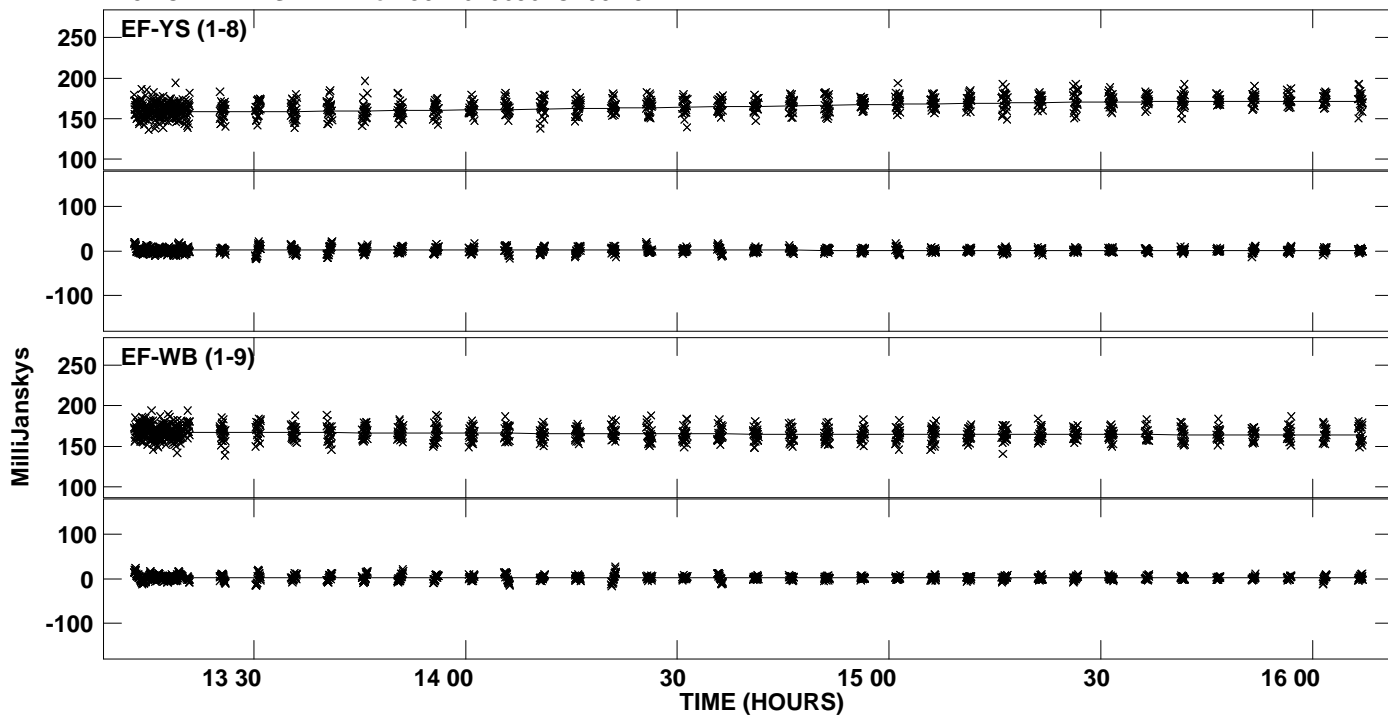
PLot file version 20 created 05-JUN-2013 14:22:35  
Amplitude andPhase vs Time for J0726+0636.MULTI.1 CL # 3  
IF 2 CHAN 1 STK RR of J0726+0636.ICL001.3



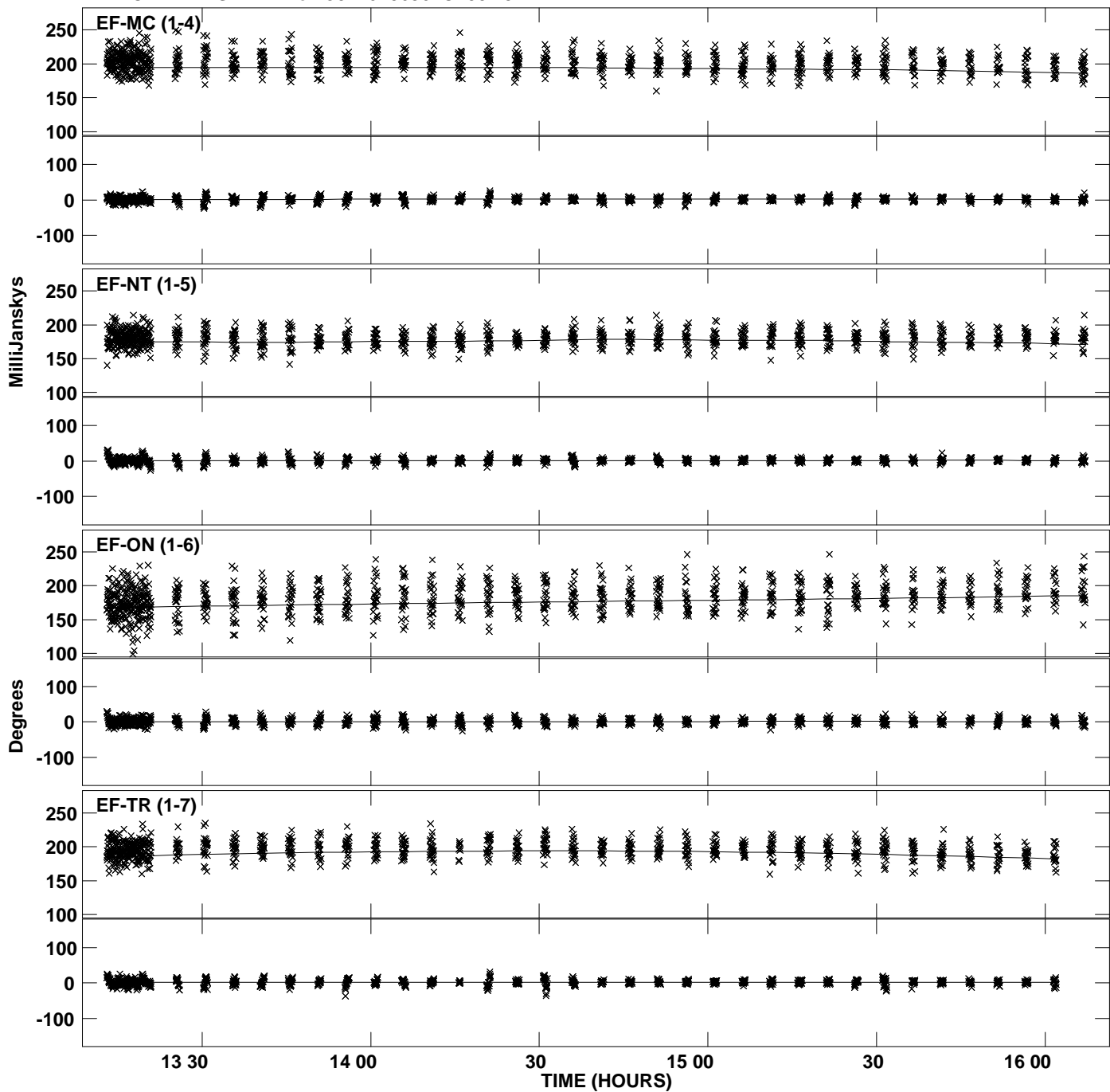
Plot file version 21 created 05-JUN-2013 14:22:35  
Amplitude and Phase vs Time for J0726+0636.MULTI.1 CL # 3  
IF 3 CHAN 1 STK RR of J0726+0636.ICL001.3



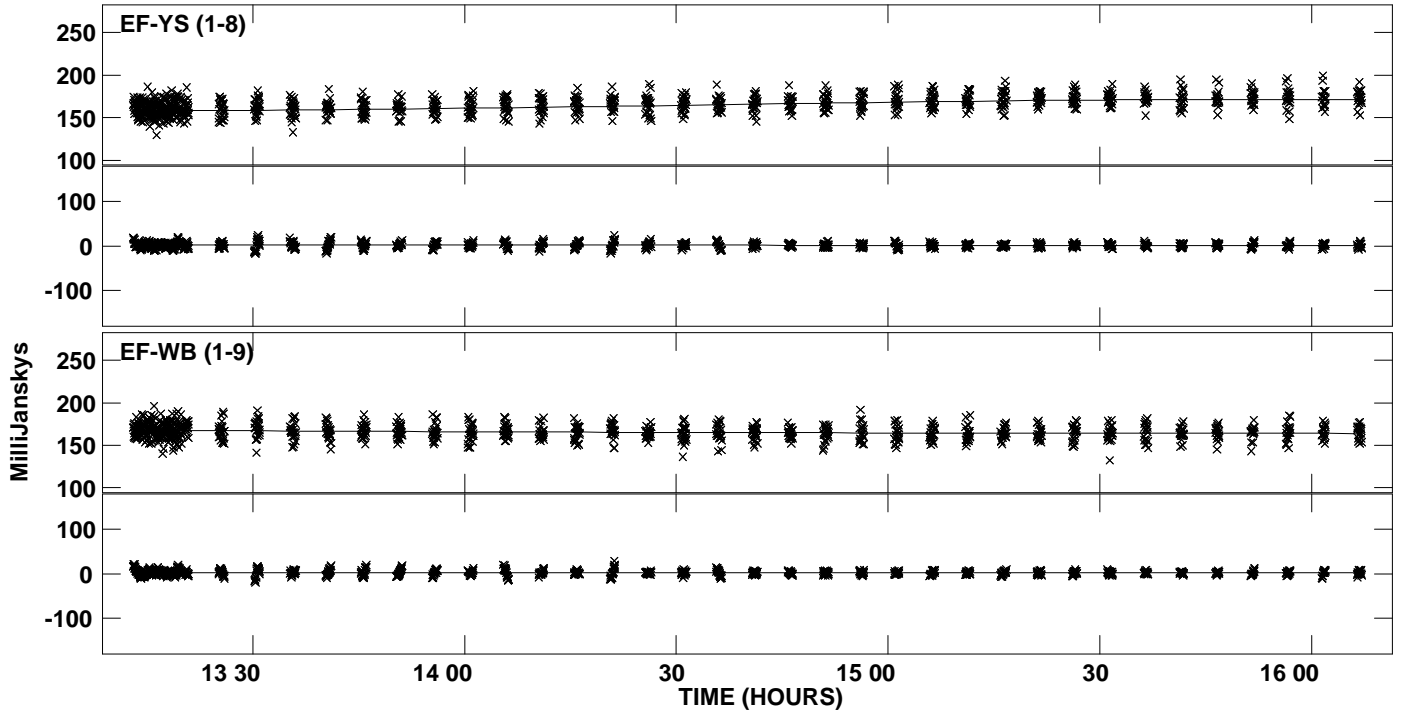
Plot file version 22 created 05-JUN-2013 14:22:35  
Amplitude andPhase vs Time for J0726+0636.MULTI.1 CL # 3  
IF 3 CHAN 1 STK RR of J0726+0636.ICL001.3



Plot file version 23 created 05-JUN-2013 14:22:35  
Amplitude andPhase vs Time for J0726+0636.MULTI.1 CL # 3  
IF 4 CHAN 1 STK RR of J0726+0636.ICL001.3

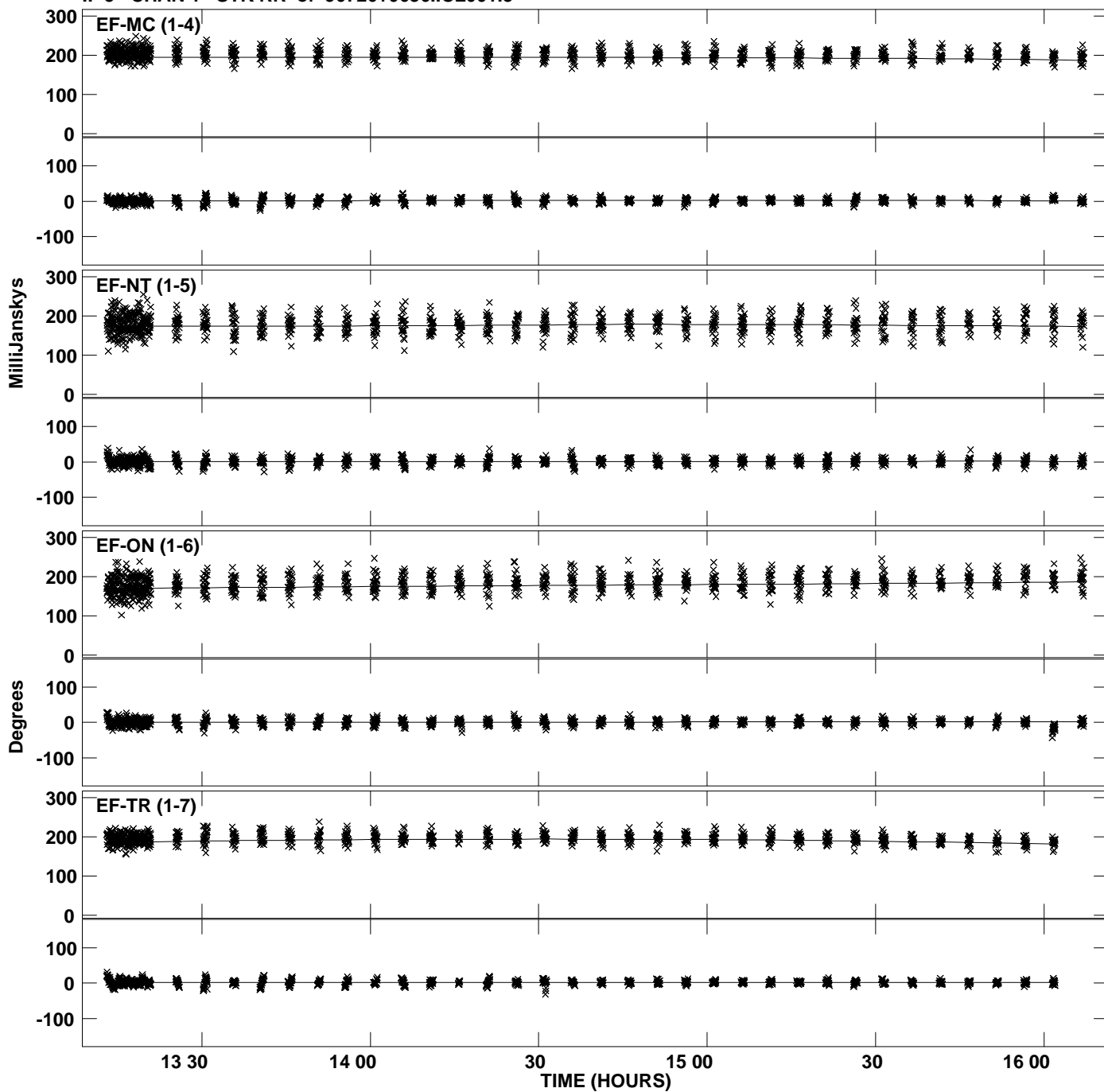


PLot file version 24 created 05-JUN-2013 14:22:35  
Amplitude andPhase vs Time for J0726+0636.MULTI.1 CL # 3  
IF 4 CHAN 1 STK RR of J0726+0636.ICL001.3

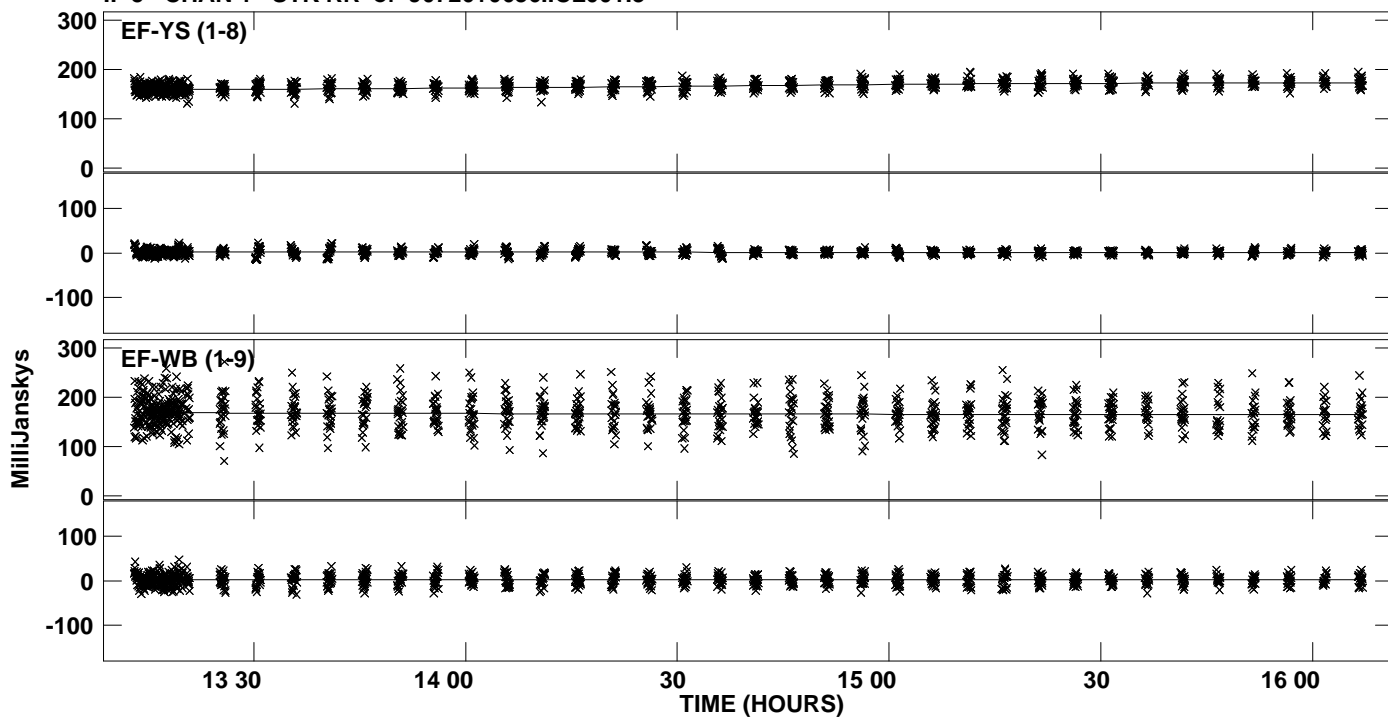




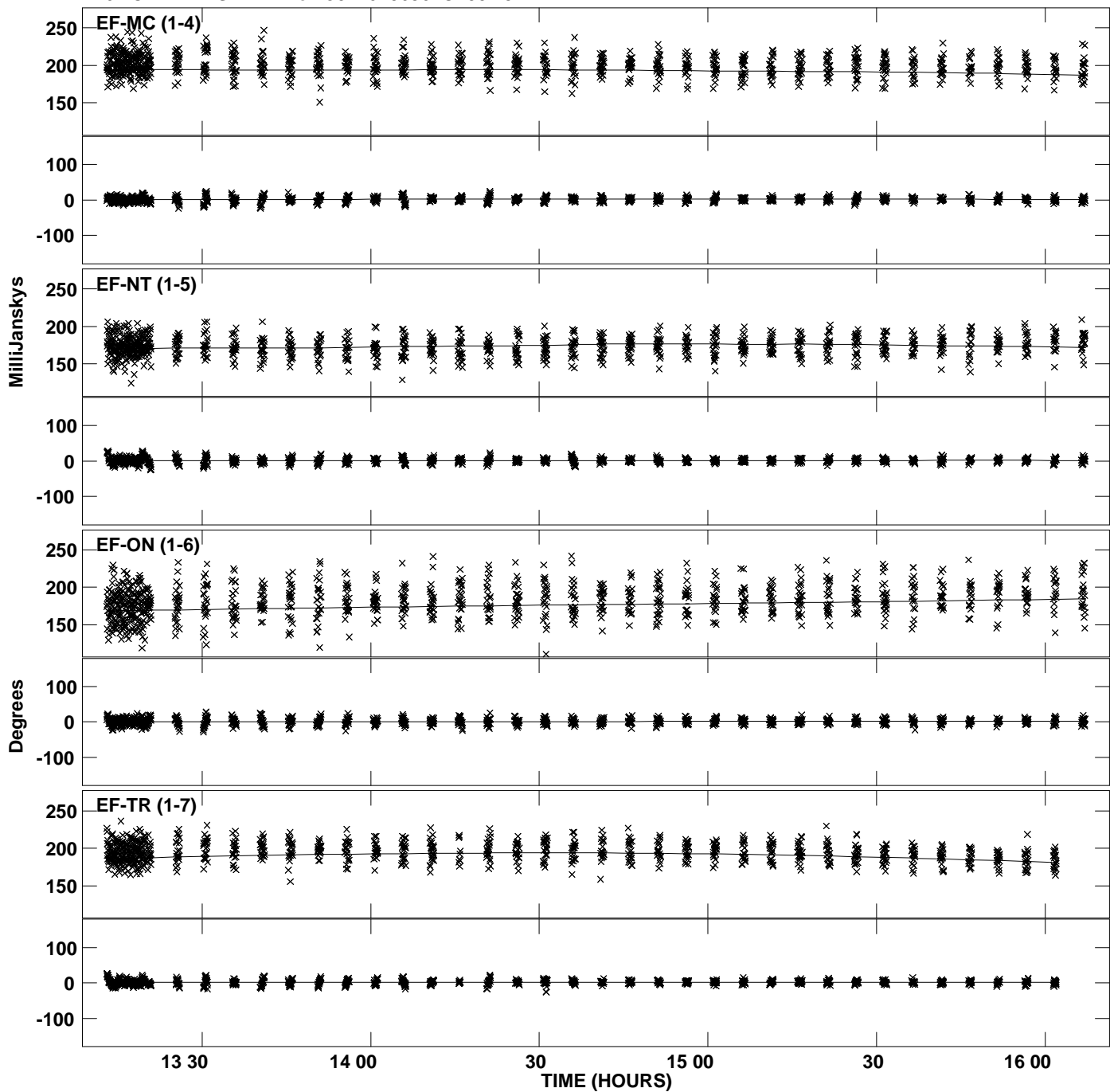
PLot file version 25 created 05-JUN-2013 14:22:35  
Amplitude andPhase vs Time for J0726+0636.MULTI.1 CL # 3  
IF 5 CHAN 1 STK RR of J0726+0636.ICL001.3



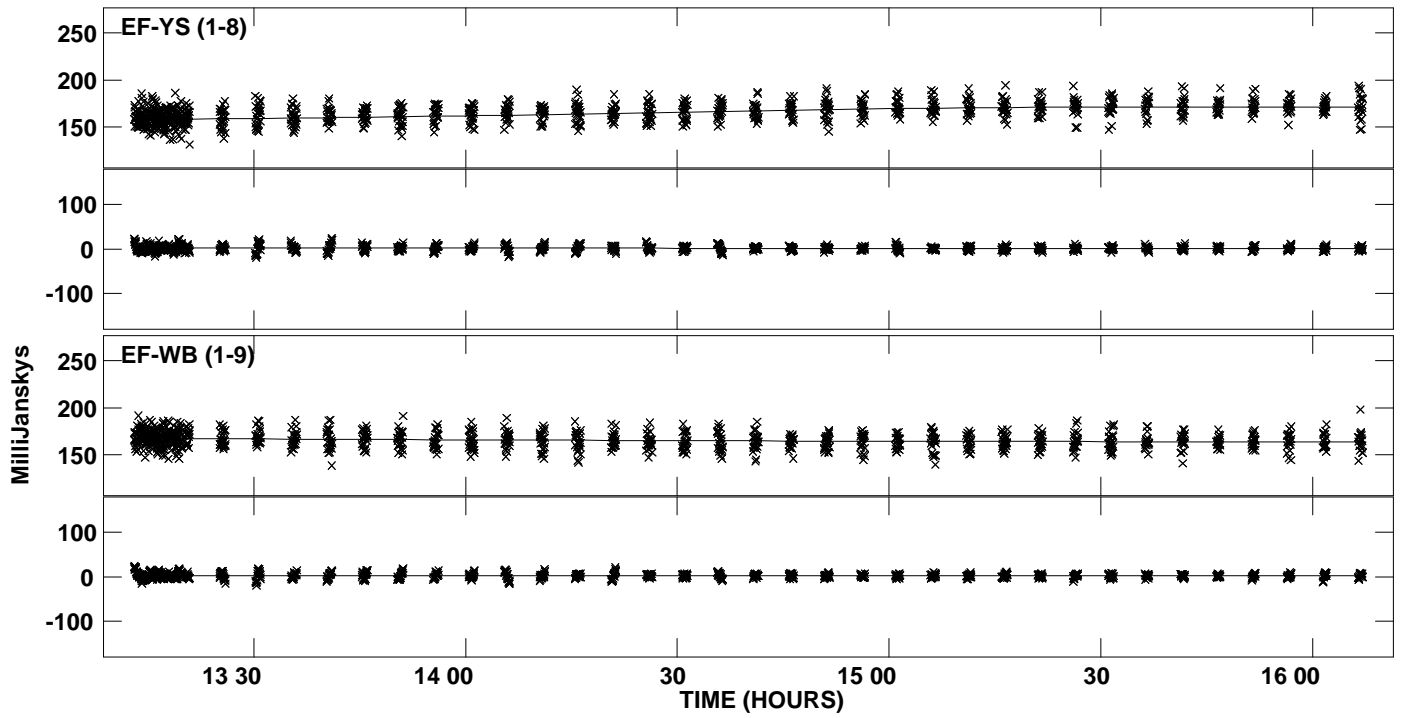
Plot file version 26 created 05-JUN-2013 14:22:35  
Amplitude andPhase vs Time for J0726+0636.MULTI.1 CL # 3  
IF 5 CHAN 1 STK RR of J0726+0636.ICL001.3



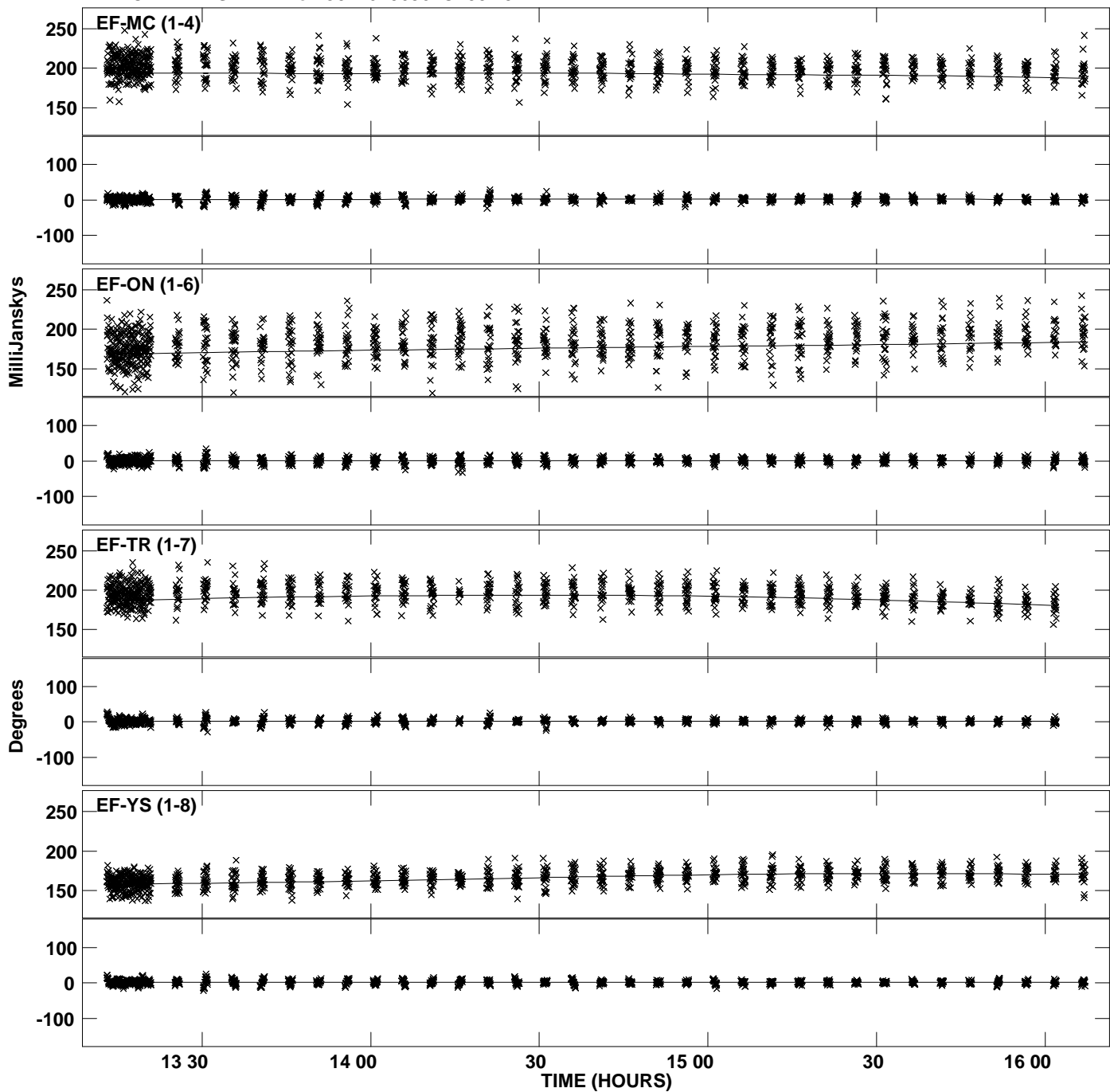
Plot file version 27 created 05-JUN-2013 14:22:35  
Amplitude and Phase vs Time for J0726+0636.MULTI.1 CL # 3  
IF 6 CHAN 1 STK RR of J0726+0636.ICL001.3



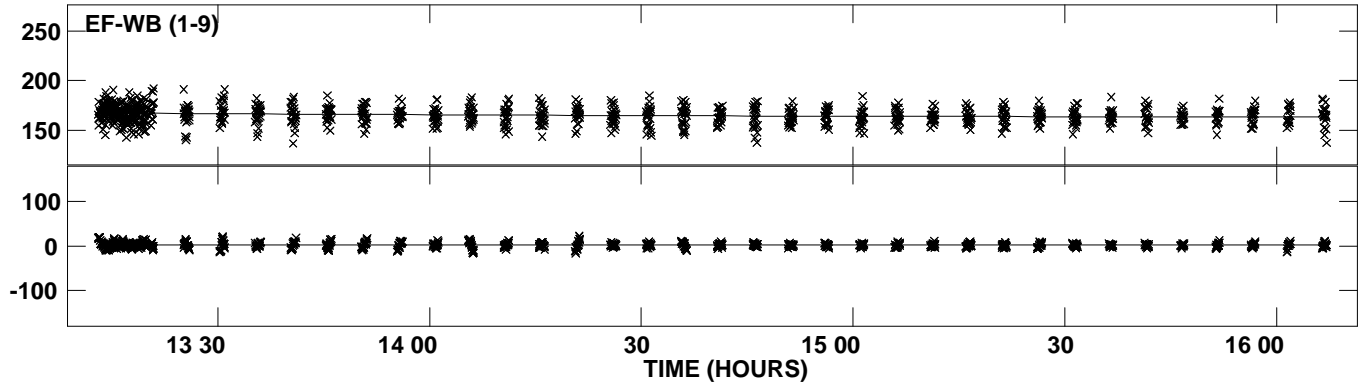
Plot file version 28 created 05-JUN-2013 14:22:35  
Amplitude andPhase vs Time for J0726+0636.MULTI.1 CL # 3  
IF 6 CHAN 1 STK RR of J0726+0636.ICL001.3



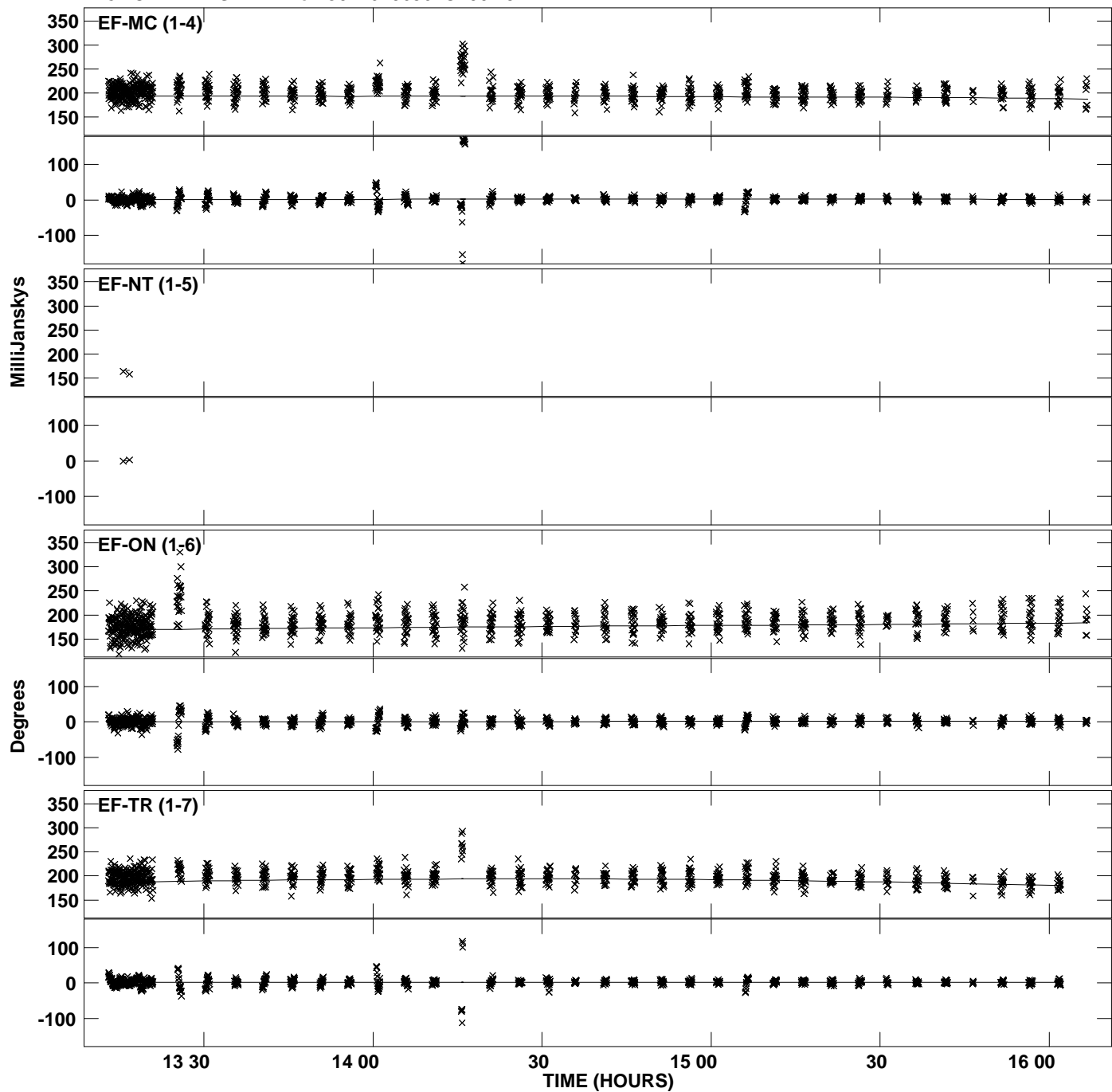
Plot file version 29 created 05-JUN-2013 14:22:36  
Amplitude and Phase vs Time for J0726+0636.MULTI.1 CL # 3  
IF 7 CHAN 1 STK RR of J0726+0636.ICL001.3



PLot file version 30 created 05-JUN-2013 14:22:36  
Amplitude andPhase vs Time for J0726+0636.MULTI.1 CL # 3  
IF 7 CHAN 1 STK RR of J0726+0636.ICL001.3



Plot file version 31 created 05-JUN-2013 14:22:36  
Amplitude and Phase vs Time for J0726+0636.MULTI.1 CL # 3  
IF 8 CHAN 1 STK RR of J0726+0636.ICL001.3



Plot file version 32 created 05-JUN-2013 14:22:36  
Amplitude andPhase vs Time for J0726+0636.MULTI.1 CL # 3  
IF 8 CHAN 1 STK RR of J0726+0636.ICL001.3

