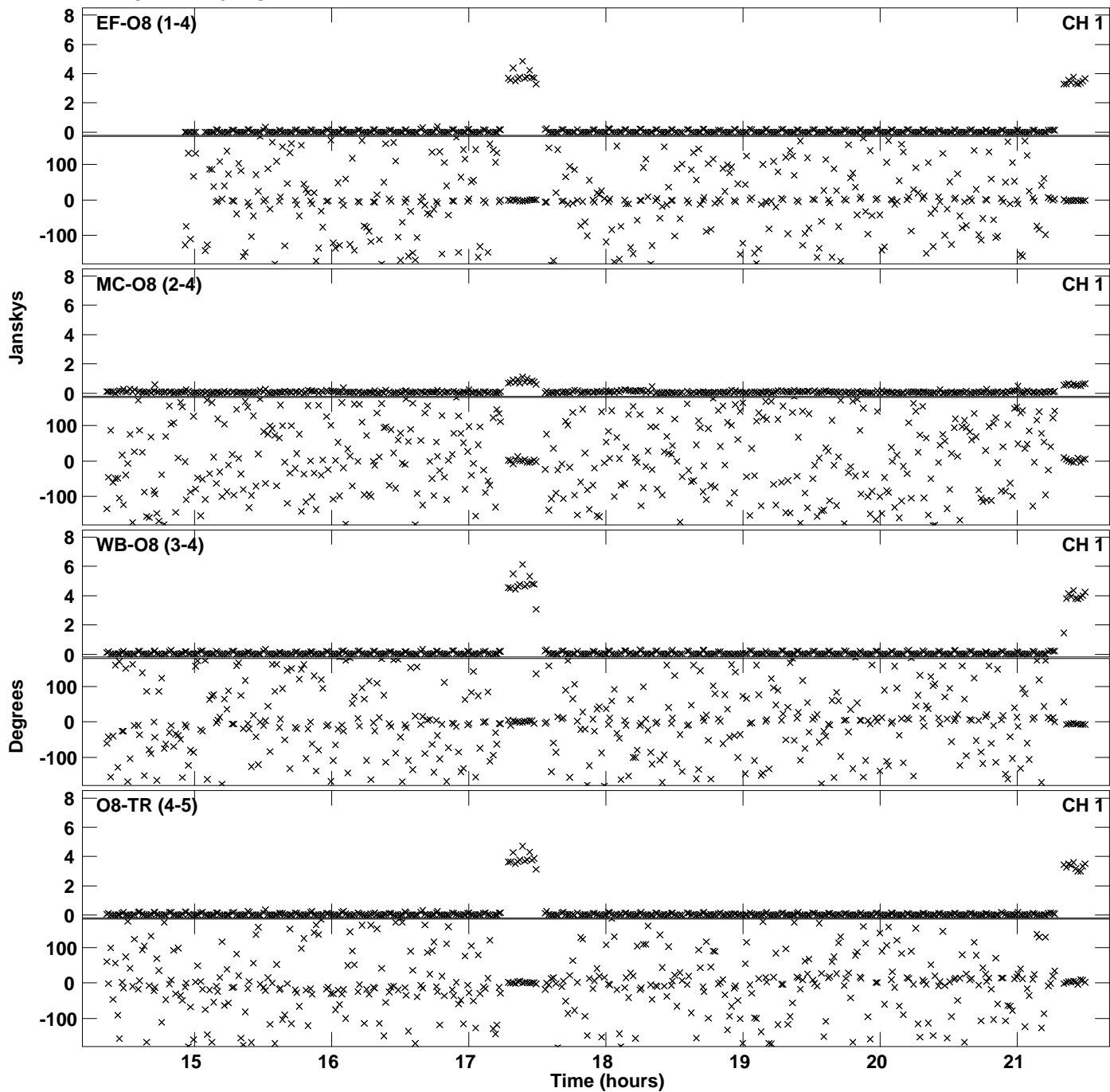
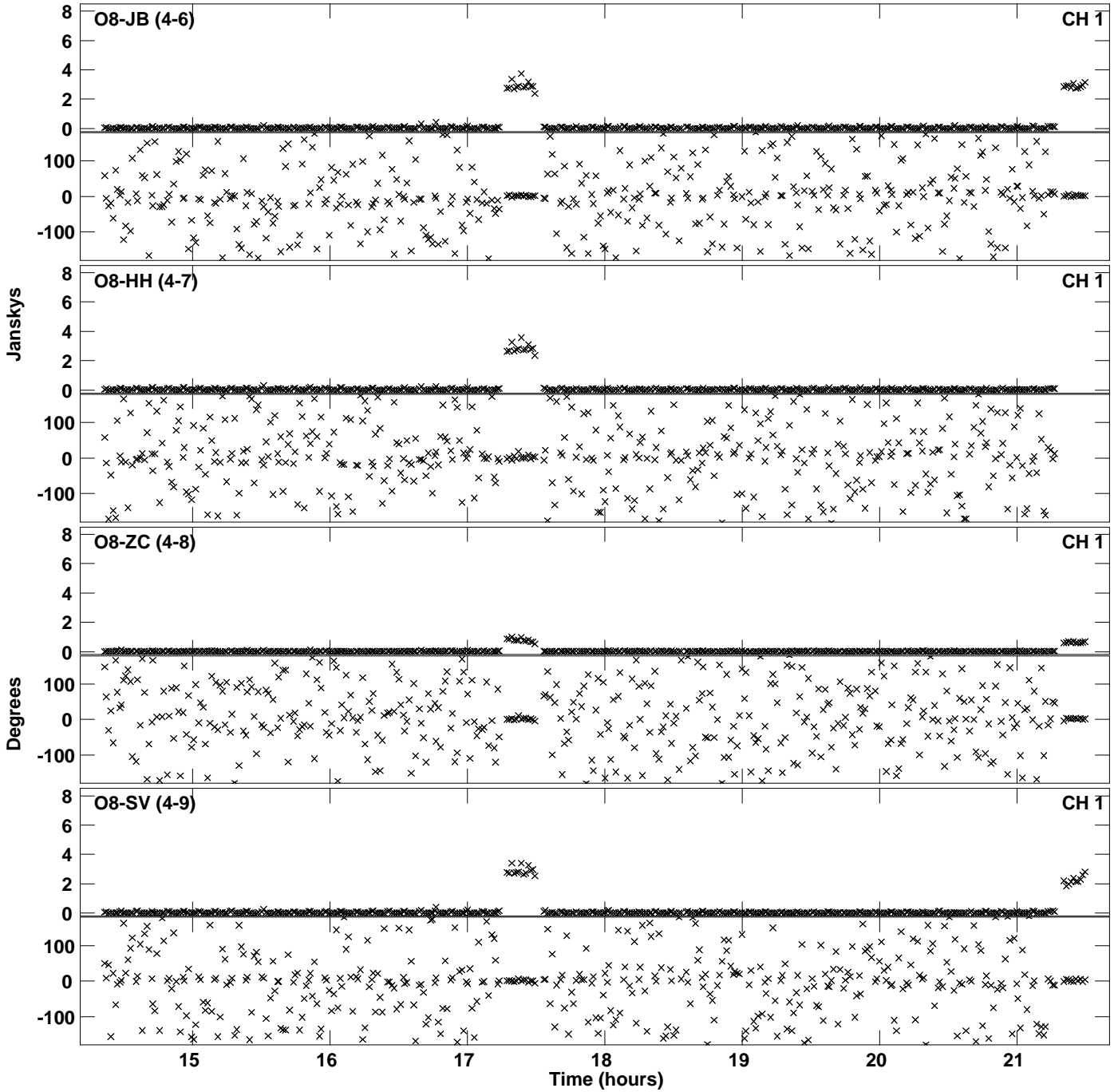


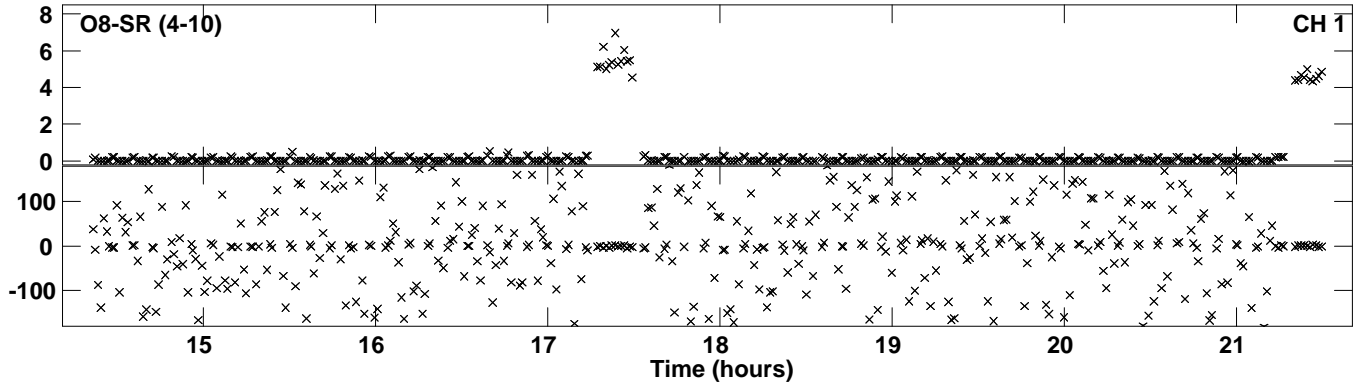
Plot file version 1 created 29-JAN-2019 17:11:03
Amplitude andPhase vs Time for EH035A.UVDATA.1 Vect aver. CL # 3
IF 1 CHAN 1 - 64 STK LL



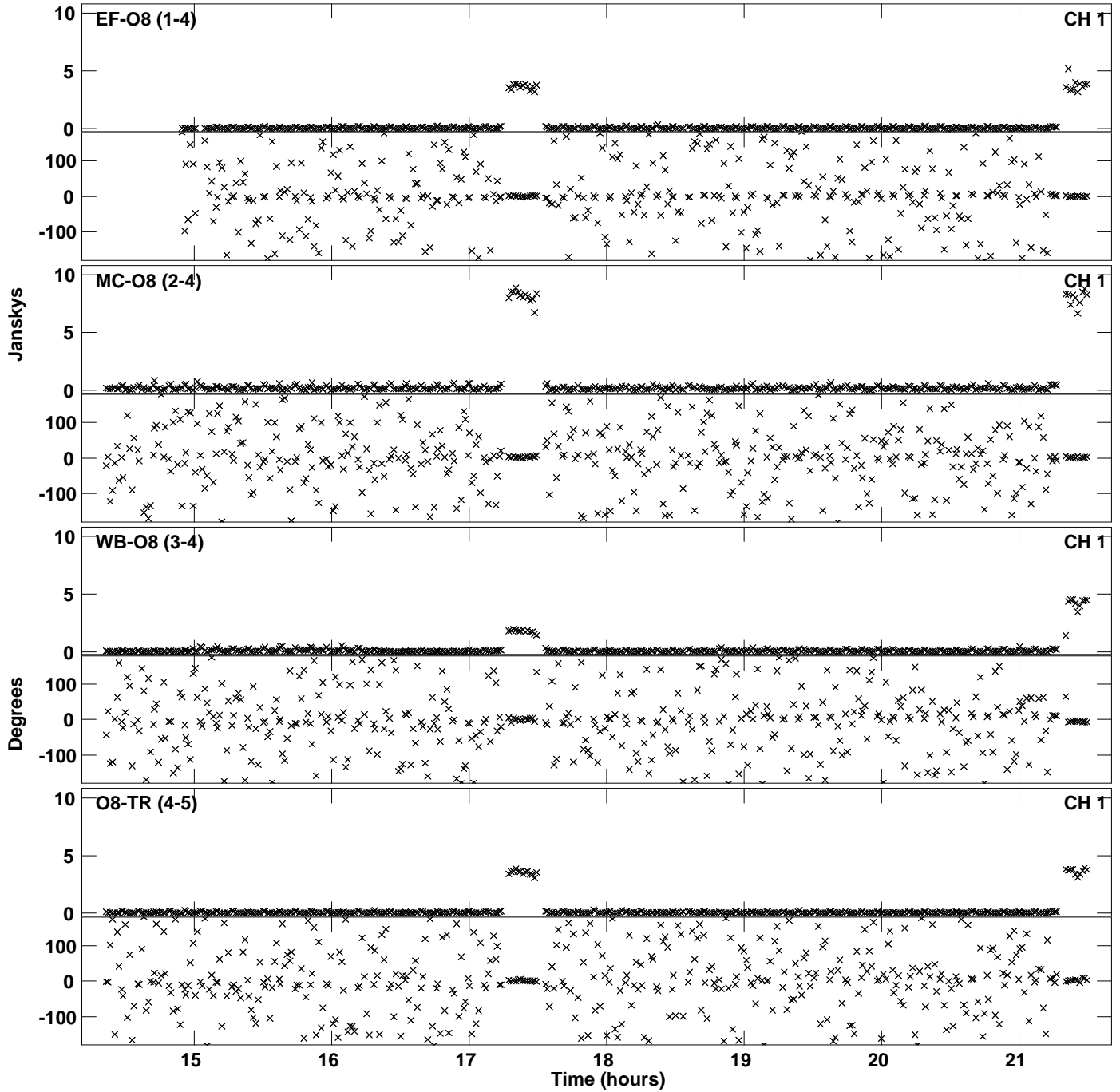
Plot file version 2 created 29-JAN-2019 17:11:03
Amplitude andPhase vs Time for EH035A.UVDATA.1 Vect aver. CL # 3
IF 1 CHAN 1 - 64 STK LL



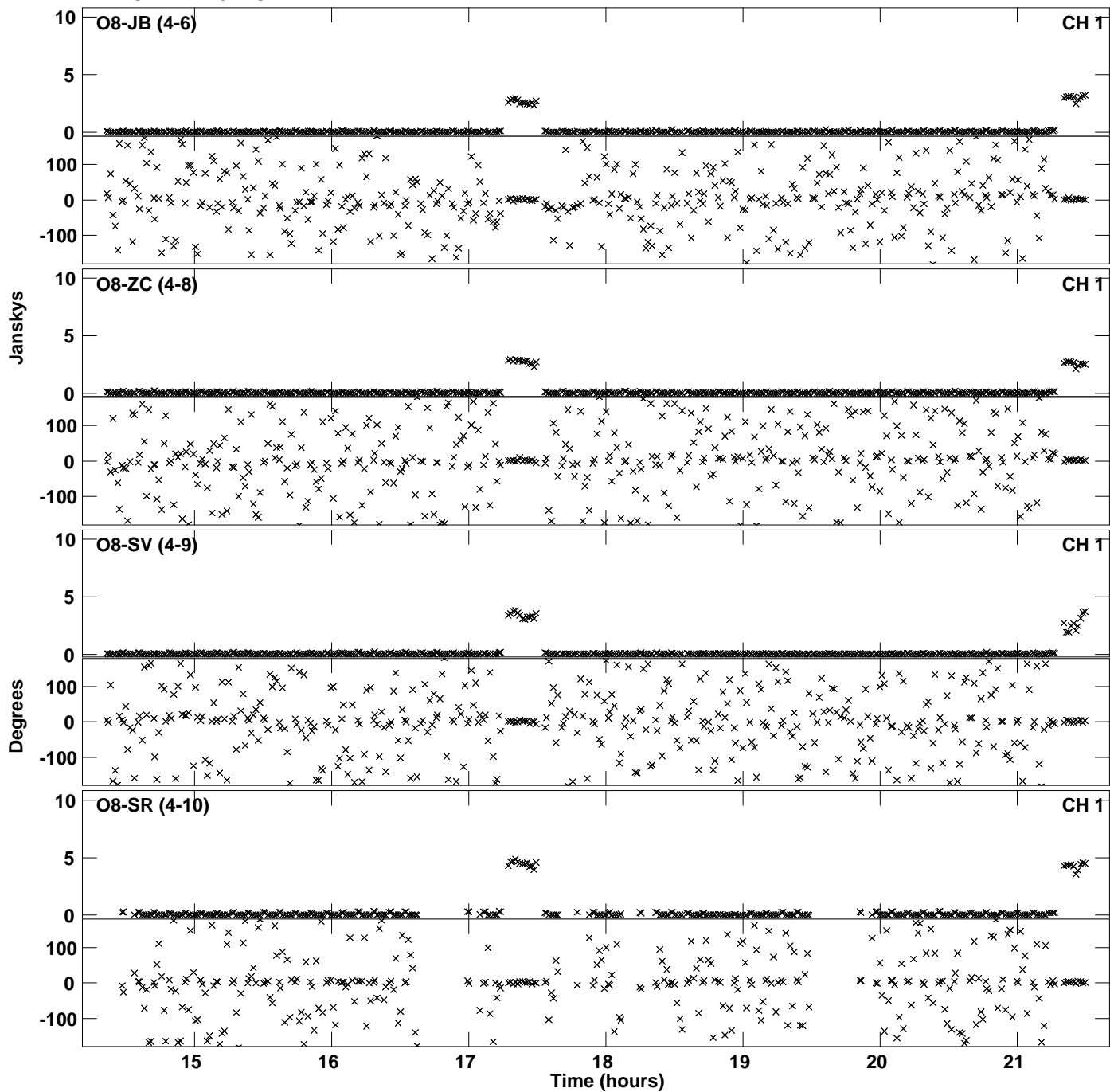
Plot file version 3 created 29-JAN-2019 17:11:03
Amplitude and Phase vs Time for EH035A.UVDATA.1 Vect aver. CL # 3
IF 1 CHAN 1 - 64 STK LL



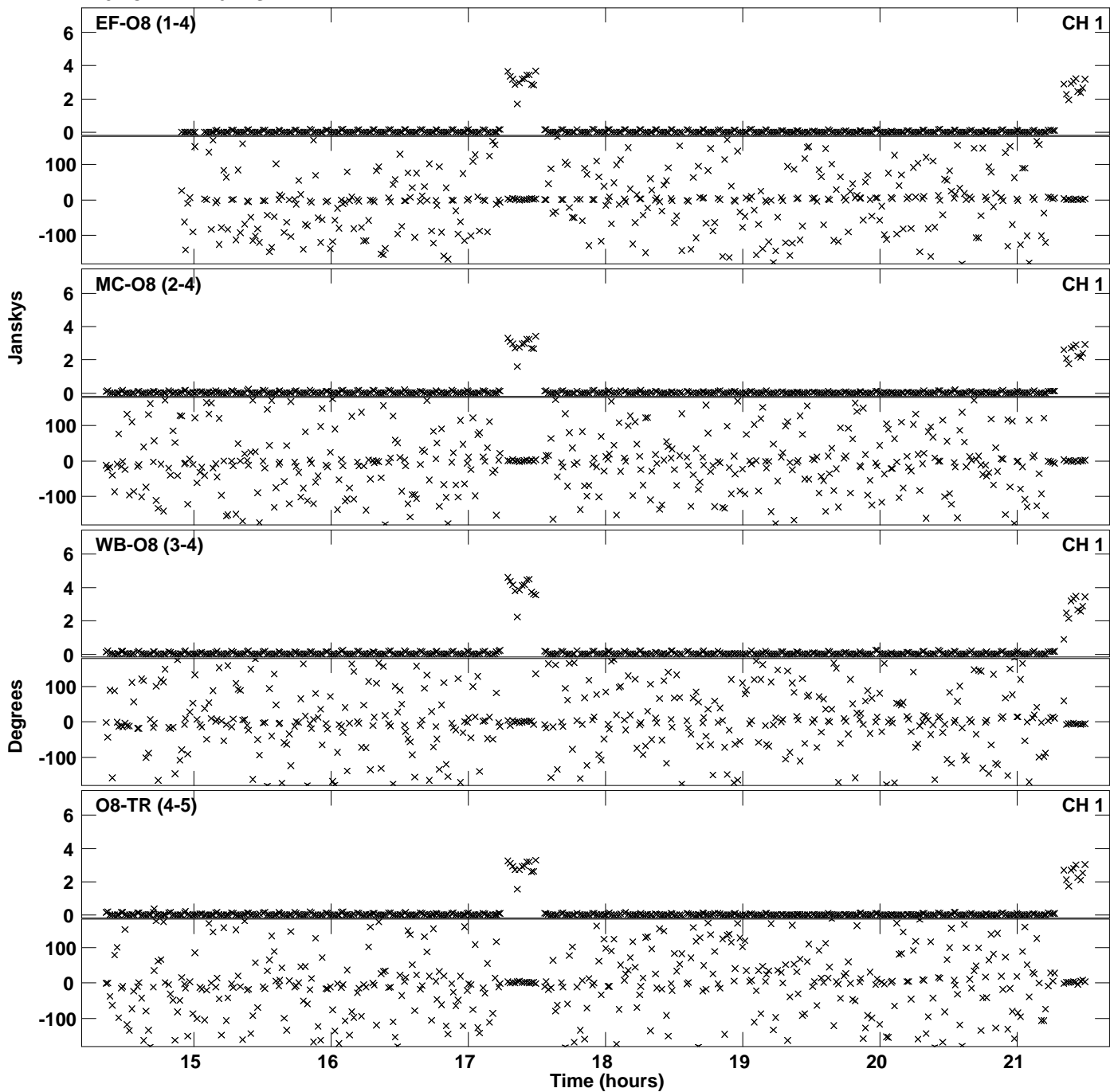
Plot file version 4 created 29-JAN-2019 17:11:23
Amplitude andPhase vs Time for EH035A.UVDATA.1 Vect aver. CL # 3
IF 2 CHAN 1 - 64 STK LL



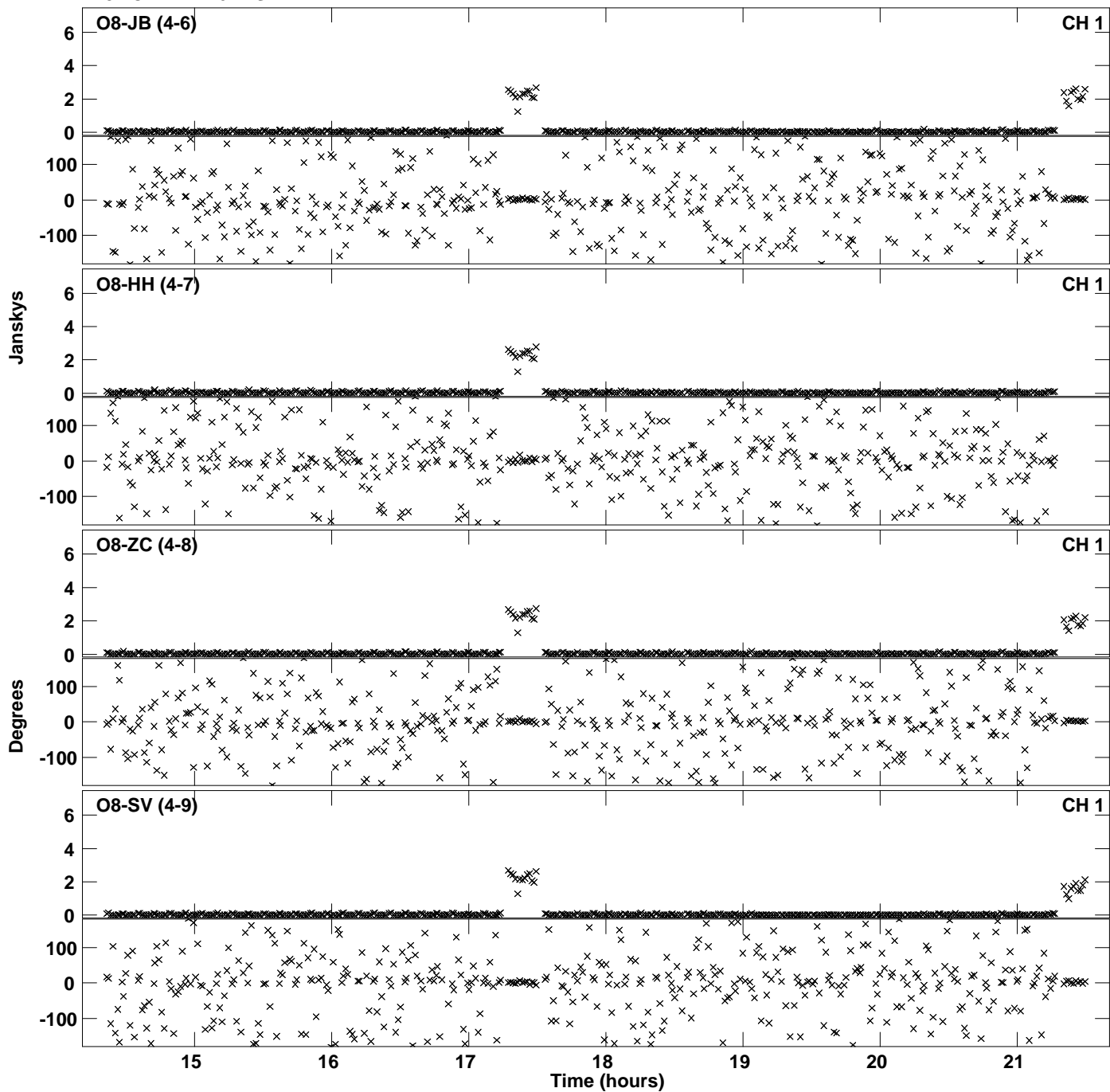
Plot file version 5 created 29-JAN-2019 17:11:23
Amplitude andPhase vs Time for EH035A.UVDATA.1 Vect aver. CL # 3
IF 2 CHAN 1 - 64 STK LL



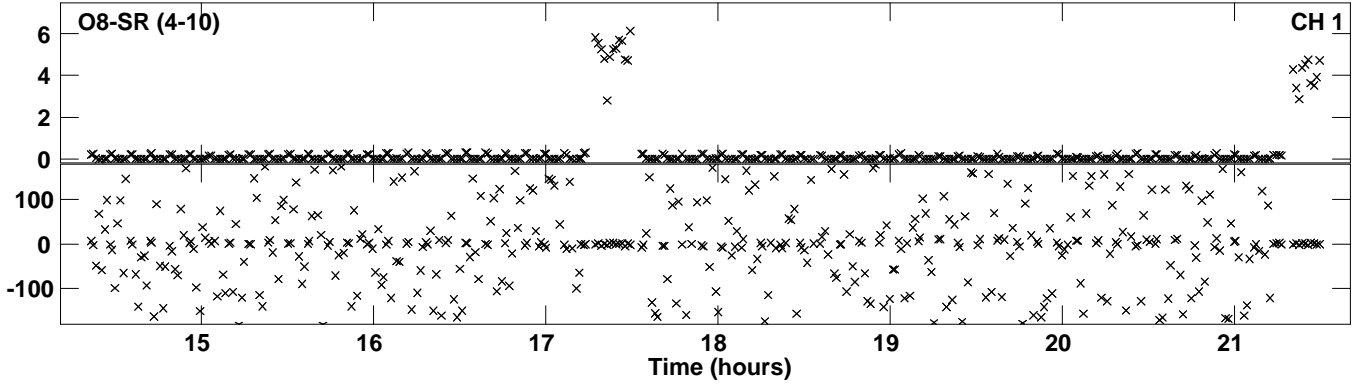
Plot file version 6 created 29-JAN-2019 17:11:42
Amplitude andPhase vs Time for EH035A.UVDATA.1 Vect aver. CL # 3
IF 3 CHAN 1 - 64 STK LL



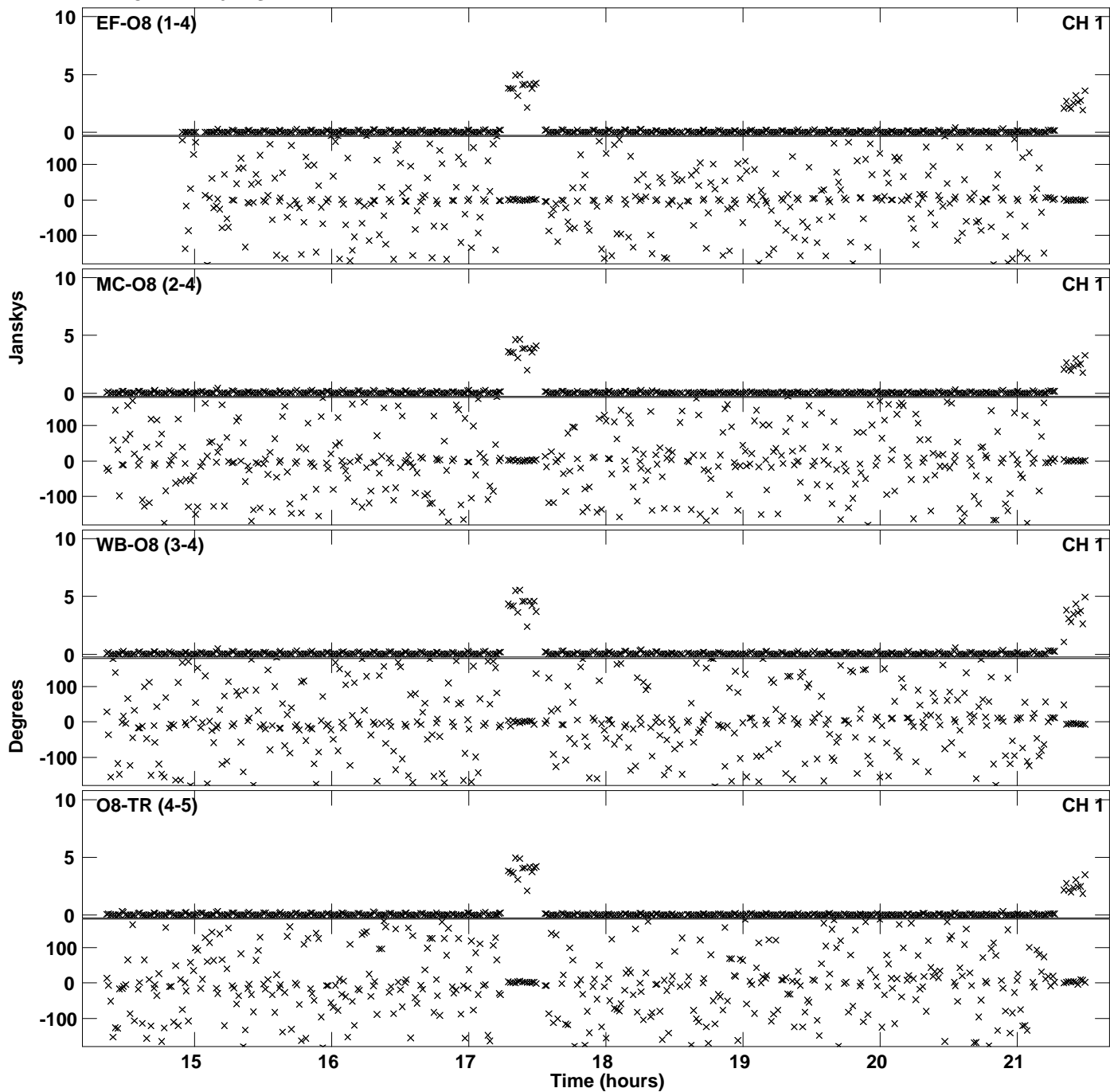
Plot file version 7 created 29-JAN-2019 17:11:42
Amplitude andPhase vs Time for EH035A.UVDATA.1 Vect aver. CL # 3
IF 3 CHAN 1 - 64 STK LL



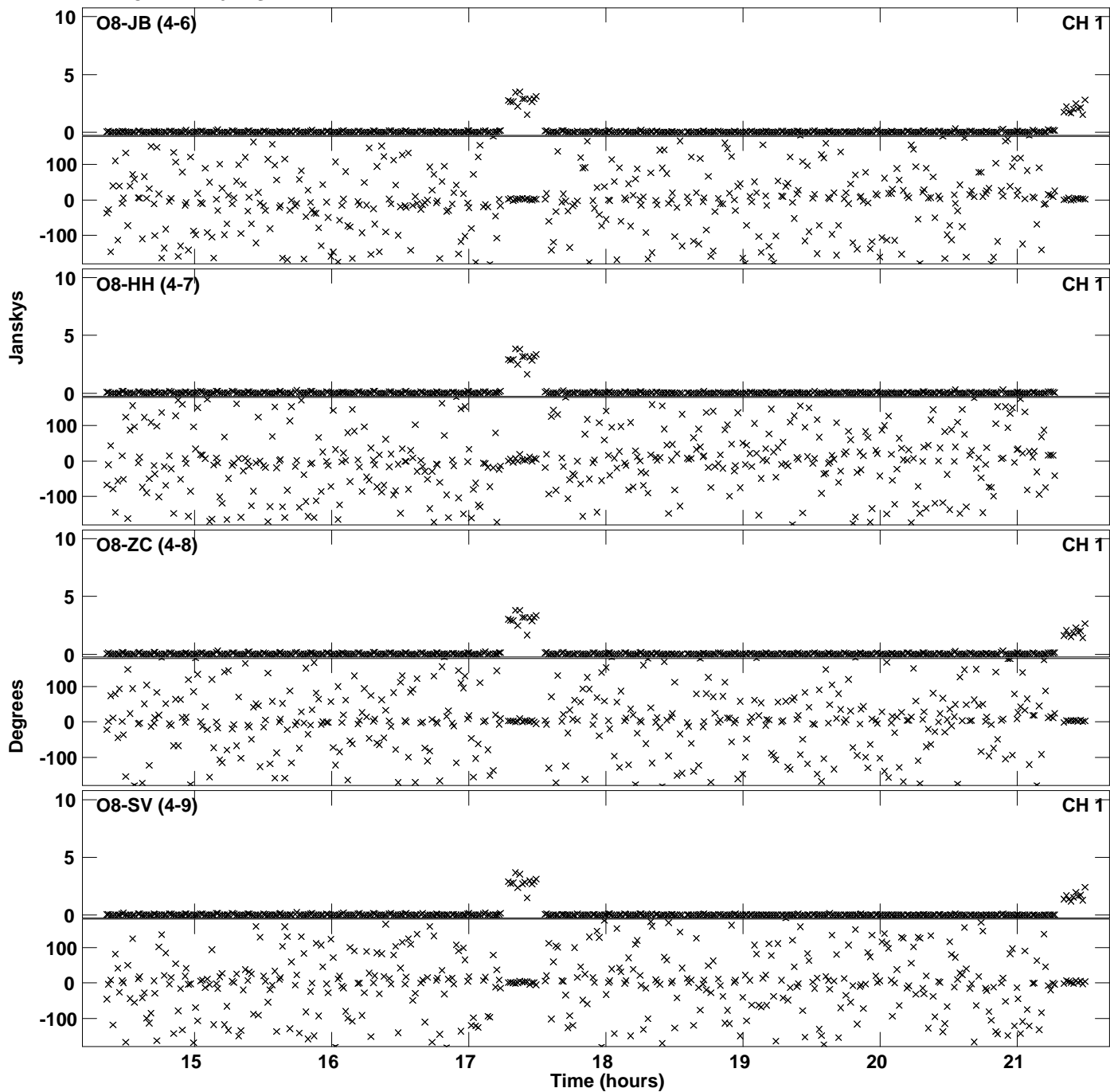
Plot file version 8 created 29-JAN-2019 17:11:42
Amplitude and Phase vs Time for EH035A.UVDATA.1 Vect aver. CL # 3
IF 3 CHAN 1 - 64 STK LL



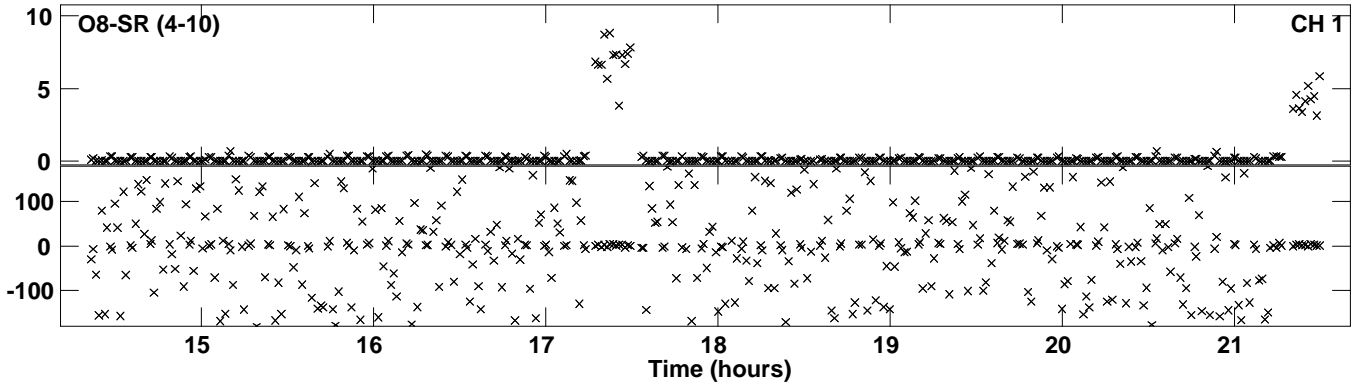
Plot file version 9 created 29-JAN-2019 17:12:02
Amplitude andPhase vs Time for EH035A.UVDATA.1 Vect aver. CL # 3
IF 4 CHAN 1 - 64 STK LL



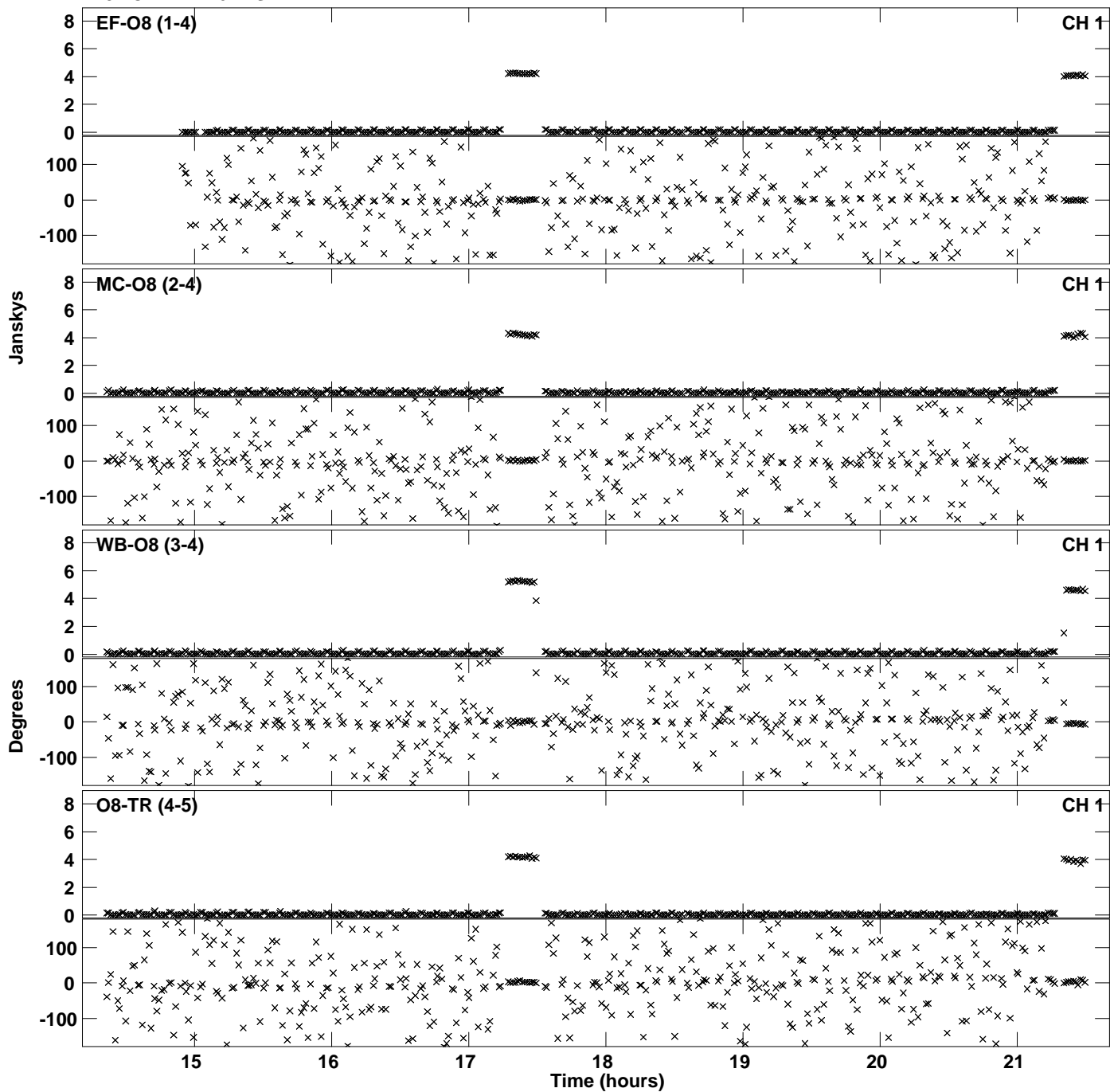
PLot file version 10 created 29-JAN-2019 17:12:02
Amplitude andPhase vs Time for EH035A.UVDATA.1 Vect aver. CL # 3
IF 4 CHAN 1 - 64 STK LL



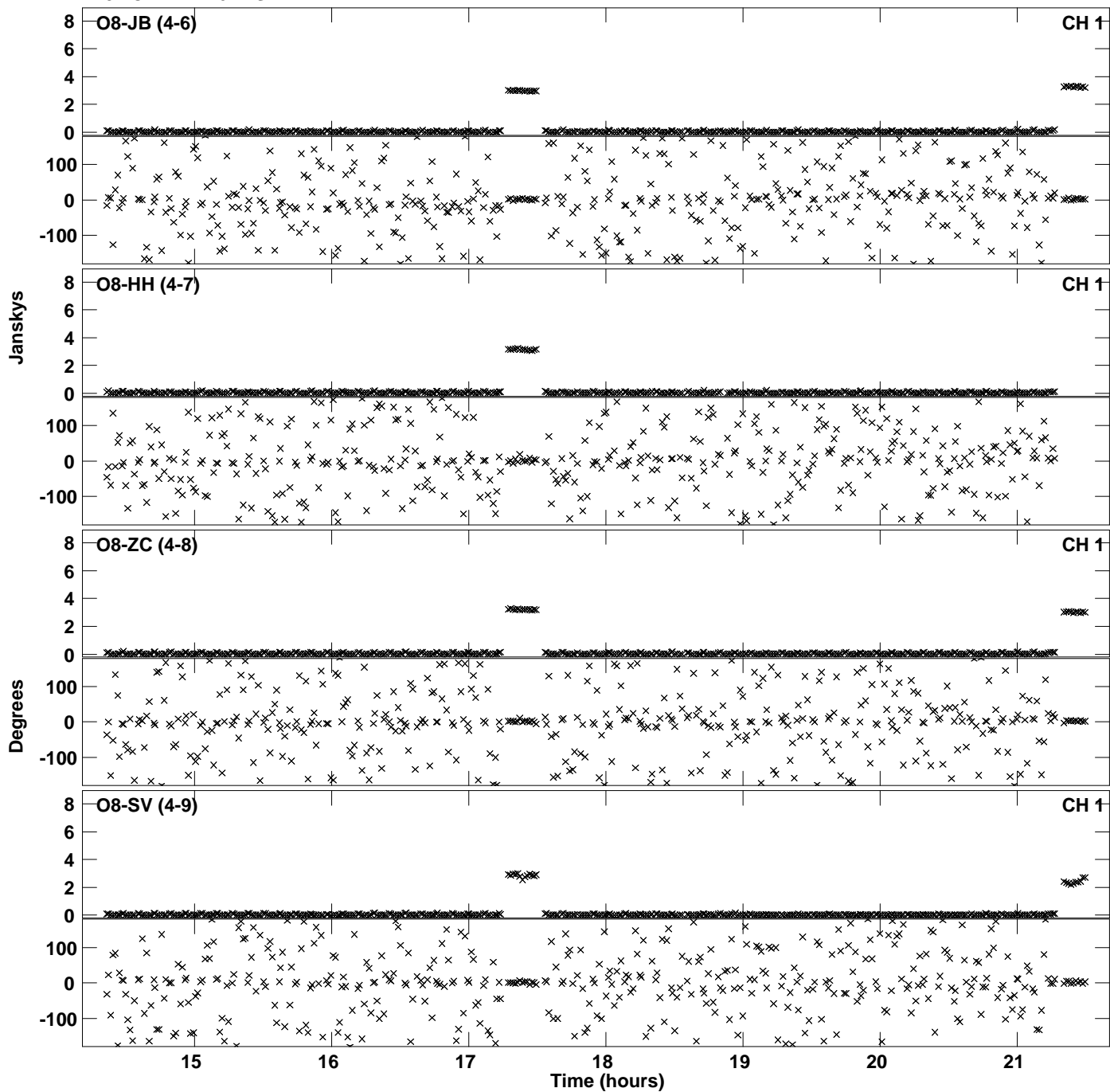
Plot file version 11 created 29-JAN-2019 17:12:02
Amplitude and Phase vs Time for EH035A.UVDATA.1 Vect aver. CL # 3
IF 4 CHAN 1 - 64 STK LL



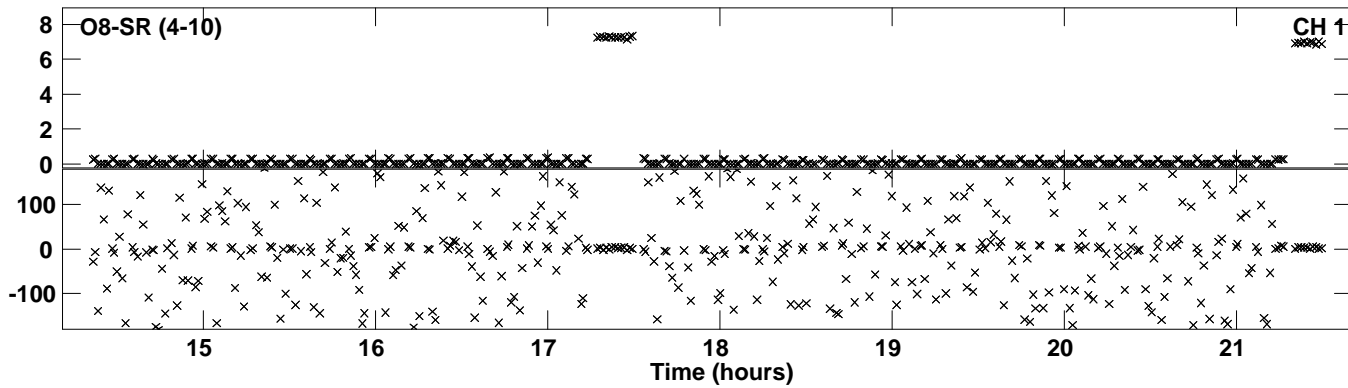
Plot file version 12 created 29-JAN-2019 17:12:22
Amplitude andPhase vs Time for EH035A.UVDATA.1 Vect aver. CL # 3
IF 5 CHAN 1 - 64 STK LL



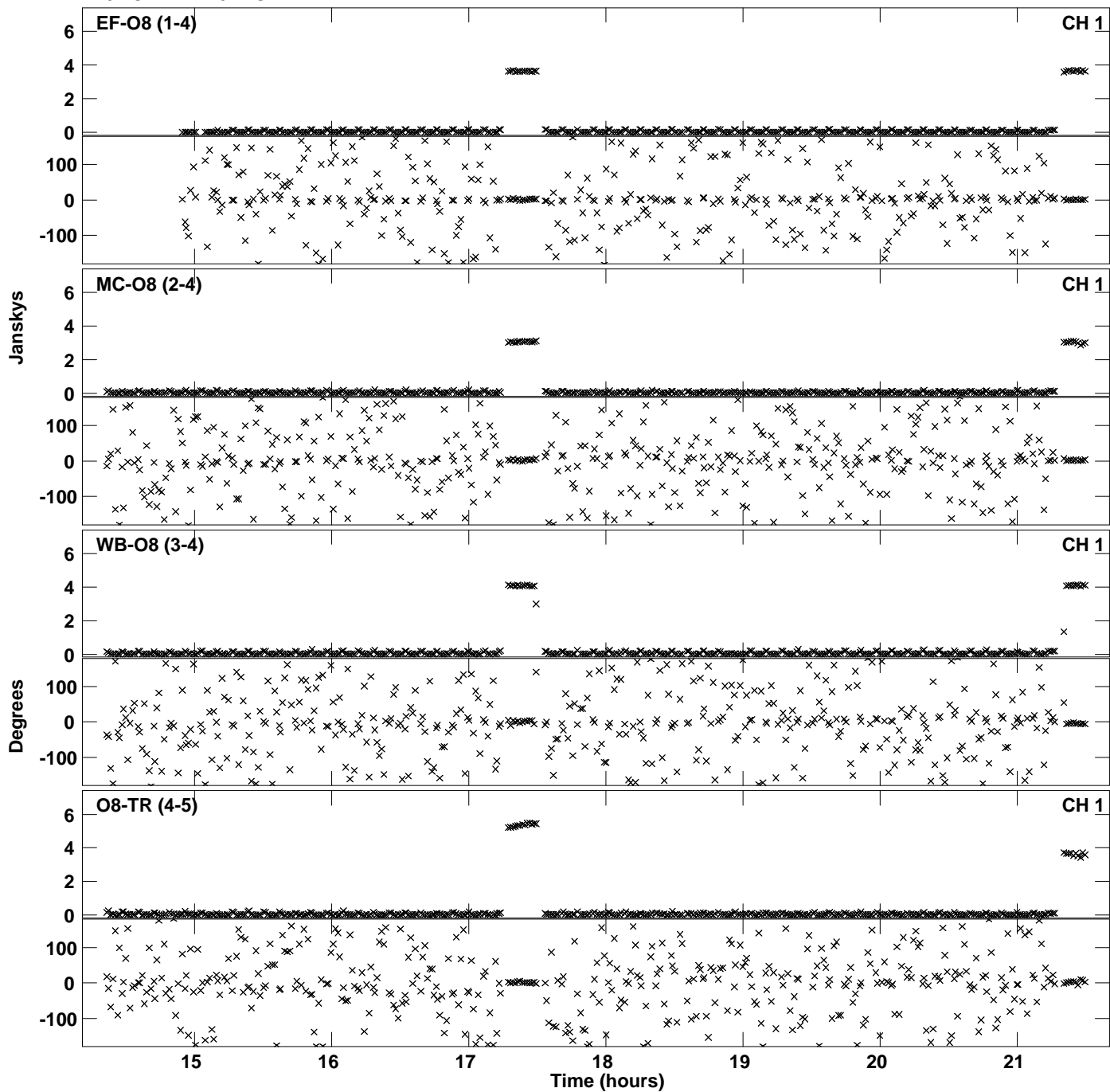
Plot file version 13 created 29-JAN-2019 17:12:22
Amplitude andPhase vs Time for EH035A.UVDATA.1 Vect aver. CL # 3
IF 5 CHAN 1 - 64 STK LL



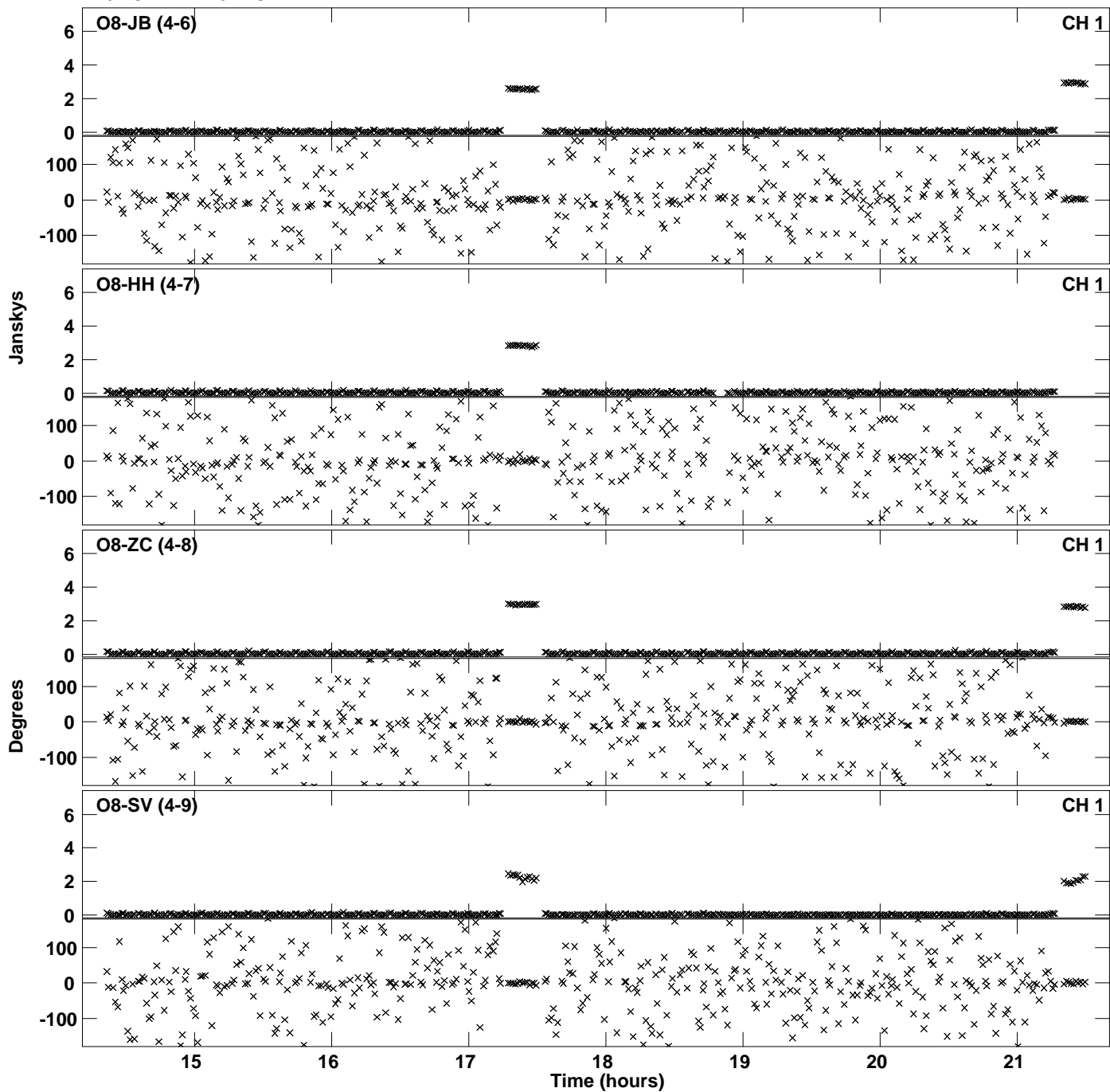
Plot file version 14 created 29-JAN-2019 17:12:22
Amplitude and Phase vs Time for EH035A.UVDATA.1 Vect aver. CL # 3
IF 5 CHAN 1 - 64 STK LL



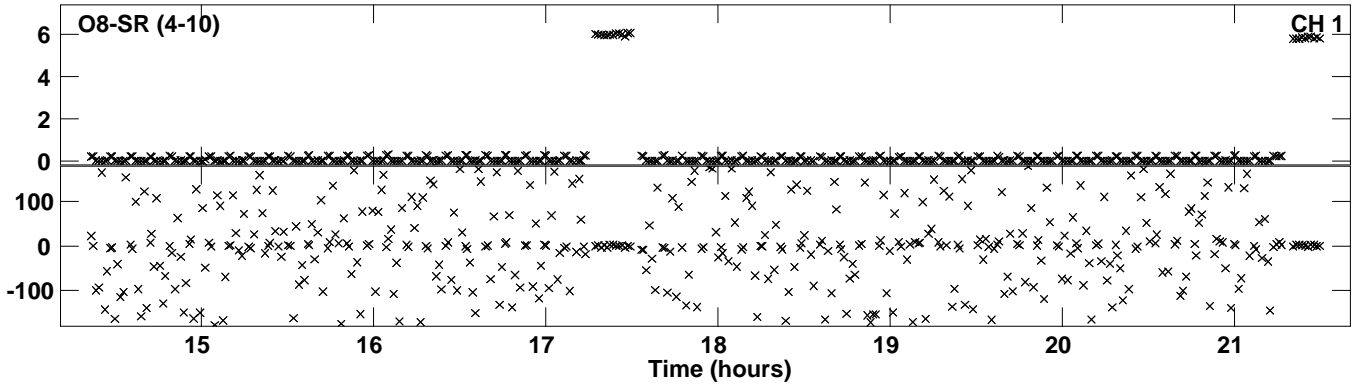
Plot file version 15 created 29-JAN-2019 17:12:41
Amplitude andPhase vs Time for EH035A.UVDATA.1 Vect aver. CL # 3
IF 6 CHAN 1 - 64 STK LL



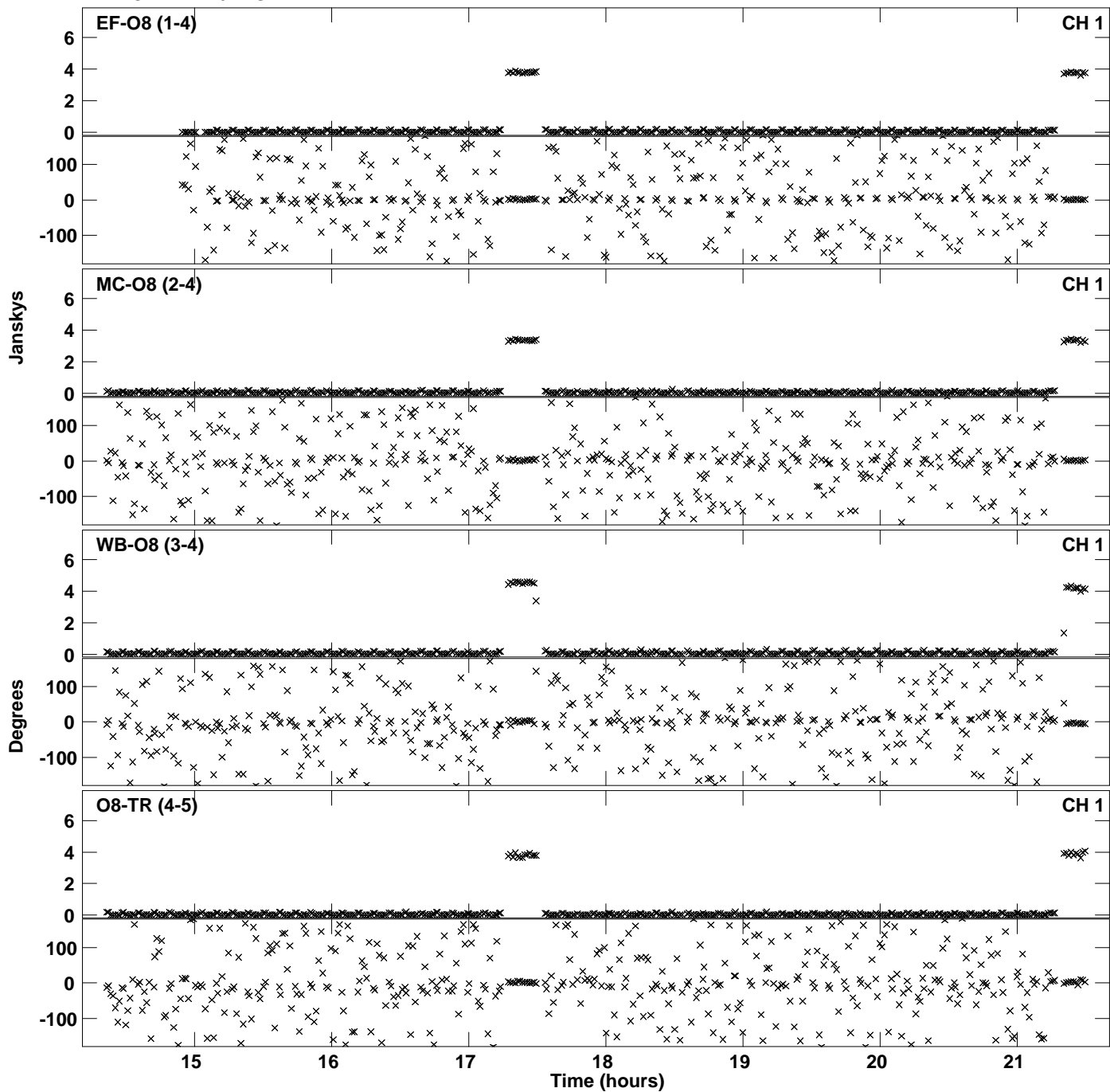
Plot file version 16 created 29-JAN-2019 17:12:41
Amplitude andPhase vs Time for EH035A.UVDATA.1 Vect aver. CL # 3
IF 6 CHAN 1 - 64 STK LL



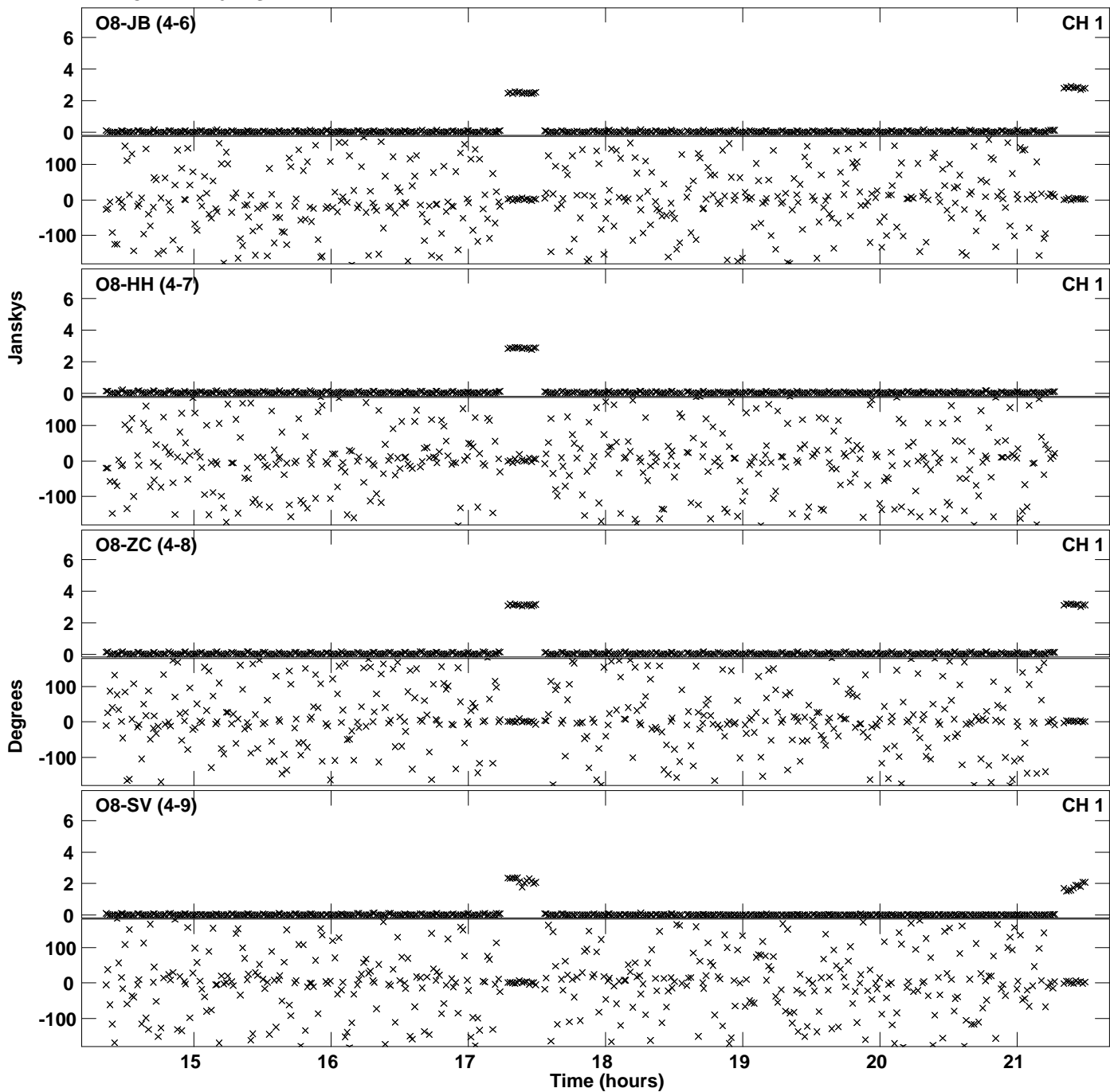
PLot file version 17 created 29-JAN-2019 17:12:41
Amplitude andPhase vs Time for EH035A.UVDATA.1 Vect aver. CL # 3
IF 6 CHAN 1 - 64 STK LL



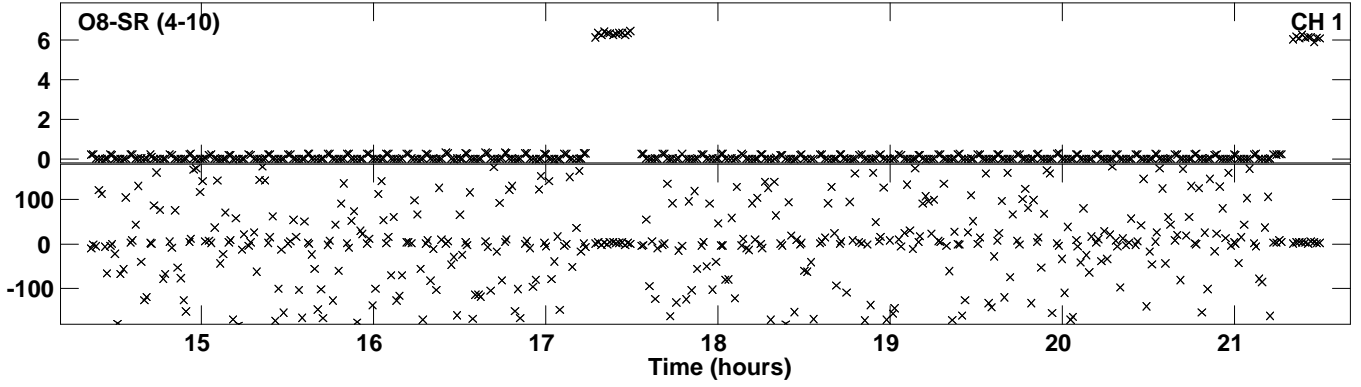
Plot file version 18 created 29-JAN-2019 17:13:01
Amplitude andPhase vs Time for EH035A.UVDATA.1 Vect aver. CL # 3
IF 7 CHAN 1 - 64 STK LL



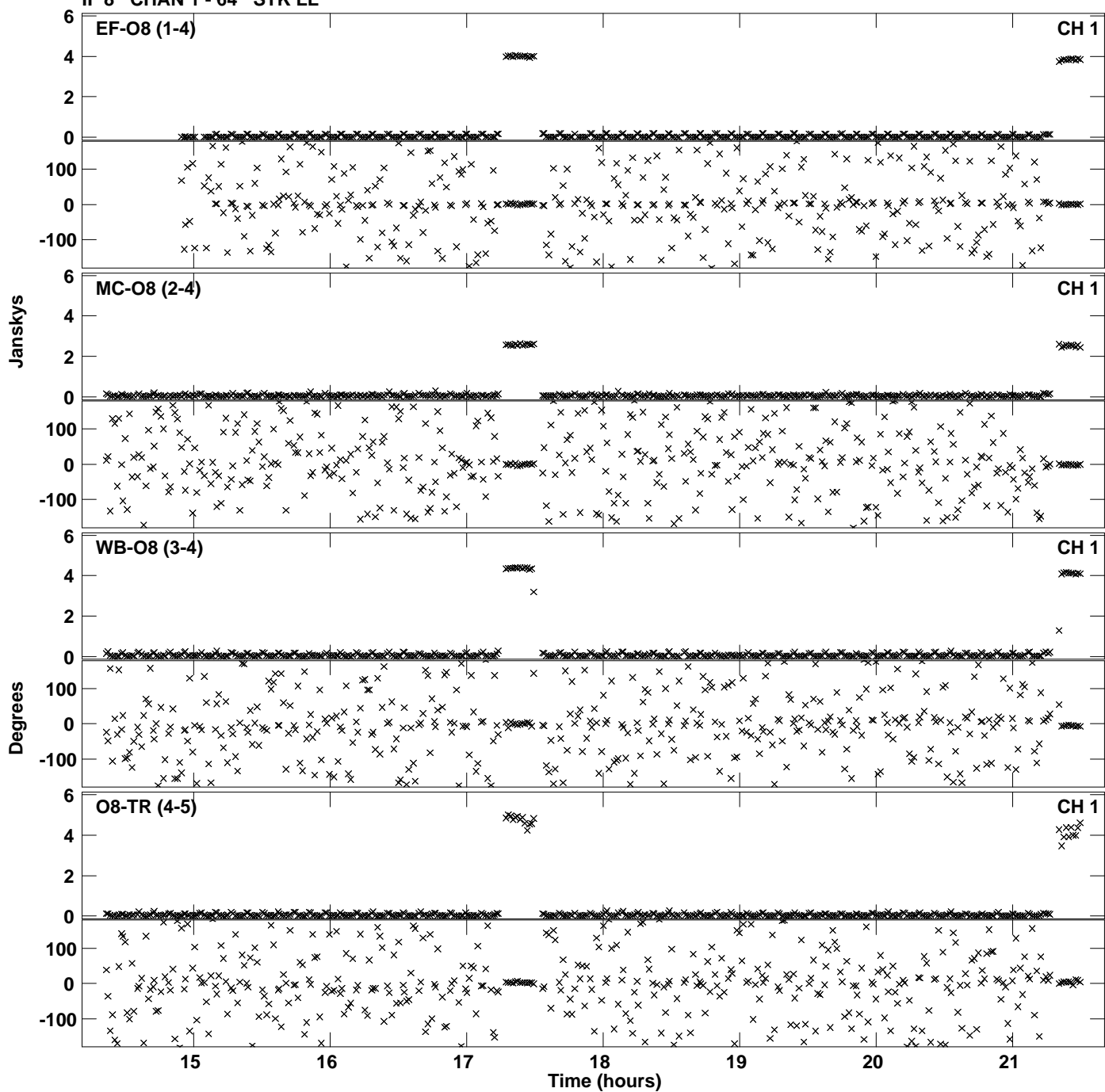
PLot file version 19 created 29-JAN-2019 17:13:01
Amplitude andPhase vs Time for EH035A.UVDATA.1 Vect aver. CL # 3
IF 7 CHAN 1 - 64 STK LL



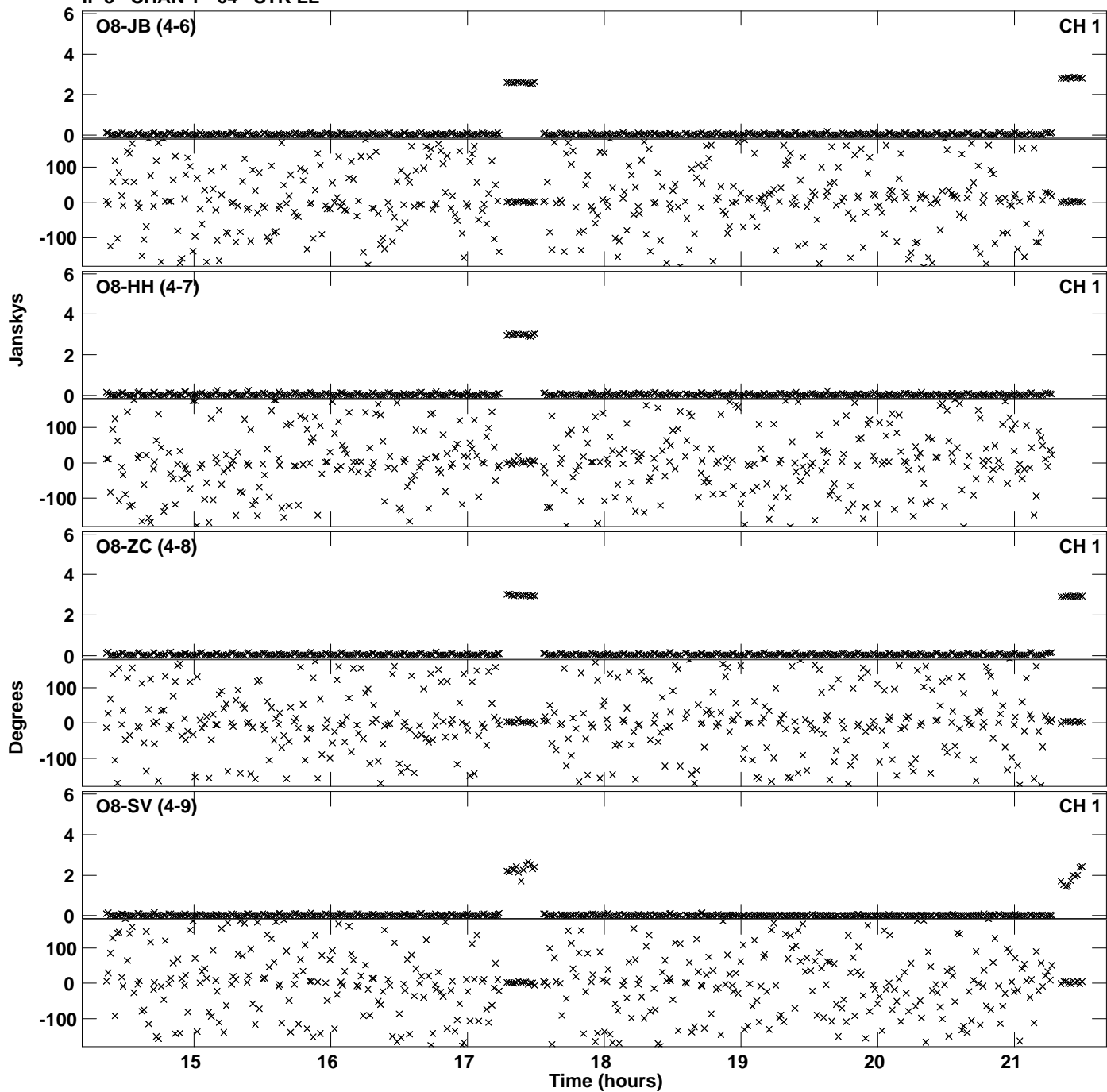
PLot file version 20 created 29-JAN-2019 17:13:01
Amplitude andPhase vs Time for EH035A.UVDATA.1 Vect aver. CL # 3
IF 7 CHAN 1 - 64 STK LL



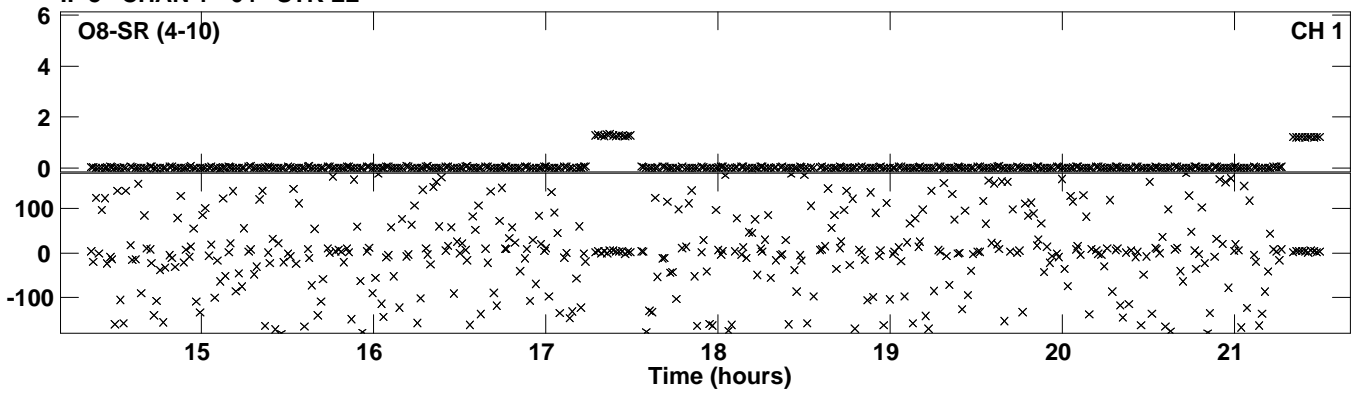
Plot file version 21 created 29-JAN-2019 17:13:20
Amplitude andPhase vs Time for EH035A.UVDATA.1 Vect aver. CL # 3
IF 8 CHAN 1 - 64 STK LL



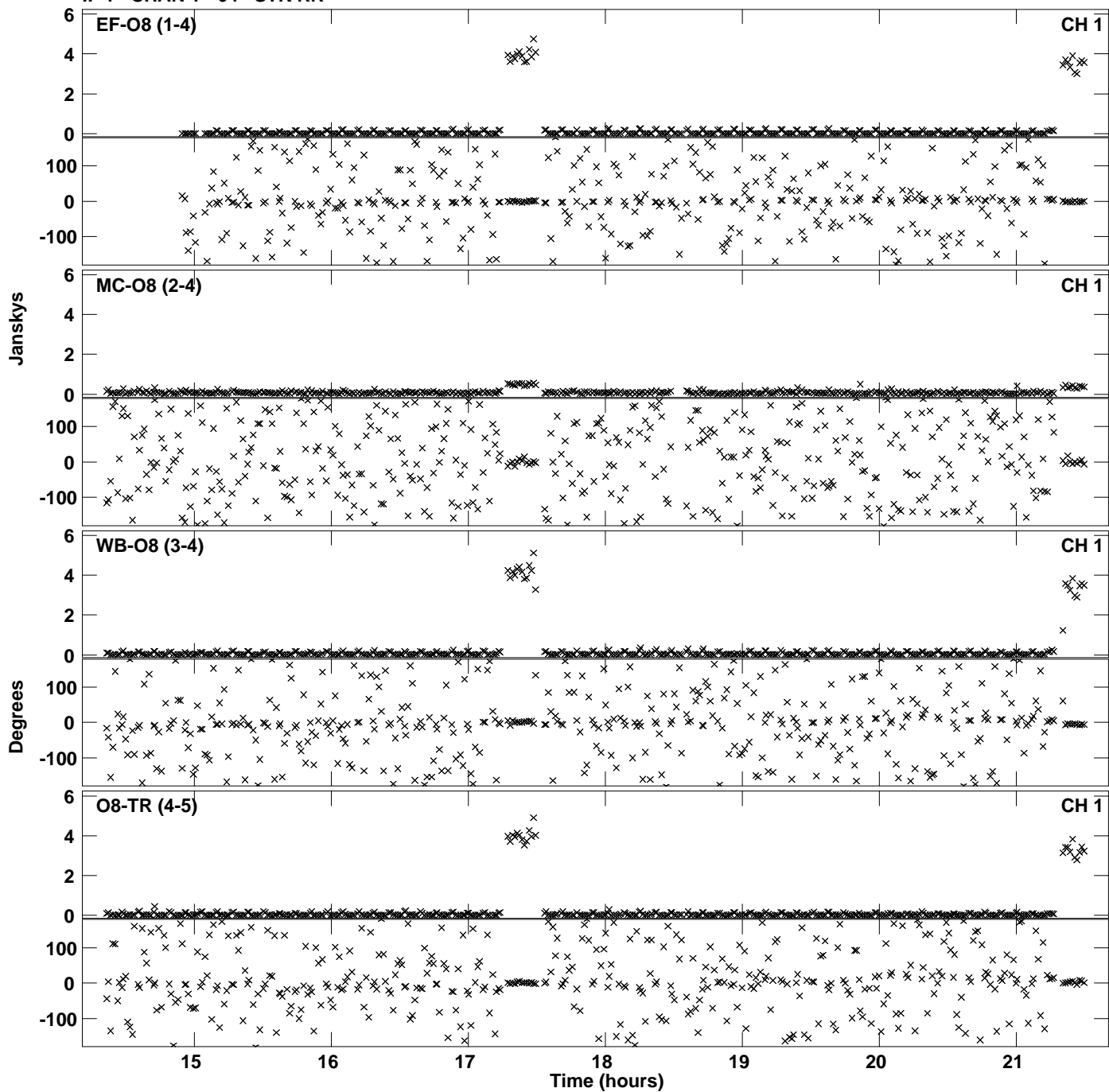
Plot file version 22 created 29-JAN-2019 17:13:20
Amplitude and Phase vs Time for EH035A.UVDATA.1 Vect aver. CL # 3
IF 8 CHAN 1 - 64 STK LL



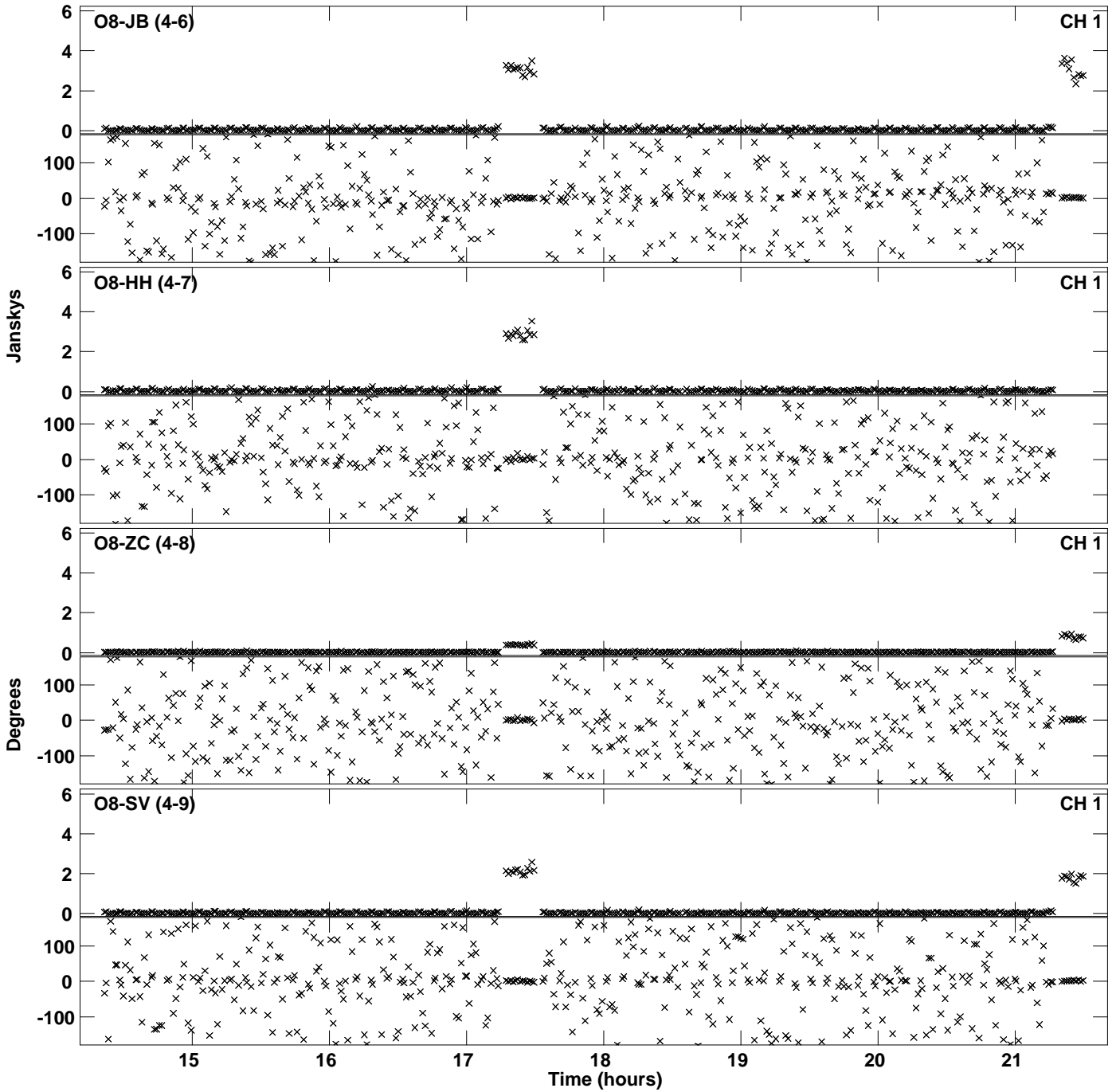
Plot file version 23 created 29-JAN-2019 17:13:20
Amplitude and Phase vs Time for EH035A.UVDATA.1 Vect aver. CL # 3
IF 8 CHAN 1 - 64 STK LL



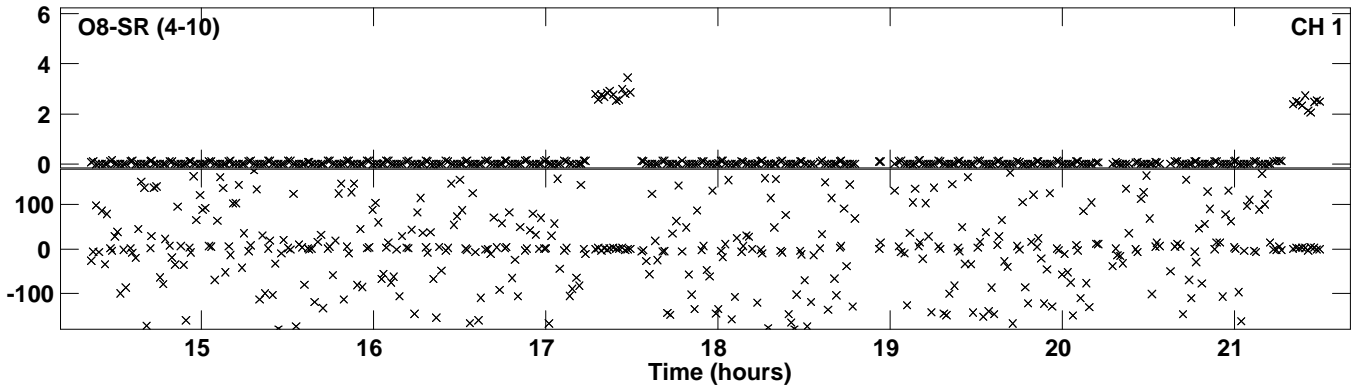
Plot file version 24 created 29-JAN-2019 17:13:37
Amplitude andPhase vs Time for EH035A.UVDATA.1 Vect aver. CL # 3
IF 1 CHAN 1 - 64 STK RR



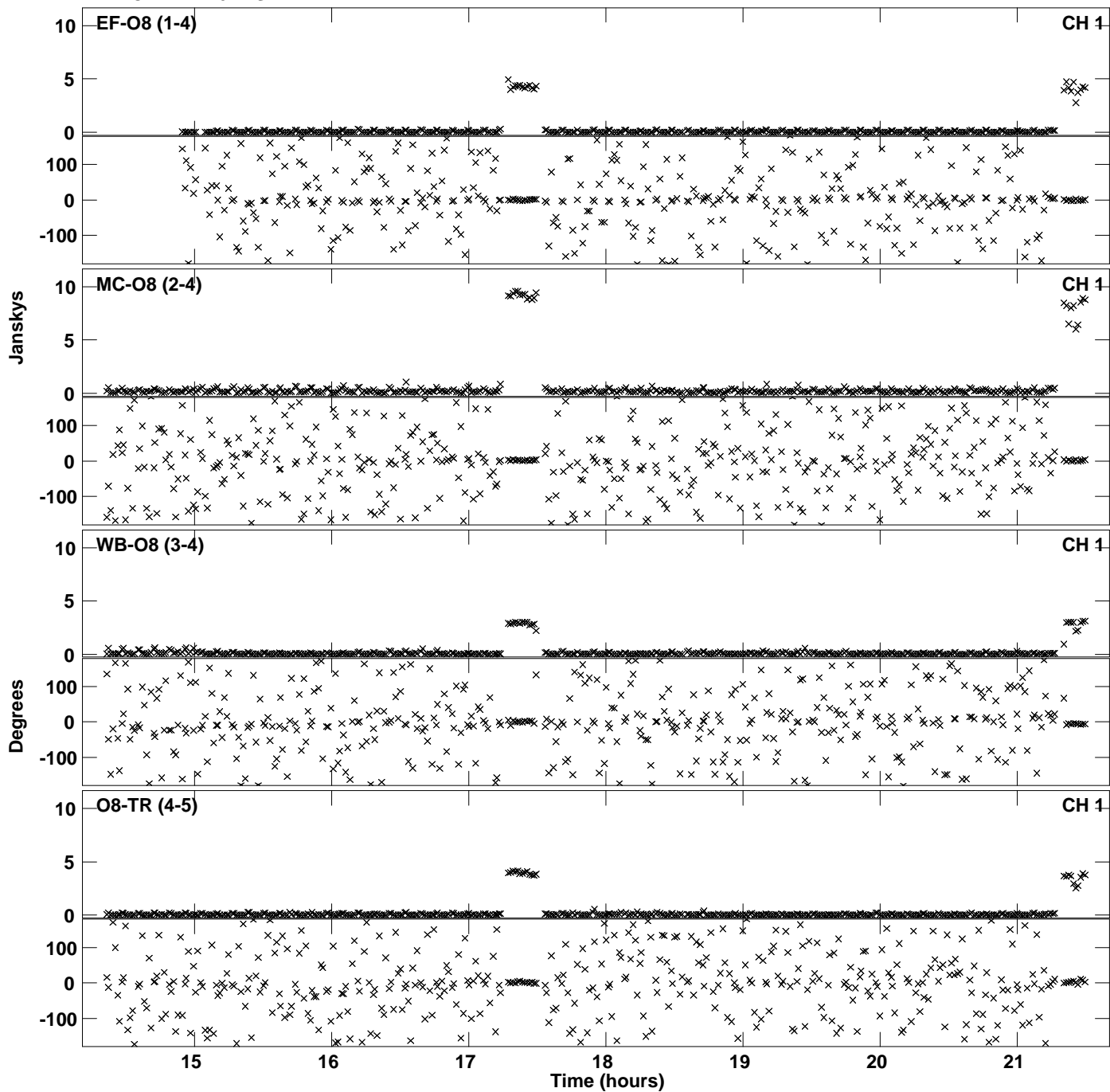
Plot file version 25 created 29-JAN-2019 17:13:37
Amplitude andPhase vs Time for EH035A.UVDATA.1 Vect aver. CL # 3
IF 1 CHAN 1 - 64 STK RR



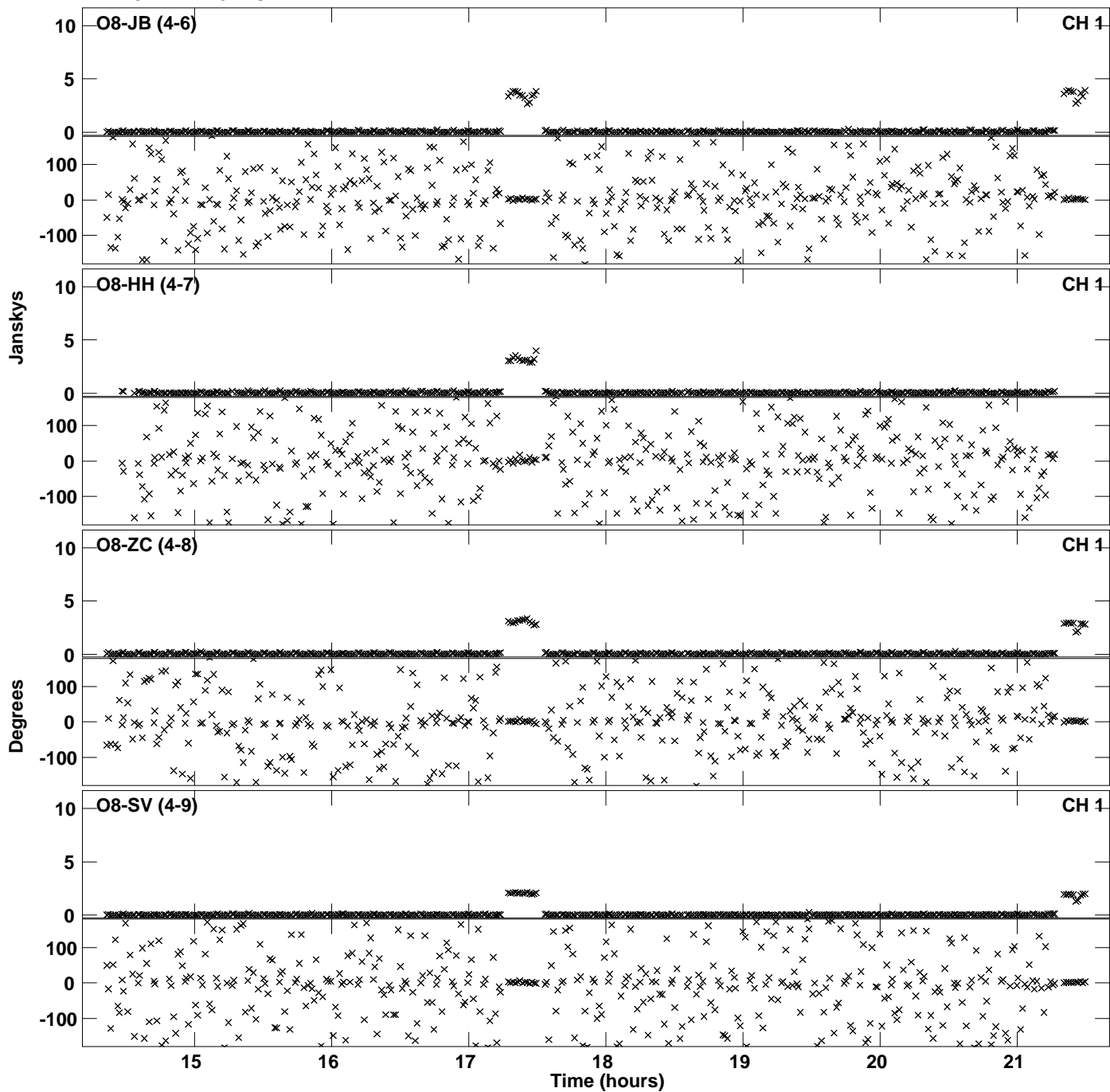
PLot file version 26 created 29-JAN-2019 17:13:37
Amplitude andPhase vs Time for EH035A.UVDATA.1 Vect aver. CL # 3
IF 1 CHAN 1 - 64 STK RR



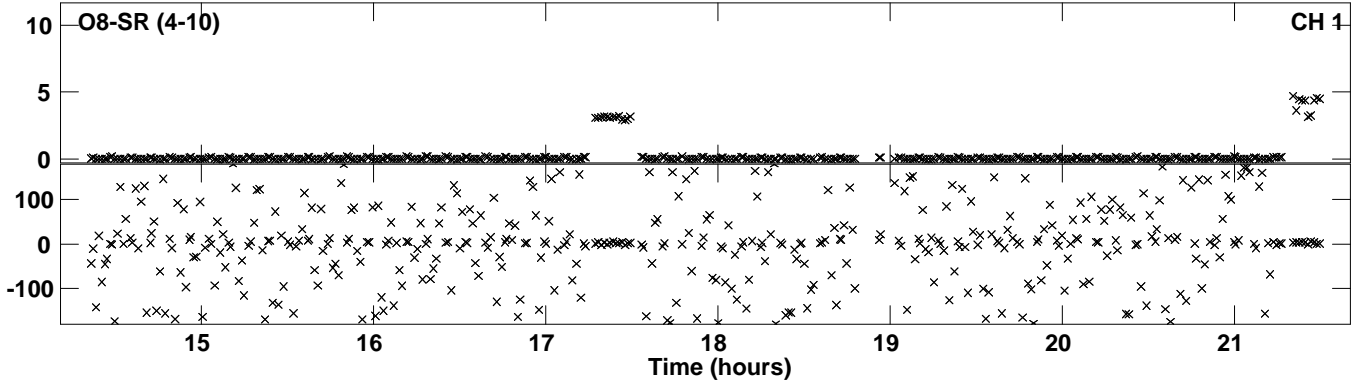
Plot file version 27 created 29-JAN-2019 17:13:54
Amplitude and Phase vs Time for EH035A.UVDATA.1 Vect aver. CL # 3
IF 2 CHAN 1 - 64 STK RR



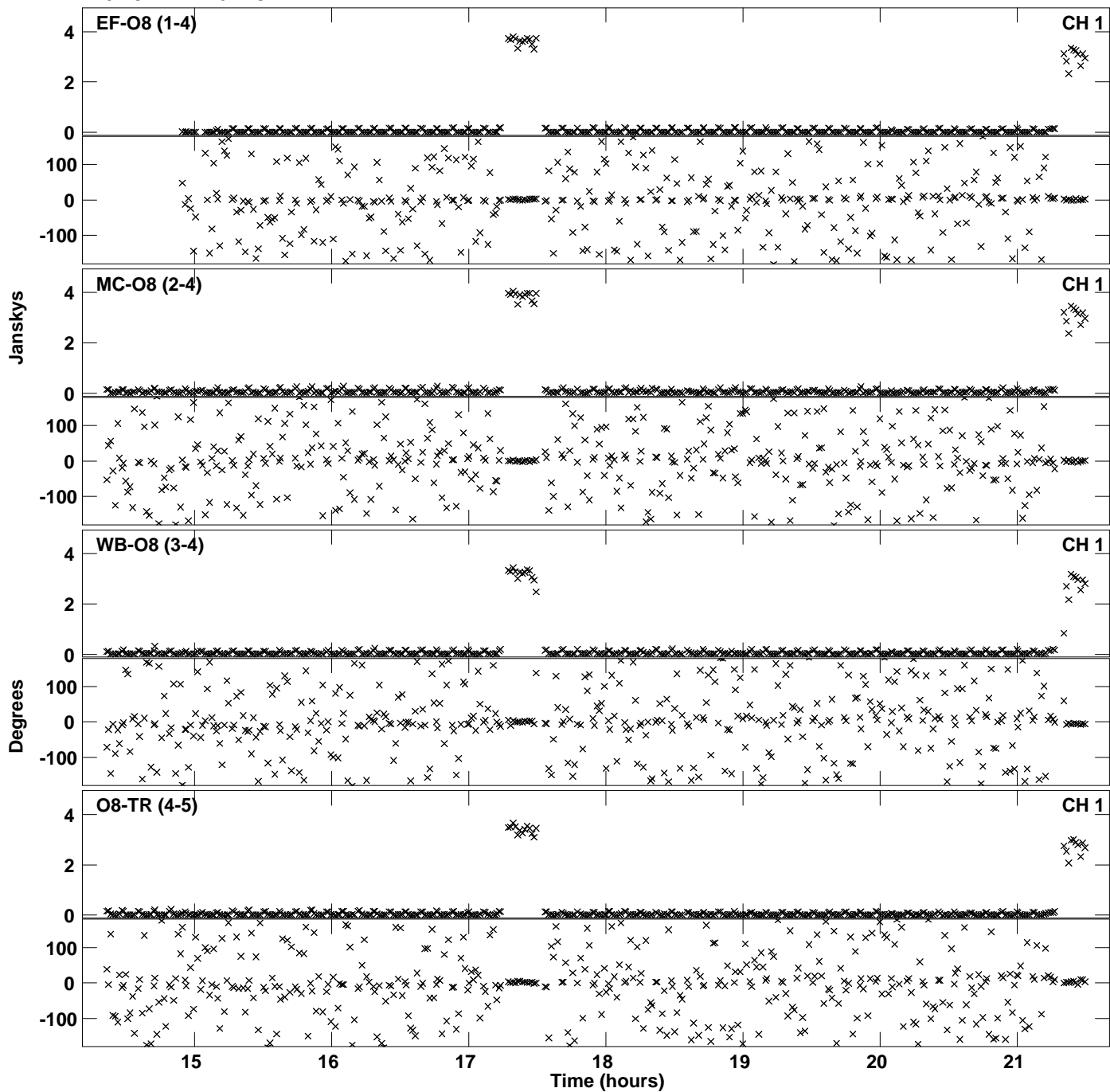
Plot file version 28 created 29-JAN-2019 17:13:54
Amplitude and Phase vs Time for EH035A.UVDATA.1 Vect aver. CL # 3
IF 2 CHAN 1 - 64 STK RR



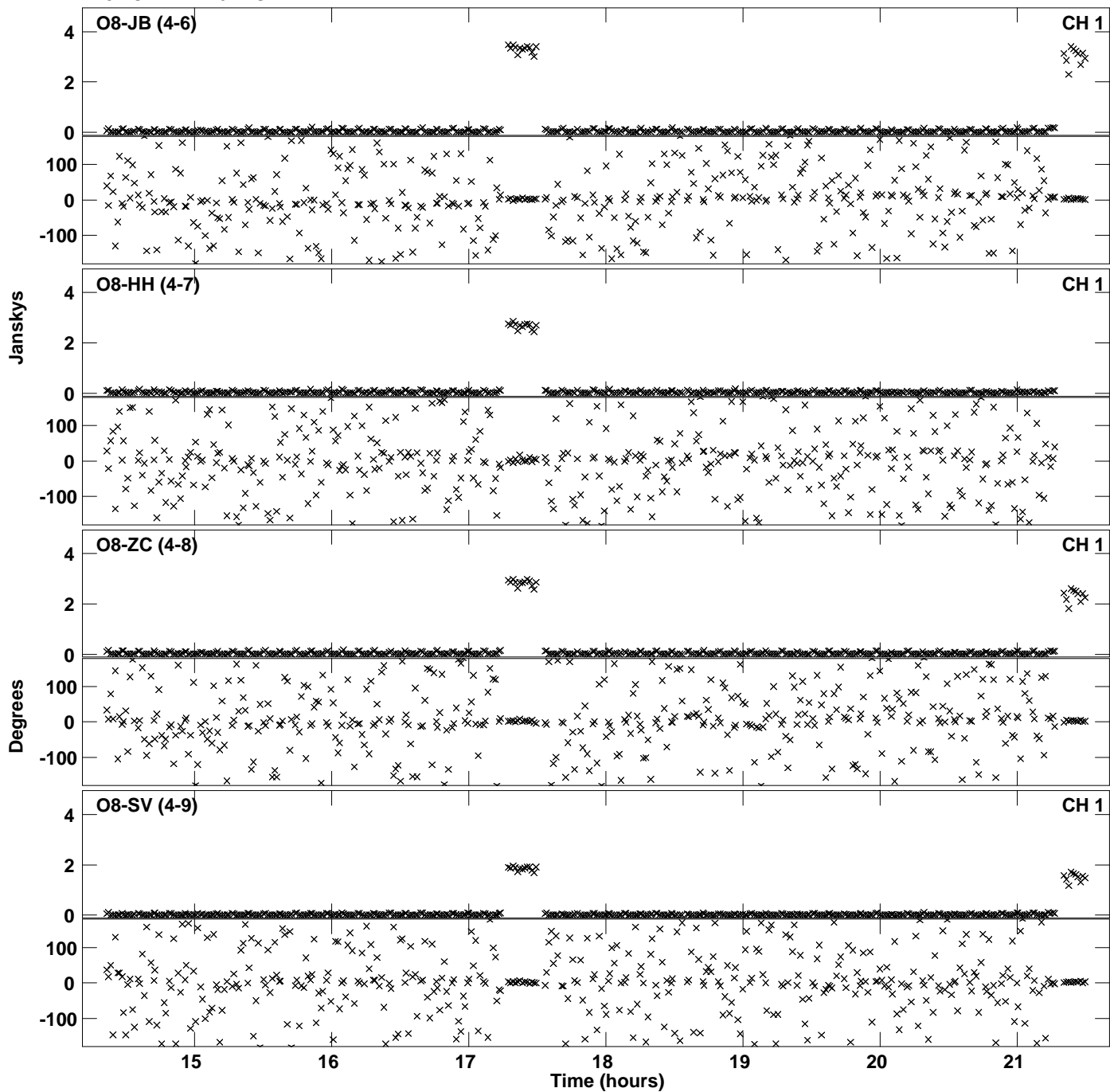
PLot file version 29 created 29-JAN-2019 17:13:54
Amplitude andPhase vs Time for EH035A.UVDATA.1 Vect aver. CL # 3
IF 2 CHAN 1 - 64 STK RR



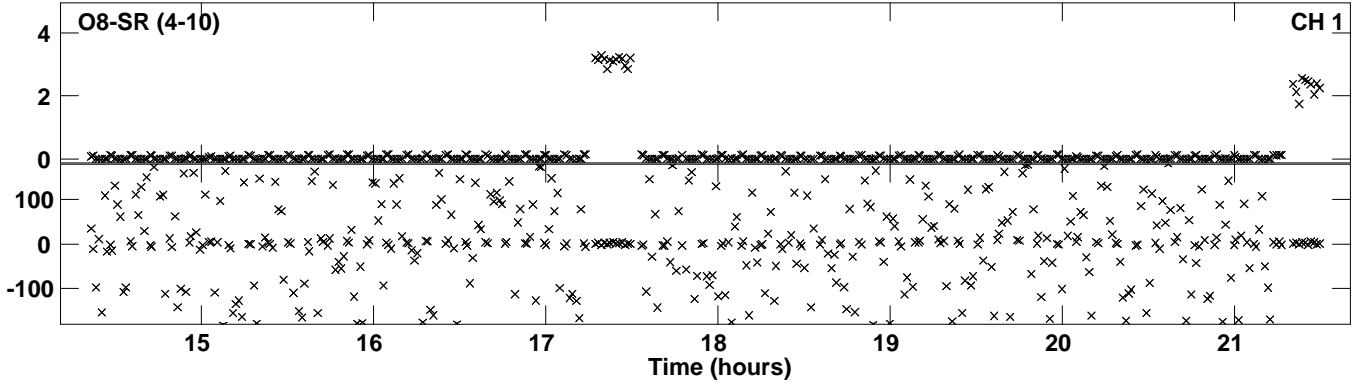
Plot file version 30 created 29-JAN-2019 17:14:11
Amplitude andPhase vs Time for EH035A.UVDATA.1 Vect aver. CL # 3
IF 3 CHAN 1 - 64 STK RR



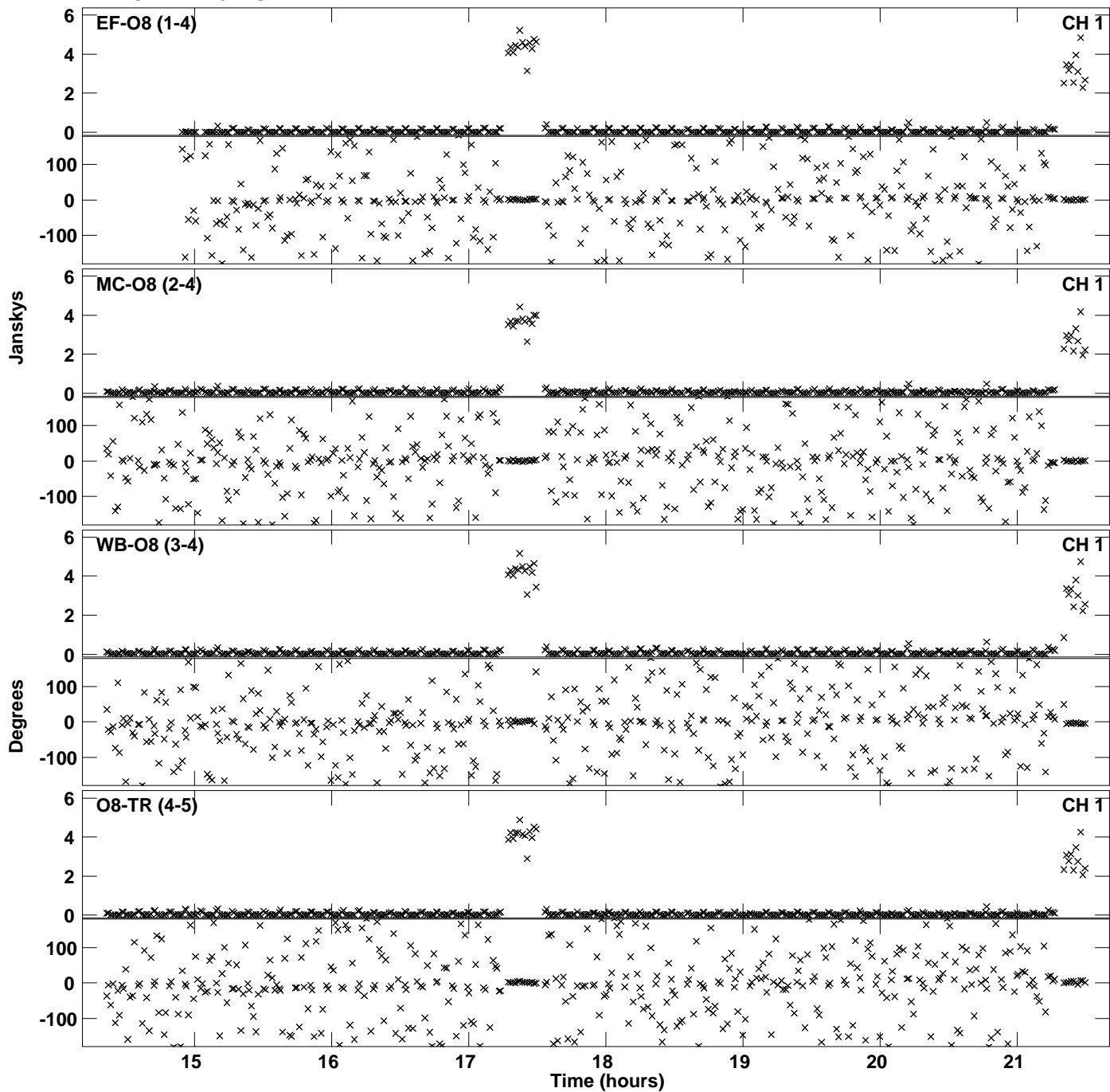
Plot file version 31 created 29-JAN-2019 17:14:11
Amplitude andPhase vs Time for EH035A.UVDATA.1 Vect aver. CL # 3
IF 3 CHAN 1 - 64 STK RR



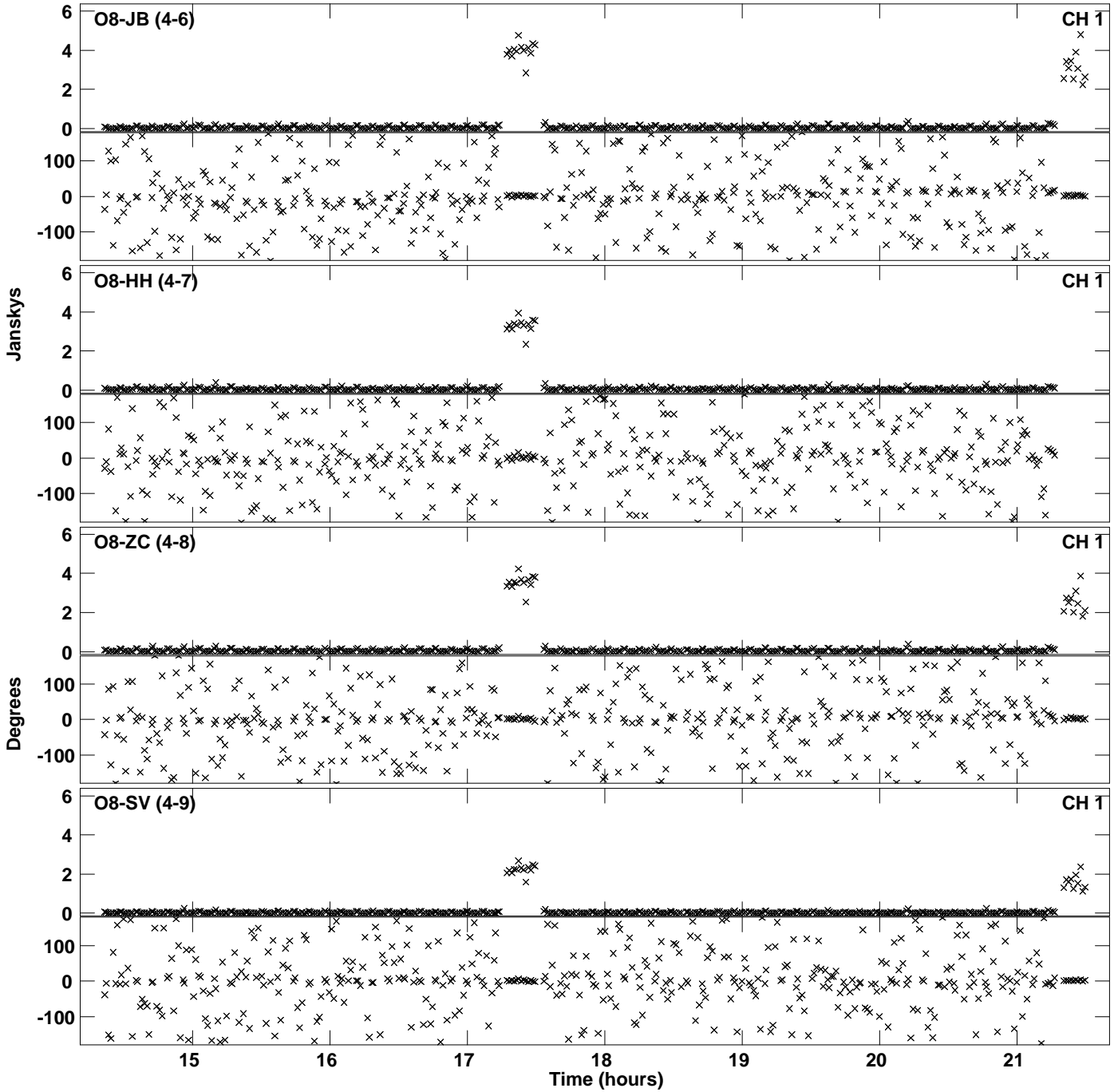
PLot file version 32 created 29-JAN-2019 17:14:11
Amplitude andPhase vs Time for EH035A.UVDATA.1 Vect aver. CL # 3
IF 3 CHAN 1 - 64 STK RR



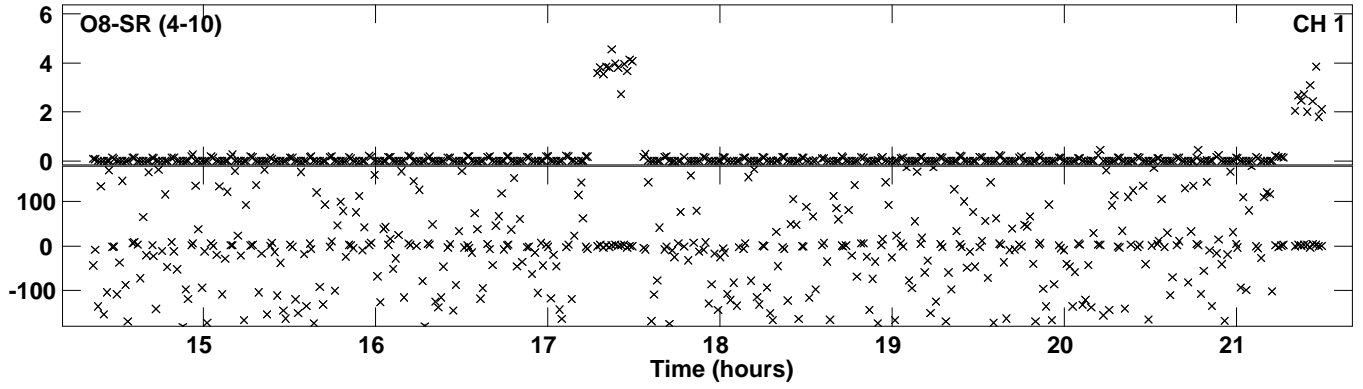
Plot file version 33 created 29-JAN-2019 17:14:28
Amplitude andPhase vs Time for EH035A.UVDATA.1 Vect aver. CL # 3
IF 4 CHAN 1 - 64 STK RR



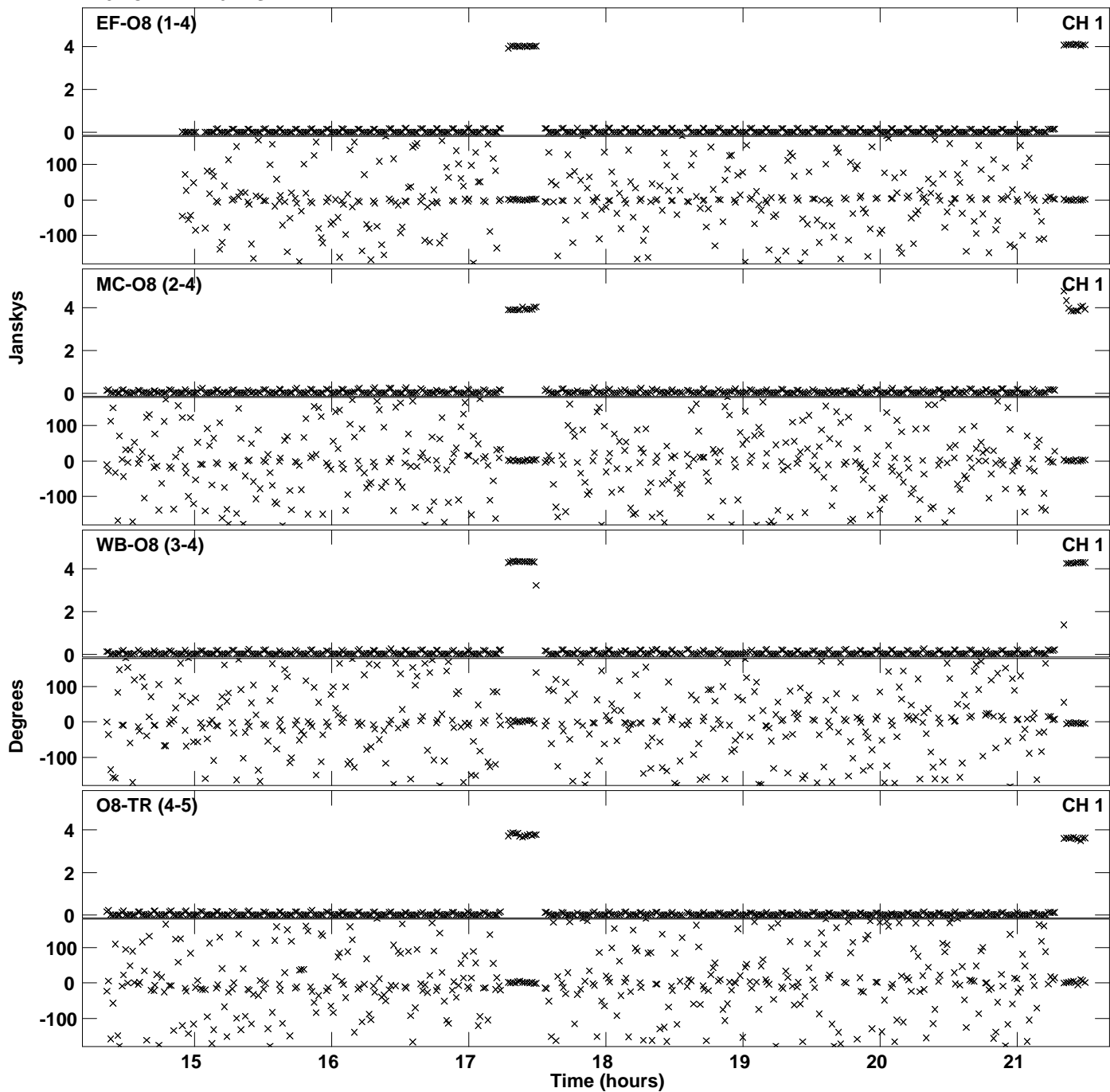
PLot file version 34 created 29-JAN-2019 17:14:28
Amplitude andPhase vs Time for EH035A.UVDATA.1 Vect aver. CL # 3
IF 4 CHAN 1 - 64 STK RR



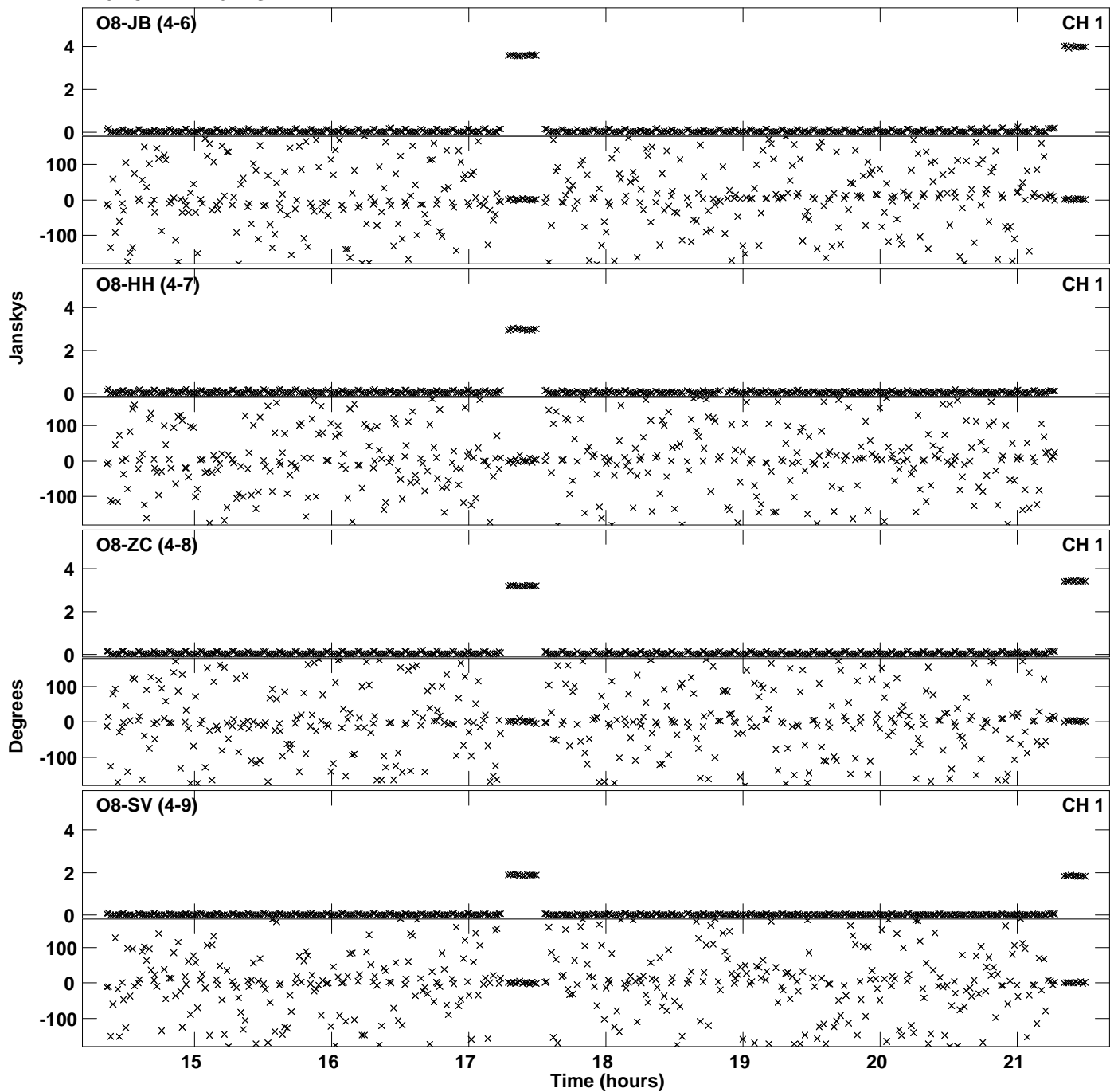
Plot file version 35 created 29-JAN-2019 17:14:28
Amplitude and Phase vs Time for EH035A.UVDATA.1 Vect aver. CL # 3
IF 4 CHAN 1 - 64 STK RR



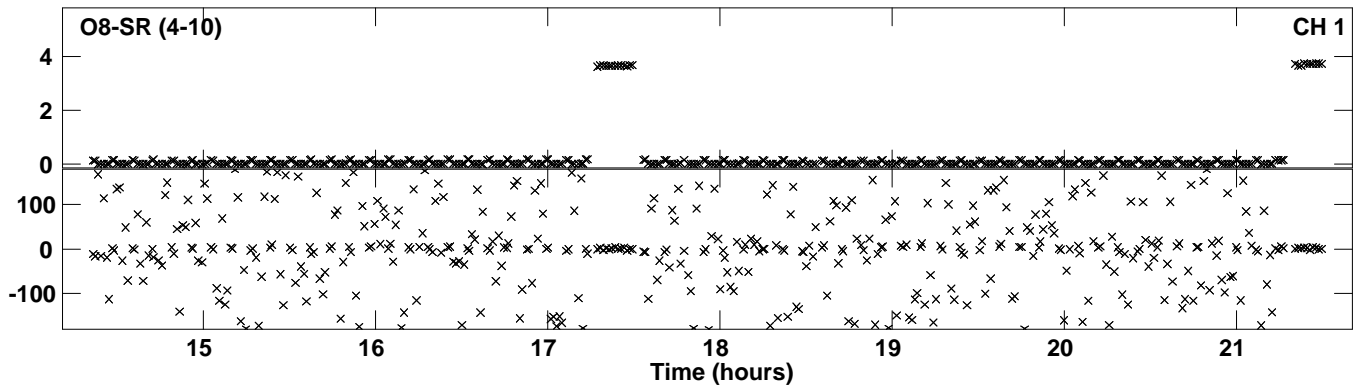
Plot file version 36 created 29-JAN-2019 17:14:45
Amplitude andPhase vs Time for EH035A.UVDATA.1 Vect aver. CL # 3
IF 5 CHAN 1 - 64 STK RR



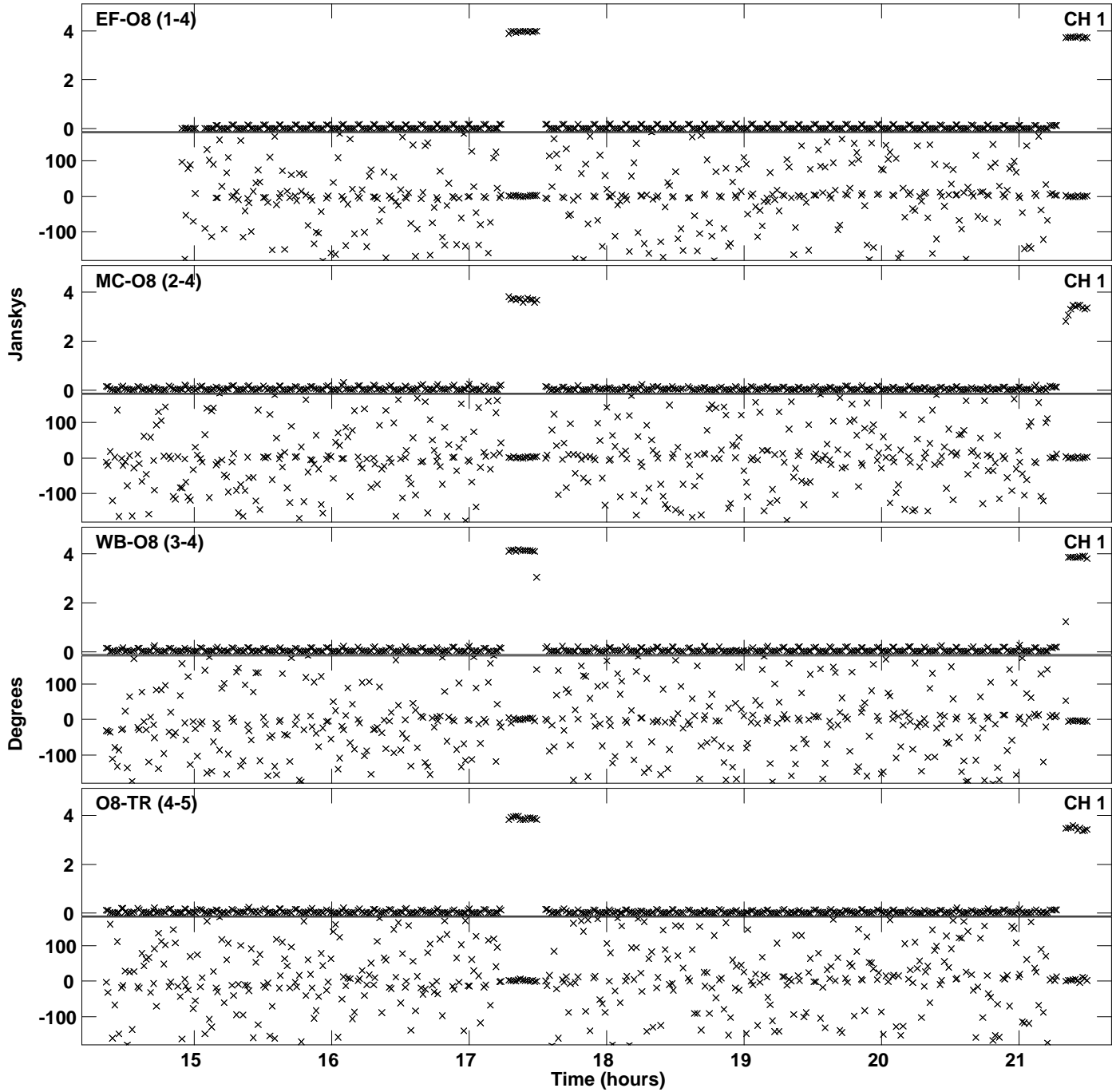
Plot file version 37 created 29-JAN-2019 17:14:45
Amplitude andPhase vs Time for EH035A.UVDATA.1 Vect aver. CL # 3
IF 5 CHAN 1 - 64 STK RR



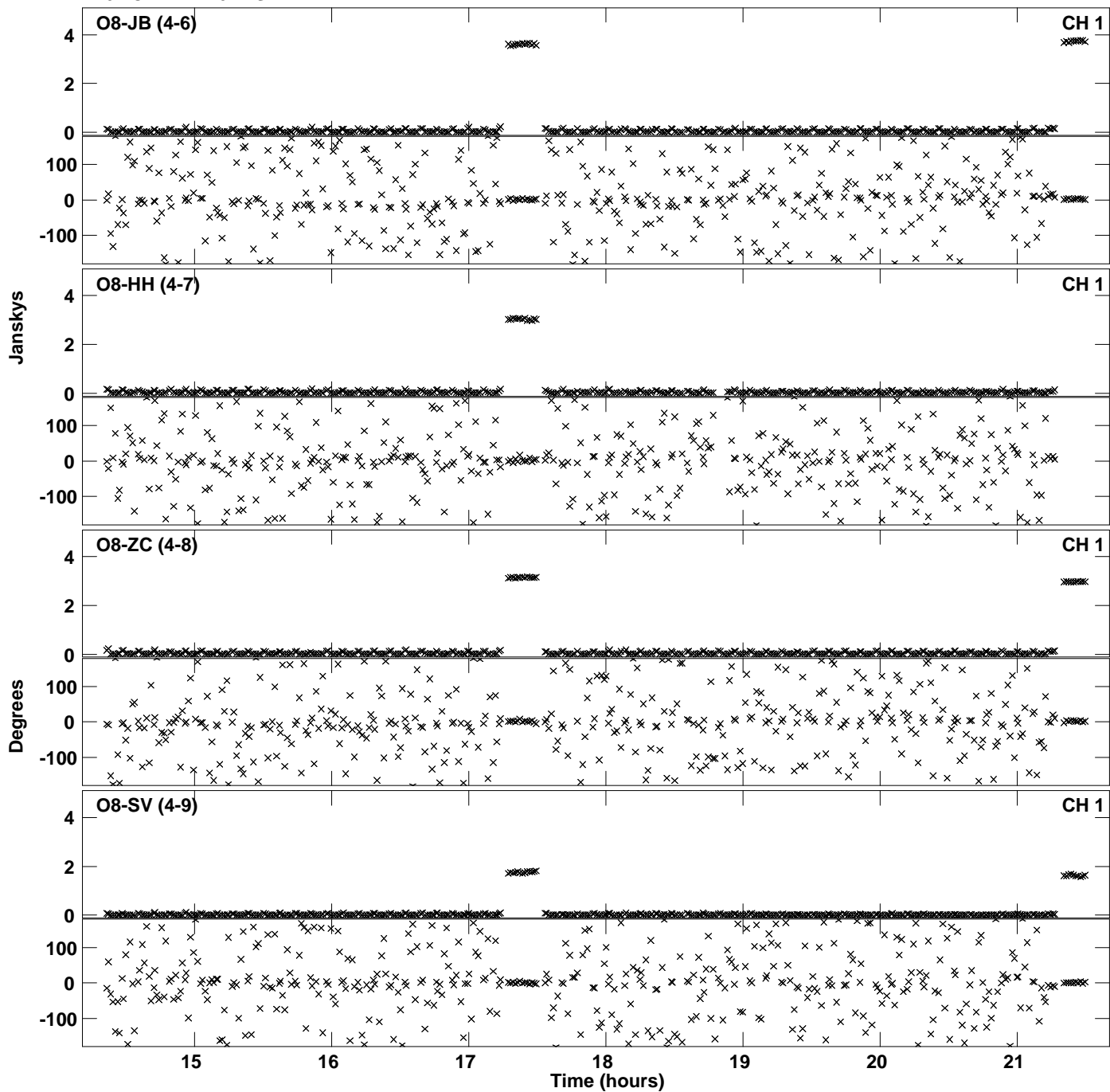
PLot file version 38 created 29-JAN-2019 17:14:45
Amplitude andPhase vs Time for EH035A.UVDATA.1 Vect aver. CL # 3
IF 5 CHAN 1 - 64 STK RR



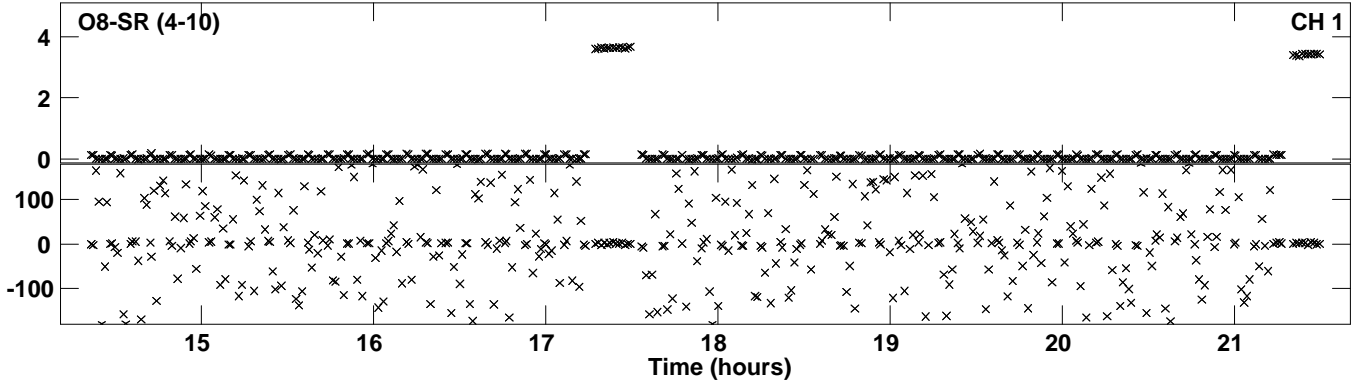
Plot file version 39 created 29-JAN-2019 17:15:02
Amplitude and Phase vs Time for EH035A.UVDATA.1 Vect aver. CL # 3
IF 6 CHAN 1 - 64 STK RR



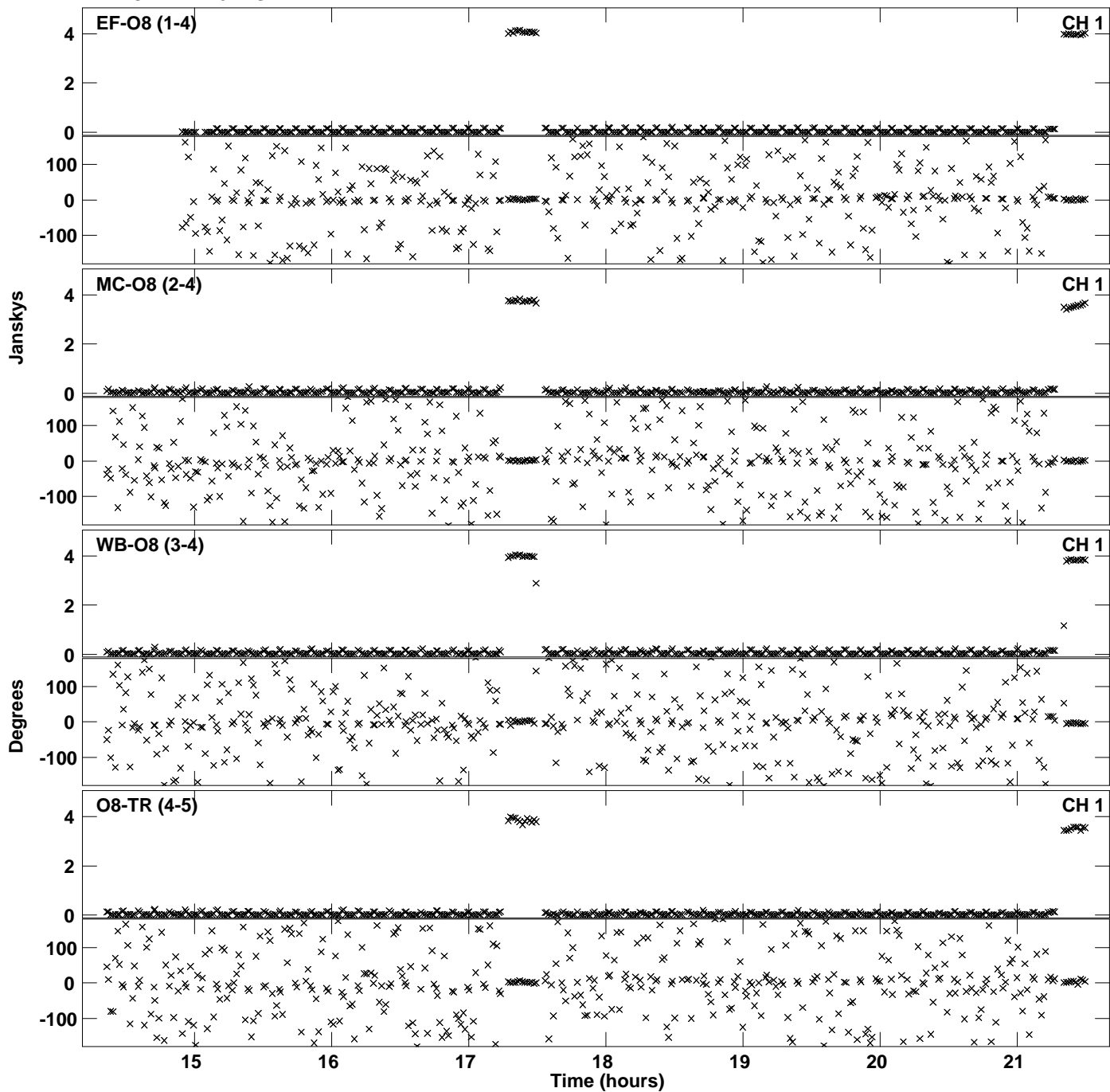
PLot file version 40 created 29-JAN-2019 17:15:02
Amplitude andPhase vs Time for EH035A.UVDATA.1 Vect aver. CL # 3
IF 6 CHAN 1 - 64 STK RR



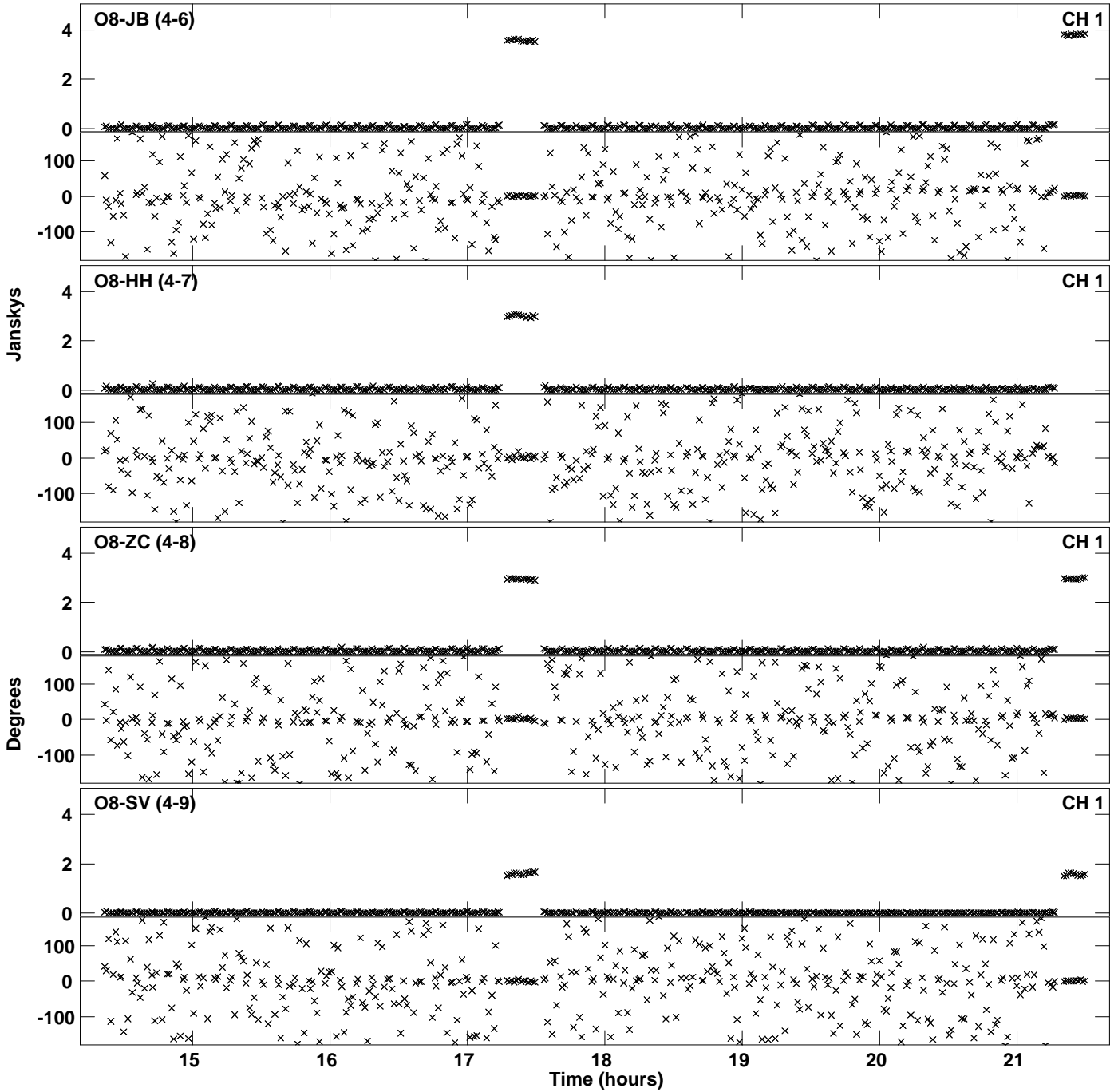
PLot file version 41 created 29-JAN-2019 17:15:02
Amplitude andPhase vs Time for EH035A.UVDATA.1 Vect aver. CL # 3
IF 6 CHAN 1 - 64 STK RR



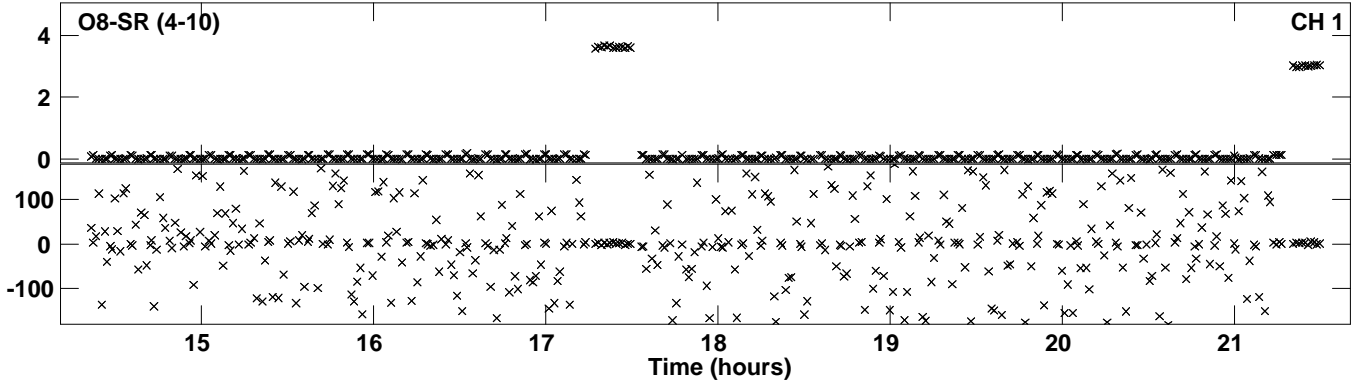
Plot file version 42 created 29-JAN-2019 17:15:19
Amplitude and Phase vs Time for EH035A.UVDATA.1 Vect aver. CL # 3
IF 7 CHAN 1 - 64 STK RR



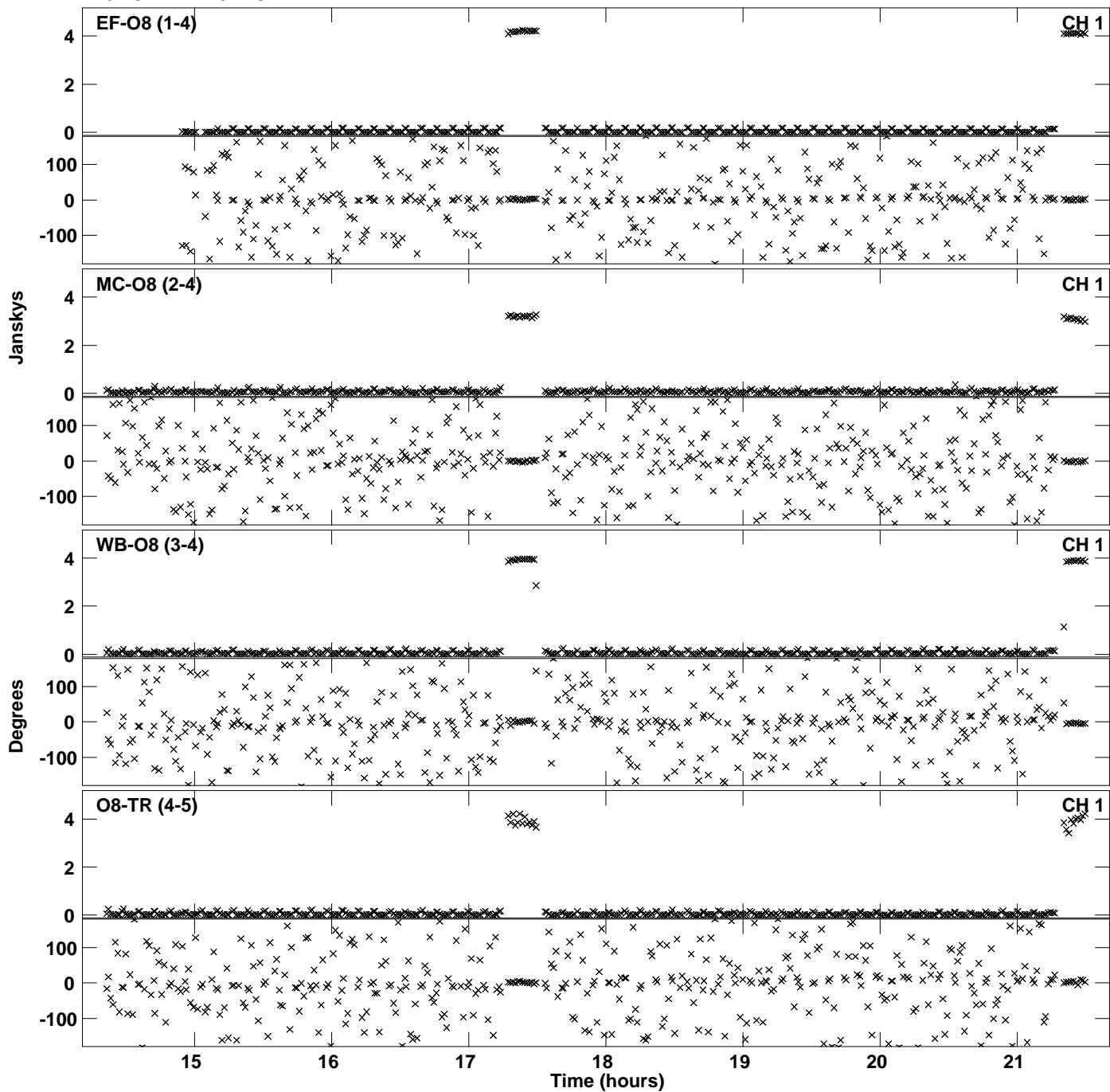
Plot file version 43 created 29-JAN-2019 17:15:19
Amplitude andPhase vs Time for EH035A.UVDATA.1 Vect aver. CL # 3
IF 7 CHAN 1 - 64 STK RR



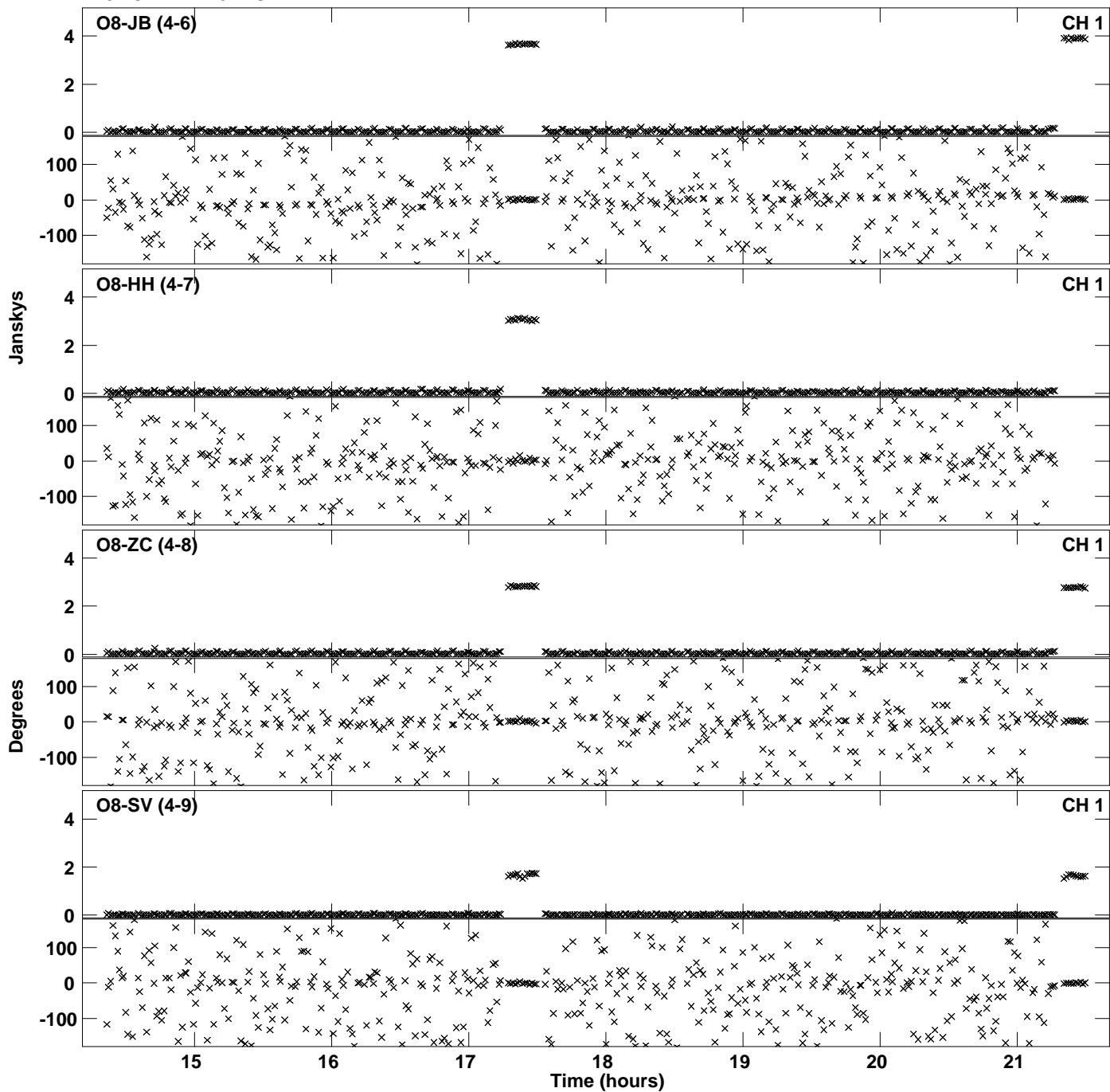
PLot file version 44 created 29-JAN-2019 17:15:19
Amplitude andPhase vs Time for EH035A.UVDATA.1 Vect aver. CL # 3
IF 7 CHAN 1 - 64 STK RR



Plot file version 45 created 29-JAN-2019 17:15:36
Amplitude andPhase vs Time for EH035A.UVDATA.1 Vect aver. CL # 3
IF 8 CHAN 1 - 64 STK RR



Plot file version 46 created 29-JAN-2019 17:15:36
Amplitude andPhase vs Time for EH035A.UVDATA.1 Vect aver. CL # 3
IF 8 CHAN 1 - 64 STK RR



Plot file version 47 created 29-JAN-2019 17:15:36
Amplitude and Phase vs Time for EH035A.UVDATA.1 Vect aver. CL # 3
IF 8 CHAN 1 - 64 STK RR

