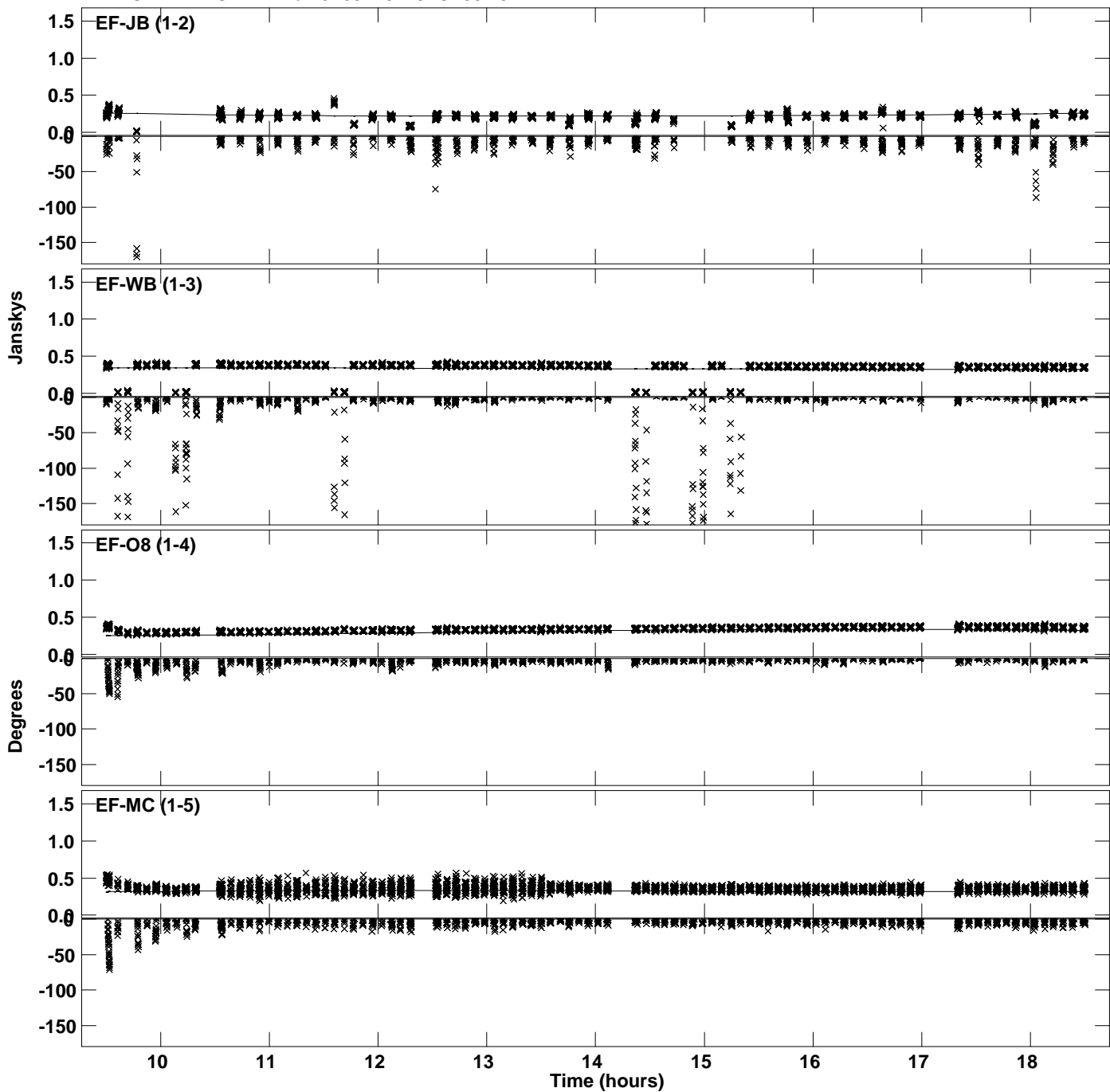
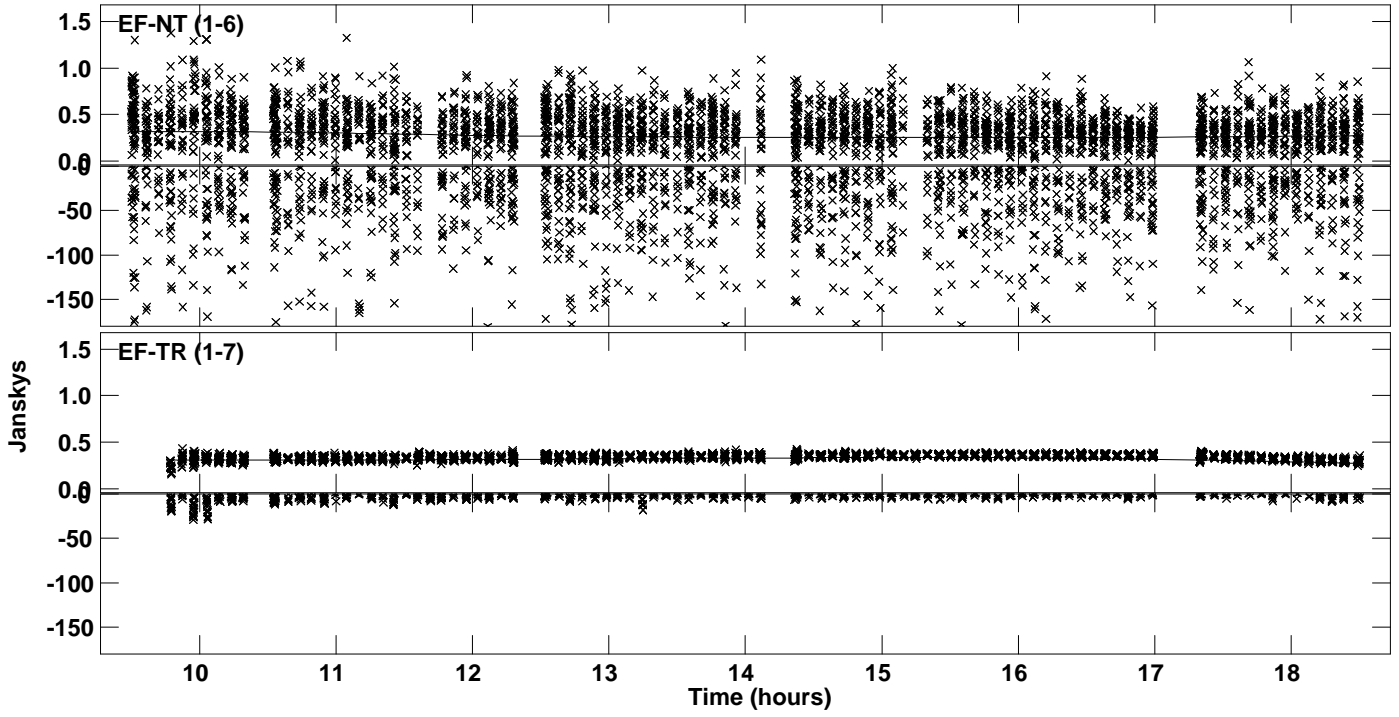


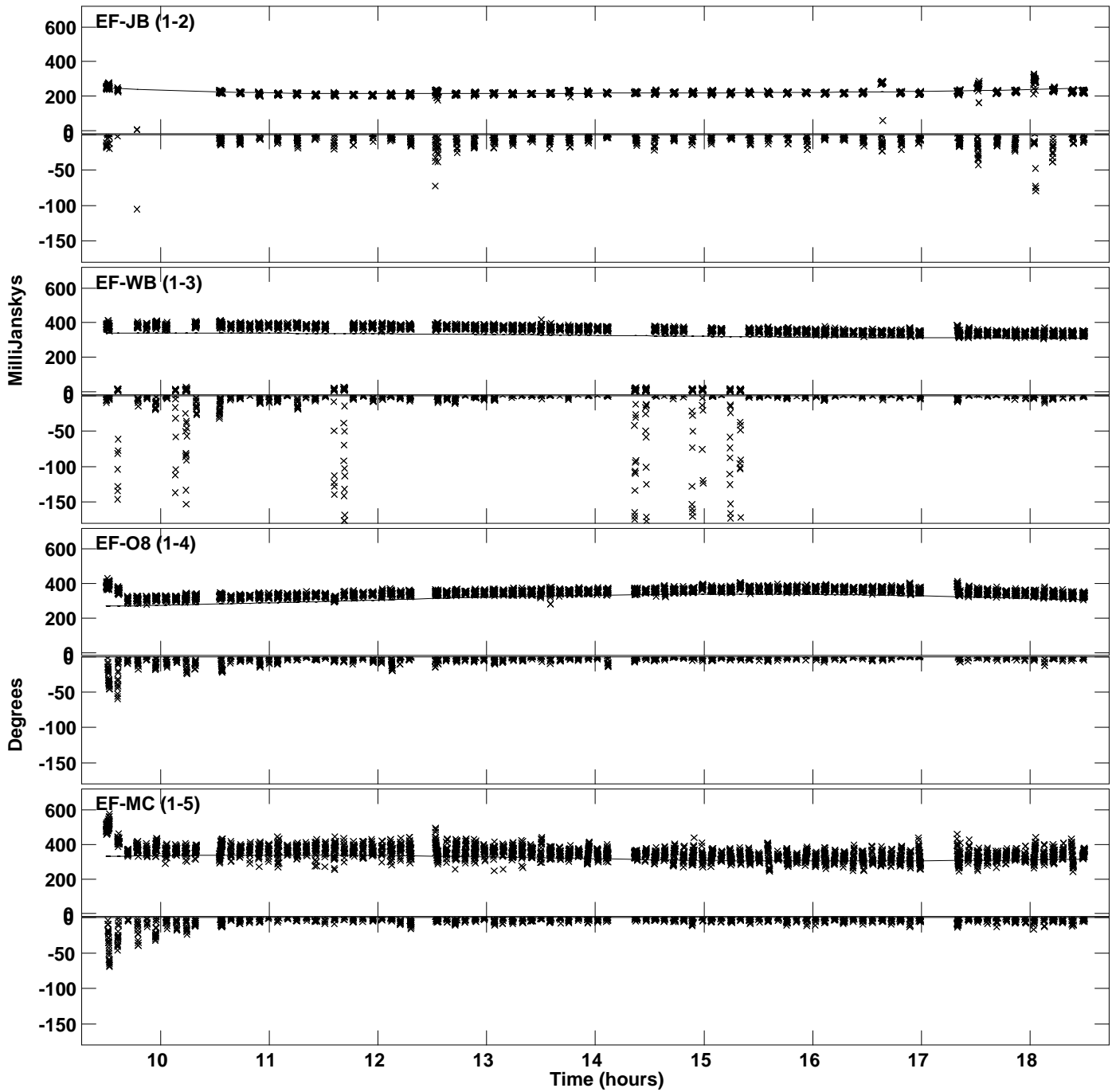
Plot file version 1 created 10-MAR-2022 17:31:15
Amplitude and Phase vs Time for J1651+0129.MULTI.1 CL # 3
IF 1 CHAN 1 STK LL of J1651+0129.ICL001.3



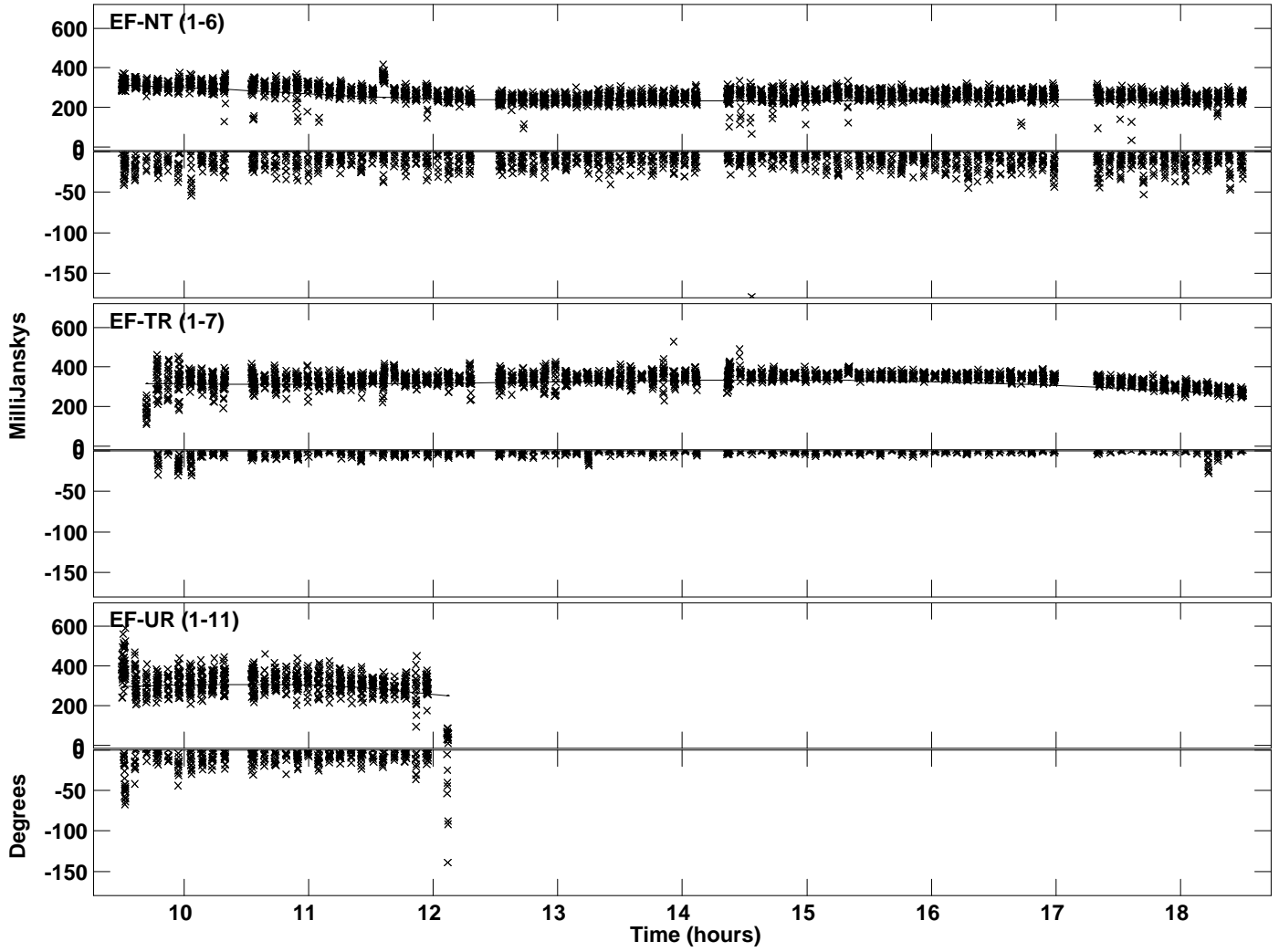
Plot file version 2 created 10-MAR-2022 17:31:15
Amplitude and Phase vs Time for J1651+0129.MULTI.1 CL # 3
IF 1 CHAN 1 STK LL of J1651+0129.ICL001.3



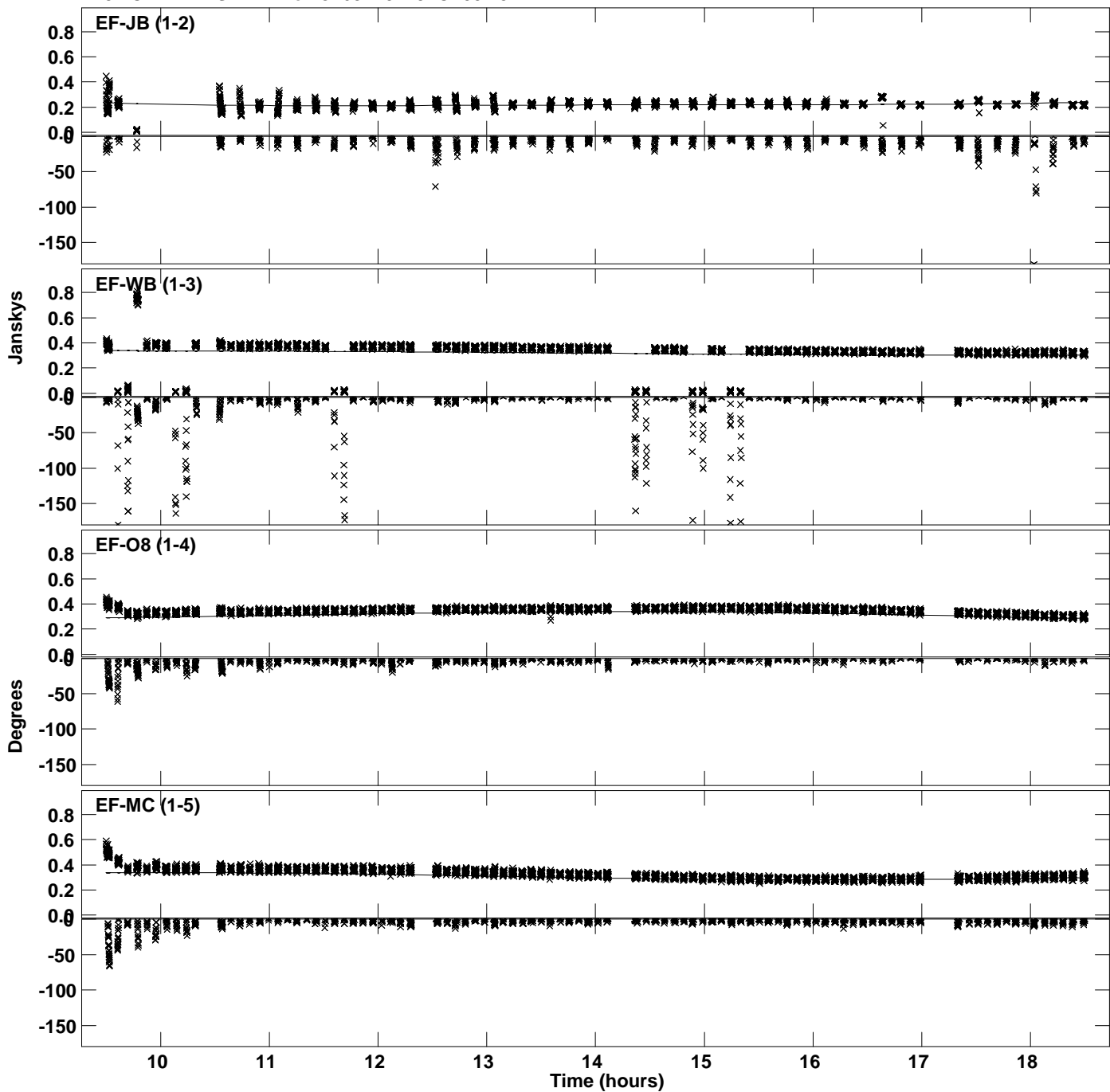
Plot file version 3 created 10-MAR-2022 17:31:16
Amplitude andPhase vs Time for J1651+0129.MULTI.1 CL # 3
IF 2 CHAN 1 STK LL of J1651+0129.ICL001.3



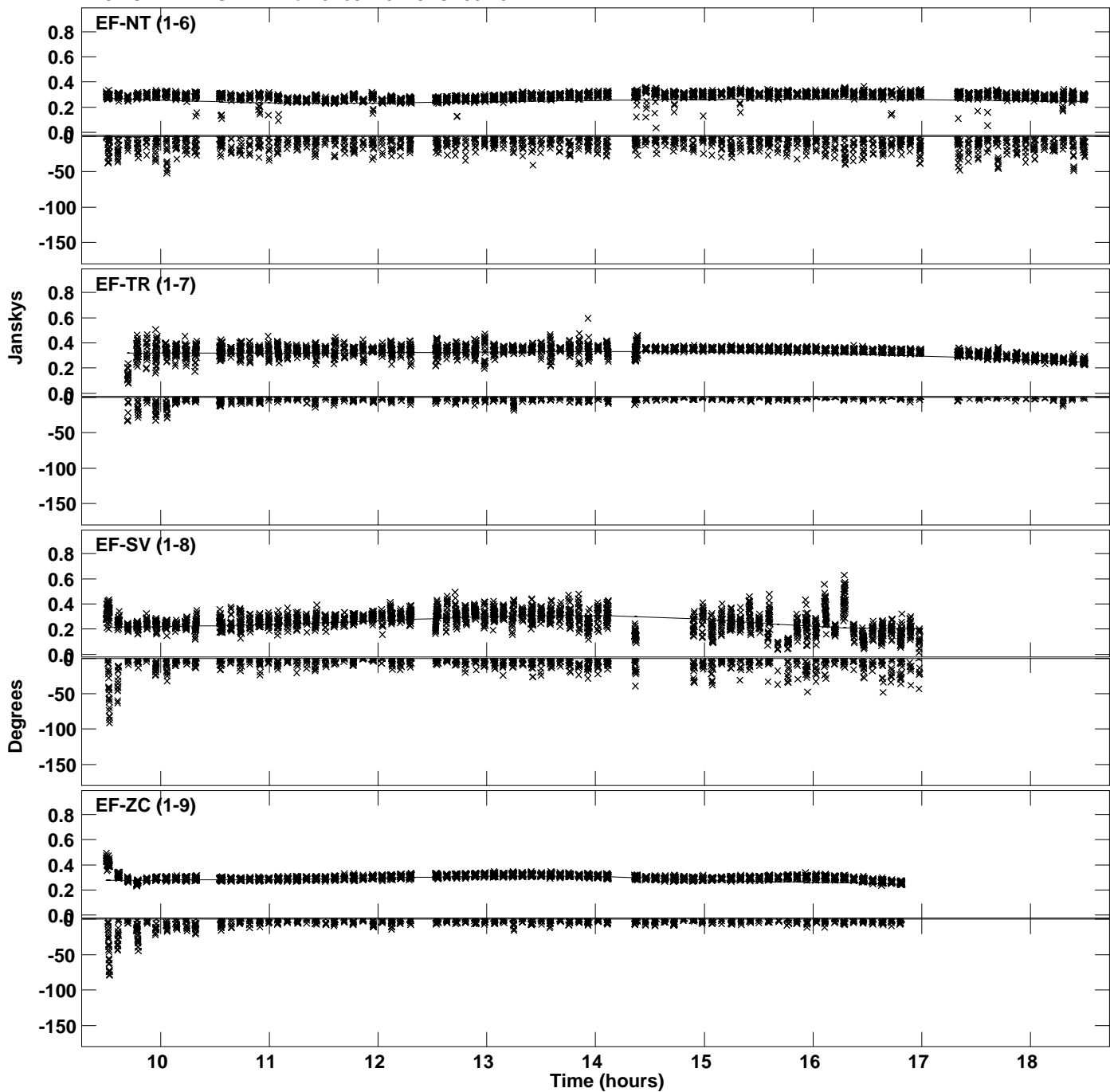
Plot file version 4 created 10-MAR-2022 17:31:16
Amplitude and Phase vs Time for J1651+0129.MULTI.1 CL # 3
IF 2 CHAN 1 STK LL of J1651+0129.ICL001.3



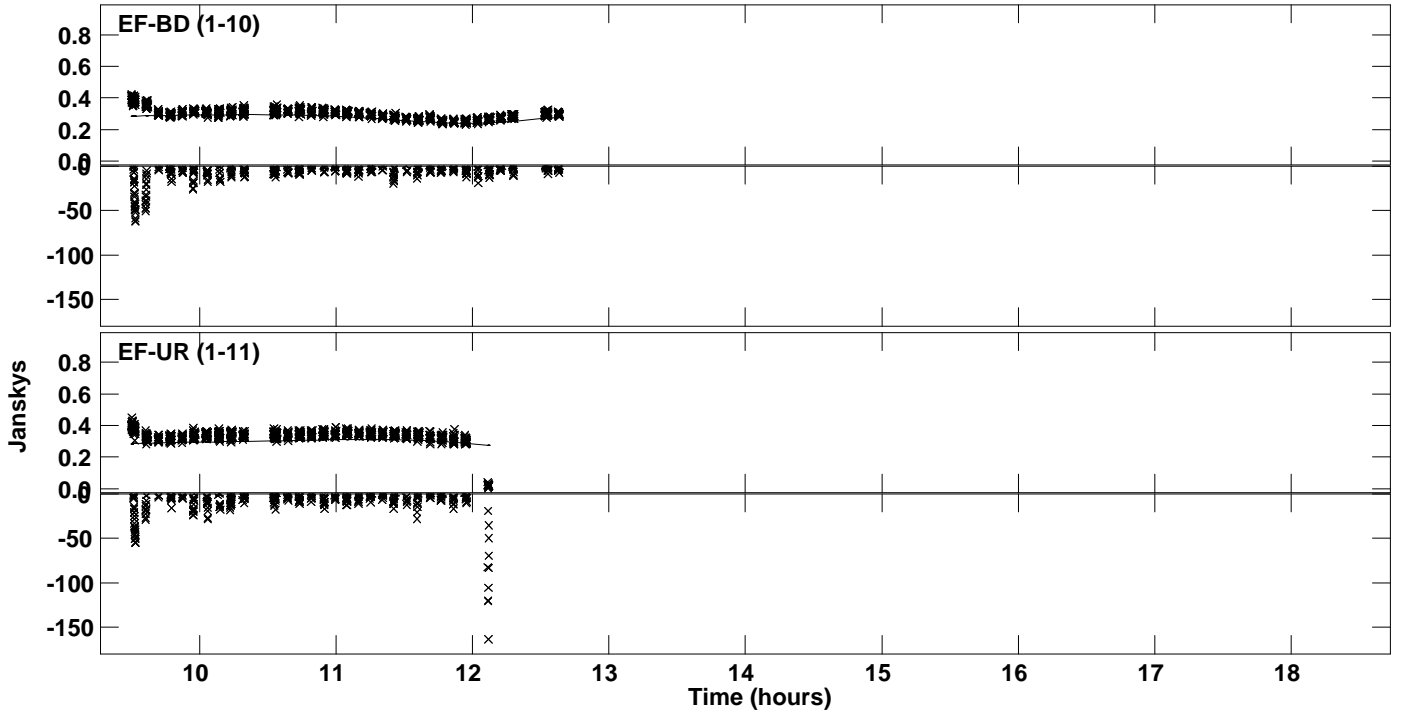
Plot file version 5 created 10-MAR-2022 17:31:18
Amplitude and Phase vs Time for J1651+0129.MULTI.1 CL # 3
IF 3 CHAN 1 STK LL of J1651+0129.ICL001.3



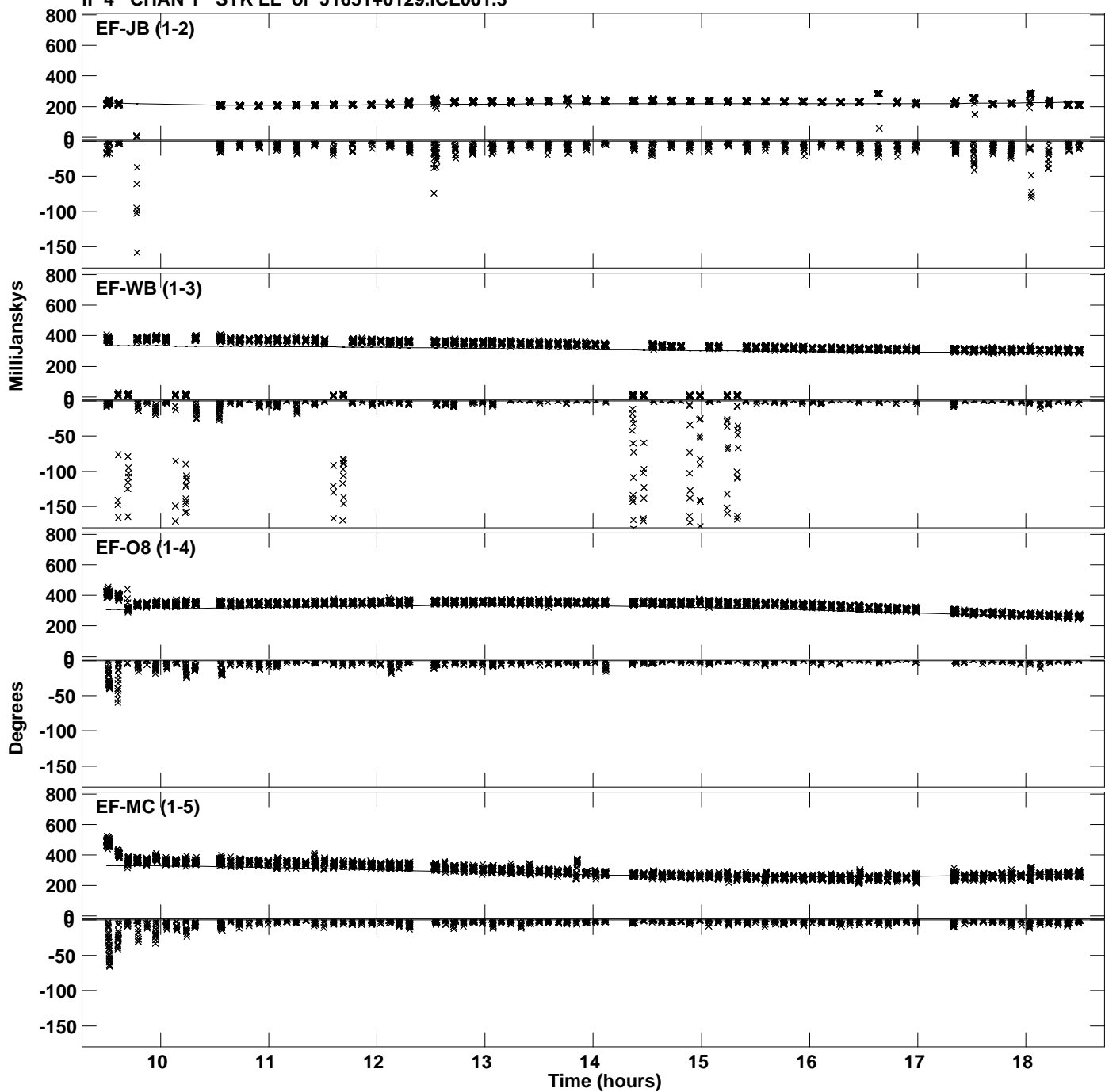
Plot file version 6 created 10-MAR-2022 17:31:18
Amplitude and Phase vs Time for J1651+0129.MULTI.1 CL # 3
IF 3 CHAN 1 STK LL of J1651+0129.ICL001.3



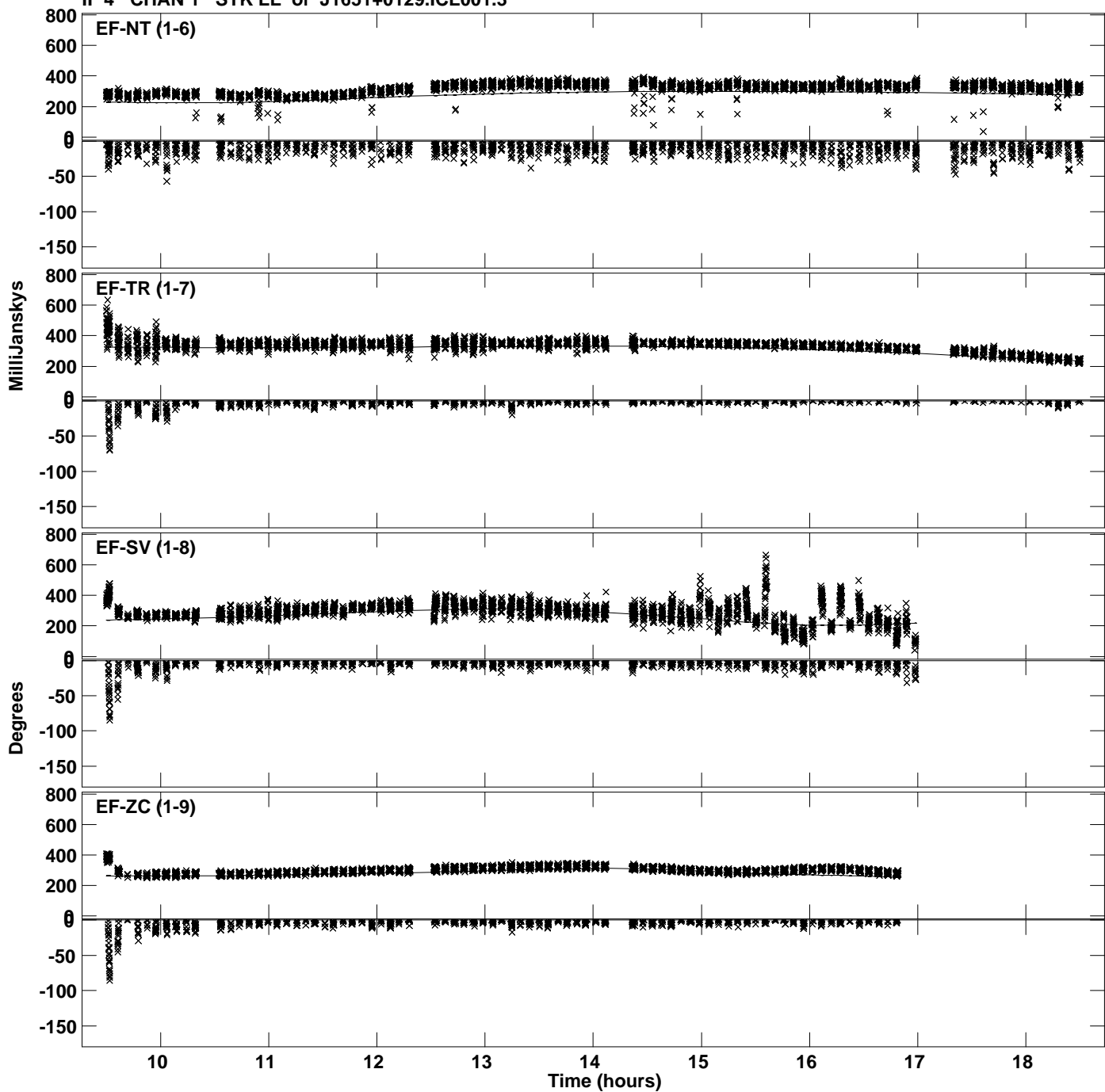
Plot file version 7 created 10-MAR-2022 17:31:18
Amplitude and Phase vs Time for J1651+0129.MULTI.1 CL # 3
IF 3 CHAN 1 STK LL of J1651+0129.ICL001.3



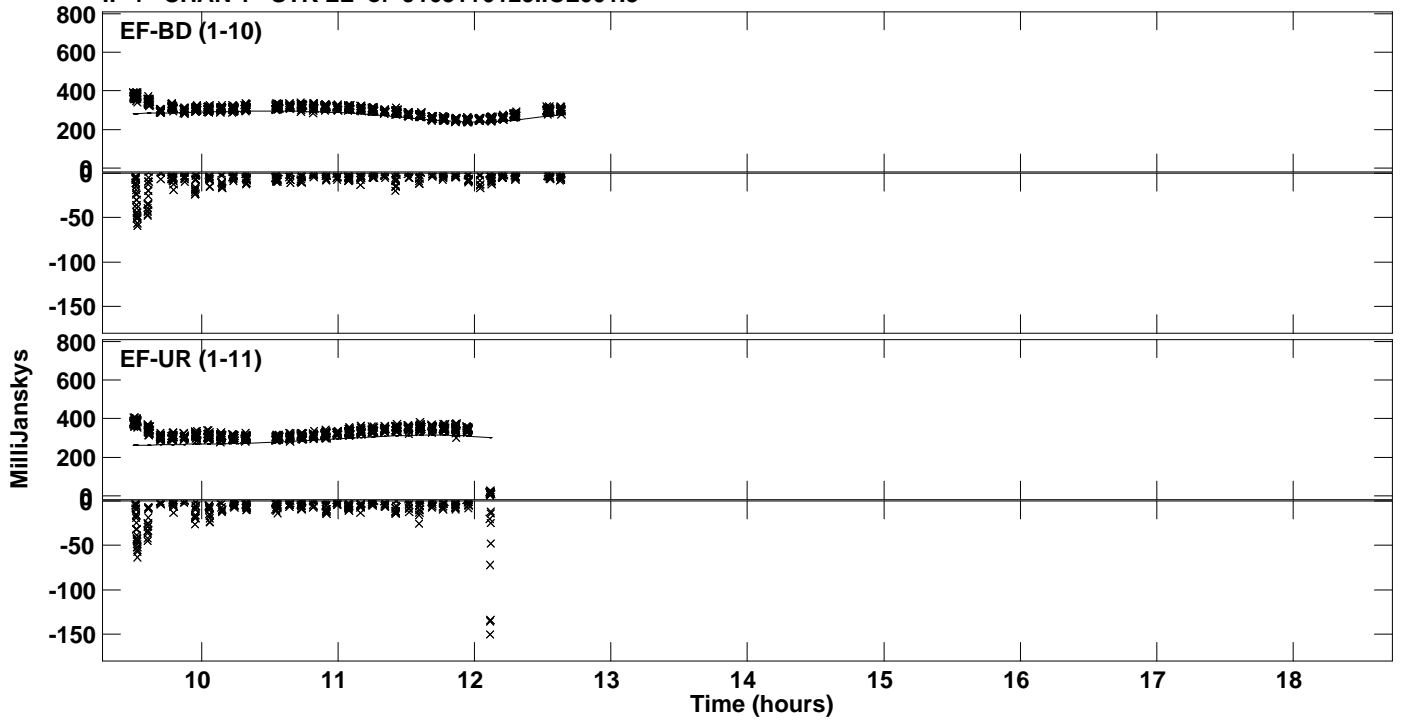
Plot file version 8 created 10-MAR-2022 17:31:19
Amplitude andPhase vs Time for J1651+0129.MULTI.1 CL # 3
IF 4 CHAN 1 STK LL of J1651+0129.ICL001.3



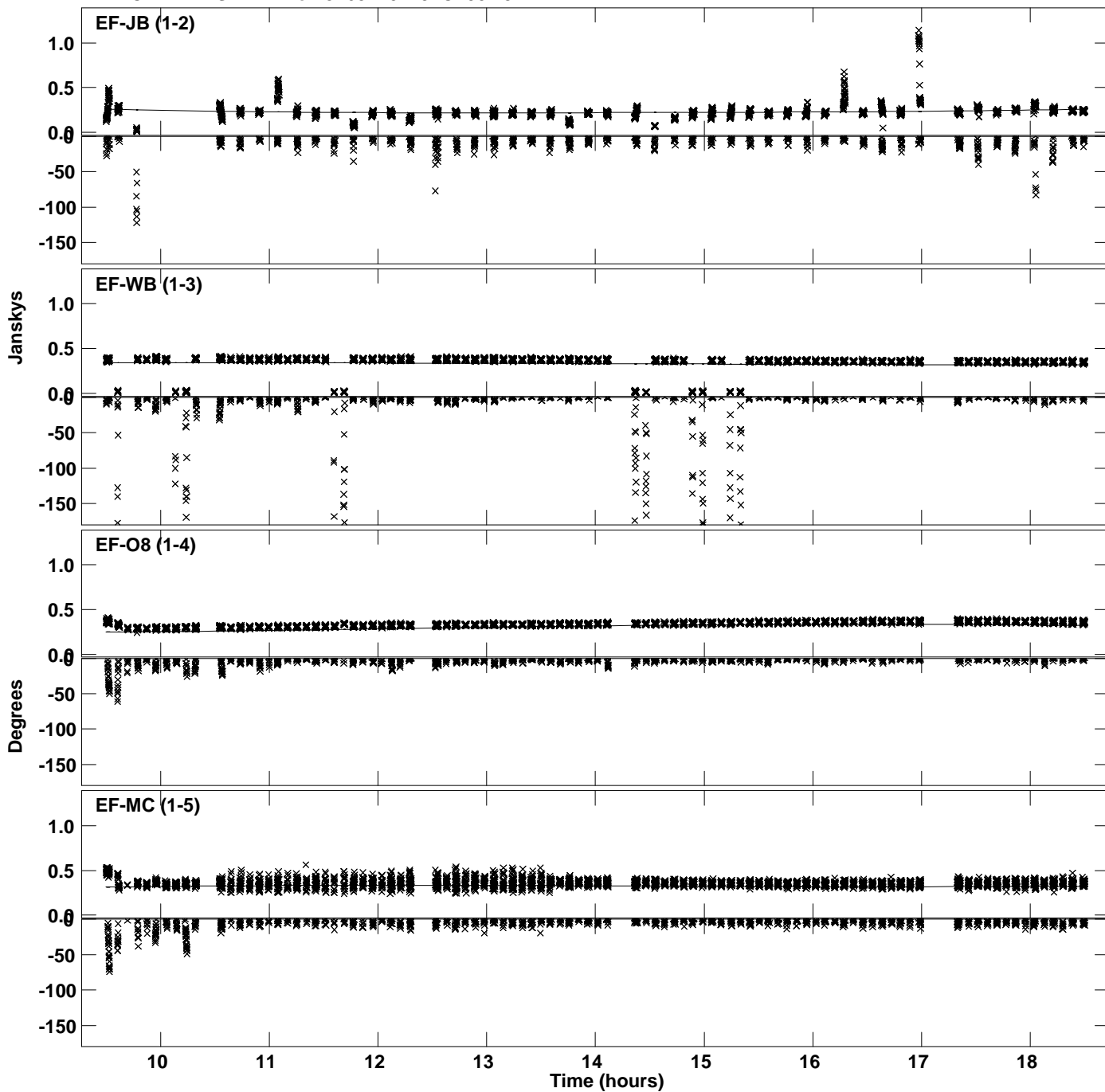
Plot file version 9 created 10-MAR-2022 17:31:19
Amplitude andPhase vs Time for J1651+0129.MULTI.1 CL # 3
IF 4 CHAN 1 STK LL of J1651+0129.ICL001.3



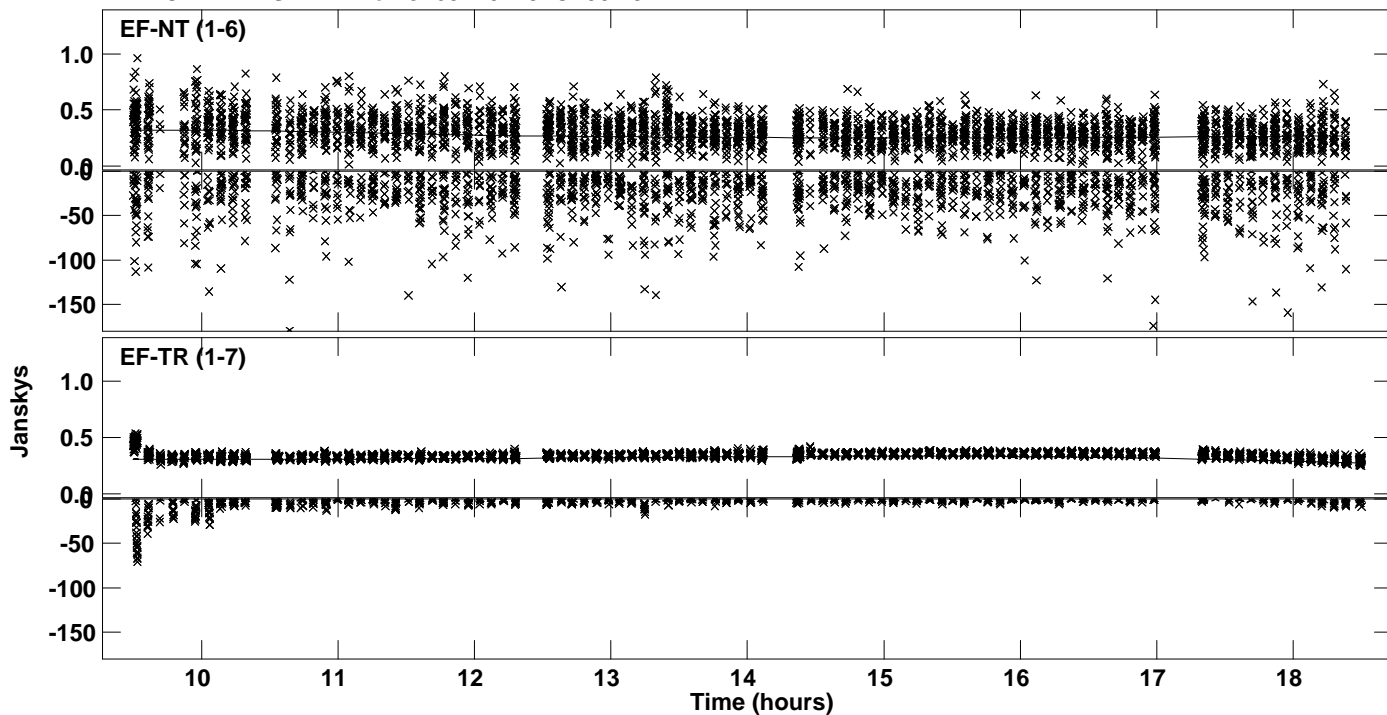
Plot file version 10 created 10-MAR-2022 17:31:19
Amplitude and Phase vs Time for J1651+0129.MULTI.1 CL # 3
IF 4 CHAN 1 STK LL of J1651+0129.ICL001.3



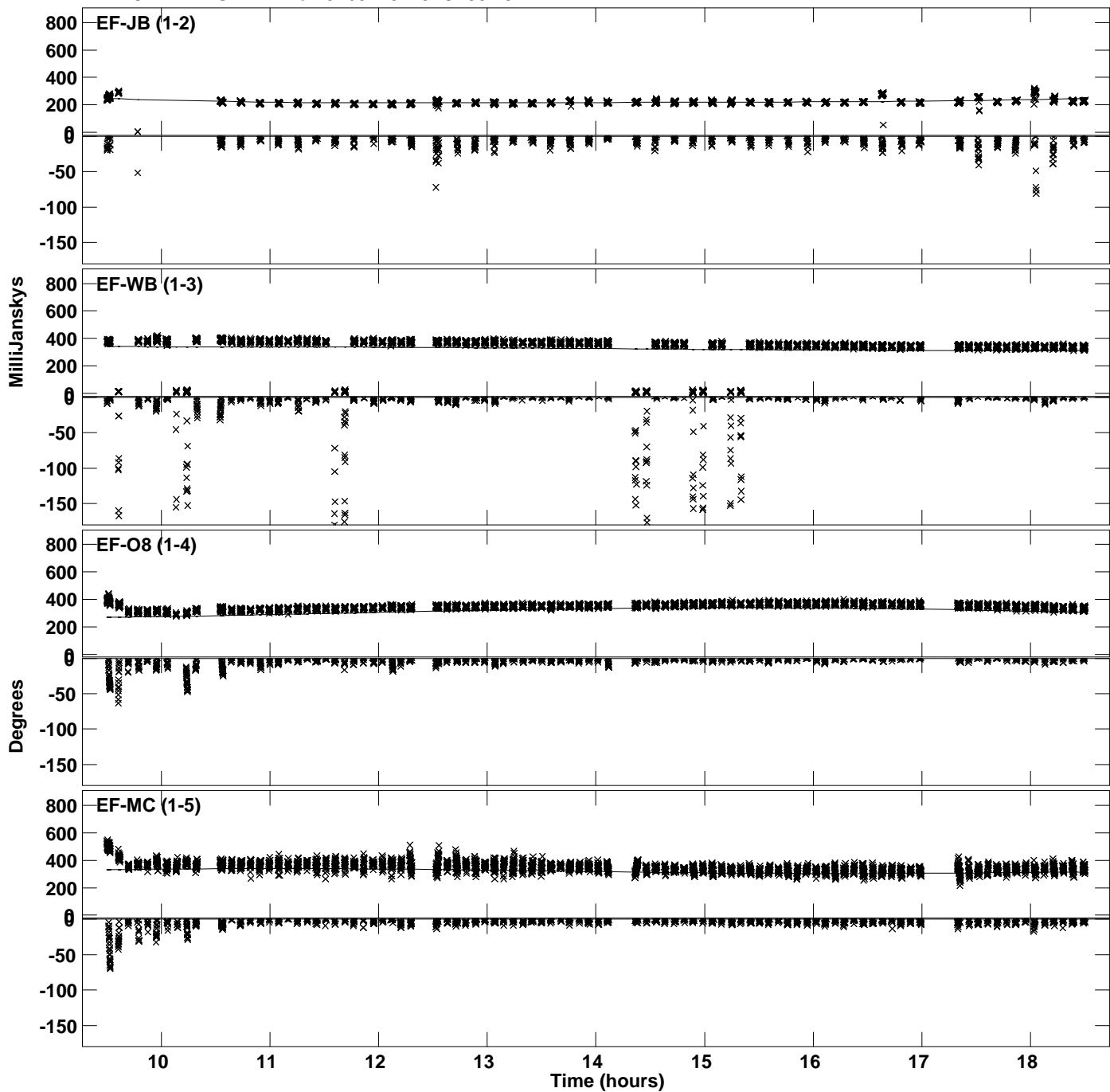
Plot file version 11 created 10-MAR-2022 17:31:20
Amplitude and Phase vs Time for J1651+0129.MULTI.1 CL # 3
IF 1 CHAN 1 STK RR of J1651+0129.ICL001.3



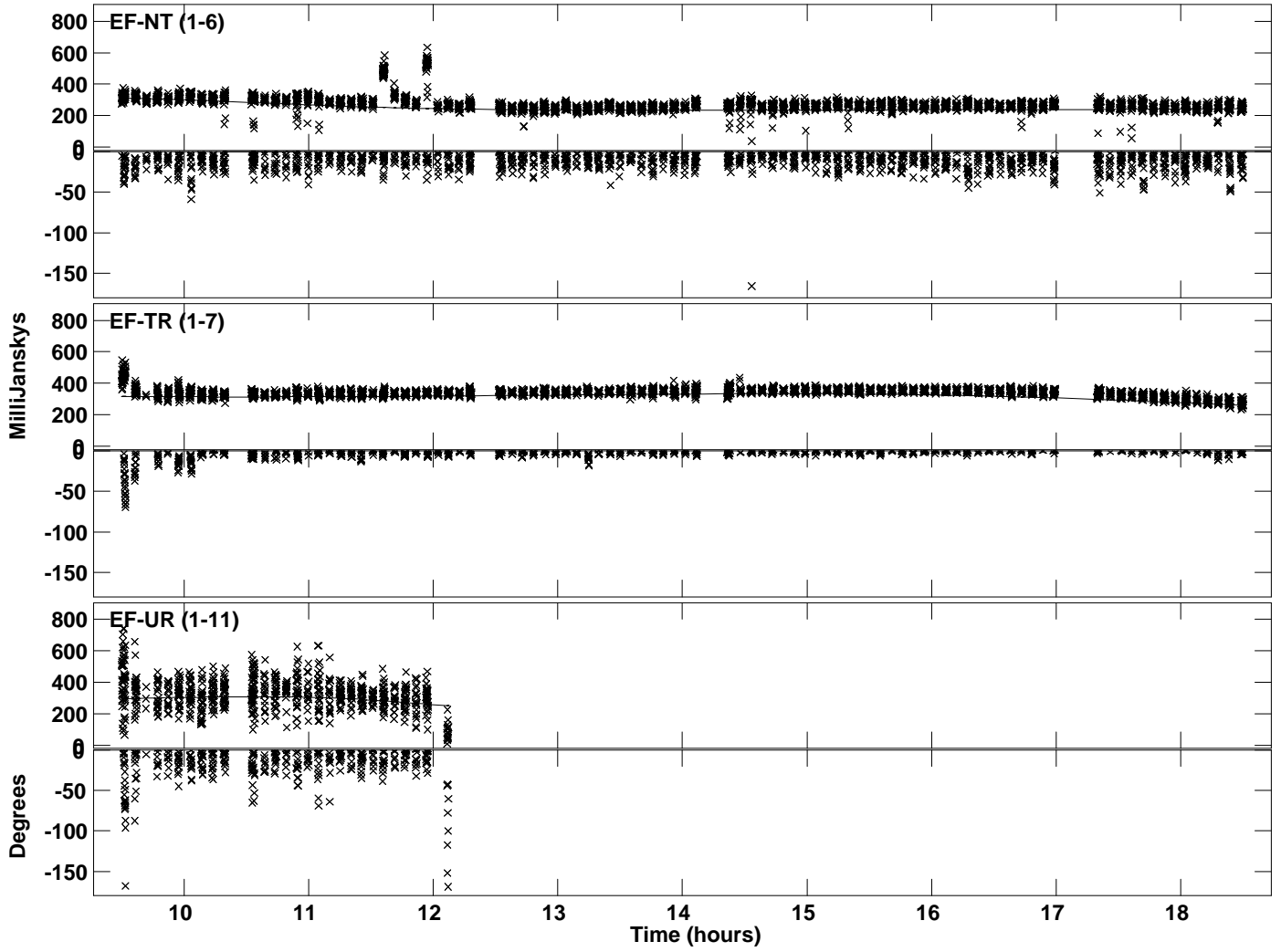
Plot file version 12 created 10-MAR-2022 17:31:20
Amplitude andPhase vs Time for J1651+0129.MULTI.1 CL # 3
IF 1 CHAN 1 STK RR of J1651+0129.ICL001.3



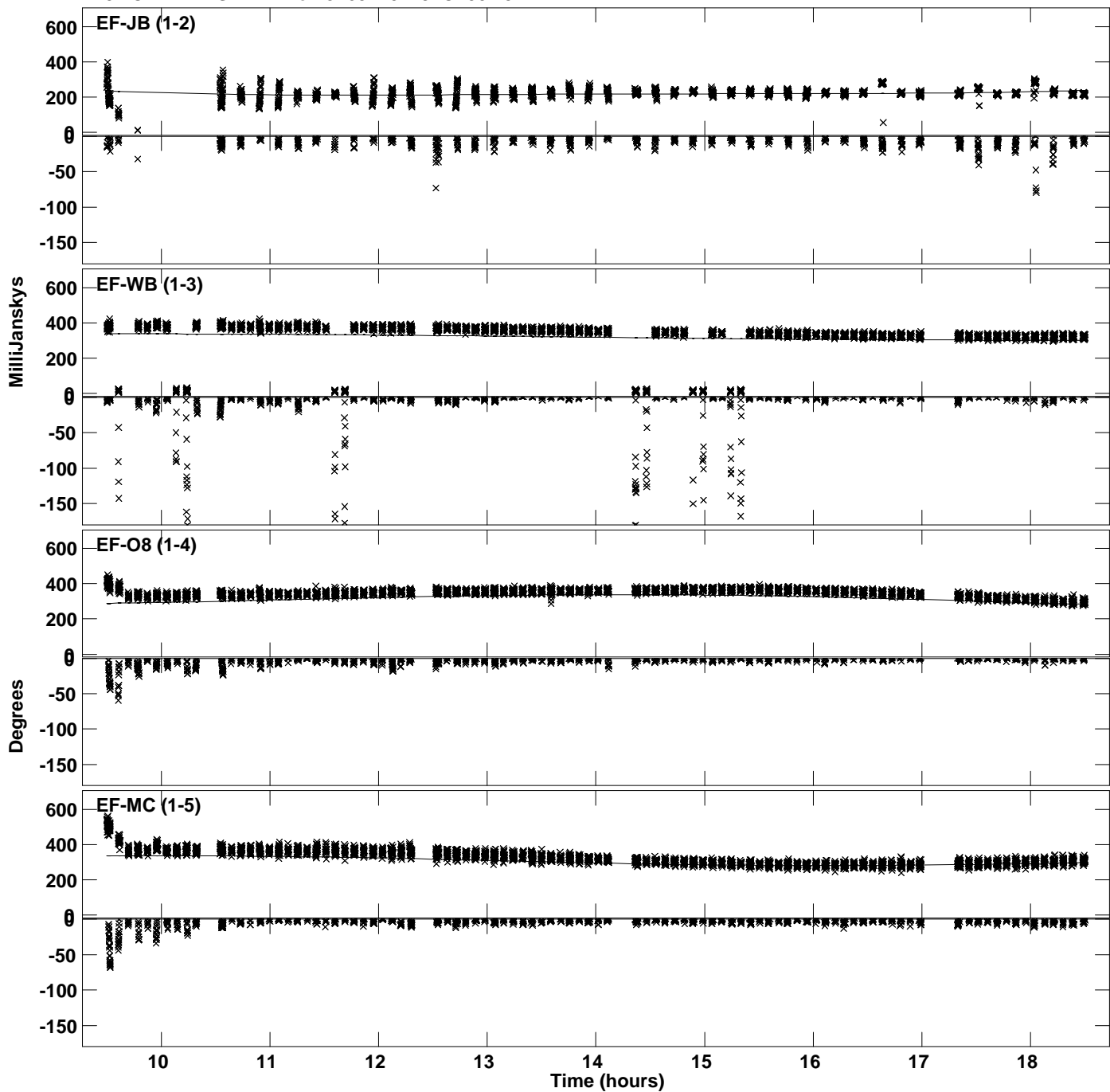
Plot file version 13 created 10-MAR-2022 17:31:21
Amplitude andPhase vs Time for J1651+0129.MULTI.1 CL # 3
IF 2 CHAN 1 STK RR of J1651+0129.ICL001.3



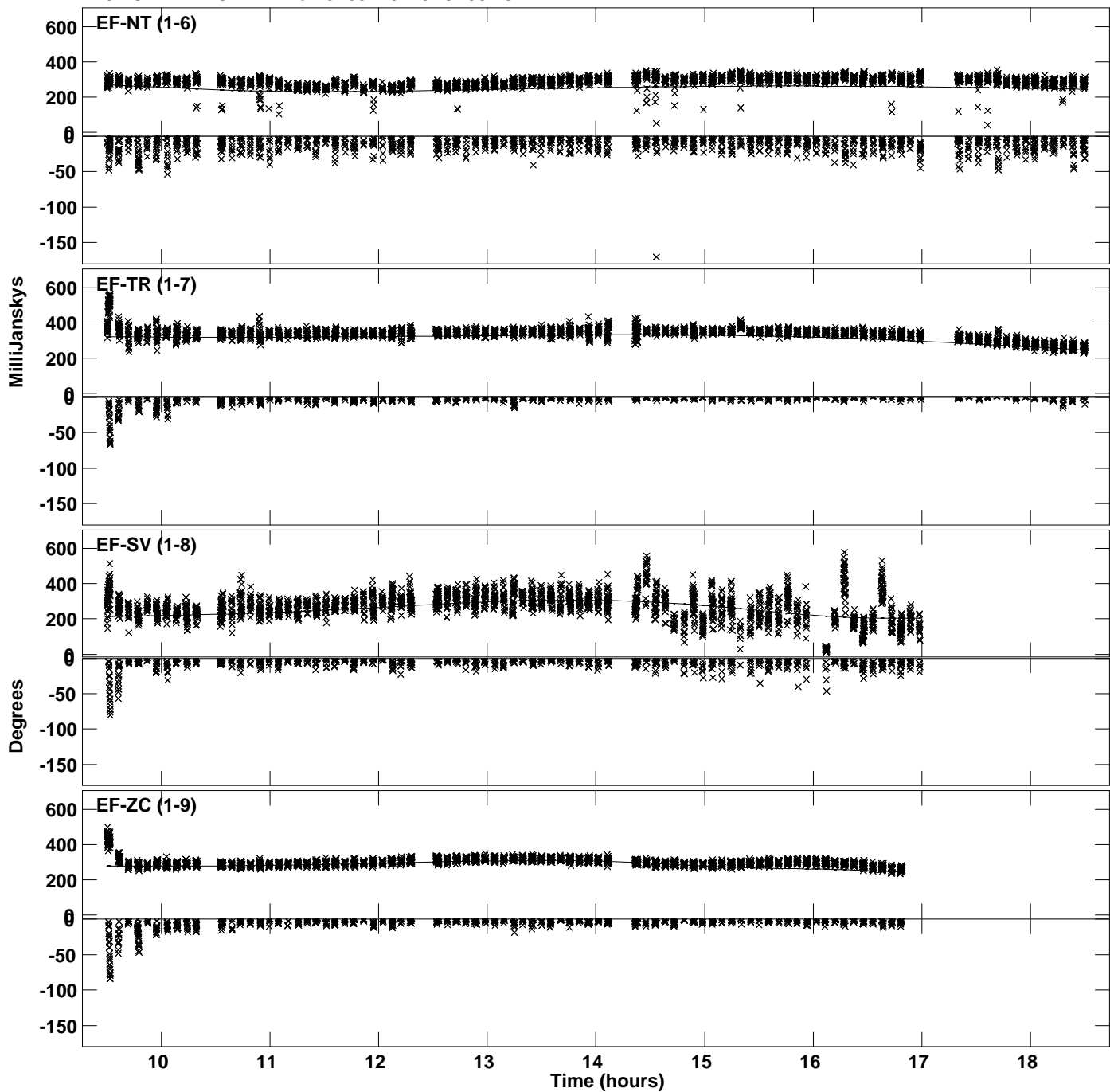
Plot file version 14 created 10-MAR-2022 17:31:21
Amplitude andPhase vs Time for J1651+0129.MULTI.1 CL # 3
IF 2 CHAN 1 STK RR of J1651+0129.ICL001.3



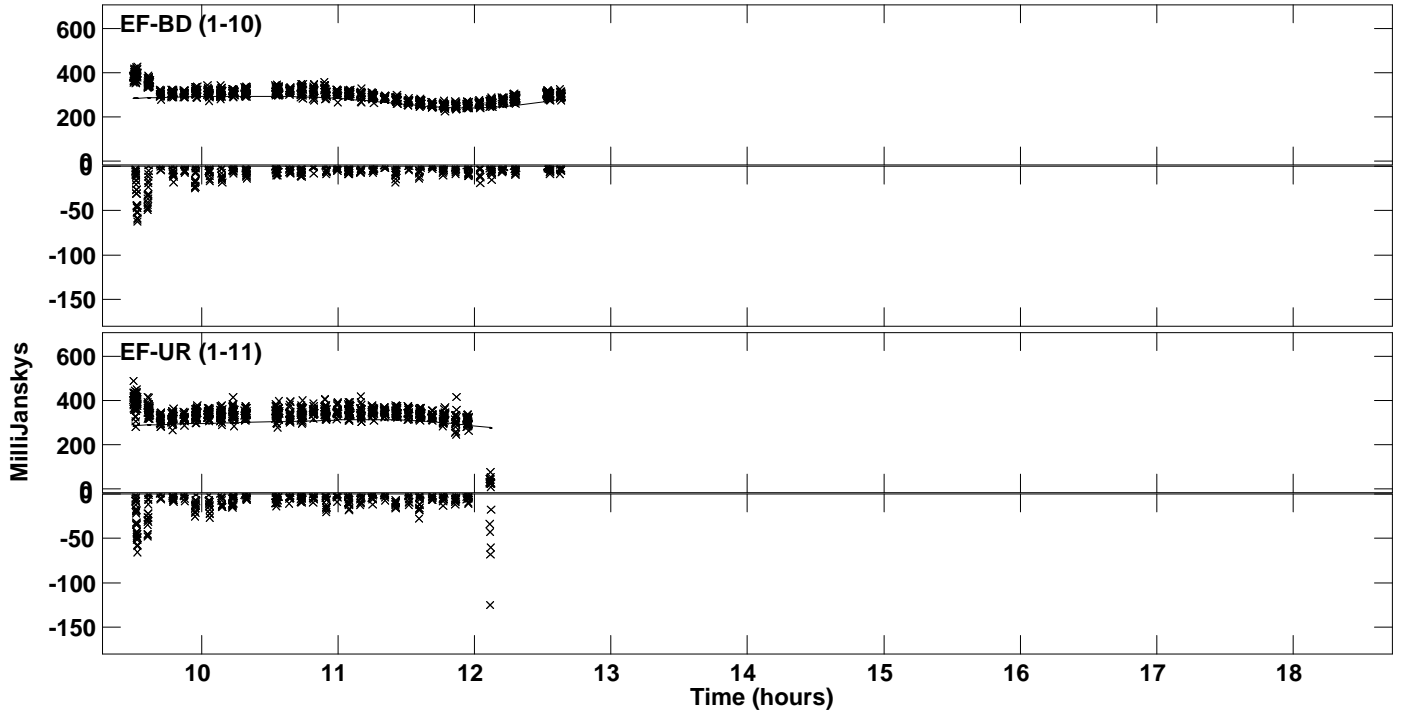
Plot file version 15 created 10-MAR-2022 17:31:23
Amplitude andPhase vs Time for J1651+0129.MULTI.1 CL # 3
IF 3 CHAN 1 STK RR of J1651+0129.ICL001.3



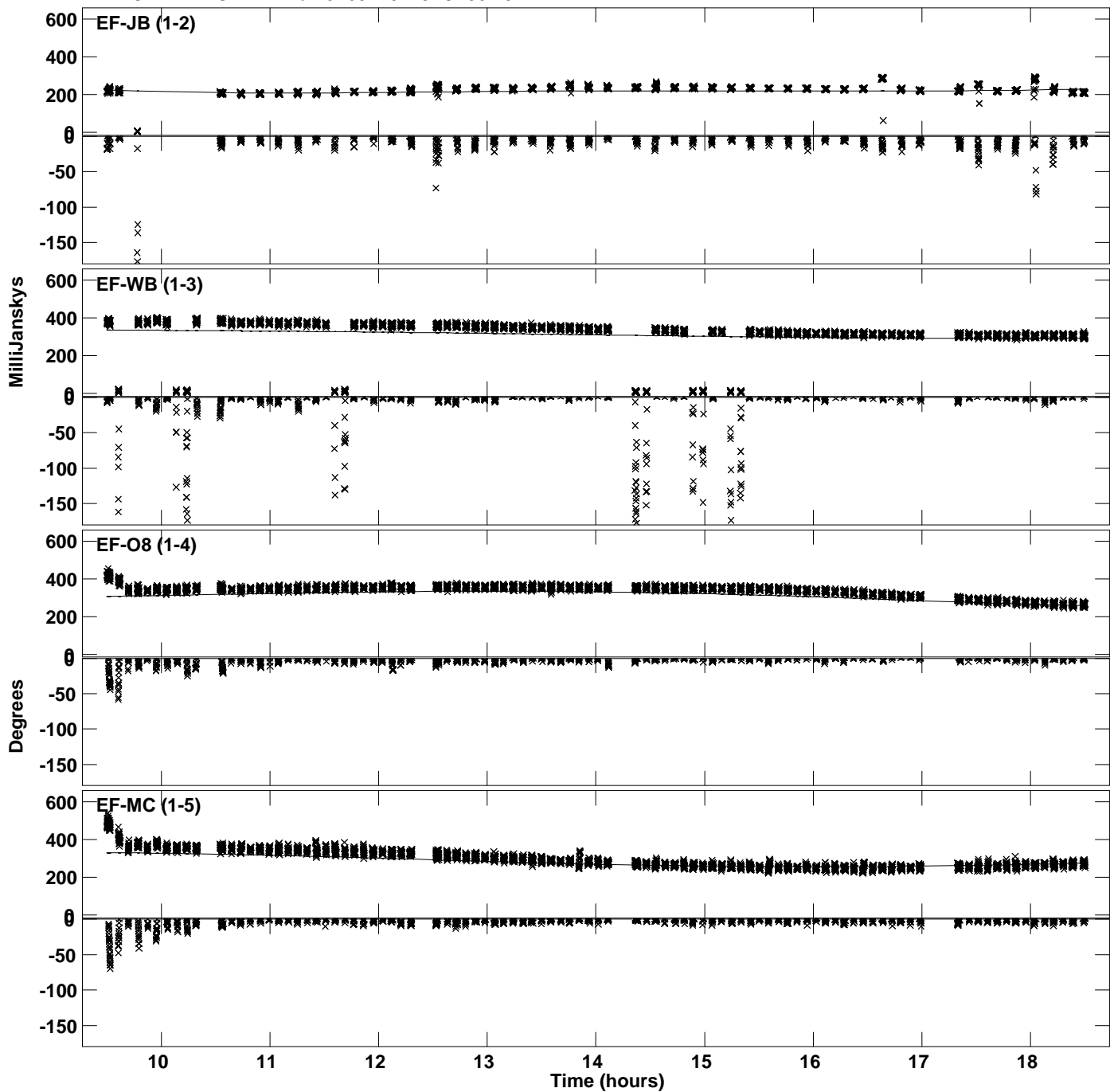
PLot file version 16 created 10-MAR-2022 17:31:23
Amplitude andPhase vs Time for J1651+0129.MULTI.1 CL # 3
IF 3 CHAN 1 STK RR of J1651+0129.ICL001.3



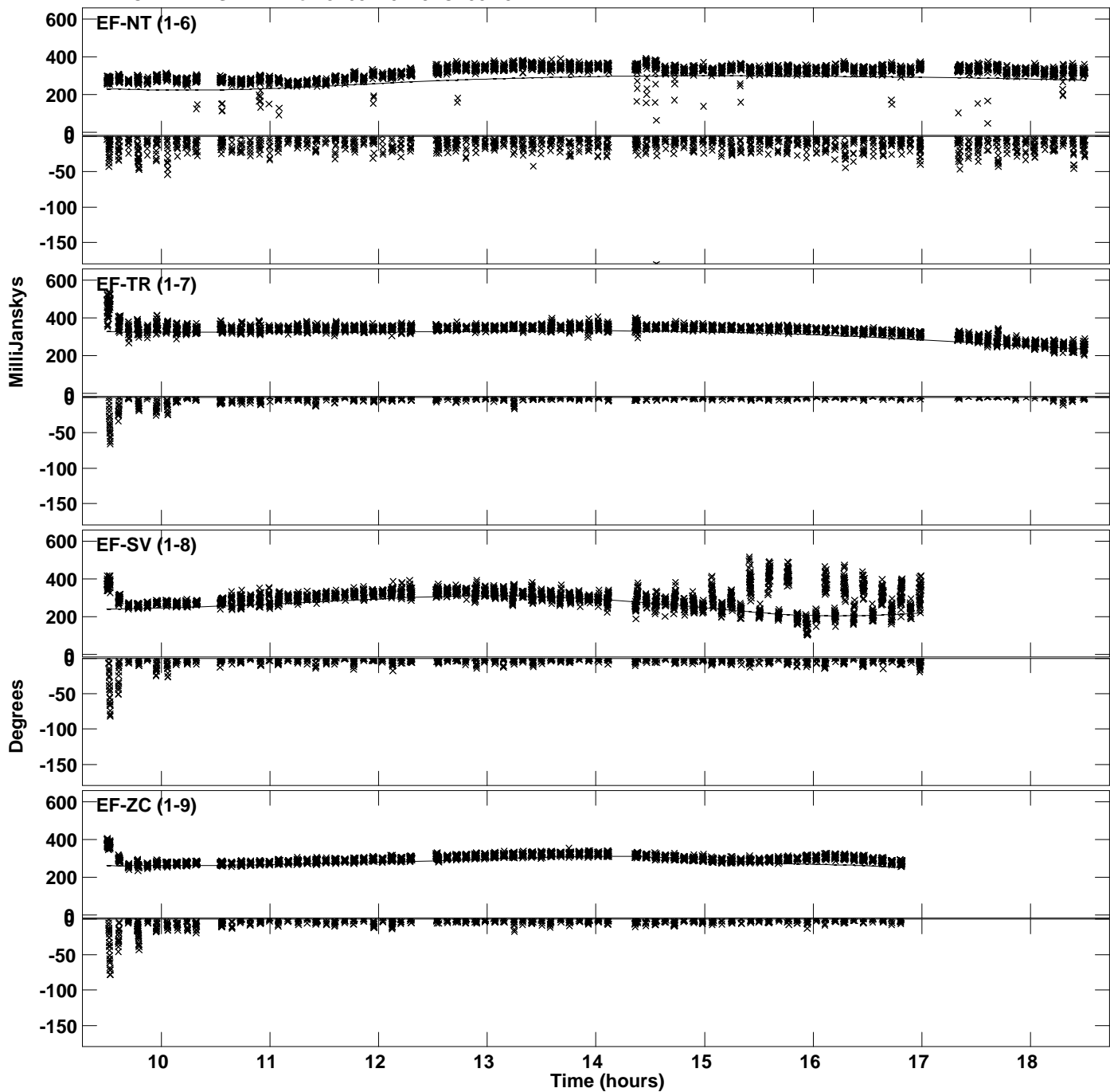
PLot file version 17 created 10-MAR-2022 17:31:23
Amplitude andPhase vs Time for J1651+0129.MULTI.1 CL # 3
IF 3 CHAN 1 STK RR of J1651+0129.ICL001.3



Plot file version 18 created 10-MAR-2022 17:31:24
Amplitude andPhase vs Time for J1651+0129.MULTI.1 CL # 3
IF 4 CHAN 1 STK RR of J1651+0129.ICL001.3



Plot file version 19 created 10-MAR-2022 17:31:24
Amplitude andPhase vs Time for J1651+0129.MULTI.1 CL # 3
IF 4 CHAN 1 STK RR of J1651+0129.ICL001.3



PLot file version 20 created 10-MAR-2022 17:31:24
Amplitude andPhase vs Time for J1651+0129.MULTI.1 CL # 3
IF 4 CHAN 1 STK RR of J1651+0129.ICL001.3

