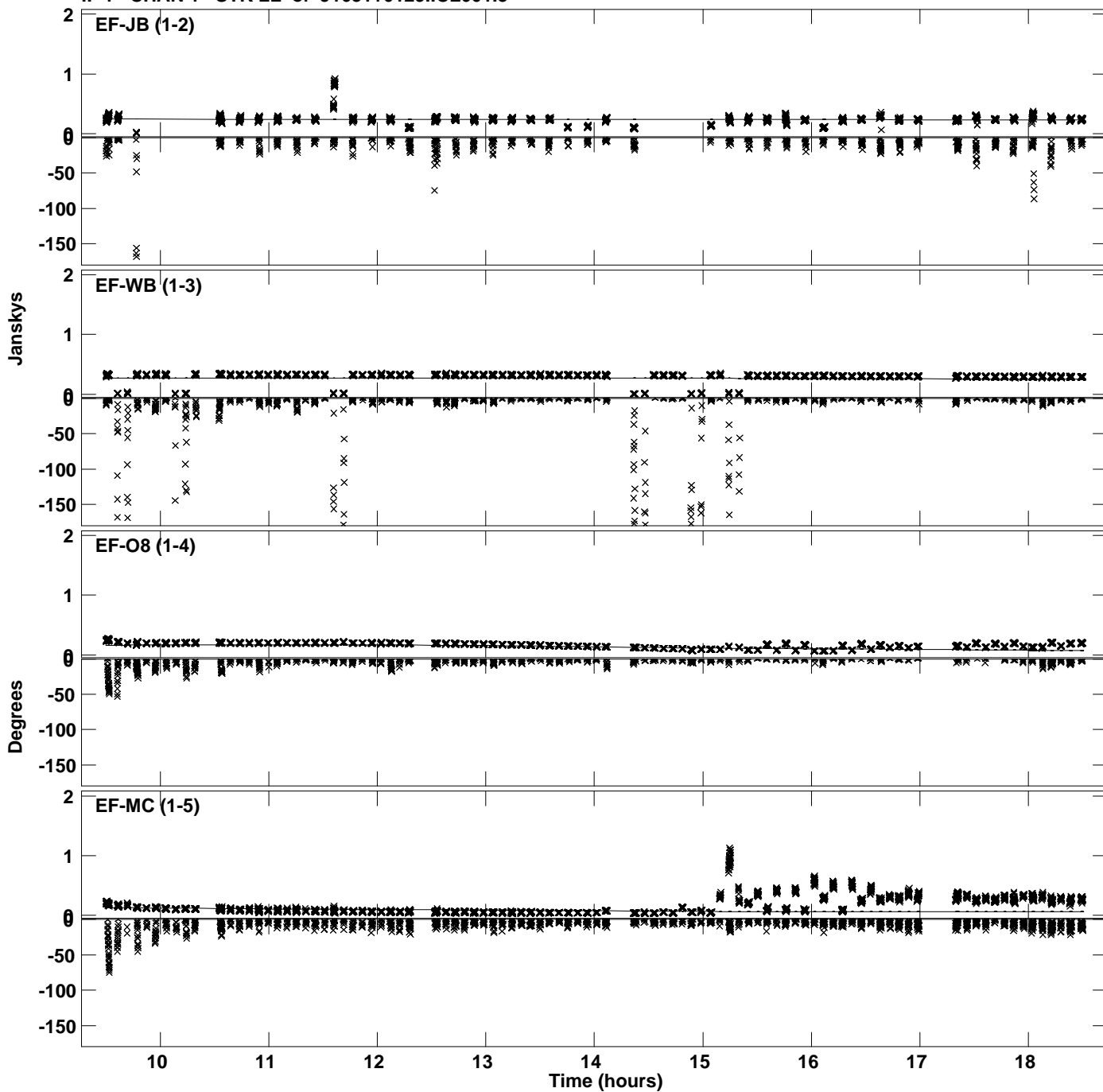
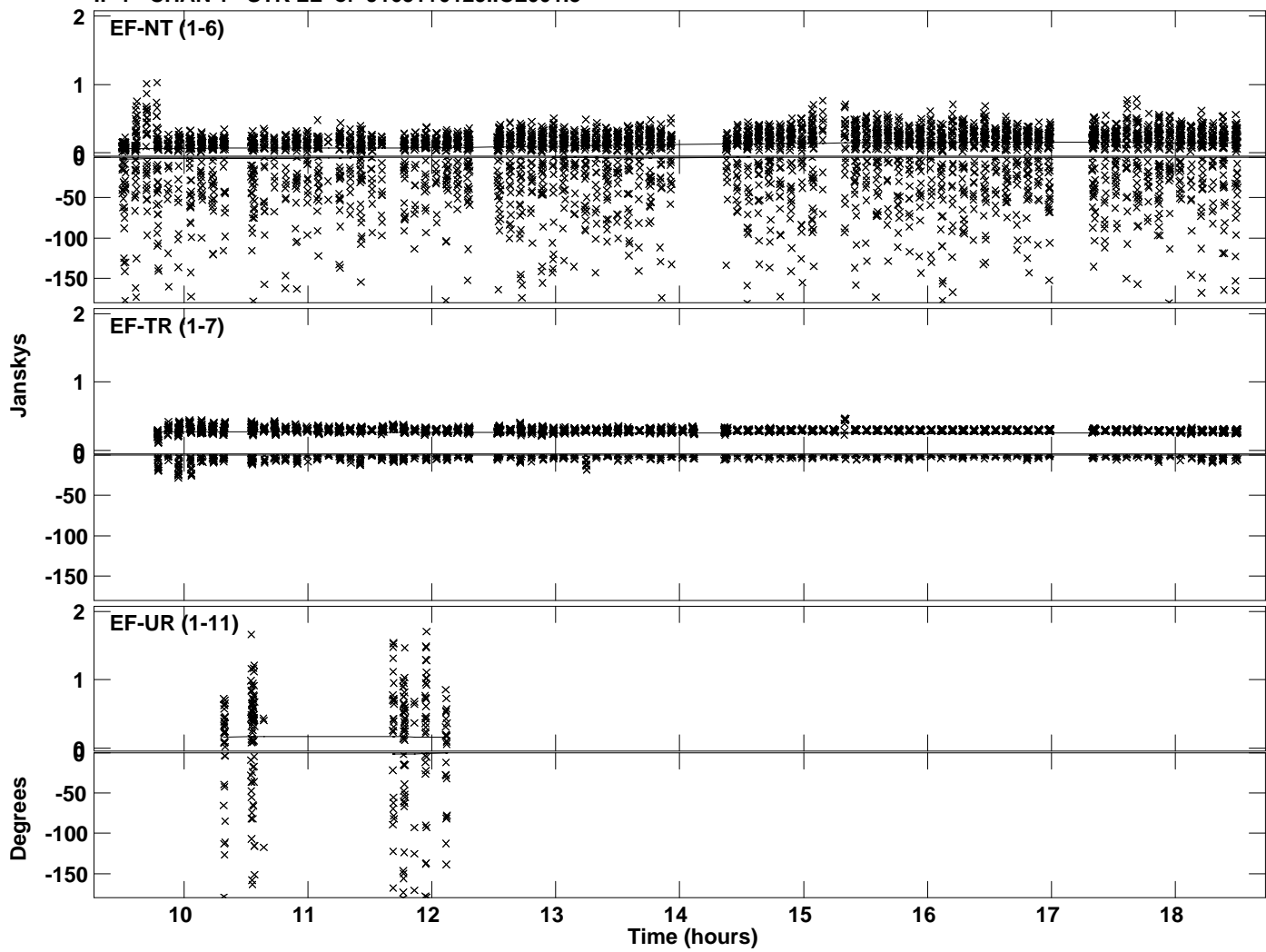


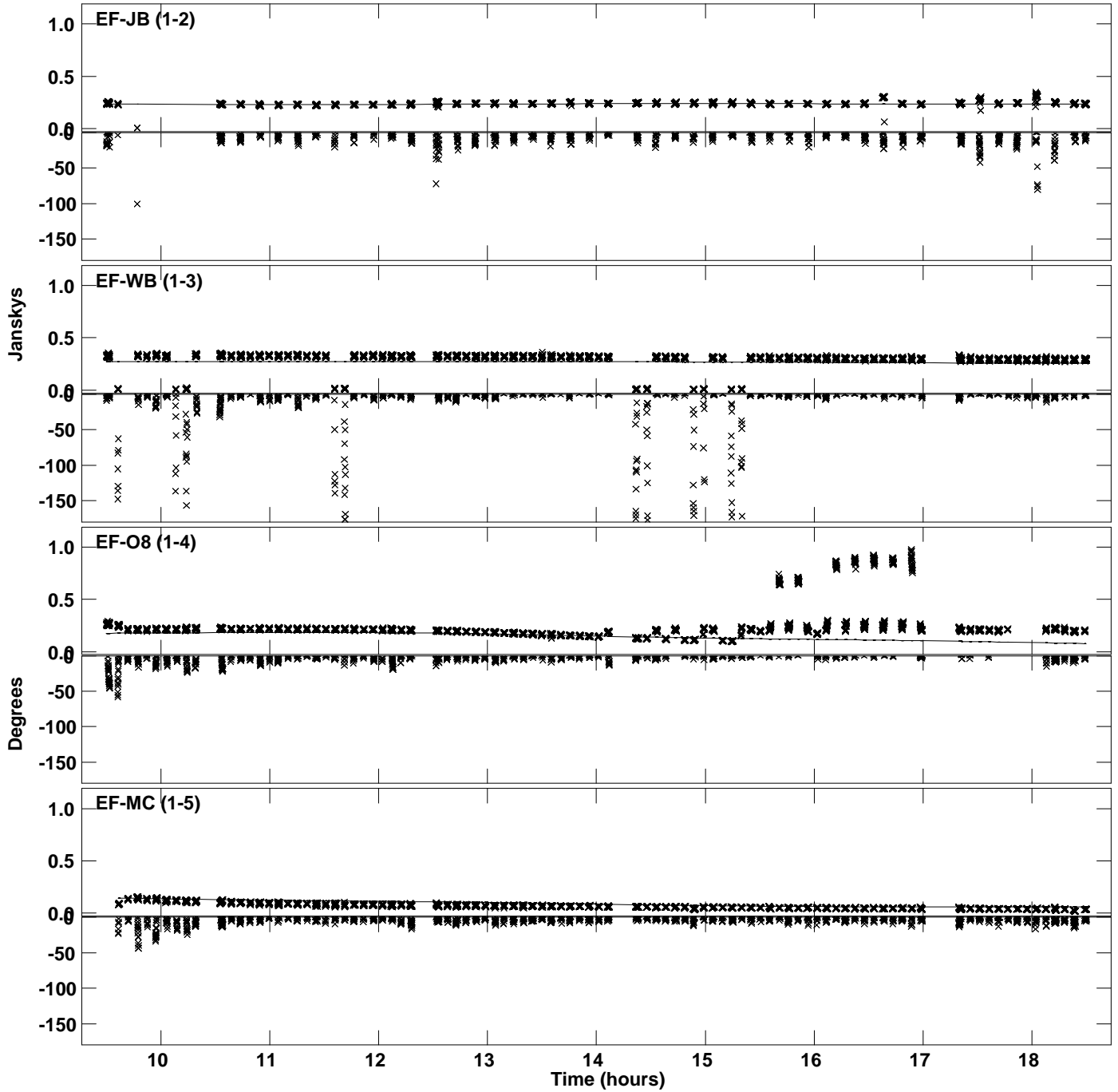
Plot file version 1 created 16-FEB-2022 21:23:24
Amplitude and Phase vs Time for J1651+0129.MULTI.1 CL # 3
IF 1 CHAN 1 STK LL of J1651+0129.ICL001.3



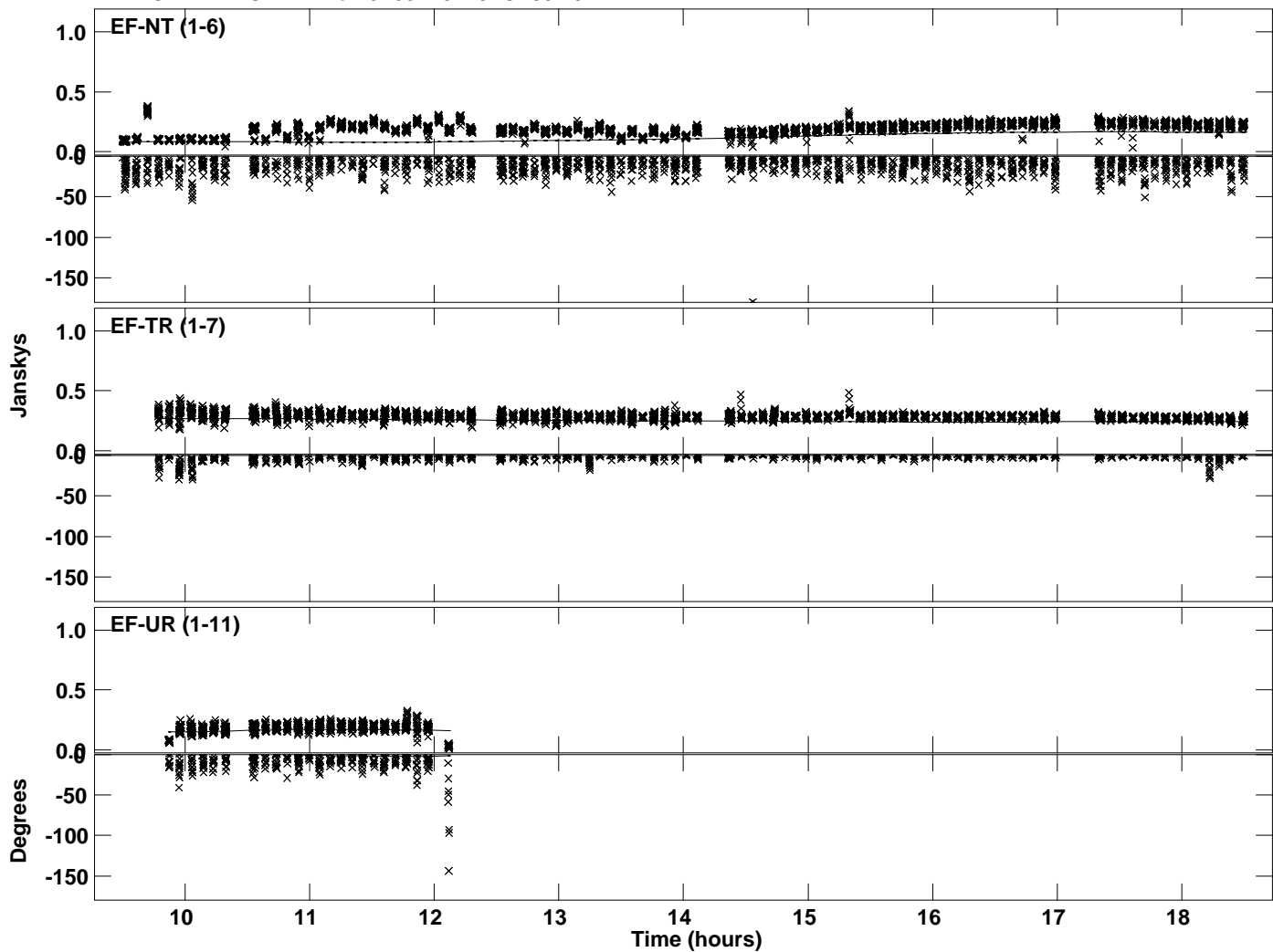
Plot file version 2 created 16-FEB-2022 21:23:24
Amplitude and Phase vs Time for J1651+0129.MULTI.1 CL # 3
IF 1 CHAN 1 STK LL of J1651+0129.ICL001.3



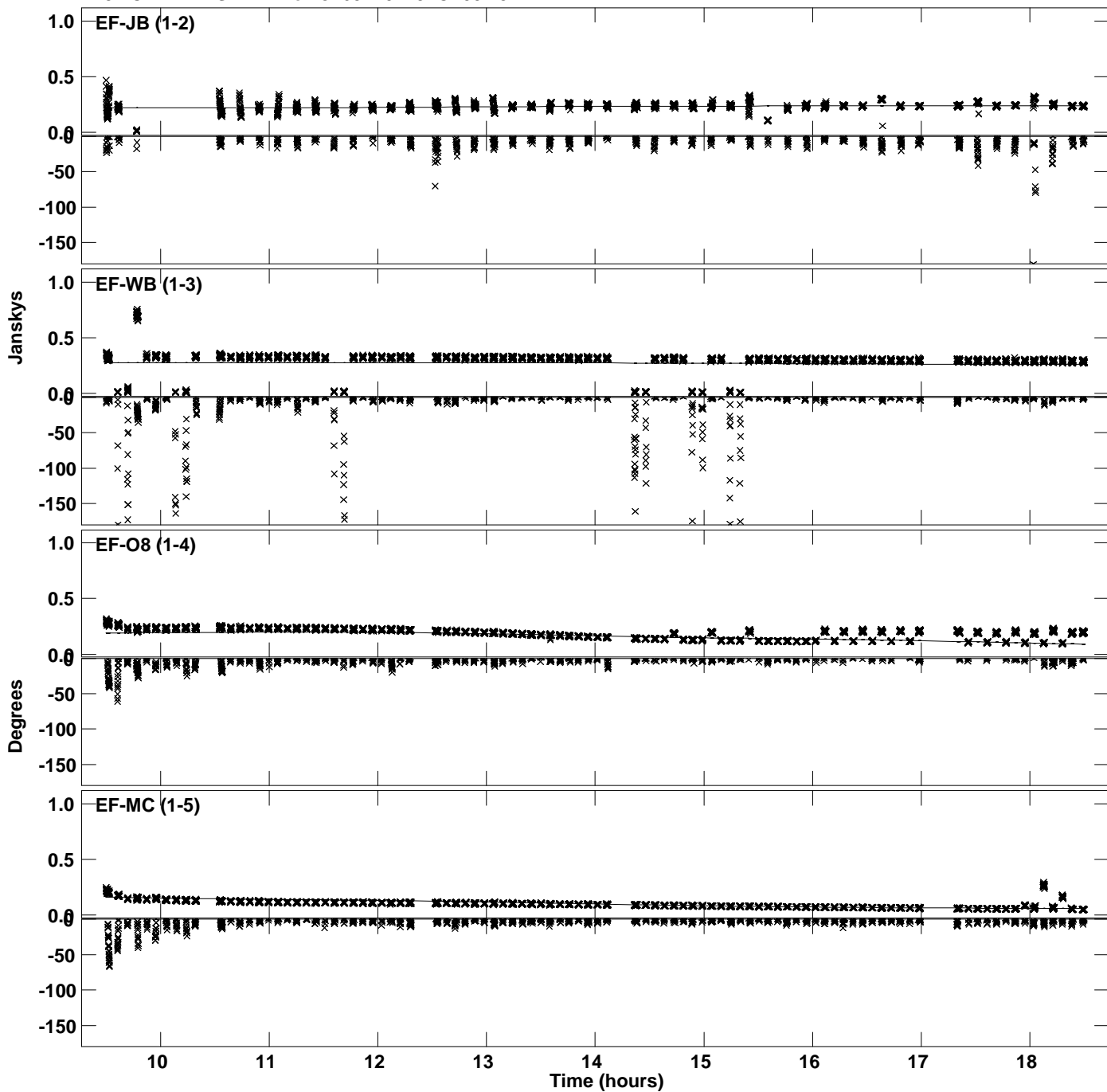
Plot file version 3 created 16-FEB-2022 21:23:25
Amplitude and Phase vs Time for J1651+0129.MULTI.1 CL # 3
IF 2 CHAN 1 STK LL of J1651+0129.ICL001.3



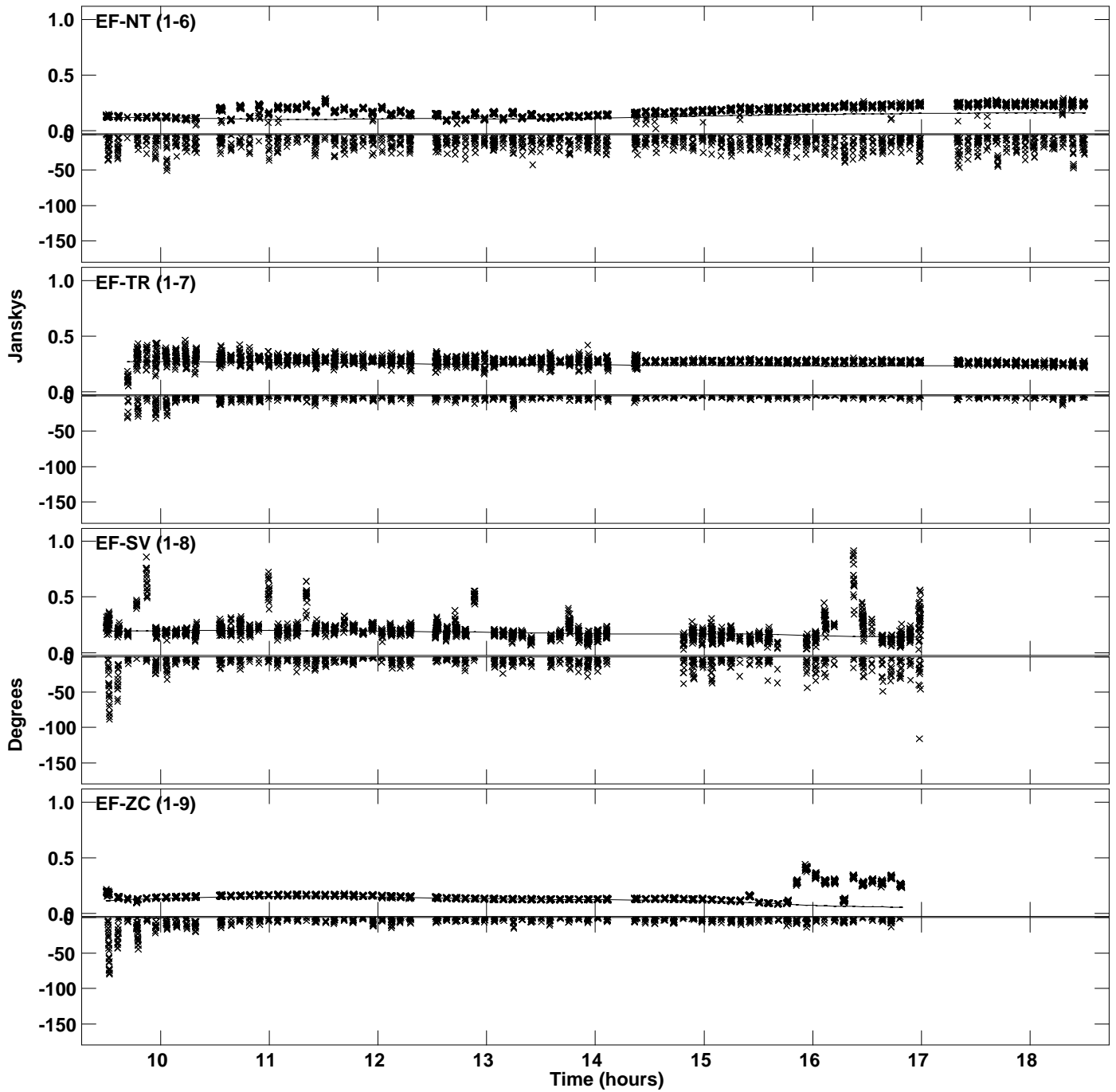
Plot file version 4 created 16-FEB-2022 21:23:25
Amplitude and Phase vs Time for J1651+0129.MULTI.1 CL # 3
IF 2 CHAN 1 STK LL of J1651+0129.ICL001.3



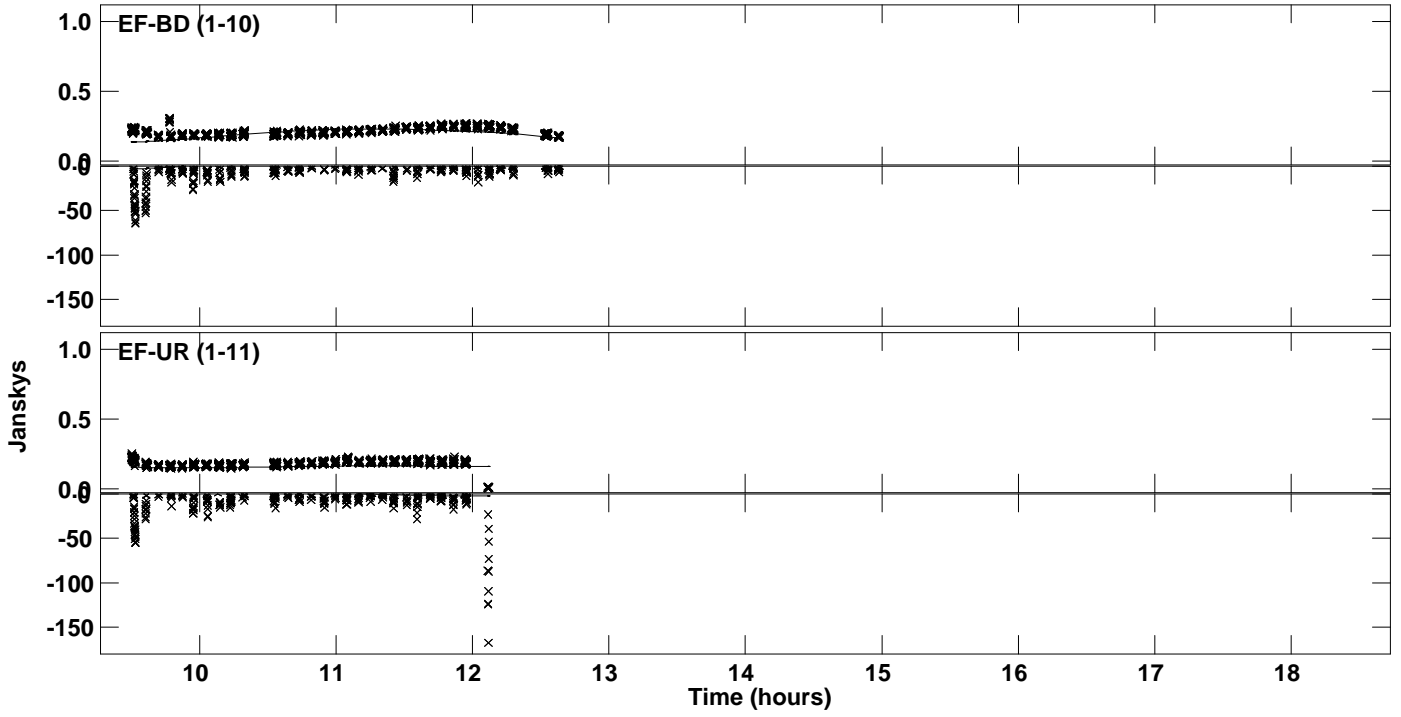
Plot file version 5 created 16-FEB-2022 21:23:25
Amplitude and Phase vs Time for J1651+0129.MULTI.1 CL # 3
IF 3 CHAN 1 STK LL of J1651+0129.ICL001.3



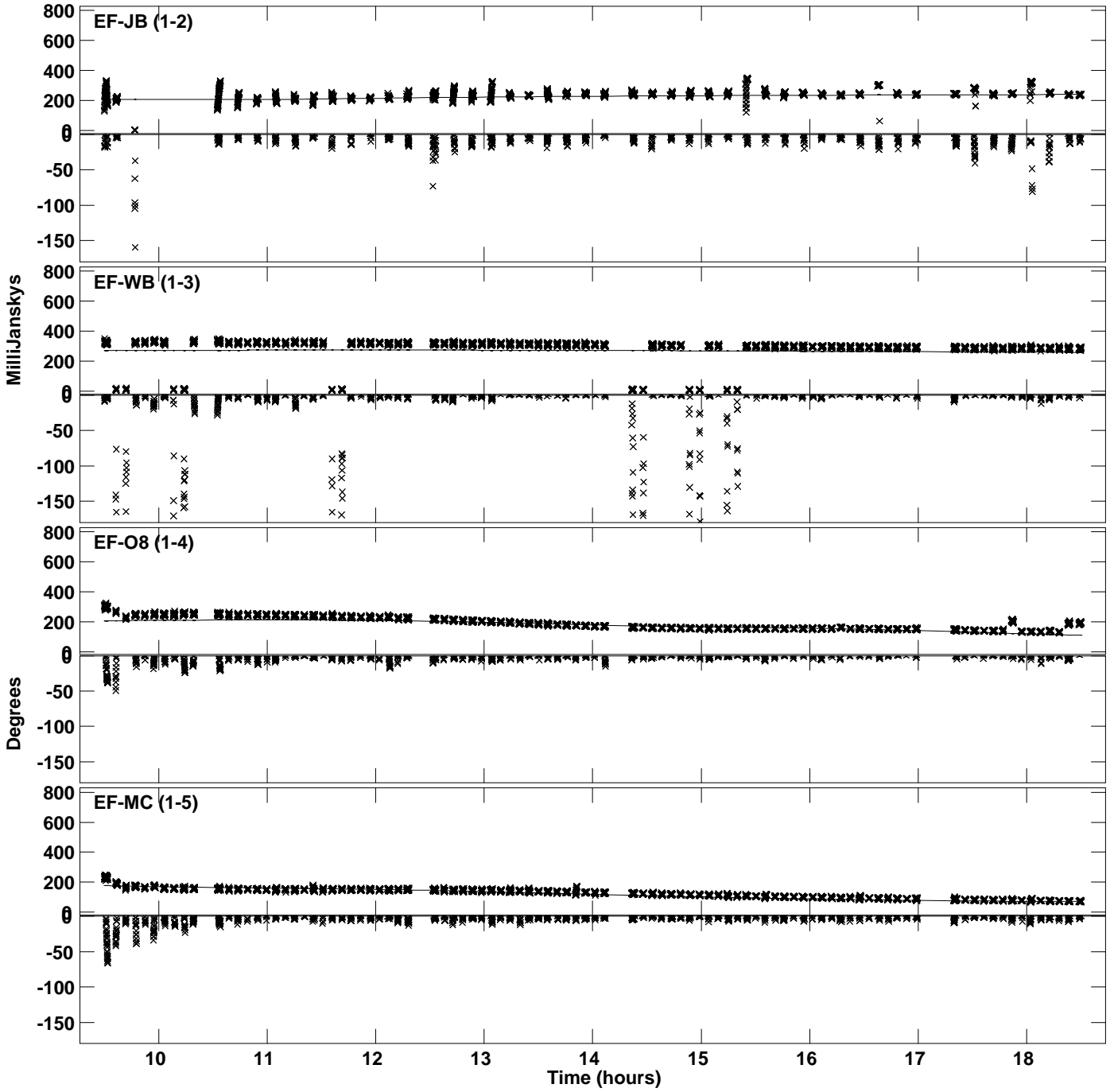
Plot file version 6 created 16-FEB-2022 21:23:25
Amplitude and Phase vs Time for J1651+0129.MULTI.1 CL # 3
IF 3 CHAN 1 STK LL of J1651+0129.ICL001.3



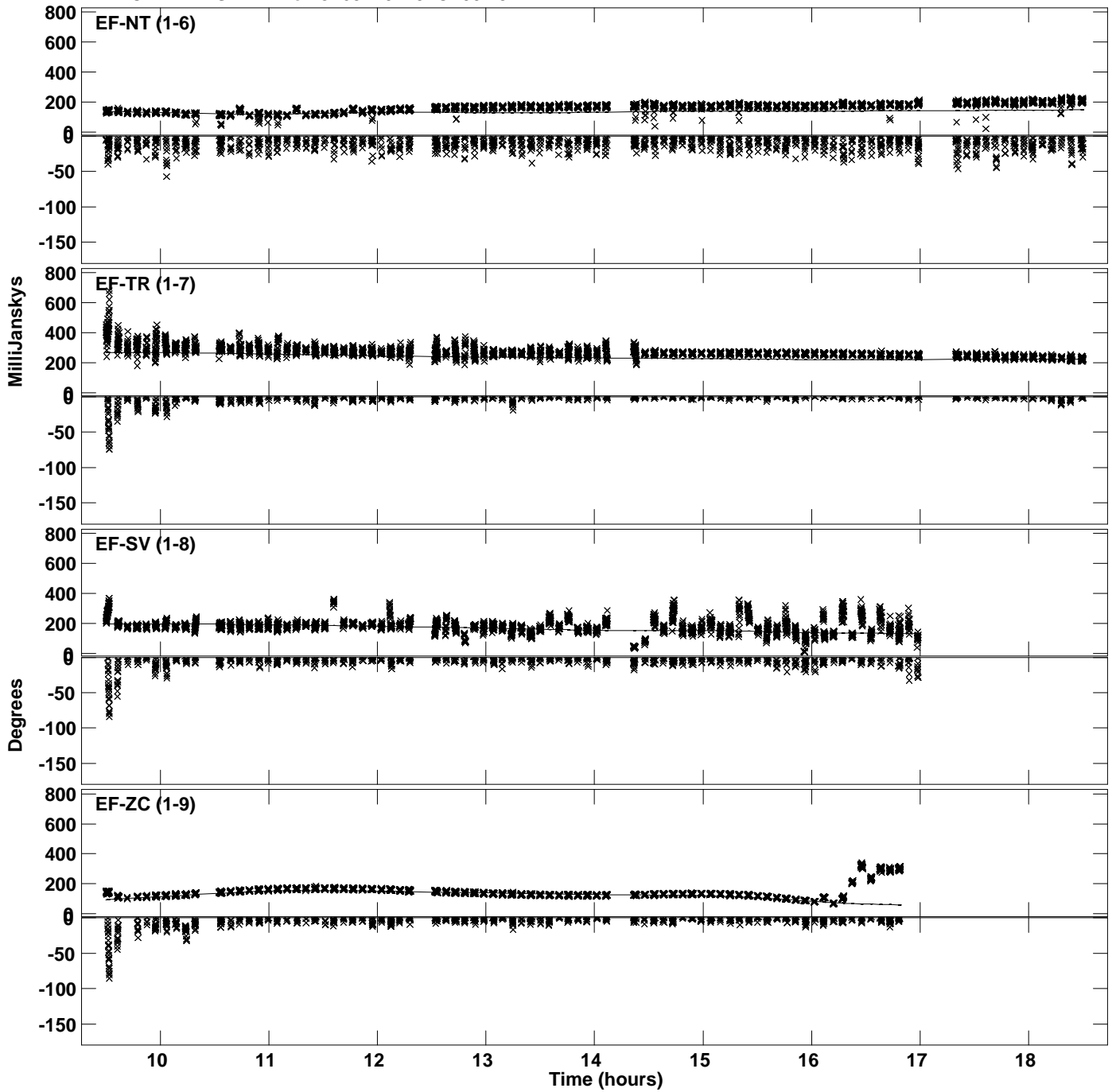
Plot file version 7 created 16-FEB-2022 21:23:25
Amplitude and Phase vs Time for J1651+0129.MULTI.1 CL # 3
IF 3 CHAN 1 STK LL of J1651+0129.ICL001.3



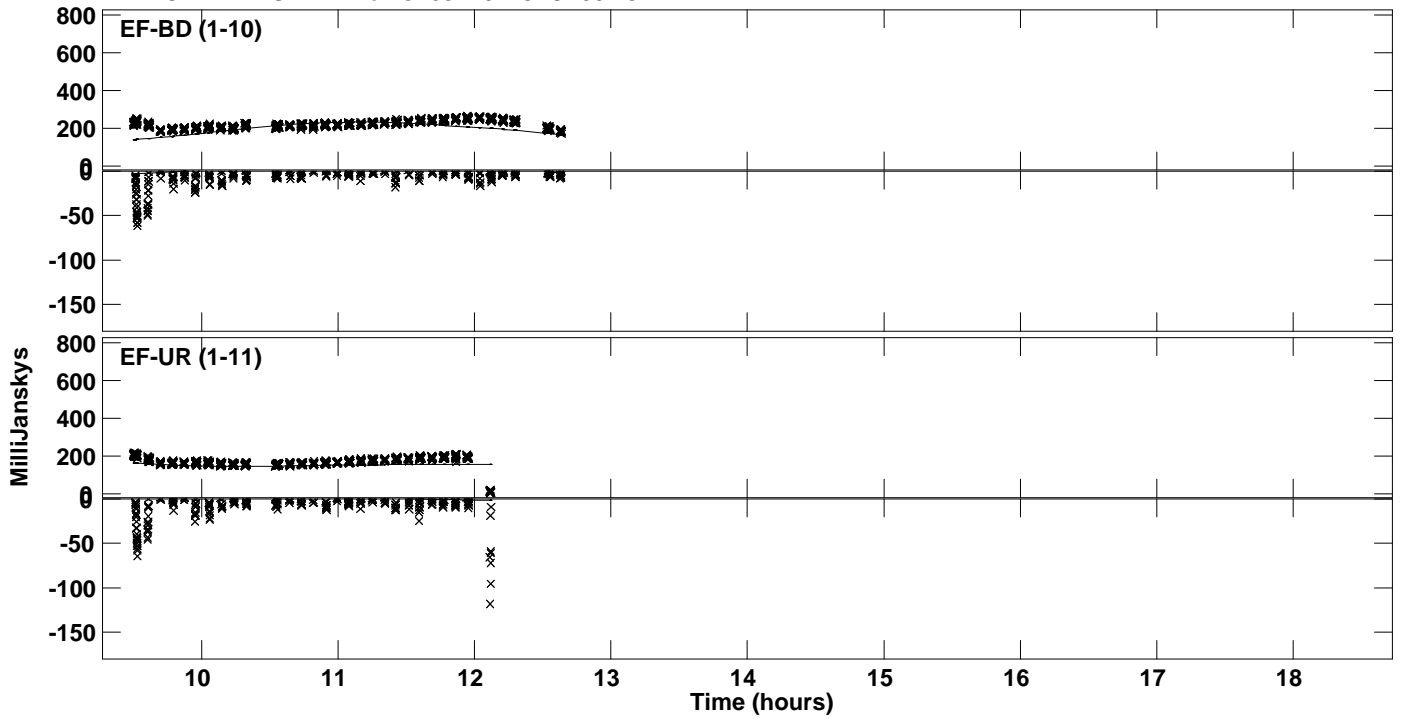
Plot file version 8 created 16-FEB-2022 21:23:26
Amplitude andPhase vs Time for J1651+0129.MULTI.1 CL # 3
IF 4 CHAN 1 STK LL of J1651+0129.ICL001.3



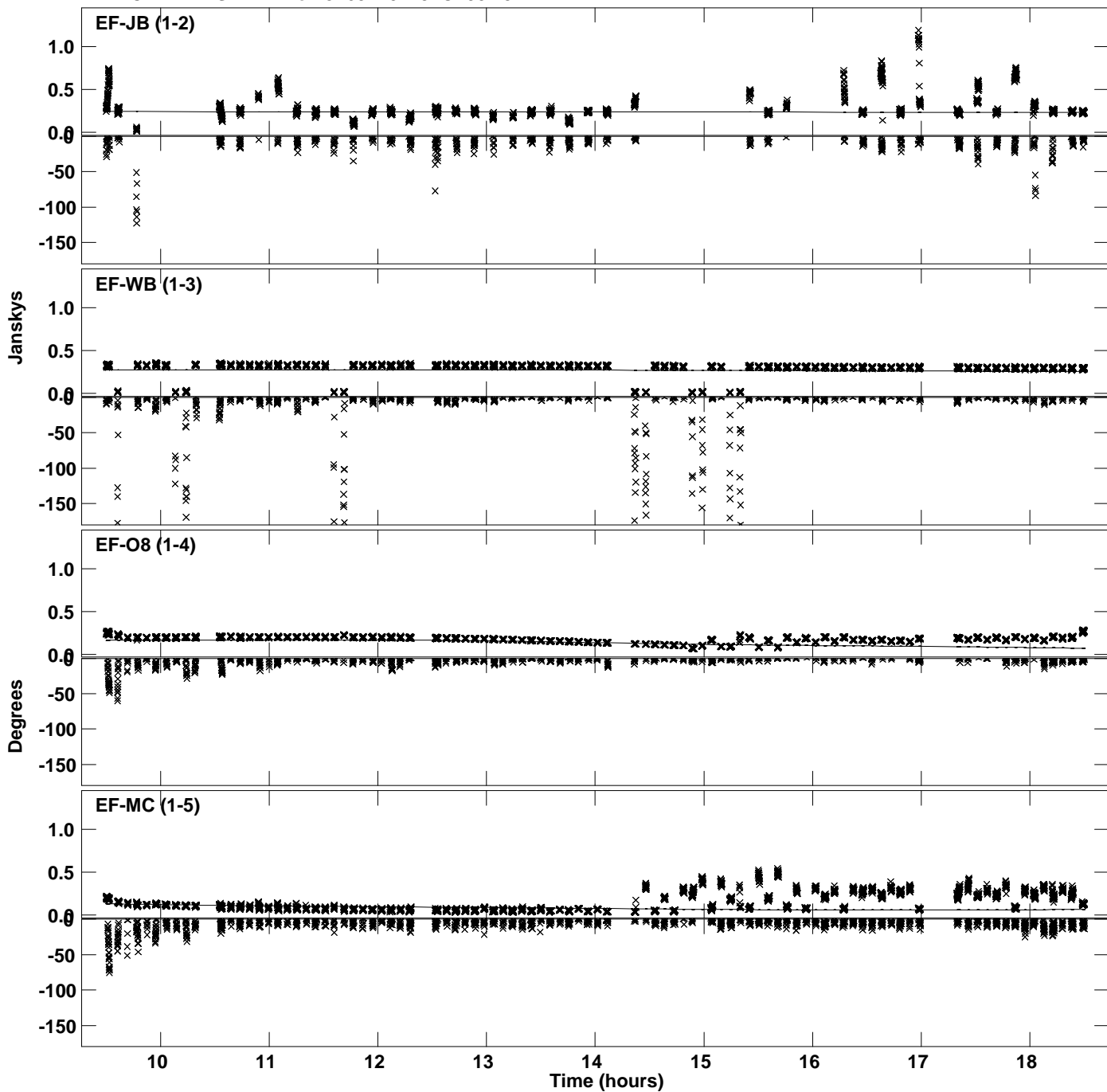
Plot file version 9 created 16-FEB-2022 21:23:26
Amplitude and Phase vs Time for J1651+0129.MULTI.1 CL # 3
IF 4 CHAN 1 STK LL of J1651+0129.ICL001.3



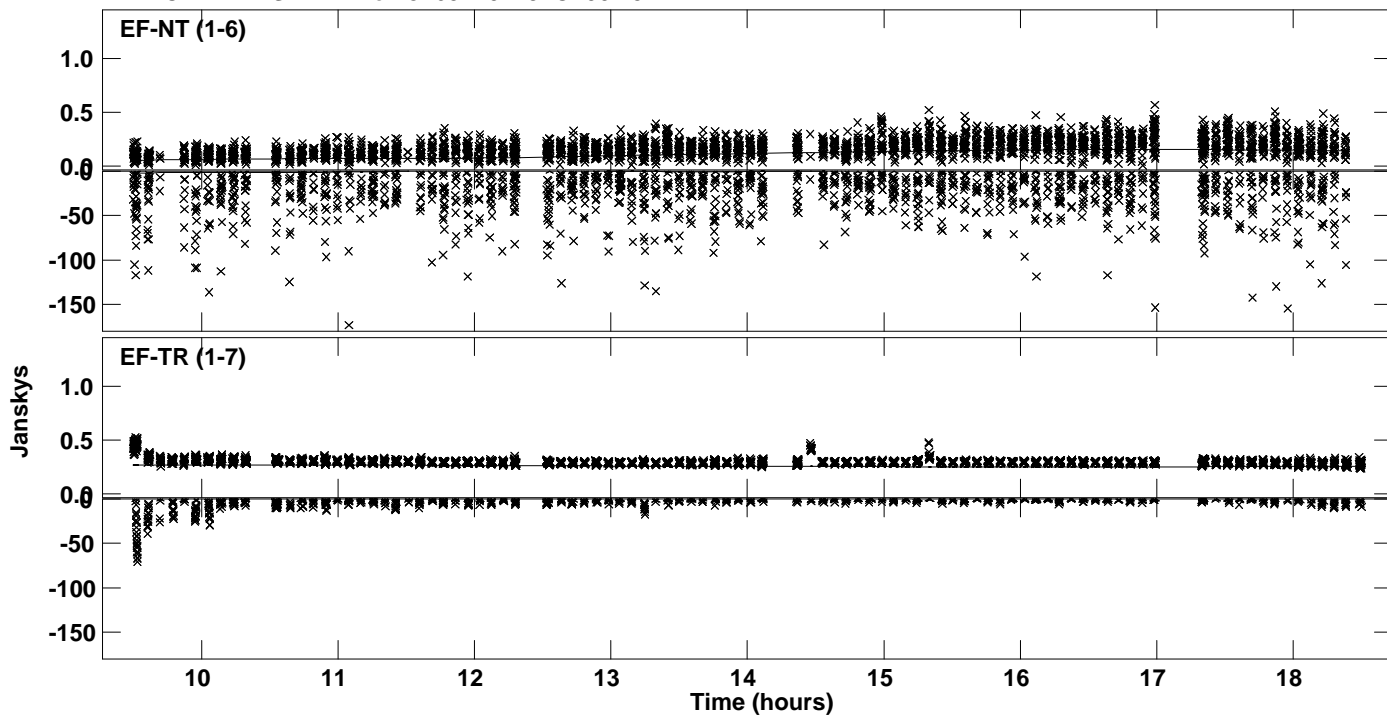
Plot file version 10 created 16-FEB-2022 21:23:26
Amplitude and Phase vs Time for J1651+0129.MULTI.1 CL # 3
IF 4 CHAN 1 STK LL of J1651+0129.ICL001.3



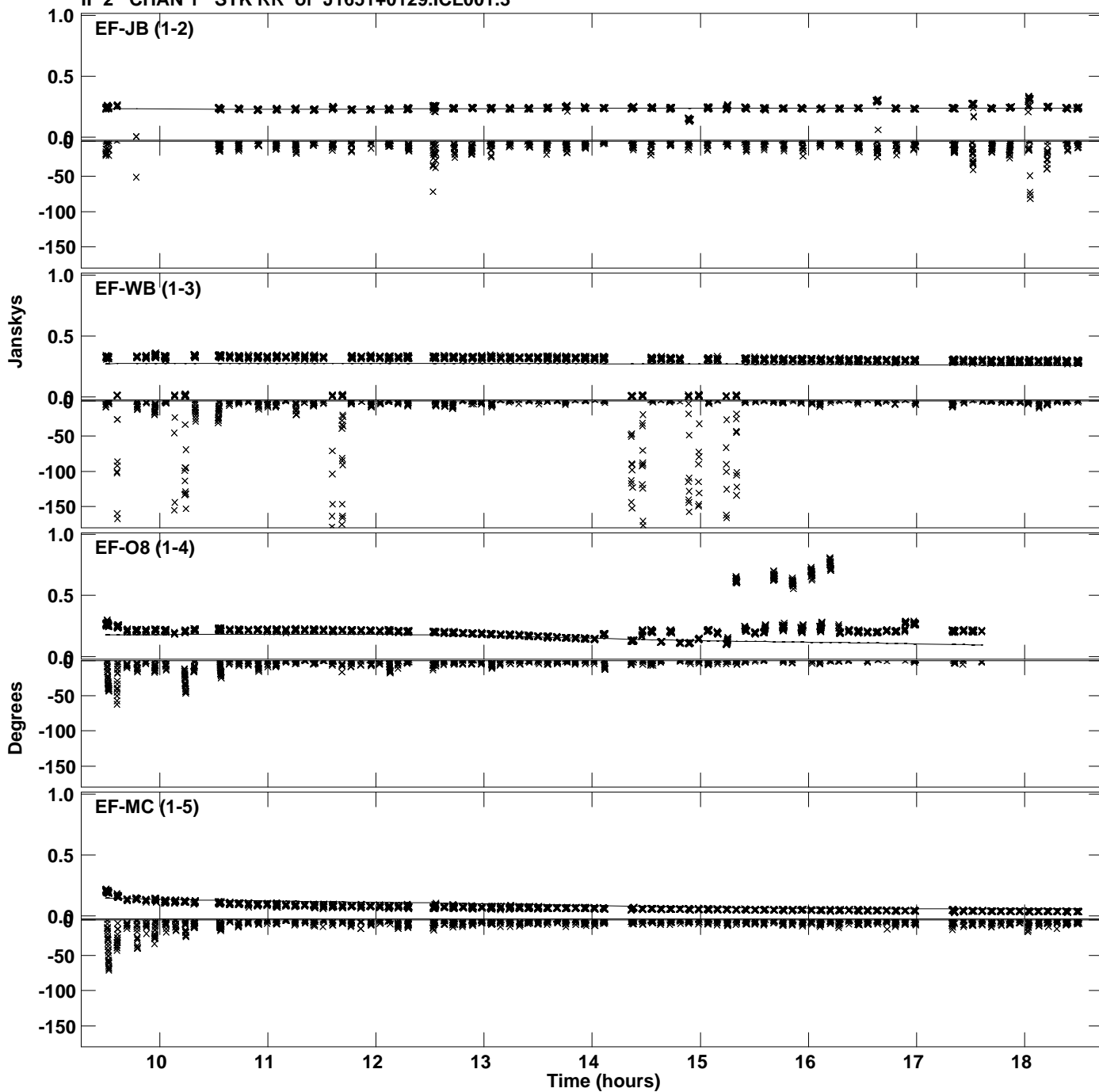
Plot file version 11 created 16-FEB-2022 21:23:26
Amplitude and Phase vs Time for J1651+0129.MULTI.1 CL # 3
IF 1 CHAN 1 STK RR of J1651+0129.ICL001.3



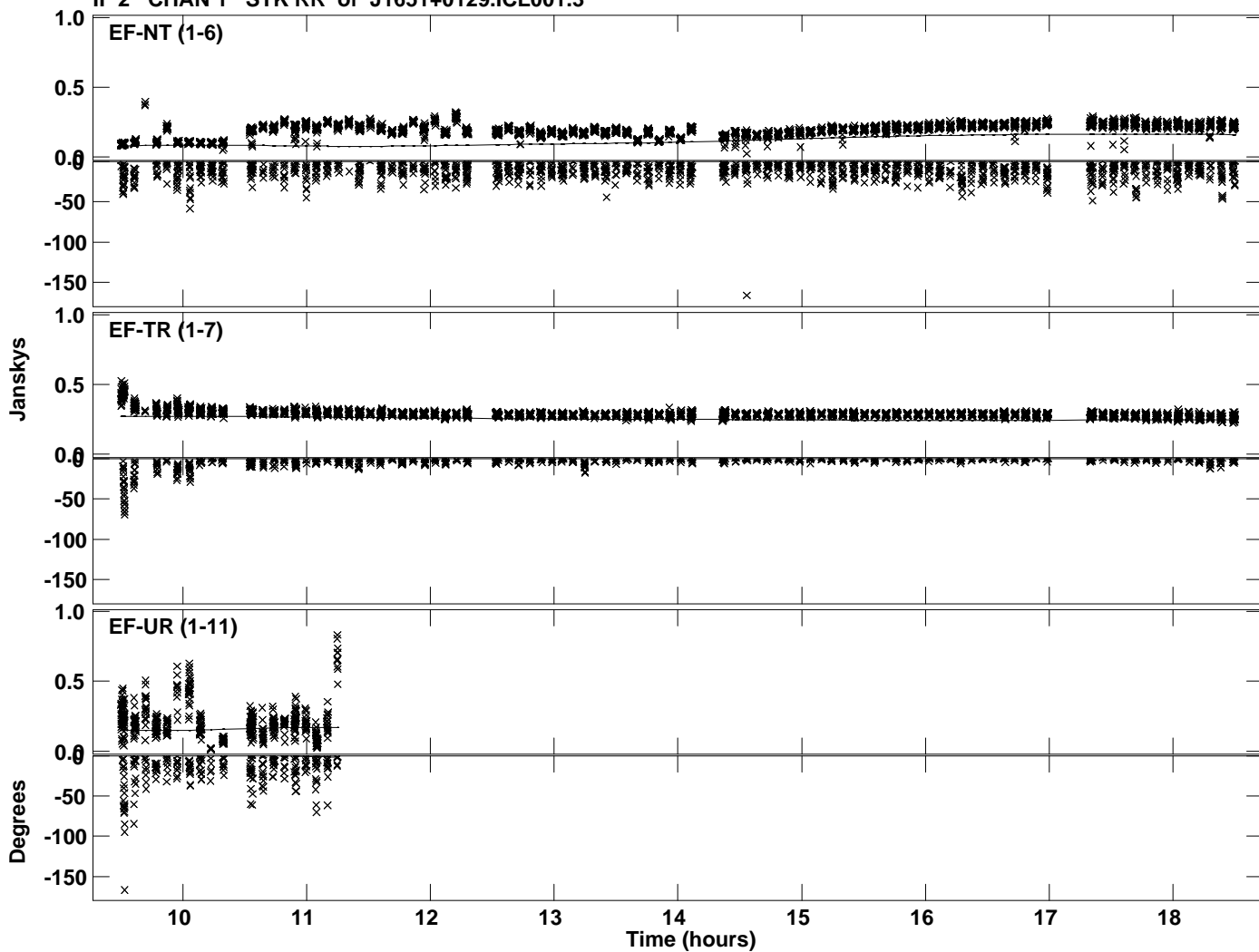
Plot file version 12 created 16-FEB-2022 21:23:26
Amplitude andPhase vs Time for J1651+0129.MULTI.1 CL # 3
IF 1 CHAN 1 STK RR of J1651+0129.ICL001.3



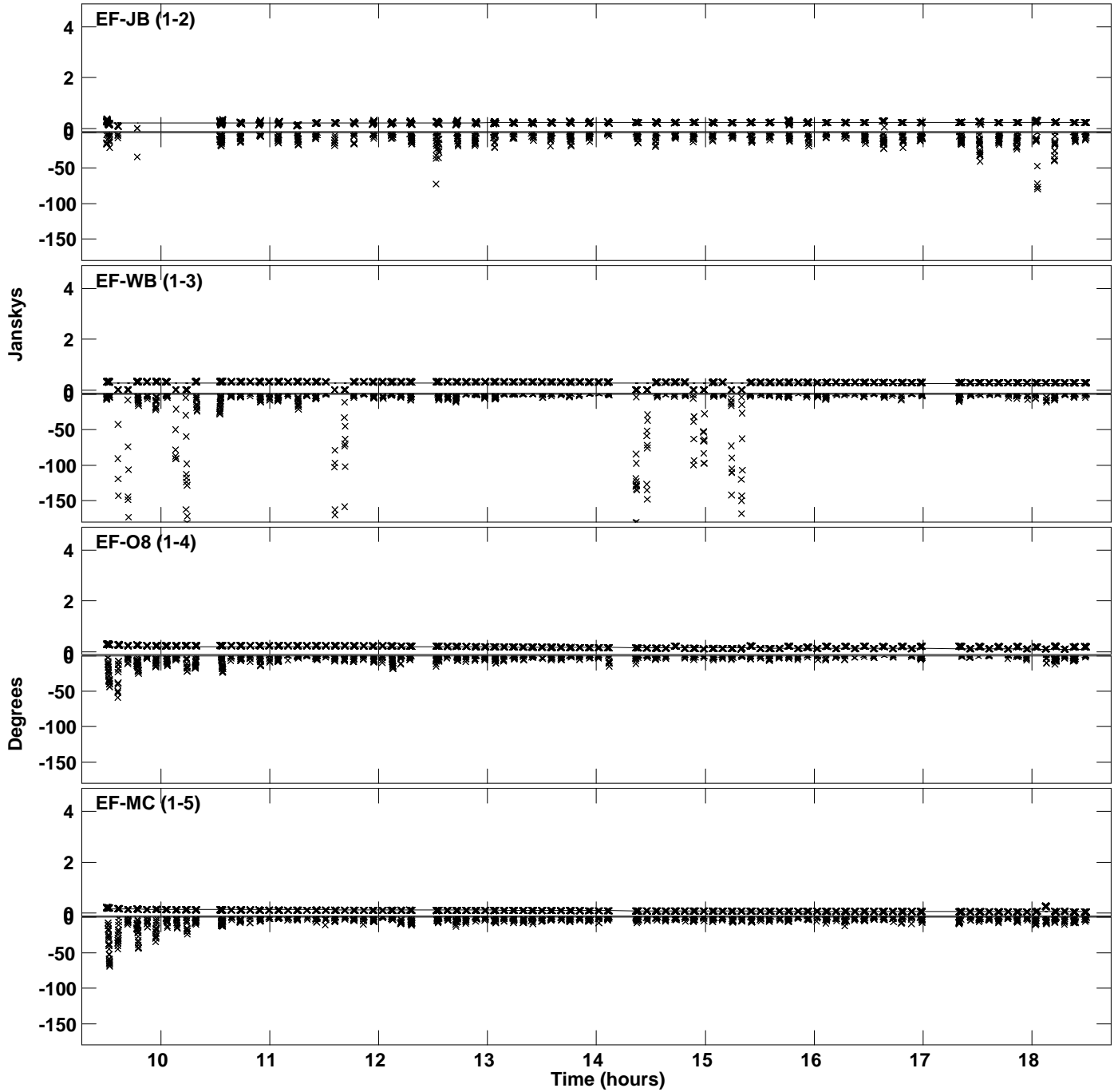
Plot file version 13 created 16-FEB-2022 21:23:26
Amplitude andPhase vs Time for J1651+0129.MULTI.1 CL # 3
IF 2 CHAN 1 STK RR of J1651+0129.ICL001.3



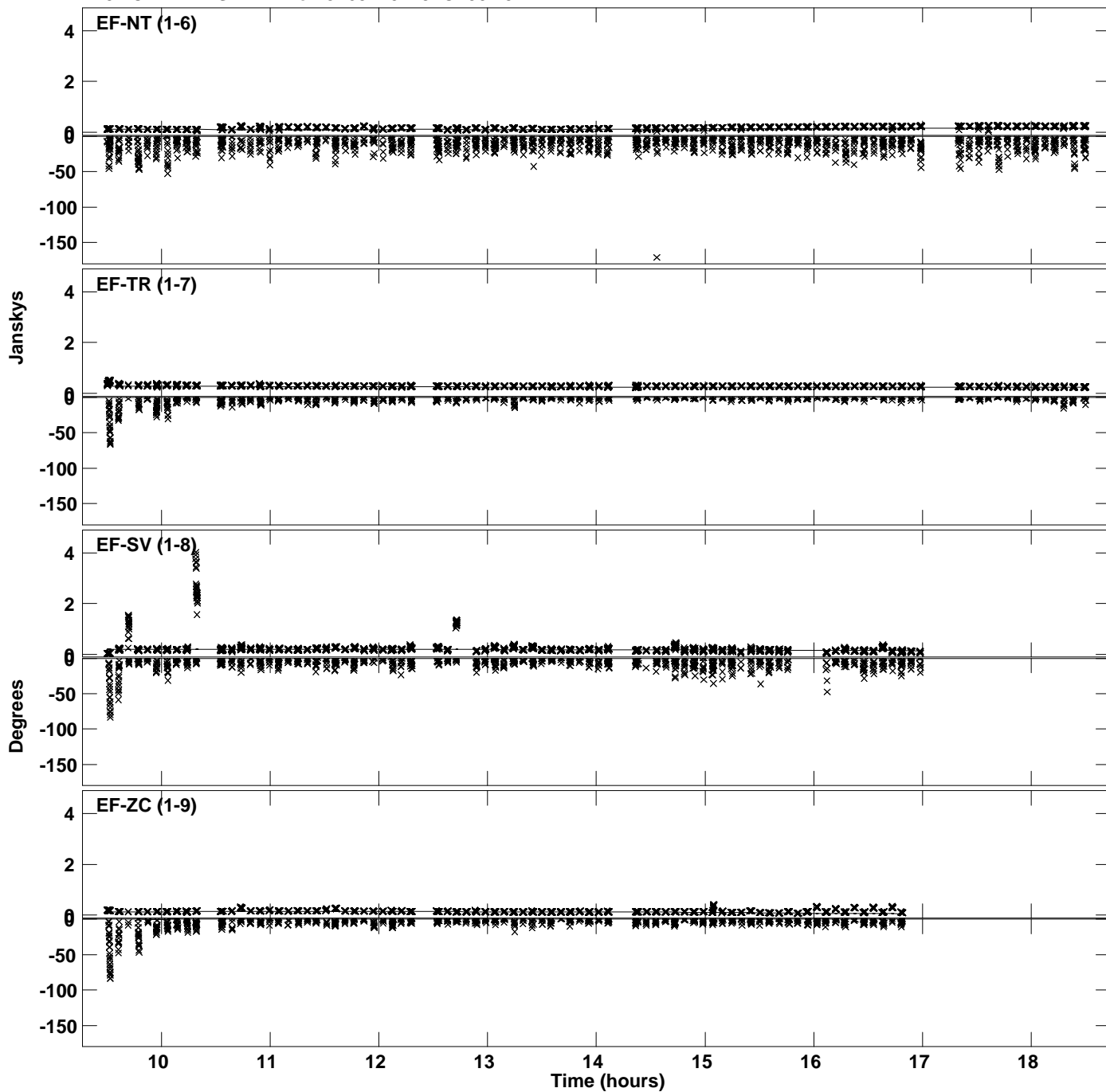
Plot file version 14 created 16-FEB-2022 21:23:26
Amplitude andPhase vs Time for J1651+0129.MULTI.1 CL # 3
IF 2 CHAN 1 STK RR of J1651+0129.ICL001.3



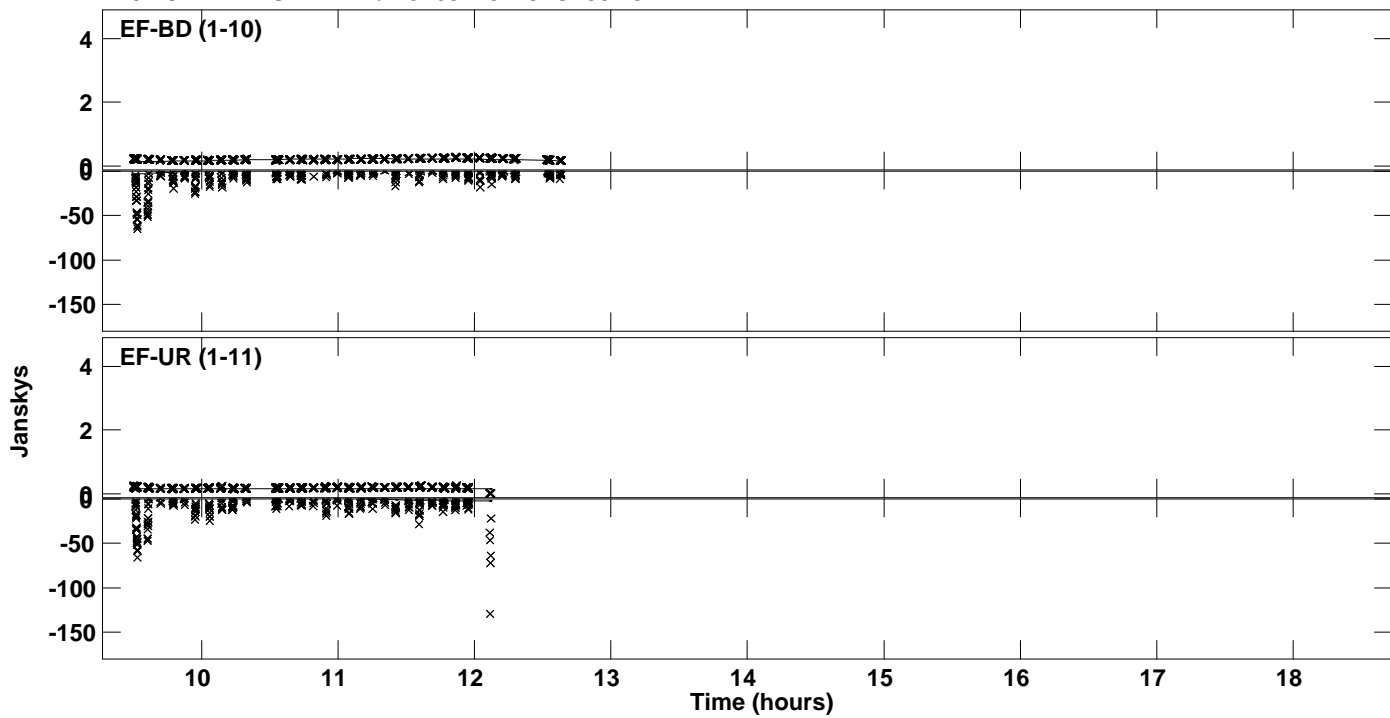
Plot file version 15 created 16-FEB-2022 21:23:27
Amplitude and Phase vs Time for J1651+0129.MULTI.1 CL # 3
IF 3 CHAN 1 STK RR of J1651+0129.ICL001.3



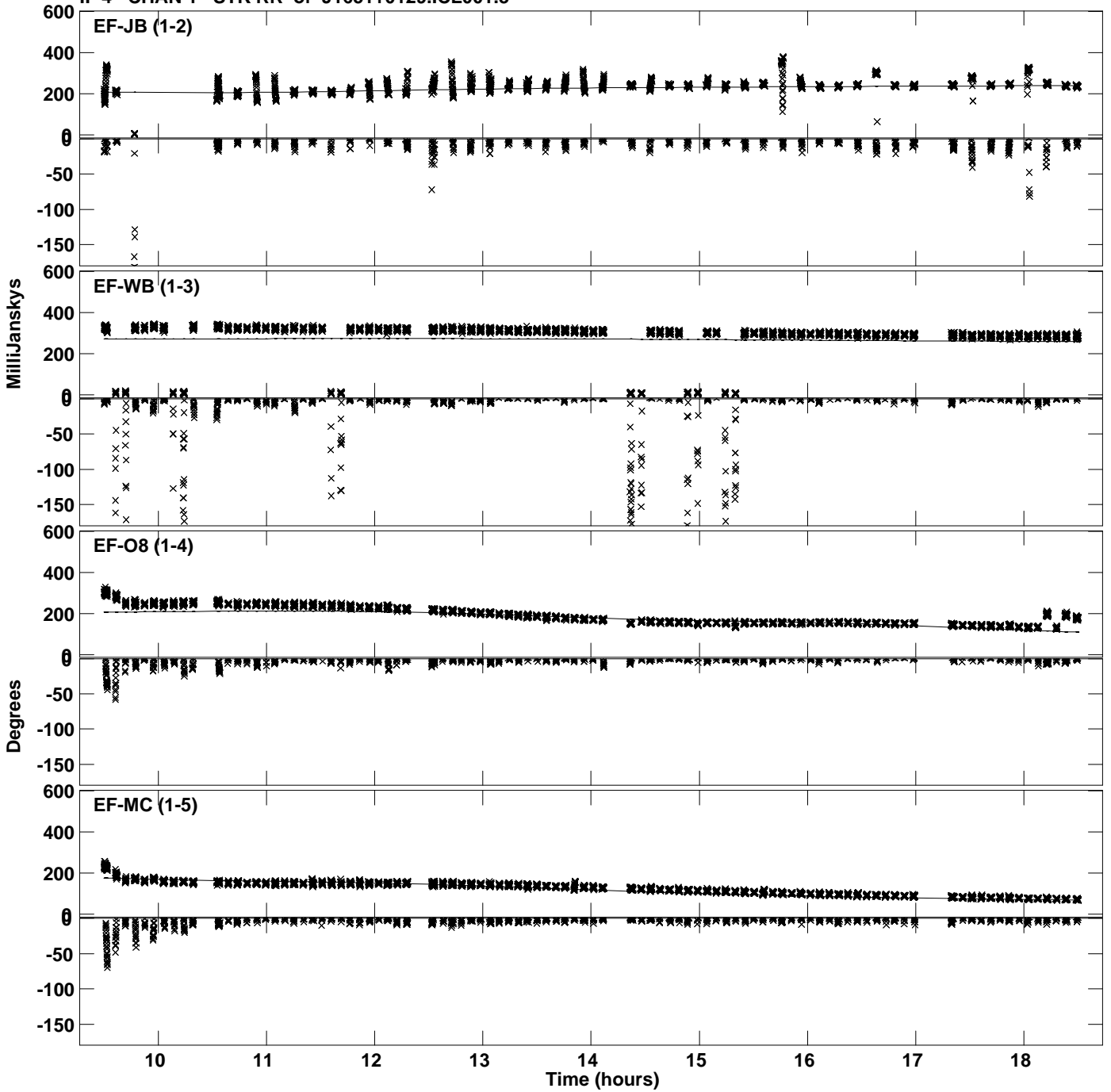
Plot file version 16 created 16-FEB-2022 21:23:27
Amplitude and Phase vs Time for J1651+0129.MULTI.1 CL # 3
IF 3 CHAN 1 STK RR of J1651+0129.ICL001.3



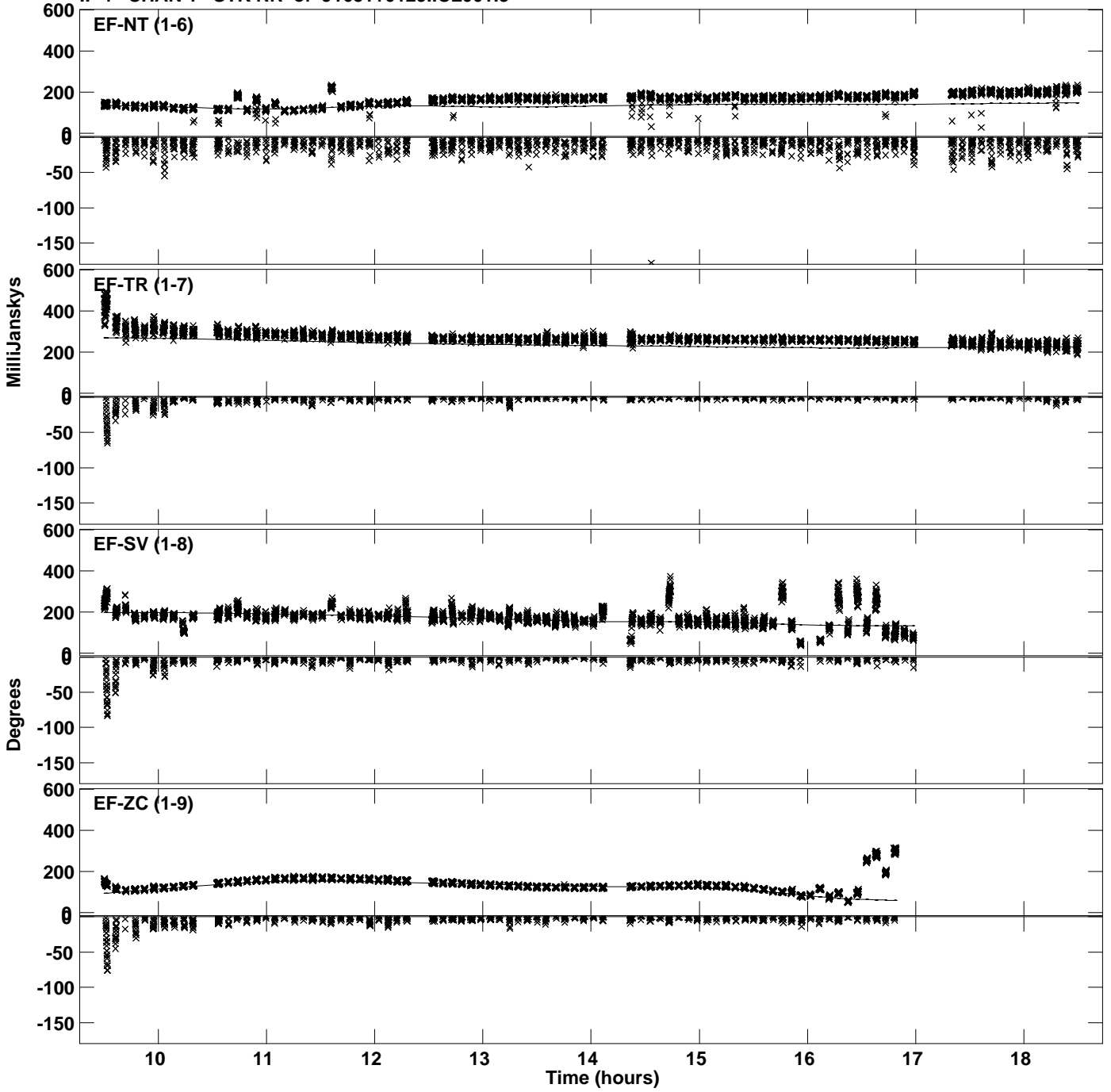
Plot file version 17 created 16-FEB-2022 21:23:27
Amplitude and Phase vs Time for J1651+0129.MULTI.1 CL # 3
IF 3 CHAN 1 STK RR of J1651+0129.ICL001.3



Plot file version 18 created 16-FEB-2022 21:23:27
Amplitude andPhase vs Time for J1651+0129.MULTI.1 CL # 3
IF 4 CHAN 1 STK RR of J1651+0129.ICL001.3



Plot file version 19 created 16-FEB-2022 21:23:27
Amplitude andPhase vs Time for J1651+0129.MULTI.1 CL # 3
IF 4 CHAN 1 STK RR of J1651+0129.ICL001.3



Plot file version 20 created 16-FEB-2022 21:23:27
Amplitude and Phase vs Time for J1651+0129.MULTI.1 CL # 3
IF 4 CHAN 1 STK RR of J1651+0129.ICL001.3

