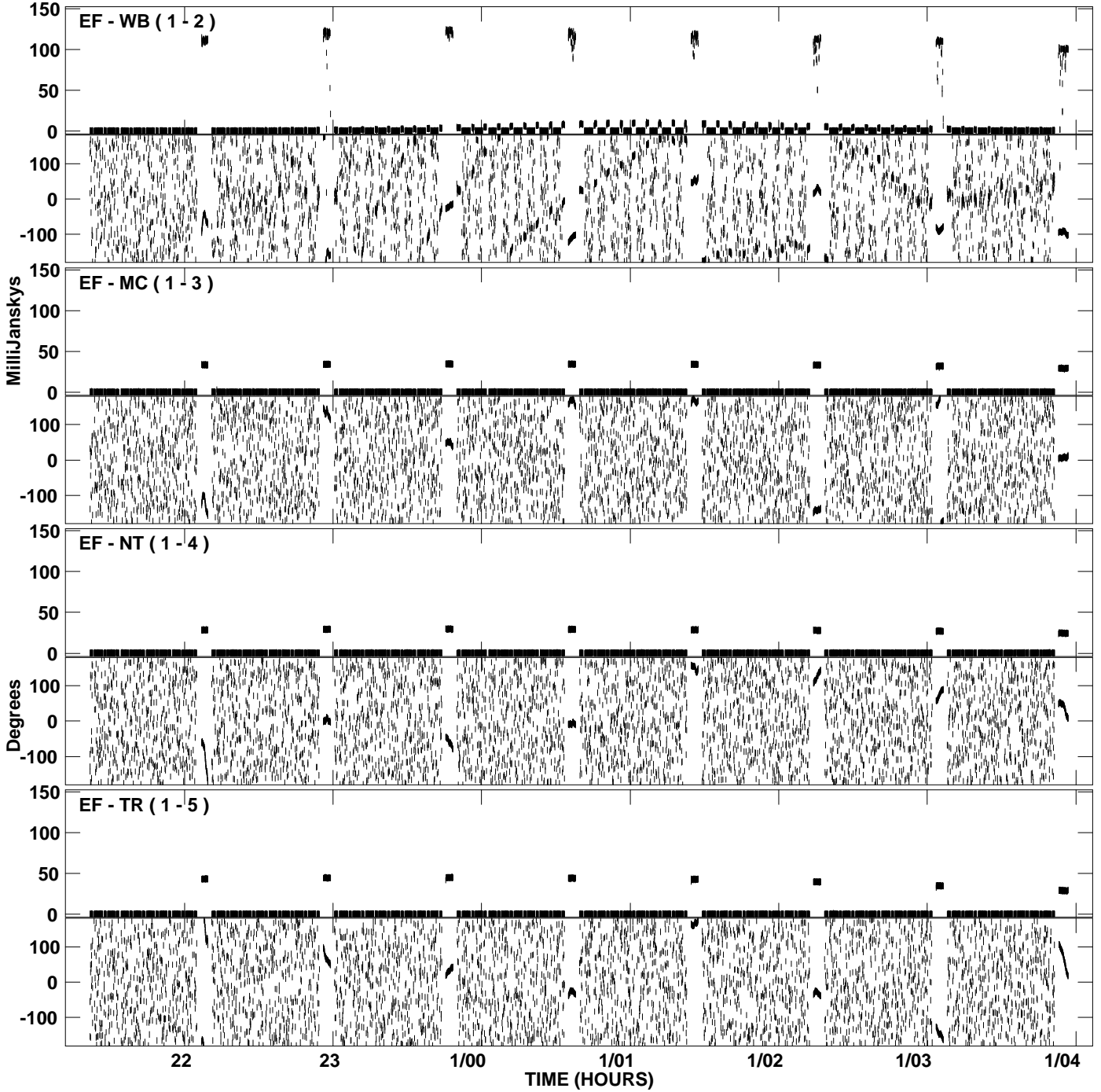
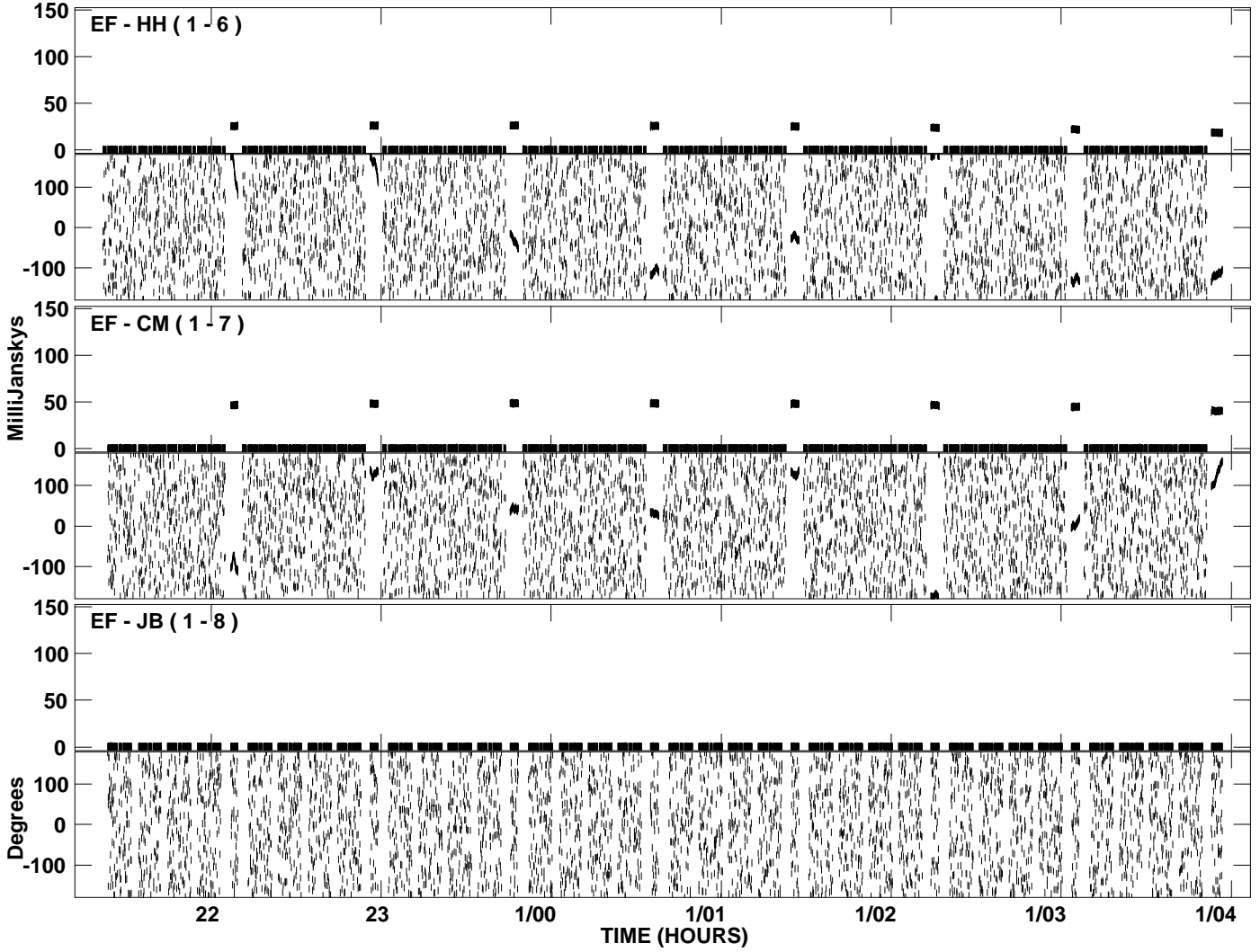


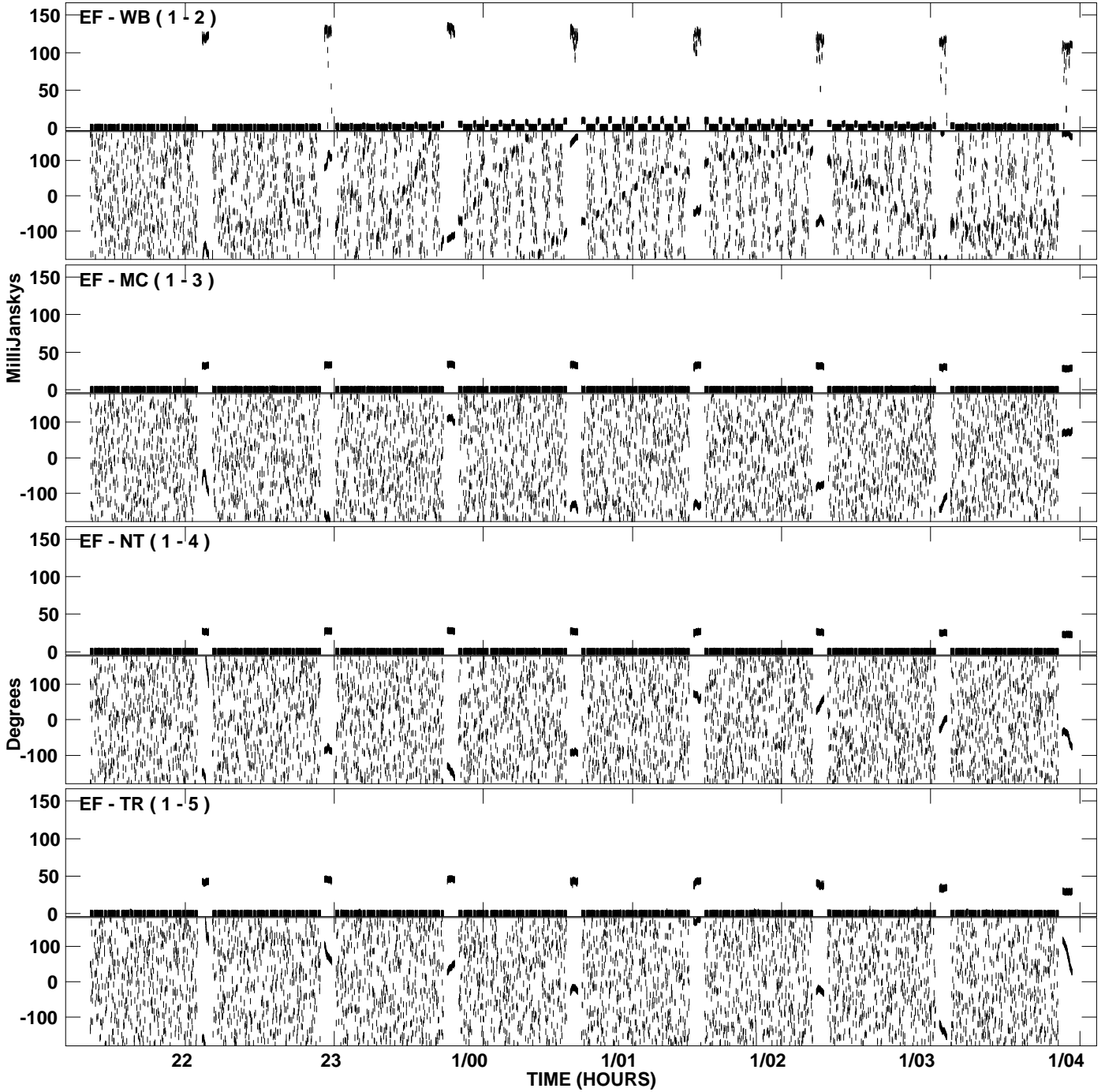
PLot file version 1 created 17-OCT-2007 11:39:56
Amplitude andPhase vs Time for EI009A 1.UVDATA.1 Vect aver.
IF 1 CHAN 1 - 32 STK LL



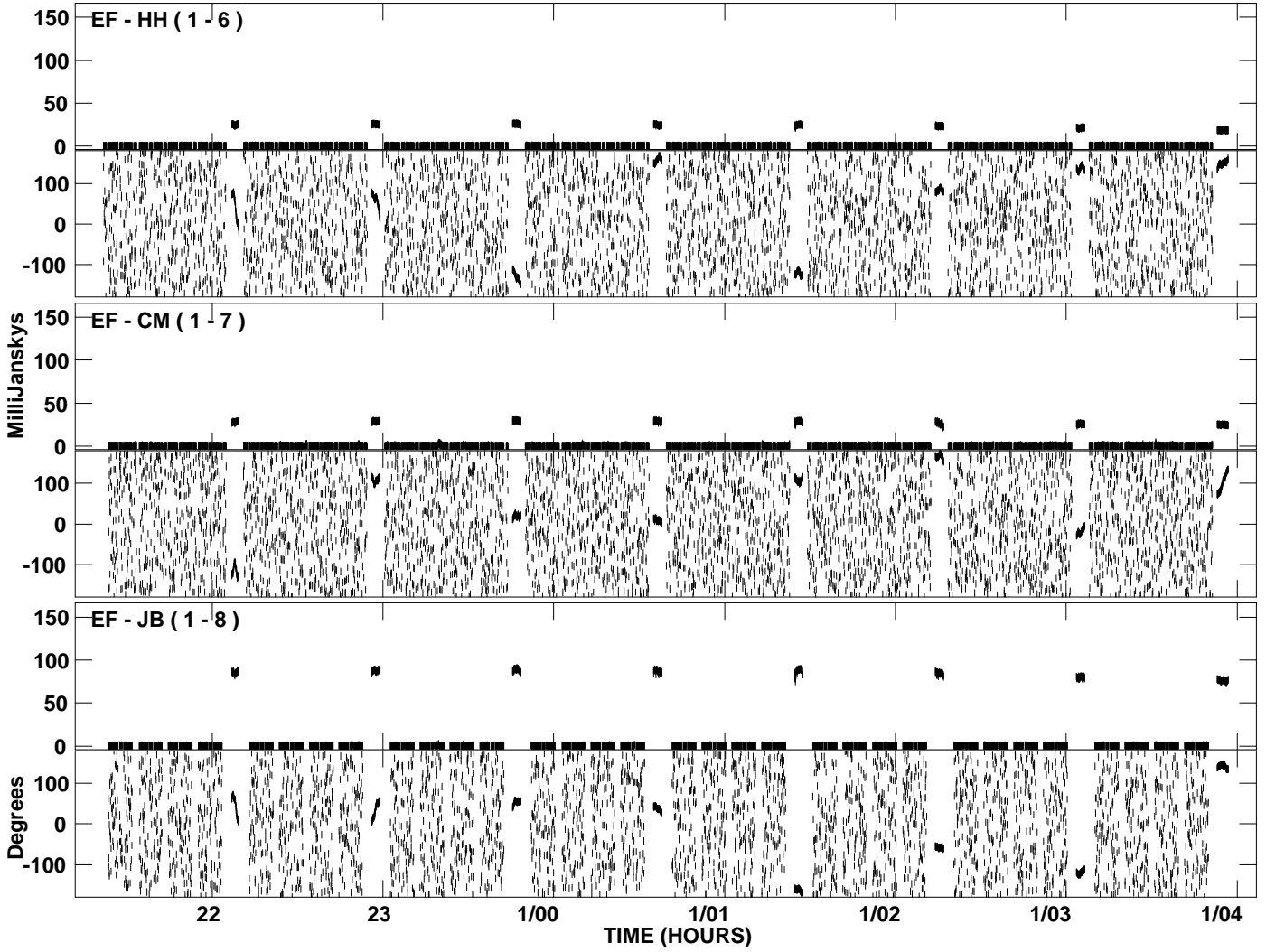
PLot file version 2 created 17-OCT-2007 11:39:56
Amplitude andPhase vs Time for EI009A 1.UVDATA.1 Vect aver.
IF 1 CHAN 1 - 32 STK LL



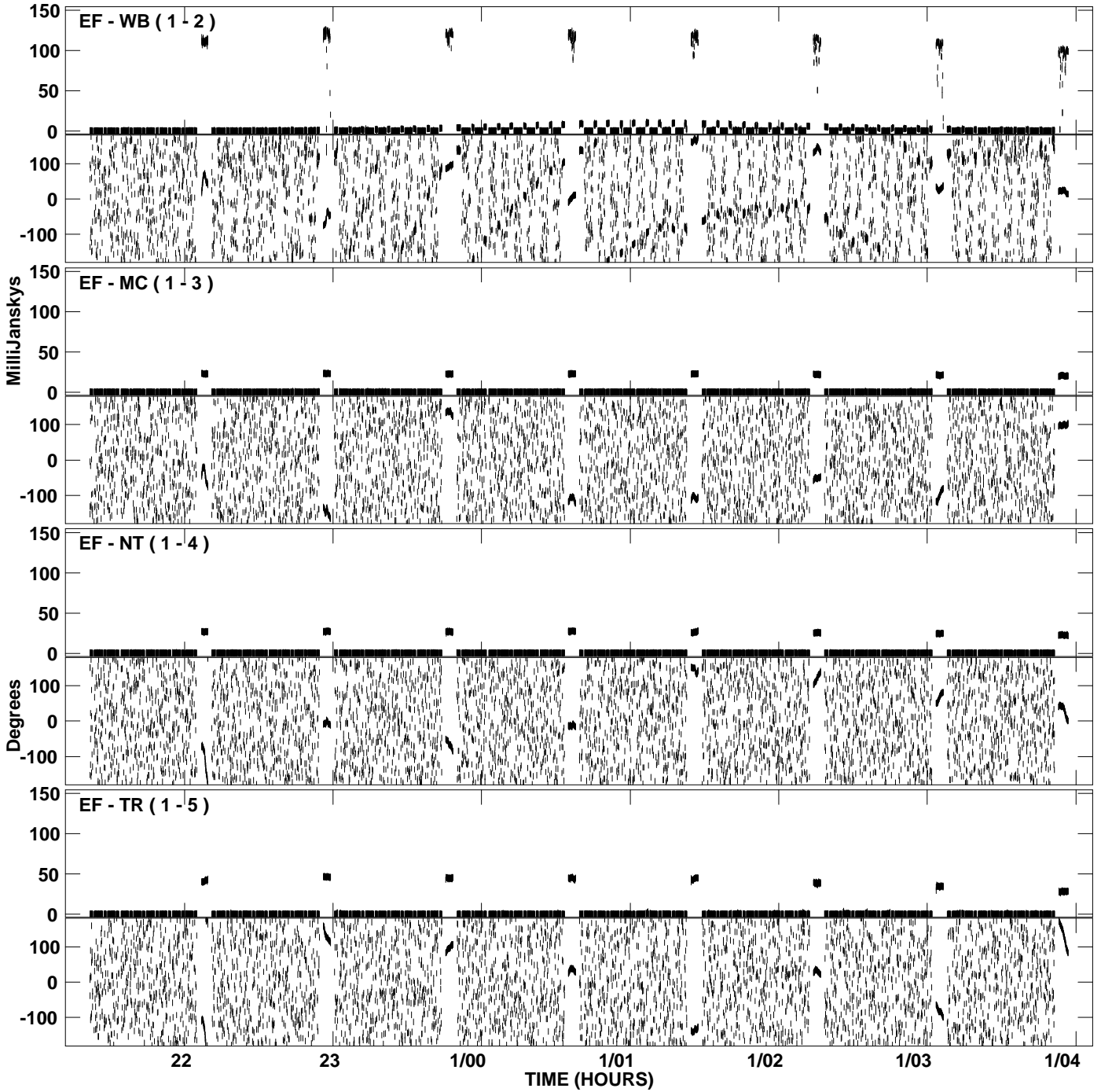
PLot file version 3 created 17-OCT-2007 11:40:01
Amplitude andPhase vs Time for EI009A 1.UVDATA.1 Vect aver.
IF 2 CHAN 1 - 32 STK LL



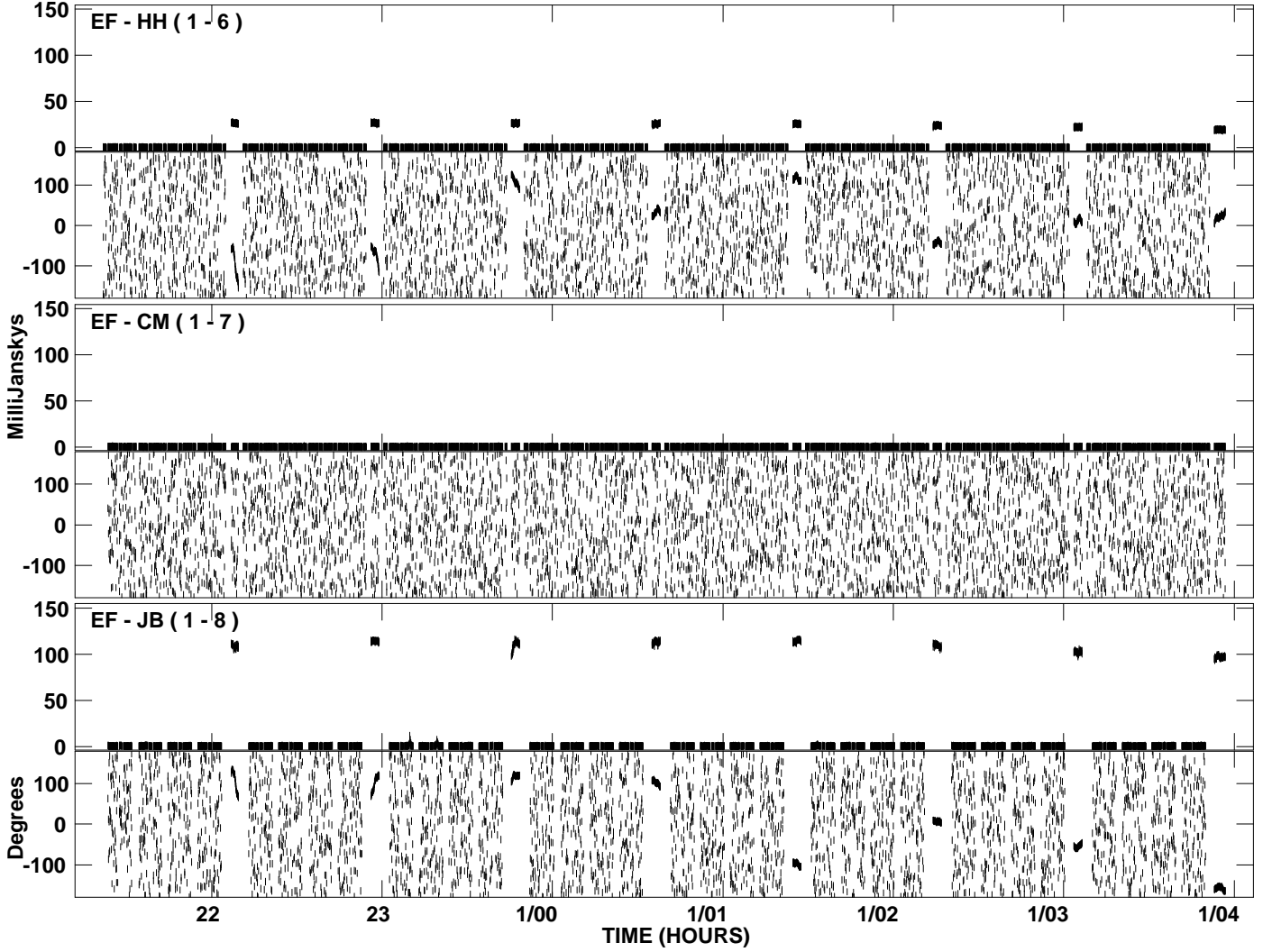
PLot file version 4 created 17-OCT-2007 11:40:01
Amplitude andPhase vs Time for EI009A 1.UVDATA.1 Vect aver.
IF 2 CHAN 1 - 32 STK LL



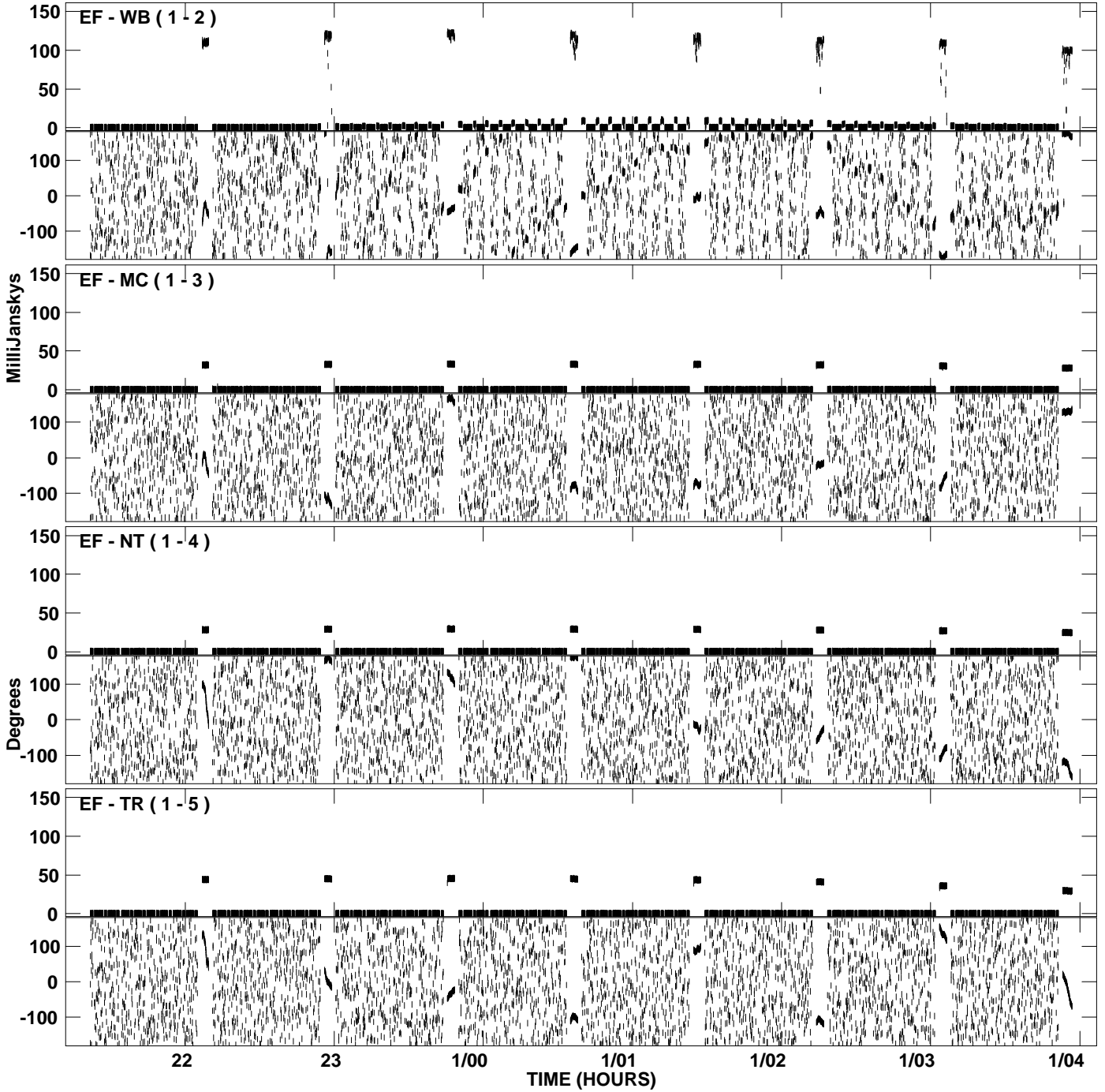
PLot file version 5 created 17-OCT-2007 11:40:04
Amplitude and Phase vs Time for E1009A 1.UVDATA.1 Vect aver.
IF 3 CHAN 1 - 32 STK LL



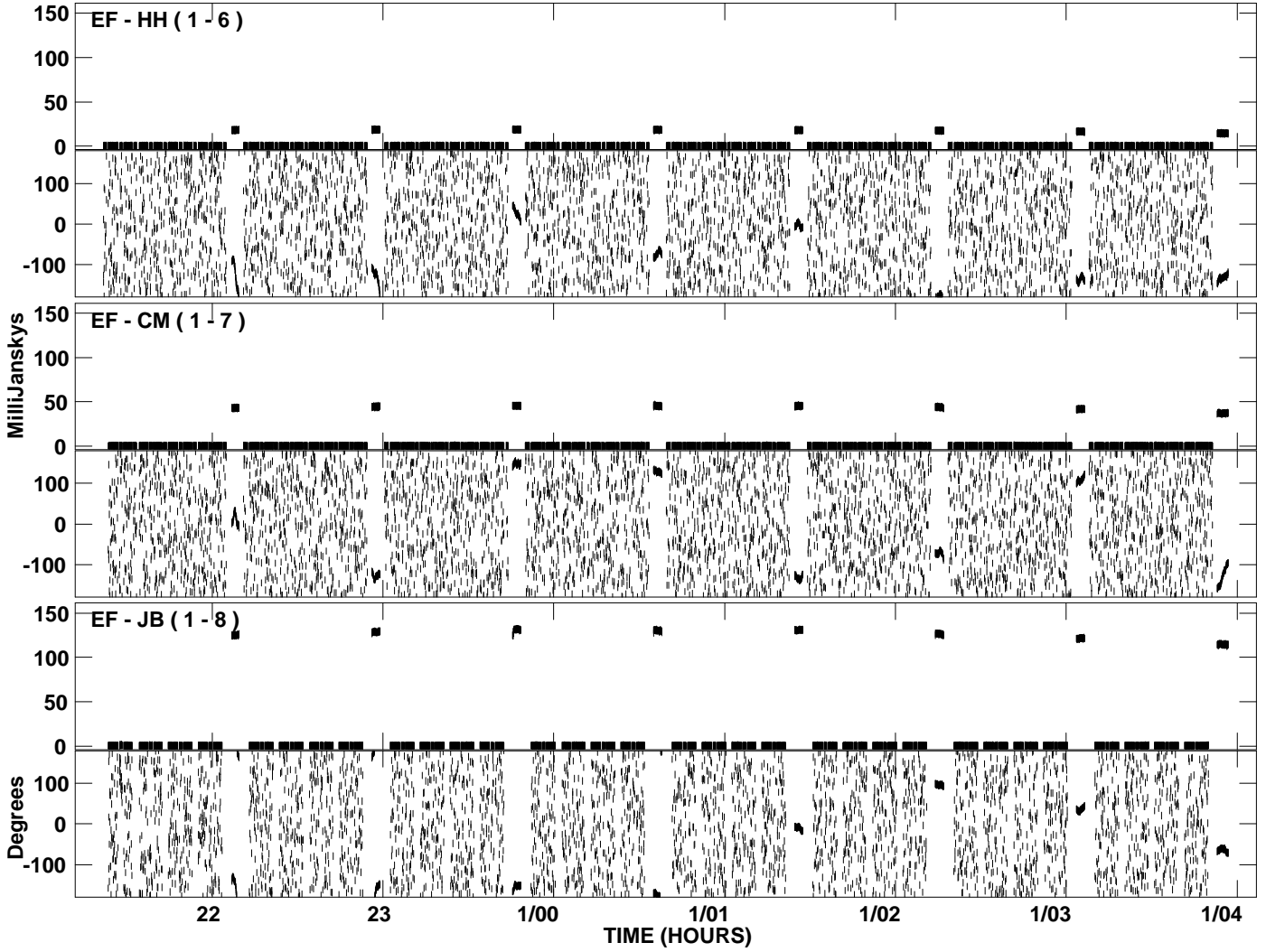
PLot file version 6 created 17-OCT-2007 11:40:04
Amplitude andPhase vs Time for EI009A 1.UVDATA.1 Vect aver.
IF 3 CHAN 1 - 32 STK LL



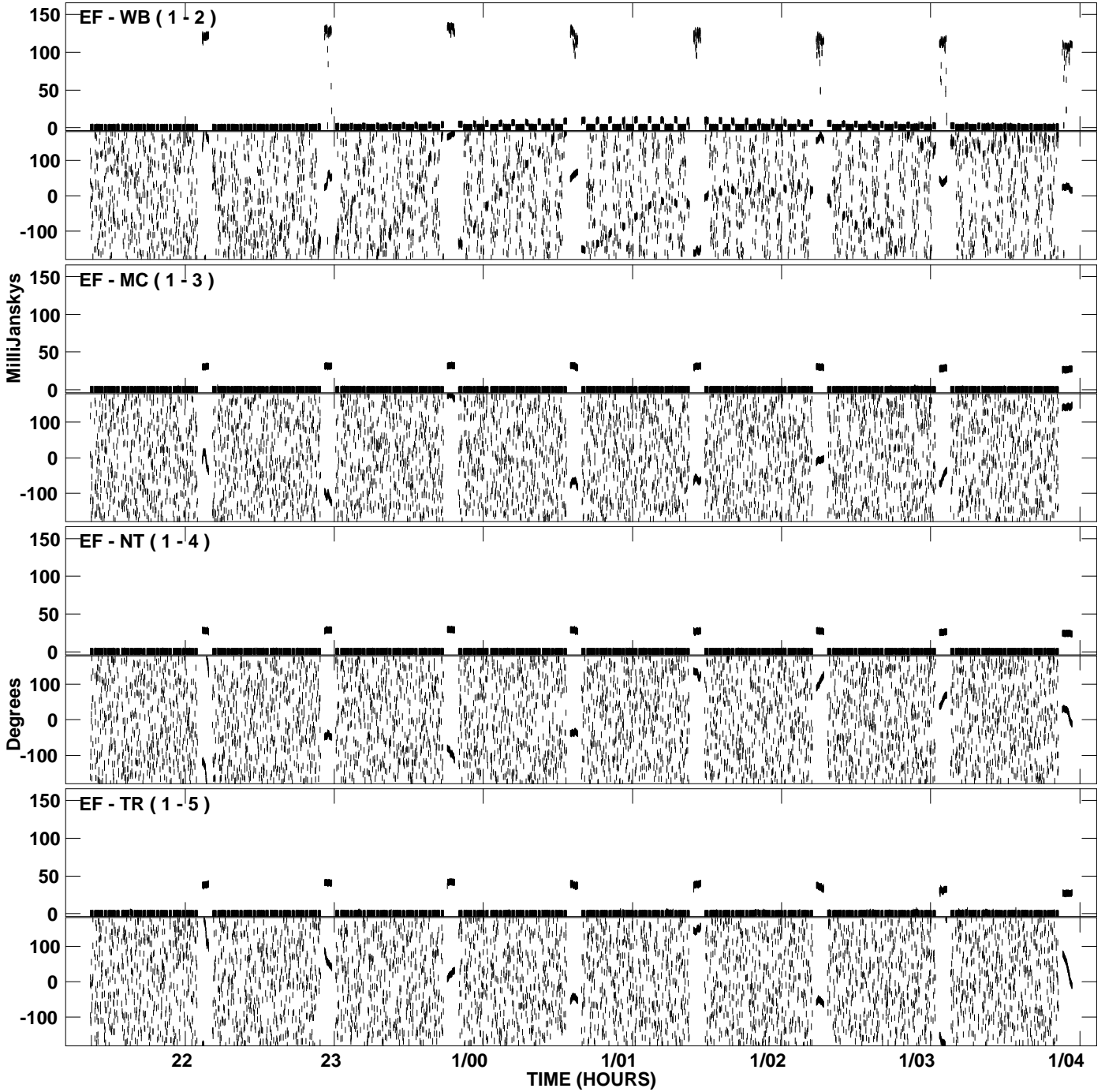
PLot file version 7 created 17-OCT-2007 11:40:08
Amplitude andPhase vs Time for EI009A 1.UVDATA.1 Vect aver.
IF 1 CHAN 1 - 32 STK RR



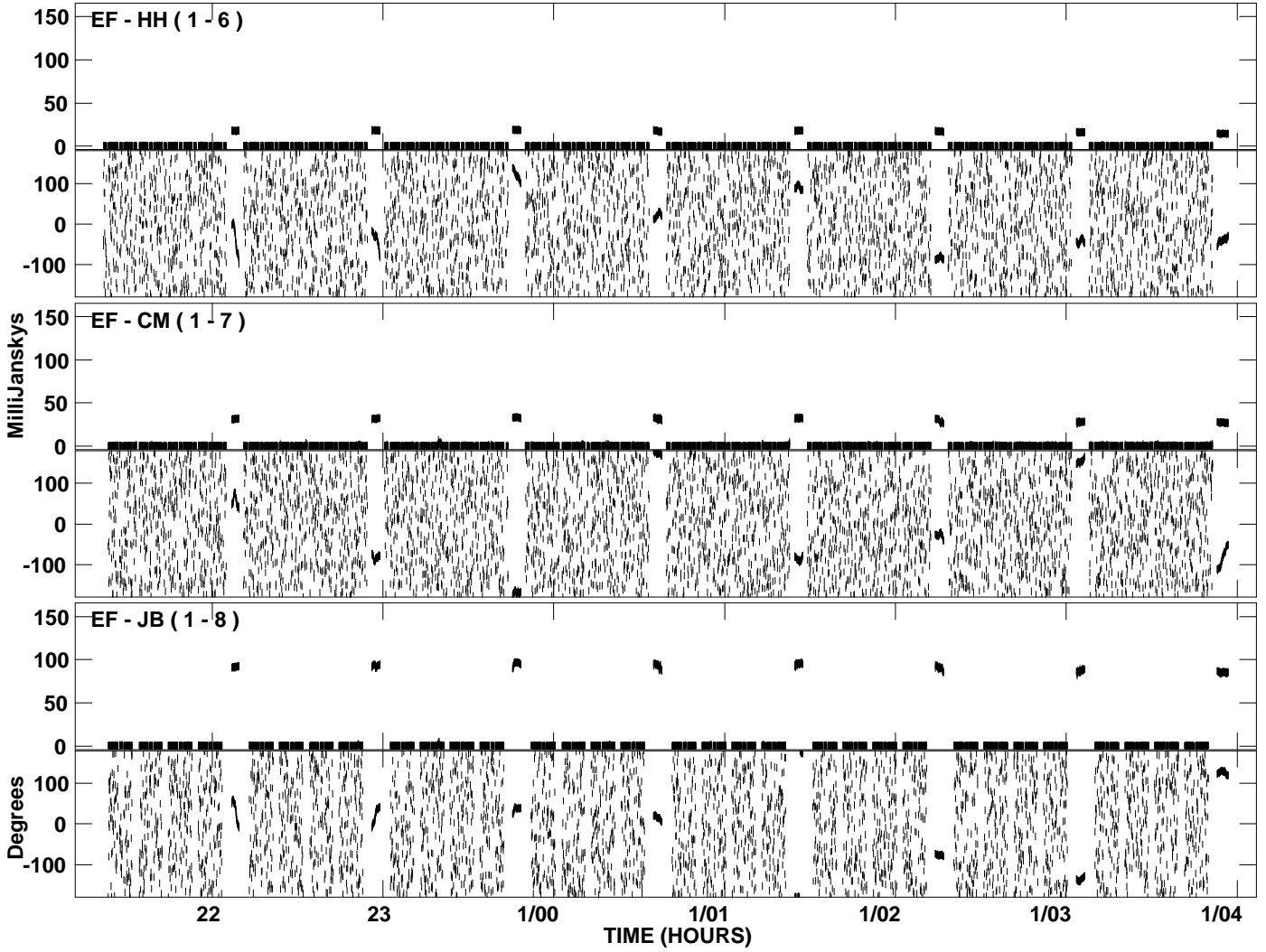
PLot file version 8 created 17-OCT-2007 11:40:08
Amplitude andPhase vs Time for EI009A 1.UVDATA.1 Vect aver.
IF 1 CHAN 1 - 32 STK RR



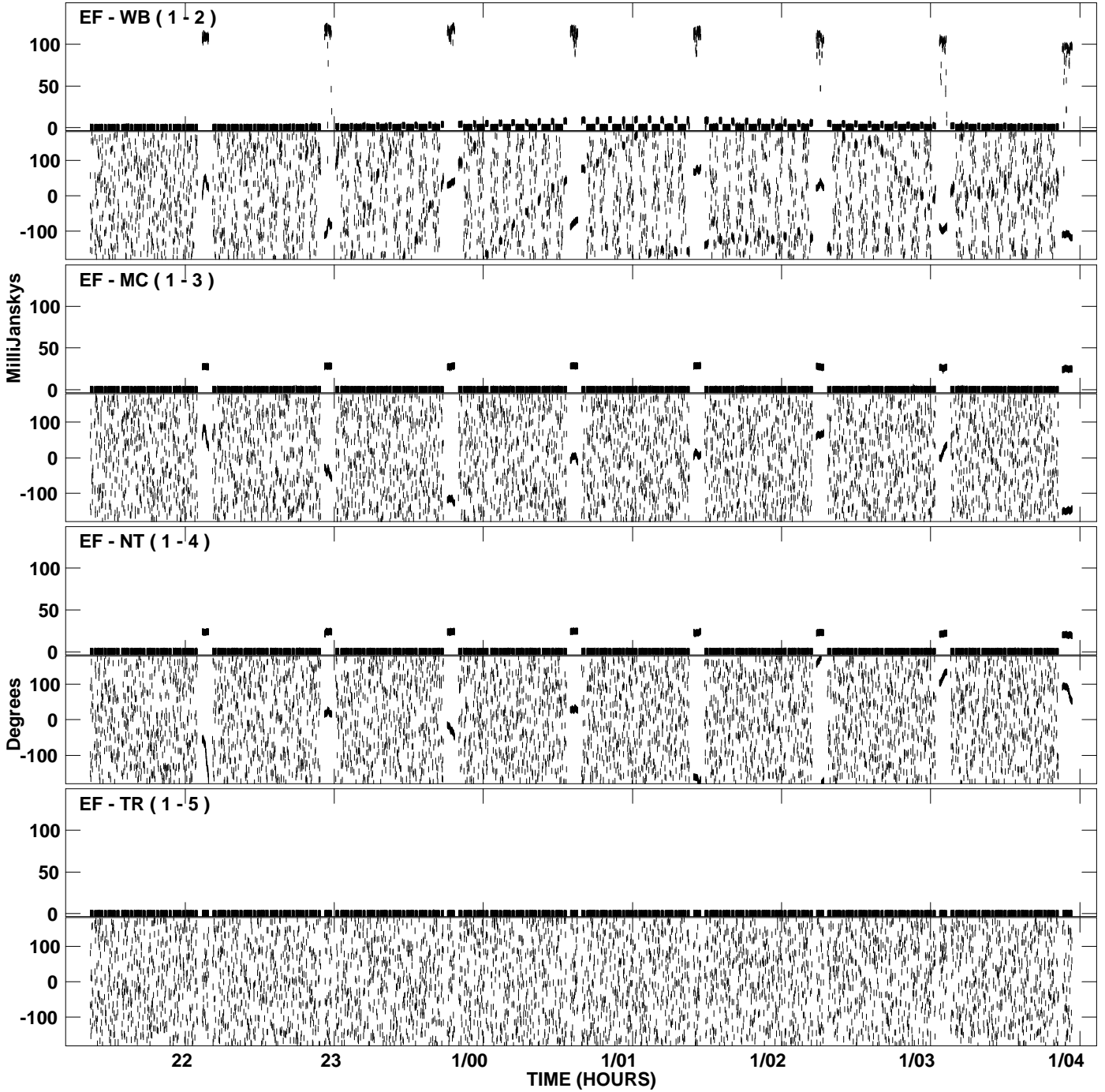
PLot file version 9 created 17-OCT-2007 11:40:12
Amplitude andPhase vs Time for EI009A 1.UVDATA.1 Vect aver.
IF 2 CHAN 1 - 32 STK RR



PLot file version 10 created 17-OCT-2007 11:40:12
Amplitude andPhase vs Time for EI009A 1.UVDATA.1 Vect aver.
IF 2 CHAN 1 - 32 STK RR



PLot file version 11 created 17-OCT-2007 11:40:17
Amplitude andPhase vs Time for EI009A 1.UVDATA.1 Vect aver.
IF 3 CHAN 1 - 32 STK RR



PLot file version 12 created 17-OCT-2007 11:40:17
Amplitude andPhase vs Time for EI009A 1.UVDATA.1 Vect aver.
IF 3 CHAN 1 - 32 STK RR

