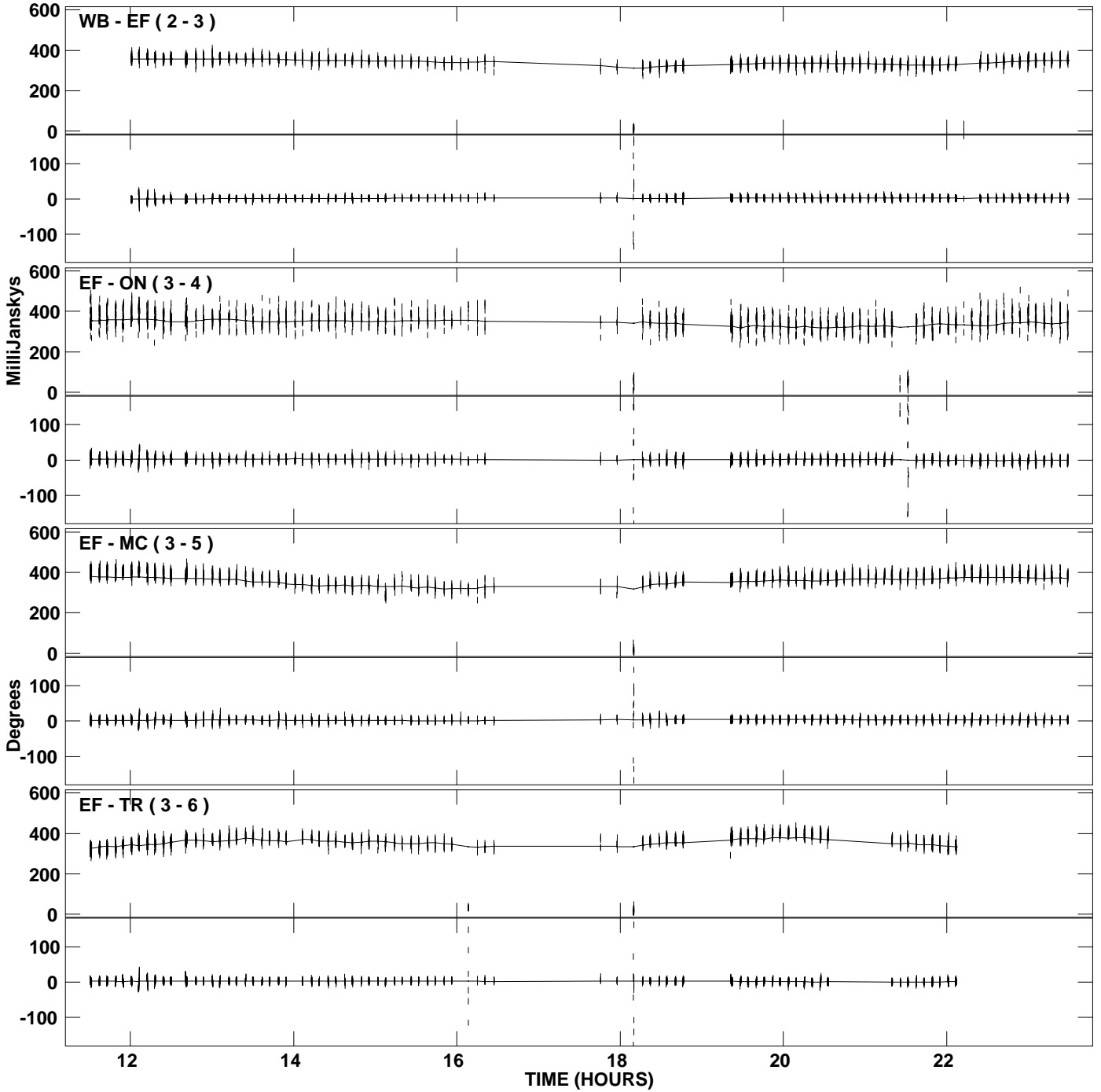
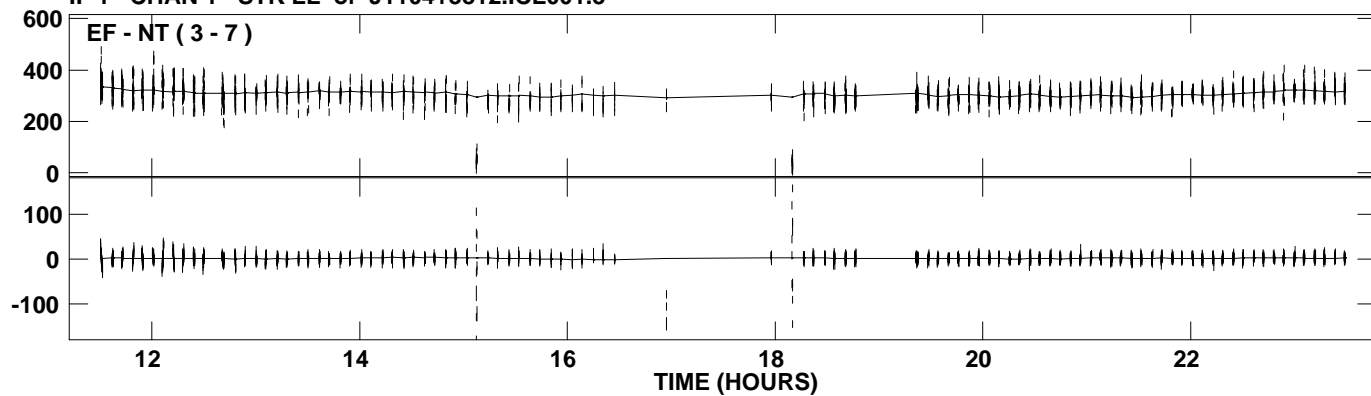


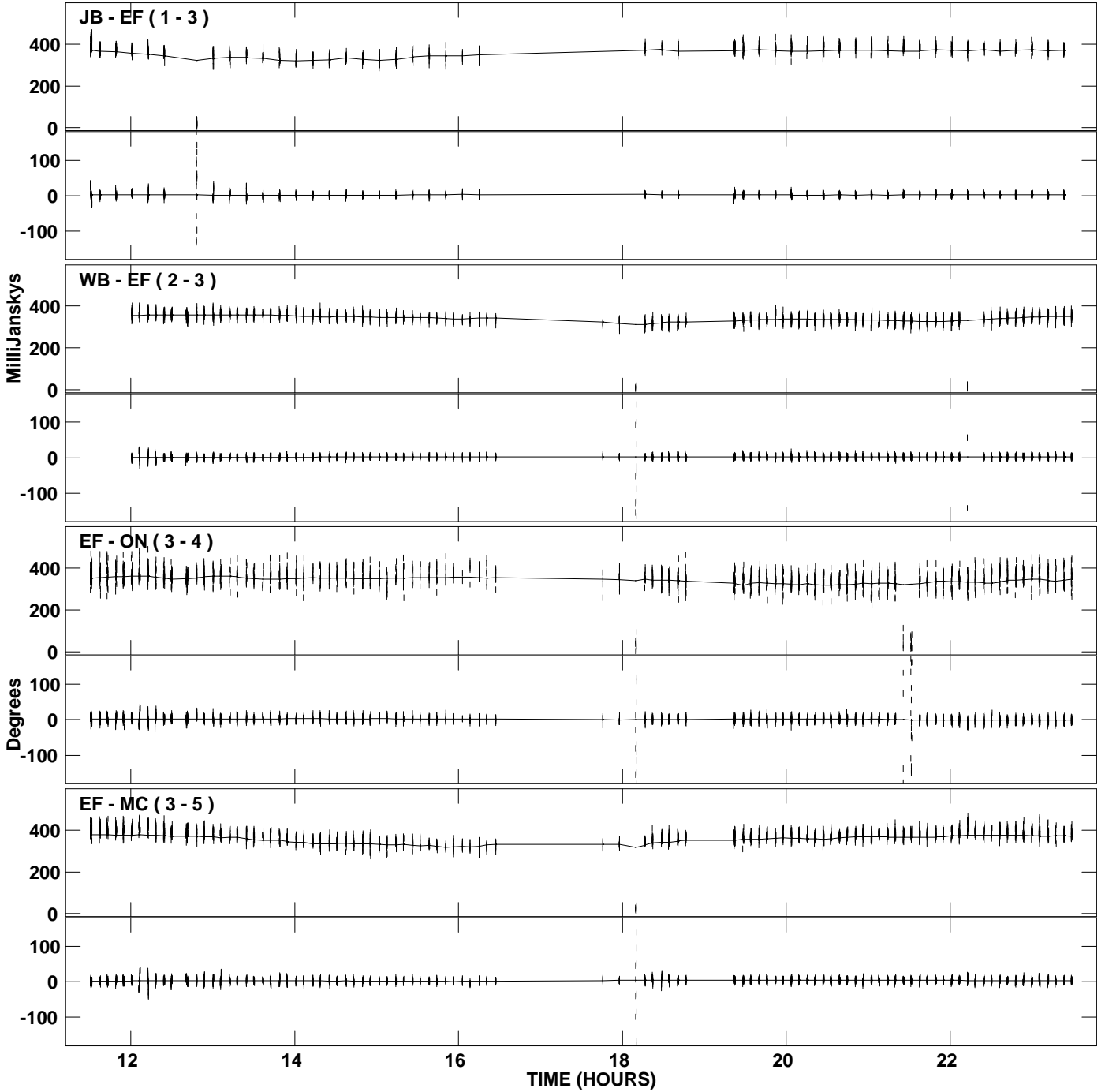
PLot file version 1 created 15-OCT-2007 19:04:02
Amplitude andPhase vs Time for J1104+3812.MULTI.1 CL # 3
IF 1 CHAN 1 STK LL of J1104+3812.ICL001.3



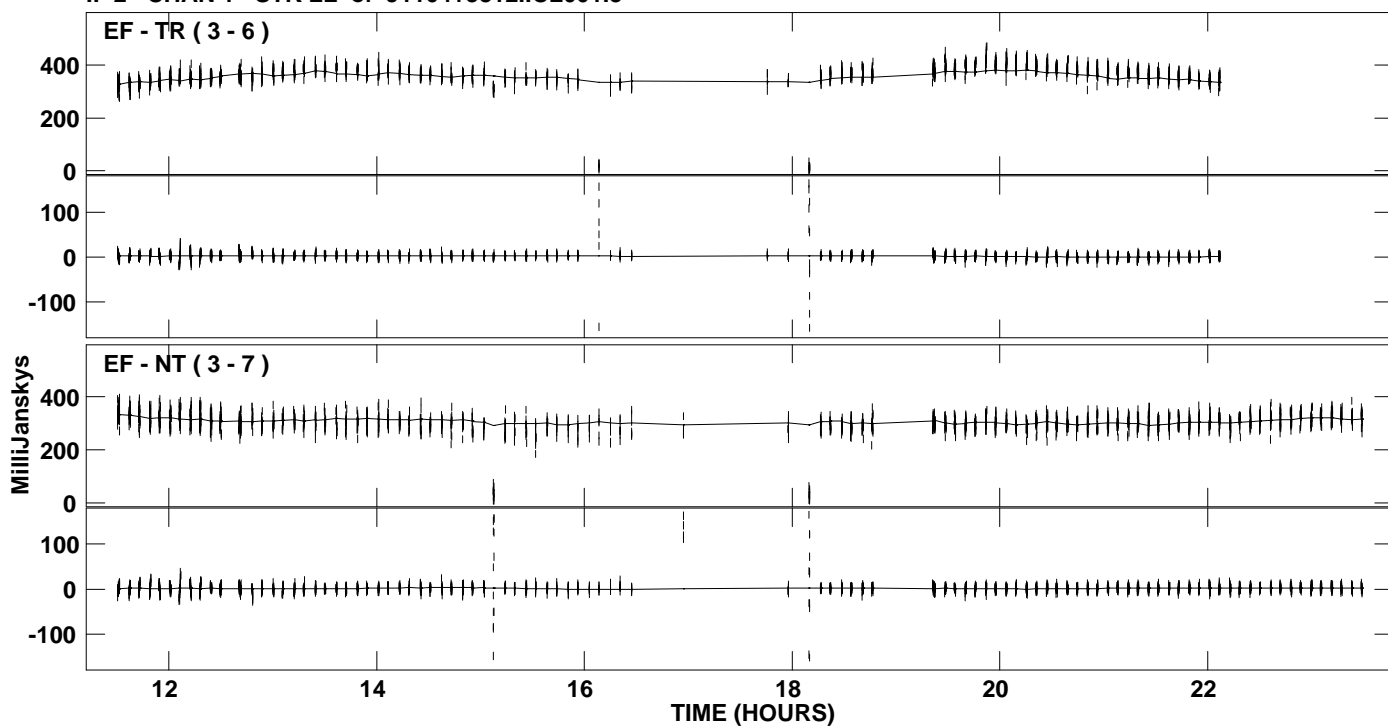
PLot file version 2 created 15-OCT-2007 19:04:03
Amplitude andPhase vs Time for J1104+3812.MULTI.1 CL # 3
IF 1 CHAN 1 STK LL of J1104+3812.ICL001.3



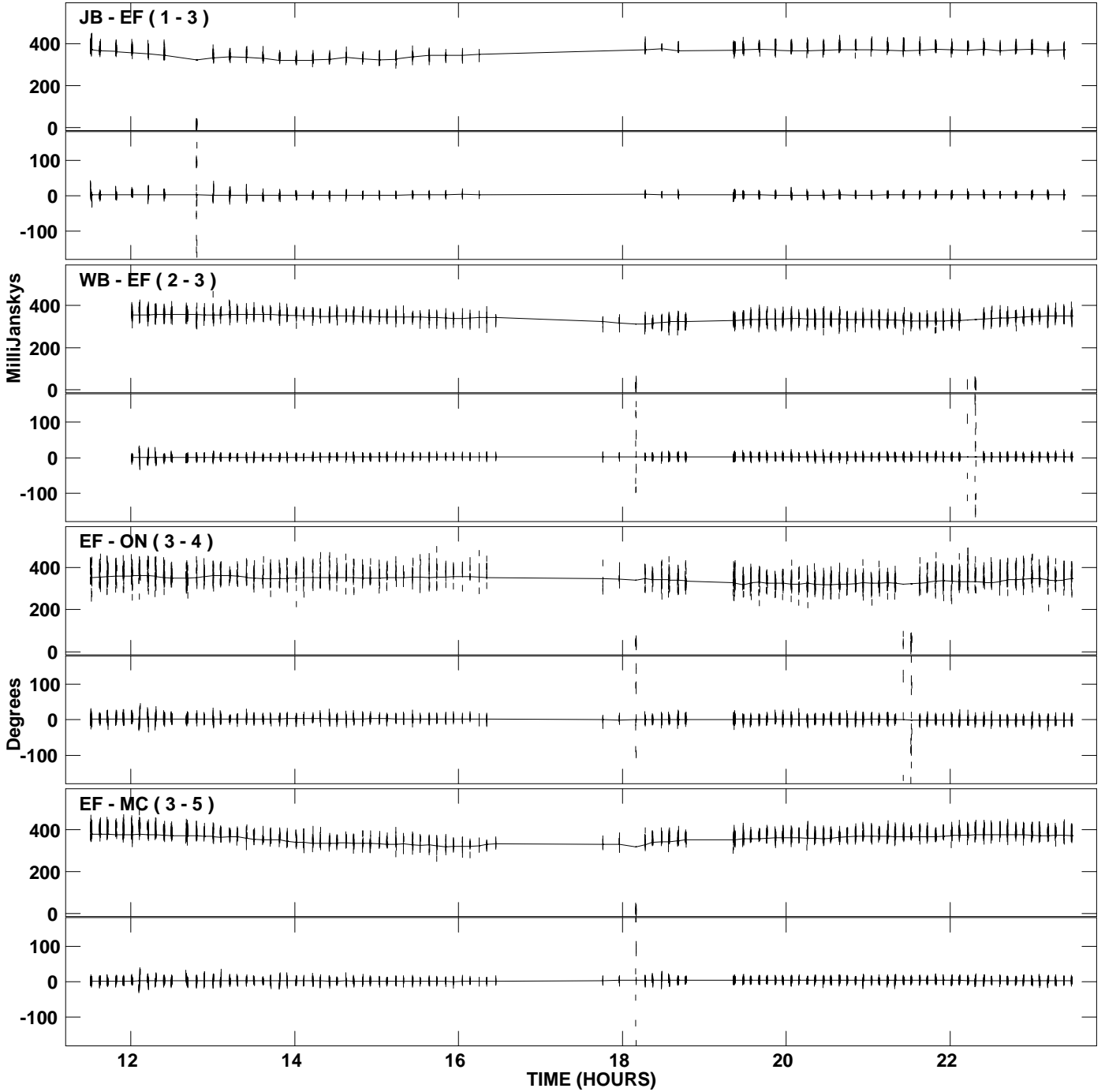
PLot file version 3 created 15-OCT-2007 19:04:05
Amplitude andPhase vs Time for J1104+3812.MULTI.1 CL # 3
IF 2 CHAN 1 STK LL of J1104+3812.ICL001.3



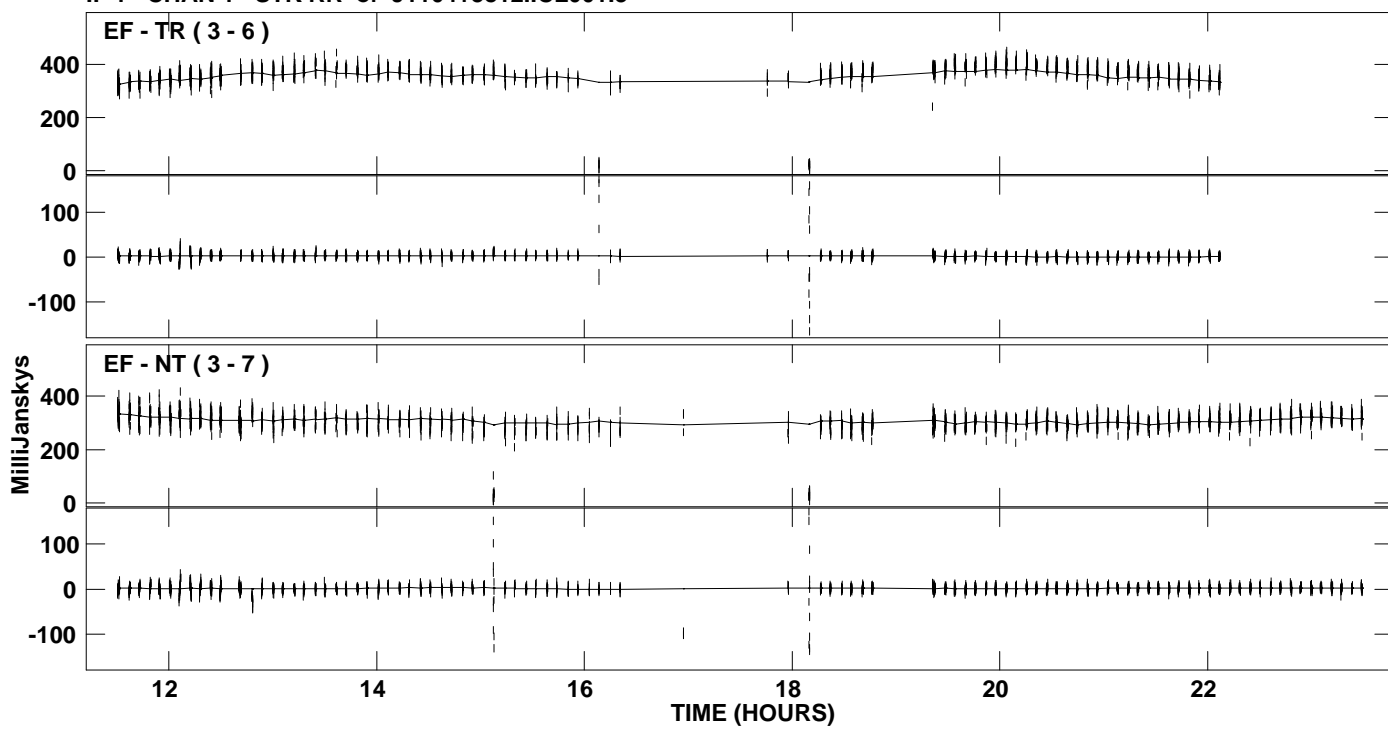
PLot file version 4 created 15-OCT-2007 19:04:05
Amplitude andPhase vs Time for J1104+3812.MULTI.1 CL # 3
IF 2 CHAN 1 STK LL of J1104+3812.ICL001.3



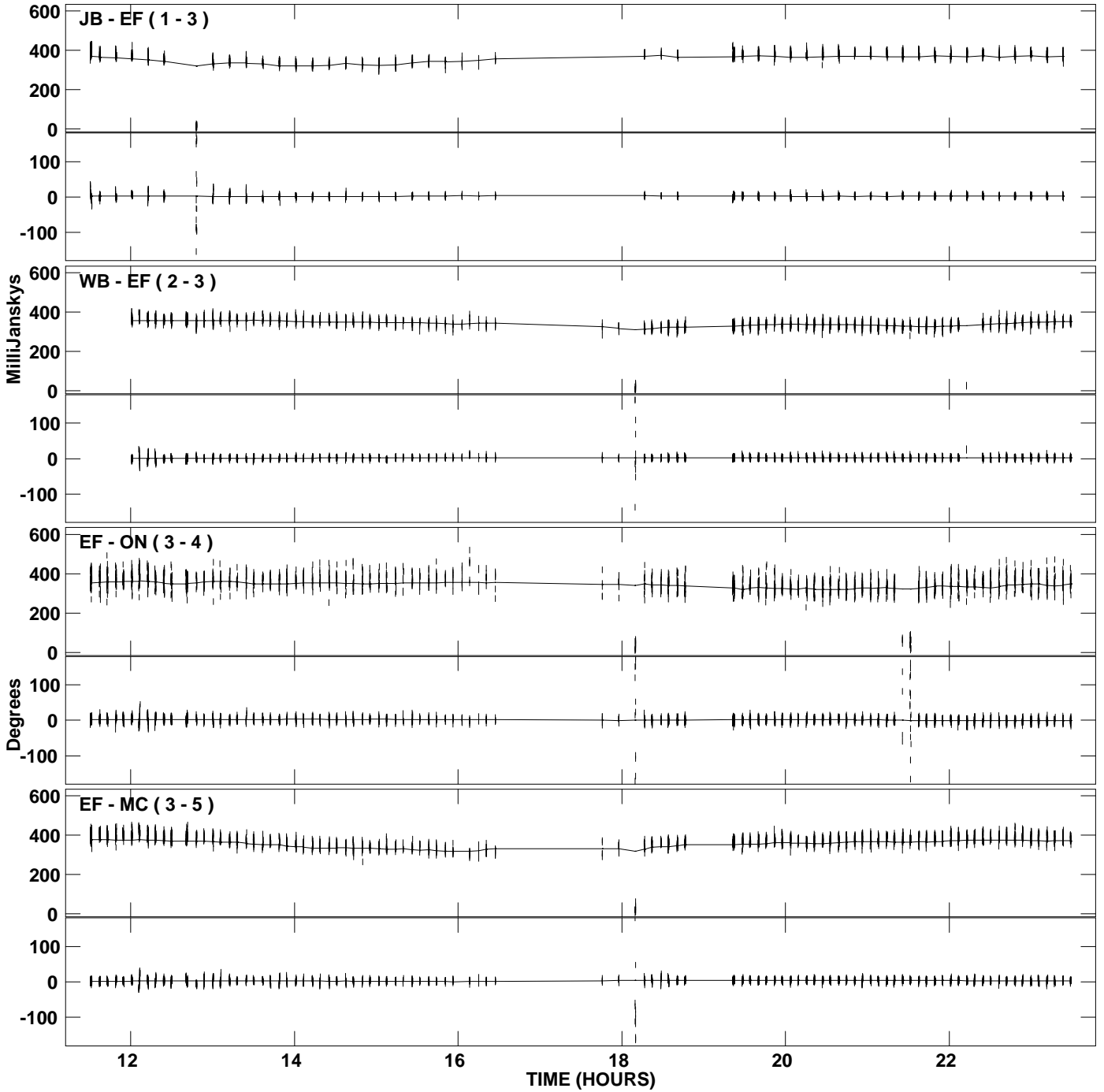
PLot file version 5 created 15-OCT-2007 19:04:08
Amplitude andPhase vs Time for J1104+3812.MULTI.1 CL # 3
IF 1 CHAN 1 STK RR of J1104+3812.ICL001.3



PLot file version 6 created 15-OCT-2007 19:04:08
Amplitude andPhase vs Time for J1104+3812.MULTI.1 CL # 3
IF 1 CHAN 1 STK RR of J1104+3812.ICL001.3



PLot file version 7 created 15-OCT-2007 19:04:10
Amplitude andPhase vs Time for J1104+3812.MULTI.1 CL # 3
IF 2 CHAN 1 STK RR of J1104+3812.ICL001.3



PLot file version 8 created 15-OCT-2007 19:04:10
Amplitude and Phase vs Time for J1104+3812.MULTI.1 CL # 3
IF 2 CHAN 1 STK RR of J1104+3812.ICL001.3

