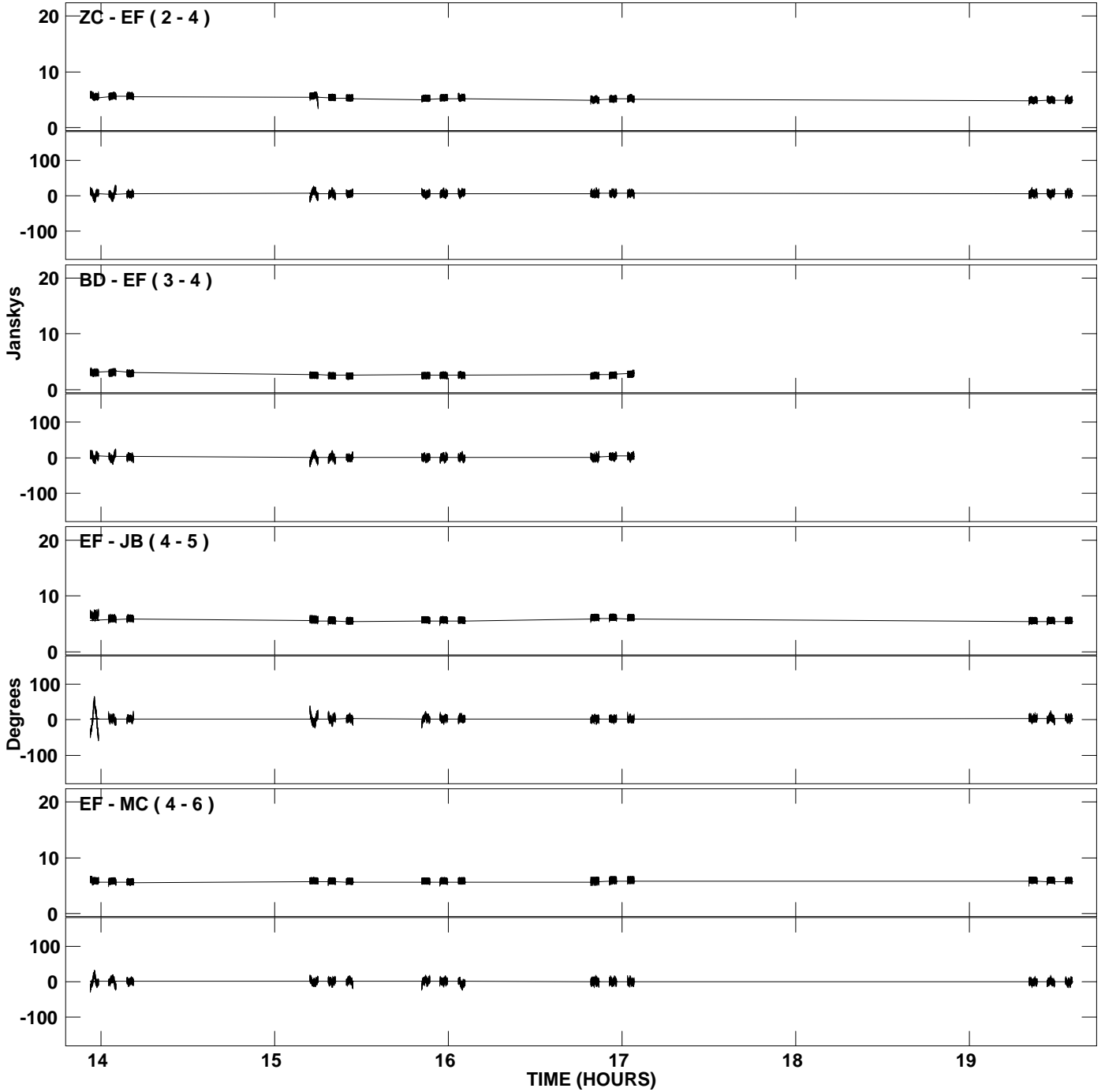
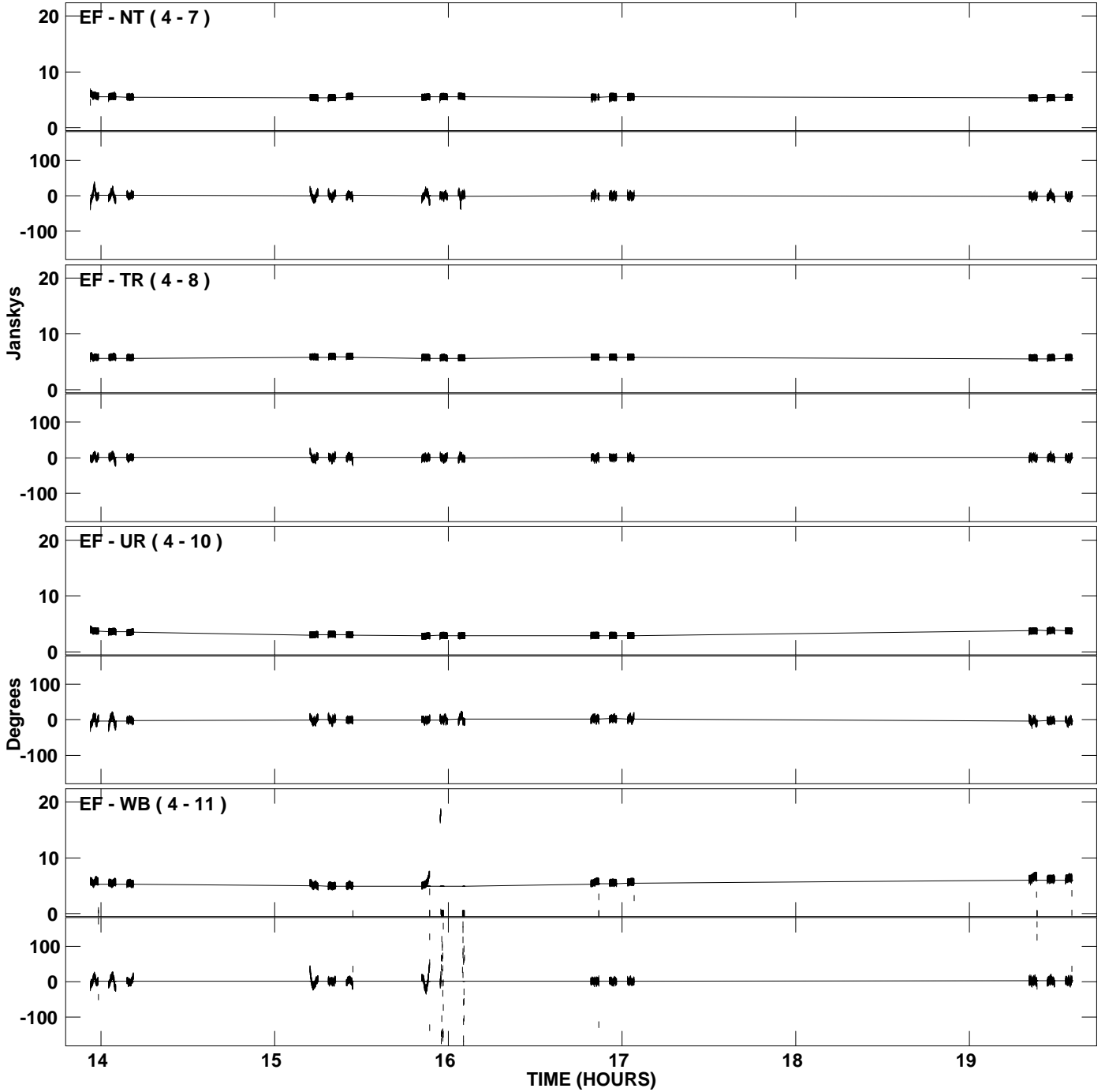


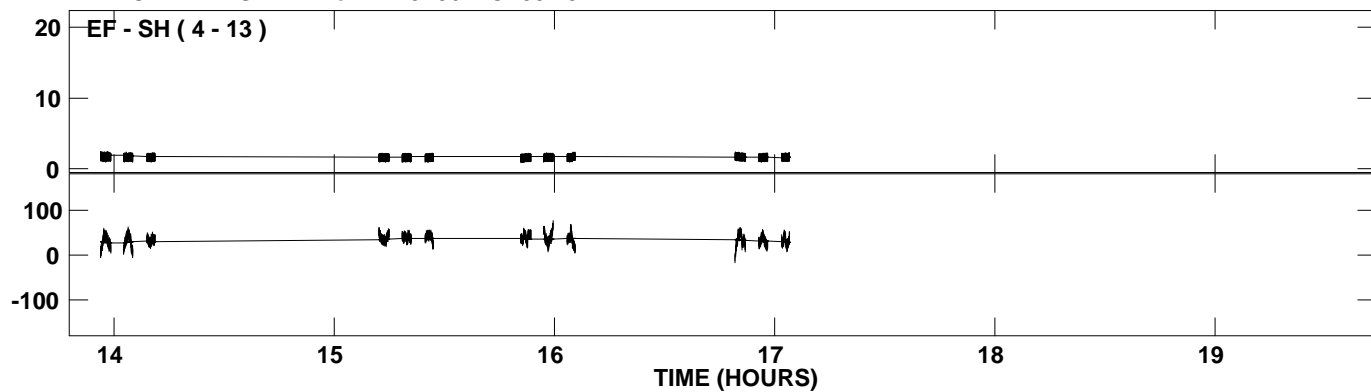
PLot file version 1 created 24-MAR-2009 17:57:45
Amplitude and Phase vs Time for 2145+067.MULTI.1 CL # 5
IF 1 CHAN 1 STK LL of 2145+067.ICL001.5



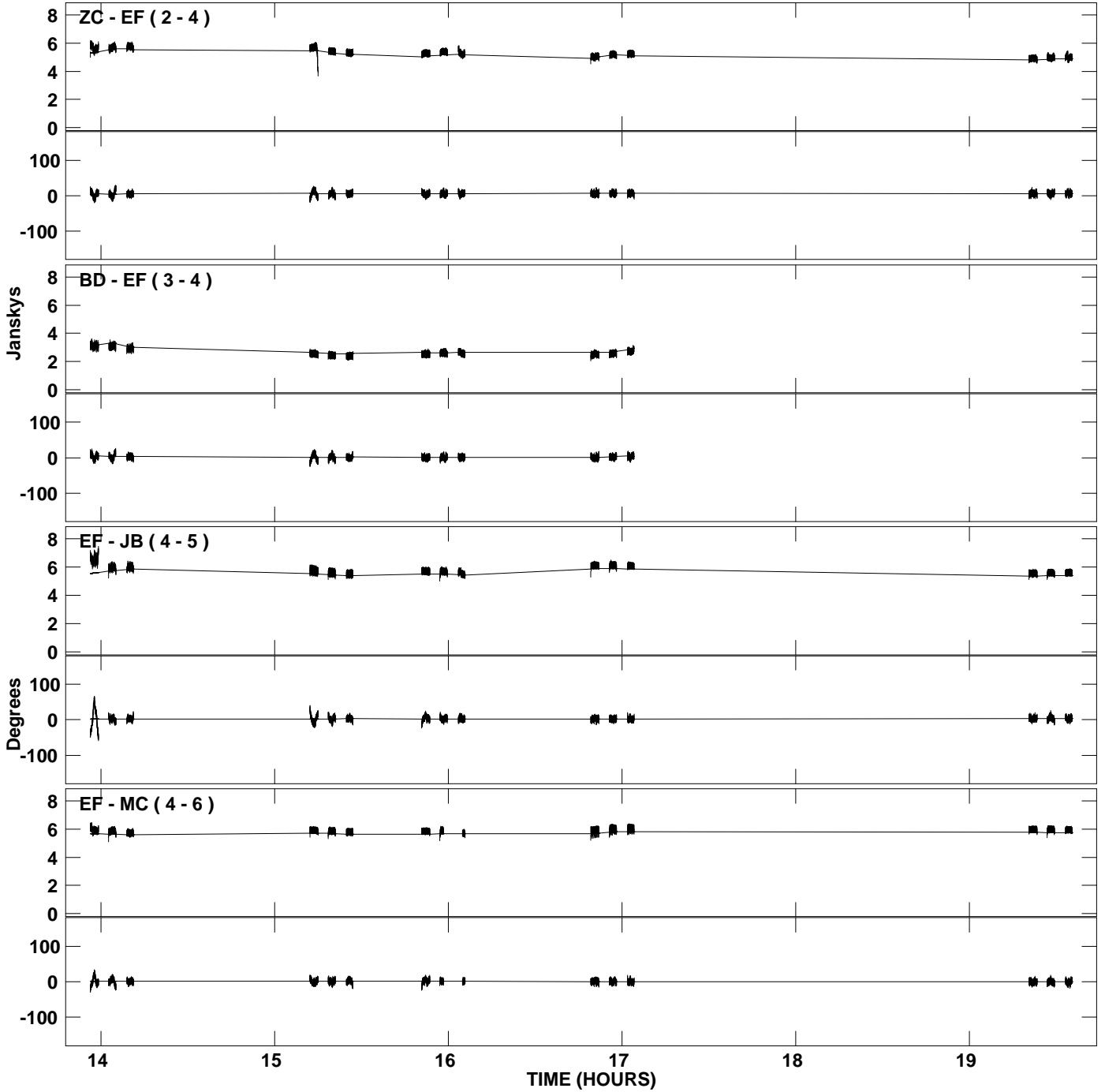
PLot file version 2 created 24-MAR-2009 17:57:45
Amplitude and Phase vs Time for 2145+067.MULTI.1 CL # 5
IF 1 CHAN 1 STK LL of 2145+067.ICL001.5



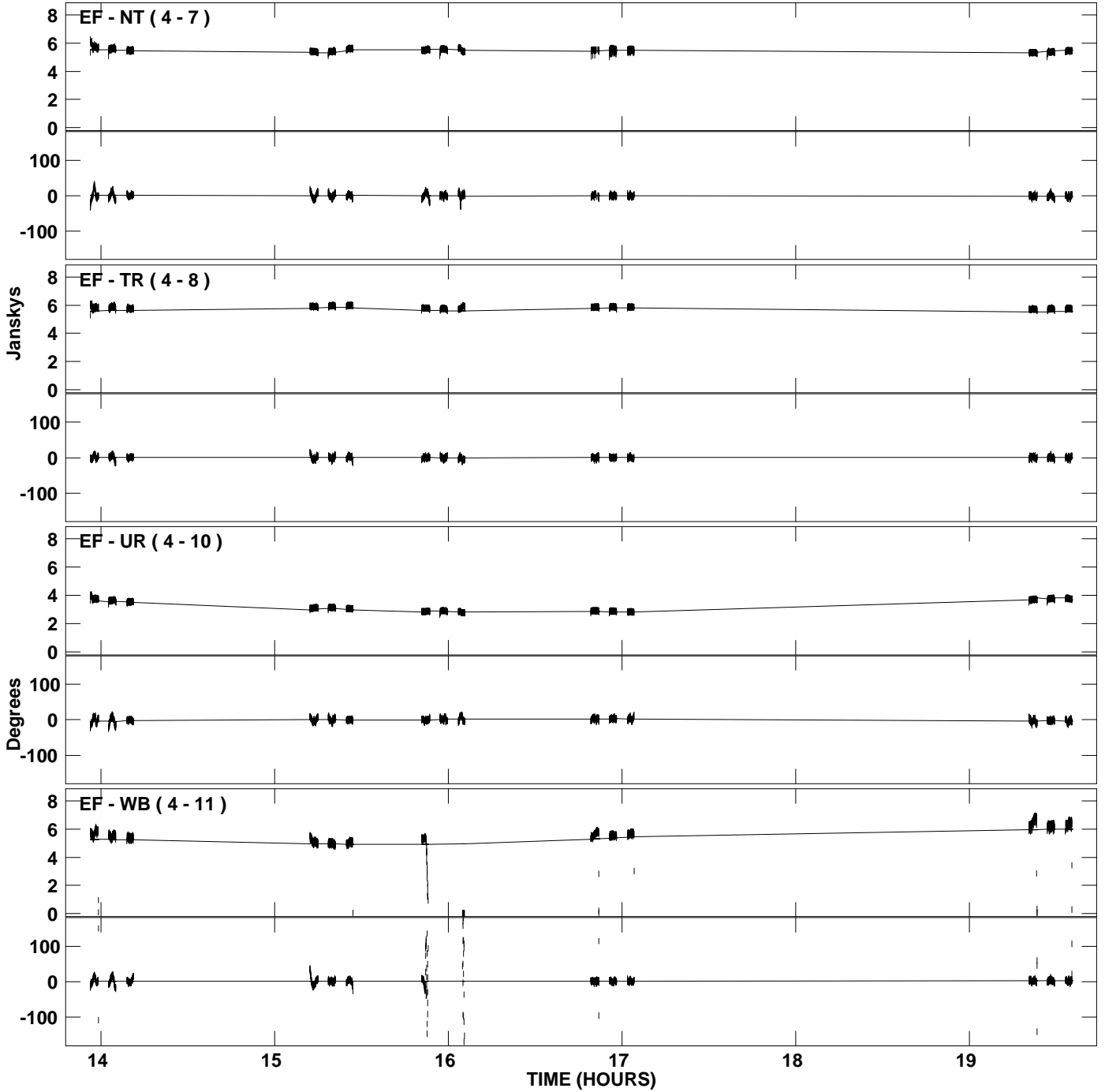
PLot file version 3 created 24-MAR-2009 17:57:45
Amplitude andPhase vs Time for 2145+067.MULTI.1 CL # 5
IF 1 CHAN 1 STK LL of 2145+067.ICL001.5



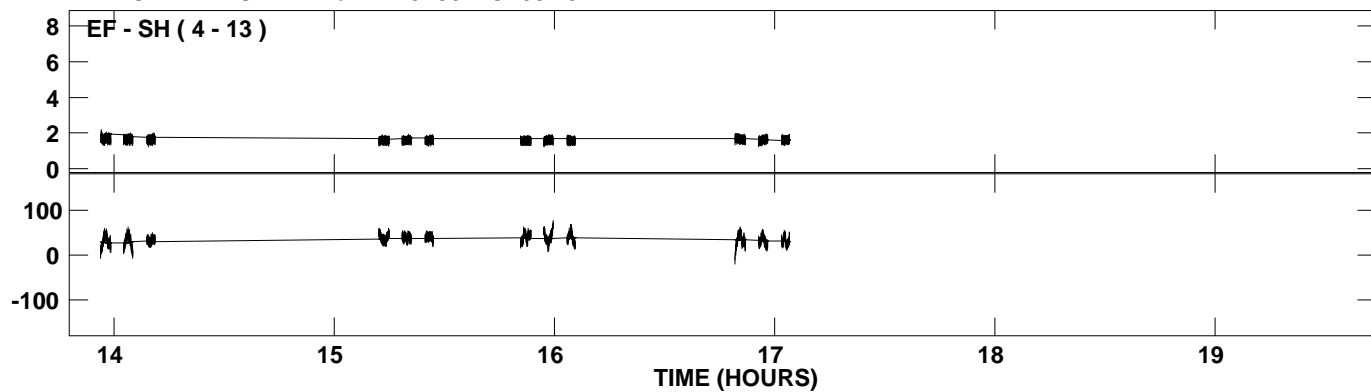
PLot file version 4 created 24-MAR-2009 17:57:45
Amplitude and Phase vs Time for 2145+067.MULTI.1 CL # 5
IF 2 CHAN 1 STK LL of 2145+067.ICL001.5



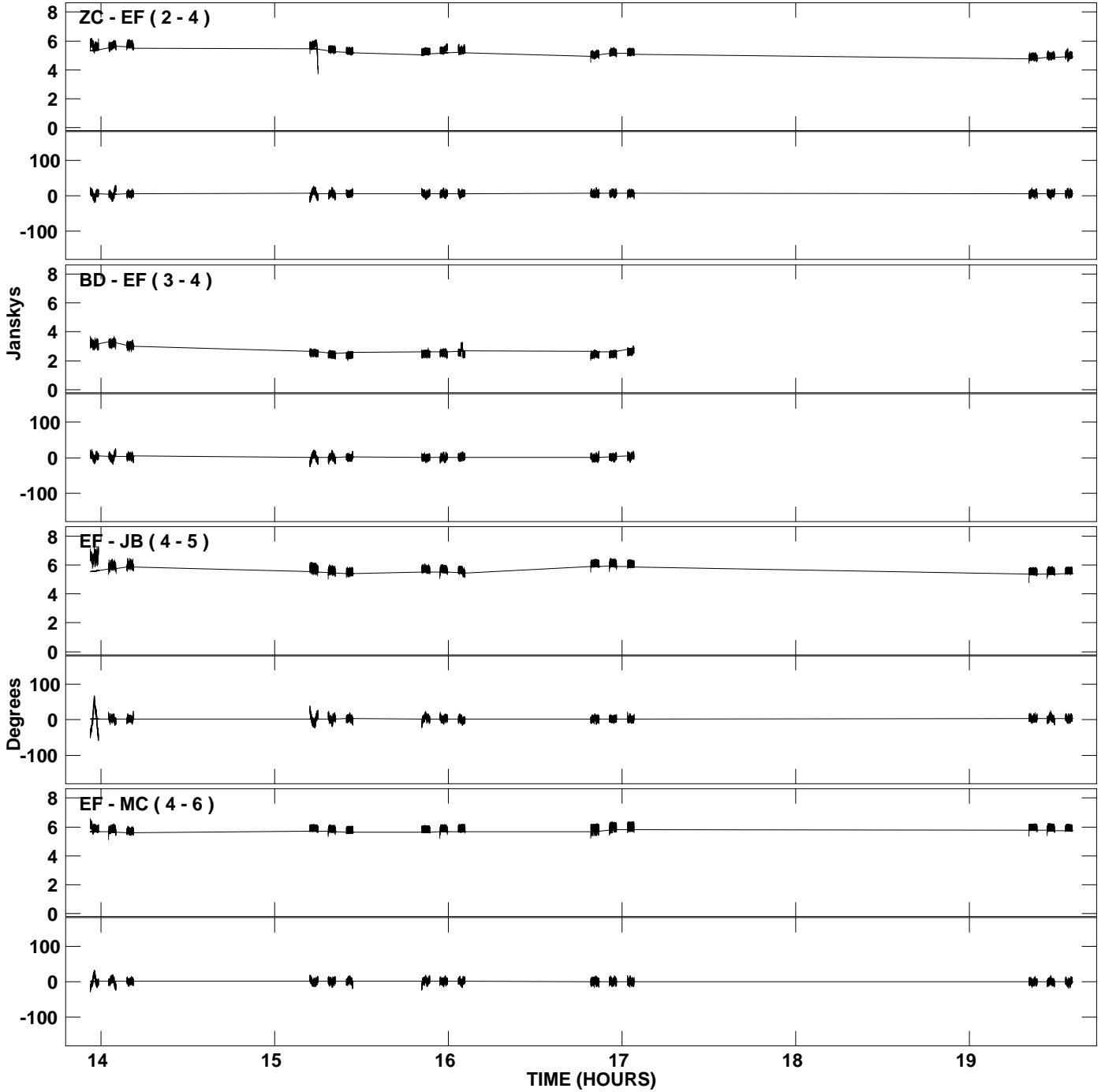
PLot file version 5 created 24-MAR-2009 17:57:45
Amplitude and Phase vs Time for 2145+067.MULTI.1 CL # 5
IF 2 CHAN 1 STK LL of 2145+067.ICL001.5



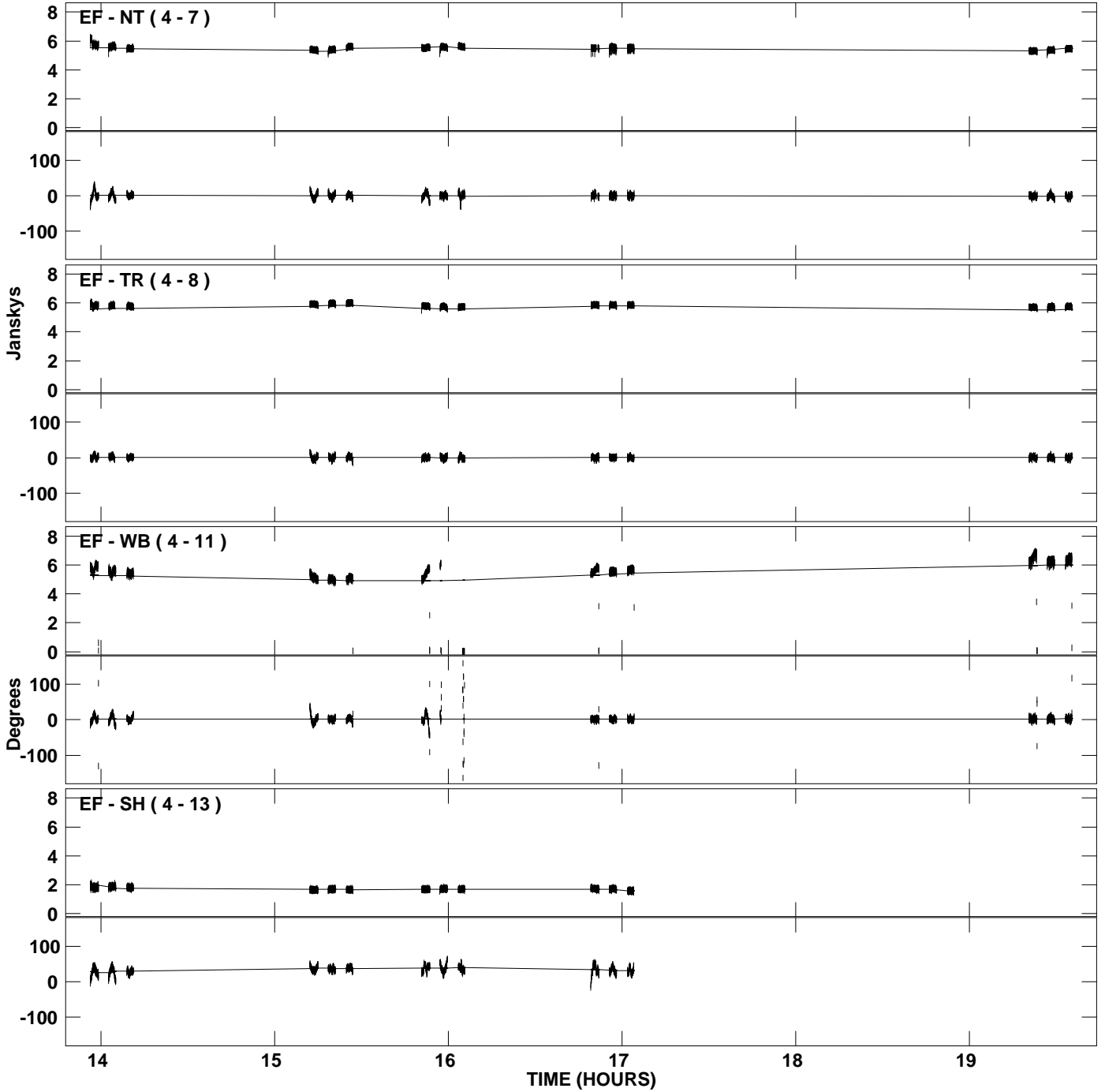
PLot file version 6 created 24-MAR-2009 17:57:45
Amplitude andPhase vs Time for 2145+067.MULTI.1 CL # 5
IF 2 CHAN 1 STK LL of 2145+067.ICL001.5



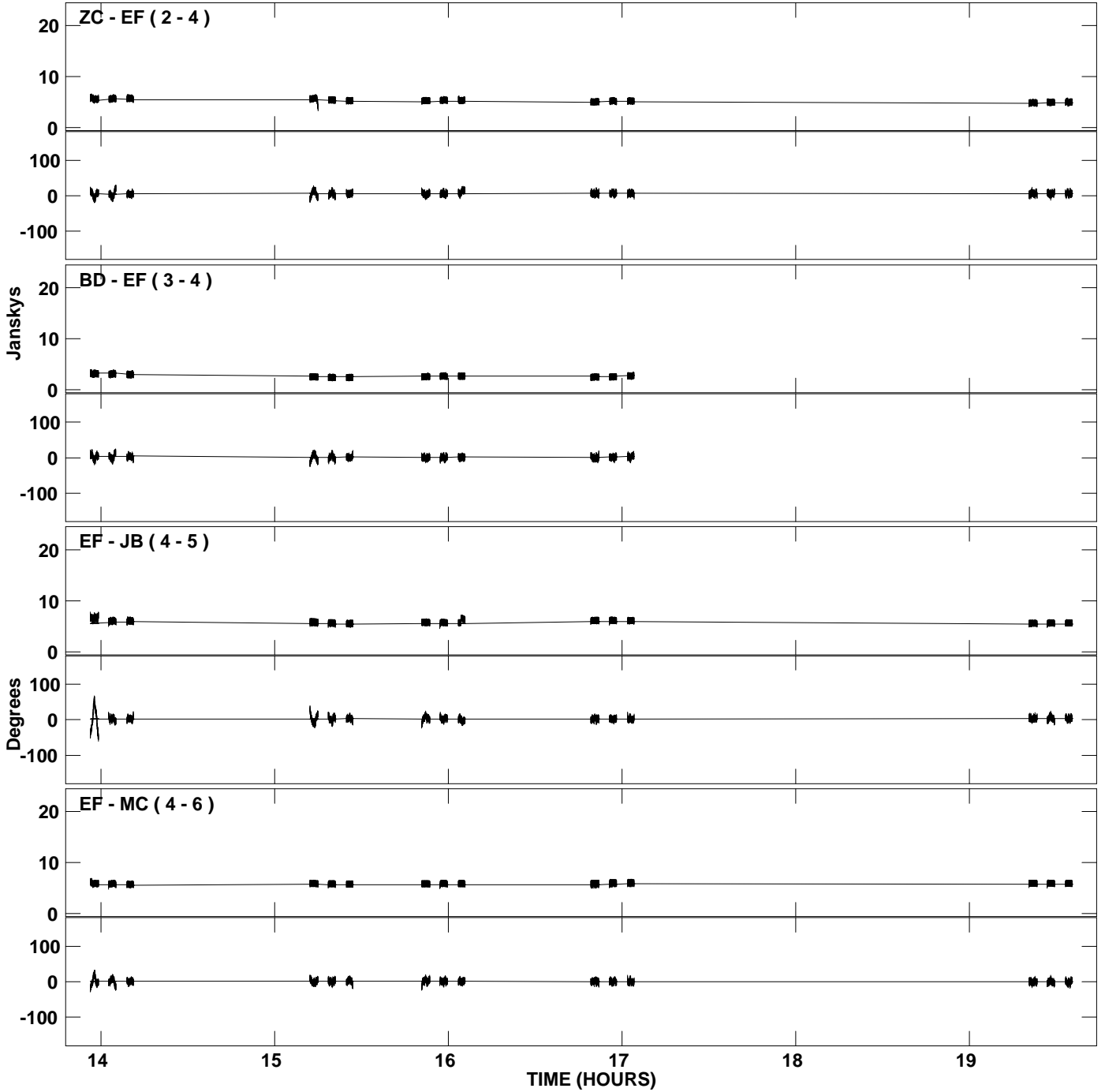
PLot file version 7 created 24-MAR-2009 17:57:46
Amplitude and Phase vs Time for 2145+067.MULTI.1 CL # 5
IF 3 CHAN 1 STK LL of 2145+067.ICL001.5



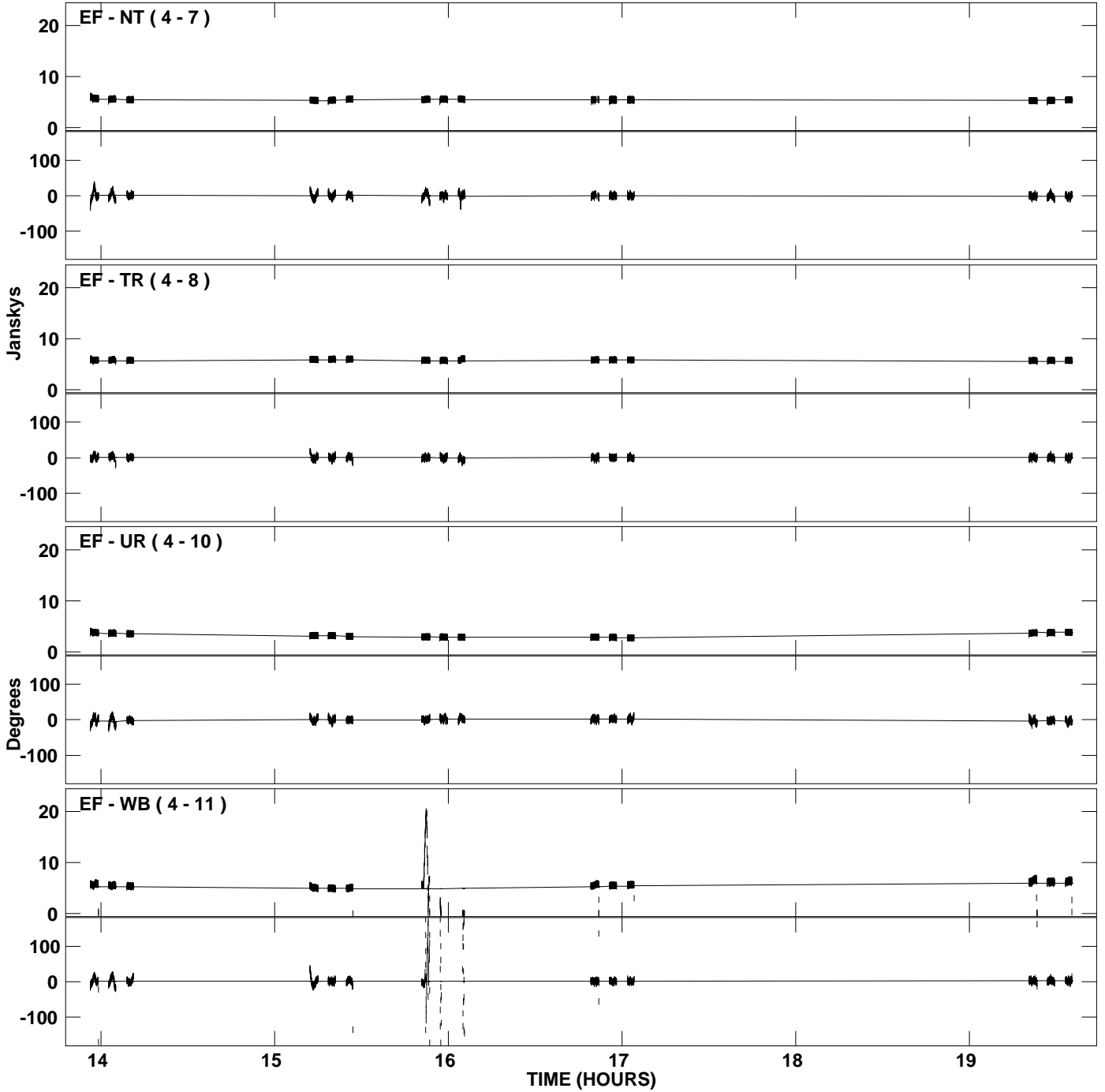
PLot file version 8 created 24-MAR-2009 17:57:46
Amplitude and Phase vs Time for 2145+067.MULTI.1 CL # 5
IF 3 CHAN 1 STK LL of 2145+067.ICL001.5



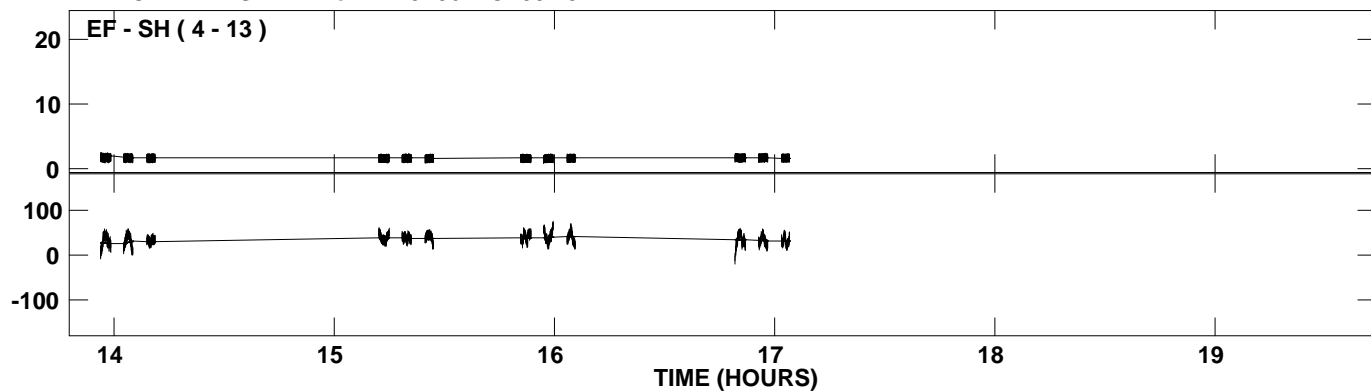
PLot file version 9 created 24-MAR-2009 17:57:47
Amplitude and Phase vs Time for 2145+067.MULTI.1 CL # 5
IF 4 CHAN 1 STK LL of 2145+067.ICL001.5



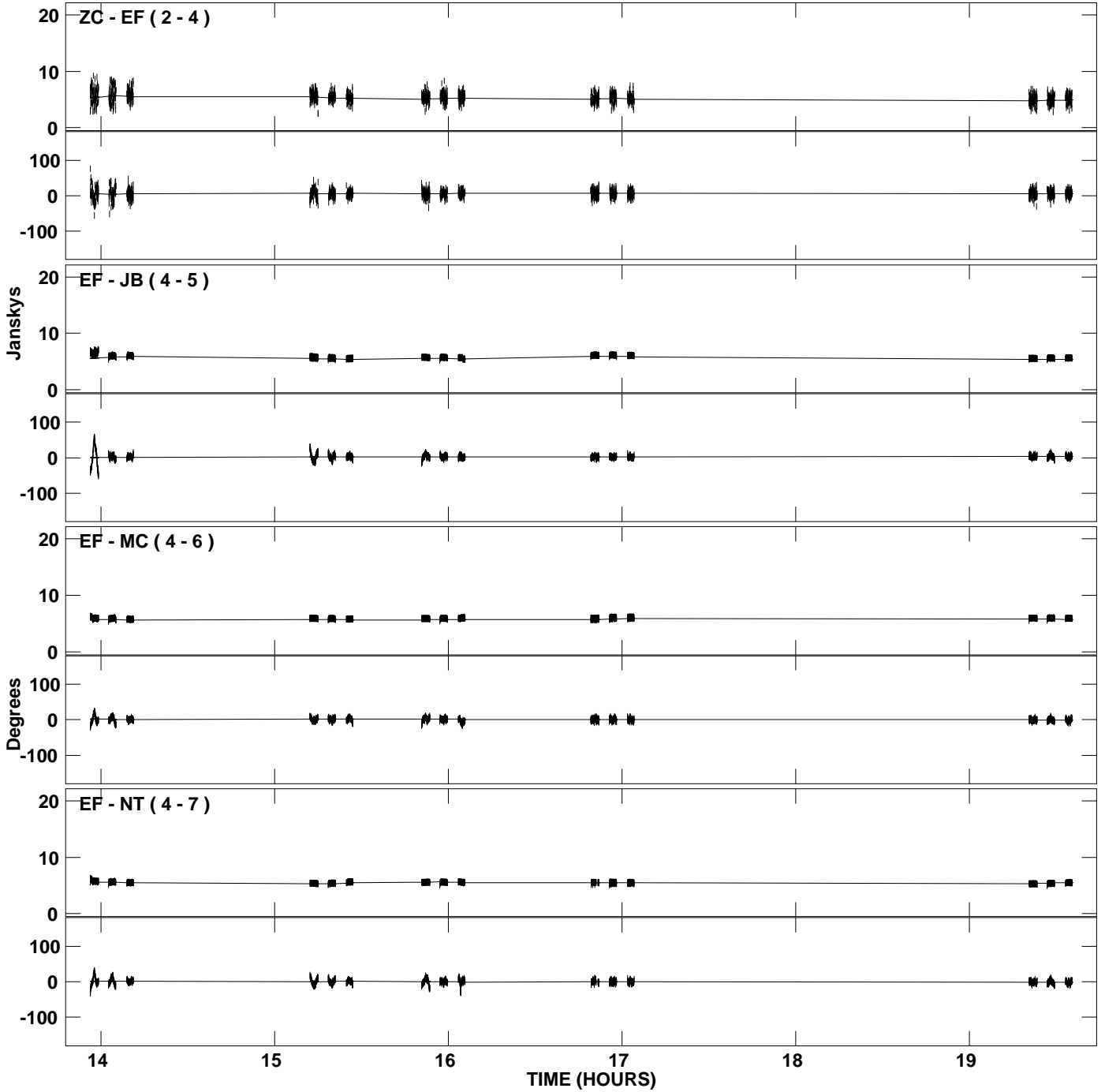
PLot file version 10 created 24-MAR-2009 17:57:47
Amplitude and Phase vs Time for 2145+067.MULTI.1 CL # 5
IF 4 CHAN 1 STK LL of 2145+067.ICL001.5



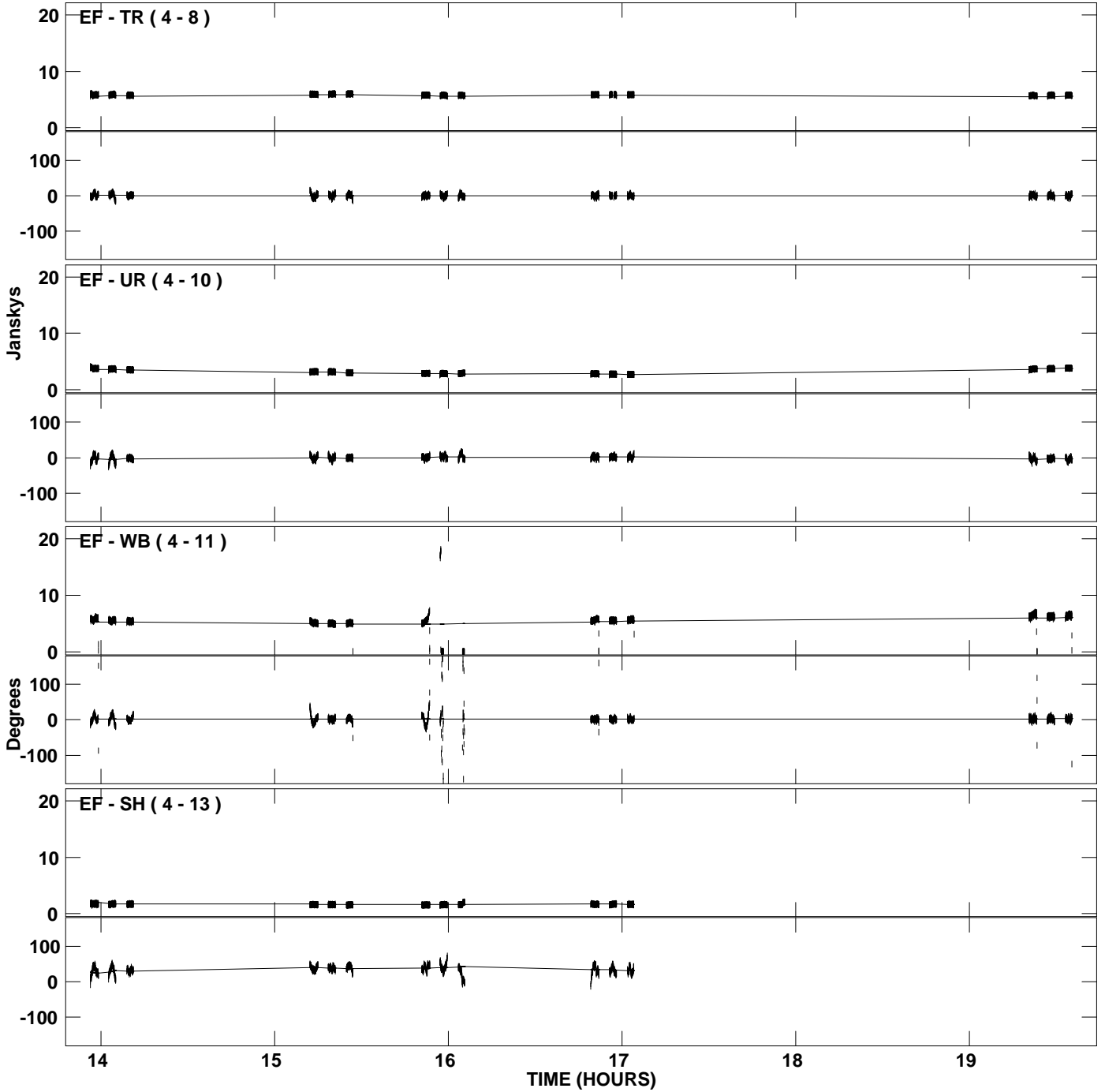
PLot file version 11 created 24-MAR-2009 17:57:47
Amplitude andPhase vs Time for 2145+067.MULTI.1 CL # 5
IF 4 CHAN 1 STK LL of 2145+067.ICL001.5



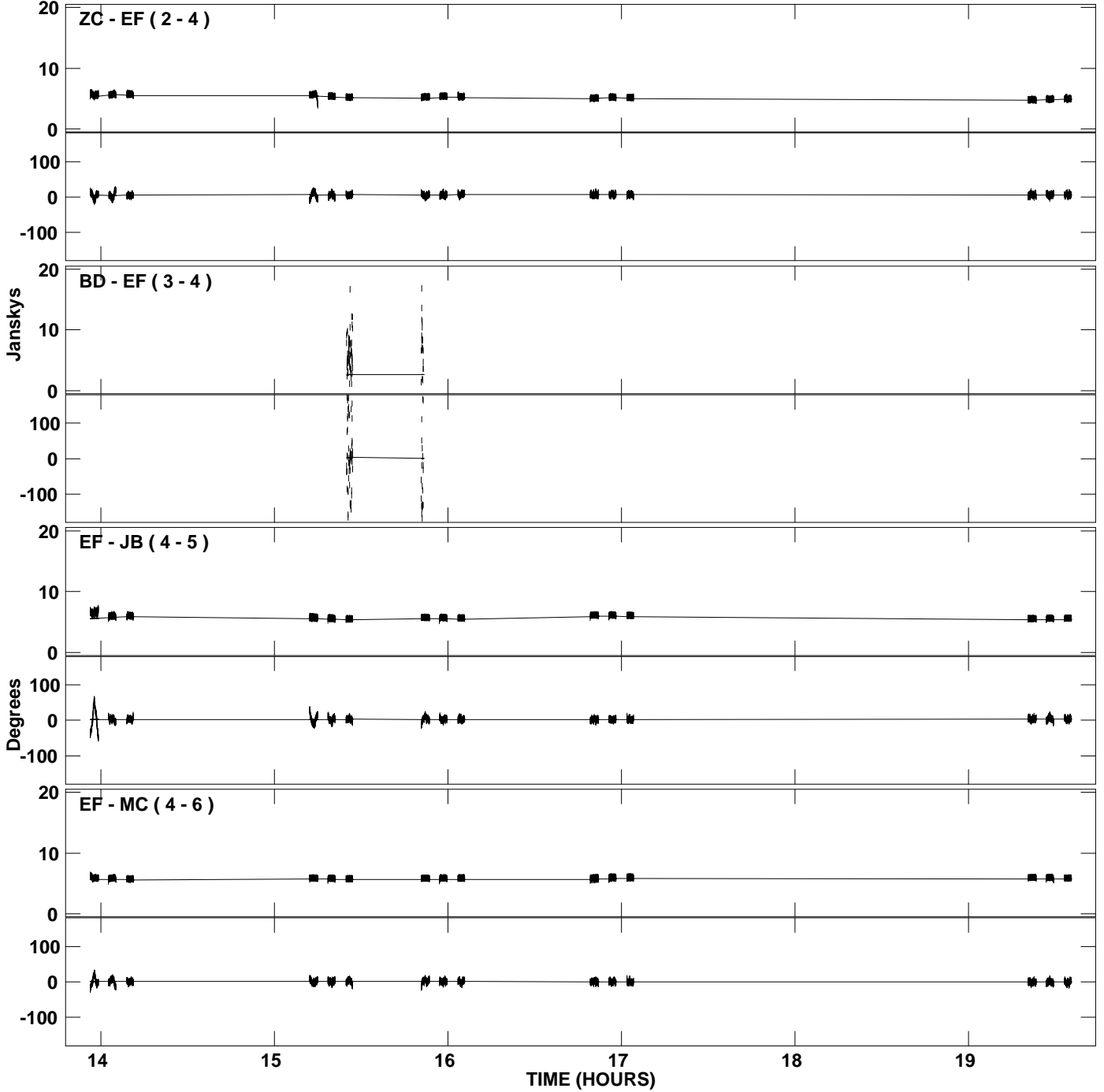
PLot file version 12 created 24-MAR-2009 17:57:47
Amplitude and Phase vs Time for 2145+067.MULTI.1 CL # 5
IF 5 CHAN 1 STK LL of 2145+067.ICL001.5



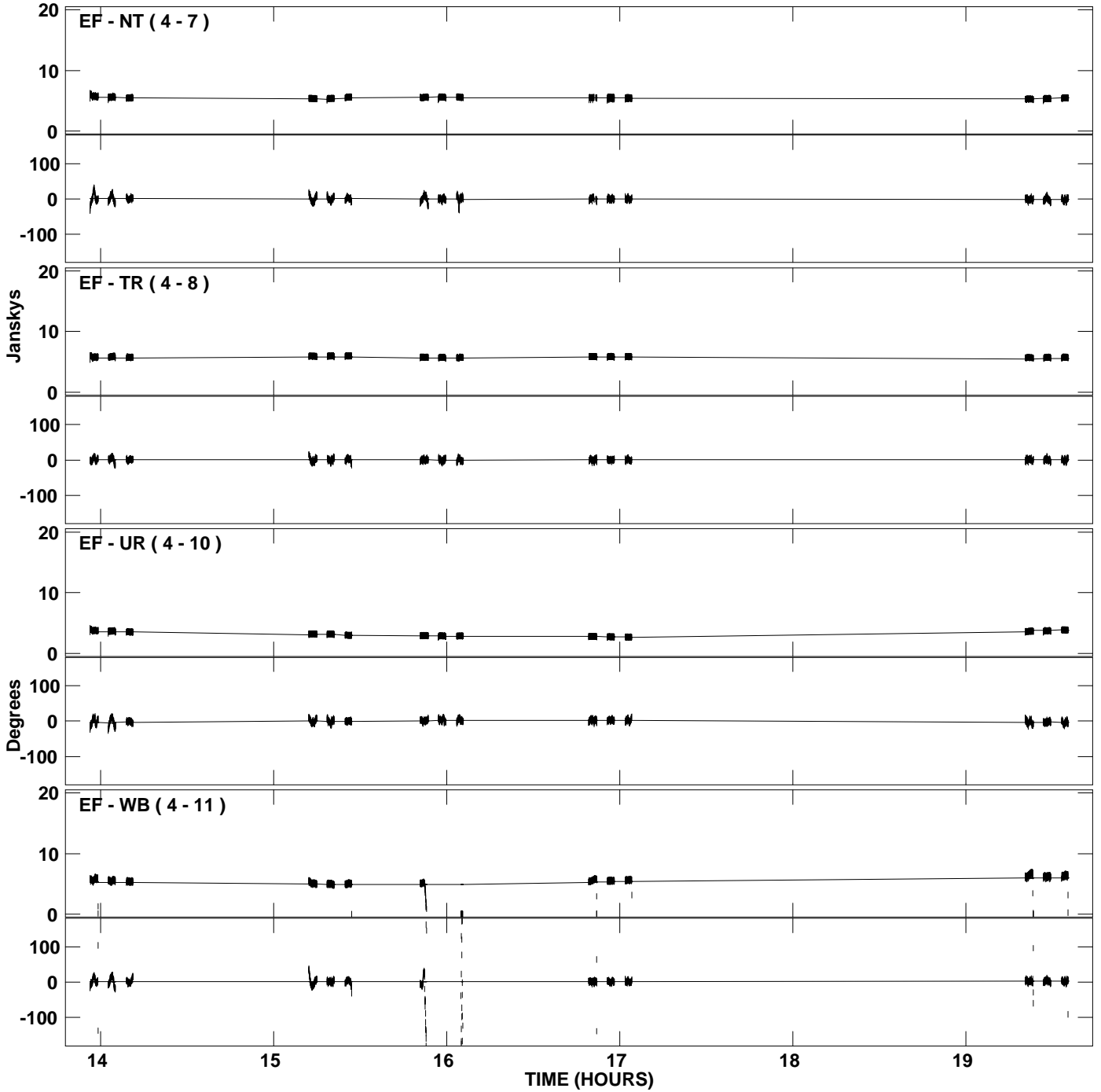
PLot file version 13 created 24-MAR-2009 17:57:47
Amplitude and Phase vs Time for 2145+067.MULTI.1 CL # 5
IF 5 CHAN 1 STK LL of 2145+067.ICL001.5



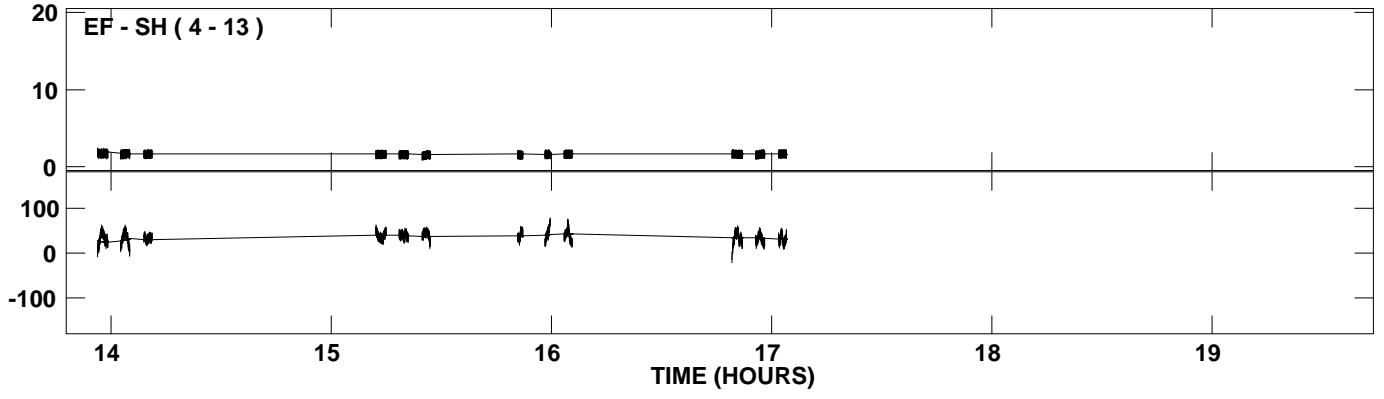
PLot file version 14 created 24-MAR-2009 17:57:48
Amplitude andPhase vs Time for 2145+067.MULTI.1 CL # 5
IF 6 CHAN 1 STK LL of 2145+067.ICL001.5



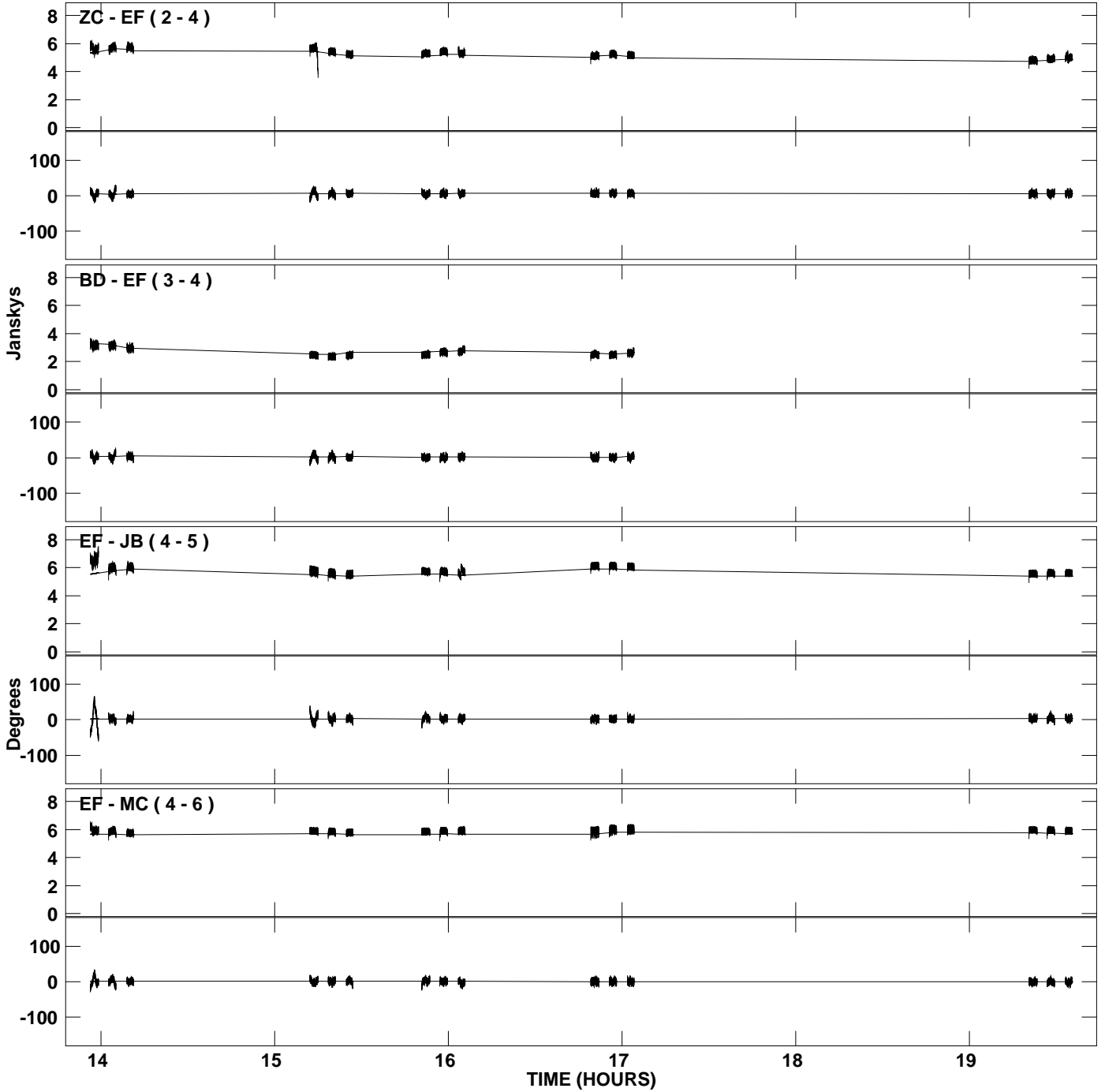
PLot file version 15 created 24-MAR-2009 17:57:48
Amplitude and Phase vs Time for 2145+067.MULTI.1 CL # 5
IF 6 CHAN 1 STK LL of 2145+067.ICL001.5



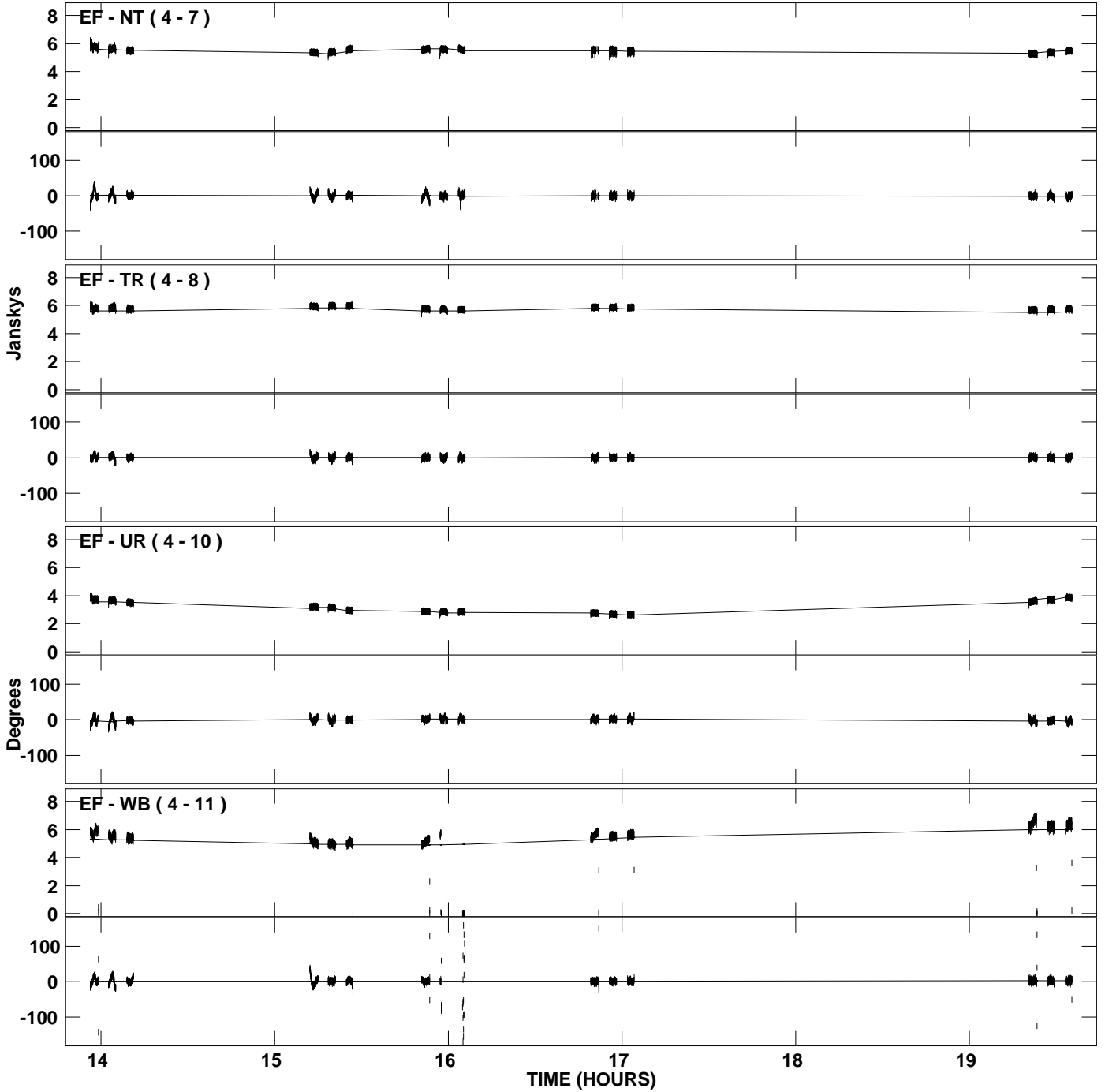
PLot file version 16 created 24-MAR-2009 17:57:48
Amplitude and Phase vs Time for 2145+067.MULTI.1 CL # 5
IF 6 CHAN 1 STK LL of 2145+067.ICL001.5



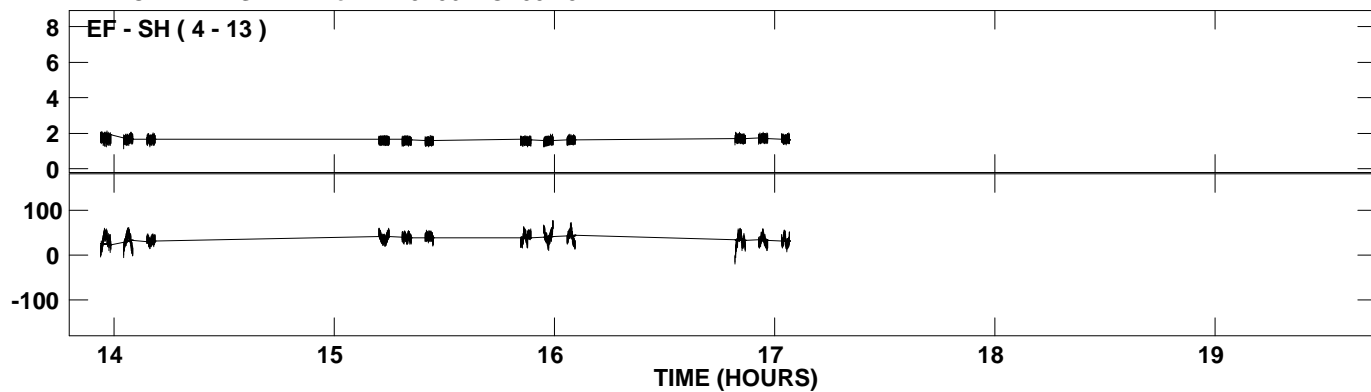
PLot file version 17 created 24-MAR-2009 17:57:48
Amplitude and Phase vs Time for 2145+067.MULTI.1 CL # 5
IF 7 CHAN 1 STK LL of 2145+067.ICL001.5



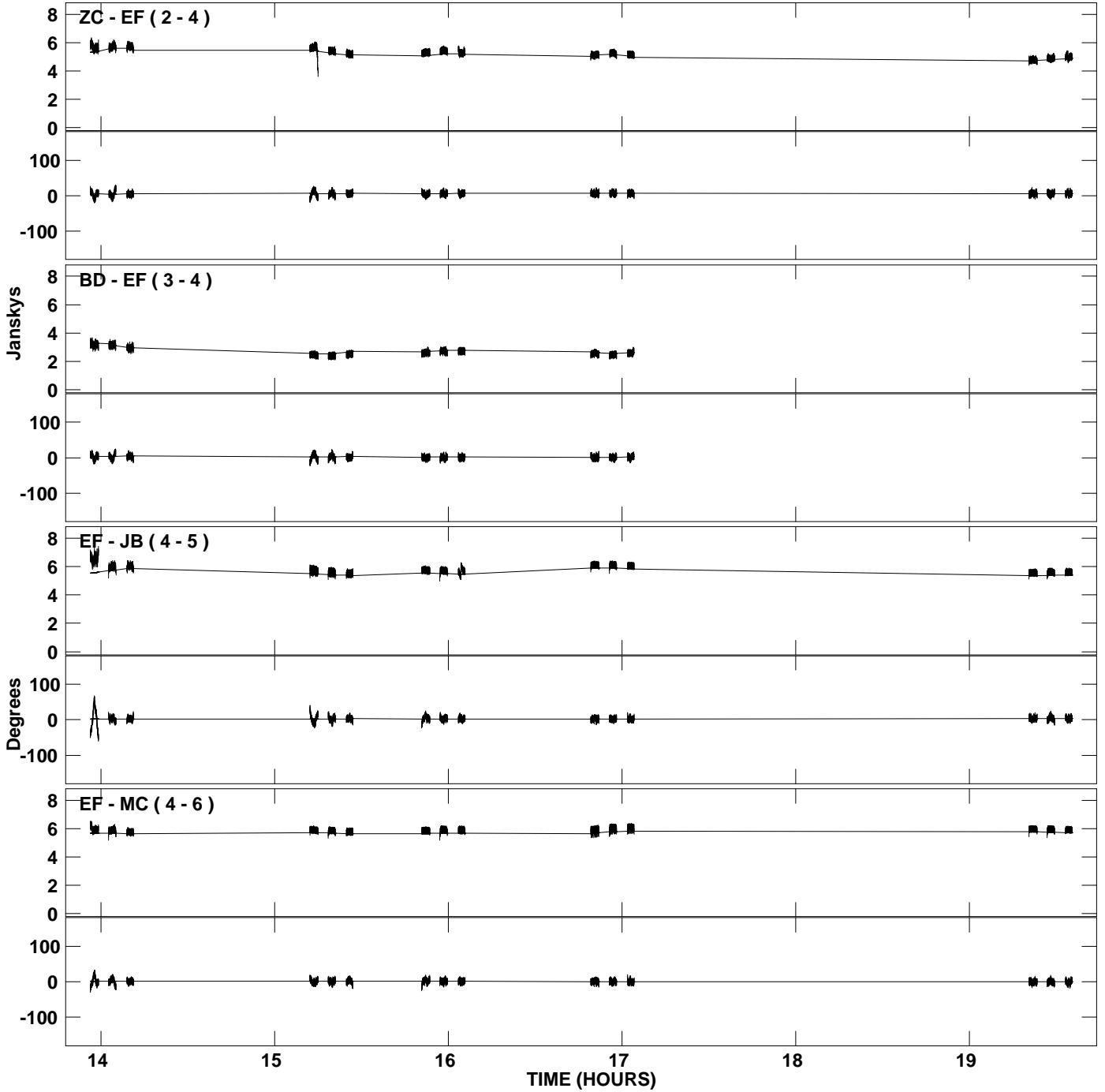
PLot file version 18 created 24-MAR-2009 17:57:48
Amplitude andPhase vs Time for 2145+067.MULTI.1 CL # 5
IF 7 CHAN 1 STK LL of 2145+067.ICL001.5



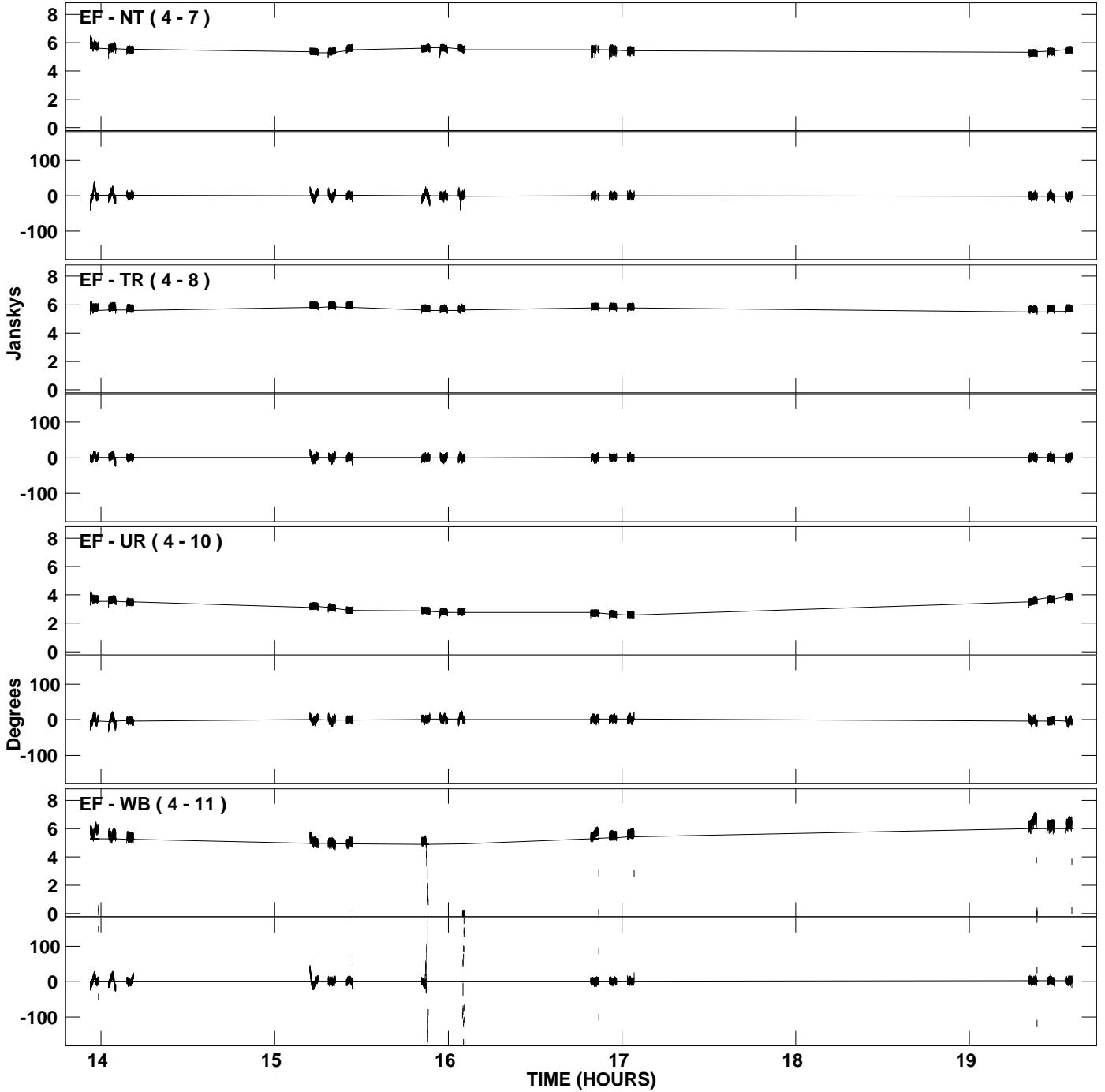
PLot file version 19 created 24-MAR-2009 17:57:48
Amplitude and Phase vs Time for 2145+067.MULTI.1 CL # 5
IF 7 CHAN 1 STK LL of 2145+067.ICL001.5



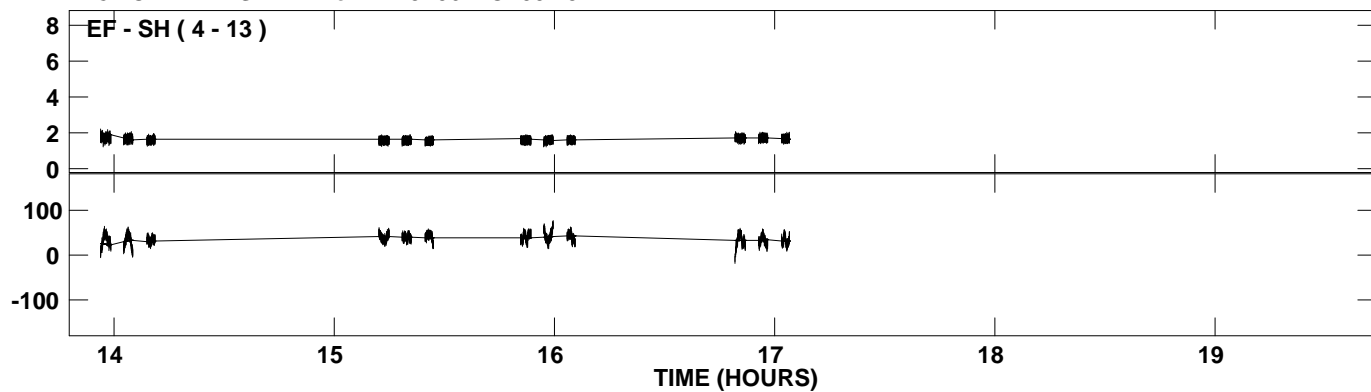
PLot file version 20 created 24-MAR-2009 17:57:49
Amplitude andPhase vs Time for 2145+067.MULTI.1 CL # 5
IF 8 CHAN 1 STK LL of 2145+067.ICL001.5



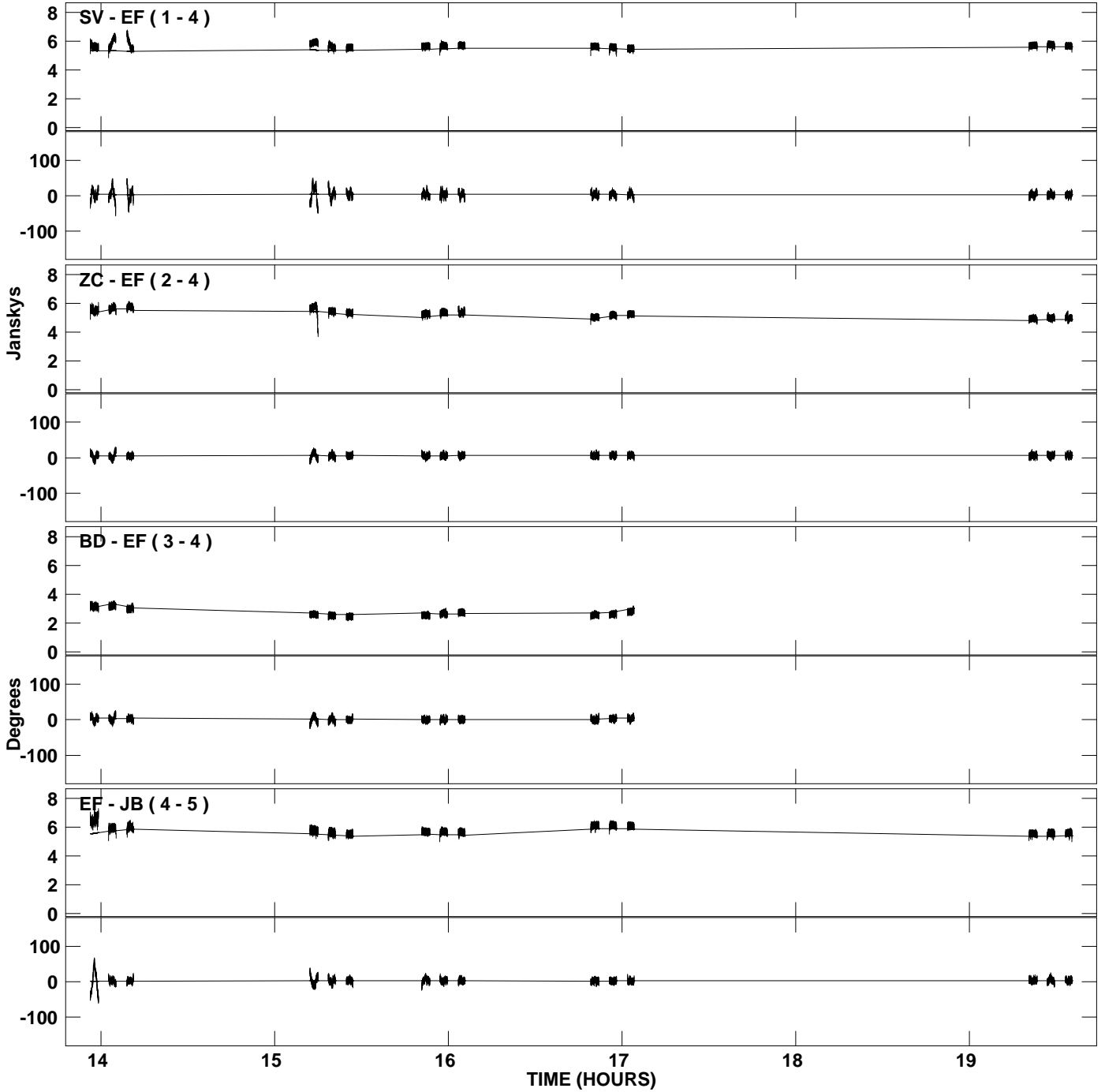
PLot file version 21 created 24-MAR-2009 17:57:49
Amplitude and Phase vs Time for 2145+067.MULTI.1 CL # 5
IF 8 CHAN 1 STK LL of 2145+067.ICL001.5



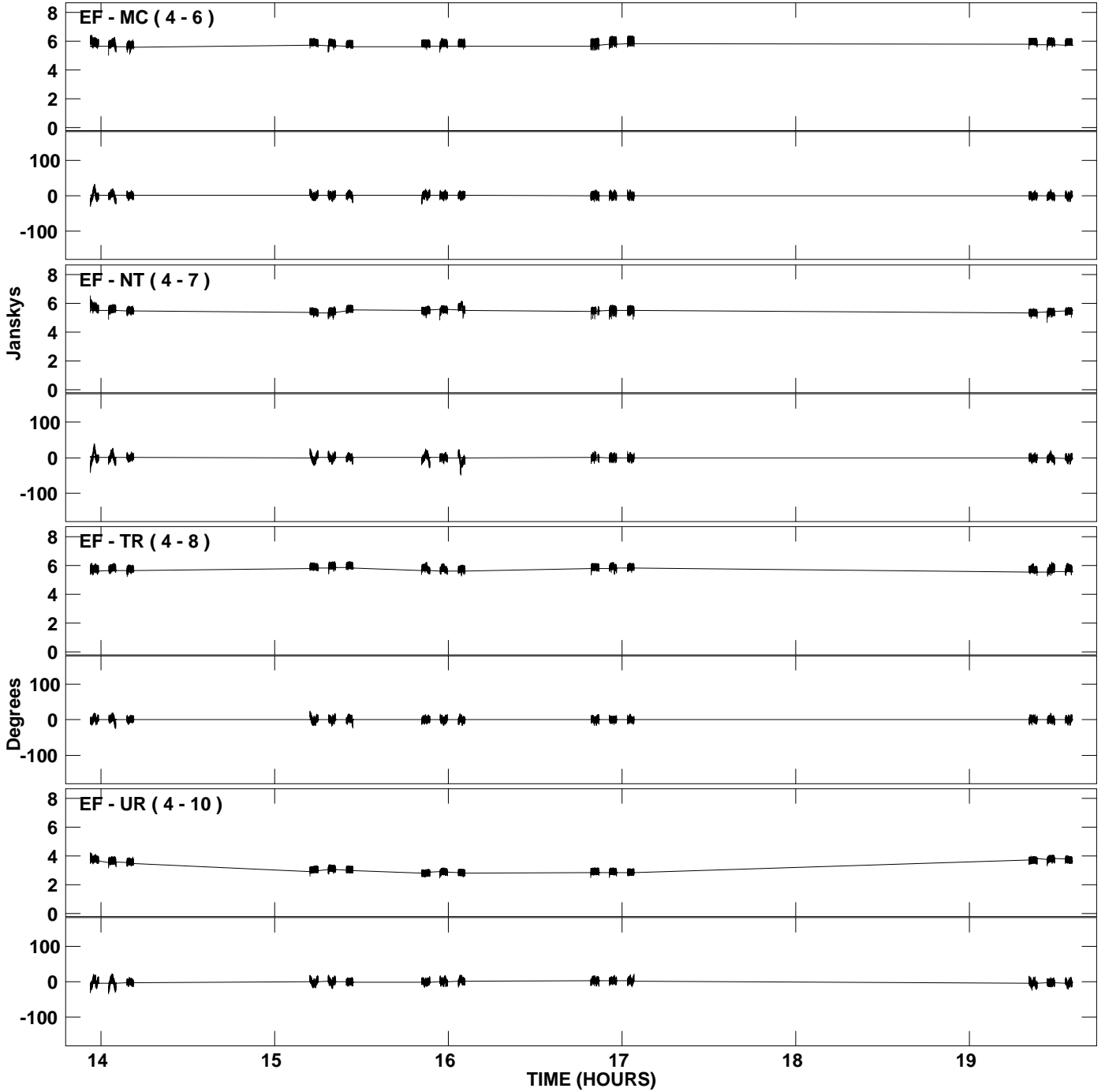
PLot file version 22 created 24-MAR-2009 17:57:49
Amplitude andPhase vs Time for 2145+067.MULTI.1 CL # 5
IF 8 CHAN 1 STK LL of 2145+067.ICL001.5



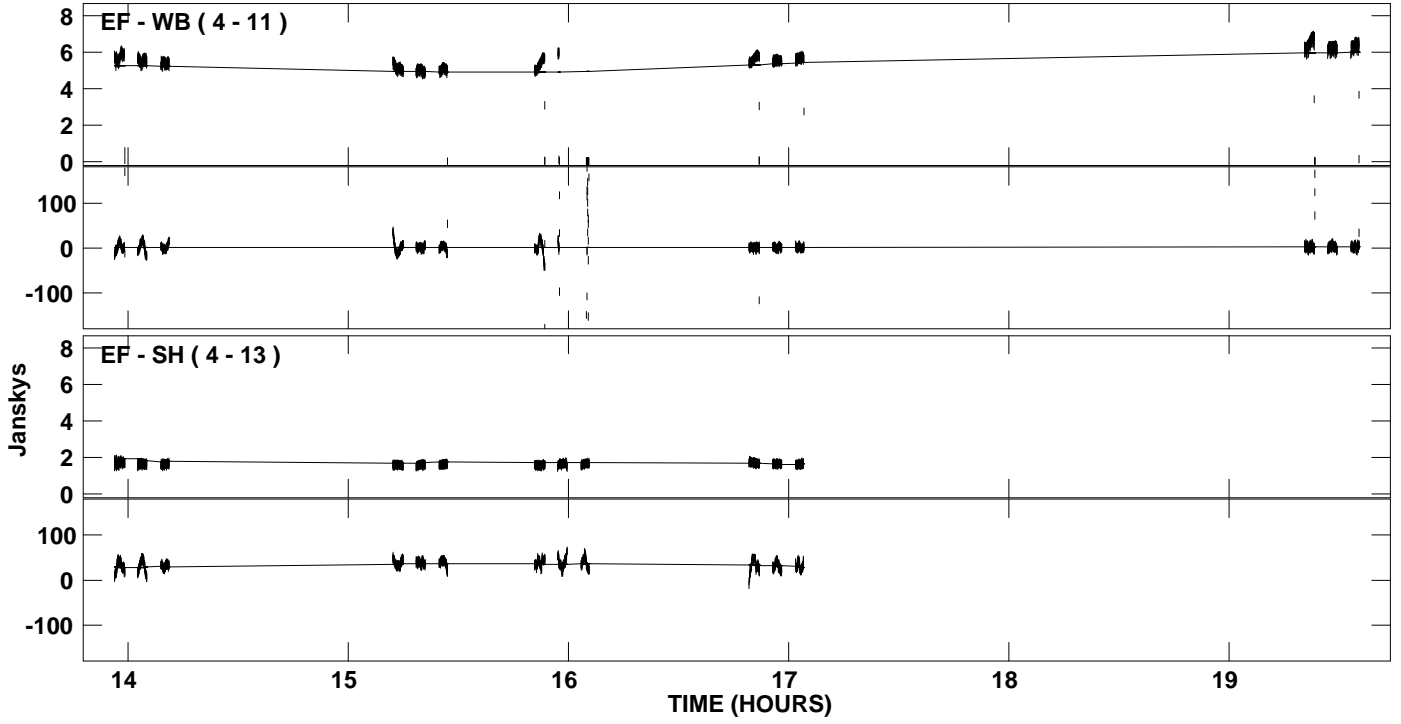
PLot file version 23 created 24-MAR-2009 17:57:49
Amplitude andPhase vs Time for 2145+067.MULTI.1 CL # 5
IF 1 CHAN 1 STK RR of 2145+067.ICL001.5



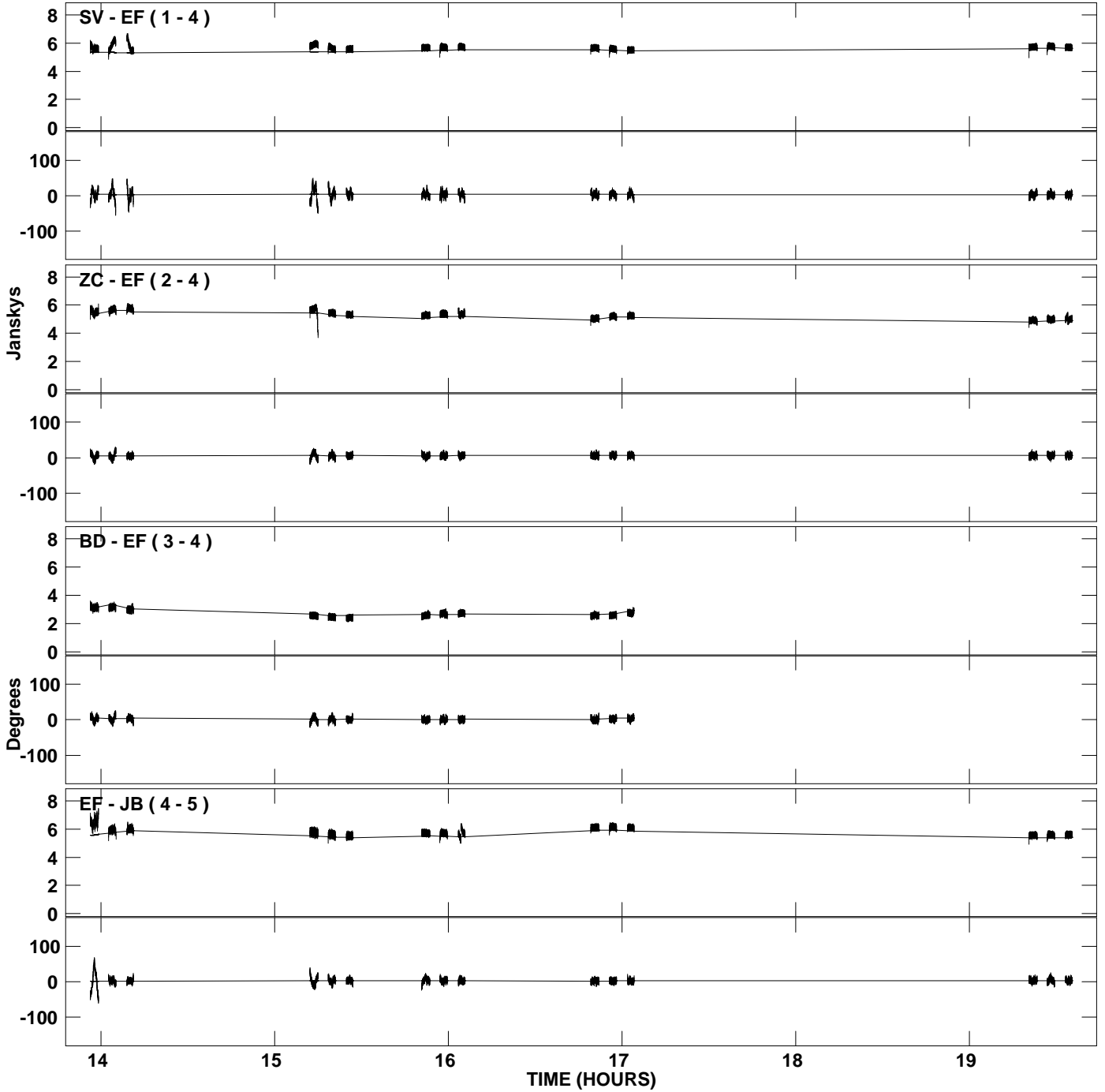
PLot file version 24 created 24-MAR-2009 17:57:49
Amplitude andPhase vs Time for 2145+067.MULTI.1 CL # 5
IF 1 CHAN 1 STK RR of 2145+067.ICL001.5



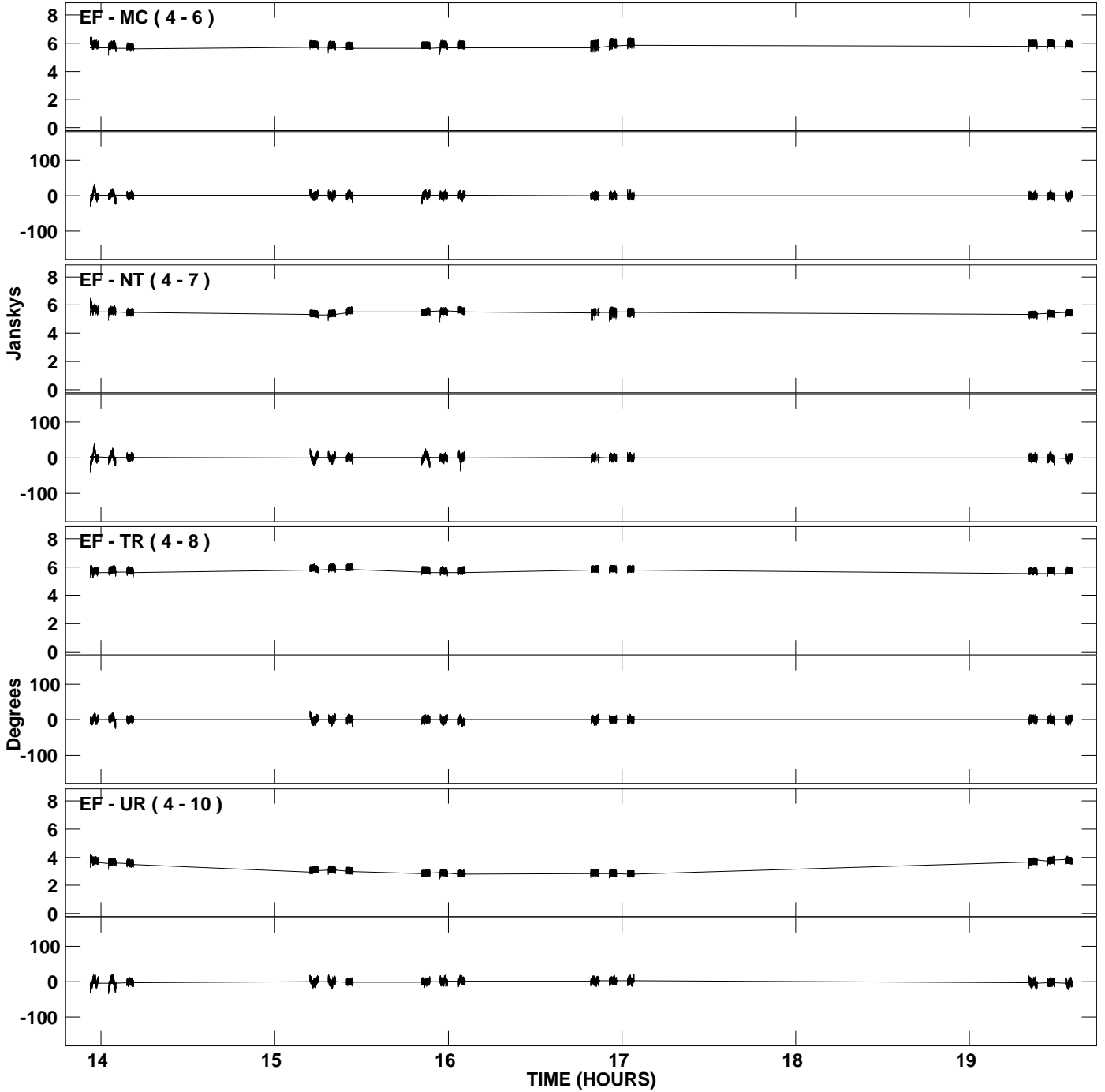
PLot file version 25 created 24-MAR-2009 17:57:49
Amplitude andPhase vs Time for 2145+067.MULTI.1 CL # 5
IF 1 CHAN 1 STK RR of 2145+067.ICL001.5



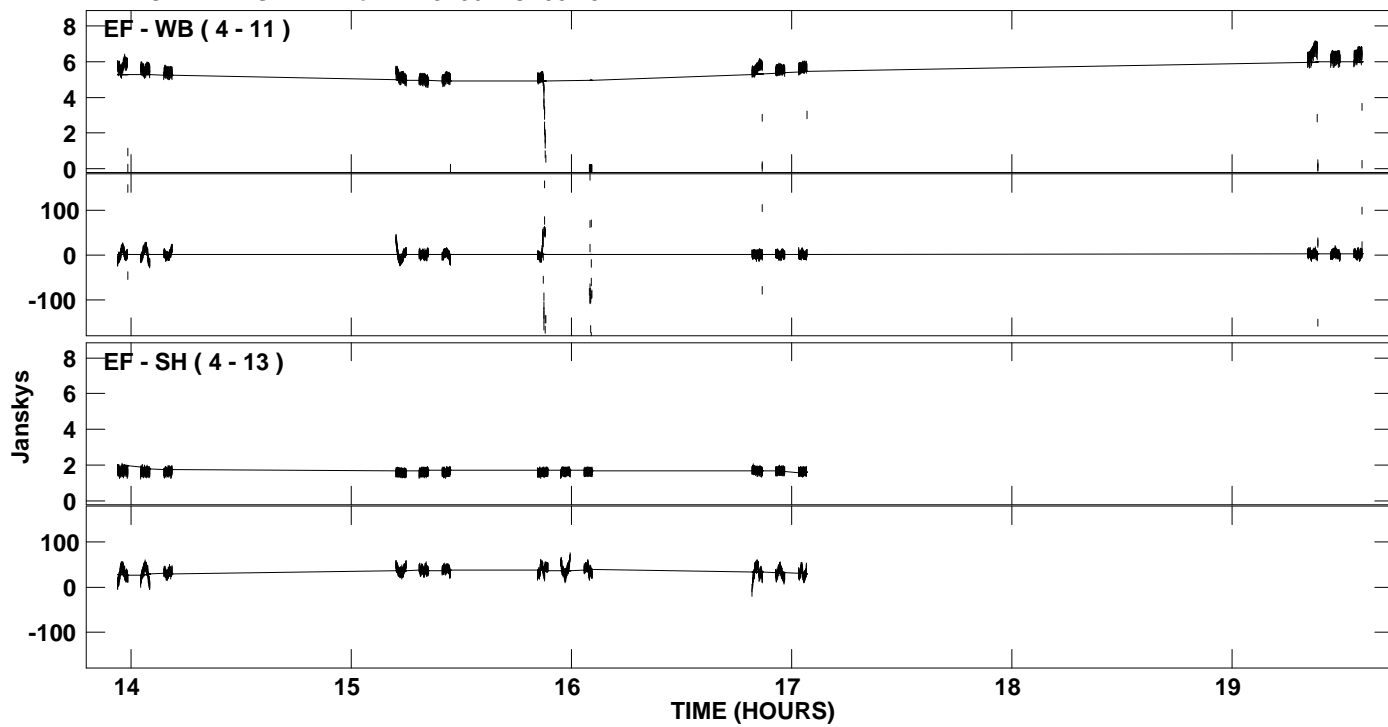
PLot file version 26 created 24-MAR-2009 17:57:50
Amplitude and Phase vs Time for 2145+067.MULTI.1 CL # 5
IF 2 CHAN 1 STK RR of 2145+067.ICL001.5



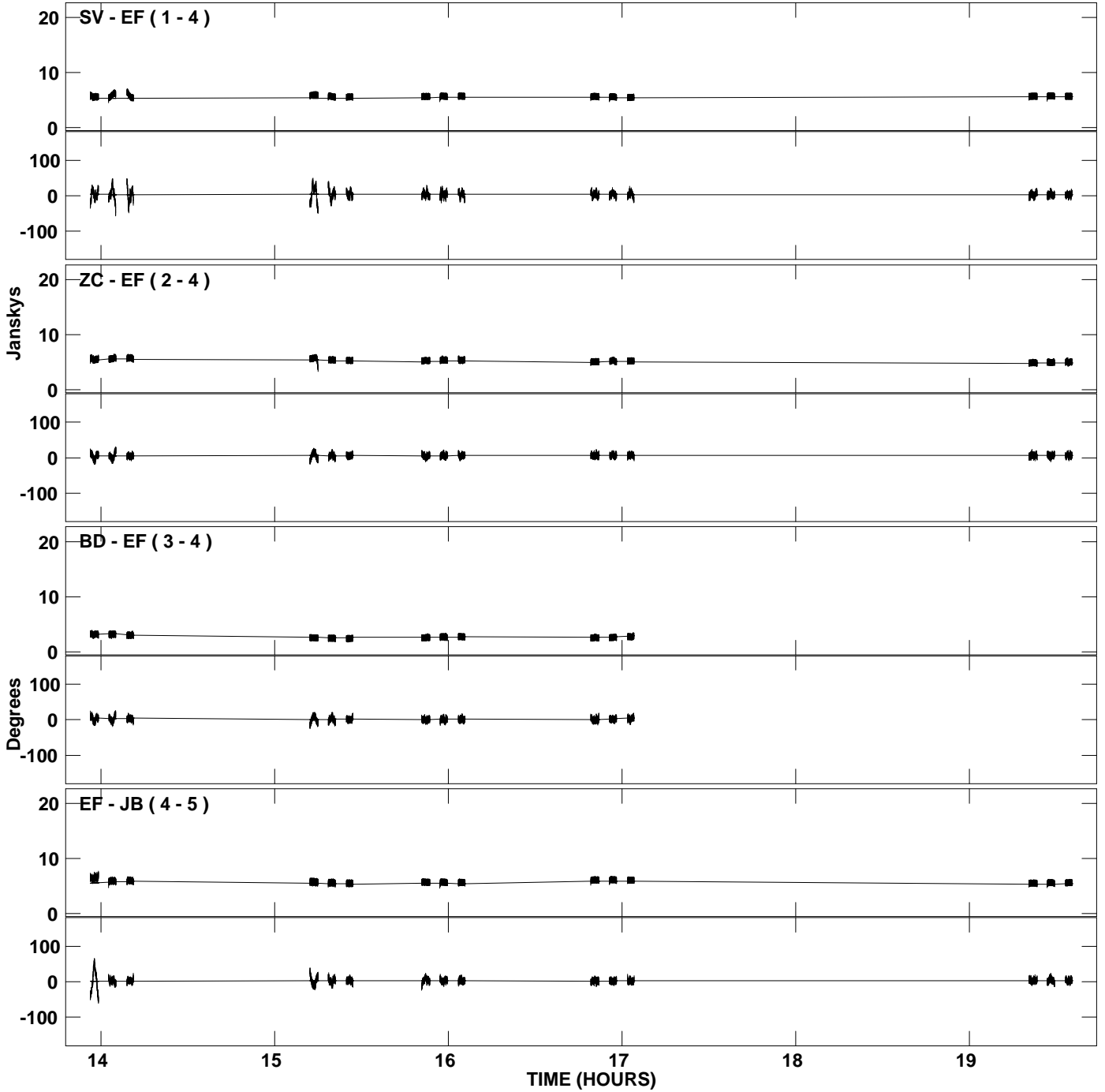
PLot file version 27 created 24-MAR-2009 17:57:50
Amplitude and Phase vs Time for 2145+067.MULTI.1 CL # 5
IF 2 CHAN 1 STK RR of 2145+067.ICL001.5



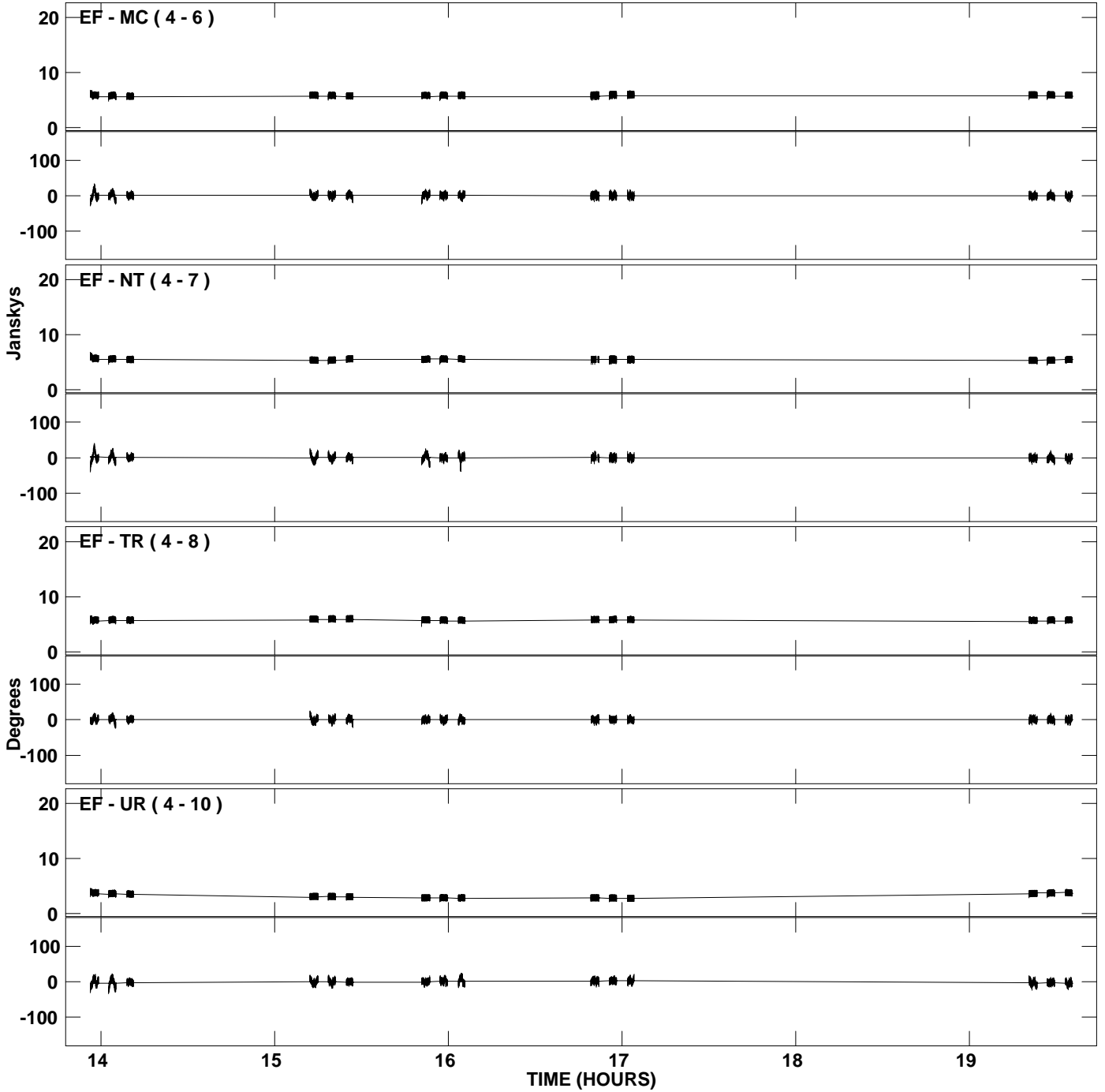
PLot file version 28 created 24-MAR-2009 17:57:50
Amplitude and Phase vs Time for 2145+067.MULTI.1 CL # 5
IF 2 CHAN 1 STK RR of 2145+067.ICL001.5



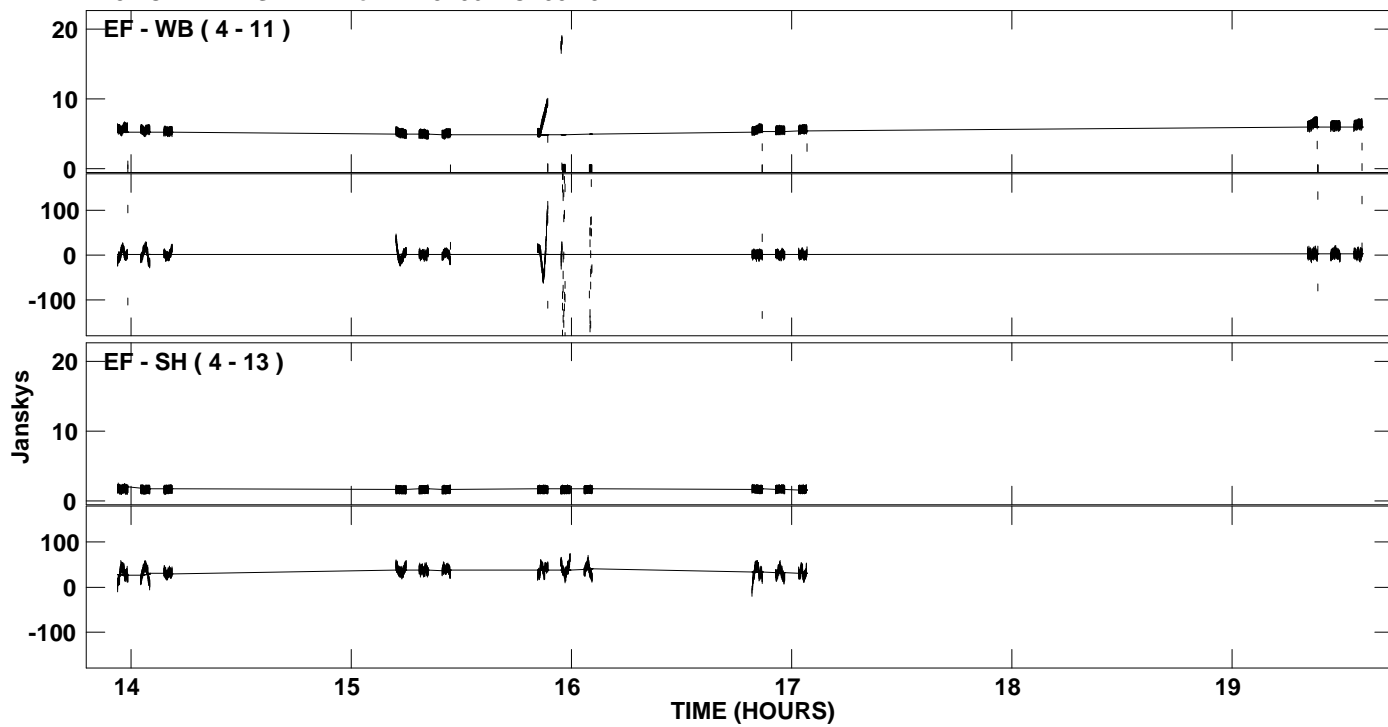
PLot file version 29 created 24-MAR-2009 17:57:51
Amplitude andPhase vs Time for 2145+067.MULTI.1 CL # 5
IF 3 CHAN 1 STK RR of 2145+067.ICL001.5



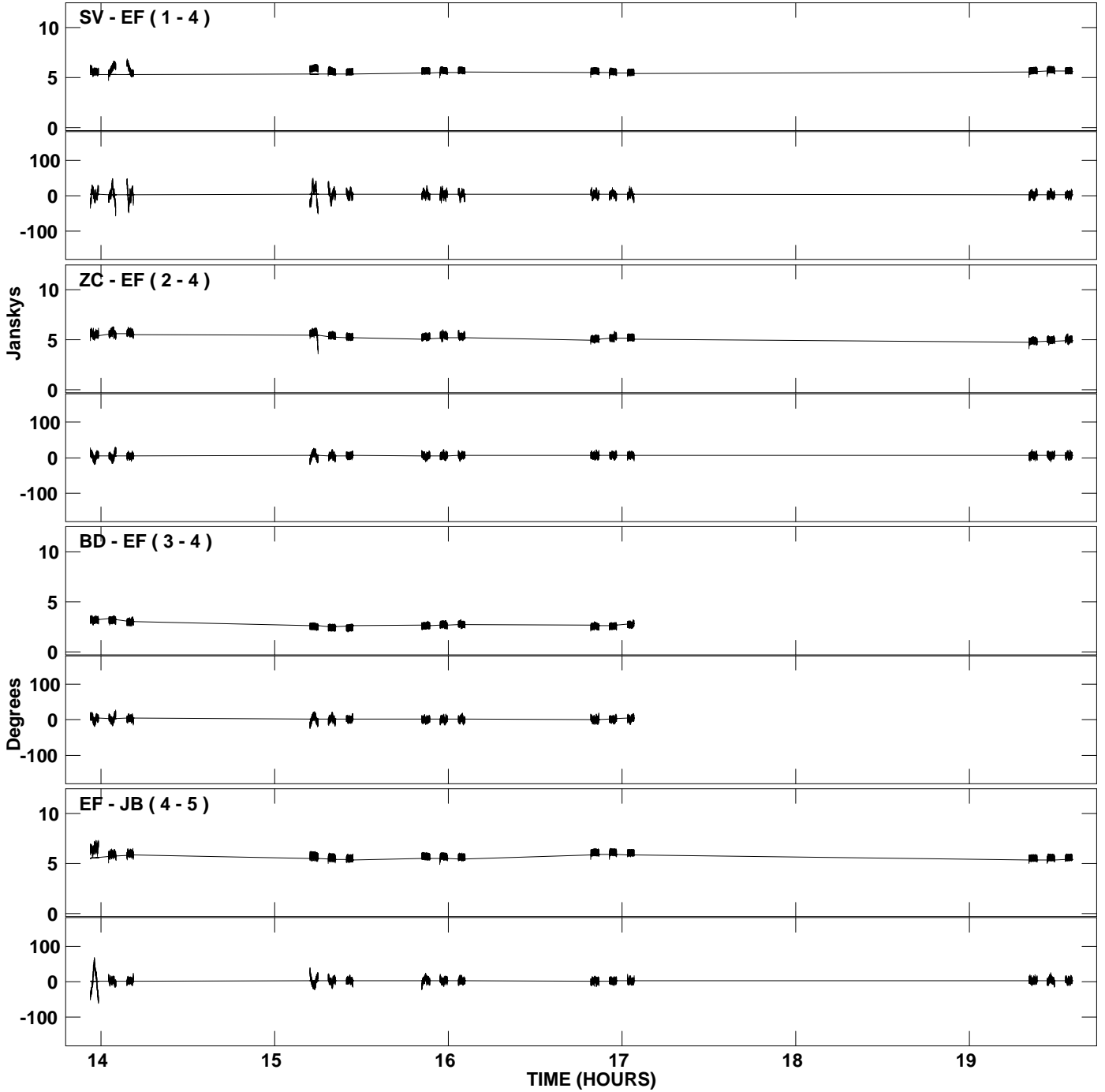
PLot file version 30 created 24-MAR-2009 17:57:51
Amplitude and Phase vs Time for 2145+067.MULTI.1 CL # 5
IF 3 CHAN 1 STK RR of 2145+067.ICL001.5



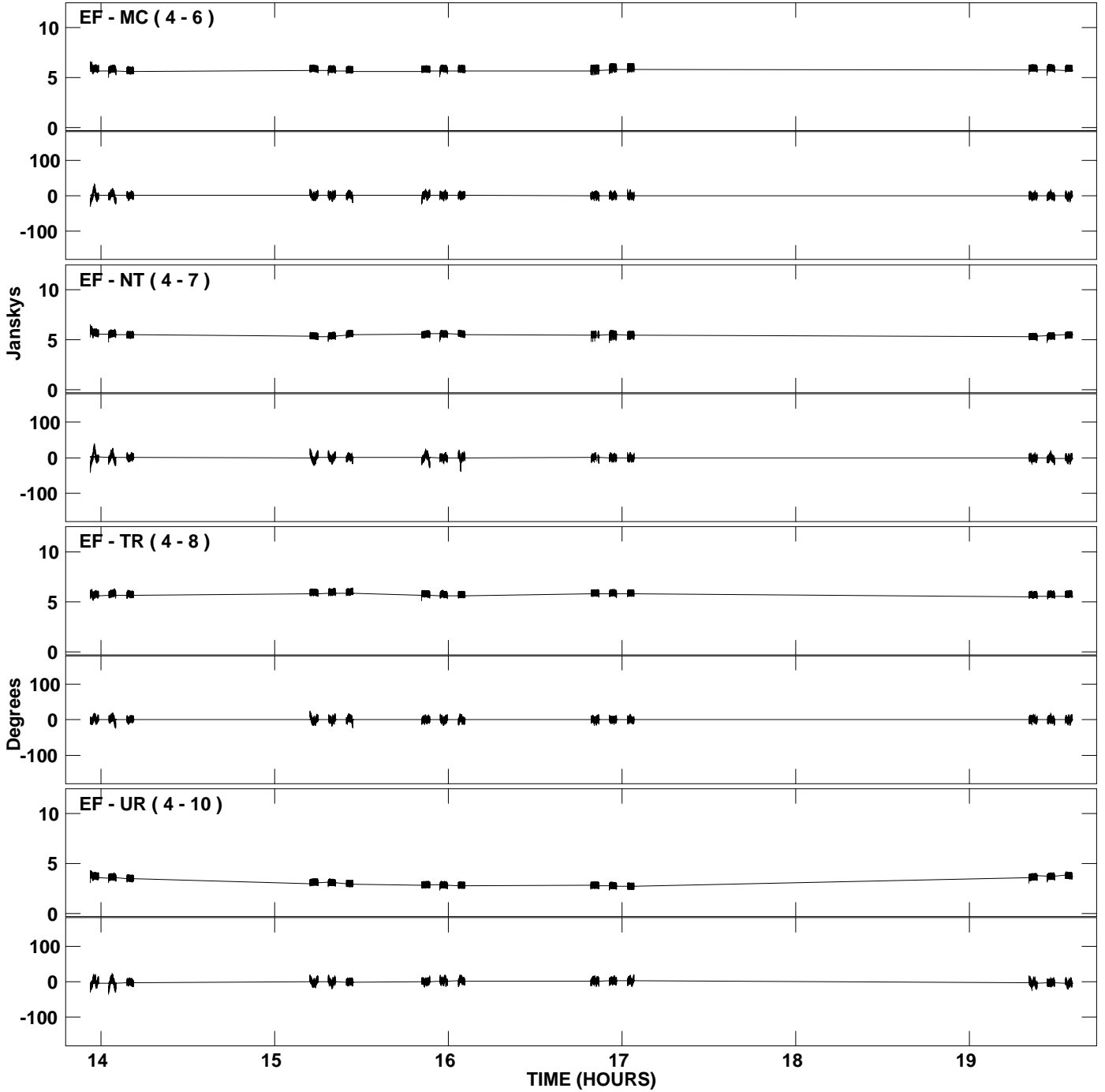
PLot file version 31 created 24-MAR-2009 17:57:51
Amplitude and Phase vs Time for 2145+067.MULTI.1 CL # 5
IF 3 CHAN 1 STK RR of 2145+067.ICL001.5



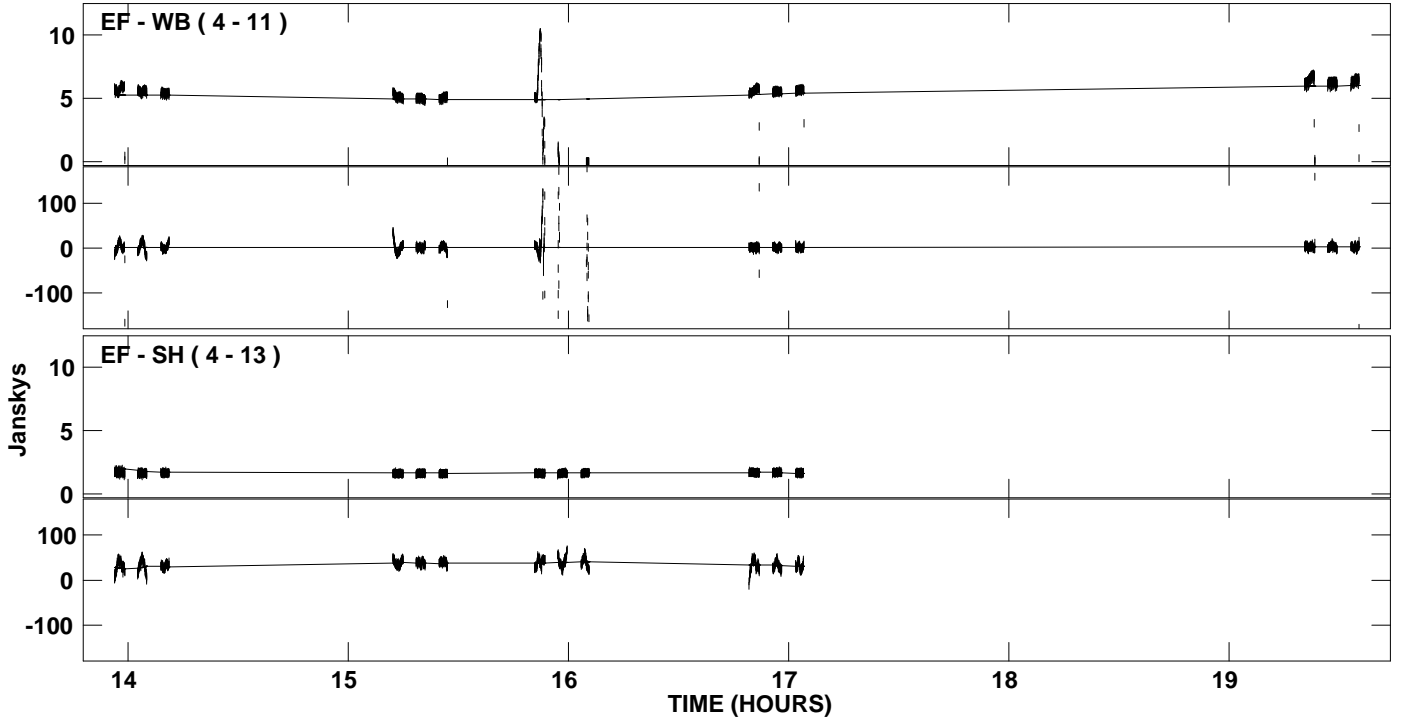
PLot file version 32 created 24-MAR-2009 17:57:51
Amplitude and Phase vs Time for 2145+067.MULTI.1 CL # 5
IF 4 CHAN 1 STK RR of 2145+067.ICL001.5



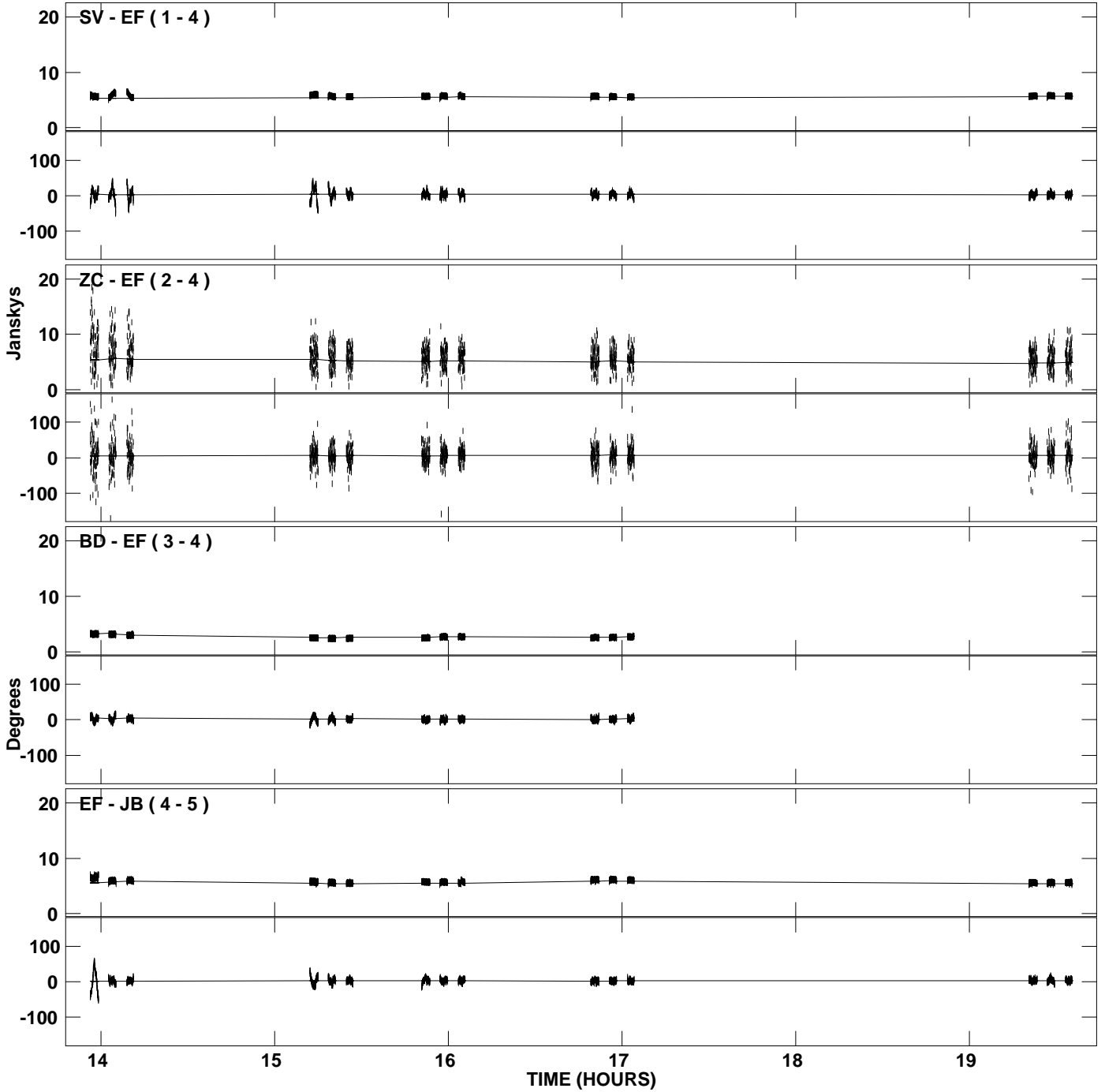
PLot file version 33 created 24-MAR-2009 17:57:51
Amplitude and Phase vs Time for 2145+067.MULTI.1 CL # 5
IF 4 CHAN 1 STK RR of 2145+067.ICL001.5



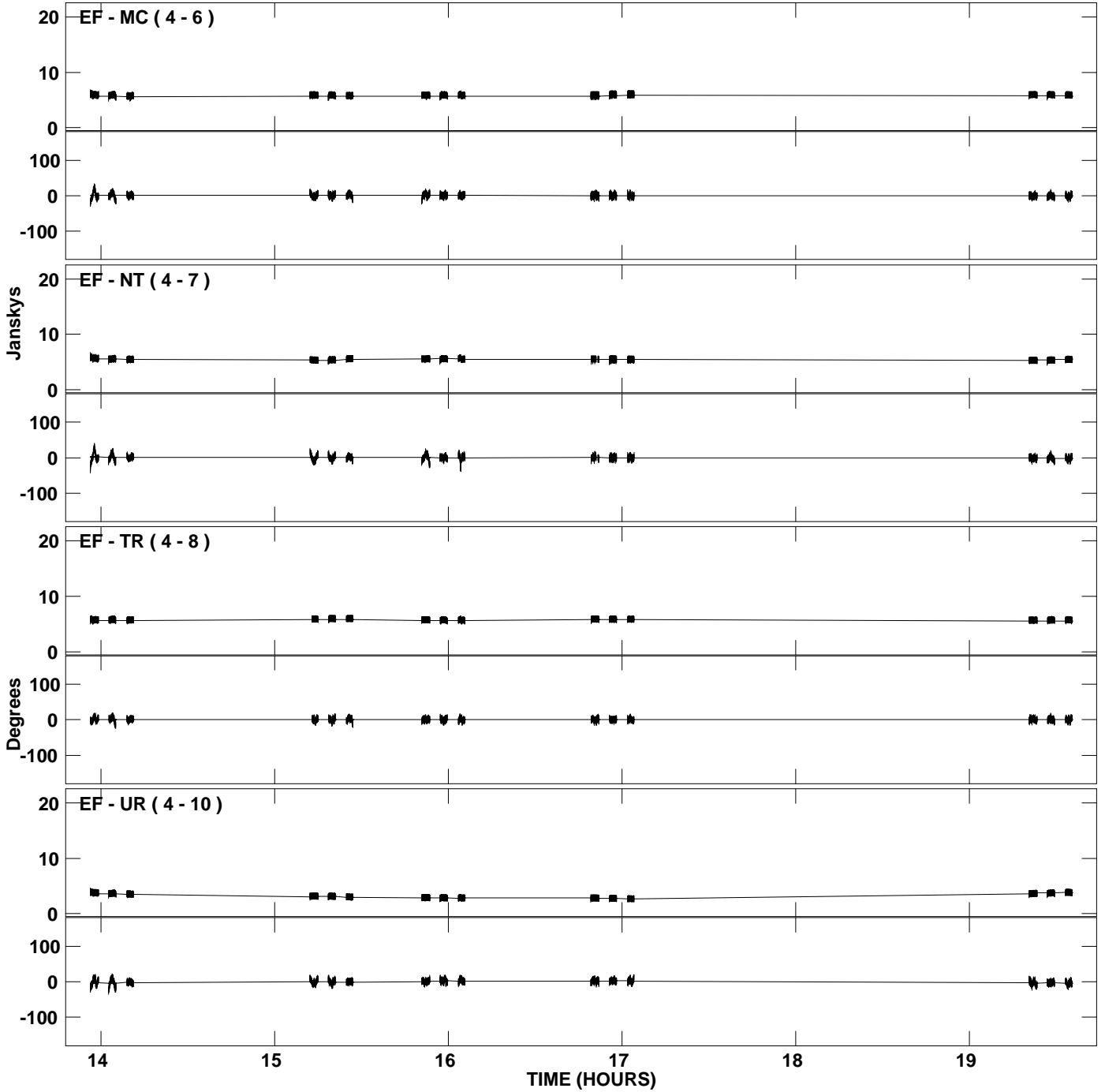
PLot file version 34 created 24-MAR-2009 17:57:51
Amplitude and Phase vs Time for 2145+067.MULTI.1 CL # 5
IF 4 CHAN 1 STK RR of 2145+067.ICL001.5



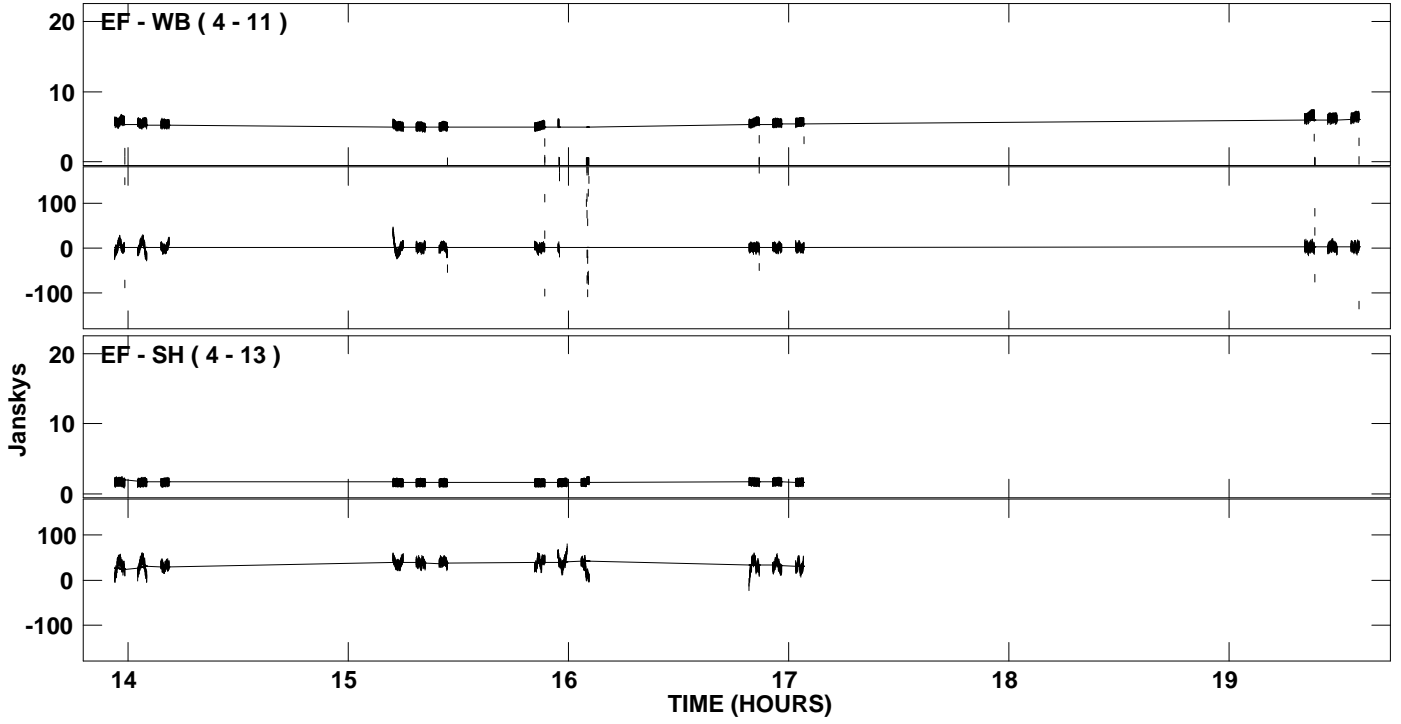
PLot file version 35 created 24-MAR-2009 17:57:52
Amplitude andPhase vs Time for 2145+067.MULTI.1 CL # 5
IF 5 CHAN 1 STK RR of 2145+067.ICL001.5



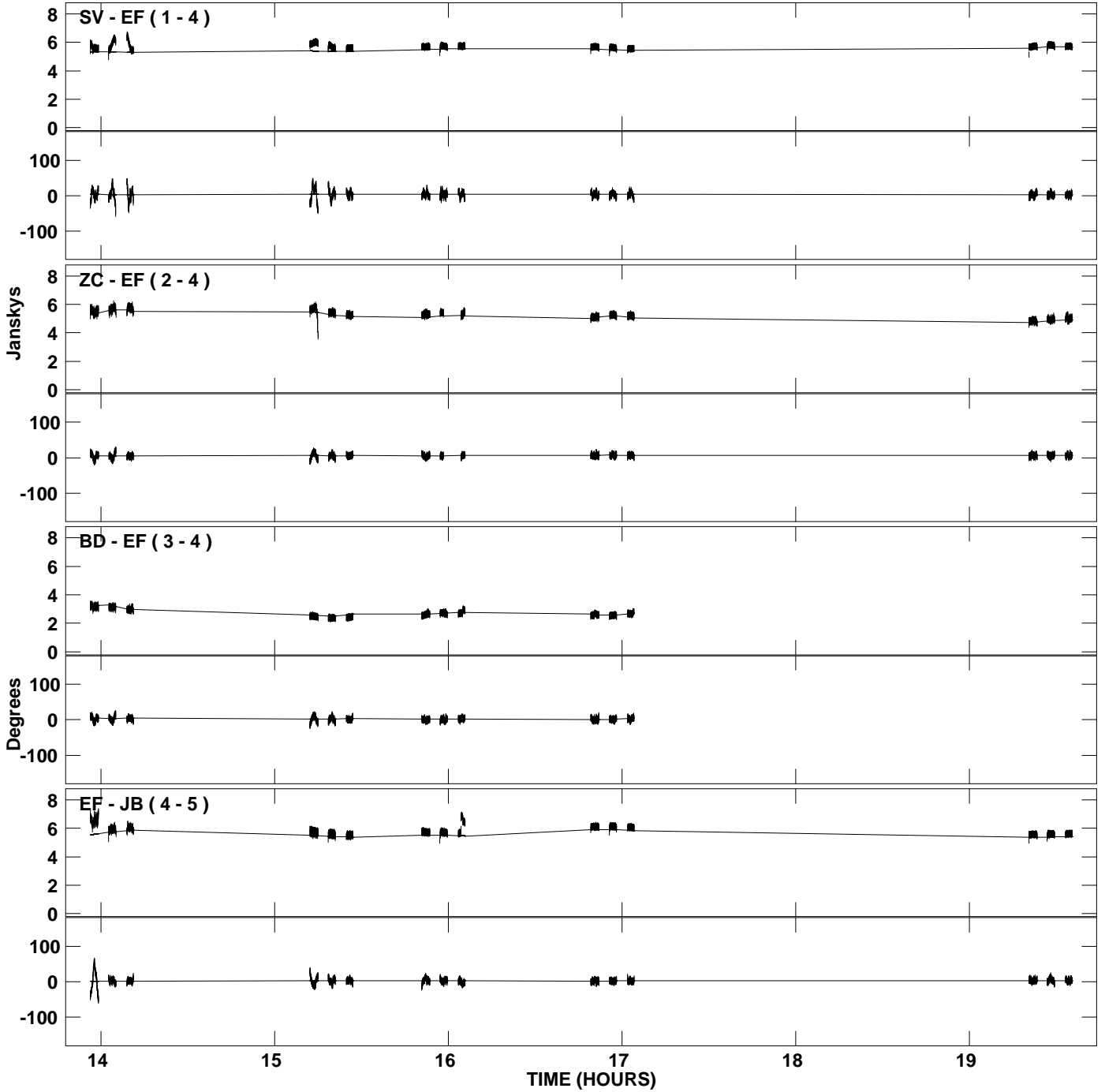
PLot file version 36 created 24-MAR-2009 17:57:52
Amplitude and Phase vs Time for 2145+067.MULTI.1 CL # 5
IF 5 CHAN 1 STK RR of 2145+067.ICL001.5



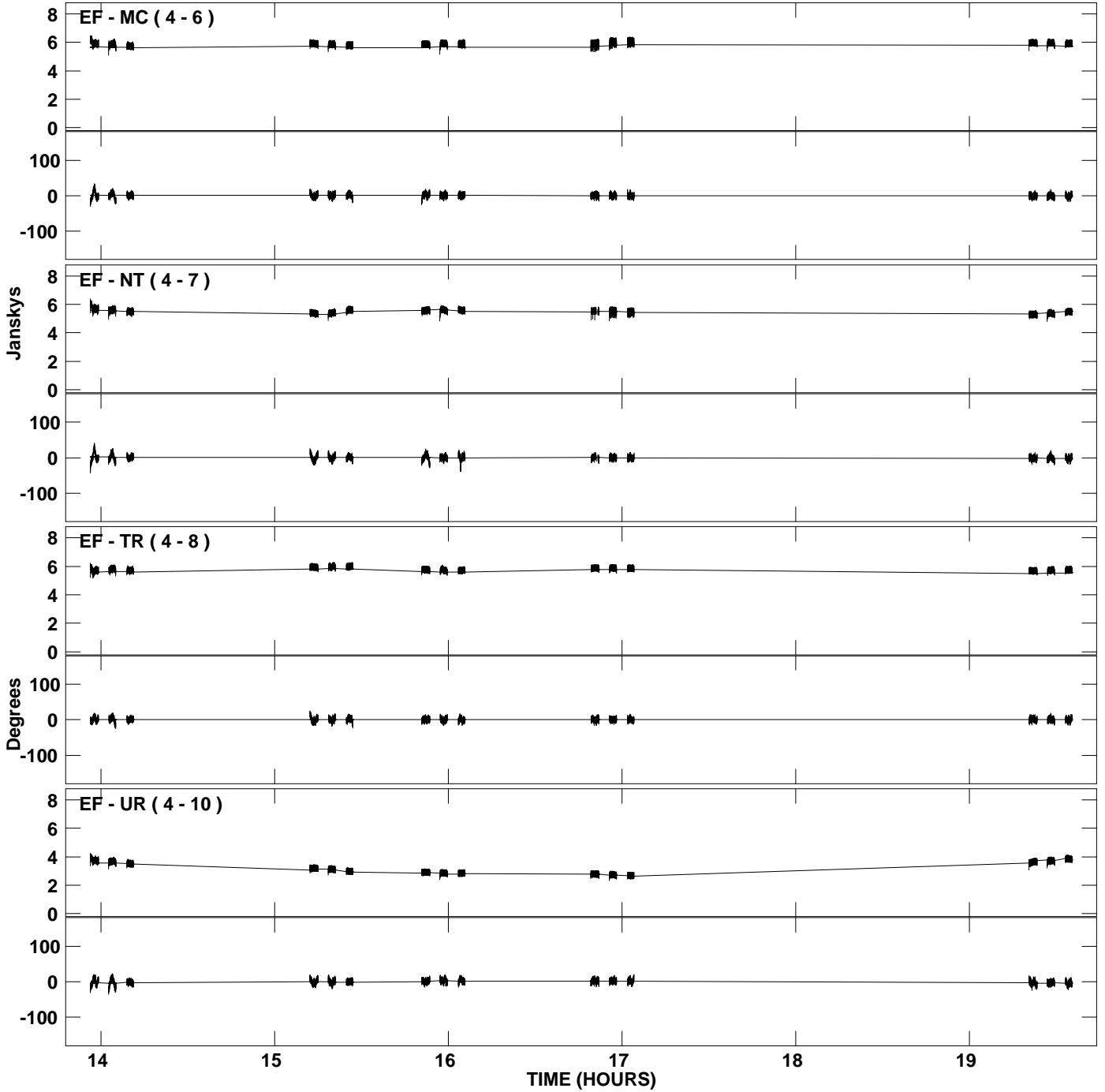
PLot file version 37 created 24-MAR-2009 17:57:52
Amplitude and Phase vs Time for 2145+067.MULTI.1 CL # 5
IF 5 CHAN 1 STK RR of 2145+067.ICL001.5



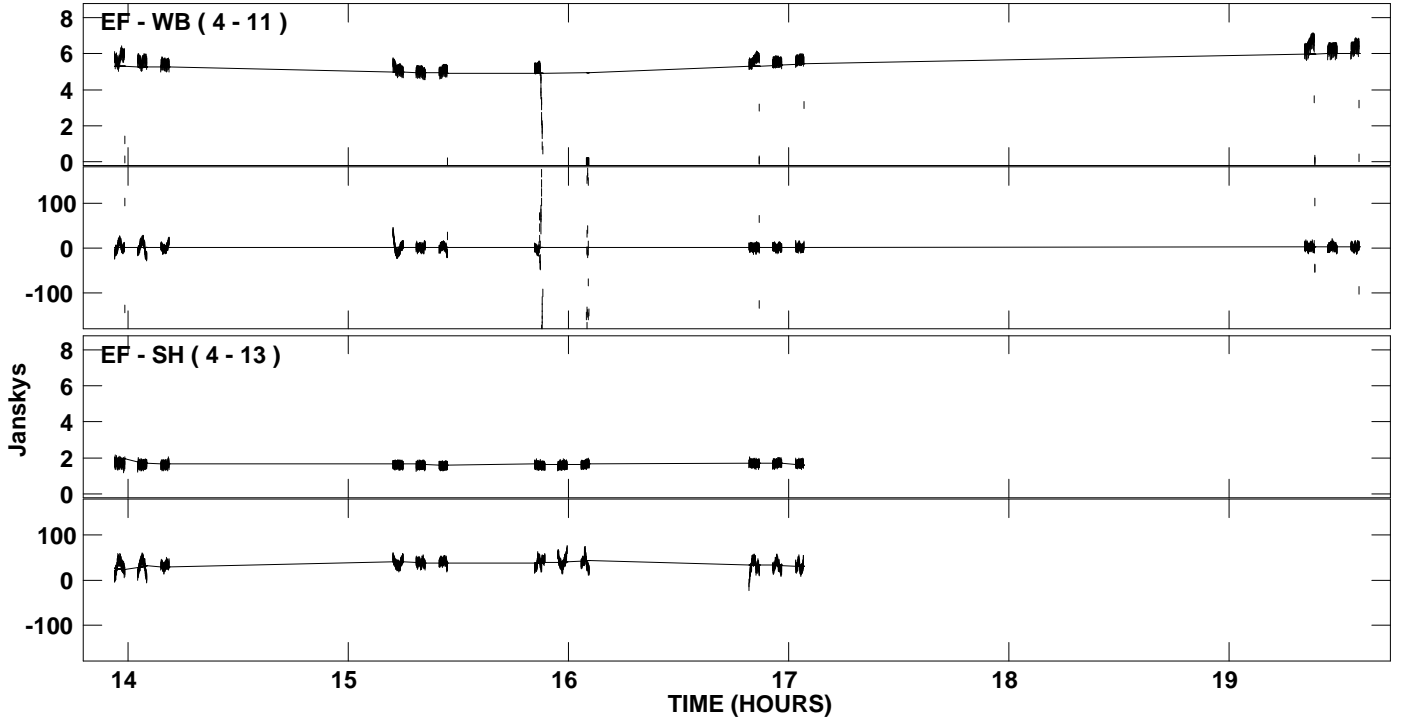
PLot file version 38 created 24-MAR-2009 17:57:53
Amplitude andPhase vs Time for 2145+067.MULTI.1 CL # 5
IF 6 CHAN 1 STK RR of 2145+067.ICL001.5



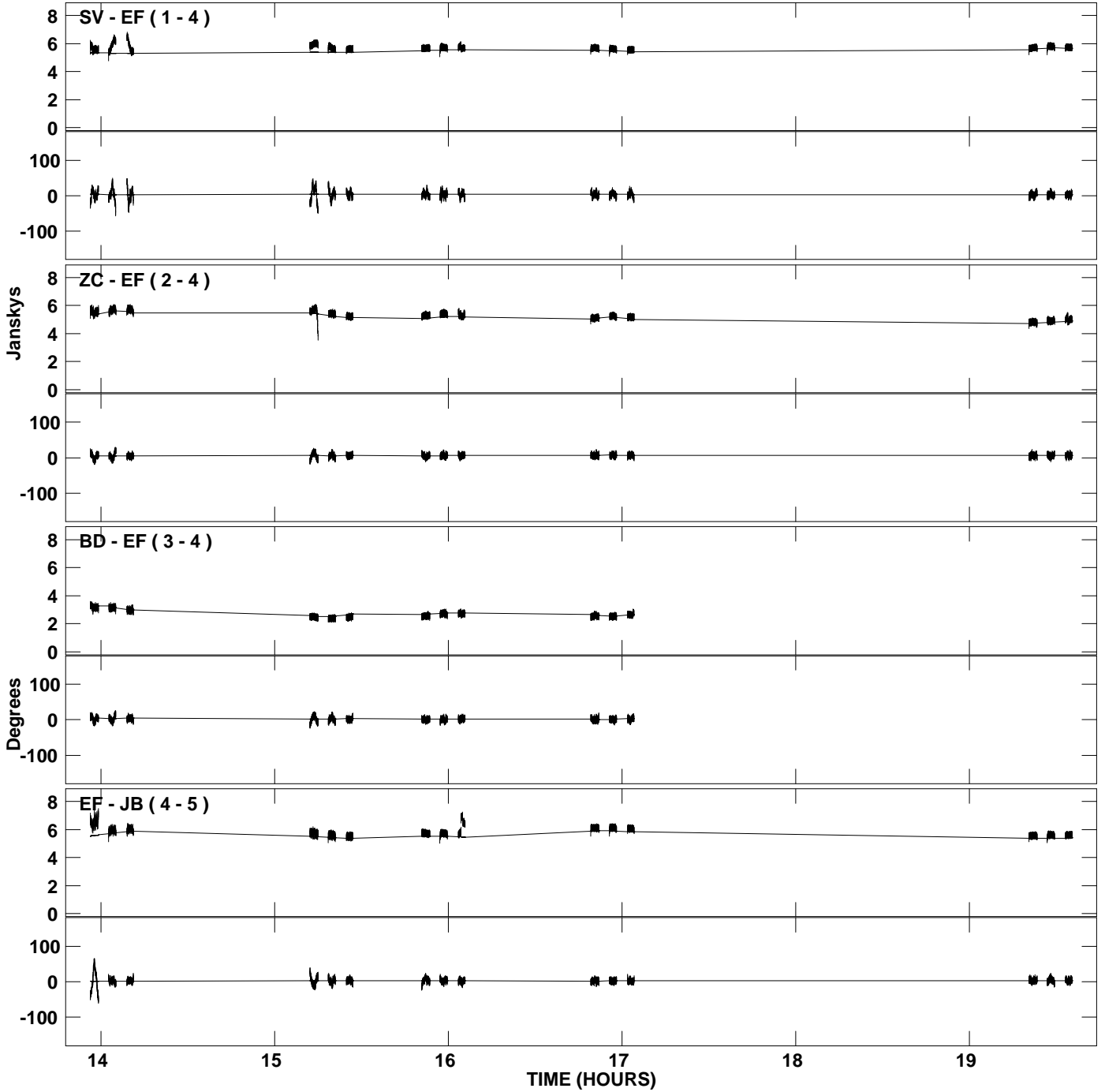
PLot file version 39 created 24-MAR-2009 17:57:53
Amplitude and Phase vs Time for 2145+067.MULTI.1 CL # 5
IF 6 CHAN 1 STK RR of 2145+067.ICL001.5



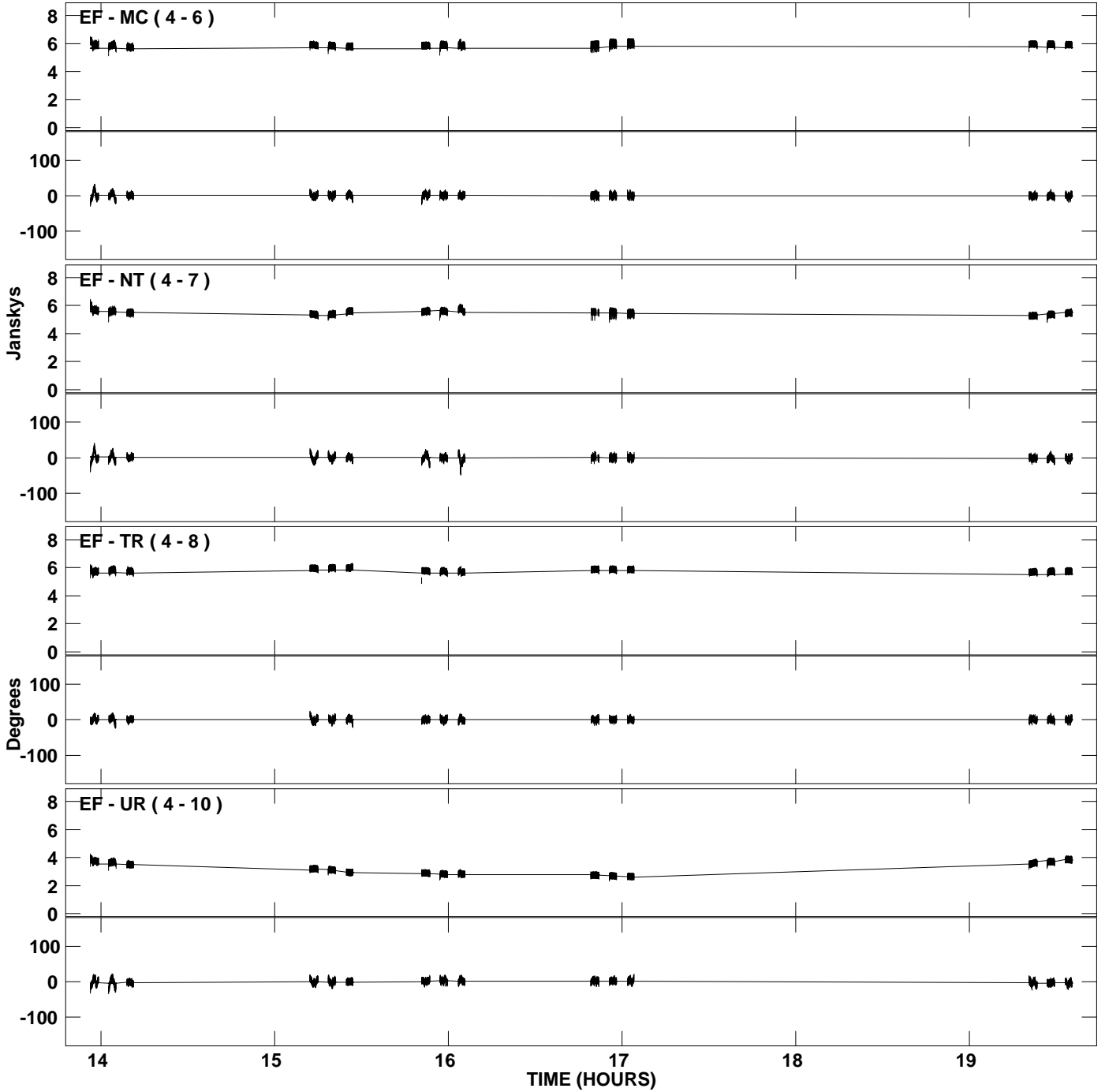
PLot file version 40 created 24-MAR-2009 17:57:53
Amplitude and Phase vs Time for 2145+067.MULTI.1 CL # 5
IF 6 CHAN 1 STK RR of 2145+067.ICL001.5



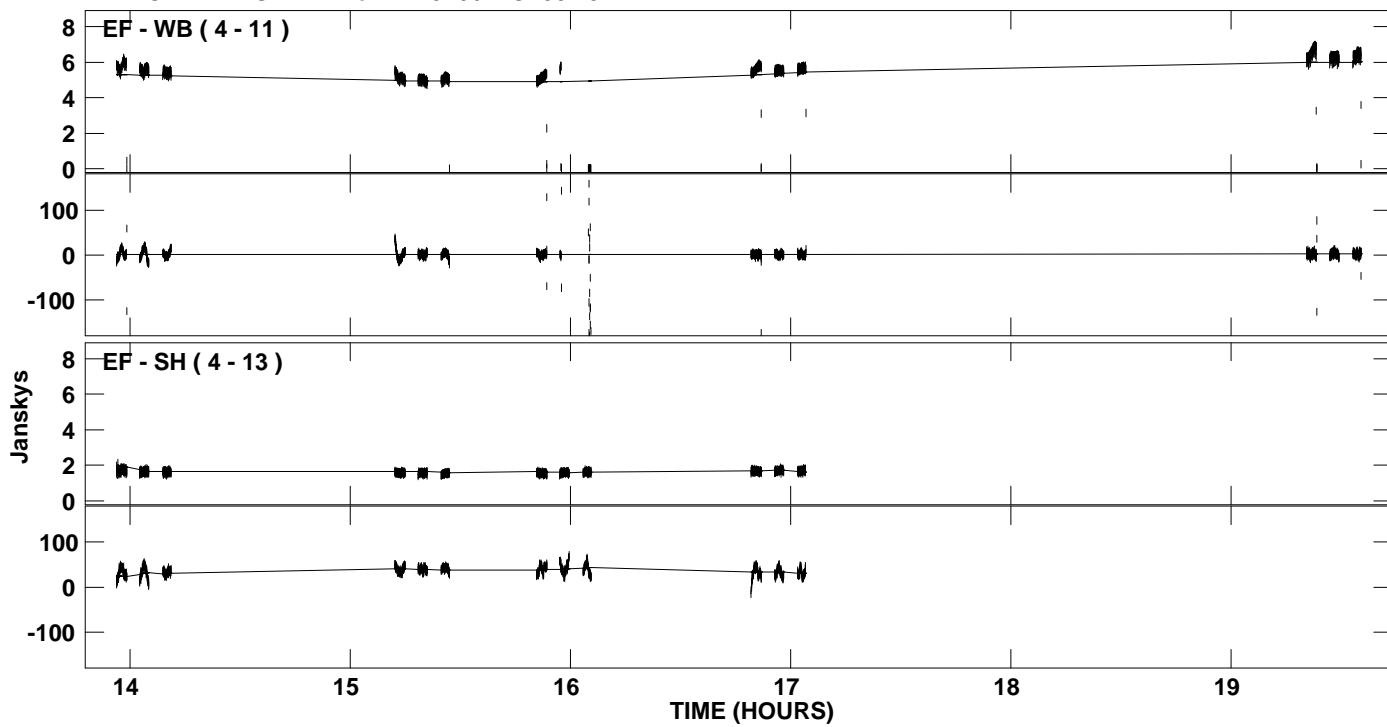
PLot file version 41 created 24-MAR-2009 17:57:53
Amplitude andPhase vs Time for 2145+067.MULTI.1 CL # 5
IF 7 CHAN 1 STK RR of 2145+067.ICL001.5



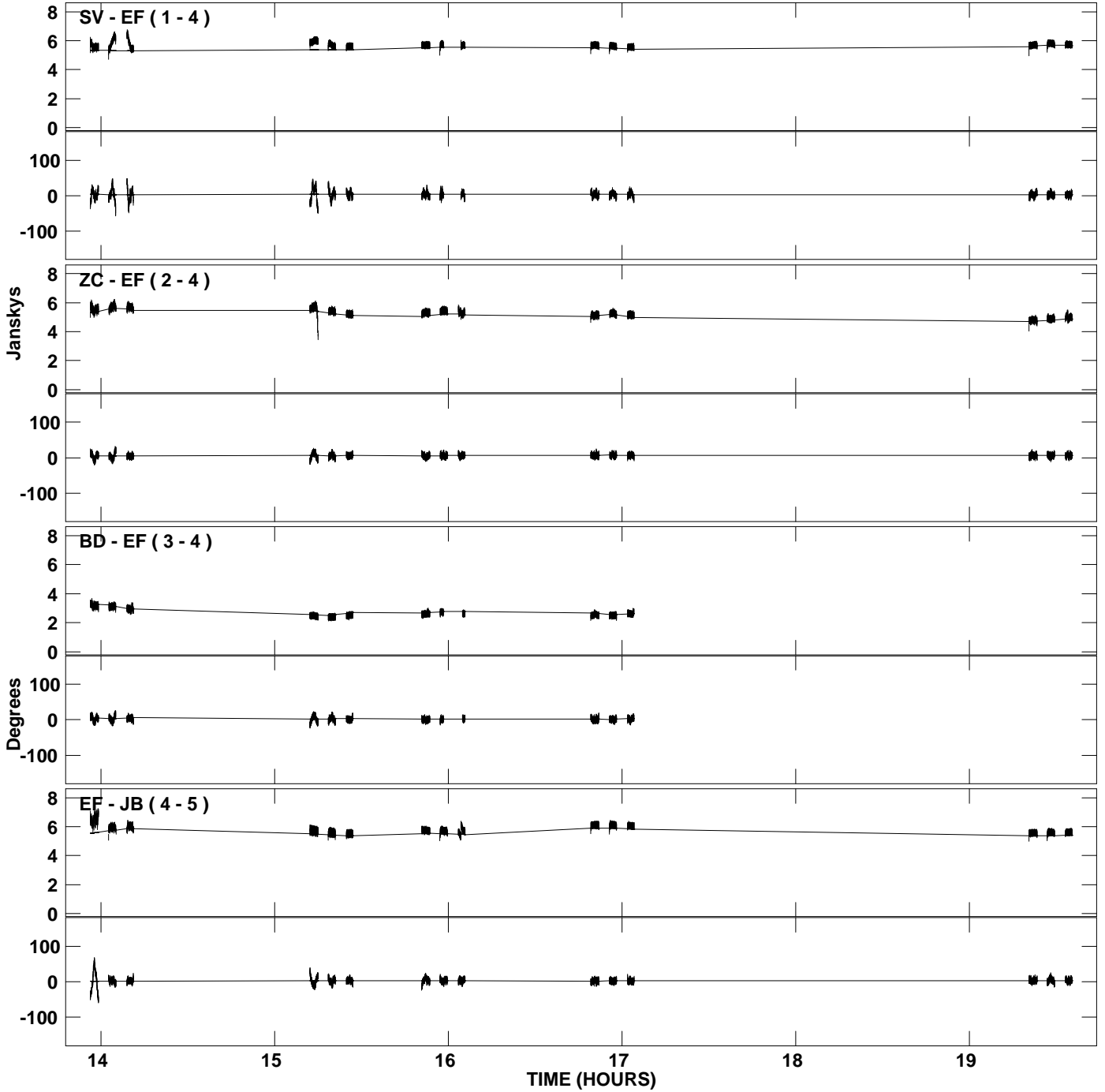
PLot file version 42 created 24-MAR-2009 17:57:53
Amplitude and Phase vs Time for 2145+067.MULTI.1 CL # 5
IF 7 CHAN 1 STK RR of 2145+067.ICL001.5



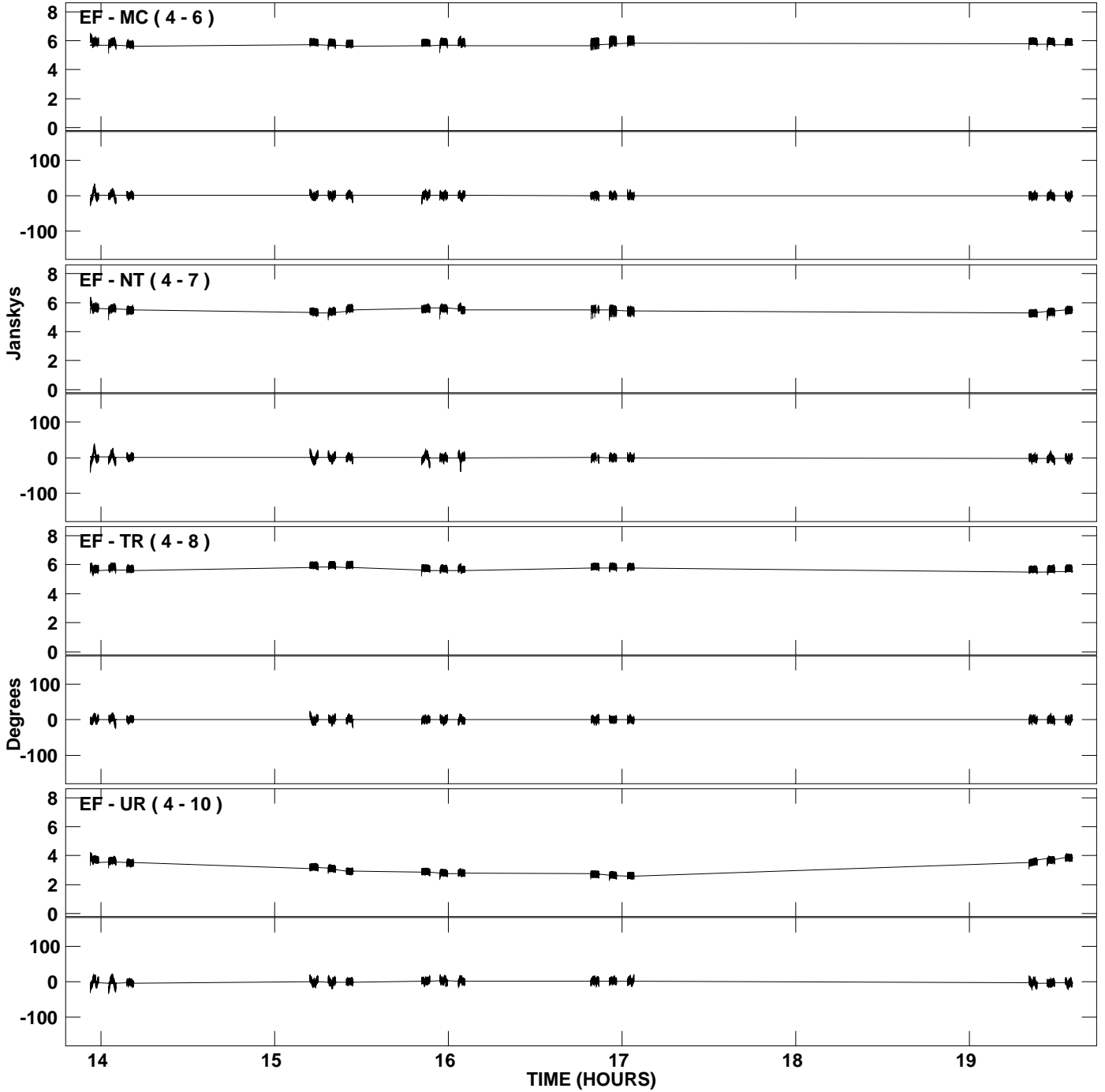
PLot file version 43 created 24-MAR-2009 17:57:53
Amplitude andPhase vs Time for 2145+067.MULTI.1 CL # 5
IF 7 CHAN 1 STK RR of 2145+067.ICL001.5



PLot file version 44 created 24-MAR-2009 17:57:54
Amplitude and Phase vs Time for 2145+067.MULTI.1 CL # 5
IF 8 CHAN 1 STK RR of 2145+067.ICL001.5



PLot file version 45 created 24-MAR-2009 17:57:54
Amplitude andPhase vs Time for 2145+067.MULTI.1 CL # 5
IF 8 CHAN 1 STK RR of 2145+067.ICL001.5



PLot file version 46 created 24-MAR-2009 17:57:54
Amplitude andPhase vs Time for 2145+067.MULTI.1 CL # 5
IF 8 CHAN 1 STK RR of 2145+067.ICL001.5

