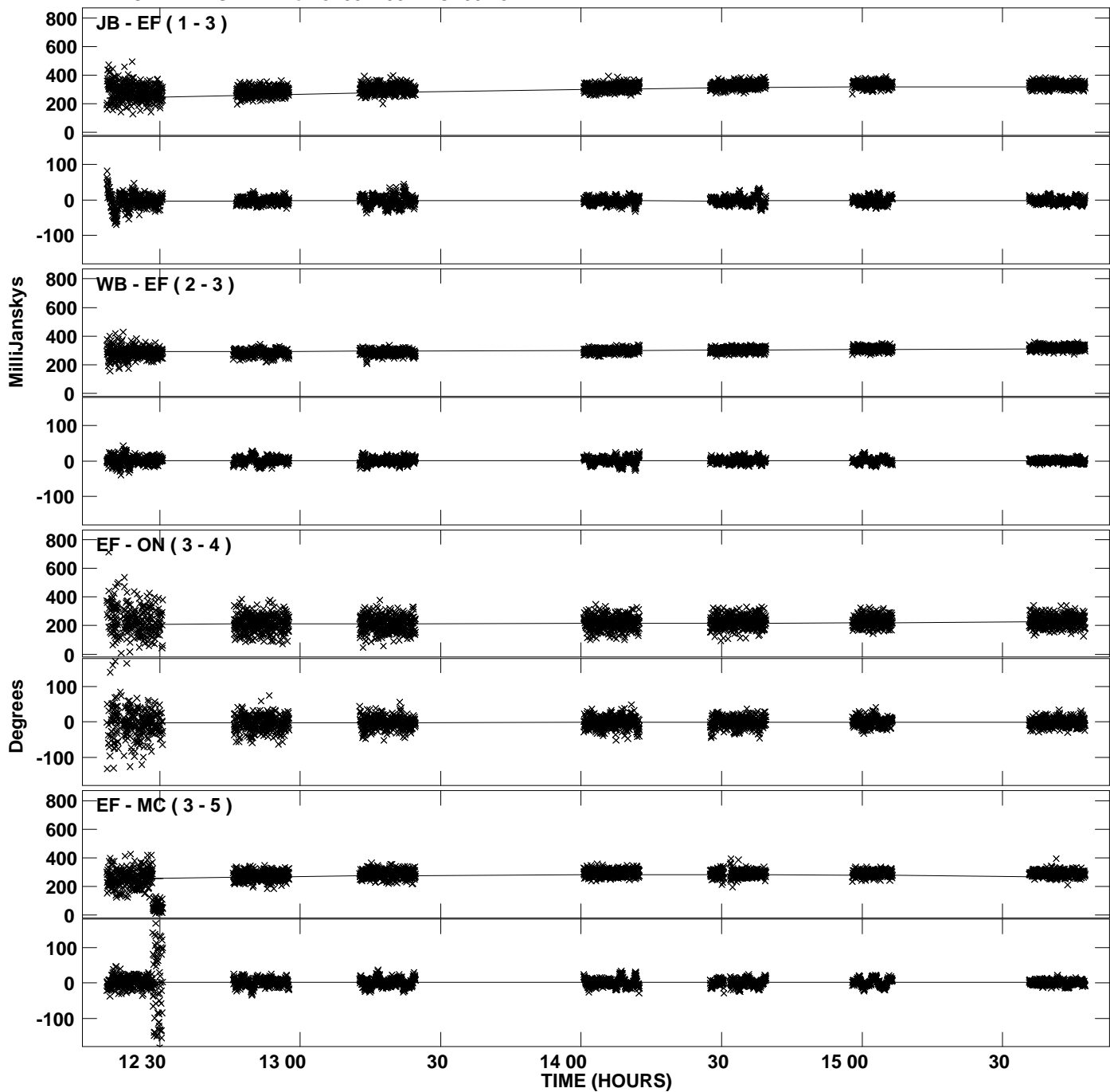
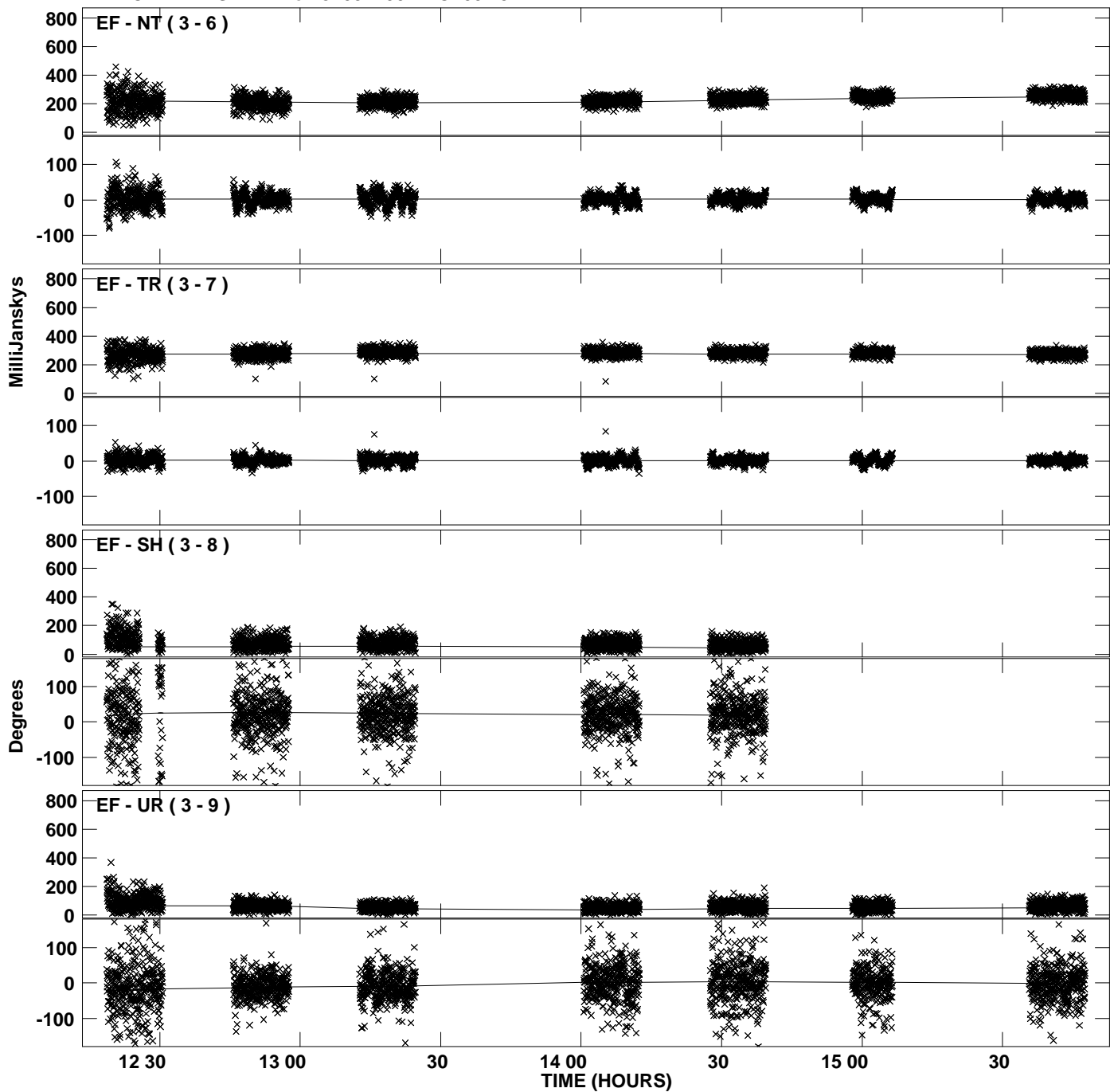


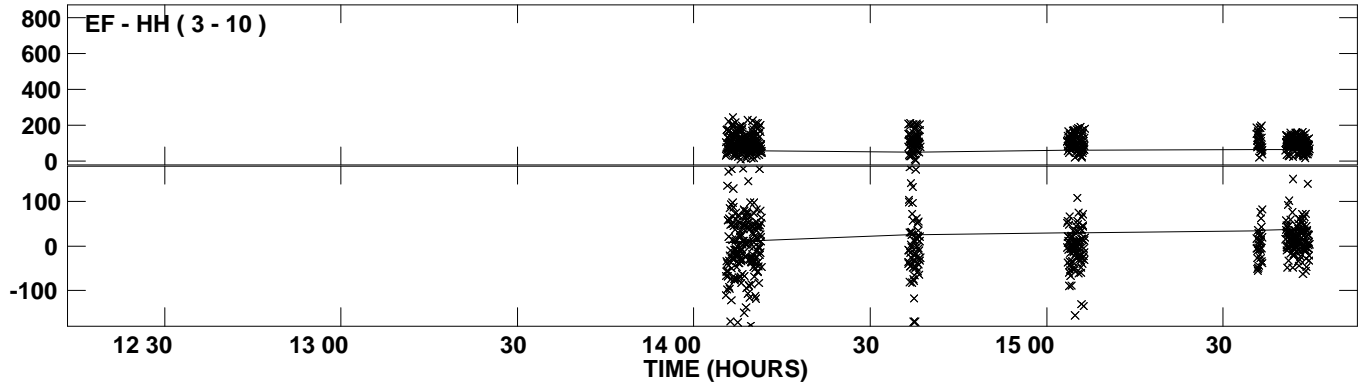
Plot file version 1 created 11-SEP-2008 19:18:45
Amplitude and Phase vs Time for J1057+0012.MULTI.1 CL # 3
IF 1 CHAN 1 STK LL of J1057+0012.ICL001.3



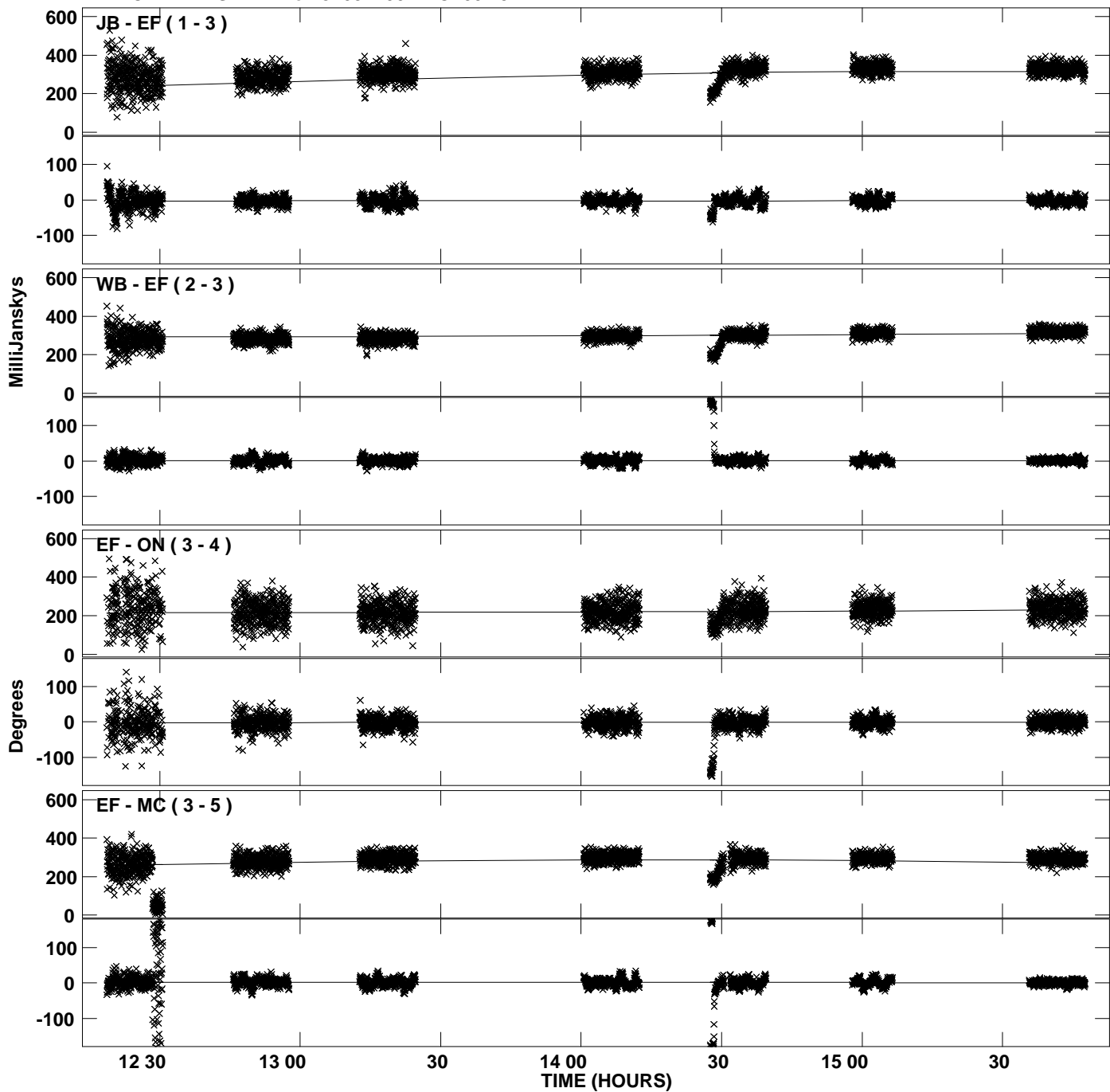
Plot file version 2 created 11-SEP-2008 19:18:45
Amplitude and Phase vs Time for J1057+0012.MULTI.1 CL # 3
IF 1 CHAN 1 STK LL of J1057+0012.ICL001.3



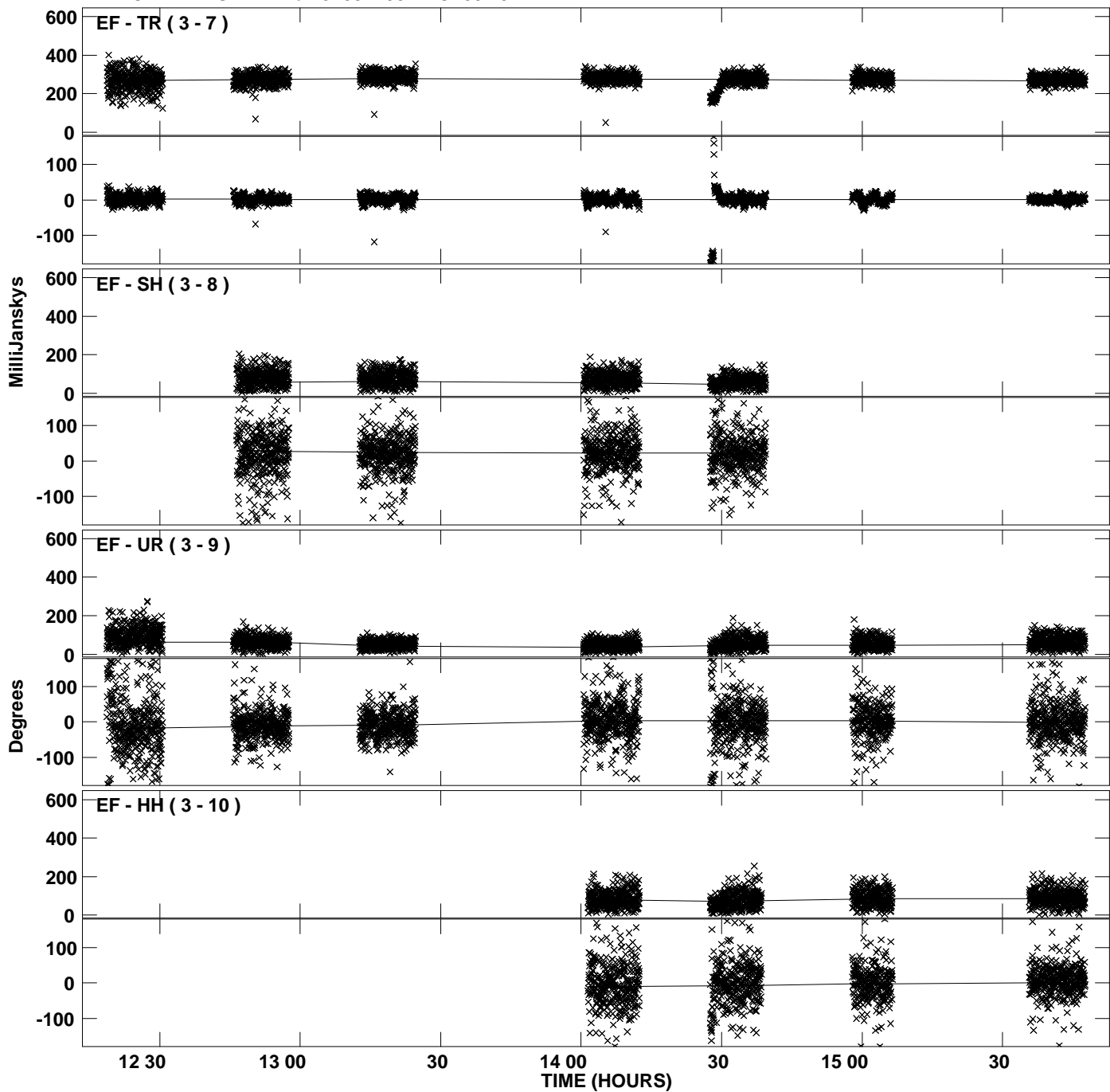
Plot file version 3 created 11-SEP-2008 19:18:45
Amplitude and Phase vs Time for J1057+0012.MULTI.1 CL # 3
IF 1 CHAN 1 STK LL of J1057+0012.ICL001.3



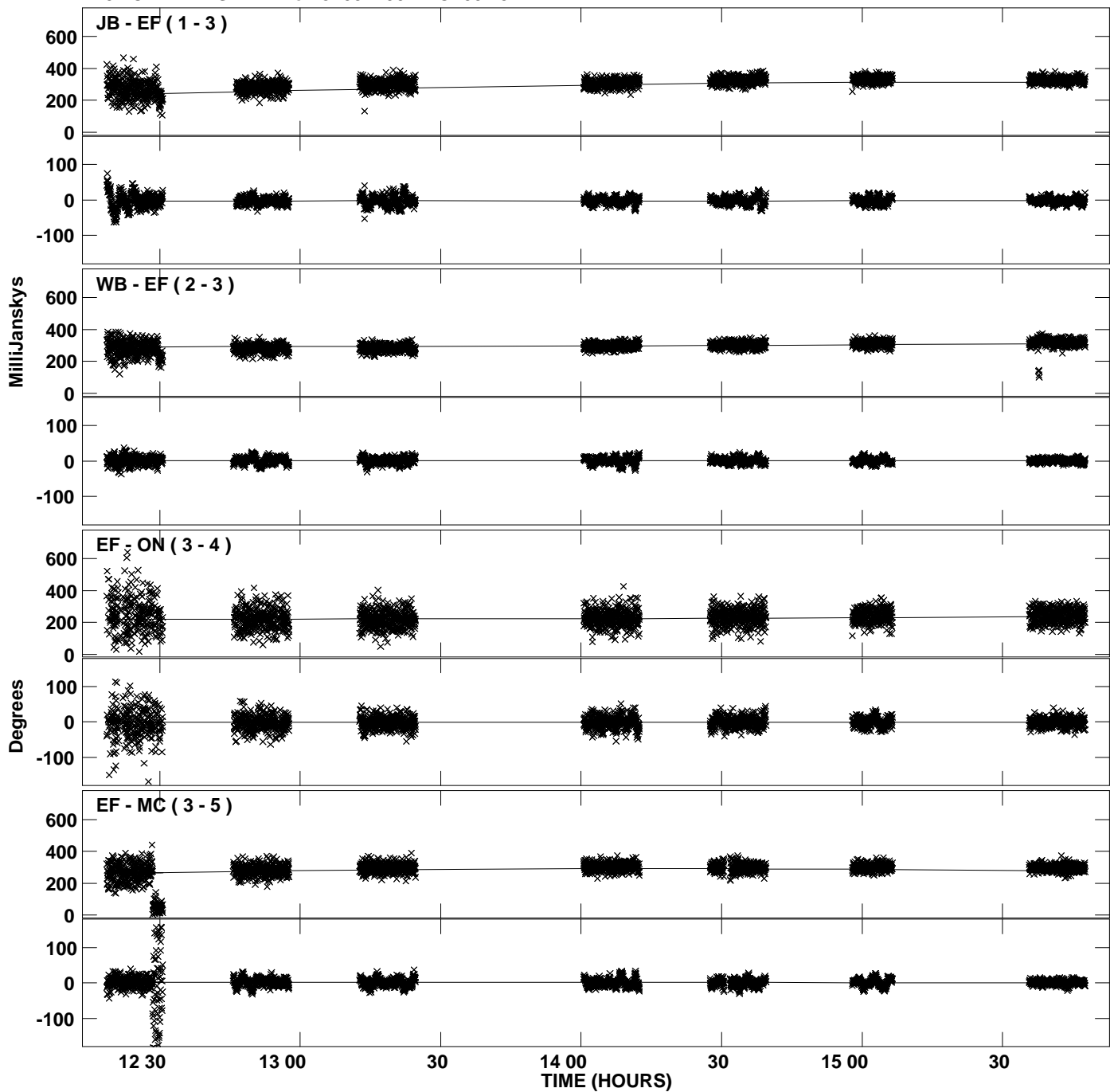
Plot file version 4 created 11-SEP-2008 19:18:47
Amplitude andPhase vs Time for J1057+0012.MULTI.1 CL # 3
IF 2 CHAN 1 STK LL of J1057+0012.ICL001.3



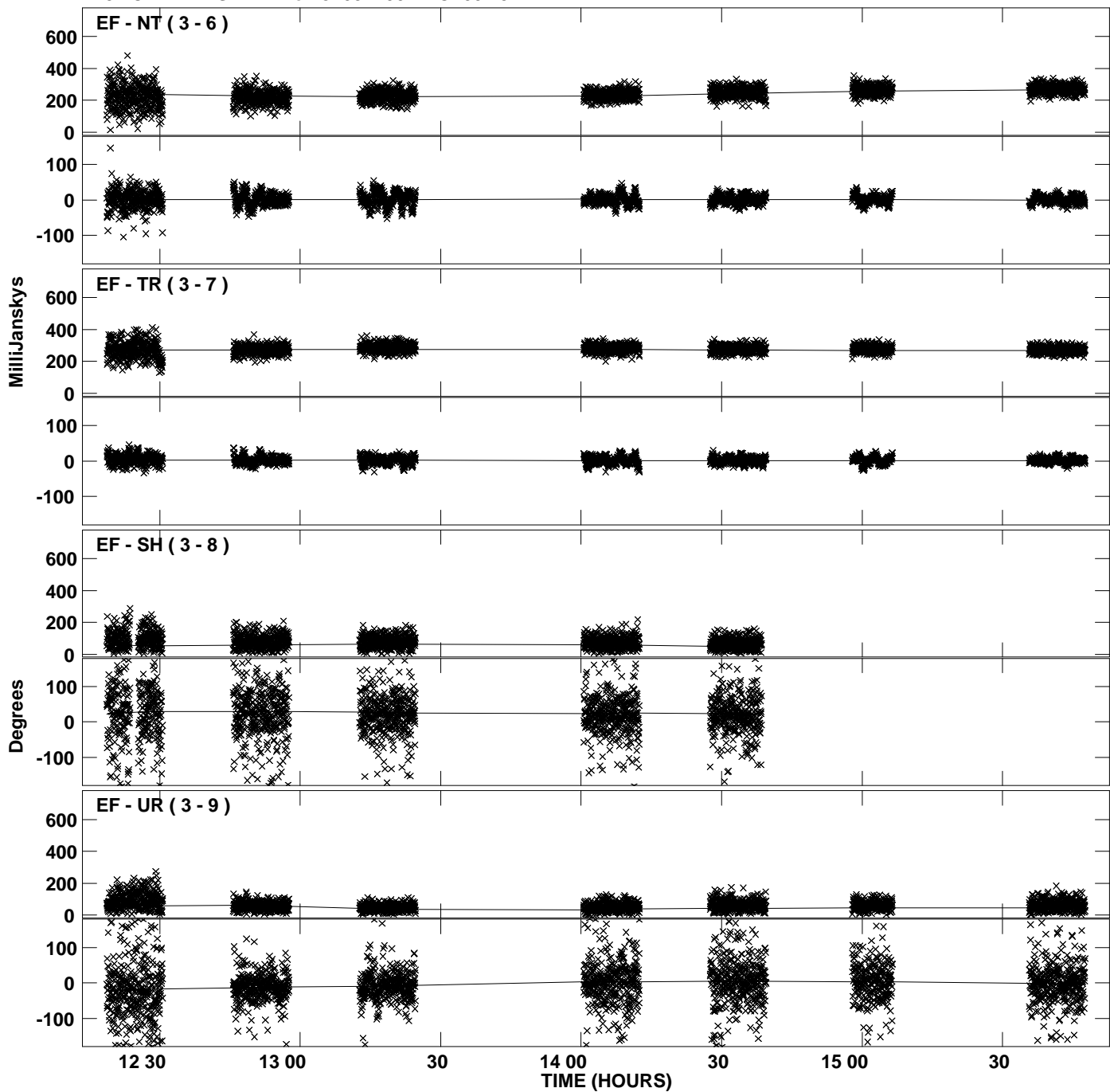
Plot file version 5 created 11-SEP-2008 19:18:47
Amplitude andPhase vs Time for J1057+0012.MULTI.1 CL # 3
IF 2 CHAN 1 STK LL of J1057+0012.ICL001.3



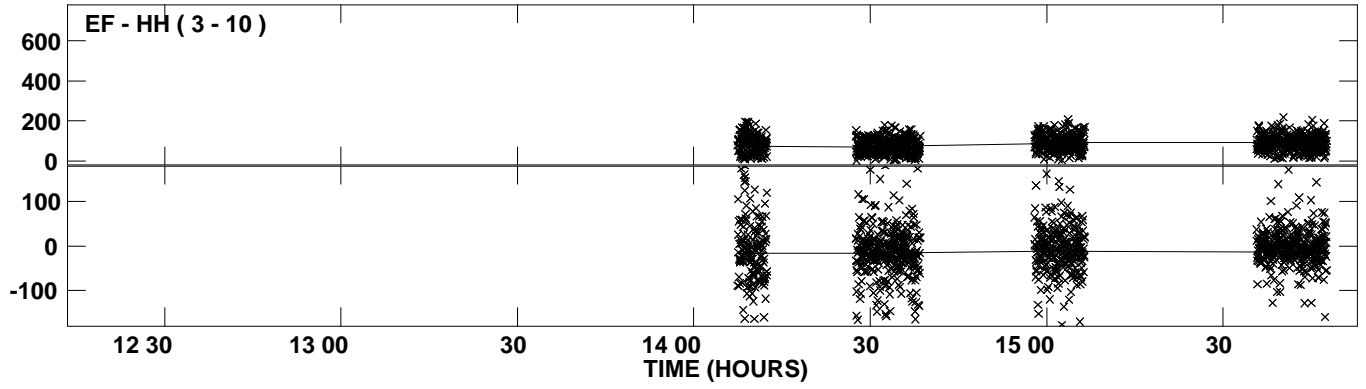
Plot file version 6 created 11-SEP-2008 19:18:49
Amplitude and Phase vs Time for J1057+0012.MULTI.1 CL # 3
IF 3 CHAN 1 STK LL of J1057+0012.ICL001.3



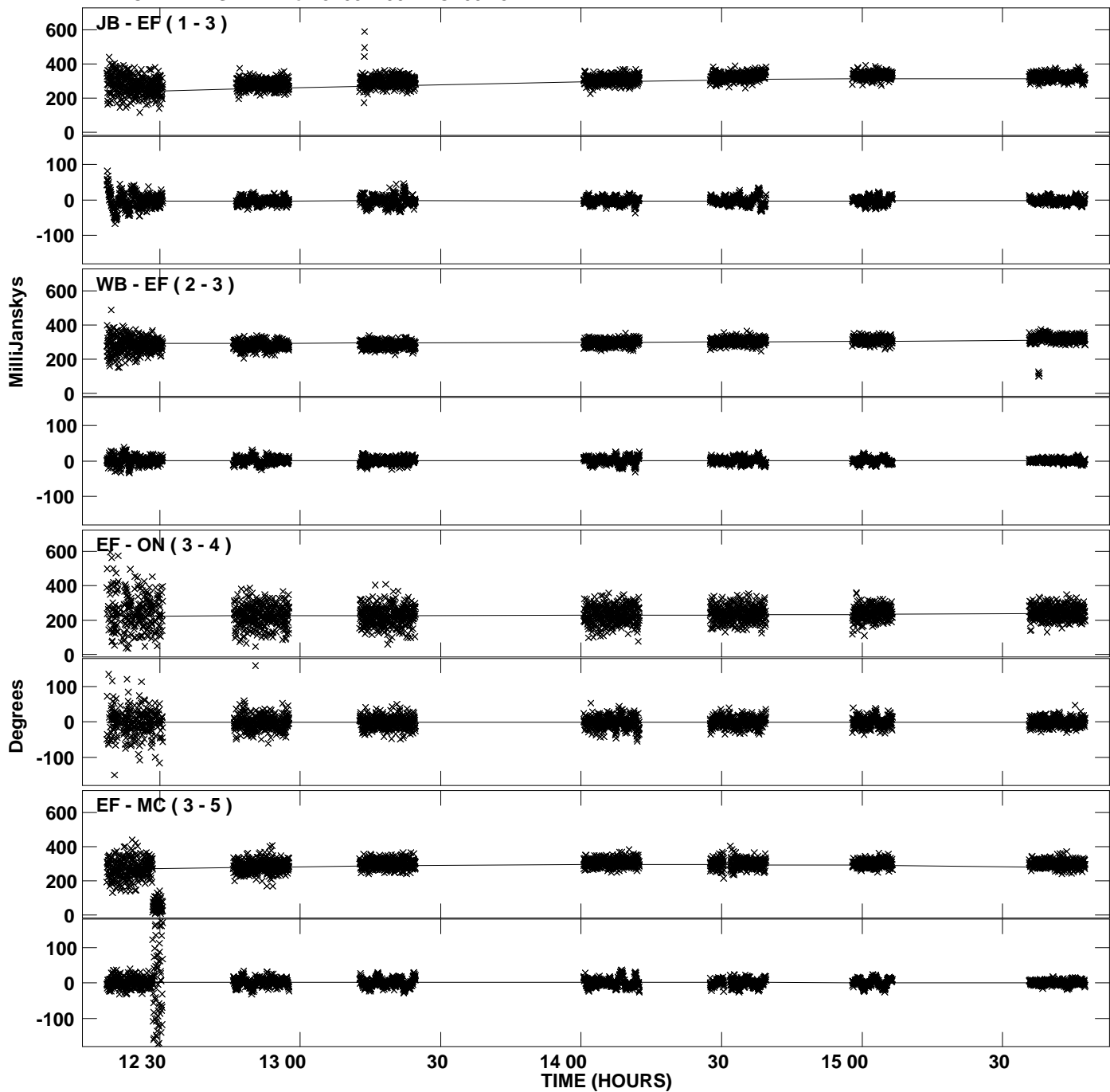
Plot file version 7 created 11-SEP-2008 19:18:49
Amplitude and Phase vs Time for J1057+0012.MULTI.1 CL # 3
IF 3 CHAN 1 STK LL of J1057+0012.ICL001.3



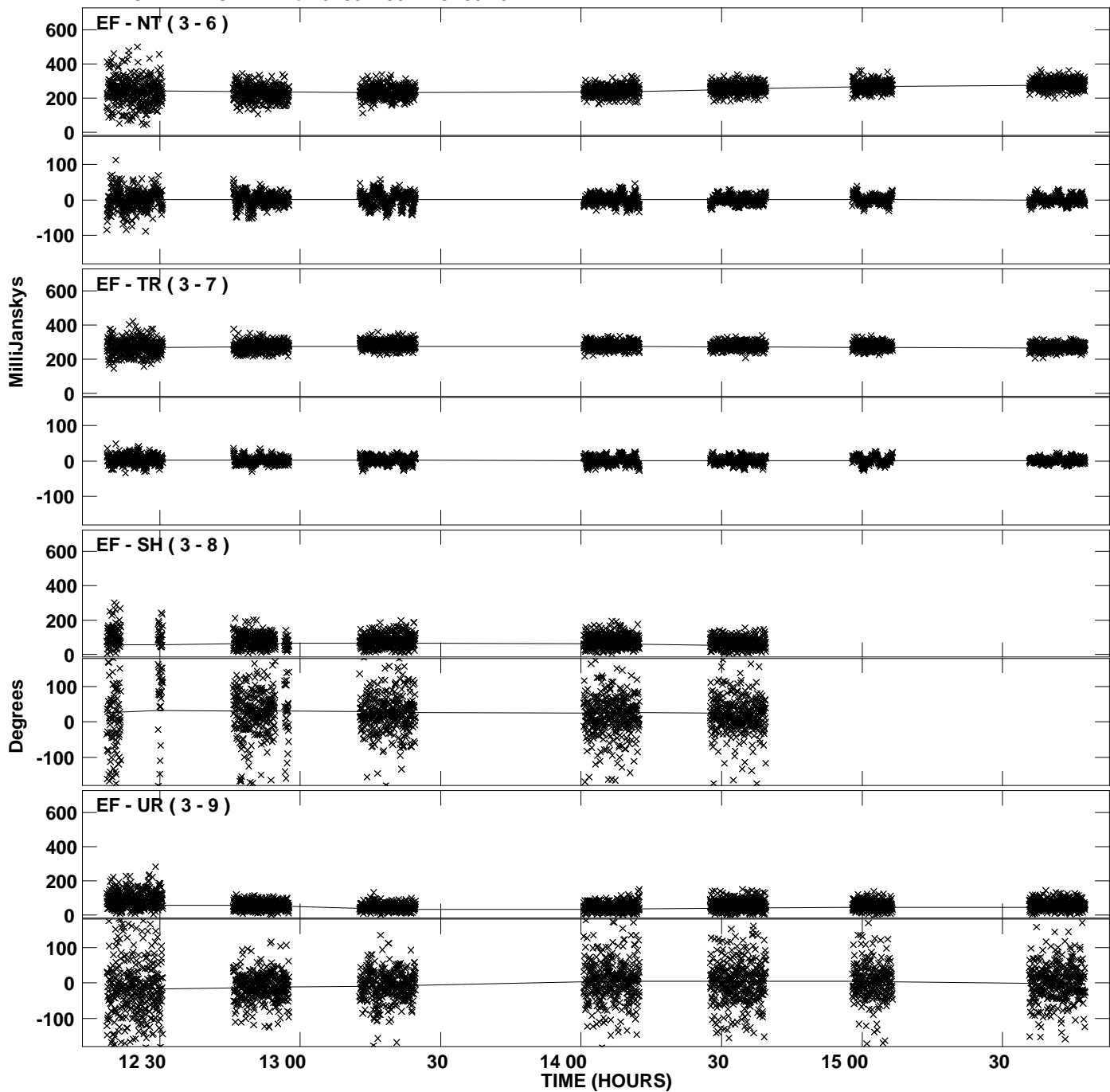
Plot file version 8 created 11-SEP-2008 19:18:49
Amplitude and Phase vs Time for J1057+0012.MULTI.1 CL # 3
IF 3 CHAN 1 STK LL of J1057+0012.ICL001.3



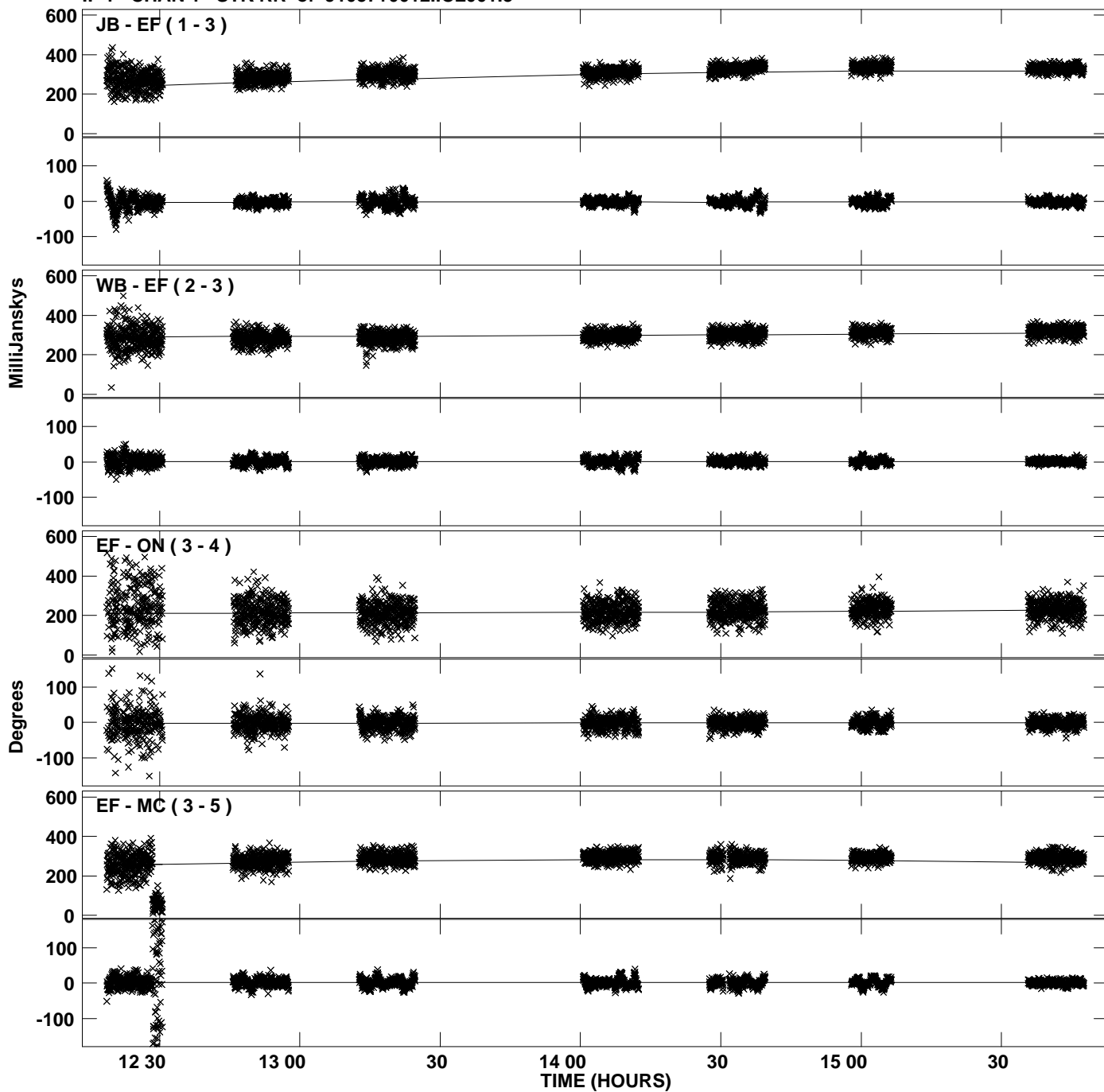
Plot file version 9 created 11-SEP-2008 19:18:51
Amplitude and Phase vs Time for J1057+0012.MULTI.1 CL # 3
IF 4 CHAN 1 STK LL of J1057+0012.ICL001.3



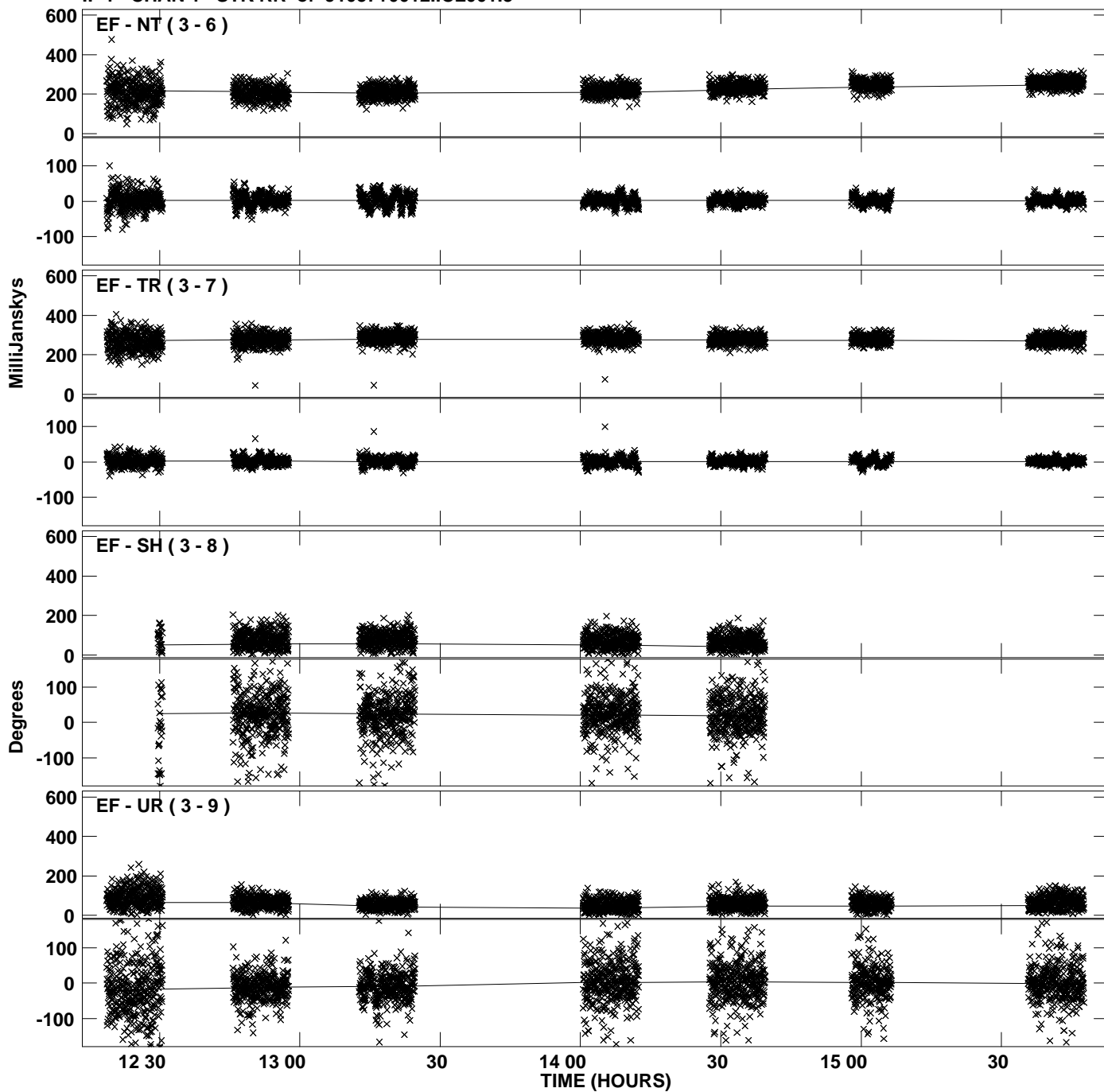
Plot file version 10 created 11-SEP-2008 19:18:51
Amplitude and Phase vs Time for J1057+0012.MULTI.1 CL # 3
IF 4 CHAN 1 STK LL of J1057+0012.ICL001.3



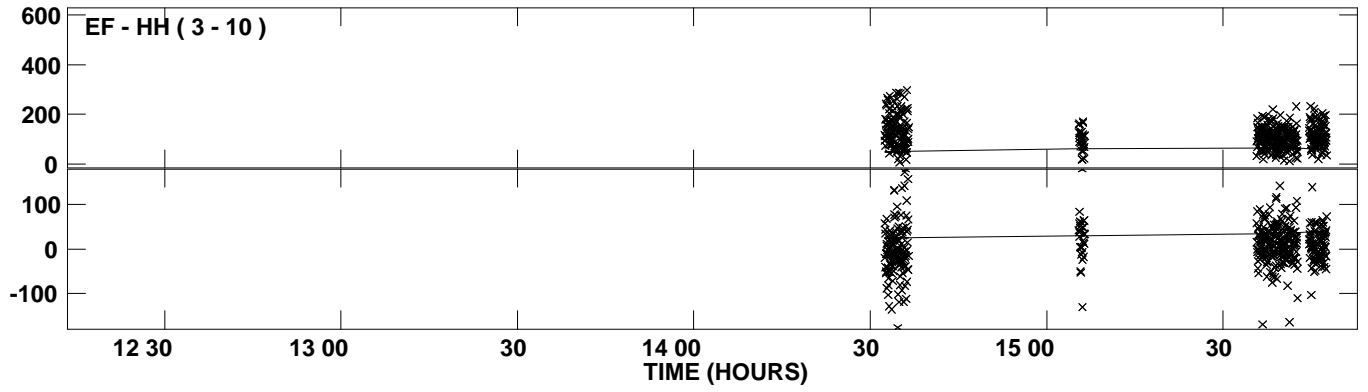
Plot file version 11 created 11-SEP-2008 19:18:53
Amplitude and Phase vs Time for J1057+0012.MULTI.1 CL # 3
IF 1 CHAN 1 STK RR of J1057+0012.ICL001.3



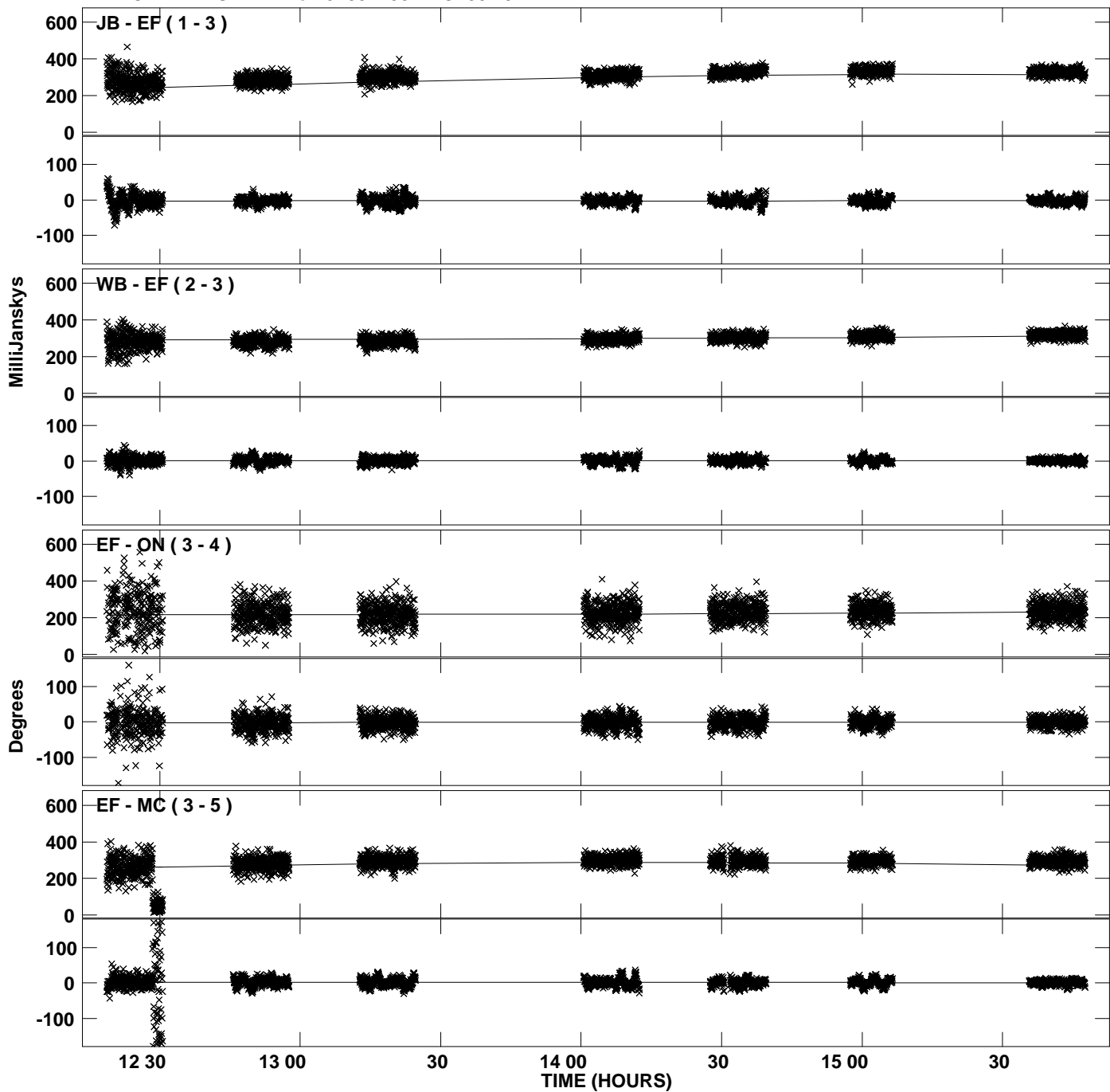
Plot file version 12 created 11-SEP-2008 19:18:53
Amplitude and Phase vs Time for J1057+0012.MULTI.1 CL # 3
IF 1 CHAN 1 STK RR of J1057+0012.ICL001.3



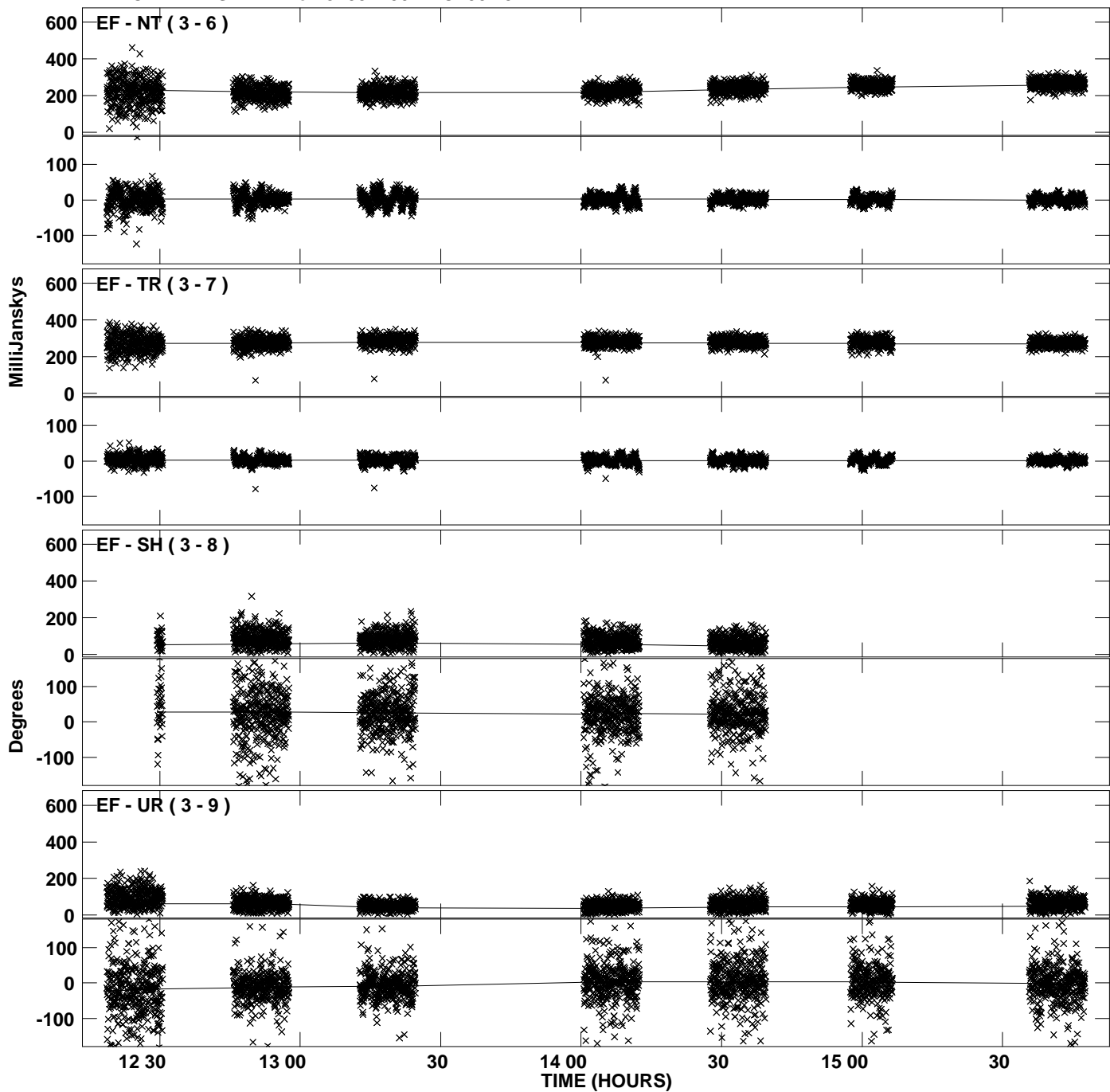
PLot file version 13 created 11-SEP-2008 19:18:53
Amplitude andPhase vs Time for J1057+0012.MULTI.1 CL # 3
IF 1 CHAN 1 STK RR of J1057+0012.ICL001.3



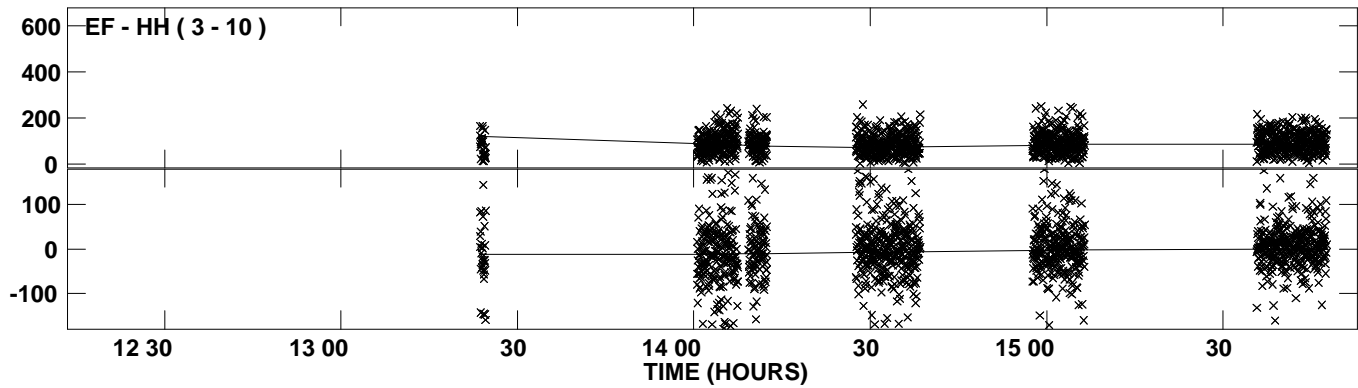
Plot file version 14 created 11-SEP-2008 19:18:55
Amplitude andPhase vs Time for J1057+0012.MULTI.1 CL # 3
IF 2 CHAN 1 STK RR of J1057+0012.ICL001.3



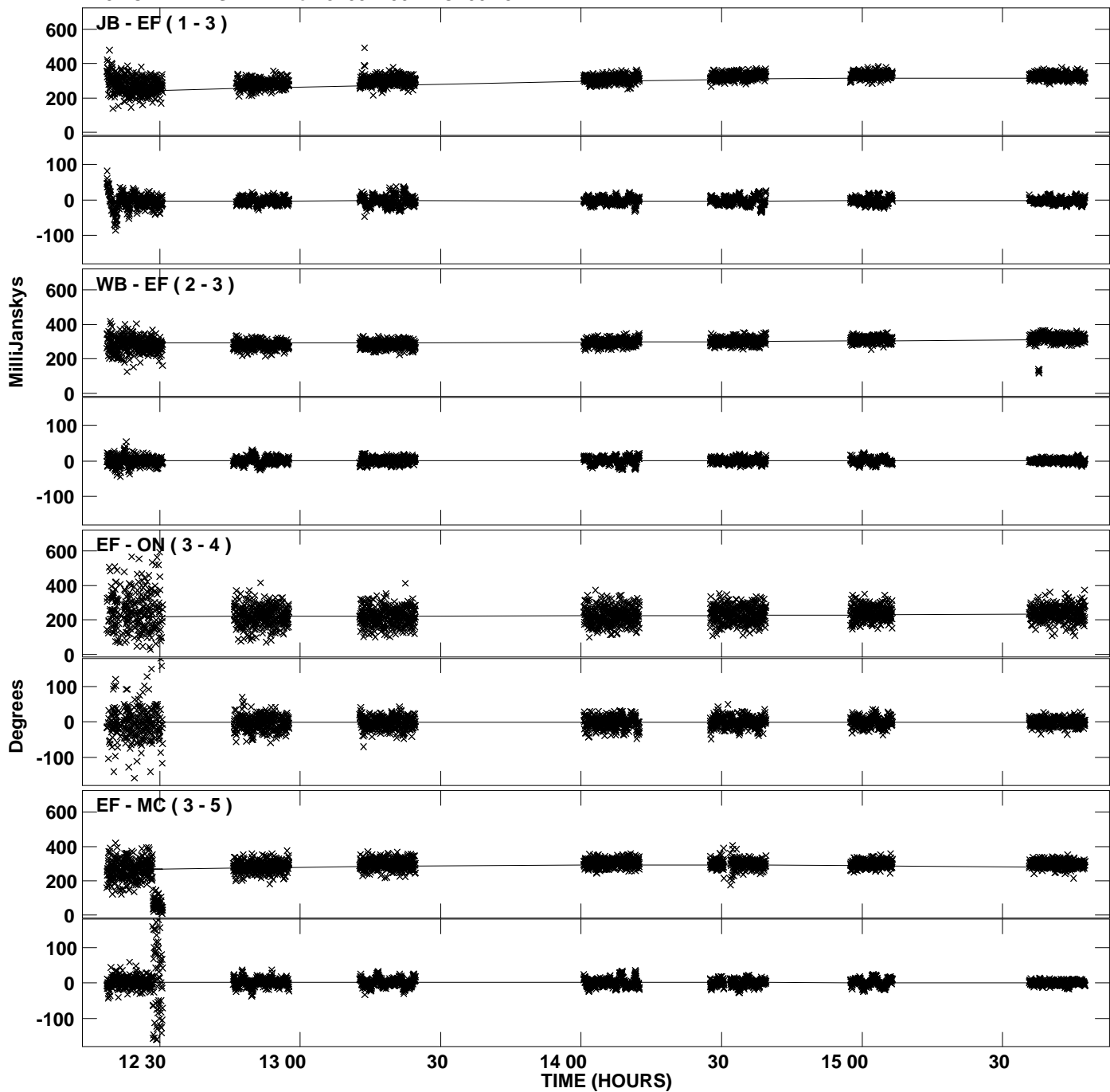
Plot file version 15 created 11-SEP-2008 19:18:56
Amplitude and Phase vs Time for J1057+0012.MULTI.1 CL # 3
IF 2 CHAN 1 STK RR of J1057+0012.ICL001.3



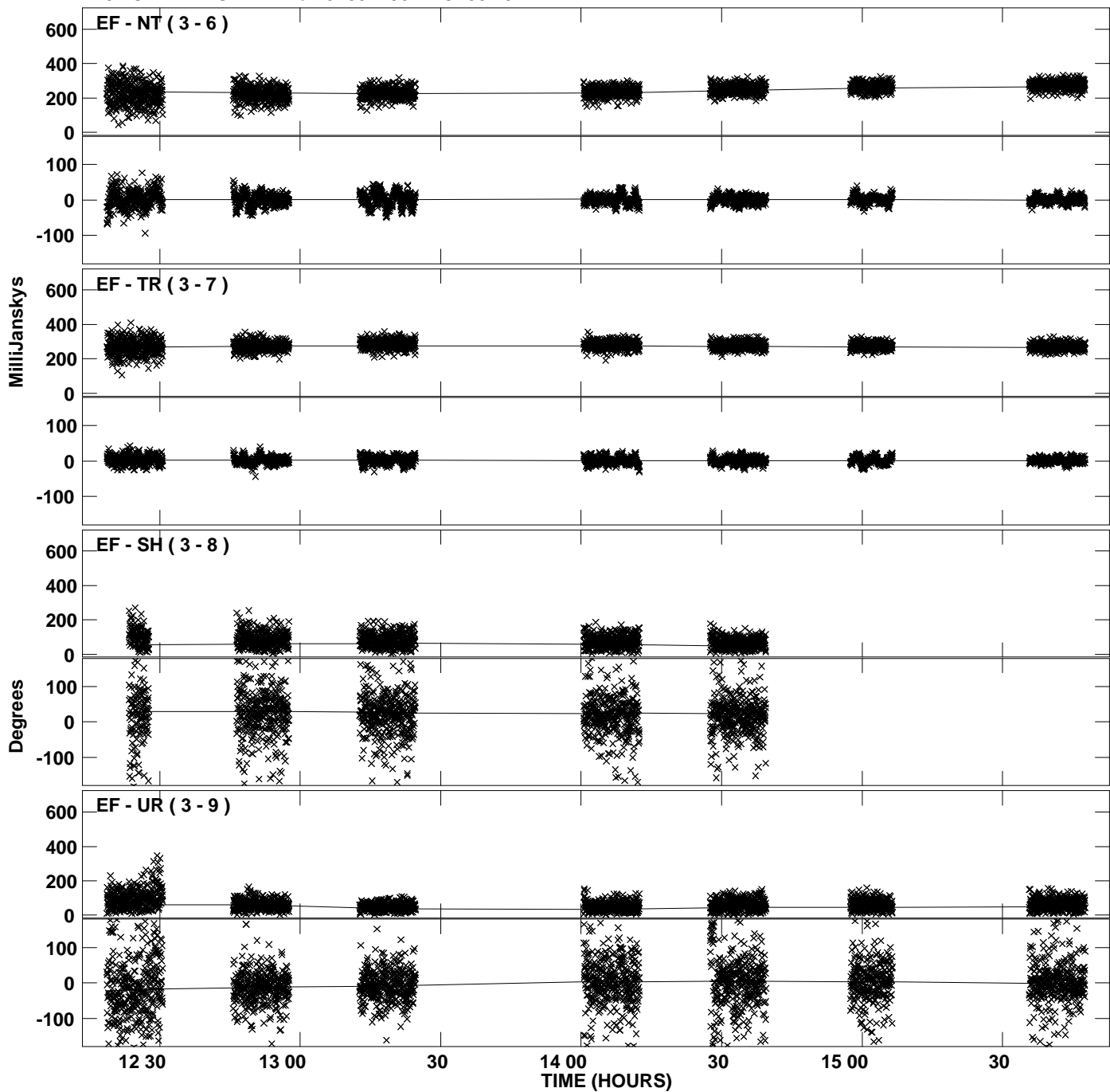
PLot file version 16 created 11-SEP-2008 19:18:56
Amplitude andPhase vs Time for J1057+0012.MULTI.1 CL # 3
IF 2 CHAN 1 STK RR of J1057+0012.ICL001.3



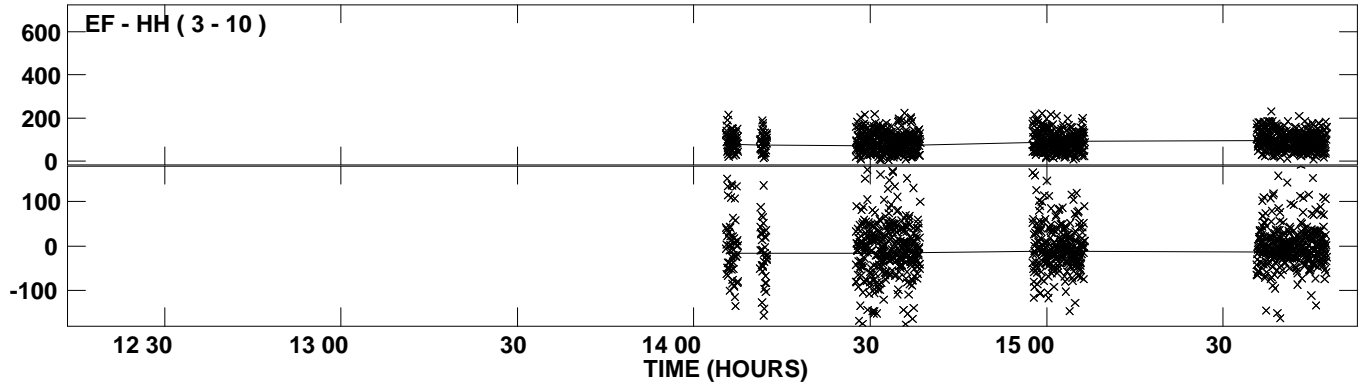
Plot file version 17 created 11-SEP-2008 19:18:57
Amplitude andPhase vs Time for J1057+0012.MULTI.1 CL # 3
IF 3 CHAN 1 STK RR of J1057+0012.ICL001.3



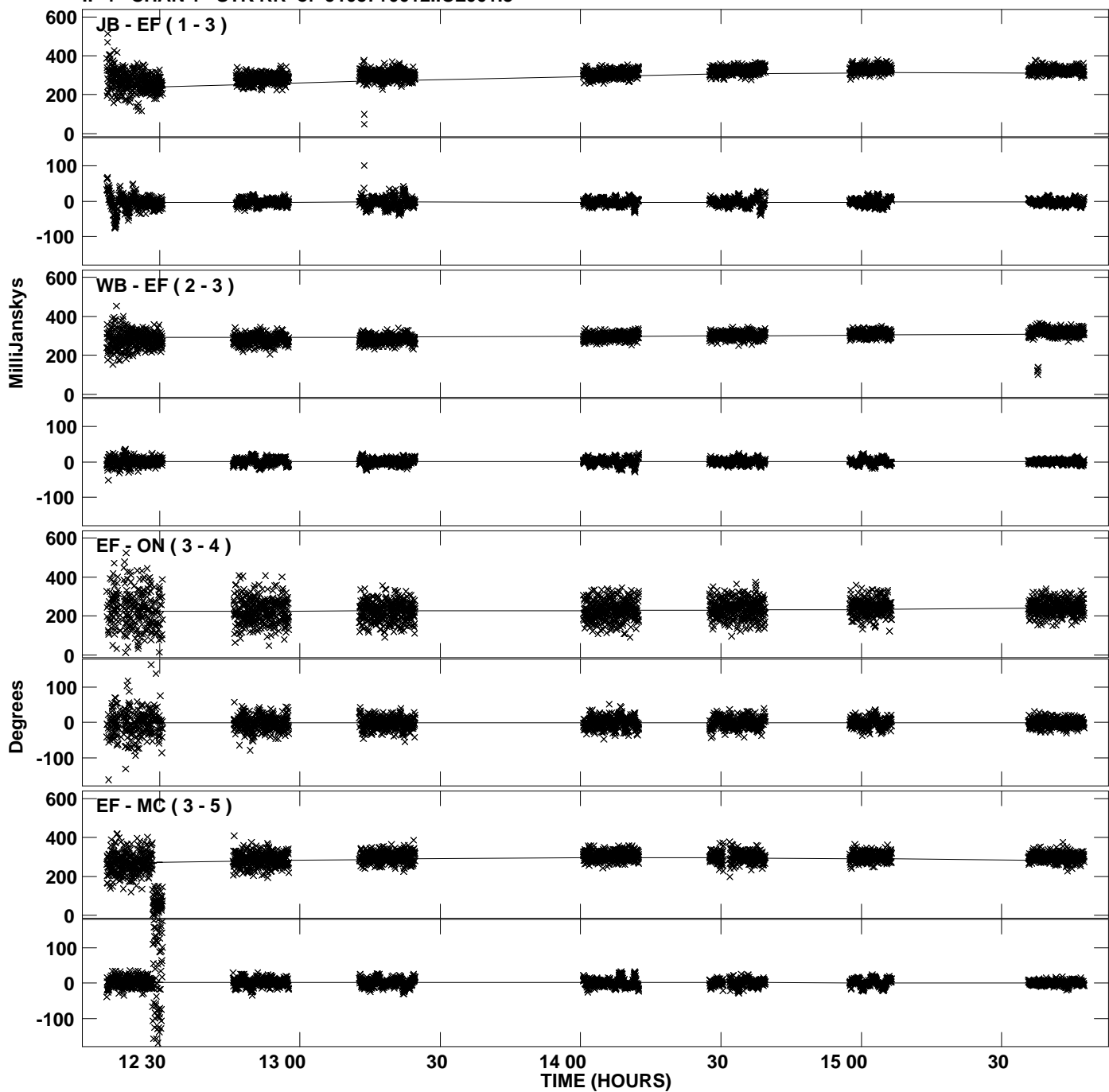
Plot file version 18 created 11-SEP-2008 19:18:57
Amplitude and Phase vs Time for J1057+0012.MULTI.1 CL # 3
IF 3 CHAN 1 STK RR of J1057+0012.ICL001.3



PLot file version 19 created 11-SEP-2008 19:18:57
Amplitude andPhase vs Time for J1057+0012.MULTI.1 CL # 3
IF 3 CHAN 1 STK RR of J1057+0012.ICL001.3



Plot file version 20 created 11-SEP-2008 19:19:00
Amplitude and Phase vs Time for J1057+0012.MULTI.1 CL # 3
IF 4 CHAN 1 STK RR of J1057+0012.ICL001.3



PLot file version 21 created 11-SEP-2008 19:19:00
Amplitude andPhase vs Time for J1057+0012.MULTI.1 CL # 3
IF 4 CHAN 1 STK RR of J1057+0012.ICL001.3

