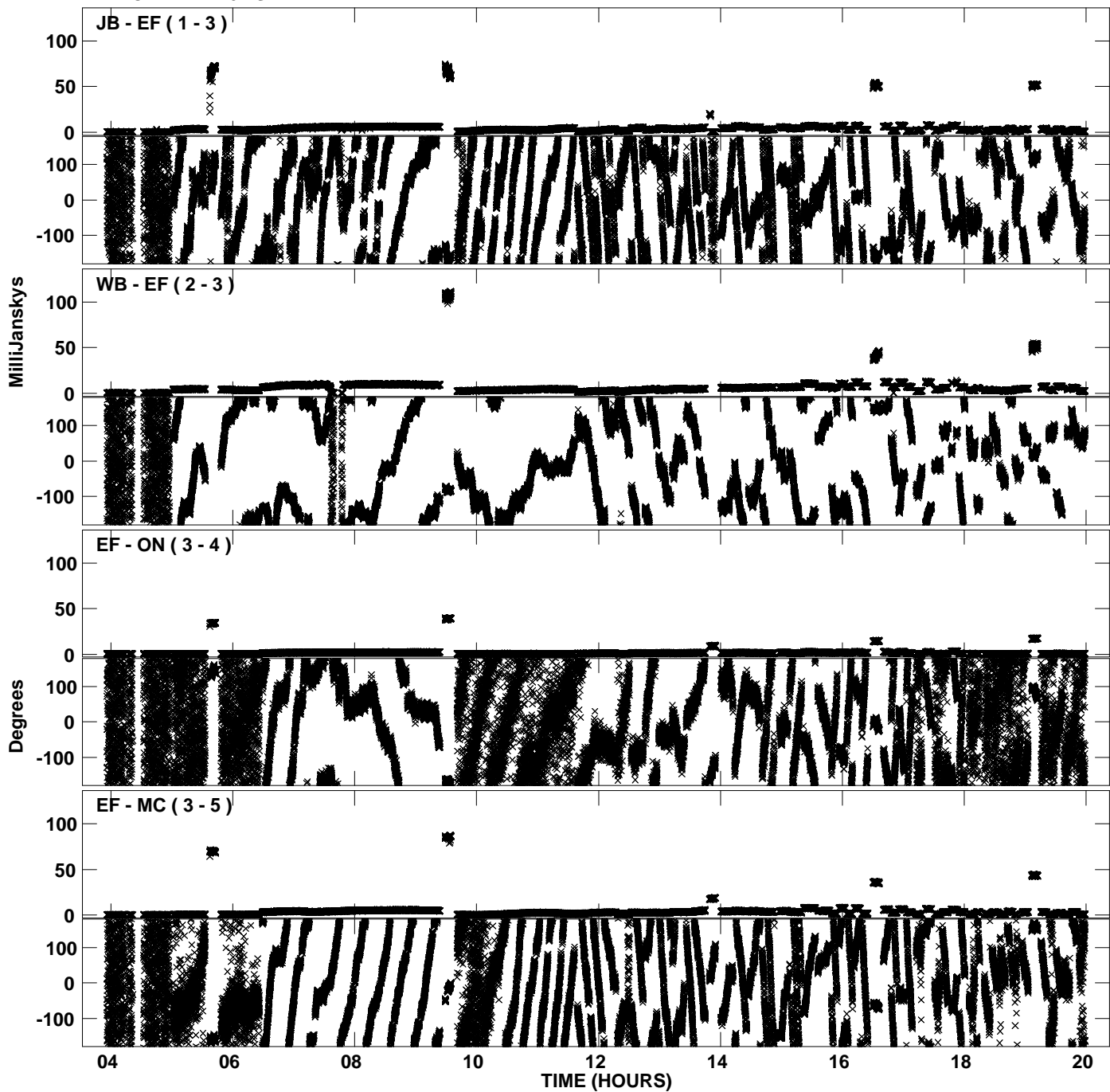
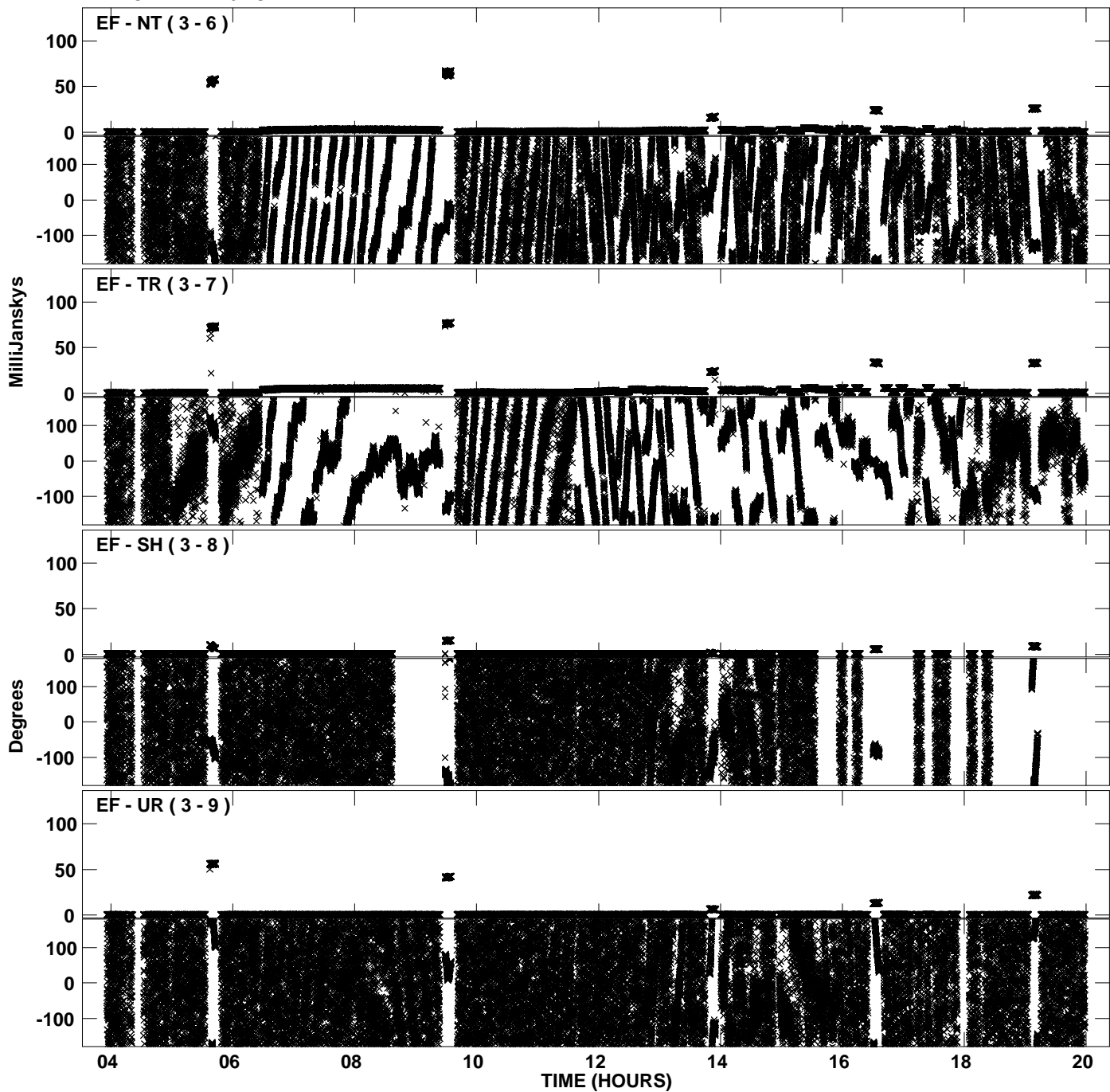


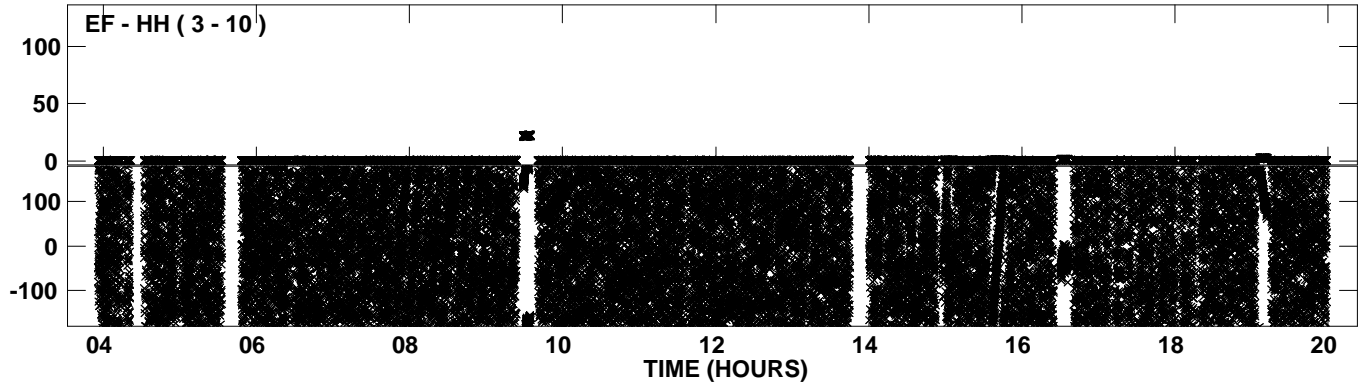
PLot file version 1 created 11-SEP-2008 14:24:15
Amplitude and Phase vs Time for EL036A.UVDATA.1 Vect aver.
IF 1 CHAN 1 - 16 STK LL



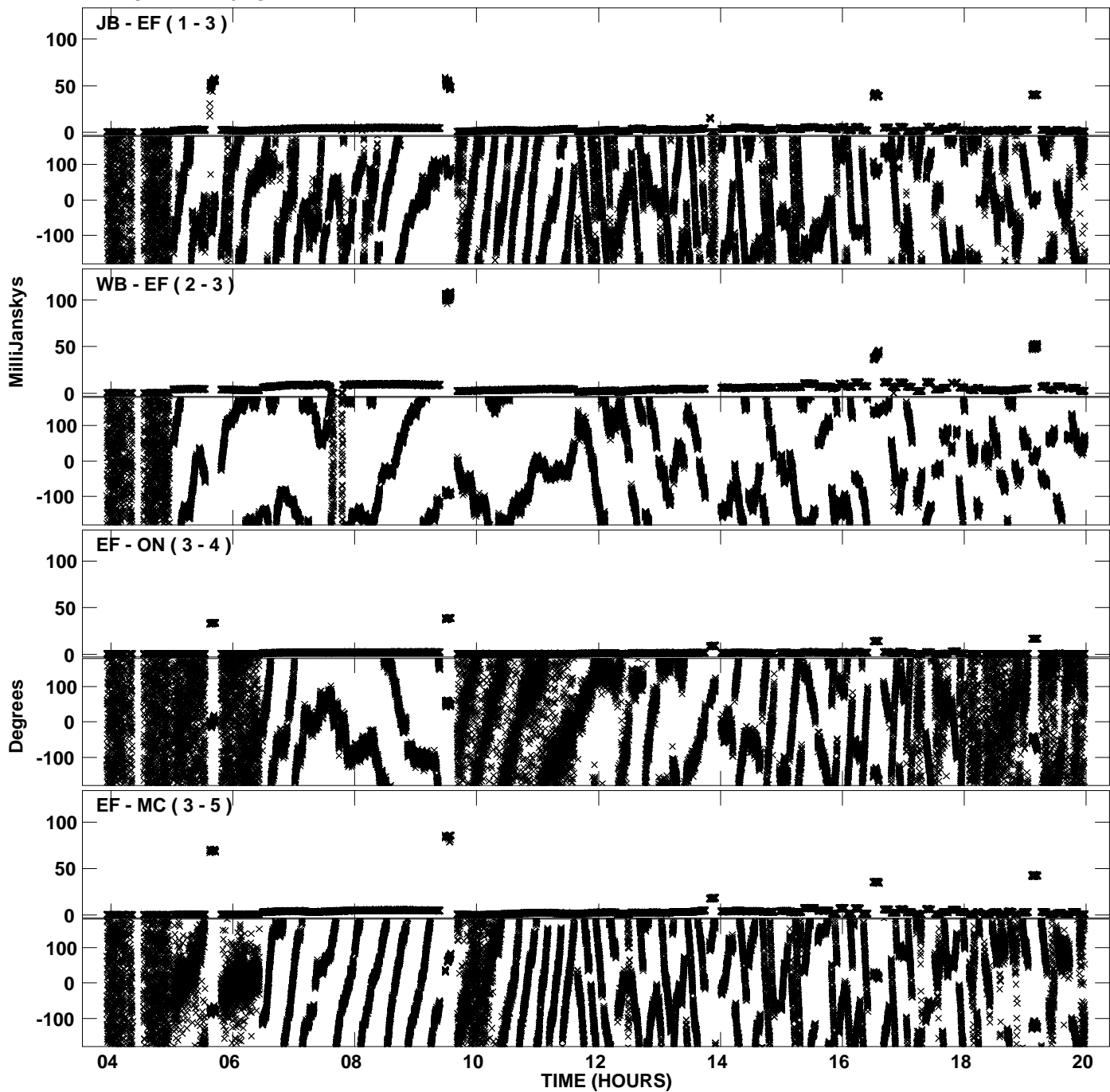
PLot file version 2 created 11-SEP-2008 14:24:16
Amplitude andPhase vs Time for EL036A.UVDATA.1 Vect aver.
IF 1 CHAN 1 - 16 STK LL



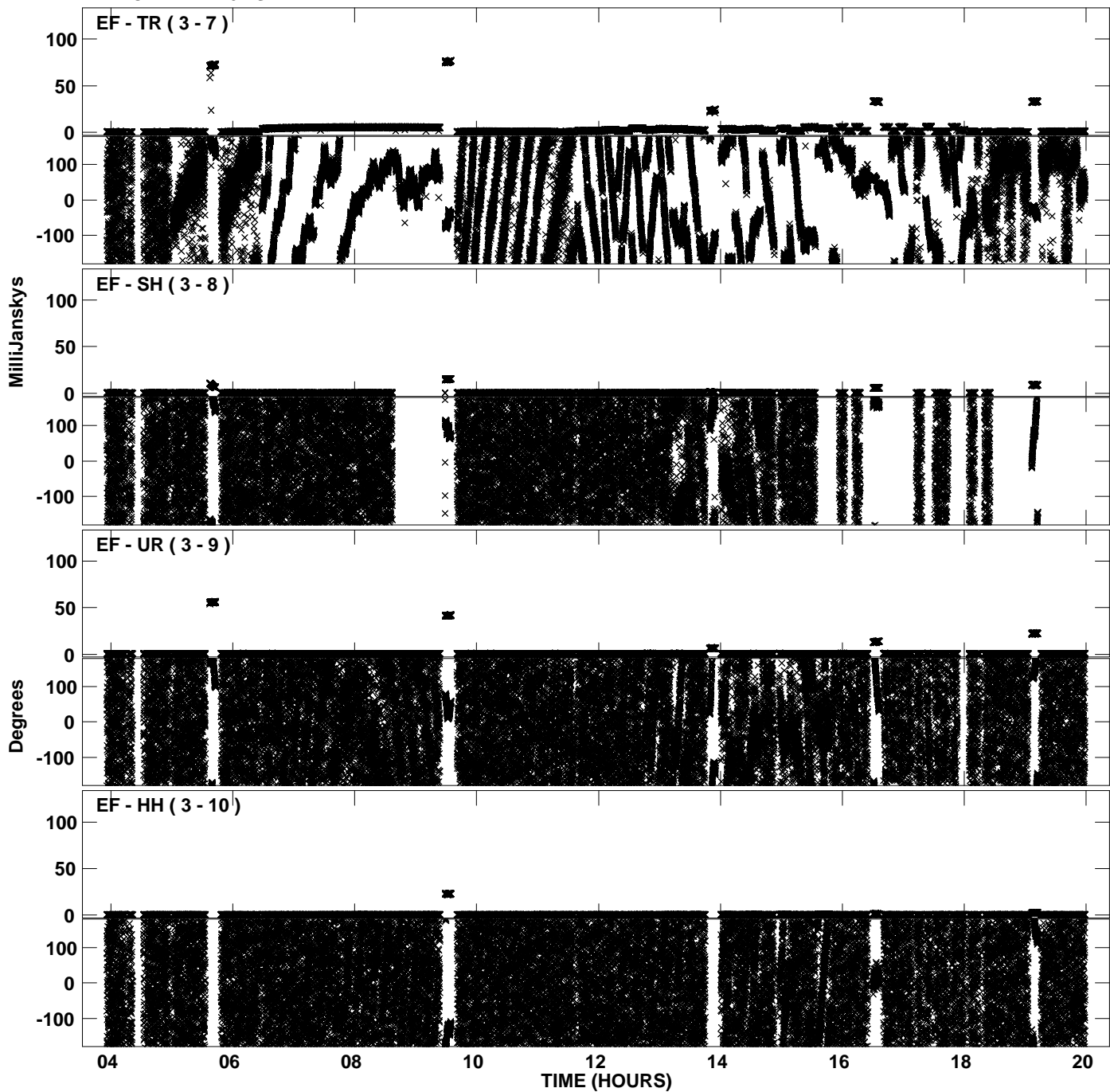
PLot file version 3 created 11-SEP-2008 14:24:16
Amplitude andPhase vs Time for EL036A.UVDATA.1 Vect aver.
IF 1 CHAN 1 - 16 STK LL



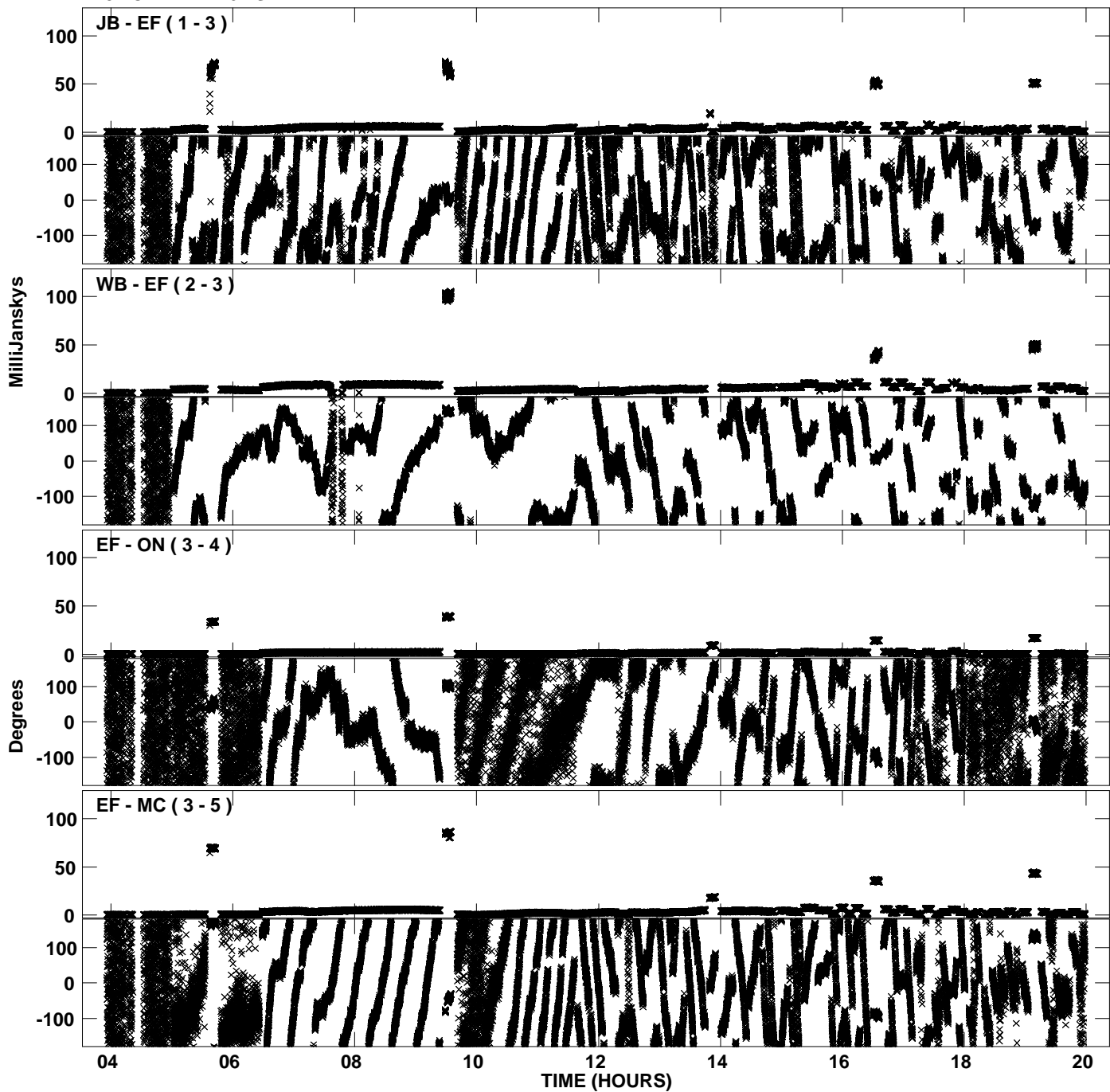
PLot file version 4 created 11-SEP-2008 14:24:46
Amplitude andPhase vs Time for EL036A.UVDATA.1 Vect aver.
IF 2 CHAN 1 - 16 STK LL



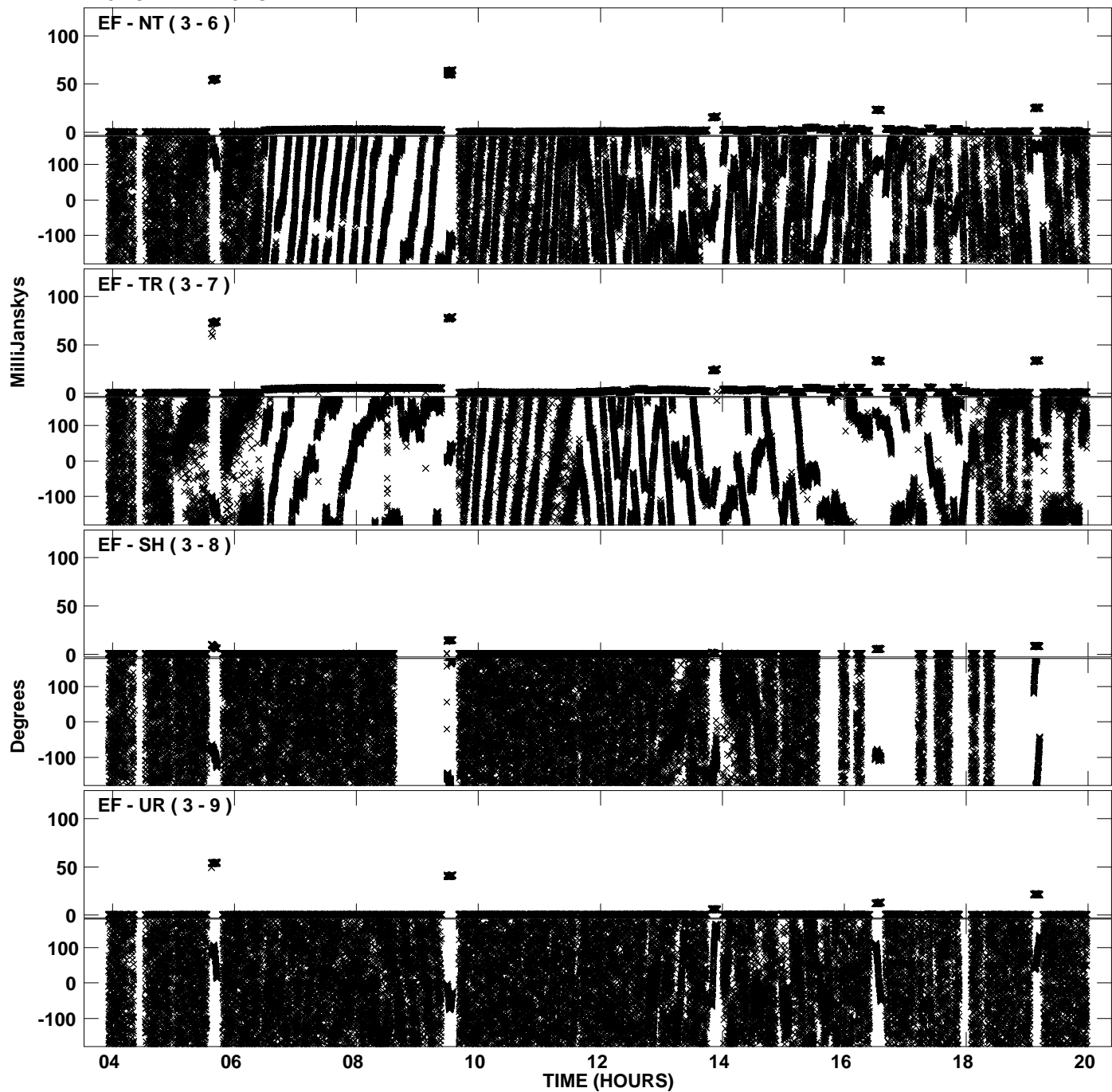
PLot file version 5 created 11-SEP-2008 14:24:46
Amplitude andPhase vs Time for EL036A.UVDATA.1 Vect aver.
IF 2 CHAN 1 - 16 STK LL



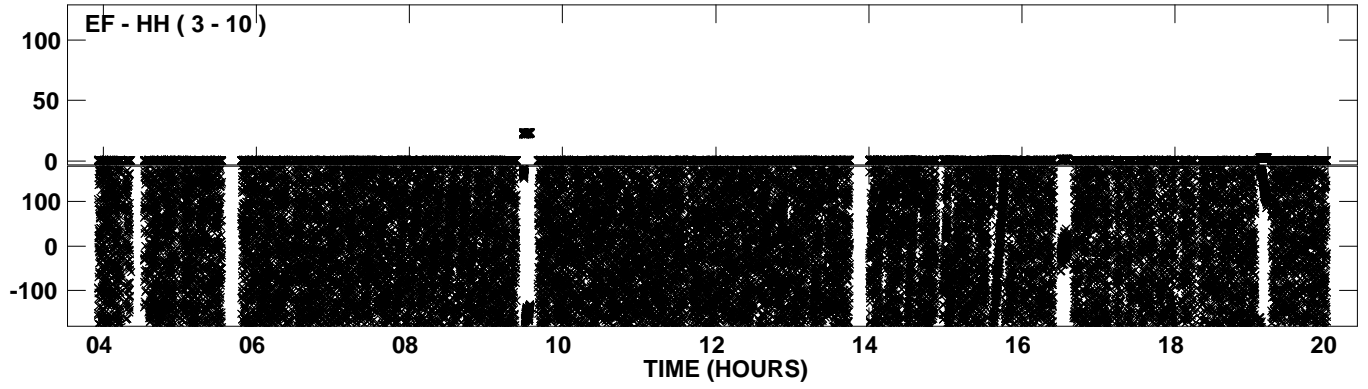
PLot file version 6 created 11-SEP-2008 14:25:14
Amplitude andPhase vs Time for EL036A.UVDATA.1 Vect aver.
IF 3 CHAN 1 - 16 STK LL



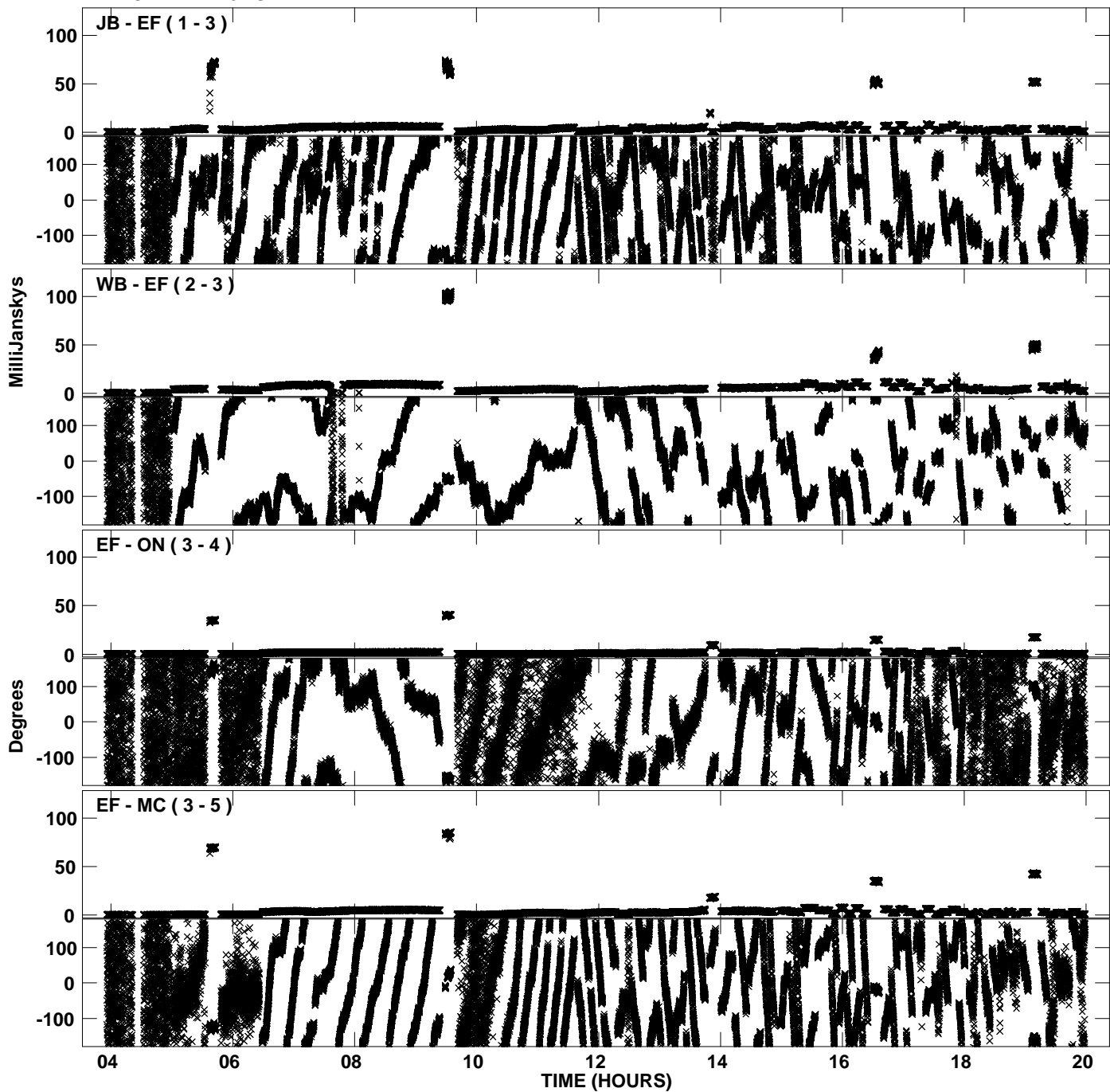
PLot file version 7 created 11-SEP-2008 14:25:15
Amplitude andPhase vs Time for EL036A.UVDATA.1 Vect aver.
IF 3 CHAN 1 - 16 STK LL



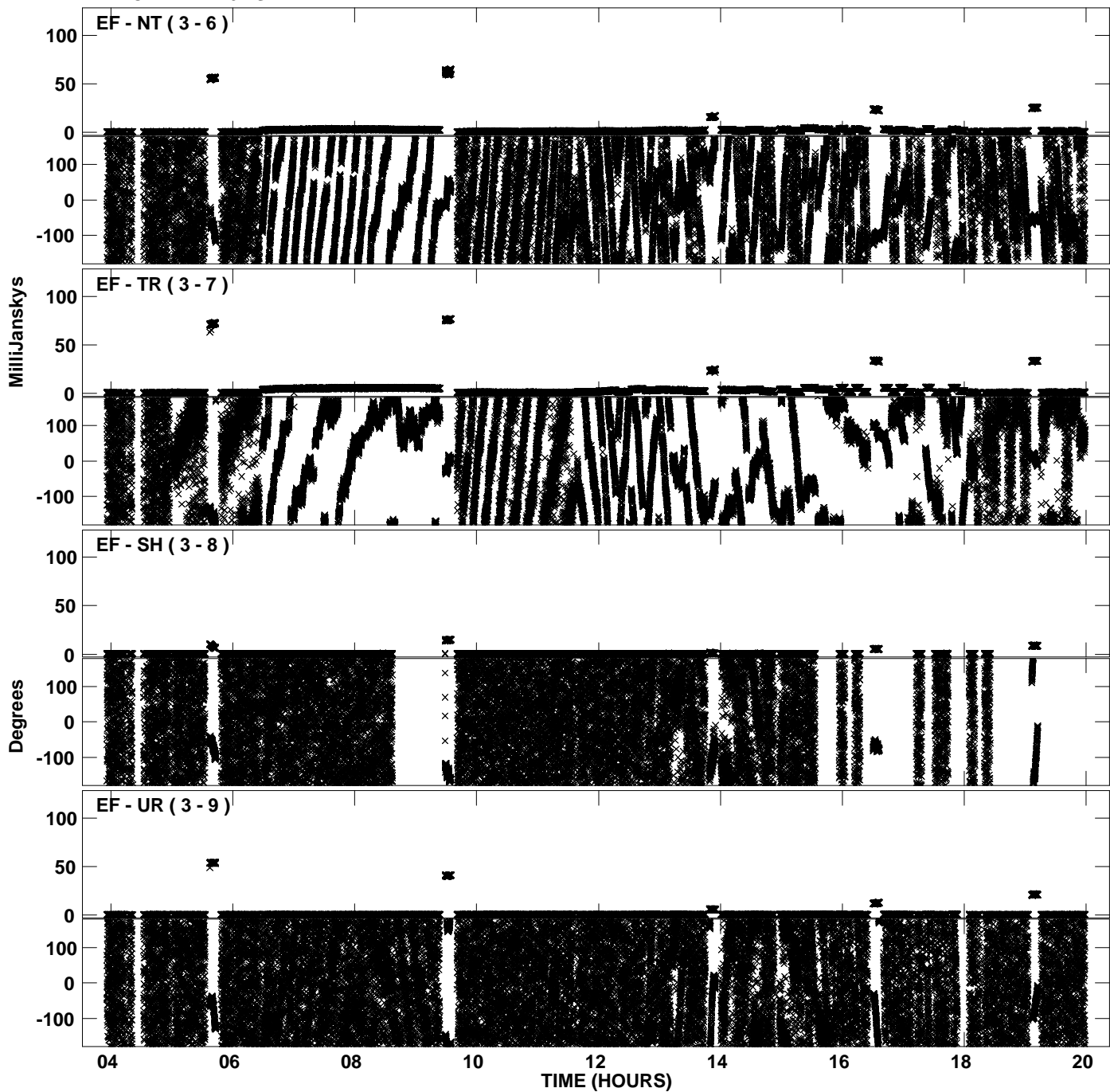
PLot file version 8 created 11-SEP-2008 14:25:15
Amplitude andPhase vs Time for EL036A.UVDATA.1 Vect aver.
IF 3 CHAN 1 - 16 STK LL



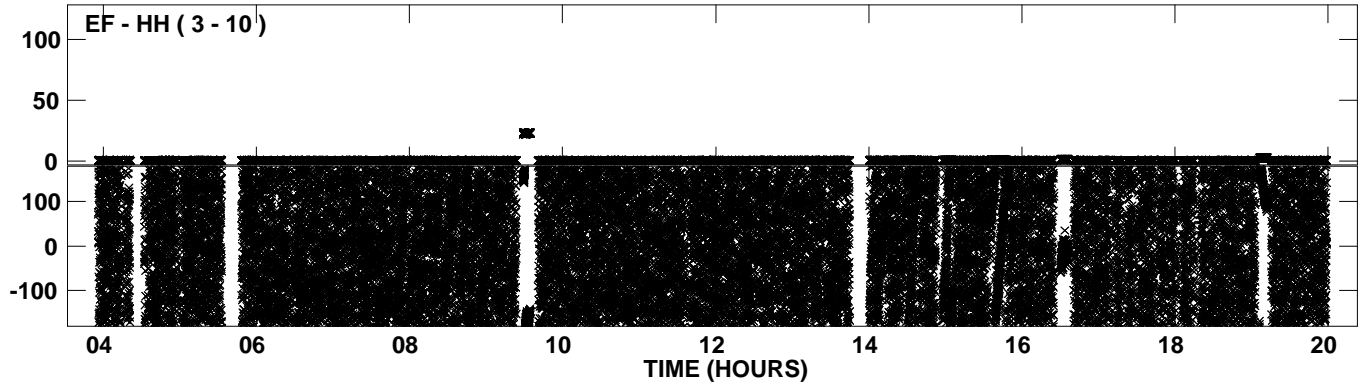
PLot file version 9 created 11-SEP-2008 14:25:43
Amplitude andPhase vs Time for EL036A.UVDATA.1 Vect aver.
IF 4 CHAN 1 - 16 STK LL



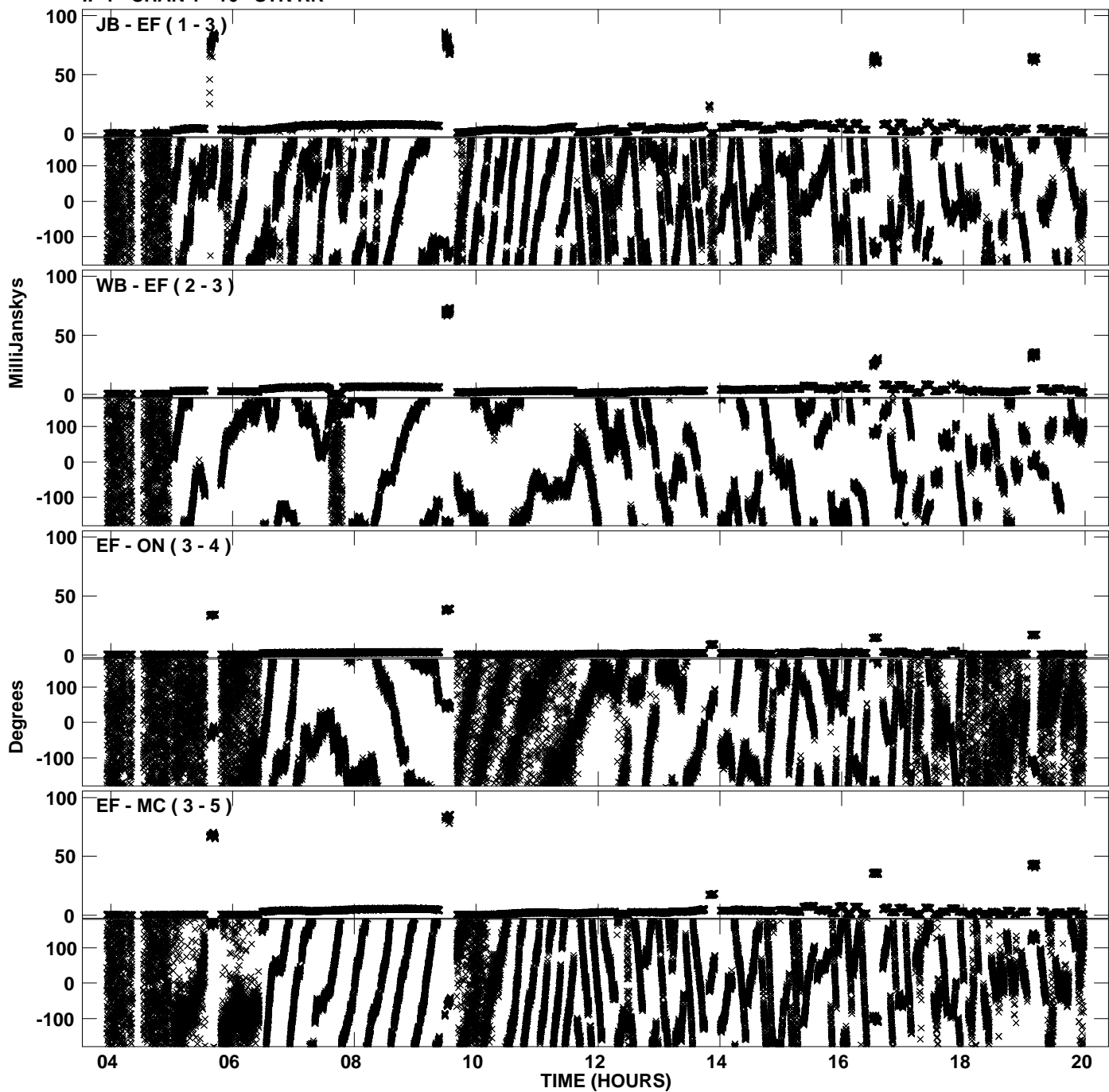
PLot file version 10 created 11-SEP-2008 14:25:44
Amplitude andPhase vs Time for EL036A.UVDATA.1 Vect aver.
IF 4 CHAN 1 - 16 STK LL



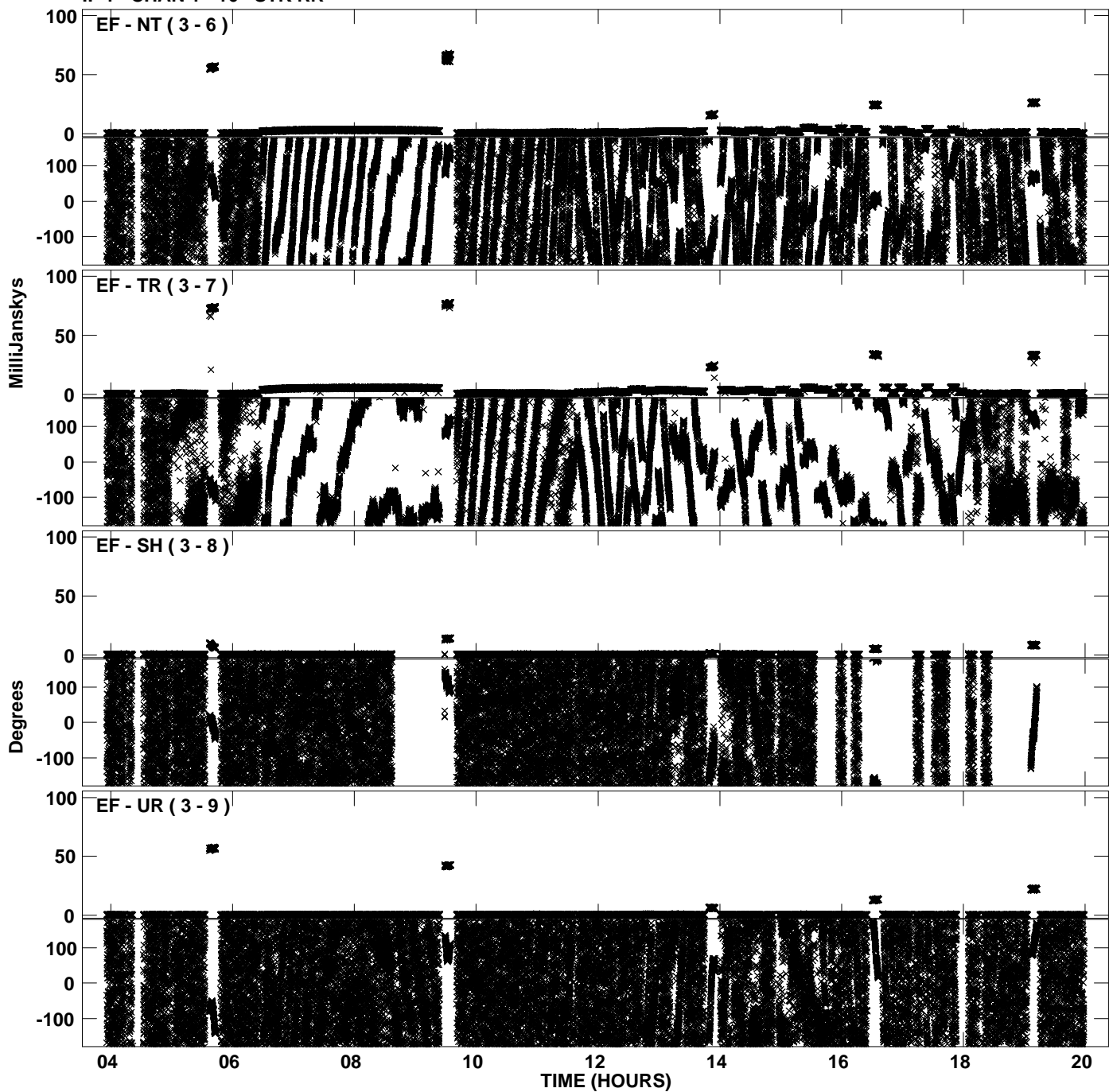
Plot file version 11 created 11-SEP-2008 14:25:44
Amplitude and Phase vs Time for EL036A.UVDATA.1 Vect aver.
IF 4 CHAN 1 - 16 STK LL



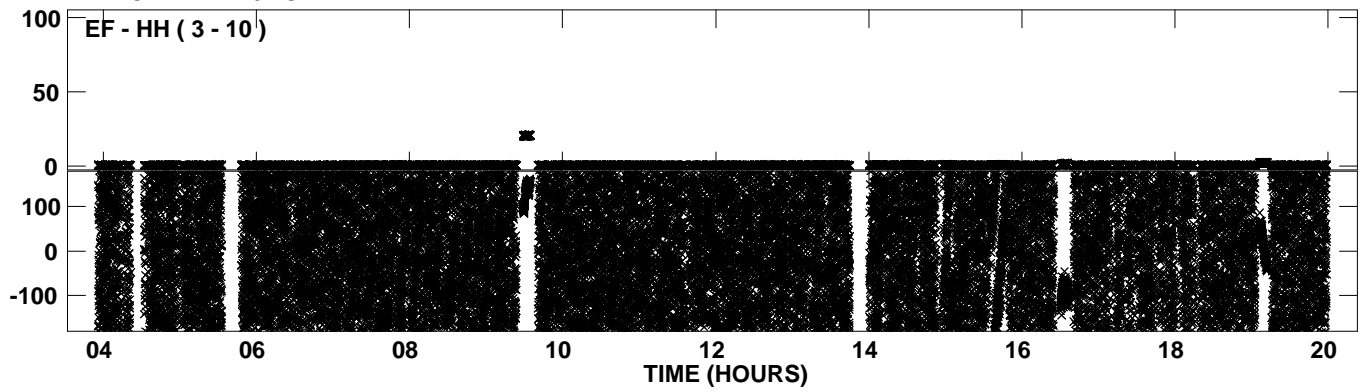
PLot file version 12 created 11-SEP-2008 14:26:13
Amplitude andPhase vs Time for EL036A.UVDATA.1 Vect aver.
IF 1 CHAN 1 - 16 STK RR



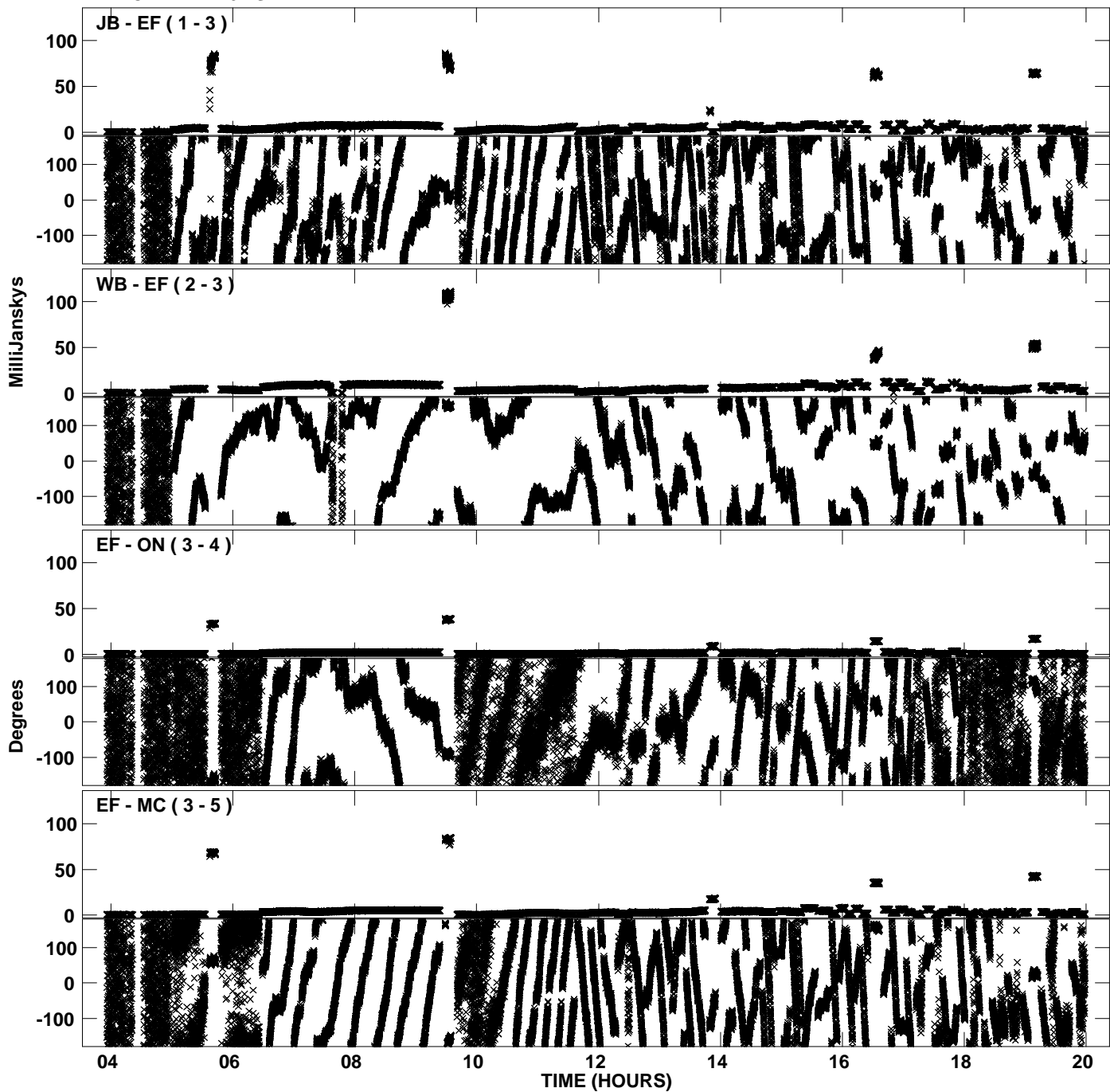
PLot file version 13 created 11-SEP-2008 14:26:13
Amplitude andPhase vs Time for EL036A.UVDATA.1 Vect aver.
IF 1 CHAN 1 - 16 STK RR



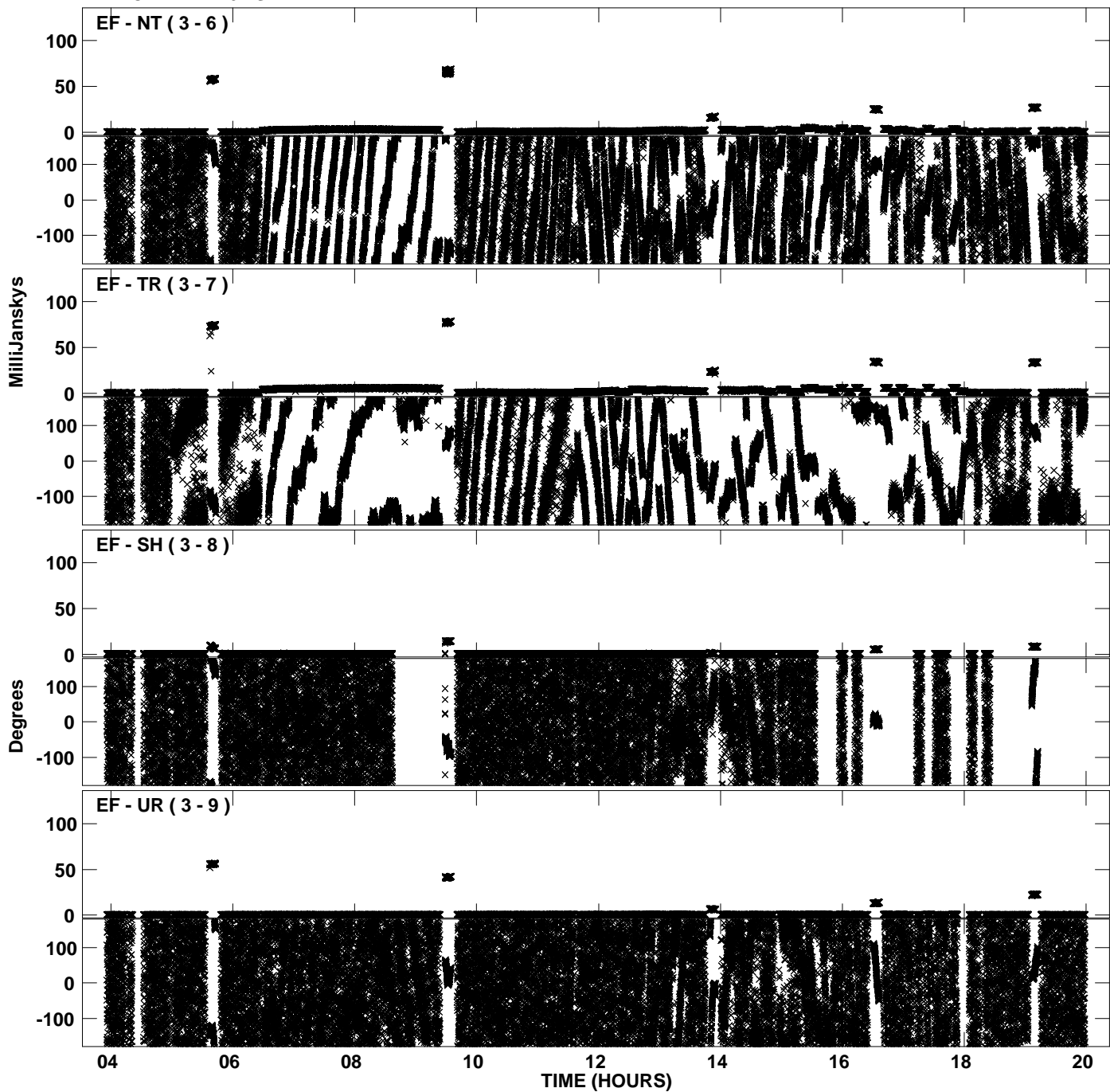
PLot file version 14 created 11-SEP-2008 14:26:14
Amplitude andPhase vs Time for EL036A.UVDATA.1 Vect aver.
IF 1 CHAN 1 - 16 STK RR



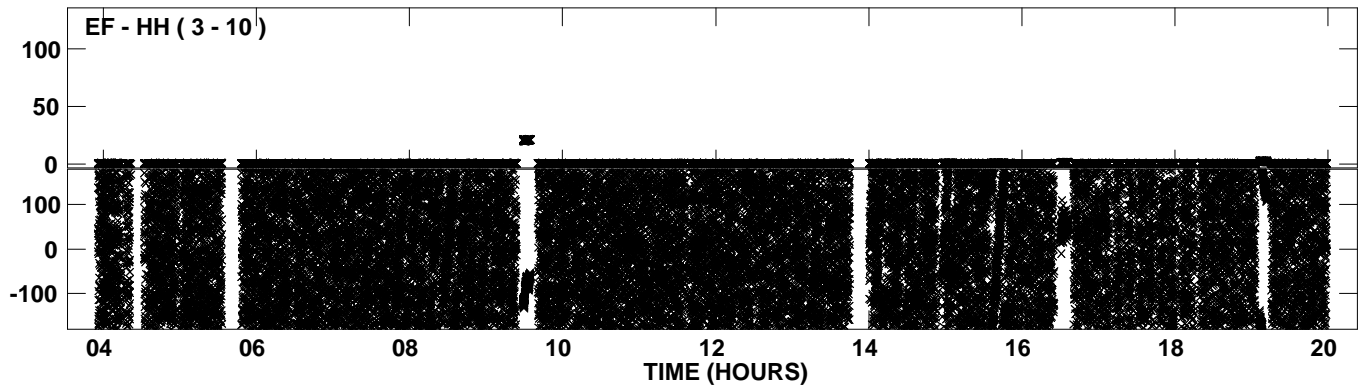
PLot file version 15 created 11-SEP-2008 14:26:41
Amplitude and Phase vs Time for EL036A.UVDATA.1 Vect aver.
IF 2 CHAN 1 - 16 STK RR



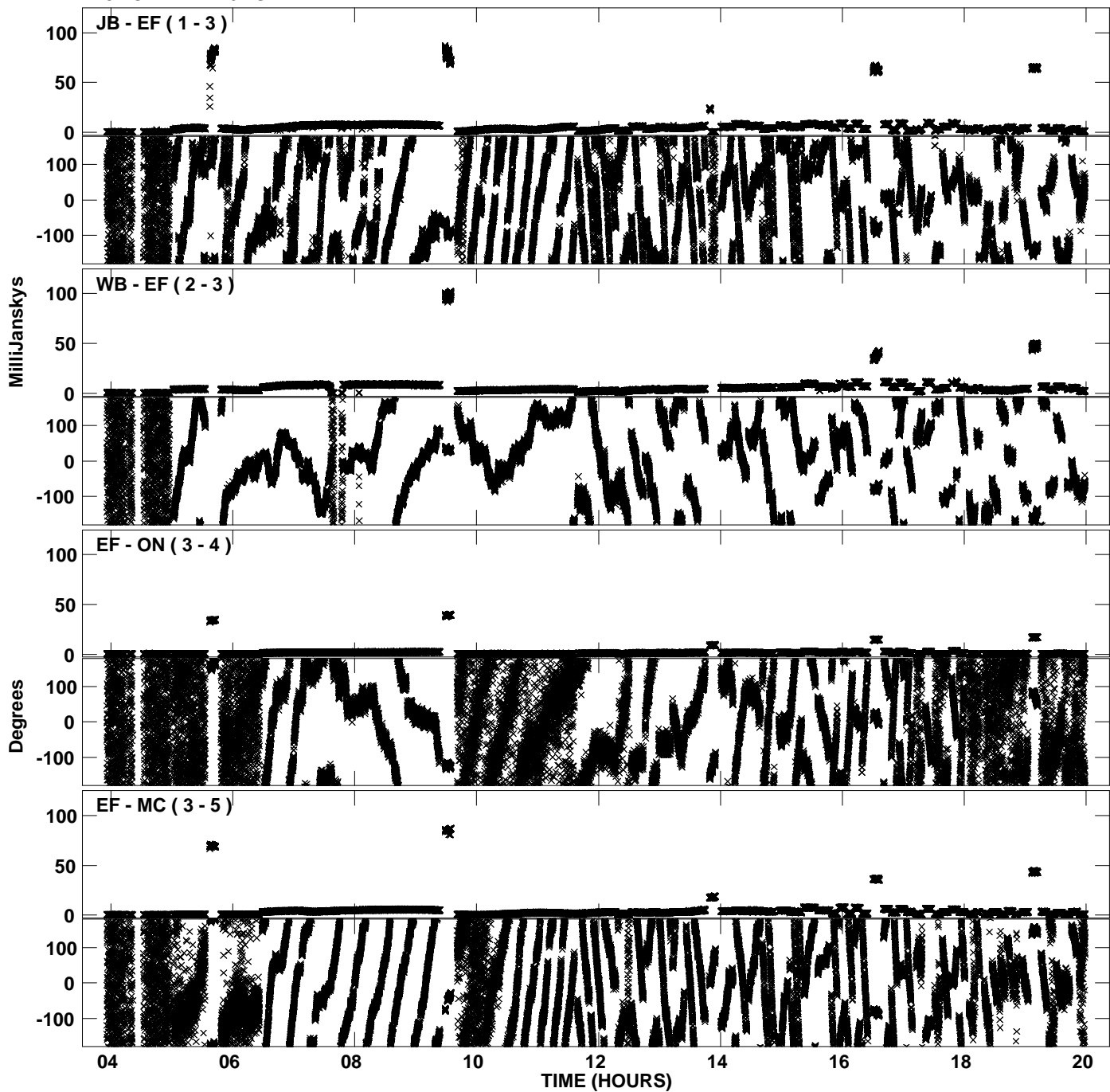
PLot file version 16 created 11-SEP-2008 14:26:42
Amplitude andPhase vs Time for EL036A.UVDATA.1 Vect aver.
IF 2 CHAN 1 - 16 STK RR



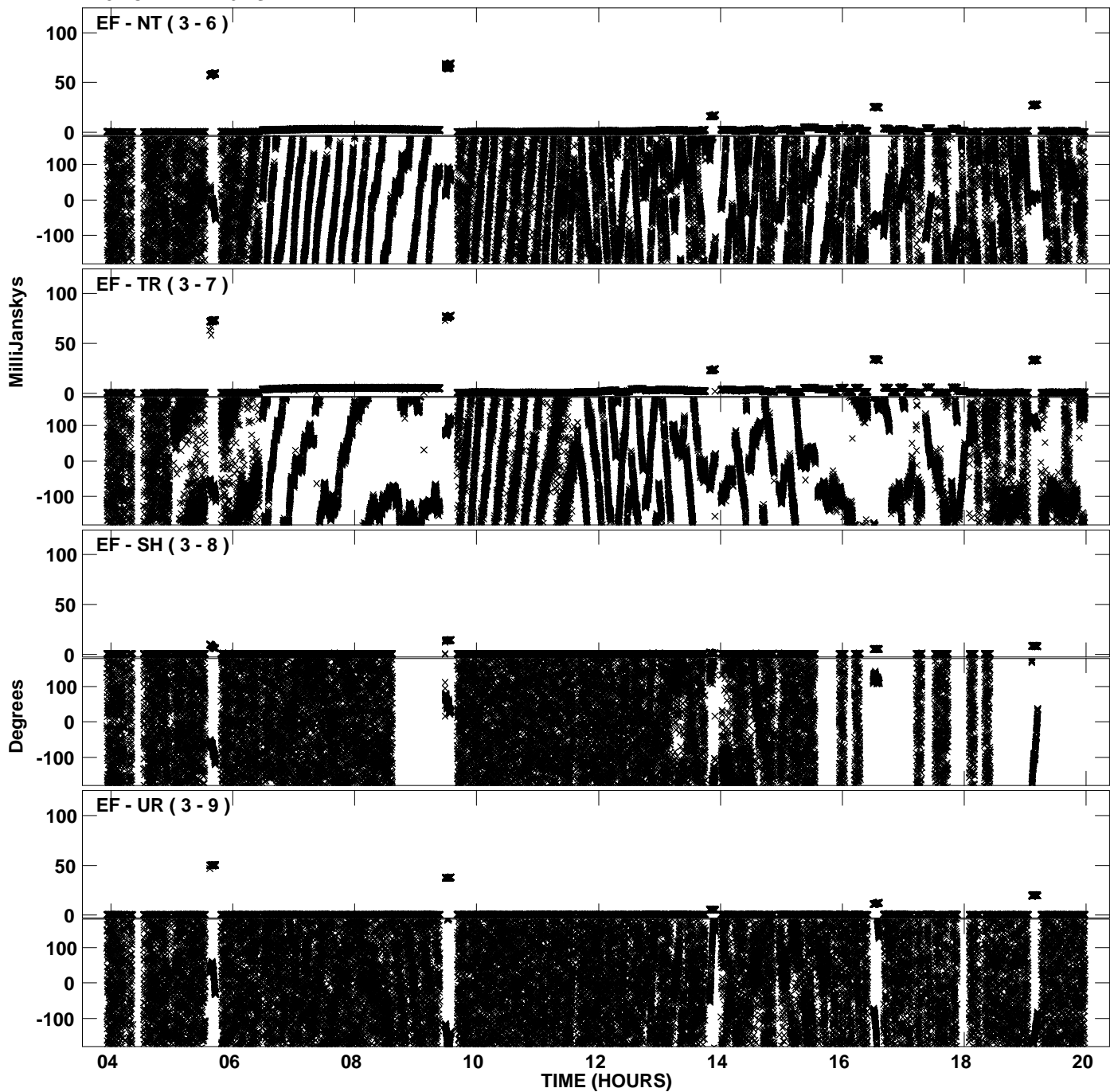
Plot file version 17 created 11-SEP-2008 14:26:42
Amplitude and Phase vs Time for EL036A.UVDATA.1 Vect aver.
IF 2 CHAN 1 - 16 STK RR



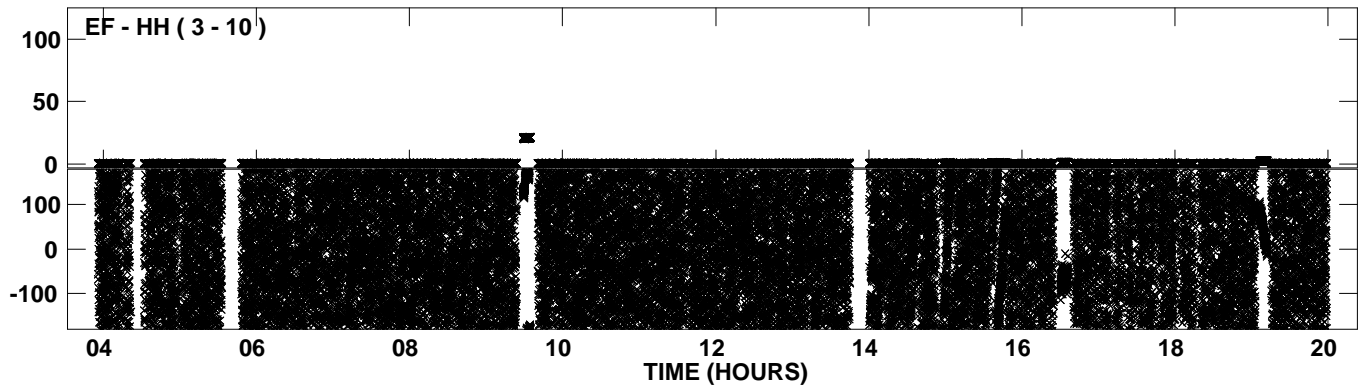
PLot file version 18 created 11-SEP-2008 14:27:10
Amplitude andPhase vs Time for EL036A.UVDATA.1 Vect aver.
IF 3 CHAN 1 - 16 STK RR



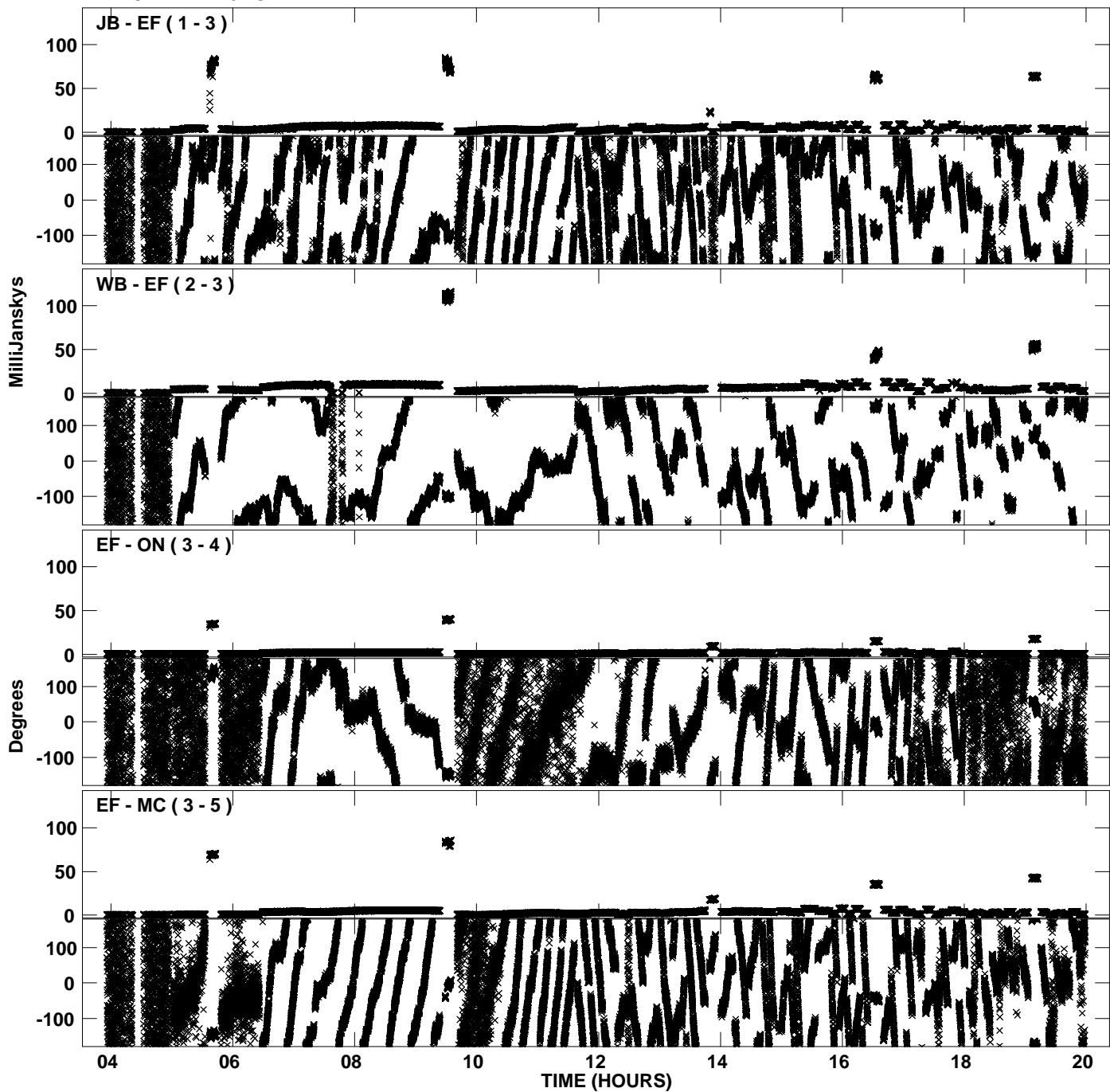
PLot file version 19 created 11-SEP-2008 14:27:11
Amplitude andPhase vs Time for EL036A.UVDATA.1 Vect aver.
IF 3 CHAN 1 - 16 STK RR



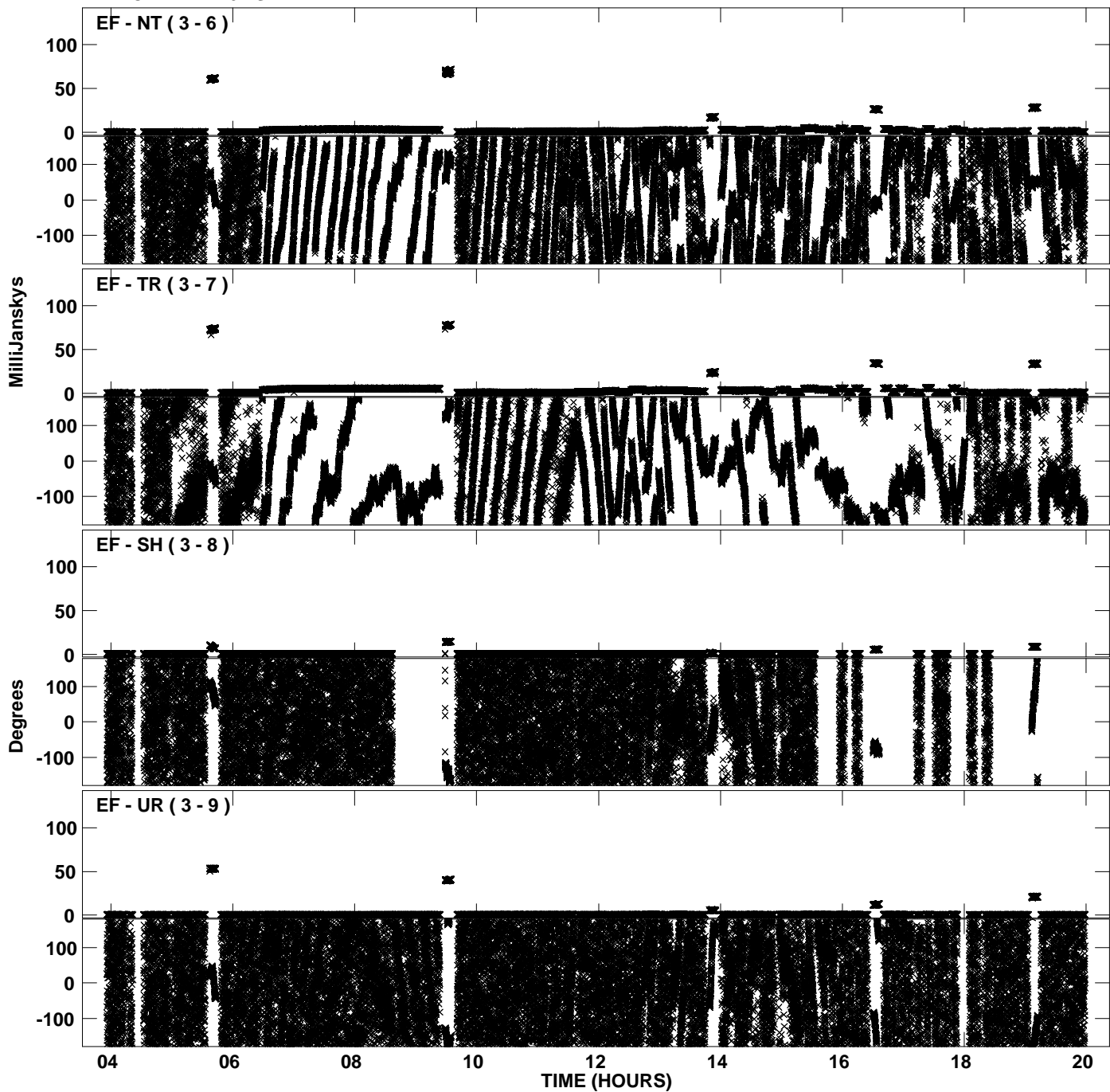
Plot file version 20 created 11-SEP-2008 14:27:12
Amplitude and Phase vs Time for EL036A.UVDATA.1 Vect aver.
IF 3 CHAN 1 - 16 STK RR



PLot file version 21 created 11-SEP-2008 14:27:39
Amplitude andPhase vs Time for EL036A.UVDATA.1 Vect aver.
IF 4 CHAN 1 - 16 STK RR



PLot file version 22 created 11-SEP-2008 14:27:40
Amplitude andPhase vs Time for EL036A.UVDATA.1 Vect aver.
IF 4 CHAN 1 - 16 STK RR



Plot file version 23 created 11-SEP-2008 14:27:41
Amplitude and Phase vs Time for EL036A.UVDATA.1 Vect aver.
IF 4 CHAN 1 - 16 STK RR

