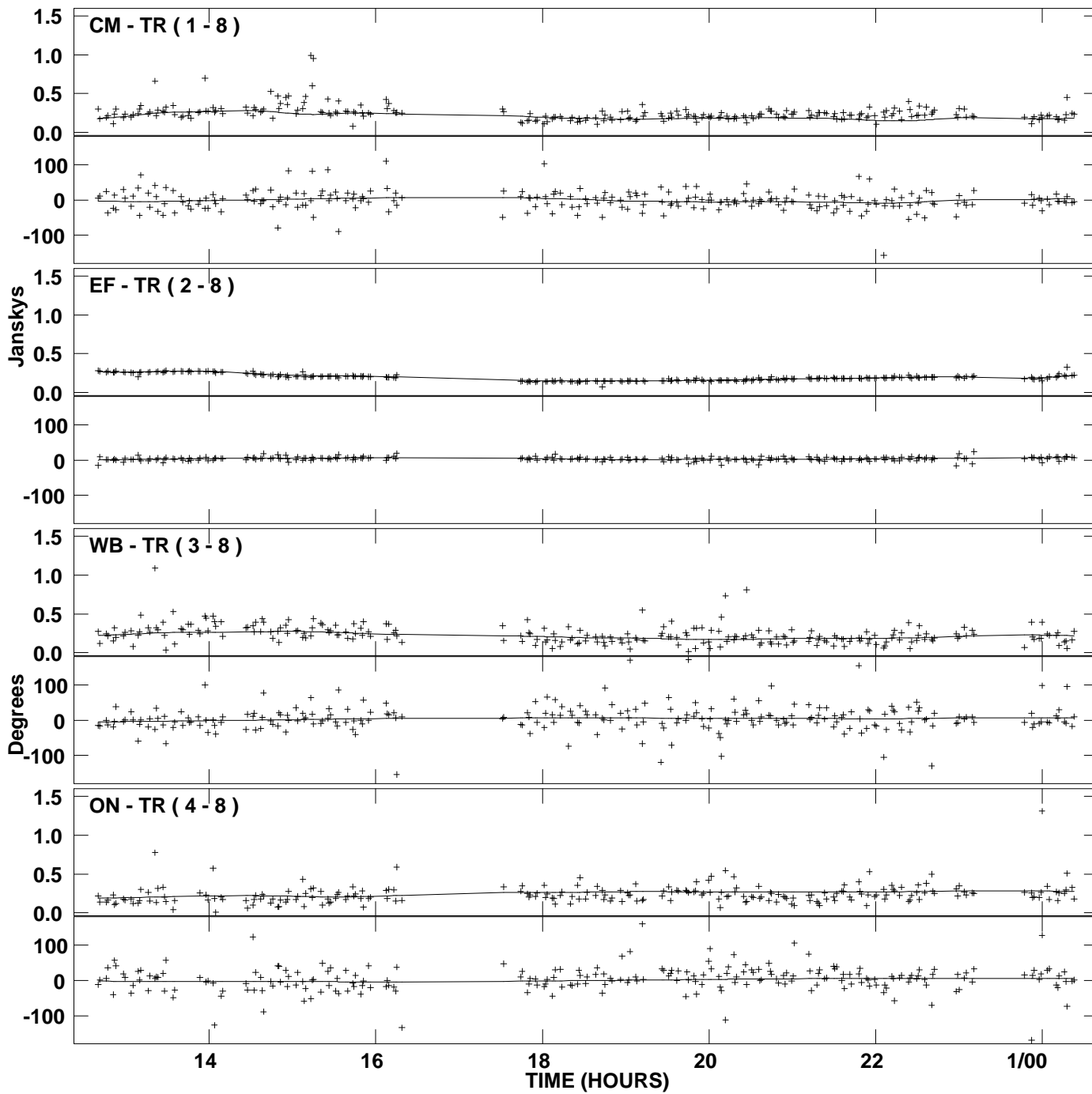
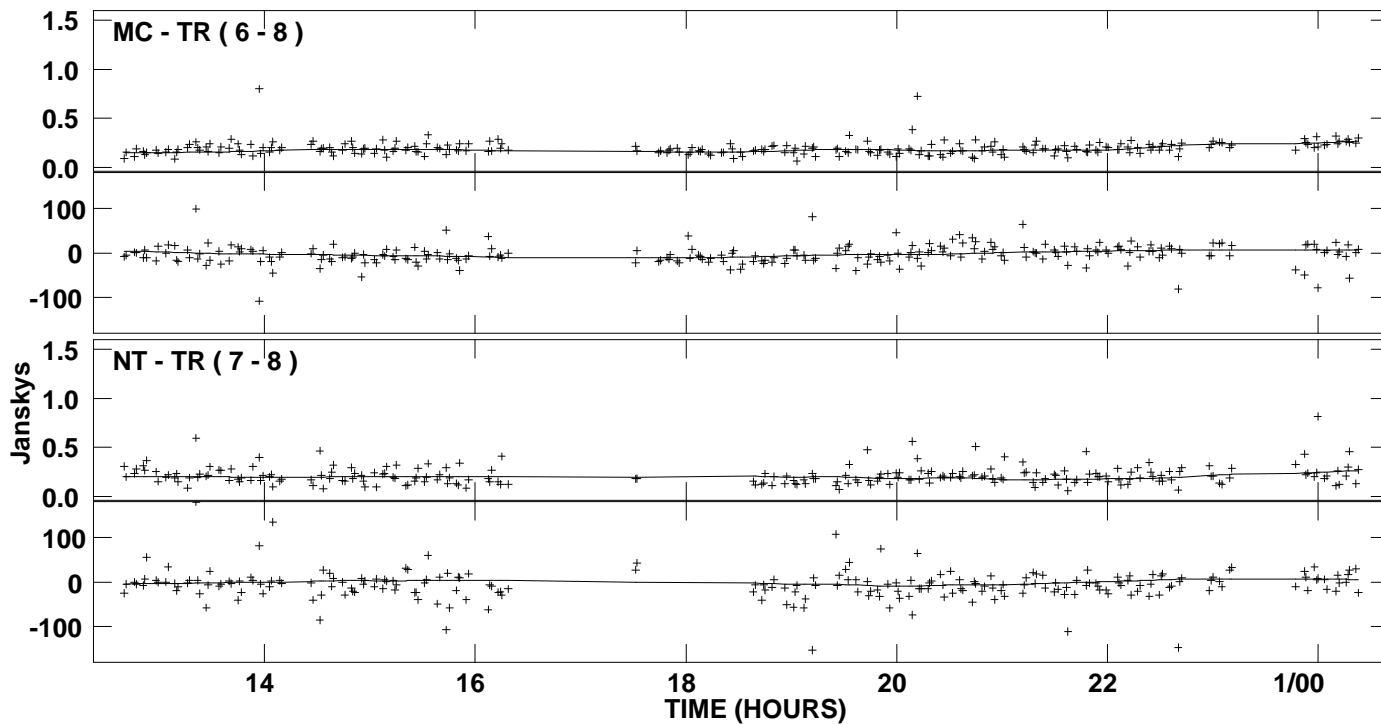


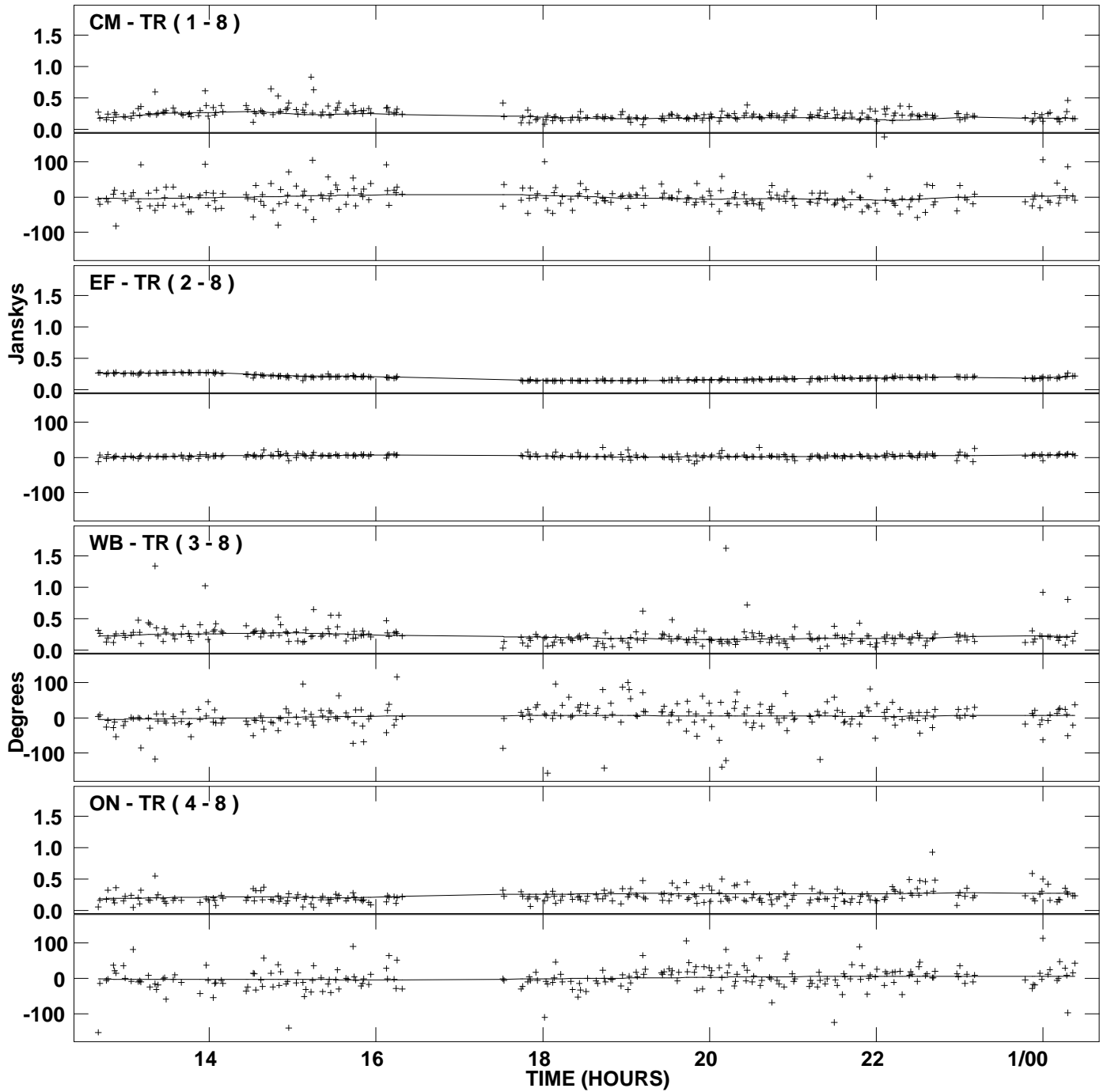
PLot file version 1 created 31-MAY-2006 21:59:32
Amplitude and Phase vs Time for J0530+3723.MULTI.1 Vect aver. CL # 3
IF 1 CHAN 1 STK LL of J0530+3723.ICL001.3



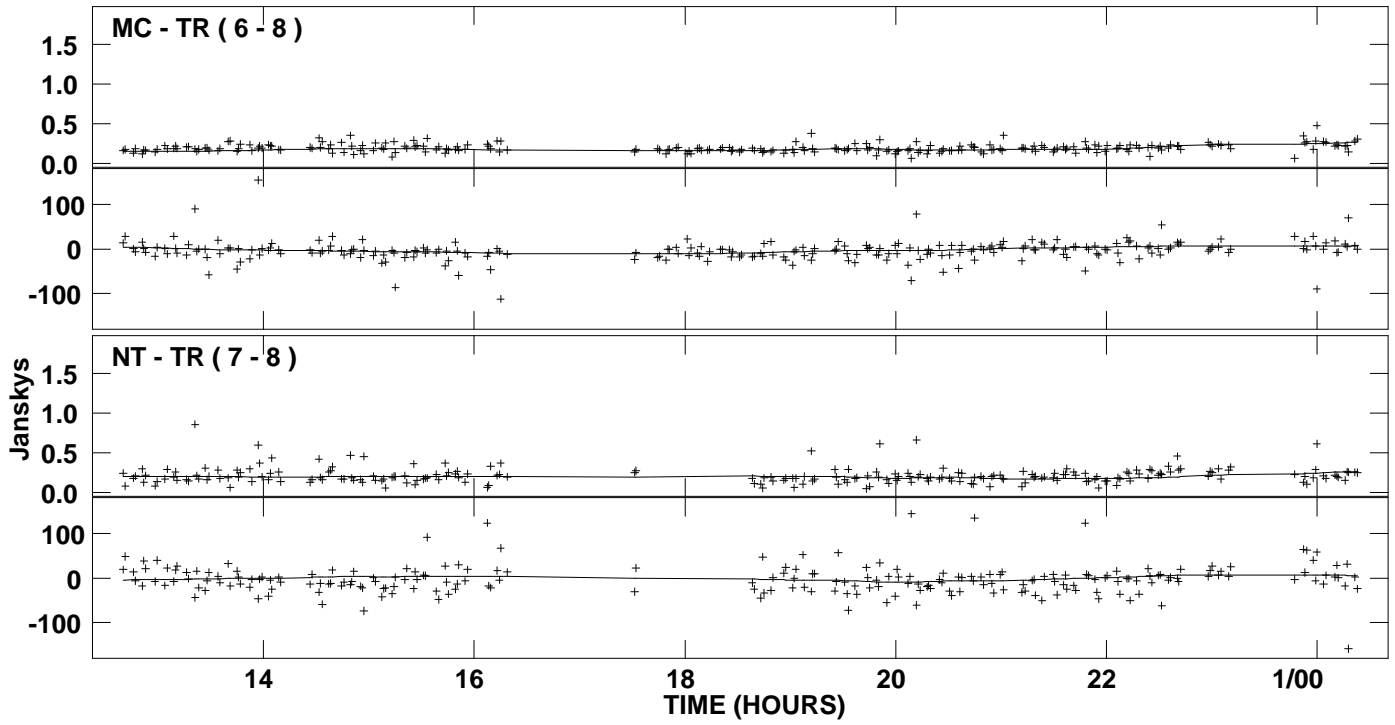
PLot file version 2 created 31-MAY-2006 21:59:32
Amplitude and Phase vs Time for J0530+3723.MULTI.1 Vect aver. CL # 3
IF 1 CHAN 1 STK LL of J0530+3723.ICL001.3



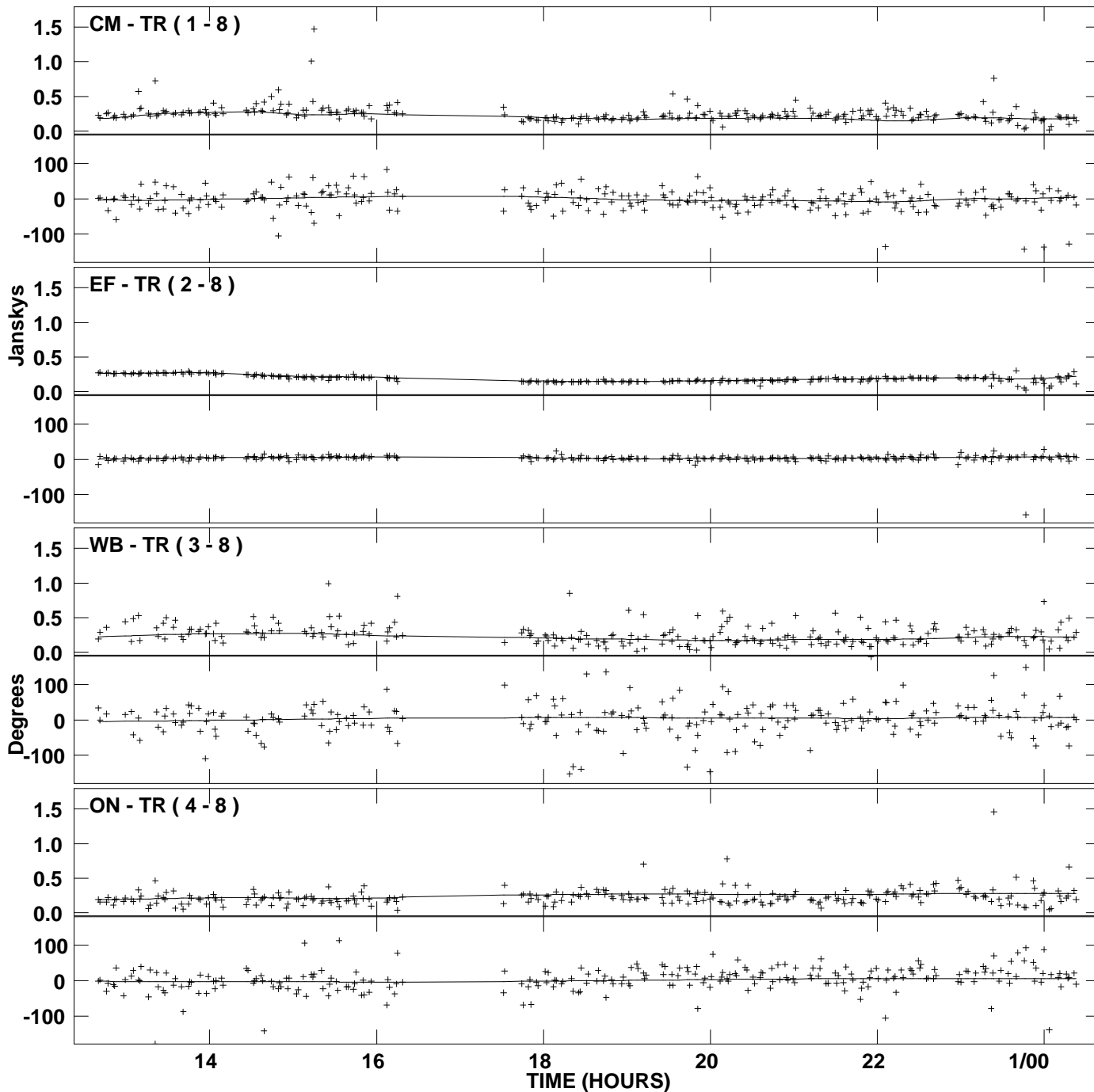
PLot file version 3 created 31-MAY-2006 21:59:37
Amplitude and Phase vs Time for J0530+3723.MULTI.1 Vect aver. CL # 3
IF 2 CHAN 1 STK LL of J0530+3723.ICL001.3



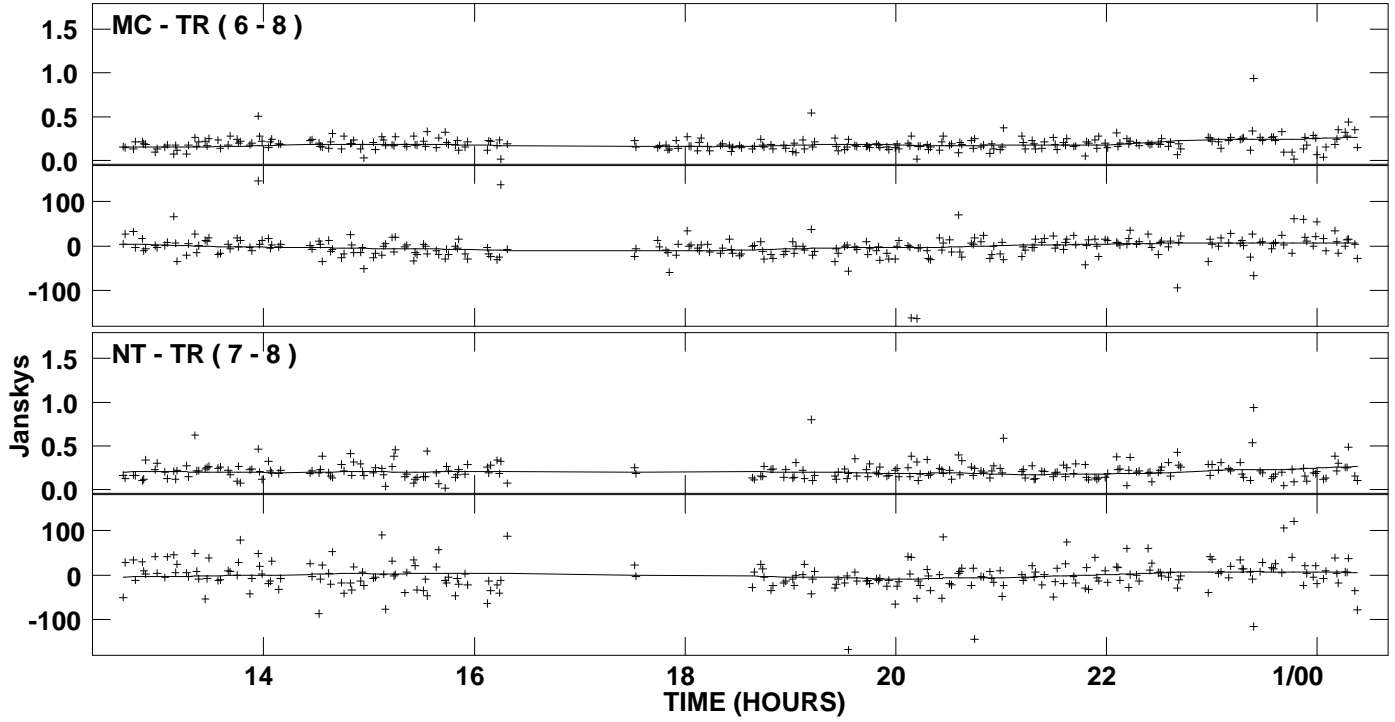
PLot file version 4 created 31-MAY-2006 21:59:37
Amplitude and Phase vs Time for J0530+3723.MULTI.1 Vect aver. CL # 3
IF 2 CHAN 1 STK LL of J0530+3723.ICL001.3



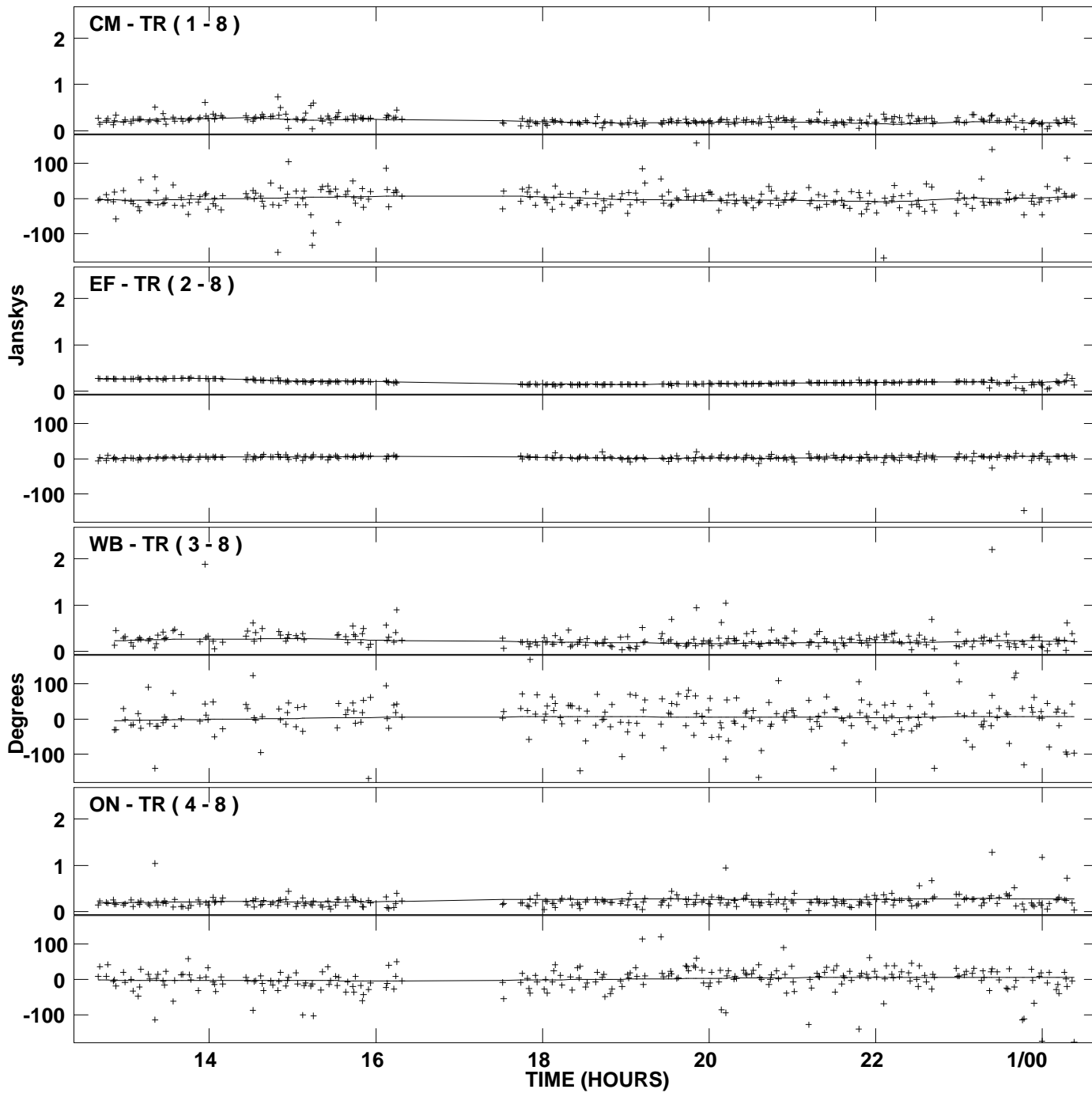
PLot file version 5 created 31-MAY-2006 21:59:41
Amplitude and Phase vs Time for J0530+3723.MULTI.1 Vect aver. CL # 3
IF 1 CHAN 1 STK RR of J0530+3723.ICL001.3



PLot file version 6 created 31-MAY-2006 21:59:41
Amplitude and Phase vs Time for J0530+3723.MULTI.1 Vect aver. CL # 3
IF 1 CHAN 1 STK RR of J0530+3723.ICL001.3



PLot file version 7 created 31-MAY-2006 21:59:46
Amplitude and Phase vs Time for J0530+3723.MULTI.1 Vect aver. CL # 3
IF 2 CHAN 1 STK RR of J0530+3723.ICL001.3



PLot file version 8 created 31-MAY-2006 21:59:46
Amplitude and Phase vs Time for J0530+3723.MULTI.1 Vect aver. CL # 3
IF 2 CHAN 1 STK RR of J0530+3723.ICL001.3

