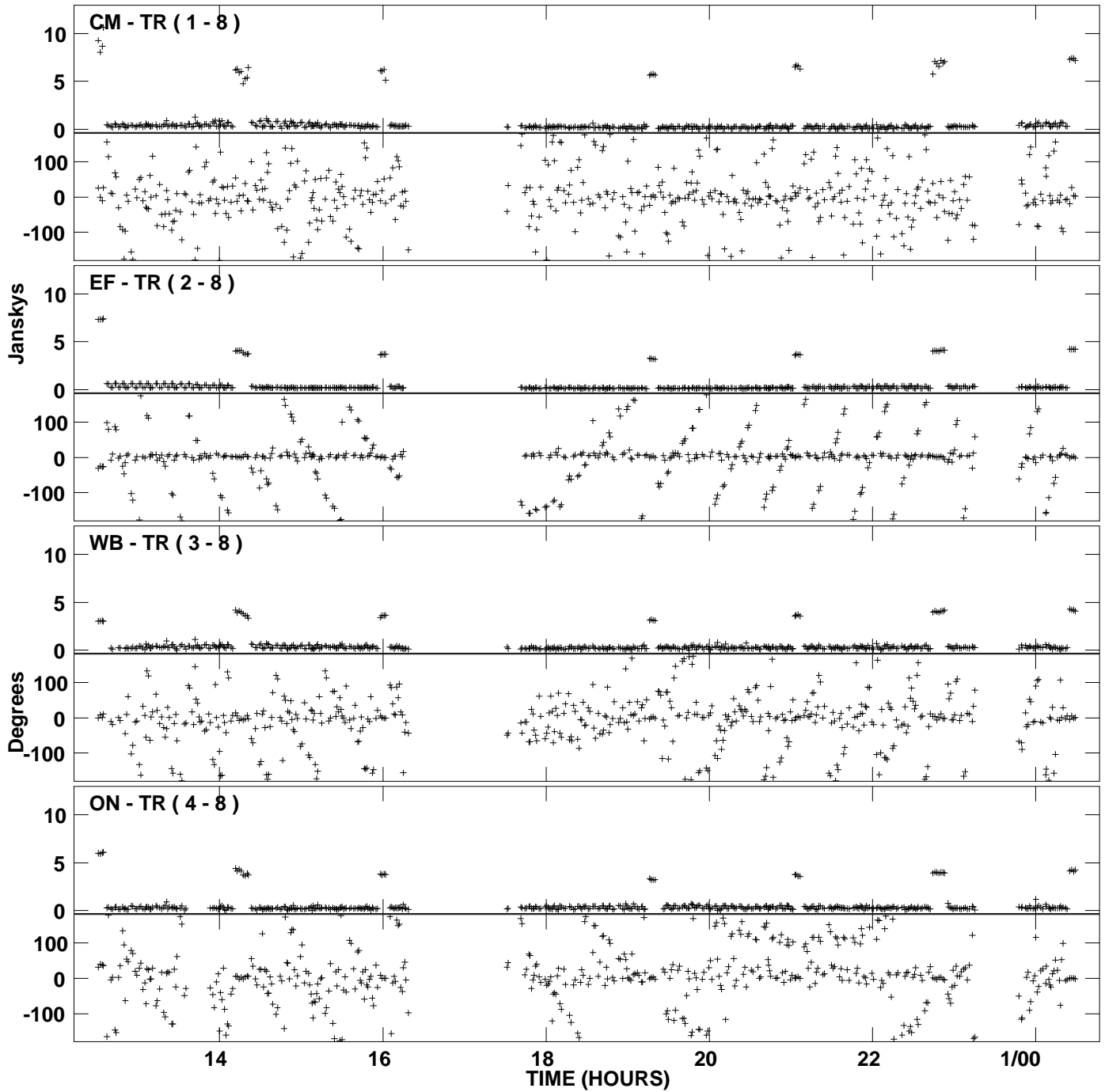
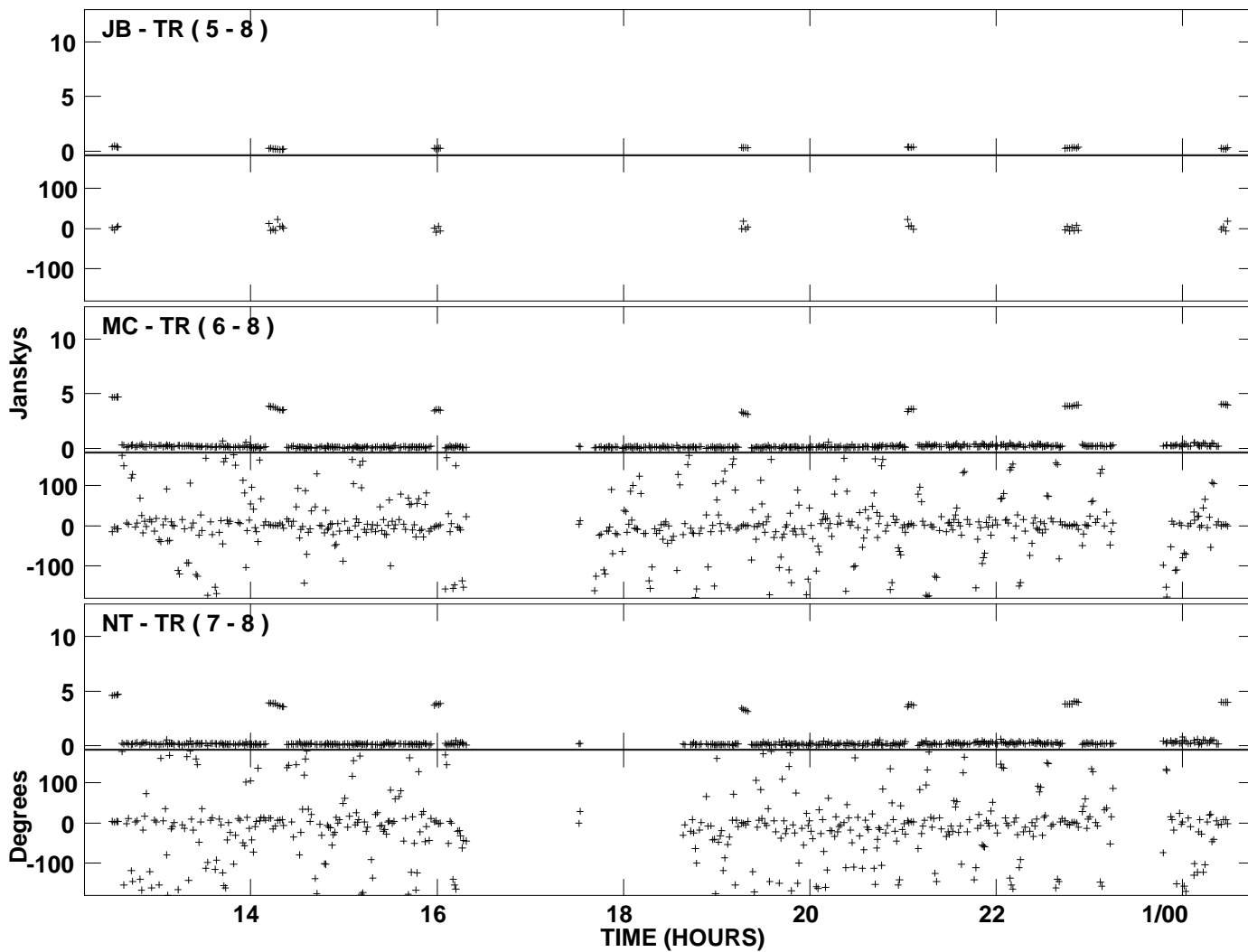


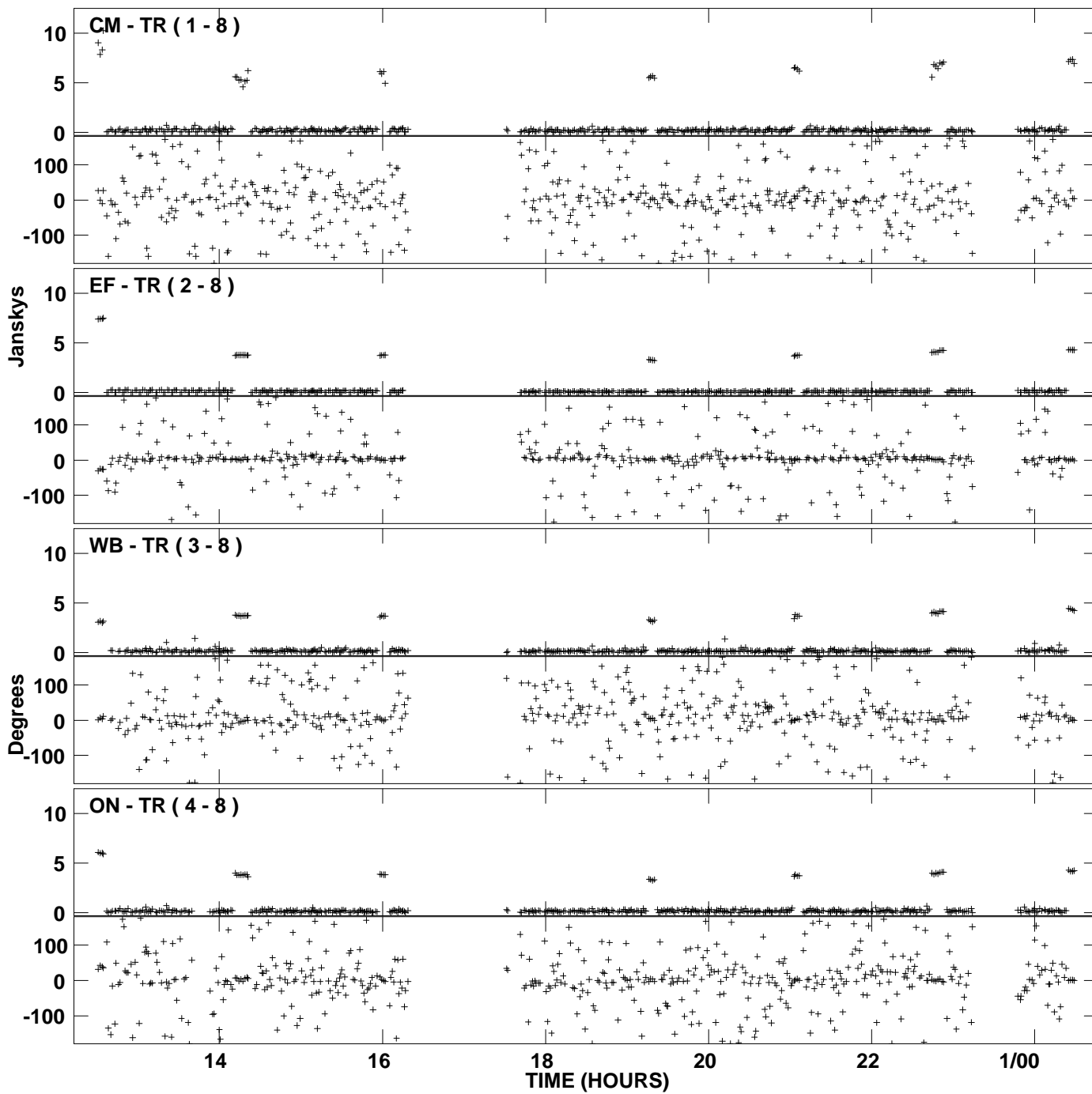
PLot file version 1 created 31-MAY-2006 21:40:35  
Amplitude and Phase vs Time for EM058A 1.UVDATA.1 Vect aver. CL # 3  
IF 1 CHAN 1 - 128 STK LL



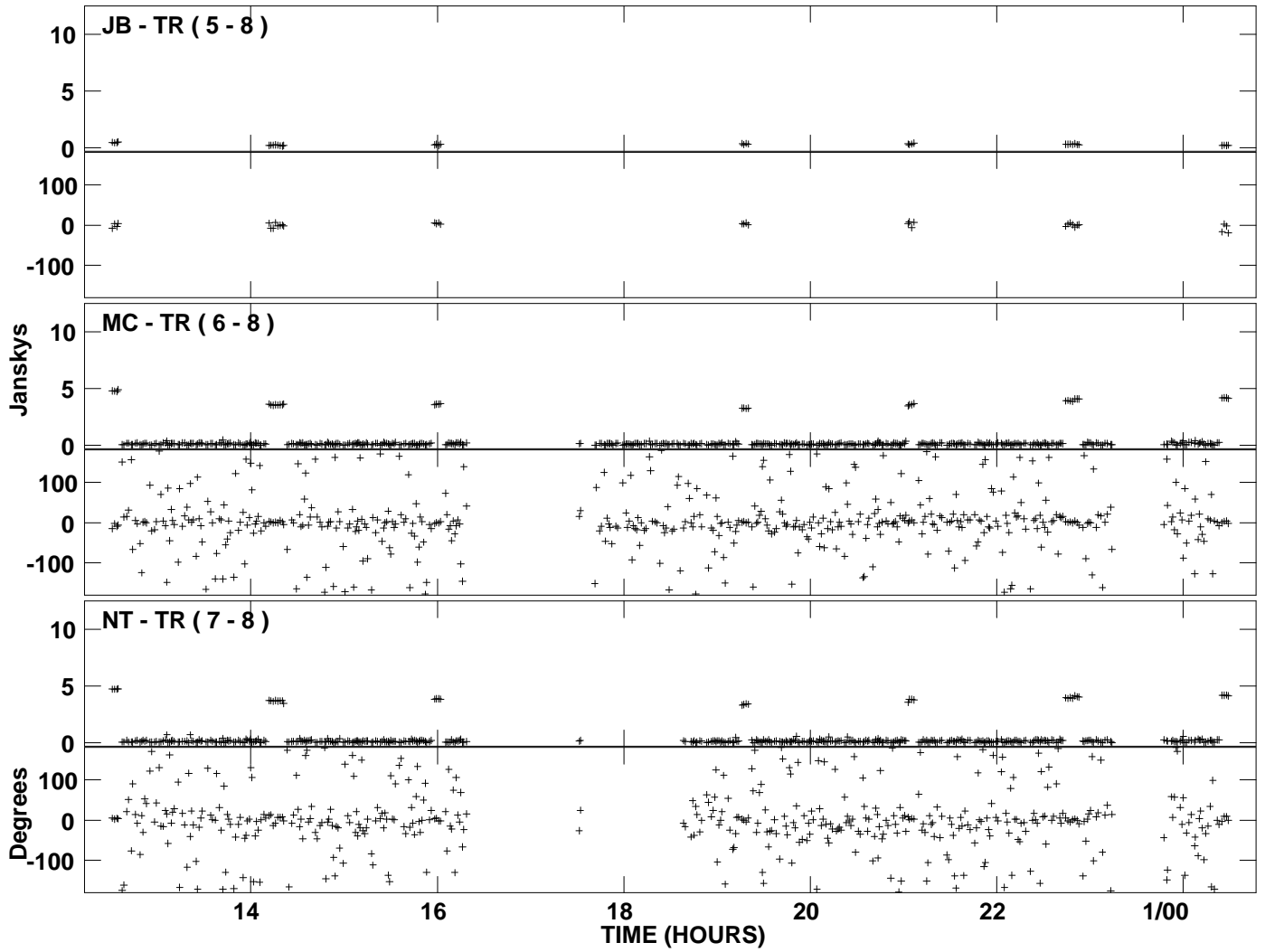
PLot file version 2 created 31-MAY-2006 21:40:35  
Amplitude and Phase vs Time for EM058A 1.UVDATA.1 Vect aver. CL # 3  
IF 1 CHAN 1 - 128 STK LL



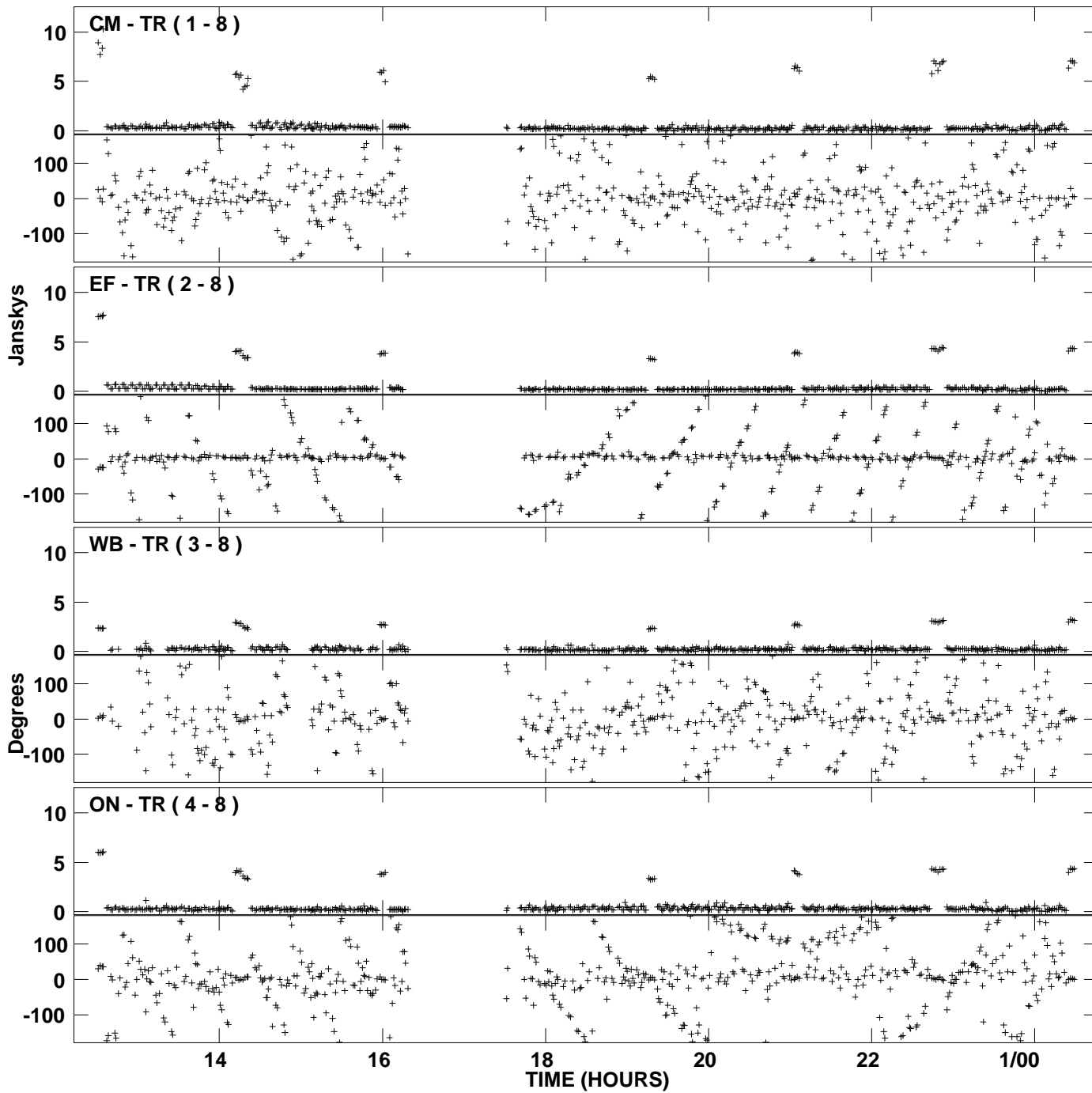
PLot file version 3 created 31-MAY-2006 21:43:45  
Amplitude and Phase vs Time for EM058A 1.UVDATA.1 Vect aver. CL # 3  
IF 2 CHAN 1 - 128 STK LL



PLot file version 4 created 31-MAY-2006 21:43:45  
Amplitude and Phase vs Time for EM058A 1.UVDATA.1 Vect aver. CL # 3  
IF 2 CHAN 1 - 128 STK LL



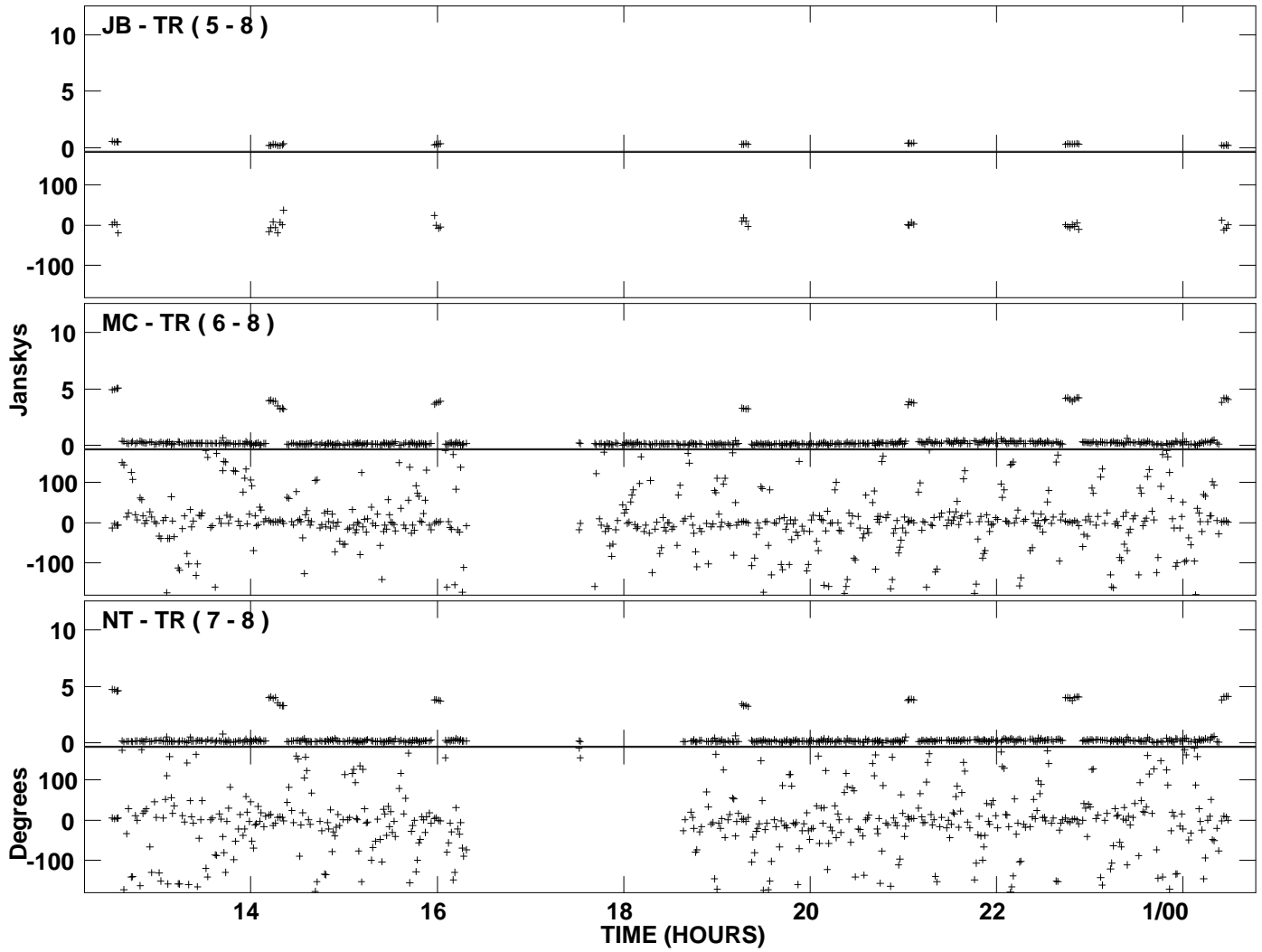
PLot file version 5 created 31-MAY-2006 21:46:49  
Amplitude and Phase vs Time for EM058A 1.UVDATA.1 Vect aver. CL # 3  
IF 1 CHAN 1 - 128 STK RR



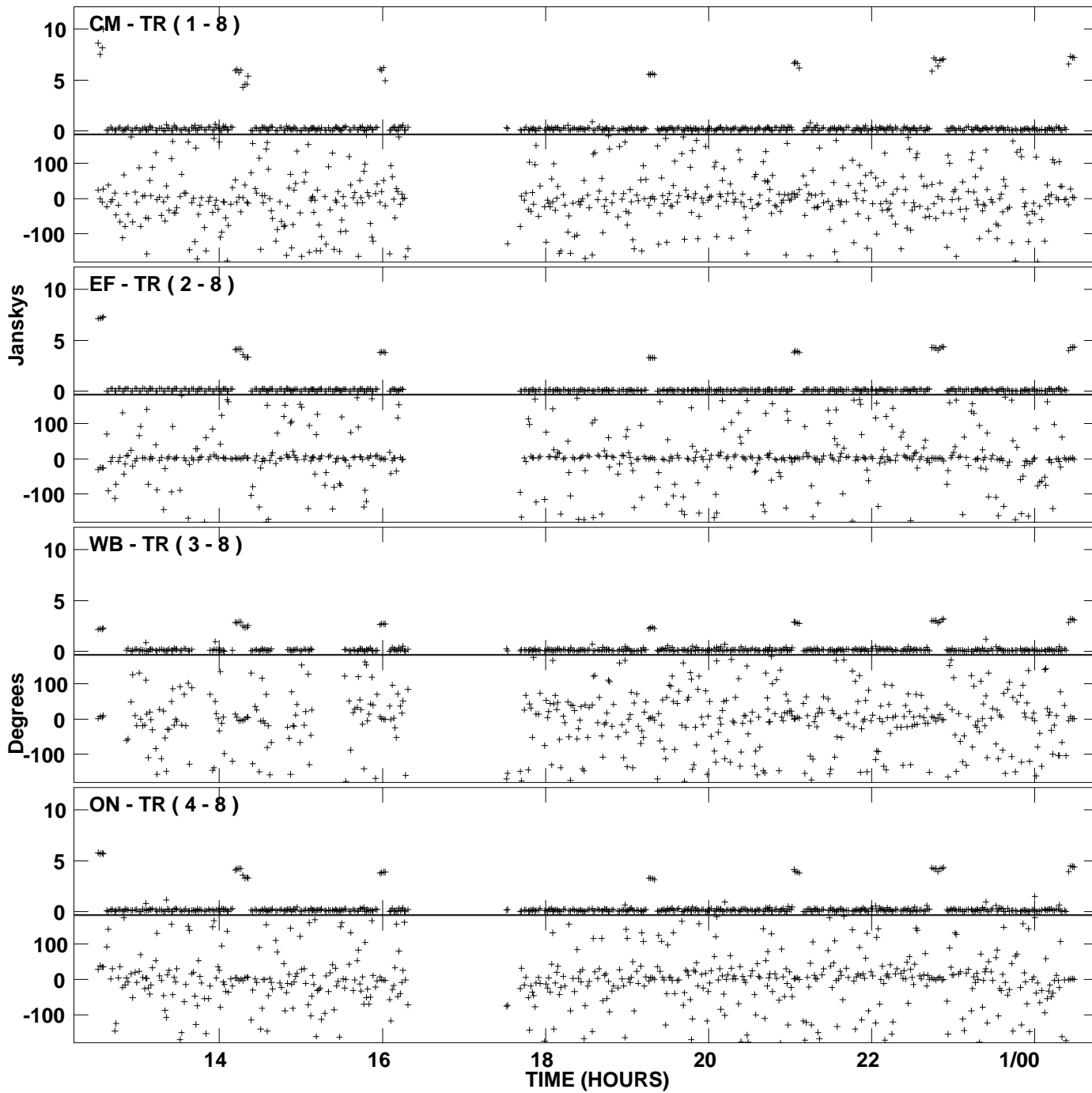
PLot file version 6 created 31-MAY-2006 21:46:49

Amplitude and Phase vs Time for EM058A 1.UVDATA.1 Vect aver. CL # 3

IF 1 CHAN 1 - 128 STK RR



PLot file version 7 created 31-MAY-2006 21:49:49  
Amplitude and Phase vs Time for EM058A 1.UVDATA.1 Vect aver. CL # 3  
IF 2 CHAN 1 - 128 STK RR



PLot file version 8 created 31-MAY-2006 21:49:49

Amplitude and Phase vs Time for EM058A 1.UVDATA.1 Vect aver. CL # 3

IF 2 CHAN 1 - 128 STK RR

