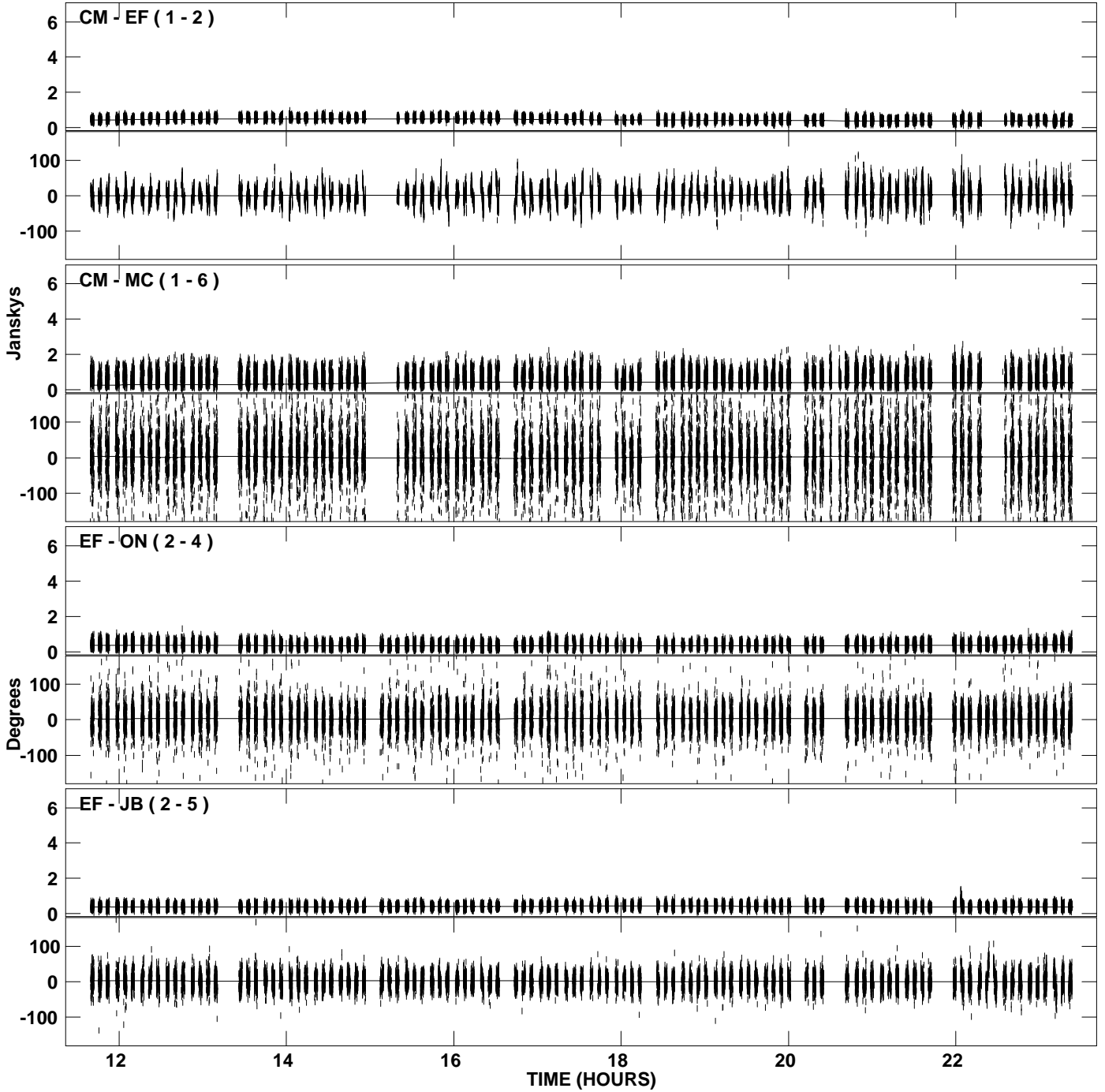
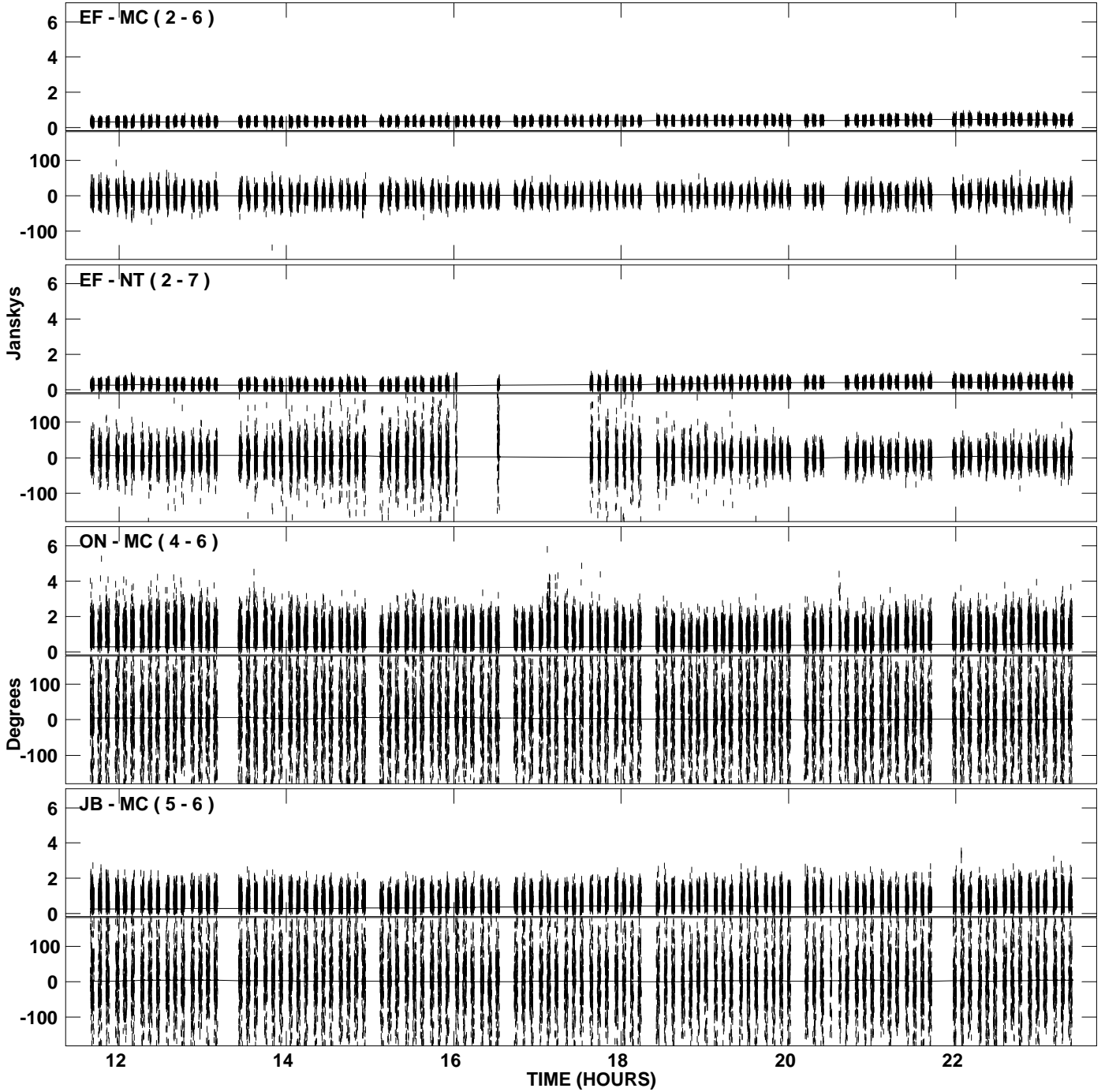


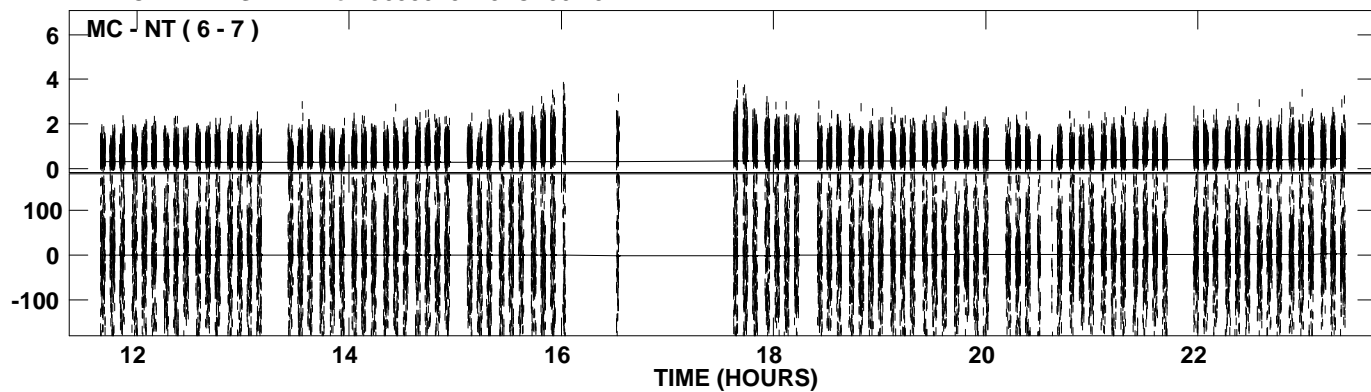
PLot file version 1 created 27-MAY-2008 20:52:57  
Amplitude and Phase vs Time for J0530+3723.MULTI.1 CL # 3  
IF 1 CHAN 1 STK LL of J0530+3723.ICL001.3



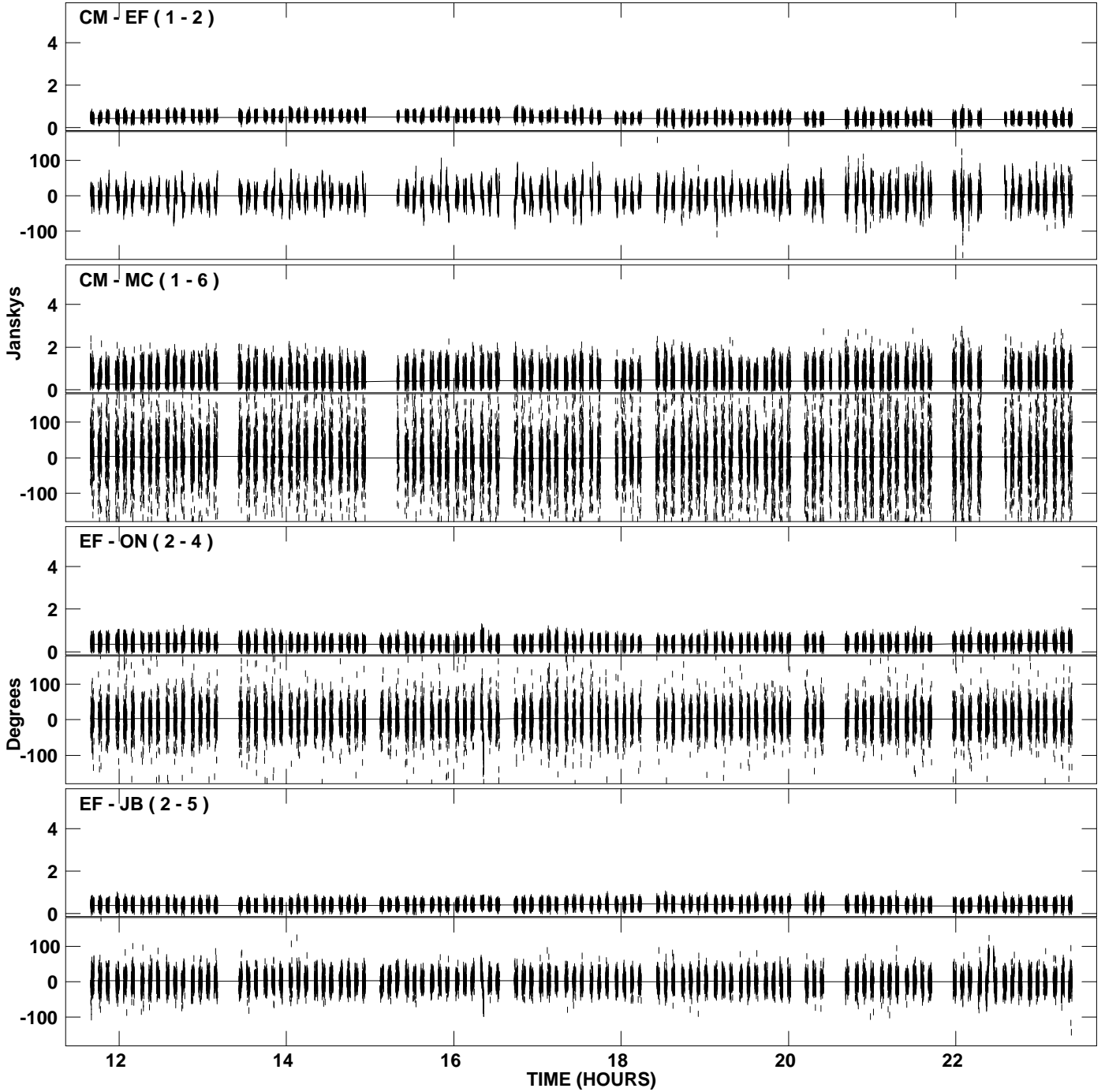
PLot file version 2 created 27-MAY-2008 20:52:57  
Amplitude and Phase vs Time for J0530+3723.MULTI.1 CL # 3  
IF 1 CHAN 1 STK LL of J0530+3723.ICL001.3



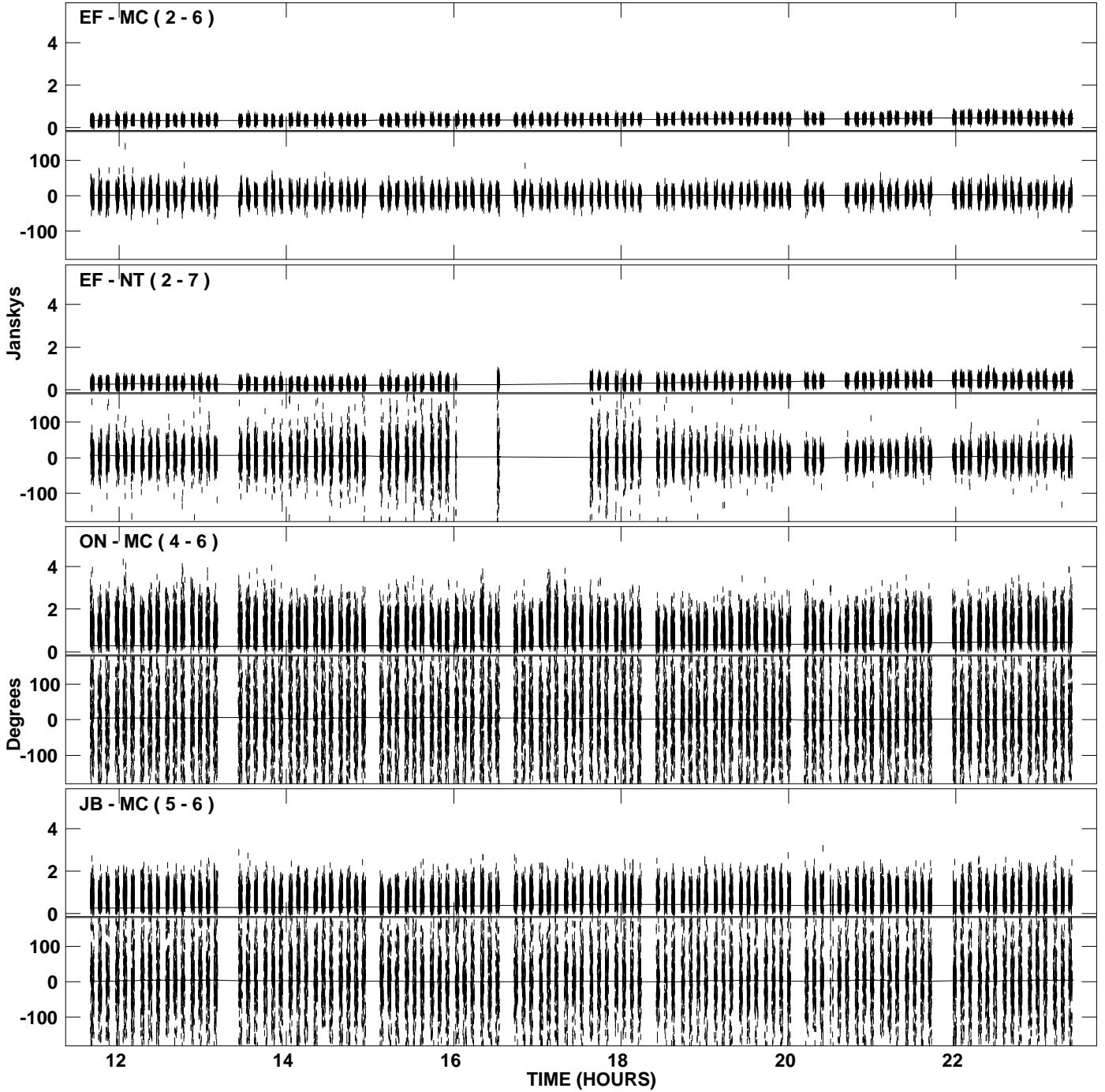
PLot file version 3 created 27-MAY-2008 20:52:57  
Amplitude andPhase vs Time for J0530+3723.MULTI.1 CL # 3  
IF 1 CHAN 1 STK LL of J0530+3723.ICL001.3



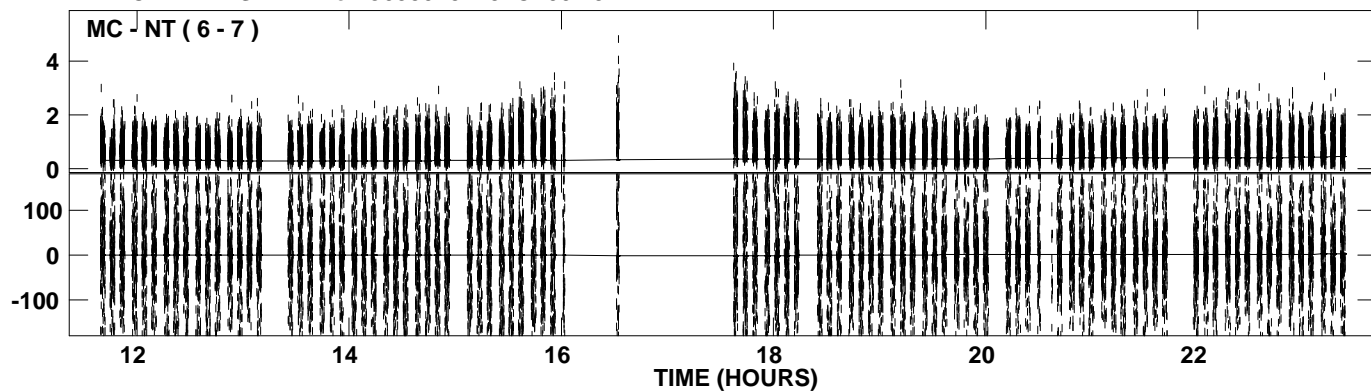
PLot file version 4 created 27-MAY-2008 20:52:59  
Amplitude andPhase vs Time for J0530+3723.MULTI.1 CL # 3  
IF 2 CHAN 1 STK LL of J0530+3723.ICL001.3



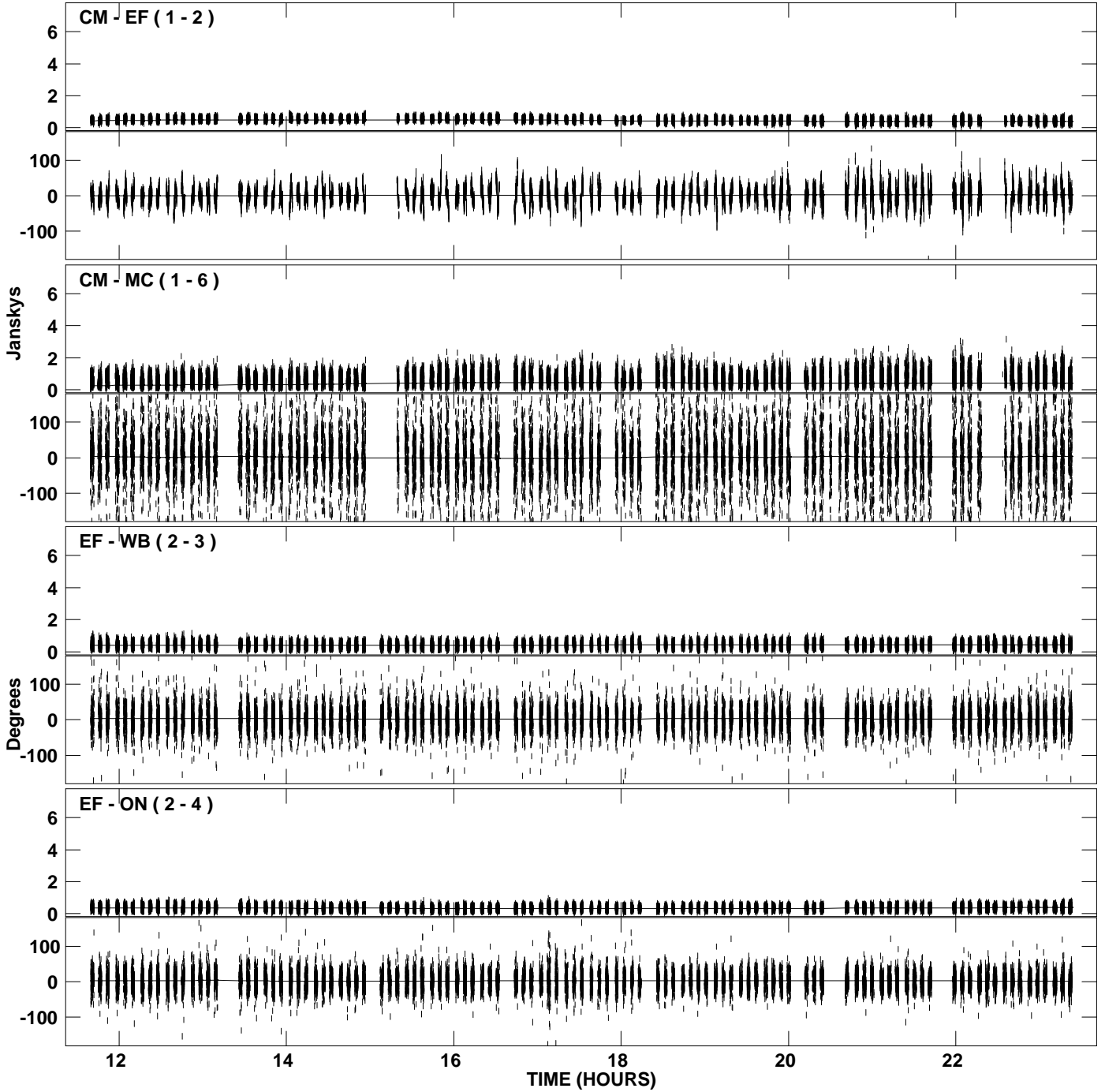
PLot file version 5 created 27-MAY-2008 20:52:59  
Amplitude and Phase vs Time for J0530+3723.MULTI.1 CL # 3  
IF 2 CHAN 1 STK LL of J0530+3723.ICL001.3



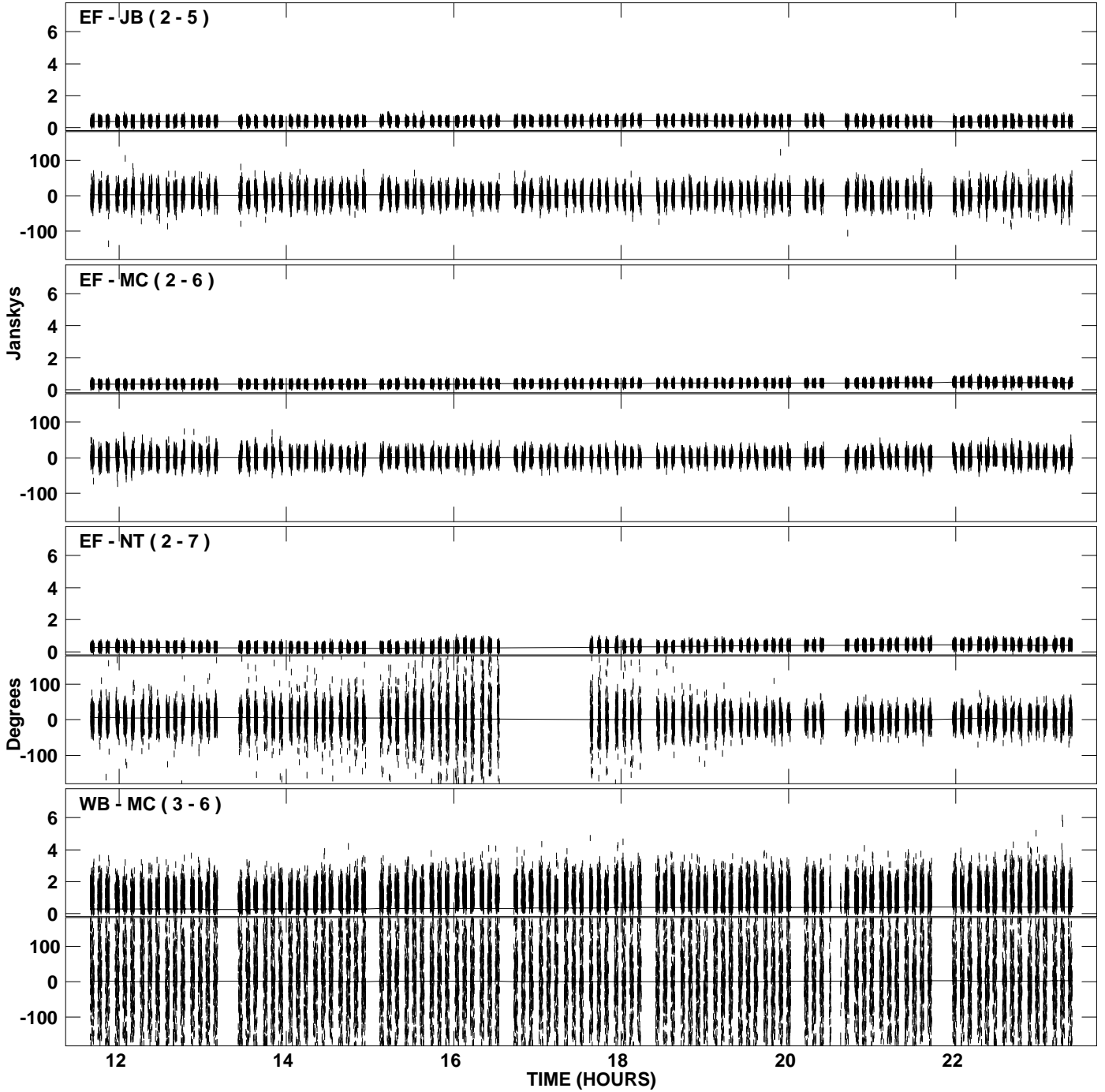
PLot file version 6 created 27-MAY-2008 20:52:59  
Amplitude andPhase vs Time for J0530+3723.MULTI.1 CL # 3  
IF 2 CHAN 1 STK LL of J0530+3723.ICL001.3



PLot file version 7 created 27-MAY-2008 20:53:01  
Amplitude and Phase vs Time for J0530+3723.MULTI.1 CL # 3  
IF 1 CHAN 1 STK RR of J0530+3723.ICL001.3

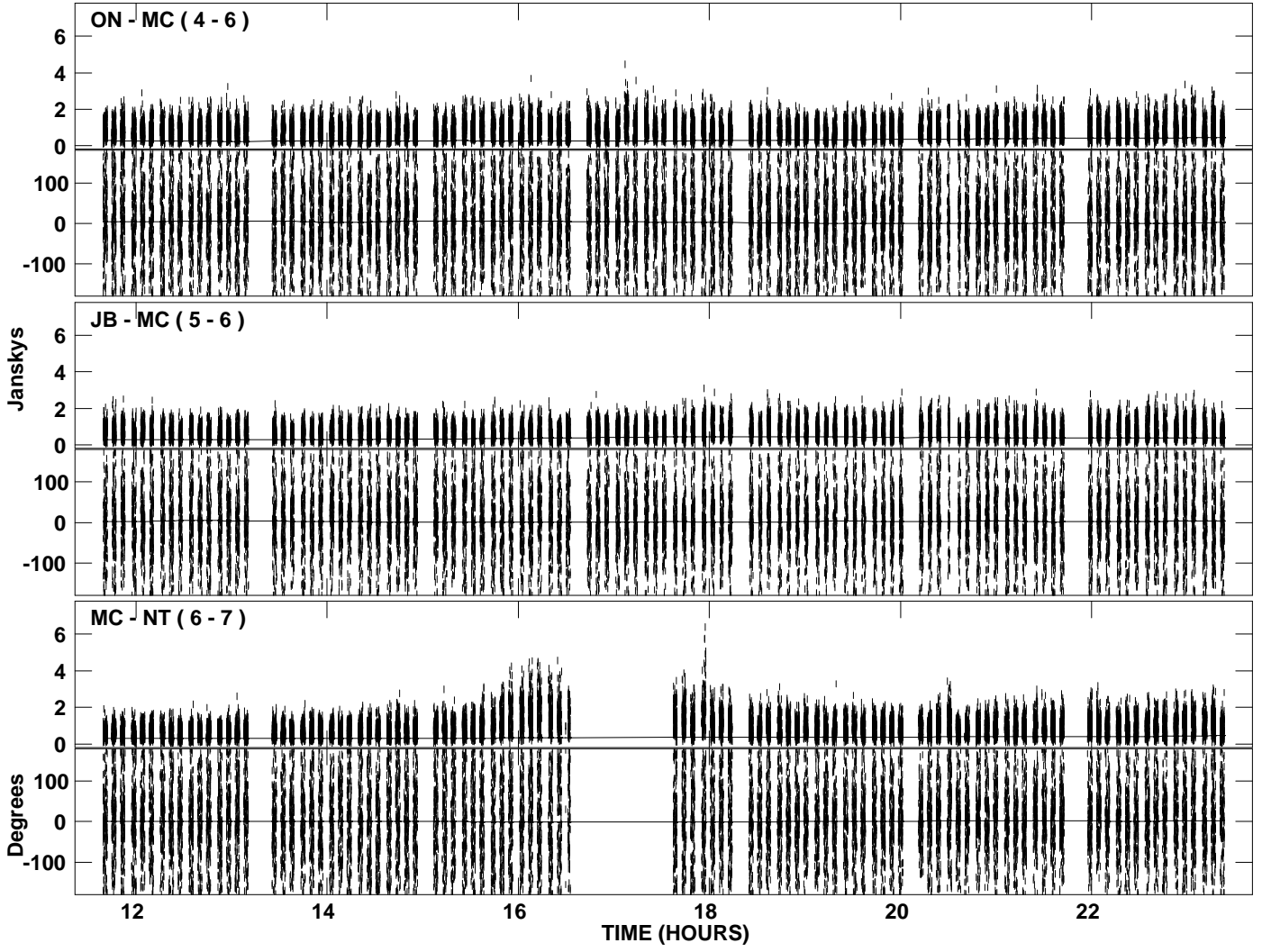


PLot file version 8 created 27-MAY-2008 20:53:01  
Amplitude and Phase vs Time for J0530+3723.MULTI.1 CL # 3  
IF 1 CHAN 1 STK RR of J0530+3723.ICL001.3

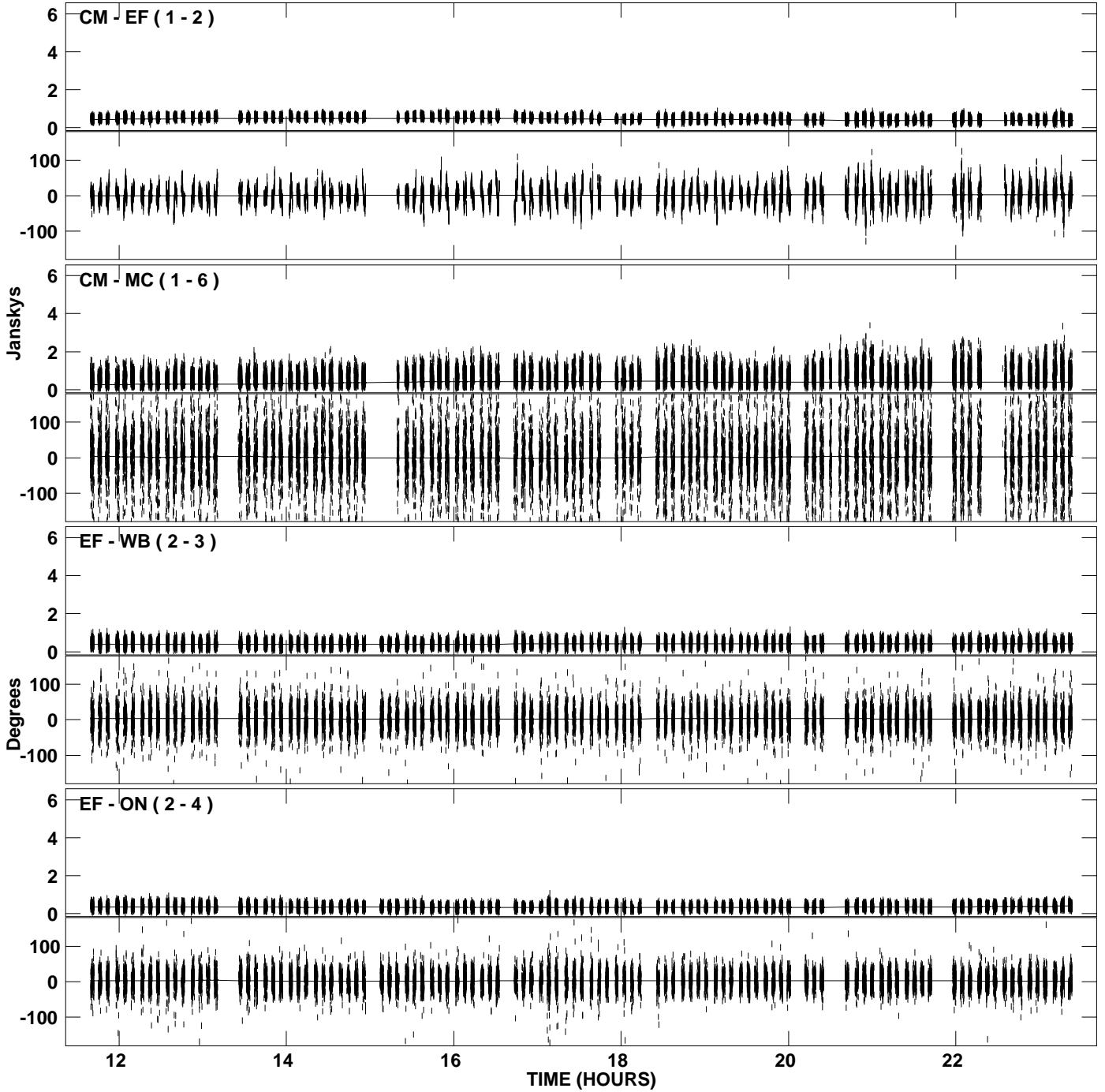




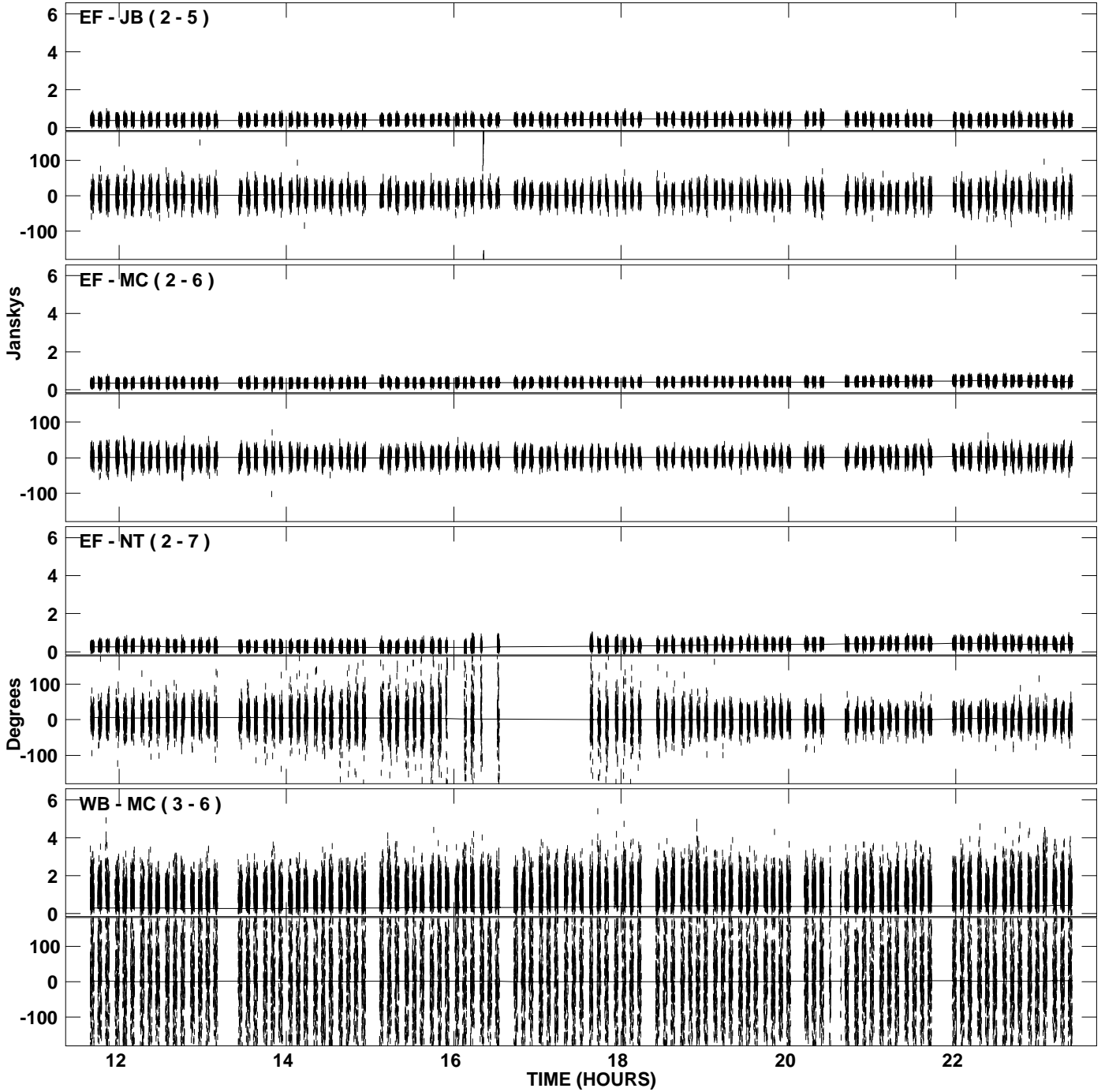
PLot file version 9 created 27-MAY-2008 20:53:01  
Amplitude and Phase vs Time for J0530+3723.MULTI.1 CL # 3  
IF 1 CHAN 1 STK RR of J0530+3723.ICL001.3



PLot file version 10 created 27-MAY-2008 20:53:03  
Amplitude andPhase vs Time for J0530+3723.MULTI.1 CL # 3  
IF 2 CHAN 1 STK RR of J0530+3723.ICL001.3



PLot file version 11 created 27-MAY-2008 20:53:03  
Amplitude and Phase vs Time for J0530+3723.MULTI.1 CL # 3  
IF 2 CHAN 1 STK RR of J0530+3723.ICL001.3



PLot file version 12 created 27-MAY-2008 20:53:03  
Amplitude andPhase vs Time for J0530+3723.MULTI.1 CL # 3  
IF 2 CHAN 1 STK RR of J0530+3723.ICL001.3

