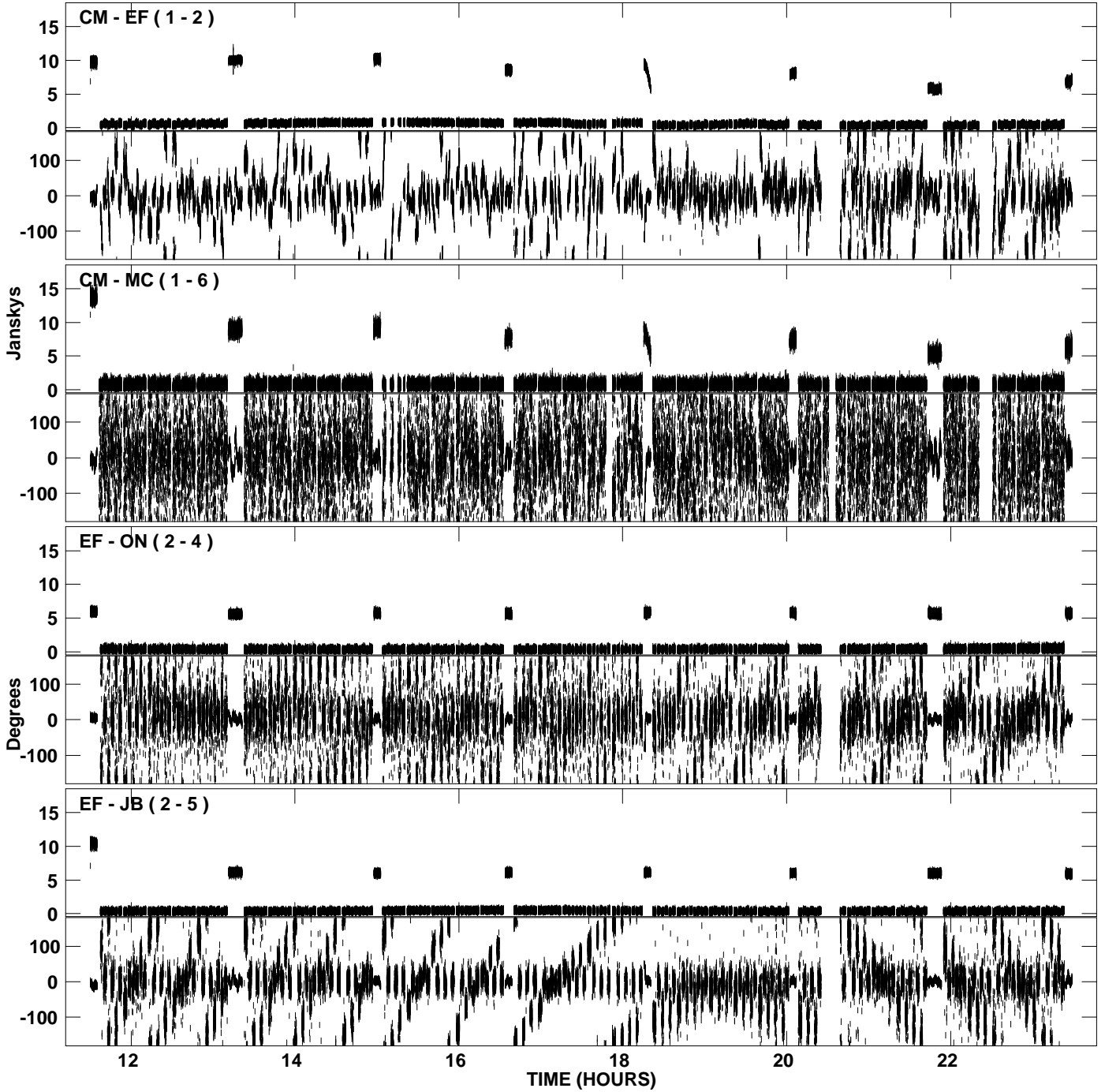
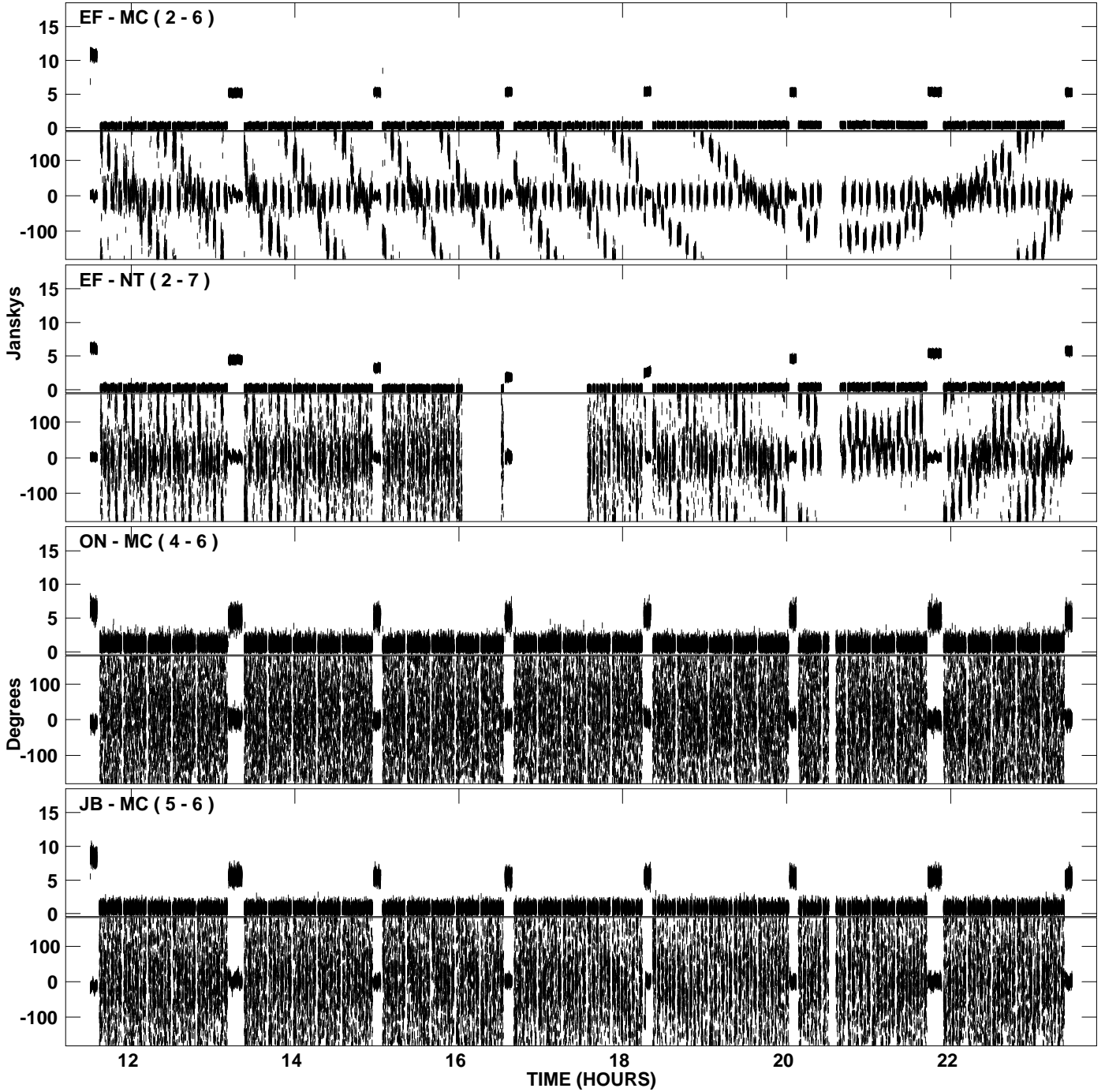


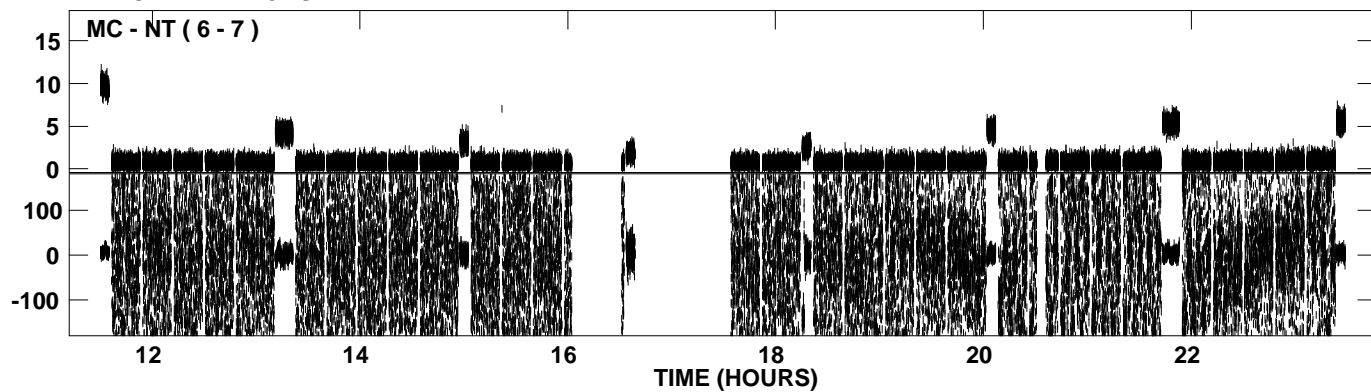
PLot file version 1 created 27-MAY-2008 20:36:02  
Amplitude and Phase vs Time for EM058B 1.UVDATA.1 Vect aver. CL # 3  
IF 1 CHAN 1 - 128 STK LL



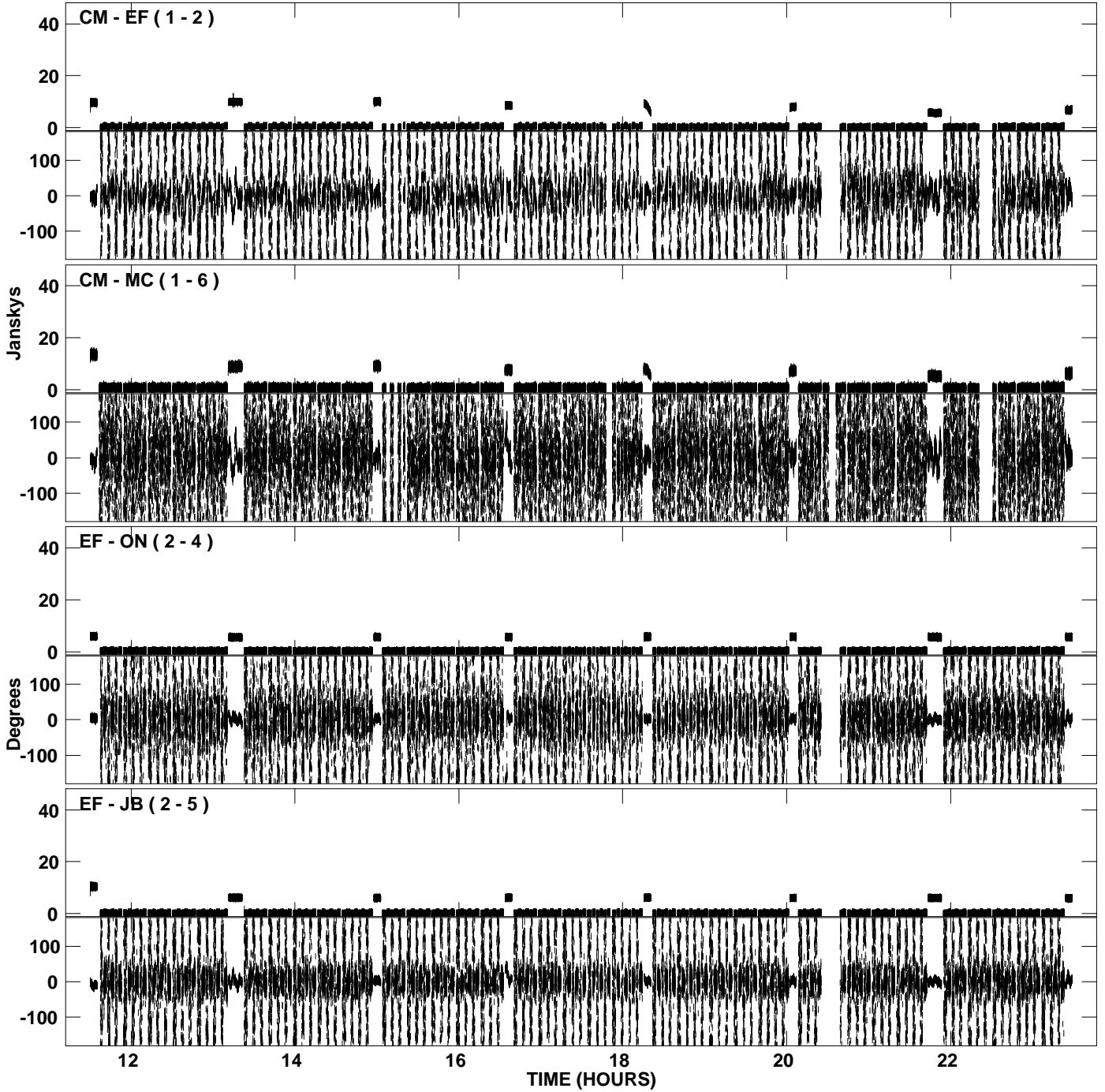
PLot file version 2 created 27-MAY-2008 20:36:02  
Amplitude andPhase vs Time for EM058B 1.UVDATA.1 Vect aver. CL # 3  
IF 1 CHAN 1 - 128 STK LL



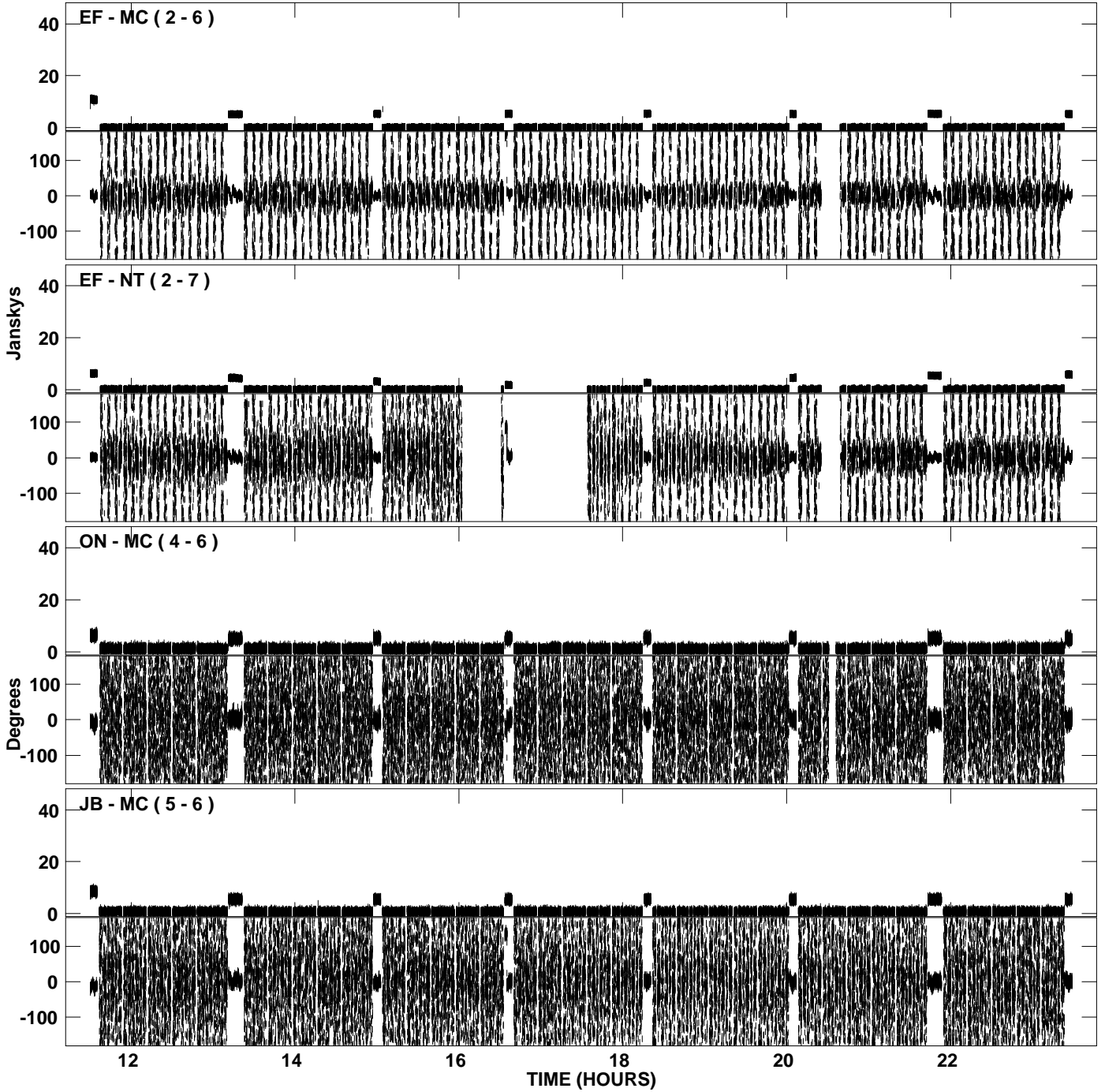
PLot file version 3 created 27-MAY-2008 20:36:03  
Amplitude andPhase vs Time for EM058B 1.UVDATA.1 Vect aver. CL # 3  
IF 1 CHAN 1 - 128 STK LL



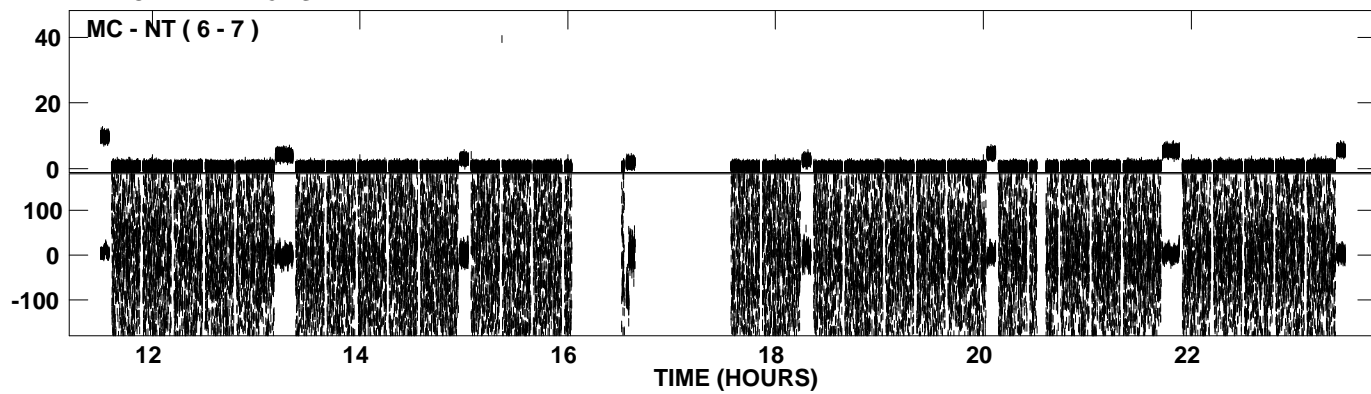
PLot file version 4 created 27-MAY-2008 20:38:45  
Amplitude and Phase vs Time for EM058B 1.UVDATA.1 Vect aver. CL # 3  
IF 2 CHAN 1 - 128 STK LL



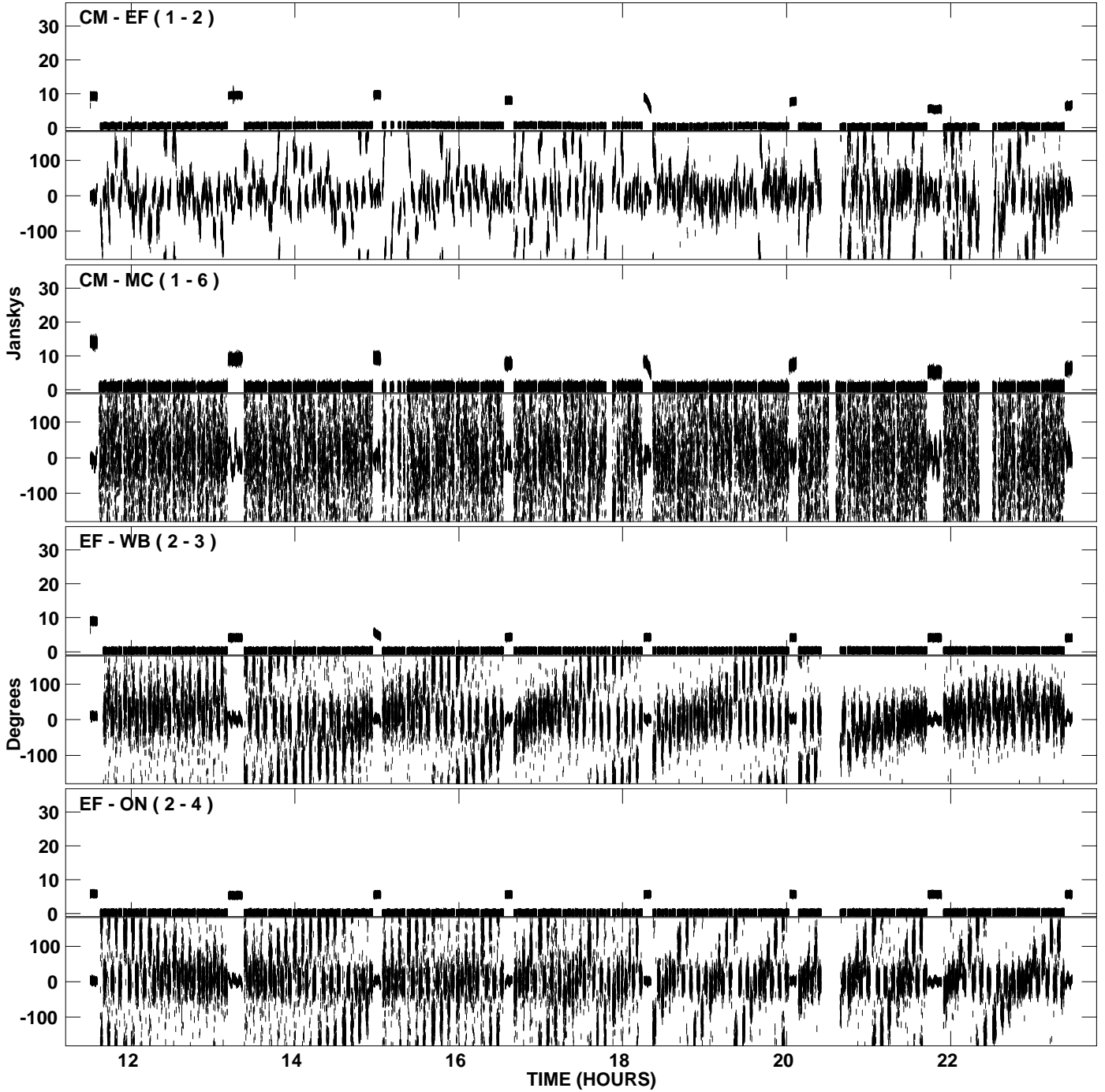
PLot file version 5 created 27-MAY-2008 20:38:45  
Amplitude andPhase vs Time for EM058B 1.UVDATA.1 Vect aver. CL # 3  
IF 2 CHAN 1 - 128 STK LL



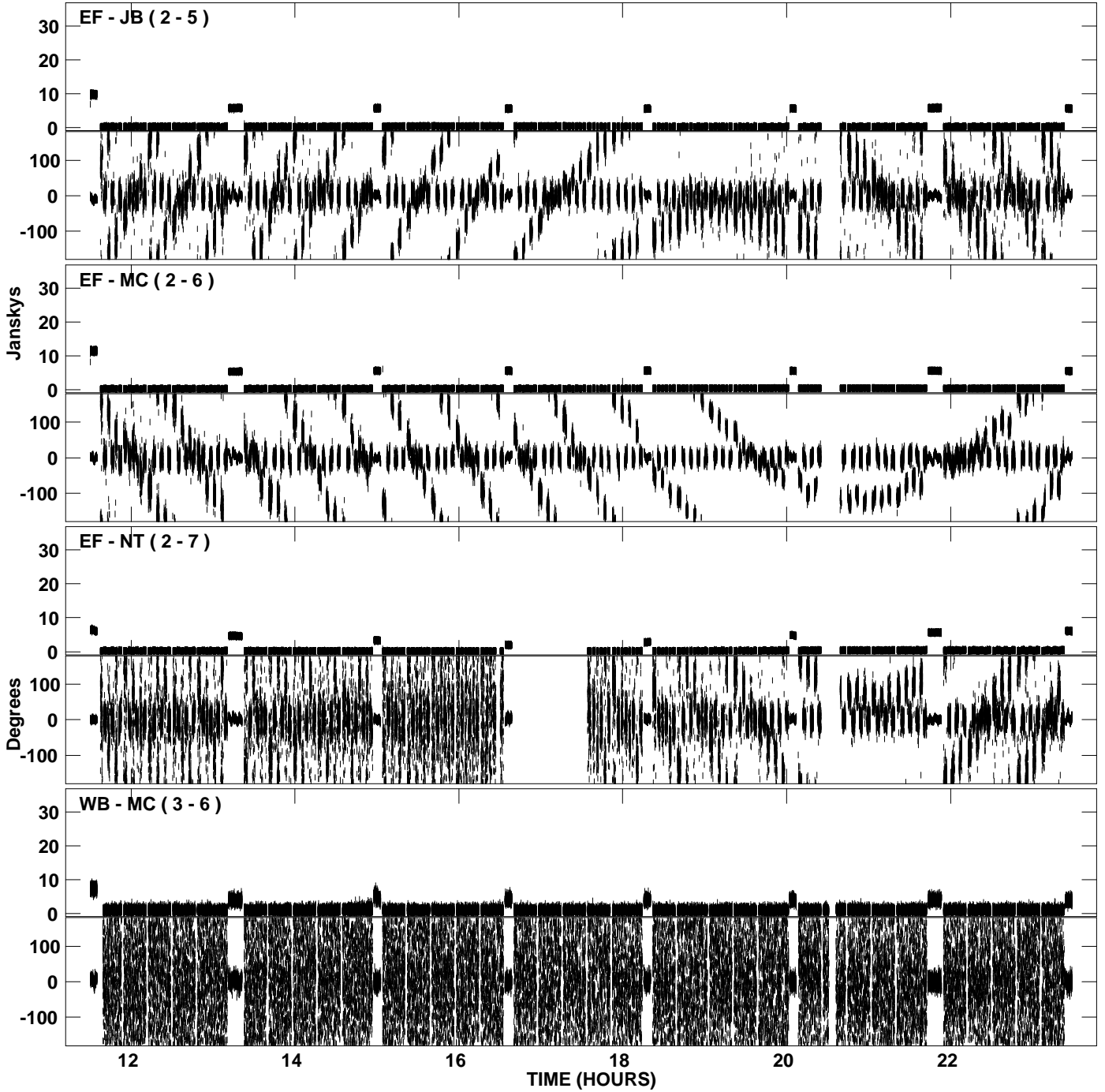
PLot file version 6 created 27-MAY-2008 20:38:46  
Amplitude andPhase vs Time for EM058B 1.UVDATA.1 Vect aver. CL # 3  
IF 2 CHAN 1 - 128 STK LL



PLot file version 7 created 27-MAY-2008 20:41:20  
Amplitude andPhase vs Time for EM058B 1.UVDATA.1 Vect aver. CL # 3  
IF 1 CHAN 1 - 128 STK RR

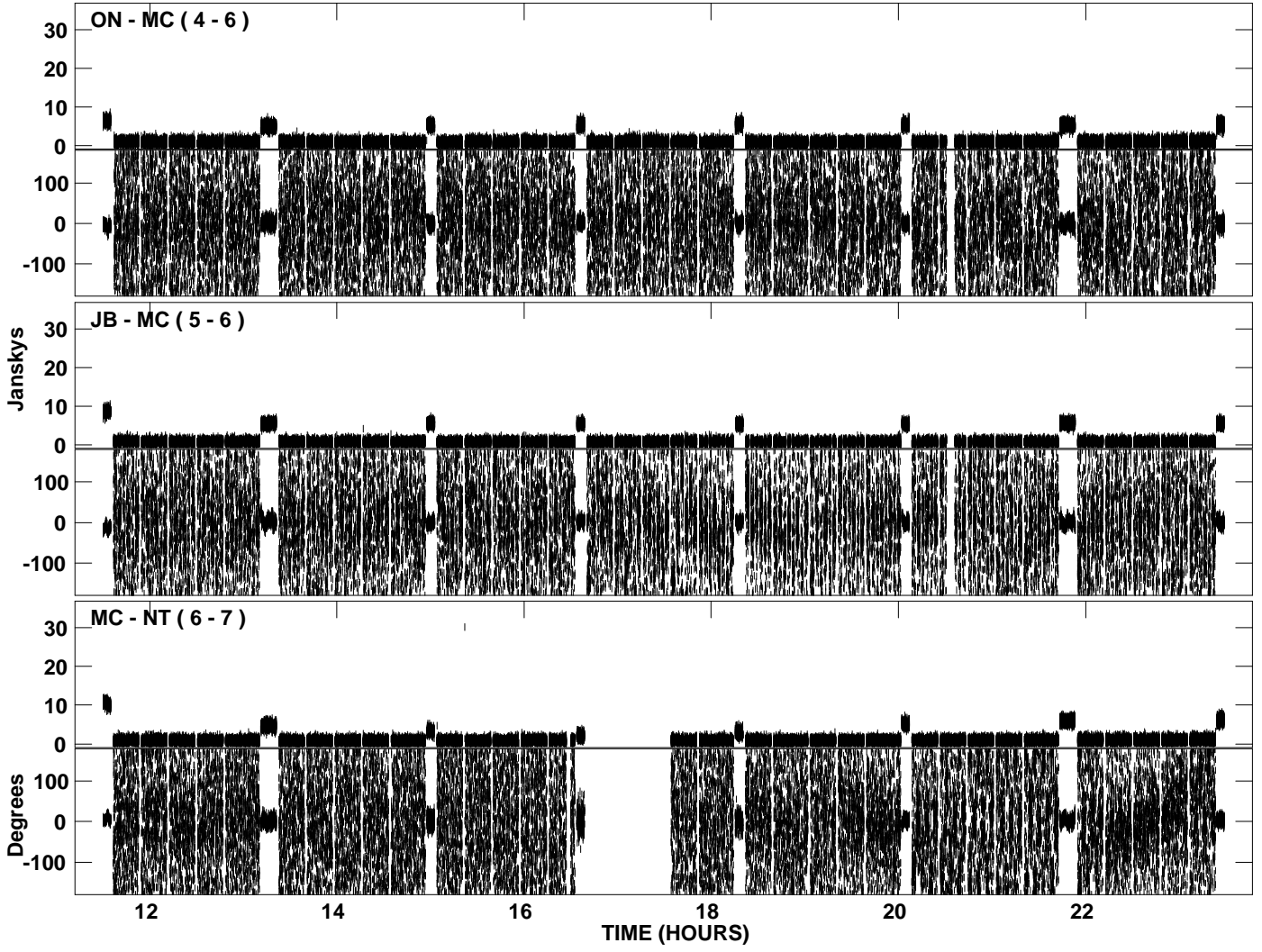


PLot file version 8 created 27-MAY-2008 20:41:20  
Amplitude andPhase vs Time for EM058B 1.UVDATA.1 Vect aver. CL # 3  
IF 1 CHAN 1 - 128 STK RR

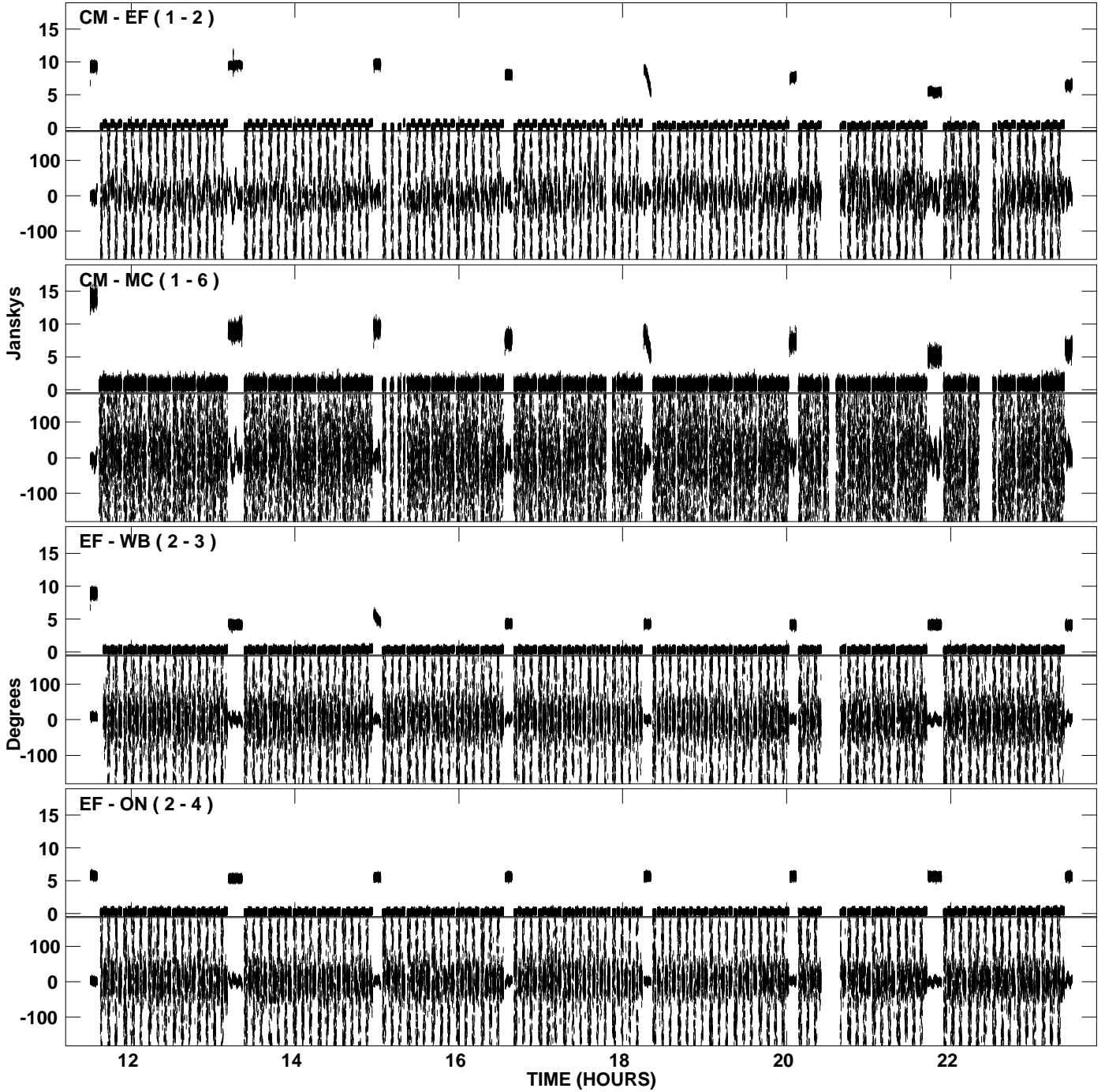




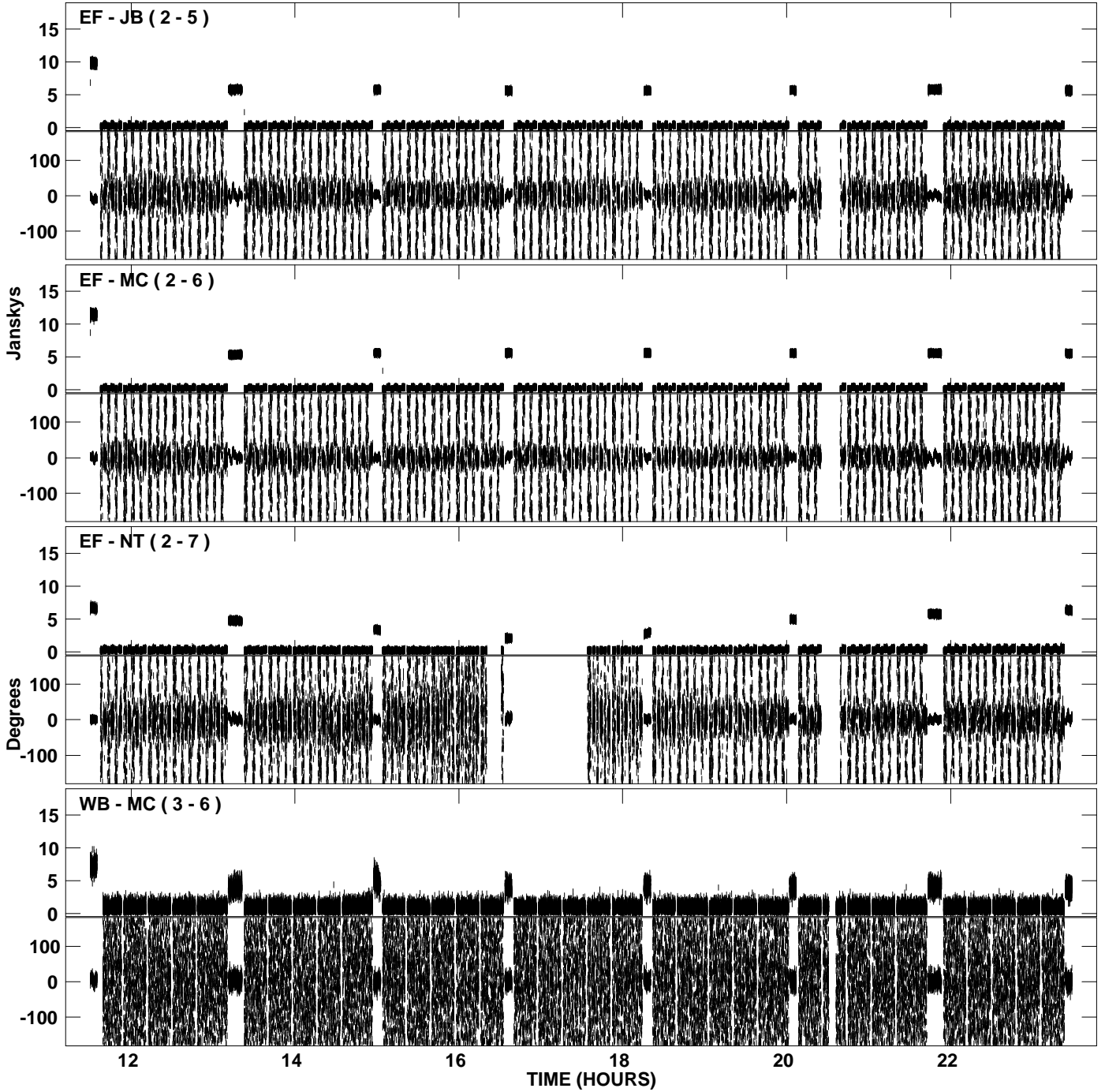
PLot file version 9 created 27-MAY-2008 20:41:20  
Amplitude andPhase vs Time for EM058B 1.UVDATA.1 Vect aver. CL # 3  
IF 1 CHAN 1 - 128 STK RR



PLot file version 10 created 27-MAY-2008 20:43:55  
Amplitude andPhase vs Time for EM058B 1.UVDATA.1 Vect aver. CL # 3  
IF 2 CHAN 1 - 128 STK RR



PLot file version 11 created 27-MAY-2008 20:43:56  
Amplitude andPhase vs Time for EM058B 1.UVDATA.1 Vect aver. CL # 3  
IF 2 CHAN 1 - 128 STK RR



PLot file version 12 created 27-MAY-2008 20:43:56  
Amplitude andPhase vs Time for EM058B 1.UVDATA.1 Vect aver. CL # 3  
IF 2 CHAN 1 - 128 STK RR

