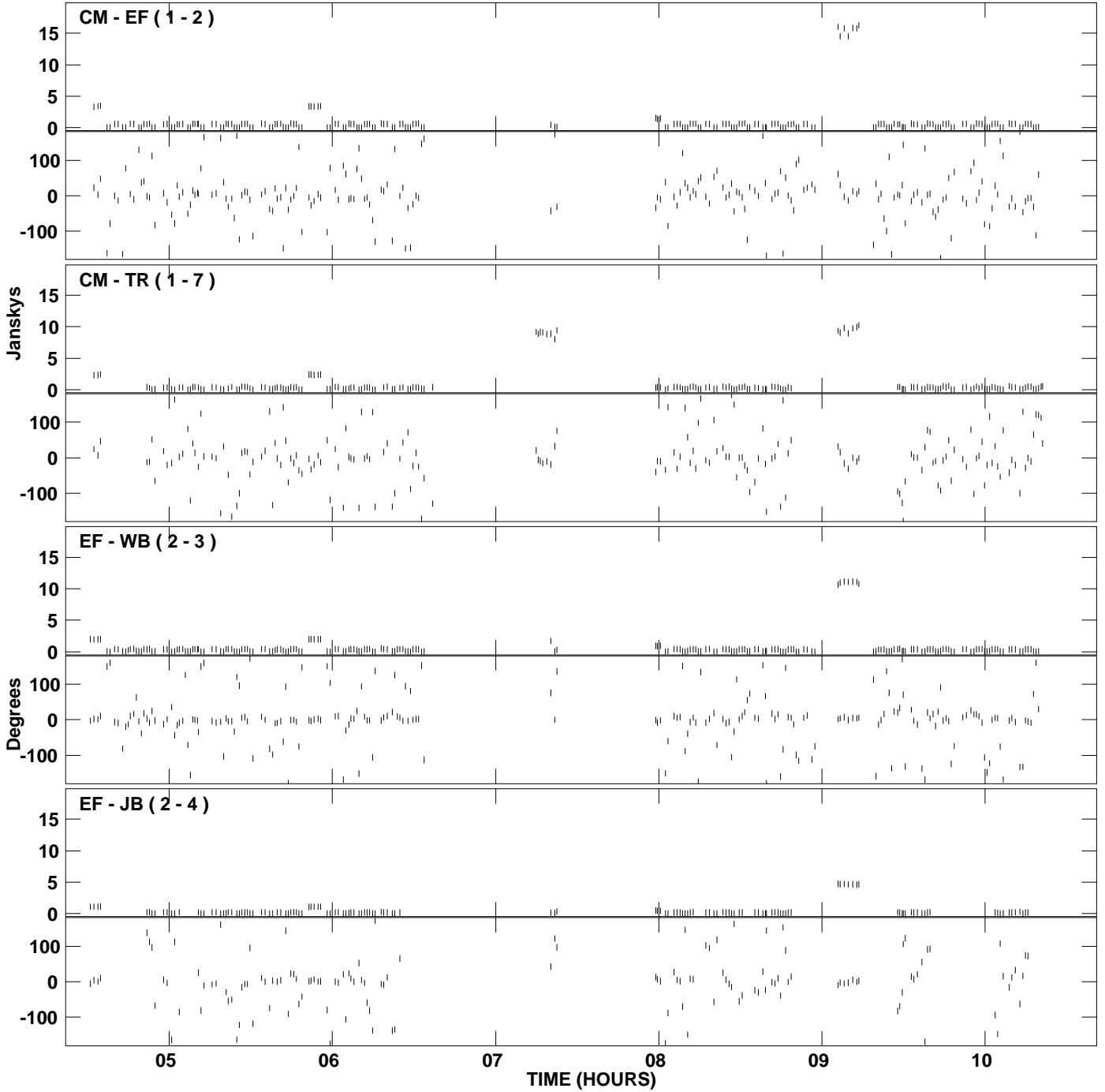
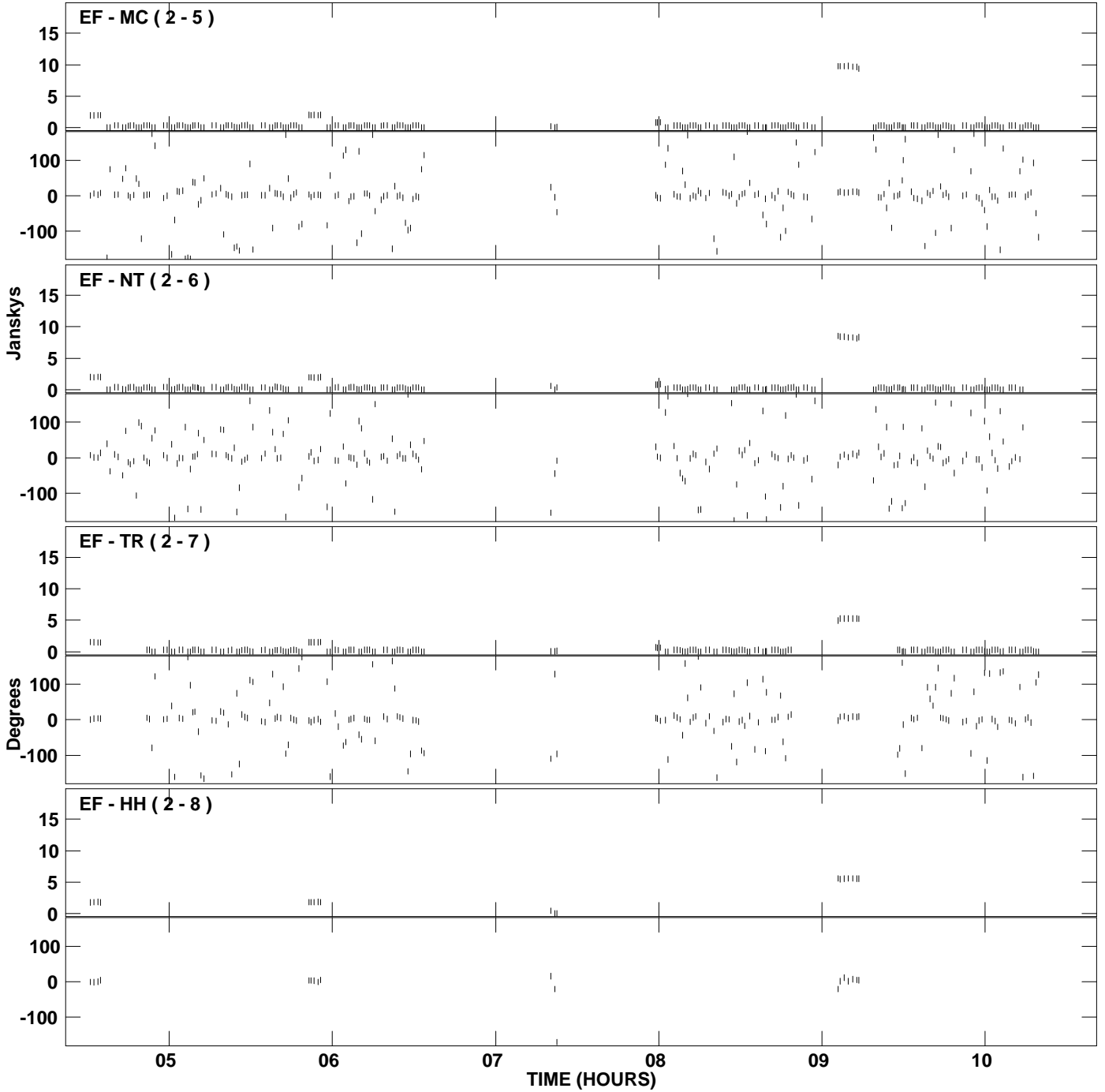


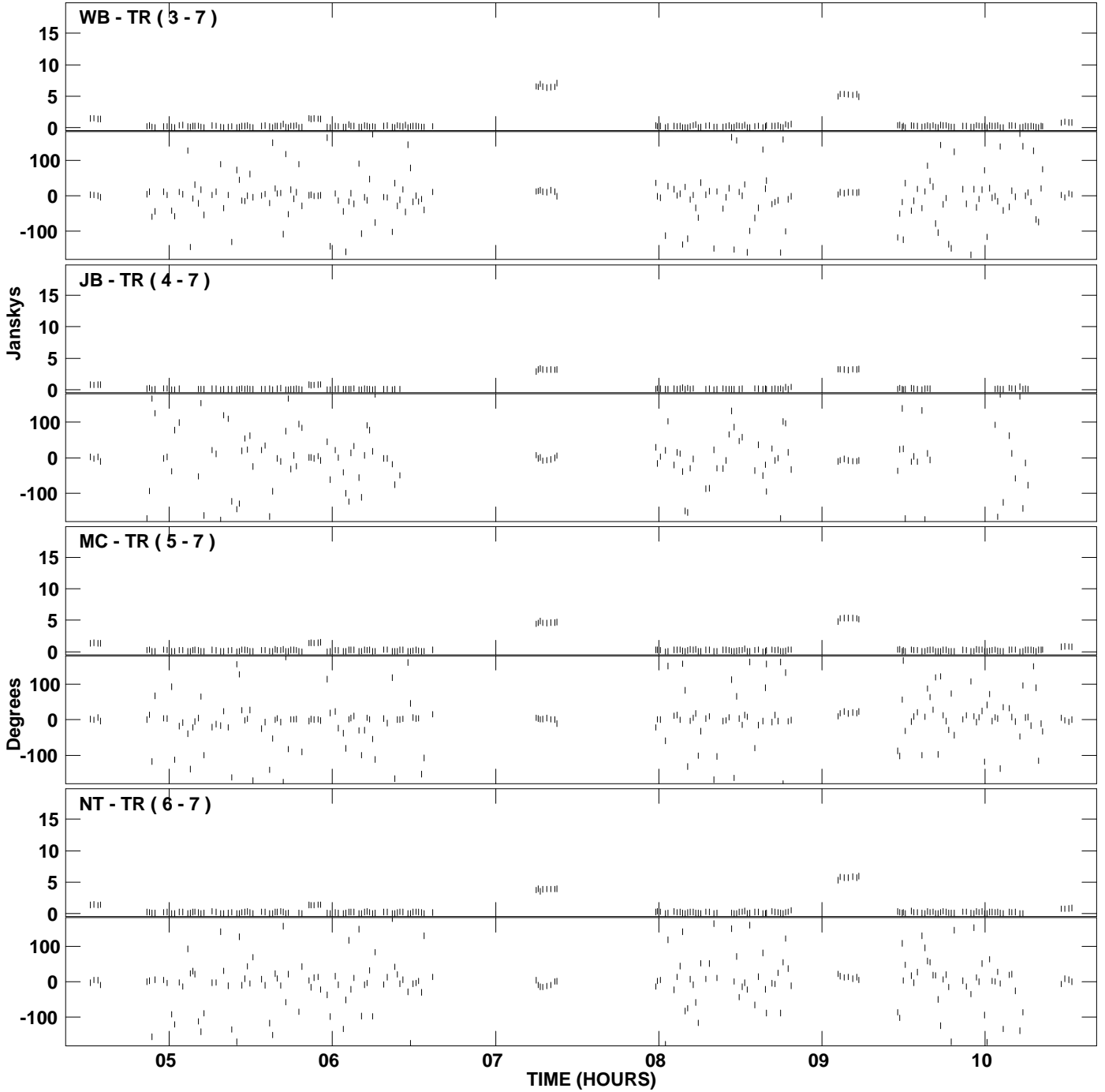
PLot file version 1 created 17-AUG-2006 18:24:48
Amplitude and Phase vs Time for EM061C 2.UVDATA.1 Vect aver. CL # 3
IF 1 CHAN 1 - 1024 STK LL



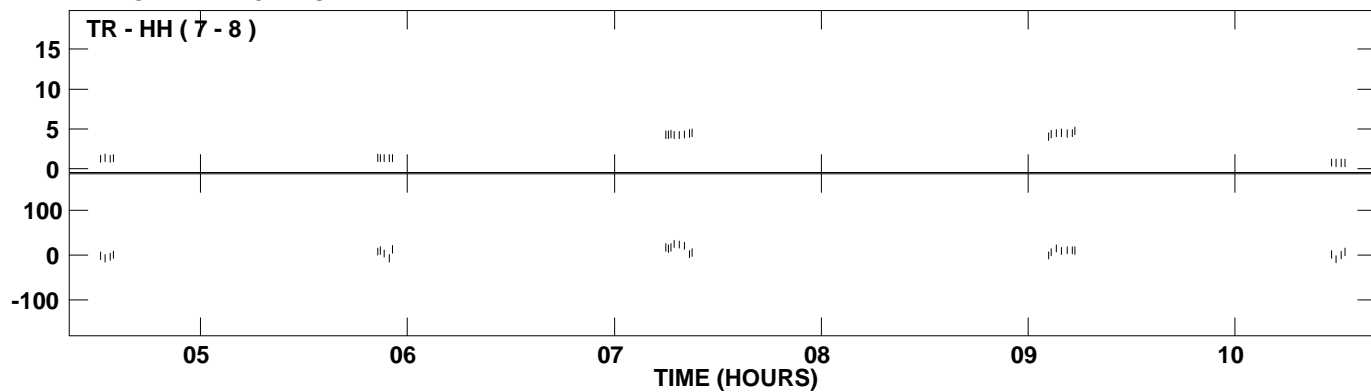
PLot file version 2 created 17-AUG-2006 18:24:48
Amplitude and Phase vs Time for EM061C 2.UVDATA.1 Vect aver. CL # 3
IF 1 CHAN 1 - 1024 STK LL



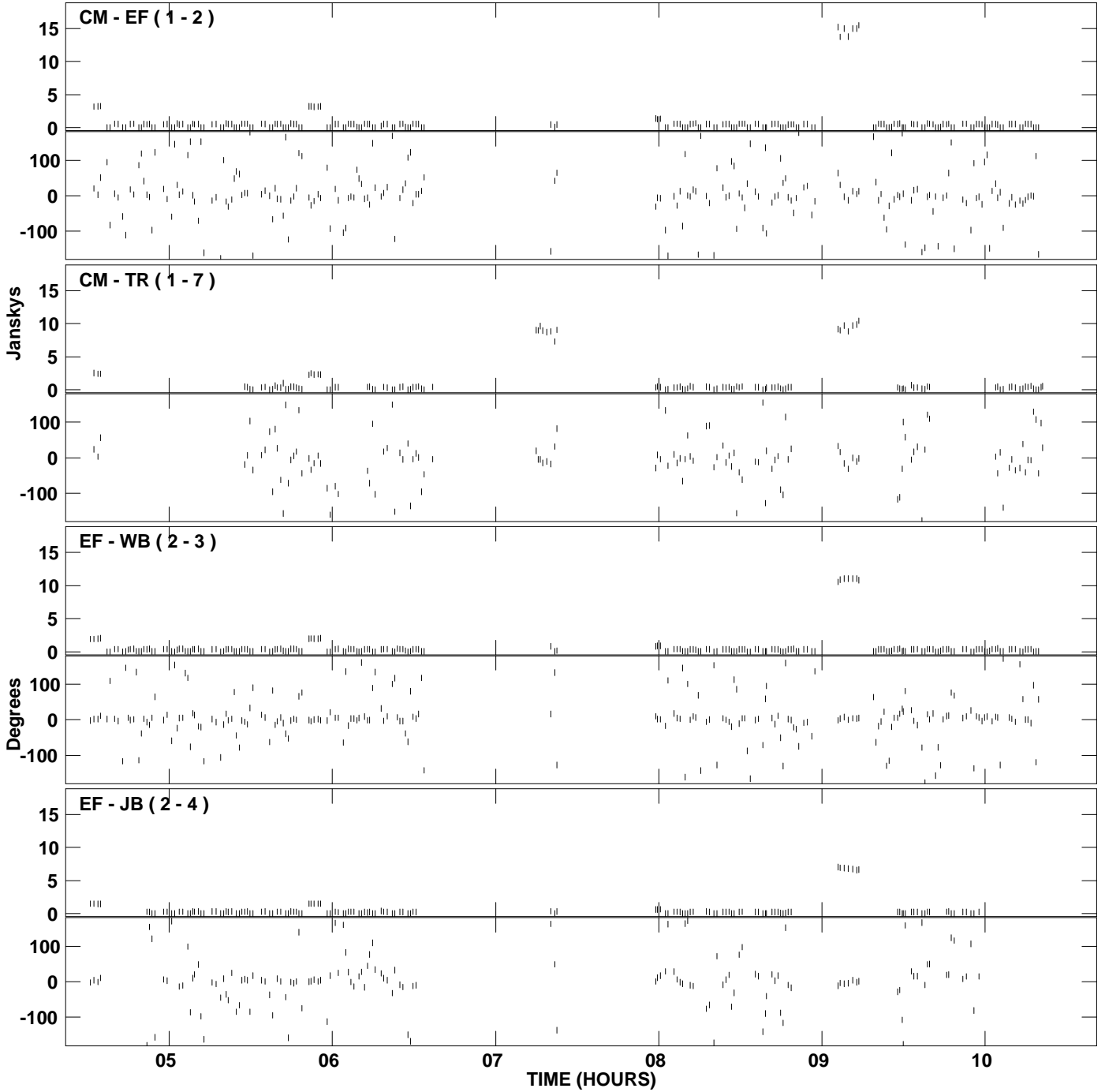
PLot file version 3 created 17-AUG-2006 18:24:48
Amplitude and Phase vs Time for EM061C 2.UVDATA.1 Vect aver. CL # 3
IF 1 CHAN 1 - 1024 STK LL



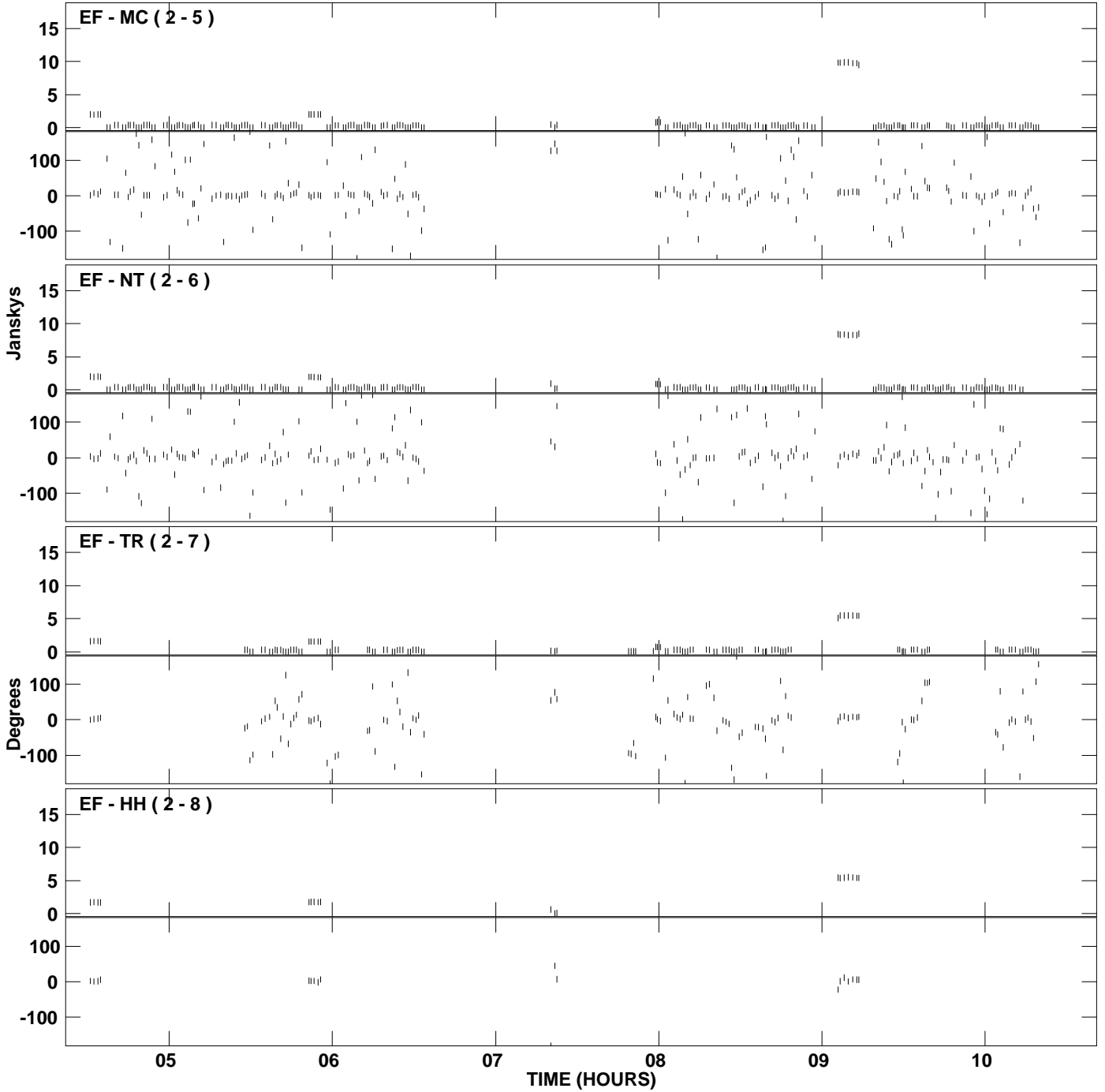
PLot file version 4 created 17-AUG-2006 18:24:48
Amplitude and Phase vs Time for EM061C 2.UVDATA.1 Vect aver. CL # 3
IF 1 CHAN 1 - 1024 STK LL



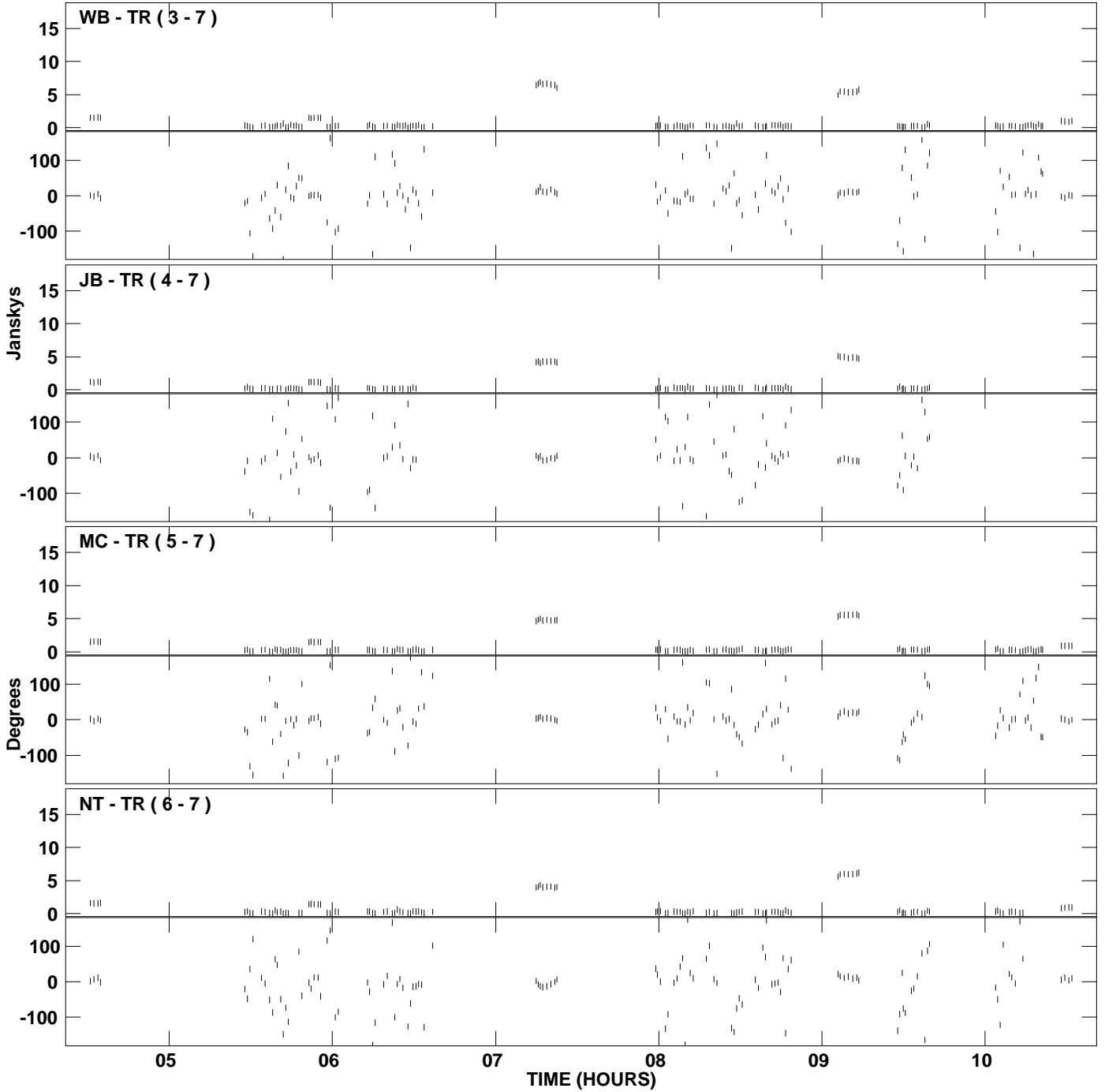
PLot file version 5 created 17-AUG-2006 18:32:26
Amplitude and Phase vs Time for EM061C 2.UVDATA.1 Vect aver. CL # 3
IF 1 CHAN 1 - 1024 STK RR



PLot file version 6 created 17-AUG-2006 18:32:26
Amplitude and Phase vs Time for EM061C 2.UVDATA.1 Vect aver. CL # 3
IF 1 CHAN 1 - 1024 STK RR



PLot file version 7 created 17-AUG-2006 18:32:26
Amplitude andPhase vs Time for EM061C 2.UVDATA.1 Vect aver. CL # 3
IF 1 CHAN 1 - 1024 STK RR



PLot file version 8 created 17-AUG-2006 18:32:26
Amplitude andPhase vs Time for EM061C 2.UVDATA.1 Vect aver. CL # 3
IF 1 CHAN 1 - 1024 STK RR

