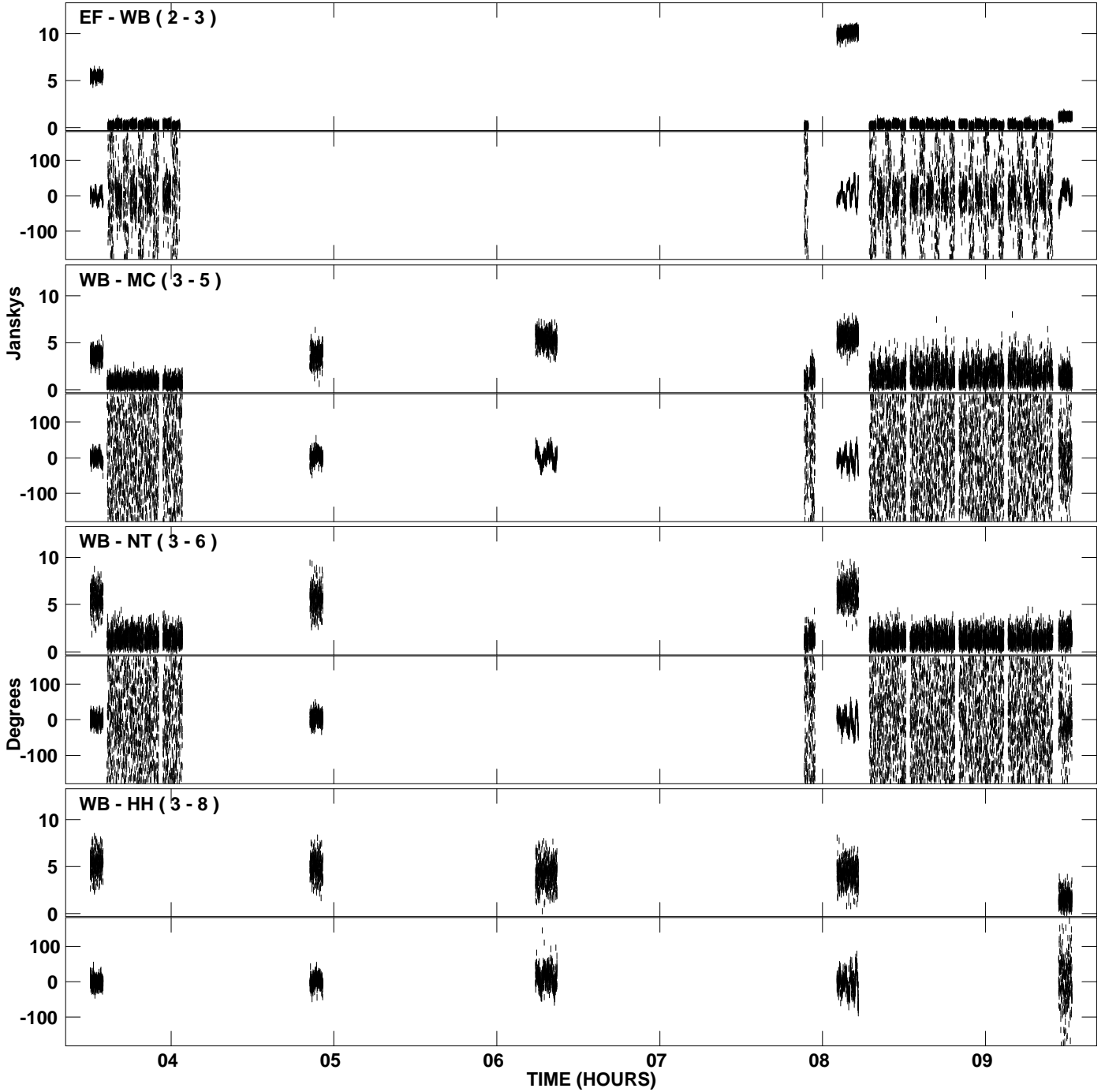
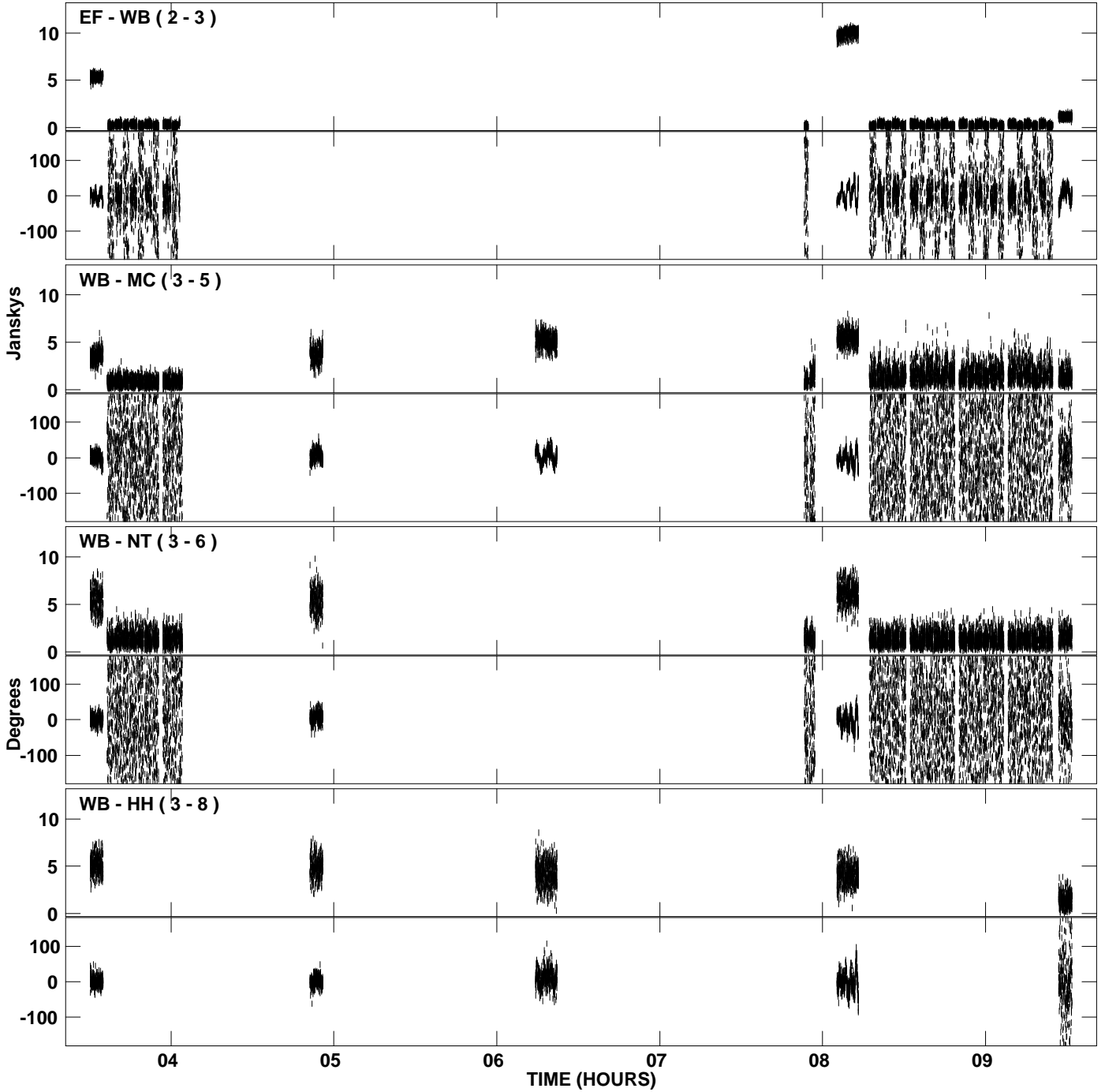


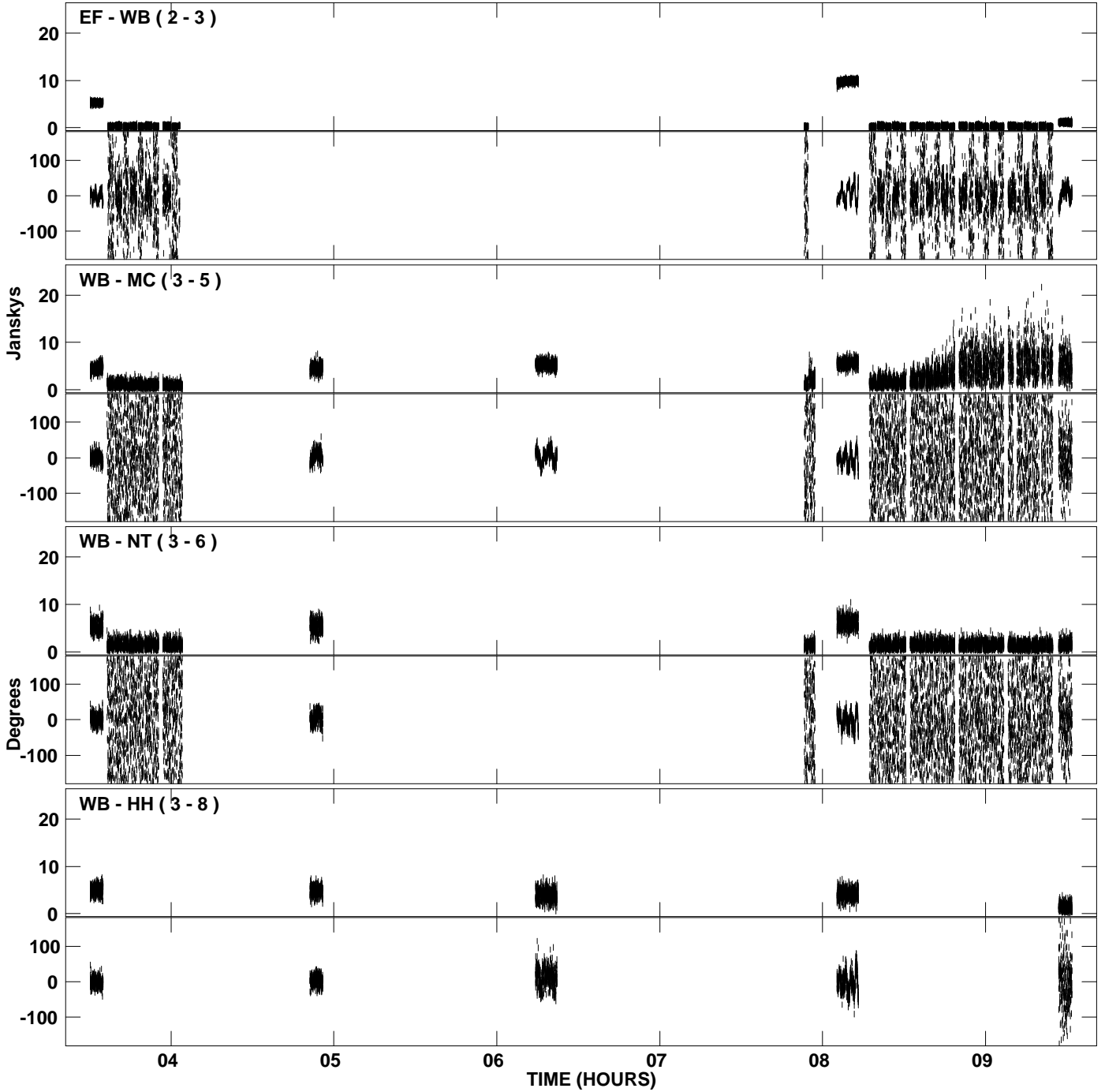
PLot file version 1 created 31-MAY-2007 15:16:24
Amplitude and Phase vs Time for EM061F 2.UVDATA.1 Vect aver. CL # 3
IF 1 CHAN 1 - 128 STK LL



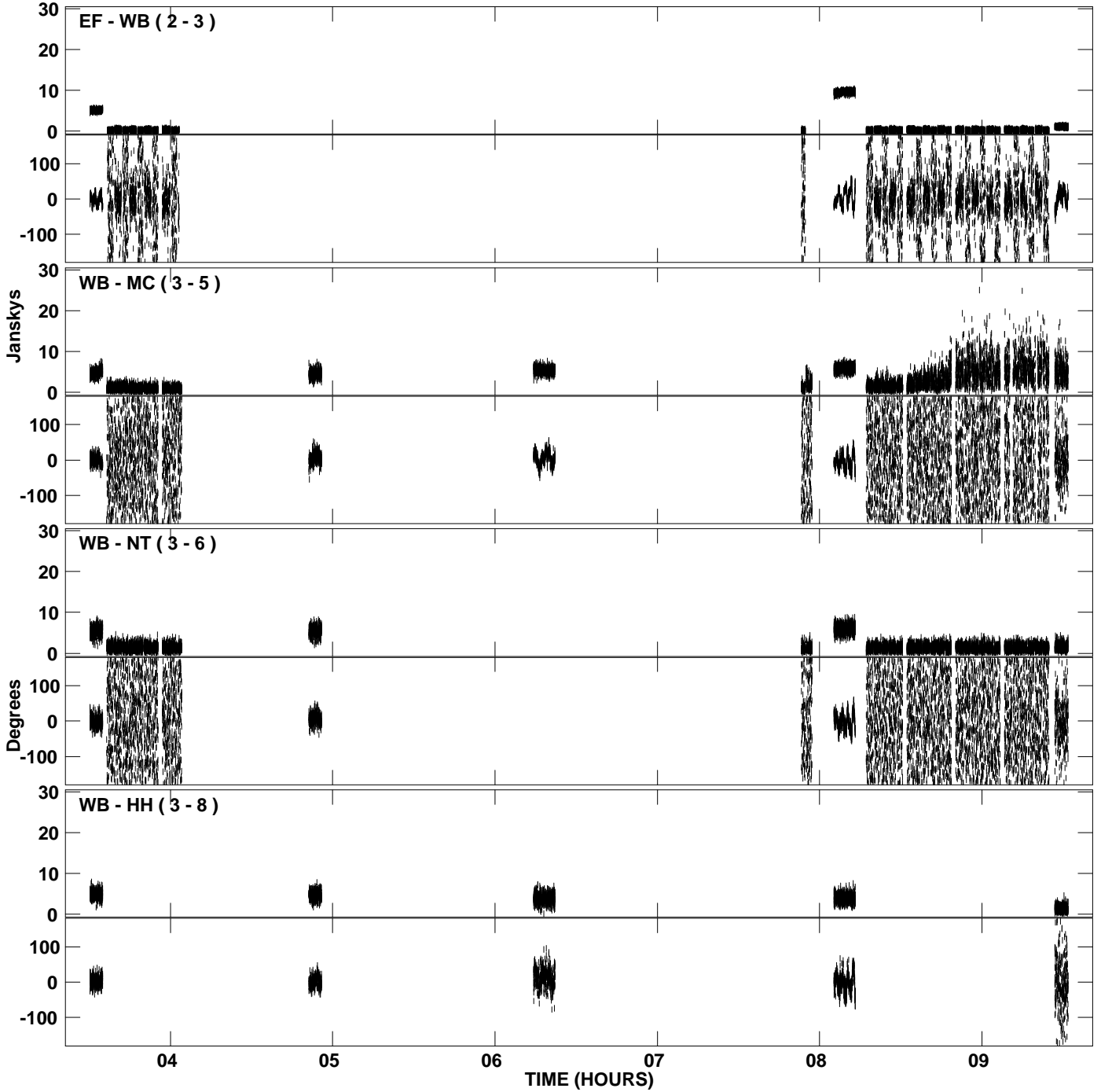
PLot file version 2 created 31-MAY-2007 15:17:55
Amplitude and Phase vs Time for EM061F 2.UVDATA.1 Vect aver. CL # 3
IF 2 CHAN 1 - 128 STK LL



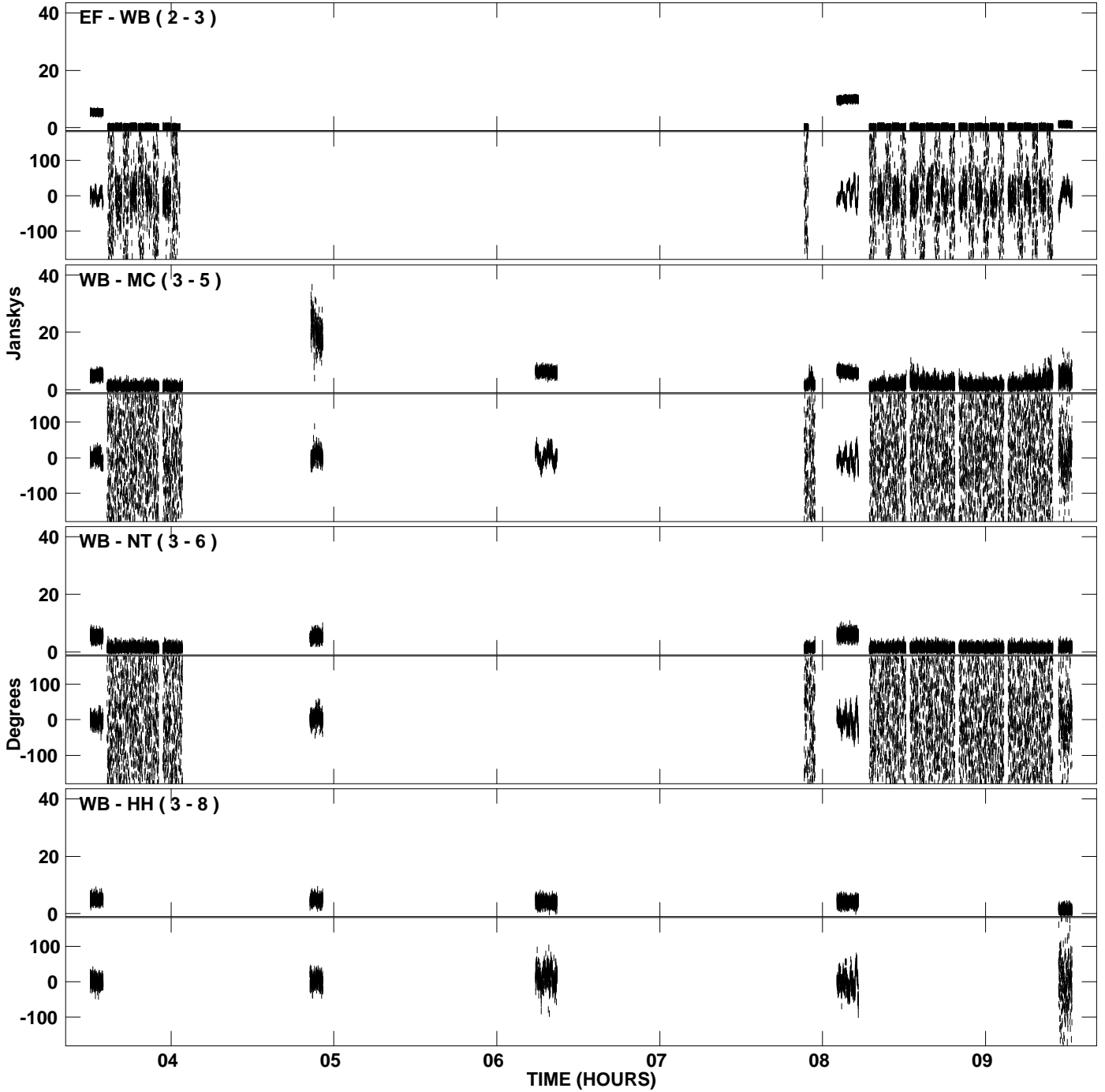
PLot file version 3 created 31-MAY-2007 15:19:23
Amplitude and Phase vs Time for EM061F 2.UVDATA.1 Vect aver. CL # 3
IF 3 CHAN 1 - 128 STK LL



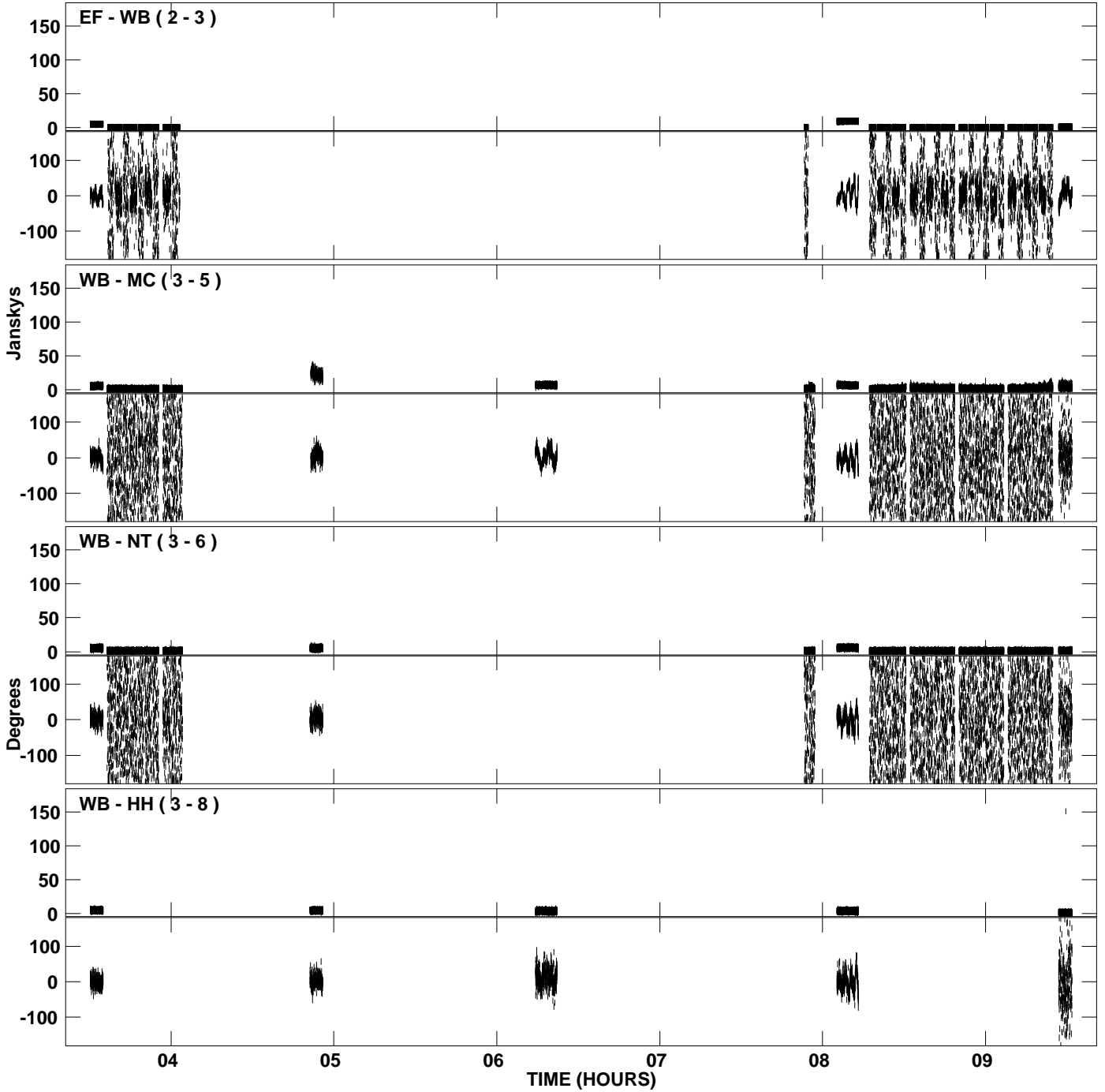
PLot file version 4 created 31-MAY-2007 15:20:51
Amplitude and Phase vs Time for EM061F 2.UVDATA.1 Vect aver. CL # 3
IF 4 CHAN 1 - 128 STK LL



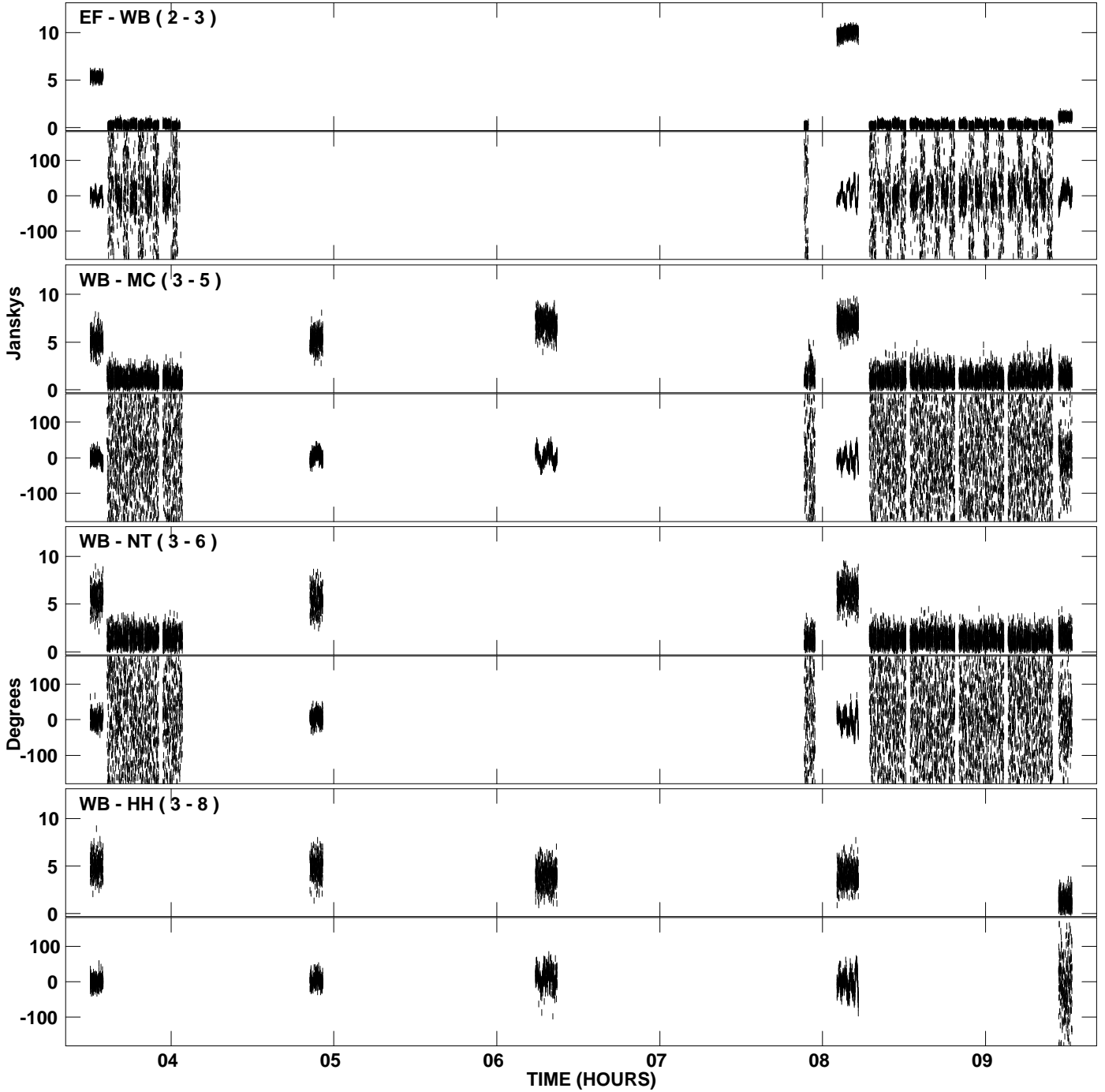
PLot file version 5 created 31-MAY-2007 15:22:22
Amplitude andPhase vs Time for EM061F 2.UVDATA.1 Vect aver. CL # 3
IF 5 CHAN 1 - 128 STK LL



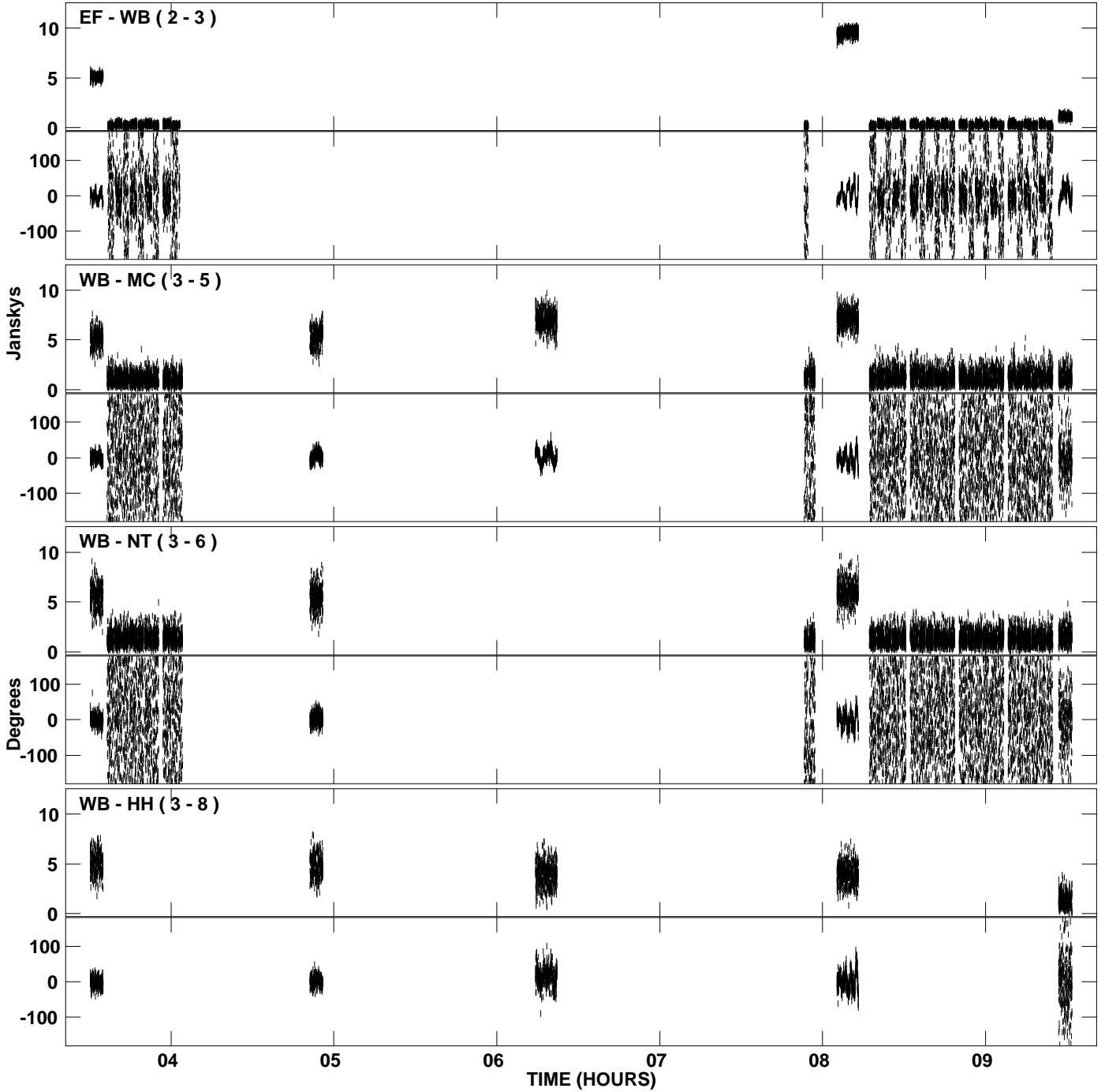
PLot file version 6 created 31-MAY-2007 15:23:52
Amplitude andPhase vs Time for EM061F 2.UVDATA.1 Vect aver. CL # 3
IF 6 CHAN 1 - 128 STK LL



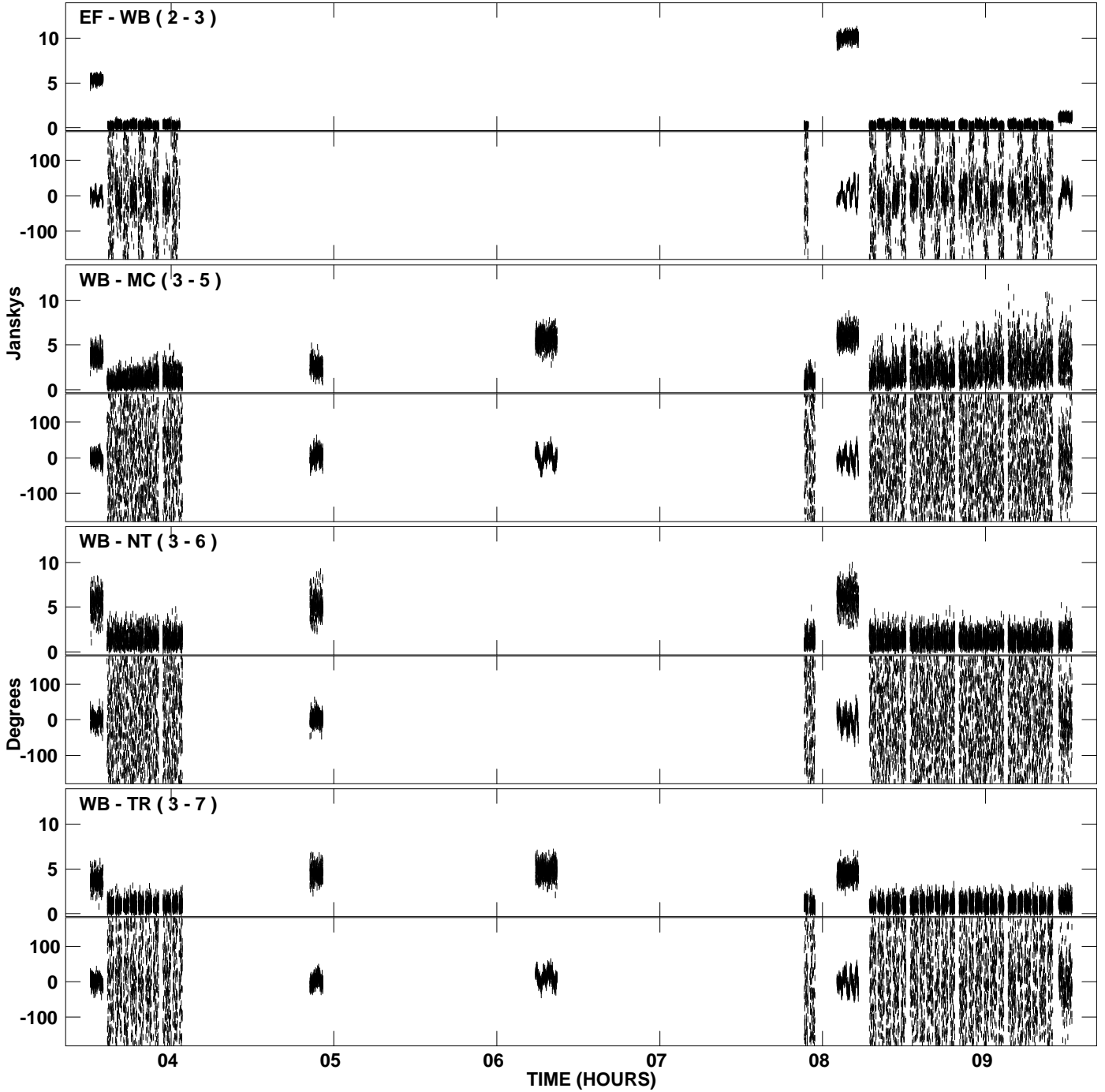
PLot file version 7 created 31-MAY-2007 15:25:21
Amplitude and Phase vs Time for EM061F 2.UVDATA.1 Vect aver. CL # 3
IF 7 CHAN 1 - 128 STK LL



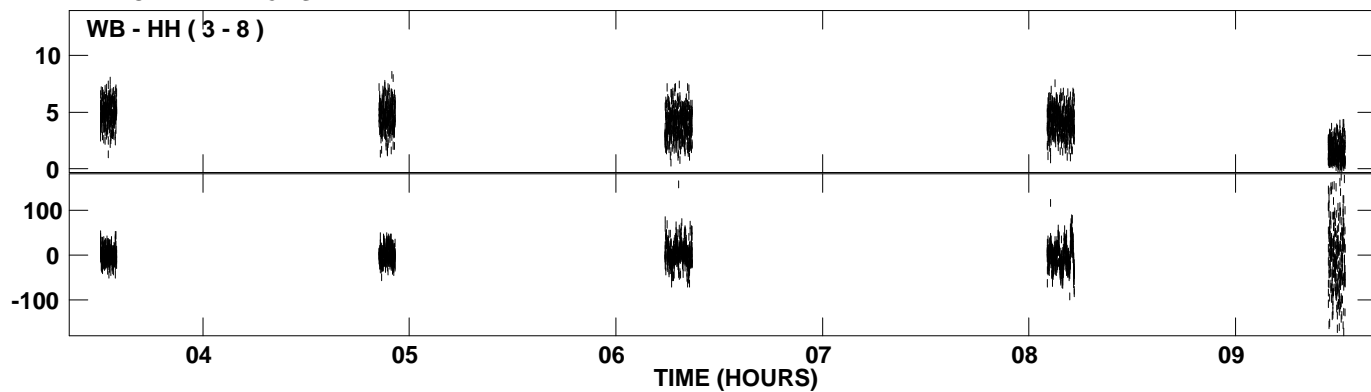
PLot file version 8 created 31-MAY-2007 15:26:49
Amplitude and Phase vs Time for EM061F 2.UVDATA.1 Vect aver. CL # 3
IF 8 CHAN 1 - 128 STK LL



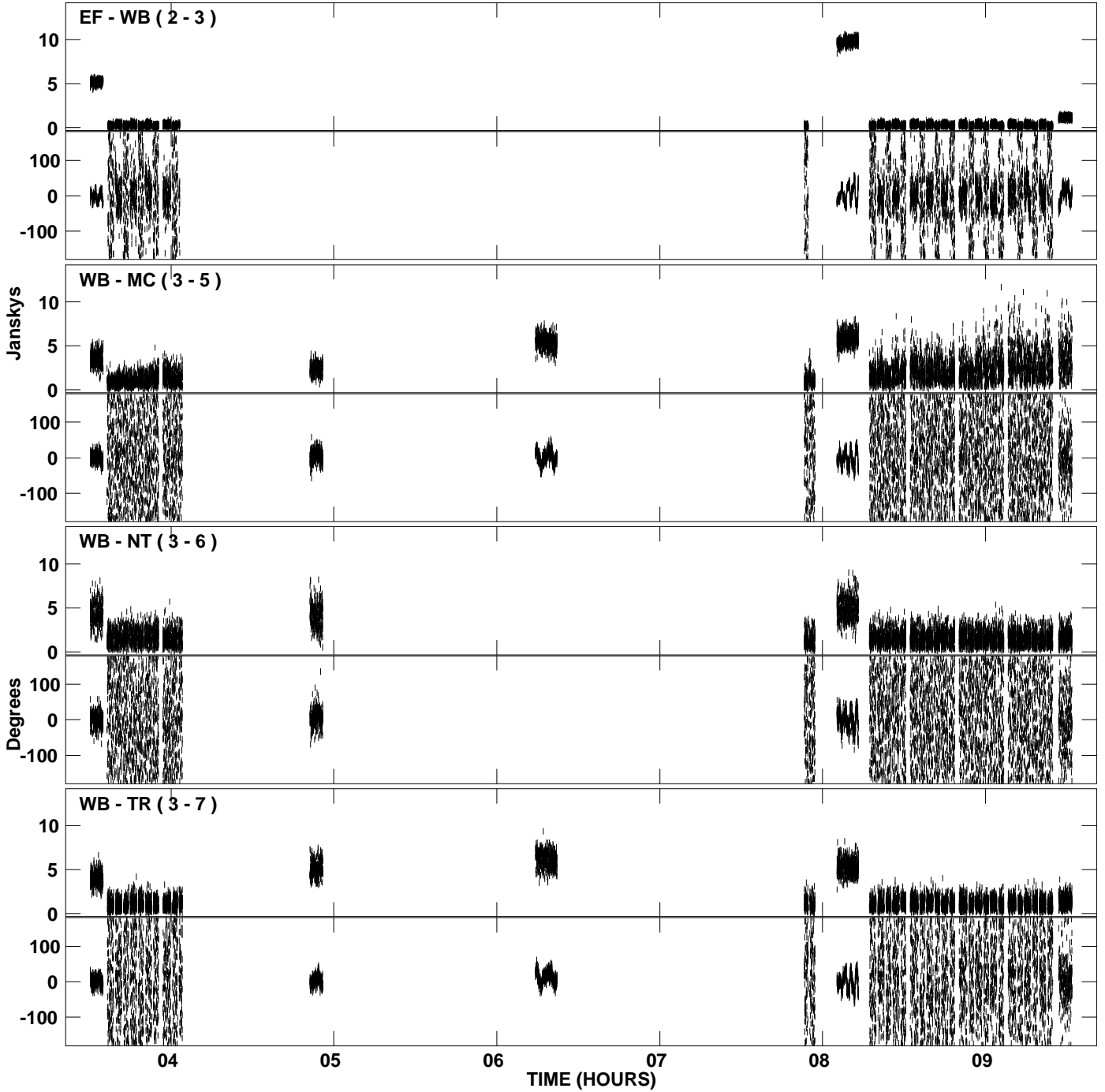
PLot file version 9 created 31-MAY-2007 15:28:17
Amplitude and Phase vs Time for EM061F 2.UVDATA.1 Vect aver. CL # 3
IF 1 CHAN 1 - 128 STK RR



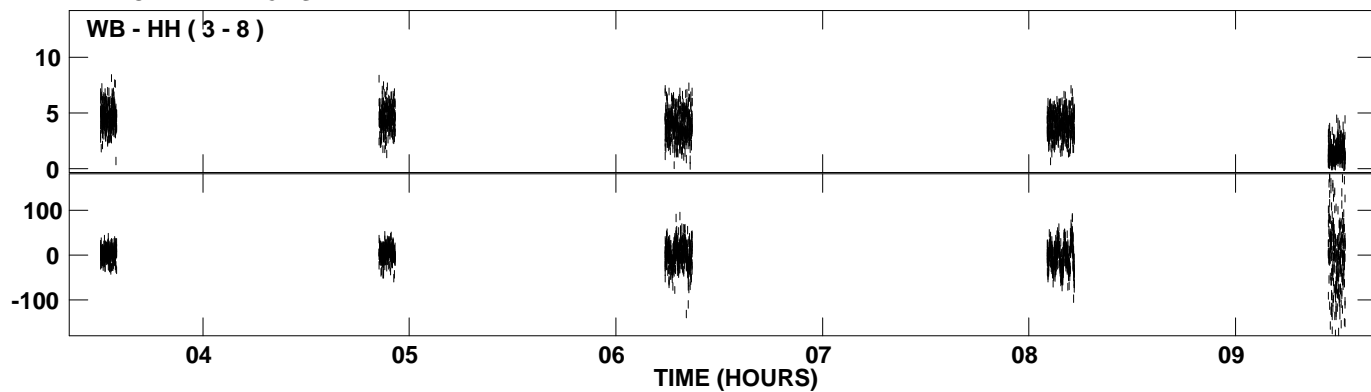
PLot file version 10 created 31-MAY-2007 15:28:17
Amplitude andPhase vs Time for EM061F 2.UVDATA.1 Vect aver. CL # 3
IF 1 CHAN 1 - 128 STK RR



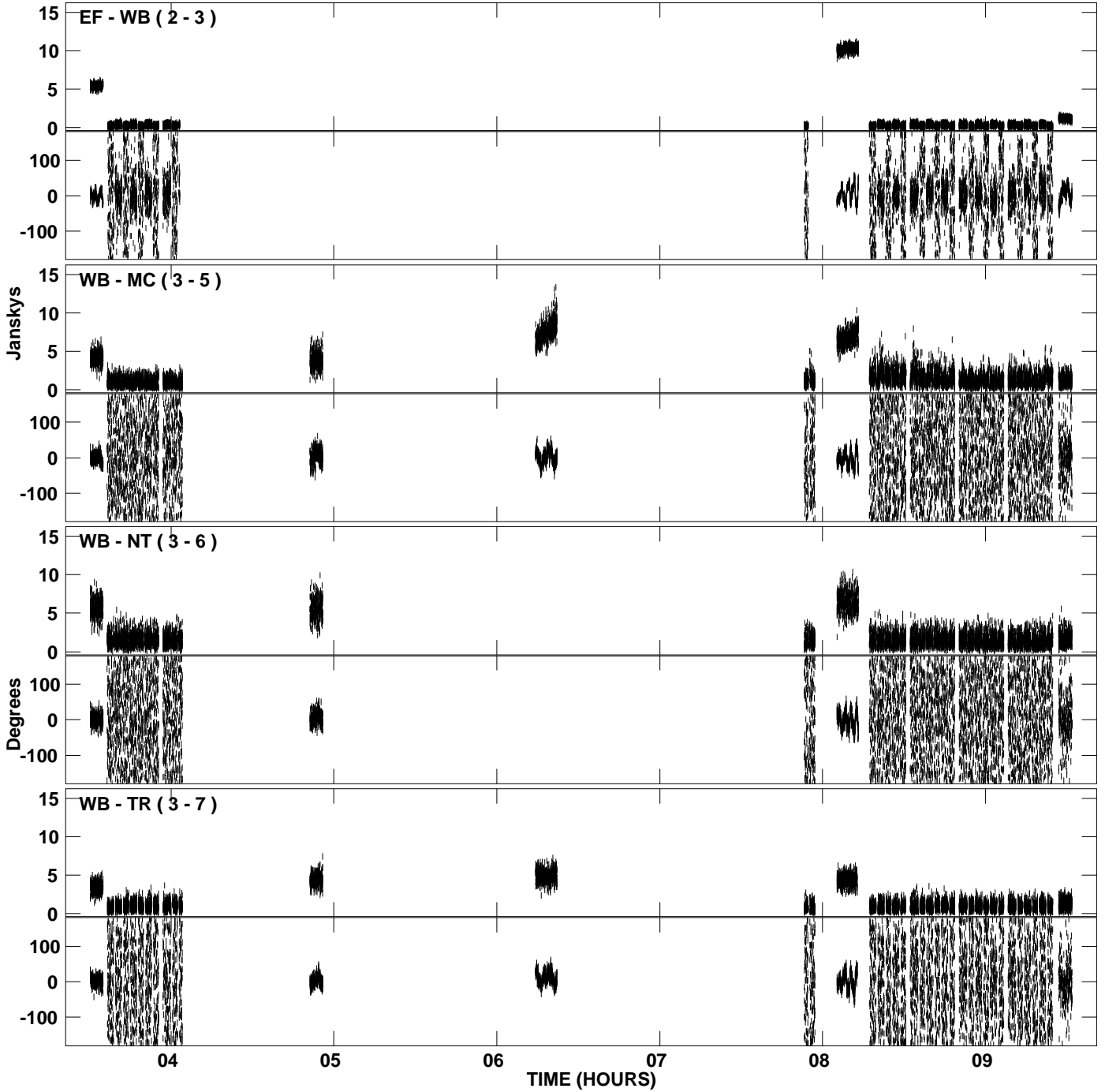
PLot file version 11 created 31-MAY-2007 15:29:44
Amplitude andPhase vs Time for EM061F 2.UVDATA.1 Vect aver. CL # 3
IF 2 CHAN 1 - 128 STK RR



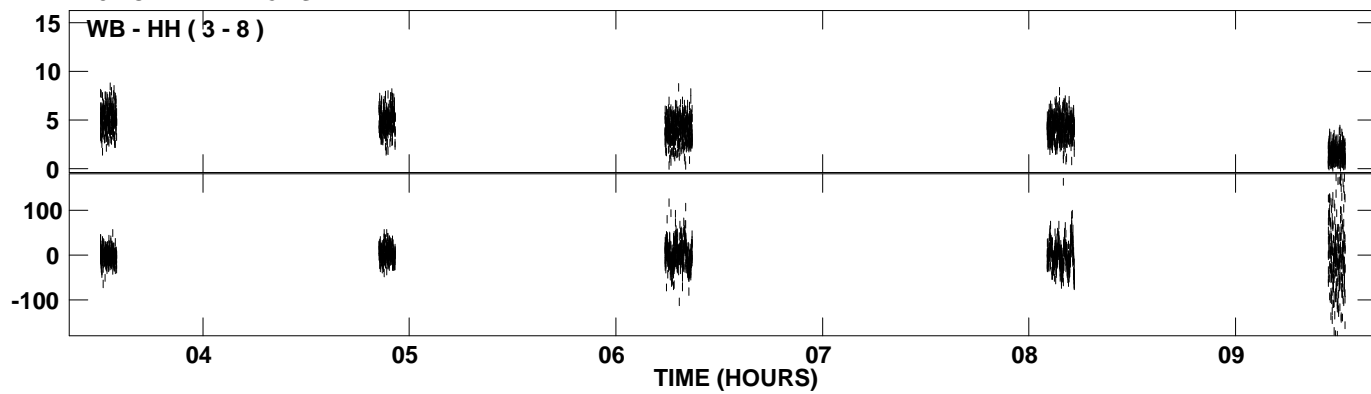
PLot file version 12 created 31-MAY-2007 15:29:44
Amplitude andPhase vs Time for EM061F 2.UVDATA.1 Vect aver. CL # 3
IF 2 CHAN 1 - 128 STK RR



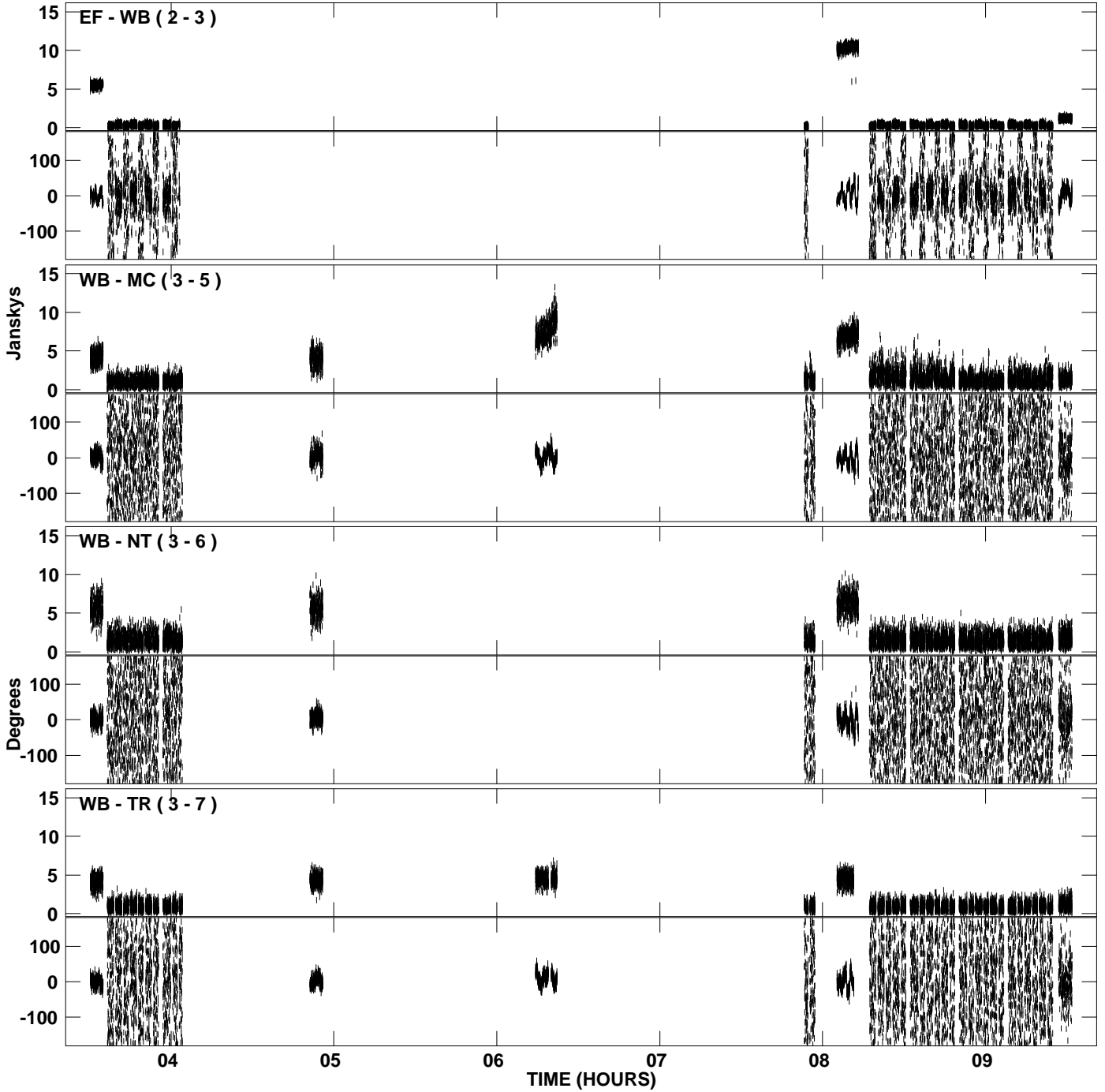
PLot file version 13 created 31-MAY-2007 15:31:10
Amplitude and Phase vs Time for EM061F 2.UVDATA.1 Vect aver. CL # 3
IF 3 CHAN 1 - 128 STK RR



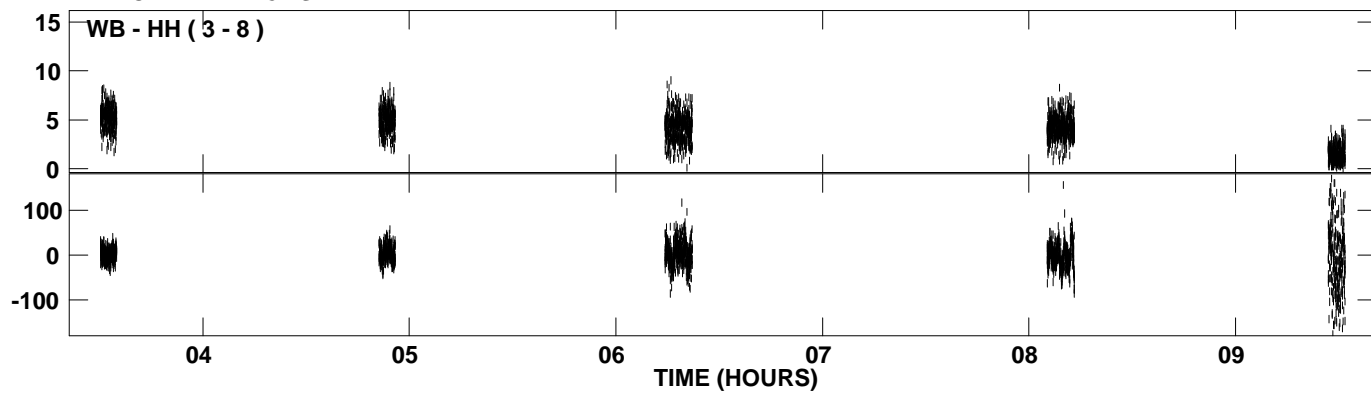
PLot file version 14 created 31-MAY-2007 15:31:10
Amplitude andPhase vs Time for EM061F 2.UVDATA.1 Vect aver. CL # 3
IF 3 CHAN 1 - 128 STK RR



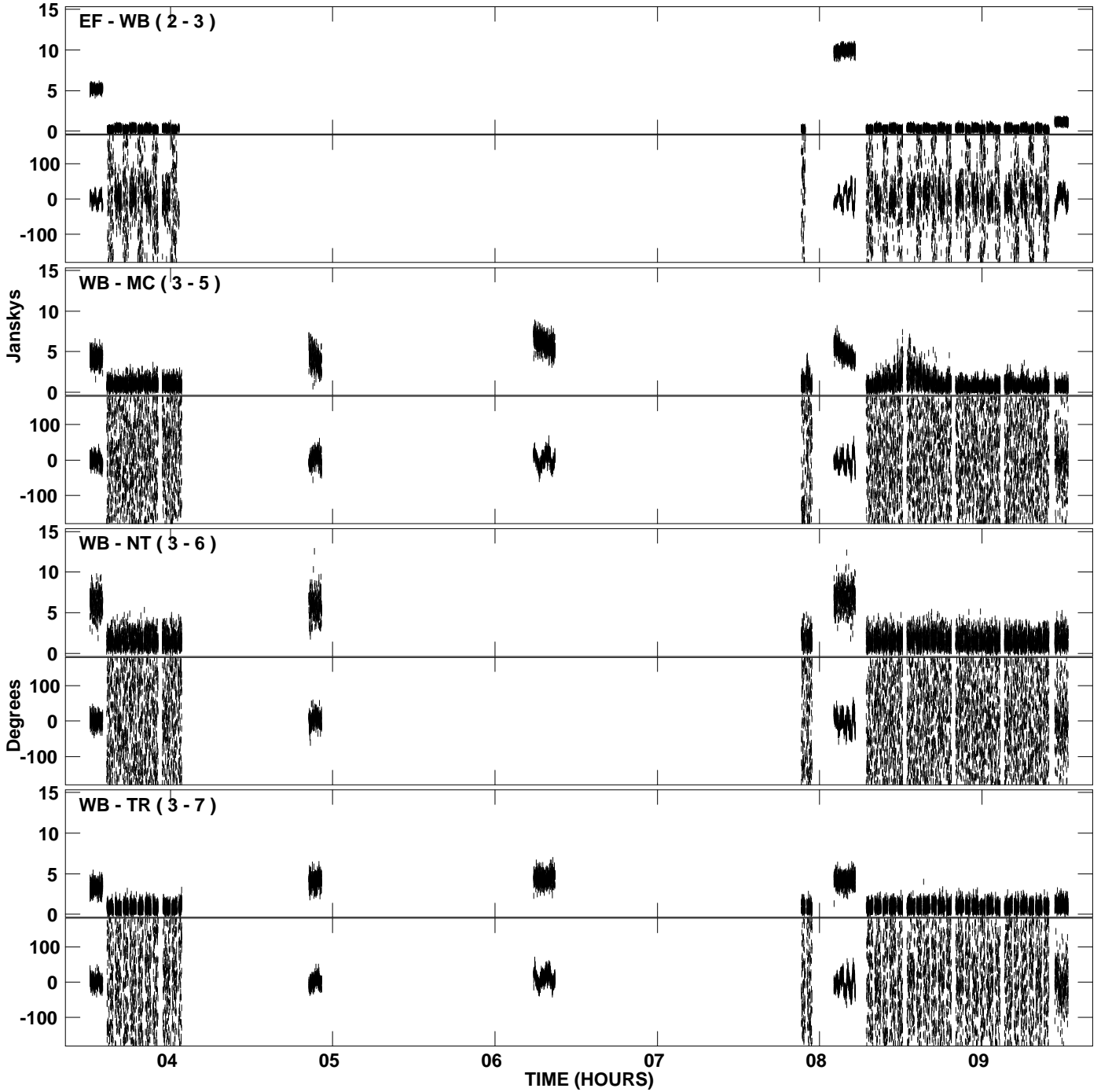
PLot file version 15 created 31-MAY-2007 15:32:38
Amplitude and Phase vs Time for EM061F 2.UVDATA.1 Vect aver. CL # 3
IF 4 CHAN 1 - 128 STK RR



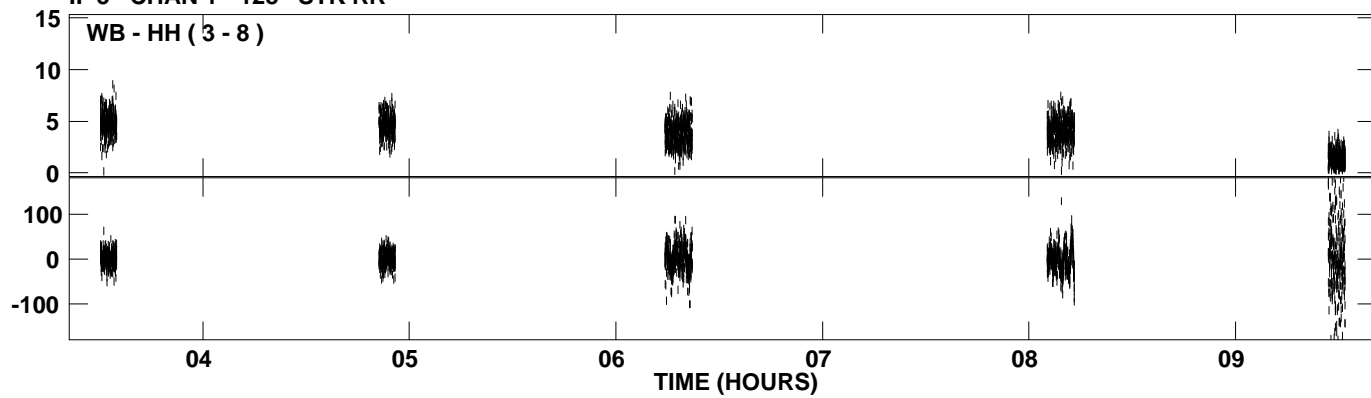
PLot file version 16 created 31-MAY-2007 15:32:39
Amplitude andPhase vs Time for EM061F 2.UVDATA.1 Vect aver. CL # 3
IF 4 CHAN 1 - 128 STK RR



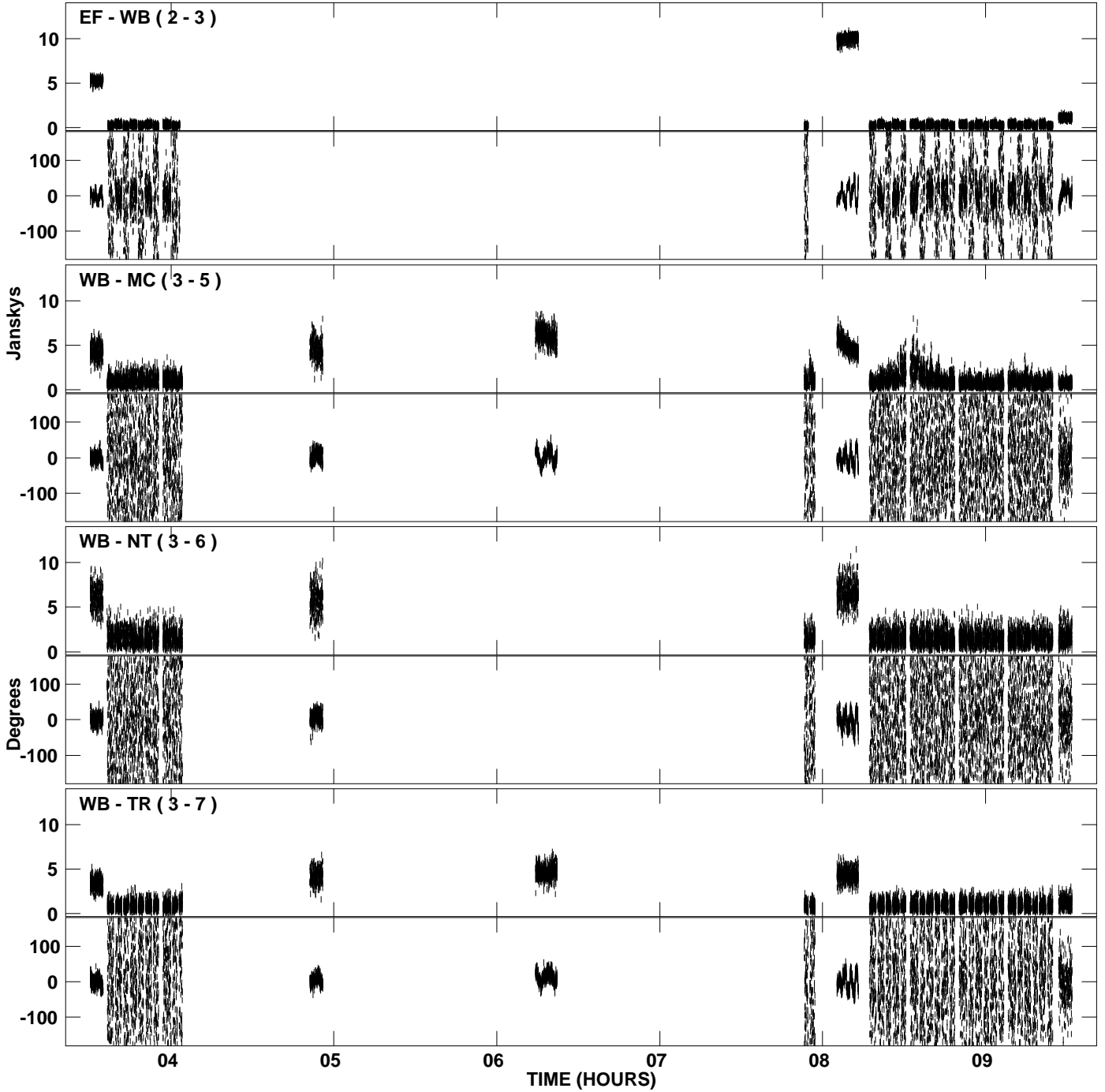
PLot file version 17 created 31-MAY-2007 15:34:05
Amplitude and Phase vs Time for EM061F 2.UVDATA.1 Vect aver. CL # 3
IF 5 CHAN 1 - 128 STK RR



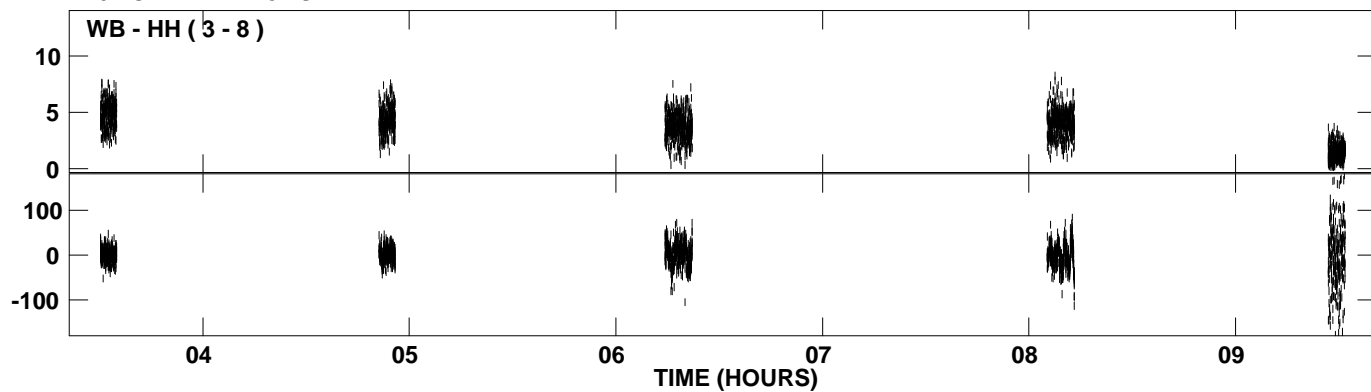
PLot file version 18 created 31-MAY-2007 15:34:06
Amplitude andPhase vs Time for EM061F 2.UVDATA.1 Vect aver. CL # 3
IF 5 CHAN 1 - 128 STK RR



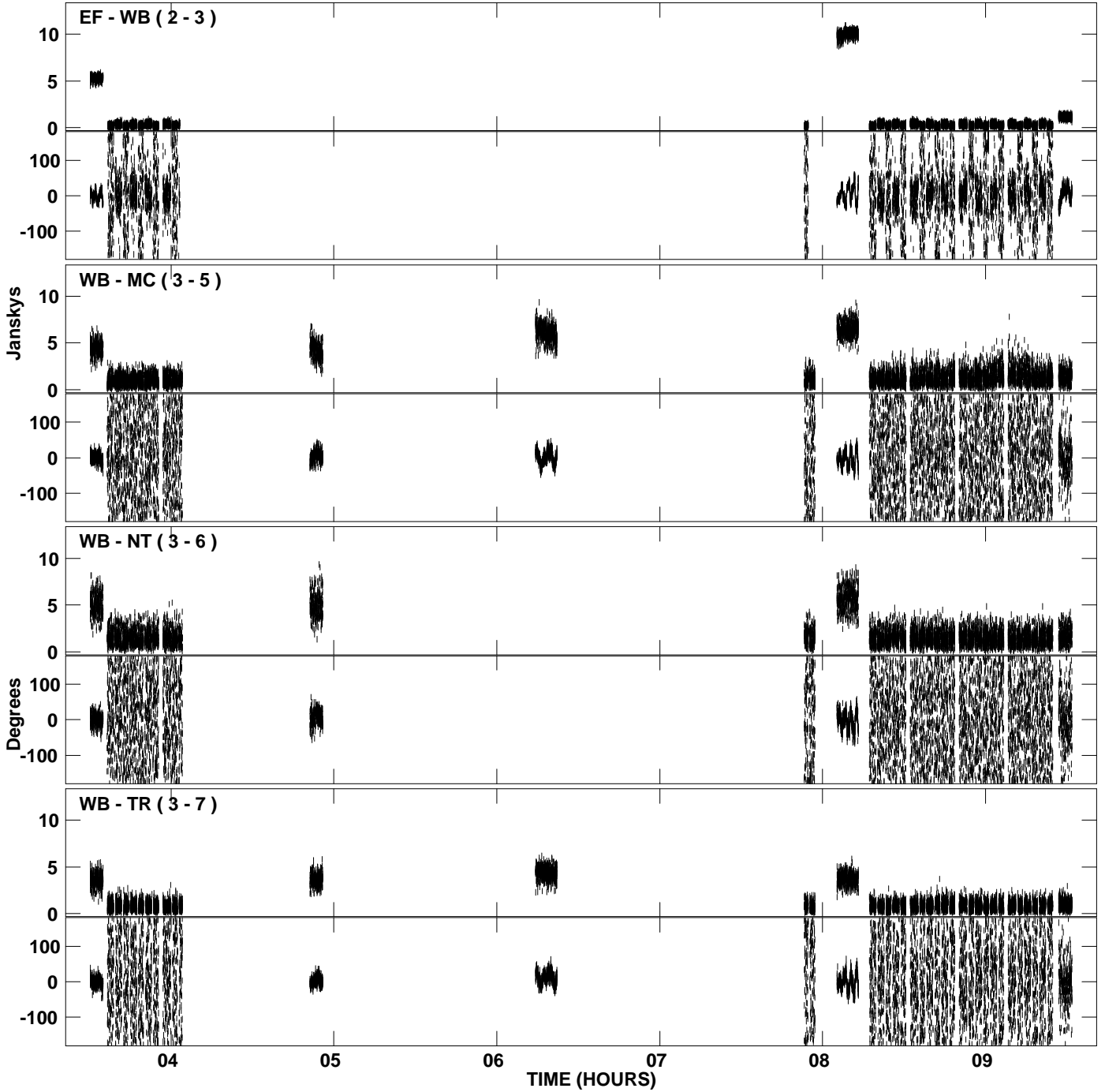
PLot file version 19 created 31-MAY-2007 15:35:32
Amplitude and Phase vs Time for EM061F 2.UVDATA.1 Vect aver. CL # 3
IF 6 CHAN 1 - 128 STK RR



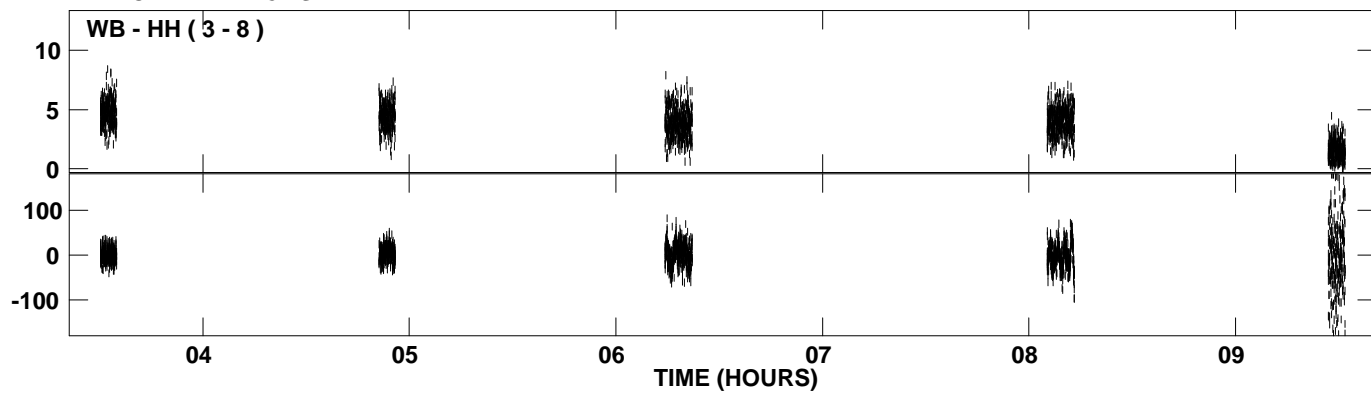
PLot file version 20 created 31-MAY-2007 15:35:32
Amplitude andPhase vs Time for EM061F 2.UVDATA.1 Vect aver. CL # 3
IF 6 CHAN 1 - 128 STK RR



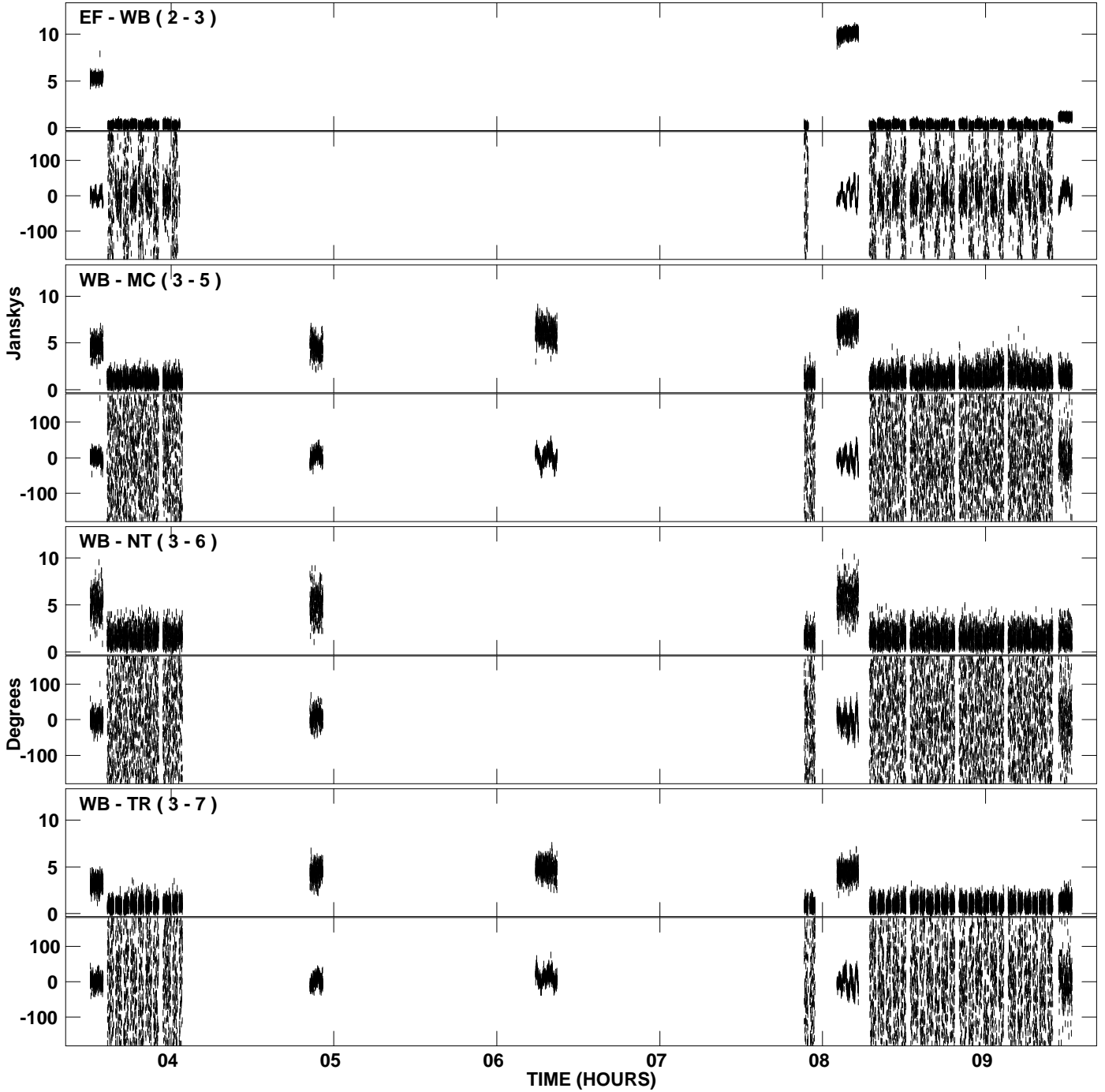
PLot file version 21 created 31-MAY-2007 15:36:59
Amplitude and Phase vs Time for EM061F 2.UVDATA.1 Vect aver. CL # 3
IF 7 CHAN 1 - 128 STK RR



PLot file version 22 created 31-MAY-2007 15:36:59
Amplitude andPhase vs Time for EM061F 2.UVDATA.1 Vect aver. CL # 3
IF 7 CHAN 1 - 128 STK RR



PLot file version 23 created 31-MAY-2007 15:38:28
Amplitude and Phase vs Time for EM061F 2.UVDATA.1 Vect aver. CL # 3
IF 8 CHAN 1 - 128 STK RR



PLot file version 24 created 31-MAY-2007 15:38:28
Amplitude andPhase vs Time for EM061F 2.UVDATA.1 Vect aver. CL # 3
IF 8 CHAN 1 - 128 STK RR

