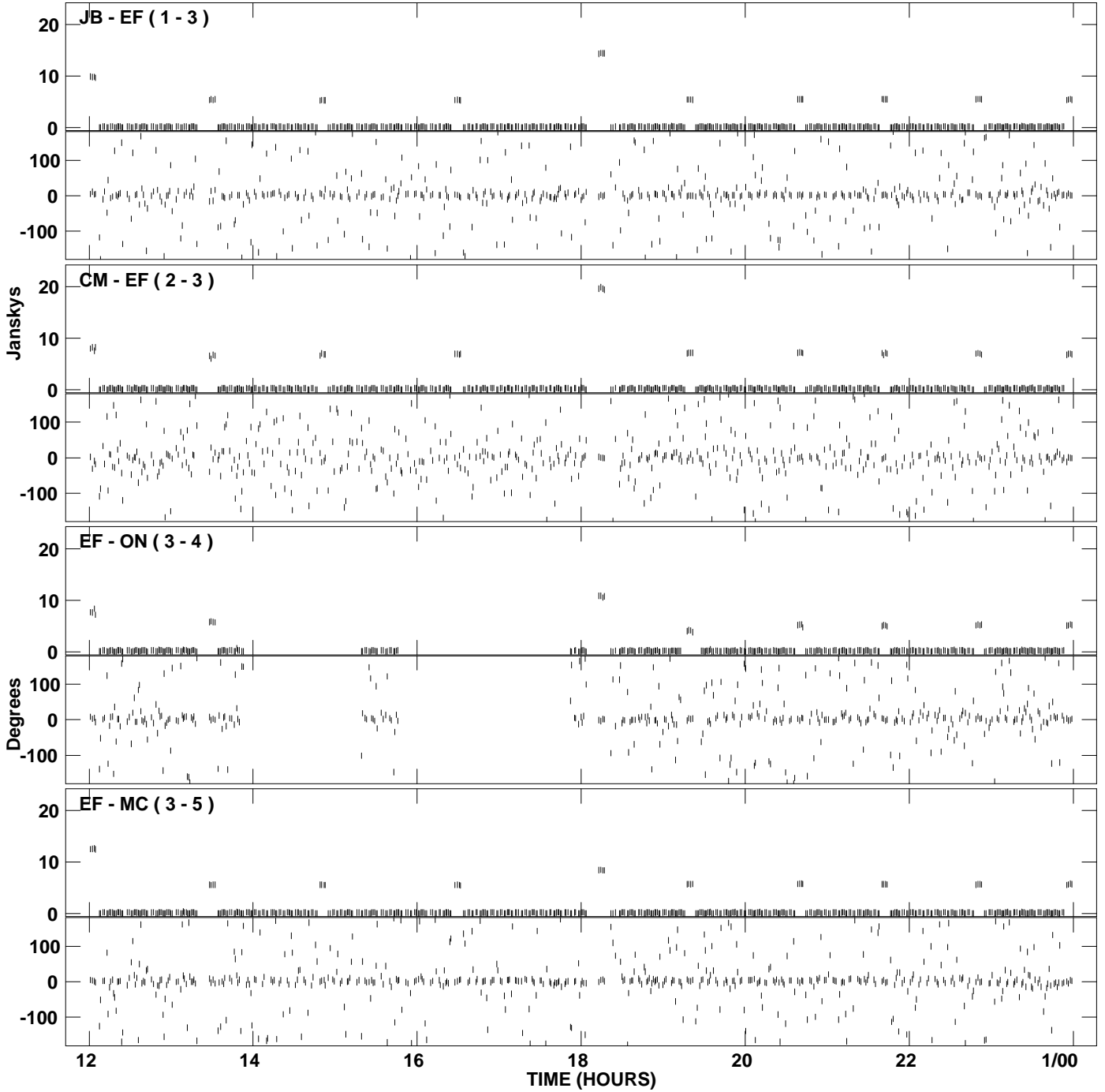
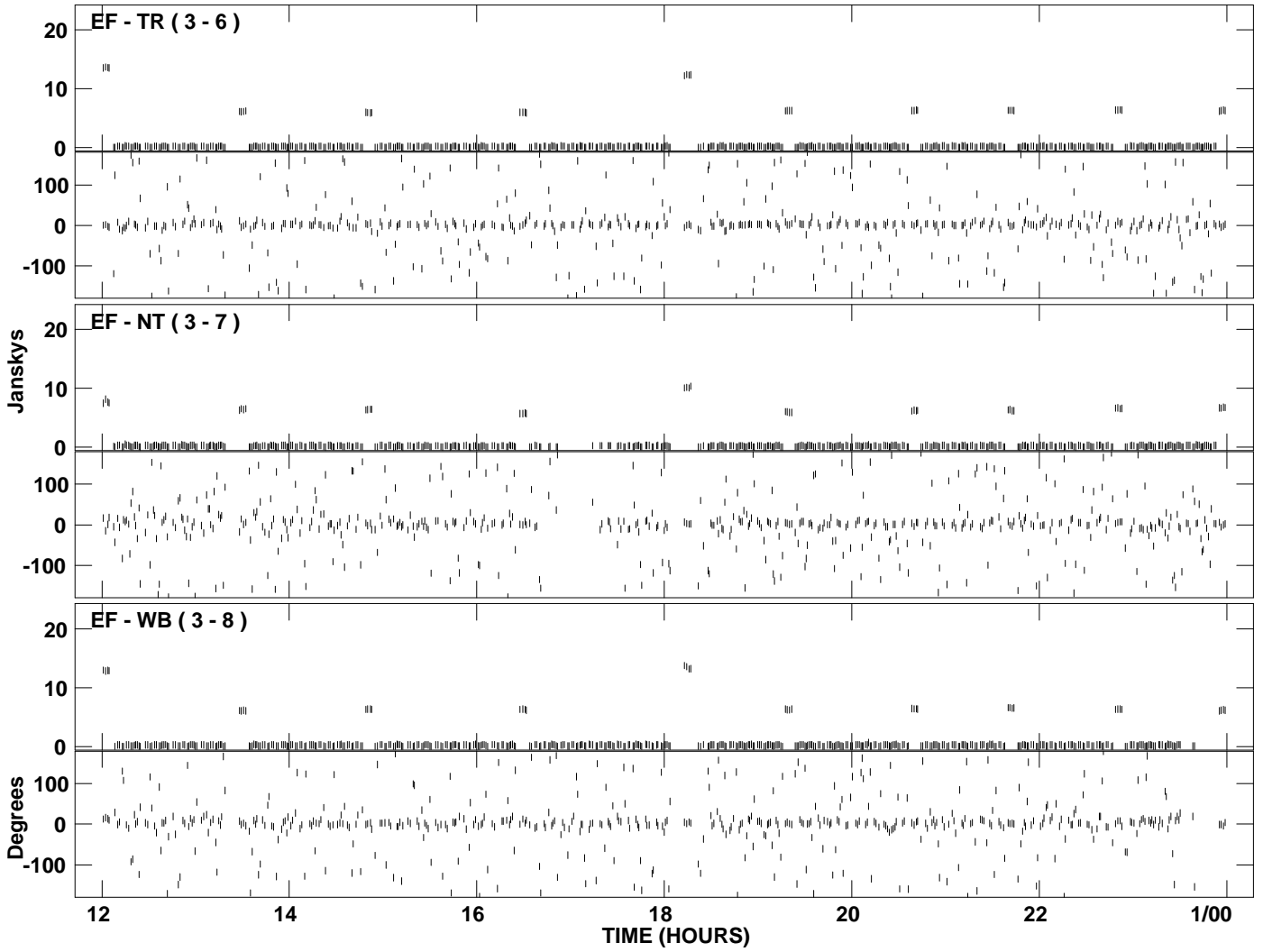


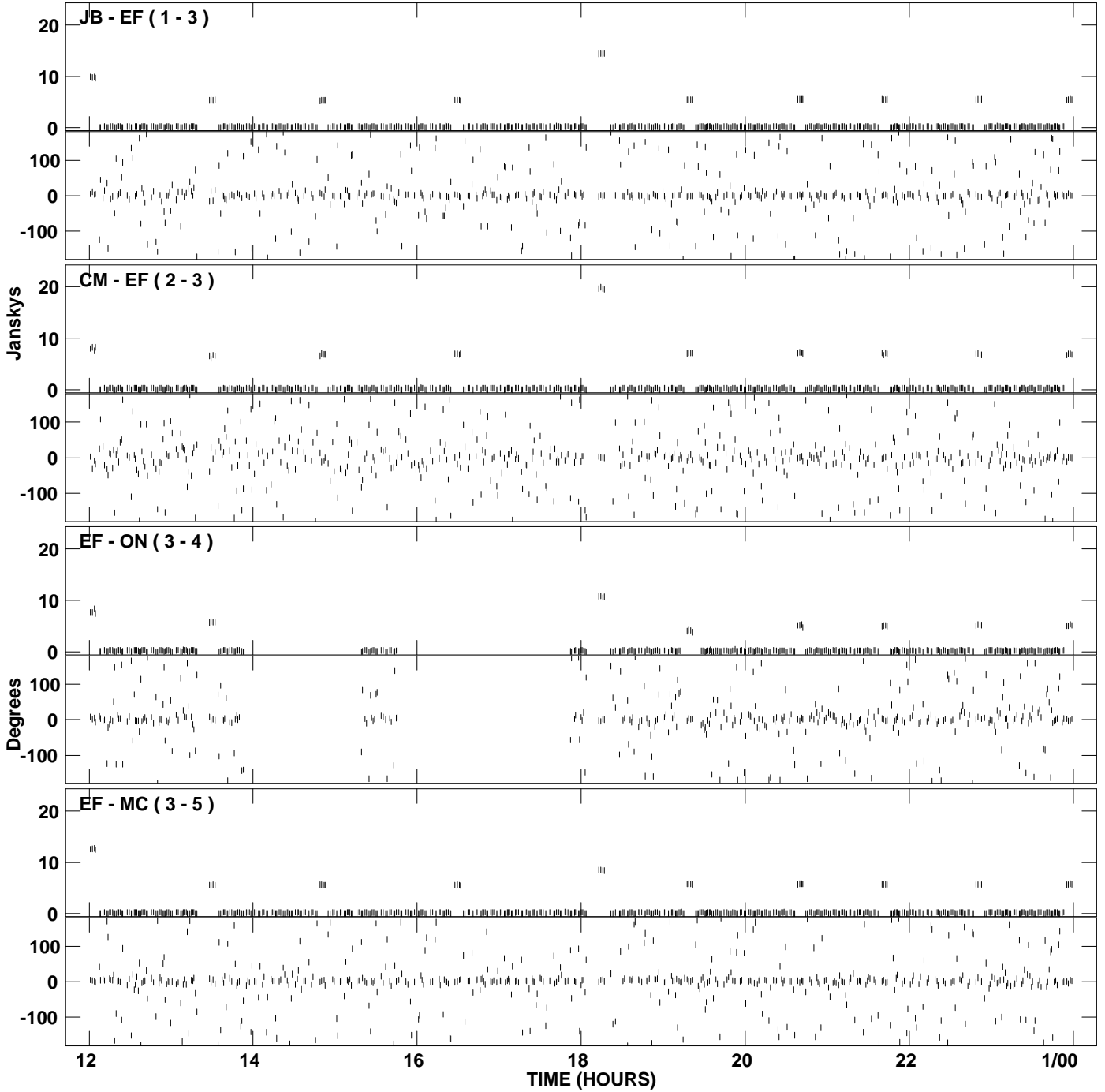
PLot file version 1 created 30-JUN-2009 15:01:14  
Amplitude and Phase vs Time for EM062B 1.UVDATA.1 Vect aver. CL # 3  
IF 1 CHAN 1 - 128 STK LL



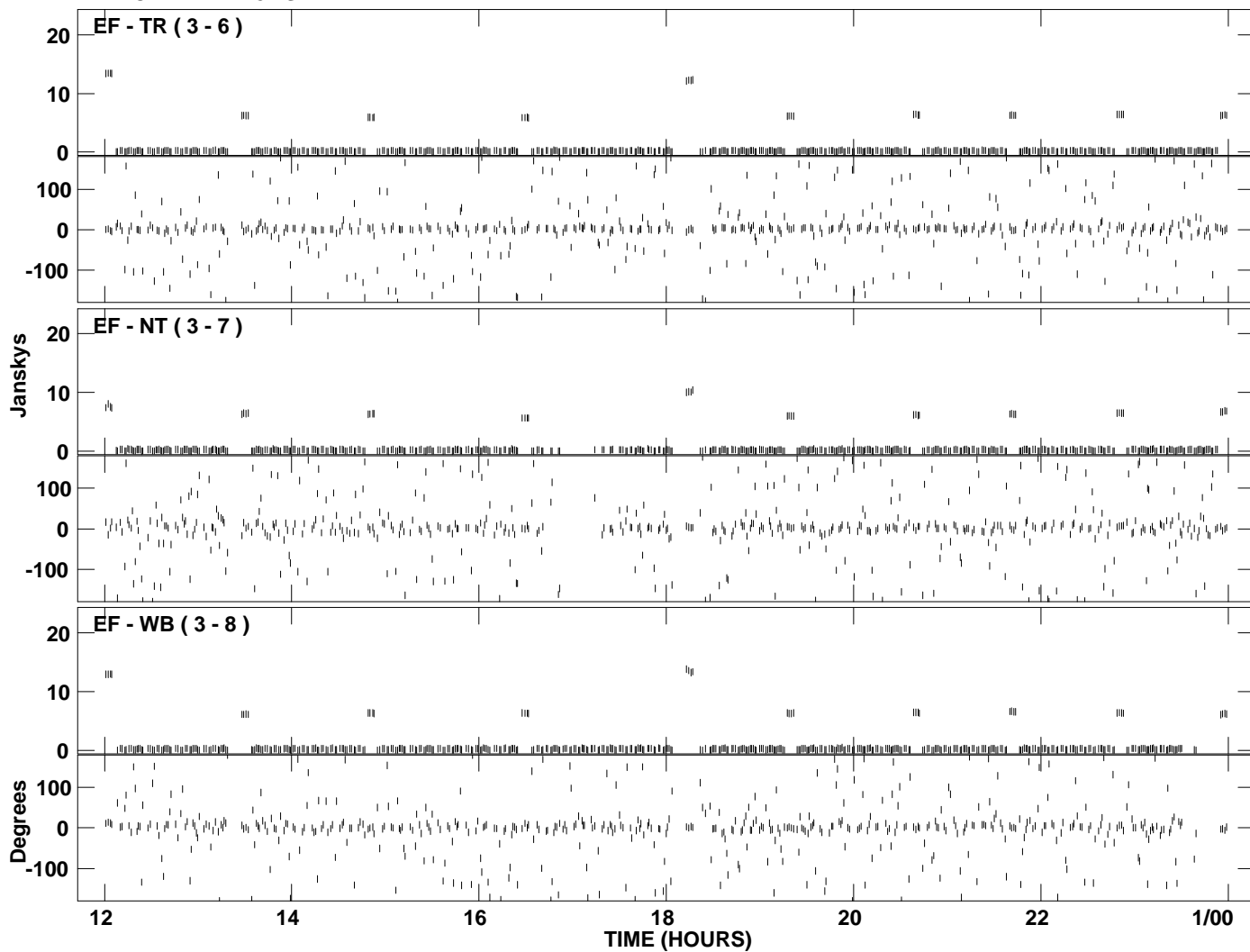
PLot file version 2 created 30-JUN-2009 15:01:14  
Amplitude and Phase vs Time for EM062B 1.UVDATA.1 Vect aver. CL # 3  
IF 1 CHAN 1 - 128 STK LL



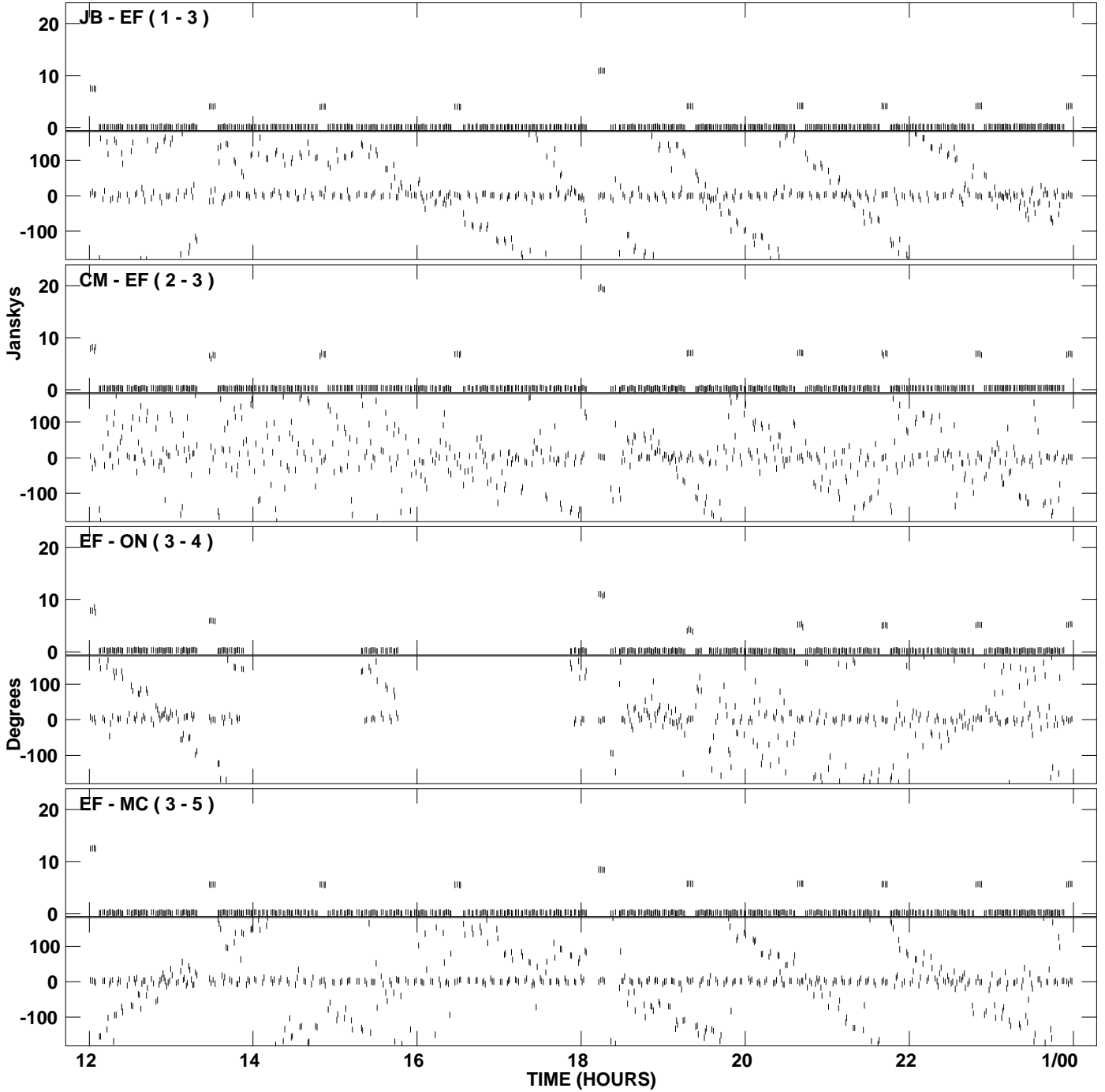
PLot file version 3 created 30-JUN-2009 15:03:08  
Amplitude and Phase vs Time for EM062B 1.UVDATA.1 Vect aver. CL # 3  
IF 2 CHAN 1 - 128 STK LL



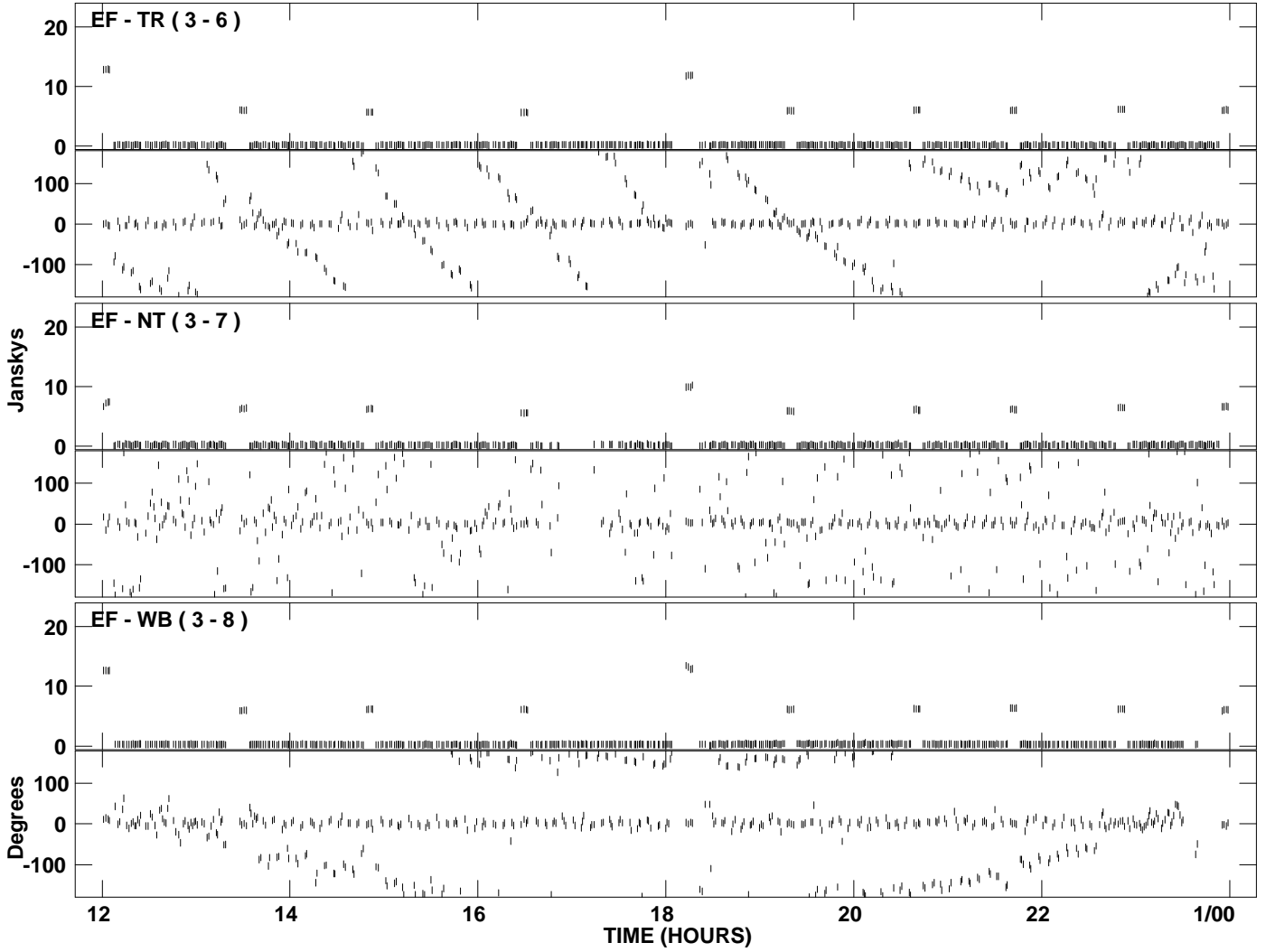
PLot file version 4 created 30-JUN-2009 15:03:08  
Amplitude and Phase vs Time for EM062B 1.UVDATA.1 Vect aver. CL # 3  
IF 2 CHAN 1 - 128 STK LL



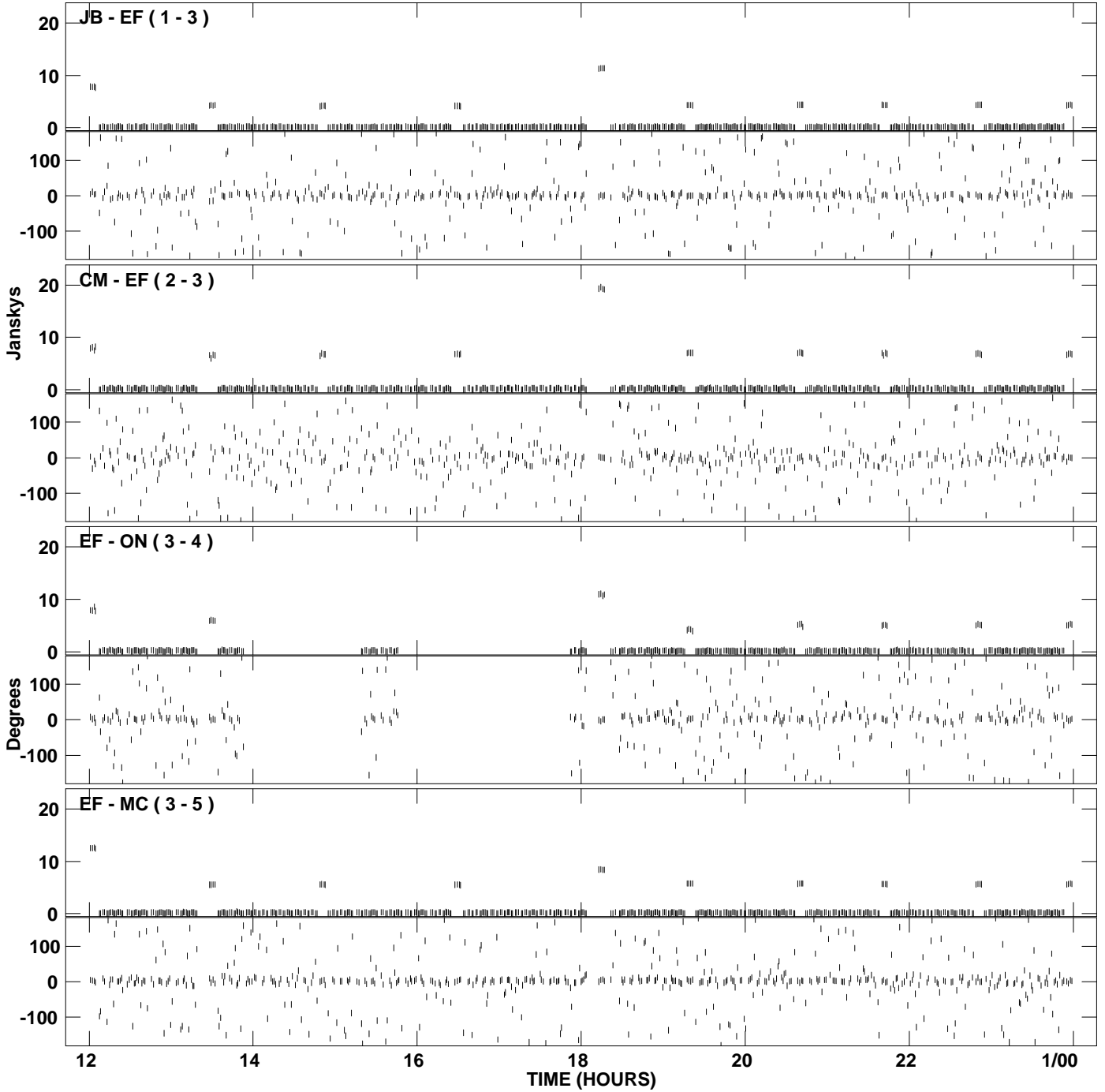
PLot file version 5 created 30-JUN-2009 15:05:05  
Amplitude and Phase vs Time for EM062B 1.UVDATA.1 Vect aver. CL # 3  
IF 3 CHAN 1 - 128 STK LL



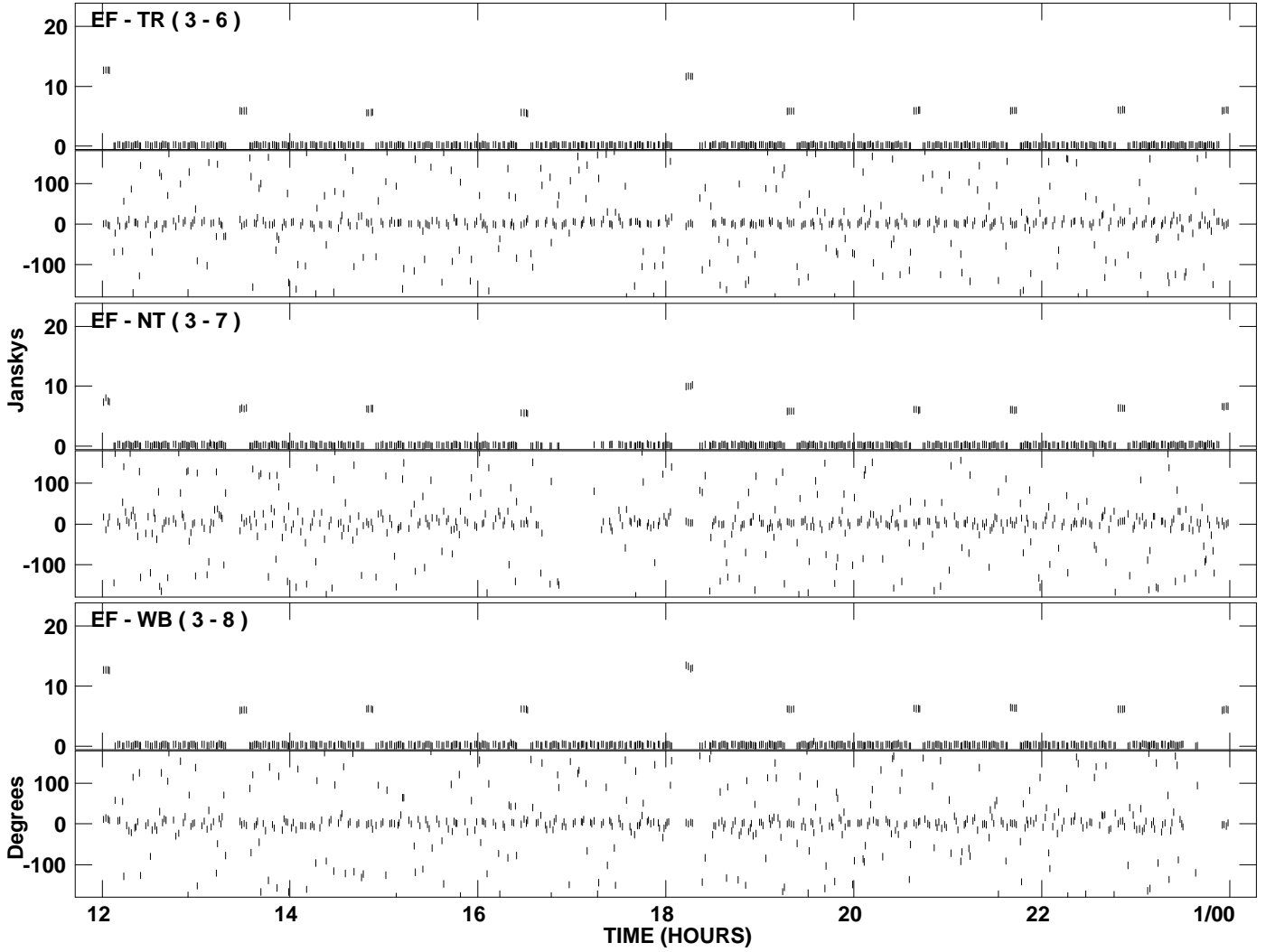
PLot file version 6 created 30-JUN-2009 15:05:05  
Amplitude and Phase vs Time for EM062B 1.UVDATA.1 Vect aver. CL # 3  
IF 3 CHAN 1 - 128 STK LL



PLot file version 7 created 30-JUN-2009 15:07:00  
Amplitude and Phase vs Time for EM062B 1.UVDATA.1 Vect aver. CL # 3  
IF 4 CHAN 1 - 128 STK LL

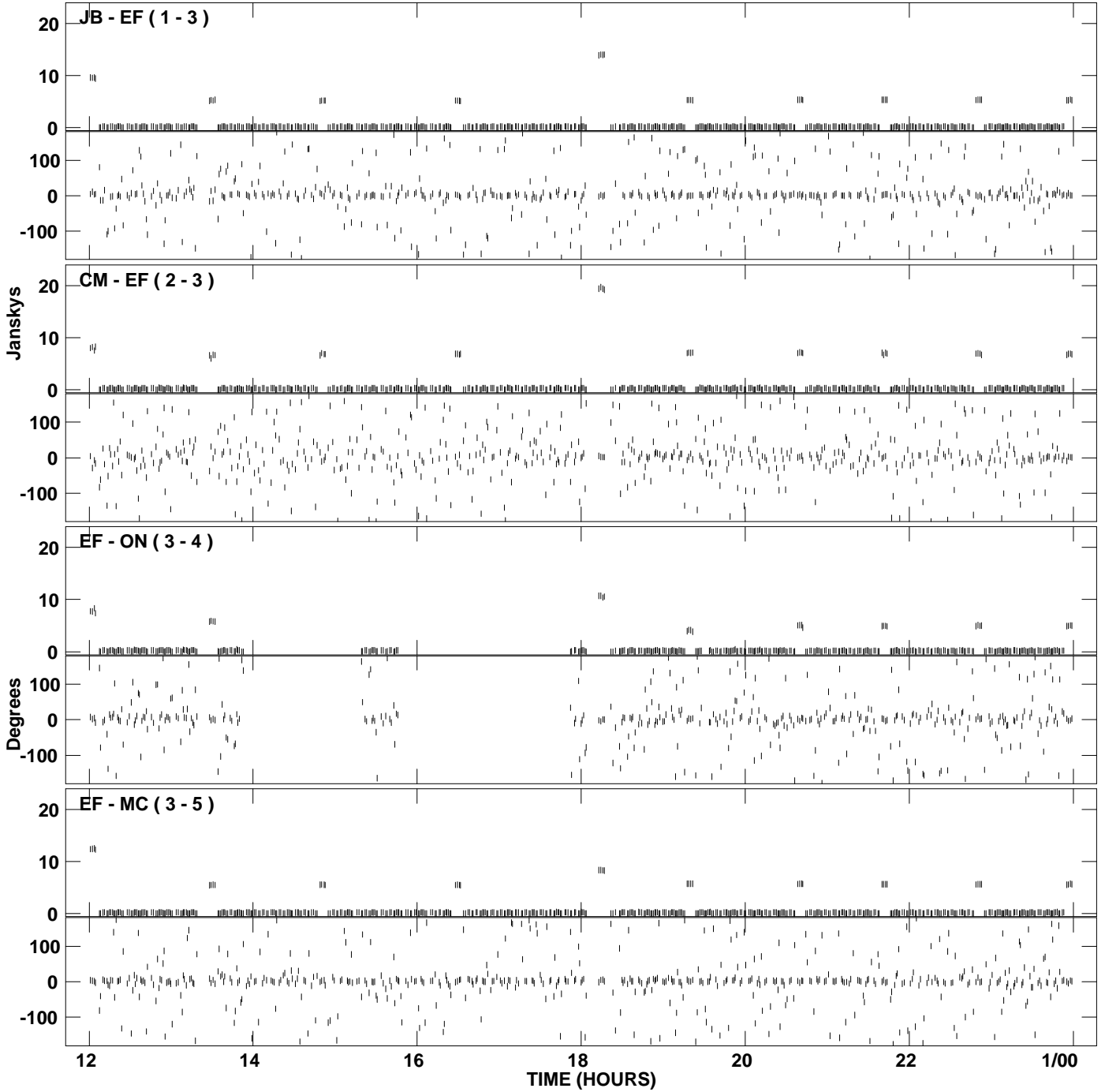


PLot file version 8 created 30-JUN-2009 15:07:00  
Amplitude and Phase vs Time for EM062B 1.UVDATA.1 Vect aver. CL # 3  
IF 4 CHAN 1 - 128 STK LL

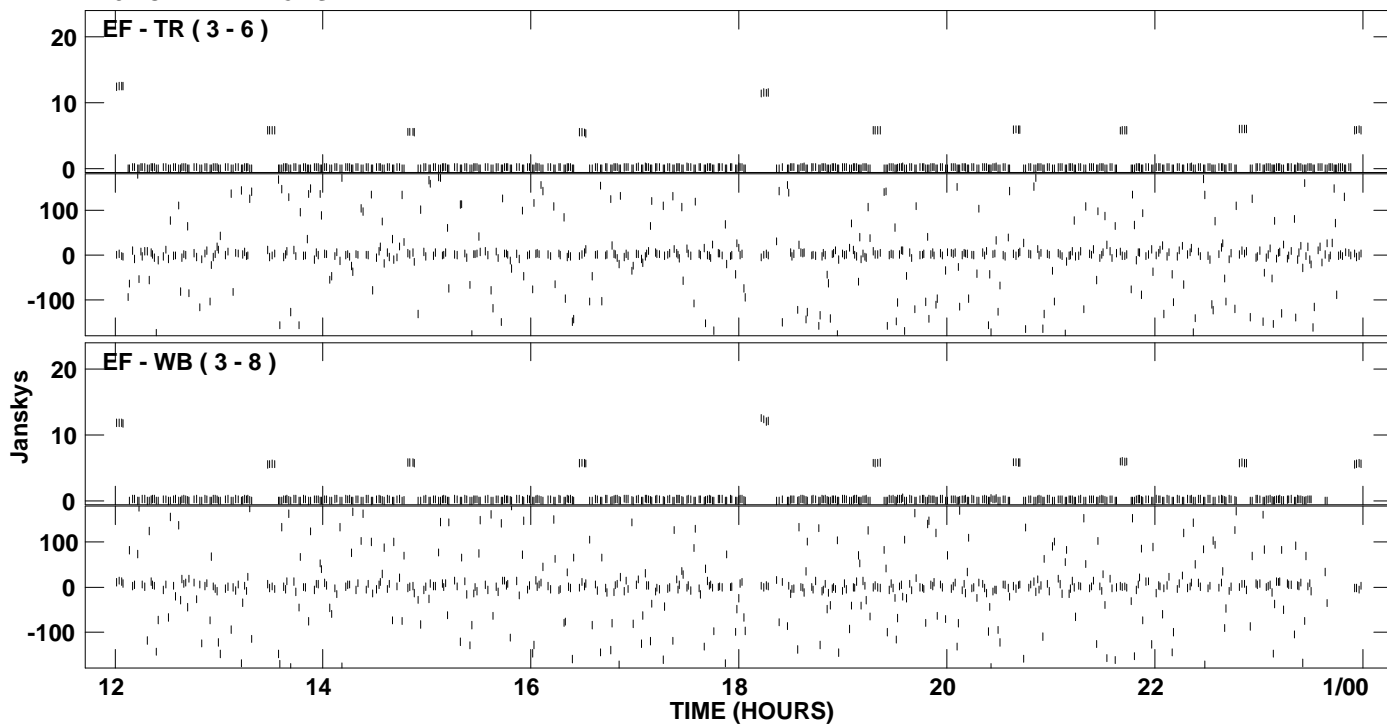




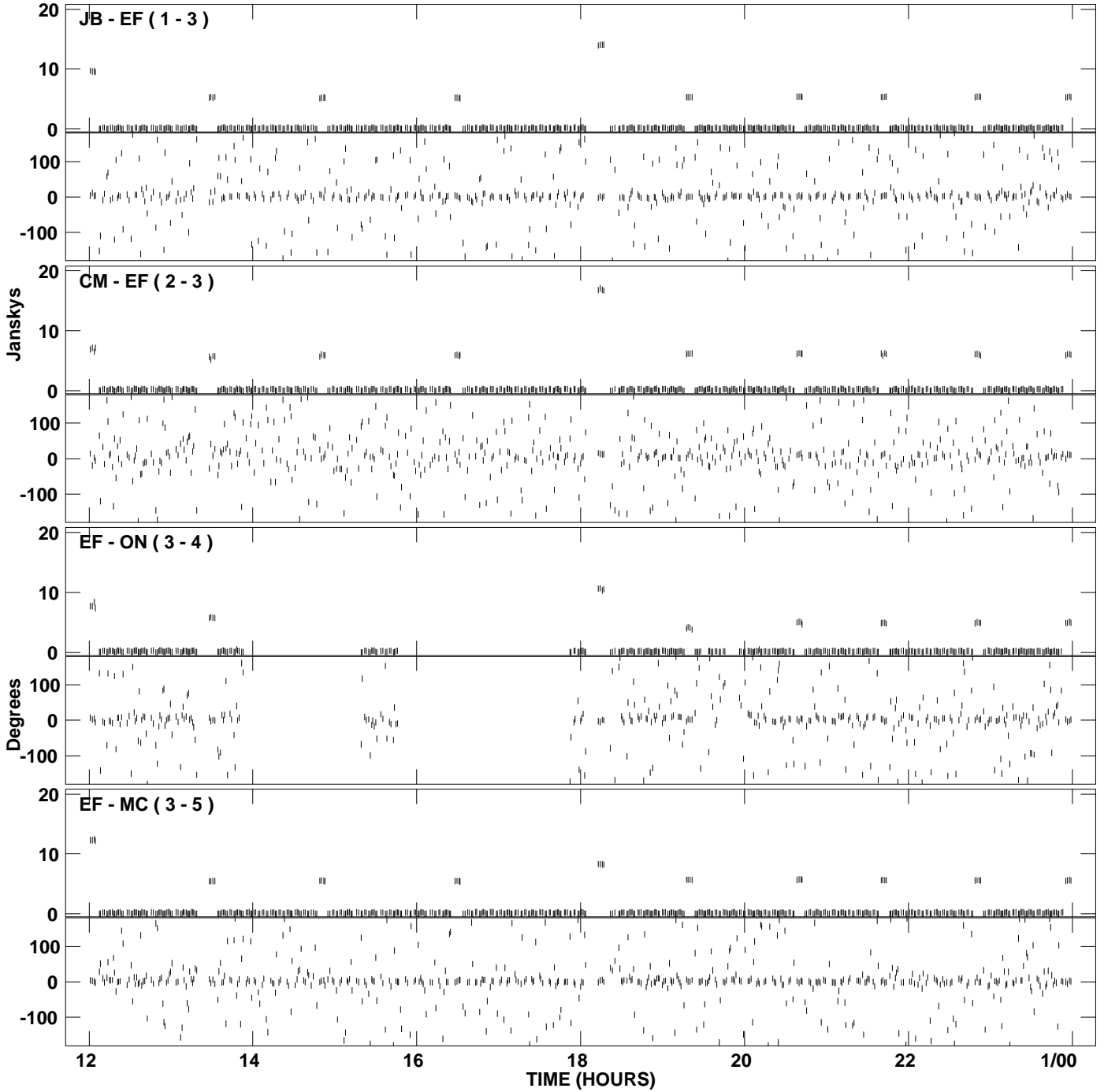
PLot file version 9 created 30-JUN-2009 15:08:55  
Amplitude and Phase vs Time for EM062B 1.UVDATA.1 Vect aver. CL # 3  
IF 5 CHAN 1 - 128 STK LL



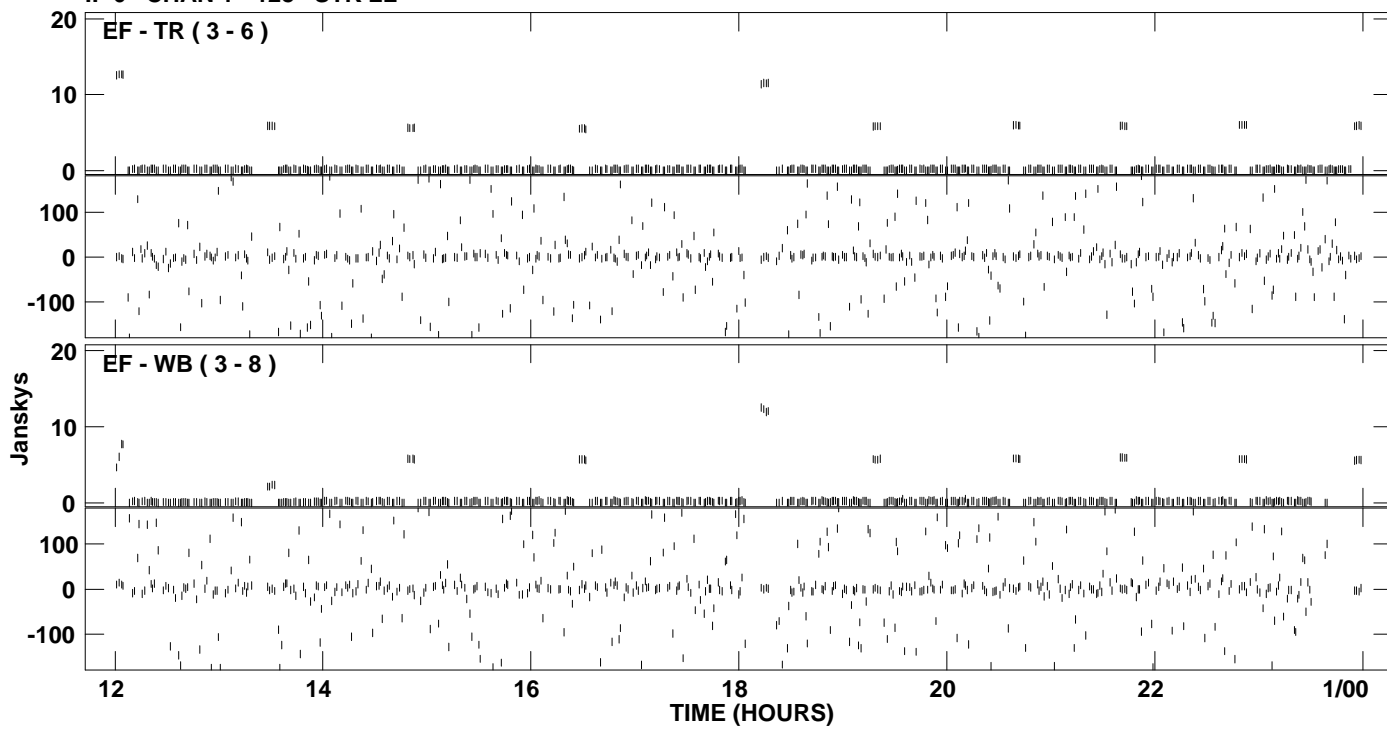
PLot file version 10 created 30-JUN-2009 15:08:55  
Amplitude andPhase vs Time for EM062B 1.UVDATA.1 Vect aver. CL # 3  
IF 5 CHAN 1 - 128 STK LL



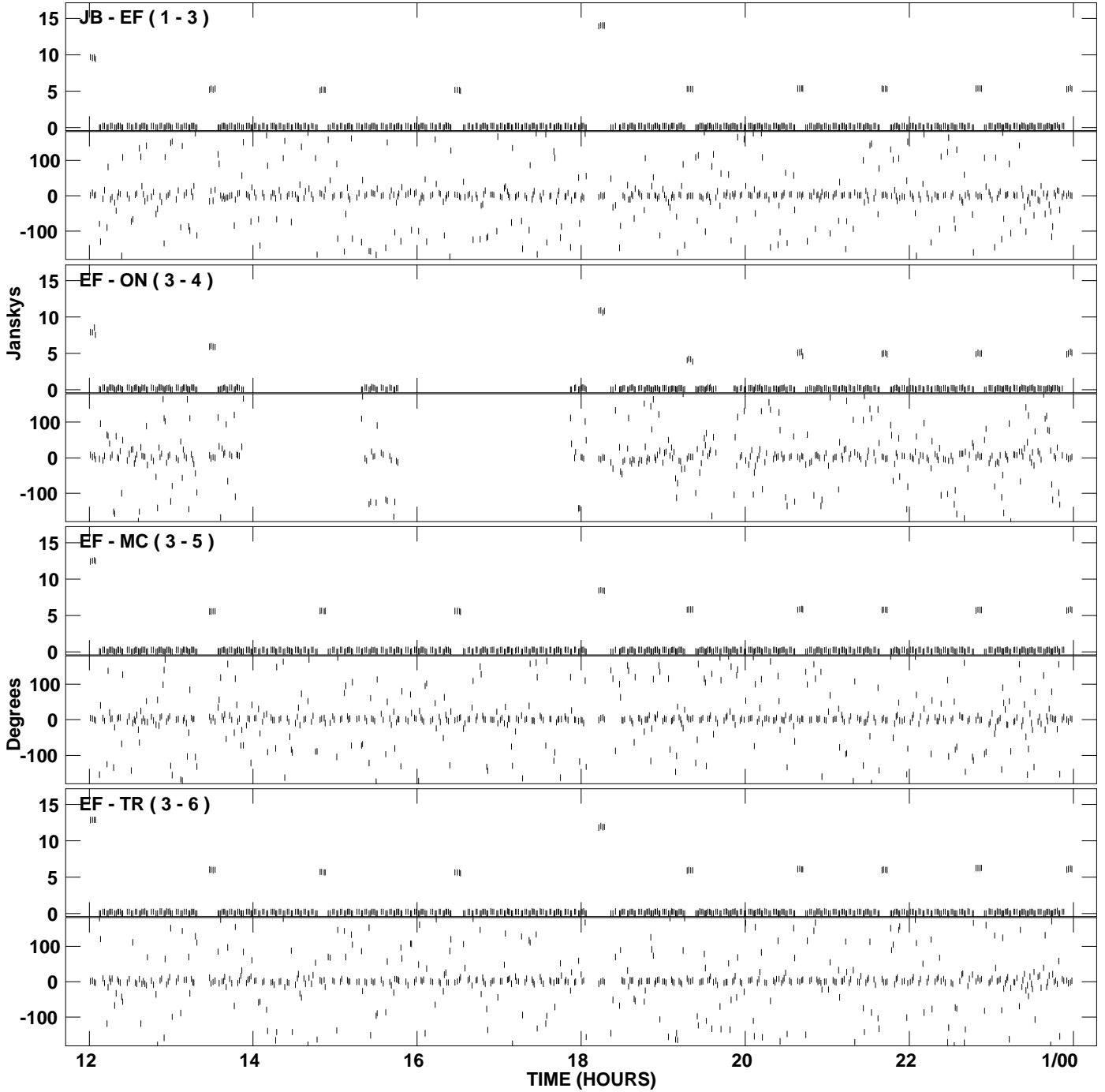
PLot file version 11 created 30-JUN-2009 15:10:49  
Amplitude and Phase vs Time for EM062B 1.UVDATA.1 Vect aver. CL # 3  
IF 6 CHAN 1 - 128 STK LL



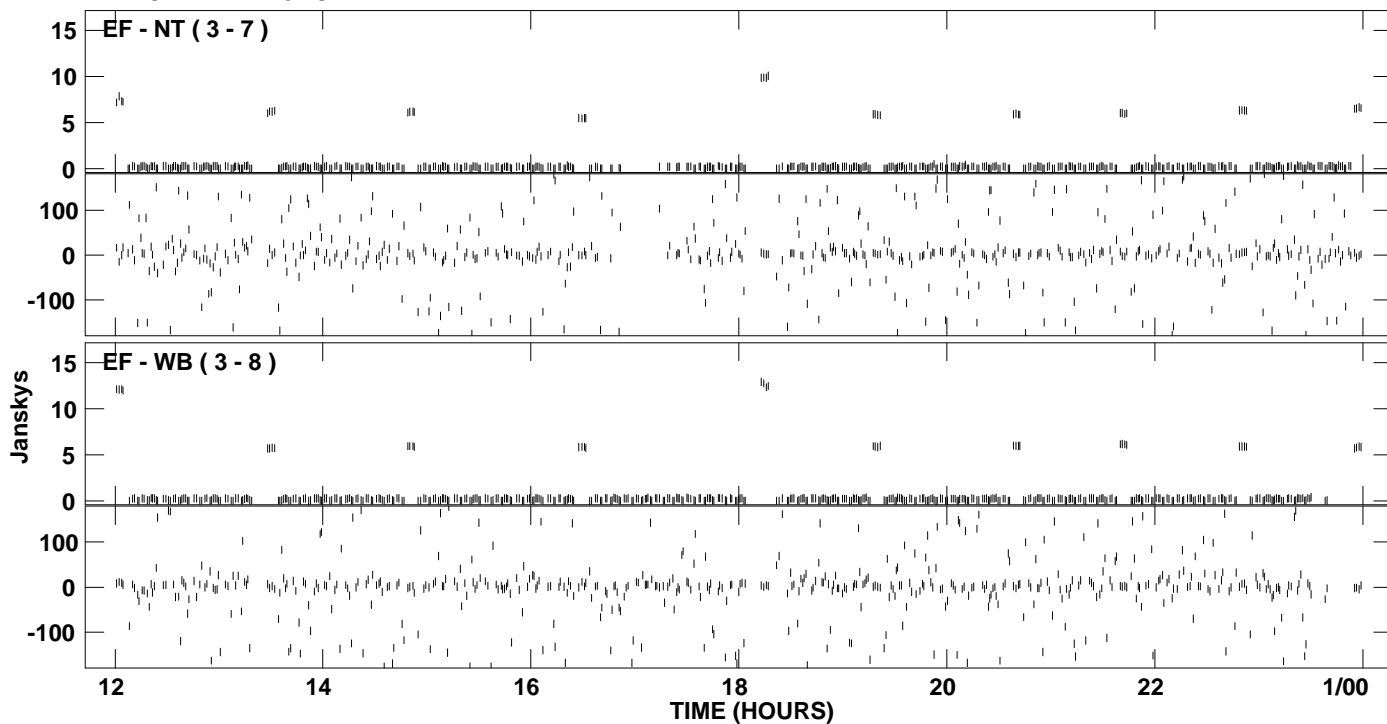
PLot file version 12 created 30-JUN-2009 15:10:49  
Amplitude and Phase vs Time for EM062B 1.UVDATA.1 Vect aver. CL # 3  
IF 6 CHAN 1 - 128 STK LL



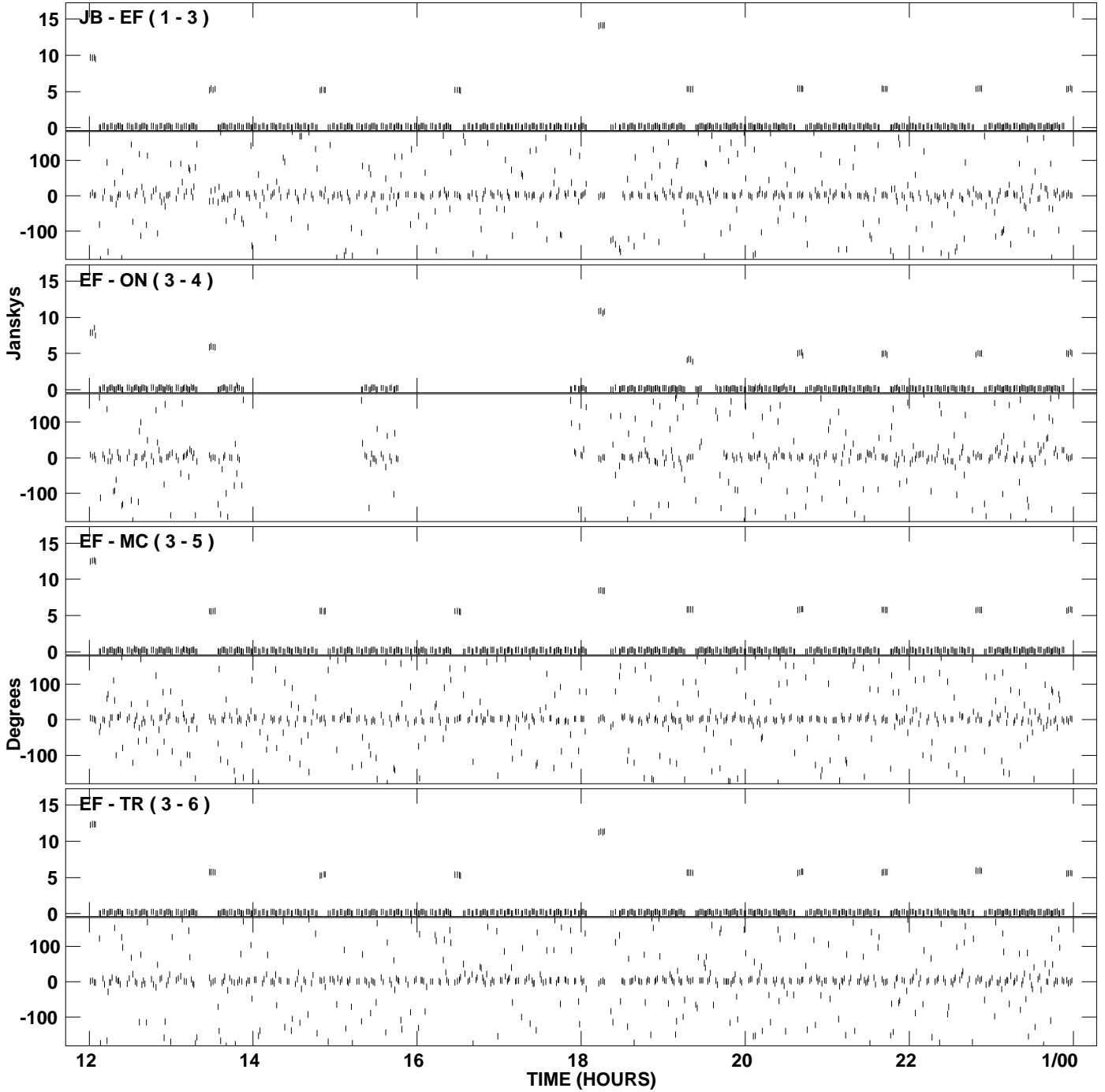
PLot file version 13 created 30-JUN-2009 15:12:38  
Amplitude and Phase vs Time for EM062B 1.UVDATA.1 Vect aver. CL # 3  
IF 7 CHAN 1 - 128 STK LL



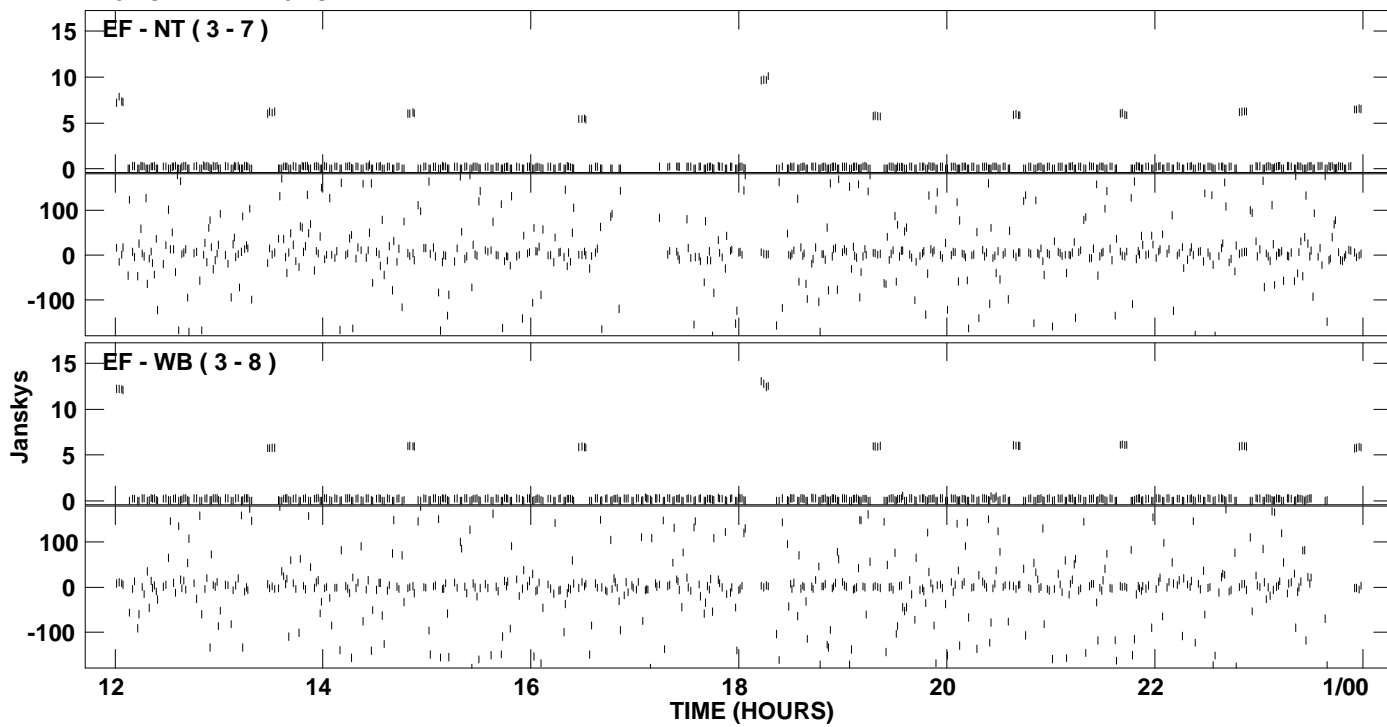
PLot file version 14 created 30-JUN-2009 15:12:38  
Amplitude andPhase vs Time for EM062B 1.UVDATA.1 Vect aver. CL # 3  
IF 7 CHAN 1 - 128 STK LL



PLot file version 15 created 30-JUN-2009 15:14:27  
Amplitude and Phase vs Time for EM062B 1.UVDATA.1 Vect aver. CL # 3  
IF 8 CHAN 1 - 128 STK LL

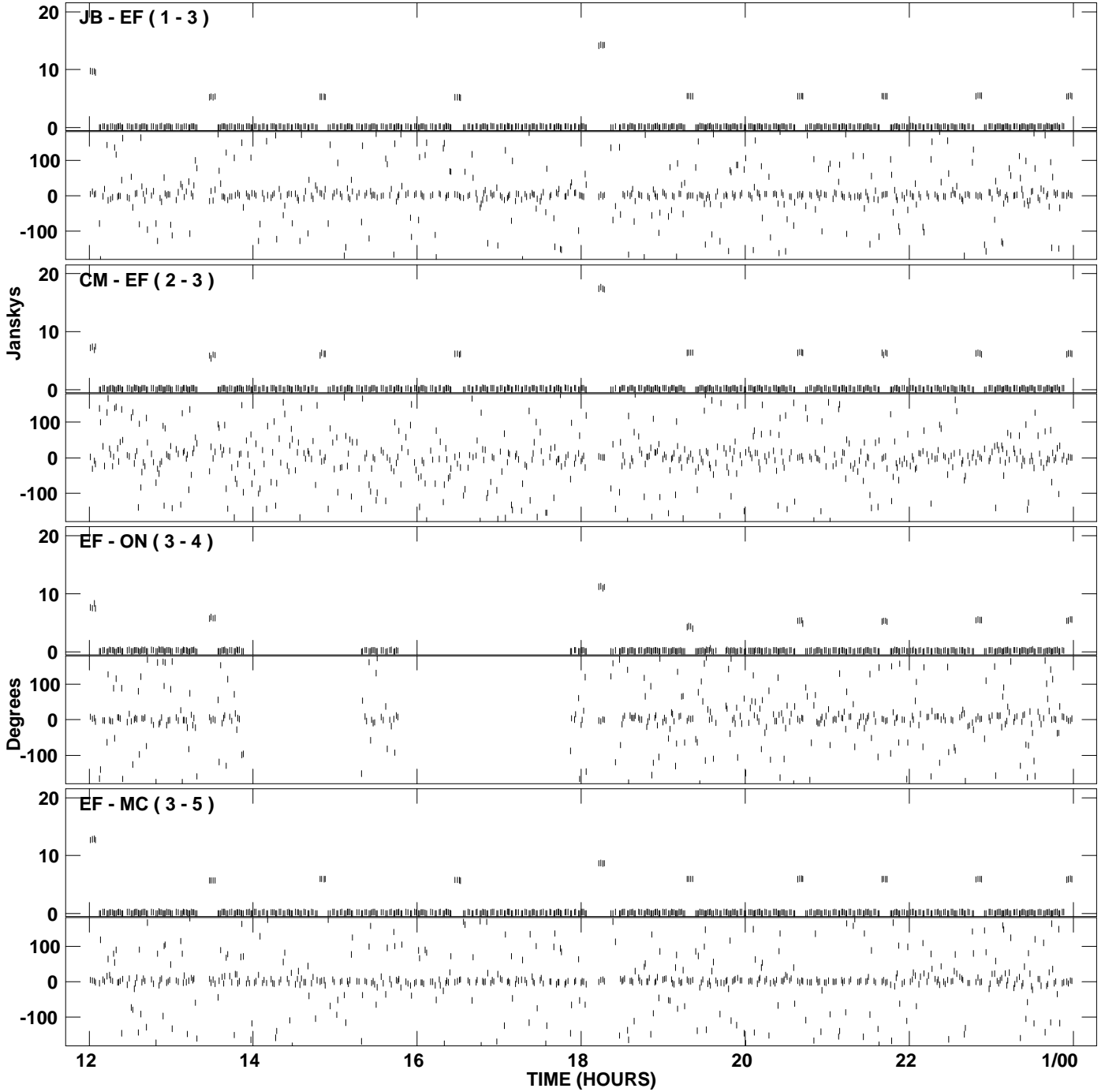


PLot file version 16 created 30-JUN-2009 15:14:27  
Amplitude andPhase vs Time for EM062B 1.UVDATA.1 Vect aver. CL # 3  
IF 8 CHAN 1 - 128 STK LL

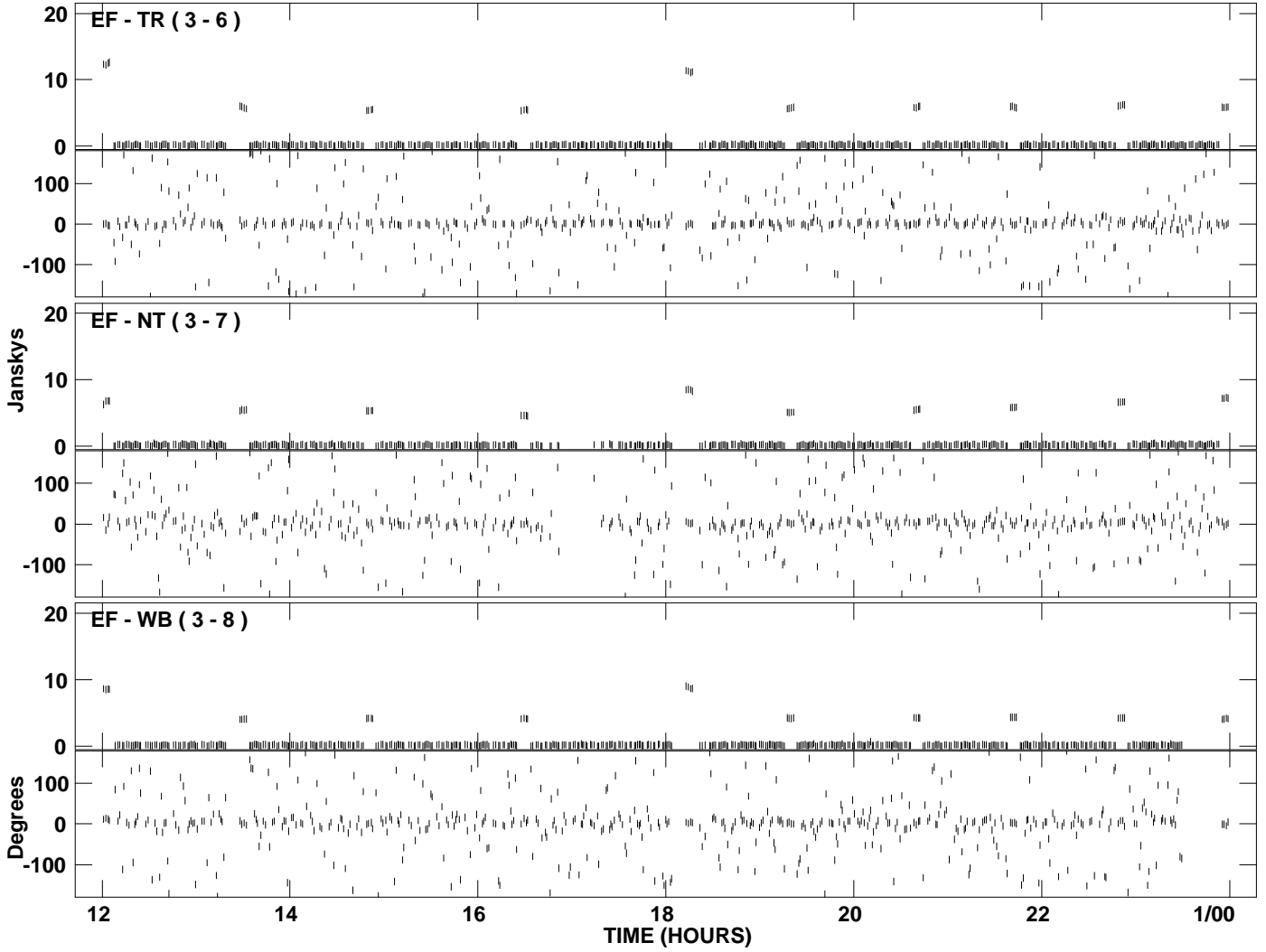




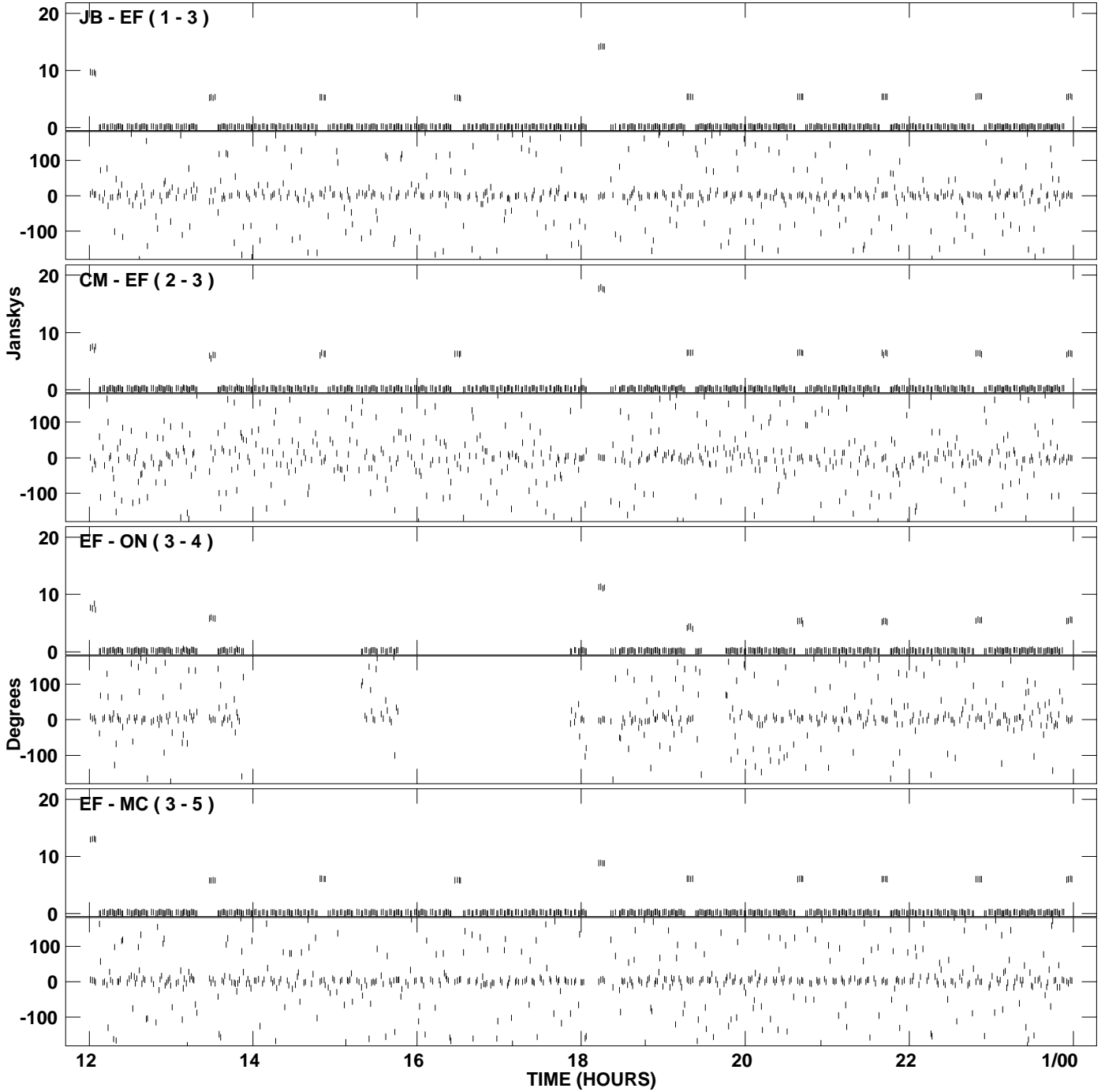
PLot file version 17 created 30-JUN-2009 15:16:22  
Amplitude and Phase vs Time for EM062B 1.UVDATA.1 Vect aver. CL # 3  
IF 1 CHAN 1 - 128 STK RR



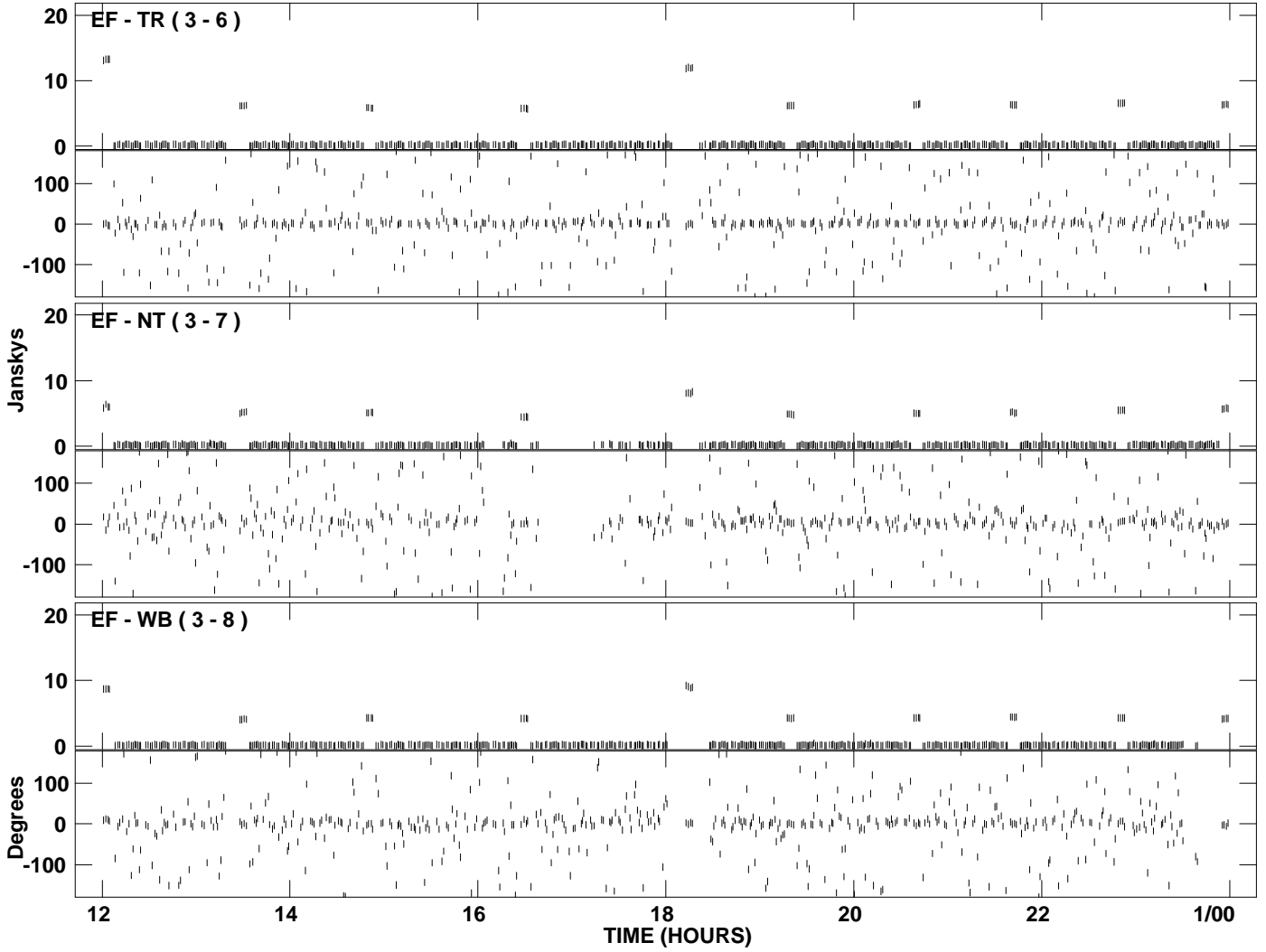
PLot file version 18 created 30-JUN-2009 15:16:22  
Amplitude andPhase vs Time for EM062B 1.UVDATA.1 Vect aver. CL # 3  
IF 1 CHAN 1 - 128 STK RR



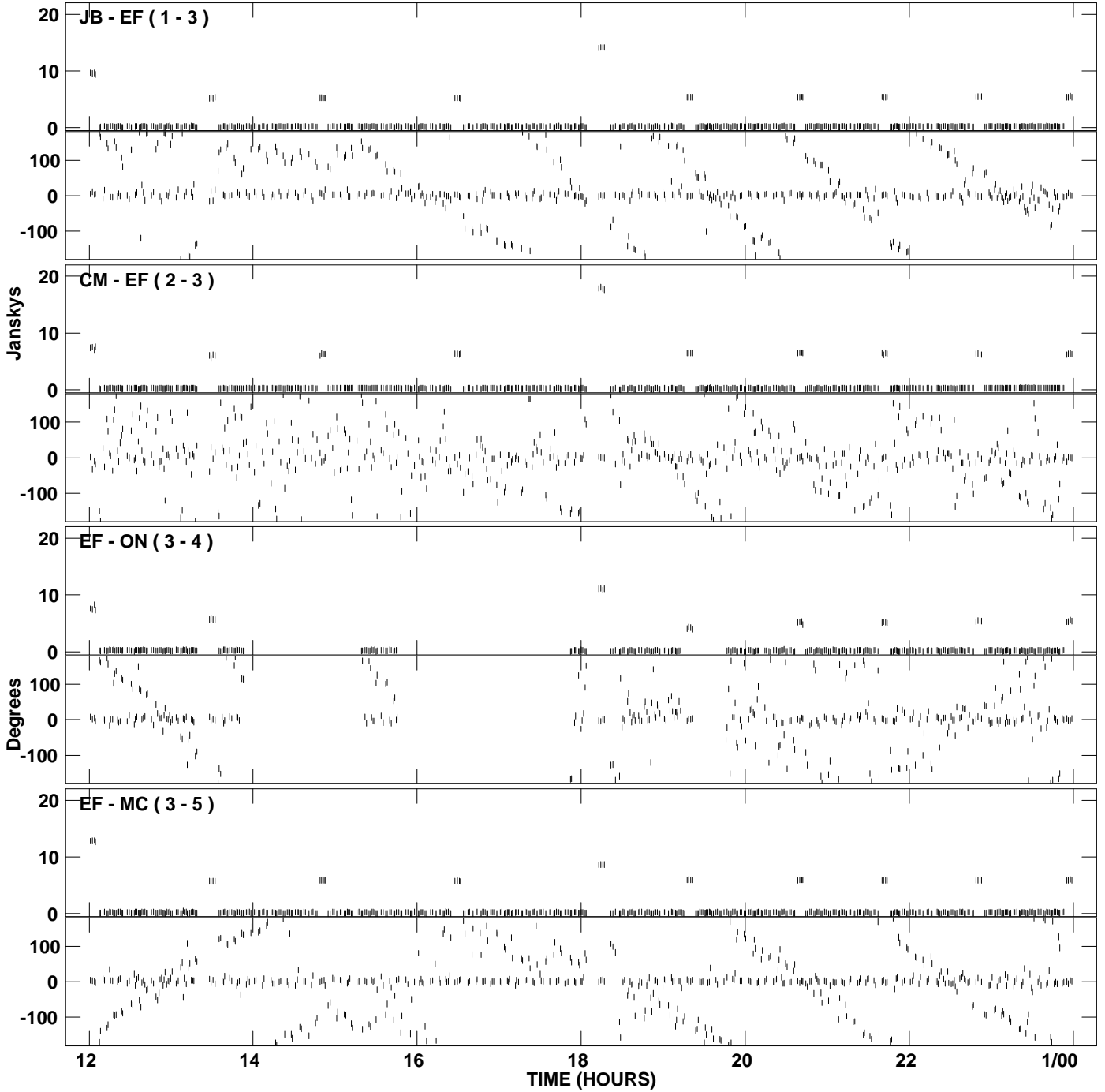
PLot file version 19 created 30-JUN-2009 15:18:17  
Amplitude and Phase vs Time for EM062B 1.UVDATA.1 Vect aver. CL # 3  
IF 2 CHAN 1 - 128 STK RR



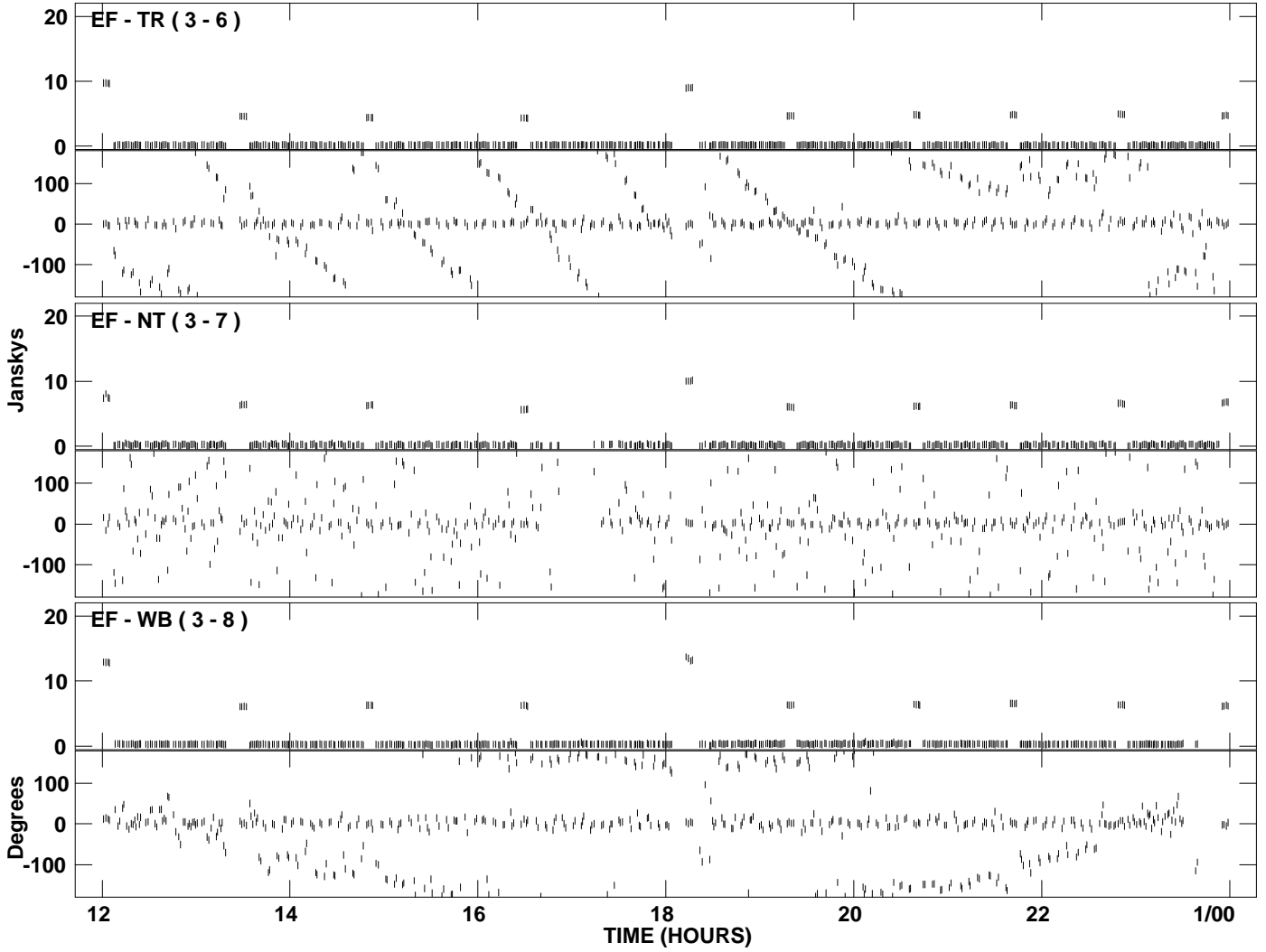
PLot file version 20 created 30-JUN-2009 15:18:17  
Amplitude andPhase vs Time for EM062B 1.UVDATA.1 Vect aver. CL # 3  
IF 2 CHAN 1 - 128 STK RR



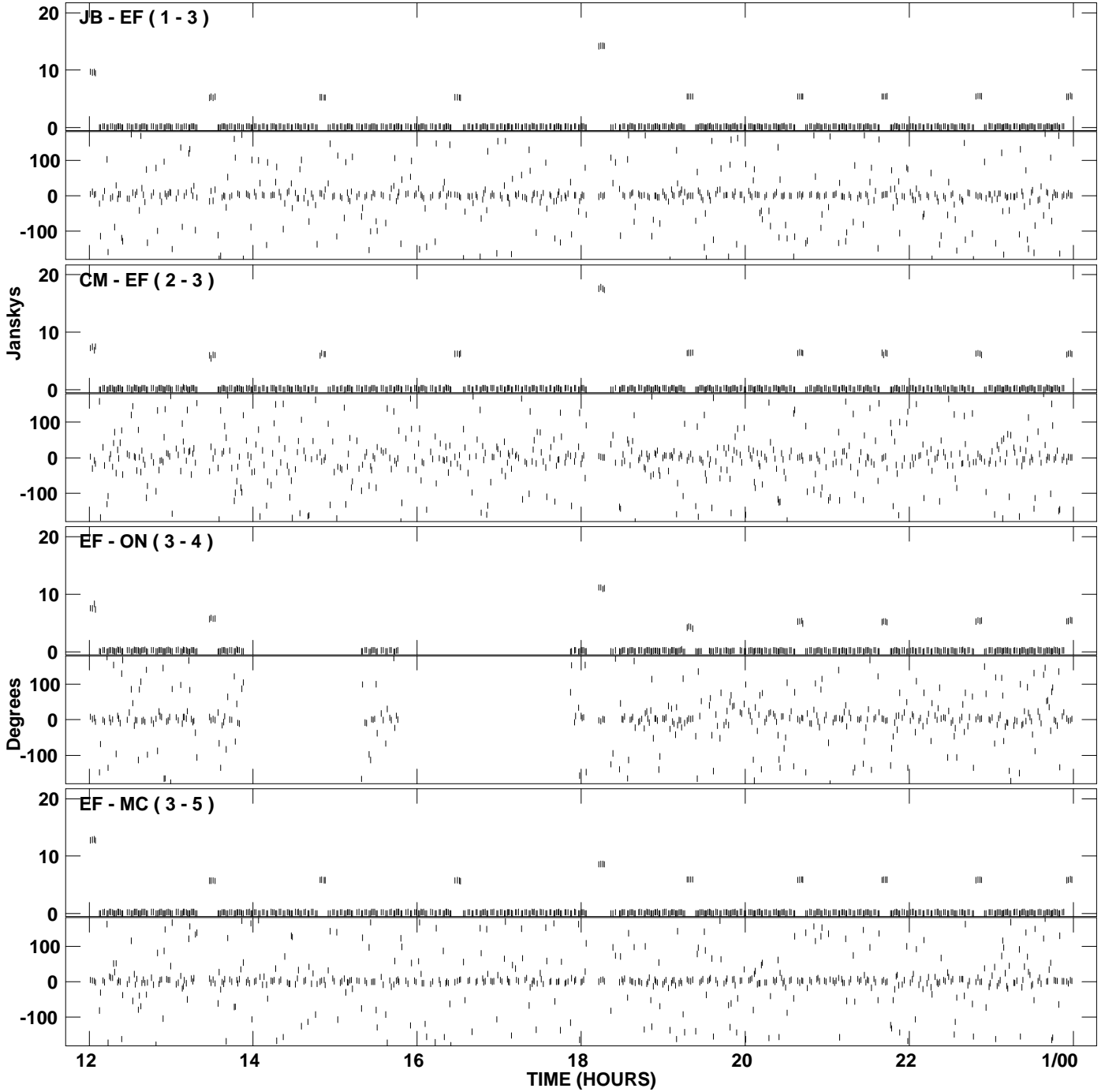
PLot file version 21 created 30-JUN-2009 15:20:08  
Amplitude and Phase vs Time for EM062B 1.UVDATA.1 Vect aver. CL # 3  
IF 3 CHAN 1 - 128 STK RR



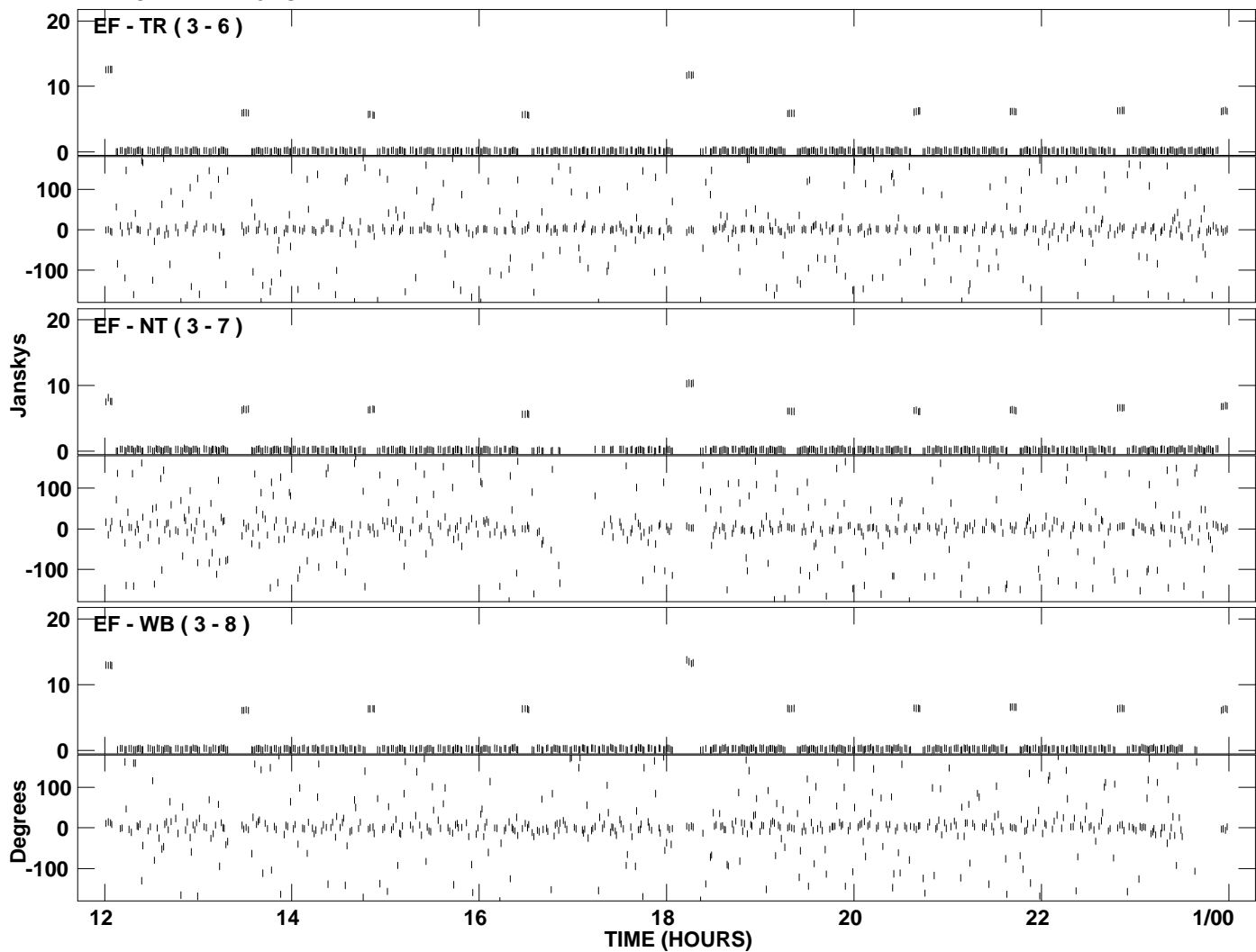
PLot file version 22 created 30-JUN-2009 15:20:08  
Amplitude and Phase vs Time for EM062B 1.UVDATA.1 Vect aver. CL # 3  
IF 3 CHAN 1 - 128 STK RR



PLot file version 23 created 30-JUN-2009 15:21:57  
Amplitude andPhase vs Time for EM062B 1.UVDATA.1 Vect aver. CL # 3  
IF 4 CHAN 1 - 128 STK RR

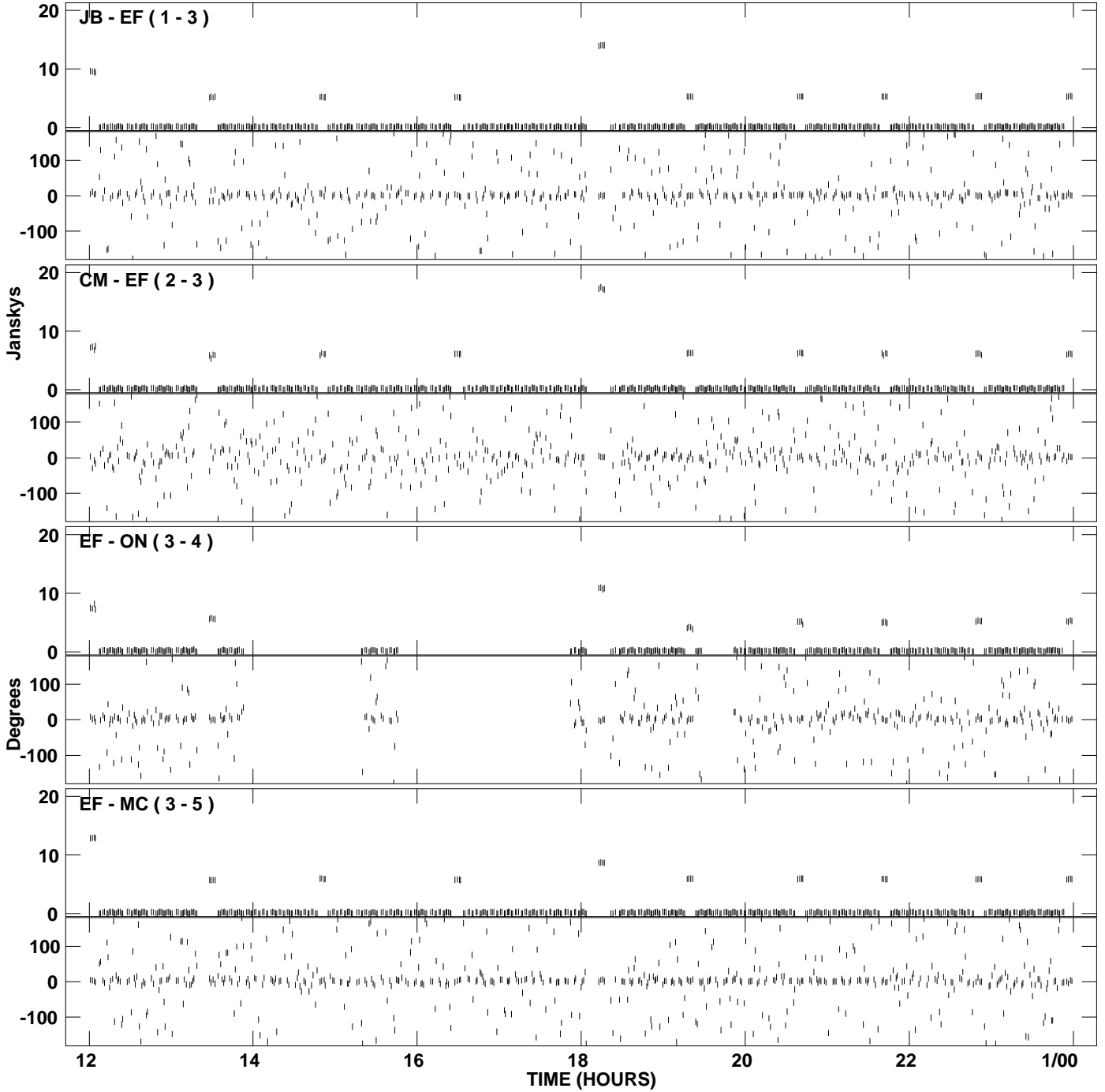


PLot file version 24 created 30-JUN-2009 15:21:58  
Amplitude and Phase vs Time for EM062B 1.UVDATA.1 Vect aver. CL # 3  
IF 4 CHAN 1 - 128 STK RR

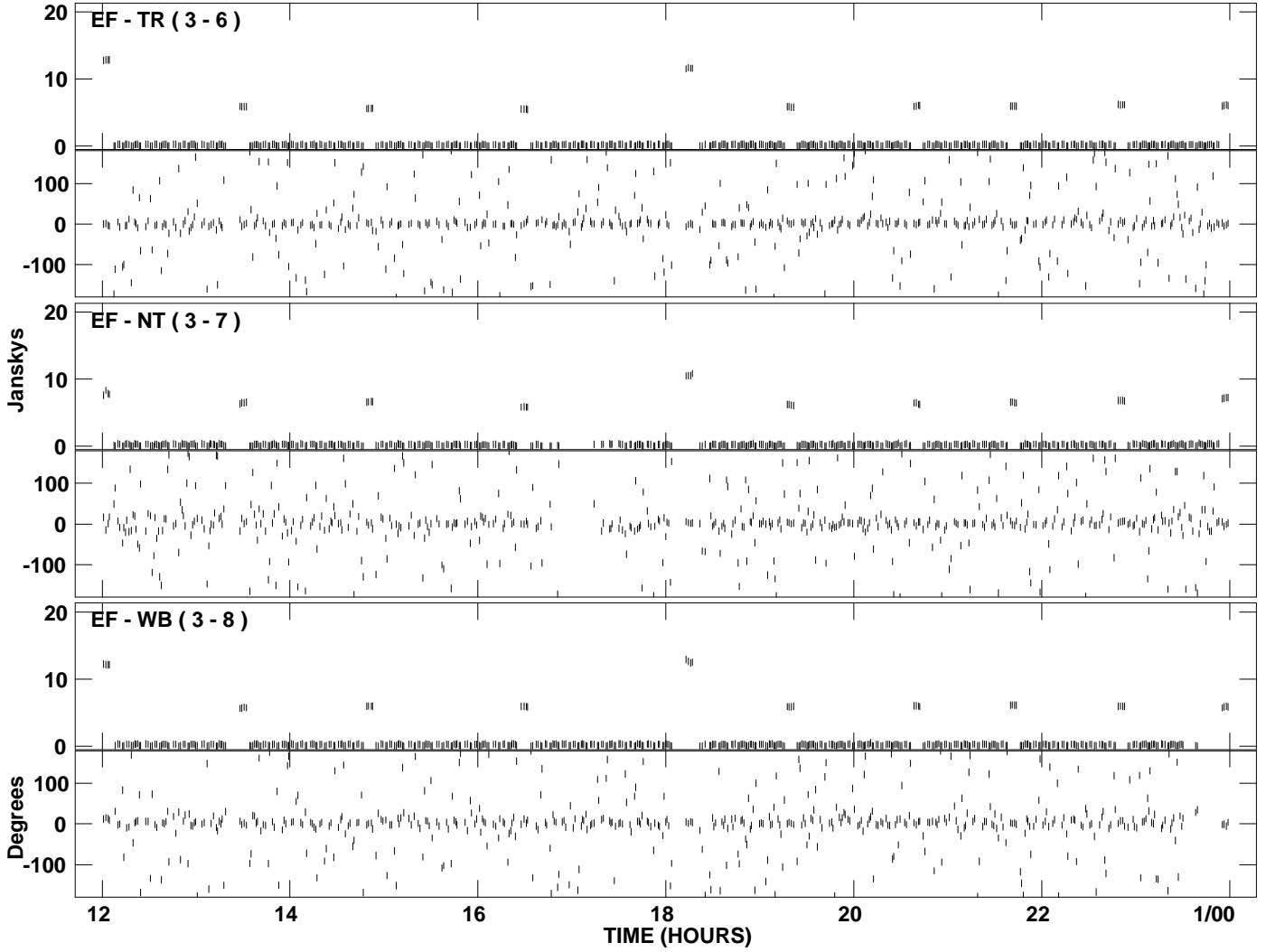




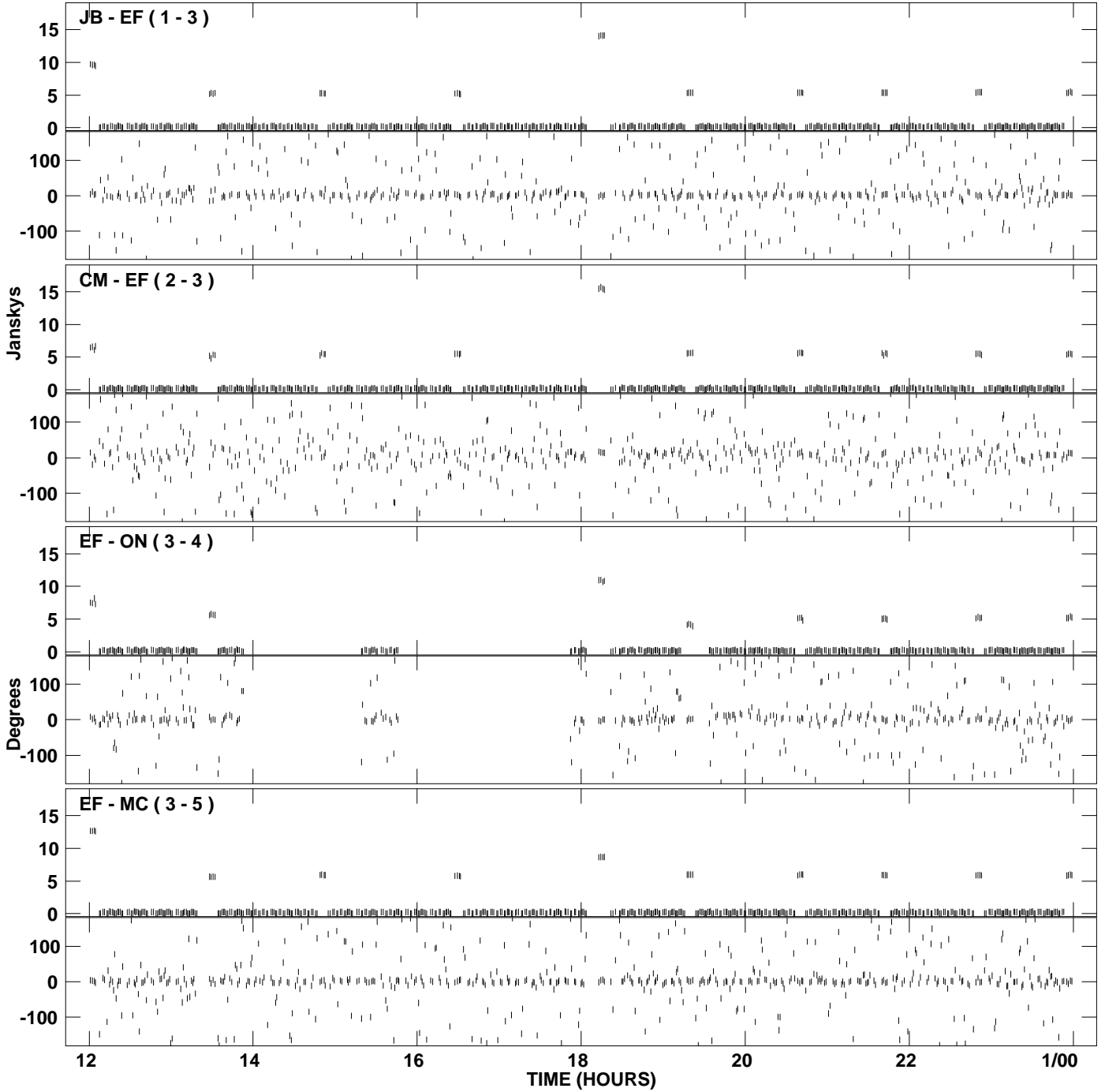
PLot file version 25 created 30-JUN-2009 15:23:46  
Amplitude and Phase vs Time for EM062B 1.UVDATA.1 Vect aver. CL # 3  
IF 5 CHAN 1 - 128 STK RR



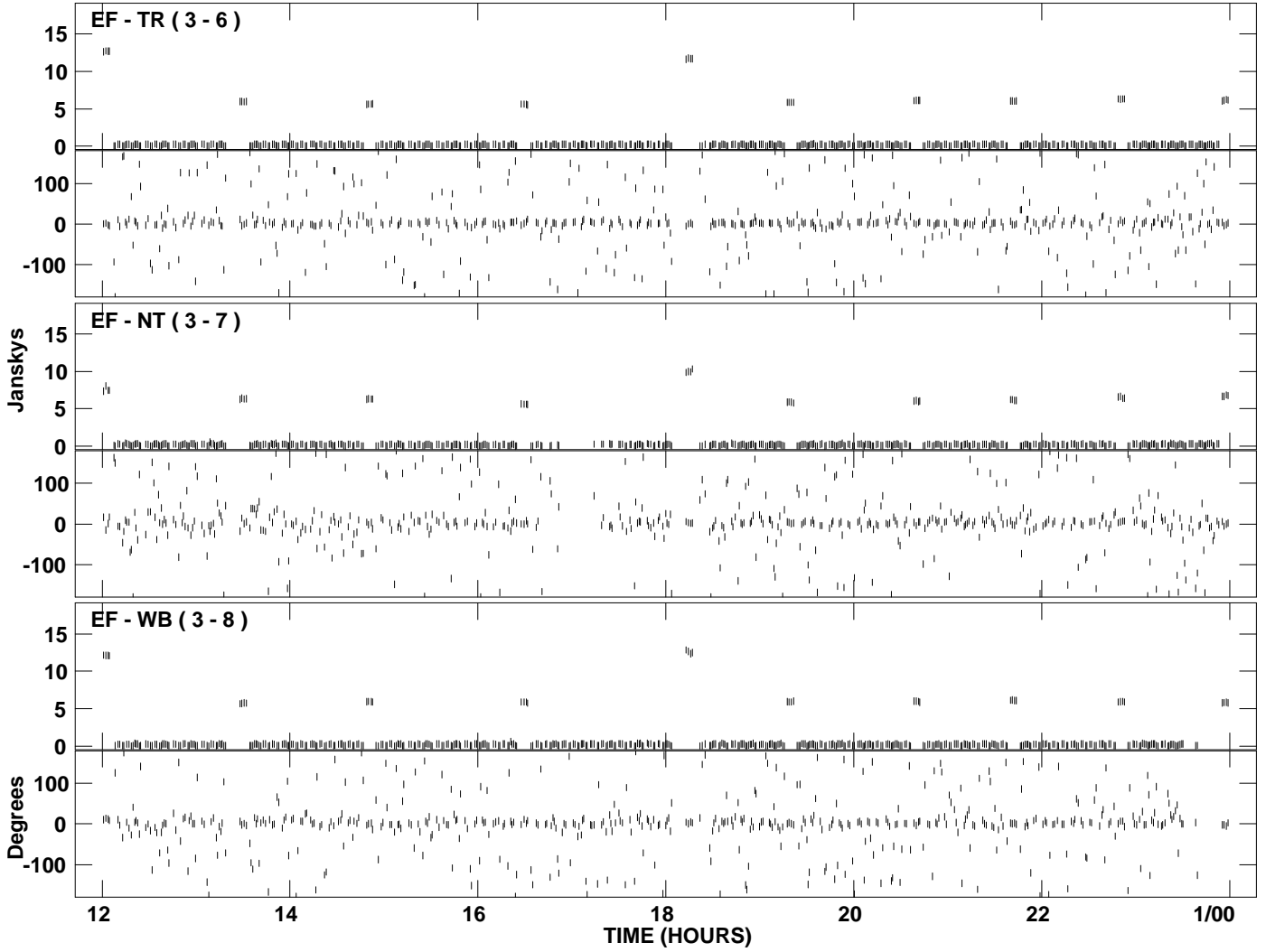
PLot file version 26 created 30-JUN-2009 15:23:46  
Amplitude andPhase vs Time for EM062B 1.UVDATA.1 Vect aver. CL # 3  
IF 5 CHAN 1 - 128 STK RR



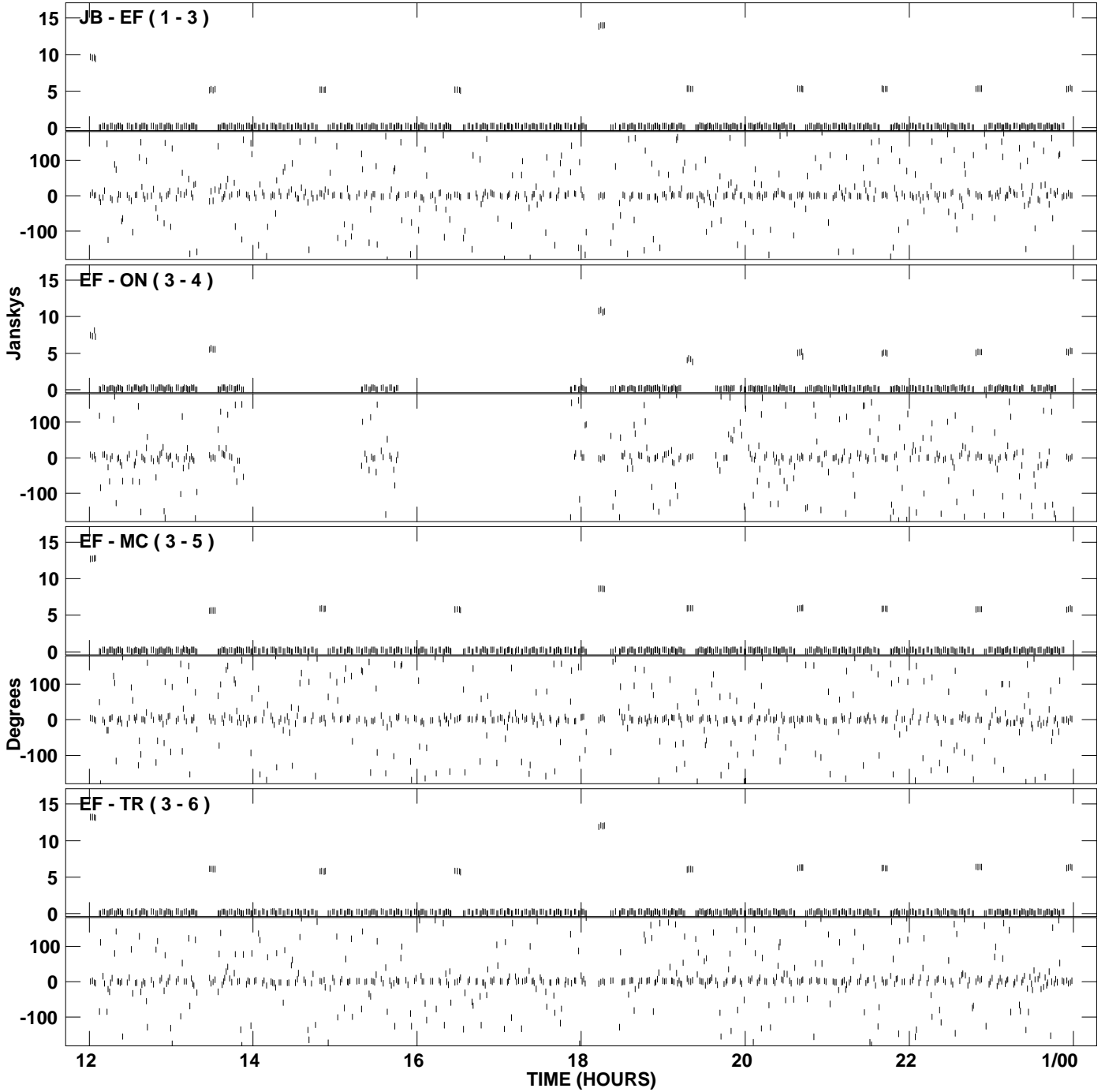
PLot file version 27 created 30-JUN-2009 15:25:35  
Amplitude and Phase vs Time for EM062B 1.UVDATA.1 Vect aver. CL # 3  
IF 6 CHAN 1 - 128 STK RR



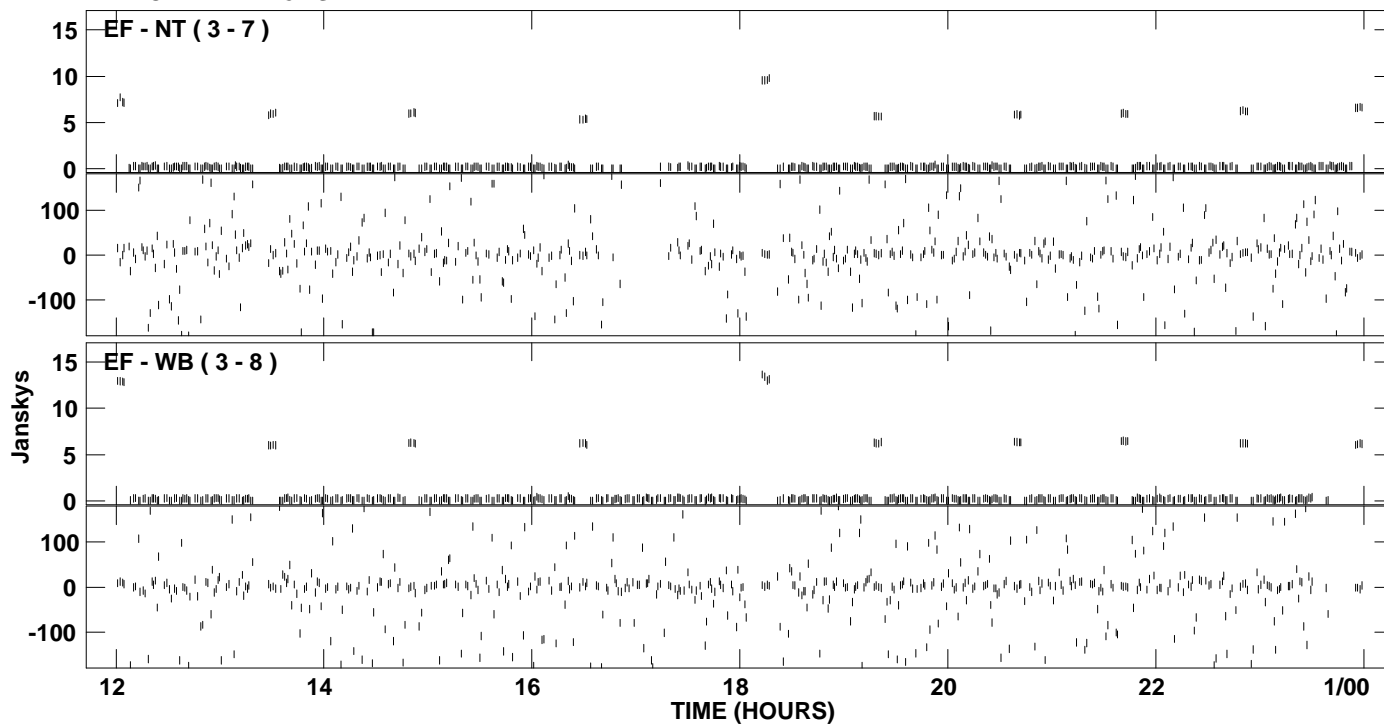
PLot file version 28 created 30-JUN-2009 15:25:35  
Amplitude andPhase vs Time for EM062B 1.UVDATA.1 Vect aver. CL # 3  
IF 6 CHAN 1 - 128 STK RR



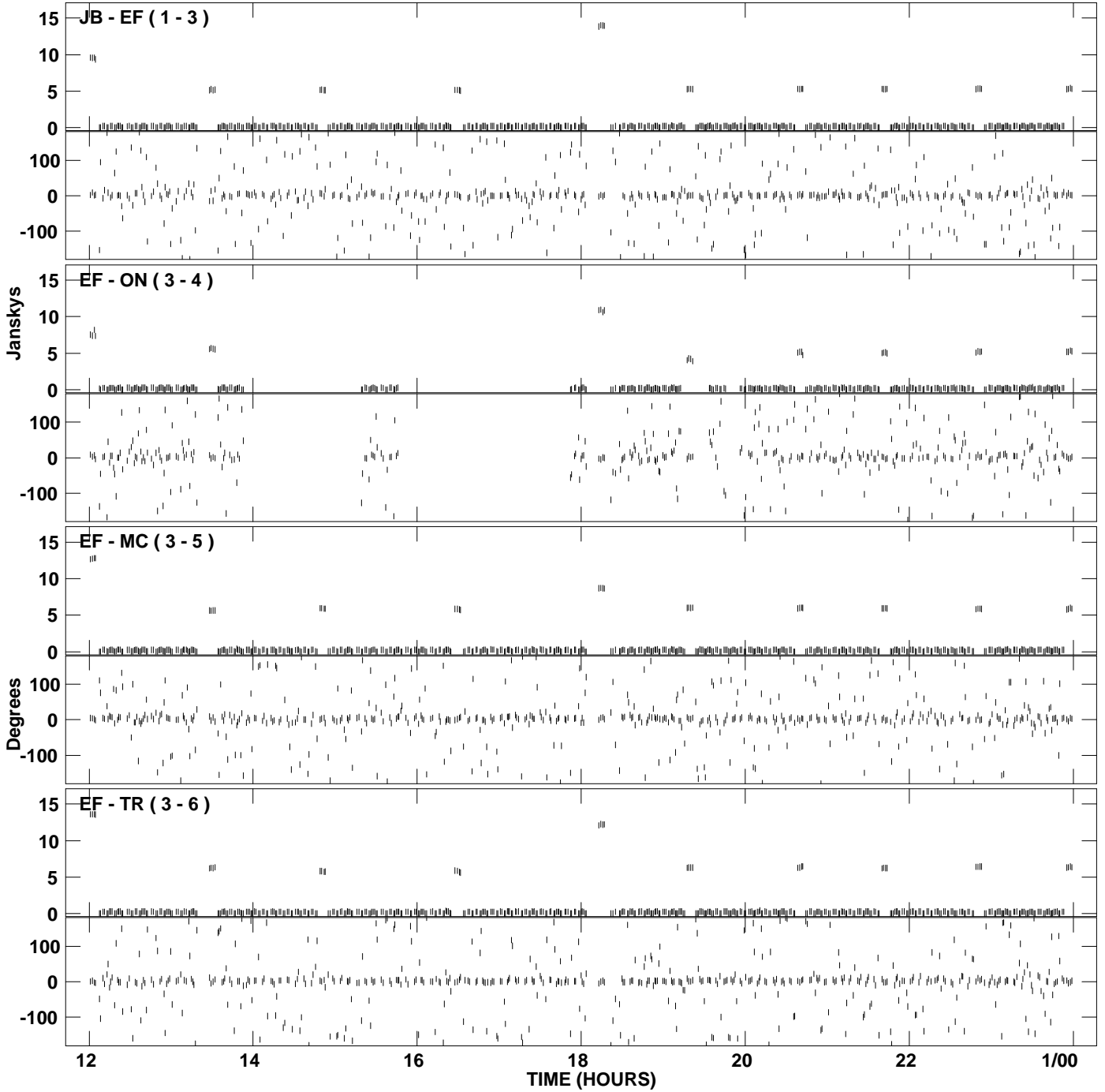
PLot file version 29 created 30-JUN-2009 15:27:19  
Amplitude and Phase vs Time for EM062B 1.UVDATA.1 Vect aver. CL # 3  
IF 7 CHAN 1 - 128 STK RR



PLot file version 30 created 30-JUN-2009 15:27:19  
Amplitude andPhase vs Time for EM062B 1.UVDATA.1 Vect aver. CL # 3  
IF 7 CHAN 1 - 128 STK RR



PLot file version 31 created 30-JUN-2009 15:29:03  
Amplitude and Phase vs Time for EM062B 1.UVDATA.1 Vect aver. CL # 3  
IF 8 CHAN 1 - 128 STK RR



PLot file version 32 created 30-JUN-2009 15:29:03  
Amplitude andPhase vs Time for EM062B 1.UVDATA.1 Vect aver. CL # 3  
IF 8 CHAN 1 - 128 STK RR

