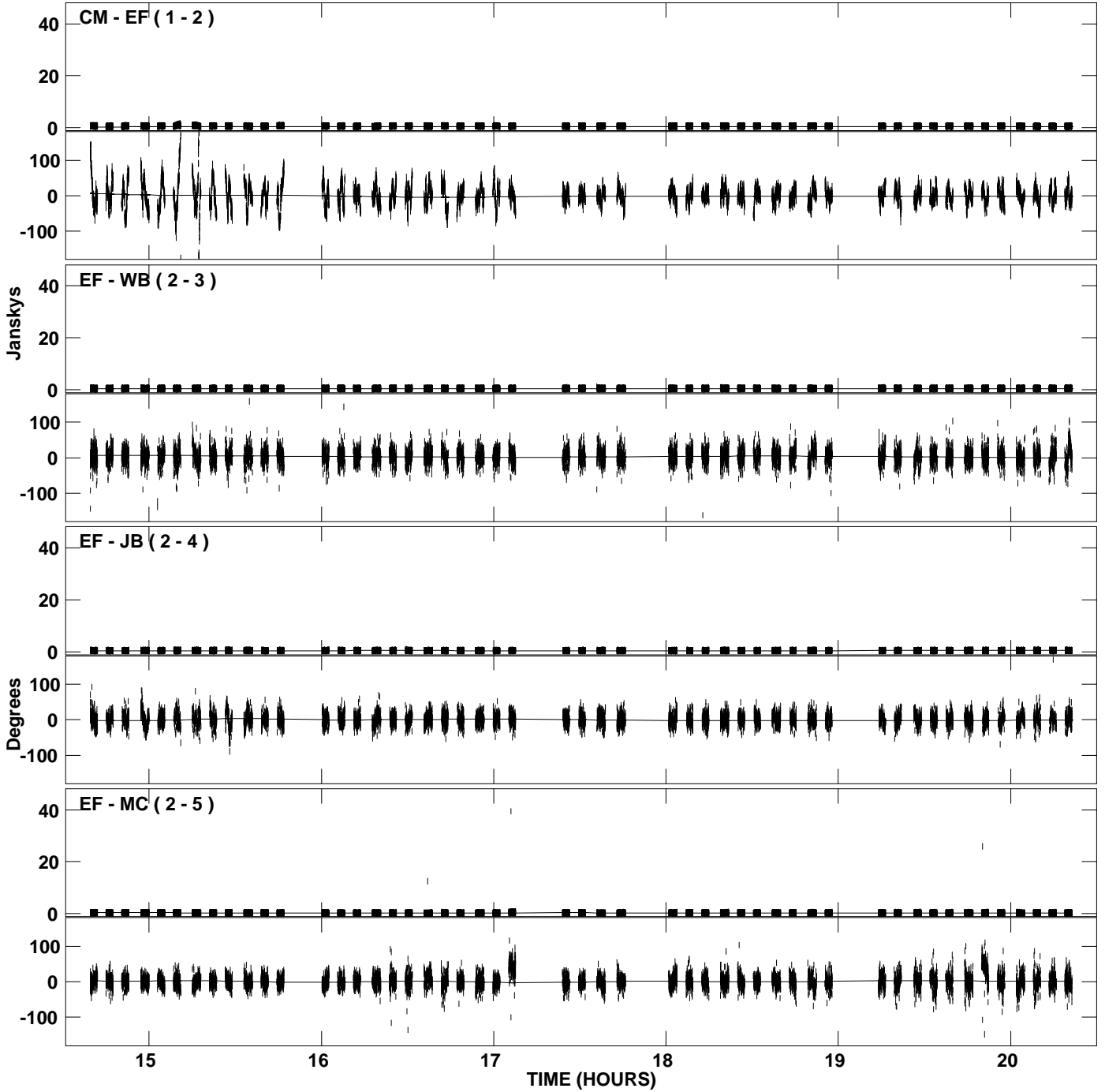
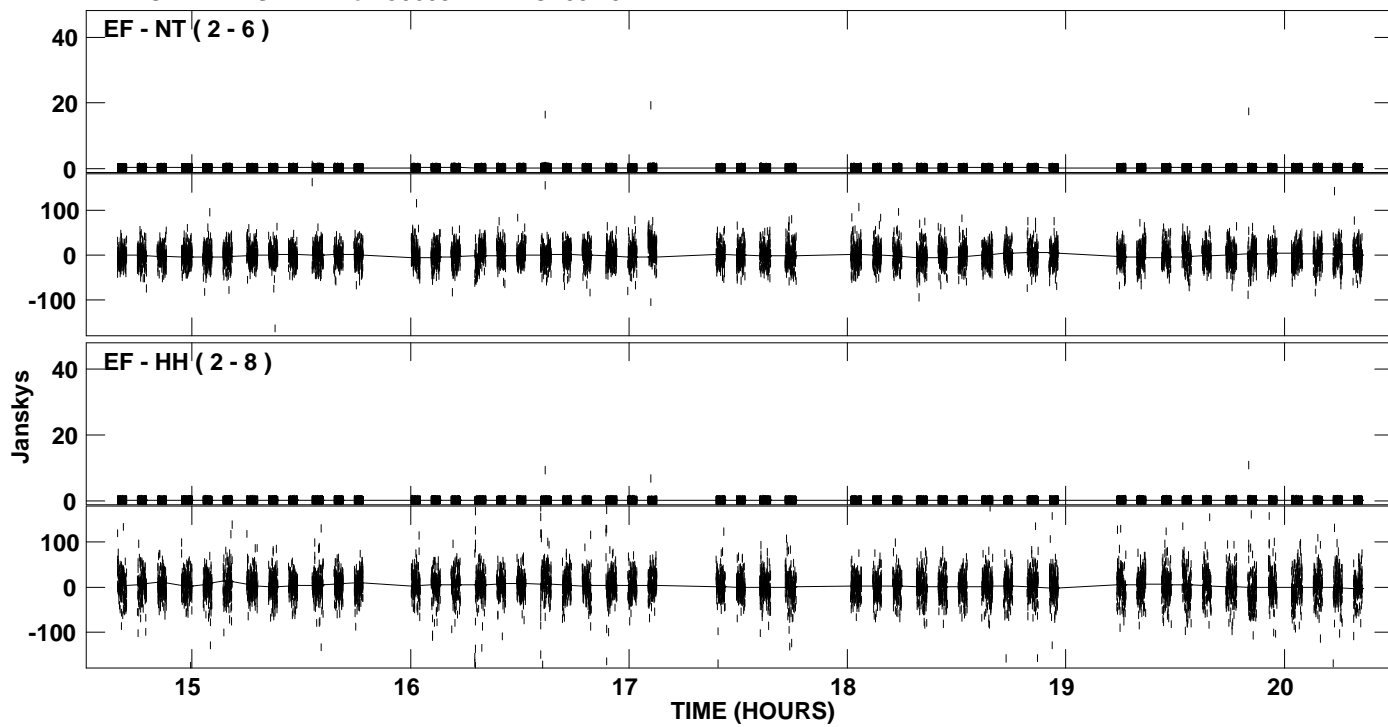


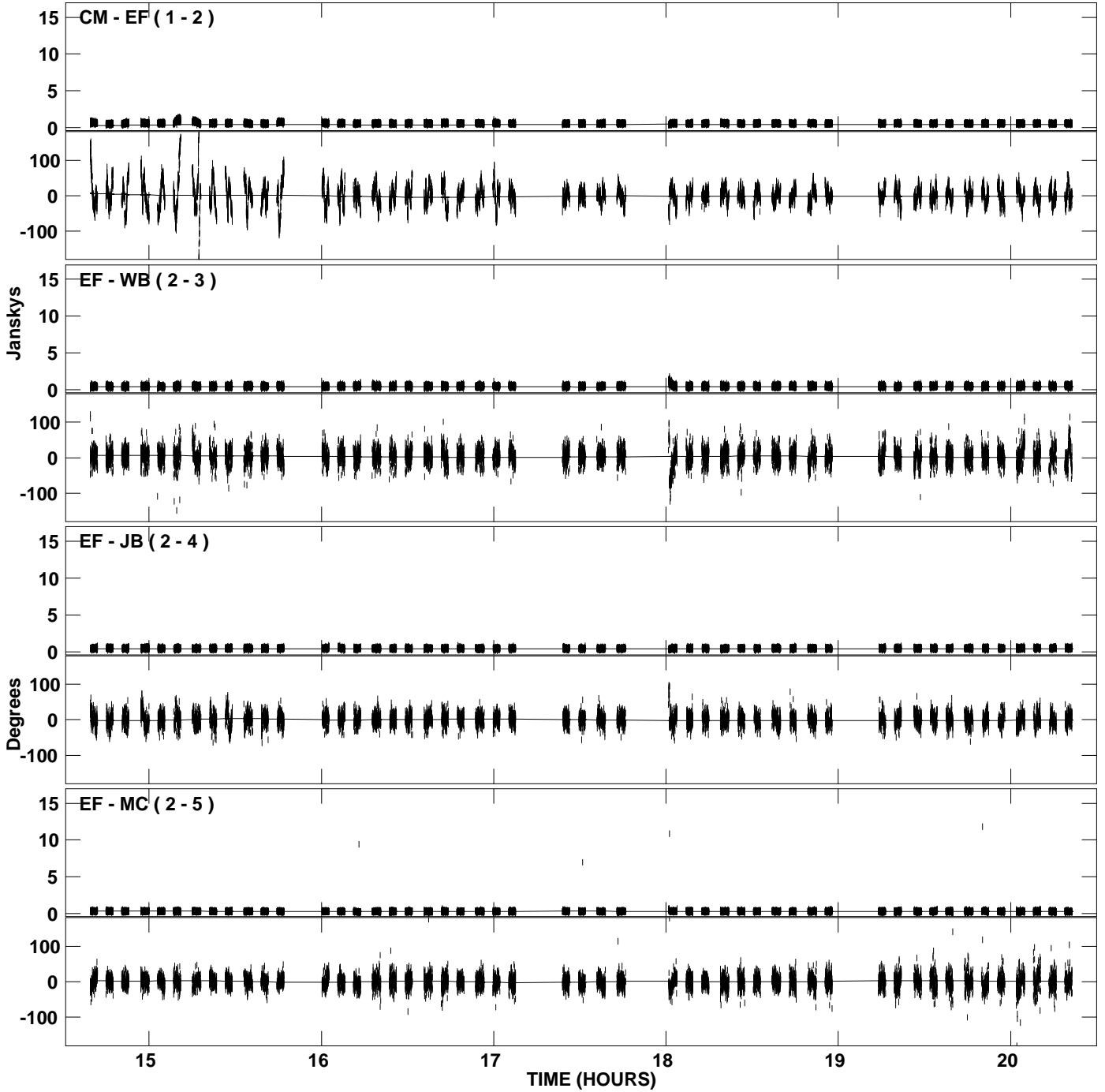
PLot file version 1 created 12-JUL-2007 18:49:26
Amplitude and Phase vs Time for J0603+1742.MULTI.1 CL # 3
IF 1 CHAN 1 STK LL of J0603+1742.ICL001.3



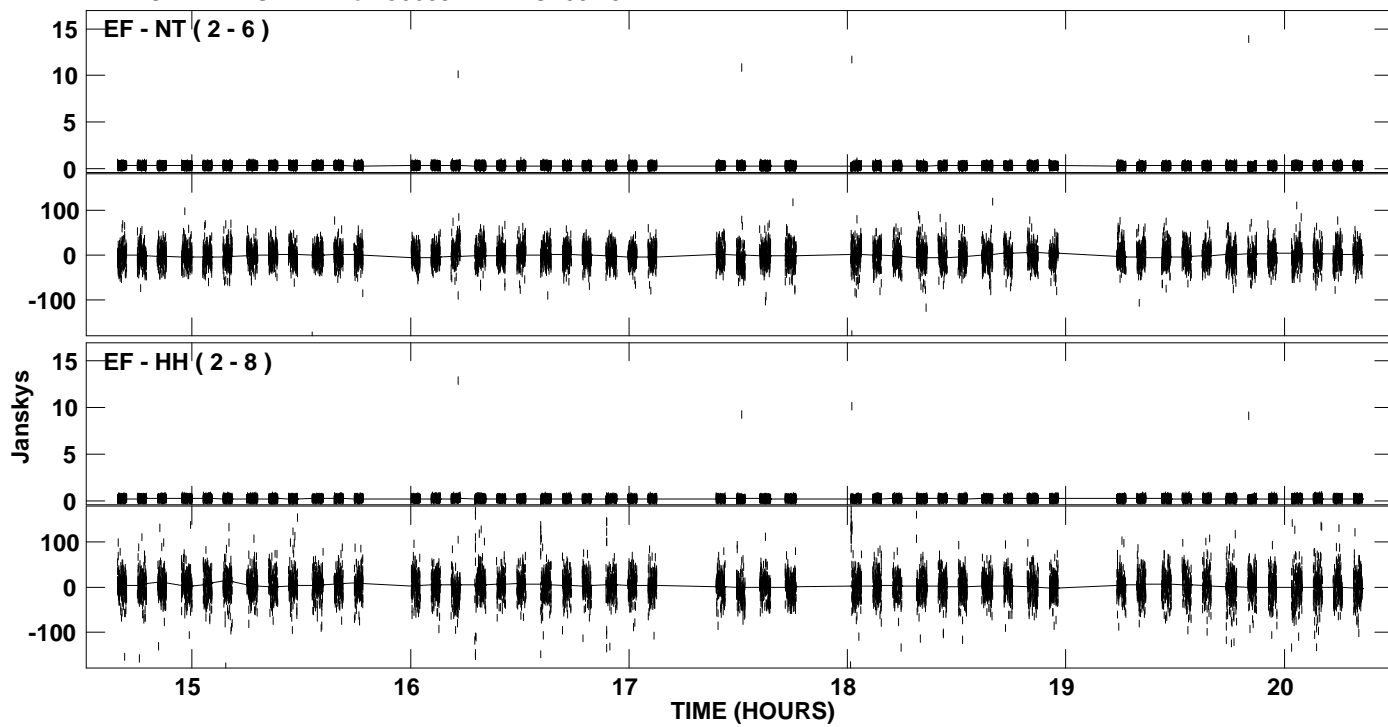
PLot file version 2 created 12-JUL-2007 18:49:26
Amplitude andPhase vs Time for J0603+1742.MULTI.1 CL # 3
IF 1 CHAN 1 STK LL of J0603+1742.ICL001.3



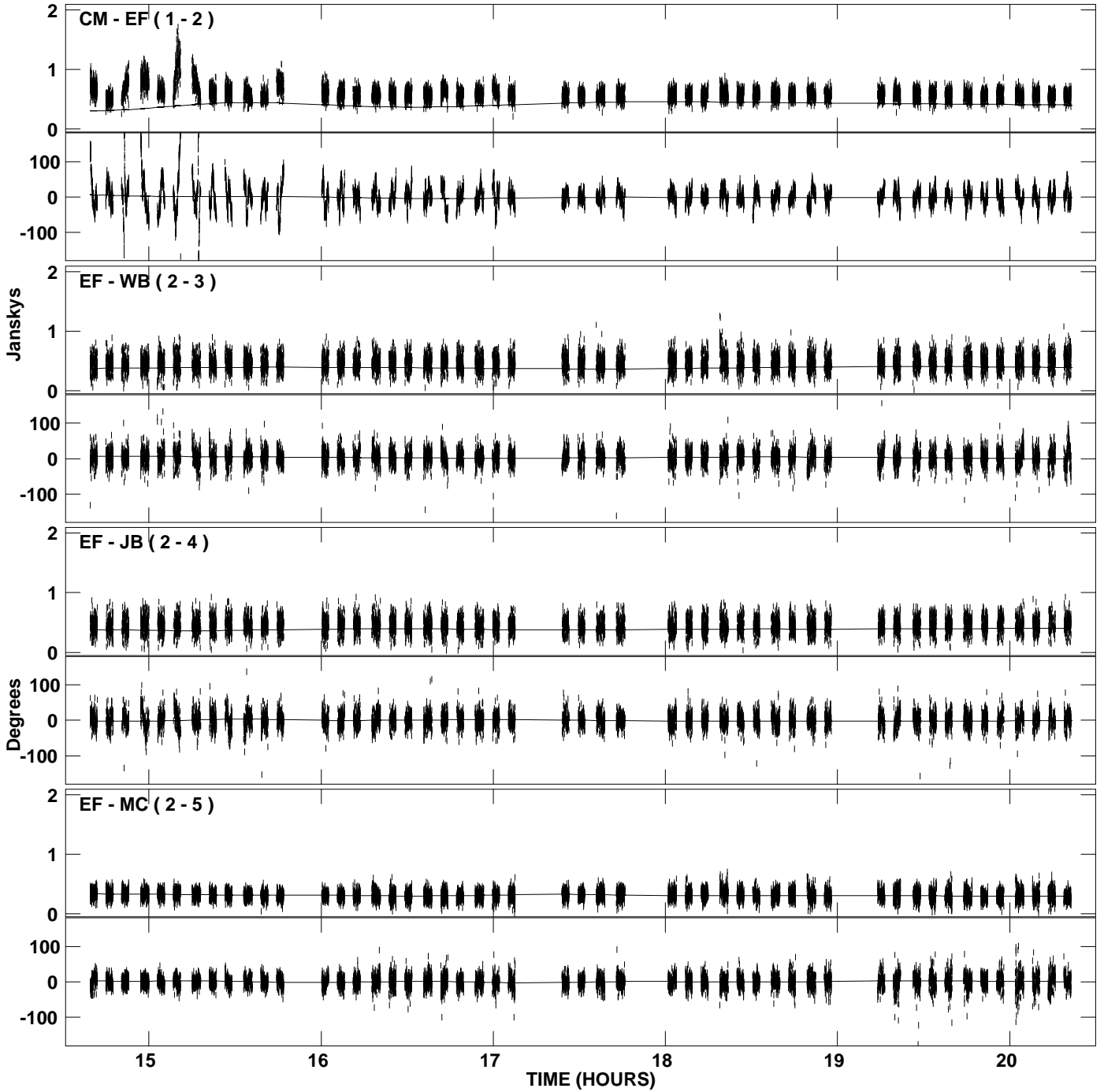
PLot file version 3 created 12-JUL-2007 18:49:27
Amplitude and Phase vs Time for J0603+1742.MULTI.1 CL # 3
IF 2 CHAN 1 STK LL of J0603+1742.ICL001.3



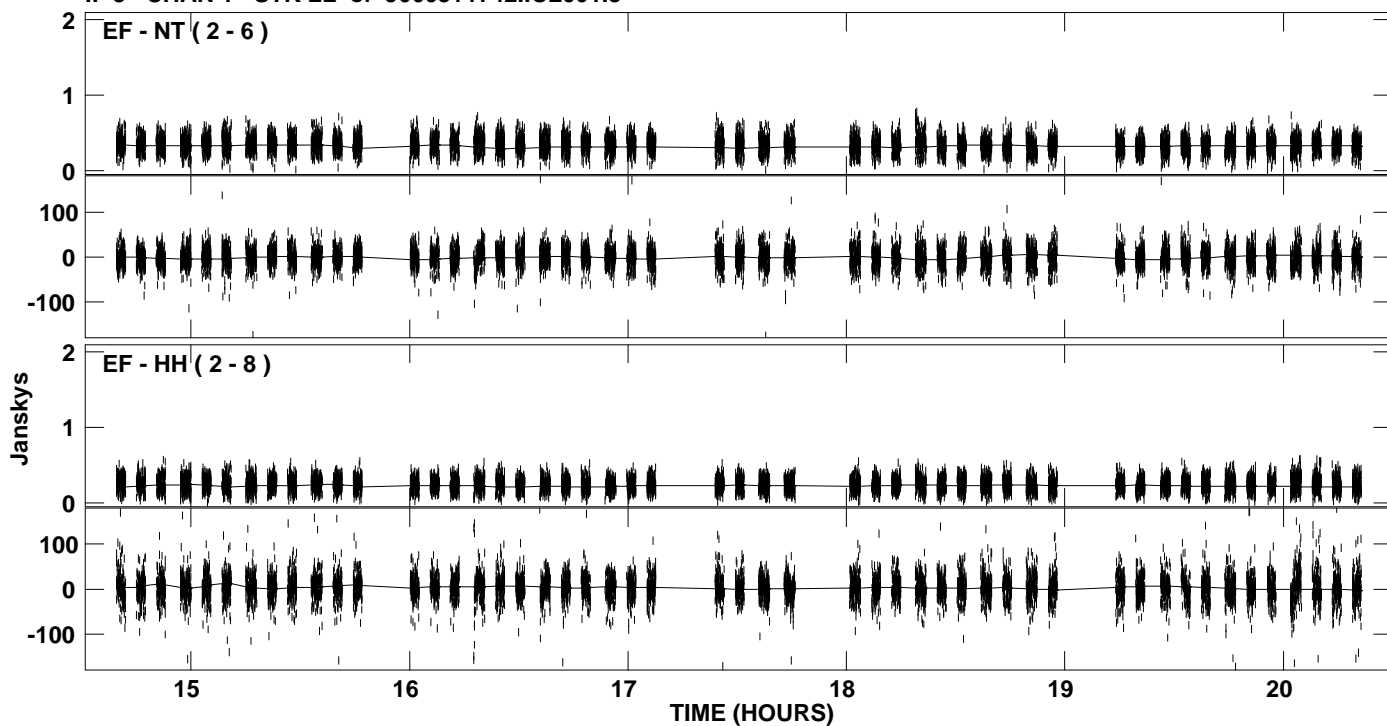
PLot file version 4 created 12-JUL-2007 18:49:27
Amplitude andPhase vs Time for J0603+1742.MULTI.1 CL # 3
IF 2 CHAN 1 STK LL of J0603+1742.ICL001.3



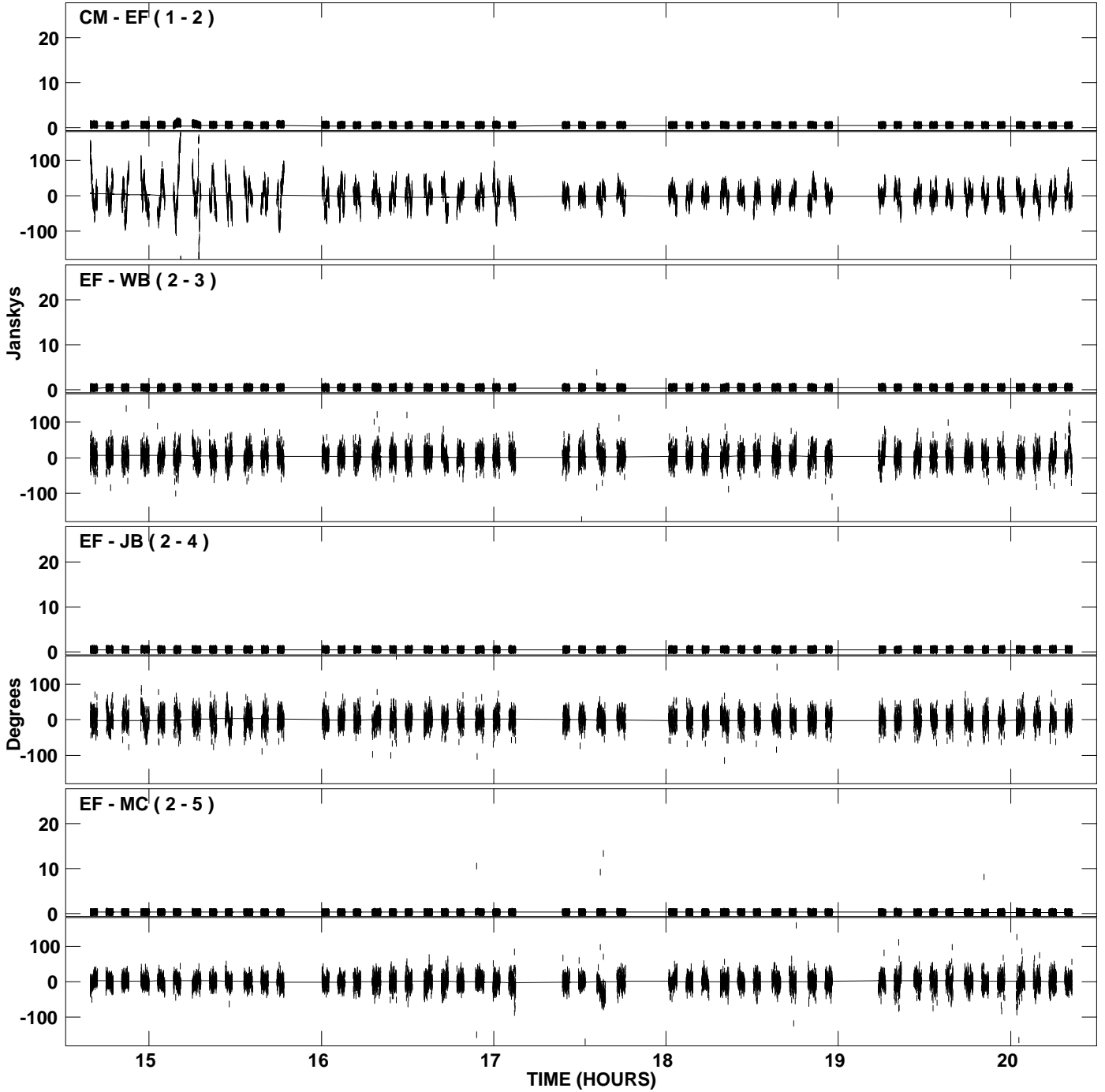
PLot file version 5 created 12-JUL-2007 18:49:28
Amplitude and Phase vs Time for J0603+1742.MULTI.1 CL # 3
IF 3 CHAN 1 STK LL of J0603+1742.ICL001.3



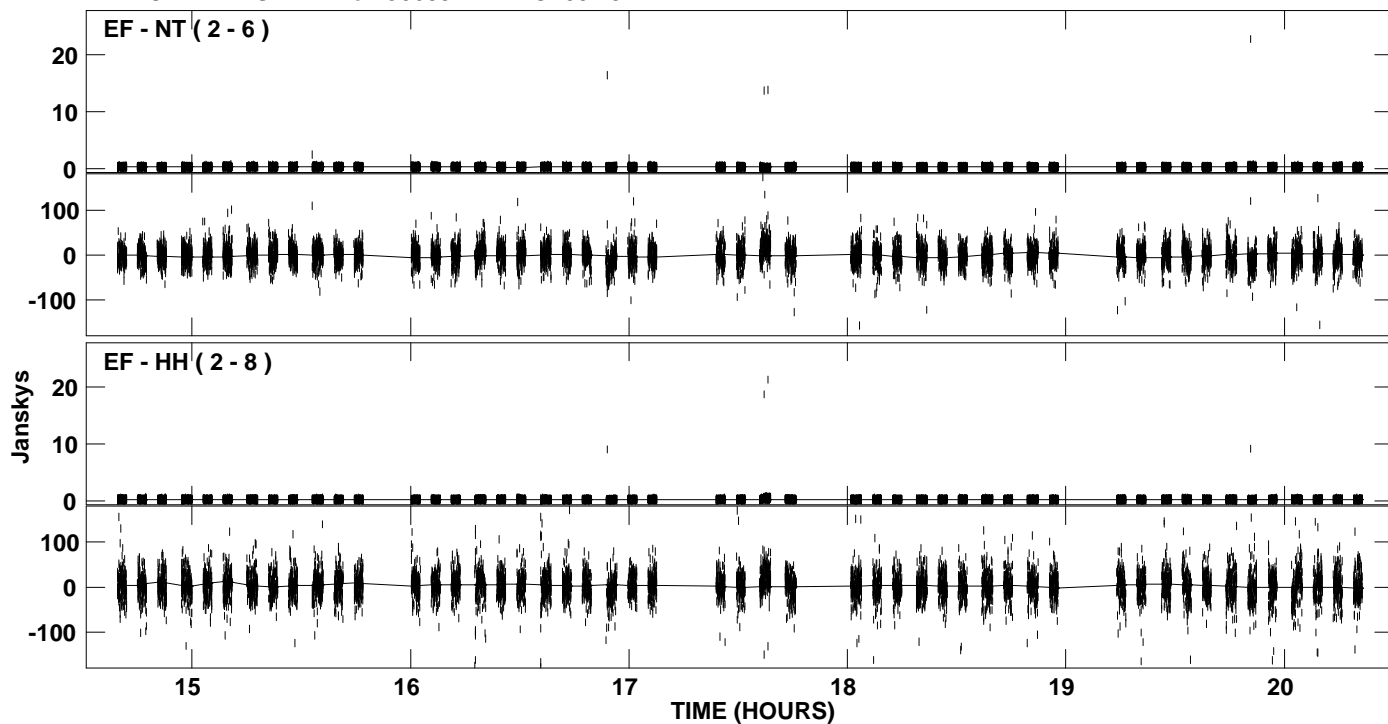
PLot file version 6 created 12-JUL-2007 18:49:29
Amplitude and Phase vs Time for J0603+1742.MULTI.1 CL # 3
IF 3 CHAN 1 STK LL of J0603+1742.ICL001.3



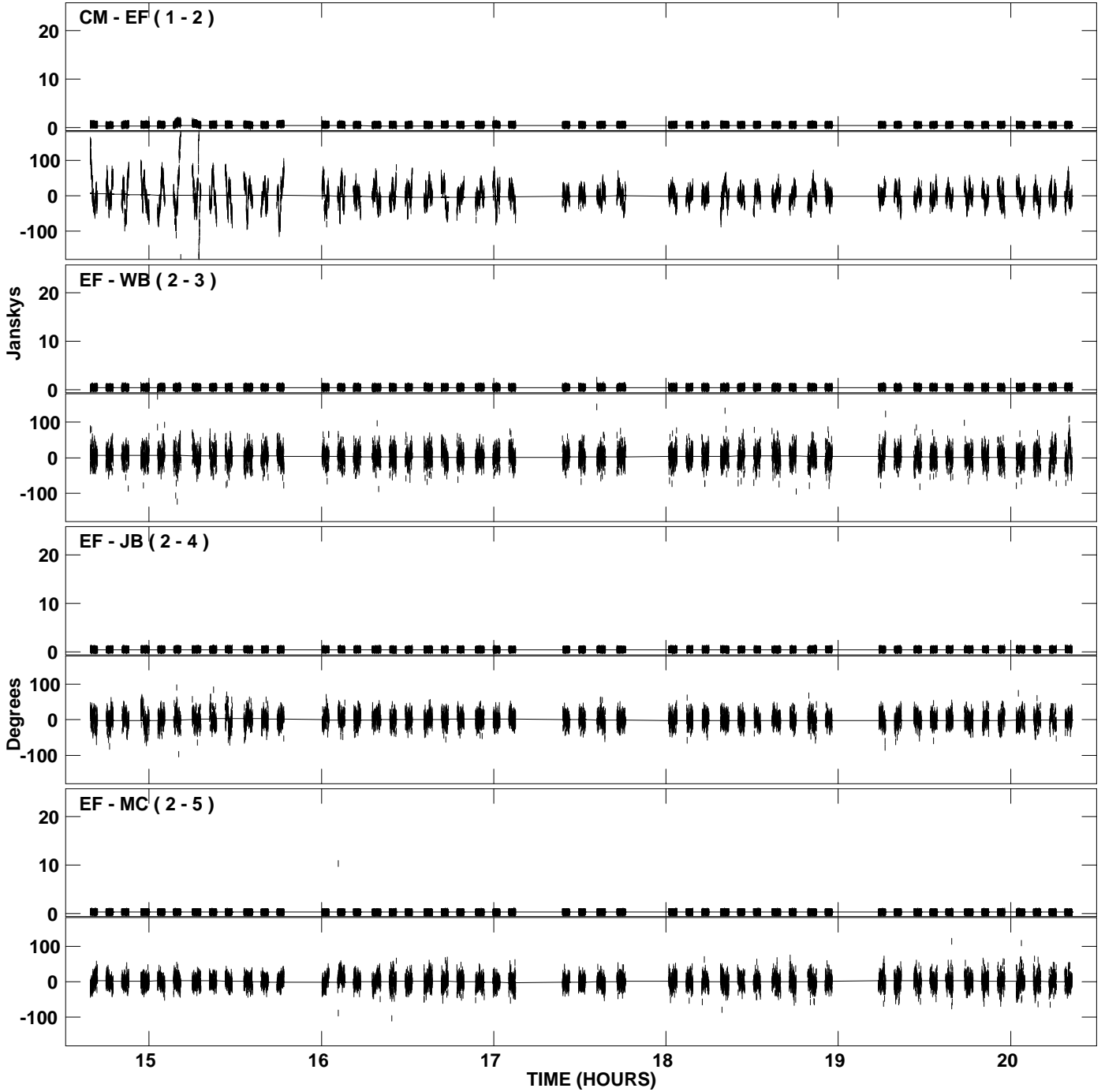
PLot file version 7 created 12-JUL-2007 18:49:30
Amplitude and Phase vs Time for J0603+1742.MULTI.1 CL # 3
IF 4 CHAN 1 STK LL of J0603+1742.ICL001.3



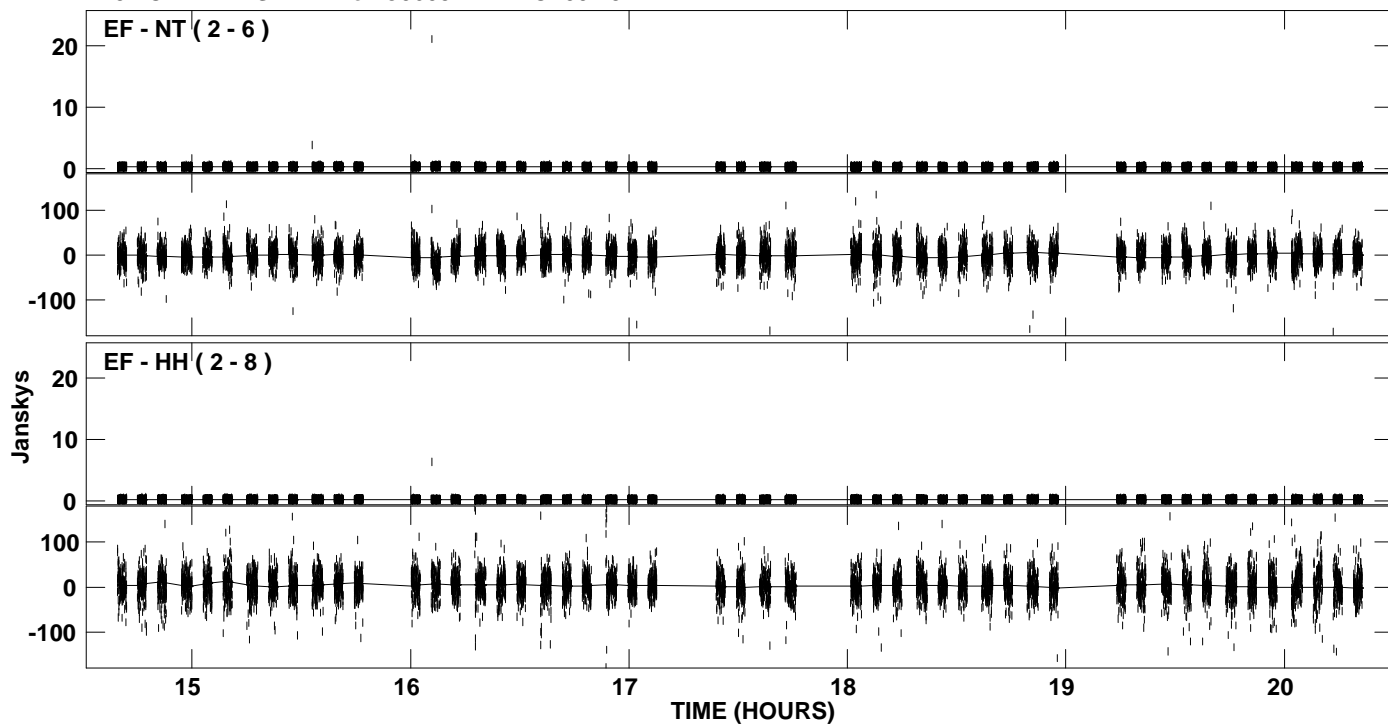
PLot file version 8 created 12-JUL-2007 18:49:30
Amplitude andPhase vs Time for J0603+1742.MULTI.1 CL # 3
IF 4 CHAN 1 STK LL of J0603+1742.ICL001.3



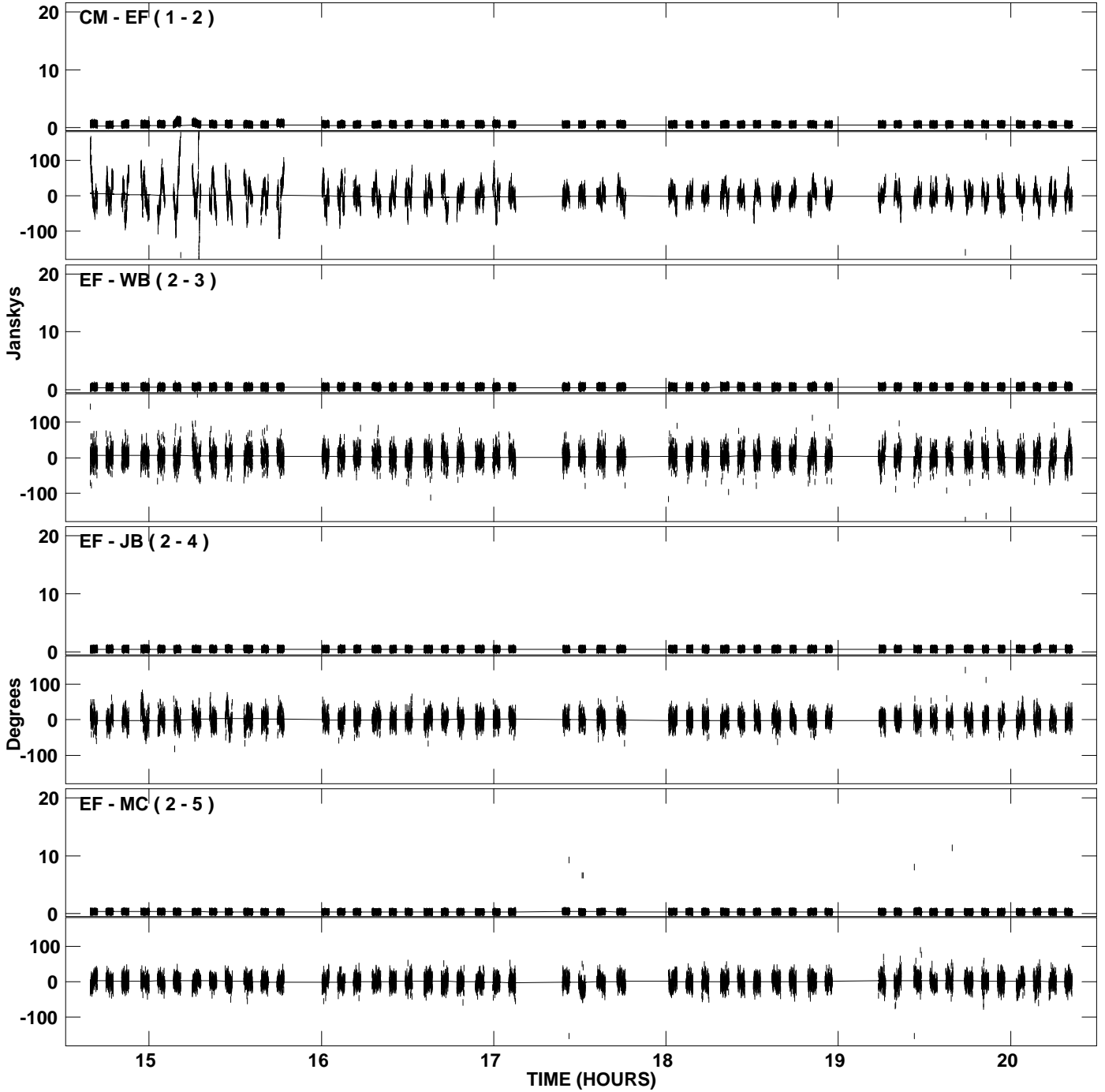
PLot file version 9 created 12-JUL-2007 18:49:31
Amplitude and Phase vs Time for J0603+1742.MULTI.1 CL # 3
IF 5 CHAN 1 STK LL of J0603+1742.ICL001.3



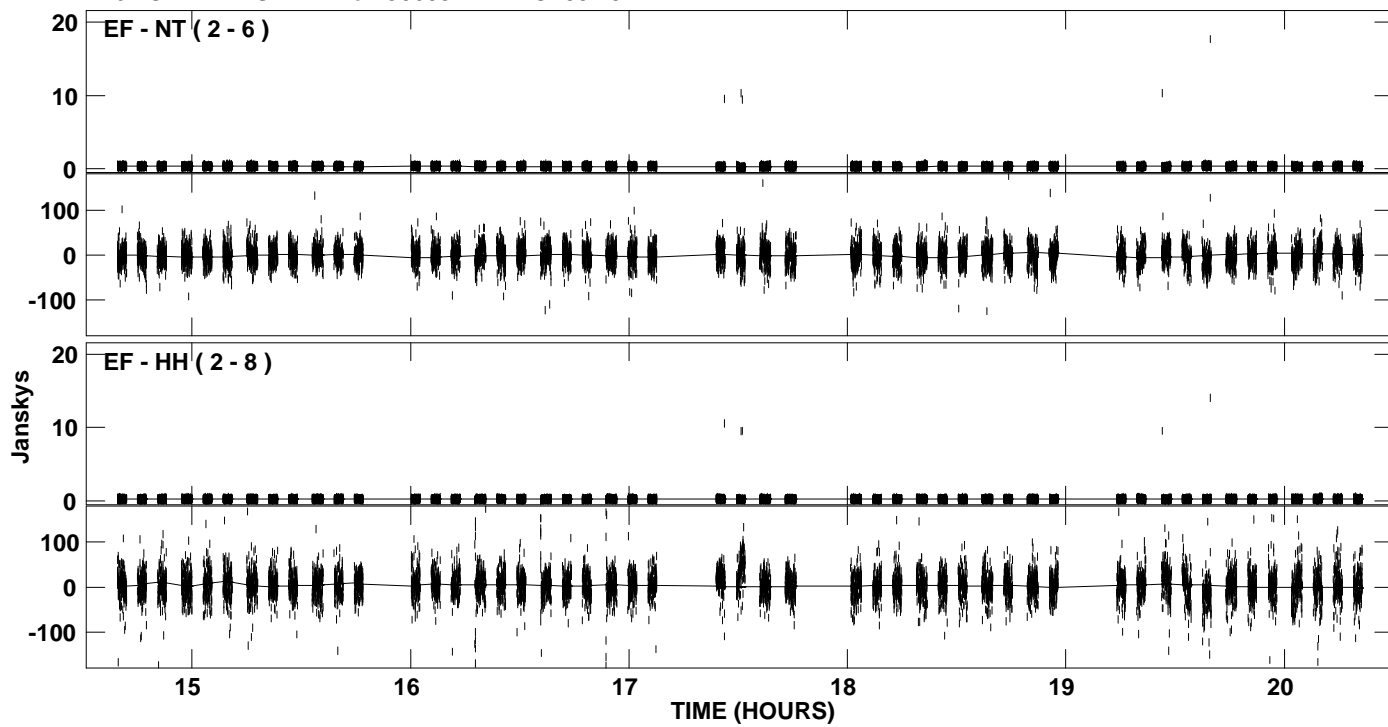
PLot file version 10 created 12-JUL-2007 18:49:31
Amplitude andPhase vs Time for J0603+1742.MULTI.1 CL # 3
IF 5 CHAN 1 STK LL of J0603+1742.ICL001.3



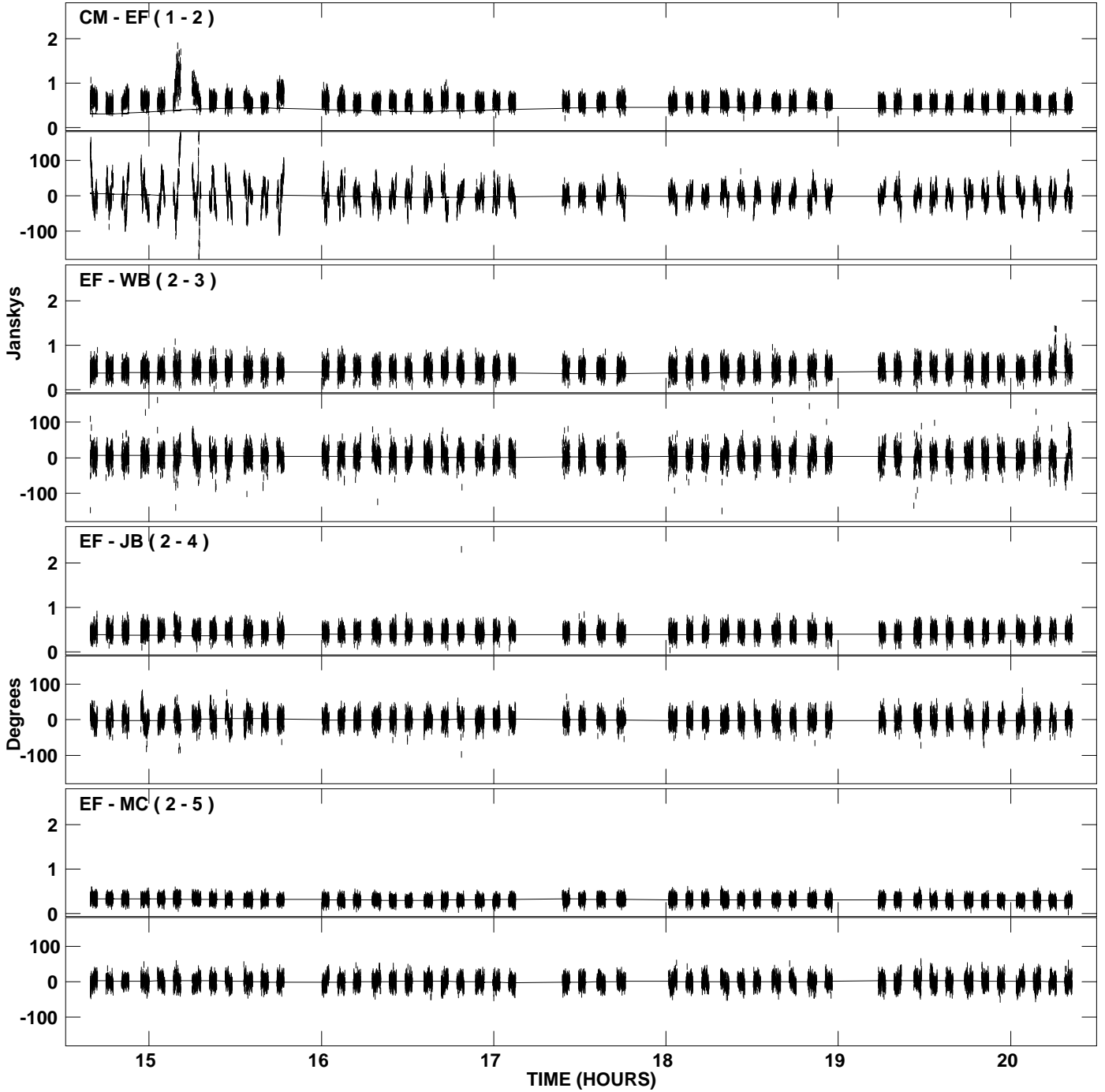
PLot file version 11 created 12-JUL-2007 18:49:33
Amplitude and Phase vs Time for J0603+1742.MULTI.1 CL # 3
IF 6 CHAN 1 STK LL of J0603+1742.ICL001.3



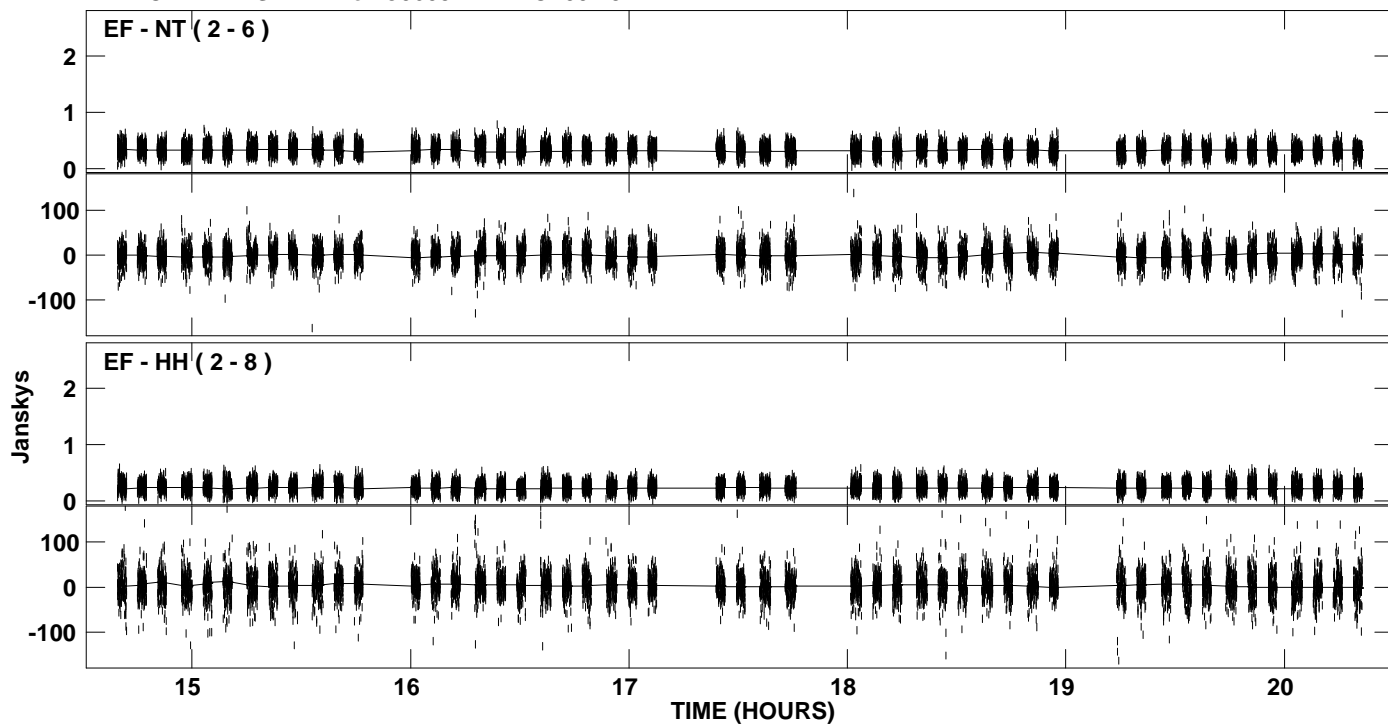
PLot file version 12 created 12-JUL-2007 18:49:33
Amplitude andPhase vs Time for J0603+1742.MULTI.1 CL # 3
IF 6 CHAN 1 STK LL of J0603+1742.ICL001.3



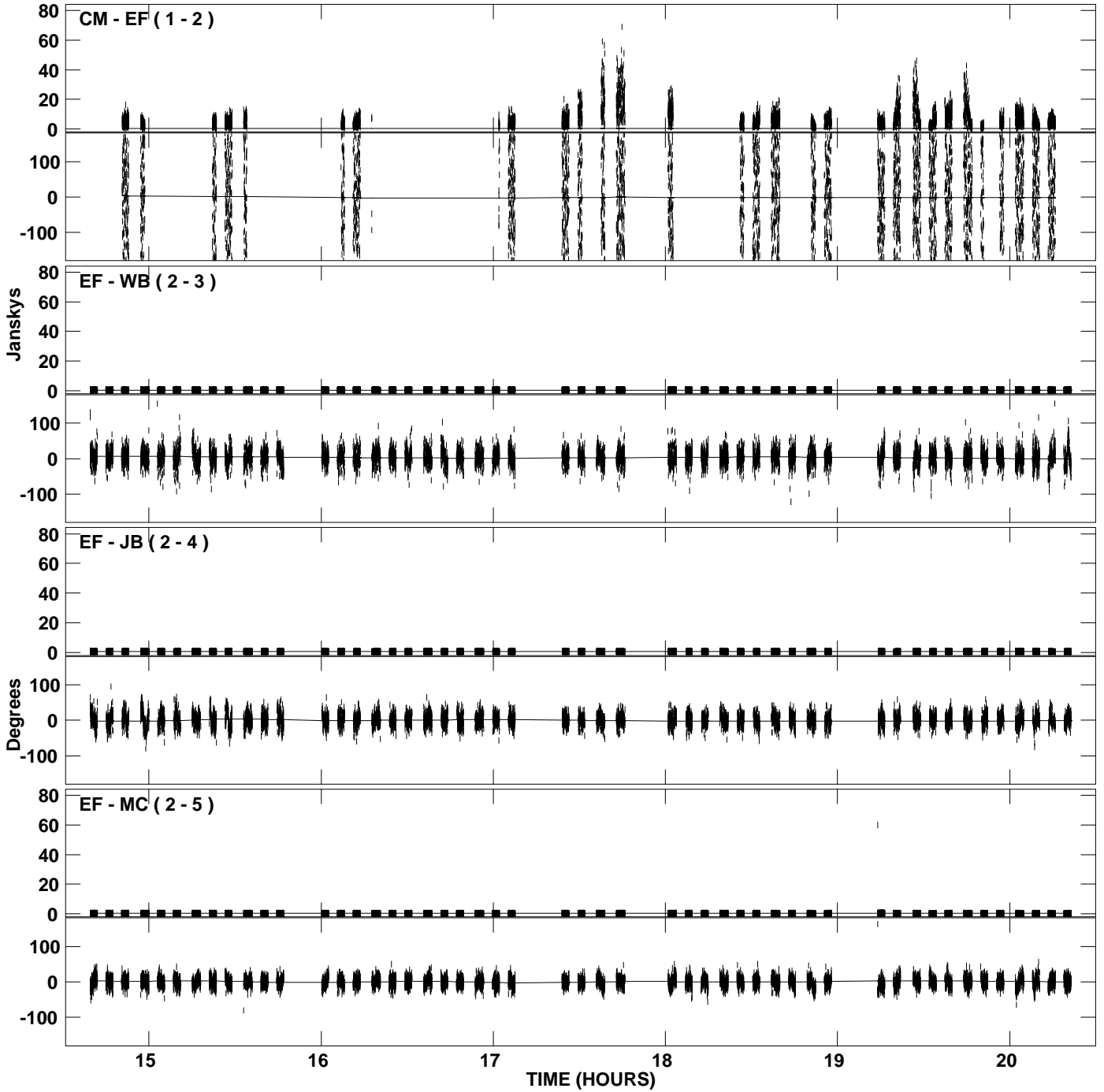
PLot file version 13 created 12-JUL-2007 18:49:34
Amplitude and Phase vs Time for J0603+1742.MULTI.1 CL # 3
IF 7 CHAN 1 STK LL of J0603+1742.ICL001.3



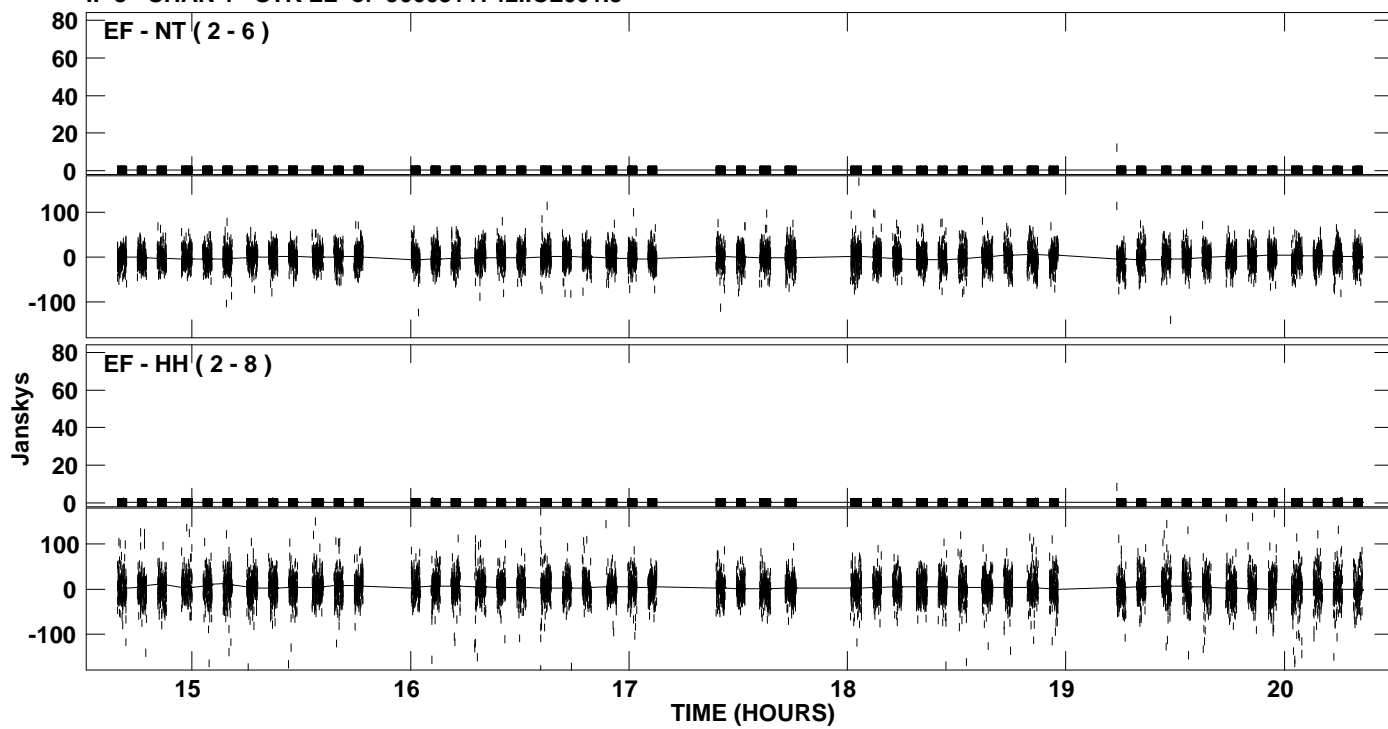
PLot file version 14 created 12-JUL-2007 18:49:34
Amplitude and Phase vs Time for J0603+1742.MULTI.1 CL # 3
IF 7 CHAN 1 STK LL of J0603+1742.ICL001.3



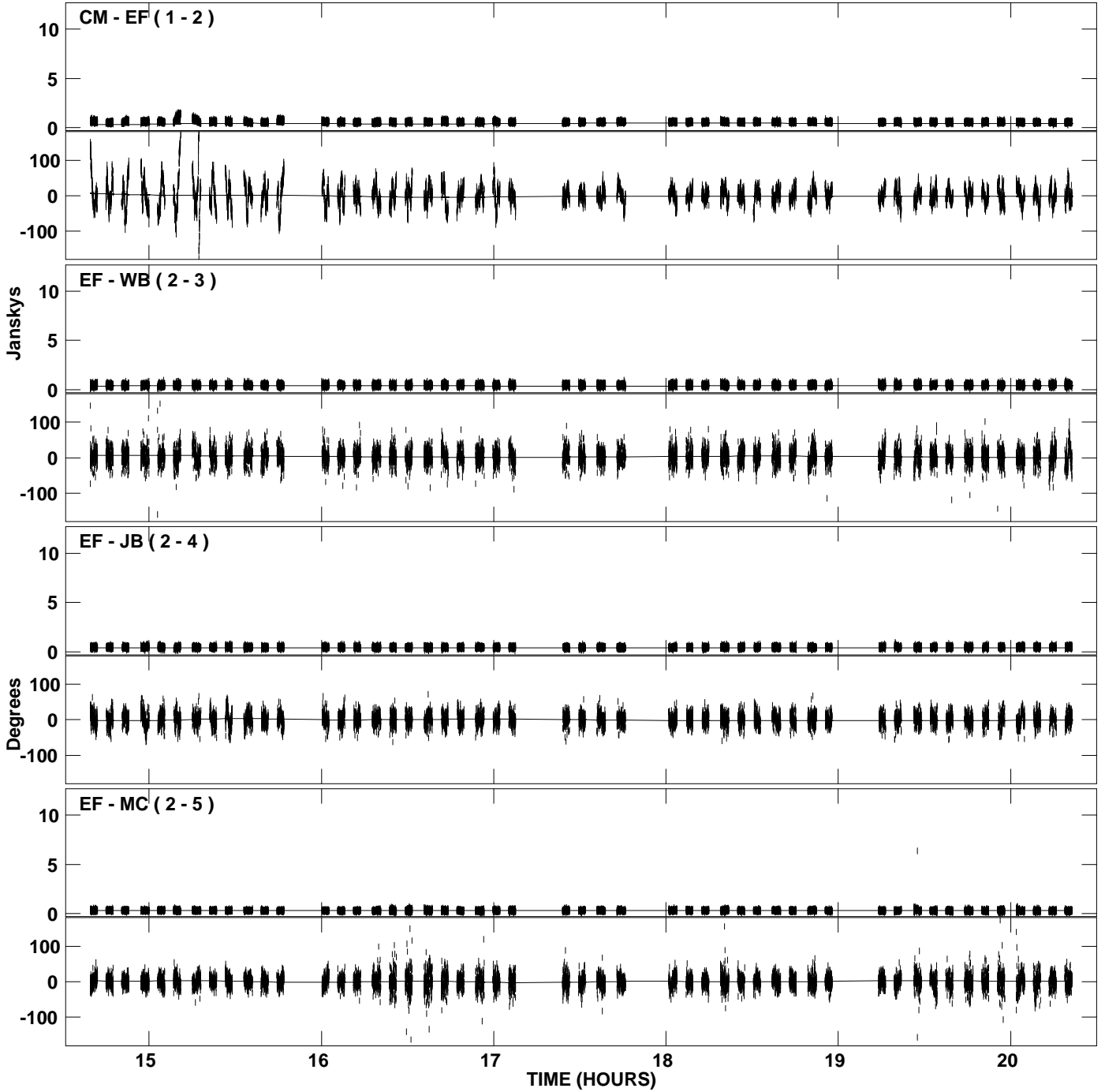
PLot file version 15 created 12-JUL-2007 18:49:35
Amplitude and Phase vs Time for J0603+1742.MULTI.1 CL # 3
IF 8 CHAN 1 STK LL of J0603+1742.ICL001.3



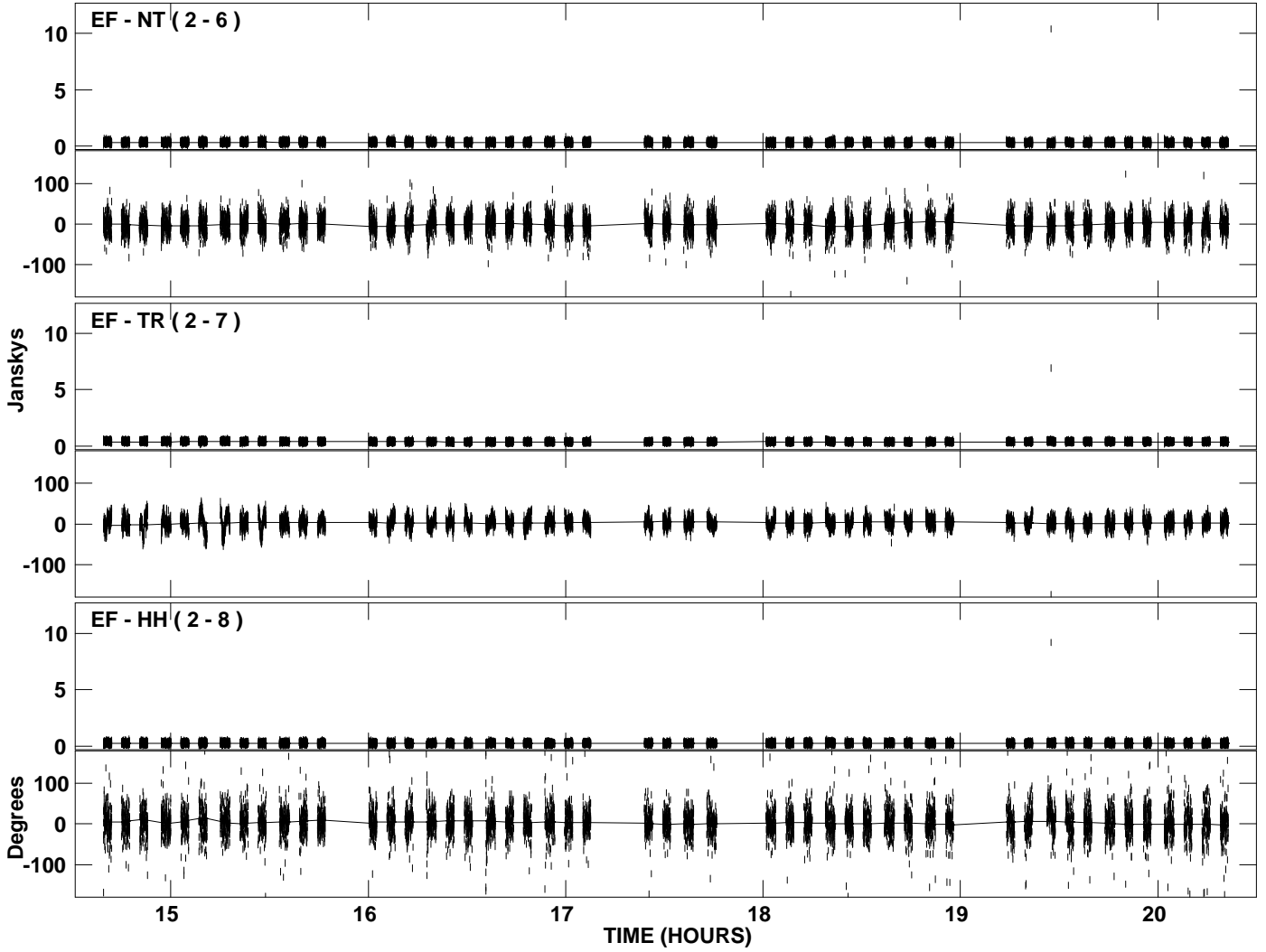
PLot file version 16 created 12-JUL-2007 18:49:35
Amplitude andPhase vs Time for J0603+1742.MULTI.1 CL # 3
IF 8 CHAN 1 STK LL of J0603+1742.ICL001.3



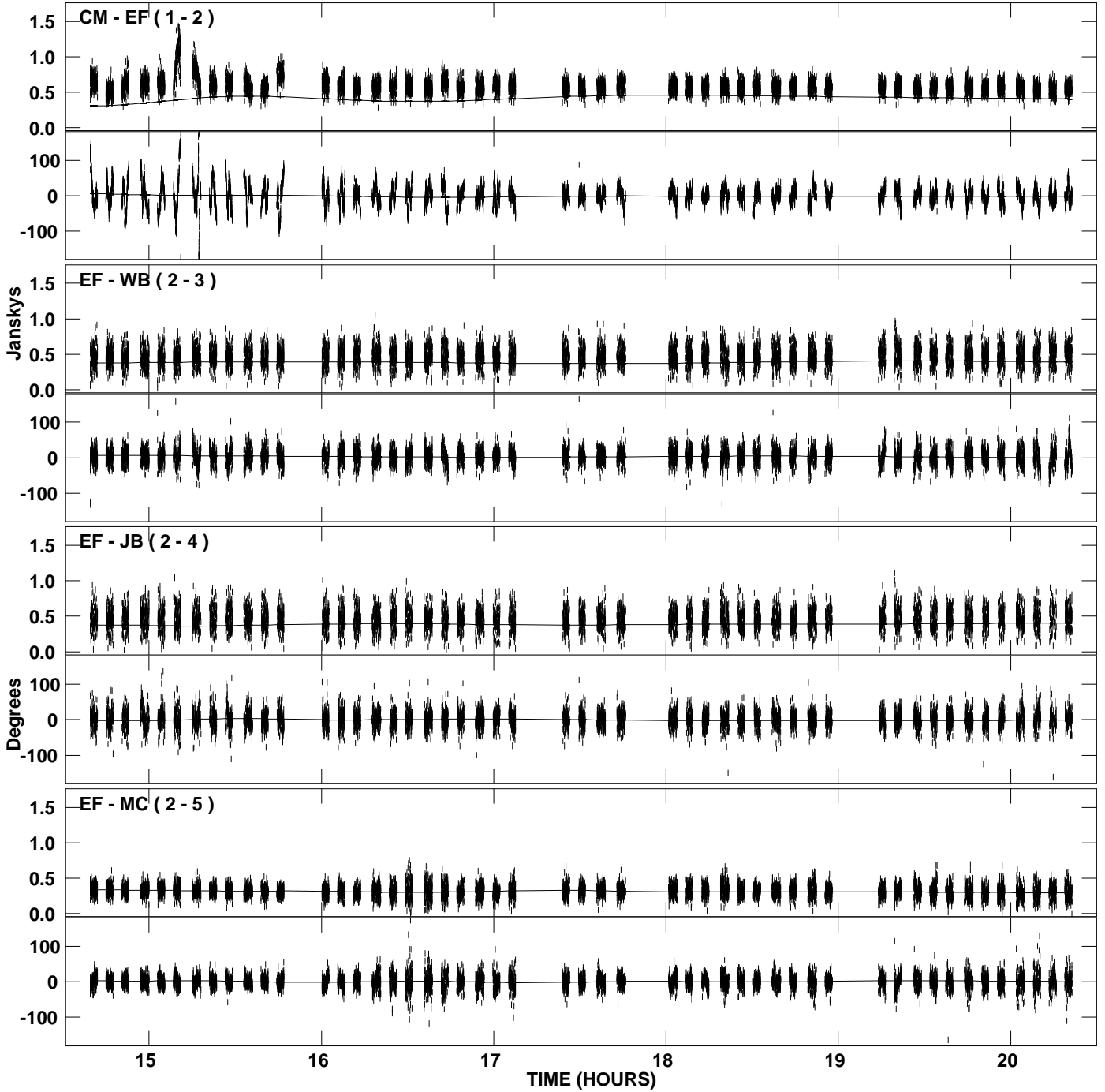
PLot file version 17 created 12-JUL-2007 18:49:37
Amplitude and Phase vs Time for J0603+1742.MULTI.1 CL # 3
IF 1 CHAN 1 STK RR of J0603+1742.ICL001.3



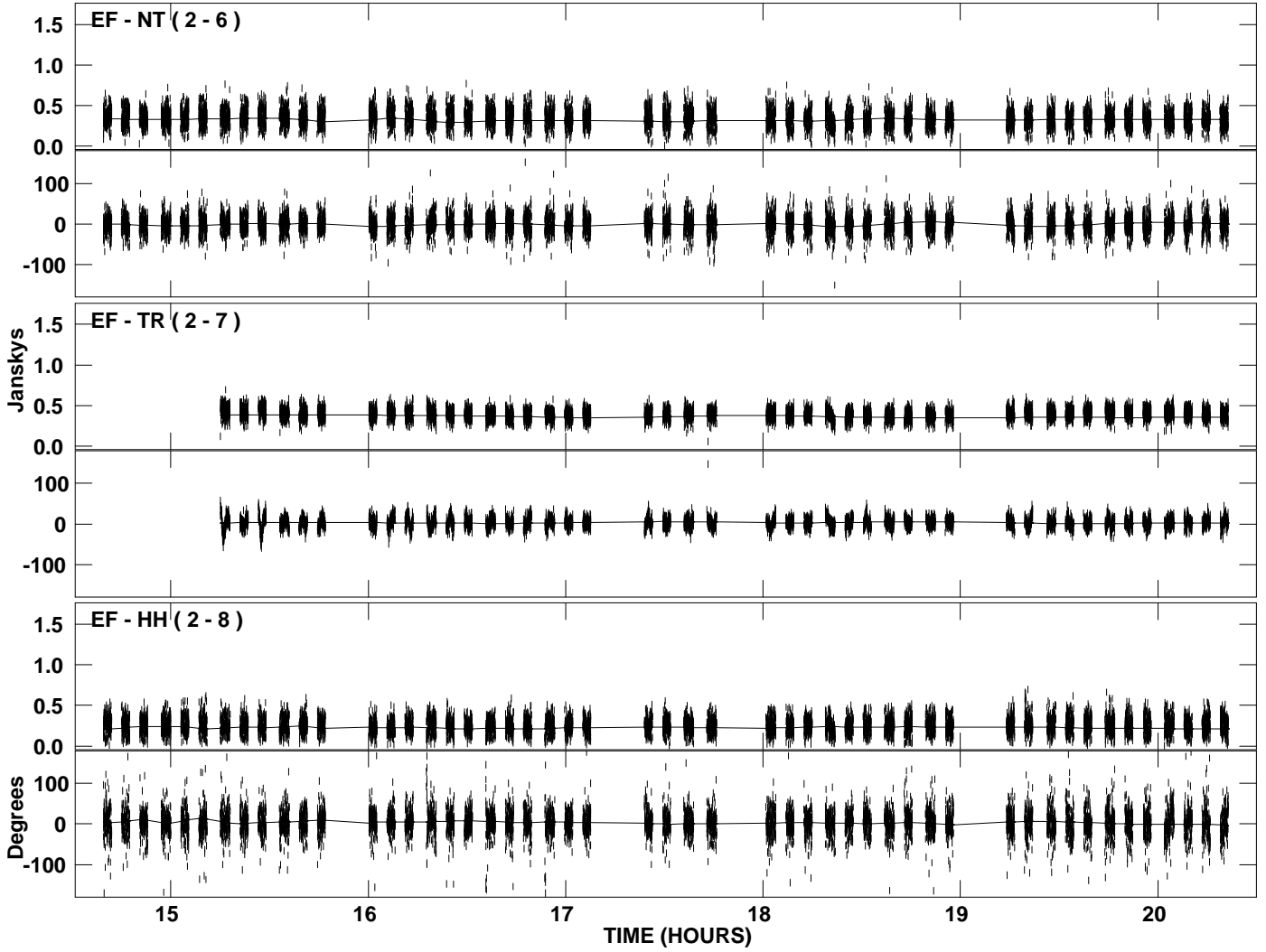
PLot file version 18 created 12-JUL-2007 18:49:37
Amplitude andPhase vs Time for J0603+1742.MULTI.1 CL # 3
IF 1 CHAN 1 STK RR of J0603+1742.ICL001.3



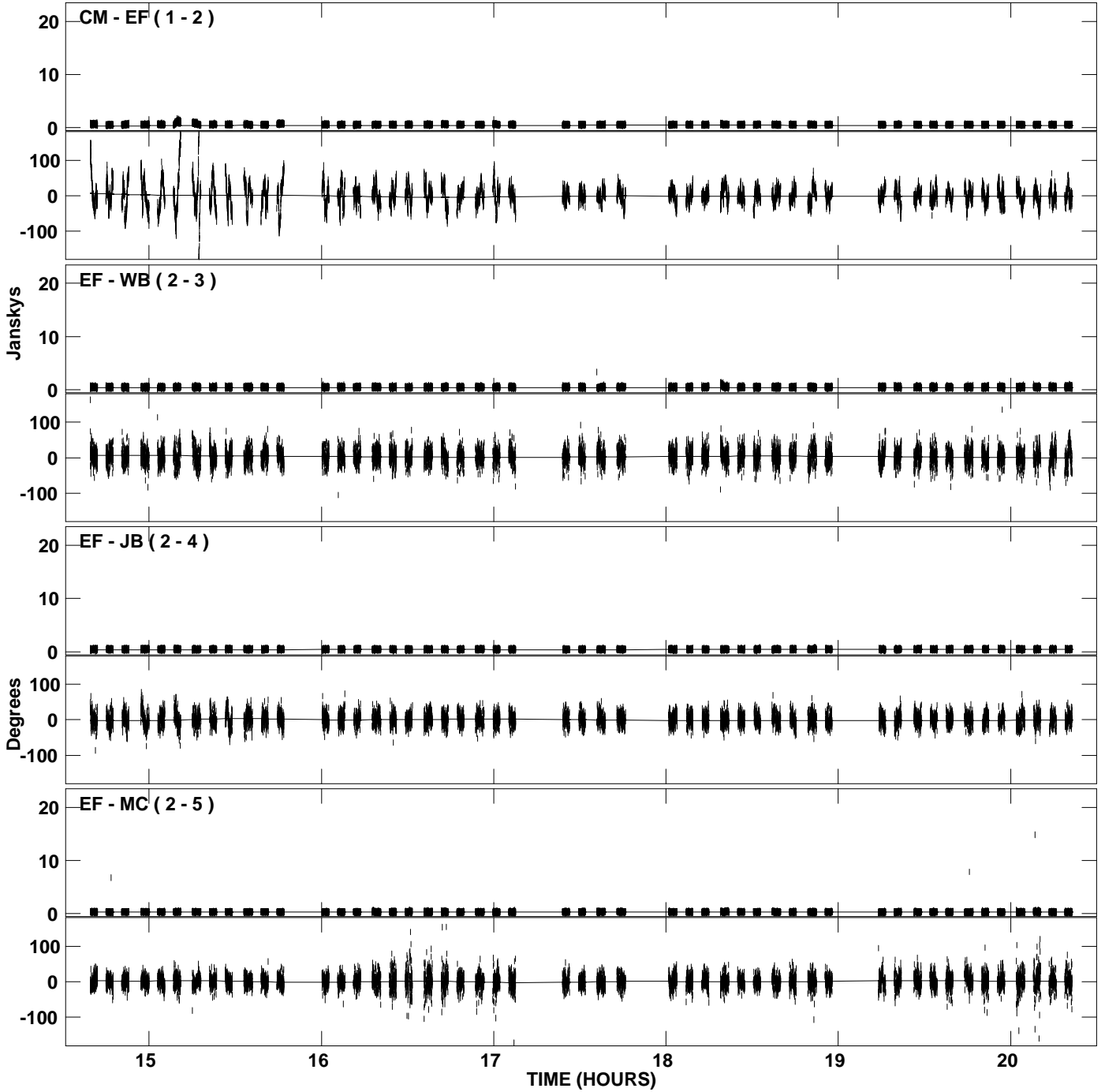
PLot file version 19 created 12-JUL-2007 18:49:38
Amplitude and Phase vs Time for J0603+1742.MULTI.1 CL # 3
IF 2 CHAN 1 STK RR of J0603+1742.ICL001.3



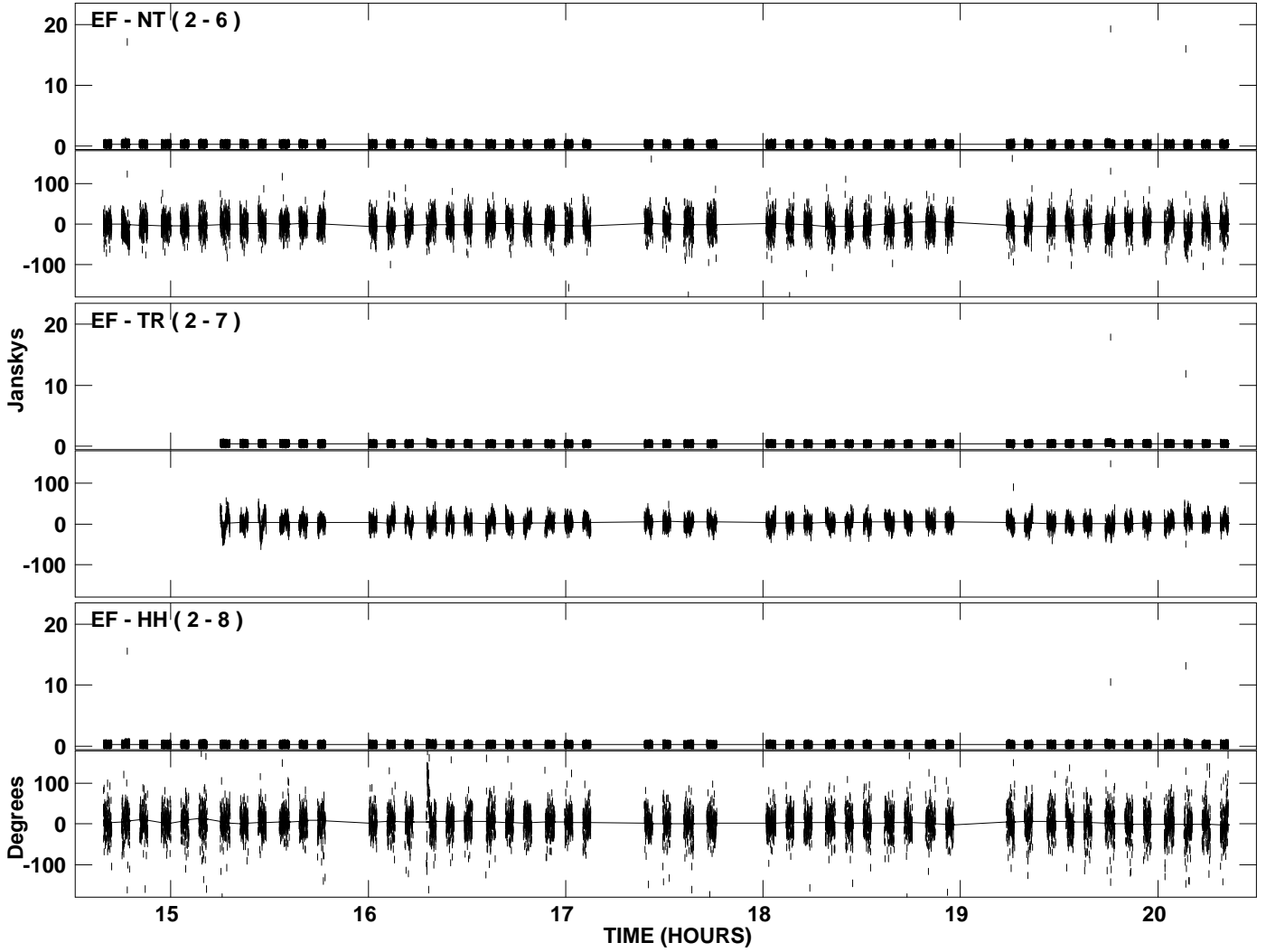
PLot file version 20 created 12-JUL-2007 18:49:38
Amplitude andPhase vs Time for J0603+1742.MULTI.1 CL # 3
IF 2 CHAN 1 STK RR of J0603+1742.ICL001.3



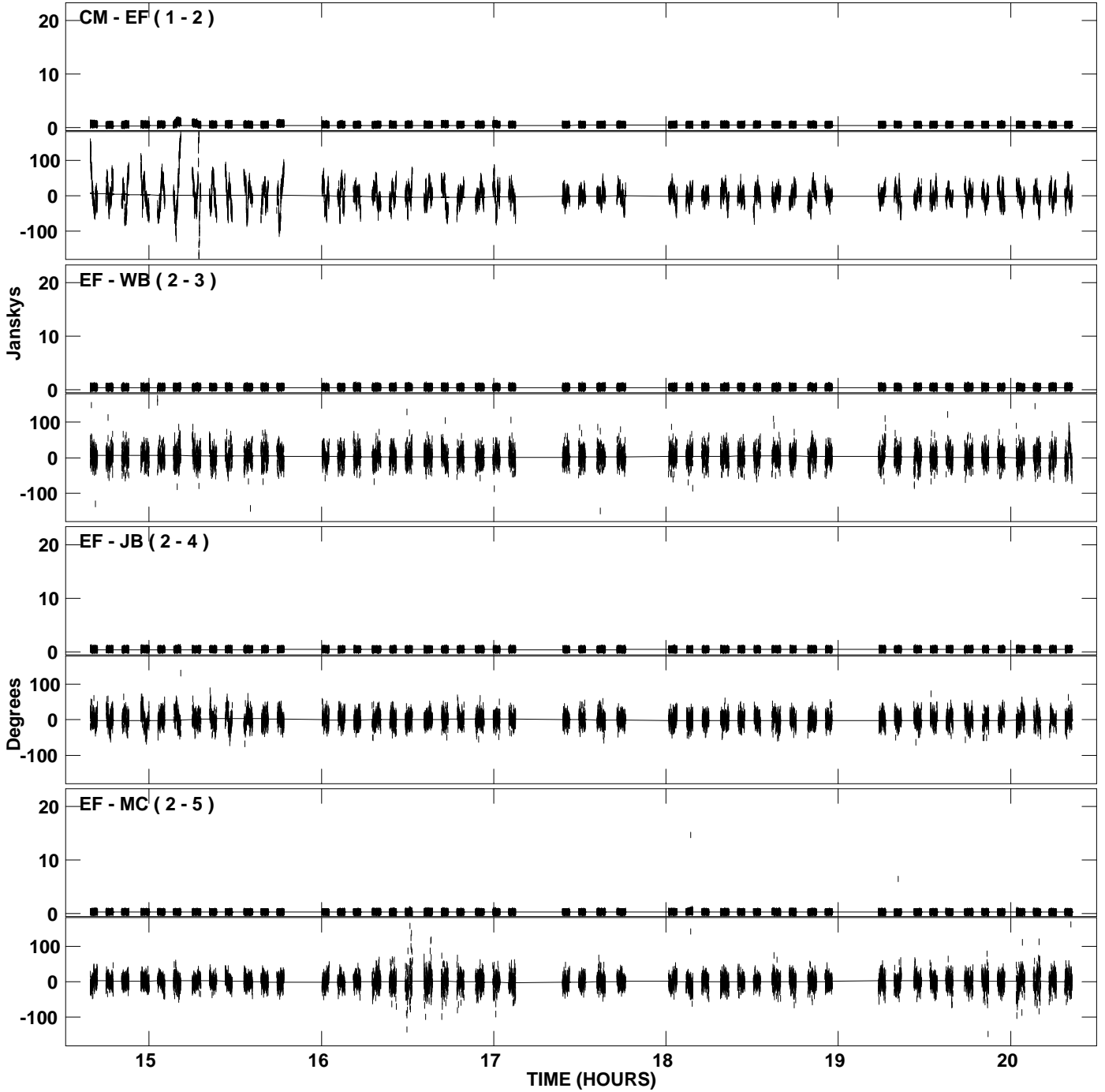
PLot file version 21 created 12-JUL-2007 18:49:39
Amplitude and Phase vs Time for J0603+1742.MULTI.1 CL # 3
IF 3 CHAN 1 STK RR of J0603+1742.ICL001.3



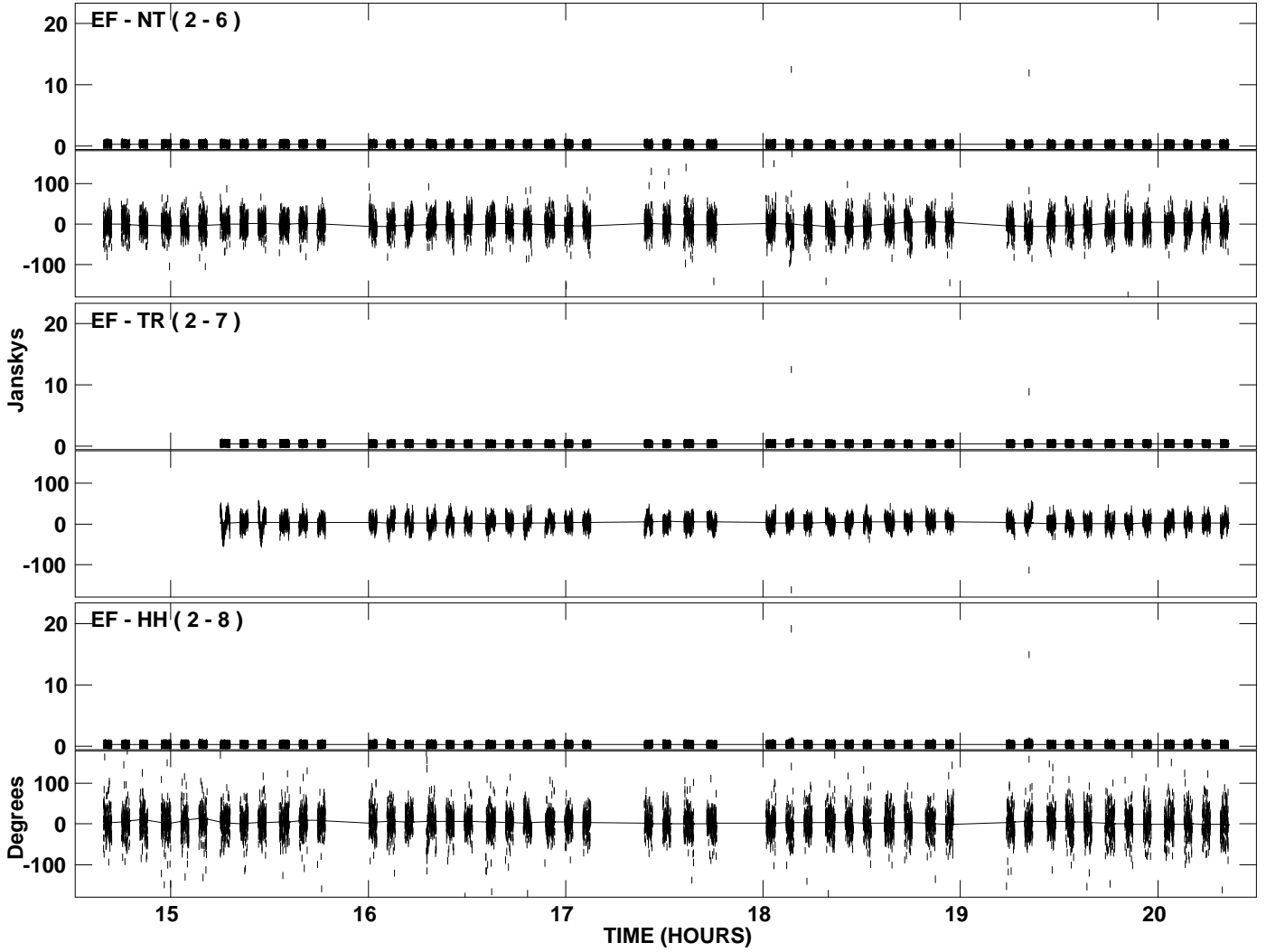
PLot file version 22 created 12-JUL-2007 18:49:40
Amplitude andPhase vs Time for J0603+1742.MULTI.1 CL # 3
IF 3 CHAN 1 STK RR of J0603+1742.ICL001.3



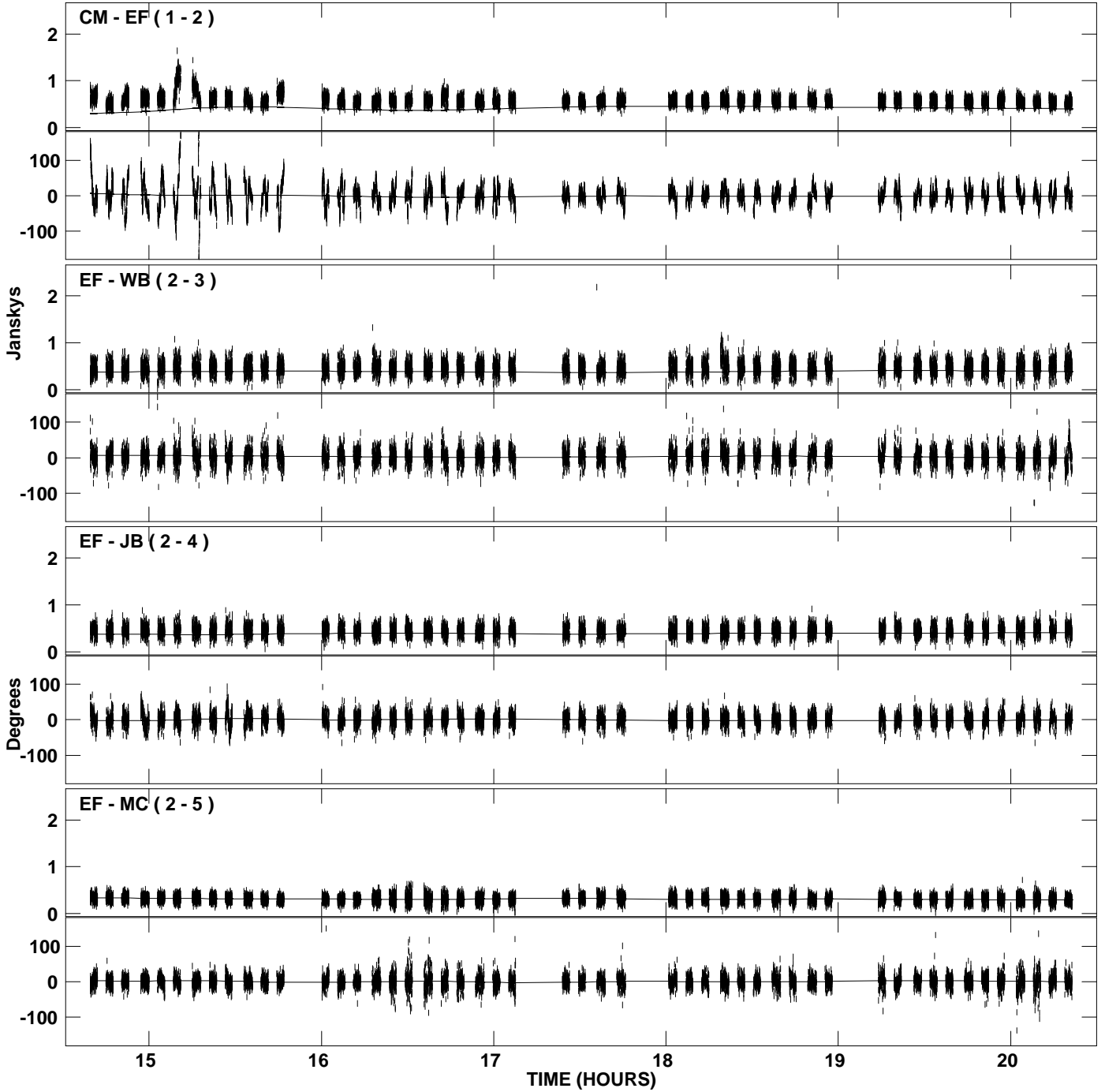
PLot file version 23 created 12-JUL-2007 18:49:41
Amplitude and Phase vs Time for J0603+1742.MULTI.1 CL # 3
IF 4 CHAN 1 STK RR of J0603+1742.ICL001.3



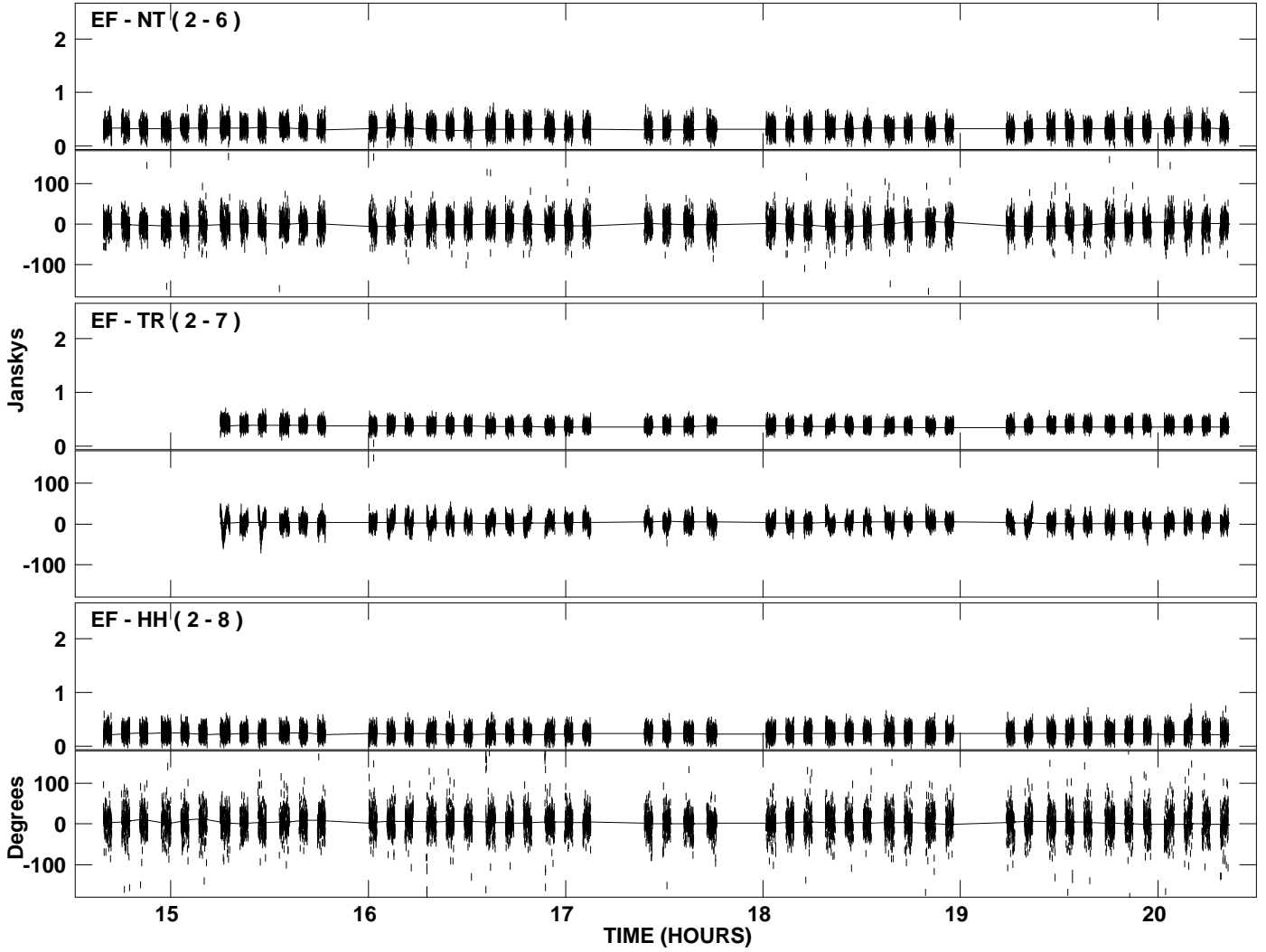
PLot file version 24 created 12-JUL-2007 18:49:41
Amplitude and Phase vs Time for J0603+1742.MULTI.1 CL # 3
IF 4 CHAN 1 STK RR of J0603+1742.ICL001.3



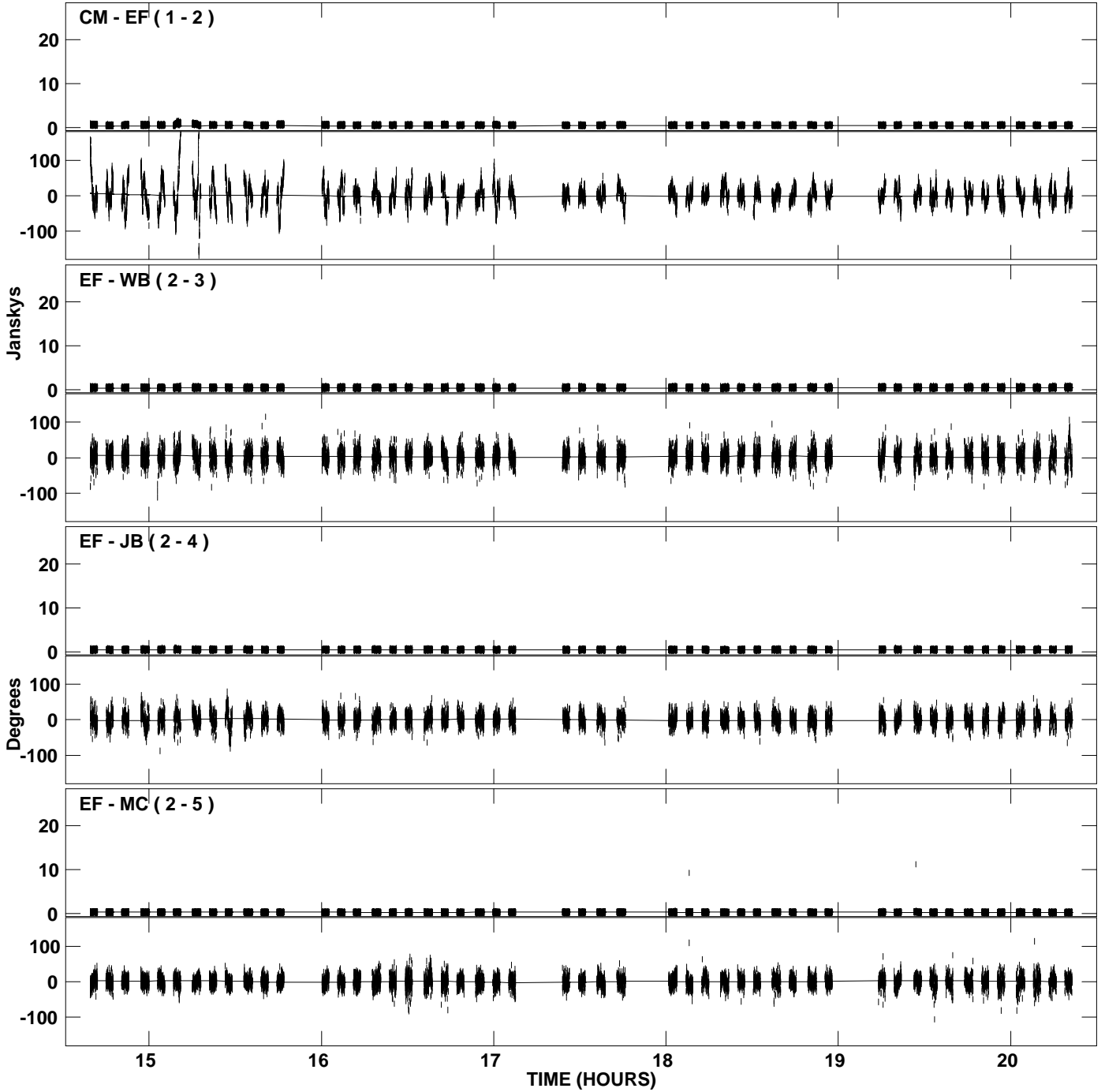
PLot file version 25 created 12-JUL-2007 18:49:42
Amplitude and Phase vs Time for J0603+1742.MULTI.1 CL # 3
IF 5 CHAN 1 STK RR of J0603+1742.ICL001.3



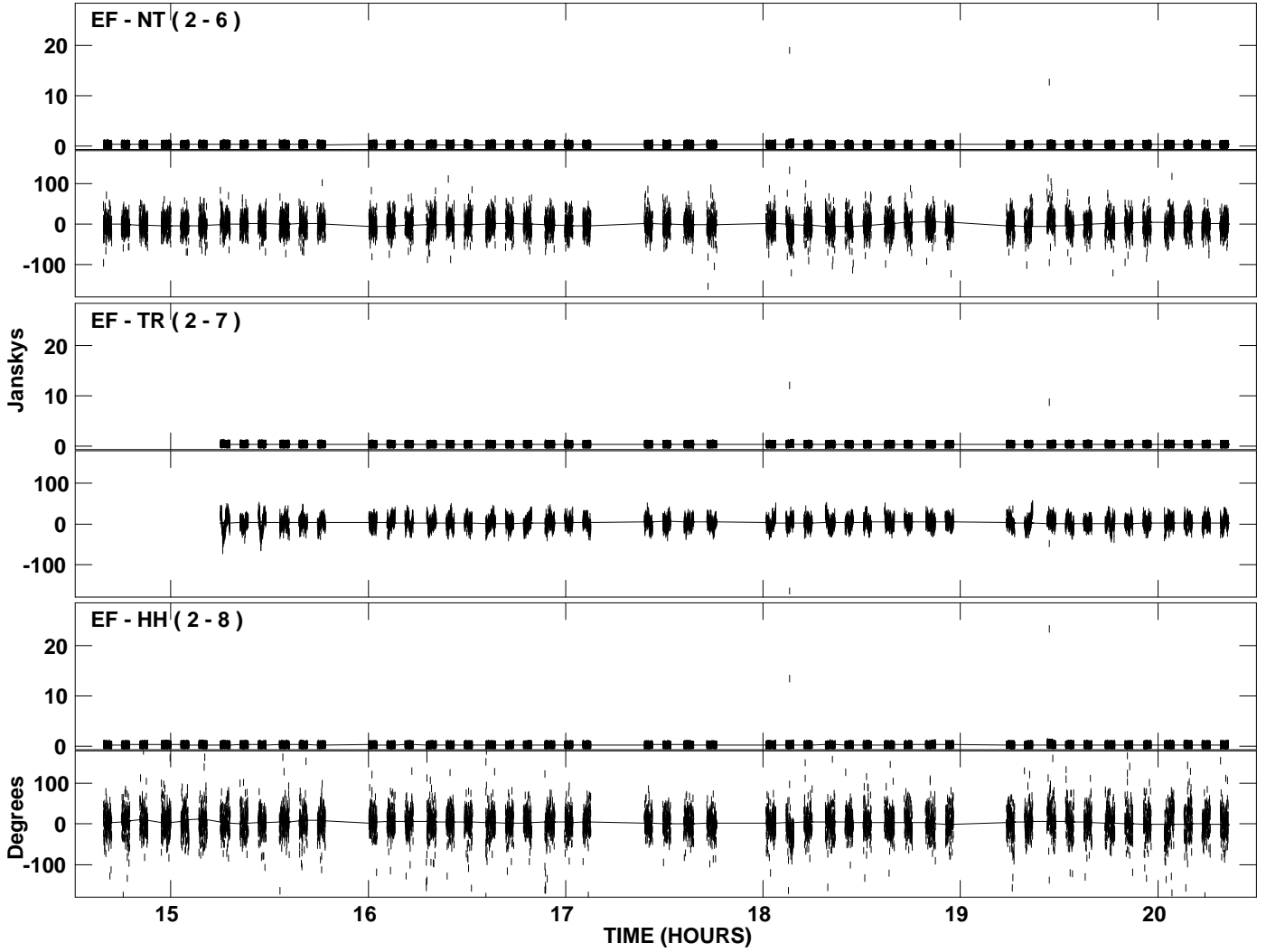
PLot file version 26 created 12-JUL-2007 18:49:42
Amplitude and Phase vs Time for J0603+1742.MULTI.1 CL # 3
IF 5 CHAN 1 STK RR of J0603+1742.ICL001.3



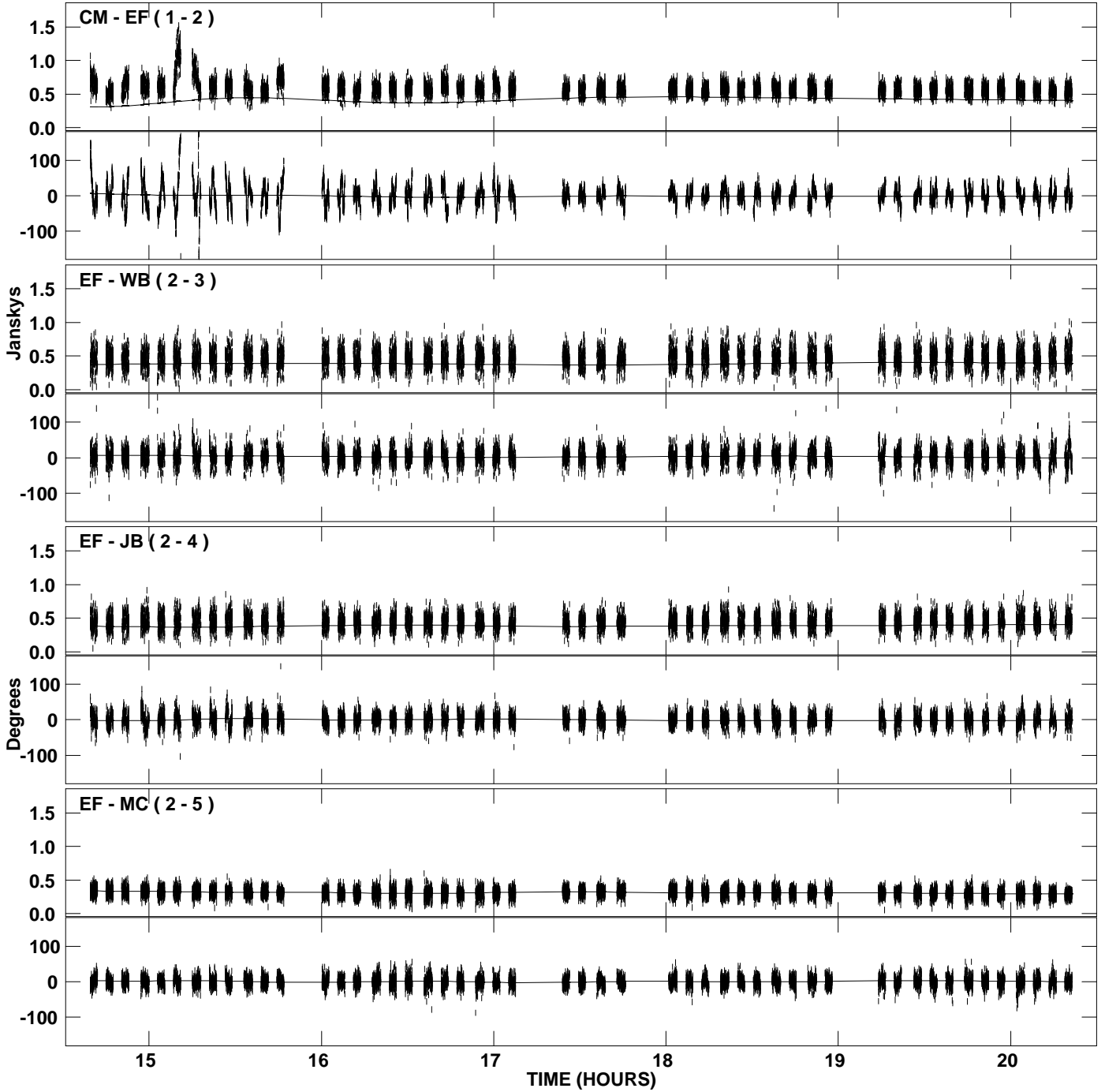
PLot file version 27 created 12-JUL-2007 18:49:43
Amplitude and Phase vs Time for J0603+1742.MULTI.1 CL # 3
IF 6 CHAN 1 STK RR of J0603+1742.ICL001.3



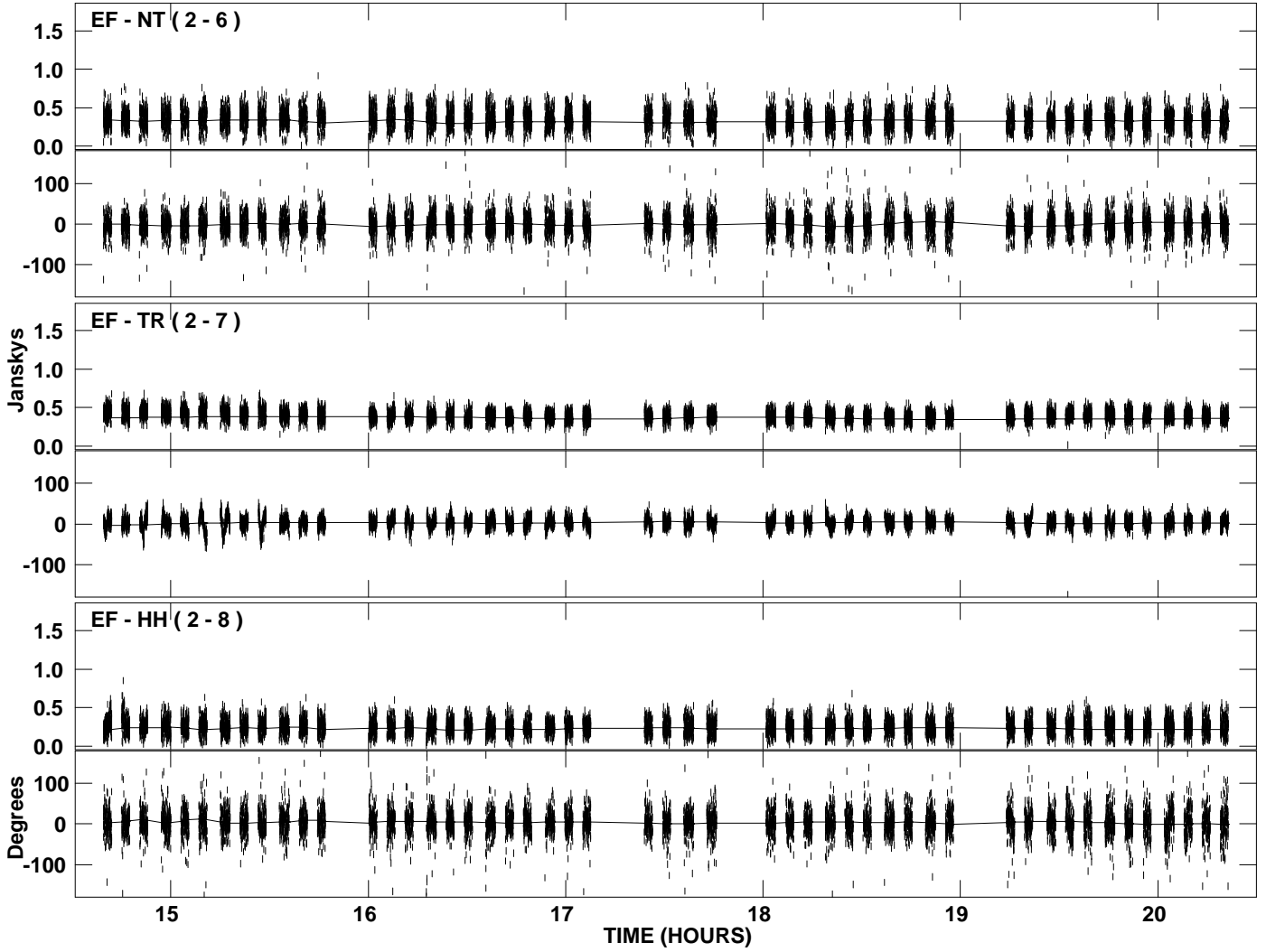
PLot file version 28 created 12-JUL-2007 18:49:44
Amplitude andPhase vs Time for J0603+1742.MULTI.1 CL # 3
IF 6 CHAN 1 STK RR of J0603+1742.ICL001.3



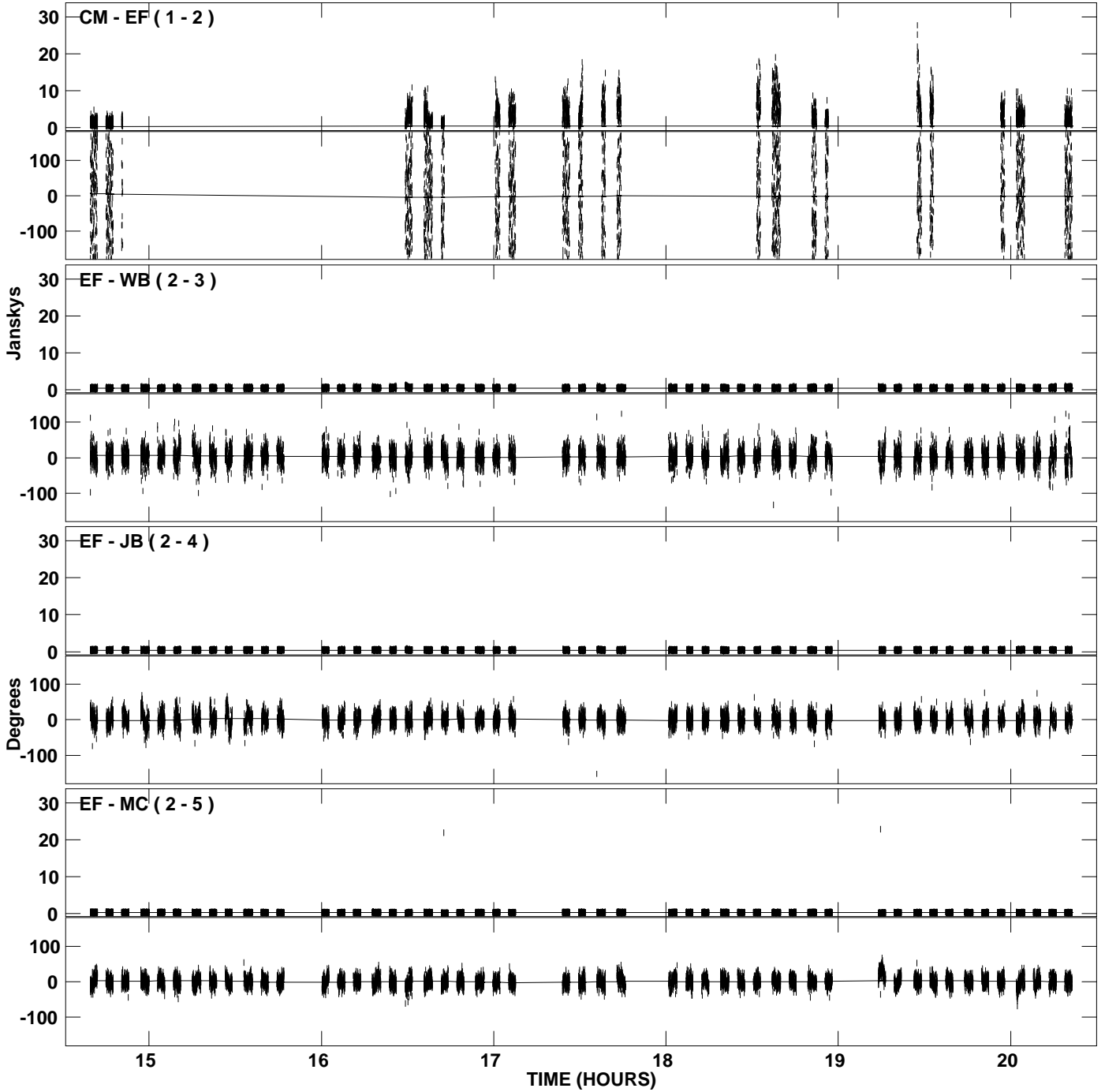
PLot file version 29 created 12-JUL-2007 18:49:45
Amplitude and Phase vs Time for J0603+1742.MULTI.1 CL # 3
IF 7 CHAN 1 STK RR of J0603+1742.ICL001.3



PLot file version 30 created 12-JUL-2007 18:49:45
Amplitude and Phase vs Time for J0603+1742.MULTI.1 CL # 3
IF 7 CHAN 1 STK RR of J0603+1742.ICL001.3



PLot file version 31 created 12-JUL-2007 18:49:46
Amplitude andPhase vs Time for J0603+1742.MULTI.1 CL # 3
IF 8 CHAN 1 STK RR of J0603+1742.ICL001.3



PLot file version 32 created 12-JUL-2007 18:49:46
Amplitude andPhase vs Time for J0603+1742.MULTI.1 CL # 3
IF 8 CHAN 1 STK RR of J0603+1742.ICL001.3

