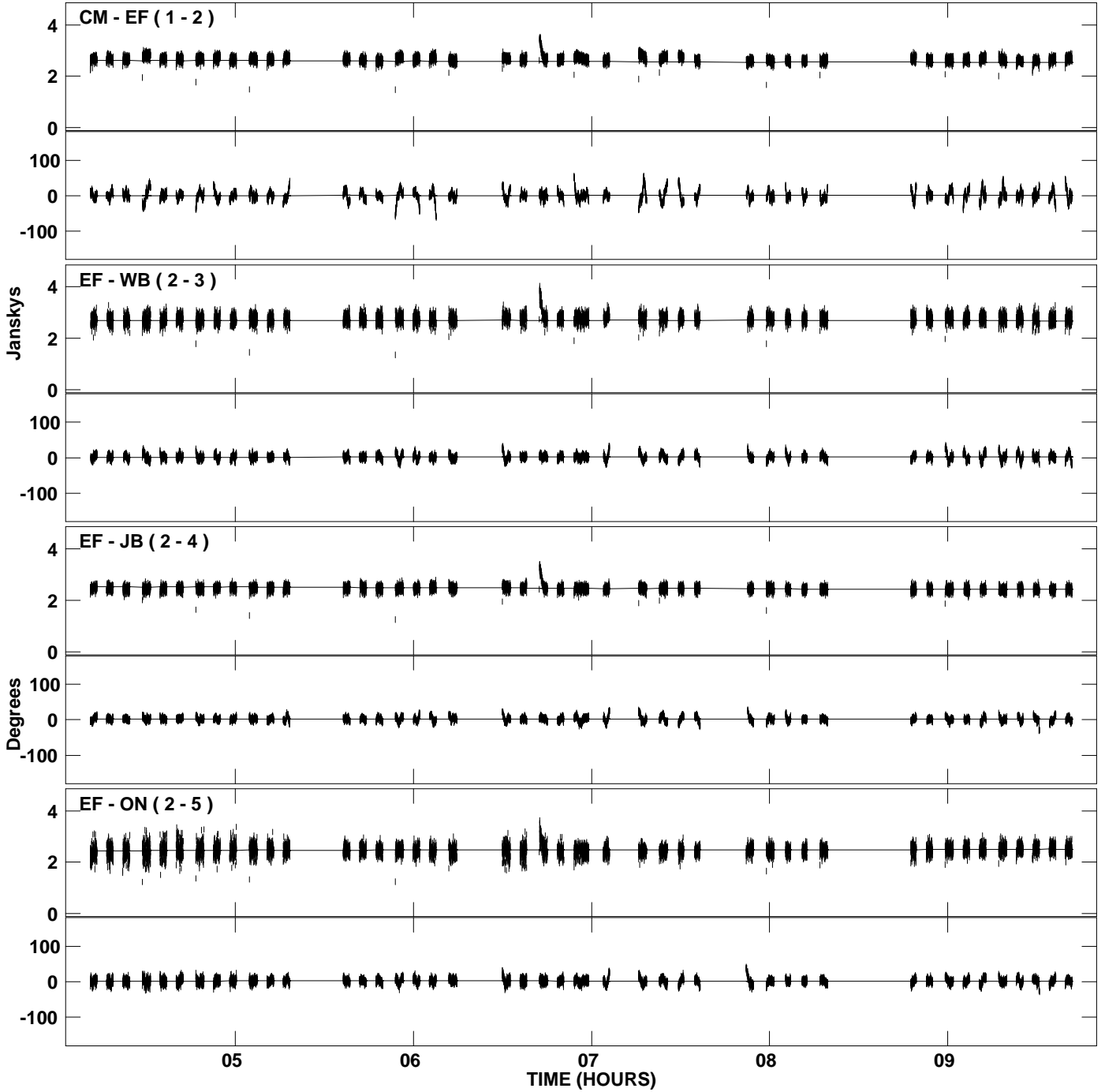
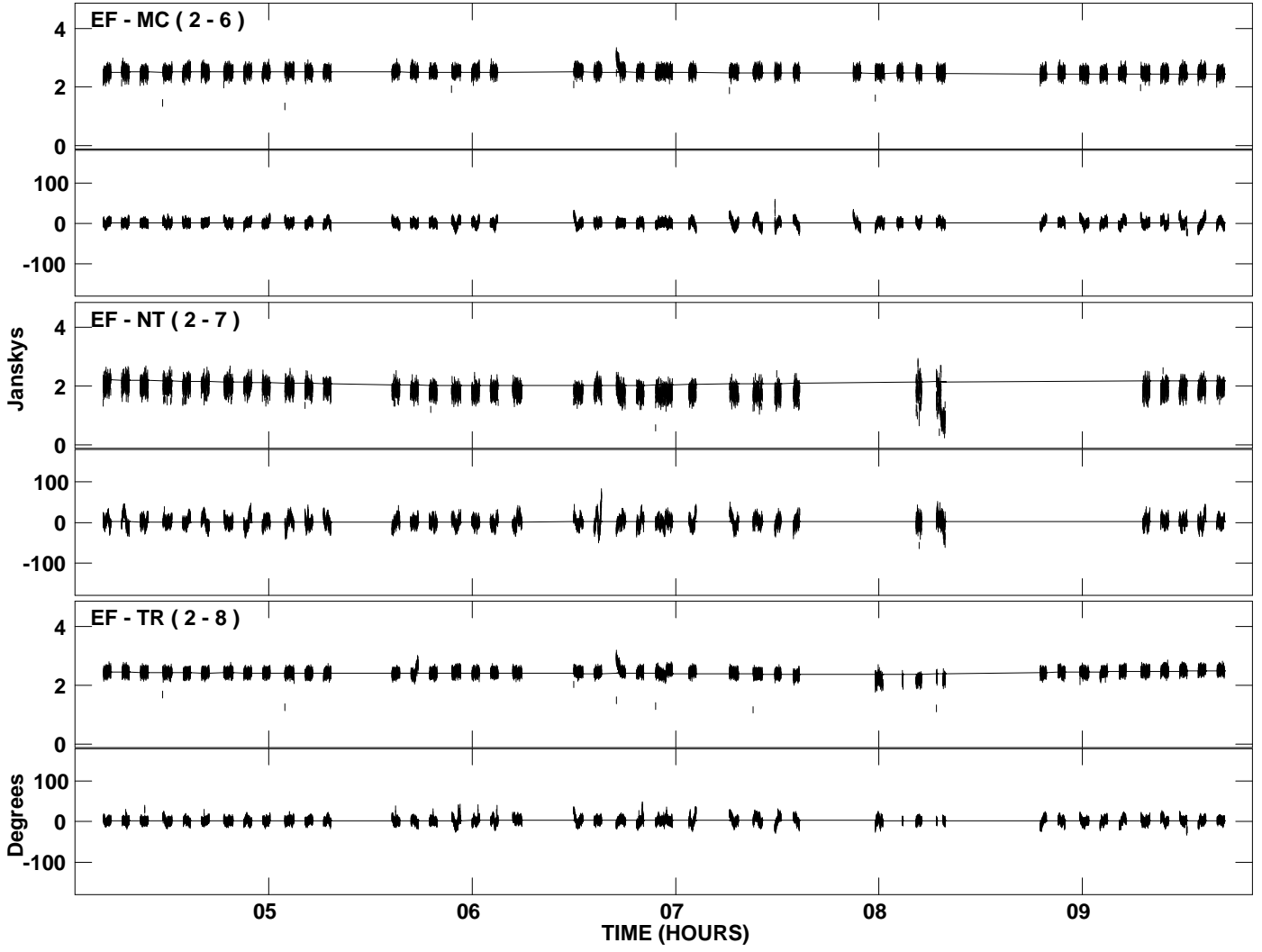


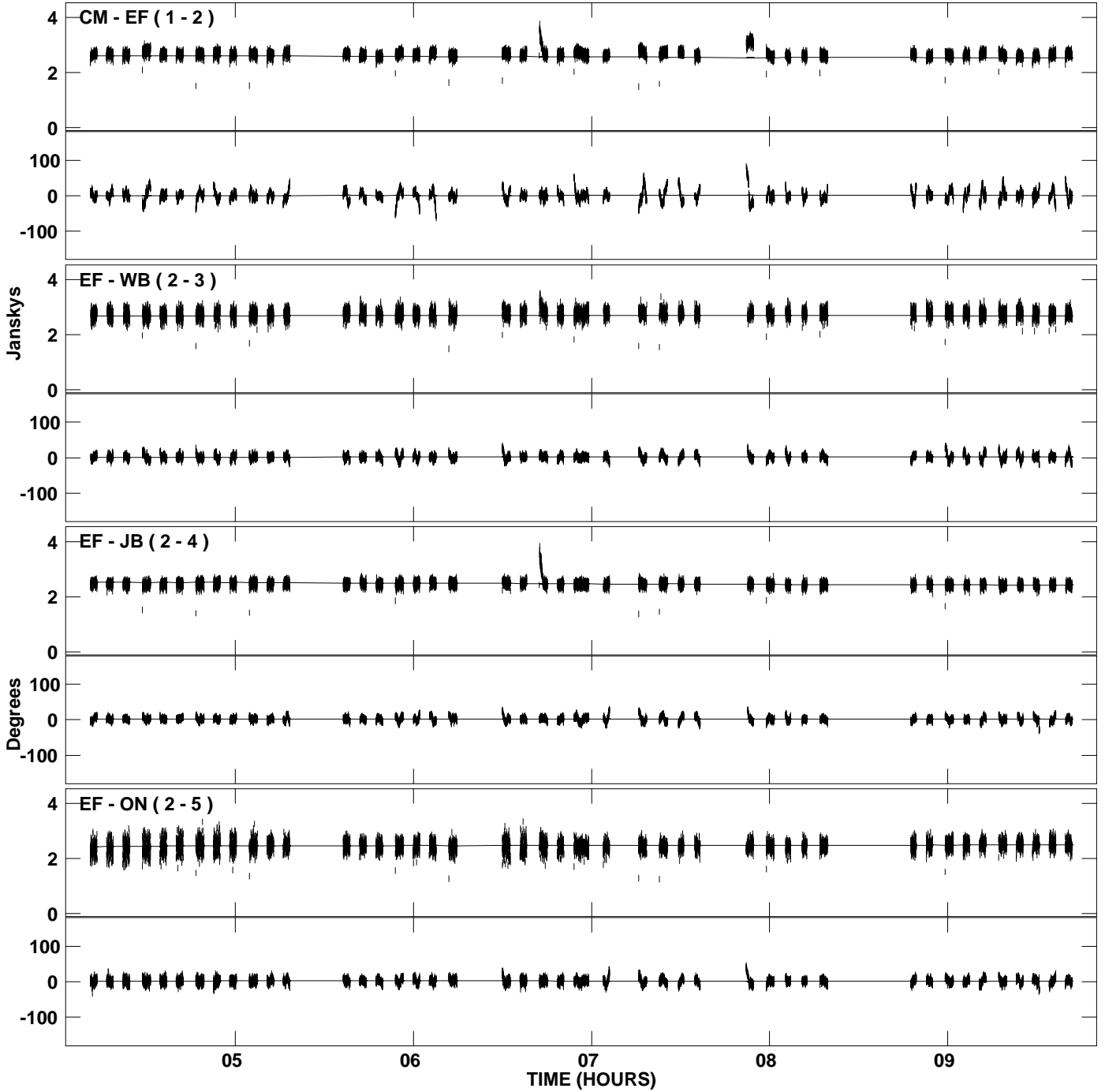
PLot file version 1 created 09-JUL-2009 16:57:09
Amplitude andPhase vs Time for J2007+4029.MULTI.1 CL # 3
IF 1 CHAN 1 STK LL of J2007+4029.ICL001.3



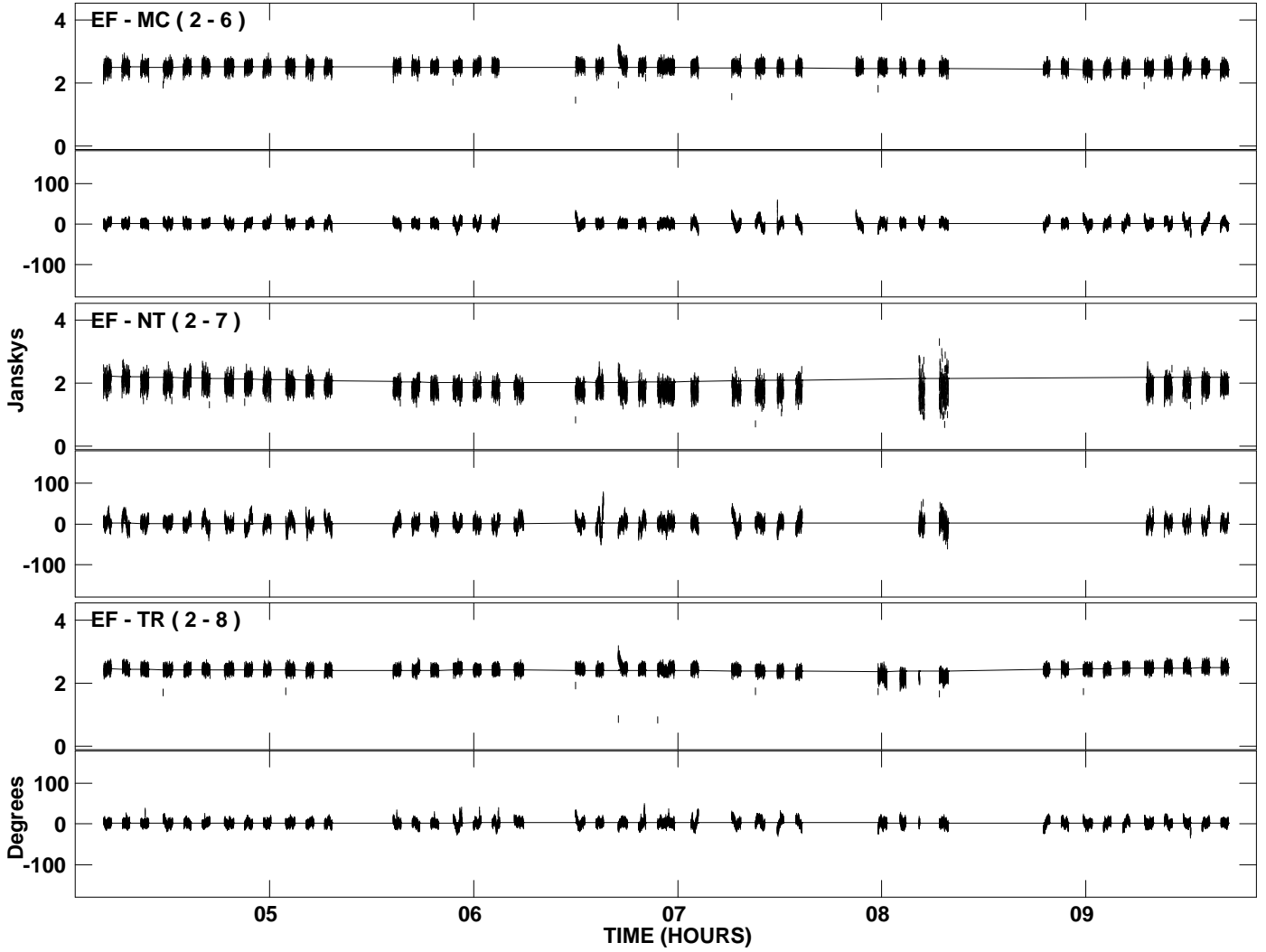
PLot file version 2 created 09-JUL-2009 16:57:09
Amplitude and Phase vs Time for J2007+4029.MULTI.1 CL # 3
IF 1 CHAN 1 STK LL of J2007+4029.ICL001.3



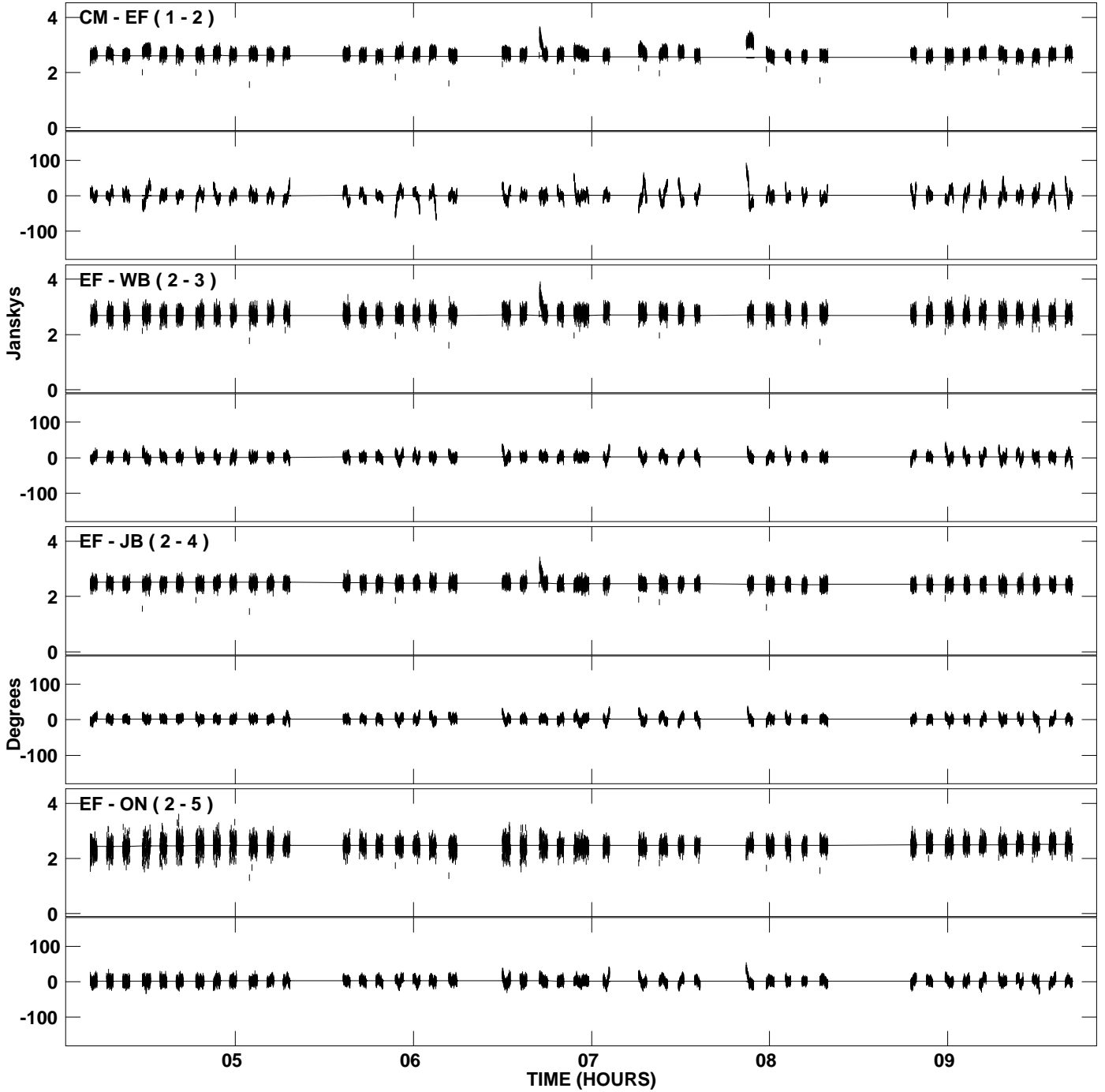
PLot file version 3 created 09-JUL-2009 16:57:10
Amplitude andPhase vs Time for J2007+4029.MULTI.1 CL # 3
IF 2 CHAN 1 STK LL of J2007+4029.ICL001.3



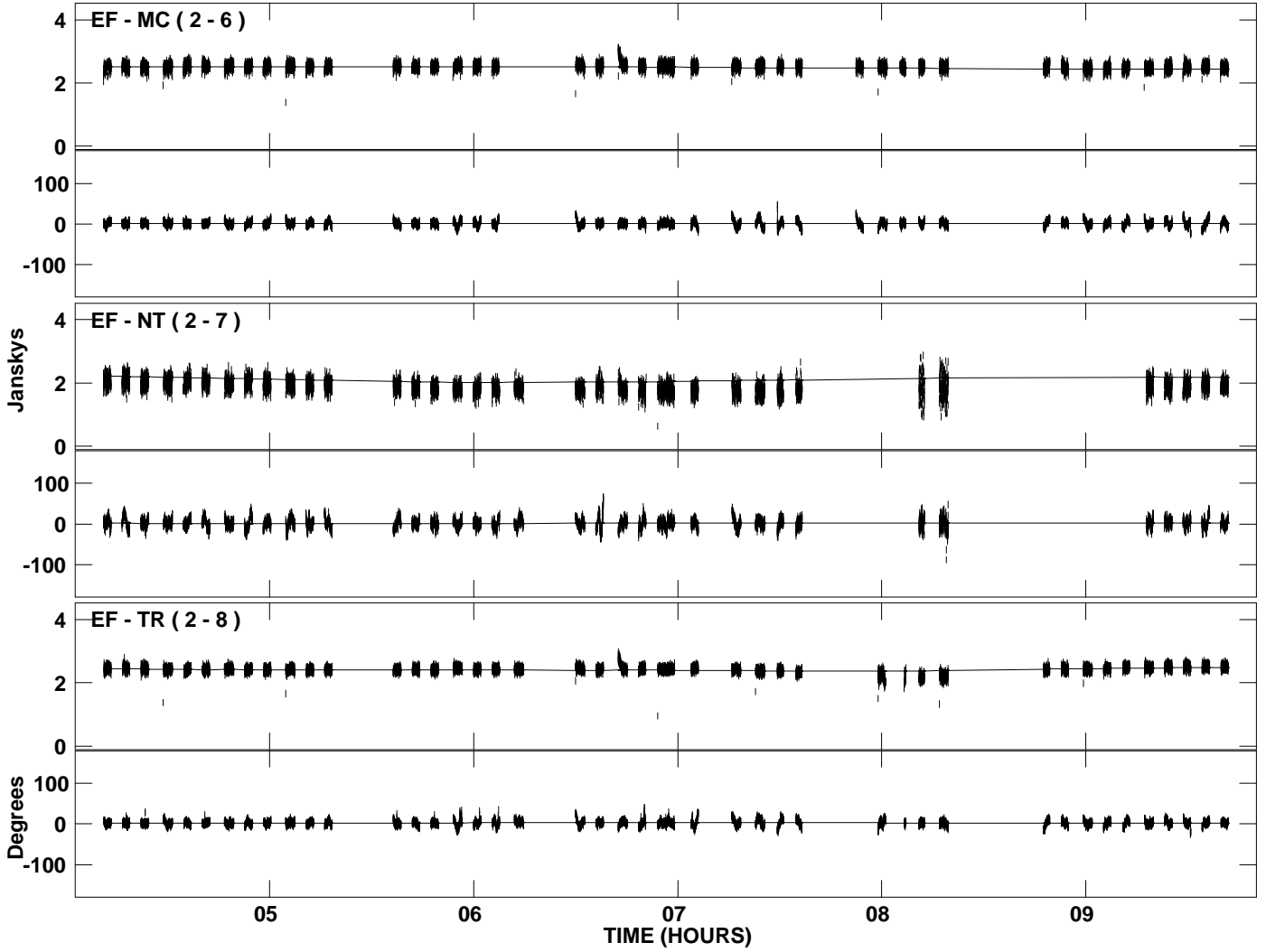
PLot file version 4 created 09-JUL-2009 16:57:10
Amplitude and Phase vs Time for J2007+4029.MULTI.1 CL # 3
IF 2 CHAN 1 STK LL of J2007+4029.ICL001.3



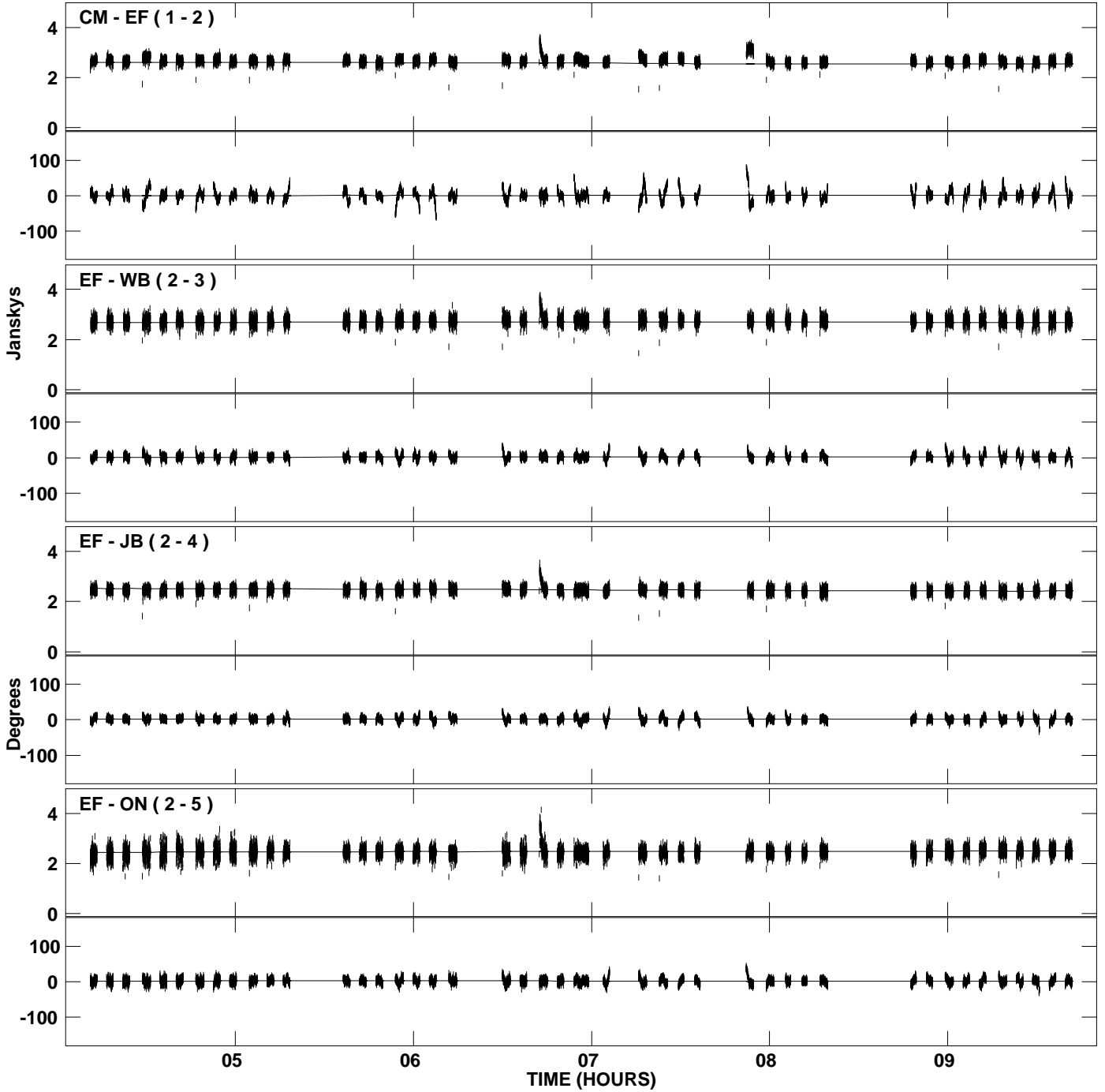
PLot file version 5 created 09-JUL-2009 16:57:11
Amplitude andPhase vs Time for J2007+4029.MULTI.1 CL # 3
IF 3 CHAN 1 STK LL of J2007+4029.ICL001.3



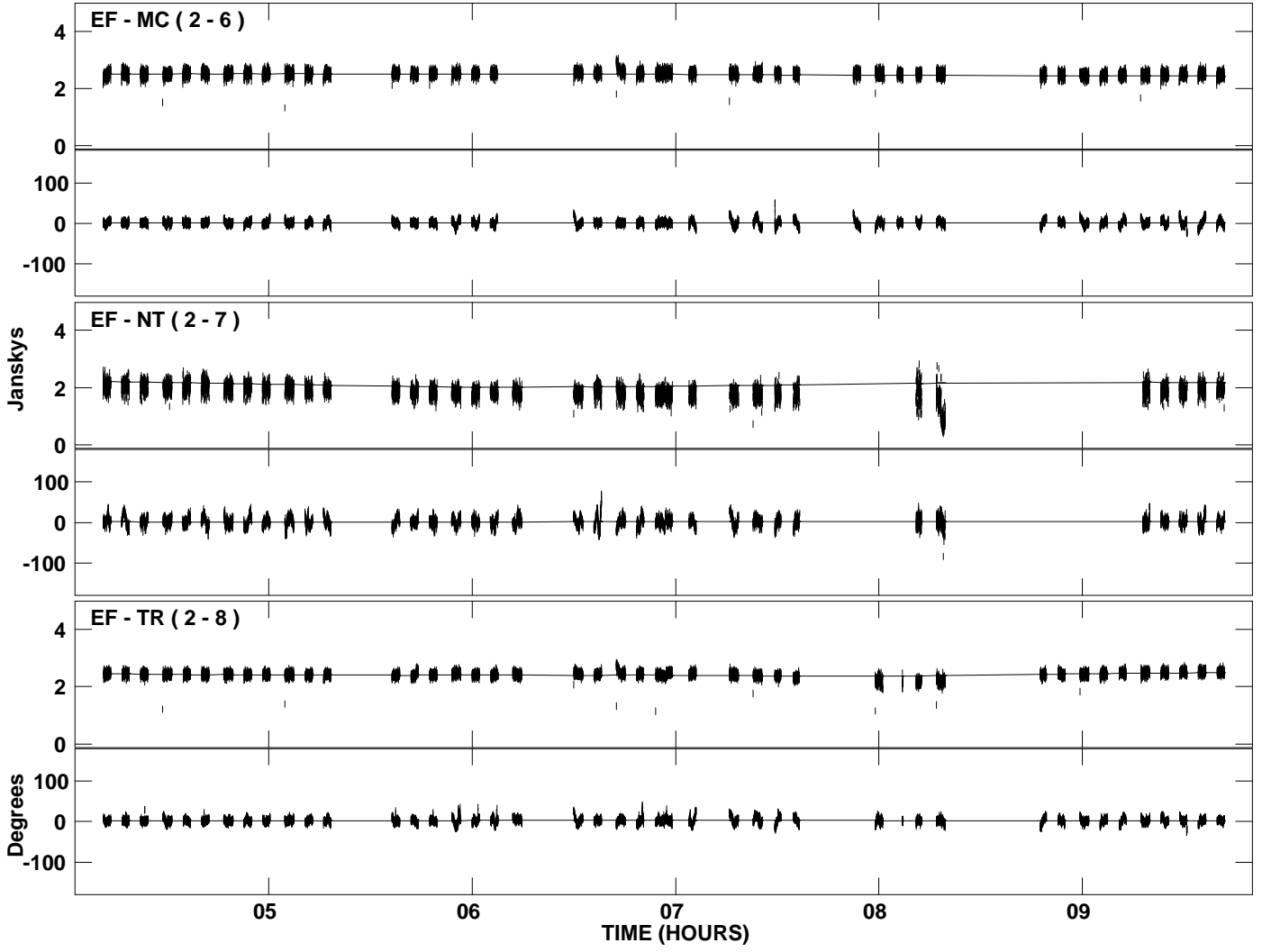
PLot file version 6 created 09-JUL-2009 16:57:11
Amplitude and Phase vs Time for J2007+4029.MULTI.1 CL # 3
IF 3 CHAN 1 STK LL of J2007+4029.ICL001.3



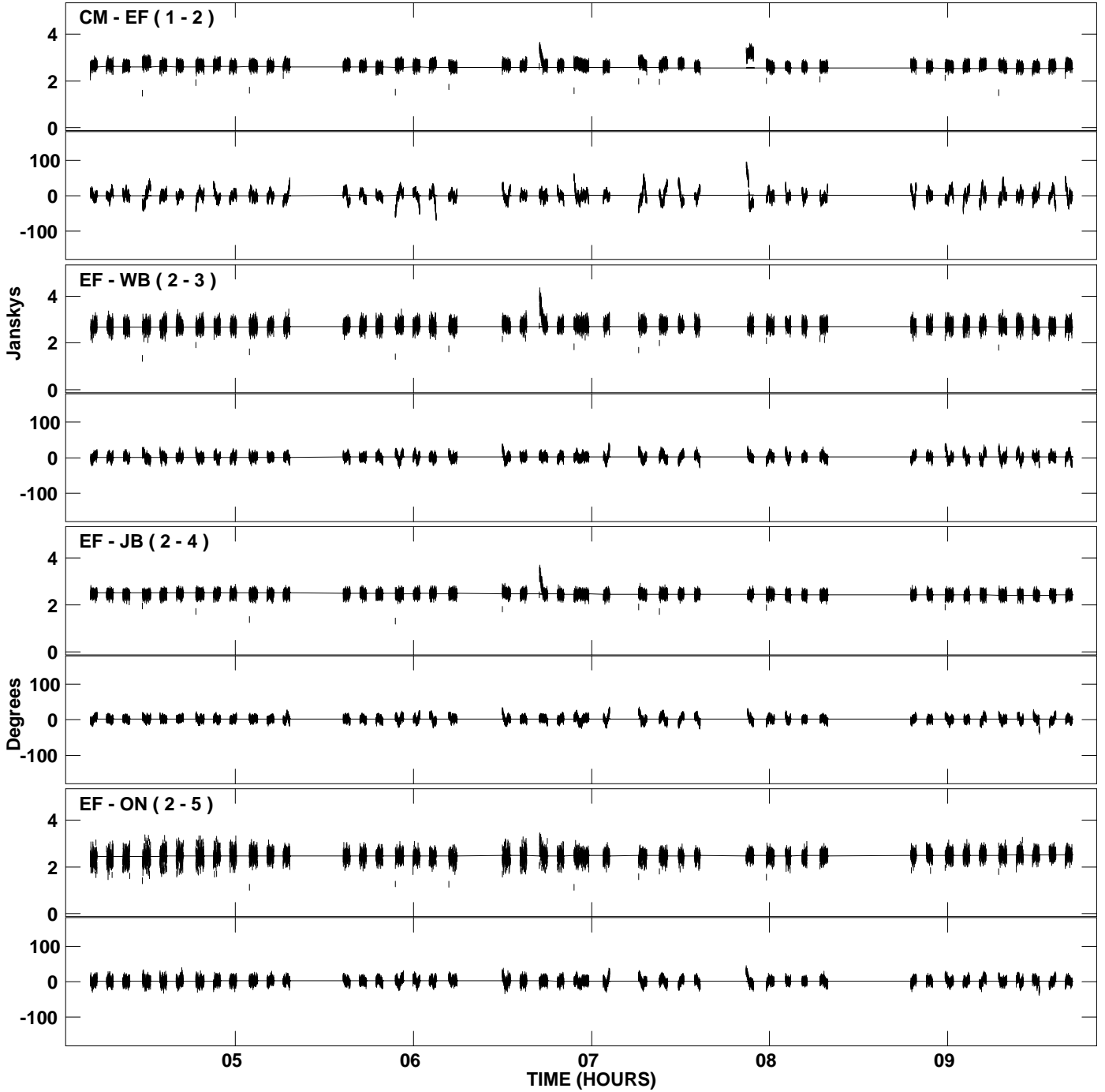
PLot file version 7 created 09-JUL-2009 16:57:12
Amplitude and Phase vs Time for J2007+4029.MULTI.1 CL # 3
IF 4 CHAN 1 STK LL of J2007+4029.ICL001.3



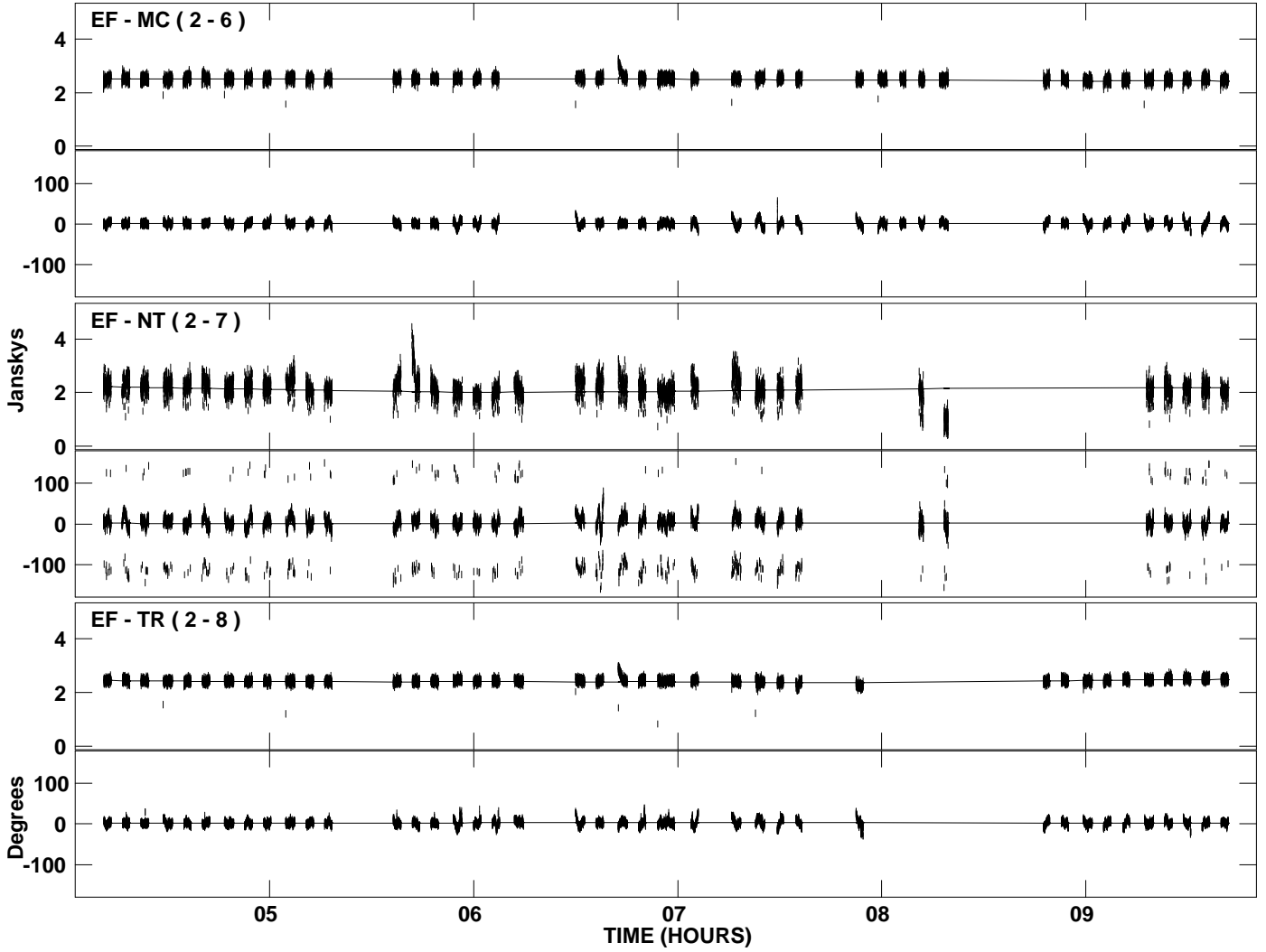
PLot file version 8 created 09-JUL-2009 16:57:12
Amplitude and Phase vs Time for J2007+4029.MULTI.1 CL # 3
IF 4 CHAN 1 STK LL of J2007+4029.ICL001.3



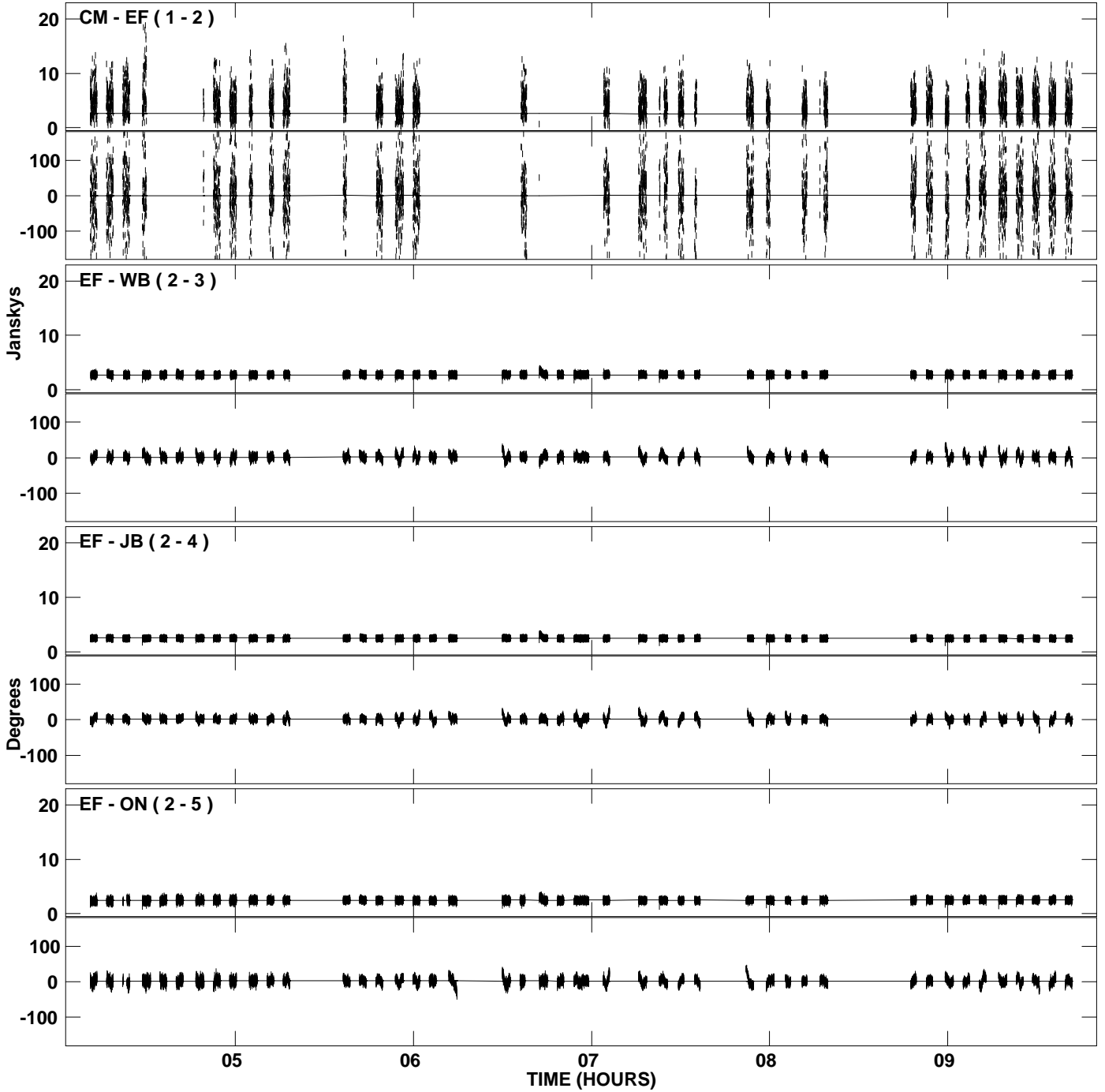
PLot file version 9 created 09-JUL-2009 16:57:12
Amplitude andPhase vs Time for J2007+4029.MULTI.1 CL # 3
IF 5 CHAN 1 STK LL of J2007+4029.ICL001.3



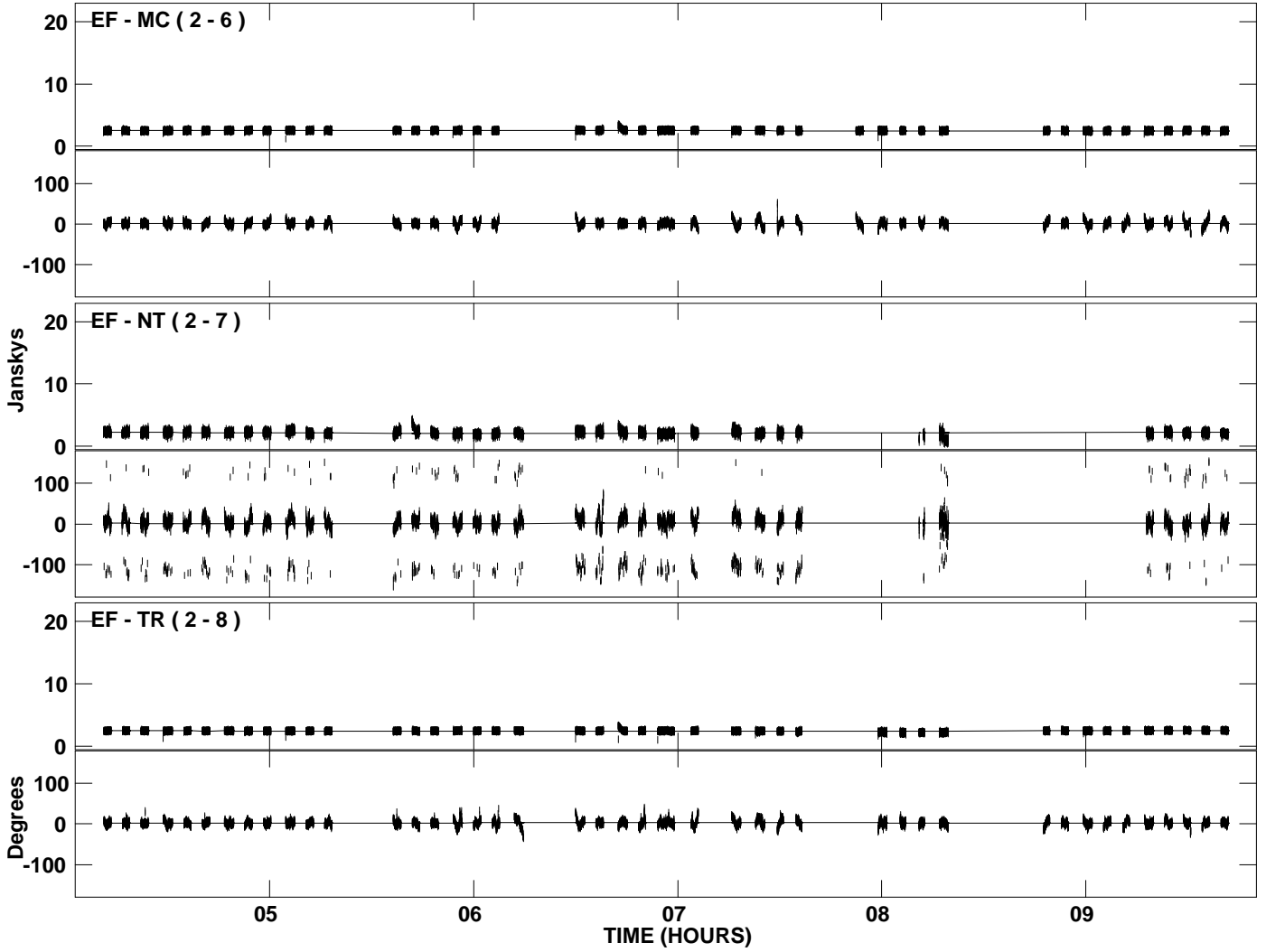
PLot file version 10 created 09-JUL-2009 16:57:12
Amplitude andPhase vs Time for J2007+4029.MULTI.1 CL # 3
IF 5 CHAN 1 STK LL of J2007+4029.ICL001.3



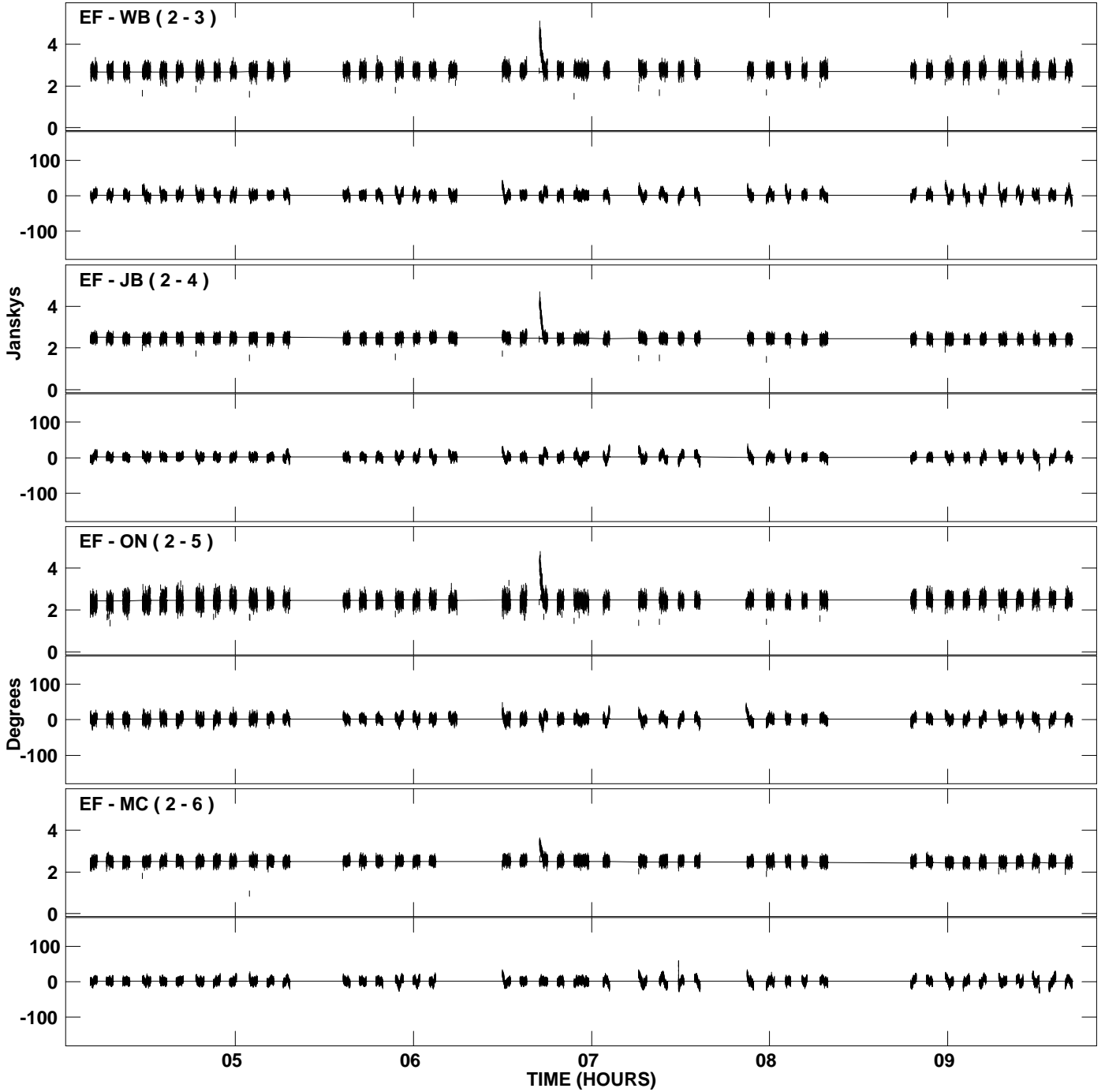
PLot file version 11 created 09-JUL-2009 16:57:13
Amplitude andPhase vs Time for J2007+4029.MULTI.1 CL # 3
IF 6 CHAN 1 STK LL of J2007+4029.ICL001.3



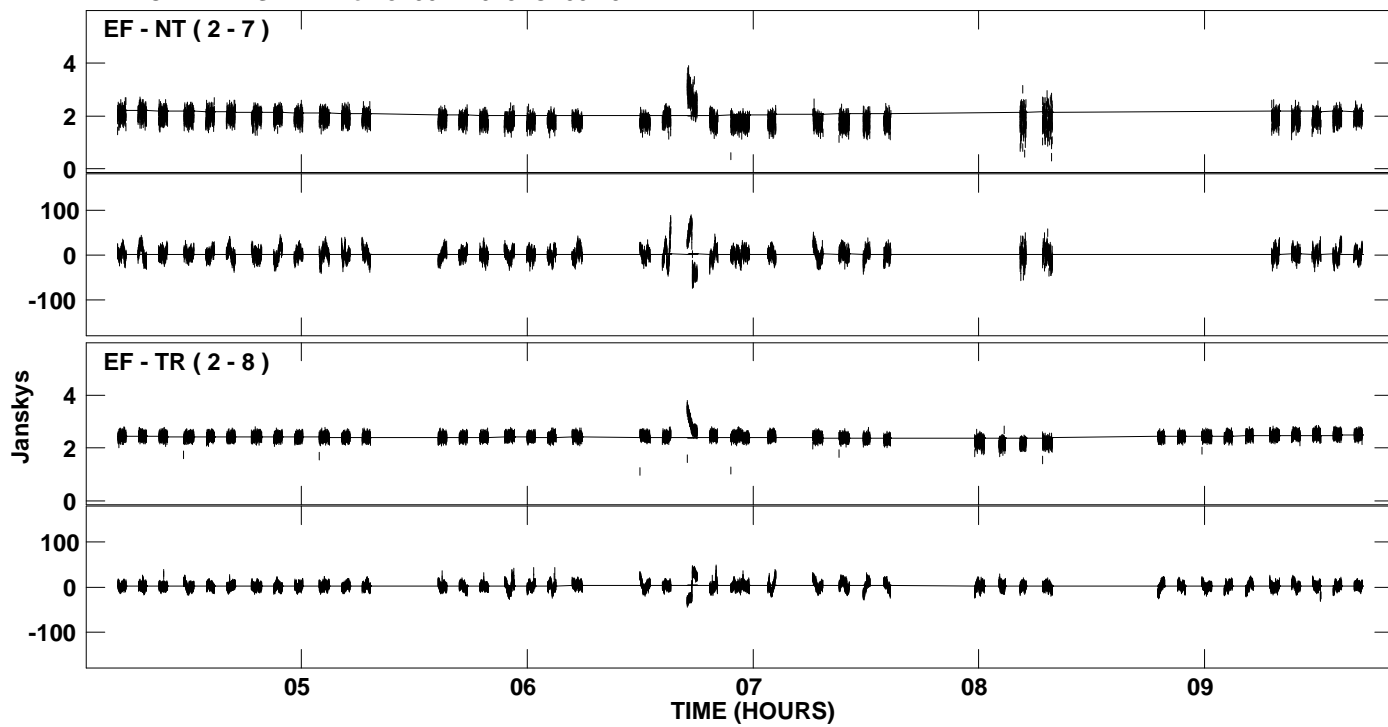
PLot file version 12 created 09-JUL-2009 16:57:13
Amplitude andPhase vs Time for J2007+4029.MULTI.1 CL # 3
IF 6 CHAN 1 STK LL of J2007+4029.ICL001.3



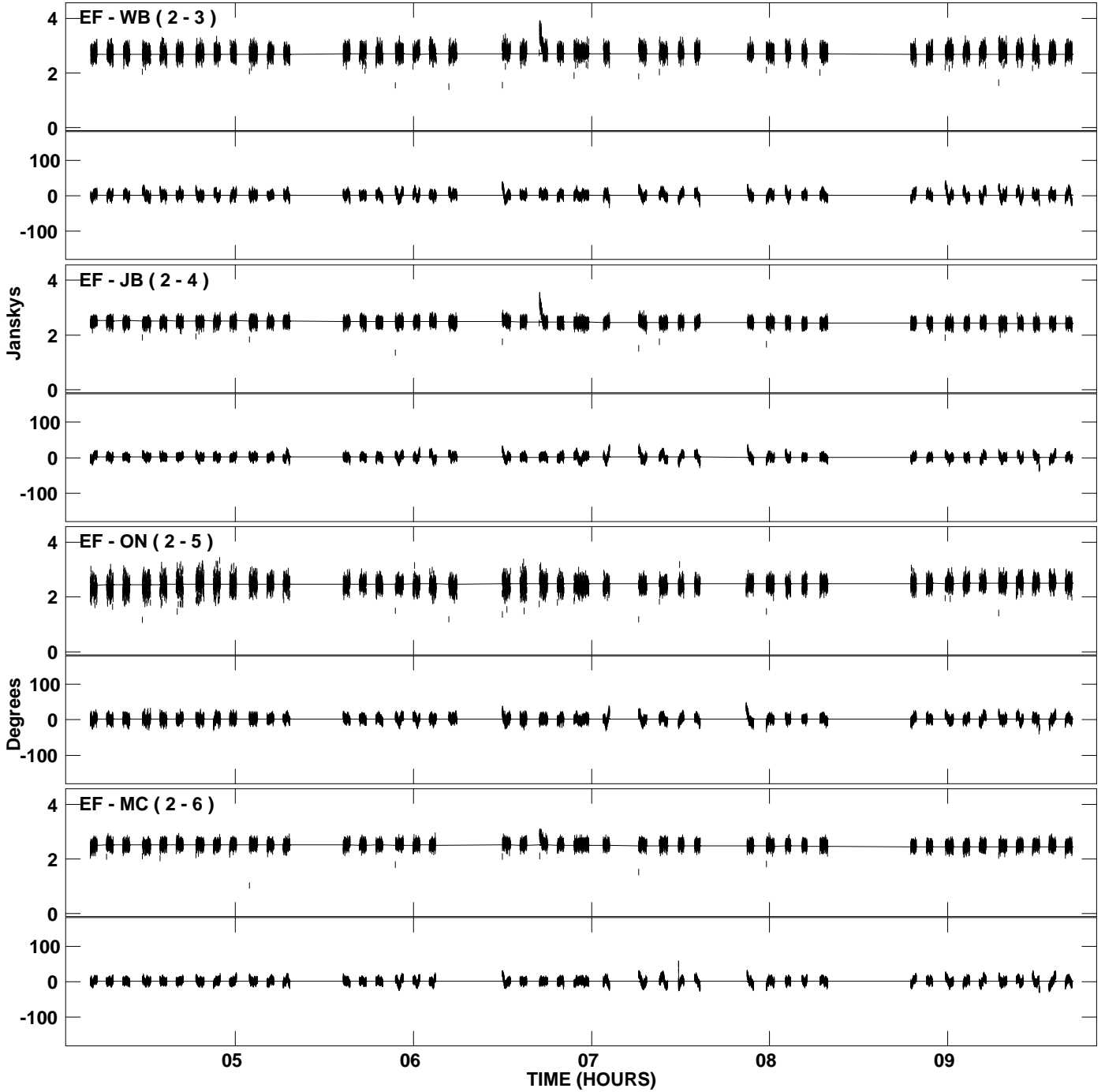
PLot file version 13 created 09-JUL-2009 16:57:14
Amplitude and Phase vs Time for J2007+4029.MULTI.1 CL # 3
IF 7 CHAN 1 STK LL of J2007+4029.ICL001.3



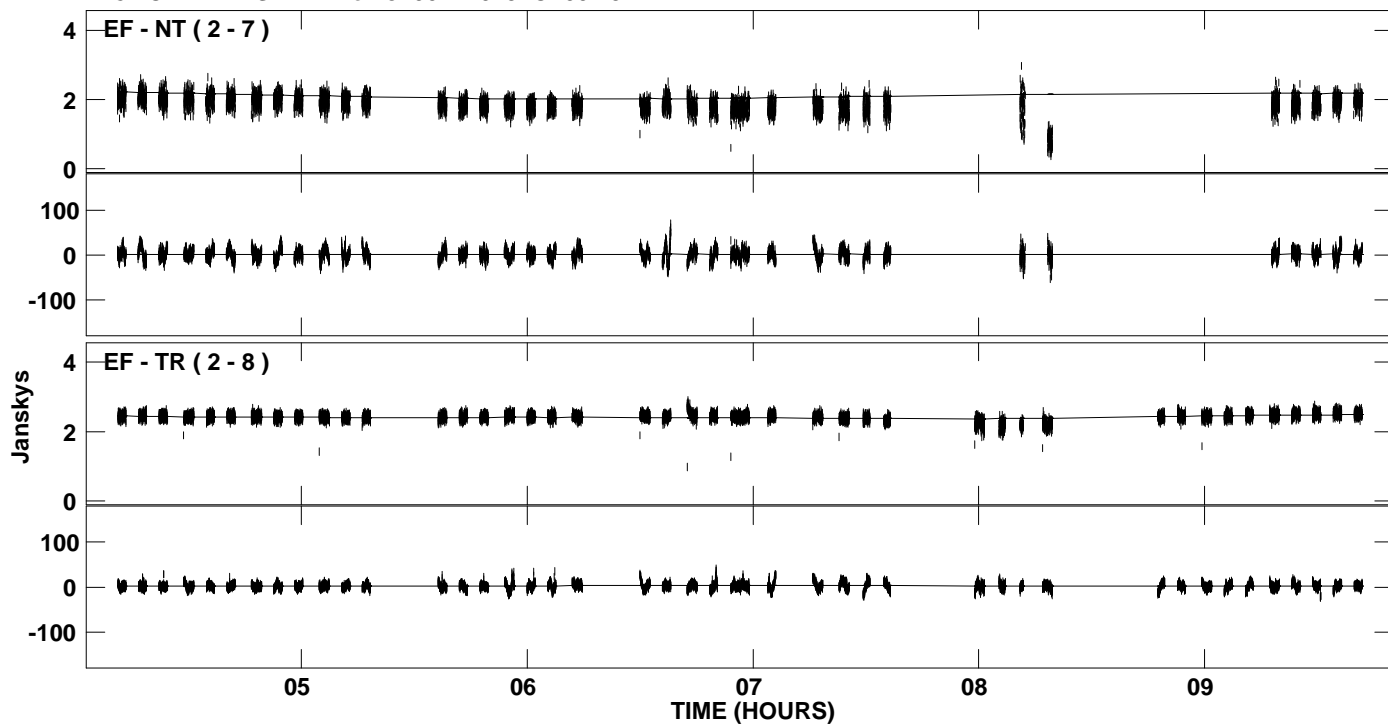
PLot file version 14 created 09-JUL-2009 16:57:14
Amplitude andPhase vs Time for J2007+4029.MULTI.1 CL # 3
IF 7 CHAN 1 STK LL of J2007+4029.ICL001.3



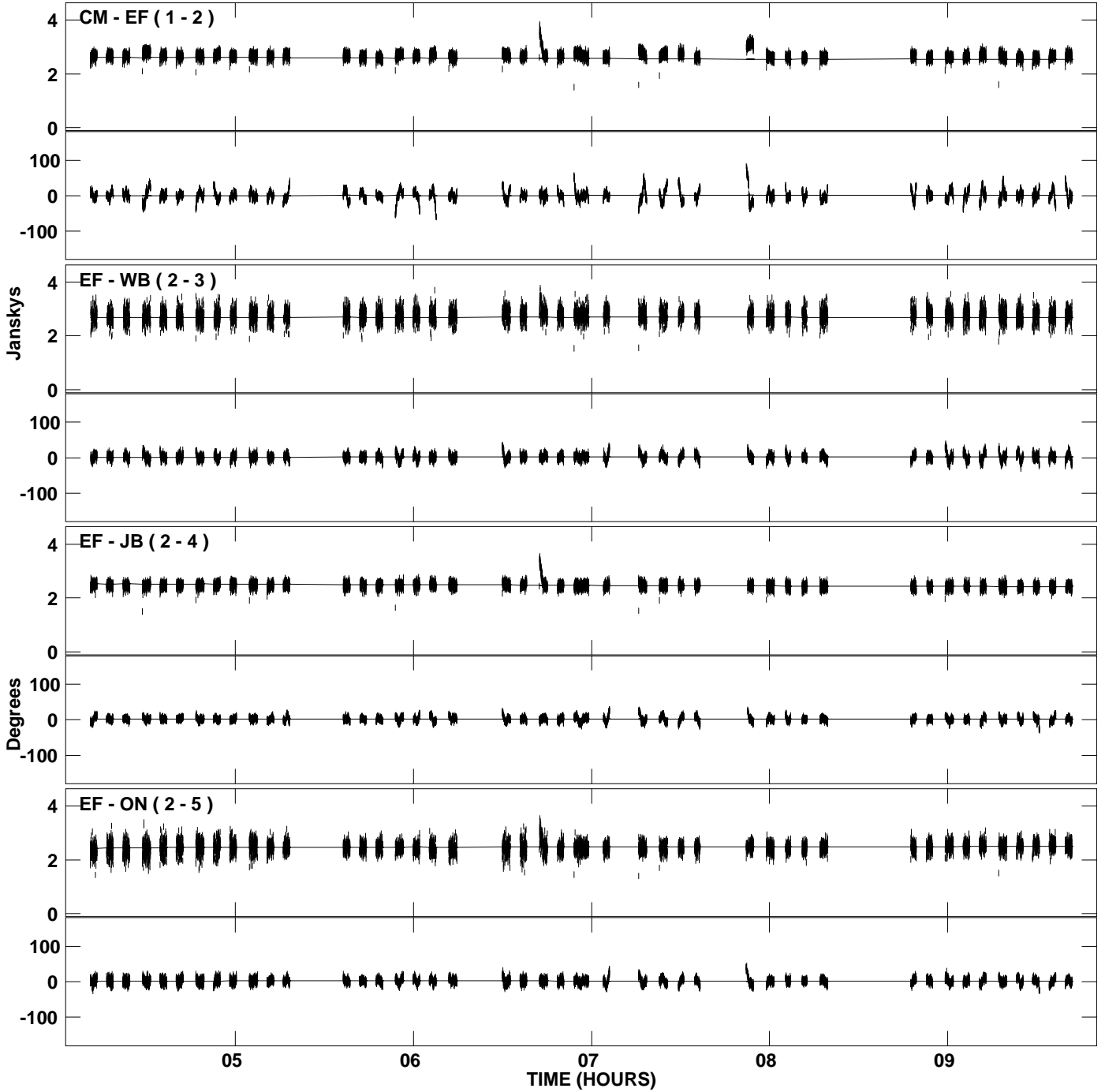
PLot file version 15 created 09-JUL-2009 16:57:15
Amplitude andPhase vs Time for J2007+4029.MULTI.1 CL # 3
IF 8 CHAN 1 STK LL of J2007+4029.ICL001.3



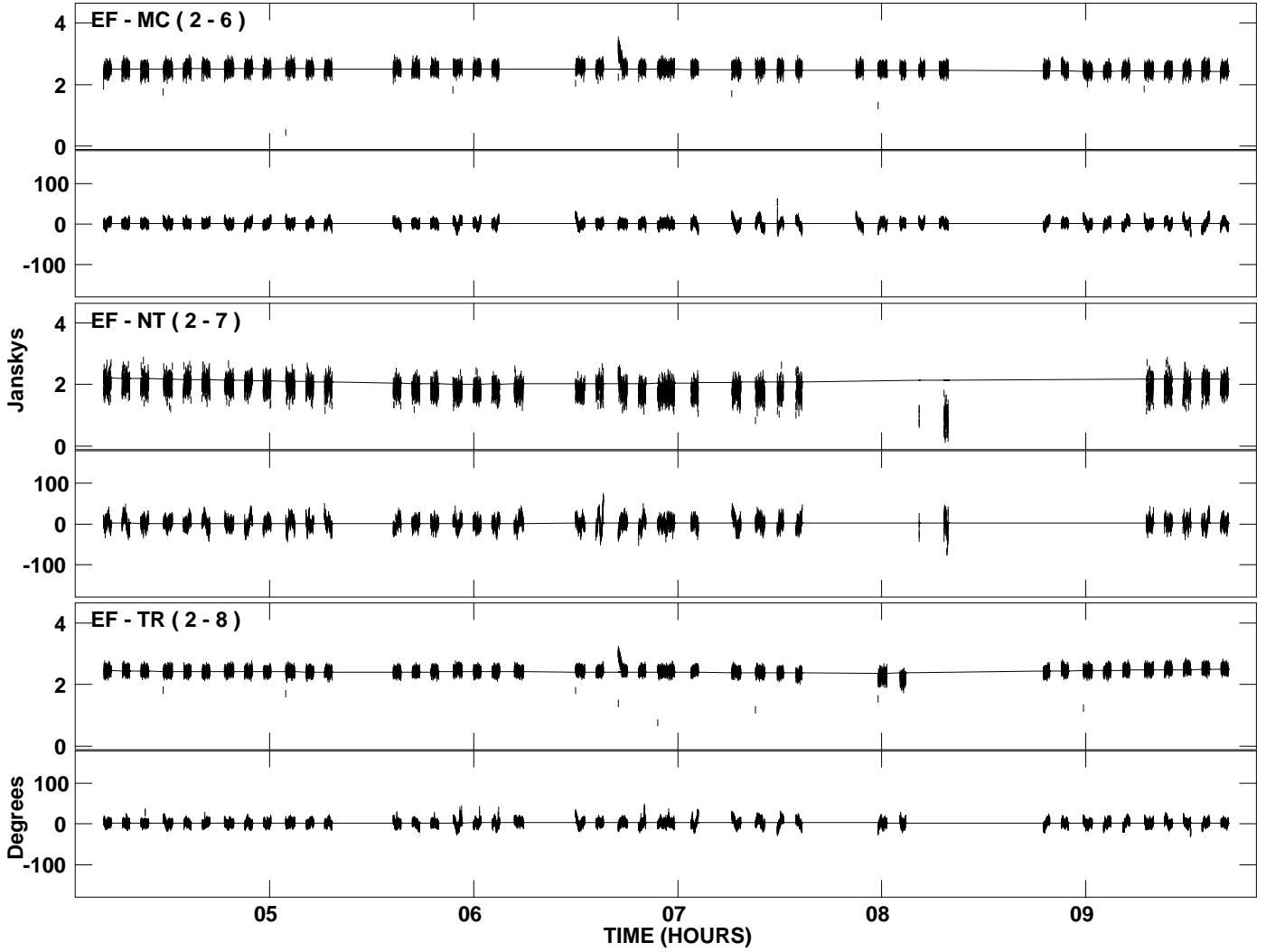
PLot file version 16 created 09-JUL-2009 16:57:15
Amplitude andPhase vs Time for J2007+4029.MULTI.1 CL # 3
IF 8 CHAN 1 STK LL of J2007+4029.ICL001.3



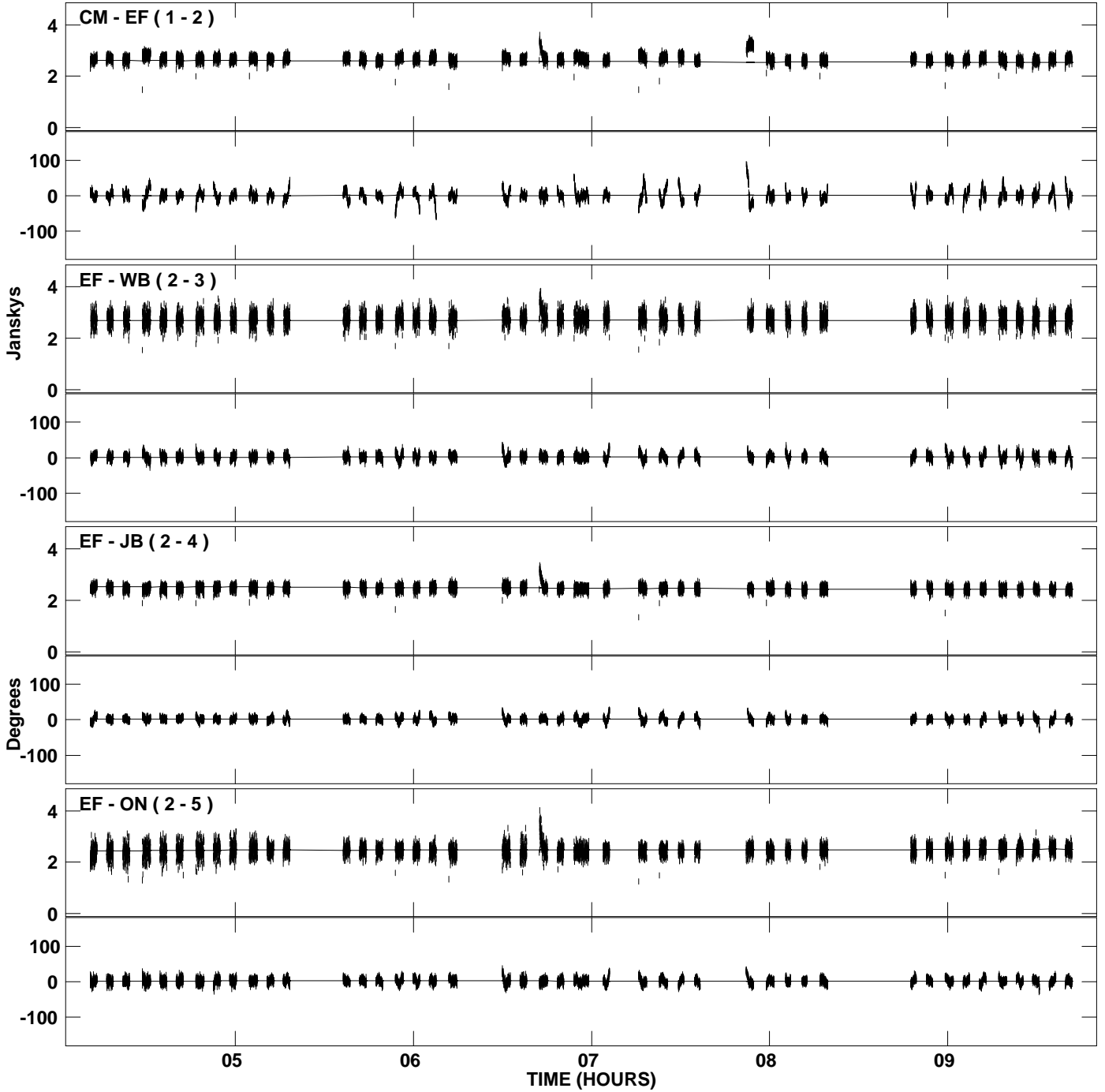
PLot file version 17 created 09-JUL-2009 16:57:15
Amplitude andPhase vs Time for J2007+4029.MULTI.1 CL # 3
IF 1 CHAN 1 STK RR of J2007+4029.ICL001.3



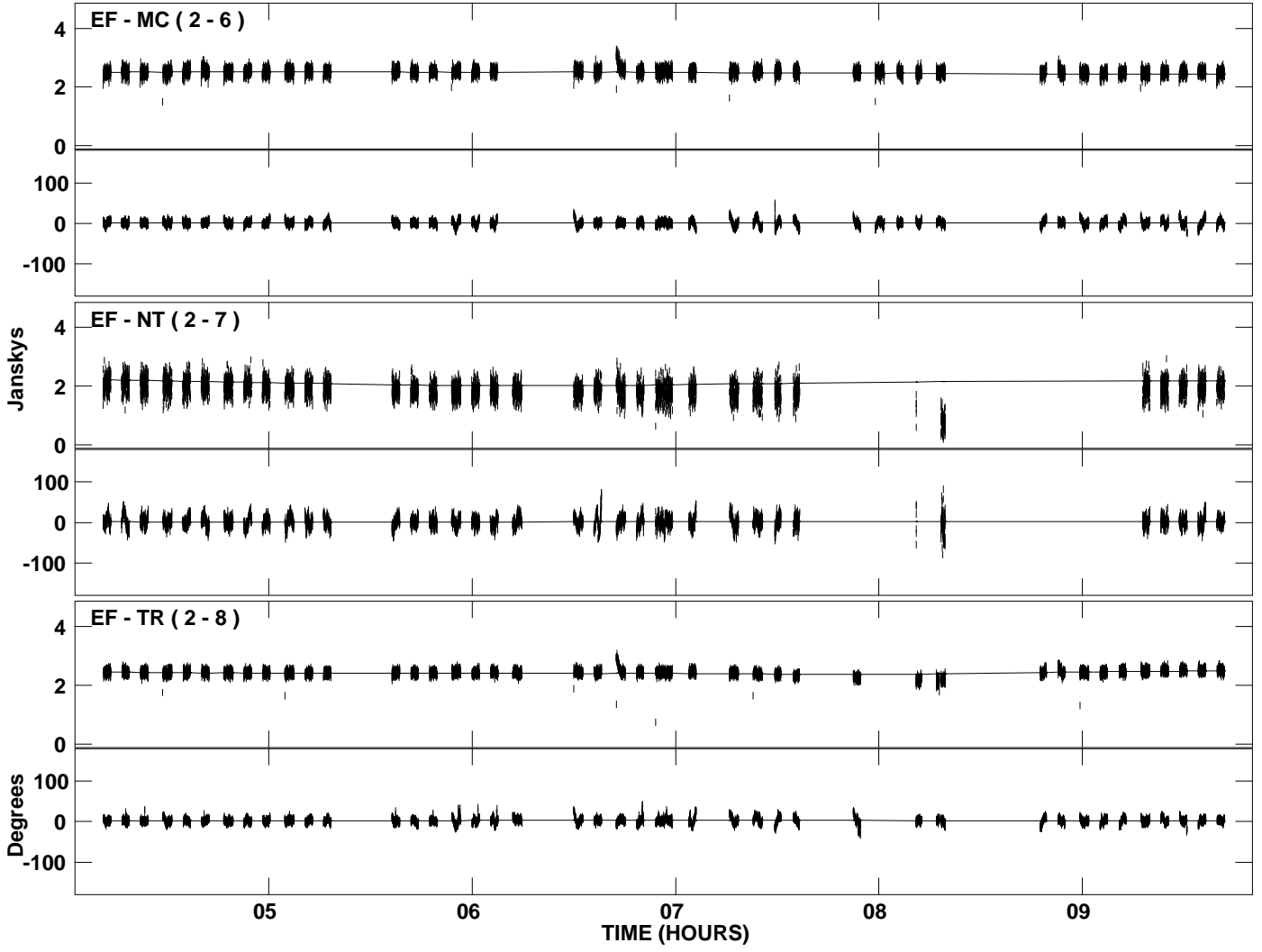
PLot file version 18 created 09-JUL-2009 16:57:15
Amplitude and Phase vs Time for J2007+4029.MULTI.1 CL # 3
IF 1 CHAN 1 STK RR of J2007+4029.ICL001.3



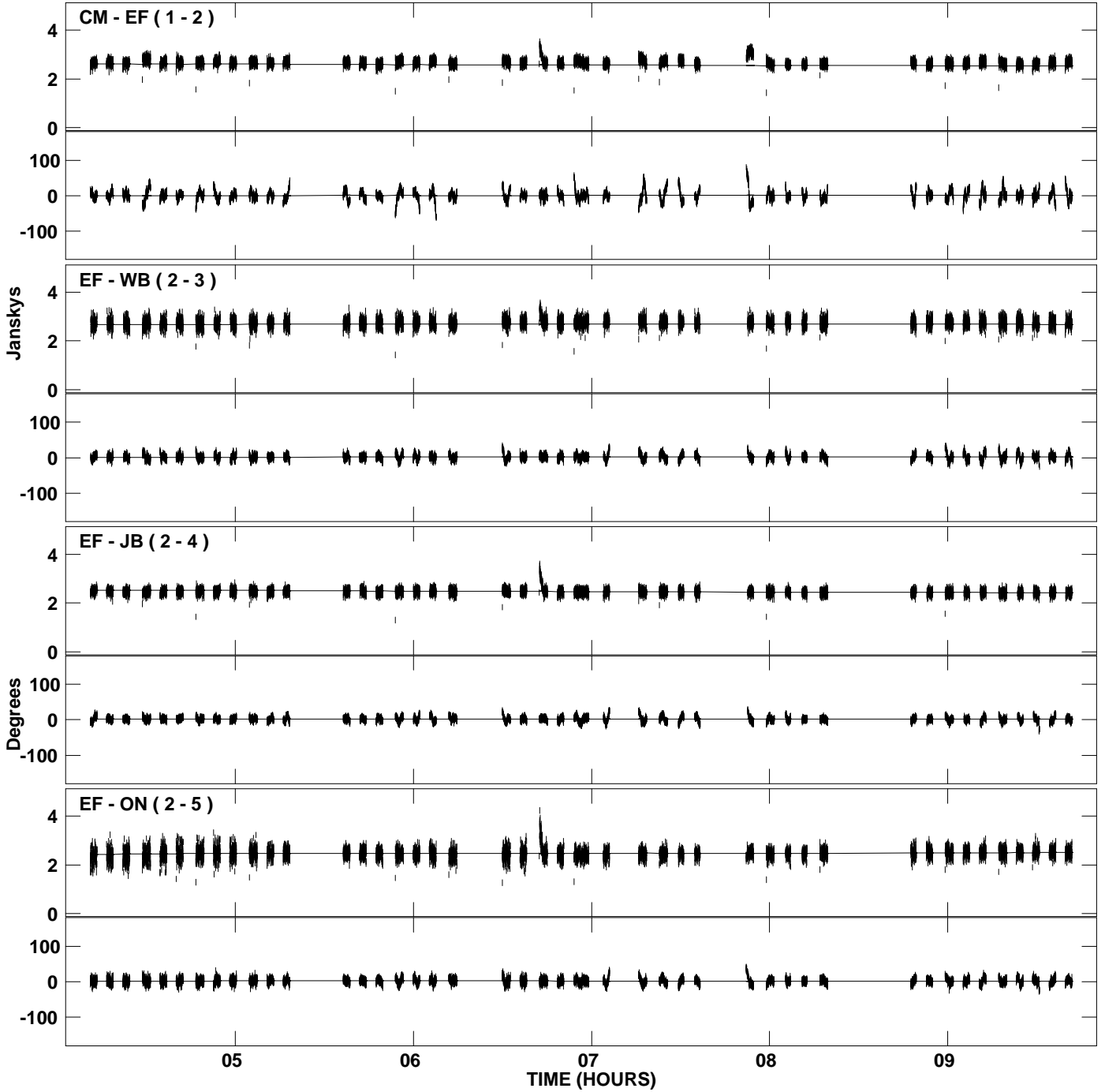
PLot file version 19 created 09-JUL-2009 16:57:16
Amplitude andPhase vs Time for J2007+4029.MULTI.1 CL # 3
IF 2 CHAN 1 STK RR of J2007+4029.ICL001.3



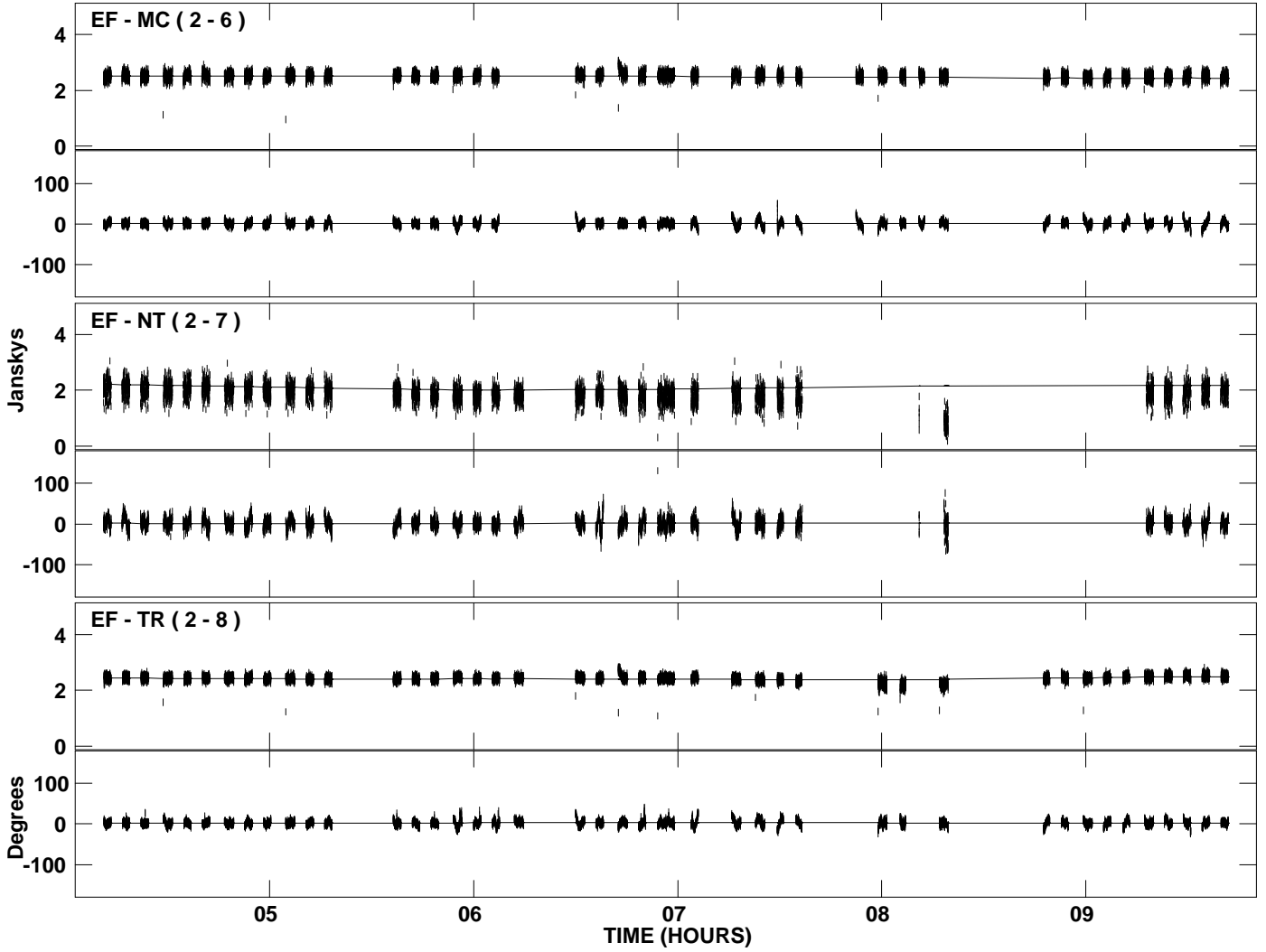
PLot file version 20 created 09-JUL-2009 16:57:16
Amplitude andPhase vs Time for J2007+4029.MULTI.1 CL # 3
IF 2 CHAN 1 STK RR of J2007+4029.ICL001.3



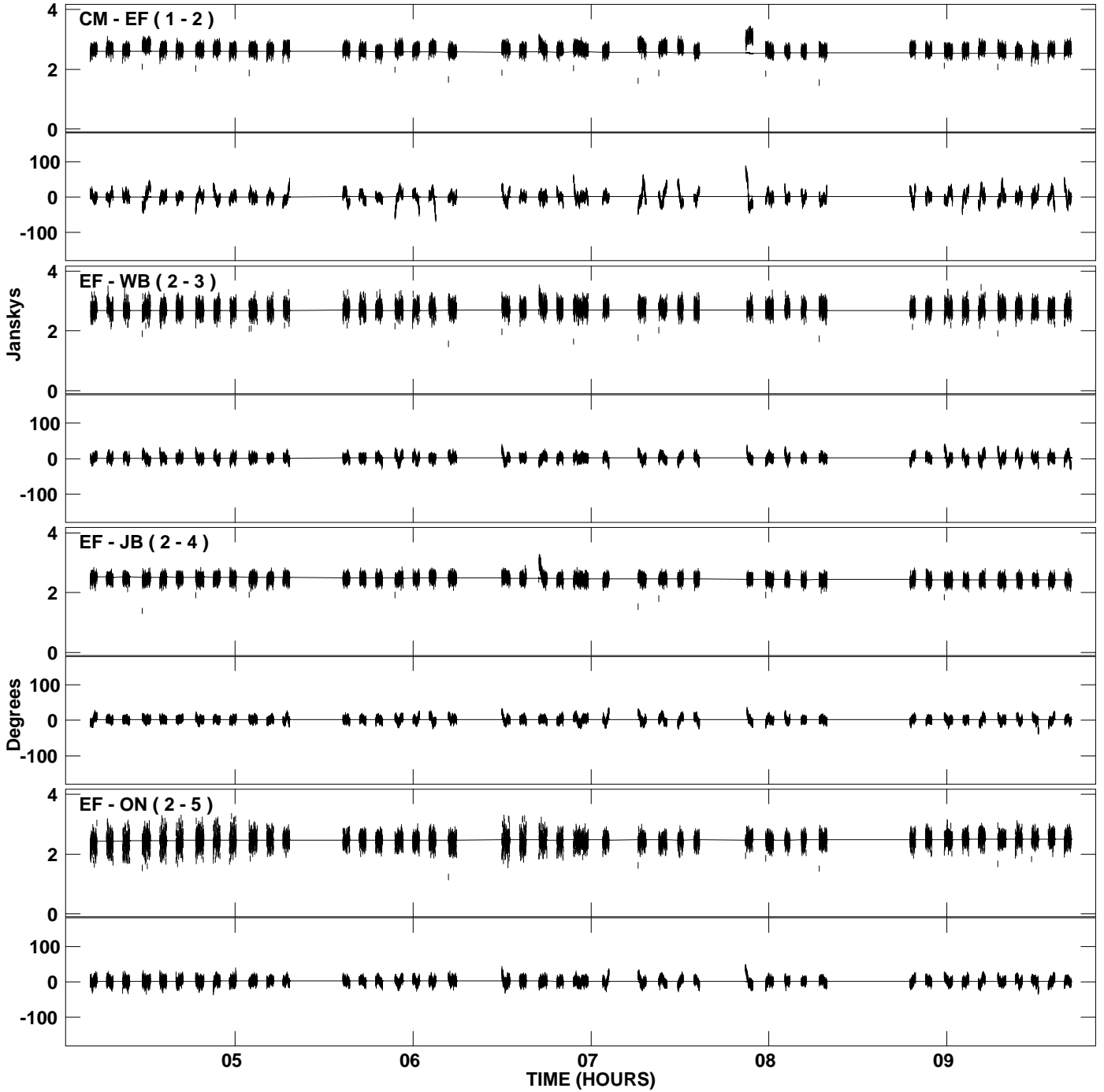
PLot file version 21 created 09-JUL-2009 16:57:17
Amplitude and Phase vs Time for J2007+4029.MULTI.1 CL # 3
IF 3 CHAN 1 STK RR of J2007+4029.ICL001.3



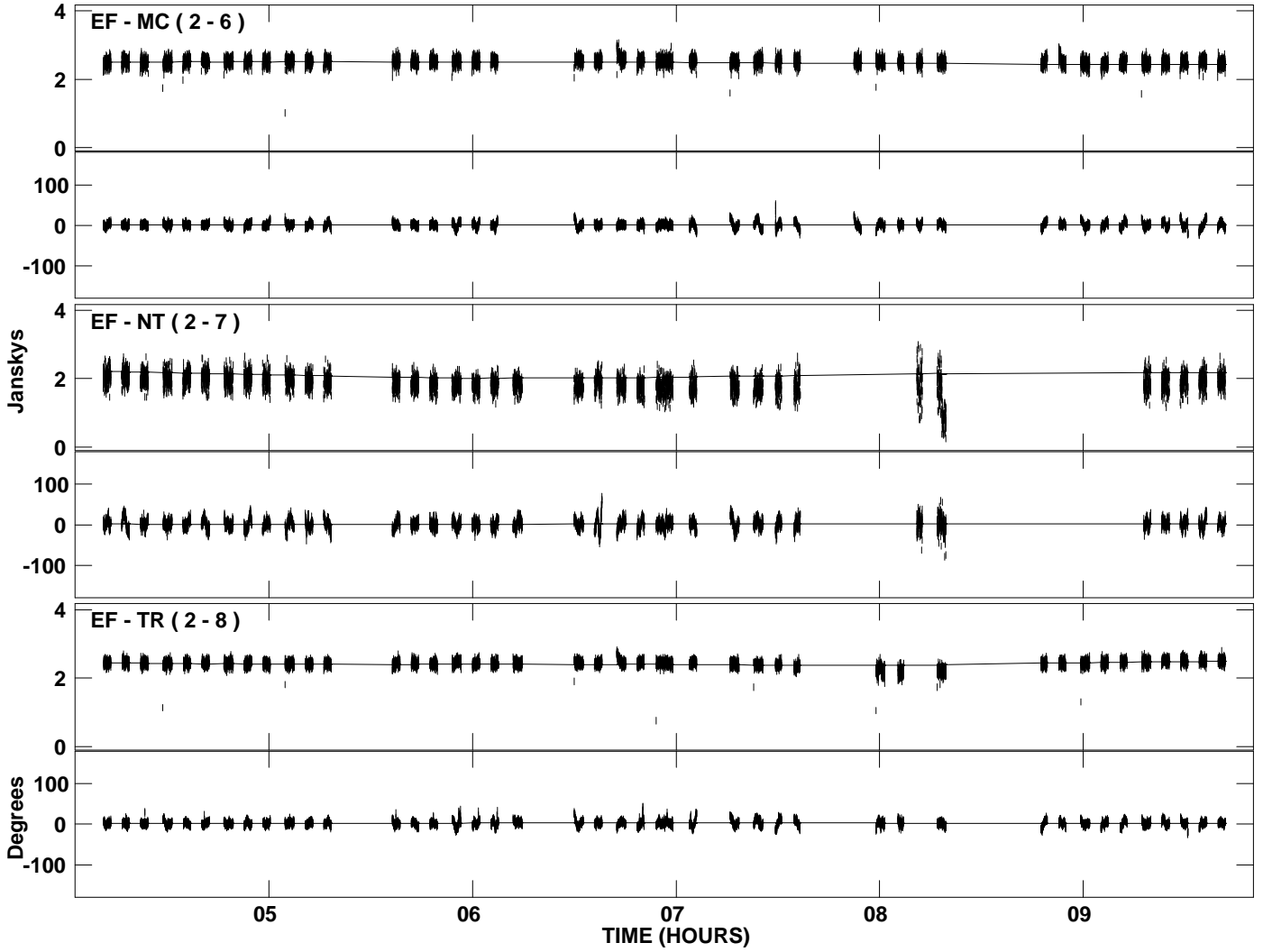
PLot file version 22 created 09-JUL-2009 16:57:17
Amplitude and Phase vs Time for J2007+4029.MULTI.1 CL # 3
IF 3 CHAN 1 STK RR of J2007+4029.ICL001.3



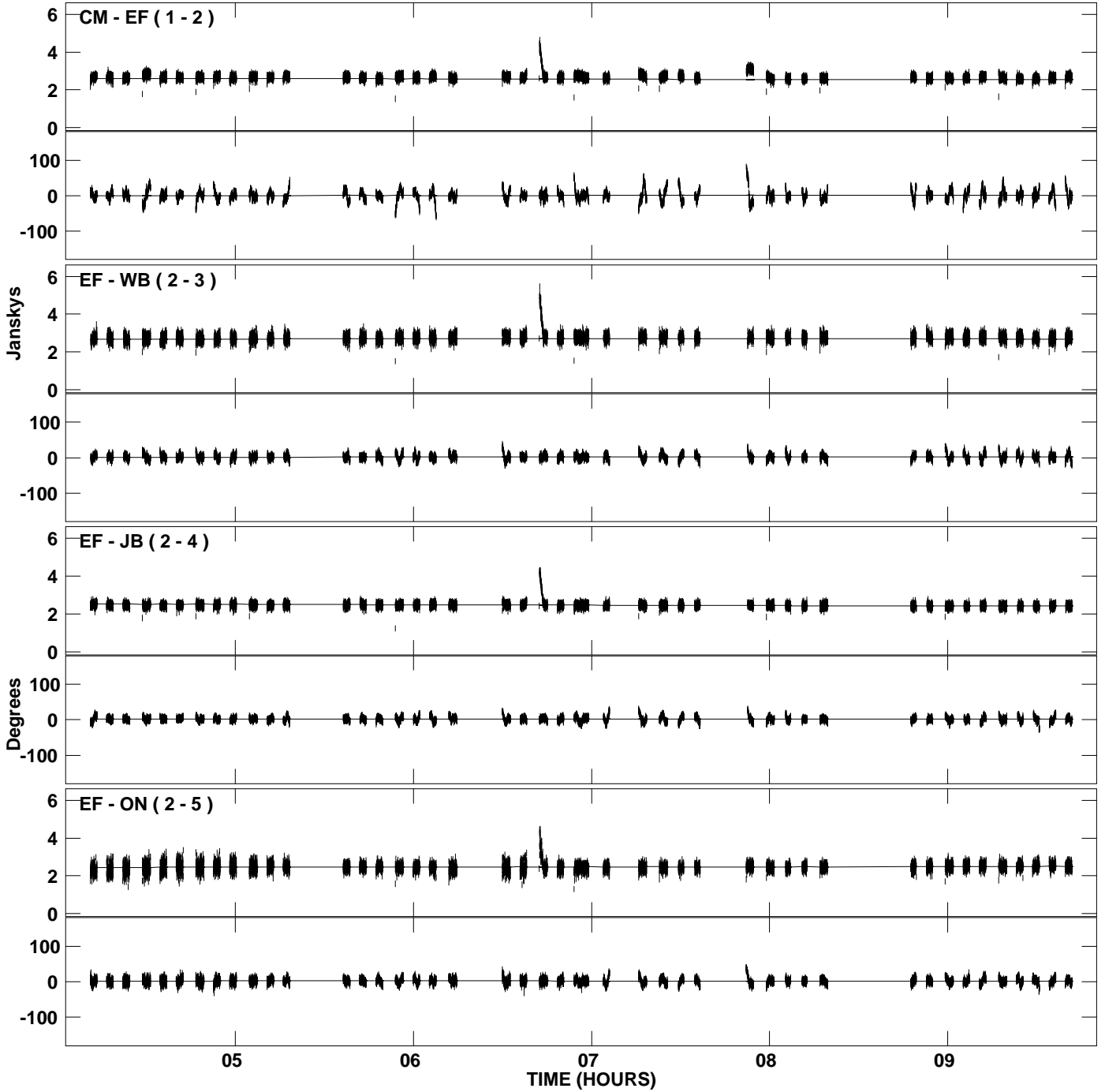
PLot file version 23 created 09-JUL-2009 16:57:17
Amplitude andPhase vs Time for J2007+4029.MULTI.1 CL # 3
IF 4 CHAN 1 STK RR of J2007+4029.ICL001.3



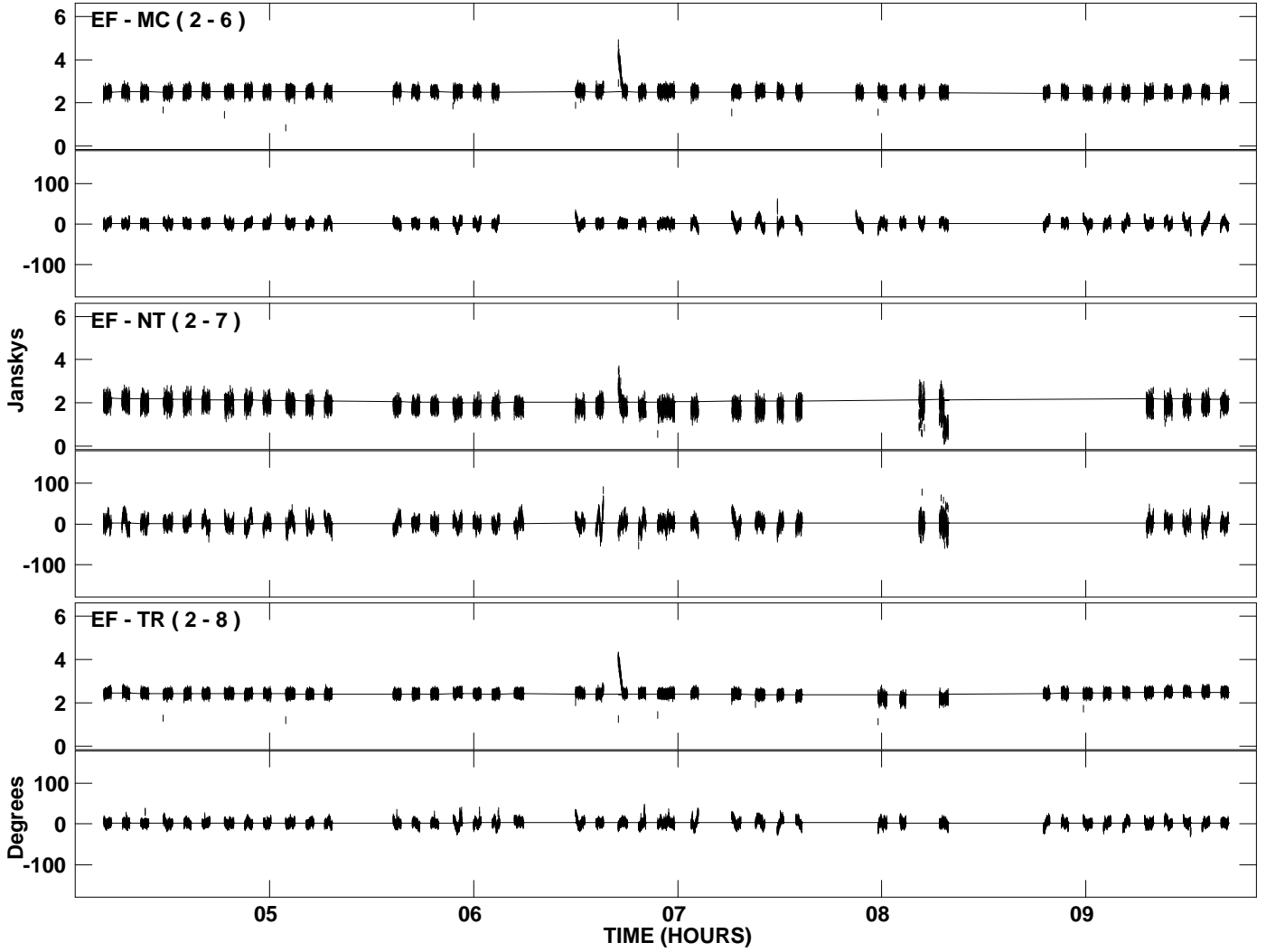
PLot file version 24 created 09-JUL-2009 16:57:17
Amplitude and Phase vs Time for J2007+4029.MULTI.1 CL # 3
IF 4 CHAN 1 STK RR of J2007+4029.ICL001.3



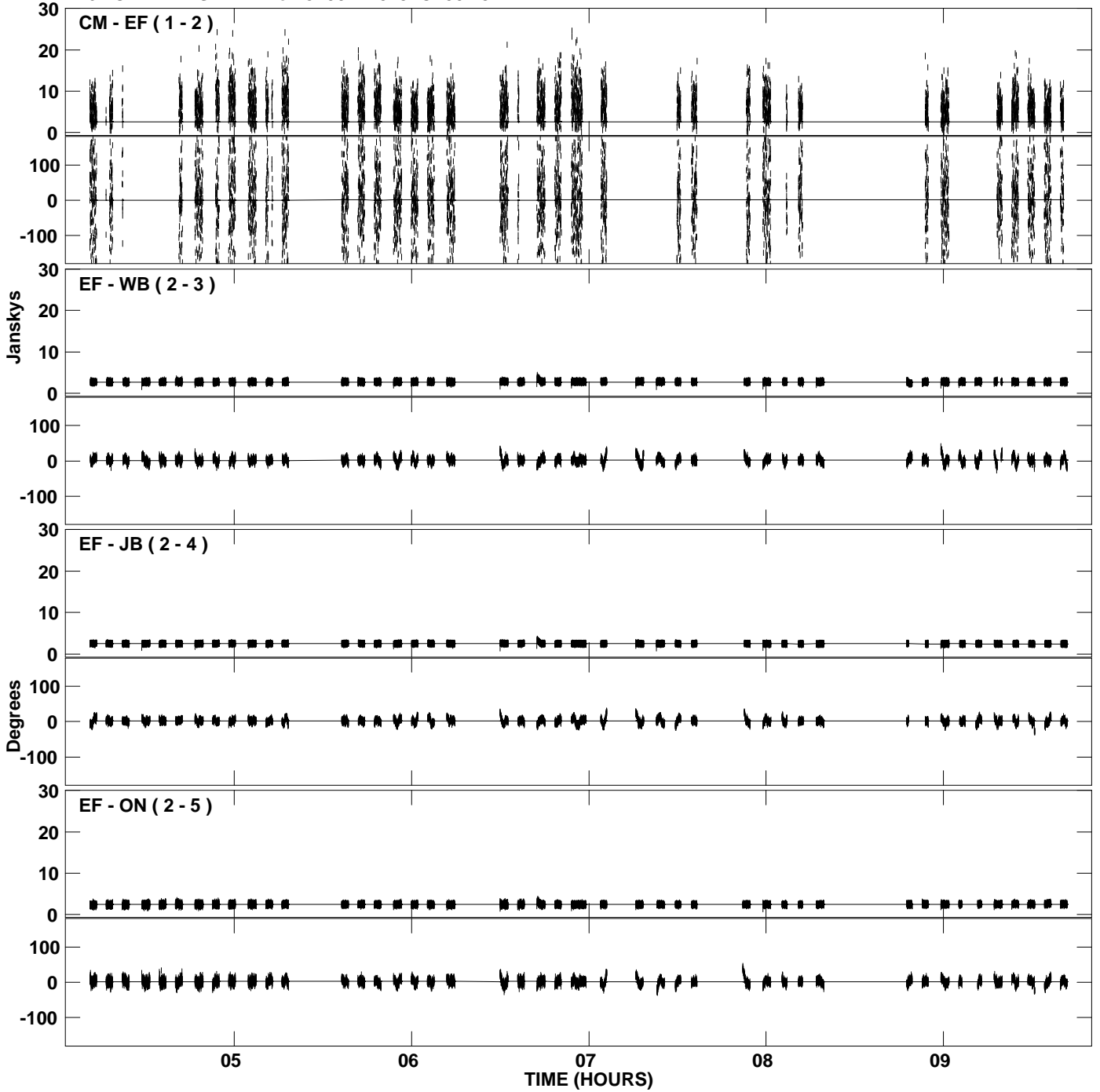
PLot file version 25 created 09-JUL-2009 16:57:18
Amplitude andPhase vs Time for J2007+4029.MULTI.1 CL # 3
IF 5 CHAN 1 STK RR of J2007+4029.ICL001.3



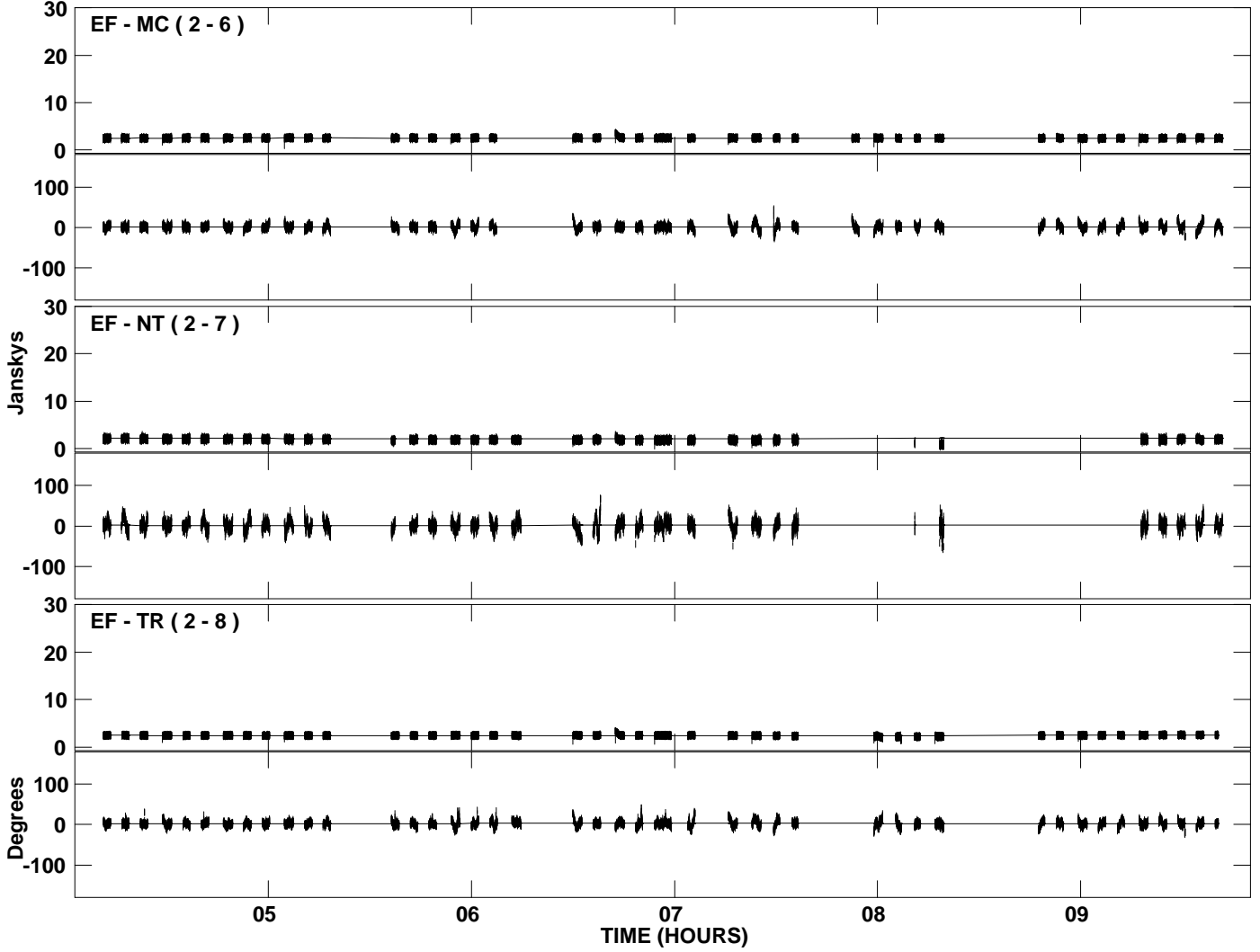
PLot file version 26 created 09-JUL-2009 16:57:18
Amplitude and Phase vs Time for J2007+4029.MULTI.1 CL # 3
IF 5 CHAN 1 STK RR of J2007+4029.ICL001.3



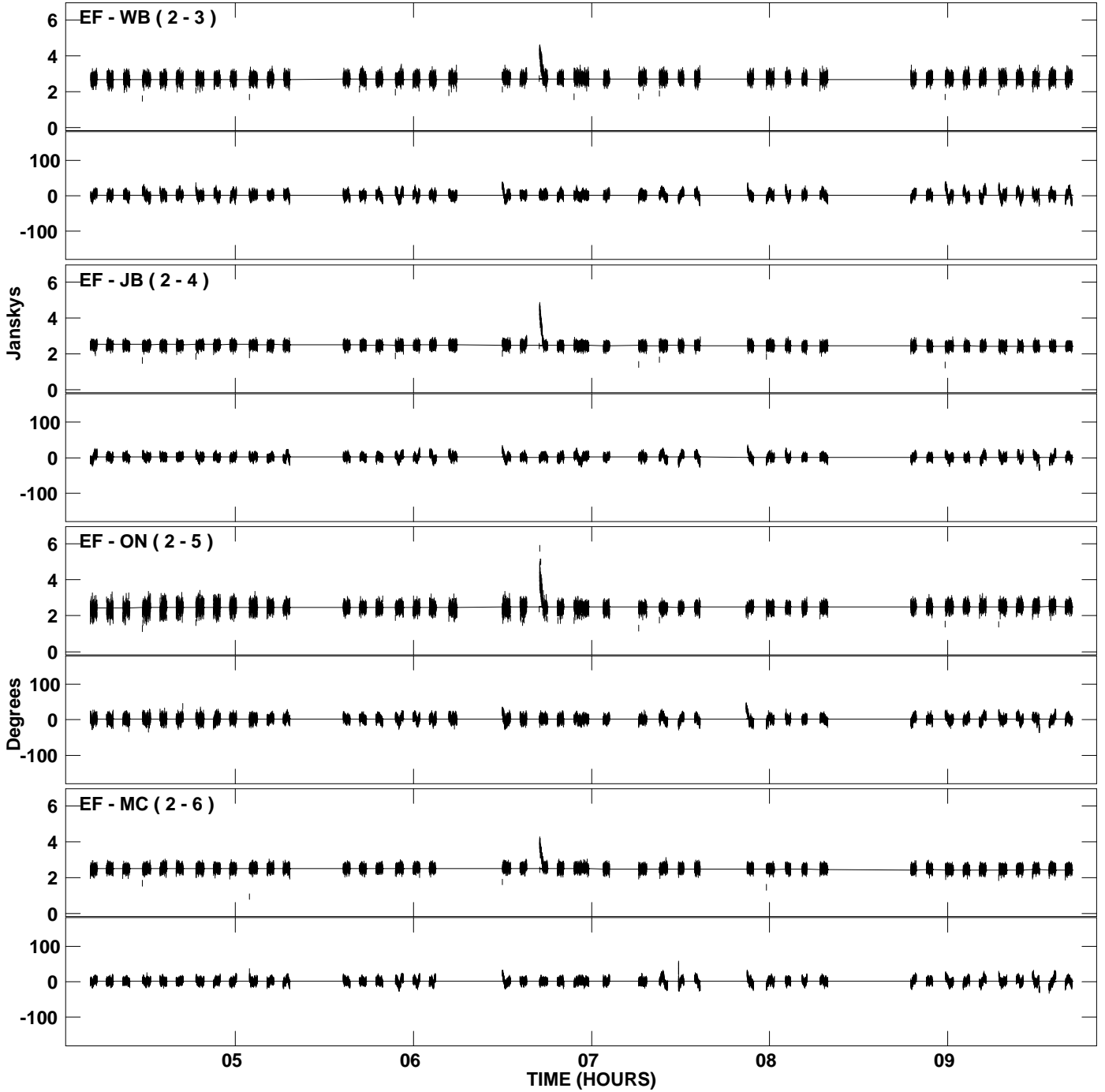
PLot file version 27 created 09-JUL-2009 16:57:19
Amplitude and Phase vs Time for J2007+4029.MULTI.1 CL # 3
IF 6 CHAN 1 STK RR of J2007+4029.ICL001.3



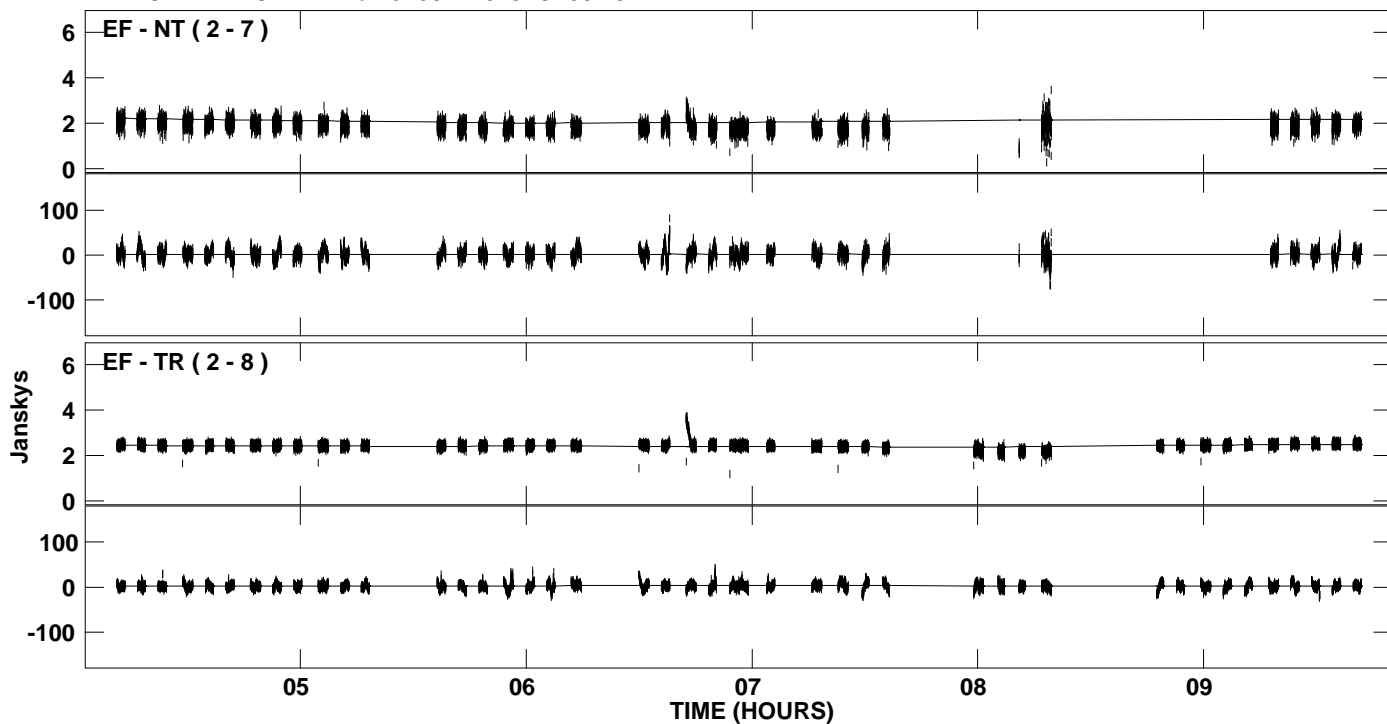
PLot file version 28 created 09-JUL-2009 16:57:19
Amplitude and Phase vs Time for J2007+4029.MULTI.1 CL # 3
IF 6 CHAN 1 STK RR of J2007+4029.ICL001.3



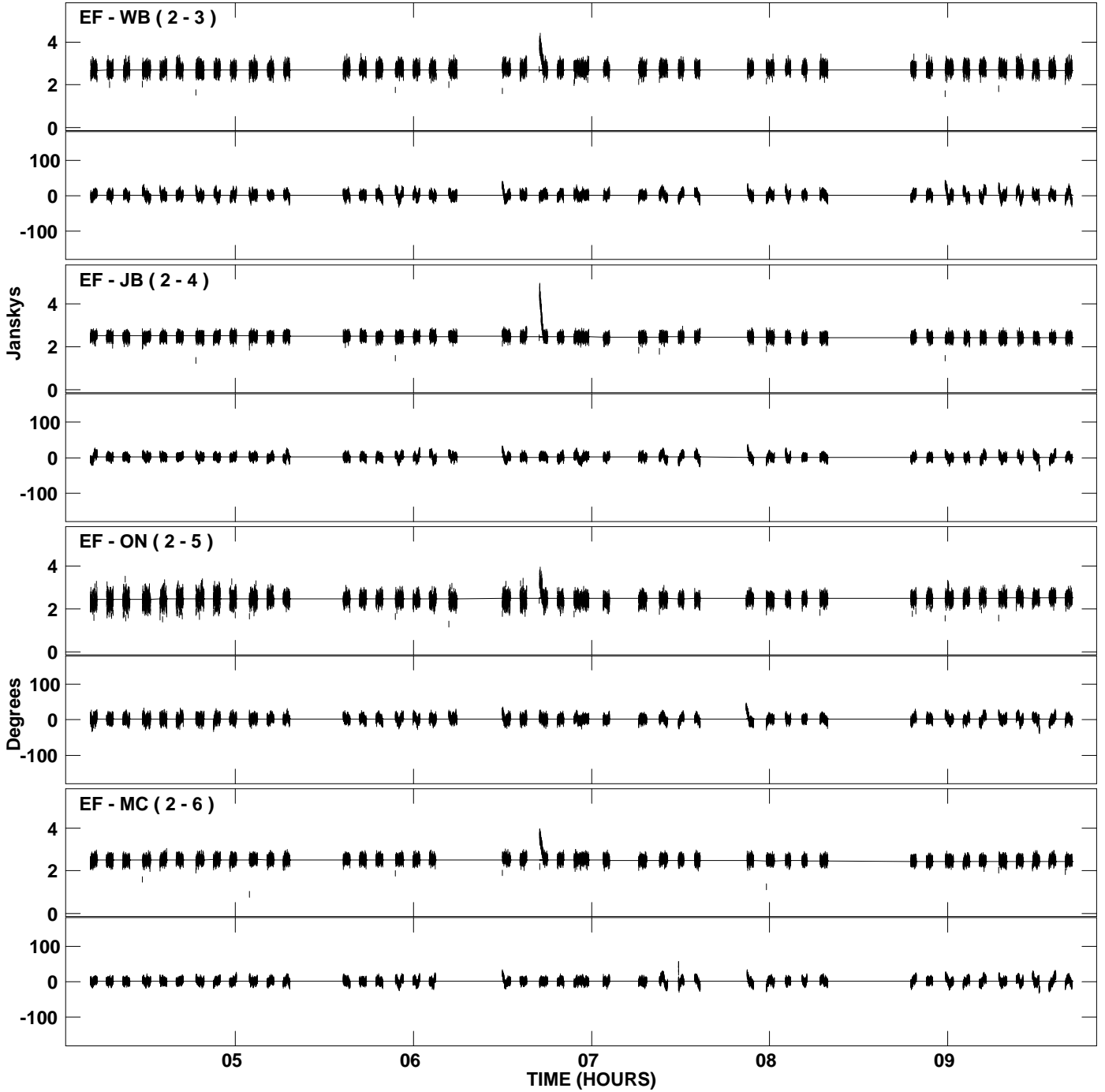
PLot file version 29 created 09-JUL-2009 16:57:19
Amplitude and Phase vs Time for J2007+4029.MULTI.1 CL # 3
IF 7 CHAN 1 STK RR of J2007+4029.ICL001.3



PLot file version 30 created 09-JUL-2009 16:57:20
Amplitude andPhase vs Time for J2007+4029.MULTI.1 CL # 3
IF 7 CHAN 1 STK RR of J2007+4029.ICL001.3



PLot file version 31 created 09-JUL-2009 16:57:20
Amplitude andPhase vs Time for J2007+4029.MULTI.1 CL # 3
IF 8 CHAN 1 STK RR of J2007+4029.ICL001.3



PLot file version 32 created 09-JUL-2009 16:57:20
Amplitude andPhase vs Time for J2007+4029.MULTI.1 CL # 3
IF 8 CHAN 1 STK RR of J2007+4029.ICL001.3

