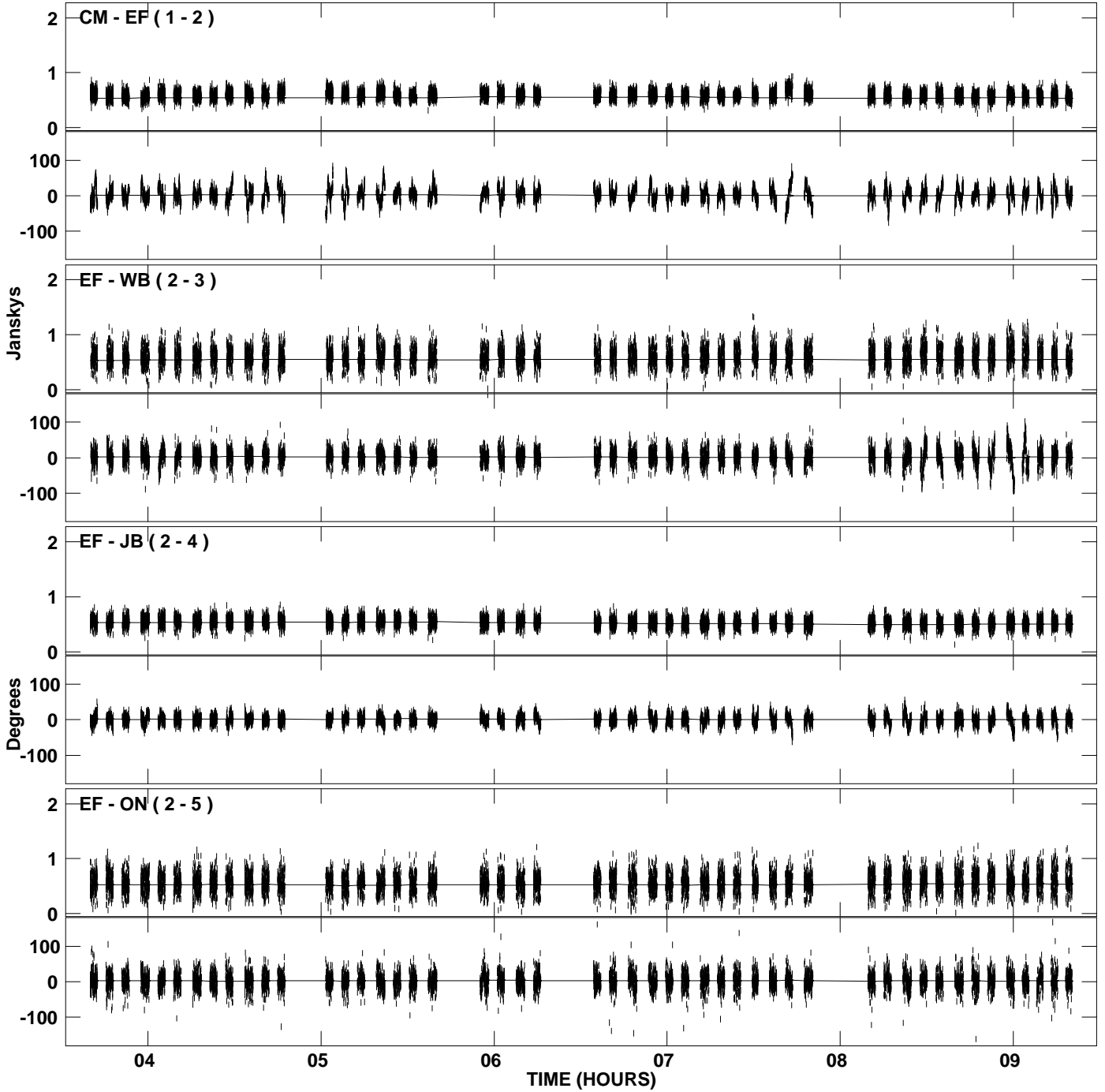
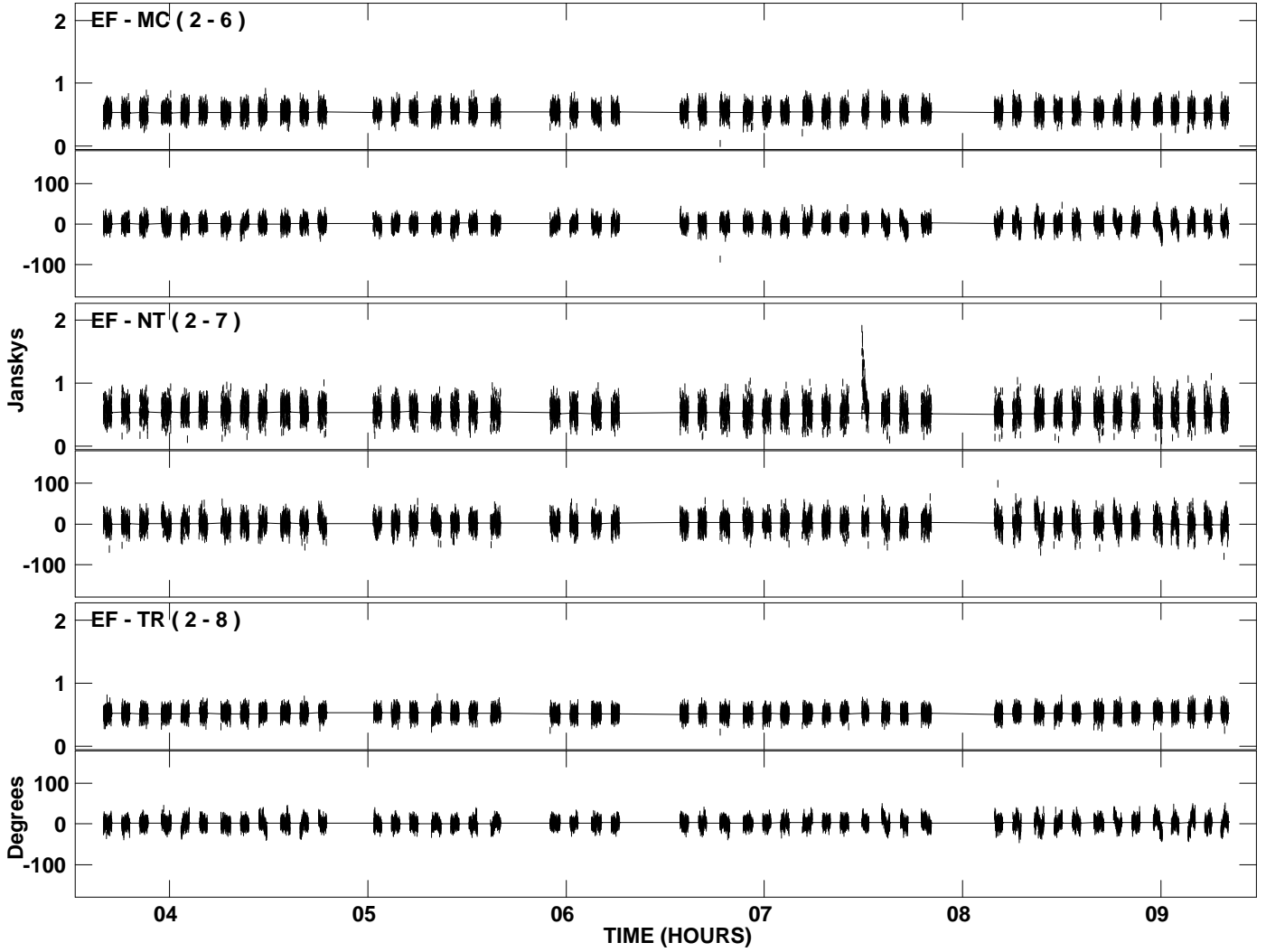


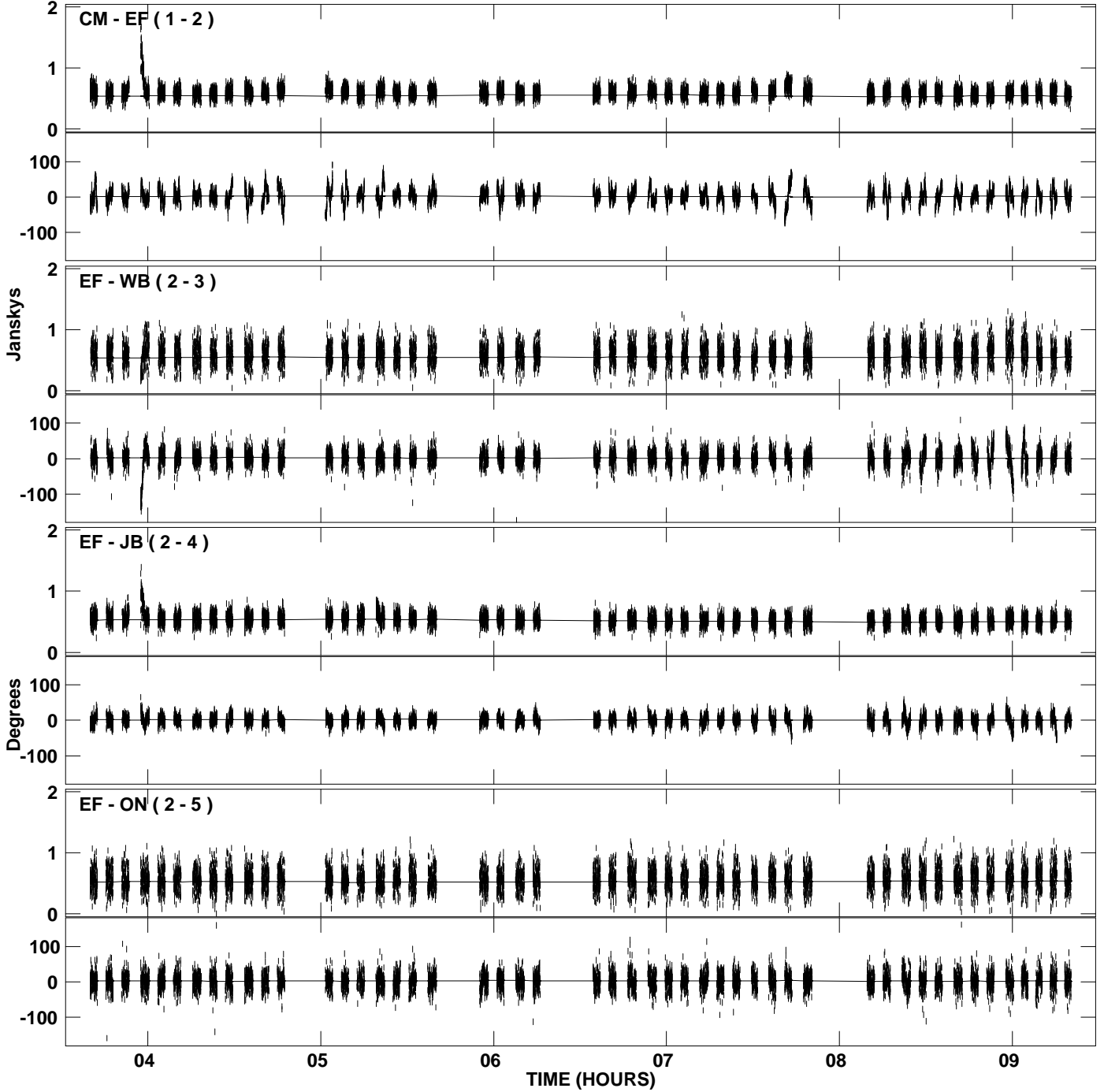
PLot file version 1 created 14-JUL-2009 20:19:17
Amplitude and Phase vs Time for J1825-0737.MULTI.1 CL # 3
IF 1 CHAN 1 STK LL of J1825-0737.ICL001.3



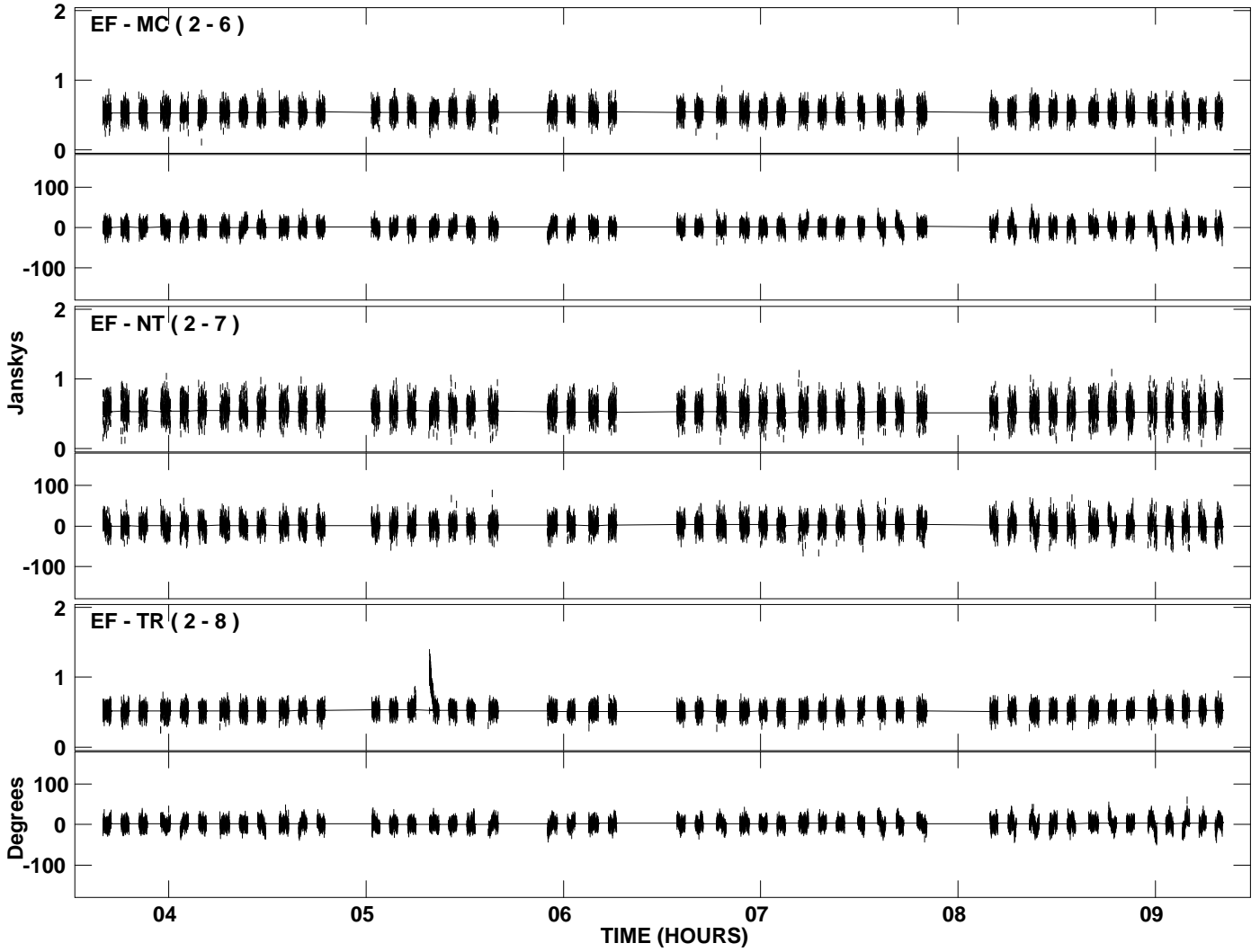
PLot file version 2 created 14-JUL-2009 20:19:17
Amplitude and Phase vs Time for J1825-0737.MULTI.1 CL # 3
IF 1 CHAN 1 STK LL of J1825-0737.ICL001.3



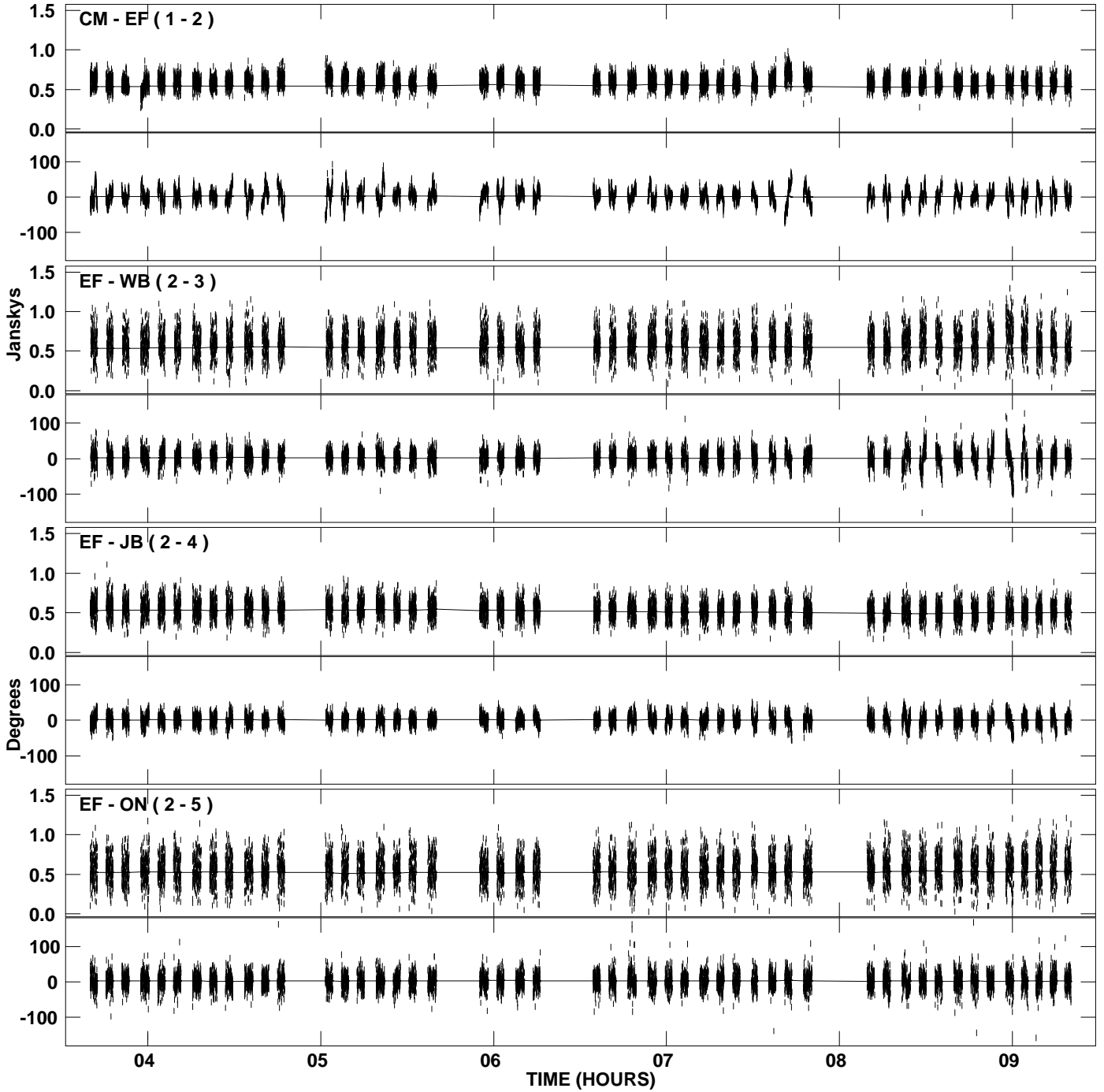
PLot file version 3 created 14-JUL-2009 20:19:18
Amplitude andPhase vs Time for J1825-0737.MULTI.1 CL # 3
IF 2 CHAN 1 STK LL of J1825-0737.ICL001.3



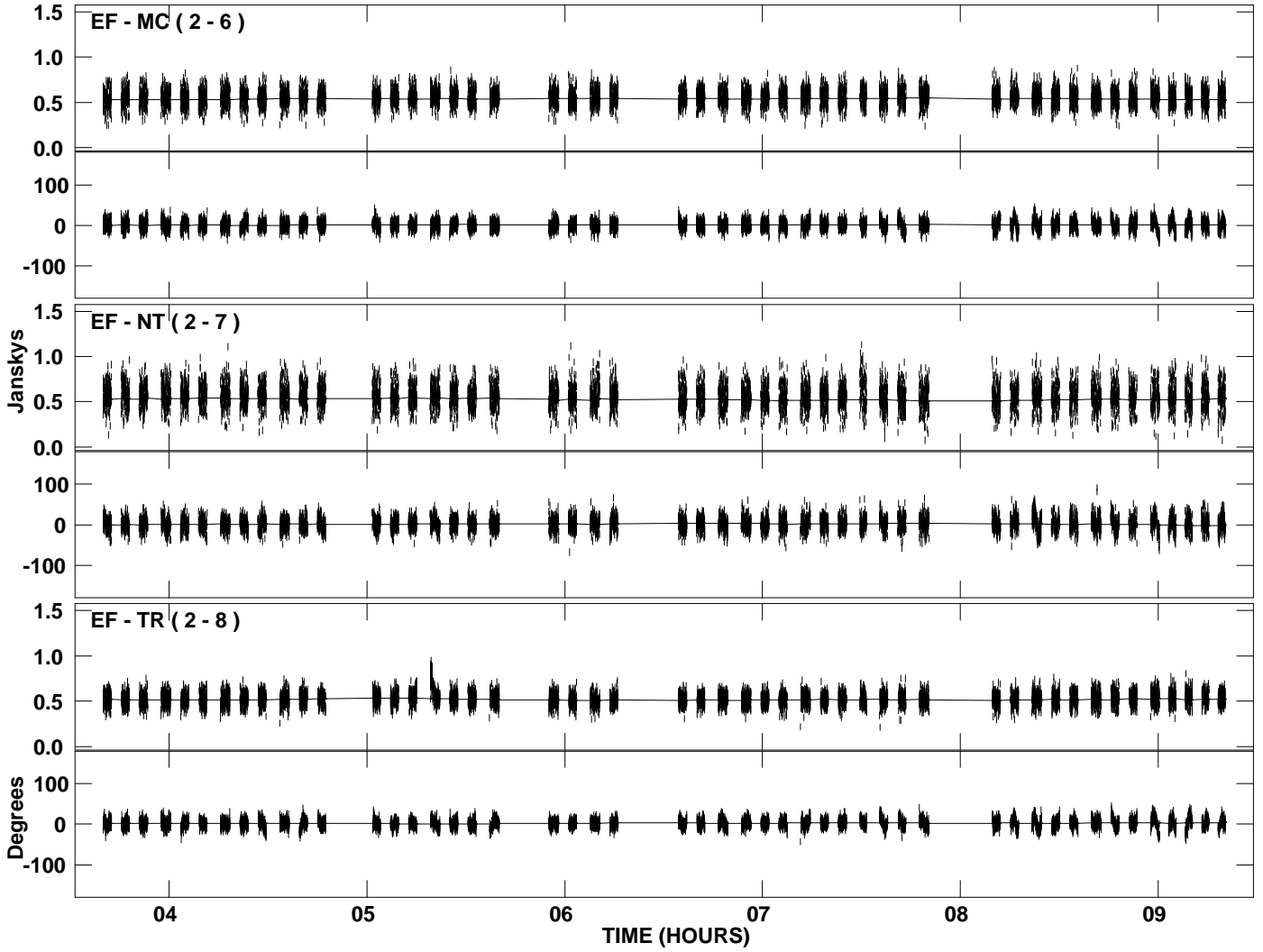
PLot file version 4 created 14-JUL-2009 20:19:18
Amplitude andPhase vs Time for J1825-0737.MULTI.1 CL # 3
IF 2 CHAN 1 STK LL of J1825-0737.ICL001.3



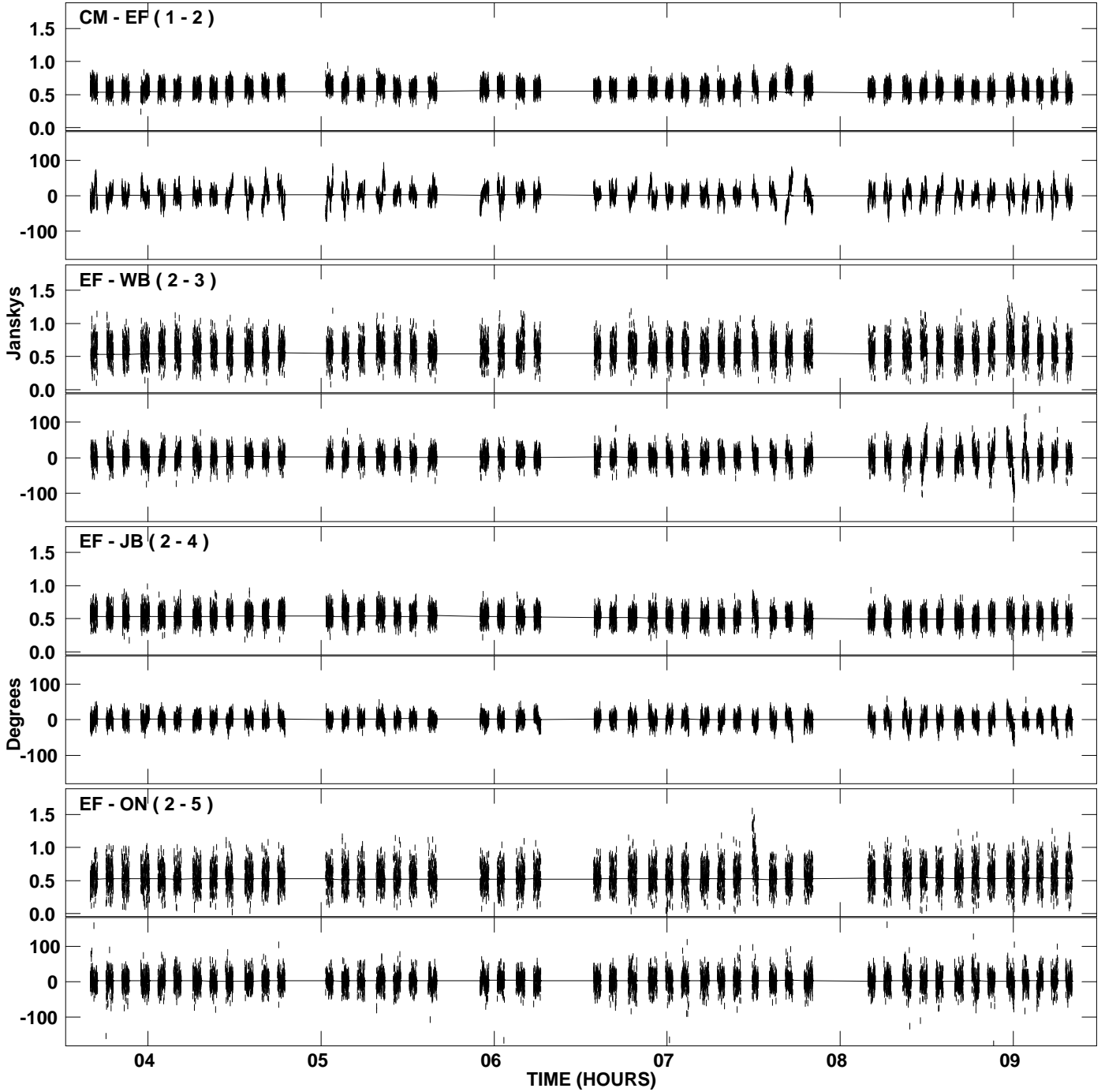
PLot file version 5 created 14-JUL-2009 20:19:19
Amplitude and Phase vs Time for J1825-0737.MULTI.1 CL # 3
IF 3 CHAN 1 STK LL of J1825-0737.ICL001.3



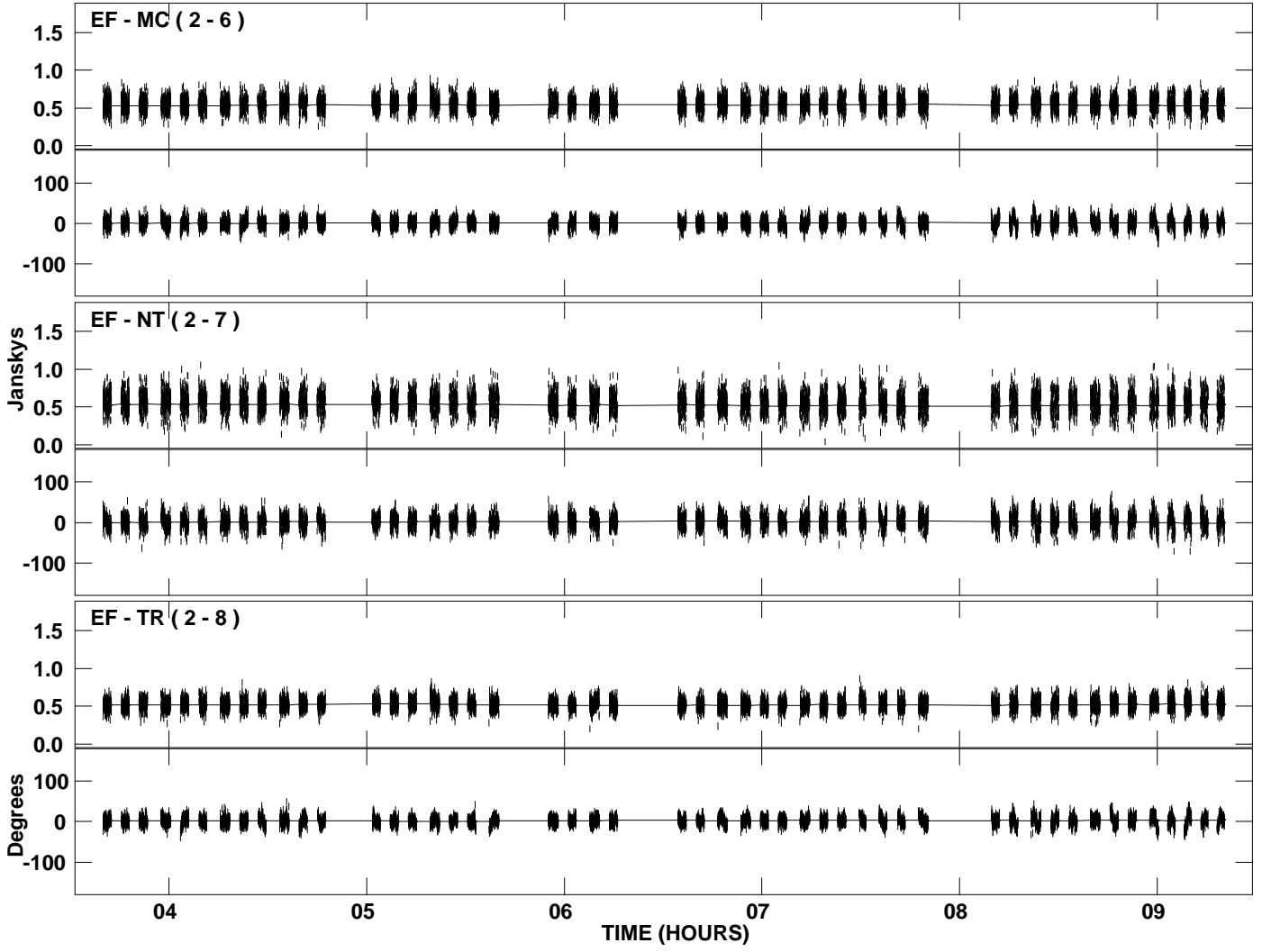
PLot file version 6 created 14-JUL-2009 20:19:19
Amplitude and Phase vs Time for J1825-0737.MULTI.1 CL # 3
IF 3 CHAN 1 STK LL of J1825-0737.ICL001.3



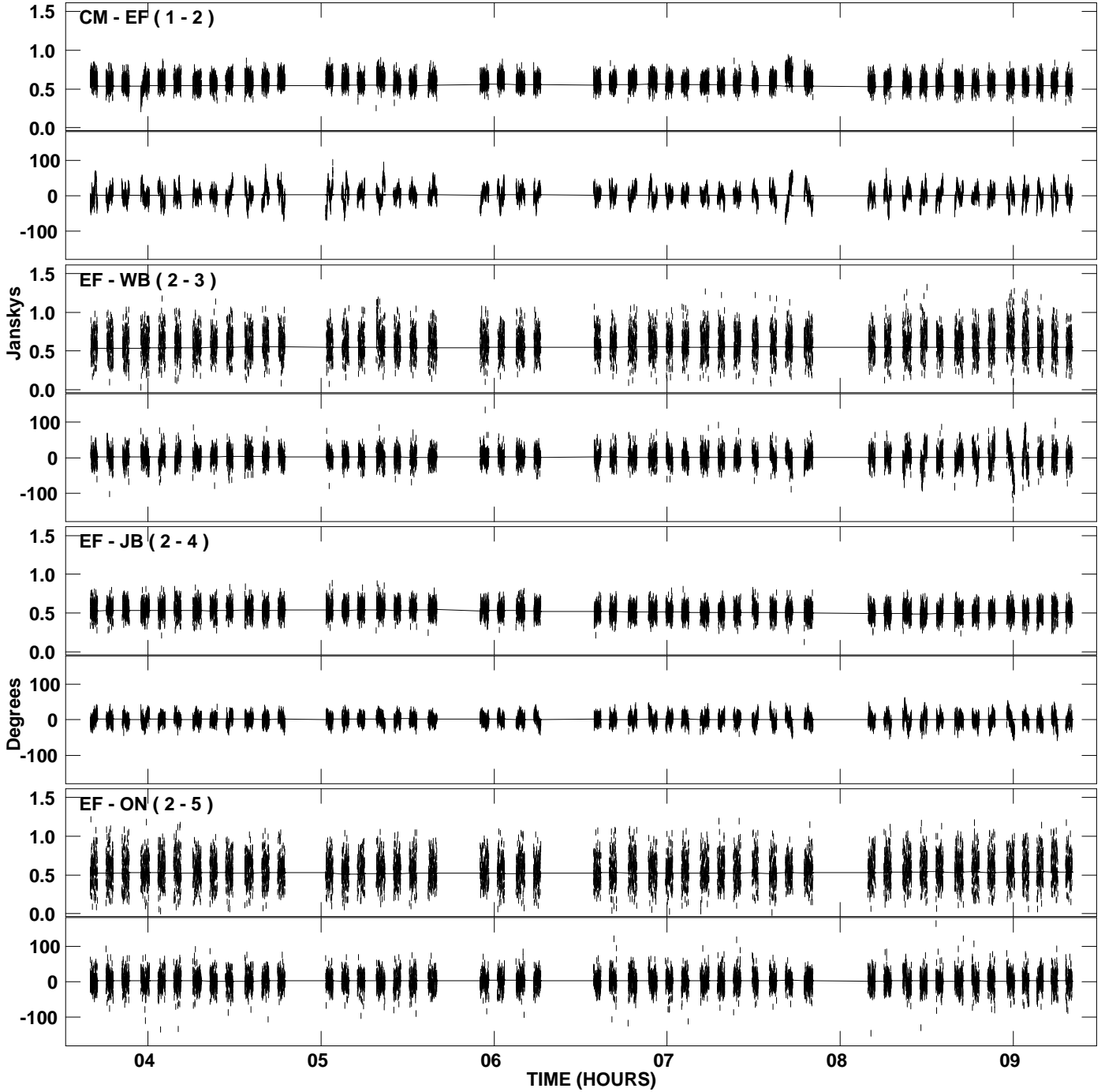
PLot file version 7 created 14-JUL-2009 20:19:20
Amplitude and Phase vs Time for J1825-0737.MULTI.1 CL # 3
IF 4 CHAN 1 STK LL of J1825-0737.ICL001.3



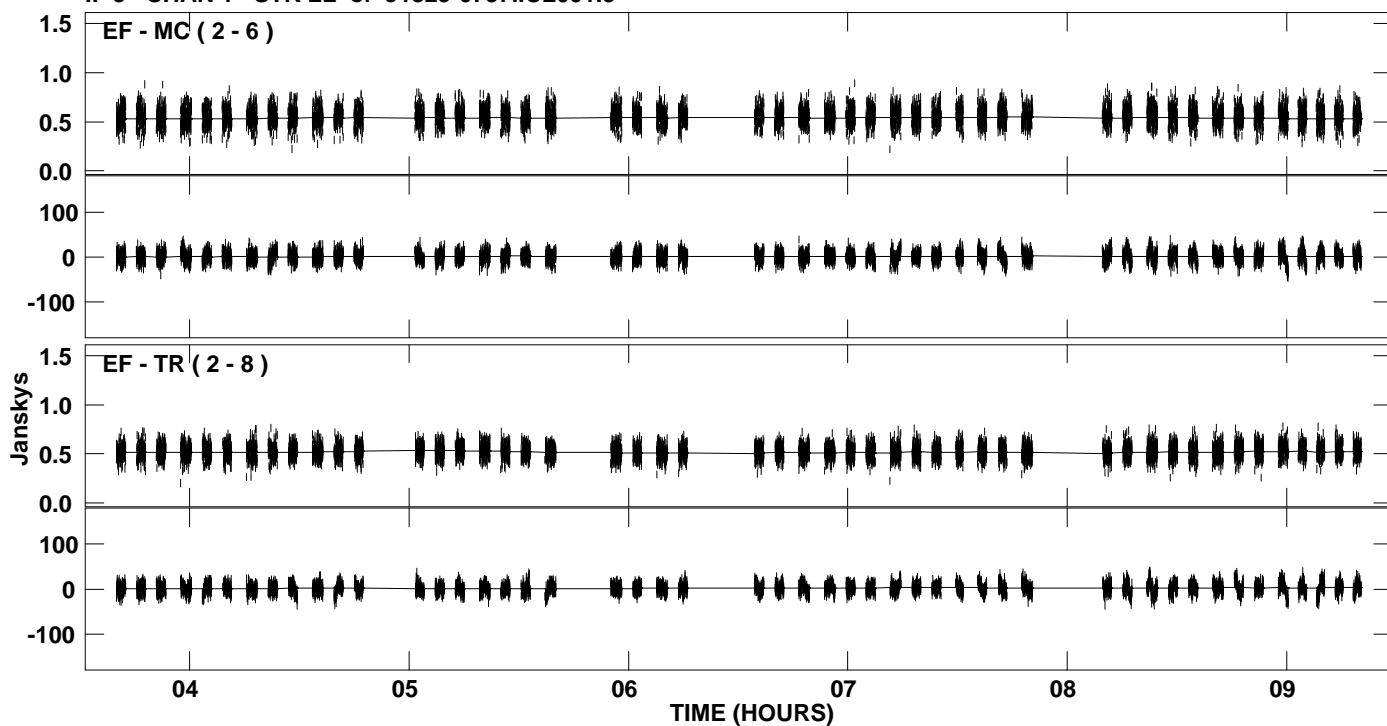
PLot file version 8 created 14-JUL-2009 20:19:20
Amplitude and Phase vs Time for J1825-0737.MULTI.1 CL # 3
IF 4 CHAN 1 STK LL of J1825-0737.ICL001.3



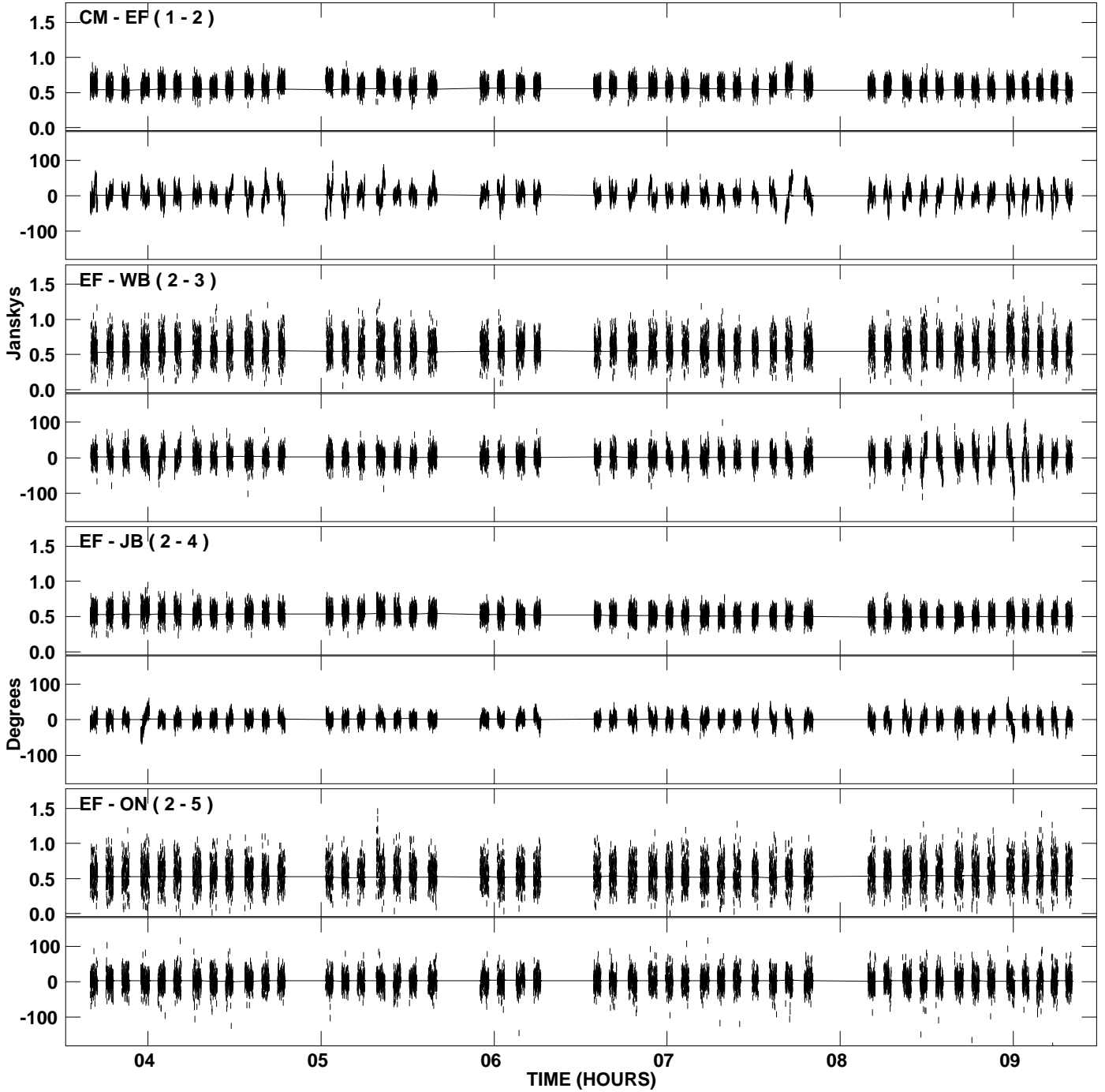
PLot file version 9 created 14-JUL-2009 20:19:21
Amplitude andPhase vs Time for J1825-0737.MULTI.1 CL # 3
IF 5 CHAN 1 STK LL of J1825-0737.ICL001.3



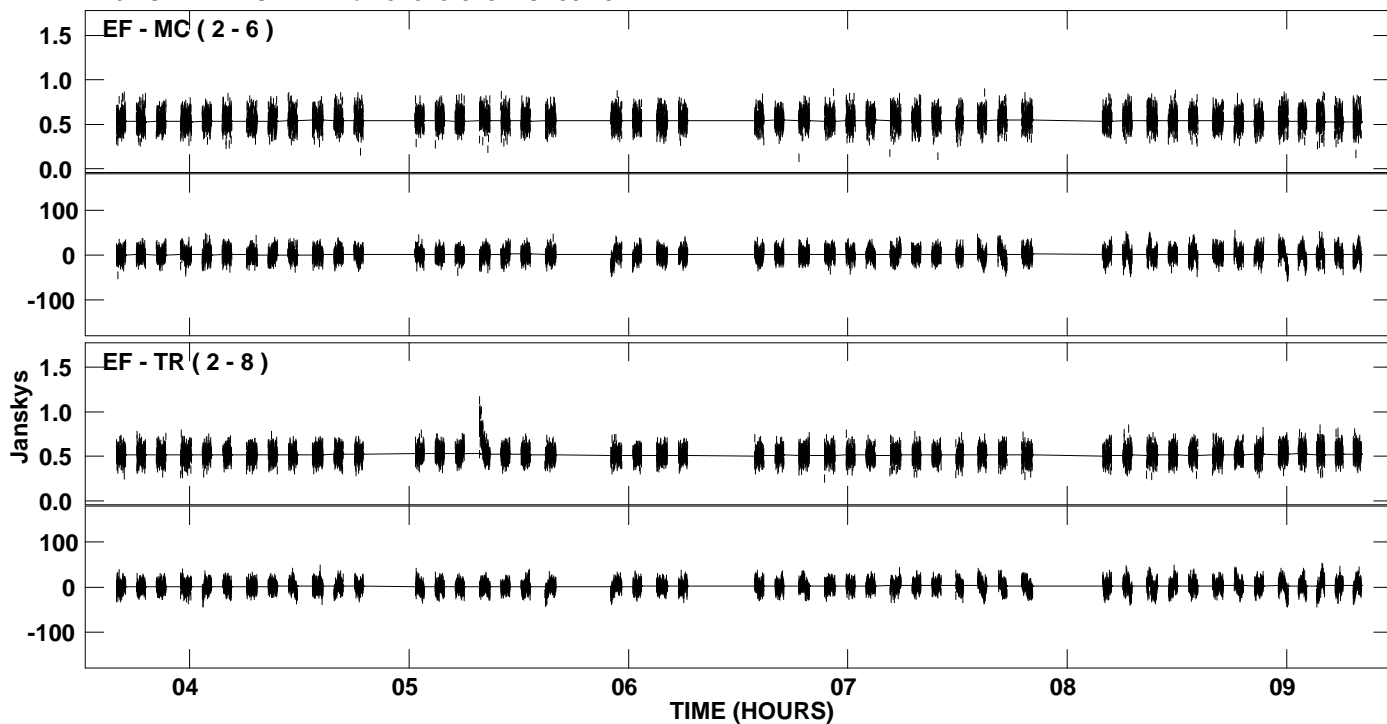
PLot file version 10 created 14-JUL-2009 20:19:21
Amplitude and Phase vs Time for J1825-0737.MULTI.1 CL # 3
IF 5 CHAN 1 STK LL of J1825-0737.ICL001.3



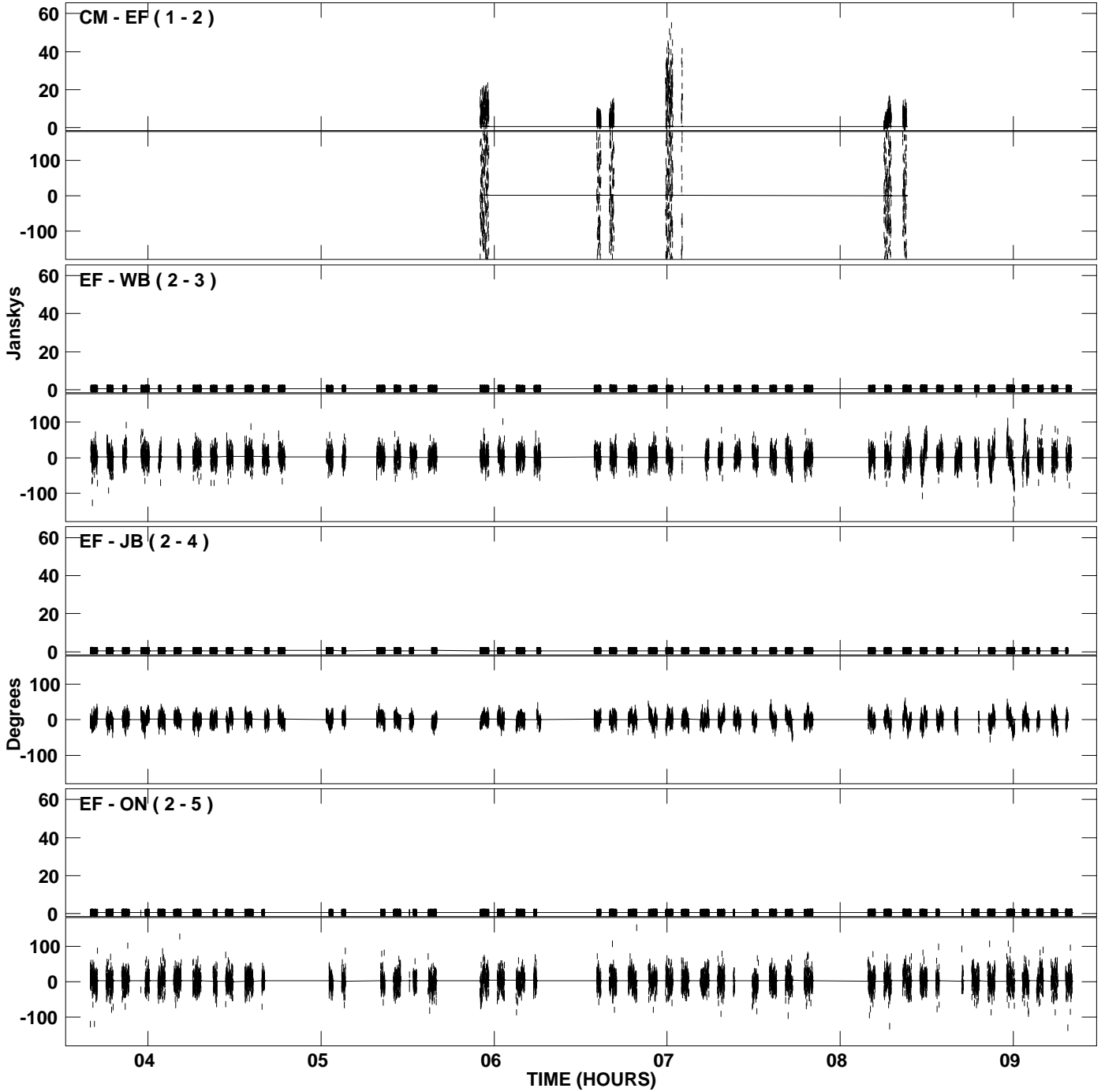
PLot file version 11 created 14-JUL-2009 20:19:22
Amplitude and Phase vs Time for J1825-0737.MULTI.1 CL # 3
IF 6 CHAN 1 STK LL of J1825-0737.ICL001.3



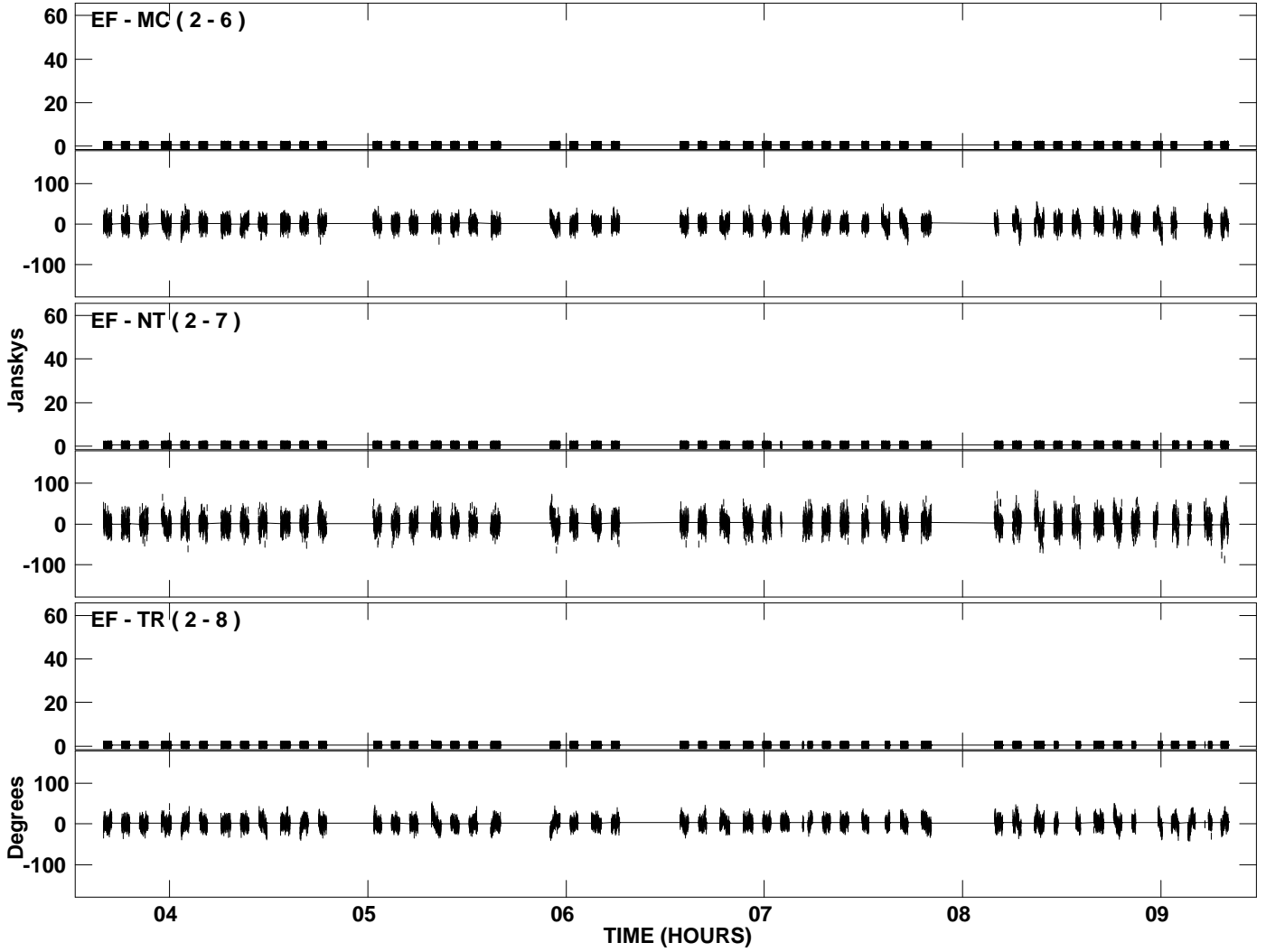
PLot file version 12 created 14-JUL-2009 20:19:22
Amplitude and Phase vs Time for J1825-0737.MULTI.1 CL # 3
IF 6 CHAN 1 STK LL of J1825-0737.ICL001.3



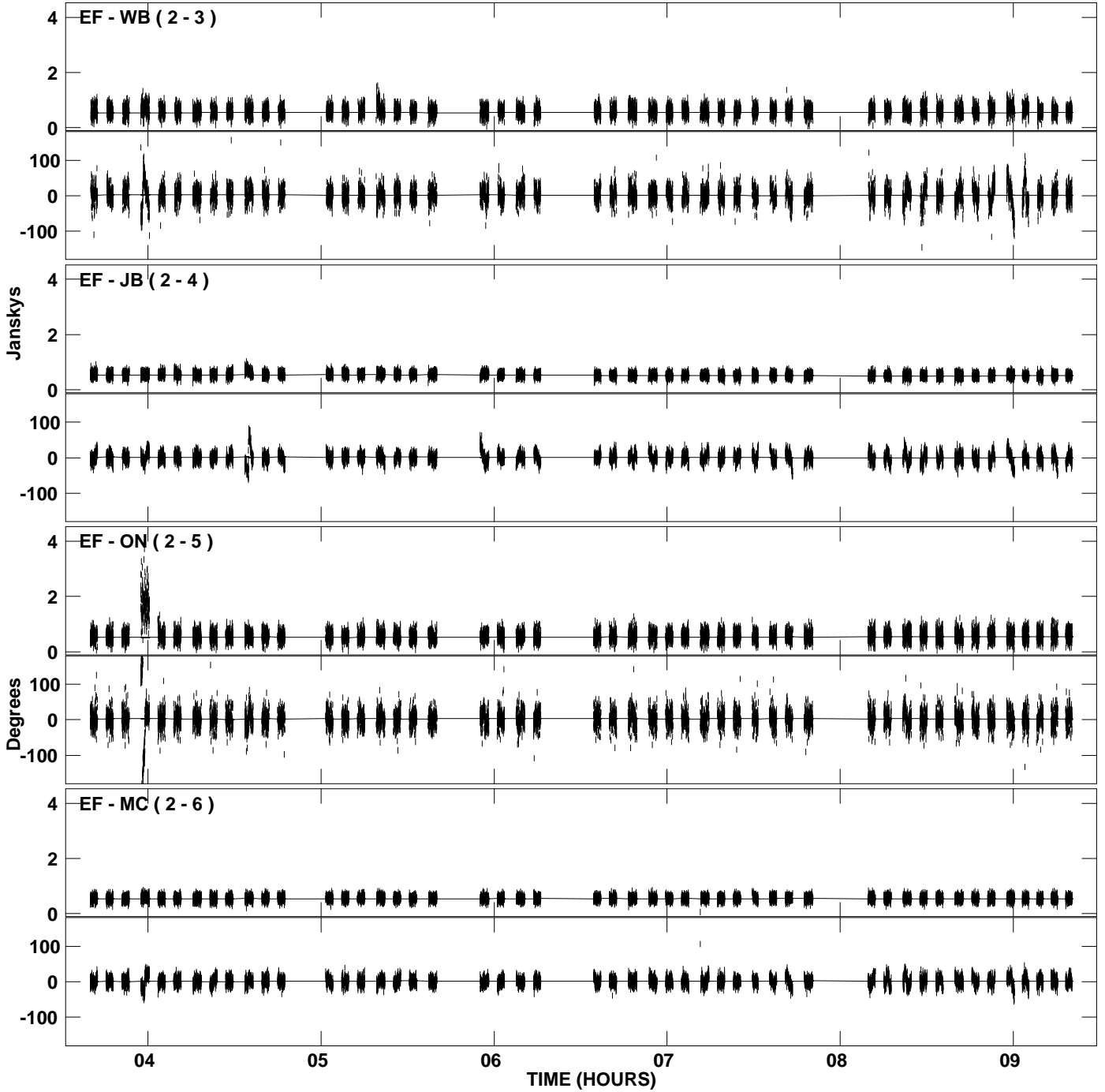
PLot file version 13 created 14-JUL-2009 20:19:23
Amplitude andPhase vs Time for J1825-0737.MULTI.1 CL # 3
IF 7 CHAN 1 STK LL of J1825-0737.ICL001.3



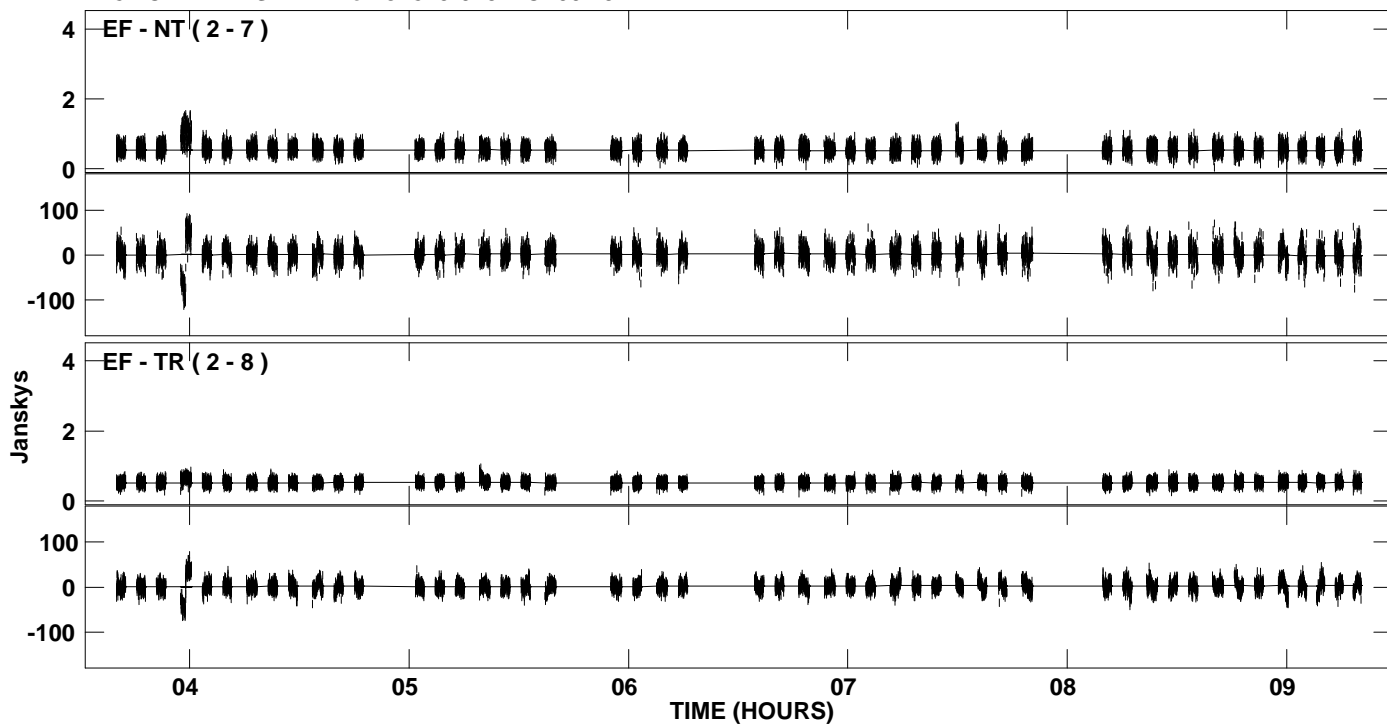
PLot file version 14 created 14-JUL-2009 20:19:23
Amplitude and Phase vs Time for J1825-0737.MULTI.1 CL # 3
IF 7 CHAN 1 STK LL of J1825-0737.ICL001.3



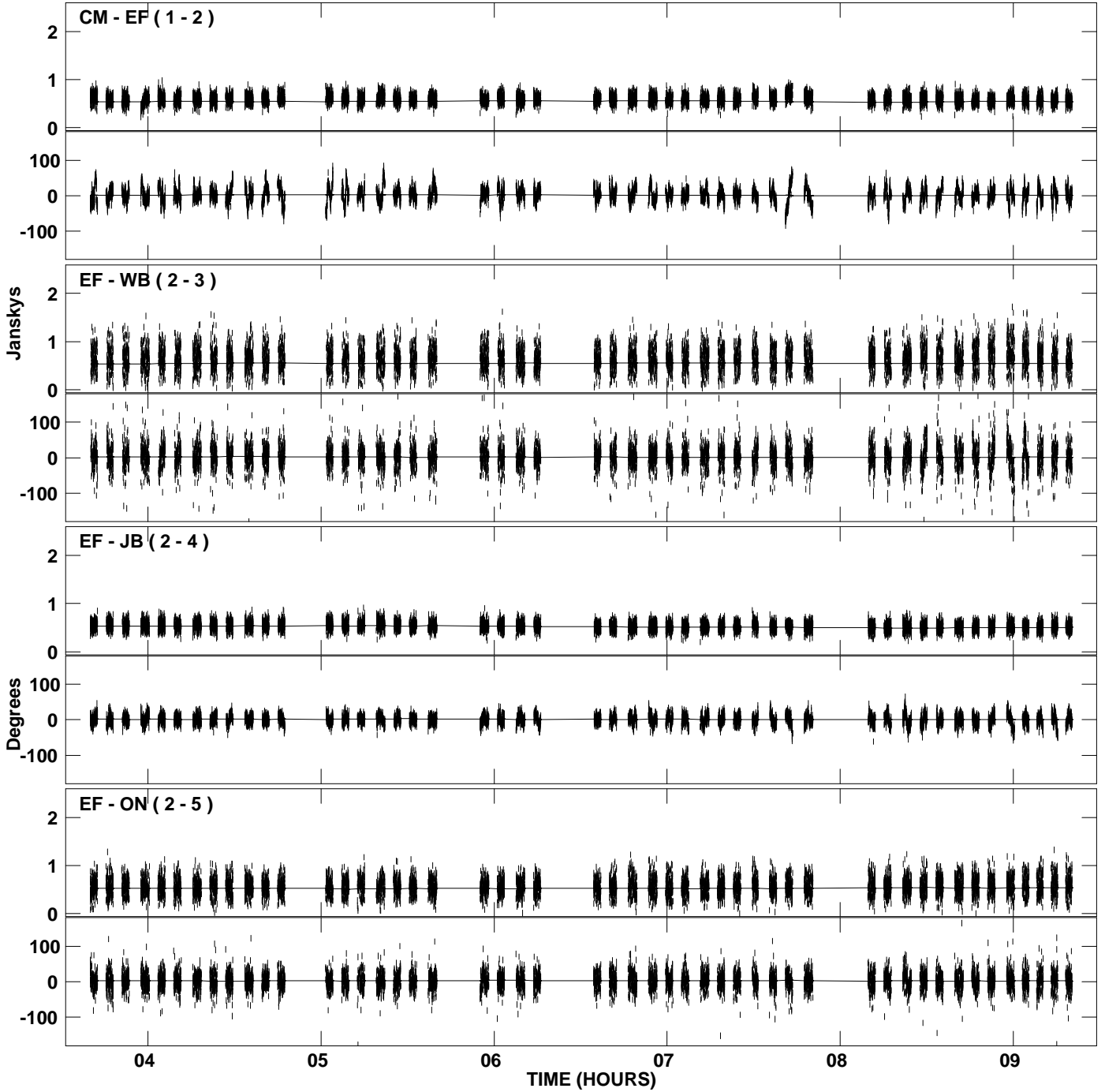
PLot file version 15 created 14-JUL-2009 20:19:24
Amplitude andPhase vs Time for J1825-0737.MULTI.1 CL # 3
IF 8 CHAN 1 STK LL of J1825-0737.ICL001.3



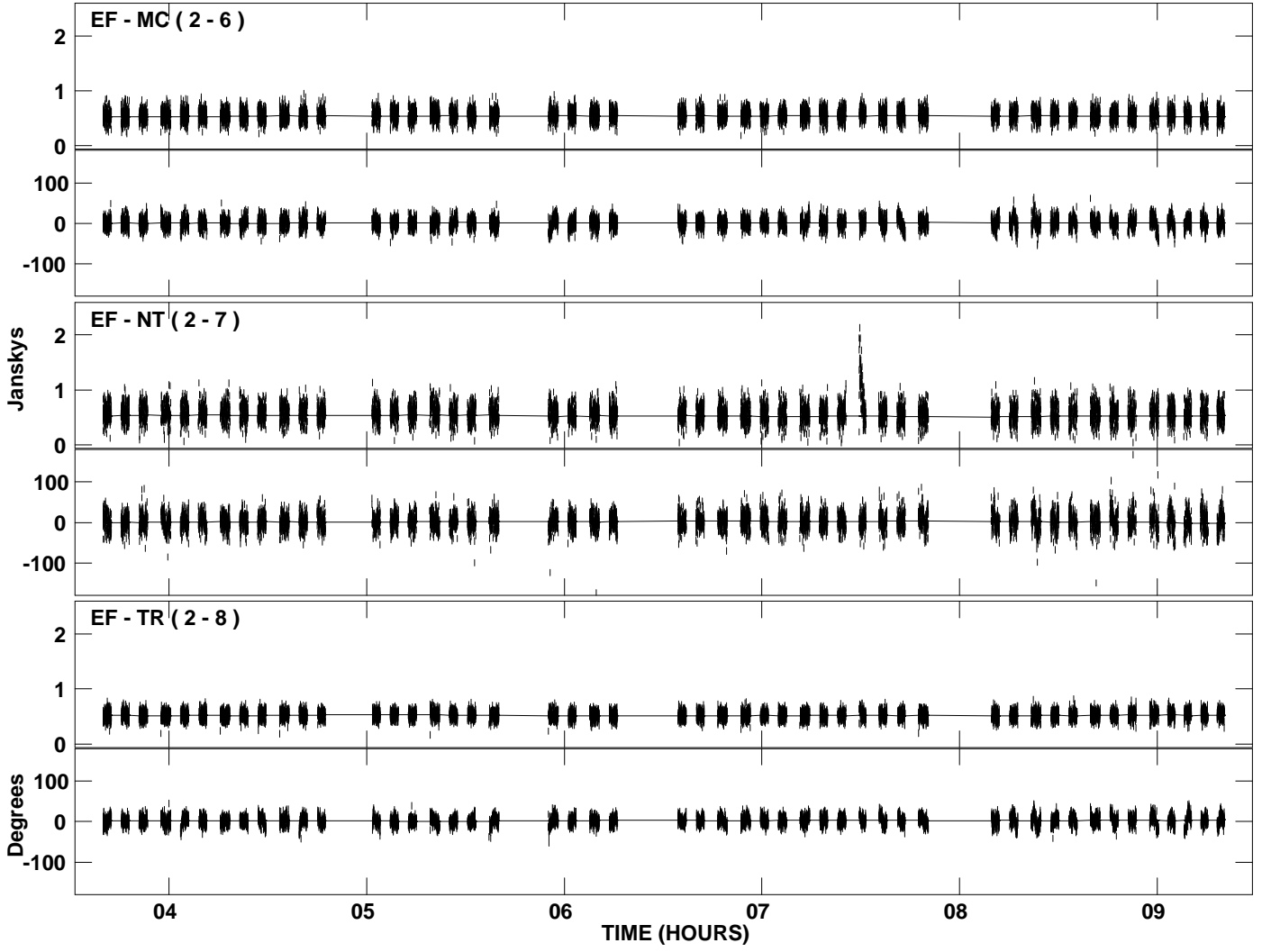
PLot file version 16 created 14-JUL-2009 20:19:24
Amplitude and Phase vs Time for J1825-0737.MULTI.1 CL # 3
IF 8 CHAN 1 STK LL of J1825-0737.ICL001.3



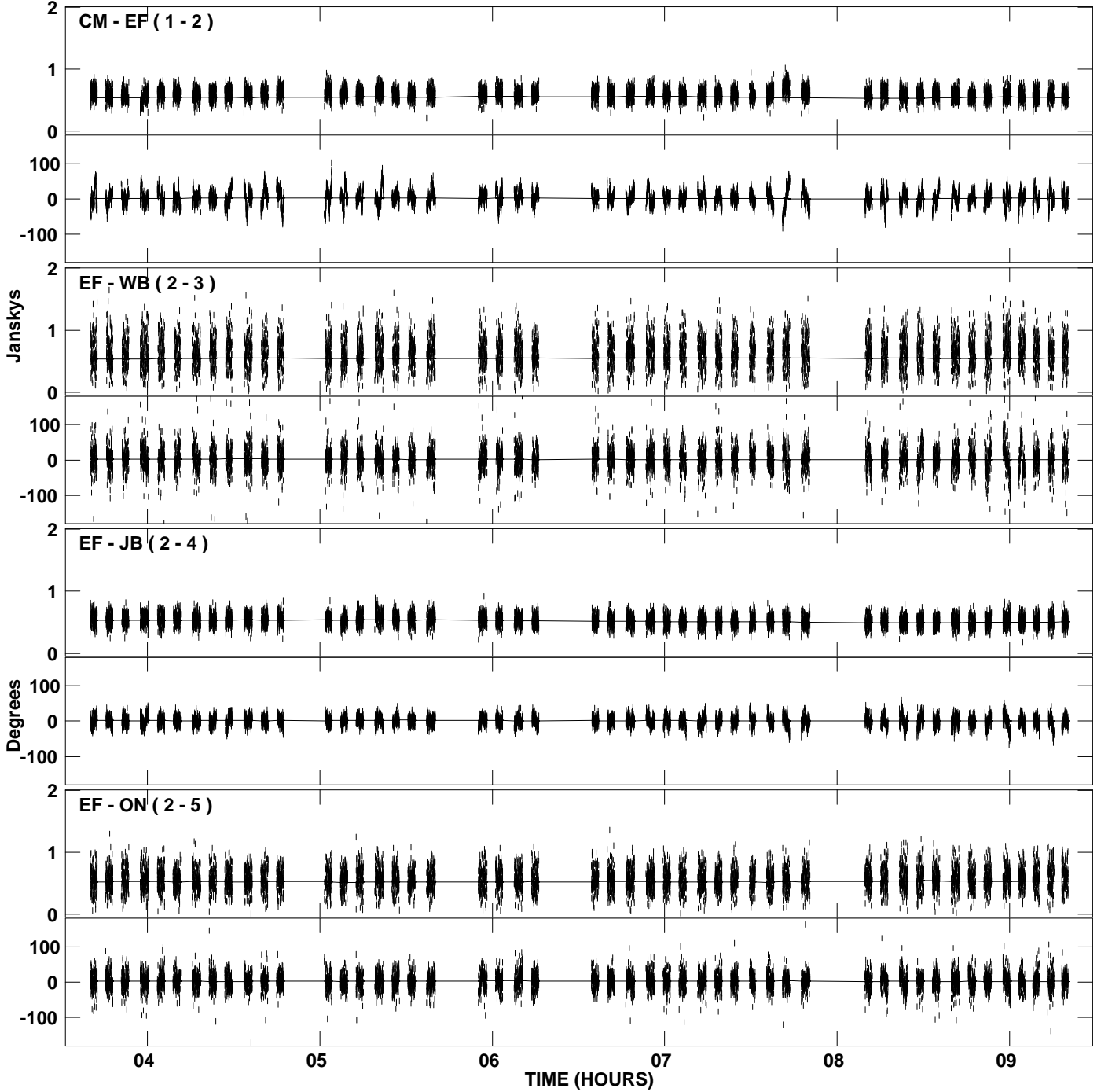
PLot file version 17 created 14-JUL-2009 20:19:25
Amplitude and Phase vs Time for J1825-0737.MULTI.1 CL # 3
IF 1 CHAN 1 STK RR of J1825-0737.ICL001.3



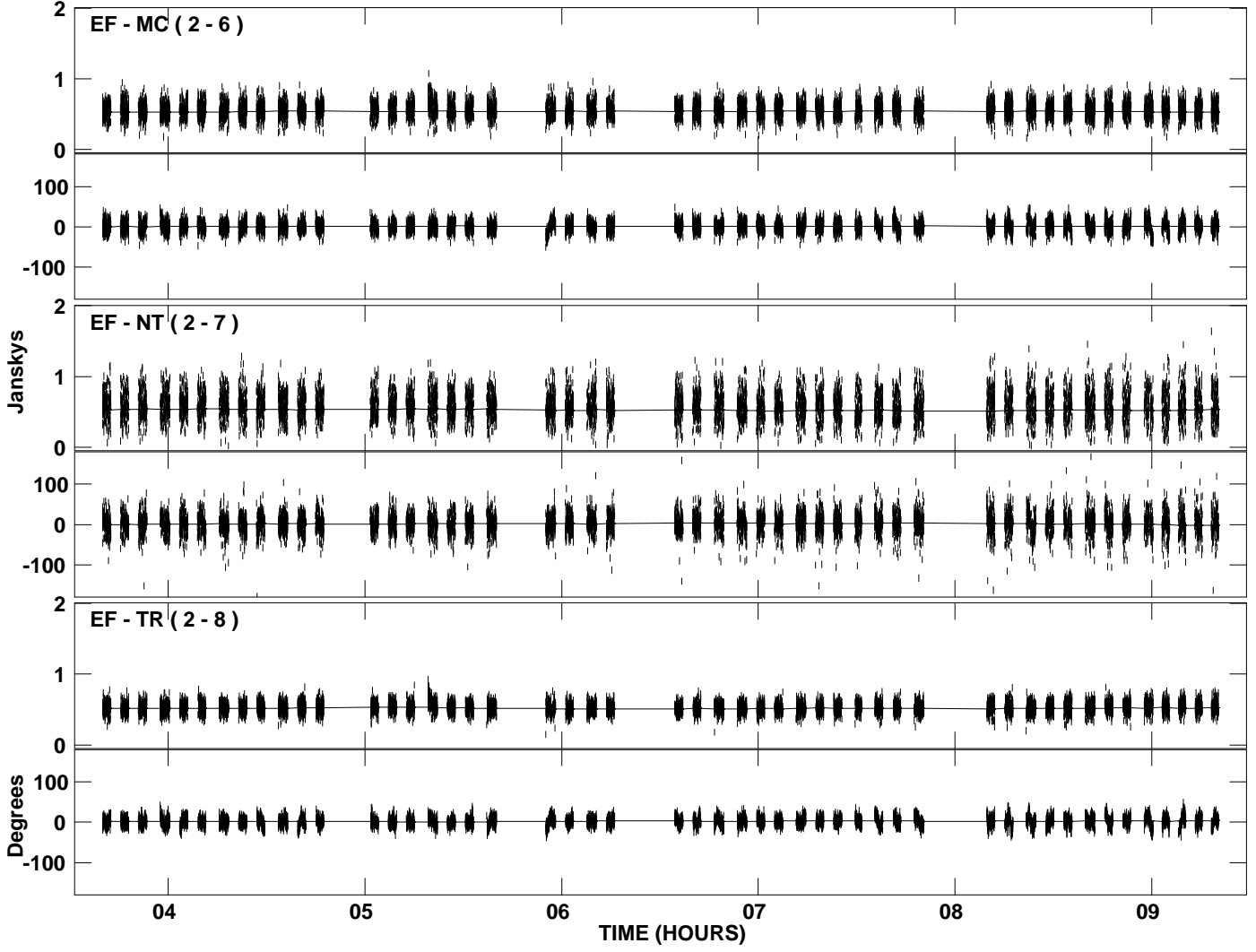
PLot file version 18 created 14-JUL-2009 20:19:25
Amplitude and Phase vs Time for J1825-0737.MULTI.1 CL # 3
IF 1 CHAN 1 STK RR of J1825-0737.ICL001.3



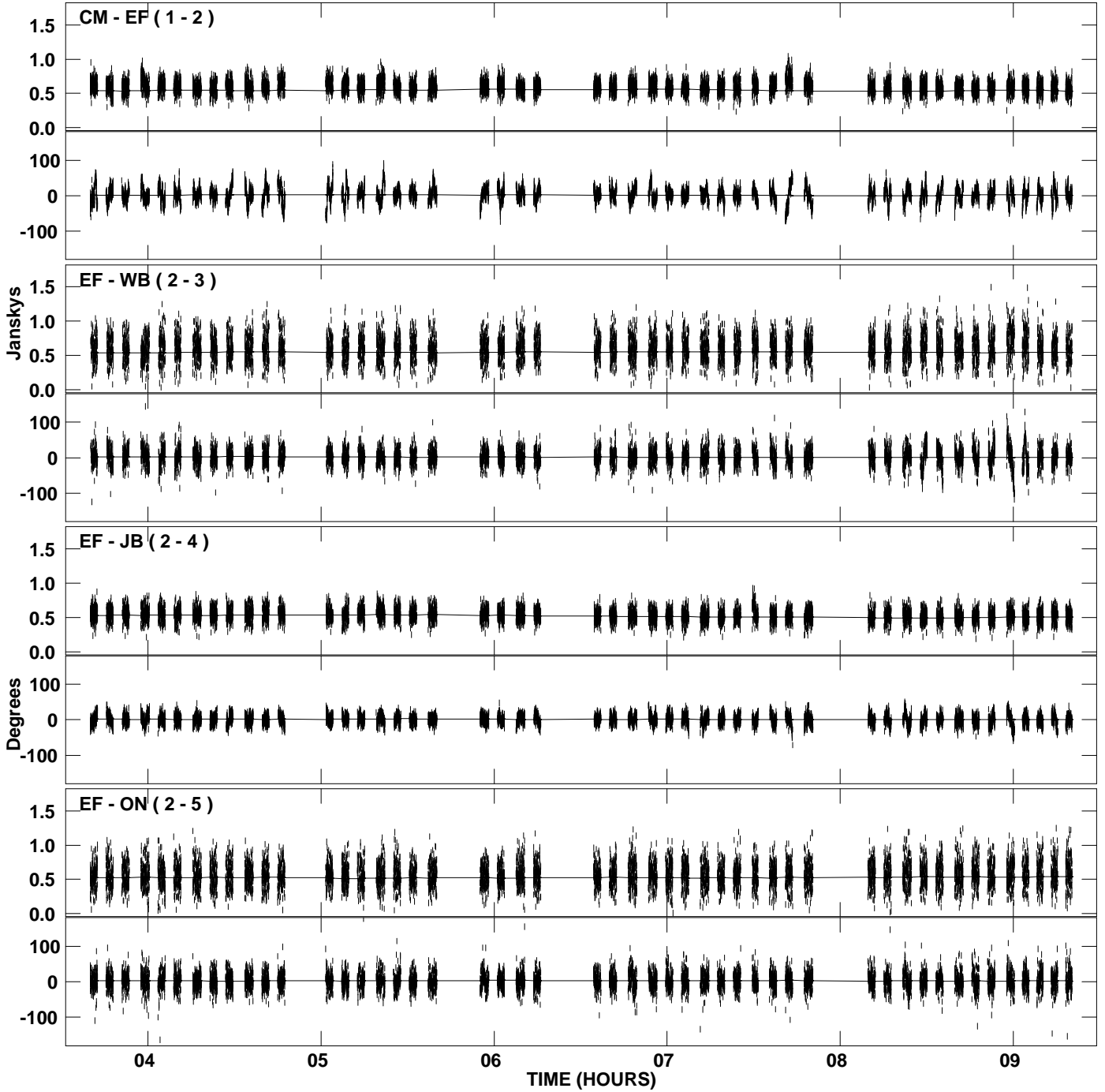
PLot file version 19 created 14-JUL-2009 20:19:26
Amplitude and Phase vs Time for J1825-0737.MULTI.1 CL # 3
IF 2 CHAN 1 STK RR of J1825-0737.ICL001.3



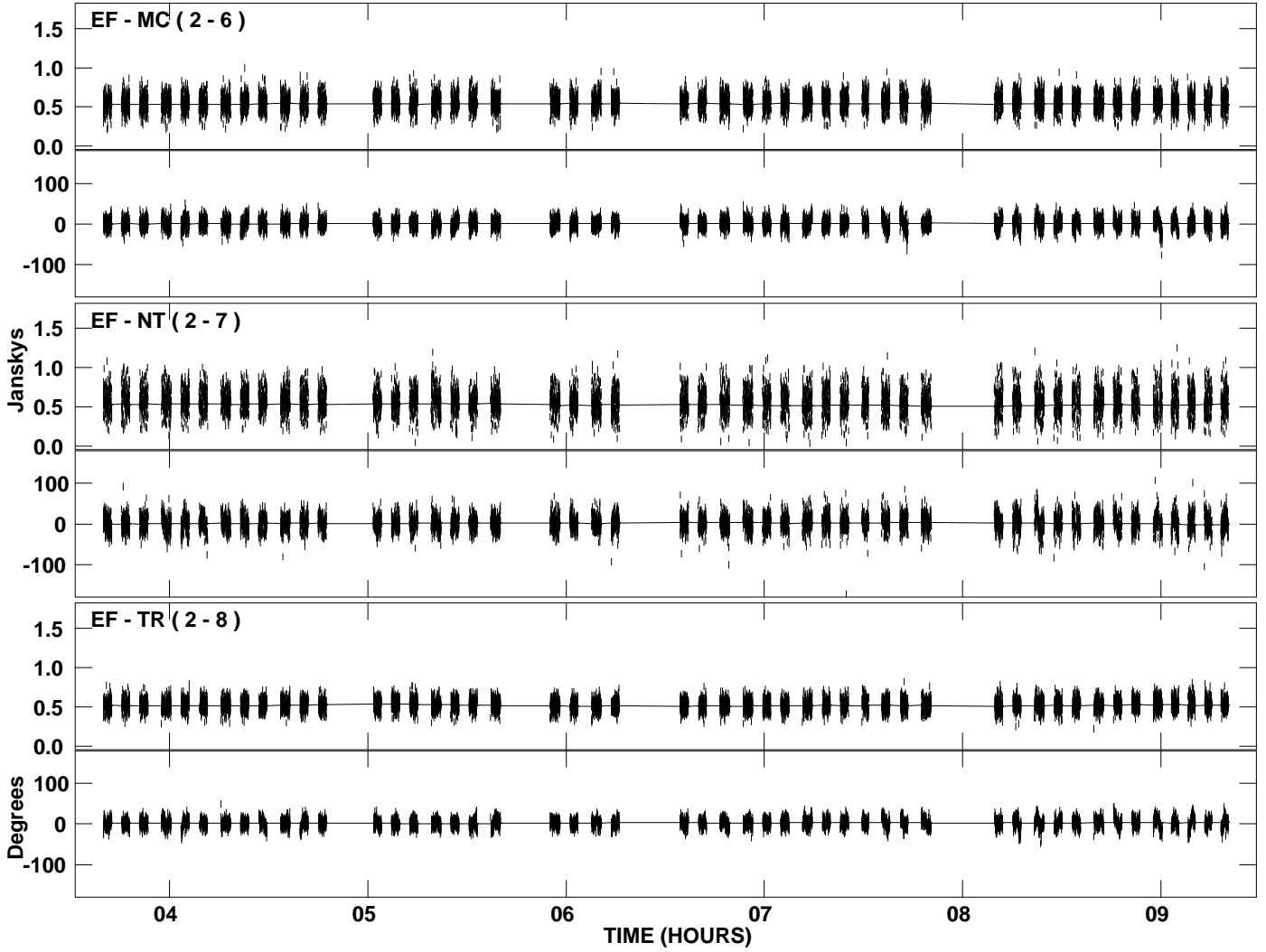
PLot file version 20 created 14-JUL-2009 20:19:26
Amplitude and Phase vs Time for J1825-0737.MULTI.1 CL # 3
IF 2 CHAN 1 STK RR of J1825-0737.ICL001.3



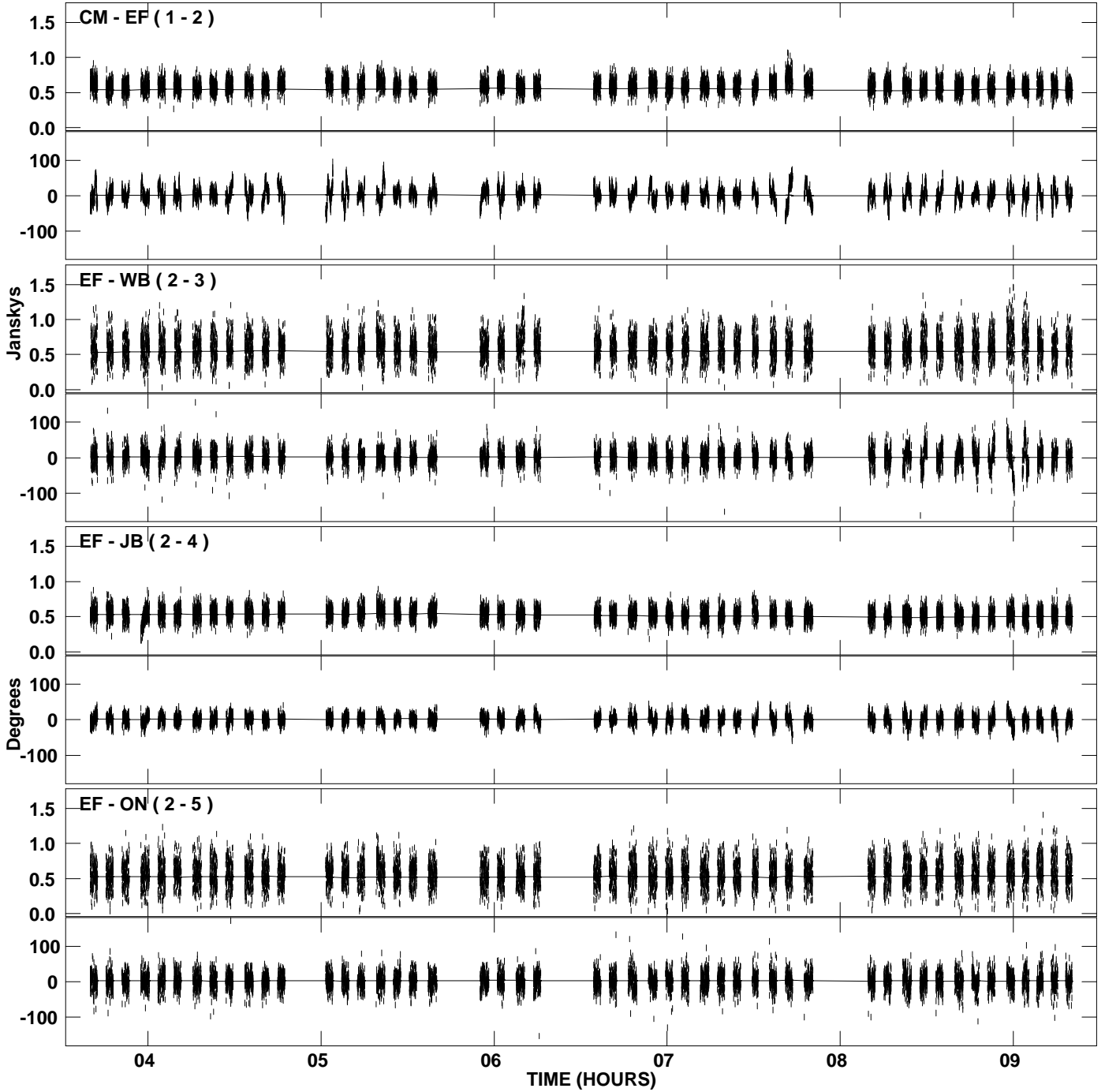
PLot file version 21 created 14-JUL-2009 20:19:27
Amplitude and Phase vs Time for J1825-0737.MULTI.1 CL # 3
IF 3 CHAN 1 STK RR of J1825-0737.ICL001.3



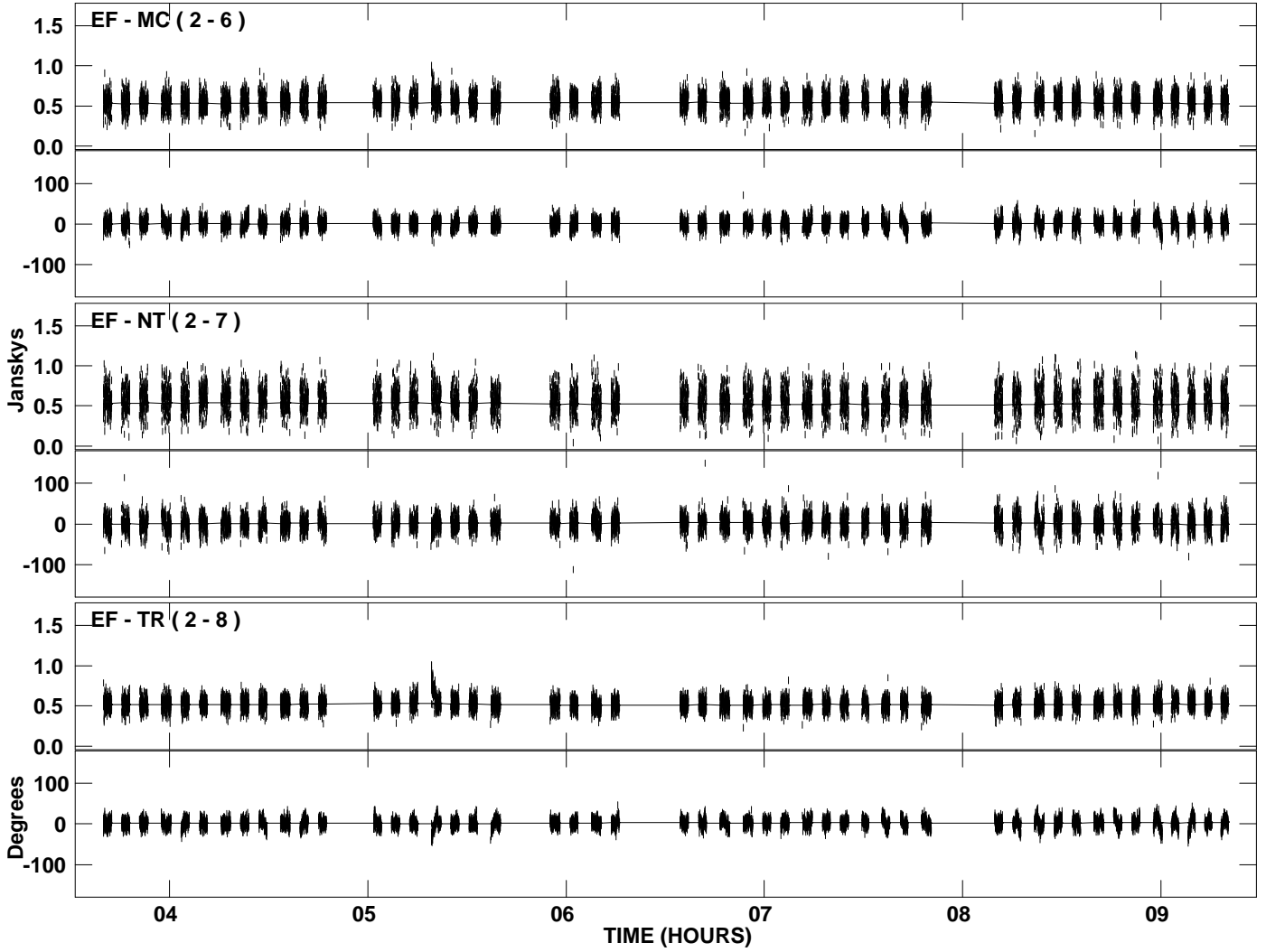
PLot file version 22 created 14-JUL-2009 20:19:27
Amplitude and Phase vs Time for J1825-0737.MULTI.1 CL # 3
IF 3 CHAN 1 STK RR of J1825-0737.ICL001.3



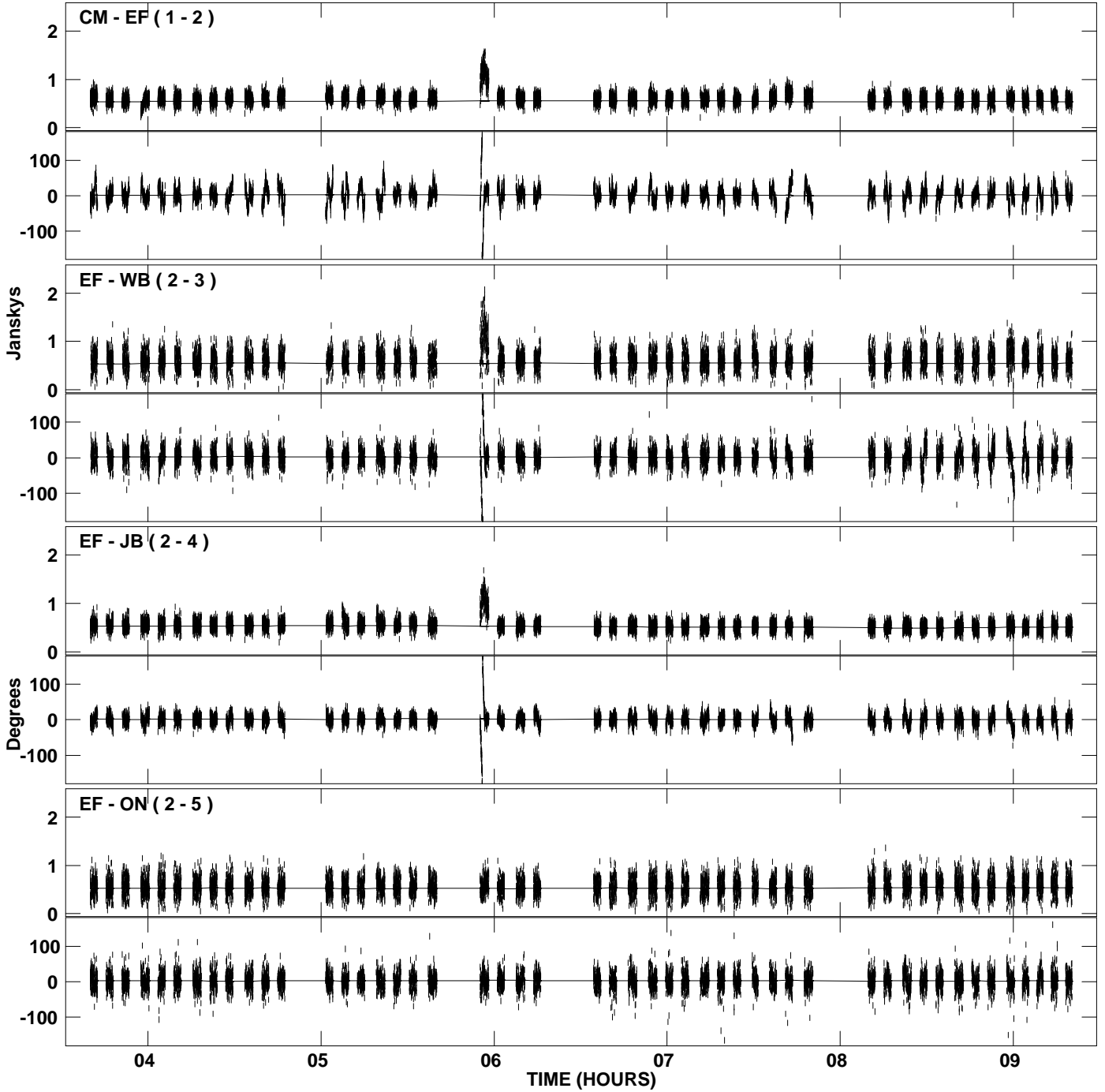
PLot file version 23 created 14-JUL-2009 20:19:28
Amplitude and Phase vs Time for J1825-0737.MULTI.1 CL # 3
IF 4 CHAN 1 STK RR of J1825-0737.ICL001.3



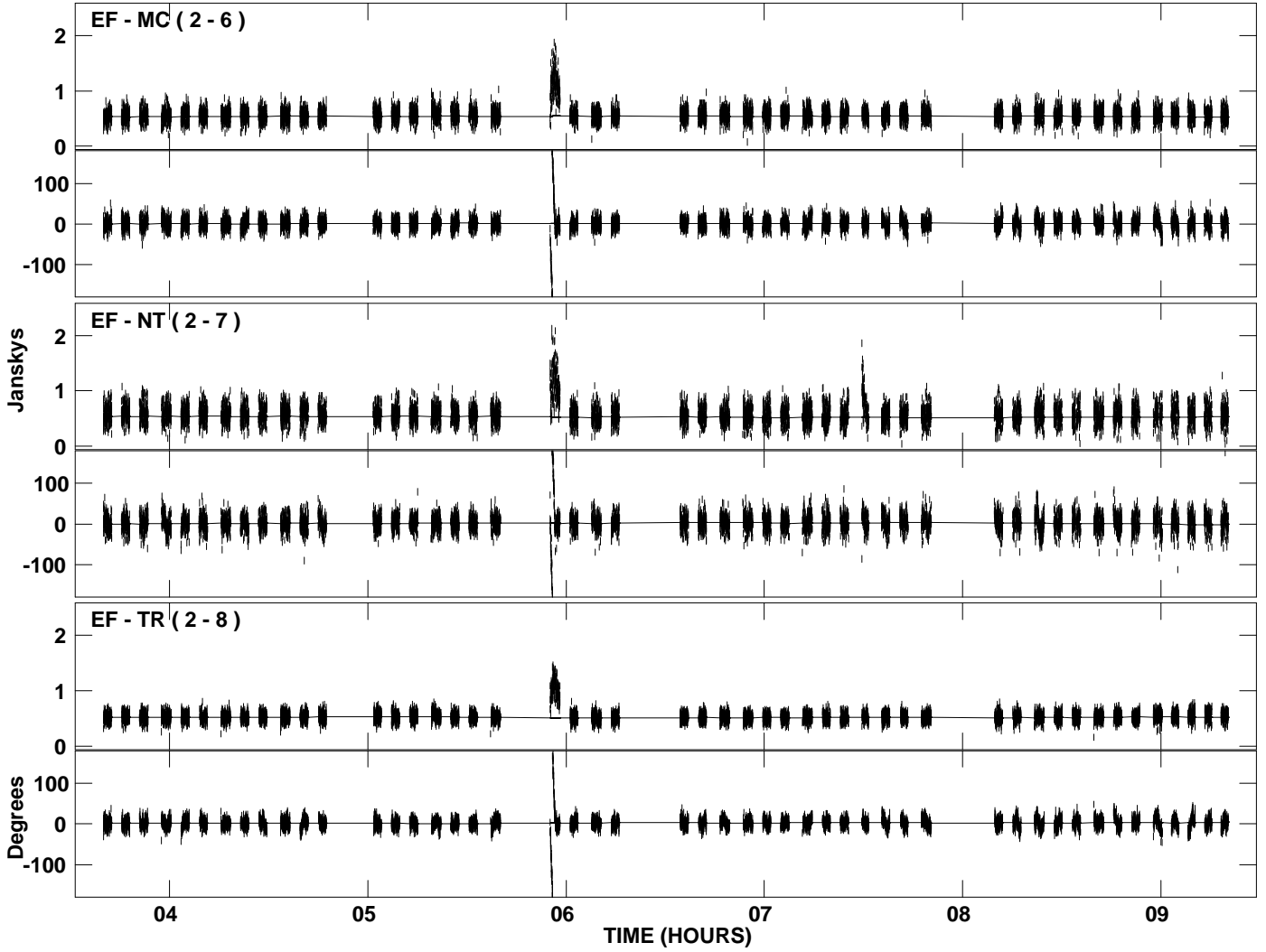
PLot file version 24 created 14-JUL-2009 20:19:29
Amplitude and Phase vs Time for J1825-0737.MULTI.1 CL # 3
IF 4 CHAN 1 STK RR of J1825-0737.ICL001.3



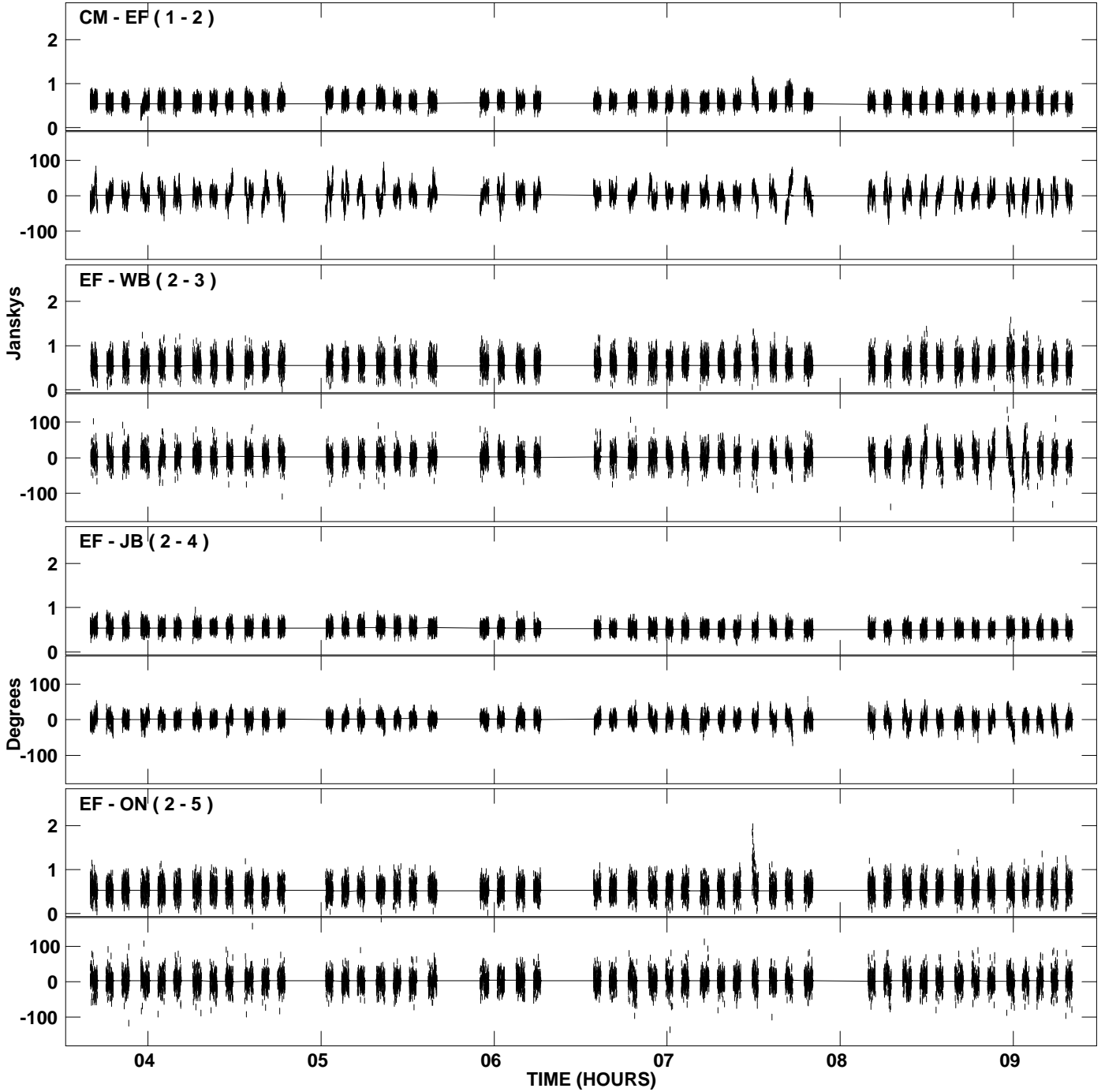
PLot file version 25 created 14-JUL-2009 20:19:29
Amplitude and Phase vs Time for J1825-0737.MULTI.1 CL # 3
IF 5 CHAN 1 STK RR of J1825-0737.ICL001.3



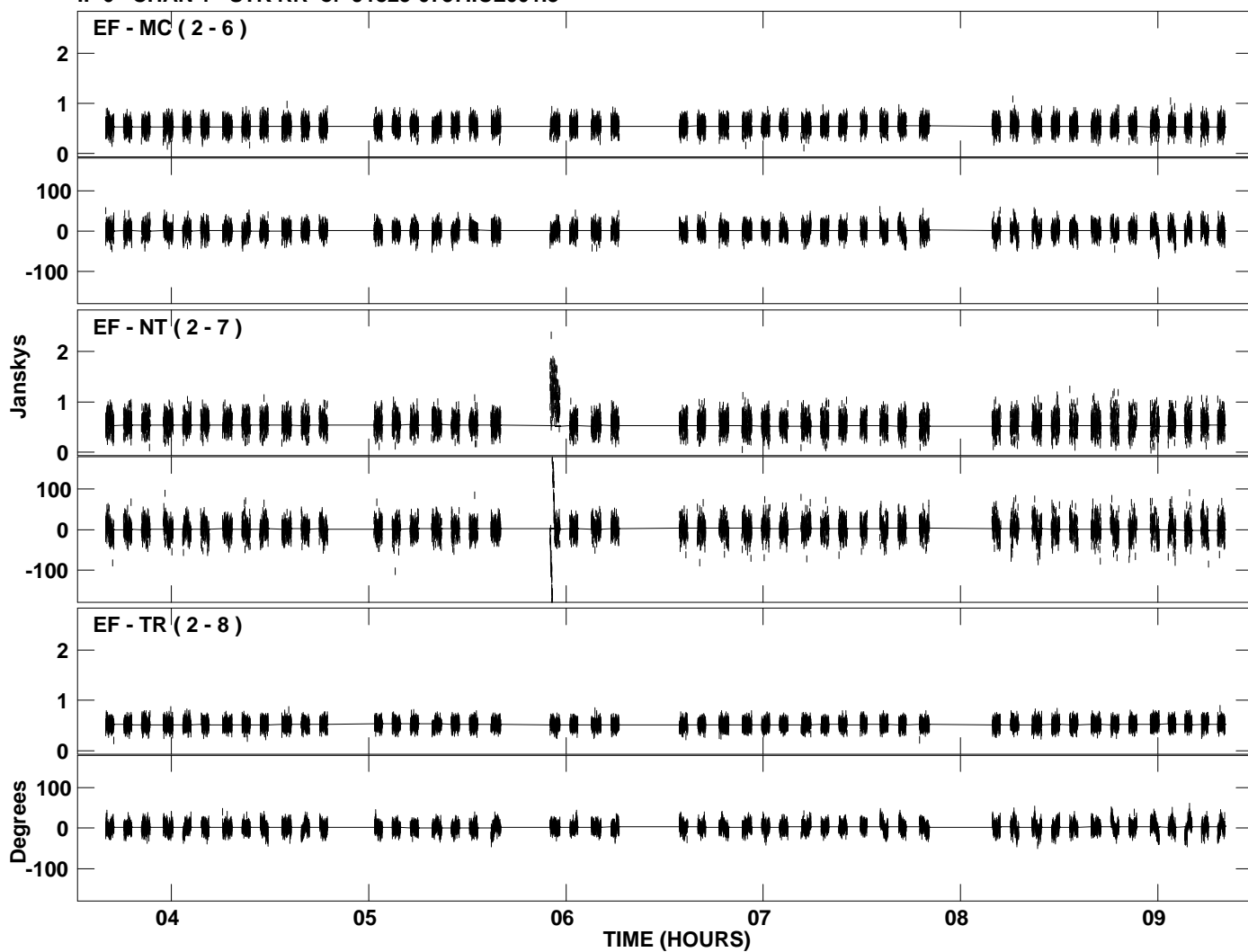
PLot file version 26 created 14-JUL-2009 20:19:30
Amplitude and Phase vs Time for J1825-0737.MULTI.1 CL # 3
IF 5 CHAN 1 STK RR of J1825-0737.ICL001.3



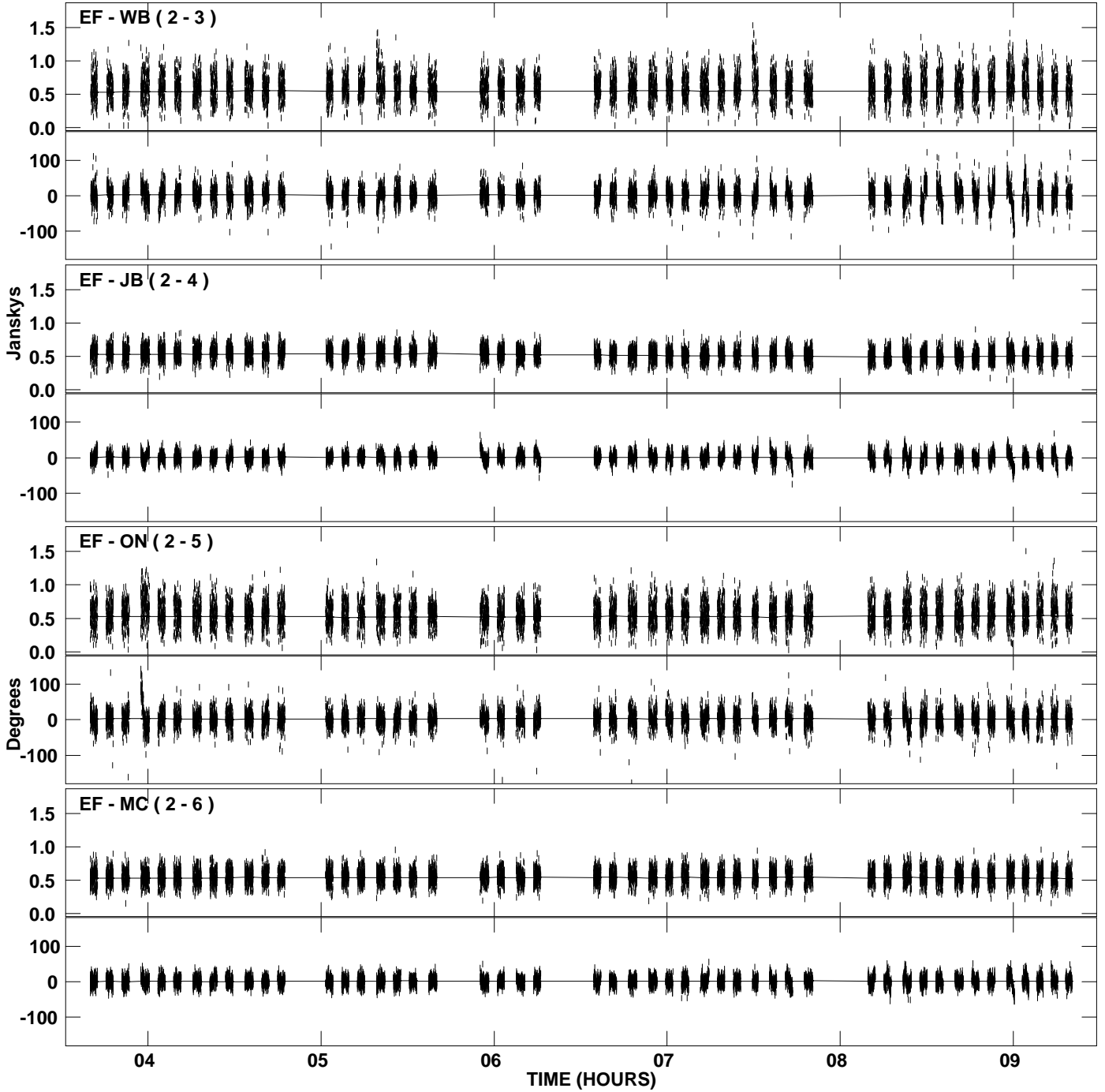
PLot file version 27 created 14-JUL-2009 20:19:30
Amplitude and Phase vs Time for J1825-0737.MULTI.1 CL # 3
IF 6 CHAN 1 STK RR of J1825-0737.ICL001.3



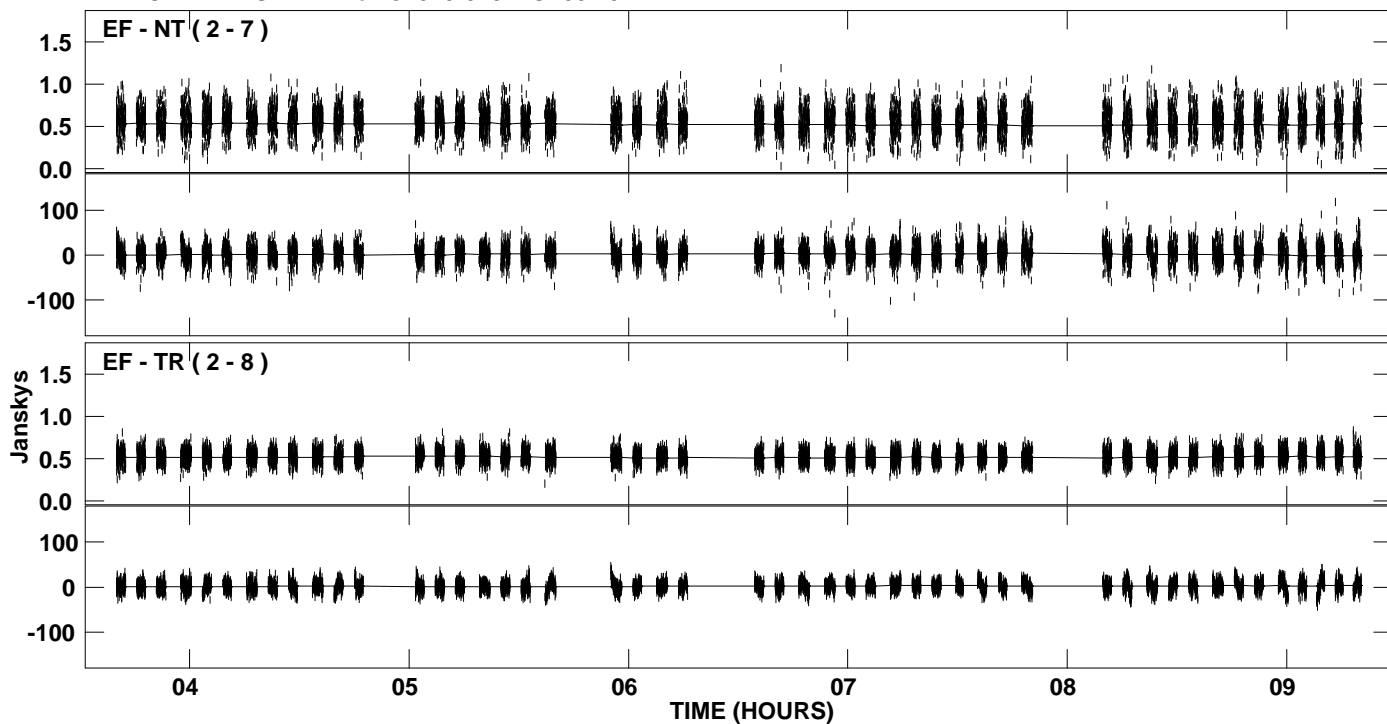
PLot file version 28 created 14-JUL-2009 20:19:31
Amplitude andPhase vs Time for J1825-0737.MULTI.1 CL # 3
IF 6 CHAN 1 STK RR of J1825-0737.ICL001.3



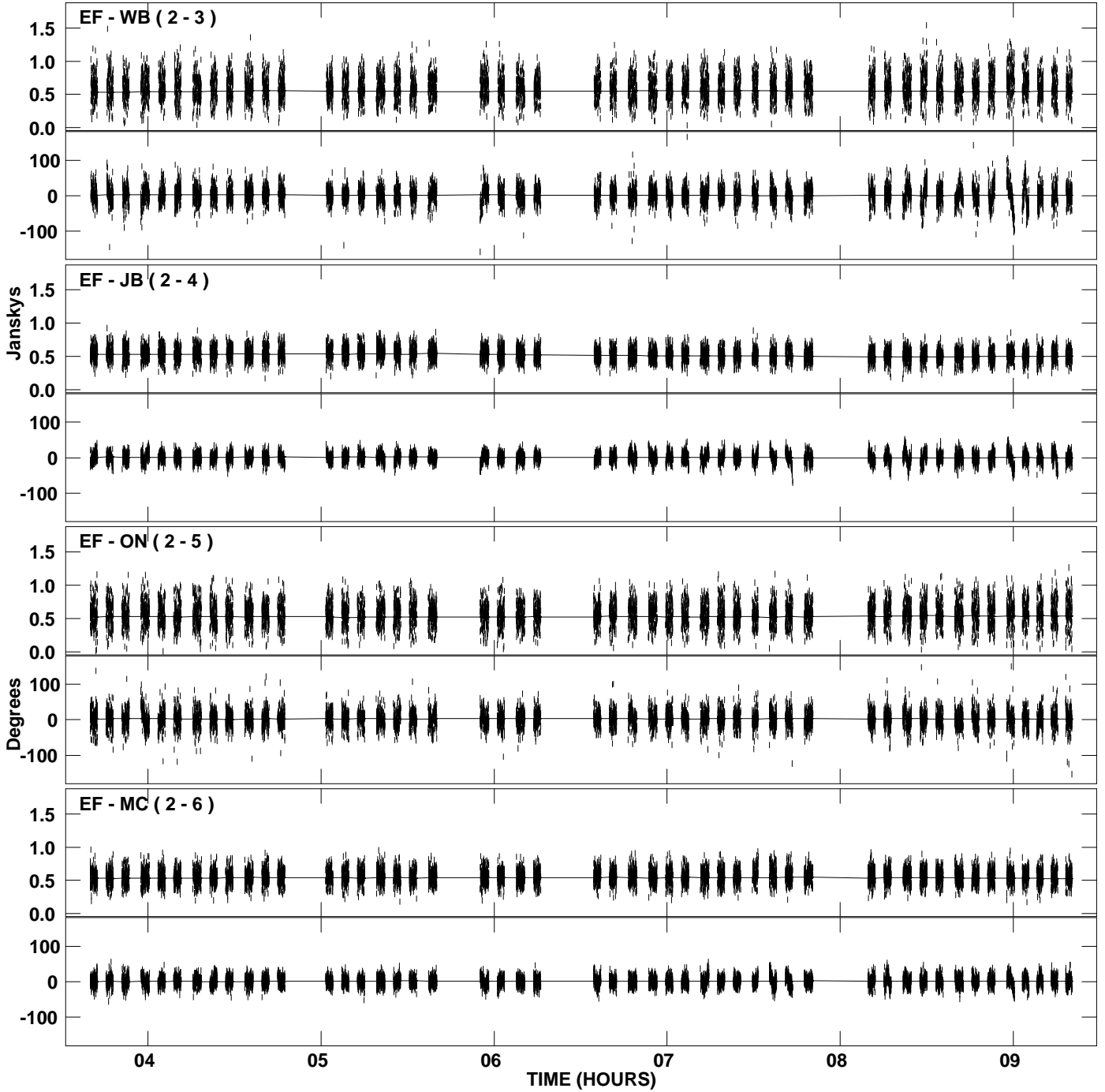
PLot file version 29 created 14-JUL-2009 20:19:31
Amplitude and Phase vs Time for J1825-0737.MULTI.1 CL # 3
IF 7 CHAN 1 STK RR of J1825-0737.ICL001.3



PLot file version 30 created 14-JUL-2009 20:19:32
Amplitude andPhase vs Time for J1825-0737.MULTI.1 CL # 3
IF 7 CHAN 1 STK RR of J1825-0737.ICL001.3



PLot file version 31 created 14-JUL-2009 20:19:32
Amplitude and Phase vs Time for J1825-0737.MULTI.1 CL # 3
IF 8 CHAN 1 STK RR of J1825-0737.ICL001.3



PLot file version 32 created 14-JUL-2009 20:19:32
Amplitude and Phase vs Time for J1825-0737.MULTI.1 CL # 3
IF 8 CHAN 1 STK RR of J1825-0737.ICL001.3

