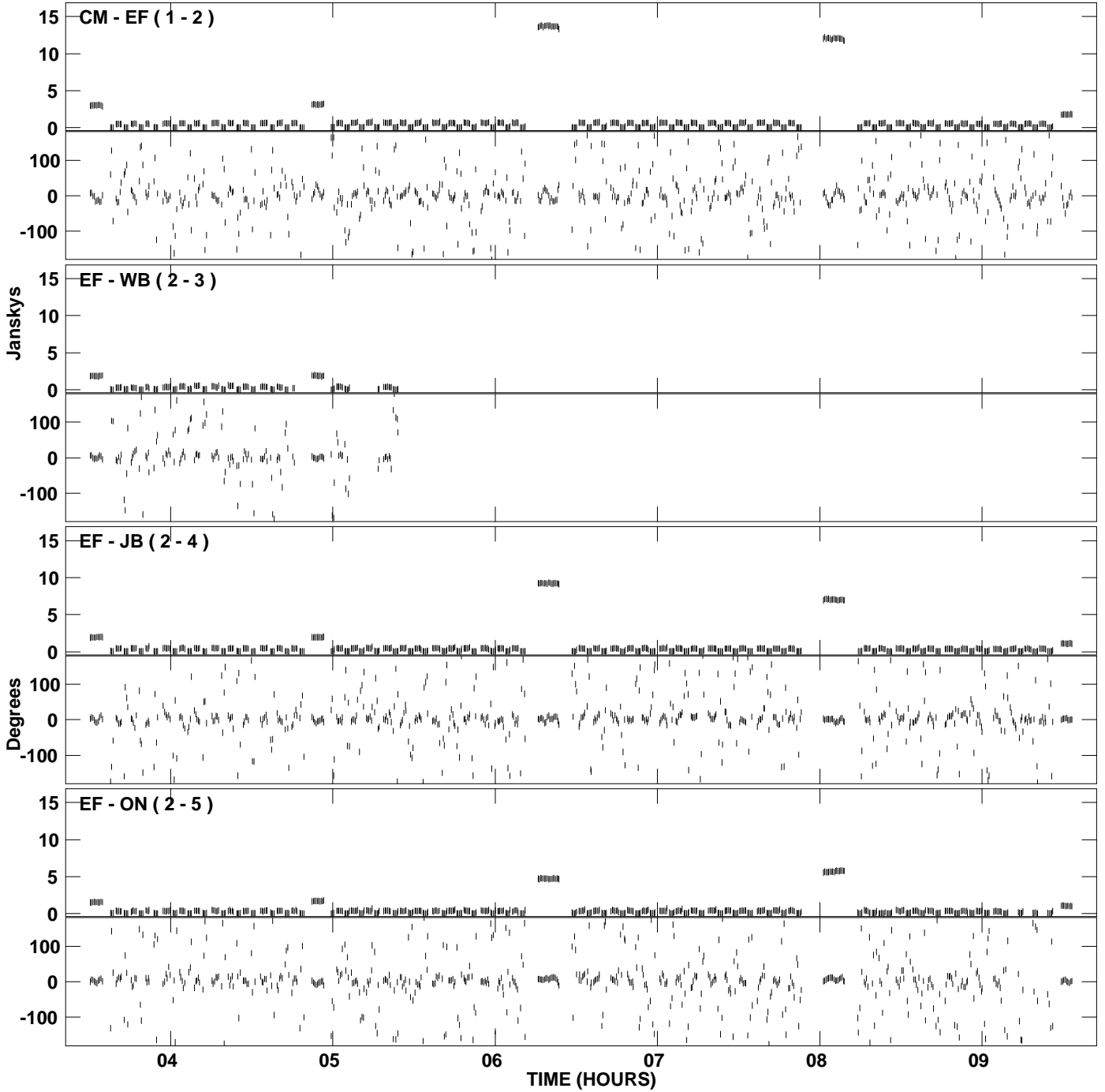
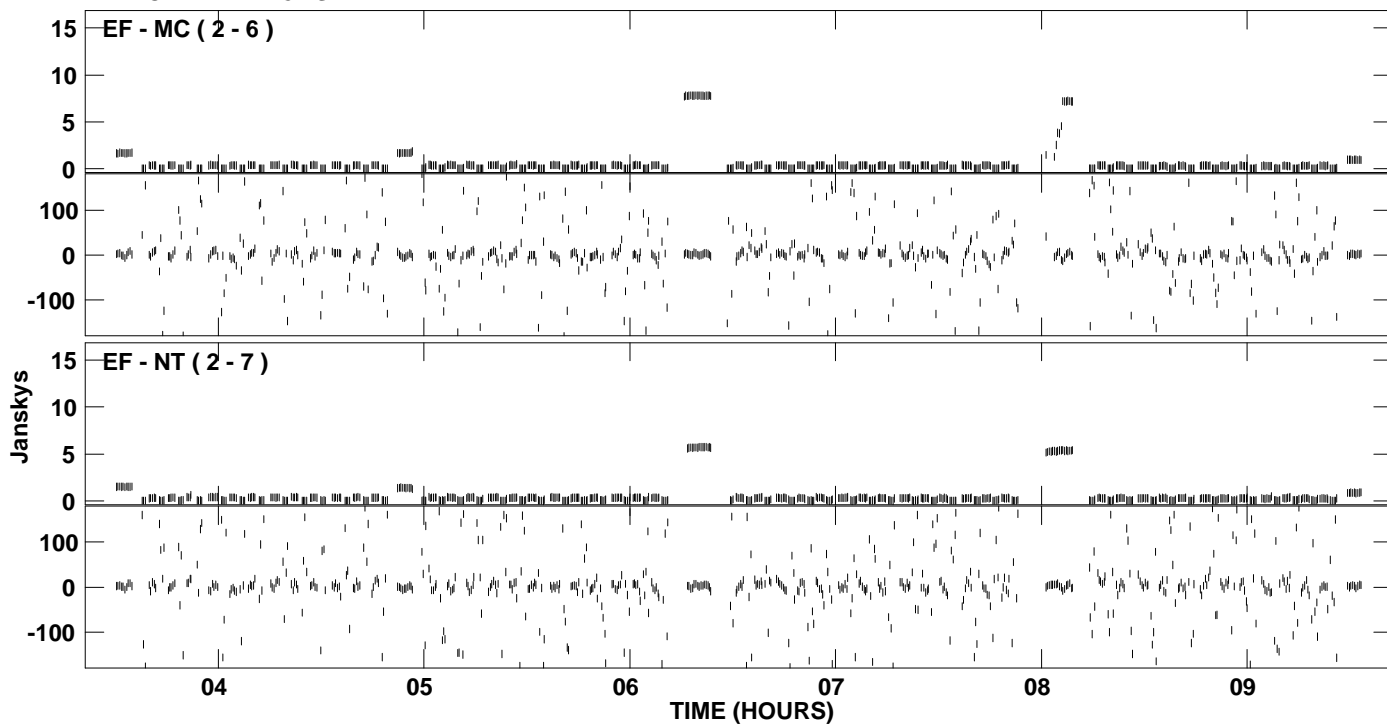


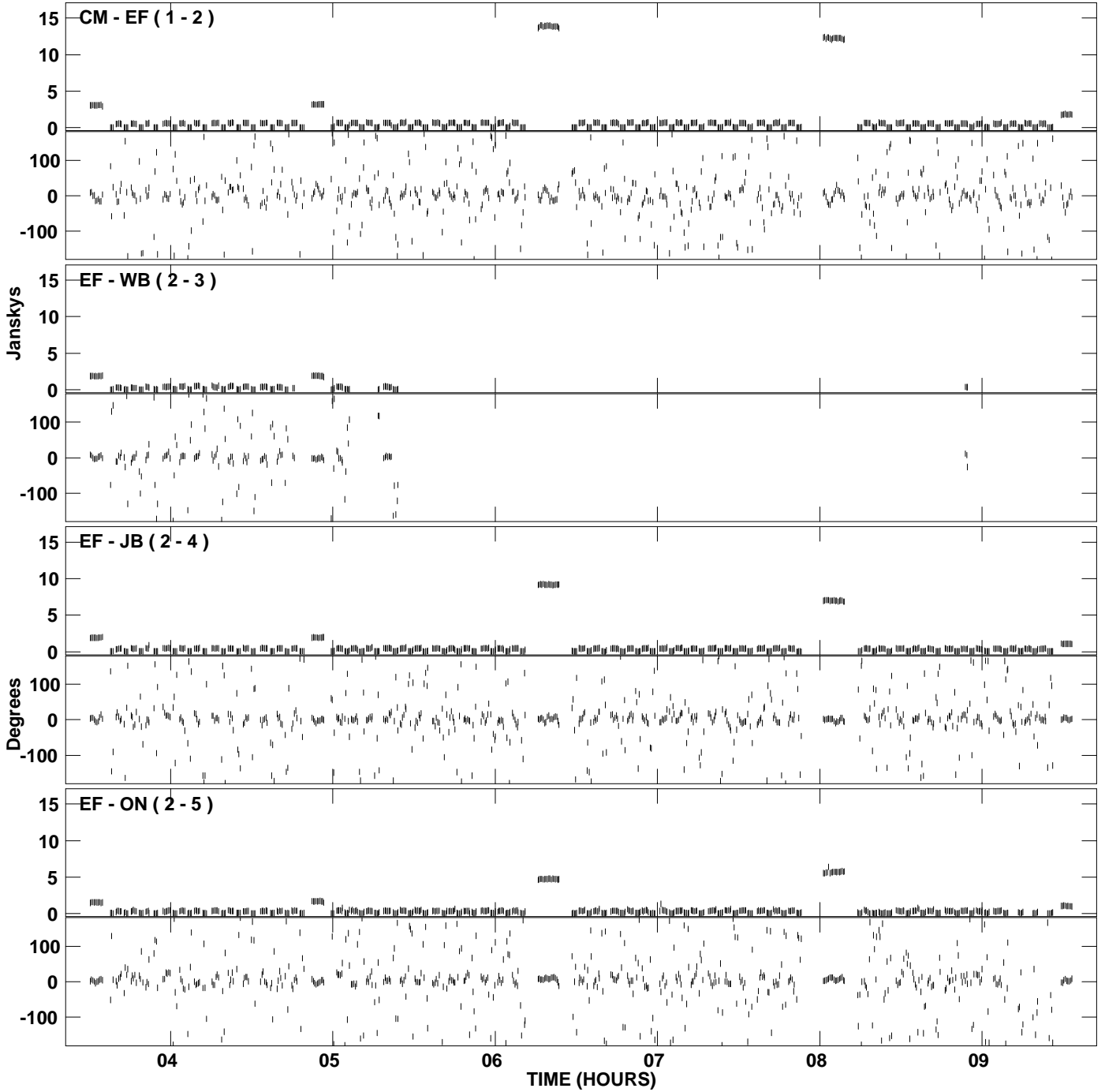
PLot file version 1 created 06-MAY-2008 12:47:24
Amplitude and Phase vs Time for EM069A 1.UVDATA.1 Vect aver. CL # 3
IF 1 CHAN 1 - 128 STK LL



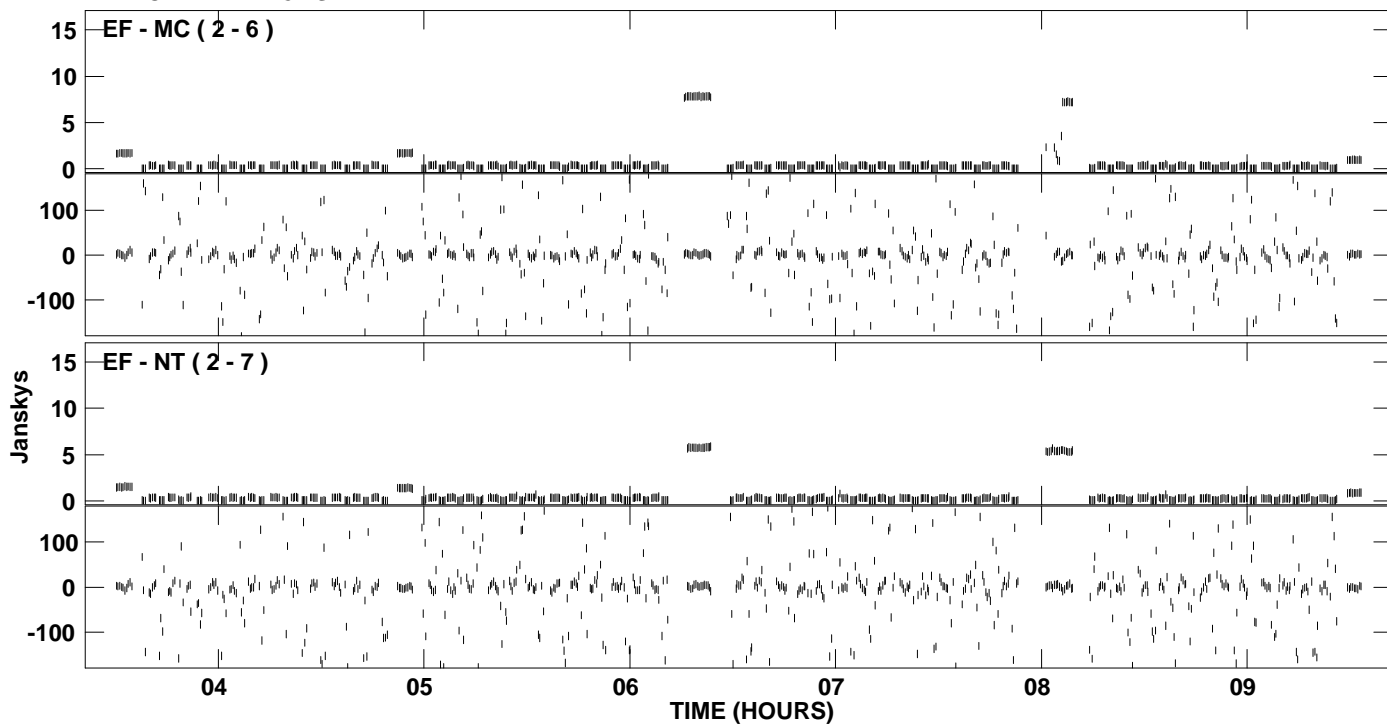
PLot file version 2 created 06-MAY-2008 12:47:24
Amplitude andPhase vs Time for EM069A 1.UVDATA.1 Vect aver. CL # 3
IF 1 CHAN 1 - 128 STK LL



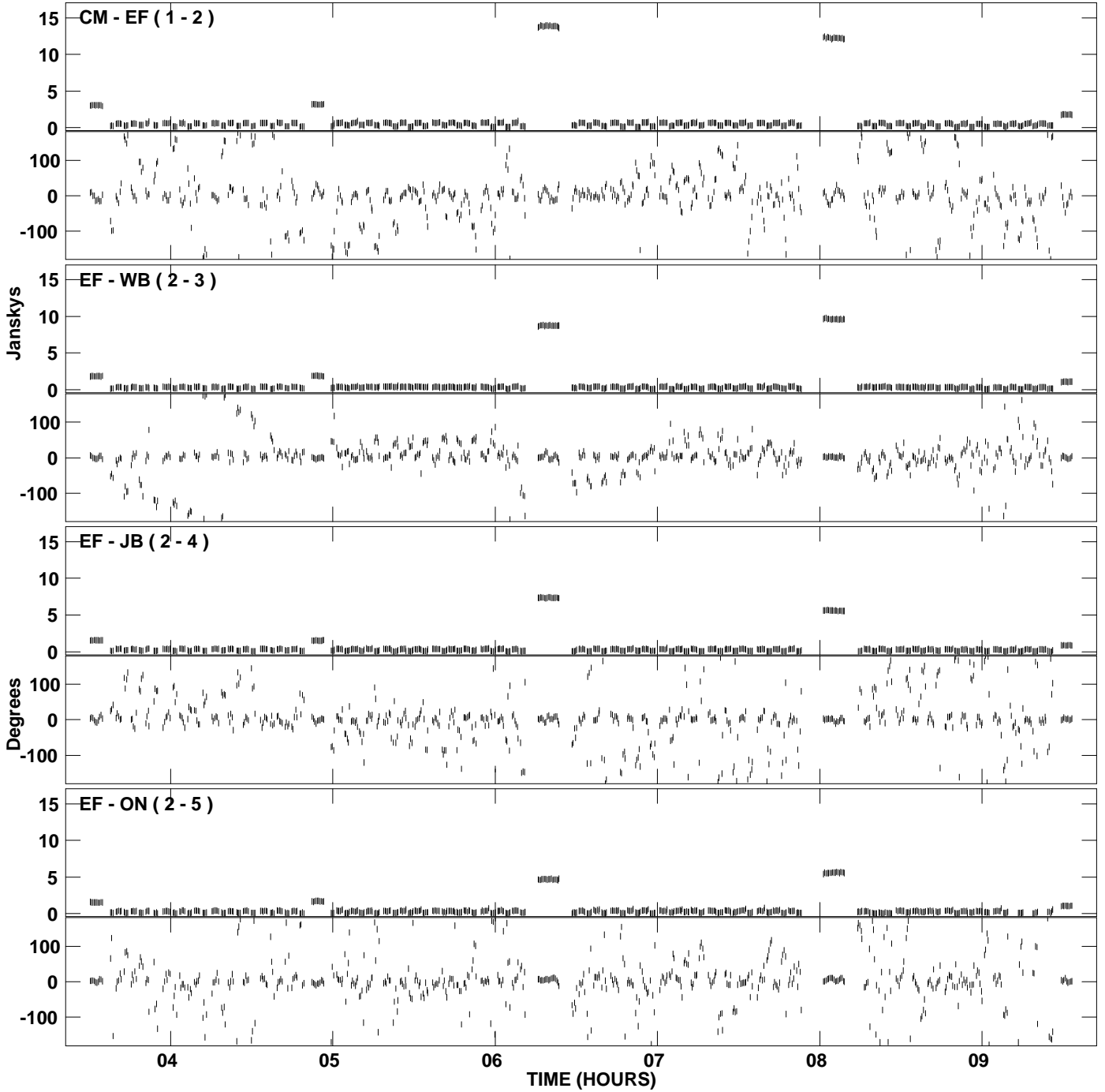
PLot file version 3 created 06-MAY-2008 12:49:42
Amplitude and Phase vs Time for EM069A 1.UVDATA.1 Vect aver. CL # 3
IF 2 CHAN 1 - 128 STK LL



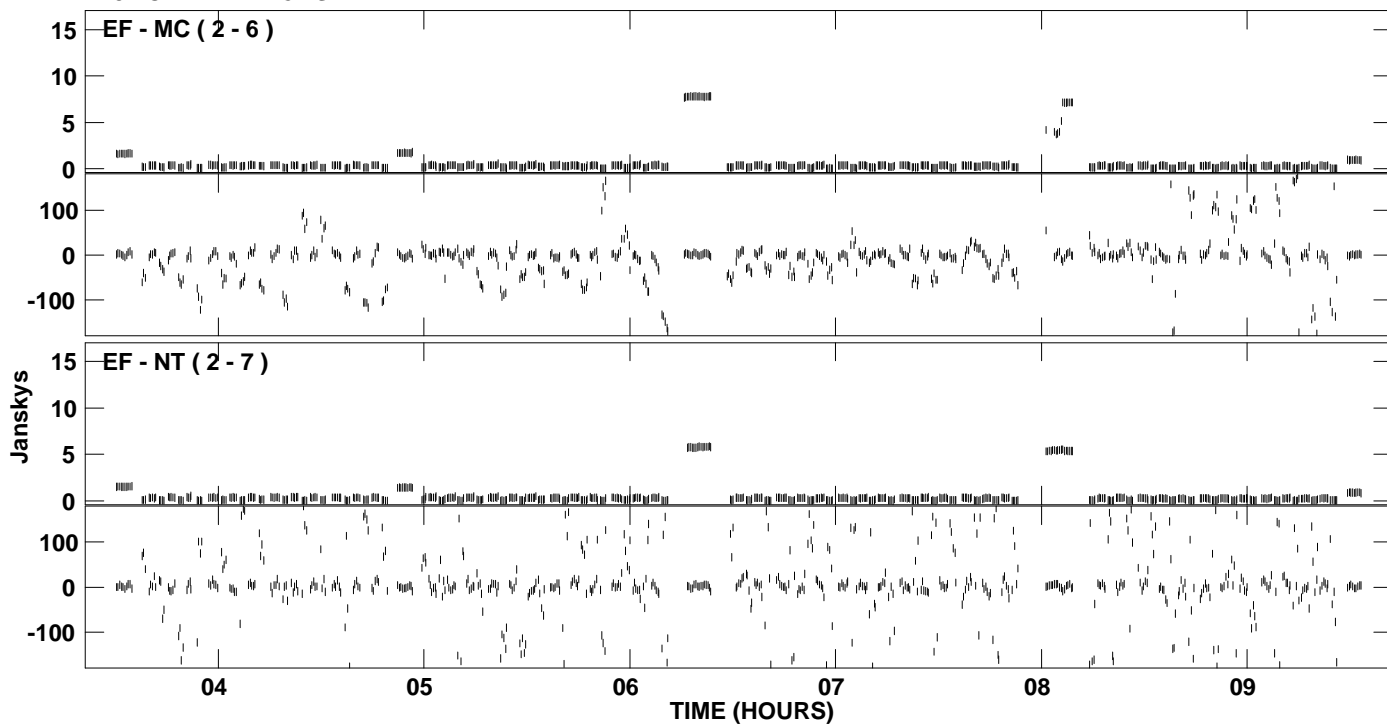
PLot file version 4 created 06-MAY-2008 12:49:42
Amplitude and Phase vs Time for EM069A 1.UVDATA.1 Vect aver. CL # 3
IF 2 CHAN 1 - 128 STK LL



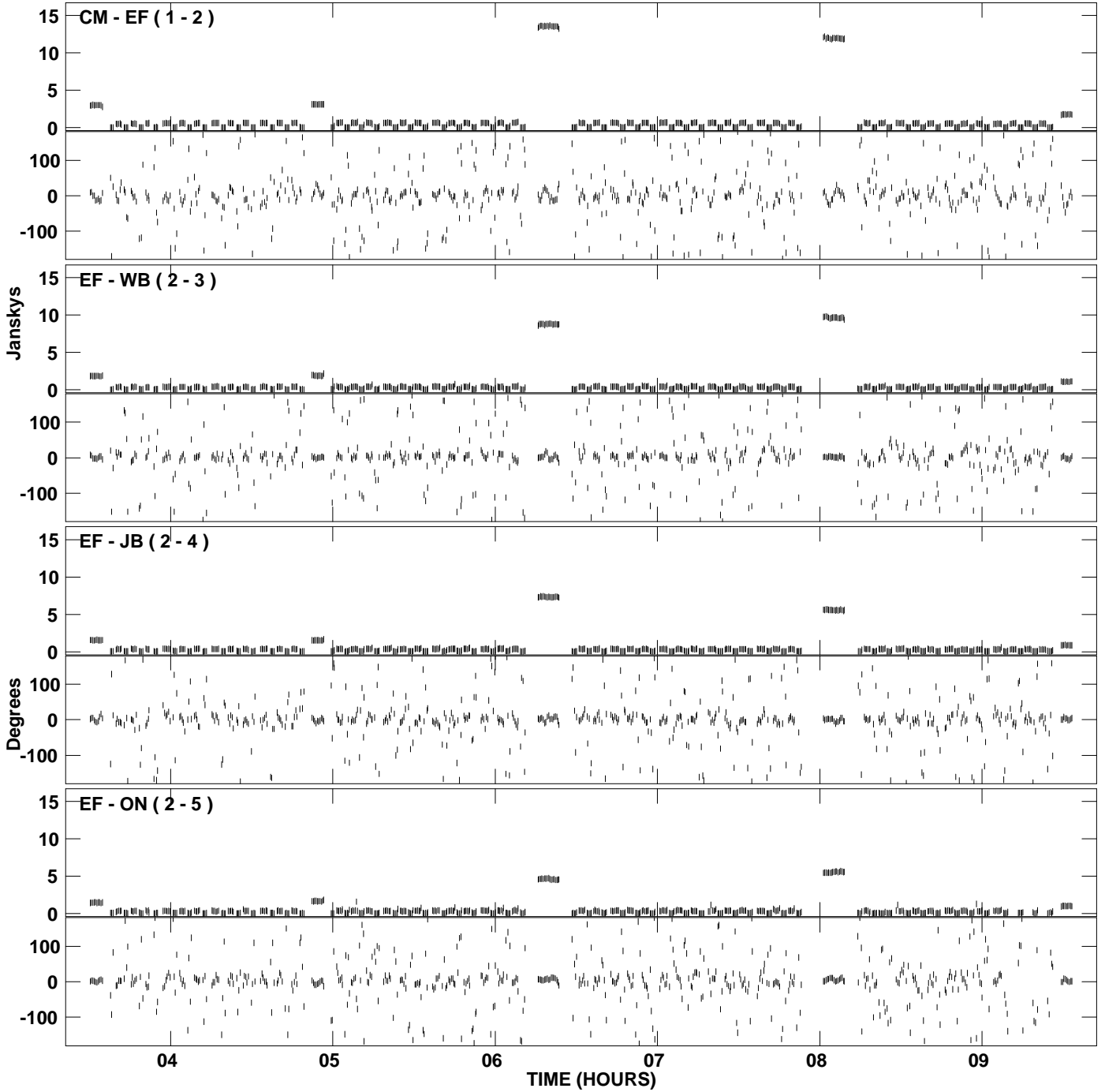
PLot file version 5 created 06-MAY-2008 12:52:04
Amplitude and Phase vs Time for EM069A 1.UVDATA.1 Vect aver. CL # 3
IF 3 CHAN 1 - 128 STK LL



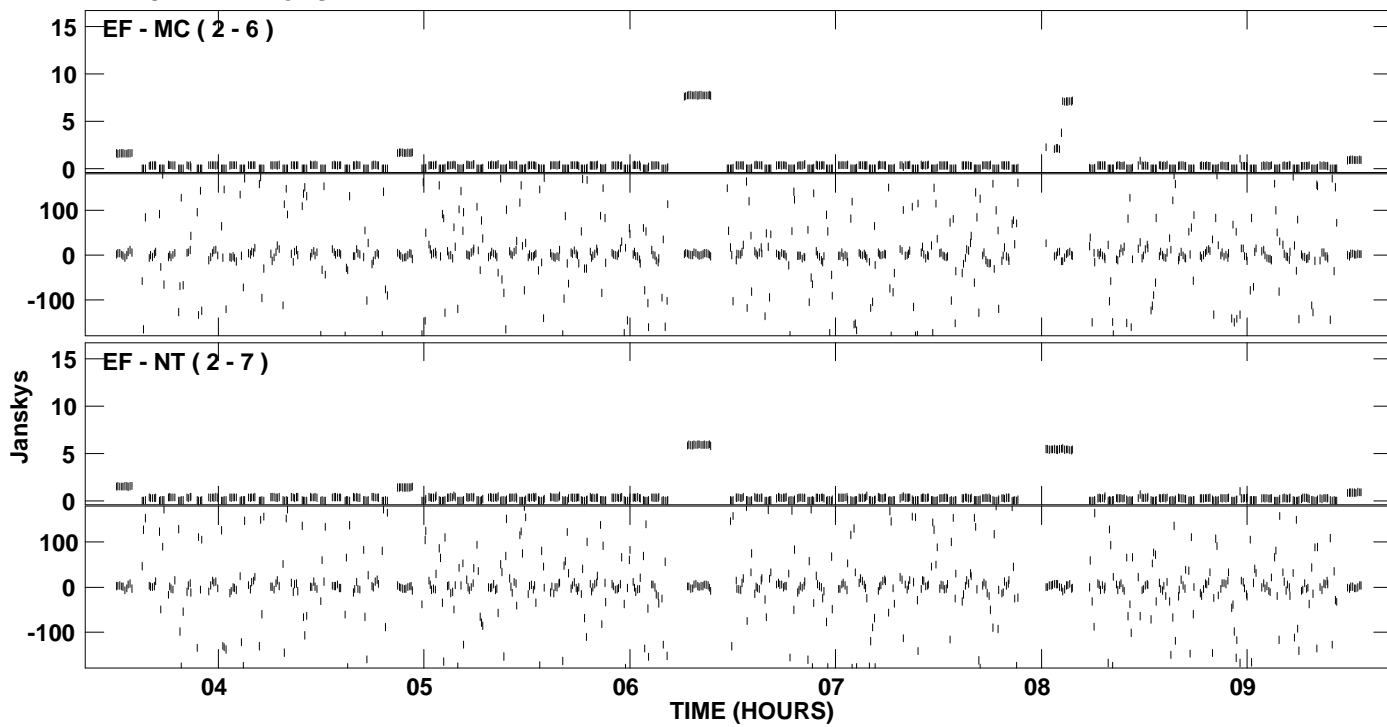
PLot file version 6 created 06-MAY-2008 12:52:04
Amplitude and Phase vs Time for EM069A 1.UVDATA.1 Vect aver. CL # 3
IF 3 CHAN 1 - 128 STK LL



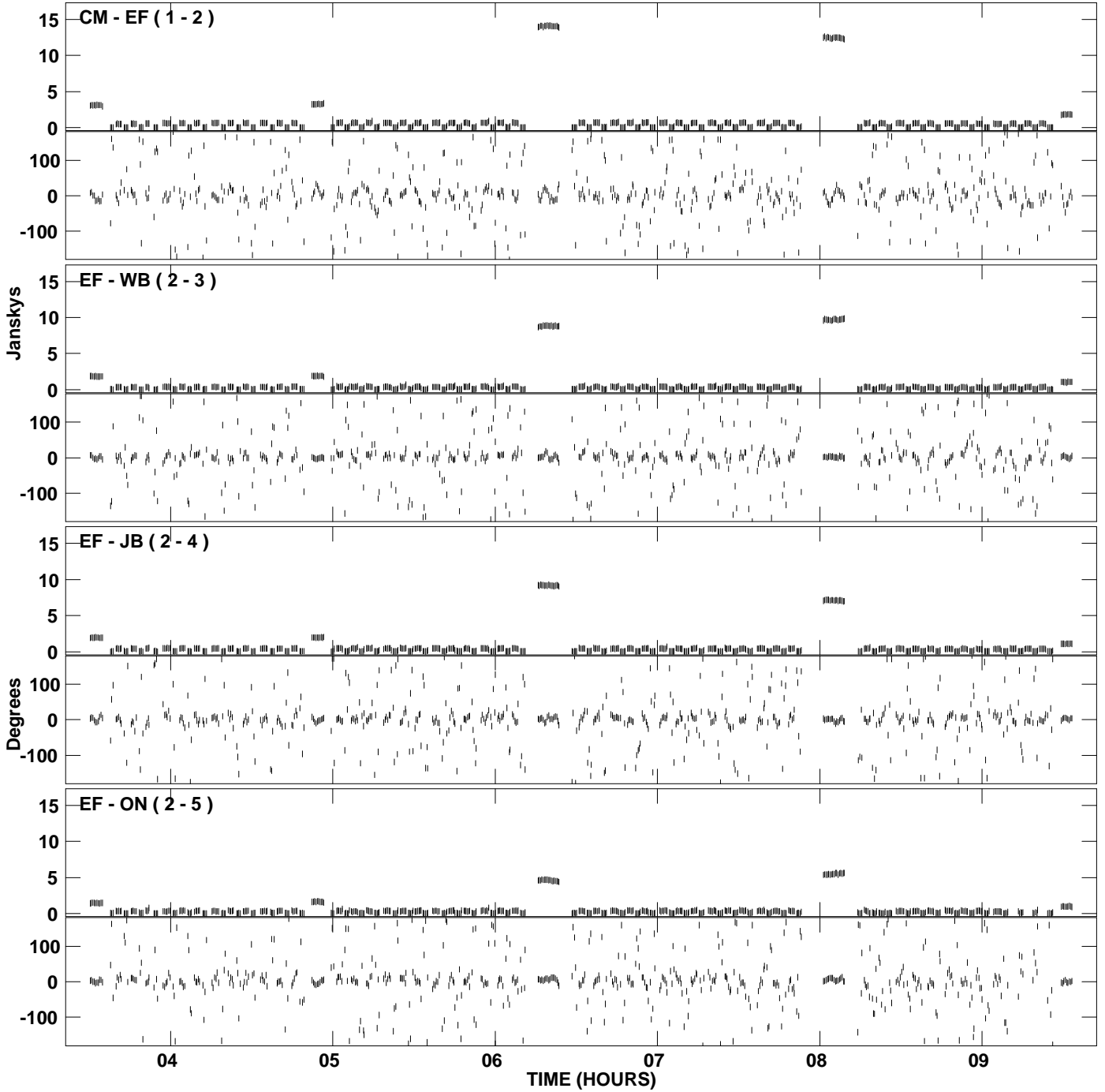
PLot file version 7 created 06-MAY-2008 12:54:26
Amplitude and Phase vs Time for EM069A 1.UVDATA.1 Vect aver. CL # 3
IF 4 CHAN 1 - 128 STK LL



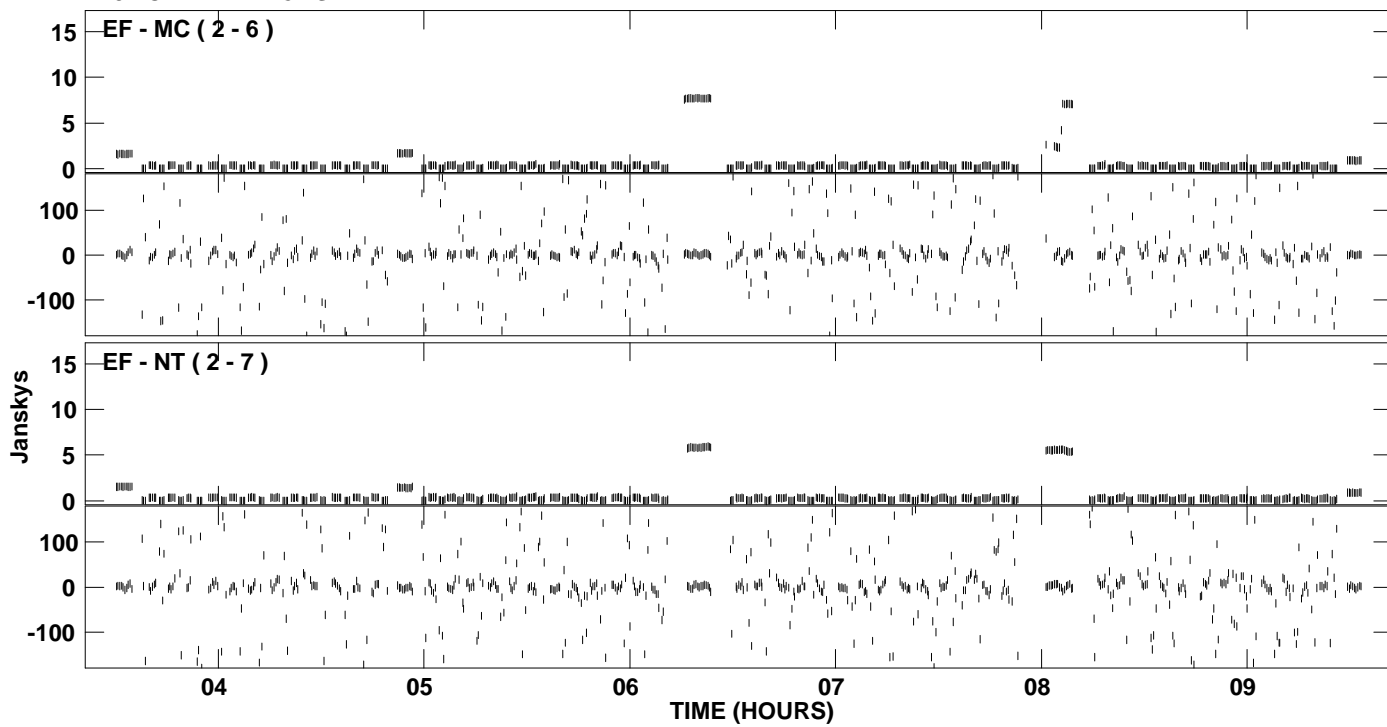
PLot file version 8 created 06-MAY-2008 12:54:26
Amplitude and Phase vs Time for EM069A 1.UVDATA.1 Vect aver. CL # 3
IF 4 CHAN 1 - 128 STK LL



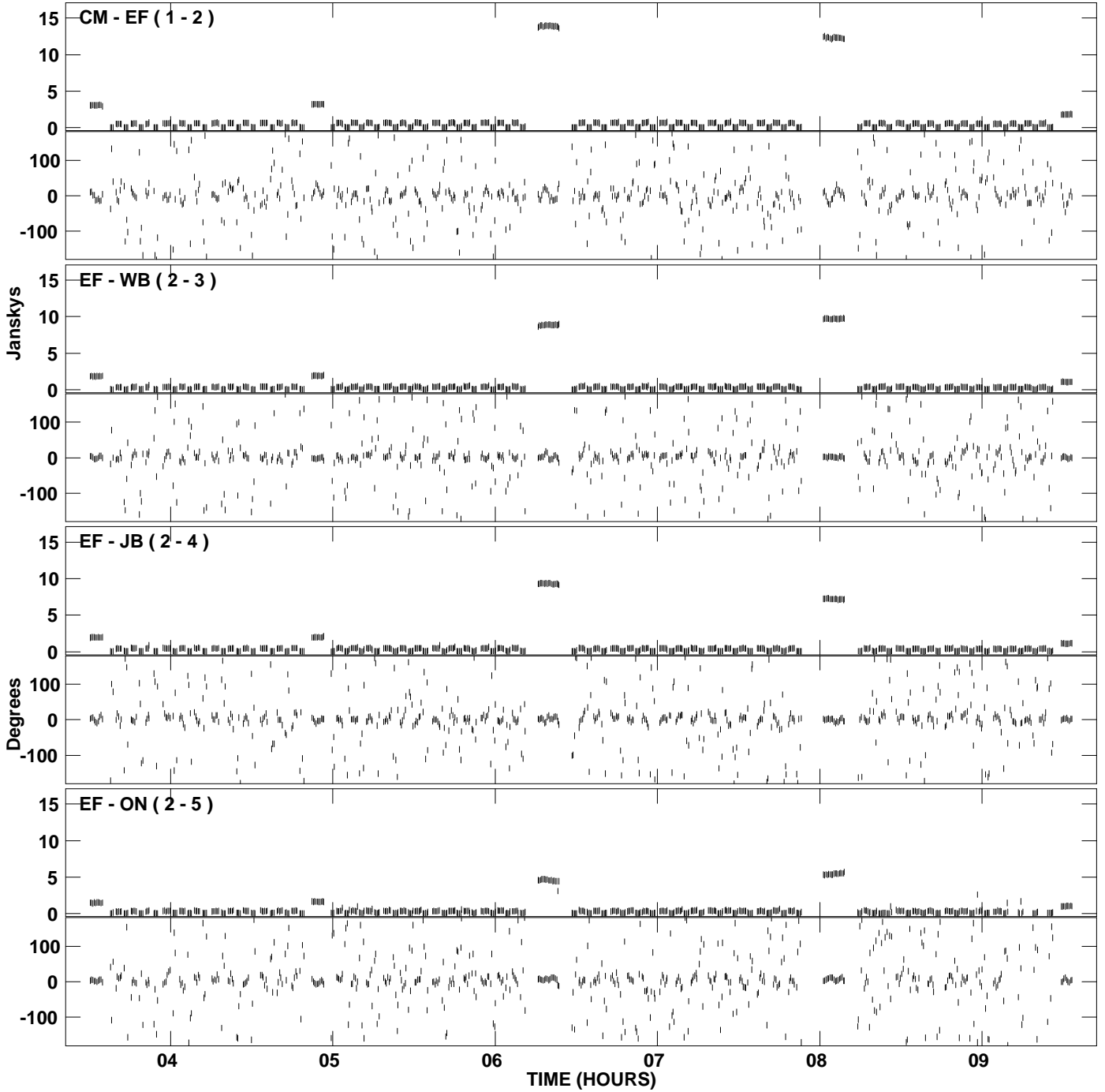
PLot file version 9 created 06-MAY-2008 12:56:50
Amplitude and Phase vs Time for EM069A 1.UVDATA.1 Vect aver. CL # 3
IF 5 CHAN 1 - 128 STK LL



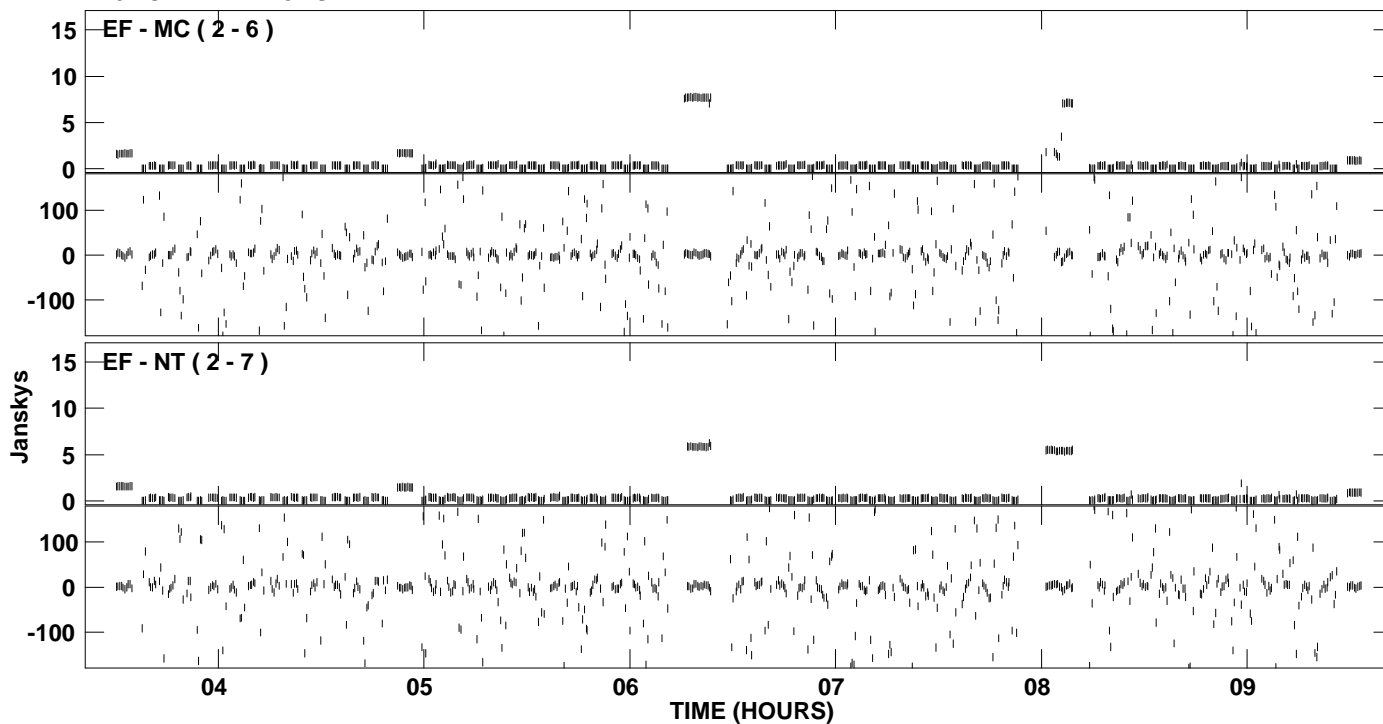
PLot file version 10 created 06-MAY-2008 12:56:50
Amplitude andPhase vs Time for EM069A 1.UVDATA.1 Vect aver. CL # 3
IF 5 CHAN 1 - 128 STK LL



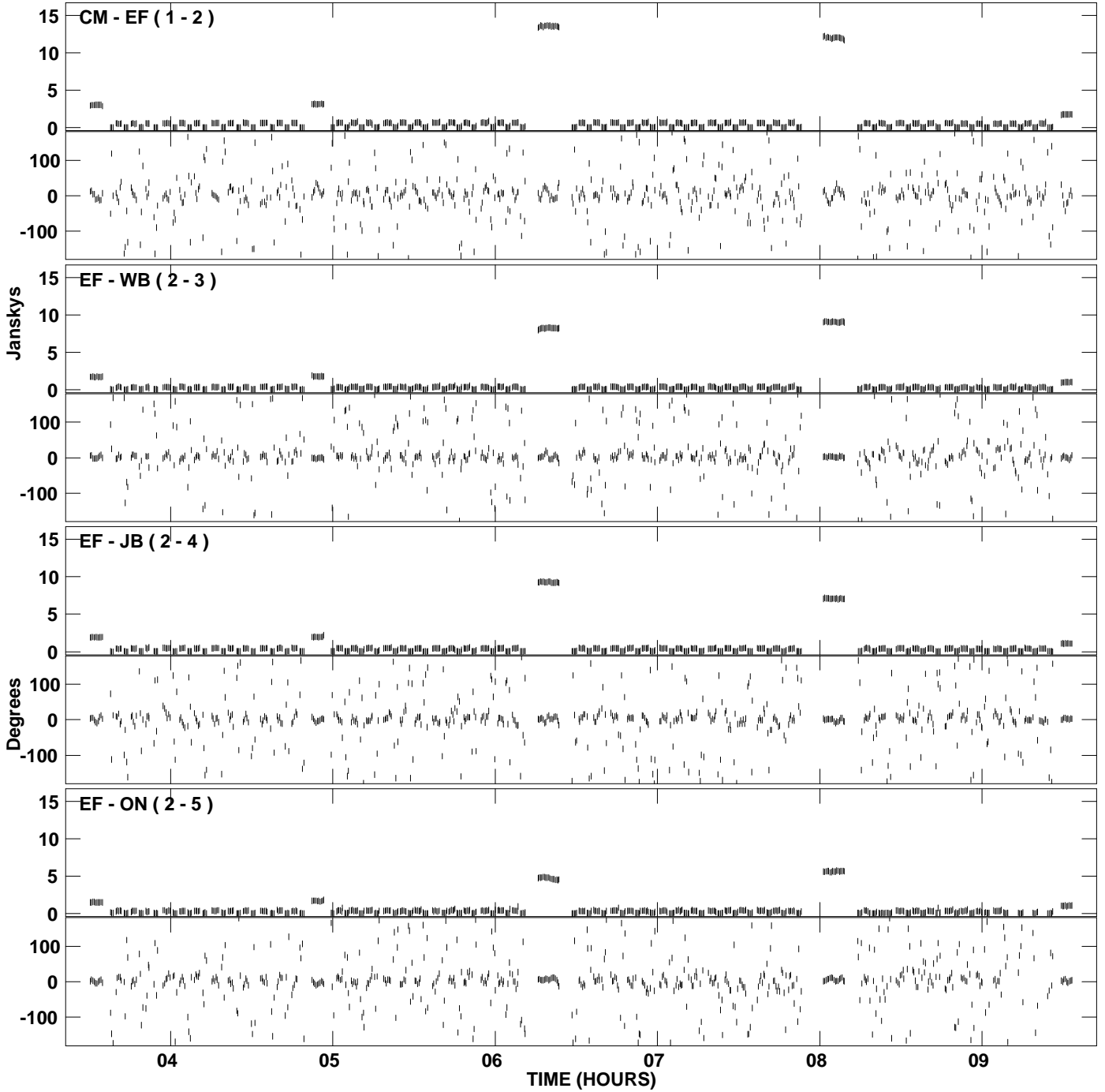
PLot file version 11 created 06-MAY-2008 12:59:09
Amplitude and Phase vs Time for EM069A 1.UVDATA.1 Vect aver. CL # 3
IF 6 CHAN 1 - 128 STK LL



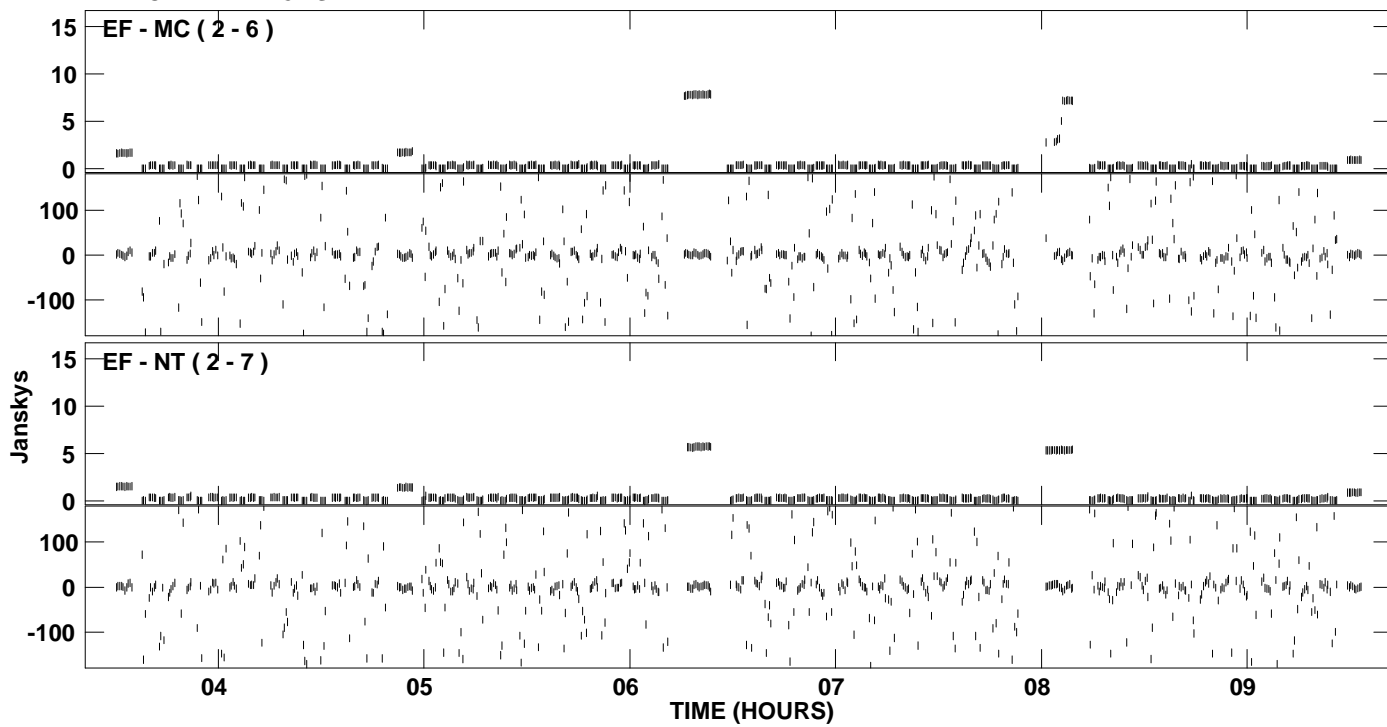
PLot file version 12 created 06-MAY-2008 12:59:09
Amplitude andPhase vs Time for EM069A 1.UVDATA.1 Vect aver. CL # 3
IF 6 CHAN 1 - 128 STK LL



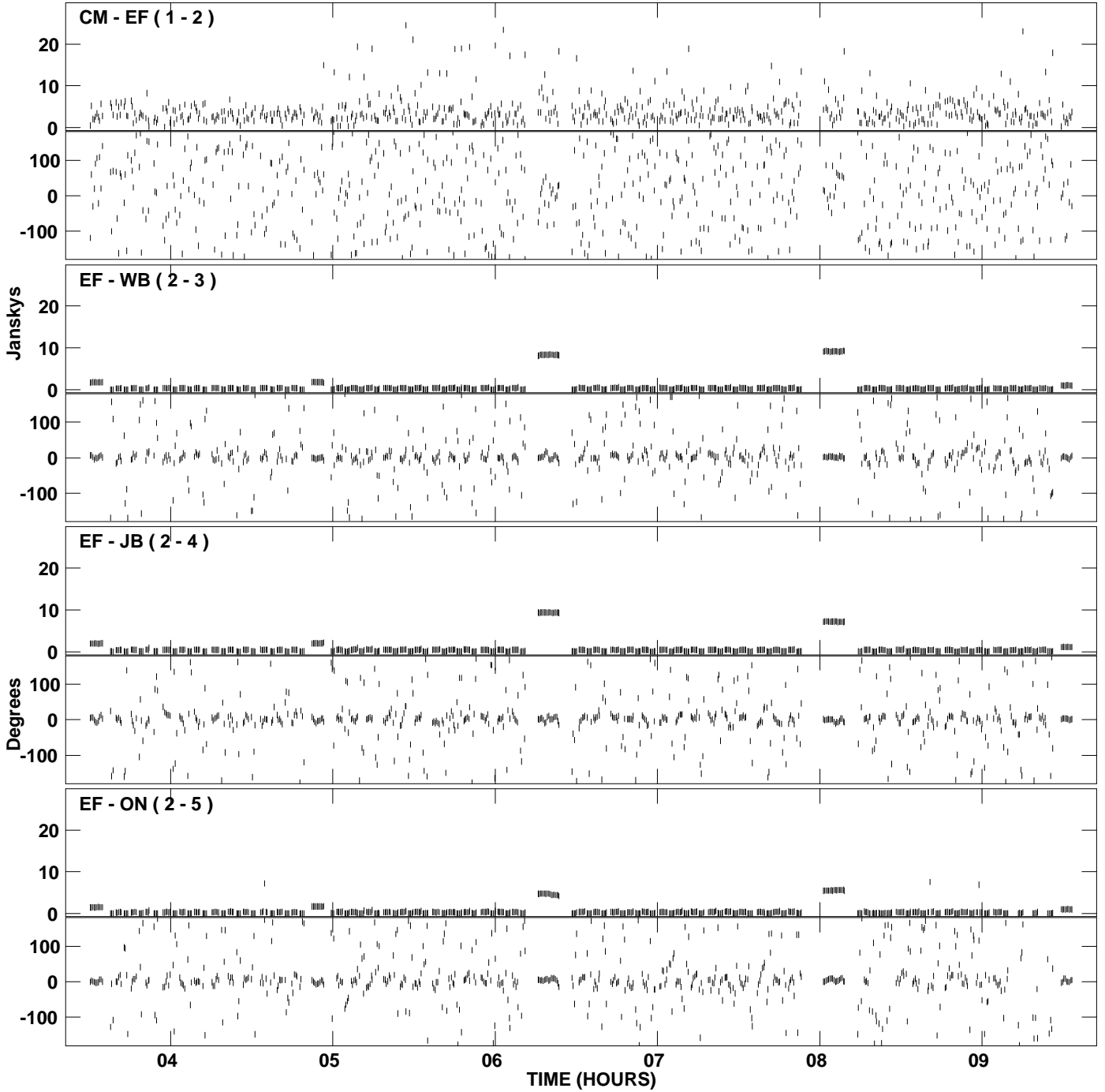
PLot file version 13 created 06-MAY-2008 13:01:30
Amplitude and Phase vs Time for EM069A 1.UVDATA.1 Vect aver. CL # 3
IF 7 CHAN 1 - 128 STK LL



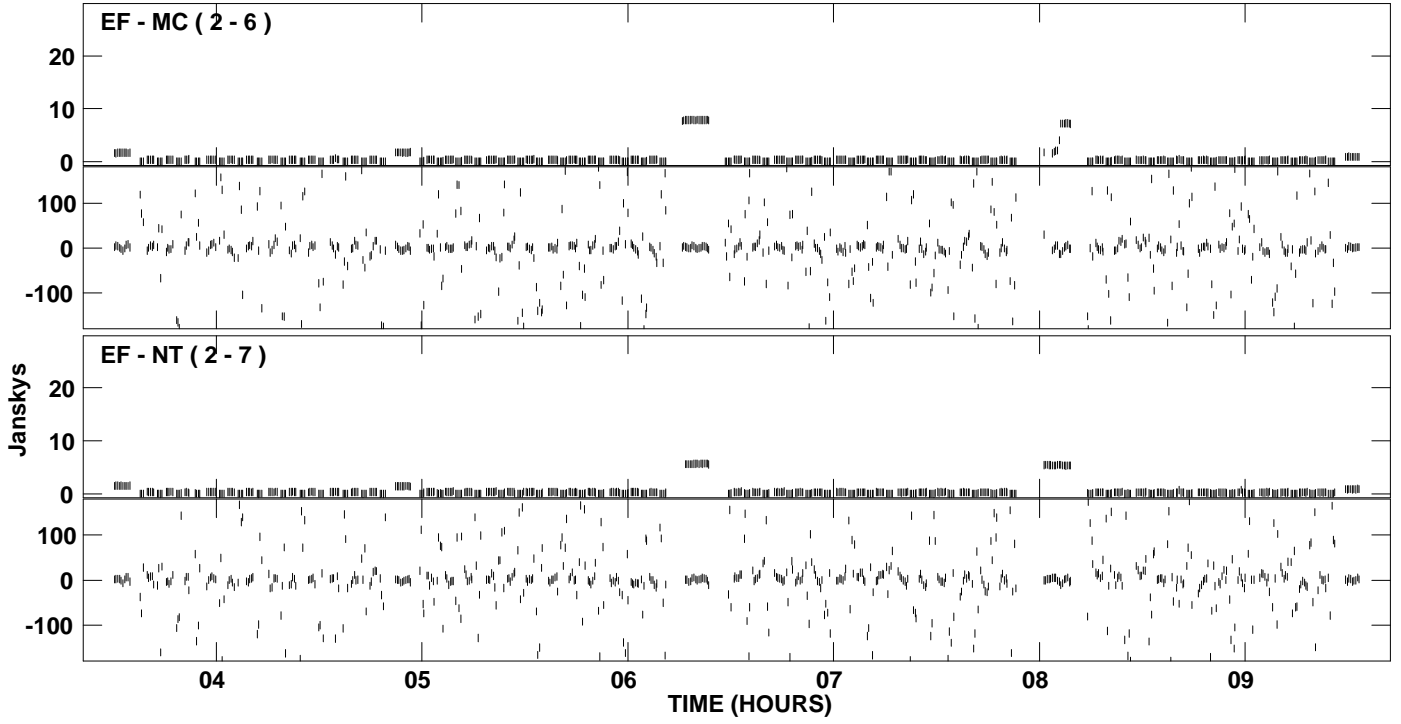
PLot file version 14 created 06-MAY-2008 13:01:30
Amplitude andPhase vs Time for EM069A 1.UVDATA.1 Vect aver. CL # 3
IF 7 CHAN 1 - 128 STK LL



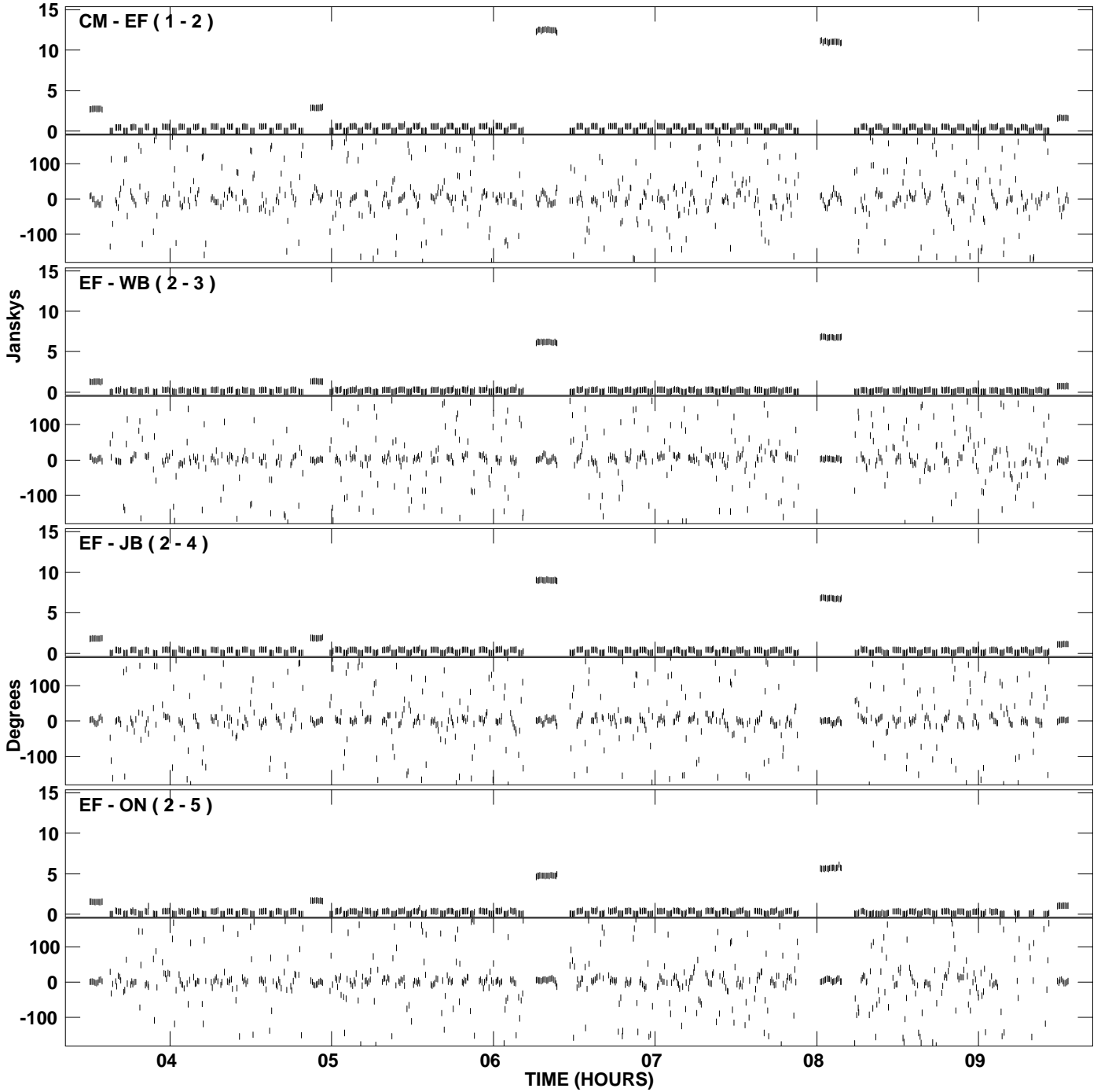
PLot file version 15 created 06-MAY-2008 13:03:48
Amplitude andPhase vs Time for EM069A 1.UVDATA.1 Vect aver. CL # 3
IF 8 CHAN 1 - 128 STK LL



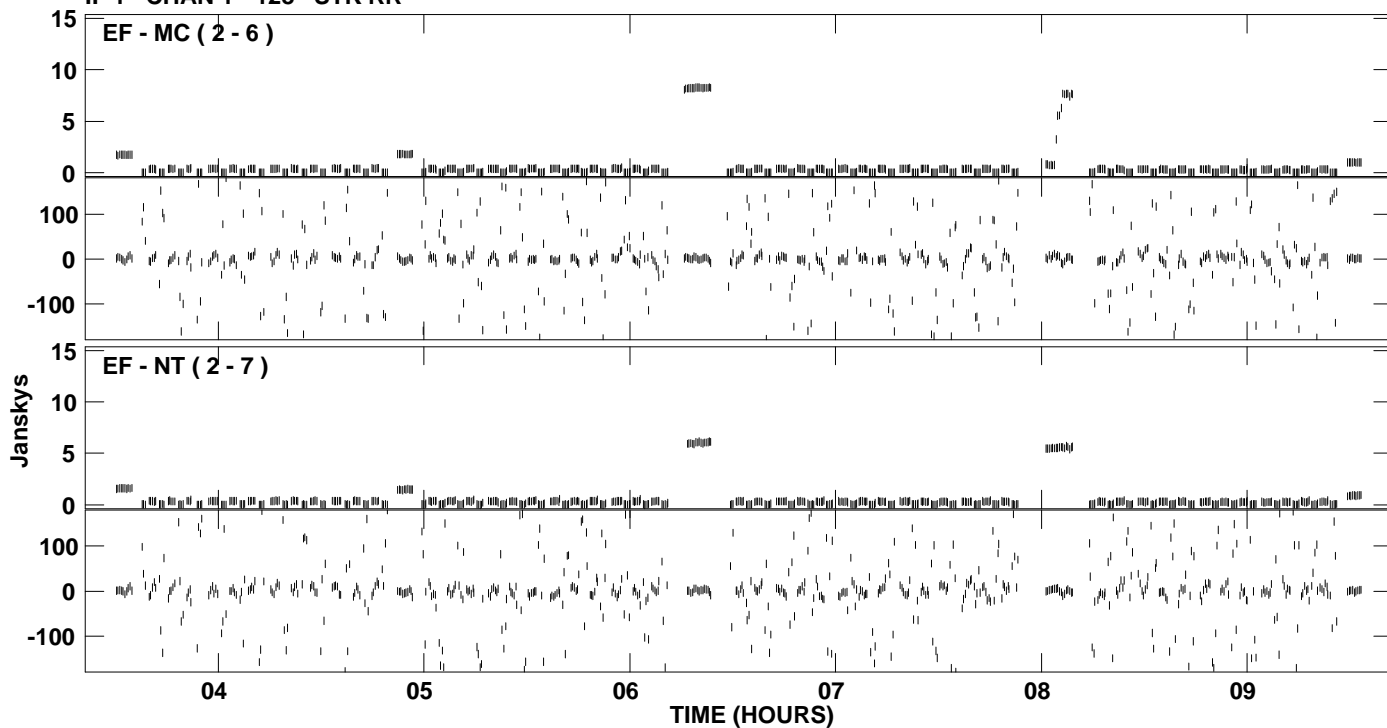
PLot file version 16 created 06-MAY-2008 13:03:48
Amplitude andPhase vs Time for EM069A 1.UVDATA.1 Vect aver. CL # 3
IF 8 CHAN 1 - 128 STK LL



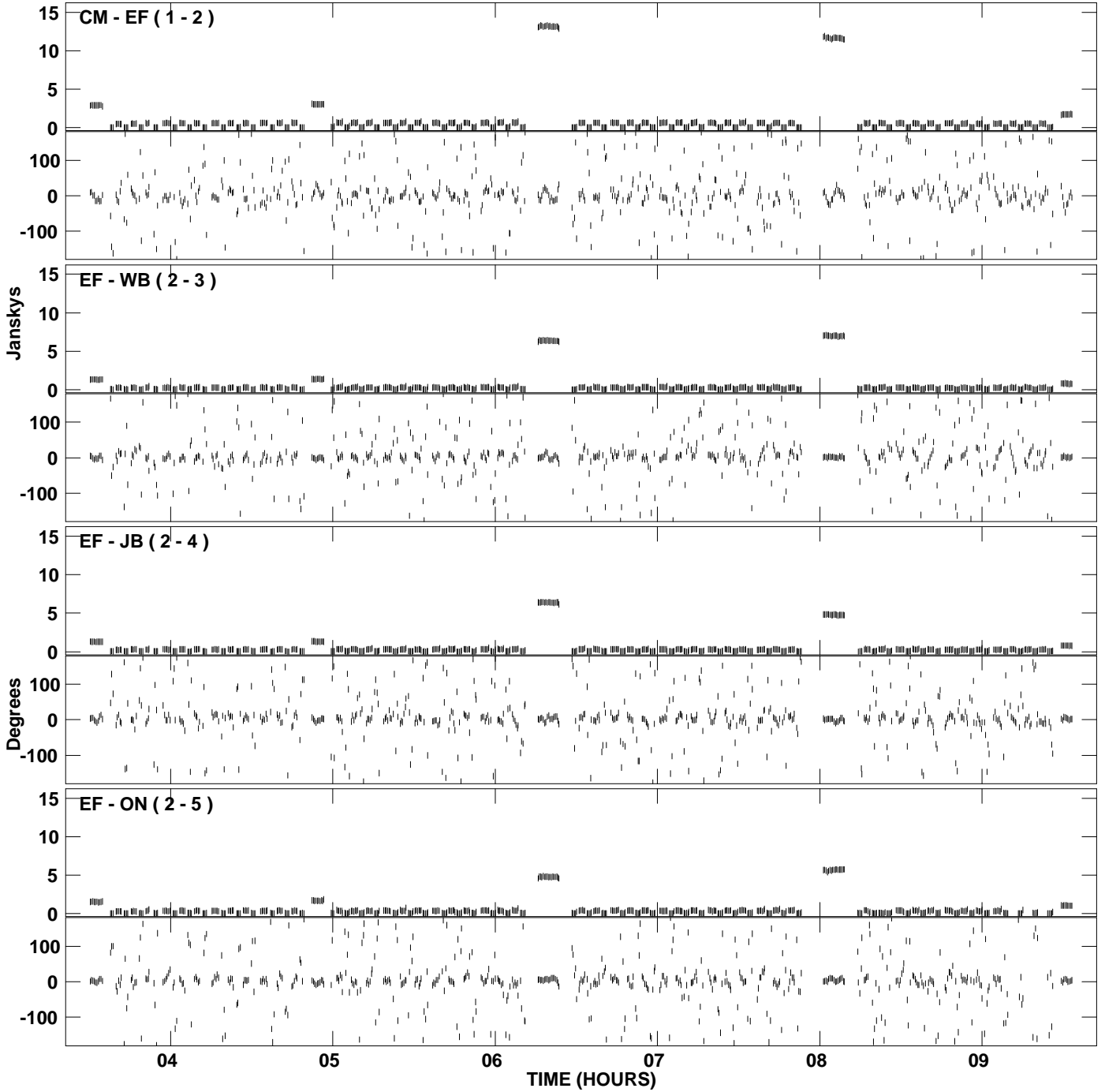
PLot file version 17 created 06-MAY-2008 13:06:07
Amplitude and Phase vs Time for EM069A 1.UVDATA.1 Vect aver. CL # 3
IF 1 CHAN 1 - 128 STK RR



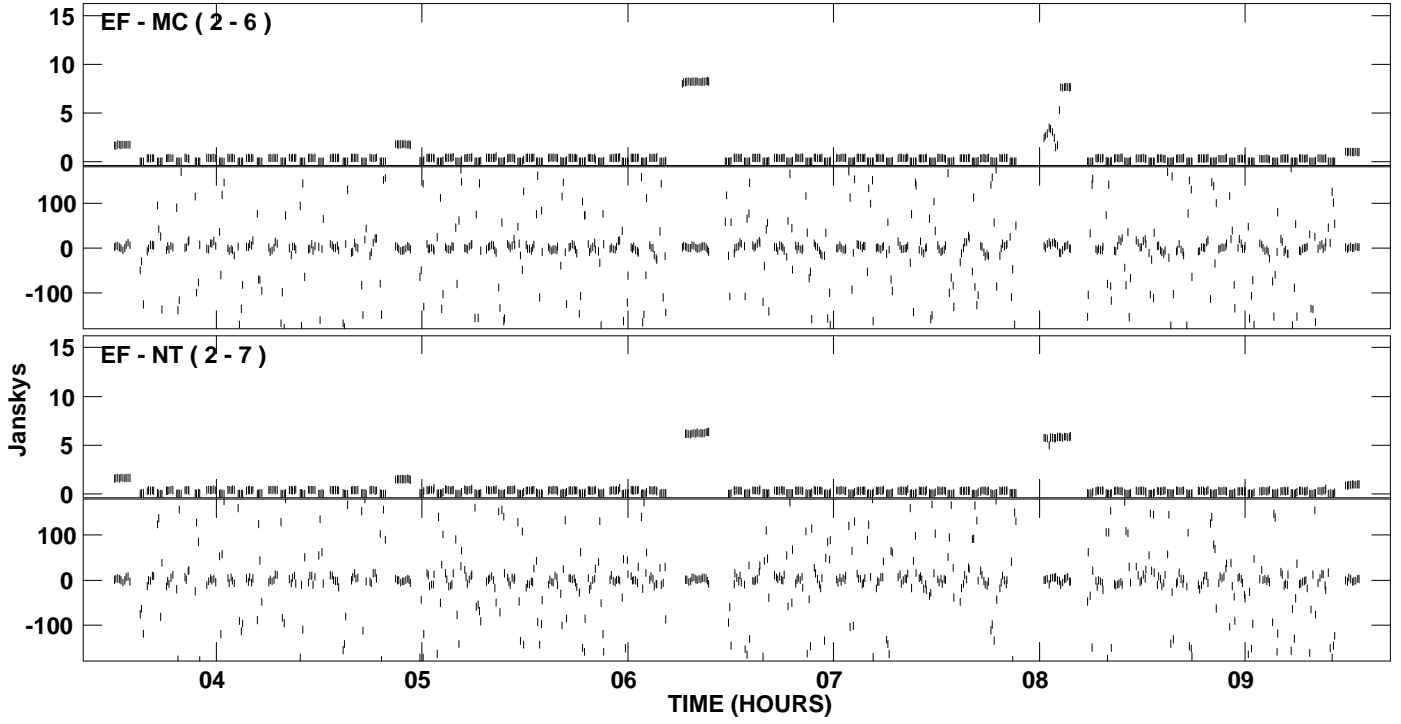
PLot file version 18 created 06-MAY-2008 13:06:07
Amplitude andPhase vs Time for EM069A 1.UVDATA.1 Vect aver. CL # 3
IF 1 CHAN 1 - 128 STK RR



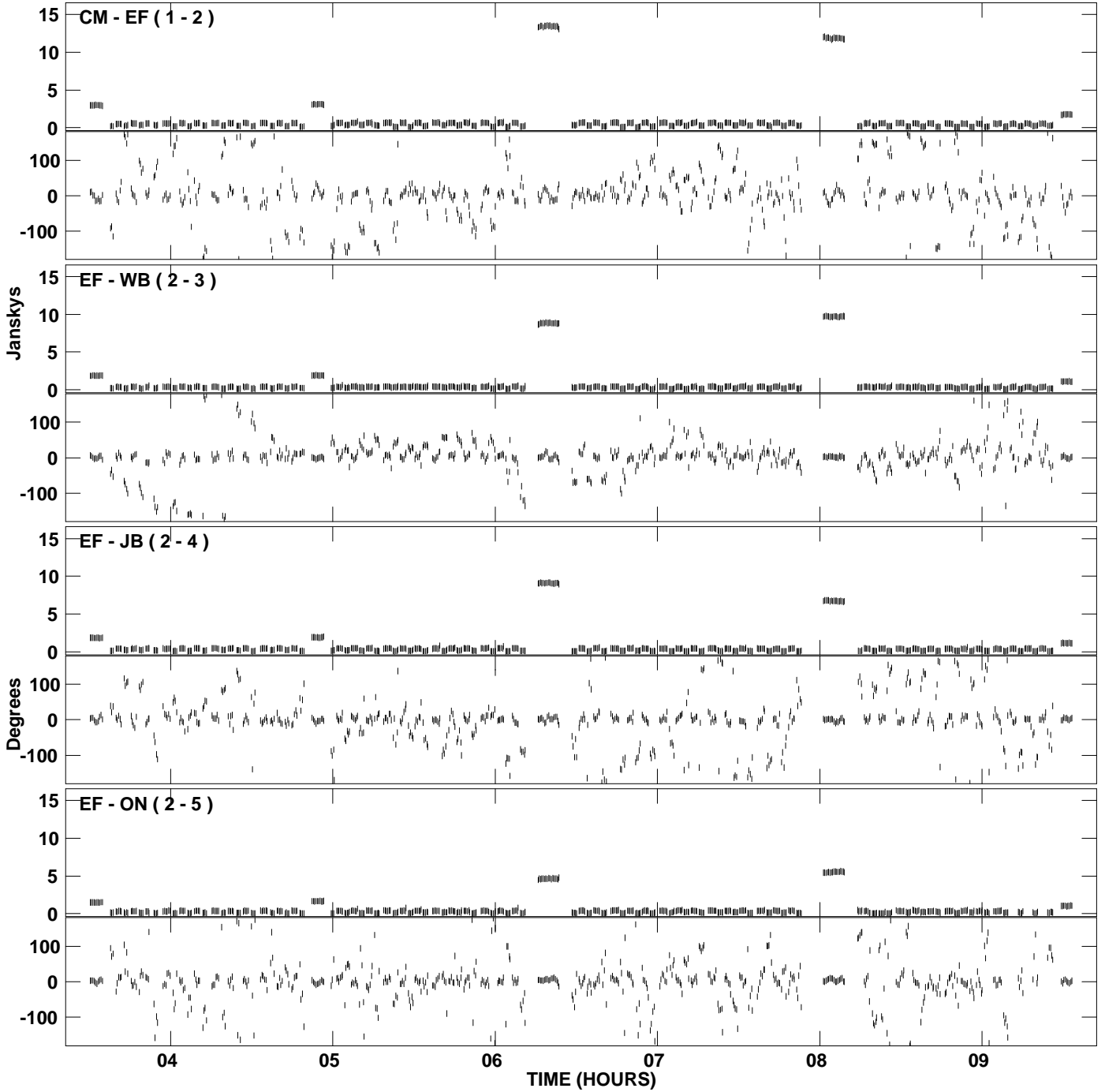
PLot file version 19 created 06-MAY-2008 13:08:25
Amplitude and Phase vs Time for EM069A 1.UVDATA.1 Vect aver. CL # 3
IF 2 CHAN 1 - 128 STK RR



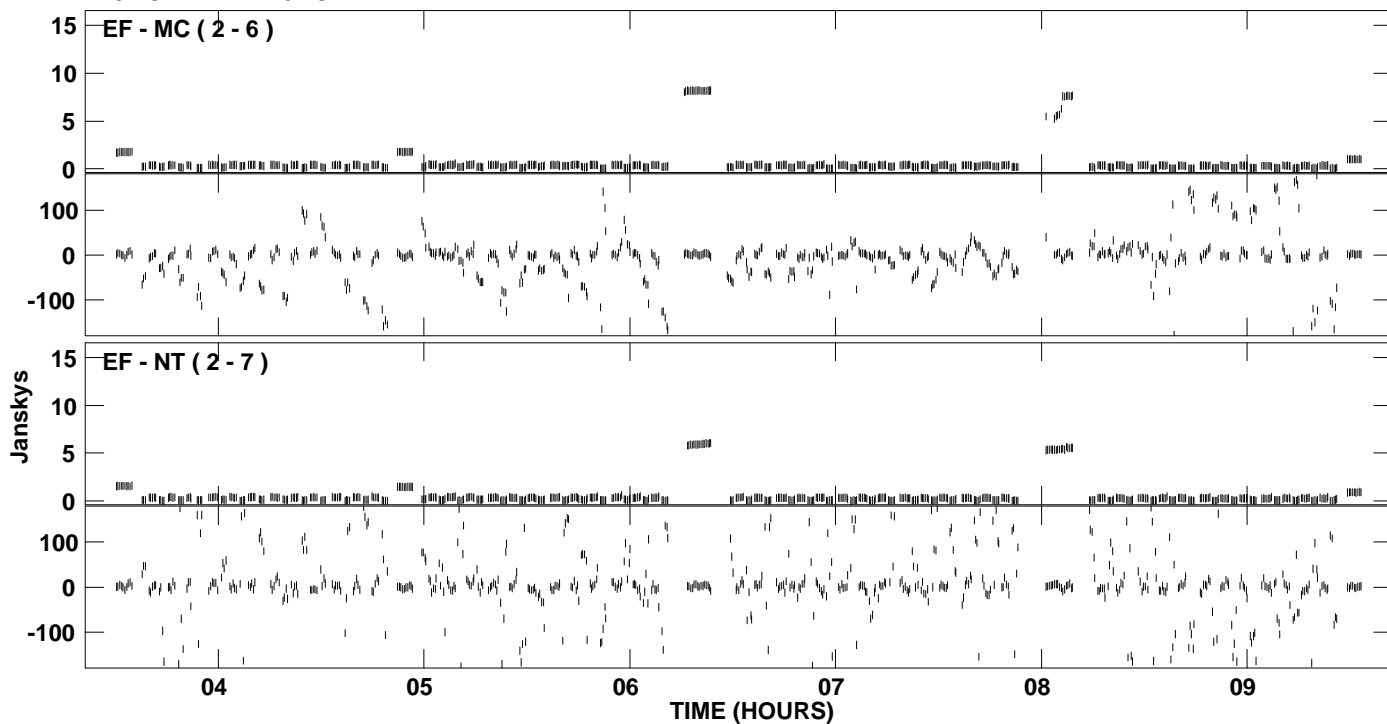
PLot file version 20 created 06-MAY-2008 13:08:25
Amplitude andPhase vs Time for EM069A 1.UVDATA.1 Vect aver. CL # 3
IF 2 CHAN 1 - 128 STK RR



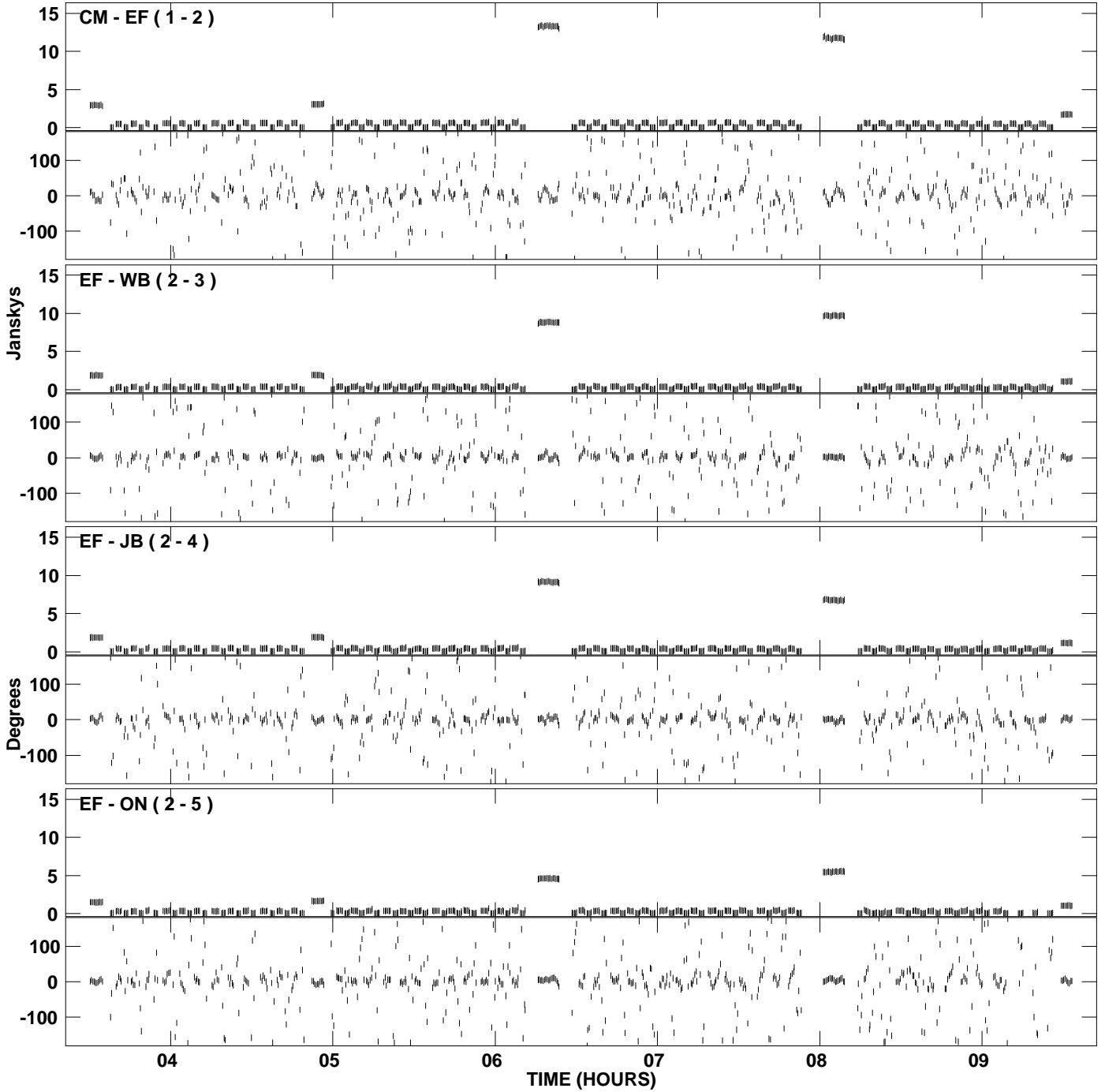
PLot file version 21 created 06-MAY-2008 13:11:39
Amplitude and Phase vs Time for EM069A 1.UVDATA.1 Vect aver. CL # 3
IF 3 CHAN 1 - 128 STK RR



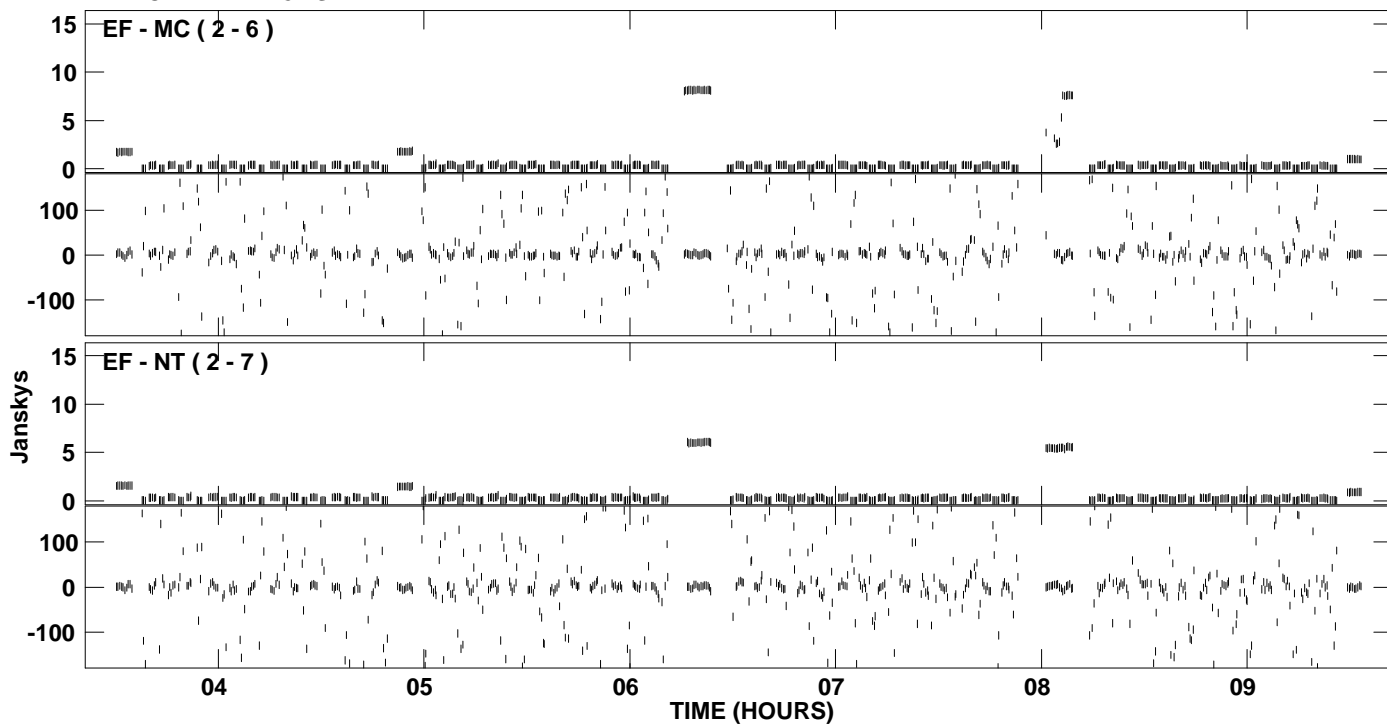
PLot file version 22 created 06-MAY-2008 13:11:39
Amplitude andPhase vs Time for EM069A 1.UVDATA.1 Vect aver. CL # 3
IF 3 CHAN 1 - 128 STK RR



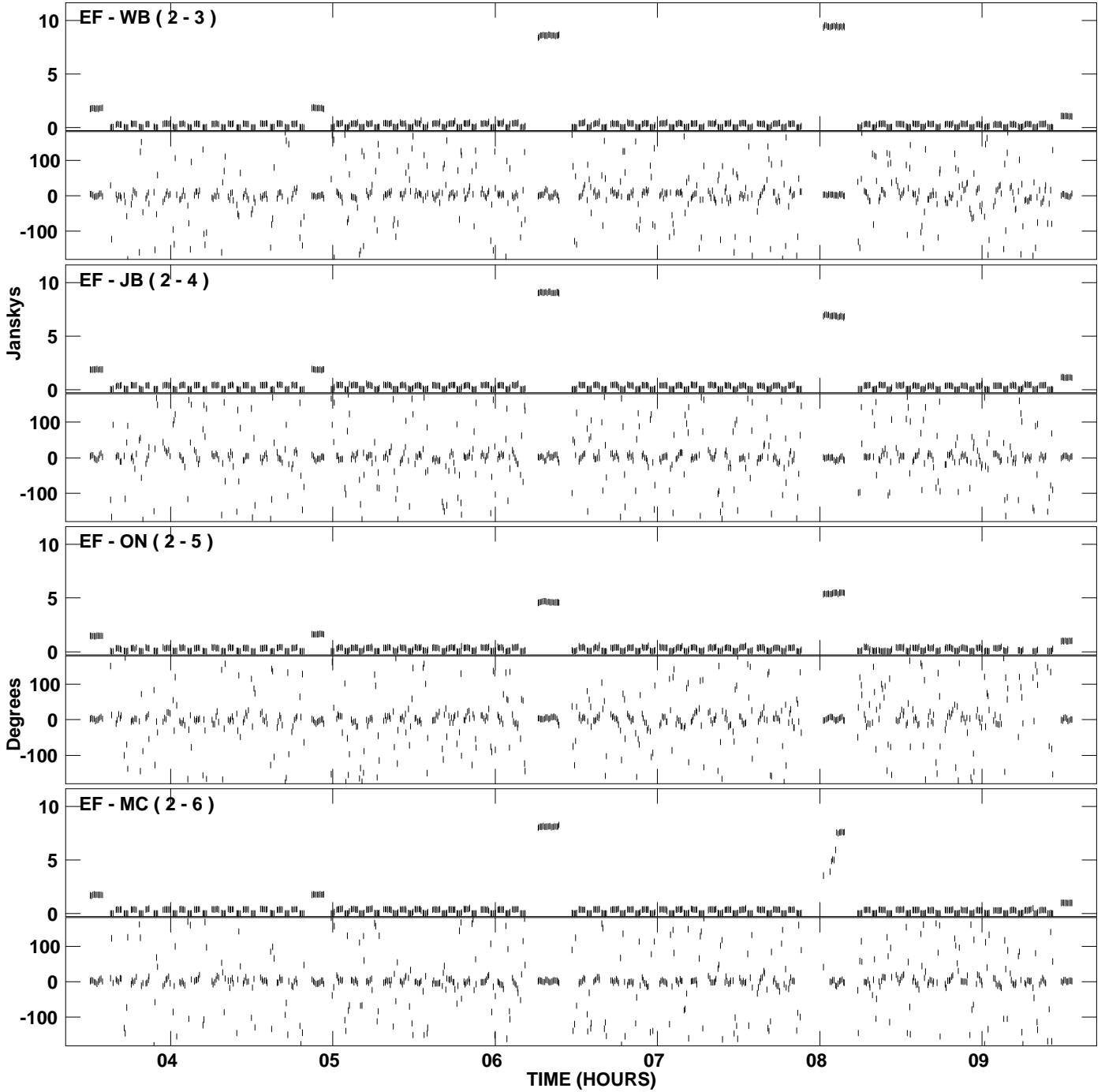
PLot file version 23 created 06-MAY-2008 13:13:52
Amplitude and Phase vs Time for EM069A 1.UVDATA.1 Vect aver. CL # 3
IF 4 CHAN 1 - 128 STK RR



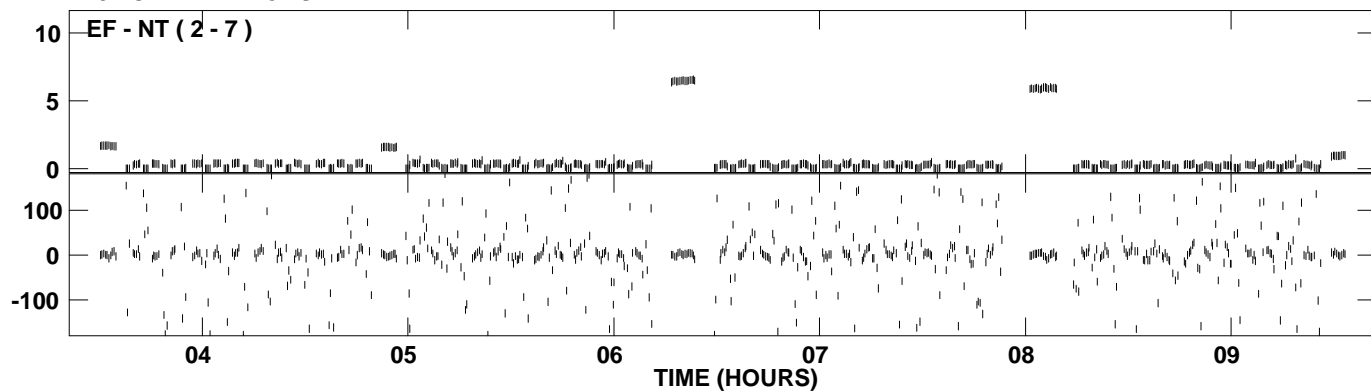
PLot file version 24 created 06-MAY-2008 13:13:52
Amplitude and Phase vs Time for EM069A 1.UVDATA.1 Vect aver. CL # 3
IF 4 CHAN 1 - 128 STK RR



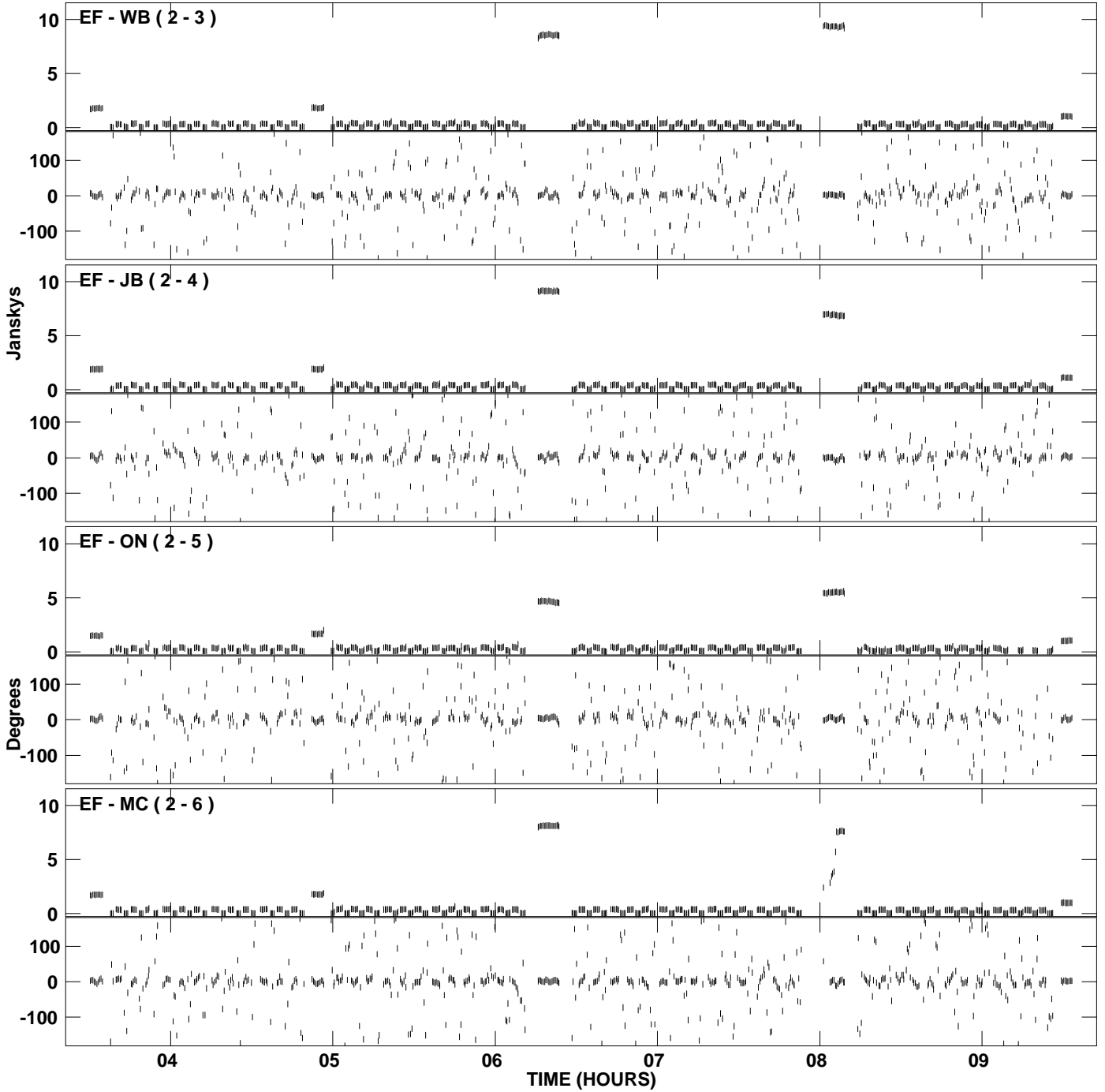
PLot file version 25 created 06-MAY-2008 13:16:29
Amplitude andPhase vs Time for EM069A 1.UVDATA.1 Vect aver. CL # 3
IF 5 CHAN 1 - 128 STK RR



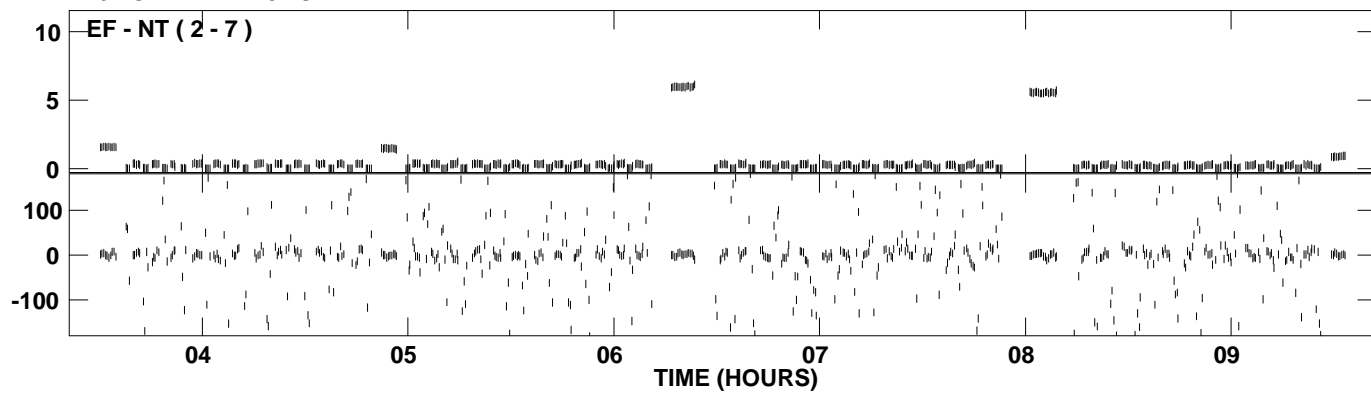
PLot file version 26 created 06-MAY-2008 13:16:29
Amplitude andPhase vs Time for EM069A 1.UVDATA.1 Vect aver. CL # 3
IF 5 CHAN 1 - 128 STK RR



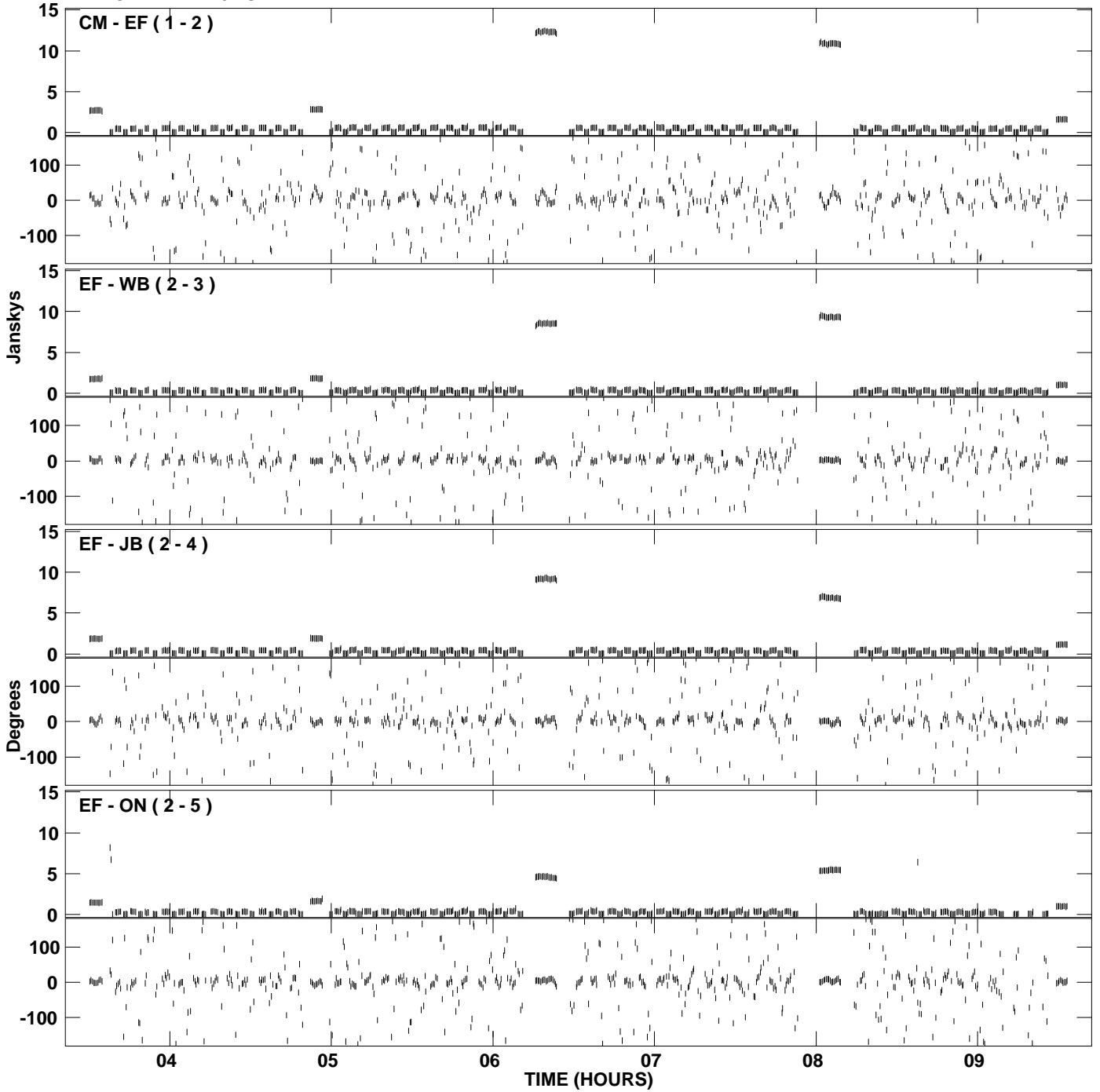
PLot file version 27 created 06-MAY-2008 13:18:39
Amplitude andPhase vs Time for EM069A 1.UVDATA.1 Vect aver. CL # 3
IF 6 CHAN 1 - 128 STK RR



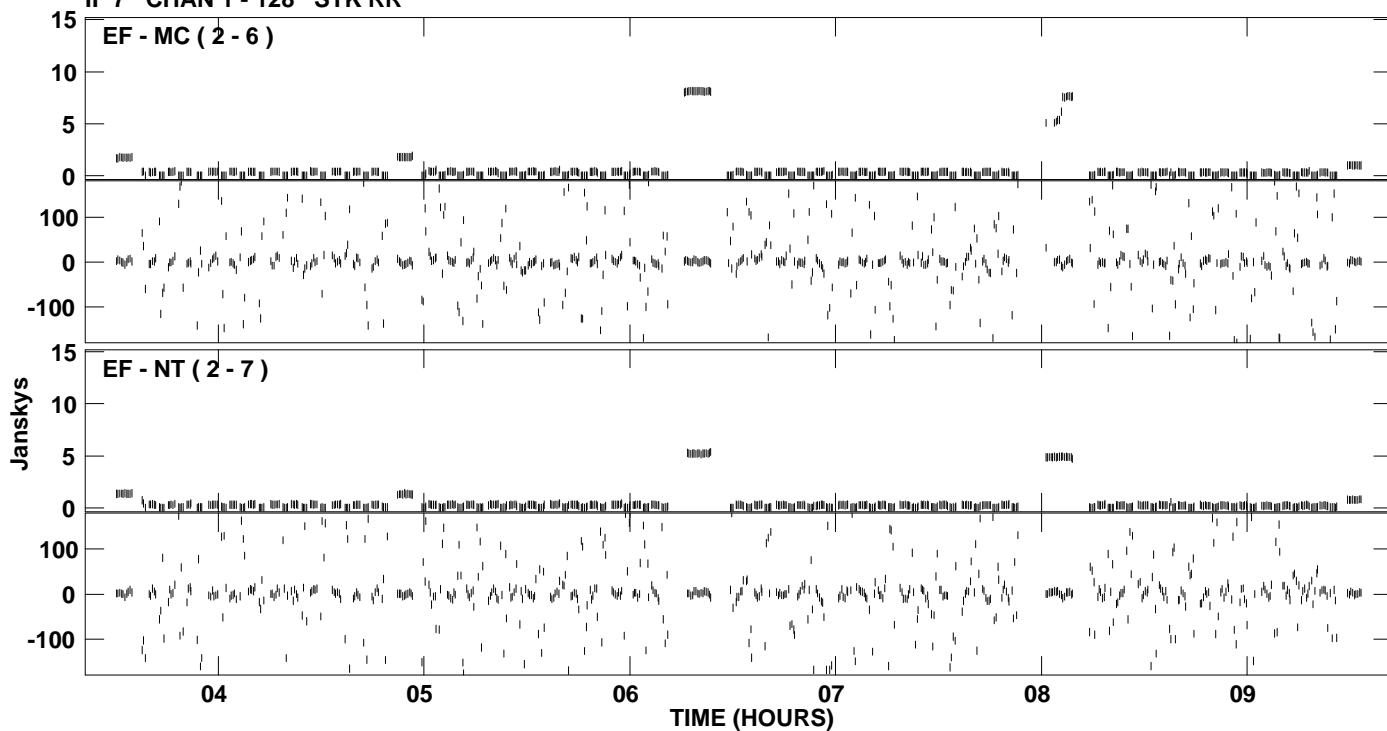
PLot file version 28 created 06-MAY-2008 13:18:39
Amplitude andPhase vs Time for EM069A 1.UVDATA.1 Vect aver. CL # 3
IF 6 CHAN 1 - 128 STK RR



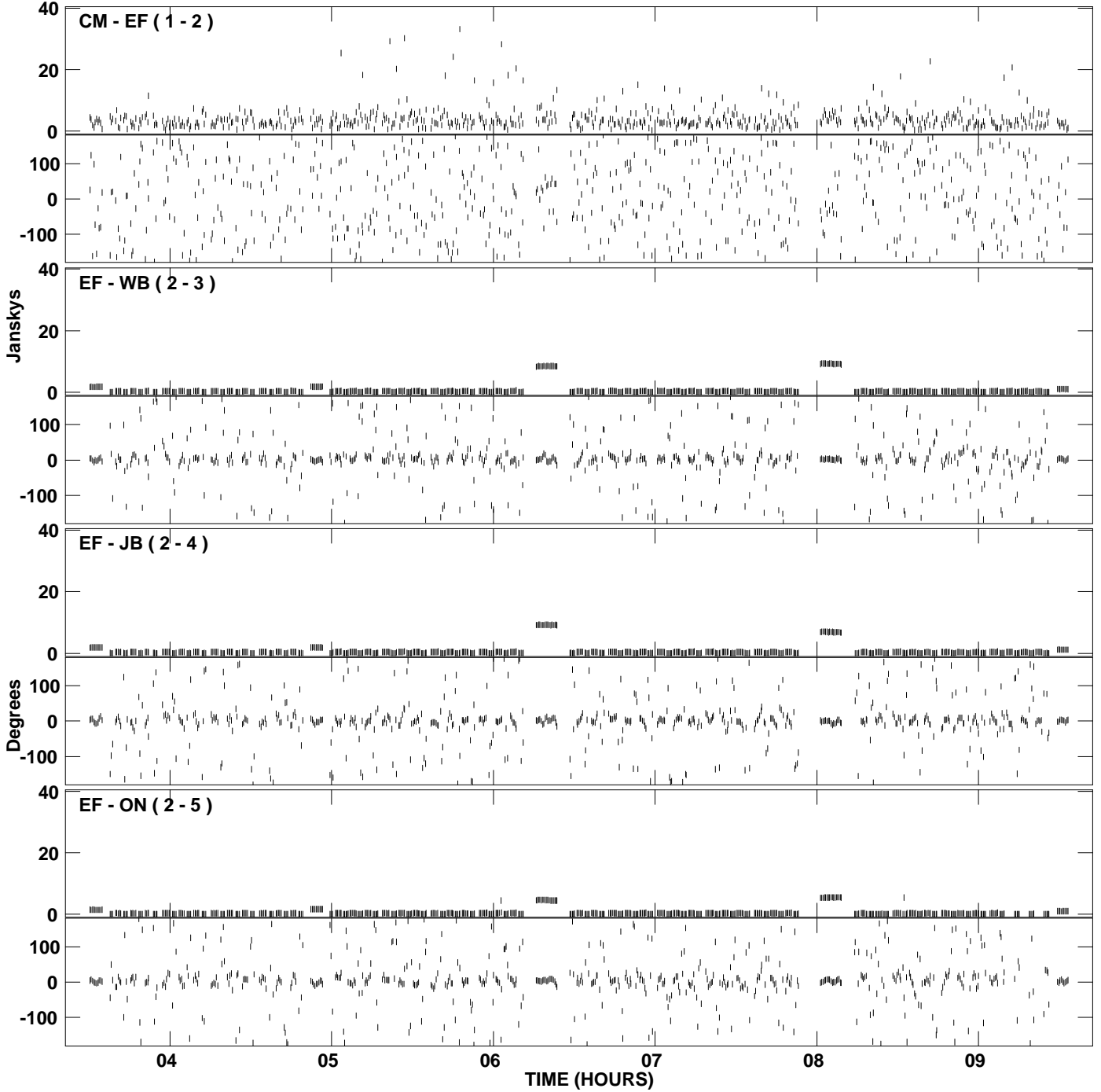
PLot file version 29 created 06-MAY-2008 13:20:39
Amplitude and Phase vs Time for EM069A 1.UVDATA.1 Vect aver. CL # 3
IF 7 CHAN 1 - 128 STK RR



PLot file version 30 created 06-MAY-2008 13:20:39
Amplitude andPhase vs Time for EM069A 1.UVDATA.1 Vect aver. CL # 3
IF 7 CHAN 1 - 128 STK RR



PLot file version 31 created 06-MAY-2008 13:22:49
Amplitude and Phase vs Time for EM069A 1.UVDATA.1 Vect aver. CL # 3
IF 8 CHAN 1 - 128 STK RR



PLot file version 32 created 06-MAY-2008 13:22:49
Amplitude and Phase vs Time for EM069A 1.UVDATA.1 Vect aver. CL # 3
IF 8 CHAN 1 - 128 STK RR

