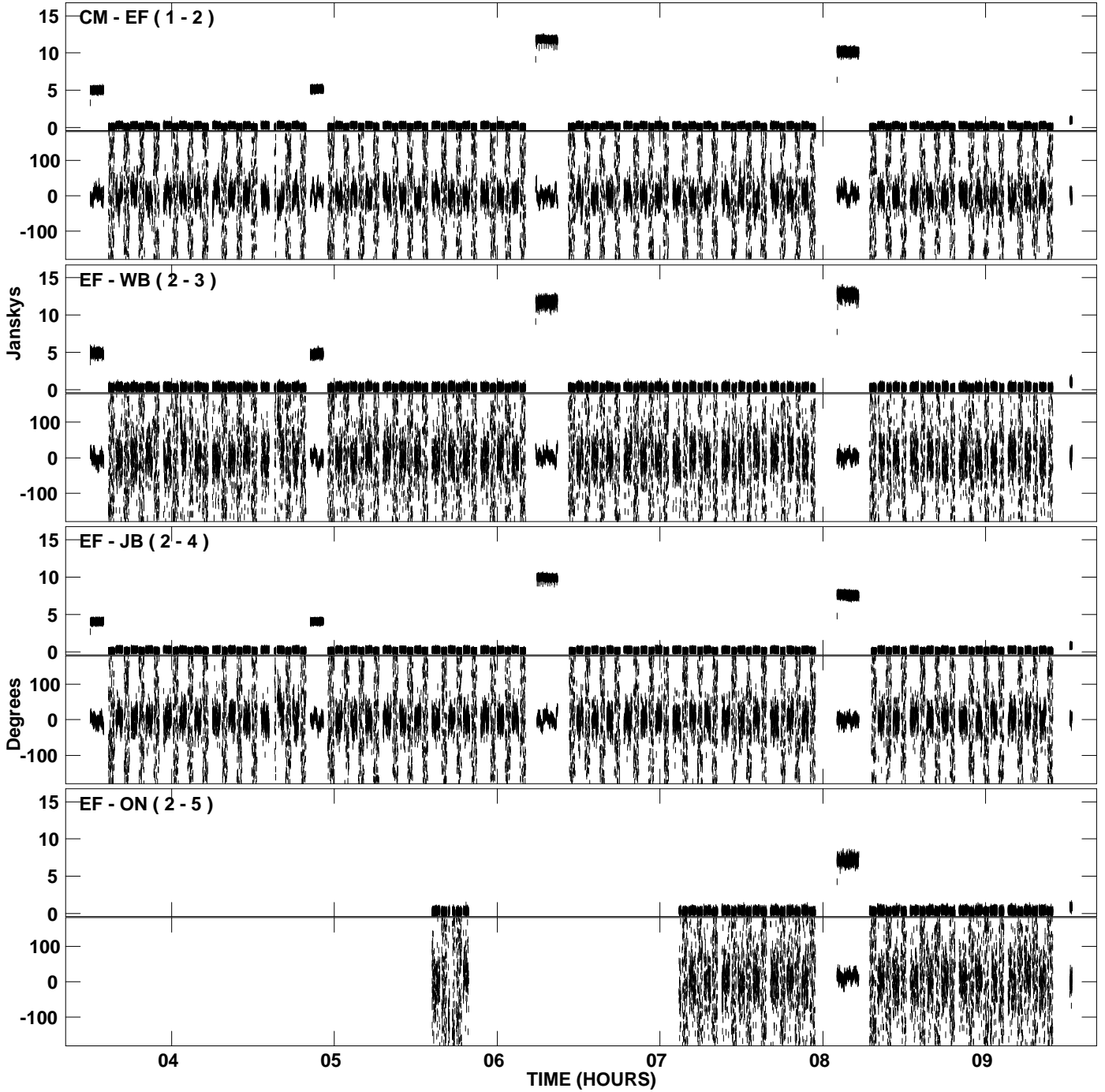
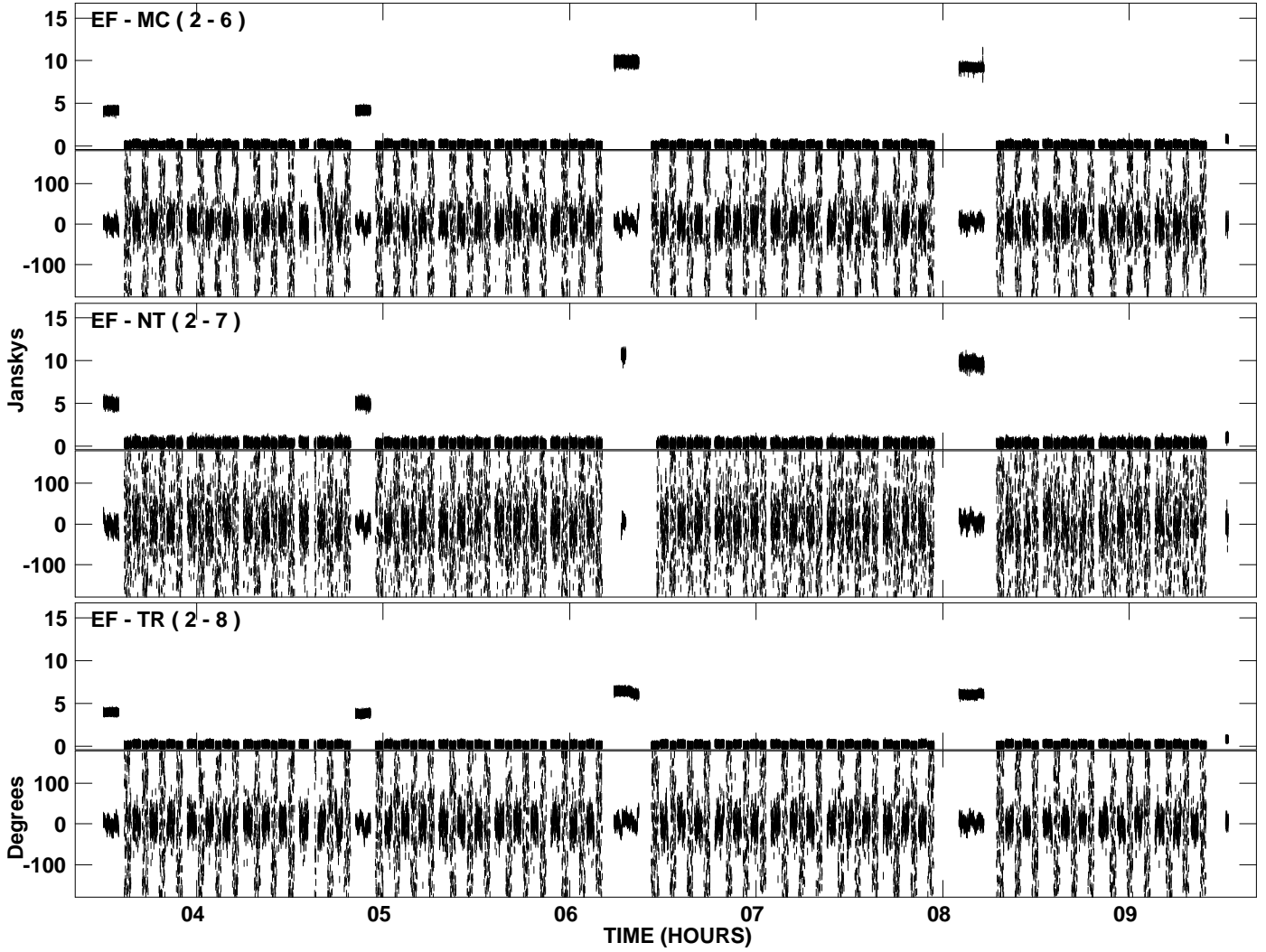


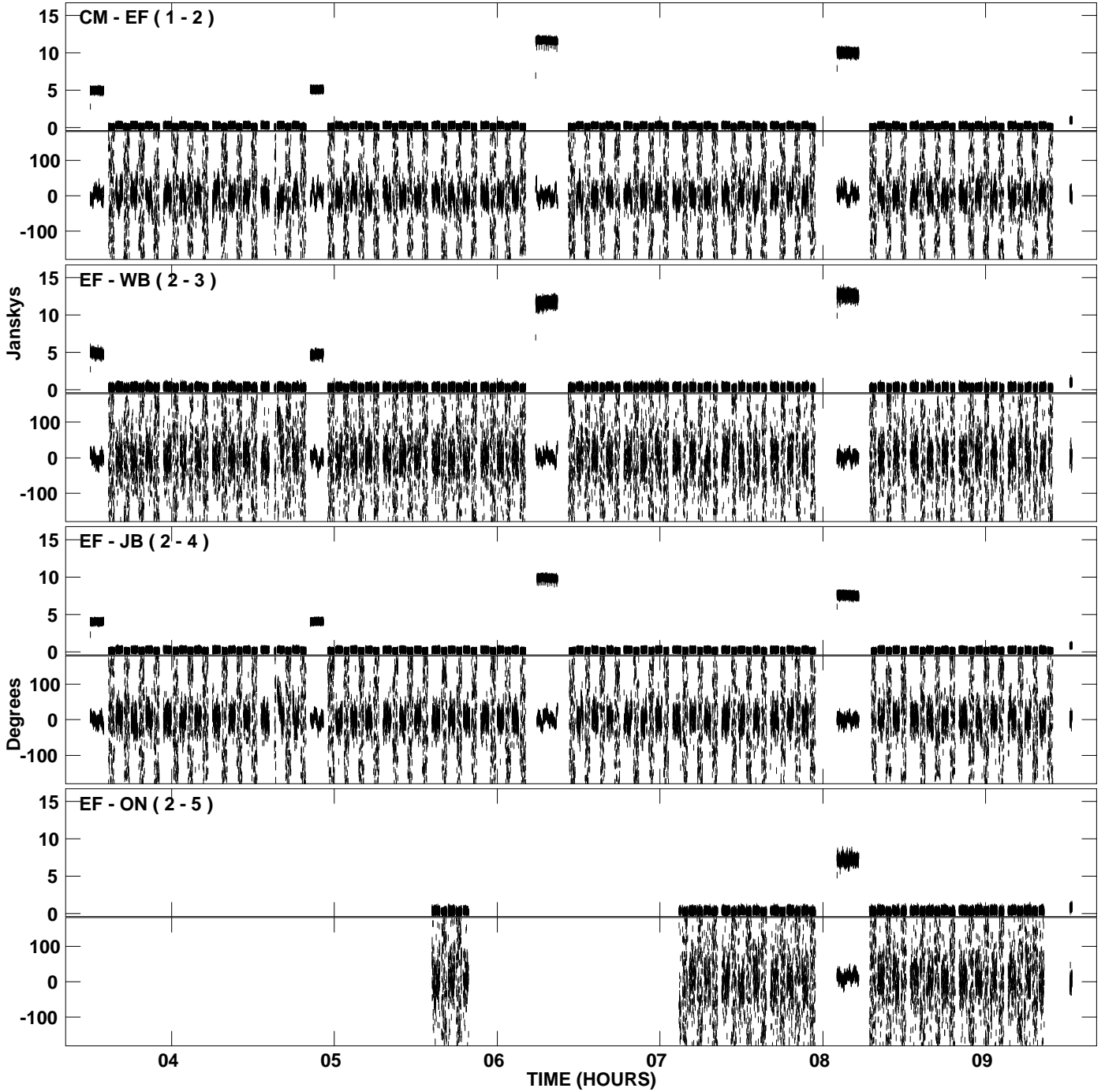
PLot file version 1 created 17-JUN-2009 00:13:24
Amplitude andPhase vs Time for EM069F 1.UVDATA.1 Vect aver. CL # 3
IF 1 CHAN 1 - 128 STK LL



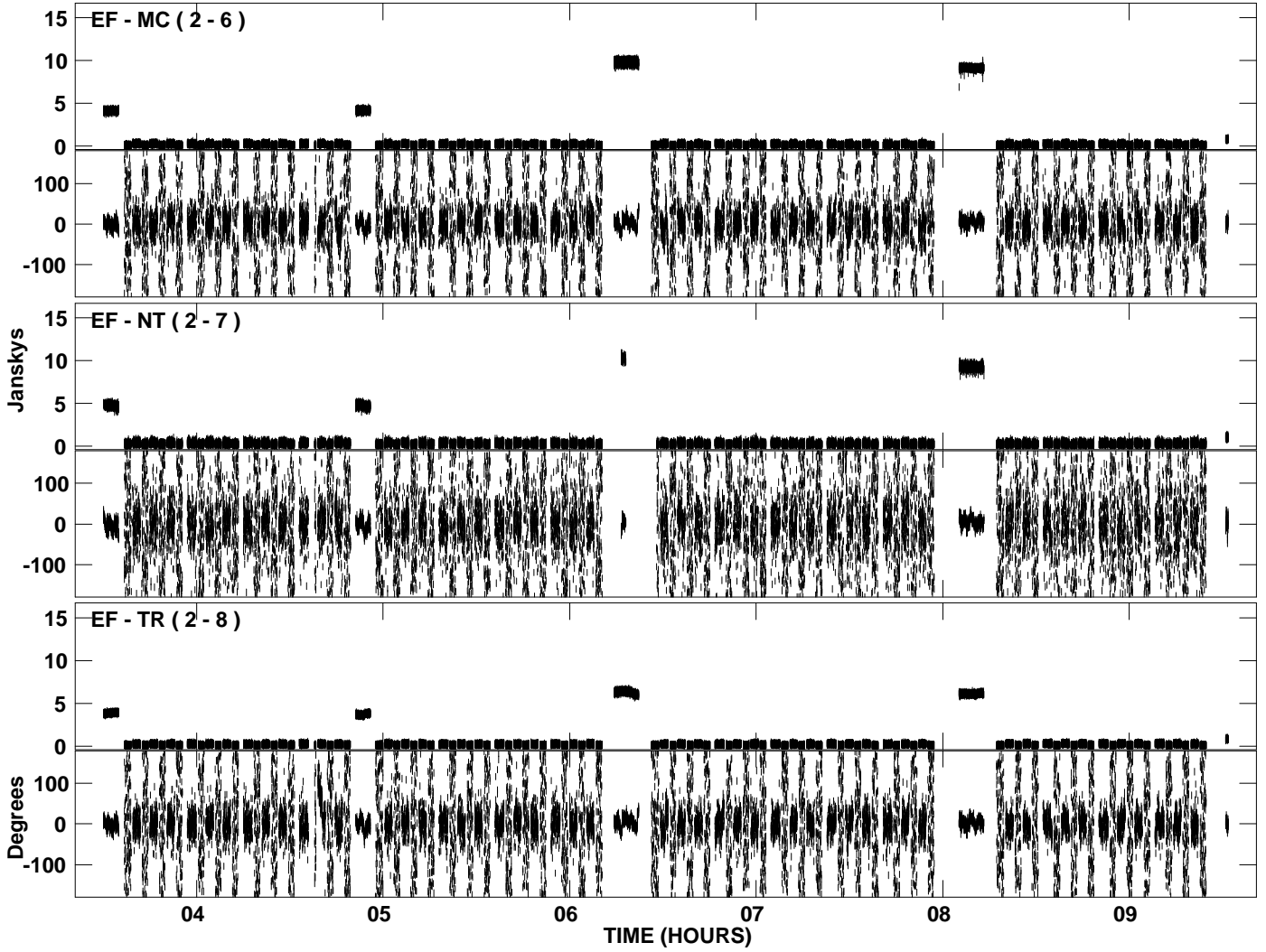
PLot file version 2 created 17-JUN-2009 00:13:25
Amplitude andPhase vs Time for EM069F 1.UVDATA.1 Vect aver. CL # 3
IF 1 CHAN 1 - 128 STK LL



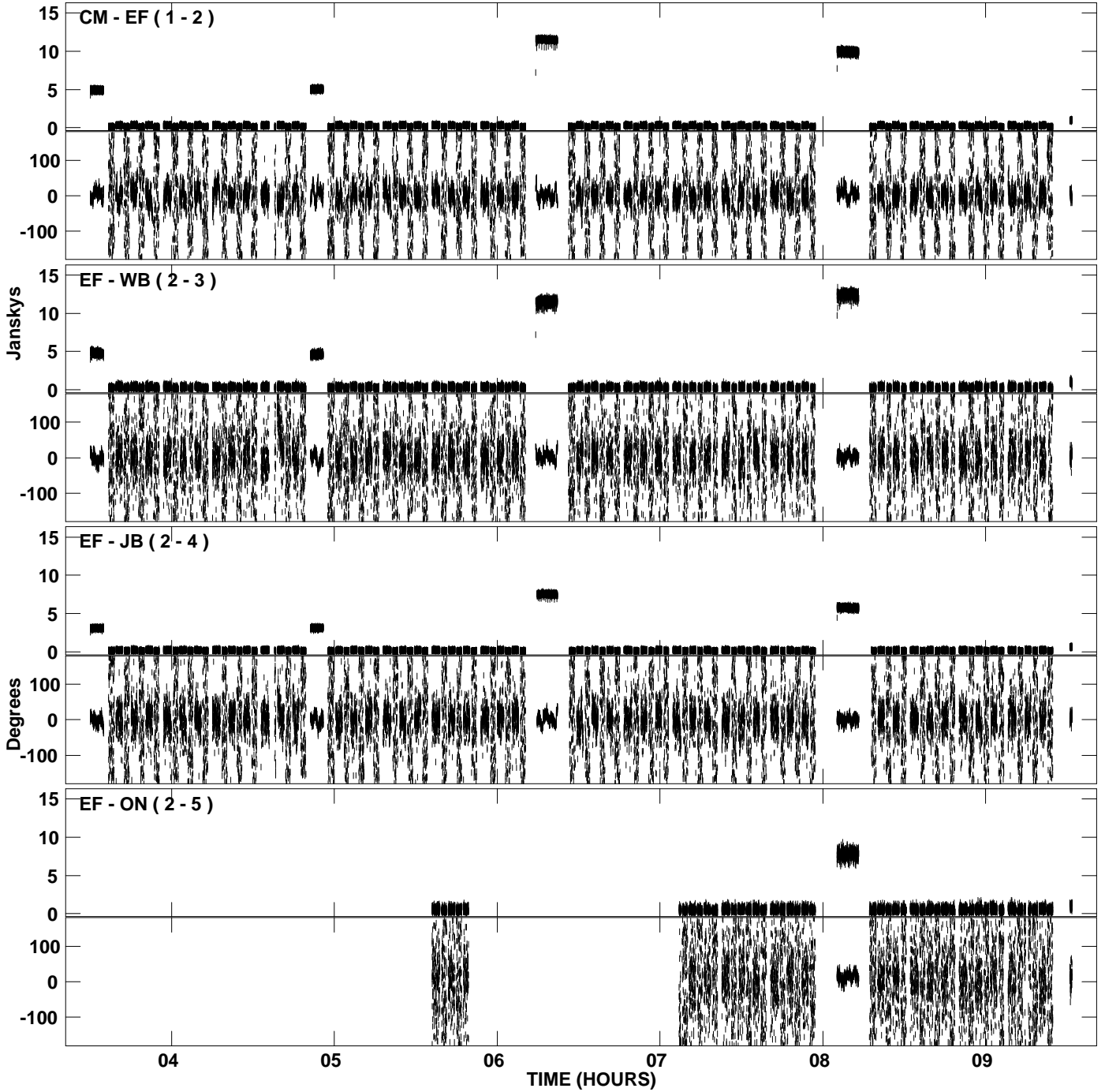
PLot file version 3 created 17-JUN-2009 00:17:24
Amplitude andPhase vs Time for EM069F 1.UVDATA.1 Vect aver. CL # 3
IF 2 CHAN 1 - 128 STK LL



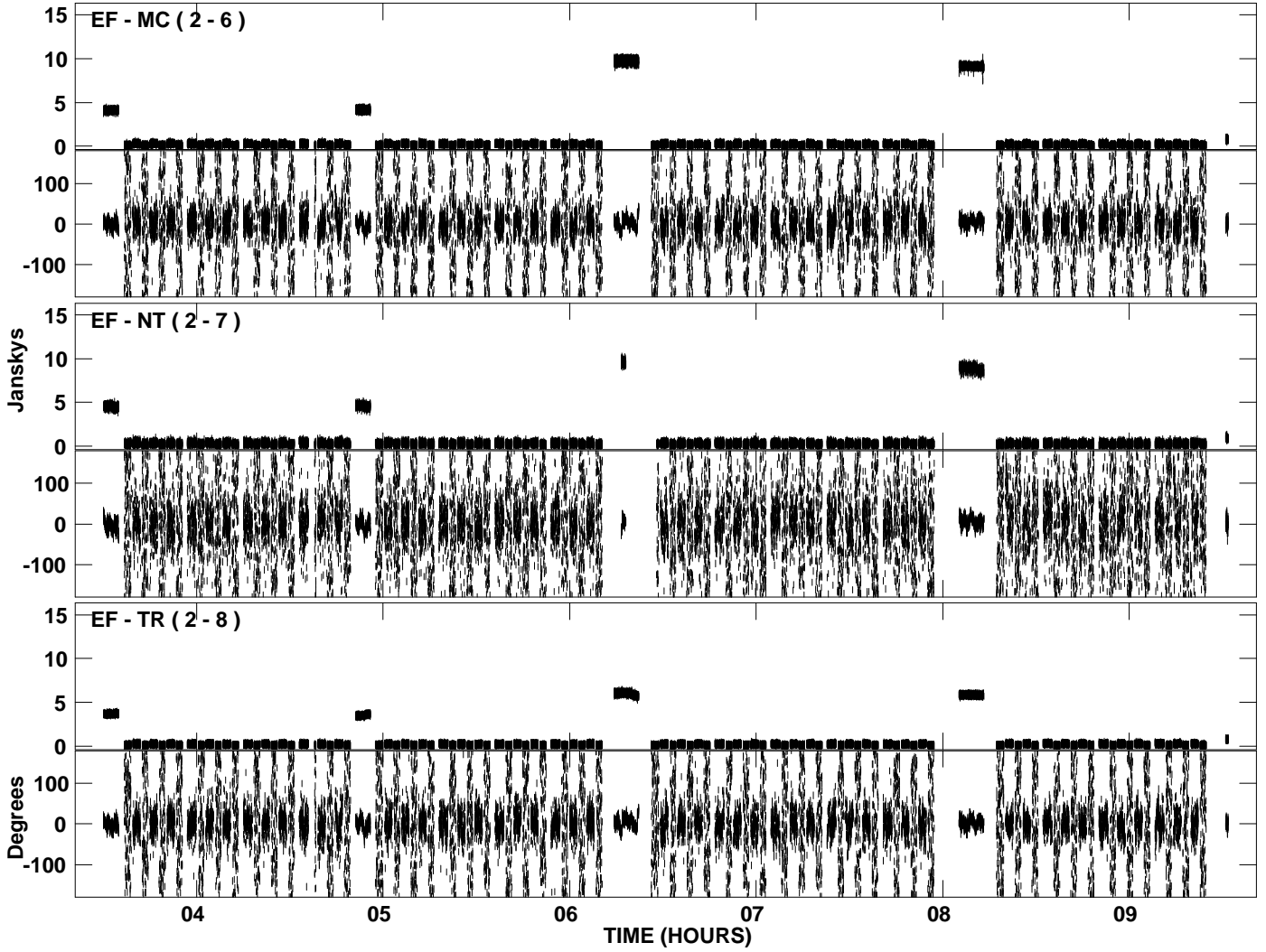
PLot file version 4 created 17-JUN-2009 00:17:24
Amplitude and Phase vs Time for EM069F 1.UVDATA.1 Vect aver. CL # 3
IF 2 CHAN 1 - 128 STK LL



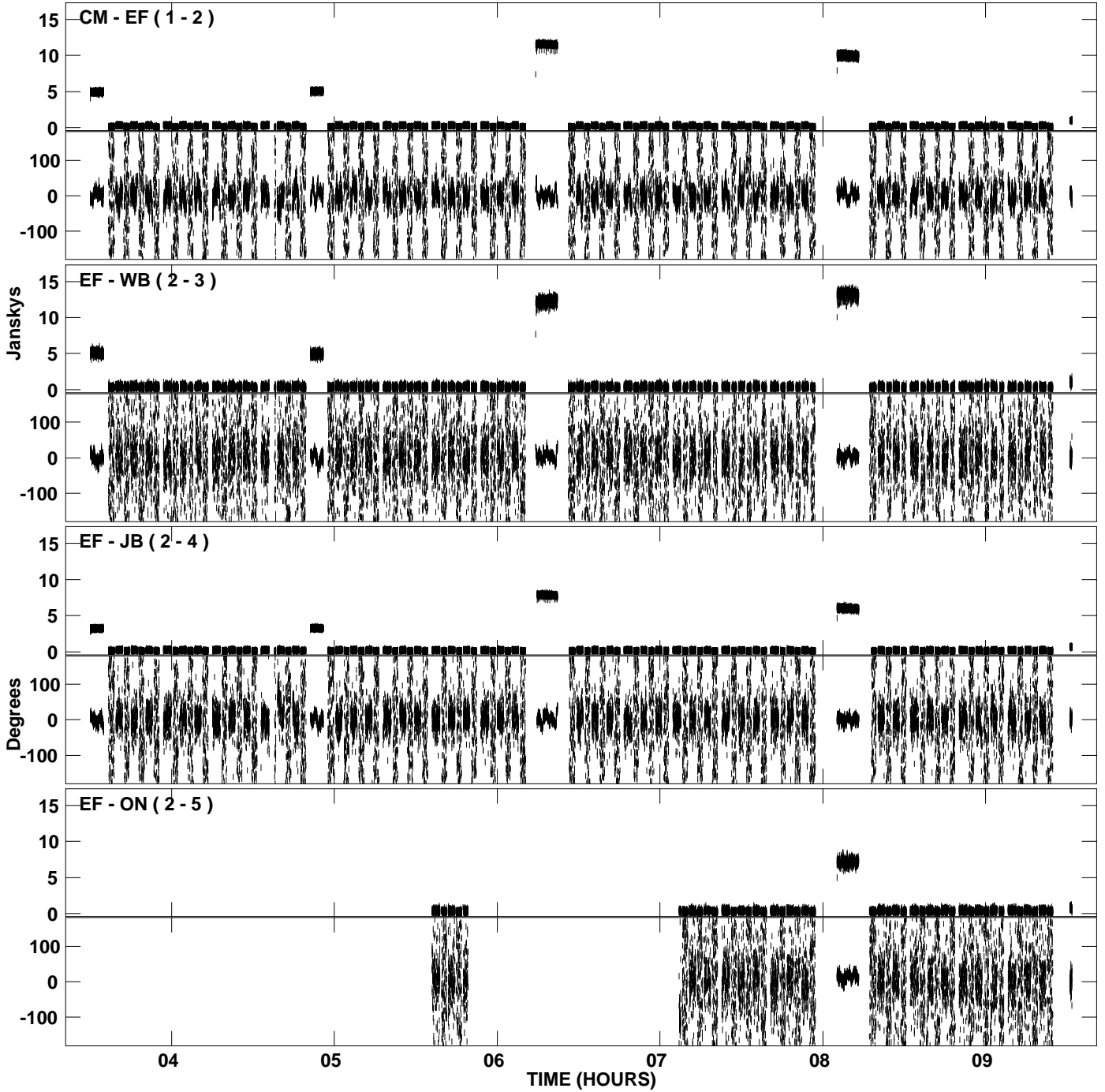
PLot file version 5 created 17-JUN-2009 00:21:37
Amplitude andPhase vs Time for EM069F 1.UVDATA.1 Vect aver. CL # 3
IF 3 CHAN 1 - 128 STK LL



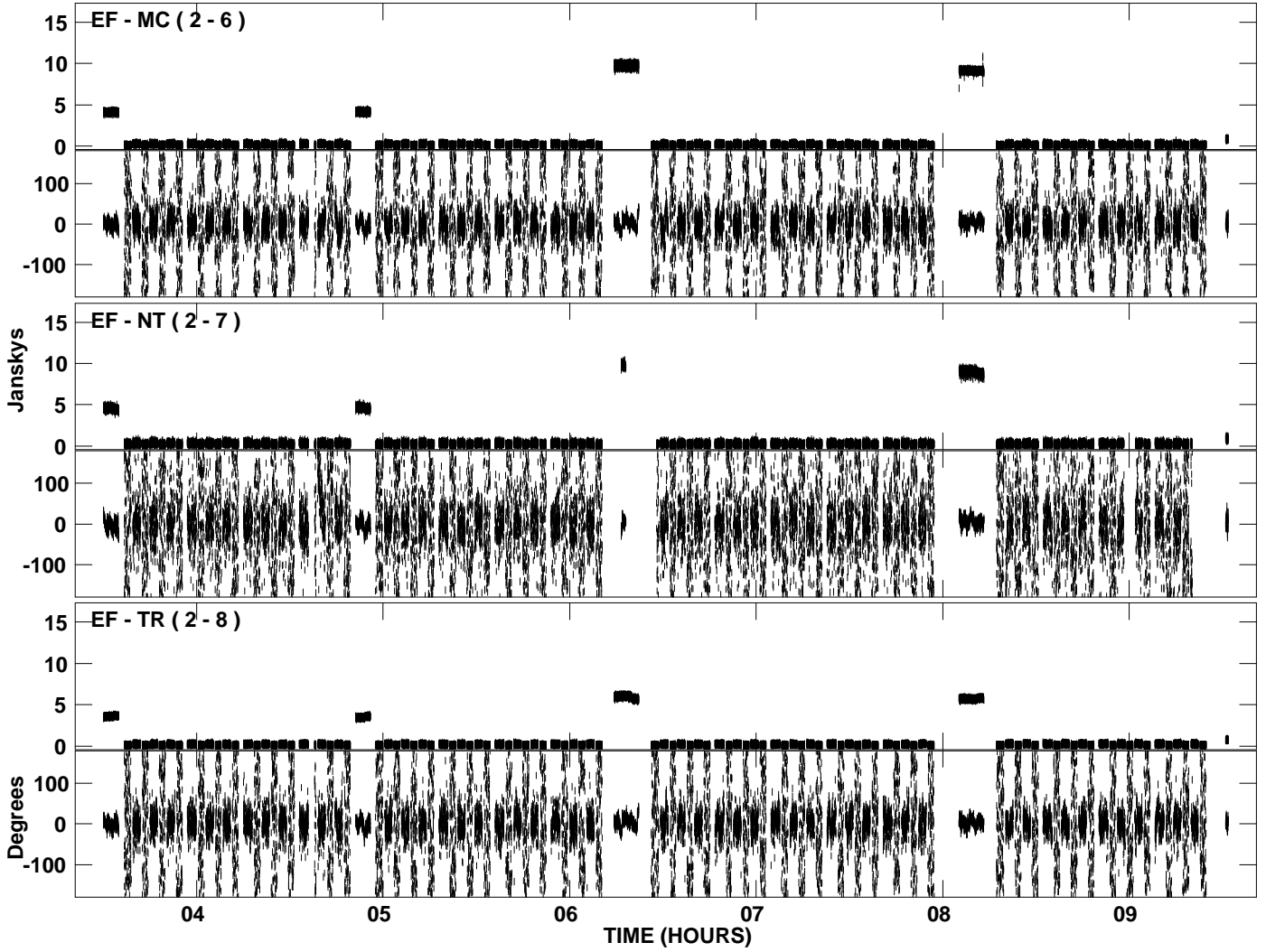
PLot file version 6 created 17-JUN-2009 00:21:38
Amplitude and Phase vs Time for EM069F 1.UVDATA.1 Vect aver. CL # 3
IF 3 CHAN 1 - 128 STK LL



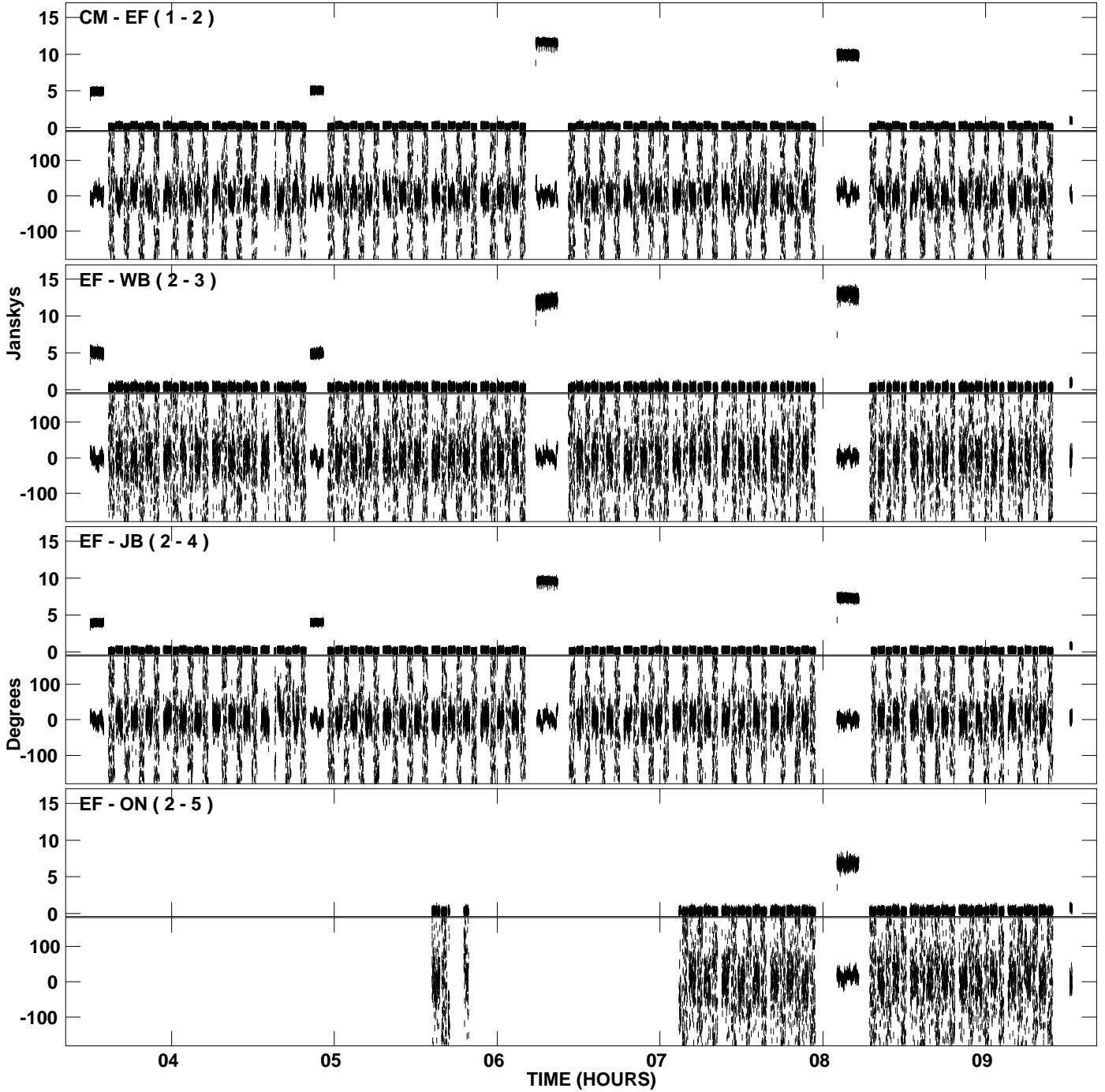
PLot file version 7 created 17-JUN-2009 00:24:11
Amplitude and Phase vs Time for EM069F 1.UVDATA.1 Vect aver. CL # 3
IF 4 CHAN 1 - 128 STK LL



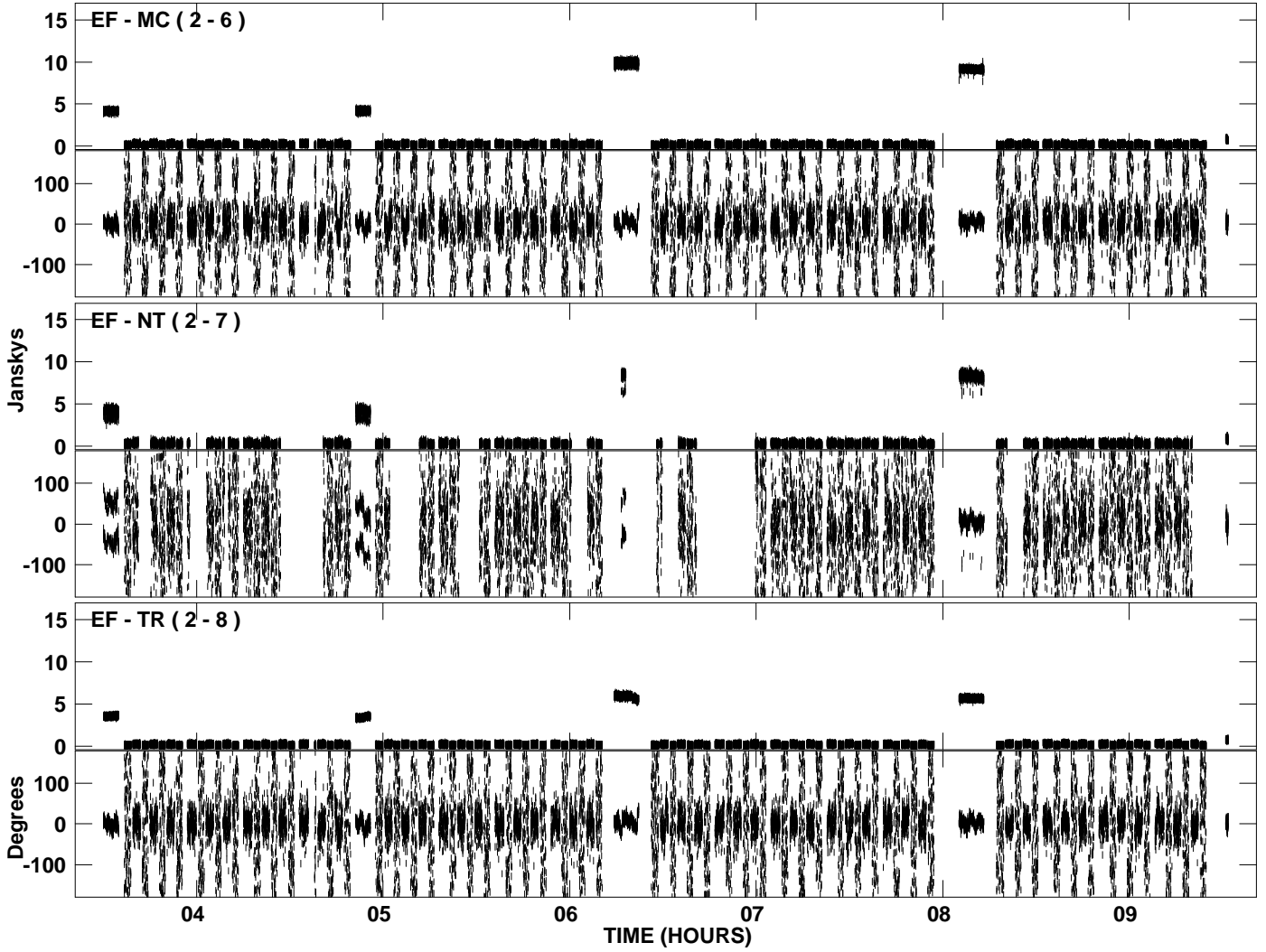
PLot file version 8 created 17-JUN-2009 00:24:11
Amplitude and Phase vs Time for EM069F 1.UVDATA.1 Vect aver. CL # 3
IF 4 CHAN 1 - 128 STK LL



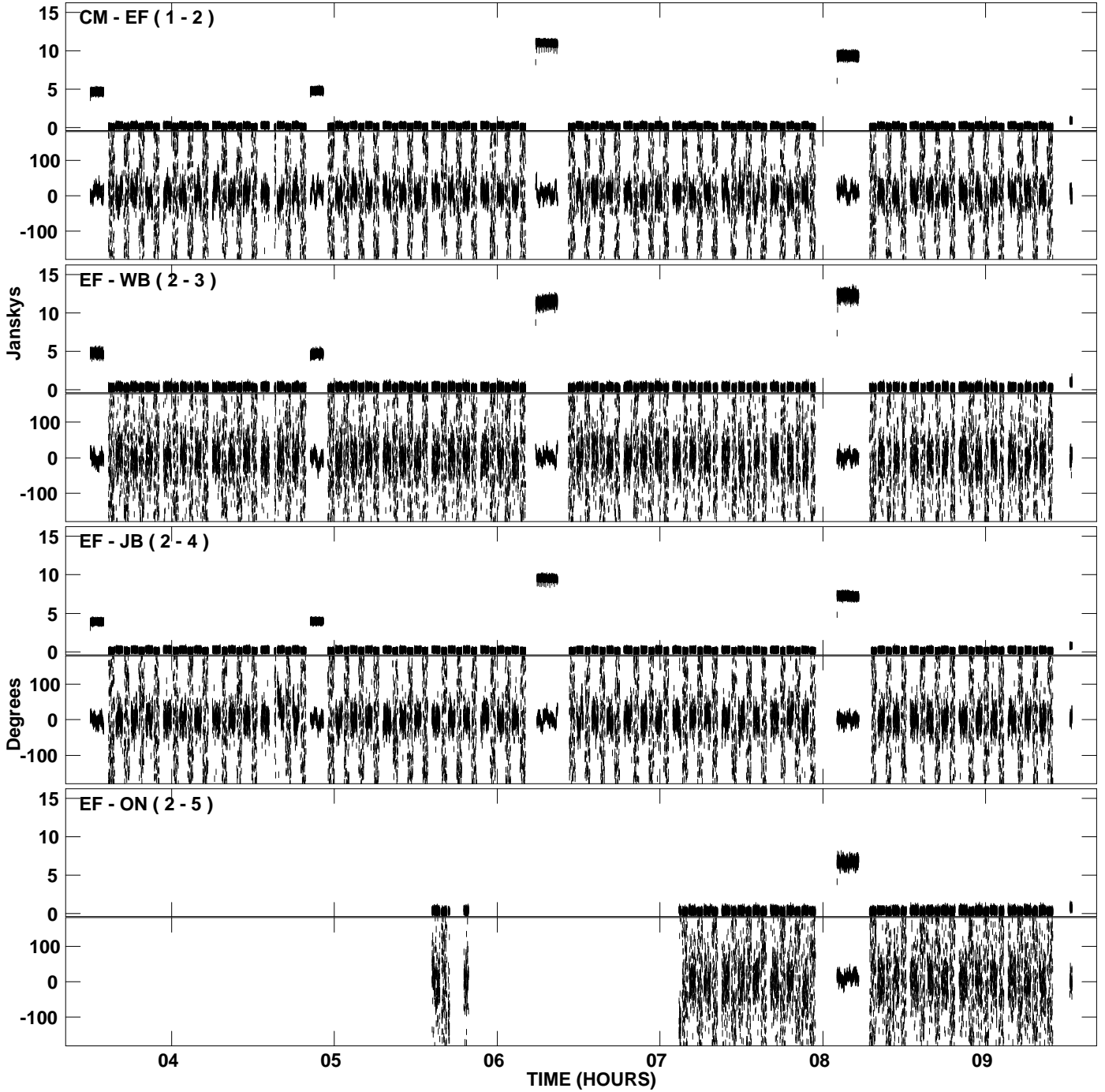
PLot file version 9 created 17-JUN-2009 00:27:46
Amplitude andPhase vs Time for EM069F 1.UVDATA.1 Vect aver. CL # 3
IF 5 CHAN 1 - 128 STK LL



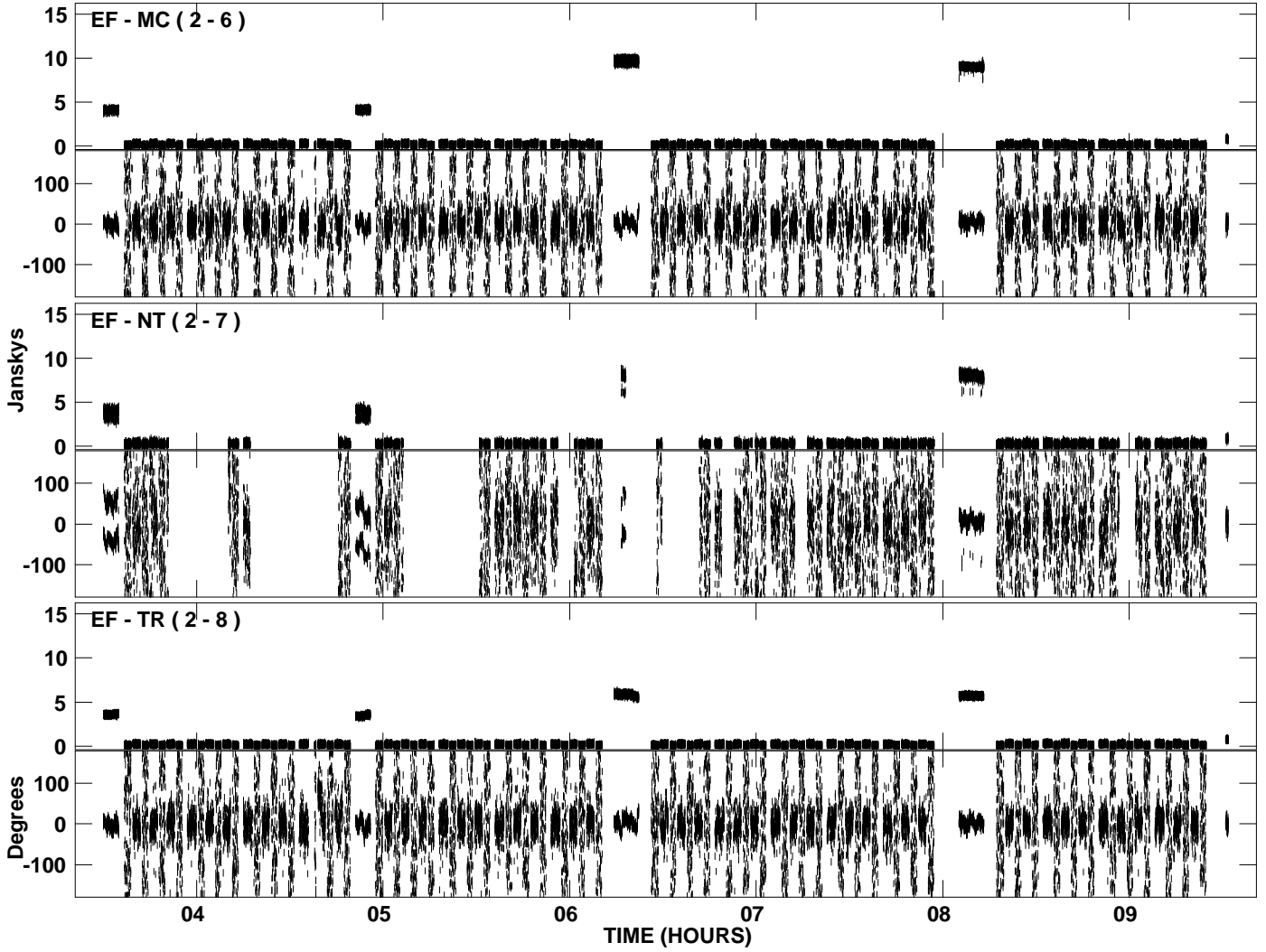
PLot file version 10 created 17-JUN-2009 00:27:47
Amplitude andPhase vs Time for EM069F 1.UVDATA.1 Vect aver. CL # 3
IF 5 CHAN 1 - 128 STK LL



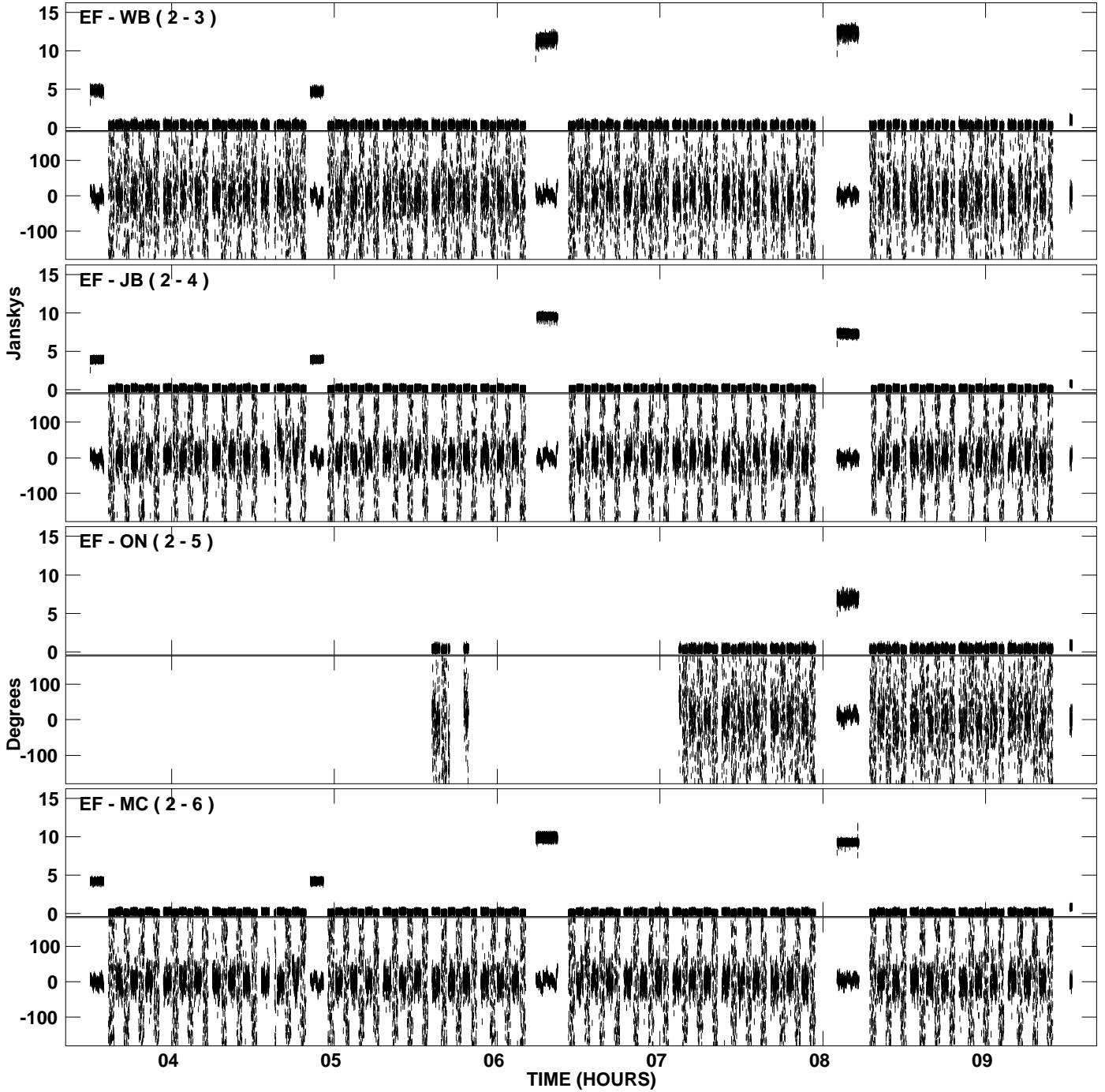
PLot file version 11 created 17-JUN-2009 00:31:53
Amplitude andPhase vs Time for EM069F 1.UVDATA.1 Vect aver. CL # 3
IF 6 CHAN 1 - 128 STK LL



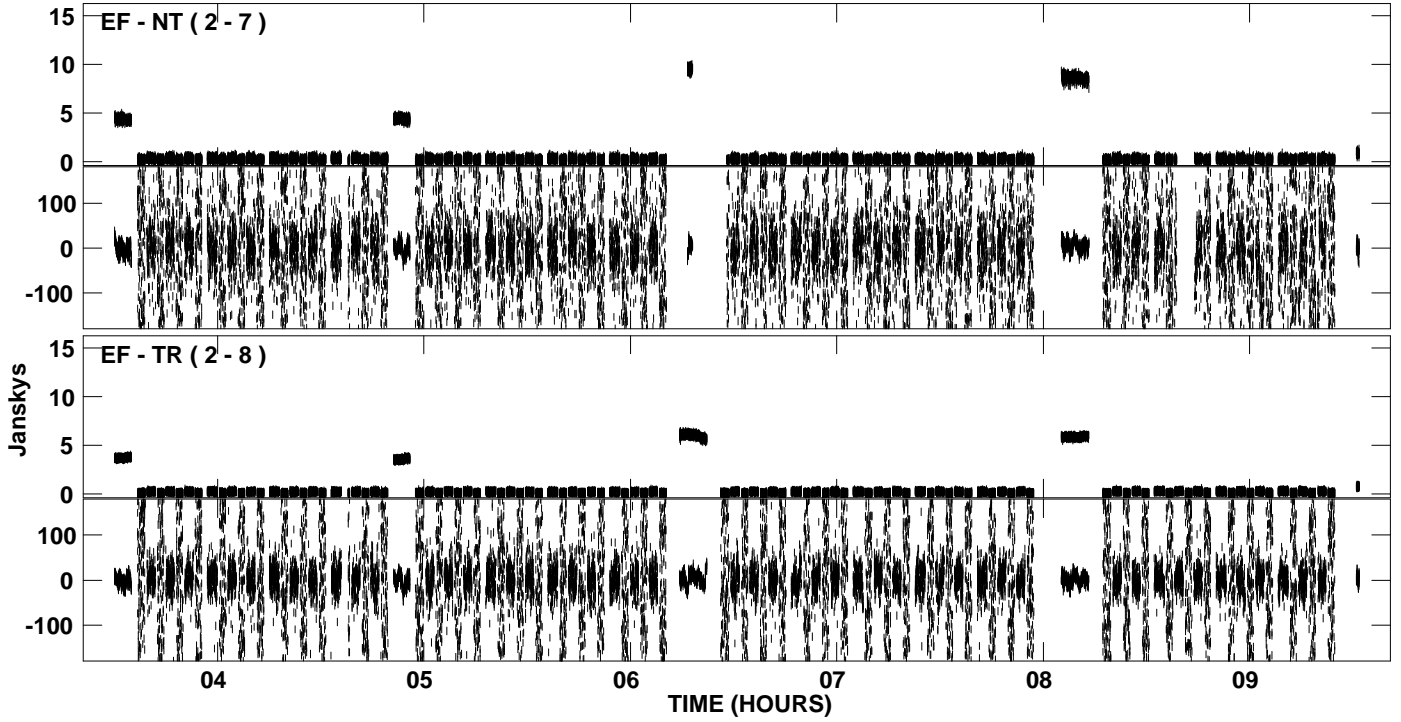
PLot file version 12 created 17-JUN-2009 00:31:53
Amplitude andPhase vs Time for EM069F 1.UVDATA.1 Vect aver. CL # 3
IF 6 CHAN 1 - 128 STK LL



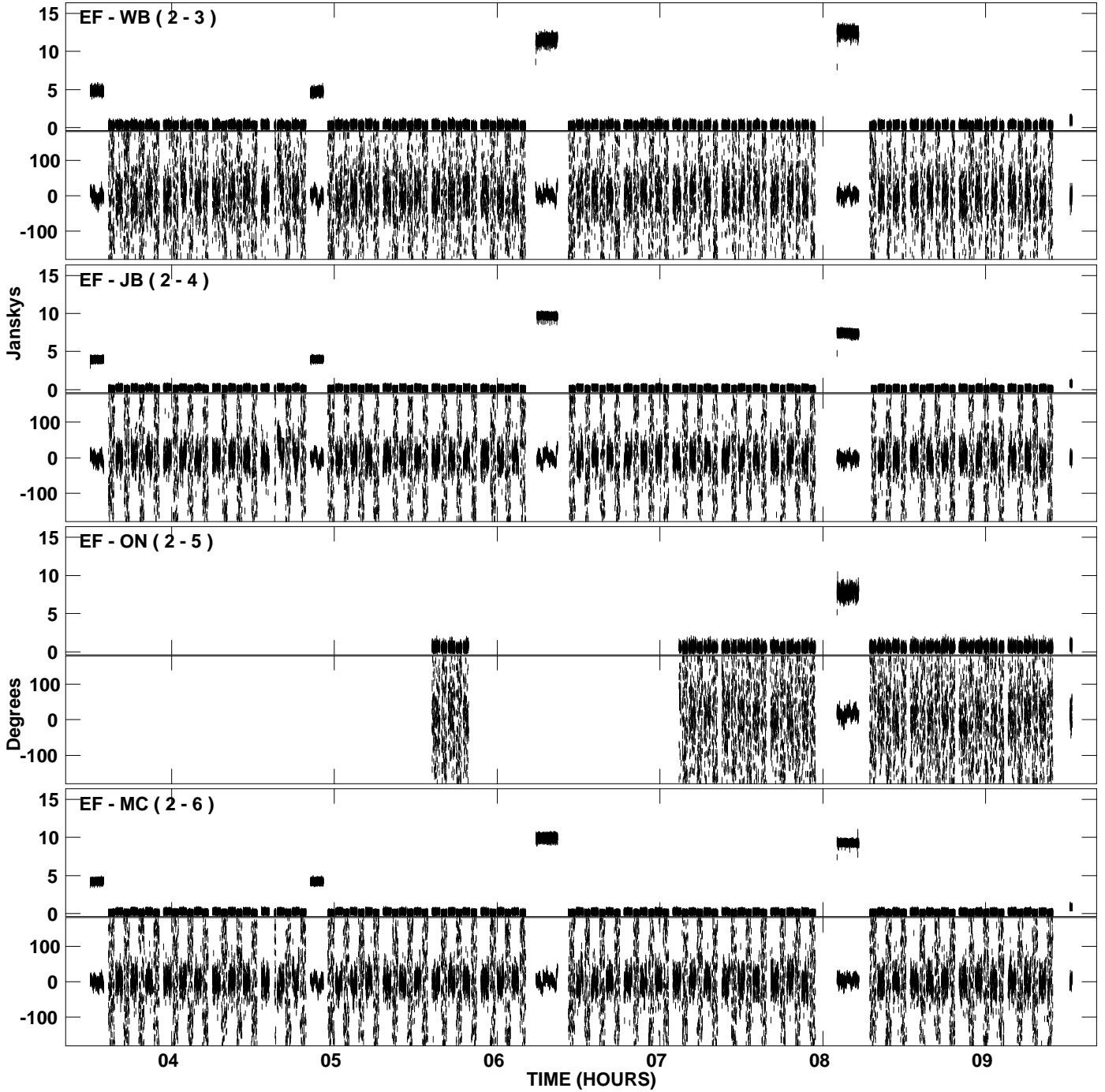
PLot file version 13 created 17-JUN-2009 00:35:32
Amplitude and Phase vs Time for EM069F 1.UVDATA.1 Vect aver. CL # 3
IF 7 CHAN 1 - 128 STK LL



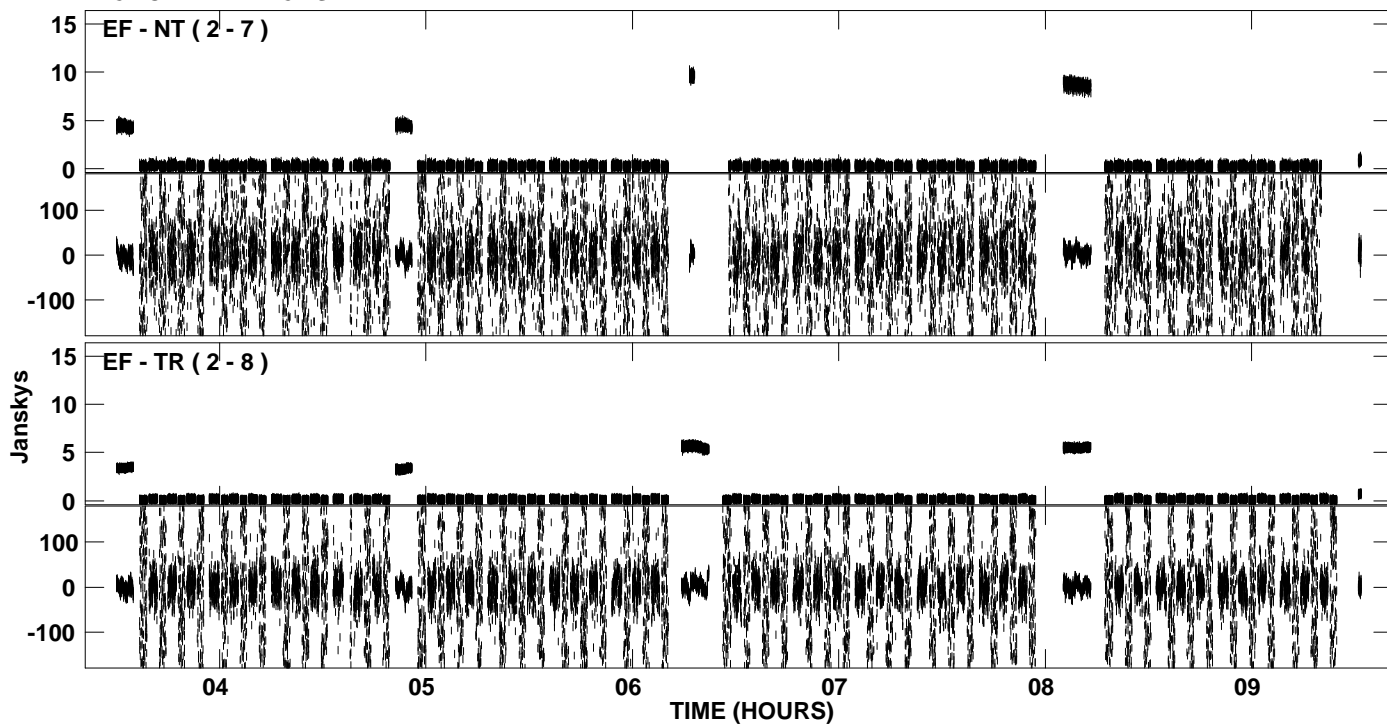
PLot file version 14 created 17-JUN-2009 00:35:32
Amplitude andPhase vs Time for EM069F 1.UVDATA.1 Vect aver. CL # 3
IF 7 CHAN 1 - 128 STK LL



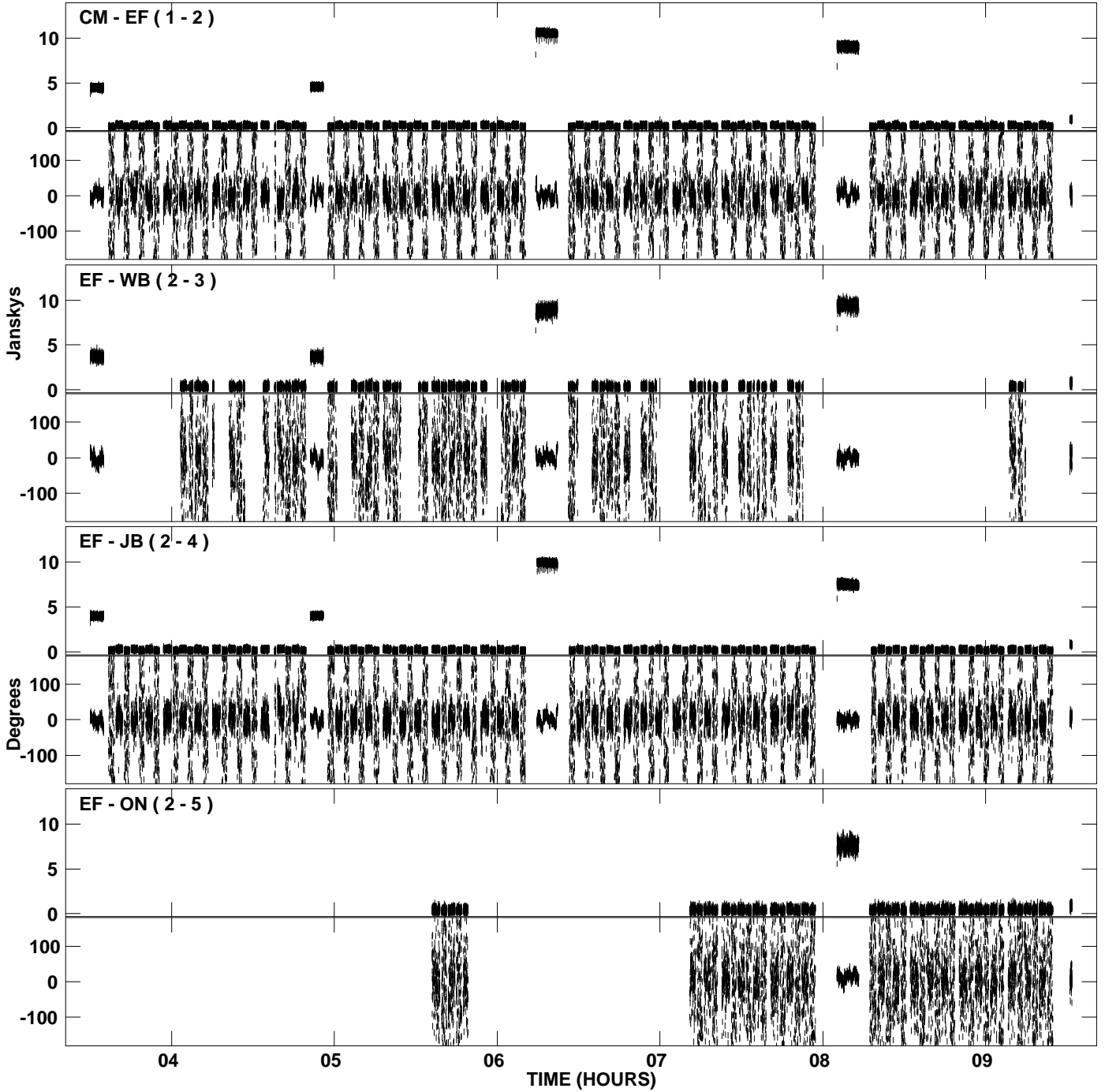
PLOT file version 15 created 17-JUN-2009 00:38:39
Amplitude and Phase vs Time for EM069F 1.UVDATA.1 Vect aver. CL # 3
IF 8 CHAN 1 - 128 STK LL



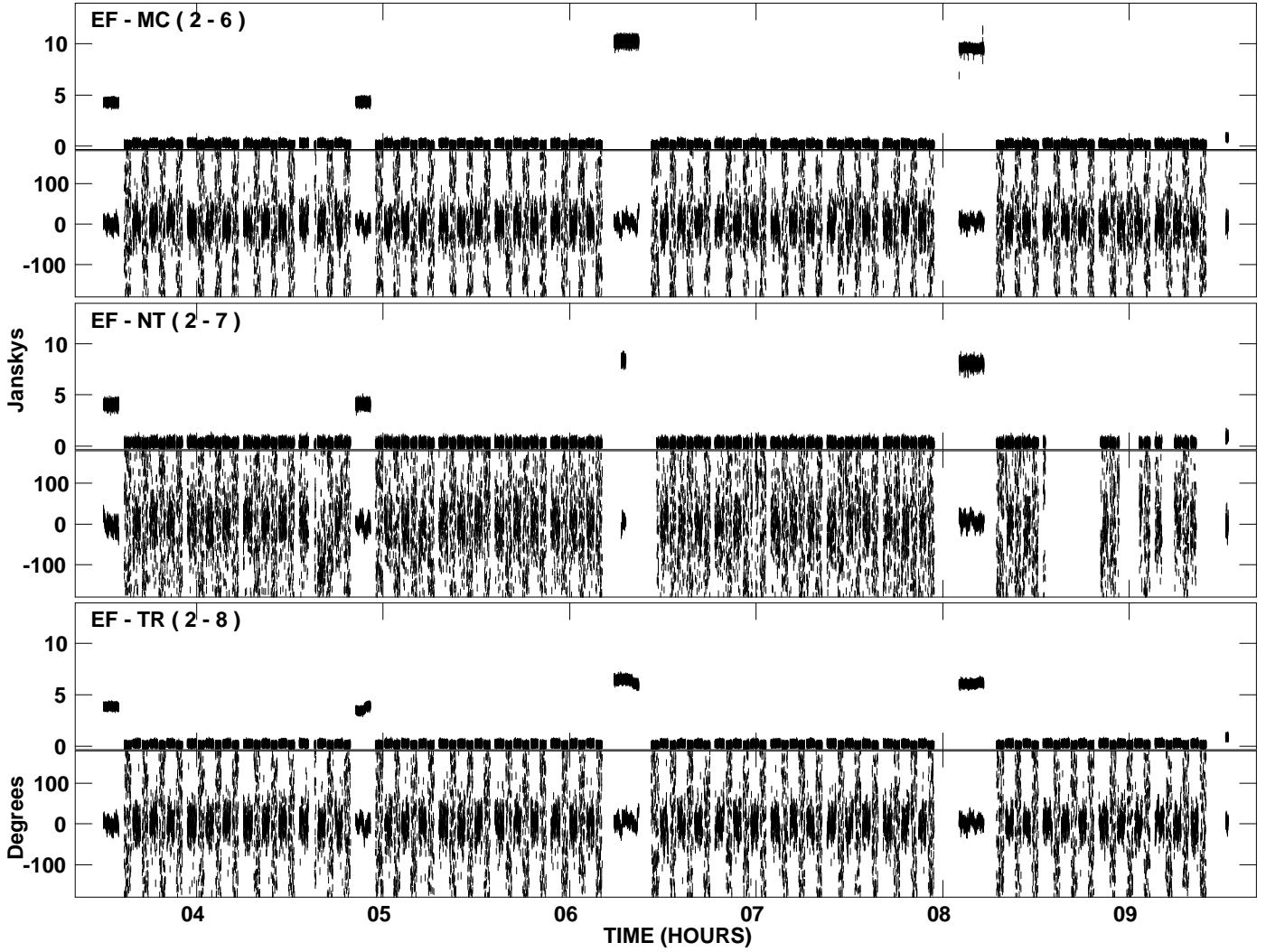
PLot file version 16 created 17-JUN-2009 00:38:40
Amplitude andPhase vs Time for EM069F 1.UVDATA.1 Vect aver. CL # 3
IF 8 CHAN 1 - 128 STK LL



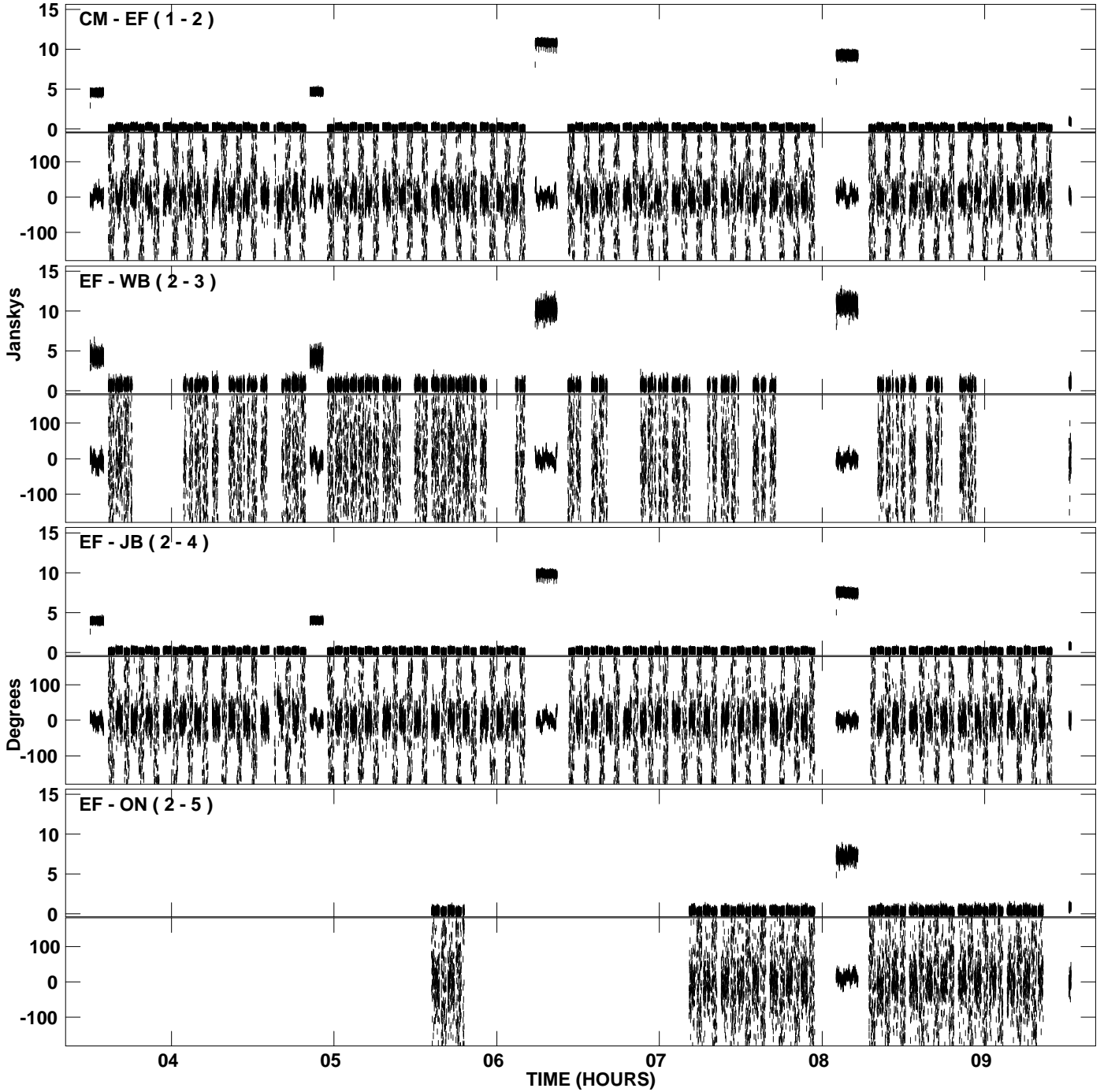
PLot file version 17 created 17-JUN-2009 00:41:28
Amplitude andPhase vs Time for EM069F 1.UVDATA.1 Vect aver. CL # 3
IF 1 CHAN 1 - 128 STK RR



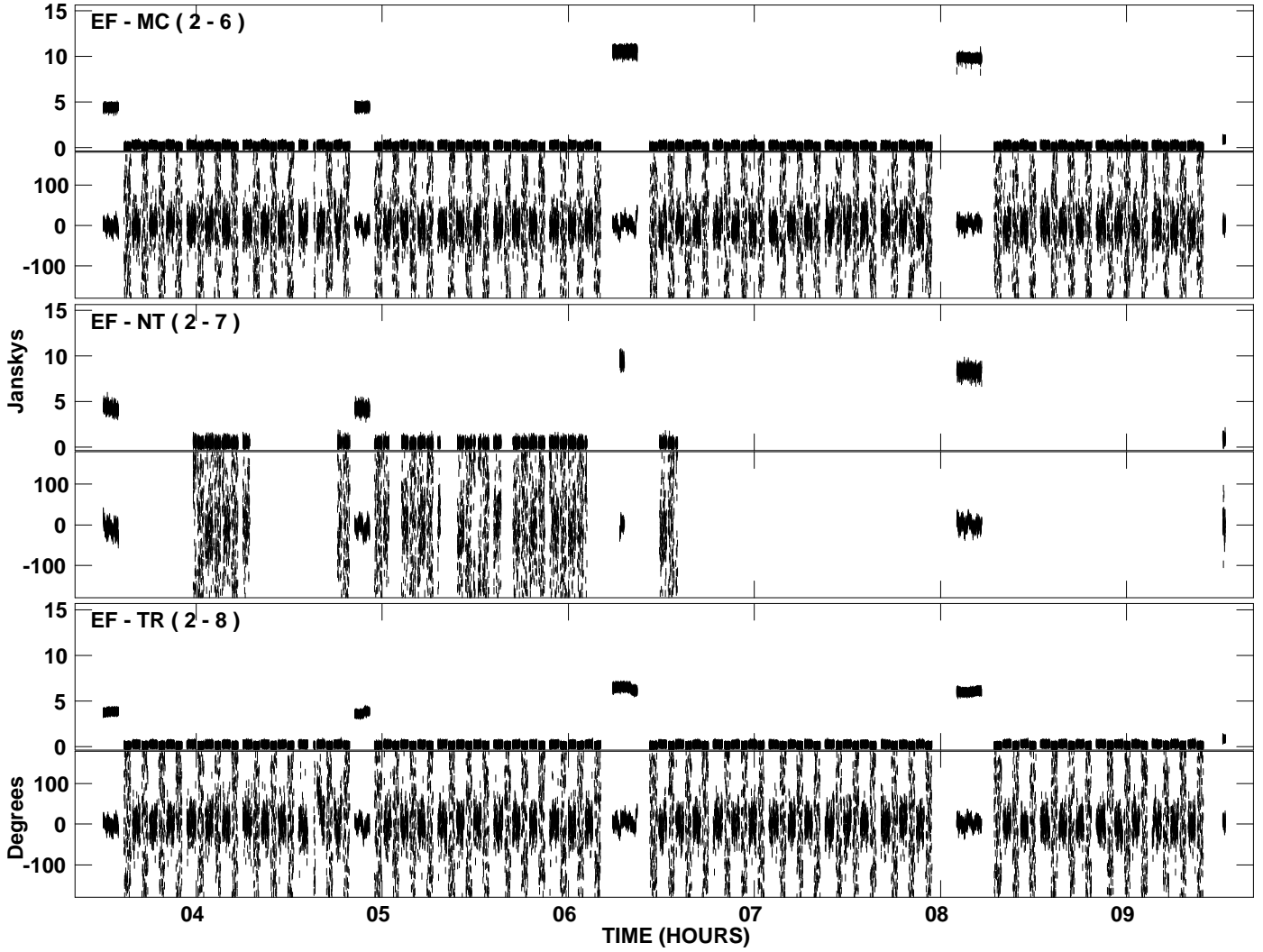
PLot file version 18 created 17-JUN-2009 00:41:28
Amplitude and Phase vs Time for EM069F 1.UVDATA.1 Vect aver. CL # 3
IF 1 CHAN 1 - 128 STK RR



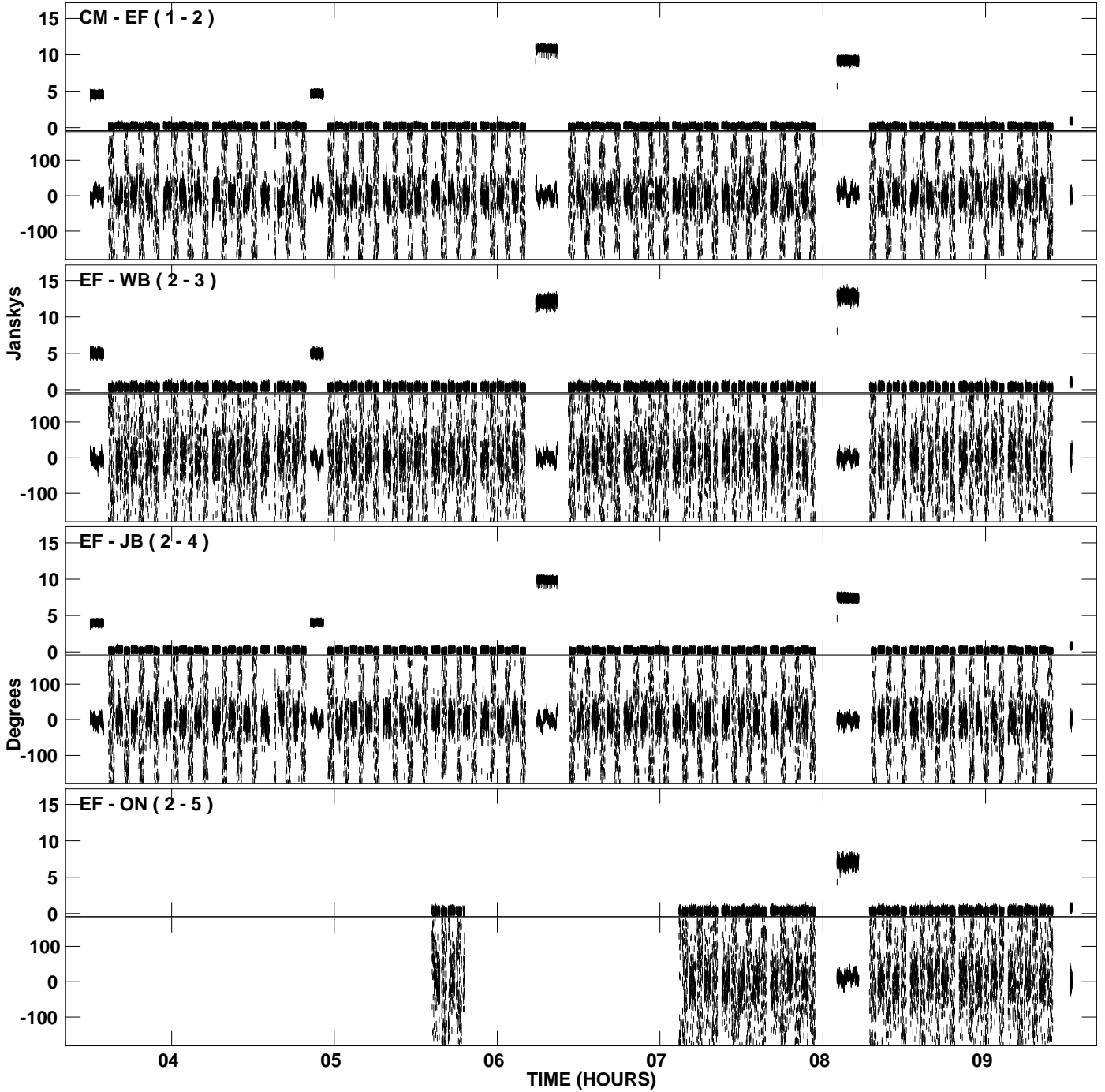
PLot file version 19 created 17-JUN-2009 00:44:26
Amplitude andPhase vs Time for EM069F 1.UVDATA.1 Vect aver. CL # 3
IF 2 CHAN 1 - 128 STK RR



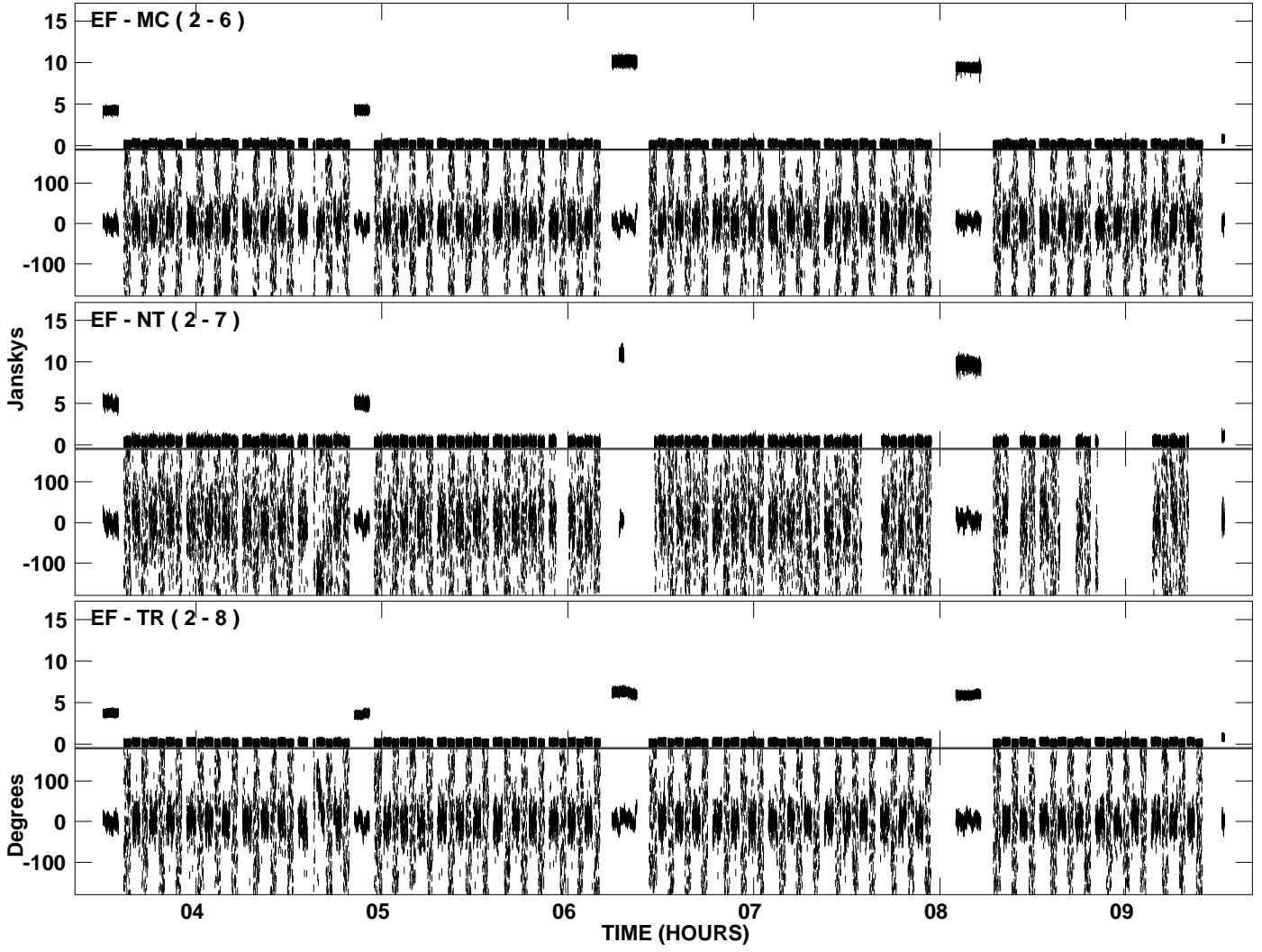
PLot file version 20 created 17-JUN-2009 00:44:27
Amplitude andPhase vs Time for EM069F 1.UVDATA.1 Vect aver. CL # 3
IF 2 CHAN 1 - 128 STK RR



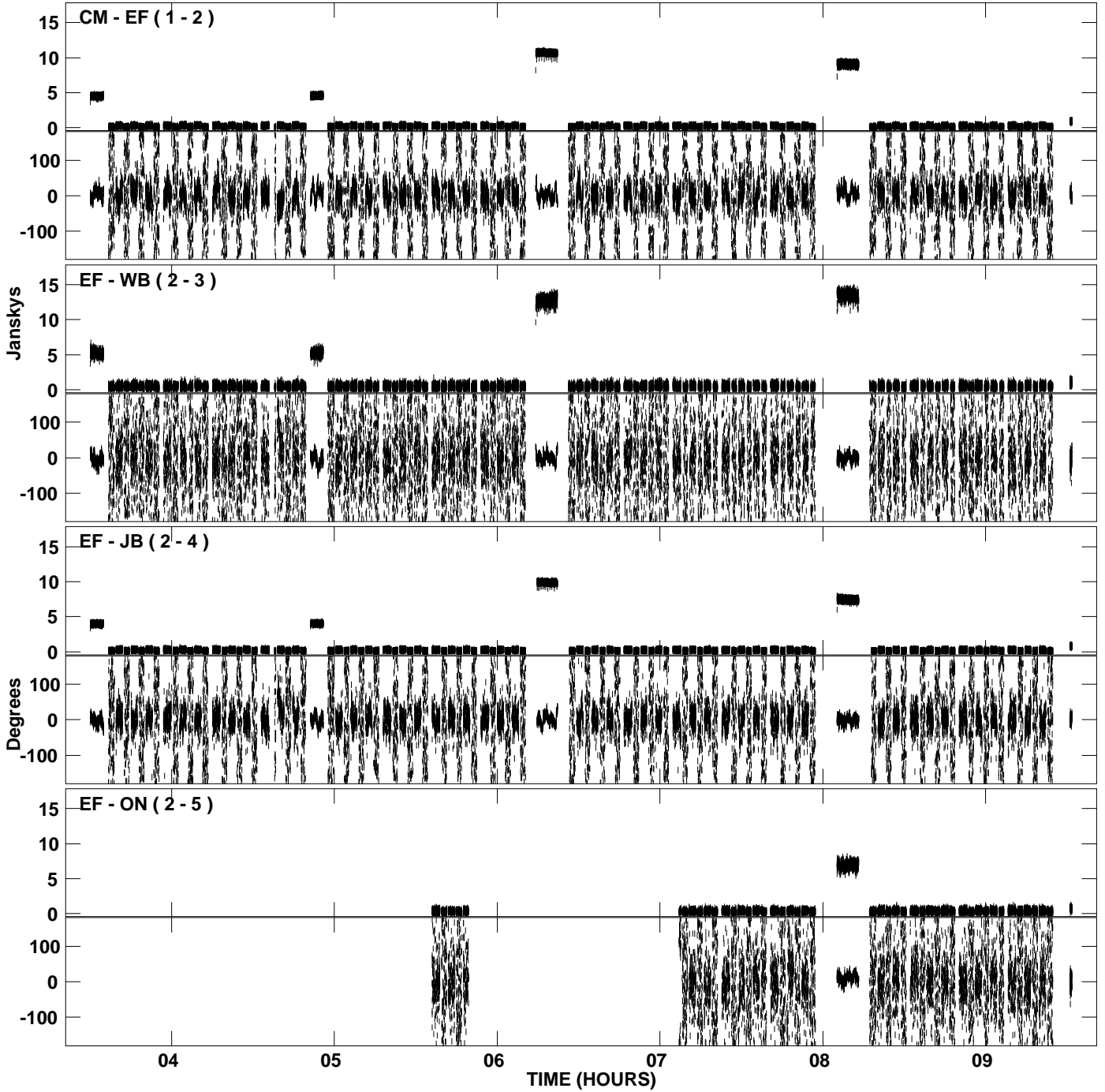
PLot file version 21 created 17-JUN-2009 00:48:28
Amplitude andPhase vs Time for EM069F 1.UVDATA.1 Vect aver. CL # 3
IF 3 CHAN 1 - 128 STK RR



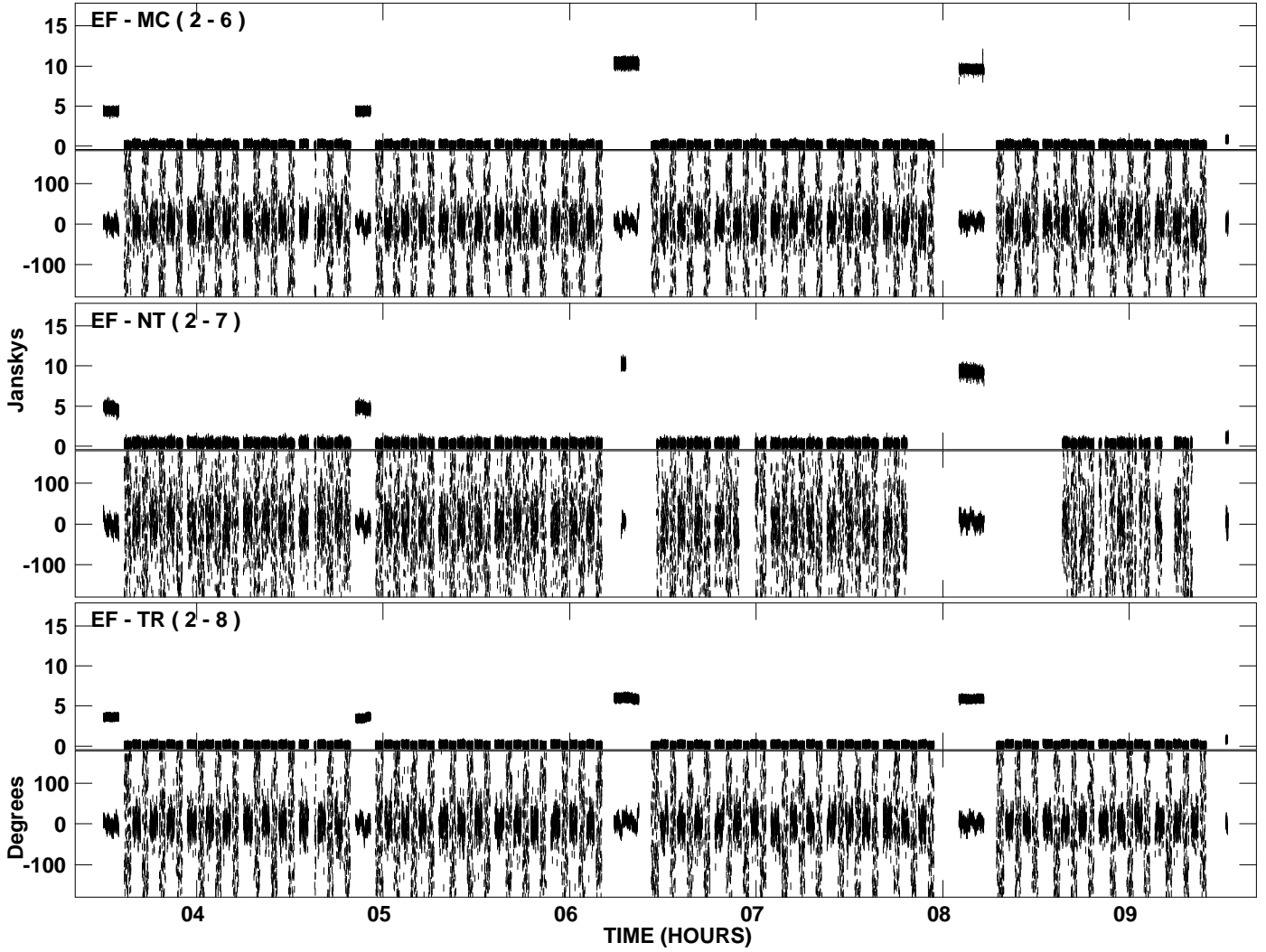
PLot file version 22 created 17-JUN-2009 00:48:28
Amplitude and Phase vs Time for EM069F 1.UVDATA.1 Vect aver. CL # 3
IF 3 CHAN 1 - 128 STK RR



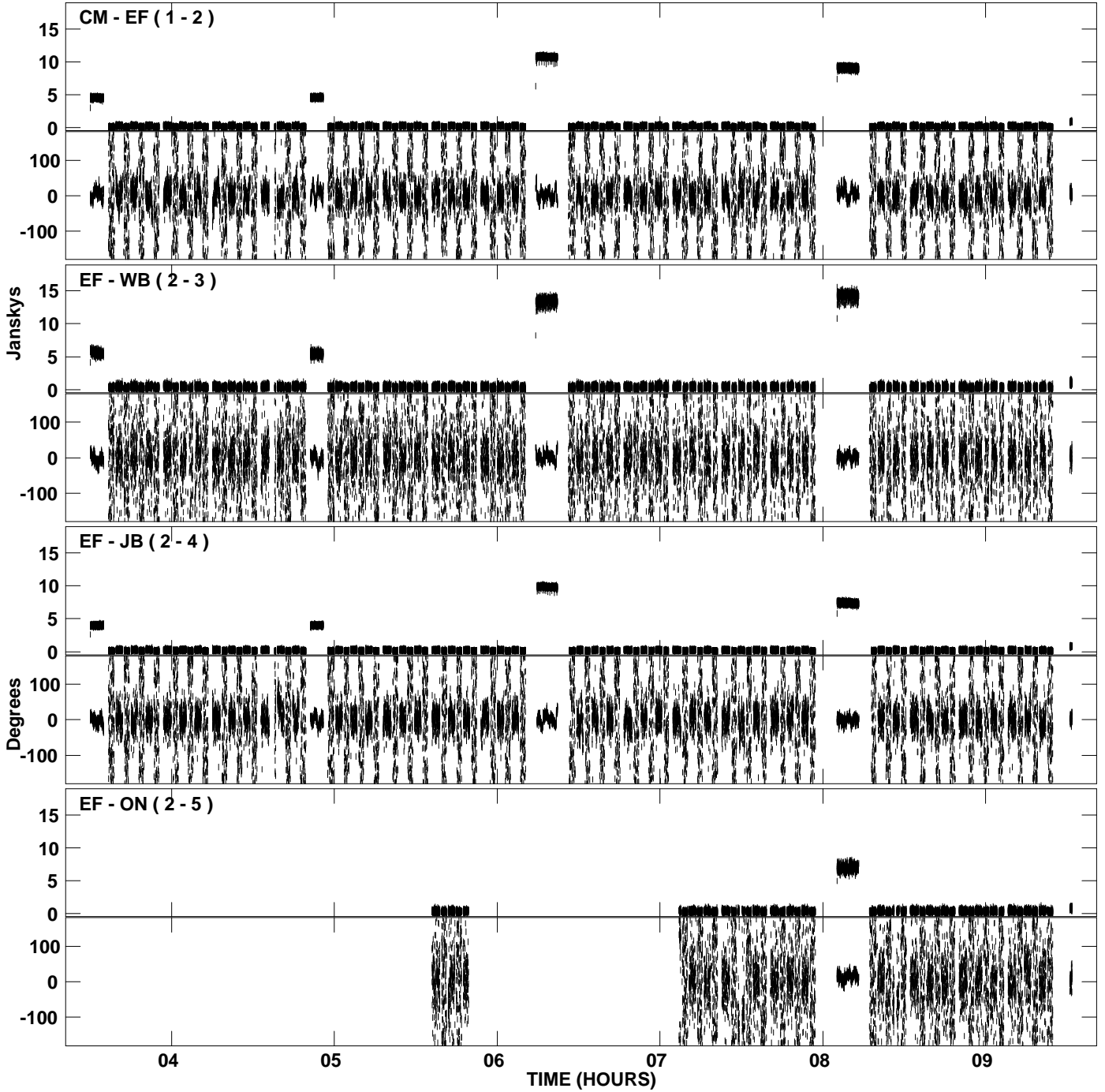
PLot file version 23 created 17-JUN-2009 00:51:10
Amplitude andPhase vs Time for EM069F 1.UVDATA.1 Vect aver. CL # 3
IF 4 CHAN 1 - 128 STK RR



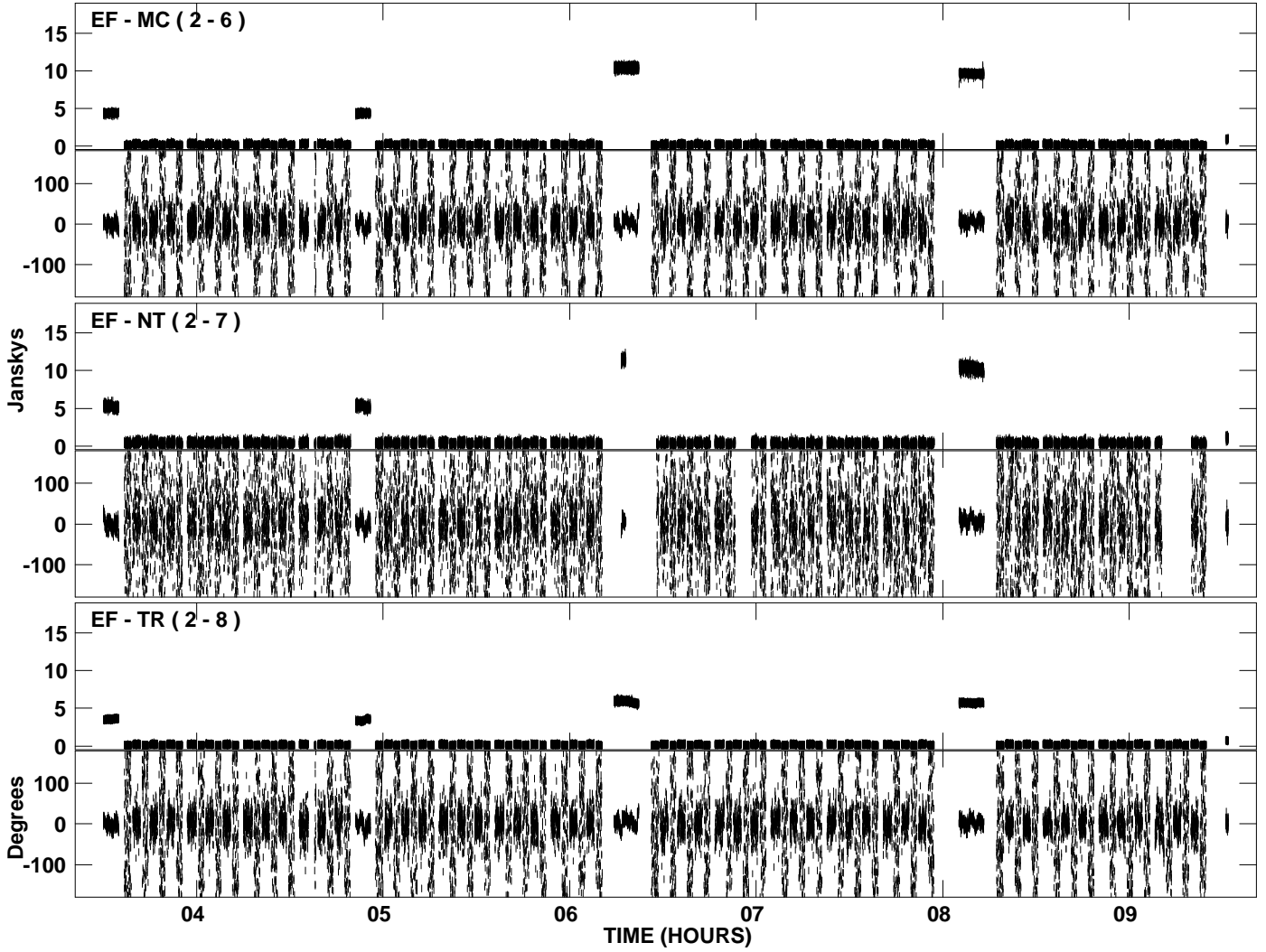
PLot file version 24 created 17-JUN-2009 00:51:10
Amplitude andPhase vs Time for EM069F 1.UVDATA.1 Vect aver. CL # 3
IF 4 CHAN 1 - 128 STK RR



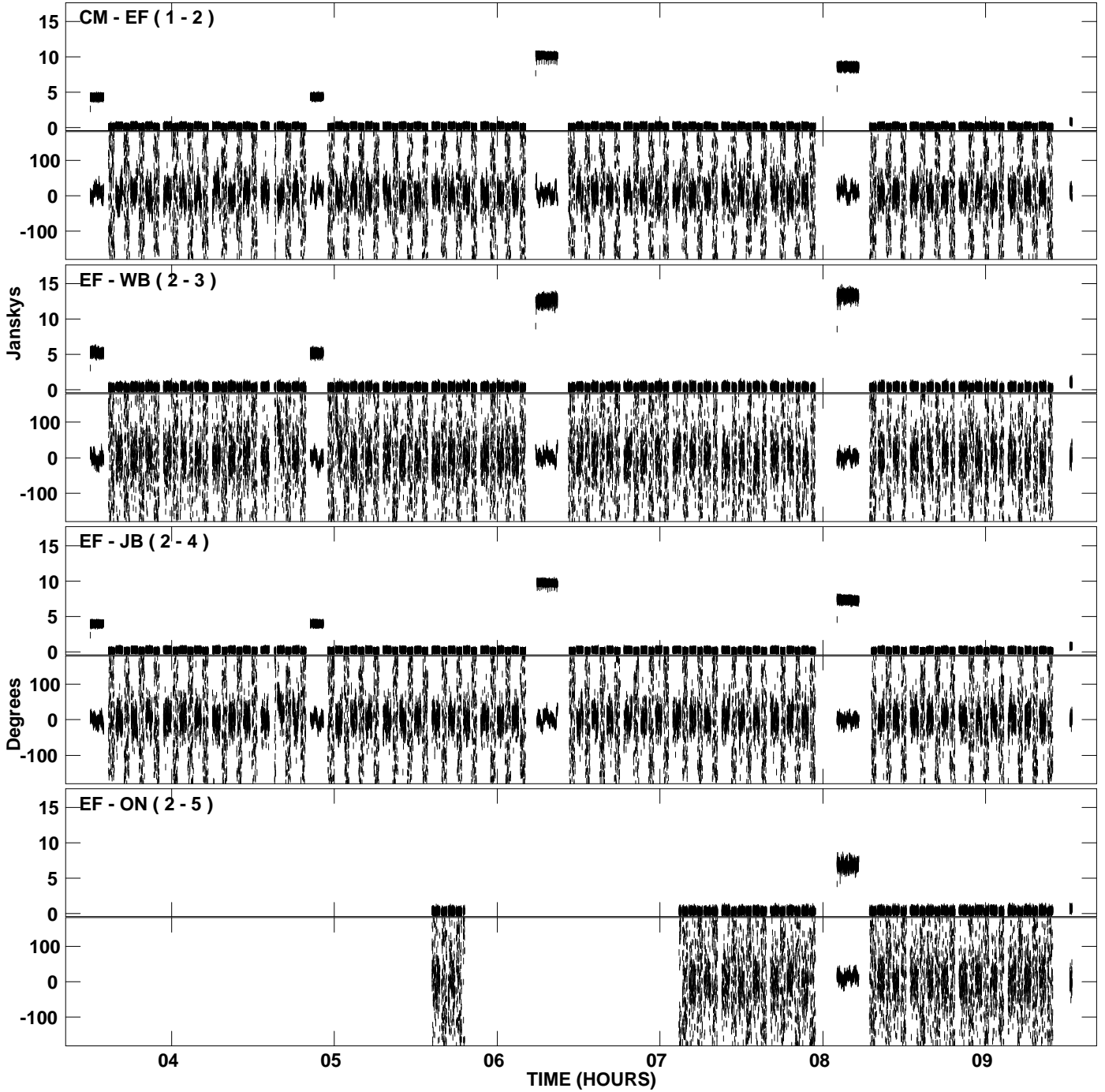
PLot file version 25 created 17-JUN-2009 00:53:07
Amplitude andPhase vs Time for EM069F 1.UVDATA.1 Vect aver. CL # 3
IF 5 CHAN 1 - 128 STK RR



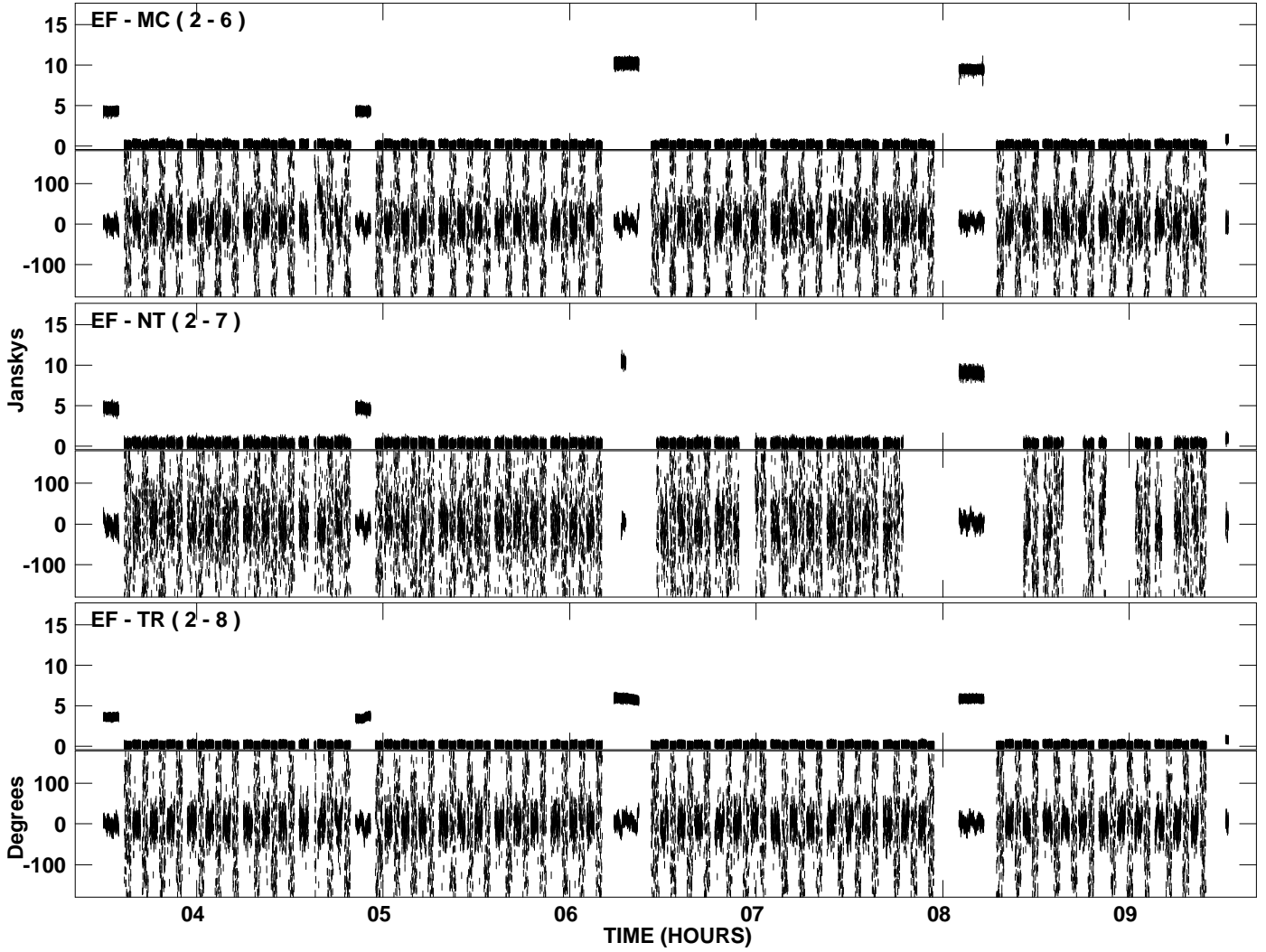
PLot file version 26 created 17-JUN-2009 00:53:08
Amplitude andPhase vs Time for EM069F 1.UVDATA.1 Vect aver. CL # 3
IF 5 CHAN 1 - 128 STK RR



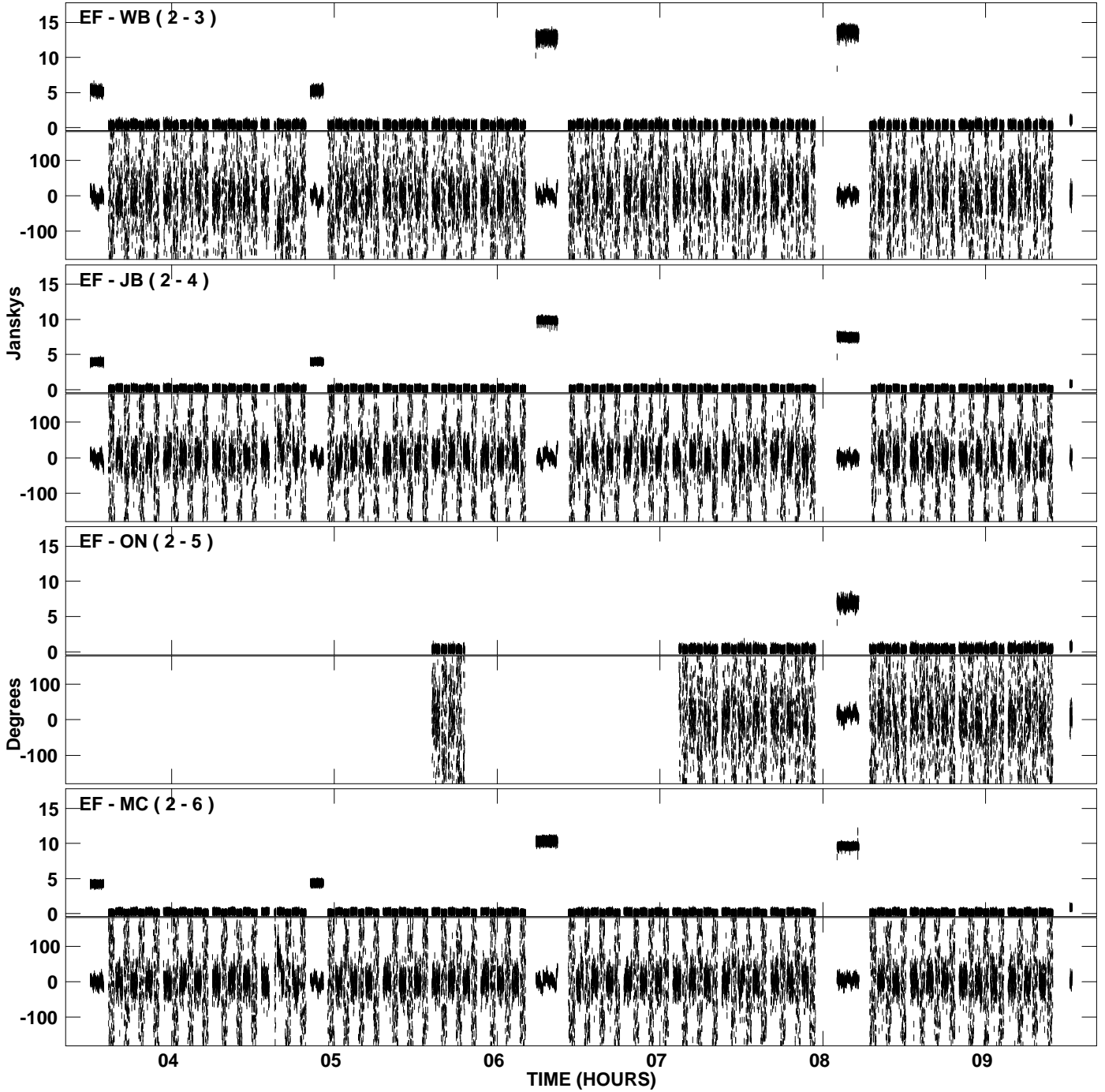
PLot file version 27 created 17-JUN-2009 00:55:03
Amplitude andPhase vs Time for EM069F 1.UVDATA.1 Vect aver. CL # 3
IF 6 CHAN 1 - 128 STK RR



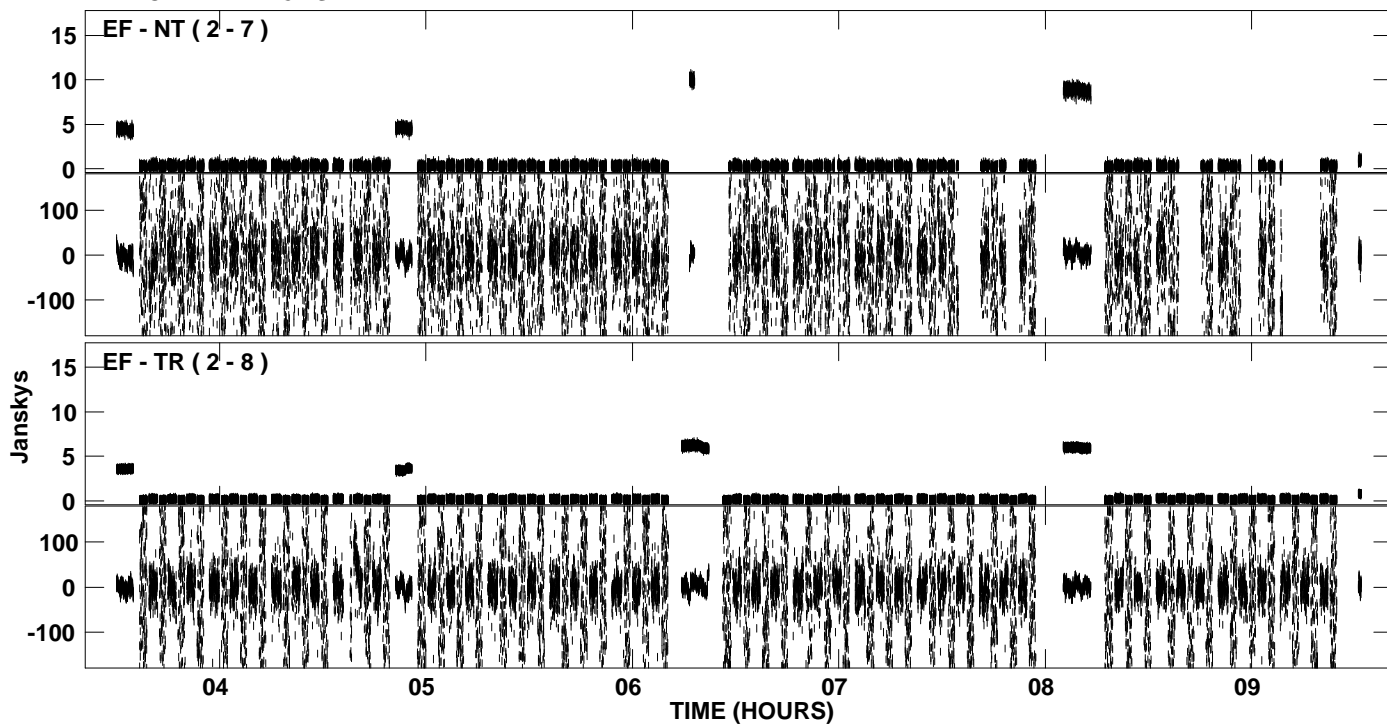
PLot file version 28 created 17-JUN-2009 00:55:03
Amplitude andPhase vs Time for EM069F 1.UVDATA.1 Vect aver. CL # 3
IF 6 CHAN 1 - 128 STK RR



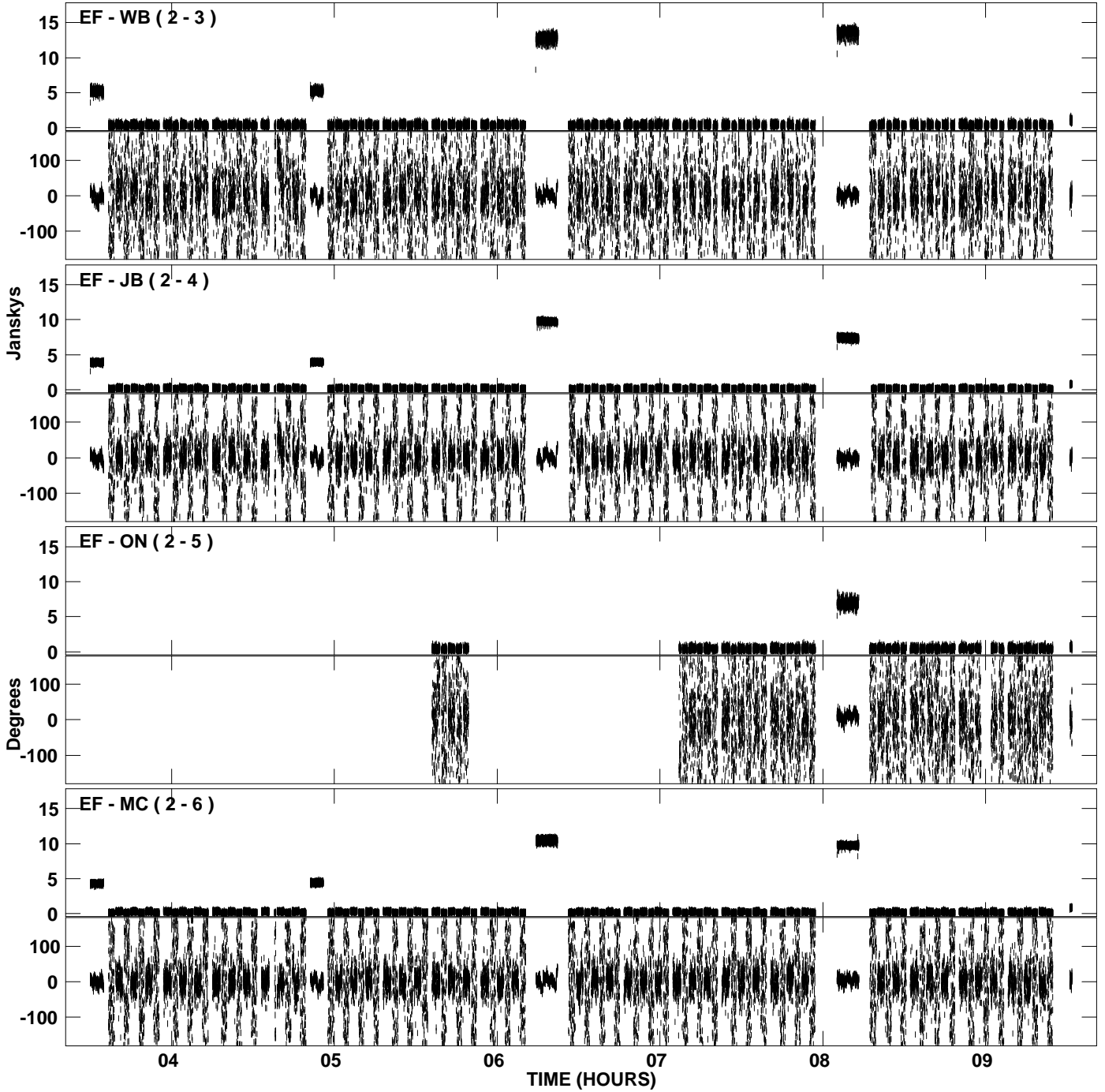
PLot file version 29 created 17-JUN-2009 00:56:57
Amplitude and Phase vs Time for EM069F 1.UVDATA.1 Vect aver. CL # 3
IF 7 CHAN 1 - 128 STK RR



PLot file version 30 created 17-JUN-2009 00:56:58
Amplitude andPhase vs Time for EM069F 1.UVDATA.1 Vect aver. CL # 3
IF 7 CHAN 1 - 128 STK RR



PLot file version 31 created 17-JUN-2009 00:58:57
Amplitude and Phase vs Time for EM069F 1.UVDATA.1 Vect aver. CL # 3
IF 8 CHAN 1 - 128 STK RR



PLot file version 32 created 17-JUN-2009 00:58:57
Amplitude andPhase vs Time for EM069F 1.UVDATA.1 Vect aver. CL # 3
IF 8 CHAN 1 - 128 STK RR

