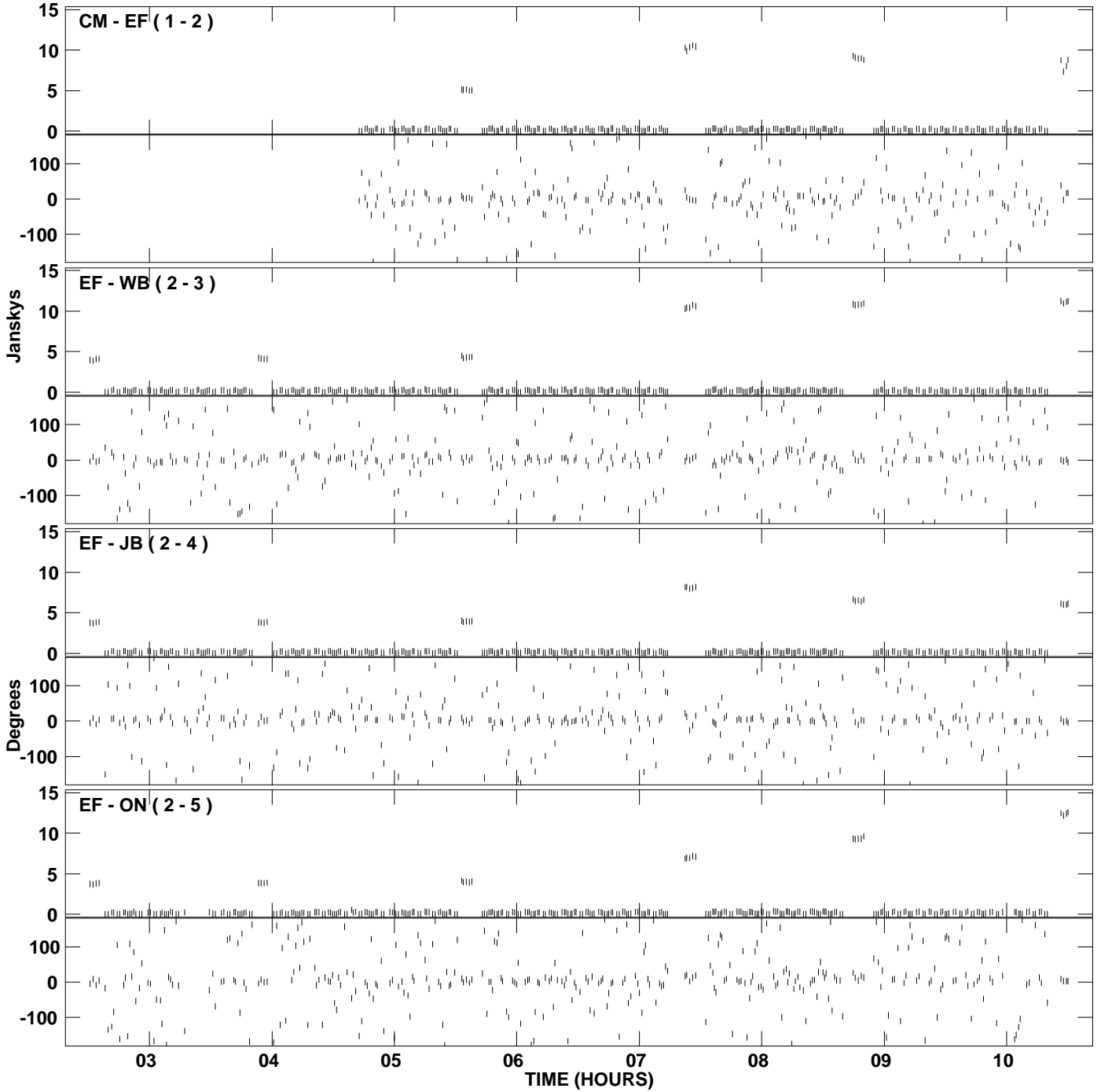
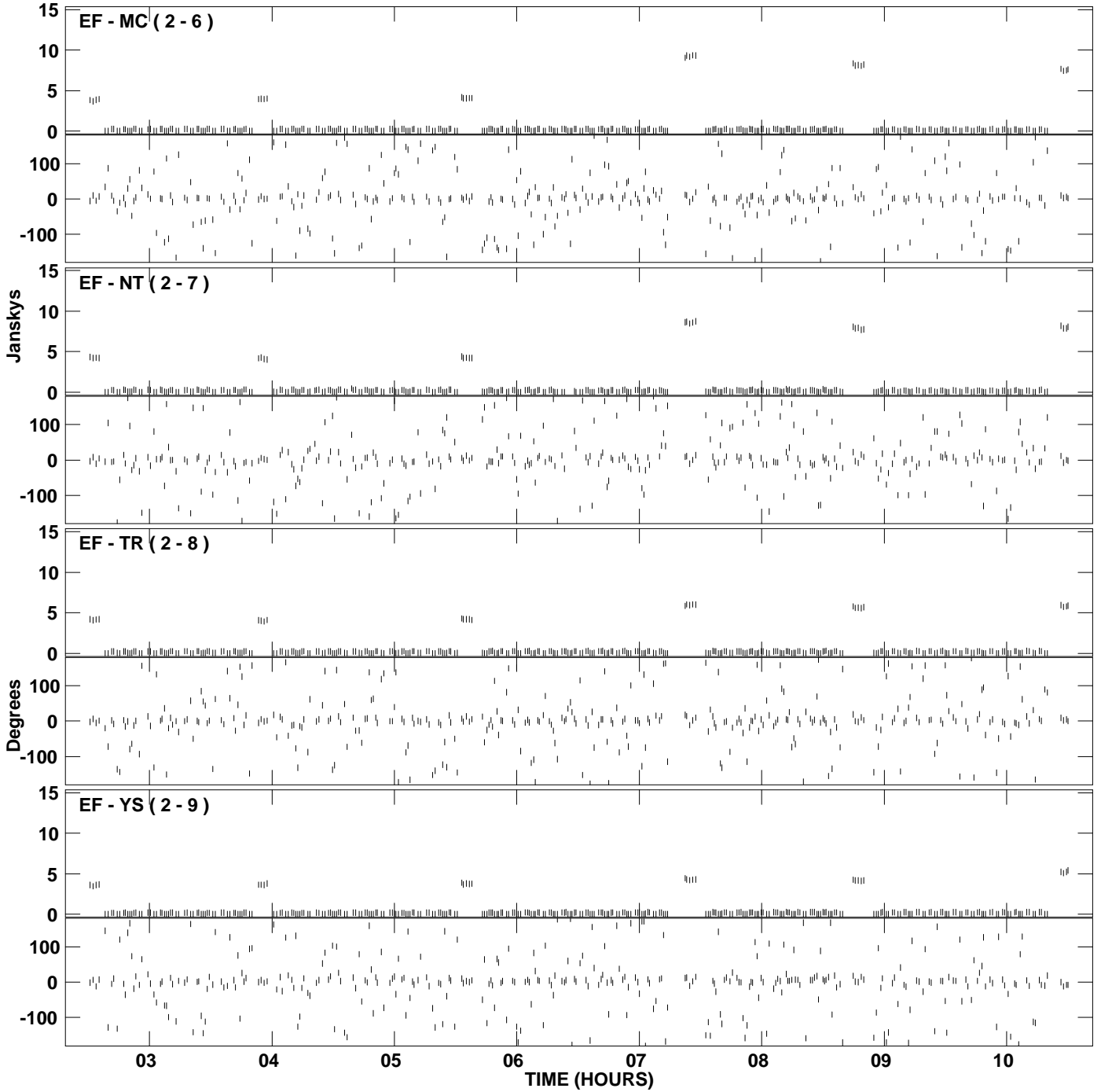


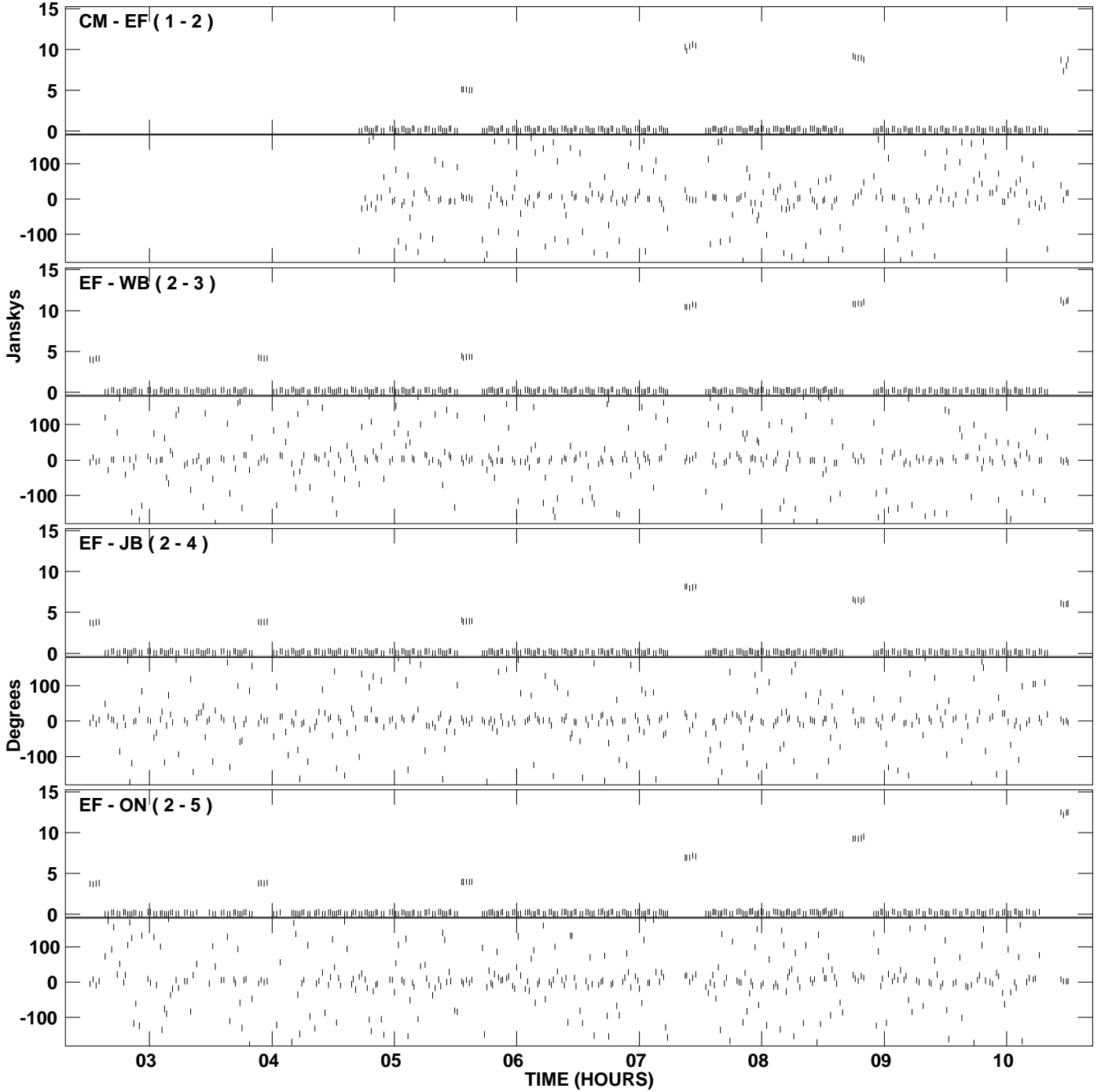
PLot file version 1 created 21-JUL-2009 18:53:38  
Amplitude and Phase vs Time for EM071A 1.UVDATA.1 Vect aver. CL # 3  
IF 1 CHAN 1 - 128 STK LL



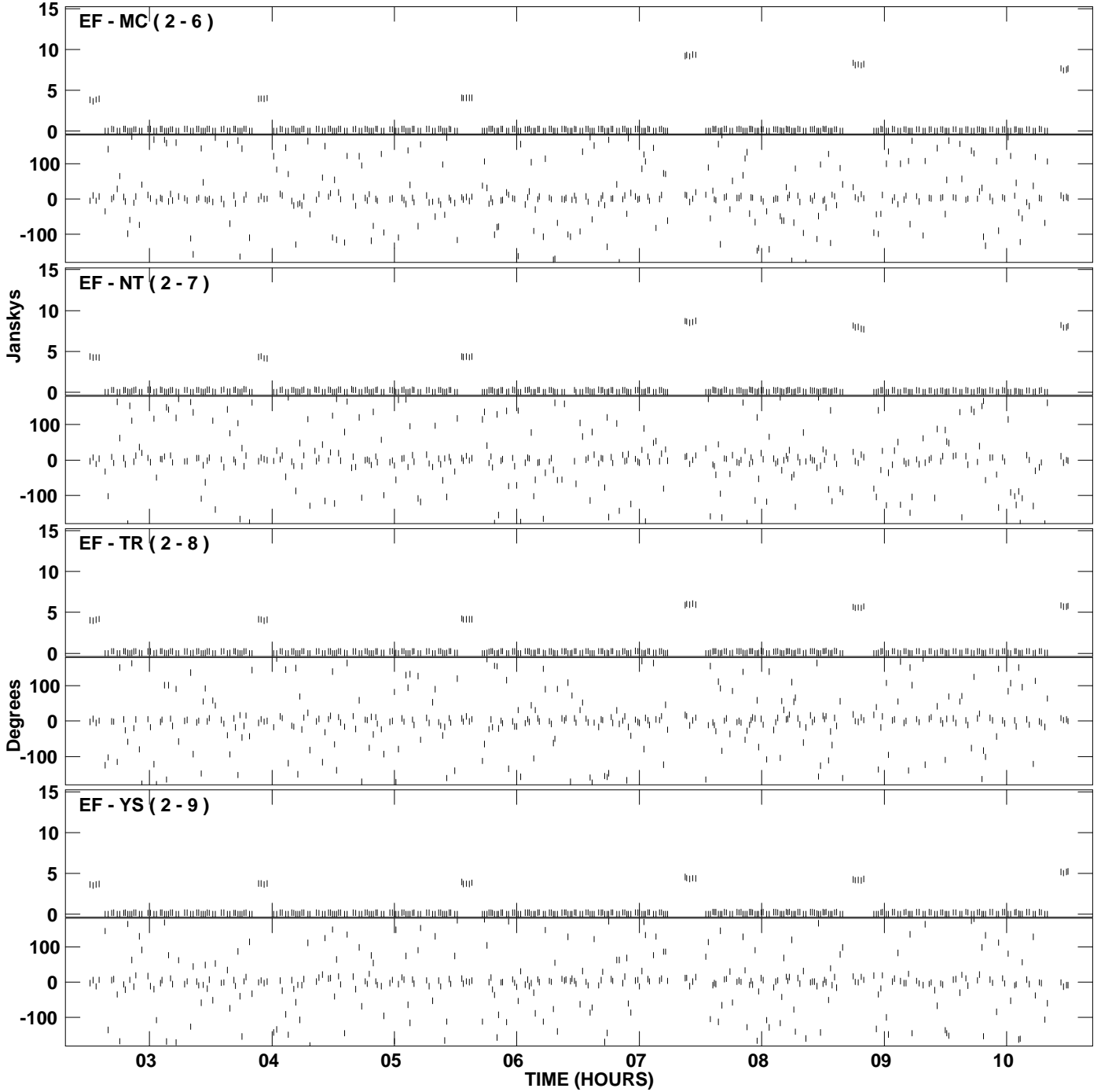
PLot file version 2 created 21-JUL-2009 18:53:38  
Amplitude andPhase vs Time for EM071A 1.UVDATA.1 Vect aver. CL # 3  
IF 1 CHAN 1 - 128 STK LL



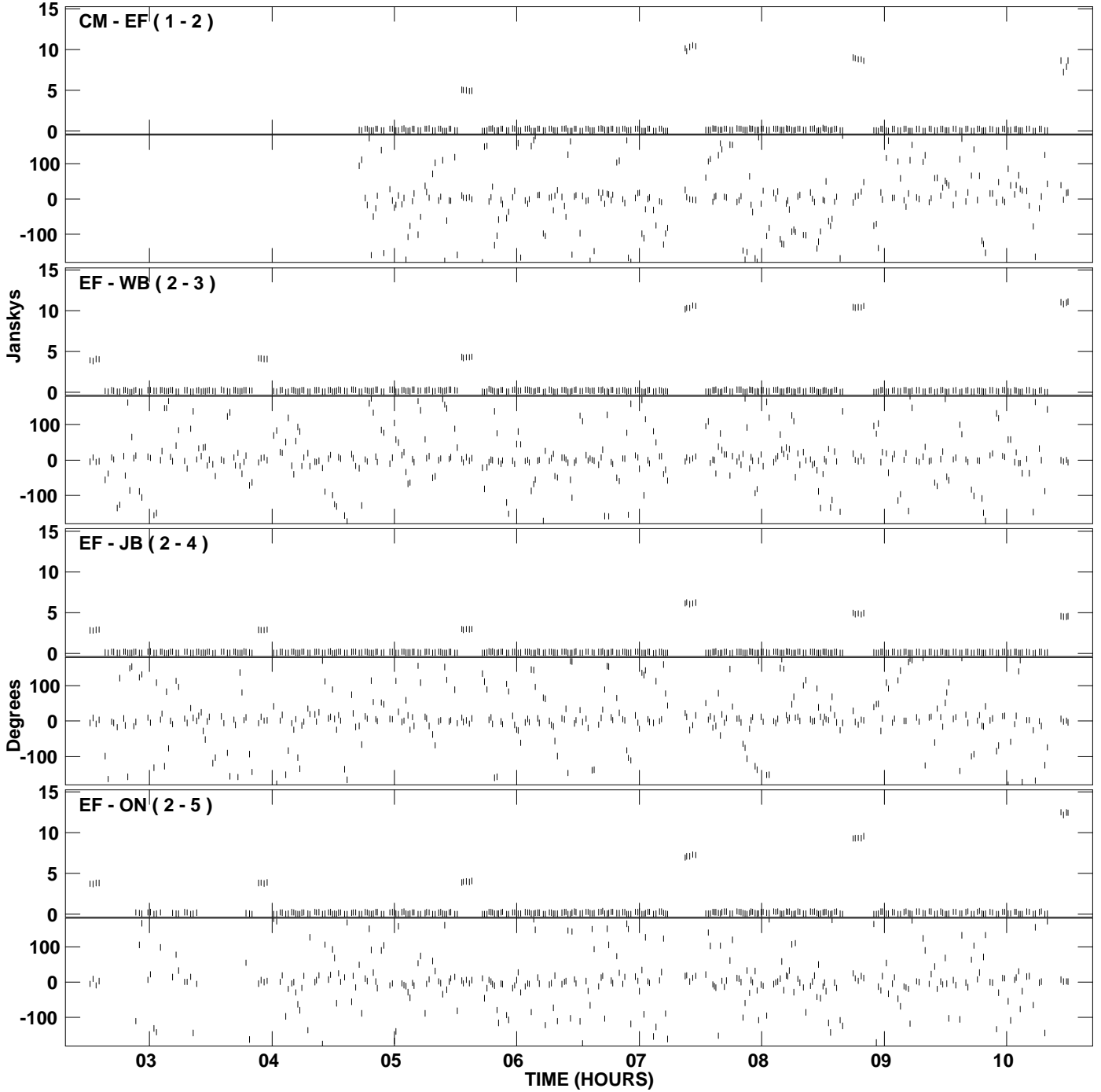
PLot file version 3 created 21-JUL-2009 18:55:17  
Amplitude and Phase vs Time for EM071A 1.UVDATA.1 Vect aver. CL # 3  
IF 2 CHAN 1 - 128 STK LL



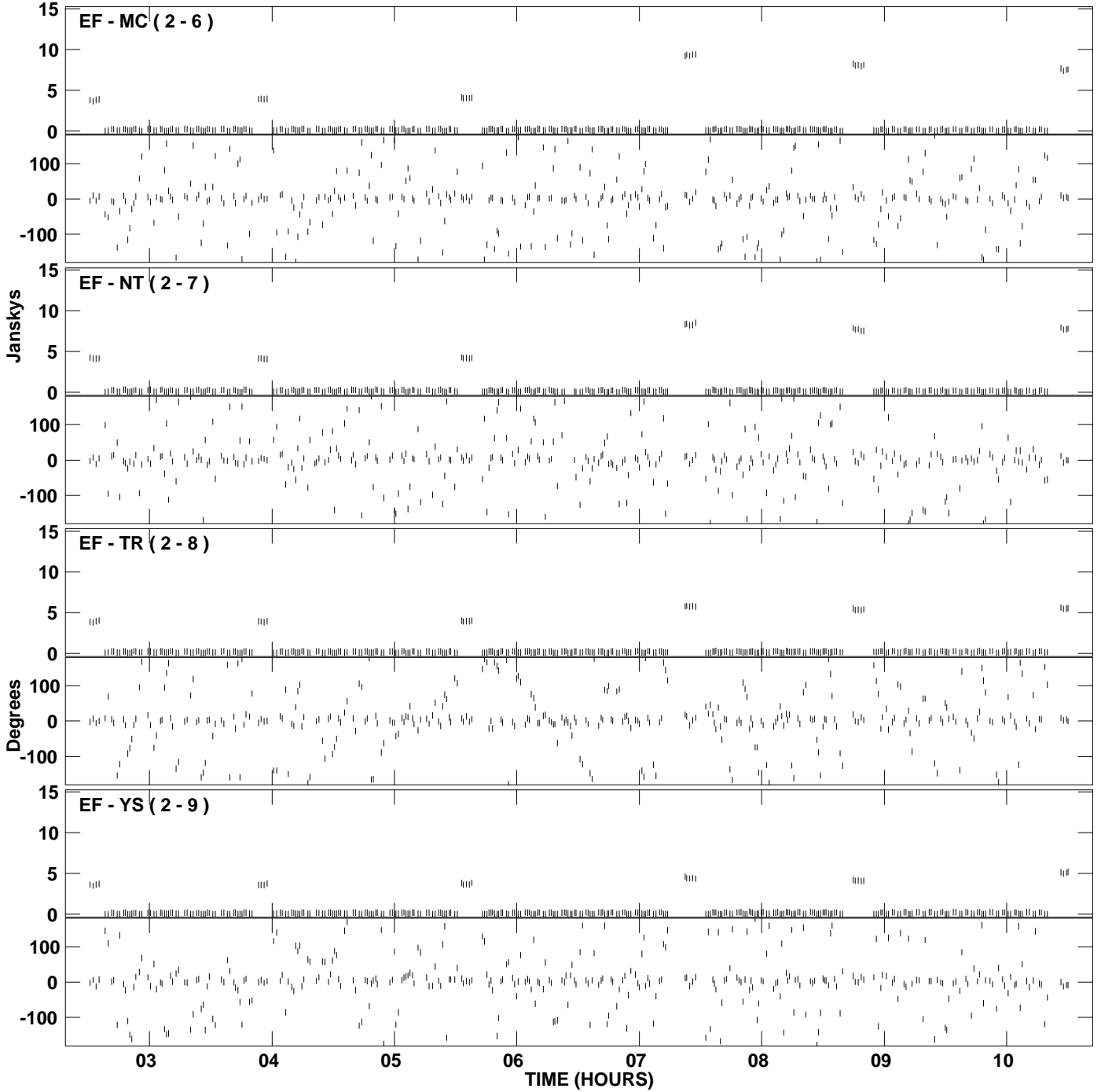
PLot file version 4 created 21-JUL-2009 18:55:17  
Amplitude and Phase vs Time for EM071A 1.UVDATA.1 Vect aver. CL # 3  
IF 2 CHAN 1 - 128 STK LL



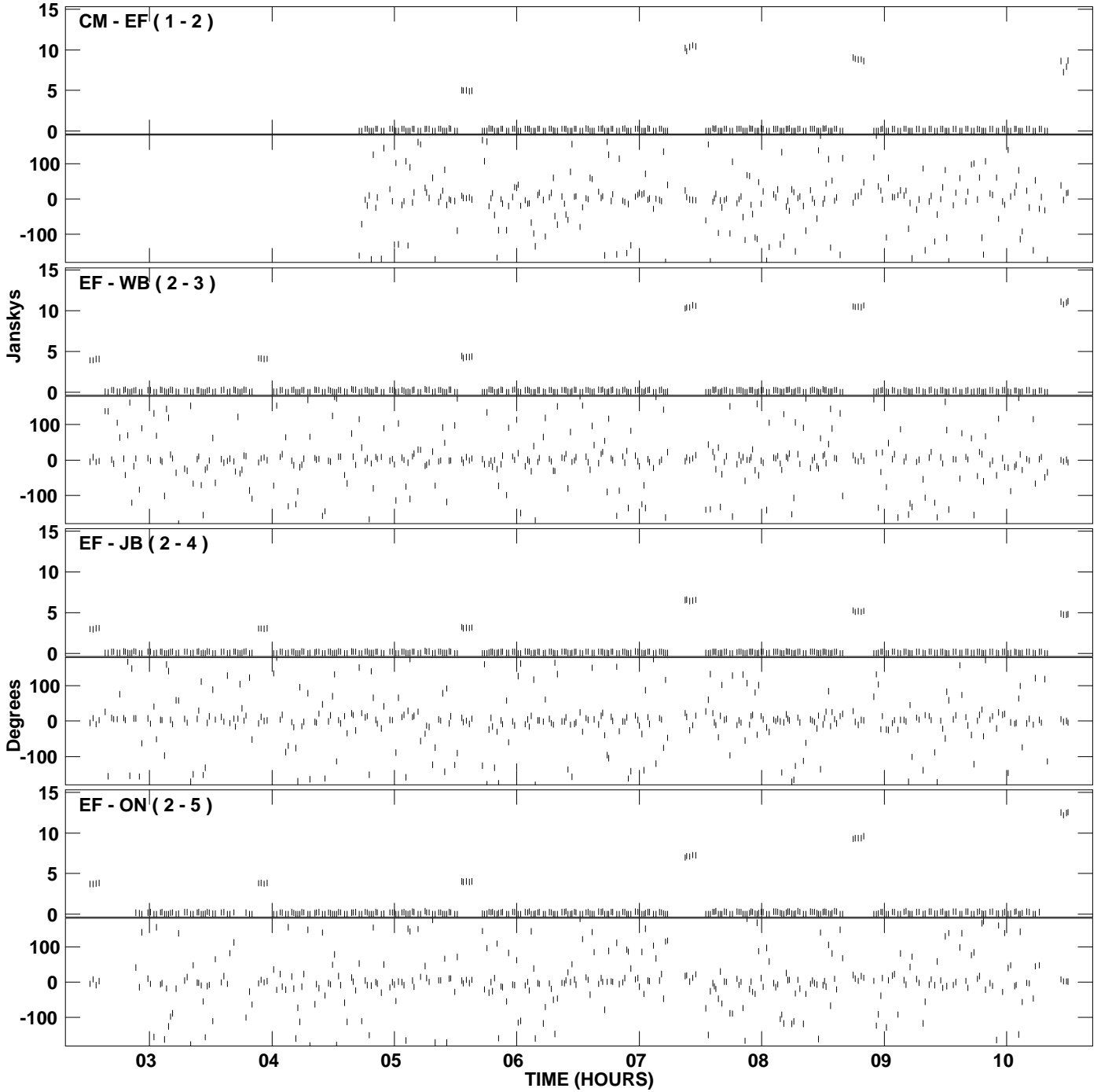
PLot file version 5 created 21-JUL-2009 18:56:58  
Amplitude and Phase vs Time for EM071A 1.UVDATA.1 Vect aver. CL # 3  
IF 3 CHAN 1 - 128 STK LL



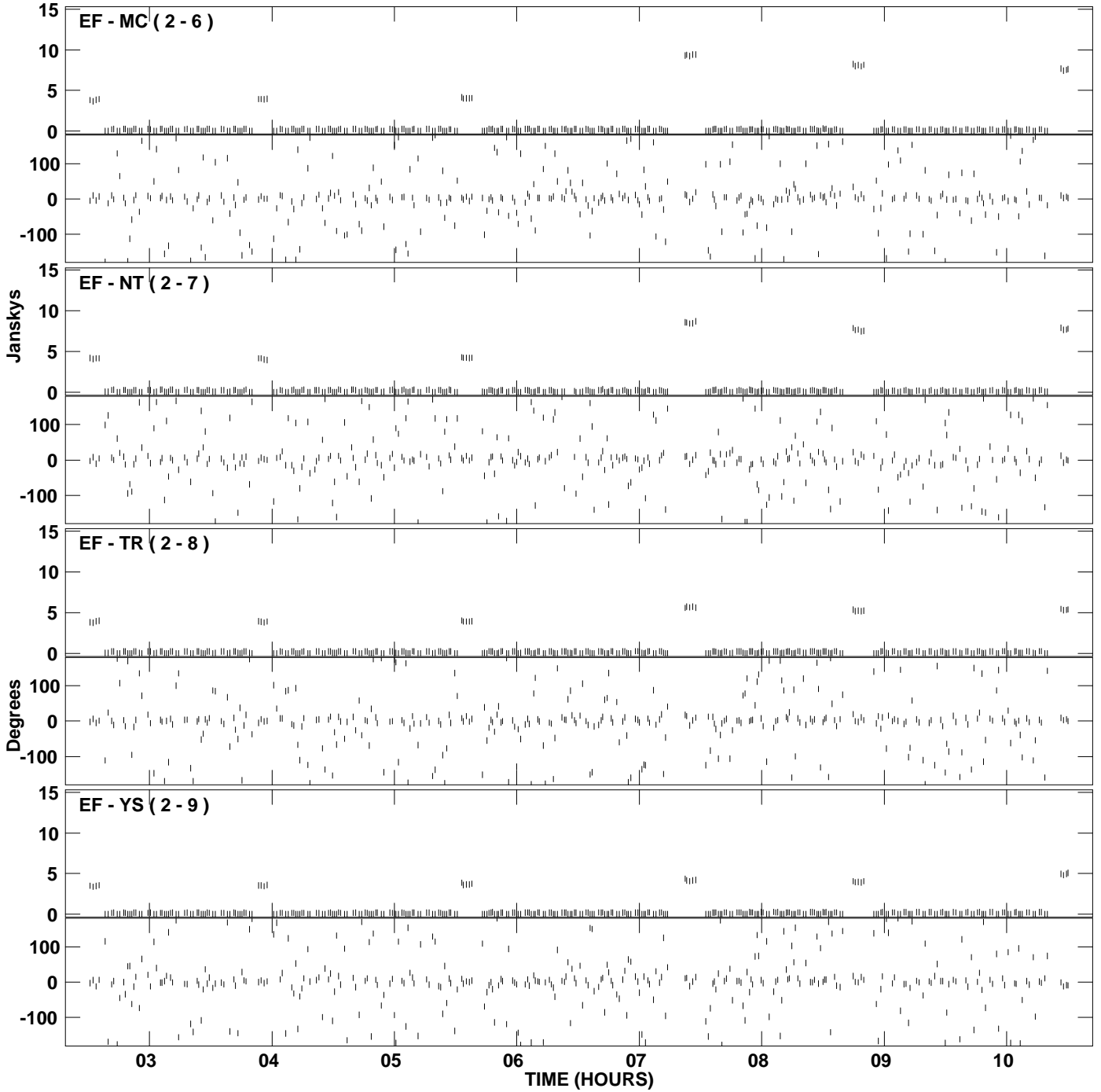
PLot file version 6 created 21-JUL-2009 18:56:58  
Amplitude andPhase vs Time for EM071A 1.UVDATA.1 Vect aver. CL # 3  
IF 3 CHAN 1 - 128 STK LL



PLot file version 7 created 21-JUL-2009 18:58:39  
Amplitude and Phase vs Time for EM071A 1.UVDATA.1 Vect aver. CL # 3  
IF 4 CHAN 1 - 128 STK LL

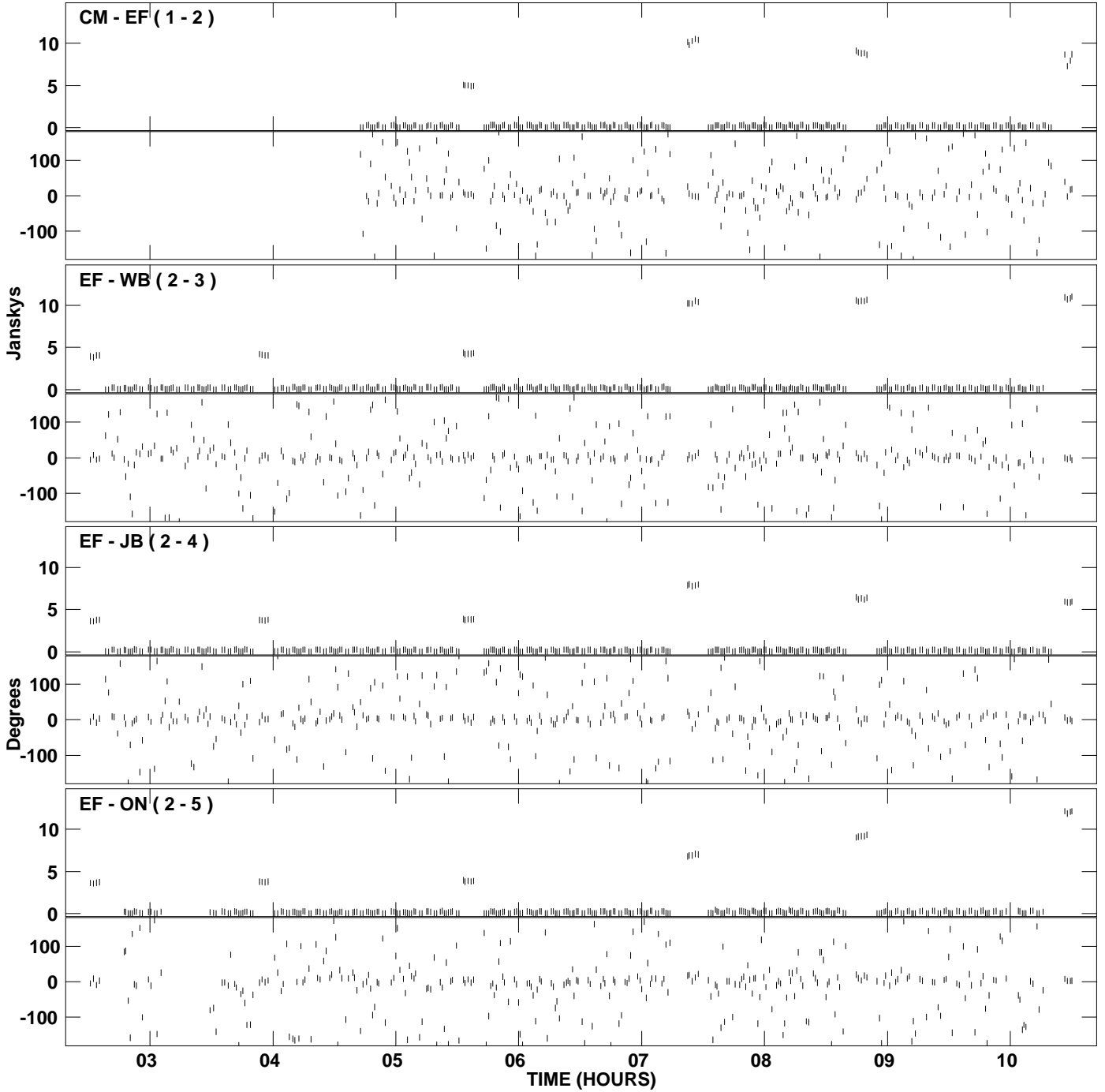


PLot file version 8 created 21-JUL-2009 18:58:39  
Amplitude and Phase vs Time for EM071A 1.UVDATA.1 Vect aver. CL # 3  
IF 4 CHAN 1 - 128 STK LL

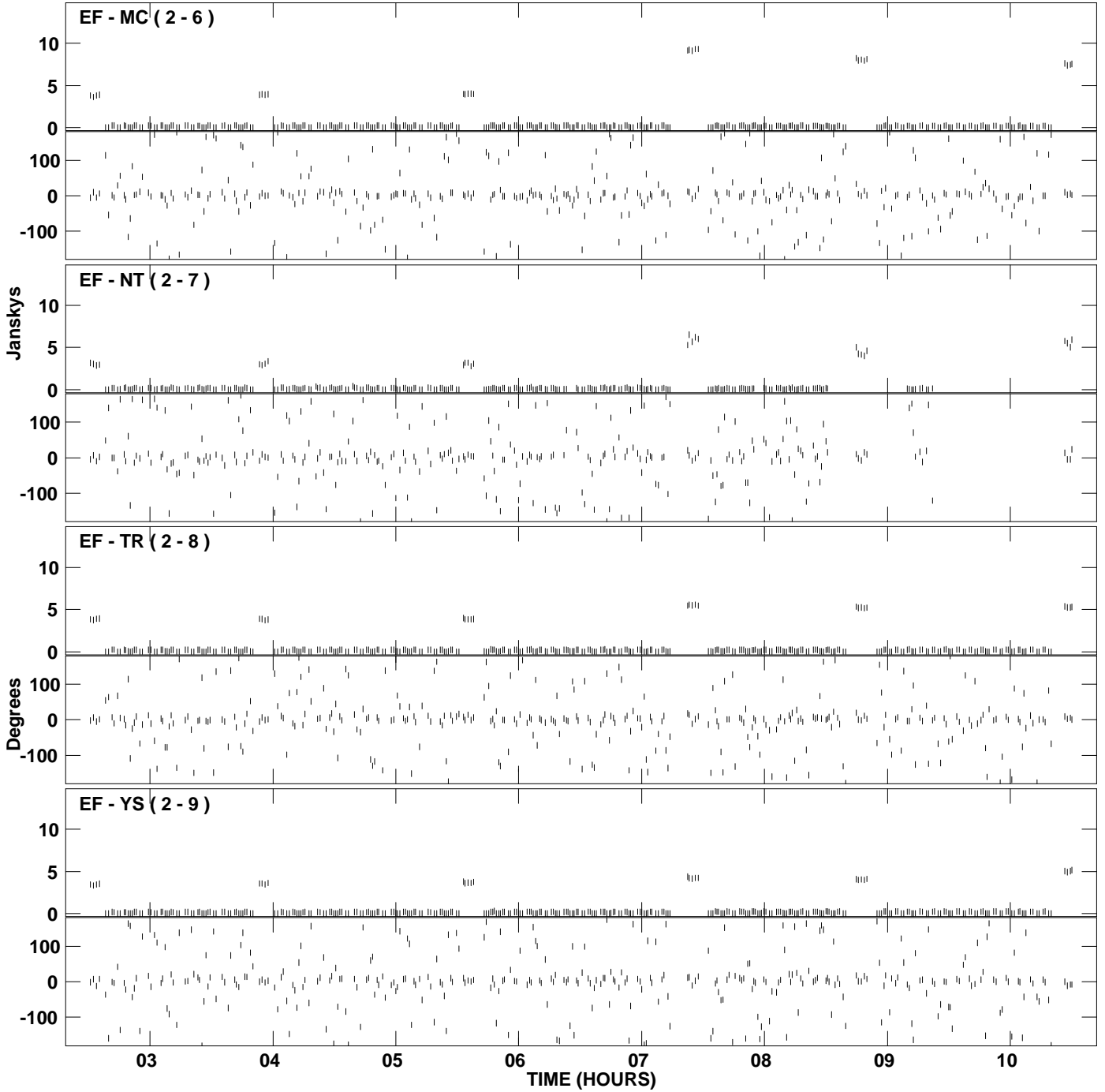




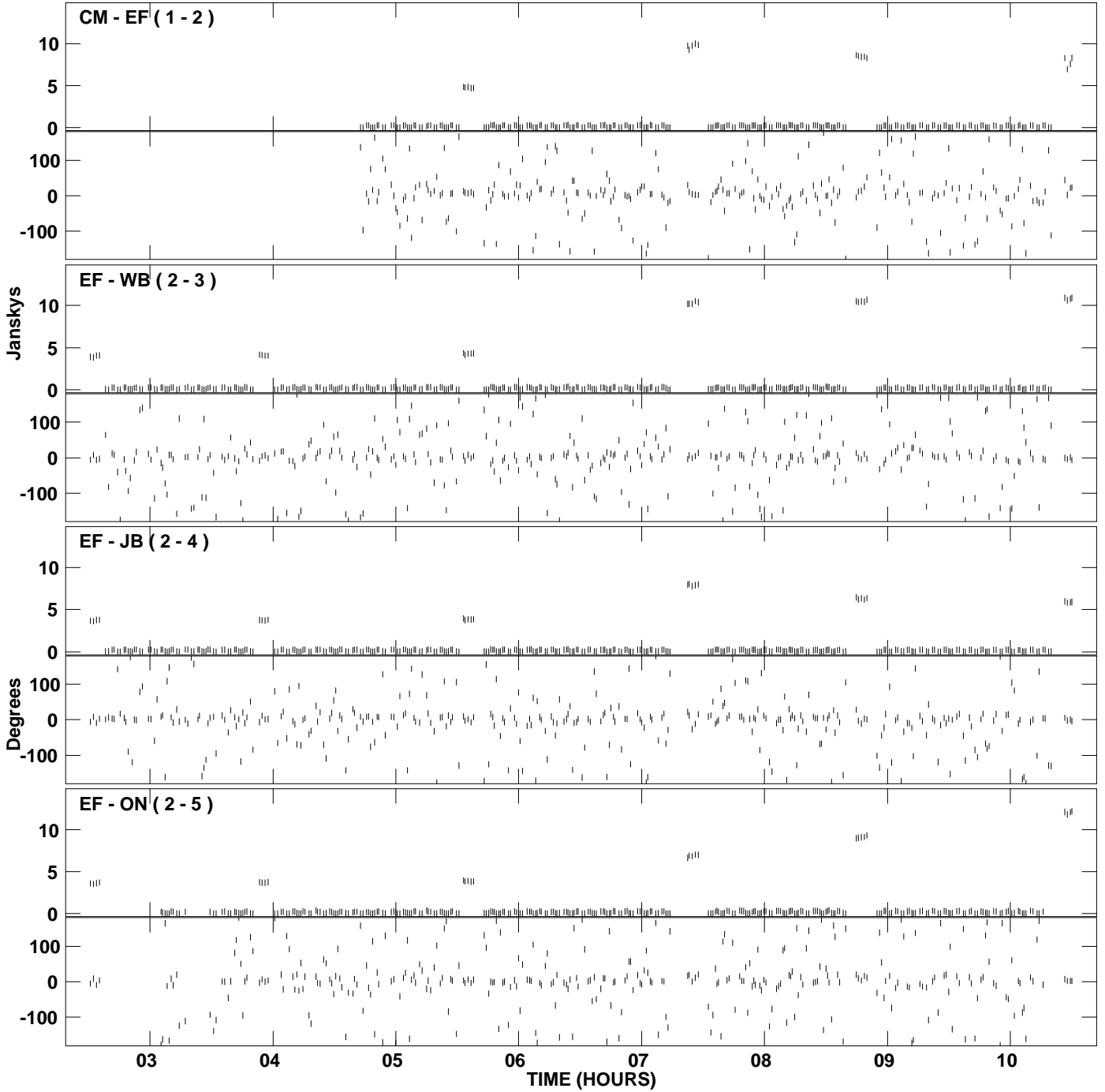
PLot file version 9 created 21-JUL-2009 19:00:19  
Amplitude and Phase vs Time for EM071A 1.UVDATA.1 Vect aver. CL # 3  
IF 5 CHAN 1 - 128 STK LL



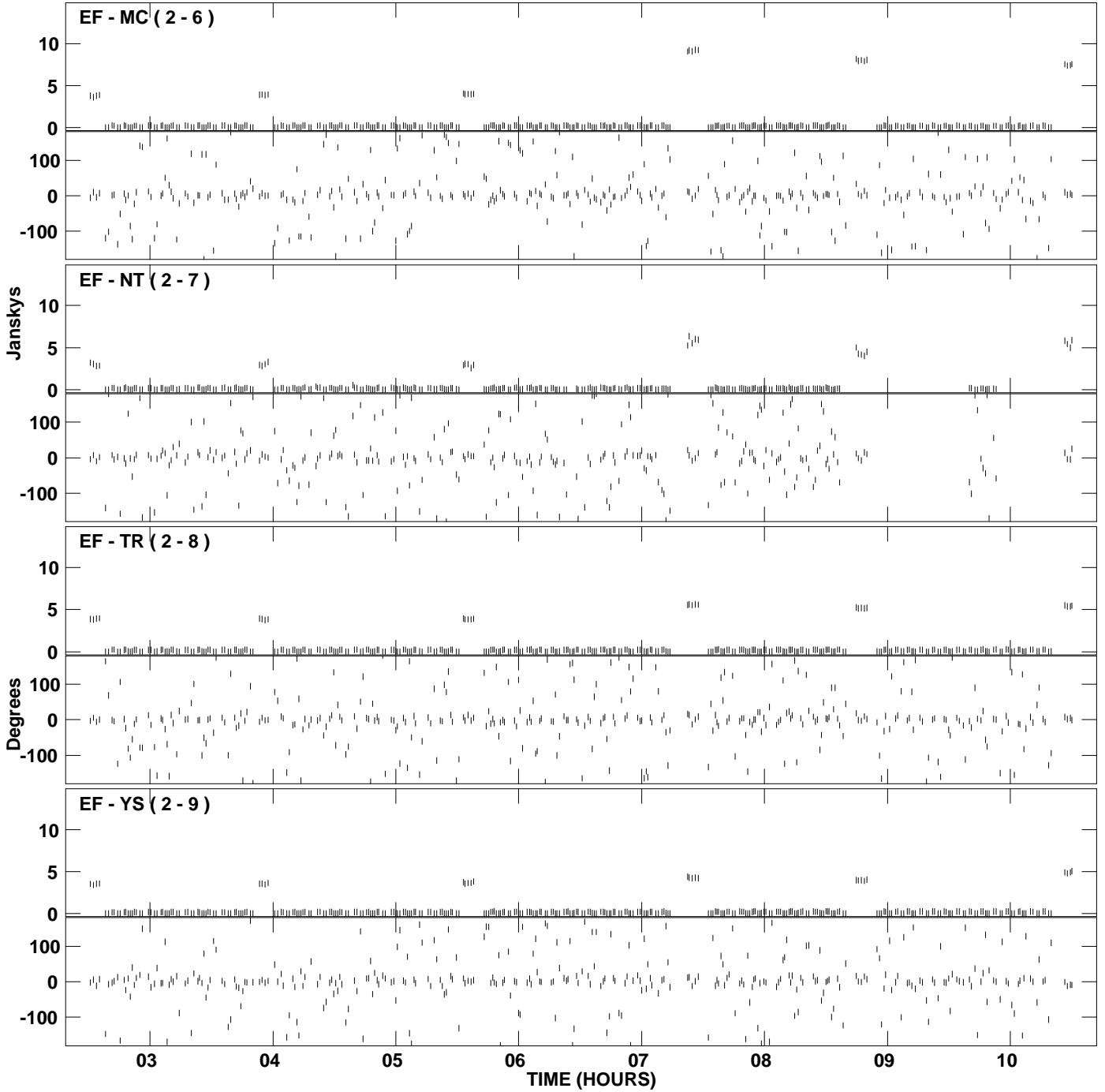
PLot file version 10 created 21-JUL-2009 19:00:19  
Amplitude and Phase vs Time for EM071A 1.UVDATA.1 Vect aver. CL # 3  
IF 5 CHAN 1 - 128 STK LL



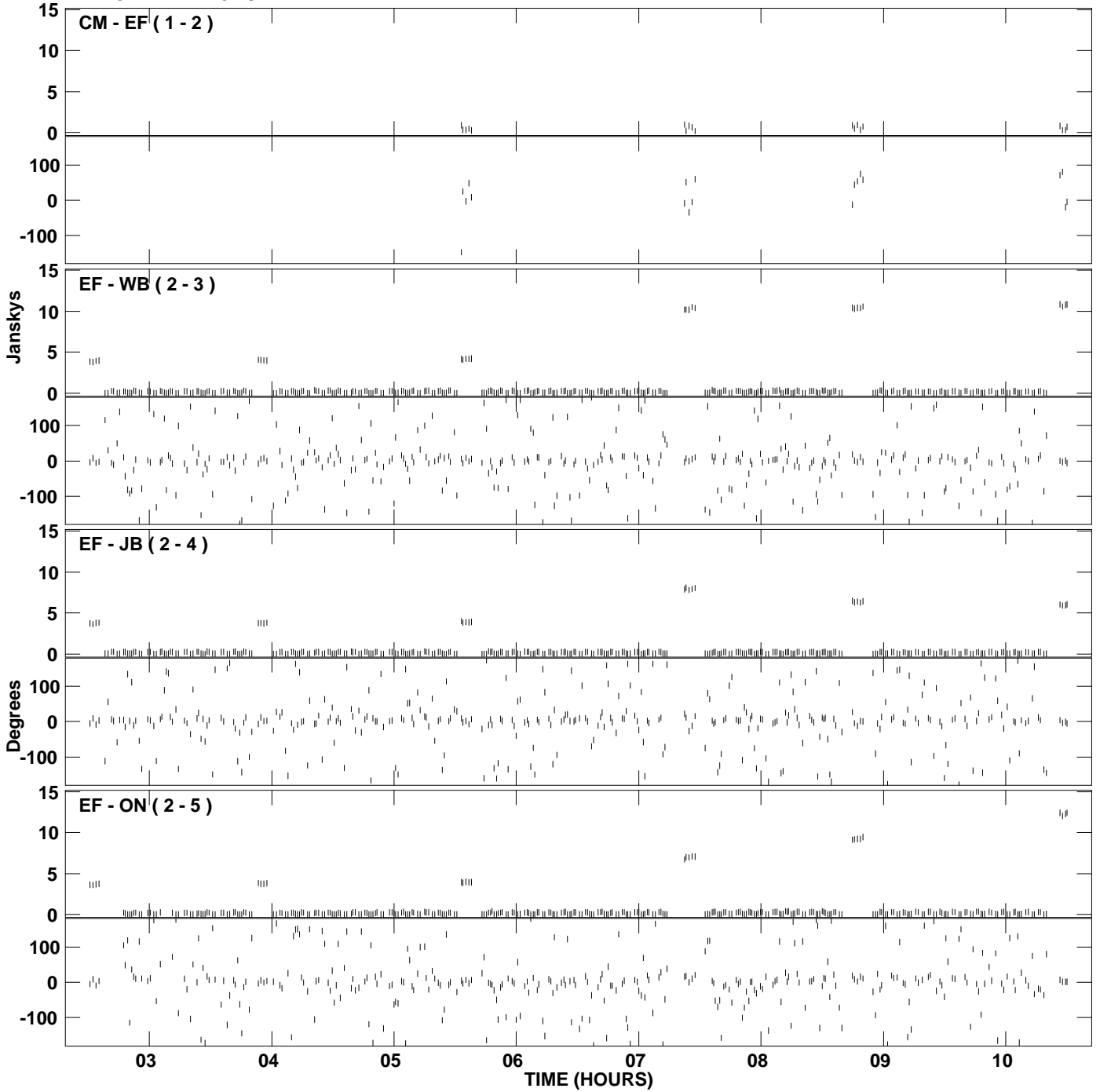
PLot file version 11 created 21-JUL-2009 19:01:58  
Amplitude andPhase vs Time for EM071A 1.UVDATA.1 Vect aver. CL # 3  
IF 6 CHAN 1 - 128 STK LL



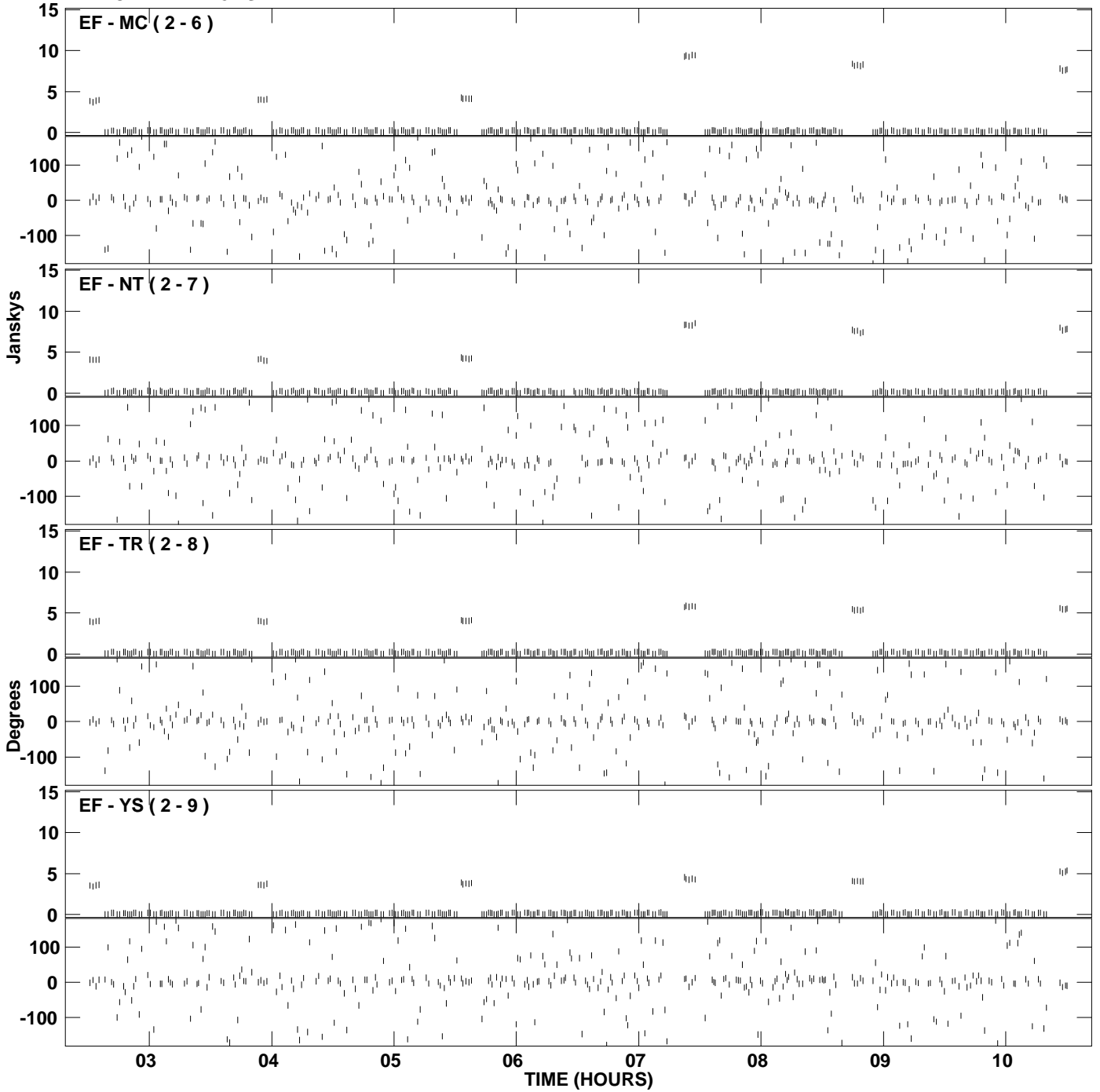
PLot file version 12 created 21-JUL-2009 19:01:58  
Amplitude and Phase vs Time for EM071A 1.UVDATA.1 Vect aver. CL # 3  
IF 6 CHAN 1 - 128 STK LL



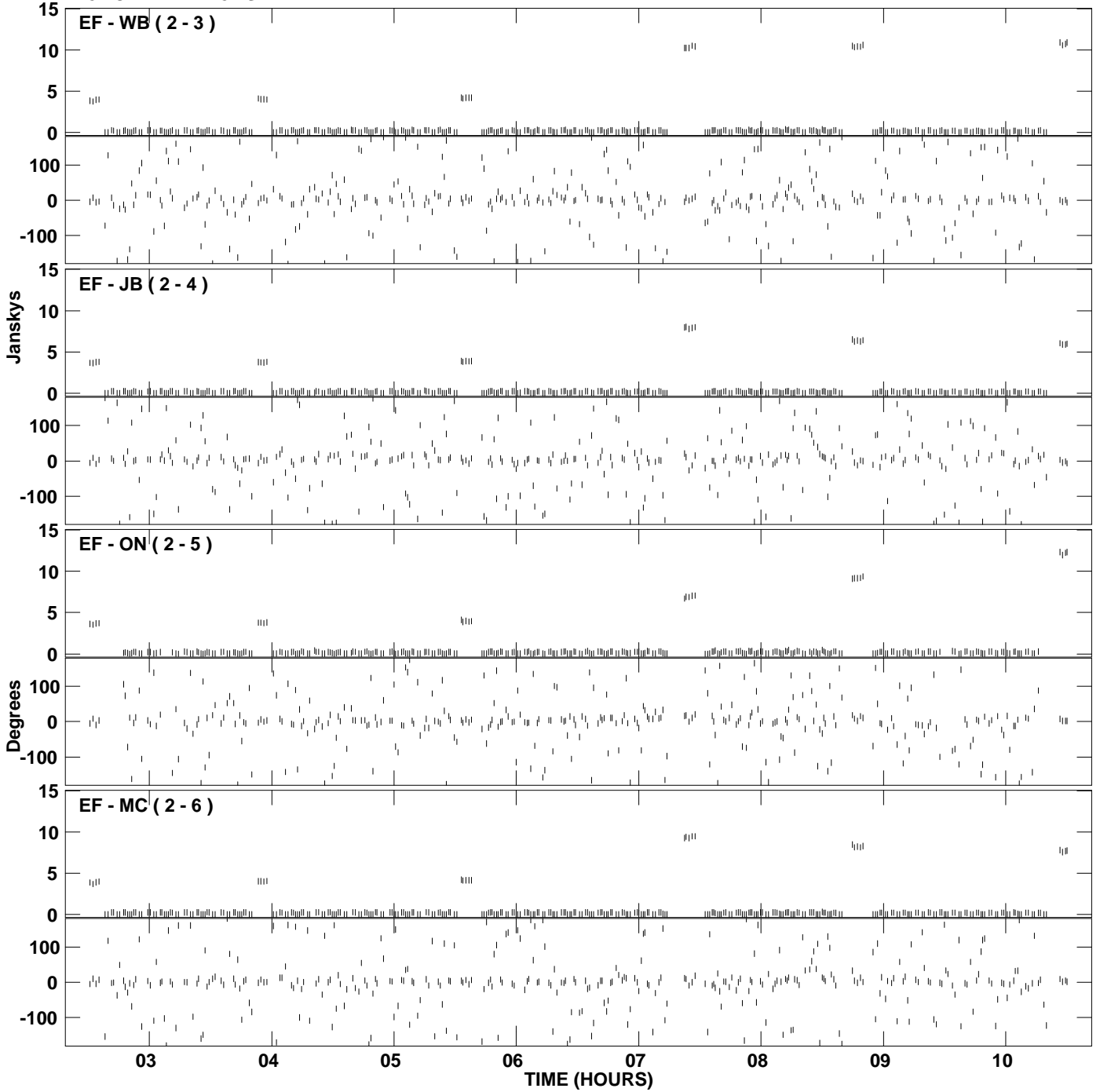
PLot file version 13 created 21-JUL-2009 19:03:35  
Amplitude and Phase vs Time for EM071A 1.UVDATA.1 Vect aver. CL # 3  
IF 7 CHAN 1 - 128 STK LL



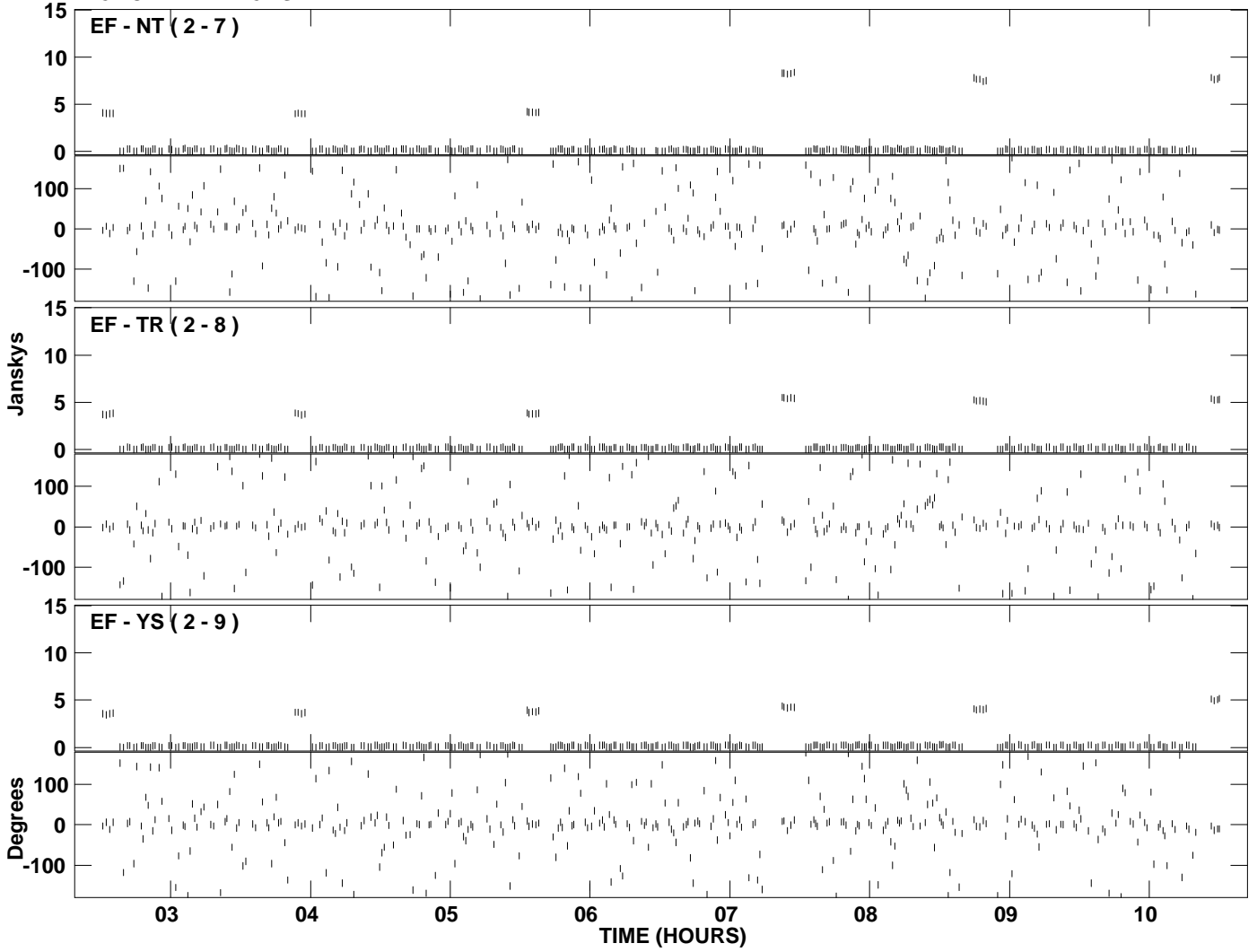
PLot file version 14 created 21-JUL-2009 19:03:36  
Amplitude and Phase vs Time for EM071A 1.UVDATA.1 Vect aver. CL # 3  
IF 7 CHAN 1 - 128 STK LL



PLot file version 15 created 21-JUL-2009 19:05:12  
Amplitude and Phase vs Time for EM071A 1.UVDATA.1 Vect aver. CL # 3  
IF 8 CHAN 1 - 128 STK LL

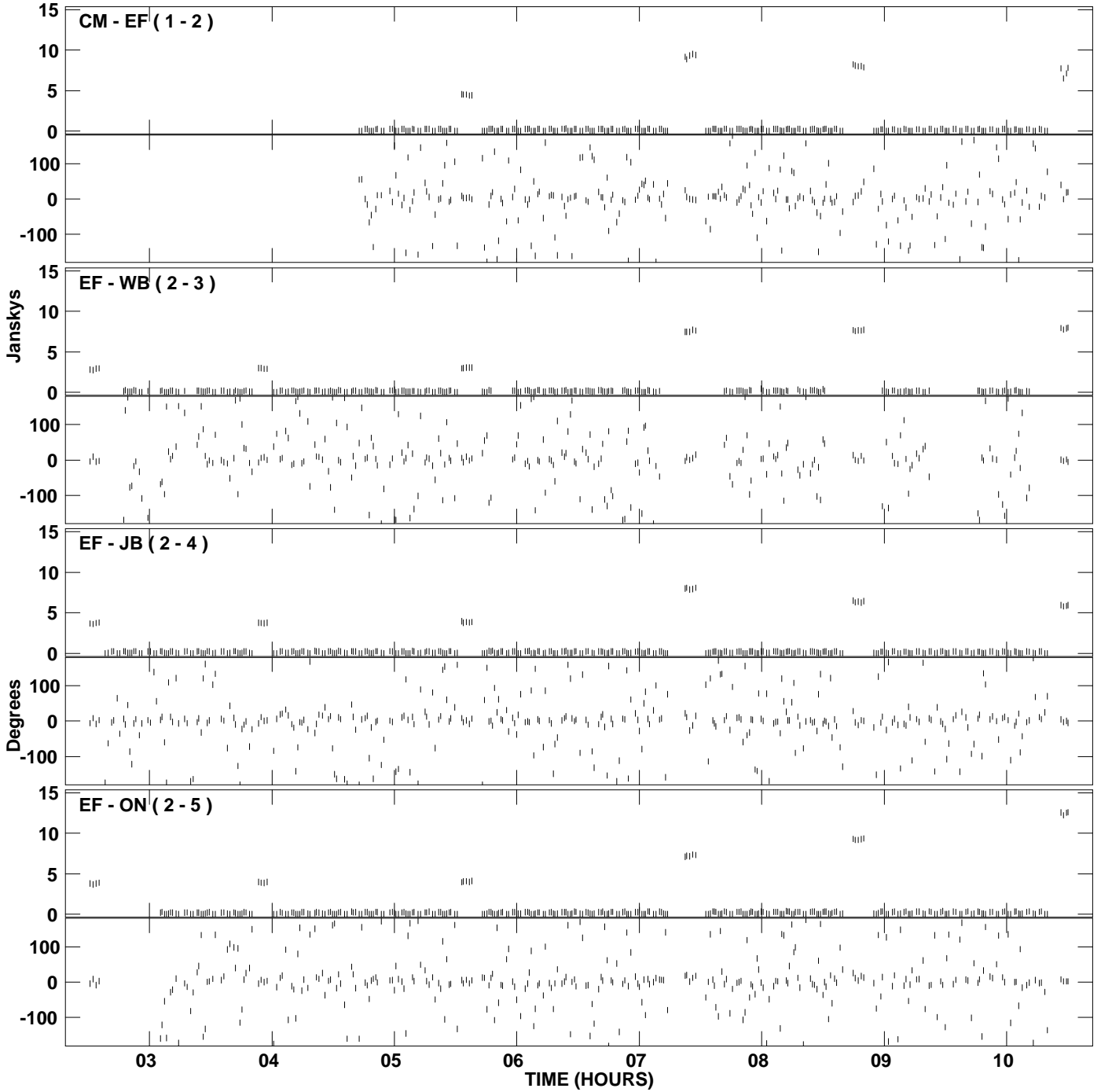


PLot file version 16 created 21-JUL-2009 19:05:12  
Amplitude andPhase vs Time for EM071A 1.UVDATA.1 Vect aver. CL # 3  
IF 8 CHAN 1 - 128 STK LL

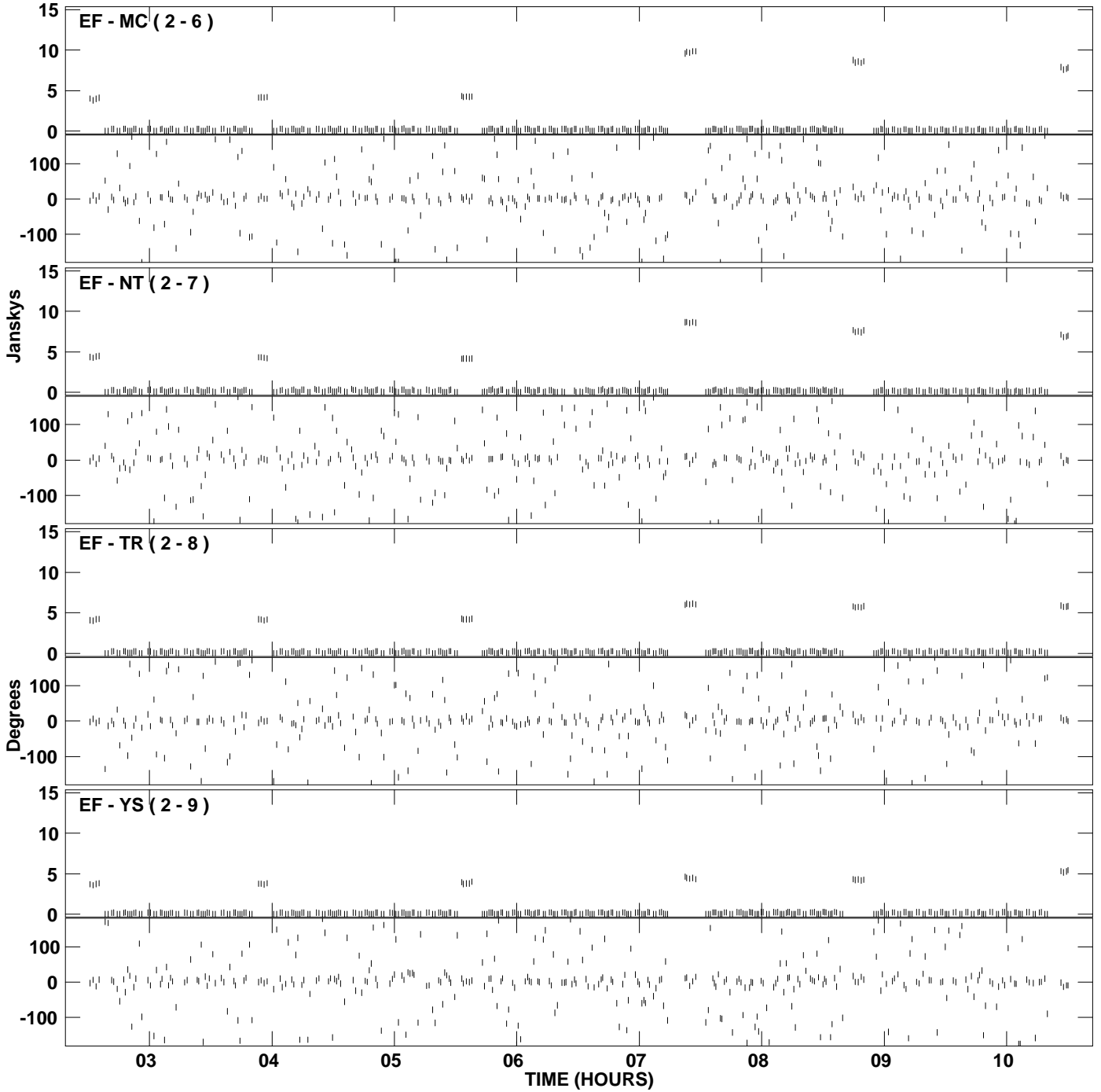




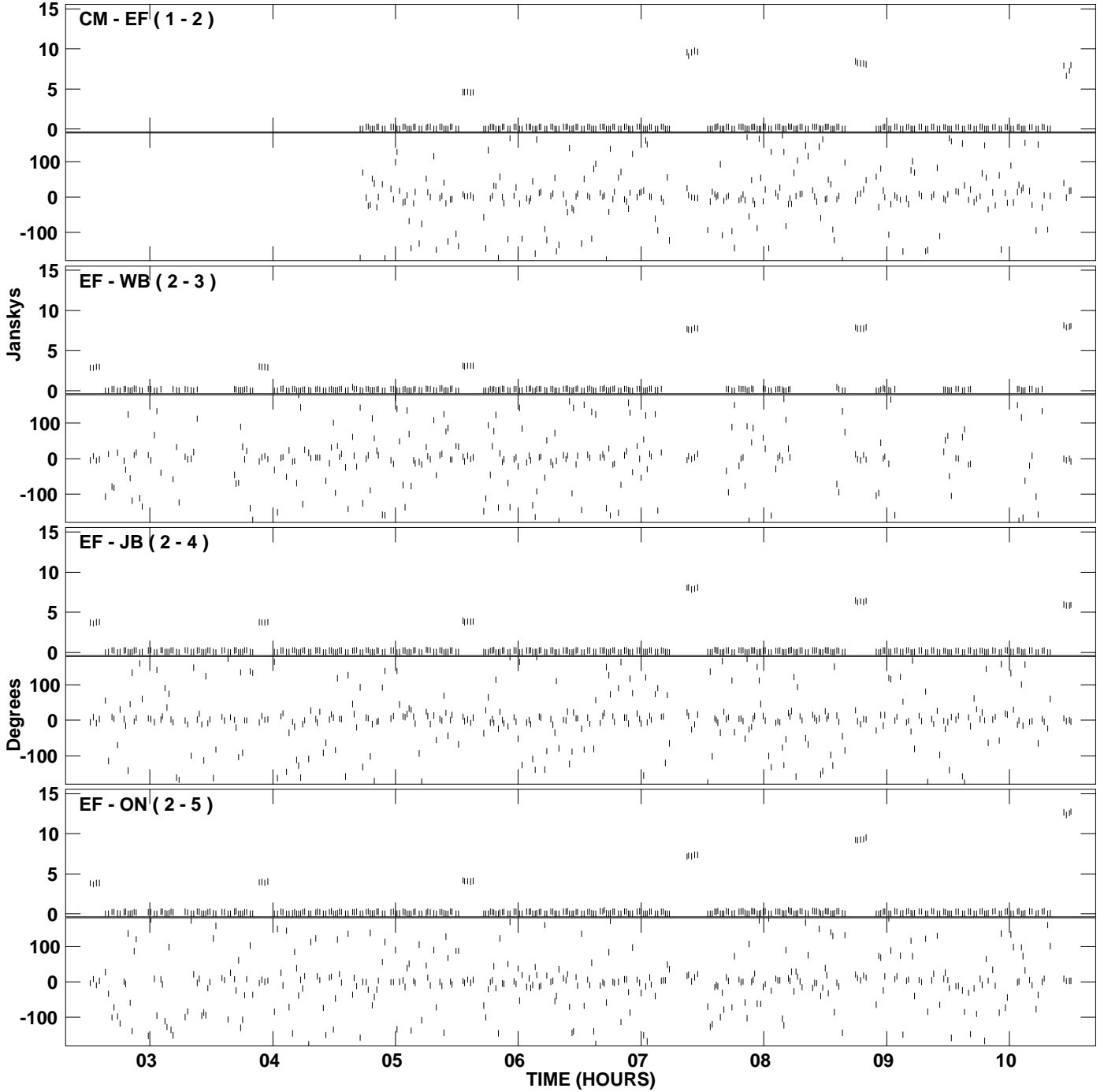
PLot file version 17 created 21-JUL-2009 19:06:48  
Amplitude andPhase vs Time for EM071A 1.UVDATA.1 Vect aver. CL # 3  
IF 1 CHAN 1 - 128 STK RR



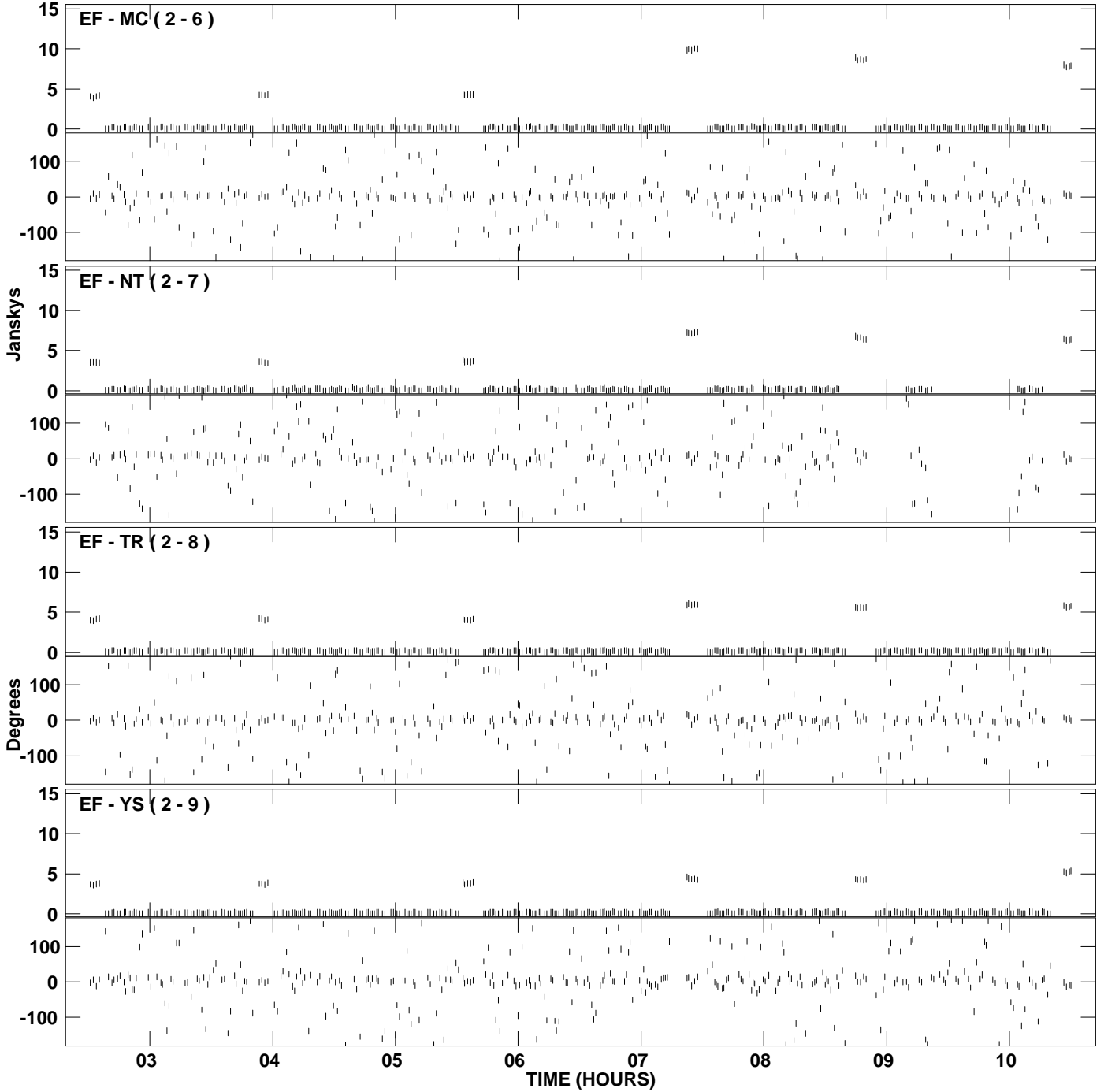
PLot file version 18 created 21-JUL-2009 19:06:48  
Amplitude and Phase vs Time for EM071A 1.UVDATA.1 Vect aver. CL # 3  
IF 1 CHAN 1 - 128 STK RR



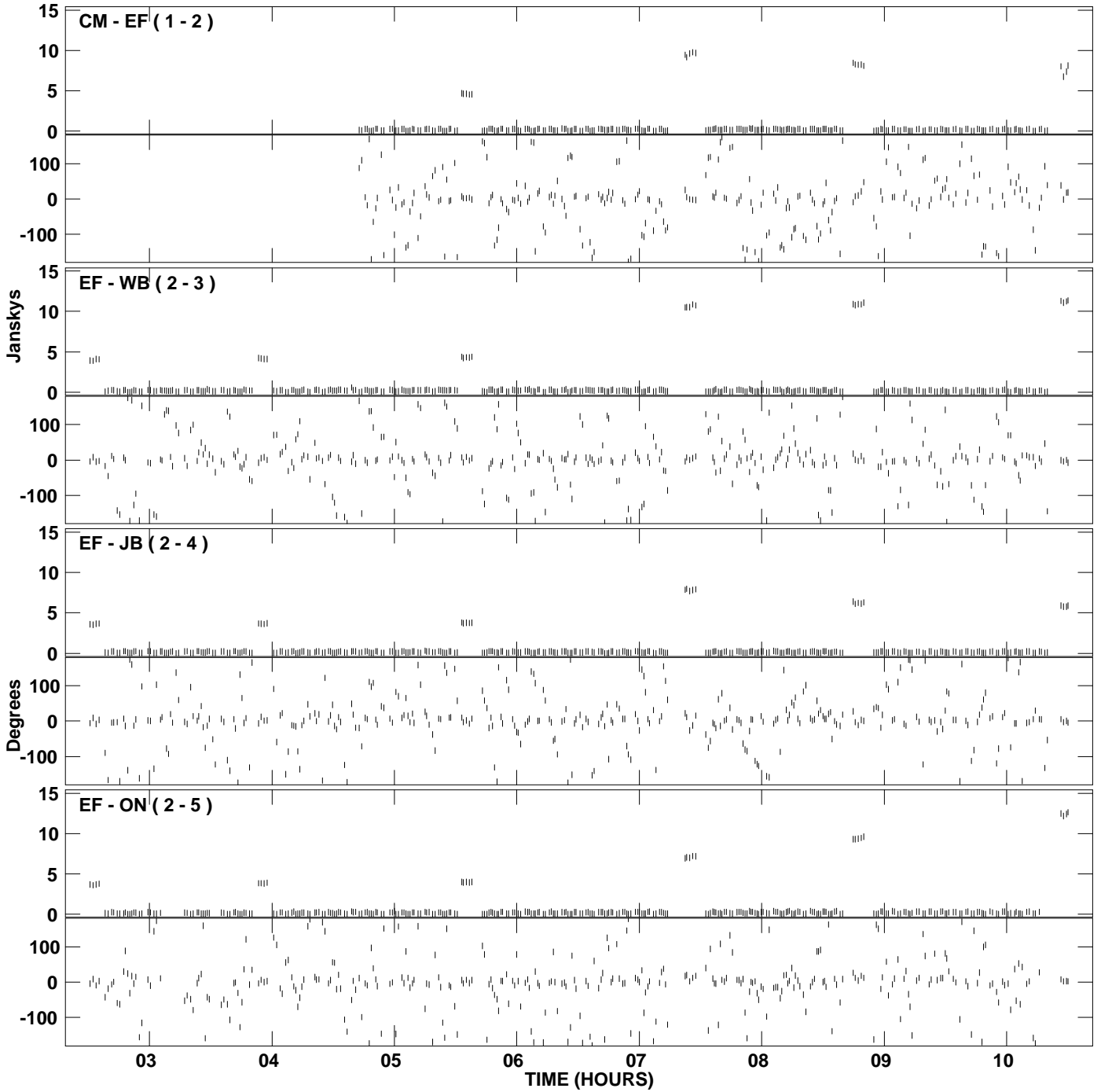
PLot file version 19 created 21-JUL-2009 19:08:22  
Amplitude andPhase vs Time for EM071A 1.UVDATA.1 Vect aver. CL # 3  
IF 2 CHAN 1 - 128 STK RR



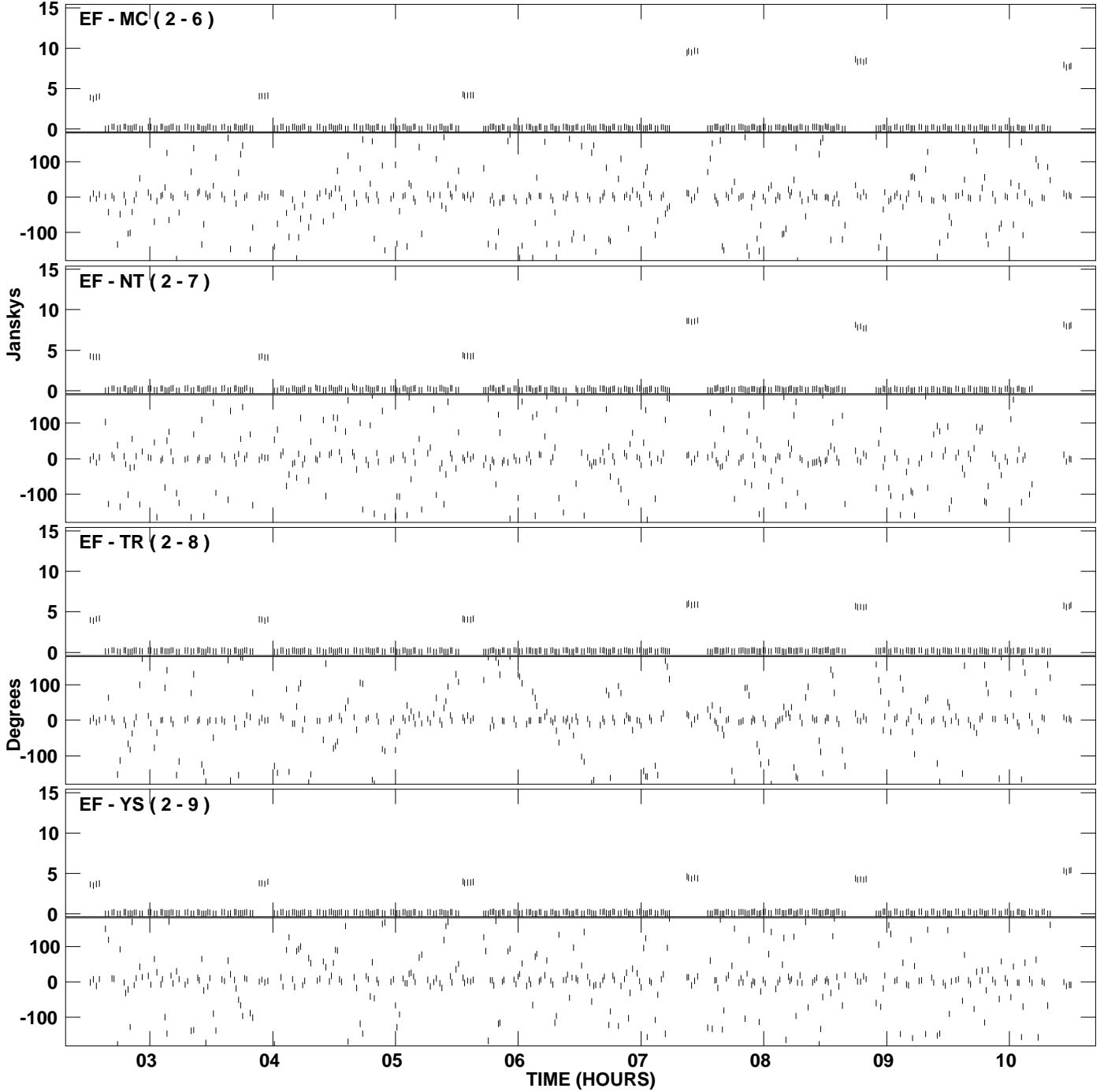
PLot file version 20 created 21-JUL-2009 19:08:22  
Amplitude andPhase vs Time for EM071A 1.UVDATA.1 Vect aver. CL # 3  
IF 2 CHAN 1 - 128 STK RR



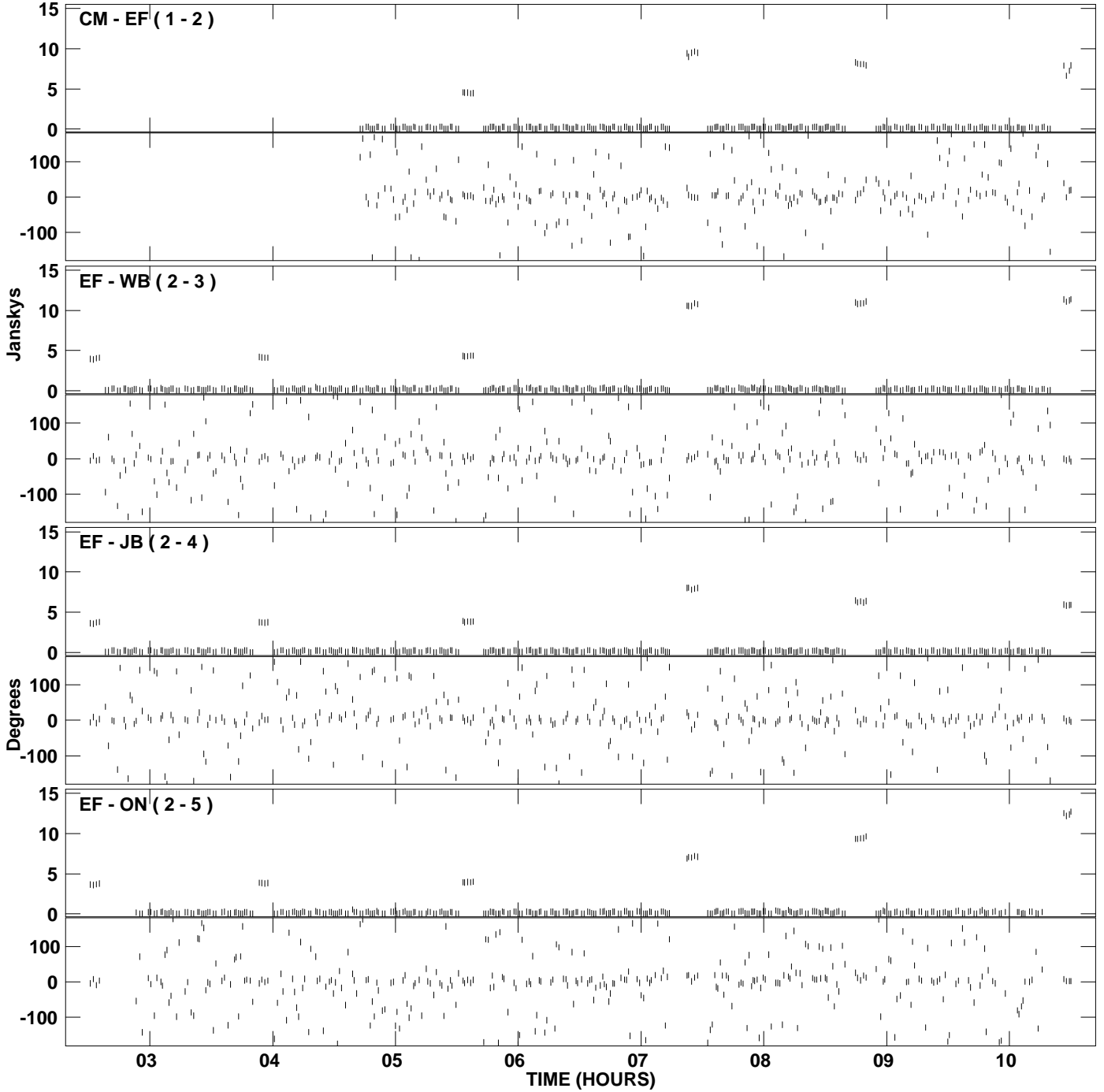
PLot file version 21 created 21-JUL-2009 19:09:59  
Amplitude andPhase vs Time for EM071A 1.UVDATA.1 Vect aver. CL # 3  
IF 3 CHAN 1 - 128 STK RR



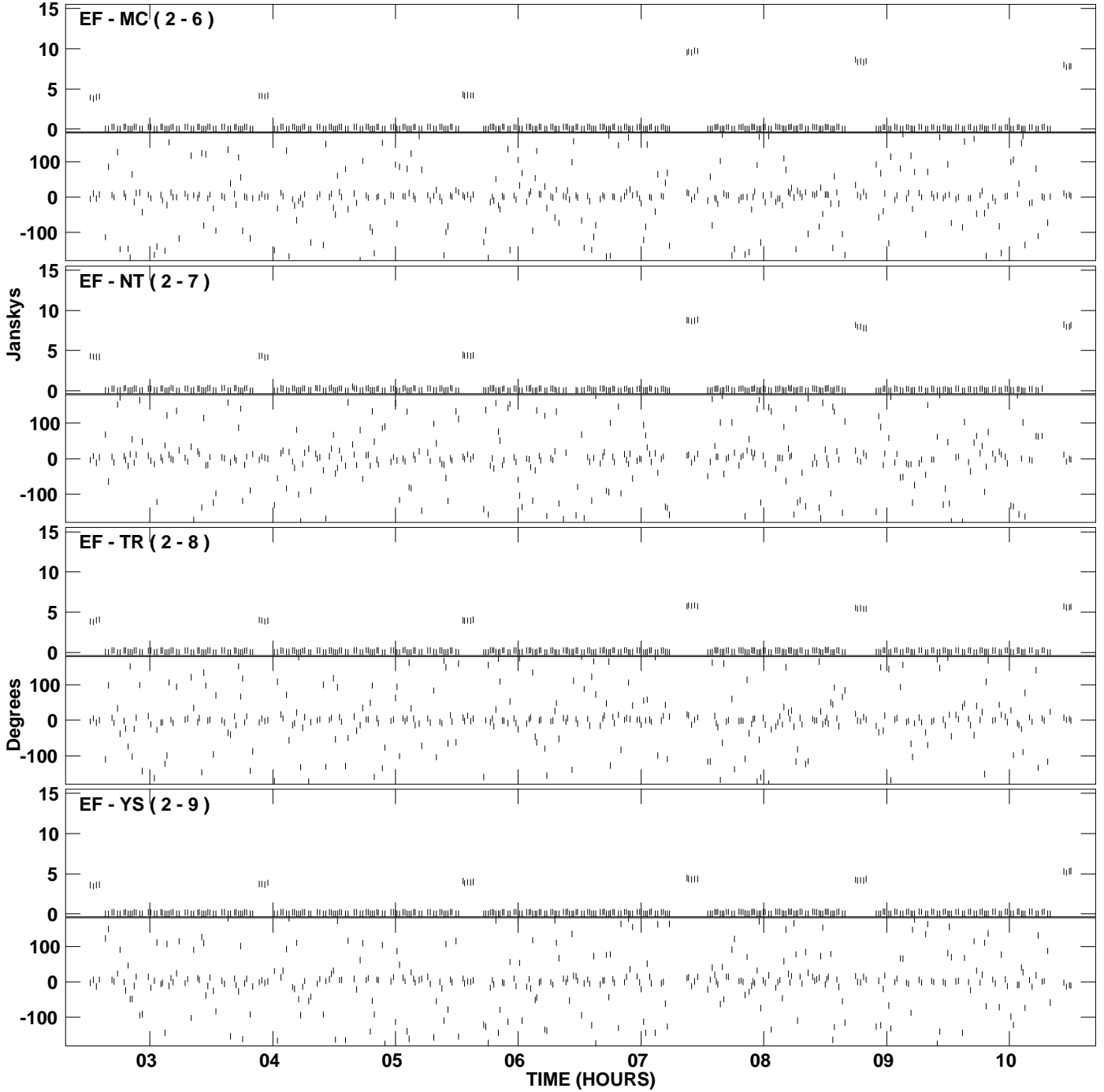
PLot file version 22 created 21-JUL-2009 19:09:59  
Amplitude and Phase vs Time for EM071A 1.UVDATA.1 Vect aver. CL # 3  
IF 3 CHAN 1 - 128 STK RR



PLot file version 23 created 21-JUL-2009 19:11:35  
Amplitude and Phase vs Time for EM071A 1.UVDATA.1 Vect aver. CL # 3  
IF 4 CHAN 1 - 128 STK RR

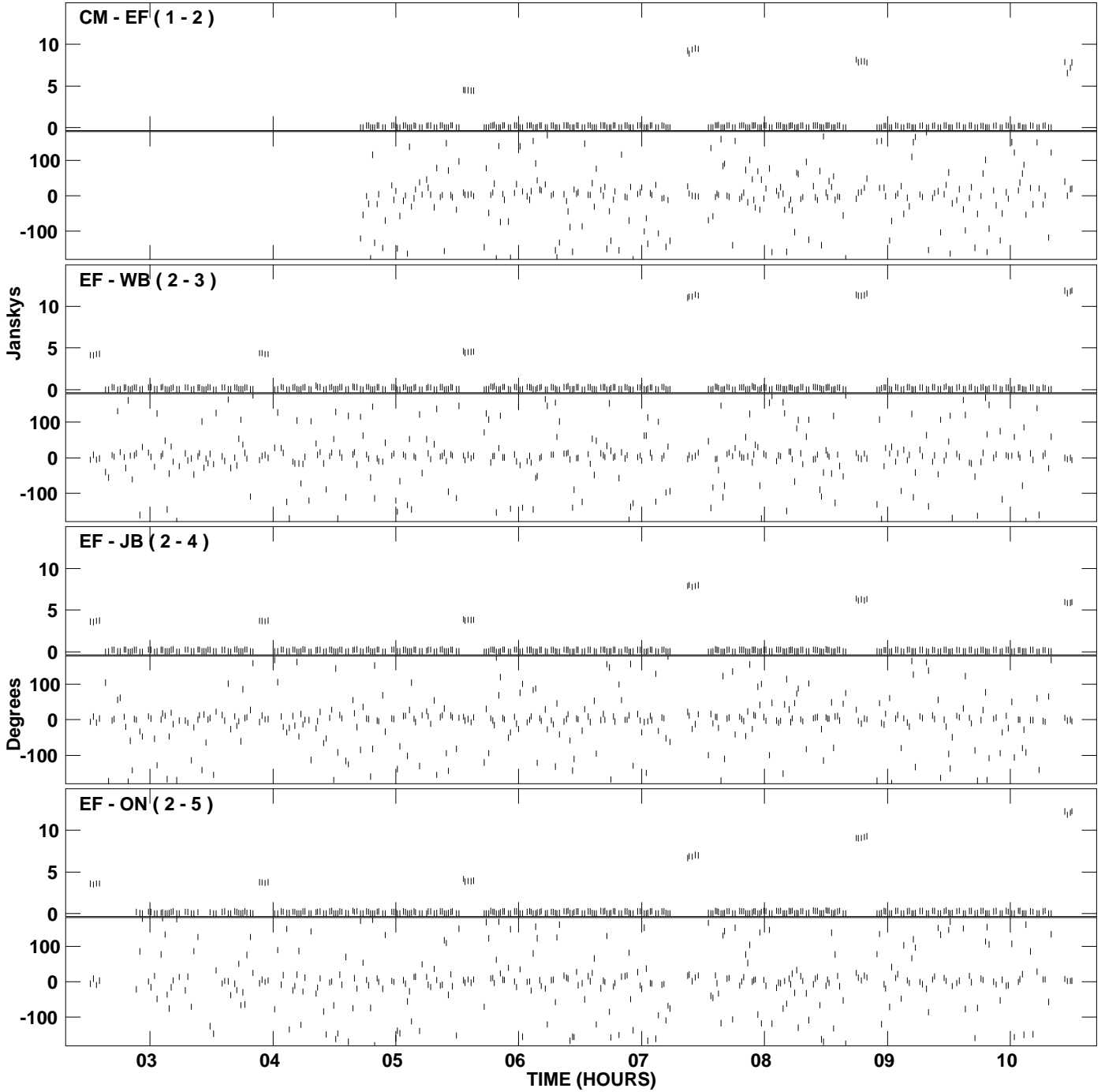


PLot file version 24 created 21-JUL-2009 19:11:35  
Amplitude and Phase vs Time for EM071A 1.UVDATA.1 Vect aver. CL # 3  
IF 4 CHAN 1 - 128 STK RR

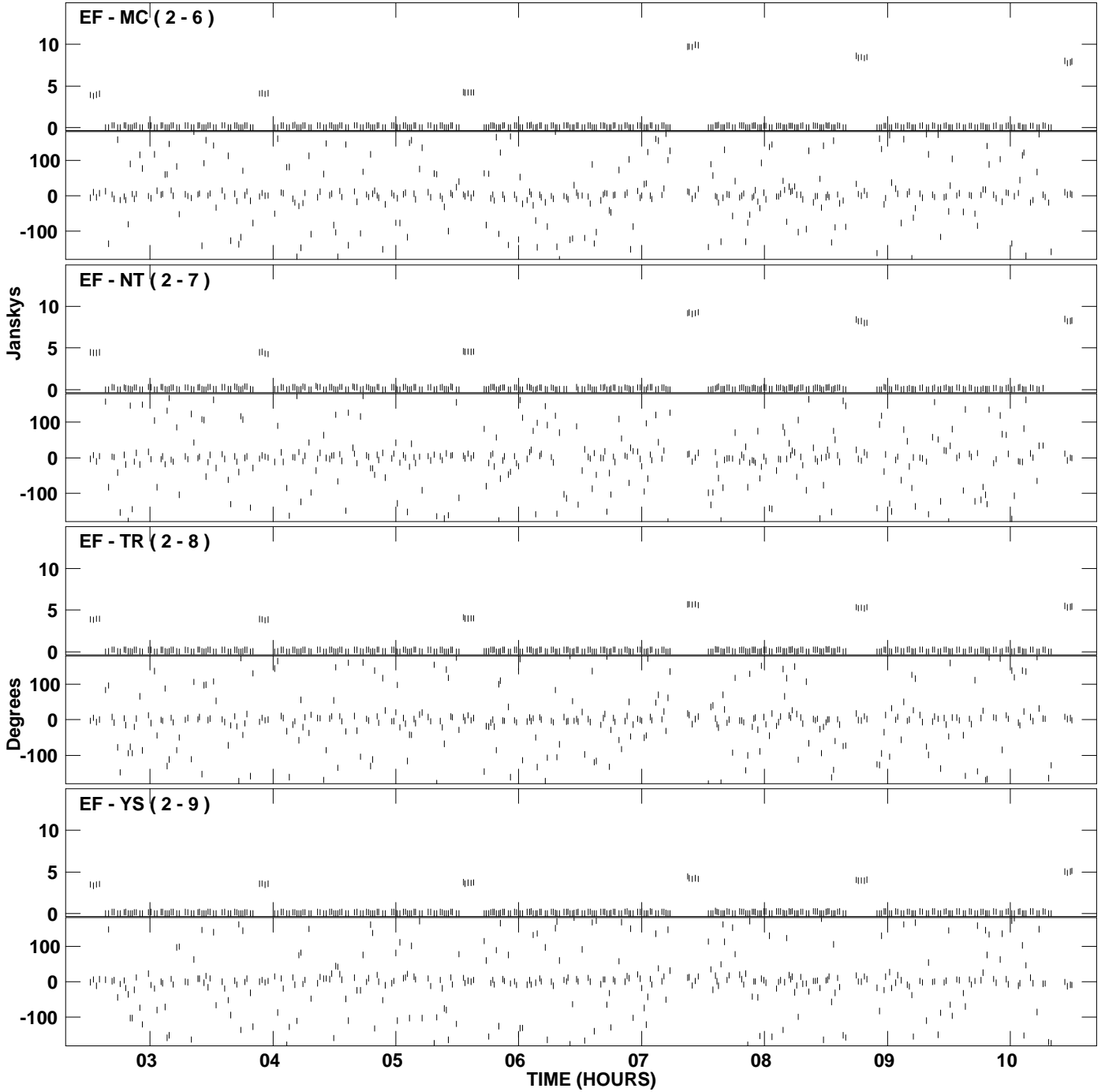




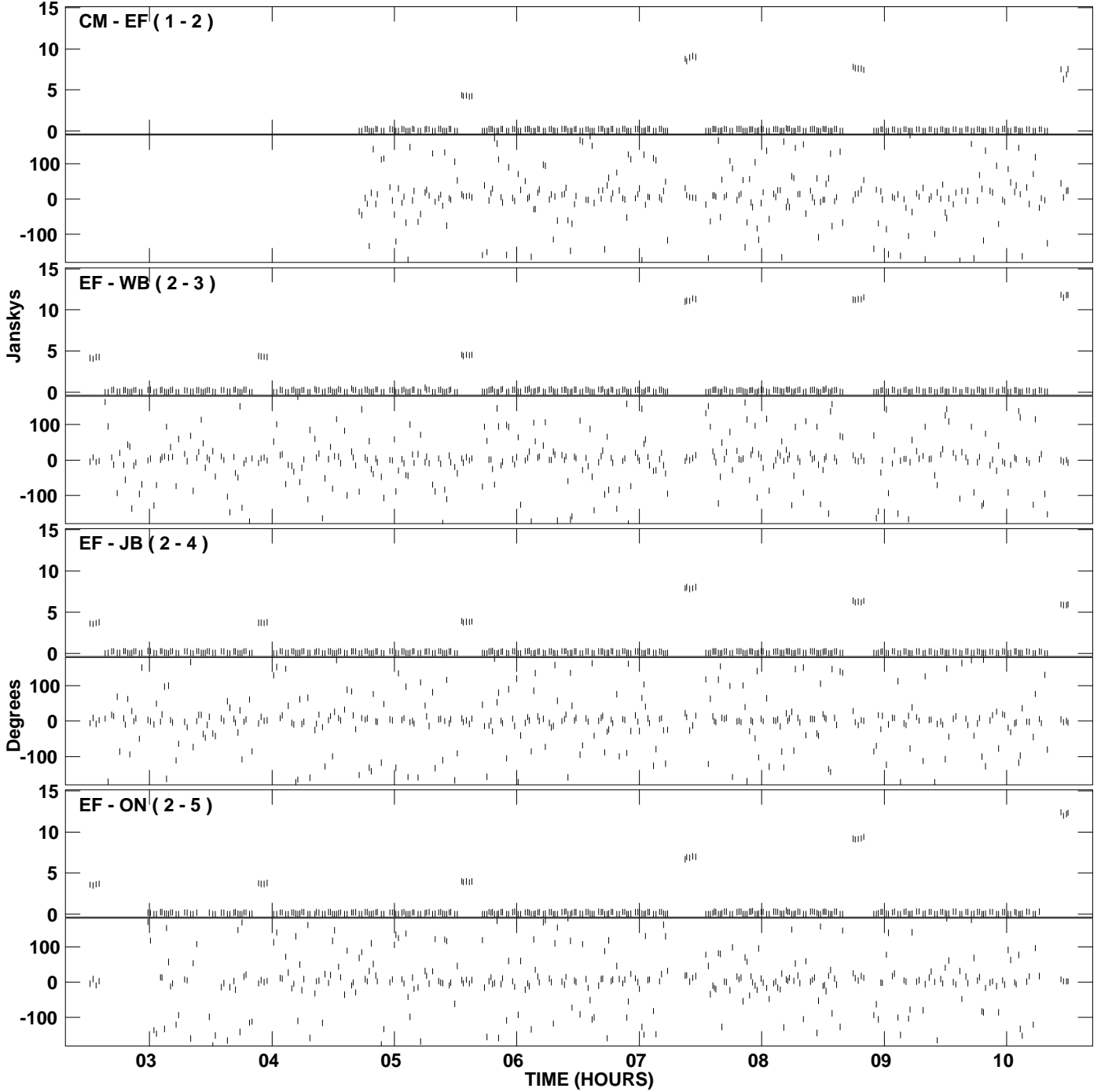
PLot file version 25 created 21-JUL-2009 19:13:15  
Amplitude andPhase vs Time for EM071A 1.UVDATA.1 Vect aver. CL # 3  
IF 5 CHAN 1 - 128 STK RR



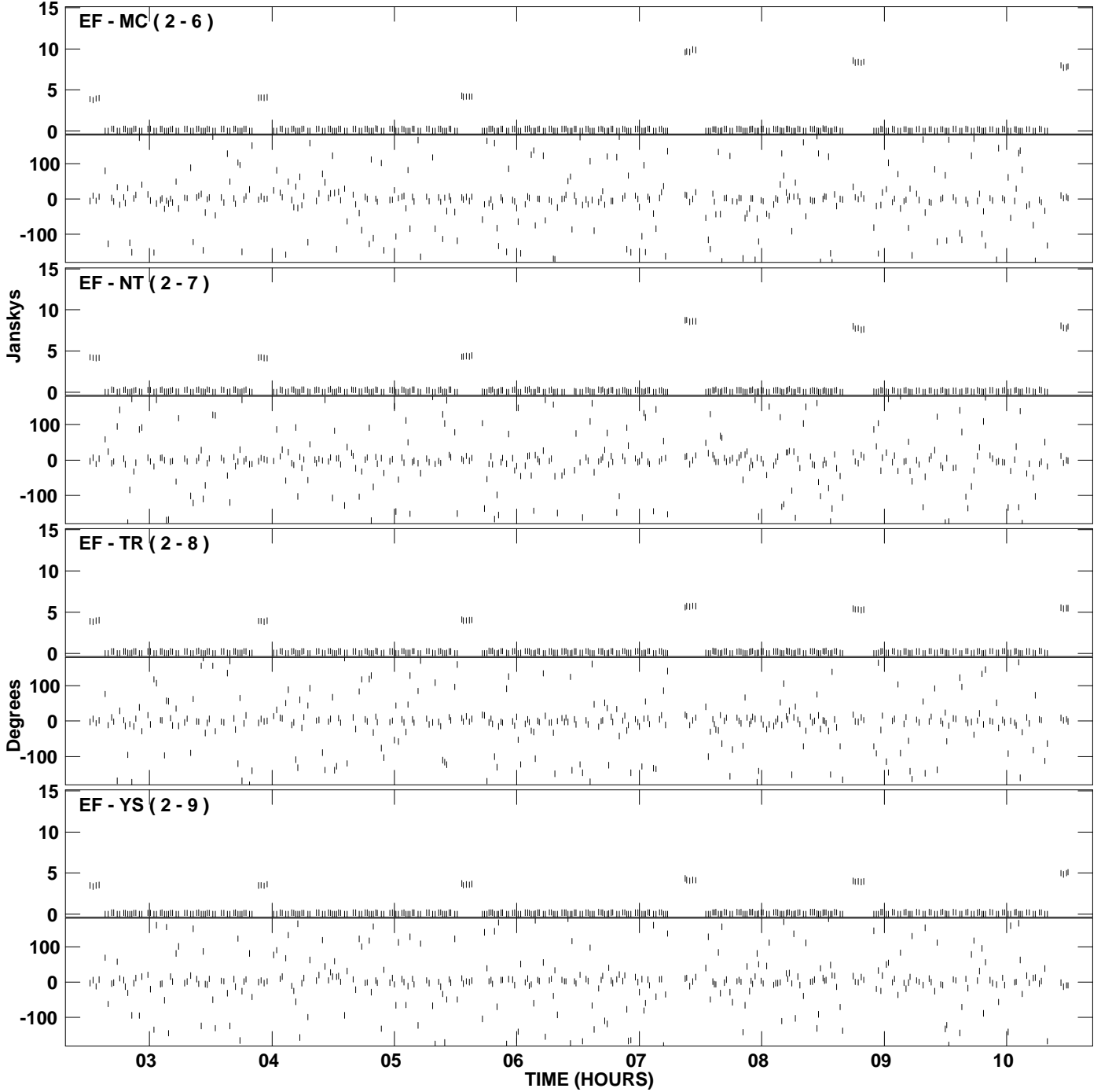
PLot file version 26 created 21-JUL-2009 19:13:15  
Amplitude and Phase vs Time for EM071A 1.UVDATA.1 Vect aver. CL # 3  
IF 5 CHAN 1 - 128 STK RR



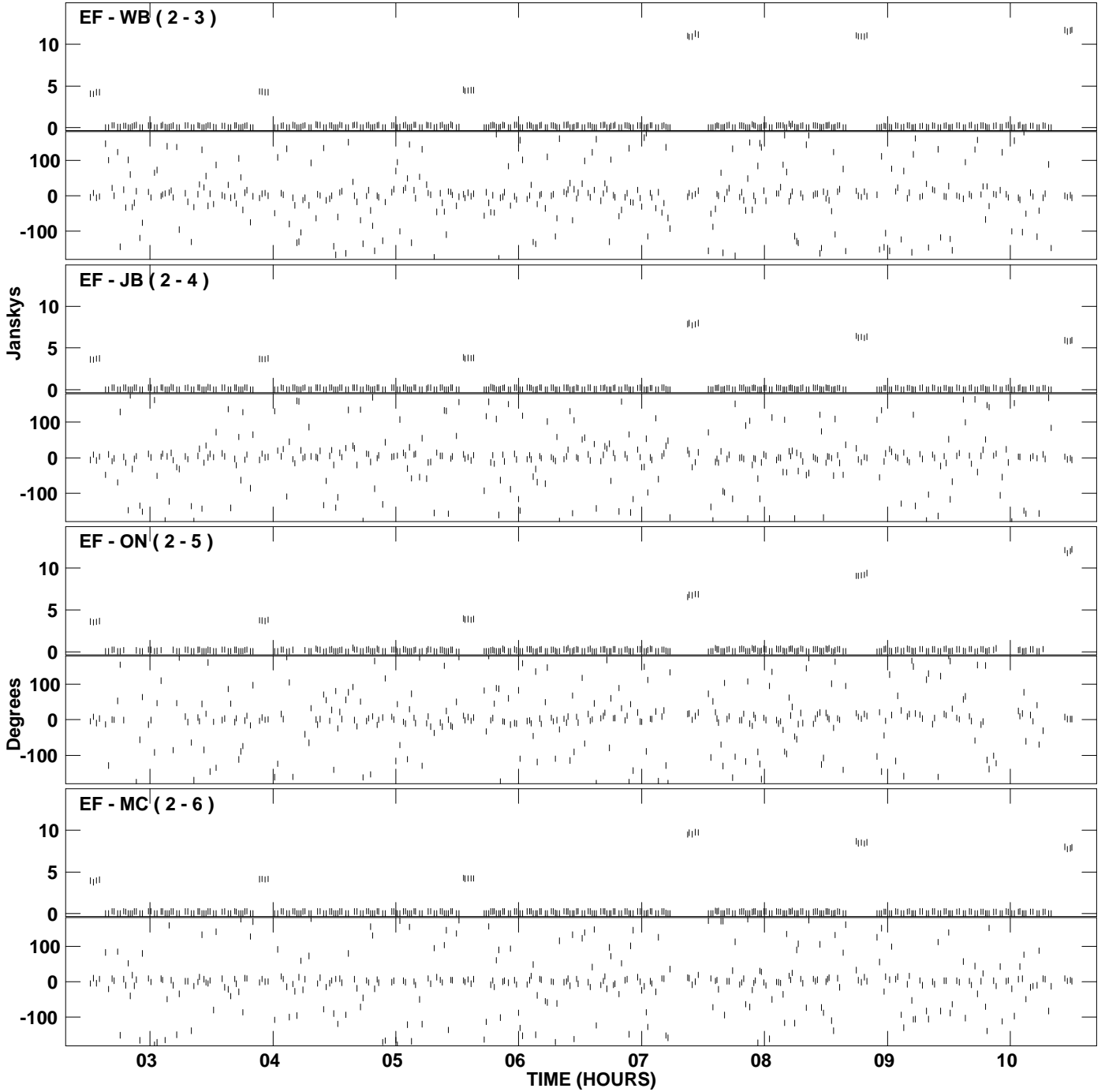
PLot file version 27 created 21-JUL-2009 19:14:51  
Amplitude andPhase vs Time for EM071A 1.UVDATA.1 Vect aver. CL # 3  
IF 6 CHAN 1 - 128 STK RR



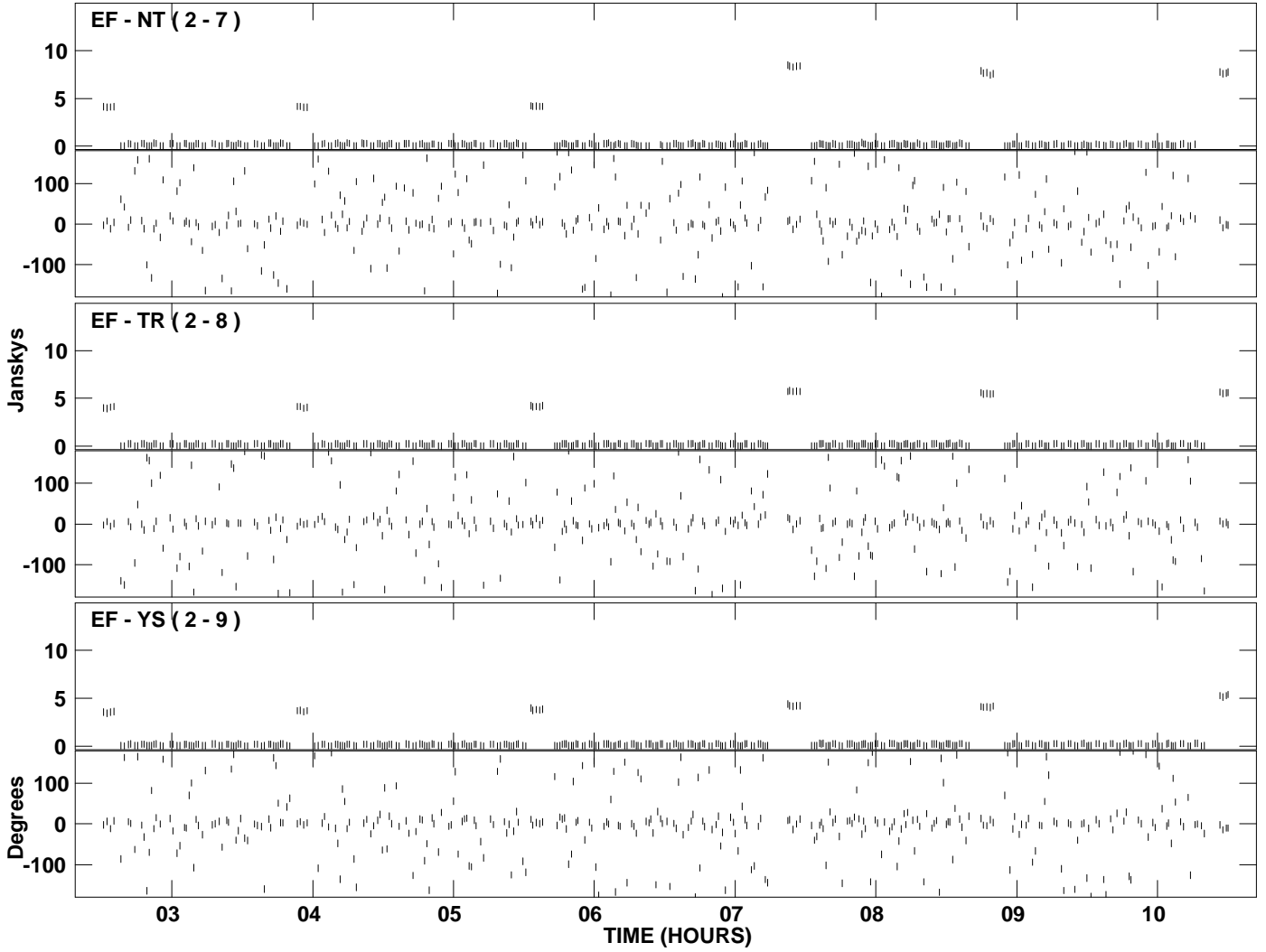
PLot file version 28 created 21-JUL-2009 19:14:51  
Amplitude and Phase vs Time for EM071A 1.UVDATA.1 Vect aver. CL # 3  
IF 6 CHAN 1 - 128 STK RR



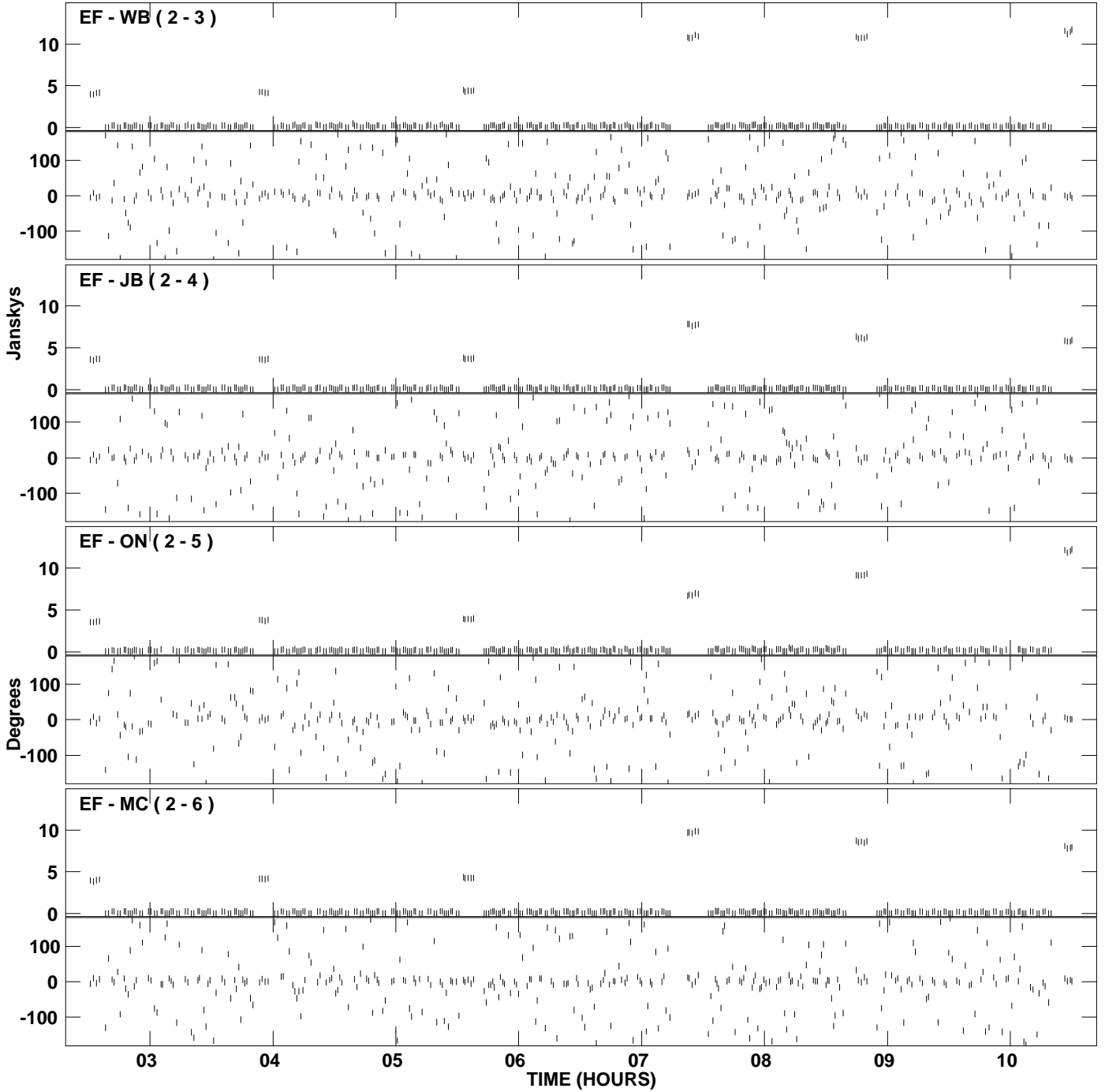
PLot file version 29 created 21-JUL-2009 19:16:25  
Amplitude and Phase vs Time for EM071A 1.UVDATA.1 Vect aver. CL # 3  
IF 7 CHAN 1 - 128 STK RR



PLot file version 30 created 21-JUL-2009 19:16:25  
Amplitude andPhase vs Time for EM071A 1.UVDATA.1 Vect aver. CL # 3  
IF 7 CHAN 1 - 128 STK RR



PLot file version 31 created 21-JUL-2009 19:17:59  
Amplitude and Phase vs Time for EM071A 1.UVDATA.1 Vect aver. CL # 3  
IF 8 CHAN 1 - 128 STK RR



PLot file version 32 created 21-JUL-2009 19:17:59  
Amplitude andPhase vs Time for EM071A 1.UVDATA.1 Vect aver. CL # 3  
IF 8 CHAN 1 - 128 STK RR

