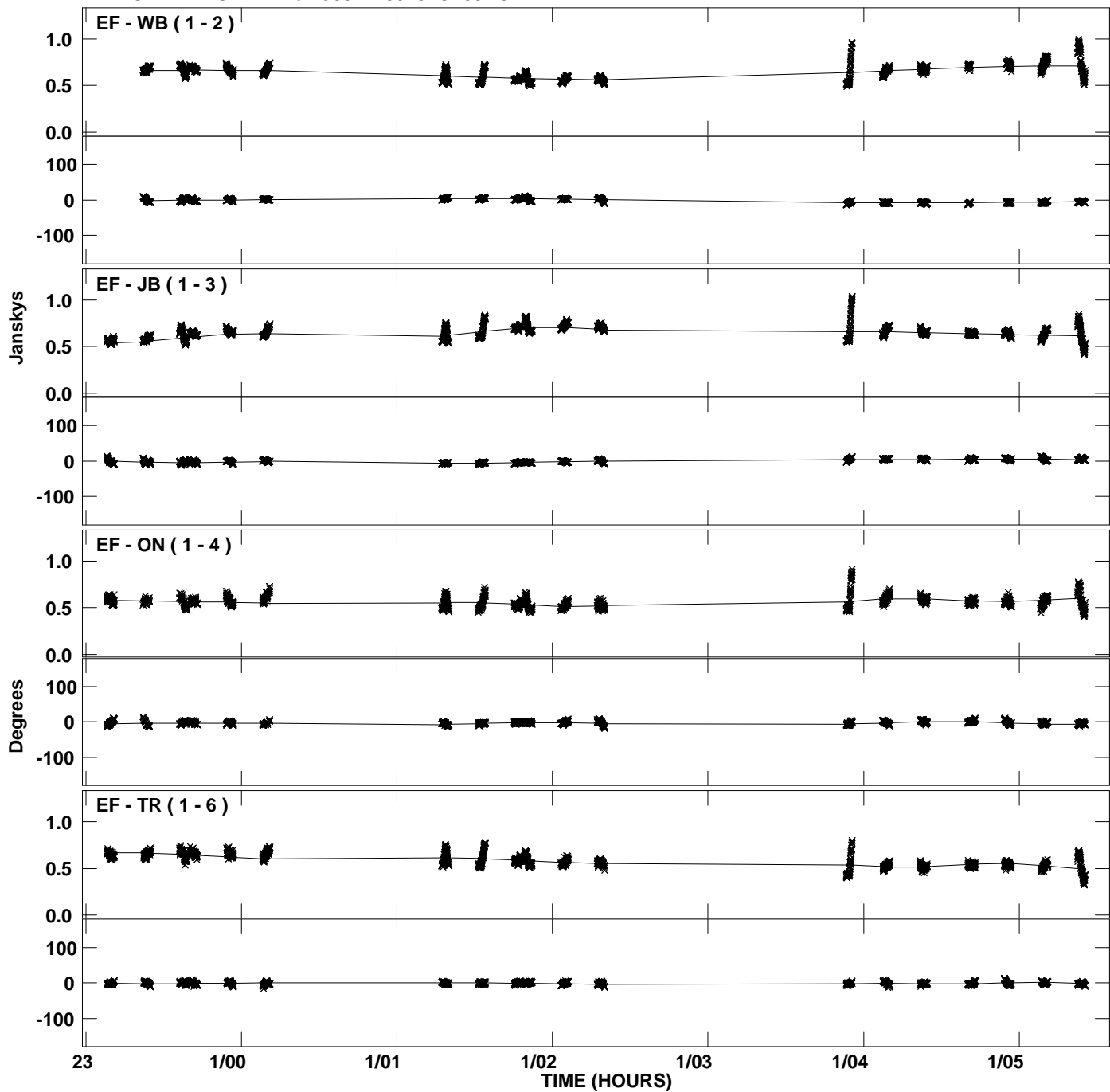
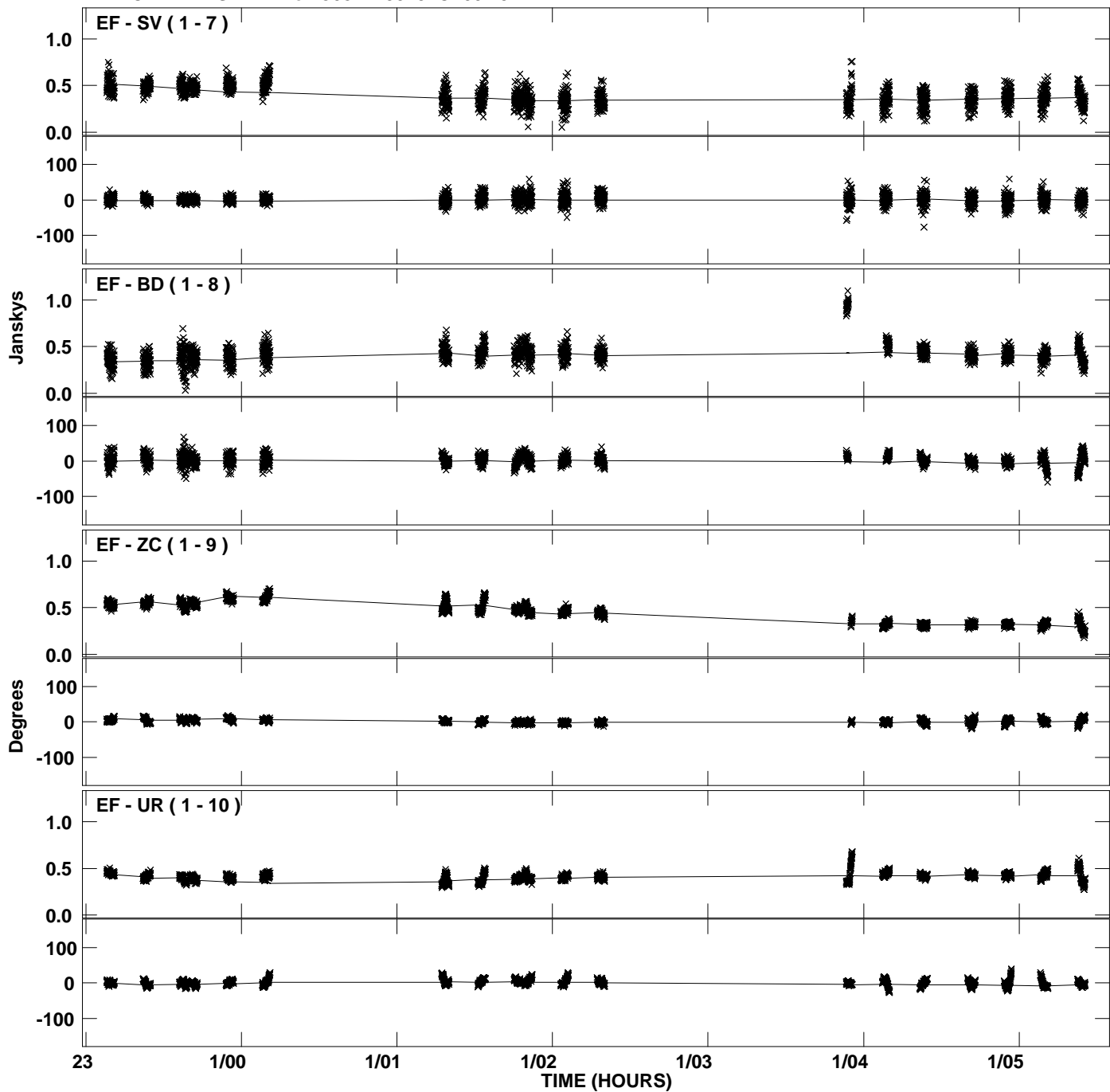


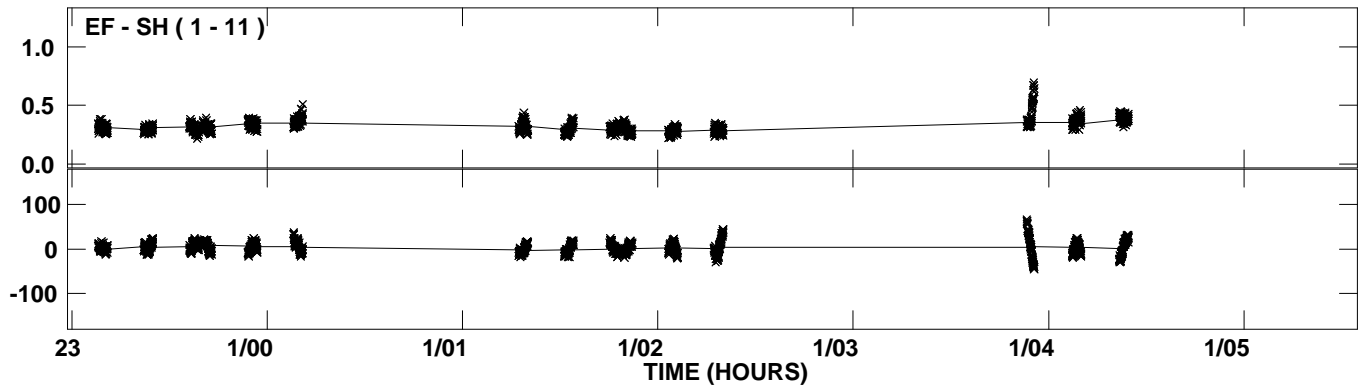
Plot file version 1 created 09-FEB-2012 16:40:51
Amplitude and Phase vs Time for J0827+3525.MULTI.1 CL # 3
IF 1 CHAN 1 STK LL of J0827+3525.ICL001.3



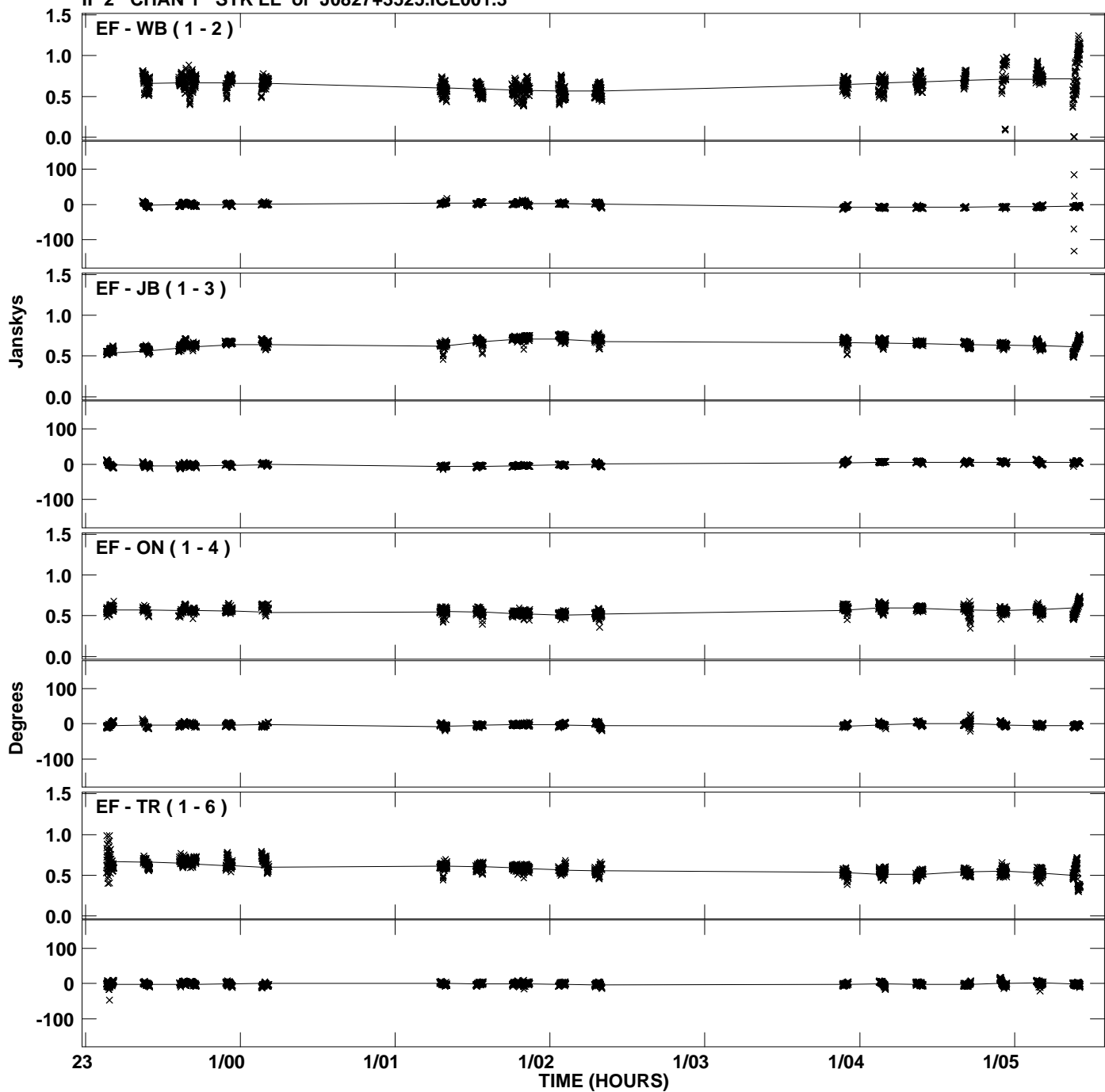
Plot file version 2 created 09-FEB-2012 16:40:51
Amplitude and Phase vs Time for J0827+3525.MULTI.1 CL # 3
IF 1 CHAN 1 STK LL of J0827+3525.ICL001.3



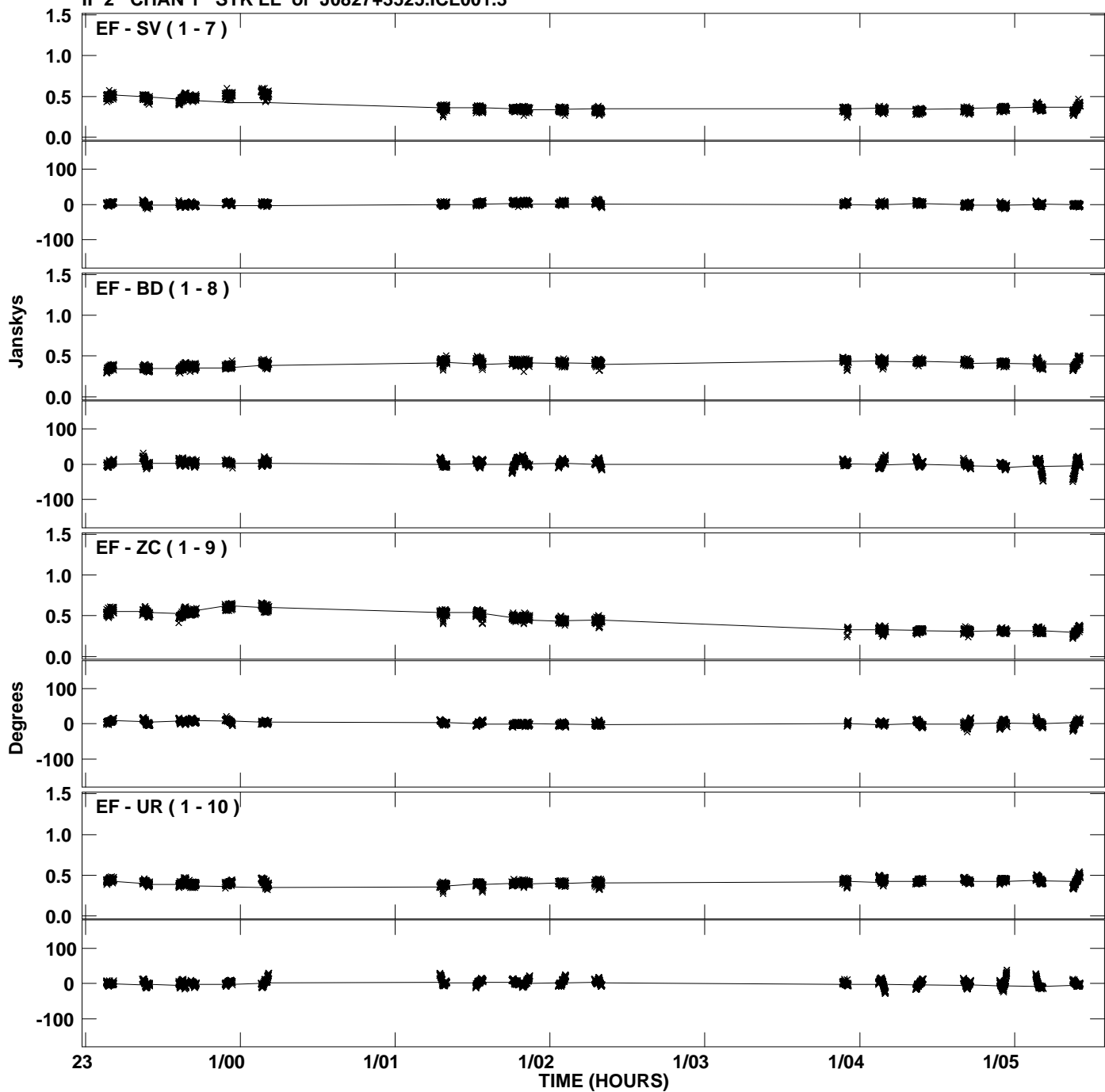
PLot file version 3 created 09-FEB-2012 16:40:51
Amplitude andPhase vs Time for J0827+3525.MULTI.1 CL # 3
IF 1 CHAN 1 STK LL of J0827+3525.ICL001.3



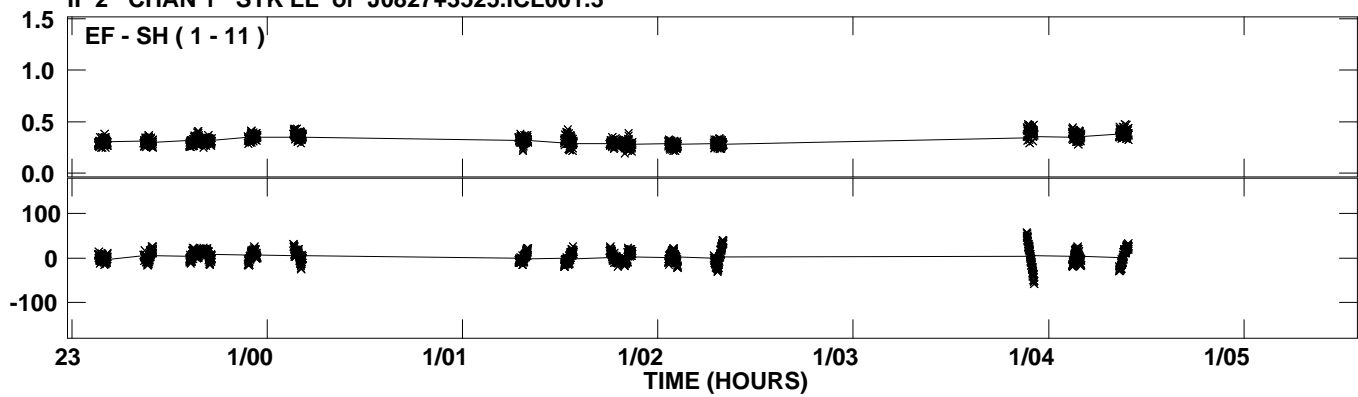
Plot file version 4 created 09-FEB-2012 16:40:52
Amplitude and Phase vs Time for J0827+3525.MULTI.1 CL # 3
IF 2 CHAN 1 STK LL of J0827+3525.ICL001.3



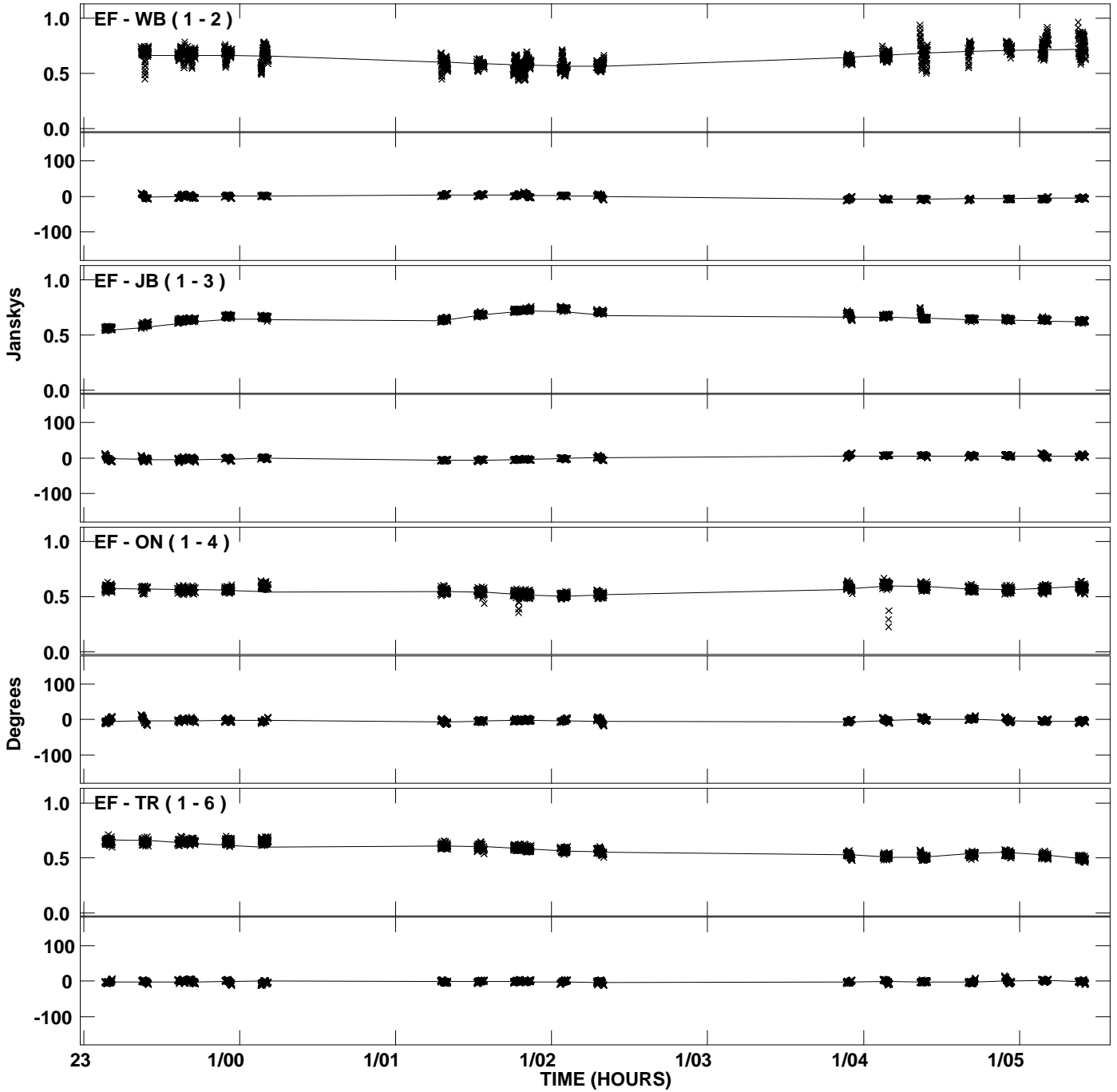
Plot file version 5 created 09-FEB-2012 16:40:52
Amplitude andPhase vs Time for J0827+3525.MULTI.1 CL # 3
IF 2 CHAN 1 STK LL of J0827+3525.ICL001.3



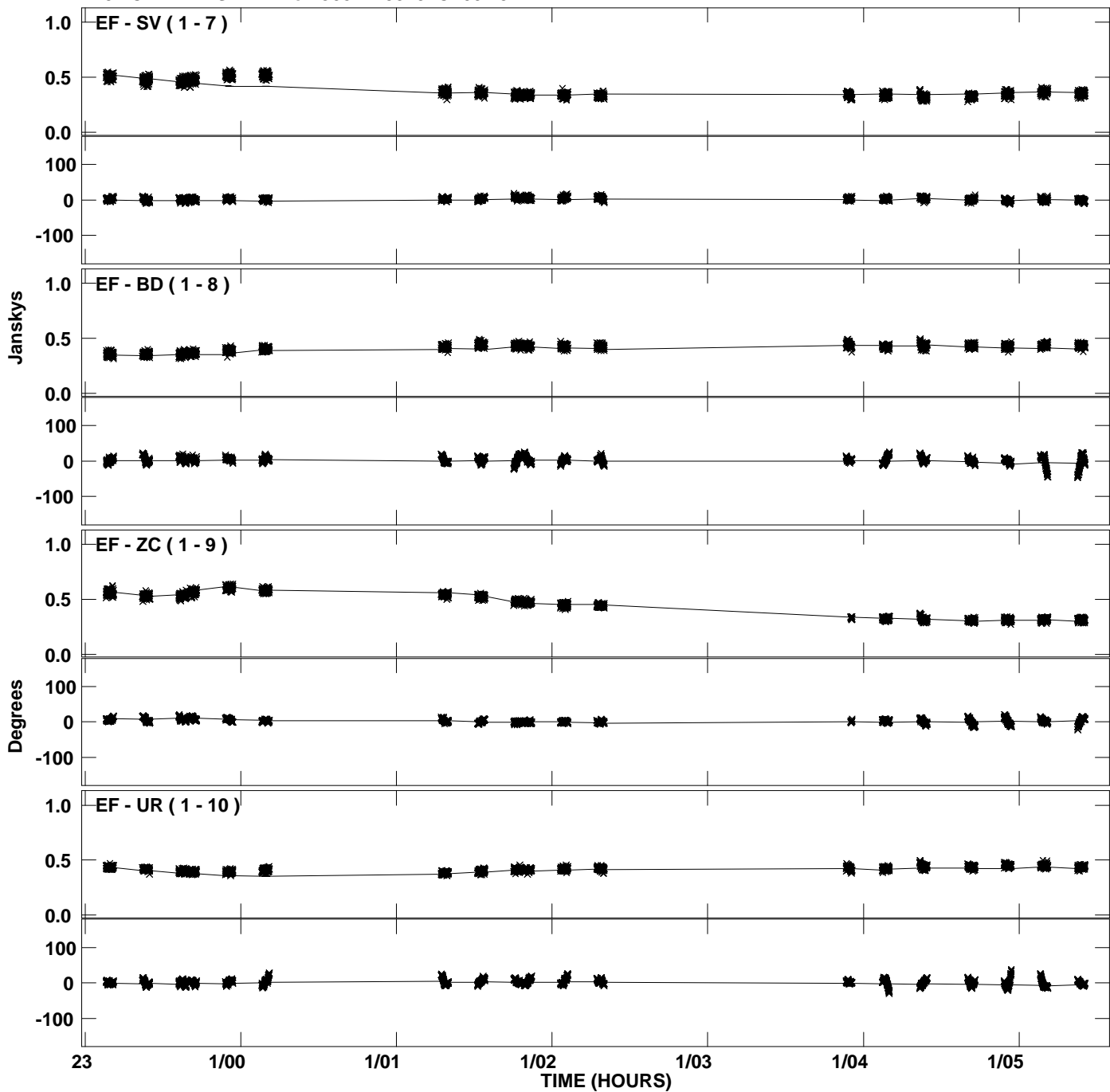
PLot file version 6 created 09-FEB-2012 16:40:53
Amplitude andPhase vs Time for J0827+3525.MULTI.1 CL # 3
IF 2 CHAN 1 STK LL of J0827+3525.ICL001.3



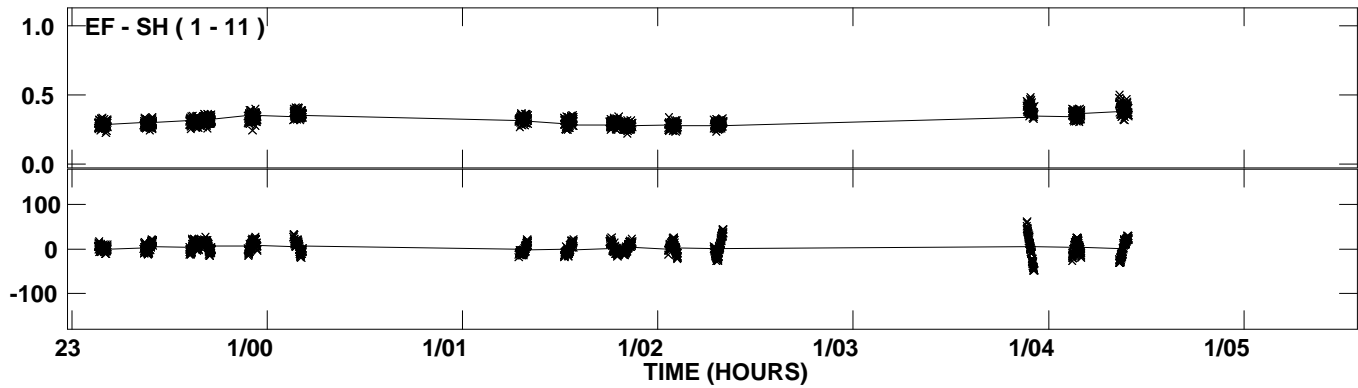
Plot file version 7 created 09-FEB-2012 16:40:54
Amplitude and Phase vs Time for J0827+3525.MULTI.1 CL # 3
IF 3 CHAN 1 STK LL of J0827+3525.ICL001.3



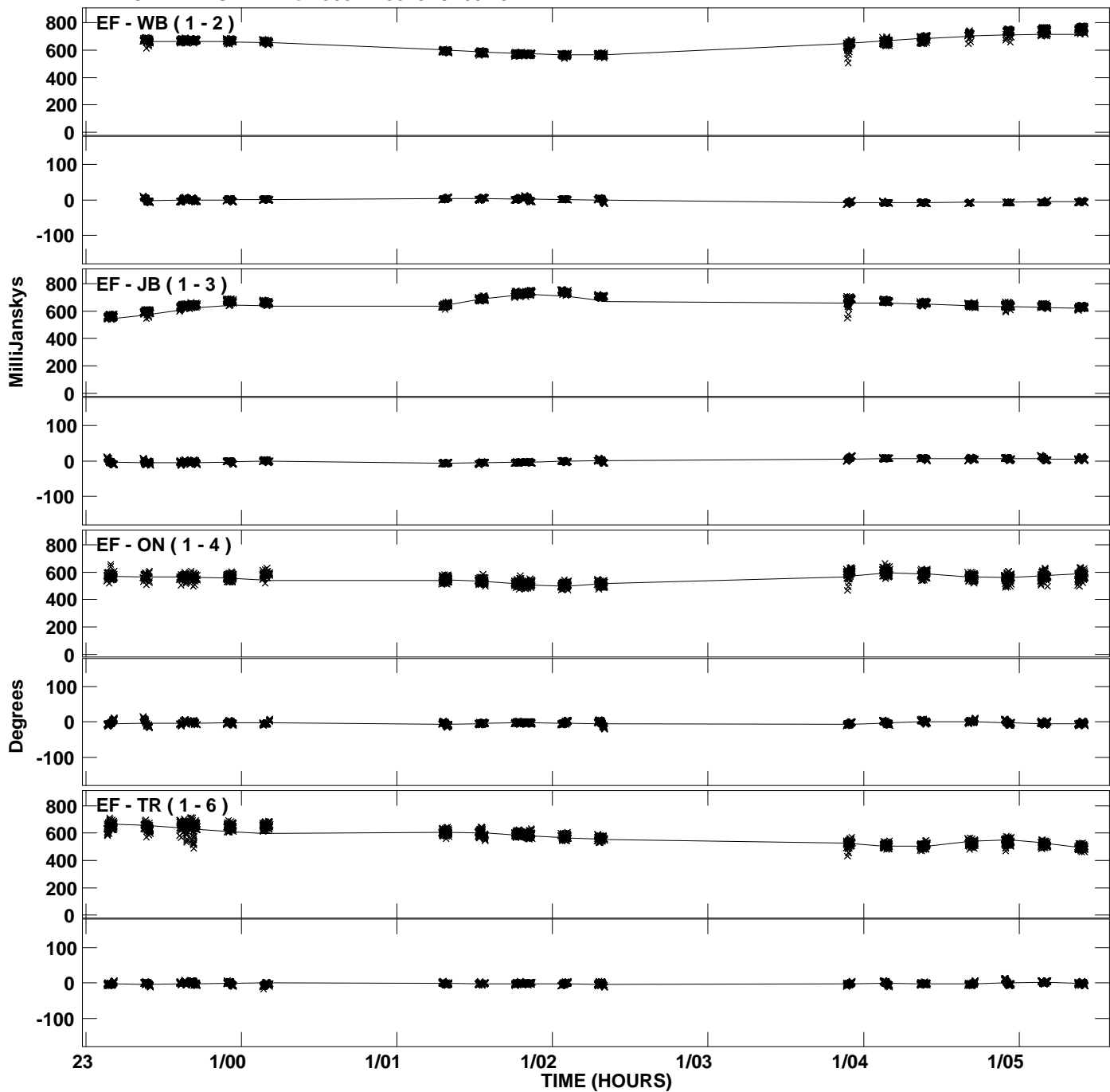
Plot file version 8 created 09-FEB-2012 16:40:54
Amplitude and Phase vs Time for J0827+3525.MULTI.1 CL # 3
IF 3 CHAN 1 STK LL of J0827+3525.ICL001.3



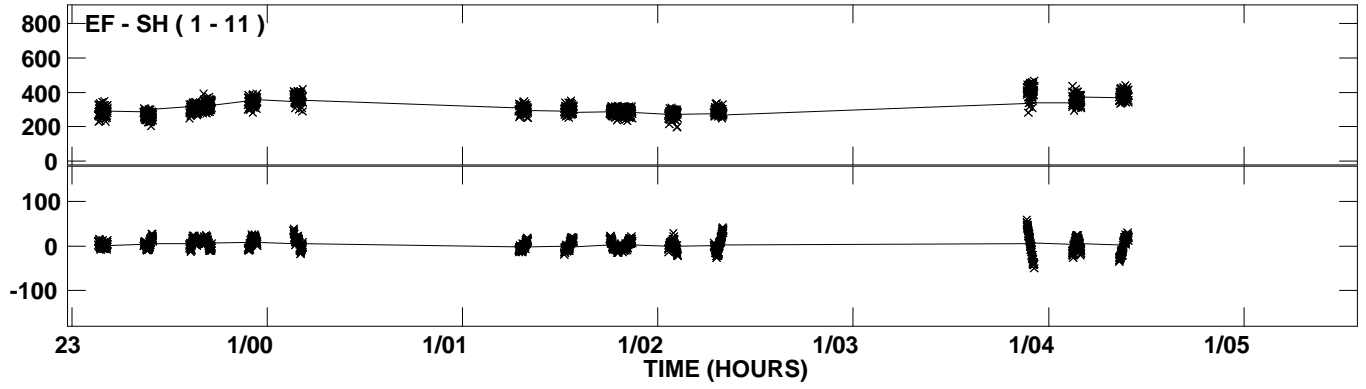
Plot file version 9 created 09-FEB-2012 16:40:54
Amplitude andPhase vs Time for J0827+3525.MULTI.1 CL # 3
IF 3 CHAN 1 STK LL of J0827+3525.ICL001.3



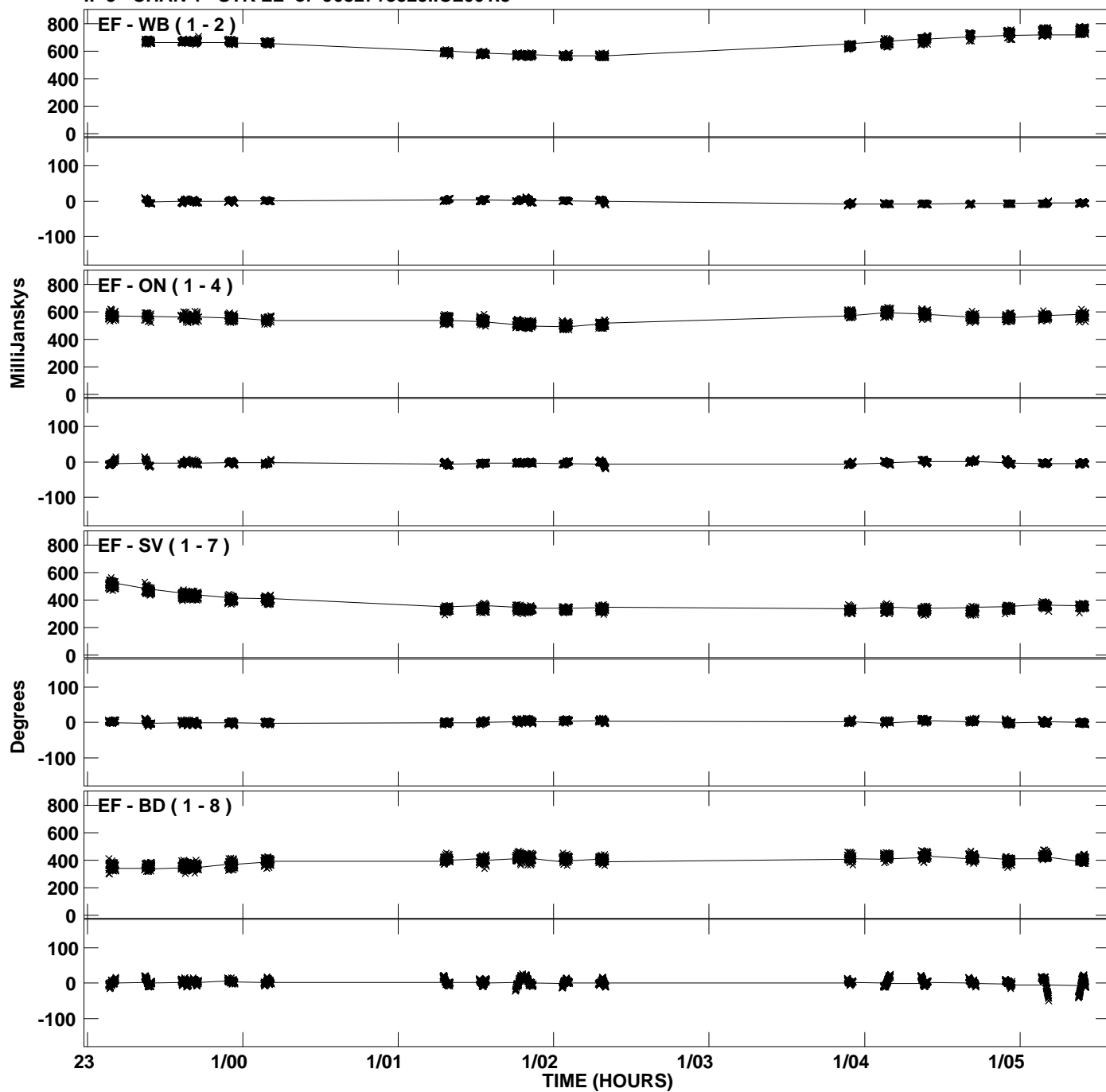
Plot file version 10 created 09-FEB-2012 16:40:55
Amplitude and Phase vs Time for J0827+3525.MULTI.1 CL # 3
IF 4 CHAN 1 STK LL of J0827+3525.ICL001.3



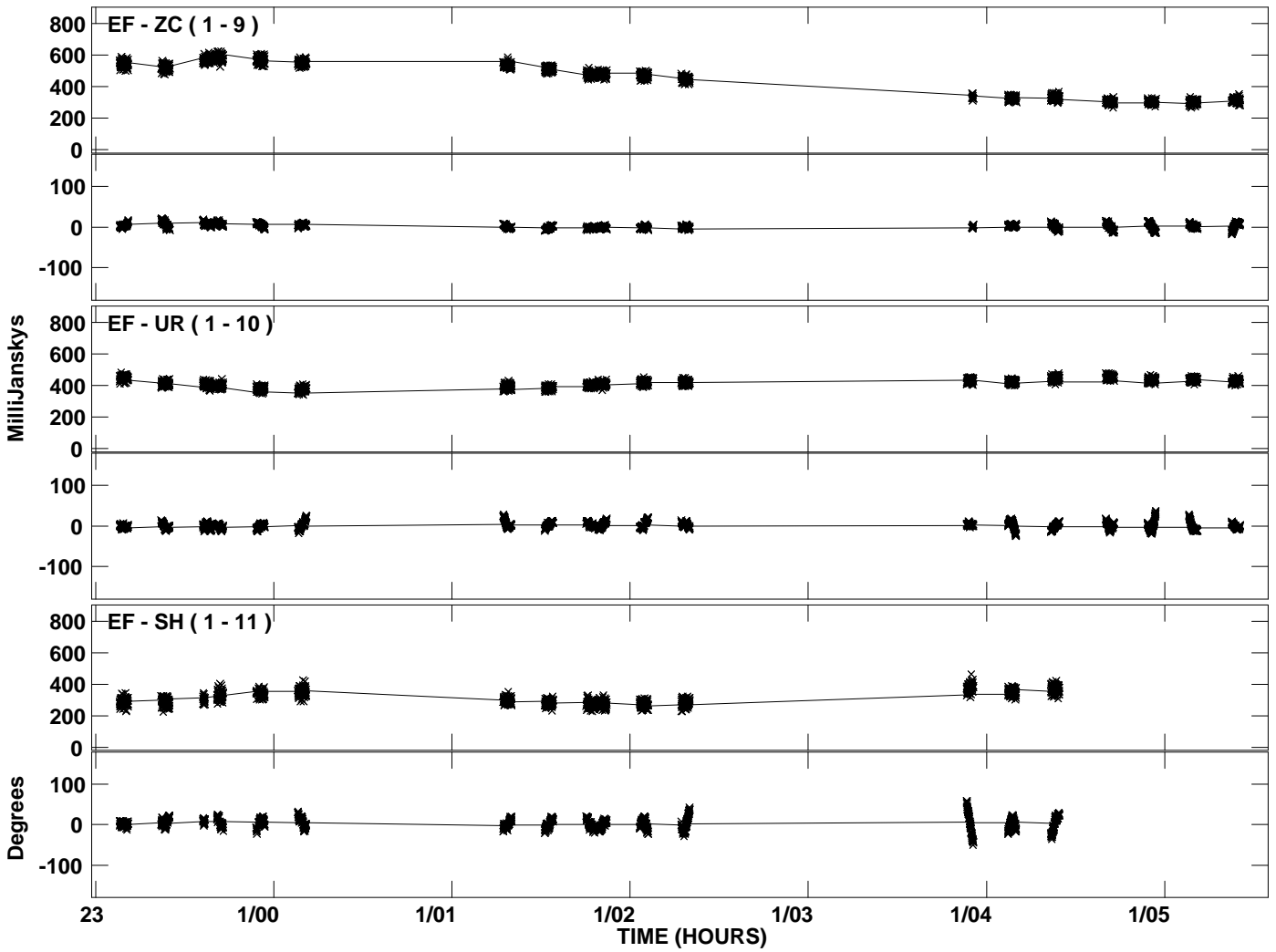
PLot file version 12 created 09-FEB-2012 16:40:56
Amplitude andPhase vs Time for J0827+3525.MULTI.1 CL # 3
IF 4 CHAN 1 STK LL of J0827+3525.ICL001.3



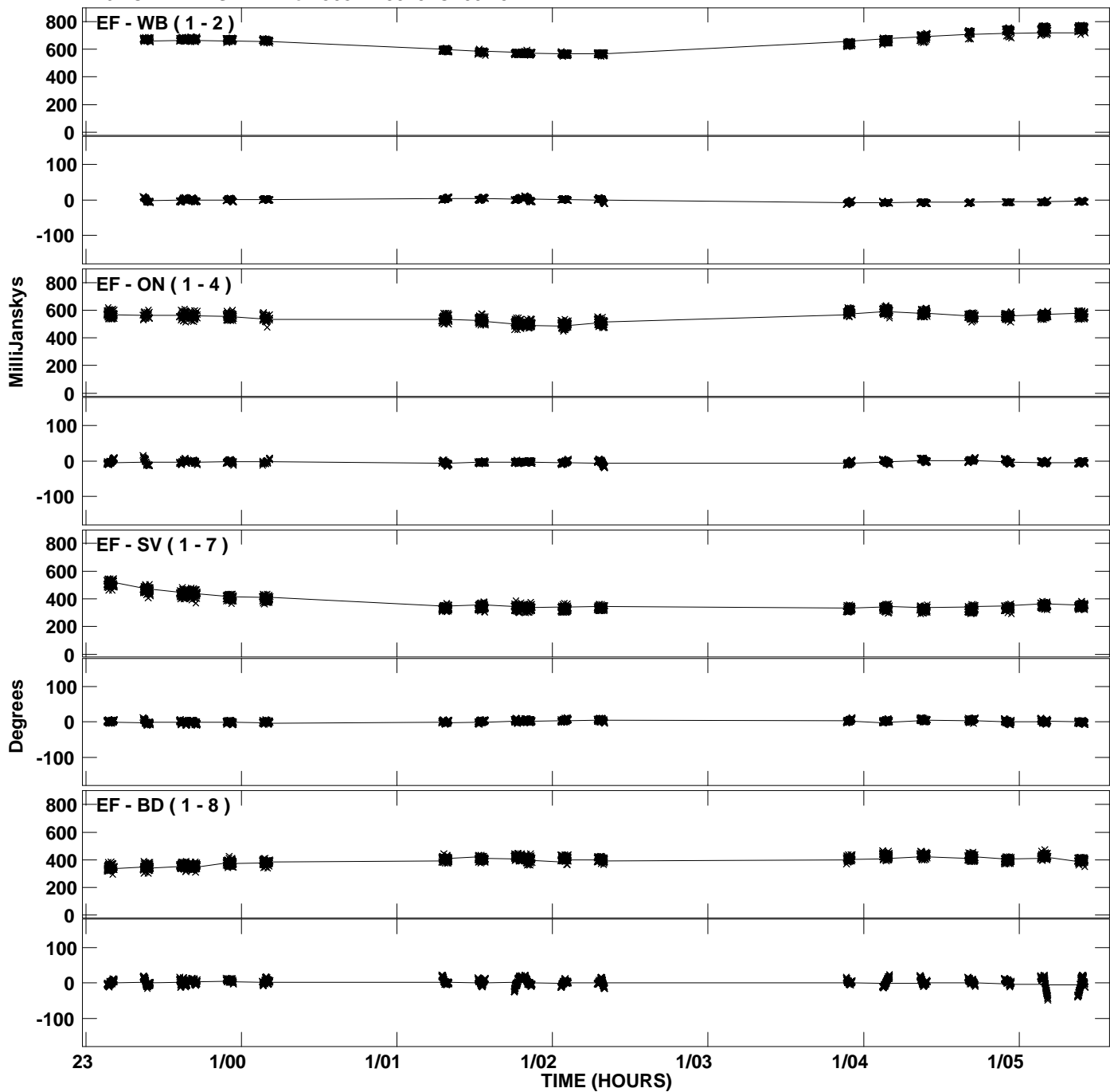
Plot file version 13 created 09-FEB-2012 16:40:57
Amplitude and Phase vs Time for J0827+3525.MULTI.1 CL # 3
IF 5 CHAN 1 STK LL of J0827+3525.ICL001.3



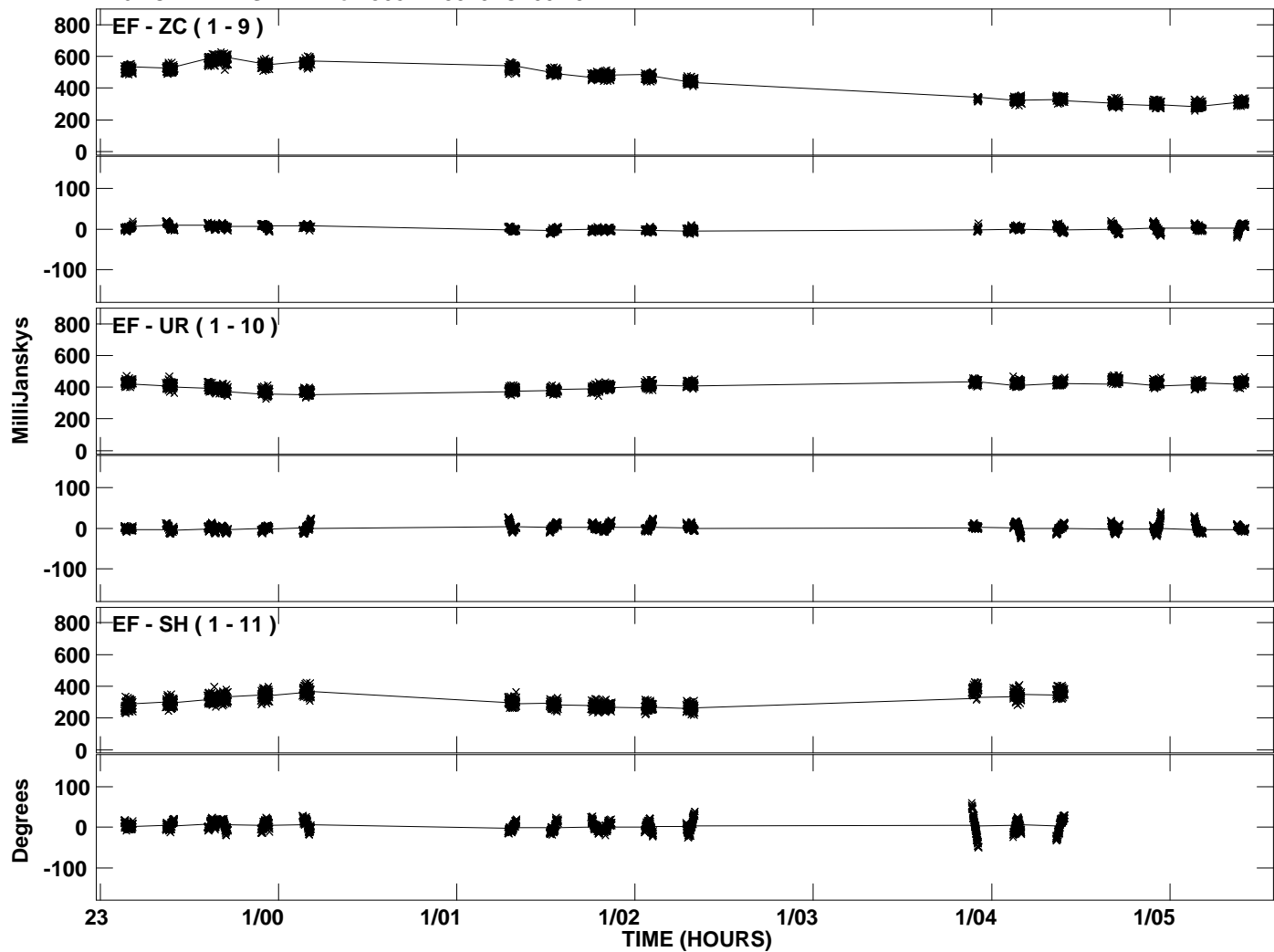
PLot file version 14 created 09-FEB-2012 16:40:57
Amplitude and Phase vs Time for J0827+3525.MULTI.1 CL # 3
IF 5 CHAN 1 STK LL of J0827+3525.ICL001.3



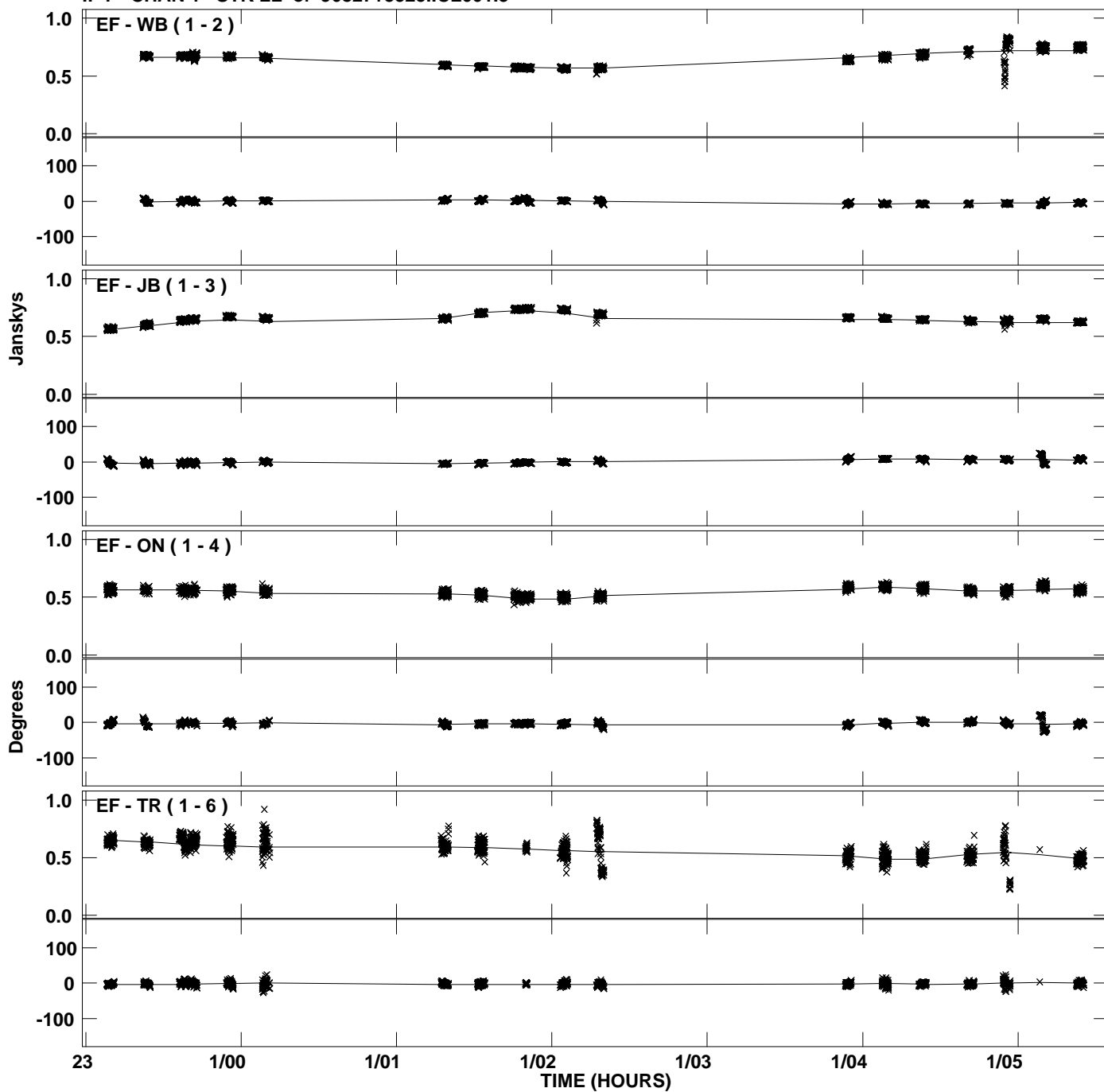
Plot file version 15 created 09-FEB-2012 16:40:58
Amplitude and Phase vs Time for J0827+3525.MULTI.1 CL # 3
IF 6 CHAN 1 STK LL of J0827+3525.ICL001.3



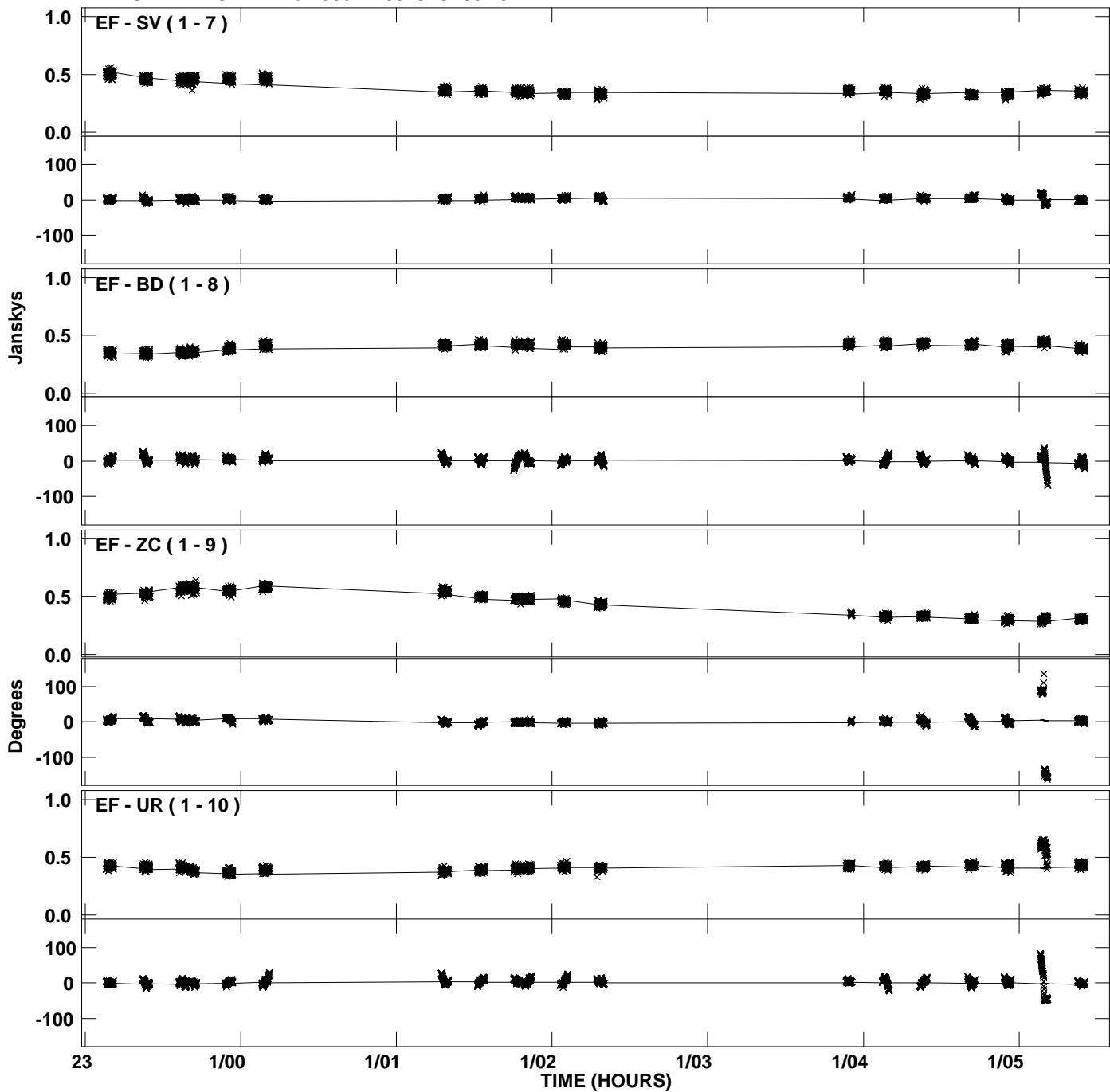
PLot file version 16 created 09-FEB-2012 16:40:58
Amplitude andPhase vs Time for J0827+3525.MULTI.1 CL # 3
IF 6 CHAN 1 STK LL of J0827+3525.ICL001.3



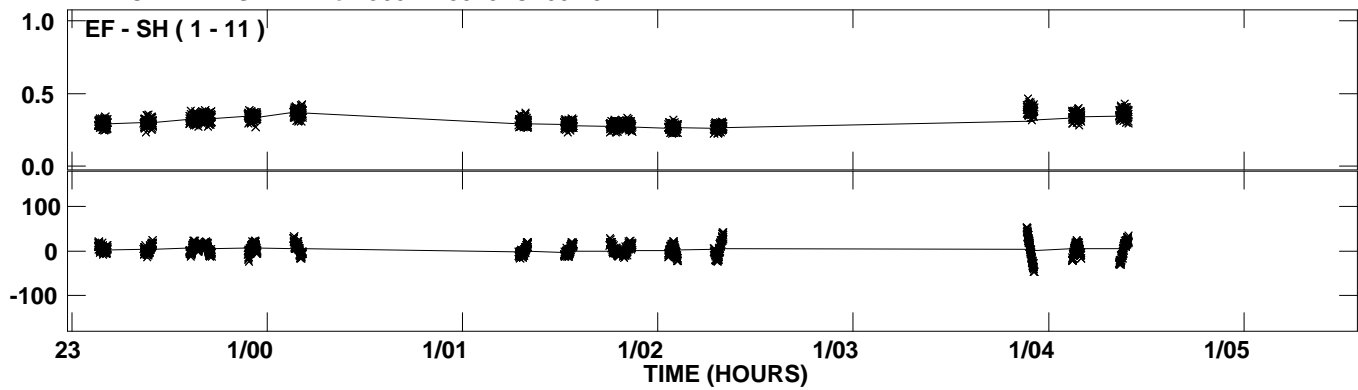
PLot file version 17 created 09-FEB-2012 16:41:00
Amplitude and Phase vs Time for J0827+3525.MULTI.1 CL # 3
IF 7 CHAN 1 STK LL of J0827+3525.ICL001.3



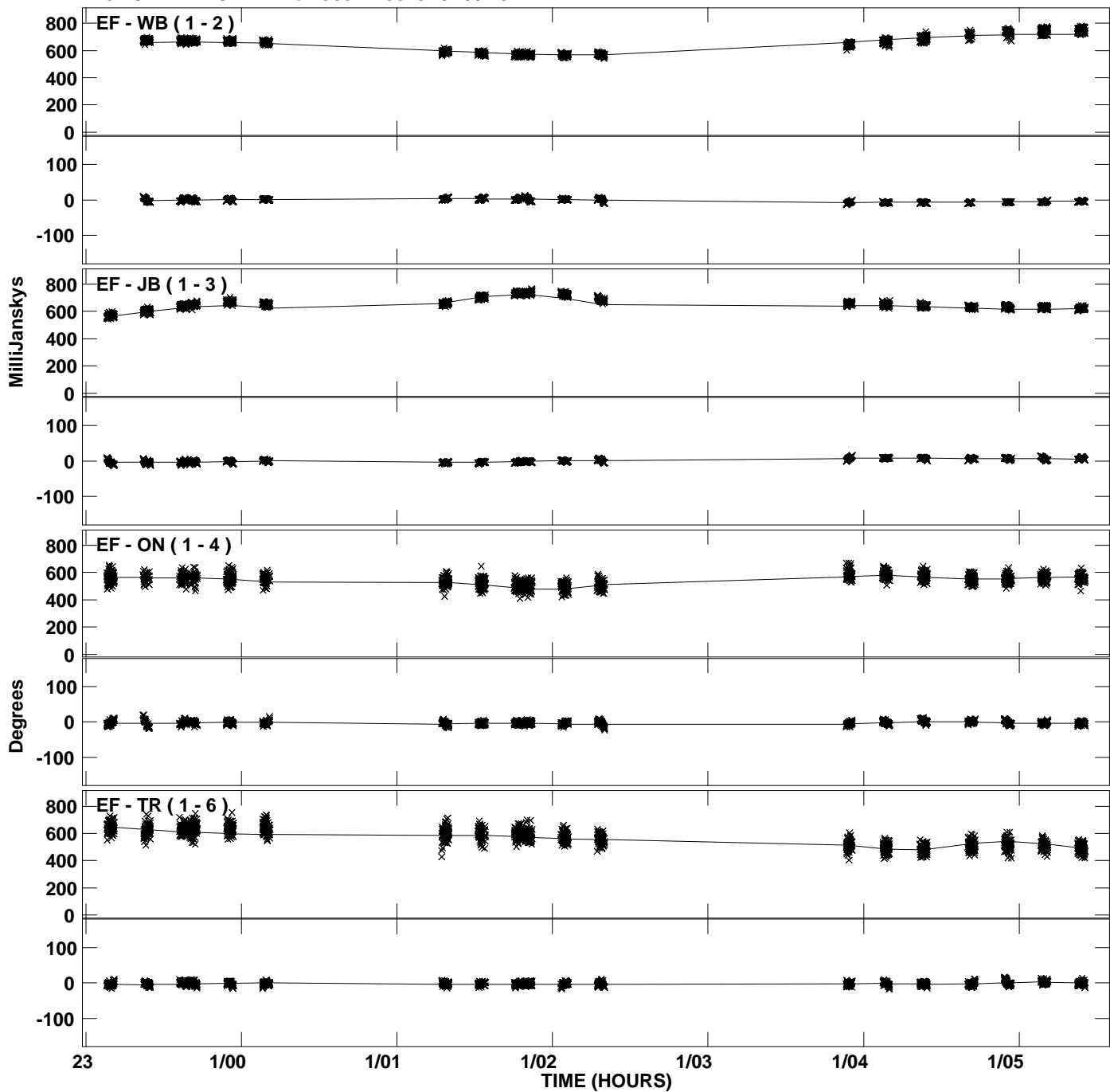
PLot file version 18 created 09-FEB-2012 16:41:00
Amplitude andPhase vs Time for J0827+3525.MULTI.1 CL # 3
IF 7 CHAN 1 STK LL of J0827+3525.ICL001.3



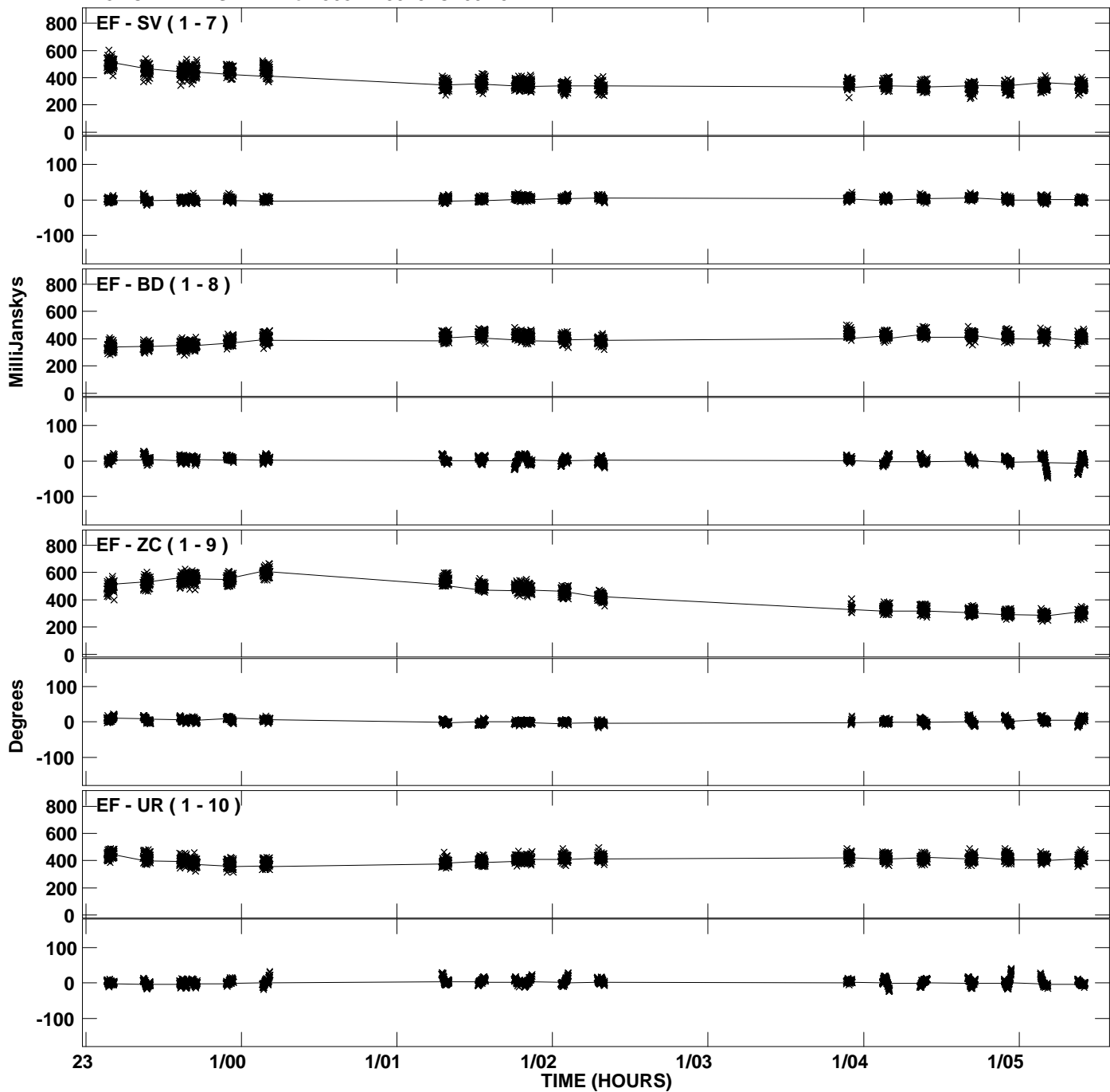
PLot file version 19 created 09-FEB-2012 16:41:00
Amplitude andPhase vs Time for J0827+3525.MULTI.1 CL # 3
IF 7 CHAN 1 STK LL of J0827+3525.ICL001.3



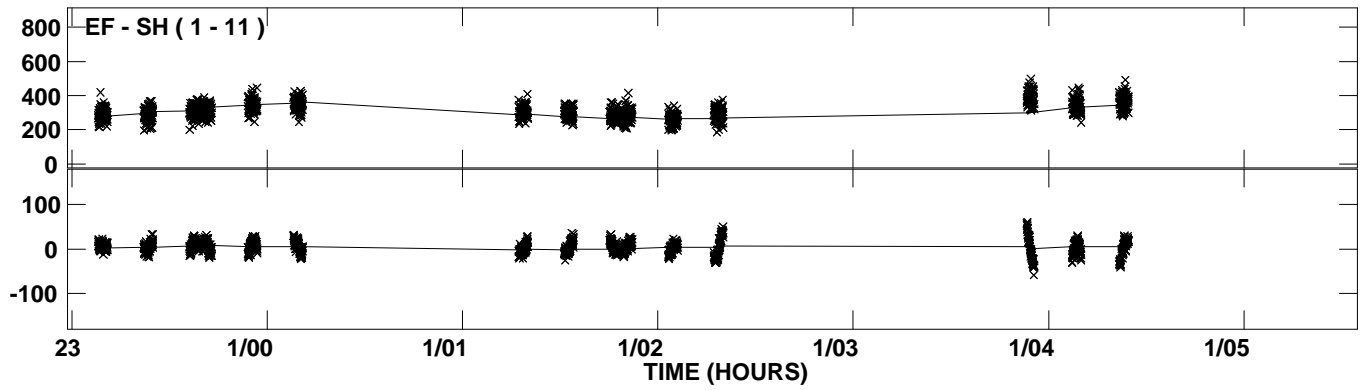
Plot file version 20 created 09-FEB-2012 16:41:01
Amplitude and Phase vs Time for J0827+3525.MULTI.1 CL # 3
IF 8 CHAN 1 STK LL of J0827+3525.ICL001.3



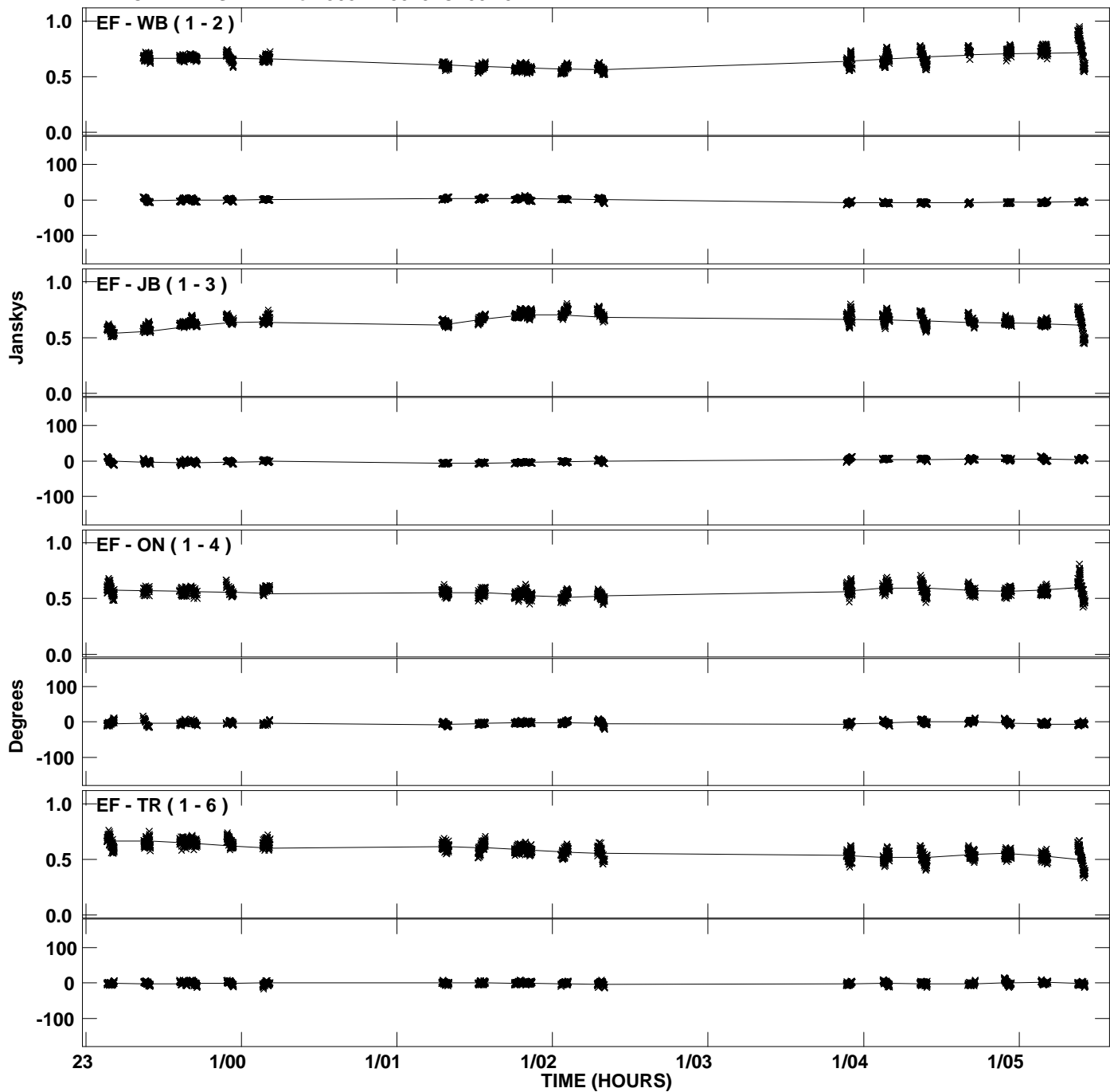
Plot file version 21 created 09-FEB-2012 16:41:01
Amplitude and Phase vs Time for J0827+3525.MULTI.1 CL # 3
IF 8 CHAN 1 STK LL of J0827+3525.ICL001.3



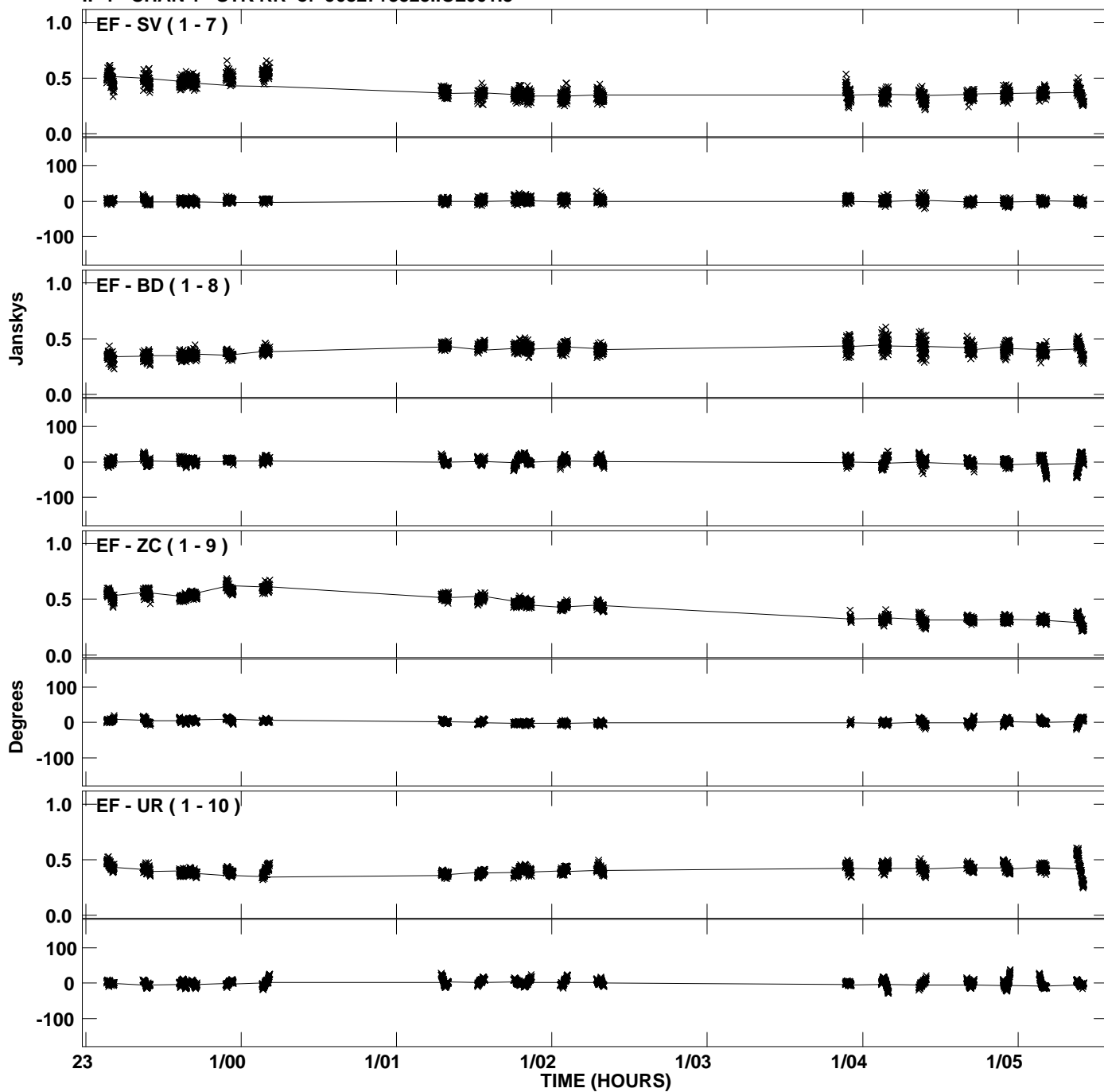
PLot file version 22 created 09-FEB-2012 16:41:01
Amplitude andPhase vs Time for J0827+3525.MULTI.1 CL # 3
IF 8 CHAN 1 STK LL of J0827+3525.ICL001.3



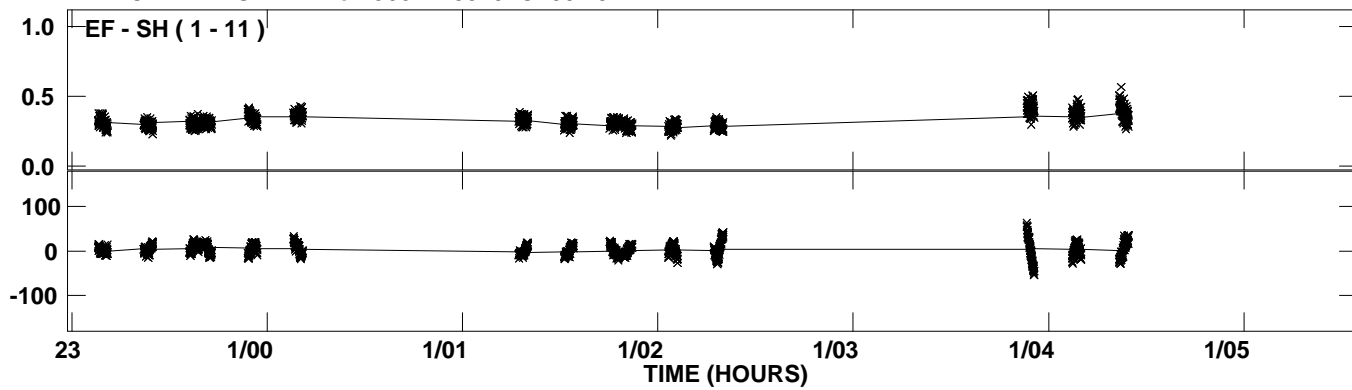
Plot file version 23 created 09-FEB-2012 16:41:02
Amplitude and Phase vs Time for J0827+3525.MULTI.1 CL # 3
IF 1 CHAN 1 STK RR of J0827+3525.ICL001.3



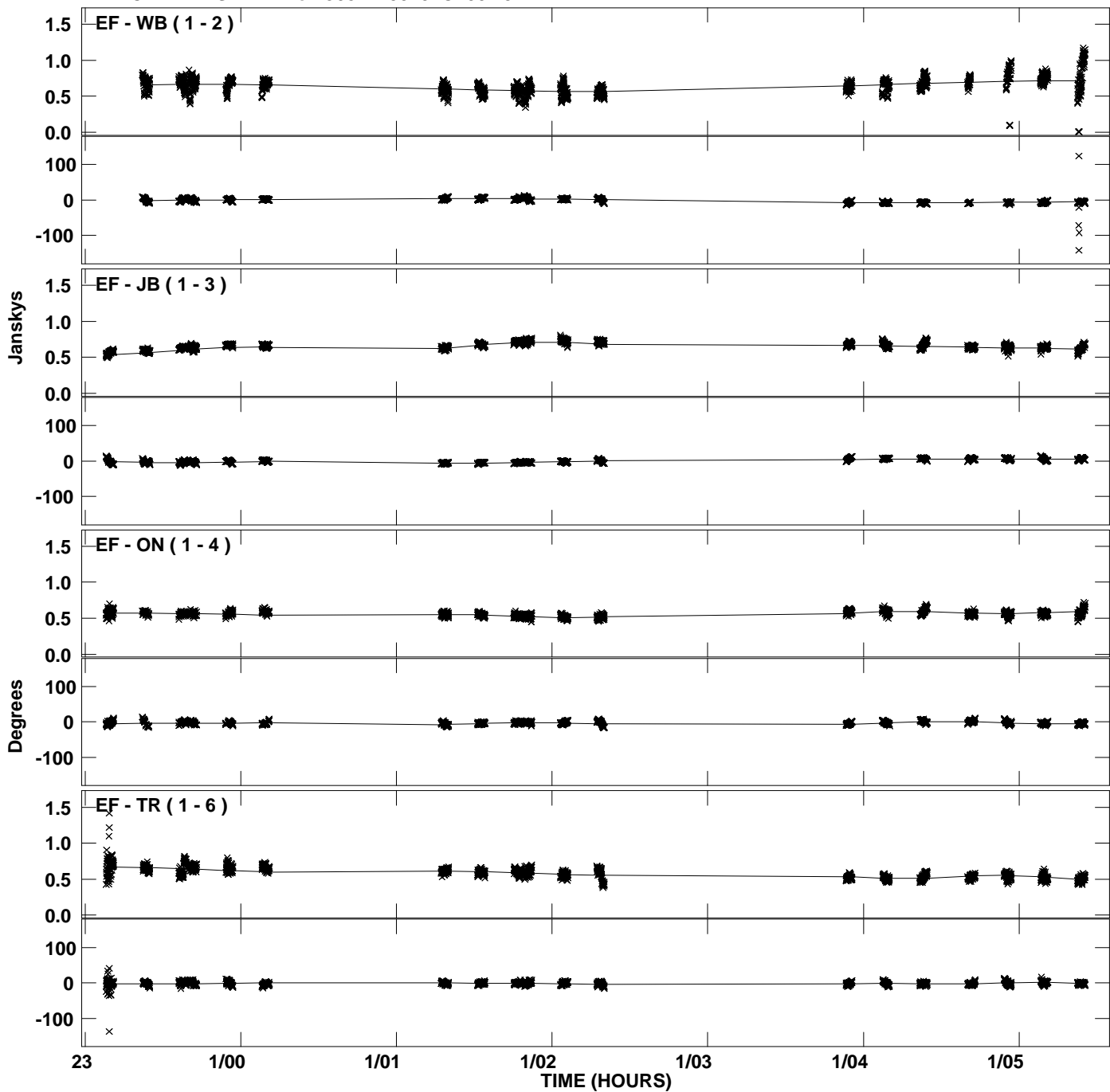
PLot file version 24 created 09-FEB-2012 16:41:02
Amplitude andPhase vs Time for J0827+3525.MULTI.1 CL # 3
IF 1 CHAN 1 STK RR of J0827+3525.ICL001.3



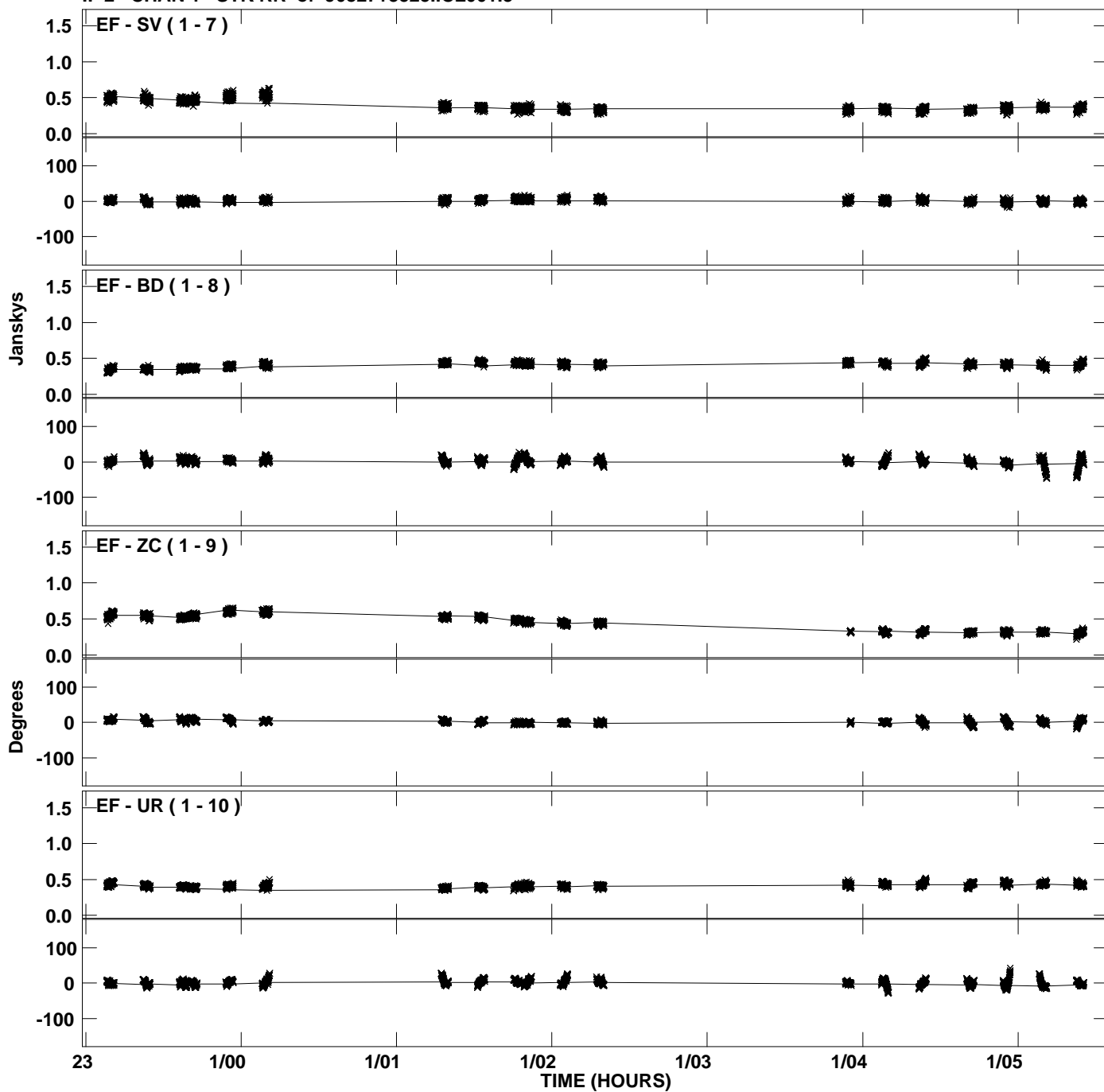
PLot file version 25 created 09-FEB-2012 16:41:02
Amplitude andPhase vs Time for J0827+3525.MULTI.1 CL # 3
IF 1 CHAN 1 STK RR of J0827+3525.ICL001.3



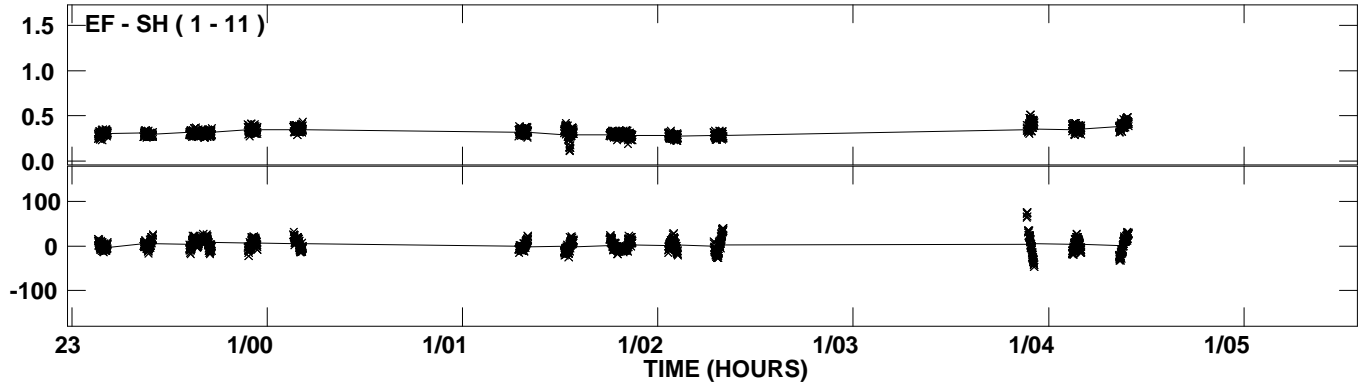
PLot file version 26 created 09-FEB-2012 16:41:04
Amplitude andPhase vs Time for J0827+3525.MULTI.1 CL # 3
IF 2 CHAN 1 STK RR of J0827+3525.ICL001.3



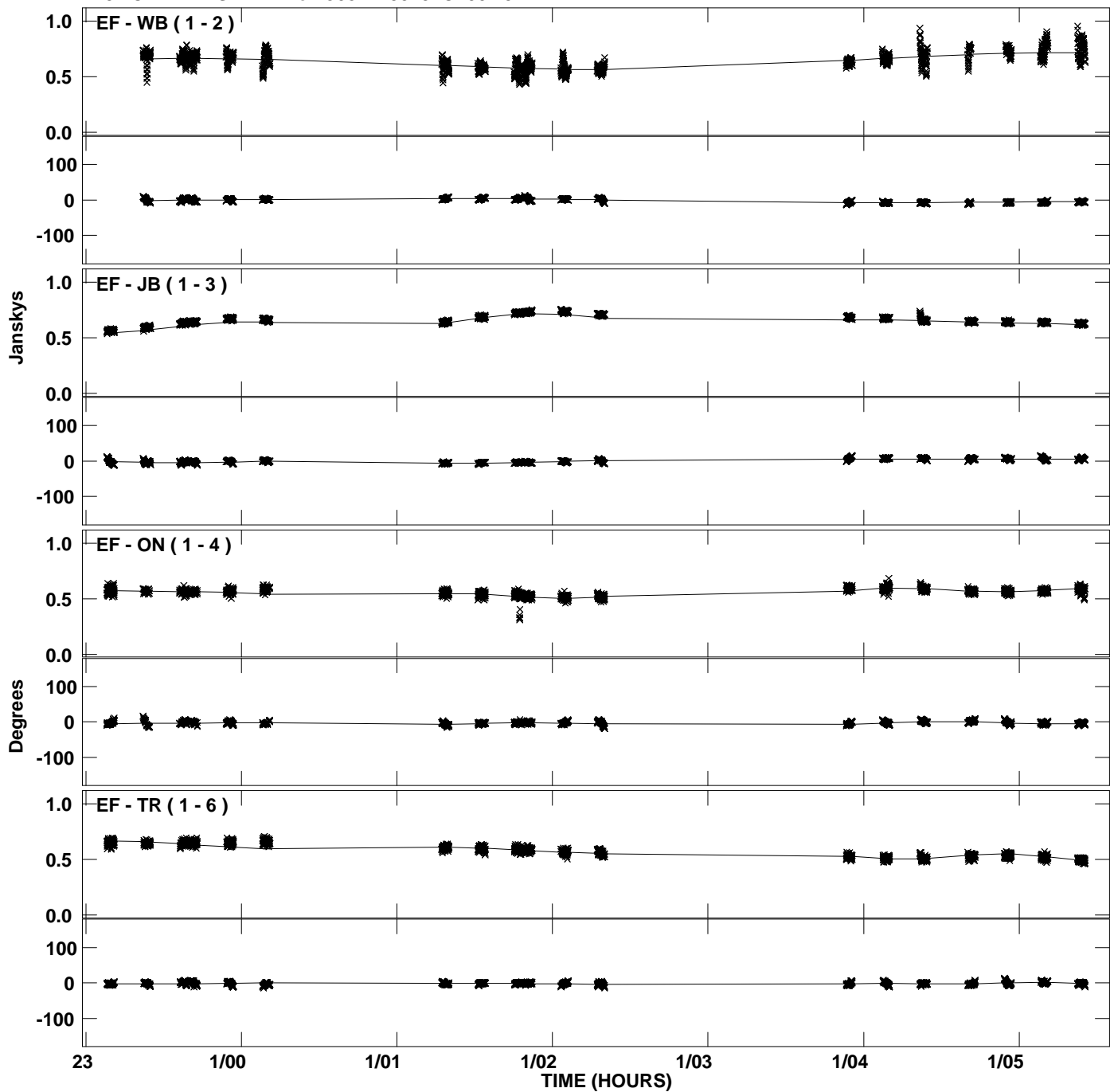
Plot file version 27 created 09-FEB-2012 16:41:04
Amplitude andPhase vs Time for J0827+3525.MULTI.1 CL # 3
IF 2 CHAN 1 STK RR of J0827+3525.ICL001.3



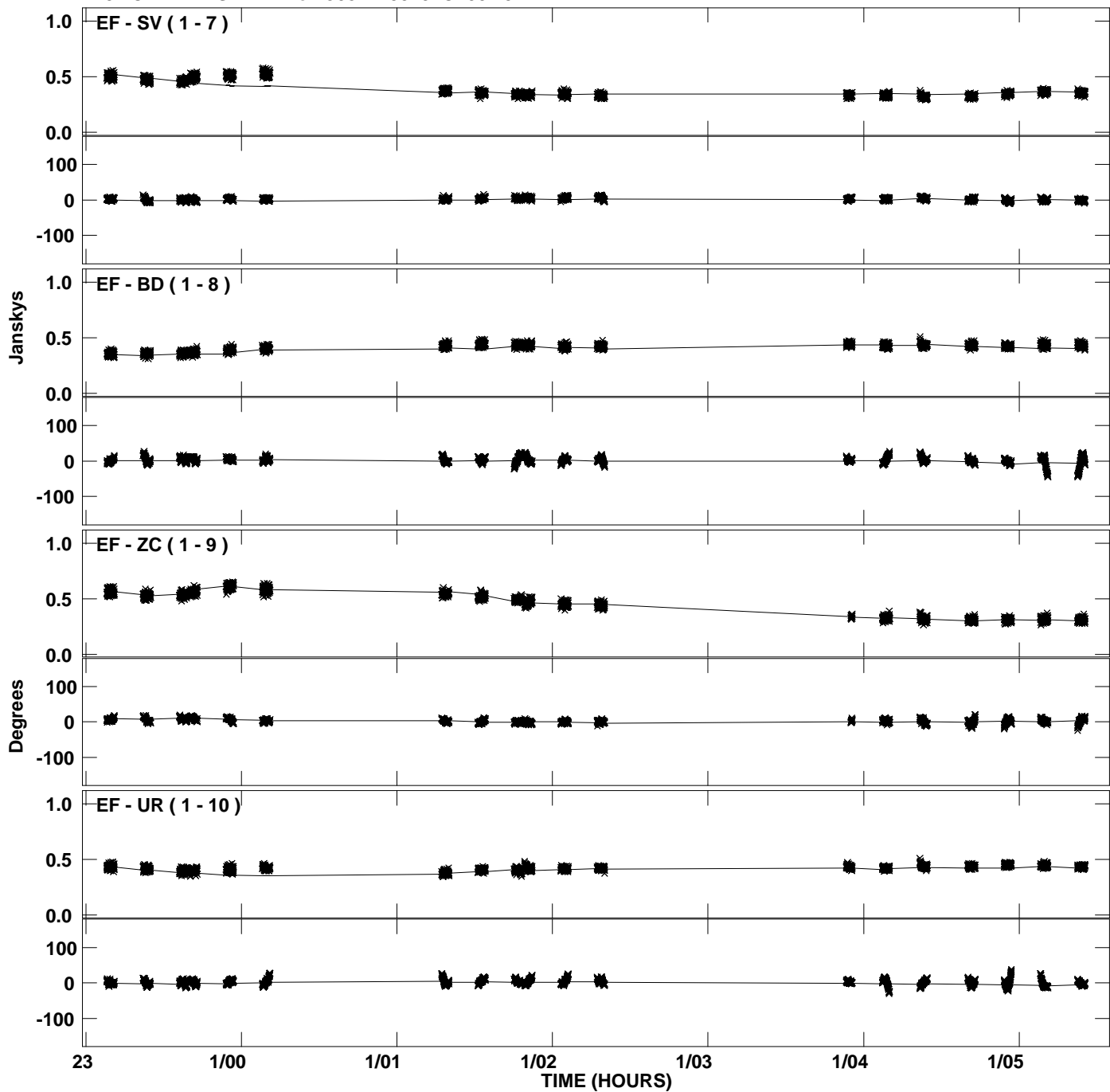
PLot file version 28 created 09-FEB-2012 16:41:04
Amplitude and Phase vs Time for J0827+3525.MULTI.1 CL # 3
IF 2 CHAN 1 STK RR of J0827+3525.ICL001.3



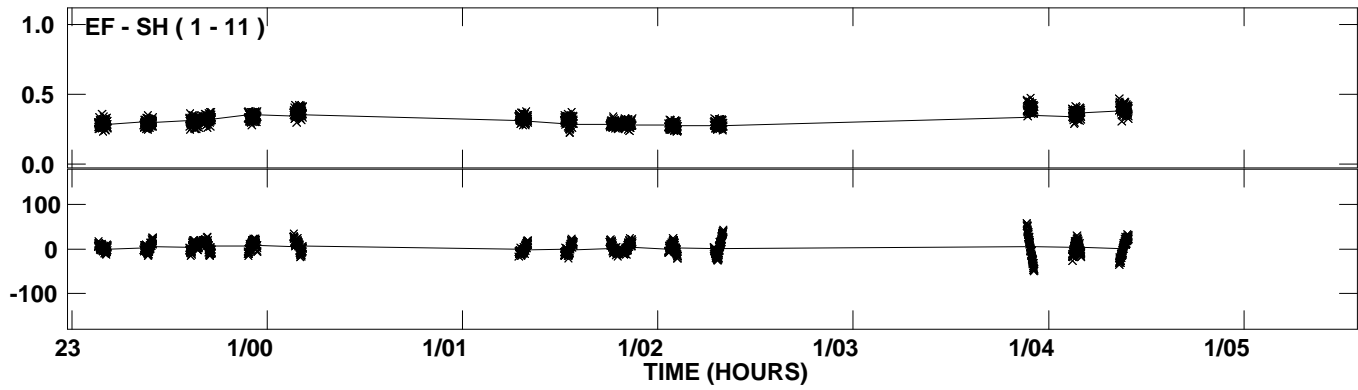
Plot file version 29 created 09-FEB-2012 16:41:05
Amplitude andPhase vs Time for J0827+3525.MULTI.1 CL # 3
IF 3 CHAN 1 STK RR of J0827+3525.ICL001.3



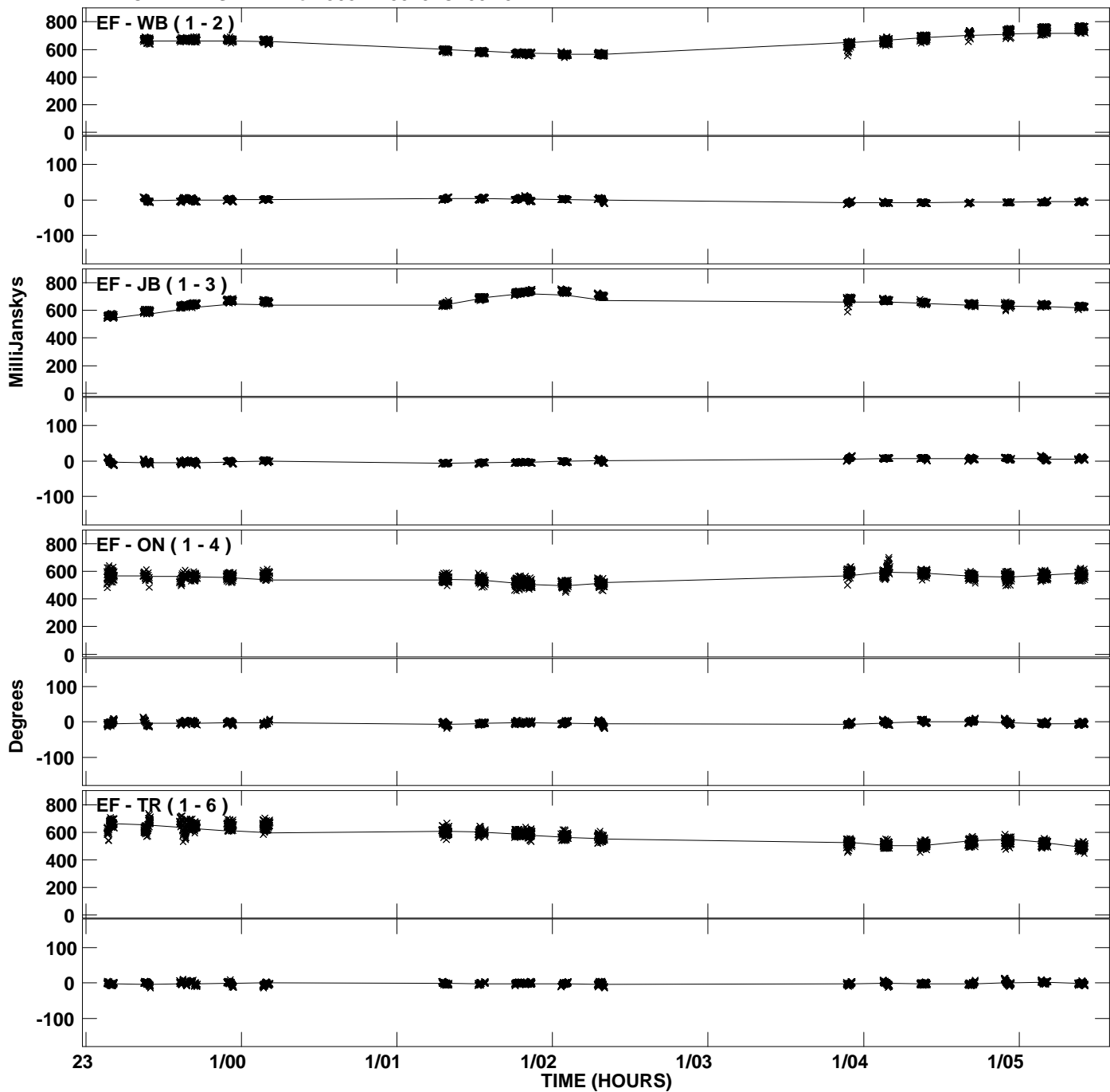
Plot file version 30 created 09-FEB-2012 16:41:05
Amplitude andPhase vs Time for J0827+3525.MULTI.1 CL # 3
IF 3 CHAN 1 STK RR of J0827+3525.ICL001.3



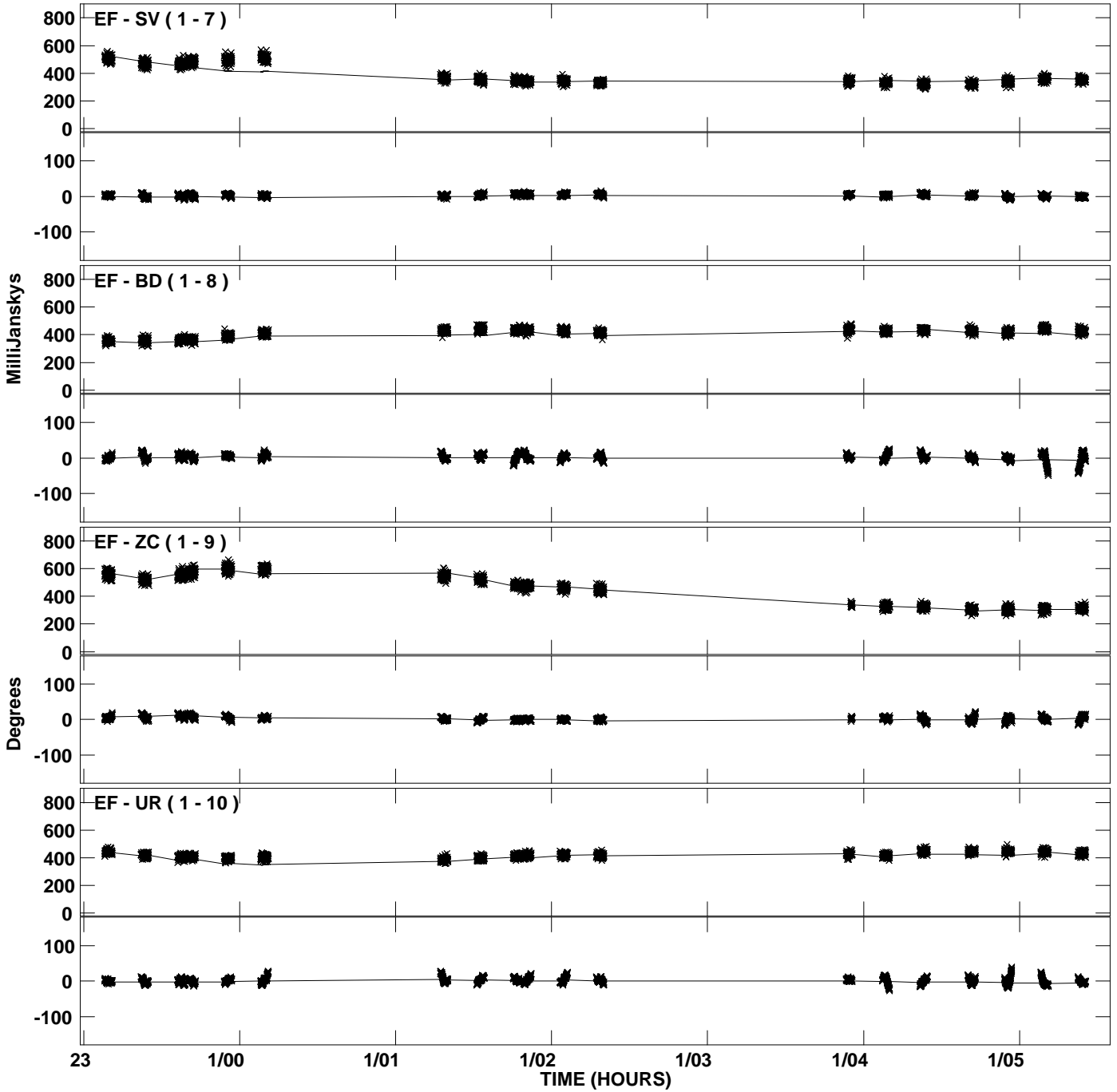
PLot file version 31 created 09-FEB-2012 16:41:06
Amplitude andPhase vs Time for J0827+3525.MULTI.1 CL # 3
IF 3 CHAN 1 STK RR of J0827+3525.ICL001.3



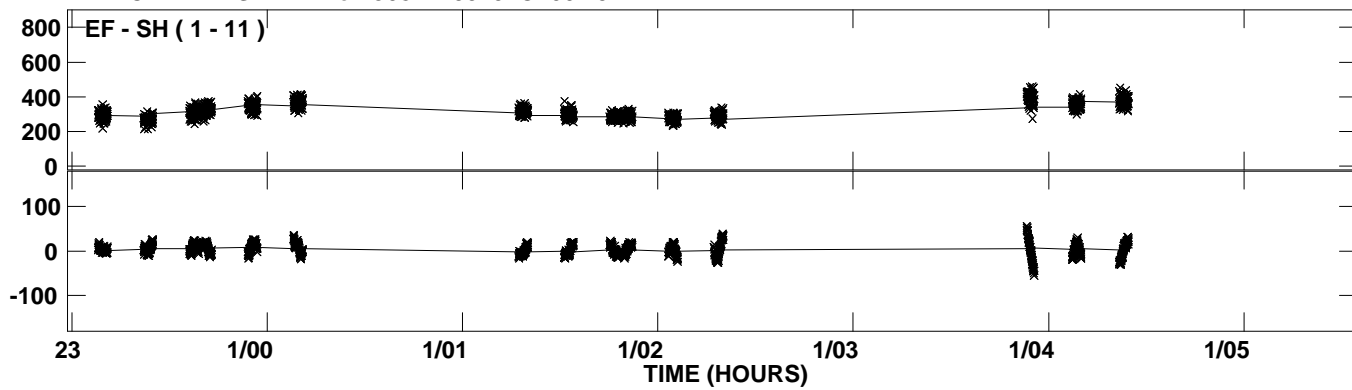
Plot file version 32 created 09-FEB-2012 16:41:07
Amplitude and Phase vs Time for J0827+3525.MULTI.1 CL # 3
IF 4 CHAN 1 STK RR of J0827+3525.ICL001.3



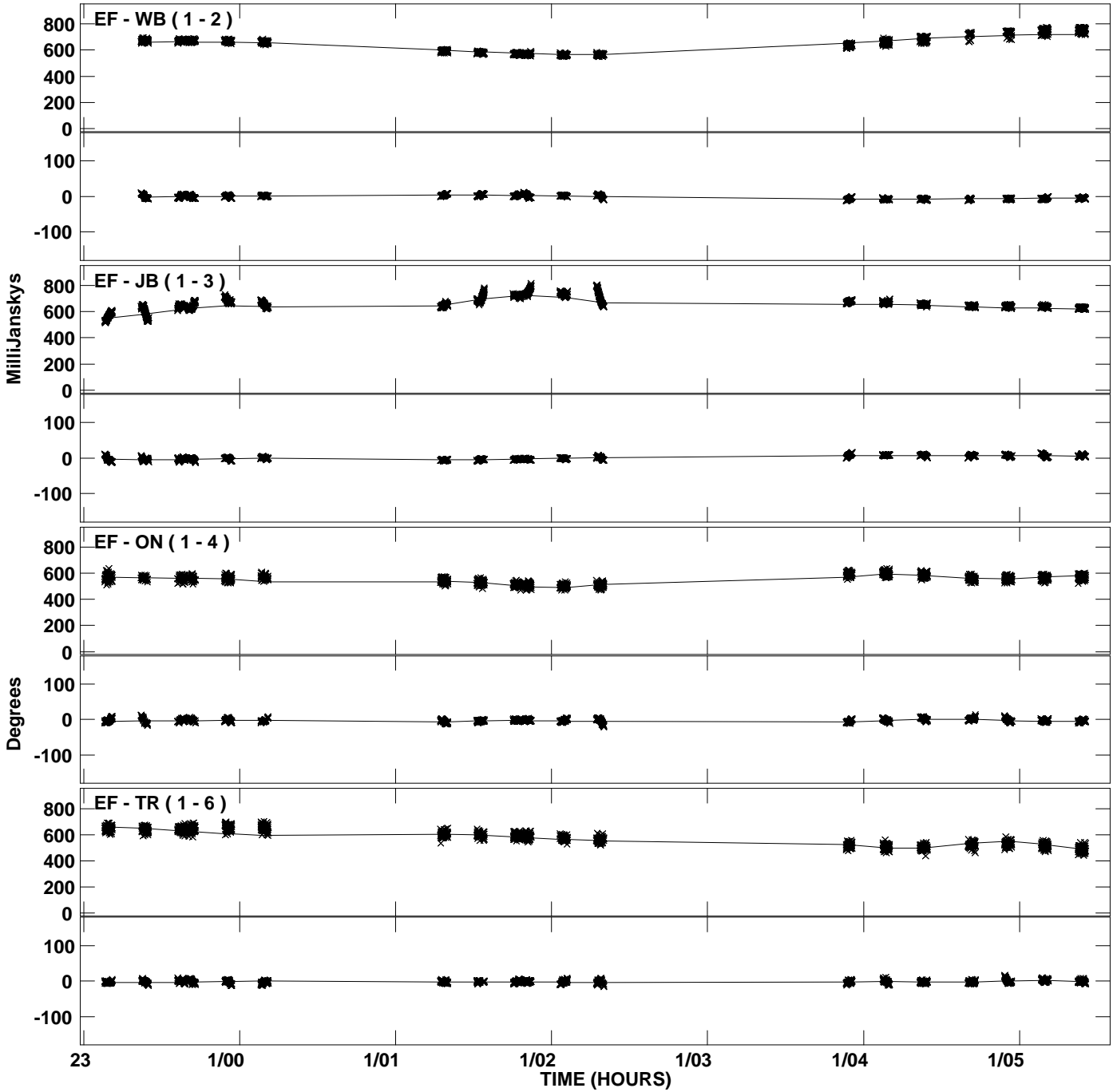
Plot file version 33 created 09-FEB-2012 16:41:07
Amplitude andPhase vs Time for J0827+3525.MULTI.1 CL # 3
IF 4 CHAN 1 STK RR of J0827+3525.ICL001.3



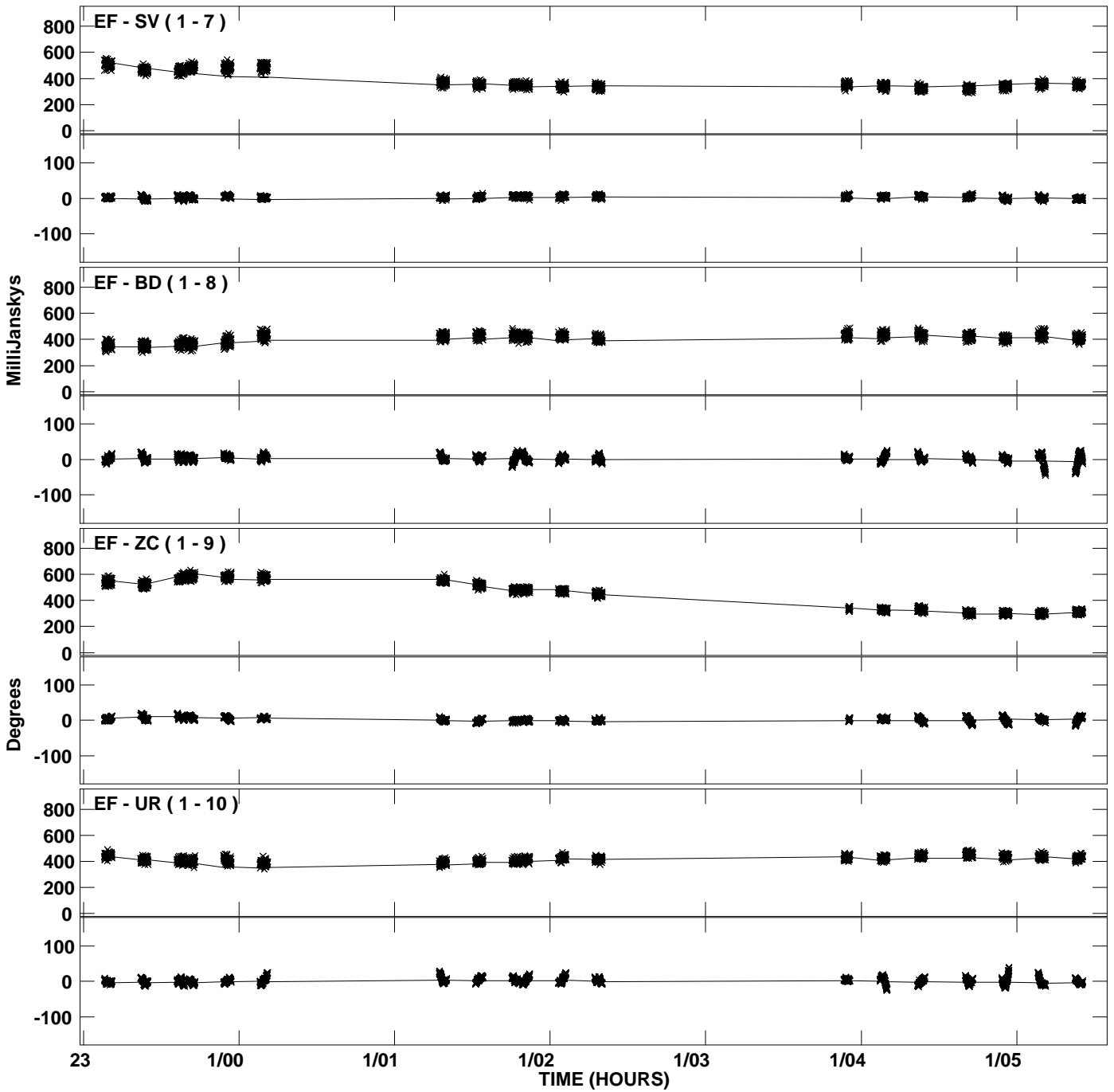
PLot file version 34 created 09-FEB-2012 16:41:07
Amplitude andPhase vs Time for J0827+3525.MULTI.1 CL # 3
IF 4 CHAN 1 STK RR of J0827+3525.ICL001.3



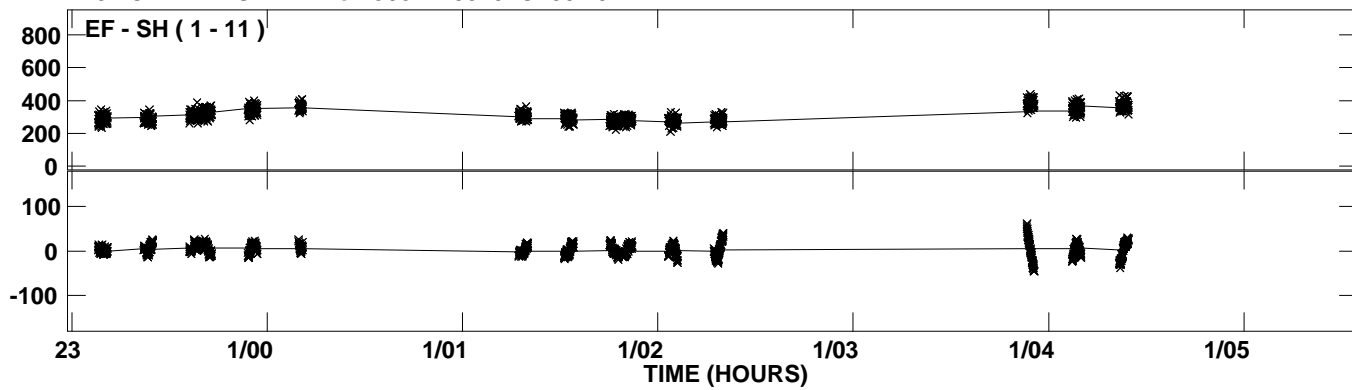
Plot file version 35 created 09-FEB-2012 16:41:08
Amplitude and Phase vs Time for J0827+3525.MULTI.1 CL # 3
IF 5 CHAN 1 STK RR of J0827+3525.ICL001.3



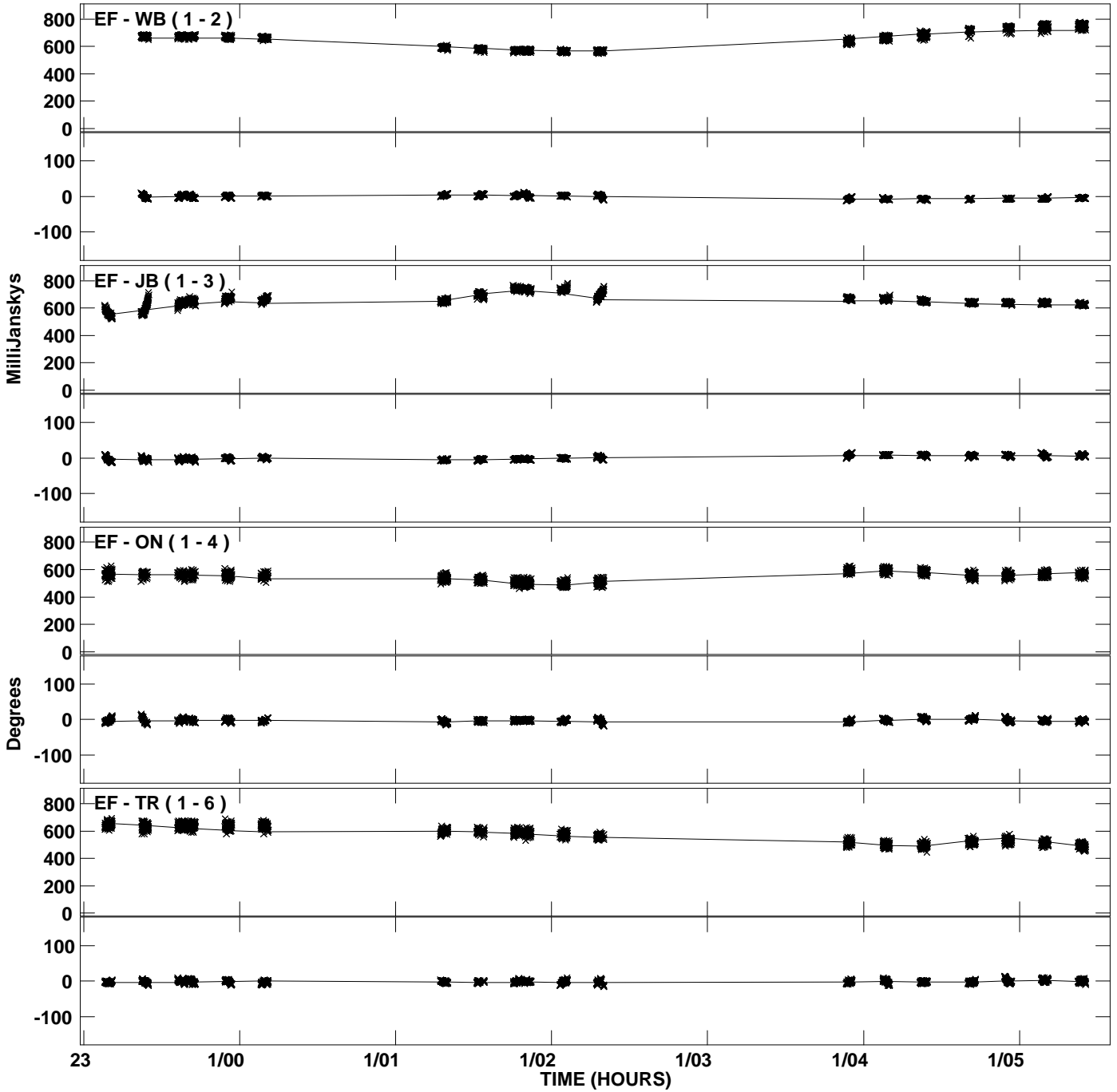
Plot file version 36 created 09-FEB-2012 16:41:08
Amplitude andPhase vs Time for J0827+3525.MULTI.1 CL # 3
IF 5 CHAN 1 STK RR of J0827+3525.ICL001.3



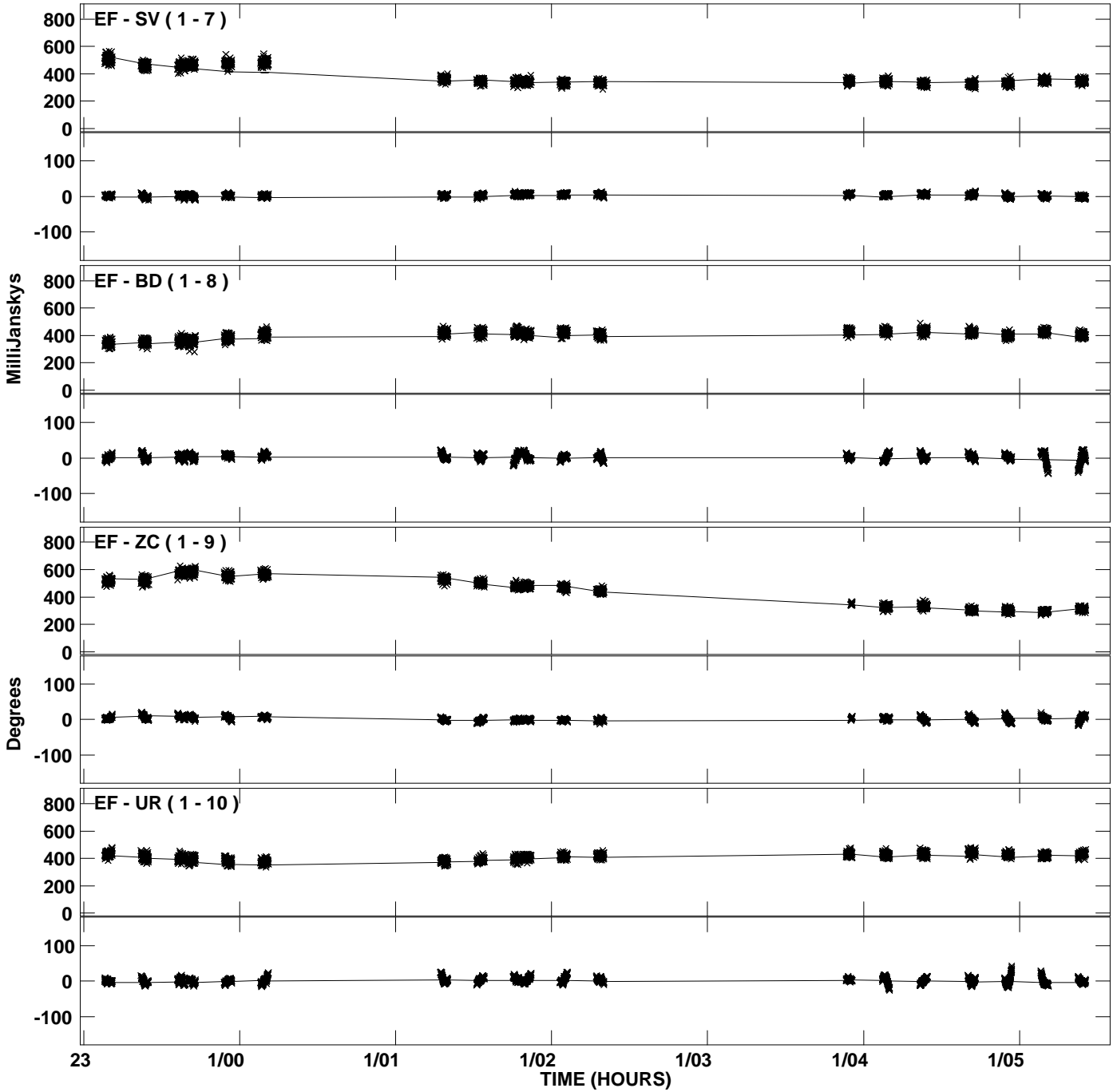
PLot file version 37 created 09-FEB-2012 16:41:08
Amplitude andPhase vs Time for J0827+3525.MULTI.1 CL # 3
IF 5 CHAN 1 STK RR of J0827+3525.ICL001.3



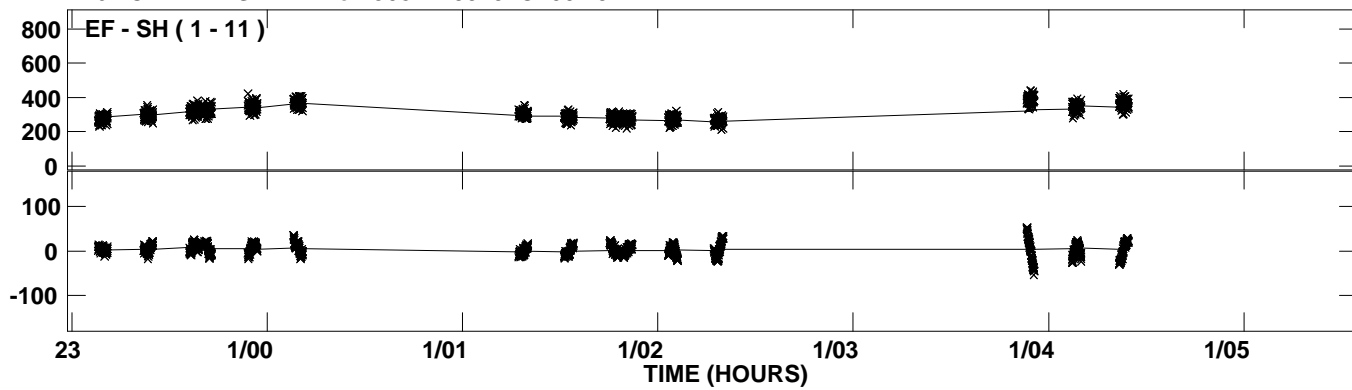
Plot file version 38 created 09-FEB-2012 16:41:09
Amplitude andPhase vs Time for J0827+3525.MULTI.1 CL # 3
IF 6 CHAN 1 STK RR of J0827+3525.ICL001.3



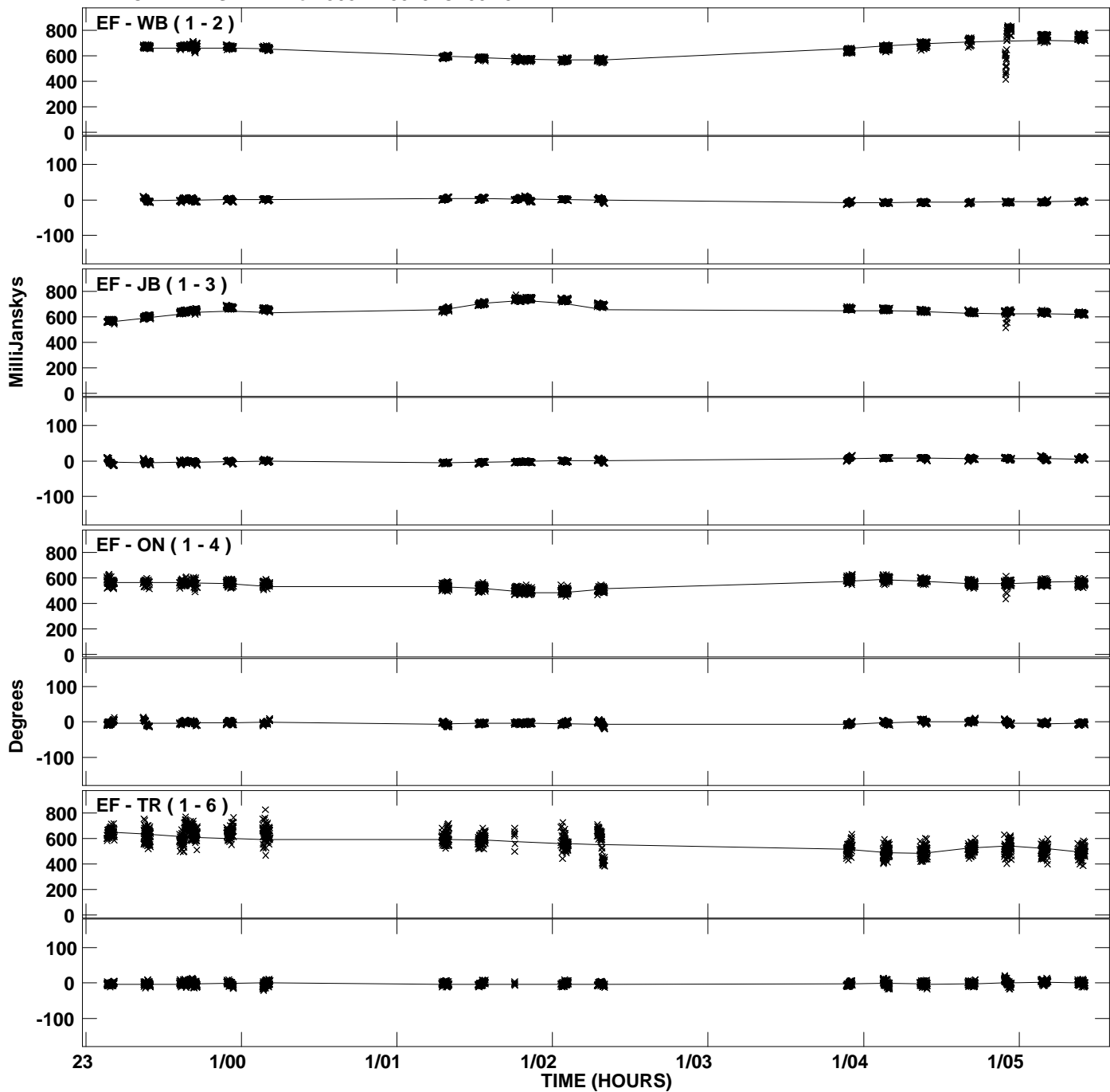
Plot file version 39 created 09-FEB-2012 16:41:09
Amplitude andPhase vs Time for J0827+3525.MULTI.1 CL # 3
IF 6 CHAN 1 STK RR of J0827+3525.ICL001.3



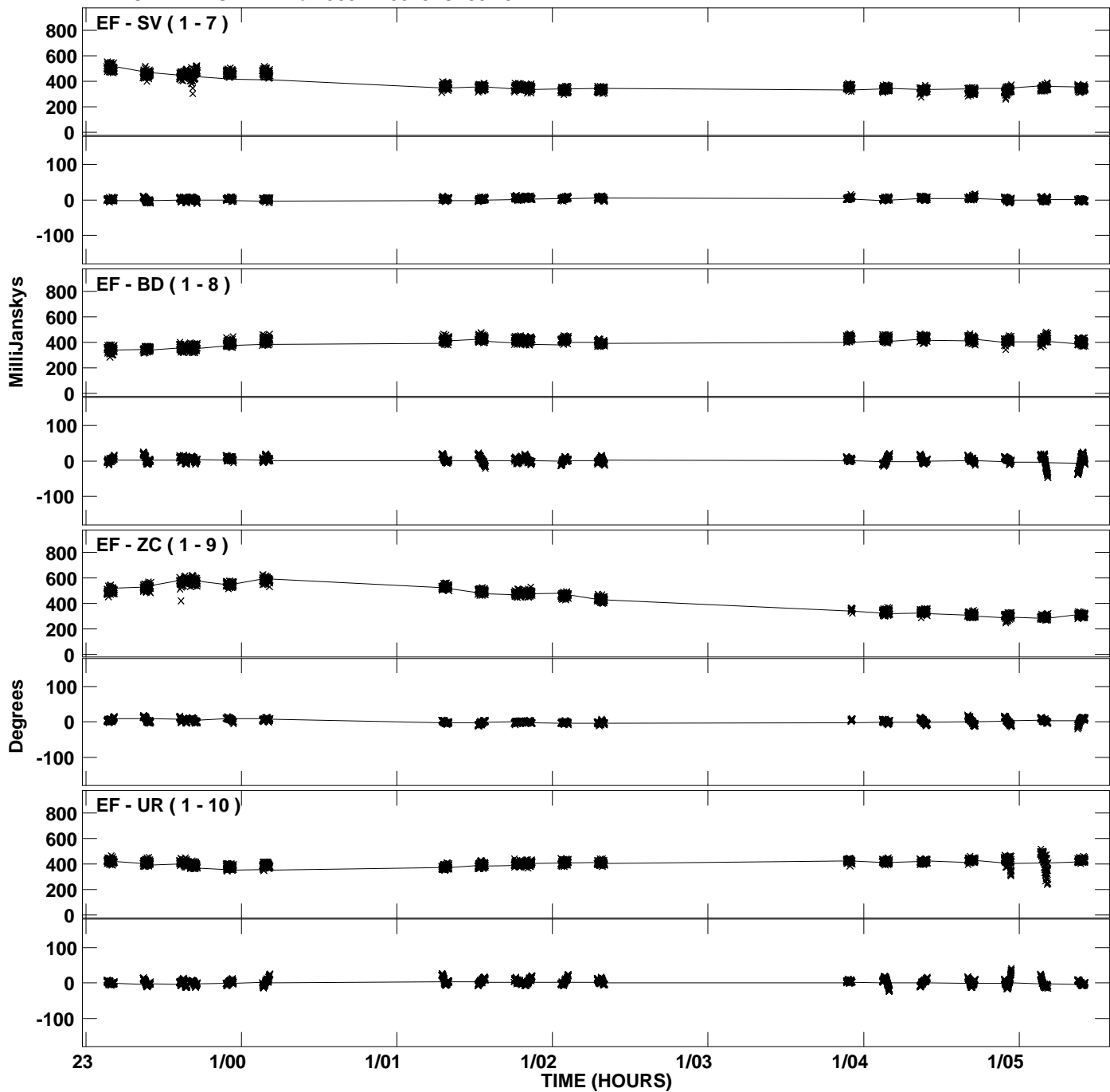
PLot file version 40 created 09-FEB-2012 16:41:10
Amplitude andPhase vs Time for J0827+3525.MULTI.1 CL # 3
IF 6 CHAN 1 STK RR of J0827+3525.ICL001.3



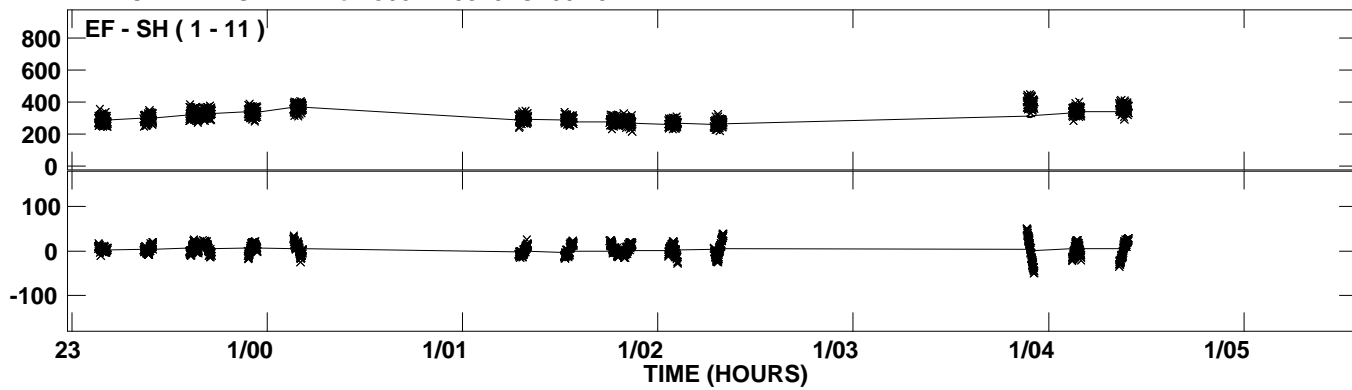
Plot file version 41 created 09-FEB-2012 16:41:12
Amplitude andPhase vs Time for J0827+3525.MULTI.1 CL # 3
IF 7 CHAN 1 STK RR of J0827+3525.ICL001.3



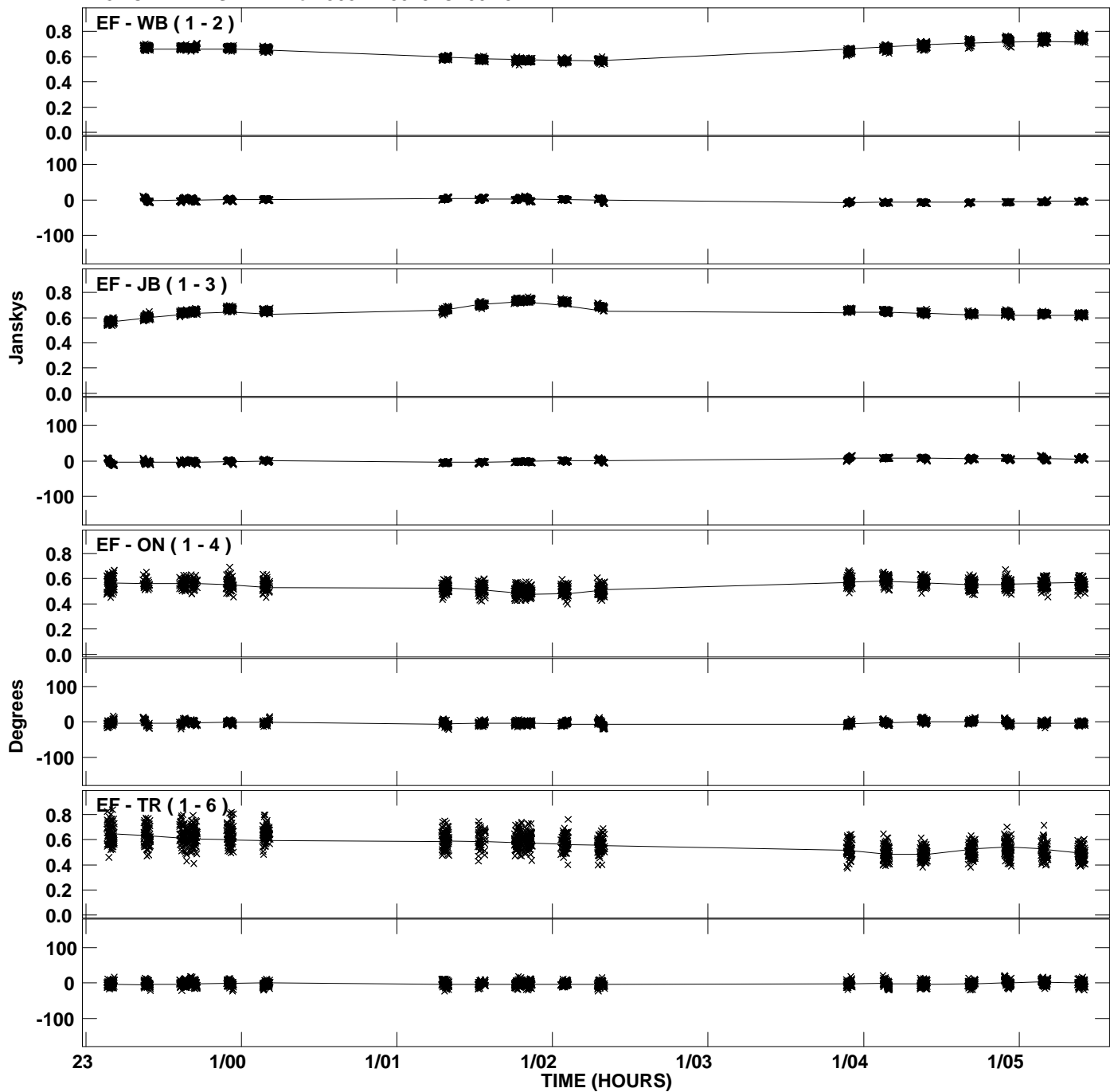
Plot file version 42 created 09-FEB-2012 16:41:12
Amplitude andPhase vs Time for J0827+3525.MULTI.1 CL # 3
IF 7 CHAN 1 STK RR of J0827+3525.ICL001.3



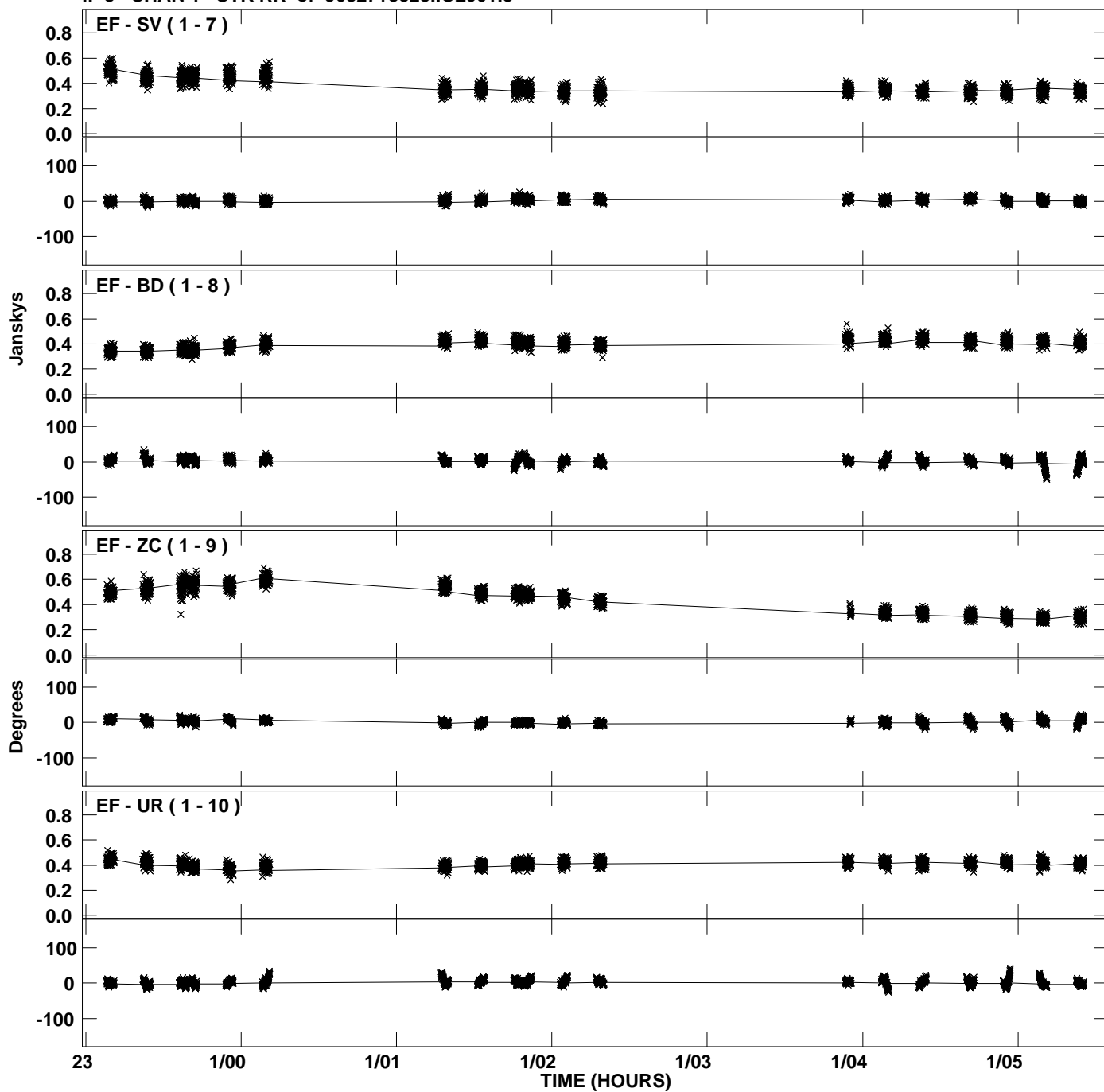
PLot file version 43 created 09-FEB-2012 16:41:12
Amplitude andPhase vs Time for J0827+3525.MULTI.1 CL # 3
IF 7 CHAN 1 STK RR of J0827+3525.ICL001.3



Plot file version 44 created 09-FEB-2012 16:41:13
Amplitude and Phase vs Time for J0827+3525.MULTI.1 CL # 3
IF 8 CHAN 1 STK RR of J0827+3525.ICL001.3



Plot file version 45 created 09-FEB-2012 16:41:13
Amplitude andPhase vs Time for J0827+3525.MULTI.1 CL # 3
IF 8 CHAN 1 STK RR of J0827+3525.ICL001.3



PLot file version 46 created 09-FEB-2012 16:41:13
Amplitude andPhase vs Time for J0827+3525.MULTI.1 CL # 3
IF 8 CHAN 1 STK RR of J0827+3525.ICL001.3

