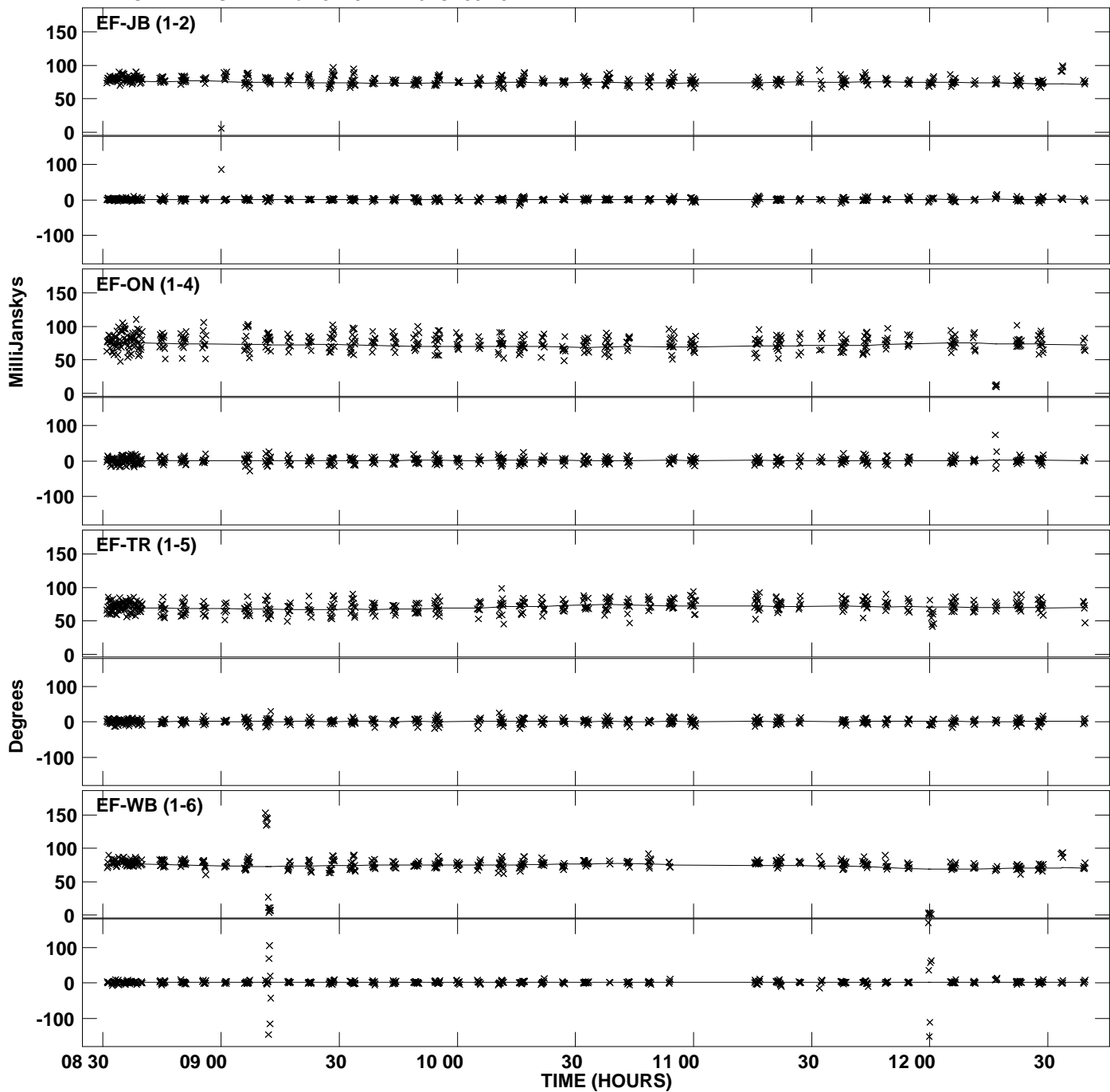
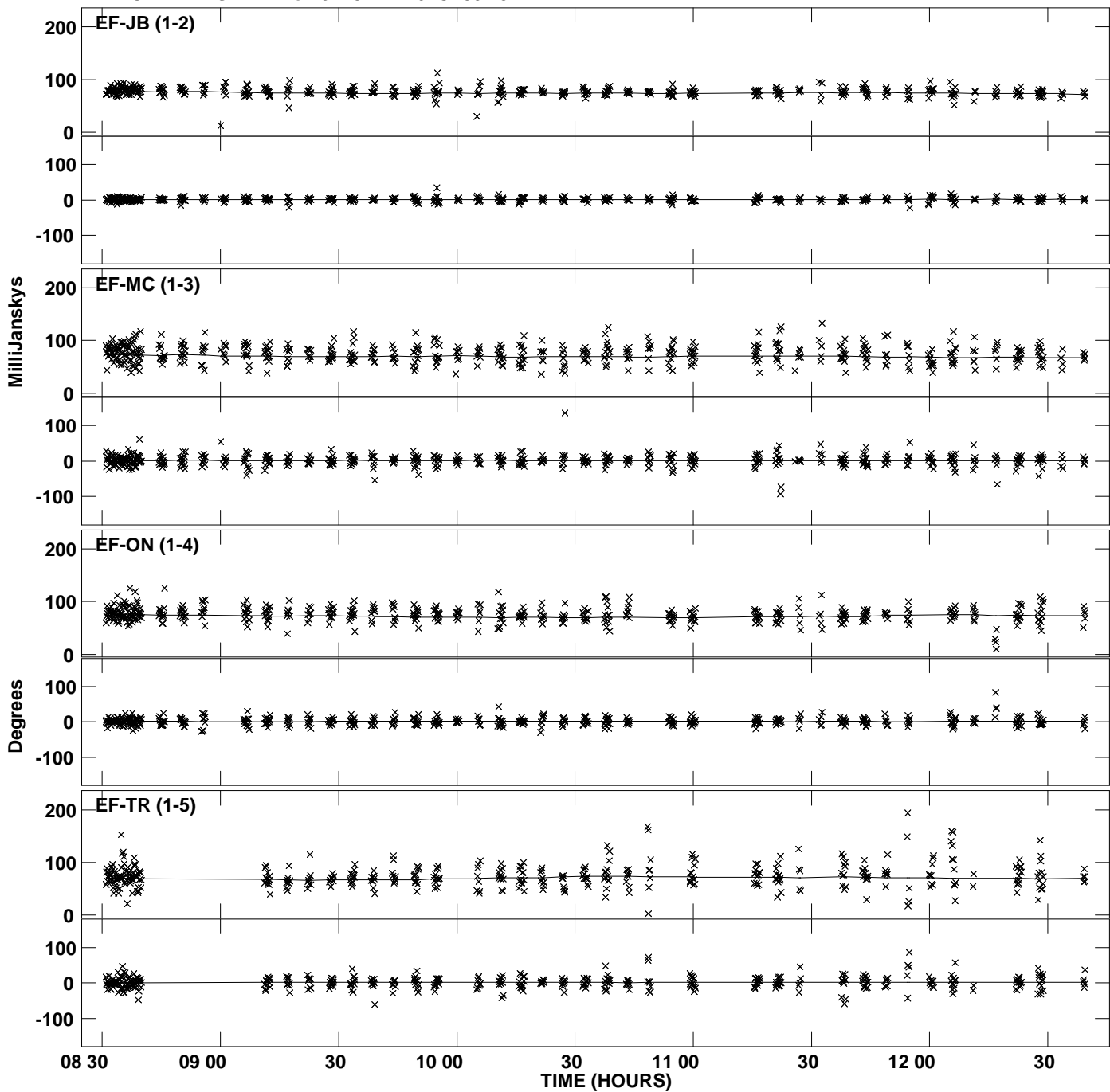


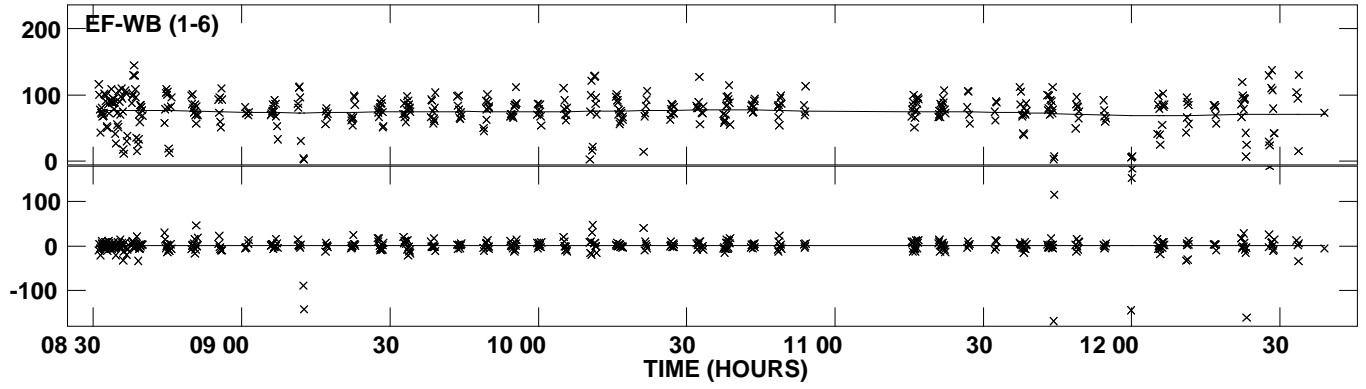
Plot file version 1 created 10-FEB-2011 13:51:39
Amplitude andPhase vs Time for J2237+4216.MULTI.1 Vect aver. CL # 3
IF 1 CHAN 1 STK LL of J2237+4216.ICL001.3



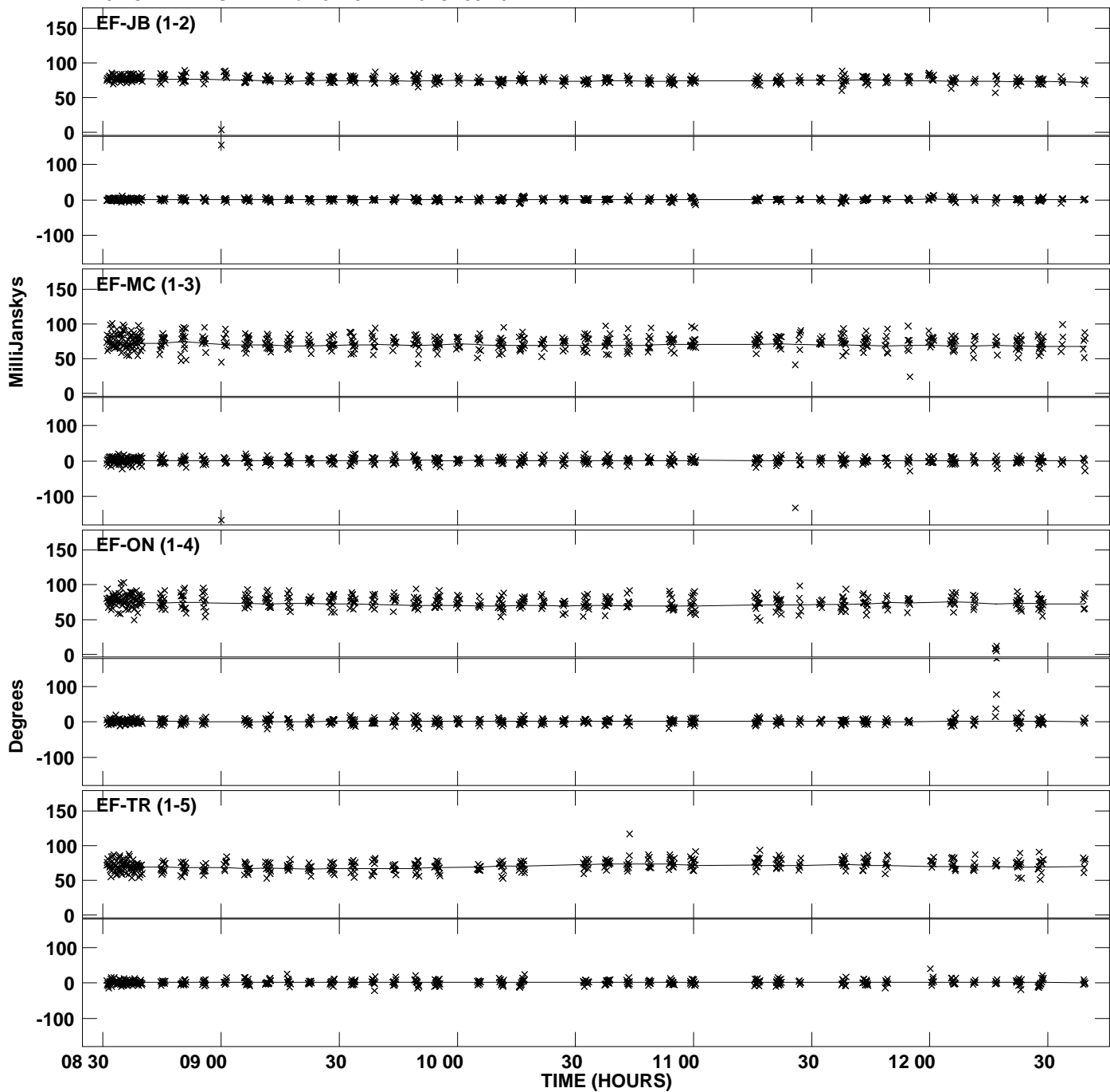
Plot file version 2 created 10-FEB-2011 13:51:39
Amplitude and Phase vs Time for J2237+4216.MULTI.1 Vect aver. CL # 3
IF 2 CHAN 1 STK LL of J2237+4216.ICL001.3



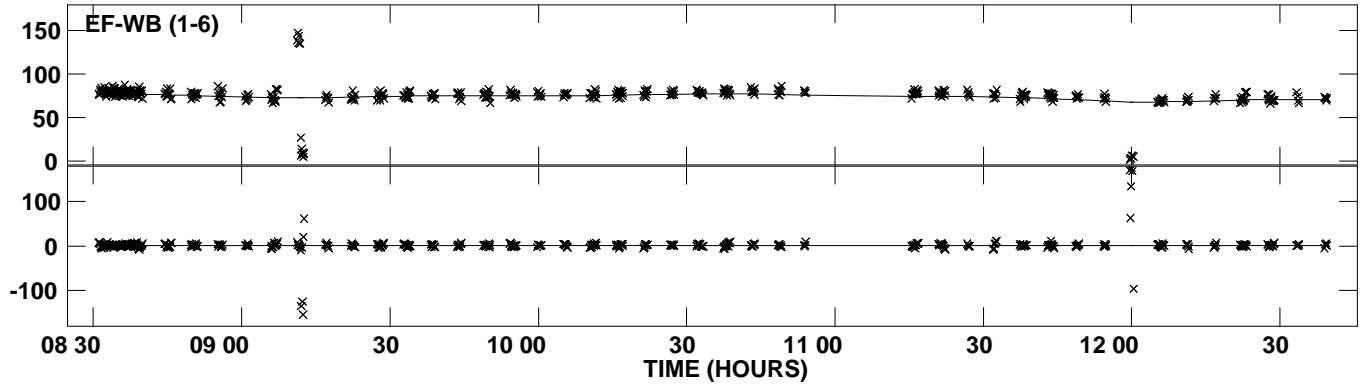
PLot file version 3 created 10-FEB-2011 13:51:39
Amplitude and Phase vs Time for J2237+4216.MULTI.1 Vect aver. CL # 3
IF 2 CHAN 1 STK LL of J2237+4216.ICL001.3



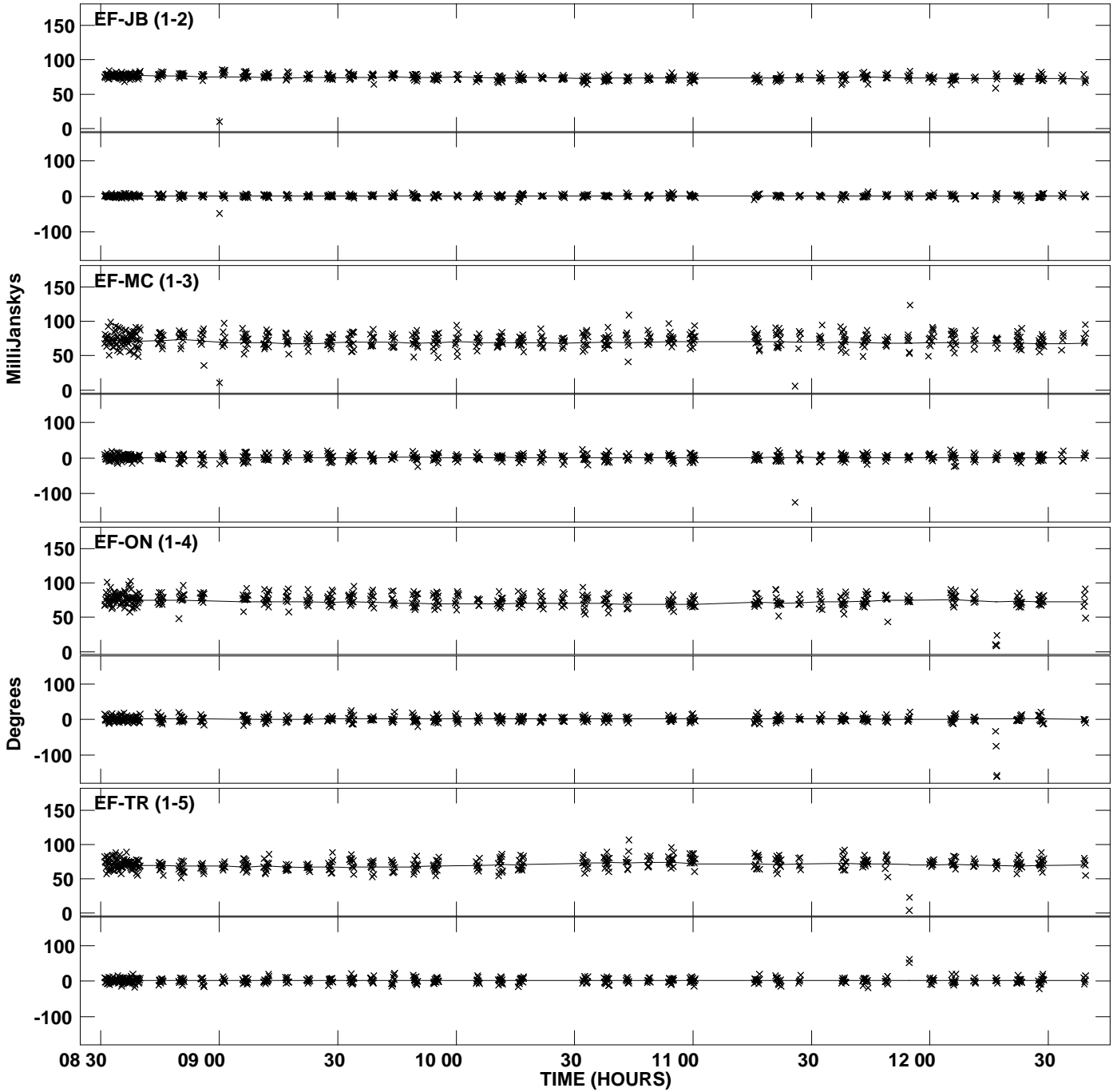
Plot file version 4 created 10-FEB-2011 13:51:39
Amplitude andPhase vs Time for J2237+4216.MULTI.1 Vect aver. CL # 3
IF 3 CHAN 1 STK LL of J2237+4216.ICL001.3



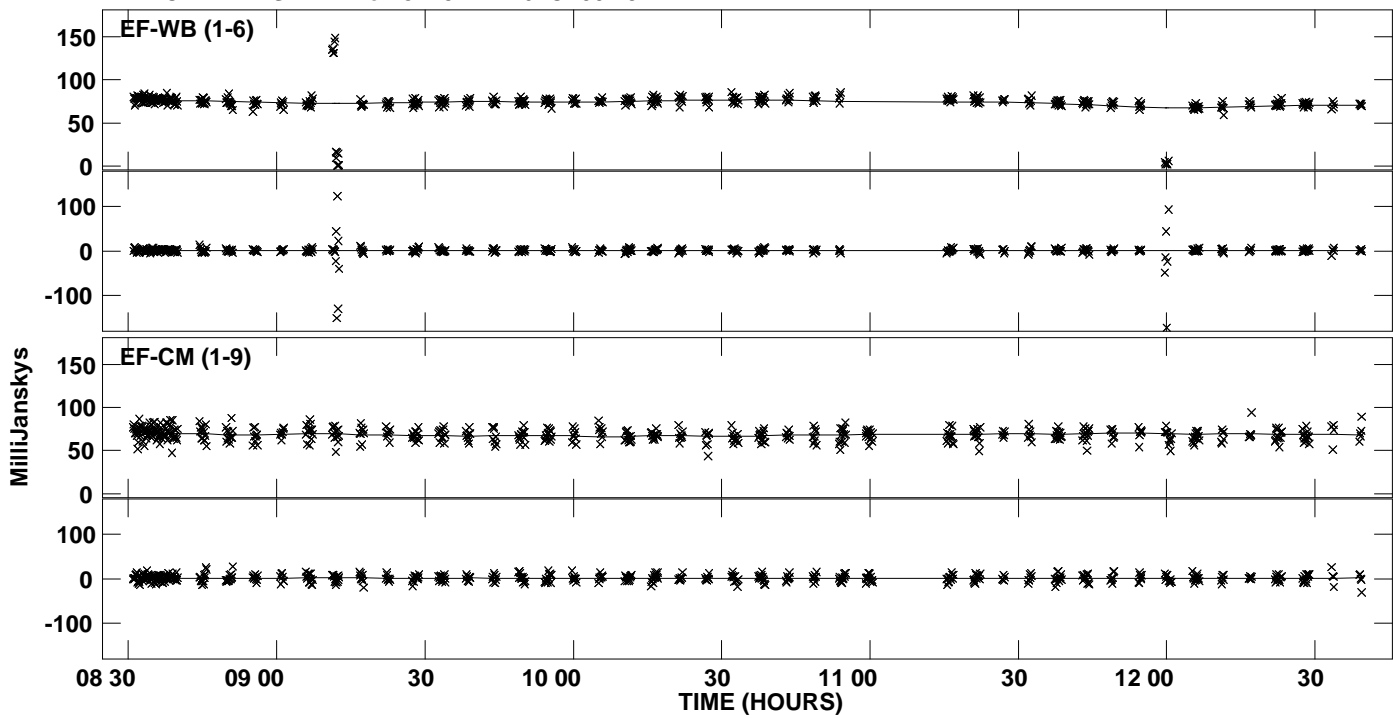
PLot file version 5 created 10-FEB-2011 13:51:39
Amplitude andPhase vs Time for J2237+4216.MULTI.1 Vect aver. CL # 3
IF 3 CHAN 1 STK LL of J2237+4216.ICL001.3



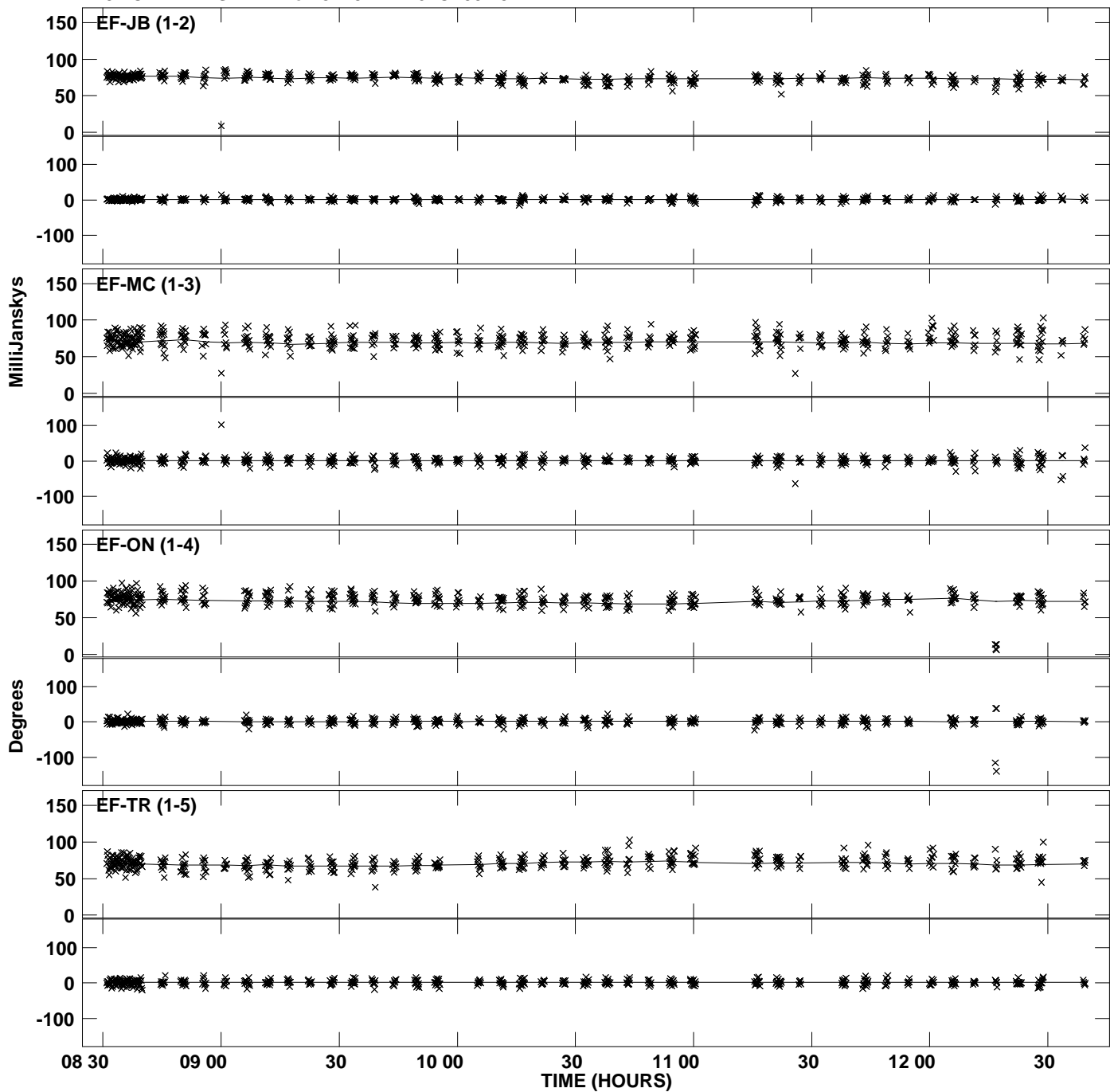
Plot file version 6 created 10-FEB-2011 13:51:40
Amplitude andPhase vs Time for J2237+4216.MULTI.1 Vect aver. CL # 3
IF 4 CHAN 1 STK LL of J2237+4216.ICL001.3



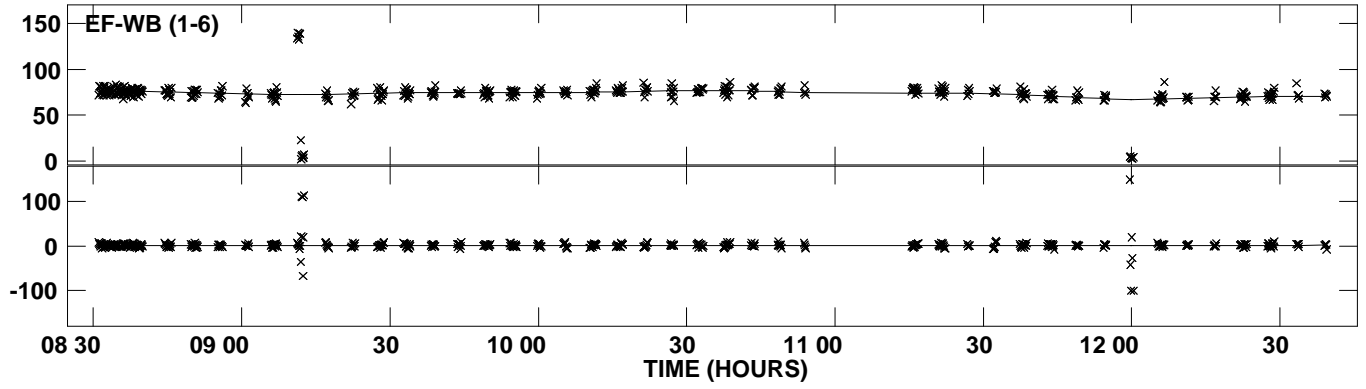
Plot file version 7 created 10-FEB-2011 13:51:40
Amplitude andPhase vs Time for J2237+4216.MULTI.1 Vect aver. CL # 3
IF 4 CHAN 1 STK LL of J2237+4216.ICL001.3



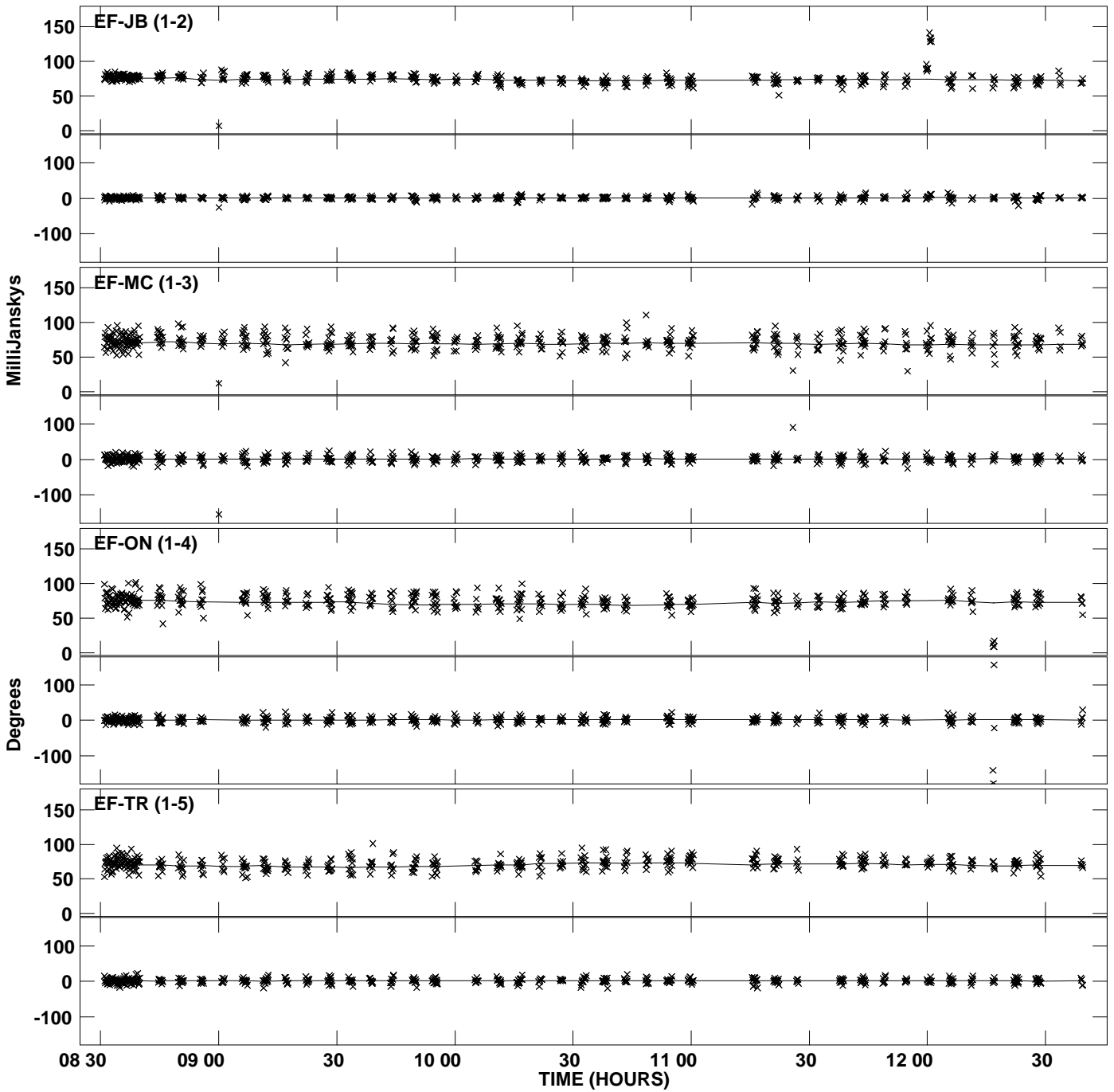
Plot file version 8 created 10-FEB-2011 13:51:40
Amplitude andPhase vs Time for J2237+4216.MULTI.1 Vect aver. CL # 3
IF 5 CHAN 1 STK LL of J2237+4216.ICL001.3



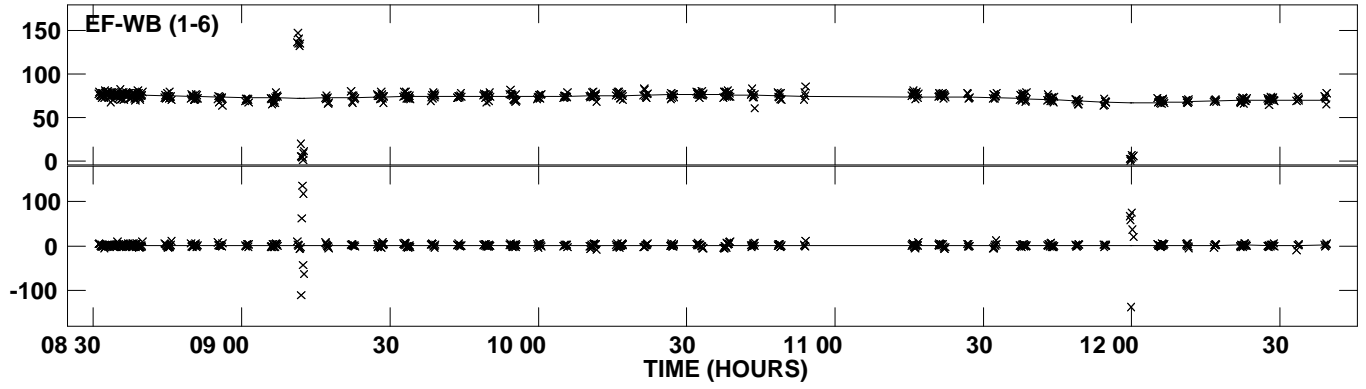
PLot file version 9 created 10-FEB-2011 13:51:40
Amplitude andPhase vs Time for J2237+4216.MULTI.1 Vect aver. CL # 3
IF 5 CHAN 1 STK LL of J2237+4216.ICL001.3



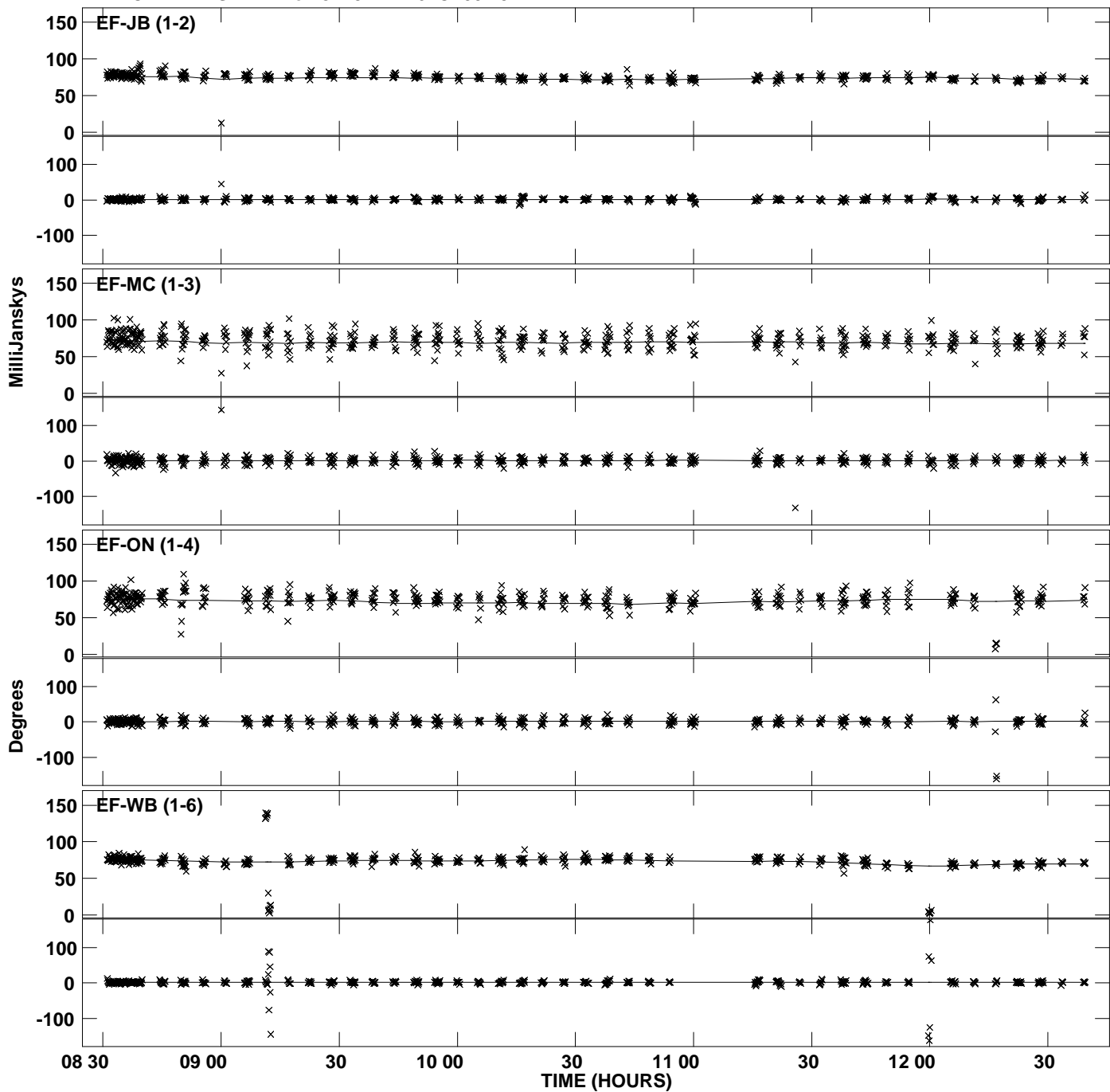
Plot file version 10 created 10-FEB-2011 13:51:40
Amplitude andPhase vs Time for J2237+4216.MULTI.1 Vect aver. CL # 3
IF 6 CHAN 1 STK LL of J2237+4216.ICL001.3



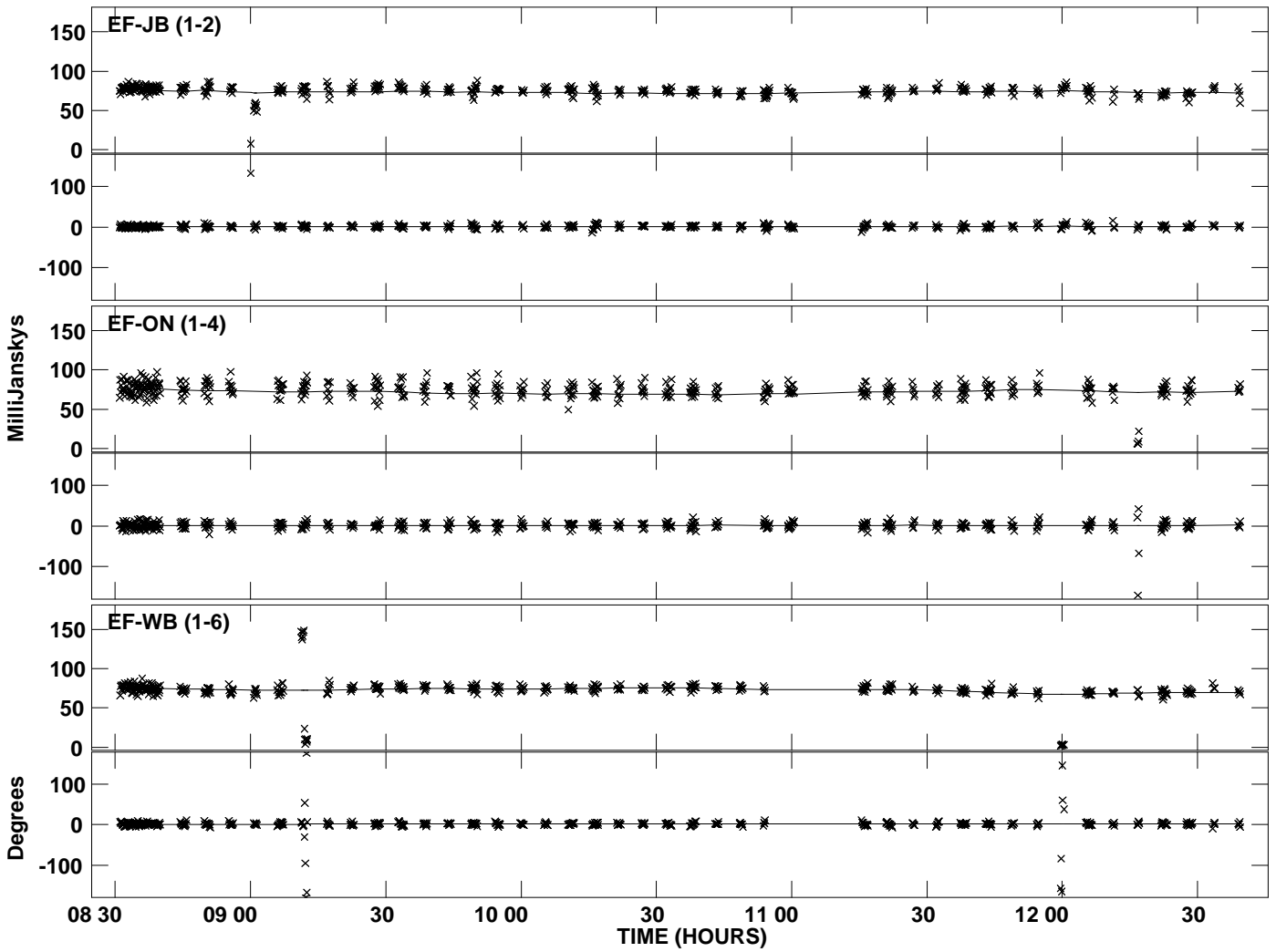
PLot file version 11 created 10-FEB-2011 13:51:40
Amplitude and Phase vs Time for J2237+4216.MULTI.1 Vect aver. CL # 3
IF 6 CHAN 1 STK LL of J2237+4216.ICL001.3



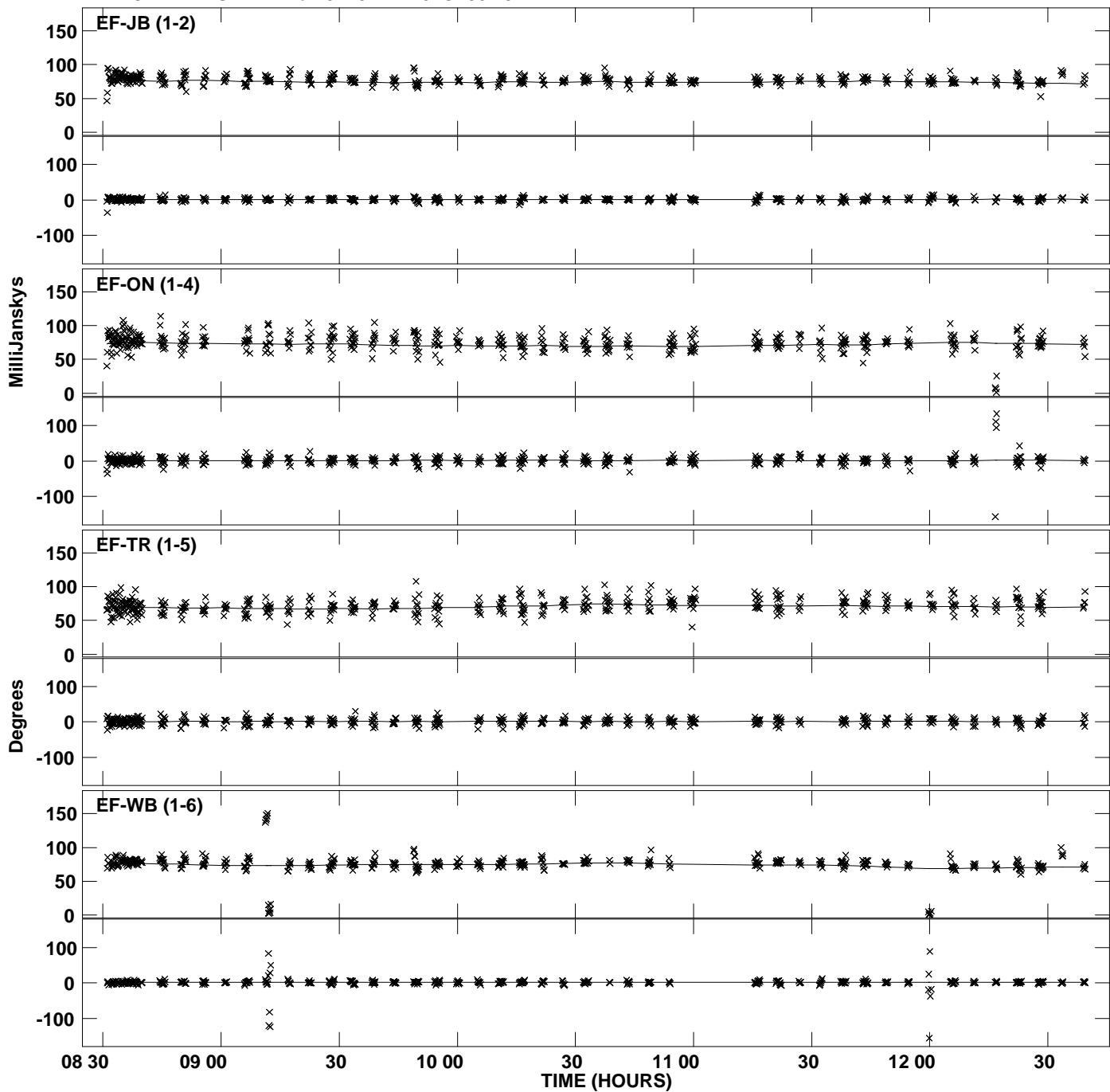
PLot file version 12 created 10-FEB-2011 13:51:41
Amplitude andPhase vs Time for J2237+4216.MULTI.1 Vect aver. CL # 3
IF 7 CHAN 1 STK LL of J2237+4216.ICL001.3



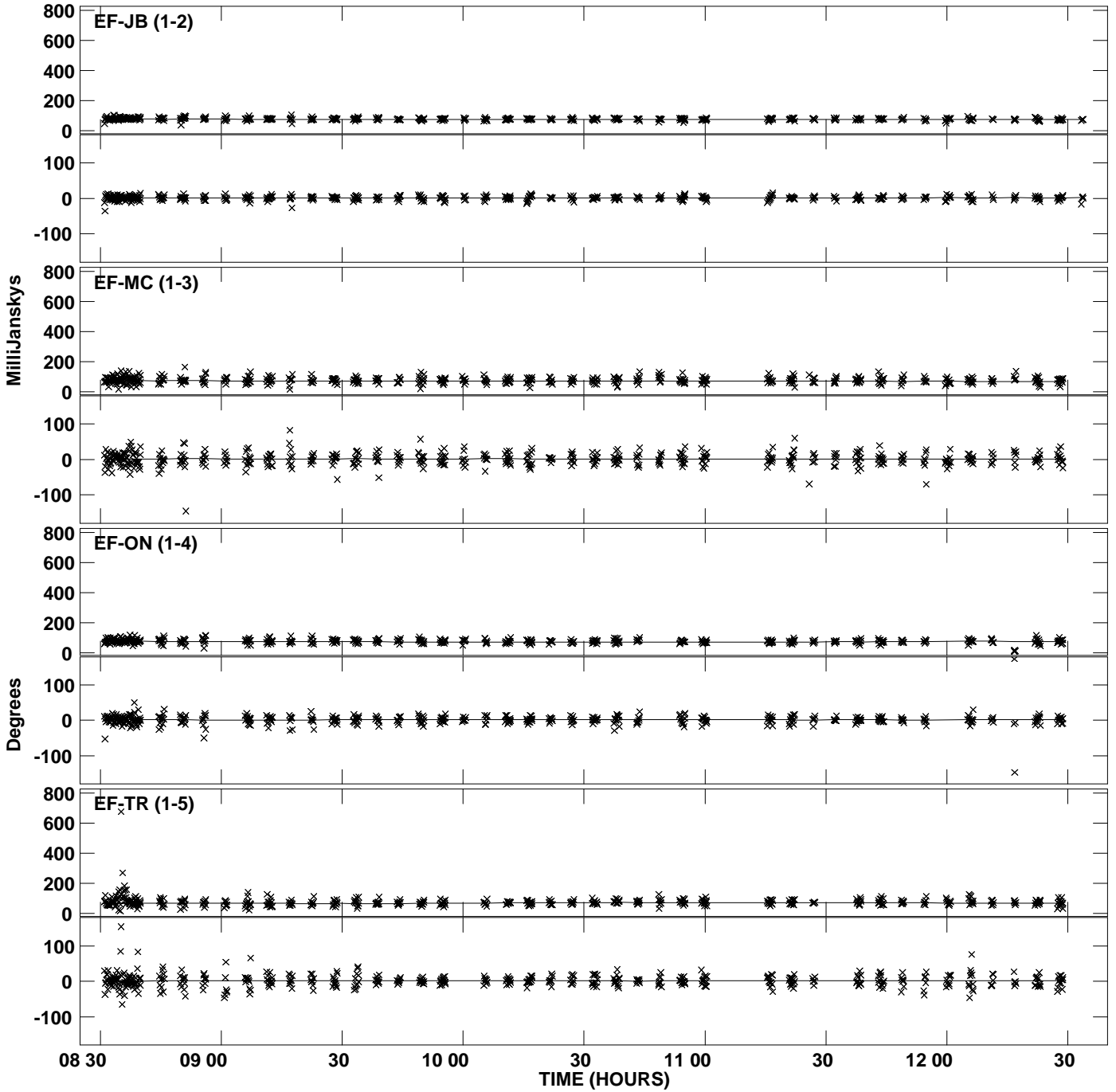
PLot file version 13 created 10-FEB-2011 13:51:41
Amplitude andPhase vs Time for J2237+4216.MULTI.1 Vect aver. CL # 3
IF 8 CHAN 1 STK LL of J2237+4216.ICL001.3



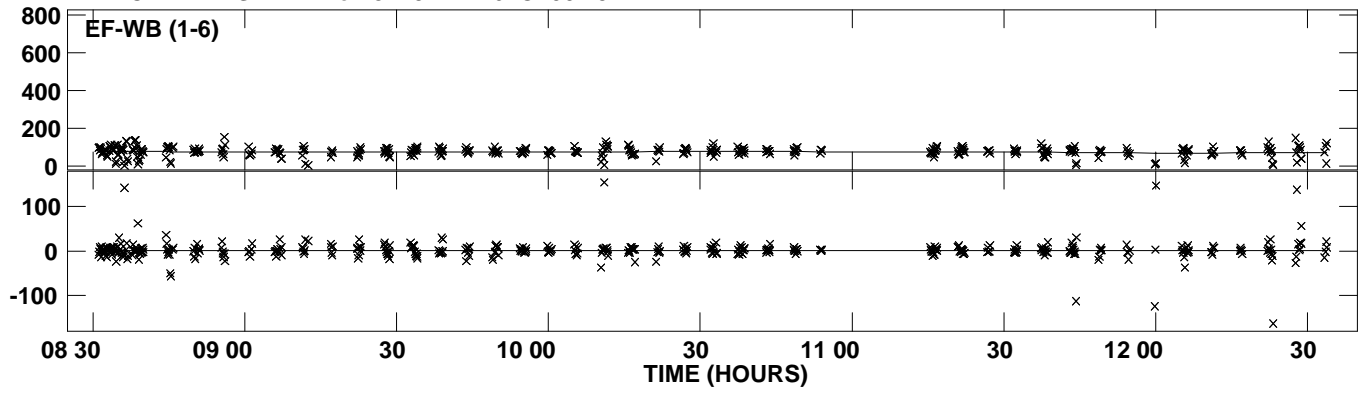
Plot file version 14 created 10-FEB-2011 13:51:41
Amplitude andPhase vs Time for J2237+4216.MULTI.1 Vect aver. CL # 3
IF 1 CHAN 1 STK RR of J2237+4216.ICL001.3



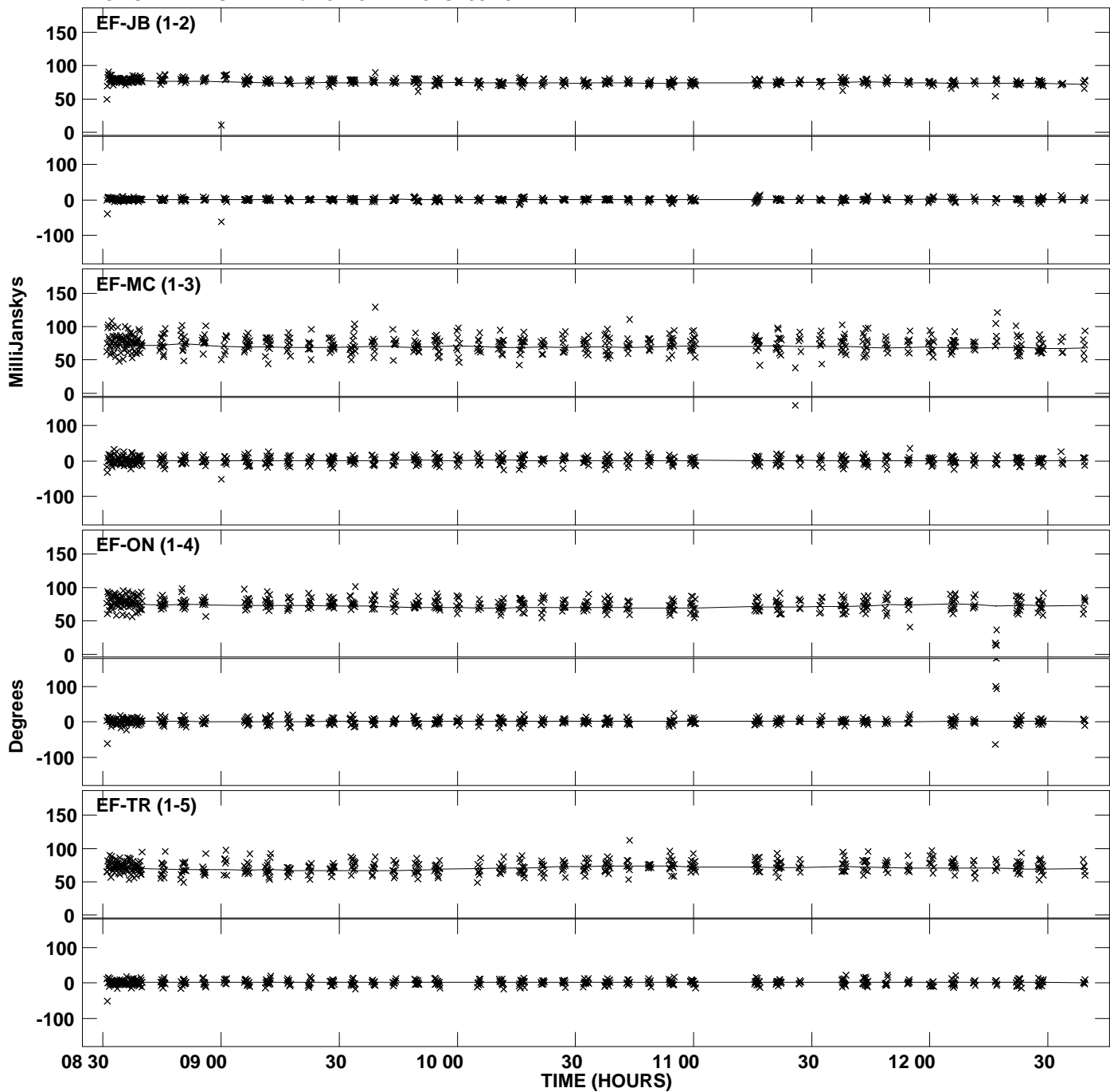
Plot file version 15 created 10-FEB-2011 13:51:42
Amplitude andPhase vs Time for J2237+4216.MULTI.1 Vect aver. CL # 3
IF 2 CHAN 1 STK RR of J2237+4216.ICL001.3



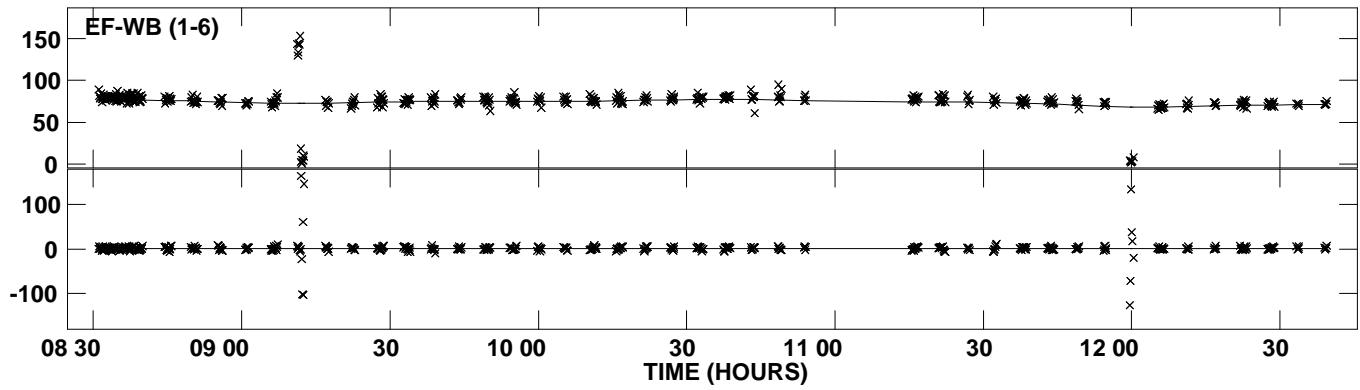
Plot file version 16 created 10-FEB-2011 13:51:42
Amplitude andPhase vs Time for J2237+4216.MULTI.1 Vect aver. CL # 3
IF 2 CHAN 1 STK RR of J2237+4216.ICL001.3



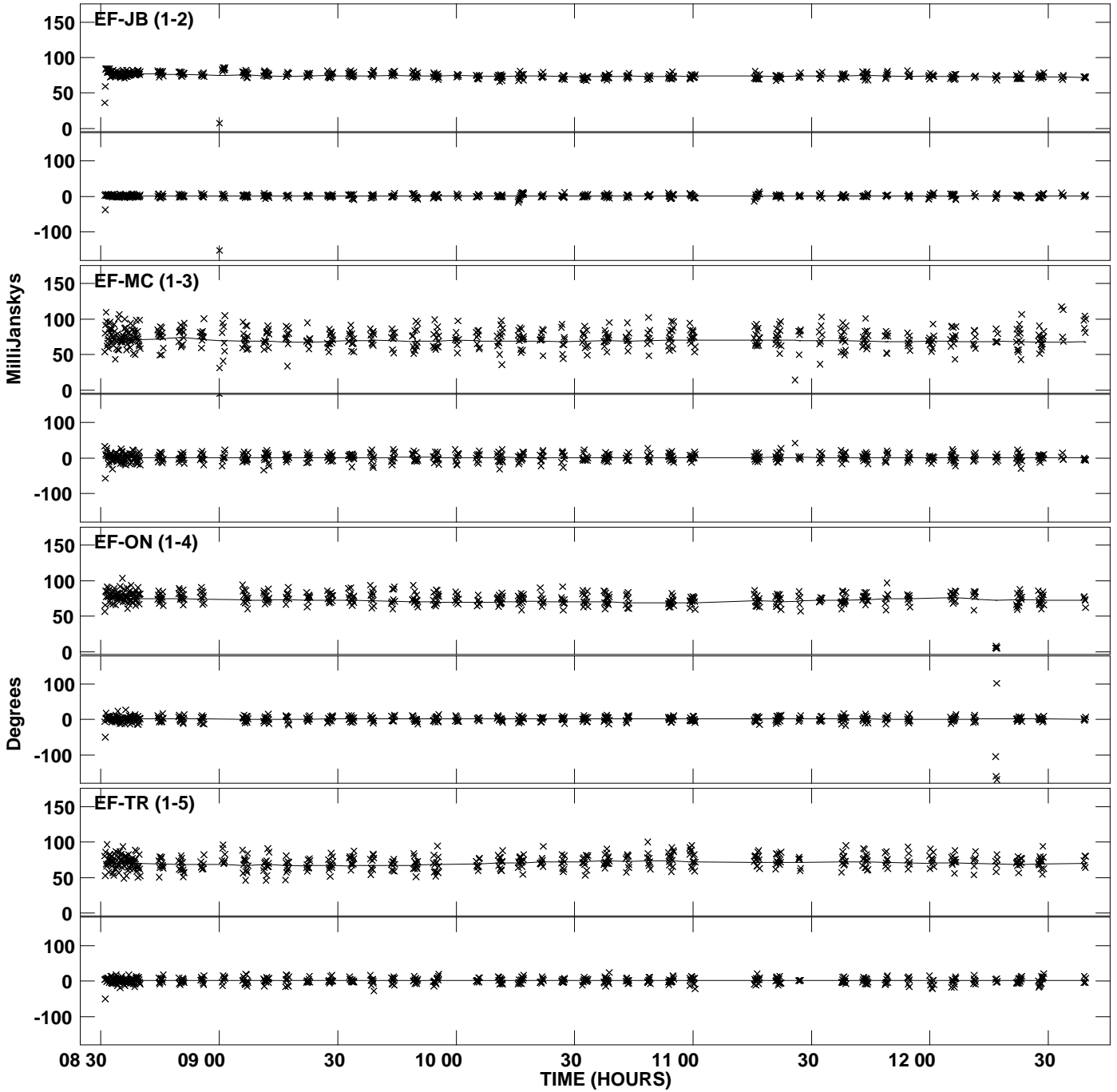
PLot file version 17 created 10-FEB-2011 13:51:43
Amplitude andPhase vs Time for J2237+4216.MULTI.1 Vect aver. CL # 3
IF 3 CHAN 1 STK RR of J2237+4216.ICL001.3



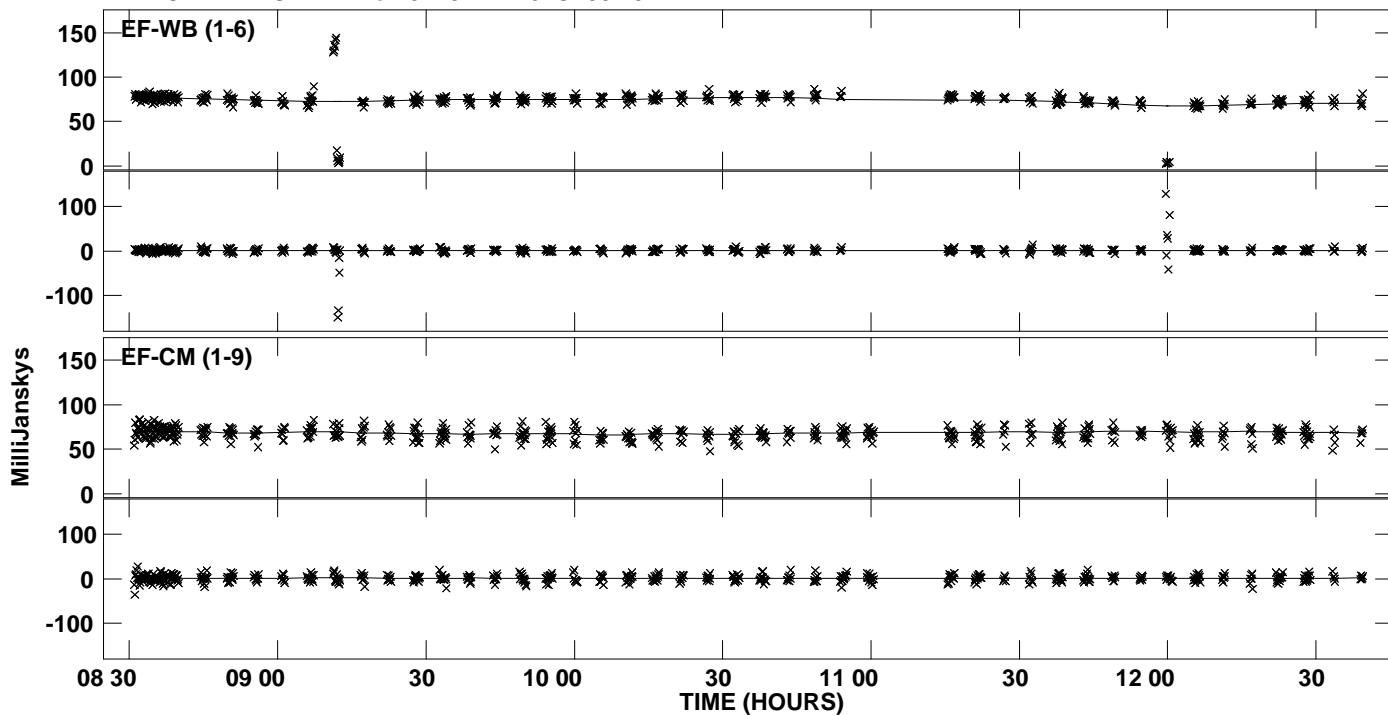
PLot file version 18 created 10-FEB-2011 13:51:43
Amplitude andPhase vs Time for J2237+4216.MULTI.1 Vect aver. CL # 3
IF 3 CHAN 1 STK RR of J2237+4216.ICL001.3



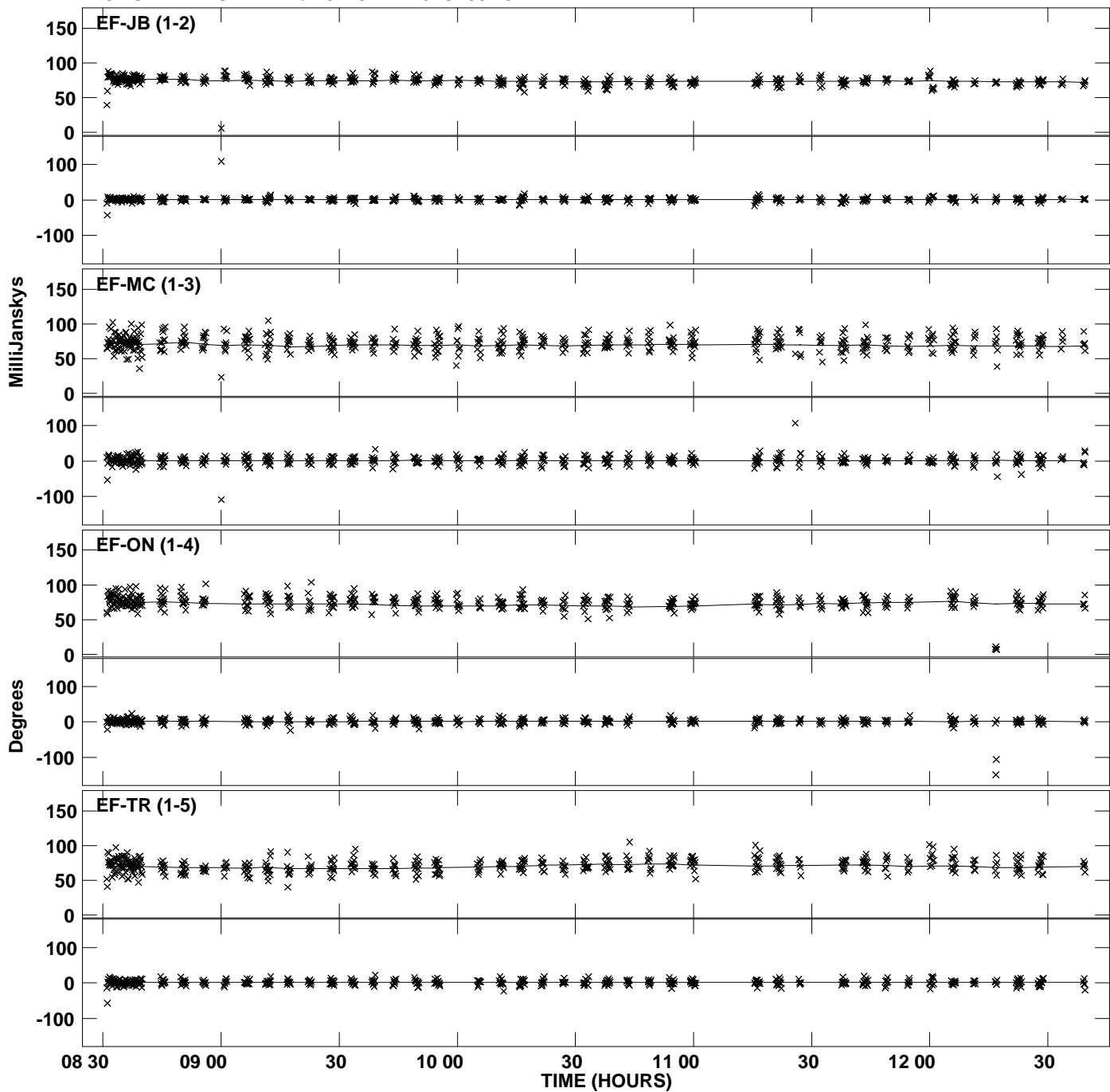
PLot file version 19 created 10-FEB-2011 13:51:43
Amplitude andPhase vs Time for J2237+4216.MULTI.1 Vect aver. CL # 3
IF 4 CHAN 1 STK RR of J2237+4216.ICL001.3



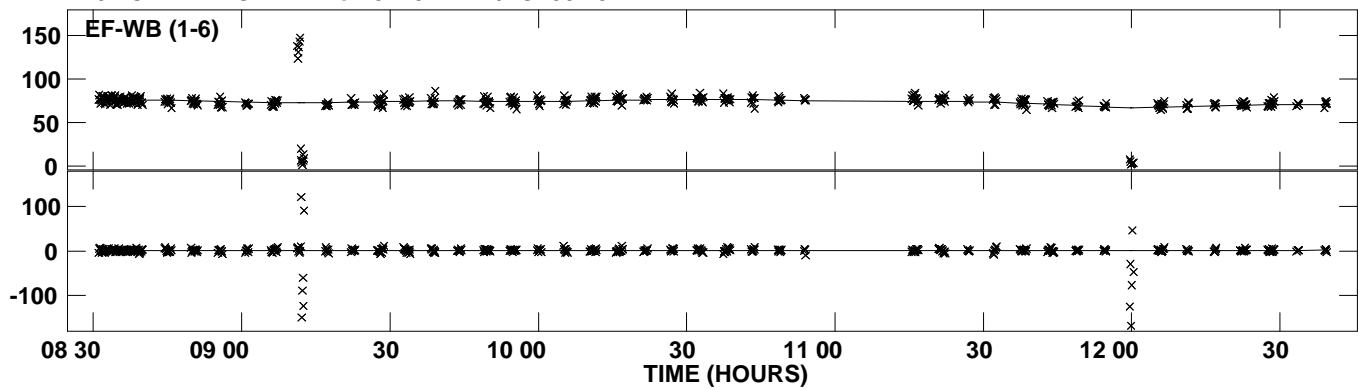
Plot file version 20 created 10-FEB-2011 13:51:43
Amplitude andPhase vs Time for J2237+4216.MULTI.1 Vect aver. CL # 3
IF 4 CHAN 1 STK RR of J2237+4216.ICL001.3



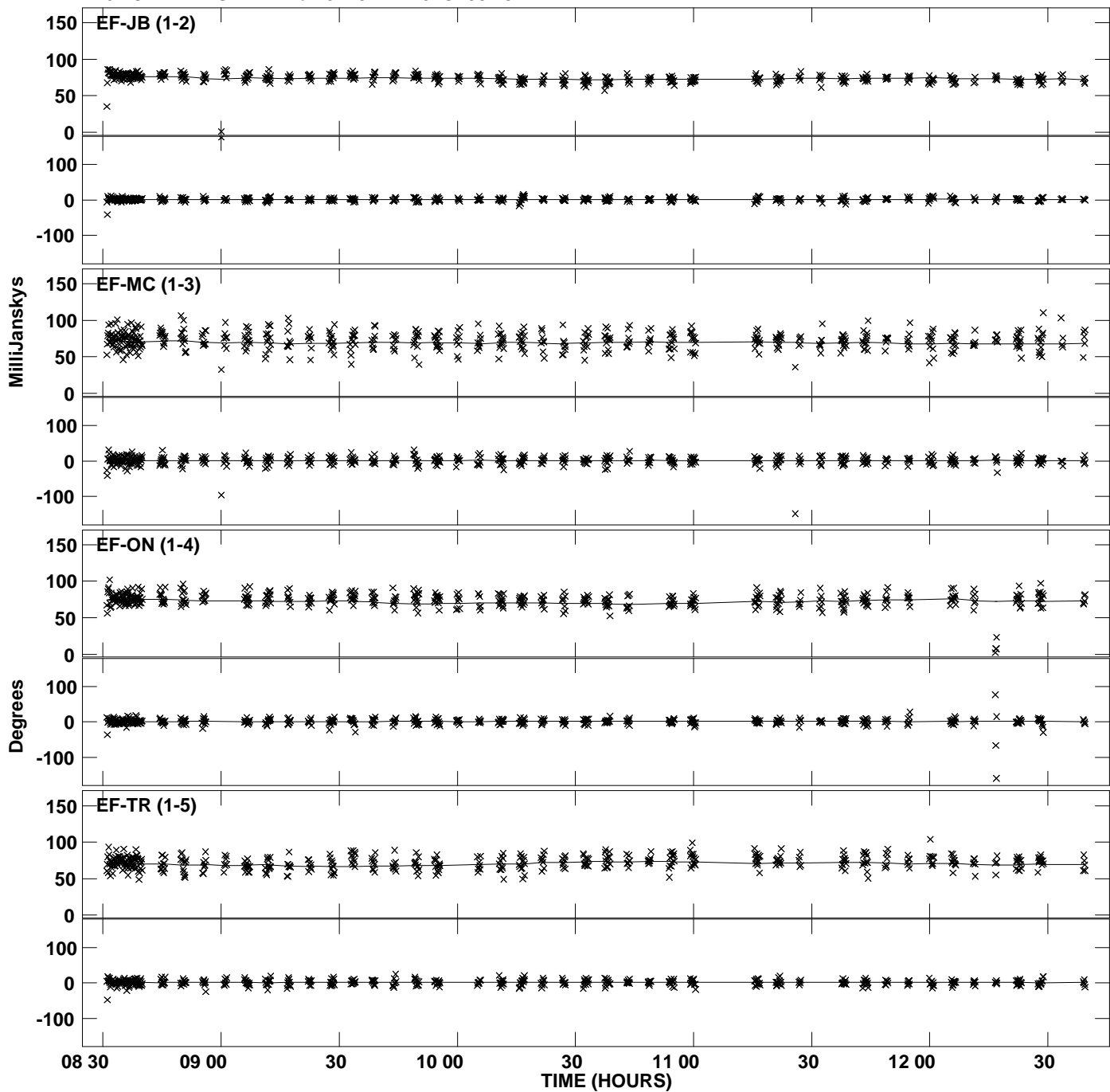
PLot file version 21 created 10-FEB-2011 13:51:44
Amplitude andPhase vs Time for J2237+4216.MULTI.1 Vect aver. CL # 3
IF 5 CHAN 1 STK RR of J2237+4216.ICL001.3



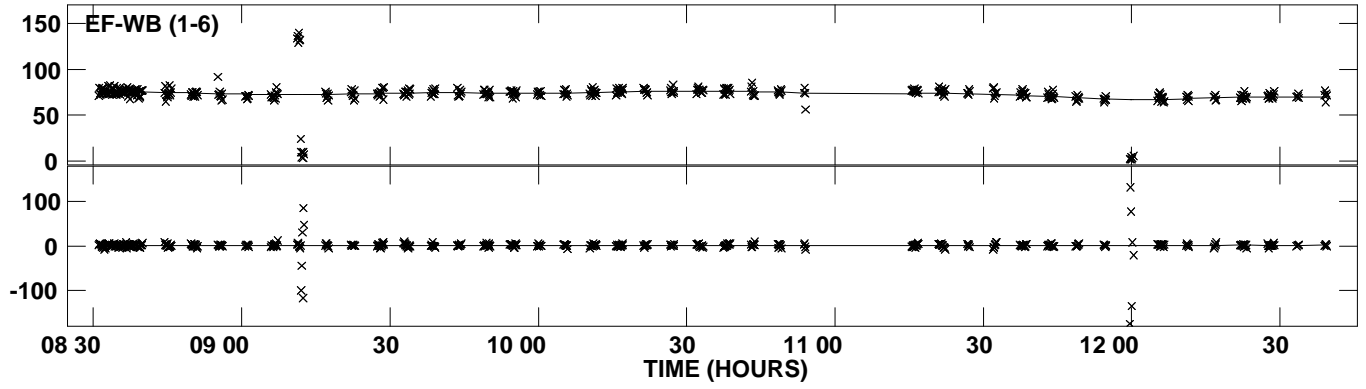
PLot file version 22 created 10-FEB-2011 13:51:44
Amplitude and Phase vs Time for J2237+4216.MULTI.1 Vect aver. CL # 3
IF 5 CHAN 1 STK RR of J2237+4216.ICL001.3



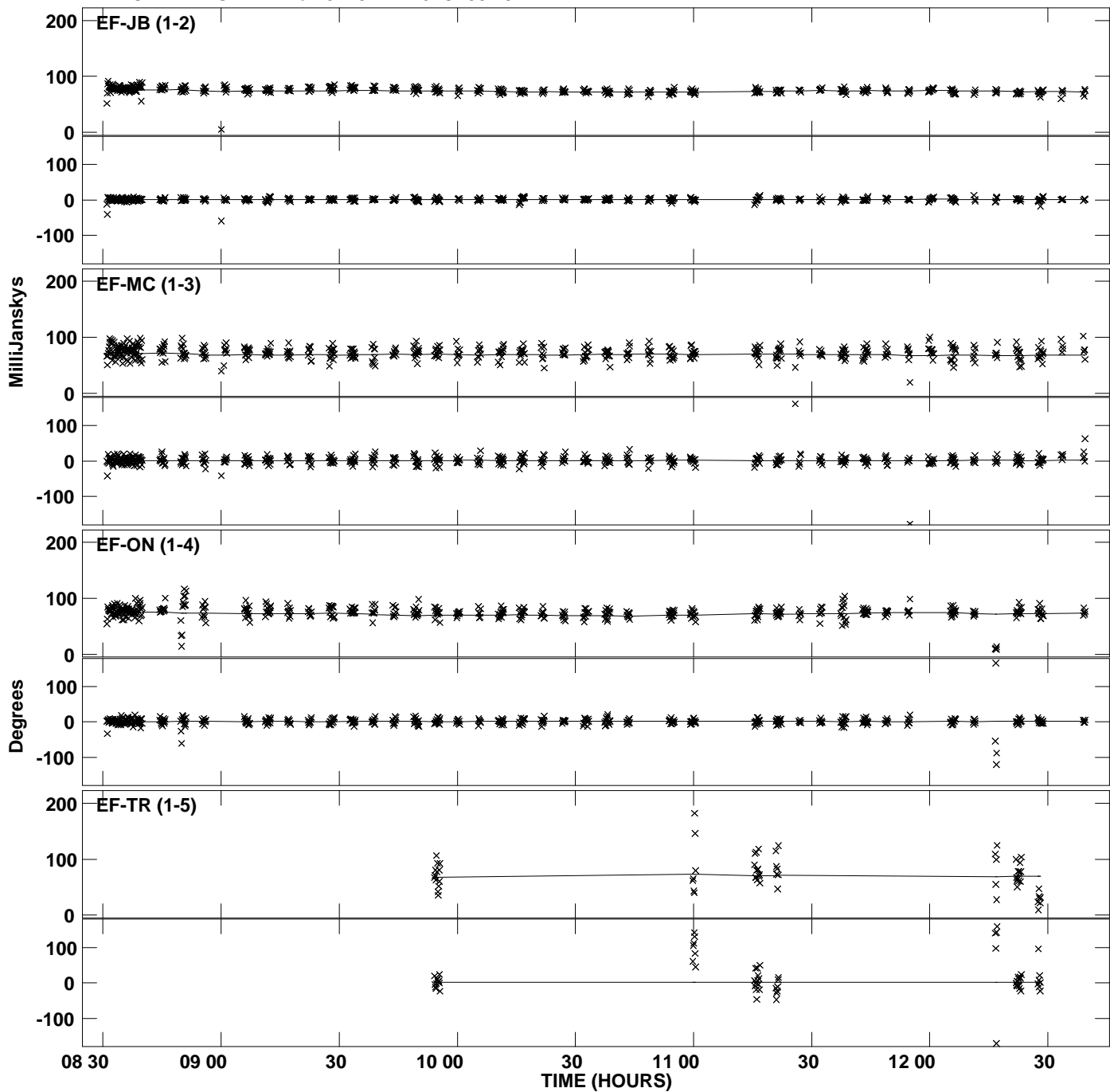
Plot file version 23 created 10-FEB-2011 13:51:44
Amplitude andPhase vs Time for J2237+4216.MULTI.1 Vect aver. CL # 3
IF 6 CHAN 1 STK RR of J2237+4216.ICL001.3



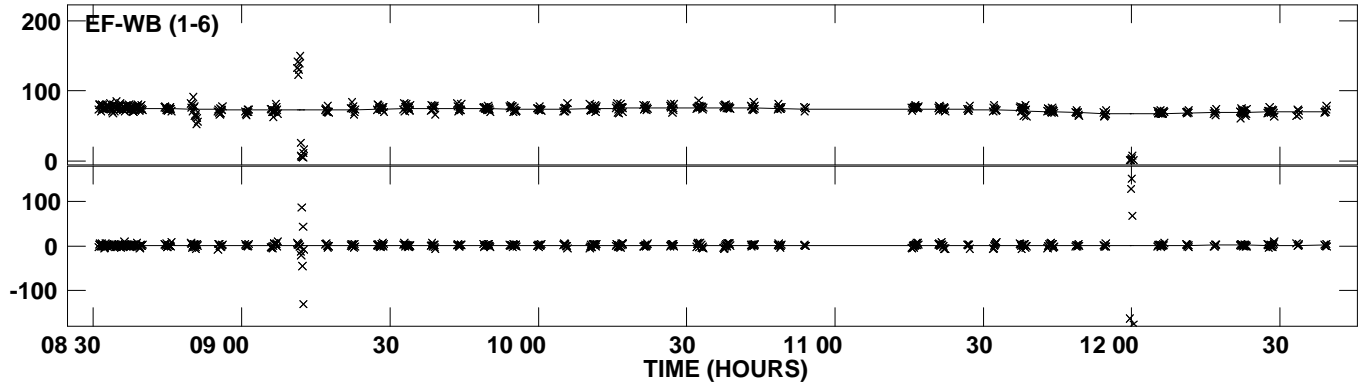
PLot file version 24 created 10-FEB-2011 13:51:44
Amplitude and Phase vs Time for J2237+4216.MULTI.1 Vect aver. CL # 3
IF 6 CHAN 1 STK RR of J2237+4216.ICL001.3



PLot file version 25 created 10-FEB-2011 13:51:44
Amplitude andPhase vs Time for J2237+4216.MULTI.1 Vect aver. CL # 3
IF 7 CHAN 1 STK RR of J2237+4216.ICL001.3



PLot file version 26 created 10-FEB-2011 13:51:44
Amplitude andPhase vs Time for J2237+4216.MULTI.1 Vect aver. CL # 3
IF 7 CHAN 1 STK RR of J2237+4216.ICL001.3



PLot file version 27 created 10-FEB-2011 13:51:45
Amplitude andPhase vs Time for J2237+4216.MULTI.1 Vect aver. CL # 3
IF 8 CHAN 1 STK RR of J2237+4216.ICL001.3

