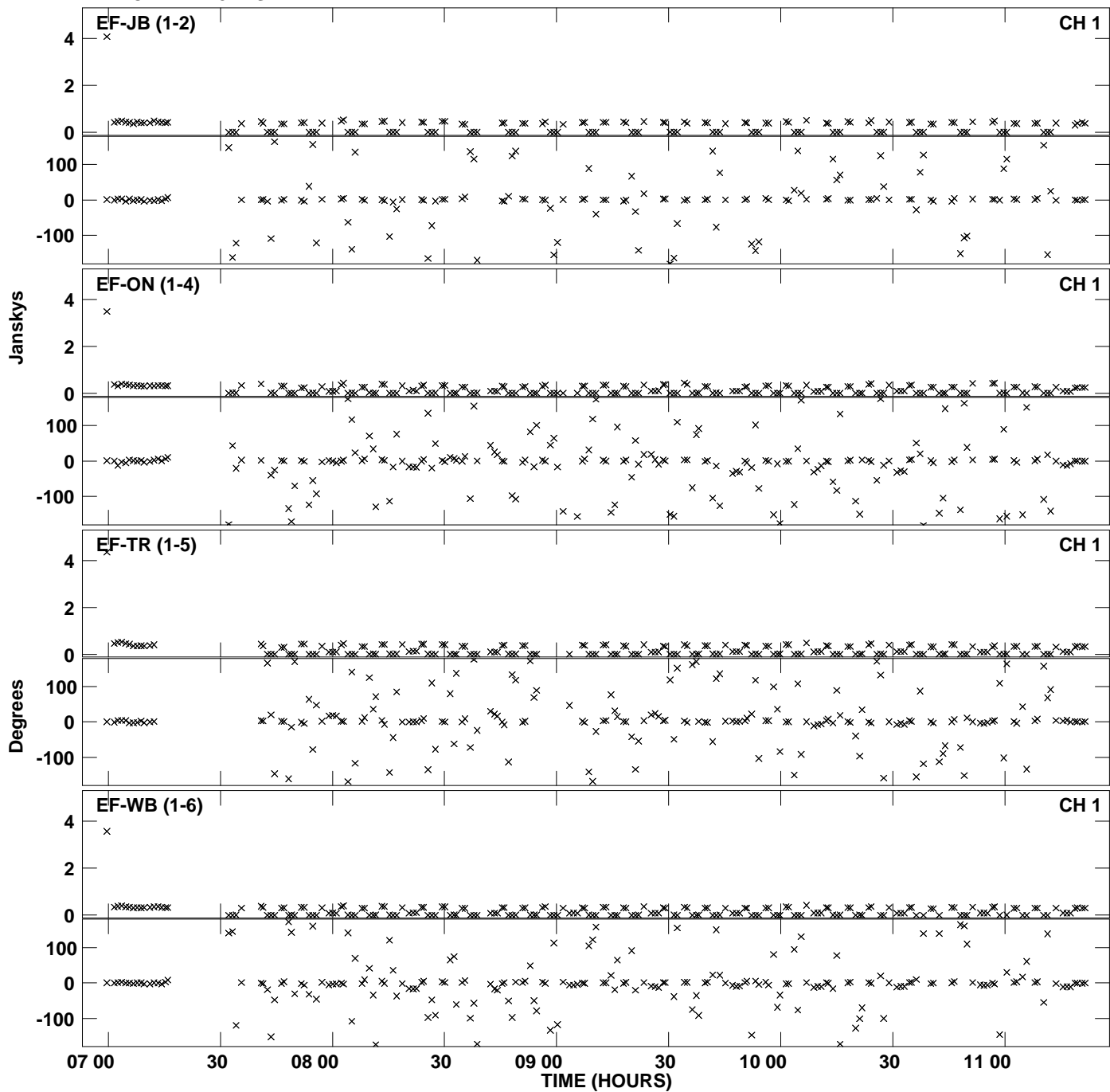
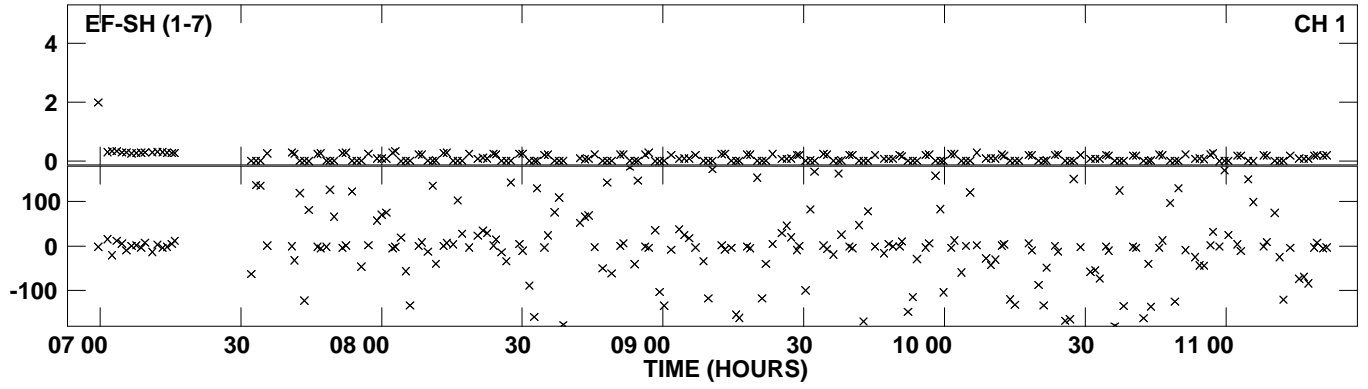


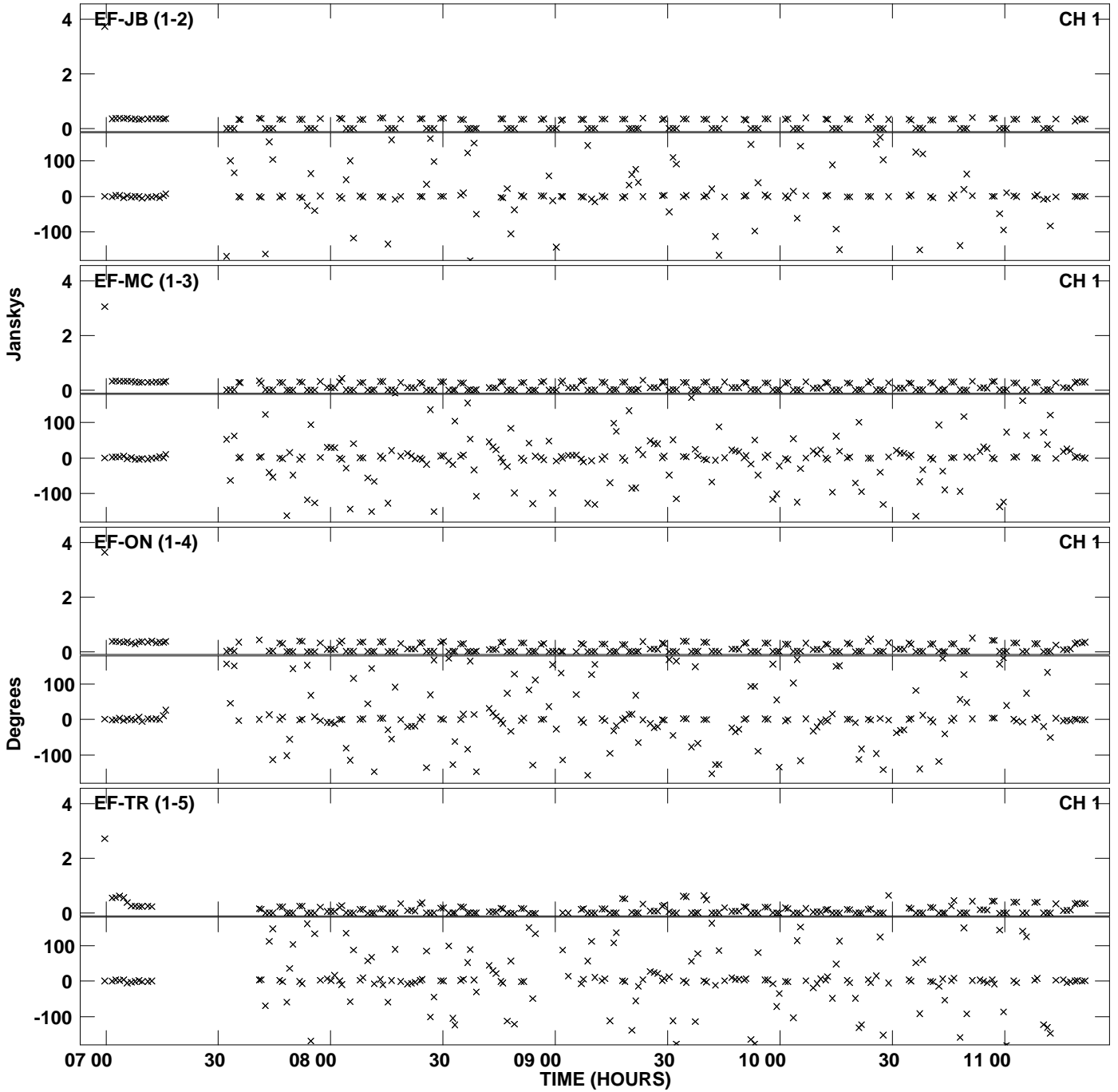
Plot file version 1 created 16-FEB-2011 19:36:29
Amplitude andPhase vs Time for EM090B.UVDATA.1 Vect aver. CL # 3
IF 1 CHAN 1 - 32 STK LL



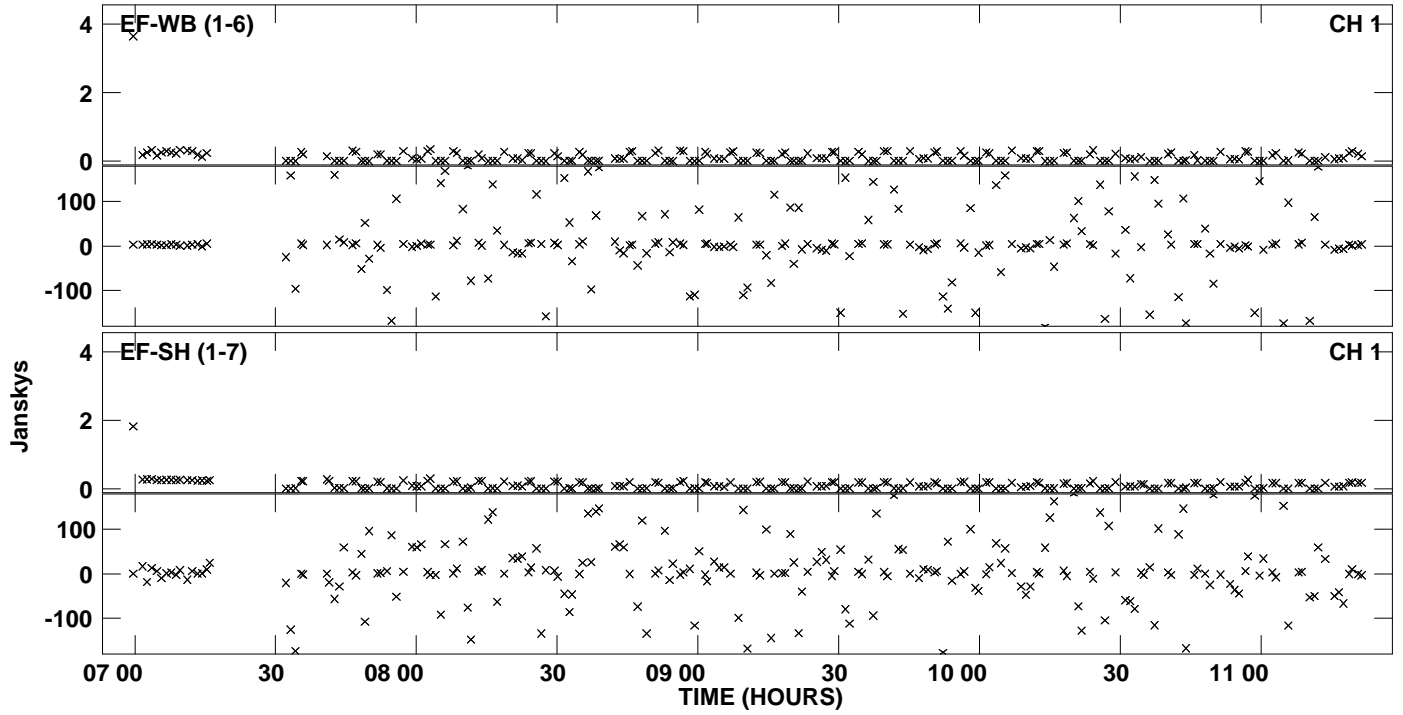
PLot file version 2 created 16-FEB-2011 19:36:29
Amplitude andPhase vs Time for EM090B.UVDATA.1 Vect aver. CL # 3
IF 1 CHAN 1 - 32 STK LL



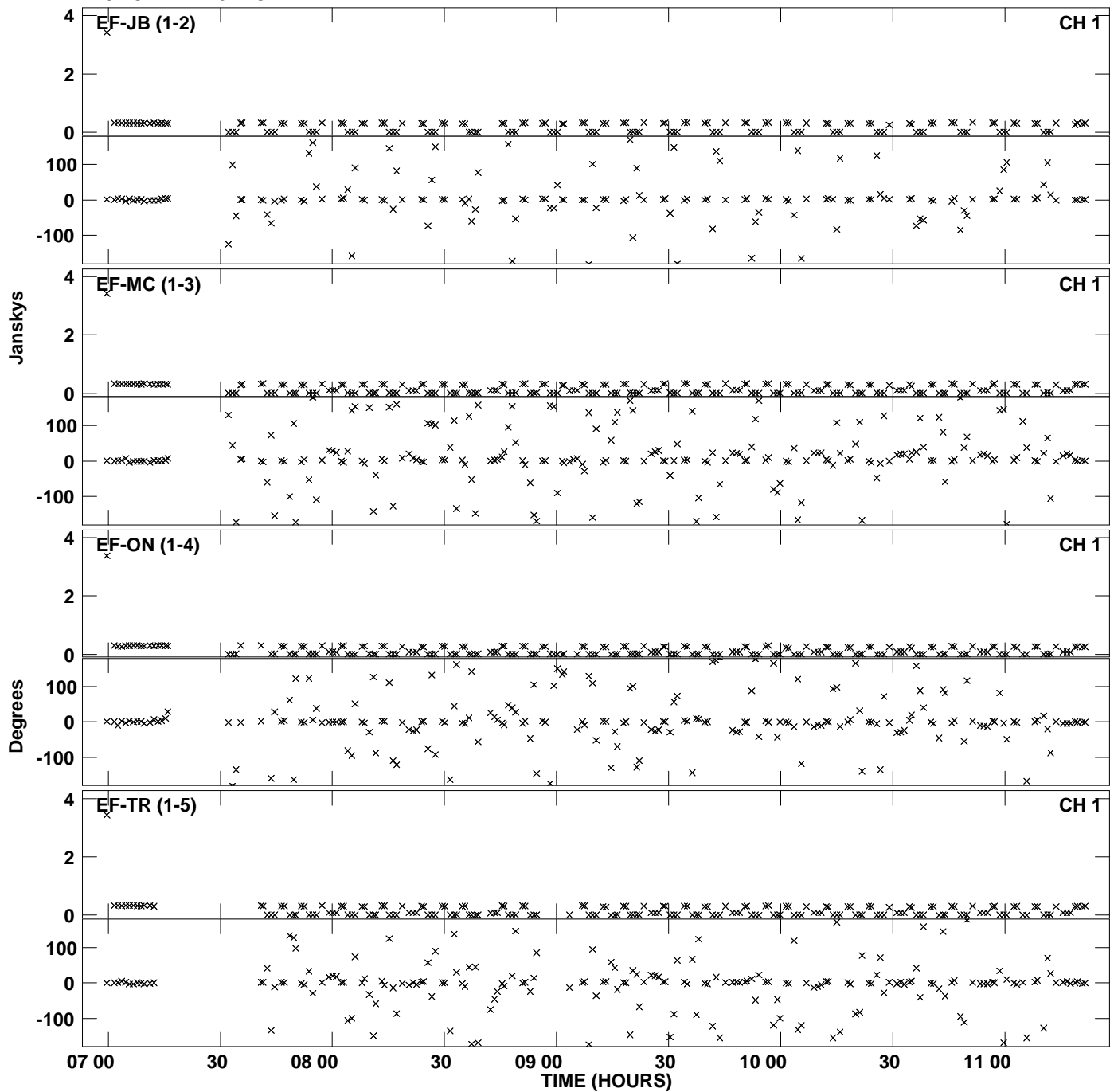
Plot file version 3 created 16-FEB-2011 19:36:35
Amplitude andPhase vs Time for EM090B.UVDATA.1 Vect aver. CL # 3
IF 2 CHAN 1 - 32 STK LL



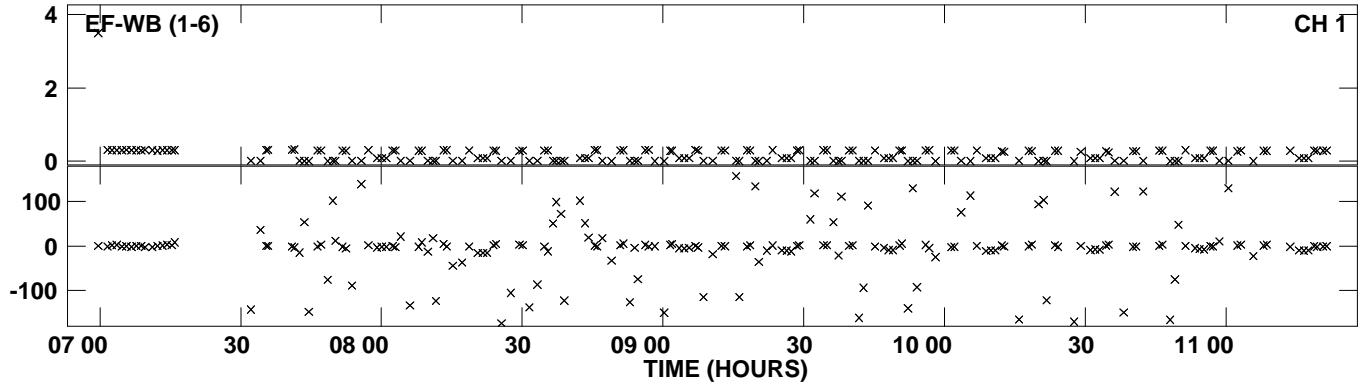
Plot file version 4 created 16-FEB-2011 19:36:35
Amplitude andPhase vs Time for EM090B.UVDATA.1 Vect aver. CL # 3
IF 2 CHAN 1 - 32 STK LL



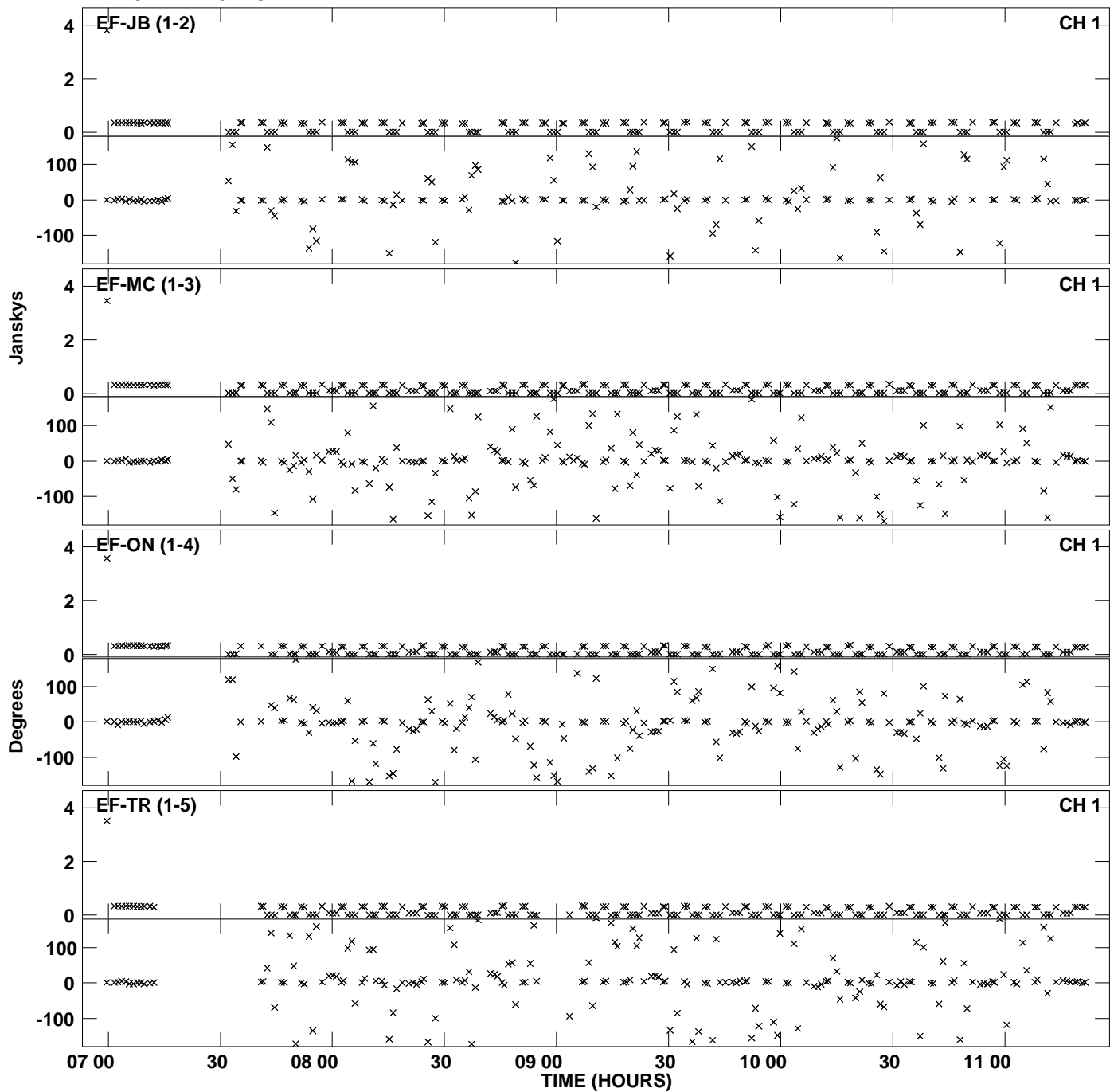
Plot file version 5 created 16-FEB-2011 19:36:40
Amplitude andPhase vs Time for EM090B.UVDATA.1 Vect aver. CL # 3
IF 3 CHAN 1 - 32 STK LL



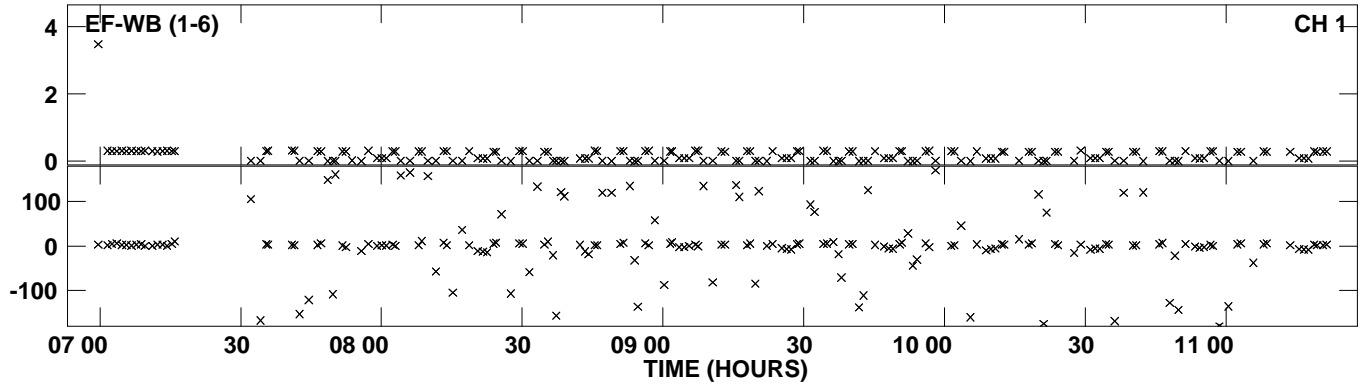
Plot file version 6 created 16-FEB-2011 19:36:40
Amplitude and Phase vs Time for EM090B.UVDATA.1 Vect aver. CL # 3
IF 3 CHAN 1 - 32 STK LL



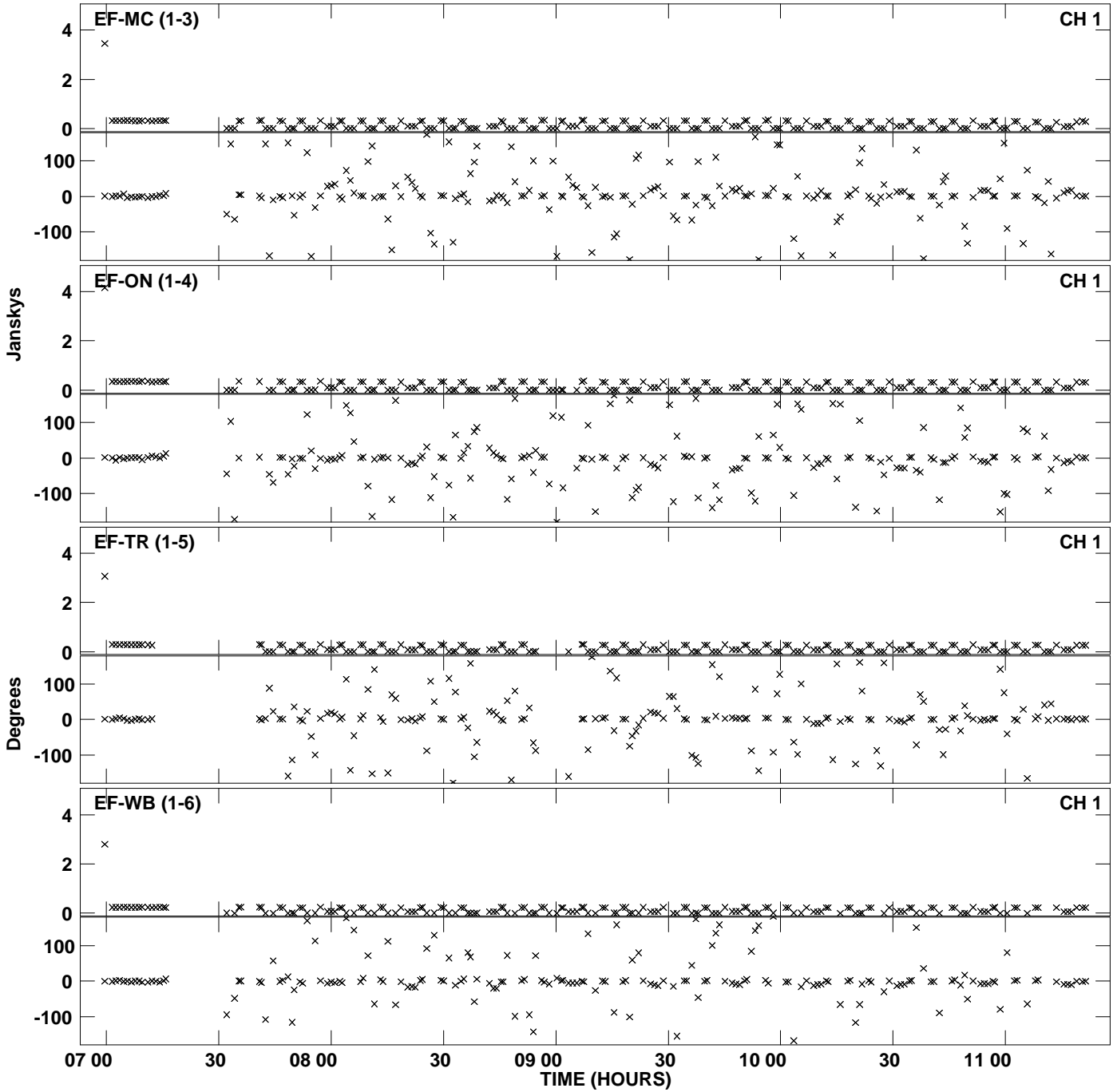
Plot file version 7 created 16-FEB-2011 19:36:44
Amplitude andPhase vs Time for EM090B.UVDATA.1 Vect aver. CL # 3
IF 4 CHAN 1 - 32 STK LL



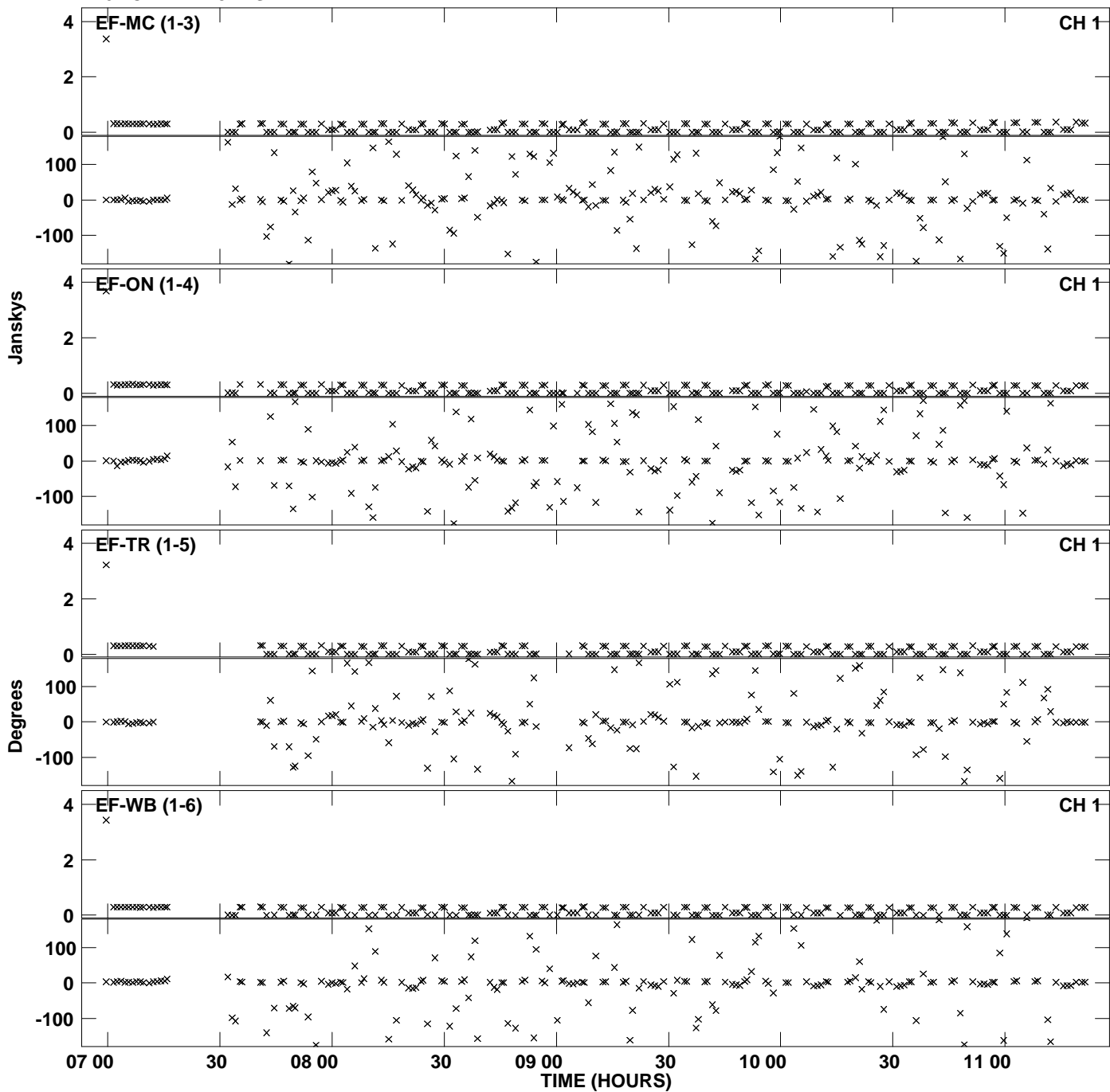
Plot file version 8 created 16-FEB-2011 19:36:44
Amplitude and Phase vs Time for EM090B.UVDATA.1 Vect aver. CL # 3
IF 4 CHAN 1 - 32 STK LL



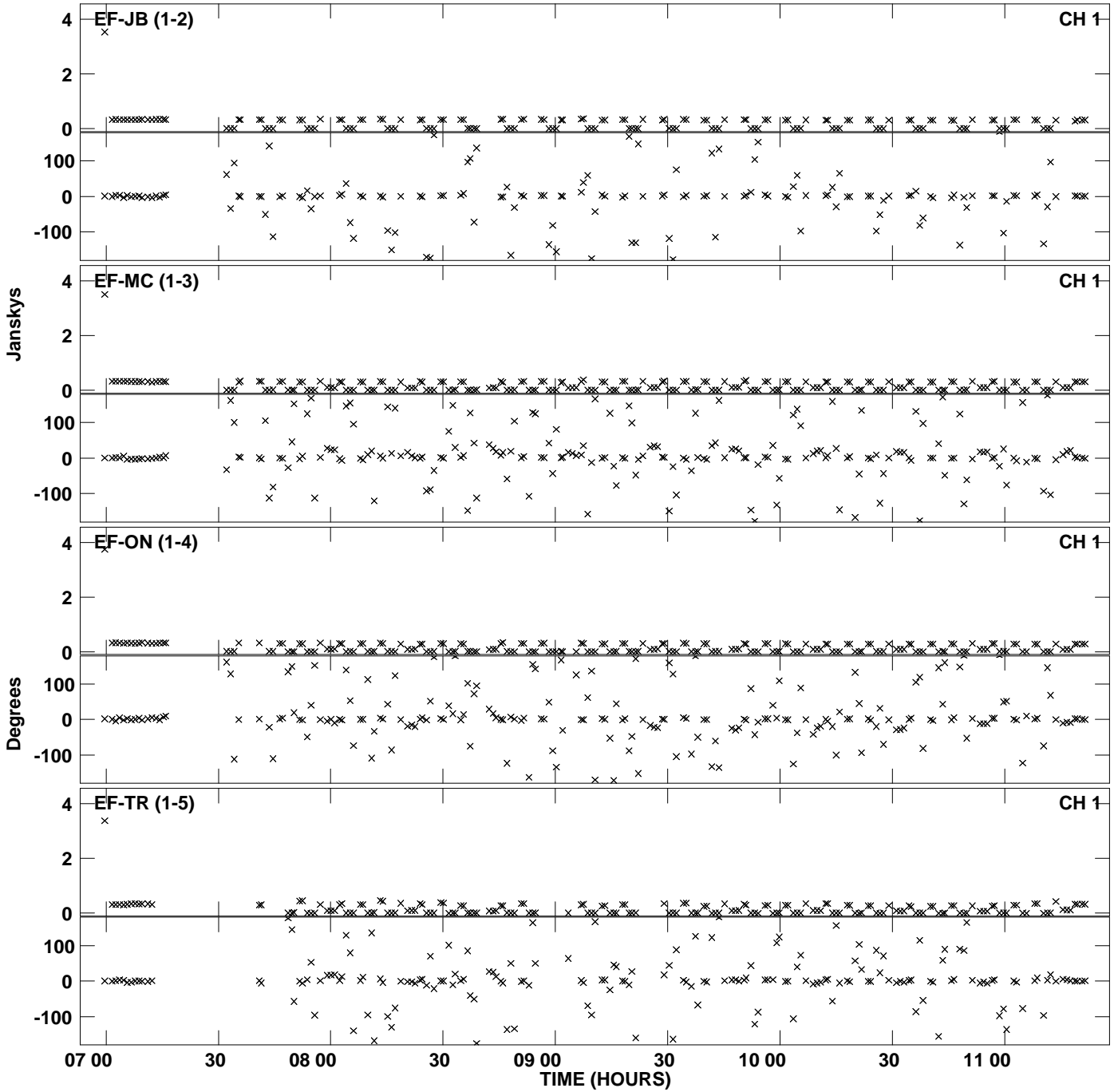
Plot file version 9 created 16-FEB-2011 19:36:49
Amplitude andPhase vs Time for EM090B.UVDATA.1 Vect aver. CL # 3
IF 5 CHAN 1 - 32 STK LL



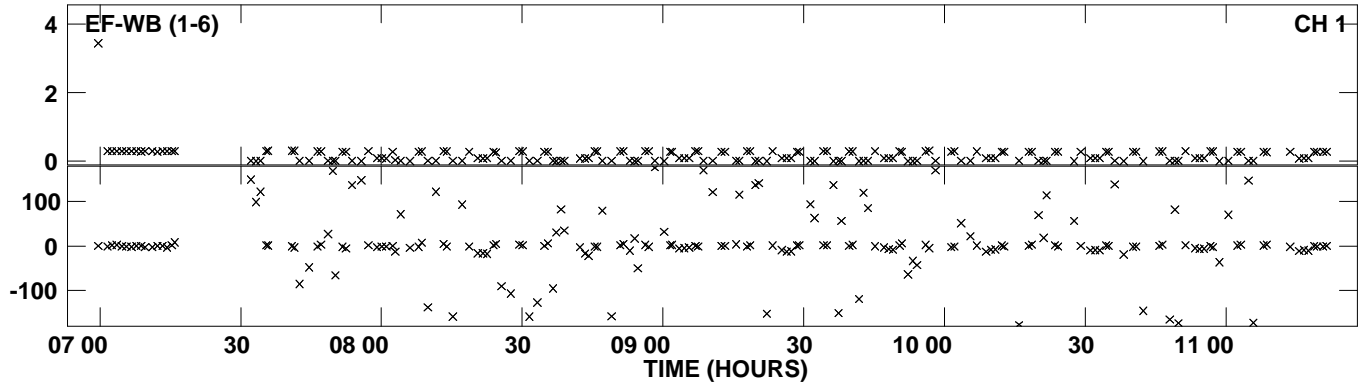
Plot file version 10 created 16-FEB-2011 19:36:53
Amplitude andPhase vs Time for EM090B.UVDATA.1 Vect aver. CL # 3
IF 6 CHAN 1 - 32 STK LL



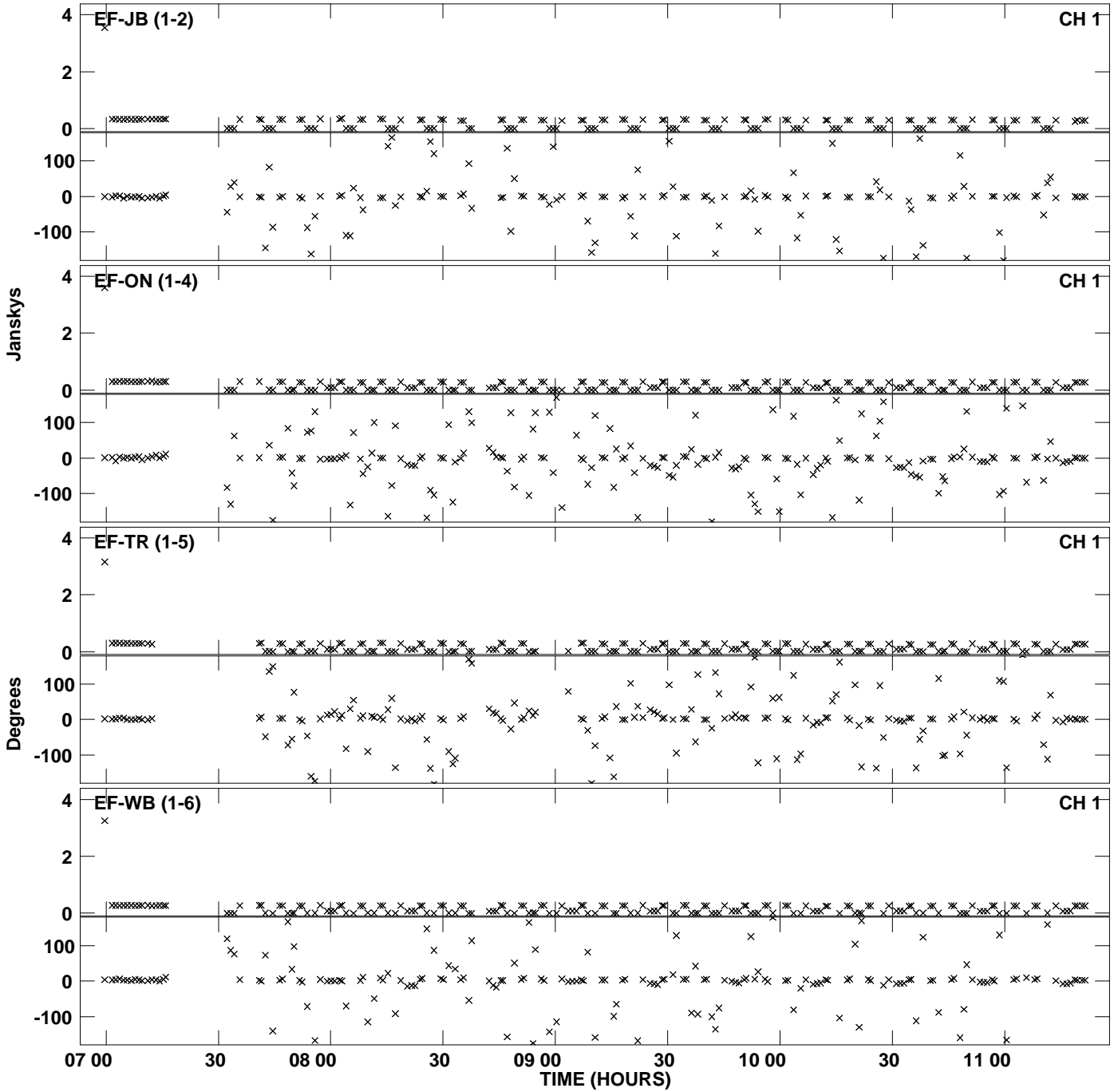
Plot file version 11 created 16-FEB-2011 19:36:58
Amplitude andPhase vs Time for EM090B.UVDATA.1 Vect aver. CL # 3
IF 7 CHAN 1 - 32 STK LL



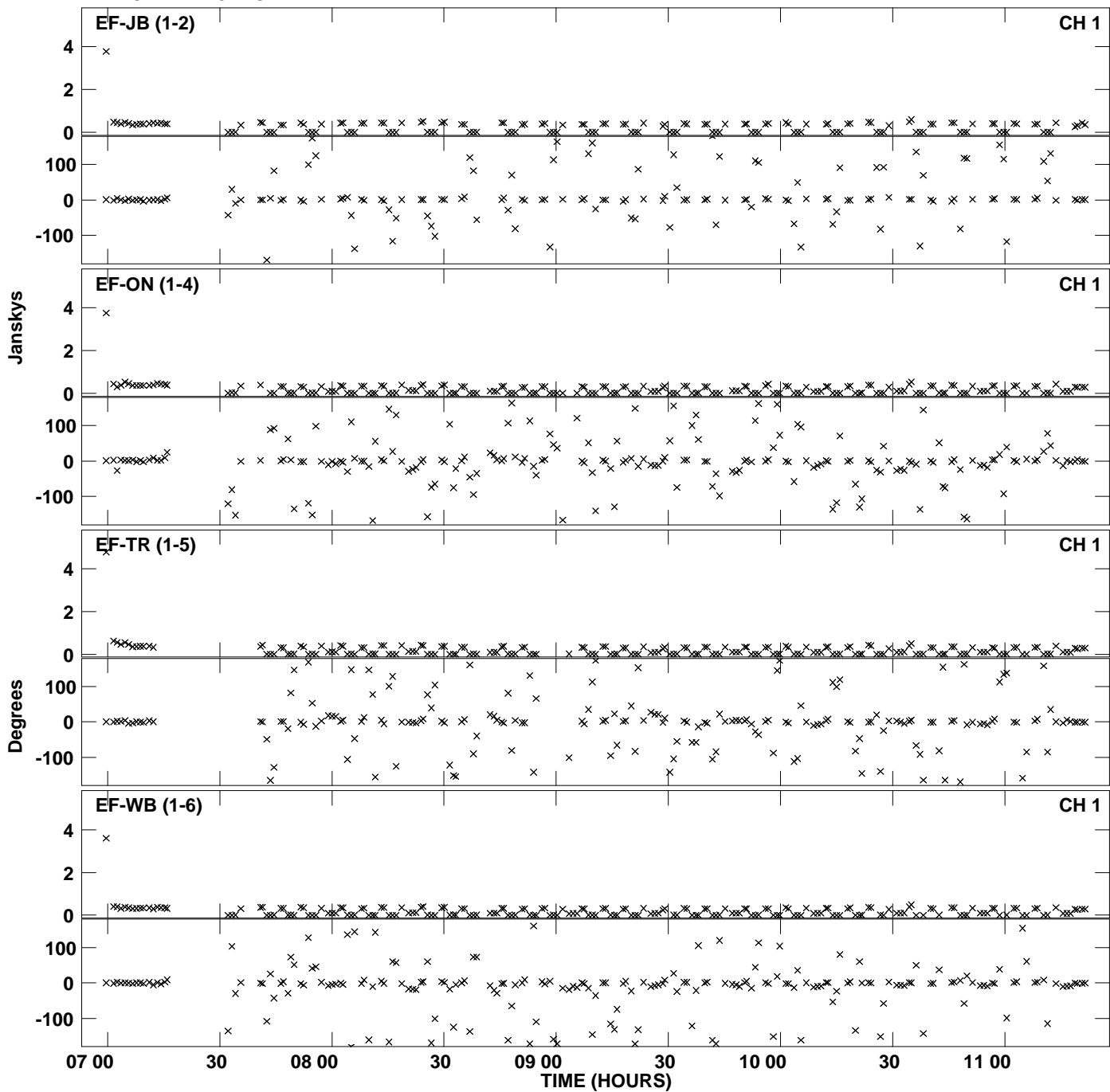
Plot file version 12 created 16-FEB-2011 19:36:58
Amplitude and Phase vs Time for EM090B.UVDATA.1 Vect aver. CL # 3
IF 7 CHAN 1 - 32 STK LL



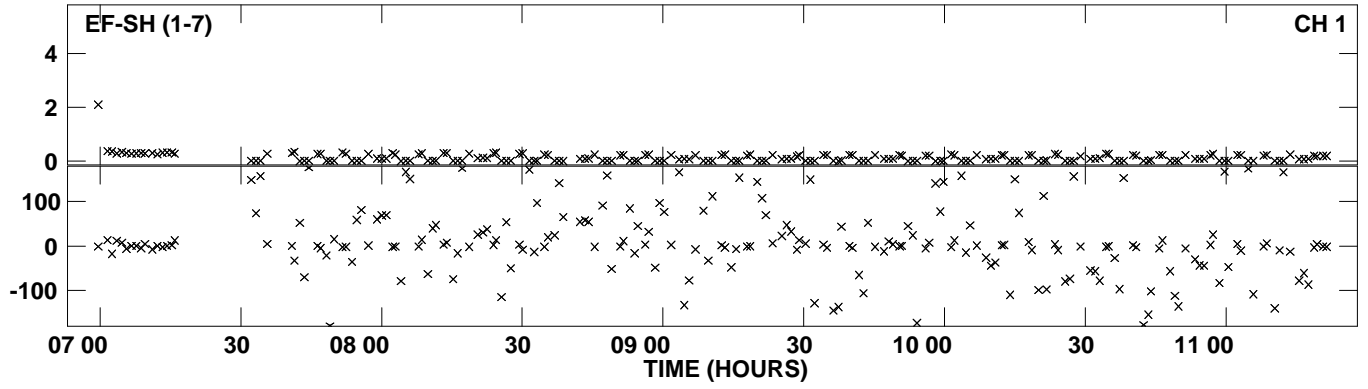
Plot file version 13 created 16-FEB-2011 19:37:02
Amplitude andPhase vs Time for EM090B.UVDATA.1 Vect aver. CL # 3
IF 8 CHAN 1 - 32 STK LL



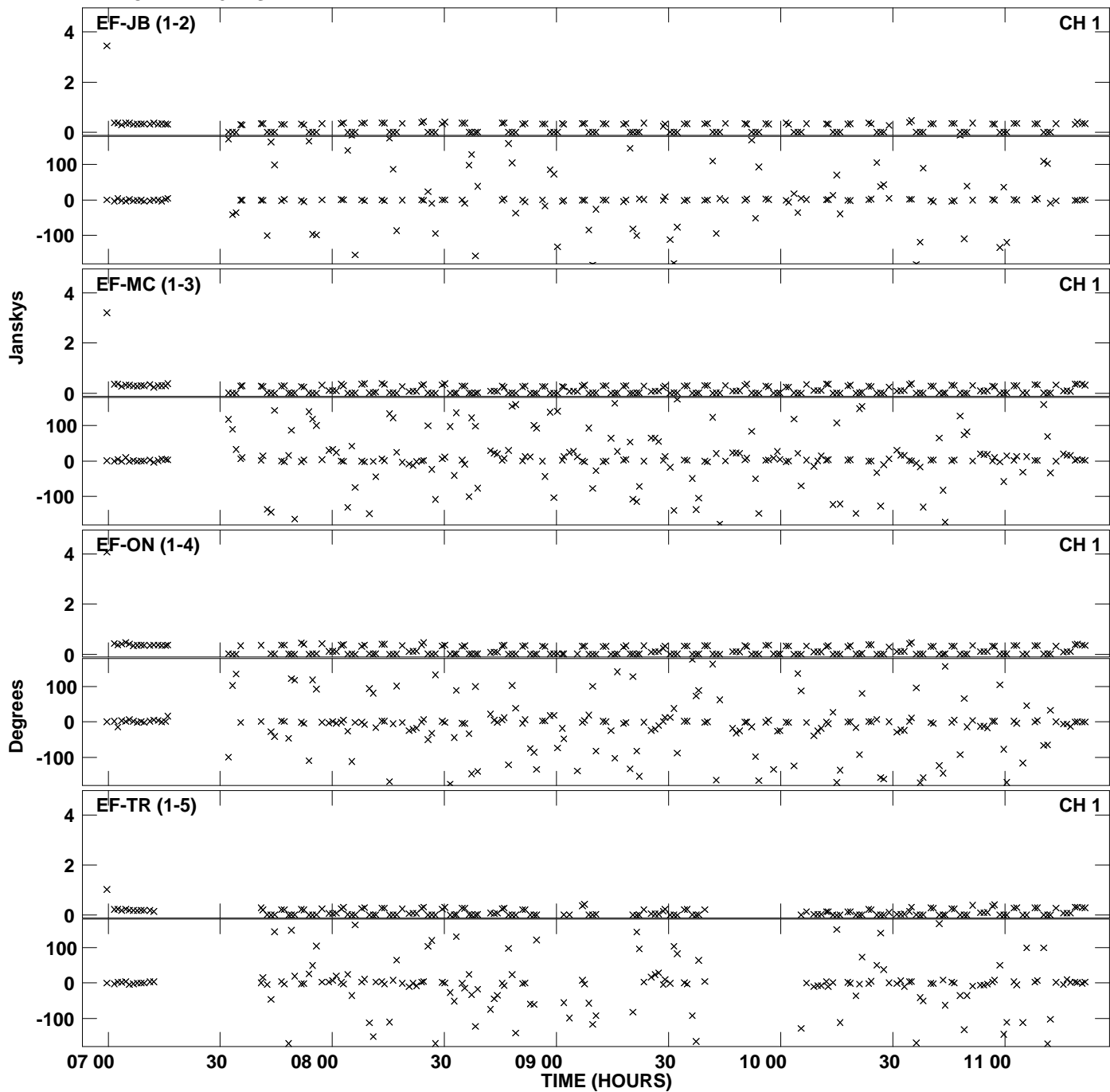
Plot file version 14 created 16-FEB-2011 19:37:07
Amplitude andPhase vs Time for EM090B.UVDATA.1 Vect aver. CL # 3
IF 1 CHAN 1 - 32 STK RR



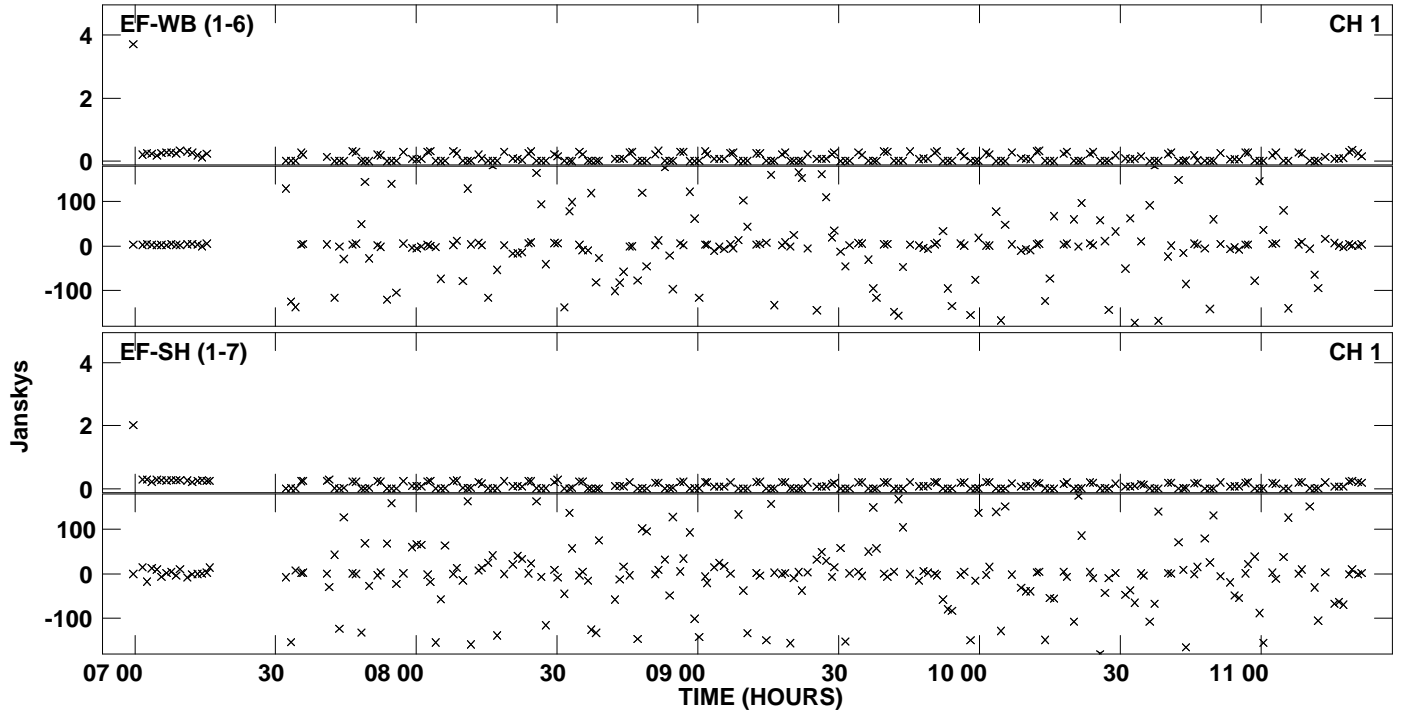
Plot file version 15 created 16-FEB-2011 19:37:07
Amplitude and Phase vs Time for EM090B.UVDATA.1 Vect aver. CL # 3
IF 1 CHAN 1 - 32 STK RR



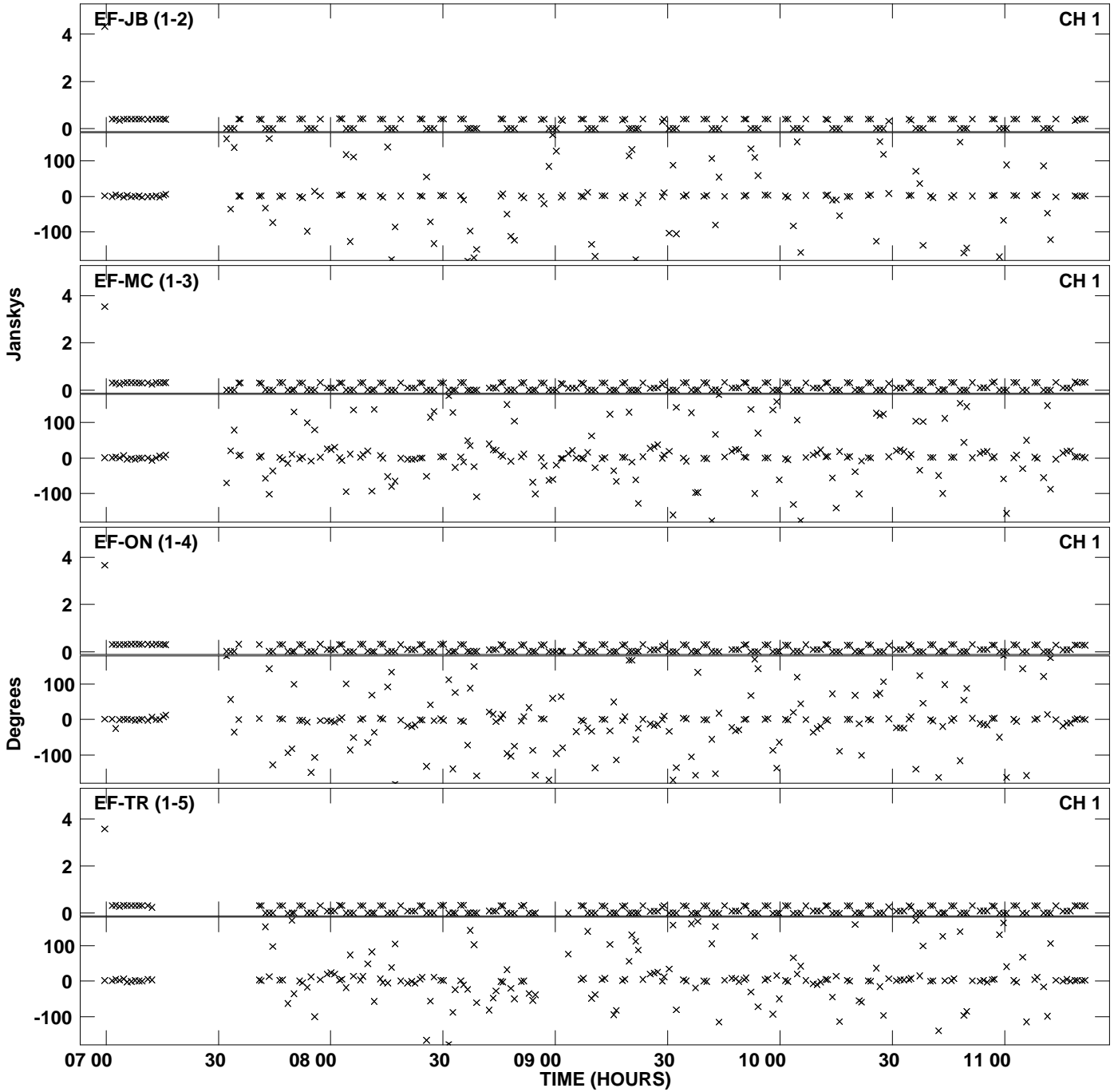
Plot file version 16 created 16-FEB-2011 19:37:11
Amplitude andPhase vs Time for EM090B.UVDATA.1 Vect aver. CL # 3
IF 2 CHAN 1 - 32 STK RR



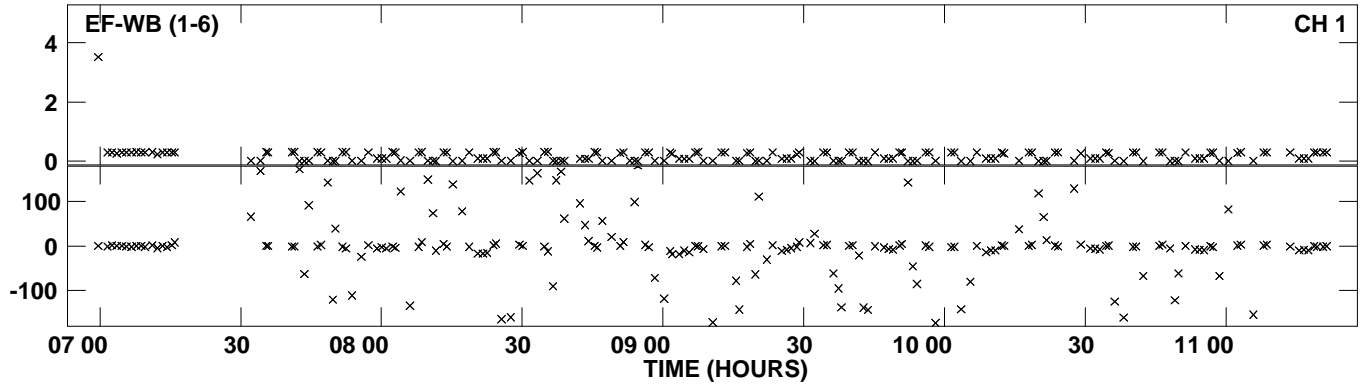
Plot file version 17 created 16-FEB-2011 19:37:11
Amplitude andPhase vs Time for EM090B.UVDATA.1 Vect aver. CL # 3
IF 2 CHAN 1 - 32 STK RR



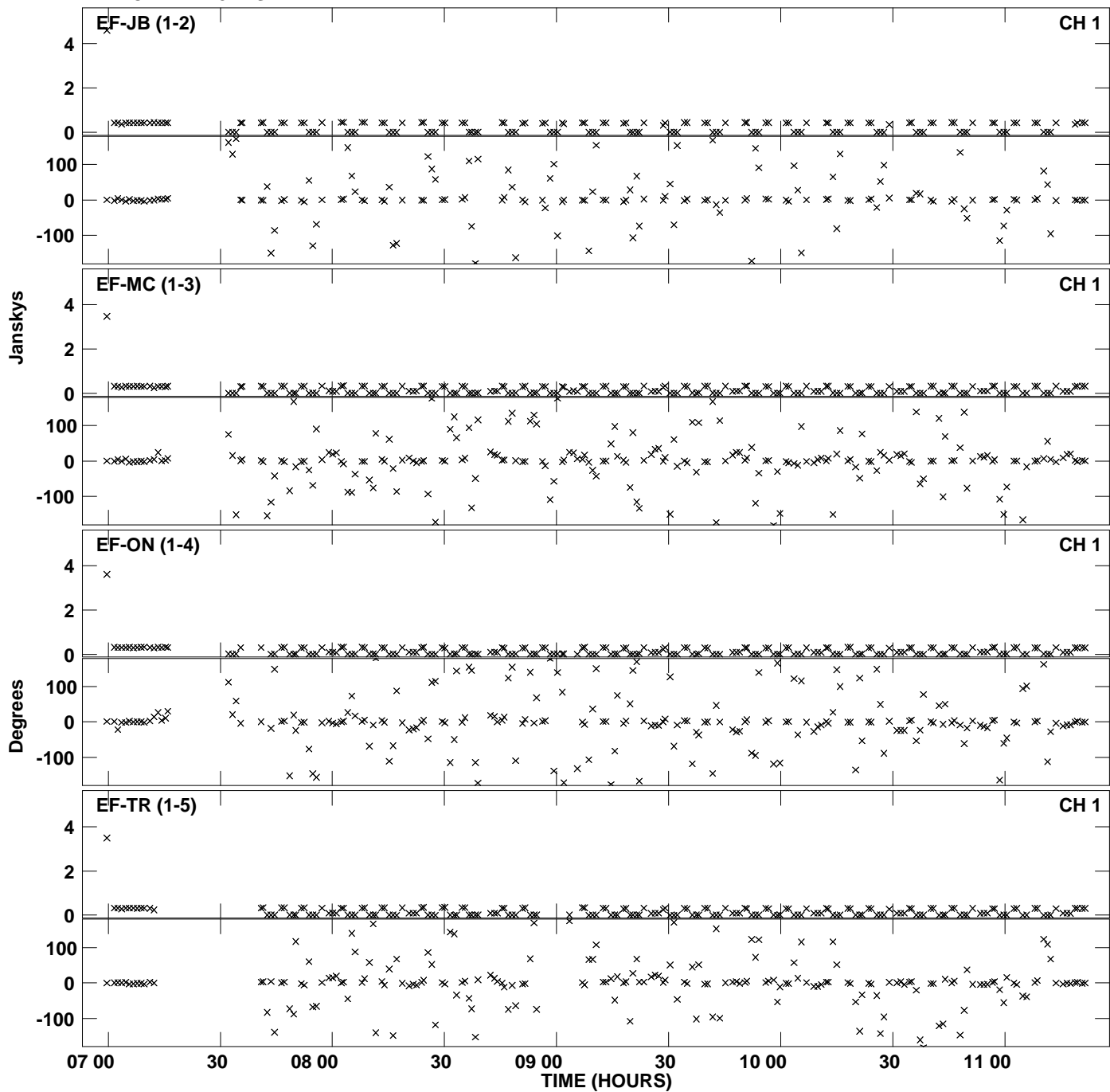
Plot file version 18 created 16-FEB-2011 19:37:15
Amplitude andPhase vs Time for EM090B.UVDATA.1 Vect aver. CL # 3
IF 3 CHAN 1 - 32 STK RR



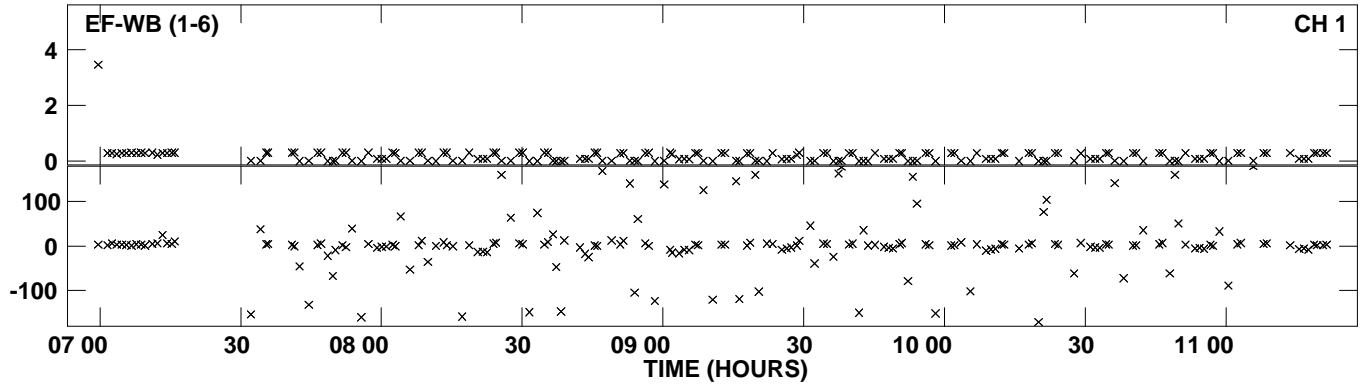
Plot file version 19 created 16-FEB-2011 19:37:15
Amplitude and Phase vs Time for EM090B.UVDATA.1 Vect aver. CL # 3
IF 3 CHAN 1 - 32 STK RR



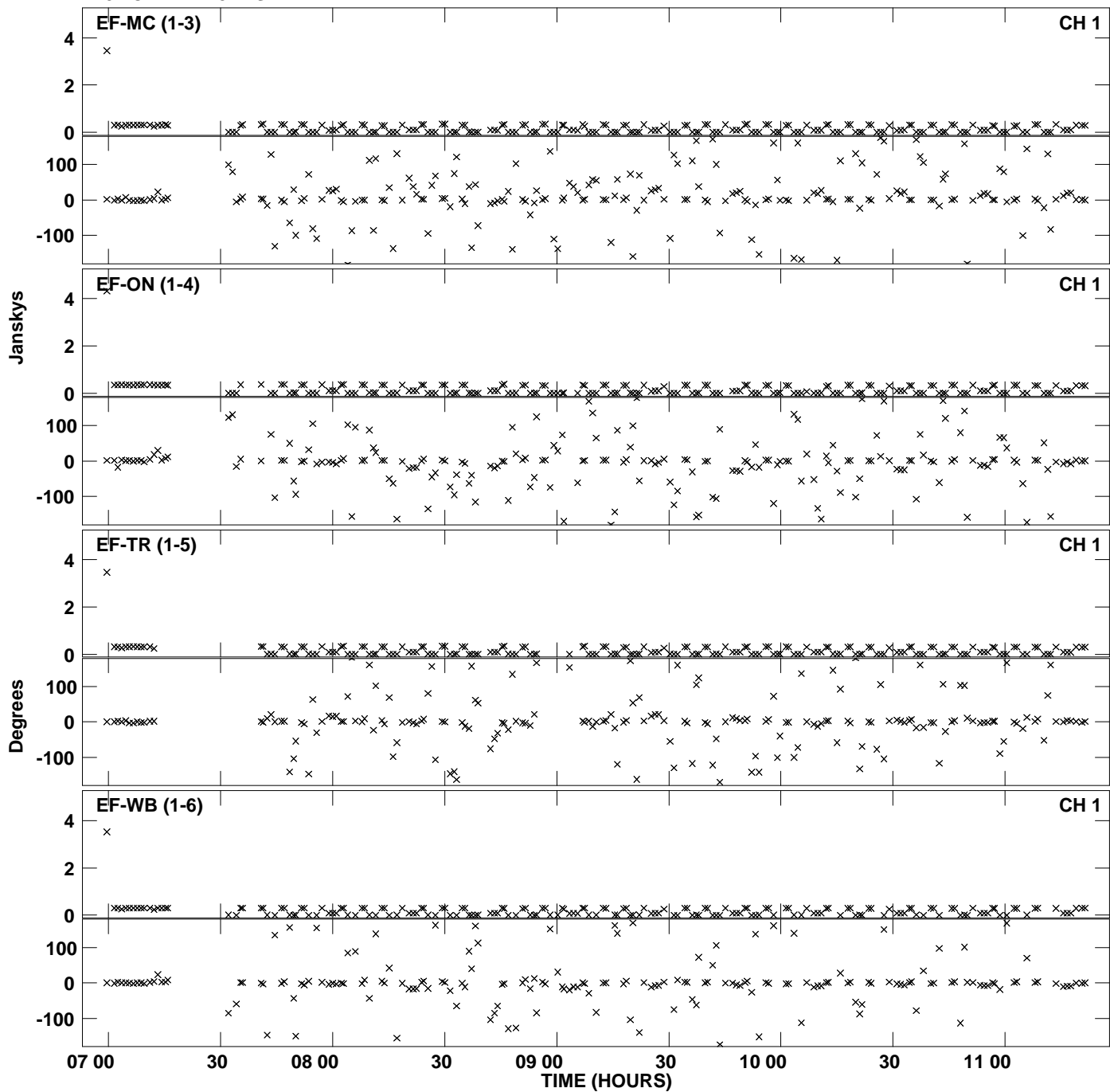
Plot file version 20 created 16-FEB-2011 19:37:20
Amplitude andPhase vs Time for EM090B.UVDATA.1 Vect aver. CL # 3
IF 4 CHAN 1 - 32 STK RR



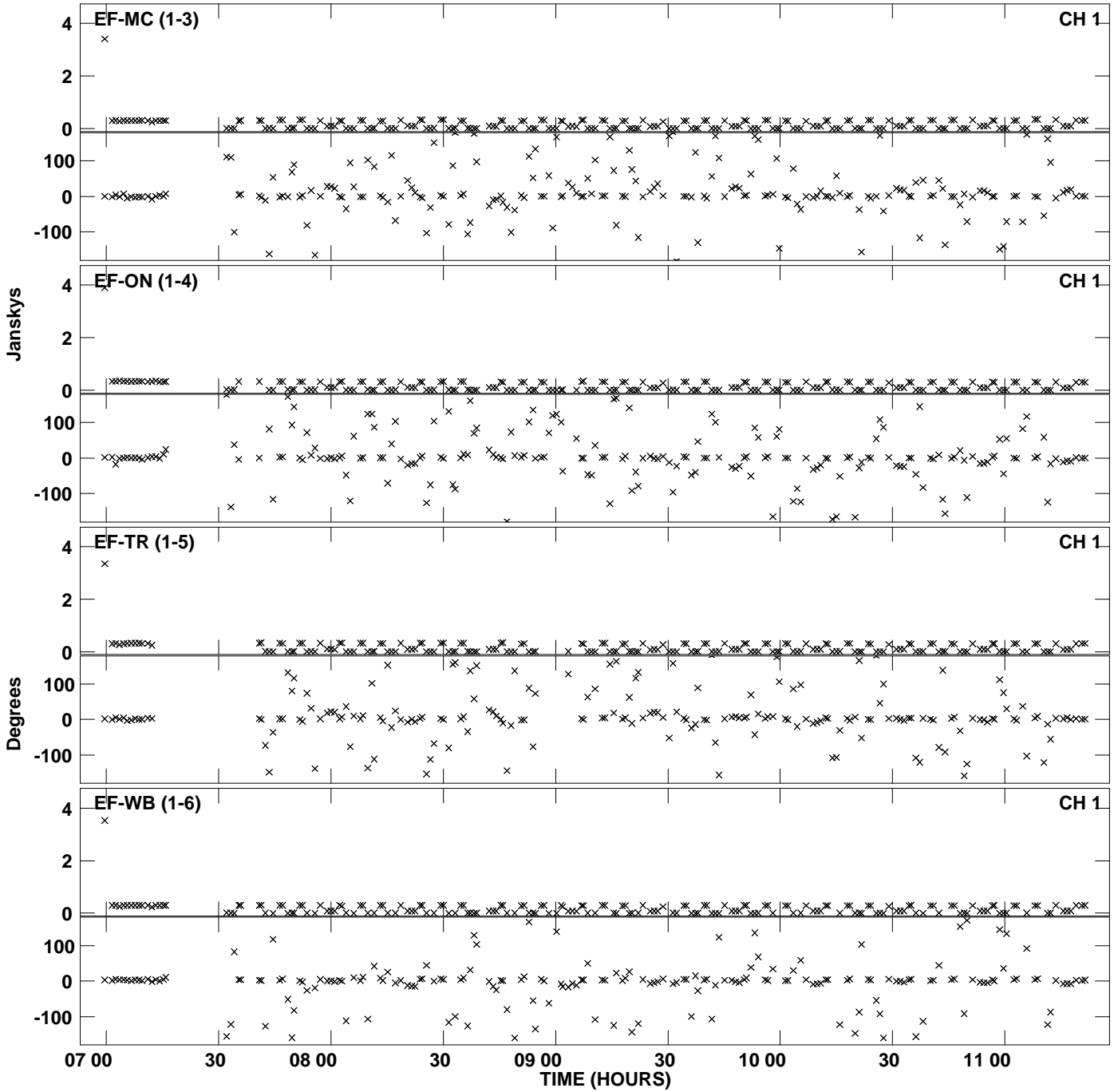
Plot file version 21 created 16-FEB-2011 19:37:20
Amplitude and Phase vs Time for EM090B.UVDATA.1 Vect aver. CL # 3
IF 4 CHAN 1 - 32 STK RR



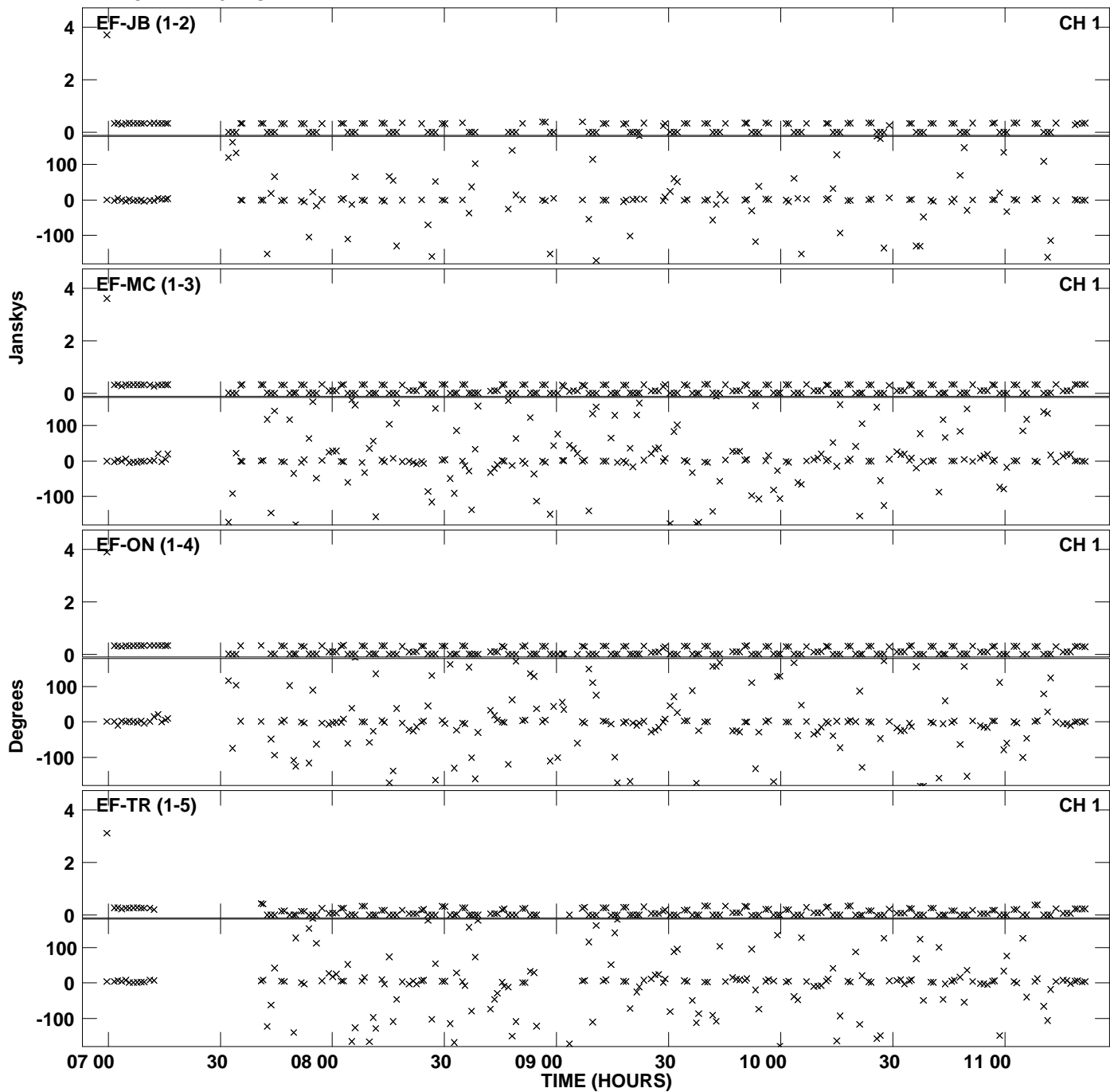
Plot file version 22 created 16-FEB-2011 19:37:24
Amplitude andPhase vs Time for EM090B.UVDATA.1 Vect aver. CL # 3
IF 5 CHAN 1 - 32 STK RR



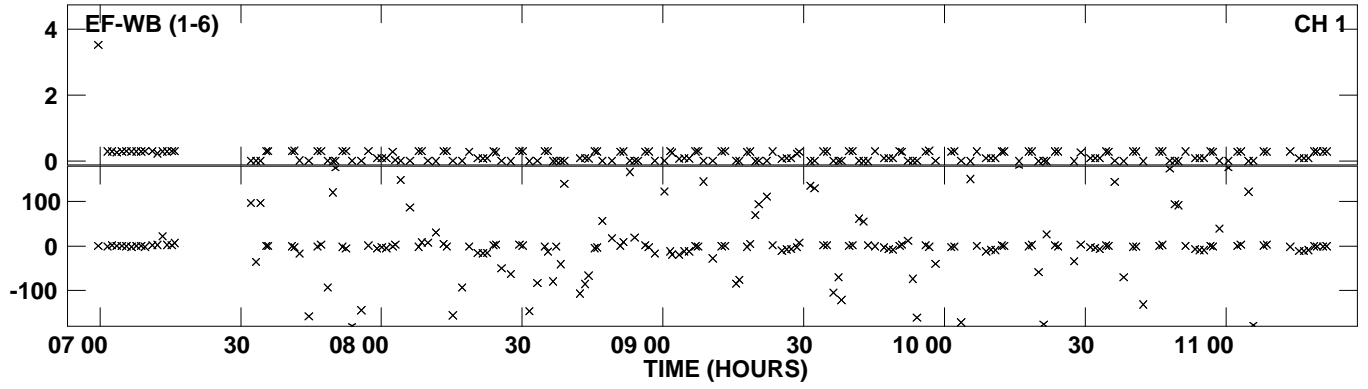
Plot file version 23 created 16-FEB-2011 19:37:28
Amplitude andPhase vs Time for EM090B.UVDATA.1 Vect aver. CL # 3
IF 6 CHAN 1 - 32 STK RR



Plot file version 24 created 16-FEB-2011 19:37:32
Amplitude andPhase vs Time for EM090B.UVDATA.1 Vect aver. CL # 3
IF 7 CHAN 1 - 32 STK RR



Plot file version 25 created 16-FEB-2011 19:37:32
Amplitude and Phase vs Time for EM090B.UVDATA.1 Vect aver. CL # 3
IF 7 CHAN 1 - 32 STK RR



Plot file version 26 created 16-FEB-2011 19:37:36
Amplitude andPhase vs Time for EM090B.UVDATA.1 Vect aver. CL # 3
IF 8 CHAN 1 - 32 STK RR

