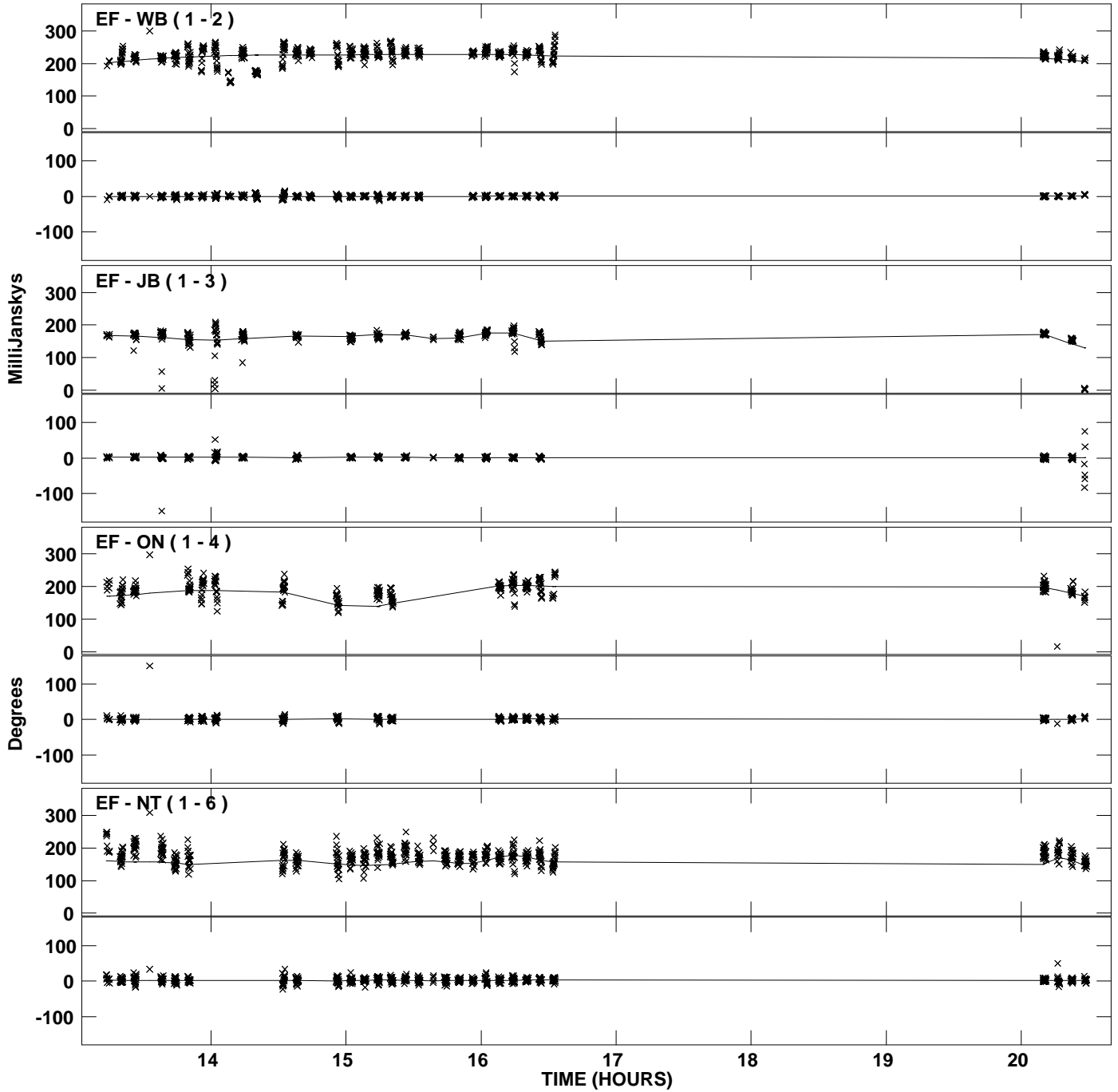
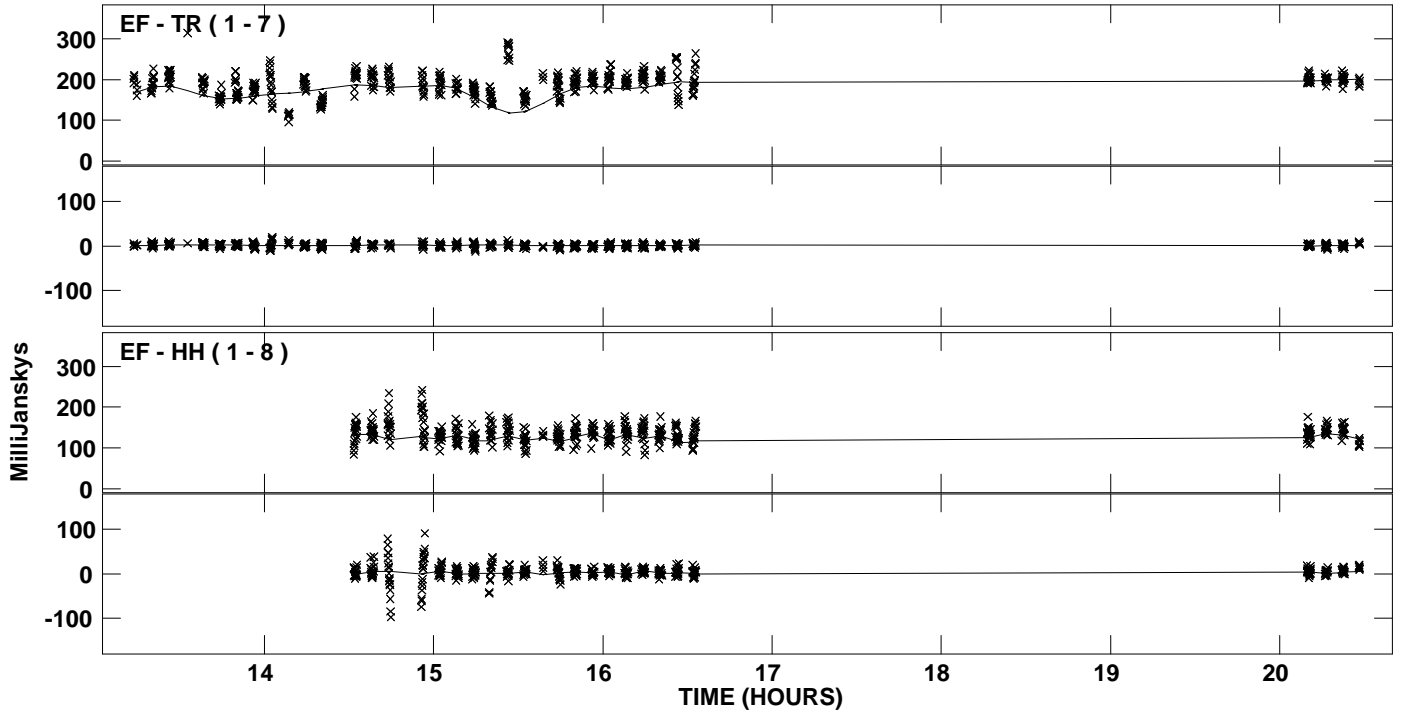


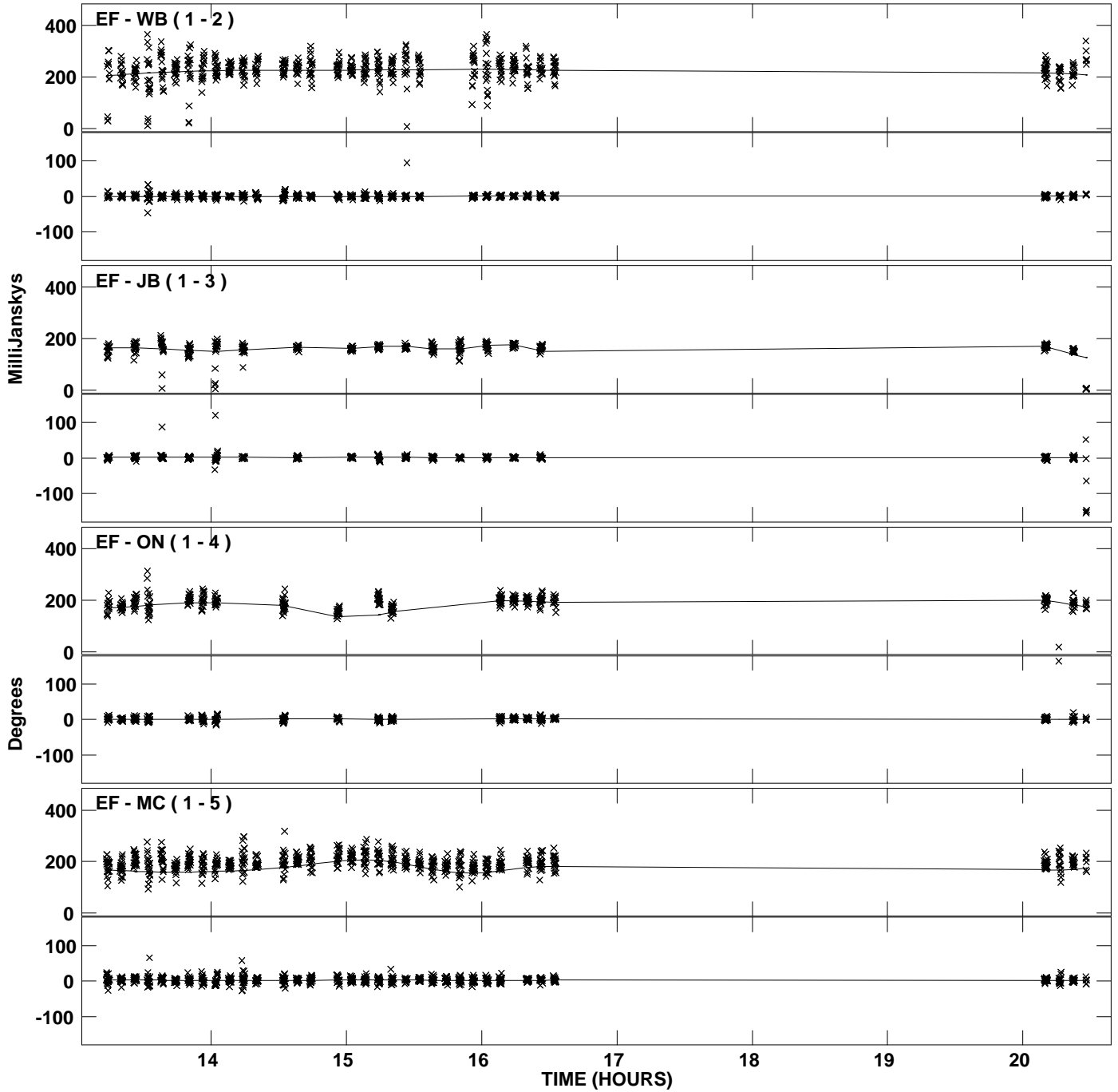
Plot file version 1 created 13-JUL-2012 11:58:39  
Amplitude and Phase vs Time for J1224+4335.MULTI.1 CL # 3  
IF 1 CHAN 1 STK LL of J1224+4335.ICL001.3



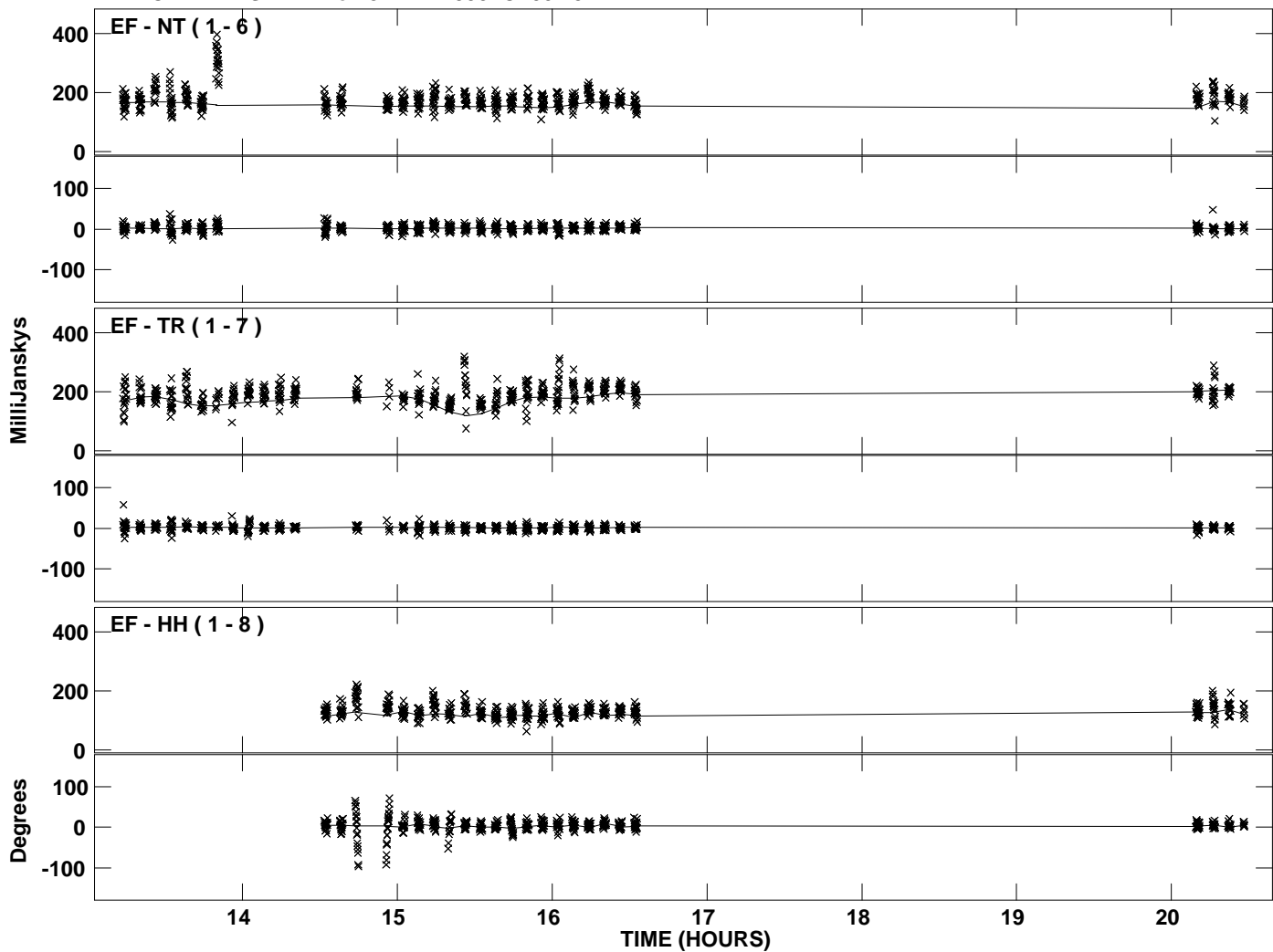
Plot file version 2 created 13-JUL-2012 11:58:39  
Amplitude and Phase vs Time for J1224+4335.MULTI.1 CL # 3  
IF 1 CHAN 1 STK LL of J1224+4335.ICL001.3



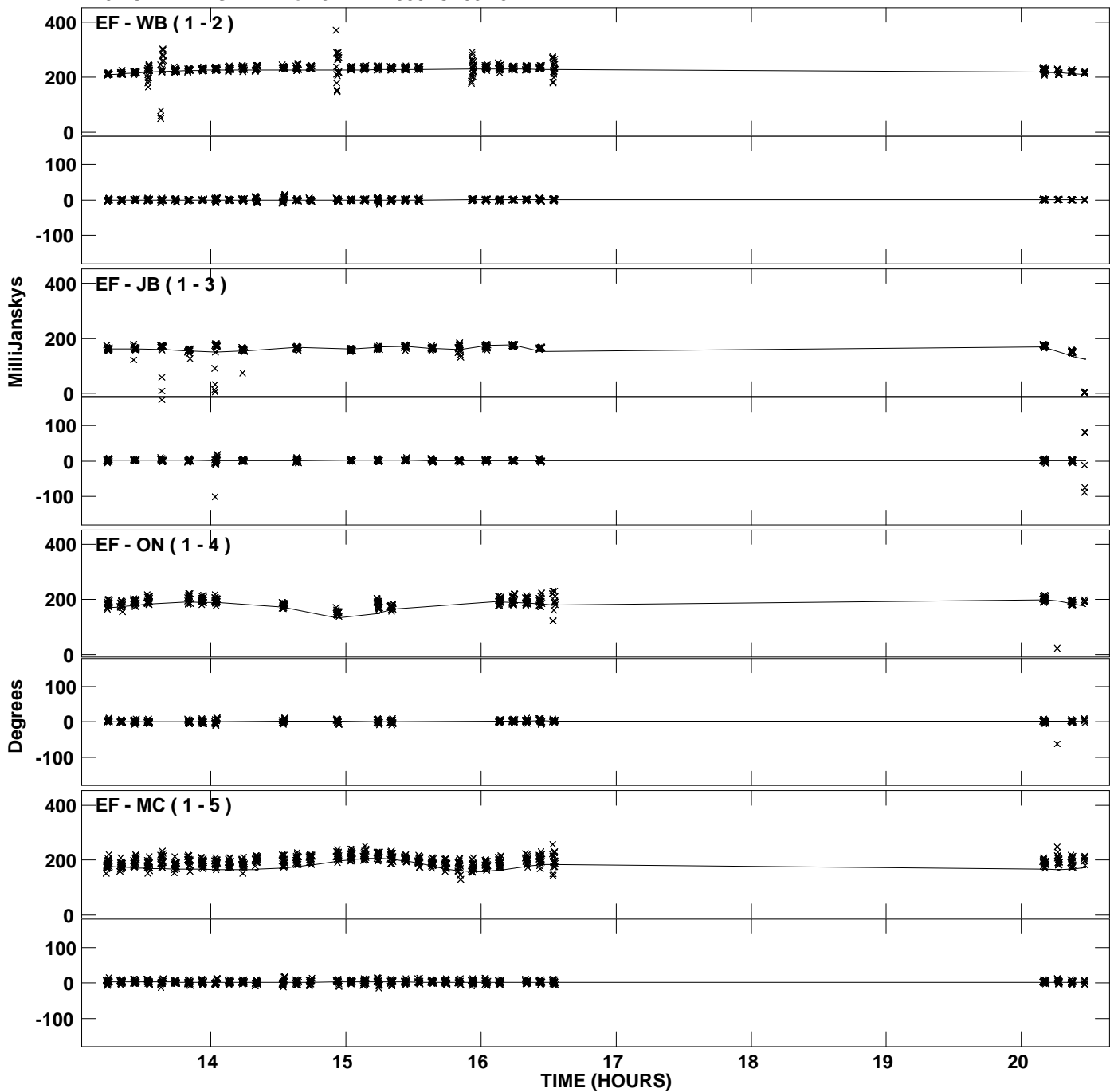
PLot file version 3 created 13-JUL-2012 11:58:39  
Amplitude andPhase vs Time for J1224+4335.MULTI.1 CL # 3  
IF 2 CHAN 1 STK LL of J1224+4335.ICL001.3



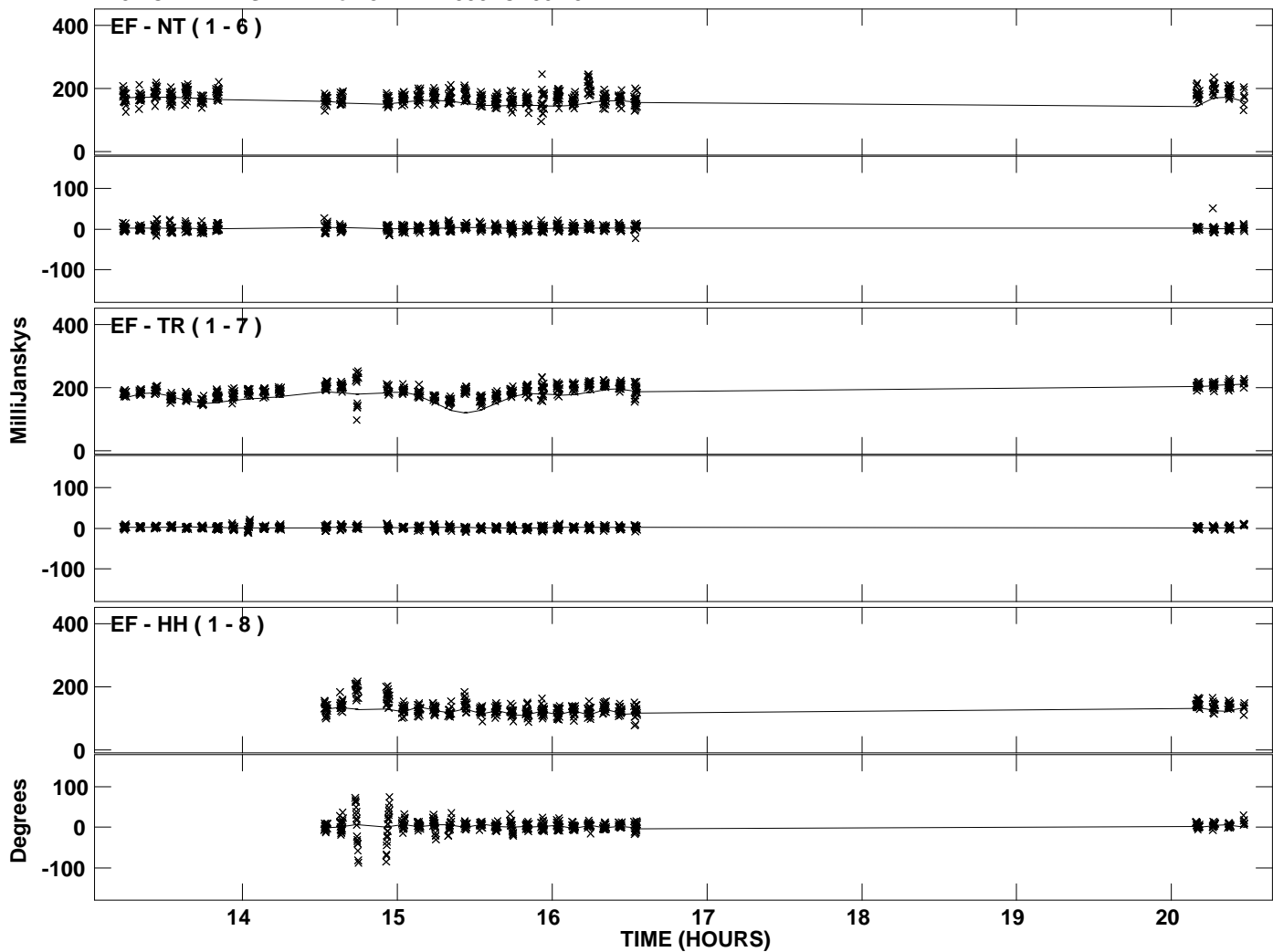
PLot file version 4 created 13-JUL-2012 11:58:39  
Amplitude andPhase vs Time for J1224+4335.MULTI.1 CL # 3  
IF 2 CHAN 1 STK LL of J1224+4335.ICL001.3



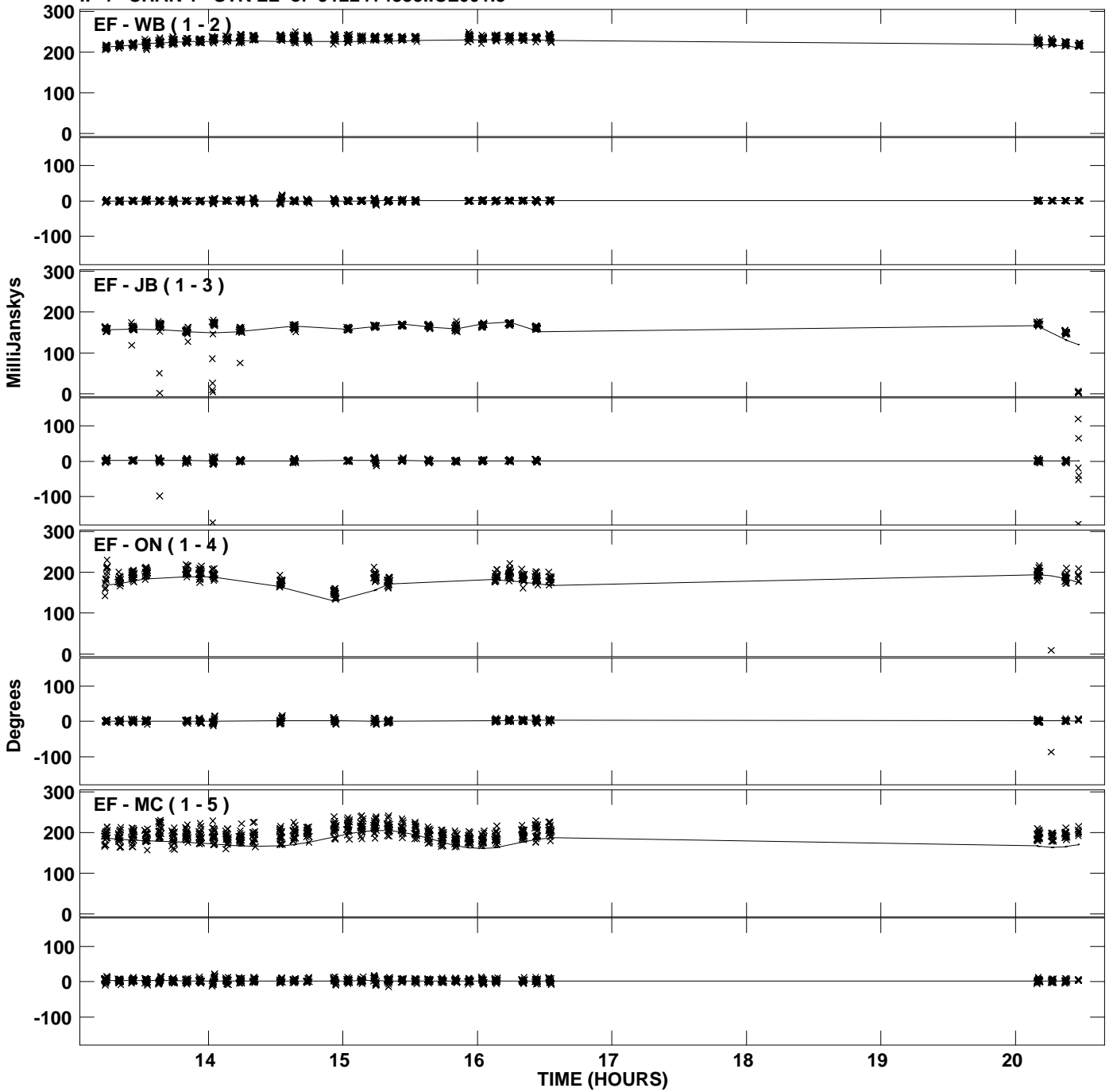
Plot file version 5 created 13-JUL-2012 11:58:39  
Amplitude andPhase vs Time for J1224+4335.MULTI.1 CL # 3  
IF 3 CHAN 1 STK LL of J1224+4335.ICL001.3



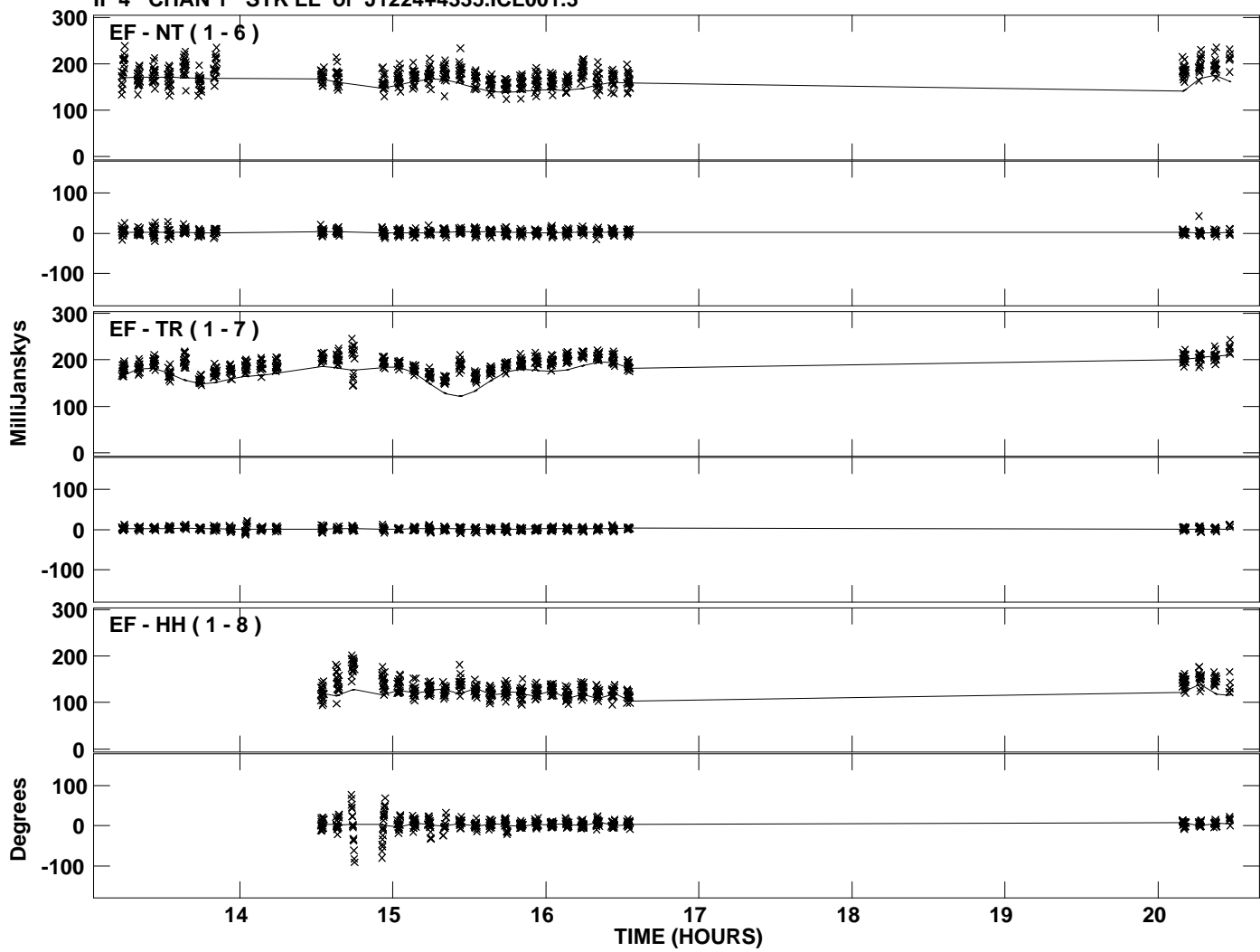
Plot file version 6 created 13-JUL-2012 11:58:39  
Amplitude andPhase vs Time for J1224+4335.MULTI.1 CL # 3  
IF 3 CHAN 1 STK LL of J1224+4335.ICL001.3



Plot file version 7 created 13-JUL-2012 11:58:40  
Amplitude and Phase vs Time for J1224+4335.MULTI.1 CL # 3  
IF 4 CHAN 1 STK LL of J1224+4335.ICL001.3

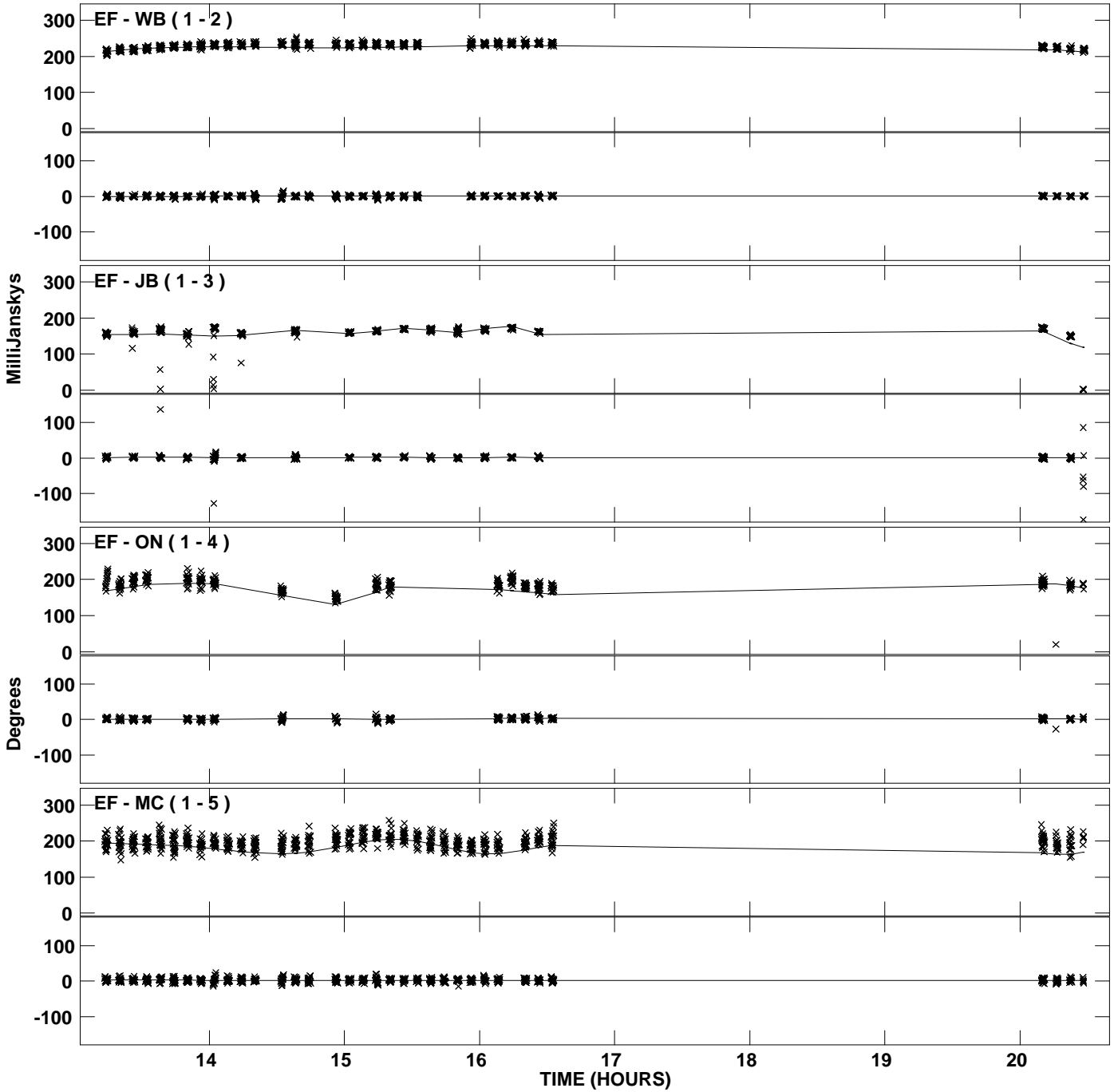


Plot file version 8 created 13-JUL-2012 11:58:40  
Amplitude and Phase vs Time for J1224+4335.MULTI.1 CL # 3  
IF 4 CHAN 1 STK LL of J1224+4335.ICL001.3

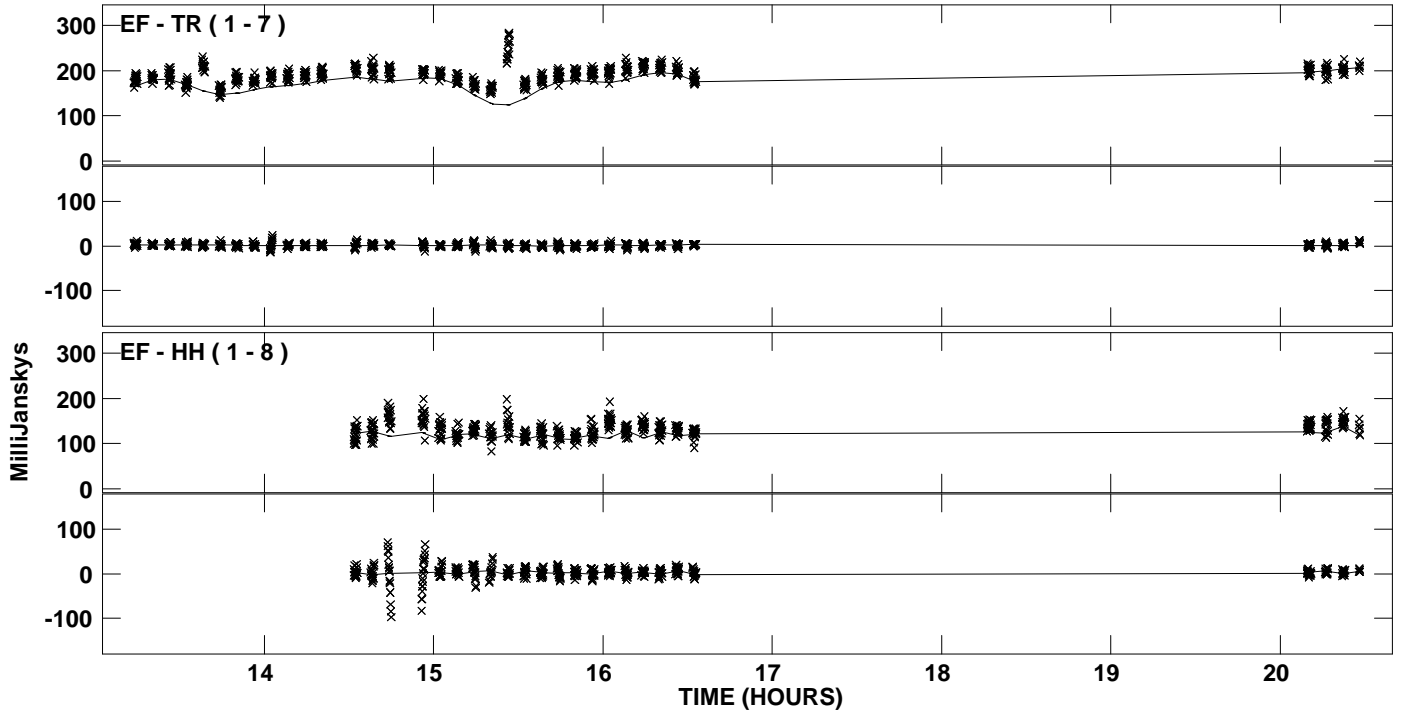




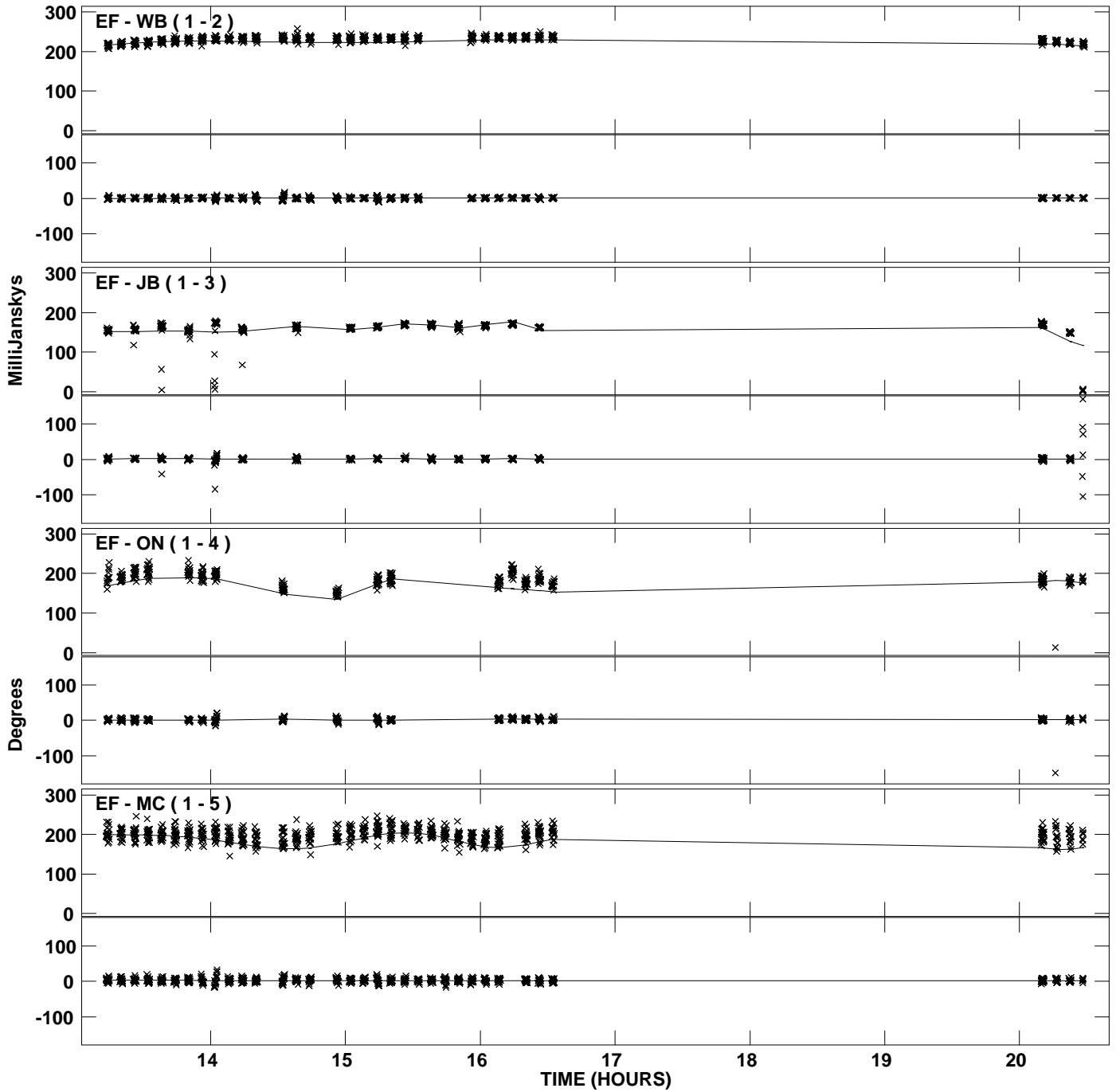
Plot file version 9 created 13-JUL-2012 11:58:40  
Amplitude and Phase vs Time for J1224+4335.MULTI.1 CL # 3  
IF 5 CHAN 1 STK LL of J1224+4335.ICL001.3



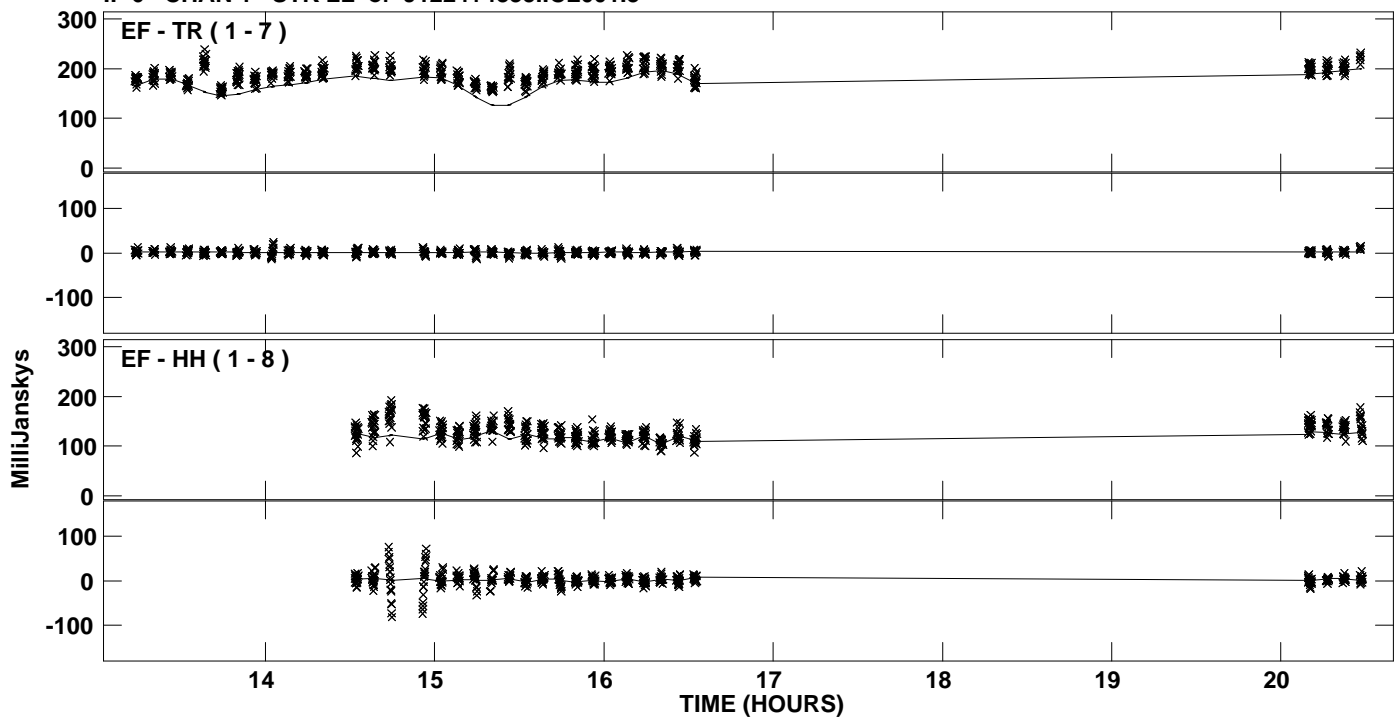
Plot file version 10 created 13-JUL-2012 11:58:40  
Amplitude and Phase vs Time for J1224+4335.MULTI.1 CL # 3  
IF 5 CHAN 1 STK LL of J1224+4335.ICL001.3



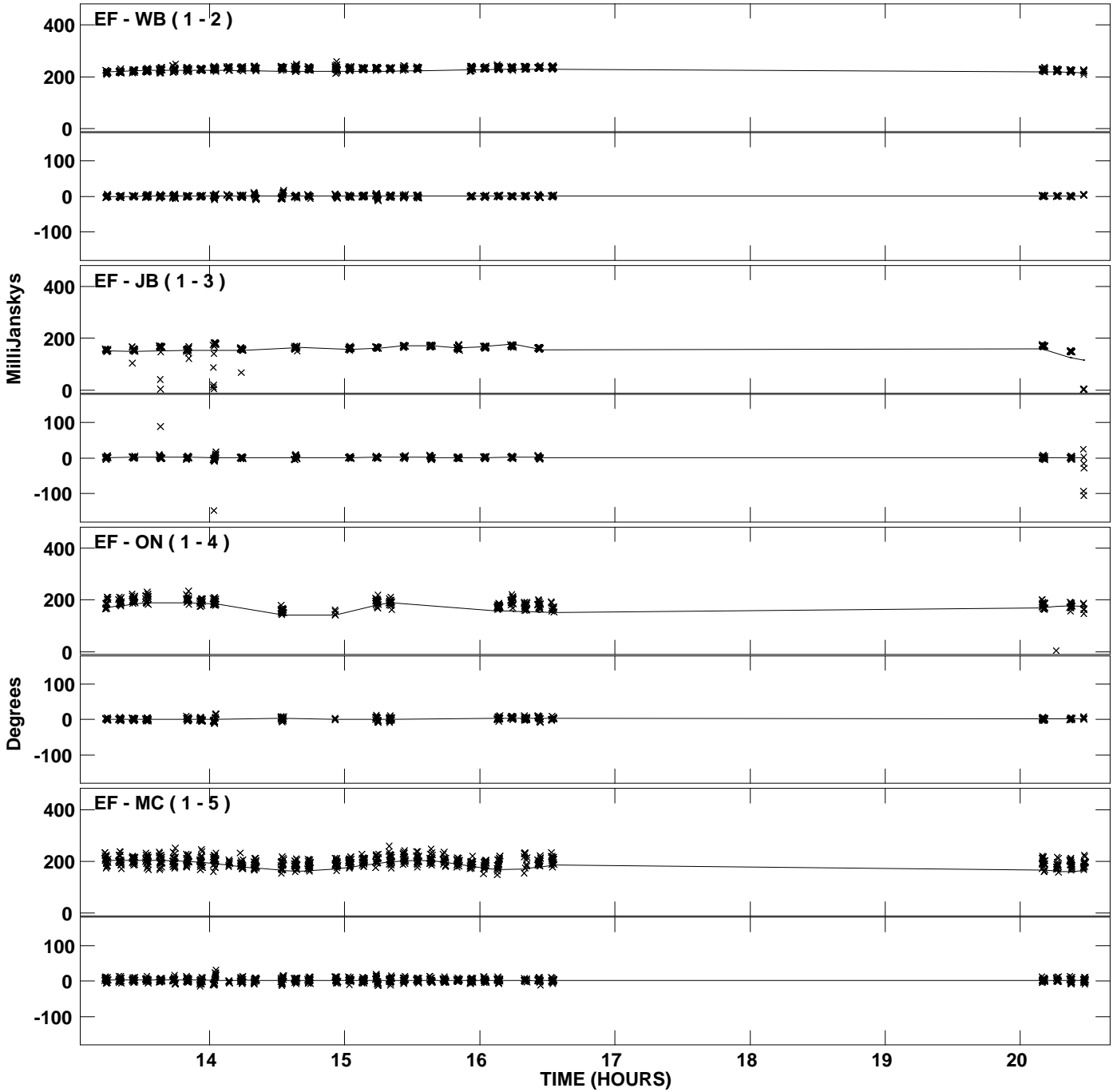
Plot file version 11 created 13-JUL-2012 11:58:40  
Amplitude andPhase vs Time for J1224+4335.MULTI.1 CL # 3  
IF 6 CHAN 1 STK LL of J1224+4335.ICL001.3



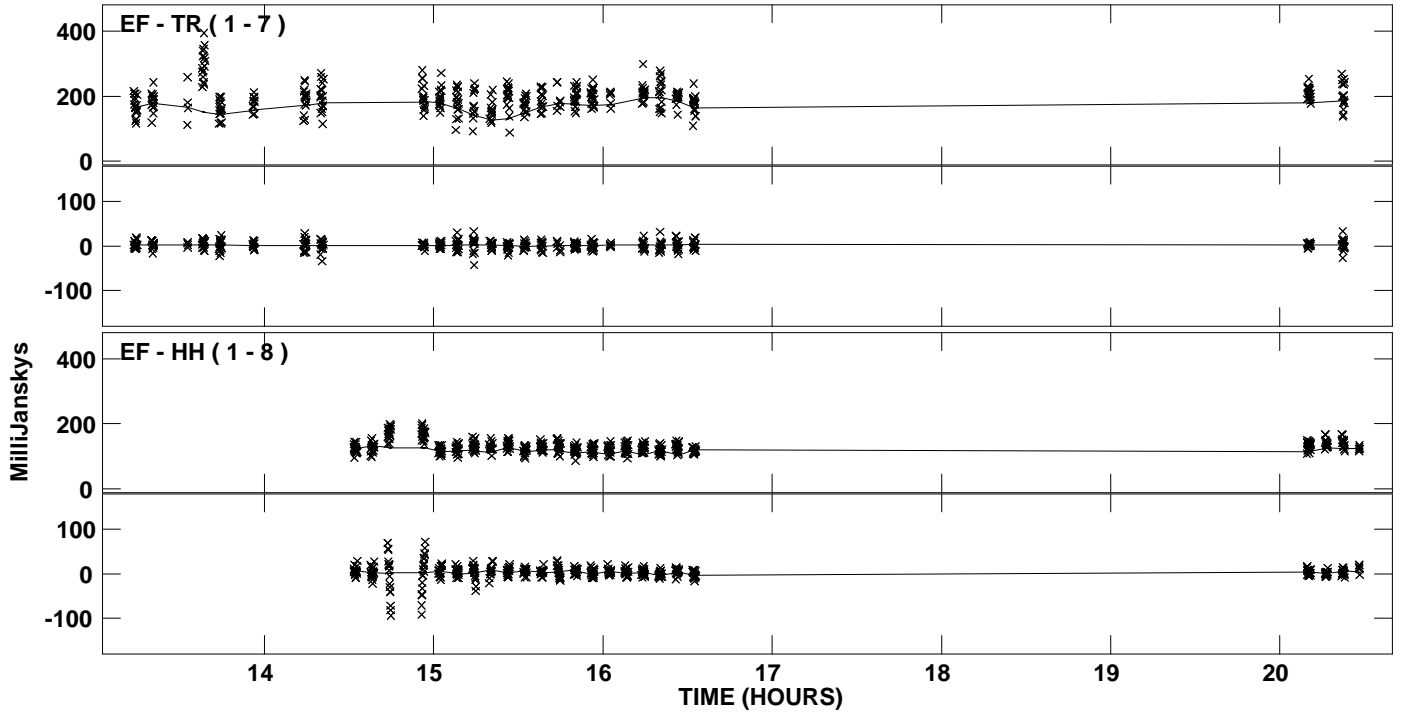
PLot file version 12 created 13-JUL-2012 11:58:40  
Amplitude andPhase vs Time for J1224+4335.MULTI.1 CL # 3  
IF 6 CHAN 1 STK LL of J1224+4335.ICL001.3



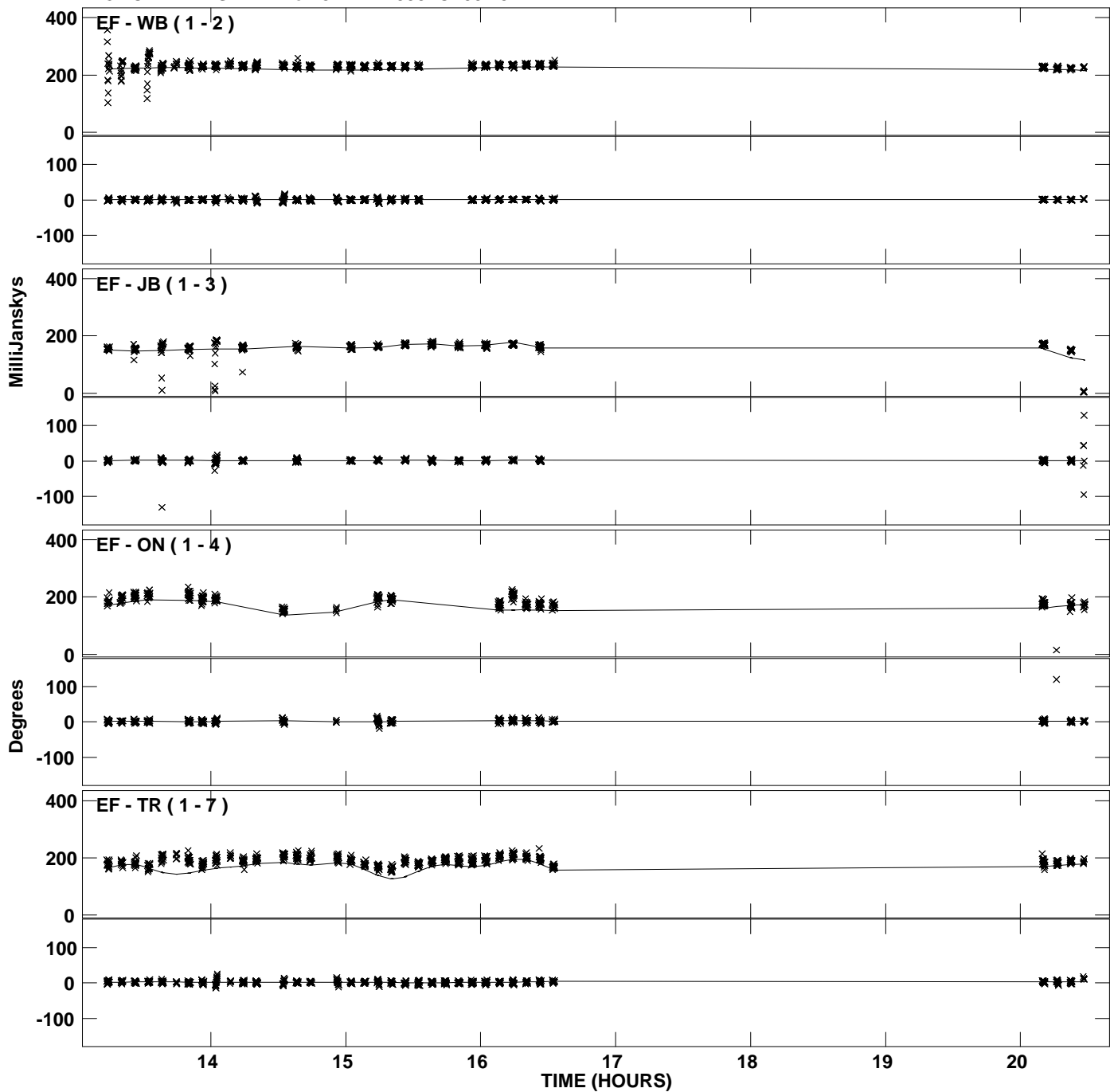
PLot file version 13 created 13-JUL-2012 11:58:40  
Amplitude andPhase vs Time for J1224+4335.MULTI.1 CL # 3  
IF 7 CHAN 1 STK LL of J1224+4335.ICL001.3



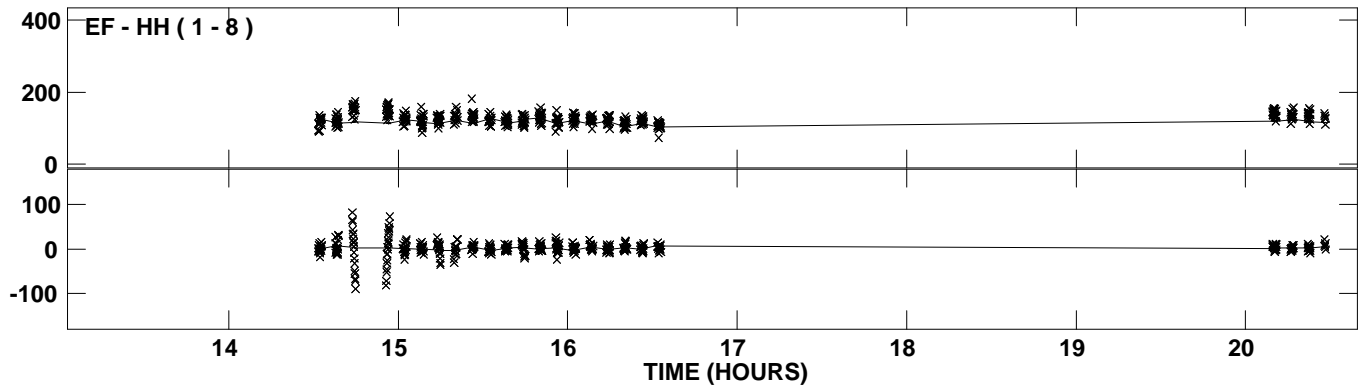
Plot file version 14 created 13-JUL-2012 11:58:40  
Amplitude and Phase vs Time for J1224+4335.MULTI.1 CL # 3  
IF 7 CHAN 1 STK LL of J1224+4335.ICL001.3



PLot file version 15 created 13-JUL-2012 11:58:40  
Amplitude andPhase vs Time for J1224+4335.MULTI.1 CL # 3  
IF 8 CHAN 1 STK LL of J1224+4335.ICL001.3

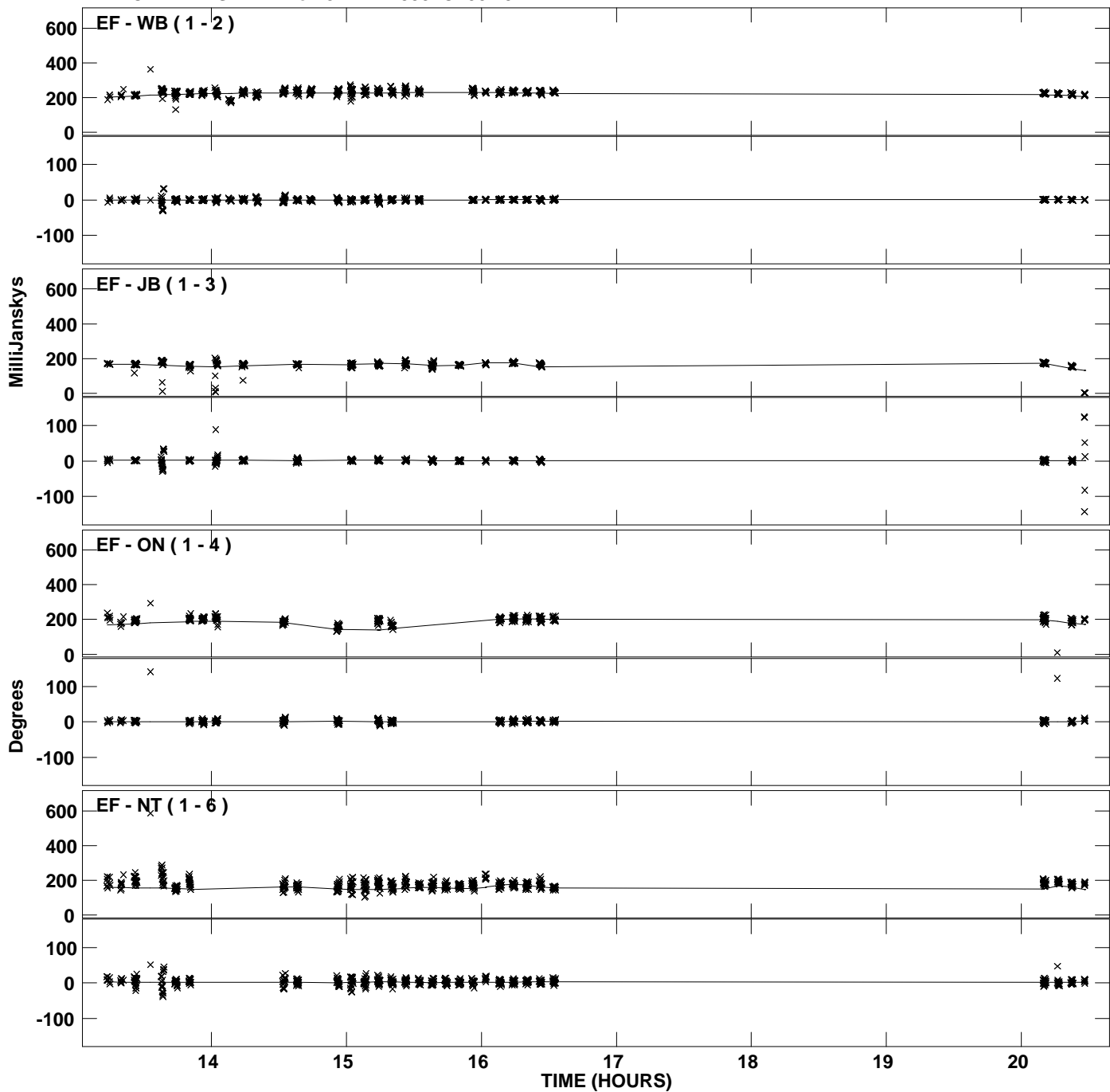


PLot file version 16 created 13-JUL-2012 11:58:40  
Amplitude andPhase vs Time for J1224+4335.MULTI.1 CL # 3  
IF 8 CHAN 1 STK LL of J1224+4335.ICL001.3

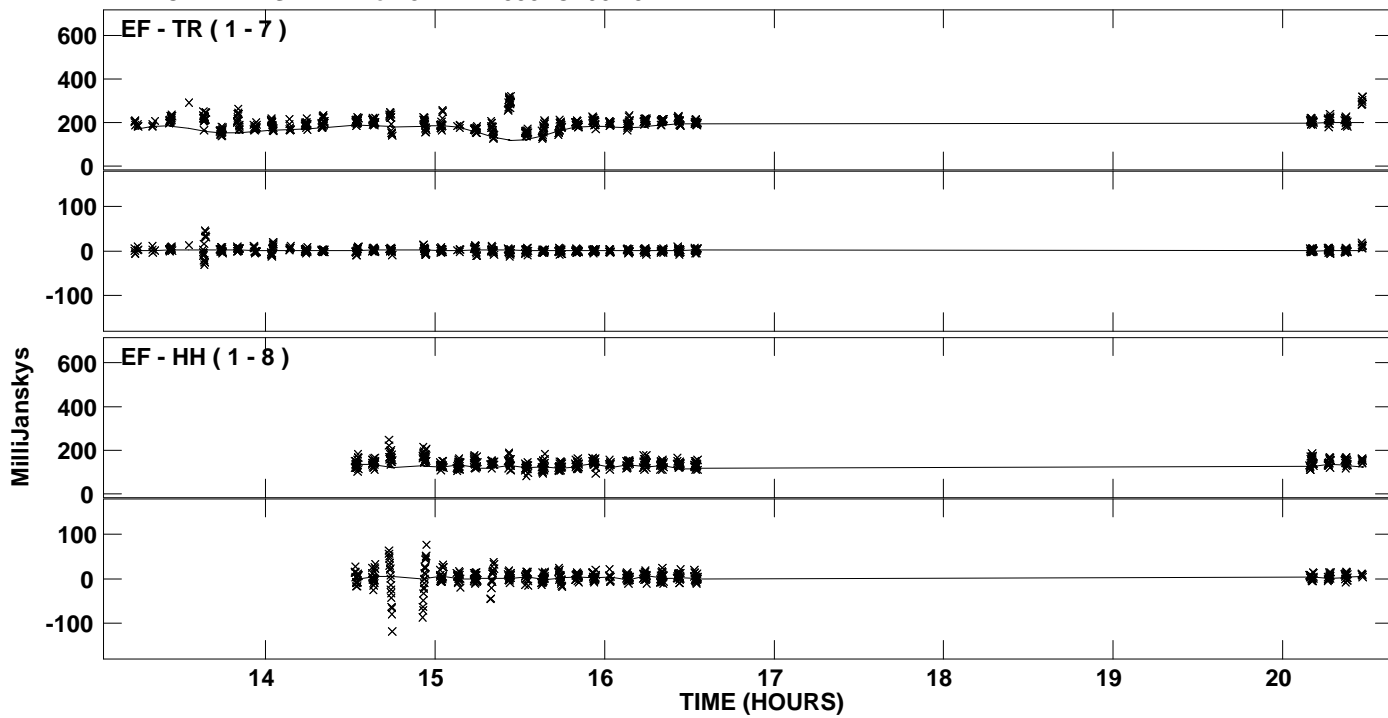




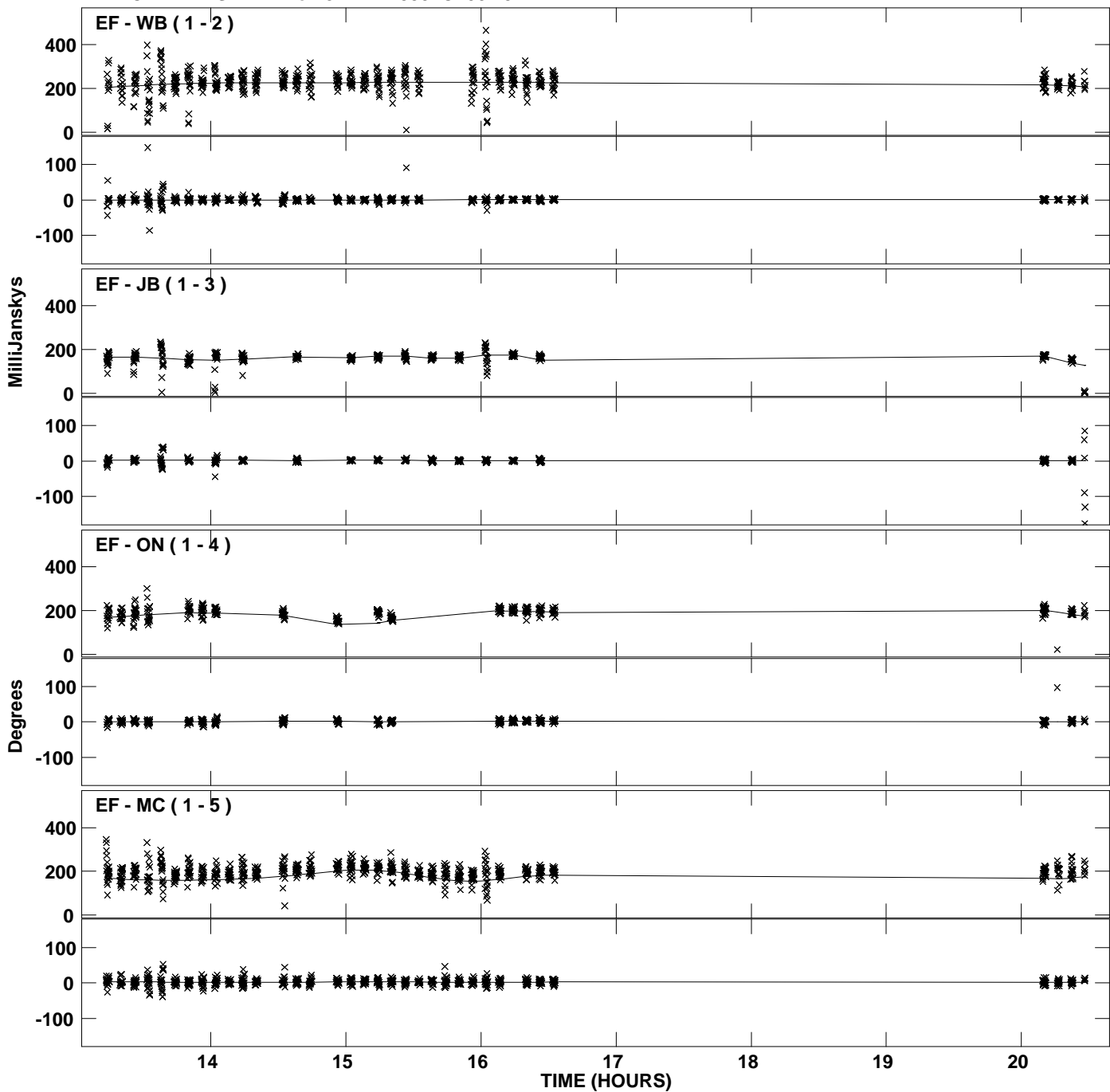
Plot file version 17 created 13-JUL-2012 11:58:40  
Amplitude andPhase vs Time for J1224+4335.MULTI.1 CL # 3  
IF 1 CHAN 1 STK RR of J1224+4335.ICL001.3



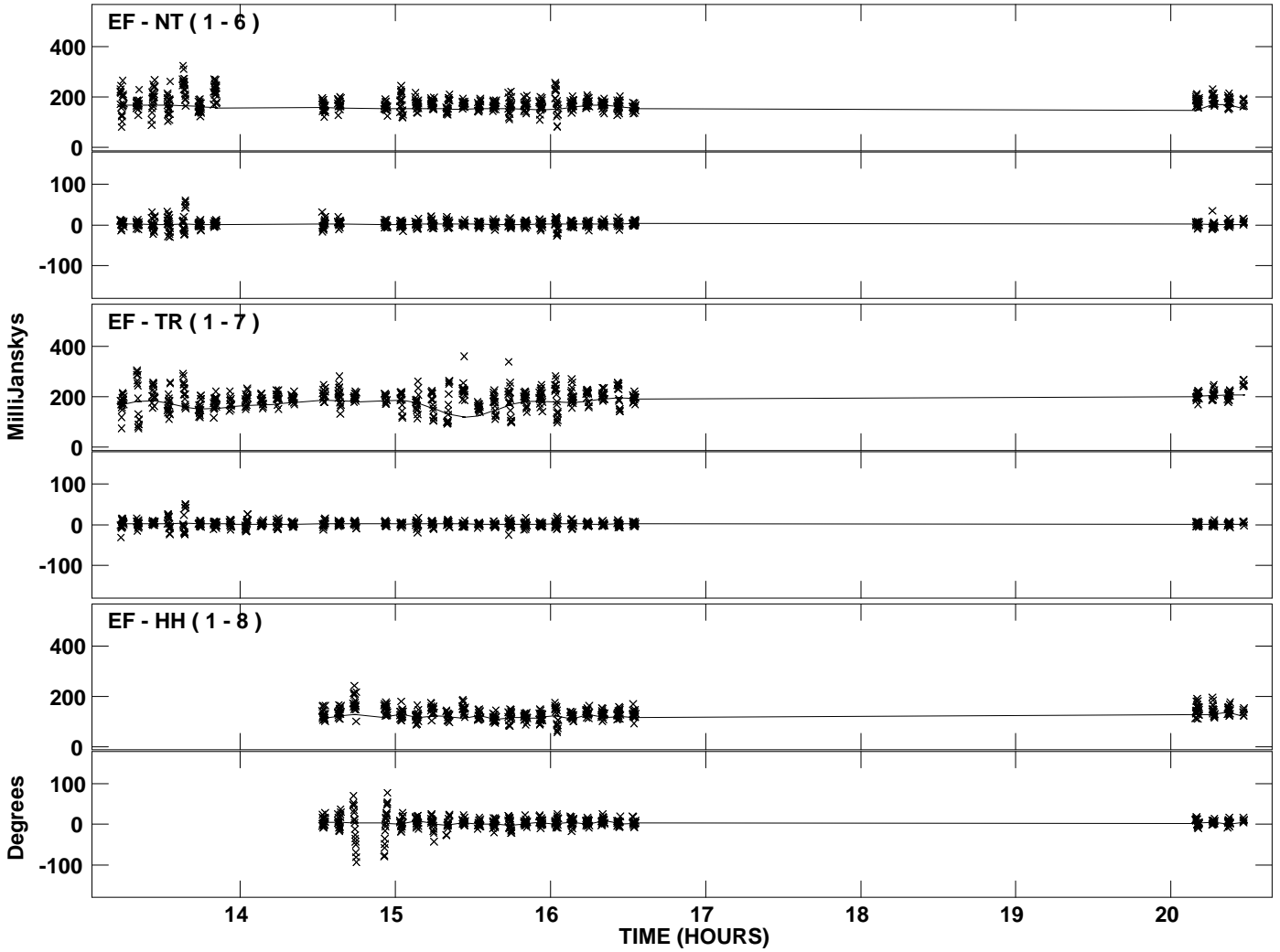
PLot file version 18 created 13-JUL-2012 11:58:40  
Amplitude andPhase vs Time for J1224+4335.MULTI.1 CL # 3  
IF 1 CHAN 1 STK RR of J1224+4335.ICL001.3



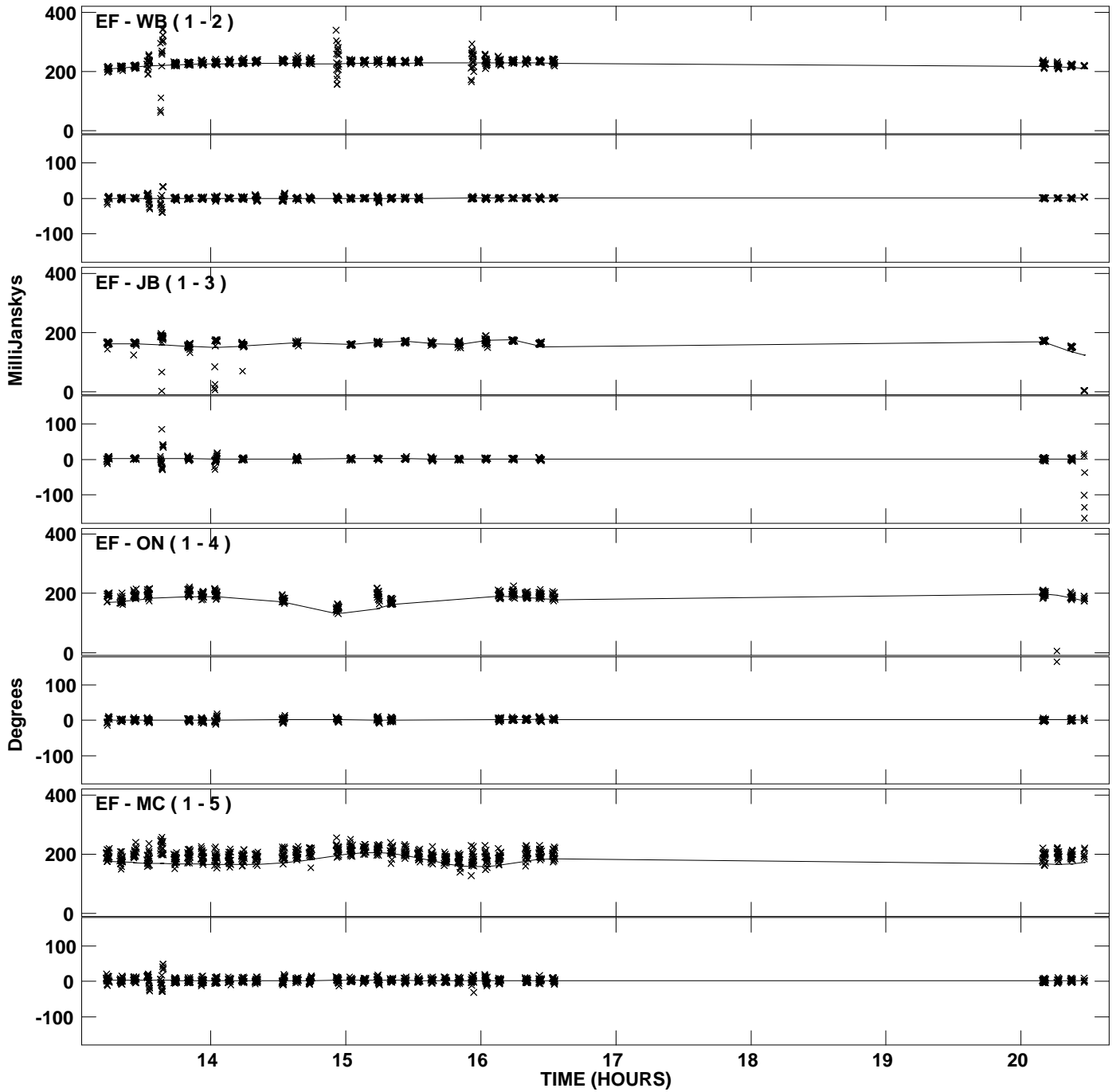
Plot file version 19 created 13-JUL-2012 11:58:40  
Amplitude and Phase vs Time for J1224+4335.MULTI.1 CL # 3  
IF 2 CHAN 1 STK RR of J1224+4335.ICL001.3



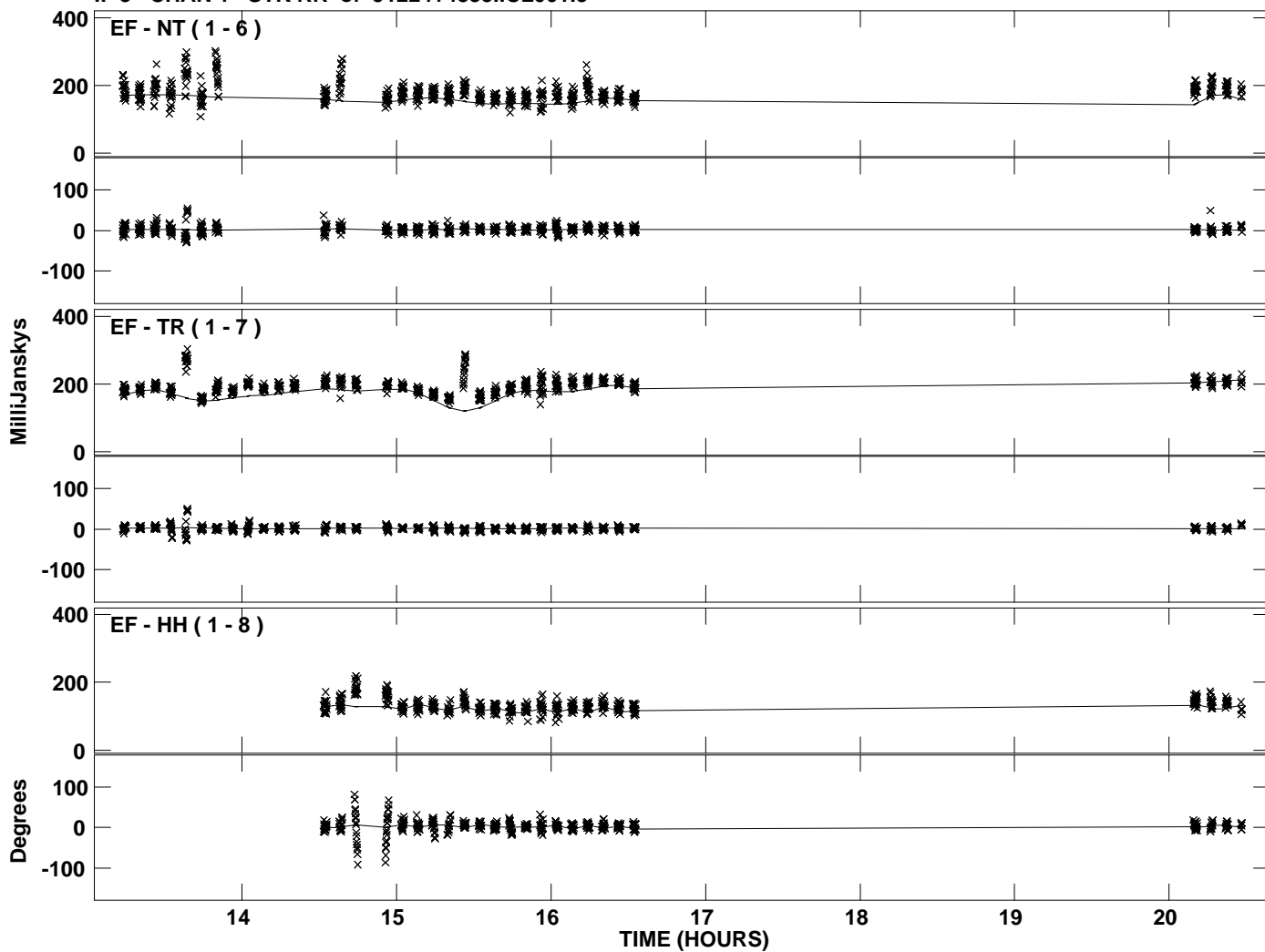
PLot file version 20 created 13-JUL-2012 11:58:40  
Amplitude andPhase vs Time for J1224+4335.MULTI.1 CL # 3  
IF 2 CHAN 1 STK RR of J1224+4335.ICL001.3



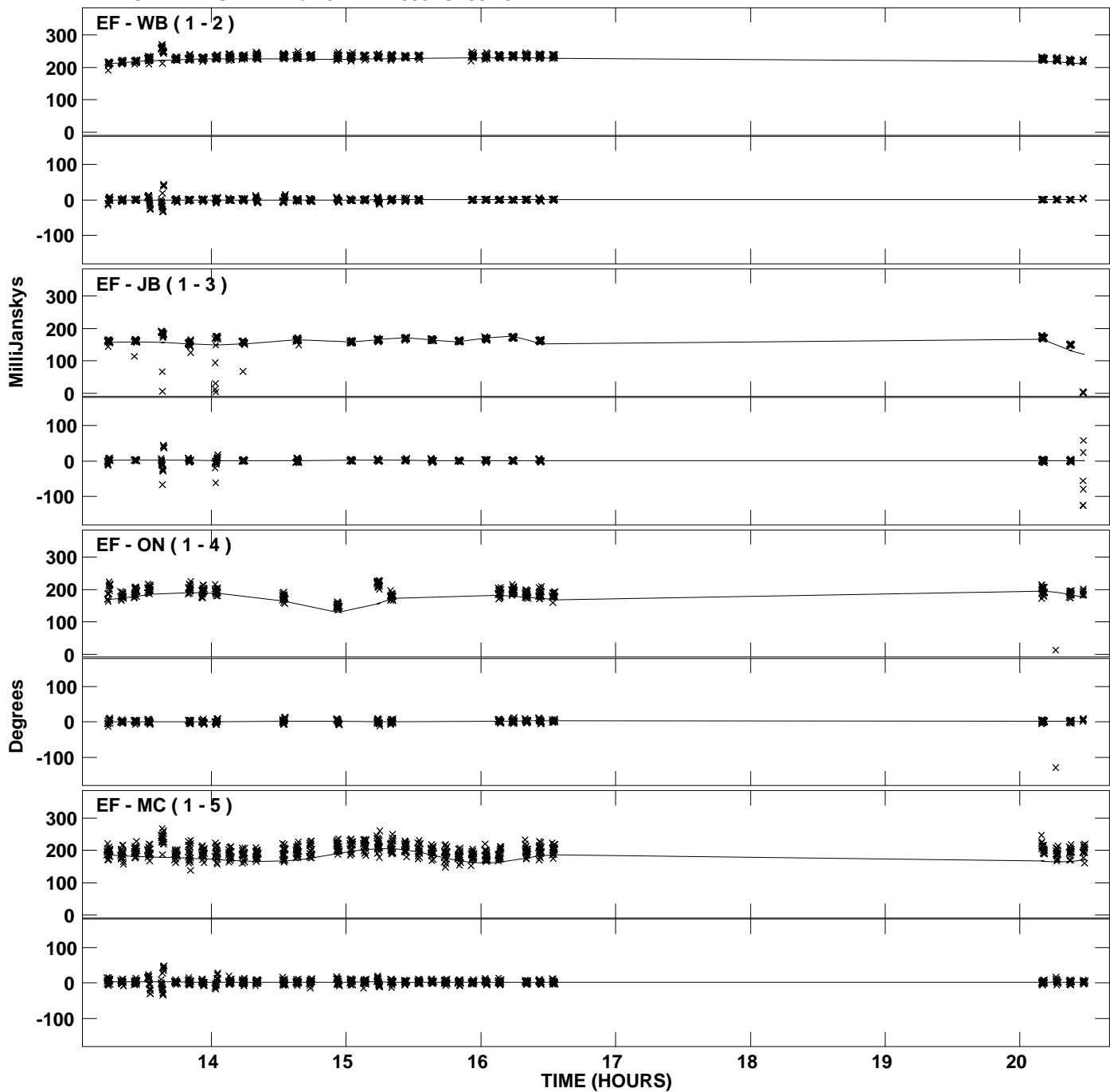
PLot file version 21 created 13-JUL-2012 11:58:40  
Amplitude andPhase vs Time for J1224+4335.MULTI.1 CL # 3  
IF 3 CHAN 1 STK RR of J1224+4335.ICL001.3



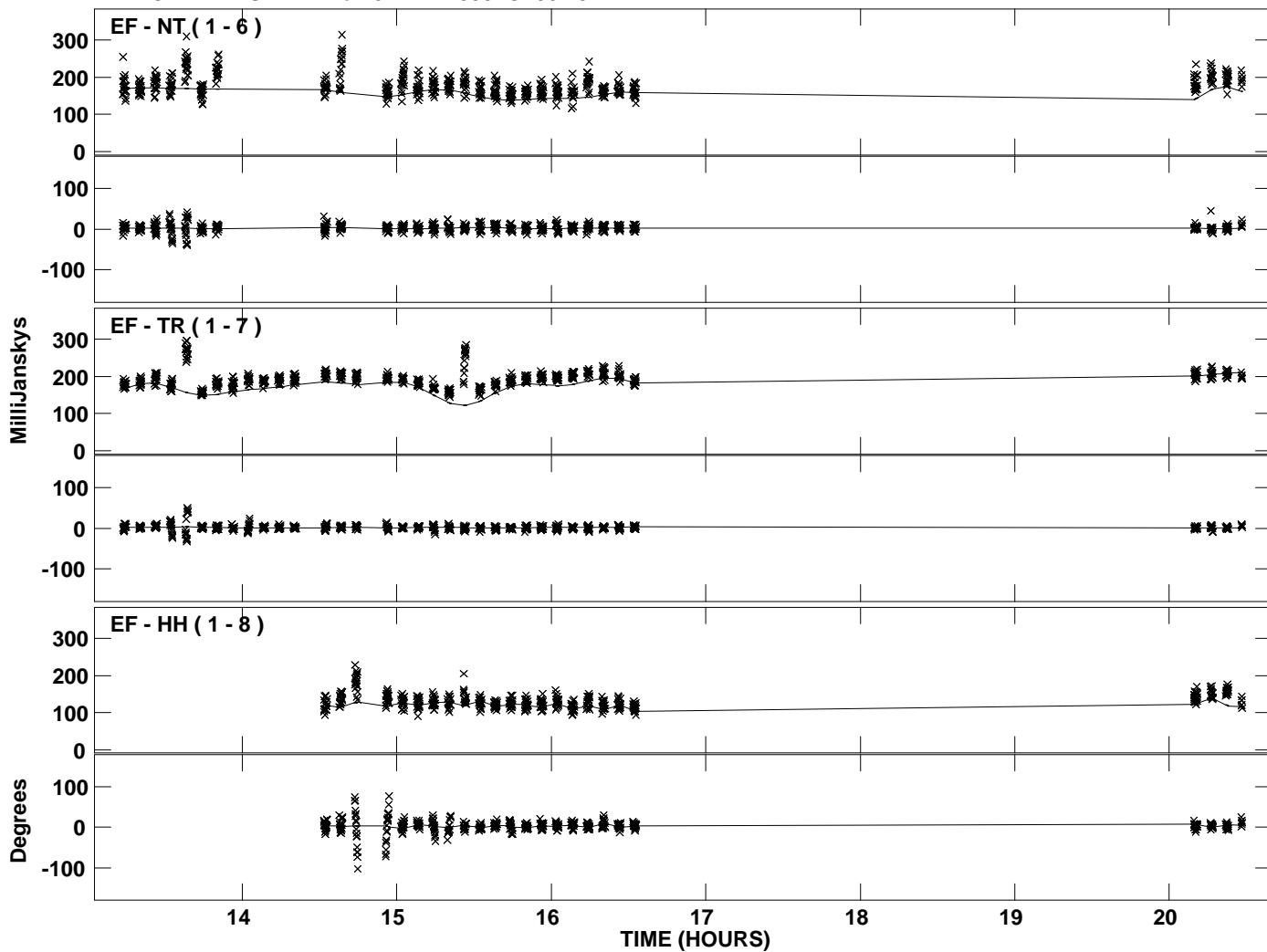
Plot file version 22 created 13-JUL-2012 11:58:40  
Amplitude andPhase vs Time for J1224+4335.MULTI.1 CL # 3  
IF 3 CHAN 1 STK RR of J1224+4335.ICL001.3



PLot file version 23 created 13-JUL-2012 11:58:40  
Amplitude andPhase vs Time for J1224+4335.MULTI.1 CL # 3  
IF 4 CHAN 1 STK RR of J1224+4335.ICL001.3

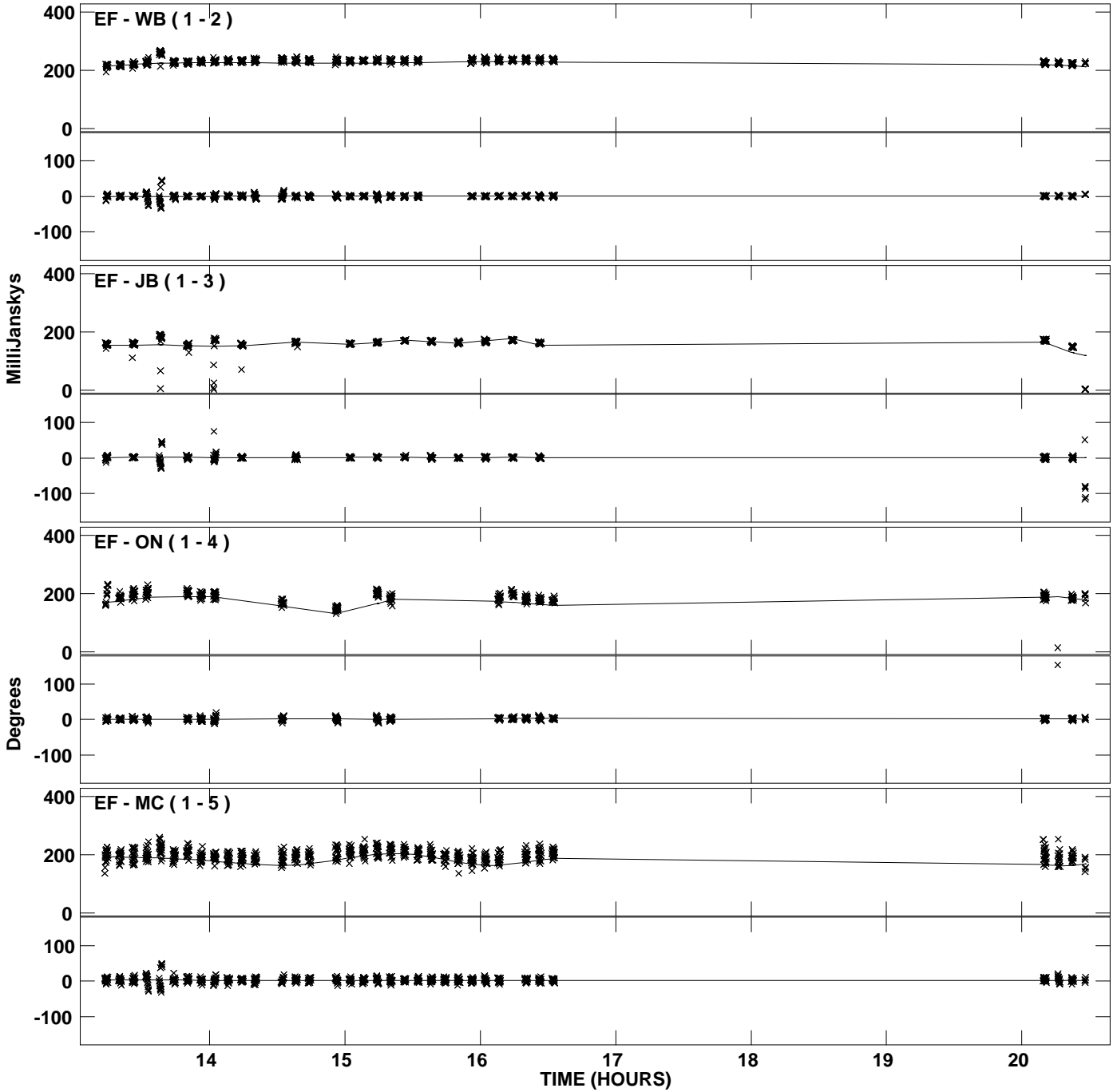


Plot file version 24 created 13-JUL-2012 11:58:40  
Amplitude andPhase vs Time for J1224+4335.MULTI.1 CL # 3  
IF 4 CHAN 1 STK RR of J1224+4335.ICL001.3

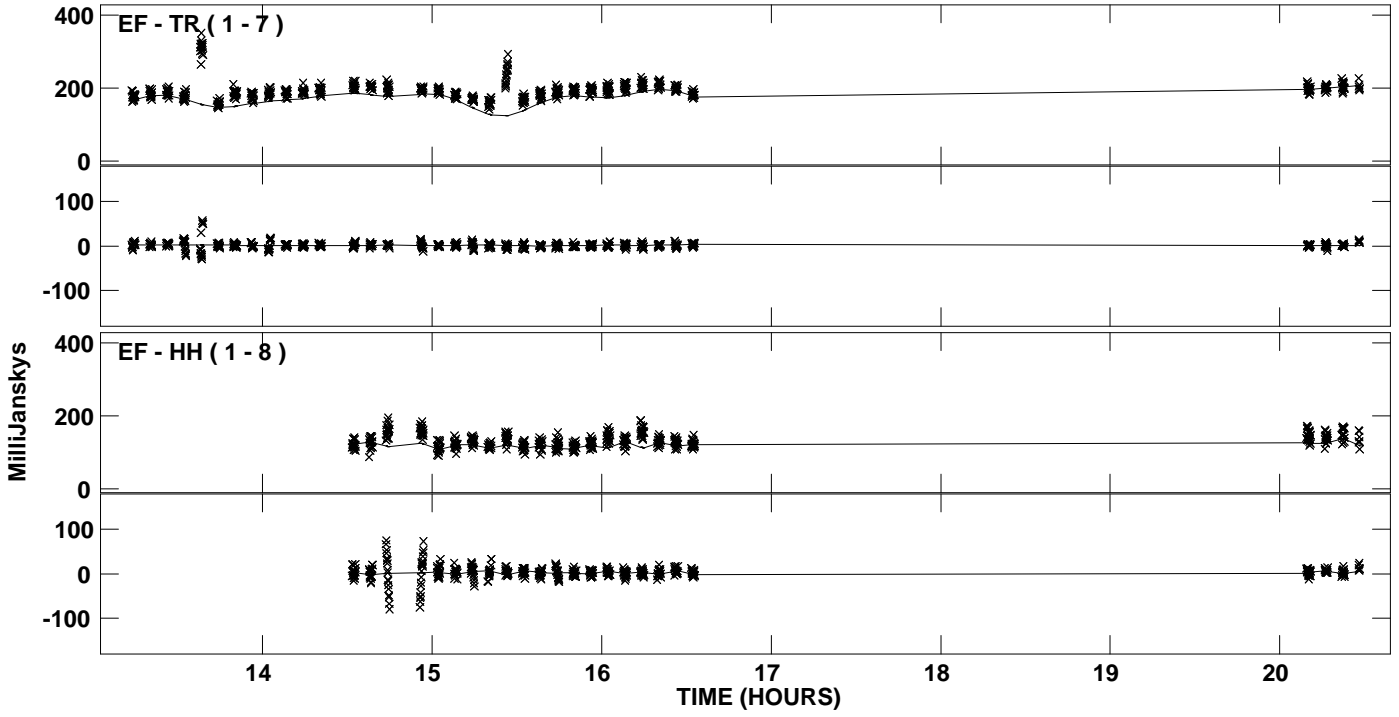




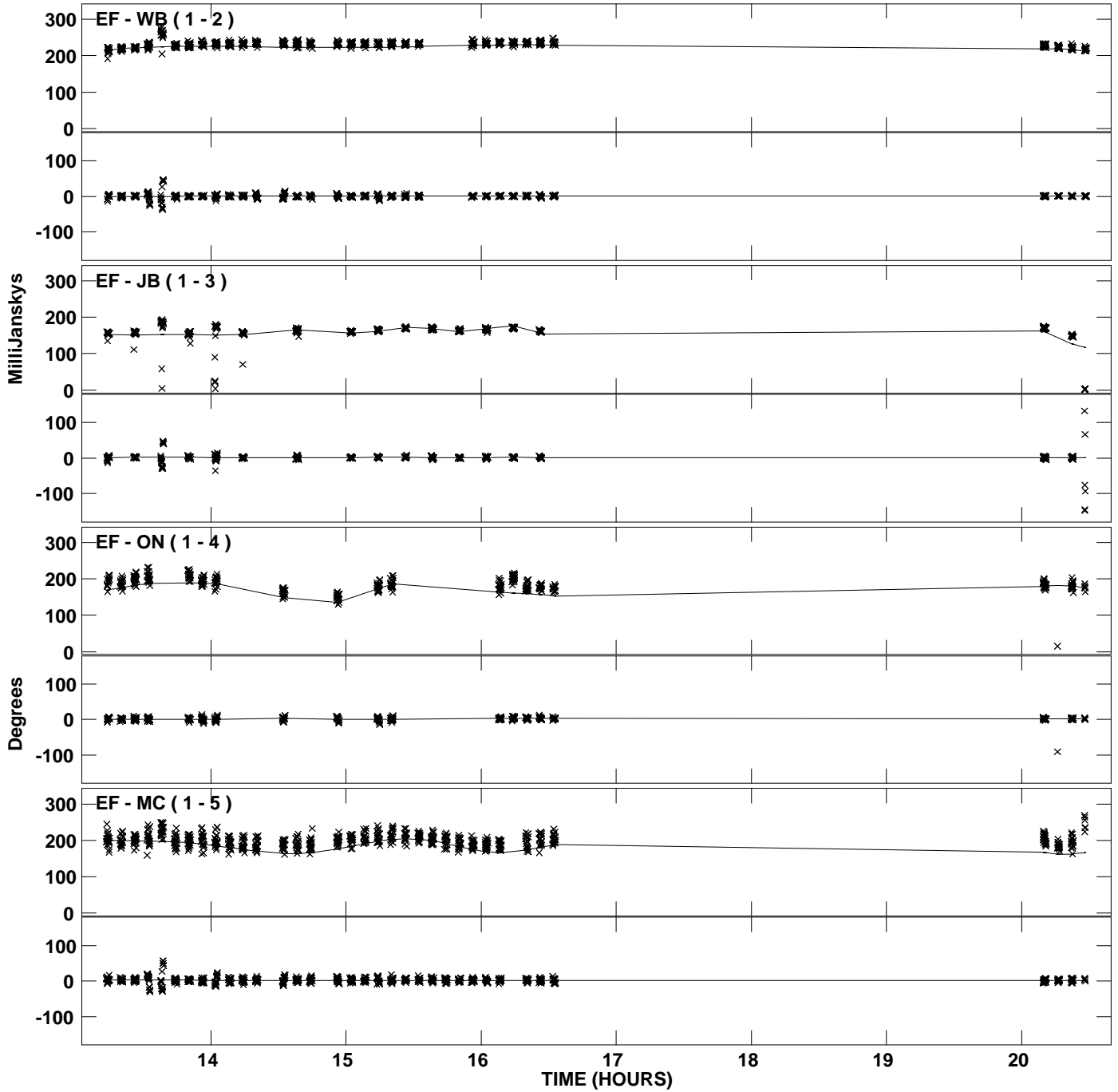
PLot file version 25 created 13-JUL-2012 11:58:40  
Amplitude andPhase vs Time for J1224+4335.MULTI.1 CL # 3  
IF 5 CHAN 1 STK RR of J1224+4335.ICL001.3



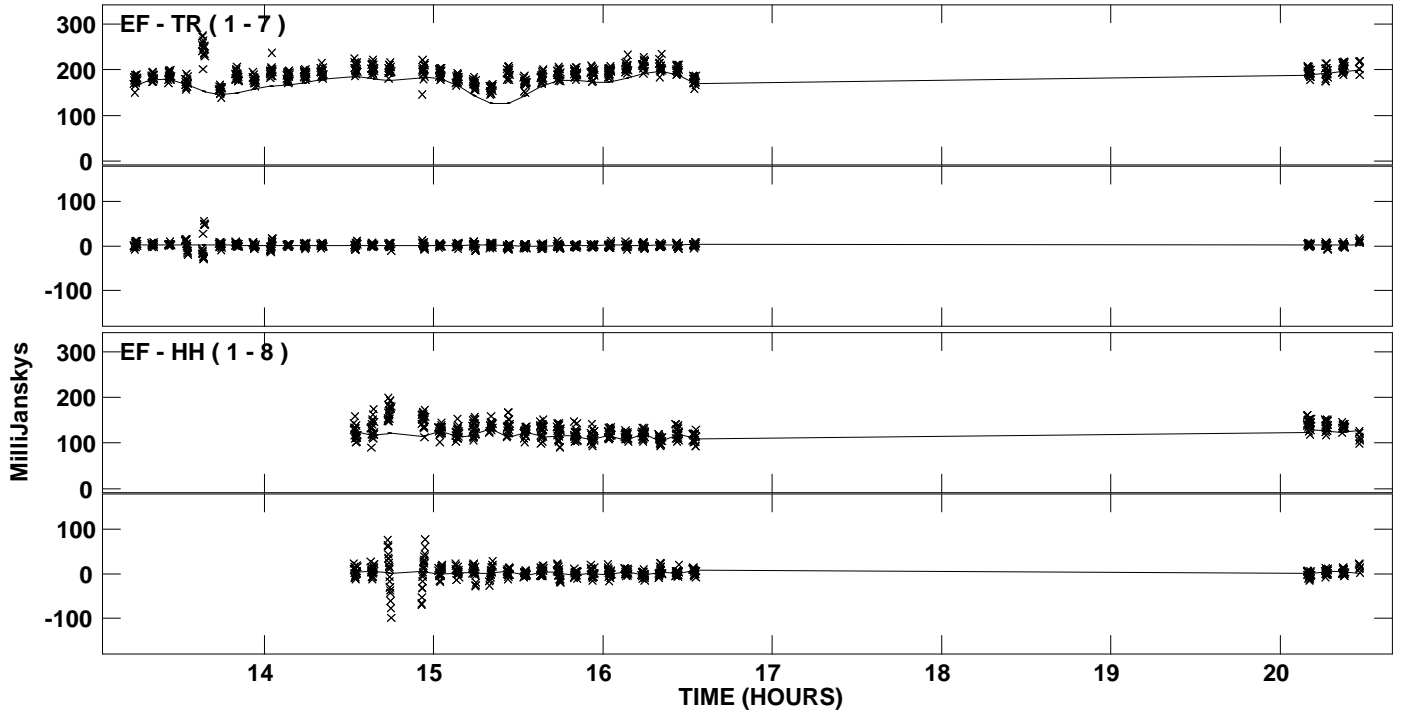
Plot file version 26 created 13-JUL-2012 11:58:40  
Amplitude andPhase vs Time for J1224+4335.MULTI.1 CL # 3  
IF 5 CHAN 1 STK RR of J1224+4335.ICL001.3



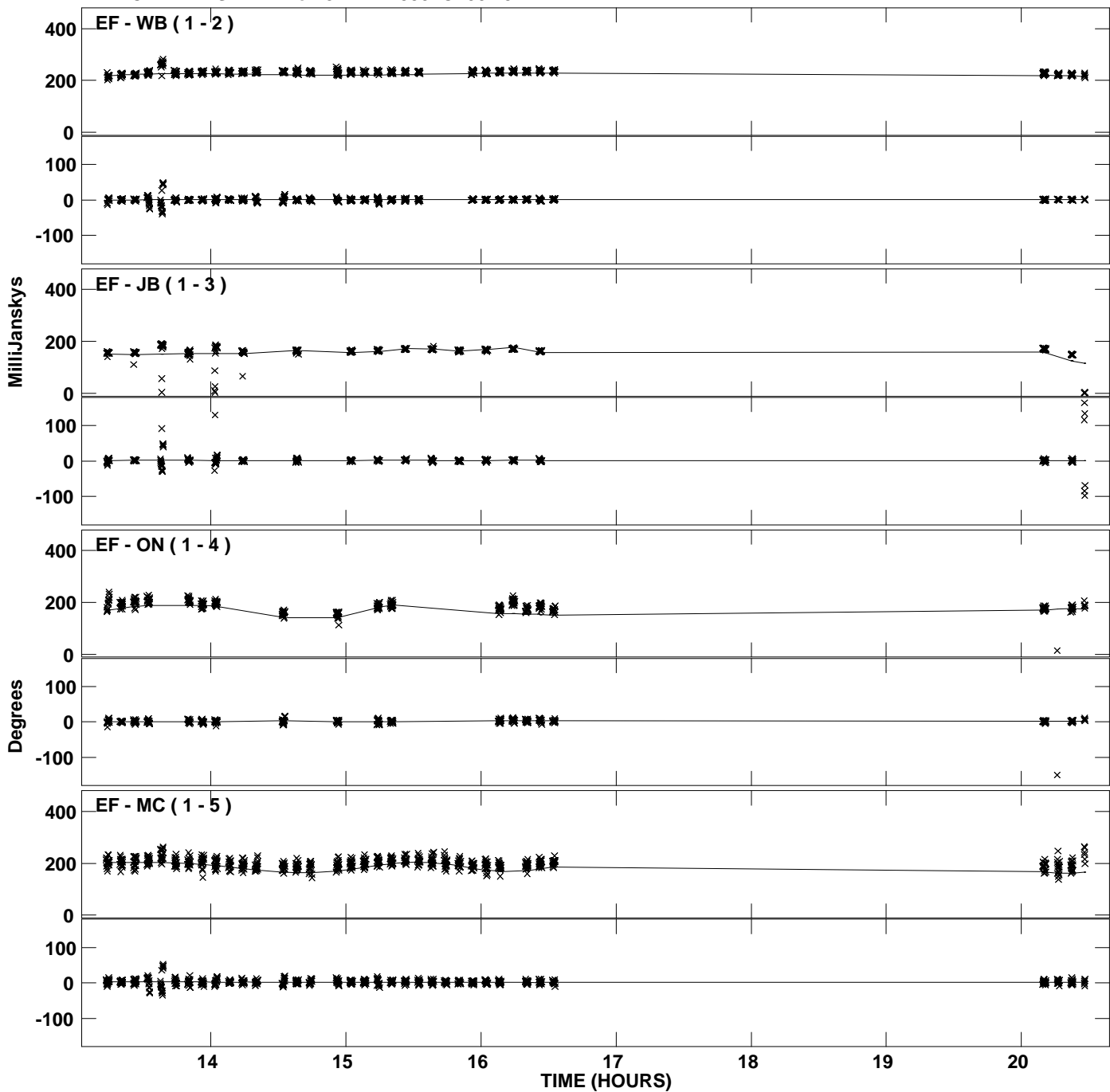
PLot file version 27 created 13-JUL-2012 11:58:40  
Amplitude andPhase vs Time for J1224+4335.MULTI.1 CL # 3  
IF 6 CHAN 1 STK RR of J1224+4335.ICL001.3



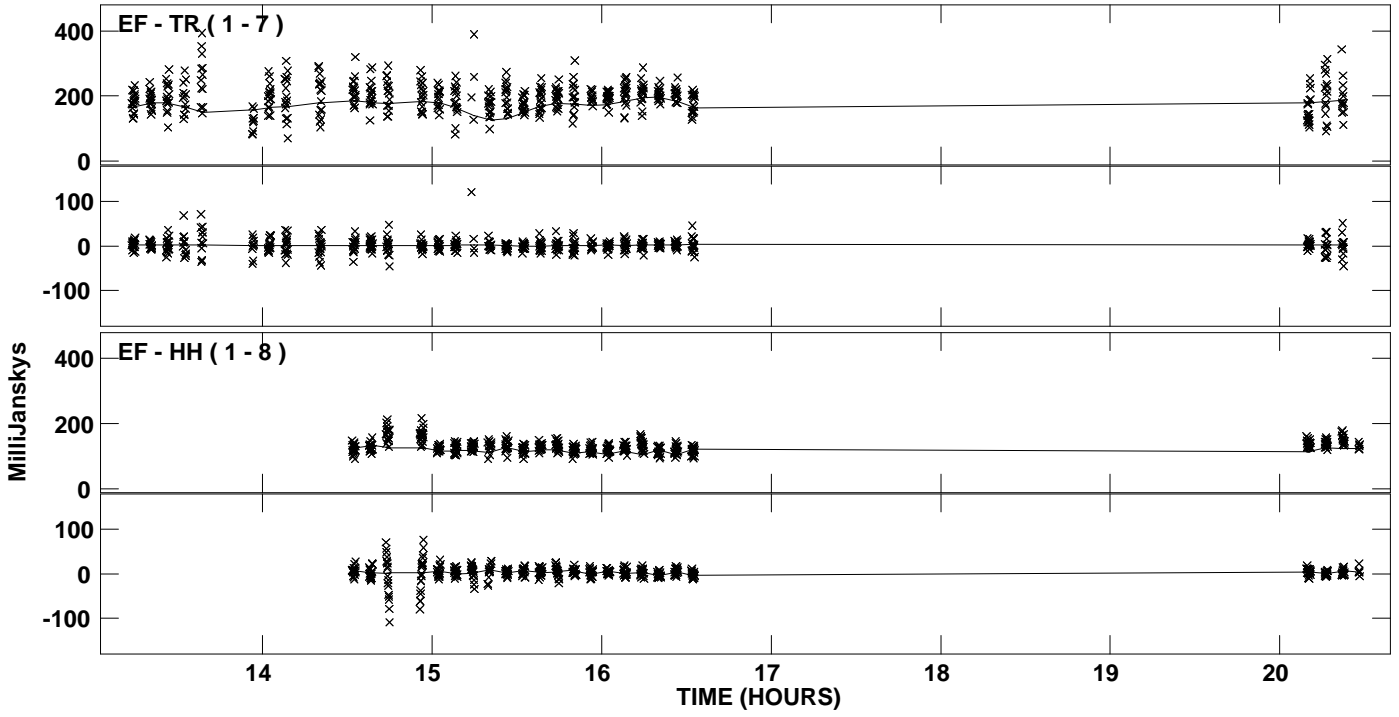
PLot file version 28 created 13-JUL-2012 11:58:40  
Amplitude andPhase vs Time for J1224+4335.MULTI.1 CL # 3  
IF 6 CHAN 1 STK RR of J1224+4335.ICL001.3



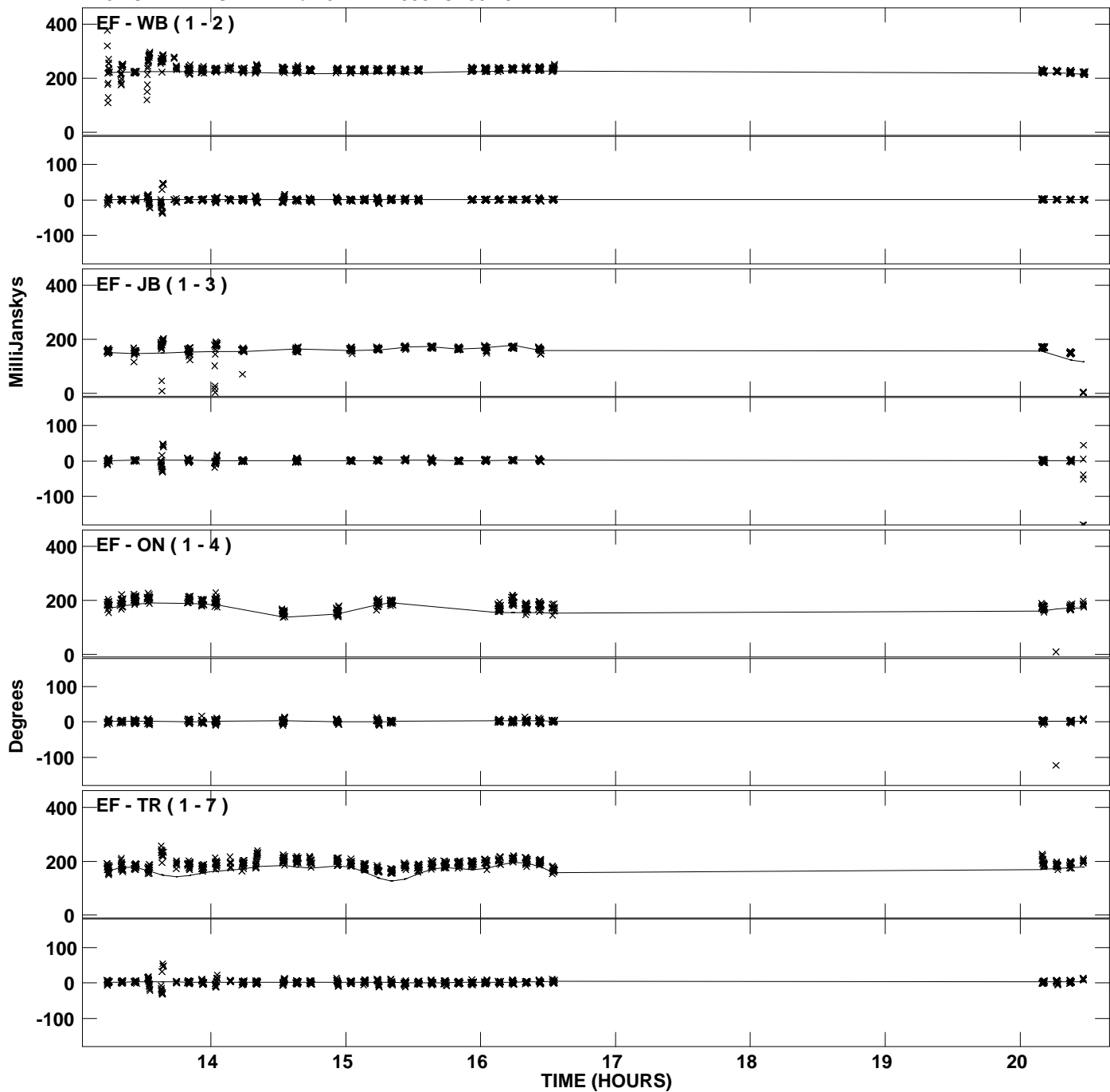
PLot file version 29 created 13-JUL-2012 11:58:40  
Amplitude andPhase vs Time for J1224+4335.MULTI.1 CL # 3  
IF 7 CHAN 1 STK RR of J1224+4335.ICL001.3



PLot file version 30 created 13-JUL-2012 11:58:40  
Amplitude and Phase vs Time for J1224+4335.MULTI.1 CL # 3  
IF 7 CHAN 1 STK RR of J1224+4335.ICL001.3



PLot file version 31 created 13-JUL-2012 11:58:41  
Amplitude andPhase vs Time for J1224+4335.MULTI.1 CL # 3  
IF 8 CHAN 1 STK RR of J1224+4335.ICL001.3



PLot file version 32 created 13-JUL-2012 11:58:41  
Amplitude andPhase vs Time for J1224+4335.MULTI.1 CL # 3  
IF 8 CHAN 1 STK RR of J1224+4335.ICL001.3

