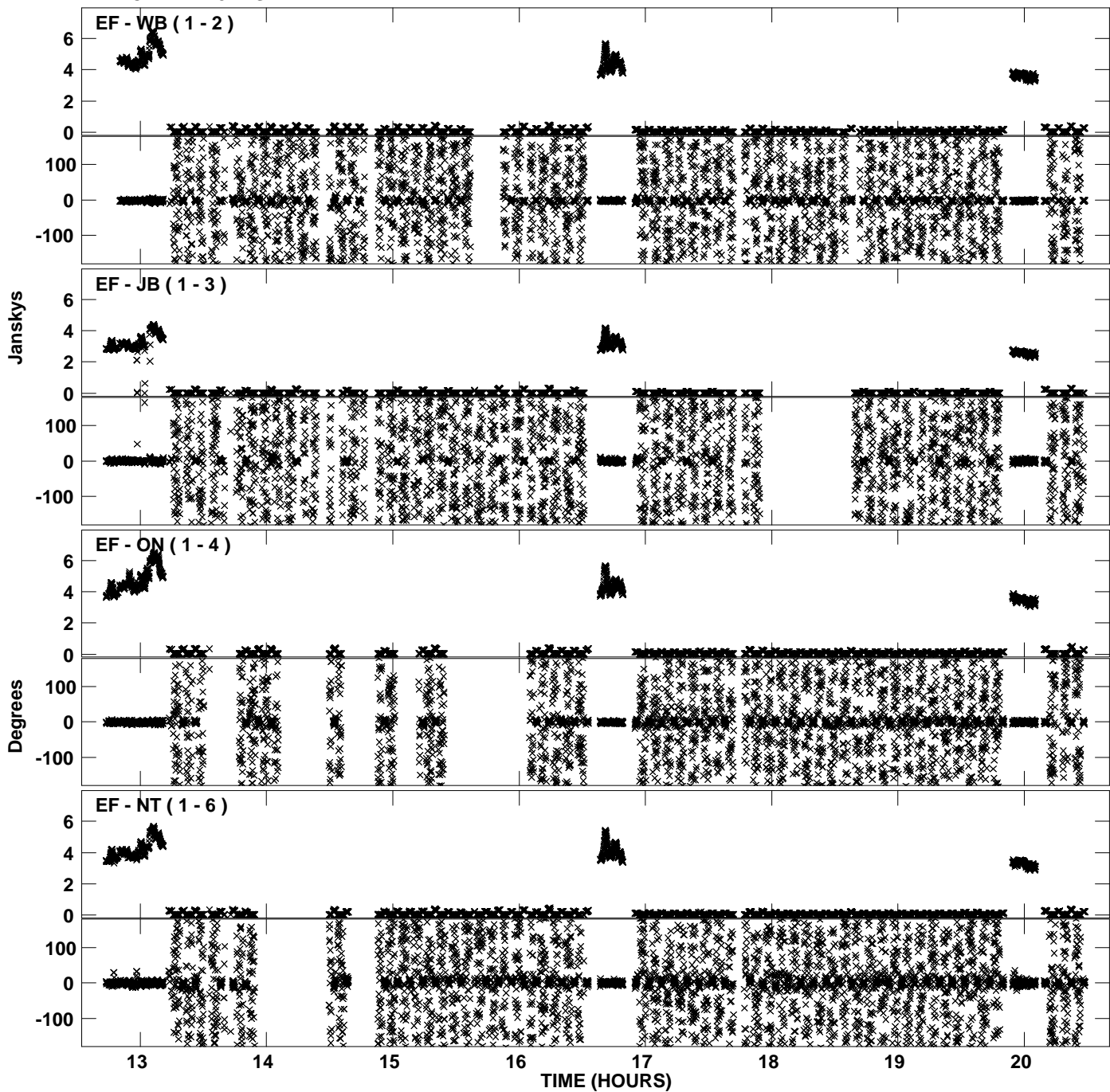
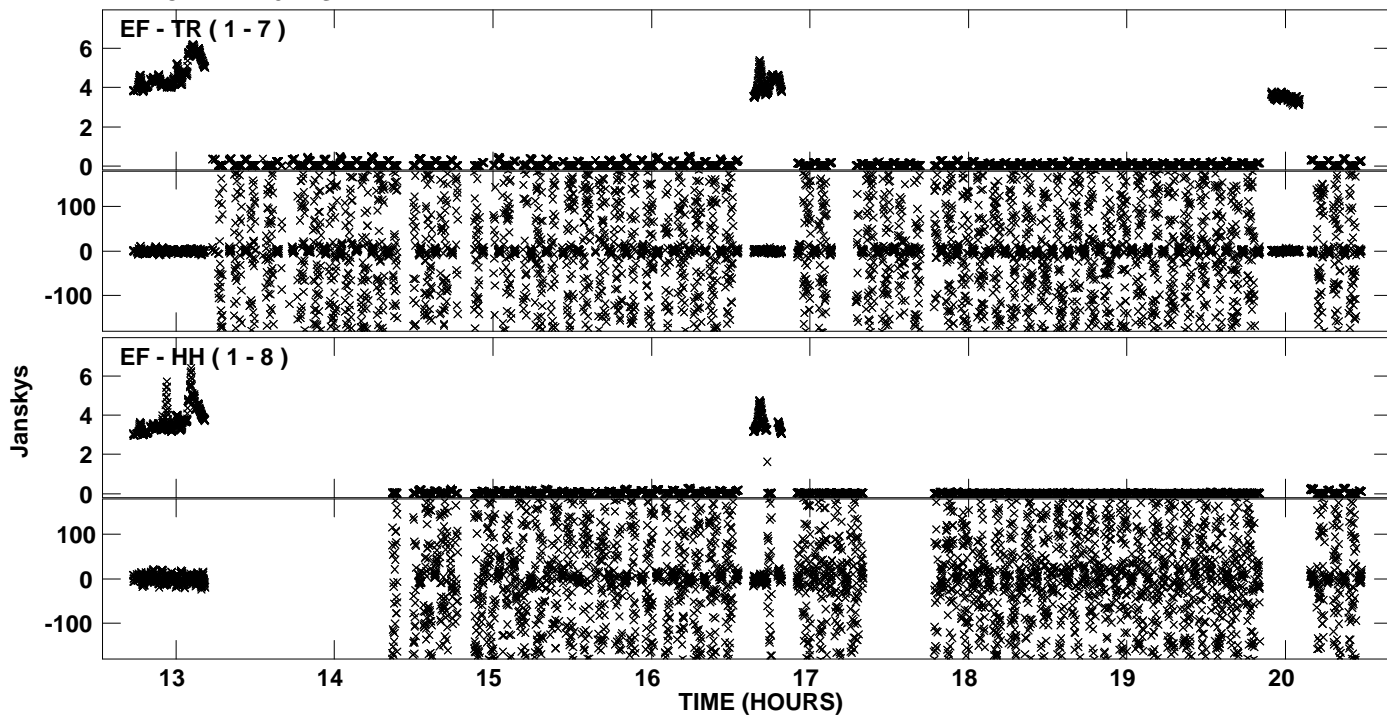


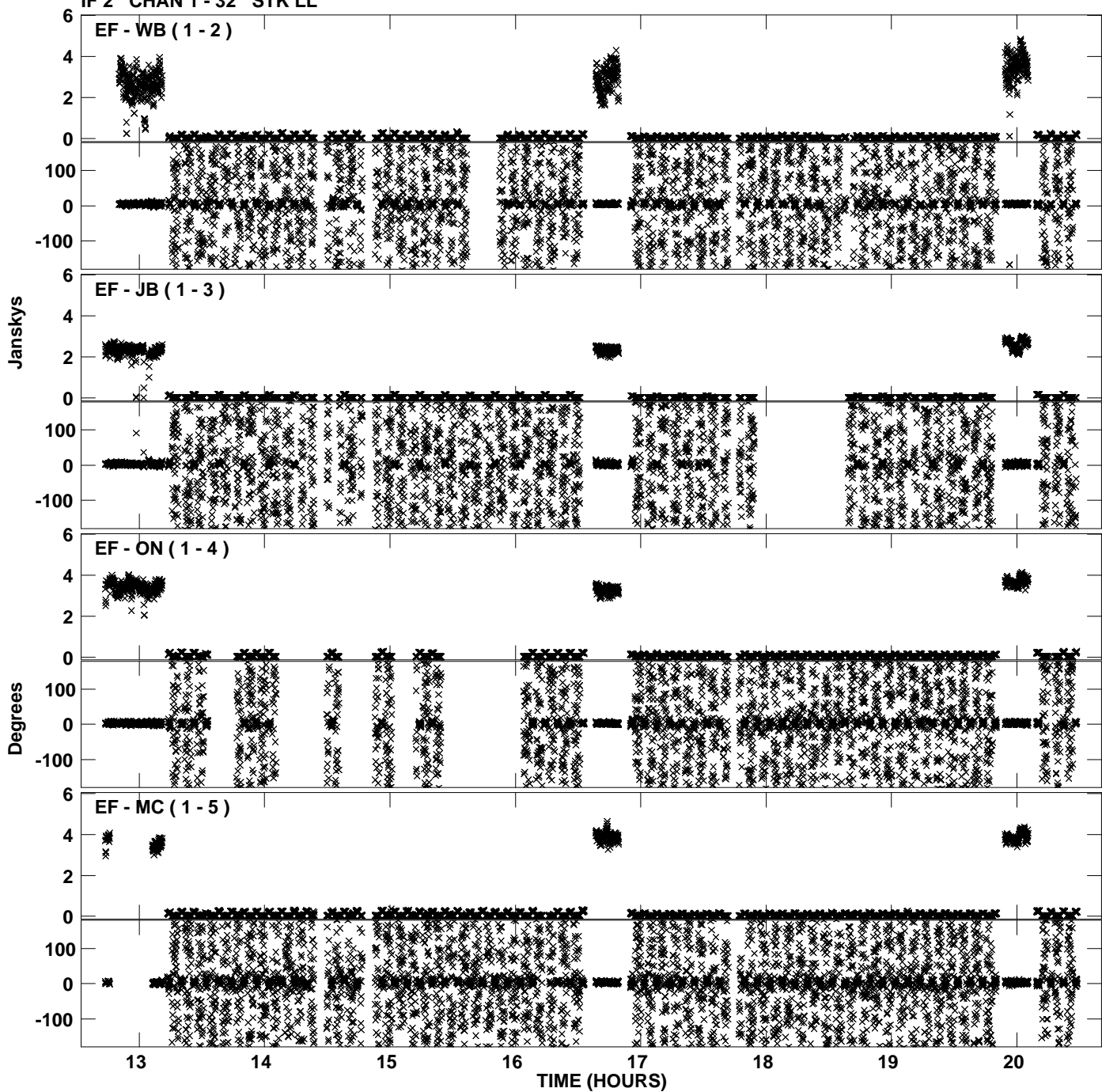
Plot file version 1 created 13-JUL-2012 11:57:08
Amplitude and Phase vs Time for EM095B.UVDATA.1 Vect aver. CL # 3
IF 1 CHAN 1 - 32 STK LL



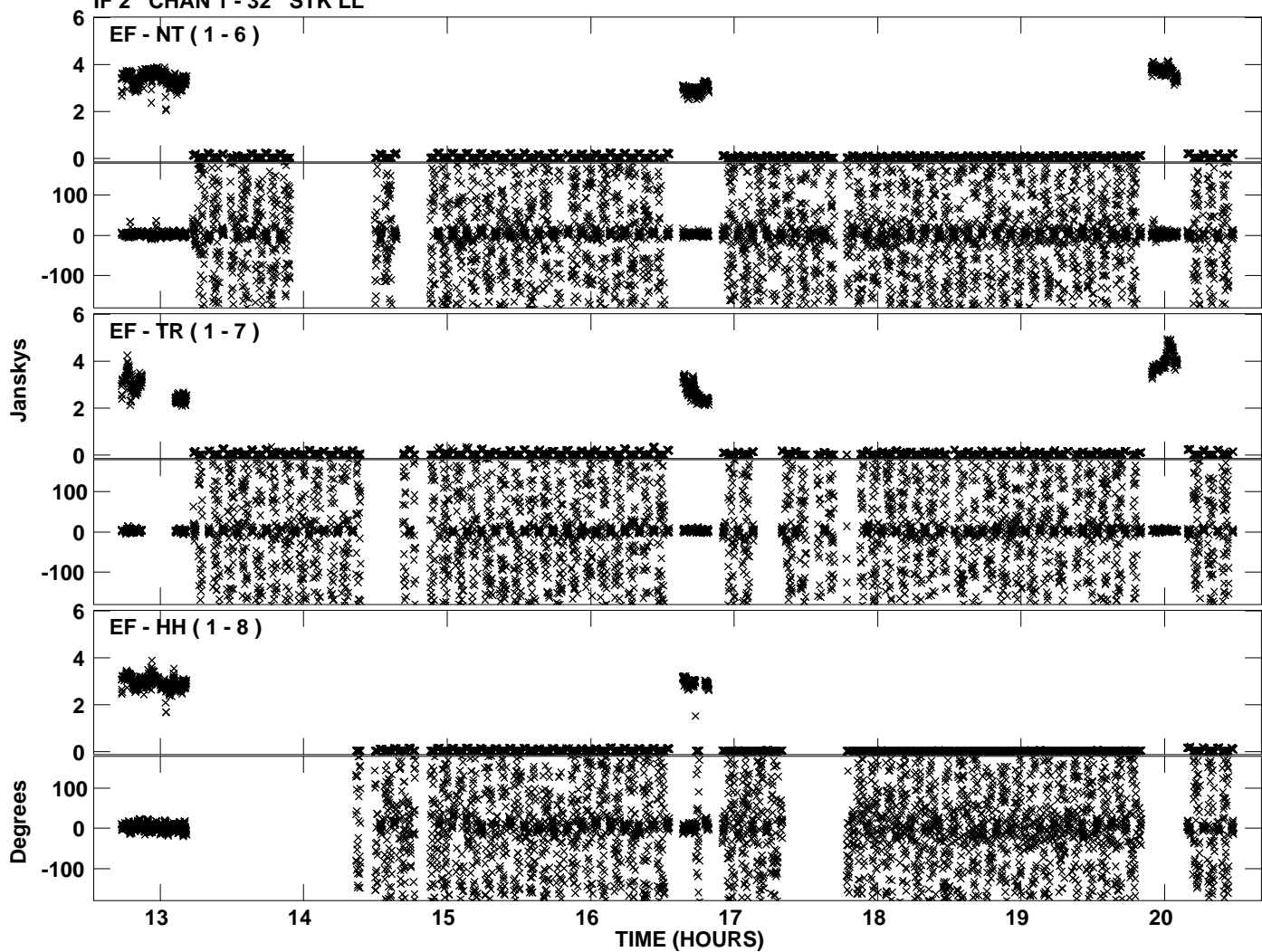
Plot file version 2 created 13-JUL-2012 11:57:08
Amplitude andPhase vs Time for EM095B.UVDATA.1 Vect aver. CL # 3
IF 1 CHAN 1 - 32 STK LL



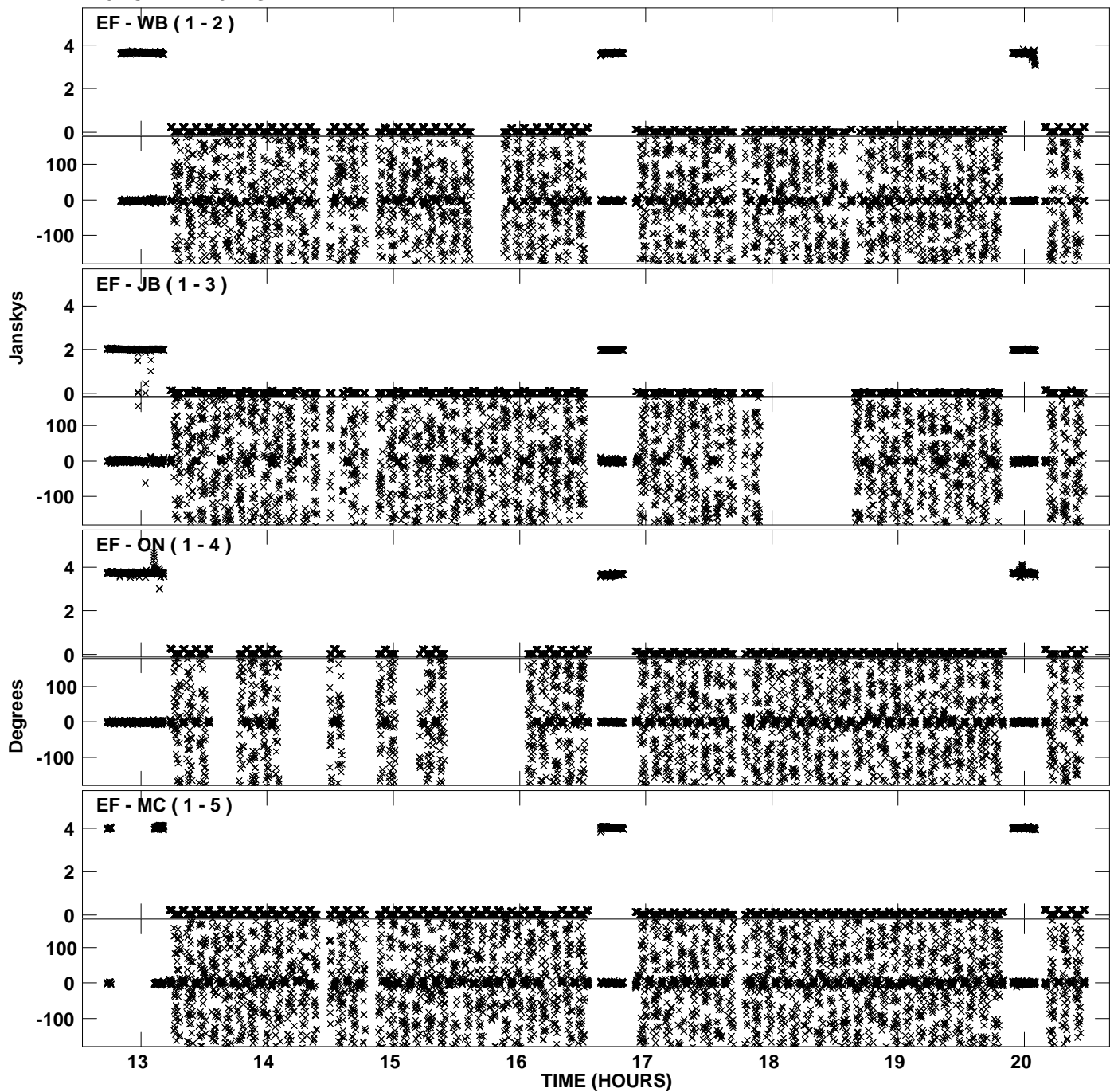
Plot file version 3 created 13-JUL-2012 11:57:09
Amplitude and Phase vs Time for EM095B.UVDATA.1 Vect aver. CL # 3
IF 2 CHAN 1 - 32 STK LL



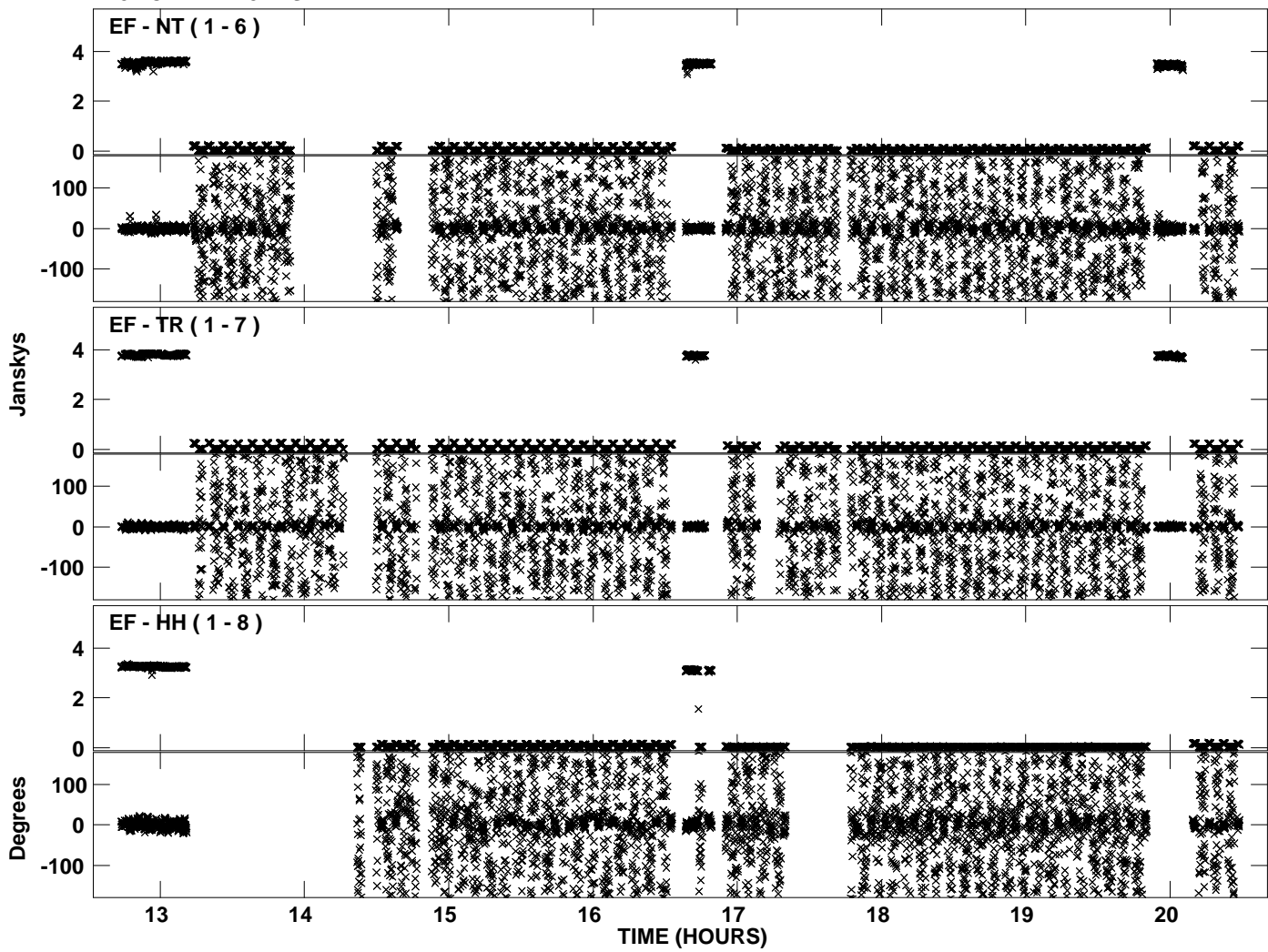
Plot file version 4 created 13-JUL-2012 11:57:09
Amplitude and Phase vs Time for EM095B.UVDATA.1 Vect aver. CL # 3
IF 2 CHAN 1 - 32 STK LL



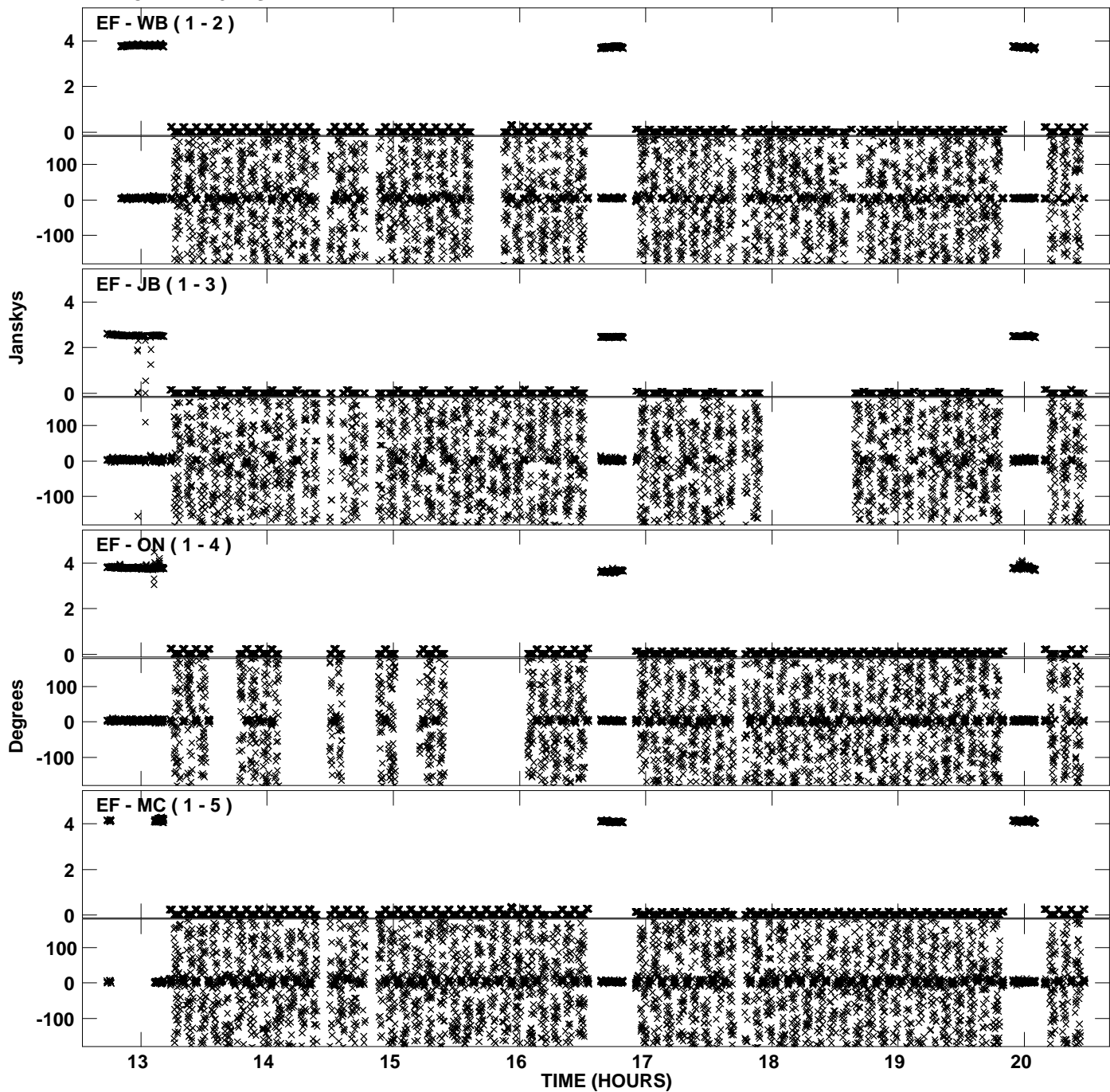
PLot file version 5 created 13-JUL-2012 11:57:11
Amplitude andPhase vs Time for EM095B.UVDATA.1 Vect aver. CL # 3
IF 3 CHAN 1 - 32 STK LL



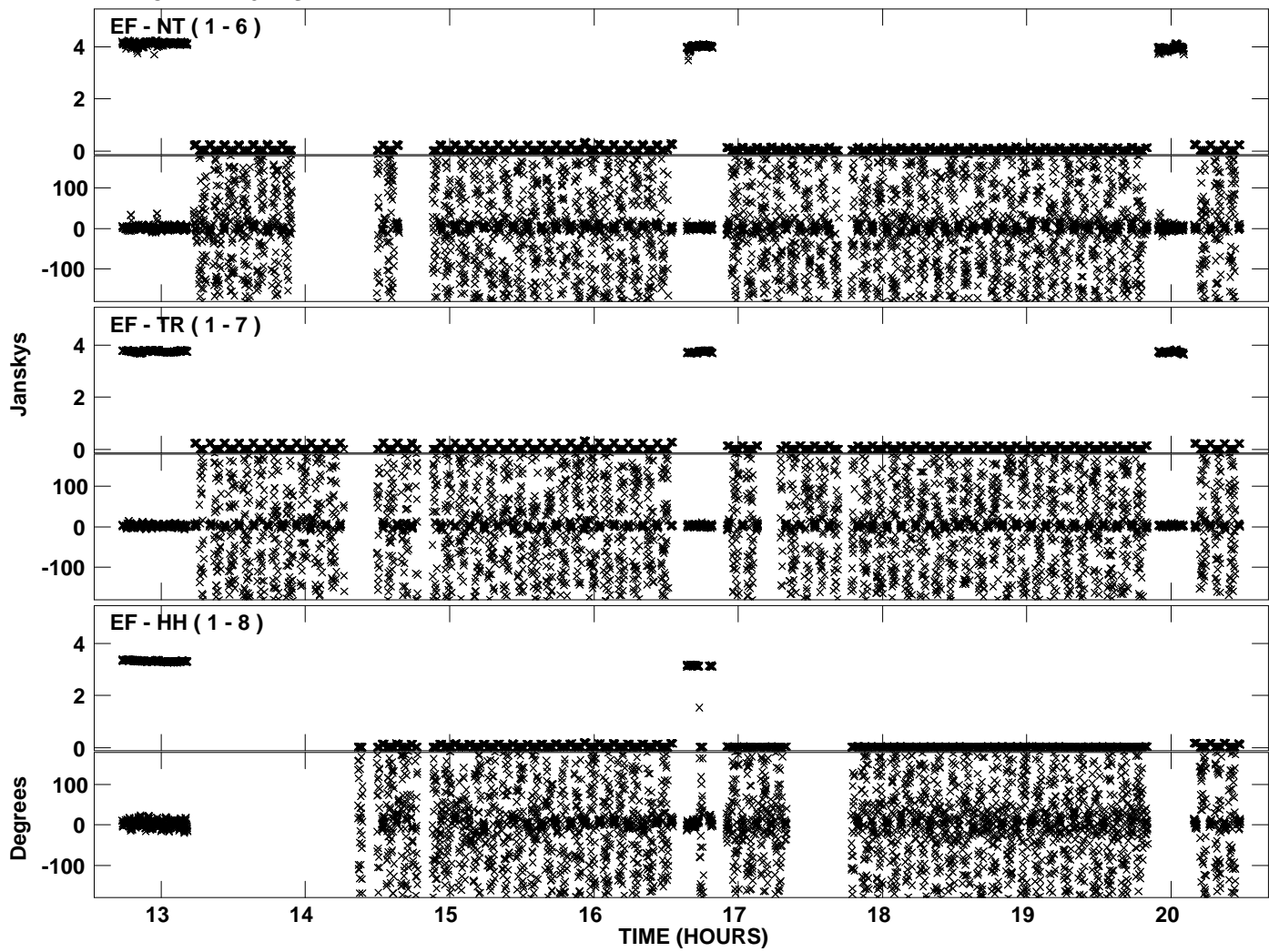
Plot file version 6 created 13-JUL-2012 11:57:11
Amplitude and Phase vs Time for EM095B.UVDATA.1 Vect aver. CL # 3
IF 3 CHAN 1 - 32 STK LL



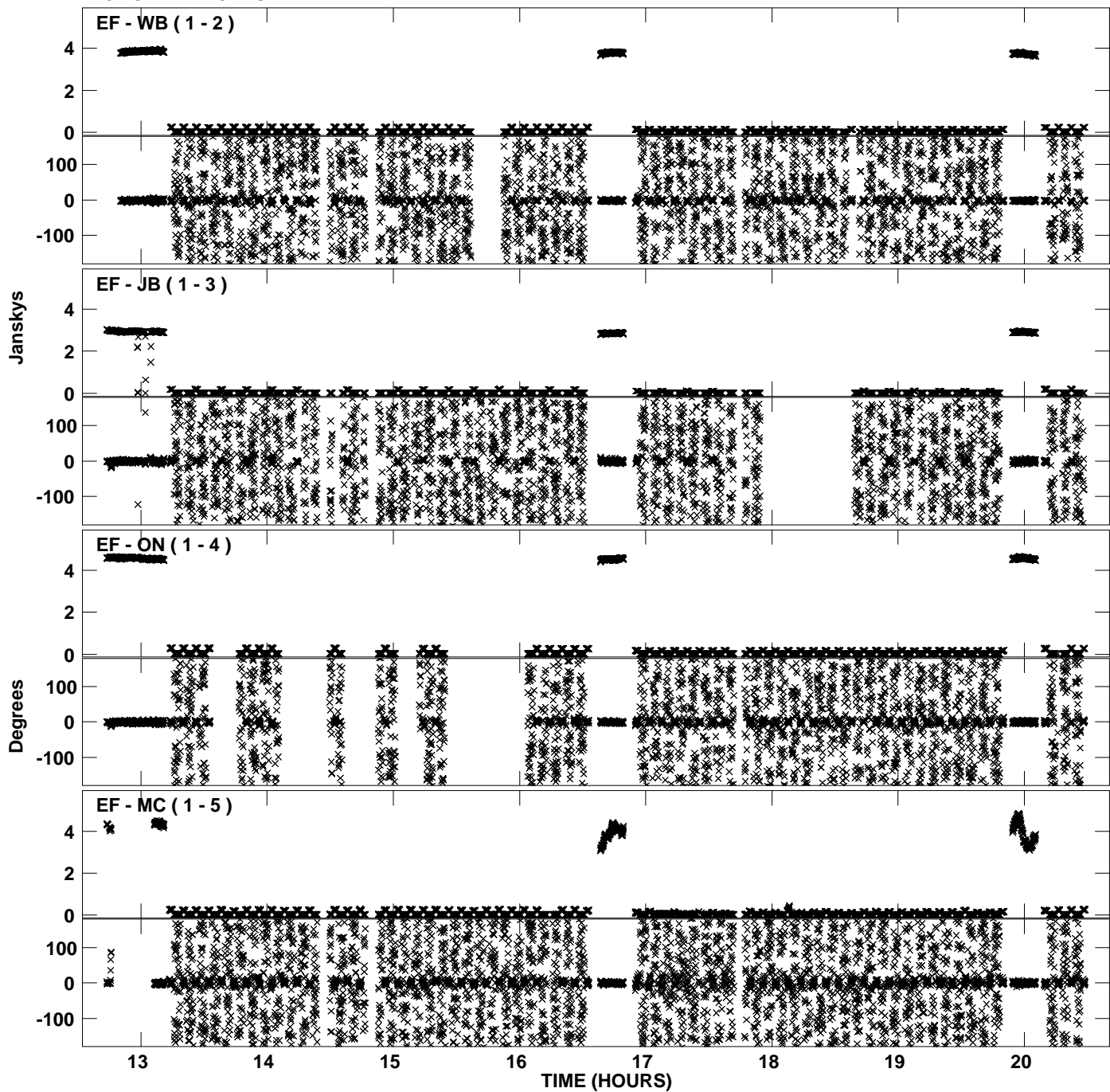
PLot file version 7 created 13-JUL-2012 11:57:13
Amplitude andPhase vs Time for EM095B.UVDATA.1 Vect aver. CL # 3
IF 4 CHAN 1 - 32 STK LL



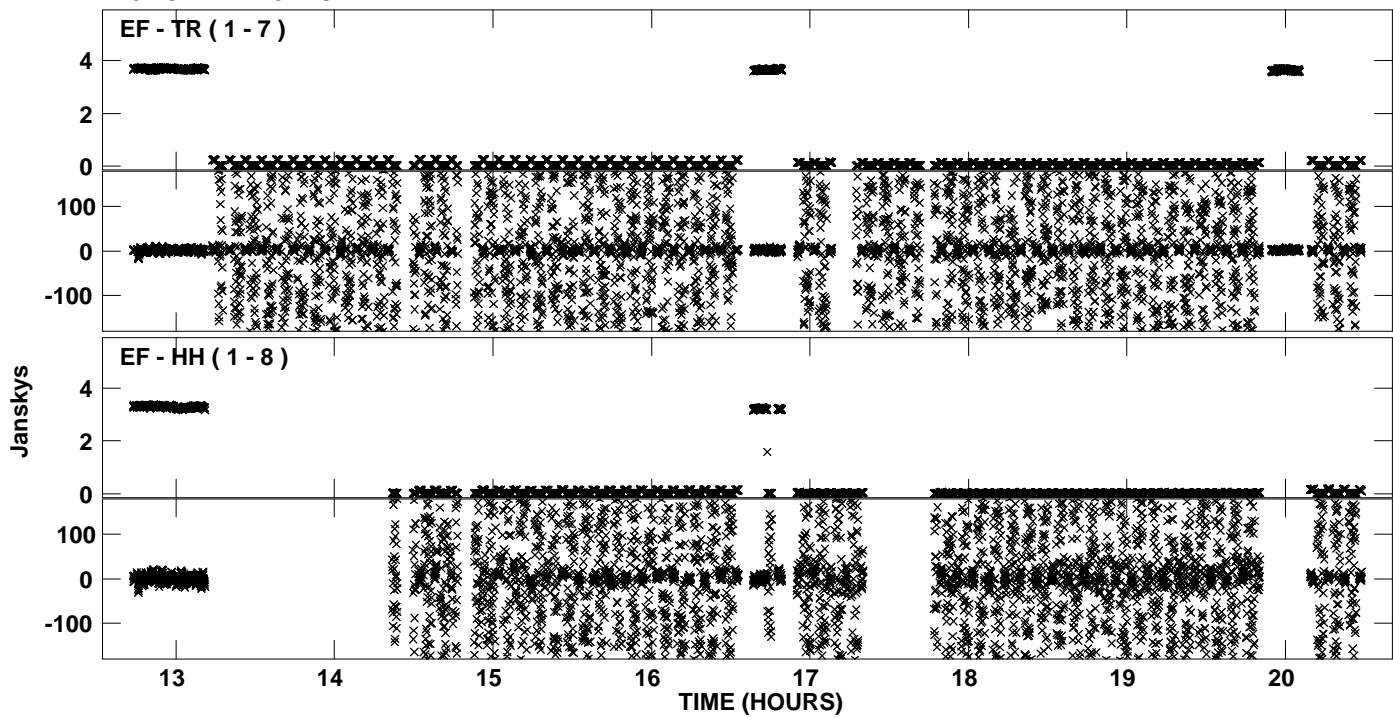
Plot file version 8 created 13-JUL-2012 11:57:13
Amplitude and Phase vs Time for EM095B.UVDATA.1 Vect aver. CL # 3
IF 4 CHAN 1 - 32 STK LL



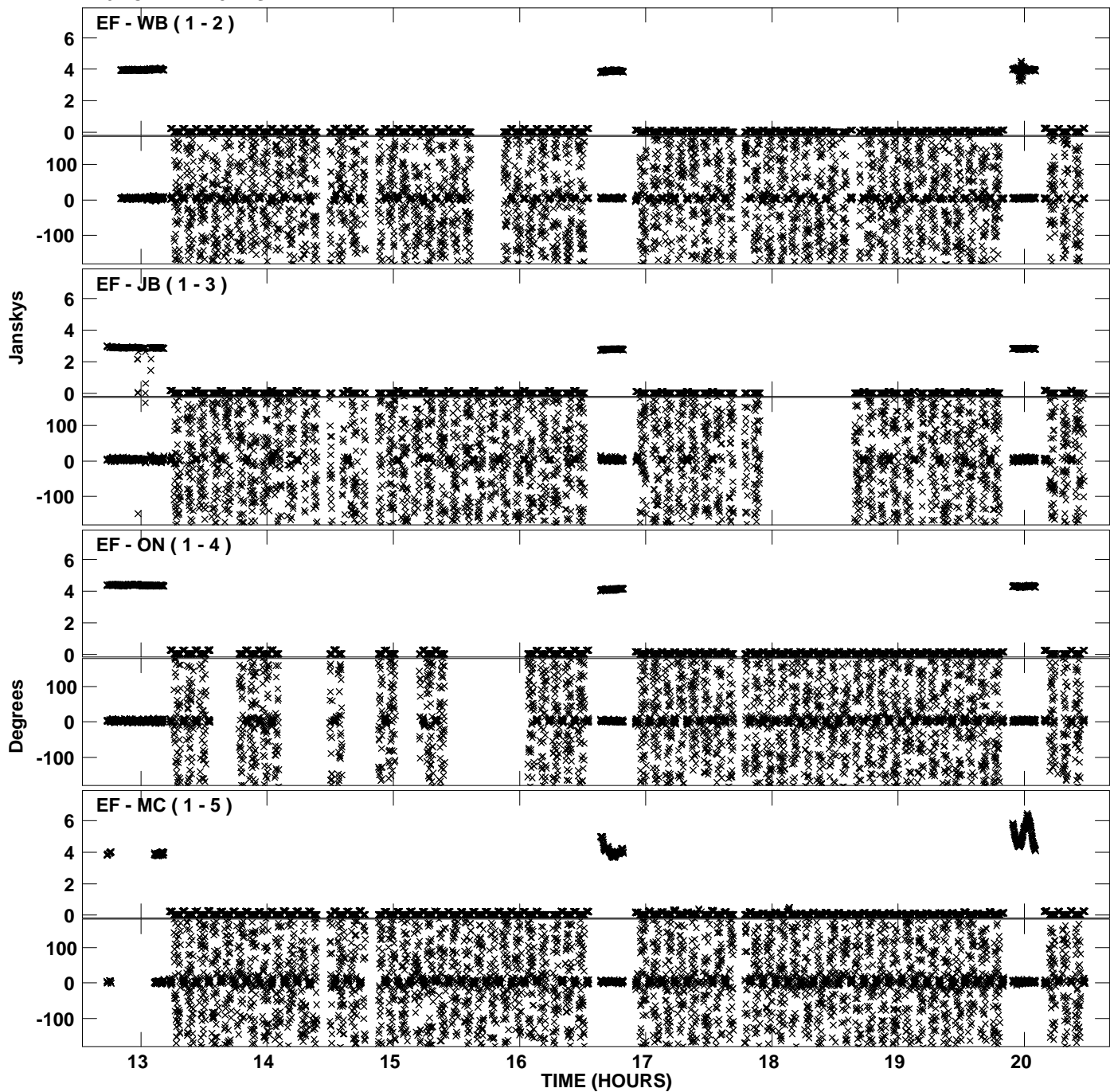
PLot file version 9 created 13-JUL-2012 11:57:14
Amplitude andPhase vs Time for EM095B.UVDATA.1 Vect aver. CL # 3
IF 5 CHAN 1 - 32 STK LL



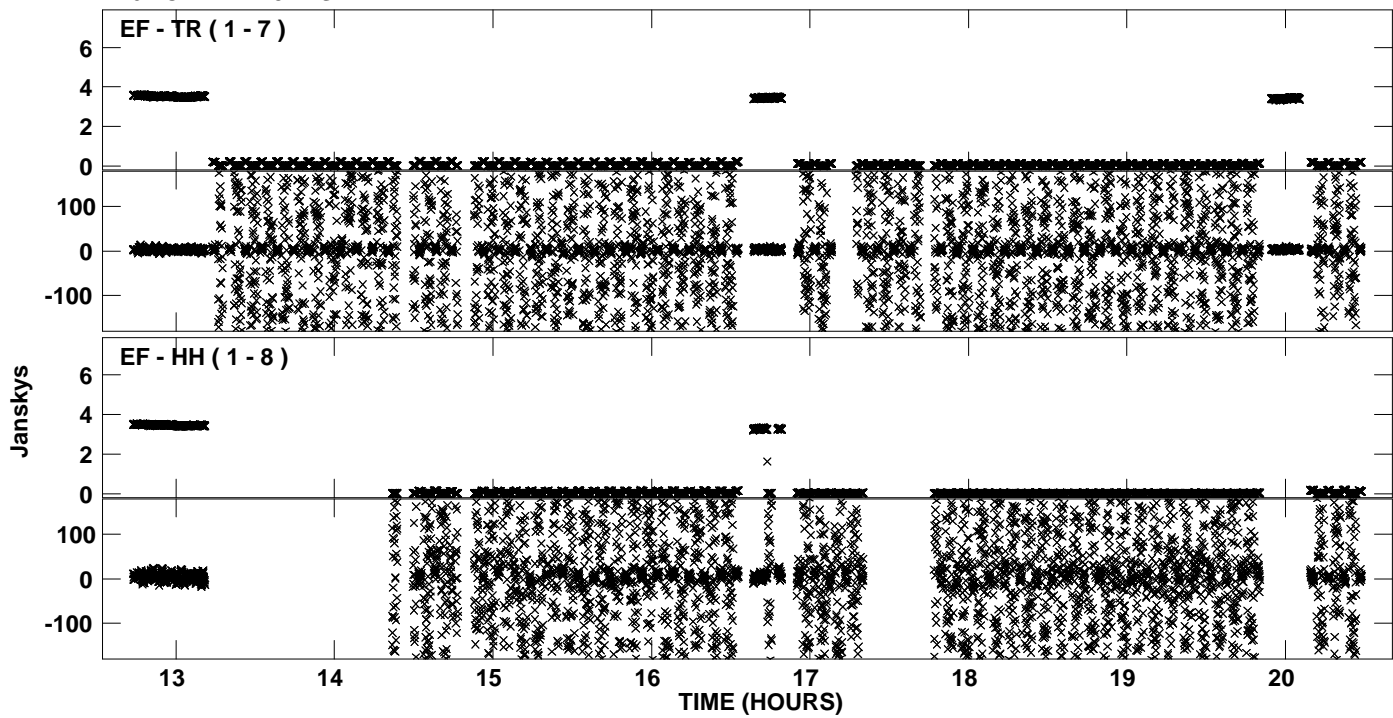
Plot file version 10 created 13-JUL-2012 11:57:14
Amplitude andPhase vs Time for EM095B.UVDATA.1 Vect aver. CL # 3
IF 5 CHAN 1 - 32 STK LL



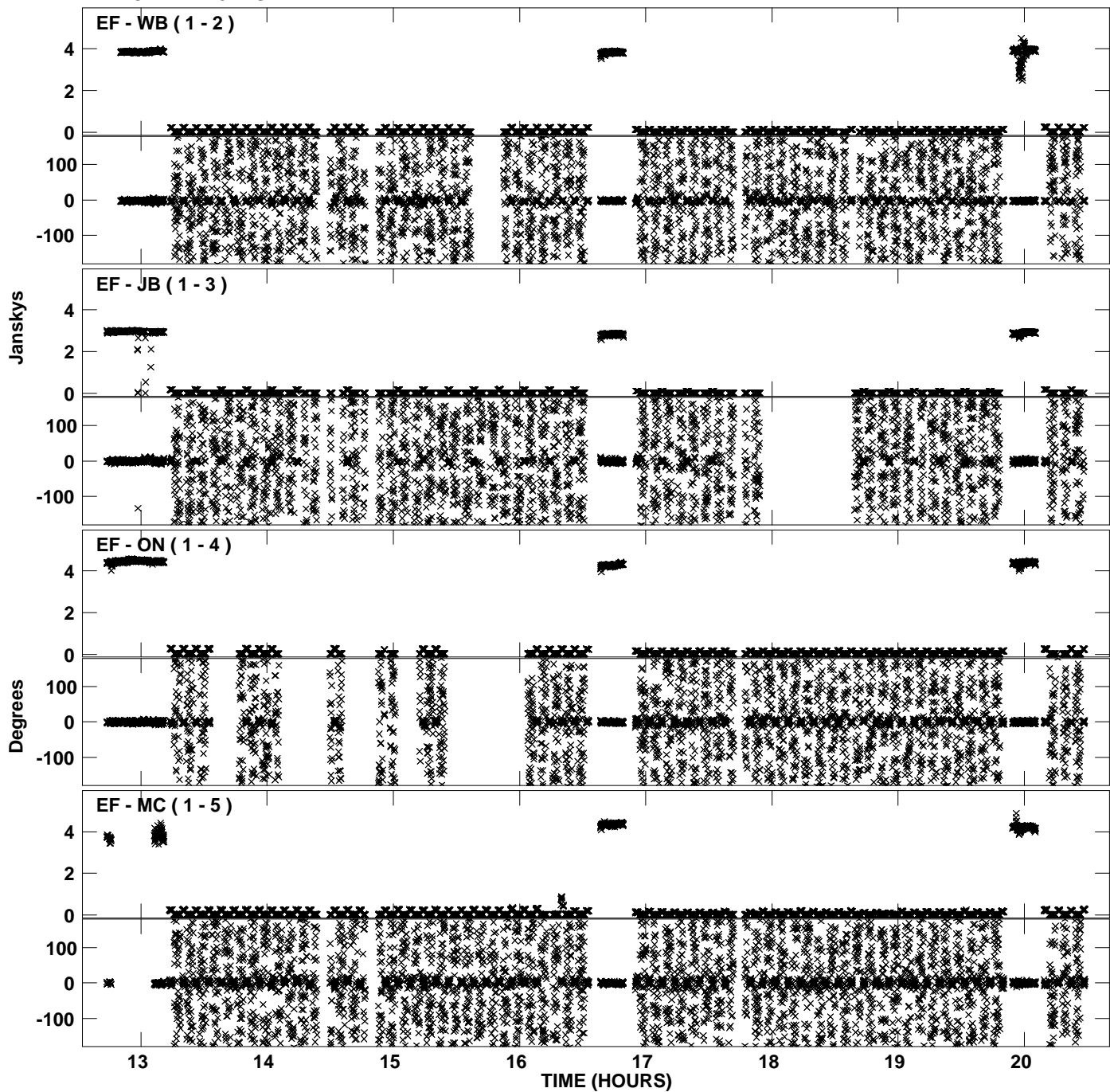
PLot file version 11 created 13-JUL-2012 11:57:15
Amplitude andPhase vs Time for EM095B.UVDATA.1 Vect aver. CL # 3
IF 6 CHAN 1 - 32 STK LL



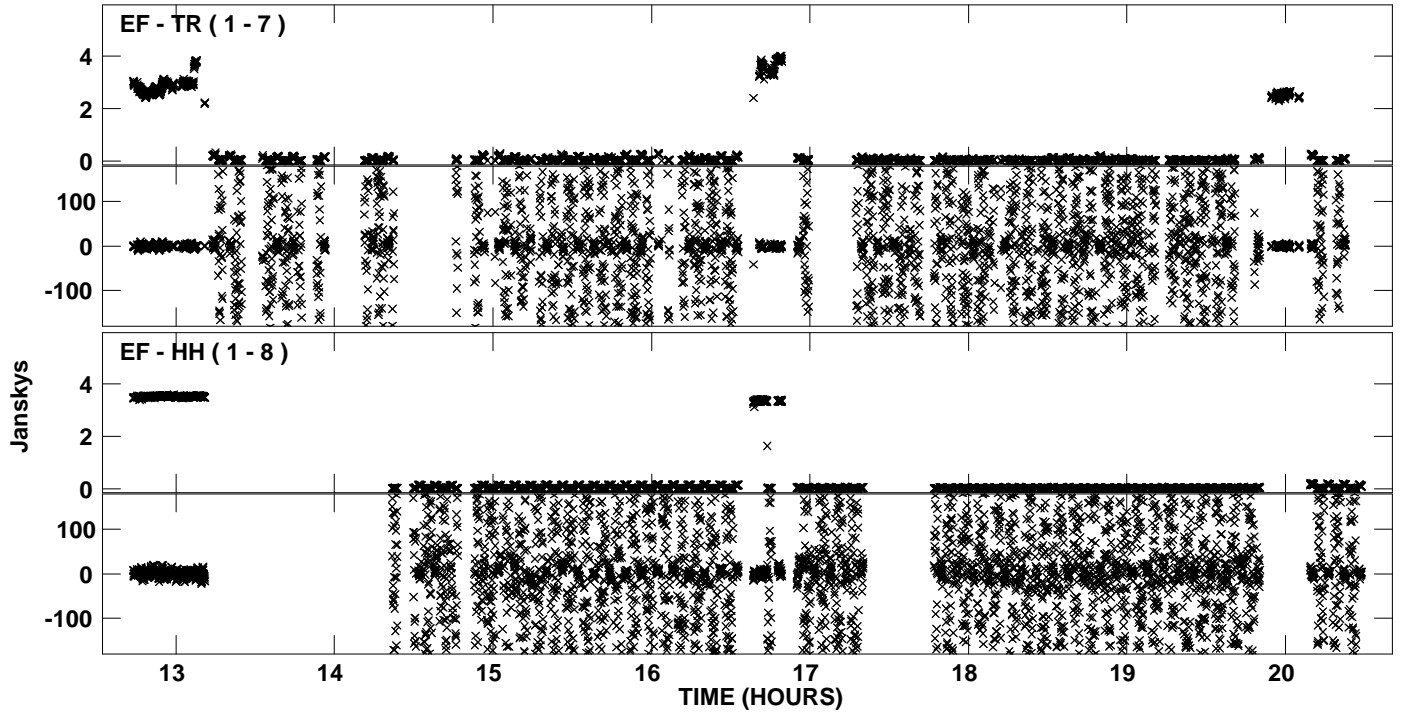
Plot file version 12 created 13-JUL-2012 11:57:15
Amplitude and Phase vs Time for EM095B.UVDATA.1 Vect aver. CL # 3
IF 6 CHAN 1 - 32 STK LL



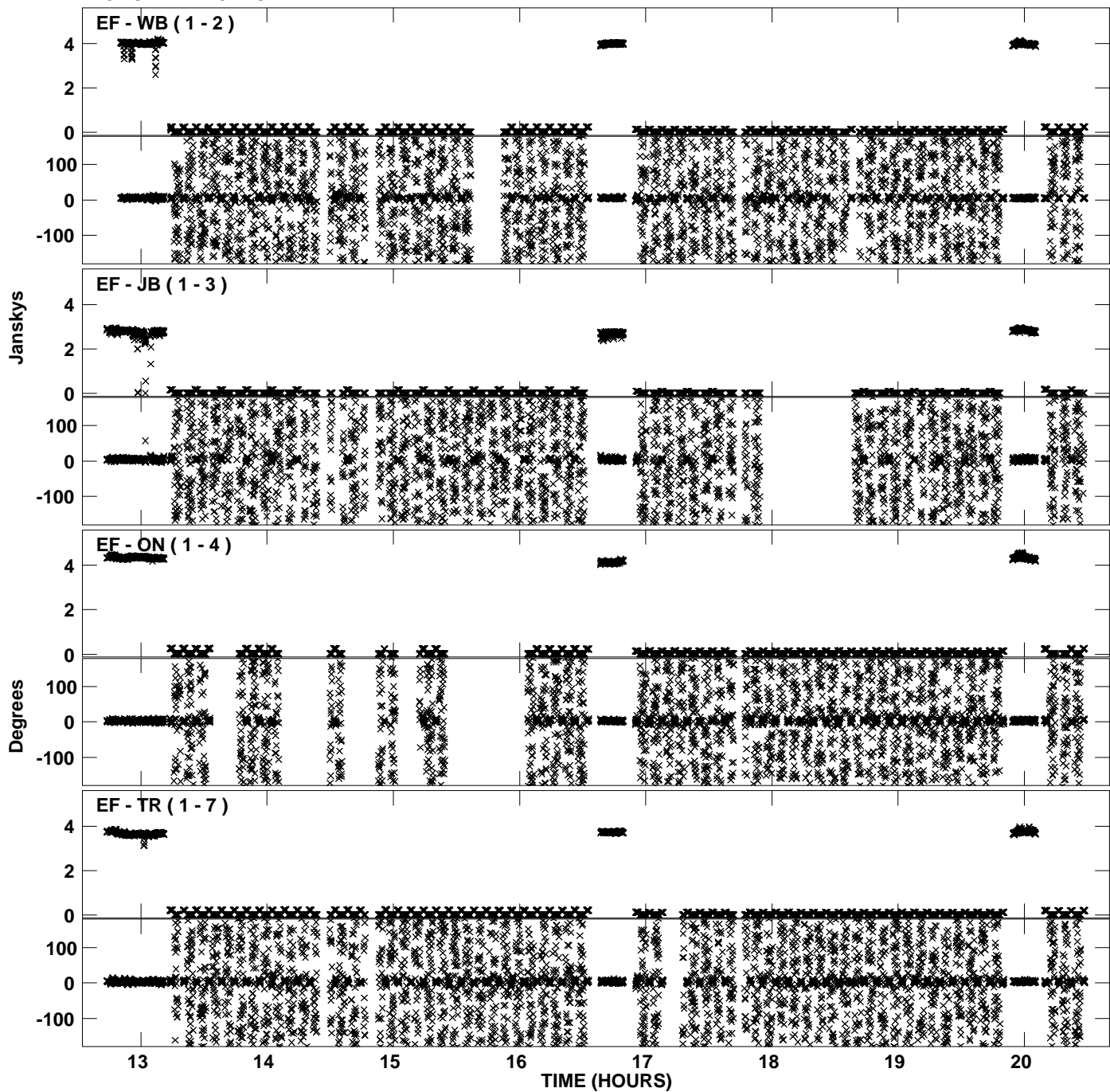
PLot file version 13 created 13-JUL-2012 11:57:17
Amplitude andPhase vs Time for EM095B.UVDATA.1 Vect aver. CL # 3
IF 7 CHAN 1 - 32 STK LL



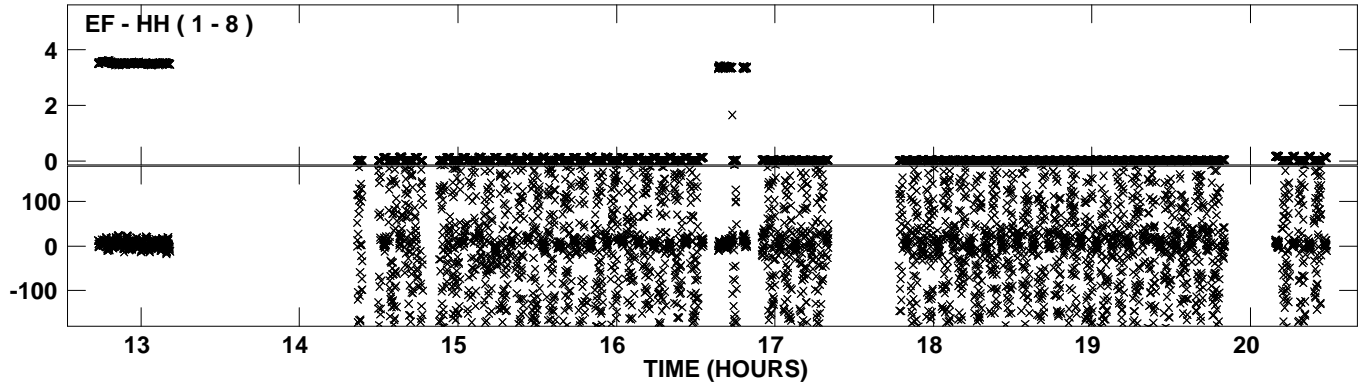
Plot file version 14 created 13-JUL-2012 11:57:17
Amplitude and Phase vs Time for EM095B.UVDATA.1 Vect aver. CL # 3
IF 7 CHAN 1 - 32 STK LL



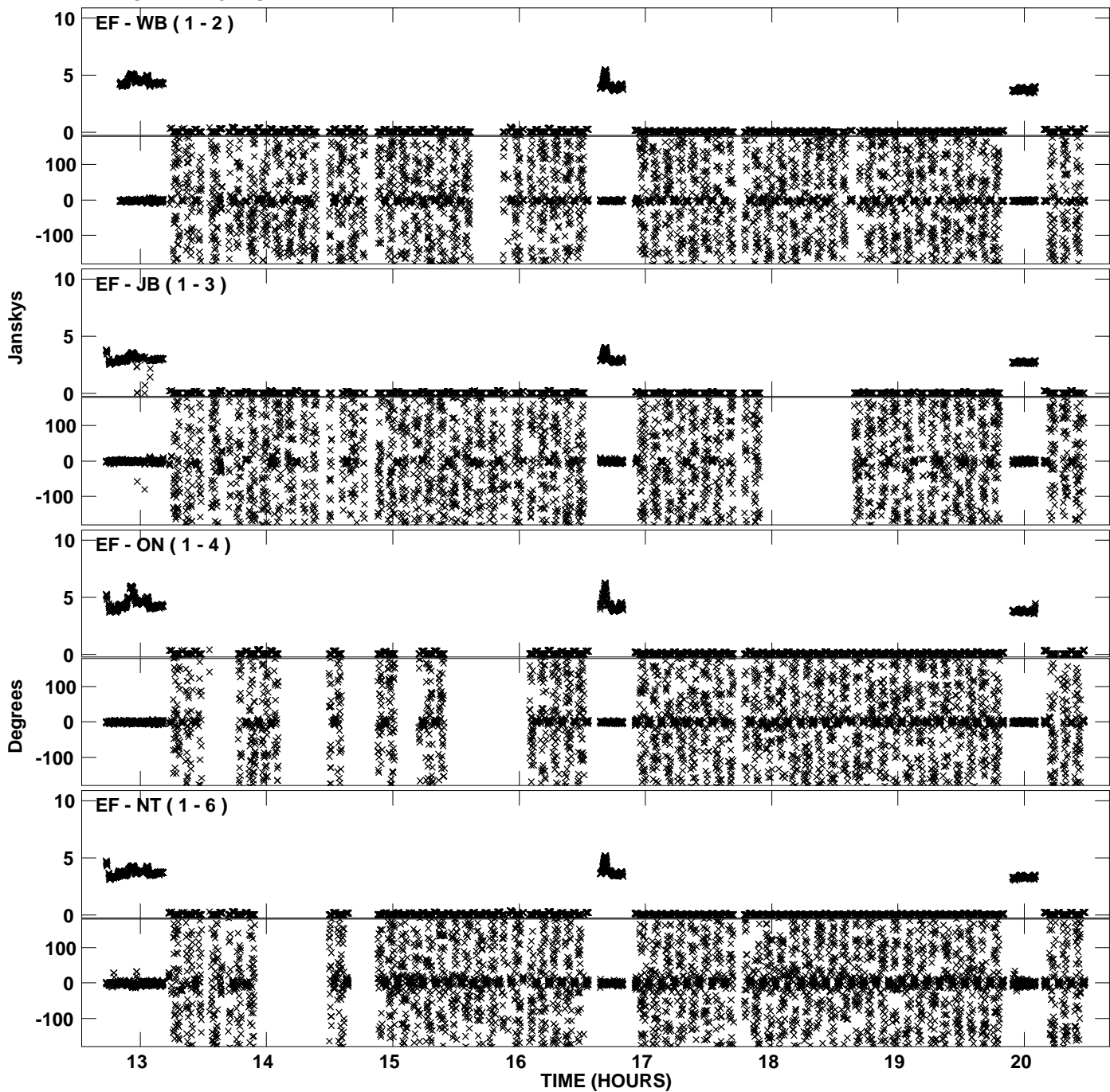
PLot file version 15 created 13-JUL-2012 11:57:18
Amplitude andPhase vs Time for EM095B.UVDATA.1 Vect aver. CL # 3
IF 8 CHAN 1 - 32 STK LL



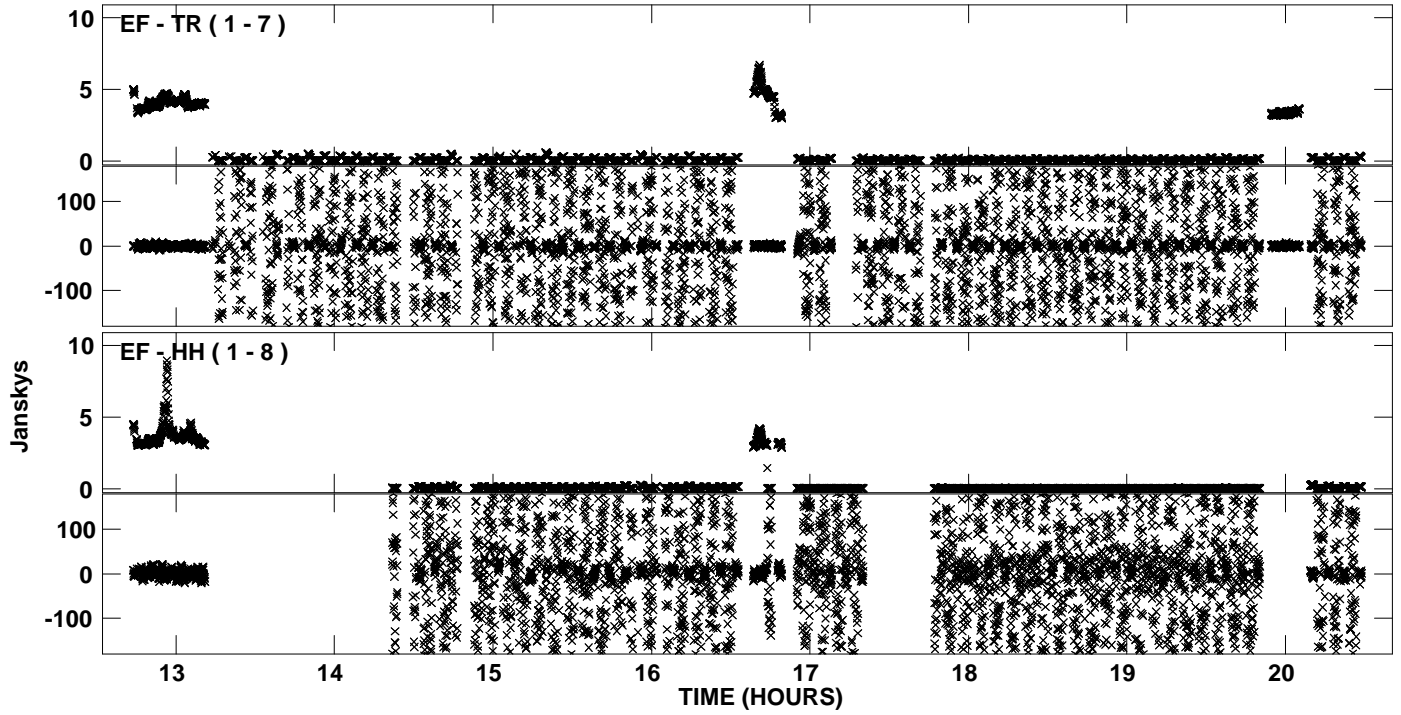
PLot file version 16 created 13-JUL-2012 11:57:18
Amplitude andPhase vs Time for EM095B.UVDATA.1 Vect aver. CL # 3
IF 8 CHAN 1 - 32 STK LL



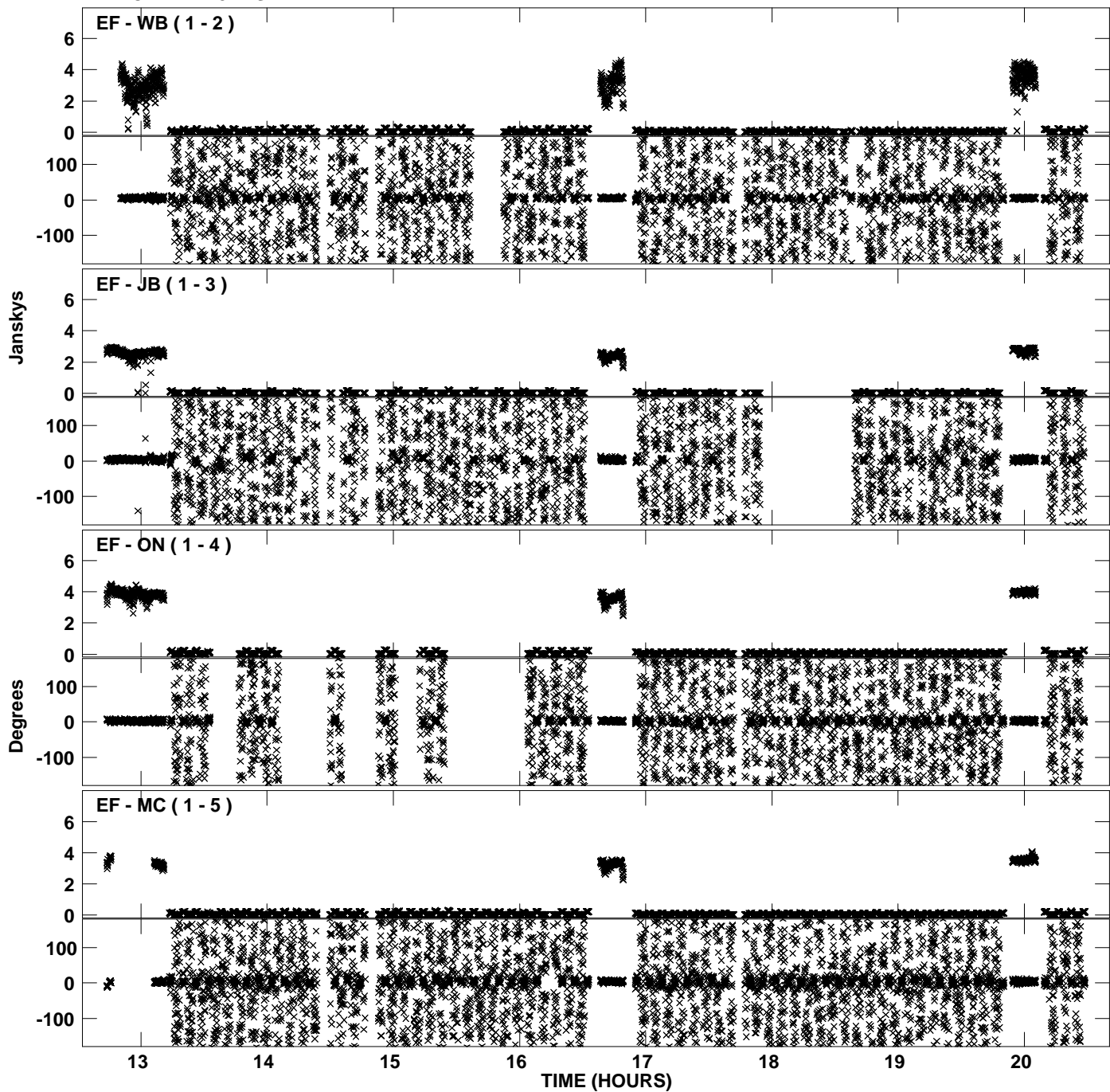
PLot file version 17 created 13-JUL-2012 11:57:19
Amplitude andPhase vs Time for EM095B.UVDATA.1 Vect aver. CL # 3
IF 1 CHAN 1 - 32 STK RR



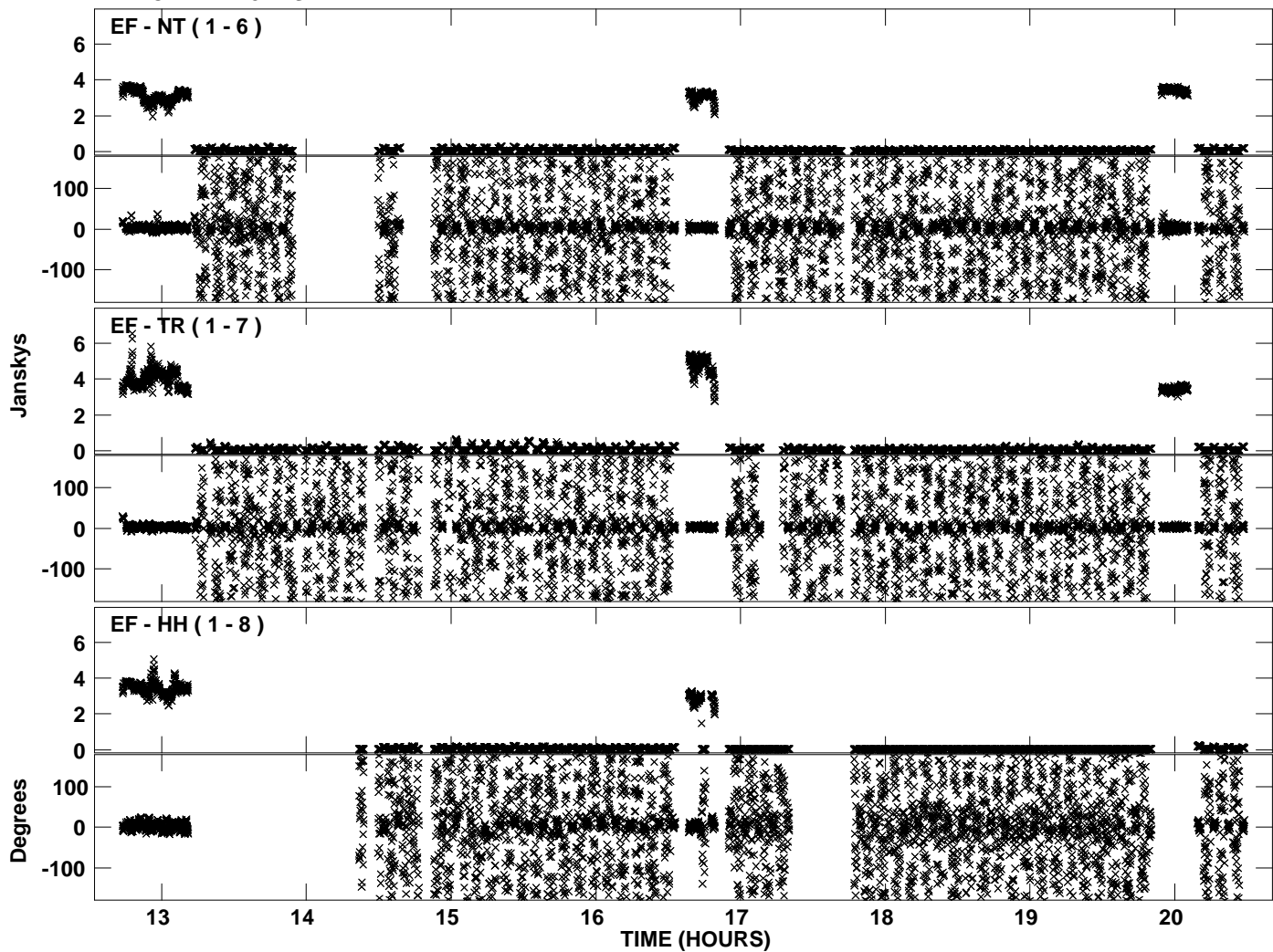
PLot file version 18 created 13-JUL-2012 11:57:19
Amplitude andPhase vs Time for EM095B.UVDATA.1 Vect aver. CL # 3
IF 1 CHAN 1 - 32 STK RR



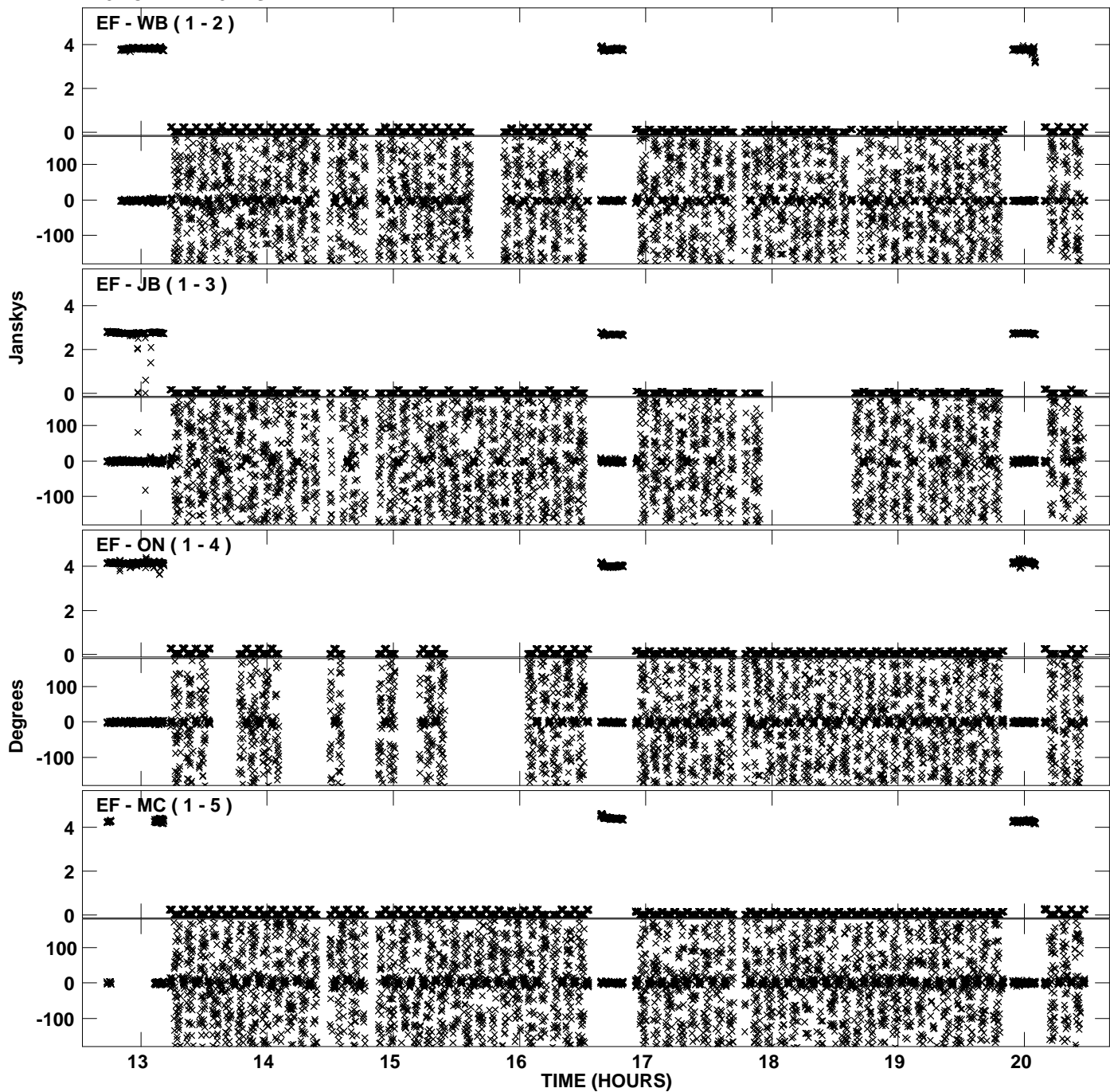
PLot file version 19 created 13-JUL-2012 11:57:21
Amplitude andPhase vs Time for EM095B.UVDATA.1 Vect aver. CL # 3
IF 2 CHAN 1 - 32 STK RR



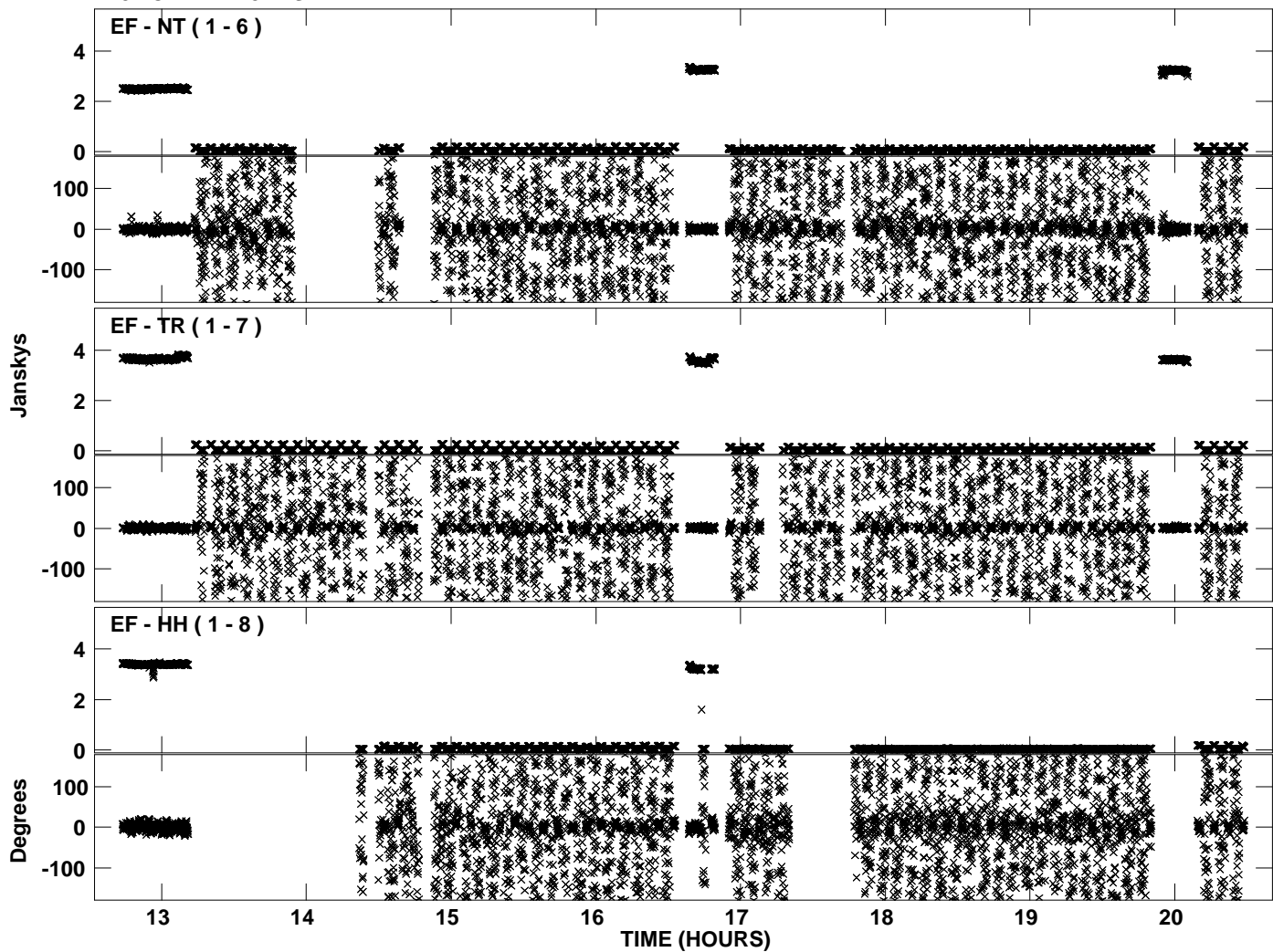
Plot file version 20 created 13-JUL-2012 11:57:21
Amplitude and Phase vs Time for EM095B.UVDATA.1 Vect aver. CL # 3
IF 2 CHAN 1 - 32 STK RR



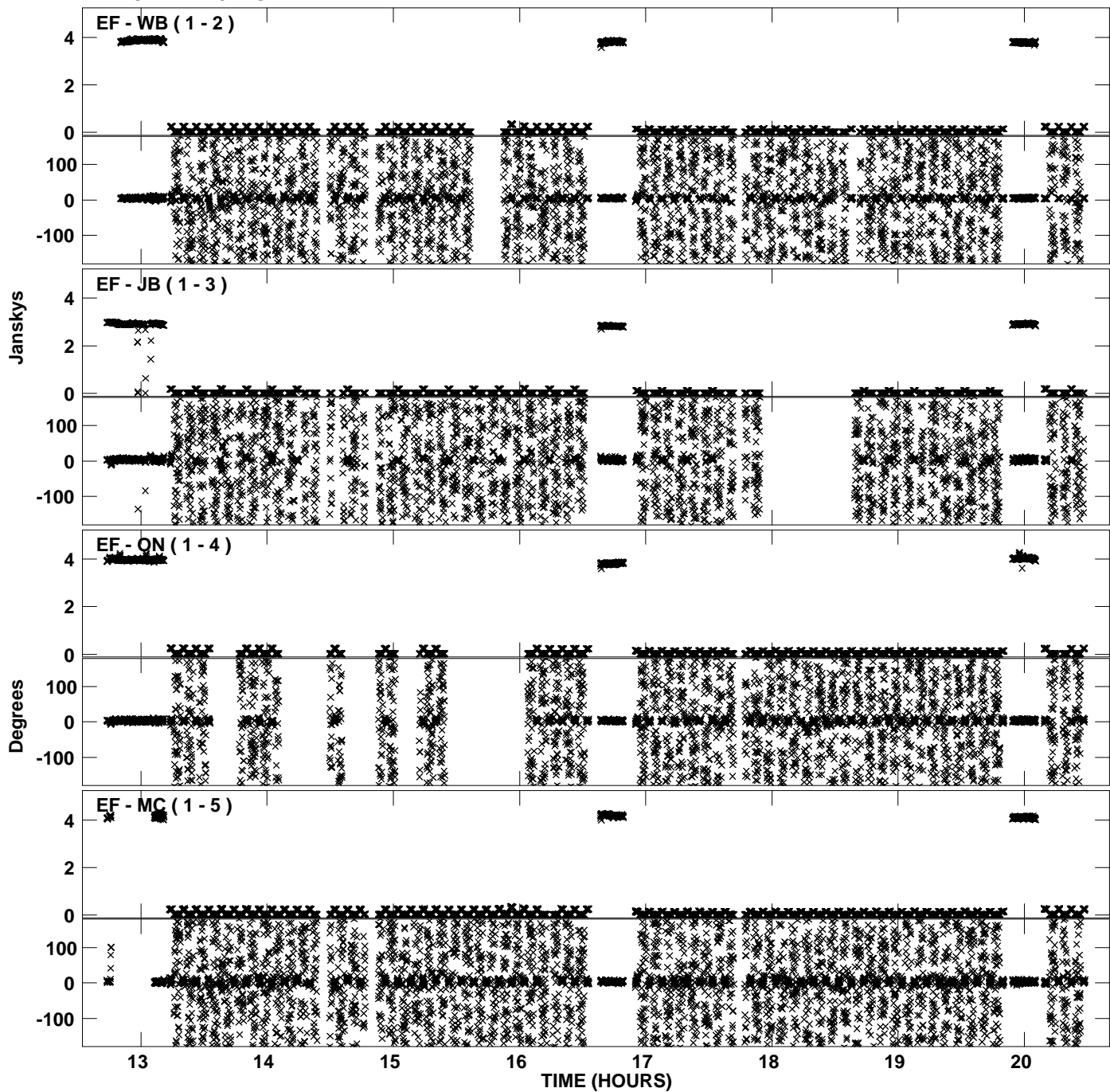
PLot file version 21 created 13-JUL-2012 11:57:22
Amplitude andPhase vs Time for EM095B.UVDATA.1 Vect aver. CL # 3
IF 3 CHAN 1 - 32 STK RR



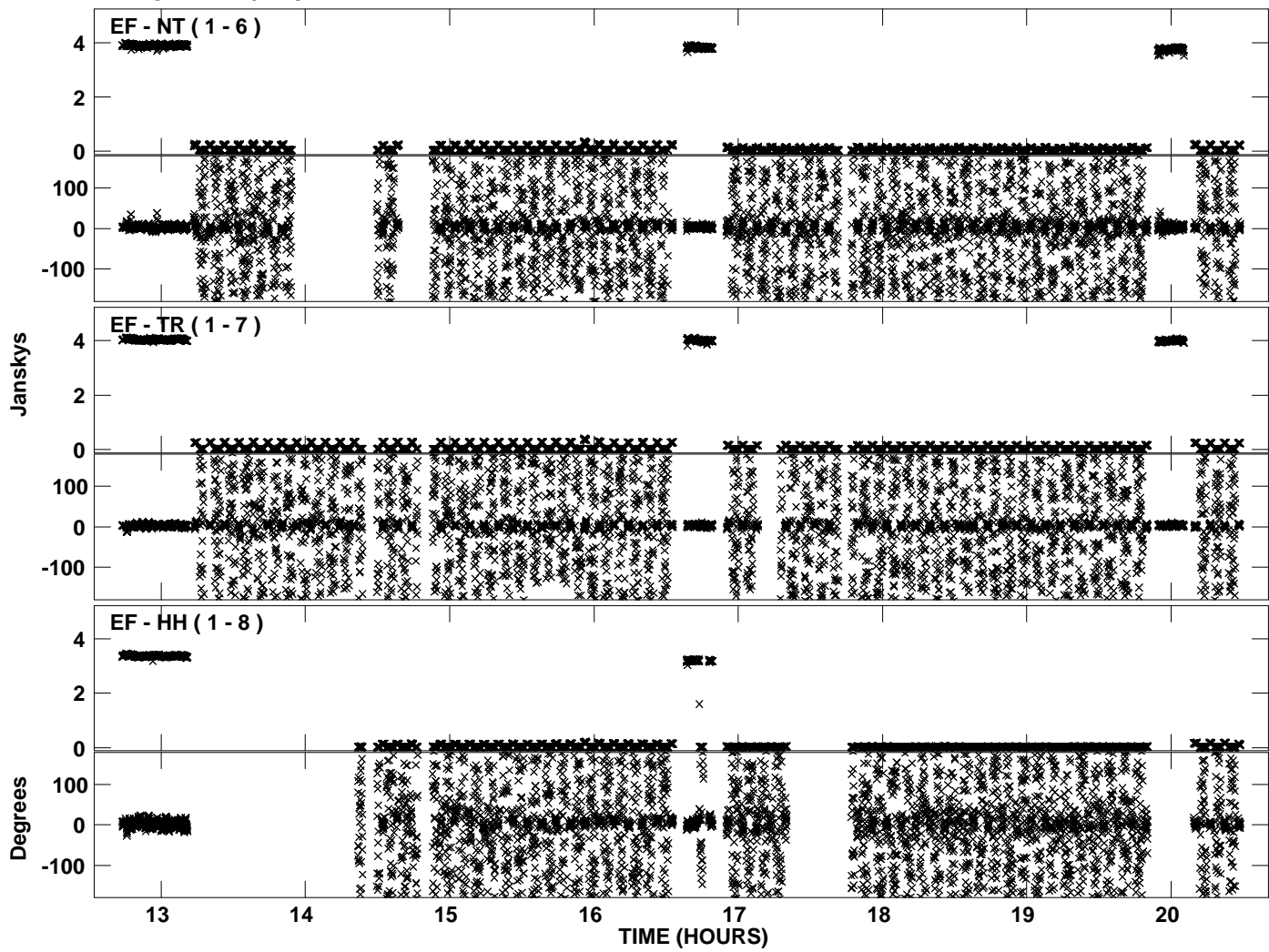
Plot file version 22 created 13-JUL-2012 11:57:22
Amplitude and Phase vs Time for EM095B.UVDATA.1 Vect aver. CL # 3
IF 3 CHAN 1 - 32 STK RR



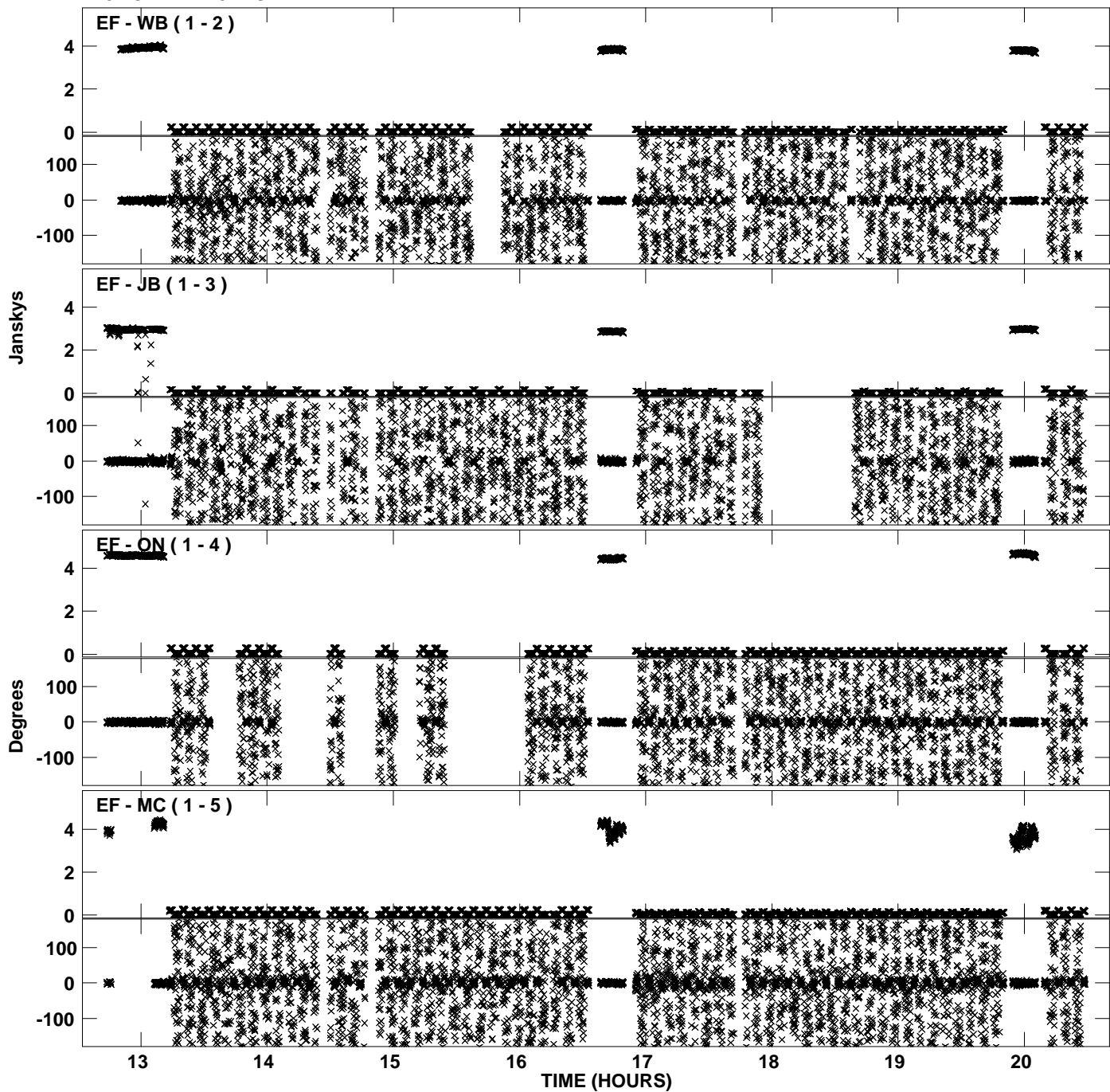
Plot file version 23 created 13-JUL-2012 11:57:24
Amplitude andPhase vs Time for EM095B.UVDATA.1 Vect aver. CL # 3
IF 4 CHAN 1 - 32 STK RR



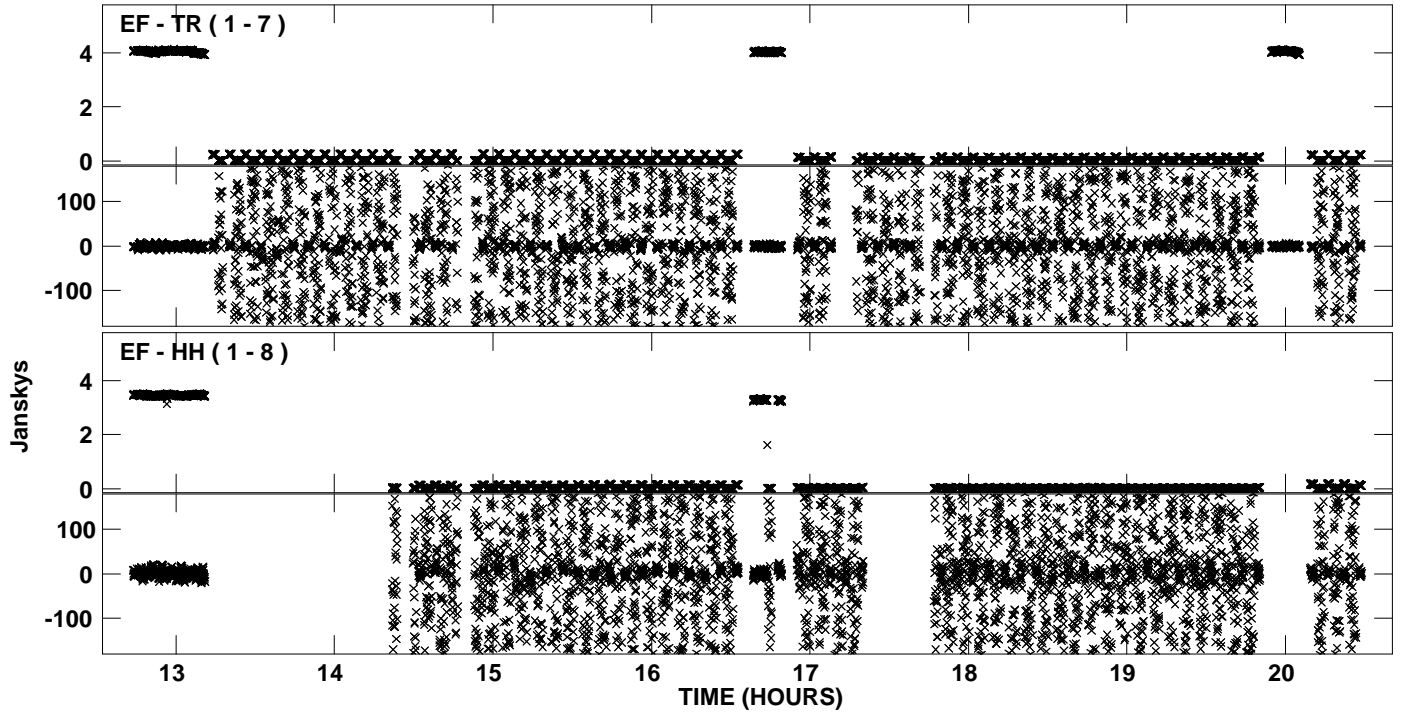
Plot file version 24 created 13-JUL-2012 11:57:24
Amplitude and Phase vs Time for EM095B.UVDATA.1 Vect aver. CL # 3
IF 4 CHAN 1 - 32 STK RR



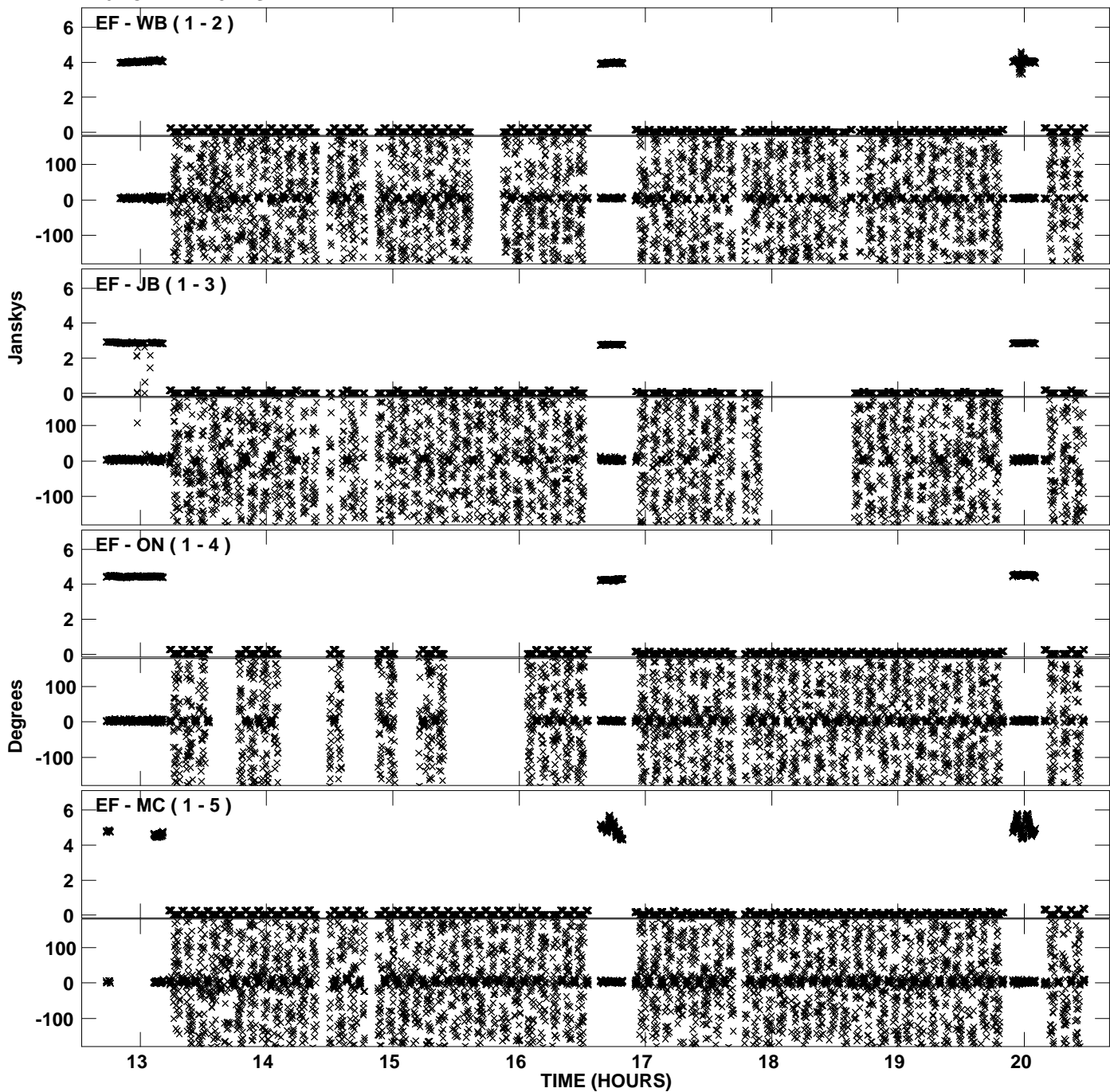
PLot file version 25 created 13-JUL-2012 11:57:25
Amplitude andPhase vs Time for EM095B.UVDATA.1 Vect aver. CL # 3
IF 5 CHAN 1 - 32 STK RR



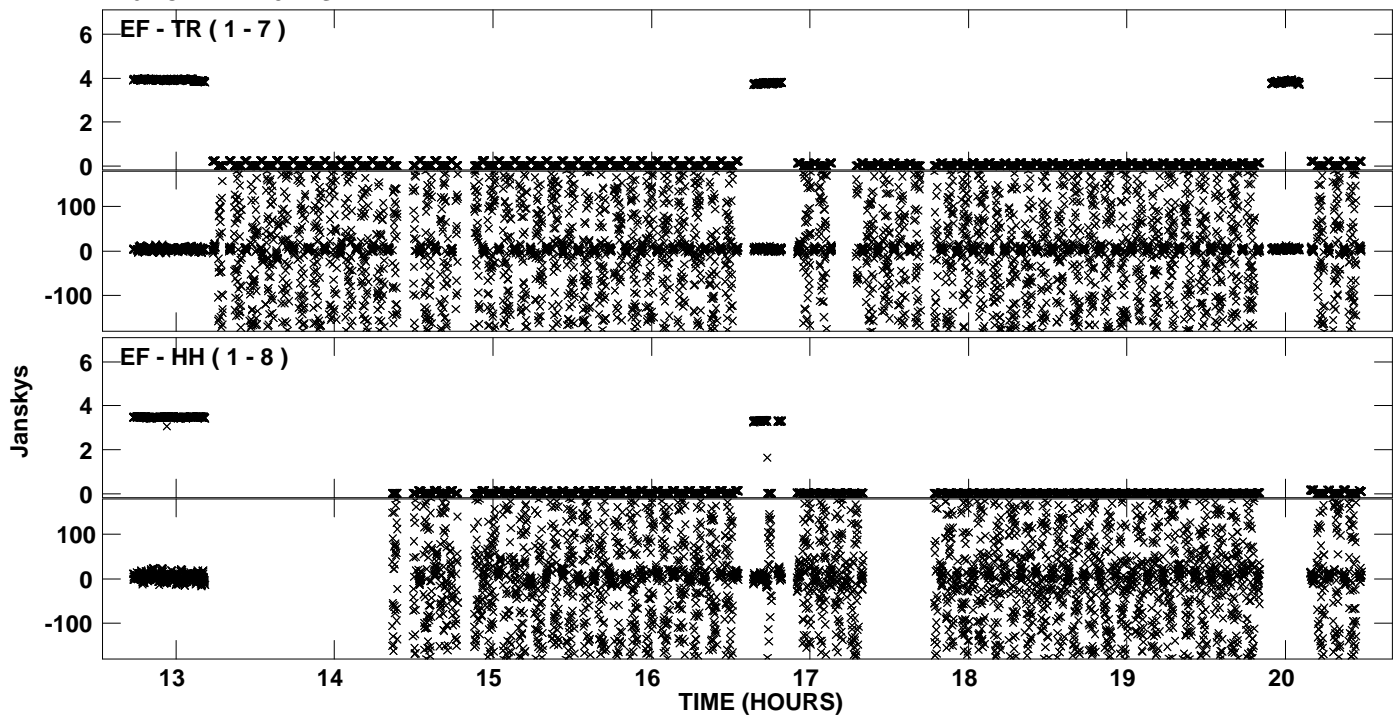
Plot file version 26 created 13-JUL-2012 11:57:25
Amplitude and Phase vs Time for EM095B.UVDATA.1 Vect aver. CL # 3
IF 5 CHAN 1 - 32 STK RR



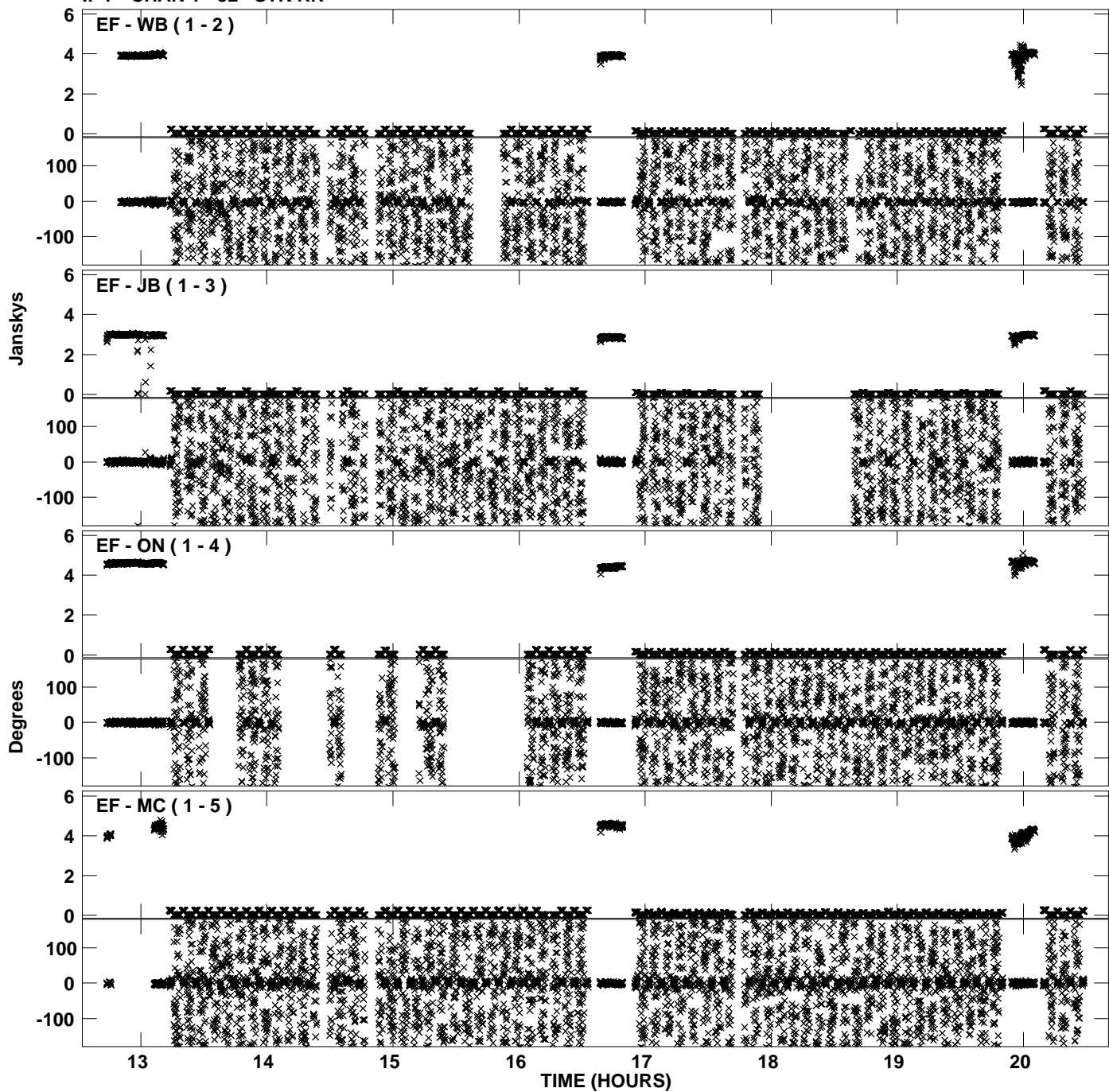
PLot file version 27 created 13-JUL-2012 11:57:26
Amplitude andPhase vs Time for EM095B.UVDATA.1 Vect aver. CL # 3
IF 6 CHAN 1 - 32 STK RR



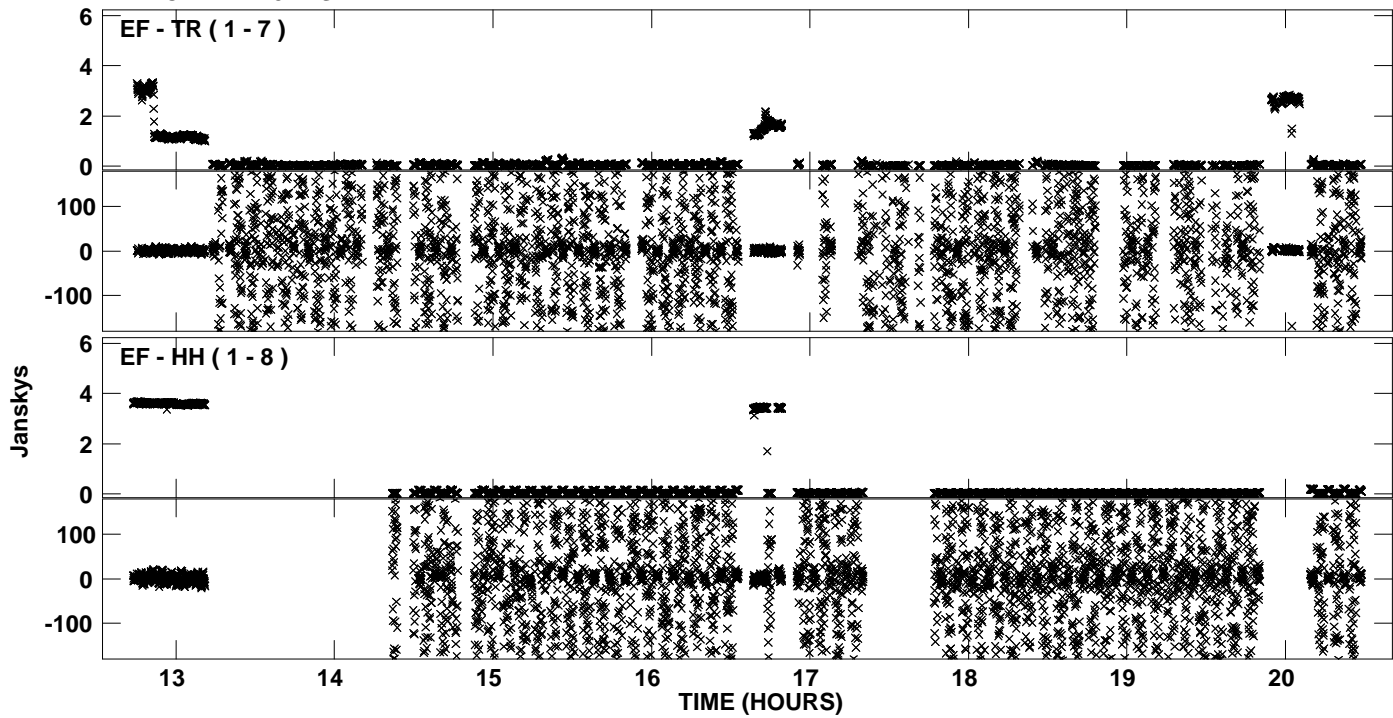
Plot file version 28 created 13-JUL-2012 11:57:26
Amplitude and Phase vs Time for EM095B.UVDATA.1 Vect aver. CL # 3
IF 6 CHAN 1 - 32 STK RR



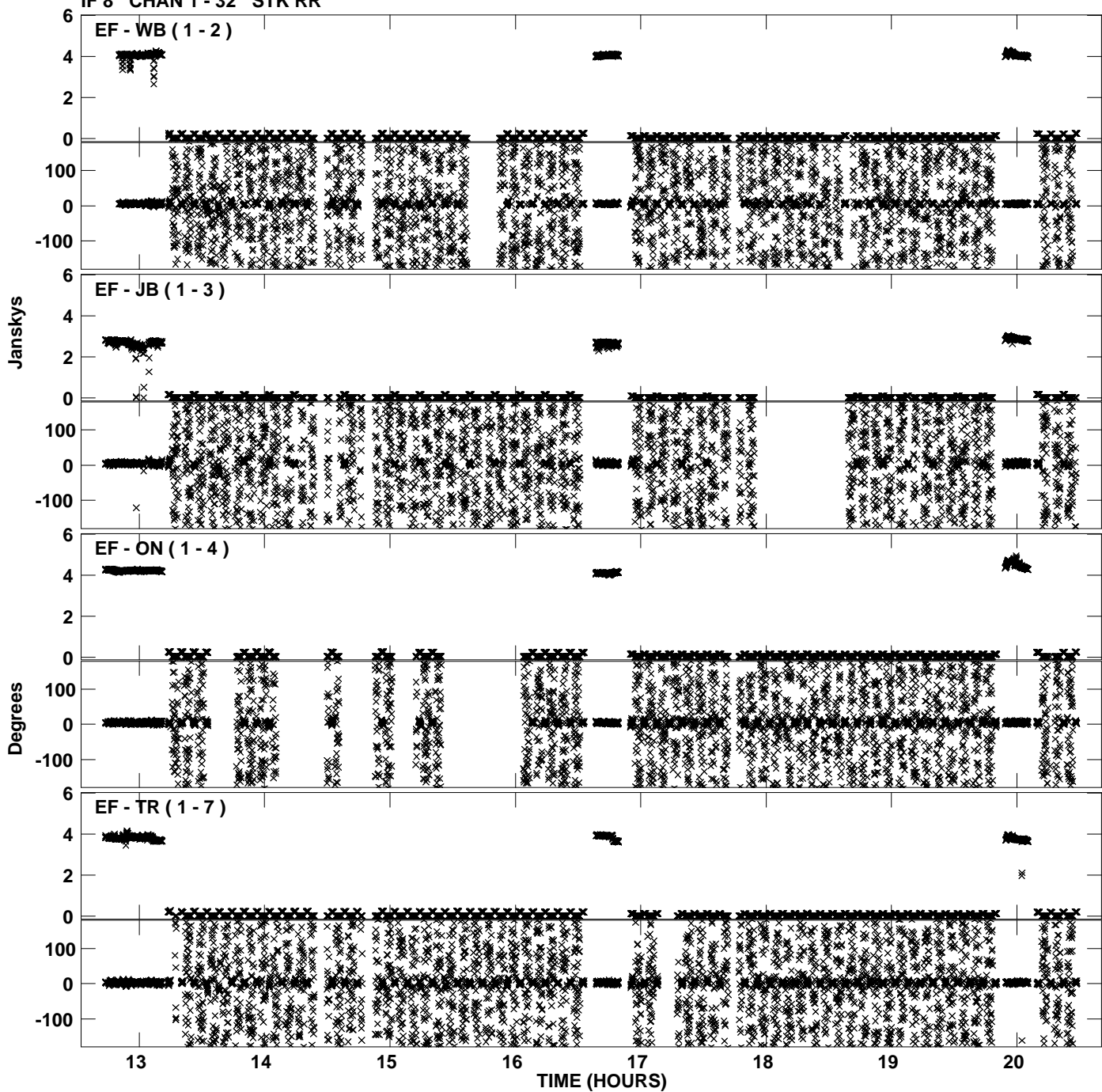
PLot file version 29 created 13-JUL-2012 11:57:28
Amplitude andPhase vs Time for EM095B.UVDATA.1 Vect aver. CL # 3
IF 7 CHAN 1 - 32 STK RR



Plot file version 30 created 13-JUL-2012 11:57:28
Amplitude and Phase vs Time for EM095B.UVDATA.1 Vect aver. CL # 3
IF 7 CHAN 1 - 32 STK RR



Plot file version 31 created 13-JUL-2012 11:57:29
Amplitude andPhase vs Time for EM095B.UVDATA.1 Vect aver. CL # 3
IF 8 CHAN 1 - 32 STK RR



PLot file version 32 created 13-JUL-2012 11:57:29
Amplitude andPhase vs Time for EM095B.UVDATA.1 Vect aver. CL # 3
IF 8 CHAN 1 - 32 STK RR

