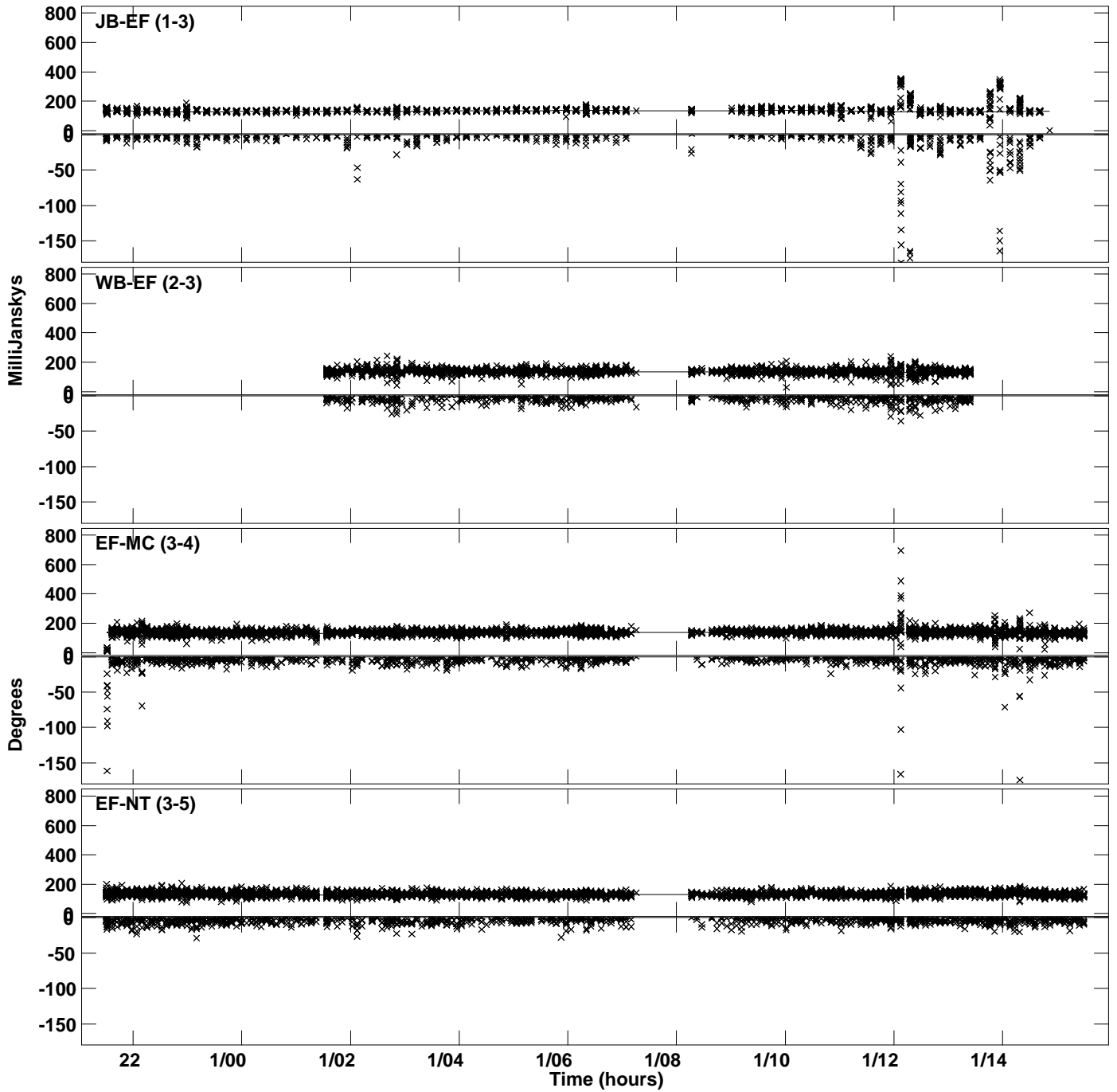
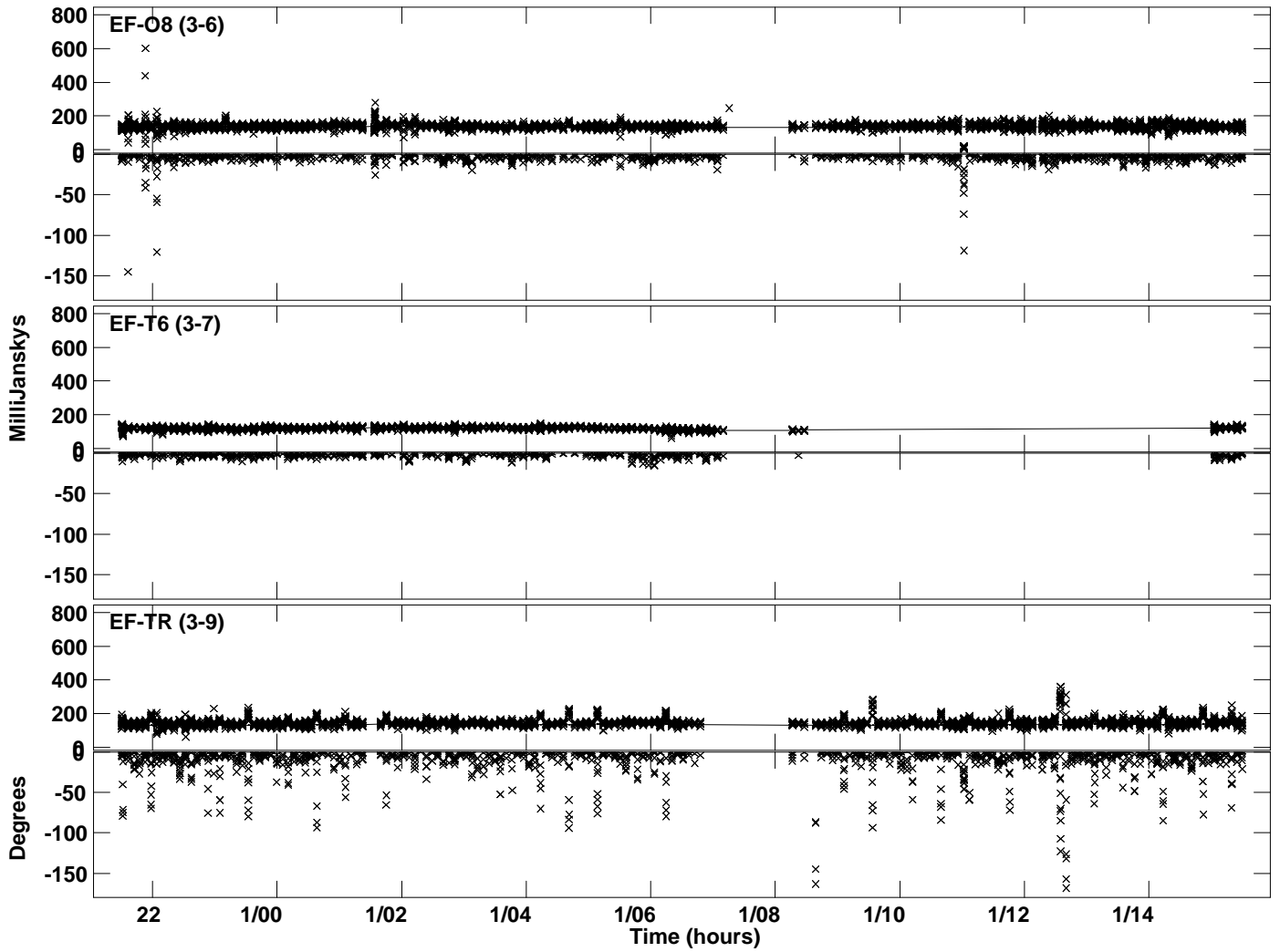


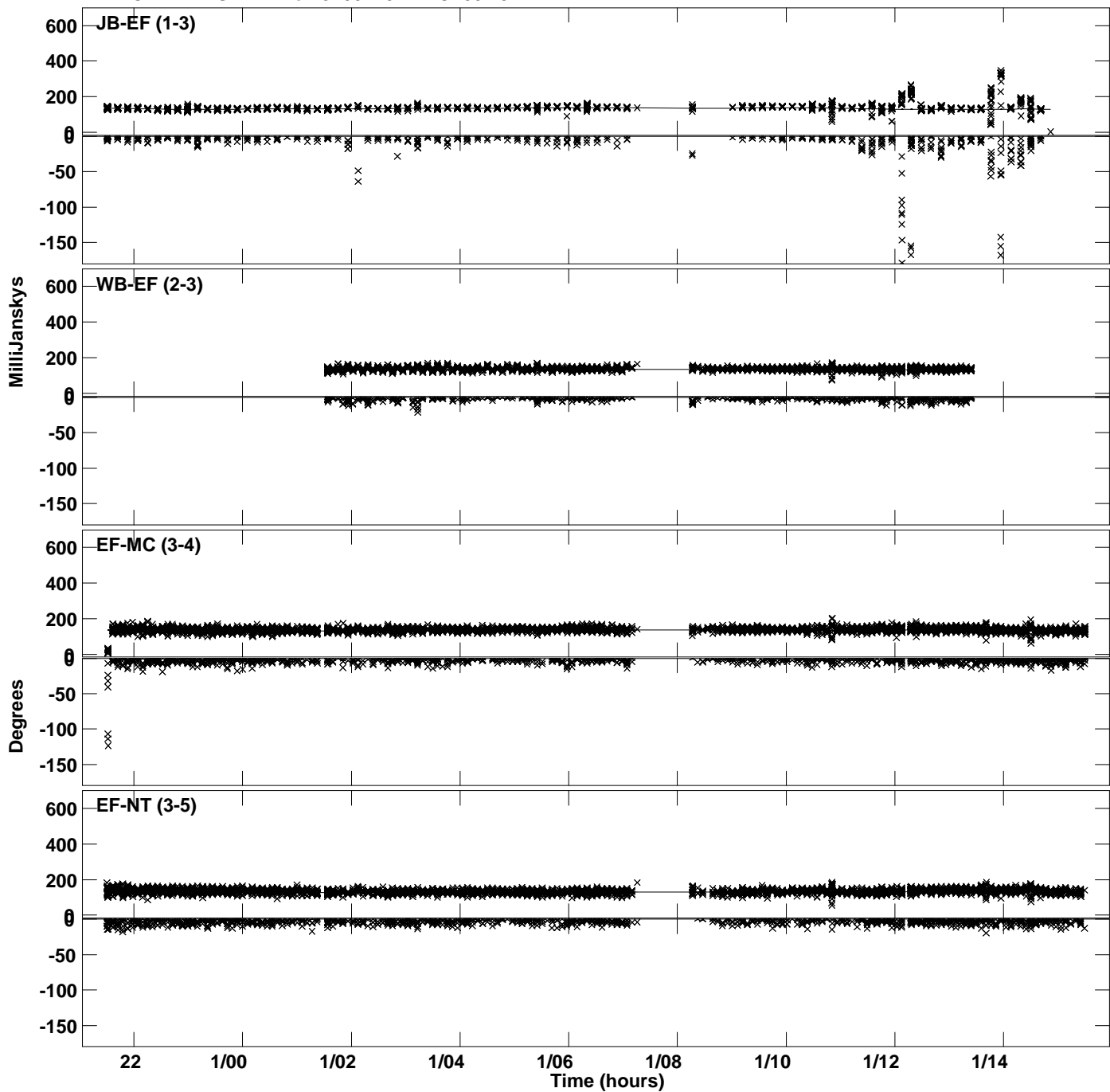
Plot file version 1 created 27-MAR-2024 20:49:00  
Amplitude and Phase vs Time for J1037+5711.MULTI.1 CL # 3  
IF 1 CHAN 1 STK LL of J1037+5711.ICL001.3



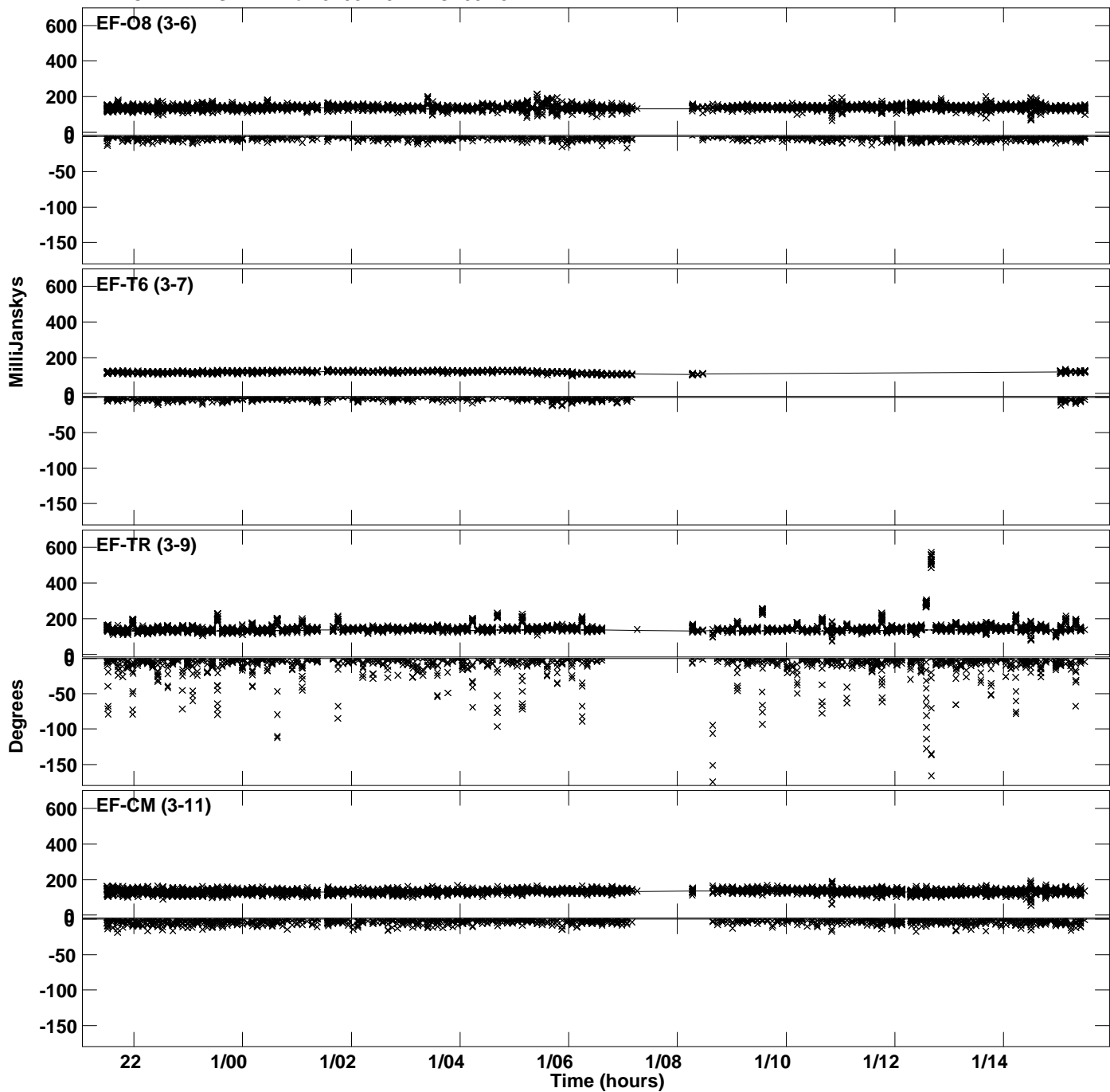
Plot file version 2 created 27-MAR-2024 20:49:00  
Amplitude and Phase vs Time for J1037+5711.MULTI.1 CL # 3  
IF 1 CHAN 1 STK LL of J1037+5711.ICL001.3



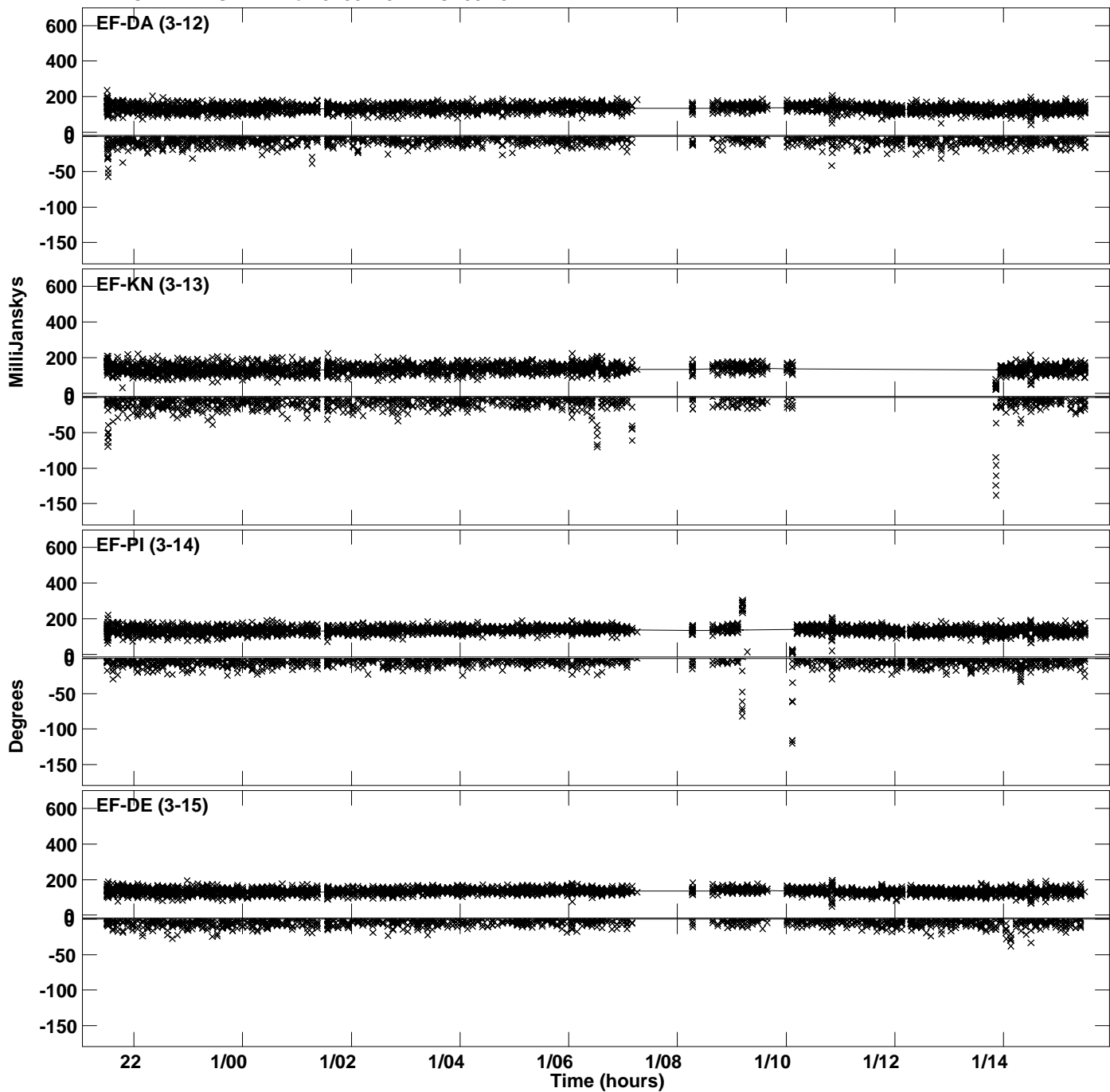
Plot file version 3 created 27-MAR-2024 20:49:00  
Amplitude andPhase vs Time for J1037+5711.MULTI.1 CL # 3  
IF 2 CHAN 1 STK LL of J1037+5711.ICL001.3



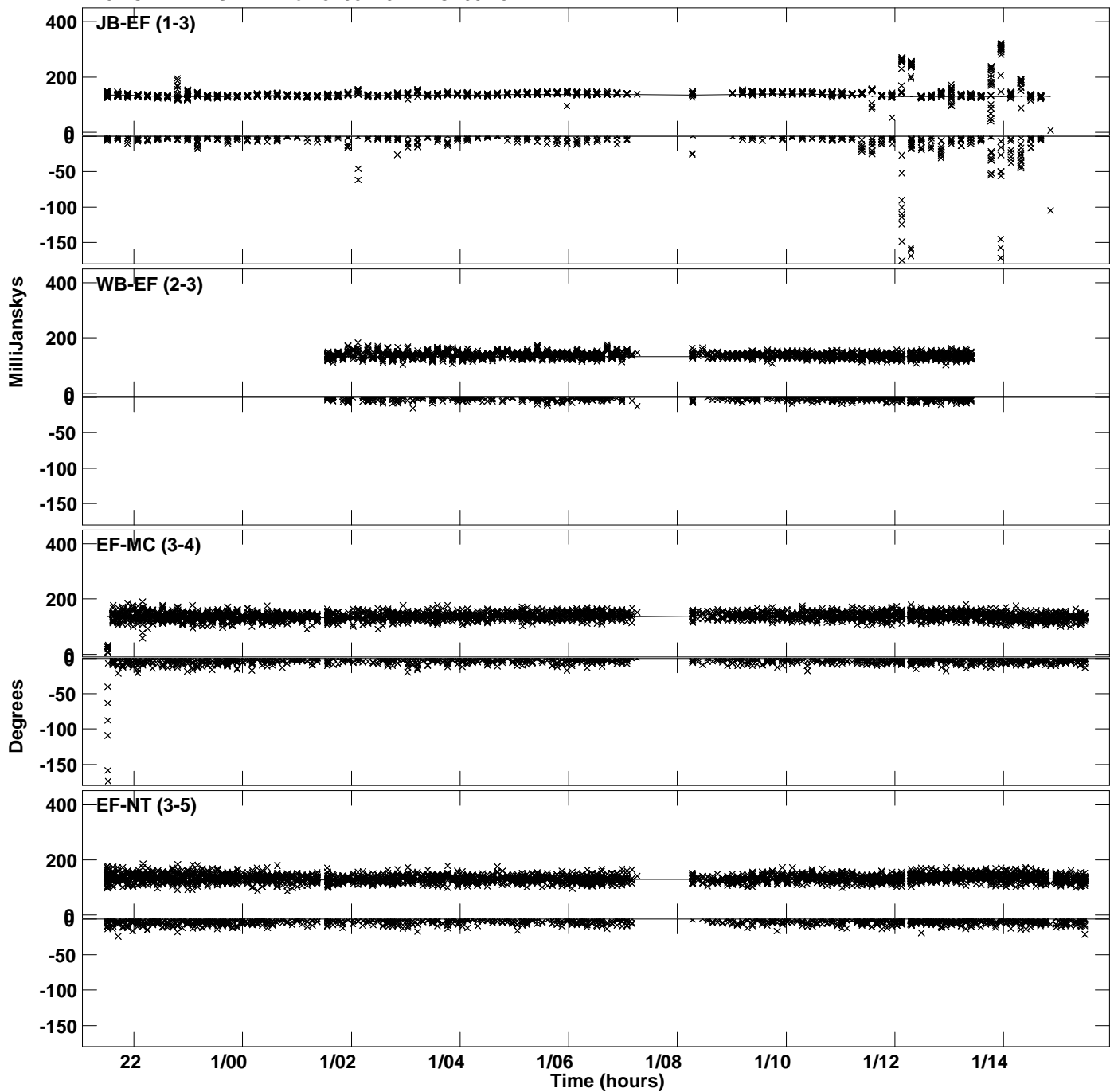
Plot file version 4 created 27-MAR-2024 20:49:00  
Amplitude and Phase vs Time for J1037+5711.MULTI.1 CL # 3  
IF 2 CHAN 1 STK LL of J1037+5711.ICL001.3



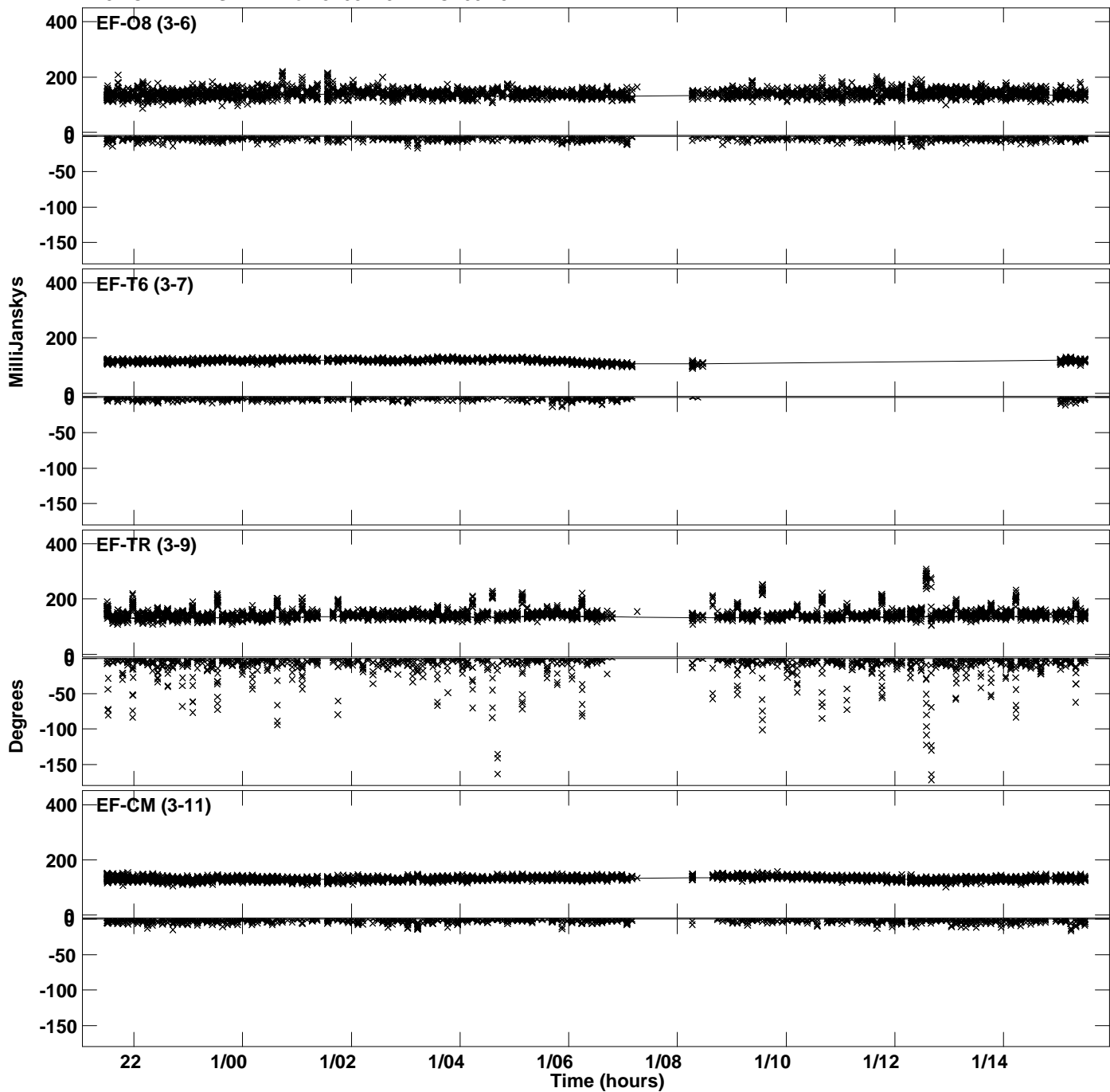
Plot file version 5 created 27-MAR-2024 20:49:00  
Amplitude andPhase vs Time for J1037+5711.MULTI.1 CL # 3  
IF 2 CHAN 1 STK LL of J1037+5711.ICL001.3



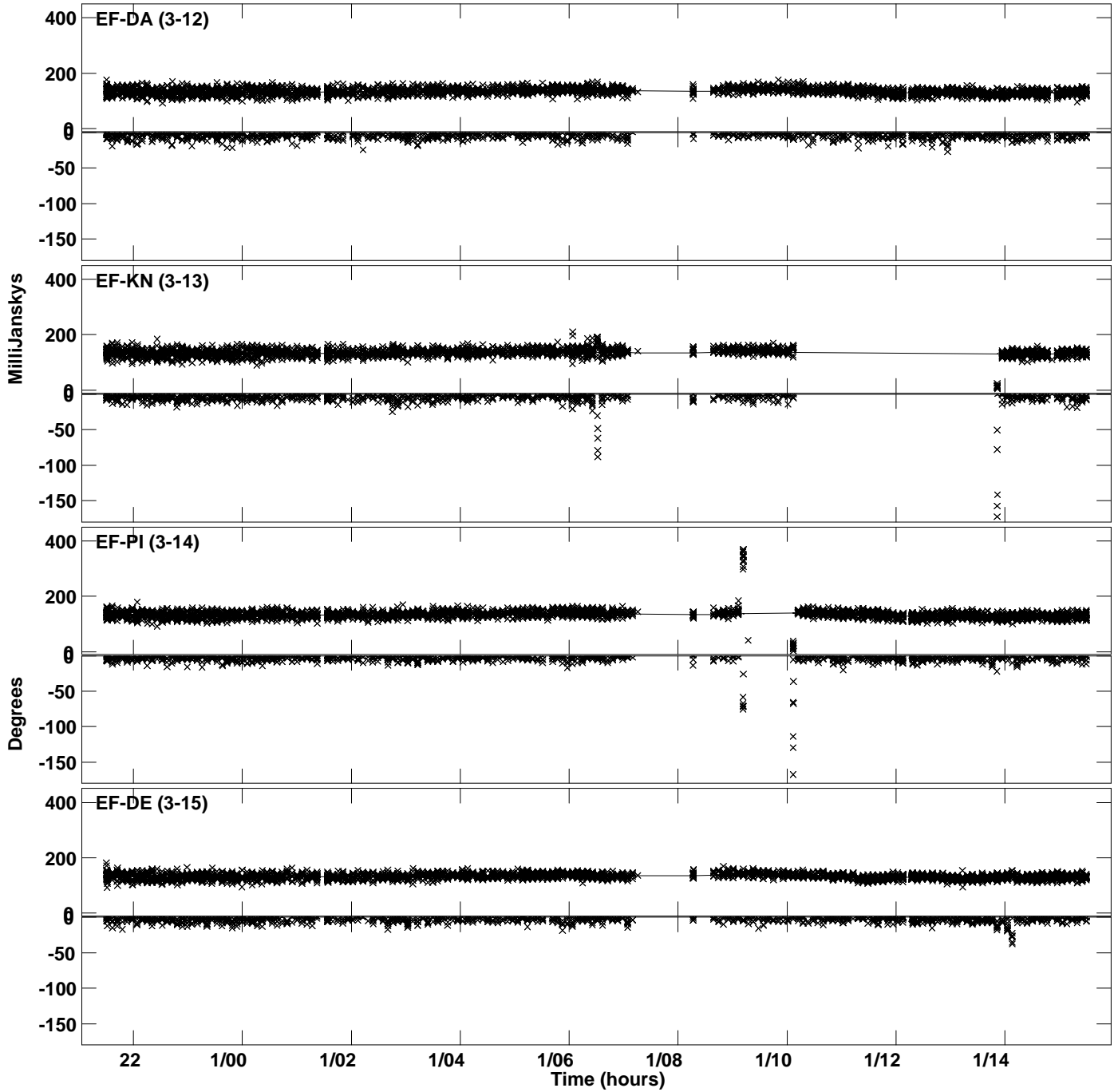
Plot file version 6 created 27-MAR-2024 20:49:01  
Amplitude andPhase vs Time for J1037+5711.MULTI.1 CL # 3  
IF 3 CHAN 1 STK LL of J1037+5711.ICL001.3



Plot file version 7 created 27-MAR-2024 20:49:01  
Amplitude and Phase vs Time for J1037+5711.MULTI.1 CL # 3  
IF 3 CHAN 1 STK LL of J1037+5711.ICL001.3

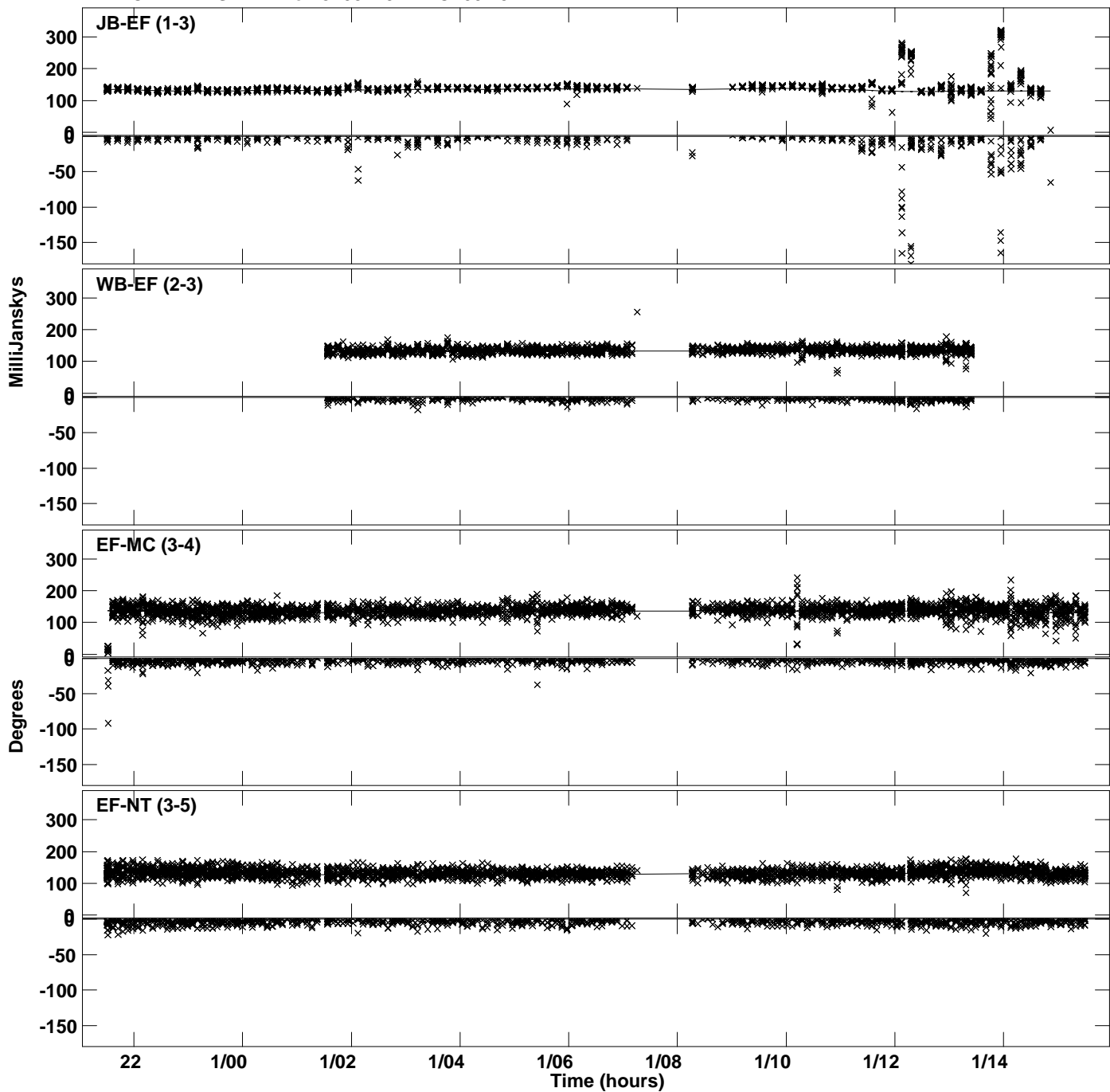


Plot file version 8 created 27-MAR-2024 20:49:01  
Amplitude and Phase vs Time for J1037+5711.MULTI.1 CL # 3  
IF 3 CHAN 1 STK LL of J1037+5711.ICL001.3

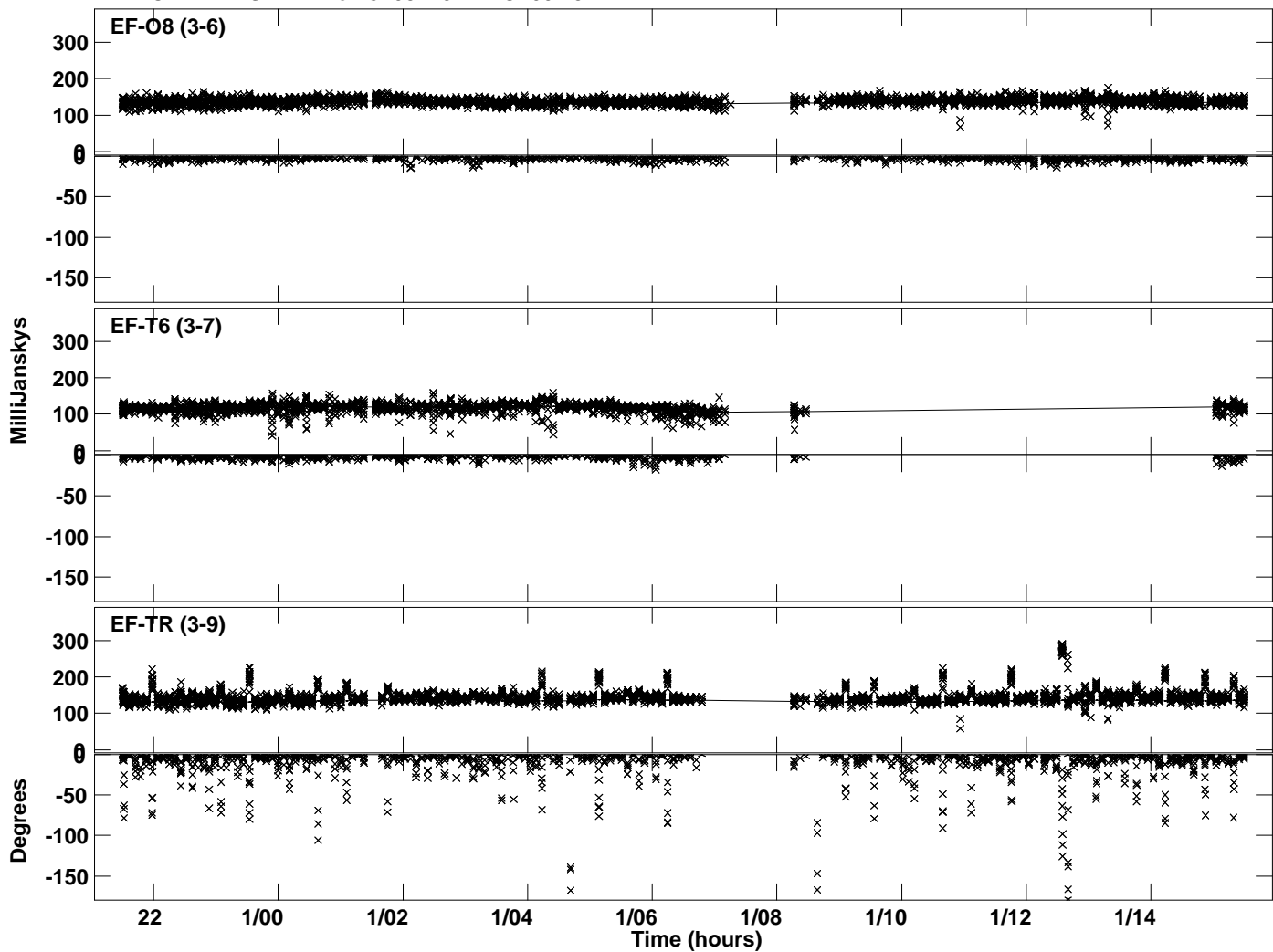




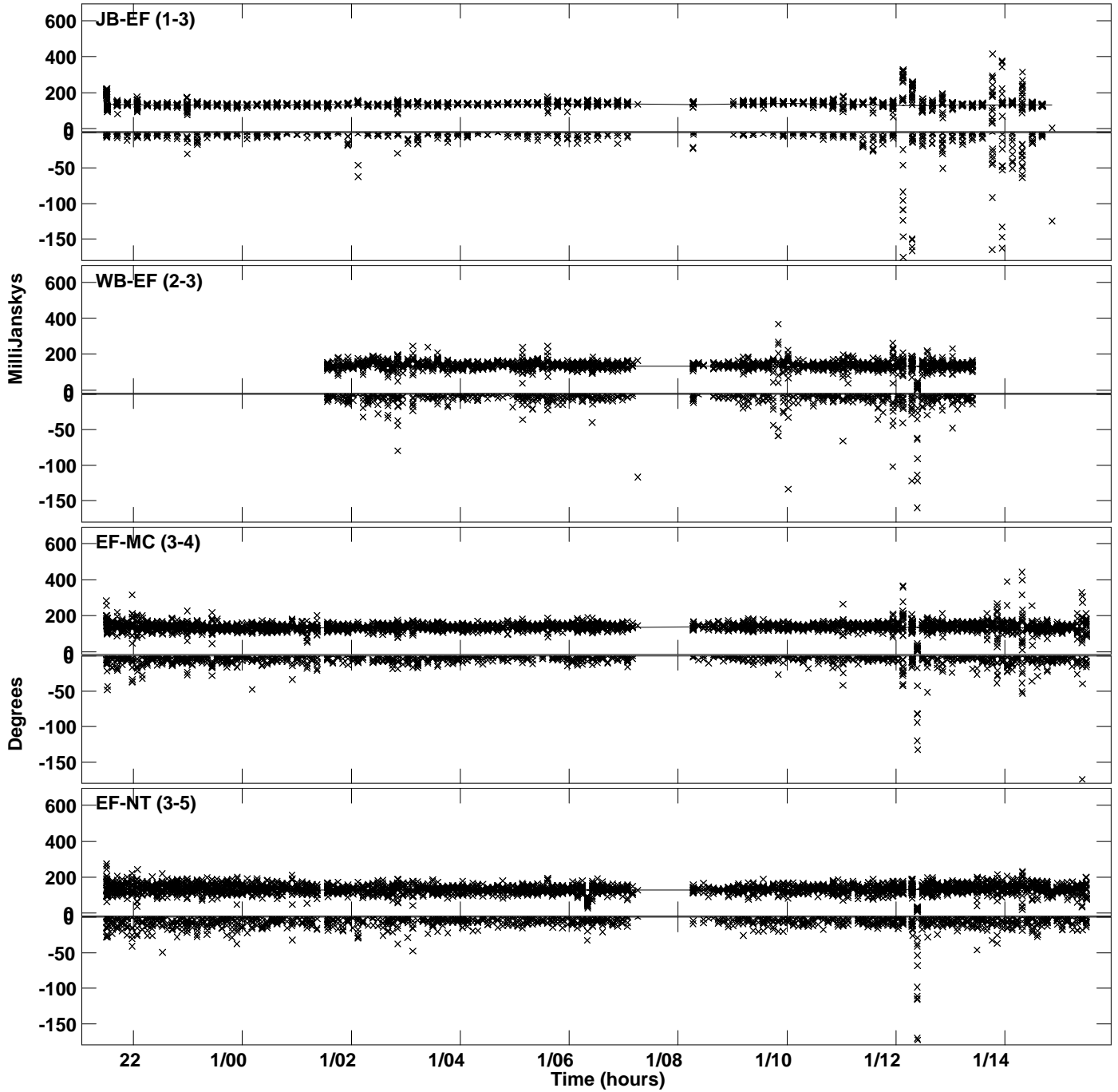
PLot file version 9 created 27-MAR-2024 20:49:02  
Amplitude andPhase vs Time for J1037+5711.MULTI.1 CL # 3  
IF 4 CHAN 1 STK LL of J1037+5711.ICL001.3



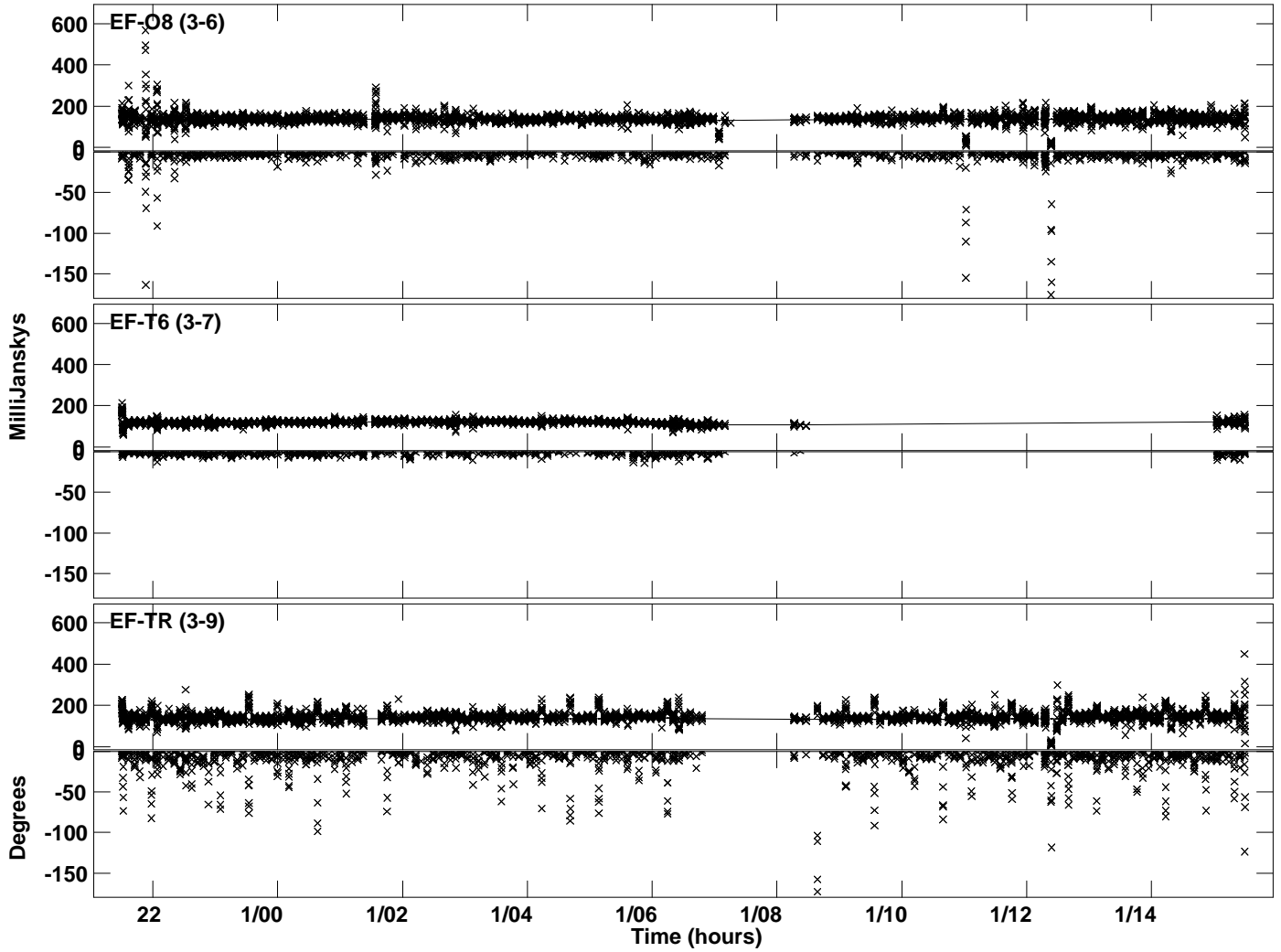
Plot file version 10 created 27-MAR-2024 20:49:02  
Amplitude and Phase vs Time for J1037+5711.MULTI.1 CL # 3  
IF 4 CHAN 1 STK LL of J1037+5711.ICL001.3



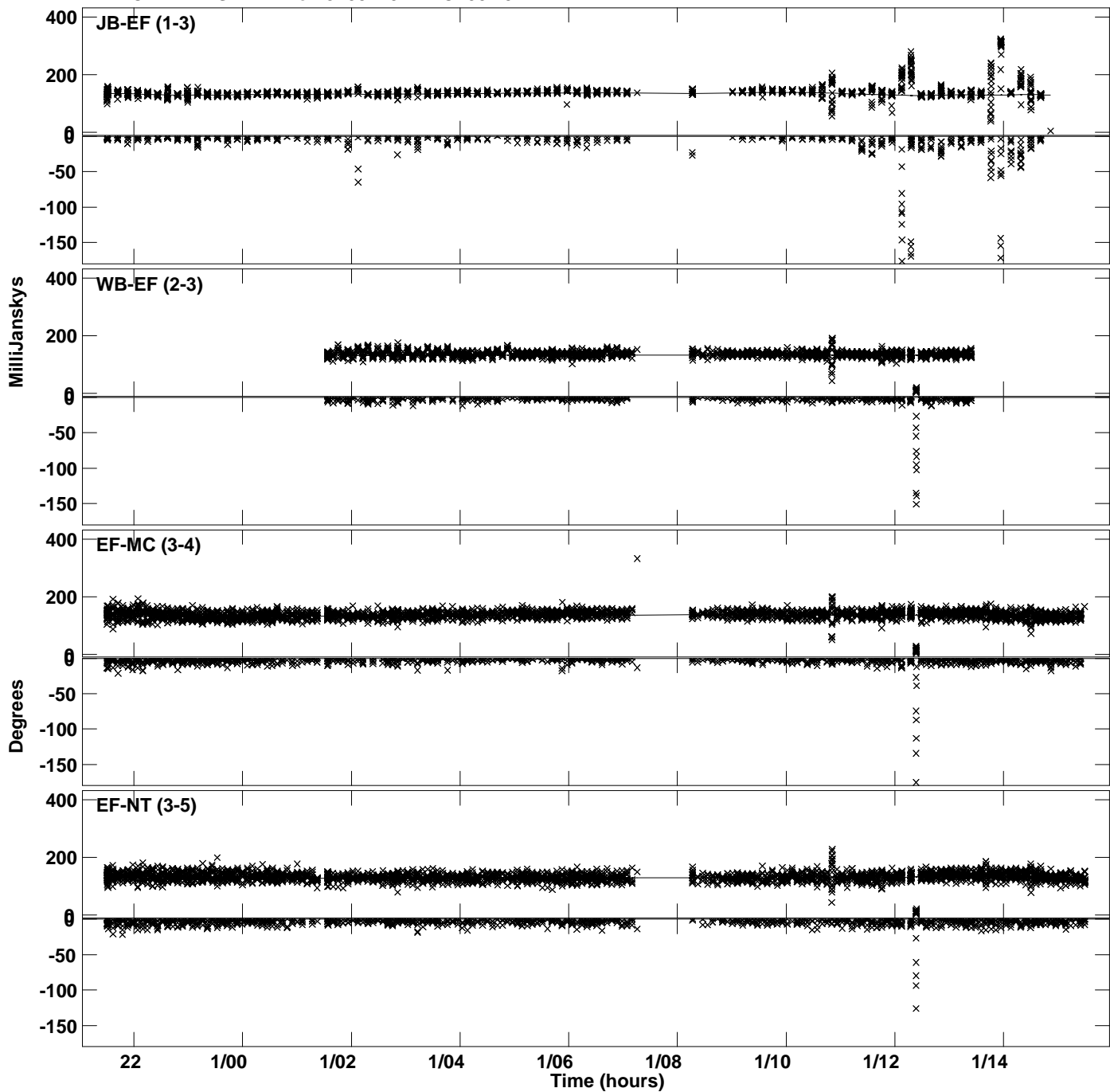
Plot file version 11 created 27-MAR-2024 20:49:02  
Amplitude andPhase vs Time for J1037+5711.MULTI.1 CL # 3  
IF 1 CHAN 1 STK RR of J1037+5711.ICL001.3



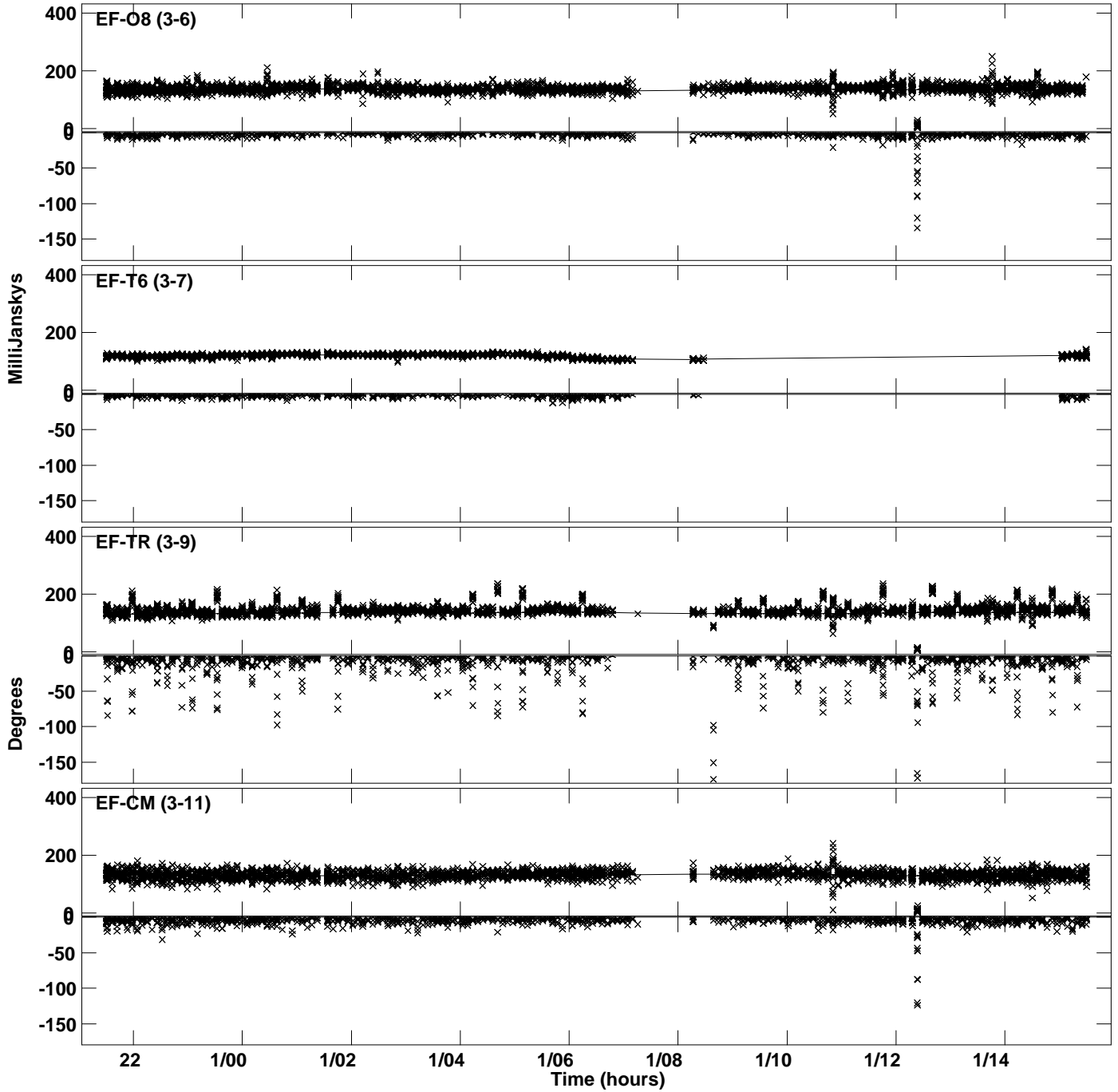
Plot file version 12 created 27-MAR-2024 20:49:02  
Amplitude andPhase vs Time for J1037+5711.MULTI.1 CL # 3  
IF 1 CHAN 1 STK RR of J1037+5711.ICL001.3



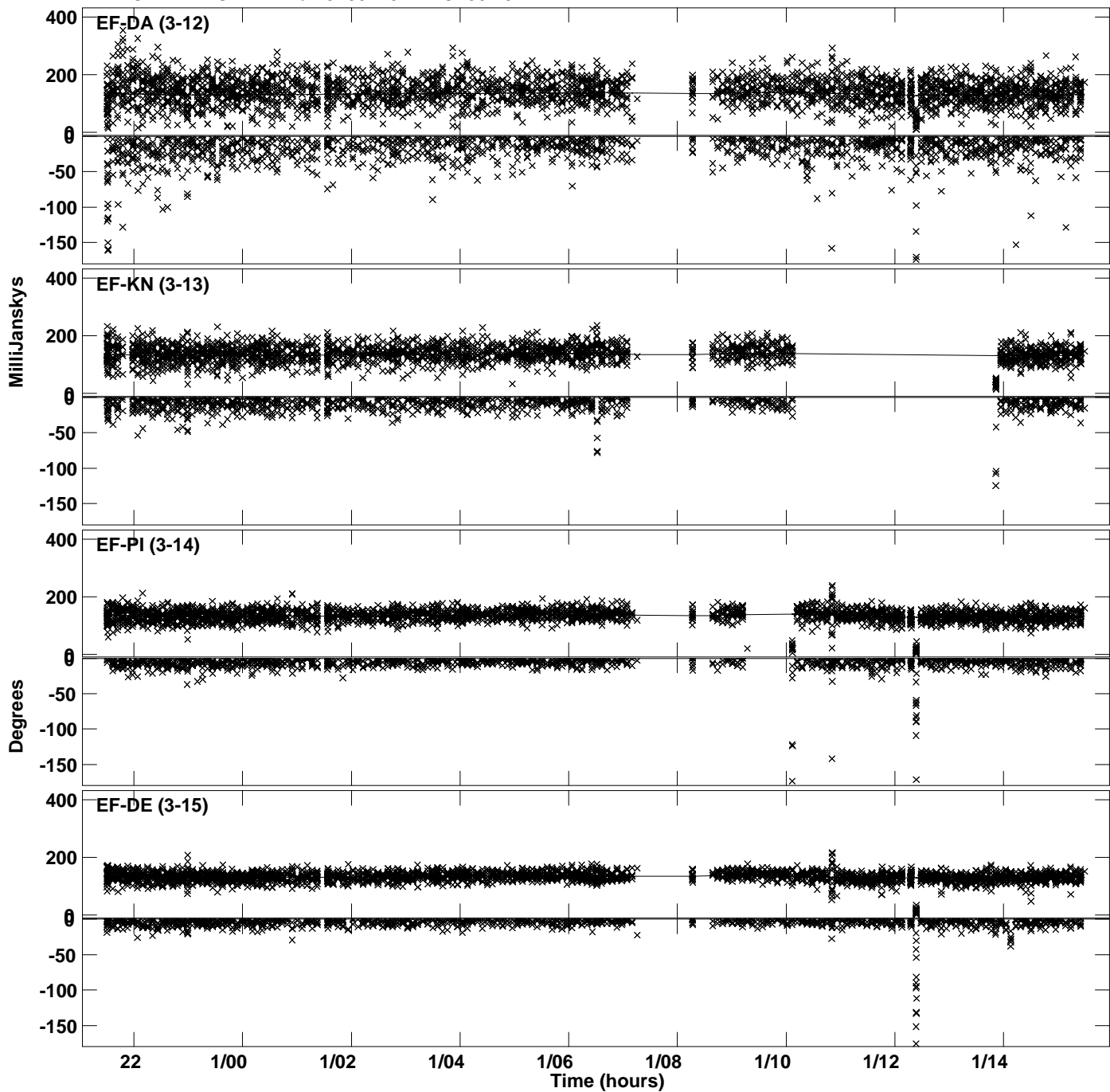
PLot file version 13 created 27-MAR-2024 20:49:03  
Amplitude andPhase vs Time for J1037+5711.MULTI.1 CL # 3  
IF 2 CHAN 1 STK RR of J1037+5711.ICL001.3



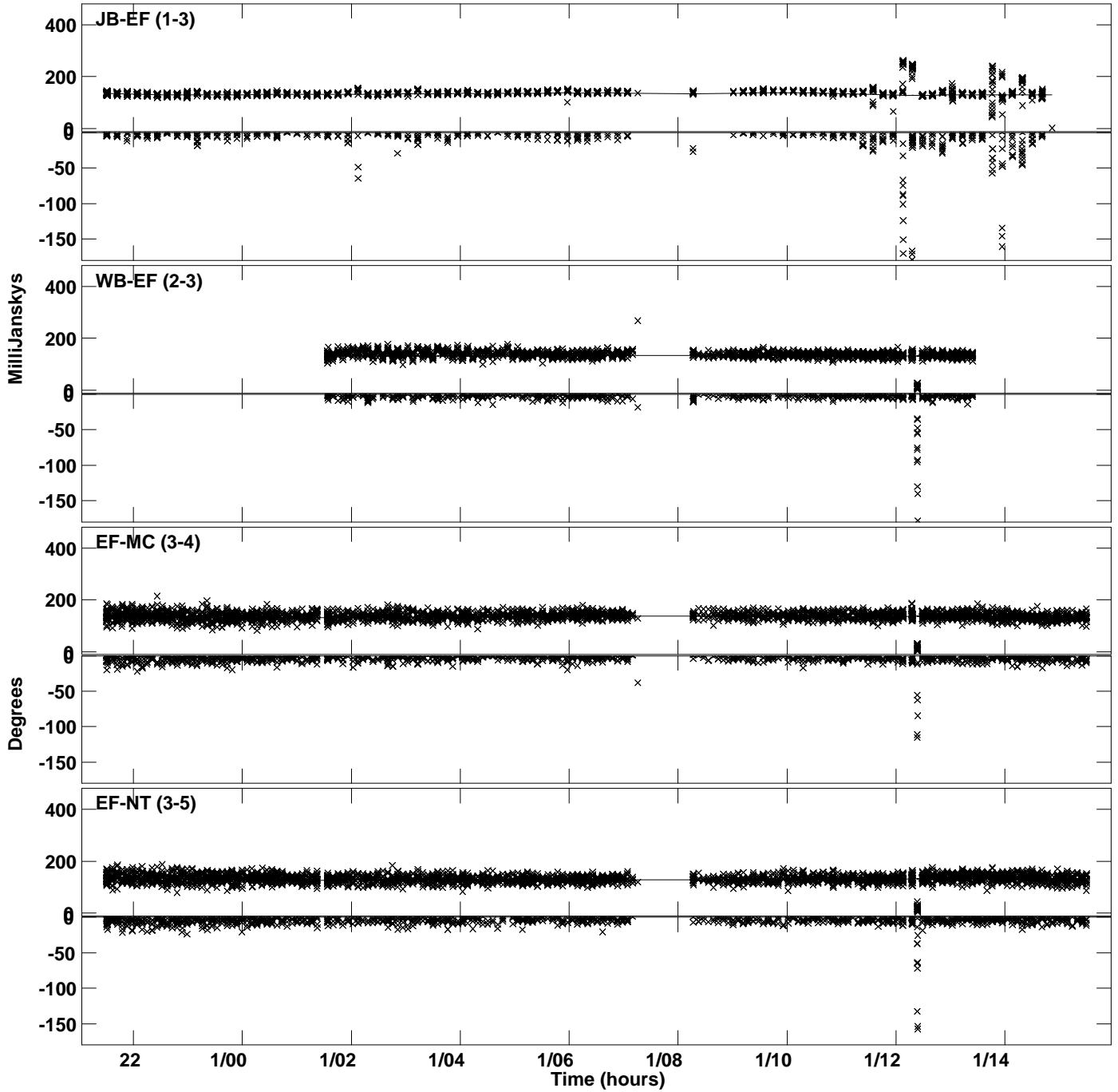
PLot file version 14 created 27-MAR-2024 20:49:03  
Amplitude andPhase vs Time for J1037+5711.MULTI.1 CL # 3  
IF 2 CHAN 1 STK RR of J1037+5711.ICL001.3



Plot file version 15 created 27-MAR-2024 20:49:03  
Amplitude andPhase vs Time for J1037+5711.MULTI.1 CL # 3  
IF 2 CHAN 1 STK RR of J1037+5711.ICL001.3

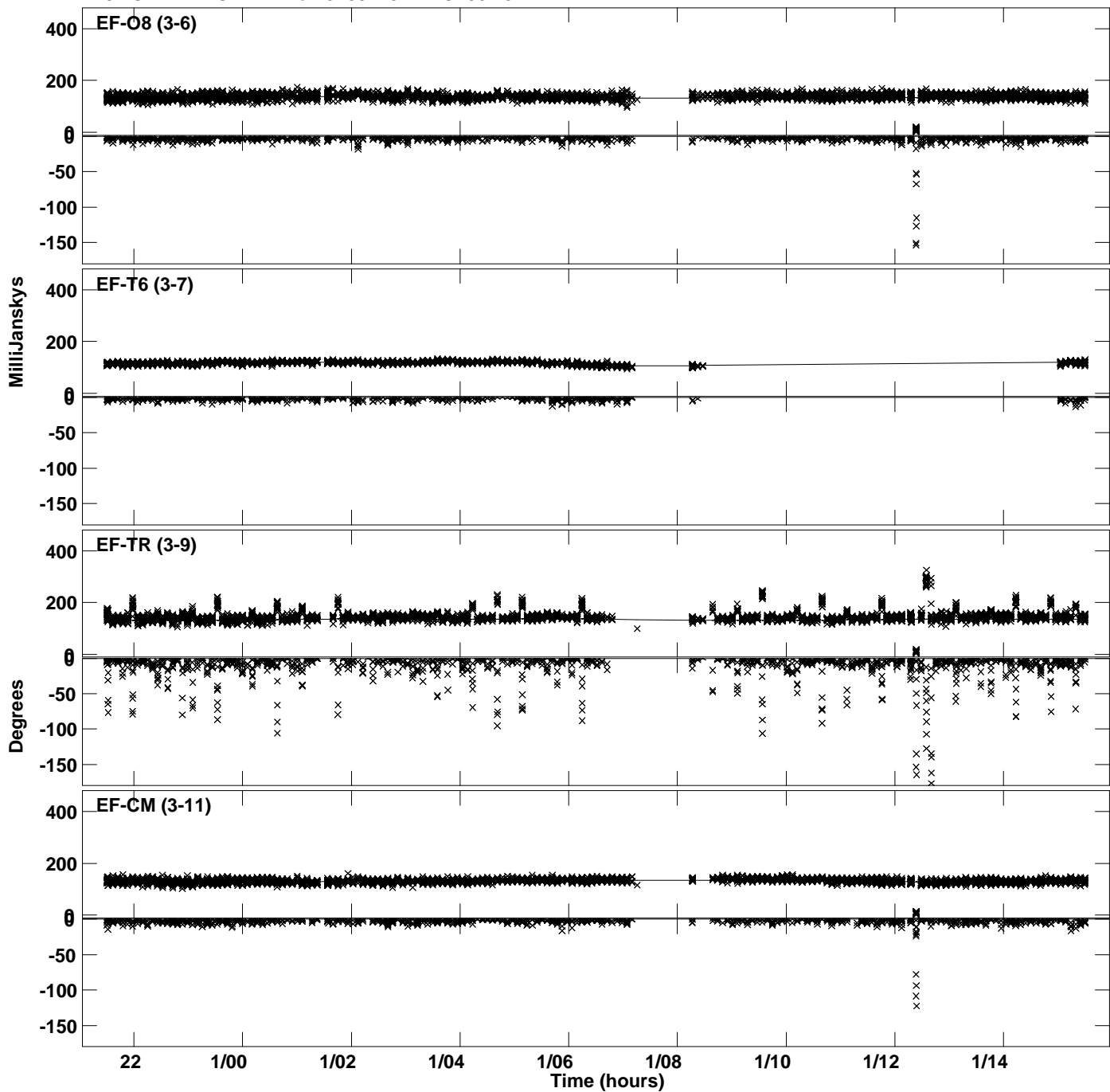


Plot file version 16 created 27-MAR-2024 20:49:03  
Amplitude andPhase vs Time for J1037+5711.MULTI.1 CL # 3  
IF 3 CHAN 1 STK RR of J1037+5711.ICL001.3

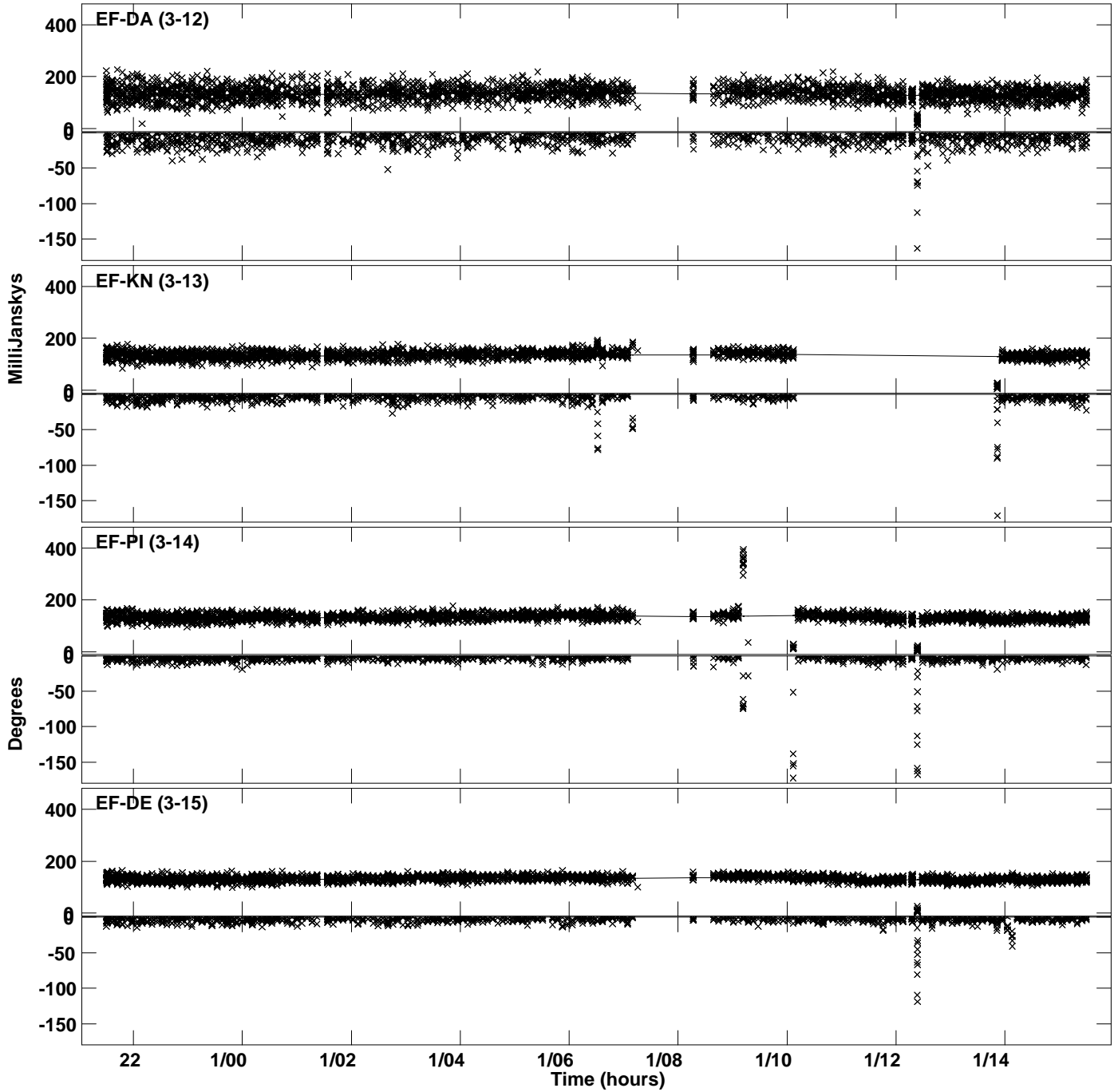




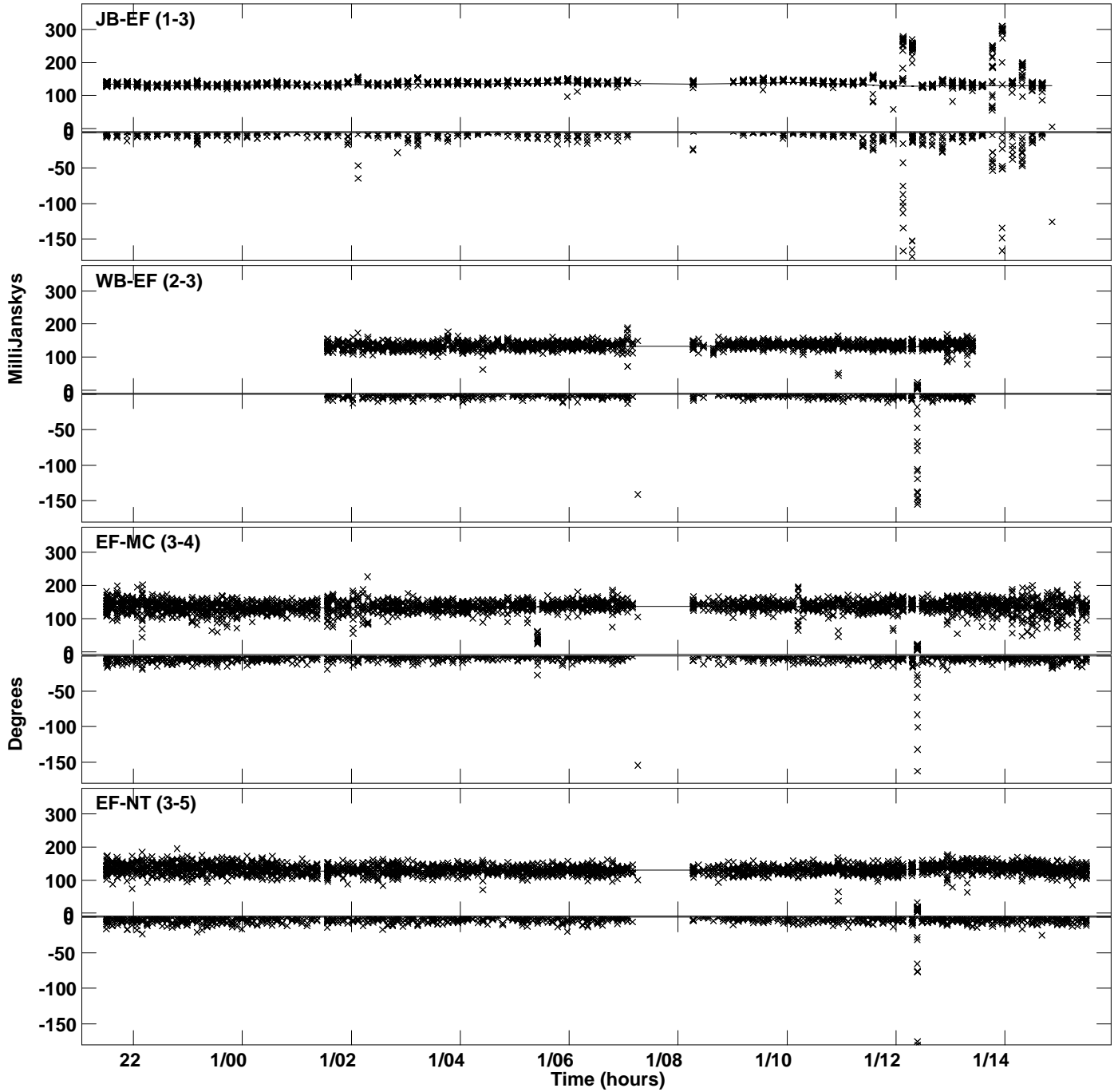
Plot file version 17 created 27-MAR-2024 20:49:03  
Amplitude and Phase vs Time for J1037+5711.MULTI.1 CL # 3  
IF 3 CHAN 1 STK RR of J1037+5711.ICL001.3



PLot file version 18 created 27-MAR-2024 20:49:03  
Amplitude andPhase vs Time for J1037+5711.MULTI.1 CL # 3  
IF 3 CHAN 1 STK RR of J1037+5711.ICL001.3



Plot file version 19 created 27-MAR-2024 20:49:04  
Amplitude andPhase vs Time for J1037+5711.MULTI.1 CL # 3  
IF 4 CHAN 1 STK RR of J1037+5711.ICL001.3



PLot file version 20 created 27-MAR-2024 20:49:04  
Amplitude andPhase vs Time for J1037+5711.MULTI.1 CL # 3  
IF 4 CHAN 1 STK RR of J1037+5711.ICL001.3

